



Cancer PathCHART Edits

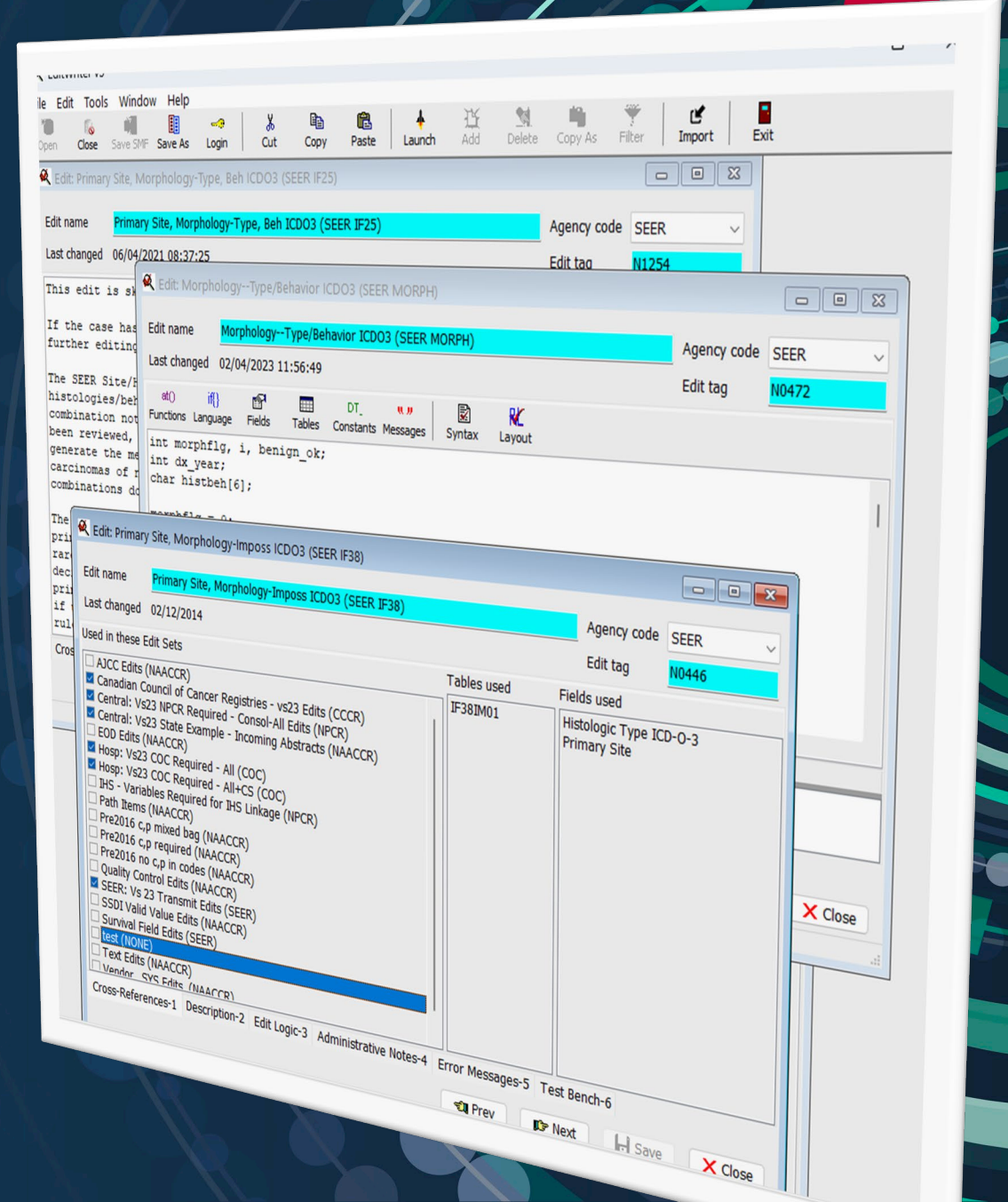
Jim Hofferkamp

NAACCR Edits Metabase Administrator

Cancer PathCHART Implementation WG Co-Chair

Program Manager

NAACCR, Inc.



Conflicts of Interest & Disclosures



I have no conflicts of interest or other
financial disclosures

What will be available from Cancer PathCHART in 2024?

- 2024 Cancer PathCHART ICD-O-3 Site Morphology Validation List (SMVL)
 - Will replace the current Site/Histology Validation List for cases diagnosed 2024 forward
- 2024 CPC Standards Search Tool
 - Online database search tool makes it easy to use the SMVL
- Edits
 - SMVL will be used with edits that check site/histology combinations
- Registry Software
 - SMVL has been provided to registry software vendors.

Current Site/Type List (STL)

- Sites are grouped
- Only valid site/histology combinations included
- 12,506 rows
- We will continue to use this table for cases diagnosed prior to 2024

A	B	C	D	E
Site recode	Site Description	Histolo	Histology Description	Histology/Behavior
C180, C182-C189, C199	LARGE INTESTINE, (EXCL. APPE	800	NEOPLASM	8000/3
C180, C182-C189, C199	LARGE INTESTINE, (EXCL. APPE	800	NEOPLASM	8001/3
C180, C182-C189, C199	LARGE INTESTINE, (EXCL. APPE	800	NEOPLASM	8002/3
C180, C182-C189, C199	LARGE INTESTINE, (EXCL. APPE	800	NEOPLASM	8003/3
C180, C182-C189, C199	LARGE INTESTINE, (EXCL. APPE	800	NEOPLASM	8004/3
C180, C182-C189, C199	LARGE INTESTINE, (EXCL. APPE	800	NEOPLASM	8005/3
C180, C182-C189, C199	LARGE INTESTINE, (EXCL. APPE	801	CARCINOMA, NOS	8010/2
C180, C182-C189, C199	LARGE INTESTINE, (EXCL. APPE	801	CARCINOMA, NOS	8010/3
C180, C182-C189, C199	LARGE INTESTINE, (EXCL. APPE	801	CARCINOMA, NOS	8011/3
C180, C182-C189, C199	LARGE INTESTINE, (EXCL. APPE	801	CARCINOMA, NOS	8012/3
C180, C182-C189, C199	LARGE INTESTINE, (EXCL. APPE	801	CARCINOMA, NOS	8013/3
C180, C182-C189, C199	LARGE INTESTINE, (EXCL. APPE	801	CARCINOMA, NOS	8014/3
C180, C182-C189, C199	LARGE INTESTINE, (EXCL. APPE	801	CARCINOMA, NOS	8015/3
C180, C182-C189, C199	LARGE INTESTINE, (EXCL. APPE	802	CARCINOMA, UNDIFF., NOS	8020/3
C180, C182-C189, C199	LARGE INTESTINE, (EXCL. APPE	802	CARCINOMA, UNDIFF., NOS	8021/3
C180, C182-C189, C199	LARGE INTESTINE, (EXCL. APPE	802	CARCINOMA, UNDIFF., NOS	8022/3
C180, C182-C189, C199	LARGE INTESTINE, (EXCL. APPE	803	GIANT & SPINDLE CELL CARCI	8030/3
C180, C182-C189, C199	LARGE INTESTINE, (EXCL. APPE	803	GIANT & SPINDLE CELL CARCI	8031/3

2024 SMVL

- A row for every site, histology, behavior combination
- Status
 - 1-Valid
 - 2-Unlikely (not included in table provided to vendors and
 - 3-Impossible
- Implementation year indicates if status has changed
- C18.1 has 1,261 rows
- Total 122,153 rows

Site	Histolo	Behavi	Status
C181	8130	2	3
C181	8130	3	3
C181	8131	3	3
C181	8140	2	1
C181	8140	3	1
C181	8144	2	1
C181	8144	3	1
C181	8145	3	1
C181	8147	3	3

Histology: 8130/3 Papillary Urothelial Cell Carcinoma
Status: 3-Impossible

Histology: 8140/3 Adenocarcinoma
Status: 1: Valid

Notice that 8142/3 Linitus Plastica is not included. That indicates the histology is not impossible for a primary of the appendix, but it is unlikely.
Status: 2 Unlikely

SMVL and Assigning Histology

Tools for Assigning Histology



- Solid Tumor Rules
 - Rules for assigning histology
- Annotated Histology List
 - List of histologies with notes on implementation and coding tips
- ICD-O-3.2 Excel Spreadsheet
 - Official list of histologies from IARC
 - Does not include updates since publication
- ICD-O-3.2 Implementation documents
 - Includes all new histologies, new terms, and changes in behavior for a specific year.
- CPC Search Tool
 - Quick and easy way to find valid, unlikely, and impossible histologies for specific sites.
 - Based on STL
- 2024 Cancer PathCHART ICD-O-3 Site Morphology Validation List

SMVL and Edits

Current Edits Checking Valid Histology and Valid Site/Histology Combinations

N0472 Morphology--Type/Behavior ICDO3 (SEER MORPH)

- Checks for valid histology codes
- Checks for new histology codes by date

N1254 Primary Site, Morphology-Type, Beh ICDO3 (SEER IF25)

- Uses STL (pre-2024 list) to check for valid primary site and histology combinations
- If combination is not on list, over-ride is required

N0446 Primary Site, Morphology-Imposs ICDO3 (SEER IF38)

N2022 Primary Site, Heme Morph, DateDX, Override (SEER)

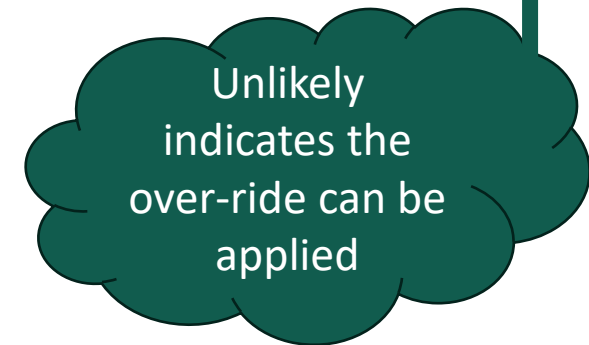
New Edit

N7040 Primary Site, Morphology-Type, Beh ICD03 2024

- Will check for valid, unlikely, and impossible site/histology combinations
- Will be based on *CPC ICD O 3 Site Morphology Validation List*
- *Will replace N1254 and N0446*

Primary Site, Morphology-Type, Beh ICDO3, 2024 (SEER) [N7040]

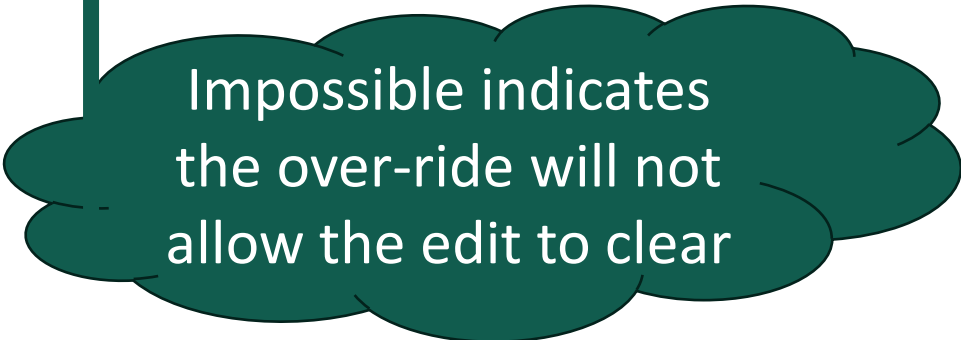
- Edit: Primary Site, Morphology-Type, Beh ICDO3, 2024 (SEER) [N7040] [SEER]
- Error: Primary Site: C619, Histologic Type ICD-O-3: 8130/3 is an **unlikely** combination
 - Primary Site (400): 'C619' **Prostate**
 - Histologic Type ICD-O-3 (522): '8130' **Papillary Urothelial Carcinoma**
 - Behavior Code ICD-O-3 (523): '3'
 - Over-ride Site/Type (2030): ''



Primary Site, Morphology-Type, Beh ICD03, 2024 (SEER) [N7040], Continued

- Error: Primary Site: C220, Histologic Type ICD-O-3: 8140/3 is biologically **impossible**. Please review for correct site/histology/behavior.

- Primary Site (400): 'C220' **Liver**
- Histologic Type ICD-O-3 (522): '8140' **Adenocarcinoma**
- Behavior Code ICD-O-3 (523): '3'
- Over-ride Site/Type (2030): ''



Impossible indicates
the over-ride will not
allow the edit to clear

Example 1

Diagnosis date pre-2024
based on current STL

- Biopsy of a mass in the brain Path Report: metastatic adenocarcinoma
 - What I enter...
- Primary Site ~~C71.9 (Brain NOS)~~ C80.9 (unknown primary)
- Histology: 8140 (Adenocarcinoma)
 - Behavior: 3
 - Over-ride:

N1254 Primary Site, Morphology-Type, Beh ICDO3 (SEER IF25)
Error: Site & Morphology conflict - ICDO3
(over-ride will allow this to pass)

N0446 Primary Site, Morphology-Imposs
ICDO3 (SEER IF38)
Error: Impossible Site & Morph
combination - ICDO3

Site/Type will pass all
edits. No over-ride
required.

Diagnosis date 2024
based on new STL

N7044 Primary Site, Morphology, Behavior
Validation
Error: Impossible site/histology combination

Example 2

Status changed 2
(Unlikely) to 3
(impossible) after CPC
review.

- Excision of lesion in the anus
 - Path Report: anorectal mucosal melanoma
- What I enter...
 - Primary Site: C21.0
 - Histology: 8744/3 (acral melanoma)
 - Over-ride:

N1254 Primary Site, Morphology-Type,
Beh ICDO3 (SEER IF25)
Error: Site & Morphology conflict - ICDO3
(over-ride will allow this to pass)

N0446 Primary Site, Morphology-Imposs
ICDO3 (SEER IF38)
(Edit does NOT trigger)

N7040 Primary Site, Morphology, Behavior
Validation
Error: Impossible site/histology combination

What to do?

- Double Check Primary site
- Check Tools for Assigning Histology resources (see slide 7)
- Check SEER Sinq
 - <https://seer.cancer.gov/seer-inquiry/>
- Submit question to Ask a SEER Registrar
 - Include:
 - Information from pathology reports
 - Statements from physicians
 - References to resources

SEER Inquiry System

Questions & Answers

SEER Inquiry System

Ask a SEER Registrar

Data Collection Answers

What to do?

No site/histology edits triggered!

N1254 Primary Site, Morphology-
Type, Beh ICDO3 (SEER IF25)
-The edit PASSED

N0446 Primary Site, Morphology-
Imposs ICDO3 (SEER IF38)
-The edit PASSED

- Answer per Ask a SEER Registrar:

Assign ICD-O code 8720/3.

- Acral melanoma is a rare subtype of melanoma occurring on the hands and feet (palms, soles, fingers, toes, and nail beds). Primary acral melanoma does not occur in other skin sites or organs.
- WHO 5th Ed GI book states the following types of melanomas occur in the anus/anorectal region:
 - melanoma, NOS 8720/3
 - nodular melanoma 8721/3
 - mucosal lentiginous melanoma 8746/3.
- Since the diagnosis does not indicate lentiginous spread, assign ICD-O code 8720/3.

- Biopsy of a lesion in the anus
 - Path Report: anorectal mucosal melanoma
- What I enter
 - Primary Site: C21.0
 - **Histology: 8720 (melanoma NOS)**
 - Behavior: 3
 - Over-ride:

N7040 Primary Site, Morphology,
Behavior Validation
-The edit PASSED

Example 3



- Path report: Glioblastoma (9440/3) of the colon (C18.9)
- Pathologist is confident the site/histology is correct.
 - Sends slides out for review and combination is confirmed by consulting pathologist.
 - Pathologist references literature stating combination is rare but has occurred.
- What I enter:
 - Primary Site:C18.9
 - Histology: 9440/3 (Glioblastoma)

N1254 Primary Site, Morphology-Type,
Beh ICDO3 (SEER IF25)
Error: Site & Morphology conflict - ICDO3
(over-ride will allow this to pass)

Primary Site, Morphology-Imposs
ICDO3 (SEER IF38)
Error: Impossible Site & Morph
combination - ICDO3

N7040 Primary Site, Morphology,
Behavior Validation
Error: Impossible Site & Morph
combination - ICDO3

What to do?

- Confirm primary site
- Confirm histology using Tools for Assigning Histology resources (see slide 7)
- Check SEER Sinq
 - <https://seer.cancer.gov/seer-inquiry/>
- Submit question to Ask a SEER Registrar
 - Include:
 - Information from pathology reports
 - Statements from physicians
 - References to resources

SEER Inquiry System

Questions & Answers

SEER Inquiry System

Ask a SEER Registrar

Data Collection Answers

Example 3

Fictional scenario!

- Response back from Ask a SEER Registrar was that a glioblastoma of the colon is possible and that the *CPC ICD O 3 Site Morphology Validation List* will be updated.

The SMVL list is updated annually.

Edits will not be updated until SMVL is updated

Registrar should hold case until abstract can pass edits.

N1254 Primary Site, Morphology-Type, Beh ICDO3 (SEER IF25)
Error: Site & Morphology conflict - ICDO3
(over-ride will allow this to pass)

Primary Site, Morphology-Imposs ICDO3 (SEER IF38)
Error: Impossible Site & Morph combination - ICDO3

- Colon
 - Path report: Glioblastoma (9440) of the colon (C189)
 - What I enter:
 - Primary Site:C189
 - Histology: 9440/3 (Glioblastoma)
 - Over-ride: 1

Updated edit
N7040 Primary Site, Morphology, Behavior Validation
(Case will pass if Over-ride is set to 1)

Summary

- SMVL/Search Tool will not impact cases diagnosed prior to 2024
- SMVL/Search Tool do not change how histology is assigned.
- If an edit is triggered due to an unlikely or impossible site/histology combination, confirm the prime site and histology.
- If there is an error in the SMVL/Search Tool or edits, save the case as incomplete until a correction can be made (do not enter incorrect codes to get past the edit!).

For More Information

Visit the Cancer PathCHART website today!

<https://seer.cancer.gov/cancerpathchart/>

Contact Us at NCICancerPathCHART@mail.nih.gov



**TURNING CANCER DATA
INTO DISCOVERY**

Thank You

NCICancerPathCHART@mail.nih.gov

 **NATIONAL CANCER INSTITUTE**

Cancer Path: CHART-Edits



Q&A

NIH NATIONAL CANCER INSTITUTE