

Table 1.24
Age-Adjusted SEER Incidence Rates and Trends for the Top 15 Cancer Sites^a by Race/Ethnicity
Both Sexes

All Races	Rate ^b		APC ^c	All Sites	Rate ^b		APC ^c	All Sites	Rate ^b		APC ^c
	2007-2011	2002-2011			2007-2011	2002-2011			2007-2011	2002-2011	
All Sites	460.4	-0.6*		All Sites	468.9	-0.6*		All Sites	480.8	-1.0*	
Breast	67.1	-0.3		Breast	68.3	-0.5		Prostate ^f	94.8	-2.0*	
Prostate ^f	67.0	-1.9*		Prostate ^f	64.2	-2.2*		Breast	70.0	0.3	
Lung and Bronchus	60.1	-1.7*		Lung and Bronchus	61.7	-1.6*		Lung and Bronchus	68.0	-1.9*	
Colon and Rectum	43.7	-2.8*		Colon and Rectum	42.9	-2.9*		Colon and Rectum	53.6	-2.7*	
Melanoma of the Skin	21.3	1.4*		Melanoma of the Skin	25.2	1.3*		Kidney and Renal Pelvis	17.9	2.7*	
Urinary Bladder	20.5	-0.8*		Urinary Bladder	22.4	-0.7*		Pancreas	15.6	-0.2	
Non-Hodgkin Lymphoma	19.7	-0.1		Non-Hodgkin Lymphoma	20.6	-0.2		Non-Hodgkin Lymphoma	14.3	-0.3	
Kidney and Renal Pelvis	15.5	1.9*		Kidney and Renal Pelvis	15.9	1.9*		Corpus and Uterus, NOS ^f	13.3	2.3*	
Corpus and Uterus, NOS ^f	13.1	1.0*		Leukemia	13.7	0.0		Urinary Bladder	12.6	-0.5	
Leukemia	13.0	0.0		Thyroid	13.7	5.8*		Myeloma	12.2	0.4	
Thyroid	12.9	5.8*		Corpus and Uterus, NOS ^f	13.4	0.8*		Stomach	11.2	-2.1*	
Pancreas	12.3	0.7*		Pancreas	12.2	0.9*		Leukemia	10.0	-1.0	
Oral Cavity and Pharynx	11.0	0.4*		Oral Cavity and Pharynx	11.4	0.8*		Liver & IBD ^g	9.4	3.4*	
Liver & IBD ^g	7.9	3.4*		Brain and ONS ^g	7.1	-0.5		Oral Cavity and Pharynx	9.4	-2.5*	
Stomach	7.5	-1.3*		Liver & IBD ^g	7.0	4.1*		Thyroid	7.6	5.9*	
Asian/Pacific Islander	Rate ^b		APC ^c	All Sites	Rate ^b		APC ^c	All Sites	Rate ^b		APC ^c
	2007-2011	2002-2011			2007-2011	2002-2011			2007-2011	2002-2011	
All Sites	306.7	-0.9*		All Sites	319.3	-0.8		All Sites	353.2	-0.9*	
Breast	51.6	0.6		Breast	42.8	0.1		Prostate ^f	53.6	-3.0*	
Lung and Bronchus	37.0	-1.4*		Lung and Bronchus	40.9	-2.7*		Breast	49.1	-0.2	
Colon and Rectum	36.9	-2.2*		Colon and Rectum	40.0	-1.7*		Colon and Rectum	36.6	-1.9*	
Prostate ^f	34.5	-3.6*		Prostate ^f	31.6	-3.6*		Lung and Bronchus	31.3	-2.1*	
Liver & IBD ^g	14.1	-0.9		Kidney and Renal Pelvis	19.4	1.6		Non-Hodgkin Lymphoma	17.7	0.3	
Non-Hodgkin Lymphoma	13.4	0.0		Liver & IBD ^g	13.7	3.9		Kidney and Renal Pelvis	15.2	1.7*	
Thyroid	12.5	5.5*		Non-Hodgkin Lymphoma	12.2	1.8		Liver & IBD ^g	12.2	2.8*	
Stomach	11.5	-3.7*		Pancreas	10.7	0.6		Urinary Bladder	11.4	-1.3*	
Corpus and Uterus, NOS ^f	10.5	2.5*		Corpus and Uterus, NOS ^f	10.6	2.2		Pancreas	11.1	-0.1	
Pancreas	9.7	0.9		Stomach	9.6	-4.0*		Stomach	11.1	-2.0*	
Urinary Bladder	8.8	-1.6*		Urinary Bladder	8.1	0.7		Thyroid	10.9	5.3*	
Kidney and Renal Pelvis	8.1	2.3*		Oral Cavity and Pharynx	8.1	3.0		Corpus and Uterus, NOS ^f	10.6	1.7*	
Leukemia	7.6	-0.2		Thyroid	7.7	4.2*		Leukemia	10.3	0.1	
Oral Cavity and Pharynx	7.5	-1.1		Leukemia	7.3	0.1		Oral Cavity and Pharynx	6.7	1.2*	
Ovary ^{fh}	5.1	-1.5*		Ovary ^{fh}	5.4	-2.1		Ovary ^{fh}	5.9	-2.1*	

Source: SEER 18 areas (San Francisco, Connecticut, Detroit, Hawaii, Iowa, New Mexico, Seattle, Utah, Atlanta, San Jose-Monterey, Los Angeles, Alaska Native Registry, Rural Georgia, California excluding SF/SJM/LA, Kentucky, Louisiana, New Jersey and Georgia excluding ATL/RG).

^a Top 15 cancer sites selected based on 2007-2011 age-adjusted rates for the race/ethnic group.

^b Rates are per 100,000 and age-adjusted to the 2000 US Std Population (19 age groups - Census P25-1130).

^c The APC is the Annual Percent Change over the time interval.

Trends are based on rates age-adjusted to the 2000 US Std Population (19 age groups - Census P25-1130).

^d Rates for American Indian/Alaska Native are based on the CHSDA (Contract Health Service Delivery Area) counties.

^e Hispanic is not mutually exclusive from whites, blacks, Asian/Pacific Islanders, and American Indians/Alaska Natives.

Incidence data for Hispanics are based on NHIA and exclude cases from the Alaska Native Registry.

^f The rates for sex-specific cancer sites are calculated using the population for both sexes combined.

^g IBD = Intrahepatic Bile Duct. ONS = Other Nervous System.

^h Ovary excludes borderline cases or histologies 8442, 8451, 8462, 8472, and 8473.

* The APC is significantly different from zero (p<.05).

- Statistic not shown. Rate based on less than 16 cases for the time interval. Trend based on less than 10 cases for at least one year within the time interval.

Table 1.25
Age-Adjusted SEER Incidence Rates and Trends for the Top 15 Cancer Sites^a by Race/Ethnicity

			Males					
All Races			White			Black		
	Rate ^b	APC ^c		Rate ^b	APC ^c		Rate ^b	APC ^c
	2007-2011	2002-2011		2007-2011	2002-2011		2007-2011	2002-2011
All Sites	529.4	-1.2*	All Sites	532.1	-1.2*	All Sites	600.9	-1.9*
Prostate	147.8	-2.3*	Prostate	139.9	-2.6*	Prostate	223.9	-2.5*
Lung and Bronchus	72.2	-2.4*	Lung and Bronchus	72.4	-2.3*	Lung and Bronchus	93.0	-2.8*
Colon and Rectum	50.6	-3.0*	Colon and Rectum	49.6	-3.2*	Colon and Rectum	62.3	-2.8*
Urinary Bladder	36.2	-0.8*	Urinary Bladder	39.4	-0.8*	Kidney and Renal Pelvis	24.7	2.1*
Melanoma of the Skin	27.7	1.6*	Melanoma of the Skin	32.3	1.6*	Urinary Bladder	21.3	0.1
Non-Hodgkin Lymphoma	23.9	0.0	Non-Hodgkin Lymphoma	24.9	-0.1	Non-Hodgkin Lymphoma	17.4	-0.5
Kidney and Renal Pelvis	21.2	1.8*	Kidney and Renal Pelvis	21.7	1.8*	Pancreas	17.2	0.3
Leukemia	16.7	-0.3	Leukemia	17.5	-0.3	Liver & IBD ^f	15.6	3.6*
Oral Cavity and Pharynx	16.5	0.4*	Oral Cavity and Pharynx	17.0	0.8*	Stomach	15.3	-3.1*
Pancreas	14.0	0.9*	Pancreas	14.0	1.0*	Myeloma	14.8	-0.3
Liver & IBD ^f	12.4	3.7*	Liver & IBD ^f	10.8	4.3*	Oral Cavity and Pharynx	14.7	-2.9*
Stomach	10.3	-1.6*	Stomach	9.2	-1.2*	Leukemia	12.9	-1.3
Myeloma	7.7	0.7*	Brain and ONS ^f	8.4	-0.5	Larynx	9.0	-3.5*
Esophagus	7.7	-0.7	Esophagus	8.0	-0.1	Esophagus	7.9	-4.8*
Brain and ONS ^f	7.6	-0.5*	Myeloma	7.2	0.7*	Brain and ONS ^f	4.7	-0.5
Asian/Pacific Islander			American Indian/Alaska Native ^d			Hispanic ^e		
	Rate ^b	APC ^c		Rate ^b	APC ^c		Rate ^b	APC ^c
	2007-2011	2002-2011		2007-2011	2002-2011		2007-2011	2002-2011
All Sites	331.0	-1.8*	All Sites	348.1	-0.7	All Sites	405.0	-1.6*
Prostate	79.3	-3.8*	Prostate	71.5	-3.9*	Prostate	121.8	-3.4*
Lung and Bronchus	49.4	-2.2*	Lung and Bronchus	49.5	-2.4	Colon and Rectum	44.3	-2.0*
Colon and Rectum	43.1	-2.4*	Colon and Rectum	45.5	0.2	Lung and Bronchus	39.6	-3.1*
Liver & IBD ^f	21.6	-0.7	Kidney and Renal Pelvis	25.3	2.4	Non-Hodgkin Lymphoma	20.6	0.4
Non-Hodgkin Lymphoma	16.3	0.0	Liver & IBD ^f	20.7	5.1	Kidney and Renal Pelvis	20.2	1.4
Urinary Bladder	15.5	-2.0*	Urinary Bladder	15.4	-	Urinary Bladder	20.0	-1.1*
Stomach	14.9	-4.1*	Non-Hodgkin Lymphoma	14.1	1.4	Liver & IBD ^f	18.7	3.2*
Kidney and Renal Pelvis	11.5	2.6*	Stomach	12.9	-4.3*	Stomach	14.8	-1.7*
Oral Cavity and Pharynx	10.9	-0.3	Pancreas	12.6	-	Leukemia	12.4	-0.3
Pancreas	10.7	0.8	Oral Cavity and Pharynx	12.5	4.1	Pancreas	12.2	1.0
Leukemia	9.4	0.1	Leukemia	8.6	1.7	Oral Cavity and Pharynx	9.8	0.9
Thyroid	5.7	5.7*	Esophagus	4.8	-	Myeloma	6.9	-0.6
Myeloma	4.5	1.8*	Testis	4.5	-	Brain and ONS ^f	5.8	-1.4*
Brain and ONS ^f	4.2	0.8	Larynx	4.3	-	Esophagus	5.2	-1.1
Esophagus	3.7	-1.2	Myeloma	4.3	-	Testis	4.8	3.0*

Source: SEER 18 areas (San Francisco, Connecticut, Detroit, Hawaii, Iowa, New Mexico, Seattle, Utah, Atlanta, San Jose-Monterey, Los Angeles, Alaska Native Registry, Rural Georgia, California excluding SF/SJM/LA, Kentucky, Louisiana, New Jersey and Georgia excluding ATL/RG).

^a Top 15 cancer sites selected based on 2007-2011 age-adjusted rates for the race/ethnic group.

^b Rates are per 100,000 and age-adjusted to the 2000 US Std Population (19 age groups - Census P25-1130).

^c The APC is the Annual Percent Change over the time interval.

Trends are based on rates age-adjusted to the 2000 US Std Population (19 age groups - Census P25-1130).

^d Rates for American Indian/Alaska Native are based on the CHSDA (Contract Health Service Delivery Area) counties.

^e Hispanic is not mutually exclusive from whites, blacks, Asian/Pacific Islanders, and American Indians/Alaska Natives.

Incidence data for Hispanics are based on NHIA and exclude cases from the Alaska Native Registry.

^f IBD = Intrahepatic Bile Duct. ONS = Other Nervous System.

* The APC is significantly different from zero (p<.05).

- Statistic not shown. Rate based on less than 16 cases for the time interval. Trend based on less than 10 cases for at least one year within the time interval.

Table 1.26
Age-Adjusted SEER Incidence Rates and Trends for the Top 15 Cancer Sites^a by Race/Ethnicity

Females

	All Races		White		Black	
	Rate ^b 2007-2011	APC ^c 2002-2011	Rate ^b 2007-2011	APC ^c 2002-2011	Rate ^b 2007-2011	APC ^c 2002-2011
All Sites	411.3	-0.2	424.4	-0.2	398.8	-0.2
Breast	124.6	-0.2	128.0	-0.3	122.8	0.5
Lung and Bronchus	51.1	-1.0*	53.8	-0.9*	51.2	-0.7
Colon and Rectum	38.2	-2.6*	37.3	-2.7*	47.5	-2.7*
Corpus and Uterus, NOS	24.6	1.2*	25.4	1.1*	23.2	2.5*
Thyroid	19.1	6.0*	20.4	6.0*	14.2	-0.5
Melanoma of the Skin	16.7	0.9	20.0	0.9	12.7	3.2*
Non-Hodgkin Lymphoma	16.3	-0.3	17.2	-0.3	11.9	-0.2
Ovary ^g	12.3	-1.7*	13.0	-1.6*	11.3	6.3*
Pancreas	10.9	0.6*	11.0	1.7*	10.5	0.8
Kidney and Renal Pelvis	10.7	1.8*	10.7	0.7*	9.8	-1.4*
Leukemia	10.2	0.1	10.7	0.2	9.4	-3.3*
Urinary Bladder	8.8	-1.2*	9.5	-1.1*	8.5	-1.1
Cervix Uteri	7.8	-1.6*	7.8	-1.2*	8.0	-0.8
Oral Cavity and Pharynx	6.2	0.1	6.4	0.4	6.9	-1.8*
Brain and ONS ^f	5.4	-0.7*	6.0	-0.7*	5.3	-1.7

	Asian/Pacific Islander		American Indian/Alaska Native ^d		Hispanic ^e	
	Rate ^b 2007-2011	APC ^c 2002-2011	Rate ^b 2007-2011	APC ^c 2002-2011	Rate ^b 2007-2011	APC ^c 2002-2011
All Sites	293.0	0.0	301.9	-0.6	320.4	-0.3*
Breast	93.6	0.6	79.3	0.2	91.3	0.0
Colon and Rectum	32.0	-2.1*	35.5	-3.5*	30.6	-1.8*
Lung and Bronchus	28.1	-0.2	34.7	-2.8	25.5	-0.9
Corpus and Uterus, NOS	19.1	2.5*	20.0	2.6	19.8	1.9*
Thyroid	18.5	5.3*	14.5	0.8	17.1	5.4*
Non-Hodgkin Lymphoma	11.2	-0.2	11.8	4.7*	15.4	0.2
Ovary ^g	9.3	-1.5*	10.6	1.3	11.2	2.0*
Stomach	9.0	-3.2*	9.8	-1.9	10.9	-1.8*
Pancreas	8.9	1.0	9.1	-0.4	10.2	-4.5*
Liver & IBD ^f	8.1	-1.3	8.0	1.9	10.2	-1.0
Cervix Uteri	6.4	-3.5*	7.6	0.1	8.7	0.4
Leukemia	6.1	-0.6	7.3	-3.6	8.3	-2.5*
Kidney and Renal Pelvis	5.5	1.8	6.5	-0.5	6.7	1.7
Oral Cavity and Pharynx	4.7	-2.4*	4.4	-	5.1	-1.9*
Urinary Bladder	3.9	-0.5	4.0	-	4.7	-0.6

Source: SEER 18 areas (San Francisco, Connecticut, Detroit, Hawaii, Iowa, New Mexico, Seattle, Utah, Atlanta, San Jose-Monterey, Los Angeles, Alaska Native Registry, Rural Georgia, California excluding SF/SJM/LA, Kentucky, Louisiana, New Jersey and Georgia excluding ATL/RG).

^a Top 15 cancer sites selected based on 2007-2011 age-adjusted rates for the race/ethnic group.

^b Rates are per 100,000 and age-adjusted to the 2000 US Std Population (19 age groups - Census P25-1130).

^c The APC is the Annual Percent Change over the time interval.

Trends are based on rates age-adjusted to the 2000 US Std Population (19 age groups - Census P25-1130).

^d Rates for American Indian/Alaska Native are based on the CHSDA (Contract Health Service Delivery Area) counties.

^e Hispanic is not mutually exclusive from whites, blacks, Asian/Pacific Islanders, and American Indians/Alaska Natives.

Incidence data for Hispanics are based on NHIA and exclude cases from the Alaska Native Registry.

^f IBD = Intrahepatic Bile Duct. ONS = Other Nervous System.

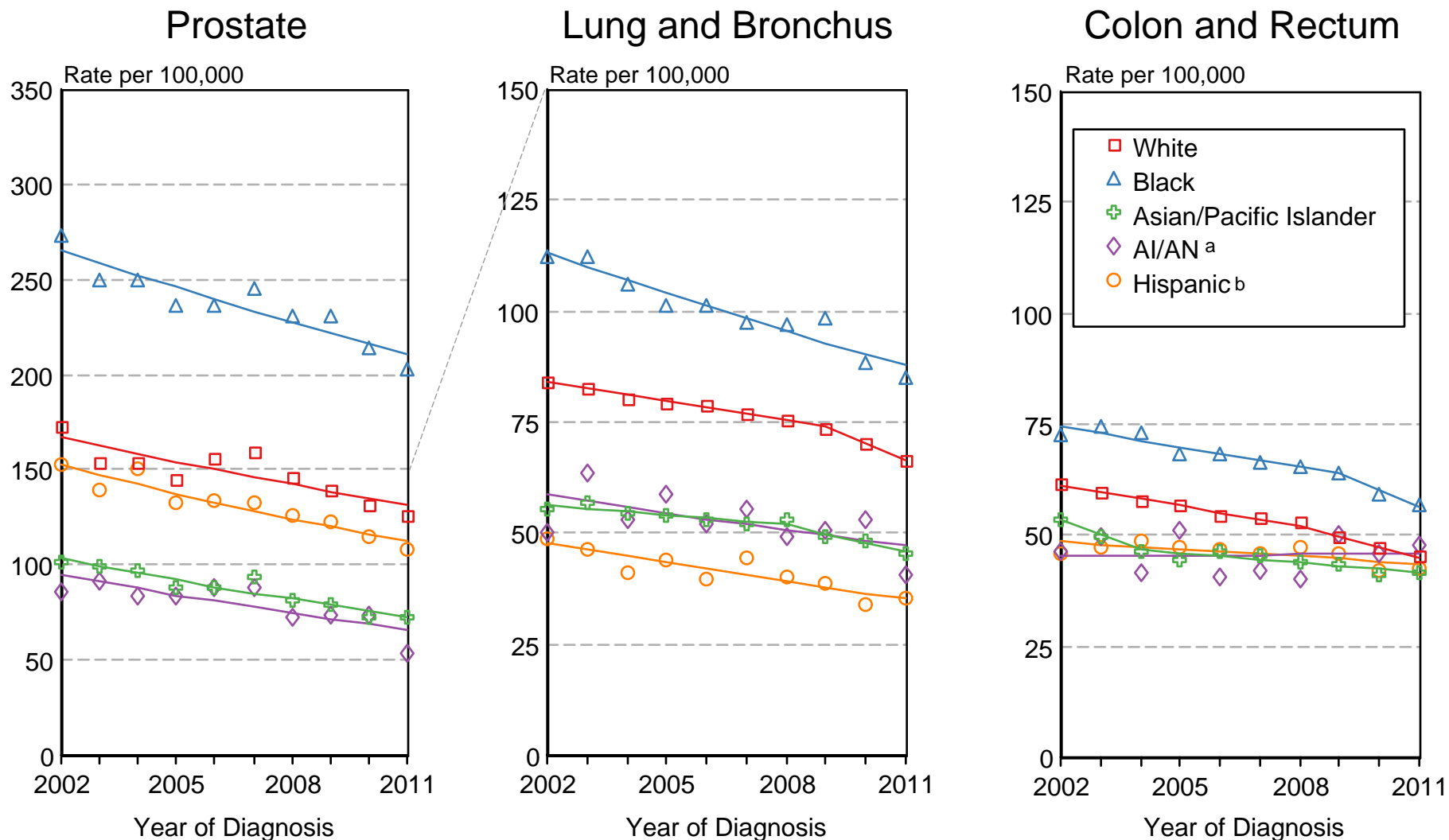
^g Ovary excludes borderline cases or histologies 8442, 8451, 8462, 8472, and 8473.

* The APC is significantly different from zero (p<.05).

- Statistic not shown. Rate based on less than 16 cases for the time interval. Trend based on less than 10 cases for at least one year within the time interval.

Figure 1.13

SEER Incidence 2002-2011 Males by Race/Ethnicity



Source: SEER 18 areas (San Francisco, Connecticut, Detroit, Hawaii, Iowa, New Mexico, Seattle, Utah, Atlanta, San Jose-Monterey, Los Angeles, Alaska Native Registry, Rural Georgia, California excluding SF/SJM/LA, Kentucky, Louisiana, New Jersey and Georgia excluding ATL/RG).

Rates are age-adjusted to the 2000 US Std Population (19 age groups - Census P25-1103).

Regression lines are calculated using the Joinpoint Regression Program Version 4.1.0, April 2014, National Cancer Institute.

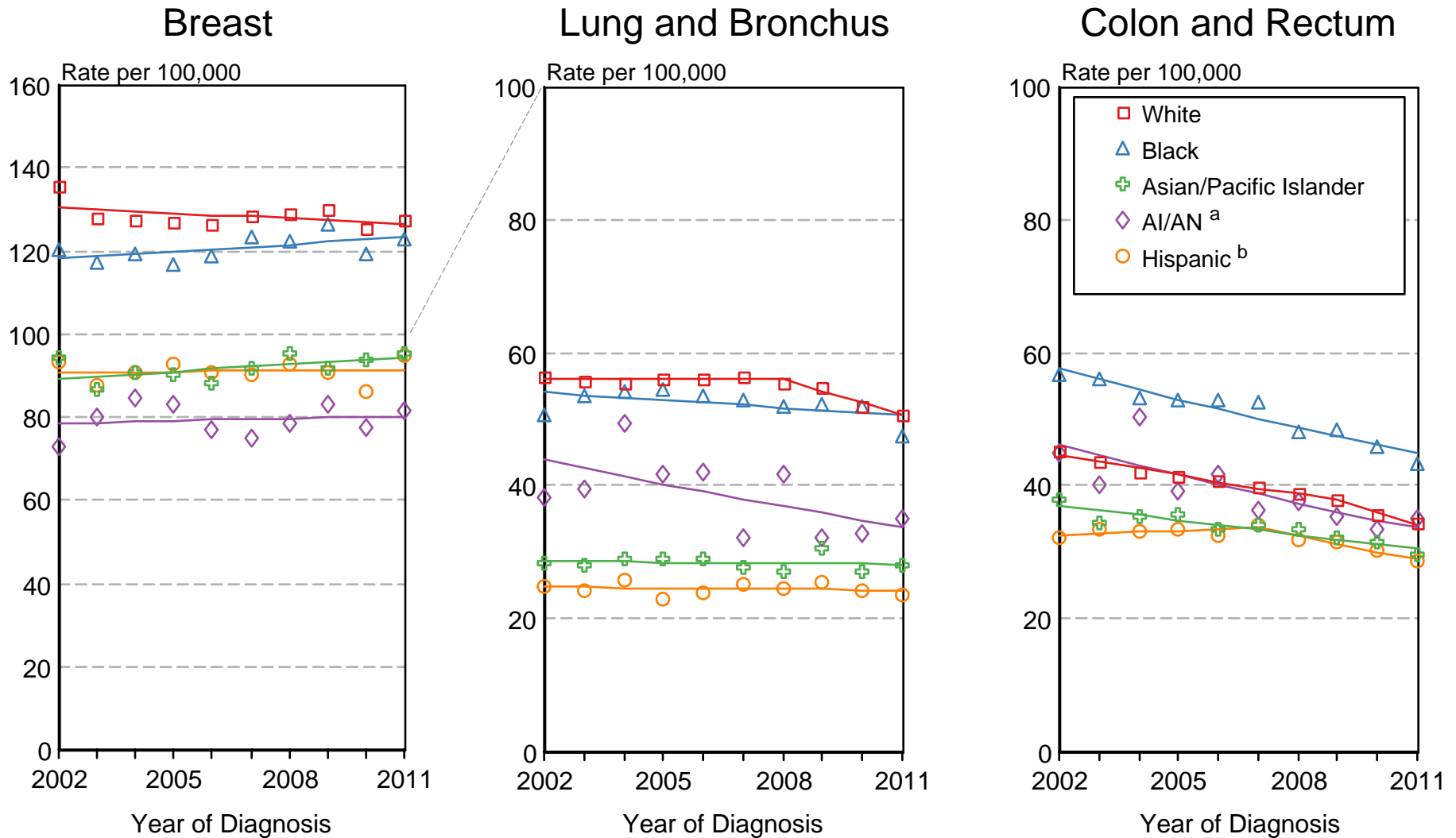
^a Incidence rates for American Indian/Alaska Native (AI/AN) are based on the CHSDA (Contract Health Service Delivery Area) counties.

^b Hispanic is not mutually exclusive from whites, blacks, Asian/Pacific Islanders, and American Indians/Alaska Natives.

Incidence data for Hispanics are based on NHIA and exclude cases from the Alaska Native Registry.

Figure 1.14

SEER Incidence 2002-2011 Females by Race/Ethnicity



Source: SEER 18 areas (San Francisco, Connecticut, Detroit, Hawaii, Iowa, New Mexico, Seattle, Utah, Atlanta, San Jose-Monterey, Los Angeles, Alaska Native Registry, Rural Georgia, California excluding SF/SJM/LA, Kentucky, Louisiana, New Jersey and Georgia excluding ATL/RG). Rates are age-adjusted to the 2000 US Std Population (19 age groups - Census P25-1103).

Regression lines are calculated using the Joinpoint Regression Program Version 4.1.0, April 2014, National Cancer Institute.

^a Incidence rates for American Indian/Alaska Native (AI/AN) are based on the CHSDA (Contract Health Service Delivery Area) counties.

^b Hispanic is not mutually exclusive from whites, blacks, Asian/Pacific Islanders, and American Indians/Alaska Natives. Incidence data for Hispanics are based on NHIA and exclude cases from the Alaska Native Registry.