

Table 1.5
Age-Adjusted SEER Incidence and U.S. Death Rates and 5-Year Relative Survival (Percent)
By Primary Cancer Site, Sex and Time Period

All Races

Site	Incidence ^a (2009-2013)			US Mortality ^b (2009-2013)			Survival ^c (%) (2006-2012)		
	Total	Males	Females	Total	Males	Females	Total	Males	Females
All Sites	448.7	504.5	409.9	168.5	204.0	143.4	66.9	67.0	66.9
Oral Cavity & Pharynx:	11.1	16.7	6.2	2.4	3.8	1.3	64.0	63.0	66.3
Lip	0.7	1.1	0.3	0.0	0.0	0.0	89.2	89.6	88.0
Tongue	3.3	5.0	1.8	0.6	0.9	0.4	64.8	65.2	63.9
Salivary gland	1.3	1.7	1.0	0.2	0.4	0.1	72.5	64.5	83.3
Floor of mouth	0.5	0.8	0.3	0.0	0.0	0.0	52.4	50.9	55.7
Gum & other oral cavity	1.5	1.8	1.3	0.3	0.4	0.3	59.2	55.6	63.5
Nasopharynx	0.6	0.9	0.4	0.2	0.3	0.1	60.7	58.9	65.0
Tonsil	1.9	3.3	0.7	0.2	0.4	0.1	72.6	73.1	69.7
Oropharynx	0.4	0.7	0.2	0.2	0.4	0.1	42.4	44.0	36.6
Hypopharynx	0.6	1.1	0.2	0.1	0.2	0.0	32.6	32.5	33.2
Other oral cavity & pharynx	0.2	0.4	0.1	0.5	0.8	0.2	41.5	43.3	36.3
Digestive System:	82.2	100.2	67.4	41.8	53.8	32.2	44.3	42.2	46.9
Esophagus	4.3	7.4	1.7	4.1	7.4	1.5	18.4	18.3	18.5
Stomach	7.4	10.0	5.3	3.3	4.5	2.4	30.4	28.5	33.2
Small intestine	2.2	2.6	1.9	0.4	0.4	0.3	66.9	66.3	67.7
Colon & Rectum:	41.0	47.1	36.0	15.1	18.1	12.7	65.1	64.9	65.2
Colon	29.0	32.1	26.5	-	-	-	64.4	64.5	64.3
Rectum	12.0	15.0	9.5	-	-	-	66.6	65.8	67.8
Anus, anal canal & anorectum	1.8	1.5	2.1	0.2	0.2	0.3	66.4	60.4	70.1
Liver & intrahepatic bile duct	8.4	13.0	4.4	6.1	9.1	3.6	17.5	17.1	18.5
Gallbladder	1.2	0.9	1.4	0.6	0.5	0.7	18.5	17.3	19.0
Other biliary	1.9	2.4	1.6	0.4	0.5	0.4	16.9	17.6	16.1
Pancreas	12.4	14.1	11.0	10.9	12.5	9.5	7.7	7.6	7.8
Retroperitoneum	0.4	0.4	0.4	0.1	0.1	0.0	56.1	55.7	56.5
Peritoneum, omentum & mesentery	0.6	0.1	1.0	0.3	0.1	0.4	32.9	41.5	32.2
Other digestive system	0.6	0.7	0.5	0.3	0.4	0.2	10.2	9.4	10.8
Respiratory System:	61.4	74.8	51.2	47.3	60.1	37.6	20.7	19.5	22.1
Nose, nasal cavity & middle ear	0.7	0.9	0.5	0.1	0.2	0.1	55.9	57.2	53.9
Larynx	3.2	5.6	1.1	1.1	1.9	0.4	60.7	61.5	57.4
Lung & bronchus	57.3	67.9	49.4	46.0	57.8	37.0	17.7	14.9	20.8
Pleura ^d	0.0	0.0	0.0	0.1	0.1	0.0	23.4	21.2	26.5
Trachea & other respiratory organs	0.2	0.3	0.1	0.1	0.1	0.0	51.4	53.3	46.3
Bones & joints	0.9	1.1	0.8	0.4	0.5	0.3	67.4	65.4	70.1
Soft tissue (including heart)	3.4	4.0	2.9	1.3	1.5	1.2	64.9	64.2	65.7
Skin (excl. basal & squamous):	23.8	31.4	18.3	3.6	5.6	2.1	90.9	88.9	93.5
Melanoma of the skin	21.8	28.5	16.9	2.7	4.1	1.7	91.5	89.5	94.0
Other non-epithelial skin	2.0	2.8	1.4	0.9	1.6	0.4	84.1	81.5	87.5
Breast	67.2	1.2	125.0	12.0	0.3	21.5	89.7	83.6	89.7
Breast (<i>in situ</i>)	16.6	0.1	31.5	-	-	-	100.0	98.6	100.0

Note: Incidence and death rates are per 100,000 and are age-adjusted to the 2000 US Std Population (19 age groups - Census P25-1130).

^a SEER 18 areas (San Francisco, Connecticut, Detroit, Hawaii, Iowa, New Mexico, Seattle, Utah, Atlanta, San Jose-Monterey, Los Angeles, Alaska Native Registry, Rural Georgia, California excluding SF/SJM/LA, Kentucky, Louisiana, New Jersey and Georgia excluding ATL/RG).

^b US Mortality Files, National Center for Health Statistics, Centers for Disease Control and Prevention.

^c SEER 18 areas. Based on follow-up of patients into 2013.

^d Mesotheliomas of the Pleura are included in the separate group Mesothelioma for incidence but are included in the Pleura grouping for mortality.

- Statistic could not be calculated due to less than 16 cases in the time interval.

Table 1.5 - continued
Age-Adjusted SEER Incidence and U.S. Death Rates and 5-Year Relative Survival (Percent)
By Primary Cancer Site, Sex and Time Period

All Races

Site	Incidence ^a (2009-2013)			US Mortality ^b (2009-2013)			Survival ^c (%) (2006-2012)		
	Total	Males	Females	Total	Males	Females	Total	Males	Females
Female Genital System:	26.1	-	49.0	8.4	-	15.3	69.3	-	69.3
Cervix uteri	3.9	-	7.5	1.2	-	2.3	67.5	-	67.5
Corpus uteri	13.1	-	24.6	1.1	-	1.9	83.0	-	83.0
Uterus, NOS	0.4	-	0.8	1.4	-	2.5	29.9	-	29.9
Ovary ^d	6.4	-	11.9	4.2	-	7.5	46.2	-	46.2
Vagina	0.4	-	0.7	0.1	-	0.2	47.8	-	47.8
Vulva	1.3	-	2.4	0.3	-	0.5	71.9	-	71.9
Other female genital system	0.6	-	1.1	0.1	-	0.3	57.4	-	57.4
Male Genital System:	62.3	136.2	-	8.5	21.1	-	98.6	98.6	-
Prostate	59.0	129.4	-	8.2	20.7	-	98.9	98.9	-
Testis	2.8	5.7	-	0.1	0.3	-	95.4	95.4	-
Penis	0.4	0.9	-	0.1	0.2	-	69.1	69.1	-
Other male genital system	0.1	0.3	-	0.0	0.0	-	84.7	84.7	-
Urinary System:	36.5	58.0	19.8	8.5	13.7	4.8	75.3	76.1	73.4
Urinary bladder	20.1	35.3	8.6	4.4	7.7	2.2	77.5	78.9	73.0
Kidney & renal pelvis	15.6	21.4	10.7	3.9	5.7	2.5	73.7	73.0	75.0
Ureter	0.5	0.8	0.4	0.1	0.1	0.1	47.3	47.5	46.7
Other urinary system	0.3	0.5	0.2	0.1	0.2	0.1	50.4	54.4	42.6
Eye & Orbit	0.8	1.0	0.7	0.1	0.1	0.1	81.8	81.2	82.3
Brain & Nervous System: ^e	6.4	7.6	5.4	4.3	5.3	3.5	33.8	32.8	35.1
Brain	6.0	7.2	5.0	-	-	-	30.8	30.3	31.5
Cranial nerves & other nervous system	0.4	0.4	0.4	-	-	-	78.1	75.9	80.2
Endocrine System:	14.6	7.7	21.3	0.8	0.8	0.8	96.2	92.0	97.6
Thyroid	13.9	6.9	20.6	0.5	0.5	0.5	98.1	95.7	98.7
Other endocrine & thymus	0.7	0.8	0.7	0.3	0.3	0.3	65.1	65.8	64.2
Lymphoma:	22.1	26.7	18.4	6.4	8.2	5.0	72.8	71.5	74.4
Hodgkin lymphoma	2.6	3.0	2.3	0.4	0.5	0.3	86.2	85.4	87.3
Non-Hodgkin lymphoma	19.5	23.7	16.1	6.0	7.7	4.7	70.7	69.2	72.4
Myeloma	6.5	8.2	5.2	3.3	4.2	2.7	48.5	49.4	47.4
Leukemia:	13.5	17.3	10.5	6.9	9.3	5.2	59.7	60.7	58.3
Lymphocytic:	6.7	8.9	5.0	1.9	2.7	1.3	78.4	79.0	77.6
Acute lymphocytic	1.7	1.9	1.5	0.4	0.5	0.4	68.1	68.2	67.8
Chronic lymphocytic	4.6	6.3	3.3	1.3	2.0	0.9	82.6	82.7	82.6
Other lymphocytic	0.4	0.6	0.2	0.1	0.2	0.1	80.4	84.2	68.7
Myeloid & Monocytic:	6.2	7.7	5.1	3.4	4.4	2.6	38.6	38.5	38.7
Acute myeloid	4.1	5.0	3.4	2.8	3.7	2.2	26.6	25.7	27.6
Chronic myeloid	1.8	2.3	1.3	0.3	0.4	0.2	65.1	64.3	66.3
Acute monocytic	0.2	0.3	0.2	0.0	0.0	0.0	23.7	22.1	25.5
Other myeloid & monocytic	0.2	0.2	0.1	0.2	0.3	0.2	32.4	33.1	31.6
Other leukemia:	0.6	0.7	0.5	1.6	2.1	1.2	33.0	31.8	34.2
Other acute leukemia	0.2	0.3	0.2	0.6	0.7	0.4	20.3	19.7	20.9
Aleukemic, subleukemic & NOS	0.3	0.4	0.3	1.0	1.4	0.8	41.8	41.2	42.2
Kaposi Sarcoma ^f	0.5	1.0	0.1	-	-	-	73.1	72.8	75.5
Mesothelioma ^f	1.0	1.8	0.4	-	-	-	9.6	7.6	15.4
Ill-defined & unspecified	8.4	9.7	7.3	12.4	15.7	9.9	18.2	22.0	14.4

Note: Incidence and death rates are per 100,000 and are age-adjusted to the 2000 US Std Population (19 age groups - Census P25-1130).

^a SEER 18 areas (San Francisco, Connecticut, Detroit, Hawaii, Iowa, New Mexico, Seattle, Utah, Atlanta, San Jose-Monterey, Los Angeles, Alaska Native Registry, Rural Georgia, California excluding SF/SJM/LA, Kentucky, Louisiana, New Jersey and Georgia excluding ATL/RG).

^b US Mortality Files, National Center for Health Statistics, Centers for Disease Control and Prevention.

^c SEER 18 areas. Based on follow-up of patients into 2013.

^d Ovary excludes borderline cases or histologies 8442, 8451, 8462, 8472, and 8473.

^e Due to coding changes, Brain & Nervous System mortality are no longer shown separately.

^f Rate not shown for mortality. Category did not exist in mortality coding until 1999.

- Statistic could not be calculated due to less than 16 cases in the time interval.

Table 1.6
Age-Adjusted SEER Incidence and U.S. Death Rates and 5-Year Relative Survival (Percent)
By Primary Cancer Site, Sex and Time Period

Site	Whites								
	Incidence ^a (2009-2013)			US Mortality ^b (2009-2013)			Survival ^c (%) (2006-2012)		
	Total	Males	Females	Total	Males	Females	Total	Males	Females
All Sites	457.4	508.2	422.5	168.4	202.9	143.6	67.5	67.4	67.6
Oral Cavity & Pharynx:	11.6	17.4	6.4	2.4	3.7	1.3	65.5	65.0	67.0
Lip	0.8	1.3	0.4	0.0	0.0	0.0	89.4	89.6	88.8
Tongue	3.6	5.4	1.9	0.6	0.9	0.4	66.5	67.1	65.0
Salivary gland	1.3	1.8	1.0	0.3	0.4	0.1	70.8	62.7	82.6
Floor of mouth	0.6	0.8	0.4	0.0	0.0	0.0	53.7	52.7	56.1
Gum & other oral cavity	1.5	1.8	1.3	0.4	0.4	0.3	59.2	55.7	63.4
Nasopharynx	0.4	0.6	0.2	0.1	0.2	0.1	58.1	56.6	61.7
Tonsil	2.1	3.6	0.7	0.2	0.4	0.1	74.4	74.9	71.6
Oropharynx	0.4	0.7	0.2	0.2	0.4	0.1	45.4	47.7	37.0
Hypopharynx	0.6	1.0	0.2	0.1	0.1	0.0	35.2	35.4	34.2
Other oral cavity & pharynx	0.2	0.4	0.1	0.4	0.7	0.2	45.4	47.3	39.9
Digestive System:	79.8	97.0	65.2	40.6	52.2	31.0	44.9	42.8	47.5
Esophagus	4.5	7.9	1.7	4.3	7.7	1.5	19.2	19.3	18.8
Stomach	6.6	9.1	4.5	2.9	3.9	2.1	29.2	27.4	32.1
Small intestine	2.2	2.5	1.9	0.3	0.4	0.3	67.9	67.0	69.0
Colon & Rectum:	40.1	46.0	35.2	14.7	17.6	12.3	65.8	65.7	65.8
Colon	28.4	31.4	26.0	-	-	-	65.4	65.6	65.3
Rectum	11.7	14.6	9.3	-	-	-	66.5	65.9	67.4
Anus, anal canal & anorectum	1.9	1.5	2.3	0.3	0.2	0.3	68.0	62.0	71.5
Liver & intrahepatic bile duct	7.5	11.6	3.9	5.7	8.3	3.4	16.9	16.6	17.5
Gallbladder	1.1	0.8	1.4	0.6	0.4	0.7	18.8	16.9	19.5
Other biliary	1.9	2.3	1.5	0.4	0.5	0.4	16.9	18.2	15.3
Pancreas	12.4	14.1	10.9	10.8	12.5	9.4	7.7	7.6	7.7
Retroperitoneum	0.4	0.4	0.3	0.1	0.1	0.0	55.8	55.8	55.9
Peritoneum, omentum & mesentery	0.6	0.1	1.0	0.3	0.1	0.4	32.3	41.0	31.6
Other digestive system	0.6	0.7	0.5	0.3	0.4	0.2	10.5	10.2	10.7
Respiratory System:	62.9	74.9	53.7	48.0	59.9	38.8	20.9	19.9	22.2
Nose, nasal cavity & middle ear	0.7	0.9	0.5	0.1	0.2	0.1	58.3	60.3	55.2
Larynx	3.2	5.6	1.2	1.0	1.8	0.4	61.8	62.5	58.5
Lung & bronchus	58.8	68.1	51.8	46.7	57.7	38.3	17.9	15.1	20.9
Pleura ^d	0.0	0.1	0.0	0.1	0.1	0.0	19.2	21.6	15.1
Trachea & other respiratory organs	0.2	0.3	0.1	0.1	0.1	0.0	50.7	53.9	42.1
Bones & joints	1.0	1.1	0.8	0.4	0.6	0.3	67.1	64.7	70.4
Soft tissue (including heart)	3.5	4.2	2.9	1.3	1.6	1.1	65.9	65.0	67.1
Skin (excl. basal & squamous):	28.1	36.5	21.9	4.1	6.3	2.4	90.5	88.4	93.3
Melanoma of the skin	25.9	33.5	20.4	3.1	4.6	2.0	91.1	89.1	93.8
Other non-epithelial skin	2.1	3.0	1.5	1.0	1.7	0.5	82.1	79.4	85.9
Breast	68.0	1.2	128.0	11.6	0.3	21.0	90.8	85.7	90.8
Breast (<i>in situ</i>)	16.4	0.1	31.5	-	-	-	100.0	100.0	100.0

Note: Incidence and death rates are per 100,000 and are age-adjusted to the 2000 US Std Population (19 age groups - Census P25-1130).

^a SEER 18 areas (San Francisco, Connecticut, Detroit, Hawaii, Iowa, New Mexico, Seattle, Utah, Atlanta, San Jose-Monterey, Los Angeles, Alaska Native Registry, Rural Georgia, California excluding SF/SJM/LA, Kentucky, Louisiana, New Jersey and Georgia excluding ATL/RG).

^b US Mortality Files, National Center for Health Statistics, Centers for Disease Control and Prevention.

^c SEER 18 areas. Based on follow-up of patients into 2013.

^d Mesotheliomas of the Pleura are included in the separate group Mesothelioma for incidence but are included in the Pleura grouping for mortality.

- Statistic could not be calculated due to less than 16 cases in the time interval.

Table 1.6 - continued
 Age-Adjusted SEER Incidence and U.S. Death Rates and 5-Year Relative Survival (Percent)
 By Primary Cancer Site, Sex and Time Period

Site	Whites								
	Incidence ^a (2009-2013)			US Mortality ^b (2009-2013)			Survival ^c (%) (2006-2012)		
	Total	Males	Females	Total	Males	Females	Total	Males	Females
Female Genital System:	26.6	-	50.5	8.3	-	15.1	70.6	-	70.6
Cervix uteri	3.8	-	7.5	1.1	-	2.1	68.9	-	68.9
Corpus uteri	13.3	-	25.4	1.0	-	1.8	85.2	-	85.2
Uterus, NOS	0.4	-	0.7	1.3	-	2.3	32.2	-	32.2
Ovary ^d	6.6	-	12.5	4.3	-	7.8	46.2	-	46.2
Vagina	0.4	-	0.7	0.1	-	0.2	48.1	-	48.1
Vulva	1.4	-	2.7	0.3	-	0.5	71.1	-	71.1
Other female genital system	0.6	-	1.2	0.1	-	0.3	56.4	-	56.4
Male Genital System:	60.2	129.8	-	7.9	19.6	-	98.8	98.8	-
Prostate	56.3	121.9	-	7.7	19.1	-	99.2	99.2	-
Testis	3.4	6.7	-	0.1	0.3	-	95.5	95.5	-
Penis	0.4	0.9	-	0.1	0.2	-	67.7	67.7	-
Other male genital system	0.1	0.3	-	0.0	0.0	-	86.8	86.8	-
Urinary System:	39.0	61.8	20.9	8.9	14.2	4.9	75.7	76.5	74.0
Urinary bladder	22.0	38.5	9.2	4.6	8.1	2.2	78.0	79.2	74.1
Kidney & renal pelvis	16.1	21.9	11.1	4.0	5.8	2.5	73.8	73.2	74.9
Ureter	0.6	0.8	0.4	0.1	0.2	0.1	47.6	48.1	46.7
Other urinary system	0.3	0.5	0.2	0.1	0.2	0.1	50.7	52.5	46.4
Eye & Orbit	1.0	1.1	0.8	0.1	0.1	0.1	80.9	80.6	81.2
Brain & Nervous System: ^e	7.1	8.3	6.0	4.7	5.7	3.8	32.6	31.8	33.7
Brain	6.7	7.9	5.5	-	-	-	29.7	29.4	30.1
Cranial nerves & other nervous system	0.4	0.4	0.4	-	-	-	79.3	76.5	82.0
Endocrine System:	15.4	8.2	22.6	0.8	0.8	0.7	96.7	92.8	97.9
Thyroid	14.7	7.4	21.9	0.5	0.5	0.5	98.4	96.1	98.9
Other endocrine & thymus	0.7	0.8	0.6	0.3	0.3	0.3	64.7	66.0	63.2
Lymphoma:	23.2	27.9	19.4	6.6	8.5	5.2	73.3	72.1	74.8
Hodgkin lymphoma	2.8	3.1	2.5	0.4	0.5	0.3	86.5	86.0	87.0
Non-Hodgkin lymphoma	20.4	24.8	16.9	6.3	8.1	4.9	71.3	69.9	72.9
Myeloma	5.9	7.7	4.5	3.1	4.0	2.4	48.4	49.8	46.5
Leukemia:	14.3	18.2	11.1	7.1	9.6	5.3	60.1	60.8	59.0
Lymphocytic:	7.3	9.5	5.4	2.0	2.8	1.4	78.7	79.1	78.0
Acute lymphocytic	1.9	2.1	1.7	0.5	0.6	0.4	68.3	68.2	68.4
Chronic lymphocytic	5.0	6.7	3.5	1.4	2.1	0.9	82.6	82.6	82.6
Other lymphocytic	0.4	0.7	0.2	0.1	0.2	0.1	81.1	84.4	71.1
Myeloid & Monocytic:	6.4	8.0	5.2	3.5	4.6	2.7	37.7	37.4	38.0
Acute myeloid	4.2	5.2	3.5	2.9	3.8	2.3	25.9	24.9	27.0
Chronic myeloid	1.8	2.3	1.4	0.3	0.4	0.2	64.2	63.5	65.2
Acute monocytic	0.2	0.3	0.2	0.0	0.0	0.0	24.4	23.2	25.8
Other myeloid & monocytic	0.2	0.2	0.1	0.2	0.3	0.2	31.3	30.9	32.1
Other leukemia:	0.6	0.7	0.5	1.6	2.2	1.2	32.9	31.0	34.7
Other acute leukemia	0.2	0.3	0.2	0.6	0.8	0.5	19.1	19.1	19.1
Aleukemic, subleukemic & NOS	0.3	0.4	0.3	1.1	1.4	0.8	42.8	40.7	44.3
Kaposi Sarcoma ^f	0.4	0.8	0.1	-	-	-	77.2	76.1	85.8
Mesothelioma ^f	1.1	2.0	0.5	-	-	-	9.5	7.5	15.4
Ill-defined & unspecified	8.5	10.0	7.3	12.4	15.8	9.9	18.9	23.4	14.3

Note: Incidence and death rates are per 100,000 and are age-adjusted to the 2000 US Std Population (19 age groups - Census P25-1130).

^a SEER 18 areas (San Francisco, Connecticut, Detroit, Hawaii, Iowa, New Mexico, Seattle, Utah, Atlanta, San Jose-Monterey, Los Angeles, Alaska Native Registry, Rural Georgia, California excluding SF/SJM/LA, Kentucky, Louisiana, New Jersey and Georgia excluding ATL/RG).

^b US Mortality Files, National Center for Health Statistics, Centers for Disease Control and Prevention.

^c SEER 18 areas. Based on follow-up of patients into 2013.

^d Ovary excludes borderline cases or histologies 8442, 8451, 8462, 8472, and 8473.

^e Due to coding changes, Brain & Nervous System mortality are no longer shown separately.

^f Rate not shown for mortality. Category did not exist in mortality coding until 1999.

- Statistic could not be calculated due to less than 16 cases in the time interval.

Table 1.7
Age-Adjusted SEER Incidence and U.S. Death Rates and 5-Year Relative Survival (Percent)
By Primary Cancer Site, Sex and Time Period

Site	Blacks								
	Incidence ^a (2009-2013)			US Mortality ^b (2009-2013)			Survival ^c (%) (2006-2012)		
	Total	Males	Females	Total	Males	Females	Total	Males	Females
All Sites	470.2	571.8	400.5	197.9	254.2	163.8	61.0	63.8	57.9
Oral Cavity & Pharynx:	9.2	14.4	5.2	2.9	5.0	1.3	46.5	42.9	54.3
Lip	0.1	0.1	-	-	-	-	73.0	63.6	84.2
Tongue	2.1	3.5	1.1	0.5	0.9	0.3	41.5	40.6	43.4
Salivary gland	1.0	1.0	1.0	0.2	0.3	0.1	76.0	67.5	82.7
Floor of mouth	0.6	0.9	0.3	0.0	0.0	-	36.5	34.7	41.9
Gum & other oral cavity	1.3	1.7	1.1	0.3	0.5	0.2	53.9	48.6	59.3
Nasopharynx	0.6	1.0	0.4	0.2	0.4	0.1	52.4	51.7	54.5
Tonsil	1.6	2.9	0.6	0.3	0.5	0.1	53.3	53.6	51.7
Oropharynx	0.6	1.0	0.3	0.4	0.6	0.2	26.2	25.9	27.1
Hypopharynx	0.9	1.7	0.3	0.2	0.3	0.1	19.2	18.6	22.5
Other oral cavity & pharynx	0.3	0.5	0.2	0.7	1.4	0.2	24.0	27.8	16.1
Digestive System:	101.8	125.1	84.7	54.9	72.1	42.6	39.5	36.0	43.2
Esophagus	4.4	7.2	2.5	3.8	6.6	1.9	11.7	10.1	15.0
Stomach	10.6	14.0	8.1	6.1	8.8	4.2	29.5	25.6	34.4
Small intestine	3.7	4.3	3.3	0.6	0.7	0.5	63.4	62.9	63.7
Colon & Rectum:	50.7	59.2	44.8	20.7	26.1	17.1	58.1	56.5	59.6
Colon	37.9	43.1	34.3	-	-	-	56.6	55.7	57.4
Rectum	12.9	16.1	10.5	-	-	-	62.2	58.4	66.4
Anus, anal canal & anorectum	1.9	2.1	1.7	0.3	0.3	0.2	56.8	52.4	61.2
Liver & intrahepatic bile duct	10.0	16.4	4.9	8.1	12.8	4.4	13.0	12.0	15.7
Gallbladder	1.5	1.3	1.8	0.9	0.8	1.0	14.4	12.3	15.2
Other biliary	1.7	2.0	1.6	0.4	0.4	0.4	12.8	10.0	15.3
Pancreas	15.5	17.2	14.2	13.5	15.0	12.2	7.3	6.6	8.0
Retroperitoneum	0.4	0.3	0.4	0.0	0.1	0.0	50.5	52.4	49.4
Peritoneum, omentum & mesentery	0.4	0.1	0.6	0.2	0.1	0.2	31.0	30.8	31.2
Other digestive system	0.8	1.0	0.7	0.4	0.5	0.3	8.1	7.9	8.1
Respiratory System:	70.5	97.0	52.2	51.4	74.4	36.0	18.1	16.9	19.6
Nose, nasal cavity & middle ear	0.6	0.8	0.4	0.2	0.2	0.1	43.1	40.9	46.0
Larynx	4.6	8.7	1.6	1.8	3.5	0.6	53.3	54.1	50.3
Lung & bronchus	65.0	87.3	50.0	49.4	70.6	35.3	14.7	12.0	18.1
Pleura ^d	-	-	-	0.0	0.1	0.0	-	-	-
Trachea & other respiratory organs	0.2	0.3	0.1	0.1	0.1	0.0	50.6	52.8	47.3
Bones & joints	0.8	0.9	0.7	0.4	0.5	0.3	67.3	67.9	66.3
Soft tissue (including heart)	3.3	3.4	3.1	1.4	1.4	1.4	60.9	60.2	61.5
Skin (excl. basal & squamous):	2.1	2.3	2.0	0.8	1.2	0.6	81.6	79.2	83.4
Melanoma of the skin	1.1	1.1	1.0	0.4	0.5	0.4	67.3	59.9	71.7
Other non-epithelial skin	1.0	1.1	1.0	0.4	0.7	0.2	92.8	92.5	92.9
Breast	71.2	1.8	125.2	17.4	0.5	29.6	80.2	71.6	80.3
Breast (<i>in situ</i>)	17.4	0.3	31.0	-	-	-	100.0	80.3	100.0

Note: Incidence and death rates are per 100,000 and are age-adjusted to the 2000 US Std Population (19 age groups - Census P25-1130).

^a SEER 18 areas (San Francisco, Connecticut, Detroit, Hawaii, Iowa, New Mexico, Seattle, Utah, Atlanta, San Jose-Monterey, Los Angeles, Alaska Native Registry, Rural Georgia, California excluding SF/SJM/LA, Kentucky, Louisiana, New Jersey and Georgia excluding ATL/RG).

^b US Mortality Files, National Center for Health Statistics, Centers for Disease Control and Prevention.

^c SEER 18 areas. Based on follow-up of patients into 2013.

^d Mesotheliomas of the Pleura are included in the separate group Mesothelioma for incidence but are included in the Pleura grouping for mortality.

- Statistic could not be calculated due to less than 16 cases in the time interval.

Table 1.7 - continued
 Age-Adjusted SEER Incidence and U.S. Death Rates and 5-Year Relative Survival (Percent)
 By Primary Cancer Site, Sex and Time Period

Site	Blacks								
	Incidence ^a (2009-2013)			US Mortality ^b (2009-2013)			Survival ^c (%) (2006-2012)		
	Total	Males	Females	Total	Males	Females	Total	Males	Females
Female Genital System:	26.4	-	46.7	11.2	-	19.2	55.6	-	55.6
Cervix uteri	4.9	-	8.9	2.2	-	3.9	57.0	-	57.0
Corpus uteri	13.1	-	23.1	1.8	-	3.1	64.0	-	64.0
Uterus, NOS	0.9	-	1.5	2.8	-	4.8	24.5	-	24.5
Ovary ^d	5.5	-	9.6	3.8	-	6.5	36.0	-	36.0
Vagina	0.6	-	0.9	0.2	-	0.3	48.8	-	48.8
Vulva	1.0	-	1.8	0.2	-	0.3	75.0	-	75.0
Other female genital system	0.5	-	0.9	0.2	-	0.3	58.0	-	58.0
Male Genital System:	87.9	206.3	-	16.1	44.6	-	96.7	96.7	-
Prostate	86.7	203.5	-	15.9	44.2	-	96.9	96.9	-
Testis	0.7	1.5	-	0.0	0.1	-	90.6	90.6	-
Penis	0.4	1.0	-	0.1	0.2	-	67.1	67.1	-
Other male genital system	0.1	0.3	-	0.0	0.1	-	62.2	62.2	-
Urinary System:	31.3	47.1	20.2	7.4	11.1	5.1	69.4	70.6	67.6
Urinary bladder	12.6	21.2	6.9	3.6	5.4	2.5	63.9	68.8	53.9
Kidney & renal pelvis	18.1	25.0	12.8	3.7	5.5	2.5	73.4	72.1	75.3
Ureter	0.2	0.4	0.2	0.1	0.1	0.0	35.5	28.0	40.1
Other urinary system	0.4	0.6	0.3	0.1	0.1	0.1	41.1	58.5	25.8
Eye & Orbit	0.3	0.3	0.2	0.0	0.0	0.0	86.2	81.1	91.5
Brain & Nervous System: ^e	4.1	4.9	3.6	2.5	3.1	2.1	39.8	36.8	43.0
Brain	3.8	4.5	3.2	-	-	-	36.4	34.0	39.1
Cranial nerves & other nervous system	0.4	0.3	0.4	-	-	-	73.4	70.3	75.4
Endocrine System:	9.2	4.6	13.3	0.9	0.8	0.9	93.2	84.3	95.6
Thyroid	8.3	3.6	12.4	0.5	0.4	0.6	96.9	93.3	97.5
Other endocrine & thymus	0.9	1.0	0.9	0.4	0.4	0.3	63.3	59.0	67.5
Lymphoma:	17.2	20.7	14.4	4.7	6.1	3.7	67.5	64.0	71.4
Hodgkin lymphoma	2.6	3.0	2.2	0.3	0.4	0.3	83.3	79.8	87.3
Non-Hodgkin lymphoma	14.6	17.6	12.2	4.4	5.7	3.5	63.6	60.0	67.5
Myeloma	13.2	15.7	11.5	6.2	7.5	5.4	48.8	48.3	49.2
Leukemia:	10.8	13.8	8.7	5.8	7.7	4.6	53.7	55.7	51.3
Lymphocytic:	4.7	6.5	3.4	1.6	2.3	1.1	69.6	70.7	68.0
Acute lymphocytic	1.0	1.2	0.9	0.3	0.4	0.3	63.6	66.4	59.2
Chronic lymphocytic	3.4	4.9	2.4	1.2	1.8	0.8	72.7	72.2	73.4
Other lymphocytic	0.2	0.4	0.1	0.1	0.1	0.1	63.6	71.2	33.0
Myeloid & Monocytic:	5.4	6.6	4.7	2.6	3.4	2.2	41.9	42.2	41.6
Acute myeloid	3.6	4.3	3.1	2.2	2.7	1.8	29.2	29.5	28.8
Chronic myeloid	1.6	1.9	1.4	0.3	0.4	0.3	65.4	64.1	66.6
Acute monocytic	0.1	0.2	0.1	0.0	0.0	-	25.3	13.6	37.0
Other myeloid & monocytic	0.1	0.2	0.1	0.2	0.2	0.1	40.3	46.7	34.0
Other leukemia:	0.6	0.8	0.5	1.6	2.0	1.3	30.9	33.5	27.4
Other acute leukemia	0.2	0.3	0.2	0.5	0.6	0.4	23.9	21.7	26.0
Aleukemic, subleukemic & NOS	0.4	0.5	0.4	1.1	1.5	0.9	34.1	40.2	27.2
Kaposi Sarcoma ^f	1.1	2.2	0.1	-	-	-	61.2	62.8	44.1
Mesothelioma ^f	0.5	1.0	0.3	-	-	-	12.7	9.5	22.5
Ill-defined & unspecified	9.3	10.4	8.4	13.8	18.1	11.0	13.1	12.3	13.7

Note: Incidence and death rates are per 100,000 and are age-adjusted to the 2000 US Std Population (19 age groups - Census P25-1130).

^a SEER 18 areas (San Francisco, Connecticut, Detroit, Hawaii, Iowa, New Mexico, Seattle, Utah, Atlanta, San Jose-Monterey, Los Angeles, Alaska Native Registry, Rural Georgia, California excluding SF/SJM/LA, Kentucky, Louisiana, New Jersey and Georgia excluding ATL/RG).

^b US Mortality Files, National Center for Health Statistics, Centers for Disease Control and Prevention.

^c SEER 18 areas. Based on follow-up of patients into 2013.

^d Ovary excludes borderline cases or histologies 8442, 8451, 8462, 8472, and 8473.

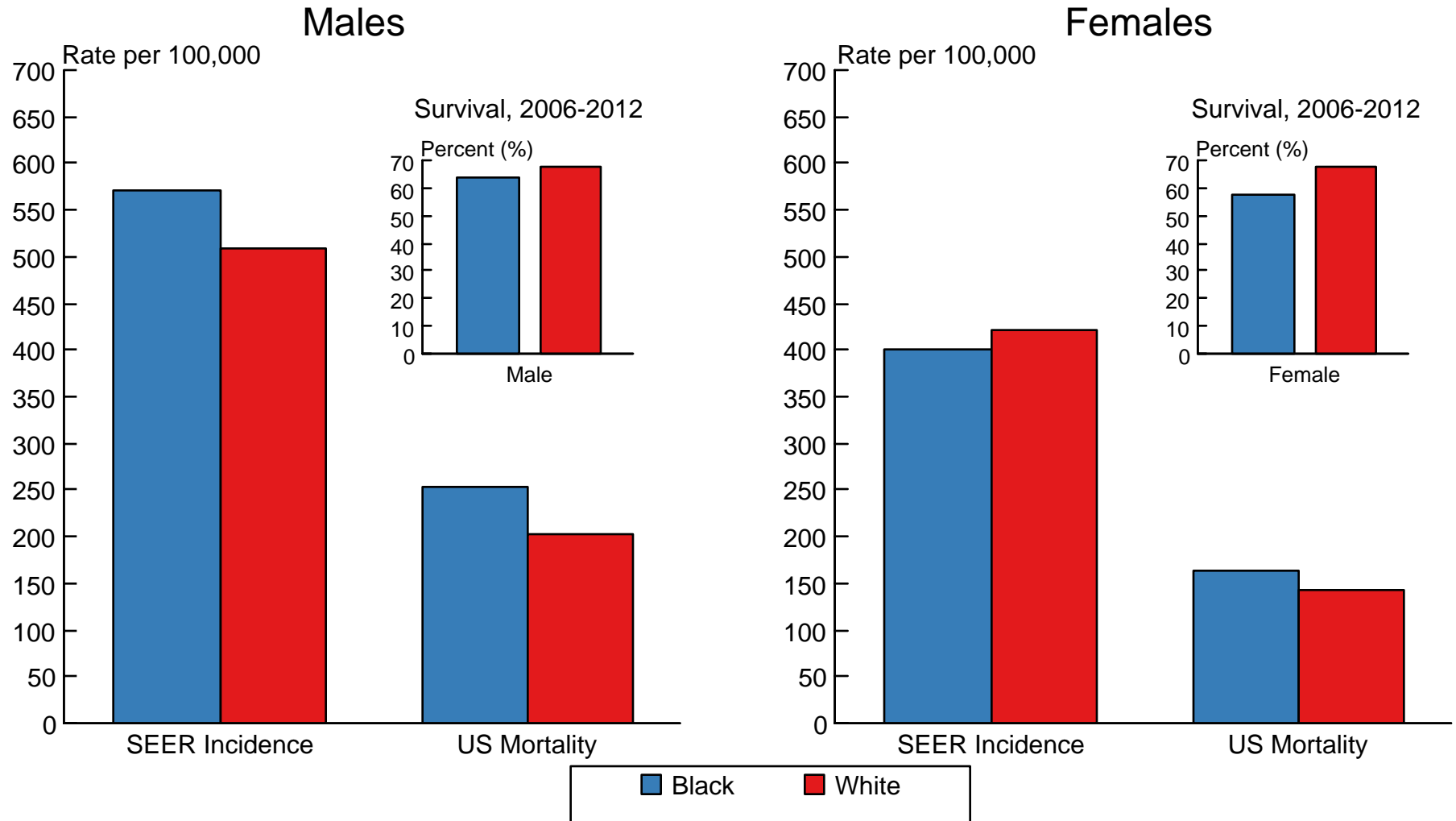
^e Due to coding changes, Brain & Nervous System mortality are no longer shown separately.

^f Rate not shown for mortality. Category did not exist in mortality coding until 1999.

- Statistic could not be calculated due to less than 16 cases in the time interval.

Figure 1.9

SEER Incidence^a and US Death Rates,^b 2009-2013 5-Year Relative Survival,^c 2006-2012 All Cancer Combined, by Race and Sex



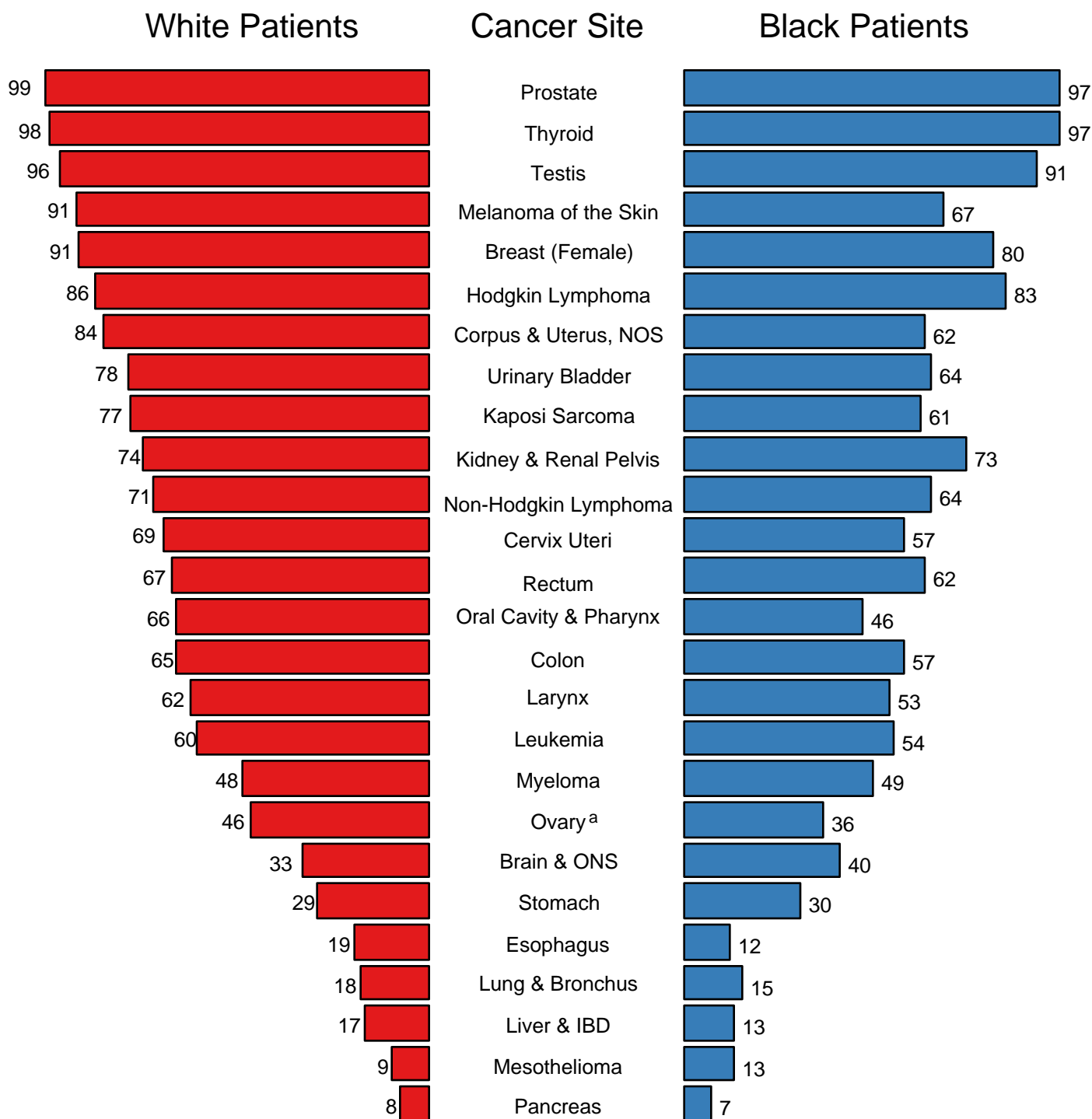
^a Incidence rates are from the SEER 18 areas (San Francisco, Connecticut, Detroit, Hawaii, Iowa, New Mexico, Seattle, Utah, Atlanta, San Jose-Monterey, Los Angeles, Alaska Native Registry, Rural Georgia, California excluding SF/SJM/LA, Kentucky, Louisiana, New Jersey and Georgia excluding ATL/RG) and are age-adjusted to the 2000 US Std Population (19 age groups - Census P25-1103).

^b Death rates are from the US Mortality Files, National Center for Health Statistics, Centers for Disease Control and Prevention and are age-adjusted to the 2000 US Std Population (19 age groups - Census P25-1103).

^c Survival rates are from the SEER 18 areas (San Francisco, Connecticut, Detroit, Hawaii, Iowa, New Mexico, Seattle, Utah, Atlanta, San Jose-Monterey, Los Angeles, Alaska Native Registry, Rural Georgia, California excluding SF/SJM/LA, Kentucky, Louisiana, New Jersey and Georgia excluding ATL/RG).

Figure 1.11

5-Year Relative Survival (%) SEER Program, 2006-2012 Both Sexes, by Race and Cancer Site



Source: SEER 18 areas (San Francisco, Connecticut, Detroit, Hawaii, Iowa, New Mexico, Seattle, Utah, Atlanta, San Jose-Monterey, Los Angeles, Alaska Native Registry, Rural Georgia, California excluding SF/SJM/LA, Kentucky, Louisiana, New Jersey and Georgia excluding ATL/RG).

^a Ovary excludes borderline cases or histologies 8442, 8451, 8462, 8472, and 8473.

Table 2.8
All Cancer Sites (Invasive)

5-Year Relative and Period Survival (Percent) by Race, Sex, Diagnosis Year and Age

	All Races			Whites			Blacks		
	Total	Males	Females	Total	Males	Females	Total	Males	Females
5-Year Relative Survival (Percent)									
Year of Diagnosis:									
1960-1963 ^a	-	-	-	39	-	-	27	-	-
1970-1973 ^a	-	-	-	43	-	-	31	-	-
1975-1977 ^b	48.9	41.7	55.9	49.8	42.7	56.5	39.0	32.7	46.2
1978-1980 ^b	49.0	43.1	54.9	50.0	44.3	55.6	39.0	33.3	45.6
1981-1983 ^b	50.2	45.2	55.1	51.3	46.6	56.0	38.8	34.2	44.4
1984-1986 ^b	52.4	47.2	57.6	53.6	48.6	58.5	40.2	35.5	45.5
1987-1989 ^b	55.3	51.1	59.6	56.7	52.8	60.6	43.0	38.9	47.7
1990-1992 ^b	59.9	59.1	60.9	61.4	60.8	62.0	47.8	47.6	48.2
1993-1995 ^b	61.3	60.8	61.8	62.4	62.0	62.8	52.8	54.4	50.6
1996-1998 ^b	63.3	63.0	63.6	64.3	64.0	64.7	55.2	57.9	52.1
1999-2001 ^b	66.0	66.3	65.7	67.2	67.5	66.8	57.9	61.0	54.3
2002-2005 ^b	67.2	67.8	66.6	68.5	69.0	67.9	59.5	63.2	55.5
2006-2012 ^b	69.0 ^e	69.3 ^e	68.6 ^e	70.0 ^e	70.3 ^e	69.7 ^e	62.7 ^e	65.6 ^e	59.5 ^e
5-Year Period Survival (Percent) ^{cd}									
2012	67.2	66.9	67.5	67.7	67.1	68.3	61.6	64.2	58.8
5-Year Relative Survival (Percent), 2006-2012 ^c									
Age at Diagnosis:									
Ages <45	82.0	77.4	84.9	83.5	79.2	86.3	71.2	65.7	74.4
Ages 45-54	73.8	68.6	78.2	75.1	69.6	79.7	64.6	63.3	65.8
Ages 55-64	70.5	70.1	70.9	71.4	70.8	72.1	63.7	66.2	59.8
Ages 65-74	66.7	69.5	62.7	67.2	69.7	63.7	61.3	66.6	53.4
Ages 75+	51.6	55.1	48.3	52.2	55.1	49.4	44.2	51.3	38.5
Ages <65	73.8	70.9	76.7	74.9	71.8	78.0	65.3	65.3	65.4
Ages 65+	59.5	63.3	55.0	59.9	63.3	56.0	54.5	61.5	46.4

^a Based on End Results data from a series of hospital registries and one population-based registry.
^b SEER 9 areas (San Francisco, Connecticut, Detroit, Hawaii, Iowa, New Mexico, Seattle, Utah, Atlanta).
Based on follow-up of patients into 2013.
^c SEER 18 areas (San Francisco, Connecticut, Detroit, Hawaii, Iowa, New Mexico, Seattle, Utah, Atlanta, San Jose-Monterey, Los Angeles, Alaska Native Registry, Rural Georgia, California excluding SF/SJM/LA, Kentucky, Louisiana, New Jersey and Georgia excluding ATL/RG).
Based on follow-up of patients into 2013.
^d Period survival provides a 2012 estimate of survival by piecing together the most recent conditional survival estimates from several cohorts. It is computed here using three year calendar blocks (2010-2012: 0-1 year survival), (2009-2011: 1-2 year survival), (2008-2010: 2-3 year survival), (2007-2009: 3-4 year survival), (2006-2008: 4-5 years survival).
^e The difference between 1975-1977 and 2006-2012 is statistically significant (p<.05).
^f The standard error is between 5 and 10 percentage points.
^g The standard error is greater than 10 percentage points.
- Statistic could not be calculated due to fewer than 25 cases during the time period.

Table 3.8
Cancer of the Brain and Other Nervous System (Invasive)

5-Year Relative and Period Survival (Percent) by Race, Sex, Diagnosis Year, Stage and Age

	All Races			Whites			Blacks		
	Total	Males	Females	Total	Males	Females	Total	Males	Females
5-Year Relative Survival (Percent)									
Year of Diagnosis:									
1960-1963 ^a	-	-	-	18	16	21	19	17	21
1970-1973 ^a	-	-	-	20	18	22	19	19	19
1975-1977 ^b	22.4	20.7	24.7	21.8	20.2	24.0	25.4	19.6	34.7 ^g
1978-1980 ^b	23.6	22.4	25.1	23.0	22.0	24.4	28.2	28.7	27.5
1981-1983 ^b	24.1	23.0	25.5	23.3	22.4	24.5	30.8	31.7	29.2 ^g
1984-1986 ^b	26.9	25.6	28.4	26.1	24.8	27.8	30.8	32.8	28.3
1987-1989 ^b	28.9	27.3	31.0	28.2	26.3	30.7	31.6	33.5	29.3
1990-1992 ^b	30.1	30.5	29.7	29.1	29.3	28.8	39.5	40.7	38.1
1993-1995 ^b	32.2	32.9	31.3	30.9	31.3	30.3	41.7	46.1	36.8
1996-1998 ^b	31.2	30.5	32.0	30.4	30.0	30.9	36.0	33.8	38.3
1999-2001 ^b	33.8	30.9	37.5	33.0	30.4	36.4	38.6	33.8	45.1
2002-2005 ^b	34.9	34.1	35.8	33.8	33.7	34.1	38.6	32.8	44.5
2006-2012 ^b	35.0 ^f	33.9 ^f	36.3 ^f	33.4 ^f	32.5 ^f	34.6 ^f	43.7 ^f	40.6 ^f	46.5 ^f
5-Year Period Survival (Percent) ^{cd}									
2012	33.8	32.7	35.1	32.8	31.7	34.0	38.4	35.9	40.9
Stage Distribution (%) 2006-2012 ^{ce}									
All Stages									
Number of cases	33,736	18,812	14,924	29,008	16,287	12,721	2,431	1,254	1,177
Percent	100%	100%	100%	100%	100%	100%	100%	100%	100%
Localized	77	78	76	77	78	76	76	78	74
Regional	16	15	16	16	15	16	15	14	17
Distant	2	2	2	2	2	2	3	3	4
Unstaged	5	4	6	5	4	6	5	5	5
5-Year Relative Survival (Percent), 2006-2012 ^c									
Age at Diagnosis:									
Ages <45	68.4	66.4	71.2	69.1	67.1	71.8	64.5	61.3	67.5
Ages 45-54	32.8	29.8	37.3	32.4	29.3	37.0	33.9	29.5	39.4
Ages 55-64	16.4	14.8	18.7	16.0	14.2	18.7	16.8	15.3	18.3
Ages 65-74	9.0	7.8	10.4	9.0	7.8	10.6	6.4	7.0	6.4
Ages 75+	4.9	5.0	4.8	4.3	4.8	3.9	9.6	3.4	13.4
Ages <65	45.5	42.8	49.2	44.6	42.0	48.3	48.0	43.9	52.4
Ages 65+	7.0	6.6	7.5	6.7	6.4	7.0	7.4	6.0	8.7
Stage ^e :									
All Stages	33.8	32.8	35.1	32.6	31.8	33.7	39.8	36.8	43.0
Localized	36.7	35.3	38.5	35.5	34.4	37.1	42.0	39.1	45.2
Regional	22.1	21.8	22.5	21.2	21.1	21.4	28.4	24.8	31.7
Distant	36.3	34.7	38.2	35.9	34.9	37.1	36.2 ^g	29.4 ^h	41.0 ^g
Unstaged	24.6	25.5	23.7	22.1	22.6	21.5	43.0	38.3 ^g	47.8 ^g

^a Based on End Results data from a series of hospital registries and one population-based registry.

^b SEER 9 areas (San Francisco, Connecticut, Detroit, Hawaii, Iowa, New Mexico, Seattle, Utah, Atlanta).

Based on follow-up of patients into 2013.

^c SEER 18 areas (San Francisco, Connecticut, Detroit, Hawaii, Iowa, New Mexico, Seattle, Utah, Atlanta, San Jose-Monterey, Los Angeles, Alaska Native Registry, Rural Georgia, California excluding SF/SJM/LA, Kentucky, Louisiana, New Jersey and Georgia excluding ATL/RG).

Based on follow-up of patients into 2013.

^d Period survival provides a 2012 estimate of survival by piecing together the most recent conditional survival estimates from several cohorts. It is computed here using three year calendar blocks (2010-2012: 0-1 year survival), (2009-2011: 1-2 year survival), (2008-2010: 2-3 year survival), (2007-2009: 3-4 year survival), (2006-2008: 4-5 years survival).

^e Stage at diagnosis is classified using SEER Summary Stage 2000. Stage distribution percentages may not sum to 100 due to rounding.

^f The difference between 1975-1977 and 2006-2012 is statistically significant ($p < .05$).

^g The standard error is between 5 and 10 percentage points.

^h The standard error is greater than 10 percentage points.

- Statistic could not be calculated due to fewer than 25 cases during the time period.

Table 4.13
Cancer of the Female Breast (Invasive)

5-Year Relative and Period Survival (Percent) by Race, Diagnosis Year, Stage and Age

	All Races, Females			White Females			Black Females		
	All	<50	50+	All	<50	50+	All	<50	50+
5-Year Relative Survival (Percent)									
Year of Diagnosis:									
1960-1963 ^a	-	-	-	63	-	-	46	-	-
1970-1973 ^a	-	-	-	68	-	-	51	-	-
1975-1977 ^b	74.8	76.5	74.3	75.6	77.8	74.9	62.2	62.4	62.0
1978-1980 ^b	74.4	75.5	74.1	75.1	76.1	74.8	63.4	67.0	61.5
1981-1983 ^b	76.1	77.4	75.7	77.1	78.5	76.7	63.4	65.1	62.6
1984-1986 ^b	78.9	77.8	79.3	80.0	79.5	80.2	65.1	63.9	65.8
1987-1989 ^b	84.1	81.4	85.0	85.1	82.7	85.9	71.1	69.6	71.9
1990-1992 ^b	85.2	83.4	85.9	86.5	85.1	87.0	71.5	70.1	72.3
1993-1995 ^b	86.4	84.3	87.1	87.7	86.2	88.1	72.7	70.4	74.1
1996-1998 ^b	88.2	86.6	88.8	89.3	88.3	89.7	76.2	73.9	77.6
1999-2001 ^b	89.7	88.1	90.3	90.8	89.8	91.1	78.8	76.9	80.0
2002-2005 ^b	90.1	89.6	90.3	91.6	91.5	91.6	77.8	77.9	77.8
2006-2012 ^b	90.8 ^f	91.0 ^f	90.8 ^f	92.0 ^f	92.2 ^f	92.0 ^f	81.5 ^f	82.6 ^f	81.0 ^f
5-Year Period Survival (Percent) ^{cd}									
2012	89.8	89.6	89.8	90.9	90.9	90.9	80.2	80.4	80.2
Stage Distribution (%) 2006-2012 ^{ce}									
All Stages									
Number of cases	332,526	79,474	253,052	265,322	59,107	206,215	36,579	10,708	25,871
Percent	100%	100%	100%	100%	100%	100%	100%	100%	100%
Localized	61	54	64	62	55	65	53	47	55
Regional	31	39	29	31	39	28	37	43	34
Distant	6	5	6	5	5	6	9	8	9
Unstaged	2	1	2	2	1	2	2	2	2
5-Year Relative Survival (Percent), 2006-2012 ^c									
Age at Diagnosis:									
Ages <45	88.4	-	-	89.8	-	-	78.8	-	-
Ages 45-54	90.6	-	-	91.8	-	-	81.4	-	-
Ages 55-64	90.2	-	-	91.3	-	-	81.1	-	-
Ages 65-74	91.3	-	-	92.2	-	-	82.9	-	-
Ages 75+	87.0	-	-	88.2	-	-	74.5	-	-
Ages <65	90.0	-	-	91.2	-	-	80.6	-	-
Ages 65+	89.4	-	-	90.3	-	-	79.5	-	-
Stage ^e :									
All Stages	89.7	89.6	89.8	90.8	90.9	90.8	80.3	80.4	80.2
Localized	98.8	96.9	99.4	99.4	97.3	99.9	94.7	93.7	95.1
Regional	85.2	86.7	84.6	86.5	88.2	85.8	75.6	76.5	75.2
Distant	26.3	36.1	23.6	27.4	38.8	24.6	18.3	24.4	15.9
Unstaged	52.5	74.8	47.5	50.5	75.6	45.8	49.8	64.1	45.0
<i>In Situ</i> ^j	100.0	100.0	100.0	100.0	100.0	100.0	100.0	99.8	100.0

^a Based on End Results data from a series of hospital registries and one population-based registry.

^b SEER 9 areas (San Francisco, Connecticut, Detroit, Hawaii, Iowa, New Mexico, Seattle, Utah, Atlanta).

Based on follow-up of patients into 2013.

^c SEER 18 areas (San Francisco, Connecticut, Detroit, Hawaii, Iowa, New Mexico, Seattle, Utah, Atlanta, San Jose-Monterey, Los Angeles, Alaska Native Registry, Rural Georgia, California excluding SF/SJM/LA, Kentucky, Louisiana, New Jersey and Georgia excluding ATL/RG).

Based on follow-up of patients into 2013.

^d Period survival provides a 2012 estimate of survival by piecing together the most recent conditional survival estimates

from several cohorts. It is computed here using three year calendar blocks (2010-2012: 0-1 year survival), (2009-2011: 1-2 year survival), (2008-2010: 2-3 year survival), (2007-2009: 3-4 year survival), (2006-2008: 4-5 years survival).

^e Stage at diagnosis is classified using SEER Summary Stage 2000. Stage distribution percentages may not sum to 100 due to rounding.

^f The difference between 1975-1977 and 2006-2012 is statistically significant ($p < .05$).

^g The standard error is between 5 and 10 percentage points.

^h The standard error is greater than 10 percentage points.

^j *In situ* cases are not included in the All Stages group.

- Statistic could not be calculated due to fewer than 25 cases during the time period.

Table 5.8
Cancer of the Cervix Uteri (Invasive)

5-Year Relative and Period Survival (Percent) by Race, Diagnosis Year, Stage and Age

	All Races, Females			White Females			Black Females		
	All	<50	50+	All	<50	50+	All	<50	50+
5-Year Relative Survival (Percent)									
Year of Diagnosis:									
1960-1963 ^a	-	-	-	58	-	-	47	-	-
1970-1973 ^a	-	-	-	64	-	-	61	-	-
1975-1977 ^b	69.1	82.5	57.9	69.7	83.9	58.1	64.6	75.6	55.1
1978-1980 ^b	67.4	78.4	57.8	68.1	79.7	58.2	61.0	70.5	52.0
1981-1983 ^b	66.9	79.6	54.6	67.8	80.8	55.0	59.2	73.6	46.2
1984-1986 ^b	67.2	77.8	55.3	68.8	79.4	56.3	57.9	68.0	48.4
1987-1989 ^b	70.1	79.6	58.0	72.5	82.6	58.5	57.0	62.7	52.0
1990-1992 ^b	69.6	79.1	56.8	70.9	81.3	56.3	57.9	63.7	50.8
1993-1995 ^b	72.6	81.8	59.7	74.2	83.5	60.1	62.8	70.7	53.3
1996-1998 ^b	72.6	81.0	60.3	73.7	82.7	59.2	64.8	67.8	61.0
1999-2001 ^b	72.4	83.9	56.3	73.4	85.7	55.1	66.0	73.9	56.6
2002-2005 ^b	68.9	79.0	55.4	70.1	81.1	54.7	62.7	70.1	53.7
2006-2012 ^b	68.8	78.6 ^f	56.5	70.6	81.1 ^f	56.7	58.4 ^f	66.0 ^f	50.5
5-Year Period Survival (Percent) ^{cd}									
2012	66.8	75.9	56.1	68.2	77.5	56.6	56.6	65.0	48.8
Stage Distribution (%) 2006-2012 ^{ce}									
All Stages									
Number of cases	22,112	12,011	10,101	16,592	9,283	7,309	3,069	1,485	1,584
Percent	100%	100%	100%	100%	100%	100%	100%	100%	100%
Localized	46	58	32	48	60	32	38	48	28
Regional	36	30	44	35	29	43	41	37	45
Distant	14	9	19	13	8	19	16	11	21
Unstaged	4	3	5	4	3	5	5	4	6
5-Year Relative Survival (Percent), 2006-2012 ^c									
Age at Diagnosis:									
Ages <45	78.8	-	-	80.4	-	-	66.7	-	-
Ages 45-54	66.7	-	-	68.1	-	-	56.3	-	-
Ages 55-64	59.8	-	-	60.5	-	-	51.8	-	-
Ages 65-74	55.5	-	-	54.4	-	-	51.7	-	-
Ages 75+	37.7	-	-	37.9	-	-	35.1	-	-
Ages <65	71.3	-	-	72.9	-	-	60.0	-	-
Ages 65+	48.4	-	-	47.9	-	-	44.1	-	-
Stage ^e :									
All Stages	67.5	76.7	56.3	68.9	78.3	56.8	57.0	64.9	49.2
Localized	91.3	93.1	87.3	91.7	93.4	87.5	86.7	89.3	82.1
Regional	57.4	61.6	53.9	58.4	63.7	53.8	48.8	49.6	48.3
Distant	16.8	19.5	15.3	18.3	22.2	16.0	11.5	10.4	12.2
Unstaged	51.8	72.7	35.8	52.2	72.8	35.4	44.7	63.6 ^g	32.8 ^g

^a Based on End Results data from a series of hospital registries and one population-based registry.

^b SEER 9 areas (San Francisco, Connecticut, Detroit, Hawaii, Iowa, New Mexico, Seattle, Utah, Atlanta).

Based on follow-up of patients into 2013.

^c SEER 18 areas (San Francisco, Connecticut, Detroit, Hawaii, Iowa, New Mexico, Seattle, Utah, Atlanta, San Jose-Monterey, Los Angeles, Alaska Native Registry, Rural Georgia, California excluding SF/SJM/LA, Kentucky, Louisiana, New Jersey and Georgia excluding ATL/RG).

Based on follow-up of patients into 2013.

^d Period survival provides a 2012 estimate of survival by piecing together the most recent conditional survival estimates from several cohorts. It is computed here using three year calendar blocks (2010-2012: 0-1 year survival), (2009-2011: 1-2 year survival), (2008-2010: 2-3 year survival), (2007-2009: 3-4 year survival), (2006-2008: 4-5 years survival).

^e Stage at diagnosis is classified using SEER Summary Stage 2000. Stage distribution percentages may not sum to 100 due to rounding.

^f The difference between 1975-1977 and 2006-2012 is statistically significant ($p < .05$).

^g The standard error is between 5 and 10 percentage points.

^h The standard error is greater than 10 percentage points.

- Statistic could not be calculated due to fewer than 25 cases during the time period.

Table 6.12
Cancer of the Colon and Rectum (Invasive)

5-Year Relative and Period Survival (Percent) by Race, Sex, Diagnosis Year, Stage and Age

	All Races			Whites			Blacks		
	Total	Males	Females	Total	Males	Females	Total	Males	Females
5-Year Relative Survival (Percent)									
Year of Diagnosis:									
1960-1963 ^a	-	-	-	-	-	-	-	-	-
1970-1973 ^a	-	-	-	-	-	-	-	-	-
1975-1977 ^b	49.8	49.0	50.6	50.1	49.3	50.7	44.6	43.3	45.9
1978-1980 ^b	51.2	50.2	52.2	51.6	50.6	52.5	45.4	43.4	46.9
1981-1983 ^b	54.0	53.8	54.2	54.4	54.4	54.3	46.5	42.8	49.5
1984-1986 ^b	57.7	57.7	57.6	58.4	58.5	58.2	48.4	47.5	49.0
1987-1989 ^b	59.6	59.8	59.3	60.0	60.5	59.5	52.3	49.9	54.5
1990-1992 ^b	61.2	61.0	61.3	61.9	61.7	62.0	52.9	54.4	51.5
1993-1995 ^b	59.9	59.8	60.0	60.5	60.3	60.6	51.7	51.3	52.1
1996-1998 ^b	62.4	62.4	62.5	63.0	62.8	63.2	54.0	55.1	53.0
1999-2001 ^b	65.1	66.1	64.1	66.5	67.4	65.7	54.1	55.3	53.0
2002-2005 ^b	65.9	65.8	66.0	66.9	67.2	66.5	56.2	53.9	58.2
2006-2012 ^b	66.2 ^f	66.2 ^f	66.2 ^f	67.1 ^f	67.2 ^f	66.9 ^f	59.1 ^f	57.6 ^f	60.3 ^f
5-Year Period Survival (Percent) ^{cd}									
2012	65.1	64.8	65.4	65.7	65.5	66.0	58.3	56.1	60.3
Stage Distribution (%) 2006-2012 ^{ce}									
All Stages									
Number of cases	209,895	107,990	101,905	163,542	84,797	78,745	25,653	12,345	13,308
Percent	100%	100%	100%	100%	100%	100%	100%	100%	100%
Localized	39	40	39	39	40	39	38	37	38
Regional	35	35	36	36	36	36	32	32	32
Distant	21	21	20	20	20	20	25	26	24
Unstaged	5	4	5	4	4	5	5	5	5
5-Year Relative Survival (Percent), 2006-2012 ^c									
Age at Diagnosis:									
Ages <45	68.1	65.7	70.7	69.8	67.1	72.8	59.3	55.3	62.7
Ages 45-54	71.1	69.6	72.8	72.0	70.7	73.7	63.6	60.2	67.0
Ages 55-64	68.2	67.6	69.1	68.8	68.2	69.7	62.0	60.5	63.8
Ages 65-74	67.5	66.7	68.4	68.2	67.6	68.9	59.0	55.9	61.8
Ages 75+	57.2	57.0	57.4	58.6	58.2	58.8	46.4	44.8	47.2
Ages <65	69.2	68.0	70.7	70.1	68.9	71.6	62.2	59.8	64.9
Ages 65+	61.7	61.9	61.5	62.6	62.8	62.3	52.9	51.4	54.0
Stage ^e :									
All Stages	65.1	64.9	65.2	65.8	65.7	65.8	58.1	56.5	59.6
Localized	90.1	89.7	90.6	90.5	89.9	91.0	86.6	85.6	87.5
Regional	71.2	71.1	71.3	71.9	72.0	71.9	64.9	62.9	66.8
Distant	13.5	12.7	14.4	14.1	13.2	15.1	9.9	8.8	10.9
Unstaged	35.5	38.1	33.1	32.2	34.9	29.8	39.6	41.9	37.4

^a Based on End Results data from a series of hospital registries and one population-based registry.

^b SEER 9 areas (San Francisco, Connecticut, Detroit, Hawaii, Iowa, New Mexico, Seattle, Utah, Atlanta).

Based on follow-up of patients into 2013.

^c SEER 18 areas (San Francisco, Connecticut, Detroit, Hawaii, Iowa, New Mexico, Seattle, Utah, Atlanta, San Jose-Monterey, Los Angeles, Alaska Native Registry, Rural Georgia, California excluding SF/SJM/LA, Kentucky, Louisiana, New Jersey and Georgia excluding ATL/RG).

Based on follow-up of patients into 2013.

^d Period survival provides a 2012 estimate of survival by piecing together the most recent conditional survival estimates from several cohorts. It is computed here using three year calendar blocks (2010-2012: 0-1 year survival), (2009-2011: 1-2 year survival), (2008-2010: 2-3 year survival), (2007-2009: 3-4 year survival), (2006-2008: 4-5 years survival).

^e Stage at diagnosis is classified using SEER Summary Stage 2000. Stage distribution percentages may not sum to 100 due to rounding.

^f The difference between 1975-1977 and 2006-2012 is statistically significant ($p < .05$).

^g The standard error is between 5 and 10 percentage points.

^h The standard error is greater than 10 percentage points.

- Statistic could not be calculated due to fewer than 25 cases during the time period.

Table 6.13
Cancer of the Colon (Invasive)

5-Year Relative and Period Survival (Percent) by Race, Sex, Diagnosis Year, Stage and Age

	All Races			Whites			Blacks		
	Total	Males	Females	Total	Males	Females	Total	Males	Females
5-Year Relative Survival (Percent)									
Year of Diagnosis:									
1960-1963 ^a	-	-	-	43	42	44	34	32	35
1970-1973 ^a	-	-	-	49	47	50	37	36	38
1975-1977 ^b	50.6	50.1	51.1	50.9	50.5	51.3	44.7	44.0	45.3
1978-1980 ^b	52.3	51.3	53.2	52.4	51.3	53.4	48.9	47.5	49.8
1981-1983 ^b	55.2	55.6	54.8	55.4	56.1	54.8	48.5	44.6	51.5
1984-1986 ^b	58.3	58.8	57.8	59.0	59.6	58.5	49.1	48.9	49.3
1987-1989 ^b	60.2	60.7	59.7	60.6	61.4	59.9	52.3	50.7	53.7
1990-1992 ^b	62.0	62.3	61.7	62.7	63.1	62.4	53.4	54.6	52.3
1993-1995 ^b	59.8	60.1	59.5	60.4	60.7	60.2	51.1	51.2	51.0
1996-1998 ^b	62.4	62.4	61.9	62.8	62.9	62.8	53.6	55.8	51.9
1999-2001 ^b	64.9	66.1	63.8	66.6	67.8	65.5	52.5	53.6	51.6
2002-2005 ^b	65.0	64.7	65.2	66.0	66.1	65.9	54.9	52.9	56.5
2006-2012 ^b	65.5 ^f	65.9 ^f	65.1 ^f	66.7 ^f	67.0 ^f	66.3 ^f	56.9 ^f	56.8 ^f	57.0 ^f
5-Year Period Survival (Percent) ^{cd}									
2012	64.4	64.3	64.4	65.4	65.4	65.4	56.8	55.0	58.4
Stage Distribution (%) 2006-2012 ^{ce}									
All Stages									
Number of cases	146,515	71,901	74,614	114,451	56,584	57,867	18,802	8,736	10,066
Percent	100%	100%	100%	100%	100%	100%	100%	100%	100%
Localized	38	39	37	38	39	37	35	35	35
Regional	36	36	37	37	36	37	34	34	35
Distant	22	22	22	21	21	21	27	27	26
Unstaged	4	4	5	4	4	4	4	4	4
5-Year Relative Survival (Percent), 2006-2012 ^c									
Age at Diagnosis:									
Ages <45	67.1	65.8	68.4	69.6	67.9	71.4	57.5	54.6	59.7
Ages 45-54	68.9	68.1	69.8	70.4	69.6	71.4	59.9	58.0	61.7
Ages 55-64	67.1	67.1	67.3	68.0	68.0	68.1	60.4	59.6	61.4
Ages 65-74	67.5	67.1	68.0	68.5	68.2	68.9	58.5	56.3	60.5
Ages 75+	58.6	58.1	59.0	60.1	59.4	60.5	47.7	46.1	48.5
Ages <65	67.7	67.2	68.3	69.0	68.5	69.7	59.9	58.5	61.2
Ages 65+	62.2	62.4	62.1	63.3	63.5	63.2	53.1	52.0	54.0
Stage ^e :									
All Stages	64.4	64.5	64.3	65.4	65.6	65.3	56.6	55.7	57.4
Localized	91.1	90.9	91.4	91.8	91.5	92.1	86.7	86.3	87.0
Regional	71.7	71.6	71.7	72.4	72.4	72.3	66.1	64.7	67.1
Distant	13.3	12.6	14.0	14.0	13.2	14.8	9.4	8.0	10.6
Unstaged	27.5	31.0	24.7	25.3	28.9	22.3	30.1	34.3	26.7

^a Based on End Results data from a series of hospital registries and one population-based registry.

^b SEER 9 areas (San Francisco, Connecticut, Detroit, Hawaii, Iowa, New Mexico, Seattle, Utah, Atlanta).

Based on follow-up of patients into 2013.

^c SEER 18 areas (San Francisco, Connecticut, Detroit, Hawaii, Iowa, New Mexico, Seattle, Utah, Atlanta, San Jose-Monterey, Los Angeles, Alaska Native Registry, Rural Georgia, California excluding SF/SJM/LA, Kentucky, Louisiana, New Jersey and Georgia excluding ATL/RG).

Based on follow-up of patients into 2013.

^d Period survival provides a 2012 estimate of survival by piecing together the most recent conditional survival estimates from several cohorts. It is computed here using three year calendar blocks (2010-2012: 0-1 year survival), (2009-2011: 1-2 year survival), (2008-2010: 2-3 year survival), (2007-2009: 3-4 year survival), (2006-2008: 4-5 years survival).

^e Stage at diagnosis is classified using SEER Summary Stage 2000. Stage distribution percentages may not sum to 100 due to rounding.

^f The difference between 1975-1977 and 2006-2012 is statistically significant ($p < .05$).

^g The standard error is between 5 and 10 percentage points.

^h The standard error is greater than 10 percentage points.

- Statistic could not be calculated due to fewer than 25 cases during the time period.

Table 6.14
Cancer of the Rectum (Invasive)

5-Year Relative and Period Survival (Percent) by Race, Sex, Diagnosis Year, Stage and Age

	All Races			Whites			Blacks		
	Total	Males	Females	Total	Males	Females	Total	Males	Females
5-Year Relative Survival (Percent)									
Year of Diagnosis:									
1960-1963 ^a	-	-	-	38	36	41	27	28	27
1970-1973 ^a	-	-	-	45	43	48	30	20	40
1975-1977 ^b	48.1	47.0	49.5	48.3	47.3	49.4	44.4	41.4	46.8
1978-1980 ^b	48.9	48.3	49.5	49.7	49.3	50.1	34.6	33.5	35.5
1981-1983 ^b	51.4	50.2	52.8	52.0	51.0	53.2	40.3	38.1	42.5
1984-1986 ^b	56.2	55.5	57.1	57.0	56.4	57.7	45.9	43.4	48.2
1987-1989 ^b	58.1	57.9	58.4	58.7	58.9	58.4	52.3	47.7	56.9
1990-1992 ^b	59.2	58.4	60.2	59.9	59.0	61.0	51.2	53.7	48.5
1993-1995 ^b	60.1	59.0	61.6	60.6	59.5	61.9	53.8	51.4	56.4
1996-1998 ^b	63.2	62.4	64.2	63.5	62.8	64.4	55.1	53.6	56.4
1999-2001 ^b	65.8	66.1	65.4	66.5	66.5	66.4	59.2	60.0	58.2
2002-2005 ^b	68.2	67.9	68.5	69.0	69.4	68.5	60.2	56.5	63.8
2006-2012 ^b	67.9 ^f	66.9 ^f	69.2 ^f	68.0 ^f	67.6 ^f	68.7 ^f	64.7 ^f	59.4 ^f	70.1 ^f
5-Year Period Survival (Percent) ^{cd}									
2012	66.7	65.6	68.0	66.5	65.6	67.7	62.2	58.7	66.2
Stage Distribution (%) 2006-2012 ^{ce}									
All Stages									
Number of cases	63,380	36,089	27,291	49,091	28,213	20,878	6,851	3,609	3,242
Percent	100%	100%	100%	100%	100%	100%	100%	100%	100%
Localized	43	42	45	42	42	43	46	43	50
Regional	33	34	32	34	35	34	27	29	24
Distant	18	19	17	18	19	17	20	21	18
Unstaged	6	5	6	5	5	6	7	7	8
5-Year Relative Survival (Percent), 2006-2012 ^c									
Age at Diagnosis:									
Ages <45	69.6	65.6	74.4	70.1	66.0	74.9	62.6	56.6	69.2
Ages 45-54	74.2	71.7	77.7	74.1	72.0	77.1	70.4	63.7	78.4
Ages 55-64	70.2	68.4	73.2	70.3	68.6	73.2	66.1	62.7	70.6
Ages 65-74	67.3	65.9	69.4	67.3	66.1	69.0	60.6	54.6	67.0
Ages 75+	52.1	53.6	50.8	52.9	54.3	51.6	40.7	39.4	41.4
Ages <65	71.6	69.2	75.2	71.7	69.5	75.0	67.3	62.2	73.7
Ages 65+	60.0	60.6	59.1	60.1	60.9	59.2	52.1	49.3	54.4
Stage ^e :									
All Stages	66.6	65.8	67.8	66.5	65.9	67.4	62.2	58.4	66.4
Localized	88.2	87.6	88.9	87.8	87.2	88.6	86.4	84.2	88.2
Regional	70.0	70.0	70.1	70.9	71.0	70.7	60.9	57.5	65.0
Distant	14.0	13.0	15.5	14.4	13.3	16.0	11.7	11.3	12.5
Unstaged	48.9	48.3	49.3	44.7	44.1	45.1	53.7	51.1	55.5

^a Based on End Results data from a series of hospital registries and one population-based registry.

^b SEER 9 areas (San Francisco, Connecticut, Detroit, Hawaii, Iowa, New Mexico, Seattle, Utah, Atlanta).

Based on follow-up of patients into 2013.

^c SEER 18 areas (San Francisco, Connecticut, Detroit, Hawaii, Iowa, New Mexico, Seattle, Utah, Atlanta, San Jose-Monterey, Los Angeles, Alaska Native Registry, Rural Georgia, California excluding SF/SJM/LA, Kentucky, Louisiana, New Jersey and Georgia excluding ATL/RG).

Based on follow-up of patients into 2013.

^d Period survival provides a 2012 estimate of survival by piecing together the most recent conditional survival estimates from several cohorts. It is computed here using three year calendar blocks (2010-2012: 0-1 year survival), (2009-2011: 1-2 year survival), (2008-2010: 2-3 year survival), (2007-2009: 3-4 year survival), (2006-2008: 4-5 years survival).

^e Stage at diagnosis is classified using SEER Summary Stage 2000. Stage distribution percentages may not sum to 100 due to rounding.

^f The difference between 1975-1977 and 2006-2012 is statistically significant ($p < .05$).

^g The standard error is between 5 and 10 percentage points.

^h The standard error is greater than 10 percentage points.

- Statistic could not be calculated due to fewer than 25 cases during the time period.

Table 7.8
Cancer of the Corpus and Uterus, NOS (Invasive)

5-Year Relative and Period Survival (Percent) by Race, Diagnosis Year, Stage and Age

	All Races, Females			White Females			Black Females		
	All	<50	50+	All	<50	50+	All	<50	50+
5-Year Relative Survival (Percent)									
Year of Diagnosis:									
1960-1963 ^a	-	-	-	73	-	-	31	-	-
1970-1973 ^a	-	-	-	81	-	-	44	-	-
1975-1977 ^b	86.9	92.7	86.2	88.0	93.3	87.4	60.0	84.4 ^g	55.4
1978-1980 ^b	82.5	91.7	81.3	83.7	93.1	82.6	54.9	82.3 ^g	49.5
1981-1983 ^b	80.7	91.2	79.4	82.2	92.3	81.1	50.7	82.8 ^g	45.6
1984-1986 ^b	82.4	93.6	81.0	84.0	93.9	82.8	56.2	83.5 ^g	52.7
1987-1989 ^b	82.3	89.8	81.2	83.9	90.9	83.0	56.7	82.8 ^g	52.9
1990-1992 ^b	83.7	90.1	82.7	85.8	92.2	84.8	54.0	72.9 ^g	50.2
1993-1995 ^b	83.2	90.0	82.0	84.9	91.5	83.8	58.5	81.7	53.9
1996-1998 ^b	83.5	90.1	82.3	85.2	91.3	84.2	61.4	81.9	57.0
1999-2001 ^b	84.2	88.7	83.3	85.9	89.9	85.2	61.4	70.9	58.8
2002-2005 ^b	82.9	89.5	81.7	85.2	91.7	84.1	60.2	75.0	56.5
2006-2012 ^b	83.4 ^f	88.4 ^f	82.5 ^f	85.6 ^f	89.8 ^f	85.0 ^f	65.7 ^f	80.6	63.1 ^f
5-Year Period Survival (Percent) ^{cd}									
2012	81.8	88.6	80.7	84.2	89.9	83.3	61.8	79.5	59.0
Stage Distribution (%) 2006-2012 ^{ce}									
All Stages									
Number of cases	71,625	10,498	61,127	57,838	7,890	49,948	7,158	978	6,180
Percent	100%	100%	100%	100%	100%	100%	100%	100%	100%
Localized	67	71	67	69	72	69	53	63	52
Regional	21	18	21	20	17	21	26	19	27
Distant	8	7	9	8	7	8	16	13	16
Unstaged	4	4	3	3	4	3	5	5	5
5-Year Relative Survival (Percent), 2006-2012 ^c									
Age at Diagnosis:									
Ages <45	89.1	-	-	90.0	-	-	81.1	-	-
Ages 45-54	87.8	-	-	89.6	-	-	70.7	-	-
Ages 55-64	84.5	-	-	87.0	-	-	64.6	-	-
Ages 65-74	78.3	-	-	81.4	-	-	57.8	-	-
Ages 75+	67.9	-	-	71.3	-	-	39.3	-	-
Ages <65	86.1	-	-	88.1	-	-	68.6	-	-
Ages 65+	74.3	-	-	77.4	-	-	52.0	-	-
Stage ^e :									
All Stages	81.7	88.4	80.5	84.0	89.5	83.2	61.9	79.0	59.0
Localized	95.4	96.4	95.2	96.3	96.9	96.3	85.5	91.9	84.2
Regional	68.7	81.6	66.8	71.4	82.9	69.8	49.3	72.2	46.7
Distant	16.8	28.8	15.0	18.4	30.6	16.7	9.3	22.8	7.4
Unstaged	49.7	87.5	42.1	49.2	88.5	42.3	38.6	84.5 ^g	30.8

^a Based on End Results data from a series of hospital registries and one population-based registry.

^b SEER 9 areas (San Francisco, Connecticut, Detroit, Hawaii, Iowa, New Mexico, Seattle, Utah, Atlanta).

Based on follow-up of patients into 2013.

^c SEER 18 areas (San Francisco, Connecticut, Detroit, Hawaii, Iowa, New Mexico, Seattle, Utah, Atlanta, San Jose-Monterey, Los Angeles, Alaska Native Registry, Rural Georgia, California excluding SF/SJM/LA, Kentucky, Louisiana, New Jersey and Georgia excluding ATL/RG).

Based on follow-up of patients into 2013.

^d Period survival provides a 2012 estimate of survival by piecing together the most recent conditional survival estimates from several cohorts. It is computed here using three year calendar blocks (2010-2012: 0-1 year survival), (2009-2011: 1-2 year survival), (2008-2010: 2-3 year survival), (2007-2009: 3-4 year survival), (2006-2008: 4-5 years survival).

^e Stage at diagnosis is classified using SEER Summary Stage 2000. Stage distribution percentages may not sum to 100 due to rounding.

^f The difference between 1975-1977 and 2006-2012 is statistically significant ($p < .05$).

^g The standard error is between 5 and 10 percentage points.

^h The standard error is greater than 10 percentage points.

- Statistic could not be calculated due to fewer than 25 cases during the time period.

Table 8.8
Cancer of the Esophagus (Invasive)

5-Year Relative and Period Survival (Percent) by Race, Sex, Diagnosis Year, Stage and Age

	All Races			Whites			Blacks		
	Total	Males	Females	Total	Males	Females	Total	Males	Females
5-Year Relative Survival (Percent)									
Year of Diagnosis:									
1960-1963 ^a	-	-	-	4	4	6	1	0	2
1970-1973 ^a	-	-	-	4	4	4	4	4	3
1975-1977 ^b	5.0	4.0	7.5	5.5	4.8	7.0	3.5	2.0	7.7
1978-1980 ^b	5.0	4.8	5.6	5.3	5.3	5.2	4.3	3.4	6.8
1981-1983 ^b	6.6	6.0	8.2	7.3	6.5	9.0	4.3	3.7	6.5
1984-1986 ^b	9.5	8.4	12.1	10.2	9.0	13.0	8.7	8.2	9.9
1987-1989 ^b	9.4	9.4	9.5	10.5	11.0	9.2	6.6	5.3	10.2
1990-1992 ^b	12.1	11.7	13.4	12.9	12.3	14.8	9.1	9.4	8.4
1993-1995 ^b	12.1	12.2	11.7	13.4	13.6	12.7	7.6	7.8	6.9
1996-1998 ^b	13.4	13.0	14.4	14.1	13.9	14.7	10.2	8.5	13.6
1999-2001 ^b	18.1	17.6	19.6	18.8	18.6	19.8	12.5	10.6	16.3
2002-2005 ^b	18.3	18.0	19.3	19.4	19.2	19.8	12.9	11.2	16.0
2006-2012 ^b	20.5 ^f	20.5 ^f	20.7 ^f	21.7 ^f	21.8 ^f	21.2 ^f	12.5 ^f	10.5 ^f	16.3 ^f
5-Year Period Survival (Percent) ^{cd}									
2012	18.6	18.3	19.6	19.3	19.2	19.7	12.0	9.6	16.5
Stage Distribution (%) 2006-2012 ^{ce}									
All Stages									
Number of cases	20,995	16,572	4,423	17,533	14,112	3,421	2,272	1,564	708
Percent	100%	100%	100%	100%	100%	100%	100%	100%	100%
Localized	20	19	23	20	20	23	18	17	21
Regional	31	31	29	31	31	29	31	31	32
Distant	38	40	32	38	40	32	40	41	35
Unstaged	11	10	16	10	9	16	11	11	12
5-Year Relative Survival (Percent), 2006-2012 ^c									
Age at Diagnosis:									
Ages <45	19.6	21.5	7.9	20.2	22.2	6.3	11.3	8.2	12.4 ^g
Ages 45-54	20.5	19.6	24.6	22.3	21.0	29.5	10.9	10.8	11.6
Ages 55-64	20.3	19.4	25.0	21.5	20.9	25.2	12.7	9.3	22.7
Ages 65-74	21.3	21.3	21.4	22.3	22.4	22.3	12.5	11.7	13.3
Ages 75+	11.5	11.7	11.2	11.7	12.0	11.1	9.2	9.2	8.7
Ages <65	20.3	19.6	23.9	21.6	21.0	25.4	12.1	9.7	18.1
Ages 65+	16.6	17.1	15.2	17.2	17.8	15.3	11.1	10.9	11.1
Stage ^e :									
All Stages	18.4	18.3	18.5	19.2	19.3	18.8	11.7	10.1	15.0
Localized	41.3	43.8	33.4	43.6	46.1	34.6	22.4	20.8	24.0
Regional	22.8	22.4	24.3	23.5	23.3	24.6	16.6	15.6	19.1
Distant	4.5	4.2	5.9	4.6	4.4	5.5	3.6	1.8	8.1
Unstaged	12.4	12.6	12.0	12.4	12.8	11.4	9.7	9.6	10.6

^a Based on End Results data from a series of hospital registries and one population-based registry.

^b SEER 9 areas (San Francisco, Connecticut, Detroit, Hawaii, Iowa, New Mexico, Seattle, Utah, Atlanta).

Based on follow-up of patients into 2013.

^c SEER 18 areas (San Francisco, Connecticut, Detroit, Hawaii, Iowa, New Mexico, Seattle, Utah, Atlanta, San Jose-Monterey, Los Angeles, Alaska Native Registry, Rural Georgia, California excluding SF/SJM/LA, Kentucky, Louisiana, New Jersey and Georgia excluding ATL/RG).

Based on follow-up of patients into 2013.

^d Period survival provides a 2012 estimate of survival by piecing together the most recent conditional survival estimates from several cohorts. It is computed here using three year calendar blocks (2010-2012: 0-1 year survival), (2009-2011: 1-2 year survival), (2008-2010: 2-3 year survival), (2007-2009: 3-4 year survival), (2006-2008: 4-5 years survival).

^e Stage at diagnosis is classified using SEER Summary Stage 2000. Stage distribution percentages may not sum to 100 due to rounding.

^f The difference between 1975-1977 and 2006-2012 is statistically significant ($p < .05$).

^g The standard error is between 5 and 10 percentage points.

^h The standard error is greater than 10 percentage points.

- Statistic could not be calculated due to fewer than 25 cases during the time period.

Table 9.8
Hodgkin Lymphoma

5-Year Relative and Period Survival (Percent) by Race, Sex, Diagnosis Year and Age

	All Races			Whites			Blacks		
	Total	Males	Females	Total	Males	Females	Total	Males	Females
5-Year Relative Survival (Percent)									
Year of Diagnosis:									
1960-1963 ^a	-	-	-	40	34	48	-	-	-
1970-1973 ^a	-	-	-	67	66	69	-	-	-
1975-1977 ^b	71.8	69.9	74.3	72.1	70.2	74.5	70.1	68.5 ^g	73.3 ^g
1978-1980 ^b	71.7	70.3	73.5	71.8	69.8	74.3	70.6	74.7 ^g	63.1 ^g
1981-1983 ^b	74.2	73.0	75.8	74.6	73.8	75.6	71.8	69.6 ^g	75.9 ^g
1984-1986 ^b	78.3	76.5	80.6	78.8	76.9	81.2	74.7	75.7 ^g	72.1 ^g
1987-1989 ^b	79.2	76.6	82.5	79.7	76.8	83.3	72.3	70.9 ^g	74.0 ^g
1990-1992 ^b	81.7	79.2	84.7	82.8	81.0	84.9	74.2	64.9	84.3
1993-1995 ^b	81.7	79.2	84.6	82.2	80.0	84.7	78.3	74.0	83.0
1996-1998 ^b	85.1	84.4	85.9	85.7	84.4	87.3	81.1	84.3	77.7
1999-2001 ^b	85.1	82.8	87.9	85.7	84.0	87.8	81.4	75.3	89.6
2002-2005 ^b	86.8	85.9	87.7	87.9	87.3	88.6	81.3	76.6	85.4
2006-2012 ^b	88.5 ^f	87.3 ^f	89.8 ^f	89.0 ^f	88.6 ^f	89.5 ^f	85.6 ^f	80.8 ^f	91.4 ^f
5-Year Period Survival (Percent) ^{cd}									
2012	86.5	85.6	87.6	86.6	86.2	87.1	83.9	79.0	89.4
Stage Distribution (%) 2006-2012 ^{ce}									
All Stages									
Number of cases	14,954	8,168	6,786	12,094	6,624	5,470	1,867	1,009	858
Percent	100%	100%	100%	100%	100%	100%	100%	100%	100%
Localized	16	17	15	16	17	15	19	19	18
Regional	40	35	46	41	36	47	32	26	39
Distant	39	43	34	38	42	33	47	53	40
Unstaged	4	4	5	4	4	5	3	2	3
5-Year Relative Survival (Percent), 2006-2012 ^c									
Age at Diagnosis:									
Ages <45	94.3	93.2	95.5	95.1	94.5	95.8	88.6	84.5	93.4
Ages 45-54	86.9	84.8	90.0	88.4	87.1	90.4	78.7	71.8	88.9
Ages 55-64	78.1	78.3	77.8	79.3	80.5	77.5	65.7	56.6 ^g	74.1 ^g
Ages 65-74	64.6	62.6	67.1	64.3	61.1	68.2	69.8 ^g	82.5 ^g	53.5 ^g
Ages 75+	41.9	42.2	41.3	42.4	41.7	42.1	45.5 ^h	-	37.5 ^h
Ages <65	91.3	90.0	92.9	92.2	91.5	93.1	84.7	79.7	90.7
Ages 65+	54.3	54.3	54.2	54.0	52.7	54.9	63.4 ^g	80.8 ^g	48.3 ^g
Stage ^e :									
All Stages	86.2	85.4	87.3	86.5	86.0	87.0	83.3	79.8	87.3
Localized	91.5	92.8	89.5	91.5	93.0	89.2	90.2	90.2	89.9
Regional	93.1	92.5	93.7	93.5	93.0	93.9	90.2	88.4	91.4
Distant	77.3	77.1	77.7	77.2	77.8	76.3	75.9	71.4	82.4
Unstaged	81.9	79.7	84.2	81.6	79.2	84.1	73.6 ^g	74.8 ^h	-

^a Based on End Results data from a series of hospital registries and one population-based registry.^b SEER 9 areas (San Francisco, Connecticut, Detroit, Hawaii, Iowa, New Mexico, Seattle, Utah, Atlanta).

Based on follow-up of patients into 2013.

^c SEER 18 areas (San Francisco, Connecticut, Detroit, Hawaii, Iowa, New Mexico, Seattle, Utah, Atlanta, San Jose-Monterey, Los Angeles, Alaska Native Registry, Rural Georgia, California excluding SF/SJM/LA, Kentucky, Louisiana, New Jersey and Georgia excluding ATL/RG).

Based on follow-up of patients into 2013.

^d Period survival provides a 2012 estimate of survival by piecing together the most recent conditional survival estimates from several cohorts. It is computed here using three year calendar blocks (2010-2012: 0-1 year survival), (2009-2011: 1-2 year survival), (2008-2010: 2-3 year survival), (2007-2009: 3-4 year survival), (2006-2008: 4-5 years survival).^e Stage at diagnosis is classified using SEER Summary Stage 2000. Stage distribution percentages may not sum to 100 due to rounding.^f The difference between 1975-1977 and 2006-2012 is statistically significant (p<.05).^g The standard error is between 5 and 10 percentage points.^h The standard error is greater than 10 percentage points.

- Statistic could not be calculated due to fewer than 25 cases during the time period.

Table 10.6
Kaposi Sarcoma

5-Year Relative and Period Survival (Percent) by Race, Sex, Diagnosis Year, Stage and Age

	All Races			Whites			Blacks		
	Total	Males	Females	Total	Males	Females	Total	Males	Females
5-Year Relative Survival (Percent)									
Year of Diagnosis:									
1960-1963 ^a	-	-	-	-	-	-	-	-	-
1970-1973 ^a	-	-	-	-	-	-	-	-	-
1975-1977 ^b	80.7 ^f	80.1 ^f	-	79.9 ^f	79.0 ^f	-	-	-	-
1978-1980 ^b	78.1 ^f	79.0 ^f	73.1 ^g	77.7 ^f	78.0 ^f	72.5 ^g	-	-	-
1981-1983 ^b	35.3	32.9	64.3 ^g	33.8	31.4	64.2 ^g	-	-	-
1984-1986 ^b	13.0	11.7	70.5 ^g	12.7	11.4	70.2 ^g	16.8	15.7	-
1987-1989 ^b	9.9	9.2	68.5 ^g	9.4	8.8	72.3 ^g	12.4	11.3	-
1990-1992 ^b	9.2	8.5	52.6 ^f	8.8	8.1	53.7 ^f	11.5	10.5	-
1993-1995 ^b	21.8	21.0	53.8 ^f	22.1	21.3	62.1 ^g	17.6	16.8	-
1996-1998 ^b	52.4	51.4	72.2 ^g	57.0	55.7	86.5 ^f	39.9	39.3	-
1999-2001 ^b	58.0	57.5	61.0 ^f	64.6	63.0	79.2 ^f	43.3	44.8	-
2002-2005 ^b	66.5	66.1	68.0 ^f	77.2	76.6	74.7 ^f	45.1	44.9	-
2006-2012 ^b	73.7 ^e	73.5	75.9 ^f	79.2	78.8	80.4 ^f	61.9	62.8	-
5-Year Period Survival (Percent) ^{cd}									
2012	73.1	73.1	71.0	76.2	75.5	78.6	63.9	66.0	-
5-Year Relative Survival (Percent), 2006-2012 ^c									
Age at Diagnosis:									
Ages <45	67.1	67.9	44.0 ^f	71.7	71.8	-	58.0	59.5	35.2 ^f
Ages 45-54	71.1	71.3	-	71.8	71.5	-	66.2	68.0	-
Ages 55-64	78.0	76.2	-	79.0	76.5	-	65.2 ^f	61.9 ^g	-
Ages 65-74	86.0	85.6	86.5 ^f	86.5	85.8 ^f	87.8 ^f	-	-	-
Ages 75+	85.9	86.6	80.6 ^f	86.3	87.1	82.1 ^f	-	-	-
Ages <65	69.5	69.8	60.9 ^f	72.8	72.4	85.9 ^f	60.4	61.7	42.8 ^f
Ages 65+	86.5	87.3	83.1 ^f	87.0	87.6	85.1 ^f	77.3 ^g	-	-

^a Based on End Results data from a series of hospital registries and one population-based registry.
^b SEER 9 areas (San Francisco, Connecticut, Detroit, Hawaii, Iowa, New Mexico, Seattle, Utah, Atlanta).
Based on follow-up of patients into 2013.
^c SEER 18 areas (San Francisco, Connecticut, Detroit, Hawaii, Iowa, New Mexico, Seattle, Utah, Atlanta, San Jose-Monterey, Los Angeles, Alaska Native Registry, Rural Georgia, California excluding SF/SJM/LA, Kentucky, Louisiana, New Jersey and Georgia excluding ATL/RG).
Based on follow-up of patients into 2013.
^d Period survival provides a 2012 estimate of survival by piecing together the most recent conditional survival estimates from several cohorts. It is computed here using three year calendar blocks (2010-2012: 0-1 year survival), (2009-2011: 1-2 year survival), (2008-2010: 2-3 year survival), (2007-2009: 3-4 year survival), (2006-2008: 4-5 years survival).
^e The difference between 1975-1977 and 2006-2012 is statistically significant (p<.05).
^f The standard error is between 5 and 10 percentage points.
^g The standard error is greater than 10 percentage points.
- Statistic could not be calculated due to fewer than 25 cases during the time period.

Table 11.8
Cancer of the Kidney and Renal Pelvis (Invasive)

5-Year Relative and Period Survival (Percent) by Race, Sex, Diagnosis Year, Stage and Age

	All Races			Whites			Blacks		
	Total	Males	Females	Total	Males	Females	Total	Males	Females
5-Year Relative Survival (Percent)									
Year of Diagnosis:									
1960-1963 ^a	-	-	-	37	36	39	38	38	37
1970-1973 ^a	-	-	-	46	44	50	44	40	49
1975-1977 ^b	50.1	50.2	49.8	49.8	50.1	49.3	48.8	47.9	50.4 ^g
1978-1980 ^b	52.9	52.7	53.3	52.6	52.8	52.1	56.8	51.9	62.8 ^g
1981-1983 ^b	50.0	51.0	48.3	49.9	51.2	47.7	50.6	50.2	51.2
1984-1986 ^b	54.5	55.0	53.7	54.7	55.4	53.5	52.5	49.2	57.4
1987-1989 ^b	56.7	57.0	56.1	57.3	58.0	56.1	54.5	52.7	56.7
1990-1992 ^b	60.2	60.5	59.6	60.7	61.2	59.8	56.9	55.2	58.8
1993-1995 ^b	61.5	61.7	61.1	62.0	62.8	60.7	57.4	54.0	62.1
1996-1998 ^b	62.5	62.9	61.9	62.0	62.6	61.0	66.9	68.1	64.5
1999-2001 ^b	64.9	63.3	67.3	64.9	63.7	67.0	63.9	59.2	69.2
2002-2005 ^b	70.6	70.7	70.4	70.9	71.1	70.5	66.7	66.6	66.8
2006-2012 ^b	74.7 ^f	73.8 ^f	76.2 ^f	74.5 ^f	73.8 ^f	75.7 ^f	75.4 ^f	73.2 ^f	78.6 ^f
5-Year Period Survival (Percent) ^{cd}									
2012	74.0	73.3	75.2	74.1	73.4	75.2	73.9	72.8	75.5
Stage Distribution (%) 2006-2012 ^{ce}									
All Stages									
Number of cases	73,225	45,411	27,814	60,010	37,397	22,613	8,214	4,867	3,347
Percent	100%	100%	100%	100%	100%	100%	100%	100%	100%
Localized	65	63	68	64	63	67	71	69	73
Regional	16	17	15	17	18	15	12	12	11
Distant	16	17	14	16	17	14	15	16	12
Unstaged	3	3	3	3	3	3	3	3	3
5-Year Relative Survival (Percent), 2006-2012 ^c									
Age at Diagnosis:									
Ages <45	86.6	85.0	88.9	88.2	86.6	90.6	77.9	75.9	80.6
Ages 45-54	80.1	77.9	84.5	80.5	78.2	85.0	77.2	75.0	81.4
Ages 55-64	75.4	73.6	79.0	75.4	73.6	79.0	76.3	74.5	79.4
Ages 65-74	72.5	71.6	73.9	72.7	71.9	74.1	71.9	70.2	74.1
Ages 75+	59.1	60.2	57.9	59.3	60.8	57.6	56.8	52.4	59.3
Ages <65	79.1	77.0	82.9	79.4	77.3	83.4	76.9	75.0	80.3
Ages 65+	66.6	67.0	66.0	66.7	67.3	65.8	66.6	65.3	67.9
Stage ^e :									
All Stages	73.7	73.0	75.0	73.8	73.2	74.9	73.4	72.1	75.3
Localized	92.5	92.4	92.6	92.8	92.7	93.0	90.6	91.0	90.1
Regional	65.7	66.7	63.8	66.4	67.5	64.1	59.4	58.4	61.1
Distant	11.7	11.0	12.9	11.8	11.5	12.4	8.4	6.7	11.7
Unstaged	36.0	39.0	31.9	34.5	36.4	31.8	37.0	43.3 ^g	28.6 ^g

^a Based on End Results data from a series of hospital registries and one population-based registry.

^b SEER 9 areas (San Francisco, Connecticut, Detroit, Hawaii, Iowa, New Mexico, Seattle, Utah, Atlanta).

Based on follow-up of patients into 2013.

^c SEER 18 areas (San Francisco, Connecticut, Detroit, Hawaii, Iowa, New Mexico, Seattle, Utah, Atlanta, San Jose-Monterey, Los Angeles, Alaska Native Registry, Rural Georgia, California excluding SF/SJM/LA, Kentucky, Louisiana, New Jersey and Georgia excluding ATL/RG).

Based on follow-up of patients into 2013.

^d Period survival provides a 2012 estimate of survival by piecing together the most recent conditional survival estimates from several cohorts. It is computed here using three year calendar blocks (2010-2012: 0-1 year survival), (2009-2011: 1-2 year survival), (2008-2010: 2-3 year survival), (2007-2009: 3-4 year survival), (2006-2008: 4-5 years survival).

^e Stage at diagnosis is classified using SEER Summary Stage 2000. Stage distribution percentages may not sum to 100 due to rounding.

^f The difference between 1975-1977 and 2006-2012 is statistically significant ($p < .05$).

^g The standard error is between 5 and 10 percentage points.

^h The standard error is greater than 10 percentage points.

- Statistic could not be calculated due to fewer than 25 cases during the time period.

Table 12.8
Cancer of the Larynx (Invasive)

5-Year Relative and Period Survival (Percent) by Race, Sex, Diagnosis Year, Stage and Age

	All Races			Whites			Blacks		
	Total	Males	Females	Total	Males	Females	Total	Males	Females
5-Year Relative Survival (Percent)									
Year of Diagnosis:									
1960-1963 ^a	-	-	-	53	54	46	-	-	-
1970-1973 ^a	-	-	-	62	63	56	-	-	-
1975-1977 ^b	66.0	66.6	62.6	66.7	67.4	62.3	58.2	57.1	63.3 ^g
1978-1980 ^b	65.3	65.5	64.6	66.2	66.3	65.4	56.9	57.2	55.8 ^g
1981-1983 ^b	68.1	68.4	66.9	69.5	69.7	68.5	56.5	57.7	50.7 ^g
1984-1986 ^b	65.2	65.8	62.2	67.0	67.6	63.9	52.8	53.1	51.1 ^g
1987-1989 ^b	65.5	66.6	61.1	66.9	68.5	60.6	55.9	54.1	61.3 ^g
1990-1992 ^b	65.8	66.7	62.3	67.7	68.5	64.4	53.5	54.0	51.3 ^g
1993-1995 ^b	63.6	65.3	56.6	65.2	67.0	57.6	53.1	54.5	47.4 ^g
1996-1998 ^b	65.0	66.8	58.7	66.9	68.5	61.1	53.8	56.8	45.0 ^g
1999-2001 ^b	63.3	64.2	59.7	65.2	66.3	60.8	50.0	49.1	53.0 ^g
2002-2005 ^b	62.8	62.9	62.3	65.3	65.3	65.2	50.5	51.5	46.8 ^g
2006-2012 ^b	62.0 ^f	62.6 ^f	58.8	63.6 ^f	64.1 ^f	61.5	52.1	53.5	46.4
5-Year Period Survival (Percent) ^{cd}									
2012	60.1	60.8	57.2	61.4	62.0	58.9	51.5	52.6	46.9
Stage Distribution (%) 2006-2012 ^{ce}									
All Stages									
Number of cases	16,454	13,295	3,159	13,204	10,673	2,531	2,513	1,991	522
Percent	100%	100%	100%	100%	100%	100%	100%	100%	100%
Localized	55	57	49	57	59	51	45	48	37
Regional	22	20	30	21	20	29	25	23	33
Distant	19	19	18	17	18	16	27	27	27
Unstaged	4	4	4	4	4	3	3	3	3
5-Year Relative Survival (Percent), 2006-2012 ^c									
Age at Diagnosis:									
Ages <45	73.8	71.9	78.3	78.8	77.7	81.2	53.2 ^g	51.1 ^g	58.8 ^h
Ages 45-54	61.6	61.7	61.0	63.3	62.9	64.7	53.2	54.9	48.4
Ages 55-64	60.9	60.8	61.3	62.7	62.6	63.0	50.8	50.1	53.7
Ages 65-74	60.6	62.6	50.9	60.5	62.5	50.7	57.8	59.8	48.3 ^g
Ages 75+	56.9	58.8	48.6	57.3	59.6	48.1	51.2	53.0 ^g	41.9 ^g
Ages <65	62.0	61.8	62.8	64.0	63.6	65.5	51.8	51.8	51.7
Ages 65+	59.1	61.2	49.8	59.1	61.3	49.5	56.1	58.1	47.0 ^g
Stage ^e :									
All Stages	60.7	61.5	57.4	61.8	62.5	58.5	53.3	54.1	50.3
Localized	76.3	77.0	72.6	76.2	76.9	72.8	73.8	74.6	69.1
Regional	44.5	43.4	47.5	45.1	44.2	47.5	41.8	39.5	47.2
Distant	35.1	35.0	35.3	36.0	36.0	36.3	30.1	30.0	30.7
Unstaged	56.4	57.8	50.2 ^g	58.0	59.9	49.2 ^g	46.6 ^g	48.6 ^g	-

^a Based on End Results data from a series of hospital registries and one population-based registry.

^b SEER 9 areas (San Francisco, Connecticut, Detroit, Hawaii, Iowa, New Mexico, Seattle, Utah, Atlanta).

Based on follow-up of patients into 2013.

^c SEER 18 areas (San Francisco, Connecticut, Detroit, Hawaii, Iowa, New Mexico, Seattle, Utah, Atlanta, San Jose-Monterey, Los Angeles, Alaska Native Registry, Rural Georgia, California excluding SF/SJM/LA, Kentucky, Louisiana, New Jersey and Georgia excluding ATL/RG).

Based on follow-up of patients into 2013.

^d Period survival provides a 2012 estimate of survival by piecing together the most recent conditional survival estimates from several cohorts. It is computed here using three year calendar blocks (2010-2012: 0-1 year survival), (2009-2011: 1-2 year survival), (2008-2010: 2-3 year survival), (2007-2009: 3-4 year survival), (2006-2008: 4-5 years survival).

^e Stage at diagnosis is classified using SEER Summary Stage 2000. Stage distribution percentages may not sum to 100 due to rounding.

^f The difference between 1975-1977 and 2006-2012 is statistically significant ($p < .05$).

^g The standard error is between 5 and 10 percentage points.

^h The standard error is greater than 10 percentage points.

- Statistic could not be calculated due to fewer than 25 cases during the time period.

Table 13.14
Leukemia

5-Year Relative and Period Survival (Percent) by Race, Sex, Diagnosis Year and Age

	All Races			Whites			Blacks		
	Total	Males	Females	Total	Males	Females	Total	Males	Females
5-Year Relative Survival (Percent)									
Year of Diagnosis:									
1960-1963 ^a	-	-	-	14	-	-	-	-	-
1970-1973 ^a	-	-	-	22	-	-	-	-	-
1975-1977 ^b	34.2	33.0	35.6	34.6	33.6	35.8	33.4	30.4	36.7
1978-1980 ^b	36.0	35.0	37.4	36.7	35.8	38.0	28.2	27.3	29.3
1981-1983 ^b	37.3	36.9	37.8	38.0	37.8	38.4	33.9	33.4	34.3
1984-1986 ^b	40.5	40.1	41.1	41.6	41.3	42.0	32.7	31.5	34.1
1987-1989 ^b	42.9	44.0	41.3	43.9	45.5	41.8	35.0	32.7	37.8
1990-1992 ^b	45.2	44.6	46.0	46.4	46.2	46.7	35.9	30.9	41.3
1993-1995 ^b	47.5	48.3	46.3	48.5	49.4	47.4	41.3	41.6	40.9
1996-1998 ^b	48.2	48.4	47.9	49.5	49.4	49.6	38.6	39.0	38.0
1999-2001 ^b	50.7	51.7	49.5	51.8	52.7	50.5	43.2	44.2	42.1
2002-2005 ^b	58.5	59.2	57.7	59.4	60.1	58.5	52.7	54.5	50.6
2006-2012 ^b	62.7 ^e	64.1 ^e	60.8 ^e	63.5 ^e	64.7 ^e	62.0 ^e	57.5 ^e	60.1 ^e	54.0 ^e
5-Year Period Survival (Percent) ^{cd}									
2012	60.6	61.5	59.4	61.0	61.8	60.0	55.3	56.5	54.1
5-Year Relative Survival (Percent), 2006-2012 ^c									
Age at Diagnosis:									
Ages <45	74.1	73.9	74.4	75.1	74.5	76.0	66.4	67.5	65.1
Ages 45-54	68.7	70.4	66.2	70.1	71.6	68.0	59.4	61.3	56.8
Ages 55-64	67.2	67.8	66.2	67.8	68.2	67.1	57.3	57.5	56.6
Ages 65-74	57.0	57.1	56.7	57.7	57.4	58.0	47.8	48.3	47.2
Ages 75+	39.1	39.3	38.9	40.0	40.0	39.9	28.8	29.7	28.0
Ages <65	70.6	70.9	70.1	71.5	71.5	71.4	62.2	63.1	60.9
Ages 65+	46.8	47.7	45.6	47.5	48.1	46.6	38.4	40.0	36.8

^a Based on End Results data from a series of hospital registries and one population-based registry.^b SEER 9 areas (San Francisco, Connecticut, Detroit, Hawaii, Iowa, New Mexico, Seattle, Utah, Atlanta).

Based on follow-up of patients into 2013.

^c SEER 18 areas (San Francisco, Connecticut, Detroit, Hawaii, Iowa, New Mexico, Seattle, Utah, Atlanta, San Jose-Monterey, Los Angeles, Alaska Native Registry, Rural Georgia, California excluding SF/SJM/LA, Kentucky, Louisiana, New Jersey and Georgia excluding ATL/RG).

Based on follow-up of patients into 2013.

^d Period survival provides a 2012 estimate of survival by piecing together the most recent conditional survival estimates from several cohorts. It is computed here using three year calendar blocks (2010-2012: 0-1 year survival), (2009-2011: 1-2 year survival), (2008-2010: 2-3 year survival), (2007-2009: 3-4 year survival), (2006-2008: 4-5 years survival).^e The difference between 1975-1977 and 2006-2012 is statistically significant (p<.05).^f The standard error is between 5 and 10 percentage points.^g The standard error is greater than 10 percentage points.

- Statistic could not be calculated due to fewer than 25 cases during the time period.

Table 13.15
Lymphocytic Leukemia

5-Year Relative and Period Survival (Percent) by Race, Sex, Diagnosis Year and Age

	All Races			Whites			Blacks		
	Total	Males	Females	Total	Males	Females	Total	Males	Females
<u>Acute Lymphocytic Leukemia</u>									
5-Year Relative Survival (Percent)									
Year of Diagnosis:									
1975-1977 ^a	40.6	36.9	45.6	40.8	37.4	45.7	33.5 ^e	-	-
...									
1984-1986 ^a	52.0	49.1	56.1	52.8	49.3	57.8	36.0 ^e	43.5 ^e	27.3 ^e
1987-1989 ^a	54.3	53.7	55.0	54.8	54.7	54.9	44.7 ^e	42.0 ^e	47.1 ^e
1990-1992 ^a	58.0	54.5	63.1	57.7	54.9	62.0	57.1 ^e	50.4 ^e	63.3 ^e
1993-1995 ^a	60.1	57.9	63.4	59.7	57.9	62.3	53.2 ^e	45.9 ^e	63.8 ^e
1996-1998 ^a	65.4	64.3	66.9	66.3	64.2	68.9	55.6 ^e	59.1 ^e	50.2 ^e
1999-2001 ^a	63.5	63.4	63.5	64.8	65.3	64.2	56.0 ^e	48.8 ^e	63.0 ^e
2002-2005 ^a	67.3	66.2	69.0	67.2	66.0	69.1	63.1	62.4 ^e	63.9 ^e
2006-2012 ^a	70.7 ^d	70.7 ^d	70.7 ^d	71.9 ^d	71.5 ^d	72.4 ^d	62.8 ^d	64.1	59.4 ^e
5-Year Period Survival (Percent) ^{bc}									
2012	68.3	68.6	68.0	68.4	68.6	68.1	65.7	69.4	60.1
5-Year Relative Survival (Percent), 2006-2012 ^b									
Age at Diagnosis:									
Ages <45	79.6	78.7	80.9	80.1	79.0	81.5	74.7	74.8	74.3
Ages 45-54	33.5	36.6	29.7	33.0	35.9	29.1	27.7 ^e	37.3 ^f	-
Ages 55-64	24.9	21.9	28.3	25.7	22.3	29.4	9.7 ^e	15.9 ^f	-
Ages 65-74	22.5	23.9	21.0	22.1	23.7	20.3	-	-	-
Ages 75+	6.9	8.8	4.2	6.6	7.9	4.9	-	-	-
Ages <65	72.6	72.1	73.3	72.9	72.3	73.7	67.7	69.4	64.6
Ages 65+	15.6	17.1	14.1	15.3	16.6	13.7	-	-	-
<u>Chronic Lymphocytic Leukemia</u>									
5-Year Relative Survival (Percent)									
Year of Diagnosis:									
1975-1977 ^a	67.1	64.7	70.3	67.9	65.4	71.2	56.9 ^e	55.1 ^e	59.0 ^e
...									
1984-1986 ^a	72.3	71.1	73.9	72.6	71.4	74.3	67.0 ^e	64.4 ^e	68.4 ^e
1987-1989 ^a	72.7	72.6	72.8	73.8	73.9	73.6	58.1	55.5 ^e	61.5 ^e
1990-1992 ^a	74.0	71.7	77.3	75.2	73.0	78.3	52.6	44.4 ^e	60.9 ^e
1993-1995 ^a	77.0	76.9	77.1	78.1	78.0	78.3	63.3	64.0 ^e	62.1 ^e
1996-1998 ^a	75.3	73.7	77.5	76.3	74.8	78.3	58.1	51.5 ^e	66.0 ^e
1999-2001 ^a	78.2	77.6	79.0	78.9	78.2	80.0	65.7	64.5 ^e	66.1 ^e
2002-2005 ^a	84.1	83.4	85.1	84.5	83.7	85.7	77.8	75.9	80.3 ^e
2006-2012 ^a	85.1 ^d	85.4 ^d	84.6 ^d	85.1 ^d	85.4 ^d	84.6 ^d	82.0 ^d	82.1 ^d	81.4 ^d
5-Year Period Survival (Percent) ^{bc}									
2012	82.4	82.5	82.2	82.4	82.6	82.1	72.0	70.0	74.7
5-Year Relative Survival (Percent), 2006-2012 ^b									
Age at Diagnosis:									
Ages <45	92.7	92.6	92.6	91.8	91.0	92.6	93.2	97.2	-
Ages 45-54	93.4	92.9	94.0	94.4	93.7	95.7	77.7	80.6	72.6 ^e
Ages 55-64	89.9	89.1	91.4	89.7	88.9	91.0	83.4	79.5	89.4
Ages 65-74	85.2	83.2	88.3	85.5	83.3	88.9	73.8	71.2	76.8
Ages 75+	70.6	70.7	70.6	70.8	71.0	70.6	54.0	51.3 ^e	56.3 ^e
Ages <65	91.1	90.4	92.2	91.1	90.4	92.4	82.4	81.7	83.0
Ages 65+	77.3	77.0	77.6	77.4	77.1	77.8	64.9	62.9	67.0

^a SEER 9 areas (San Francisco, Connecticut, Detroit, Hawaii, Iowa, New Mexico, Seattle, Utah, Atlanta).

Based on follow-up of patients into 2013.

^b SEER 18 areas (San Francisco, Connecticut, Detroit, Hawaii, Iowa, New Mexico, Seattle, Utah, Atlanta, San Jose-Monterey, Los Angeles, Alaska Native Registry, Rural Georgia, California excluding SF/SJM/LA, Kentucky, Louisiana, New Jersey and Georgia excluding ATL/RG).

Based on follow-up of patients into 2013.

^c Period survival provides a 2012 estimate of survival by piecing together the most recent conditional survival estimates from several cohorts. It is computed here using three year calendar blocks (2010-2012: 0-1 year survival), (2009-2011: 1-2 year survival), (2008-2010: 2-3 year survival), (2007-2009: 3-4 year survival), (2006-2008: 4-5 years survival). The difference between 1975-1977 and 2006-2012 is statistically significant (p<.05).

^d The standard error is between 5 and 10 percentage points.

^e The standard error is greater than 10 percentage points.

^f - Statistic could not be calculated due to fewer than 25 cases during the time period.

Table 13.16
Myeloid Leukemia

5-Year Relative and Period Survival (Percent) by Race, Sex, Diagnosis Year and Age

	All Races			Whites			Blacks		
	Total	Males	Females	Total	Males	Females	Total	Males	Females
<u>Acute Myeloid Leukemia</u>									
5-Year Relative Survival (Percent)									
Year of Diagnosis:									
1975-1977 ^a	6.2	5.5	7.0	5.8	5.4	6.2	10.1	8.2	11.7
...									
1984-1986 ^a	10.6	9.2	12.3	10.2	8.9	11.8	9.8	6.7	12.9
1987-1989 ^a	11.4	9.1	14.1	11.3	9.6	13.2	9.2	4.4	15.7 ^e
1990-1992 ^a	13.7	12.6	15.1	13.4	12.2	14.9	13.5	12.9	13.9
1993-1995 ^a	16.2	14.9	17.5	15.4	14.2	16.8	21.5	20.6 ^e	22.0
1996-1998 ^a	17.0	16.0	18.3	15.7	14.4	17.2	22.1	25.2	18.2
1999-2001 ^a	19.2	18.8	19.7	18.7	17.7	19.9	19.3	24.8	14.2
2002-2005 ^a	24.0	21.4	26.9	23.8	21.1	27.0	24.5	24.5	24.4
2006-2012 ^a	26.8 ^d	26.8 ^d	26.7 ^d	25.9 ^d	25.8 ^d	26.0 ^d	29.6 ^d	29.8 ^d	29.3 ^d
5-Year Period Survival (Percent) ^{bc}									
2012	27.6	26.6	28.9	27.1	26.0	28.5	31.0	30.4	31.6
5-Year Relative Survival (Percent), 2006-2012 ^b									
Age at Diagnosis:									
Ages <45	57.2	55.2	59.2	58.0	55.8	60.4	52.0	49.9	53.7
Ages 45-54	41.0	39.5	42.6	41.9	40.0	44.1	37.6	35.4	39.4 ^e
Ages 55-64	30.3	30.3	30.3	31.0	30.5	31.5	21.9	24.6	18.9
Ages 65-74	12.1	11.7	12.6	12.2	11.8	12.7	11.6	11.1	12.0
Ages 75+	2.2	1.8	2.6	2.4	2.0	2.8	0.9	0.0	1.2
Ages <65	44.8	43.0	46.8	45.1	43.0	47.6	41.1	39.5	42.8
Ages 65+	6.3	6.3	6.3	6.4	6.4	6.3	6.1	6.2	6.0
<u>Chronic Myeloid Leukemia</u>									
5-Year Relative Survival (Percent)									
Year of Diagnosis:									
1975-1977 ^a	21.8	19.3	25.1	20.5	18.4	23.4	27.7 ^e	21.6 ^e	35.5 ^e
...									
1984-1986 ^a	22.4	20.2	25.6	22.9	20.2	26.8	21.4	20.3 ^e	22.2 ^e
1987-1989 ^a	30.4	30.7	30.0	30.3	31.1	29.4	33.3 ^e	28.1 ^e	41.3 ^e
1990-1992 ^a	30.7	29.6	32.2	30.3	30.0	30.6	34.9 ^e	25.5 ^e	44.9 ^e
1993-1995 ^a	35.4	35.2	35.8	35.2	35.1	35.2	35.6 ^e	32.8 ^e	40.2 ^e
1996-1998 ^a	37.1	37.7	36.2	37.9	37.6	38.3	31.0	30.4 ^e	31.4 ^e
1999-2001 ^a	47.1	45.5	49.3	45.8	44.0	48.3	48.1 ^e	48.1 ^e	48.1 ^e
2002-2005 ^a	55.4	54.3	57.1	53.8	53.0	55.1	61.0	61.0 ^e	60.8 ^e
2006-2012 ^a	65.9 ^d	65.8 ^d	66.1 ^d	65.2 ^d	64.8 ^d	65.7 ^d	64.7 ^d	66.2 ^{de}	62.6 ^{de}
5-Year Period Survival (Percent) ^{bc}									
2012	67.1	66.3	68.2	66.5	65.8	67.4	67.7	68.6	66.6
5-Year Relative Survival (Percent), 2006-2012 ^b									
Age at Diagnosis:									
Ages <45	87.7	86.6	89.3	89.2	87.8	91.3	75.8	74.5	76.8
Ages 45-54	83.7	80.7	88.1	84.8	82.4	88.1	81.9	78.2 ^e	86.2 ^e
Ages 55-64	74.8	72.0	79.2	75.0	71.9	80.2	67.3	61.0 ^e	71.9 ^e
Ages 65-74	55.5	53.1	58.9	55.3	52.8	58.9	52.1 ^e	49.8 ^e	53.3 ^e
Ages 75+	27.9	27.1	28.7	27.6	25.9	29.0	23.1 ^e	21.4 ^f	22.3 ^e
Ages <65	82.5	80.3	85.8	83.3	80.9	86.9	74.9	71.9	77.9
Ages 65+	40.1	39.8	40.5	39.6	38.8	40.4	39.0	40.1 ^e	37.4 ^e

^a SEER 9 areas (San Francisco, Connecticut, Detroit, Hawaii, Iowa, New Mexico, Seattle, Utah, Atlanta).

Based on follow-up of patients into 2013.

^b SEER 18 areas (San Francisco, Connecticut, Detroit, Hawaii, Iowa, New Mexico, Seattle, Utah, Atlanta, San Jose-Monterey, Los Angeles, Alaska Native Registry, Rural Georgia, California excluding SF/SJM/LA, Kentucky, Louisiana, New Jersey and Georgia excluding ATL/RG).

Based on follow-up of patients into 2013.

^c Period survival provides a 2012 estimate of survival by piecing together the most recent conditional survival estimates from several cohorts. It is computed here using three year calendar blocks (2010-2012: 0-1 year survival), (2009-2011: 1-2 year survival), (2008-2010: 2-3 year survival), (2007-2009: 3-4 year survival), (2006-2008: 4-5 years survival).

^d The difference between 1975-1977 and 2006-2012 is statistically significant (p<.05).

^e The standard error is between 5 and 10 percentage points.

^f The standard error is greater than 10 percentage points.

- Statistic could not be calculated due to fewer than 25 cases during the time period.

Table 14.8
Cancer of the Liver and Intrahepatic Bile Duct (Invasive)

5-Year Relative and Period Survival (Percent) by Race, Sex, Diagnosis Year, Stage and Age

	All Races			Whites			Blacks		
	Total	Males	Females	Total	Males	Females	Total	Males	Females
5-Year Relative Survival (Percent)									
Year of Diagnosis:									
1960-1963 ^a	-	-	-	-	-	-	-	-	-
1970-1973 ^a	-	-	-	-	-	-	-	-	-
1975-1977 ^b	3.4	1.8	6.3	3.4	1.9	5.8	1.8	0.0	5.6
1978-1980 ^b	3.3	2.2	5.4	3.3	2.2	4.8	3.6	3.0	5.0
1981-1983 ^b	3.6	2.9	5.0	3.8	3.0	5.2	2.8	2.1	4.7
1984-1986 ^b	5.7	3.7	9.5	5.7	3.7	9.1	4.4	2.1	9.1
1987-1989 ^b	4.9	3.2	8.0	5.7	3.4	9.4	2.7	1.6	4.9
1990-1992 ^b	5.7	5.0	7.0	6.3	5.1	8.3	2.6	2.0	3.6
1993-1995 ^b	5.6	5.3	6.1	5.2	4.9	5.7	4.0	2.8	7.3
1996-1998 ^b	8.5	8.3	9.1	8.4	7.6	10.2	4.6	5.9	2.0
1999-2001 ^b	11.2	10.8	12.2	10.3	9.7	11.6	7.6	6.8	9.5
2002-2005 ^b	15.3	15.4	15.0	14.7	15.1	13.9	10.5	8.2	16.8
2006-2012 ^b	18.1 ^f	18.2 ^f	17.8 ^f	17.5 ^f	17.8 ^f	16.6 ^f	13.0 ^f	12.7	13.7 ^f
5-Year Period Survival (Percent) ^{cd}									
2012	18.3	17.8	19.5	17.6	17.4	18.4	13.8	12.6	17.5
Stage Distribution (%) 2006-2012 ^{ce}									
All Stages									
Number of cases	42,502	31,044	11,458	29,416	21,629	7,787	5,428	4,042	1,386
Percent	100%	100%	100%	100%	100%	100%	100%	100%	100%
Localized	43	43	43	43	43	42	42	42	42
Regional	27	28	25	27	27	24	28	29	27
Distant	18	18	18	18	18	18	20	20	19
Unstaged	12	11	14	13	12	15	9	9	11
5-Year Relative Survival (Percent), 2006-2012 ^c									
Age at Diagnosis:									
Ages <45	37.8	35.3	42.7	42.2	39.4	47.2	25.7	25.8	25.1 ^g
Ages 45-54	20.6	19.3	26.7	20.7	19.6	26.5	13.3	12.0	18.2
Ages 55-64	19.6	18.3	25.0	19.7	18.6	24.2	13.5	11.8	21.1
Ages 65-74	15.5	15.0	16.9	13.5	12.7	15.4	11.1	11.0	11.0
Ages 75+	7.5	7.8	7.0	6.0	6.6	5.3	3.5	4.3	0.0
Ages <65	21.4	19.8	27.8	21.6	20.1	27.9	14.4	12.8	20.6
Ages 65+	11.8	12.1	11.4	10.0	10.2	9.6	8.7	9.2	7.9
Stage ^e :									
All Stages	17.5	17.1	18.5	16.9	16.6	17.5	13.0	12.0	15.7
Localized	30.9	30.6	31.9	29.5	29.3	30.0	24.3	22.6	29.1
Regional	10.9	10.6	11.9	11.2	10.8	12.4	6.5	6.1	7.2
Distant	3.1	2.3	5.3	3.2	2.4	5.5	1.8	1.3	3.2
Unstaged	6.1	6.1	6.2	5.8	5.8	5.8	5.9	5.4	6.5

^a Based on End Results data from a series of hospital registries and one population-based registry.

^b SEER 9 areas (San Francisco, Connecticut, Detroit, Hawaii, Iowa, New Mexico, Seattle, Utah, Atlanta).

Based on follow-up of patients into 2013.

^c SEER 18 areas (San Francisco, Connecticut, Detroit, Hawaii, Iowa, New Mexico, Seattle, Utah, Atlanta, San Jose-Monterey, Los Angeles, Alaska Native Registry, Rural Georgia, California excluding SF/SJM/LA, Kentucky, Louisiana, New Jersey and Georgia excluding ATL/RG).

Based on follow-up of patients into 2013.

^d Period survival provides a 2012 estimate of survival by piecing together the most recent conditional survival estimates from several cohorts. It is computed here using three year calendar blocks (2010-2012: 0-1 year survival), (2009-2011: 1-2 year survival), (2008-2010: 2-3 year survival), (2007-2009: 3-4 year survival), (2006-2008: 4-5 years survival).

^e Stage at diagnosis is classified using SEER Summary Stage 2000. Stage distribution percentages may not sum to 100 due to rounding.

^f The difference between 1975-1977 and 2006-2012 is statistically significant ($p < .05$).

^g The standard error is between 5 and 10 percentage points.

^h The standard error is greater than 10 percentage points.

- Statistic could not be calculated due to fewer than 25 cases during the time period.

Table 15.12
Cancer of the Lung and Bronchus (Invasive)

5-Year Relative and Period Survival (Percent) by Race, Sex, Diagnosis Year, Stage and Age

	All Races			Whites			Blacks		
	Total	Males	Females	Total	Males	Females	Total	Males	Females
5-Year Relative Survival (Percent)									
Year of Diagnosis:									
1960-1963 ^a	-	-	-	8	7	11	5	5	6
1970-1973 ^a	-	-	-	10	9	14	7	6	10
1975-1977 ^b	12.2	11.1	15.3	12.2	11.1	15.4	11.2	10.5	13.8
1978-1980 ^b	12.8	11.3	16.3	12.9	11.5	16.2	11.7	9.7	17.8
1981-1983 ^b	13.1	11.5	16.4	13.3	11.7	16.6	11.3	10.1	14.9
1984-1986 ^b	12.8	11.2	16.0	13.0	11.2	16.3	11.1	10.3	12.8
1987-1989 ^b	13.0	11.9	15.0	13.3	12.0	15.3	10.9	10.8	11.1
1990-1992 ^b	13.6	12.1	15.9	13.9	12.4	16.2	10.5	9.3	12.7
1993-1995 ^b	14.3	12.5	16.9	14.6	12.6	17.1	12.8	11.2	15.7
1996-1998 ^b	14.6	12.9	16.8	14.8	13.0	17.0	12.3	10.7	14.9
1999-2001 ^b	15.3	13.1	17.9	15.5	13.3	18.0	12.6	10.8	15.2
2002-2005 ^b	16.4	14.3	18.8	16.9	14.6	19.3	13.5	12.8	14.5
2006-2012 ^b	18.7 ^f	16.0 ^f	21.7 ^f	19.0 ^f	16.4 ^f	21.8 ^f	15.9 ^f	13.3 ^f	19.0 ^f
5-Year Period Survival (Percent) ^{cd}									
2012	18.1	15.1	21.5	18.3	15.2	21.6	15.5	12.5	19.2
Stage Distribution (%) 2006-2012 ^{ce}									
All Stages									
Number of cases	266,874	141,210	125,664	218,060	113,820	104,240	30,569	17,071	13,498
Percent	100%	100%	100%	100%	100%	100%	100%	100%	100%
Localized	16	14	18	16	15	18	13	12	15
Regional	22	22	22	22	22	22	22	21	23
Distant	57	59	55	56	58	54	61	63	59
Unstaged	5	5	5	5	5	6	4	4	4
5-Year Relative Survival (Percent), 2006-2012 ^c									
Age at Diagnosis:									
Ages <45	31.7	27.1	36.1	33.4	27.9	38.7	26.1	23.6	28.8
Ages 45-54	20.6	16.3	25.4	21.3	17.0	26.1	16.3	12.4	21.1
Ages 55-64	19.9	16.6	24.3	20.2	16.9	24.4	16.2	13.6	20.2
Ages 65-74	18.8	15.8	22.4	19.1	16.1	22.5	15.0	11.9	19.1
Ages 75+	13.0	11.0	14.8	13.2	11.3	15.0	9.4	7.1	11.5
Ages <65	20.7	17.0	25.3	21.2	17.4	25.7	16.7	13.7	21.1
Ages 65+	15.9	13.5	18.4	16.2	13.8	18.6	12.7	10.1	15.5
Stage ^e :									
All Stages	17.7	14.9	20.8	17.9	15.1	20.9	14.7	12.0	18.1
Localized	55.2	49.2	60.7	55.5	49.6	60.8	48.9	43.3	54.7
Regional	28.0	25.0	31.3	28.0	25.3	31.0	25.3	21.3	29.9
Distant	4.3	3.6	5.2	4.2	3.4	5.0	4.0	3.3	5.0
Unstaged	7.4	6.7	8.1	6.8	6.0	7.5	9.9	9.1	11.0

^a Based on End Results data from a series of hospital registries and one population-based registry.

^b SEER 9 areas (San Francisco, Connecticut, Detroit, Hawaii, Iowa, New Mexico, Seattle, Utah, Atlanta).

Based on follow-up of patients into 2013.

^c SEER 18 areas (San Francisco, Connecticut, Detroit, Hawaii, Iowa, New Mexico, Seattle, Utah, Atlanta, San Jose-Monterey, Los Angeles, Alaska Native Registry, Rural Georgia, California excluding SF/SJM/LA, Kentucky, Louisiana, New Jersey and Georgia excluding ATL/RG).

Based on follow-up of patients into 2013.

^d Period survival provides a 2012 estimate of survival by piecing together the most recent conditional survival estimates from several cohorts. It is computed here using three year calendar blocks (2010-2012: 0-1 year survival), (2009-2011: 1-2 year survival), (2008-2010: 2-3 year survival), (2007-2009: 3-4 year survival), (2006-2008: 4-5 years survival).

^e Stage at diagnosis is classified using SEER Summary Stage 2000. Stage distribution percentages may not sum to 100 due to rounding.

^f The difference between 1975-1977 and 2006-2012 is statistically significant (p<.05).

^g The standard error is between 5 and 10 percentage points.

^h The standard error is greater than 10 percentage points.

- Statistic could not be calculated due to fewer than 25 cases during the time period.

Table 15.13
Small Cell Cancer of the Lung and Bronchus (Invasive)

5-Year Relative and Period Survival (Percent) by Race, Sex, Diagnosis Year, Stage and Age

	All Races			Whites			Blacks		
	Total	Males	Females	Total	Males	Females	Total	Males	Females
5-Year Relative Survival (Percent)									
Year of Diagnosis:									
1975-1977 ^a	3.6	3.1	4.8	3.7	3.1	4.9	3.7	3.8	3.6
1978-1980 ^a	4.2	3.2	6.4	4.3	3.3	6.4	3.1	2.4	5.0
1981-1983 ^a	4.5	3.5	6.2	4.6	3.6	6.1	5.0	3.7	8.2
1984-1986 ^a	4.5	3.5	6.2	4.7	3.6	6.4	3.5	2.2	5.6
1987-1989 ^a	5.1	3.9	6.6	5.1	3.9	6.8	4.0	3.3	5.1
1990-1992 ^a	5.4	4.5	6.4	5.4	4.5	6.6	4.2	3.9	4.4
1993-1995 ^a	6.4	5.1	7.9	6.3	5.0	7.6	6.7	4.0	10.4
1996-1998 ^a	5.9	5.2	6.5	6.0	5.4	6.7	3.6	2.6	4.5
1999-2001 ^a	5.7	4.8	6.7	5.6	4.4	6.9	5.2	6.0	4.2
2002-2005 ^a	6.6	4.9	8.3	6.5	4.5	8.5	5.7	5.4	5.9
2006-2012 ^a	6.6 ^e	5.4 ^e	7.9 ^e	6.5 ^e	5.3 ^e	7.7 ^e	7.0 ^e	4.9 ^e	9.0
5-Year Period Survival (Percent) ^{bc}									
2012	6.3	5.0	7.6	6.1	4.8	7.5	7.3	6.5	8.1
Stage Distribution (%) 2006-2012 ^{bd}									
All Stages									
Number of cases	34,875	17,568	17,307	30,313	15,061	15,252	3,080	1,578	1,502
Percent	100%	100%	100%	100%	100%	100%	100%	100%	100%
Localized	4	4	4	4	4	4	4	4	4
Regional	20	18	22	20	18	22	20	18	23
Distant	74	76	72	74	76	72	74	76	72
Unstaged	2	2	2	2	2	2	2	2	2
5-Year Relative Survival (Percent), 2006-2012 ^b									
Age at Diagnosis:									
Ages <45	11.8	11.1	12.4	11.3	10.6	12.1	12.5	11.0 ^f	13.2 ^f
Ages 45-54	9.4	7.6	11.3	9.2	7.0	11.4	10.2	9.3	11.4
Ages 55-64	8.2	6.2	10.4	8.1	6.1	10.1	8.6	4.8	12.8
Ages 65-74	5.8	4.7	6.9	5.9	4.7	7.0	4.7	4.1	5.2
Ages 75+	3.3	3.0	3.5	3.2	2.9	3.5	4.3	5.0	3.9
Ages <65	8.7	6.7	10.7	8.5	6.5	10.5	9.3	6.6	12.4
Ages 65+	4.7	4.0	5.4	4.8	4.0	5.5	4.6	4.4	4.7
Stage ^d :									
All Stages	6.4	5.2	7.6	6.3	5.1	7.5	7.0	5.6	8.4
Localized	27.5	23.9	30.9	27.7	24.2	30.4	27.5 ^f	23.0 ^f	32.8 ^f
Regional	14.7	12.7	16.4	14.7	12.6	16.5	14.2	11.8	16.1
Distant	2.9	2.4	3.5	2.8	2.3	3.3	3.9	2.9	4.9
Unstaged	7.8	5.5	9.9	7.4	4.1	10.2	9.1	13.2 ^f	5.2

Note: Small Cell Cancer of the Lung and Bronchus includes histologies 8002, 8041-8045.

^a SEER 9 areas (San Francisco, Connecticut, Detroit, Hawaii, Iowa, New Mexico, Seattle, Utah, Atlanta).

Based on follow-up of patients into 2013.

^b SEER 18 areas (San Francisco, Connecticut, Detroit, Hawaii, Iowa, New Mexico, Seattle, Utah, Atlanta, San Jose-Monterey, Los Angeles, Alaska Native Registry, Rural Georgia, California excluding SF/SJM/LA, Kentucky, Louisiana, New Jersey and Georgia excluding ATL/RG).

Based on follow-up of patients into 2013.

^c Period survival provides a 2012 estimate of survival by piecing together the most recent conditional survival estimates from several cohorts. It is computed here using three year calendar blocks (2010-2012: 0-1 year survival), (2009-2011: 1-2 year survival), (2008-2010: 2-3 year survival), (2007-2009: 3-4 year survival), (2006-2008: 4-5 years survival).

^d Stage at diagnosis is classified using SEER Summary Stage 2000. Stage distribution percentages may not sum to 100 due to rounding.

^e The difference between 1975-1977 and 2006-2012 is statistically significant ($p < .05$).

^f The standard error is between 5 and 10 percentage points.

^g The standard error is greater than 10 percentage points.

- Statistic could not be calculated due to fewer than 25 cases during the time period.

Table 15.14
Non-Small Cell Cancer of the Lung and Bronchus (Invasive)

5-Year Relative and Period Survival (Percent) by Race, Sex, Diagnosis Year, Stage and Age

	All Races			Whites			Blacks		
	Total	Males	Females	Total	Males	Females	Total	Males	Females
5-Year Relative Survival (Percent)									
Year of Diagnosis:									
1975-1977 ^a	16.4	14.8	21.0	16.7	15.0	21.4	13.4	12.4	17.7
1978-1980 ^a	16.7	14.8	21.4	17.0	15.2	21.5	14.2	11.6	22.8
1981-1983 ^a	17.1	15.0	21.8	17.5	15.4	22.1	13.9	12.2	19.2
1984-1986 ^a	16.6	14.4	21.0	17.0	14.7	21.5	13.1	11.9	16.4
1987-1989 ^a	16.9	15.2	19.8	17.4	15.5	20.6	13.2	12.9	14.0
1990-1992 ^a	17.6	15.5	21.1	18.3	16.1	21.7	12.8	11.1	16.2
1993-1995 ^a	18.7	16.1	22.5	19.3	16.5	23.2	15.1	13.3	18.5
1996-1998 ^a	19.4	16.7	22.9	19.9	17.1	23.5	15.3	12.8	19.3
1999-2001 ^a	20.0	16.8	24.0	20.7	17.5	24.6	14.7	12.0	18.6
2002-2005 ^a	19.9	17.2	23.2	20.8	18.0	24.1	15.2	14.0	16.8
2006-2012 ^a	22.8 ^e	19.2 ^e	26.8 ^e	23.5 ^e	19.9 ^e	27.4 ^e	18.1 ^e	14.8 ^e	22.1 ^e
5-Year Period Survival (Percent) ^{bc}									
2012	22.1	18.1	26.7	22.6	18.6	27.2	17.8	13.9	22.6
Stage Distribution (%) 2006-2012 ^{bd}									
All Stages									
Number of cases	199,665	107,280	92,385	160,614	85,329	75,285	24,213	13,633	10,580
Percent	100%	100%	100%	100%	100%	100%	100%	100%	100%
Localized	19	16	21	20	17	22	15	13	17
Regional	24	24	24	24	25	24	24	23	24
Distant	55	57	53	54	56	51	60	62	57
Unstaged	2	2	3	2	2	2	2	2	2
5-Year Relative Survival (Percent), 2006-2012 ^b									
Age at Diagnosis:									
Ages <45	33.5	28.3	38.4	36.2	29.8	42.0	26.2	23.4	29.3
Ages 45-54	23.0	18.1	28.5	24.3	19.2	29.8	17.2	12.8	22.7
Ages 55-64	23.2	19.3	28.6	24.0	19.9	29.2	17.8	15.0	22.1
Ages 65-74	22.8	19.0	27.4	23.4	19.6	27.8	17.5	13.7	22.6
Ages 75+	17.5	14.5	20.5	17.9	14.9	20.9	12.1	8.5	15.3
Ages <65	23.7	19.4	29.2	24.7	20.2	30.2	18.1	14.7	22.8
Ages 65+	20.3	17.0	24.0	20.8	17.5	24.4	15.5	12.0	19.5
Stage ^d :									
All Stages	21.6	17.9	25.9	22.2	18.5	26.4	16.8	13.5	21.1
Localized	59.2	52.8	64.8	59.5	53.2	65.0	52.2	46.2	58.2
Regional	31.4	27.6	35.8	31.6	28.1	35.7	27.5	22.7	33.2
Distant	4.9	4.0	6.1	4.8	3.8	6.0	4.2	3.4	5.3
Unstaged	13.0	11.0	15.2	12.3	10.1	14.5	13.6	11.6	16.3

Note: Non-Small Cell Cancer of the Lung and Bronchus includes histologies 8003-8004, 8012-8015, 8021-8022, 8030-8035, 8046, 8050-8052, 8070-8076, 8078, 8082-8084, 8090, 8094, 8120, 8123, 8140-8141, 8143-8145, 8147, 8190, 8200-8201, 8211, 8240-8241, 8243-8246, 8249-8255, 8260, 8290, 8310, 8320, 8323, 8333, 8401, 8430, 8440, 8470-8471, 8480-8481, 8490, 8503, 8507, 8525, 8550, 8560, 8562, 8570-8572, 8574-8576.

^a SEER 9 areas (San Francisco, Connecticut, Detroit, Hawaii, Iowa, New Mexico, Seattle, Utah, Atlanta).

Based on follow-up of patients into 2013.

^b SEER 18 areas (San Francisco, Connecticut, Detroit, Hawaii, Iowa, New Mexico, Seattle, Utah, Atlanta, San Jose-Monterey, Los Angeles, Alaska Native Registry, Rural Georgia, California excluding SF/SJM/LA, Kentucky, Louisiana, New Jersey and Georgia excluding ATL/RG).

Based on follow-up of patients into 2013.

^c Period survival provides a 2012 estimate of survival by piecing together the most recent conditional survival estimates from several cohorts. It is computed here using three year calendar blocks (2010-2012: 0-1 year survival), (2009-2011: 1-2 year survival), (2008-2010: 2-3 year survival), (2007-2009: 3-4 year survival), (2006-2008: 4-5 years survival).

^d Stage at diagnosis is classified using SEER Summary Stage 2000. Stage distribution percentages may not sum to 100 due to rounding.

^e The difference between 1975-1977 and 2006-2012 is statistically significant ($p < .05$).

^f The standard error is between 5 and 10 percentage points.

^g The standard error is greater than 10 percentage points.

- Statistic could not be calculated due to fewer than 25 cases during the time period.

Table 16.8
Melanoma of the Skin (Invasive)

5-Year Relative and Period Survival (Percent) by Race, Sex, Diagnosis Year, Stage and Age

	All Races			Whites			Blacks		
	Total	Males	Females	Total	Males	Females	Total	Males	Females
5-Year Relative Survival (Percent)									
Year of Diagnosis:									
1960-1963 ^a	-	-	-	60	51	68	-	-	-
1970-1973 ^a	-	-	-	68	62	75	-	-	-
1975-1977 ^b	81.9	77.5	86.3	82.0	77.8	86.2	56.7 ^g	-	-
1978-1980 ^b	82.7	77.7	87.7	82.8	77.8	87.8	59.8 ^h	-	-
1981-1983 ^b	82.8	78.4	87.3	82.7	78.4	87.2	61.9 ^g	-	-
1984-1986 ^b	86.6	82.5	91.0	86.4	82.2	90.9	71.2 ^h	-	-
1987-1989 ^b	88.0	84.8	91.5	87.9	84.8	91.3	78.6 ^g	-	89.5 ^g
1990-1992 ^b	89.2	86.9	91.7	89.2	87.0	91.7	59.6 ^g	-	-
1993-1995 ^b	89.7	87.2	92.6	89.5	87.0	92.6	69.5 ^g	66.6 ^g	-
1996-1998 ^b	90.9	89.5	92.6	90.8	89.2	92.7	73.9 ^g	68.0 ^h	78.6 ^g
1999-2001 ^b	92.1	90.1	94.6	92.2	90.2	94.6	73.2 ^g	69.6 ^g	76.1 ^g
2002-2005 ^b	93.1	91.2	95.4	93.2	91.2	95.6	74.1 ^g	68.0 ^h	77.7 ^g
2006-2012 ^b	93.2 ^f	91.5 ^f	95.2 ^f	93.2 ^f	91.6 ^f	95.1 ^f	69.1	58.9 ^g	76.2 ^g
5-Year Period Survival (Percent) ^{cd}									
2012	91.6	89.6	94.2	91.2	89.1	94.0	65.9	59.4	69.8
Stage Distribution (%) 2006-2012 ^{ce}									
All Stages									
Number of cases	97,325	54,623	42,702	90,839	51,290	39,549	473	197	276
Percent	100%	100%	100%	100%	100%	100%	100%	100%	100%
Localized	84	82	86	84	82	86	54	45	61
Regional	9	10	7	9	10	8	26	30	22
Distant	4	5	3	4	5	3	15	18	12
Unstaged	3	3	3	3	3	3	6	8	4
5-Year Relative Survival (Percent), 2006-2012 ^c									
Age at Diagnosis:									
Ages <45	94.4	91.0	96.7	94.2	90.7	96.6	82.0	69.3 ^g	88.2
Ages 45-54	92.6	90.1	95.3	92.3	89.6	95.2	66.1 ^g	63.3 ^g	68.2 ^g
Ages 55-64	91.3	89.6	94.0	90.9	89.2	93.7	67.7 ^g	58.4 ^g	79.1 ^g
Ages 65-74	91.9	90.7	94.2	91.7	90.4	94.1	62.3 ^g	54.8 ^g	67.6 ^g
Ages 75+	85.9	85.7	86.3	85.4	85.2	85.8	56.1 ^g	51.7 ^h	56.0 ^g
Ages <65	92.7	90.1	95.5	92.4	89.7	95.4	72.3	62.9 ^g	79.3
Ages 65+	89.2	88.5	90.3	88.8	88.1	90.0	59.7 ^g	54.1 ^g	61.2 ^g
Stage ^e :									
All Stages	91.5	89.5	94.0	91.1	89.1	93.8	67.3	59.9	71.7
Localized	98.4	97.8	99.0	98.2	97.5	98.9	90.0	96.1	86.1
Regional	62.4	59.6	67.0	62.6	60.1	67.1	46.7 ^g	34.1 ^g	57.6 ^g
Distant	17.9	16.1	21.7	17.7	16.1	21.1	21.6 ^g	15.5 ^g	30.0 ^g
Unstaged	81.2	78.9	84.1	80.2	77.5	83.5	55.1 ^h	-	-

^a Based on End Results data from a series of hospital registries and one population-based registry.^b SEER 9 areas (San Francisco, Connecticut, Detroit, Hawaii, Iowa, New Mexico, Seattle, Utah, Atlanta).

Based on follow-up of patients into 2013.

^c SEER 18 areas (San Francisco, Connecticut, Detroit, Hawaii, Iowa, New Mexico, Seattle, Utah, Atlanta, San Jose-Monterey, Los Angeles, Alaska Native Registry, Rural Georgia, California excluding SF/SJM/LA, Kentucky, Louisiana, New Jersey and Georgia excluding ATL/RG).

Based on follow-up of patients into 2013.

^d Period survival provides a 2012 estimate of survival by piecing together the most recent conditional survival estimates from several cohorts. It is computed here using three year calendar blocks (2010-2012: 0-1 year survival), (2009-2011: 1-2 year survival), (2008-2010: 2-3 year survival), (2007-2009: 3-4 year survival), (2006-2008: 4-5 years survival).^e Stage at diagnosis is classified using SEER Summary Stage 2000. Stage distribution percentages may not sum to 100 due to rounding.^f The difference between 1975-1977 and 2006-2012 is statistically significant (p<.05).^g The standard error is between 5 and 10 percentage points.^h The standard error is greater than 10 percentage points.

- Statistic could not be calculated due to fewer than 25 cases during the time period.

Table 17.4
Mesothelioma

5-Year Relative and Period Survival (Percent) by Race, Sex, Diagnosis Year, Stage and Age

	All Races			Whites			Blacks		
	Total	Males	Females	Total	Males	Females	Total	Males	Females
5-Year Relative Survival (Percent)									
Year of Diagnosis:									
1960-1963 ^a	-	-	-	-	-	-	-	-	-
1970-1973 ^a	-	-	-	-	-	-	-	-	-
1975-1977 ^b	9.7	3.0	26.7	10.4	3.3	27.4 ^f	-	-	-
1978-1980 ^b	6.0	5.5	8.1	5.9	5.2	8.7	-	-	-
1981-1983 ^b	7.7	5.3	15.1	8.1	5.4	16.2	-	-	-
1984-1986 ^b	6.6	4.3	13.9	6.1	3.7	14.1	-	-	-
1987-1989 ^b	6.2	4.6	12.2	6.3	4.8	12.1	4.8	-	-
1990-1992 ^b	7.7	4.2	20.6	7.4	4.1	20.1	10.2 ^f	8.5 ^f	-
1993-1995 ^b	6.5	3.2	18.7	5.9	2.8	18.0	9.0	8.0 ^f	-
1996-1998 ^b	9.8	8.2	15.2	9.8	8.0	16.2	11.4 ^f	-	-
1999-2001 ^b	7.6	5.3	15.9	6.7	5.0	13.1	-	-	-
2002-2005 ^b	7.2	5.2	13.5	7.0	5.0	13.5	6.0	-	-
2006-2012 ^b	9.2	6.6 ^e	17.0	9.4	6.6 ^e	18.2	5.2	5.1	-
5-Year Period Survival (Percent) ^{cd}									
2012	9.3	7.1	16.0	9.3	7.2	15.9	11.5	6.3	30.0
5-Year Relative Survival (Percent), 2006-2012 ^c									
Age at Diagnosis:									
Ages <45	48.1	42.7 ^f	54.4 ^f	46.7 ^f	42.0 ^f	53.3 ^f	-	-	-
Ages 45-54	19.7	15.2	26.6	19.9	15.7	26.2 ^f	23.4 ^f	-	-
Ages 55-64	11.9	9.7	18.5	12.6	9.8	20.9	8.3 ^f	11.5 ^f	-
Ages 65-74	8.7	7.1	14.4	9.1	7.6	14.5	6.4	5.6	-
Ages 75+	4.0	3.6	4.8	3.8	3.2	5.2	4.2	5.6	-
Ages <65	18.0	13.9	26.9	18.1	14.1	27.4	22.3	16.9 ^f	30.9 ^f
Ages 65+	6.0	5.1	8.6	6.0	5.1	8.9	5.4	5.6	-

^a Based on End Results data from a series of hospital registries and one population-based registry.^b SEER 9 areas (San Francisco, Connecticut, Detroit, Hawaii, Iowa, New Mexico, Seattle, Utah, Atlanta).

Based on follow-up of patients into 2013.

^c SEER 18 areas (San Francisco, Connecticut, Detroit, Hawaii, Iowa, New Mexico, Seattle, Utah, Atlanta, San Jose-Monterey, Los Angeles, Alaska Native Registry, Rural Georgia, California excluding SF/SJM/LA, Kentucky, Louisiana, New Jersey and Georgia excluding ATL/RG).

Based on follow-up of patients into 2013.

^d Period survival provides a 2012 estimate of survival by piecing together the most recent conditional survival estimates from several cohorts. It is computed here using three year calendar blocks (2010-2012: 0-1 year survival), (2009-2011: 1-2 year survival), (2008-2010: 2-3 year survival), (2007-2009: 3-4 year survival), (2006-2008: 4-5 years survival).^e The difference between 1975-1977 and 2006-2012 is statistically significant (p<.05).^f The standard error is between 5 and 10 percentage points.^g The standard error is greater than 10 percentage points.

- Statistic could not be calculated due to fewer than 25 cases during the time period.

Table 18.8
Myeloma

5-Year Relative and Period Survival (Percent) by Race, Sex, Diagnosis Year and Age

	All Races			Whites			Blacks		
	Total	Males	Females	Total	Males	Females	Total	Males	Females
5-Year Relative Survival (Percent)									
Year of Diagnosis:									
1960-1963 ^a	-	-	-	12	13	10	-	-	-
1970-1973 ^a	-	-	-	19	20	17	-	-	-
1975-1977 ^b	24.6	23.9	25.3	24.1	23.6	24.7	29.3	28.9	29.5
1978-1980 ^b	25.9	24.4	27.5	24.8	24.1	25.5	32.5	27.4	37.5
1981-1983 ^b	27.5	25.7	29.4	27.2	25.4	28.9	28.9	29.6	27.9
1984-1986 ^b	27.2	27.6	26.9	25.9	25.7	26.2	31.8	33.3	30.3
1987-1989 ^b	27.2	28.9	25.5	26.9	29.1	24.5	30.0	29.7	30.3
1990-1992 ^b	29.2	30.5	27.9	28.3	29.6	26.9	34.3	38.1	30.6
1993-1995 ^b	31.6	32.1	31.1	30.5	31.2	29.6	35.4	34.9	35.7
1996-1998 ^b	32.4	34.5	30.3	32.2	34.2	29.8	31.4	33.0	30.2
1999-2001 ^b	34.4	36.7	31.8	34.4	36.8	31.5	34.1	36.7	32.0
2002-2005 ^b	43.2	44.1	42.2	43.6	45.1	41.7	42.3	41.1	43.5
2006-2012 ^b	50.2 ^f	50.4 ^f	50.1 ^f	49.8 ^f	50.6 ^f	48.9 ^f	51.8 ^f	49.7 ^f	53.7 ^f
5-Year Period Survival (Percent) ^{cd}									
2012	49.5	50.4	48.4	49.2	50.5	47.5	50.3	50.0	50.5
Stage Distribution (%) 2006-2012 ^{ce}									
All Stages									
Number of cases	30,426	16,660	13,766	22,149	12,533	9,616	6,080	2,936	3,144
Percent	100%	100%	100%	100%	100%	100%	100%	100%	100%
Localized	5	6	4	5	6	4	4	5	3
Regional	0	0	0	0	0	0	0	0	0
Distant	95	94	96	95	94	96	96	95	97
Unstaged	0	0	0	0	0	0	0	0	0
5-Year Relative Survival (Percent), 2006-2012 ^c									
Age at Diagnosis:									
Ages <45	73.1	71.6	75.3	72.3	70.6	75.2	72.5	72.1	73.0
Ages 45-54	64.8	63.7	66.4	66.4	65.3	67.9	59.2	55.2	63.2
Ages 55-64	58.0	57.8	58.2	58.5	59.0	57.8	56.8	54.9	58.8
Ages 65-74	47.4	47.2	47.7	48.4	48.5	48.3	44.3	41.7	46.6
Ages 75+	29.2	30.4	28.1	29.5	31.1	28.0	26.7	28.3	26.0
Ages <65	61.7	61.1	62.5	62.3	62.1	62.5	59.5	57.1	62.0
Ages 65+	38.2	39.2	37.1	38.5	39.9	36.9	36.7	36.8	36.6
Stage ^e :									
All Stages	48.5	49.4	47.4	48.4	49.8	46.5	48.8	48.3	49.2
Localized	69.6	71.4	66.3	70.5	73.1	65.5	61.5	60.9 ^g	62.4 ^g
Regional	-	-	-	-	-	-	-	-	-
Distant	47.4	48.1	46.6	47.1	48.3	45.7	48.3	47.7	48.8
Unstaged	-	-	-	-	-	-	-	-	-

^a Based on End Results data from a series of hospital registries and one population-based registry.^b SEER 9 areas (San Francisco, Connecticut, Detroit, Hawaii, Iowa, New Mexico, Seattle, Utah, Atlanta).

Based on follow-up of patients into 2013.

^c SEER 18 areas (San Francisco, Connecticut, Detroit, Hawaii, Iowa, New Mexico, Seattle, Utah, Atlanta, San Jose-Monterey, Los Angeles, Alaska Native Registry, Rural Georgia, California excluding SF/SJM/LA, Kentucky, Louisiana, New Jersey and Georgia excluding ATL/RG).

Based on follow-up of patients into 2013.

^d Period survival provides a 2012 estimate of survival by piecing together the most recent conditional survival estimates from several cohorts. It is computed here using three year calendar blocks (2010-2012: 0-1 year survival), (2009-2011: 1-2 year survival), (2008-2010: 2-3 year survival), (2007-2009: 3-4 year survival), (2006-2008: 4-5 years survival).^e Stage at diagnosis is classified using SEER Summary Stage 2000. Stage distribution percentages may not sum to 100 due to rounding.^f The difference between 1975-1977 and 2006-2012 is statistically significant (p<.05).^g The standard error is between 5 and 10 percentage points.^h The standard error is greater than 10 percentage points.

- Statistic could not be calculated due to fewer than 25 cases during the time period.

Table 19.8
Non-Hodgkin Lymphoma

5-Year Relative and Period Survival (Percent) by Race, Sex, Diagnosis Year and Age

	All Races			Whites			Blacks		
	Total	Males	Females	Total	Males	Females	Total	Males	Females
5-Year Relative Survival (Percent)									
Year of Diagnosis:									
1960-1963 ^a	-	-	-	31	31	31	-	-	-
1970-1973 ^a	-	-	-	41	39	43	-	-	-
1975-1977 ^b	46.5	45.6	47.5	46.8	46.3	47.3	48.6	42.6	55.3 ^g
1978-1980 ^b	47.9	46.0	49.8	47.8	46.2	49.5	51.3	47.3	56.7
1981-1983 ^b	50.6	50.2	50.9	50.8	50.5	51.1	49.5	49.2	49.8
1984-1986 ^b	51.6	50.1	53.3	52.0	50.6	53.6	46.8	44.5	49.9
1987-1989 ^b	50.9	47.6	54.9	51.3	48.1	55.2	46.0	41.7	51.0
1990-1992 ^b	50.7	46.6	55.7	51.5	47.5	56.4	42.2	38.2	47.7
1993-1995 ^b	52.5	48.7	57.4	53.2	49.7	57.6	42.1	35.7	54.0
1996-1998 ^b	58.8	57.0	60.9	59.4	57.6	61.4	54.6	53.0	56.9
1999-2001 ^b	63.9	61.4	66.9	64.9	62.8	67.5	55.7	48.9	63.8
2002-2005 ^b	70.2	68.8	71.7	71.5	70.5	72.6	63.3	59.3	67.9
2006-2012 ^b	72.6 ^f	71.7 ^f	73.7 ^f	73.6 ^f	72.9 ^f	74.5 ^f	65.2 ^f	61.3 ^f	69.2 ^f
5-Year Period Survival (Percent) ^{cd}									
2012	71.4	69.9	73.1	71.8	70.4	73.6	65.6	63.4	67.9
Stage Distribution (%) 2006-2012 ^{ce}									
All Stages									
Number of cases	94,683	51,367	43,316	78,649	42,785	35,864	7,765	4,170	3,595
Percent	100%	100%	100%	100%	100%	100%	100%	100%	100%
Localized	28	27	29	27	27	28	28	25	31
Regional	15	15	15	15	15	15	15	14	15
Distant	50	51	48	50	52	48	51	55	47
Unstaged	8	7	8	7	7	8	6	6	7
5-Year Relative Survival (Percent), 2006-2012 ^c									
Age at Diagnosis:									
Ages <45	81.6	79.4	85.1	83.4	81.0	87.4	69.1	67.1	72.2
Ages 45-54	79.0	76.0	83.3	80.8	78.1	84.7	64.2	60.0	70.1
Ages 55-64	76.0	73.2	79.7	77.1	74.5	80.6	65.5	60.3	71.9
Ages 65-74	70.8	68.2	73.8	71.5	69.0	74.4	63.6	55.5	70.3
Ages 75+	55.1	53.1	56.7	55.7	53.3	57.6	47.0	41.4	49.6
Ages <65	78.4	75.8	82.1	79.8	77.3	83.4	66.5	62.8	71.5
Ages 65+	62.4	60.7	63.9	62.9	61.2	64.5	56.6	50.4	60.4
Stage ^e :									
All Stages	70.7	69.2	72.4	71.3	69.9	72.9	63.6	60.0	67.5
Localized	82.6	82.3	83.0	83.0	82.9	83.1	78.2	74.1	81.8
Regional	74.4	73.3	75.6	75.0	74.2	76.0	67.7	65.5	69.7
Distant	63.1	61.5	65.1	64.2	62.6	66.2	54.5	52.1	57.6
Unstaged	69.6	67.6	71.6	68.3	66.2	70.5	63.3	59.6	66.2

^a Based on End Results data from a series of hospital registries and one population-based registry.

^b SEER 9 areas (San Francisco, Connecticut, Detroit, Hawaii, Iowa, New Mexico, Seattle, Utah, Atlanta).

Based on follow-up of patients into 2013.

^c SEER 18 areas (San Francisco, Connecticut, Detroit, Hawaii, Iowa, New Mexico, Seattle, Utah, Atlanta, San Jose-Monterey, Los Angeles, Alaska Native Registry, Rural Georgia, California excluding SF/SJM/LA, Kentucky, Louisiana, New Jersey and Georgia excluding ATL/RG).

Based on follow-up of patients into 2013.

^d Period survival provides a 2012 estimate of survival by piecing together the most recent conditional survival estimates from several cohorts. It is computed here using three year calendar blocks (2010-2012: 0-1 year survival), (2009-2011: 1-2 year survival), (2008-2010: 2-3 year survival), (2007-2009: 3-4 year survival), (2006-2008: 4-5 years survival).

^e Stage at diagnosis is classified using SEER Summary Stage 2000. Stage distribution percentages may not sum to 100 due to rounding.

^f The difference between 1975-1977 and 2006-2012 is statistically significant ($p < .05$).

^g The standard error is between 5 and 10 percentage points.

^h The standard error is greater than 10 percentage points.

- Statistic could not be calculated due to fewer than 25 cases during the time period.

Table 20.10
Cancer of the Oral Cavity and Pharynx (Invasive)

5-Year Relative and Period Survival (Percent) by Race, Sex, Diagnosis Year, Stage and Age

	All Races			Whites			Blacks		
	Total	Males	Females	Total	Males	Females	Total	Males	Females
5-Year Relative Survival (Percent)									
Year of Diagnosis:									
1960-1963 ^a	-	-	-	45	-	-	-	-	-
1970-1973 ^a	-	-	-	43	-	-	-	-	-
1975-1977 ^b	52.5	51.6	54.8	54.1	53.8	54.7	36.0	29.7	49.0
1978-1980 ^b	53.3	51.8	56.5	55.3	54.4	57.3	34.9	29.8	45.8
1981-1983 ^b	51.7	50.0	55.1	54.0	52.8	56.5	30.8	25.3	45.6
1984-1986 ^b	54.0	51.6	59.0	56.3	54.8	59.4	35.0	29.5	49.1
1987-1989 ^b	53.5	51.0	58.7	55.9	54.1	59.7	34.0	30.0	44.2
1990-1992 ^b	55.4	53.2	60.1	57.9	56.4	60.9	32.9	28.2	45.7
1993-1995 ^b	57.6	56.2	60.5	60.0	59.4	61.3	37.9	33.0	50.5
1996-1998 ^b	57.7	56.2	60.9	59.9	59.1	61.4	36.1	31.2	48.9
1999-2001 ^b	60.3	59.2	62.6	62.2	62.0	62.8	44.6	39.4	57.1
2002-2005 ^b	63.9	63.2	65.3	65.7	65.7	65.7	45.8	42.0	53.2
2006-2012 ^b	67.0 ^f	66.3 ^f	68.7 ^f	68.7 ^f	68.3 ^f	69.5 ^f	47.2 ^f	44.5 ^f	53.4
5-Year Period Survival (Percent) ^{cd}									
2012	64.5	63.5	66.8	66.1	65.6	67.3	46.9	43.4	54.7
Stage Distribution (%) 2006-2012 ^{ce}									
All Stages									
Number of cases	53,633	38,079	15,554	43,879	31,488	12,391	5,018	3,468	1,550
Percent	100%	100%	100%	100%	100%	100%	100%	100%	100%
Localized	30	26	42	31	27	43	20	15	31
Regional	47	51	38	48	51	38	49	52	41
Distant	18	20	15	17	18	14	28	30	24
Unstaged	5	4	5	4	4	5	3	3	4
5-Year Relative Survival (Percent), 2006-2012 ^c									
Age at Diagnosis:									
Ages <45	79.3	76.1	84.4	80.9	78.5	85.1	68.3	58.9	79.9
Ages 45-54	68.8	67.9	72.0	71.6	70.6	75.1	46.3	44.3	50.4
Ages 55-64	65.1	63.9	69.3	67.3	66.2	71.2	44.1	42.1	50.0
Ages 65-74	59.7	58.4	63.1	61.4	60.3	64.3	41.4	38.6	47.9
Ages 75+	50.3	49.2	51.6	51.0	50.4	51.7	31.3	25.9	37.2 ^g
Ages <65	68.7	66.9	73.8	70.7	69.3	75.5	49.3	45.3	58.4
Ages 65+	55.6	54.9	56.7	56.8	56.5	57.3	38.4	35.4	44.1
Stage ^e :									
All Stages	64.0	63.0	66.3	65.5	65.0	67.0	46.5	42.9	54.3
Localized	83.3	82.1	85.3	83.2	82.1	84.8	79.2	74.5	84.1
Regional	63.3	64.5	59.4	65.0	66.5	59.7	45.0	43.8	48.2
Distant	38.0	37.8	38.6	38.9	39.0	38.6	26.5	25.6	28.9
Unstaged	47.2	46.7	48.0	45.9	46.1	45.4	38.6	38.6 ^g	37.3 ^g

^a Based on End Results data from a series of hospital registries and one population-based registry.

^b SEER 9 areas (San Francisco, Connecticut, Detroit, Hawaii, Iowa, New Mexico, Seattle, Utah, Atlanta).

Based on follow-up of patients into 2013.

^c SEER 18 areas (San Francisco, Connecticut, Detroit, Hawaii, Iowa, New Mexico, Seattle, Utah, Atlanta, San Jose-Monterey, Los Angeles, Alaska Native Registry, Rural Georgia, California excluding SF/SJM/LA, Kentucky, Louisiana, New Jersey and Georgia excluding ATL/RG).

Based on follow-up of patients into 2013.

^d Period survival provides a 2012 estimate of survival by piecing together the most recent conditional survival estimates from several cohorts. It is computed here using three year calendar blocks (2010-2012: 0-1 year survival), (2009-2011: 1-2 year survival), (2008-2010: 2-3 year survival), (2007-2009: 3-4 year survival), (2006-2008: 4-5 years survival).

^e Stage at diagnosis is classified using SEER Summary Stage 2000. Stage distribution percentages may not sum to 100 due to rounding.

^f The difference between 1975-1977 and 2006-2012 is statistically significant ($p < .05$).

^g The standard error is between 5 and 10 percentage points.

^h The standard error is greater than 10 percentage points.

- Statistic could not be calculated due to fewer than 25 cases during the time period.

Table 21.8
Cancer of the Ovary(Invasive)

5-Year Relative and Period Survival (Percent) by Race, Diagnosis Year, Stage and Age

	All Races, Females			White Females			Black Females		
	All	<65	65+	All	<65	65+	All	<65	65+
5-Year Relative Survival (Percent)									
Year of Diagnosis:									
1960-1963 ^a	-	-	-	32	-	-	32	-	-
1970-1973 ^a	-	-	-	36	-	-	32	-	-
1975-1977 ^b	36.0	44.2	21.4	35.3	43.6	21.1	41.9	48.9	24.9 ^g
1978-1980 ^b	37.7	47.3	22.1	36.8	46.4	22.3	38.8	49.2	12.8
1981-1983 ^b	38.8	50.2	23.1	38.4	50.2	23.1	37.5	45.4	22.6
1984-1986 ^b	38.4	49.4	24.1	37.5	48.4	23.8	39.4	52.2	21.2
1987-1989 ^b	38.2	51.1	23.6	38.1	51.2	23.9	33.7	46.9	17.1
1990-1992 ^b	40.5	55.4	24.1	40.4	56.0	24.1	35.5	49.1	16.8
1993-1995 ^b	41.5	55.8	26.5	40.6	55.5	25.9	41.5	54.8	26.9
1996-1998 ^b	43.9	57.1	28.4	43.3	56.6	28.5	39.2	53.3	20.4
1999-2001 ^b	43.8	55.8	28.9	43.5	56.3	28.9	35.6	44.1	21.9
2002-2005 ^b	43.9	57.1	26.6	43.5	57.1	26.9	36.8	45.4	21.1
2006-2012 ^b	46.4 ^f	59.6 ^f	28.8 ^f	46.0 ^f	59.5 ^f	29.2 ^f	38.1	48.4	22.3
5-Year Period Survival (Percent) ^{cd}									
2012	47.6	60.2	30.3	47.7	60.7	31.0	38.4	49.0	22.6
Stage Distribution (%) 2006-2012 ^{ce}									
All Stages									
Number of cases	34,144	19,326	14,818	28,143	15,421	12,722	2,909	1,707	1,202
Percent	100%	100%	100%	100%	100%	100%	100%	100%	100%
Localized	15	20	7	14	20	7	15	20	7
Regional	19	23	14	19	23	14	15	17	11
Distant	60	53	69	61	54	69	62	57	70
Unstaged	6	3	10	6	3	9	8	6	11
5-Year Relative Survival (Percent), 2006-2012 ^c									
Age at Diagnosis:									
Ages <45	76.8	-	-	77.5	-	-	66.4	-	-
Ages 45-54	58.7	-	-	60.0	-	-	43.4	-	-
Ages 55-64	49.8	-	-	50.6	-	-	34.6	-	-
Ages 65-74	38.4	-	-	39.4	-	-	27.2	-	-
Ages 75+	20.2	-	-	20.6	-	-	13.8	-	-
Ages <65	59.1	-	-	59.7	-	-	46.3	-	-
Ages 65+	28.9	-	-	29.4	-	-	21.0	-	-
Stage ^e :									
All Stages	46.2	59.1	28.9	46.2	59.7	29.4	36.0	46.3	21.0
Localized	92.1	93.7	86.4	92.8	94.6	87.1	85.7	87.3	78.5 ^g
Regional	73.1	80.4	56.8	73.4	80.7	58.5	57.9	67.9	34.9 ^g
Distant	28.8	37.6	19.7	29.3	38.6	20.1	20.6	25.6	14.4
Unstaged	24.2	53.5	10.9	22.8	53.0	10.8	27.4	54.0 ^g	7.7

Ovary excludes borderline cases or histologies 8442, 8451, 8462, 8472, and 8473.

^a Based on End Results data from a series of hospital registries and one population-based registry.^b SEER 9 areas (San Francisco, Connecticut, Detroit, Hawaii, Iowa, New Mexico, Seattle, Utah, Atlanta).

Based on follow-up of patients into 2013.

^c SEER 18 areas (San Francisco, Connecticut, Detroit, Hawaii, Iowa, New Mexico, Seattle, Utah, Atlanta, San Jose-Monterey, Los Angeles, Alaska Native Registry, Rural Georgia, California excluding SF/SJM/LA, Kentucky, Louisiana, New Jersey and Georgia excluding ATL/RG).

Based on follow-up of patients into 2013.

^d Period survival provides a 2012 estimate of survival by piecing together the most recent conditional survival estimates from several cohorts. It is computed here using three year calendar blocks (2010-2012: 0-1 year survival), (2009-2011: 1-2 year survival), (2008-2010: 2-3 year survival), (2007-2009: 3-4 year survival), (2006-2008: 4-5 years survival).^e Stage at diagnosis is classified using SEER Summary Stage 2000. Stage distribution percentages may not sum to 100 due to rounding.^f The difference between 1975-1977 and 2006-2012 is statistically significant (p<.05).^g The standard error is between 5 and 10 percentage points.^h The standard error is greater than 10 percentage points.

- Statistic could not be calculated due to fewer than 25 cases during the time period.

Table 22.8
Cancer of the Pancreas (Invasive)

5-Year Relative and Period Survival (Percent) by Race, Sex, Diagnosis Year, Stage and Age

	All Races			Whites			Blacks		
	Total	Males	Females	Total	Males	Females	Total	Males	Females
5-Year Relative Survival (Percent)									
Year of Diagnosis:									
1960-1963 ^a	-	-	-	1	1	2	1	0	3
1970-1973 ^a	-	-	-	2	2	2	2	0	3
1975-1977 ^b	2.5	2.6	2.2	2.5	2.7	2.3	2.3	2.5	1.9
1978-1980 ^b	2.9	2.7	3.0	2.5	2.6	2.5	5.7	4.5	7.0
1981-1983 ^b	2.7	2.4	3.1	2.5	2.1	3.0	3.6	3.7	3.2
1984-1986 ^b	2.9	2.3	3.5	2.6	2.1	3.1	4.7	3.9	5.3
1987-1989 ^b	3.5	3.3	3.7	3.2	3.1	3.3	5.5	5.1	5.8
1990-1992 ^b	4.3	4.1	4.5	4.4	4.2	4.5	3.6	3.2	4.0
1993-1995 ^b	4.0	3.7	4.3	3.9	3.6	4.2	3.6	3.3	3.7
1996-1998 ^b	4.4	4.6	4.1	4.1	4.7	3.6	3.4	3.1	3.5
1999-2001 ^b	5.1	5.2	5.0	5.0	5.5	4.4	5.6	3.7	7.4
2002-2005 ^b	5.7	5.1	6.3	5.9	5.5	6.3	4.3	2.9	5.5
2006-2012 ^b	8.5 ^f	9.0 ^f	8.0 ^f	8.5 ^f	8.9 ^f	8.0 ^f	8.0 ^f	8.6 ^f	7.4 ^f
5-Year Period Survival (Percent) ^{cd}									
2012	8.6	8.5	8.6	8.4	8.5	8.4	8.3	7.2	9.4
Stage Distribution (%) 2006-2012 ^{ce}									
All Stages									
Number of cases	58,535	29,306	29,229	46,506	23,682	22,824	7,186	3,311	3,875
Percent	100%	100%	100%	100%	100%	100%	100%	100%	100%
Localized	9	8	10	9	8	10	10	8	11
Regional	29	28	29	29	29	29	26	25	26
Distant	52	55	50	52	54	49	57	60	54
Unstaged	10	8	11	10	8	11	8	7	9
5-Year Relative Survival (Percent), 2006-2012 ^c									
Age at Diagnosis:									
Ages <45	28.4	23.7	34.2	27.9	23.8	33.1	29.7	20.9	37.3
Ages 45-54	13.0	11.1	15.9	12.9	10.6	16.4	13.0	12.6	13.5
Ages 55-64	8.7	7.9	9.9	9.0	8.3	10.0	6.1	4.6	8.2
Ages 65-74	7.2	7.2	7.2	7.3	7.4	7.3	5.6	3.7	7.0
Ages 75+	3.9	4.0	3.8	3.9	4.0	3.8	3.1	3.9	2.9
Ages <65	11.6	10.1	13.9	11.6	10.2	13.7	10.4	8.4	13.1
Ages 65+	5.3	5.6	5.1	5.4	5.7	5.1	4.4	3.8	4.7
Stage ^e :									
All Stages	7.7	7.6	7.8	7.7	7.6	7.7	7.3	6.6	8.0
Localized	29.3	30.2	28.6	29.0	30.3	27.7	26.4	23.0	28.6
Regional	11.1	11.6	10.6	11.4	11.7	10.9	10.8	11.7	10.0
Distant	2.6	2.5	2.7	2.6	2.5	2.6	2.2	1.7	2.7
Unstaged	4.9	5.5	4.5	4.3	4.7	4.0	9.2	9.3	8.8

^a Based on End Results data from a series of hospital registries and one population-based registry.

^b SEER 9 areas (San Francisco, Connecticut, Detroit, Hawaii, Iowa, New Mexico, Seattle, Utah, Atlanta).

Based on follow-up of patients into 2013.

^c SEER 18 areas (San Francisco, Connecticut, Detroit, Hawaii, Iowa, New Mexico, Seattle, Utah, Atlanta, San Jose-Monterey, Los Angeles, Alaska Native Registry, Rural Georgia, California excluding SF/SJM/LA, Kentucky, Louisiana, New Jersey and Georgia excluding ATL/RG).

Based on follow-up of patients into 2013.

^d Period survival provides a 2012 estimate of survival by piecing together the most recent conditional survival estimates from several cohorts. It is computed here using three year calendar blocks (2010-2012: 0-1 year survival), (2009-2011: 1-2 year survival), (2008-2010: 2-3 year survival), (2007-2009: 3-4 year survival), (2006-2008: 4-5 years survival).

^e Stage at diagnosis is classified using SEER Summary Stage 2000. Stage distribution percentages may not sum to 100 due to rounding.

^f The difference between 1975-1977 and 2006-2012 is statistically significant ($p < .05$).

^g The standard error is between 5 and 10 percentage points.

^h The standard error is greater than 10 percentage points.

- Statistic could not be calculated due to fewer than 25 cases during the time period.

Table 23.8
Cancer of the Prostate (Invasive)

5-Year Relative and Period Survival (Percent) by Race, Diagnosis Year, Stage and Age

	All Races, Males			White Males			Black Males		
	All	<65	65+	All	<65	65+	All	<65	65+
5-Year Relative Survival (Percent)									
Year of Diagnosis:									
1960-1963 ^a	-	-	-	50	-	-	35	-	-
1970-1973 ^a	-	-	-	63	-	-	55	-	-
1975-1977 ^b	67.8	73.4	66.1	68.5	75.2	66.6	60.7	62.0	60.1
1978-1980 ^b	70.1	75.2	68.6	71.2	76.7	69.6	62.1	65.0	60.6
1981-1983 ^b	72.0	76.0	70.9	73.1	77.6	71.9	62.8	65.0	61.9
1984-1986 ^b	75.2	77.3	74.6	76.4	79.0	75.7	65.6	67.2	64.9
1987-1989 ^b	82.8	83.2	82.7	84.4	84.7	84.3	71.1	72.8	70.6
1990-1992 ^b	92.9	93.0	92.9	94.1	94.0	94.1	84.4	86.8	83.5
1993-1995 ^b	95.2	95.9	94.9	95.9	96.6	95.6	91.7	93.3	90.8
1996-1998 ^b	97.4	98.5	96.7	97.4	98.9	97.2	94.9	96.7	93.4
1999-2001 ^b	99.3	99.1	99.3	99.7	99.5	99.6	97.3	98.0	96.2
2002-2005 ^b	99.6	99.4	99.7	99.8	99.6	99.7	97.7	98.8	96.3
2006-2012 ^b	99.3 ^f	99.5 ^f	99.2 ^f	99.7 ^f	99.8 ^f	99.4 ^f	97.3 ^f	98.1 ^f	96.1 ^f
5-Year Period Survival (Percent) ^{cd}									
2012	98.7	99.1	98.4	98.9	99.3	98.5	97.1	98.1	95.7
Stage Distribution (%) 2006-2012 ^{ce}									
All Stages									
Number of cases	368,301	163,823	204,478	282,870	122,545	160,325	54,632	30,066	24,566
Percent	100%	100%	100%	100%	100%	100%	100%	100%	100%
Localized	80	80	80	80	79	81	82	81	82
Regional	12	16	9	13	16	10	10	13	7
Distant	4	3	6	4	3	5	5	4	7
Unstaged	4	2	5	3	1	4	3	2	4
5-Year Relative Survival (Percent), 2006-2012 ^c									
Age at Diagnosis:									
Ages <45	96.1	-	-	95.4	-	-	97.4	-	-
Ages 45-54	98.1	-	-	98.2	-	-	97.5	-	-
Ages 55-64	99.4	-	-	99.7	-	-	98.2	-	-
Ages 65-74	100.0	-	-	100.0	-	-	97.5	-	-
Ages 75+	95.1	-	-	95.0	-	-	90.5	-	-
Ages <65	99.1	-	-	99.3	-	-	98.0	-	-
Ages 65+	98.7	-	-	99.0	-	-	95.6	-	-
Stage ^e :									
All Stages	98.9	99.1	98.7	99.2	99.3	99.0	96.9	98.0	95.6
Localized	100.0	100.0	100.0	100.0	100.0	100.0	100.0	100.0	100.0
Regional	100.0	100.0	100.0	100.0	99.9	100.0	100.0	100.0	98.7
Distant	29.3	32.5	27.9	28.7	31.6	27.6	29.0	32.4	26.3
Unstaged	79.4	89.7	76.3	74.4	87.4	70.8	68.0	82.2	61.8

^a Based on End Results data from a series of hospital registries and one population-based registry.

^b SEER 9 areas (San Francisco, Connecticut, Detroit, Hawaii, Iowa, New Mexico, Seattle, Utah, Atlanta).

Based on follow-up of patients into 2013.

^c SEER 18 areas (San Francisco, Connecticut, Detroit, Hawaii, Iowa, New Mexico, Seattle, Utah, Atlanta, San Jose-Monterey, Los Angeles, Alaska Native Registry, Rural Georgia, California excluding SF/SJM/LA, Kentucky, Louisiana, New Jersey and Georgia excluding ATL/RG).

Based on follow-up of patients into 2013.

^d Period survival provides a 2012 estimate of survival by piecing together the most recent conditional survival estimates from several cohorts. It is computed here using three year calendar blocks (2010-2012: 0-1 year survival), (2009-2011: 1-2 year survival), (2008-2010: 2-3 year survival), (2007-2009: 3-4 year survival), (2006-2008: 4-5 years survival).

^e Stage at diagnosis is classified using SEER Summary Stage 2000. Stage distribution percentages may not sum to 100 due to rounding.

^f The difference between 1975-1977 and 2006-2012 is statistically significant ($p < .05$).

^g The standard error is between 5 and 10 percentage points.

^h The standard error is greater than 10 percentage points.

- Statistic could not be calculated due to fewer than 25 cases during the time period.

Table 24.8
Cancer of the Stomach (Invasive)

5-Year Relative and Period Survival (Percent) by Race, Sex, Diagnosis Year, Stage and Age

	All Races			Whites			Blacks		
	Total	Males	Females	Total	Males	Females	Total	Males	Females
5-Year Relative Survival (Percent)									
Year of Diagnosis:									
1960-1963 ^a	-	-	-	11	10	13	8	5	14
1970-1973 ^a	-	-	-	13	12	14	13	15	10
1975-1977 ^b	15.2	14.4	16.6	14.1	13.1	15.8	16.1	16.1	16.1
1978-1980 ^b	16.1	14.3	18.9	15.4	13.6	18.2	16.4	15.6	18.0
1981-1983 ^b	17.2	16.4	18.7	16.2	15.4	17.6	16.4	16.2	16.7
1984-1986 ^b	17.6	15.5	20.9	16.8	14.4	20.8	19.1	16.9	22.1
1987-1989 ^b	19.7	17.0	24.3	18.3	15.5	23.1	18.8	16.6	22.5
1990-1992 ^b	20.9	18.0	25.4	18.8	16.0	23.2	22.7	22.0	23.7
1993-1995 ^b	21.0	20.1	22.5	19.9	18.9	21.8	19.3	17.5	21.9
1996-1998 ^b	22.3	21.0	24.2	20.3	18.6	23.2	22.6	20.4	25.3
1999-2001 ^b	24.1	23.4	25.2	22.3	21.0	24.5	23.0	25.0	20.1
2002-2005 ^b	27.0	25.0	30.1	25.9	24.3	28.7	28.6	24.5	34.0
2006-2012 ^b	31.1 ^f	29.2 ^f	34.2 ^f	30.2 ^f	28.8 ^f	32.6 ^f	30.3 ^f	24.1 ^f	38.0 ^f
5-Year Period Survival (Percent) ^{cd}									
2012	31.7	29.4	35.3	30.7	28.5	34.5	30.8	25.9	37.1
Stage Distribution (%) 2006-2012 ^{ce}									
All Stages									
Number of cases	35,916	21,645	14,271	25,196	15,683	9,513	5,009	2,771	2,238
Percent	100%	100%	100%	100%	100%	100%	100%	100%	100%
Localized	27	24	30	26	24	30	27	24	31
Regional	28	30	25	27	29	23	28	29	26
Distant	35	37	32	36	38	33	35	39	31
Unstaged	10	9	12	10	9	13	10	9	12
5-Year Relative Survival (Percent), 2006-2012 ^c									
Age at Diagnosis:									
Ages <45	34.0	30.3	37.8	32.4	28.4	37.0	31.7	27.2	35.9
Ages 45-54	34.4	31.8	38.8	32.8	29.8	38.5	35.6	31.6	41.4
Ages 55-64	33.6	31.5	38.1	32.6	30.7	37.3	32.7	28.6	39.5
Ages 65-74	33.2	30.2	38.7	31.9	29.4	37.1	31.1	25.9	38.9
Ages 75+	23.4	22.1	24.9	22.6	21.3	24.0	19.9	14.7	23.5
Ages <65	33.9	31.4	38.3	32.7	30.1	37.7	33.5	29.4	39.6
Ages 65+	27.7	26.1	29.9	26.6	25.2	28.6	25.6	21.3	30.2
Stage ^e :									
All Stages	30.4	28.5	33.2	29.2	27.4	32.1	29.5	25.6	34.4
Localized	66.9	64.7	69.6	66.0	63.9	68.6	64.0	58.0	69.6
Regional	30.9	31.0	30.7	29.5	29.8	28.9	28.2	28.5	27.9
Distant	5.0	5.1	4.7	4.8	4.9	4.6	5.8	5.2	6.6
Unstaged	21.9	18.8	25.1	21.4	18.6	24.5	21.3	15.6	27.0

^a Based on End Results data from a series of hospital registries and one population-based registry.^b SEER 9 areas (San Francisco, Connecticut, Detroit, Hawaii, Iowa, New Mexico, Seattle, Utah, Atlanta).

Based on follow-up of patients into 2013.

^c SEER 18 areas (San Francisco, Connecticut, Detroit, Hawaii, Iowa, New Mexico, Seattle, Utah, Atlanta, San Jose-Monterey, Los Angeles, Alaska Native Registry, Rural Georgia, California excluding SF/SJM/LA, Kentucky, Louisiana, New Jersey and Georgia excluding ATL/RG).

Based on follow-up of patients into 2013.

^d Period survival provides a 2012 estimate of survival by piecing together the most recent conditional survival estimates from several cohorts. It is computed here using three year calendar blocks (2010-2012: 0-1 year survival), (2009-2011: 1-2 year survival), (2008-2010: 2-3 year survival), (2007-2009: 3-4 year survival), (2006-2008: 4-5 years survival).^e Stage at diagnosis is classified using SEER Summary Stage 2000. Stage distribution percentages may not sum to 100 due to rounding.^f The difference between 1975-1977 and 2006-2012 is statistically significant (p<.05).^g The standard error is between 5 and 10 percentage points.^h The standard error is greater than 10 percentage points.

- Statistic could not be calculated due to fewer than 25 cases during the time period.

Table 25.8
Cancer of the Testis (Invasive)

5-Year Relative and Period Survival (Percent) by Race, Diagnosis Year, Stage and Age

	All Races, Males			White Males			Black Males		
	All	<50	50+	All	<50	50+	All	<50	50+
5-Year Relative Survival (Percent)									
Year of Diagnosis:									
1960-1963 ^a	-	-	-	63	-	-	-	-	-
1970-1973 ^a	-	-	-	72	-	-	-	-	-
1975-1977 ^b	82.6	83.3	77.6	82.5	83.2	77.3	-	-	-
1978-1980 ^b	88.8	89.5	82.2	89.2	89.8	83.1	73.1 ^g	78.0 ^g	-
1981-1983 ^b	92.0	92.5	85.5	92.2	92.7	86.2	87.7 ^g	84.7 ^g	-
1984-1986 ^b	92.6	93.6	80.4	92.9	94.0	80.6	87.0 ^g	89.4 ^g	-
1987-1989 ^b	95.2	95.0	95.7	95.4	95.4	95.3	88.4 ^g	87.8 ^g	-
1990-1992 ^b	95.8	95.8	93.7	96.2	96.1	94.6	84.2 ^g	89.0 ^g	-
1993-1995 ^b	95.8	96.4	86.7	96.1	96.6	87.8	88.0	89.4	-
1996-1998 ^b	95.6	96.3	86.6	95.8	96.4	86.6	89.0	90.3	-
1999-2001 ^b	96.2	96.4	91.8	96.5	96.7	92.7	87.6	89.0	-
2002-2005 ^b	96.2	96.8	90.0	96.7	97.2	91.4	85.7	85.6	-
2006-2012 ^b	96.8 ^f	96.8 ^f	96.3 ^f	97.3 ^f	97.2 ^f	97.1 ^f	90.4	89.6	91.9 ^g
5-Year Period Survival (Percent) ^{cd}									
2012	95.3	95.6	92.2	95.4	95.7	92.8	90.2	91.6	79.9
Stage Distribution (%) 2006-2012 ^{ce}									
All Stages									
Number of cases	15,693	13,925	1,768	14,107	12,501	1,606	480	413	67
Percent	100%	100%	100%	100%	100%	100%	100%	100%	100%
Localized	68	68	68	68	68	67	62	61	66
Regional	19	19	18	19	19	19	21	22	18
Distant	12	12	11	12	13	11	15	15	10
Unstaged	1	1	3	1	1	3	3	2	6
5-Year Relative Survival (Percent), 2006-2012 ^c									
Age at Diagnosis:									
Ages <45	95.5	-	-	95.6	-	-	90.4	-	-
Ages 45-54	96.1	-	-	96.1	-	-	92.9	-	-
Ages 55-64	92.6	-	-	92.6	-	-	-	-	-
Ages 65-74	87.5	-	-	88.8	-	-	-	-	-
Ages 75+	85.1 ^g	-	-	88.4	-	-	-	-	-
Ages <65	95.5	-	-	95.6	-	-	91.5	-	-
Ages 65+	87.0	-	-	89.0	-	-	-	-	-
Stage ^e :									
All Stages	95.4	95.5	93.9	95.5	95.6	94.4	90.6	91.2	85.9 ^g
Localized	99.3	99.1	99.3	99.4	99.2	99.3	97.2	97.2	94.5 ^g
Regional	96.1	96.3	94.8	96.3	96.4	95.7	89.2	90.5	-
Distant	73.9	75.2	61.3	74.3	75.6	61.6	66.3 ^g	67.3 ^g	-
Unstaged	77.4	84.6	57.5 ^g	76.1	83.9	55.8 ^g	-	-	-

^a Based on End Results data from a series of hospital registries and one population-based registry.^b SEER 9 areas (San Francisco, Connecticut, Detroit, Hawaii, Iowa, New Mexico, Seattle, Utah, Atlanta).

Based on follow-up of patients into 2013.

^c SEER 18 areas (San Francisco, Connecticut, Detroit, Hawaii, Iowa, New Mexico, Seattle, Utah, Atlanta, San Jose-Monterey, Los Angeles, Alaska Native Registry, Rural Georgia, California excluding SF/SJM/LA, Kentucky, Louisiana, New Jersey and Georgia excluding ATL/RG).

Based on follow-up of patients into 2013.

^d Period survival provides a 2012 estimate of survival by piecing together the most recent conditional survival estimates from several cohorts. It is computed here using three year calendar blocks (2010-2012: 0-1 year survival), (2009-2011: 1-2 year survival), (2008-2010: 2-3 year survival), (2007-2009: 3-4 year survival), (2006-2008: 4-5 years survival).^e Stage at diagnosis is classified using SEER Summary Stage 2000. Stage distribution percentages may not sum to 100 due to rounding.^f The difference between 1975-1977 and 2006-2012 is statistically significant (p<.05).^g The standard error is between 5 and 10 percentage points.^h The standard error is greater than 10 percentage points.

- Statistic could not be calculated due to fewer than 25 cases during the time period.

Table 26.8
Cancer of the Thyroid (Invasive)

5-Year Relative and Period Survival (Percent) by Race, Sex, Diagnosis Year, Stage and Age

	All Races			Whites			Blacks		
	Total	Males	Females	Total	Males	Females	Total	Males	Females
5-Year Relative Survival (Percent)									
Year of Diagnosis:									
1960-1963 ^a	-	-	-	83	75	87	-	-	-
1970-1973 ^a	-	-	-	86	82	87	-	-	-
1975-1977 ^b	92.1	91.1	92.5	91.8	90.7	92.2	89.8	-	91.0
1978-1980 ^b	92.1	87.2	93.6	91.5	87.5	92.7	90.2	68.0 ^h	95.5
1981-1983 ^b	93.6	92.2	93.9	93.0	90.9	93.7	96.4	100.0	93.2
1984-1986 ^b	93.2	89.8	94.3	93.2	89.4	94.4	89.3	85.5 ^g	90.3
1987-1989 ^b	94.4	91.6	95.2	94.1	91.5	95.0	92.4	91.2 ^g	92.4
1990-1992 ^b	94.3	90.5	95.5	94.9	91.6	96.0	85.8	84.5 ^g	86.2
1993-1995 ^b	95.4	91.6	96.6	95.5	91.6	96.8	93.2	87.8 ^g	94.3
1996-1998 ^b	95.6	91.0	96.9	95.9	91.3	97.3	95.0	86.5 ^g	96.4
1999-2001 ^b	96.4	94.3	97.1	96.8	95.0	97.4	92.0	88.4 ^g	92.4
2002-2005 ^b	97.4	94.6	98.2	97.5	94.8	98.2	96.5	95.4	96.5
2006-2012 ^b	98.3 ^f	96.2 ^f	98.8 ^f	98.6 ^f	96.7 ^f	99.0 ^f	96.8 ^f	90.5	97.8 ^f
5-Year Period Survival (Percent) ^{cd}									
2012	98.3	95.9	99.0	98.6	96.3	99.1	97.1	93.9	97.8
Stage Distribution (%) 2006-2012 ^{ce}									
All Stages									
Number of cases	67,335	15,398	51,937	54,571	12,915	41,656	4,465	787	3,678
Percent	100%	100%	100%	100%	100%	100%	100%	100%	100%
Localized	68	58	71	68	58	71	79	71	80
Regional	27	33	25	27	34	25	14	19	13
Distant	4	7	3	4	6	3	5	8	4
Unstaged	2	2	2	2	2	1	2	2	2
5-Year Relative Survival (Percent), 2006-2012 ^c									
Age at Diagnosis:									
Ages <45	99.7	99.0	99.9	99.8	99.0	99.9	99.1	98.0	99.3
Ages 45-54	99.1	96.7	99.7	99.1	96.8	99.7	98.9	96.2	99.3
Ages 55-64	97.5	94.9	98.5	97.8	95.4	98.7	96.3	90.8	97.0
Ages 65-74	95.6	91.8	97.0	96.1	92.7	97.5	92.2	84.6	94.1
Ages 75+	86.6	86.0	86.8	87.9	87.4	88.1	74.9	65.8 ^g	75.0
Ages <65	99.1	97.1	99.6	99.2	97.2	99.7	98.5	95.6	98.9
Ages 65+	92.8	90.1	93.6	93.6	91.4	94.4	87.4	81.8	88.7
Stage ^e :									
All Stages	98.1	95.7	98.7	98.4	96.1	98.9	96.9	93.3	97.5
Localized	99.9	99.8	99.9	99.9	99.8	99.9	99.6	98.5	99.8
Regional	97.8	96.2	98.4	98.0	96.6	98.6	95.0	91.6	96.0
Distant	55.3	50.4	58.3	56.2	50.3	60.1	45.6	42.6 ^g	46.8
Unstaged	88.2	83.6	89.7	86.9	84.3	87.7	86.7	-	88.6

^a Based on End Results data from a series of hospital registries and one population-based registry.^b SEER 9 areas (San Francisco, Connecticut, Detroit, Hawaii, Iowa, New Mexico, Seattle, Utah, Atlanta).

Based on follow-up of patients into 2013.

^c SEER 18 areas (San Francisco, Connecticut, Detroit, Hawaii, Iowa, New Mexico, Seattle, Utah, Atlanta, San Jose-Monterey, Los Angeles, Alaska Native Registry, Rural Georgia, California excluding SF/SJM/LA, Kentucky, Louisiana, New Jersey and Georgia excluding ATL/RG).

Based on follow-up of patients into 2013.

^d Period survival provides a 2012 estimate of survival by piecing together the most recent conditional survival estimates from several cohorts. It is computed here using three year calendar blocks (2010-2012: 0-1 year survival), (2009-2011: 1-2 year survival), (2008-2010: 2-3 year survival), (2007-2009: 3-4 year survival), (2006-2008: 4-5 years survival).^e Stage at diagnosis is classified using SEER Summary Stage 2000. Stage distribution percentages may not sum to 100 due to rounding.^f The difference between 1975-1977 and 2006-2012 is statistically significant (p<.05).^g The standard error is between 5 and 10 percentage points.^h The standard error is greater than 10 percentage points.

- Statistic could not be calculated due to fewer than 25 cases during the time period.

Table 27.8
Cancer of the Urinary Bladder (Invasive and *In Situ*)

5-Year Relative and Period Survival (Percent) by Race, Sex, Diagnosis Year, Stage and Age

	All Races			Whites			Blacks		
	Total	Males	Females	Total	Males	Females	Total	Males	Females
5-Year Relative Survival (Percent)									
Year of Diagnosis:									
1960-1963 ^a	-	-	-	53	53	53	24	24	24
1970-1973 ^a	-	-	-	61	61	60	36	38	27
1975-1977 ^b	72.3	73.7	68.3	73.3	74.3	70.2	50.3	56.5	38.1 ^g
1978-1980 ^b	73.9	75.1	70.4	74.7	75.4	72.3	54.5	62.6	40.1
1981-1983 ^b	76.7	78.1	72.7	77.4	78.5	74.0	59.5	64.9	47.0 ^g
1984-1986 ^b	76.7	78.1	72.6	77.2	78.5	73.6	59.4	62.3	52.8
1987-1989 ^b	79.0	81.3	71.9	79.8	82.0	73.1	62.6	67.5	52.9
1990-1992 ^b	79.2	81.7	71.9	80.2	82.6	73.1	63.1	65.7	58.5
1993-1995 ^b	80.3	82.1	75.1	81.1	82.5	76.9	60.5	67.7	46.2
1996-1998 ^b	79.1	80.4	75.4	79.8	81.1	75.9	62.7	65.6	56.0
1999-2001 ^b	80.0	80.9	77.3	81.0	81.5	79.5	67.4	71.6	60.0
2002-2005 ^b	79.9	81.7	74.6	80.8	82.4	75.9	63.2	67.4	55.6
2006-2012 ^b	78.5 ^f	79.9 ^f	74.1 ^f	78.9 ^f	80.2 ^f	74.9 ^f	66.1 ^f	70.9 ^f	55.7 ^f
5-Year Period Survival (Percent) ^{cd}									
2012	77.2	78.6	73.1	77.8	78.8	74.4	63.5	68.8	52.7
Stage Distribution (%) 2006-2012 ^{ce}									
All Stages									
Number of cases	88,593	66,870	21,723	78,556	59,732	18,824	4,837	3,213	1,624
Percent	100%	100%	100%	100%	100%	100%	100%	100%	100%
In Situ	51	52	50	52	52	51	40	44	32
Localized	34	35	33	34	35	33	37	36	39
Regional	7	7	8	7	7	8	11	9	15
Distant	4	4	6	4	4	5	8	7	9
Unstaged	3	2	3	2	2	3	4	3	5
5-Year Relative Survival (Percent), 2006-2012 ^c									
Age at Diagnosis:									
Ages <45	88.1	89.4	84.5	88.6	89.7	85.7	75.7	78.2	66.4 ^g
Ages 45-54	84.4	85.2	82.2	85.5	85.8	84.4	69.6	73.7	59.0
Ages 55-64	82.6	82.9	81.5	83.2	83.3	82.8	68.4	70.4	62.0
Ages 65-74	79.5	80.4	76.3	80.2	80.9	77.3	65.0	69.2	57.1
Ages 75+	70.4	72.7	64.3	70.9	72.9	65.3	54.6	60.9	46.2
Ages <65	83.5	84.0	82.0	84.2	84.4	83.5	69.5	72.2	61.2
Ages 65+	74.3	76.2	68.8	74.9	76.6	69.8	59.8	65.7	50.7
Stage ^e :									
All Stages	77.5	78.9	73.0	78.0	79.2	74.1	63.9	68.8	53.9
In Situ	95.9	95.6	96.7	96.1	95.7	97.0	89.9	90.4	87.8
Localized	70.2	72.5	63.0	70.5	72.6	63.4	60.8	66.6	50.2
Regional	34.5	36.4	29.5	34.9	36.8	29.4	26.8	24.2	29.1
Distant	5.2	5.4	4.6	5.1	5.1	5.0	5.1	6.2	4.1
Unstaged	45.9	50.5	35.5	44.5	48.9	34.0	38.0	48.8 ^g	21.5 ^g

^a Based on End Results data from a series of hospital registries and one population-based registry.

^b SEER 9 areas (San Francisco, Connecticut, Detroit, Hawaii, Iowa, New Mexico, Seattle, Utah, Atlanta).

Based on follow-up of patients into 2013.

^c SEER 18 areas (San Francisco, Connecticut, Detroit, Hawaii, Iowa, New Mexico, Seattle, Utah, Atlanta, San Jose-Monterey, Los Angeles, Alaska Native Registry, Rural Georgia, California excluding SF/SJM/LA, Kentucky, Louisiana, New Jersey and Georgia excluding ATL/RG).

Based on follow-up of patients into 2013.

^d Period survival provides a 2012 estimate of survival by piecing together the most recent conditional survival estimates from several cohorts. It is computed here using three year calendar blocks (2010-2012: 0-1 year survival), (2009-2011: 1-2 year survival), (2008-2010: 2-3 year survival), (2007-2009: 3-4 year survival), (2006-2008: 4-5 years survival).

^e Stage at diagnosis is classified using SEER Summary Stage 2000. Stage distribution percentages may not sum to 100 due to rounding.

^f The difference between 1975-1977 and 2006-2012 is statistically significant ($p < .05$).

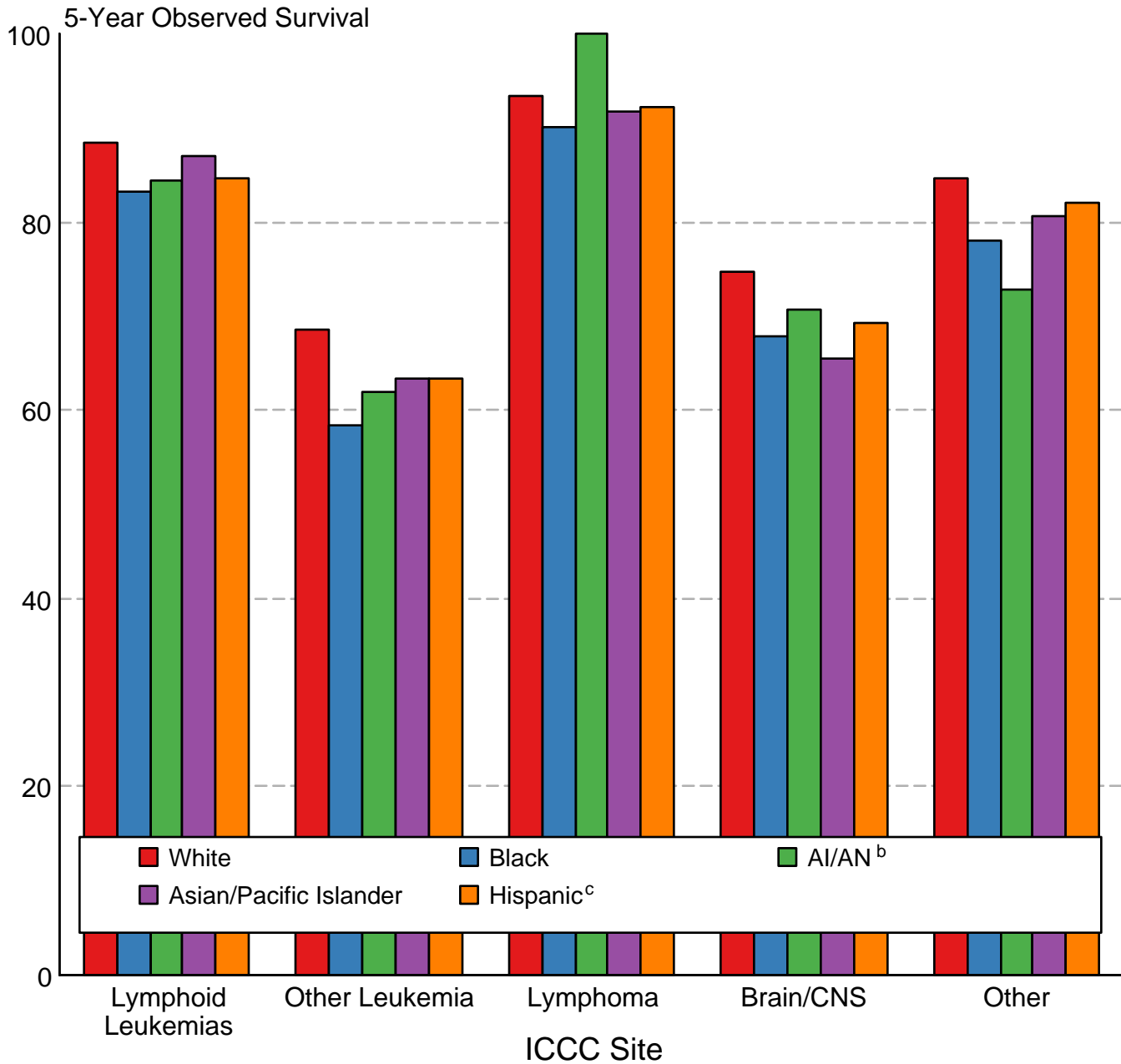
^g The standard error is between 5 and 10 percentage points.

^h The standard error is greater than 10 percentage points.

- Statistic could not be calculated due to fewer than 25 cases during the time period.

Figure 29.3

Childhood Cancer 5-Year Observed Survival (%) by ICCC Group^a and Race/Ethnicity Both Sexes, Under 20 Years of Age, 2006-2012



Source: SEER 18 areas (San Francisco, Connecticut, Detroit, Hawaii, Iowa, New Mexico, Seattle, Utah, Atlanta, San Jose-Monterey, Los Angeles, Alaska Native Registry, Rural Georgia, California excluding SF/SJM/LA, Kentucky, Louisiana, New Jersey and Georgia excluding ATL/RG).

International Classification of Childhood Cancer is based on ICD-O-3. Steliarova-Foucher E, Stiller C, Lacour B, Kaatsch P. International Classification of Childhood Cancer, Third Edition. Cancer. April 1, 2005; Vol 103, No. 7, pg 1457-1467.

^a Excludes myelodysplastic syndromes (MDS) and benign brain tumors.

^b American Indian/Alaska Native. Survival data for American Indian/Alaska Native are based on the CHSDA (Contract Health Service Delivery Area) counties.

^c Hispanic is not mutually exclusive from whites, blacks, Asian/Pacific Islanders, and American Indians/Alaska Natives. Survival data for Hispanics are based on NHIA and excludes cases from the Alaska Native Registry.