

Table I-19
AGE-ADJUSTED SEER INCIDENCE RATES AND TRENDS FOR THE TOP 15 CANCER SITES^a BY RACE/ETHNICITY

Both Sexes

	All Races		White		Black	
	Rate ^b 2000-2003	APC ^c 1994-2003	Rate ^b 2000-2003	APC ^c 1994-2003	Rate ^b 2000-2003	APC ^c 1994-2003
All Sites	471.3	-0.4	478.4	-0.3	504.4	-0.9*
Prostate ^f	74.8	0.5	72.4	-0.4	106.6	-0.9
Breast	70.4	-0.5	72.4	0.7	76.9	-1.3*
Lung and Bronchus	64.8	-1.2*	66.0	-1.1*	67.9	-0.4
Colon and Rectum	52.4	-1.0*	52.0	-1.1*	62.8	-0.3
Urinary Bladder	20.9	0.0	22.8	0.2	14.9	-2.0*
Non-Hodgkin Lymphoma	19.1	-0.1	21.1	2.1*	14.3	-0.1
Melanoma of the Skin	18.2	1.6*	19.9	-0.1	14.1	1.1
Corpus and Uterus, NOS ^f	12.6	-0.9*	13.1	-1.0*	12.8	-2.3*
Kidney and Renal Pelvis	12.6	1.9*	13.0	2.2*	12.4	0.7
Leukemia	12.2	-0.9*	12.7	-0.9*	11.3	1.2
Pancreas	11.3	-0.2	11.1	0.1	11.1	-2.9*
Oral Cavity and Pharynx	10.5	-1.5*	10.5	-1.3*	10.9	-1.5*
Thyroid	8.2	5.0*	8.6	5.4*	10.1	-0.5
Stomach	8.1	-1.5*	7.8	-1.0*	7.2	3.5*
Ovary ^{fh}	7.4	-1.0*	7.1	-1.5*	6.4	-4.5*
	Asian/Pacific Islander		American Indian/Alaska Native		Hispanic ^e	
	Rate ^b 2000-2003	APC ^c 1994-2003	Rate ^d 1999-2002	APC ^d 1994-2002	Rate ^b 2000-2003	APC ^c 1994-2003
All Sites	315.6	-0.6*	325.8	-1.4	353.1	-0.7
Breast	48.5	0.9	46.5	-1.4	60.9	-0.2
Colon and Rectum	42.4	-0.7	43.1	-3.9*	48.1	-0.5
Prostate ^f	41.8	-0.7	40.0	-3.0	39.0	-0.7
Lung and Bronchus	39.6	-0.8*	30.7	-3.4	32.6	-1.9*
Stomach	14.4	-3.2*	16.2	4.7	16.1	-0.8*
Liver & IBD ^g	13.8	0.1	14.9	-2.0	12.3	-1.9*
Non-Hodgkin Lymphoma	13.2	-0.1	12.4	3.3	12.1	2.7*
Urinary Bladder	9.3	0.6	10.8	1.5	11.5	-0.2
Pancreas	8.9	-0.9	9.9	-0.8	10.3	-1.1
Corpus and Uterus, NOS ^f	8.6	0.4	8.4	-	9.5	-2.2*
Thyroid	8.4	2.3*	8.2	-8.4*	9.5	1.3
Oral Cavity and Pharynx	7.9	-1.7	7.2	-	9.2	-0.5
Leukemia	7.3	-1.4*	7.1	-0.2	7.3	-3.7*
Kidney and Renal Pelvis	6.3	1.4	7.1	2.0	7.2	4.1*
Ovary ^{fh}	5.3	0.2	6.4	1.3	6.2	-0.2

- Statistic not shown. Rate based on less than 16 cases for the time interval. Trend based on less than 10 cases for at least one year within the time interval.

^a Top 15 cancer sites selected based on 2000-2003 age-adjusted rates for the race/ethnic group.

^b Incidence data used in calculating the rates are from the 17 SEER areas (San Francisco, Connecticut, Detroit, Hawaii, Iowa, New Mexico, Seattle, Utah, Atlanta, San Jose-Monterey, Los Angeles, Alaska Native Registry, Rural Georgia, California excluding SF/SJM/LA, Kentucky, Louisiana and New Jersey). Rates are age-adjusted to the 2000 US Std Population (19 age groups - Census P25-1130).

^c The APC is the Annual Percent Change over the time interval. Incidence data used in calculating the trends are from the 13 SEER areas (San Francisco, Connecticut, Detroit, Hawaii, Iowa, New Mexico, Seattle, Utah, Atlanta, San Jose-Monterey, Los Angeles, Alaska Native Registry and Rural Georgia). Trends are based on rates age-adjusted to the 2000 US Std Population (19 age groups - Census P25-1130).

^d Incidence data for American Indians/Alaska Natives include cases from Connecticut, Detroit, Iowa, New Mexico, Seattle, Utah, Atlanta, and the Alaska Native Registry for the time period 1994-2002.

^e Hispanic is not mutually exclusive from Whites, Blacks, Asian/Pacific Islanders, and American Indians/Alaska Natives.

^f Incidence data for Hispanics are based on NHIA and exclude cases from Hawaii, Seattle, Alaska Native Registry and Kentucky.

^g The rates for sex-specific cancer sites are calculated using the population for both sexes combined.

^h IBD = Intrahepatic Bile Duct. ONS = Other Nervous System.

* Ovary excludes borderline cases or histologies 8442, 8451, 8462, 8472, and 8473.

† The APC is significantly different from zero (p<.05).

Table I-20
AGE-ADJUSTED SEER INCIDENCE RATES AND TRENDS FOR THE TOP 15 CANCER SITES^a BY RACE/ETHNICITY

			Males					
All Races			White			Black		
	Rate ^b	APC ^c		Rate ^b	APC ^c		Rate ^b	APC ^c
	2000-2003	1994-2003		2000-2003	1994-2003		2000-2003	1994-2003
All Sites	558.1	-0.7*	All Sites	558.3	-0.6*	All Sites	666.4	-1.5*
Prostate	170.3	0.0	Prostate	163.4	0.1	Prostate	258.3	-1.3*
Lung and Bronchus	82.1	-2.0*	Lung and Bronchus	81.7	-2.0*	Lung and Bronchus	112.2	-2.4*
Colon and Rectum	61.7	-1.3*	Colon and Rectum	61.4	-1.5*	Colon and Rectum	72.9	-0.1
Urinary Bladder	37.0	0.0	Urinary Bladder	40.2	0.1	Kidney and Renal Pelvis	20.1	1.4
Melanoma of the Skin	23.2	1.6*	Melanoma of the Skin	26.5	1.9*	Urinary Bladder	19.8	0.7
Non-Hodgkin Lymphoma	23.0	-0.8*	Non-Hodgkin Lymphoma	23.8	-0.7*	Oral Cavity and Pharynx	18.0	-3.5*
Kidney and Renal Pelvis	17.5	1.7*	Kidney and Renal Pelvis	18.0	1.9*	Stomach	17.7	-3.3*
Leukemia	15.9	-1.0*	Leukemia	16.5	-1.0*	Non-Hodgkin Lymphoma	17.6	-1.9*
Oral Cavity and Pharynx	15.6	-1.7*	Oral Cavity and Pharynx	15.7	-1.3*	Pancreas	16.2	-2.7*
Pancreas	12.8	-0.5*	Pancreas	12.7	0.1	Myeloma	13.7	0.1
Stomach	11.5	-2.3*	Stomach	10.2	-2.3*	Leukemia	12.9	-0.8
Liver & IBD ^f	9.3	2.6*	Brain and ONS ^f	8.3	0.0	Liver & IBD ^f	12.1	4.5*
Esophagus	7.8	0.3	Esophagus	7.8	1.4*	Larynx	11.7	-3.6*
Brain and ONS ^f	7.6	-0.3	Liver & IBD ^f	7.8	2.5*	Esophagus	10.8	-4.5*
Myeloma	6.9	-0.2	Larynx	6.6	-3.6*	Brain and ONS ^f	4.9	-0.8
Asian/Pacific Islander			American Indian/Alaska Native			Hispanic ^e		
	Rate ^b	APC ^c		Rate ^d	APC ^d		Rate ^b	APC ^c
	2000-2003	1994-2003		1999-2002	1994-2002		2000-2003	1994-2003
All Sites	361.8	-0.9*	All Sites	359.9	-1.9	All Sites	419.1	-1.1*
Prostate	96.8	-0.4	Prostate	70.7	-3.5	Prostate	141.1	-0.7
Lung and Bronchus	55.7	-1.0*	Lung and Bronchus	55.5	-5.2*	Colon and Rectum	47.3	-0.8
Colon and Rectum	51.2	-0.9*	Colon and Rectum	52.7	-2.4	Lung and Bronchus	44.7	-2.2*
Liver & IBD ^f	20.9	0.4	Stomach	21.6	-	Urinary Bladder	19.9	0.0
Stomach	18.9	-3.2*	Kidney and Renal Pelvis	20.9	0.5	Non-Hodgkin Lymphoma	18.9	-1.1
Urinary Bladder	16.4	1.5*	Non-Hodgkin Lymphoma	15.0	-	Kidney and Renal Pelvis	16.0	3.2*
Non-Hodgkin Lymphoma	15.7	-0.8	Liver & IBD ^f	14.5	-	Stomach	15.9	-3.4*
Oral Cavity and Pharynx	11.0	-2.2	Urinary Bladder	12.5	-	Liver & IBD ^f	14.1	0.7
Pancreas	9.9	-3.0*	Oral Cavity and Pharynx	11.4	-	Leukemia	11.7	-1.8
Leukemia	9.2	-1.0	Pancreas	10.8	-	Pancreas	10.8	-1.9
Kidney and Renal Pelvis	8.8	1.3	Esophagus	9.5	-	Oral Cavity and Pharynx	9.2	-3.9*
Esophagus	4.0	-3.1*	Leukemia	8.6	-	Myeloma	6.8	-0.5
Brain and ONS ^f	4.0	-0.6	Myeloma	6.2	-	Brain and ONS ^f	5.9	1.2
Thyroid	3.8	1.6	Brain and ONS ^f	4.7	-	Larynx	5.3	-1.8
Myeloma	3.7	-2.5	Testis	3.7	-	Esophagus	5.2	-1.6

- Statistic not shown. Rate based on less than 16 cases for the time interval. Trend based on less than 10 cases for at least one year within the time interval.

^a Top 15 cancer sites selected based on 2000-2003 age-adjusted rates for the race/ethnic group.

^b Incidence data used in calculating the rates are from the 17 SEER areas (San Francisco, Connecticut, Detroit, Hawaii, Iowa, New Mexico, Seattle, Utah, Atlanta, San Jose-Monterey, Los Angeles, Alaska Native Registry, Rural Georgia, California excluding SF/SJM/LA, Kentucky, Louisiana and New Jersey). Rates are age-adjusted to the 2000 US Std Population (19 age groups - Census P25-1130).

^c The APC is the Annual Percent Change over the time interval. Incidence data used in calculating the trends are from the 13 SEER areas (San Francisco, Connecticut, Detroit, Hawaii, Iowa, New Mexico, Seattle, Utah, Atlanta, San Jose-Monterey, Los Angeles, Alaska Native Registry and Rural Georgia). Trends are based on rates age-adjusted to the 2000 US Std Population (19 age groups - Census P25-1130).

^d Incidence data for American Indians/Alaska Natives include cases from Connecticut, Detroit, Iowa, New Mexico, Seattle, Utah, Atlanta, and the Alaska Native Registry for the time period 1994-2002.

^e Hispanic is not mutually exclusive from Whites, Blacks, Asian/Pacific Islanders, and American Indians/Alaska Natives.

^f Incidence data for Hispanics are based on NHIA and exclude cases from Hawaii, Seattle, Alaska Native Registry and Kentucky.

^f IBD = Intrahepatic Bile Duct. ONS = Other Nervous System.

* The APC is significantly different from zero (p<.05).

Table I-21
AGE-ADJUSTED SEER INCIDENCE RATES AND TRENDS FOR THE TOP 15 CANCER SITES^a BY RACE/ETHNICITY

	Females						
	All Races		White			Black	
	Rate ^b 2000-2003	APC ^c 1994-2003	Rate ^b 2000-2003	APC ^c 1994-2003	Rate ^b 2000-2003	APC ^c 1994-2003	
All Sites	412.0	-0.2	424.6	-0.1	395.4	-0.4	
Breast	129.1	-0.3	134.0	-0.2	118.0	-0.4	
Lung and Bronchus	52.3	-0.3	54.7	-0.2	56.1	-0.4	
Colon and Rectum	45.3	-0.8*	44.7	-0.8*	53.1	0.3	
Corpus and Uterus, NOS	23.3	-0.6*	24.3	-0.7*	19.5	1.4	
Non-Hodgkin Lymphoma	16.1	0.8*	17.3	2.3*	13.7	-1.4	
Melanoma of the Skin	14.7	1.7*	16.8	0.8*	11.7	2.5*	
Ovary ^g	13.7	-0.9*	14.5	-0.8*	11.5	-4.4*	
Thyroid	12.1	5.3*	12.7	5.7*	10.1	-0.7	
Pancreas	10.0	-0.1	10.0	-0.1	9.7	0.8	
Leukemia	9.4	-1.0*	9.8	0.0	9.3	-1.1	
Urinary Bladder	9.3	-0.3	9.8	-1.0	9.1	-3.1*	
Cervix Uteri	8.8	-3.1*	9.0	2.2*	8.0	-0.4	
Kidney and Renal Pelvis	8.7	1.9*	8.5	-2.4*	7.4	0.8	
Oral Cavity and Pharynx	6.1	-1.6*	6.1	-1.7*	7.1	5.4*	
Stomach	5.6	-0.7	5.9	0.0	5.8	-1.3	
	Asian/Pacific Islander		American Indian/Alaska Native		Hispanic ^e		
	Rate ^b 2000-2003	APC ^c 1994-2003	Rate ^d 1999-2002	APC ^d 1994-2002	Rate ^b 2000-2003	APC ^c 1994-2003	
All Sites	285.4	-0.1	305.0	-0.8	310.9	-0.4	
Breast	88.6	0.8	74.4	-2.9	89.1	-0.4	
Colon and Rectum	35.7	-0.3	41.9	-0.4	32.7	-0.8	
Lung and Bronchus	27.3	-0.2	33.8	-1.6	24.0	-1.5*	
Corpus and Uterus, NOS	15.8	0.4	15.6	-	17.0	-0.2	
Thyroid	12.5	2.5*	13.1	-0.1	14.2	-3.5*	
Non-Hodgkin Lymphoma	11.3	0.9	12.3	-	13.9	-0.2	
Stomach	11.0	-3.0*	10.8	-	11.4	0.0	
Ovary ^g	9.7	0.1	10.1	-	11.2	4.0*	
Cervix Uteri	8.2	-6.3*	10.0	4.8	9.9	-0.8	
Pancreas	8.1	1.1	10.0	-	9.6	-0.2	
Liver & IBD ^f	8.0	-0.1	7.2	-	9.0	1.6	
Leukemia	5.9	-1.7	6.5	-	7.8	-2.4	
Oral Cavity and Pharynx	5.4	-0.6	6.3	-	5.6	1.8	
Kidney and Renal Pelvis	4.4	1.8*	6.2	-	5.5	-0.9	
Urinary Bladder	3.9	-0.5	5.7	-	4.8	0.1	

- Statistic not shown. Rate based on less than 16 cases for the time interval. Trend based on less than 10 cases for at least one year within the time interval.

^a Top 15 cancer sites selected based on 2000-2003 age-adjusted rates for the race/ethnic group.

^b Incidence data used in calculating the rates are from the 17 SEER areas (San Francisco, Connecticut, Detroit, Hawaii, Iowa, New Mexico, Seattle, Utah, Atlanta, San Jose-Monterey, Los Angeles, Alaska Native Registry, Rural Georgia, California excluding SF/SJM/LA, Kentucky, Louisiana and New Jersey). Rates are age-adjusted to the 2000 US Std Population (19 age groups - Census P25-1130).

^c The APC is the Annual Percent Change over the time interval. Incidence data used in calculating the trends are from the 13 SEER areas (San Francisco, Connecticut, Detroit, Hawaii, Iowa, New Mexico, Seattle, Utah, Atlanta, San Jose-Monterey, Los Angeles, Alaska Native Registry and Rural Georgia). Trends are based on rates age-adjusted to the 2000 US Std Population (19 age groups - Census P25-1130).

^d Incidence data for American Indians/Alaska Natives include cases from Connecticut, Detroit, Iowa, New Mexico, Seattle, Utah, Atlanta, and the Alaska Native Registry for the time period 1994-2002.

^e Hispanic is not mutually exclusive from Whites, Blacks, Asian/Pacific Islanders, and American Indians/Alaska Natives.

Incidence data for Hispanics are based on NHIA and exclude cases from Hawaii, Seattle, Alaska Native Registry and Kentucky.

^f IBD = Intrahepatic Bile Duct. ONS = Other Nervous System.

^g Ovary excludes borderline cases or histologies 8442, 8451, 8462, 8472, and 8473.

* The APC is significantly different from zero (p<.05).

SEER Incidence 1994-2003

Males by Race/Ethnicity

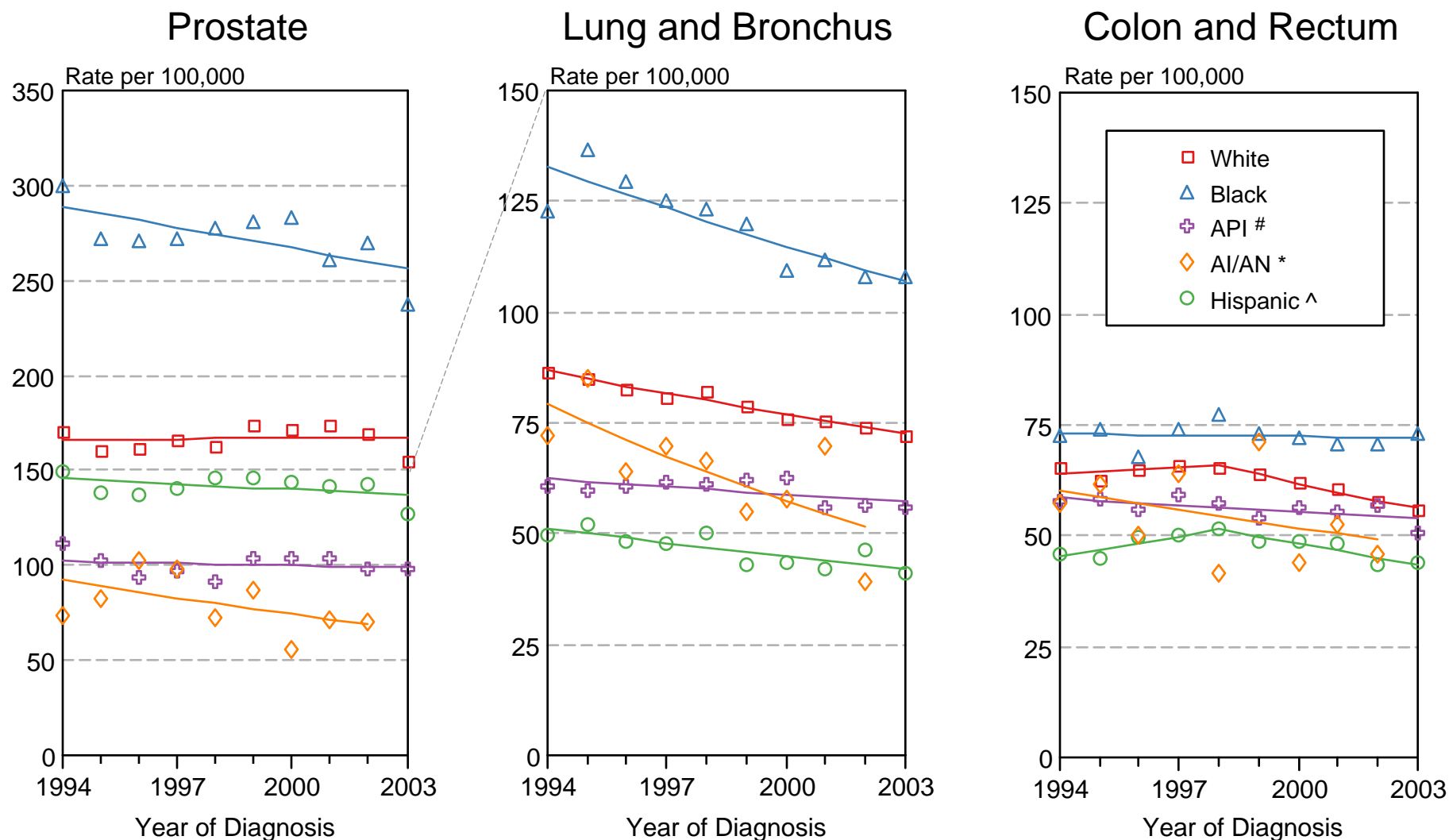


Figure 1-13

Source: SEER 13 areas (San Francisco, Connecticut, Detroit, Hawaii, Iowa, New Mexico, Seattle, Utah, Atlanta, San Jose-Monterey, Los Angeles, Alaska Native Registry and Rural Georgia). Rates are age-adjusted to the 2000 US Std Population (19 age groups - Census P25-1103). Regression lines are calculated using the Joinpoint Regression Program Version 3.1, April 2006, National Cancer Institute.

API = Asian/Pacific Islander.

* AI/AN = American Indian/Alaska Native. Incidence data for American Indians/Alaska Natives include cases from Connecticut, Detroit, Iowa, New Mexico, Seattle, Utah, Atlanta, and the Alaska Native Registry for the time period 1994-2002.

^ Hispanic is not mutually exclusive from Whites, Blacks, Asian/Pacific Islanders, and American Indians/Alaska Natives. Incidence data for Hispanics are based on NHIA and exclude cases from Hawaii, Seattle, and Alaska Native Registry.

SEER Incidence 1994-2003 Females by Race/Ethnicity

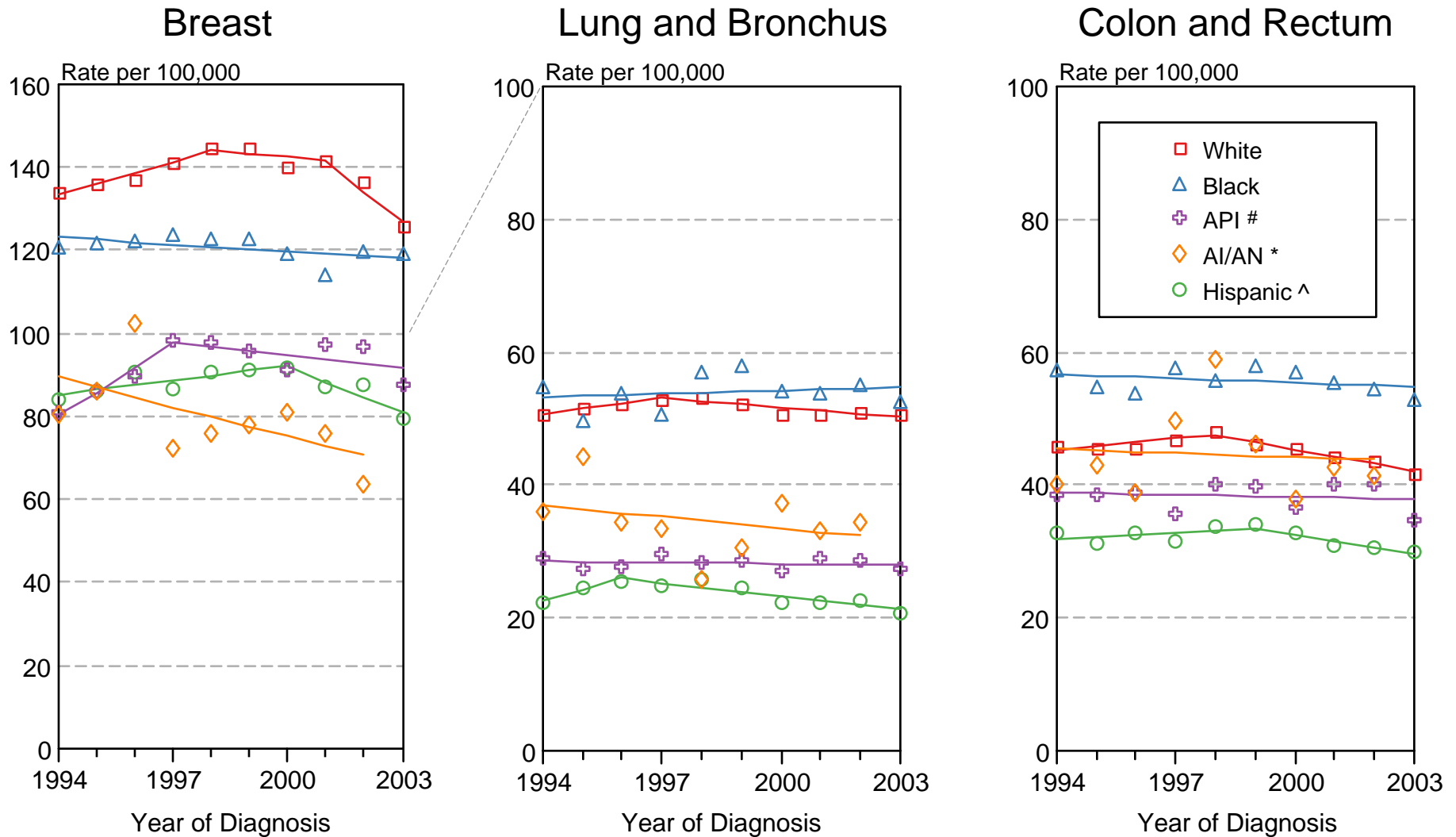


Figure I-14

Source: SEER 13 areas (San Francisco, Connecticut, Detroit, Hawaii, Iowa, New Mexico, Seattle, Utah, Atlanta, San Jose-Monterey, Los Angeles, Alaska Native Registry and Rural Georgia). Rates are age-adjusted to the 2000 US Std Population (19 age groups - Census P25-1103). Regression lines are calculated using the Joinpoint Regression Program Version 3.1, April 2006, National Cancer Institute.

API = Asian/Pacific Islander.

* AI/AN = American Indian/Alaska Native. Incidence data for American Indians/Alaska Natives include cases from Connecticut, Detroit, Iowa, New Mexico, Seattle, Utah, Atlanta, and the Alaska Native Registry for the time period 1994-2002.

^ Hispanic is not mutually exclusive from Whites, Blacks, Asian/Pacific Islanders, and American Indians/Alaska Natives. Incidence data for Hispanics are based on NHIA and exclude cases from Hawaii, Seattle, and Alaska Native Registry.