

Table 2.1
All Cancer Sites (Invasive)

Trends in SEER Incidence^{ab} and U.S. Mortality^c Using the Joinpoint Regression Program,
1975-2006 With up to Four Joinpoints, 1992-2006 With up to Two Joinpoints,
Both Sexes by Race/Ethnicity

	Joinpoint Trend 1		Joinpoint Trend 2		Joinpoint Trend 3		Joinpoint Trend 4		Joinpoint Trend 5		AAPC ^d	
	Years	APC	Years	APC	Years	APC	Years	APC	Years	APC	1997-2006	2002-2006
<u>SEER 9 Delay-Adjusted Incidence^a, 1975-2006</u>												
All Races	1975-1989	1.2*	1989-1992	2.8	1992-1995	-2.4	1995-1999	0.9	1999-2006	-0.7*	-0.4*	-0.7*
White	1975-1982	0.9*	1982-1992	1.8*	1992-1995	-2.1	1995-1999	1.2	1999-2006	-0.7*	-0.3	-0.7*
Black	1975-1984	1.6*	1984-1989	0.4	1989-1992	4.3*	1992-2006	-0.9*			-0.9*	-0.9*
<u>SEER 13 Delay-Adjusted Incidence^b, 1992-2006</u>												
All Races	1992-1994	-3.2*	1994-1999	0.4	1999-2006	-0.9*					-0.6*	-0.9*
White	1992-1994	-3.3*	1994-1999	0.7	1999-2006	-0.8*					-0.5*	-0.8*
Black	1992-2004	-0.7*	2004-2006	-2.6							-1.1*	-1.6*
<u>SEER 9 Observed Incidence^a, 1975-2006</u>												
All Races	1975-1989	1.2*	1989-1992	2.8*	1992-1995	-2.4	1995-1999	1.0	1999-2006	-1.1*	-0.6*	-1.1*
White	1975-1982	0.9*	1982-1992	1.8*	1992-1995	-2.0	1995-2000	0.8*	2000-2006	-1.2*	-0.6*	-1.2*
Black	1975-1984	1.6*	1984-1989	0.4	1989-1992	4.2*	1992-2004	-0.9*	2004-2006	-3.0	-1.4*	-2.0*
<u>SEER 13 Observed Incidence^b, 1992-2006</u>												
All Races	1992-1994	-2.9*	1994-2001	0.1	2001-2006	-1.6*					-0.8*	-1.6*
White	1992-1994	-3.0*	1994-2001	0.3	2001-2006	-1.6*					-0.8*	-1.6*
White NH ^{ef}	1992-1994	-3.0*	1994-2001	0.4*	2001-2006	-1.5*					-0.6*	-1.5*
Black	1992-2004	-0.8*	2004-2006	-3.8*							-1.5*	-2.3*
Black NH ^{ef}	1992-2004	-0.8*	2004-2006	-3.6*							-1.4*	-2.2*
API ^e	1992-1995	-1.9	1995-2002	0.0	2002-2006	-1.9*					-0.9*	-1.9*
AI/AN ^{eg}	1992-2006	0.1									0.1	0.1
Hispanic ^f	1992-2006	-0.6*									-0.6*	-0.6*
<u>U.S. Cancer Mortality^c, 1975-2006</u>												
All Races	1975-1990	0.5*	1990-1993	-0.3	1993-2001	-1.1*	2001-2006	-1.6*			-1.4*	-1.6*
White	1975-1990	0.4*	1990-1994	-0.3	1994-1997	-1.4*	1997-2000	-0.6	2000-2006	-1.4*	-1.2*	-1.4*
Black	1975-1983	1.3*	1983-1991	0.7*	1991-1995	-0.8*	1995-2002	-1.7*	2002-2006	-2.3*	-1.9*	-2.3*
<u>U.S. Cancer Mortality^c, 1992-2006</u>												
All Races	1992-2001	-1.0*	2001-2006	-1.6*							-1.3*	-1.6*
White	1992-2001	-0.9*	2001-2006	-1.5*							-1.2*	-1.5*
White NH ^{ef}	1992-2002	-0.8*	2002-2006	-1.4*							-1.1*	-1.4*
Black	1992-1995	-0.8	1995-2002	-1.7*	2002-2006	-2.3*					-2.0*	-2.3*
Black NH ^{ef}	1992-1999	-1.2*	1999-2006	-1.9*							-1.7*	-1.9*
API ^e	1992-2006	-1.7*									-1.7*	-1.7*
AI/AN ^{eg}	1992-2006	-0.2									-0.2	-0.2
Hispanic ^f	1992-1999	-0.2	1999-2006	-1.9*							-1.5*	-1.9*

Joinpoint Regression Program Version 3.3.1, April 2008, National Cancer Institute. (<http://srab.cancer.gov/joinpoint/>).

The APC is the Annual Percent Change based on rates age-adjusted to the 2000 US Std Population (19 age groups - Census P25-1130).

^a Trends are from the SEER 9 areas (San Francisco, Connecticut, Detroit, Hawaii, Iowa, New Mexico, Seattle, Utah, and Atlanta).

^b Trends are from the SEER 13 areas (SEER 9 Areas, Los Angeles, San Jose-Monterey, Rural Georgia, and the Alaska Native Registry).

^c Trends are from US Mortality Files, National Center for Health Statistics, Centers for Disease Control and Prevention.

^d The AAPC is the Average Annual Percent Change and is based on the APCs calculated by Joinpoint.

^e API - Asian/Pacific Islander, AI/AN - American Indian/Alaska Native, NH - Non-Hispanic

^f Hispanic and Non-Hispanic are not mutually exclusive from whites, blacks, Asian/Pacific Islanders, and American Indians/Alaska

Natives. Incidence data for Hispanics and Non-Hispanics are based on NHIA and exclude cases from the Alaska Native Registry.

The Hispanic and Non-Hispanic mortality trends exclude deaths from CT, DC, ME, MD, MN, NH, NY, ND, OK and VT.

^g Data for American Indian/Alaska Native are based on the CHSDA (Contract Health Service Delivery Area) counties.

* The APC/AAPC is significantly different from zero ($p < .05$).

- Joinpoint regression line analysis could not be performed on data series.

Table 2.2
All Cancer Sites (Invasive)

Trends in SEER Incidence^{ab} and U.S. Mortality^c Using the Joinpoint Regression Program,
1975-2006 With up to Four Joinpoints, 1992-2006 With up to Two Joinpoints,
Males by Race/Ethnicity

	Joinpoint Trend 1		Joinpoint Trend 2		Joinpoint Trend 3		Joinpoint Trend 4		Joinpoint Trend 5		AAPC ^d	
	Years	APC	Years	APC	Years	APC	Years	APC	Years	APC	1997-2006	2002-2006
<u>SEER 9 Delay-Adjusted Incidence^a, 1975-2006</u>												
All Races	1975-1989	1.3*	1989-1992	5.2*	1992-1995	-4.9*	1995-2000	0.5	2000-2006	-1.3*	-0.7*	-1.3*
White	1975-1989	1.4*	1989-1992	5.0*	1992-1995	-5.0*	1995-2001	0.6*	2001-2006	-1.5*	-0.6*	-1.5*
Black	1975-1981	2.8*	1981-1989	0.7	1989-1992	6.9*	1992-2006	-1.7*			-1.7*	-1.7*
<u>SEER 13 Delay-Adjusted Incidence^b, 1992-2006</u>												
All Races	1992-1995	-4.4*	1995-2001	0.1	2001-2006	-1.7*					-0.9*	-1.7*
White	1992-1994	-6.7*	1994-2001	0.0	2001-2006	-1.5*					-0.8*	-1.5*
Black	1992-2004	-1.5*	2004-2006	-4.9							-2.2*	-3.2*
<u>SEER 9 Observed Incidence^a, 1975-2006</u>												
All Races	1975-1989	1.3*	1989-1992	5.1*	1992-1995	-4.8*	1995-2001	0.3	2001-2006	-1.9*	-0.9*	-1.9*
White	1975-1989	1.4*	1989-1992	5.0*	1992-1995	-5.1*	1995-2001	0.5*	2001-2006	-2.0*	-0.9*	-2.0*
Black	1975-1981	2.8*	1981-1989	0.6	1989-1992	6.7*	1992-2004	-1.7*	2004-2006	-4.7*	-2.4*	-3.2*
<u>SEER 13 Observed Incidence^b, 1992-2006</u>												
All Races	1992-1995	-4.5*	1995-2001	0.1	2001-2006	-2.1*					-1.1*	-2.1*
White	1992-1994	-6.7*	1994-2001	-0.1	2001-2006	-1.9*					-1.1*	-1.9*
White NH ^{ef}	1992-1994	-6.8*	1994-2001	0.1	2001-2006	-1.8*					-1.0*	-1.8*
Black	1992-2004	-1.6*	2004-2006	-6.2*							-2.6*	-3.9*
Black NH ^{ef}	1992-2004	-1.6*	2004-2006	-5.9*							-2.6*	-3.7*
API ^e	1992-1996	-2.7*	1996-2001	0.2	2001-2006	-2.1*					-1.1*	-2.1*
AI/AN ^{eg}	1992-2006	-1.0									-1.0*	-1.0*
Hispanic ^f	1992-2004	-0.8*	2004-2006	-4.7							-1.7*	-2.8*
<u>U.S. Cancer Mortality^c, 1975-2006</u>												
All Races	1975-1979	1.0*	1979-1990	0.3*	1990-1993	-0.5	1993-2001	-1.5*	2001-2006	-2.0*	-1.8*	-2.0*
White	1975-1980	0.8*	1980-1992	0.2*	1992-2001	-1.4*	2001-2006	-1.8*			-1.6*	-1.8*
Black	1975-1982	1.8*	1982-1990	1.0*	1990-1993	-0.2	1993-2000	-2.0*	2000-2006	-2.8*	-2.5*	-2.8*
<u>U.S. Cancer Mortality^c, 1992-2006</u>												
All Races	1992-2001	-1.5*	2001-2006	-2.0*							-1.8*	-2.0*
White	1992-2001	-1.4*	2001-2006	-1.8*							-1.6*	-1.8*
White NH ^{ef}	1992-2006	-1.4*									-1.4*	-1.4*
Black	1992-1996	-1.2*	1996-2006	-2.6*							-2.6*	-2.6*
Black NH ^{ef}	1992-1999	-1.7*	1999-2006	-2.5*							-2.3*	-2.5*
API ^e	1992-2006	-2.1*									-2.1*	-2.1*
AI/AN ^{eg}	1992-2006	-0.5									-0.5*	-0.5*
Hispanic ^f	1992-1998	-0.1	1998-2006	-2.4*							-2.2*	-2.4*

Joinpoint Regression Program Version 3.3.1, April 2008, National Cancer Institute. (<http://srab.cancer.gov/joinpoint/>).

The APC is the Annual Percent Change based on rates age-adjusted to the 2000 US Std Population (19 age groups - Census P25-1130).

^a Trends are from the SEER 9 areas (San Francisco, Connecticut, Detroit, Hawaii, Iowa, New Mexico, Seattle, Utah, and Atlanta).

^b Trends are from the SEER 13 areas (SEER 9 Areas, Los Angeles, San Jose-Monterey, Rural Georgia, and the Alaska Native Registry).

^c Trends are from US Mortality Files, National Center for Health Statistics, Centers for Disease Control and Prevention.

^d The AAPC is the Average Annual Percent Change and is based on the APCs calculated by Joinpoint.

^e API - Asian/Pacific Islander, AI/AN - American Indian/Alaska Native, NH - Non-Hispanic

^f Hispanic and Non-Hispanic are not mutually exclusive from whites, blacks, Asian/Pacific Islanders, and American Indians/Alaska

Natives. Incidence data for Hispanics and Non-Hispanics are based on NHIA and exclude cases from the Alaska Native Registry.

The Hispanic and Non-Hispanic mortality trends exclude deaths from CT, DC, ME, MD, MN, NH, NY, ND, OK and VT.

^g Data for American Indian/Alaska Native are based on the CHSDA (Contract Health Service Delivery Area) counties.

* The APC/AAPC is significantly different from zero ($p < .05$).

- Joinpoint regression line analysis could not be performed on data series.

Table 2.3
All Cancer Sites (Invasive)

Trends in SEER Incidence^{ab} and U.S. Mortality^c Using the Joinpoint Regression Program,
1975-2006 With up to Four Joinpoints, 1992-2006 With up to Two Joinpoints,
Females by Race/Ethnicity

	Joinpoint Trend 1		Joinpoint Trend 2		Joinpoint Trend 3		Joinpoint Trend 4		Joinpoint Trend 5		AAPC ^d	
	Years	APC	Years	APC	Years	APC	Years	APC	Years	APC	1997-2006	2002-2006
<u>SEER 9 Delay-Adjusted Incidence^a, 1975-2006</u>												
All Races	1975-1979	-0.3	1979-1987	1.6*	1987-1995	0.1	1995-1998	1.4	1998-2006	-0.5*	-0.3	-0.5*
White	1975-1979	-0.2	1979-1987	1.7*	1987-1995	0.1	1995-1998	1.7	1998-2006	-0.5*	-0.2	-0.5*
Black	1975-1991	1.1*	1991-2006	0.0							0.0	0.0
<u>SEER 13 Delay-Adjusted Incidence^b, 1992-2006</u>												
All Races	1992-1998	0.8*	1998-2006	-0.6*							-0.5*	-0.6*
White	1992-1998	1.0*	1998-2006	-0.6*							-0.4*	-0.6*
Black	1992-2006	0.0									0.0	0.0
<u>SEER 9 Observed Incidence^a, 1975-2006</u>												
All Races	1975-1979	-0.3	1979-1987	1.6*	1987-1995	0.1	1995-1998	1.5	1998-2006	-0.8*	-0.5*	-0.8*
White	1975-1979	-0.2	1979-1987	1.7*	1987-1995	0.1	1995-1998	1.8	1998-2006	-0.8*	-0.5*	-0.8*
Black	1975-1991	1.1*	1991-2006	-0.1							-0.1	-0.1
<u>SEER 13 Observed Incidence^b, 1992-2006</u>												
All Races	1992-1998	0.8*	1998-2006	-0.9*							-0.7*	-0.9*
White	1992-1994	-0.4	1994-1998	1.5*	1998-2006	-0.9*					-0.7*	-0.9*
White NH ^{ef}	1992-1994	-0.1	1994-1998	1.6*	1998-2006	-0.8*					-0.6*	-0.8*
Black	1992-2006	-0.2									-0.2	-0.2
Black NH ^{ef}	1992-2006	-0.2									-0.2	-0.2
API ^e	1992-2002	0.4	2002-2006	-1.5							-0.4	-1.5
AI/AN ^{eg}	1992-2006	1.1*									1.1*	1.1*
Hispanic ^f	1992-2006	-0.2									-0.2	-0.2
<u>U.S. Cancer Mortality^c, 1975-2006</u>												
All Races	1975-1990	0.6*	1990-1994	-0.1	1994-2002	-0.8*	2002-2006	-1.5*			-1.1*	-1.5*
White	1975-1990	0.6*	1990-1995	-0.2	1995-1998	-1.2*	1998-2001	-0.3	2001-2006	-1.4*	-1.0*	-1.4*
Black	1975-1991	1.0*	1991-1999	-0.6*	1999-2006	-1.5*					-1.3*	-1.5*
<u>U.S. Cancer Mortality^c, 1992-2006</u>												
All Races	1992-2001	-0.7*	2001-2006	-1.4*							-1.1*	-1.4*
White	1992-2001	-0.7*	2001-2006	-1.3*							-1.0*	-1.3*
White NH ^{ef}	1992-2001	-0.5*	2001-2006	-1.2*							-0.9*	-1.2*
Black	1992-1997	-0.5*	1997-2003	-1.2*	2003-2006	-2.0*					-1.4*	-1.8*
Black NH ^{ef}	1992-1997	-0.3	1997-2003	-1.0*	2003-2006	-1.9*					-1.3*	-1.7*
API ^e	1992-2006	-1.1*									-1.1*	-1.1*
AI/AN ^{eg}	1992-2006	0.1									0.1	0.1
Hispanic ^f	1992-2000	-0.2	2000-2006	-1.6*							-1.1*	-1.6*

Joinpoint Regression Program Version 3.3.1, April 2008, National Cancer Institute. (<http://srab.cancer.gov/joinpoint/>).

The APC is the Annual Percent Change based on rates age-adjusted to the 2000 US Std Population (19 age groups - Census P25-1130).

^a Trends are from the SEER 9 areas (San Francisco, Connecticut, Detroit, Hawaii, Iowa, New Mexico, Seattle, Utah, and Atlanta).

^b Trends are from the SEER 13 areas (SEER 9 Areas, Los Angeles, San Jose-Monterey, Rural Georgia, and the Alaska Native Registry).

^c Trends are from US Mortality Files, National Center for Health Statistics, Centers for Disease Control and Prevention.

^d The AAPC is the Average Annual Percent Change and is based on the APCs calculated by Joinpoint.

^e API - Asian/Pacific Islander, AI/AN - American Indian/Alaska Native, NH - Non-Hispanic

^f Hispanic and Non-Hispanic are not mutually exclusive from whites, blacks, Asian/Pacific Islanders, and American Indians/Alaska

Natives. Incidence data for Hispanics and Non-Hispanics are based on NHIA and exclude cases from the Alaska Native Registry.

The Hispanic and Non-Hispanic mortality trends exclude deaths from CT, DC, ME, MD, MN, NH, NY, ND, OK and VT.

^g Data for American Indian/Alaska Native are based on the CHSDA (Contract Health Service Delivery Area) counties.

* The APC/AAPC is significantly different from zero ($p < .05$).

- Joinpoint regression line analysis could not be performed on data series.

Table 2.4
All Cancer Sites (Invasive)

Age-adjusted SEER Incidence^a Rates by Year, Race and Sex

Year of Diagnosis:	All Races			Whites			Blacks		
	Total	Males	Females	Total	Males	Females	Total	Males	Females
1975	400.38	466.77	365.83	402.13	468.60	369.56	426.21	525.13	356.43
1976	407.39	481.16	367.39	409.73	481.86	373.20	427.38	553.02	340.44
1977	407.73	486.49	363.69	409.28	487.10	367.86	442.62	577.65	352.01
1978	407.31	488.43	362.17	409.80	489.83	367.91	436.33	570.52	343.90
1979	412.47	496.49	365.46	414.09	497.62	369.66	451.54	589.90	358.94
1980	417.94	505.70	368.00	419.42	505.16	373.29	467.16	614.68	366.32
1981	425.23	510.87	377.04	427.68	510.90	383.85	472.65	633.89	362.85
1982	424.45	511.07	376.13	427.75	512.48	383.39	465.24	621.86	359.54
1983	431.13	519.92	380.75	434.40	520.93	388.01	486.67	645.50	381.75
1984	439.88	525.37	392.34	443.51	527.51	399.47	487.89	643.89	385.60
1985	448.73	531.08	403.06	453.36	533.39	411.46	488.36	642.77	387.63
1986	451.27	538.15	402.16	455.89	542.83	408.98	493.67	643.90	396.23
1987	467.93	563.07	413.18	474.83	568.67	423.31	500.86	665.97	393.93
1988	463.70	558.30	409.05	470.12	564.95	417.67	503.74	657.37	404.16
1989	467.52	566.79	408.09	474.87	573.24	418.31	492.25	660.66	384.43
1990	481.65	592.31	415.26	488.57	598.84	424.61	520.53	698.47	407.60
1991	502.69	637.14	418.54	510.01	644.02	428.04	548.68	764.00	412.53
1992	510.22	657.61	414.60	516.46	662.70	423.39	567.59	807.11	412.60
1993	492.99	621.48	408.04	496.58	619.62	416.90	567.33	816.59	403.48
1994	482.92	589.01	413.00	486.81	586.74	422.57	556.45	781.26	408.05
1995	476.09	570.49	414.22	481.25	569.00	425.39	540.60	744.38	404.30
1996	478.28	571.34	417.39	483.85	572.40	427.49	538.33	724.41	415.06
1997	485.51	574.43	427.67	492.53	575.12	440.33	537.53	734.55	408.95
1998	486.93	571.03	432.87	495.45	574.48	446.04	531.57	716.49	412.59
1999	489.15	579.13	429.27	496.97	580.65	442.31	536.68	716.98	418.40
2000	484.03	576.80	420.65	494.13	580.18	436.40	522.60	705.44	400.05
2001	486.54	576.35	424.52	497.31	582.10	439.68	513.68	689.00	395.21
2002	482.96	568.14	424.40	492.61	574.07	437.14	526.46	687.19	418.40
2003	469.33	551.99	412.30	479.20	556.17	426.83	508.94	664.99	403.91
2004	467.70	546.61	412.98	477.13	551.69	425.77	506.12	656.99	405.70
2005	459.94	531.85	410.21	470.39	538.84	423.71	486.53	608.51	404.72
2006	456.20	527.31	406.01	464.31	530.15	418.49	477.70	598.85	394.60
1975-2006	461.24	551.98	404.12	466.62	554.34	413.30	504.87	672.06	394.00

^a SEER 9 areas (San Francisco, Connecticut, Detroit, Hawaii, Iowa, New Mexico, Seattle, Utah, and Atlanta).
Rates are per 100,000 and are age-adjusted to the 2000 US Std Population (19 age groups - Census P25-1130).
- Statistic not shown. Rate based on less than 16 cases for the time interval.

Table 2.5
All Cancer Sites (Invasive)

Age-adjusted U.S. Death^a Rates by Year, Race and Sex

Year of Death:	All Races			Whites			Blacks		
	Total	Males	Females	Total	Males	Females	Total	Males	Females
1975	199.14	258.43	160.03	196.33	254.00	158.99	235.50	320.45	174.17
1976	202.30	262.23	162.70	199.38	257.50	161.69	241.76	328.45	179.10
1977	203.02	264.23	162.94	199.67	258.78	161.61	246.38	337.95	181.60
1978	204.42	267.07	163.76	201.14	261.65	162.54	247.24	340.91	181.53
1979	204.53	268.65	163.06	201.20	263.24	161.70	248.98	344.67	182.73
1980	206.96	271.08	165.75	203.27	265.03	164.17	256.18	353.91	189.25
1981	206.40	269.78	165.90	202.64	263.27	164.55	256.77	358.65	187.47
1982	208.32	272.89	167.45	204.54	266.28	166.11	260.36	364.86	190.17
1983	209.21	274.09	168.27	205.17	267.22	166.69	263.75	369.32	193.24
1984	210.91	275.08	170.55	206.66	267.55	169.02	268.15	377.93	195.67
1985	211.35	275.68	170.96	207.25	268.25	169.58	268.06	377.82	196.31
1986	211.79	276.04	171.59	207.73	268.83	170.01	269.45	378.92	199.05
1987	211.91	276.34	171.54	207.78	268.96	169.87	271.12	383.24	199.91
1988	212.62	276.89	172.53	208.48	269.46	170.94	271.59	384.17	200.36
1989	214.30	278.50	174.25	209.96	270.25	172.88	275.87	395.28	200.87
1990	214.95	279.82	174.65	210.41	271.48	172.89	279.30	399.14	205.39
1991	215.06	279.15	175.30	210.62	271.19	173.41	278.97	395.85	207.39
1992	213.46	276.51	174.39	209.24	268.91	172.58	274.93	389.20	205.80
1993	213.45	275.89	174.55	209.16	267.89	172.82	277.09	394.76	206.29
1994	211.74	272.12	174.11	207.83	264.73	172.62	271.96	385.20	204.06
1995	209.89	268.50	173.35	206.09	261.46	171.73	269.51	379.02	204.53
1996	207.00	263.75	171.21	203.40	256.83	169.85	265.28	373.70	200.94
1997	203.55	258.13	169.00	199.94	251.58	167.35	262.14	363.18	202.53
1998	200.82	253.63	166.93	197.56	247.62	165.38	255.66	353.13	198.38
1999	200.72	252.75	167.24	197.75	247.14	165.92	253.80	349.23	197.54
2000	198.69	248.21	166.64	196.28	243.14	165.92	248.05	340.92	193.19
2001	195.89	244.08	164.33	193.59	239.42	163.46	244.04	332.36	191.92
2002	193.71	240.22	162.87	191.74	236.33	162.04	240.27	322.97	191.05
2003	190.06	234.18	160.47	188.29	230.69	159.69	234.47	311.39	188.17
2004	185.92	228.61	157.10	184.29	225.12	156.54	228.41	304.01	182.97
2005	184.24	226.44	155.52	182.86	223.47	155.02	224.39	297.21	180.43
2006	181.07	221.11	153.66	180.10	218.74	153.44	218.79	287.75	176.92
1975-2006	203.72	260.43	167.11	200.61	254.69	165.92	255.30	353.38	193.65

^a US Mortality Files, National Center for Health Statistics, Centers for Disease Control and Prevention.
Rates are per 100,000 and are age-adjusted to the 2000 US Std Population (19 age groups - Census P25-1130).
- Statistic not shown. Rate based on less than 16 cases for the time interval.

Table 2.6
All Cancer Sites (Invasive)

SEER Incidence^a and U.S. Death^b Rates, Age-Adjusted and Age-Specific Rates, by Race and Sex

	All Races			Whites			Blacks		
	Total	Males	Females	Total	Males	Females	Total	Males	Females
<u>SEER Incidence</u>									
<u>Age at Diagnosis</u>									
Age-Adjusted Rates, 2002-2006									
All ages	462.9	541.8	408.5	470.6	544.3	420.5	493.6	633.7	398.9
Under 65	221.1	217.0	226.3	224.1	217.0	232.4	246.8	281.1	220.1
65 and over	2,134.3	2,787.2	1,668.0	2,174.8	2,806.7	1,720.4	2,198.8	3,071.2	1,635.0
All ages (IARC world std) ^c	313.3	354.8	282.8	318.7	356.2	291.5	340.1	429.9	275.8
Age-Specific Rates, 2002-2006									
<1	23.6	25.7	21.4	24.8	27.3	22.1	16.6	16.4	16.8
1-4	20.8	22.6	19.0	21.8	23.7	19.9	14.8	16.0	13.6
5-9	11.1	11.8	10.4	11.6	12.6	10.7	9.0	9.2	8.7
10-14	13.0	13.6	12.5	13.7	14.2	13.1	10.7	10.8	10.5
15-19	21.2	22.4	19.9	22.9	24.5	21.2	14.0	14.1	13.9
20-24	34.5	32.8	36.2	37.3	36.2	38.5	22.5	19.2	25.9
25-29	53.4	45.1	62.2	57.1	48.7	66.4	39.5	32.3	46.2
30-34	81.7	60.5	103.5	85.9	64.5	108.7	69.8	48.3	89.4
35-39	125.7	87.4	164.7	129.3	91.1	169.5	116.4	81.2	148.4
40-44	208.6	144.9	272.3	212.0	147.0	278.7	207.4	158.5	251.7
45-49	343.7	271.8	414.1	345.7	270.2	421.5	373.5	342.5	400.8
50-54	549.8	527.3	571.5	551.4	520.0	582.3	656.7	739.4	586.4
55-59	853.2	934.4	776.7	855.8	918.9	795.0	1,043.8	1,356.8	784.0
60-64	1,262.4	1,500.8	1,044.3	1,280.5	1,496.8	1,078.7	1,497.2	2,031.5	1,072.0
65-69	1,743.0	2,203.4	1,343.9	1,776.5	2,205.8	1,396.6	1,962.1	2,785.5	1,336.0
70-74	2,110.4	2,741.9	1,603.0	2,157.5	2,763.0	1,660.6	2,217.1	3,128.3	1,577.3
75-79	2,397.9	3,157.6	1,854.2	2,449.0	3,180.0	1,919.2	2,406.3	3,367.3	1,812.7
80-84	2,470.8	3,247.2	1,983.6	2,511.2	3,271.4	2,034.5	2,377.5	3,297.1	1,871.5
85+	2,201.4	2,995.7	1,829.7	2,225.9	3,039.2	1,850.6	2,118.0	2,810.3	1,832.2
<u>U.S. Mortality</u>									
<u>Age at Death</u>									
Age-Adjusted Rates, 2002-2006									
All ages	186.9	229.9	157.8	185.4	226.7	157.3	229.0	304.2	183.7
Under 65	61.1	65.6	57.0	59.2	63.2	55.6	86.2	99.0	76.0
65 and over	1,056.3	1,365.5	855.0	1,057.2	1,356.9	860.4	1,216.1	1,723.1	928.2
All ages (IARC world std) ^c	111.8	132.7	96.3	110.4	130.2	95.6	142.1	181.7	116.0
Age-Specific Rates, 2002-2006									
<1	1.8	1.9	1.8	2.0	2.1	1.9	1.3	1.1	1.6
1-4	2.4	2.6	2.2	2.4	2.6	2.2	2.5	2.6	2.4
5-9	2.6	2.8	2.3	2.6	2.9	2.4	2.4	2.7	2.1
10-14	2.4	2.6	2.2	2.4	2.6	2.3	2.5	2.8	2.2
15-19	3.4	4.0	2.8	3.5	4.2	2.8	3.3	3.8	2.8
20-24	4.7	5.5	4.0	4.7	5.5	3.9	5.1	5.8	4.4
25-29	6.7	7.0	6.4	6.5	7.0	6.0	8.6	8.0	9.1
30-34	11.7	10.7	12.8	11.4	10.5	12.3	15.6	13.5	17.4
35-39	22.0	18.4	25.6	21.3	18.2	24.5	29.5	22.2	36.0
40-44	45.0	40.2	49.9	43.1	38.7	47.6	63.9	55.8	71.0
45-49	87.6	86.1	89.0	83.1	81.6	84.6	131.2	132.8	129.8
50-54	156.7	167.5	146.5	149.7	158.5	141.1	234.6	269.0	205.6
55-59	262.4	291.8	234.7	254.8	280.1	230.5	378.1	460.6	310.2
60-64	430.8	496.3	371.1	424.0	482.8	369.5	578.9	738.0	454.7
65-69	637.1	760.1	530.0	633.5	748.9	531.1	798.0	1,037.8	620.2
70-74	896.4	1,100.0	732.2	896.8	1,089.7	738.1	1,057.7	1,434.1	802.1
75-79	1,173.6	1,498.8	939.8	1,176.0	1,488.8	947.4	1,346.1	1,901.9	1,014.8
80-84	1,436.0	1,918.7	1,138.6	1,439.1	1,910.7	1,146.1	1,606.6	2,383.4	1,198.6
85+	1,669.1	2,378.6	1,350.9	1,675.4	2,380.8	1,358.4	1,788.6	2,758.1	1,404.9

^a SEER 17 areas. Rates are per 100,000 and are age-adjusted to the 2000 US Std Population (19 age groups - Census P25-1130), unless noted.

^b US Mortality Files, National Center for Health Statistics, Centers for Disease Control and Prevention.

^c Rates are per 100,000 and are age-adjusted to the 2000 US Std Population (19 age groups - Census P25-1130), unless noted.

^c Rates are per 100,000 and are age-adjusted to the IARC world standard population.

- Statistic not shown. Rate based on less than 16 cases for the time interval.

Table 2.7
All Cancer Sites (Invasive)

Survival Rates, by Race, Sex, Diagnosis Year and Age

	All Races			Whites			Blacks		
	Total	Males	Females	Total	Males	Females	Total	Males	Females
5-Year Relative Survival Rates									
Year of Diagnosis:									
1960-1963 ^a	-	-	-	39	-	-	27	-	-
1970-1973 ^a	-	-	-	43	-	-	31	-	-
1975-1977 ^b	50.1	42.3	57.1	51.0	43.3	57.8	39.7	32.7	47.1
1978-1980 ^b	50.4	44.0	56.4	51.4	45.3	57.1	39.6	33.3	46.6
1981-1983 ^b	51.6	46.1	56.7	52.8	47.6	57.6	39.6	34.3	45.6
1984-1986 ^b	53.5	47.7	58.9	54.7	49.1	59.9	40.8	35.5	46.4
1987-1989 ^b	56.4	51.6	61.1	57.8	53.3	62.1	43.7	38.8	48.9
1990-1992 ^b	60.9	59.6	62.4	62.4	61.3	63.5	48.2	47.3	49.3
1993-1995 ^b	62.2	61.2	63.4	63.4	62.4	64.5	53.0	53.7	52.0
1996-1998 ^b	64.4	63.6	65.3	65.6	64.7	66.4	55.5	57.2	53.5
1999-2005 ^b	67.8 ^e	68.0 ^e	67.7 ^e	69.1 ^e	69.3 ^e	68.9 ^e	59.4 ^e	62.2 ^e	56.2 ^e
5-Year Period Survival Rates^{cd}									
Year of Diagnosis:									
1999-2005	66.6	66.9	66.3	67.4	67.6	67.2	58.7	61.2	55.8
5-Year Relative Survival Rates, 1999-2005^c									
Age at Diagnosis:									
Ages <45	78.6	73.4	82.0	80.4	75.8	83.5	65.1	56.8	70.2
Ages 45-54	71.2	64.9	76.3	72.9	66.5	78.0	59.0	56.3	61.6
Ages 55-64	68.4	68.3	68.5	69.4	69.1	69.8	60.7	64.6	54.7
Ages 65-74	64.2	67.9	59.3	64.9	68.2	60.4	58.1	65.1	47.9
Ages 75+	53.8	58.5	49.5	54.4	58.7	50.6	44.8	51.7	38.7
Ages <65	71.7	68.3	74.9	73.1	69.7	76.3	61.1	60.6	61.6
Ages 65+	59.7	64.2	54.5	60.3	64.5	55.6	53.1	60.8	43.9

^a Rates are based on End Results data from a series of hospital registries and one population-based registry.
^b Rates are from the SEER 9 areas (San Francisco, Connecticut, Detroit, Hawaii, Iowa, New Mexico, Seattle, Utah, Atlanta).
Rates are based on follow-up of patients into 2006.
^c Rates are from the SEER 17 areas (San Francisco, Connecticut, Detroit, Hawaii, Iowa, New Mexico, Seattle, Utah, Atlanta, San Jose-Monterey, Los Angeles, Alaska Native Registry, Rural Georgia, California excluding SF/SJM/LA, Kentucky, Louisiana and New Jersey). California excluding SF/SJM/LA, Kentucky, Louisiana, and New Jersey contribute cases for diagnosis years 2000-2005. The remaining 13 SEER Areas contribute cases for the entire period 1999-2005. Rates are based on follow-up of patients into 2006.
^d Period survival provides a more up-to-date estimate of survival by piecing together the most recent conditional survival estimates from several cohorts. It is computed here using three year calendar blocks (2003-2005: 0-1 year survival), (2002-2004: 1-2 year survival), (2001-2003: 2-3 year survival), (2000-2002: 3-4 year survival), (1999-2001: 4-5 years survival).
^e The difference in rates between 1975-1977 and 1999-2005 is statistically significant (p<.05).
^f The standard error of the survival rate is between 5 and 10 percentage points.
^g The standard error of the survival rate is greater than 10 percentage points.
- Statistic could not be calculated due to fewer than 25 cases during the time period.

Table 2.8
All Cancer Sites (Invasive)

Survival Rates^a
By Year of Diagnosis

All Races, Males and Females

	Year of Diagnosis																			
	1975- 1979	1980- 1984	1985- 1989	1990	1991	1992	1993	1994	1995	1996	1997	1998	1999	2000	2001	2002	2003	2004	2005	
Relative Survival Rates (SEER ^b)																				
1-year	70.0	71.7	74.0	75.8	77.3	78.0	77.4	77.2	77.2	77.6	78.3	78.6	79.3	79.6	80.1	80.3	80.1	80.6	80.7	
2-year	60.4	62.1	65.1	67.4	69.4	70.6	70.2	69.8	69.9	70.7	71.4	72.0	72.8	73.3	74.1	74.5	74.1	74.6		
3-year	55.5	57.2	60.5	63.2	65.4	67.0	66.5	66.1	66.3	67.3	68.1	68.7	69.7	70.3	71.1	71.7	71.2			
4-year	52.4	53.9	57.6	60.5	62.9	64.6	64.0	63.6	64.1	65.1	66.0	66.7	67.8	68.4	69.4	70.0				
5-year	50.2	51.5	55.5	58.8	61.0	62.7	62.2	62.0	62.5	63.6	64.4	65.2	66.5	67.3	68.2					
6-year	48.5	49.7	53.9	57.3	59.4	61.2	60.9	60.7	61.3	62.4	63.3	64.2	65.5	66.4						
7-year	47.2	48.2	52.5	55.8	58.1	59.9	59.7	59.6	60.3	61.7	62.6	63.5	64.8							
8-year	46.2	47.1	51.5	54.7	56.9	58.8	58.7	58.8	59.7	61.0	62.0	63.0								
9-year	45.3	46.1	50.5	53.7	56.0	58.0	57.8	58.1	59.1	60.5	61.5									
10-year	44.5	45.4	49.7	52.8	55.3	57.2	57.1	57.5	58.6	60.0										
11-year	43.8	44.7	49.0	52.1	54.6	56.5	56.5	56.9	58.1											
12-year	43.2	44.2	48.4	51.5	54.0	56.0	56.1	56.5												
13-year	42.9	43.8	47.8	51.0	53.5	55.5	55.7													
14-year	42.5	43.3	47.4	50.6	53.1	55.2														
15-year	42.2	43.0	47.0	50.3	52.6															
16-year	42.0	42.6	46.7	50.0																
17-year	41.9	42.3	46.5																	
18-year	41.7	42.1																		
19-year	41.7	41.9																		
20-year	41.6	41.8																		

^a

Survival rates are relative rates expressed as percents.

^b

Rates are from the SEER 9 areas (San Francisco, Connecticut, Detroit, Hawaii, Iowa, New Mexico, Seattle, Utah, and Atlanta).

Table 2.9
All Cancer Sites (Invasive)

Survival Rates^a
By Year of Diagnosis

All Races, Males

Year of Diagnosis

	1975- 1979	1980- 1984	1985- 1989	1990	1991	1992	1993	1994	1995	1996	1997	1998	1999	2000	2001	2002	2003	2004	2005
Relative Survival Rates (SEER ^b)																			
1-year	64.6	67.6	70.6	73.8	76.4	77.7	76.8	76.3	76.0	76.7	77.4	77.3	78.6	79.1	79.7	79.7	79.6	80.3	80.3
2-year	53.9	57.2	60.9	64.7	68.2	70.2	69.5	68.5	68.4	69.7	70.5	70.7	71.9	72.9	73.5	74.0	73.6	74.4	
3-year	48.6	52.0	55.9	60.4	64.4	66.9	65.9	64.9	64.9	66.3	67.3	67.5	68.9	69.9	71.0	71.5	71.0		
4-year	45.2	48.5	52.6	57.6	61.8	64.6	63.5	62.3	62.6	64.1	65.3	65.5	67.1	68.2	69.4	70.1			
5-year	42.8	45.9	50.4	55.7	59.8	62.6	61.6	60.7	61.1	62.7	63.7	64.2	66.0	67.2	68.5				
6-year	41.0	43.9	48.6	54.0	57.9	61.0	60.4	59.4	59.8	61.6	62.6	63.2	65.2	66.3					
7-year	39.5	42.3	47.0	52.2	56.3	59.5	59.0	58.2	58.9	60.8	62.0	62.6	64.5						
8-year	38.2	41.0	45.7	50.7	54.9	58.1	58.0	57.2	58.1	60.2	61.5	62.1							
9-year	37.1	39.9	44.5	49.5	53.8	57.0	56.9	56.4	57.5	59.7	60.9								
10-year	36.0	39.0	43.5	48.4	52.8	55.9	56.0	55.7	56.9	59.2									
11-year	35.1	38.3	42.6	47.4	51.8	55.1	55.3	55.1	56.4										
12-year	34.4	37.6	41.6	46.6	51.1	54.4	54.6	54.4											
13-year	33.9	37.1	40.8	46.0	50.4	53.7	54.0												
14-year	33.4	36.5	40.1	45.4	49.8	53.1													
15-year	32.9	36.1	39.5	44.8	49.0														
16-year	32.5	35.5	39.0	44.3															
17-year	32.2	35.1	38.7																
18-year	31.9	34.8																	
19-year	31.8	34.5																	
20-year	31.7	34.3																	

^a

Survival rates are relative rates expressed as percents.

^b

Rates are from the SEER 9 areas (San Francisco, Connecticut, Detroit, Hawaii, Iowa, New Mexico, Seattle, Utah, and Atlanta).

Table 2.10
All Cancer Sites (Invasive)

Survival Rates^a
By Year of Diagnosis

All Races, Females

Year of Diagnosis

	1975- 1979	1980- 1984	1985- 1989	1990	1991	1992	1993	1994	1995	1996	1997	1998	1999	2000	2001	2002	2003	2004	2005
Relative Survival Rates (SEER ^b)																			
1-year	75.4	75.8	77.5	77.9	78.4	78.4	78.2	78.2	78.6	78.5	79.2	79.9	80.0	80.1	80.6	80.9	80.7	81.0	81.2
2-year	66.7	67.1	69.4	70.3	70.7	71.1	71.0	71.2	71.5	71.8	72.4	73.3	73.8	73.7	74.6	75.1	74.7	74.8	
3-year	62.1	62.3	65.1	66.1	66.5	67.1	67.1	67.5	67.9	68.3	68.9	70.0	70.5	70.6	71.2	71.9	71.4		
4-year	59.0	59.2	62.5	63.6	64.1	64.6	64.5	65.0	65.6	66.1	66.6	67.8	68.4	68.6	69.4	69.8			
5-year	56.9	56.9	60.4	62.0	62.3	62.7	62.8	63.4	64.0	64.4	65.1	66.2	66.9	67.4	67.9				
6-year	55.2	55.1	58.9	60.6	61.0	61.5	61.6	62.1	62.8	63.3	64.0	65.2	65.9	66.4					
7-year	54.0	53.7	57.7	59.4	59.9	60.3	60.4	61.0	61.8	62.6	63.2	64.4	65.1						
8-year	53.0	52.5	56.8	58.5	59.0	59.7	59.5	60.5	61.2	61.8	62.6	63.9							
9-year	52.1	51.6	55.9	57.7	58.3	59.2	58.9	59.9	60.6	61.3	62.0								
10-year	51.4	50.8	55.3	57.0	57.8	58.7	58.3	59.4	60.3	60.8									
11-year	50.7	50.1	54.7	56.5	57.4	58.1	57.8	58.8	59.8										
12-year	50.1	49.6	54.2	56.0	56.9	57.7	57.6	58.5											
13-year	49.8	49.2	53.8	55.6	56.6	57.5	57.5												
14-year	49.4	48.8	53.5	55.3	56.3	57.4													
15-year	49.1	48.5	53.2	55.1	56.1														
16-year	48.8	48.1	53.0	55.0															
17-year	48.6	47.8	52.8																
18-year	48.5	47.6																	
19-year	48.4	47.4																	
20-year	48.2	47.3																	

^a
^b

Survival rates are relative rates expressed as percents.

Rates are from the SEER 9 areas (San Francisco, Connecticut, Detroit, Hawaii, Iowa, New Mexico, Seattle, Utah, and Atlanta).

Table 2.11
All Cancer Sites (Invasive)

Risk of Being Diagnosed With Cancer in 10, 20 and 30 Years,
Lifetime Risk of Being Diagnosed with Cancer Given Alive and Cancer-Free at Current Age, and
Lifetime Risk of Dying from Cancer Given Alive at Current Age
Both Sexes, 2004-2006 By Race/Ethnicity

Race/ Ethnicity	Current Age	Risk of Being Diagnosed with Cancer			Risk of Dying from Cancer	
		+10 yrs Percent (95% C.I.)	+20 yrs Percent (95% C.I.)	+30 yrs Percent (95% C.I.)	Eventually Percent (95% C.I.)	Eventually Percent (95% C.I.)
All Races	0	0.17 (0.16, 0.17)	0.34 (0.33, 0.34)	0.77 (0.76, 0.78)	40.58 (40.48, 40.67)	21.20 (21.17, 21.23)
	10	0.17 (0.17, 0.18)	0.61 (0.60, 0.62)	1.61 (1.60, 1.63)	40.96 (40.87, 41.06)	21.47 (21.44, 21.50)
	20	0.44 (0.43, 0.44)	1.45 (1.43, 1.46)	3.99 (3.97, 4.01)	41.01 (40.92, 41.11)	21.54 (21.51, 21.57)
	30	1.02 (1.01, 1.03)	3.60 (3.58, 3.62)	9.53 (9.49, 9.56)	41.11 (41.01, 41.21)	21.69 (21.66, 21.72)
	40	2.64 (2.62, 2.65)	8.69 (8.66, 8.72)	19.61 (19.56, 19.67)	40.95 (40.85, 41.05)	21.81 (21.78, 21.84)
	50	6.35 (6.32, 6.38)	17.82 (17.77, 17.88)	30.58 (30.50, 30.67)	40.21 (40.11, 40.31)	21.78 (21.75, 21.81)
	60	12.77 (12.72, 12.82)	26.99 (26.90, 27.07)	35.57 (35.47, 35.67)	37.71 (37.60, 37.81)	21.04 (21.00, 21.07)
	70	17.87 (17.79, 17.94)	28.66 (28.55, 28.76)	- (- , -)	31.34 (31.23, 31.46)	18.61 (18.58, 18.65)
80	16.96 (16.87, 17.06)	- (- , -)	- (- , -)	21.18 (21.05, 21.30)	14.03 (13.99, 14.06)	
White	0	0.17 (0.17, 0.18)	0.36 (0.35, 0.36)	0.82 (0.81, 0.83)	41.09 (40.99, 41.20)	21.38 (21.35, 21.41)
	10	0.19 (0.18, 0.19)	0.65 (0.64, 0.66)	1.69 (1.68, 1.71)	41.41 (41.31, 41.52)	21.61 (21.58, 21.64)
	20	0.47 (0.46, 0.48)	1.52 (1.50, 1.53)	4.09 (4.06, 4.11)	41.45 (41.34, 41.55)	21.67 (21.64, 21.70)
	30	1.06 (1.05, 1.07)	3.66 (3.64, 3.69)	9.61 (9.58, 9.65)	41.51 (41.40, 41.62)	21.81 (21.77, 21.84)
	40	2.66 (2.64, 2.68)	8.73 (8.70, 8.77)	19.83 (19.77, 19.89)	41.31 (41.20, 41.42)	21.91 (21.88, 21.94)
	50	6.37 (6.34, 6.40)	18.01 (17.94, 18.07)	30.98 (30.89, 31.07)	40.53 (40.42, 40.64)	21.87 (21.84, 21.90)
	60	12.93 (12.87, 12.98)	27.34 (27.25, 27.44)	35.92 (35.80, 36.03)	37.95 (37.83, 38.07)	21.11 (21.08, 21.15)
	70	18.10 (18.02, 18.18)	28.86 (28.75, 28.98)	- (- , -)	31.42 (31.30, 31.54)	18.65 (18.61, 18.69)
80	16.99 (16.88, 17.09)	- (- , -)	- (- , -)	21.02 (20.89, 21.15)	13.98 (13.94, 14.02)	
Black	0	0.12 (0.11, 0.14)	0.25 (0.23, 0.26)	0.55 (0.53, 0.57)	36.49 (36.20, 36.78)	21.12 (21.03, 21.21)
	10	0.13 (0.12, 0.14)	0.44 (0.42, 0.45)	1.32 (1.28, 1.35)	37.27 (36.98, 37.57)	21.63 (21.53, 21.72)
	20	0.31 (0.30, 0.33)	1.20 (1.17, 1.23)	3.80 (3.75, 3.86)	37.41 (37.11, 37.71)	21.72 (21.63, 21.81)
	30	0.90 (0.88, 0.93)	3.56 (3.50, 3.61)	10.24 (10.14, 10.35)	37.80 (37.50, 38.10)	21.98 (21.88, 22.07)
	40	2.73 (2.69, 2.78)	9.62 (9.52, 9.73)	20.88 (20.70, 21.06)	38.01 (37.70, 38.32)	22.25 (22.16, 22.35)
	50	7.38 (7.28, 7.47)	19.43 (19.24, 19.61)	30.42 (30.16, 30.68)	37.77 (37.44, 38.10)	22.38 (22.28, 22.48)
	60	14.15 (13.97, 14.33)	27.06 (26.78, 27.34)	33.81 (33.48, 34.15)	35.69 (35.33, 36.05)	21.74 (21.64, 21.85)
	70	17.66 (17.39, 17.92)	26.89 (26.53, 27.25)	- (- , -)	29.46 (29.06, 29.87)	19.39 (19.27, 19.51)
80	16.02 (15.65, 16.38)	- (- , -)	- (- , -)	20.48 (20.01, 20.96)	15.19 (15.05, 15.33)	

Devcan Version 6.4.0, April 2009, National Cancer Institute (<http://srab.cancer.gov/devcan/>).

Source: Incidence data are from the SEER 17 areas (San Francisco, Connecticut, Detroit, Hawaii, Iowa, New Mexico, Seattle, Utah, Atlanta, San Jose-Monterey, Los Angeles, Alaska Native Registry, Rural Georgia, California excluding SF/SJM/LA, Kentucky, Louisiana and New Jersey). Mortality data are from the NCHS public use data file for the total US.

- Statistic could not be calculated.

A percent or confidence interval value of 0.00 represents a value that is below 0.005.

Table 2.11 - continued
All Cancer Sites (Invasive)

Risk of Being Diagnosed With Cancer in 10, 20 and 30 Years,
Lifetime Risk of Being Diagnosed with Cancer Given Alive and Cancer-Free at Current Age, and
Lifetime Risk of Dying from Cancer Given Alive at Current Age
Both Sexes, 2004-2006 By Race/Ethnicity

Race/ Ethnicity	Current Age	Risk of Being Diagnosed with Cancer			Risk of Dying from Cancer	
		+10 yrs Percent (95% C.I.)	+20 yrs Percent (95% C.I.)	+30 yrs Percent (95% C.I.)	Eventually Percent (95% C.I.)	Eventually Percent (95% C.I.)
Asian/ Pacific Islander	0	0.14 (0.13, 0.15)	0.27 (0.25, 0.28)	0.56 (0.53, 0.58)	34.97 (34.59, 35.37)	18.24 (17.97, 18.51)
	10	0.13 (0.12, 0.14)	0.42 (0.40, 0.44)	1.17 (1.14, 1.21)	35.18 (34.79, 35.58)	18.37 (18.10, 18.65)
	20	0.30 (0.28, 0.31)	1.05 (1.02, 1.08)	3.06 (3.01, 3.12)	35.18 (34.78, 35.58)	18.39 (18.12, 18.67)
	30	0.76 (0.74, 0.78)	2.79 (2.73, 2.84)	6.90 (6.81, 6.99)	35.13 (34.74, 35.54)	18.42 (18.15, 18.70)
	40	2.05 (2.01, 2.09)	6.22 (6.13, 6.30)	13.72 (13.57, 13.88)	34.79 (34.39, 35.20)	18.39 (18.11, 18.67)
	50	4.29 (4.22, 4.36)	12.02 (11.87, 12.17)	22.31 (22.07, 22.55)	33.72 (33.31, 34.13)	18.16 (17.88, 18.44)
	60	8.24 (8.11, 8.37)	19.21 (18.97, 19.45)	27.80 (27.48, 28.13)	31.37 (30.94, 31.81)	17.46 (17.17, 17.75)
	70	12.58 (12.37, 12.78)	22.43 (22.10, 22.76)	- (- , -)	26.52 (26.07, 26.99)	15.87 (15.57, 16.18)
	80	13.11 (12.81, 13.42)	- (- , -)	- (- , -)	18.56 (18.04, 19.09)	12.77 (12.43, 13.12)
American Indian/ Alaska Native ^a	0	0.15 (0.11, 0.20)	0.26 (0.20, 0.32)	0.56 (0.48, 0.65)	28.06 (26.87, 29.38)	16.74 (16.21, 17.29)
	10	0.11 (0.08, 0.14)	0.42 (0.36, 0.49)	1.16 (1.04, 1.28)	28.48 (27.27, 29.83)	17.06 (16.52, 17.62)
	20	0.31 (0.26, 0.37)	1.06 (0.94, 1.18)	2.80 (2.61, 2.99)	28.61 (27.39, 29.96)	17.18 (16.64, 17.75)
	30	0.76 (0.67, 0.86)	2.53 (2.36, 2.72)	6.42 (6.11, 6.75)	28.84 (27.60, 30.22)	17.46 (16.91, 18.04)
	40	1.83 (1.69, 1.98)	5.85 (5.55, 6.17)	13.17 (12.59, 13.76)	28.99 (27.72, 30.42)	17.82 (17.26, 18.42)
	50	4.24 (3.98, 4.52)	11.96 (11.39, 12.56)	21.31 (20.40, 22.26)	28.67 (27.34, 30.16)	18.11 (17.52, 18.74)
	60	8.54 (8.02, 9.09)	18.89 (17.95, 19.87)	25.23 (24.00, 26.52)	27.03 (25.60, 28.64)	17.87 (17.24, 18.55)
	70	12.70 (11.83, 13.61)	20.49 (19.18, 21.86)	- (- , -)	22.69 (21.12, 24.50)	16.03 (15.32, 16.80)
	80	11.51 (10.26, 12.86)	- (- , -)	- (- , -)	14.77 (12.99, 16.92)	12.47 (11.60, 13.43)
Hispanic ^b	0	0.16 (0.16, 0.17)	0.33 (0.32, 0.34)	0.67 (0.65, 0.68)	36.64 (36.30, 37.00)	17.27 (17.12, 17.43)
	10	0.17 (0.16, 0.18)	0.51 (0.50, 0.52)	1.27 (1.24, 1.29)	36.93 (36.58, 37.29)	17.45 (17.29, 17.61)
	20	0.34 (0.33, 0.35)	1.10 (1.08, 1.12)	3.01 (2.97, 3.05)	36.96 (36.61, 37.32)	17.49 (17.34, 17.65)
	30	0.77 (0.75, 0.78)	2.70 (2.66, 2.74)	7.17 (7.10, 7.25)	37.03 (36.67, 37.40)	17.59 (17.43, 17.75)
	40	1.96 (1.93, 1.99)	6.51 (6.44, 6.58)	15.31 (15.17, 15.45)	36.86 (36.50, 37.23)	17.64 (17.48, 17.80)
	50	4.72 (4.66, 4.78)	13.85 (13.71, 13.99)	25.19 (24.96, 25.42)	36.22 (35.85, 36.61)	17.57 (17.41, 17.74)
	60	9.93 (9.80, 10.06)	22.26 (22.03, 22.49)	30.81 (30.50, 31.13)	34.26 (33.86, 34.67)	17.05 (16.88, 17.22)
	70	14.80 (14.59, 15.01)	25.07 (24.74, 25.40)	- (- , -)	29.20 (28.76, 29.66)	15.47 (15.29, 15.65)
	80	14.85 (14.52, 15.18)	- (- , -)	- (- , -)	20.83 (20.29, 21.39)	12.32 (12.11, 12.54)

Devcan Version 6.4.0, April 2009, National Cancer Institute (<http://srab.cancer.gov/devcan/>).

Source: Incidence data are from the SEER 17 areas (San Francisco, Connecticut, Detroit, Hawaii, Iowa, New Mexico, Seattle, Utah, Atlanta, San Jose-Monterey, Los Angeles, Alaska Native Registry, Rural Georgia, California excluding SF/SJM/LA, Kentucky, Louisiana and New Jersey). Mortality data are from the NCHS public use data file for the total US.

^a Underlying incidence and mortality data for American Indian/Alaska Native are based on the CHSDA (Contract Health Service Delivery Area) counties.

^b Hispanic is not mutually exclusive from whites, blacks, Asian/Pacific Islanders, and American Indians/Alaska Natives.

Underlying incidence data for Hispanics are based on NHIA and exclude cases from the Alaska Native Registry.

Underlying mortality data for Hispanics exclude deaths from the District of Columbia, Minnesota, New Hampshire and North Dakota.

- Statistic could not be calculated.

A percent or confidence interval value of 0.00 represents a value that is below 0.005.

Table 2.11 - continued
All Cancer Sites (Invasive)

Risk of Being Diagnosed With Cancer in 10, 20 and 30 Years,
Lifetime Risk of Being Diagnosed with Cancer Given Alive and Cancer-Free at Current Age, and
Lifetime Risk of Dying from Cancer Given Alive at Current Age
Males, 2004-2006 By Race/Ethnicity

Race/ Ethnicity	Current Age	Risk of Being Diagnosed with Cancer						Risk of Dying from Cancer	
		+10 yrs Percent (95% C.I.)	+20 yrs Percent (95% C.I.)	+30 yrs Percent (95% C.I.)	Eventually Percent (95% C.I.)	Eventually Percent (95% C.I.)			
All Races	0	0.18 (0.17, 0.19)	0.36 (0.35, 0.37)	0.73 (0.72, 0.75)	44.05 (43.91, 44.20)	23.24 (23.19, 23.29)			
	10	0.18 (0.18, 0.19)	0.56 (0.55, 0.57)	1.27 (1.25, 1.29)	44.53 (44.38, 44.68)	23.57 (23.52, 23.61)			
	20	0.38 (0.38, 0.39)	1.10 (1.08, 1.11)	3.08 (3.06, 3.10)	44.66 (44.51, 44.81)	23.67 (23.63, 23.72)			
	30	0.73 (0.71, 0.74)	2.74 (2.72, 2.76)	8.96 (8.91, 9.00)	45.02 (44.87, 45.17)	23.94 (23.89, 23.99)			
	40	2.06 (2.04, 2.08)	8.42 (8.37, 8.46)	21.51 (21.43, 21.59)	45.30 (45.14, 45.45)	24.21 (24.16, 24.26)			
	50	6.68 (6.64, 6.72)	20.45 (20.36, 20.53)	35.64 (35.51, 35.76)	45.46 (45.30, 45.62)	24.47 (24.43, 24.52)			
	60	15.61 (15.53, 15.69)	32.83 (32.70, 32.97)	42.02 (41.86, 42.18)	43.97 (43.80, 44.15)	24.11 (24.06, 24.17)			
	70	22.98 (22.85, 23.11)	35.23 (35.05, 35.41)	- (- , -)	37.84 (37.64, 38.04)	22.01 (21.95, 22.06)			
	80	21.92 (21.73, 22.11)	- (- , -)	- (- , -)	26.58 (26.35, 26.82)	17.57 (17.51, 17.64)			
White	0	0.19 (0.18, 0.20)	0.38 (0.37, 0.39)	0.79 (0.77, 0.80)	44.16 (44.00, 44.33)	23.36 (23.31, 23.41)			
	10	0.19 (0.19, 0.20)	0.61 (0.60, 0.62)	1.35 (1.34, 1.37)	44.56 (44.39, 44.72)	23.63 (23.58, 23.68)			
	20	0.42 (0.41, 0.43)	1.17 (1.15, 1.19)	3.16 (3.13, 3.18)	44.67 (44.50, 44.83)	23.73 (23.68, 23.78)			
	30	0.76 (0.75, 0.78)	2.78 (2.76, 2.81)	8.92 (8.87, 8.97)	44.97 (44.80, 45.13)	23.98 (23.93, 24.03)			
	40	2.06 (2.04, 2.09)	8.34 (8.29, 8.38)	21.43 (21.34, 21.52)	45.18 (45.01, 45.35)	24.22 (24.17, 24.27)			
	50	6.59 (6.54, 6.63)	20.34 (20.24, 20.43)	35.59 (35.45, 35.73)	45.28 (45.11, 45.46)	24.45 (24.40, 24.50)			
	60	15.53 (15.44, 15.62)	32.75 (32.60, 32.90)	41.83 (41.66, 42.01)	43.69 (43.50, 43.88)	24.06 (24.00, 24.11)			
	70	22.86 (22.72, 23.01)	34.92 (34.72, 35.11)	- (- , -)	37.38 (37.17, 37.60)	21.90 (21.84, 21.96)			
	80	21.55 (21.35, 21.75)	- (- , -)	- (- , -)	25.96 (25.71, 26.21)	17.39 (17.32, 17.46)			
Black	0	0.13 (0.11, 0.14)	0.25 (0.23, 0.27)	0.50 (0.47, 0.53)	40.50 (40.05, 40.95)	23.51 (23.37, 23.65)			
	10	0.12 (0.11, 0.14)	0.38 (0.36, 0.41)	0.98 (0.94, 1.03)	41.47 (41.01, 41.93)	24.13 (23.99, 24.28)			
	20	0.26 (0.24, 0.28)	0.87 (0.83, 0.91)	3.15 (3.08, 3.22)	41.76 (41.30, 42.23)	24.30 (24.16, 24.45)			
	30	0.63 (0.59, 0.66)	2.97 (2.90, 3.04)	11.00 (10.85, 11.16)	42.62 (42.14, 43.10)	24.78 (24.64, 24.93)			
	40	2.43 (2.37, 2.49)	10.75 (10.59, 10.91)	25.37 (25.07, 25.67)	43.50 (43.02, 44.00)	25.35 (25.20, 25.51)			
	50	9.00 (8.85, 9.14)	24.79 (24.48, 25.10)	37.71 (37.28, 38.15)	44.39 (43.87, 44.92)	26.00 (25.84, 26.16)			
	60	19.46 (19.14, 19.77)	35.38 (34.89, 35.87)	42.11 (41.55, 42.69)	43.60 (43.00, 44.21)	26.09 (25.91, 26.27)			
	70	24.55 (24.04, 25.07)	34.94 (34.25, 35.63)	- (- , -)	37.23 (36.48, 37.99)	24.42 (24.21, 24.63)			
	80	21.78 (21.00, 22.58)	- (- , -)	- (- , -)	26.58 (25.58, 27.62)	20.81 (20.53, 21.09)			

Devcan Version 6.4.0, April 2009, National Cancer Institute (<http://srab.cancer.gov/devcan/>).

Source: Incidence data are from the SEER 17 areas (San Francisco, Connecticut, Detroit, Hawaii, Iowa, New Mexico, Seattle, Utah, Atlanta, San Jose-Monterey, Los Angeles, Alaska Native Registry, Rural Georgia, California excluding SF/SJM/LA, Kentucky, Louisiana and New Jersey). Mortality data are from the NCHS public use data file for the total US.

- Statistic could not be calculated.

A percent or confidence interval value of 0.00 represents a value that is below 0.005.

Table 2.11 - continued
All Cancer Sites (Invasive)

Risk of Being Diagnosed With Cancer in 10, 20 and 30 Years,
Lifetime Risk of Being Diagnosed with Cancer Given Alive and Cancer-Free at Current Age, and
Lifetime Risk of Dying from Cancer Given Alive at Current Age
Males, 2004-2006 By Race/Ethnicity

Race/ Ethnicity	Current Age	Risk of Being Diagnosed with Cancer					Risk of Dying from Cancer	
		+10 yrs Percent (95% C.I.)	+20 yrs Percent (95% C.I.)	+30 yrs Percent (95% C.I.)	Eventually Percent (95% C.I.)	Eventually Percent (95% C.I.)		
Asian/ Pacific Islander	0	0.15 (0.13, 0.17)	0.28 (0.25, 0.30)	0.50 (0.47, 0.54)	38.15 (37.56, 38.75)	20.62 (20.22, 21.04)		
	10	0.13 (0.11, 0.15)	0.36 (0.33, 0.39)	0.80 (0.76, 0.84)	38.40 (37.81, 39.01)	20.78 (20.38, 21.20)		
	20	0.23 (0.21, 0.25)	0.67 (0.64, 0.71)	1.97 (1.91, 2.03)	38.44 (37.84, 39.05)	20.82 (20.41, 21.24)		
	30	0.45 (0.42, 0.47)	1.75 (1.70, 1.81)	5.55 (5.43, 5.67)	38.53 (37.93, 39.15)	20.89 (20.48, 21.31)		
	40	1.32 (1.27, 1.37)	5.16 (5.04, 5.27)	14.00 (13.76, 14.23)	38.49 (37.89, 39.11)	20.91 (20.49, 21.33)		
	50	3.94 (3.84, 4.04)	13.01 (12.78, 13.24)	26.00 (25.62, 26.39)	38.15 (37.53, 38.78)	20.80 (20.38, 21.23)		
	60	9.72 (9.51, 9.93)	23.64 (23.24, 24.04)	33.35 (32.81, 33.88)	36.65 (36.00, 37.32)	20.27 (19.84, 20.72)		
	70	16.49 (16.13, 16.86)	27.99 (27.43, 28.56)	- (- , -)	31.90 (31.19, 32.64)	18.75 (18.29, 19.23)		
	80	16.69 (16.14, 17.24)	- (- , -)	- (- , -)	22.36 (21.52, 23.24)	15.38 (14.84, 15.95)		
American Indian/ Alaska Native ^a	0	0.15 (0.09, 0.23)	0.25 (0.18, 0.35)	0.53 (0.43, 0.66)	27.02 (25.35, 29.09)	17.78 (16.95, 18.69)		
	10	0.11 (0.07, 0.16)	0.40 (0.31, 0.50)	0.92 (0.78, 1.08)	27.51 (25.80, 29.62)	18.18 (17.33, 19.11)		
	20	0.29 (0.22, 0.38)	0.82 (0.68, 0.98)	2.08 (1.86, 2.32)	27.69 (25.96, 29.82)	18.35 (17.49, 19.29)		
	30	0.54 (0.44, 0.67)	1.84 (1.63, 2.06)	5.65 (5.23, 6.09)	28.13 (26.36, 30.32)	18.80 (17.92, 19.77)		
	40	1.35 (1.18, 1.53)	5.30 (4.89, 5.74)	13.20 (12.37, 14.07)	28.66 (26.83, 30.93)	19.41 (18.50, 20.42)		
	50	4.21 (3.83, 4.61)	12.60 (11.75, 13.50)	22.19 (20.84, 23.61)	29.04 (27.11, 31.43)	20.10 (19.13, 21.17)		
	60	9.45 (8.66, 10.30)	20.25 (18.83, 21.75)	26.46 (24.61, 28.45)	27.96 (25.86, 30.60)	20.34 (19.28, 21.53)		
	70	13.71 (12.37, 15.16)	21.60 (19.58, 23.80)	- (- , -)	23.50 (21.13, 26.59)	19.01 (17.76, 20.42)		
	80	12.32 (10.30, 14.63)	- (- , -)	- (- , -)	15.28 (12.52, 19.32)	15.97 (14.29, 17.91)		
Hispanic ^b	0	0.18 (0.17, 0.19)	0.36 (0.34, 0.38)	0.66 (0.64, 0.69)	40.58 (40.02, 41.15)	19.71 (19.46, 19.97)		
	10	0.18 (0.17, 0.19)	0.49 (0.47, 0.51)	0.99 (0.96, 1.01)	40.94 (40.38, 41.52)	19.94 (19.68, 20.20)		
	20	0.31 (0.30, 0.33)	0.81 (0.79, 0.83)	2.17 (2.13, 2.21)	41.06 (40.50, 41.65)	20.02 (19.77, 20.29)		
	30	0.50 (0.49, 0.52)	1.88 (1.84, 1.93)	6.32 (6.22, 6.42)	41.36 (40.78, 41.95)	20.22 (19.96, 20.49)		
	40	1.40 (1.37, 1.44)	5.92 (5.82, 6.01)	16.67 (16.45, 16.89)	41.57 (40.98, 42.17)	20.39 (20.12, 20.66)		
	50	4.69 (4.60, 4.78)	15.88 (15.65, 16.10)	29.99 (29.62, 30.36)	41.76 (41.16, 42.39)	20.57 (20.30, 20.85)		
	60	12.33 (12.12, 12.54)	27.89 (27.50, 28.28)	37.56 (37.04, 38.08)	40.86 (40.21, 41.54)	20.37 (20.08, 20.66)		
	70	19.65 (19.28, 20.03)	31.86 (31.29, 32.45)	- (- , -)	36.04 (35.27, 36.84)	19.04 (18.72, 19.36)		
	80	19.76 (19.13, 20.39)	- (- , -)	- (- , -)	26.51 (25.48, 27.60)	15.96 (15.56, 16.38)		

Devcan Version 6.4.0, April 2009, National Cancer Institute (<http://srab.cancer.gov/devcan/>).

Source: Incidence data are from the SEER 17 areas (San Francisco, Connecticut, Detroit, Hawaii, Iowa, New Mexico, Seattle, Utah, Atlanta, San Jose-Monterey, Los Angeles, Alaska Native Registry, Rural Georgia, California excluding SF/SJM/LA, Kentucky, Louisiana and New Jersey). Mortality data are from the NCHS public use data file for the total US.

^a Underlying incidence and mortality data for American Indian/Alaska Native are based on the CHSDA (Contract Health Service Delivery Area) counties.

^b Hispanic is not mutually exclusive from whites, blacks, Asian/Pacific Islanders, and American Indians/Alaska Natives.

Underlying incidence data for Hispanics are based on NHIA and exclude cases from the Alaska Native Registry.

Underlying mortality data for Hispanics exclude deaths from the District of Columbia, Minnesota, New Hampshire and North Dakota.

- Statistic could not be calculated.

A percent or confidence interval value of 0.00 represents a value that is below 0.005.

Table 2.11 - continued
All Cancer Sites (Invasive)

Risk of Being Diagnosed With Cancer in 10, 20 and 30 Years,
Lifetime Risk of Being Diagnosed with Cancer Given Alive and Cancer-Free at Current Age, and
Lifetime Risk of Dying from Cancer Given Alive at Current Age
Females, 2004-2006 By Race/Ethnicity

Race/ Ethnicity	Current Age	Risk of Being Diagnosed with Cancer						Risk of Dying from Cancer	
		+10 yrs Percent (95% C.I.)	+20 yrs Percent (95% C.I.)	+30 yrs Percent (95% C.I.)	Eventually Percent (95% C.I.)	Eventually Percent (95% C.I.)			
All Races	0	0.15 (0.15, 0.16)	0.32 (0.31, 0.33)	0.81 (0.79, 0.82)	37.63 (37.51, 37.75)	19.65 (19.61, 19.69)			
	10	0.17 (0.16, 0.17)	0.66 (0.65, 0.67)	1.97 (1.95, 1.99)	37.94 (37.81, 38.06)	19.87 (19.83, 19.91)			
	20	0.50 (0.49, 0.51)	1.81 (1.79, 1.83)	4.93 (4.90, 4.96)	37.92 (37.79, 38.04)	19.90 (19.86, 19.94)			
	30	1.33 (1.31, 1.34)	4.48 (4.45, 4.51)	10.12 (10.07, 10.17)	37.77 (37.65, 37.90)	19.95 (19.91, 19.99)			
	40	3.21 (3.19, 3.24)	8.97 (8.93, 9.02)	17.85 (17.77, 17.92)	37.18 (37.06, 37.31)	19.94 (19.90, 19.98)			
	50	6.03 (6.00, 6.07)	15.33 (15.26, 15.40)	25.99 (25.88, 26.09)	35.59 (35.46, 35.73)	19.67 (19.63, 19.71)			
	60	10.18 (10.12, 10.24)	21.84 (21.74, 21.94)	30.02 (29.90, 30.15)	32.36 (32.22, 32.49)	18.68 (18.64, 18.72)			
	70	13.92 (13.83, 14.00)	23.68 (23.56, 23.80)	- (- , -)	26.47 (26.33, 26.61)	16.21 (16.17, 16.25)			
	80	13.99 (13.88, 14.10)	- (- , -)	- (- , -)	17.99 (17.85, 18.12)	11.97 (11.92, 12.01)			
White	0	0.16 (0.15, 0.16)	0.33 (0.32, 0.34)	0.85 (0.83, 0.87)	38.52 (38.38, 38.66)	19.87 (19.83, 19.91)			
	10	0.18 (0.17, 0.18)	0.70 (0.69, 0.72)	2.06 (2.03, 2.08)	38.78 (38.64, 38.92)	20.06 (20.01, 20.10)			
	20	0.53 (0.51, 0.54)	1.89 (1.86, 1.91)	5.07 (5.03, 5.10)	38.75 (38.61, 38.89)	20.09 (20.04, 20.13)			
	30	1.37 (1.36, 1.39)	4.58 (4.55, 4.62)	10.35 (10.29, 10.40)	38.59 (38.45, 38.73)	20.13 (20.09, 20.18)			
	40	3.27 (3.25, 3.30)	9.16 (9.10, 9.21)	18.33 (18.24, 18.41)	37.96 (37.82, 38.10)	20.12 (20.07, 20.16)			
	50	6.16 (6.12, 6.20)	15.77 (15.68, 15.85)	26.74 (26.62, 26.85)	36.33 (36.18, 36.47)	19.85 (19.80, 19.89)			
	60	10.51 (10.43, 10.58)	22.50 (22.39, 22.62)	30.75 (30.61, 30.89)	32.99 (32.84, 33.14)	18.84 (18.80, 18.89)			
	70	14.34 (14.24, 14.43)	24.20 (24.06, 24.33)	- (- , -)	26.87 (26.72, 27.03)	16.32 (16.28, 16.37)			
	80	14.21 (14.09, 14.32)	- (- , -)	- (- , -)	18.07 (17.92, 18.21)	11.97 (11.93, 12.02)			
Black	0	0.12 (0.10, 0.14)	0.25 (0.23, 0.27)	0.60 (0.57, 0.63)	32.92 (32.55, 33.30)	19.24 (19.12, 19.36)			
	10	0.13 (0.12, 0.14)	0.49 (0.46, 0.52)	1.63 (1.58, 1.68)	33.54 (33.16, 33.93)	19.66 (19.53, 19.78)			
	20	0.36 (0.34, 0.38)	1.51 (1.46, 1.56)	4.41 (4.33, 4.50)	33.55 (33.16, 33.93)	19.69 (19.57, 19.81)			
	30	1.16 (1.12, 1.20)	4.10 (4.02, 4.18)	9.59 (9.45, 9.73)	33.55 (33.17, 33.94)	19.77 (19.65, 19.90)			
	40	3.01 (2.95, 3.08)	8.64 (8.51, 8.77)	16.92 (16.69, 17.14)	33.21 (32.81, 33.60)	19.83 (19.70, 19.95)			
	50	5.98 (5.86, 6.09)	14.76 (14.54, 14.98)	24.10 (23.78, 24.41)	32.06 (31.65, 32.47)	19.59 (19.46, 19.72)			
	60	9.92 (9.72, 10.11)	20.45 (20.13, 20.77)	27.23 (26.83, 27.63)	29.44 (29.00, 29.88)	18.57 (18.43, 18.70)			
	70	13.19 (12.90, 13.47)	21.67 (21.26, 22.08)	- (- , -)	24.44 (23.97, 24.91)	16.15 (16.01, 16.29)			
	80	13.14 (12.75, 13.53)	- (- , -)	- (- , -)	17.42 (16.91, 17.95)	12.35 (12.19, 12.51)			

Devcan Version 6.4.0, April 2009, National Cancer Institute (<http://srab.cancer.gov/devcan/>).

Source: Incidence data are from the SEER 17 areas (San Francisco, Connecticut, Detroit, Hawaii, Iowa, New Mexico, Seattle, Utah, Atlanta, San Jose-Monterey, Los Angeles, Alaska Native Registry, Rural Georgia, California excluding SF/SJM/LA, Kentucky, Louisiana and New Jersey). Mortality data are from the NCHS public use data file for the total US.

- Statistic could not be calculated.

A percent or confidence interval value of 0.00 represents a value that is below 0.005.

Table 2.11 - continued
All Cancer Sites (Invasive)

Risk of Being Diagnosed With Cancer in 10, 20 and 30 Years,
Lifetime Risk of Being Diagnosed with Cancer Given Alive and Cancer-Free at Current Age, and
Lifetime Risk of Dying from Cancer Given Alive at Current Age
Females, 2004-2006 By Race/Ethnicity

Race/ Ethnicity	Current Age	Risk of Being Diagnosed with Cancer					Risk of Dying from Cancer	
		+10 yrs Percent (95% C.I.)	+20 yrs Percent (95% C.I.)	+30 yrs Percent (95% C.I.)	Eventually Percent (95% C.I.)	Eventually Percent (95% C.I.)		
Asian/ Pacific Islander	0	0.13 (0.11, 0.15)	0.26 (0.23, 0.28)	0.61 (0.57, 0.65)	32.43 (31.92, 32.97)	16.26 (15.90, 16.63)		
	10	0.13 (0.11, 0.14)	0.48 (0.45, 0.52)	1.53 (1.48, 1.59)	32.60 (32.08, 33.14)	16.36 (16.01, 16.74)		
	20	0.36 (0.34, 0.39)	1.41 (1.36, 1.46)	4.08 (3.99, 4.17)	32.56 (32.04, 33.10)	16.37 (16.01, 16.74)		
	30	1.06 (1.02, 1.10)	3.74 (3.66, 3.83)	8.15 (8.01, 8.28)	32.40 (31.87, 32.94)	16.37 (16.01, 16.75)		
	40	2.72 (2.65, 2.79)	7.18 (7.06, 7.31)	13.53 (13.32, 13.74)	31.76 (31.23, 32.31)	16.30 (15.94, 16.67)		
	50	4.61 (4.51, 4.71)	11.17 (10.97, 11.37)	19.29 (19.00, 19.59)	30.01 (29.46, 30.57)	15.97 (15.61, 16.35)		
	60	6.96 (6.80, 7.13)	15.58 (15.30, 15.87)	23.22 (22.82, 23.63)	26.96 (26.40, 27.54)	15.16 (14.79, 15.54)		
	70	9.62 (9.38, 9.86)	18.14 (17.74, 18.54)	- (- , -)	22.31 (21.72, 22.92)	13.61 (13.22, 14.01)		
	80	10.67 (10.31, 11.03)	- (- , -)	- (- , -)	15.89 (15.24, 16.57)	10.83 (10.40, 11.28)		
American Indian/ Alaska Native ^a	0	0.15 (0.09, 0.24)	0.26 (0.18, 0.36)	0.59 (0.47, 0.72)	29.15 (27.48, 31.07)	16.09 (15.39, 16.84)		
	10	0.11 (0.08, 0.16)	0.45 (0.35, 0.55)	1.40 (1.22, 1.60)	29.50 (27.80, 31.45)	16.35 (15.64, 17.11)		
	20	0.33 (0.26, 0.43)	1.29 (1.12, 1.49)	3.51 (3.21, 3.82)	29.57 (27.86, 31.53)	16.43 (15.72, 17.20)		
	30	0.97 (0.82, 1.13)	3.21 (2.93, 3.51)	7.18 (6.71, 7.67)	29.57 (27.85, 31.55)	16.56 (15.84, 17.34)		
	40	2.30 (2.08, 2.54)	6.37 (5.93, 6.84)	13.14 (12.36, 13.95)	29.35 (27.59, 31.37)	16.71 (15.98, 17.50)		
	50	4.27 (3.91, 4.66)	11.37 (10.60, 12.17)	20.52 (19.29, 21.81)	28.37 (26.55, 30.47)	16.69 (15.94, 17.51)		
	60	7.72 (7.05, 8.44)	17.69 (16.45, 19.00)	24.21 (22.57, 25.96)	26.24 (24.32, 28.47)	16.13 (15.34, 17.00)		
	70	11.88 (10.76, 13.08)	19.65 (17.95, 21.48)	- (- , -)	22.07 (20.00, 24.52)	14.07 (13.21, 15.02)		
	80	11.01 (9.46, 12.74)	- (- , -)	- (- , -)	14.43 (12.18, 17.30)	10.52 (9.53, 11.65)		
Hispanic ^b	0	0.15 (0.14, 0.16)	0.30 (0.29, 0.32)	0.68 (0.65, 0.70)	33.64 (33.19, 34.11)	15.50 (15.31, 15.71)		
	10	0.16 (0.15, 0.17)	0.54 (0.52, 0.56)	1.59 (1.56, 1.63)	33.87 (33.41, 34.34)	15.65 (15.45, 15.85)		
	20	0.38 (0.37, 0.40)	1.44 (1.41, 1.48)	3.95 (3.88, 4.01)	33.83 (33.37, 34.30)	15.65 (15.45, 15.86)		
	30	1.07 (1.04, 1.10)	3.59 (3.53, 3.65)	8.12 (8.01, 8.23)	33.69 (33.22, 34.16)	15.66 (15.46, 15.87)		
	40	2.56 (2.51, 2.61)	7.16 (7.05, 7.26)	14.21 (14.03, 14.40)	33.11 (32.64, 33.59)	15.60 (15.40, 15.81)		
	50	4.76 (4.67, 4.85)	12.08 (11.89, 12.26)	21.09 (20.81, 21.37)	31.66 (31.18, 32.15)	15.34 (15.14, 15.55)		
	60	7.85 (7.69, 8.01)	17.53 (17.25, 17.81)	25.22 (24.83, 25.61)	28.88 (28.37, 29.39)	14.61 (14.40, 14.82)		
	70	11.13 (10.89, 11.37)	19.98 (19.59, 20.37)	- (- , -)	24.19 (23.65, 24.75)	13.01 (12.79, 13.24)		
	80	11.82 (11.46, 12.19)	- (- , -)	- (- , -)	17.45 (16.83, 18.09)	10.18 (9.93, 10.43)		

Devcan Version 6.4.0, April 2009, National Cancer Institute (<http://srab.cancer.gov/devcan/>).

Source: Incidence data are from the SEER 17 areas (San Francisco, Connecticut, Detroit, Hawaii, Iowa, New Mexico, Seattle, Utah, Atlanta, San Jose-Monterey, Los Angeles, Alaska Native Registry, Rural Georgia, California excluding SF/SJM/LA, Kentucky, Louisiana and New Jersey). Mortality data are from the NCHS public use data file for the total US.

^a Underlying incidence and mortality data for American Indian/Alaska Native are based on the CHSDA (Contract Health Service Delivery Area) counties.

^b Hispanic is not mutually exclusive from whites, blacks, Asian/Pacific Islanders, and American Indians/Alaska Natives. Underlying incidence data for Hispanics are based on NHIA and exclude cases from the Alaska Native Registry.

- Underlying mortality data for Hispanics exclude deaths from the District of Columbia, Minnesota, New Hampshire and North Dakota. Statistic could not be calculated.

A percent or confidence interval value of 0.00 represents a value that is below 0.005.

Table 2.12
All Cancer Sites (Invasive)

SEER Incidence and U.S. Mortality
Age-Adjusted Rates and Trends^a
By Race/Ethnicity and Sex

SEER Incidence	SEER 17 Areas ^b			SEER 13 Areas ^b			SEER 9 Areas ^b		
	Rate 2002-2006			Trend 1997-2006 ^c			Trend 1997-2006 ^d		
	Rate per 100,000 persons			AAPC (%)			AAPC (%)		
RACE/ETHNICITY	Total	Males	Females	Total	Males	Females	Total	Males	Females
All Races	462.9	541.8	408.5	-0.8*	-1.1*	-0.7*	-0.6*	-0.9*	-0.5*
White	470.6	544.3	420.5	-0.8*	-1.1*	-0.7*	-0.6*	-0.9*	-0.5*
White Hispanic ^e	357.2	416.0	319.7	-0.7*	-1.7*	-0.3*	-	-	-
White Non-Hispanic ^e	489.2	564.4	437.4	-0.6*	-1.0*	-0.6*	-	-	-
Black	493.6	633.7	398.9	-1.5*	-2.6*	-0.2	-1.4*	-2.4*	-0.1
Asian/Pacific Islander	311.1	349.1	287.5	-0.9*	-1.1*	-0.4	-	-	-
Amer Ind/Alaska Nat ^f	313.6	331.0	302.2	0.1	-1.0*	1.1*	-	-	-
Hispanic ^e	350.6	409.7	312.5	-0.6*	-1.7*	-0.2	-	-	-
<u>U.S. Mortality^g</u>									
	Rate 2002-2006			Trend 1997-2006 ^h					
	Rate per 100,000 persons			AAPC (%)					
RACE/ETHNICITY	Total	Males	Females	Total	Males	Females			
All Races	186.9	229.9	157.8	-1.3*	-1.8*	-1.1*			
White	185.4	226.7	157.3	-1.2*	-1.6*	-1.0*			
White Hispanic ^e	129.0	159.8	107.7	-1.5*	-2.1*	-1.2*			
White Non-Hispanic ^e	189.8	231.8	161.2	-1.1*	-1.4*	-0.9*			
Black	229.0	304.2	183.7	-2.0*	-2.6*	-1.4*			
Asian/Pacific Islander	111.8	135.4	95.1	-1.7*	-2.1*	-1.1*			
Amer Ind/Alaska Nat									
Total U.S.	125.1	146.4	110.1	-1.6*	-2.6*	-0.6*			
CHSDA Counties	157.8	183.3	140.1	-0.2	-0.5*	0.1			
Non-CHSDA Counties	84.1	100.7	72.0	-2.4*	-4.0	-1.3			
Hispanic ^e	124.7	154.7	103.9	-1.5*	-2.2*	-1.1*			

The AAPC is the Average Annual Percent Change over the time interval. The AAPCs are calculated by the Joinpoint Regression Program Version 3.3, April 2008, National Cancer Institute.

- Statistic not shown. Rate based on less than 16 cases for the time interval.

Trend based on less than 10 cases for at least one year within the time interval.

a Rates are age-adjusted to the 2000 US Std Population (19 age groups - Census P25-1130). Trends

are based on rates age-adjusted to the 2000 US Std Population (19 age groups - Census P25-1130).

b The SEER 9 areas are San Francisco, Connecticut, Detroit, Hawaii, Iowa, New Mexico, Seattle, Utah and Atlanta.

The SEER 13 areas comprise the SEER 9 areas plus San Jose-Monterey, Los Angeles, the Alaska Native Registry and Rural Georgia.

The SEER 17 areas comprise the SEER 13 areas plus California excluding SF/SJM/LA, Kentucky, Louisiana and New Jersey.

c The 1997-2006 AAPC estimates are based on a Joinpoint analysis with up to 2 Joinpoints over diagnosis years 1992-2006.

d The 1997-2006 AAPC estimates are based on a Joinpoint analysis with up to 4 Joinpoints over diagnosis years 1975-2006.

e Hispanic and Non-Hispanic are not mutually exclusive from whites, blacks, Asian/Pacific Islanders, and American Indians/Alaska Natives. Incidence data for Hispanics and Non-Hispanics are based on NHIA and exclude cases from the Alaska Native Registry. The 2002-2006 Hispanic and Non-Hispanic death rates exclude deaths from the District of Columbia, Minnesota, New Hampshire and North Dakota. The 1997-2006 Hispanic and Non-Hispanic mortality trends exclude deaths from Connecticut, the District of Columbia, Maine, Maryland, Minnesota, New Hampshire, New York, North Dakota, Oklahoma and Vermont.

f Incidence data for American Indian/Alaska Native are based on the CHSDA(Contract Health Service Delivery Area) counties.

g US Mortality Files, National Center for Health Statistics, CDC.

h The 1997-2006 mortality AAPCs are based on a Joinpoint analysis using years of death 1992-2006.

* The APC is significantly different from zero (p<.05).

Table 2.13
All Cancer Sites (Invasive)

Age-Adjusted SEER Incidence Rates^a
By Registry, Race and Sex

	All Races			Whites			Blacks		
	Total	Males	Females	Total	Males	Females	Total	Males	Females
<u>SEER Incidence Rates^a, 2002-2006</u>									
Atlanta & Rural Georgia	441.96	536.46	379.34	441.45	518.21	392.41	467.05	622.53	371.27
Atlanta	441.20	533.19	380.91	440.00	514.06	393.62	470.12	625.24	375.19
Rural Georgia	463.47	600.77	360.57	468.32	589.69	372.57	452.63	627.04	339.94
California	435.57	503.05	389.06	447.08	510.48	403.76	467.84	578.36	388.81
Greater Bay Area	430.91	495.22	387.18	455.16	518.22	412.48	472.47	568.30	404.01
San Francisco-Oakland	435.72	497.77	393.37	458.14	516.74	418.26	479.72	572.31	414.25
San Jose-Monterey	421.85	491.12	374.83	450.08	521.64	402.03	427.11	562.50	318.24
Los Angeles	419.14	486.72	374.60	424.71	483.20	387.40	473.66	592.03	393.19
Greater California	445.31	513.68	396.99	453.98	519.30	408.12	457.99	569.27	371.95
Connecticut	504.33	584.23	451.51	507.90	583.40	459.06	478.80	607.96	389.78
Detroit	515.18	621.83	443.78	507.29	596.47	450.00	551.70	719.72	440.37
Hawaii	420.26	480.30	378.33	518.99	604.76	450.17	330.27	427.25	207.02
Iowa	473.57	549.46	423.25	469.09	541.58	421.62	514.11	648.23	407.89
Kentucky	504.00	599.30	440.57	499.71	592.39	438.27	543.03	681.01	452.06
Louisiana	489.16	610.61	403.80	483.63	591.30	407.61	514.10	684.53	402.46
New Jersey	504.16	595.00	444.18	509.89	591.52	457.15	492.42	639.72	397.58
New Mexico	409.62	472.29	361.01	425.41	489.87	374.97	282.22	316.47	249.37
Seattle-Puget Sound	496.22	568.22	445.16	509.45	580.13	459.03	502.68	627.42	398.59
Utah	403.48	480.47	342.61	408.74	486.66	347.01	340.30	405.45	280.30
9 SEER Areas ^b	466.91	544.69	412.93	476.42	549.72	426.13	500.31	641.62	405.13
11 SEER Areas ^b	453.44	528.62	401.89	463.87	534.24	416.28	492.30	626.88	401.13
13 SEER Areas ^b	453.59	528.88	401.94	463.90	534.43	416.15	491.55	626.68	400.07
17 SEER Areas ^b	462.85	541.81	408.47	470.64	544.33	420.45	493.55	633.70	398.92

^a Rates are per 100,000 and are age-adjusted to the 2000 US Std Population (19 age groups - Census P25-1130)

^b The SEER 9 areas are San Francisco, Connecticut, Detroit, Hawaii, Iowa, New Mexico, Seattle, Utah and Atlanta.

The SEER 11 areas comprise the SEER 9 areas plus San Jose-Monterey and Los Angeles.

The SEER 13 areas comprise the SEER 11 areas plus the Alaska Native Registry and Rural Georgia.

The SEER 17 areas comprise the SEER 13 areas plus California excluding SF/SJM/LA, Kentucky, Louisiana and New Jersey.

- Statistic not shown. Rate based on less than 16 cases for the time interval.

Table 2.14
All Cancer Sites (Invasive)

Age-Adjusted SEER Death Rates^a
By Registry, Race and Sex

	All Races			Whites			Blacks		
	Total	Males	Females	Total	Males	Females	Total	Males	Females
<u>SEER Death Rates^a, 2002-2006</u>									
Atlanta & Rural Georgia	171.67	211.92	147.99	159.38	193.22	139.29	209.45	279.90	171.79
Atlanta	170.68	210.05	147.85	158.58	191.93	139.12	208.95	278.06	172.55
Rural Georgia	195.62	252.13	156.25	179.26	223.73	146.14	229.97	325.34	173.01
California	169.70	202.23	147.64	174.10	206.21	152.45	225.79	284.01	188.95
Greater Bay Area	162.15	190.40	143.80	168.93	195.86	152.01	234.83	286.61	202.88
San Francisco-Oakland	167.19	196.35	148.16	172.56	199.63	155.33	241.24	292.68	209.61
San Jose-Monterey	152.25	178.89	135.08	162.57	189.48	146.07	193.79	260.69	147.41
Los Angeles	163.49	194.56	143.07	164.20	193.14	145.56	226.62	288.21	188.76
Greater California	175.45	210.06	151.31	179.71	214.53	155.47	219.02	278.04	179.27
Connecticut	182.60	223.45	156.84	182.74	223.37	157.14	198.09	252.58	166.09
Detroit	196.10	239.15	168.83	187.89	227.46	162.92	234.99	299.47	194.59
Hawaii	150.28	186.15	122.38	180.57	220.12	150.15	95.20	133.54	54.67
Iowa	184.30	229.10	154.64	184.16	228.59	154.79	248.99	332.51	191.96
Kentucky	219.31	280.75	178.71	217.90	278.92	177.37	258.58	335.46	211.66
Louisiana	217.01	278.60	175.78	202.62	256.79	165.81	264.65	359.67	205.29
New Jersey	189.44	226.70	166.18	190.08	226.35	167.29	222.24	282.22	188.09
New Mexico	165.19	199.19	140.20	168.82	203.27	143.40	165.46	218.00	124.42
Seattle-Puget Sound	181.50	214.89	158.77	184.21	216.99	162.01	214.16	261.46	178.27
Utah	139.24	167.02	118.70	139.79	167.82	119.04	165.01	214.20	138.04
9 SEER Areas ^b	175.42	212.00	151.09	176.22	212.07	152.55	221.26	281.64	184.52
11 SEER Areas ^b	171.46	206.28	148.40	173.02	206.97	150.77	222.07	282.70	185.03
13 SEER Areas ^b	171.62	206.52	148.45	173.04	207.02	150.72	221.91	282.99	184.58
17 SEER Areas ^b	180.29	218.30	154.85	181.55	218.71	156.76	230.36	297.44	189.16
Total U.S.	186.89	229.90	157.85	185.36	226.69	157.28	229.02	304.23	183.74

^a US Mortality Files, National Center for Health Statistics, Centers for Disease Control and Prevention.
Rates are per 100,000 and are age-adjusted to the 2000 US Std Population (19 age groups - Census P25-1130).

^b The SEER 9 areas are San Francisco, Connecticut, Detroit, Hawaii, Iowa, New Mexico, Seattle, Utah and Atlanta.
The SEER 11 areas comprise the SEER 9 areas plus San Jose-Monterey and Los Angeles.
The SEER 13 areas comprise the SEER 11 areas plus the Alaska Native Registry and Rural Georgia.
The SEER 17 areas comprise the SEER 13 areas plus California excluding SF/SJM/LA, Kentucky, Louisiana and New Jersey.
- Statistic not shown. Rate based on less than 16 cases for the time interval.

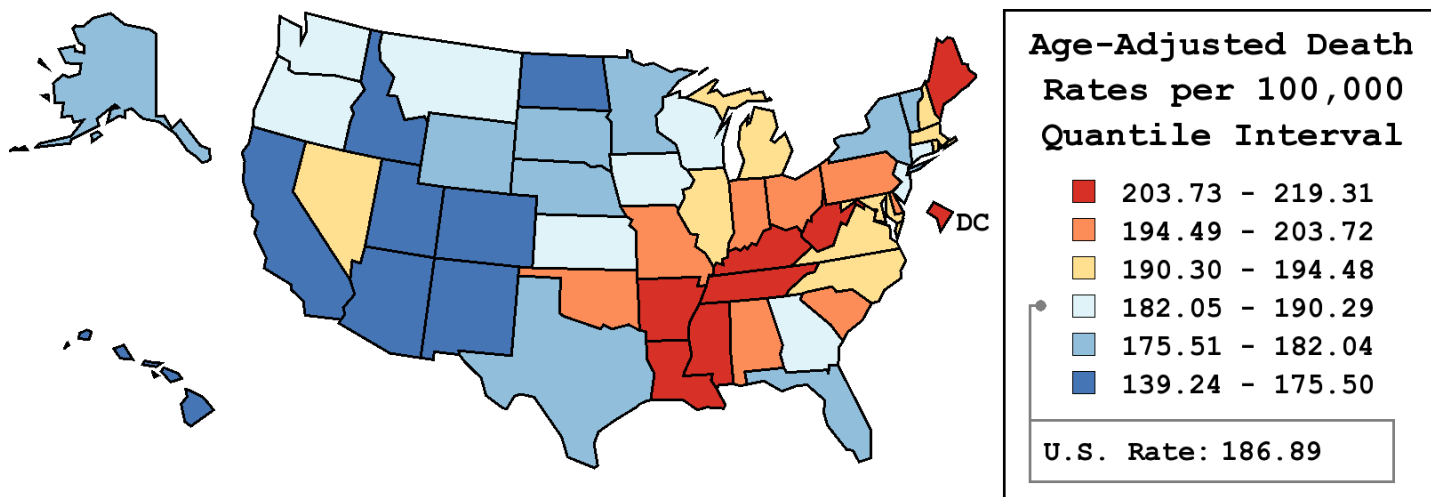
Table 2.15
All Cancer Sites (Invasive)

Age-Adjusted Cancer Death^a Rates by State, All Races, 2002-2006

Males and Females

State	Rate	SE	Rank	PD
TOTAL U.S.	186.89	0.11		
High Five States				
Kentucky	219.31	1.02	(01)	17.35 ^c
Louisiana	217.01	1.01	(02)	16.12 ^c
West Virginia	211.40	1.39	(03)	13.12 ^c
Mississippi	211.34	1.22	(04)	13.09 ^c
Tennessee	208.83	0.83	(05)	11.74 ^c
Low Five States				
New Mexico	165.19	1.33	(47)	-11.61 ^c
Arizona	163.86	0.75	(48)	-12.32 ^c
Colorado	163.46	0.93	(49)	-12.53 ^c
Hawaii	150.28	1.47	(50)	-19.59 ^c
Utah	139.24	1.26	(51)	-25.49 ^c

State	Rate	SE	Rank	PD	State	Rate	SE	Rank	PD
Alabama	203.72	0.92	(09)	9.01 ^c	Montana	182.67	1.88	(33)	-2.26
Alaska	182.04	3.24	(35)	-2.60	Nebraska	178.17	1.38	(39)	-4.67
Arizona	163.86	0.75	(48)	-12.32 ^c	Nevada	192.97	1.37	(21)	3.26
Arkansas	204.98	1.16	(06)	9.68 ^c	New Hampshire	190.62	1.70	(25)	2.00
California	169.70	0.33	(46)	-9.19 ^c	New Jersey	189.44	0.64	(27)	1.37
Colorado	163.46	0.93	(49)	-12.53 ^c	New Mexico	165.19	1.33	(47)	-11.61 ^c
Connecticut	182.60	0.98	(34)	-2.29	New York	176.13	0.42	(43)	-5.76 ^c
Delaware	198.65	2.13	(13)	6.29 ^c	North Carolina	194.29	0.68	(18)	3.96
D.C.	204.92	2.68	(07)	9.65 ^c	North Dakota	175.50	2.20	(44)	-6.10 ^c
Florida	177.25	0.40	(40)	-5.16 ^c	Ohio	202.29	0.57	(11)	8.24 ^c
Georgia	190.29	0.72	(26)	1.82	Oklahoma	198.10	1.03	(14)	6.00 ^c
Hawaii	150.28	1.47	(50)	-19.59 ^c	Oregon	189.25	1.00	(28)	1.26
Idaho	171.63	1.62	(45)	-8.17 ^c	Pennsylvania	196.43	0.51	(16)	5.11 ^c
Illinois	194.48	0.56	(17)	4.06	Rhode Island	191.35	1.79	(23)	2.39
Indiana	202.73	0.80	(10)	8.48 ^c	South Carolina	197.69	0.96	(15)	5.78 ^c
Iowa	184.30	1.04	(30)	-1.39	South Dakota	178.78	2.03	(38)	-4.34
Kansas	184.69	1.14	(29)	-1.18	Tennessee	208.83	0.83	(05)	11.74 ^c
Kentucky	219.31	1.02	(01)	17.35 ^c	Texas	181.67	0.44	(36)	-2.79
Louisiana	217.01	1.01	(02)	16.12 ^c	Utah	139.24	1.26	(51)	-25.49 ^c
Maine	204.15	1.63	(08)	9.23 ^c	Vermont	179.35	2.32	(37)	-4.03
Maryland	193.33	0.86	(20)	3.45	Virginia	191.95	0.74	(22)	2.71
Massachusetts	190.93	0.74	(24)	2.16	Washington	183.37	0.79	(32)	-1.88
Michigan	193.36	0.61	(19)	3.46	West Virginia	211.40	1.39	(03)	13.12 ^c
Minnesota	176.60	0.84	(42)	-5.50 ^c	Wisconsin	184.26	0.80	(31)	-1.41
Mississippi	211.34	1.22	(04)	13.09 ^c	Wyoming	176.74	2.65	(41)	-5.43 ^c
Missouri	200.08	0.81	(12)	7.06 ^c					



^a US Mortality Files, National Center for Health Statistics, Centers for Disease Control and Prevention. Rates are per 100,000 and are age-adjusted to the 2000 US Std Population (19 age groups - Census P25-1130).
^b Difference between state rate and total U.S. rate is statistically significant ($p \leq .0002$).
^c Absolute percent difference between state rate and total U.S. rate is 5% or more.
SE Standard error of the rate.
PD Percent difference between state rate and total U.S. rate.

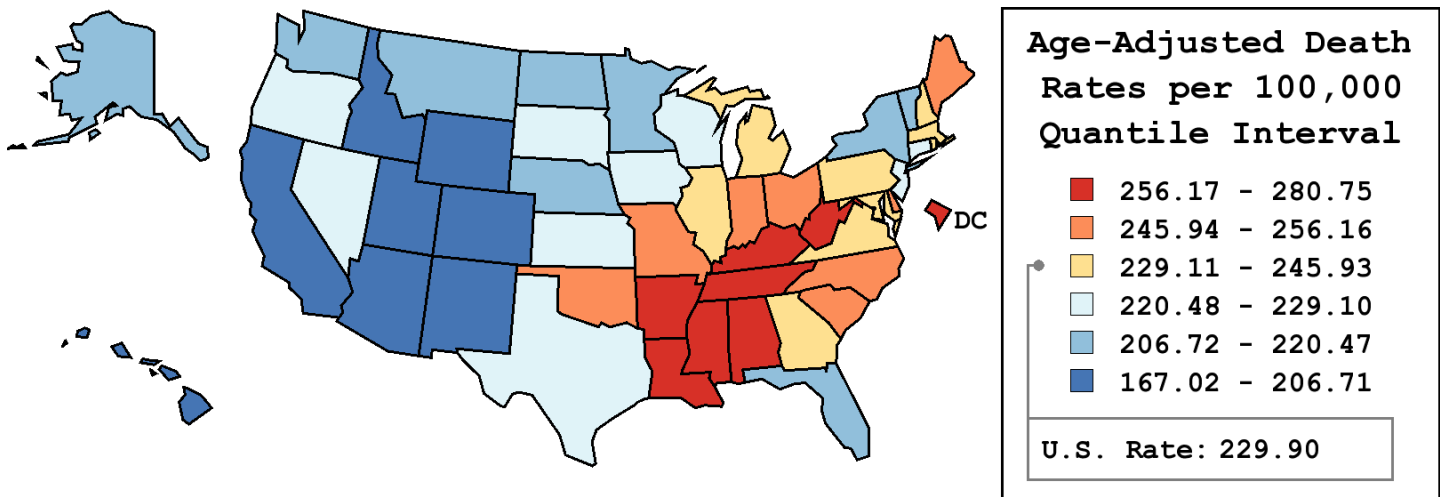
Table 2.16
All Cancer Sites (Invasive)

Age-Adjusted Cancer Death^a Rates by State, All Races, 2002-2006

Males

State	Rate	SE	Rank	PD
TOTAL U.S.	229.90	0.19		
High Five States				
Kentucky	280.75	1.82	(01)	22.12 ^c
Mississippi	280.13	2.22	(02)	21.85 ^c
Louisiana	278.60	1.80	(03)	21.18 ^c
D.C.	270.20	4.96	(04)	17.53 ^c
Tennessee	268.04	1.49	(05)	16.59 ^c
Low Five States				
New Mexico	199.19	2.22	(47)	-13.36 ^c
Arizona	196.85	1.23	(48)	-14.38 ^c
Colorado	195.98	1.59	(49)	-14.76 ^c
Hawaii	186.15	2.45	(50)	-19.03 ^c
Utah	167.02	2.10	(51)	-27.35 ^c

State	Rate	SE	Rank	PD	State	Rate	SE	Rank	PD
Alabama	267.72	1.68	(06)	16.45 ^c	Montana	214.93	3.09	(41)	-6.51 ^c
Alaska	217.01	5.48	(37)	-5.61 ^c	Nebraska	220.47	2.37	(35)	-4.10
Arizona	196.85	1.23	(48)	-14.38 ^c	Nevada	223.33	2.21	(32)	-2.86
Arkansas	261.64	2.03	(08)	13.80 ^c	New Hampshire	233.22	2.95	(25)	1.44
California	202.23	0.55	(46)	-12.04 ^c	New Jersey	226.70	1.11	(29)	-1.39
Colorado	195.98	1.59	(49)	-14.76 ^c	New Mexico	199.19	2.22	(47)	-13.36 ^c
Connecticut	223.45	1.69	(31)	-2.81	New York	211.70	0.72	(43)	-7.92 ^c
Delaware	245.99	3.68	(16)	7.00 ^c	North Carolina	248.29	1.22	(14)	8.00 ^c
D.C.	270.20	4.96	(04)	17.53 ^c	North Dakota	214.10	3.66	(42)	-6.87 ^c
Florida	215.23	0.66	(40)	-6.38 ^c	Ohio	251.92	1.01	(11)	9.58 ^c
Georgia	245.93	1.33	(17)	6.97 ^c	Oklahoma	247.61	1.79	(15)	7.70 ^c
Hawaii	186.15	2.45	(50)	-19.03 ^c	Oregon	223.21	1.65	(33)	-2.91
Idaho	205.51	2.67	(45)	-10.61 ^c	Pennsylvania	243.19	0.89	(18)	5.78 ^c
Illinois	240.52	0.98	(20)	4.62	Rhode Island	240.44	3.14	(21)	4.58
Indiana	253.01	1.41	(10)	10.05 ^c	South Carolina	256.16	1.73	(09)	11.42 ^c
Iowa	229.10	1.78	(26)	-0.35	South Dakota	221.84	3.42	(34)	-3.51
Kansas	227.13	1.94	(28)	-1.21	Tennessee	268.04	1.49	(05)	16.59 ^c
Kentucky	280.75	1.82	(01)	22.12 ^c	Texas	227.34	0.77	(27)	-1.11
Louisiana	278.60	1.80	(03)	21.18 ^c	Utah	167.02	2.10	(51)	-27.35 ^c
Maine	251.33	2.81	(12)	9.32 ^c	Vermont	216.22	3.96	(38)	-5.95 ^c
Maryland	236.80	1.51	(22)	3.00	Virginia	241.35	1.32	(19)	4.98
Massachusetts	235.43	1.30	(24)	2.40	Washington	217.27	1.32	(36)	-5.49 ^c
Michigan	236.17	1.06	(23)	2.73	West Virginia	263.08	2.42	(07)	14.43 ^c
Minnesota	215.45	1.43	(39)	-6.29 ^c	Wisconsin	226.33	1.36	(30)	-1.55
Mississippi	280.13	2.22	(02)	21.85 ^c	Wyoming	206.71	4.36	(44)	-10.09 ^c
Missouri	249.40	1.40	(13)	8.48 ^c					



^a US Mortality Files, National Center for Health Statistics, Centers for Disease Control and Prevention. Rates are per 100,000 and are age-adjusted to the 2000 US Std Population (19 age groups - Census P25-1130).
^b Difference between state rate and total U.S. rate is statistically significant ($p \leq .0002$).
^c Absolute percent difference between state rate and total U.S. rate is 5% or more.
SE Standard error of the rate.
PD Percent difference between state rate and total U.S. rate.

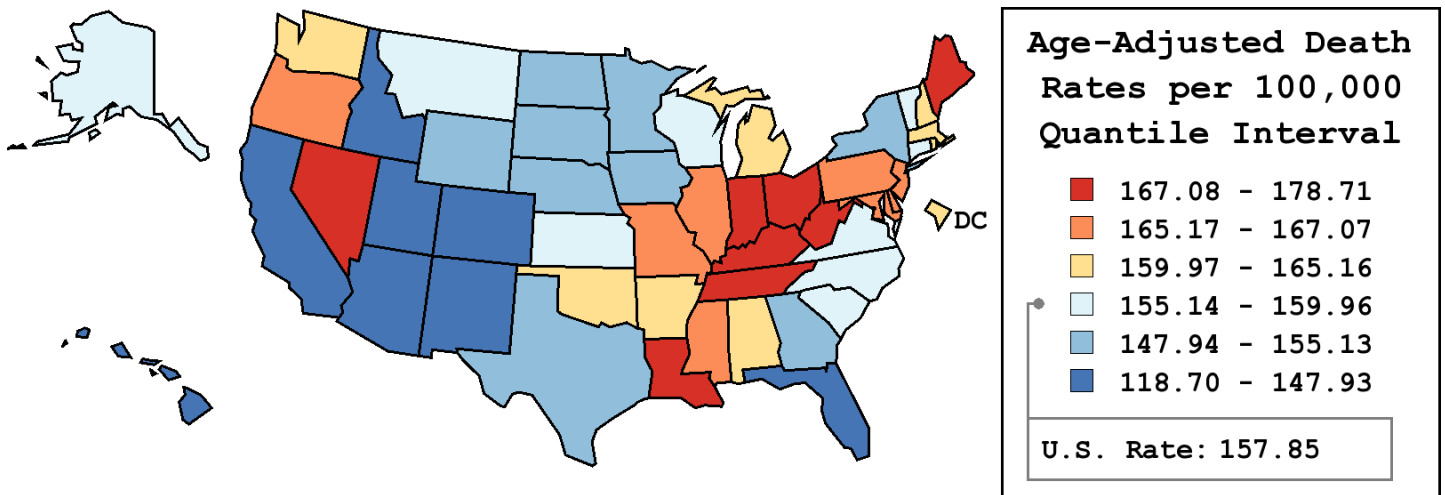
Table 2.17
All Cancer Sites (Invasive)

Age-Adjusted Cancer Death^a Rates by State, All Races, 2002-2006

Females

State	Rate	SE	Rank	PD
TOTAL U.S.	157.85	0.14		
High Five States				
Kentucky	178.71	1.22	(01)	13.22 ^c
West Virginia	175.95	1.70	(02)	11.47 ^c
Louisiana	175.78	1.20	(03)	11.36 ^c
Maine	172.37	2.01	(04)	9.20 ^c
Ohio	170.15	0.70	(05)	7.80 ^c
Low Five States				
Colorado	142.30	1.15	(47)	-9.85 ^c
New Mexico	140.20	1.65	(48)	-11.18 ^c
Arizona	138.42	0.93	(49)	-12.31 ^c
Hawaii	122.38	1.80	(50)	-22.47 ^c
Utah	118.70	1.56	(51)	-24.80 ^c

State	Rate	SE	Rank	PD	State	Rate	SE	Rank	PD
Alabama	161.55	1.09	(23)	2.34	Montana	159.96	2.39	(26)	1.34
Alaska	155.23	4.00	(33)	-1.65	Nebraska	149.73	1.71	(41)	-5.14 ^c
Arizona	138.42	0.93	(49)	-12.31 ^c	Nevada	168.23	1.73	(08)	6.58 ^c
Arkansas	165.16	1.40	(17)	4.63	New Hampshire	163.06	2.10	(22)	3.31
California	147.64	0.41	(45)	-6.47 ^c	New Jersey	166.18	0.79	(11)	5.28 ^c
Colorado	142.30	1.15	(47)	-9.85 ^c	New Mexico	140.20	1.65	(48)	-11.18 ^c
Connecticut	156.84	1.20	(30)	-0.64	New York	153.87	0.51	(38)	-2.52
Delaware	165.83	2.59	(13)	5.06 ^c	North Carolina	158.93	0.81	(28)	0.68
D.C.	164.33	3.13	(19)	4.11	North Dakota	149.32	2.76	(42)	-5.40 ^c
Florida	147.93	0.50	(44)	-6.28 ^c	Ohio	170.15	0.70	(05)	7.80 ^c
Georgia	155.13	0.85	(35)	-1.72	Oklahoma	163.71	1.26	(20)	3.71
Hawaii	122.38	1.80	(50)	-22.47 ^c	Oregon	165.52	1.26	(14)	4.87
Idaho	146.21	2.02	(46)	-7.37 ^c	Pennsylvania	166.30	0.63	(10)	5.35 ^c
Illinois	165.32	0.68	(15)	4.74	Rhode Island	161.18	2.18	(24)	2.11
Indiana	170.08	0.98	(06)	7.75 ^c	South Carolina	158.29	1.14	(29)	0.28
Iowa	154.64	1.28	(36)	-2.03	South Dakota	148.11	2.51	(43)	-6.17 ^c
Kansas	156.53	1.41	(32)	-0.83	Tennessee	169.53	0.99	(07)	7.40 ^c
Kentucky	178.71	1.22	(01)	13.22 ^c	Texas	150.26	0.53	(40)	-4.80
Louisiana	175.78	1.20	(03)	11.36 ^c	Utah	118.70	1.56	(51)	-24.80 ^c
Maine	172.37	2.01	(04)	9.20 ^c	Vermont	155.14	2.88	(34)	-1.72
Maryland	165.26	1.04	(16)	4.70	Virginia	159.88	0.89	(27)	1.29
Massachusetts	163.48	0.91	(21)	3.57	Washington	160.16	0.99	(25)	1.47
Michigan	164.88	0.76	(18)	4.46	West Virginia	175.95	1.70	(02)	11.47 ^c
Minnesota	151.68	1.04	(39)	-3.91	Wisconsin	156.57	0.98	(31)	-0.81
Mississippi	165.98	1.43	(12)	5.15 ^c	Wyoming	154.37	3.36	(37)	-2.20
Missouri	167.07	0.98	(09)	5.84 ^c					



^a US Mortality Files, National Center for Health Statistics, Centers for Disease Control and Prevention. Rates are per 100,000 and are age-adjusted to the 2000 US Std Population (19 age groups - Census P25-1130).
^b Difference between state rate and total U.S. rate is statistically significant ($p \leq .0002$).
^c Absolute percent difference between state rate and total U.S. rate is 5% or more.
SE Standard error of the rate.
PD Percent difference between state rate and total U.S. rate.

Table 2.18
All Cancer Sites (Invasive)

Estimated United States Cancer Prevalence Counts^a on January 1, 2006
By Race/Ethnicity, Sex and Years Since Diagnosis

Years Since Diagnosis		0 to <5	5 to <10	10 to <15	15 to <20	20 to <25	25 to <30	0 to <16 ^e	0 to <31 ^e	>=31 ^g	Complete ^h
<u>Race</u>	<u>Sex</u>										
All Races ^b	Both Sexes	4,077,488	2,756,143	1,827,790	1,067,357	628,995	408,422	8,921,919	10,831,324	553,568	11,384,892
	Males	2,080,191	1,358,523	873,389	402,083	208,914	117,265	4,419,347	5,056,502	112,387	5,168,889
	Females	1,997,297	1,397,620	954,401	665,274	420,081	291,157	4,502,572	5,774,822	441,181	6,216,003
White ^b	Both Sexes	3,520,272	2,420,229	1,629,494	969,935	573,796	373,186	7,806,111	9,546,459	489,074	10,035,533
	Males	1,788,398	1,184,235	776,817	368,293	192,182	108,601	3,847,393	4,433,351	104,730	4,538,081
	Females	1,731,874	1,235,994	852,677	601,642	381,614	264,585	3,958,718	5,113,108	384,344	5,497,452
Black ^b	Both Sexes	383,691	229,026	136,791	64,711	36,625	22,580	765,969	877,013	31,078	908,091
	Males	205,824	124,429	70,194	22,917	10,825	5,090	406,933	440,037	3,170	443,207
	Females	177,867	104,597	66,597	41,794	25,800	17,490	359,036	436,976	27,908	464,884
Asian/ Pacific Islander ^c	Both Sexes	106,876	61,997	36,247	+	+	+	210,102	+	+	+
	Males	46,735	25,186	13,666	+	+	+	87,178	+	+	+
	Females	60,141	36,811	22,581	+	+	+	122,924	+	+	+
Hispanic ^d	Both Sexes	235,971	137,977	84,667	+	+	+	471,035	+	+	+
	Males	113,967	64,417	36,535	+	+	+	219,442	+	+	+
	Females	122,004	73,560	48,132	+	+	+	251,593	+	+	+

Estimated prevalence percent^a on January 1, 2006, of the SEER 11 population diagnosed in the previous 16 years
By Age at Prevalence, Race/Ethnicity and Sex

Age at Prevalence		Age Specific (Crude)									Age-Adjusted ^f	
		All Ages	0-9	10-19	20-29	30-39	40-49	50-59	60-69	70-79	80+	All Ages
<u>Race</u>	<u>Sex</u>											
All Races ^c	Both Sexes	2.6125%	0.0793%	0.1565%	0.2705%	0.6644%	1.5625%	3.7265%	8.1929%	13.5686%	14.5035%	2.7072%
	Males	2.6003%	0.0849%	0.1644%	0.2517%	0.5169%	1.0685%	3.0327%	8.9806%	18.2203%	21.3291%	3.0961%
	Females	2.6243%	0.0734%	0.1482%	0.2906%	0.8161%	2.0556%	4.3885%	7.4821%	9.9786%	10.7168%	2.4852%
White ^c	Both Sexes	2.8537%	0.0852%	0.1709%	0.3002%	0.7370%	1.6543%	3.8634%	8.5564%	14.2545%	14.9548%	2.8361%
	Males	2.8095%	0.0914%	0.1792%	0.2805%	0.5835%	1.1472%	3.1082%	9.1880%	18.7633%	21.6733%	3.1916%
	Females	2.8979%	0.0787%	0.1621%	0.3221%	0.9016%	2.1772%	4.6067%	7.9711%	10.6939%	11.2707%	2.6436%
Black ^c	Both Sexes	1.8858%	0.0545%	0.1071%	0.1695%	0.4686%	1.2564%	3.6290%	8.5309%	13.3964%	12.4397%	2.5470%
	Males	2.1113%	0.0529%	0.1120%	0.1484%	0.3284%	0.8707%	3.6866%	11.5962%	21.5351%	21.3968%	3.4812%
	Females	1.6811%	0.0562%	0.1020%	0.1897%	0.5912%	1.5952%	3.5812%	6.1444%	7.9816%	8.1016%	1.9708%
Asian/ Pacific Islander ^c	Both Sexes	1.6845%	0.0639%	0.1182%	0.1711%	0.3946%	1.1504%	2.6637%	4.9710%	8.2974%	10.3437%	1.7781%
	Males	1.4974%	0.0723%	0.1278%	0.1540%	0.2500%	0.5948%	1.6187%	4.6846%	10.5931%	14.9192%	1.8270%
	Females	1.8603%	0.0550%	0.1079%	0.1882%	0.5316%	1.6602%	3.5809%	5.2137%	6.6146%	7.3284%	1.7941%
Hispanic ^d	Both Sexes	1.0593%	0.0750%	0.1452%	0.1889%	0.4534%	1.1045%	2.5183%	5.5502%	9.4464%	10.0358%	1.8825%
	Males	0.9496%	0.0811%	0.1499%	0.1800%	0.3352%	0.6388%	1.7880%	5.9158%	13.2025%	15.1482%	2.1375%
	Females	1.1753%	0.0686%	0.1402%	0.1995%	0.5903%	1.5988%	3.2110%	5.2405%	6.7129%	7.0643%	1.7685%

^a US 2006 cancer prevalence counts are based on 2006 cancer prevalence proportions from the SEER registries and 1/1/2006 US population estimates based on the average of 2005 and 2006 population estimates from the US Bureau of the Census. Prevalence was calculated using the First Malignant Primary Only for a person.

^{b c d} Statistics based on (b) SEER 9 Areas (c) SEER 11 Areas and Rural Georgia (d) NHIA for Hispanic for SEER 11 Areas and Rural Georgia.

^e Maximum limited-duration prevalence: 31 years for 1975-2006 SEER 9 data; 16 years for 1990-2006 SEER 11 data (used to calculate prevalence for Hispanics and Asian Pacific Islanders).

^f Percentages are age-adjusted to the 2000 US Standard Population (19 age groups - Census P25-1130) by 5-year age groups.

^{g h i} (g) Cases diagnosed more than 31 years ago were estimated using the completeness index method (Capocaccia et. al. 1997, Merrill et. al. 2000). (h) Complete prevalence is obtained by summing 0 to <31 and >=31. (i) Age-specific completeness index was approximated using empirical data from historical Connecticut tumor registry.

- Statistic not shown. Statistic based on fewer than 5 cases estimated alive in SEER for the time interval.

+ Not available.

SEER Observed Incidence, SEER Delay Adjusted Incidence and US Death Rates^a All Cancer Sites, by Race and Sex

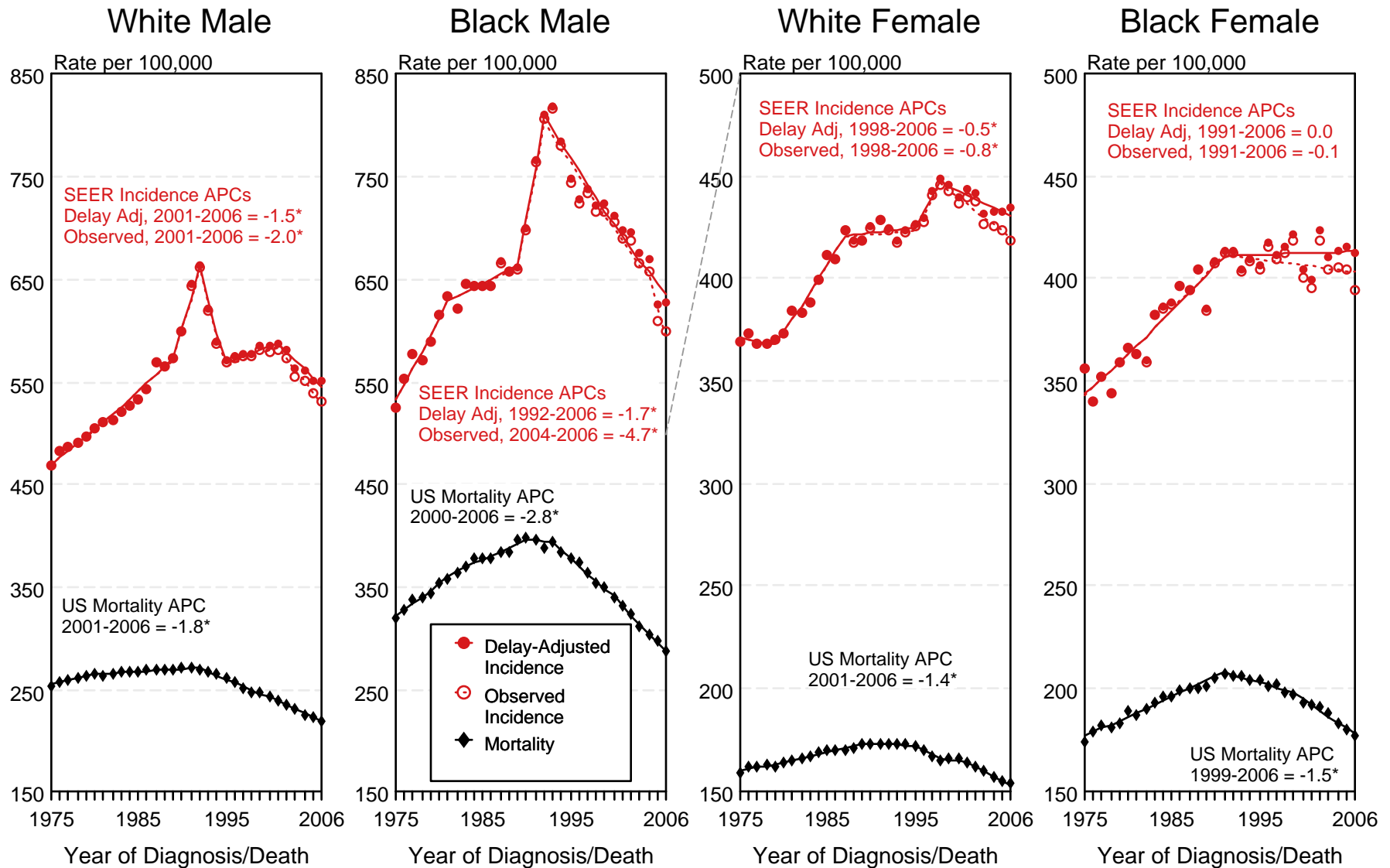


Figure 2.1

^a Source: SEER 9 areas and US Mortality Files (National Center for Health Statistics, CDC). Rates are age-adjusted to the 2000 US Std Population (19 age groups - Census P25-1103). Regression lines and APCs are calculated using the Joinpoint Regression Program Version 3.3.1, April 2008, National Cancer Institute. The APC is the Annual Percent Change for the regression line segments. The APC shown on the graph is for the most recent trend.
* The APC is significantly different from zero ($p < 0.05$).

SEER Observed Incidence, SEER Delay Adjusted Incidence and US Death Rates^a All Cancer Sites, Under 65 Years of Age, by Race and Sex

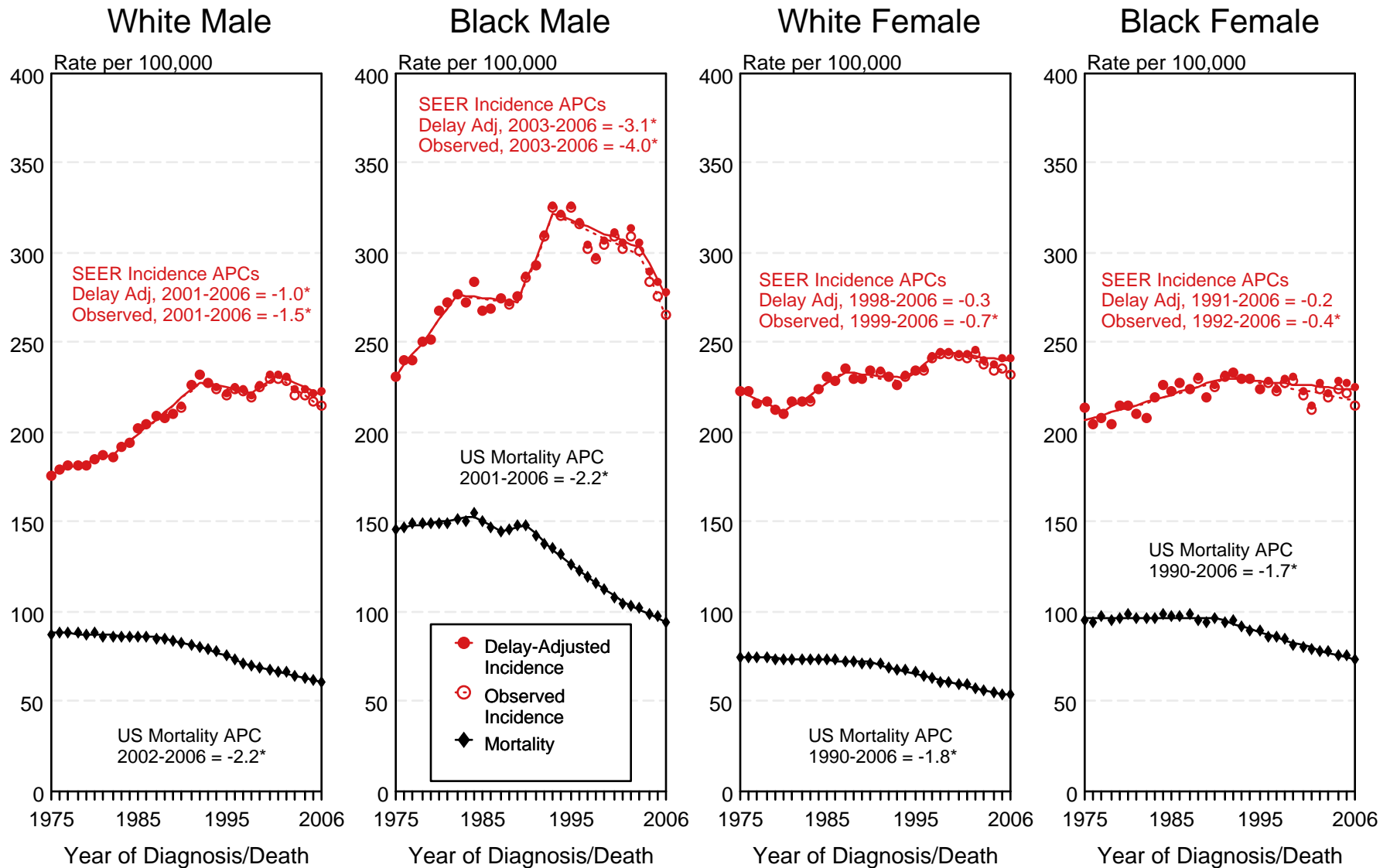


Figure 2.2

^a Source: SEER 9 areas and US Mortality Files (National Center for Health Statistics, CDC). Rates are age-adjusted to the 2000 US Std Population (19 age groups - Census P25-1103). Regression lines and APCs are calculated using the Joinpoint Regression Program Version 3.3.1, April 2008, National Cancer Institute. The APC is the Annual Percent Change for the regression line segments. The APC shown on the graph is for the most recent trend.
* The APC is significantly different from zero (p < 0.05).

SEER Observed Incidence, SEER Delay Adjusted Incidence and US Death Rates^a All Cancer Sites, Ages 65 and Over, by Race and Sex

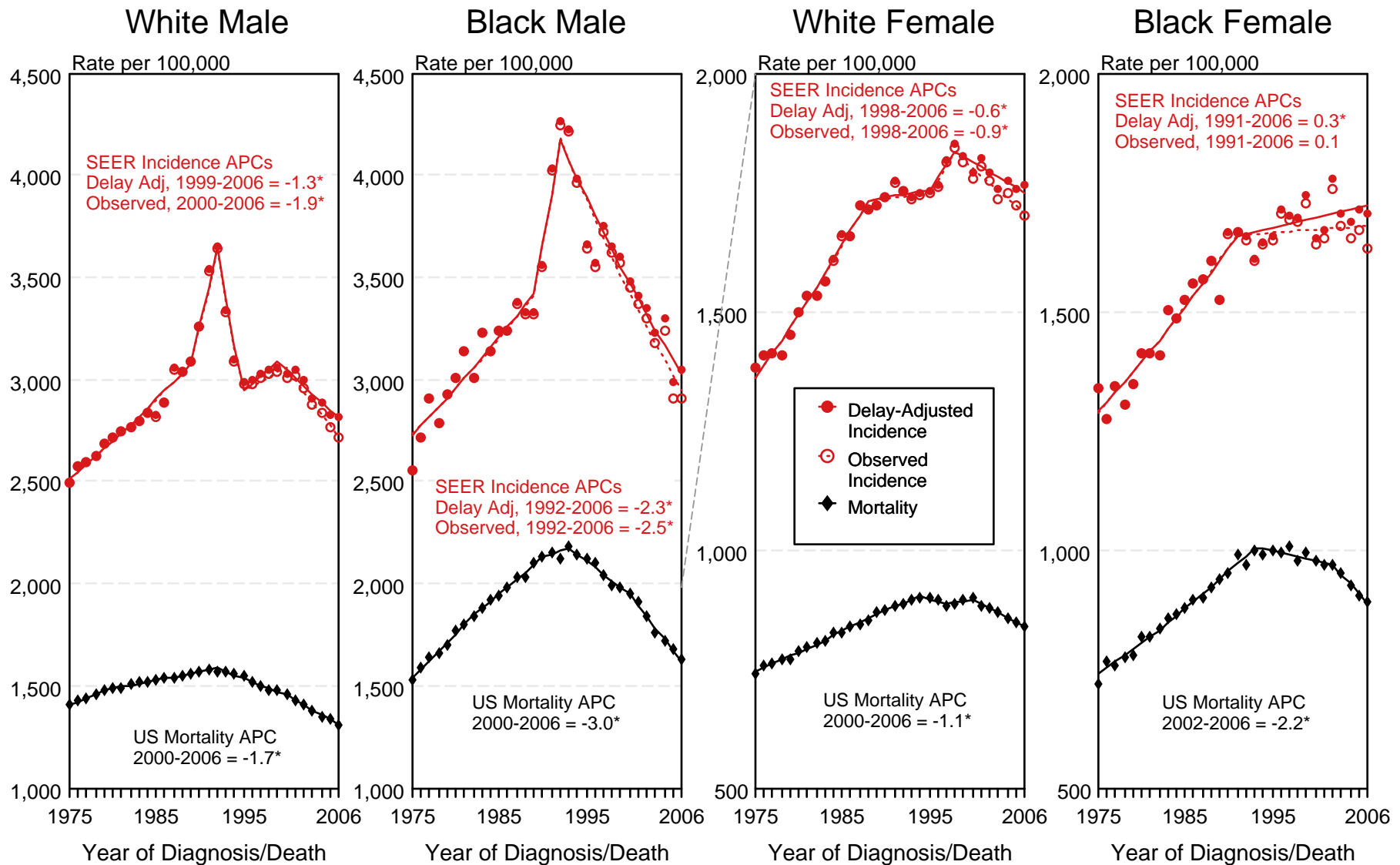


Figure 2.3

^a Source: SEER 9 areas and US Mortality Files (National Center for Health Statistics, CDC). Rates are age-adjusted to the 2000 US Std Population (19 age groups - Census P25-1103). Regression lines and APCs are calculated using the Joinpoint Regression Program Version 3.3.1, April 2008, National Cancer Institute. The APC is the Annual Percent Change for the regression line segments. The APC shown on the graph is for the most recent trend.
* The APC is significantly different from zero ($p < 0.05$).

SEER Incidence and US Death Rates^a All Cancer Sites, Both Sexes

Joinpoint Analyses for Whites and Blacks from 1975-2006

and for Asian/Pacific Islanders, American Indians/Alaska Natives and Hispanics from 1992-2006

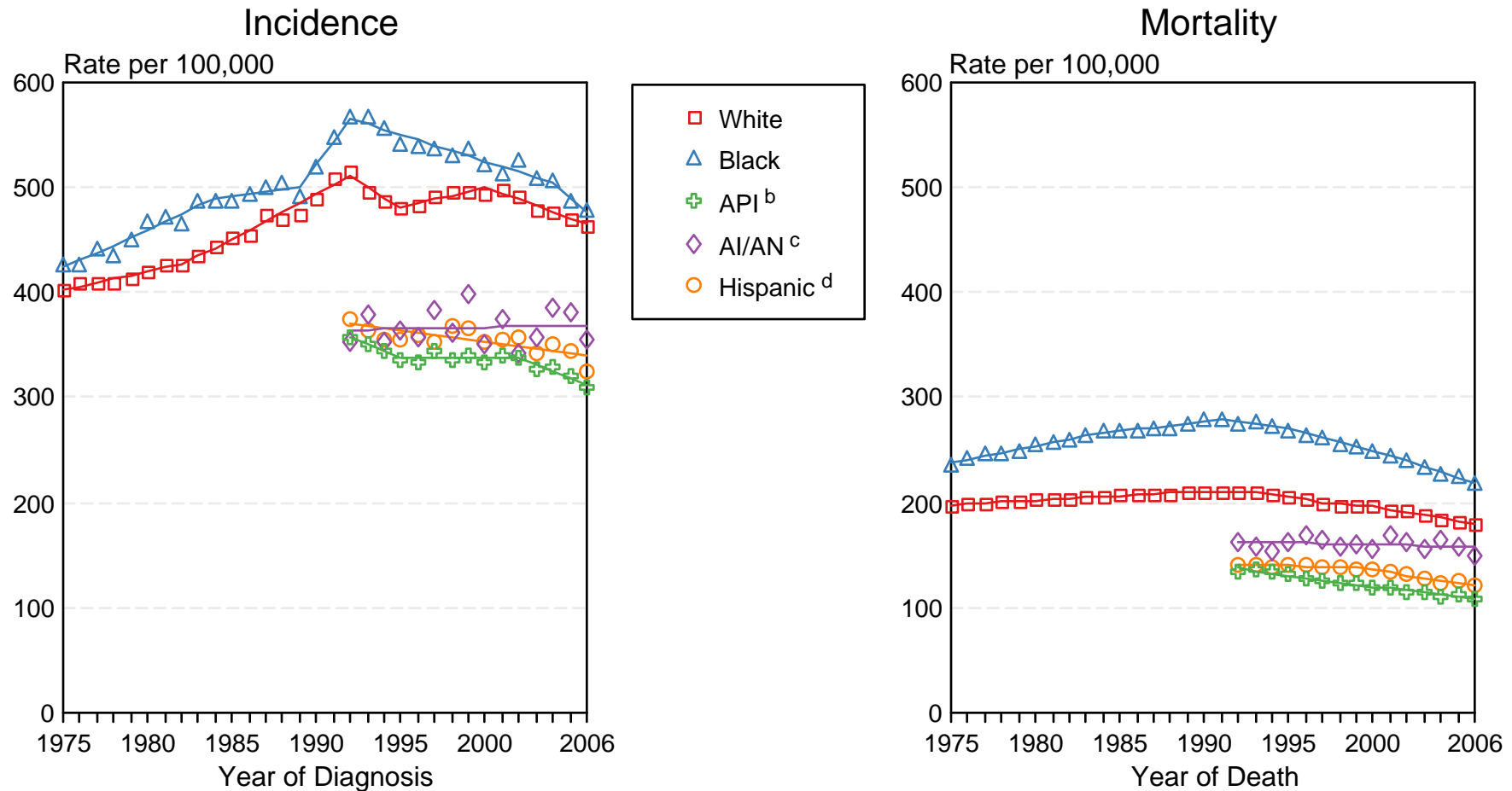


Figure 2.4

Source: Incidence data for whites and blacks are from the SEER 9 areas (San Francisco, Connecticut, Detroit, Hawaii, Iowa, New Mexico, Seattle, Utah, Atlanta).

Incidence data for Asian/Pacific Islanders, American Indians/Alaska Natives and Hispanics are from the SEER 13 Areas (SEER 9 Areas, San Jose-Monterey, Los Angeles, Alaska Native Registry and Rural Georgia). Mortality data are from US Mortality Files, National Center for Health Statistics, CDC.

^a Rates are age-adjusted to the 2000 US Std Population (19 age groups - Census P25-1103).

Regression lines are calculated using the Joinpoint Regression Program Version 3.3.1, April 2008, National Cancer Institute. Joinpoint analyses for Whites and Blacks during the 1975-2006 period allow a maximum of 4 joinpoints. Analyses for other ethnic groups during the period 1992-2006 allow a maximum of 2 joinpoints.

^b API = Asian/Pacific Islander.

^c AI/AN = American Indian/Alaska Native. Rates for American Indian/Alaska Native are based on the CHSDA(Contract Health Service Delivery Area) counties.

^d Hispanic is not mutually exclusive from whites, blacks, Asian/Pacific Islanders, and American Indians/Alaska Natives. Incidence data for Hispanics are based on NHIA and exclude cases from the Alaska Native Registry. Mortality data for Hispanics exclude cases from Connecticut, the District of Columbia, Maine, Maryland, Minnesota, New Hampshire, New York, North Dakota, Oklahoma, and Vermont.

SEER Observed Incidence and SEER Delay Adjusted Incidence Rates^a SEER 9 Areas Compared to SEER 13 Areas All Cancer Sites, Males, by Race

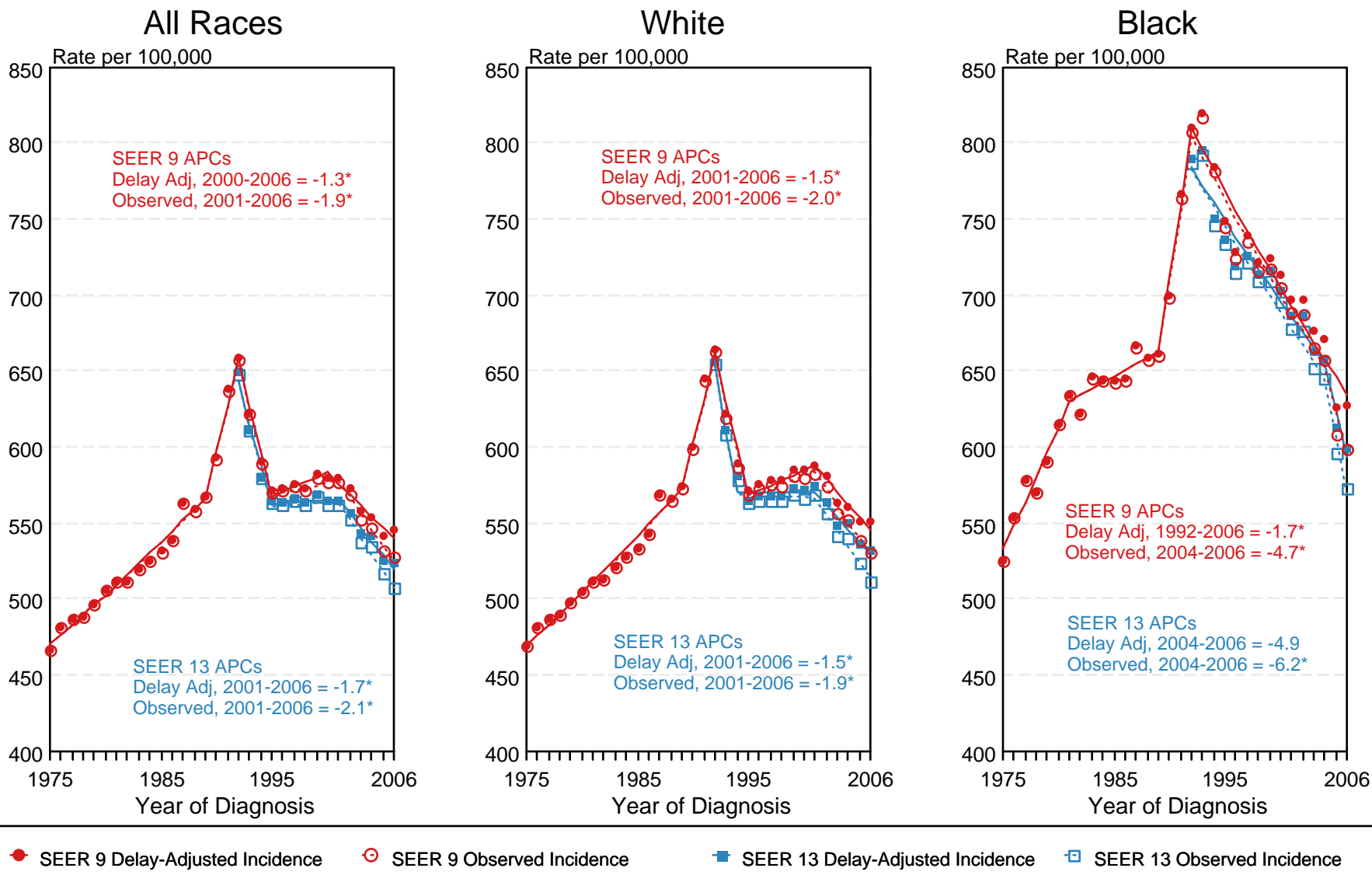
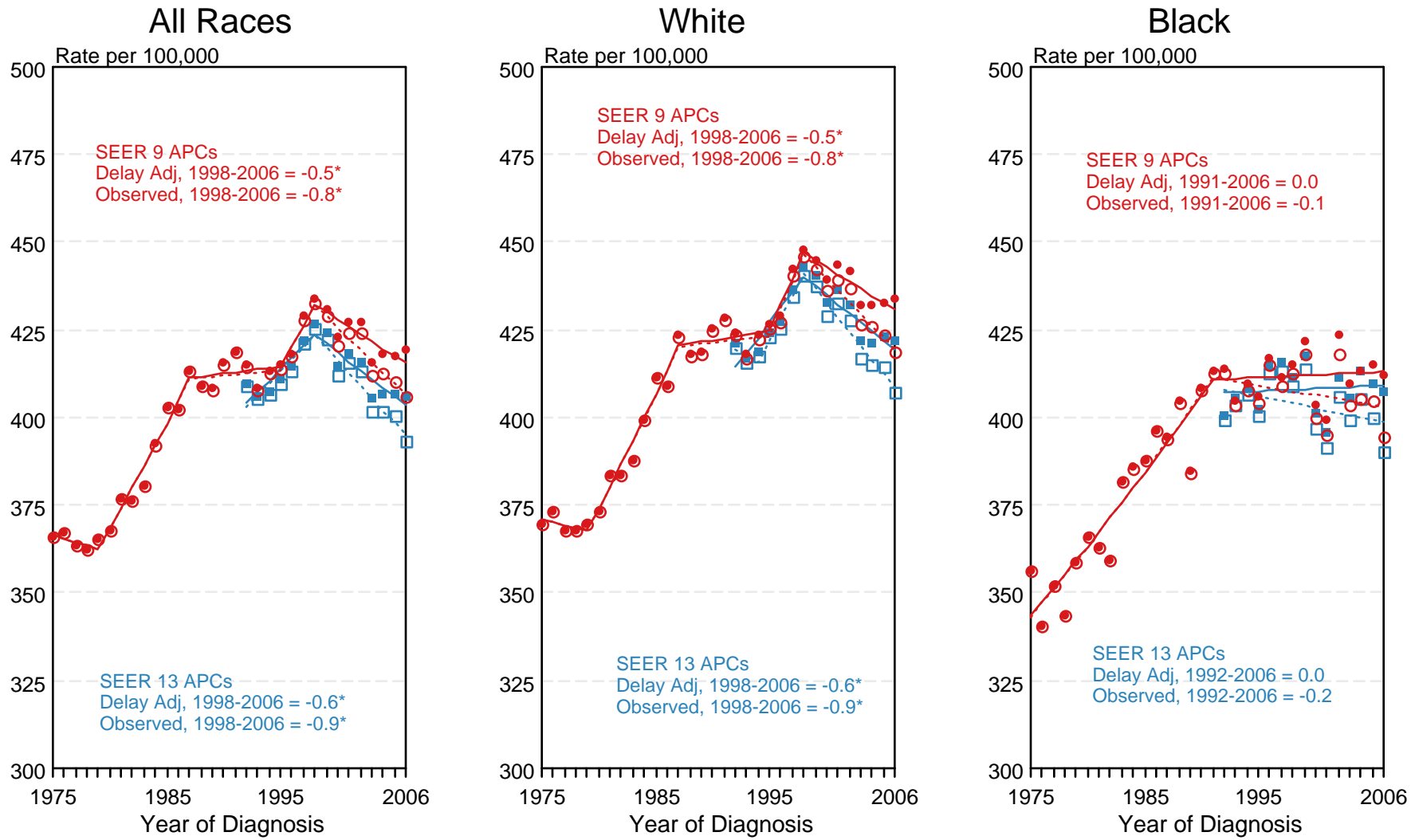


Figure 2.5

^a Source: SEER 9 areas and SEER 13 areas.
Rates are age-adjusted to the 2000 US Std Population (19 age groups - Census P25-1103).
Regression lines and APCs are calculated using the Joinpoint Regression Program Version 3.3.1, April 2008, National Cancer Institute.
The APC is the Annual Percent Change for the regression line segments. The APC shown on the graph is for the most recent trend.
* The APC is significantly different from zero ($p < 0.05$).

SEER Observed Incidence and SEER Delay Adjusted Incidence Rates^a SEER 9 Areas Compared to SEER 13 Areas All Cancer Sites, Female, by Race



● SEER 9 Delay-Adjusted Incidence ○ SEER 9 Observed Incidence ■ SEER 13 Delay-Adjusted Incidence □ SEER 13 Observed Incidence

^a Source: SEER 9 areas and SEER 13 areas.
Rates are age-adjusted to the 2000 US Std Population (19 age groups - Census P25-1103).
Regression lines and APCs are calculated using the Joinpoint Regression Program Version 3.3.1, April 2008, National Cancer Institute.
The APC is the Annual Percent Change for the regression line segments. The APC shown on the graph is for the most recent trend.
* The APC is significantly different from zero (p < 0.05).

Figure 2.6