

## Coding Guidelines

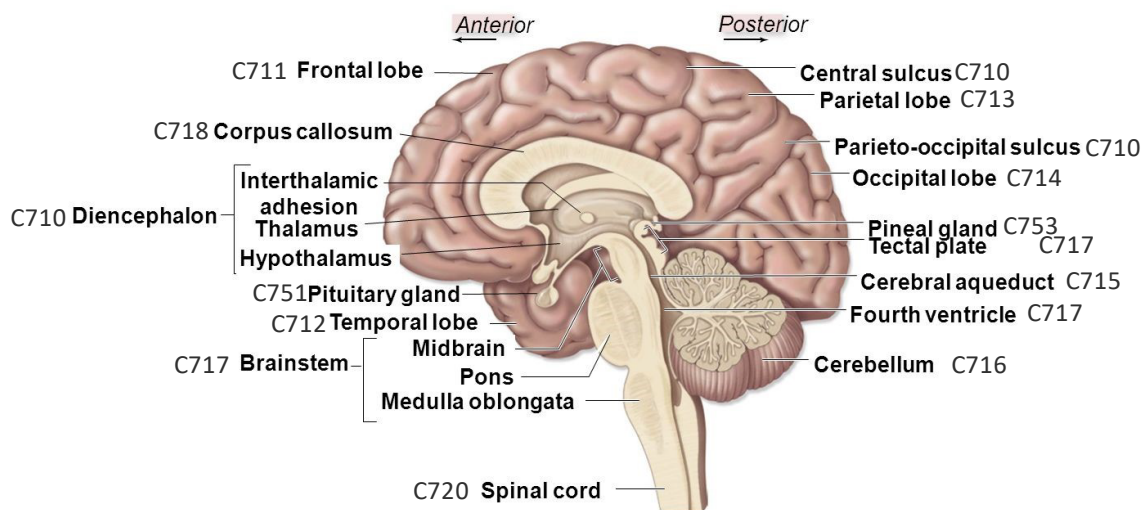
### Brain [and Other Parts of Central Nervous System] Meninges C700-C709, Brain C710-C719, Spinal Cord, Cranial Nerves and Other Parts of Central Nervous System C720-C729

#### Reportability

- Report high-grade astrocytoma with piloid features (HGAP) (9421/3) as of 01/01/2023
- Report pilocytic astrocytoma/juvenile pilocytic astrocytoma as 9421/1 for all CNS sites as of 01/01/2023

#### Primary Site

#### *Brain and Associated Structures with Topography Codes*

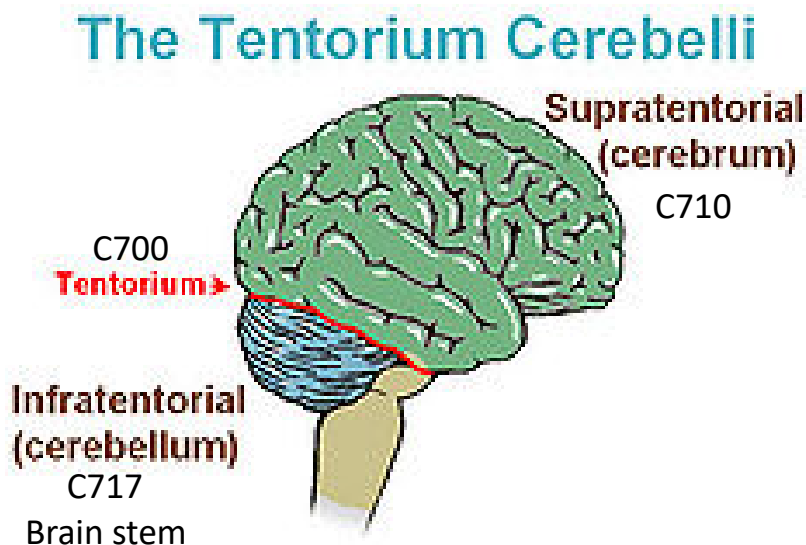


**Extra-axial:** Outside the brain parenchyma

**Intra-axial:** Within the brain

***Tentorium C700***

A fold of the dura mater which separates the cerebellum from the cerebrum, divides the cranial cavity into supratentorial and infratentorial spaces.

***Supratentorial, NOS C710***

## Supratentorial subsites

- All subsites coded C711-C715
- Primary site C710 (excluding hypothalamus, pallium, thalamus)
- Anterior cranial fossa (C719)
- Corpus callosum (C718)
- Middle cranial fossa (C719)
- Tapetum (C718)
- Suprasellar (C719)

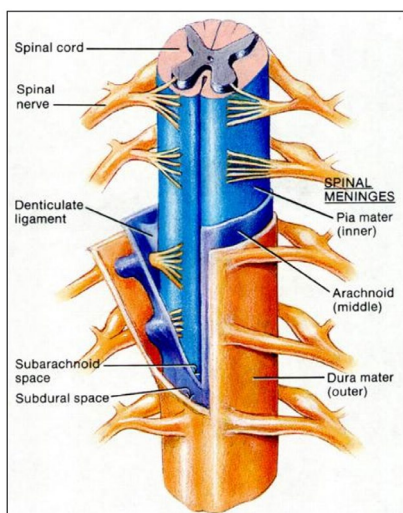
***Infratentorial, NOS C717***

## Infratentorial subsites

- All subsites coded C716-C717
- Hypothalamus (C710)
- Pallium (C710)
- Posterior cranial fossa (C719)
- Thalamus (C710)

Supratentorial and Infratentorial subsites are based on Summary Stage 2018.

***Spinal Meninges C701 and Nerve Roots C720***



**Intradural:** Within the dura, within the meninges

**Extradural:** Outside the dura, outside the meninges

**Intramedullary:** Within the spinal cord

**Extramedullary:** Outside the spinal cord

**Histology**

Code low grade neuroepithelial neoplasm to 9413/0 (Dysembryoplastic neuroepithelial tumor).

**Laterality**

***Meningioma***

Assign code **4** (Bilateral involvement, lateral origin unknown; stated to be single primary) when

- **One** meningioma extends to both right and left sides

**AND**

- It is **not** possible to determine whether the meningioma originated on the left or the right

Assign code **5** (Midline tumor) when

- The meningioma originates in the midline