

Table XV-1
LUNG AND BRONCHUS CANCER (Invasive)

TRENDS IN SEER INCIDENCE^a AND U.S. MORTALITY^b USING THE JOINPOINT REGRESSION PROGRAM, 1975-2001
WITH UP TO THREE JOINPOINTS BY RACE AND SEX

		Joinpoint Segment 1		Joinpoint Segment 2		Joinpoint Segment 3		Joinpoint Segment 4	
		Year	APC	Year	APC	Year	APC	Year	APC
<u>SEER Cancer Incidence^a</u>									
All Races	Male and Female	1975-1982	2.5 ^c	1982-1991	1.0 ^c	1991-1999	-0.7 ^c	1999-2001	-3.5 ^c
All Races	Male	1975-1982	1.5 ^c	1982-1992	-0.5 ^c	1992-2001	-2.2 ^c		
All Races	Female	1975-1988	4.6 ^c	1988-1998	1.3 ^c	1998-2001	-2.3 ^c		
White	Male and Female	1975-1981	2.5 ^c	1981-1988	1.6 ^c	1988-1998	-0.1	1998-2001	-2.7 ^c
White	Male	1975-1981	1.5 ^c	1981-1991	-0.3	1991-2001	-2.1 ^c		
White	Female	1975-1982	5.6 ^c	1982-1988	4.1 ^c	1988-1998	1.6 ^c	1998-2001	-2.5 ^c
Black	Male and Female	1975-1985	3.1 ^c	1985-2001	-0.8 ^c				
Black	Male	1975-1984	3.2 ^c	1984-2001	-1.7 ^c				
Black	Female	1975-1990	4.3 ^c	1990-2001	0.3				
<u>SEER Delay-Adjusted Incidence^a</u>									
All Races	Male and Female	1975-1982	2.5 ^c	1982-1991	1.0 ^c	1991-2001	-0.8 ^c		
All Races	Male	1975-1982	1.4 ^c	1982-1991	-0.4	1991-2001	-1.9 ^c		
All Races	Female	1975-1982	5.5 ^c	1982-1990	3.5 ^c	1990-1998	1.1 ^c	1998-2001	-1.3
White	Male and Female	1975-1982	2.5 ^c	1982-1991	1.1 ^c	1991-2001	-0.6 ^c		
White	Male	1975-1981	1.5 ^c	1981-1990	-0.2	1990-2001	-1.7 ^c		
White	Female	1975-1982	5.6 ^c	1982-1988	4.2 ^c	1988-1998	1.6 ^c	1998-2001	-1.5
Black	Male and Female	1975-1984	3.5 ^c	1984-2001	-0.6 ^c				
Black	Male	1975-1984	3.1 ^c	1984-2001	-1.6 ^c				
Black	Female	1975-1990	4.2 ^c	1990-2001	0.5				
<u>U.S. Cancer Mortality^b</u>									
All Races	Male and Female	1975-1980	3.0 ^c	1980-1990	1.8 ^c	1990-1995	-0.2	1995-2001	-1.0 ^c
All Races	Male	1975-1982	1.8 ^c	1982-1991	0.4 ^c	1991-2001	-1.9 ^c		
All Races	Female	1975-1982	6.0 ^c	1982-1990	4.2 ^c	1990-1995	1.7 ^c	1995-2001	0.2
White	Male and Female	1975-1982	2.6 ^c	1982-1991	1.7 ^c	1991-2001	-0.6 ^c		
White	Male	1975-1982	1.7 ^c	1982-1991	0.4 ^c	1991-2001	-1.8 ^c		
White	Female	1975-1983	5.8 ^c	1983-1990	4.1 ^c	1990-1995	1.8 ^c	1995-2001	0.3
Black	Male and Female	1975-1981	3.5 ^c	1981-1990	1.9 ^c	1990-1997	-0.9 ^c	1997-2001	-2.1 ^c
Black	Male	1975-1981	3.1 ^c	1981-1989	1.6 ^c	1989-1993	-0.7	1993-2001	-2.6 ^c
Black	Female	1975-1980	7.1 ^c	1980-1990	4.2 ^c	1990-1998	1.3 ^c	1998-2001	-1.5

Joinpoint Regression Program Version 2.7, September 2003, National Cancer Institute. (<http://srab.cancer.gov/joinpoint/>).

^a The APC is the Annual Percent Change based on rates age-adjusted to the 2000 U.S. standard population by 5-year age groups. Trends are from the SEER 9 areas.

^b Trends are from the NCHS public use data file for the total US.

^c The APC is significantly different from zero (p<.05).

Table XV-2
 SMALL CELL LUNG AND BRONCHUS CANCER (Invasive) AND NON-SMALL CELL LUNG AND BRONCHUS CANCER (Invasive)

TRENDS IN SEER INCIDENCE^a USING THE JOINTPOINT REGRESSION PROGRAM, 1975-2001
 WITH UP TO THREE JOINTPOINTS BY RACE AND SEX

		Joinpoint Segment 1		Joinpoint Segment 2		Joinpoint Segment 3		Joinpoint Segment 4	
		Year	APC	Year	APC	Year	APC	Year	APC
<u>SEER Cancer Incidence for Small Cell Lung and Bronchus^a</u>									
All Races	Male and Female	1975-1982	6.2 ^c	1982-1989	1.3	1989-2001	-2.4 ^c		
All Races	Male	1975-1980	6.4 ^c	1980-1988	0.5	1988-2001	-3.4 ^c		
All Races	Female	1975-1982	9.6 ^c	1982-1991	3.0 ^c	1991-2001	-1.8 ^c		
White	Male and Female	1975-1982	6.3 ^c	1982-1989	1.4 ^c	1989-2001	-2.2 ^c		
White	Male	1975-1980	6.2 ^c	1980-1988	0.6	1988-2001	-3.3 ^c		
White	Female	1975-1982	10.2 ^c	1982-1991	3.1 ^c	1991-2001	-1.6 ^c		
Black	Male and Female	1975-1986	4.5 ^c	1986-2001	-2.1 ^c				
Black	Male	1975-1985	4.8 ^c	1985-2001	-3.2 ^c				
Black	Female	1975-1991	4.5 ^c	1991-2001	-2.0				
<u>SEER Cancer Incidence for Non-Small Cell Lung and Bronchus^a</u>									
All Races	Male and Female	1975-1988	1.5 ^c	1988-1998	0.0	1998-2001	-2.7 ^c		
All Races	Male	1975-1981	1.1 ^c	1981-1992	-0.3	1992-2001	-1.9 ^c		
All Races	Female	1975-1988	4.3 ^c	1988-1998	1.7 ^c	1998-2001	-2.1 ^c		
White	Male and Female	1975-1988	1.6 ^c	1988-1998	0.2	1998-2001	-2.4 ^c		
White	Male	1975-1990	0.2	1990-2001	-1.8 ^c				
White	Female	1975-1988	4.4 ^c	1988-1998	1.9 ^c	1998-2001	-2.1 ^c		
Black	Male and Female	1975-1984	3.3 ^c	1984-2001	-0.6 ^c				
Black	Male	1975-1984	2.6 ^c	1984-1998	-1.2 ^c	1998-2001	-5.7 ^c		
Black	Female	1975-1990	4.2 ^c	1990-2001	0.5				

Joinpoint Regression Program Version 2.7, September 2003, National Cancer Institute. (<http://srab.cancer.gov/joinpoint/>).

^a The APC is the Annual Percent Change based on rates age-adjusted to the 2000 U.S. standard population by 5-year age groups. Trends are from the SEER 9 areas.

^b Trends are from the NCHS public use data file for the total US.

^c The APC is significantly different from zero (p<.05).

Table XV-3
LUNG AND BRONCHUS CANCER (Invasive)

SEER INCIDENCE RATES, AGE-ADJUSTED AND AGE-SPECIFIC RATES^a, BY RACE AND SEX

	All Races			Whites			Blacks		
	Total	Males	Females	Total	Males	Females	Total	Males	Females
<u>AGE-ADJUSTED RATES</u>									
YEAR OF DIAGNOSIS:									
1975	52.3	89.5	24.5	52.0	89.1	24.9	64.6	115.1	24.7
1976	55.4	93.8	27.3	54.6	92.7	27.3	72.3	131.0	28.6
1977	56.7	95.5	28.3	55.9	94.7	28.1	73.6	124.8	33.9
1978	57.9	96.7	29.7	57.3	95.9	29.9	74.5	130.7	31.6
1979	58.6	95.8	31.6	58.0	95.1	31.6	74.4	127.4	34.0
1980	60.6	99.9	32.2	59.4	97.7	32.4	86.6	151.5	38.3
1981	62.0	99.4	35.1	61.6	98.5	35.5	82.2	143.0	37.2
1982	63.3	100.7	36.7	63.1	99.7	37.7	80.4	141.1	35.7
1983	63.4	99.5	37.8	63.0	97.7	39.0	86.6	151.3	39.5
1984	65.5	102.1	39.5	64.4	100.0	39.7	93.1	159.2	44.8
1985	64.7	98.7	40.2	64.0	97.0	40.9	89.6	149.8	46.0
1986	65.8	99.1	42.3	65.2	97.5	42.9	92.9	156.1	48.7
1987	68.0	101.6	44.2	68.2	100.8	45.5	84.8	143.7	43.2
1988	68.1	98.9	46.3	68.3	98.1	47.8	88.3	145.3	48.0
1989	67.7	98.1	46.2	67.7	97.2	47.3	89.3	142.7	51.7
1990	68.2	97.2	47.8	68.4	96.4	49.0	86.9	137.6	52.1
1991	69.4	97.6	49.6	69.1	96.2	50.7	93.3	145.3	56.9
1992	69.6	97.5	49.9	69.1	95.1	51.1	94.1	149.6	55.7
1993	67.9	94.1	49.2	67.9	92.7	50.7	86.3	135.7	52.2
1994	67.3	91.2	50.6	67.4	90.3	51.7	87.2	131.8	56.2
1995	66.9	90.0	50.4	67.1	88.0	52.4	86.3	139.7	50.2
1996	66.4	88.0	51.2	66.8	86.7	53.0	83.9	127.8	54.8
1997	66.6	86.4	52.5	67.3	85.0	54.9	82.2	129.5	50.3
1998	67.4	88.0	52.8	67.9	86.6	54.9	86.8	130.2	57.4
1999	65.5	84.3	52.1	66.0	83.0	54.1	83.8	121.5	58.2
2000	63.4	81.1	50.6	63.9	79.8	52.6	79.1	113.3	56.0
2001	61.2	77.7	49.1	62.1	77.3	51.0	76.9	110.2	54.5
<u>AGE-ADJUSTED RATES, 1997-2001</u>									
AGE AT DIAGNOSIS:									
All ages	64.8	83.4	51.4	65.4	82.3	53.5	81.7	120.7	55.3
Under 65	23.4	27.1	20.0	23.0	25.7	20.5	35.9	48.8	25.1
65 and over	350.7	472.6	268.7	358.2	473.5	281.1	398.0	617.5	263.8
All ages(IARC world std) ^b	42.3	52.7	34.2	42.6	51.6	35.6	55.4	79.7	37.8
<u>AGE-SPECIFIC RATES, 1997-2001</u>									
AGE AT DIAGNOSIS:									
<1	-	-	-	-	-	-	-	-	-
1-4	-	-	-	-	-	-	-	-	-
5-9	-	-	-	-	-	-	-	-	-
10-14	-	-	-	-	-	-	-	-	-
15-19	-	-	-	-	-	-	-	-	-
20-24	0.3	-	-	-	-	-	-	-	-
25-29	0.5	0.6	-	0.5	-	-	-	-	-
30-34	1.3	1.2	1.5	1.2	1.1	1.4	1.8	-	-
35-39	4.3	4.2	4.4	4.0	3.8	4.3	7.2	7.9	6.6
40-44	12.1	13.0	11.2	10.9	11.4	10.5	24.1	28.7	20.1
45-49	26.2	29.1	23.4	24.5	26.3	22.8	46.1	60.1	34.2
50-54	56.3	64.2	48.7	54.5	59.0	50.0	95.2	132.1	63.8
55-59	116.4	132.6	100.9	114.3	125.0	103.8	182.2	244.0	130.0
60-64	203.5	246.7	164.0	206.9	242.0	174.0	270.0	386.9	176.2
65-69	298.4	365.4	241.0	307.0	365.5	255.8	354.7	500.3	245.4
70-74	386.3	499.3	297.8	396.9	499.0	315.4	458.7	690.1	302.2
75-79	403.8	541.1	307.2	412.4	541.2	321.9	452.8	713.7	289.4
80-84	382.1	546.5	282.9	387.9	551.6	289.6	405.9	666.1	270.4
85+	265.1	450.8	187.1	263.2	451.9	186.4	264.5	504.2	173.5

^a SEER 9 areas. Rates are per 100,000 and are age-adjusted to the 2000 U.S. standard population by 5-year age groups, unless noted.

^b SEER 9 areas. Rates are per 100,000 and are age-adjusted to the IARC world standard population.

- Statistic not shown. Rate based on less than 25 cases for the time interval.

Table XV-4
SMALL CELL LUNG AND BRONCHUS CANCER (Invasive)

SEER INCIDENCE RATES, AGE-ADJUSTED AND AGE-SPECIFIC RATES^a, BY RACE AND SEX

	All Races			Whites			Blacks		
	Total	Males	Females	Total	Males	Females	Total	Males	Females
<u>AGE-ADJUSTED RATES</u>									
YEAR OF DIAGNOSIS:									
1975	6.6	10.3	3.8	6.9	10.7	4.0	5.9	8.9	3.5
1976	7.1	11.4	3.8	7.1	11.5	3.9	8.2	12.8	4.8
1977	7.7	12.4	4.2	7.8	12.8	4.2	8.1	11.0	5.8
1978	8.6	13.4	5.0	8.9	13.7	5.3	7.8	13.9	-
1979	8.7	13.1	5.3	9.0	13.6	5.6	7.6	11.8	4.5
1980	9.1	14.2	5.2	9.3	14.4	5.5	10.0	17.5	4.4
1981	9.7	14.5	6.1	10.0	14.8	6.5	9.2	15.9	4.2
1982	10.4	14.9	7.1	10.7	15.3	7.6	9.6	15.9	4.9
1983	10.4	14.9	7.1	10.7	15.0	7.6	9.1	15.1	4.9
1984	10.7	15.2	7.4	11.0	15.7	7.8	10.4	15.0	6.9
1985	10.4	15.0	7.1	10.8	15.3	7.5	11.1	17.8	6.3
1986	11.2	15.5	8.0	11.5	16.0	8.3	12.3	17.7	8.4
1987	10.6	14.1	8.2	11.2	14.6	8.8	9.5	14.5	6.0
1988	11.4	15.3	8.5	11.9	15.6	9.2	10.5	17.9	5.3
1989	11.2	14.8	8.7	11.7	15.2	9.2	12.1	17.5	8.5
1990	10.7	13.8	8.4	11.3	14.5	9.1	9.4	13.7	6.2
1991	11.3	14.0	9.4	11.7	14.3	9.9	12.4	16.0	10.0
1992	10.5	13.4	8.4	11.0	13.8	9.0	10.2	13.4	8.0
1993	10.0	12.3	8.4	10.5	12.7	9.0	9.4	13.2	6.8
1994	9.8	11.7	8.4	10.2	11.9	9.1	9.9	13.6	7.4
1995	9.8	12.2	8.1	10.3	12.6	8.8	9.4	13.7	6.6
1996	9.7	12.0	7.9	10.2	12.4	8.6	8.6	11.7	6.7
1997	9.5	10.9	8.6	10.1	11.1	9.5	7.8	10.7	6.1
1998	9.3	10.9	8.1	9.9	11.3	8.8	9.4	12.2	7.4
1999	8.7	10.0	7.9	9.3	10.2	8.7	8.1	10.9	6.0
2000	8.7	10.3	7.5	9.2	10.7	8.1	9.4	11.5	7.9
2001	8.2	9.6	7.2	8.7	10.0	7.8	8.5	10.8	6.8
<u>AGE-ADJUSTED RATES, 1997-2001</u>									
AGE AT DIAGNOSIS:									
All ages	8.9	10.3	7.9	9.4	10.7	8.6	8.7	11.2	6.8
Under 65	3.6	3.8	3.4	3.8	3.9	3.7	4.0	5.1	3.1
65 and over	45.4	55.0	39.1	48.2	57.2	42.3	41.0	53.9	32.9
All ages(IARC world std) ^b	6.1	6.9	5.6	6.5	7.1	6.1	6.1	7.9	4.8
<u>AGE-SPECIFIC RATES, 1997-2001</u>									
AGE AT DIAGNOSIS:									
<1	-	-	-	-	-	-	-	-	-
1-4	-	-	-	-	-	-	-	-	-
5-9	-	-	-	-	-	-	-	-	-
10-14	-	-	-	-	-	-	-	-	-
15-19	-	-	-	-	-	-	-	-	-
20-24	-	-	-	-	-	-	-	-	-
25-29	-	-	-	-	-	-	-	-	-
30-34	-	-	-	-	-	-	-	-	-
35-39	0.4	-	0.5	0.4	-	-	-	-	-
40-44	1.4	1.5	1.4	1.6	1.6	1.5	-	-	-
45-49	3.4	3.5	3.3	3.6	3.7	3.6	3.5	-	-
50-54	8.4	9.1	7.7	8.9	9.3	8.5	10.8	14.6	7.6
55-59	19.2	20.2	18.2	20.4	20.8	20.0	20.4	25.6	16.0
60-64	32.8	35.5	30.2	34.8	36.1	33.5	35.7	47.4	26.3
65-69	47.3	52.1	43.2	50.8	54.2	47.7	45.4	57.3	36.5
70-74	53.4	60.8	47.6	57.2	63.0	52.5	46.4	63.6	34.8
75-79	52.9	65.2	44.2	56.1	68.9	47.2	43.6	52.0	38.3
80-84	40.5	54.6	32.1	42.0	56.3	33.4	34.3	-	27.7
85+	17.6	32.3	11.4	17.5	32.6	11.4	23.6	-	-

^a SEER 9 areas. Rates are per 100,000 and are age-adjusted to the 2000 U.S. standard population by 5-year age groups, unless noted.

^b SEER 9 areas. Rates are per 100,000 and are age-adjusted to the IARC world standard population.

- Statistic not shown. Rate based on less than 25 cases for the time interval.

Table XV-5
 NON-SMALL CELL LUNG AND BRONCHUS CANCER (Invasive)

SEER INCIDENCE RATES, AGE-ADJUSTED AND AGE-SPECIFIC RATES^a, BY RACE AND SEX

	All Races			Whites			Blacks		
	Total	Males	Females	Total	Males	Females	Total	Males	Females
<u>AGE-ADJUSTED RATES</u>									
YEAR OF DIAGNOSIS:									
1975	45.6	79.2	20.8	45.1	78.4	20.9	58.8	106.1	21.2
1976	48.4	82.4	23.5	47.5	81.2	23.4	64.1	118.2	23.9
1977	49.0	83.1	24.1	48.0	81.9	23.8	65.5	113.8	28.1
1978	49.2	83.3	24.6	48.4	82.2	24.6	66.7	116.8	28.5
1979	49.9	82.7	26.2	49.0	81.5	26.0	66.8	115.6	29.5
1980	51.5	85.7	27.0	50.1	83.3	26.8	76.7	133.9	33.9
1981	52.3	84.9	29.0	51.6	83.6	29.1	73.0	127.1	33.0
1982	52.9	85.8	29.6	52.3	84.4	30.2	70.7	125.1	30.8
1983	53.1	84.6	30.8	52.3	82.6	31.4	77.5	136.3	34.6
1984	54.8	86.9	32.1	53.3	84.3	31.9	82.6	144.2	38.0
1985	54.2	83.8	33.1	53.2	81.7	33.4	78.6	132.1	39.8
1986	54.6	83.6	34.3	53.7	81.5	34.7	80.7	138.4	40.4
1987	57.3	87.5	36.0	57.0	86.2	36.7	75.3	129.2	37.2
1988	56.8	83.6	37.8	56.5	82.4	38.6	77.8	127.5	42.7
1989	56.5	83.3	37.5	56.0	82.0	38.1	77.2	125.3	43.2
1990	57.6	83.4	39.4	57.1	82.0	39.9	77.5	123.9	45.9
1991	58.1	83.6	40.3	57.5	81.9	40.8	80.9	129.3	46.9
1992	59.1	84.1	41.4	58.1	81.3	42.1	83.9	136.1	47.7
1993	57.8	81.8	40.8	57.4	80.0	41.8	76.9	122.4	45.3
1994	57.5	79.5	42.1	57.2	78.4	42.6	77.2	118.2	48.7
1995	57.1	77.8	42.3	56.8	75.5	43.7	76.9	126.0	43.6
1996	56.8	76.0	43.2	56.6	74.3	44.4	75.2	116.0	48.1
1997	57.1	75.6	43.9	57.1	73.8	45.4	74.3	118.8	44.2
1998	58.1	77.1	44.6	58.1	75.3	46.0	77.4	118.1	50.0
1999	56.8	74.3	44.2	56.7	72.8	45.4	75.7	110.6	52.1
2000	54.7	70.8	43.1	54.7	69.1	44.5	69.6	101.8	48.1
2001	53.0	68.1	41.9	53.4	67.3	43.2	68.4	99.3	47.7
<u>AGE-ADJUSTED RATES, 1997-2001</u>									
AGE AT DIAGNOSIS:									
All ages	55.9	73.1	43.5	56.0	71.6	44.9	73.0	109.5	48.5
Under 65	19.8	23.3	16.6	19.2	21.7	16.8	31.9	43.8	22.1
65 and over	305.3	417.6	229.7	310.0	416.3	238.8	356.9	563.6	230.8
All ages(IARC world std) ^b	36.2	45.8	28.6	36.1	44.5	29.5	49.3	71.7	33.0
<u>AGE-SPECIFIC RATES, 1997-2001</u>									
AGE AT DIAGNOSIS:									
<1	-	-	-	-	-	-	-	-	-
1-4	-	-	-	-	-	-	-	-	-
5-9	-	-	-	-	-	-	-	-	-
10-14	-	-	-	-	-	-	-	-	-
15-19	-	-	-	-	-	-	-	-	-
20-24	-	-	-	-	-	-	-	-	-
25-29	0.5	0.6	-	0.5	-	-	-	-	-
30-34	1.2	1.1	1.3	1.1	0.9	1.3	1.8	-	-
35-39	3.9	3.9	3.9	3.6	3.5	3.8	6.5	7.0	6.0
40-44	10.7	11.5	9.8	9.4	9.8	8.9	22.9	27.4	18.9
45-49	22.8	25.6	20.1	20.9	22.6	19.3	42.6	56.7	30.6
50-54	47.9	55.0	41.0	45.6	49.8	41.5	84.4	117.5	56.2
55-59	97.2	112.4	82.7	93.9	104.2	83.8	161.8	218.4	114.0
60-64	170.8	211.1	133.8	172.2	205.9	140.6	234.3	339.6	149.9
65-69	251.1	313.3	197.8	256.3	311.2	208.0	309.3	443.0	208.9
70-74	332.9	438.5	250.1	339.8	436.0	262.9	412.3	626.5	267.5
75-79	350.9	476.0	263.0	356.2	472.3	274.7	409.2	661.7	251.0
80-84	341.5	491.9	250.8	345.9	495.4	256.2	371.7	619.3	242.7
85+	247.5	418.4	175.7	245.7	419.2	175.0	240.9	466.2	155.4

^a SEER 9 areas. Rates are per 100,000 and are age-adjusted to the 2000 U.S. standard population by 5-year age groups, unless noted.

^b SEER 9 areas. Rates are per 100,000 and are age-adjusted to the IARC world standard population.

- Statistic not shown. Rate based on less than 25 cases for the time interval.

Table XV-6
LUNG AND BRONCHUS CANCER (Invasive)

U.S. DEATH RATES, AGE-ADJUSTED AND AGE-SPECIFIC RATES^a, BY RACE AND SEX

	All Races			Whites			Blacks		
	Total	Males	Females	Total	Males	Females	Total	Males	Females
<u>AGE-ADJUSTED RATES</u>									
YEAR OF DEATH:									
1975	42.6	76.4	17.6	42.1	75.5	17.7	49.3	91.0	17.3
1976	44.2	78.5	19.0	43.7	77.6	19.1	51.1	94.0	18.5
1977	45.5	80.4	20.0	44.8	79.1	20.1	54.6	100.8	19.9
1978	46.9	82.1	21.4	46.3	80.8	21.6	55.3	101.6	20.7
1979	47.7	82.9	22.3	47.1	81.6	22.4	56.4	102.9	22.2
1980	49.4	84.7	24.1	48.8	83.3	24.2	59.2	106.7	24.6
1981	50.0	85.2	24.9	49.3	83.5	25.1	60.6	109.7	25.1
1982	51.4	86.8	26.5	50.8	85.2	26.7	62.3	112.5	26.3
1983	52.4	87.0	28.1	51.7	85.4	28.3	63.7	112.8	28.7
1984	53.4	88.2	28.9	52.6	86.2	29.3	65.1	118.0	28.0
1985	54.3	88.5	30.4	53.7	86.7	30.8	65.8	117.5	29.6
1986	55.0	89.0	31.4	54.4	87.0	31.8	67.0	119.2	31.0
1987	56.2	90.0	32.7	55.6	88.1	33.0	68.6	121.8	32.5
1988	57.0	89.9	34.1	56.4	87.9	34.6	69.2	122.2	33.5
1989	57.9	89.8	35.8	57.2	87.6	36.3	71.0	124.7	34.9
1990	58.9	90.6	36.8	58.2	88.4	37.3	72.1	125.2	36.5
1991	59.0	89.9	37.6	58.4	87.8	38.1	71.6	123.6	37.2
1992	58.9	88.0	38.7	58.3	86.0	39.2	71.4	121.1	38.6
1993	59.1	87.6	39.3	58.7	85.5	40.0	71.1	122.0	37.7
1994	58.5	85.7	39.6	58.2	83.8	40.3	70.2	118.6	38.6
1995	58.4	84.4	40.3	58.1	82.6	41.0	69.3	116.1	38.8
1996	57.9	82.8	40.4	57.7	81.2	41.2	68.3	113.2	39.1
1997	57.5	81.3	40.8	57.3	79.8	41.5	67.9	110.2	40.5
1998	57.1	79.9	41.0	56.9	78.5	41.7	66.9	107.4	40.7
1999	55.4	77.0	40.2	55.3	75.7	40.9	65.0	103.6	40.0
2000	55.8	76.4	41.1	56.0	75.4	42.1	63.8	101.0	39.7
2001	55.2	75.1	40.9	55.5	74.1	42.0	62.6	99.2	38.8
<u>AGE-ADJUSTED RATES, 1997-2001</u>									
AGE AT DEATH:									
All ages	56.2	77.9	40.8	56.2	76.6	41.6	65.2	104.1	39.9
Under 65	18.6	23.2	14.3	18.2	22.2	14.5	25.7	37.4	16.2
65 and over	316.1	455.6	224.0	318.4	452.7	229.3	337.6	565.0	204.1
All ages(IARC world std) ^b	35.5	47.6	26.1	35.4	46.7	26.6	42.8	66.2	26.3
<u>AGE-SPECIFIC RATES, 1997-2001</u>									
AGE AT DEATH:									
<1	-	-	-	-	-	-	-	-	-
1-4	-	-	-	-	-	-	-	-	-
5-9	-	-	-	-	-	-	-	-	-
10-14	-	-	-	-	-	-	-	-	-
15-19	0.0	-	-	-	-	-	-	-	-
20-24	0.1	0.1	-	0.1	0.1	-	-	-	-
25-29	0.2	0.2	0.2	0.2	0.2	0.2	0.2	-	-
30-34	0.7	0.7	0.7	0.8	0.8	0.8	0.7	0.7	0.7
35-39	3.0	3.1	2.9	2.8	2.9	2.8	4.5	5.1	4.1
40-44	9.4	10.7	8.1	8.8	9.7	7.8	15.3	20.0	11.1
45-49	20.6	25.0	16.3	19.2	22.7	15.8	34.7	48.2	23.2
50-54	45.1	55.4	35.2	43.5	51.7	35.4	70.2	102.5	43.0
55-59	93.6	117.7	71.0	92.3	113.2	72.5	127.6	189.9	76.8
60-64	162.7	208.9	120.9	163.1	205.1	124.4	198.2	295.9	121.6
65-69	247.4	327.6	178.9	249.5	324.4	184.3	279.1	426.7	169.9
70-74	328.7	449.1	234.6	330.6	444.6	240.0	368.8	584.5	225.8
75-79	366.0	520.6	258.6	368.6	516.6	264.7	392.5	657.8	232.6
80-84	367.3	555.7	256.9	370.9	553.8	262.9	357.5	656.3	208.9
85+	296.2	523.7	204.0	298.1	525.3	206.4	284.8	563.4	179.9

^a NCHS public use data file for the total US. Rates are per 100,000 and are age-adjusted to the 2000 U.S. standard population by 5-year age groups, unless noted.

^b NCHS public use data file for the total US. Rates are per 100,000 and are age-adjusted to the IARC world standard population.

- Statistic not shown. Rate based on less than 25 cases for the time interval.

Table XV-7
LUNG AND BRONCHUS CANCER (Invasive)

SURVIVAL RATES, BY RACE, SEX, DIAGNOSIS YEAR, STAGE AND AGE

	All Races			Whites			Blacks		
	Total	Males	Females	Total	Males	Females	Total	Males	Females
<u>5-YR RELATIVE SURVIVAL RATES</u>									
YEAR OF DIAGNOSIS:									
1960-1963 ^a	-	-	-	8	7	11	5	5	6
1970-1973 ^a	-	-	-	10	9	14	7	6	10
1974-1976 ^b	12.5	11.2	15.9	12.5	11.1	16.0	11.5	11.0	13.3
1977-1979 ^b	13.3	11.7	17.1	13.6	12.0	17.2	11.1	9.1	17.3
1980-1982 ^b	13.4	12.0	16.1	13.5	12.2	16.2	12.1	10.9	15.6
1983-1985 ^b	13.6	11.9	16.8	13.8	12.1	17.0	11.4	10.2	14.2
1986-1988 ^b	13.3	12.0	15.4	13.5	12.0	15.8	11.9	12.0	11.7
1989-1991 ^b	14.0	12.4	16.2	14.4	12.8	16.6	10.8	9.6	13.0
1992-1994 ^b	14.7	12.9	17.1	15.1	13.2	17.5	11.8	10.5	14.1
1995-2000 ^b	15.2 ^c	13.6 ^c	17.2 ^c	15.4 ^c	13.7 ^c	17.4 ^c	13.2 ^c	11.9	15.4
1995-2000 ^b									
ALL STAGES	15.2	13.6	17.2	15.4	13.7	17.4	13.2	11.9	15.4
LOCALIZED	49.4	45.4	53.5	49.8	45.6	53.8	44.3	41.8	47.6
REGIONAL	16.1	15.1	17.4	16.3	15.2	17.6	14.9	13.6	16.8
DISTANT	2.1	2.1	2.3	2.1	2.0	2.3	1.4	1.4	1.3
UNSTAGED	8.2	8.5	8.0	7.9	8.1	7.7	10.5	10.3	10.8
<u>STAGE DISTRIBUTION (%) 1995-2000^b</u>									
ALL STAGES									
Number of cases	75,341	42,541	32,800	62,661	34,580	28,081	7,901	4,911	2,990
Percent	100%	100%	100%	100%	100%	100%	100%	100%	100%
LOCALIZED	16	15	18	17	15	18	14	13	16
REGIONAL	37	38	36	37	37	36	38	37	38
DISTANT	39	40	38	39	40	38	40	42	38
UNSTAGED	8	8	9	8	8	9	8	8	8
<u>5-YR RELATIVE SURVIVAL RATES, 1995-2000^b</u>									
AGE AT DIAGNOSIS:									
<45	22.1	19.3	25.7	24.5	22.3	27.0	16.1	12.9	21.3
45-54	19.0	15.8	23.2	19.4	15.5	24.2	16.1	15.3	17.6
55-64	17.2	15.1	20.2	17.7	15.6	20.3	13.4	11.3	17.2
65-74	15.3	13.8	17.2	15.5	13.8	17.6	12.4	11.7	13.6
75+	10.0	9.2	10.8	10.0	9.1	10.9	10.1	9.3	11.2
Under 65	18.2	15.7	21.5	18.7	16.1	22.0	14.6	12.8	17.9
65 and over	13.3	12.1	14.6	13.4	12.1	14.8	11.6	10.9	12.7

^a Rates are based on End Results data from a series of hospital registries and one population-based registry.
^b Rates are from the SEER 9 areas. They are based on data from population-based registries in Connecticut, New Mexico, Utah, Iowa, Hawaii, Atlanta, Detroit, Seattle-Puget Sound and San Francisco-Oakland. Rates are based on follow-up of patients into 2001.
^c The difference in rates between 1974-1976 and 1995-2000 is statistically significant (p<.05).
^d The standard error of the survival rate is between 5 and 10 percentage points.
^e The standard error of the survival rate is greater than 10 percentage points.
- Statistic could not be calculated.

Table XV-8
SMALL CELL LUNG AND BRONCHUS CANCER (Invasive)

SURVIVAL RATES, BY RACE, SEX, DIAGNOSIS YEAR, STAGE AND AGE

	All Races			Whites			Blacks		
	Total	Males	Females	Total	Males	Females	Total	Males	Females
<u>5-YR RELATIVE SURVIVAL RATES</u>									
YEAR OF DIAGNOSIS:									
1974-1976 ^a	3.6	3.0	5.0	3.6	2.9	5.0	3.4	3.6	3.1
1977-1979 ^a	4.5	3.3	6.7	4.5	3.3	6.7	3.8	3.4	4.8
1980-1982 ^a	4.7	3.8	6.2	4.8	4.0	6.1	3.9	3.0	6.4
1983-1985 ^a	4.7	3.5	6.6	4.8	3.6	6.6	4.7	2.5	8.6
1986-1988 ^a	5.0	3.9	6.5	5.2	4.0	6.8	3.9	3.4	4.6
1989-1991 ^a	5.4	4.5	6.5	5.5	4.3	6.9	3.7	4.3	2.9
1992-1994 ^b	6.3	4.9	7.8	6.3	4.9	7.7	5.5	3.8	7.6
1995-2000 ^b	6.5 ^b	5.6 ^b	7.4 ^b	6.6 ^b	5.6 ^b	7.6 ^b	5.4 ^b	5.0 ^b	5.9
1995-2000 ^a									
ALL STAGES	6.5	5.6	7.4	6.6	5.6	7.6	5.4	5.0	5.9
LOCALIZED	21.4	19.6	23.1	21.8	20.1	23.1	15.5 ^c	20.2 ^d	-
REGIONAL	10.8	9.3	12.2	11.0	9.4	12.5	9.9	9.7	10.4
DISTANT	2.1	2.0	2.3	2.2	2.0	2.4	0.4	0.0	0.8
UNSTAGED	6.7	6.0	6.9	6.4	6.1	6.3	13.3 ^c	-	15.0 ^c
<u>STAGE DISTRIBUTION (%) 1995-2000^a</u>									
ALL STAGES									
Number of cases	11,306	5,941	5,365	9,895	5,111	4,784	877	481	396
Percent	100%	100%	100%	100%	100%	100%	100%	100%	100%
LOCALIZED	6	6	7	6	6	7	5	5	5
REGIONAL	34	32	36	33	31	36	36	34	37
DISTANT	55	57	52	55	58	52	54	57	52
UNSTAGED	5	5	6	5	5	6	5	4	6
<u>5-YR RELATIVE SURVIVAL RATES, 1995-2000^a</u>									
AGE AT DIAGNOSIS:									
<45	11.6	9.2	14.7	12.5	9.2	16.3	0.0	-	-
45-54	9.8	7.0	13.5	9.7	7.2	13.1	9.0	3.8	14.9
55-64	8.4	7.1	9.9	8.8	7.5	10.3	4.0	4.3	3.8
65-74	5.4	4.8	5.9	5.3	4.4	6.1	5.7	6.3	5.4
75+	3.4	3.3	3.6	3.5	3.3	3.7	3.3	4.4	0.0
Under 65	8.9	7.2	11.1	9.2	7.5	11.3	5.7	4.4	7.5
65 and over	4.7	4.3	5.1	4.7	4.0	5.3	5.1	5.7	4.5

^a Rates are from the SEER 9 areas. They are based on data from population-based registries in Connecticut, New Mexico, Utah, Iowa, Hawaii, Atlanta, Detroit, Seattle-Puget Sound and San Francisco-Oakland. Rates are based on follow-up of patients into 2001.

^b The difference in rates between 1974-1976 and 1995-2000 is statistically significant (p<.05).

^c The standard error of the survival rate is between 5 and 10 percentage points.

^d The standard error of the survival rate is greater than 10 percentage points.

- Statistic could not be calculated.

Table XV-9
NON-SMALL CELL LUNG AND BRONCHUS CANCER (Invasive)

SURVIVAL RATES, BY RACE, SEX, DIAGNOSIS YEAR, STAGE AND AGE

	All Races			Whites			Blacks		
	Total	Males	Females	Total	Males	Females	Total	Males	Females
<u>5-YR RELATIVE SURVIVAL RATES</u>									
YEAR OF DIAGNOSIS:									
1974-1976 ^a	13.9	12.4	17.9	14.0	12.4	18.2	12.4	11.7	15.3
1977-1979 ^a	15.0	13.2	19.3	15.4	13.6	19.5	12.1	9.7	19.6
1980-1982 ^a	15.1	13.6	18.4	15.4	13.8	18.7	13.2	11.9	17.0
1983-1985 ^a	15.5	13.5	19.2	15.9	13.8	19.6	12.3	11.2	15.2
1986-1988 ^a	15.1	13.6	17.7	15.4	13.7	18.2	13.1	13.1	13.1
1989-1991 ^a	15.8	13.9	18.6	16.3	14.5	19.1	11.8	10.3	14.8
1992-1994 ^b	16.3	14.3	19.1	16.9	14.7	19.7	12.7	11.3	15.2
1995-2000 ^b	16.9 ^b	15.0 ^b	19.2 ^b	17.2 ^b	15.2 ^b	19.5 ^b	14.2 ^b	12.6	16.9
1995-2000 ^a									
ALL STAGES	16.9	15.0	19.2	17.2	15.2	19.5	14.2	12.6	16.9
LOCALIZED	51.3	47.1	55.6	51.7	47.3	55.9	45.4	42.7	49.1
REGIONAL	17.0	15.9	18.4	17.2	16.1	18.7	15.5	13.9	17.8
DISTANT	2.2	2.1	2.3	2.1	1.9	2.3	1.6	1.6	1.5
UNSTAGED	8.4	8.7	8.1	8.1	8.3	7.9	10.2	10.2	10.0
<u>STAGE DISTRIBUTION (%) 1995-2000^a</u>									
ALL STAGES									
Number of cases	64,035	36,600	27,435	52,766	29,469	23,297	7,024	4,430	2,594
Percent	100%	100%	100%	100%	100%	100%	100%	100%	100%
LOCALIZED	18	16	20	18	17	21	15	14	18
REGIONAL	37	38	36	37	38	35	38	38	38
DISTANT	36	37	35	36	37	35	39	40	36
UNSTAGED	9	8	9	9	9	9	8	8	8
<u>5-YR RELATIVE SURVIVAL RATES, 1995-2000^a</u>									
AGE AT DIAGNOSIS:									
<45	23.4	20.5	27.0	26.3	24.2	28.6	16.7	13.4	22.1
45-54	20.7	17.5	25.0	21.4	17.3	26.3	16.9	16.3	18.2
55-64	19.2	16.8	22.7	19.8	17.4	23.0	14.7	12.2	19.4
65-74	17.3	15.3	19.8	17.6	15.5	20.3	13.4	12.3	15.3
75+	11.0	10.1	11.9	11.0	10.0	12.1	10.9	9.7	12.3
Under 65	20.0	17.3	23.8	20.8	17.9	24.5	15.7	13.6	19.4
65 and over	14.8	13.4	16.5	15.0	13.5	16.8	12.5	11.5	14.2

^a Rates are from the SEER 9 areas. They are based on data from population-based registries in Connecticut, New Mexico, Utah, Iowa, Hawaii, Atlanta, Detroit, Seattle-Puget Sound and San Francisco-Oakland. Rates are based on follow-up of patients into 2001.

^b The difference in rates between 1974-1976 and 1995-2000 is statistically significant (p<.05).

^c The standard error of the survival rate is between 5 and 10 percentage points.

^d The standard error of the survival rate is greater than 10 percentage points.

- Statistic could not be calculated.

Table XV-10
LUNG AND BRONCHUS CANCER (Invasive)

SURVIVAL RATES^a

By Year of Diagnosis

All Races, Males and Females

Year of Diagnosis

	1975- 1979	1980- 1984	1985	1986	1987	1988	1989	1990	1991	1992	1993	1994	1995	1996	1997	1998	1999	2000	
Relative Survival Rates (SEER ^b)																			
1-year	36.8	38.7	39.6	40.3	39.7	40.2	40.4	40.3	41.2	41.1	40.8	41.0	41.5	41.1	41.8	41.3	42.7	42.1	
2-year	21.8	22.6	23.0	23.2	22.8	23.3	23.5	23.6	24.0	24.8	24.6	24.6	25.4	25.5	25.4	25.7	26.2		
3-year	16.7	17.4	17.7	17.7	17.1	17.7	17.6	18.0	18.8	19.0	18.9	19.1	19.5	19.9	19.9	20.1			
4-year	14.4	15.0	15.1	14.8	14.8	15.1	15.3	15.3	16.0	16.2	16.2	16.4	17.0	16.9	17.1				
5-year	13.1	13.4	13.6	13.2	13.3	13.4	14.0	13.8	14.2	14.4	14.8	14.9	15.1	15.2					
6-year	12.1	12.3	12.7	12.1	12.2	12.2	13.0	12.7	13.2	13.2	13.6	13.7	13.7						
7-year	11.4	11.5	11.6	11.4	11.1	11.3	12.0	11.8	12.1	12.2	12.6	12.7							
8-year	10.8	10.7	10.9	10.6	10.5	10.6	11.2	11.0	11.2	11.3	11.7								
9-year	10.2	10.0	10.3	10.1	9.8	10.0	10.6	10.2	10.7	10.6									
11-year	9.7	9.4	9.7	9.4	9.4	9.4	10.1	9.5	10.2										
10-year	9.3	9.1	9.3	8.9	9.0	8.9	9.5	9.0											
12-year	8.9	8.6	8.9	8.4	8.5	8.3	9.1												
13-year	8.5	8.2	8.5	8.1	8.0	8.0													
14-year	8.2	7.9	8.2	7.8	7.6														
15-year	7.8	7.5	7.8	7.4															
16-year	7.6	7.2	7.3																
17-year	7.3	6.9																	
18-year	7.1																		
19-year	6.8																		
20-year	6.6																		

^a Survival rates are relative rates expressed as percents.
^b Rates are from the SEER 9 areas.

Table XV-11
LUNG AND BRONCHUS CANCER (Invasive)

SURVIVAL RATES^a

By Year of Diagnosis

All Races, Males

Year of Diagnosis

	1975- 1979	1980- 1984	1985	1986	1987	1988	1989	1990	1991	1992	1993	1994	1995	1996	1997	1998	1999	2000	
Relative Survival Rates (SEER ^b)																			
1-year	34.8	36.9	37.0	38.3	38.2	38.1	38.0	38.0	38.9	39.0	38.2	38.7	39.3	39.4	39.5	38.5	39.7	39.7	
2-year	20.1	20.9	21.1	21.0	21.8	21.8	22.0	21.3	22.0	23.2	22.2	22.1	23.6	23.8	23.7	23.3	23.3		
3-year	15.2	15.8	15.7	16.0	16.0	16.4	16.2	16.0	17.1	17.6	16.5	16.8	17.7	18.5	18.4	17.8			
4-year	12.9	13.4	13.1	13.1	13.7	13.7	14.0	13.4	14.1	14.8	13.9	14.2	15.3	15.3	15.6				
5-year	11.6	12.0	11.8	11.6	12.4	12.1	12.8	11.9	12.6	13.2	12.6	12.9	13.6	13.8					
6-year	10.6	11.0	10.8	10.6	11.4	10.8	12.0	10.9	11.8	11.9	11.6	11.7	12.4						
7-year	10.1	10.1	9.9	9.9	10.4	9.9	11.3	10.2	10.6	11.0	10.8	10.8							
8-year	9.5	9.3	9.3	9.1	9.9	9.1	10.7	9.4	9.8	10.0	9.9								
9-year	9.0	8.7	8.7	8.7	9.3	8.6	10.1	8.5	9.3	9.4									
11-year	8.5	8.2	8.3	8.1	8.8	8.2	9.7	7.9	9.0										
10-year	8.0	7.9	8.0	7.5	8.4	7.8	9.2	7.3											
12-year	7.7	7.5	7.5	7.0	7.9	7.2	8.8												
13-year	7.3	7.2	7.2	6.7	7.3	6.9													
14-year	7.1	6.8	7.0	6.5	7.0														
15-year	6.6	6.5	6.6	6.2															
16-year	6.4	6.1	6.4																
17-year	6.3	5.8																	
18-year	6.0																		
19-year	5.8																		
20-year	5.6																		

^a Survival rates are relative rates expressed as percents.
^b Rates are from the SEER 9 areas.

Table XV-12
LUNG AND BRONCHUS CANCER (Invasive)

SURVIVAL RATES^a

By Year of Diagnosis

All Races, Females

Year of Diagnosis

	1975- 1979	1980- 1984	1985	1986	1987	1988	1989	1990	1991	1992	1993	1994	1995	1996	1997	1998	1999	2000	
Relative Survival Rates (SEER ^b)																			
1-year	41.9	42.8	44.7	43.9	42.2	43.6	44.3	43.9	44.7	44.2	44.7	44.1	44.6	43.4	44.6	44.7	46.3	45.0	
2-year	26.0	26.2	26.8	27.1	24.6	25.7	25.8	27.2	26.9	27.0	28.1	27.9	27.9	27.6	27.5	28.8	29.7		
3-year	20.7	20.9	21.5	20.6	19.0	19.6	19.7	21.1	21.3	21.1	22.4	22.2	22.1	21.7	21.7	22.9			
4-year	18.2	18.1	19.0	17.8	16.6	17.4	17.3	18.1	18.7	18.3	19.4	19.4	19.3	18.8	18.9				
5-year	16.6	16.3	17.1	15.9	14.8	15.5	15.7	16.5	16.5	16.1	17.8	17.5	17.0	17.0					
6-year	15.4	15.0	16.0	14.7	13.6	14.3	14.5	15.2	15.2	15.0	16.4	16.3	15.5						
7-year	14.5	14.1	14.6	13.8	12.2	13.4	13.2	14.0	14.1	13.9	15.1	15.1							
8-year	13.7	13.2	13.8	12.9	11.5	12.7	12.0	13.3	13.3	13.1	14.1								
9-year	13.0	12.4	12.9	12.4	10.5	11.9	11.2	12.5	12.5	12.3									
11-year	12.3	11.7	12.2	11.5	10.3	11.2	10.6	11.8	11.8										
10-year	11.8	11.2	11.4	11.0	9.8	10.5	10.0	11.2											
12-year	11.4	10.6	11.0	10.6	9.4	9.8	9.6												
13-year	11.0	10.0	10.5	10.0	9.0	9.5													
14-year	10.5	9.7	9.9	9.7	8.4														
15-year	10.0	9.2	9.6	9.1															
16-year	9.8	8.8	8.8																
17-year	9.3	8.5																	
18-year	9.0																		
19-year	8.6																		
20-year	8.3																		

^a Survival rates are relative rates expressed as percents.
^b Rates are from the SEER 9 areas.

Table XV-13
LUNG AND BRONCHUS CANCER (Invasive)

Percent Diagnosed With Cancer In 10, 20 and 30 Years and In Remaining Lifetime,
Given Cancer Free At Current Age By Race and Sex

Lifetime Risk (Percent) of Being Diagnosed (12 SEER Areas) With Cancer and
Lifetime Risk (Percent) of Dying (Total U.S.) From Cancer

1999-2001

All Races

Current Age	Males				Females			
	+10 yrs	+20 yrs	+30 yrs	Eventually	+10 yrs	+20 yrs	+30 yrs	Eventually
0	0.00	0.00	0.00	7.63	0.00	0.00	0.01	5.71
10	0.00	0.00	0.03	7.74	0.00	0.01	0.03	5.77
20	0.00	0.03	0.22	7.78	0.00	0.03	0.19	5.79
30	0.03	0.22	1.07	7.87	0.03	0.19	0.83	5.81
40	0.20	1.06	3.30	7.97	0.16	0.81	2.41	5.83
50	0.89	3.21	6.22	8.06	0.66	2.29	4.39	5.78
60	2.51	5.75	7.48	7.74	1.71	3.91	5.17	5.37

Lifetime Risk of Being Diagnosed = 7.63%
Lifetime Risk of Dying = 7.29%

Lifetime Risk of Being Diagnosed = 5.71%
Lifetime Risk of Dying = 4.84%

Whites

Current Age	Males				Females			
	+10 yrs	+20 yrs	+30 yrs	Eventually	+10 yrs	+20 yrs	+30 yrs	Eventually
0	0.00	0.00	0.00	7.63	0.00	0.00	0.01	5.99
10	0.00	0.00	0.03	7.72	0.00	0.01	0.03	6.05
20	0.00	0.03	0.20	7.76	0.00	0.03	0.19	6.06
30	0.02	0.20	1.00	7.84	0.03	0.19	0.85	6.08
40	0.18	0.99	3.24	7.93	0.16	0.83	2.53	6.10
50	0.84	3.16	6.19	8.01	0.68	2.42	4.65	6.05
60	2.50	5.75	7.46	7.70	1.82	4.15	5.42	5.62

Lifetime Risk of Being Diagnosed = 7.63%
Lifetime Risk of Dying = 7.36%

Lifetime Risk of Being Diagnosed = 5.99%
Lifetime Risk of Dying = 5.02%

Blacks

Current Age	Males				Females			
	+10 yrs	+20 yrs	+30 yrs	Eventually	+10 yrs	+20 yrs	+30 yrs	Eventually
0	0.00	0.00	0.00	8.20	0.00	0.00	0.00	5.29
10	0.00	0.00	0.06	8.42	0.00	0.00	0.04	5.41
20	0.00	0.05	0.44	8.50	0.00	0.04	0.30	5.43
30	0.05	0.45	1.91	8.72	0.04	0.30	1.14	5.47
40	0.41	1.92	4.76	8.96	0.27	1.12	2.76	5.52
50	1.63	4.69	7.72	9.21	0.89	2.60	4.43	5.48
60	3.57	7.11	8.67	8.85	1.87	3.88	4.86	5.03

Lifetime Risk of Being Diagnosed = 8.20%
Lifetime Risk of Dying = 7.36%

Lifetime Risk of Being Diagnosed = 5.29%
Lifetime Risk of Dying = 3.92%

Table XV-14
LUNG AND BRONCHUS (Invasive)

AGE-ADJUSTED SEER INCIDENCE AND U.S. DEATH RATES

By Race/Ethnicity and Sex

Incidence^a

RACE/ETHNICITY	Rate 1997-2001			Trend 1992-2001		
	Rate per 100,000 persons			APC (%)		
	Total	Males	Females	Total	Males	Females
All Races	61.7	79.1	49.1	-1.3 ^d	-2.3 ^d	-0.2
White	62.4	77.9	51.3	-1.2 ^d	-2.3 ^d	-0.2
White Hispanic ^b	33.3	46.0	24.5	-2.3 ^d	-2.9 ^d	-1.6
White Non-Hispanic ^b	64.1	79.1	53.4	-1.1 ^d	-2.1 ^d	-0.1
Black	79.8	117.2	54.5	-1.5 ^d	-2.6 ^d	0.5
Asian/Pacific Islander	42.4	60.5	28.5	-1.1 ^d	-1.3 ^d	-0.1
Amer Ind/Alaska Nat	33.1	46.0	23.4	-3.9 ^d	-4.3 ^d	-3.1 ^d
Hispanic ^b	32.6	45.2	23.9	-2.1 ^d	-2.7 ^d	-1.5

Mortality^c

RACE/ETHNICITY	Rate 1997-2001			Trend 1992-2001		
	Rate per 100,000 persons			APC (%)		
	Total	Males	Females	Total	Males	Females
All Races	56.2	77.9	40.8	-0.8 ^d	-1.9 ^d	0.6 ^d
White	56.2	76.6	41.6	-0.7 ^d	-1.7 ^d	0.7 ^d
White Hispanic ^b	25.7	40.4	15.3	-0.9 ^d	-1.5 ^d	0.1
White Non-Hispanic ^b	58.4	79.5	43.3	-0.5 ^d	-1.6 ^d	0.8 ^d
Black	65.2	104.1	39.9	-1.5 ^d	-2.4 ^d	0.4
Asian/Pacific Islander	28.2	40.2	19.2	-1.2 ^d	-1.7 ^d	0.1
Amer Ind/Alaska Nat	36.3	49.8	26.6	-0.6	-1.8	1.0
Hispanic ^b	25.2	39.6	14.9	-0.9 ^d	-1.4 ^d	0.1

The APC is the Annual Percent Change over the time interval.

- Statistic not shown. Rate based on less than 25 cases for the time interval. Trend based on less than 10 cases for at least one year within the time interval.

^a Incidence data are from the 12 SEER areas (San Francisco, Connecticut, Detroit, Hawaii, Iowa, New Mexico, Seattle, Utah, Atlanta, San Jose-Monterey, Los Angeles, and Alaska Native Registry).

^b Hispanic and Non-Hispanic are not mutually exclusive from Whites, Blacks, Asian Pacific Islanders, and American Indians/Alaska Natives. Incidence data for Hispanics and Non-Hispanics do not include cases from Detroit, Hawaii and Alaska Native Registry. For mortality, information is included for all states except Connecticut, Maine, Maryland, Oklahoma, New York, New Hampshire, North Dakota and Vermont.

^c Mortality data are analyzed from a public use file provided by the National Center for Health Statistics (NCHS).

^d The APC is significantly different from zero (p<.05).

Table XV-15
LUNG AND BRONCHUS CANCER (Invasive)

AGE-ADJUSTED SEER INCIDENCE RATES^a AND SEER DEATH RATES^b
By Registry, Race and Sex

	All Races			Whites			Blacks		
	Total	Males	Females	Total	Males	Females	Total	Males	Females
<u>SEER INCIDENCE RATES^a, 1997-2001</u>									
REGISTRY									
12 registries	61.7	79.1	49.1	62.4	77.9	51.3	79.8	117.2	54.5
11 registries	61.6	79.1	49.1	62.4	77.9	51.3	79.8	117.2	54.5
9 registries	64.8	83.4	51.4	65.4	82.3	53.5	81.7	120.7	55.3
San Francisco-Oakland	59.2	72.3	49.7	61.0	70.2	54.6	79.7	108.7	59.4
Connecticut	68.6	86.8	56.2	68.8	86.2	57.1	71.3	105.5	49.2
Metropolitan Detroit	81.4	106.7	64.2	79.5	101.2	65.0	91.6	132.8	63.6
Hawaii	52.6	69.7	38.1	65.6	77.5	54.3	-	-	-
Iowa	66.6	92.1	48.4	66.3	91.6	48.3	102.8	145.7	70.0
New Mexico	46.8	60.9	36.1	48.6	62.5	38.0	59.9	97.6	-
Seattle-Puget Sound	72.3	87.3	61.6	73.9	87.7	64.2	92.6	131.3	60.0
Utah	31.0	42.7	21.8	31.2	42.9	21.9	-	-	-
Metropolitan Atlanta	69.6	96.2	52.0	70.1	91.1	56.2	70.8	118.1	42.9
San Jose-Monterey	50.9	62.2	42.8	53.6	63.9	46.4	64.0	84.6	45.0
Los Angeles	54.3	69.1	43.4	54.0	65.9	45.3	75.9	109.9	52.9
<u>SEER DEATH RATES^b, 1997-2001</u>									
REGISTRY									
12 registries	47.8	63.3	36.9	48.4	62.6	38.5	63.7	95.0	43.0
11 registries	47.7	63.2	36.8	48.3	62.6	38.4	63.7	95.1	43.0
9 registries	49.7	66.1	38.1	50.2	65.7	39.5	63.8	95.4	42.9
San Francisco-Oakland	47.4	60.0	38.7	49.3	59.6	42.3	68.0	97.2	48.5
Connecticut	50.5	65.9	40.2	50.5	65.3	40.7	55.9	87.2	37.1
Metropolitan Detroit	59.3	79.6	45.7	57.5	76.0	45.4	68.2	97.8	48.3
Hawaii	38.8	53.1	26.9	47.5	59.0	37.0	-	-	-
Iowa	51.7	74.4	35.9	51.5	74.2	35.7	87.3	116.4	64.8
New Mexico	39.6	52.4	29.9	41.1	53.9	31.4	45.8	66.0	-
Seattle-Puget Sound	55.9	69.7	45.9	57.4	70.5	48.0	67.1	95.3	43.6
Utah	25.2	36.2	16.7	25.2	36.1	16.8	-	-	-
Metropolitan Atlanta	54.4	78.9	38.9	54.5	74.8	41.7	56.7	97.3	33.2
San Jose-Monterey	40.1	49.4	33.4	42.1	50.4	36.4	64.2	82.9	45.9
Los Angeles	43.4	57.2	33.5	43.3	54.7	35.0	63.6	94.8	43.1

Note: San Jose-Monterey and Los Angeles are new SEER areas as of 1992 and their data are only used in tables where indicated.

^a SEER 9 areas. Incidence rates are per 100,000 and are age-adjusted to the 2000 U.S. standard population by 5-year age groups.

^b NCHS public use data file for the total US. Death rates are per 100,000 and are age-adjusted to the 2000 U.S. standard population by 5-year age groups.

- Statistic could not be calculated or populations are inadequate.

Table XV-16
LUNG AND BRONCHUS CANCER (Invasive)

AVERAGE ANNUAL AGE-ADJUSTED CANCER DEATH^a RATES BY STATE, ALL RACES, 1997-2001

Males and Females

State	Rate	SE	Rank	PD
TOTAL U.S.	56.2	0.06		
High Five States				
Kentucky	78.0 ^{bc}	0.62	(01)	38.8
West Virginia	73.1 ^{bc}	0.83	(02)	30.1
Mississippi	70.0 ^{bc}	0.72	(03)	24.6
Arkansas	68.8 ^{bc}	0.69	(04)	22.4
Tennessee	68.7 ^{bc}	0.49	(05)	22.2
Low Five States				
North Dakota	45.1 ^{bc}	1.14	(47)	-19.8
Colorado	41.5 ^{bc}	0.50	(48)	-26.2
New Mexico	39.6 ^{bc}	0.69	(49)	-29.5
Hawaii	38.8 ^{bc}	0.79	(50)	-31.0
Utah	25.2 ^{bc}	0.58	(51)	-55.2

Males

State	Rate	SE	Rank	PD
TOTAL U.S.	77.9	0.12		
High Five States				
Kentucky	114.5 ^{bc}	1.19	(01)	47.0
Mississippi	111.1 ^{bc}	1.43	(02)	42.6
Tennessee	105.2 ^{bc}	0.97	(03)	35.0
Arkansas	103.6 ^{bc}	1.31	(04)	33.0
West Virginia	102.8 ^{bc}	1.54	(05)	32.0
Low Five States				
Idaho	61.0 ^{bc}	1.55	(47)	-21.7
Colorado	53.8 ^{bc}	0.89	(48)	-30.9
Hawaii	53.1 ^{bc}	1.37	(49)	-31.8
New Mexico	52.4 ^{bc}	1.22	(50)	-32.7
Utah	36.2 ^{bc}	1.05	(51)	-53.5

Females

State	Rate	SE	Rank	PD
TOTAL U.S.	40.8	0.07		
High Five States				
Nevada	54.1 ^{bc}	1.09	(01)	32.6
Kentucky	52.5 ^{bc}	0.68	(02)	28.7
West Virginia	52.5 ^{bc}	0.93	(03)	28.7
Delaware	47.9 ^{bc}	1.47	(04)	17.4
Alaska	46.9 ^b	2.43	(05)	15.0
Low Five States				
South Dakota	31.2 ^{bc}	1.20	(47)	-23.5
North Dakota	31.2 ^{bc}	1.29	(48)	-23.5
New Mexico	29.9 ^{bc}	0.81	(49)	-26.7
Hawaii	26.9 ^{bc}	0.90	(50)	-34.1
Utah	16.7 ^{bc}	0.63	(51)	-59.1

For additional detailed cancer statistics by state, please visit the State Cancer Profiles website. <http://statecancerprofiles.cancer.gov/>

- ^a NCHS public use data file. Rates are per 100,000 and are age-adjusted to the 2000 U.S. standard population by 5-year age groups.
- ^b Absolute percent difference between state rate and total U.S. rate is 5% or more.
- ^c Difference between state rate and total U.S. rate is statistically significant (p<=.0002).
- SE Standard error of the rate.
- PD Percent difference between state rate and total U.S. rate.

Table XV-17
LUNG AND BRONCHUS CANCER (Invasive)

Estimated United States Cancer Prevalence Counts^a on January 1, 2001
By Race/Ethnicity, Sex and Years Since Diagnosis

Years Since Diagnosis	0 to <5	5 to <10	10 to <15	15 to <20	20 to <25	0 to <11 ^e	0 to <26 ^e	>=26 ^g	Complete ^h
Race/Sex									
All Races ^b	201,687	65,597	33,792	18,636	9,864	275,731	330,991	16,540	347,531
Males	101,771	31,625	16,925	9,065	5,175	137,354	165,394	9,659	175,053
Females	99,916	33,972	16,867	9,571	4,689	138,377	165,597	6,881	172,478
White ^b	174,418	58,006	29,982	16,579	8,691	239,871	288,892	8,771	297,663
Males	86,667	27,574	14,762	7,854	4,532	117,662	142,117	4,546	146,663
Females	87,751	30,432	15,220	8,725	4,159	122,209	146,775	4,225	151,000
Black ^b	21,217	6,066	3,097	1,678	870	28,107	33,088	879	33,967
Males	11,525	3,183	1,749	967	499	15,160	18,014	510	18,524
Females	9,692	2,883	1,348	711	371	12,947	15,074	369	15,443
Asian/Pacific Islander ^c	4,269	1,016	+	+	+	5,426	+	+	+
Males	2,532	597	+	+	+	3,208	+	+	+
Females	1,737	419	+	+	+	2,218	+	+	+
Hispanic ^d	5,186	1,554	+	+	+	7,017	+	+	+
Males	2,805	765	+	+	+	3,696	+	+	+
Females	2,381	789	+	+	+	3,321	+	+	+

Estimated prevalence percent^a on January 1, 2001, of the SEER 11 population diagnosed in the previous 10 years
By Age at Prevalence, Race/Ethnicity and Sex

Age at Prevalence	Age Specific (Crude)										Age-Adjusted ^f
	All Ages	0-9	10-19	20-29	30-39	40-49	50-59	60-69	70-79	80+	All Ages
Race/Sex											
All Races ^c	0.0790%	-	0.0001%	0.0011%	0.0043%	0.0254%	0.1157%	0.3512%	0.5468%	0.3766%	0.0881%
Males	0.0806%	-	-	0.0008%	0.0039%	0.0256%	0.1206%	0.3908%	0.6464%	0.4991%	0.1012%
Females	0.0775%	-	-	0.0014%	0.0047%	0.0252%	0.1111%	0.3161%	0.4721%	0.3117%	0.0787%
White ^c	0.0851%	-	0.0002%	0.0012%	0.0042%	0.0250%	0.1134%	0.3663%	0.5642%	0.3789%	0.0900%
Males	0.0837%	-	-	0.0009%	0.0038%	0.0240%	0.1121%	0.3934%	0.6463%	0.4946%	0.1000%
Females	0.0864%	-	-	0.0015%	0.0047%	0.0259%	0.1147%	0.3417%	0.5019%	0.3185%	0.0831%
Black ^c	0.0689%	-	-	-	0.0061%	0.0410%	0.1787%	0.4027%	0.5670%	0.3226%	0.1012%
Males	0.0784%	-	-	-	0.0065%	0.0477%	0.2239%	0.5082%	0.7307%	0.5098%	0.1309%
Females	0.0603%	-	-	-	0.0058%	0.0351%	0.1409%	0.3191%	0.4590%	0.2365%	0.0807%
Asian/Pacific Islander ^c	0.0537%	-	-	0.0009%	0.0032%	0.0149%	0.0796%	0.2164%	0.4061%	0.3978%	0.0648%
Males	0.0661%	-	-	-	0.0025%	0.0181%	0.0973%	0.2855%	0.5999%	0.5385%	0.0882%
Females	0.0422%	-	-	0.0014%	0.0039%	0.0119%	0.0640%	0.1600%	0.2607%	0.2999%	0.0469%
Hispanic ^d	0.0177%	-	-	0.0008%	0.0026%	0.0109%	0.0387%	0.1499%	0.2648%	0.2278%	0.0409%
Males	0.0179%	-	-	-	0.0027%	0.0107%	0.0456%	0.1677%	0.3334%	0.3316%	0.0505%
Females	0.0174%	-	-	0.0010%	0.0024%	0.0110%	0.0323%	0.1353%	0.2160%	0.1717%	0.0343%

^a US 2001 cancer prevalence counts are based on 2001 cancer prevalence proportions from the SEER registries and 1/1/2001 US population estimates based on the average of 2000 and 2001 population estimates from the US Bureau of the Census. Prevalence was calculated using the First Malignant Primary Only for a person.

^{b c d} Statistics based on b) SEER 9 Areas c) SEER 11 Areas d) SEER 11 Areas excluding Hawaii and Detroit.

^e Maximum limited-duration prevalence: 26 years for 1975-2001 SEER 9 data; 11 years for 1990-2001 SEER 11 data (used to calculate prevalence for Hispanics and Asian Pacific Islanders).

^f Percentages are age-adjusted to the 2000 US standard population by 5-year age groups.

^{g h} (g) Cases diagnosed 26 years or more ago were estimated using the completeness index method (Capocaccia et. al. 1997, Merrill et. al. 2000). (h) Complete prevalence is obtained by summing 0 to <26 and >=26.

- Statistic not shown. Statistic based on fewer than 5 cases estimated alive in SEER for the time interval.

+ Not available.

SEER Incidence, Delay Adjusted Incidence and US Death Rates+ Lung and Bronchus Cancer, by Race and Sex

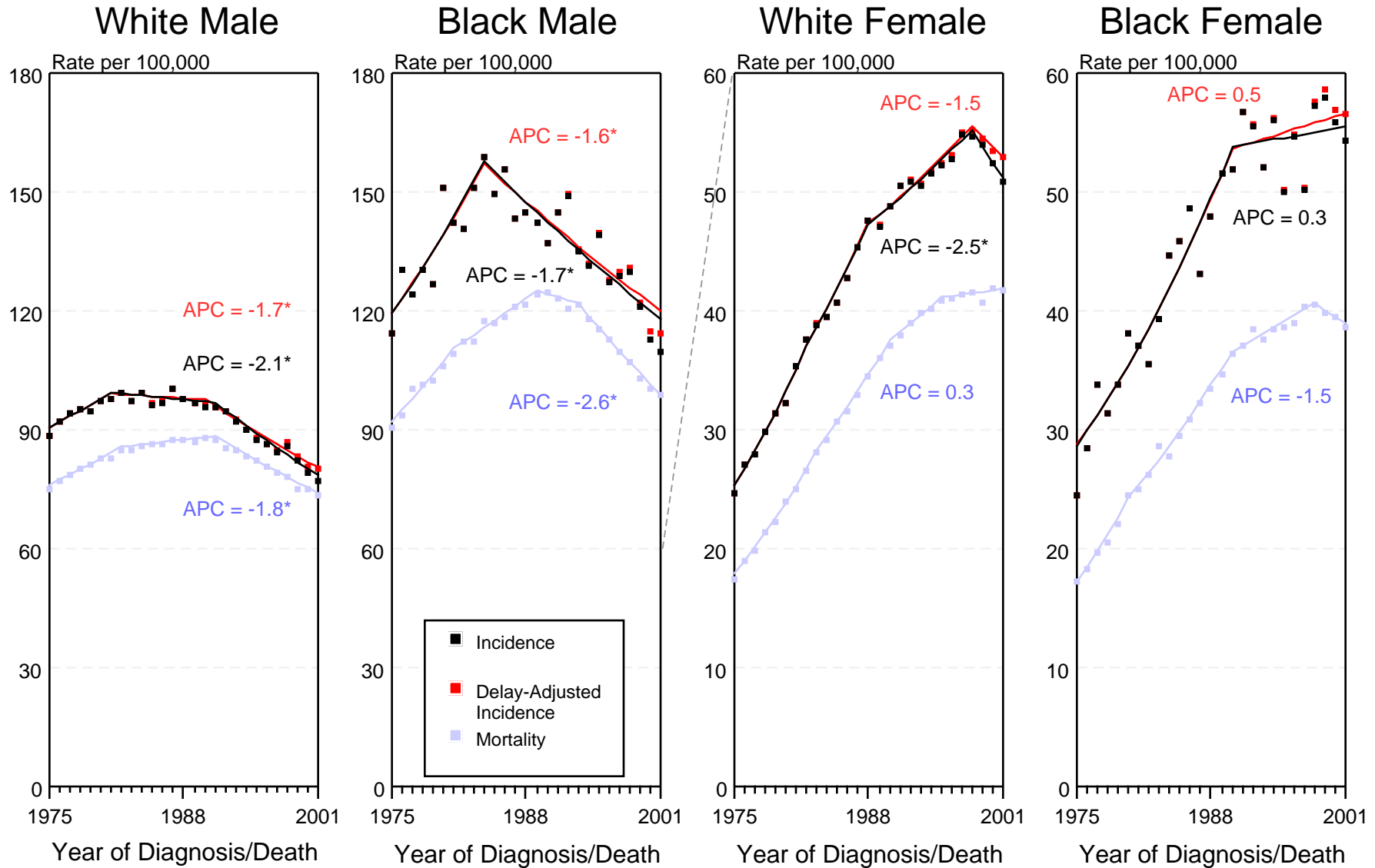


Figure XV-1

+ Source: SEER 9 areas and NCHS public use data file for the total US. Rates are age-adjusted to the 2000 US standard million population by 5-year age groups. Regression lines and APCs are calculated using the Joinpoint Regression Program Version 2.7, September 2003, National Cancer Institute.

The APC is the Annual Percent Change for the regression line segments. The APC shown on the graph is for the most recent trend.

* The APC is significantly different from zero ($p < 0.05$).

SEER Incidence and US Death Rates+ Lung and Bronchus Cancer, Under 65 Years of Age, by Race and Sex

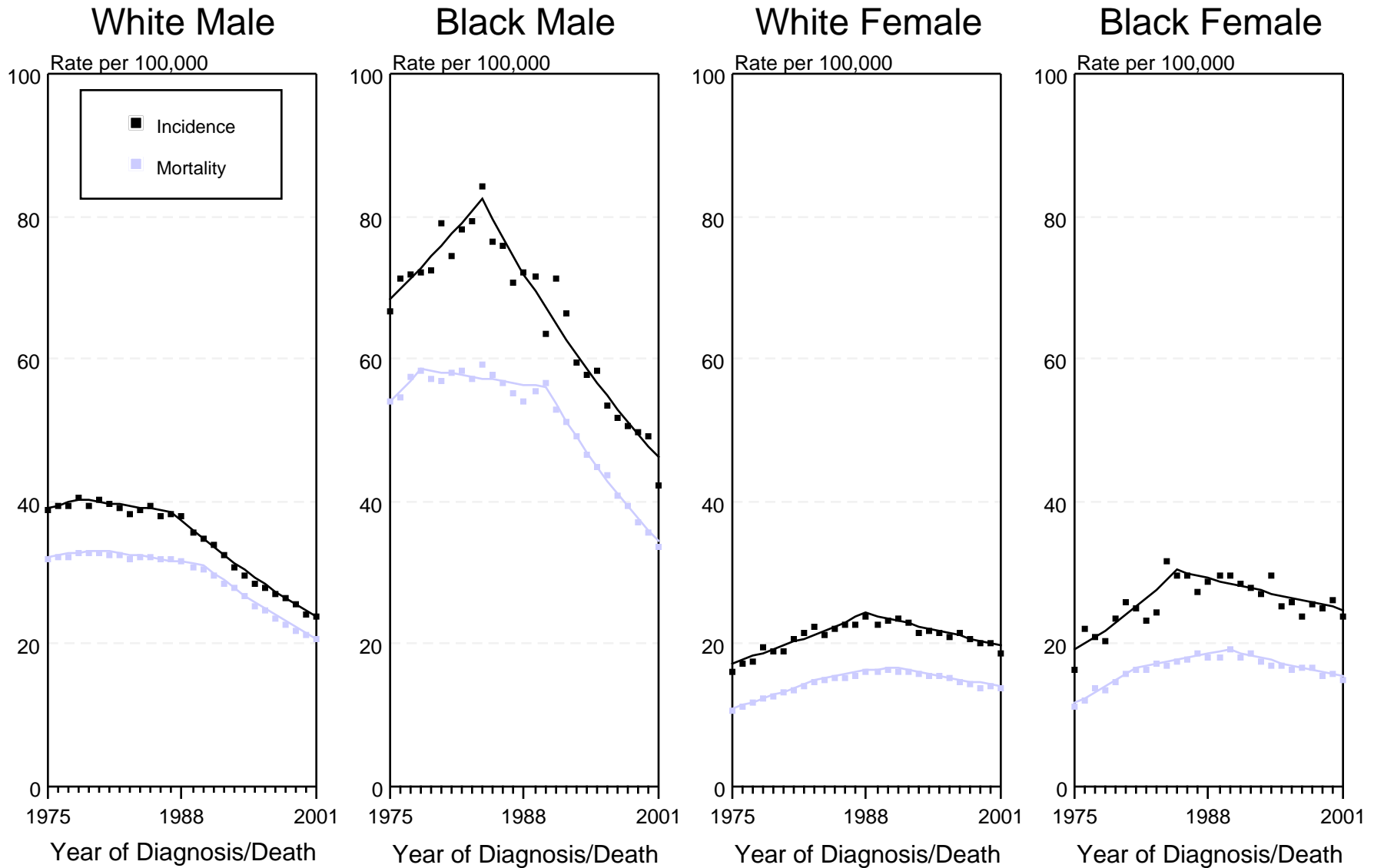


Figure XV-2

+ Source: SEER 9 areas and NCHS public use data file for the total US. Rates are age-adjusted to the 2000 US standard million population by 5-year age groups. Regression lines are calculated using the Joinpoint Regression Program Version 2.7, September 2003, National Cancer Institute.

SEER Incidence and US Death Rates+ Lung and Bronchus Cancer, Ages 65 and Over, by Race and Sex

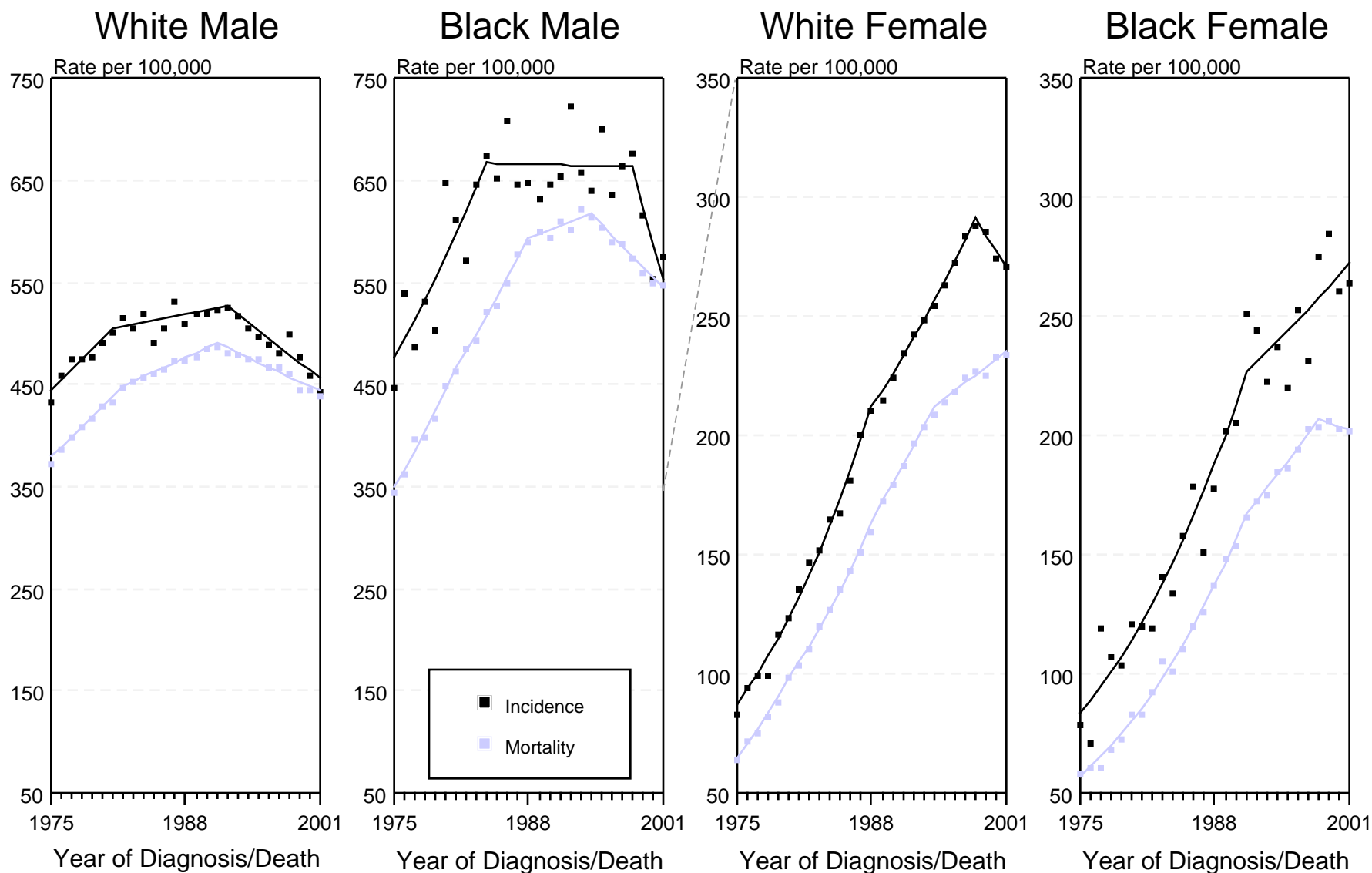


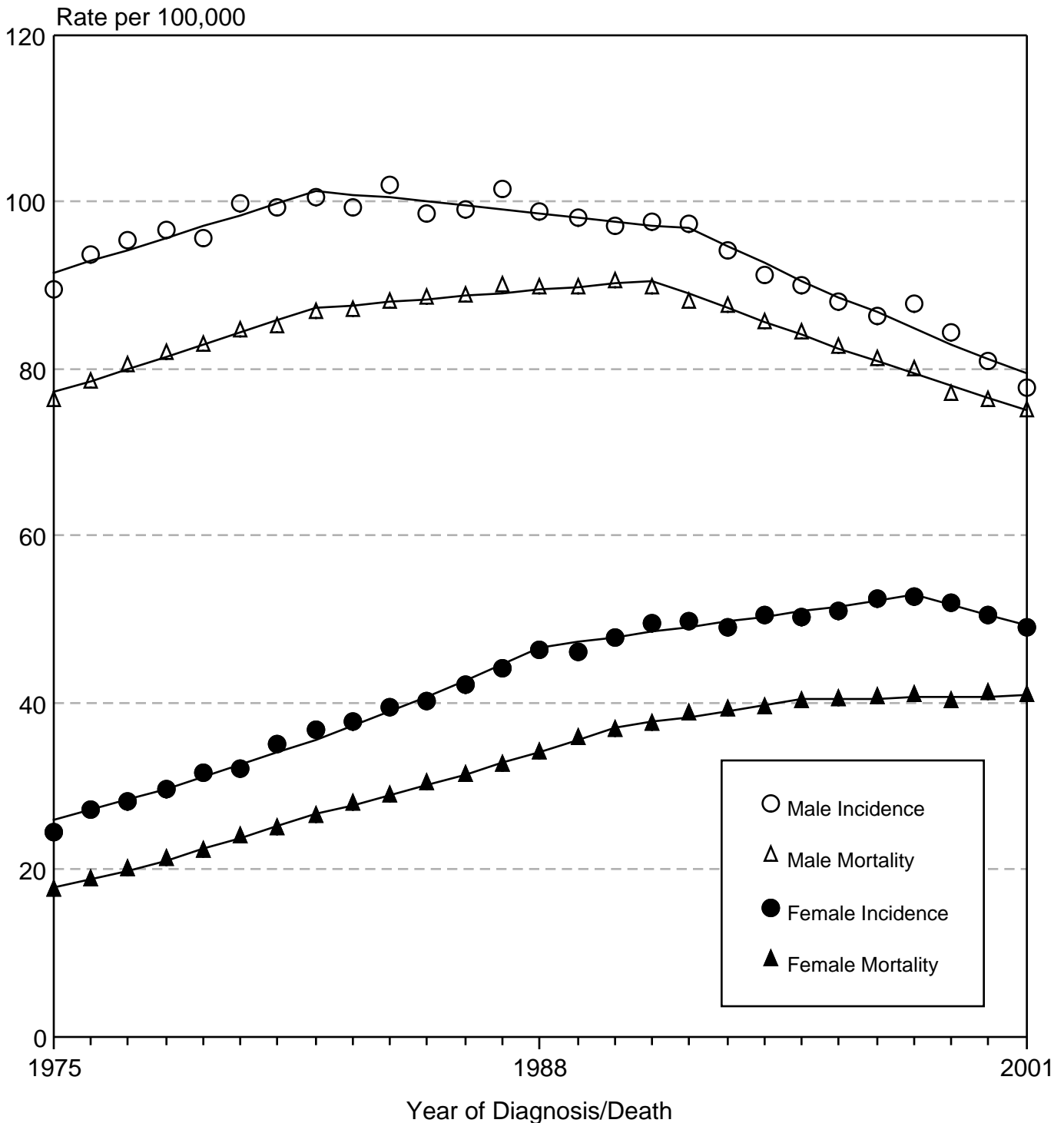
Figure XV-3

+ Source: SEER 9 areas and NCHS public use data file for the total US. Rates are age-adjusted to the 2000 US standard million population by 5-year age groups. Regression lines are calculated using the Joinpoint Regression Program Version 2.7, September 2003, National Cancer Institute.

Cancer of the Lung & Bronchus

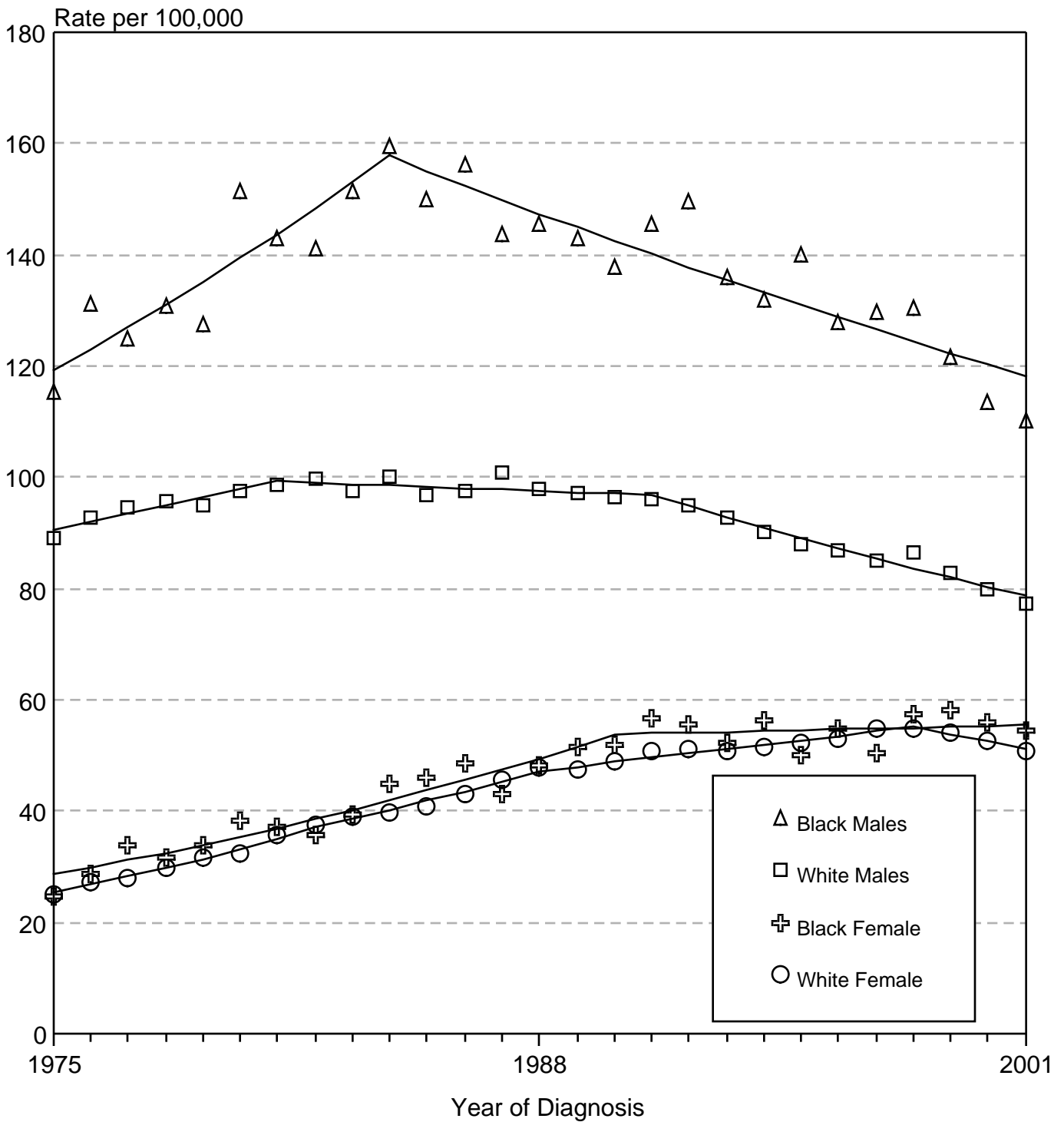
SEER Incidence & US Death Rates, 1975-2001

By Sex, All Races



Source: SEER 9 areas and NCHS public use data file for the total US. Rates are age-adjusted to the 2000 US standard million population by 5-year age groups. Regression lines are calculated using the Joinpoint Regression Program Version 2.7, September 2003, National Cancer Institute.

Cancer of the Lung & Bronchus SEER Incidence, 1975-2001 By Sex and Race



Source: SEER 9 areas. Rates are age-adjusted to the 2000 US standard million population by 5-year age groups. Regression lines are calculated using the Joinpoint Regression Program Version 2.7, September 2003, National Cancer Institute.