

Table 15.1  
Cancer of the Lung and Bronchus (Invasive)

Trends in SEER Incidence<sup>ab</sup> and U.S. Mortality<sup>c</sup> Using the Joinpoint Regression Program,  
1975-2006 With up to Four Joinpoints, 1992-2006 With up to Two Joinpoints,  
Both Sexes by Race/Ethnicity

	Joinpoint Trend 1		Joinpoint Trend 2		Joinpoint Trend 3		Joinpoint Trend 4		Joinpoint Trend 5		AAPC <sup>d</sup>	
	Years	APC	Years	APC	Years	APC	Years	APC	Years	APC	1997-2006	2002-2006
<u>SEER 9 Delay-Adjusted Incidence<sup>a</sup>, 1975-2006</u>												
All Races	1975-1982	2.5*	1982-1991	1.0*	1991-2006	-0.8*					-0.8*	-0.8*
White	1975-1982	2.5*	1982-1991	1.1*	1991-2006	-0.6*					-0.6*	-0.6*
Black	1975-1985	3.2*	1985-2006	-0.9*							-0.9*	-0.9*
<u>SEER 13 Delay-Adjusted Incidence<sup>b</sup>, 1992-2006</u>												
All Races	1992-2006	-1.1*									-1.1*	-1.1*
White	1992-2006	-1.0*									-1.0*	-1.0*
Black	1992-2006	-1.3*									-1.3*	-1.3*
<u>SEER 9 Observed Incidence<sup>a</sup>, 1975-2006</u>												
All Races	1975-1982	2.5*	1982-1991	1.0*	1991-2006	-0.8*					-0.8*	-0.8*
White	1975-1987	2.0*	1987-1998	-0.1	1998-2006	-1.1*					-1.0*	-1.1*
Black	1975-1986	2.8*	1986-2006	-1.1*							-1.1*	-1.1*
<u>SEER 13 Observed Incidence<sup>b</sup>, 1992-2006</u>												
All Races	1992-2006	-1.2*									-1.2*	-1.2*
White	1992-1998	-0.5	1998-2006	-1.5*							-1.4*	-1.5*
White NH <sup>ef</sup>	1992-1998	-0.4	1998-2006	-1.2*							-1.1*	-1.2*
Black	1992-2006	-1.4*									-1.4*	-1.4*
Black NH <sup>ef</sup>	1992-2006	-1.4*									-1.4*	-1.4*
API <sup>e</sup>	1992-2006	-0.7*									-0.7*	-0.7*
AI/AN <sup>eg</sup>	1992-2006	-0.3									-0.3	-0.3
Hispanic <sup>f</sup>	1992-2006	-1.8*									-1.8*	-1.8*
<u>U.S. Cancer Mortality<sup>c</sup>, 1975-2006</u>												
All Races	1975-1980	3.0*	1980-1990	1.8*	1990-1995	-0.2	1995-2006	-1.0*			-1.0*	-1.0*
White	1975-1980	2.9*	1980-1990	1.8*	1990-1995	-0.1	1995-2006	-0.9*			-0.9*	-0.9*
Black	1975-1981	3.5*	1981-1990	1.9*	1990-1996	-0.8*	1996-2006	-1.8*			-1.8*	-1.8*
<u>U.S. Cancer Mortality<sup>c</sup>, 1992-2006</u>												
All Races	1992-2006	-0.9*									-0.9*	-0.9*
White	1992-2006	-0.8*									-0.8*	-0.8*
White NH <sup>ef</sup>	1992-2006	-0.6*									-0.6*	-0.6*
Black	1992-1997	-1.1*	1997-2006	-1.8*							-1.8*	-1.8*
Black NH <sup>ef</sup>	1992-2006	-1.4*									-1.4*	-1.4*
API <sup>e</sup>	1992-2006	-1.3*									-1.3*	-1.3*
AI/AN <sup>eg</sup>	1992-2006	-0.2									-0.2	-0.2
Hispanic <sup>f</sup>	1992-1997	0.4	1997-2006	-2.1*							-2.1*	-2.1*

Joinpoint Regression Program Version 3.3.1, April 2008, National Cancer Institute. (<http://srab.cancer.gov/joinpoint/>).

The APC is the Annual Percent Change based on rates age-adjusted to the 2000 US Std Population (19 age groups - Census P25-1130).

<sup>a</sup> Trends are from the SEER 9 areas (San Francisco, Connecticut, Detroit, Hawaii, Iowa, New Mexico, Seattle, Utah, and Atlanta).

<sup>b</sup> Trends are from the SEER 13 areas (SEER 9 Areas, Los Angeles, San Jose-Monterey, Rural Georgia, and the Alaska Native Registry).

<sup>c</sup> Trends are from US Mortality Files, National Center for Health Statistics, Centers for Disease Control and Prevention.

<sup>d</sup> The AAPC is the Average Annual Percent Change and is based on the APCs calculated by Joinpoint.

<sup>e</sup> API - Asian/Pacific Islander, AI/AN - American Indian/Alaska Native, NH - Non-Hispanic

<sup>f</sup> Hispanic and Non-Hispanic are not mutually exclusive from whites, blacks, Asian/Pacific Islanders, and American Indians/Alaska

Natives. Incidence data for Hispanics and Non-Hispanics are based on NHIA and exclude cases from the Alaska Native Registry.

The Hispanic and Non-Hispanic mortality trends exclude deaths from CT, DC, ME, MD, MN, NH, NY, ND, OK and VT.

<sup>g</sup> Data for American Indian/Alaska Native are based on the CHSDA (Contract Health Service Delivery Area) counties.

\* The APC/AAPC is significantly different from zero ( $p < .05$ ).

- Joinpoint regression line analysis could not be performed on data series.

Table 15.2  
Cancer of the Lung and Bronchus (Invasive)

Trends in SEER Incidence<sup>ab</sup> and U.S. Mortality<sup>c</sup> Using the Joinpoint Regression Program,  
1975-2006 With up to Four Joinpoints, 1992-2006 With up to Two Joinpoints,  
Males by Race/Ethnicity

	Joinpoint Trend 1		Joinpoint Trend 2		Joinpoint Trend 3		Joinpoint Trend 4		Joinpoint Trend 5		AAPC <sup>d</sup>	
	Years	APC	Years	APC	Years	APC	Years	APC	Years	APC	1997-2006	2002-2006
<u>SEER 9 Delay-Adjusted Incidence<sup>a</sup>, 1975-2006</u>												
All Races	1975-1982	1.4*	1982-1991	-0.4	1991-2006	-1.8*					-1.8*	-1.8*
White	1975-1981	1.5*	1981-1990	-0.2	1990-2006	-1.7*					-1.7*	-1.7*
Black	1975-1984	2.9*	1984-1998	-1.4*	1998-2006	-3.3*					-3.1*	-3.3*
<u>SEER 13 Delay-Adjusted Incidence<sup>b</sup>, 1992-2006</u>												
All Races	1992-2006	-2.0*									-2.0*	-2.0*
White	1992-2006	-2.0*									-2.0*	-2.0*
Black	1992-2006	-2.6*									-2.6*	-2.6*
<u>SEER 9 Observed Incidence<sup>a</sup>, 1975-2006</u>												
All Races	1975-1982	1.4*	1982-1991	-0.4	1991-2006	-1.9*					-1.9*	-1.9*
White	1975-1981	1.4*	1981-1989	-0.1	1989-2003	-1.6*	2003-2006	-3.3*			-2.2*	-2.9*
Black	1975-1984	2.9*	1984-1998	-1.4*	1998-2006	-3.6*					-3.3*	-3.6*
<u>SEER 13 Observed Incidence<sup>b</sup>, 1992-2006</u>												
All Races	1992-2003	-1.9*	2003-2006	-3.3*							-2.4*	-3.0*
White	1992-2006	-2.1*									-2.1*	-2.1*
White NH <sup>ef</sup>	1992-2006	-1.9*									-1.9*	-1.9*
Black	1992-2006	-2.7*									-2.7*	-2.7*
Black NH <sup>ef</sup>	1992-2006	-2.7*									-2.7*	-2.7*
API <sup>e</sup>	1992-2006	-1.2*									-1.2*	-1.2*
AI/AN <sup>eg</sup>	1992-2006	-2.2*									-2.2*	-2.2*
Hispanic <sup>f</sup>	1992-2006	-2.3*									-2.3*	-2.3*
<u>U.S. Cancer Mortality<sup>c</sup>, 1975-2006</u>												
All Races	1975-1978	2.5*	1978-1984	1.2*	1984-1990	0.4*	1990-1994	-1.3*	1994-2006	-2.0*	-2.0*	-2.0*
White	1975-1982	1.7*	1982-1991	0.4*	1991-2006	-1.8*					-1.8*	-1.8*
Black	1975-1977	4.9*	1977-1984	2.3*	1984-1990	1.2*	1990-1995	-1.4*	1995-2006	-2.8*	-2.8*	-2.8*
<u>U.S. Cancer Mortality<sup>c</sup>, 1992-2006</u>												
All Races	1992-2006	-1.9*									-1.9*	-1.9*
White	1992-2006	-1.8*									-1.8*	-1.8*
White NH <sup>ef</sup>	1992-2006	-1.6*									-1.6*	-1.6*
Black	1992-1994	-0.8	1994-2006	-2.8*							-2.8*	-2.8*
Black NH <sup>ef</sup>	1992-2006	-2.5*									-2.5*	-2.5*
API <sup>e</sup>	1992-2006	-1.6*									-1.6*	-1.6*
AI/AN <sup>eg</sup>	1992-2006	-1.7*									-1.7*	-1.7*
Hispanic <sup>f</sup>	1992-1997	0.1	1997-2006	-3.1*							-3.1*	-3.1*

Joinpoint Regression Program Version 3.3.1, April 2008, National Cancer Institute. (<http://srab.cancer.gov/joinpoint/>).

The APC is the Annual Percent Change based on rates age-adjusted to the 2000 US Std Population (19 age groups - Census P25-1130).

<sup>a</sup> Trends are from the SEER 9 areas (San Francisco, Connecticut, Detroit, Hawaii, Iowa, New Mexico, Seattle, Utah, and Atlanta).

<sup>b</sup> Trends are from the SEER 13 areas (SEER 9 Areas, Los Angeles, San Jose-Monterey, Rural Georgia, and the Alaska Native Registry).

<sup>c</sup> Trends are from US Mortality Files, National Center for Health Statistics, Centers for Disease Control and Prevention.

<sup>d</sup> The AAPC is the Average Annual Percent Change and is based on the APCs calculated by Joinpoint.

<sup>e</sup> API - Asian/Pacific Islander, AI/AN - American Indian/Alaska Native, NH - Non-Hispanic

<sup>f</sup> Hispanic and Non-Hispanic are not mutually exclusive from whites, blacks, Asian/Pacific Islanders, and American Indians/Alaska

Natives. Incidence data for Hispanics and Non-Hispanics are based on NHIA and exclude cases from the Alaska Native Registry.

The Hispanic and Non-Hispanic mortality trends exclude deaths from CT, DC, ME, MD, MN, NH, NY, ND, OK and VT.

<sup>g</sup> Data for American Indian/Alaska Native are based on the CHSDA (Contract Health Service Delivery Area) counties.

\* The APC/AAPC is significantly different from zero ( $p < .05$ ).

- Joinpoint regression line analysis could not be performed on data series.

Table 15.3  
Cancer of the Lung and Bronchus (Invasive)

Trends in SEER Incidence<sup>ab</sup> and U.S. Mortality<sup>c</sup> Using the Joinpoint Regression Program,  
1975-2006 With up to Four Joinpoints, 1992-2006 With up to Two Joinpoints,  
Females by Race/Ethnicity

	Joinpoint Trend 1		Joinpoint Trend 2		Joinpoint Trend 3		Joinpoint Trend 4		Joinpoint Trend 5		AAPC <sup>d</sup>	
	Years	APC	Years	APC	Years	APC	Years	APC	Years	APC	1997-2006	2002-2006
<u>SEER 9 Delay-Adjusted Incidence<sup>a</sup>, 1975-2006</u>												
All Races	1975-1982	5.6*	1982-1991	3.4*	1991-2006	0.4*					0.4*	0.4*
White	1975-1982	5.6*	1982-1988	4.1*	1988-1997	1.6*	1997-2006	0.1			0.1	0.1
Black	1975-1990	4.2*	1990-2006	0.6*							0.6*	0.6*
<u>SEER 13 Delay-Adjusted Incidence<sup>b</sup>, 1992-2006</u>												
All Races	1992-1997	0.7	1997-2006	-0.3							-0.3*	-0.3*
White	1992-1997	1.0	1997-2006	-0.4*							-0.4*	-0.4*
Black	1992-2006	0.6*									0.6*	0.6*
<u>SEER 9 Observed Incidence<sup>a</sup>, 1975-2006</u>												
All Races	1975-1982	5.5*	1982-1990	3.5*	1990-1998	1.0*	1998-2006	-0.1			0.0	-0.1
White	1975-1982	5.6*	1982-1988	4.1*	1988-1997	1.6*	1997-2006	-0.1			-0.1	-0.1
Black	1975-1990	4.3*	1990-2006	0.4							0.4	0.4
<u>SEER 13 Observed Incidence<sup>b</sup>, 1992-2006</u>												
All Races	1992-1998	0.6	1998-2006	-0.6*							-0.5*	-0.6*
White	1992-1997	1.1*	1997-2006	-0.6*							-0.6*	-0.6*
White NH <sup>ef</sup>	1992-1997	1.3*	1997-2006	-0.4							-0.4	-0.4
Black	1992-2006	0.5									0.5*	0.5*
Black NH <sup>ef</sup>	1992-2006	0.5*									0.5*	0.5*
API <sup>e</sup>	1992-2006	0.4									0.4	0.4
AI/AN <sup>eg</sup>	1992-2006	2.2*									2.2*	2.2*
Hispanic <sup>f</sup>	1992-2006	-1.3*									-1.3*	-1.3*
<u>U.S. Cancer Mortality<sup>c</sup>, 1975-2006</u>												
All Races	1975-1982	6.0*	1982-1990	4.2*	1990-1995	1.7*	1995-2003	0.3*	2003-2006	-0.9	-0.1	-0.6
White	1975-1983	5.8*	1983-1990	4.1*	1990-1994	2.0*	1994-2002	0.5*	2002-2006	-0.6*	0.0	-0.6*
Black	1975-1980	7.1*	1980-1990	4.2*	1990-1997	1.3*	1997-2006	-0.1			-0.1	-0.1
<u>U.S. Cancer Mortality<sup>c</sup>, 1992-2006</u>												
All Races	1992-2002	0.6*	2002-2006	-0.8							0.0	-0.8*
White	1992-2002	0.7*	2002-2006	-0.8							0.0	-0.8
White NH <sup>ef</sup>	1992-2002	0.9*	2002-2006	-0.5							0.3	-0.5
Black	1992-2006	0.3*									0.3*	0.3*
Black NH <sup>ef</sup>	1992-2006	0.5*									0.5*	0.5*
API <sup>e</sup>	1992-2006	-0.5									-0.5	-0.5
AI/AN <sup>eg</sup>	1992-2006	1.6*									1.6*	1.6*
Hispanic <sup>f</sup>	1992-2006	-0.3									-0.3	-0.3

Joinpoint Regression Program Version 3.3.1, April 2008, National Cancer Institute. (<http://srab.cancer.gov/joinpoint/>).

The APC is the Annual Percent Change based on rates age-adjusted to the 2000 US Std Population (19 age groups - Census P25-1130).

<sup>a</sup> Trends are from the SEER 9 areas (San Francisco, Connecticut, Detroit, Hawaii, Iowa, New Mexico, Seattle, Utah, and Atlanta).

<sup>b</sup> Trends are from the SEER 13 areas (SEER 9 Areas, Los Angeles, San Jose-Monterey, Rural Georgia, and the Alaska Native Registry).

<sup>c</sup> Trends are from US Mortality Files, National Center for Health Statistics, Centers for Disease Control and Prevention.

<sup>d</sup> The AAPC is the Average Annual Percent Change and is based on the APCs calculated by Joinpoint.

<sup>e</sup> API - Asian/Pacific Islander, AI/AN - American Indian/Alaska Native, NH - Non-Hispanic

<sup>f</sup> Hispanic and Non-Hispanic are not mutually exclusive from whites, blacks, Asian/Pacific Islanders, and American Indians/Alaska

Natives. Incidence data for Hispanics and Non-Hispanics are based on NHIA and exclude cases from the Alaska Native Registry.

The Hispanic and Non-Hispanic mortality trends exclude deaths from CT, DC, ME, MD, MN, NH, NY, ND, OK and VT.

<sup>g</sup> Data for American Indian/Alaska Native are based on the CHSDA (Contract Health Service Delivery Area) counties.

\* The APC/AAPC is significantly different from zero ( $p < .05$ ).

- Joinpoint regression line analysis could not be performed on data series.

Table 15.4  
Small Cell Cancer of the Lung and Bronchus (Invasive) and Non-Small Cell Cancer of the Lung and Bronchus (Invasive)

Trends in SEER 9 Observed Incidence<sup>a</sup> Using the Joinpoint Regression Program,  
1975-2006 With up to Four Joinpoints,  
By Race and Sex

		<u>Joinpoint Trend 1</u>		<u>Joinpoint Trend 2</u>		<u>Joinpoint Trend 3</u>		<u>Joinpoint Trend 4</u>		<u>Joinpoint Trend 5</u>		<u>AAPC<sup>b</sup></u>
		Years	APC	Years	APC	Years	APC	Years	APC	Years	APC	2002-2006
<u>SEER 9 Observed Incidence<sup>a</sup> for Small Cell Cancer of the Lung and Bronchus, 1975-2006</u>												
All Races	Both Sexes	1975-1982	6.2*	1982-1989	1.3*	1989-2006	-2.4*					-2.4*
All Races	Male	1975-1981	5.5*	1981-1988	0.1	1988-2006	-3.3*					-3.3*
All Races	Female	1975-1982	9.6*	1982-1991	2.9*	1991-2006	-1.7*					-1.7*
White	Both Sexes	1975-1982	6.3*	1982-1989	1.4*	1989-2006	-2.2*					-2.2*
White	Male	1975-1980	6.3*	1980-1988	0.5	1988-2006	-3.2*					-3.2*
White	Female	1975-1982	10.0*	1982-1990	3.5*	1990-2006	-1.3*					-1.3*
Black	Both Sexes	1975-1986	4.7*	1986-2006	-2.4*							-2.4*
Black	Male	1975-1986	4.2*	1986-2006	-3.7*							-3.7*
Black	Female	1975-1991	4.4*	1991-2006	-1.7*							-1.7*
<u>SEER 9 Observed Incidence<sup>a</sup> for Non-Small Cell Cancer of the Lung and Bronchus, 1975-2006</u>												
All Races	Both Sexes	1975-1991	1.3*	1991-2006	-0.6*							-0.6*
All Races	Male	1975-1981	1.1*	1981-1992	-0.3	1992-2006	-1.7*					-1.7*
All Races	Female	1975-1988	4.3*	1988-1997	1.7*	1997-2006	0.2					0.2
White	Both Sexes	1975-1991	1.4*	1991-2006	-0.5*							-0.5*
White	Male	1975-1987	0.4*	1987-2003	-1.3*	2003-2006	-3.6*					-3.0*
White	Female	1975-1988	4.4*	1988-1997	1.9*	1997-2006	0.2					0.2
Black	Both Sexes	1975-1984	3.1*	1984-1998	-0.3	1998-2006	-1.8*					-1.8*
Black	Male	1975-1984	2.6*	1984-1998	-1.2*	1998-2006	-3.5*					-3.5*
Black	Female	1975-1990	4.2*	1990-2006	0.7*							0.7*

Joinpoint Regression Program Version 3.3.1, April 2008, National Cancer Institute. (<http://srab.cancer.gov/joinpoint/>).

The APC is the Annual Percent Change based on rates age-adjusted to the 2000 US Std Population (19 age groups - Census P25-1130).

Trends are from the SEER 9 areas (San Francisco, Connecticut, Detroit, Hawaii, Iowa, New Mexico, Seattle, Utah, and Atlanta).

The AAPC is the Average Annual Percent Change and is based on the APCs calculated by Joinpoint.

\* The APC/AAPC is significantly different from zero (p<.05).

- Joinpoint regression line analysis could not be performed on data series.

a  
b  
\*  
-

Table 15.5  
Cancer of the Lung and Bronchus (Invasive)

Age-adjusted SEER Incidence<sup>a</sup> Rates by Year, Race and Sex

Year of Diagnosis:	All Races			Whites			Blacks		
	Total	Males	Females	Total	Males	Females	Total	Males	Females
1975	52.26	89.54	24.53	51.96	89.16	24.86	64.56	114.92	24.66
1976	55.42	93.81	27.31	54.64	92.77	27.28	72.34	131.00	28.63
1977	56.70	95.52	28.32	55.88	94.77	28.05	73.57	124.84	33.88
1978	57.84	96.67	29.65	57.27	95.86	29.90	74.47	130.51	31.58
1979	58.61	95.81	31.56	58.02	95.18	31.63	74.52	127.59	34.11
1980	60.65	99.96	32.21	59.42	97.71	32.36	86.57	151.30	38.25
1981	62.04	99.42	35.12	61.55	98.47	35.52	82.31	142.96	37.45
1982	63.30	100.71	36.73	63.06	99.70	37.68	80.37	141.06	35.68
1983	63.45	99.45	37.89	63.05	97.66	39.10	86.62	151.34	39.49
1984	65.50	102.08	39.45	64.35	99.94	39.63	93.06	159.21	44.82
1985	64.63	98.65	40.23	64.01	96.91	40.88	89.56	149.68	46.04
1986	65.78	99.08	42.28	65.18	97.41	42.94	92.99	156.37	48.67
1987	67.90	101.52	44.15	68.07	100.64	45.50	84.78	143.70	43.22
1988	68.01	98.70	46.26	68.24	97.94	47.68	88.12	144.93	48.06
1989	67.54	97.95	46.09	67.56	97.04	47.23	89.04	142.77	51.37
1990	68.06	96.95	47.74	68.21	96.16	48.91	86.74	137.17	52.06
1991	69.21	97.27	49.56	68.98	95.93	50.62	93.10	144.90	56.87
1992	69.43	97.15	49.84	68.89	94.82	51.06	93.92	148.84	55.86
1993	67.75	93.92	49.18	67.82	92.49	50.68	86.30	135.35	52.43
1994	67.14	90.92	50.49	67.23	90.09	51.57	87.15	131.58	56.36
1995	66.80	89.74	50.42	67.08	87.89	52.44	85.63	138.54	50.00
1996	66.38	87.95	51.12	66.75	86.68	52.90	84.20	128.30	55.15
1997	66.56	86.22	52.56	67.19	84.80	54.93	82.03	129.27	50.30
1998	67.48	87.95	52.93	68.02	86.58	55.07	86.95	130.36	57.67
1999	65.77	84.50	52.44	66.26	83.25	54.38	84.27	121.64	58.92
2000	64.01	81.91	51.14	64.58	80.63	53.18	79.37	113.33	56.59
2001	63.91	80.94	51.52	64.82	80.62	53.40	79.75	113.40	56.99
2002	63.67	79.87	52.17	64.42	79.34	53.91	80.50	111.25	60.11
2003	64.22	80.28	52.65	65.03	78.96	55.22	79.77	117.20	54.57
2004	61.44	75.17	51.45	62.13	74.41	53.25	74.01	101.90	55.53
2005	61.75	74.14	52.82	62.77	73.99	54.77	72.37	94.23	57.84
2006	59.97	71.28	51.63	60.45	70.11	53.46	73.03	95.71	57.23
1975-2006	64.13	90.32	45.12	64.16	89.40	46.09	82.27	128.76	49.60

<sup>a</sup> SEER 9 areas (San Francisco, Connecticut, Detroit, Hawaii, Iowa, New Mexico, Seattle, Utah, and Atlanta).  
Rates are per 100,000 and are age-adjusted to the 2000 US Std Population (19 age groups - Census P25-1130).  
- Statistic not shown. Rate based on less than 16 cases for the time interval.

Table 15.6  
 Small Cell Cancer of the Lung and Bronchus (Invasive)  
 Age-adjusted SEER Incidence<sup>a</sup> Rates by Year, Race and Sex

Year of Diagnosis:	All Races			Whites			Blacks		
	Total	Males	Females	Total	Males	Females	Total	Males	Females
1975	6.65	10.34	3.79	6.89	10.70	3.97	5.87	8.94	3.48
1976	7.06	11.36	3.84	7.12	11.52	3.89	8.23	12.82	4.76
1977	7.70	12.38	4.22	7.84	12.79	4.21	8.13	11.19	5.78
1978	8.64	13.39	5.03	8.87	13.69	5.28	7.81	13.89	3.13
1979	8.68	13.09	5.36	9.03	13.63	5.61	7.63	11.83	4.47
1980	9.10	14.20	5.23	9.33	14.40	5.54	9.99	17.53	4.38
1981	9.71	14.55	6.12	10.01	14.84	6.48	9.21	15.87	4.21
1982	10.37	14.92	7.12	10.73	15.28	7.55	9.63	15.94	4.92
1983	10.36	14.86	7.08	10.74	15.04	7.64	9.12	15.08	4.85
1984	10.69	15.18	7.41	11.05	15.64	7.77	10.41	14.99	6.86
1985	10.44	14.96	7.08	10.78	15.25	7.49	11.07	17.77	6.27
1986	11.20	15.52	7.98	11.54	15.99	8.27	12.26	17.70	8.35
1987	10.65	14.13	8.19	11.17	14.56	8.84	9.53	14.49	6.03
1988	11.37	15.28	8.50	11.89	15.62	9.19	10.49	17.86	5.30
1989	11.24	14.84	8.68	11.68	15.21	9.21	12.07	17.67	8.35
1990	10.65	13.84	8.38	11.26	14.46	9.05	9.35	13.70	6.21
1991	11.28	14.00	9.35	11.68	14.34	9.84	12.34	15.92	10.00
1992	10.49	13.39	8.44	10.96	13.84	8.96	10.16	13.32	7.95
1993	10.02	12.33	8.34	10.48	12.64	8.94	9.38	13.25	6.74
1994	9.77	11.69	8.42	10.24	11.98	9.05	9.95	13.62	7.43
1995	9.85	12.22	8.14	10.35	12.58	8.76	9.43	13.72	6.61
1996	9.70	12.06	7.96	10.26	12.45	8.63	8.80	12.02	6.84
1997	9.53	10.85	8.64	10.11	11.11	9.49	7.86	10.82	6.05
1998	9.28	10.83	8.14	9.85	11.26	8.83	9.37	12.10	7.45
1999	8.80	10.03	7.96	9.33	10.25	8.78	8.14	10.95	6.05
2000	8.76	10.38	7.56	9.25	10.79	8.12	9.41	11.54	7.86
2001	8.33	9.77	7.32	8.86	10.24	7.91	8.50	10.78	6.87
2002	8.24	9.35	7.48	8.92	9.81	8.32	7.21	9.74	5.71
2003	8.17	9.06	7.54	8.67	9.32	8.28	7.85	9.46	6.72
2004	8.01	8.87	7.40	8.41	9.12	7.90	8.52	9.69	7.77
2005	7.47	8.52	6.72	8.08	9.07	7.39	6.44	7.51	5.75
2006	7.51	8.28	6.97	8.05	8.56	7.72	6.72	8.09	5.81
1975-2006	9.34	12.09	7.28	9.79	12.50	7.79	8.99	12.73	6.35

Note: Small Cell Cancer of the Lung and Bronchus includes histologies 8041-8045.  
<sup>a</sup> SEER 9 areas (San Francisco, Connecticut, Detroit, Hawaii, Iowa, New Mexico, Seattle, Utah, and Atlanta).  
 Rates are per 100,000 and are age-adjusted to the 2000 US Std Population (19 age groups - Census P25-1130).  
 - Statistic not shown. Rate based on less than 16 cases for the time interval.

Table 15.7  
 Non-Small Cell Cancer of the Lung and Bronchus (Invasive)  
 Age-adjusted SEER Incidence<sup>a</sup> Rates by Year, Race and Sex

Year of Diagnosis:	All Races			Whites			Blacks		
	Total	Males	Females	Total	Males	Females	Total	Males	Females
1975	45.61	79.20	20.74	45.07	78.46	20.89	58.68	105.98	21.18
1976	48.36	82.45	23.47	47.52	81.25	23.39	64.11	118.18	23.87
1977	49.00	83.14	24.10	48.04	81.98	23.84	65.44	113.65	28.10
1978	49.20	83.28	24.62	48.40	82.17	24.62	66.65	116.63	28.45
1979	49.92	82.72	26.21	48.99	81.55	26.02	66.89	115.76	29.64
1980	51.56	85.76	26.98	50.09	83.31	26.82	76.58	133.78	33.87
1981	52.33	84.88	29.00	51.54	83.63	29.05	73.10	127.09	33.24
1982	52.93	85.79	29.62	52.33	84.42	30.13	70.74	125.12	30.76
1983	53.09	84.59	30.81	52.30	82.62	31.46	77.50	136.26	34.64
1984	54.81	86.90	32.05	53.31	84.29	31.85	82.64	144.23	37.96
1985	54.18	83.69	33.15	53.22	81.66	33.39	78.49	131.91	39.78
1986	54.58	83.56	34.30	53.64	81.42	34.67	80.73	138.68	40.31
1987	57.25	87.39	35.96	56.91	86.08	36.65	75.25	129.21	37.19
1988	56.65	83.42	37.76	56.35	82.32	38.49	77.63	127.07	42.76
1989	56.30	83.11	37.41	55.88	81.83	38.02	76.97	125.10	43.02
1990	57.40	83.11	39.35	56.95	81.70	39.85	77.38	123.46	45.84
1991	57.93	83.27	40.22	57.30	81.59	40.79	80.76	128.98	46.87
1992	58.93	83.75	41.40	57.92	80.98	42.09	83.76	135.52	47.91
1993	57.73	81.59	40.84	57.34	79.85	41.75	76.92	122.10	45.69
1994	57.37	79.23	42.07	56.99	78.12	42.51	77.20	117.96	48.93
1995	56.95	77.51	42.28	56.72	75.31	43.68	76.20	124.83	43.39
1996	56.68	75.89	43.16	56.49	74.23	44.26	75.40	116.28	48.31
1997	57.04	75.37	43.92	57.09	73.69	45.44	74.17	118.45	44.25
1998	58.21	77.12	44.79	58.17	75.32	46.23	77.58	118.26	50.22
1999	56.97	74.47	44.48	56.93	73.00	45.60	76.13	110.70	52.87
2000	55.26	71.52	43.57	55.33	69.83	45.06	69.96	101.79	48.72
2001	55.58	71.17	44.21	55.97	70.38	45.50	71.24	102.62	50.12
2002	55.43	70.52	44.69	55.50	69.54	45.59	73.29	101.50	54.41
2003	56.05	71.22	45.11	56.35	69.63	46.94	71.92	107.74	47.84
2004	53.43	66.30	44.06	53.72	65.29	45.36	65.50	92.21	47.76
2005	54.28	65.62	46.09	54.69	64.92	47.37	65.93	86.71	52.09
2006	52.46	63.00	44.66	52.40	61.55	45.74	66.31	87.62	51.42
1975-2006	54.79	78.23	37.83	54.37	76.90	38.31	73.28	116.04	43.24

Note: Non-Small Cell Cancer of the Lung and Bronchus includes histologies 8000-8040, 8046-9049, 9056-9139, 9141-9589.  
<sup>a</sup> SEER 9 areas (San Francisco, Connecticut, Detroit, Hawaii, Iowa, New Mexico, Seattle, Utah, and Atlanta).  
 Rates are per 100,000 and are age-adjusted to the 2000 US Std Population (19 age groups - Census P25-1130).  
 - Statistic not shown. Rate based on less than 16 cases for the time interval.

Table 15.8  
Cancer of the Lung and Bronchus (Invasive)

Age-adjusted U.S. Death<sup>a</sup> Rates by Year, Race and Sex

Year of Death:	All Races			Whites			Blacks		
	Total	Males	Females	Total	Males	Females	Total	Males	Females
1975	42.56	76.39	17.56	42.08	75.47	17.67	49.33	91.01	17.34
1976	44.20	78.52	18.97	43.72	77.55	19.10	51.07	93.96	18.51
1977	45.49	80.45	20.01	44.82	79.09	20.09	54.56	100.80	19.91
1978	46.88	82.06	21.40	46.29	80.76	21.58	55.26	101.65	20.66
1979	47.69	82.94	22.32	47.08	81.64	22.42	56.43	102.89	22.24
1980	49.41	84.71	24.13	48.75	83.27	24.22	59.16	106.67	24.57
1981	49.99	85.16	24.95	49.28	83.52	25.10	60.57	109.71	25.10
1982	51.43	86.79	26.47	50.78	85.18	26.72	62.27	112.55	26.30
1983	52.40	87.04	28.10	51.70	85.40	28.28	63.68	112.76	28.73
1984	53.36	88.22	28.94	52.64	86.24	29.27	65.07	117.98	27.98
1985	54.32	88.54	30.41	53.68	86.69	30.81	65.76	117.50	29.64
1986	55.04	88.95	31.41	54.36	87.03	31.76	66.95	119.18	31.00
1987	56.24	90.05	32.72	55.56	88.09	33.04	68.65	121.77	32.48
1988	56.97	89.87	34.14	56.35	87.86	34.57	69.18	122.15	33.54
1989	57.90	89.77	35.77	57.21	87.57	36.27	71.04	124.72	34.87
1990	58.85	90.56	36.85	58.18	88.40	37.31	72.06	125.17	36.48
1991	58.99	89.88	37.61	58.38	87.76	38.12	71.64	123.58	37.16
1992	58.90	88.01	38.70	58.34	85.98	39.21	71.35	121.06	38.55
1993	59.13	87.60	39.28	58.66	85.52	39.97	71.12	121.98	37.72
1994	58.54	85.69	39.62	58.15	83.78	40.30	70.15	118.63	38.61
1995	58.38	84.37	40.26	58.08	82.62	40.97	69.28	116.08	38.84
1996	57.91	82.82	40.41	57.69	81.15	41.22	68.30	113.18	39.08
1997	57.51	81.33	40.82	57.31	79.83	41.52	67.89	110.21	40.53
1998	57.08	79.89	40.98	56.93	78.47	41.69	66.86	107.40	40.67
1999	55.42	76.97	40.15	55.31	75.67	40.86	65.00	103.61	40.00
2000	55.84	76.45	41.12	55.99	75.39	42.08	63.81	100.91	39.66
2001	55.30	75.22	41.00	55.53	74.25	42.03	62.65	99.35	38.84
2002	54.97	73.55	41.56	55.28	72.78	42.59	62.24	95.70	40.26
2003	54.16	71.92	41.24	54.48	71.23	42.23	61.16	93.08	40.31
2004	53.34	70.37	40.89	53.67	69.69	41.90	60.09	90.67	40.01
2005	52.83	69.47	40.62	53.28	69.09	41.59	58.88	87.32	40.21
2006	51.74	67.45	40.17	52.26	67.13	41.25	57.21	84.57	39.18
1975-2006	54.30	81.74	34.65	54.01	80.41	35.13	63.80	107.17	34.22

<sup>a</sup> US Mortality Files, National Center for Health Statistics, Centers for Disease Control and Prevention.  
Rates are per 100,000 and are age-adjusted to the 2000 US Std Population (19 age groups - Census P25-1130).  
- Statistic not shown. Rate based on less than 16 cases for the time interval.



Table 15.9  
Cancer of the Lung and Bronchus (Invasive)

SEER Incidence<sup>a</sup> and U.S. Death<sup>b</sup> Rates, Age-Adjusted and Age-Specific Rates, by Race and Sex

	All Races			Whites			Blacks		
	Total	Males	Females	Total	Males	Females	Total	Males	Females
<u>SEER Incidence</u>									
<u>Age at Diagnosis</u>									
Age-Adjusted Rates, 2002-2006									
All ages	63.1	77.7	52.5	64.4	77.6	54.8	74.7	104.3	54.7
Under 65	20.5	23.1	18.2	20.4	22.2	18.7	30.3	39.4	22.9
65 and over	357.3	455.1	289.5	368.4	460.6	304.5	381.5	552.7	274.6
All ages (IARC world std) <sup>c</sup>	39.8	47.7	33.6	40.6	47.4	35.2	49.4	67.6	36.2
Age-Specific Rates, 2002-2006									
<1	-	-	-	-	-	-	-	-	-
1-4	-	-	-	-	-	-	-	-	-
5-9	-	-	-	-	-	-	-	-	-
10-14	-	-	-	-	-	-	-	-	-
15-19	0.1	-	0.1	0.1	-	-	-	-	-
20-24	0.3	0.3	0.3	0.3	0.3	0.4	-	-	-
25-29	0.6	0.6	0.6	0.6	0.5	0.7	0.6	-	-
30-34	1.2	1.1	1.3	1.1	1.0	1.2	1.5	1.6	1.3
35-39	3.4	3.2	3.6	3.3	3.0	3.6	3.9	3.7	4.0
40-44	10.4	10.0	10.9	10.1	9.5	10.8	16.0	16.3	15.7
45-49	25.5	26.3	24.7	24.6	24.6	24.7	42.9	50.0	36.7
50-54	50.6	56.7	44.8	48.6	53.1	44.2	85.2	105.9	67.6
55-59	97.2	111.3	83.9	96.2	106.0	86.7	146.9	202.7	100.5
60-64	178.8	208.4	151.7	182.6	206.6	160.1	235.7	322.8	166.5
65-69	278.4	329.3	234.3	288.6	332.6	249.6	327.5	452.8	232.3
70-74	374.4	455.7	309.0	388.6	461.8	328.6	398.3	558.2	286.0
75-79	434.5	556.2	347.3	449.2	564.6	365.5	451.0	643.6	331.9
80-84	413.4	554.5	324.8	422.6	560.3	336.3	422.0	645.2	299.1
85+	297.6	441.7	230.1	300.6	445.6	233.7	298.6	497.4	216.5
<u>U.S. Mortality</u>									
<u>Age at Death</u>									
Age-Adjusted Rates, 2002-2006									
All ages	53.4	70.5	40.9	53.8	69.9	41.9	59.9	90.1	40.0
Under 65	16.4	19.9	13.2	16.1	19.1	13.3	22.8	32.0	15.3
65 and over	308.8	420.0	232.4	313.9	421.3	239.5	316.1	492.2	210.5
All ages (IARC world std) <sup>c</sup>	32.9	42.3	25.5	33.1	41.8	26.1	38.7	57.0	25.7
Age-Specific Rates, 2002-2006									
<1	-	-	-	-	-	-	-	-	-
1-4	-	-	-	-	-	-	-	-	-
5-9	-	-	-	-	-	-	-	-	-
10-14	-	-	-	-	-	-	-	-	-
15-19	0.0	0.0	-	0.0	-	-	-	-	-
20-24	0.1	0.1	0.1	0.1	0.1	0.1	-	-	-
25-29	0.2	0.2	0.2	0.2	0.2	0.2	0.2	0.3	-
30-34	0.6	0.6	0.5	0.5	0.6	0.5	0.6	0.8	0.5
35-39	2.3	2.3	2.3	2.3	2.2	2.3	2.8	3.1	2.4
40-44	8.3	8.8	7.8	8.0	8.3	7.8	11.9	13.9	10.2
45-49	20.5	23.2	17.9	19.5	21.6	17.5	32.0	40.5	24.5
50-54	40.5	49.5	31.8	38.8	46.4	31.3	62.5	85.7	42.8
55-59	77.9	96.2	60.7	76.5	92.0	61.6	110.4	158.8	70.6
60-64	145.2	180.1	113.3	145.5	176.0	117.1	182.1	269.3	114.0
65-69	224.9	284.3	173.2	228.2	283.3	179.3	254.6	373.7	166.3
70-74	310.0	402.0	235.8	316.3	403.6	244.6	317.5	477.1	209.2
75-79	372.2	503.2	278.0	378.8	504.8	286.6	374.1	585.4	248.1
80-84	379.1	540.7	279.6	384.1	542.5	285.7	377.4	614.2	253.0
85+	300.5	473.1	223.1	304.6	477.6	226.9	277.5	482.4	196.5

<sup>a</sup> SEER 17 areas. Rates are per 100,000 and are age-adjusted to the 2000 US Std Population (19 age groups - Census P25-1130), unless noted.

<sup>b</sup> US Mortality Files, National Center for Health Statistics, Centers for Disease Control and Prevention.

<sup>c</sup> Rates are per 100,000 and are age-adjusted to the 2000 US Std Population (19 age groups - Census P25-1130), unless noted.

- Rates are per 100,000 and are age-adjusted to the IARC world standard population.

- Statistic not shown. Rate based on less than 16 cases for the time interval.

Table 15.10  
Small Cell Cancer of the Lung and Bronchus<sup>a</sup>(Invasive) and Non-Small Cell Cancer of the Lung and Bronchus<sup>b</sup>(Invasive)

SEER Incidence<sup>c</sup> Rates, Age-Adjusted and Age-Specific Rates, by Race and Sex

	All Races			Whites			Blacks		
	Total	Males	Females	Total	Males	Females	Total	Males	Females
<u>Small Cell Cancer of the Lung and Bronchus<sup>a</sup></u>									
<u>Age at Diagnosis</u>									
Age-Adjusted Rates, 2002-2006									
All ages	7.9	9.0	7.2	8.5	9.4	7.9	7.2	9.1	5.9
Under 65	3.0	3.2	2.8	3.3	3.4	3.1	3.0	3.6	2.6
65 and over	42.0	49.1	37.2	45.1	51.4	41.0	35.9	46.7	29.1
All ages (IARC world std) <sup>d</sup>	5.4	5.9	4.9	5.8	6.2	5.5	4.9	6.1	4.1
Age-Specific Rates, 2002-2006									
<1	-	-	-	-	-	-	-	-	-
1-4	-	-	-	-	-	-	-	-	-
5-9	-	-	-	-	-	-	-	-	-
10-14	-	-	-	-	-	-	-	-	-
15-19	-	-	-	-	-	-	-	-	-
20-24	-	-	-	-	-	-	-	-	-
25-29	-	-	-	-	-	-	-	-	-
30-34	-	-	-	-	-	-	-	-	-
35-39	0.3	0.3	0.3	0.3	0.3	0.3	-	-	-
40-44	1.1	1.1	1.2	1.3	1.2	1.3	1.2	1.1	1.3
45-49	3.4	3.4	3.4	3.7	3.7	3.7	3.8	4.1	3.6
50-54	7.5	8.3	6.8	8.0	8.6	7.5	8.4	9.9	7.2
55-59	15.1	16.2	14.1	16.2	16.9	15.5	15.3	18.1	13.0
60-64	27.3	29.2	25.6	29.6	30.7	28.6	25.4	32.1	20.2
65-69	40.1	42.5	38.1	43.9	45.2	42.7	35.1	43.8	28.5
70-74	48.8	53.8	44.7	53.0	57.1	49.6	39.8	46.2	35.4
75-79	51.4	61.6	44.1	54.7	63.9	48.1	43.0	56.5	34.6
80-84	39.5	51.1	32.2	41.0	51.9	34.3	38.7	60.2	26.9
85+	19.0	29.8	14.0	19.8	30.8	14.8	13.9	21.5	10.8
<u>Non-Small Cell Cancer Lung and Bronchus<sup>b</sup></u>									
<u>Age at Diagnosis</u>									
Age-Adjusted Rates, 2002-2006									
All ages	55.1	68.7	45.3	55.8	68.2	46.9	67.5	95.2	48.7
Under 65	17.5	19.9	15.3	17.1	18.8	15.5	27.3	35.8	20.3
65 and over	315.2	406.0	252.3	323.3	409.3	263.6	345.6	506.0	245.5
All ages (IARC world std) <sup>b</sup>	34.5	41.8	28.7	34.8	41.2	29.7	44.5	61.6	32.1
Age-Specific Rates, 2002-2006									
<1	-	-	-	-	-	-	-	-	-
1-4	-	-	-	-	-	-	-	-	-
5-9	-	-	-	-	-	-	-	-	-
10-14	-	-	-	-	-	-	-	-	-
15-19	0.1	-	0.1	0.1	-	-	-	-	-
20-24	0.3	0.3	0.3	0.3	0.3	0.4	-	-	-
25-29	0.6	0.5	0.6	0.6	0.5	0.6	0.6	-	-
30-34	1.1	1.0	1.2	1.0	0.9	1.2	1.4	1.5	1.3
35-39	3.1	2.9	3.3	3.0	2.7	3.3	3.6	3.5	3.8
40-44	9.3	8.9	9.6	8.8	8.3	9.4	14.8	15.2	14.4
45-49	22.1	22.9	21.3	20.9	20.9	20.9	39.1	45.9	33.1
50-54	43.1	48.4	37.9	40.6	44.5	36.7	76.8	96.0	60.5
55-59	82.1	95.1	69.8	80.0	89.1	71.2	131.5	184.6	87.5
60-64	151.5	179.2	126.1	152.9	176.0	131.5	210.3	290.7	146.4
65-69	238.2	286.7	196.2	244.7	287.4	206.9	292.4	409.0	203.8
70-74	325.6	401.9	264.4	335.6	404.6	279.0	358.5	512.0	250.7
75-79	383.0	494.6	303.2	394.4	500.7	317.4	408.0	587.1	297.3
80-84	373.9	503.4	292.6	381.6	508.4	302.0	383.3	585.1	272.2
85+	278.5	411.9	216.1	280.8	414.8	218.9	284.7	475.9	205.7

<sup>a</sup> Small Cell Cancer of the Lung and Bronchus includes histologies 8041-8045.  
<sup>b</sup> Non-Small Cell Cancer of the Lung and Bronchus includes histologies 8000-8040, 8046-9049, 9056-9139, 9141-9589.  
<sup>c</sup> SEER 17 areas. Rates are per 100,000 and are age-adjusted to the 2000 US Std Population (19 age groups - Census P25-1130), unless noted.  
<sup>d</sup> Rates are per 100,000 and are age-adjusted to the IARC world standard population.  
- Statistic not shown. Rate based on less than 16 cases for the time interval.

Table 15.11  
Cancer of the Lung and Bronchus (Invasive)

## Survival Rates, by Race, Sex, Diagnosis Year, Stage and Age

	All Races			Whites			Blacks		
	Total	Males	Females	Total	Males	Females	Total	Males	Females
<b>5-Year Relative Survival Rates</b>									
Year of Diagnosis:									
1960-1963 <sup>a</sup>	-	-	-	8	7	11	5	5	6
1970-1973 <sup>a</sup>	-	-	-	10	9	14	7	6	10
1975-1977 <sup>b</sup>	12.7	11.5	15.8	12.8	11.5	15.9	11.5	10.8	14.0
1978-1980 <sup>b</sup>	13.3	11.8	16.7	13.4	12.0	16.6	12.1	10.0	18.1
1981-1983 <sup>b</sup>	13.7	12.1	16.9	13.9	12.3	17.1	11.7	10.5	15.1
1984-1986 <sup>b</sup>	13.3	11.6	16.4	13.5	11.7	16.7	11.4	10.7	13.0
1987-1989 <sup>b</sup>	13.5	12.4	15.4	13.8	12.5	15.8	11.2	11.1	11.5
1990-1992 <sup>b</sup>	14.1	12.6	16.3	14.5	13.0	16.6	10.8	9.6	12.8
1993-1995 <sup>b</sup>	14.9	12.9	17.4	15.1	13.1	17.7	13.1	11.6	15.8
1996-1998 <sup>b</sup>	15.2	13.4	17.4	15.4	13.5	17.7	12.7	11.0	15.2
1999-2005 <sup>b</sup>	16.3 <sup>e</sup>	14.0 <sup>e</sup>	18.8 <sup>e</sup>	16.6 <sup>e</sup>	14.4 <sup>e</sup>	19.1 <sup>e</sup>	12.9 <sup>e</sup>	11.1	15.2
<b>5-Year Period Survival Rates<sup>cd</sup></b>									
Year of Diagnosis:									
1999-2005	15.9	13.8	18.4	16.2	14.1	18.5	12.4	10.6	14.8
<b>Stage Distribution (%) 1999-2005<sup>c</sup></b>									
All Stages									
Number of cases	227,919	123,777	104,142	190,480	101,713	88,767	23,512	13,702	9,810
Percent	100%	100%	100%	100%	100%	100%	100%	100%	100%
Localized	15	13	16	15	14	17	12	11	14
Regional	22	22	22	22	22	22	22	23	22
Distant	55	57	54	55	56	53	59	60	58
Unstaged	8	7	8	8	8	9	6	6	6
<b>5-Year Relative Survival Rates, 1999-2005<sup>c</sup></b>									
Age at Diagnosis:									
Ages <45	24.0	22.6	25.5	26.0	24.7	27.2	16.1	14.4	18.0
Ages 45-54	18.5	14.8	23.2	19.4	15.3	24.3	13.6	11.3	17.1
Ages 55-64	17.7	15.1	21.2	18.2	15.5	21.6	13.7	11.9	16.6
Ages 65-74	15.6	13.4	18.3	15.8	13.5	18.4	12.0	10.6	13.8
Ages 75+	11.1	9.7	12.4	11.4	10.0	12.6	8.2	6.8	9.2
Ages <65	18.4	15.5	22.2	19.1	16.1	22.8	13.9	11.9	17.0
Ages 65+	13.7	11.9	15.6	13.9	12.1	15.7	10.6	9.4	12.0
Stage:									
All Stages	15.6	13.4	18.1	15.9	13.7	18.3	12.4	10.8	14.5
Localized	52.6	47.7	57.1	53.1	48.3	57.5	44.8	41.3	48.5
Regional	23.7	21.5	26.2	23.8	21.8	26.1	19.9	18.0	22.6
Distant	3.5	2.9	4.2	3.4	2.9	4.1	3.0	2.8	3.4
Unstaged	8.5	7.6	9.4	8.2	7.3	9.0	10.3	8.8	12.3

<sup>a</sup> Rates are based on End Results data from a series of hospital registries and one population-based registry.

<sup>b</sup> Rates are from the SEER 9 areas (San Francisco, Connecticut, Detroit, Hawaii, Iowa, New Mexico, Seattle, Utah, Atlanta).

Rates are based on follow-up of patients into 2006.

<sup>c</sup> Rates are from the SEER 17 areas (San Francisco, Connecticut, Detroit, Hawaii, Iowa, New Mexico, Seattle, Utah, Atlanta, San Jose-Monterey, Los Angeles, Alaska Native Registry, Rural Georgia, California excluding SF/SJM/LA, Kentucky, Louisiana and New Jersey). California excluding SF/SJM/LA, Kentucky, Louisiana, and New Jersey contribute cases for diagnosis years 2000-2005.

<sup>d</sup> The remaining 13 SEER Areas contribute cases for the entire period 1999-2005. Rates are based on follow-up of patients into 2006.

Period survival provides a more up-to-date estimate of survival by piecing together the most recent conditional survival estimates from several cohorts. It is computed here using three year calendar blocks (2003-2005: 0-1 year survival),

(2002-2004: 1-2 year survival), (2001-2003: 2-3 year survival), (2000-2002: 3-4 year survival), (1999-2001: 4-5 years survival).

<sup>e</sup> The difference in rates between 1975-1977 and 1999-2005 is statistically significant ( $p < .05$ ).

<sup>f</sup> The standard error of the survival rate is between 5 and 10 percentage points.

<sup>g</sup> The standard error of the survival rate is greater than 10 percentage points.

- Statistic could not be calculated due to fewer than 25 cases during the time period.

Table 15.12  
Small Cell Cancer of the Lung and Bronchus (Invasive)

## Survival Rates, by Race, Sex, Diagnosis Year, Stage and Age

	All Races			Whites			Blacks		
	Total	Males	Females	Total	Males	Females	Total	Males	Females
<b>5-Year Relative Survival Rates</b>									
Year of Diagnosis:									
1975-1977 <sup>a</sup>	3.7	3.1	4.8	3.7	3.1	4.9	3.8	3.9	3.6
1978-1980 <sup>a</sup>	4.4	3.3	6.6	4.5	3.5	6.6	3.2	2.4	5.0
1981-1983 <sup>a</sup>	4.8	3.8	6.4	4.8	3.9	6.2	5.6	4.3	8.5
1984-1986 <sup>a</sup>	4.7	3.6	6.5	4.9	3.7	6.7	3.6	2.3	5.6
1987-1989 <sup>a</sup>	5.2	4.0	6.7	5.3	4.0	6.9	4.0	3.4	4.7
1990-1992 <sup>a</sup>	5.6	4.8	6.6	5.7	4.8	6.8	4.0	4.0	3.9
1993-1995 <sup>a</sup>	6.7	5.4	8.1	6.6	5.3	7.9	6.9	4.6	9.9
1996-1998 <sup>b</sup>	6.2	5.4	7.0	6.4	5.6	7.2	4.2	3.2	5.2
1999-2005 <sup>a</sup>	6.3 <sup>d</sup>	5.0 <sup>d</sup>	7.5 <sup>d</sup>	6.3 <sup>d</sup>	4.8 <sup>d</sup>	7.7 <sup>d</sup>	5.5 <sup>d</sup>	5.2 <sup>d</sup>	5.8
<b>5-Year Period Survival Rates<sup>bc</sup></b>									
Year of Diagnosis:									
1999-2005	6.3	5.3	7.2	6.3	5.3	7.2	5.0	4.3	5.8
<b>Stage Distribution (%) 1999-2005<sup>b</sup></b>									
All Stages									
Number of cases	31,163	15,924	15,239	27,417	13,783	13,634	2,461	1,304	1,157
Percent	100%	100%	100%	100%	100%	100%	100%	100%	100%
Localized	5	5	5	5	5	5	5	4	6
Regional	21	19	23	21	19	23	22	22	22
Distant	69	71	66	69	71	66	68	68	67
Unstaged	5	5	6	5	5	6	5	5	5
<b>5-Year Relative Survival Rates, 1999-2005<sup>b</sup></b>									
Age at Diagnosis:									
Ages <45	10.7	10.8	10.7	11.5	11.2	11.9	3.2	5.3	0.0
Ages 45-54	8.7	6.5	11.4	8.9	6.6	11.6	6.9	4.6	10.5
Ages 55-64	7.3	5.7	9.0	7.3	5.5	9.2	6.7	6.9	6.0
Ages 65-74	5.4	4.8	5.9	5.3	4.5	5.9	3.8	4.6	3.0
Ages 75+	3.1	2.6	3.5	3.4	3.0	3.6	0.0	0.0	0.0
Ages <65	7.9	6.2	9.7	7.9	6.1	10.0	6.6	6.1	7.1
Ages 65+	4.6	4.1	5.0	4.6	4.0	5.0	2.8	3.1	2.5
Stage:									
All Stages	6.0	5.1	7.0	6.1	5.0	7.1	4.8	4.7	4.8
Localized	20.3	19.2	21.0	20.2	18.6	21.2	15.1	19.6 <sup>e</sup>	11.4 <sup>e</sup>
Regional	13.3	12.1	14.3	13.5	12.4	14.3	9.8	9.4	10.6
Distant	2.6	2.1	3.1	2.6	1.9	3.3	2.0	2.1	1.8
Unstaged	8.2	6.7	9.4	8.0	6.5	9.0	8.9	7.0	10.8

<sup>a</sup> Rates are from the SEER 9 areas (San Francisco, Connecticut, Detroit, Hawaii, Iowa, New Mexico, Seattle, Utah, Atlanta). Rates are based on follow-up of patients into 2006.

<sup>b</sup> Rates are from the SEER 17 areas (San Francisco, Connecticut, Detroit, Hawaii, Iowa, New Mexico, Seattle, Utah, Atlanta, San Jose-Monterey, Los Angeles, Alaska Native Registry, Rural Georgia, California excluding SF/SJM/LA, Kentucky, Louisiana and New Jersey). California excluding SF/SJM/LA, Kentucky, Louisiana, and New Jersey contribute cases for diagnosis years 2000-2005. The remaining 13 SEER Areas contribute cases for the entire period 1999-2005. Rates are based on follow-up of patients into 2006.

<sup>c</sup> Period survival provides a more up-to-date estimate of survival by piecing together the most recent conditional survival estimates from several cohorts. It is computed here using three year calendar blocks (2003-2005: 0-1 year survival), (2002-2004: 1-2 year survival), (2001-2003: 2-3 year survival), (2000-2002: 3-4 year survival), (1999-2001: 4-5 years survival).

<sup>d</sup> The difference in rates between 1975-1977 and 1999-2005 is statistically significant (p<.05).

<sup>e</sup> The standard error of the survival rate is between 5 and 10 percentage points.

<sup>f</sup> The standard error of the survival rate is greater than 10 percentage points.

- Statistic could not be calculated due to fewer than 25 cases during the time period.

Table 15.13  
Non-Small Cell Cancer of the Lung and Bronchus (Invasive)

Survival Rates, by Race, Sex, Diagnosis Year, Stage and Age

	All Races			Whites			Blacks		
	Total	Males	Females	Total	Males	Females	Total	Males	Females
<b>5-Year Relative Survival Rates</b>									
Year of Diagnosis:									
1975-1977 <sup>a</sup>	14.2	12.7	18.0	14.3	12.8	18.1	12.5	11.5	16.2
1978-1980 <sup>a</sup>	15.0	13.4	18.9	15.3	13.6	18.9	13.2	10.9	20.1
1981-1983 <sup>a</sup>	15.6	13.7	19.5	16.0	14.0	19.9	12.6	11.4	16.1
1984-1986 <sup>a</sup>	15.1	13.2	18.8	15.5	13.4	19.3	12.6	11.8	14.5
1987-1989 <sup>a</sup>	15.4	14.0	17.6	15.7	14.3	18.1	12.3	12.1	12.7
1990-1992 <sup>a</sup>	15.8	14.0	18.6	16.4	14.6	19.1	11.7	10.2	14.3
1993-1995 <sup>a</sup>	16.4	14.2	19.5	16.8	14.5	20.0	13.9	12.4	16.7
1996-1998 <sup>b</sup>	16.8	14.7	19.5	17.2	14.9	19.9	13.7	11.8	16.8
1999-2005 <sup>a</sup>	18.0 <sup>d</sup>	15.4 <sup>d</sup>	20.9 <sup>d</sup>	18.5 <sup>d</sup>	16.0 <sup>d</sup>	21.3 <sup>d</sup>	13.8 <sup>d</sup>	11.8	16.5
<b>5-Year Period Survival Rates<sup>bc</sup></b>									
Year of Diagnosis:									
1999-2005	17.5	15.1	20.4	18.0	15.5	20.7	13.3	11.3	16.0
<b>Stage Distribution (%) 1999-2005<sup>b</sup></b>									
All Stages									
Number of cases	196,756	107,853	88,903	163,063	87,930	75,133	21,051	12,398	8,653
Percent	100%	100%	100%	100%	100%	100%	100%	100%	100%
Localized	16	15	18	17	15	19	13	12	15
Regional	22	23	22	22	23	22	22	23	22
Distant	53	55	52	52	54	50	58	59	57
Unstaged	8	8	9	9	8	9	6	6	7
<b>5-Year Relative Survival Rates, 1999-2005<sup>b</sup></b>									
Age at Diagnosis:									
Ages <45	25.7	24.0	27.3	28.0	26.5	29.3	17.0	15.0	19.2
Ages 45-54	20.2	16.2	25.4	21.5	17.0	27.0	14.3	12.0	17.8
Ages 55-64	19.8	16.8	23.9	20.6	17.5	24.6	14.6	12.5	18.3
Ages 65-74	17.4	14.7	20.7	17.7	14.9	21.0	13.0	11.3	15.5
Ages 75+	12.1	10.5	13.6	12.4	10.9	13.8	8.9	7.5	10.0
Ages <65	20.4	17.1	24.7	21.4	18.0	25.7	14.7	12.5	18.3
Ages 65+	15.1	13.0	17.3	15.3	13.3	17.6	11.5	10.1	13.2
Stage:									
All Stages	17.2	14.7	20.1	17.7	15.2	20.5	13.3	11.5	15.8
Localized	54.2	49.1	59.1	54.8	49.7	59.4	46.1	42.2	50.4
Regional	25.2	22.7	28.4	25.5	23.0	28.4	21.1	18.9	24.2
Distant	3.7	3.1	4.4	3.6	3.1	4.3	3.2	2.8	3.7
Unstaged	8.5	7.7	9.4	8.2	7.4	9.0	10.4	8.9	12.3

<sup>a</sup> Rates are from the SEER 9 areas (San Francisco, Connecticut, Detroit, Hawaii, Iowa, New Mexico, Seattle, Utah, Atlanta). Rates are based on follow-up of patients into 2006.

<sup>b</sup> Rates are from the SEER 17 areas (San Francisco, Connecticut, Detroit, Hawaii, Iowa, New Mexico, Seattle, Utah, Atlanta, San Jose-Monterey, Los Angeles, Alaska Native Registry, Rural Georgia, California excluding SF/SJM/LA, Kentucky, Louisiana and New Jersey). California excluding SF/SJM/LA, Kentucky, Louisiana, and New Jersey contribute cases for diagnosis years 2000-2005.

<sup>c</sup> The remaining 13 SEER Areas contribute cases for the entire period 1999-2005. Rates are based on follow-up of patients into 2006. Period survival provides a more up-to-date estimate of survival by piecing together the most recent conditional survival estimates from several cohorts. It is computed here using three year calendar blocks (2003-2005: 0-1 year survival),

(2002-2004: 1-2 year survival), (2001-2003: 2-3 year survival), (2000-2002: 3-4 year survival), (1999-2001: 4-5 years survival).

<sup>d</sup> The difference in rates between 1975-1977 and 1999-2005 is statistically significant ( $p < .05$ ).

<sup>e</sup> The standard error of the survival rate is between 5 and 10 percentage points.

<sup>f</sup> The standard error of the survival rate is greater than 10 percentage points.

- Statistic could not be calculated due to fewer than 25 cases during the time period.

Table 15.14  
Cancer of the Lung and Bronchus (Invasive)

Survival Rates<sup>a</sup>  
By Year of Diagnosis

All Races, Males and Females

Year of Diagnosis

	1975- 1979	1980- 1984	1985- 1989	1990	1991	1992	1993	1994	1995	1996	1997	1998	1999	2000	2001	2002	2003	2004	2005
Relative Survival Rates (SEER <sup>b</sup> )																			
1-year	36.7	38.7	40.0	40.3	41.2	41.1	40.8	41.0	41.5	41.0	41.7	41.2	42.7	42.3	41.6	42.0	43.1	43.5	44.4
2-year	21.7	22.6	23.1	23.6	23.9	24.7	24.6	24.5	25.4	25.3	25.4	25.8	26.4	26.5	26.2	27.1	27.1	28.0	
3-year	16.7	17.4	17.5	18.0	18.7	19.0	18.9	19.1	19.5	19.7	19.8	20.2	20.2	20.8	20.3	21.4	21.2		
4-year	14.4	14.9	15.0	15.3	16.0	16.2	16.2	16.3	17.0	16.7	17.0	17.4	17.4	18.1	17.3	18.1			
5-year	13.0	13.4	13.5	13.8	14.2	14.4	14.7	14.8	15.1	15.1	15.3	15.1	15.7	16.2	15.6				
6-year	12.0	12.3	12.4	12.7	13.2	13.2	13.6	13.6	13.7	13.8	13.9	13.8	14.4	14.8					
7-year	11.4	11.5	11.5	11.7	12.0	12.2	12.6	12.6	13.0	12.8	12.9	12.9	13.4						
8-year	10.8	10.7	10.8	11.0	11.2	11.3	11.7	11.9	12.2	12.0	12.0	11.9							
9-year	10.2	10.0	10.1	10.1	10.6	10.6	11.1	11.2	11.6	11.2	11.2								
11-year	9.7	9.4	9.6	9.4	10.1	10.0	10.3	10.6	11.0	10.5									
10-year	9.2	9.1	9.0	8.9	9.5	9.4	9.8	10.1	10.5										
12-year	8.9	8.6	8.6	8.3	9.0	9.1	9.2	9.4											
13-year	8.5	8.2	8.2	8.1	8.4	8.6	8.8												
14-year	8.2	7.9	7.8	7.9	7.8	8.4													
15-year	7.8	7.5	7.5	7.6	7.4														
16-year	7.6	7.2	7.2	7.3															
17-year	7.4	6.9	6.8																
18-year	7.0	6.6																	
19-year	6.8	6.2																	
20-year	6.6	5.8																	

<sup>a</sup> Survival rates are relative rates expressed as percents.  
<sup>b</sup> Rates are from the SEER 9 areas (San Francisco, Connecticut, Detroit, Hawaii, Iowa, New Mexico, Seattle, Utah, and Atlanta).

Table 15.15  
Cancer of the Lung and Bronchus (Invasive)

Survival Rates<sup>a</sup>  
By Year of Diagnosis

All Races, Males

Year of Diagnosis

	1975- 1979	1980- 1984	1985- 1989	1990	1991	1992	1993	1994	1995	1996	1997	1998	1999	2000	2001	2002	2003	2004	2005
Relative Survival Rates (SEER <sup>b</sup> )																			
1-year	34.7	36.8	37.9	38.1	39.0	39.1	38.2	38.7	39.3	39.1	39.3	38.4	39.6	40.0	38.3	38.4	40.6	40.5	40.8
2-year	20.0	20.8	21.5	21.4	22.1	23.2	22.4	22.1	23.6	23.5	23.5	23.2	23.3	24.3	22.7	23.6	24.2	25.0	
3-year	15.1	15.7	16.0	16.1	17.1	17.6	16.6	16.7	17.6	18.2	18.1	17.8	17.0	18.7	17.7	18.4	18.7		
4-year	12.9	13.4	13.5	13.5	14.2	14.8	14.0	14.0	15.2	15.0	15.3	15.1	14.4	16.1	14.8	15.5			
5-year	11.5	12.0	12.1	12.0	12.6	13.1	12.6	12.7	13.5	13.5	13.8	12.9	13.0	14.6	13.2				
6-year	10.6	10.9	11.1	11.0	11.7	11.8	11.6	11.5	12.2	12.2	12.3	11.4	11.8	13.1					
7-year	10.0	10.1	10.3	10.2	10.6	10.9	10.8	10.6	11.7	11.2	11.3	10.6	10.9						
8-year	9.5	9.3	9.6	9.3	9.7	9.9	9.9	9.9	10.8	10.5	10.6	9.7							
9-year	8.9	8.7	9.1	8.4	9.2	9.2	9.4	9.5	10.2	10.0	9.8								
11-year	8.4	8.2	8.6	7.7	8.9	8.6	8.9	9.0	9.5	9.2									
10-year	8.0	7.9	8.0	7.2	8.2	7.9	8.2	8.7	9.1										
12-year	7.6	7.5	7.5	6.7	7.9	7.7	7.7	7.9											
13-year	7.2	7.1	7.1	6.5	7.2	7.3	7.1												
14-year	7.0	6.8	6.8	6.3	6.6	7.1													
15-year	6.6	6.4	6.5	5.9	6.2														
16-year	6.4	6.1	6.3	5.5															
17-year	6.2	5.7	5.8																
18-year	5.9	5.5																	
19-year	5.7	5.2																	
20-year	5.5	4.9																	

<sup>a</sup> Survival rates are relative rates expressed as percents.  
<sup>b</sup> Rates are from the SEER 9 areas (San Francisco, Connecticut, Detroit, Hawaii, Iowa, New Mexico, Seattle, Utah, and Atlanta).

Table 15.16  
Cancer of the Lung and Bronchus (Invasive)

Survival Rates<sup>a</sup>  
By Year of Diagnosis

All Races, Females

Year of Diagnosis

	1975- 1979	1980- 1984	1985- 1989	1990	1991	1992	1993	1994	1995	1996	1997	1998	1999	2000	2001	2002	2003	2004	2005
Relative Survival Rates (SEER <sup>b</sup> )																			
1-year	41.7	42.7	43.7	43.7	44.5	44.2	44.5	44.1	44.6	43.5	44.6	44.9	46.5	45.2	45.6	46.3	46.1	46.9	48.3
2-year	25.8	26.2	26.0	27.0	26.8	27.0	27.8	27.9	28.0	27.6	27.6	29.1	30.1	29.3	30.4	31.1	30.4	31.4	
3-year	20.6	20.9	20.0	20.9	21.1	21.1	22.2	22.3	22.1	21.7	21.9	23.3	24.1	23.4	23.5	24.8	24.1		
4-year	18.2	18.1	17.6	18.0	18.6	18.3	19.2	19.4	19.4	18.9	19.1	20.3	21.0	20.4	20.4	21.1			
5-year	16.6	16.4	15.8	16.4	16.4	16.2	17.7	17.5	17.1	17.2	17.1	17.9	18.9	18.3	18.4				
6-year	15.4	15.1	14.6	15.2	15.2	15.1	16.3	16.4	15.7	15.8	15.7	16.7	17.4	16.8					
7-year	14.6	14.2	13.4	14.0	14.1	14.0	15.1	15.2	14.7	14.8	14.8	15.5	16.3						
8-year	13.8	13.3	12.6	13.3	13.2	13.3	14.2	14.4	14.1	13.8	13.7	14.6							
9-year	13.1	12.5	11.8	12.5	12.6	12.5	13.4	13.4	13.4	12.8	12.8								
11-year	12.4	11.8	11.2	11.7	11.8	11.9	12.3	12.6	12.8	12.0									
10-year	11.9	11.3	10.6	11.2	11.2	11.3	11.9	11.9	12.3										
12-year	11.5	10.7	10.1	10.5	10.5	10.9	11.1	11.1											
13-year	11.2	10.1	9.7	10.3	9.9	10.4	10.9												
14-year	10.6	9.8	9.2	9.9	9.2	10.1													
15-year	10.2	9.4	8.8	9.8	8.9														
16-year	9.9	8.9	8.5	9.5															
17-year	9.5	8.7	8.3																
18-year	9.1	8.3																	
19-year	8.8	7.7																	
20-year	8.5	7.3																	

<sup>a</sup> Survival rates are relative rates expressed as percents.  
<sup>b</sup> Rates are from the SEER 9 areas (San Francisco, Connecticut, Detroit, Hawaii, Iowa, New Mexico, Seattle, Utah, and Atlanta).



Table 15.17  
Cancer of the Lung and Bronchus (Invasive)

Risk of Being Diagnosed With Cancer in 10, 20 and 30 Years,  
Lifetime Risk of Being Diagnosed with Cancer Given Alive and Cancer-Free at Current Age, and  
Lifetime Risk of Dying from Cancer Given Alive at Current Age  
Both Sexes, 2004-2006 By Race/Ethnicity

Race/ Ethnicity	Current Age	Risk of Being Diagnosed with Cancer						Risk of Dying from Cancer	
		+10 yrs Percent ( 95% C.I. )	+20 yrs Percent ( 95% C.I. )	+30 yrs Percent ( 95% C.I. )	Eventually Percent ( 95% C.I. )	Eventually Percent ( 95% C.I. )			
All Races	0	0.00 ( 0.00, 0.00 )	0.00 ( 0.00, 0.00 )	0.01 ( 0.01, 0.01 )	6.96 ( 6.92, 7.00 )	5.97 ( 5.95, 5.99 )			
	10	0.00 ( 0.00, 0.00 )	0.01 ( 0.00, 0.01 )	0.03 ( 0.03, 0.03 )	7.04 ( 7.00, 7.08 )	6.05 ( 6.03, 6.07 )			
	20	0.00 ( 0.00, 0.01 )	0.03 ( 0.03, 0.03 )	0.21 ( 0.20, 0.21 )	7.07 ( 7.03, 7.11 )	6.08 ( 6.06, 6.09 )			
	30	0.03 ( 0.02, 0.03 )	0.21 ( 0.20, 0.21 )	0.88 ( 0.87, 0.89 )	7.13 ( 7.09, 7.17 )	6.13 ( 6.12, 6.15 )			
	40	0.18 ( 0.18, 0.19 )	0.87 ( 0.86, 0.88 )	2.73 ( 2.71, 2.75 )	7.20 ( 7.16, 7.24 )	6.20 ( 6.18, 6.22 )			
	50	0.71 ( 0.70, 0.72 )	2.62 ( 2.60, 2.64 )	5.35 ( 5.32, 5.38 )	7.22 ( 7.18, 7.26 )	6.24 ( 6.22, 6.25 )			
	60	2.04 ( 2.02, 2.05 )	4.94 ( 4.91, 4.98 )	6.63 ( 6.59, 6.67 )	6.93 ( 6.89, 6.97 )	6.03 ( 6.01, 6.05 )			
	70	3.35 ( 3.32, 3.38 )	5.29 ( 5.25, 5.33 )	- ( - , - )	5.64 ( 5.60, 5.68 )	5.01 ( 4.99, 5.03 )			
80	2.73 ( 2.70, 2.76 )	- ( - , - )	- ( - , - )	3.22 ( 3.18, 3.25 )	3.04 ( 3.03, 3.06 )				
White	0	0.00 ( 0.00, 0.00 )	0.00 ( 0.00, 0.00 )	0.01 ( 0.01, 0.01 )	7.15 ( 7.10, 7.19 )	6.11 ( 6.10, 6.13 )			
	10	0.00 ( 0.00, 0.00 )	0.01 ( 0.00, 0.01 )	0.03 ( 0.03, 0.03 )	7.22 ( 7.18, 7.27 )	6.19 ( 6.17, 6.20 )			
	20	0.00 ( 0.00, 0.01 )	0.03 ( 0.03, 0.03 )	0.20 ( 0.20, 0.21 )	7.25 ( 7.21, 7.29 )	6.21 ( 6.19, 6.23 )			
	30	0.02 ( 0.02, 0.03 )	0.20 ( 0.19, 0.20 )	0.87 ( 0.86, 0.88 )	7.31 ( 7.26, 7.35 )	6.27 ( 6.25, 6.29 )			
	40	0.18 ( 0.17, 0.18 )	0.85 ( 0.84, 0.86 )	2.78 ( 2.75, 2.80 )	7.37 ( 7.33, 7.42 )	6.33 ( 6.31, 6.35 )			
	50	0.70 ( 0.69, 0.71 )	2.67 ( 2.65, 2.70 )	5.51 ( 5.47, 5.55 )	7.39 ( 7.35, 7.44 )	6.36 ( 6.34, 6.38 )			
	60	2.10 ( 2.08, 2.12 )	5.11 ( 5.07, 5.15 )	6.82 ( 6.77, 6.86 )	7.11 ( 7.06, 7.15 )	6.15 ( 6.13, 6.17 )			
	70	3.46 ( 3.43, 3.49 )	5.43 ( 5.39, 5.47 )	- ( - , - )	5.76 ( 5.72, 5.81 )	5.10 ( 5.08, 5.12 )			
80	2.77 ( 2.74, 2.81 )	- ( - , - )	- ( - , - )	3.24 ( 3.20, 3.28 )	3.07 ( 3.05, 3.09 )				
Black	0	0.00 ( 0.00, 0.00 )	0.00 ( 0.00, 0.00 )	0.01 ( 0.00, 0.01 )	6.59 ( 6.47, 6.71 )	5.46 ( 5.41, 5.51 )			
	10	0.00 ( 0.00, 0.00 )	0.01 ( 0.00, 0.01 )	0.04 ( 0.03, 0.04 )	6.75 ( 6.62, 6.87 )	5.60 ( 5.55, 5.65 )			
	20	0.00 ( 0.00, 0.01 )	0.04 ( 0.03, 0.04 )	0.32 ( 0.31, 0.34 )	6.79 ( 6.66, 6.92 )	5.63 ( 5.58, 5.68 )			
	30	0.03 ( 0.03, 0.04 )	0.32 ( 0.31, 0.34 )	1.30 ( 1.27, 1.34 )	6.90 ( 6.77, 7.02 )	5.71 ( 5.66, 5.76 )			
	40	0.30 ( 0.28, 0.31 )	1.30 ( 1.26, 1.34 )	3.34 ( 3.27, 3.42 )	7.02 ( 6.89, 7.15 )	5.82 ( 5.77, 5.88 )			
	50	1.06 ( 1.02, 1.09 )	3.21 ( 3.13, 3.28 )	5.60 ( 5.49, 5.71 )	7.07 ( 6.94, 7.21 )	5.89 ( 5.84, 5.95 )			
	60	2.41 ( 2.34, 2.48 )	5.09 ( 4.98, 5.21 )	6.47 ( 6.33, 6.60 )	6.74 ( 6.60, 6.89 )	5.66 ( 5.61, 5.72 )			
	70	3.36 ( 3.26, 3.46 )	5.07 ( 4.93, 5.21 )	- ( - , - )	5.41 ( 5.27, 5.56 )	4.65 ( 4.59, 4.71 )			
80	2.69 ( 2.57, 2.81 )	- ( - , - )	- ( - , - )	3.23 ( 3.09, 3.38 )	2.93 ( 2.87, 3.00 )				

Devcan Version 6.4.0, April 2009, National Cancer Institute (<http://srab.cancer.gov/devcan/>).

Source: Incidence data are from the SEER 17 areas (San Francisco, Connecticut, Detroit, Hawaii, Iowa, New Mexico, Seattle, Utah, Atlanta, San Jose-Monterey, Los Angeles, Alaska Native Registry, Rural Georgia, California excluding SF/SJM/LA, Kentucky, Louisiana and New Jersey). Mortality data are from the NCHS public use data file for the total US.

- Statistic could not be calculated.

A percent or confidence interval value of 0.00 represents a value that is below 0.005.

Table 15.17 - continued  
Cancer of the Lung and Bronchus (Invasive)

Risk of Being Diagnosed With Cancer in 10, 20 and 30 Years,  
Lifetime Risk of Being Diagnosed with Cancer Given Alive and Cancer-Free at Current Age, and  
Lifetime Risk of Dying from Cancer Given Alive at Current Age  
Both Sexes, 2004-2006 By Race/Ethnicity

Race/ Ethnicity	Current Age	Risk of Being Diagnosed with Cancer				Risk of Dying from Cancer	
		+10 yrs Percent ( 95% C.I. )	+20 yrs Percent ( 95% C.I. )	+30 yrs Percent ( 95% C.I. )	Eventually Percent ( 95% C.I. )	Eventually Percent ( 95% C.I. )	
Asian/ Pacific Islander	0	0.00 ( 0.00, 0.00 )	0.00 ( 0.00, 0.00 )	0.00 ( 0.00, 0.01 )	5.52 ( 5.36, 5.69 )	4.20 ( 4.07, 4.33 )	
	10	0.00 ( 0.00, 0.00 )	0.00 ( 0.00, 0.01 )	0.03 ( 0.02, 0.03 )	5.57 ( 5.41, 5.74 )	4.23 ( 4.11, 4.37 )	
	20	0.00 ( 0.00, 0.01 )	0.03 ( 0.02, 0.03 )	0.14 ( 0.13, 0.15 )	5.58 ( 5.42, 5.75 )	4.24 ( 4.12, 4.38 )	
	30	0.02 ( 0.02, 0.03 )	0.14 ( 0.13, 0.15 )	0.57 ( 0.55, 0.60 )	5.61 ( 5.44, 5.78 )	4.26 ( 4.13, 4.39 )	
	40	0.11 ( 0.10, 0.12 )	0.55 ( 0.53, 0.58 )	1.62 ( 1.57, 1.68 )	5.61 ( 5.45, 5.78 )	4.27 ( 4.14, 4.40 )	
	50	0.44 ( 0.42, 0.47 )	1.53 ( 1.48, 1.59 )	3.48 ( 3.39, 3.57 )	5.58 ( 5.41, 5.75 )	4.25 ( 4.12, 4.39 )	
	60	1.13 ( 1.08, 1.17 )	3.14 ( 3.05, 3.24 )	4.74 ( 4.61, 4.88 )	5.32 ( 5.15, 5.49 )	4.12 ( 3.99, 4.26 )	
	70	2.19 ( 2.11, 2.27 )	3.93 ( 3.80, 4.06 )	- ( - , - )	4.55 ( 4.38, 4.73 )	3.70 ( 3.56, 3.84 )	
	80	2.15 ( 2.04, 2.26 )	- ( - , - )	- ( - , - )	2.92 ( 2.74, 3.11 )	2.69 ( 2.54, 2.85 )	
American Indian/ Alaska Native <sup>a</sup>	0	0.00 ( 0.00, 0.02 )	0.01 ( 0.00, 0.03 )	0.01 ( 0.00, 0.03 )	4.82 ( 4.33, 5.46 )	4.07 ( 3.83, 4.35 )	
	10	0.01 ( 0.00, 0.02 )	0.01 ( 0.00, 0.02 )	0.02 ( 0.01, 0.05 )	4.91 ( 4.41, 5.56 )	4.16 ( 3.91, 4.44 )	
	20	0.00 ( 0.00, 0.02 )	0.02 ( 0.01, 0.04 )	0.11 ( 0.08, 0.15 )	4.94 ( 4.44, 5.60 )	4.19 ( 3.94, 4.48 )	
	30	0.02 ( 0.01, 0.04 )	0.11 ( 0.08, 0.15 )	0.60 ( 0.51, 0.70 )	5.02 ( 4.51, 5.69 )	4.27 ( 4.02, 4.57 )	
	40	0.10 ( 0.07, 0.14 )	0.60 ( 0.50, 0.70 )	1.87 ( 1.66, 2.11 )	5.14 ( 4.61, 5.82 )	4.39 ( 4.13, 4.69 )	
	50	0.52 ( 0.43, 0.62 )	1.85 ( 1.63, 2.09 )	4.07 ( 3.68, 4.50 )	5.25 ( 4.70, 5.96 )	4.50 ( 4.22, 4.82 )	
	60	1.43 ( 1.23, 1.65 )	3.82 ( 3.42, 4.27 )	4.88 ( 4.37, 5.44 )	5.08 ( 4.52, 5.84 )	4.46 ( 4.17, 4.81 )	
	70	2.81 ( 2.43, 3.22 )	4.04 ( 3.52, 4.62 )	- ( - , - )	4.28 ( 3.69, 5.11 )	3.68 ( 3.37, 4.05 )	
	80	1.71 ( 1.31, 2.21 )	- ( - , - )	- ( - , - )	2.05 ( 1.49, 2.99 )	2.14 ( 1.82, 2.56 )	
Hispanic <sup>b</sup>	0	0.00 ( 0.00, 0.00 )	0.00 ( 0.00, 0.00 )	0.01 ( 0.00, 0.01 )	4.24 ( 4.11, 4.37 )	3.10 ( 3.03, 3.16 )	
	10	0.00 ( 0.00, 0.00 )	0.01 ( 0.00, 0.01 )	0.02 ( 0.01, 0.02 )	4.28 ( 4.16, 4.41 )	3.13 ( 3.07, 3.20 )	
	20	0.00 ( 0.00, 0.01 )	0.02 ( 0.01, 0.02 )	0.09 ( 0.08, 0.10 )	4.30 ( 4.17, 4.43 )	3.15 ( 3.08, 3.21 )	
	30	0.01 ( 0.01, 0.01 )	0.08 ( 0.08, 0.09 )	0.38 ( 0.36, 0.40 )	4.33 ( 4.20, 4.47 )	3.17 ( 3.10, 3.24 )	
	40	0.07 ( 0.07, 0.08 )	0.37 ( 0.35, 0.39 )	1.28 ( 1.24, 1.32 )	4.36 ( 4.23, 4.50 )	3.20 ( 3.13, 3.27 )	
	50	0.30 ( 0.29, 0.32 )	1.23 ( 1.19, 1.28 )	2.79 ( 2.72, 2.87 )	4.38 ( 4.25, 4.52 )	3.22 ( 3.15, 3.29 )	
	60	0.98 ( 0.94, 1.02 )	2.62 ( 2.54, 2.70 )	3.83 ( 3.73, 3.94 )	4.29 ( 4.15, 4.43 )	3.18 ( 3.11, 3.25 )	
	70	1.83 ( 1.77, 1.90 )	3.19 ( 3.08, 3.30 )	- ( - , - )	3.70 ( 3.56, 3.85 )	2.84 ( 2.76, 2.92 )	
	80	1.78 ( 1.68, 1.88 )	- ( - , - )	- ( - , - )	2.45 ( 2.29, 2.62 )	2.03 ( 1.94, 2.11 )	

Devcan Version 6.4.0, April 2009, National Cancer Institute (<http://srab.cancer.gov/devcan/>).

Source: Incidence data are from the SEER 17 areas (San Francisco, Connecticut, Detroit, Hawaii, Iowa, New Mexico, Seattle, Utah, Atlanta, San Jose-Monterey, Los Angeles, Alaska Native Registry, Rural Georgia, California excluding SF/SJM/LA, Kentucky, Louisiana and New Jersey). Mortality data are from the NCHS public use data file for the total US.

<sup>a</sup> Underlying incidence and mortality data for American Indian/Alaska Native are based on the CHSDA (Contract Health Service Delivery Area) counties.

<sup>b</sup> Hispanic is not mutually exclusive from whites, blacks, Asian/Pacific Islanders, and American Indians/Alaska Natives.

Underlying incidence data for Hispanics are based on NHIA and exclude cases from the Alaska Native Registry.

Underlying mortality data for Hispanics exclude deaths from the District of Columbia, Minnesota, New Hampshire and North Dakota.

- Statistic could not be calculated.

A percent or confidence interval value of 0.00 represents a value that is below 0.005.

Table 15.17 - continued  
Cancer of the Lung and Bronchus (Invasive)

Risk of Being Diagnosed With Cancer in 10, 20 and 30 Years,  
Lifetime Risk of Being Diagnosed with Cancer Given Alive and Cancer-Free at Current Age, and  
Lifetime Risk of Dying from Cancer Given Alive at Current Age  
Males, 2004-2006 By Race/Ethnicity

Race/ Ethnicity	Current Age	Risk of Being Diagnosed with Cancer						Risk of Dying from Cancer	
		+10 yrs Percent ( 95% C.I. )	+20 yrs Percent ( 95% C.I. )	+30 yrs Percent ( 95% C.I. )	Eventually Percent ( 95% C.I. )	Eventually Percent ( 95% C.I. )			
All Races	0	0.00 ( 0.00, 0.00 )	0.00 ( 0.00, 0.00 )	0.01 ( 0.00, 0.01 )	7.73 ( 7.67, 7.79 )	7.04 ( 7.01, 7.07 )			
	10	0.00 ( 0.00, 0.00 )	0.01 ( 0.00, 0.01 )	0.03 ( 0.03, 0.03 )	7.84 ( 7.78, 7.90 )	7.15 ( 7.12, 7.18 )			
	20	0.00 ( 0.00, 0.01 )	0.03 ( 0.03, 0.03 )	0.20 ( 0.20, 0.21 )	7.88 ( 7.82, 7.94 )	7.19 ( 7.16, 7.22 )			
	30	0.02 ( 0.02, 0.03 )	0.20 ( 0.20, 0.21 )	0.96 ( 0.94, 0.97 )	7.98 ( 7.92, 8.05 )	7.29 ( 7.26, 7.32 )			
	40	0.18 ( 0.18, 0.19 )	0.95 ( 0.93, 0.96 )	3.05 ( 3.02, 3.08 )	8.09 ( 8.03, 8.15 )	7.40 ( 7.37, 7.43 )			
	50	0.80 ( 0.78, 0.81 )	2.97 ( 2.94, 3.00 )	6.11 ( 6.06, 6.16 )	8.19 ( 8.13, 8.26 )	7.51 ( 7.48, 7.54 )			
	60	2.35 ( 2.32, 2.38 )	5.74 ( 5.69, 5.79 )	7.67 ( 7.60, 7.73 )	8.00 ( 7.93, 8.07 )	7.38 ( 7.35, 7.41 )			
	70	4.03 ( 3.98, 4.07 )	6.32 ( 6.25, 6.38 )	- ( - , - )	6.71 ( 6.64, 6.78 )	6.32 ( 6.29, 6.36 )			
80	3.47 ( 3.41, 3.52 )	- ( - , - )	- ( - , - )	4.06 ( 3.99, 4.12 )	4.11 ( 4.07, 4.14 )				
White	0	0.00 ( 0.00, 0.00 )	0.00 ( 0.00, 0.00 )	0.01 ( 0.00, 0.01 )	7.81 ( 7.75, 7.88 )	7.13 ( 7.11, 7.16 )			
	10	0.00 ( 0.00, 0.00 )	0.01 ( 0.00, 0.01 )	0.03 ( 0.02, 0.03 )	7.90 ( 7.84, 7.97 )	7.23 ( 7.20, 7.26 )			
	20	0.00 ( 0.00, 0.01 )	0.03 ( 0.02, 0.03 )	0.19 ( 0.19, 0.20 )	7.95 ( 7.88, 8.01 )	7.27 ( 7.24, 7.30 )			
	30	0.02 ( 0.02, 0.02 )	0.19 ( 0.19, 0.20 )	0.91 ( 0.90, 0.93 )	8.04 ( 7.97, 8.11 )	7.36 ( 7.33, 7.39 )			
	40	0.17 ( 0.17, 0.18 )	0.91 ( 0.89, 0.92 )	3.03 ( 2.99, 3.06 )	8.15 ( 8.08, 8.22 )	7.46 ( 7.43, 7.49 )			
	50	0.76 ( 0.75, 0.77 )	2.95 ( 2.92, 2.99 )	6.15 ( 6.10, 6.21 )	8.25 ( 8.18, 8.32 )	7.57 ( 7.54, 7.60 )			
	60	2.36 ( 2.33, 2.39 )	5.81 ( 5.75, 5.87 )	7.75 ( 7.68, 7.82 )	8.06 ( 7.99, 8.14 )	7.43 ( 7.40, 7.47 )			
	70	4.08 ( 4.03, 4.13 )	6.38 ( 6.31, 6.45 )	- ( - , - )	6.75 ( 6.67, 6.82 )	6.36 ( 6.33, 6.40 )			
80	3.49 ( 3.43, 3.55 )	- ( - , - )	- ( - , - )	4.05 ( 3.98, 4.12 )	4.10 ( 4.07, 4.14 )				
Black	0	0.00 ( 0.00, 0.00 )	0.00 ( 0.00, 0.00 )	0.01 ( 0.00, 0.01 )	7.74 ( 7.55, 7.94 )	6.91 ( 6.83, 7.00 )			
	10	0.00 ( 0.00, 0.00 )	0.01 ( 0.00, 0.01 )	0.04 ( 0.03, 0.05 )	7.95 ( 7.75, 8.15 )	7.10 ( 7.02, 7.19 )			
	20	0.01 ( 0.00, 0.01 )	0.04 ( 0.03, 0.05 )	0.34 ( 0.31, 0.36 )	8.02 ( 7.82, 8.22 )	7.16 ( 7.08, 7.25 )			
	30	0.03 ( 0.03, 0.04 )	0.34 ( 0.31, 0.36 )	1.56 ( 1.50, 1.62 )	8.21 ( 8.01, 8.42 )	7.32 ( 7.24, 7.41 )			
	40	0.31 ( 0.29, 0.34 )	1.58 ( 1.52, 1.64 )	4.18 ( 4.06, 4.30 )	8.44 ( 8.23, 8.65 )	7.53 ( 7.44, 7.61 )			
	50	1.35 ( 1.29, 1.40 )	4.11 ( 3.99, 4.24 )	7.02 ( 6.83, 7.20 )	8.64 ( 8.42, 8.87 )	7.73 ( 7.64, 7.82 )			
	60	3.21 ( 3.09, 3.33 )	6.57 ( 6.37, 6.76 )	8.14 ( 7.91, 8.37 )	8.45 ( 8.21, 8.70 )	7.62 ( 7.52, 7.72 )			
	70	4.47 ( 4.29, 4.65 )	6.56 ( 6.32, 6.81 )	- ( - , - )	6.97 ( 6.71, 7.24 )	6.47 ( 6.36, 6.59 )			
80	3.69 ( 3.46, 3.94 )	- ( - , - )	- ( - , - )	4.41 ( 4.12, 4.73 )	4.39 ( 4.26, 4.53 )				

Devcan Version 6.4.0, April 2009, National Cancer Institute (<http://srab.cancer.gov/devcan/>).

Source: Incidence data are from the SEER 17 areas (San Francisco, Connecticut, Detroit, Hawaii, Iowa, New Mexico, Seattle, Utah, Atlanta, San Jose-Monterey, Los Angeles, Alaska Native Registry, Rural Georgia, California excluding SF/SJM/LA, Kentucky, Louisiana and New Jersey). Mortality data are from the NCHS public use data file for the total US.

- Statistic could not be calculated.

A percent or confidence interval value of 0.00 represents a value that is below 0.005.

Table 15.17 - continued  
Cancer of the Lung and Bronchus (Invasive)

Risk of Being Diagnosed With Cancer in 10, 20 and 30 Years,  
Lifetime Risk of Being Diagnosed with Cancer Given Alive and Cancer-Free at Current Age, and  
Lifetime Risk of Dying from Cancer Given Alive at Current Age  
Males, 2004-2006 By Race/Ethnicity

Race/ Ethnicity	Current Age	Risk of Being Diagnosed with Cancer						Risk of Dying from Cancer	
		+10 yrs Percent ( 95% C.I. )	+20 yrs Percent ( 95% C.I. )	+30 yrs Percent ( 95% C.I. )	Eventually Percent ( 95% C.I. )	Eventually Percent ( 95% C.I. )			
Asian/ Pacific Islander	0	0.00 ( 0.00, 0.00 )	0.00 ( 0.00, 0.00 )	0.00 ( 0.00, 0.01 )	6.92 ( 6.67, 7.18 )	5.45 ( 5.25, 5.66 )			
	10	0.00 ( 0.00, 0.00 )	0.00 ( 0.00, 0.01 )	0.03 ( 0.02, 0.04 )	6.98 ( 6.73, 7.25 )	5.50 ( 5.29, 5.71 )			
	20	0.00 ( 0.00, 0.01 )	0.03 ( 0.02, 0.04 )	0.15 ( 0.14, 0.17 )	7.00 ( 6.75, 7.27 )	5.51 ( 5.31, 5.73 )			
	30	0.03 ( 0.02, 0.03 )	0.15 ( 0.14, 0.17 )	0.70 ( 0.66, 0.74 )	7.05 ( 6.79, 7.32 )	5.55 ( 5.34, 5.77 )			
	40	0.13 ( 0.11, 0.14 )	0.68 ( 0.64, 0.72 )	2.05 ( 1.96, 2.14 )	7.07 ( 6.82, 7.35 )	5.57 ( 5.36, 5.79 )			
	50	0.56 ( 0.52, 0.60 )	1.95 ( 1.87, 2.04 )	4.59 ( 4.42, 4.75 )	7.07 ( 6.81, 7.35 )	5.57 ( 5.36, 5.79 )			
	60	1.46 ( 1.38, 1.54 )	4.21 ( 4.05, 4.37 )	6.24 ( 6.02, 6.47 )	6.81 ( 6.54, 7.09 )	5.44 ( 5.22, 5.67 )			
	70	3.05 ( 2.91, 3.20 )	5.31 ( 5.09, 5.54 )	- ( - , - )	5.94 ( 5.66, 6.24 )	4.95 ( 4.72, 5.20 )			
	80	2.95 ( 2.75, 3.16 )	- ( - , - )	- ( - , - )	3.77 ( 3.48, 4.09 )	3.62 ( 3.37, 3.90 )			
American Indian/ Alaska Native <sup>a</sup>	0	0.00 ( 0.00, 0.04 )	0.01 ( 0.00, 0.05 )	0.01 ( 0.00, 0.06 )	4.99 ( 4.19, 6.28 )	4.48 ( 4.08, 4.99 )			
	10	0.01 ( 0.00, 0.03 )	0.01 ( 0.00, 0.04 )	0.03 ( 0.01, 0.07 )	5.10 ( 4.28, 6.42 )	4.59 ( 4.18, 5.11 )			
	20	0.01 ( 0.00, 0.03 )	0.02 ( 0.00, 0.06 )	0.11 ( 0.07, 0.17 )	5.15 ( 4.31, 6.48 )	4.64 ( 4.22, 5.17 )			
	30	0.01 ( 0.00, 0.05 )	0.11 ( 0.06, 0.17 )	0.61 ( 0.48, 0.76 )	5.27 ( 4.42, 6.63 )	4.77 ( 4.34, 5.31 )			
	40	0.09 ( 0.05, 0.15 )	0.61 ( 0.48, 0.77 )	1.96 ( 1.65, 2.31 )	5.43 ( 4.55, 6.84 )	4.95 ( 4.50, 5.51 )			
	50	0.55 ( 0.42, 0.70 )	1.96 ( 1.64, 2.33 )	4.34 ( 3.75, 5.01 )	5.63 ( 4.70, 7.11 )	5.16 ( 4.68, 5.76 )			
	60	1.55 ( 1.26, 1.89 )	4.16 ( 3.54, 4.86 )	5.14 ( 4.38, 6.03 )	5.57 ( 4.58, 7.18 )	5.21 ( 4.69, 5.87 )			
	70	3.14 ( 2.55, 3.83 )	4.32 ( 3.53, 5.27 )	- ( - , - )	4.84 ( 3.75, 6.72 )	4.56 ( 3.97, 5.33 )			
	80	1.72 ( 1.10, 2.59 )	- ( - , - )	- ( - , - )	2.47 ( 1.30, 5.06 )	2.90 ( 2.19, 3.94 )			
Hispanic <sup>b</sup>	0	0.00 ( 0.00, 0.00 )	0.00 ( 0.00, 0.00 )	0.00 ( 0.00, 0.01 )	5.17 ( 4.96, 5.41 )	4.16 ( 4.05, 4.28 )			
	10	0.00 ( 0.00, 0.00 )	0.00 ( 0.00, 0.01 )	0.01 ( 0.01, 0.02 )	5.23 ( 5.02, 5.47 )	4.21 ( 4.10, 4.34 )			
	20	0.00 ( 0.00, 0.01 )	0.01 ( 0.01, 0.02 )	0.08 ( 0.08, 0.09 )	5.26 ( 5.05, 5.50 )	4.24 ( 4.12, 4.36 )			
	30	0.01 ( 0.01, 0.01 )	0.08 ( 0.07, 0.09 )	0.41 ( 0.38, 0.43 )	5.33 ( 5.11, 5.57 )	4.29 ( 4.17, 4.42 )			
	40	0.07 ( 0.06, 0.08 )	0.40 ( 0.38, 0.43 )	1.50 ( 1.44, 1.57 )	5.39 ( 5.16, 5.63 )	4.34 ( 4.22, 4.47 )			
	50	0.34 ( 0.32, 0.36 )	1.47 ( 1.41, 1.54 )	3.47 ( 3.35, 3.60 )	5.47 ( 5.24, 5.72 )	4.41 ( 4.29, 4.54 )			
	60	1.21 ( 1.15, 1.27 )	3.34 ( 3.21, 3.47 )	4.85 ( 4.68, 5.04 )	5.47 ( 5.23, 5.73 )	4.42 ( 4.29, 4.55 )			
	70	2.45 ( 2.33, 2.57 )	4.19 ( 4.00, 4.38 )	- ( - , - )	4.89 ( 4.63, 5.18 )	4.02 ( 3.88, 4.17 )			
	80	2.43 ( 2.25, 2.61 )	- ( - , - )	- ( - , - )	3.41 ( 3.11, 3.77 )	2.98 ( 2.81, 3.16 )			

Devcan Version 6.4.0, April 2009, National Cancer Institute (<http://srab.cancer.gov/devcan/>).

Source: Incidence data are from the SEER 17 areas (San Francisco, Connecticut, Detroit, Hawaii, Iowa, New Mexico, Seattle, Utah, Atlanta, San Jose-Monterey, Los Angeles, Alaska Native Registry, Rural Georgia, California excluding SF/SJM/LA, Kentucky, Louisiana and New Jersey). Mortality data are from the NCHS public use data file for the total US.

<sup>a</sup> Underlying incidence and mortality data for American Indian/Alaska Native are based on the CHSDA (Contract Health Service Delivery Area) counties.

<sup>b</sup> Hispanic is not mutually exclusive from whites, blacks, Asian/Pacific Islanders, and American Indians/Alaska Natives.

Underlying incidence data for Hispanics are based on NHIA and exclude cases from the Alaska Native Registry.

Underlying mortality data for Hispanics exclude deaths from the District of Columbia, Minnesota, New Hampshire and North Dakota.

- Statistic could not be calculated.

A percent or confidence interval value of 0.00 represents a value that is below 0.005.

Table 15.17 - continued  
Cancer of the Lung and Bronchus (Invasive)

Risk of Being Diagnosed With Cancer in 10, 20 and 30 Years,  
Lifetime Risk of Being Diagnosed with Cancer Given Alive and Cancer-Free at Current Age, and  
Lifetime Risk of Dying from Cancer Given Alive at Current Age  
Females, 2004-2006 By Race/Ethnicity

Race/ Ethnicity	Current Age	Risk of Being Diagnosed with Cancer						Risk of Dying from Cancer	
		+10 yrs Percent ( 95% C.I. )	+20 yrs Percent ( 95% C.I. )	+30 yrs Percent ( 95% C.I. )	Eventually Percent ( 95% C.I. )	Eventually Percent ( 95% C.I. )			
All Races	0	0.00 ( 0.00, 0.00 )	0.00 ( 0.00, 0.00 )	0.01 ( 0.01, 0.01 )	6.31 ( 6.25, 6.36 )	5.04 ( 5.02, 5.06 )			
	10	0.00 ( 0.00, 0.00 )	0.01 ( 0.00, 0.01 )	0.03 ( 0.03, 0.04 )	6.37 ( 6.32, 6.43 )	5.10 ( 5.08, 5.12 )			
	20	0.00 ( 0.00, 0.01 )	0.03 ( 0.03, 0.03 )	0.21 ( 0.21, 0.22 )	6.39 ( 6.34, 6.44 )	5.11 ( 5.09, 5.13 )			
	30	0.03 ( 0.03, 0.03 )	0.21 ( 0.20, 0.21 )	0.81 ( 0.80, 0.83 )	6.42 ( 6.36, 6.47 )	5.14 ( 5.12, 5.16 )			
	40	0.18 ( 0.18, 0.19 )	0.79 ( 0.78, 0.81 )	2.43 ( 2.40, 2.45 )	6.44 ( 6.39, 6.50 )	5.17 ( 5.15, 5.19 )			
	50	0.62 ( 0.61, 0.63 )	2.29 ( 2.27, 2.32 )	4.68 ( 4.64, 4.72 )	6.40 ( 6.34, 6.45 )	5.15 ( 5.13, 5.17 )			
	60	1.75 ( 1.73, 1.77 )	4.25 ( 4.21, 4.30 )	5.76 ( 5.71, 5.81 )	6.06 ( 6.00, 6.11 )	4.92 ( 4.90, 4.94 )			
	70	2.81 ( 2.77, 2.84 )	4.50 ( 4.45, 4.55 )	- ( - , - )	4.83 ( 4.78, 4.88 )	4.02 ( 4.00, 4.04 )			
	80	2.25 ( 2.21, 2.28 )	- ( - , - )	- ( - , - )	2.69 ( 2.65, 2.73 )	2.39 ( 2.37, 2.41 )			
White	0	0.00 ( 0.00, 0.00 )	0.00 ( 0.00, 0.00 )	0.01 ( 0.01, 0.01 )	6.60 ( 6.54, 6.66 )	5.23 ( 5.21, 5.25 )			
	10	0.00 ( 0.00, 0.00 )	0.01 ( 0.00, 0.01 )	0.03 ( 0.03, 0.04 )	6.66 ( 6.60, 6.72 )	5.28 ( 5.26, 5.31 )			
	20	0.01 ( 0.00, 0.01 )	0.03 ( 0.03, 0.03 )	0.21 ( 0.20, 0.22 )	6.67 ( 6.62, 6.73 )	5.30 ( 5.27, 5.32 )			
	30	0.03 ( 0.02, 0.03 )	0.20 ( 0.20, 0.21 )	0.82 ( 0.81, 0.84 )	6.70 ( 6.64, 6.76 )	5.32 ( 5.30, 5.35 )			
	40	0.18 ( 0.17, 0.19 )	0.80 ( 0.79, 0.82 )	2.54 ( 2.51, 2.57 )	6.73 ( 6.67, 6.79 )	5.35 ( 5.33, 5.38 )			
	50	0.63 ( 0.62, 0.65 )	2.41 ( 2.37, 2.44 )	4.93 ( 4.88, 4.98 )	6.68 ( 6.62, 6.74 )	5.33 ( 5.30, 5.35 )			
	60	1.85 ( 1.83, 1.88 )	4.50 ( 4.45, 4.55 )	6.04 ( 5.99, 6.10 )	6.33 ( 6.27, 6.39 )	5.09 ( 5.06, 5.11 )			
	70	2.96 ( 2.92, 3.00 )	4.69 ( 4.64, 4.75 )	- ( - , - )	5.01 ( 4.96, 5.07 )	4.14 ( 4.11, 4.16 )			
	80	2.31 ( 2.27, 2.35 )	- ( - , - )	- ( - , - )	2.73 ( 2.69, 2.78 )	2.43 ( 2.41, 2.45 )			
Black	0	0.00 ( 0.00, 0.00 )	0.00 ( 0.00, 0.00 )	0.00 ( 0.00, 0.01 )	5.57 ( 5.42, 5.73 )	4.20 ( 4.14, 4.27 )			
	10	0.00 ( 0.00, 0.00 )	0.00 ( 0.00, 0.01 )	0.04 ( 0.03, 0.05 )	5.69 ( 5.54, 5.85 )	4.30 ( 4.24, 4.36 )			
	20	0.00 ( 0.00, 0.01 )	0.04 ( 0.03, 0.05 )	0.31 ( 0.29, 0.33 )	5.71 ( 5.56, 5.87 )	4.31 ( 4.25, 4.37 )			
	30	0.03 ( 0.03, 0.04 )	0.31 ( 0.29, 0.33 )	1.07 ( 1.03, 1.12 )	5.76 ( 5.60, 5.92 )	4.35 ( 4.28, 4.41 )			
	40	0.28 ( 0.26, 0.30 )	1.06 ( 1.01, 1.10 )	2.61 ( 2.52, 2.70 )	5.81 ( 5.65, 5.98 )	4.40 ( 4.34, 4.46 )			
	50	0.81 ( 0.77, 0.85 )	2.42 ( 2.34, 2.51 )	4.40 ( 4.26, 4.53 )	5.76 ( 5.60, 5.93 )	4.39 ( 4.33, 4.46 )			
	60	1.76 ( 1.68, 1.84 )	3.91 ( 3.78, 4.05 )	5.13 ( 4.97, 5.29 )	5.40 ( 5.23, 5.57 )	4.17 ( 4.10, 4.24 )			
	70	2.56 ( 2.44, 2.68 )	4.01 ( 3.85, 4.17 )	- ( - , - )	4.33 ( 4.16, 4.51 )	3.42 ( 3.35, 3.49 )			
	80	2.11 ( 1.98, 2.25 )	- ( - , - )	- ( - , - )	2.58 ( 2.42, 2.75 )	2.16 ( 2.09, 2.23 )			

Devcan Version 6.4.0, April 2009, National Cancer Institute (<http://srab.cancer.gov/devcan/>).

Source: Incidence data are from the SEER 17 areas (San Francisco, Connecticut, Detroit, Hawaii, Iowa, New Mexico, Seattle, Utah, Atlanta, San Jose-Monterey, Los Angeles, Alaska Native Registry, Rural Georgia, California excluding SF/SJM/LA, Kentucky, Louisiana and New Jersey). Mortality data are from the NCHS public use data file for the total US.

- Statistic could not be calculated.

A percent or confidence interval value of 0.00 represents a value that is below 0.005.

Table 15.17 - continued  
Cancer of the Lung and Bronchus (Invasive)

Risk of Being Diagnosed With Cancer in 10, 20 and 30 Years,  
Lifetime Risk of Being Diagnosed with Cancer Given Alive and Cancer-Free at Current Age, and  
Lifetime Risk of Dying from Cancer Given Alive at Current Age  
Females, 2004-2006 By Race/Ethnicity

Race/ Ethnicity	Current Age	Risk of Being Diagnosed with Cancer				Risk of Dying from Cancer	
		+10 yrs Percent ( 95% C.I. )	+20 yrs Percent ( 95% C.I. )	+30 yrs Percent ( 95% C.I. )	Eventually Percent ( 95% C.I. )	Eventually Percent ( 95% C.I. )	
Asian/ Pacific Islander	0	0.00 ( 0.00, 0.00 )	0.00 ( 0.00, 0.00 )	0.00 ( 0.00, 0.01 )	4.34 ( 4.14, 4.56 )	3.16 ( 3.01, 3.33 )	
	10	0.00 ( 0.00, 0.00 )	0.01 ( 0.00, 0.01 )	0.03 ( 0.02, 0.04 )	4.37 ( 4.17, 4.59 )	3.18 ( 3.03, 3.36 )	
	20	0.00 ( 0.00, 0.01 )	0.03 ( 0.02, 0.04 )	0.13 ( 0.12, 0.15 )	4.38 ( 4.18, 4.60 )	3.19 ( 3.03, 3.36 )	
	30	0.02 ( 0.02, 0.03 )	0.13 ( 0.11, 0.14 )	0.46 ( 0.43, 0.49 )	4.39 ( 4.19, 4.61 )	3.20 ( 3.04, 3.37 )	
	40	0.10 ( 0.09, 0.12 )	0.44 ( 0.41, 0.47 )	1.26 ( 1.19, 1.32 )	4.38 ( 4.18, 4.60 )	3.20 ( 3.04, 3.37 )	
	50	0.34 ( 0.31, 0.37 )	1.16 ( 1.10, 1.23 )	2.57 ( 2.46, 2.68 )	4.33 ( 4.12, 4.55 )	3.17 ( 3.01, 3.34 )	
	60	0.85 ( 0.79, 0.90 )	2.29 ( 2.19, 2.40 )	3.53 ( 3.38, 3.68 )	4.09 ( 3.89, 4.32 )	3.05 ( 2.89, 3.23 )	
	70	1.54 ( 1.46, 1.63 )	2.86 ( 2.72, 3.01 )	- ( - , - )	3.46 ( 3.26, 3.70 )	2.73 ( 2.56, 2.91 )	
	80	1.57 ( 1.44, 1.69 )	- ( - , - )	- ( - , - )	2.28 ( 2.07, 2.53 )	2.00 ( 1.83, 2.21 )	
American Indian/ Alaska Native <sup>a</sup>	0	0.00 ( 0.00, 0.04 )	0.00 ( 0.00, 0.05 )	0.01 ( 0.00, 0.05 )	4.73 ( 4.10, 5.64 )	3.75 ( 3.44, 4.13 )	
	10	0.00 ( 0.00, 0.03 )	0.01 ( 0.00, 0.03 )	0.02 ( 0.01, 0.06 )	4.80 ( 4.17, 5.73 )	3.81 ( 3.50, 4.20 )	
	20	0.00 ( 0.00, 0.02 )	0.02 ( 0.00, 0.05 )	0.12 ( 0.07, 0.18 )	4.82 ( 4.18, 5.75 )	3.83 ( 3.52, 4.22 )	
	30	0.02 ( 0.00, 0.05 )	0.12 ( 0.07, 0.18 )	0.59 ( 0.46, 0.74 )	4.86 ( 4.22, 5.80 )	3.88 ( 3.55, 4.26 )	
	40	0.10 ( 0.06, 0.16 )	0.59 ( 0.46, 0.74 )	1.79 ( 1.51, 2.12 )	4.93 ( 4.28, 5.89 )	3.94 ( 3.62, 4.34 )	
	50	0.50 ( 0.38, 0.64 )	1.74 ( 1.45, 2.08 )	3.84 ( 3.31, 4.42 )	4.98 ( 4.30, 5.96 )	3.98 ( 3.65, 4.39 )	
	60	1.32 ( 1.06, 1.62 )	3.53 ( 3.00, 4.13 )	4.65 ( 3.98, 5.42 )	4.74 ( 4.05, 5.76 )	3.90 ( 3.55, 4.33 )	
	70	2.53 ( 2.05, 3.08 )	3.81 ( 3.14, 4.59 )	- ( - , - )	3.91 ( 3.22, 5.00 )	3.06 ( 2.71, 3.51 )	
	80	1.71 ( 1.20, 2.39 )	- ( - , - )	- ( - , - )	1.85 ( 1.28, 3.03 )	1.71 ( 1.38, 2.18 )	
Hispanic <sup>b</sup>	0	0.00 ( 0.00, 0.00 )	0.00 ( 0.00, 0.00 )	0.01 ( 0.00, 0.01 )	3.49 ( 3.34, 3.65 )	2.22 ( 2.14, 2.30 )	
	10	0.00 ( 0.00, 0.00 )	0.01 ( 0.00, 0.01 )	0.02 ( 0.01, 0.02 )	3.52 ( 3.37, 3.69 )	2.24 ( 2.16, 2.32 )	
	20	0.00 ( 0.00, 0.01 )	0.02 ( 0.01, 0.02 )	0.09 ( 0.08, 0.10 )	3.53 ( 3.37, 3.69 )	2.24 ( 2.17, 2.33 )	
	30	0.01 ( 0.01, 0.02 )	0.09 ( 0.08, 0.10 )	0.35 ( 0.33, 0.38 )	3.54 ( 3.38, 3.70 )	2.25 ( 2.17, 2.33 )	
	40	0.08 ( 0.07, 0.09 )	0.34 ( 0.32, 0.37 )	1.08 ( 1.03, 1.14 )	3.55 ( 3.39, 3.71 )	2.26 ( 2.18, 2.34 )	
	50	0.27 ( 0.25, 0.29 )	1.02 ( 0.97, 1.07 )	2.22 ( 2.13, 2.31 )	3.52 ( 3.36, 3.69 )	2.26 ( 2.18, 2.34 )	
	60	0.78 ( 0.73, 0.83 )	2.02 ( 1.93, 2.12 )	3.00 ( 2.87, 3.13 )	3.37 ( 3.21, 3.55 )	2.21 ( 2.13, 2.29 )	
	70	1.36 ( 1.28, 1.44 )	2.43 ( 2.30, 2.56 )	- ( - , - )	2.83 ( 2.67, 3.01 )	1.98 ( 1.89, 2.07 )	
	80	1.34 ( 1.23, 1.45 )	- ( - , - )	- ( - , - )	1.85 ( 1.68, 2.04 )	1.44 ( 1.35, 1.53 )	

Devcan Version 6.4.0, April 2009, National Cancer Institute (<http://srab.cancer.gov/devcan/>).

Source: Incidence data are from the SEER 17 areas (San Francisco, Connecticut, Detroit, Hawaii, Iowa, New Mexico, Seattle, Utah, Atlanta, San Jose-Monterey, Los Angeles, Alaska Native Registry, Rural Georgia, California excluding SF/SJM/LA, Kentucky, Louisiana and New Jersey). Mortality data are from the NCHS public use data file for the total US.

<sup>a</sup> Underlying incidence and mortality data for American Indian/Alaska Native are based on the CHSDA (Contract Health Service Delivery Area) counties.

<sup>b</sup> Hispanic is not mutually exclusive from whites, blacks, Asian/Pacific Islanders, and American Indians/Alaska Natives.

Underlying incidence data for Hispanics are based on NHIA and exclude cases from the Alaska Native Registry.

Underlying mortality data for Hispanics exclude deaths from the District of Columbia, Minnesota, New Hampshire and North Dakota.

- Statistic could not be calculated.

A percent or confidence interval value of 0.00 represents a value that is below 0.005.

Table 15.18  
Lung and Bronchus (Invasive)

SEER Incidence and U.S. Mortality  
Age-Adjusted Rates and Trends<sup>a</sup>  
By Race/Ethnicity and Sex

SEER Incidence	SEER 17 Areas <sup>b</sup>			SEER 13 Areas <sup>b</sup>			SEER 9 Areas <sup>b</sup>		
	Rate 2002-2006			Trend 1997-2006 <sup>c</sup>			Trend 1997-2006 <sup>d</sup>		
	Rate per 100,000 persons			AAPC (%)			AAPC (%)		
RACE/ETHNICITY	Total	Males	Females	Total	Males	Females	Total	Males	Females
All Races	63.1	77.7	52.5	-1.2*	-2.4*	-0.5*	-0.8*	-1.9*	0.0
White	64.4	77.6	54.8	-1.4*	-2.1*	-0.6*	-1.0*	-2.2*	-0.1
White Hispanic <sup>e</sup>	33.1	43.9	25.3	-2.0*	-2.5*	-1.4*	-	-	-
White Non-Hispanic <sup>e</sup>	68.8	82.2	59.0	-1.1*	-1.9*	-0.4	-	-	-
Black	74.7	104.3	54.7	-1.4*	-2.7*	0.5*	-1.1*	-3.3*	0.4
Asian/Pacific Islander	38.9	53.4	28.1	-0.7*	-1.2*	0.4	-	-	-
Amer Ind/Alaska Nat <sup>f</sup>	44.9	51.6	39.8	-0.3	-2.2*	2.2*	-	-	-
Hispanic <sup>e</sup>	32.5	43.2	24.7	-1.8*	-2.3*	-1.3*	-	-	-
<u>U.S. Mortality<sup>g</sup></u>									
RACE/ETHNICITY	Rate 2002-2006			Trend 1997-2006 <sup>h</sup>					
	Rate per 100,000 persons			AAPC (%)					
	Total	Males	Females	Total	Males	Females			
All Races	53.4	70.5	40.9	-0.9*	-1.9*	0.0			
White	53.8	69.9	41.9	-0.8*	-1.8*	0.0			
White Hispanic <sup>e</sup>	23.4	34.9	14.9	-2.1*	-2.9*	-0.3			
White Non-Hispanic <sup>e</sup>	56.4	72.9	44.2	-0.6*	-1.6*	0.3			
Black	59.9	90.1	40.0	-1.8*	-2.8*	0.3*			
Asian/Pacific Islander	26.2	36.9	18.2	-1.3*	-1.6*	-0.5			
Amer Ind/Alaska Nat									
Total U.S.	33.9	41.2	28.3	-0.9*	-2.6*	1.0*			
CHSDA Counties	39.7	48.0	33.5	-0.2	-1.7*	1.6*			
Non-CHSDA Counties	26.5	32.9	21.6	-1.7*	-3.5*	0.4			
Hispanic <sup>e</sup>	22.7	33.9	14.4	-2.1*	-3.1*	-0.3			

The AAPC is the Average Annual Percent Change over the time interval. The AAPCs are calculated by the Joinpoint Regression Program Version 3.3, April 2008, National Cancer Institute.

- Statistic not shown. Rate based on less than 16 cases for the time interval.

Trend based on less than 10 cases for at least one year within the time interval.

a Rates are age-adjusted to the 2000 US Std Population (19 age groups - Census P25-1130). Trends

are based on rates age-adjusted to the 2000 US Std Population (19 age groups - Census P25-1130).

b The SEER 9 areas are San Francisco, Connecticut, Detroit, Hawaii, Iowa, New Mexico, Seattle, Utah and Atlanta.

The SEER 13 areas comprise the SEER 9 areas plus San Jose-Monterey, Los Angeles, the Alaska Native Registry and Rural Georgia.

The SEER 17 areas comprise the SEER 13 areas plus California excluding SF/SJM/LA, Kentucky, Louisiana and New Jersey.

c The 1997-2006 AAPC estimates are based on a Joinpoint analysis with up to 2 Joinpoints over diagnosis years 1992-2006.

d The 1997-2006 AAPC estimates are based on a Joinpoint analysis with up to 4 Joinpoints over diagnosis years 1975-2006.

e Hispanic and Non-Hispanic are not mutually exclusive from whites, blacks, Asian/Pacific Islanders, and American Indians/Alaska Natives. Incidence data for Hispanics and Non-Hispanics are based on NHIA and exclude cases from the Alaska Native Registry. The 2002-2006 Hispanic and Non-Hispanic death rates exclude deaths from the District of Columbia, Minnesota, New Hampshire and North Dakota. The 1997-2006 Hispanic and Non-Hispanic mortality trends exclude deaths from Connecticut, the District of Columbia, Maine, Maryland, Minnesota, New Hampshire, New York, North Dakota, Oklahoma and Vermont.

f Incidence data for American Indian/Alaska Native are based on the CHSDA(Contract Health Service Delivery Area) counties.

g US Mortality Files, National Center for Health Statistics, CDC.

h The 1997-2006 mortality AAPCs are based on a Joinpoint analysis using years of death 1992-2006.

\* The APC is significantly different from zero (p<.05).

Table 15.19  
Cancer of the Lung And Bronchus (Invasive)

Age-Adjusted SEER Incidence Rates<sup>a</sup>  
By Registry, Race and Sex

	All Races			Whites			Blacks		
	Total	Males	Females	Total	Males	Females	Total	Males	Females
<u>SEER Incidence Rates<sup>a</sup>, 2002-2006</u>									
Atlanta & Rural Georgia	59.99	78.79	47.19	60.30	75.22	50.03	62.40	94.29	43.16
Atlanta	59.43	77.51	47.26	59.30	73.41	49.77	63.23	95.09	44.19
Rural Georgia	72.43	104.19	48.01	80.26	108.92	56.36	57.02	93.67	33.18
California	54.68	65.12	47.03	56.15	65.23	49.59	70.35	91.84	55.10
Greater Bay Area	51.32	59.66	45.39	52.06	57.46	48.53	75.63	92.27	63.90
San Francisco-Oakland	53.21	61.81	47.09	53.12	58.13	49.87	78.40	95.07	66.68
San Jose-Monterey	47.65	55.51	42.04	50.23	56.36	46.17	58.65	81.54	41.43
Los Angeles	47.49	59.21	38.95	46.75	56.30	39.82	69.79	94.43	53.01
Greater California	59.33	69.81	51.59	61.18	71.06	53.94	67.67	88.68	51.87
Connecticut	68.87	81.76	60.15	69.85	82.04	61.71	61.38	84.91	45.86
Detroit	80.12	99.51	66.78	78.74	95.45	67.47	89.55	121.97	67.87
Hawaii	52.93	68.81	40.09	63.33	73.67	54.67	31.88	34.01	-
Iowa	68.51	89.91	53.05	68.30	89.52	53.02	97.84	140.40	62.92
Kentucky	100.50	133.05	76.92	100.55	132.81	77.10	107.18	148.53	79.54
Louisiana	79.68	109.53	57.90	79.33	104.45	60.82	82.13	128.46	50.90
New Jersey	65.56	79.61	55.97	66.85	79.72	58.15	67.87	92.54	51.99
New Mexico	47.16	57.50	38.97	49.59	59.81	41.44	45.30	60.47	32.45
Seattle-Puget Sound	68.63	79.59	60.67	69.96	79.88	62.83	77.76	104.74	56.32
Utah	29.63	37.79	22.96	29.46	37.58	22.81	60.27	74.91	-
9 SEER Areas <sup>b</sup>	62.15	76.03	52.10	62.90	75.26	54.07	75.78	103.68	57.03
11 SEER Areas <sup>b</sup>	58.04	71.14	48.55	58.84	70.33	50.63	73.90	100.75	55.75
13 SEER Areas <sup>b</sup>	58.16	71.33	48.61	58.90	70.45	50.64	73.62	100.61	55.40
17 SEER Areas <sup>b</sup>	63.09	77.67	52.48	64.38	77.63	54.79	74.71	104.28	54.68

<sup>a</sup> Rates are per 100,000 and are age-adjusted to the 2000 US Std Population (19 age groups - Census P25-1130)

<sup>b</sup> The SEER 9 areas are San Francisco, Connecticut, Detroit, Hawaii, Iowa, New Mexico, Seattle, Utah and Atlanta.

The SEER 11 areas comprise the SEER 9 areas plus San Jose-Monterey and Los Angeles.

The SEER 13 areas comprise the SEER 11 areas plus the Alaska Native Registry and Rural Georgia.

The SEER 17 areas comprise the SEER 13 areas plus California excluding SF/SJM/LA, Kentucky, Louisiana and New Jersey.

- Statistic not shown. Rate based on less than 16 cases for the time interval.



Table 15.20  
Cancer of the Lung And Bronchus (Invasive)

Age-Adjusted SEER Death Rates<sup>a</sup>  
By Registry, Race and Sex

	All Races			Whites			Blacks		
	Total	Males	Females	Total	Males	Females	Total	Males	Females
<u>SEER Death Rates<sup>a</sup>, 2002-2006</u>									
Atlanta & Rural Georgia	46.90	64.74	34.91	46.80	62.05	36.31	49.30	77.06	32.79
Atlanta	46.44	63.65	34.95	46.13	60.79	36.15	49.45	76.80	33.33
Rural Georgia	57.15	86.16	35.62	60.90	87.76	40.11	50.35	85.90	28.13
California	42.84	53.04	35.33	44.24	53.41	37.52	57.36	79.40	41.85
Greater Bay Area	39.75	47.59	34.18	41.05	46.75	37.21	63.31	83.17	49.60
San Francisco-Oakland	41.46	49.50	35.70	42.25	47.43	38.70	65.58	85.31	52.01
San Jose-Monterey	36.42	43.95	31.16	39.04	45.77	34.61	49.74	78.04	29.47
Los Angeles	37.59	48.87	29.33	37.05	46.58	30.07	56.25	79.23	40.56
Greater California	46.47	56.92	38.69	48.10	58.06	40.69	54.76	77.45	37.92
Connecticut	48.64	61.19	40.10	49.35	61.48	41.10	44.65	65.93	31.67
Detroit	57.15	74.20	45.40	55.78	70.91	45.43	65.25	91.86	47.57
Hawaii	37.22	50.48	26.44	47.23	56.49	38.95	-	-	-
Iowa	52.32	72.08	38.07	52.24	71.85	38.12	79.50	117.56	50.29
Kentucky	77.68	107.59	56.40	77.81	107.71	56.45	82.73	116.36	60.48
Louisiana	65.66	92.92	46.05	64.17	87.05	47.54	71.14	114.38	42.36
New Jersey	49.23	62.70	40.07	50.00	62.96	41.15	54.85	76.53	41.47
New Mexico	37.37	47.26	29.69	39.19	49.05	31.49	40.45	61.14	24.54
Seattle-Puget Sound	51.68	61.99	44.16	53.04	62.73	46.04	59.59	80.01	42.12
Utah	24.42	32.76	17.62	24.28	32.69	17.40	44.12	-	-
9 SEER Areas <sup>b</sup>	46.47	59.36	37.14	47.24	59.18	38.65	57.94	82.33	41.78
11 SEER Areas <sup>b</sup>	43.91	56.16	35.02	44.67	55.86	36.61	57.35	81.34	41.31
13 SEER Areas <sup>b</sup>	44.04	56.35	35.10	44.79	56.01	36.68	57.23	81.35	41.08
17 SEER Areas <sup>b</sup>	48.56	62.37	38.51	49.58	62.46	40.21	59.97	87.18	41.80
Total U.S.	53.38	70.49	40.88	53.77	69.93	41.90	59.85	90.13	39.98

<sup>a</sup> US Mortality Files, National Center for Health Statistics, Centers for Disease Control and Prevention.  
Rates are per 100,000 and are age-adjusted to the 2000 US Std Population (19 age groups - Census P25-1130).

<sup>b</sup> The SEER 9 areas are San Francisco, Connecticut, Detroit, Hawaii, Iowa, New Mexico, Seattle, Utah and Atlanta.  
The SEER 11 areas comprise the SEER 9 areas plus San Jose-Monterey and Los Angeles.  
The SEER 13 areas comprise the SEER 11 areas plus the Alaska Native Registry and Rural Georgia.  
The SEER 17 areas comprise the SEER 13 areas plus California excluding SF/SJM/LA, Kentucky, Louisiana and New Jersey.  
- Statistic not shown. Rate based on less than 16 cases for the time interval.

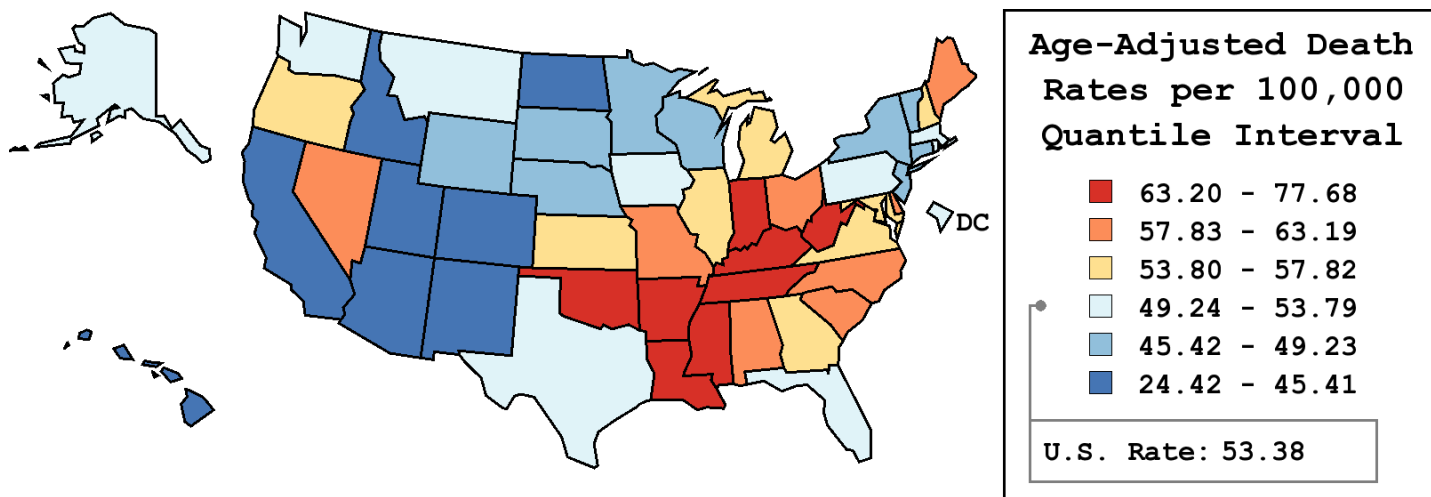
Table 15.21  
Cancer of the Lung and Bronchus (Invasive)

Age-Adjusted Cancer Death<sup>a</sup> Rates By State, All Races, 2002-2006

Males and Females

State	Rate	SE	Rank	PD
TOTAL U.S.	53.38	0.06		
High Five States				
Kentucky	77.68	0.60	(01)	45.54 <sup>c</sup>
Arkansas	68.68	0.67	(02)	28.67 <sup>c</sup>
Tennessee	68.38	0.47	(03)	28.10 <sup>c</sup>
West Virginia	68.27	0.79	(04)	27.90 <sup>c</sup>
Mississippi	67.26	0.69	(05)	26.01 <sup>c</sup>
Low Five States				
California	42.84	0.17	(47)	-19.75 <sup>c</sup>
Colorado	39.99	0.46	(48)	-25.09 <sup>c</sup>
New Mexico	37.37	0.63	(49)	-29.98 <sup>c</sup>
Hawaii	37.22	0.73	(50)	-30.27 <sup>c</sup>
Utah	24.42	0.53	(51)	-54.24 <sup>c</sup>

State	Rate	SE	Rank	PD	State	Rate	SE	Rank	PD
Alabama	63.19	0.51	(09)	18.37 <sup>c</sup>	Montana	51.10	1.00	(33)	-4.27
Alaska	52.68	1.73	(29)	-1.31	Nebraska	48.33	0.73	(40)	-9.45 <sup>c</sup>
Arizona	45.33	0.39	(45)	-15.08 <sup>c</sup>	Nevada	58.11	0.74	(16)	8.87 <sup>c</sup>
Arkansas	68.68	0.67	(02)	28.67 <sup>c</sup>	New Hampshire	53.95	0.91	(24)	1.08
California	42.84	0.17	(47)	-19.75 <sup>c</sup>	New Jersey	49.23	0.33	(35)	-7.78 <sup>c</sup>
Colorado	39.99	0.46	(48)	-25.09 <sup>c</sup>	New Mexico	37.37	0.63	(49)	-29.98 <sup>c</sup>
Connecticut	48.64	0.51	(39)	-8.87 <sup>c</sup>	New York	46.28	0.21	(42)	-13.30 <sup>c</sup>
Delaware	61.37	1.18	(12)	14.97 <sup>c</sup>	North Carolina	59.17	0.37	(15)	10.86 <sup>c</sup>
D.C.	50.80	1.34	(34)	-4.83	North Dakota	45.41	1.13	(44)	-14.92 <sup>c</sup>
Florida	53.30	0.22	(28)	-0.15	Ohio	60.43	0.31	(13)	13.21 <sup>c</sup>
Georgia	57.82	0.40	(17)	8.32 <sup>c</sup>	Oklahoma	63.52	0.58	(07)	19.00 <sup>c</sup>
Hawaii	37.22	0.73	(50)	-30.27 <sup>c</sup>	Oregon	54.85	0.54	(21)	2.76
Idaho	43.64	0.82	(46)	-18.25 <sup>c</sup>	Pennsylvania	53.79	0.27	(25)	0.78
Illinois	54.56	0.30	(23)	2.21	Rhode Island	53.79	0.96	(26)	0.76
Indiana	63.34	0.45	(08)	18.66 <sup>c</sup>	South Carolina	59.73	0.53	(14)	11.91 <sup>c</sup>
Iowa	52.32	0.56	(31)	-1.98	South Dakota	49.07	1.07	(36)	-8.07 <sup>c</sup>
Kansas	54.74	0.62	(22)	2.55	Tennessee	68.38	0.47	(03)	28.10 <sup>c</sup>
Kentucky	77.68	0.60	(01)	45.54 <sup>c</sup>	Texas	52.11	0.24	(32)	-2.38
Louisiana	65.66	0.55	(06)	23.01 <sup>c</sup>	Utah	24.42	0.53	(51)	-54.24 <sup>c</sup>
Maine	61.88	0.90	(11)	15.93 <sup>c</sup>	Vermont	49.02	1.21	(37)	-8.16 <sup>c</sup>
Maryland	55.30	0.46	(20)	3.61	Virginia	56.50	0.40	(18)	5.85 <sup>c</sup>
Massachusetts	53.34	0.39	(27)	-0.06	Washington	52.51	0.42	(30)	-1.62
Michigan	56.29	0.33	(19)	5.45 <sup>c</sup>	West Virginia	68.27	0.79	(04)	27.90 <sup>c</sup>
Minnesota	46.17	0.43	(43)	-13.50 <sup>c</sup>	Wisconsin	48.74	0.41	(38)	-8.69 <sup>c</sup>
Mississippi	67.26	0.69	(05)	26.01 <sup>c</sup>	Wyoming	46.52	1.36	(41)	-12.85 <sup>c</sup>
Missouri	63.10	0.45	(10)	18.22 <sup>c</sup>					



<sup>a</sup> US Mortality Files, National Center for Health Statistics, Centers for Disease Control and Prevention. Rates are per 100,000 and are age-adjusted to the 2000 US Std Population (19 age groups - Census P25-1130).  
<sup>b</sup> Difference between state rate and total U.S. rate is statistically significant ( $p \leq .0002$ ).  
<sup>c</sup> Absolute percent difference between state rate and total U.S. rate is 5% or more.  
SE Standard error of the rate.  
PD Percent difference between state rate and total U.S. rate.

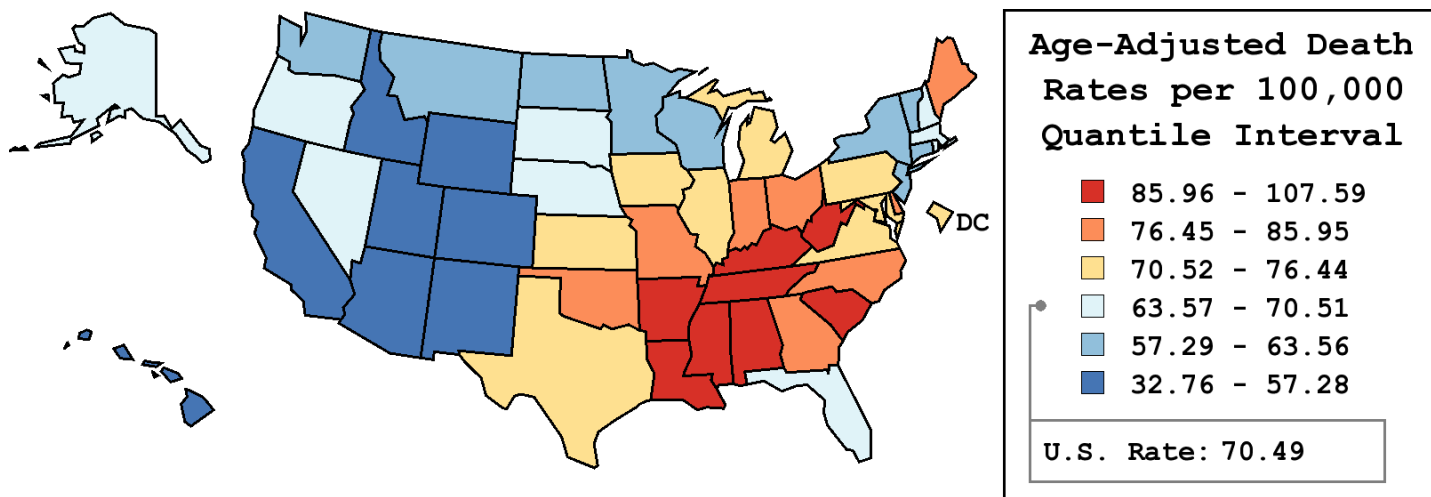
Table 15.22  
Cancer of the Lung and Bronchus (Invasive)

Age-Adjusted Cancer Death<sup>a</sup> Rates By State, All Races, 2002-2006

Males

State	Rate	SE	Rank	PD
TOTAL U.S.	70.49	0.11		
High Five States				
Kentucky	107.59	1.11	(01)	52.63 <sup>c</sup>
Mississippi	100.18	1.31	(02)	42.12 <sup>c</sup>
Tennessee	97.83	0.89	(03)	38.79 <sup>c</sup>
Arkansas	96.90	1.22	(04)	37.46 <sup>c</sup>
Alabama	93.42	0.97	(05)	32.53 <sup>c</sup>
Low Five States				
California	53.04	0.28	(47)	-24.76 <sup>c</sup>
Hawaii	50.48	1.28	(48)	-28.39 <sup>c</sup>
Colorado	49.66	0.80	(49)	-29.55 <sup>c</sup>
New Mexico	47.26	1.08	(50)	-32.95 <sup>c</sup>
Utah	32.76	0.92	(51)	-53.53 <sup>c</sup>

State	Rate	SE	Rank	PD	State	Rate	SE	Rank	PD
Alabama	93.42	0.97	(05)	32.53 <sup>c</sup>	Montana	61.70	1.64	(38)	-12.47 <sup>c</sup>
Alaska	63.63	2.87	(34)	-9.74 <sup>c</sup>	Nebraska	65.84	1.29	(31)	-6.60 <sup>c</sup>
Arizona	56.44	0.65	(45)	-19.94 <sup>c</sup>	Nevada	66.10	1.17	(30)	-6.22 <sup>c</sup>
Arkansas	96.90	1.22	(04)	37.46 <sup>c</sup>	New Hampshire	66.91	1.56	(29)	-5.08 <sup>c</sup>
California	53.04	0.28	(47)	-24.76 <sup>c</sup>	New Jersey	62.70	0.58	(37)	-11.05 <sup>c</sup>
Colorado	49.66	0.80	(49)	-29.55 <sup>c</sup>	New Mexico	47.26	1.08	(50)	-32.95 <sup>c</sup>
Connecticut	61.19	0.88	(39)	-13.20 <sup>c</sup>	New York	59.50	0.38	(42)	-15.59 <sup>c</sup>
Delaware	78.65	2.05	(16)	11.57 <sup>c</sup>	North Carolina	83.71	0.70	(13)	18.75 <sup>c</sup>
D.C.	74.34	2.57	(18)	5.47 <sup>c</sup>	North Dakota	60.48	1.95	(41)	-14.20 <sup>c</sup>
Florida	68.27	0.37	(27)	-3.15	Ohio	81.55	0.57	(14)	15.69 <sup>c</sup>
Georgia	84.07	0.77	(12)	19.27 <sup>c</sup>	Oklahoma	85.94	1.04	(10)	21.92 <sup>c</sup>
Hawaii	50.48	1.28	(48)	-28.39 <sup>c</sup>	Oregon	65.68	0.89	(32)	-6.83 <sup>c</sup>
Idaho	54.59	1.37	(46)	-22.56 <sup>c</sup>	Pennsylvania	72.45	0.48	(22)	2.78
Illinois	72.59	0.53	(21)	2.98	Rhode Island	70.51	1.70	(26)	0.02
Indiana	85.27	0.81	(11)	20.97 <sup>c</sup>	South Carolina	86.20	0.99	(08)	22.28 <sup>c</sup>
Iowa	72.08	1.00	(23)	2.26	South Dakota	65.43	1.85	(33)	-7.18 <sup>c</sup>
Kansas	72.65	1.10	(20)	3.07	Tennessee	97.83	0.89	(03)	38.79 <sup>c</sup>
Kentucky	107.59	1.11	(01)	52.63 <sup>c</sup>	Texas	70.84	0.43	(25)	0.50
Louisiana	92.92	1.03	(06)	31.81 <sup>c</sup>	Utah	32.76	0.92	(51)	-53.53 <sup>c</sup>
Maine	79.16	1.56	(15)	12.30 <sup>c</sup>	Vermont	60.67	2.07	(40)	-13.94 <sup>c</sup>
Maryland	71.54	0.82	(24)	1.49	Virginia	76.44	0.73	(17)	8.43 <sup>c</sup>
Massachusetts	66.98	0.69	(28)	-4.98	Washington	63.56	0.71	(35)	-9.83 <sup>c</sup>
Michigan	73.48	0.59	(19)	4.25	West Virginia	92.76	1.41	(07)	31.59 <sup>c</sup>
Minnesota	58.66	0.74	(43)	-16.78 <sup>c</sup>	Wisconsin	62.93	0.71	(36)	-10.72 <sup>c</sup>
Mississippi	100.18	1.31	(02)	42.12 <sup>c</sup>	Wyoming	57.28	2.28	(44)	-18.74 <sup>c</sup>
Missouri	85.95	0.81	(09)	21.93 <sup>c</sup>					



<sup>a</sup> US Mortality Files, National Center for Health Statistics, Centers for Disease Control and Prevention. Rates are per 100,000 and are age-adjusted to the 2000 US Std Population (19 age groups - Census P25-1130).  
<sup>b</sup> Difference between state rate and total U.S. rate is statistically significant ( $p \leq .0002$ ).  
<sup>c</sup> Absolute percent difference between state rate and total U.S. rate is 5% or more.  
SE Standard error of the rate.  
PD Percent difference between state rate and total U.S. rate.

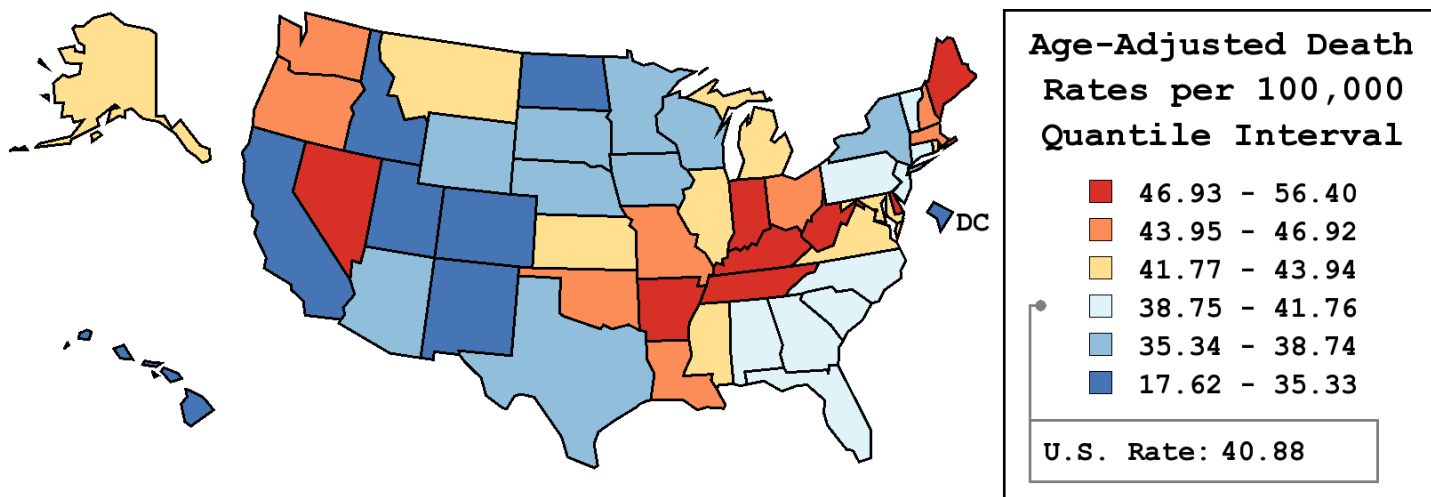
Table 15.23  
Cancer of the Lung And Bronchus (Invasive)

Age-Adjusted Cancer Death<sup>a</sup> Rates By State, All Races, 2002-2006

Females

State	Rate	SE	Rank	PD
TOTAL U.S.	40.88	0.07		
High Five States				
Kentucky	56.40	0.69	(01)	37.96 <sup>c</sup>
Nevada	51.18	0.95	(02)	25.19 <sup>c</sup>
West Virginia	50.41	0.91	(03)	23.32 <sup>c</sup>
Maine	49.44	1.08	(04)	20.94 <sup>c</sup>
Delaware	48.52	1.40	(05)	18.69 <sup>c</sup>
Low Five States				
North Dakota	34.19	1.35	(47)	-16.37 <sup>c</sup>
Colorado	33.17	0.56	(48)	-18.85 <sup>c</sup>
New Mexico	29.69	0.76	(49)	-27.36 <sup>c</sup>
Hawaii	26.44	0.84	(50)	-35.33 <sup>c</sup>
Utah	17.62	0.61	(51)	-56.90 <sup>c</sup>

State	Rate	SE	Rank	PD	State	Rate	SE	Rank	PD
Alabama	41.75	0.55	(27)	2.13	Montana	42.97	1.25	(21)	5.13 <sup>c</sup>
Alaska	43.41	2.13	(20)	6.18 <sup>c</sup>	Nebraska	35.50	0.84	(43)	-13.17 <sup>c</sup>
Arizona	36.30	0.48	(42)	-11.19 <sup>c</sup>	Nevada	51.18	0.95	(02)	25.19 <sup>c</sup>
Arkansas	47.62	0.75	(07)	16.49 <sup>c</sup>	New Hampshire	44.72	1.11	(14)	9.40 <sup>c</sup>
California	35.33	0.20	(44)	-13.58 <sup>c</sup>	New Jersey	40.07	0.39	(33)	-1.98
Colorado	33.17	0.56	(48)	-18.85 <sup>c</sup>	New Mexico	29.69	0.76	(49)	-27.36 <sup>c</sup>
Connecticut	40.10	0.61	(32)	-1.91	New York	37.19	0.25	(40)	-9.03 <sup>c</sup>
Delaware	48.52	1.40	(05)	18.69 <sup>c</sup>	North Carolina	41.76	0.41	(26)	2.16
D.C.	35.04	1.45	(46)	-14.29 <sup>c</sup>	North Dakota	34.19	1.35	(47)	-16.37 <sup>c</sup>
Florida	41.20	0.26	(28)	0.79	Ohio	45.54	0.36	(13)	11.41 <sup>c</sup>
Georgia	39.50	0.43	(34)	-3.37	Oklahoma	46.92	0.67	(09)	14.78 <sup>c</sup>
Hawaii	26.44	0.84	(50)	-35.33 <sup>c</sup>	Oregon	46.77	0.67	(10)	14.43 <sup>c</sup>
Idaho	35.07	1.00	(45)	-14.21 <sup>c</sup>	Pennsylvania	40.73	0.31	(29)	-0.36
Illinois	41.99	0.35	(24)	2.71	Rhode Island	42.60	1.13	(22)	4.20
Indiana	47.96	0.52	(06)	17.33 <sup>c</sup>	South Carolina	40.49	0.57	(31)	-0.94
Iowa	38.07	0.65	(38)	-6.86 <sup>c</sup>	South Dakota	36.89	1.27	(41)	-9.75 <sup>c</sup>
Kansas	41.82	0.74	(25)	2.29	Tennessee	47.39	0.52	(08)	15.93 <sup>c</sup>
Kentucky	56.40	0.69	(01)	37.96 <sup>c</sup>	Texas	38.30	0.27	(36)	-6.30 <sup>c</sup>
Louisiana	46.05	0.62	(12)	12.66 <sup>c</sup>	Utah	17.62	0.61	(51)	-56.90 <sup>c</sup>
Maine	49.44	1.08	(04)	20.94 <sup>c</sup>	Vermont	40.72	1.49	(30)	-0.38
Maryland	43.80	0.54	(18)	7.15 <sup>c</sup>	Virginia	42.24	0.46	(23)	3.34
Massachusetts	44.21	0.48	(16)	8.15 <sup>c</sup>	Washington	44.39	0.52	(15)	8.58 <sup>c</sup>
Michigan	43.94	0.39	(17)	7.49 <sup>c</sup>	West Virginia	50.41	0.91	(03)	23.32 <sup>c</sup>
Minnesota	37.35	0.52	(39)	-8.64 <sup>c</sup>	Wisconsin	38.74	0.50	(35)	-5.22 <sup>c</sup>
Mississippi	43.73	0.73	(19)	6.97 <sup>c</sup>	Wyoming	38.12	1.68	(37)	-6.75 <sup>c</sup>
Missouri	46.61	0.52	(11)	14.03 <sup>c</sup>					



<sup>a</sup> US Mortality Files, National Center for Health Statistics, Centers for Disease Control and Prevention. Rates are per 100,000 and are age-adjusted to the 2000 US Std Population (19 age groups - Census P25-1130).  
<sup>b</sup> Difference between state rate and total U.S. rate is statistically significant ( $p \leq .0002$ ).  
<sup>c</sup> Absolute percent difference between state rate and total U.S. rate is 5% or more.  
SE Standard error of the rate.  
PD Percent difference between state rate and total U.S. rate.

Table 15.24  
Cancer of the Lung And Bronchus (Invasive)

Estimated United States Cancer Prevalence Counts<sup>a</sup> on January 1, 2006  
By Race/Ethnicity, Sex and Years Since Diagnosis

Years Since Diagnosis		0 to <5	5 to <10	10 to <15	15 to <20	20 to <25	25 to <30	0 to <16 <sup>e</sup>	0 to <31 <sup>e</sup>	>=31 <sup>g</sup>	Complete <sup>h</sup>
<u>Race</u>	<u>Sex</u>										
All Races <sup>b</sup>	Both Sexes	209,050	69,333	38,216	20,390	10,614	5,704	321,698	354,138	10,858	364,996
	Males	98,835	31,266	17,584	9,575	4,868	2,761	149,826	165,363	6,159	171,522
	Females	110,215	38,067	20,632	10,815	5,746	2,943	171,872	188,775	4,699	193,474
White <sup>b</sup>	Both Sexes	179,953	60,907	33,688	18,225	9,281	5,065	279,134	307,813	5,180	312,993
	Males	84,397	26,889	15,254	8,362	4,190	2,419	128,428	141,881	2,489	144,370
	Females	95,556	34,018	18,434	9,863	5,091	2,646	150,706	165,932	2,691	168,623
Black <sup>b</sup>	Both Sexes	21,763	6,180	3,492	1,697	1,076	472	31,842	34,803	482	35,285
	Males	10,526	3,132	1,745	974	524	266	15,613	17,265	259	17,524
	Females	11,237	3,048	1,747	723	552	206	16,229	17,538	223	17,761
Asian/ Pacific Islander <sup>c</sup>	Both Sexes	5,727	1,557	660	+	+	+	8,044	+	+	+
	Males	3,052	859	379	+	+	+	4,342	+	+	+
	Females	2,675	698	281	+	+	+	3,702	+	+	+
Hispanic <sup>d</sup>	Both Sexes	6,284	1,751	965	+	+	+	9,167	+	+	+
	Males	3,314	906	457	+	+	+	4,751	+	+	+
	Females	2,970	845	508	+	+	+	4,416	+	+	+

Estimated prevalence percent<sup>a</sup> on January 1, 2006, of the SEER 11 population diagnosed in the previous 16 years  
By Age at Prevalence, Race/Ethnicity and Sex

Age at Prevalence		Age Specific (Crude)									Age-Adjusted <sup>f</sup>	
		All Ages	0-9	10-19	20-29	30-39	40-49	50-59	60-69	70-79	80+	All Ages
<u>Race</u>	<u>Sex</u>											
All Races <sup>c</sup>	Both Sexes	0.0907%	0.0001%	0.0002%	0.0015%	0.0051%	0.0261%	0.1095%	0.3490%	0.6279%	0.4910%	0.0962%
	Males	0.0865%	0.0002%	0.0002%	0.0014%	0.0045%	0.0226%	0.1105%	0.3619%	0.6871%	0.5888%	0.1033%
	Females	0.0949%	-	0.0002%	0.0016%	0.0056%	0.0295%	0.1085%	0.3373%	0.5822%	0.4368%	0.0914%
White <sup>c</sup>	Both Sexes	0.0973%	0.0001%	0.0002%	0.0017%	0.0052%	0.0258%	0.1059%	0.3595%	0.6531%	0.5031%	0.0986%
	Males	0.0900%	0.0002%	0.0002%	0.0015%	0.0048%	0.0222%	0.1029%	0.3580%	0.6950%	0.5911%	0.1027%
	Females	0.1047%	-	-	0.0018%	0.0058%	0.0296%	0.1089%	0.3609%	0.6200%	0.4547%	0.0960%
Black <sup>c</sup>	Both Sexes	0.0772%	-	-	0.0009%	0.0053%	0.0346%	0.1682%	0.4036%	0.6451%	0.4113%	0.1062%
	Males	0.0795%	-	-	-	0.0043%	0.0293%	0.1950%	0.4835%	0.7630%	0.5325%	0.1251%
	Females	0.0751%	-	-	-	0.0062%	0.0392%	0.1459%	0.3413%	0.5667%	0.3526%	0.0935%
Asian/ Pacific Islander <sup>c</sup>	Both Sexes	0.0676%	-	-	0.0010%	0.0039%	0.0200%	0.0850%	0.2482%	0.4628%	0.4443%	0.0735%
	Males	0.0754%	-	-	-	0.0032%	0.0191%	0.0963%	0.3094%	0.5893%	0.5998%	0.0917%
	Females	0.0603%	-	-	-	0.0046%	0.0208%	0.0751%	0.1963%	0.3701%	0.3418%	0.0599%
Hispanic <sup>d</sup>	Both Sexes	0.0206%	-	-	0.0012%	0.0023%	0.0116%	0.0399%	0.1367%	0.2779%	0.2697%	0.0424%
	Males	0.0205%	-	-	0.0009%	0.0028%	0.0114%	0.0427%	0.1480%	0.3501%	0.3602%	0.0510%
	Females	0.0207%	-	-	0.0016%	0.0017%	0.0118%	0.0372%	0.1272%	0.2253%	0.2171%	0.0365%

<sup>a</sup> US 2006 cancer prevalence counts are based on 2006 cancer prevalence proportions from the SEER registries and 1/1/2006 US population estimates based on the average of 2005 and 2006 population estimates from the US Bureau of the Census. Prevalence was calculated using the First Malignant Primary Only for a person.

<sup>b c d</sup> Statistics based on (b) SEER 9 Areas (c) SEER 11 Areas and Rural Georgia (d) NHIA for Hispanic for SEER 11 Areas and Rural Georgia.

<sup>e</sup> Maximum limited-duration prevalence: 31 years for 1975-2006 SEER 9 data; 16 years for 1990-2006 SEER 11 data (used to calculate prevalence for Hispanics and Asian Pacific Islanders).

<sup>f</sup> Percentages are age-adjusted to the 2000 US Standard Population (19 age groups - Census P25-1130) by 5-year age groups.

<sup>g h i</sup> (g) Cases diagnosed more than 31 years ago were estimated using the completeness index method (Capocaccia et. al. 1997, Merrill et. al. 2000). (h) Complete prevalence is obtained by summing 0 to <31 and >=31. (i) Age-specific completeness index was approximated using empirical data from historical Connecticut tumor registry.

- Statistic not shown. Statistic based on fewer than 5 cases estimated alive in SEER for the time interval.

+ Not available.

Table 15.25

Cancer of the Lung and Bronchus (Invasive)

Percent Distribution and Counts by Histology among Histologically Confirmed Cases, 2002-2006  
Both Sexes by Race

Histology <sup>a</sup>	All Races		White		Black		Asian/Pacific Islander		American Indian/ Alaska Native <sup>b</sup>		Hispanic <sup>c</sup>	
	Count	Percent	Count	Percent	Count	Percent	Count	Percent	Count	Percent	Count	Percent
Carcinoma	197,766	98.9%	165,989	98.9%	19,930	99.1%	10,540	99.1%	675	98.3%	10,242	98.6%
Small cell (8041-8045)	28,076	14.0%	24,817	14.8%	2,151	10.7%	901	8.5%	127	18.5%	1,230	11.8%
Non-small cell <sup>d</sup>	169,690	84.9%	141,172	84.1%	17,779	88.4%	9,639	90.6%	548	79.8%	9,012	86.8%
Squamous and transitional cell (8051-8052,8070-8084, 8120-8131)	39,702	19.9%	33,175	19.8%	4,580	22.8%	1,657	15.6%	167	24.3%	1,806	17.4%
Adenocarcinoma (8050,8140-8149, 8160-8162,8190-8221, 8250-8263,8270-8280, 8290-8337,8350-8390, 8400-8560,8570-8576, 8940-8941)	73,764	36.9%	61,343	36.6%	6,932	34.5%	5,098	47.9%	169	24.6%	4,124	39.7%
Large cell (8011-8015)	7,066	3.5%	5,824	3.5%	860	4.3%	340	3.2%	21	3.1%	389	3.7%
Other non-small cell <sup>e</sup>	49,158	24.6%	40,830	24.3%	5,407	26.9%	2,544	23.9%	191	27.8%	2,693	25.9%
Sarcoma (8680-8713,8800-8921, 8990-8991,9040-9044, 9120-9136,9150-9252, 9370-9373,9540-9582)	344	0.2%	295	0.2%	28	0.1%	-	-	-	-	29	0.3%
Other specified types <sup>f</sup> (8720-8790,8930-8936, 8950-8983,9000-9030, 9060-9110,9260-9365, 9380-9539)	158	0.1%	133	0.1%	19	0.1%	-	-	-	-	-	-
Unspecified (8000-8005)	1,629	0.8%	1,400	0.8%	141	0.7%	76	0.7%	-	-	102	1.0%
Total	199,898	100.0%	167,818	100.0%	20,118	100.0%	10,636	100.0%	687	100.0%	10,385	100.0%

Source: SEER 17 areas (San Francisco, Connecticut, Detroit, Hawaii, Iowa, New Mexico, Seattle, Utah, Atlanta, San Jose-Monterey, Los Angeles, Alaska Native Registry, Rural Georgia, California excluding SF/SJM/LA, Kentucky, Louisiana and New Jersey). Percents may not sum to 100 due to rounding.

<sup>a</sup> Excludes Kaposi Sarcoma, mesothelioma, lymphomas, leukemias, myelomas, lymphoreticular, and immunoproliferative diseases.

<sup>b</sup> Estimates for American Indian/Alaska Native are based on the CHSDA (Contract Health Service Delivery Area) counties.

<sup>c</sup> Hispanic is not mutually exclusive from whites, blacks, Asian/Pacific Islanders, and American Indians/Alaska Natives.

<sup>d</sup> Underlying incidence data for Hispanics are based on NHIA and exclude cases from the Alaska Native Registry.

<sup>e</sup> Non-small cell includes histologies 8010-8015, 8020-8022, 8030-8040, 8046, 8050-8052, 8070-8084, 8090-8110, 8120-8131, 8140-8156, 8160-8162, 8170-8175, 8180, 8190-8221, 8230-8231, 8240-8263, 8270-8280, 8290-8337, 8340-8347, 8350-8390, 8400-8562, 8570-8576, 8580-8671, 8940-8941.

<sup>f</sup> Includes large cell carcinoma, NOS, other specified carcinomas, and unspecified carcinomas (8010, 8020-8022, 8030-8040, 8046, 8090-8110, 8150-8156, 8170-8175, 8180, 8230-8231, 8240-8249, 8340-8347, 8561-8562, 8580-8671).

<sup>g</sup> Other specific types includes melanomas.

- Statistic not shown due to fewer than 16 cases during the time period.

Table 15.26

## Cancer of the Lung and Bronchus (Invasive)

Percent Distribution and Counts by Histology among Histologically Confirmed Cases, 2002-2006  
Males by Race

Histology <sup>a</sup>	All Races		White		Black		Asian/Pacific Islander		American Indian/ Alaska Native <sup>b</sup>		Hispanic <sup>c</sup>	
	Count	Percent	Count	Percent	Count	Percent	Count	Percent	Count	Percent	Count	Percent
Carcinoma	106,340	98.9%	87,963	98.9%	11,449	99.1%	6,241	99.1%	340	98.0%	5,796	98.7%
Small cell (8041-8045)	14,106	13.1%	12,271	13.8%	1,123	9.7%	613	9.7%	59	17.0%	699	11.9%
Non-small cell <sup>d</sup>	92,234	85.8%	75,692	85.1%	10,326	89.4%	5,628	89.4%	281	81.0%	5,097	86.8%
Squamous and transitional cell (8051-8052,8070-8084, 8120-8131)	25,268	23.5%	20,843	23.4%	3,011	26.1%	1,233	19.6%	95	27.4%	1,206	20.5%
Adenocarcinoma (8050,8140-8149, 8160-8162,8190-8221, 8250-8263,8270-8280, 8290-8337,8350-8390, 8400-8560,8570-8576, 8940-8941)	36,058	33.6%	29,650	33.3%	3,640	31.5%	2,575	40.9%	77	22.2%	2,111	36.0%
Large cell (8011-8015)	4,050	3.8%	3,300	3.7%	509	4.4%	225	3.6%	-	-	255	4.3%
Other non-small cell <sup>e</sup>	26,858	25.0%	21,899	24.6%	3,166	27.4%	1,595	25.3%	101	29.1%	1,525	26.0%
Sarcoma (8680-8713,8800-8921, 8990-8991,9040-9044, 9120-9136,9150-9252, 9370-9373,9540-9582)	203	0.2%	174	0.2%	18	0.2%	-	-	-	-	16	0.3%
Other specified types <sup>f</sup> (8720-8790,8930-8936, 8950-8983,9000-9030, 9060-9110,9260-9365, 9380-9539)	87	0.1%	74	0.1%	-	-	-	-	-	-	-	-
Unspecified (8000-8005)	844	0.8%	717	0.8%	77	0.7%	42	0.7%	-	-	53	0.9%
Total	107,475	100.0%	88,929	100.0%	11,552	100.0%	6,295	100.0%	347	100.0%	5,870	100.0%

Source: SEER 17 areas (San Francisco, Connecticut, Detroit, Hawaii, Iowa, New Mexico, Seattle, Utah, Atlanta, San Jose-Monterey, Los Angeles, Alaska Native Registry, Rural Georgia, California excluding SF/SJM/LA, Kentucky, Louisiana and New Jersey). Percents may not sum to 100 due to rounding.

<sup>a</sup> Excludes Kaposi Sarcoma, mesothelioma, lymphomas, leukemias, myelomas, lymphoreticular, and immunoproliferative diseases.

<sup>b</sup> Estimates for American Indian/Alaska Native are based on the CHSDA (Contract Health Service Delivery Area) counties.

<sup>c</sup> Hispanic is not mutually exclusive from whites, blacks, Asian/Pacific Islanders, and American Indians/Alaska Natives.

<sup>d</sup> Underlying incidence data for Hispanics are based on NHIA and exclude cases from the Alaska Native Registry.

<sup>e</sup> Non-small cell includes histologies 8010-8015, 8020-8022, 8030-8040, 8046, 8050-8052, 8070-8084, 8090-8110, 8120-8131, 8140-8156, 8160-8162, 8170-8175, 8180, 8190-8221, 8230-8231, 8240-8263, 8270-8280, 8290-8337, 8340-8347, 8350-8390, 8400-8562, 8570-8576, 8580-8671, 8940-8941.

<sup>f</sup> Includes large cell carcinoma, NOS, other specified carcinomas, and unspecified carcinomas (8010, 8020-8022, 8030-8040, 8046, 8090-8110, 8150-8156, 8170-8175, 8180, 8230-8231, 8240-8249, 8340-8347, 8561-8562, 8580-8671).

<sup>g</sup> Other specific types includes melanomas.

- Statistic not shown due to fewer than 16 cases during the time period.

Table 15.27

## Cancer of the Lung and Bronchus (Invasive)

Percent Distribution and Counts by Histology among Histologically Confirmed Cases, 2002-2006  
Females by Race

Histology <sup>a</sup>	All Races		White		Black		Asian/Pacific Islander		American Indian/ Alaska Native <sup>b</sup>		Hispanic <sup>c</sup>	
	Count	Percent	Count	Percent	Count	Percent	Count	Percent	Count	Percent	Count	Percent
Carcinoma	91,426	98.9%	78,026	98.9%	8,481	99.0%	4,299	99.0%	335	98.5%	4,446	98.5%
Small cell (8041-8045)	13,970	15.1%	12,546	15.9%	1,028	12.0%	288	6.6%	68	20.0%	531	11.8%
Non-small cell <sup>d</sup>	77,456	83.8%	65,480	83.0%	7,453	87.0%	4,011	92.4%	267	78.5%	3,915	86.7%
Squamous and transitional cell (8051-8052,8070-8084, 8120-8131)	14,434	15.6%	12,332	15.6%	1,569	18.3%	424	9.8%	72	21.2%	600	13.3%
Adenocarcinoma (8050,8140-8149, 8160-8162,8190-8221, 8250-8263,8270-8280, 8290-8337,8350-8390, 8400-8560,8570-8576, 8940-8941)	37,706	40.8%	31,693	40.2%	3,292	38.4%	2,523	58.1%	92	27.1%	2,013	44.6%
Large cell (8011-8015)	3,016	3.3%	2,524	3.2%	351	4.1%	115	2.6%	-	-	134	3.0%
Other non-small cell <sup>e</sup>	22,300	24.1%	18,931	24.0%	2,241	26.2%	949	21.9%	90	26.5%	1,168	25.9%
Sarcoma (8680-8713,8800-8921, 8990-8991,9040-9044, 9120-9136,9150-9252, 9370-9373,9540-9582)	141	0.2%	121	0.2%	-	-	-	-	-	-	-	-
Other specified types <sup>f</sup> (8720-8790,8930-8936, 8950-8983,9000-9030, 9060-9110,9260-9365, 9380-9539)	71	0.1%	59	0.1%	-	-	-	-	-	-	-	-
Unspecified (8000-8005)	785	0.8%	683	0.9%	64	0.7%	34	0.8%	-	-	49	1.1%
Total	92,423	100.0%	78,889	100.0%	8,566	100.0%	4,341	100.0%	340	100.0%	4,515	100.0%

Source: SEER 17 areas (San Francisco, Connecticut, Detroit, Hawaii, Iowa, New Mexico, Seattle, Utah, Atlanta, San Jose-Monterey, Los Angeles, Alaska Native Registry, Rural Georgia, California excluding SF/SJM/LA, Kentucky, Louisiana and New Jersey). Percents may not sum to 100 due to rounding.

<sup>a</sup> Excludes Kaposi Sarcoma, mesothelioma, lymphomas, leukemias, myelomas, lymphoreticular, and immunoproliferative diseases.

<sup>b</sup> Estimates for American Indian/Alaska Native are based on the CHSDA (Contract Health Service Delivery Area) counties.

<sup>c</sup> Hispanic is not mutually exclusive from whites, blacks, Asian/Pacific Islanders, and American Indians/Alaska Natives.

<sup>d</sup> Underlying incidence data for Hispanics are based on NHIA and exclude cases from the Alaska Native Registry.

<sup>e</sup> Non-small cell includes histologies 8010-8015, 8020-8022, 8030-8040, 8046, 8050-8052, 8070-8084, 8090-8110, 8120-8131, 8140-8156, 8160-8162, 8170-8175, 8180, 8190-8221, 8230-8231, 8240-8263, 8270-8280, 8290-8337, 8340-8347, 8350-8390, 8400-8562, 8570-8576, 8580-8671, 8940-8941.

<sup>f</sup> Includes large cell carcinoma, NOS, other specified carcinomas, and unspecified carcinomas (8010, 8020-8022, 8030-8040, 8046, 8090-8110, 8150-8156, 8170-8175, 8180, 8230-8231, 8240-8249, 8340-8347, 8561-8562, 8580-8671).

<sup>g</sup> Other specific types includes melanomas.

- Statistic not shown due to fewer than 16 cases during the time period.



# SEER Observed Incidence, SEER Delay Adjusted Incidence and US Death Rates<sup>a</sup> Cancer of the Lung and Bronchus, by Race and Sex

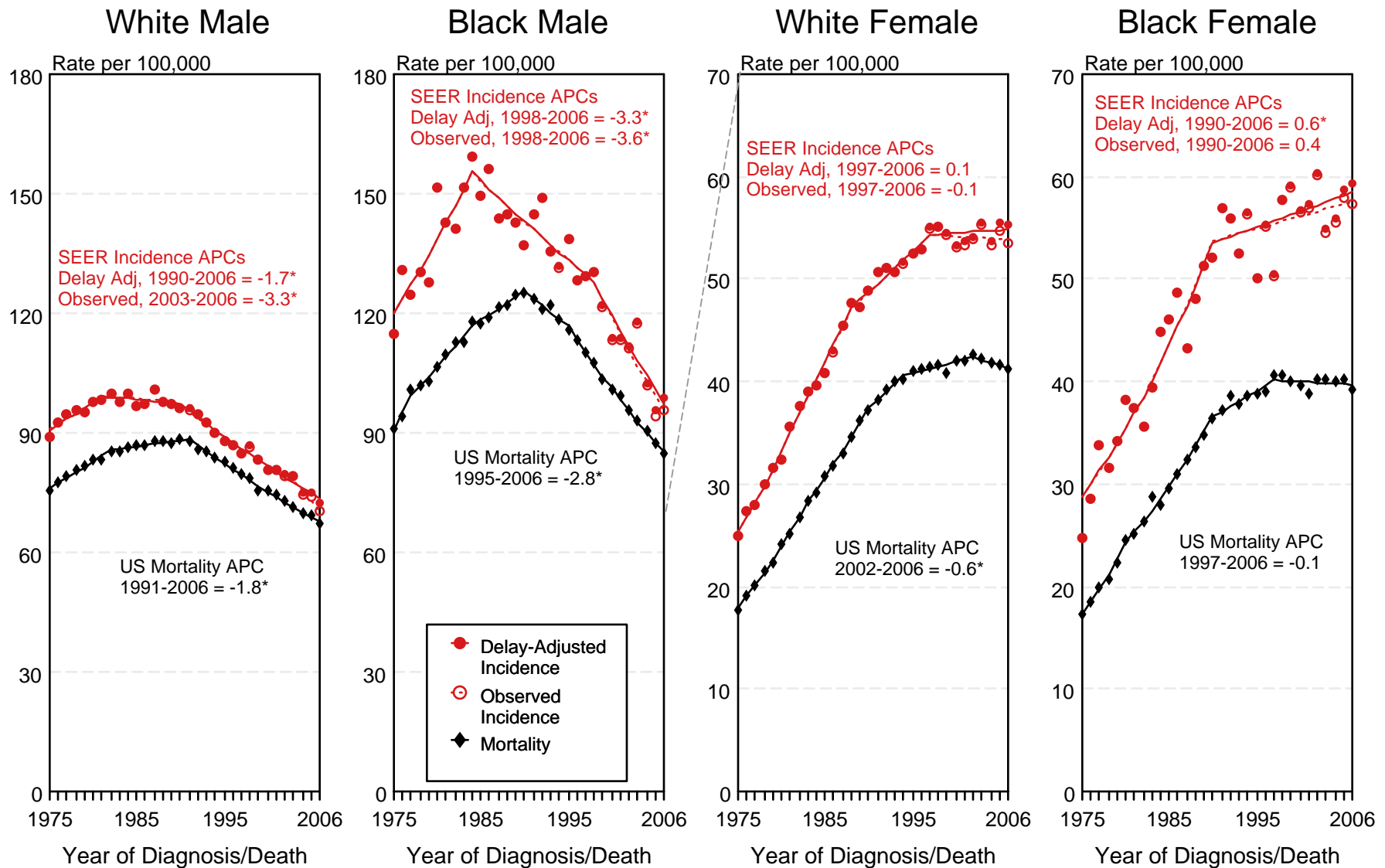


Figure 15.1

<sup>a</sup> Source: SEER 9 areas and US Mortality Files (National Center for Health Statistics, CDC). Rates are age-adjusted to the 2000 US Std Population (19 age groups - Census P25-1103). Regression lines and APCs are calculated using the Joinpoint Regression Program Version 3.3.1, April 2008, National Cancer Institute. The APC is the Annual Percent Change for the regression line segments. The APC shown on the graph is for the most recent trend.  
 \* The APC is significantly different from zero ( $p < 0.05$ ).

# SEER Observed Incidence, SEER Delay Adjusted Incidence and US Death Rates<sup>a</sup> Cancer of the Lung and Bronchus, Under 65 Years of Age, by Race and Sex

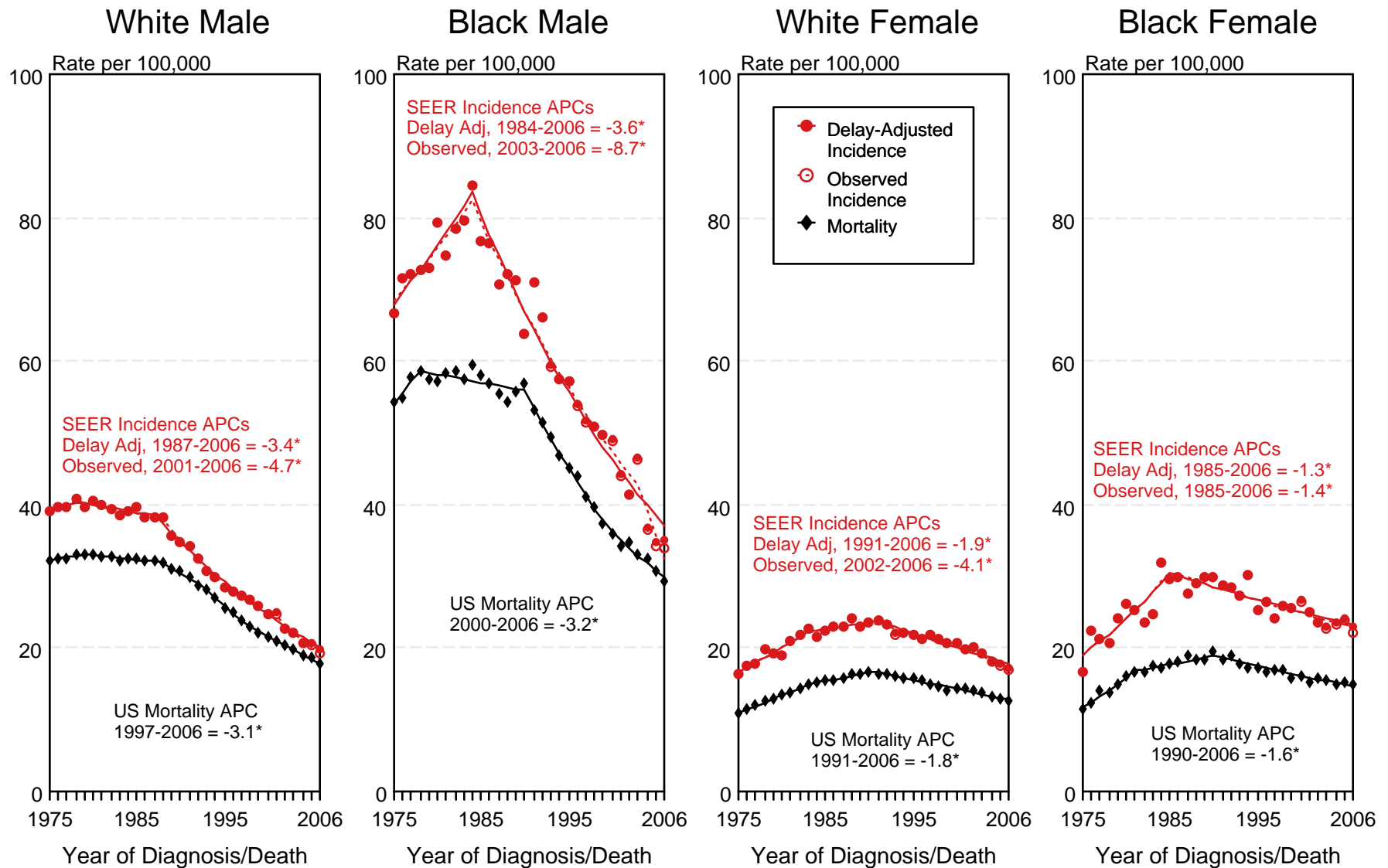


Figure 15.2

<sup>a</sup> Source: SEER 9 areas and US Mortality Files (National Center for Health Statistics, CDC). Rates are age-adjusted to the 2000 US Std Population (19 age groups - Census P25-1103). Regression lines and APCs are calculated using the Joinpoint Regression Program Version 3.3.1, April 2008, National Cancer Institute. The APC is the Annual Percent Change for the regression line segments. The APC shown on the graph is for the most recent trend.  
\* The APC is significantly different from zero ( $p < 0.05$ ).

# SEER Observed Incidence, SEER Delay Adjusted Incidence and US Death Rates<sup>a</sup> Cancer of the Lung and Bronchus, Ages 65 and Over, by Race and Sex

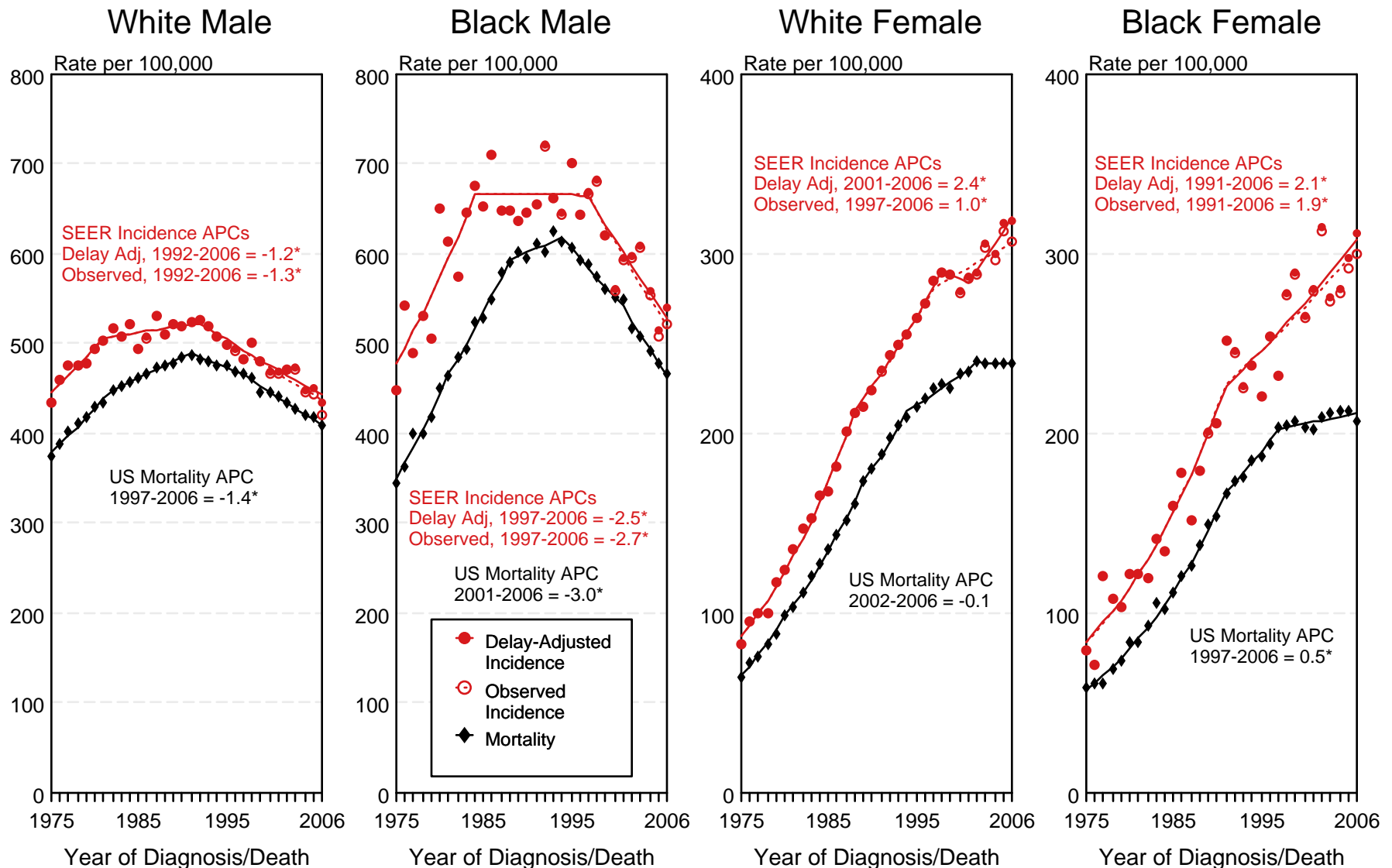


Figure 15.3

<sup>a</sup> Source: SEER 9 areas and US Mortality Files (National Center for Health Statistics, CDC). Rates are age-adjusted to the 2000 US Std Population (19 age groups - Census P25-1103). Regression lines and APCs are calculated using the Joinpoint Regression Program Version 3.3.1, April 2008, National Cancer Institute. The APC is the Annual Percent Change for the regression line segments. The APC shown on the graph is for the most recent trend.  
 \* The APC is significantly different from zero ( $p < 0.05$ ).

# SEER Incidence and US Death Rates<sup>a</sup> Cancer of the Lung and Bronchus, Both Sexes

and for Asian/Pacific Islanders, American Indians/Alaska Natives and Hispanics from 1992-2006

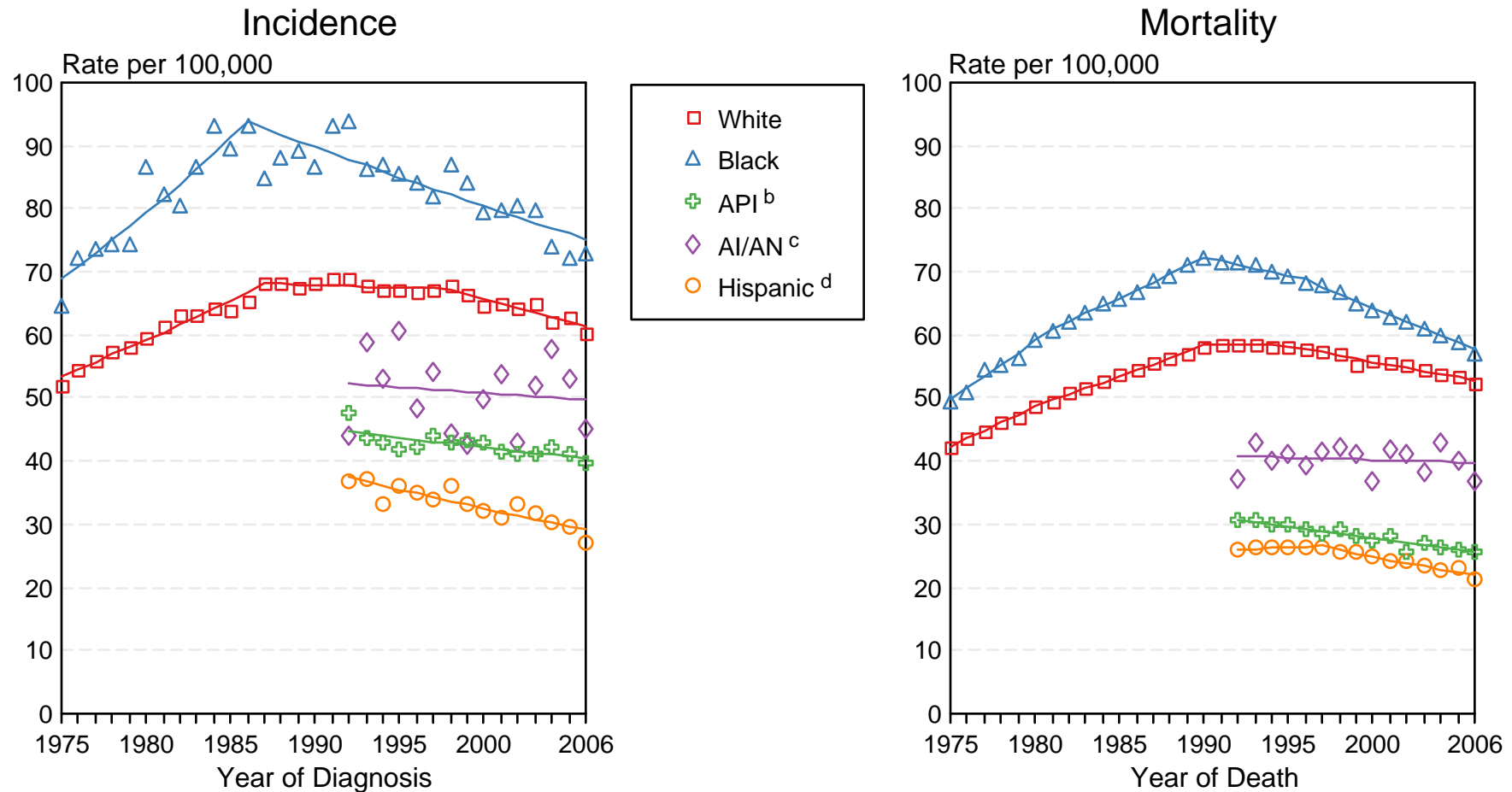


Figure 15.4

Source: Incidence data for whites and blacks are from the SEER 9 areas (San Francisco, Connecticut, Detroit, Hawaii, Iowa, New Mexico, Seattle, Utah, Atlanta).

Incidence data for Asian/Pacific Islanders, American Indians/Alaska Natives and Hispanics are from the SEER 13 Areas (SEER 9 Areas, San Jose-Monterey, Los Angeles, Alaska Native Registry and Rural Georgia). Mortality data are from US Mortality Files, National Center for Health Statistics, CDC.

<sup>a</sup> Rates are age-adjusted to the 2000 US Std Population (19 age groups - Census P25-1103).

Regression lines are calculated using the Joinpoint Regression Program Version 3.3.1, April 2008, National Cancer Institute. Joinpoint analyses for Whites and Blacks during the 1975-2006 period allow a maximum of 4 joinpoints. Analyses for other ethnic groups during the period 1992-2006 allow a maximum of 2 joinpoints.

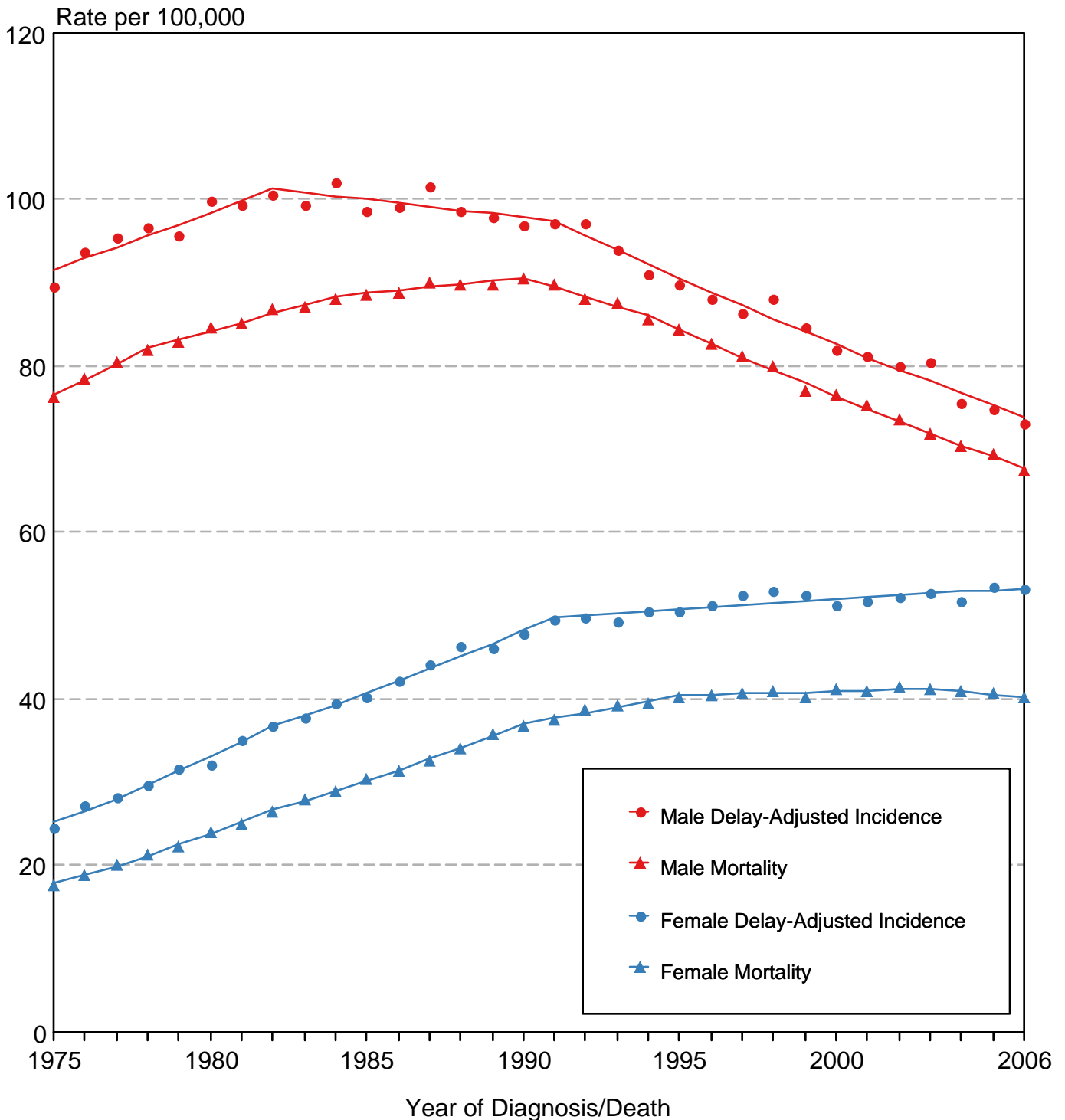
<sup>b</sup> API = Asian/Pacific Islander.

<sup>c</sup> AI/AN = American Indian/Alaska Native. Rates for American Indian/Alaska Native are based on the CHSDA(Contract Health Service Delivery Area) counties.

<sup>d</sup> Hispanic is not mutually exclusive from whites, blacks, Asian/Pacific Islanders, and American Indians/Alaska Natives. Incidence data for Hispanics are based on NHIA and exclude cases from the Alaska Native Registry. Mortality data for Hispanics exclude cases from Connecticut, the District of Columbia, Maine, Maryland, Minnesota, New Hampshire, New York, North Dakota, Oklahoma, and Vermont.

Figure 15.5

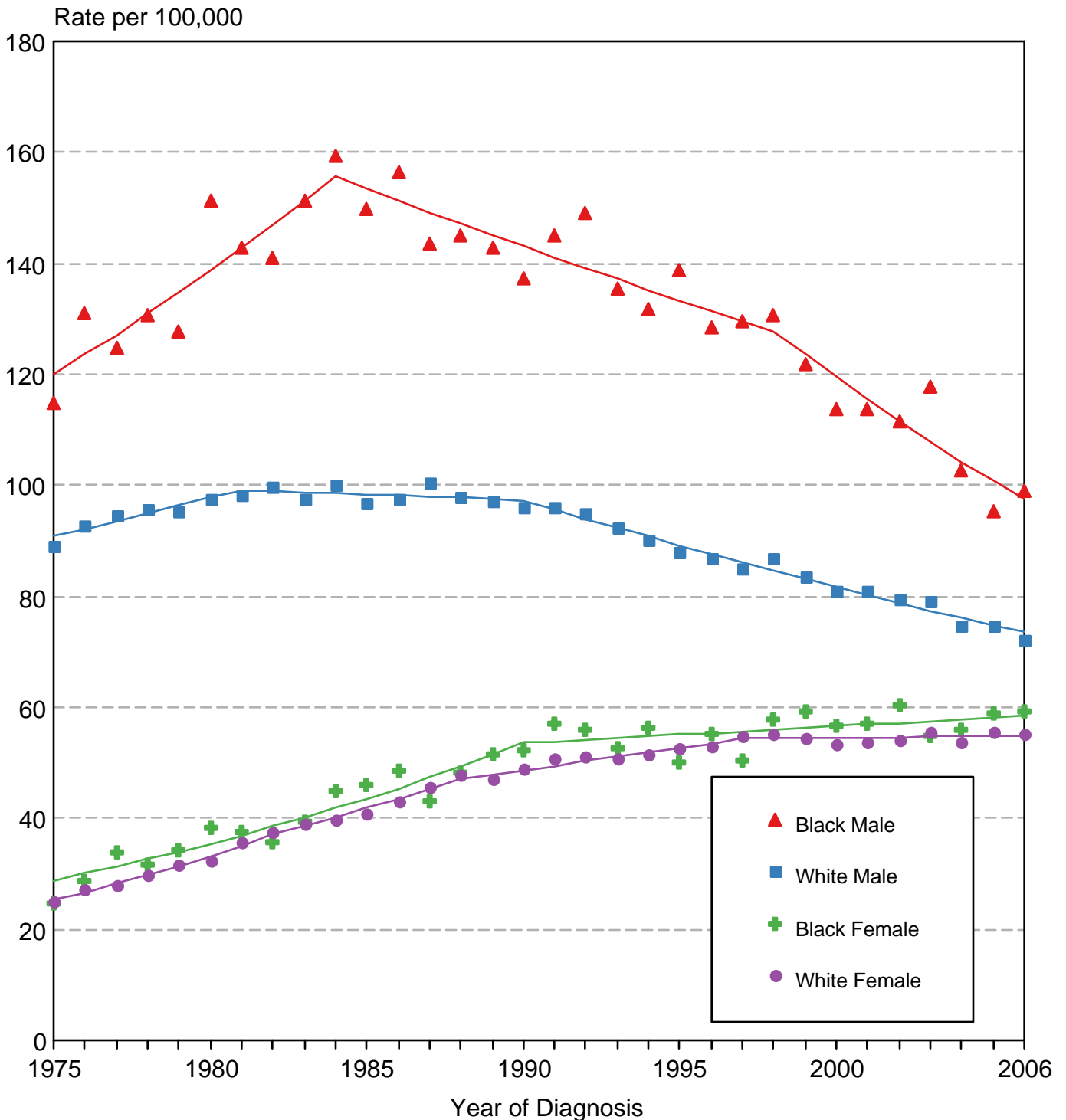
# Cancer of the Lung & Bronchus SEER Delay-Adjusted Incidence & US Death Rates, 1975-2006, All Races, By Sex



Source: SEER 9 areas and US Mortality Files (National Center for Health Statistics, CDC).  
Rates are age-adjusted to the 2000 US Std Population (19 age groups - Census P25-1103).  
Regression lines are calculated using the Joinpoint Regression Program Version 3.3.1, April 2008, National Cancer Institute.

Figure 15.6

# Cancer of the Lung & Bronchus SEER Delay-Adjusted Incidence, 1975-2006 By Sex and Race



Source: SEER 9 areas. Rates are age-adjusted to the 2000 US Std Population (19 age groups - Census P25-1103). Regression lines are calculated using the Joinpoint Regression Program Version 3.3.1, April 2008, National Cancer Institute.

# SEER Observed Incidence and SEER Delay Adjusted Incidence Rates<sup>a</sup> SEER 9 Areas Compared to SEER 13 Areas Cancer of the Lung and Bronchus, Male, by Race

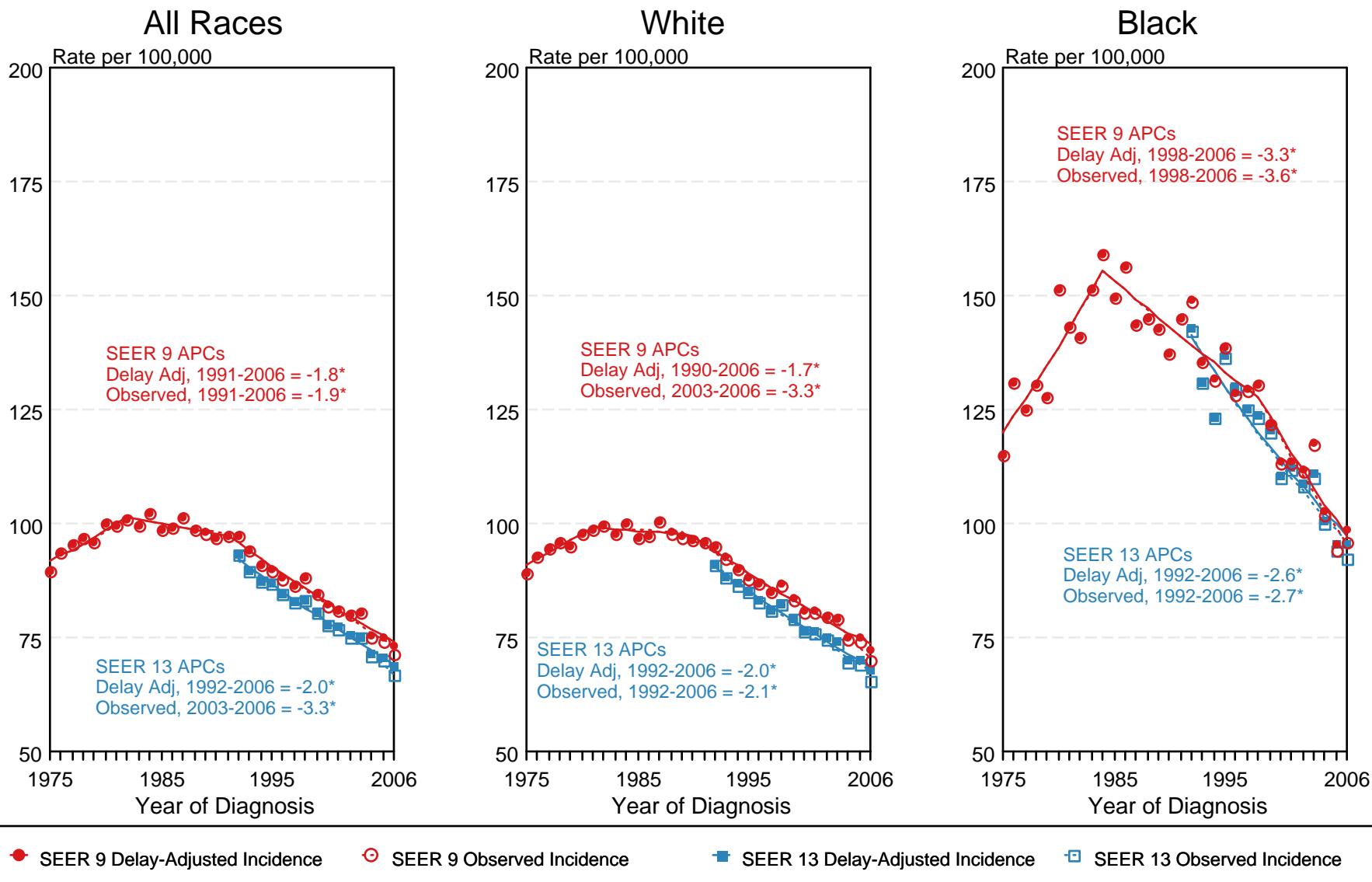


Figure 15.7

<sup>a</sup> Source: SEER 9 areas and SEER 13 areas.  
Rates are age-adjusted to the 2000 US Std Population (19 age groups - Census P25-1103).  
Regression lines and APCs are calculated using the Joinpoint Regression Program Version 3.3.1, April 2008, National Cancer Institute.  
The APC is the Annual Percent Change for the regression line segments. The APC shown on the graph is for the most recent trend.  
\* The APC is significantly different from zero ( $p < 0.05$ ).

# SEER Observed Incidence and SEER Delay Adjusted Incidence Rates<sup>a</sup> SEER 9 Areas Compared to SEER 13 Areas Cancer of the Lung and Bronchus, Female, by Race

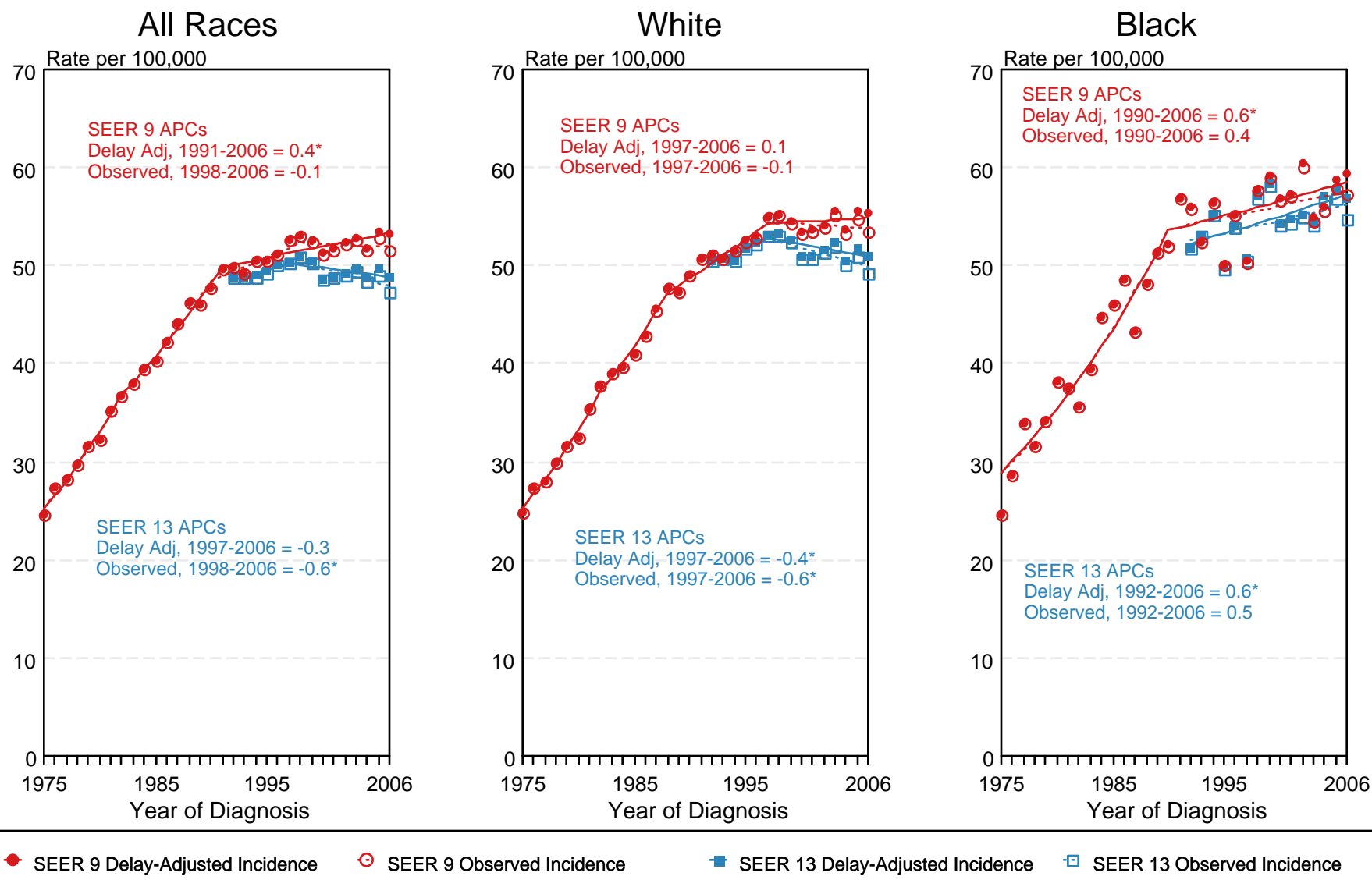


Figure 15.8

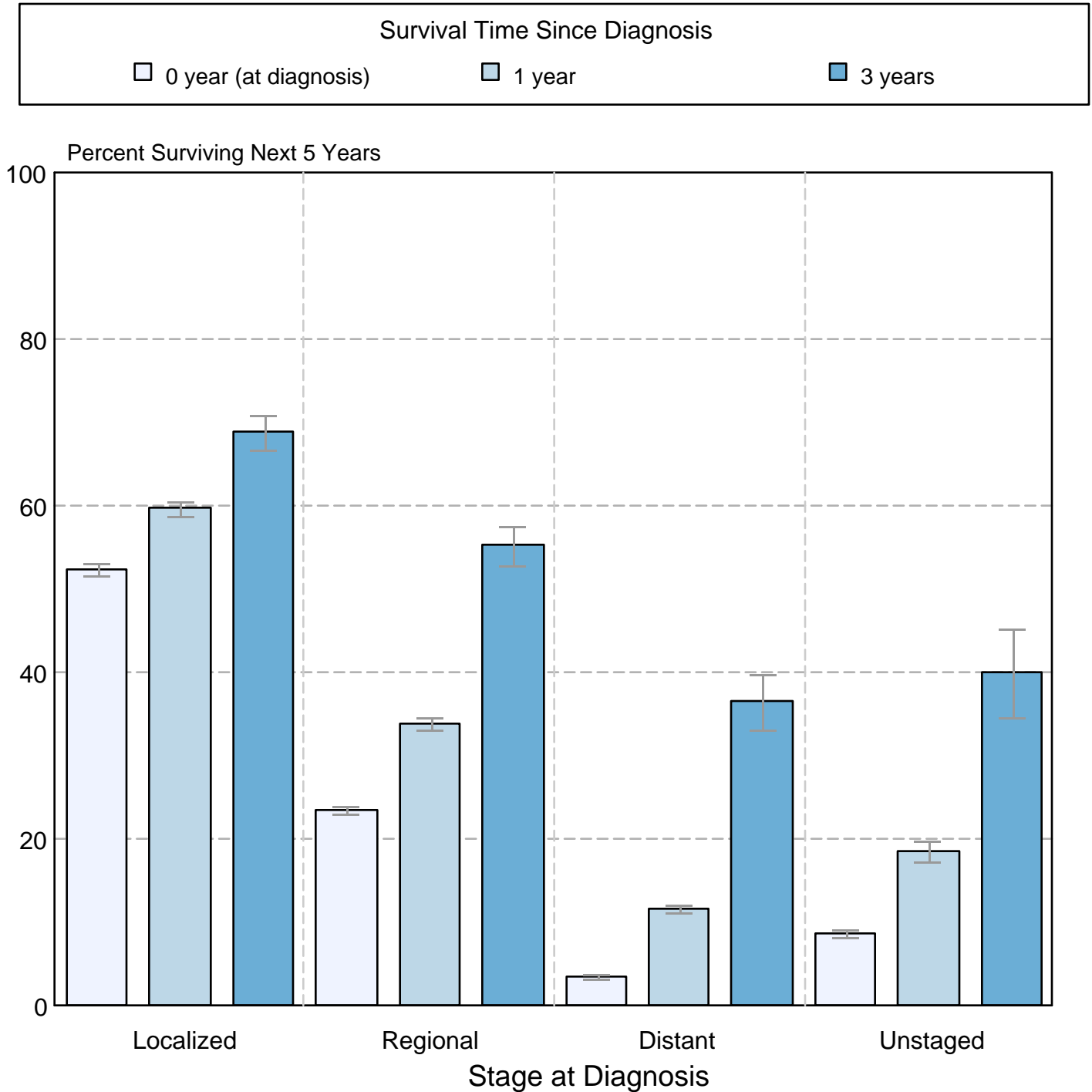
<sup>a</sup> Source: SEER 9 areas and SEER 13 areas.  
Rates are age-adjusted to the 2000 US Std Population (19 age groups - Census P25-1103).  
Regression lines and APCs are calculated using the Joinpoint Regression Program Version 3.3.1, April 2008, National Cancer Institute.  
The APC is the Annual Percent Change for the regression line segments. The APC shown on the graph is for the most recent trend.  
\* The APC is significantly different from zero ( $p < 0.05$ ).



Figure 15.9

## Cancer of the Lung and Bronchus 5-Year SEER Conditional Relative Survival Rates and 95% Confidence Intervals

Probability of surviving the next 5 years given the cohort  
has already survived 0, 1, or 3 years  
1998-2005 by stage at diagnosis



Source: SEER 17 areas (San Francisco, Connecticut, Detroit, Hawaii, Iowa, New Mexico, Seattle, Utah, Atlanta, San Jose-Monterey, Los Angeles, Alaska Native Registry, Rural Georgia, California excluding SF/SJM/LA, Kentucky, Louisiana, and New Jersey). California excluding SF/SJM/LA, Kentucky, Louisiana, and New Jersey contribute cases for diagnosis years 2000-2006. The remaining 13 SEER Areas contribute cases for the entire period 1998-2005. Percent surviving is not shown if based on less than 25 cases. Confidence intervals are not shown if length of the confidence interval is greater than 5 times the standard error.