

Table 10.1
Kaposi Sarcoma

Number of Cases

By SEER Location and Year of Diagnosis, 1975-2012

All Races, Males, All Ages

Year of Diagnosis

SEER Location	1975- 1979	1980- 1981	1982- 1983	1984- 1985	1986- 1987	1988- 1989	1990- 1991	1992- 1993	1994- 1995	1996- 1997	1998- 1999	2000- 2001	2002- 2003	2004- 2005	2006- 2007	2008- 2009	2010- 2012
SEER 9 ^b	134	79	325	888	1,571	2,131	2,231	2,056	1,800	841	392	402	336	371	335	343	523
SEER 9 except SF-Oakland	102	44	85	261	428	776	841	976	874	464	245	265	223	245	239	250	390
San Francisco- Oakland SMSA ^c	32	35	240	627	1,143	1,355	1,390	1,080	926	377	147	137	113	126	96	93	133
San Francisco City/County	15	21	200	539	951	1,076	1,089	792	689	254	85	82	72	82	61	61	85

Age-Adjusted Cancer Incidence Rates^a

By SEER Location and Year of Diagnosis, 1975-2012

All Races, Males, All Ages

Year of Diagnosis

SEER Location	1975- 1979	1980- 1981	1982- 1983	1984- 1985	1986- 1987	1988- 1989	1990- 1991	1992- 1993	1994- 1995	1996- 1997	1998- 1999	2000- 2001	2002- 2003	2004- 2005	2006- 2007	2008- 2009	2010- 2012
SEER 9 ^b	0.4	0.5	1.7	4.2	7.1	9.2	9.3	8.1	7.0	3.2	1.5	1.5	1.3	1.4	1.3	1.3	1.2
SEER 9 except SF-Oakland	0.4	0.4	0.6	1.6	2.3	4.0	4.2	4.6	4.0	2.1	1.1	1.2	1.0	1.1	1.1	1.1	1.1
San Francisco- Oakland SMSA ^c	0.7	1.3	7.0	17.2	30.0	34.0	34.0	25.6	22.0	9.0	3.5	3.1	2.7	2.9	2.2	2.1	1.9
San Francisco City/County	1.1	3.1	25.0	65.2	111.0	124.9	125.9	89.1	77.4	28.3	9.4	8.9	8.0	9.1	6.7	6.6	5.9

^a Rates are per 100,000 males and are age-adjusted to the 2000 US Std Population (19 age groups - Census P25-1130).

^b The SEER 9 areas are San Francisco-Oakland SMSA, Connecticut, Detroit, Hawaii, Iowa, New Mexico, Seattle, Utah and Atlanta.

^c The San Francisco-Oakland SMSA represents 15% of all persons in the SEER areas. For this age group, all SEER areas may not be generalizable to the United States for Kaposi Sarcoma.

- Statistic not shown. Rate based on less than 4 cases for the time interval.

Table 10.2
Kaposi Sarcoma

Number of Cases

By SEER Location and Year of Diagnosis, 1975-2012

All Races, Males, Ages 20-54

Year of Diagnosis

SEER Location	1975- 1979	1980- 1981	1982- 1983	1984- 1985	1986- 1987	1988- 1989	1990- 1991	1992- 1993	1994- 1995	1996- 1997	1998- 1999	2000- 2001	2002- 2003	2004- 2005	2006- 2007	2008- 2009	2010- 2012
SEER 9 ^b	13	26	253	805	1,478	1,994	2,102	1,922	1,674	756	319	348	262	309	269	252	386
SEER 9 except SF-Oakland	11	5	35	207	379	695	772	910	809	411	198	227	184	202	197	185	288
San Francisco- Oakland SMSA ^c	<4	21	218	598	1,099	1,299	1,330	1,012	865	345	121	121	78	107	72	67	98
San Francisco City/County	<4	18	192	519	921	1,040	1,051	748	647	237	75	75	54	72	52	49	69

Age-Adjusted Cancer Incidence Rates^a

By SEER Location and Year of Diagnosis, 1975-2012

All Races, Males, Ages 20-54

Year of Diagnosis

SEER Location	1975- 1979	1980- 1981	1982- 1983	1984- 1985	1986- 1987	1988- 1989	1990- 1991	1992- 1993	1994- 1995	1996- 1997	1998- 1999	2000- 2001	2002- 2003	2004- 2005	2006- 2007	2008- 2009	2010- 2012
SEER 9 ^b	0.1	0.3	2.4	7.4	13.1	16.9	17.1	14.9	12.6	5.6	2.3	2.5	1.9	2.3	2.0	1.9	1.9
SEER 9 except SF-Oakland	0.1	0.1	0.4	2.2	3.9	6.9	7.4	8.4	7.2	3.6	1.7	2.0	1.6	1.8	1.7	1.6	1.6
San Francisco- Oakland SMSA ^c	-	1.3	12.0	32.3	57.2	64.5	64.0	46.9	40.1	15.9	5.4	5.3	3.4	4.9	3.3	3.0	2.9
San Francisco City/County	-	5.3	47.6	125.1	213.7	239.5	240.8	165.5	142.3	51.8	15.9	15.9	11.4	15.8	11.3	10.5	9.7

^a Rates are per 100,000 males aged 20-54 and are age-adjusted to the 2000 US Std Population (19 age groups - Census P25-1130).

^b The SEER 9 areas are San Francisco-Oakland SMSA, Connecticut, Detroit, Hawaii, Iowa, New Mexico, Seattle, Utah and Atlanta.

^c The San Francisco-Oakland SMSA represents 15% of all persons in the SEER areas. For this age group, all SEER areas may not be generalizable to the United States for Kaposi Sarcoma.

- Statistic not shown. Rate based on less than 4 cases for the time interval.

Table 10.3

Kaposi Sarcoma

Number of Cases

By SEER Location and Year of Diagnosis, 1975-2012

All Races, Males, Ages 55+

Year of Diagnosis

SEER Location	1975- 1979	1980- 1981	1982- 1983	1984- 1985	1986- 1987	1988- 1989	1990- 1991	1992- 1993	1994- 1995	1996- 1997	1998- 1999	2000- 2001	2002- 2003	2004- 2005	2006- 2007	2008- 2009	2010- 2012
SEER 9 ^b	121	53	71	82	92	135	129	133	126	85	73	53	74	61	66	89	133
SEER 9 except SF-Oakland	91	39	49	54	49	81	69	65	65	53	47	37	39	42	42	63	99
San Francisco- Oakland SMSA ^c	30	14	22	28	43	54	60	68	61	32	26	16	35	19	24	26	34
San Francisco City/County	14	<4	8	20	30	35	38	44	42	17	10	7	18	10	9	12	15

Age-Adjusted Cancer Incidence Rates^a

By SEER Location and Year of Diagnosis, 1975-2012

All Races, Males, Ages 55+

Year of Diagnosis

SEER Location	1975- 1979	1980- 1981	1982- 1983	1984- 1985	1986- 1987	1988- 1989	1990- 1991	1992- 1993	1994- 1995	1996- 1997	1998- 1999	2000- 2001	2002- 2003	2004- 2005	2006- 2007	2008- 2009	2010- 2012
SEER 9 ^b	1.9	1.9	2.4	2.5	2.5	3.6	3.6	3.3	3.0	2.1	1.7	1.3	1.5	1.2	1.2	1.6	1.4
SEER 9 except SF-Oakland	1.7	1.7	2.0	2.0	1.8	2.7	2.4	2.0	1.9	1.6	1.3	1.1	1.0	1.0	1.0	1.3	1.3
San Francisco- Oakland SMSA ^c	2.9	3.1	4.6	4.7	6.4	8.1	9.6	10.1	9.0	4.8	3.7	2.3	4.5	2.3	2.8	2.9	2.2
San Francisco City/County	4.7	-	5.6	12.9	19.8	23.5	26.4	30.4	29.8	11.5	6.7	4.4	10.8	5.7	4.8	6.3	4.7

^a Rates are per 100,000 males aged 55+ and are age-adjusted to the 2000 US Std Population (19 age groups - Census P25-1130).^b The SEER 9 areas are San Francisco-Oakland SMSA, Connecticut, Detroit, Hawaii, Iowa, New Mexico, Seattle, Utah and Atlanta.^c The San Francisco-Oakland SMSA represents 15% of all persons in the SEER areas. For this age group, all SEER areas may not be generalizable to the United States for Kaposi Sarcoma.

- Statistic not shown. Rate based on less than 4 cases for the time interval.

Table 10.4
Kaposi Sarcoma

Age-adjusted SEER Incidence^a Rates by Year, Race and Sex

Year of Diagnosis:	All Races			Whites			Blacks		
	Total	Males	Females	Total	Males	Females	Total	Males	Females
1975-2012	1.68	3.29	0.12	1.73	3.37	0.11	2.18	4.45	0.24
1975	0.23	0.56	-	0.22	0.56	-	-	-	-
1976	0.25	0.47	-	0.24	0.48	-	-	-	-
1977	0.29	0.54	-	0.30	0.55	-	-	-	-
1978	0.24	0.35	0.17	0.23	0.34	-	-	-	-
1979	0.18	0.30	-	0.18	0.30	-	-	-	-
1980	0.28	0.56	-	0.30	0.61	-	-	-	-
1981	0.32	0.54	-	0.34	0.61	-	-	-	-
1982	0.65	1.20	0.18	0.71	1.31	0.18	-	-	-
1983	1.07	2.19	-	1.19	2.40	-	-	-	-
1984	1.81	3.59	-	1.99	3.91	-	1.27	2.89	-
1985	2.46	4.86	0.16	2.79	5.47	0.18	1.09	2.24	-
1986	3.27	6.52	-	3.70	7.32	-	1.65	3.59	-
1987	3.80	7.60	-	4.25	8.44	-	2.09	4.29	-
1988	4.43	8.87	0.15	4.82	9.56	0.15	3.40	7.28	-
1989	4.76	9.53	0.14	5.13	10.17	-	4.64	9.84	-
1990	4.62	9.22	0.18	5.05	10.00	0.16	3.65	7.54	-
1991	4.70	9.40	0.19	5.04	10.00	0.18	4.59	9.53	-
1992	4.37	8.67	0.18	4.59	8.99	0.18	5.02	10.59	-
1993	3.86	7.64	0.17	4.05	7.96	0.15	4.28	8.60	-
1994	3.78	7.46	0.17	3.86	7.55	0.13	4.25	8.63	-
1995	3.29	6.45	0.20	3.26	6.34	0.17	4.98	10.35	-
1996	2.24	4.40	0.16	2.00	3.98	-	4.67	9.21	-
1997	1.08	2.09	0.14	0.91	1.77	-	2.73	5.43	-
1998	0.81	1.58	-	0.70	1.34	-	1.79	3.78	-
1999	0.78	1.47	0.14	0.66	1.24	-	1.94	3.72	-
2000	0.80	1.55	-	0.67	1.30	-	1.99	4.00	-
2001	0.83	1.51	0.17	0.67	1.20	0.15	1.95	3.89	-
2002	0.68	1.28	0.12	0.57	1.07	-	1.51	3.05	-
2003	0.67	1.29	-	0.60	1.12	-	1.52	3.21	-
2004	0.70	1.35	-	0.60	1.16	-	1.69	3.41	-
2005	0.78	1.47	0.12	0.61	1.15	-	2.03	4.01	-
2006	0.61	1.19	-	0.51	0.97	-	1.44	2.93	-
2007	0.69	1.32	-	0.58	1.07	-	1.73	3.57	-
2008	0.67	1.33	-	0.56	1.10	-	1.66	3.22	-
2009	0.64	1.20	0.11	0.54	1.02	-	1.48	2.89	-
2010	0.64	1.22	0.09	0.45	0.84	-	1.85	3.76	-
2011	0.64	1.26	-	0.45	0.88	-	1.99	4.13	-
2012	0.65	1.25	0.09	0.47	0.90	-	1.83	3.66	-

^a SEER 9 areas (San Francisco, Connecticut, Detroit, Hawaii, Iowa, New Mexico, Seattle, Utah, and Atlanta). Rates are per 100,000 and are age-adjusted to the 2000 US Std Population (19 age groups - Census P25-1130).
- Statistic not shown. Rate based on less than 16 cases for the time interval.

Table 10.5
Kaposi Sarcoma

SEER Incidence^a Rates, Age-Adjusted and Age-Specific Rates, by Race and Sex

	All Races			Whites			Blacks		
	Total	Males	Females	Total	Males	Females	Total	Males	Females
<u>SEER Incidence</u>									
<u>Age at Diagnosis</u>									
Age-Adjusted Rates, 2008-2012									
All ages	0.5	1.0	0.1	0.5	0.9	0.1	1.1	2.2	0.2
Under 65	0.5	0.9	0.0	0.4	0.7	0.0	1.2	2.3	0.1
65 and over	0.9	1.6	0.5	1.0	1.7	0.5	0.6	1.2	-
All ages (IARC world std) ^b	0.4	0.8	0.1	0.3	0.6	0.0	1.0	1.9	0.1
Age-Specific Rates, 2008-2012									
<1	-	-	-	-	-	-	-	-	-
1-4	-	-	-	-	-	-	-	-	-
5-9	-	-	-	-	-	-	-	-	-
10-14	-	-	-	-	-	-	-	-	-
15-19	-	-	-	-	-	-	-	-	-
20-24	0.2	0.4	-	0.1	0.1	-	1.2	2.2	-
25-29	0.6	1.1	-	0.3	0.7	-	1.9	3.9	-
30-34	0.8	1.6	-	0.6	1.2	-	2.5	5.0	-
35-39	0.8	1.6	-	0.7	1.3	-	2.0	4.2	-
40-44	1.1	2.1	-	0.9	1.7	-	2.4	4.6	-
45-49	1.0	2.0	-	0.9	1.7	-	2.2	4.3	-
50-54	0.6	1.1	-	0.5	1.0	-	1.1	2.2	-
55-59	0.5	0.9	-	0.4	0.8	-	0.7	1.4	-
60-64	0.5	0.9	-	0.4	0.8	-	-	-	-
65-69	0.6	1.0	-	0.6	1.1	-	-	-	-
70-74	0.7	1.0	0.3	0.7	1.1	0.3	-	-	-
75-79	0.9	1.5	0.4	0.9	1.5	0.5	-	-	-
80-84	1.4	2.4	0.7	1.4	2.5	0.7	-	-	-
85+	2.0	3.4	1.3	2.0	3.6	1.2	-	-	-

^a SEER 18 areas. Rates are per 100,000 and are age-adjusted to the 2000 US Std Population (19 age groups - Census P25-1130), unless noted.

^b Rates are per 100,000 and are age-adjusted to the IARC world standard population.

- Statistic not shown. Rate based on less than 16 cases for the time interval.

Table 10.6
Kaposi Sarcoma

5-Year Relative and Period Survival (Percent) by Race, Sex, Diagnosis Year, Stage and Age

	All Races			Whites			Blacks		
	Total	Males	Females	Total	Males	Females	Total	Males	Females
5-Year Relative Survival (Percent)									
Year of Diagnosis:									
1960-1963 ^a	-	-	-	-	-	-	-	-	-
1970-1973 ^a	-	-	-	-	-	-	-	-	-
1975-1977 ^b	80.7 ^f	80.1 ^f	-	79.9 ^f	79.0 ^f	-	-	-	-
1978-1980 ^b	78.1 ^f	79.0 ^f	73.1 ^g	77.7 ^f	78.0 ^f	72.5 ^g	-	-	-
1981-1983 ^b	35.7	33.3	64.4 ^g	34.1	31.7	64.2 ^g	-	-	-
1984-1986 ^b	13.0	11.7	70.5 ^g	12.7	11.4	70.2 ^g	16.8	15.7	-
1987-1989 ^b	9.9	9.2	68.5 ^g	9.4	8.8	72.3 ^g	12.4	11.3	-
1990-1992 ^b	9.2	8.5	52.6 ^f	8.8	8.1	53.7 ^f	11.5	10.5	-
1993-1995 ^b	21.8	21.0	53.8 ^f	22.2	21.4	62.1 ^g	17.1	16.3	-
1996-1998 ^b	52.3	51.4	72.2 ^g	57.0	55.7	86.5 ^f	39.9	39.3	-
1999-2001 ^b	57.9	57.4	61.0 ^f	64.5	62.8	79.2 ^f	43.0	44.5	-
2002-2004 ^b	64.4	63.4	72.2 ^f	75.3	73.8	80.3 ^g	41.6	41.8	-
2005-2011 ^b	73.5 ^e	73.2 ^e	73.1 ^f	80.0	79.8	77.3 ^f	59.8	60.0	-
5-Year Period Survival (Percent) ^{cd}									
2011	73.7	73.0	78.5	78.7	77.1	89.2	59.9	60.9	-
5-Year Relative Survival (Percent), 2005-2011 ^c									
Age at Diagnosis:									
Ages <45	67.3	67.9	46.3 ^f	73.0	73.1	-	55.6	56.6	37.3 ^g
Ages 45-54	68.0	68.1	-	70.8	70.6	-	59.0	59.8	-
Ages 55-64	80.6	78.7	-	82.0	80.2	-	63.8 ^f	56.2 ^g	-
Ages 65-74	85.6	83.1	88.4 ^f	86.0	83.7 ^f	90.1 ^f	-	-	-
Ages 75+	87.3	88.6	81.4 ^f	87.7	89.2	82.1 ^f	-	-	-
Ages <65	69.0	69.2	63.8 ^f	73.7	73.4	85.2 ^f	56.8	57.4	49.4 ^f
Ages 65+	87.6	88.2	84.5 ^f	88.0	88.6	85.0 ^f	78.7 ^g	-	-

^a Based on End Results data from a series of hospital registries and one population-based registry.
^b SEER 9 areas (San Francisco, Connecticut, Detroit, Hawaii, Iowa, New Mexico, Seattle, Utah, Atlanta).
Based on follow-up of patients into 2012.
^c SEER 18 areas (San Francisco, Connecticut, Detroit, Hawaii, Iowa, New Mexico, Seattle, Utah, Atlanta, San Jose-Monterey, Los Angeles, Alaska Native Registry, Rural Georgia, California excluding SF/SJM/LA, Kentucky, Louisiana, New Jersey and Georgia excluding ATL/RG).
Based on follow-up of patients into 2012.
^d Period survival provides a 2011 estimate of survival by piecing together the most recent conditional survival estimates from several cohorts. It is computed here using three year calendar blocks (2009-2011: 0-1 year survival), (2008-2010: 1-2 year survival), (2007-2009: 2-3 year survival), (2006-2008: 3-4 year survival), (2005-2007: 4-5 years survival).
^e The difference between 1975-1977 and 2005-2011 is statistically significant (p<.05).
^f The standard error is between 5 and 10 percentage points.
^g The standard error is greater than 10 percentage points.
- Statistic could not be calculated due to fewer than 25 cases during the time period.

Table 10.7
Kaposi Sarcoma

SEER^a Relative Survival (Percent)
By Year of Diagnosis

All Races, Males and Females

Year of Diagnosis

	1975- 1979	1980- 1984	1985- 1989	1990- 1994	1995	1996	1997	1998	1999	2000	2001	2002	2003	2004	2005	2006	2007	2008	2009	2010	2011
Survival Time																					
1-year	95.0	65.4	59.0	58.9	61.7	68.8	72.9	73.8	76.6	74.1	80.3	77.7	75.2	82.6	81.9	81.2	82.7	79.6	82.2	83.3	84.3
2-year	89.6	44.4	32.9	29.4	46.7	60.4	65.1	65.5	65.0	66.3	72.5	70.6	72.5	73.5	78.5	78.4	80.2	75.5	79.9	77.0	
3-year	88.7	35.9	19.7	18.2	42.9	53.8	62.1	61.1	61.2	60.0	67.1	66.9	66.9	70.9	74.6	76.0	78.5	74.3	76.7		
4-year	83.8	31.8	13.8	13.9	38.7	51.5	58.9	59.0	56.4	57.0	65.0	65.7	65.0	69.4	73.9	75.3	77.1	74.3			
5-year	83.8	27.9	10.5	11.7	35.7	48.3	56.6	58.5	55.6	54.1	63.5	59.9	64.8	68.2	71.9	73.0	75.1				
6-year	76.9	24.2	8.8	10.8	35.1	45.5	54.5	55.7	53.1	52.6	63.2	58.1	64.6	66.8	70.2	71.8					
7-year	76.8	23.2	7.7	10.2	33.4	44.8	49.7	53.1	52.5	52.6	62.4	58.1	60.8	66.7	68.1						
8-year	76.8	20.3	6.7	9.8	32.1	44.4	46.9	50.4	52.0	52.0	61.0	56.2	58.6	66.5							
9-year	76.8	18.9	6.1	9.5	31.1	42.6	44.5	49.8	52.0	50.5	58.8	56.1	56.9								
10-year	76.8	16.9	5.9	9.3	29.8	42.5	43.4	49.8	51.1	48.5	55.9	56.1									
11-year	74.7	15.6	5.7	9.1	28.7	42.1	42.0	49.1	49.9	46.3	55.9										
12-year	74.7	15.3	5.6	9.1	27.9	41.7	40.9	49.1	49.9	45.5											
13-year	74.7	14.6	5.2	9.0	27.3	41.7	39.9	47.7	49.9												
14-year	74.7	14.6	5.0	8.8	26.8	40.3	39.8	45.2													
15-year	74.7	14.6	4.9	8.5	26.2	40.1	39.8														
16-year	74.7	14.6	4.8	8.4	25.6	39.9															
17-year	74.7	14.3	4.8	8.2	25.3																
18-year	74.7	13.0	4.8	8.0																	
19-year	74.7	13.0	4.6																		
20-year	74.7	13.0	4.5																		

^a Based on the SEER 9 areas (San Francisco, Connecticut, Detroit, Hawaii, Iowa, New Mexico, Seattle, Utah, and Atlanta).

Table 10.8
Kaposi SarcomaSEER^a Relative Survival (Percent)
By Year of Diagnosis

All Races, Males

Year of Diagnosis

	1975- 1979	1980- 1984	1985- 1989	1990- 1994	1995	1996	1997	1998	1999	2000	2001	2002	2003	2004	2005	2006	2007	2008	2009	2010	2011
Survival Time																					
1-year	95.2	63.6	58.6	58.5	60.8	68.5	72.7	73.0	76.6	73.8	79.6	76.4	75.5	81.3	82.9	80.6	82.6	80.9	81.6	83.1	83.1
2-year	89.1	41.7	32.2	28.7	45.5	59.7	64.2	64.0	64.4	65.6	72.8	69.6	72.5	72.0	79.2	77.6	80.3	76.8	80.1	77.0	
3-year	86.8	33.4	18.9	17.5	41.8	53.5	60.7	59.6	60.7	59.5	68.2	66.7	67.1	69.0	75.6	75.4	78.2	75.5	76.4		
4-year	83.7	29.3	13.0	13.2	37.7	51.1	57.0	57.0	55.4	56.7	65.7	66.2	65.0	67.1	74.8	74.8	76.4	75.5			
5-year	83.6	25.8	9.6	11.0	35.0	48.0	55.6	56.2	54.3	54.1	63.4	59.8	64.6	65.5	72.6	72.4	74.0				
6-year	74.2	21.8	8.0	10.1	34.3	45.3	53.3	54.0	51.4	53.0	63.4	58.0	64.3	63.8	70.7	71.2					
7-year	74.1	20.5	6.8	9.5	32.4	44.5	49.1	52.4	50.6	53.0	63.2	58.0	60.0	63.8	68.4						
8-year	74.1	18.2	6.0	9.1	31.2	44.1	46.4	50.7	50.6	52.4	61.9	57.0	58.2	63.8							
9-year	74.1	16.9	5.3	8.8	30.4	42.1	43.8	50.1	50.6	50.7	60.0	56.8	57.7								
10-year	74.1	15.1	5.2	8.6	29.1	42.0	42.5	50.1	49.9	49.2	56.7	56.8									
11-year	69.0	13.8	5.0	8.4	28.2	41.7	41.5	49.3	48.5	46.8	56.6										
12-year	68.9	13.6	4.9	8.3	27.2	41.2	40.3	49.3	48.5	45.9											
13-year	68.9	13.0	4.6	8.3	26.7	41.2	39.2	47.7	48.2												
14-year	68.9	13.0	4.4	8.0	26.2	40.1	39.2	45.1													
15-year	68.9	12.9	4.3	7.8	25.7	39.9	39.2														
16-year	68.9	12.7	4.2	7.7	25.1	39.7															
17-year	68.9	12.7	4.2	7.5	25.0																
18-year	68.9	12.3	4.2	7.3																	
19-year	68.9	12.3	4.0																		
20-year	68.9	12.3	3.9																		

^a Based on the SEER 9 areas (San Francisco, Connecticut, Detroit, Hawaii, Iowa, New Mexico, Seattle, Utah, and Atlanta).

Table 10.9
Kaposi SarcomaSEER^a Relative Survival (Percent)
By Year of Diagnosis

All Races, Females

Year of Diagnosis

	1975- 1979	1980- 1984	1985- 1989	1990- 1994	1995	1996	1997	1998	1999	2000	2001	2002	2003	2004	2005	2006	2007	2008	2009	2010	2011
Survival Time																					
1-year	92.6	90.0	80.4	80.3	87.2	78.4	74.9	85.4	75.8	78.0	86.3	88.7	68.6	100.0	64.3	89.8	83.7	44.8	87.7	81.6	97.5
2-year	90.4	83.5	79.0	63.2	85.9	78.4	74.9	85.4	69.6	76.5	67.5	78.2	68.6	97.2	64.3	89.8	78.0	44.8	75.9	75.8	
3-year	90.4	73.4	74.3	57.2	74.5	64.5	74.9	85.0	65.8	67.3	52.1	66.4	61.5	97.2	57.0	80.0	78.0	44.8	75.9		
4-year	83.5	69.5	73.6	53.8	71.4	64.5	74.9	85.0	65.8	61.5	52.1	54.7	61.5	97.2	57.0	80.0	78.0	44.8			
5-year	81.4	61.0	73.6	52.5	53.7	55.2	69.1	85.0	65.8	52.5	52.1	54.7	61.5	97.2	57.0	80.0	78.0				
6-year	81.4	61.0	73.6	48.8	53.7	49.3	69.1	80.8	65.8	43.3	52.1	54.7	61.5	97.2	57.0	80.0					
7-year	81.4	61.0	73.6	48.6	53.7	49.3	58.1	54.5	65.8	43.3	50.9	54.7	61.5	97.2	57.0						
8-year	81.4	54.1	66.7	48.5	53.7	49.3	51.9	19.5	65.8	43.3	45.9	40.1	61.5	72.0							
9-year	81.4	51.0	66.0	47.6	51.1	49.3	51.9	19.5	65.8	43.3	38.5	40.1	35.4								
10-year	81.4	45.4	59.7	47.6	48.2	49.3	51.9	19.5	62.8	35.5	38.5	40.1									
11-year	81.4	42.7	59.7	47.6	40.4	49.3	46.8	19.5	62.8	35.5	38.5										
12-year	81.4	41.9	57.0	47.6	40.4	49.3	46.8	19.5	62.8	35.5											
13-year	81.4	41.0	52.4	47.6	40.4	38.4	46.8	19.5	62.8												
14-year	81.4	41.0	39.2	47.6	39.1	38.4	46.8	19.5													
15-year	81.4	41.0	33.4	47.6	27.5	38.4	46.8														
16-year	81.4	41.0	33.4	47.6	27.5	38.4															
17-year	81.4	29.3	33.4	47.6	15.7																
18-year	80.2	16.6	33.4	47.6																	
19-year	80.2	16.6	33.4																		
20-year	80.2	16.6	33.4																		

^a Based on the SEER 9 areas (San Francisco, Connecticut, Detroit, Hawaii, Iowa, New Mexico, Seattle, Utah, and Atlanta).

Table 10.10
Kaposi Sarcoma

Risk of Being Diagnosed With Cancer in 10, 20 and 30 Years,
Lifetime Risk of Being Diagnosed with Cancer Given Alive and Cancer-Free at Current Age, and
Lifetime Risk of Dying from Cancer Given Alive at Current Age
Both Sexes, 2010-2012 By Race/Ethnicity

Race/ Ethnicity	Current Age	Risk of Being Diagnosed with Cancer				Risk of Dying from Cancer	Race/ Ethnicity	Current Age	Risk of Being Diagnosed with Cancer				Risk of Dying from Cancer
		+10 yrs	+20 yrs	+30 yrs	Ever				+10 yrs	+20 yrs	+30 yrs	Ever	
All Races	0	0.00	0.00	0.00	0.05	0.00	Asian/ Pacific Islander	0	0.00	0.00	0.00	0.02	0.00
	10	0.00	0.00	0.01	0.05	0.00		10	0.00	0.00	0.00	0.02	0.00
	20	0.00	0.01	0.02	0.05	0.00		20	0.00	0.00	0.01	0.02	0.00
	30	0.01	0.02	0.02	0.04	0.00		30	0.00	0.01	0.01	0.02	0.00
	40	0.01	0.01	0.02	0.03	0.00		40	0.00	0.01	0.01	0.02	0.00
	50	0.01	0.01	0.02	0.03	0.00		50	0.00	0.01	0.01	0.01	0.00
	60	0.00	0.01	0.02	0.02	0.00		60	0.00	0.01	0.01	0.01	0.00
	70	0.01	0.02	-	0.02	0.00		70	0.00	0.01	-	0.01	0.00
80	0.01	-	-	0.02	0.00	80	0.00	-	-	0.01	0.00		
White	0	0.00	0.00	0.00	0.04	0.00	American Indian/ Alaska Native ^a	0	0.00	0.00	0.00	0.02	0.00
	10	0.00	0.00	0.01	0.04	0.00		10	0.00	0.00	0.00	0.02	0.00
	20	0.00	0.01	0.01	0.04	0.00		20	0.00	0.00	0.01	0.02	0.00
	30	0.01	0.01	0.02	0.04	0.00		30	0.00	0.01	0.01	0.02	0.00
	40	0.01	0.01	0.02	0.03	0.00		40	0.01	0.01	0.01	0.02	0.00
	50	0.00	0.01	0.02	0.03	0.00		50	0.00	0.00	0.01	0.02	0.01
	60	0.00	0.01	0.02	0.02	0.00		60	0.00	0.00	0.02	0.02	0.01
	70	0.01	0.02	-	0.02	0.00		70	0.00	0.02	-	0.02	0.01
80	0.01	-	-	0.02	0.00	80	0.02	-	-	0.02	0.01		
Black	0	0.00	0.00	0.02	0.08	0.00	Hispanic ^b	0	0.00	0.00	0.00	0.08	0.00
	10	0.00	0.02	0.04	0.08	0.00		10	0.00	0.00	0.01	0.08	0.00
	20	0.02	0.04	0.06	0.08	0.00		20	0.00	0.01	0.02	0.08	0.00
	30	0.02	0.04	0.05	0.07	0.00		30	0.01	0.02	0.02	0.08	0.00
	40	0.02	0.03	0.04	0.04	0.00		40	0.01	0.02	0.02	0.07	0.00
	50	0.01	0.01	0.02	0.02	0.00		50	0.01	0.01	0.03	0.07	0.00
	60	0.00	0.01	0.01	0.02	0.00		60	0.01	0.02	0.04	0.06	0.00
	70	0.00	0.01	-	0.01	0.00		70	0.02	0.04	-	0.06	0.00
80	0.01	-	-	0.01	0.00	80	0.03	-	-	0.05	0.00		

Devcan 6.8.0, August 2014, National Cancer Institute (<http://surveillance.cancer.gov/devcan/>).

Source: Incidence data are from the SEER 18 areas (San Francisco, Connecticut, Detroit, Hawaii, Iowa, New Mexico, Seattle, Utah, Atlanta, San Jose-Monterey, Los Angeles, Alaska Native Registry, Rural Georgia, California excluding SF/SJM/LA, Kentucky, Louisiana, New Jersey, and Georgia excluding ATL/RG). Mortality data are from the NCHS public use data file for the total US.

^a Underlying incidence and mortality data for American Indian/Alaska Native are based on the CHSDA (Contract Health Service Delivery Area) counties.

^b Hispanic is not mutually exclusive from whites, blacks, Asian/Pacific Islanders, and American Indians/Alaska Natives. Underlying incidence data for Hispanics are based on NHIA and exclude cases from the Alaska Native Registry.

- Statistic could not be calculated.

A percent of 0.00 represents a value that is below 0.005.

Table 10.11
Kaposi Sarcoma

Risk of Being Diagnosed With Cancer in 10, 20 and 30 Years,
Lifetime Risk of Being Diagnosed with Cancer Given Alive and Cancer-Free at Current Age, and
Lifetime Risk of Dying from Cancer Given Alive at Current Age
Males, 2010-2012 By Race/Ethnicity

Race/ Ethnicity	Current Age	Risk of Being Diagnosed with Cancer				Risk of Dying from Cancer	Race/ Ethnicity	Current Age	Risk of Being Diagnosed with Cancer				Risk of Dying from Cancer
		+10 yrs	+20 yrs	+30 yrs	Ever				+10 yrs	+20 yrs	+30 yrs	Ever	
All Races	0	0.00	0.00	0.01	0.08	0.00	Asian/ Pacific Islander	0	0.00	0.00	0.00	0.04	0.00
	10	0.00	0.01	0.02	0.08	0.00		10	0.00	0.00	0.01	0.04	0.00
	20	0.01	0.02	0.04	0.08	0.00		20	0.00	0.01	0.01	0.04	0.00
	30	0.02	0.03	0.04	0.07	0.00		30	0.00	0.01	0.02	0.03	0.00
	40	0.02	0.03	0.04	0.06	0.00		40	0.01	0.01	0.02	0.03	0.00
	50	0.01	0.02	0.03	0.04	0.00		50	0.01	0.01	0.02	0.02	0.00
	60	0.01	0.02	0.03	0.03	0.00		60	0.00	0.01	0.02	0.02	0.00
	70	0.01	0.02	-	0.03	0.00		70	0.01	0.01	-	0.01	0.00
80	0.02	-	-	0.02	0.00	80	0.01	-	-	0.01	0.00		
White	0	0.00	0.00	0.00	0.06	0.00	American Indian/ Alaska Native ^a	0	0.00	0.00	0.00	0.04	0.01
	10	0.00	0.00	0.01	0.06	0.00		10	0.00	0.00	0.00	0.04	0.01
	20	0.00	0.01	0.03	0.06	0.00		20	0.00	0.00	0.01	0.04	0.01
	30	0.01	0.03	0.03	0.06	0.00		30	0.00	0.01	0.01	0.04	0.01
	40	0.01	0.02	0.03	0.05	0.00		40	0.01	0.01	0.01	0.04	0.01
	50	0.01	0.02	0.03	0.04	0.00		50	0.01	0.01	0.01	0.04	0.01
	60	0.01	0.02	0.03	0.03	0.00		60	0.00	0.01	0.04	0.04	0.01
	70	0.01	0.02	-	0.03	0.00		70	0.01	0.04	-	0.04	0.02
80	0.02	-	-	0.02	0.00	80	0.05	-	-	0.05	0.02		
Black	0	0.00	0.00	0.04	0.16	0.00	Hispanic ^b	0	0.00	0.00	0.01	0.11	0.01
	10	0.00	0.04	0.08	0.16	0.00		10	0.00	0.01	0.02	0.12	0.01
	20	0.03	0.08	0.12	0.16	0.00		20	0.01	0.02	0.04	0.12	0.01
	30	0.05	0.09	0.11	0.13	0.00		30	0.02	0.03	0.04	0.11	0.01
	40	0.04	0.06	0.07	0.08	0.00		40	0.02	0.03	0.04	0.10	0.01
	50	0.02	0.03	0.03	0.04	0.00		50	0.01	0.03	0.05	0.08	0.01
	60	0.01	0.01	0.02	0.03	0.00		60	0.01	0.04	0.05	0.07	0.01
	70	0.01	0.02	-	0.02	0.00		70	0.02	0.04	-	0.07	0.01
80	0.02	-	-	0.02	0.00	80	0.03	-	-	0.06	0.01		

Devcan 6.8.0, August 2014, National Cancer Institute (<http://surveillance.cancer.gov/devcan/>).

Source: Incidence data are from the SEER 18 areas (San Francisco, Connecticut, Detroit, Hawaii, Iowa, New Mexico, Seattle, Utah, Atlanta, San Jose-Monterey, Los Angeles, Alaska Native Registry, Rural Georgia, California excluding SF/SJM/LA, Kentucky, Louisiana, New Jersey, and Georgia excluding ATL/RG). Mortality data are from the NCHS public use data file for the total US.

^a Underlying incidence and mortality data for American Indian/Alaska Native are based on the CHSDA (Contract Health Service Delivery Area) counties.

^b Hispanic is not mutually exclusive from whites, blacks, Asian/Pacific Islanders, and American Indians/Alaska Natives. Underlying incidence data for Hispanics are based on NHIA and exclude cases from the Alaska Native Registry.

- Statistic could not be calculated.

A percent of 0.00 represents a value that is below 0.005.

Table 10.12
Kaposi Sarcoma

Risk of Being Diagnosed With Cancer in 10, 20 and 30 Years,
Lifetime Risk of Being Diagnosed with Cancer Given Alive and Cancer-Free at Current Age, and
Lifetime Risk of Dying from Cancer Given Alive at Current Age
Females, 2010-2012 By Race/Ethnicity

Race/ Ethnicity	Current Age	Risk of Being Diagnosed with Cancer				Risk of Dying from Cancer	Race/ Ethnicity	Current Age	Risk of Being Diagnosed with Cancer				Risk of Dying from Cancer
		+10 yrs	+20 yrs	+30 yrs	Ever				+10 yrs	+20 yrs	+30 yrs	Ever	
All Races	0	0.00	0.00	0.00	0.01	0.00	Asian/ Pacific Islander	0	0.00	0.00	0.00	0.00	0.00
	10	0.00	0.00	0.00	0.01	0.00		10	0.00	0.00	0.00	0.00	0.00
	20	0.00	0.00	0.00	0.01	0.00		20	0.00	0.00	0.00	0.00	0.00
	30	0.00	0.00	0.00	0.01	0.00		30	0.00	0.00	0.00	0.00	0.00
	40	0.00	0.00	0.00	0.01	0.00		40	0.00	0.00	0.00	0.00	0.00
	50	0.00	0.00	0.00	0.01	0.00		50	0.00	0.00	0.00	0.00	0.00
	60	0.00	0.00	0.01	0.01	0.00		60	0.00	0.00	0.00	0.00	0.00
	70	0.00	0.01	-	0.01	0.00		70	0.00	0.00	-	0.00	0.00
80	0.01	-	-	0.01	0.00	80	0.00	-	-	0.00	0.00		
White	0	0.00	0.00	0.00	0.01	0.00	American Indian/ Alaska Native ^a	0	0.00	0.00	0.00	0.01	0.00
	10	0.00	0.00	0.00	0.01	0.00		10	0.00	0.00	0.00	0.01	0.00
	20	0.00	0.00	0.00	0.01	0.00		20	0.00	0.00	0.01	0.01	0.00
	30	0.00	0.00	0.00	0.01	0.00		30	0.00	0.01	0.01	0.01	0.00
	40	0.00	0.00	0.00	0.01	0.00		40	0.01	0.01	0.01	0.01	0.00
	50	0.00	0.00	0.01	0.01	0.00		50	0.00	0.00	0.00	0.00	0.00
	60	0.00	0.00	0.01	0.01	0.00		60	0.00	0.00	0.00	0.00	0.00
	70	0.00	0.01	-	0.01	0.00		70	0.00	0.00	-	0.00	0.00
80	0.01	-	-	0.01	0.00	80	0.00	-	-	0.00	0.00		
Black	0	0.00	0.00	0.00	0.01	0.00	Hispanic ^b	0	0.00	0.00	0.00	0.05	0.00
	10	0.00	0.00	0.00	0.01	0.00		10	0.00	0.00	0.00	0.05	0.00
	20	0.00	0.00	0.01	0.01	0.00		20	0.00	0.00	0.00	0.05	0.00
	30	0.00	0.00	0.01	0.01	0.00		30	0.00	0.00	0.00	0.05	0.00
	40	0.00	0.00	0.01	0.01	0.00		40	0.00	0.00	0.00	0.05	0.00
	50	0.00	0.00	0.00	0.01	0.00		50	0.00	0.00	0.01	0.05	0.00
	60	0.00	0.00	0.00	0.01	0.00		60	0.00	0.01	0.03	0.06	0.00
	70	0.00	0.00	-	0.01	0.00		70	0.01	0.03	-	0.06	0.00
80	0.00	-	-	0.01	0.00	80	0.02	-	-	0.05	0.00		

Devcan 6.8.0, August 2014, National Cancer Institute (<http://surveillance.cancer.gov/devcan/>).

Source: Incidence data are from the SEER 18 areas (San Francisco, Connecticut, Detroit, Hawaii, Iowa, New Mexico, Seattle, Utah, Atlanta, San Jose-Monterey, Los Angeles, Alaska Native Registry, Rural Georgia, California excluding SF/SJM/LA, Kentucky, Louisiana, New Jersey, and Georgia excluding ATL/RG). Mortality data are from the NCHS public use data file for the total US.

^a Underlying incidence and mortality data for American Indian/Alaska Native are based on the CHSDA (Contract Health Service Delivery Area) counties.

^b Hispanic is not mutually exclusive from whites, blacks, Asian/Pacific Islanders, and American Indians/Alaska Natives. Underlying incidence data for Hispanics are based on NHIA and exclude cases from the Alaska Native Registry.

- Statistic could not be calculated.

A percent of 0.00 represents a value that is below 0.005.

Table 10.13
Kaposi Sarcoma

SEER Incidence
Age-Adjusted Rates and Trends^a
By Race/Ethnicity and Sex

SEER Incidence	SEER 18 Areas ^b			SEER 13 Areas ^b			SEER 9 Areas ^b		
	Rate 2008-2012			Trend 2003-2012 ^c			Trend 2003-2012 ^d		
	Rate per 100,000 persons			AAPC (%)			AAPC (%)		
RACE/ETHNICITY	Total	Males	Females	Total	Males	Females	Total	Males	Females
All Races	0.5	1.0	0.1	-2.4*	-2.4*	-4.8*	-1.5*	-1.5*	-4.5*
White	0.5	0.9	0.1	-2.9*	-3.0*	-4.6*	-2.3*	-2.3*	-4.9*
White Hispanic ^e	0.7	1.2	0.2	-4.2	-3.5*	-	-	-	-
White Non-Hispanic ^e	0.4	0.8	0.1	-3.0*	-3.1*	-5.4*	-	-	-
Black	1.1	2.2	0.2	-1.4	-1.3	-2.3	0.4	0.5	-
Asian/Pacific Islander	0.2	0.4	-	-0.3	0.5	-	-	-	-
Amer Ind/Alaska Nat ^f	-	-	-	-	-	-	-	-	-
Hispanic ^e	0.7	1.2	0.2	-3.3	-3.8*	-3.3	-	-	-

The AAPC is the Average Annual Percent Change over the time interval. The AAPCs are calculated by the Joinpoint Regression Program Version 4.2.0, April 2015, National Cancer Institute.

- Statistic not shown. Rate based on less than 16 cases for the time interval.

Trend based on less than 10 cases for at least one year within the time interval.

^a Rates are age-adjusted to the 2000 US Std Population (19 age groups - Census P25-1130). Trends are based on rates age-adjusted to the 2000 US Std Population (19 age groups - Census P25-1130).

^b The SEER 9 areas are San Francisco, Connecticut, Detroit, Hawaii, Iowa, New Mexico, Seattle, Utah, and Atlanta.

The SEER 13 areas comprise the SEER 9 areas plus San Jose-Monterey, Los Angeles, the Alaska Native Registry, and Rural Georgia.

The SEER 18 areas comprise the SEER 13 areas plus California excluding SF/SJM/LA, Kentucky, Louisiana, New Jersey, and Georgia excluding ATL/RG.

^c The 2003-2012 AAPC estimates are based on a Joinpoint analysis with up to 3 Joinpoints over diagnosis years 1992-2012.

^d The 2003-2012 AAPC estimates are based on a Joinpoint analysis with up to 5 Joinpoints over diagnosis years 1975-2012.

^e Hispanic and Non-Hispanic are not mutually exclusive from whites, blacks, Asian/Pacific Islanders, and American Indians/Alaska Natives. Incidence data for Hispanics and Non-Hispanics are based on NHIA and exclude cases from the Alaska Native Registry.

^f Incidence data for American Indian/Alaska Native are based on the CHSDA (Contract Health Service Delivery Area) counties.

* The APC is significantly different from zero (p<.05).

Table 10.14
Kaposi Sarcoma

Age-Adjusted SEER Incidence Rates^a
By Registry, Race and Sex

	All Races			Whites			Blacks		
	Total	Males	Females	Total	Males	Females	Total	Males	Females
<u>SEER Incidence Rates^a, 2008-2012</u>									
California	0.62	1.18	0.08	0.62	1.16	0.09	1.16	2.31	-
Greater Bay Area	0.83	1.55	0.13	0.99	1.82	0.14	1.43	2.79	-
San Francisco-Oakland	1.04	2.01	-	1.23	2.34	-	1.66	3.30	-
San Jose-Monterey	0.46	0.74	-	0.58	0.94	-	-	-	-
Los Angeles	0.91	1.77	0.10	0.88	1.65	0.13	1.57	3.39	-
Greater California	0.41	0.76	0.06	0.40	0.75	0.06	0.70	1.29	-
Connecticut	0.35	0.64	0.14	0.30	0.57	-	-	-	-
Detroit	0.54	1.01	0.13	0.34	0.61	-	1.03	2.11	-
Georgia	0.84	1.63	0.08	0.42	0.79	-	1.66	3.49	-
Atlanta	1.77	3.51	-	0.95	1.80	-	2.94	6.33	-
Rural Georgia	-	-	-	-	-	-	-	-	-
Greater Georgia	0.29	0.54	-	0.20	0.36	-	0.50	1.02	-
Hawaii	0.22	0.45	-	-	-	-	-	-	-
Iowa	0.11	0.22	-	-	-	-	-	-	-
Kentucky	0.24	0.44	-	0.21	0.40	-	-	-	-
Louisiana	0.50	0.94	-	0.42	0.79	-	0.65	1.27	-
New Jersey	0.41	0.69	0.16	0.33	0.57	0.12	0.78	1.36	-
New Mexico	0.46	0.86	-	0.43	0.81	-	-	-	-
Seattle-Puget Sound	0.50	0.96	-	0.53	1.02	-	-	-	-
Utah	0.13	0.26	-	-	-	-	-	-	-
9 SEER Areas ^b	0.65	1.25	0.08	0.49	0.94	0.06	1.76	3.54	0.22
11 SEER Areas ^b	0.70	1.34	0.09	0.59	1.11	0.08	1.70	3.46	0.17
13 SEER Areas ^b	0.70	1.33	0.09	0.59	1.11	0.08	1.68	3.42	0.17
18 SEER Areas ^b	0.54	1.01	0.09	0.46	0.86	0.08	1.11	2.19	0.16

^a Rates are per 100,000 and are age-adjusted to the 2000 US Std Population (19 age groups - Census P25-1130)

^b The SEER 9 areas are San Francisco, Connecticut, Detroit, Hawaii, Iowa, New Mexico, Seattle, Utah and Atlanta.

The SEER 11 areas comprise the SEER 9 areas plus San Jose-Monterey and Los Angeles.

The SEER 13 areas comprise the SEER 11 areas plus the Alaska Native Registry and Rural Georgia.

The SEER 18 areas comprise the SEER 13 areas plus California excluding SF/SJM/LA, Kentucky, Louisiana, New Jersey and Georgia excluding ATL/RG.

- Statistic not shown. Rate based on less than 16 cases for the time interval.

Table 10.15
Kaposi SarcomaEstimated United States Cancer Prevalence Counts^a on January 1, 2012
By Race/Ethnicity, Sex and Years Since Diagnosis

Years Since Diagnosis		0 to <5	5 to <10	10 to <15	15 to <20	20 to <25	25 to <30	0 to <20 ^e	0 to <37 ^e	>=37 ^g	Complete ^h
<u>Race</u>	<u>Sex</u>										
All Races ^b	Both Sexes	7,384	5,524	4,521	6,509	1,589	579	24,738	26,300	+	+
	Males	6,836	5,165	4,277	6,367	1,489	545	23,345	24,829	+	+
	Females	548	359	244	142	100	34	1,393	1,471	+	+
White ^b	Both Sexes	4,557	4,106	3,235	5,325	1,272	495	17,877	19,162	+	+
	Males	4,177	3,841	3,037	5,229	1,193	472	16,858	18,077	+	+
	Females	380	265	198	96	79	23	1,019	1,085	+	+
Black ^b	Both Sexes	2,359	1,214	990	804	144	38	5,438	5,560	+	+
	Males	2,238	1,138	978	769	134	38	5,185	5,307	+	+
	Females	121	76	12	35	10	0	253	253	+	+
Asian/ Pacific Islander ^c	Both Sexes	134	89	62	+	+	+	359	+	+	+
	Males	134	84	62	+	+	+	354	+	+	+
	Females	0	5	0	+	+	+	5	+	+	+
Hispanic ^d	Both Sexes	1,259	1,080	926	+	+	+	4,360	+	+	+
	Males	1,115	1,019	875	+	+	+	4,083	+	+	+
	Females	144	61	51	+	+	+	277	+	+	+

Estimated prevalence percent^a on January 1, 2012, of the SEER^c population diagnosed in the previous 20 years
By Age at Prevalence, Race/Ethnicity and Sex

Age at Prevalence		All Ages	0-9	10-19	20-29	30-39	40-49	50-59	60-69	70-79	80+	Age-Adjusted ^f All Ages
<u>Race</u>	<u>Sex</u>											
All Races ^c	Both Sexes	0.0085%	-	-	0.0012%	0.0054%	0.0192%	0.0207%	0.0121%	0.0095%	0.0152%	0.0082%
	Males	0.0165%	-	-	0.0022%	0.0106%	0.0377%	0.0416%	0.0245%	0.0179%	0.0288%	0.0161%
	Females	0.0008%	-	-	-	0.0002%	0.0008%	0.0006%	0.0009%	0.0027%	0.0072%	0.0007%
White ^c	Both Sexes	0.0086%	-	-	0.0006%	0.0046%	0.0182%	0.0212%	0.0127%	0.0104%	0.0161%	0.0080%
	Males	0.0164%	-	-	0.0012%	0.0089%	0.0350%	0.0422%	0.0253%	0.0191%	0.0301%	0.0155%
	Females	0.0009%	-	-	-	-	0.0008%	0.0005%	0.0009%	0.0031%	0.0078%	0.0007%
Black ^c	Both Sexes	0.0128%	-	-	0.0046%	0.0147%	0.0358%	0.0284%	0.0133%	0.0066%	0.0124%	0.0133%
	Males	0.0259%	-	-	0.0091%	0.0309%	0.0751%	0.0589%	0.0284%	0.0137%	0.0215%	0.0277%
	Females	0.0009%	-	-	-	-	-	0.0018%	-	-	0.0080%	0.0009%
Asian/ Pacific Islander ^c	Both Sexes	0.0021%	-	-	-	0.0011%	0.0048%	0.0049%	0.0032%	0.0032%	0.0045%	0.0020%
	Males	0.0044%	-	-	-	0.0023%	0.0099%	0.0105%	0.0070%	0.0074%	0.0103%	0.0044%
	Females	-	-	-	-	-	-	-	-	-	-	-
Hispanic ^d	Both Sexes	0.0085%	-	-	0.0009%	0.0065%	0.0233%	0.0256%	0.0177%	0.0168%	0.0428%	0.0113%
	Males	0.0158%	-	-	0.0016%	0.0126%	0.0441%	0.0514%	0.0361%	0.0291%	0.0693%	0.0214%
	Females	0.0011%	-	-	-	-	0.0016%	-	0.0019%	0.0078%	0.0270%	0.0019%

^a US 2012 cancer prevalence counts are based on 2012 cancer prevalence proportions from the SEER registries and 1/1/2012 US population estimates based on the average of 2011 and 2012 population estimates from the US Bureau of the Census. Prevalence was calculated using the First Malignant Primary Only for a person.

^{b c d} Statistics based on (b) SEER 9 Areas (c) SEER 11 Areas and Rural Georgia (d) NHIA for Hispanic for SEER 11 Areas and Rural Georgia.

^e Maximum limited-duration prevalence: 37 years for 1975-2012 SEER 9 data; 20 years for 1992-2012 SEER 11 data (used to calculate prevalence for Hispanics and Asian Pacific Islanders).

^f Percentages are age-adjusted to the 2000 US Standard Population (19 age groups - Census P25-1130) by 5-year age groups.

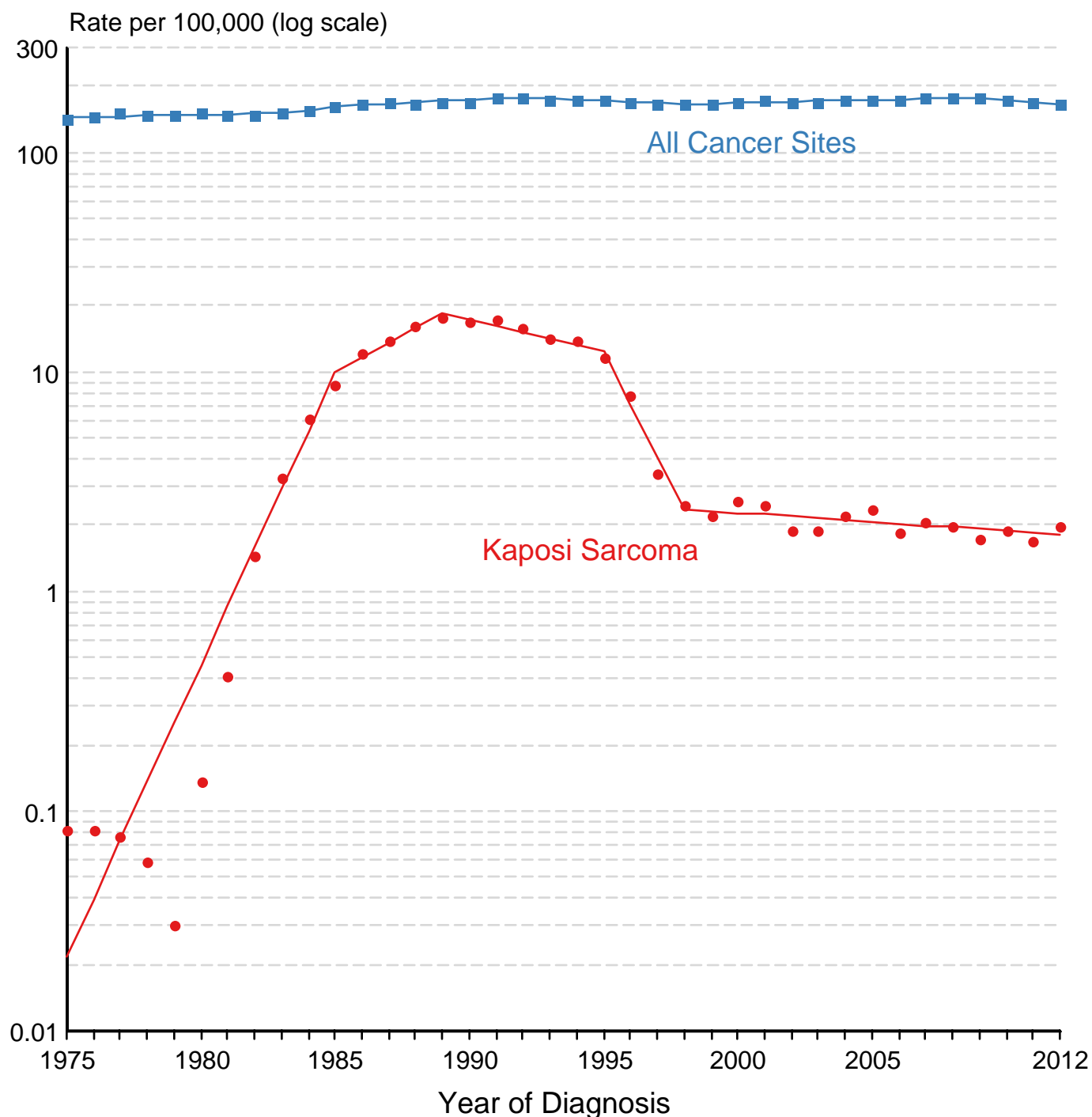
^{g h i} (g) Cases diagnosed more than 37 years ago were estimated using the completeness index method (Capocaccia et. al. 1997, Merrill et. al. 2000). (h) Complete prevalence is obtained by summing 0 to <37 and >=37. (i) Age-specific completeness index was approximated using empirical data from historical Connecticut tumor registry.

- Statistic not shown. Statistic based on fewer than 5 cases estimated alive in SEER for the time interval.

+ Not available.

Figure 10.1

All Cancer Sites vs Kaposi Sarcoma SEER Incidence Rates, 1975-2012 Males, Ages 20-54



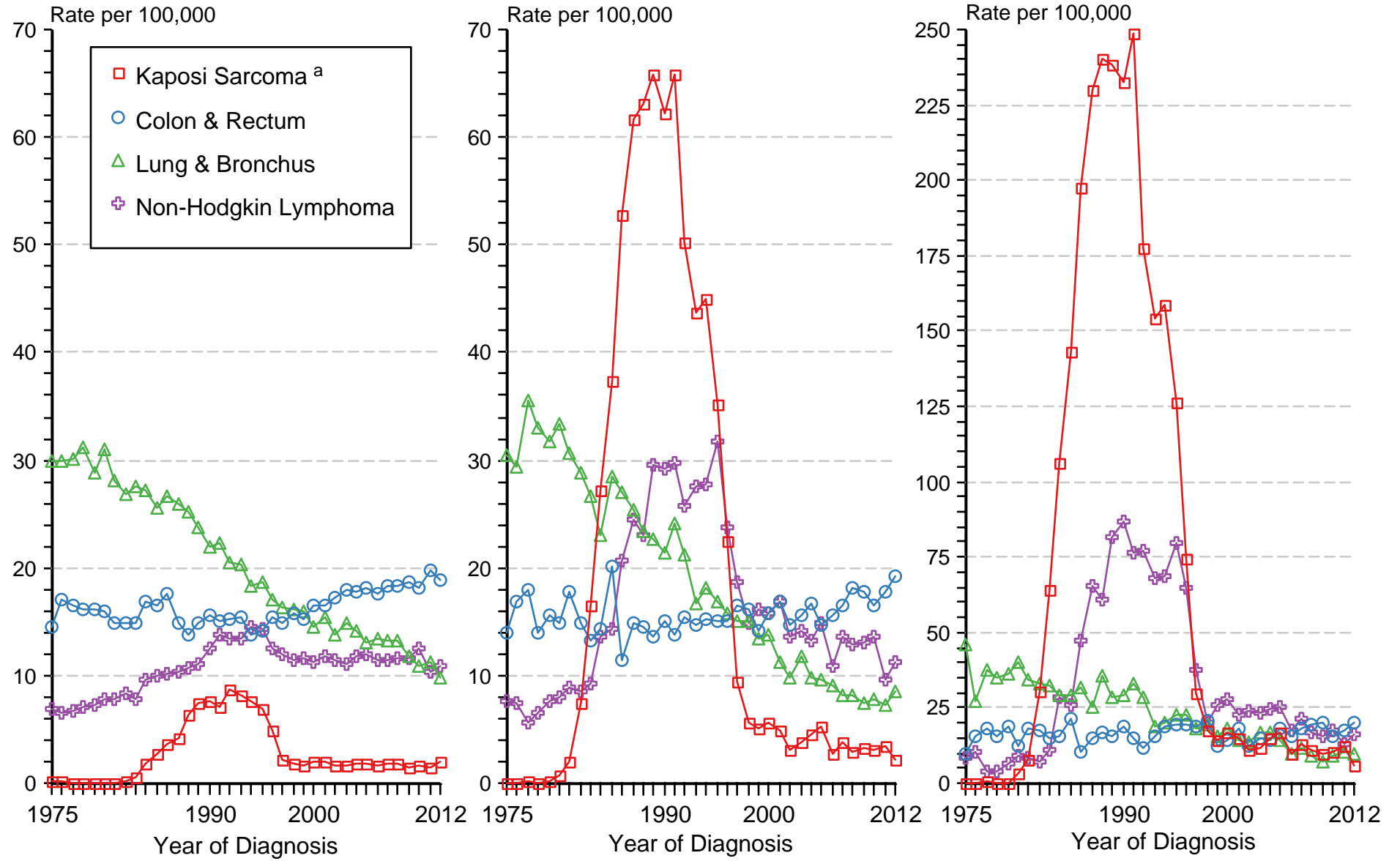
Source: SEER 9 areas.
Rates are age-adjusted to the 2000 US Std Population (19 age groups - Census P25-1103).
Regression lines are calculated using the Joinpoint Regression Program Version 4.2.0, April 2015,
National Cancer Institute.

Figure 10.2

All SEER excluding San Francisco/Oakland Males, Ages 20-54 1975-2012

San Francisco/Oakland Males, Ages 20-54 1975-2012

San Francisco County/City Males, Ages 20-54 1975-2012



Source: SEER 9 areas. Rates are age-adjusted to the 2000 US Std Population (19 age groups - Census P25-1103).

^a Kaposi Sarcoma cases are excluded from Colon & Rectum, Lung & Bronchus, and Non-Hodgkin Lymphoma cases.