

Table 1.27
Age-Adjusted U.S. Death Rates and Trends for the Top 15 Cancer Sites^a by Race/Ethnicity
Both Sexes

	All Races		White		Black			
	Rate ^b 2009-2013	APC ^c 2004-2013	Rate ^b 2009-2013	APC ^c 2004-2013	Rate ^b 2009-2013	APC ^c 2004-2013		
All Sites	168.5	-1.5*	168.4	-1.4*	197.9	-2.1*		
Lung and Bronchus	46.0	-2.3*	46.7	-2.2*	49.4	-2.7*		
Colon and Rectum	15.1	-2.5*	14.7	-2.5*	20.7	-3.0*		
Breast	12.0	-2.0*	11.6	-2.0*	17.4	-1.5*		
Pancreas	10.9	0.1	10.8	0.2*	Prostate ^f	15.9	-3.7*	
Prostate ^f	8.2	-2.7*	7.7	-2.5*	Pancreas	13.5	-0.4*	
Leukemia	6.9	-0.9*	7.1	-0.7*	Liver & IBD ^g	8.1	2.5*	
Liver & IBD ^g	6.1	2.8*	6.3	-2.3*	Myeloma	6.2	-0.8*	
Non-Hodgkin Lymphoma	6.0	-2.3*	Liver & IBD ^g	5.7	2.9*	Stomach	6.1	-3.1*
Urinary Bladder	4.4	0.0	Brain and ONS ^g	4.7	0.3	Leukemia	5.8	-1.5*
Brain and ONS ^g	4.3	0.2	Urinary Bladder	4.6	0.1*	Corpus and Uterus, NOS ^f	4.7	1.6*
Ovary ^f	4.2	-2.5*	Ovary ^f	4.3	-2.5*	Non-Hodgkin Lymphoma	4.4	-1.9*
Esophagus	4.1	-1.0*	Esophagus	4.3	-0.4*	Ovary ^f	3.8	-2.0*
Kidney and Renal Pelvis	3.9	-0.8*	Kidney and Renal Pelvis	4.0	-0.7*	Esophagus	3.8	-4.4*
Myeloma	3.3	-0.8*	Melanoma of the Skin	3.1	0.0	Kidney and Renal Pelvis	3.7	-1.4*
Stomach	3.3	-2.5*	Myeloma	3.1	-0.8*	Urinary Bladder	3.6	-0.9*
	Asian/Pacific Islander		American Indian/Alaska Native ^d		Hispanic ^e			
	Rate ^b 2009-2013	APC ^c 2004-2013	Rate ^b 2009-2013	APC ^c 2004-2013	Rate ^b 2009-2013	APC ^c 2004-2013		
All Sites	104.4	-1.3*	153.6	-1.2*	117.6	-1.2*		
Lung and Bronchus	24.2	-1.6*	37.8	-1.7*	19.7	-2.5*		
Colon and Rectum	10.5	-1.5*	16.8	0.1	12.0	-1.7*		
Liver & IBD ^g	9.7	-0.6	Liver & IBD ^g	10.2	1.7	Liver & IBD ^g	9.0	1.6*
Pancreas	7.7	0.0	Pancreas	8.7	-0.9	Pancreas	8.6	-0.2
Breast	6.3	-1.2*	Breast	8.2	-3.9*	Breast	8.0	-1.2*
Stomach	5.7	-4.0*	Prostate ^f	7.7	-2.6*	Prostate ^f	6.8	-2.8*
Non-Hodgkin Lymphoma	4.0	-1.4*	Kidney and Renal Pelvis	6.5	1.0	Stomach	5.4	-2.7*
Leukemia	4.0	0.2	Stomach	5.3	-2.5	Non-Hodgkin Lymphoma	5.1	-1.2*
Prostate ^f	3.6	-3.7*	Non-Hodgkin Lymphoma	4.5	-2.5*	Leukemia	4.9	0.0
Ovary ^f	2.5	-1.4*	Leukemia	4.5	-2.1	Kidney and Renal Pelvis	3.5	-1.1*
Brain and ONS ^g	2.0	0.8	Ovary ^f	3.7	-1.5	Ovary ^f	3.1	-1.8*
Oral Cavity and Pharynx	1.9	-0.9	Esophagus	3.3	-2.8*	Brain and ONS ^g	2.9	0.3
Kidney and Renal Pelvis	1.9	-0.3	Myeloma	2.9	-2.2	Myeloma	2.8	-0.7
Urinary Bladder	1.7	0.1	Brain and ONS ^g	2.4	2.5	Urinary Bladder	2.3	-0.6
Esophagus	1.7	-2.2*	Urinary Bladder	2.1	1.3	Esophagus	2.2	-1.5

Source: US Mortality Files, National Center for Health Statistics, Centers for Disease Control and Prevention.

^a Top 15 cancer sites selected based on 2009-2013 age-adjusted rates for the race/ethnic group.

^b Rates are per 100,000 and age-adjusted to the 2000 US Std Population (19 age groups - Census P25-1130).

^c The APC is the Annual Percent Change over the time interval.

Trends are based on rates age-adjusted to the 2000 US Std Population (19 age groups - Census P25-1130).

^d Rates for American Indian/Alaska Native are based on the CHSDA (Contract Health Service Delivery Area) counties.

^e Hispanic is not mutually exclusive from whites, blacks, Asian/Pacific Islanders, and American Indians/Alaska Natives.

^f The rates for sex-specific cancer sites are calculated using the population for both sexes combined.

^g IBD = Intrahepatic Bile Duct. ONS = Other Nervous System.

* The APC is significantly different from zero (p<.05).

- Statistic not shown. Rate based on less than 16 cases for the time interval. Trend based on less than 10 cases for at least one year within the time interval.

Table 1.28
Age-Adjusted U.S. Death Rates and Trends for the Top 15 Cancer Sites^a by Race/Ethnicity

Males

All Races	Rate ^b		APC ^c	All Races	Rate ^b		APC ^c	All Races	Rate ^b		APC ^c
	2009-2013	2004-2013			2009-2013	2004-2013			2009-2013	2004-2013	
All Sites	204.0	-1.8*		All Sites	202.9	-1.6*		All Sites	254.2	-2.7*	
Lung and Bronchus	57.8	-2.9*		Lung and Bronchus	57.7	-2.9*		Lung and Bronchus	70.6	-3.4*	
Prostate	20.7	-3.4*		Prostate	19.1	-3.3*		Prostate	44.2	-4.3*	
Colon and Rectum	18.1	-2.6*		Colon and Rectum	17.6	-2.6*		Colon and Rectum	26.1	-2.7*	
Pancreas	12.5	0.1		Pancreas	12.5	0.2*		Pancreas	15.0	-0.5	
Leukemia	9.3	-0.9*		Leukemia	9.6	-0.8*		Liver & IBD ^f	12.8	2.7*	
Liver & IBD ^f	9.1	2.9*		Liver & IBD ^f	8.3	3.1*		Stomach	8.8	-3.4*	
Non-Hodgkin Lymphoma	7.7	-2.0*		Urinary Bladder	8.1	0.0		Leukemia	7.7	-1.7*	
Urinary Bladder	7.7	-0.1*		Non-Hodgkin Lymphoma	8.1	-2.0*		Myeloma	7.5	-1.3*	
Esophagus	7.4	-1.0*		Esophagus	7.7	-0.5*		Esophagus	6.6	-4.6*	
Kidney and Renal Pelvis	5.7	-0.6*		Kidney and Renal Pelvis	5.8	-0.5*		Non-Hodgkin Lymphoma	5.7	-1.6*	
Brain and ONS ^f	5.3	0.2		Brain and ONS ^f	5.7	0.3		Kidney and Renal Pelvis	5.5	-1.4*	
Stomach	4.5	-2.8*		Melanoma of the Skin	4.6	0.2		Urinary Bladder	5.4	-0.6	
Myeloma	4.2	-0.8*		Myeloma	4.0	-0.7*		Oral Cavity and Pharynx	5.0	-3.4*	
Melanoma of the Skin	4.1	0.0		Stomach	3.9	-2.8*		Larynx	3.5	-4.0*	
Oral Cavity and Pharynx	3.8	-0.4		Oral Cavity and Pharynx	3.7	0.2		Brain and ONS ^f	3.1	0.7	
Asian/Pacific Islander				American Indian/Alaska Native^d				Hispanic^e			
	Rate ^b	APC ^c		Rate ^b	APC ^c		Rate ^b	APC ^c			
	2009-2013	2004-2013		2009-2013	2004-2013		2009-2013	2004-2013			
All Sites	125.6	-1.6*		All Sites	183.0	-1.3*		All Sites	145.0	-1.6*	
Lung and Bronchus	32.7	-2.4*		Lung and Bronchus	46.6	-1.7		Lung and Bronchus	28.3	-3.3*	
Liver & IBD ^f	14.4	-0.4		Prostate	19.1	-3.3*		Prostate	17.1	-3.3*	
Colon and Rectum	12.6	-1.4*		Colon and Rectum	18.9	-1.1		Colon and Rectum	15.4	-1.3*	
Prostate	9.1	-3.6*		Liver & IBD ^f	14.3	3.7*		Liver & IBD ^f	13.0	1.5*	
Pancreas	8.3	-0.4		Pancreas	9.6	-1.9		Pancreas	9.6	-0.4	
Stomach	7.5	-4.3*		Kidney and Renal Pelvis	9.0	-0.5		Stomach	7.1	-3.0*	
Leukemia	5.1	-0.4		Stomach	7.4	-4.2		Non-Hodgkin Lymphoma	6.3	-1.0*	
Non-Hodgkin Lymphoma	4.9	-1.5*		Leukemia	6.2	-1.7		Leukemia	6.2	-0.2	
Urinary Bladder	2.9	0.7		Non-Hodgkin Lymphoma	5.7	0.1		Kidney and Renal Pelvis	4.9	-1.9*	
Esophagus	2.9	-2.0		Esophagus	5.2	-4.2		Esophagus	4.1	-1.4	
Oral Cavity and Pharynx	2.9	-0.9		Urinary Bladder	3.8	1.2		Urinary Bladder	4.0	-0.6	
Kidney and Renal Pelvis	2.8	0.5		Myeloma	3.4	-3.0		Myeloma	3.5	-0.4	
Brain and ONS ^f	2.4	0.5		Oral Cavity and Pharynx	3.3	-2.2		Brain and ONS ^f	3.4	0.1	
Myeloma	2.2	-0.1		Brain and ONS ^f	3.0	1.9		Oral Cavity and Pharynx	2.4	-1.3*	
Soft Tissue including Heart	1.1	0.6		Soft Tissue including Heart	1.7	-		Larynx	1.6	-3.0*	

Source: US Mortality Files, National Center for Health Statistics, Centers for Disease Control and Prevention.

^a Top 15 cancer sites selected based on 2009-2013 age-adjusted rates for the race/ethnic group.

^b Rates are per 100,000 and age-adjusted to the 2000 US Std Population (19 age groups - Census P25-1130).

^c The APC is the Annual Percent Change over the time interval.

Trends are based on rates age-adjusted to the 2000 US Std Population (19 age groups - Census P25-1130).

^d Rates for American Indian/Alaska Native are based on the CHSDA(Contract Health Service Delivery Area) counties.

^e Hispanic is not mutually exclusive from whites, blacks, Asian/Pacific Islanders, and American Indians/Alaska Natives.

^f IBD = Intrahepatic Bile Duct. ONS = Other Nervous System.

* The APC is significantly different from zero (p<.05).

- Statistic not shown. Rate based on less than 16 cases for the time interval. Trend based on less than 10 cases for at least one year within the time interval.

Table 1.29
Age-Adjusted U.S. Death Rates and Trends for the Top 15 Cancer Sites^a by Race/Ethnicity

Females

All Races	Rate ^b		APC ^c	All Sites	Rate ^b		APC ^c	All Sites	Rate ^b		APC ^c
	2009-2013	2004-2013			2009-2013	2004-2013			2009-2013	2004-2013	
All Sites	143.4	-1.4*		All Sites	143.6	-1.3*		All Sites	163.8	-1.6*	
Lung and Bronchus	37.0	-1.6*		Lung and Bronchus	38.3	-1.5*		Lung and Bronchus	35.3	-1.9*	
Breast	21.5	-1.8*		Breast	21.0	-1.8*		Breast	29.6	-1.4*	
Colon and Rectum	12.7	-2.7*		Colon and Rectum	12.3	-2.6*		Colon and Rectum	17.1	-3.5*	
Pancreas	9.5	0.1		Pancreas	9.4	0.2		Pancreas	12.2	-0.3	
Ovary	7.5	-2.2*		Ovary	7.8	-2.2*		Corpus and Uterus, NOS	7.9	1.9*	
Leukemia	5.2	-1.0*		Leukemia	5.3	-0.9*		Ovary	6.5	-1.8*	
Non-Hodgkin Lymphoma	4.7	-2.8*		Non-Hodgkin Lymphoma	4.9	-2.8*		Myeloma	5.4	-0.5	
Corpus and Uterus, NOS	4.5	1.3*		Corpus and Uterus, NOS	4.1	1.1*		Leukemia	4.6	-1.4*	
Liver & IBD ^f	3.6	2.2*		Brain and ONS ^f	3.8	0.3		Liver & IBD ^f	4.4	2.0*	
Brain and ONS ^f	3.5	0.1		Liver & IBD ^f	3.4	2.3*		Stomach	4.2	-3.0*	
Myeloma	2.7	-1.1*		Kidney and Renal Pelvis	2.5	-1.3*		Cervix Uteri	3.9	-1.9*	
Kidney and Renal Pelvis	2.5	-1.4*		Myeloma	2.4	-1.2*		Non-Hodgkin Lymphoma	3.5	-2.0*	
Stomach	2.4	-2.4*		Urinary Bladder	2.2	-0.4*		Urinary Bladder	2.5	-1.7*	
Cervix Uteri	2.3	-0.7*		Cervix Uteri	2.1	-0.4		Kidney and Renal Pelvis	2.5	-1.5*	
Urinary Bladder	2.2	-0.6*		Stomach	2.1	-2.4*		Brain and ONS ^f	2.1	0.1	
Asian/Pacific Islander				American Indian/Alaska Native ^d				Hispanic ^e			
	Rate ^b	APC ^c		Rate ^b	APC ^c		Rate ^b	APC ^c			
	2009-2013	2004-2013		2009-2013	2004-2013		2009-2013	2004-2013			
All Sites	89.6	-1.0*		All Sites	132.3	-1.4*		All Sites	98.5	-0.9*	
Lung and Bronchus	18.1	-0.4		Lung and Bronchus	31.3	-1.6*		Breast	14.5	-1.0*	
Breast	11.2	-1.3*		Colon and Rectum	15.1	1.0		Lung and Bronchus	13.5	-1.4*	
Colon and Rectum	9.0	-1.7*		Breast	14.7	-3.7*		Colon and Rectum	9.4	-2.4*	
Pancreas	7.3	0.4		Pancreas	8.0	-0.9		Pancreas	7.8	-0.1	
Liver & IBD ^f	6.0	-0.9		Liver & IBD ^f	6.8	-1.6		Liver & IBD ^f	5.7	1.4*	
Ovary	4.5	-1.3*		Ovary	6.7	-1.3		Ovary	5.5	-1.7*	
Stomach	4.4	-3.7*		Kidney and Renal Pelvis	4.5	2.6		Non-Hodgkin Lymphoma	4.2	-1.4*	
Non-Hodgkin Lymphoma	3.3	-1.2*		Stomach	3.8	-0.8		Stomach	4.1	-2.5*	
Leukemia	3.1	0.9		Corpus and Uterus, NOS	3.6	3.7		Leukemia	4.0	0.4	
Corpus and Uterus, NOS	2.9	2.8*		Non-Hodgkin Lymphoma	3.5	-5.4*		Corpus and Uterus, NOS	3.6	2.6*	
Cervix Uteri	1.8	-1.7		Leukemia	3.3	-2.0		Cervix Uteri	2.6	-2.8*	
Brain and ONS ^f	1.7	1.1		Cervix Uteri	3.2	-1.3		Brain and ONS ^f	2.4	0.6	
Myeloma	1.3	-2.0		Myeloma	2.6	-1.1		Kidney and Renal Pelvis	2.3	-0.4	
Oral Cavity and Pharynx	1.2	-1.2		Esophagus	1.8	-		Myeloma	2.3	-1.2	
Kidney and Renal Pelvis	1.2	-1.5		Brain and ONS ^f	1.8	-		Urinary Bladder	1.2	-1.4	

Source: US Mortality Files, National Center for Health Statistics, Centers for Disease Control and Prevention.

^a Top 15 cancer sites selected based on 2009-2013 age-adjusted rates for the race/ethnic group.

^b Rates are per 100,000 and age-adjusted to the 2000 US Std Population (19 age groups - Census P25-1130).

^c The APC is the Annual Percent Change over the time interval.

Trends are based on rates age-adjusted to the 2000 US Std Population (19 age groups - Census P25-1130).

^d Rates for American Indian/Alaska Native are based on the CHSDA (Contract Health Service Delivery Area) counties.

^e Hispanic is not mutually exclusive from whites, blacks, Asian/Pacific Islanders, and American Indians/Alaska Natives.

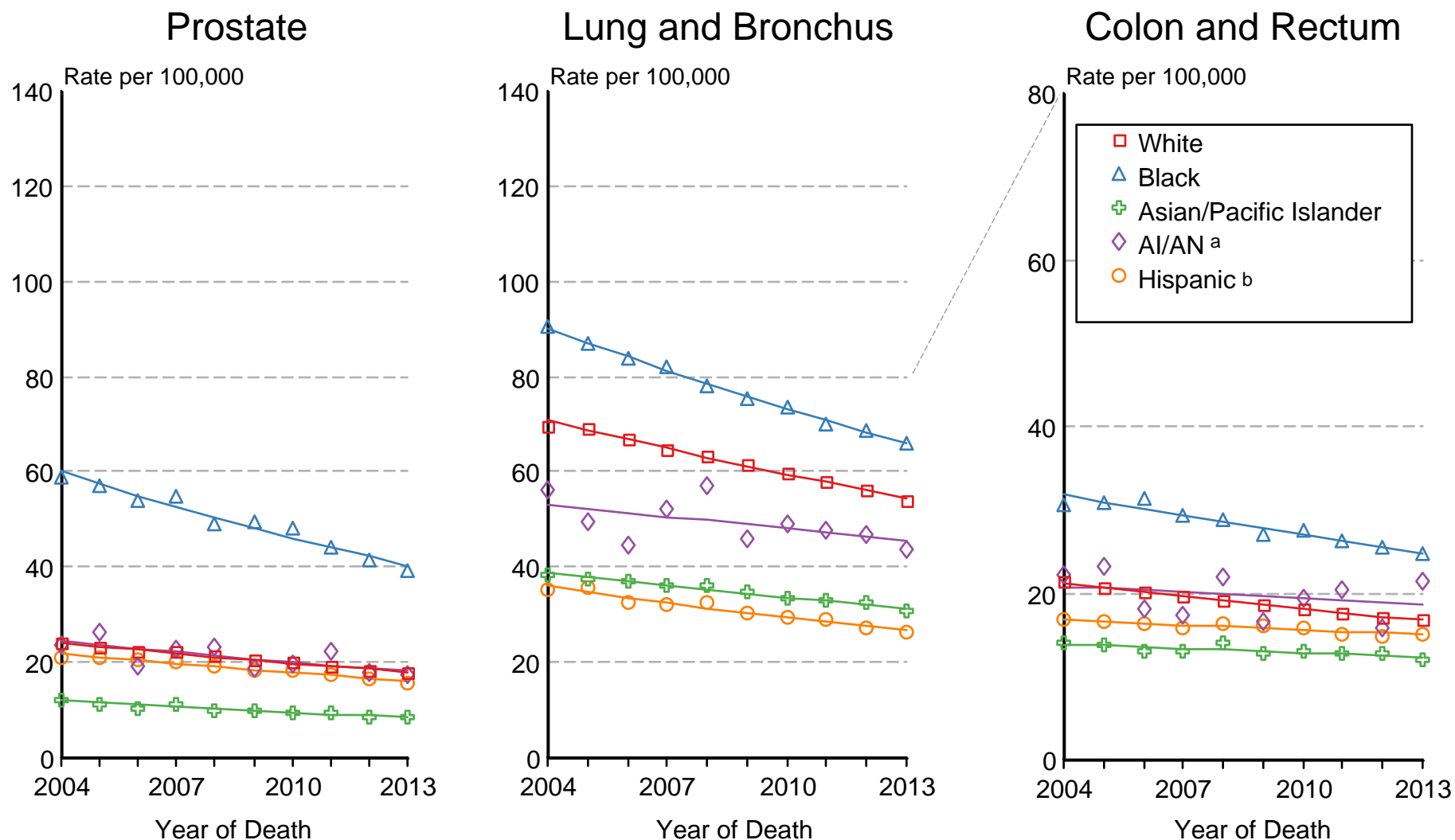
^f IBD = Intrahepatic Bile Duct. ONS = Other Nervous System.

* The APC is significantly different from zero (p<.05).

- Statistic not shown. Rate based on less than 16 cases for the time interval. Trend based on less than 10 cases for at least one year within the time interval.

Figure 1.15

US Mortality 2004-2013 Males by Race/Ethnicity



Source: US Mortality Files, National Center for Health Statistics, Centers for Disease Control and Prevention.

Rates are age-adjusted to the 2000 US Std Population (19 age groups - Census P25-1103).

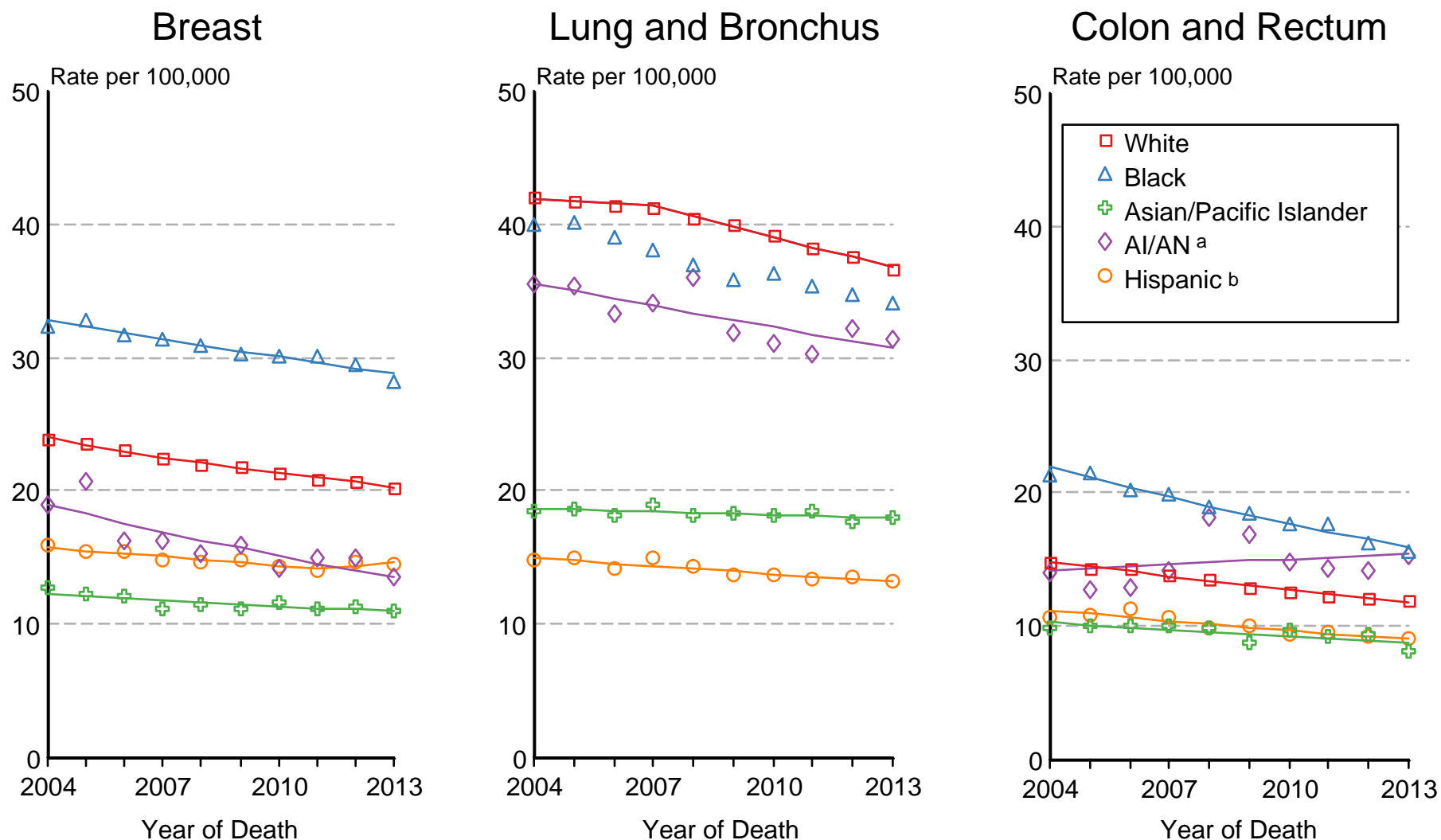
Regression lines are calculated using the Joinpoint Regression Program Version 4.3.0.0, April 2016, National Cancer Institute.

^a Mortality rates for American Indian/Alaska Native (AI/AN) are based on the CHSDA (Contract Health Service Delivery Area) counties.

^b Hispanic is not mutually exclusive from whites, blacks, Asian/Pacific Islanders, and American Indians/Alaska Natives.

Figure 1.16

US Mortality 2004-2013 Females by Race/Ethnicity



Source: US Mortality Files, National Center for Health Statistics, Centers for Disease Control and Prevention.

Rates are age-adjusted to the 2000 US Std Population (19 age groups - Census P25-1103).

Regression lines are calculated using the Joinpoint Regression Program Version 4.3.0.0, April 2016, National Cancer Institute.

^a Mortality rates for American Indian/Alaska Native (AI/AN) are based on the CHSDA (Contract Health Service Delivery Area) counties.

^b Hispanic is not mutually exclusive from whites, blacks, Asian/Pacific Islanders, and American Indians/Alaska Natives.