

Table 9.1
Hodgkin Lymphoma

Trends in SEER Incidence^{ab} and U.S. Mortality^c Using the Joinpoint Regression Program,
1975-2016 With up to Five Joinpoints, 2000-2016 With up to Three Joinpoints,
Both Sexes by Race/Ethnicity

| | JP Trend 1 | | JP Trend 2 | | JP Trend 3 | | JP Trend 4 | | JP Trend 5 | | JP Trend 6 | | AAPC ^d | |
|--|------------|-------|------------|-------|------------|-------|------------|-------|------------|-----|------------|-----|-------------------|---------|
| | Years | APC | Years | APC | Years | APC | Years | APC | Years | APC | Years | APC | 2007-16 | 2012-16 |
| <u>SEER 9 Delay-Adjusted Incidence^a, 1975-2016</u> | | | | | | | | | | | | | | |
| All Races | 1975-03 | -0.2* | 2003-06 | 3.0 | 2006-16 | -1.6* | | | | | | | -1.6* | -1.6* |
| White | 1975-88 | 0.6* | 1988-01 | -0.9* | 2001-07 | 1.9 | 2007-16 | -2.1* | | | | | -2.1* | -2.1* |
| Black | 1975-16 | 1.1* | | | | | | | | | | | 1.1* | 1.1* |
| <u>SEER 21 Delay-Adjusted Incidence^b, 2000-2016</u> | | | | | | | | | | | | | | |
| All Races | 2000-07 | 0.8* | 2007-16 | -1.5* | | | | | | | | | -1.5* | -1.5* |
| White | 2000-07 | 0.7 | 2007-16 | -1.7* | | | | | | | | | -1.7* | -1.7* |
| White NH ^{ef} | 2000-06 | 0.9 | 2006-16 | -1.5* | | | | | | | | | -1.5* | -1.5* |
| Black | 2000-08 | 2.4* | 2008-16 | -1.0 | | | | | | | | | -0.6 | -1.0 |
| Black NH ^{ef} | 2000-08 | 2.5* | 2008-16 | -0.9 | | | | | | | | | -0.5 | -0.9 |
| API ^e | 2000-16 | 0.5 | | | | | | | | | | | 0.5 | 0.5 |
| AI/AN ^{eg} | 2000-16 | 3.5* | | | | | | | | | | | 3.5* | 3.5* |
| Hispanic ^f | 2000-16 | -0.4 | | | | | | | | | | | -0.4 | -0.4 |
| <u>U.S. Cancer Mortality^c, 1975-2016</u> | | | | | | | | | | | | | | |
| All Races | 1975-79 | -6.5* | 1979-98 | -3.5* | 1998-09 | -2.2* | 2009-16 | -4.5* | | | | | -4.0* | -4.5* |
| White | 1975-79 | -6.2* | 1979-96 | -3.6* | 1996-10 | -2.3* | 2010-16 | -4.8* | | | | | -4.0* | -4.8* |
| Black | 1975-16 | -3.0* | | | | | | | | | | | -3.0* | -3.0* |
| <u>U.S. Cancer Mortality^c, 2000-2016</u> | | | | | | | | | | | | | | |
| All Races | 2000-06 | -1.4 | 2006-16 | -4.0* | | | | | | | | | -4.0* | -4.0* |
| White | 2000-16 | -3.1* | | | | | | | | | | | -3.1* | -3.1* |
| White NH ^{ef} | 2000-16 | -3.4* | | | | | | | | | | | -3.4* | -3.4* |
| Black | 2000-16 | -2.7* | | | | | | | | | | | -2.7* | -2.7* |
| Black NH ^{ef} | 2000-16 | -2.6* | | | | | | | | | | | -2.6* | -2.6* |
| API ^e | 2000-16 | -3.1* | | | | | | | | | | | -3.1* | -3.1* |
| AI/AN ^{eg} | - | - | | | | | | | | | | | - | - |
| Hispanic ^f | 2000-16 | -1.3* | | | | | | | | | | | -1.3* | -1.3* |

Joinpoint Regression Program Version 4.7, February 2019, National Cancer Institute. (<https://surveillance.cancer.gov/joinpoint/>).

The APC is the Annual Percent Change based on rates age-adjusted to the 2000 US Std Population (19 age groups - Census P25-1130).

^a Trends are from the SEER 9 areas (San Francisco, Connecticut, Detroit, Hawaii, Iowa, New Mexico, Seattle, Utah, and Atlanta).

^b Trends are from the SEER 21 areas (SEER 9 areas, Los Angeles, Alaska Native Registry, Rural Georgia, California excluding SF/SJM/LA, Kentucky, Louisiana, New Jersey, Georgia excluding ATL/RG, Idaho, New York and Massachusetts).

^c Trends are from US Mortality Files, National Center for Health Statistics, Centers for Disease Control and Prevention.

^d The AAPC is the Average Annual Percent Change and is based on the APCs calculated by Joinpoint.

^e API - Asian/Pacific Islander, AI/AN - American Indian/Alaska Native, NH - Non-Hispanic

^f Hispanic and Non-Hispanic are not mutually exclusive from whites, blacks, Asian/Pacific Islanders, and American Indians/Alaska Natives. Incidence data for Hispanics and Non-Hispanics are based on NHIA and exclude cases from the Alaska Native Registry.

^g Data for American Indian/Alaska Native are based on the Purchased/Referred Care Delivery Area (PRCDA) counties.

* The APC/AAPC is significantly different from zero (p<.05).

- Joinpoint regression line analysis could not be performed on data series.

Table 9.2
Hodgkin Lymphoma

Trends in SEER Incidence^{ab} and U.S. Mortality^c Using the Joinpoint Regression Program,
1975-2016 With up to Five Joinpoints, 2000-2016 With up to Three Joinpoints,
Males by Race/Ethnicity

| | JP Trend 1 | | JP Trend 2 | | JP Trend 3 | | JP Trend 4 | | JP Trend 5 | | JP Trend 6 | | AAPC ^d | |
|--|------------|-------|------------|-------|------------|-------|------------|-----|------------|-----|------------|-----|-------------------|---------|
| | Years | APC | Years | APC | Years | APC | Years | APC | Years | APC | Years | APC | 2007-16 | 2012-16 |
| <u>SEER 9 Delay-Adjusted Incidence^a, 1975-2016</u> | | | | | | | | | | | | | | |
| All Races | 1975-03 | -0.7* | 2003-07 | 2.9 | 2007-16 | -1.6* | | | | | | | -1.6* | -1.6* |
| White | 1975-16 | -0.4* | | | | | | | | | | | -0.4* | -0.4* |
| Black | 1975-16 | 0.7* | | | | | | | | | | | 0.7* | 0.7* |
| <u>SEER 21 Delay-Adjusted Incidence^b, 2000-2016</u> | | | | | | | | | | | | | | |
| All Races | 2000-07 | 0.8 | 2007-16 | -1.6* | | | | | | | | | -1.6* | -1.6* |
| White | 2000-06 | 1.1 | 2006-16 | -1.6* | | | | | | | | | -1.6* | -1.6* |
| White NH ^{ef} | 2000-16 | -0.6* | | | | | | | | | | | -0.6* | -0.6* |
| Black | 2000-16 | 0.3 | | | | | | | | | | | 0.3 | 0.3 |
| Black NH ^{ef} | 2000-16 | 0.5 | | | | | | | | | | | 0.5 | 0.5 |
| API ^e | 2000-16 | 0.5 | | | | | | | | | | | 0.5 | 0.5 |
| AI/AN ^{eg} | 2000-16 | 0.7 | | | | | | | | | | | 0.7 | 0.7 |
| Hispanic ^f | 2000-16 | -1.1* | | | | | | | | | | | -1.1* | -1.1* |
| <u>U.S. Cancer Mortality^c, 1975-2016</u> | | | | | | | | | | | | | | |
| All Races | 1975-96 | -4.0* | 1996-16 | -2.6* | | | | | | | | | -2.6* | -2.6* |
| White | 1975-96 | -4.0* | 1996-16 | -2.5* | | | | | | | | | -2.5* | -2.5* |
| Black | 1975-16 | -3.2* | | | | | | | | | | | -3.2* | -3.2* |
| <u>U.S. Cancer Mortality^c, 2000-2016</u> | | | | | | | | | | | | | | |
| All Races | 2000-16 | -2.7* | | | | | | | | | | | -2.7* | -2.7* |
| White | 2000-16 | -2.7* | | | | | | | | | | | -2.7* | -2.7* |
| White NH ^{ef} | 2000-16 | -2.9* | | | | | | | | | | | -2.9* | -2.9* |
| Black | 2000-16 | -2.7* | | | | | | | | | | | -2.7* | -2.7* |
| Black NH ^{ef} | 2000-16 | -2.5* | | | | | | | | | | | -2.5* | -2.5* |
| API ^e | 2000-16 | -2.1 | | | | | | | | | | | -2.1 | -2.1 |
| AI/AN ^{eg} | - | - | | | | | | | | | | | - | - |
| Hispanic ^f | 2000-16 | -1.8* | | | | | | | | | | | -1.8* | -1.8* |

Joinpoint Regression Program Version 4.7, February 2019, National Cancer Institute. (<https://surveillance.cancer.gov/joinpoint/>).

The APC is the Annual Percent Change based on rates age-adjusted to the 2000 US Std Population (19 age groups - Census P25-1130).

^a Trends are from the SEER 9 areas (San Francisco, Connecticut, Detroit, Hawaii, Iowa, New Mexico, Seattle, Utah, and Atlanta).

^b Trends are from the SEER 21 areas (SEER 9 areas, Los Angeles, Alaska Native Registry, Rural Georgia, California excluding SF/SJM/LA, Kentucky, Louisiana, New Jersey, Georgia excluding ATL/RG, Idaho, New York and Massachusetts).

^c Trends are from US Mortality Files, National Center for Health Statistics, Centers for Disease Control and Prevention.

^d The AAPC is the Average Annual Percent Change and is based on the APCs calculated by Joinpoint.

^e API - Asian/Pacific Islander, AI/AN - American Indian/Alaska Native, NH - Non-Hispanic

^f Hispanic and Non-Hispanic are not mutually exclusive from whites, blacks, Asian/Pacific Islanders, and American Indians/Alaska Natives. Incidence data for Hispanics and Non-Hispanics are based on NHIA and exclude cases from the Alaska Native Registry.

^g Data for American Indian/Alaska Native are based on the Purchased/Referred Care Delivery Area (PRCDA) counties.

* The APC/AAPC is significantly different from zero (p<.05).

- Joinpoint regression line analysis could not be performed on data series.

Table 9.3
Hodgkin Lymphoma

Trends in SEER Incidence^{ab} and U.S. Mortality^c Using the Joinpoint Regression Program,
1975-2016 With up to Five Joinpoints, 2000-2016 With up to Three Joinpoints,
Females by Race/Ethnicity

| | JP Trend 1 | | JP Trend 2 | | JP Trend 3 | | JP Trend 4 | | JP Trend 5 | | JP Trend 6 | | AAPC ^d | |
|--|------------|-------|------------|-------|------------|-------|------------|-----|------------|-----|------------|-----|-------------------|---------|
| | Years | APC | Years | APC | Years | APC | Years | APC | Years | APC | Years | APC | 2007-16 | 2012-16 |
| <u>SEER 9 Delay-Adjusted Incidence^a, 1975-2016</u> | | | | | | | | | | | | | | |
| All Races | 1975-07 | 0.4* | 2007-16 | -1.9* | | | | | | | | | -1.9* | -1.9* |
| White | 1975-07 | 0.4* | 2007-16 | -2.2* | | | | | | | | | -2.2* | -2.2* |
| Black | 1975-16 | 1.6* | | | | | | | | | | | 1.6* | 1.6* |
| <u>SEER 21 Delay-Adjusted Incidence^b, 2000-2016</u> | | | | | | | | | | | | | | |
| All Races | 2000-04 | 2.3 | 2004-16 | -1.2* | | | | | | | | | -1.2* | -1.2* |
| White | 2000-07 | 0.7 | 2007-16 | -1.8* | | | | | | | | | -1.8* | -1.8* |
| White NH ^{ef} | 2000-16 | -0.8* | | | | | | | | | | | -0.8* | -0.8* |
| Black | 2000-16 | 0.9 | | | | | | | | | | | 0.9 | 0.9 |
| Black NH ^{ef} | 2000-16 | 1.0* | | | | | | | | | | | 1.0* | 1.0* |
| API ^e | 2000-16 | 0.4 | | | | | | | | | | | 0.4 | 0.4 |
| AI/AN ^{eg} | - | - | | | | | | | | | | | - | - |
| Hispanic ^f | 2000-16 | 0.5 | | | | | | | | | | | 0.5 | 0.5 |
| <u>U.S. Cancer Mortality^c, 1975-2016</u> | | | | | | | | | | | | | | |
| All Races | 1975-85 | -4.9* | 1985-09 | -2.6* | 2009-16 | -5.2* | | | | | | | -4.6* | -5.2* |
| White | 1975-85 | -5.0* | 1985-09 | -2.5* | 2009-16 | -5.3* | | | | | | | -4.7* | -5.3* |
| Black | 1975-16 | -2.6* | | | | | | | | | | | -2.6* | -2.6* |
| <u>U.S. Cancer Mortality^c, 2000-2016</u> | | | | | | | | | | | | | | |
| All Races | 2000-09 | -2.7* | 2009-16 | -5.2* | | | | | | | | | -4.6* | -5.2* |
| White | 2000-09 | -2.6* | 2009-16 | -5.3* | | | | | | | | | -4.7* | -5.3* |
| White NH ^{ef} | 2000-09 | -2.8* | 2009-16 | -6.0* | | | | | | | | | -5.3* | -6.0* |
| Black | 2000-16 | -2.8* | | | | | | | | | | | -2.8* | -2.8* |
| Black NH ^{ef} | 2000-16 | -2.7* | | | | | | | | | | | -2.7* | -2.7* |
| API ^e | 2000-13 | -8.0* | 2013-16 | 27.0 | | | | | | | | | 2.4 | 17.2 |
| AI/AN ^{eg} | - | - | | | | | | | | | | | - | - |
| Hispanic ^f | 2000-16 | -0.6 | | | | | | | | | | | -0.6 | -0.6 |

Joinpoint Regression Program Version 4.7, February 2019, National Cancer Institute. (<https://surveillance.cancer.gov/joinpoint/>).

The APC is the Annual Percent Change based on rates age-adjusted to the 2000 US Std Population (19 age groups - Census P25-1130).

^a Trends are from the SEER 9 areas (San Francisco, Connecticut, Detroit, Hawaii, Iowa, New Mexico, Seattle, Utah, and Atlanta).

^b Trends are from the SEER 21 areas (SEER 9 areas, Los Angeles, Alaska Native Registry, Rural Georgia, California excluding SF/SJM/LA, Kentucky, Louisiana, New Jersey, Georgia excluding ATL/RG, Idaho, New York and Massachusetts).

^c Trends are from US Mortality Files, National Center for Health Statistics, Centers for Disease Control and Prevention.

^d The AAPC is the Average Annual Percent Change and is based on the APCs calculated by Joinpoint.

^e API - Asian/Pacific Islander, AI/AN - American Indian/Alaska Native, NH - Non-Hispanic

^f Hispanic and Non-Hispanic are not mutually exclusive from whites, blacks, Asian/Pacific Islanders, and American Indians/Alaska Natives. Incidence data for Hispanics and Non-Hispanics are based on NHIA and exclude cases from the Alaska Native Registry.

^g Data for American Indian/Alaska Native are based on the Purchased/Referred Care Delivery Area (PRCDA) counties.

* The APC/AAPC is significantly different from zero (p<.05).

- Joinpoint regression line analysis could not be performed on data series.

Table 9.4
Hodgkin Lymphoma

Delay-adjusted SEER Incidence^a Rates by Year, Race and Sex

| Year of Diagnosis: | All Races | | | Whites | | | Blacks | | |
|--------------------|-----------|-------|---------|--------|-------|---------|--------|-------|---------|
| | Total | Males | Females | Total | Males | Females | Total | Males | Females |
| 1975-1979 | 2.91 | 3.63 | 2.30 | 3.11 | 3.81 | 2.52 | 2.23 | 3.36 | 1.27 |
| 1980 | 2.77 | 3.31 | 2.27 | 2.98 | 3.53 | 2.48 | 1.82 | 2.07 | 1.54 |
| 1981 | 2.92 | 3.58 | 2.34 | 3.23 | 3.92 | 2.62 | 1.43 | 1.94 | 0.98 |
| 1982 | 2.92 | 3.50 | 2.45 | 3.13 | 3.67 | 2.69 | 2.58 | 3.15 | 2.04 |
| 1983 | 3.02 | 3.72 | 2.39 | 3.33 | 4.00 | 2.70 | 2.11 | 3.85 | 0.96 |
| 1984 | 3.06 | 3.72 | 2.47 | 3.38 | 4.02 | 2.79 | 2.07 | 3.31 | 1.12 |
| 1985 | 2.98 | 3.51 | 2.50 | 3.31 | 3.85 | 2.83 | 1.74 | 2.26 | 1.27 |
| 1986 | 2.73 | 3.33 | 2.22 | 2.91 | 3.50 | 2.41 | 2.27 | 2.80 | 1.90 |
| 1987 | 3.04 | 3.71 | 2.50 | 3.33 | 4.00 | 2.77 | 2.12 | 2.78 | 1.54 |
| 1988 | 3.10 | 3.60 | 2.67 | 3.43 | 4.00 | 2.94 | 1.94 | 1.93 | 1.93 |
| 1989 | 3.06 | 3.68 | 2.54 | 3.35 | 3.97 | 2.84 | 2.16 | 3.15 | 1.37 |
| 1990 | 3.06 | 3.51 | 2.63 | 3.30 | 3.83 | 2.78 | 3.02 | 3.23 | 2.81 |
| 1991 | 3.03 | 3.51 | 2.61 | 3.35 | 3.84 | 2.91 | 2.44 | 2.77 | 2.08 |
| 1992 | 2.87 | 3.12 | 2.68 | 3.06 | 3.24 | 2.92 | 2.66 | 2.71 | 2.61 |
| 1993 | 2.86 | 3.27 | 2.50 | 3.09 | 3.49 | 2.75 | 2.96 | 3.64 | 2.46 |
| 1994 | 2.85 | 3.15 | 2.59 | 3.15 | 3.49 | 2.82 | 2.15 | 2.41 | 1.99 |
| 1995 | 2.77 | 3.23 | 2.36 | 3.05 | 3.52 | 2.65 | 2.32 | 2.93 | 1.78 |
| 1996 | 2.86 | 3.32 | 2.42 | 3.14 | 3.63 | 2.69 | 2.46 | 3.19 | 1.83 |
| 1997 | 2.82 | 2.95 | 2.70 | 3.07 | 3.22 | 2.92 | 2.58 | 2.42 | 2.72 |
| 1998 | 2.80 | 3.11 | 2.54 | 3.13 | 3.45 | 2.87 | 2.15 | 2.46 | 1.89 |
| 1999 | 2.86 | 3.08 | 2.69 | 3.10 | 3.23 | 3.02 | 2.58 | 3.14 | 2.12 |
| 2000 | 2.82 | 3.30 | 2.37 | 3.07 | 3.55 | 2.62 | 2.42 | 3.03 | 1.87 |
| 2001 | 2.57 | 2.95 | 2.23 | 2.74 | 3.13 | 2.37 | 2.48 | 3.17 | 1.98 |
| 2002 | 2.96 | 3.27 | 2.71 | 3.15 | 3.45 | 2.91 | 2.97 | 3.23 | 2.82 |
| 2003 | 2.72 | 3.12 | 2.37 | 3.02 | 3.47 | 2.61 | 2.42 | 2.82 | 2.23 |
| 2004 | 2.95 | 3.06 | 2.89 | 3.12 | 3.20 | 3.10 | 3.17 | 3.25 | 3.13 |
| 2005 | 3.02 | 3.51 | 2.62 | 3.24 | 3.73 | 2.83 | 3.24 | 3.54 | 2.95 |
| 2006 | 3.00 | 3.32 | 2.70 | 3.22 | 3.51 | 2.92 | 3.16 | 3.93 | 2.51 |
| 2007 | 3.18 | 3.68 | 2.74 | 3.44 | 3.90 | 3.02 | 3.33 | 4.10 | 2.68 |
| 2008 | 2.97 | 3.38 | 2.59 | 3.23 | 3.61 | 2.88 | 3.10 | 3.72 | 2.56 |
| 2009 | 2.94 | 3.20 | 2.71 | 3.24 | 3.49 | 3.01 | 2.65 | 3.23 | 2.13 |
| 2010 | 2.80 | 3.26 | 2.38 | 3.03 | 3.53 | 2.55 | 2.58 | 3.10 | 2.14 |
| 2011 | 2.74 | 3.18 | 2.35 | 2.92 | 3.35 | 2.51 | 2.95 | 3.56 | 2.40 |
| 2012 | 2.74 | 3.06 | 2.44 | 2.94 | 3.29 | 2.60 | 2.84 | 2.90 | 2.75 |
| 2013 | 2.68 | 3.09 | 2.33 | 2.83 | 3.18 | 2.53 | 2.93 | 3.63 | 2.33 |
| 2014 | 2.84 | 3.34 | 2.38 | 3.01 | 3.50 | 2.56 | 3.02 | 3.51 | 2.57 |
| 2015 | 2.66 | 3.05 | 2.30 | 2.83 | 3.13 | 2.55 | 3.12 | 4.21 | 2.25 |
| 2016 | 2.63 | 3.00 | 2.28 | 2.78 | 3.20 | 2.38 | 2.98 | 3.37 | 2.65 |

Reference: [Cancer Incidence Rates Adjusted for Reporting Delay](#).

Individual rates for diagnosis years 1975-1979 available in web browser version of [Cancer Statistics Review](#).

SEER 9 areas (San Francisco, Connecticut, Detroit, Hawaii, Iowa, New Mexico, Seattle, Utah, and Atlanta).

Rates are per 100,000 and are age-adjusted to the 2000 US Std Population (19 age groups - Census P25-1130).

Delay-adjusted rate is not shown for observed rates based on less than 16 cases for the time interval.

^a

-

Table 9.5
Hodgkin Lymphoma

Age-adjusted SEER Incidence^a Rates by Year, Race and Sex

| Year of Diagnosis: | All Races | | | Whites | | | Blacks | | |
|--------------------|-----------|-------|---------|--------|-------|---------|--------|-------|---------|
| | Total | Males | Females | Total | Males | Females | Total | Males | Females |
| 1975-2016 | 2.87 | 3.32 | 2.48 | 3.11 | 3.56 | 2.72 | 2.59 | 3.16 | 2.12 |
| 1975-1979 | 2.91 | 3.63 | 2.30 | 3.11 | 3.81 | 2.52 | 2.23 | 3.36 | 1.27 |
| 1980 | 2.77 | 3.31 | 2.27 | 2.98 | 3.53 | 2.48 | 1.82 | 2.07 | 1.54 |
| 1981 | 2.92 | 3.58 | 2.34 | 3.23 | 3.92 | 2.62 | 1.43 | 1.94 | - |
| 1982 | 2.92 | 3.50 | 2.45 | 3.13 | 3.67 | 2.69 | 2.58 | 3.15 | 2.04 |
| 1983 | 3.02 | 3.72 | 2.39 | 3.33 | 4.00 | 2.70 | 2.11 | 3.85 | - |
| 1984 | 3.06 | 3.72 | 2.47 | 3.38 | 4.02 | 2.79 | 2.07 | 3.31 | - |
| 1985 | 2.98 | 3.51 | 2.50 | 3.31 | 3.85 | 2.83 | 1.74 | 2.26 | - |
| 1986 | 2.73 | 3.33 | 2.22 | 2.91 | 3.50 | 2.41 | 2.27 | 2.80 | 1.90 |
| 1987 | 3.04 | 3.71 | 2.50 | 3.33 | 4.00 | 2.77 | 2.12 | 2.78 | 1.54 |
| 1988 | 3.10 | 3.60 | 2.67 | 3.43 | 4.00 | 2.94 | 1.94 | 1.93 | 1.93 |
| 1989 | 3.06 | 3.68 | 2.54 | 3.35 | 3.97 | 2.84 | 2.16 | 3.15 | 1.37 |
| 1990 | 3.06 | 3.51 | 2.63 | 3.30 | 3.83 | 2.78 | 3.02 | 3.23 | 2.81 |
| 1991 | 3.03 | 3.51 | 2.61 | 3.35 | 3.84 | 2.91 | 2.44 | 2.77 | 2.08 |
| 1992 | 2.87 | 3.12 | 2.68 | 3.06 | 3.24 | 2.92 | 2.66 | 2.71 | 2.61 |
| 1993 | 2.86 | 3.27 | 2.50 | 3.09 | 3.49 | 2.75 | 2.96 | 3.64 | 2.46 |
| 1994 | 2.85 | 3.15 | 2.59 | 3.15 | 3.49 | 2.82 | 2.15 | 2.41 | 1.99 |
| 1995 | 2.77 | 3.23 | 2.36 | 3.05 | 3.52 | 2.65 | 2.32 | 2.93 | 1.78 |
| 1996 | 2.86 | 3.32 | 2.42 | 3.14 | 3.63 | 2.69 | 2.46 | 3.19 | 1.83 |
| 1997 | 2.82 | 2.95 | 2.70 | 3.07 | 3.22 | 2.92 | 2.58 | 2.42 | 2.72 |
| 1998 | 2.80 | 3.11 | 2.54 | 3.13 | 3.45 | 2.87 | 2.15 | 2.46 | 1.89 |
| 1999 | 2.86 | 3.08 | 2.69 | 3.10 | 3.23 | 3.02 | 2.58 | 3.14 | 2.12 |
| 2000 | 2.82 | 3.30 | 2.37 | 3.07 | 3.55 | 2.62 | 2.42 | 3.03 | 1.87 |
| 2001 | 2.57 | 2.95 | 2.23 | 2.74 | 3.13 | 2.37 | 2.48 | 3.17 | 1.98 |
| 2002 | 2.96 | 3.27 | 2.71 | 3.15 | 3.45 | 2.91 | 2.97 | 3.23 | 2.82 |
| 2003 | 2.72 | 3.12 | 2.37 | 3.02 | 3.47 | 2.61 | 2.42 | 2.82 | 2.23 |
| 2004 | 2.95 | 3.06 | 2.89 | 3.12 | 3.20 | 3.10 | 3.17 | 3.25 | 3.13 |
| 2005 | 3.02 | 3.51 | 2.62 | 3.24 | 3.73 | 2.83 | 3.24 | 3.54 | 2.95 |
| 2006 | 3.00 | 3.32 | 2.70 | 3.22 | 3.51 | 2.92 | 3.16 | 3.93 | 2.51 |
| 2007 | 3.18 | 3.68 | 2.74 | 3.44 | 3.90 | 3.02 | 3.33 | 4.10 | 2.68 |
| 2008 | 2.96 | 3.38 | 2.59 | 3.22 | 3.61 | 2.88 | 3.09 | 3.71 | 2.55 |
| 2009 | 2.94 | 3.20 | 2.71 | 3.23 | 3.48 | 3.00 | 2.63 | 3.21 | 2.12 |
| 2010 | 2.79 | 3.25 | 2.38 | 3.02 | 3.52 | 2.54 | 2.56 | 3.07 | 2.12 |
| 2011 | 2.73 | 3.16 | 2.34 | 2.90 | 3.34 | 2.50 | 2.92 | 3.52 | 2.37 |
| 2012 | 2.72 | 3.04 | 2.42 | 2.92 | 3.27 | 2.58 | 2.80 | 2.86 | 2.71 |
| 2013 | 2.66 | 3.07 | 2.31 | 2.81 | 3.16 | 2.51 | 2.88 | 3.57 | 2.29 |
| 2014 | 2.81 | 3.31 | 2.36 | 2.98 | 3.47 | 2.53 | 2.95 | 3.44 | 2.52 |
| 2015 | 2.64 | 3.02 | 2.28 | 2.80 | 3.10 | 2.52 | 3.05 | 4.13 | 2.20 |
| 2016 | 2.59 | 2.95 | 2.24 | 2.74 | 3.15 | 2.34 | 2.88 | 3.25 | 2.56 |

^a Individual rates for diagnosis years 1975-1979 available in web browser version of [Cancer Statistics Review](#).
SEER 9 areas (San Francisco, Connecticut, Detroit, Hawaii, Iowa, New Mexico, Seattle, Utah, and Atlanta).
Rates are per 100,000 and are age-adjusted to the 2000 US Std Population (19 age groups - Census P25-1130).
- Statistic not shown. Rate based on less than 16 cases for the time interval.

Table 9.6
Hodgkin Lymphoma

Age-adjusted U.S. Death^a Rates by Year, Race and Sex

| Year of Death: | All Races | | | Whites | | | Blacks | | |
|----------------|-----------|-------|---------|--------|-------|---------|--------|-------|---------|
| | Total | Males | Females | Total | Males | Females | Total | Males | Females |
| 1975-2016 | 0.58 | 0.73 | 0.46 | 0.61 | 0.76 | 0.48 | 0.49 | 0.66 | 0.37 |
| 1975-1979 | 1.13 | 1.45 | 0.86 | 1.16 | 1.48 | 0.90 | 0.89 | 1.27 | 0.59 |
| 1980 | 0.98 | 1.23 | 0.76 | 1.01 | 1.27 | 0.80 | 0.75 | 1.09 | 0.48 |
| 1981 | 0.93 | 1.15 | 0.74 | 0.96 | 1.19 | 0.76 | 0.74 | 0.88 | 0.62 |
| 1982 | 0.88 | 1.09 | 0.70 | 0.92 | 1.15 | 0.72 | 0.70 | 0.78 | 0.62 |
| 1983 | 0.85 | 1.09 | 0.65 | 0.88 | 1.13 | 0.68 | 0.64 | 0.90 | 0.45 |
| 1984 | 0.86 | 1.18 | 0.60 | 0.88 | 1.19 | 0.63 | 0.79 | 1.18 | 0.47 |
| 1985 | 0.77 | 0.98 | 0.58 | 0.78 | 1.00 | 0.60 | 0.71 | 0.96 | 0.51 |
| 1986 | 0.78 | 1.00 | 0.58 | 0.80 | 1.04 | 0.60 | 0.65 | 0.85 | 0.49 |
| 1987 | 0.74 | 0.96 | 0.56 | 0.77 | 0.98 | 0.58 | 0.67 | 0.94 | 0.46 |
| 1988 | 0.67 | 0.88 | 0.50 | 0.69 | 0.91 | 0.51 | 0.59 | 0.75 | 0.48 |
| 1989 | 0.71 | 0.92 | 0.54 | 0.73 | 0.94 | 0.56 | 0.66 | 0.92 | 0.47 |
| 1990 | 0.66 | 0.85 | 0.50 | 0.69 | 0.88 | 0.52 | 0.56 | 0.81 | 0.36 |
| 1991 | 0.65 | 0.83 | 0.51 | 0.66 | 0.83 | 0.51 | 0.67 | 0.89 | 0.49 |
| 1992 | 0.65 | 0.83 | 0.50 | 0.67 | 0.86 | 0.52 | 0.58 | 0.77 | 0.45 |
| 1993 | 0.61 | 0.79 | 0.47 | 0.63 | 0.80 | 0.50 | 0.57 | 0.83 | 0.39 |
| 1994 | 0.56 | 0.66 | 0.47 | 0.56 | 0.66 | 0.48 | 0.55 | 0.73 | 0.41 |
| 1995 | 0.55 | 0.67 | 0.44 | 0.56 | 0.68 | 0.46 | 0.53 | 0.73 | 0.36 |
| 1996 | 0.53 | 0.64 | 0.44 | 0.55 | 0.65 | 0.46 | 0.47 | 0.63 | 0.36 |
| 1997 | 0.53 | 0.62 | 0.46 | 0.54 | 0.63 | 0.47 | 0.54 | 0.67 | 0.43 |
| 1998 | 0.48 | 0.61 | 0.36 | 0.49 | 0.62 | 0.37 | 0.48 | 0.66 | 0.33 |
| 1999 | 0.51 | 0.63 | 0.41 | 0.53 | 0.66 | 0.43 | 0.41 | 0.55 | 0.30 |
| 2000 | 0.46 | 0.55 | 0.39 | 0.48 | 0.57 | 0.41 | 0.35 | 0.42 | 0.30 |
| 2001 | 0.47 | 0.56 | 0.38 | 0.48 | 0.59 | 0.39 | 0.42 | 0.52 | 0.35 |
| 2002 | 0.47 | 0.58 | 0.38 | 0.49 | 0.60 | 0.41 | 0.40 | 0.57 | 0.27 |
| 2003 | 0.46 | 0.55 | 0.39 | 0.48 | 0.57 | 0.41 | 0.36 | 0.47 | 0.27 |
| 2004 | 0.43 | 0.55 | 0.34 | 0.44 | 0.57 | 0.35 | 0.40 | 0.47 | 0.34 |
| 2005 | 0.42 | 0.51 | 0.36 | 0.43 | 0.51 | 0.37 | 0.42 | 0.55 | 0.32 |
| 2006 | 0.44 | 0.56 | 0.33 | 0.45 | 0.57 | 0.35 | 0.41 | 0.56 | 0.30 |
| 2007 | 0.41 | 0.51 | 0.33 | 0.43 | 0.53 | 0.35 | 0.36 | 0.45 | 0.29 |
| 2008 | 0.37 | 0.45 | 0.31 | 0.39 | 0.47 | 0.33 | 0.33 | 0.39 | 0.28 |
| 2009 | 0.40 | 0.48 | 0.32 | 0.41 | 0.49 | 0.34 | 0.39 | 0.48 | 0.30 |
| 2010 | 0.38 | 0.49 | 0.29 | 0.40 | 0.51 | 0.31 | 0.30 | 0.36 | 0.26 |
| 2011 | 0.36 | 0.47 | 0.27 | 0.37 | 0.48 | 0.28 | 0.35 | 0.50 | 0.24 |
| 2012 | 0.34 | 0.42 | 0.27 | 0.35 | 0.43 | 0.28 | 0.33 | 0.41 | 0.26 |
| 2013 | 0.32 | 0.41 | 0.25 | 0.34 | 0.42 | 0.26 | 0.28 | 0.34 | 0.24 |
| 2014 | 0.31 | 0.40 | 0.24 | 0.32 | 0.40 | 0.25 | 0.31 | 0.42 | 0.23 |
| 2015 | 0.31 | 0.40 | 0.24 | 0.33 | 0.43 | 0.24 | 0.27 | 0.30 | 0.25 |
| 2016 | 0.27 | 0.35 | 0.21 | 0.29 | 0.37 | 0.22 | 0.21 | 0.32 | 0.14 |

^a Individual rates for years of death 1975-1979 available in web browser version of [Cancer Statistics Review](#).
US Mortality Files, National Center for Health Statistics, Centers for Disease Control and Prevention.
Rates are per 100,000 and are age-adjusted to the 2000 US Std Population (19 age groups - Census P25-1130).
- Statistic not shown. Rate based on less than 16 cases for the time interval.

Table 9.7
Hodgkin LymphomaSEER Incidence^a and U.S. Death^b Rates, Age-Adjusted and Age-Specific Rates, by Race and Sex

| | All Races | | | Whites | | | Blacks | | |
|---------------------------------------|-----------|-------|---------|--------|-------|---------|--------|-------|---------|
| | Total | Males | Females | Total | Males | Females | Total | Males | Females |
| <u>SEER Incidence</u> | | | | | | | | | |
| <u>Age at Diagnosis</u> | | | | | | | | | |
| Age-Adjusted Rates, 2012-2016 | | | | | | | | | |
| All ages | 2.7 | 3.0 | 2.3 | 2.8 | 3.1 | 2.5 | 2.7 | 3.1 | 2.3 |
| Under 65 | 2.5 | 2.8 | 2.3 | 2.7 | 2.9 | 2.4 | 2.7 | 3.1 | 2.3 |
| 65 and over | 3.6 | 4.4 | 2.9 | 3.9 | 4.8 | 3.2 | 2.5 | 3.0 | 2.3 |
| All ages (WHO world std) ^c | 2.6 | 2.8 | 2.3 | 2.7 | 3.0 | 2.5 | 2.6 | 2.9 | 2.3 |
| Age-Specific Rates, 2012-2016 | | | | | | | | | |
| <1 | - | - | - | - | - | - | - | - | - |
| 1-4 | 0.1 | - | - | 0.1 | - | - | - | - | - |
| 5-9 | 0.3 | 0.5 | 0.2 | 0.3 | 0.4 | 0.2 | 0.5 | 0.8 | - |
| 10-14 | 1.3 | 1.4 | 1.1 | 1.3 | 1.5 | 1.1 | 1.3 | 1.2 | 1.3 |
| 15-19 | 3.3 | 3.3 | 3.2 | 3.6 | 3.6 | 3.6 | 2.6 | 2.8 | 2.4 |
| 20-24 | 4.3 | 4.0 | 4.6 | 4.7 | 4.3 | 5.0 | 3.2 | 3.0 | 3.4 |
| 25-29 | 4.1 | 4.0 | 4.1 | 4.4 | 4.4 | 4.6 | 3.5 | 3.9 | 3.2 |
| 30-34 | 3.6 | 3.9 | 3.3 | 3.9 | 4.2 | 3.5 | 3.7 | 3.9 | 3.5 |
| 35-39 | 3.0 | 3.2 | 2.8 | 3.1 | 3.3 | 2.9 | 3.7 | 4.2 | 3.4 |
| 40-44 | 2.7 | 3.2 | 2.3 | 2.8 | 3.1 | 2.5 | 3.7 | 4.8 | 2.8 |
| 45-49 | 2.6 | 3.2 | 1.9 | 2.7 | 3.4 | 2.0 | 3.3 | 4.0 | 2.8 |
| 50-54 | 2.4 | 3.2 | 1.8 | 2.4 | 3.1 | 1.8 | 3.6 | 4.8 | 2.6 |
| 55-59 | 2.6 | 3.4 | 1.9 | 2.7 | 3.5 | 2.0 | 2.8 | 3.5 | 2.2 |
| 60-64 | 2.7 | 3.2 | 2.2 | 2.9 | 3.4 | 2.3 | 3.1 | 3.5 | 2.7 |
| 65-69 | 3.1 | 3.8 | 2.5 | 3.3 | 4.0 | 2.6 | 2.9 | 3.6 | 2.3 |
| 70-74 | 3.7 | 4.5 | 3.1 | 4.1 | 5.0 | 3.4 | 2.4 | 2.6 | 2.2 |
| 75-79 | 4.2 | 5.3 | 3.4 | 4.5 | 5.6 | 3.6 | 2.9 | 3.3 | 2.6 |
| 80-84 | 4.0 | 4.7 | 3.5 | 4.3 | 5.1 | 3.7 | 2.4 | - | - |
| 85+ | 2.9 | 4.0 | 2.4 | 3.1 | 4.3 | 2.5 | - | - | - |
| <u>U.S. Mortality</u> | | | | | | | | | |
| <u>Age at Death</u> | | | | | | | | | |
| Age-Adjusted Rates, 2012-2016 | | | | | | | | | |
| All ages | 0.3 | 0.4 | 0.2 | 0.3 | 0.4 | 0.3 | 0.3 | 0.4 | 0.2 |
| Under 65 | 0.2 | 0.2 | 0.1 | 0.2 | 0.2 | 0.1 | 0.2 | 0.3 | 0.2 |
| 65 and over | 1.4 | 1.8 | 1.1 | 1.5 | 1.9 | 1.1 | 0.8 | 1.0 | 0.7 |
| All ages (WHO world std) ^c | 0.2 | 0.3 | 0.2 | 0.2 | 0.3 | 0.2 | 0.2 | 0.3 | 0.2 |
| Age-Specific Rates, 2012-2016 | | | | | | | | | |
| <1 | - | - | - | - | - | - | - | - | - |
| 1-4 | - | - | - | - | - | - | - | - | - |
| 5-9 | - | - | - | - | - | - | - | - | - |
| 10-14 | - | - | - | - | - | - | - | - | - |
| 15-19 | 0.0 | 0.0 | - | 0.0 | 0.0 | - | - | - | - |
| 20-24 | 0.1 | 0.1 | 0.1 | 0.1 | 0.1 | 0.1 | 0.1 | - | - |
| 25-29 | 0.2 | 0.2 | 0.1 | 0.2 | 0.2 | 0.1 | 0.2 | 0.3 | 0.2 |
| 30-34 | 0.2 | 0.2 | 0.1 | 0.2 | 0.2 | 0.1 | 0.3 | 0.4 | 0.2 |
| 35-39 | 0.2 | 0.2 | 0.1 | 0.2 | 0.2 | 0.1 | 0.3 | 0.3 | 0.3 |
| 40-44 | 0.2 | 0.2 | 0.2 | 0.2 | 0.2 | 0.2 | 0.3 | 0.3 | 0.2 |
| 45-49 | 0.2 | 0.3 | 0.2 | 0.2 | 0.3 | 0.2 | 0.3 | 0.5 | - |
| 50-54 | 0.3 | 0.4 | 0.2 | 0.3 | 0.4 | 0.2 | 0.4 | 0.6 | - |
| 55-59 | 0.4 | 0.5 | 0.3 | 0.4 | 0.5 | 0.3 | 0.5 | 0.7 | 0.4 |
| 60-64 | 0.5 | 0.6 | 0.3 | 0.5 | 0.6 | 0.4 | 0.4 | 0.5 | - |
| 65-69 | 0.7 | 0.9 | 0.5 | 0.8 | 1.0 | 0.5 | 0.5 | 0.7 | 0.4 |
| 70-74 | 1.1 | 1.5 | 0.7 | 1.2 | 1.6 | 0.8 | 0.6 | - | 0.6 |
| 75-79 | 1.6 | 1.9 | 1.4 | 1.7 | 2.0 | 1.5 | 0.9 | 1.2 | - |
| 80-84 | 2.0 | 2.6 | 1.6 | 2.2 | 2.8 | 1.7 | 1.3 | - | 1.3 |
| 85+ | 2.2 | 3.1 | 1.7 | 2.3 | 3.3 | 1.8 | 1.3 | - | 1.0 |

^a SEER 21 areas. Rates are per 100,000 and are age-adjusted to the 2000 US Std Population (19 age groups - Census P25-1130), unless noted.

^b US Mortality Files, National Center for Health Statistics, Centers for Disease Control and Prevention.

^c Rates are per 100,000 and are age-adjusted to the 2000 US Std Population (19 age groups - Census P25-1130), unless noted.

- Rates are per 100,000 and are age-adjusted to the world (WHO 2000-2025) standard million.

- Statistic not shown. Rate based on less than 16 cases for the time interval.

Table 9.8
Hodgkin Lymphoma

5-Year Relative and Period Survival (Percent) by Race, Sex, Diagnosis Year and Age

| | All Races | | | Whites | | | Blacks | | |
|--|-------------------|-------------------|-------------------|-------------------|-------------------|-------------------|-------------------|-------------------|-------------------|
| | Total | Males | Females | Total | Males | Females | Total | Males | Females |
| 5-Year Relative Survival (Percent) | | | | | | | | | |
| Year of Diagnosis: | | | | | | | | | |
| 1960-1963 ^a | - | - | - | 40 | 34 | 48 | - | - | - |
| 1970-1973 ^a | - | - | - | 67 | 66 | 69 | - | - | - |
| 1975-1977 ^b | 71.8 | 69.9 | 74.3 | 72.1 | 70.1 | 74.6 | 70.1 | 68.5 ^g | 73.3 ^g |
| 1978-1980 ^b | 71.7 | 70.3 | 73.5 | 71.8 | 69.8 | 74.3 | 70.6 | 74.7 ^g | 63.1 ^g |
| 1981-1983 ^b | 74.3 | 72.9 | 76.0 | 74.6 | 73.7 | 75.7 | 71.8 | 69.6 ^g | 75.9 ^g |
| 1984-1986 ^b | 78.4 | 76.6 | 80.7 | 78.8 | 76.9 | 81.2 | 74.9 | 76.0 ^g | 72.1 ^g |
| 1987-1989 ^b | 79.2 | 76.6 | 82.5 | 79.7 | 76.8 | 83.3 | 72.3 | 70.9 ^g | 74.0 ^g |
| 1990-1992 ^b | 81.8 | 79.3 | 84.7 | 82.9 | 81.1 | 85.0 | 74.3 | 65.2 | 84.3 |
| 1993-1995 ^b | 81.7 | 79.3 | 84.6 | 82.2 | 80.1 | 84.7 | 78.3 | 74.0 | 83.0 |
| 1996-1998 ^b | 85.1 | 84.4 | 85.9 | 85.7 | 84.4 | 87.3 | 81.2 | 84.4 | 77.7 |
| 1999-2001 ^b | 85.1 | 82.8 | 87.9 | 85.7 | 84.0 | 87.8 | 81.6 | 75.4 | 89.8 |
| 2002-2004 ^b | 86.2 | 85.2 | 87.2 | 87.7 | 86.9 | 88.5 | 79.2 | 74.4 | 82.8 |
| 2005-2008 ^b | 89.0 | 87.9 | 90.2 | 89.5 | 88.8 | 90.2 | 86.6 | 83.3 | 90.3 |
| 2009-2015 ^b | 88.5 ^f | 87.5 ^f | 89.9 ^f | 89.3 ^f | 88.5 ^f | 90.4 ^f | 85.1 ^f | 81.6 ^f | 89.2 ^f |
| 5-Year Period Survival (Percent) ^{cd} | | | | | | | | | |
| 2015 | 86.7 | 85.4 | 88.3 | 87.2 | 85.8 | 88.8 | 83.8 | 81.9 | 86.2 |
| Stage Distribution (%) 2009-2015 ^{ce} | | | | | | | | | |
| All Stages | | | | | | | | | |
| Number of cases | 14,589 | 8,077 | 6,512 | 11,597 | 6,424 | 5,173 | 1,896 | 1,054 | 842 |
| Percent | 100% | 100% | 100% | 100% | 100% | 100% | 100% | 100% | 100% |
| Localized | 15 | 16 | 14 | 15 | 16 | 13 | 17 | 17 | 16 |
| Regional | 39 | 35 | 45 | 41 | 36 | 47 | 31 | 26 | 37 |
| Distant | 41 | 45 | 37 | 40 | 44 | 36 | 50 | 55 | 43 |
| Unstaged/Unknown | 4 | 5 | 4 | 4 | 4 | 4 | 3 | 3 | 3 |
| 5-Year Relative Survival (Percent), 2009-2015 ^c | | | | | | | | | |
| Age at Diagnosis: | | | | | | | | | |
| Ages <45 | 94.4 | 93.6 | 95.3 | 95.2 | 94.7 | 95.7 | 89.5 | 85.8 | 93.7 |
| Ages 45-54 | 85.8 | 83.6 | 89.6 | 87.2 | 85.8 | 89.6 | 79.6 | 74.6 | 86.8 |
| Ages 55-64 | 79.3 | 78.1 | 80.8 | 80.0 | 78.8 | 81.6 | 71.7 | 69.0 | 73.8 ^g |
| Ages 65-74 | 67.4 | 66.2 | 68.8 | 66.7 | 64.4 | 69.7 | 68.9 ^g | 77.3 ^h | 59.8 ^h |
| Ages 75+ | 46.2 | 46.8 | 45.2 | 47.0 | 46.4 | 46.9 | - | - | - |
| Ages <65 | 91.2 | 89.8 | 92.9 | 92.0 | 90.9 | 93.3 | 85.7 | 81.9 | 90.3 |
| Ages 65+ | 58.0 | 58.4 | 57.4 | 58.0 | 56.9 | 58.7 | 61.2 ^g | 70.0 ^g | 52.8 ^g |
| Stage ^e : | | | | | | | | | |
| All Stages | 86.6 | 85.6 | 87.8 | 86.8 | 85.9 | 87.9 | 84.1 | 81.2 | 87.5 |
| Localized | 91.6 | 91.5 | 91.6 | 91.5 | 91.3 | 91.6 | 91.6 | 91.9 | 91.0 |
| Regional | 93.5 | 92.3 | 94.6 | 93.5 | 92.3 | 94.7 | 93.0 | 91.0 | 94.1 |
| Distant | 78.4 | 78.5 | 78.2 | 78.7 | 79.3 | 77.7 | 76.2 | 72.7 | 81.4 |
| Unstaged/Unknown | 83.0 | 81.6 | 84.4 | 81.8 | 78.6 | 85.2 | 77.2 ^g | 85.6 ^g | 68.2 ^g |

^a Based on End Results data from a series of hospital registries and one population-based registry.^b SEER 9 areas (San Francisco, Connecticut, Detroit, Hawaii, Iowa, New Mexico, Seattle, Utah, Atlanta).^c Based on follow-up of patients into 2016. [Expected survival rates](#) are derived from the U.S. Annual Life Tables.^c SEER 18 areas (San Francisco, Connecticut, Detroit, Hawaii, Iowa, New Mexico, Seattle, Utah, Atlanta, San Jose-Monterey, Los Angeles, Alaska Native Registry, Rural Georgia, California excluding SF/SJM/LA, Kentucky, Louisiana, New Jersey and Georgia excluding ATL/RG). Expected survival rates are derived from life tables by socio-economic status, geography and race developed by the SEER program.^d Based on follow-up of patients into 2016.^d Period survival provides a 2015 estimate of survival by piecing together the most recent conditional survival estimates from several cohorts. It is computed here using three year calendar blocks (2010-2012: 0-1 year survival), (2009-2011: 1-2 year survival), (2008-2010: 2-3 year survival), (2007-2009: 3-4 year survival), (2006-2008: 4-5 years survival).^e Stage at diagnosis is classified using SEER Summary Stage 2000. Stage distribution percentages may not sum to 100 due to rounding.^f The difference between 1975-1977 and 2009-2015 is statistically significant (p<.05).^g The standard error is between 5 and 10 percentage points.^h The standard error is greater than 10 percentage points.⁻ Statistic could not be calculated due to fewer than 25 cases during the time period.

Table 9.9
Hodgkin Lymphoma

SEER^a Relative Survival (Percent)
By Year of Diagnosis

All Races, Males and Females

Year of Diagnosis

| | 1975- 1979 | 1980- 1984 | 1985- 1989 | 1990- 1994 | 1995 | 1996 | 1997 | 1998 | 1999 | 2000 | 2001 | 2002 | 2003 | 2004 | 2005 | 2006 | 2007 | 2008 | 2009 | 2010 | 2011 | 2012 | 2013 | 2014 | 2015 |
|---------------|---------------|---------------|---------------|---------------|------|------|------|------|------|------|------|------|------|------|------|------|------|------|------|------|------|------|------|------|------|
| Survival Time | | | | | | | | | | | | | | | | | | | | | | | | | |
| 1-year | 86.9 | 89.4 | 90.7 | 92.1 | 92.8 | 91.6 | 93.6 | 94.6 | 91.0 | 92.4 | 94.0 | 92.9 | 93.2 | 91.5 | 93.5 | 92.4 | 93.4 | 94.7 | 92.3 | 91.9 | 93.6 | 94.6 | 93.8 | 94.0 | 93.0 |
| 2-year | 80.8 | 83.6 | 86.3 | 87.7 | 88.6 | 88.1 | 90.9 | 90.5 | 87.7 | 90.6 | 90.8 | 89.8 | 92.2 | 89.5 | 91.0 | 90.1 | 92.5 | 92.7 | 89.7 | 90.7 | 92.3 | 92.8 | 92.4 | 93.2 | |
| 3-year | 76.5 | 80.0 | 83.0 | 85.1 | 86.5 | 86.8 | 89.3 | 88.3 | 85.5 | 88.7 | 88.5 | 88.4 | 89.9 | 87.3 | 90.4 | 88.9 | 90.7 | 91.7 | 88.3 | 89.7 | 91.2 | 91.3 | 91.2 | | |
| 4-year | 73.6 | 77.4 | 80.5 | 83.2 | 83.5 | 84.6 | 88.4 | 86.6 | 84.2 | 87.9 | 86.6 | 86.1 | 88.1 | 86.1 | 89.6 | 88.5 | 89.1 | 90.7 | 87.2 | 88.6 | 89.9 | 90.6 | | | |
| 5-year | 71.4 | 74.8 | 79.0 | 81.6 | 82.2 | 83.2 | 87.2 | 84.9 | 83.5 | 86.4 | 85.2 | 85.2 | 87.5 | 85.9 | 88.5 | 88.2 | 88.6 | 90.5 | 85.6 | 86.7 | 89.5 | | | | |
| 6-year | 69.0 | 72.3 | 77.5 | 80.0 | 80.2 | 81.7 | 85.9 | 83.8 | 82.2 | 85.6 | 84.3 | 84.7 | 87.0 | 84.9 | 88.0 | 86.9 | 87.1 | 89.6 | 84.5 | 85.5 | | | | | |
| 7-year | 67.1 | 70.6 | 75.2 | 78.6 | 79.0 | 80.0 | 85.2 | 83.0 | 80.9 | 84.9 | 84.3 | 83.4 | 86.4 | 84.3 | 87.4 | 86.3 | 85.3 | 88.2 | 83.7 | | | | | | |
| 8-year | 65.0 | 69.3 | 74.0 | 77.8 | 78.5 | 79.3 | 84.7 | 82.4 | 80.0 | 83.8 | 83.8 | 82.3 | 85.6 | 83.4 | 85.9 | 86.3 | 84.2 | 87.3 | | | | | | | |
| 9-year | 63.0 | 67.9 | 73.2 | 76.8 | 77.2 | 78.3 | 84.6 | 81.5 | 79.1 | 83.0 | 82.8 | 81.2 | 84.7 | 83.0 | 85.5 | 85.9 | 84.2 | | | | | | | | |
| 10-year | 61.7 | 66.8 | 72.6 | 76.0 | 76.7 | 76.7 | 83.9 | 80.2 | 78.2 | 83.0 | 81.9 | 80.4 | 84.4 | 82.7 | 85.4 | 85.2 | | | | | | | | | |
| 11-year | 60.4 | 65.8 | 71.7 | 75.5 | 75.7 | 75.8 | 83.4 | 79.6 | 78.0 | 82.8 | 81.4 | 79.0 | 84.0 | 82.4 | 85.0 | | | | | | | | | | |
| 12-year | 59.4 | 64.7 | 70.9 | 74.7 | 75.5 | 74.9 | 82.9 | 79.3 | 77.6 | 82.4 | 81.3 | 78.2 | 83.4 | 81.9 | | | | | | | | | | | |
| 13-year | 58.7 | 63.8 | 69.7 | 74.0 | 75.5 | 74.3 | 81.9 | 79.0 | 76.4 | 82.0 | 79.5 | 77.4 | 82.2 | | | | | | | | | | | | |
| 14-year | 57.5 | 62.7 | 68.6 | 73.6 | 75.5 | 73.5 | 80.3 | 78.4 | 76.3 | 81.2 | 79.5 | 77.4 | | | | | | | | | | | | | |
| 15-year | 56.4 | 61.9 | 67.5 | 73.0 | 75.4 | 73.2 | 79.5 | 77.2 | 75.7 | 79.0 | 78.0 | | | | | | | | | | | | | | |
| 16-year | 55.7 | 60.8 | 66.8 | 72.5 | 75.1 | 73.2 | 79.2 | 77.1 | 74.2 | 78.0 | | | | | | | | | | | | | | | |
| 17-year | 54.7 | 59.5 | 66.3 | 71.9 | 74.7 | 72.5 | 78.1 | 76.7 | 73.6 | | | | | | | | | | | | | | | | |
| 18-year | 53.8 | 58.6 | 65.6 | 71.3 | 73.8 | 72.0 | 77.1 | 76.0 | | | | | | | | | | | | | | | | | |
| 19-year | 53.2 | 58.0 | 64.9 | 70.4 | 73.8 | 71.7 | 76.2 | | | | | | | | | | | | | | | | | | |
| 20-year | 52.1 | 57.0 | 64.2 | 69.8 | 73.4 | 70.8 | | | | | | | | | | | | | | | | | | | |

^a Based on the SEER 9 areas (San Francisco, Connecticut, Detroit, Hawaii, Iowa, New Mexico, Seattle, Utah, and Atlanta). [Expected survival rates](#) are derived from the U.S. Annual Life Tables.

Table 9.10
Hodgkin Lymphoma

SEER^a Relative Survival (Percent)
By Year of Diagnosis

All Races, Males

Year of Diagnosis

| | 1975- 1979 | 1980- 1984 | 1985- 1989 | 1990- 1994 | 1995 | 1996 | 1997 | 1998 | 1999 | 2000 | 2001 | 2002 | 2003 | 2004 | 2005 | 2006 | 2007 | 2008 | 2009 | 2010 | 2011 | 2012 | 2013 | 2014 | 2015 |
|---------------|---------------|---------------|---------------|---------------|------|------|------|------|------|------|------|------|------|------|------|------|------|------|------|------|------|------|------|------|------|
| Survival Time | | | | | | | | | | | | | | | | | | | | | | | | | |
| 1-year | 85.9 | 89.4 | 89.8 | 91.2 | 92.2 | 92.7 | 92.1 | 94.3 | 89.3 | 90.9 | 92.9 | 90.8 | 93.0 | 89.5 | 93.6 | 91.5 | 92.7 | 93.5 | 93.1 | 90.3 | 92.6 | 93.8 | 91.9 | 93.4 | 91.8 |
| 2-year | 80.2 | 83.6 | 84.7 | 85.9 | 88.0 | 88.6 | 89.5 | 91.0 | 86.1 | 88.4 | 89.1 | 88.2 | 92.2 | 88.2 | 90.9 | 89.0 | 91.6 | 91.4 | 89.5 | 89.5 | 91.5 | 92.1 | 89.9 | 92.8 | |
| 3-year | 75.3 | 80.3 | 81.3 | 83.1 | 85.1 | 87.1 | 87.4 | 88.8 | 83.6 | 85.4 | 86.6 | 86.7 | 89.9 | 86.2 | 90.2 | 88.5 | 89.4 | 90.6 | 87.9 | 87.8 | 90.3 | 90.8 | 88.9 | | |
| 4-year | 71.7 | 77.2 | 78.3 | 80.8 | 81.1 | 85.1 | 86.9 | 86.5 | 82.8 | 83.8 | 85.2 | 84.8 | 86.8 | 85.7 | 88.9 | 87.4 | 87.9 | 89.2 | 87.1 | 87.1 | 89.1 | 90.1 | | | |
| 5-year | 69.2 | 74.1 | 76.5 | 79.1 | 80.2 | 83.0 | 85.9 | 84.5 | 82.5 | 81.9 | 83.7 | 83.8 | 86.1 | 85.7 | 87.8 | 87.2 | 87.2 | 89.2 | 84.8 | 85.2 | 88.5 | | | | |
| 6-year | 66.5 | 71.5 | 74.7 | 77.2 | 78.9 | 81.9 | 83.5 | 83.6 | 80.5 | 80.9 | 82.2 | 83.0 | 86.1 | 83.7 | 87.1 | 85.6 | 85.3 | 88.2 | 83.8 | 83.8 | | | | | |
| 7-year | 64.3 | 69.7 | 71.9 | 76.0 | 77.6 | 79.7 | 82.9 | 82.3 | 78.7 | 80.2 | 81.9 | 81.2 | 85.1 | 83.5 | 85.9 | 85.2 | 83.4 | 85.9 | 82.6 | | | | | | |
| 8-year | 62.4 | 68.3 | 70.5 | 74.9 | 76.5 | 78.6 | 82.2 | 81.8 | 77.5 | 79.1 | 81.4 | 80.0 | 84.2 | 82.6 | 83.3 | 85.2 | 82.3 | 84.7 | | | | | | | |
| 9-year | 60.0 | 67.1 | 69.3 | 73.9 | 75.4 | 77.6 | 82.2 | 80.4 | 76.1 | 78.8 | 79.7 | 79.2 | 82.8 | 82.6 | 83.0 | 85.0 | 82.3 | | | | | | | | |
| 10-year | 58.9 | 65.8 | 68.7 | 73.3 | 75.4 | 75.3 | 81.3 | 78.3 | 75.2 | 78.8 | 78.3 | 78.5 | 82.3 | 81.7 | 83.0 | 84.6 | | | | | | | | | |
| 11-year | 57.5 | 64.8 | 67.2 | 72.6 | 74.3 | 74.2 | 80.7 | 77.7 | 75.2 | 77.9 | 77.4 | 76.0 | 81.7 | 81.2 | 83.0 | | | | | | | | | | |
| 12-year | 56.4 | 63.4 | 66.1 | 71.9 | 74.3 | 72.6 | 80.7 | 77.3 | 74.2 | 77.3 | 77.1 | 75.3 | 80.8 | 80.6 | | | | | | | | | | | |
| 13-year | 55.8 | 62.8 | 64.5 | 71.0 | 74.3 | 72.1 | 78.9 | 77.1 | 71.7 | 76.6 | 75.9 | 74.0 | 79.6 | | | | | | | | | | | | |
| 14-year | 54.4 | 61.4 | 63.4 | 70.7 | 74.3 | 70.7 | 77.2 | 76.1 | 71.5 | 75.6 | 75.9 | 73.9 | | | | | | | | | | | | | |
| 15-year | 53.2 | 60.7 | 62.2 | 70.0 | 74.3 | 70.2 | 76.2 | 73.4 | 70.4 | 73.5 | 74.6 | | | | | | | | | | | | | | |
| 16-year | 52.5 | 59.7 | 61.3 | 69.6 | 74.3 | 70.2 | 75.8 | 73.3 | 70.0 | 72.3 | | | | | | | | | | | | | | | |
| 17-year | 51.2 | 58.3 | 60.9 | 68.9 | 74.3 | 69.8 | 74.9 | 72.7 | 68.4 | | | | | | | | | | | | | | | | |
| 18-year | 50.2 | 57.3 | 60.1 | 68.1 | 73.1 | 69.0 | 73.2 | 71.6 | | | | | | | | | | | | | | | | | |
| 19-year | 49.6 | 56.8 | 59.5 | 67.4 | 73.1 | 68.6 | 71.9 | | | | | | | | | | | | | | | | | | |
| 20-year | 48.6 | 55.5 | 58.6 | 67.1 | 72.7 | 67.9 | | | | | | | | | | | | | | | | | | | |

^a Based on the SEER 9 areas (San Francisco, Connecticut, Detroit, Hawaii, Iowa, New Mexico, Seattle, Utah, and Atlanta). [Expected survival rates](#) are derived from the U.S. Annual Life Tables.

Table 9.11
Hodgkin Lymphoma

SEER^a Relative Survival (Percent)
By Year of Diagnosis

All Races, Females

Year of Diagnosis

| | 1975- 1979 | 1980- 1984 | 1985- 1989 | 1990- 1994 | 1995 | 1996 | 1997 | 1998 | 1999 | 2000 | 2001 | 2002 | 2003 | 2004 | 2005 | 2006 | 2007 | 2008 | 2009 | 2010 | 2011 | 2012 | 2013 | 2014 | 2015 |
|---------------|---------------|---------------|---------------|---------------|------|------|------|------|------|------|------|------|------|------|------|------|------|------|------|------|------|------|------|------|------|
| Survival Time | | | | | | | | | | | | | | | | | | | | | | | | | |
| 1-year | 88.2 | 89.5 | 91.8 | 93.0 | 93.7 | 90.0 | 95.1 | 94.9 | 92.9 | 94.5 | 95.3 | 95.2 | 93.4 | 93.4 | 93.4 | 93.4 | 94.5 | 96.1 | 91.4 | 93.8 | 94.7 | 95.6 | 96.4 | 94.7 | 94.4 |
| 2-year | 81.6 | 83.7 | 88.3 | 89.9 | 89.3 | 87.4 | 92.3 | 89.9 | 89.5 | 93.6 | 92.7 | 91.6 | 92.2 | 90.9 | 91.1 | 91.3 | 93.5 | 94.1 | 89.7 | 92.2 | 93.2 | 93.6 | 95.6 | 93.7 | |
| 3-year | 78.1 | 79.7 | 85.0 | 87.6 | 88.1 | 86.3 | 91.3 | 87.7 | 87.5 | 93.1 | 90.8 | 90.2 | 90.0 | 88.4 | 90.6 | 89.4 | 92.5 | 92.9 | 88.6 | 91.8 | 92.1 | 91.9 | 94.0 | | |
| 4-year | 76.2 | 77.6 | 83.2 | 86.0 | 86.5 | 84.0 | 89.8 | 86.6 | 85.7 | 93.1 | 88.5 | 87.5 | 89.6 | 86.3 | 90.4 | 89.4 | 90.7 | 92.5 | 87.3 | 90.6 | 90.8 | 91.1 | | | |
| 5-year | 74.4 | 75.8 | 82.1 | 84.7 | 84.6 | 83.6 | 88.5 | 85.3 | 84.4 | 92.6 | 87.1 | 86.7 | 89.1 | 86.2 | 89.2 | 89.4 | 90.2 | 91.7 | 86.3 | 88.6 | 90.8 | | | | |
| 6-year | 72.3 | 73.5 | 81.0 | 83.4 | 81.8 | 81.5 | 88.5 | 84.0 | 84.0 | 92.0 | 86.9 | 86.6 | 88.1 | 85.9 | 89.2 | 88.5 | 89.3 | 91.3 | 85.2 | 87.7 | | | | | |
| 7-year | 70.8 | 71.9 | 79.3 | 81.7 | 80.6 | 80.5 | 87.7 | 83.7 | 83.2 | 91.1 | 86.9 | 85.8 | 87.8 | 85.1 | 89.0 | 87.5 | 87.9 | 91.0 | 84.8 | | | | | | |
| 8-year | 68.5 | 70.7 | 78.4 | 81.3 | 80.6 | 80.1 | 87.2 | 83.2 | 82.7 | 90.4 | 86.9 | 84.7 | 87.2 | 84.1 | 89.0 | 86.9 | 86.7 | 90.5 | | | | | | | |
| 9-year | 66.9 | 69.0 | 78.1 | 80.4 | 79.5 | 78.9 | 86.6 | 82.7 | 82.2 | 88.6 | 86.7 | 83.3 | 87.1 | 83.3 | 88.5 | 86.6 | 86.4 | | | | | | | | |
| 10-year | 65.4 | 68.2 | 77.6 | 79.3 | 78.2 | 78.4 | 86.5 | 82.3 | 81.4 | 88.6 | 86.6 | 82.5 | 86.9 | 83.3 | 87.7 | 85.8 | | | | | | | | | |
| 11-year | 64.3 | 67.2 | 77.2 | 78.9 | 77.5 | 77.5 | 86.1 | 81.7 | 80.9 | 88.6 | 86.5 | 82.1 | 86.7 | 83.3 | 86.9 | | | | | | | | | | |
| 12-year | 63.5 | 66.3 | 76.8 | 78.0 | 76.9 | 77.4 | 85.1 | 81.3 | 80.9 | 88.6 | 86.5 | 81.1 | 86.5 | 83.0 | | | | | | | | | | | |
| 13-year | 62.6 | 65.2 | 76.1 | 77.6 | 76.2 | 77.1 | 84.9 | 80.9 | 80.9 | 88.6 | 84.2 | 81.0 | 85.4 | | | | | | | | | | | | |
| 14-year | 61.6 | 64.3 | 75.2 | 77.0 | 76.2 | 76.8 | 83.4 | 80.9 | 80.9 | 88.6 | 84.0 | 81.0 | | | | | | | | | | | | | |
| 15-year | 60.8 | 63.4 | 74.1 | 76.6 | 75.9 | 76.8 | 82.8 | 80.9 | 80.9 | 86.6 | 82.3 | | | | | | | | | | | | | | |
| 16-year | 60.0 | 62.4 | 73.6 | 76.0 | 75.8 | 76.8 | 82.4 | 80.9 | 78.7 | 85.6 | | | | | | | | | | | | | | | |
| 17-year | 59.4 | 61.1 | 72.9 | 75.5 | 75.2 | 75.8 | 81.4 | 80.9 | 78.7 | | | | | | | | | | | | | | | | |
| 18-year | 58.6 | 60.4 | 72.5 | 74.9 | 74.5 | 75.6 | 81.1 | 80.8 | | | | | | | | | | | | | | | | | |
| 19-year | 57.9 | 59.6 | 71.6 | 73.9 | 74.3 | 75.4 | 80.6 | | | | | | | | | | | | | | | | | | |
| 20-year | 56.8 | 58.9 | 71.2 | 73.0 | 74.2 | 74.5 | | | | | | | | | | | | | | | | | | | |

^a Based on the SEER 9 areas (San Francisco, Connecticut, Detroit, Hawaii, Iowa, New Mexico, Seattle, Utah, and Atlanta). [Expected survival rates](#) are derived from the U.S. Annual Life Tables.

Table 9.12
Hodgkin Lymphoma

Risk of Being Diagnosed With Cancer in 10, 20 and 30 Years,
Lifetime Risk of Being Diagnosed with Cancer Given Alive and Cancer-Free at Current Age, and
Lifetime Risk of Dying from Cancer Given Alive at Current Age
Both Sexes, 2014-2016 By Race/Ethnicity

| Race/ Ethnicity | Current Age | Risk of Being Diagnosed with Cancer | | | | Risk of Dying from Cancer | Race/ Ethnicity | Current Age | Risk of Being Diagnosed with Cancer | | | | Risk of Dying from Cancer |
|--------------------|----------------|--|---------|---------|------|------------------------------|--|----------------|--|---------|---------|------|------------------------------|
| | | +10 yrs | +20 yrs | +30 yrs | Ever | | | | +10 yrs | +20 yrs | +30 yrs | Ever | |
| All Races | 0 | 0.00 | 0.03 | 0.06 | 0.22 | 0.03 | Asian/ Pacific Islander | 0 | 0.00 | 0.02 | 0.04 | 0.11 | 0.02 |
| | 10 | 0.02 | 0.06 | 0.10 | 0.22 | 0.03 | | 10 | 0.02 | 0.04 | 0.05 | 0.11 | 0.02 |
| | 20 | 0.04 | 0.07 | 0.10 | 0.20 | 0.03 | | 20 | 0.02 | 0.04 | 0.05 | 0.10 | 0.02 |
| | 30 | 0.03 | 0.06 | 0.08 | 0.16 | 0.03 | | 30 | 0.02 | 0.02 | 0.03 | 0.07 | 0.02 |
| | 40 | 0.03 | 0.05 | 0.08 | 0.13 | 0.03 | | 40 | 0.01 | 0.02 | 0.03 | 0.06 | 0.02 |
| | 50 | 0.02 | 0.05 | 0.08 | 0.10 | 0.03 | | 50 | 0.01 | 0.02 | 0.04 | 0.05 | 0.02 |
| | 60 | 0.03 | 0.06 | 0.08 | 0.08 | 0.03 | | 60 | 0.01 | 0.03 | 0.04 | 0.04 | 0.02 |
| | 70 | 0.04 | 0.06 | - | 0.06 | 0.03 | | 70 | 0.02 | 0.03 | - | 0.04 | 0.02 |
| 80 | 0.03 | - | - | 0.03 | 0.02 | 80 | 0.02 | - | - | 0.02 | 0.01 | | |
| White | 0 | 0.00 | 0.03 | 0.07 | 0.23 | 0.03 | American Indian/ Alaska Native ^a | 0 | 0.00 | 0.01 | 0.02 | 0.12 | 0.02 |
| | 10 | 0.02 | 0.07 | 0.10 | 0.23 | 0.04 | | 10 | 0.01 | 0.02 | 0.03 | 0.12 | 0.02 |
| | 20 | 0.04 | 0.08 | 0.10 | 0.21 | 0.04 | | 20 | 0.01 | 0.02 | 0.03 | 0.11 | 0.02 |
| | 30 | 0.03 | 0.06 | 0.09 | 0.16 | 0.03 | | 30 | 0.01 | 0.02 | 0.02 | 0.10 | 0.02 |
| | 40 | 0.03 | 0.05 | 0.08 | 0.13 | 0.03 | | 40 | 0.01 | 0.02 | 0.04 | 0.09 | 0.02 |
| | 50 | 0.03 | 0.05 | 0.09 | 0.11 | 0.03 | | 50 | 0.01 | 0.03 | 0.07 | 0.09 | 0.02 |
| | 60 | 0.03 | 0.06 | 0.08 | 0.09 | 0.03 | | 60 | 0.03 | 0.07 | 0.08 | 0.09 | 0.02 |
| | 70 | 0.04 | 0.06 | - | 0.06 | 0.03 | | 70 | 0.04 | 0.07 | - | 0.07 | 0.02 |
| 80 | 0.03 | - | - | 0.03 | 0.02 | 80 | 0.03 | - | - | 0.03 | 0.02 | | |
| Black | 0 | 0.00 | 0.02 | 0.05 | 0.20 | 0.02 | Hispanic ^b | 0 | 0.00 | 0.02 | 0.05 | 0.23 | 0.05 |
| | 10 | 0.02 | 0.05 | 0.09 | 0.20 | 0.02 | | 10 | 0.02 | 0.05 | 0.07 | 0.23 | 0.05 |
| | 20 | 0.03 | 0.07 | 0.10 | 0.18 | 0.02 | | 20 | 0.03 | 0.05 | 0.07 | 0.21 | 0.05 |
| | 30 | 0.04 | 0.07 | 0.10 | 0.15 | 0.02 | | 30 | 0.02 | 0.04 | 0.07 | 0.18 | 0.05 |
| | 40 | 0.03 | 0.07 | 0.09 | 0.12 | 0.02 | | 40 | 0.02 | 0.05 | 0.08 | 0.16 | 0.05 |
| | 50 | 0.03 | 0.06 | 0.08 | 0.09 | 0.02 | | 50 | 0.02 | 0.06 | 0.10 | 0.14 | 0.05 |
| | 60 | 0.03 | 0.05 | 0.06 | 0.06 | 0.02 | | 60 | 0.03 | 0.08 | 0.12 | 0.12 | 0.05 |
| | 70 | 0.02 | 0.03 | - | 0.04 | 0.02 | | 70 | 0.05 | 0.09 | - | 0.10 | 0.05 |
| 80 | 0.02 | - | - | 0.02 | 0.01 | 80 | 0.05 | - | - | 0.05 | 0.04 | | |

Devcan 6.7.7, April 2019, National Cancer Institute (<https://surveillance.cancer.gov/devcan/>).

Source: Incidence data are from the SEER 21 areas (San Francisco, Connecticut, Detroit, Hawaii, Iowa, New Mexico, Seattle, Utah, Atlanta, San Jose-Monterey, Los Angeles, Alaska Native Registry, Rural Georgia, California excluding SF/SJM/LA, Kentucky, Louisiana, New Jersey, Georgia excluding ATL/RG, Idaho, New York and Massachusetts). Mortality data are from the NCHS public use data file for the total US.

^a Underlying incidence and mortality data for American Indian/Alaska Native are based on the PRCA (Purchased/Referred Care Delivery Areas) counties.

^b Hispanic is not mutually exclusive from whites, blacks, Asian/Pacific Islanders, and American Indians/Alaska Natives. Underlying incidence data for Hispanics are based on NHIA and exclude cases from the Alaska Native Registry.

- Statistic could not be calculated.

A percent of 0.00 represents a value that is below 0.005.

Table 9.13
Hodgkin Lymphoma

Risk of Being Diagnosed With Cancer in 10, 20 and 30 Years,
Lifetime Risk of Being Diagnosed with Cancer Given Alive and Cancer-Free at Current Age, and
Lifetime Risk of Dying from Cancer Given Alive at Current Age
Males, 2014-2016 By Race/Ethnicity

| Race/ Ethnicity | Current Age | Risk of Being Diagnosed with Cancer | | | | Risk of Dying from Cancer | Race/ Ethnicity | Current Age | Risk of Being Diagnosed with Cancer | | | | Risk of Dying from Cancer |
|--------------------|----------------|--|---------|---------|------|------------------------------|--|----------------|--|---------|---------|------|------------------------------|
| | | +10 yrs | +20 yrs | +30 yrs | Ever | | | | +10 yrs | +20 yrs | +30 yrs | Ever | |
| All Races | 0 | 0.00 | 0.03 | 0.06 | 0.24 | 0.04 | Asian/ Pacific Islander | 0 | 0.00 | 0.02 | 0.04 | 0.13 | 0.03 |
| | 10 | 0.02 | 0.06 | 0.10 | 0.24 | 0.04 | | 10 | 0.02 | 0.04 | 0.06 | 0.13 | 0.03 |
| | 20 | 0.04 | 0.07 | 0.10 | 0.22 | 0.04 | | 20 | 0.02 | 0.04 | 0.05 | 0.11 | 0.03 |
| | 30 | 0.03 | 0.07 | 0.10 | 0.18 | 0.04 | | 30 | 0.02 | 0.03 | 0.04 | 0.09 | 0.03 |
| | 40 | 0.03 | 0.06 | 0.09 | 0.15 | 0.04 | | 40 | 0.01 | 0.02 | 0.03 | 0.07 | 0.03 |
| | 50 | 0.03 | 0.06 | 0.10 | 0.12 | 0.04 | | 50 | 0.01 | 0.03 | 0.05 | 0.06 | 0.03 |
| | 60 | 0.03 | 0.07 | 0.09 | 0.09 | 0.03 | | 60 | 0.01 | 0.04 | 0.05 | 0.05 | 0.03 |
| | 70 | 0.04 | 0.07 | - | 0.07 | 0.03 | | 70 | 0.02 | 0.04 | - | 0.04 | 0.02 |
| 80 | 0.03 | - | - | 0.04 | 0.02 | 80 | 0.02 | - | - | 0.02 | 0.02 | | |
| White | 0 | 0.00 | 0.03 | 0.07 | 0.25 | 0.04 | American Indian/ Alaska Native ^a | 0 | 0.00 | 0.01 | 0.02 | 0.07 | 0.02 |
| | 10 | 0.02 | 0.07 | 0.10 | 0.25 | 0.04 | | 10 | 0.01 | 0.02 | 0.03 | 0.07 | 0.02 |
| | 20 | 0.04 | 0.08 | 0.11 | 0.23 | 0.04 | | 20 | 0.01 | 0.02 | 0.03 | 0.06 | 0.02 |
| | 30 | 0.04 | 0.07 | 0.10 | 0.19 | 0.04 | | 30 | 0.01 | 0.02 | 0.03 | 0.05 | 0.02 |
| | 40 | 0.03 | 0.06 | 0.10 | 0.15 | 0.04 | | 40 | 0.02 | 0.03 | 0.04 | 0.05 | 0.02 |
| | 50 | 0.03 | 0.07 | 0.10 | 0.13 | 0.04 | | 50 | 0.01 | 0.03 | 0.03 | 0.03 | 0.02 |
| | 60 | 0.04 | 0.08 | 0.10 | 0.10 | 0.04 | | 60 | 0.02 | 0.02 | 0.02 | 0.02 | 0.02 |
| | 70 | 0.04 | 0.07 | - | 0.07 | 0.03 | | 70 | 0.00 | 0.00 | - | 0.00 | 0.01 |
| 80 | 0.04 | - | - | 0.04 | 0.02 | 80 | 0.00 | - | - | 0.00 | 0.02 | | |
| Black | 0 | 0.00 | 0.03 | 0.06 | 0.22 | 0.03 | Hispanic ^b | 0 | 0.00 | 0.02 | 0.04 | 0.25 | 0.06 |
| | 10 | 0.02 | 0.05 | 0.09 | 0.22 | 0.03 | | 10 | 0.02 | 0.04 | 0.06 | 0.25 | 0.06 |
| | 20 | 0.03 | 0.07 | 0.10 | 0.20 | 0.03 | | 20 | 0.03 | 0.05 | 0.07 | 0.23 | 0.06 |
| | 30 | 0.03 | 0.07 | 0.11 | 0.17 | 0.03 | | 30 | 0.02 | 0.05 | 0.08 | 0.21 | 0.06 |
| | 40 | 0.04 | 0.08 | 0.11 | 0.14 | 0.03 | | 40 | 0.03 | 0.06 | 0.09 | 0.19 | 0.06 |
| | 50 | 0.04 | 0.07 | 0.09 | 0.10 | 0.02 | | 50 | 0.03 | 0.07 | 0.12 | 0.16 | 0.06 |
| | 60 | 0.04 | 0.06 | 0.07 | 0.07 | 0.02 | | 60 | 0.04 | 0.10 | 0.13 | 0.14 | 0.06 |
| | 70 | 0.03 | 0.04 | - | 0.04 | 0.02 | | 70 | 0.07 | 0.11 | - | 0.11 | 0.05 |
| 80 | 0.02 | - | - | 0.02 | 0.02 | 80 | 0.05 | - | - | 0.06 | 0.04 | | |

Devcan 6.7.7, April 2019, National Cancer Institute (<https://surveillance.cancer.gov/devcan/>).

Source: Incidence data are from the SEER 21 areas (San Francisco, Connecticut, Detroit, Hawaii, Iowa, New Mexico, Seattle, Utah, Atlanta, San Jose-Monterey, Los Angeles, Alaska Native Registry, Rural Georgia, California excluding SF/SJM/LA, Kentucky, Louisiana, New Jersey, Georgia excluding ATL/RG, Idaho, New York and Massachusetts). Mortality data are from the NCHS public use data file for the total US.

^a Underlying incidence and mortality data for American Indian/Alaska Native are based on the PRCA (Purchased/Referred Care Delivery Areas) counties.

^b Hispanic is not mutually exclusive from whites, blacks, Asian/Pacific Islanders, and American Indians/Alaska Natives. Underlying incidence data for Hispanics are based on NHIA and exclude cases from the Alaska Native Registry.

- Statistic could not be calculated.

A percent of 0.00 represents a value that is below 0.005.

Table 9.14
Hodgkin Lymphoma

Risk of Being Diagnosed With Cancer in 10, 20 and 30 Years,
Lifetime Risk of Being Diagnosed with Cancer Given Alive and Cancer-Free at Current Age, and
Lifetime Risk of Dying from Cancer Given Alive at Current Age
Females, 2014-2016 By Race/Ethnicity

| Race/ Ethnicity | Current Age | Risk of Being Diagnosed with Cancer | | | | Risk of Dying from Cancer | Race/ Ethnicity | Current Age | Risk of Being Diagnosed with Cancer | | | | Risk of Dying from Cancer |
|--------------------|----------------|--|---------|---------|------|------------------------------|--|----------------|--|---------|---------|------|------------------------------|
| | | +10 yrs | +20 yrs | +30 yrs | Ever | | | | +10 yrs | +20 yrs | +30 yrs | Ever | |
| All Races | 0 | 0.00 | 0.02 | 0.06 | 0.20 | 0.03 | Asian/ Pacific Islander | 0 | 0.00 | 0.01 | 0.04 | 0.10 | 0.02 |
| | 10 | 0.02 | 0.06 | 0.09 | 0.20 | 0.03 | | 10 | 0.01 | 0.04 | 0.05 | 0.10 | 0.02 |
| | 20 | 0.04 | 0.07 | 0.09 | 0.17 | 0.03 | | 20 | 0.02 | 0.04 | 0.05 | 0.09 | 0.02 |
| | 30 | 0.03 | 0.05 | 0.07 | 0.13 | 0.03 | | 30 | 0.01 | 0.02 | 0.03 | 0.06 | 0.02 |
| | 40 | 0.02 | 0.04 | 0.06 | 0.10 | 0.03 | | 40 | 0.01 | 0.01 | 0.02 | 0.05 | 0.02 |
| | 50 | 0.02 | 0.04 | 0.07 | 0.09 | 0.03 | | 50 | 0.01 | 0.01 | 0.03 | 0.04 | 0.02 |
| | 60 | 0.02 | 0.05 | 0.07 | 0.07 | 0.02 | | 60 | 0.01 | 0.02 | 0.04 | 0.04 | 0.02 |
| | 70 | 0.03 | 0.05 | - | 0.05 | 0.02 | | 70 | 0.01 | 0.03 | - | 0.03 | 0.01 |
| 80 | 0.02 | - | - | 0.03 | 0.02 | 80 | 0.02 | - | - | 0.02 | 0.01 | | |
| White | 0 | 0.00 | 0.03 | 0.07 | 0.21 | 0.03 | American Indian/ Alaska Native ^a | 0 | 0.00 | 0.01 | 0.02 | 0.16 | 0.02 |
| | 10 | 0.02 | 0.07 | 0.10 | 0.21 | 0.03 | | 10 | 0.00 | 0.02 | 0.03 | 0.16 | 0.02 |
| | 20 | 0.05 | 0.08 | 0.10 | 0.19 | 0.03 | | 20 | 0.01 | 0.02 | 0.02 | 0.15 | 0.02 |
| | 30 | 0.03 | 0.05 | 0.07 | 0.14 | 0.03 | | 30 | 0.01 | 0.01 | 0.02 | 0.14 | 0.02 |
| | 40 | 0.02 | 0.04 | 0.06 | 0.11 | 0.03 | | 40 | 0.00 | 0.01 | 0.04 | 0.14 | 0.02 |
| | 50 | 0.02 | 0.04 | 0.07 | 0.09 | 0.03 | | 50 | 0.01 | 0.04 | 0.11 | 0.14 | 0.02 |
| | 60 | 0.02 | 0.05 | 0.07 | 0.08 | 0.03 | | 60 | 0.03 | 0.10 | 0.13 | 0.14 | 0.02 |
| | 70 | 0.03 | 0.05 | - | 0.06 | 0.02 | | 70 | 0.08 | 0.12 | - | 0.12 | 0.02 |
| 80 | 0.03 | - | - | 0.03 | 0.02 | 80 | 0.05 | - | - | 0.05 | 0.03 | | |
| Black | 0 | 0.00 | 0.02 | 0.05 | 0.18 | 0.02 | Hispanic ^b | 0 | 0.00 | 0.02 | 0.05 | 0.21 | 0.05 |
| | 10 | 0.02 | 0.05 | 0.08 | 0.18 | 0.02 | | 10 | 0.02 | 0.05 | 0.07 | 0.21 | 0.05 |
| | 20 | 0.03 | 0.07 | 0.10 | 0.16 | 0.02 | | 20 | 0.03 | 0.05 | 0.07 | 0.19 | 0.05 |
| | 30 | 0.04 | 0.06 | 0.09 | 0.13 | 0.02 | | 30 | 0.02 | 0.04 | 0.06 | 0.16 | 0.05 |
| | 40 | 0.03 | 0.05 | 0.07 | 0.10 | 0.02 | | 40 | 0.02 | 0.04 | 0.06 | 0.14 | 0.05 |
| | 50 | 0.03 | 0.05 | 0.06 | 0.07 | 0.02 | | 50 | 0.02 | 0.05 | 0.09 | 0.12 | 0.05 |
| | 60 | 0.02 | 0.04 | 0.05 | 0.05 | 0.02 | | 60 | 0.03 | 0.07 | 0.11 | 0.11 | 0.05 |
| | 70 | 0.02 | 0.03 | - | 0.03 | 0.01 | | 70 | 0.04 | 0.08 | - | 0.09 | 0.05 |
| 80 | 0.01 | - | - | 0.02 | 0.01 | 80 | 0.04 | - | - | 0.05 | 0.03 | | |

Devcan 6.7.7, April 2019, National Cancer Institute (<https://surveillance.cancer.gov/devcan/>).

Source: Incidence data are from the SEER 21 areas (San Francisco, Connecticut, Detroit, Hawaii, Iowa, New Mexico, Seattle, Utah, Atlanta, San Jose-Monterey, Los Angeles, Alaska Native Registry, Rural Georgia, California excluding SF/SJM/LA, Kentucky, Louisiana, New Jersey, Georgia excluding ATL/RG, Idaho, New York and Massachusetts). Mortality data are from the NCHS public use data file for the total US.

^a Underlying incidence and mortality data for American Indian/Alaska Native are based on the PRCDA (Purchased/Referred Care Delivery Areas) counties.

^b Hispanic is not mutually exclusive from whites, blacks, Asian/Pacific Islanders, and American Indians/Alaska Natives. Underlying incidence data for Hispanics are based on NHIA and exclude cases from the Alaska Native Registry.

- Statistic could not be calculated.

A percent of 0.00 represents a value that is below 0.005.

Table 9.15
Hodgkin Lymphoma

SEER Incidence and U.S. Mortality
Age-Adjusted Rates and Trends^a
By Race/Ethnicity and Sex

| SEER Incidence | SEER 21 Areas ^b | | | SEER 21 Areas ^b | | | SEER 9 Areas ^b | | |
|-----------------------------------|----------------------------|-------|---------|------------------------------|-------|---------|------------------------------|-------|---------|
| | Rate 2012-2016 | | | Trend 2007-2016 ^c | | | Trend 2007-2016 ^d | | |
| | Rate per 100,000 persons | | | AAPC (%) | | | AAPC (%) | | |
| Race/Ethnicity | Total | Males | Females | Total | Males | Females | Total | Males | Females |
| All Races | 2.7 | 3.0 | 2.3 | -1.7* | -1.7* | -1.4* | -1.8* | -1.8* | -2.0* |
| White | 2.8 | 3.1 | 2.5 | -1.9* | -1.8* | -2.0* | -2.2* | -2.0* | -2.3* |
| White Hispanic ^e | 2.5 | 2.8 | 2.2 | -1.5* | -1.3* | -1.1 | - | - | - |
| White Non-Hispanic ^e | 3.0 | 3.4 | 2.7 | -1.7* | -0.7* | -2.0* | - | - | - |
| Black | 2.7 | 3.1 | 2.3 | -0.9 | 0.2 | 0.7 | 1.0* | 0.6* | 0.5 |
| Asian/Pacific Islander | 1.3 | 1.5 | 1.0 | 0.2 | 0.3 | 0.1 | - | - | - |
| Amer Ind/Alaska Nat ^f | 1.4 | 1.5 | 1.2 | 3.0* | 0.2 | - | - | - | - |
| Hispanic ^e | 2.4 | 2.7 | 2.1 | -0.5 | -1.2* | 0.3 | - | - | - |
| <u>U.S. Mortality^g</u> | | | | | | | | | |
| | Rate 2012-2016 | | | Trend 2007-2016 ^h | | | | | |
| | Rate per 100,000 persons | | | AAPC (%) | | | | | |
| Race/Ethnicity | Total | Males | Females | Total | Males | Females | | | |
| All Races | 0.3 | 0.4 | 0.2 | -4.0* | -2.7* | -4.6* | | | |
| White | 0.3 | 0.4 | 0.3 | -3.1* | -2.7* | -4.7* | | | |
| White Hispanic ^e | 0.4 | 0.5 | 0.3 | -1.2* | -1.7* | -0.6 | | | |
| White Non-Hispanic ^e | 0.3 | 0.4 | 0.2 | -3.4* | -2.9* | -5.3* | | | |
| Black | 0.3 | 0.4 | 0.2 | -2.7* | -2.7* | -2.8* | | | |
| Asian/Pacific Islander | 0.1 | 0.2 | 0.1 | -3.1* | -2.1 | 2.4 | | | |
| Amer Ind/Alaska Nat | | | | | | | | | |
| Total U.S. | 0.1 | - | - | -4.4 | - | - | | | |
| PRCDA Counties | - | - | - | - | - | - | | | |
| Non-PRCDA Counties | - | - | - | - | - | - | | | |
| Hispanic ^e | 0.4 | 0.5 | 0.3 | -1.3* | -1.8* | -0.6 | | | |

The AAPC is the Average Annual Percent Change over the time interval. The AAPCs are calculated by the Joinpoint Regression Program Version 4.7, February 2019, National Cancer Institute.

Statistic not shown. Rate based on less than 16 cases for the time interval.

Trend based on less than 10 cases for at least one year within the time interval.

Rates are age-adjusted to the 2000 US Std Population (19 age groups - Census P25-1130). Trends are based on rates age-adjusted to the 2000 US Std Population (19 age groups - Census P25-1130).

The SEER 9 areas are San Francisco, Connecticut, Detroit, Hawaii, Iowa, New Mexico, Seattle, Utah, and Atlanta.

The SEER 21 areas comprise the SEER 9 areas plus San Jose-Monterey, Los Angeles, the Alaska Native Registry, Rural Georgia, California excluding SF/SJM/LA, Kentucky, Louisiana, New Jersey, Georgia excluding ATL/RG, Idaho, New York and Massachusetts.

The 2007-2016 AAPC estimates are based on a Joinpoint analysis with up to 3 Joinpoints over diagnosis years 2000-2016.

The 2007-2016 AAPC estimates are based on a Joinpoint analysis with up to 5 Joinpoints over diagnosis years 1975-2016.

Hispanic and Non-Hispanic are not mutually exclusive from whites, blacks, Asian/Pacific Islanders, and American Indians/Alaska Natives. Incidence data for Hispanics and Non-Hispanics are based on NHIA and exclude cases from the Alaska Native Registry.

Incidence data for American Indian/Alaska Native are based on the Purchased/Referred Care Delivery Area (PRCDA) counties.

US Mortality Files, National Center for Health Statistics, CDC.

The 2007-2016 mortality AAPCs are based on a Joinpoint analysis using years of death 2000-2016.

The APC is significantly different from zero (p<.05).

Table 9.16
Hodgkin Lymphoma

Age-Adjusted SEER Incidence Rates^a
By Registry, Race and Sex

| | All Races | | | Whites | | | Blacks | | |
|--|-----------|-------|---------|--------|-------|---------|--------|-------|---------|
| | Total | Males | Females | Total | Males | Females | Total | Males | Females |
| <u>SEER Incidence Rates^a, 2012-2016</u> | | | | | | | | | |
| California | 2.20 | 2.50 | 1.93 | 2.40 | 2.69 | 2.12 | 2.15 | 2.44 | 1.87 |
| Greater Bay Area | 2.26 | 2.61 | 1.93 | 2.65 | 2.99 | 2.32 | 2.62 | 3.21 | 2.04 |
| San Francisco-Oakland | 2.27 | 2.49 | 2.07 | 2.66 | 2.88 | 2.45 | 2.59 | 2.86 | 2.33 |
| San Jose-Monterey | 2.25 | 2.82 | 1.69 | 2.67 | 3.18 | 2.16 | - | - | - |
| Los Angeles | 2.09 | 2.39 | 1.82 | 2.30 | 2.70 | 1.94 | 1.99 | 1.91 | 2.09 |
| Greater California | 2.24 | 2.53 | 1.97 | 2.38 | 2.63 | 2.15 | 2.09 | 2.49 | 1.64 |
| Connecticut | 3.33 | 3.81 | 2.92 | 3.34 | 3.74 | 2.99 | 3.10 | 4.19 | 2.34 |
| Detroit | 3.11 | 3.63 | 2.63 | 3.40 | 3.89 | 2.94 | 2.81 | 3.52 | 2.20 |
| Georgia | 2.53 | 2.84 | 2.25 | 2.54 | 2.75 | 2.35 | 2.67 | 3.22 | 2.20 |
| Atlanta | 2.63 | 3.02 | 2.32 | 2.57 | 2.94 | 2.27 | 3.01 | 3.53 | 2.60 |
| Rural Georgia | 2.87 | - | - | - | - | - | - | - | - |
| Greater Georgia | 2.44 | 2.71 | 2.20 | 2.52 | 2.67 | 2.39 | 2.33 | 2.84 | 1.85 |
| Hawaii | 1.56 | 1.89 | 1.27 | 2.31 | 2.24 | 2.41 | - | - | - |
| Idaho | 2.49 | 2.83 | 2.15 | 2.54 | 2.89 | 2.18 | - | - | - |
| Iowa | 3.12 | 3.66 | 2.61 | 3.11 | 3.69 | 2.55 | 3.75 | - | - |
| Kentucky | 2.60 | 3.08 | 2.16 | 2.61 | 3.10 | 2.16 | 2.80 | 3.02 | 2.59 |
| Louisiana | 2.67 | 2.97 | 2.39 | 2.82 | 2.98 | 2.66 | 2.40 | 2.93 | 1.90 |
| Massachusetts | 2.72 | 2.97 | 2.51 | 2.89 | 3.09 | 2.73 | 2.05 | 2.47 | 1.66 |
| New Jersey | 3.20 | 3.59 | 2.85 | 3.39 | 3.82 | 3.00 | 3.02 | 3.26 | 2.84 |
| New Mexico | 2.41 | 2.97 | 1.90 | 2.52 | 3.04 | 2.06 | - | - | - |
| New York | 3.24 | 3.56 | 2.97 | 3.50 | 3.81 | 3.22 | 3.03 | 3.30 | 2.86 |
| Seattle-Puget Sound | 2.65 | 3.11 | 2.19 | 2.69 | 3.12 | 2.27 | 3.25 | 4.01 | 2.37 |
| Utah | 2.38 | 2.54 | 2.23 | 2.46 | 2.60 | 2.31 | - | - | - |
| SEER 9 Areas ^b | 2.68 | 3.08 | 2.32 | 2.85 | 3.23 | 2.50 | 2.92 | 3.46 | 2.45 |
| SEER 13 Areas ^b | 2.51 | 2.89 | 2.16 | 2.70 | 3.09 | 2.34 | 2.75 | 3.21 | 2.35 |
| SEER 18 Areas ^b | 2.52 | 2.87 | 2.20 | 2.67 | 3.00 | 2.36 | 2.60 | 3.04 | 2.20 |
| SEER 21 Areas ^b | 2.65 | 2.99 | 2.35 | 2.81 | 3.14 | 2.52 | 2.67 | 3.07 | 2.33 |

^a Rates are per 100,000 and are age-adjusted to the 2000 US Std Population (19 age groups - Census P25-1130)

^b The SEER 9 areas are San Francisco, Connecticut, Detroit, Hawaii, Iowa, New Mexico, Seattle, Utah and Atlanta.

The SEER 13 areas comprise the SEER 9 areas plus San Jose-Monterey, Los Angeles, the Alaska Native Registry and Rural Georgia.

The SEER 18 areas comprise the SEER 13 areas plus California excluding SF/SJM/LA, Kentucky, Louisiana, New Jersey and Georgia

excluding ATL/RG.

The SEER 21 areas comprise the SEER 18 areas plus Idaho, New York and Massachusetts.

- Statistic not shown. Rate based on less than 16 cases for the time interval.

Table 9.17
Hodgkin Lymphoma

Age-Adjusted SEER Death Rates^a
By Registry, Race and Sex

| | All Races | | | Whites | | | Blacks | | |
|--|-----------|-------|---------|--------|-------|---------|--------|-------|---------|
| | Total | Males | Females | Total | Males | Females | Total | Males | Females |
| <u>SEER Death Rates^a, 2012-2016</u> | | | | | | | | | |
| California | 0.35 | 0.44 | 0.27 | 0.37 | 0.47 | 0.29 | 0.38 | 0.53 | 0.27 |
| Greater Bay Area | 0.28 | 0.35 | 0.22 | 0.34 | 0.40 | 0.30 | - | - | - |
| San Francisco-Oakland | 0.26 | 0.34 | 0.19 | 0.30 | 0.39 | 0.24 | - | - | - |
| San Jose-Monterey | 0.32 | 0.37 | 0.28 | 0.40 | 0.41 | 0.40 | - | - | - |
| Los Angeles | 0.33 | 0.39 | 0.28 | 0.36 | 0.43 | 0.31 | - | - | - |
| Greater California | 0.38 | 0.50 | 0.28 | 0.39 | 0.50 | 0.28 | 0.60 | 0.80 | - |
| Connecticut | 0.26 | 0.37 | 0.16 | 0.28 | 0.42 | 0.15 | - | - | - |
| Detroit | 0.34 | 0.42 | 0.27 | 0.35 | 0.38 | 0.33 | 0.34 | - | - |
| Georgia | 0.32 | 0.41 | 0.24 | 0.31 | 0.42 | 0.22 | 0.34 | 0.40 | 0.28 |
| Atlanta | 0.26 | 0.34 | 0.21 | 0.23 | - | - | 0.33 | - | - |
| Rural Georgia | - | - | - | - | - | - | - | - | - |
| Greater Georgia | 0.34 | 0.43 | 0.25 | 0.34 | 0.45 | 0.24 | 0.32 | - | - |
| Hawaii | 0.23 | - | - | - | - | - | - | - | - |
| Idaho | 0.30 | - | - | 0.31 | - | - | - | - | - |
| Iowa | 0.24 | 0.33 | 0.16 | 0.25 | 0.34 | 0.16 | - | - | - |
| Kentucky | 0.26 | 0.35 | 0.21 | 0.26 | 0.37 | 0.19 | - | - | - |
| Louisiana | 0.38 | 0.43 | 0.34 | 0.43 | 0.48 | 0.40 | 0.22 | - | - |
| Massachusetts | 0.24 | 0.30 | 0.19 | 0.26 | 0.32 | 0.21 | - | - | - |
| New Jersey | 0.28 | 0.36 | 0.21 | 0.32 | 0.41 | 0.25 | - | - | - |
| New Mexico | 0.40 | 0.59 | 0.23 | 0.42 | 0.61 | - | - | - | - |
| New York | 0.31 | 0.36 | 0.26 | 0.35 | 0.39 | 0.31 | 0.21 | 0.33 | - |
| Seattle-Puget Sound | 0.24 | 0.29 | 0.19 | 0.25 | 0.30 | 0.20 | - | - | - |
| Utah | 0.28 | 0.32 | - | 0.29 | 0.32 | - | - | - | - |
| SEER 9 Areas ^b | 0.27 | 0.36 | 0.20 | 0.29 | 0.38 | 0.21 | 0.26 | 0.36 | 0.19 |
| SEER 13 Areas ^b | 0.29 | 0.36 | 0.22 | 0.31 | 0.38 | 0.25 | 0.28 | 0.40 | 0.20 |
| SEER 18 Areas ^b | 0.31 | 0.40 | 0.24 | 0.33 | 0.42 | 0.26 | 0.29 | 0.38 | 0.22 |
| SEER 21 Areas ^b | 0.31 | 0.39 | 0.24 | 0.33 | 0.41 | 0.27 | 0.27 | 0.36 | 0.19 |
| Total U.S. | 0.31 | 0.40 | 0.24 | 0.32 | 0.41 | 0.25 | 0.28 | 0.36 | 0.22 |

^a US Mortality Files, National Center for Health Statistics, Centers for Disease Control and Prevention. Rates are per 100,000 and are age-adjusted to the 2000 US Std Population (19 age groups - Census P25-1130).

^b The SEER 9 areas are San Francisco, Connecticut, Detroit, Hawaii, Iowa, New Mexico, Seattle, Utah and Atlanta. The SEER 13 areas comprise the SEER 9 areas plus San Jose-Monterey, Los Angeles, the Alaska Native Registry and Rural Georgia. The SEER 18 areas comprise the SEER 13 areas plus California excluding SF/SJM/LA, Kentucky, Louisiana, New Jersey and Georgia excluding ATL/RG.

The SEER 21 areas comprise the SEER 18 areas plus Idaho, New York and Massachusetts.

- Statistic not shown. Rate based on less than 16 cases for the time interval.

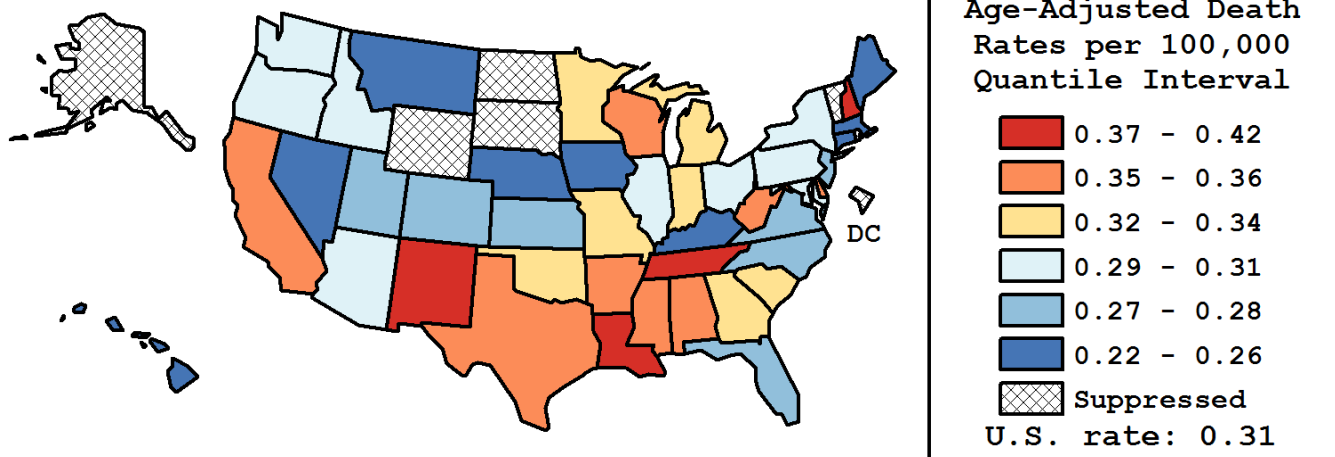
Table 9.18
Hodgkin Lymphoma

Age-Adjusted Cancer Death^a Rates By State, All Races, 2012-2016

Males and Females

| State | Rate | SE | Rank(CI) ^d | PD |
|------------------|------|------|-----------------------|---------------------|
| TOTAL U.S. | 0.31 | 0.00 | | |
| High Five States | | | | |
| New Hampshire | 0.42 | 0.08 | 01(01,42) | 34.66 ^c |
| New Mexico | 0.40 | 0.06 | 02(01,38) | 30.15 ^c |
| Louisiana | 0.38 | 0.04 | 03(01,35) | 21.77 ^c |
| Tennessee | 0.37 | 0.03 | 04(01,33) | 18.26 ^c |
| Texas | 0.36 | 0.02 | 05(02,22) | 15.94 ^c |
| Low Five States | | | | |
| Nevada | 0.25 | 0.04 | 40(06,44) | -19.98 ^c |
| Massachusetts | 0.24 | 0.03 | 41(17,44) | -22.16 ^c |
| Iowa | 0.24 | 0.04 | 42(09,44) | -23.36 ^c |
| Hawaii | 0.23 | 0.05 | 43(03,44) | -26.43 ^c |
| Nebraska | 0.22 | 0.05 | 44(07,44) | -30.07 ^c |

| State | Rate | SE | Rank(CI) ^d | PD | State | Rate | SE | Rank(CI) ^d | PD |
|---------------|------|------|-----------------------|---------------------|----------------|------|------|-----------------------|---------------------|
| Alabama | 0.35 | 0.04 | 09(01,39) | 13.01 | Montana | 0.25 | 0.07 | 39(01,44) | -19.14 ^c |
| Alaska | - | - | -(-,-) | - | Nebraska | 0.22 | 0.05 | 44(07,44) | -30.07 ^c |
| Arizona | 0.29 | 0.03 | 28(05,43) | -5.80 | Nevada | 0.25 | 0.04 | 40(06,44) | -19.98 ^c |
| Arkansas | 0.36 | 0.05 | 07(01,41) | 15.03 ^c | New Hampshire | 0.42 | 0.08 | 01(01,42) | 34.66 ^c |
| California | 0.35 | 0.01 | 12(03,23) | 11.20 | New Jersey | 0.28 | 0.02 | 31(09,43) | -10.37 |
| Colorado | 0.28 | 0.03 | 30(05,44) | -9.93 | New Mexico | 0.40 | 0.06 | 02(01,38) | 30.15 ^c |
| Connecticut | 0.26 | 0.04 | 37(06,44) | -15.32 ^c | New York | 0.31 | 0.02 | 22(07,37) | -0.76 |
| Delaware | 0.36 | 0.08 | 06(01,44) | 15.17 ^c | North Carolina | 0.27 | 0.02 | 35(14,43) | -14.21 |
| D.C. | - | - | -(-,-) | - | North Dakota | - | - | -(-,-) | - |
| Florida | 0.28 | 0.02 | 29(15,41) | -9.64 | Ohio | 0.31 | 0.02 | 20(04,37) | 0.74 |
| Georgia | 0.32 | 0.03 | 19(03,40) | 1.97 | Oklahoma | 0.34 | 0.04 | 14(01,41) | 10.61 |
| Hawaii | 0.23 | 0.05 | 43(03,44) | -26.43 ^c | Oregon | 0.30 | 0.04 | 23(02,43) | -2.94 |
| Idaho | 0.30 | 0.06 | 26(01,44) | -4.01 | Pennsylvania | 0.31 | 0.02 | 21(05,38) | -0.09 |
| Illinois | 0.30 | 0.02 | 24(07,40) | -3.15 | Rhode Island | - | - | -(-,-) | - |
| Indiana | 0.32 | 0.03 | 18(02,41) | 3.33 | South Carolina | 0.33 | 0.04 | 15(01,41) | 5.38 |
| Iowa | 0.24 | 0.04 | 42(09,44) | -23.36 ^c | South Dakota | - | - | -(-,-) | - |
| Kansas | 0.28 | 0.04 | 32(02,44) | -10.44 | Tennessee | 0.37 | 0.03 | 04(01,33) | 18.26 ^c |
| Kentucky | 0.26 | 0.03 | 36(07,44) | -15.08 ^c | Texas | 0.36 | 0.02 | 05(02,22) | 15.94 ^c |
| Louisiana | 0.38 | 0.04 | 03(01,35) | 21.77 ^c | Utah | 0.28 | 0.05 | 33(01,44) | -10.52 |
| Maine | 0.26 | 0.06 | 38(01,44) | -16.92 ^c | Vermont | - | - | -(-,-) | - |
| Maryland | 0.30 | 0.03 | 25(03,43) | -3.30 | Virginia | 0.28 | 0.03 | 34(09,43) | -11.35 |
| Massachusetts | 0.24 | 0.03 | 41(17,44) | -22.16 ^c | Washington | 0.29 | 0.03 | 27(04,43) | -5.15 |
| Michigan | 0.32 | 0.02 | 16(02,38) | 4.23 | West Virginia | 0.35 | 0.06 | 11(01,44) | 11.77 |
| Minnesota | 0.32 | 0.03 | 17(01,41) | 3.73 | Wisconsin | 0.35 | 0.03 | 10(01,36) | 12.71 |
| Mississippi | 0.35 | 0.05 | 08(01,42) | 13.55 | Wyoming | - | - | -(-,-) | - |
| Missouri | 0.34 | 0.03 | 13(01,38) | 10.71 | | | | | |



^a US Mortality Files, National Center for Health Statistics, Centers for Disease Control and Prevention. Rates are per 100,000 and are age-adjusted to the 2000 US Std Population (19 age groups - Census P25-1130).

^b Difference between state rate and total U.S. rate is statistically significant ($p < .0002$).

^c Absolute percent difference between state rate and total U.S. rate is 15% or more.

^d Rank of state level death rate and the 95% confidence intervals (low, high) for the rank.

SE Standard error of the rate.

PD Percent difference between state rate and total U.S. rate.

- Statistic not shown. Rate based on less than 16 cases for the time interval.

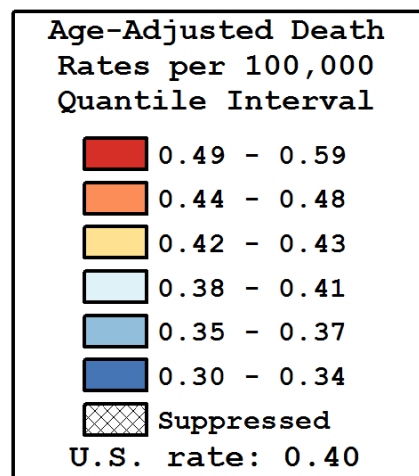
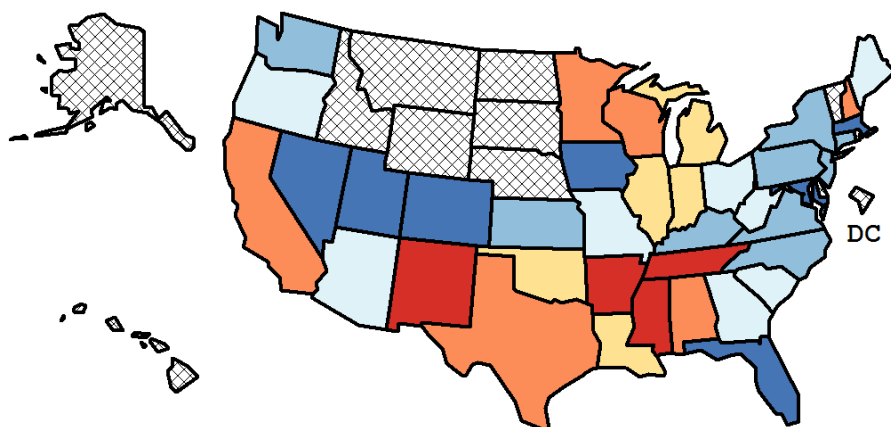
Table 9.19
Hodgkin Lymphoma

Age-Adjusted Cancer Death^a Rates By State, All Races, 2012-2016

Males

| State | Rate | SE | Rank(CI) ^d | PD |
|------------------|------|------|-----------------------|---------------------|
| TOTAL U.S. | 0.40 | 0.01 | | |
| High Five States | | | | |
| New Mexico | 0.59 | 0.11 | 01(01,35) | 48.39 ^c |
| Arkansas | 0.50 | 0.08 | 02(01,38) | 27.60 ^c |
| Tennessee | 0.50 | 0.06 | 03(01,30) | 27.50 ^c |
| Mississippi | 0.49 | 0.08 | 04(01,38) | 22.83 ^c |
| New Hampshire | 0.48 | 0.12 | 05(01,39) | 22.17 ^c |
| Low Five States | | | | |
| Iowa | 0.33 | 0.06 | 35(03,39) | -16.12 ^c |
| Nevada | 0.32 | 0.07 | 36(03,39) | -18.86 ^c |
| Utah | 0.32 | 0.08 | 37(02,39) | -19.05 ^c |
| Maryland | 0.32 | 0.05 | 38(08,39) | -19.79 ^c |
| Massachusetts | 0.30 | 0.04 | 39(12,39) | -23.00 ^c |

| State | Rate | SE | Rank(CI) ^d | PD | State | Rate | SE | Rank(CI) ^d | PD |
|---------------|------|------|-----------------------|---------------------|----------------|------|------|-----------------------|---------------------|
| Alabama | 0.47 | 0.06 | 08(01,36) | 18.23 ^c | Montana | - | - | -(-,-) | - |
| Alaska | - | - | -(-,-) | - | Nebraska | - | - | -(-,-) | - |
| Arizona | 0.38 | 0.05 | 23(04,39) | -3.90 | Nevada | 0.32 | 0.07 | 36(03,39) | -18.86 ^c |
| Arkansas | 0.50 | 0.08 | 02(01,38) | 27.60 ^c | New Hampshire | 0.48 | 0.12 | 05(01,39) | 22.17 ^c |
| California | 0.44 | 0.02 | 10(04,25) | 11.29 | New Jersey | 0.36 | 0.04 | 28(06,39) | -9.08 |
| Colorado | 0.34 | 0.06 | 33(04,39) | -13.36 | New Mexico | 0.59 | 0.11 | 01(01,35) | 48.39 ^c |
| Connecticut | 0.37 | 0.06 | 25(02,39) | -6.39 | New York | 0.36 | 0.03 | 27(10,38) | -7.80 |
| Delaware | - | - | -(-,-) | - | North Carolina | 0.35 | 0.04 | 30(07,39) | -10.63 |
| D.C. | - | - | -(-,-) | - | North Dakota | - | - | -(-,-) | - |
| Florida | 0.34 | 0.02 | 34(16,39) | -13.73 | Ohio | 0.40 | 0.04 | 21(04,37) | 1.53 |
| Georgia | 0.41 | 0.04 | 18(02,37) | 3.63 | Oklahoma | 0.42 | 0.07 | 15(01,39) | 5.33 |
| Hawaii | - | - | -(-,-) | - | Oregon | 0.41 | 0.06 | 17(01,39) | 3.65 |
| Idaho | - | - | -(-,-) | - | Pennsylvania | 0.37 | 0.03 | 24(08,38) | -6.30 |
| Illinois | 0.42 | 0.04 | 14(02,34) | 6.25 | Rhode Island | - | - | -(-,-) | - |
| Indiana | 0.43 | 0.05 | 13(01,38) | 8.02 | South Carolina | 0.41 | 0.06 | 19(01,39) | 3.48 |
| Iowa | 0.33 | 0.06 | 35(03,39) | -16.12 ^c | South Dakota | - | - | -(-,-) | - |
| Kansas | 0.37 | 0.07 | 26(01,39) | -6.96 | Tennessee | 0.50 | 0.06 | 03(01,30) | 27.50 ^c |
| Kentucky | 0.35 | 0.06 | 32(03,39) | -11.56 | Texas | 0.48 | 0.03 | 06(01,21) | 20.90 ^c |
| Louisiana | 0.43 | 0.06 | 12(01,38) | 8.56 | Utah | 0.32 | 0.08 | 37(02,39) | -19.05 ^c |
| Maine | 0.41 | 0.11 | 16(01,39) | 4.95 | Vermont | - | - | -(-,-) | - |
| Maryland | 0.32 | 0.05 | 38(08,39) | -19.79 ^c | Virginia | 0.35 | 0.04 | 29(06,39) | -10.27 |
| Massachusetts | 0.30 | 0.04 | 39(12,39) | -23.00 ^c | Washington | 0.35 | 0.04 | 31(05,39) | -11.51 |
| Michigan | 0.43 | 0.04 | 11(02,34) | 9.38 | West Virginia | 0.40 | 0.09 | 20(01,39) | 1.74 |
| Minnesota | 0.45 | 0.06 | 09(01,36) | 14.00 | Wisconsin | 0.47 | 0.06 | 07(01,34) | 19.08 ^c |
| Mississippi | 0.49 | 0.08 | 04(01,38) | 22.83 ^c | Wyoming | - | - | -(-,-) | - |
| Missouri | 0.39 | 0.05 | 22(02,39) | -0.53 | | | | | |



^a US Mortality Files, National Center for Health Statistics, Centers for Disease Control and Prevention. Rates are per 100,000 and are age-adjusted to the 2000 US Std Population (19 age groups - Census P25-1130).

^b Difference between state rate and total U.S. rate is statistically significant ($p < .0002$).

^c Absolute percent difference between state rate and total U.S. rate is 15% or more.

^d Rank of state level death rate and the 95% confidence intervals (low, high) for the rank.

SE Standard error of the rate.

PD Percent difference between state rate and total U.S. rate.

- Statistic not shown. Rate based on less than 16 cases for the time interval.

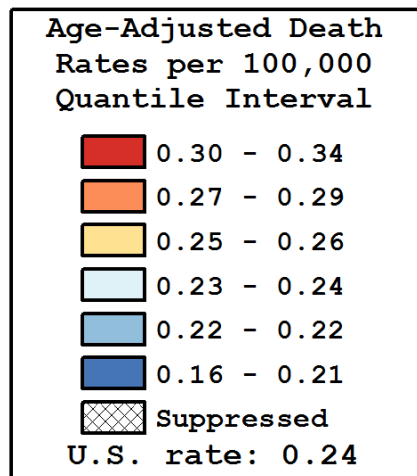
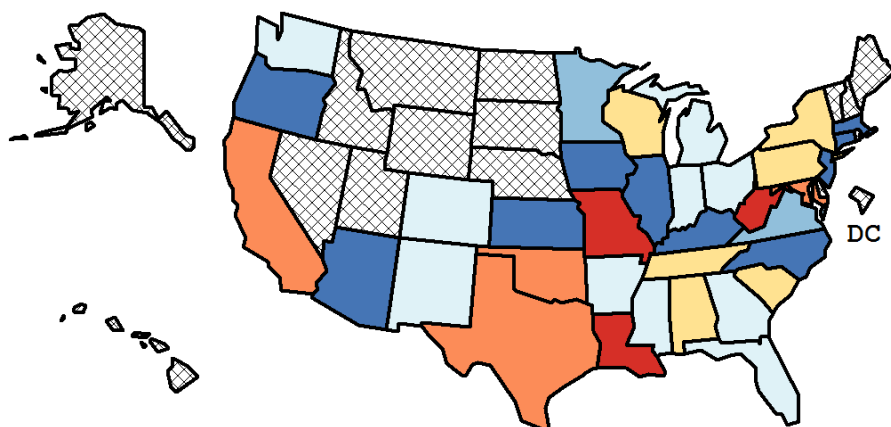
Table 9.20
Hodgkin Lymphoma

Age-Adjusted Cancer Death^a Rates By State, All Races, 2012-2016

Females

| State | Rate | SE | Rank(CI) ^d | PD |
|------------------|------|------|-----------------------|---------------------|
| TOTAL U.S. | 0.24 | 0.01 | | |
| High Five States | | | | |
| Louisiana | 0.34 | 0.05 | 01(01,26) | 40.61 ^c |
| West Virginia | 0.31 | 0.08 | 02(01,35) | 27.07 ^c |
| Missouri | 0.30 | 0.04 | 03(01,31) | 24.22 ^c |
| Oklahoma | 0.29 | 0.05 | 04(01,34) | 20.70 ^c |
| Maryland | 0.29 | 0.04 | 05(01,32) | 18.57 ^c |
| Low Five States | | | | |
| Illinois | 0.20 | 0.02 | 31(08,35) | -14.92 |
| North Carolina | 0.19 | 0.03 | 32(09,35) | -19.76 ^c |
| Massachusetts | 0.19 | 0.03 | 33(07,35) | -21.96 ^c |
| Connecticut | 0.16 | 0.04 | 34(07,35) | -32.55 ^c |
| Iowa | 0.16 | 0.04 | 35(06,35) | -34.44 ^c |

| State | Rate | SE | Rank(CI) ^d | PD | State | Rate | SE | Rank(CI) ^d | PD |
|---------------|------|------|-----------------------|---------------------|----------------|------|------|-----------------------|---------------------|
| Alabama | 0.25 | 0.04 | 11(01,35) | 5.94 | Montana | - | - | -(-,-) | - |
| Alaska | - | - | -(-,-) | - | Nebraska | - | - | -(-,-) | - |
| Arizona | 0.21 | 0.03 | 29(03,35) | -12.87 | Nevada | - | - | -(-,-) | - |
| Arkansas | 0.24 | 0.06 | 14(01,35) | 0.62 | New Hampshire | - | - | -(-,-) | - |
| California | 0.27 | 0.02 | 07(02,23) | 11.24 | New Jersey | 0.21 | 0.03 | 28(05,35) | -12.28 |
| Colorado | 0.23 | 0.04 | 21(01,35) | -3.92 | New Mexico | 0.23 | 0.06 | 19(01,35) | -2.38 |
| Connecticut | 0.16 | 0.04 | 34(07,35) | -32.55 ^c | New York | 0.26 | 0.02 | 09(02,27) | 9.02 |
| Delaware | - | - | -(-,-) | - | North Carolina | 0.19 | 0.03 | 32(09,35) | -19.76 ^c |
| D.C. | - | - | -(-,-) | - | North Dakota | - | - | -(-,-) | - |
| Florida | 0.23 | 0.02 | 23(06,32) | -4.47 | Ohio | 0.23 | 0.03 | 20(03,33) | -2.39 |
| Georgia | 0.24 | 0.03 | 17(02,34) | -1.27 | Oklahoma | 0.29 | 0.05 | 04(01,34) | 20.70 ^c |
| Hawaii | - | - | -(-,-) | - | Oregon | 0.21 | 0.04 | 26(01,35) | -11.47 |
| Idaho | - | - | -(-,-) | - | Pennsylvania | 0.26 | 0.03 | 08(01,29) | 10.09 |
| Illinois | 0.20 | 0.02 | 31(08,35) | -14.92 | Rhode Island | - | - | -(-,-) | - |
| Indiana | 0.24 | 0.04 | 18(02,35) | -2.11 | South Carolina | 0.25 | 0.04 | 12(01,35) | 4.37 |
| Iowa | 0.16 | 0.04 | 35(06,35) | -34.44 ^c | South Dakota | - | - | -(-,-) | - |
| Kansas | 0.21 | 0.05 | 27(01,35) | -11.86 | Tennessee | 0.26 | 0.04 | 10(01,34) | 7.65 |
| Kentucky | 0.21 | 0.04 | 30(02,35) | -14.04 | Texas | 0.27 | 0.02 | 06(02,25) | 12.03 |
| Louisiana | 0.34 | 0.05 | 01(01,26) | 40.61 ^c | Utah | - | - | -(-,-) | - |
| Maine | - | - | -(-,-) | - | Vermont | - | - | -(-,-) | - |
| Maryland | 0.29 | 0.04 | 05(01,32) | 18.57 ^c | Virginia | 0.22 | 0.03 | 25(03,35) | -10.02 |
| Massachusetts | 0.19 | 0.03 | 33(07,35) | -21.96 ^c | Washington | 0.24 | 0.04 | 15(01,34) | 0.29 |
| Michigan | 0.23 | 0.03 | 22(03,34) | -4.29 | West Virginia | 0.31 | 0.08 | 02(01,35) | 27.07 ^c |
| Minnesota | 0.22 | 0.04 | 24(02,35) | -9.25 | Wisconsin | 0.25 | 0.04 | 13(01,34) | 1.91 |
| Mississippi | 0.24 | 0.05 | 16(01,35) | 0.00 | Wyoming | - | - | -(-,-) | - |
| Missouri | 0.30 | 0.04 | 03(01,31) | 24.22 ^c | | | | | |



^a US Mortality Files, National Center for Health Statistics, Centers for Disease Control and Prevention. Rates are per 100,000 and are age-adjusted to the 2000 US Std Population (19 age groups - Census P25-1130).

^b Difference between state rate and total U.S. rate is statistically significant (p<=.0002).

^c Absolute percent difference between state rate and total U.S. rate is 15% or more.

^d Rank of state level death rate and the 95% confidence intervals (low, high) for the rank.

SE Standard error of the rate.

PD Percent difference between state rate and total U.S. rate.

- Statistic not shown. Rate based on less than 16 cases for the time interval.

Table 9.21
Hodgkin LymphomaEstimated United States Cancer Prevalence Counts^a on January 1, 2016
By Race/Ethnicity, Sex and Years Since Diagnosis

| Years Since Diagnosis | | 0 to <5 | 5 to <10 | 10 to <15 | 15 to <20 | 20 to <24 | 0 to <24 ^b | >=24 ^d | Complete ^e |
|-------------------------------|------------|---------|----------|-----------|-----------|-----------|-----------------------|-------------------|-----------------------|
| <u>Race</u> | <u>Sex</u> | | | | | | | | |
| All Races | Both Sexes | 37,437 | 35,145 | 29,981 | 25,990 | 18,237 | 146,789 | 64,184 | 210,974 |
| | Males | 20,890 | 18,902 | 15,287 | 13,181 | 8,972 | 77,233 | 31,343 | 108,576 |
| | Females | 16,547 | 16,243 | 14,694 | 12,808 | 9,264 | 69,556 | 32,841 | 102,397 |
| White | Both Sexes | 30,507 | 29,258 | 25,439 | 22,613 | 16,108 | 123,925 | 61,817 | 187,446 |
| | Males | 17,050 | 15,906 | 13,104 | 11,426 | 7,981 | 65,468 | 31,491 | 97,930 |
| | Females | 13,457 | 13,352 | 12,334 | 11,187 | 8,126 | 58,457 | 30,325 | 89,516 |
| Black | Both Sexes | 4,976 | 4,443 | 3,427 | 2,643 | 1,745 | 17,234 | 5,362 | 22,597 |
| | Males | 2,773 | 2,284 | 1,554 | 1,334 | 831 | 8,777 | 3,481 | 12,258 |
| | Females | 2,203 | 2,159 | 1,873 | 1,310 | 913 | 8,458 | 1,881 | 10,339 |
| Asian/ Pacific Islander | Both Sexes | 1,082 | 927 | 720 | 414 | 229 | 3,372 | + | + |
| | Males | 592 | 445 | 373 | 227 | 77 | 1,714 | + | + |
| | Females | 491 | 482 | 347 | 187 | 151 | 1,658 | + | + |
| Hispanic | Both Sexes | 4,772 | 4,081 | 2,993 | 2,316 | 1,344 | 15,506 | + | + |
| | Males | 2,636 | 2,220 | 1,628 | 1,260 | 734 | 8,480 | + | + |
| | Females | 2,136 | 1,861 | 1,364 | 1,056 | 610 | 7,026 | + | + |

Estimated prevalence percent^a on January 1, 2016, of the SEER population diagnosed in the previous 24 years
By Age at Prevalence, Race/Ethnicity and Sex

| Age at Prevalence | | Age Specific (Crude) | | | | | | | | | | Age-Adjusted ^c |
|-------------------------------|------------|----------------------|--------|--------|--------|--------|--------|--------|--------|--------|--------|---------------------------|
| | | All Ages | 0-9 | 10-19 | 20-29 | 30-39 | 40-49 | 50-59 | 60-69 | 70-79 | 80+ | All Ages |
| <u>Race</u> | <u>Sex</u> | | | | | | | | | | | |
| All Races | Both Sexes | 0.0456 | 0.0006 | 0.0106 | 0.0412 | 0.0729 | 0.0801 | 0.0637 | 0.0502 | 0.0477 | 0.0372 | 0.0454 |
| | Males | 0.0487 | 0.0009 | 0.0120 | 0.0424 | 0.0700 | 0.0826 | 0.0722 | 0.0605 | 0.0580 | 0.0453 | 0.0483 |
| | Females | 0.0425 | 0.0004 | 0.0090 | 0.0400 | 0.0758 | 0.0776 | 0.0556 | 0.0410 | 0.0390 | 0.0323 | 0.0428 |
| White | Both Sexes | 0.0491 | 0.0005 | 0.0109 | 0.0450 | 0.0796 | 0.0861 | 0.0672 | 0.0525 | 0.0503 | 0.0403 | 0.0487 |
| | Males | 0.0524 | 0.0007 | 0.0120 | 0.0464 | 0.0758 | 0.0884 | 0.0754 | 0.0626 | 0.0611 | 0.0487 | 0.0514 |
| | Females | 0.0460 | 0.0003 | 0.0098 | 0.0436 | 0.0835 | 0.0838 | 0.0592 | 0.0431 | 0.0411 | 0.0350 | 0.0462 |
| Black | Both Sexes | 0.0382 | 0.0015 | 0.0102 | 0.0317 | 0.0622 | 0.0740 | 0.0609 | 0.0478 | 0.0392 | 0.0179 | 0.0400 |
| | Males | 0.0406 | 0.0021 | 0.0127 | 0.0313 | 0.0608 | 0.0744 | 0.0725 | 0.0602 | 0.0475 | 0.0256 | 0.0432 |
| | Females | 0.0360 | 0.0008 | 0.0075 | 0.0322 | 0.0635 | 0.0736 | 0.0508 | 0.0379 | 0.0335 | 0.0141 | 0.0375 |
| Asian/ Pacific Islander | Both Sexes | 0.0166 | 0.0003 | 0.0070 | 0.0203 | 0.0282 | 0.0233 | 0.0178 | 0.0143 | 0.0150 | 0.0096 | 0.0158 |
| | Males | 0.0176 | - | 0.0098 | 0.0245 | 0.0264 | 0.0244 | 0.0182 | 0.0141 | 0.0197 | 0.0121 | 0.0169 |
| | Females | 0.0156 | - | 0.0042 | 0.0162 | 0.0299 | 0.0224 | 0.0175 | 0.0145 | 0.0112 | 0.0080 | 0.0147 |
| Hispanic | Both Sexes | 0.0271 | 0.0007 | 0.0096 | 0.0300 | 0.0440 | 0.0423 | 0.0396 | 0.0429 | 0.0493 | 0.0313 | 0.0302 |
| | Males | 0.0294 | 0.0009 | 0.0112 | 0.0324 | 0.0437 | 0.0449 | 0.0446 | 0.0528 | 0.0569 | 0.0472 | 0.0333 |
| | Females | 0.0249 | 0.0005 | 0.0080 | 0.0275 | 0.0442 | 0.0395 | 0.0347 | 0.0341 | 0.0434 | 0.0215 | 0.0274 |

^a US 2016 cancer prevalence counts are based on 2016 cancer prevalence proportions from the SEER 13 Areas (excluding the Alaska Native Registry) and 1/1/2016 US population estimates based on the average of 2015 and 2016 population estimates from the US Bureau of the Census.

^b Prevalence was calculated using the first invasive tumor for each cancer site diagnosed during the previous 24 years. Maximum limited-duration prevalence is 24 years for 1992-2016 data.

^c Percentages are age-adjusted to the 2000 US Standard Population (19 age groups - Census P25-1130) by 5-year age groups.

^d Cases diagnosed more than 24 years ago were estimated using the completeness index method (Capocaccia et. al. 1997, Merrill et. al. 2000).

^e Complete prevalence is obtained by summing 0 to <24 and >=24.

- Statistic not shown. Statistic based on fewer than 5 cases estimated alive in SEER for the time interval.

+ Not available.

Table 9.22
All Lymphoid Neoplasms With Detailed Hodgkin Lymphoma Subtypes^a

SEER^b Incidence Rates and Annual Percent Change by Age at Diagnosis

All Races, Both Sexes, 2007-2016

| Site | All Ages | | | Ages 0-19 | | | Ages 20-64 | | | Ages 65+ | | |
|--|----------|---------|--------|-----------|--------|-------|------------|---------|-------|----------|---------|-------|
| | Rate | Count | APC | Rate | Count | APC | Rate | Count | APC | Rate | Count | APC |
| Lymphoid Neoplasm | 37.2 | 452,924 | -0.5* | 6.2 | 18,862 | 0.4 | 24.7 | 189,692 | -0.5* | 165.7 | 244,370 | -0.5 |
| 1 Hodgkin Lymphoma | 2.8 | 32,262 | -1.7* | 1.3 | 3,927 | -0.6 | 3.3 | 22,556 | -1.5* | 3.9 | 5,779 | -3.1* |
| 1(a) Classical Hodgkin lymphoma | 2.6 | 30,059 | -2.1* | 1.2 | 3,618 | -1.3* | 3.0 | 21,017 | -2.0* | 3.7 | 5,424 | -3.3* |
| 1(a)1. Lymphocyte-rich/mixed cellularity/ lymphocyte-depleted | 0.4 | 4,809 | -6.0* | 0.1 | 382 | -4.7 | 0.4 | 3,151 | -4.9* | 0.9 | 1,276 | -8.8* |
| 1(a)1.1 Lymphocyte-rich | 0.1 | 1,033 | -5.7* | 0.0 | 79 | - | 0.1 | 719 | -4.8* | 0.2 | 235 | -7.0* |
| 1(a)1.2 Mixed cellularity | 0.3 | 3,458 | -5.5* | 0.1 | 289 | -3.6 | 0.3 | 2,260 | -4.5* | 0.6 | 909 | -8.2* |
| 1(a)1.3 Lymphocyte-depleted | 0.0 | 318 | -12.3* | - | - | - | 0.0 | 172 | - | 0.1 | 132 | - |
| 1(a)2. Nodular sclerosis | 1.5 | 16,753 | -3.3* | 0.8 | 2,606 | -2.4* | 1.8 | 12,373 | -3.2* | 1.2 | 1,774 | -5.1* |
| 1(a)3. Classical Hodgkin lymphoma, NOS ^c | 0.7 | 8,497 | 2.5* | 0.2 | 630 | 5.4* | 0.8 | 5,493 | 2.7* | 1.6 | 2,374 | 1.1 |
| 1(b) Nodular lymphocyte predominant Hodgkin Lymphoma | 0.2 | 2,203 | 5.2* | 0.1 | 309 | 9.0* | 0.2 | 1,539 | 5.5* | 0.2 | 355 | 1.1 |
| 2 Non-Hodgkin lymphoma | 33.6 | 409,991 | -0.3 | 4.8 | 14,693 | 0.4 | 21.0 | 163,591 | -0.3 | 157.2 | 231,707 | -0.4 |
| 3 Composite Hodgkin lymphoma and Non-Hodgkin lymphoma | 0.1 | 762 | 27.3* | 0.0 | 20 | - | 0.0 | 339 | 22.7* | 0.3 | 403 | - |
| 4 Lymphoid neoplasm, NOS ^c | 0.8 | 9,909 | -5.5* | 0.1 | 222 | 11.3* | 0.4 | 3,206 | -5.9* | 4.3 | 6,481 | -5.9* |

^a The APC is the Annual Percent Change over the time interval.

Morton LM, Turner JJ, Cerhan JR, Linet MS, Treseler PA, Clarke CA, Jack A, Cozen W, Maynadié M, Spinelli JJ, Costantini AS, Rüdiger T, Scarpa A, Zheng T, Weisenburger DD. Proposed classification of lymphoid neoplasms for epidemiologic research from the Pathology Working Group of the International Lymphoma Epidemiology Consortium (InterLymph). *Blood*. 2007;110:695-708.

^b SEER 21 areas (San Francisco, Connecticut, Detroit, Hawaii, Iowa, New Mexico, Seattle, Utah, Atlanta, San Jose-Monterey, Los Angeles, Alaska Native Registry, Rural Georgia, California excluding SF/SJM/LA, Kentucky, Louisiana, New Jersey, Georgia excluding ATL/RG, Idaho, New York and Massachusetts).

^c NOS = Not otherwise specified.

* The APC is significantly different from zero (p<.05).

- Statistic not shown. Rate based on less than 16 cases for the time interval.

- Trend based on less than 10 cases for at least one year within the time interval.

Table 9.23
All Lymphoid Neoplasms With Detailed Hodgkin Lymphoma Subtypes^a

SEER^b Incidence Rates and Annual Percent Change by Age at Diagnosis

All Races, Males, 2007-2016

| Site | All Ages | | | Ages 0-19 | | | Ages 20-64 | | | Ages 65+ | | |
|--|----------|---------|-------|-----------|--------|-------|------------|---------|-------|----------|---------|-------|
| | Rate | Count | APC | Rate | Count | APC | Rate | Count | APC | Rate | Count | APC |
| Lymphoid Neoplasm | 46.1 | 253,152 | -0.5* | 7.0 | 10,973 | 0.5 | 29.4 | 110,367 | -0.7* | 212.2 | 131,812 | -0.5 |
| 1 Hodgkin Lymphoma | 3.1 | 17,710 | -1.7* | 1.3 | 2,118 | -0.3 | 3.6 | 12,525 | -1.6* | 4.8 | 3,067 | -3.1* |
| 1(a) Classical Hodgkin lymphoma | 2.9 | 16,267 | -2.2* | 1.2 | 1,866 | -1.4* | 3.3 | 11,513 | -2.1* | 4.6 | 2,888 | -3.2* |
| 1(a)1. Lymphocyte-rich/mixed cellularity/ lymphocyte-depleted | 0.5 | 3,046 | -5.4* | 0.2 | 270 | -4.9 | 0.6 | 2,126 | -4.4* | 1.0 | 650 | -7.9* |
| 1(a)1.1 Lymphocyte-rich | 0.1 | 616 | -5.6* | 0.0 | 60 | - | 0.1 | 455 | -4.4* | 0.2 | 101 | - |
| 1(a)1.2 Mixed cellularity | 0.4 | 2,232 | -4.8* | 0.1 | 204 | - | 0.4 | 1,549 | -4.1* | 0.8 | 479 | -6.9* |
| 1(a)1.3 Lymphocyte-depleted | 0.0 | 198 | - | - | - | - | 0.0 | 122 | - | 0.1 | 70 | - |
| 1(a)2. Nodular sclerosis | 1.5 | 8,359 | -3.6* | 0.8 | 1,248 | -2.2 | 1.8 | 6,162 | -3.6* | 1.5 | 949 | -5.1* |
| 1(a)3. Classical Hodgkin lymphoma, NOS ^c | 0.9 | 4,862 | 2.1* | 0.2 | 348 | 4.9* | 0.9 | 3,225 | 2.4* | 2.1 | 1,289 | 0.7 |
| 1(b) Nodular lymphocyte predominant Hodgkin Lymphoma | 0.3 | 1,443 | 4.7* | 0.2 | 252 | 9.2* | 0.3 | 1,012 | 4.9* | 0.3 | 179 | -1.2 |
| 2 Non-Hodgkin lymphoma | 41.9 | 229,772 | -0.3 | 5.6 | 8,711 | 0.5 | 25.2 | 95,756 | -0.5* | 201.7 | 125,305 | -0.3 |
| 3 Composite Hodgkin lymphoma and Non-Hodgkin lymphoma | 0.1 | 435 | 27.1* | - | - | - | 0.1 | 215 | - | 0.3 | 207 | - |
| 4 Lymphoid neoplasm, NOS ^c | 1.0 | 5,235 | -5.9* | 0.1 | 131 | - | 0.5 | 1,871 | -6.5* | 5.4 | 3,233 | -6.1* |

^a The APC is the Annual Percent Change over the time interval.

Morton LM, Turner JJ, Cerhan JR, Linet MS, Treseler PA, Clarke CA, Jack A, Cozen W, Maynadié M, Spinelli JJ, Costantini AS, Rüdiger T, Scarpa A, Zheng T, Weisenburger DD. Proposed classification of lymphoid neoplasms for epidemiologic research from the Pathology Working Group of the International Lymphoma Epidemiology Consortium (InterLymph). *Blood*. 2007;110:695-708.

^b SEER 21 areas (San Francisco, Connecticut, Detroit, Hawaii, Iowa, New Mexico, Seattle, Utah, Atlanta, San Jose-Monterey, Los Angeles, Alaska Native Registry, Rural Georgia, California excluding SF/SJM/LA, Kentucky, Louisiana, New Jersey, Georgia excluding ATL/RG, Idaho, New York and Massachusetts).

^c NOS = Not otherwise specified.

* The APC is significantly different from zero (p<.05).

- Statistic not shown. Rate based on less than 16 cases for the time interval.

- Trend based on less than 10 cases for at least one year within the time interval.

Table 9.24
All Lymphoid Neoplasms With Detailed Hodgkin Lymphoma Subtypes^a

SEER^b Incidence Rates and Annual Percent Change by Age at Diagnosis

All Races, Females, 2007-2016

| Site | All Ages | | | Ages 0-19 | | | Ages 20-64 | | | Ages 65+ | | |
|--|----------|---------|-------|-----------|-------|------|------------|--------|-------|----------|---------|--------|
| | Rate | Count | APC | Rate | Count | APC | Rate | Count | APC | Rate | Count | APC |
| Lymphoid Neoplasm | 30.1 | 199,772 | -0.5* | 5.3 | 7,889 | 0.2 | 20.2 | 79,325 | -0.2 | 132.2 | 112,558 | -0.8* |
| 1 Hodgkin Lymphoma | 2.4 | 14,552 | -1.6* | 1.2 | 1,809 | -1.0 | 2.9 | 10,031 | -1.4* | 3.2 | 2,712 | -3.2* |
| 1(a) Classical Hodgkin lymphoma | 2.3 | 13,792 | -2.0* | 1.1 | 1,752 | -1.3 | 2.7 | 9,504 | -1.8* | 3.0 | 2,536 | -3.7* |
| 1(a)1. Lymphocyte-rich/mixed cellularity/ lymphocyte-depleted | 0.3 | 1,763 | -7.1* | 0.1 | 112 | - | 0.3 | 1,025 | -5.9* | 0.8 | 626 | -9.9* |
| 1(a)1.1 Lymphocyte-rich | 0.1 | 417 | -5.8* | 0.0 | 19 | - | 0.1 | 264 | -5.4* | 0.2 | 134 | - |
| 1(a)1.2 Mixed cellularity | 0.2 | 1,226 | -6.9* | 0.1 | 85 | - | 0.2 | 711 | -5.5* | 0.5 | 430 | -10.0* |
| 1(a)1.3 Lymphocyte-depleted | 0.0 | 120 | - | - | - | - | 0.0 | 50 | - | 0.1 | 62 | - |
| 1(a)2. Nodular sclerosis | 1.4 | 8,394 | -3.0* | 0.9 | 1,358 | -2.5 | 1.8 | 6,211 | -2.8* | 1.0 | 825 | -5.3* |
| 1(a)3. Classical Hodgkin lymphoma, NOS ^c | 0.6 | 3,635 | 3.0* | 0.2 | 282 | 6.3* | 0.6 | 2,268 | 3.1* | 1.3 | 1,085 | 1.5 |
| 1(b) Nodular lymphocyte predominant Hodgkin Lymphoma | 0.1 | 760 | 6.3* | 0.0 | 57 | - | 0.1 | 527 | 6.6* | 0.2 | 176 | 3.8 |
| 2 Non-Hodgkin lymphoma | 26.9 | 180,219 | -0.3 | 4.0 | 5,982 | 0.3 | 17.0 | 67,835 | 0.0 | 125.1 | 106,402 | -0.6* |
| 3 Composite Hodgkin lymphoma and Non-Hodgkin lymphoma | 0.0 | 327 | - | - | - | - | 0.0 | 124 | - | 0.2 | 196 | - |
| 4 Lymphoid neoplasm, NOS ^c | 0.7 | 4,674 | -5.2* | 0.1 | 91 | - | 0.3 | 1,335 | -5.1* | 3.6 | 3,248 | -5.8* |

^a The APC is the Annual Percent Change over the time interval.

Morton LM, Turner JJ, Cerhan JR, Linet MS, Treseler PA, Clarke CA, Jack A, Cozen W, Maynadié M, Spinelli JJ, Costantini AS, Rüdiger T, Scarpa A, Zheng T, Weisenburger DD. Proposed classification of lymphoid neoplasms for epidemiologic research from the Pathology Working Group of the International Lymphoma Epidemiology Consortium (InterLymph). *Blood*. 2007;110:695-708.

^b SEER 21 areas (San Francisco, Connecticut, Detroit, Hawaii, Iowa, New Mexico, Seattle, Utah, Atlanta, San Jose-Monterey, Los Angeles, Alaska Native Registry, Rural Georgia, California excluding SF/SJM/LA, Kentucky, Louisiana, New Jersey, Georgia excluding ATL/RG, Idaho, New York and Massachusetts).

^c NOS = Not otherwise specified.

* The APC is significantly different from zero (p<.05).

- Statistic not shown. Rate based on less than 16 cases for the time interval.

- Trend based on less than 10 cases for at least one year within the time interval.

Table 9.25
All Lymphoid Neoplasms With Detailed Hodgkin Lymphoma Subtypes^a
SEER^b 5-Year Relative Survival (Percent) by Age at Diagnosis
All Races, Both Sexes, 2009-2015

| Site | All Ages | | Ages 0-19 | | Ages 20-64 | | Ages 65+ | |
|--|----------|----------------------|-----------------------|----------------------|----------------------|----------------------|----------|--|
| | Count | Percent (95% C.I.) | Percent (95% C.I.) | Percent (95% C.I.) | Percent (95% C.I.) | Percent (95% C.I.) | | |
| Lymphoid Neoplasm | 184,989 | 71.3 (71.0 , 71.6) | 90.5 (89.8 , 91.2) | 78.6 (78.3 , 78.9) | 61.7 (61.2 , 62.2) | | | |
| 1 Hodgkin Lymphoma | 14,589 | 86.6 (85.9 , 87.3) | 97.3 (96.2 , 98.0) | 90.0 (89.3 , 90.7) | 58.0 (55.0 , 60.9) | | | |
| 1(a) Classical Hodgkin lymphoma | 13,606 | 85.8 (85.1 , 86.5) | 97.0 (95.9 , 97.8) | 89.7 (88.9 , 90.4) | 55.1 (51.9 , 58.1) | | | |
| 1(a)1. Lymphocyte-rich/mixed cellularity/ lymphocyte-depleted | 2,098 | 83.6 (81.6 , 85.5) | 99.5 (94.2 , 100.0) | 88.1 (86.0 , 90.0) | 61.6 (55.3 , 67.2) | | | |
| 1(a)1.1 Lymphocyte-rich | 421 | 91.3 (86.7 , 94.4) | 100.0 (- , -) | 95.7 (91.1 , 97.9) | 67.6 (49.4 , 80.5) | | | |
| 1(a)1.2 Mixed cellularity | 1,543 | 83.7 (81.2 , 85.8) | 99.3 (92.9 , 99.9) | 87.4 (84.8 , 89.6) | 63.7 (56.4 , 70.2) | | | |
| 1(a)1.3 Lymphocyte-depleted | 134 | 58.9 (49.2 , 67.4) | 100.0 (- , -) | 68.6 (56.6 , 77.9) | 32.2 (16.7 , 48.7) | | | |
| 1(a)2. Nodular sclerosis | 7,729 | 90.6 (89.8 , 91.4) | 97.2 (95.8 , 98.1) | 92.5 (91.6 , 93.3) | 60.3 (55.0 , 65.2) | | | |
| 1(a)3. Classical Hodgkin lymphoma, NOS ^c | 3,779 | 77.0 (75.2 , 78.6) | 94.3 (90.0 , 96.8) | 84.1 (82.3 , 85.8) | 45.5 (40.5 , 50.5) | | | |
| 1(b) Nodular lymphocyte predominant Hodgkin Lymphoma | 983 | 96.6 (94.5 , 97.9) | 100.0 (- , -) | 95.2 (92.2 , 97.0) | 94.1 (85.0 , 97.8) | | | |
| 2 Non-Hodgkin lymphoma | 166,396 | 70.4 (70.1 , 70.7) | 88.8 (88.0 , 89.6) | 77.2 (76.8 , 77.5) | 62.4 (61.9 , 62.9) | | | |
| 3 Composite Hodgkin lymphoma and Non-Hodgkin lymphoma | 290 | 77.3 (70.4 , 82.8) | - (- , -) | 83.9 (76.3 , 89.2) | 65.7 (51.3 , 76.8) | | | |
| 4 Lymphoid neoplasm, NOS ^c | 3,714 | 51.7 (49.6 , 53.7) | 84.7 (76.3 , 90.4) | 66.9 (64.0 , 69.5) | 40.0 (37.2 , 42.8) | | | |

^a Morton LM, Turner JJ, Cerhan JR, Linet MS, Treseler PA, Clarke CA, Jack A, Cozen W, Maynadié M, Spinelli JJ, Costantini AS, Rüdiger T, Scarpa A, Zheng T, Weisenburger DD. Proposed classification of lymphoid neoplasms for epidemiologic research from the Pathology Working Group of the International Lymphoma Epidemiology Consortium (InterLymph). *Blood*. 2007;110:695-708.

^b SEER 18 areas (San Francisco, Connecticut, Detroit, Hawaii, Iowa, New Mexico, Seattle, Utah, Atlanta, San Jose-Monterey, Los Angeles, Alaska Native Registry, Rural Georgia, California excluding SF/SJM/LA, Kentucky, Louisiana, New Jersey and Georgia excluding ATL/RG). [Expected survival rates](#) are derived from life tables by socio-economic status, geography and race developed by the SEER program.

^c NOS = Not otherwise specified.

- Statistic not displayed due to less than 25 cases.

Table 9.26
All Lymphoid Neoplasms With Detailed Hodgkin Lymphoma Subtypes^a

SEER^b 5-Year Relative Survival (Percent) by Age at Diagnosis

All Races, Males, 2009-2015

| Site | All Ages | | Ages 0-19 | | Ages 20-64 | | Ages 65+ | |
|--|----------|----------------------|----------------------|----------------------|----------------------|----------------------|----------------------|--|
| | Count | Percent (95% C.I.) | Percent (95% C.I.) | Percent (95% C.I.) | Percent (95% C.I.) | Percent (95% C.I.) | Percent (95% C.I.) | |
| Lymphoid Neoplasm | 103,504 | 70.7 (70.4 , 71.1) | 90.3 (89.3 , 91.1) | 76.7 (76.3 , 77.2) | 61.4 (60.7 , 62.1) | | | |
| 1 Hodgkin Lymphoma | 8,077 | 85.6 (84.6 , 86.5) | 97.3 (95.7 , 98.3) | 88.4 (87.4 , 89.4) | 58.4 (54.2 , 62.3) | | | |
| 1(a) Classical Hodgkin lymphoma | 7,383 | 84.5 (83.4 , 85.5) | 96.9 (95.0 , 98.1) | 87.9 (86.8 , 88.9) | 55.0 (50.7 , 59.1) | | | |
| 1(a)1. Lymphocyte-rich/mixed cellularity/ lymphocyte-depleted | 1,351 | 84.6 (82.0 , 86.8) | 100.0 (- , -) | 88.1 (85.4 , 90.3) | 59.7 (51.1 , 67.3) | | | |
| 1(a)1.1 Lymphocyte-rich | 253 | 91.7 (86.7 , 94.9) | 100.0 (- , -) | 96.4 (91.3 , 98.5) | 59.3 (36.6 , 76.2) | | | |
| 1(a)1.2 Mixed cellularity | 1,019 | 84.7 (81.7 , 87.2) | 100.0 (- , -) | 87.6 (84.3 , 90.2) | 62.1 (52.8 , 70.0) | | | |
| 1(a)1.3 Lymphocyte-depleted | 79 | 58.6 (45.6 , 69.6) | 100.0 (- , -) | 63.2 (47.9 , 75.2) | 39.6 (15.9 , 62.6) | | | |
| 1(a)2. Nodular sclerosis | 3,869 | 89.2 (87.9 , 90.4) | 97.2 (94.8 , 98.5) | 91.0 (89.6 , 92.3) | 60.0 (52.5 , 66.7) | | | |
| 1(a)3. Classical Hodgkin lymphoma, NOS ^c | 2,163 | 75.6 (73.2 , 77.8) | 92.2 (84.5 , 96.2) | 81.6 (79.0 , 83.8) | 46.2 (39.0 , 53.1) | | | |
| 1(b) Nodular lymphocyte predominant Hodgkin Lymphoma | 694 | 96.7 (94.0 , 98.2) | 100.0 (- , -) | 94.7 (91.3 , 96.8) | 96.9 (69.3 , 99.7) | | | |
| 2 Non-Hodgkin lymphoma | 93,329 | 69.8 (69.4 , 70.3) | 88.7 (87.5 , 89.7) | 75.4 (74.9 , 75.9) | 62.0 (61.3 , 62.7) | | | |
| 3 Composite Hodgkin lymphoma and Non-Hodgkin lymphoma | 163 | 80.6 (72.8 , 86.3) | - (- , -) | 83.5 (74.2 , 89.6) | 73.2 (57.0 , 84.1) | | | |
| 4 Lymphoid neoplasm, NOS ^c | 1,935 | 49.3 (46.4 , 52.1) | 83.6 (72.1 , 90.7) | 60.0 (56.0 , 63.8) | 38.6 (34.5 , 42.6) | | | |

^a Morton LM, Turner JJ, Cerhan JR, Linet MS, Treseler PA, Clarke CA, Jack A, Cozen W, Maynadié M, Spinelli JJ, Costantini AS, Rüdiger T, Scarpa A, Zheng T, Weisenburger DD. Proposed classification of lymphoid neoplasms for epidemiologic research from the Pathology Working Group of the International Lymphoma Epidemiology Consortium (InterLymph). *Blood*. 2007;110:695-708.

^b SEER 18 areas (San Francisco, Connecticut, Detroit, Hawaii, Iowa, New Mexico, Seattle, Utah, Atlanta, San Jose-Monterey, Los Angeles, Alaska Native Registry, Rural Georgia, California excluding SF/SJM/LA, Kentucky, Louisiana, New Jersey and Georgia excluding ATL/RG). [Expected survival rates](#) are derived from life tables by socio-economic status, geography and race developed by the SEER program.

^c NOS = Not otherwise specified.

- Statistic not displayed due to less than 25 cases.

Table 9.27
All Lymphoid Neoplasms With Detailed Hodgkin Lymphoma Subtypes^a
SEER^b 5-Year Relative Survival (Percent) by Age at Diagnosis
All Races, Females, 2009-2015

| Site | All Ages | | Ages 0-19 | | Ages 20-64 | | Ages 65+ | |
|--|----------|----------------------|----------------------|----------------------|----------------------|----------------------|----------------------|--|
| | Count | Percent (95% C.I.) | Percent (95% C.I.) | Percent (95% C.I.) | Percent (95% C.I.) | Percent (95% C.I.) | Percent (95% C.I.) | |
| Lymphoid Neoplasm | 81,485 | 72.1 (71.7 , 72.5) | 90.8 (89.8 , 91.8) | 81.3 (80.8 , 81.8) | 62.1 (61.4 , 62.8) | | | |
| 1 Hodgkin Lymphoma | 6,512 | 87.8 (86.8 , 88.8) | 97.1 (95.6 , 98.1) | 92.1 (91.1 , 92.9) | 57.4 (52.9 , 61.6) | | | |
| 1(a) Classical Hodgkin lymphoma | 6,223 | 87.4 (86.4 , 88.4) | 97.0 (95.5 , 98.1) | 91.9 (90.8 , 92.8) | 55.0 (50.5 , 59.4) | | | |
| 1(a)1. Lymphocyte-rich/mixed cellularity/ lymphocyte-depleted | 747 | 81.9 (78.2 , 85.1) | 97.7 (84.2 , 99.7) | 88.1 (84.2 , 91.1) | 63.4 (53.6 , 71.6) | | | |
| 1(a)1.1 Lymphocyte-rich | 168 | 90.0 (80.7 , 94.9) | 100.0 (- , -) | 93.3 (83.7 , 97.3) | 74.8 (44.1 , 90.2) | | | |
| 1(a)1.2 Mixed cellularity | 524 | 81.4 (76.9 , 85.1) | 96.8 (78.9 , 99.6) | 86.9 (82.1 , 90.6) | 65.0 (53.7 , 74.2) | | | |
| 1(a)1.3 Lymphocyte-depleted | 55 | 57.3 (42.8 , 69.4) | 100.0 (- , -) | 78.2 (57.2 , 89.7) | 19.5 (6.0 , 38.7) | | | |
| 1(a)2. Nodular sclerosis | 3,860 | 92.0 (90.9 , 93.0) | 97.1 (95.2 , 98.3) | 93.9 (92.7 , 94.9) | 60.7 (52.8 , 67.6) | | | |
| 1(a)3. Classical Hodgkin lymphoma, NOS ^c | 1,616 | 78.8 (76.2 , 81.1) | 96.5 (91.6 , 98.6) | 87.8 (85.2 , 90.0) | 44.9 (37.8 , 51.8) | | | |
| 1(b) Nodular lymphocyte predominant Hodgkin Lymphoma | 289 | 96.1 (92.4 , 98.1) | 100.0 (- , -) | 96.2 (89.6 , 98.7) | 90.3 (75.0 , 96.5) | | | |
| 2 Non-Hodgkin lymphoma | 73,067 | 71.1 (70.6 , 71.5) | 89.0 (87.7 , 90.2) | 79.7 (79.1 , 80.2) | 62.8 (62.1 , 63.5) | | | |
| 3 Composite Hodgkin lymphoma and Non-Hodgkin lymphoma | 127 | 69.6 (57.1 , 79.1) | - (- , -) | 83.2 (68.5 , 91.5) | 52.4 (31.4 , 69.7) | | | |
| 4 Lymphoid neoplasm, NOS ^c | 1,779 | 54.2 (51.3 , 57.1) | 86.3 (70.8 , 93.9) | 75.8 (71.7 , 79.3) | 41.2 (37.3 , 45.1) | | | |

^a Morton LM, Turner JJ, Cerhan JR, Linet MS, Treseler PA, Clarke CA, Jack A, Cozen W, Maynadié M, Spinelli JJ, Costantini AS, Rüdiger T, Scarpa A, Zheng T, Weisenburger DD. Proposed classification of lymphoid neoplasms for epidemiologic research from the Pathology Working Group of the International Lymphoma Epidemiology Consortium (InterLymph). *Blood*. 2007;110:695-708.

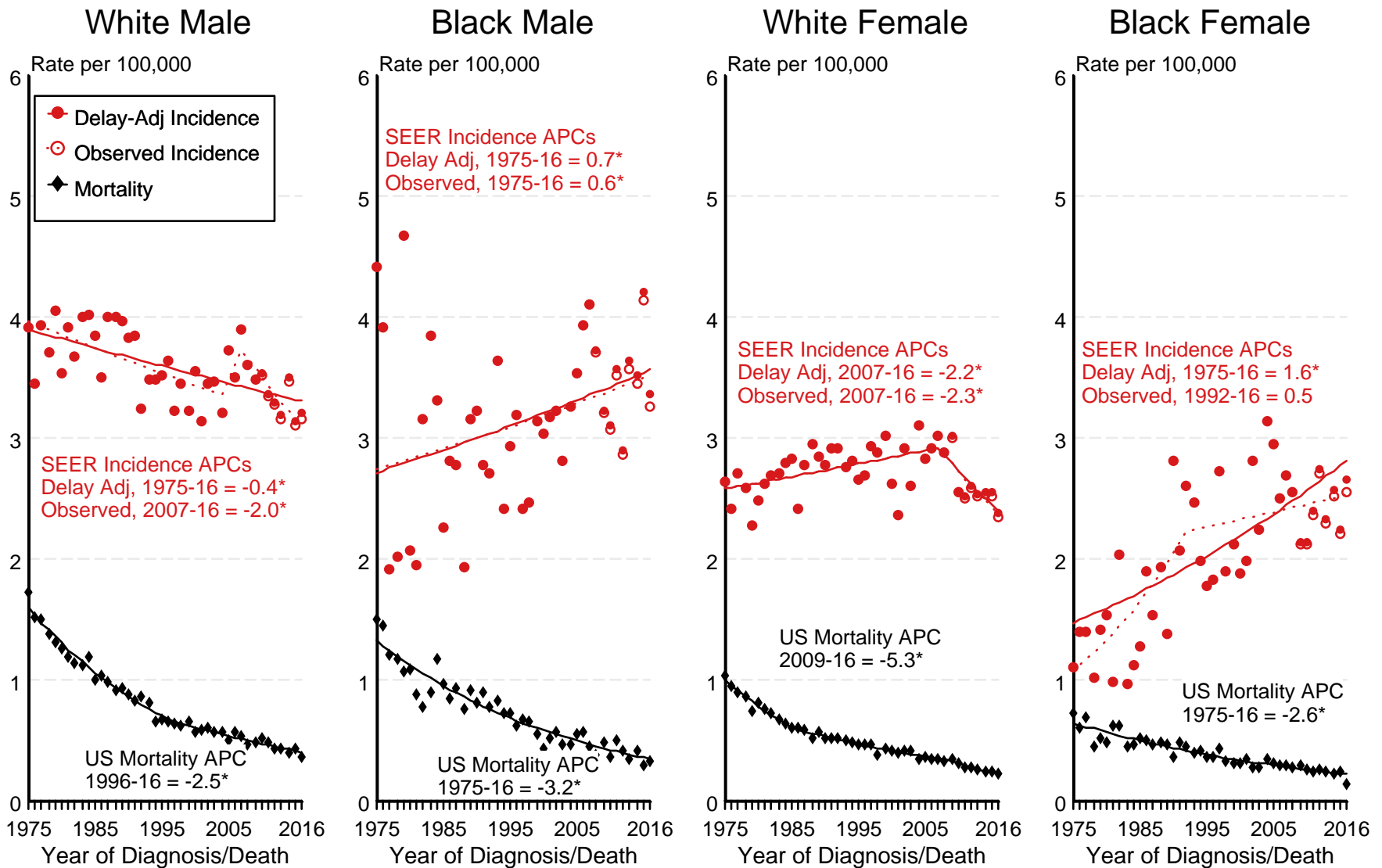
^b SEER 18 areas (San Francisco, Connecticut, Detroit, Hawaii, Iowa, New Mexico, Seattle, Utah, Atlanta, San Jose-Monterey, Los Angeles, Alaska Native Registry, Rural Georgia, California excluding SF/SJM/LA, Kentucky, Louisiana, New Jersey and Georgia excluding ATL/RG). [Expected survival rates](#) are derived from life tables by socio-economic status, geography and race developed by the SEER program.

^c NOS = Not otherwise specified.

- Statistic not displayed due to less than 25 cases.

Figure 9.1

SEER Observed Incidence, SEER Delay Adjusted Incidence and US Death Rates^a Hodgkin Lymphoma, by Race and Sex



Source: SEER 9 areas and US Mortality Files (National Center for Health Statistics, CDC).

^a Rates are age-adjusted to the 2000 US Std Population (19 age groups - Census P25-1103).

Regression lines and APCs are calculated using the Joinpoint Regression Program Version 4.7, February 2019, National Cancer Institute.

The APC is the Annual Percent Change for the regression line segments. The APC shown on the graph is for the most recent trend.

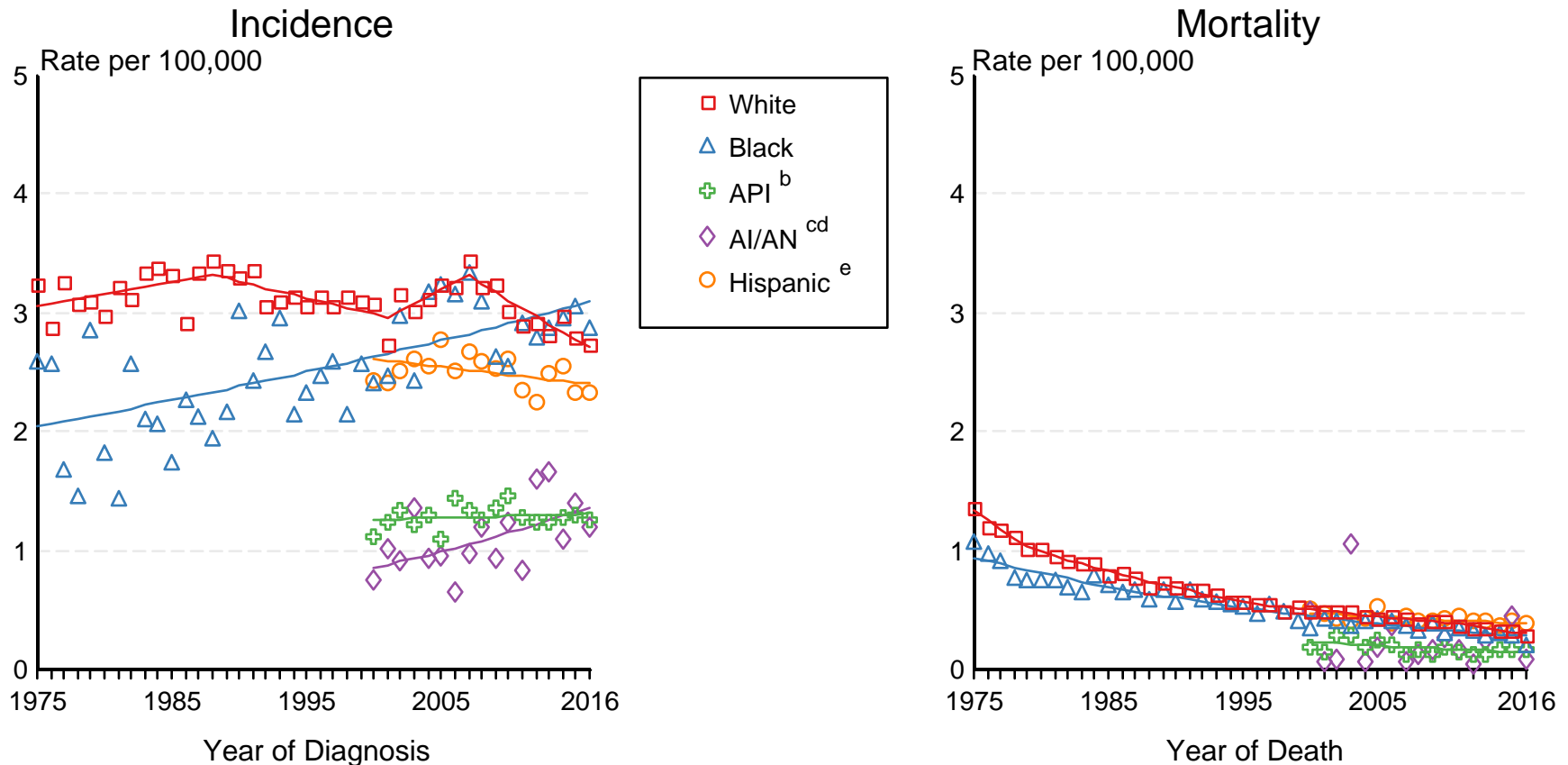
* The APC is significantly different from zero ($p < 0.05$).

Figure 9.2

SEER Incidence and US Death Rates^a Hodgkin Lymphoma, Both Sexes

Joinpoint Analyses for Whites and Blacks from 1975-2016

and for Asian/Pacific Islanders, American Indians/Alaska Natives and Hispanics from 2000-2016



Source: Incidence data for whites and blacks are from the SEER 9 areas (San Francisco, Connecticut, Detroit, Hawaii, Iowa, New Mexico, Seattle, Utah, Atlanta). Incidence data for Asian/Pacific Islanders, American Indians/Alaska Natives and Hispanics are from the SEER 21 areas (SEER 9 areas, San Jose-Monterey, Los Angeles, Alaska Native Registry, Rural Georgia, California excluding SF/SJM/LA, Kentucky, Louisiana, New Jersey, Georgia excluding ATL/RG, Idaho, New York and Massachusetts). Mortality data are from US Mortality Files, National Center for Health Statistics, CDC.

^a Rates are age-adjusted to the 2000 US Std Population (19 age groups - Census P25-1103). Regression lines are calculated using the Joinpoint Regression Program Version 4.7, February 2019, National Cancer Institute. Joinpoint analyses for Whites and Blacks during the 1975-2016 period allow a maximum of 5 joinpoints. Analyses for other ethnic groups during the period 2000-2015 allow a maximum of 3 joinpoints.

^b API = Asian/Pacific Islander.

^c AI/AN = American Indian/Alaska Native. Rates for American Indian/Alaska Native are based on the Purchased/Referred Care Delivery Area (PRCDA) counties.

^d Joinpoint could not fit a regression line for American Indian/Alaska Native Incidence due to insufficient data.

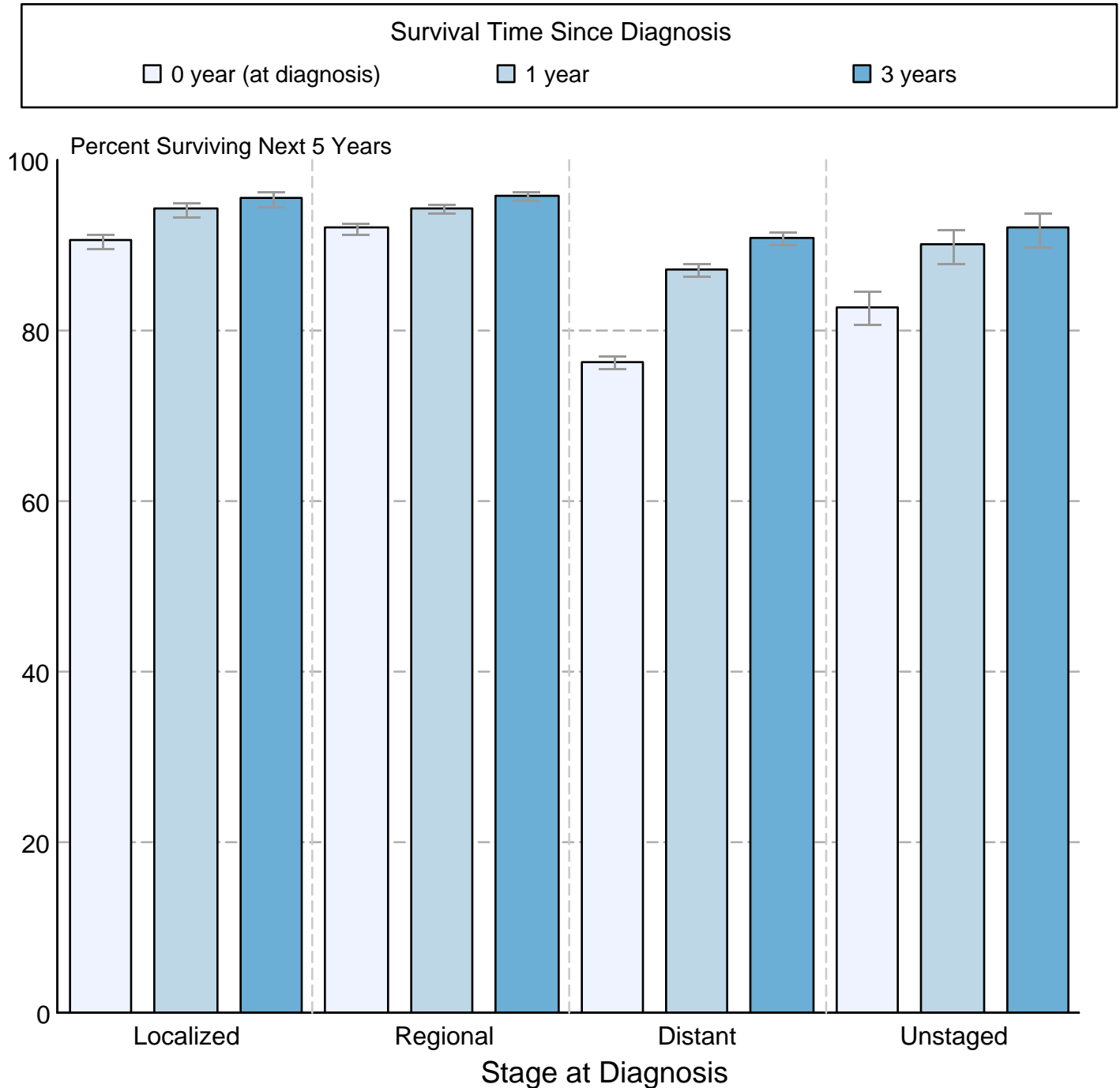
^e Hispanic is not mutually exclusive from whites, blacks, Asian/Pacific Islanders, and American Indians/Alaska Natives. Incidence data for Hispanics are based on NHIA and exclude cases from the Alaska Native Registry.

Figure 9.3

Hodgkin Lymphoma

5-Year SEER Conditional Relative Survival and 95% Confidence Intervals

Probability of surviving the next 5 years given the cohort
has already survived 0, 1, or 3 years
2000-2015 by stage at diagnosis



Source: SEER 18 areas (San Francisco, Connecticut, Detroit, Hawaii, Iowa, New Mexico, Seattle, Utah, Atlanta, San Jose-Monterey, Los Angeles, Alaska Native Registry, Rural Georgia, California excluding SF/SJM/LA, Kentucky, Louisiana, New Jersey and Georgia excluding ATL/RG).
 Percent surviving is not shown if based on less than 25 cases.
 Confidence intervals are not shown if length of the confidence interval is greater than 5 times the standard error.