

Table 22.1
Cancer of the Pancreas (Invasive)

Trends in SEER Incidence^{ab} and U.S. Mortality^c Using the Joinpoint Regression Program,
1975-2016 With up to Five Joinpoints, 2000-2016 With up to Three Joinpoints,
Both Sexes by Race/Ethnicity

	JP Trend 1		JP Trend 2		JP Trend 3		JP Trend 4		JP Trend 5		JP Trend 6		AAPC ^d	
	Years	APC	Years	APC	Years	APC	Years	APC	Years	APC	Years	APC	2007-16	2012-16
<u>SEER 9 Delay-Adjusted Incidence^a, 1975-2016</u>														
All Races	1975-78	-2.2	1978-84	1.3	1984-89	-1.4	1989-00	0.0	2000-08	1.5*	2008-16	0.4	0.5*	0.4
White	1975-79	-1.9	1979-84	1.7	1984-87	-2.5	1987-99	-0.2	1999-06	1.7*	2006-16	0.7*	0.7*	0.7*
Black	1975-16	-0.1											-0.1	-0.1
<u>SEER 21 Delay-Adjusted Incidence^b, 2000-2016</u>														
All Races	2000-08	1.1*	2008-16	0.5*									0.6*	0.5*
White	2000-08	1.3*	2008-16	0.6*									0.7*	0.6*
White NH ^{ef}	2000-08	1.4*	2008-16	0.7*									0.8*	0.7*
Black	2000-16	0.3*											0.3*	0.3*
Black NH ^{ef}	2000-16	0.3*											0.3*	0.3*
API ^e	2000-16	0.6*											0.6*	0.6*
AI/AN ^{eg}	2000-14	-1.3	2014-16	19.8									3.0	8.7
Hispanic ^f	2000-16	0.4*											0.4*	0.4*
<u>U.S. Cancer Mortality^c, 1975-2016</u>														
All Races	1975-02	-0.1*	2002-05	1.0	2005-16	0.1*							0.1*	0.1*
White	1975-96	-0.2*	1996-16	0.4*									0.4*	0.4*
Black	1975-87	1.4*	1987-16	-0.5*									-0.5*	-0.5*
<u>U.S. Cancer Mortality^c, 2000-2016</u>														
All Races	2000-16	0.3*											0.3*	0.3*
White	2000-16	0.4*											0.4*	0.4*
White NH ^{ef}	2000-16	0.4*											0.4*	0.4*
Black	2000-16	-0.3*											-0.3*	-0.3*
Black NH ^{ef}	2000-16	-0.2*											-0.2*	-0.2*
API ^e	2000-16	0.2											0.2	0.2
AI/AN ^{eg}	2000-16	0.8											0.8	0.8
Hispanic ^f	2000-16	0.0											0.0	0.0

Joinpoint Regression Program Version 4.7, February 2019, National Cancer Institute. (<https://surveillance.cancer.gov/joinpoint/>).

The APC is the Annual Percent Change based on rates age-adjusted to the 2000 US Std Population (19 age groups - Census P25-1130).

^a Trends are from the SEER 9 areas (San Francisco, Connecticut, Detroit, Hawaii, Iowa, New Mexico, Seattle, Utah, and Atlanta).

^b Trends are from the SEER 21 areas (SEER 9 areas, Los Angeles, Alaska Native Registry, Rural Georgia, California excluding SF/SJM/LA, Kentucky, Louisiana, New Jersey, Georgia excluding ATL/RG, Idaho, New York and Massachusetts).

^c Trends are from US Mortality Files, National Center for Health Statistics, Centers for Disease Control and Prevention.

^d The AAPC is the Average Annual Percent Change and is based on the APCs calculated by Joinpoint.

^e API - Asian/Pacific Islander, AI/AN - American Indian/Alaska Native, NH - Non-Hispanic

^f Hispanic and Non-Hispanic are not mutually exclusive from whites, blacks, Asian/Pacific Islanders, and American Indians/Alaska Natives. Incidence data for Hispanics and Non-Hispanics are based on NHIA and exclude cases from the Alaska Native Registry.

^g Data for American Indian/Alaska Native are based on the Purchased/Referred Care Delivery Area (PRCDA) counties.

* The APC/AAPC is significantly different from zero (p<.05).

- Joinpoint regression line analysis could not be performed on data series.

Table 22.2
Cancer of the Pancreas (Invasive)

Trends in SEER Incidence^{ab} and U.S. Mortality^c Using the Joinpoint Regression Program,
1975-2016 With up to Five Joinpoints, 2000-2016 With up to Three Joinpoints,
Males by Race/Ethnicity

	JP Trend 1		JP Trend 2		JP Trend 3		JP Trend 4		JP Trend 5		JP Trend 6		AAPC ^d	
	Years	APC	Years	APC	Years	APC	Years	APC	Years	APC	Years	APC	2007-16	2012-16
<u>SEER 9 Delay-Adjusted Incidence^a, 1975-2016</u>														
All Races	1975-93	-0.8*	1993-03	0.2	2003-06	3.0	2006-16	0.3					0.3	0.3
White	1975-94	-1.0*	1994-16	0.9*									0.9*	0.9*
Black	1975-16	-0.3*											-0.3*	-0.3*
<u>SEER 21 Delay-Adjusted Incidence^b, 2000-2016</u>														
All Races	2000-09	1.2*	2009-16	0.4*									0.6*	0.4*
White	2000-16	0.9*											0.9*	0.9*
White NH ^{ef}	2000-16	1.1*											1.1*	1.1*
Black	2000-16	0.4*											0.4*	0.4*
Black NH ^{ef}	2000-16	0.5*											0.5*	0.5*
API ^e	2000-16	0.6*											0.6*	0.6*
AI/AN ^{eg}	2000-16	2.2											2.2	2.2
Hispanic ^f	2000-16	0.5											0.5	0.5
<u>U.S. Cancer Mortality^c, 1975-2016</u>														
All Races	1975-86	-0.8*	1986-00	-0.3*	2000-16	0.3*							0.3*	0.3*
White	1975-86	-1.0*	1986-96	-0.3*	1996-16	0.3*							0.3*	0.3*
Black	1975-92	0.5*	1992-01	-1.5*	2001-16	-0.3*							-0.3*	-0.3*
<u>U.S. Cancer Mortality^c, 2000-2016</u>														
All Races	2000-16	0.3*											0.3*	0.3*
White	2000-16	0.4*											0.4*	0.4*
White NH ^{ef}	2000-16	0.4*											0.4*	0.4*
Black	2000-16	-0.3*											-0.3*	-0.3*
Black NH ^{ef}	2000-16	-0.3*											-0.3*	-0.3*
API ^e	2000-16	0.1											0.1	0.1
AI/AN ^{eg}	2000-05	10.0	2005-16	-0.7									-0.7	-0.7
Hispanic ^f	2000-16	0.1											0.1	0.1

Joinpoint Regression Program Version 4.7, February 2019, National Cancer Institute. (<https://surveillance.cancer.gov/joinpoint/>).

The APC is the Annual Percent Change based on rates age-adjusted to the 2000 US Std Population (19 age groups - Census P25-1130).

^a Trends are from the SEER 9 areas (San Francisco, Connecticut, Detroit, Hawaii, Iowa, New Mexico, Seattle, Utah, and Atlanta).

^b Trends are from the SEER 21 areas (SEER 9 areas, Los Angeles, Alaska Native Registry, Rural Georgia, California excluding SF/SJM/LA, Kentucky, Louisiana, New Jersey, Georgia excluding ATL/RG, Idaho, New York and Massachusetts).

^c Trends are from US Mortality Files, National Center for Health Statistics, Centers for Disease Control and Prevention.

^d The AAPC is the Average Annual Percent Change and is based on the APCs calculated by Joinpoint.

^e API - Asian/Pacific Islander, AI/AN - American Indian/Alaska Native, NH - Non-Hispanic

^f Hispanic and Non-Hispanic are not mutually exclusive from whites, blacks, Asian/Pacific Islanders, and American Indians/Alaska Natives. Incidence data for Hispanics and Non-Hispanics are based on NHIA and exclude cases from the Alaska Native Registry.

^g Data for American Indian/Alaska Native are based on the Purchased/Referred Care Delivery Area (PRCDA) counties.

* The APC/AAPC is significantly different from zero (p<.05).

- Joinpoint regression line analysis could not be performed on data series.

Table 22.3
Cancer of the Pancreas (Invasive)

Trends in SEER Incidence^{ab} and U.S. Mortality^c Using the Joinpoint Regression Program,
1975-2016 With up to Five Joinpoints, 2000-2016 With up to Three Joinpoints,
Females by Race/Ethnicity

	JP Trend 1		JP Trend 2		JP Trend 3		JP Trend 4		JP Trend 5		JP Trend 6		AAPC ^d	
	Years	APC	Years	APC	Years	APC	Years	APC	Years	APC	Years	APC	2007-16	2012-16
<u>SEER 9 Delay-Adjusted Incidence^a, 1975-2016</u>														
All Races	1975-84	1.4*	1984-96	-0.5	1996-16	1.0*							1.0*	1.0*
White	1975-84	1.3*	1984-97	-0.5	1997-16	1.2*							1.2*	1.2*
Black	1975-16	0.1											0.1	0.1
<u>SEER 21 Delay-Adjusted Incidence^b, 2000-2016</u>														
All Races	2000-16	0.7*											0.7*	0.7*
White	2000-16	0.9*											0.9*	0.9*
White NH ^{ef}	2000-16	0.9*											0.9*	0.9*
Black	2000-16	0.2											0.2	0.2
Black NH ^{ef}	2000-16	0.3											0.3	0.3
API ^e	2000-16	0.6*											0.6*	0.6*
AI/AN ^{eg}	2000-16	-1.8											-1.8	-1.8
Hispanic ^f	2000-16	0.4*											0.4*	0.4*
<u>U.S. Cancer Mortality^c, 1975-2016</u>														
All Races	1975-84	0.8*	1984-03	0.1	2003-06	1.0	2006-16	0.0					0.0	0.0
White	1975-93	0.4*	1993-97	-0.6	1997-08	0.6*	2008-16	0.1					0.1	0.1
Black	1975-86	2.5*	1986-16	-0.3*									-0.3*	-0.3*
<u>U.S. Cancer Mortality^c, 2000-2016</u>														
All Races	2000-16	0.2*											0.2*	0.2*
White	2000-16	0.3*											0.3*	0.3*
White NH ^{ef}	2000-16	0.4*											0.4*	0.4*
Black	2000-16	-0.3*											-0.3*	-0.3*
Black NH ^{ef}	2000-16	-0.2											-0.2	-0.2
API ^e	2000-16	0.2											0.2	0.2
AI/AN ^{eg}	2000-16	0.2											0.2	0.2
Hispanic ^f	2000-16	0.0											0.0	0.0

Joinpoint Regression Program Version 4.7, February 2019, National Cancer Institute. (<https://surveillance.cancer.gov/joinpoint/>).

The APC is the Annual Percent Change based on rates age-adjusted to the 2000 US Std Population (19 age groups - Census P25-1130).

^a Trends are from the SEER 9 areas (San Francisco, Connecticut, Detroit, Hawaii, Iowa, New Mexico, Seattle, Utah, and Atlanta).

^b Trends are from the SEER 21 areas (SEER 9 areas, Los Angeles, Alaska Native Registry, Rural Georgia, California excluding SF/SJM/LA, Kentucky, Louisiana, New Jersey, Georgia excluding ATL/RG, Idaho, New York and Massachusetts).

^c Trends are from US Mortality Files, National Center for Health Statistics, Centers for Disease Control and Prevention.

^d The AAPC is the Average Annual Percent Change and is based on the APCs calculated by Joinpoint.

^e API - Asian/Pacific Islander, AI/AN - American Indian/Alaska Native, NH - Non-Hispanic

^f Hispanic and Non-Hispanic are not mutually exclusive from whites, blacks, Asian/Pacific Islanders, and American Indians/Alaska Natives. Incidence data for Hispanics and Non-Hispanics are based on NHIA and exclude cases from the Alaska Native Registry.

^g Data for American Indian/Alaska Native are based on the Purchased/Referred Care Delivery Area (PRCDA) counties.

* The APC/AAPC is significantly different from zero ($p < .05$).

- Joinpoint regression line analysis could not be performed on data series.

Table 22.4
Cancer of the Pancreas (Invasive)

Delay-adjusted SEER Incidence^a Rates by Year, Race and Sex

Year of Diagnosis:	All Races			Whites			Blacks		
	Total	Males	Females	Total	Males	Females	Total	Males	Females
1975-1979	11.66	14.68	9.47	11.42	14.48	9.23	16.35	19.86	13.64
1980	11.51	14.19	9.61	11.06	13.69	9.18	17.94	21.76	15.53
1981	11.68	13.54	10.17	11.39	13.26	9.91	17.18	20.86	14.10
1982	11.72	13.81	10.18	11.41	13.46	9.95	16.86	20.99	13.96
1983	12.19	14.66	10.44	11.75	14.07	10.12	18.13	23.05	14.90
1984	12.22	13.94	10.93	12.03	13.87	10.64	17.19	18.36	16.34
1985	12.10	14.35	10.50	11.70	13.60	10.34	18.80	25.28	14.55
1986	11.68	13.78	10.21	11.37	13.54	9.82	17.32	20.16	15.59
1987	11.61	13.81	10.11	11.10	13.38	9.56	18.32	18.98	17.78
1988	11.66	13.72	10.21	11.11	13.36	9.57	18.56	19.55	17.45
1989	11.33	12.88	10.07	10.98	12.66	9.64	15.02	16.12	14.00
1990	11.28	12.81	10.06	11.02	12.46	9.84	15.20	18.82	12.63
1991	11.39	12.90	10.22	11.04	12.61	9.79	17.01	18.20	16.16
1992	11.62	13.22	10.34	11.33	12.90	10.02	17.34	19.77	15.75
1993	10.97	12.54	9.70	10.51	11.98	9.30	16.97	18.90	15.33
1994	11.37	13.26	9.90	10.89	12.35	9.73	17.45	21.53	14.49
1995	11.14	12.73	9.96	10.71	12.32	9.57	18.15	20.40	16.31
1996	11.30	12.92	9.93	10.91	12.48	9.57	17.06	19.68	14.88
1997	11.49	13.07	10.19	11.02	12.56	9.72	17.95	19.47	16.62
1998	11.49	13.12	10.23	11.25	12.99	9.87	14.80	16.36	13.89
1999	11.10	12.58	9.82	10.71	12.23	9.34	16.70	19.53	14.69
2000	11.42	13.33	9.84	11.07	12.93	9.56	15.75	18.16	13.38
2001	11.34	13.18	9.99	11.06	13.08	9.53	14.29	15.53	13.33
2002	11.77	13.06	10.58	11.59	13.28	10.08	16.12	14.92	16.24
2003	11.65	12.91	10.60	11.44	12.71	10.34	16.13	17.10	15.40
2004	12.00	13.97	10.35	11.75	13.61	10.18	16.09	19.55	13.45
2005	12.10	13.84	10.69	11.79	13.52	10.34	17.21	18.62	16.50
2006	12.60	14.31	11.21	12.48	14.48	10.83	16.96	18.37	15.71
2007	12.49	14.42	10.91	12.34	14.43	10.61	15.57	16.42	14.81
2008	12.76	14.60	11.26	12.40	14.25	10.85	17.31	19.37	15.86
2009	13.15	14.78	11.80	12.85	14.51	11.49	17.54	20.49	15.24
2010	12.66	13.98	11.52	12.25	13.61	11.07	17.25	19.34	15.65
2011	12.52	14.61	10.82	12.29	14.37	10.55	16.20	17.88	14.92
2012	13.14	14.69	11.84	13.01	15.07	11.29	17.00	16.18	17.14
2013	13.00	14.74	11.59	12.80	14.44	11.41	16.11	18.51	14.56
2014	13.01	14.92	11.40	12.95	14.81	11.33	16.85	20.23	14.31
2015	13.14	14.68	11.82	13.02	14.51	11.68	16.62	19.27	14.85
2016	13.18	14.67	11.93	13.02	14.50	11.74	16.12	17.38	15.12

Reference: [Cancer Incidence Rates Adjusted for Reporting Delay](#).

Individual rates for diagnosis years 1975-1979 available in web browser version of [Cancer Statistics Review](#).

SEER 9 areas (San Francisco, Connecticut, Detroit, Hawaii, Iowa, New Mexico, Seattle, Utah, and Atlanta).

Rates are per 100,000 and are age-adjusted to the 2000 US Std Population (19 age groups - Census P25-1130).

Delay-adjusted rate is not shown for observed rates based on less than 16 cases for the time interval.

^a

-

Table 22.5
Cancer of the Pancreas (Invasive)

Age-adjusted SEER Incidence^a Rates by Year, Race and Sex

Year of Diagnosis:	All Races			Whites			Blacks		
	Total	Males	Females	Total	Males	Females	Total	Males	Females
1975-2016	12.01	13.87	10.53	11.69	13.60	10.18	16.68	18.85	15.04
1975-1979	11.66	14.68	9.47	11.42	14.48	9.23	16.35	19.86	13.64
1980	11.51	14.19	9.61	11.06	13.69	9.18	17.94	21.76	15.53
1981	11.68	13.54	10.17	11.39	13.26	9.91	17.18	20.86	14.10
1982	11.72	13.81	10.18	11.41	13.46	9.95	16.86	20.99	13.96
1983	12.19	14.66	10.44	11.75	14.07	10.12	18.13	23.05	14.90
1984	12.22	13.94	10.93	12.03	13.87	10.64	17.19	18.36	16.34
1985	12.10	14.35	10.50	11.70	13.60	10.34	18.80	25.28	14.55
1986	11.68	13.78	10.21	11.37	13.54	9.82	17.32	20.16	15.59
1987	11.61	13.81	10.11	11.10	13.38	9.56	18.32	18.98	17.78
1988	11.66	13.72	10.21	11.11	13.36	9.57	18.56	19.55	17.45
1989	11.33	12.88	10.07	10.98	12.66	9.64	15.02	16.12	14.00
1990	11.28	12.81	10.06	11.02	12.46	9.84	15.20	18.82	12.63
1991	11.39	12.90	10.22	11.04	12.61	9.79	17.01	18.20	16.16
1992	11.62	13.22	10.34	11.33	12.90	10.02	17.34	19.77	15.75
1993	10.97	12.54	9.70	10.51	11.98	9.30	16.97	18.90	15.33
1994	11.37	13.26	9.90	10.89	12.35	9.73	17.45	21.53	14.49
1995	11.14	12.73	9.96	10.71	12.32	9.57	18.15	20.40	16.31
1996	11.30	12.92	9.93	10.91	12.48	9.57	17.06	19.68	14.88
1997	11.49	13.07	10.19	11.02	12.56	9.72	17.95	19.47	16.62
1998	11.49	13.12	10.23	11.25	12.99	9.87	14.80	16.36	13.89
1999	11.10	12.58	9.82	10.71	12.23	9.34	16.70	19.53	14.69
2000	11.42	13.33	9.84	11.07	12.93	9.56	15.75	18.16	13.38
2001	11.34	13.18	9.99	11.06	13.08	9.53	14.29	15.53	13.33
2002	11.77	13.06	10.58	11.59	13.28	10.08	16.12	14.92	16.24
2003	11.65	12.91	10.60	11.44	12.71	10.34	16.13	17.10	15.40
2004	12.00	13.97	10.35	11.75	13.61	10.18	16.09	19.55	13.45
2005	12.10	13.84	10.69	11.79	13.52	10.34	17.21	18.62	16.50
2006	12.60	14.31	11.21	12.48	14.48	10.83	16.96	18.37	15.71
2007	12.49	14.42	10.91	12.34	14.43	10.61	15.57	16.42	14.81
2008	12.75	14.59	11.25	12.39	14.24	10.84	17.30	19.35	15.84
2009	13.13	14.76	11.79	12.83	14.49	11.47	17.51	20.45	15.22
2010	12.64	13.96	11.50	12.22	13.58	11.04	17.20	19.29	15.60
2011	12.49	14.57	10.79	12.25	14.33	10.52	16.14	17.81	14.86
2012	13.10	14.64	11.80	12.96	15.01	11.25	16.91	16.10	17.05
2013	12.95	14.68	11.55	12.75	14.38	11.36	16.00	18.39	14.47
2014	12.93	14.83	11.34	12.87	14.72	11.26	16.69	20.05	14.16
2015	13.02	14.55	11.71	12.89	14.37	11.57	16.44	19.06	14.69
2016	12.87	14.32	11.65	12.67	14.09	11.43	15.72	16.98	14.73

^a Individual rates for diagnosis years 1975-1979 available in web browser version of [Cancer Statistics Review](#).
SEER 9 areas (San Francisco, Connecticut, Detroit, Hawaii, Iowa, New Mexico, Seattle, Utah, and Atlanta).
Rates are per 100,000 and are age-adjusted to the 2000 US Std Population (19 age groups - Census P25-1130).
- Statistic not shown. Rate based on less than 16 cases for the time interval.

Table 22.6
Cancer of the Pancreas (Invasive)

Age-adjusted U.S. Death^a Rates by Year, Race and Sex

Year of Death:	All Races			Whites			Blacks		
	Total	Males	Females	Total	Males	Females	Total	Males	Females
1975-2016	10.75	12.62	9.29	10.54	12.44	9.05	13.96	16.02	12.42
1975-1979	10.75	13.66	8.67	10.56	13.47	8.50	13.04	16.26	10.66
1980	10.62	13.10	8.83	10.36	12.85	8.58	13.78	16.47	11.80
1981	10.70	13.16	8.92	10.50	12.91	8.77	13.40	16.96	10.83
1982	10.59	13.06	8.85	10.32	12.76	8.60	14.09	17.07	11.91
1983	10.69	12.82	9.13	10.36	12.40	8.87	14.78	18.10	12.45
1984	10.80	12.96	9.22	10.45	12.61	8.89	14.96	17.52	13.08
1985	10.63	12.86	9.03	10.33	12.53	8.76	14.43	17.29	12.40
1986	10.60	12.46	9.23	10.30	12.16	8.93	14.60	16.72	13.04
1987	10.59	12.52	9.18	10.28	12.16	8.90	14.58	17.36	12.61
1988	10.49	12.51	8.98	10.15	12.16	8.65	14.52	17.05	12.66
1989	10.62	12.61	9.17	10.25	12.22	8.82	15.02	17.71	13.15
1990	10.69	12.59	9.25	10.34	12.19	8.92	15.18	18.08	13.21
1991	10.69	12.58	9.28	10.40	12.27	8.99	14.55	16.93	12.79
1992	10.70	12.61	9.27	10.35	12.23	8.92	15.40	18.22	13.44
1993	10.66	12.41	9.37	10.33	12.06	9.05	15.05	17.59	13.31
1994	10.64	12.37	9.31	10.28	11.98	8.95	15.16	17.69	13.38
1995	10.45	12.13	9.18	10.21	11.91	8.92	13.90	15.78	12.54
1996	10.47	12.08	9.23	10.17	11.79	8.91	14.43	16.45	12.97
1997	10.45	12.22	9.07	10.16	11.97	8.76	14.57	16.39	13.14
1998	10.52	12.29	9.15	10.23	12.02	8.83	14.52	16.49	13.07
1999	10.62	12.32	9.27	10.38	12.07	9.03	14.18	16.58	12.40
2000	10.55	12.14	9.26	10.33	11.98	8.99	14.05	15.79	12.70
2001	10.57	12.15	9.30	10.40	12.05	9.07	13.70	15.07	12.56
2002	10.56	12.22	9.23	10.36	12.08	8.96	13.70	15.47	12.37
2003	10.55	12.09	9.29	10.35	11.93	9.04	13.84	15.53	12.52
2004	10.70	12.40	9.31	10.51	12.23	9.09	13.71	15.57	12.22
2005	10.83	12.42	9.53	10.67	12.29	9.33	13.77	15.47	12.47
2006	10.86	12.43	9.55	10.71	12.39	9.32	13.70	14.88	12.64
2007	10.84	12.56	9.46	10.67	12.45	9.22	14.04	15.59	12.79
2008	10.96	12.51	9.67	10.85	12.45	9.49	13.67	15.12	12.55
2009	10.84	12.43	9.53	10.72	12.37	9.37	13.58	15.00	12.37
2010	10.98	12.70	9.58	10.87	12.63	9.42	13.62	15.72	12.08
2011	10.88	12.49	9.54	10.78	12.47	9.36	13.32	14.84	12.11
2012	11.01	12.65	9.63	10.93	12.69	9.42	13.39	14.50	12.48
2013	10.82	12.44	9.45	10.73	12.41	9.30	13.42	14.88	12.18
2014	10.92	12.61	9.50	10.89	12.64	9.39	13.18	14.95	11.80
2015	11.00	12.66	9.59	10.93	12.69	9.41	13.36	14.85	12.21
2016	11.05	12.67	9.69	11.00	12.69	9.55	13.31	14.86	12.15

^a Individual rates for years of death 1975-1979 available in web browser version of [Cancer Statistics Review](#).
US Mortality Files, National Center for Health Statistics, Centers for Disease Control and Prevention.
Rates are per 100,000 and are age-adjusted to the 2000 US Std Population (19 age groups - Census P25-1130).
- Statistic not shown. Rate based on less than 16 cases for the time interval.

Table 22.7
Cancer of the Pancreas (Invasive)SEER Incidence^a and U.S. Death^b Rates, Age-Adjusted and Age-Specific Rates, by Race and Sex

	All Races			Whites			Blacks		
	Total	Males	Females	Total	Males	Females	Total	Males	Females
<u>SEER Incidence</u>									
<u>Age at Diagnosis</u>									
Age-Adjusted Rates, 2012-2016									
All ages	12.9	14.6	11.5	13.0	14.8	11.4	15.2	16.7	14.0
Under 65	4.4	5.0	3.7	4.3	5.0	3.7	5.8	6.8	5.0
65 and over	72.0	81.0	65.0	72.7	82.5	64.9	79.9	85.5	75.8
All ages (WHO world std) ^c	9.0	10.3	8.0	9.0	10.4	7.9	10.9	12.2	9.9
Age-Specific Rates, 2012-2016									
<1	-	-	-	-	-	-	-	-	-
1-4	-	-	-	-	-	-	-	-	-
5-9	-	-	-	-	-	-	-	-	-
10-14	0.1	-	0.1	0.1	-	-	-	-	-
15-19	0.1	-	0.2	0.1	-	0.2	-	-	-
20-24	0.2	0.1	0.2	0.2	0.1	0.2	-	-	-
25-29	0.3	0.2	0.5	0.3	0.2	0.4	0.4	-	0.6
30-34	0.7	0.7	0.7	0.6	0.7	0.6	0.9	0.8	0.9
35-39	1.4	1.5	1.3	1.4	1.5	1.2	1.7	1.8	1.6
40-44	2.7	2.9	2.5	2.7	2.9	2.5	3.4	3.9	2.9
45-49	5.8	6.7	5.0	5.7	6.5	4.8	7.5	8.7	6.5
50-54	11.7	13.4	10.0	11.5	13.2	9.7	15.6	17.4	14.1
55-59	20.4	23.9	17.1	20.2	23.7	16.8	27.6	32.3	23.6
60-64	32.4	38.4	26.8	32.0	38.0	26.4	44.0	53.6	36.3
65-69	47.4	55.5	40.2	48.1	56.5	40.5	56.3	65.9	49.0
70-74	63.4	73.2	55.3	64.2	74.5	55.4	72.9	83.3	65.6
75-79	80.5	89.0	73.9	81.0	90.8	73.2	89.3	92.3	87.3
80-84	95.2	106.3	87.5	96.0	108.8	86.9	100.7	96.7	102.8
85+	102.5	110.5	98.4	103.2	111.6	98.8	106.1	108.8	104.9
<u>U.S. Mortality</u>									
<u>Age at Death</u>									
Age-Adjusted Rates, 2012-2016									
All ages	11.0	12.6	9.6	10.9	12.6	9.4	13.3	14.8	12.2
Under 65	3.2	3.8	2.5	3.1	3.8	2.5	4.3	5.2	3.5
65 and over	64.8	73.2	58.2	64.7	73.8	57.5	75.7	81.1	71.7
All ages (WHO world std) ^c	6.4	7.5	5.4	6.3	7.4	5.3	8.0	9.2	7.0
Age-Specific Rates, 2012-2016									
<1	-	-	-	-	-	-	-	-	-
1-4	-	-	-	-	-	-	-	-	-
5-9	-	-	-	-	-	-	-	-	-
10-14	-	-	-	-	-	-	-	-	-
15-19	-	-	-	-	-	-	-	-	-
20-24	0.0	0.0	0.0	0.0	-	-	-	-	-
25-29	0.1	0.1	0.1	0.1	0.1	0.0	0.1	-	-
30-34	0.2	0.2	0.2	0.2	0.2	0.2	0.3	0.3	0.3
35-39	0.6	0.8	0.5	0.6	0.8	0.4	0.7	0.9	0.6
40-44	1.6	1.9	1.2	1.6	1.9	1.2	1.9	2.4	1.4
45-49	4.0	4.8	3.2	3.9	4.6	3.2	5.2	6.6	4.0
50-54	8.5	10.2	6.8	8.3	10.1	6.5	11.7	13.7	10.0
55-59	15.7	19.1	12.5	15.3	18.7	12.1	21.8	26.1	18.2
60-64	25.7	31.2	20.6	25.2	30.6	20.1	35.1	43.0	28.7
65-69	37.8	45.1	31.3	37.8	45.3	30.9	46.5	54.4	40.5
70-74	53.4	61.7	46.3	53.4	62.1	45.8	64.4	72.6	58.5
75-79	70.9	79.9	63.8	70.7	80.7	62.5	84.3	90.3	80.3
80-84	90.8	99.9	84.4	90.5	100.7	83.1	103.5	104.0	103.2
85+	107.1	116.4	102.2	107.1	117.5	101.6	116.0	115.6	116.1

^a SEER 21 areas. Rates are per 100,000 and are age-adjusted to the 2000 US Std Population (19 age groups - Census P25-1130), unless noted.

^b US Mortality Files, National Center for Health Statistics, Centers for Disease Control and Prevention.

^c Rates are per 100,000 and are age-adjusted to the 2000 US Std Population (19 age groups - Census P25-1130), unless noted.

^d Rates are per 100,000 and are age-adjusted to the world (WHO 2000-2025) standard million.

- Statistic not shown. Rate based on less than 16 cases for the time interval.

Table 22.8
Cancer of the Pancreas (Invasive)

5-Year Relative and Period Survival (Percent) by Race, Sex, Diagnosis Year, Stage and Age

	All Races			Whites			Blacks		
	Total	Males	Females	Total	Males	Females	Total	Males	Females
5-Year Relative Survival (Percent)									
Year of Diagnosis:									
1960-1963 ^a	-	-	-	1	1	2	1	0	3
1970-1973 ^a	-	-	-	2	2	2	2	0	3
1975-1977 ^b	2.5	2.6	2.2	2.5	2.7	2.3	2.3	2.5	1.9
1978-1980 ^b	2.9	2.7	3.0	2.5	2.6	2.5	5.7	4.5	7.0
1981-1983 ^b	2.7	2.4	3.1	2.5	2.1	3.0	3.6	3.7	3.2
1984-1986 ^b	2.9	2.3	3.5	2.6	2.1	3.1	4.7	3.9	5.3
1987-1989 ^b	3.5	3.3	3.7	3.2	3.0	3.3	5.5	5.1	5.8
1990-1992 ^b	4.3	4.1	4.5	4.4	4.2	4.5	3.6	3.2	4.0
1993-1995 ^b	4.0	3.7	4.3	3.9	3.6	4.2	3.7	3.6	3.7
1996-1998 ^b	4.4	4.6	4.1	4.1	4.7	3.6	3.4	3.1	3.5
1999-2001 ^b	5.1	5.2	5.0	5.0	5.5	4.5	5.6	3.7	7.4
2002-2004 ^b	5.6	5.3	5.9	5.7	5.6	5.7	4.5	3.0	5.7
2005-2008 ^b	7.4	7.3	7.5	7.5	7.2	7.7	6.3	6.9	5.8
2009-2015 ^b	9.8 ^f	10.3 ^f	9.2 ^f	9.8 ^f	10.4 ^f	9.2 ^f	8.9 ^f	8.7 ^f	9.1 ^f
5-Year Period Survival (Percent) ^{cd}									
2015	10.1	10.2	10.0	10.0	10.2	9.7	10.2	9.3	11.0
Stage Distribution (%) 2009-2015 ^{ce}									
All Stages									
Number of cases	63,444	32,169	31,275	49,999	25,795	24,204	7,863	3,647	4,216
Percent	100%	100%	100%	100%	100%	100%	100%	100%	100%
Localized	10	10	11	10	9	11	10	9	11
Regional	29	29	30	30	30	30	27	26	28
Distant	53	55	50	52	54	50	56	60	53
Unstaged/Unknown	8	7	9	8	7	9	7	6	7
5-Year Relative Survival (Percent), 2009-2015 ^c									
Age at Diagnosis:									
Ages <45	36.3	29.1	44.0	36.3	30.3	43.2	34.8	17.9	47.1
Ages 45-54	15.6	13.6	18.6	15.6	13.5	18.7	14.7	12.8	17.1
Ages 55-64	10.5	9.9	11.2	10.6	10.2	11.1	8.4	7.4	9.6
Ages 65-74	8.7	9.1	8.2	8.8	9.2	8.4	7.2	6.4	7.8
Ages 75+	4.5	5.0	4.2	4.6	5.3	4.2	3.7	2.2	4.3
Ages <65	14.0	12.3	16.2	13.8	12.5	15.8	12.5	9.8	15.8
Ages 65+	6.4	7.2	5.8	6.5	7.3	5.8	5.6	4.9	5.9
Stage ^e :									
All Stages	9.3	9.4	9.2	9.2	9.5	9.0	9.0	7.7	10.1
Localized	37.4	39.6	35.5	36.9	39.5	34.5	34.5	31.4	36.3
Regional	12.4	13.2	11.6	12.5	13.2	11.7	12.2	12.1	12.2
Distant	2.9	2.9	3.0	3.0	3.0	2.9	2.8	2.3	3.3
Unstaged/Unknown	5.6	6.4	5.0	4.9	5.8	4.0	10.2	10.0	10.2

^a Based on End Results data from a series of hospital registries and one population-based registry.^b SEER 9 areas (San Francisco, Connecticut, Detroit, Hawaii, Iowa, New Mexico, Seattle, Utah, Atlanta).Based on follow-up of patients into 2016. [Expected survival rates](#) are derived from the U.S. Annual Life Tables.^c SEER 18 areas (San Francisco, Connecticut, Detroit, Hawaii, Iowa, New Mexico, Seattle, Utah, Atlanta, San Jose-Monterey, Los Angeles, Alaska Native Registry, Rural Georgia, California excluding SF/SJM/LA, Kentucky, Louisiana, New Jersey and Georgia excluding ATL/RG). Expected survival rates are derived from life tables by socio-economic status, geography and race developed by the SEER program.^d Based on follow-up of patients into 2016.

Period survival provides a 2015 estimate of survival by piecing together the most recent conditional survival estimates from several cohorts. It is computed here using three year calendar blocks (2010-2012: 0-1 year survival), (2009-2011: 1-2 year survival), (2008-2010: 2-3 year survival), (2007-2009: 3-4 year survival), (2006-2008: 4-5 years survival).

^e Stage at diagnosis is classified using SEER Summary Stage 2000. Stage distribution percentages may not sum to 100 due to rounding.^f The difference between 1975-1977 and 2009-2015 is statistically significant (p<.05).^g The standard error is between 5 and 10 percentage points.^h The standard error is greater than 10 percentage points.

- Statistic could not be calculated due to fewer than 25 cases during the time period.

Table 22.9
Cancer of the Pancreas (Invasive)
SEER^a Relative Survival (Percent)
By Year of Diagnosis

All Races, Males and Females

Year of Diagnosis

	1975- 1979	1980- 1984	1985- 1989	1990- 1994	1995	1996	1997	1998	1999	2000	2001	2002	2003	2004	2005	2006	2007	2008	2009	2010	2011	2012	2013	2014	2015
Survival Time																									
1-year	14.2	15.9	17.1	18.5	17.8	19.1	20.0	19.7	22.2	21.9	23.9	25.2	22.7	23.1	27.0	26.0	27.9	29.9	29.9	30.5	31.4	34.9	35.7	35.1	36.0
2-year	5.9	6.2	6.8	8.6	8.3	9.3	9.9	8.7	10.5	11.0	11.4	11.9	11.4	11.9	13.0	13.2	13.9	15.1	16.0	16.7	16.3	19.8	20.4	19.4	
3-year	3.6	4.1	4.7	5.8	5.2	6.3	7.1	5.6	6.5	7.4	7.3	8.4	7.6	8.3	9.0	9.4	9.7	10.4	11.9	11.9	11.6	14.7	15.3		
4-year	3.0	3.3	3.8	4.8	4.0	4.8	5.5	4.5	5.7	6.1	6.1	6.8	5.8	6.4	7.2	8.1	8.3	8.5	10.0	9.9	9.4	12.5			
5-year	2.5	2.8	3.3	4.2	3.6	4.2	5.0	3.8	5.1	5.2	5.1	6.2	5.0	5.5	6.4	7.6	7.7	7.7	8.7	8.3	8.1				
6-year	2.3	2.5	2.9	4.0	3.2	3.8	4.5	3.7	4.6	4.7	4.7	5.7	4.6	5.0	5.8	7.0	7.0	7.2	8.1	7.4					
7-year	2.1	2.3	2.7	3.6	3.1	3.5	4.3	3.4	4.3	4.3	4.2	5.0	4.3	4.7	5.5	6.2	6.4	6.6	7.4						
8-year	1.9	2.1	2.5	3.4	2.7	3.4	4.1	3.1	4.0	3.8	3.9	4.8	4.0	4.4	5.1	6.0	5.7	6.0							
9-year	1.8	2.0	2.2	3.2	2.6	3.3	4.0	2.8	3.8	3.7	3.8	4.6	3.8	4.2	4.8	5.8	5.3								
10-year	1.8	1.9	2.2	3.0	2.5	3.2	3.9	2.7	3.6	3.6	3.5	4.5	3.4	4.1	4.4	5.7									
11-year	1.7	1.7	2.1	2.8	2.5	2.9	3.8	2.5	3.3	3.6	3.3	4.1	3.2	4.1	4.0										
12-year	1.7	1.7	2.1	2.7	2.3	2.8	3.6	2.4	3.2	3.2	3.2	4.0	3.2	4.1											
13-year	1.6	1.6	2.0	2.6	2.2	2.7	3.3	2.3	3.1	3.1	3.2	3.8	3.0												
14-year	1.6	1.6	1.9	2.5	1.9	2.7	3.1	2.0	3.1	2.7	3.0	3.8													
15-year	1.5	1.5	1.8	2.4	1.8	2.7	3.0	2.0	3.0	2.6	2.7														
16-year	1.5	1.4	1.7	2.2	1.7	2.2	2.9	1.8	2.8	2.5															
17-year	1.4	1.4	1.7	2.2	1.4	1.9	2.7	1.6	2.7																
18-year	1.3	1.3	1.7	2.2	1.4	1.9	2.7	1.3																	
19-year	1.3	1.3	1.6	2.1	1.4	1.9	2.7																		
20-year	1.2	1.3	1.6	2.0	1.3	1.9																			

^a Based on the SEER 9 areas (San Francisco, Connecticut, Detroit, Hawaii, Iowa, New Mexico, Seattle, Utah, and Atlanta). [Expected survival rates](#) are derived from the U.S. Annual Life Tables.

Table 22.10
Cancer of the Pancreas (Invasive)

SEER^a Relative Survival (Percent)
By Year of Diagnosis

All Races, Males

Year of Diagnosis

	1975- 1979	1980- 1984	1985- 1989	1990- 1994	1995	1996	1997	1998	1999	2000	2001	2002	2003	2004	2005	2006	2007	2008	2009	2010	2011	2012	2013	2014	2015
Survival Time																									
1-year	14.2	15.1	16.8	17.9	16.9	20.0	21.3	19.4	22.7	22.0	23.4	24.9	24.2	25.3	26.0	27.4	28.1	31.5	29.5	30.1	32.7	34.7	36.0	36.2	35.3
2-year	5.8	5.9	6.2	8.4	7.3	10.9	9.9	9.2	9.8	11.4	12.1	11.1	11.6	12.6	11.9	13.7	13.6	16.1	16.7	16.4	17.8	19.8	20.6	20.0	
3-year	3.4	3.8	4.4	5.8	4.1	7.1	7.0	5.6	5.9	7.1	8.0	8.1	7.6	8.2	7.9	9.8	9.0	11.4	12.8	12.1	12.8	14.6	15.2		
4-year	3.0	3.0	3.2	4.6	3.5	5.8	5.5	4.6	5.5	5.9	6.4	6.9	5.6	5.9	5.6	8.2	7.8	9.8	10.9	9.9	10.5	12.5			
5-year	2.6	2.5	2.9	4.0	3.0	5.1	4.7	4.0	4.9	5.2	5.5	6.1	4.6	5.1	5.2	7.6	7.2	9.0	9.5	8.5	9.2				
6-year	2.4	2.2	2.4	3.8	2.7	4.7	3.9	3.8	4.0	4.9	5.1	5.3	4.2	4.5	4.7	7.1	6.3	8.5	8.8	7.4					
7-year	2.3	1.9	2.3	3.4	2.7	4.2	3.4	3.5	3.9	4.5	4.6	4.8	4.0	4.1	4.3	6.1	5.9	7.6	8.1						
8-year	2.0	1.7	2.1	3.1	2.4	4.2	3.4	3.3	3.8	3.9	4.2	4.4	3.8	3.8	4.0	6.0	5.1	6.9							
9-year	1.9	1.6	1.8	3.0	2.2	4.0	3.3	2.9	3.6	3.7	4.1	4.3	3.4	3.6	3.7	5.9	4.7								
10-year	1.8	1.5	1.7	2.7	2.1	3.8	3.2	2.9	3.6	3.5	3.9	4.2	2.8	3.5	3.4	5.6									
11-year	1.7	1.5	1.7	2.7	2.0	3.2	2.9	2.9	3.2	3.5	3.7	3.6	2.6	3.5	2.9										
12-year	1.6	1.5	1.7	2.6	1.8	3.0	2.8	2.7	3.1	2.9	3.4	3.5	2.6	3.4											
13-year	1.6	1.4	1.5	2.5	1.7	3.0	2.6	2.6	3.0	2.7	3.4	3.5	2.2												
14-year	1.6	1.4	1.5	2.4	1.2	2.9	2.4	2.4	3.0	2.4	3.4	3.5													
15-year	1.6	1.3	1.3	2.3	1.2	2.8	2.2	2.4	3.0	2.3	3.2														
16-year	1.6	1.3	1.3	2.1	1.2	2.0	1.9	2.4	2.7	2.3															
17-year	1.4	1.3	1.3	2.1	0.8	1.7	1.9	2.1	2.7																
18-year	1.3	1.3	1.2	2.1	0.7	1.7	1.9	1.6																	
19-year	1.2	1.3	1.2	2.1	0.7	1.6	1.8																		
20-year	1.1	1.2	1.2	1.9	0.2	1.6																			

^a Based on the SEER 9 areas (San Francisco, Connecticut, Detroit, Hawaii, Iowa, New Mexico, Seattle, Utah, and Atlanta). [Expected survival rates](#) are derived from the U.S. Annual Life Tables.

Table 22.11
Cancer of the Pancreas (Invasive)

SEER^a Relative Survival (Percent)
By Year of Diagnosis

All Races, Females

Year of Diagnosis

	1975- 1979	1980- 1984	1985- 1989	1990- 1994	1995	1996	1997	1998	1999	2000	2001	2002	2003	2004	2005	2006	2007	2008	2009	2010	2011	2012	2013	2014	2015
Survival Time																									
1-year	14.2	16.8	17.3	19.2	18.6	18.3	18.9	20.0	21.7	21.8	24.3	25.4	21.3	20.8	28.0	24.8	27.6	28.4	30.2	30.9	30.1	35.1	35.4	34.0	36.7
2-year	5.9	6.6	7.3	8.7	9.1	7.9	9.9	8.3	11.1	10.5	10.8	12.7	11.3	11.2	14.0	12.8	14.2	14.0	15.2	17.0	14.6	19.9	20.3	18.9	
3-year	3.8	4.4	5.1	5.8	6.2	5.5	7.2	5.7	7.1	7.7	6.7	8.7	7.6	8.4	10.2	9.0	10.5	9.4	11.1	11.8	10.4	14.9	15.4		
4-year	3.0	3.6	4.3	4.9	4.4	3.9	5.5	4.3	5.8	6.3	5.8	6.7	5.9	7.0	8.8	8.1	8.9	7.3	9.1	9.8	8.1	12.4			
5-year	2.4	3.2	3.7	4.4	4.2	3.4	5.2	3.7	5.3	5.1	4.6	6.3	5.3	6.0	7.6	7.5	8.3	6.4	7.8	8.2	7.0				
6-year	2.3	2.8	3.4	4.1	3.7	3.0	4.9	3.7	5.1	4.4	4.3	6.0	4.9	5.6	7.0	6.9	7.8	5.9	7.4	7.4					
7-year	2.0	2.7	3.1	3.8	3.4	2.8	4.9	3.4	4.7	4.0	3.7	5.2	4.5	5.3	6.7	6.2	7.0	5.5	6.7						
8-year	1.8	2.5	2.8	3.7	3.0	2.6	4.9	2.8	4.1	3.8	3.5	5.0	4.3	5.0	6.2	5.9	6.4	5.1							
9-year	1.8	2.3	2.7	3.4	3.0	2.5	4.6	2.5	3.9	3.7	3.4	4.8	4.1	4.8	5.9	5.8	5.9								
10-year	1.7	2.2	2.6	3.2	2.9	2.5	4.6	2.4	3.7	3.7	3.1	4.7	4.0	4.7	5.4	5.7									
11-year	1.7	2.0	2.5	2.9	2.9	2.5	4.6	2.1	3.4	3.7	3.0	4.5	3.8	4.7	5.0										
12-year	1.7	1.9	2.5	2.7	2.8	2.5	4.3	2.1	3.2	3.5	2.9	4.4	3.7	4.7											
13-year	1.6	1.8	2.4	2.7	2.6	2.3	3.9	1.9	3.2	3.4	2.8	4.1	3.7												
14-year	1.5	1.7	2.4	2.6	2.4	2.3	3.8	1.4	3.1	3.0	2.4	4.1													
15-year	1.3	1.6	2.3	2.3	2.2	2.3	3.7	1.4	3.0	2.8	2.1														
16-year	1.3	1.5	2.0	2.3	2.1	2.3	3.7	1.0	2.8	2.6															
17-year	1.3	1.4	2.0	2.3	2.0	2.1	3.5	1.0	2.7																
18-year	1.3	1.4	2.0	2.2	2.0	2.1	3.5	1.0																	
19-year	1.3	1.4	2.0	2.2	2.0	2.1	3.5																		
20-year	1.3	1.4	2.0	2.1	2.0	2.1																			

^a Based on the SEER 9 areas (San Francisco, Connecticut, Detroit, Hawaii, Iowa, New Mexico, Seattle, Utah, and Atlanta). [Expected survival rates](#) are derived from the U.S. Annual Life Tables.

Table 22.12
Cancer of the Pancreas (Invasive)

Risk of Being Diagnosed With Cancer in 10, 20 and 30 Years,
Lifetime Risk of Being Diagnosed with Cancer Given Alive and Cancer-Free at Current Age, and
Lifetime Risk of Dying from Cancer Given Alive at Current Age
Both Sexes, 2014-2016 By Race/Ethnicity

Race/ Ethnicity	Current Age	Risk of Being Diagnosed with Cancer				Risk of Dying from Cancer	Race/ Ethnicity	Current Age	Risk of Being Diagnosed with Cancer				Risk of Dying from Cancer
		+10 yrs	+20 yrs	+30 yrs	Ever				+10 yrs	+20 yrs	+30 yrs	Ever	
All Races	0	0.00	0.00	0.00	1.63	1.37	Asian/ Pacific Islander	0	0.00	0.00	0.01	1.61	1.43
	10	0.00	0.00	0.02	1.65	1.39		10	0.00	0.00	0.01	1.62	1.45
	20	0.00	0.01	0.06	1.65	1.39		20	0.00	0.01	0.05	1.62	1.45
	30	0.01	0.06	0.21	1.66	1.41		30	0.01	0.04	0.15	1.62	1.45
	40	0.05	0.20	0.55	1.67	1.42		40	0.03	0.14	0.38	1.62	1.46
	50	0.16	0.52	1.06	1.66	1.43		50	0.10	0.35	0.83	1.61	1.46
	60	0.38	0.95	1.43	1.59	1.39		60	0.26	0.75	1.27	1.54	1.43
	70	0.64	1.18	-	1.36	1.24		70	0.52	1.08	-	1.37	1.32
80	0.72	-	-	0.95	0.94	80	0.65	-	-	1.00	1.08		
White	0	0.00	0.00	0.00	1.63	1.37	American Indian/ Alaska Native ^a	0	0.00	0.00	0.00	1.33	1.01
	10	0.00	0.00	0.02	1.64	1.38		10	0.00	0.00	0.01	1.34	1.03
	20	0.00	0.01	0.06	1.64	1.39		20	0.00	0.01	0.04	1.35	1.03
	30	0.01	0.06	0.21	1.65	1.40		30	0.01	0.04	0.16	1.37	1.05
	40	0.04	0.20	0.55	1.66	1.41		40	0.03	0.16	0.40	1.40	1.08
	50	0.16	0.52	1.06	1.66	1.42		50	0.13	0.38	0.74	1.42	1.11
	60	0.38	0.95	1.44	1.59	1.39		60	0.27	0.65	1.17	1.38	1.13
	70	0.64	1.19	-	1.35	1.23		70	0.43	1.03	-	1.26	1.04
80	0.72	-	-	0.94	0.92	80	0.79	-	-	1.10	0.84		
Black	0	0.00	0.00	0.00	1.67	1.45	Hispanic ^b	0	0.00	0.00	0.00	1.67	1.29
	10	0.00	0.00	0.02	1.70	1.48		10	0.00	0.00	0.01	1.68	1.31
	20	0.00	0.02	0.07	1.71	1.49		20	0.00	0.01	0.05	1.68	1.31
	30	0.01	0.07	0.27	1.72	1.51		30	0.01	0.05	0.18	1.69	1.32
	40	0.06	0.26	0.67	1.74	1.53		40	0.04	0.17	0.48	1.70	1.33
	50	0.21	0.64	1.18	1.74	1.55		50	0.13	0.45	0.97	1.69	1.33
	60	0.47	1.06	1.51	1.67	1.52		60	0.33	0.87	1.39	1.63	1.30
	70	0.70	1.24	-	1.42	1.36		70	0.59	1.16	-	1.42	1.17
80	0.76	-	-	1.02	1.06	80	0.70	-	-	1.02	0.92		

Devcan 6.7.7, April 2019, National Cancer Institute (<https://surveillance.cancer.gov/devcan/>).

Source: Incidence data are from the SEER 21 areas (San Francisco, Connecticut, Detroit, Hawaii, Iowa, New Mexico, Seattle, Utah, Atlanta, San Jose-Monterey, Los Angeles, Alaska Native Registry, Rural Georgia, California excluding SF/SJM/LA, Kentucky, Louisiana, New Jersey, Georgia excluding ATL/RG, Idaho, New York and Massachusetts). Mortality data are from the NCHS public use data file for the total US.

^a Underlying incidence and mortality data for American Indian/Alaska Native are based on the PRCDA (Purchased/Referred Care Delivery Areas) counties.

^b Hispanic is not mutually exclusive from whites, blacks, Asian/Pacific Islanders, and American Indians/Alaska Natives. Underlying incidence data for Hispanics are based on NHIA and exclude cases from the Alaska Native Registry.

- Statistic could not be calculated.

A percent of 0.00 represents a value that is below 0.005.

Table 22.13
Cancer of the Pancreas (Invasive)

Risk of Being Diagnosed With Cancer in 10, 20 and 30 Years,
Lifetime Risk of Being Diagnosed with Cancer Given Alive and Cancer-Free at Current Age, and
Lifetime Risk of Dying from Cancer Given Alive at Current Age
Males, 2014-2016 By Race/Ethnicity

Race/ Ethnicity	Current Age	Risk of Being Diagnosed with Cancer				Risk of Dying from Cancer	Race/ Ethnicity	Current Age	Risk of Being Diagnosed with Cancer				Risk of Dying from Cancer
		+10 yrs	+20 yrs	+30 yrs	Ever				+10 yrs	+20 yrs	+30 yrs	Ever	
All Races	0	0.00	0.00	0.00	1.66	1.39	Asian/ Pacific Islander	0	0.00	0.00	0.00	1.63	1.41
	10	0.00	0.00	0.01	1.67	1.41		10	0.00	0.00	0.01	1.64	1.43
	20	0.00	0.01	0.06	1.68	1.42		20	0.00	0.01	0.05	1.64	1.43
	30	0.01	0.06	0.24	1.70	1.44		30	0.01	0.05	0.17	1.65	1.44
	40	0.05	0.23	0.63	1.72	1.46		40	0.04	0.15	0.43	1.65	1.44
	50	0.18	0.60	1.16	1.72	1.47		50	0.12	0.40	0.88	1.63	1.44
	60	0.44	1.05	1.52	1.64	1.43		60	0.29	0.79	1.29	1.57	1.41
	70	0.70	1.24	-	1.39	1.26		70	0.54	1.08	-	1.39	1.30
80	0.75	-	-	0.96	0.94	80	0.66	-	-	1.04	1.09		
White	0	0.00	0.00	0.00	1.66	1.40	American Indian/ Alaska Native ^a	0	0.00	0.00	0.00	1.60	0.96
	10	0.00	0.00	0.01	1.68	1.42		10	0.00	0.00	0.01	1.62	0.98
	20	0.00	0.01	0.06	1.69	1.42		20	0.00	0.01	0.03	1.63	0.98
	30	0.01	0.06	0.23	1.70	1.44		30	0.00	0.03	0.18	1.66	1.01
	40	0.05	0.23	0.63	1.72	1.46		40	0.02	0.18	0.48	1.72	1.04
	50	0.18	0.60	1.18	1.72	1.48		50	0.17	0.48	0.94	1.78	1.08
	60	0.44	1.06	1.53	1.65	1.44		60	0.35	0.84	1.43	1.76	1.10
	70	0.72	1.26	-	1.39	1.27		70	0.58	1.26	-	1.65	0.98
80	0.76	-	-	0.95	0.93	80	0.96	-	-	1.50	0.77		
Black	0	0.00	0.00	0.00	1.60	1.37	Hispanic ^b	0	0.00	0.00	0.00	1.65	1.29
	10	0.00	0.00	0.02	1.63	1.41		10	0.00	0.00	0.01	1.67	1.31
	20	0.00	0.02	0.08	1.64	1.42		20	0.00	0.01	0.05	1.67	1.31
	30	0.01	0.08	0.30	1.67	1.44		30	0.01	0.05	0.19	1.69	1.33
	40	0.07	0.29	0.77	1.69	1.48		40	0.04	0.18	0.52	1.70	1.34
	50	0.23	0.73	1.26	1.70	1.50		50	0.15	0.50	1.04	1.70	1.34
	60	0.55	1.13	1.51	1.63	1.46		60	0.37	0.94	1.43	1.64	1.31
	70	0.72	1.19	-	1.34	1.28		70	0.64	1.19	-	1.43	1.19
80	0.72	-	-	0.94	0.97	80	0.72	-	-	1.03	0.93		

Devcan 6.7.7, April 2019, National Cancer Institute (<https://surveillance.cancer.gov/devcan/>).

Source: Incidence data are from the SEER 21 areas (San Francisco, Connecticut, Detroit, Hawaii, Iowa, New Mexico, Seattle, Utah, Atlanta, San Jose-Monterey, Los Angeles, Alaska Native Registry, Rural Georgia, California excluding SF/SJM/LA, Kentucky, Louisiana, New Jersey, Georgia excluding ATL/RG, Idaho, New York and Massachusetts). Mortality data are from the NCHS public use data file for the total US.

^a Underlying incidence and mortality data for American Indian/Alaska Native are based on the PRCDA (Purchased/Referred Care Delivery Areas) counties.

^b Hispanic is not mutually exclusive from whites, blacks, Asian/Pacific Islanders, and American Indians/Alaska Natives. Underlying incidence data for Hispanics are based on NHIA and exclude cases from the Alaska Native Registry.

- Statistic could not be calculated.

A percent of 0.00 represents a value that is below 0.005.

Table 22.14
Cancer of the Pancreas (Invasive)

Risk of Being Diagnosed With Cancer in 10, 20 and 30 Years,
Lifetime Risk of Being Diagnosed with Cancer Given Alive and Cancer-Free at Current Age, and
Lifetime Risk of Dying from Cancer Given Alive at Current Age
Females, 2014-2016 By Race/Ethnicity

Race/ Ethnicity	Current Age	Risk of Being Diagnosed with Cancer				Risk of Dying from Cancer	Race/ Ethnicity	Current Age	Risk of Being Diagnosed with Cancer				Risk of Dying from Cancer
		+10 yrs	+20 yrs	+30 yrs	Ever				+10 yrs	+20 yrs	+30 yrs	Ever	
All Races	0	0.00	0.00	0.01	1.60	1.35	Asian/ Pacific Islander	0	0.00	0.00	0.01	1.60	1.46
	10	0.00	0.01	0.02	1.62	1.37		10	0.00	0.01	0.02	1.61	1.47
	20	0.00	0.02	0.06	1.62	1.37		20	0.00	0.01	0.04	1.61	1.47
	30	0.01	0.05	0.19	1.62	1.38		30	0.01	0.04	0.13	1.61	1.47
	40	0.04	0.18	0.48	1.63	1.39		40	0.03	0.12	0.34	1.60	1.47
	50	0.14	0.45	0.96	1.61	1.39		50	0.09	0.32	0.79	1.59	1.47
	60	0.32	0.86	1.36	1.54	1.36		60	0.23	0.71	1.25	1.53	1.44
	70	0.58	1.14	-	1.33	1.22		70	0.51	1.07	-	1.36	1.34
80	0.70	-	-	0.95	0.93	80	0.64	-	-	0.98	1.07		
White	0	0.00	0.00	0.01	1.59	1.34	American Indian/ Alaska Native ^a	0	0.00	0.00	0.00	1.11	1.06
	10	0.00	0.01	0.02	1.60	1.35		10	0.00	0.00	0.01	1.12	1.07
	20	0.00	0.01	0.05	1.60	1.35		20	0.00	0.01	0.05	1.12	1.07
	30	0.01	0.05	0.18	1.61	1.36		30	0.01	0.05	0.15	1.13	1.08
	40	0.04	0.17	0.48	1.61	1.37		40	0.04	0.14	0.32	1.14	1.10
	50	0.13	0.45	0.95	1.60	1.37		50	0.11	0.29	0.56	1.14	1.13
	60	0.33	0.85	1.35	1.52	1.34		60	0.20	0.48	0.96	1.08	1.14
	70	0.58	1.12	-	1.31	1.20		70	0.32	0.84	-	0.98	1.08
80	0.70	-	-	0.94	0.92	80	0.68	-	-	0.85	0.87		
Black	0	0.00	0.00	0.01	1.73	1.52	Hispanic ^b	0	0.00	0.00	0.01	1.69	1.30
	10	0.00	0.01	0.02	1.76	1.55		10	0.00	0.01	0.02	1.70	1.31
	20	0.00	0.02	0.07	1.76	1.55		20	0.00	0.01	0.05	1.70	1.32
	30	0.01	0.07	0.24	1.77	1.56		30	0.01	0.05	0.17	1.71	1.32
	40	0.05	0.23	0.59	1.78	1.58		40	0.04	0.16	0.44	1.71	1.33
	50	0.18	0.56	1.12	1.77	1.60		50	0.12	0.41	0.91	1.69	1.33
	60	0.40	1.00	1.51	1.70	1.56		60	0.30	0.82	1.36	1.62	1.29
	70	0.68	1.27	-	1.48	1.41		70	0.56	1.14	-	1.41	1.17
80	0.78	-	-	1.06	1.10	80	0.69	-	-	1.02	0.91		

Devcan 6.7.7, April 2019, National Cancer Institute (<https://surveillance.cancer.gov/devcan/>).

Source: Incidence data are from the SEER 21 areas (San Francisco, Connecticut, Detroit, Hawaii, Iowa, New Mexico, Seattle, Utah, Atlanta, San Jose-Monterey, Los Angeles, Alaska Native Registry, Rural Georgia, California excluding SF/SJM/LA, Kentucky, Louisiana, New Jersey, Georgia excluding ATL/RG, Idaho, New York and Massachusetts). Mortality data are from the NCHS public use data file for the total US.

^a Underlying incidence and mortality data for American Indian/Alaska Native are based on the PRCDA (Purchased/Referred Care Delivery Areas) counties.

^b Hispanic is not mutually exclusive from whites, blacks, Asian/Pacific Islanders, and American Indians/Alaska Natives. Underlying incidence data for Hispanics are based on NHIA and exclude cases from the Alaska Native Registry.

- Statistic could not be calculated.

A percent of 0.00 represents a value that is below 0.005.

Table 22.15
Cancer of the Pancreas (Invasive)

SEER Incidence and U.S. Mortality
Age-Adjusted Rates and Trends^a
By Race/Ethnicity and Sex

SEER Incidence	SEER 21 Areas ^b			SEER 21 Areas ^b			SEER 9 Areas ^b		
	Rate 2012-2016			Trend 2007-2016 ^c			Trend 2007-2016 ^d		
	Rate per 100,000 persons			AAPC (%)			AAPC (%)		
Race/Ethnicity	Total	Males	Females	Total	Males	Females	Total	Males	Females
All Races	12.9	14.6	11.5	0.4	0.4*	0.7*	0.3	0.1	0.9*
White	13.0	14.8	11.4	0.5*	0.4	0.8*	0.4	0.2	1.0*
White Hispanic ^e	11.7	12.5	11.0	0.3	0.3	0.3	-	-	-
White Non-Hispanic ^e	13.2	15.1	11.5	0.6*	0.5	0.8*	-	-	-
Black	15.2	16.7	14.0	0.2	0.3	0.1	-0.1	-0.3*	0.1
Asian/Pacific Islander	9.8	10.8	9.1	0.4*	0.4	0.5	-	-	-
Amer Ind/Alaska Nat ^f	9.5	11.4	8.0	-0.2	1.8	-2.2*	-	-	-
Hispanic ^e	11.3	12.0	10.7	0.3*	0.4	0.3	-	-	-
<u>U.S. Mortality^g</u>									
U.S. Mortality ^g	Rate 2012-2016			Trend 2007-2016 ^h					
	Rate per 100,000 persons			AAPC (%)					
	Total	Males	Females	Total	Males	Females			
All Races	11.0	12.6	9.6	0.3*	0.3*	0.2*			
White	10.9	12.6	9.4	0.4*	0.4*	0.3*			
White Hispanic ^e	9.0	10.0	8.1	0.2	0.2	0.1			
White Non-Hispanic ^e	11.1	12.9	9.5	0.4*	0.4*	0.4*			
Black	13.3	14.8	12.2	-0.3*	-0.3*	-0.3*			
Asian/Pacific Islander	7.6	8.2	7.1	0.2	0.1	0.2			
Amer Ind/Alaska Nat									
Total U.S.	6.7	7.2	6.3	0.2	0.2	0.0			
PRCDA Counties	8.9	9.9	8.0	0.8	-0.7	0.2			
Non-PRCDA Counties	4.3	4.3	4.3	-0.5	-1.2	0.2			
Hispanic ^e	8.5	9.4	7.7	0.0	0.1	0.0			

The AAPC is the Average Annual Percent Change over the time interval. The AAPCs are calculated by the Joinpoint Regression Program Version 4.7, February 2019, National Cancer Institute.

Statistic not shown. Rate based on less than 16 cases for the time interval.

Trend based on less than 10 cases for at least one year within the time interval.

Rates are age-adjusted to the 2000 US Std Population (19 age groups - Census P25-1130). Trends are based on rates age-adjusted to the 2000 US Std Population (19 age groups - Census P25-1130).

The SEER 9 areas are San Francisco, Connecticut, Detroit, Hawaii, Iowa, New Mexico, Seattle, Utah, and Atlanta.

The SEER 21 areas comprise the SEER 9 areas plus San Jose-Monterey, Los Angeles, the Alaska Native Registry, Rural Georgia, California excluding SF/SJM/LA, Kentucky, Louisiana, New Jersey, Georgia excluding ATL/RG, Idaho, New York and Massachusetts.

The 2007-2016 AAPC estimates are based on a Joinpoint analysis with up to 3 Joinpoints over diagnosis years 2000-2016.

The 2007-2016 AAPC estimates are based on a Joinpoint analysis with up to 5 Joinpoints over diagnosis years 1975-2016.

Hispanic and Non-Hispanic are not mutually exclusive from whites, blacks, Asian/Pacific Islanders, and American Indians/Alaska Natives. Incidence data for Hispanics and Non-Hispanics are based on NHIA and exclude cases from the Alaska Native Registry.

Incidence data for American Indian/Alaska Native are based on the Purchased/Referred Care Delivery Area (PRCDA) counties.

US Mortality Files, National Center for Health Statistics, CDC.

The 2007-2016 mortality AAPCs are based on a Joinpoint analysis using years of death 2000-2016.

The APC is significantly different from zero (p<.05).

Table 22.16
Cancer of the Pancreas (Invasive)

Age-Adjusted SEER Incidence Rates^a
By Registry, Race and Sex

	All Races			Whites			Blacks		
	Total	Males	Females	Total	Males	Females	Total	Males	Females
<u>SEER Incidence Rates^a, 2012-2016</u>									
California	11.65	13.19	10.36	11.93	13.56	10.52	14.11	15.78	12.79
Greater Bay Area	11.81	13.32	10.56	12.26	13.83	10.90	16.83	19.01	15.25
San Francisco-Oakland	11.84	13.39	10.55	12.23	14.03	10.65	17.14	18.89	15.86
San Jose-Monterey	11.74	13.19	10.56	12.29	13.46	11.31	15.22	20.11	10.82
Los Angeles	11.40	12.71	10.33	11.65	13.02	10.51	13.66	14.92	12.70
Greater California	11.71	13.36	10.29	11.93	13.69	10.41	13.20	14.96	11.66
Connecticut	13.65	15.56	12.07	13.57	15.53	11.94	14.33	15.34	13.33
Detroit	15.24	17.12	13.71	14.55	16.47	12.94	18.40	21.07	16.45
Georgia	13.16	15.32	11.44	12.53	14.89	10.57	15.61	17.40	14.38
Atlanta	13.30	15.41	11.75	12.45	14.95	10.54	15.35	16.78	14.45
Rural Georgia	11.93	13.61	10.48	11.13	13.01	9.57	14.04	17.18	11.79
Greater Georgia	13.22	15.45	11.38	12.67	15.05	10.64	15.94	17.93	14.55
Hawaii	13.45	15.11	11.98	12.46	14.16	10.47	-	-	-
Idaho	13.34	15.25	11.53	13.43	15.46	11.51	-	-	-
Iowa	13.24	15.07	11.68	13.21	15.07	11.62	19.14	20.03	18.05
Kentucky	13.34	15.03	11.89	13.20	14.97	11.68	15.99	16.12	15.57
Louisiana	14.25	16.33	12.53	13.82	16.03	11.98	15.89	17.70	14.40
Massachusetts	12.64	14.29	11.26	12.65	14.31	11.26	13.31	14.90	11.83
New Jersey	13.87	15.65	12.45	14.09	16.00	12.55	15.40	16.30	14.59
New Mexico	11.21	12.43	10.16	11.35	12.48	10.35	12.95	16.24	-
New York	13.99	15.94	12.41	14.20	16.36	12.43	14.76	16.09	13.75
Seattle-Puget Sound	12.85	14.21	11.71	12.89	14.17	11.78	16.90	19.92	13.94
Utah	11.09	12.47	9.82	11.11	12.46	9.88	-	-	-
SEER 9 Areas ^b	12.97	14.60	11.61	12.83	14.51	11.38	16.34	18.16	14.98
SEER 13 Areas ^b	12.56	14.12	11.26	12.56	14.15	11.19	15.65	17.40	14.34
SEER 18 Areas ^b	12.68	14.36	11.28	12.68	14.44	11.19	15.46	17.06	14.20
SEER 21 Areas ^b	12.92	14.65	11.49	12.96	14.78	11.42	15.19	16.72	13.99

^a Rates are per 100,000 and are age-adjusted to the 2000 US Std Population (19 age groups - Census P25-1130)

^b The SEER 9 areas are San Francisco, Connecticut, Detroit, Hawaii, Iowa, New Mexico, Seattle, Utah and Atlanta.

The SEER 13 areas comprise the SEER 9 areas plus San Jose-Monterey, Los Angeles, the Alaska Native Registry and Rural Georgia. The SEER 18 areas comprise the SEER 13 areas plus California excluding SF/SJM/LA, Kentucky, Louisiana, New Jersey and Georgia excluding ATL/RG.

The SEER 21 areas comprise the SEER 18 areas plus Idaho, New York and Massachusetts.

- Statistic not shown. Rate based on less than 16 cases for the time interval.

Table 22.17
Cancer of the Pancreas (Invasive)

Age-Adjusted SEER Death Rates^a
By Registry, Race and Sex

	All Races			Whites			Blacks		
	Total	Males	Females	Total	Males	Females	Total	Males	Females
<u>SEER Death Rates^a, 2012-2016</u>									
California	10.35	11.77	9.16	10.67	12.21	9.36	12.69	14.32	11.41
Greater Bay Area	9.84	11.12	8.77	10.34	11.77	9.12	14.03	16.10	12.44
San Francisco-Oakland	9.97	11.27	8.91	10.40	11.85	9.18	14.06	16.10	12.49
San Jose-Monterey	9.58	10.82	8.50	10.22	11.61	8.98	14.11	16.39	12.00
Los Angeles	10.42	11.70	9.38	10.66	12.08	9.49	12.88	14.32	11.84
Greater California	10.49	12.02	9.19	10.76	12.39	9.36	11.85	13.44	10.48
Connecticut	10.66	11.93	9.60	10.63	12.02	9.46	12.01	12.06	11.69
Detroit	12.19	13.63	10.95	11.79	13.53	10.26	14.32	14.91	13.76
Georgia	10.71	12.72	9.11	10.45	12.58	8.67	12.09	13.94	10.74
Atlanta	10.19	12.14	8.75	9.94	11.90	8.37	11.13	13.70	9.57
Rural Georgia	9.12	10.62	7.71	9.10	10.88	7.42	9.72	-	-
Greater Georgia	11.05	13.12	9.35	10.70	12.94	8.83	12.93	14.36	11.71
Hawaii	10.94	12.24	9.85	11.69	12.45	10.58	-	-	-
Idaho	11.28	13.02	9.60	11.42	13.25	9.67	-	-	-
Iowa	11.10	12.97	9.51	11.08	12.96	9.48	17.23	18.82	15.34
Kentucky	11.26	12.78	9.95	11.18	12.74	9.84	13.27	14.06	12.36
Louisiana	12.91	15.07	11.13	12.25	14.68	10.26	15.02	16.45	13.71
Massachusetts	11.18	12.75	9.89	11.48	13.10	10.16	9.94	11.81	8.34
New Jersey	11.14	12.51	10.04	11.39	12.91	10.15	12.89	13.58	12.30
New Mexico	9.64	10.90	8.52	9.84	11.03	8.77	9.98	-	-
New York	11.11	12.79	9.77	11.49	13.37	9.95	11.06	12.24	10.19
Seattle-Puget Sound	10.51	12.02	9.24	10.65	12.14	9.37	14.54	17.91	11.54
Utah	9.79	10.90	8.76	9.82	10.86	8.85	-	-	-
SEER 9 Areas ^b	10.62	12.05	9.41	10.65	12.14	9.36	12.77	14.30	11.60
SEER 13 Areas ^b	10.52	11.90	9.37	10.64	12.09	9.38	12.77	14.29	11.63
SEER 18 Areas ^b	10.79	12.29	9.53	10.87	12.48	9.50	13.04	14.41	11.93
SEER 21 Areas ^b	10.88	12.42	9.60	11.03	12.69	9.63	12.41	13.77	11.33
Total U.S.	10.96	12.61	9.57	10.89	12.63	9.42	13.33	14.82	12.16

^a US Mortality Files, National Center for Health Statistics, Centers for Disease Control and Prevention. Rates are per 100,000 and are age-adjusted to the 2000 US Std Population (19 age groups - Census P25-1130).

^b The SEER 9 areas are San Francisco, Connecticut, Detroit, Hawaii, Iowa, New Mexico, Seattle, Utah and Atlanta. The SEER 13 areas comprise the SEER 9 areas plus San Jose-Monterey, Los Angeles, the Alaska Native Registry and Rural Georgia. The SEER 18 areas comprise the SEER 13 areas plus California excluding SF/SJM/LA, Kentucky, Louisiana, New Jersey and Georgia excluding ATL/RG.

The SEER 21 areas comprise the SEER 18 areas plus Idaho, New York and Massachusetts.

- Statistic not shown. Rate based on less than 16 cases for the time interval.

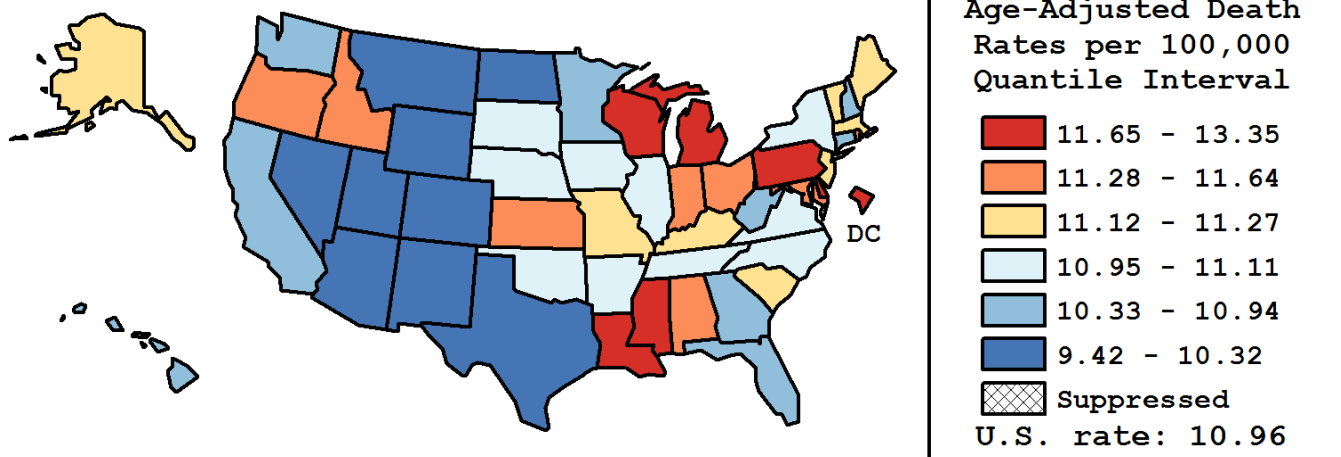
Table 22.18
Cancer of the Pancreas (Invasive)

Age-Adjusted Cancer Death^a Rates By State, All Races, 2012-2016

Males and Females

State	Rate	SE	Rank(CI) ^d	PD
TOTAL U.S.	10.96	0.02		
High Five States				
D.C.	13.35	0.66	01(01,14)	21.81 ^c
Mississippi	13.16	0.28	02(01,04)	20.04 ^c
Louisiana	12.91	0.23	03(01,04)	17.76 ^c
Michigan	11.93	0.14	04(03,13)	8.88
Pennsylvania	11.82	0.12	05(03,14)	7.83
Low Five States				
Wyoming	9.90	0.56	47(09,51)	-9.69
North Dakota	9.84	0.49	48(15,51)	-10.25
Utah	9.79	0.29	49(36,51)	-10.70
New Mexico	9.64	0.28	50(40,51)	-12.04
Colorado	9.42	0.19	51(46,51)	-14.03

State	Rate	SE	Rank(CI) ^d	PD	State	Rate	SE	Rank(CI) ^d	PD
Alabama	11.52	0.20	10(04,31)	5.14	Montana	10.17	0.40	46(14,51)	-7.24
Alaska	11.12	0.66	22(02,51)	1.50	Nebraska	10.95	0.32	33(05,48)	-0.09
Arizona	10.32	0.16	43(32,49)	-5.84	Nevada	10.22	0.26	45(26,51)	-6.78
Arkansas	10.96	0.25	32(07,45)	0.00	New Hampshire	10.63	0.36	40(07,50)	-3.01
California	10.35	0.07	42(37,47)	-5.60	New Jersey	11.14	0.15	20(10,37)	1.61
Colorado	9.42	0.19	51(46,51)	-14.03	New Mexico	9.64	0.28	50(40,51)	-12.04
Connecticut	10.66	0.22	38(15,48)	-2.69	New York	11.11	0.10	25(12,35)	1.35
Delaware	11.75	0.45	06(02,42)	7.23	North Carolina	11.02	0.14	28(12,39)	0.50
D.C.	13.35	0.66	01(01,14)	21.81 ^c	North Dakota	9.84	0.49	48(15,51)	-10.25
Florida	10.44	0.09	41(34,47)	-4.73	Ohio	11.64	0.13	08(04,19)	6.20
Georgia	10.71	0.15	37(20,45)	-2.26	Oklahoma	10.98	0.23	31(09,44)	0.17
Hawaii	10.94	0.36	34(04,48)	-0.15	Oregon	11.36	0.22	12(04,37)	3.69
Idaho	11.28	0.36	15(04,45)	2.91	Pennsylvania	11.82	0.12	05(03,14)	7.83
Illinois	11.03	0.12	27(13,38)	0.63	Rhode Island	11.36	0.42	13(03,46)	3.64
Indiana	11.34	0.18	14(05,34)	3.45	South Carolina	11.27	0.20	16(05,38)	2.84
Iowa	11.10	0.24	26(06,42)	1.31	South Dakota	11.01	0.47	29(04,49)	0.47
Kansas	11.41	0.27	11(04,38)	4.09	Tennessee	11.11	0.17	24(09,39)	1.40
Kentucky	11.26	0.21	17(05,39)	2.75	Texas	10.24	0.09	44(38,49)	-6.60
Louisiana	12.91	0.23	03(01,04)	17.76 ^c	Utah	9.79	0.29	49(36,51)	-10.70
Maine	11.19	0.35	18(04,46)	2.13	Vermont	11.12	0.53	23(03,50)	1.42
Maryland	11.53	0.19	09(04,29)	5.16	Virginia	10.99	0.16	30(11,41)	0.25
Massachusetts	11.18	0.17	19(08,37)	2.02	Washington	10.71	0.17	36(18,46)	-2.24
Michigan	11.93	0.14	04(03,13)	8.88	West Virginia	10.66	0.30	39(10,49)	-2.74
Minnesota	10.78	0.19	35(15,45)	-1.65	Wisconsin	11.72	0.19	07(03,23)	6.97
Mississippi	13.16	0.28	02(01,04)	20.04 ^c	Wyoming	9.90	0.56	47(09,51)	-9.69
Missouri	11.14	0.18	21(07,39)	1.60					



^a US Mortality Files, National Center for Health Statistics, Centers for Disease Control and Prevention. Rates are per 100,000 and are age-adjusted to the 2000 US Std Population (19 age groups - Census P25-1130).

^b Difference between state rate and total U.S. rate is statistically significant ($p < .0002$).

^c Absolute percent difference between state rate and total U.S. rate is 15% or more.

^d Rank of state level death rate and the 95% confidence intervals (low, high) for the rank.

SE Standard error of the rate.

PD Percent difference between state rate and total U.S. rate.

- Statistic not shown. Rate based on less than 16 cases for the time interval.

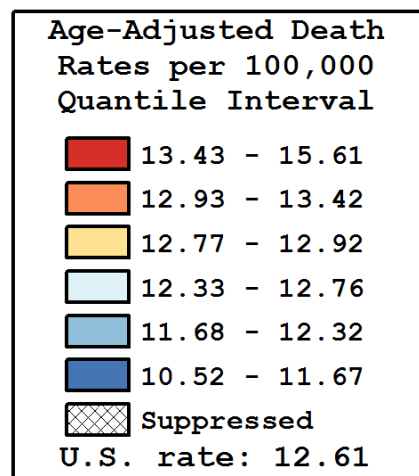
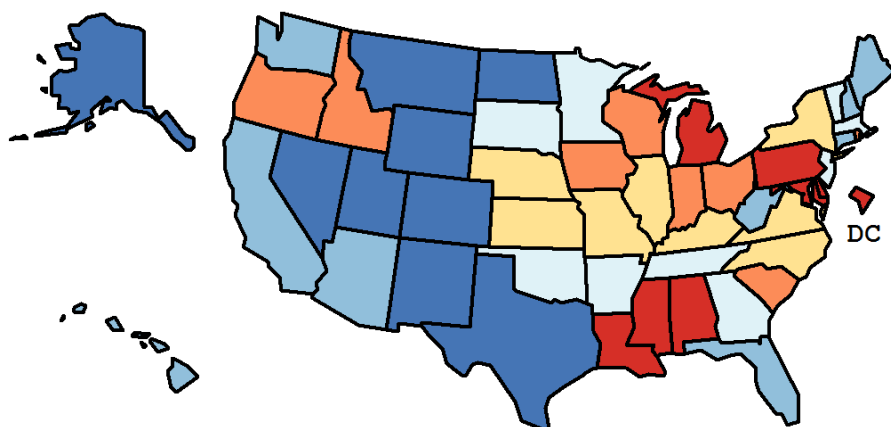
Table 22.19
Cancer of the Pancreas (Invasive)

Age-Adjusted Cancer Death^a Rates By State, All Races, 2012-2016

Males

State	Rate	SE	Rank(CI) ^d	PD
TOTAL U.S.	12.61	0.04		
High Five States				
Mississippi	15.61	0.48	01(01,05)	23.77 ^c
D.C.	15.41	1.10	02(01,34)	22.16 ^c
Louisiana	15.07	0.38	03(01,05)	19.49 ^c
Delaware	14.16	0.75	04(01,38)	12.30 ^c
Pennsylvania	13.85	0.20	05(03,14)	9.83
Low Five States				
Montana	10.95	0.61	47(21,51)	-13.16 ^c
New Mexico	10.90	0.45	48(33,51)	-13.53 ^c
Utah	10.90	0.45	49(31,51)	-13.56 ^c
Colorado	10.82	0.31	50(40,51)	-14.22 ^c
Wyoming	10.52	0.84	51(14,51)	-16.56 ^c

State	Rate	SE	Rank(CI) ^d	PD	State	Rate	SE	Rank(CI) ^d	PD
Alabama	13.47	0.33	08(03,32)	6.83	Montana	10.95	0.61	47(21,51)	-13.16 ^c
Alaska	11.14	0.97	46(04,51)	-11.62 ^c	Nebraska	12.87	0.53	19(03,46)	2.05
Arizona	11.90	0.25	40(24,47)	-5.67	Nevada	11.44	0.41	44(24,51)	-9.26
Arkansas	12.41	0.40	33(08,46)	-1.60	New Hampshire	12.32	0.58	34(04,50)	-2.32
California	11.77	0.12	42(34,46)	-6.68	New Jersey	12.51	0.24	31(12,41)	-0.78
Colorado	10.82	0.31	50(40,51)	-14.22 ^c	New Mexico	10.90	0.45	48(33,51)	-13.53 ^c
Connecticut	11.93	0.36	39(16,48)	-5.39	New York	12.79	0.16	22(11,34)	1.41
Delaware	14.16	0.75	04(01,38)	12.30 ^c	North Carolina	12.91	0.23	18(07,36)	2.37
D.C.	15.41	1.10	02(01,34)	22.16 ^c	North Dakota	11.30	0.78	45(07,51)	-10.38 ^c
Florida	12.23	0.14	37(25,42)	-3.03	Ohio	13.20	0.21	13(05,30)	4.68
Georgia	12.72	0.25	27(09,39)	0.87	Oklahoma	12.54	0.36	30(08,46)	-0.59
Hawaii	12.24	0.56	36(05,50)	-2.94	Oregon	13.29	0.35	12(03,36)	5.35
Idaho	13.02	0.56	15(03,45)	3.28	Pennsylvania	13.85	0.20	05(03,14)	9.83
Illinois	12.92	0.21	17(07,35)	2.45	Rhode Island	13.35	0.70	11(01,45)	5.85
Indiana	13.37	0.29	10(03,30)	6.04	South Carolina	13.08	0.33	14(04,37)	3.75
Iowa	12.97	0.39	16(04,41)	2.84	South Dakota	12.42	0.74	32(03,51)	-1.49
Kansas	12.83	0.42	21(04,44)	1.76	Tennessee	12.76	0.28	25(07,40)	1.15
Kentucky	12.78	0.34	23(05,42)	1.35	Texas	11.67	0.15	43(35,48)	-7.43
Louisiana	15.07	0.38	03(01,05)	19.49 ^c	Utah	10.90	0.45	49(31,51)	-13.56 ^c
Maine	11.85	0.54	41(08,51)	-6.07	Vermont	12.54	0.85	29(02,51)	-0.52
Maryland	13.57	0.31	06(03,27)	7.63	Virginia	12.77	0.26	24(08,39)	1.25
Massachusetts	12.75	0.27	26(07,39)	1.09	Washington	12.29	0.27	35(15,45)	-2.52
Michigan	13.50	0.23	07(04,23)	7.05	West Virginia	12.04	0.47	38(08,50)	-4.50
Minnesota	12.57	0.30	28(08,43)	-0.35	Wisconsin	13.42	0.30	09(03,31)	6.45
Mississippi	15.61	0.48	01(01,05)	23.77 ^c	Wyoming	10.52	0.84	51(14,51)	-16.56 ^c
Missouri	12.84	0.29	20(06,39)	1.82					



^a US Mortality Files, National Center for Health Statistics, Centers for Disease Control and Prevention. Rates are per 100,000 and are age-adjusted to the 2000 US Std Population (19 age groups - Census P25-1130).

^b Difference between state rate and total U.S. rate is statistically significant ($p < .0002$).

^c Absolute percent difference between state rate and total U.S. rate is 10% or more.

^d Rank of state level death rate and the 95% confidence intervals (low, high) for the rank.

SE Standard error of the rate.

PD Percent difference between state rate and total U.S. rate.

- Statistic not shown. Rate based on less than 16 cases for the time interval.

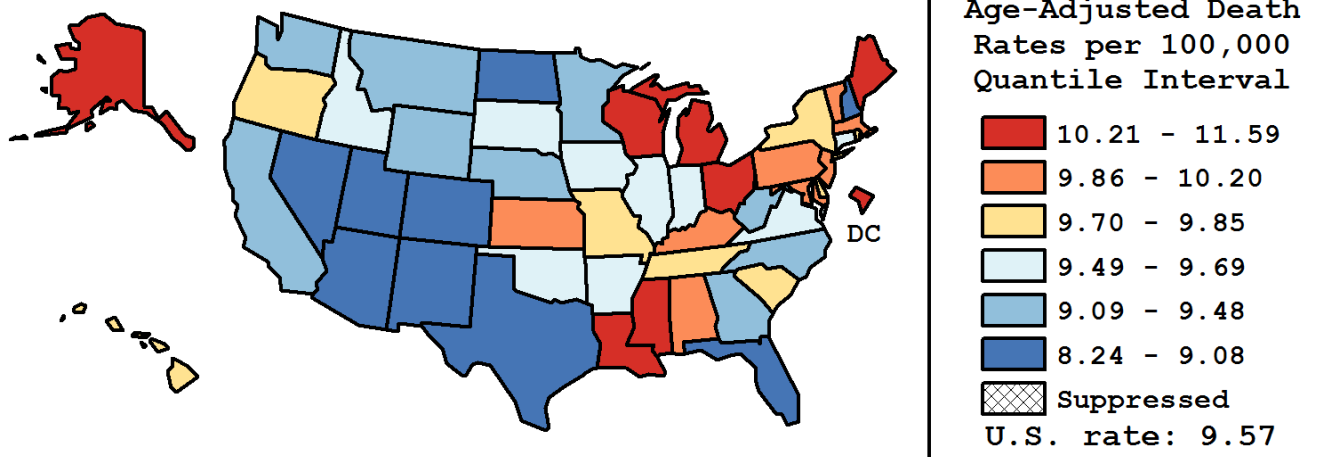
Table 22.20
Cancer of the Pancreas (Invasive)

Age-Adjusted Cancer Death^a Rates By State, All Races, 2012-2016

Females

State	Rate	SE	Rank(CI) ^d	PD
TOTAL U.S.	9.57	0.03		
High Five States				
D.C.	11.59	0.81	01(01,39)	21.08 ^c
Mississippi	11.23	0.35	02(01,11)	17.30 ^c
Louisiana	11.13	0.28	03(01,10)	16.27 ^c
Alaska	11.07	0.89	04(01,49)	15.67 ^c
Maine	10.67	0.46	05(01,35)	11.48
Low Five States				
Arizona	8.89	0.20	47(29,51)	-7.14
Utah	8.76	0.37	48(17,51)	-8.49
New Mexico	8.52	0.36	49(26,51)	-10.99
North Dakota	8.45	0.61	50(07,51)	-11.73
Colorado	8.24	0.24	51(44,51)	-13.91

State	Rate	SE	Rank(CI) ^d	PD	State	Rate	SE	Rank(CI) ^d	PD
Alabama	9.87	0.25	16(05,41)	3.12	Montana	9.38	0.53	37(03,51)	-2.06
Alaska	11.07	0.89	04(01,49)	15.67 ^c	Nebraska	9.33	0.40	38(06,51)	-2.53
Arizona	8.89	0.20	47(29,51)	-7.14	Nevada	9.08	0.34	43(10,51)	-5.19
Arkansas	9.63	0.31	27(05,48)	0.63	New Hampshire	9.01	0.45	44(08,51)	-5.89
California	9.16	0.09	41(31,47)	-4.34	New Jersey	10.04	0.18	11(05,32)	4.89
Colorado	8.24	0.24	51(44,51)	-13.91	New Mexico	8.52	0.36	49(26,51)	-10.99
Connecticut	9.60	0.28	29(07,47)	0.22	New York	9.77	0.12	20(10,35)	2.00
Delaware	9.73	0.55	22(02,51)	1.62	North Carolina	9.48	0.17	34(14,45)	-1.03
D.C.	11.59	0.81	01(01,39)	21.08 ^c	North Dakota	8.45	0.61	50(07,51)	-11.73
Florida	8.90	0.11	46(36,50)	-7.02	Ohio	10.34	0.16	07(03,20)	8.00
Georgia	9.11	0.18	42(25,49)	-4.87	Oklahoma	9.69	0.29	25(06,46)	1.24
Hawaii	9.85	0.46	17(02,49)	2.84	Oregon	9.78	0.28	19(05,45)	2.10
Idaho	9.60	0.46	28(03,50)	0.30	Pennsylvania	10.13	0.15	10(05,26)	5.86
Illinois	9.51	0.15	33(14,43)	-0.71	Rhode Island	9.79	0.52	18(02,50)	2.26
Indiana	9.69	0.22	26(08,42)	1.22	South Carolina	9.76	0.25	21(05,44)	1.94
Iowa	9.51	0.30	32(07,49)	-0.66	South Dakota	9.55	0.59	30(02,51)	-0.22
Kansas	10.20	0.34	09(02,39)	6.58	Tennessee	9.72	0.22	23(08,42)	1.57
Kentucky	9.95	0.27	13(04,40)	3.97	Texas	9.00	0.12	45(33,49)	-5.95
Louisiana	11.13	0.28	03(01,10)	16.27 ^c	Utah	8.76	0.37	48(17,51)	-8.49
Maine	10.67	0.46	05(01,35)	11.48	Vermont	9.92	0.68	14(01,51)	3.66
Maryland	9.97	0.23	12(04,37)	4.19	Virginia	9.52	0.20	31(11,45)	-0.61
Massachusetts	9.89	0.21	15(05,37)	3.27	Washington	9.39	0.21	36(13,48)	-1.91
Michigan	10.60	0.18	06(02,14)	10.72	West Virginia	9.40	0.38	35(06,50)	-1.85
Minnesota	9.24	0.24	39(16,49)	-3.46	Wisconsin	10.22	0.23	08(03,30)	6.80
Mississippi	11.23	0.35	02(01,11)	17.30 ^c	Wyoming	9.20	0.75	40(01,51)	-3.94
Missouri	9.71	0.22	24(08,42)	1.45					



^a US Mortality Files, National Center for Health Statistics, Centers for Disease Control and Prevention. Rates are per 100,000 and are age-adjusted to the 2000 US Std Population (19 age groups - Census P25-1130).

^b Difference between state rate and total U.S. rate is statistically significant ($p < .0002$).

^c Absolute percent difference between state rate and total U.S. rate is 15% or more.

^d Rank of state level death rate and the 95% confidence intervals (low, high) for the rank.

SE Standard error of the rate.

PD Percent difference between state rate and total U.S. rate.

- Statistic not shown. Rate based on less than 16 cases for the time interval.

Table 22.21
Cancer of the Pancreas (Invasive)

Estimated United States Cancer Prevalence Counts^a on January 1, 2016
By Race/Ethnicity, Sex and Years Since Diagnosis

Years Since Diagnosis		0 to <5	5 to <10	10 to <15	15 to <20	20 to <24	0 to <24 ^b	>=24 ^d	Complete ^e
Race	Sex								
All Races	Both Sexes	53,929	10,127	4,024	1,824	832	70,735	2,819	73,554
	Males	27,124	5,187	1,759	810	208	35,088	1,330	36,418
	Females	26,805	4,940	2,265	1,014	623	35,647	1,489	37,136
White	Both Sexes	44,556	8,296	3,377	1,411	655	58,294	2,308	61,221
	Males	22,760	4,311	1,562	690	172	29,495	1,163	31,041
	Females	21,796	3,985	1,814	721	482	28,799	1,145	30,180
Black	Both Sexes	6,478	1,238	411	260	89	8,476	881	9,358
	Males	2,875	583	108	76	0	3,642	406	4,048
	Females	3,602	655	303	185	89	4,834	475	5,309
Asian/ Pacific Islander	Both Sexes	2,167	415	185	87	34	2,889	+	+
	Males	1,038	200	67	24	10	1,339	+	+
	Females	1,129	215	118	63	25	1,550	+	+
Hispanic	Both Sexes	4,279	724	362	177	96	5,638	+	+
	Males	1,873	332	121	67	6	2,400	+	+
	Females	2,406	392	241	110	89	3,238	+	+

Estimated prevalence percent^a on January 1, 2016, of the SEER population diagnosed in the previous 24 years
By Age at Prevalence, Race/Ethnicity and Sex

Age at Prevalence		All Ages	0-9	10-19	20-29	Age Specific (Crude)					Age-Adjusted ^c	
Race	Sex											
All Races	Both Sexes	0.0220	0.0000	0.0003	0.0010	0.0029	0.0095	0.0272	0.0613	0.0992	0.0938	0.0186
	Males	0.0221	0.0000	0.0003	0.0005	0.0025	0.0085	0.0269	0.0682	0.1132	0.1093	0.0201
	Females	0.0218	0.0001	0.0003	0.0015	0.0034	0.0105	0.0274	0.0551	0.0876	0.0842	0.0174
White	Both Sexes	0.0231	0.0001	0.0003	0.0011	0.0029	0.0091	0.0257	0.0604	0.1002	0.0940	0.0184
	Males	0.0236	0.0001	0.0002	0.0006	0.0025	0.0081	0.0261	0.0674	0.1148	0.1103	0.0200
	Females	0.0226	0.0001	0.0003	0.0016	0.0034	0.0101	0.0253	0.0539	0.0878	0.0838	0.0171
Black	Both Sexes	0.0188	-	0.0003	0.0007	0.0024	0.0123	0.0374	0.0721	0.0961	0.0891	0.0204
	Males	0.0168	-	0.0003	0.0005	0.0017	0.0105	0.0331	0.0791	0.0999	0.0904	0.0203
	Females	0.0206	-	0.0003	0.0009	0.0030	0.0139	0.0412	0.0666	0.0934	0.0885	0.0206
Asian/ Pacific Islander	Both Sexes	0.0142	-	-	0.0008	0.0037	0.0077	0.0209	0.0502	0.0759	0.0791	0.0151
	Males	0.0137	-	-	-	0.0036	0.0083	0.0194	0.0512	0.0906	0.0812	0.0159
	Females	0.0146	-	-	0.0013	0.0038	0.0072	0.0221	0.0494	0.0642	0.0777	0.0144
Hispanic	Both Sexes	0.0099	0.0001	0.0003	0.0011	0.0027	0.0076	0.0203	0.0467	0.0812	0.0836	0.0151
	Males	0.0083	-	0.0004	0.0003	0.0014	0.0057	0.0177	0.0449	0.0958	0.0717	0.0147
	Females	0.0115	0.0001	0.0003	0.0020	0.0041	0.0095	0.0229	0.0482	0.0700	0.0909	0.0157

^a US 2016 cancer prevalence counts are based on 2016 cancer prevalence proportions from the SEER 13 Areas (excluding the Alaska Native Registry) and 1/1/2016 US population estimates based on the average of 2015 and 2016 population estimates from the US Bureau of the Census.

^b Prevalence was calculated using the first invasive tumor for each cancer site diagnosed during the previous 24 years. Maximum limited-duration prevalence is 24 years for 1992-2016 data.

^c Percentages are age-adjusted to the 2000 US Standard Population (19 age groups - Census P25-1130) by 5-year age groups.

^d Cases diagnosed more than 24 years ago were estimated using the completeness index method (Capocaccia et. al. 1997, Merrill et. al. 2000).

^e Complete prevalence is obtained by summing 0 to <24 and >=24.

- Statistic not shown. Statistic based on fewer than 5 cases estimated alive in SEER for the time interval.

+ Not available.

Table 22.22

Cancer of the Pancreas (Invasive)

Percent Distribution and Counts by Histology among Histologically Confirmed Cases, 2012-2016
Both Sexes by Race

Histology ^a	All Races		White		Black		Asian/Pacific Islander		American Indian/ Alaska Native ^b		Hispanic ^c	
	Count	Percent	Count	Percent	Count	Percent	Count	Percent	Count	Percent	Count	Percent
Carcinoma	69,818	98.4%	55,902	98.5%	8,656	98.4%	4,643	98.3%	232	96.7%	7,299	98.2%
Epidermoid carcinoma ^d (8051-8131)	192	0.3%	146	0.3%	26	0.3%	17	0.4%	-	-	21	0.3%
Adenocarcinoma ^e	60,326	85.0%	48,497	85.4%	7,434	84.5%	3,910	82.8%	193	80.4%	6,278	84.4%
Adenocarcinoma, NOS (8140)	47,997	67.7%	38,596	68.0%	6,045	68.7%	2,981	63.1%	153	63.8%	4,890	65.8%
Papillary adenocarcinoma, NOS (8260)	44	0.1%	33	0.1%	-	-	-	-	-	-	-	-
Mucinous adenocarcinoma (8480,8482)	1,567	2.2%	1,272	2.2%	149	1.7%	128	2.7%	-	-	189	2.5%
Mucin-producing adenocarcinoma (8481)	384	0.5%	305	0.5%	54	0.6%	24	0.5%	-	-	39	0.5%
Infiltrating duct carcinoma (8500-8503,8507,8514)	8,238	11.6%	6,606	11.6%	947	10.8%	618	13.1%	24	10.0%	871	11.7%
Other adenocarcinoma ^f	2,096	3.0%	1,685	3.0%	234	2.7%	153	3.2%	-	-	278	3.7%
Other specific carcinomas ^g	6,956	9.8%	5,483	9.7%	844	9.6%	524	11.1%	24	10.0%	738	9.9%
Islet cell carcinoma (8150-8155)	362	0.5%	301	0.5%	41	0.5%	16	0.3%	-	-	30	0.4%
Other carcinomas ^h	6,594	9.3%	5,182	9.1%	803	9.1%	508	10.8%	22	9.2%	708	9.5%
Unspecified, "Carcinoma, NOS" (8010,8020-8022)	2,344	3.3%	1,776	3.1%	352	4.0%	192	4.1%	-	-	262	3.5%
Sarcoma and other soft tissue tumors ⁱ	55	0.1%	45	0.1%	-	-	-	-	-	-	-	-
Other specific types ^j	78	0.1%	61	0.1%	-	-	-	-	-	-	-	-
Unspecified (8000-8005)	979	1.4%	769	1.4%	128	1.5%	70	1.5%	-	-	113	1.5%
Total	70,932	100.0%	56,779	100.0%	8,796	100.0%	4,725	100.0%	240	100.0%	7,436	100.0%

Source: SEER 21 areas (San Francisco, Connecticut, Detroit, Hawaii, Iowa, New Mexico, Seattle, Utah, Atlanta, San Jose-Monterey, Los Angeles, Alaska Native Registry, Rural Georgia, California excluding SF/SJM/LA, Kentucky, Louisiana, New Jersey, Georgia excluding ATL/RG, Idaho, New York and Massachusetts).

Percents may not sum to 100 due to rounding.

^a Excludes Kaposi Sarcoma, mesothelioma, lymphomas, leukemias, myelomas, lymphoreticular, and immunoproliferative diseases.

^b Estimates for American Indian/Alaska Native are based on the Purchased/Referred Care Delivery Area (PRCDA) counties.

^c Hispanic is not mutually exclusive from whites, blacks, Asian/Pacific Islanders, and American Indians/Alaska Natives.

Underlying incidence data for Hispanics are based on NHIA and exclude cases from the Alaska Native Registry.

^d Epidermoid carcinoma includes squamous, basal, and transitional cell carcinomas.

^e Adenocarcinoma includes histologies 8050,8140-8147,8160-8162,8180-8221,8250-8507,8514,8520-8551,8560,8570-8574,8576,8940-8941.

^f Other adenocarcinoma include histologies 8050,8141-8147,8160-8162,8180-8221,8250-8259,8261-8479,8483-8499,8504-8506,8520-8551,8560,8570-8574,8576,8940-8941.

^g Other specific carcinomas include histologies 8012-8015,8030-8046,8150-8155,8170-8180,8230-8249,8508,8510-8513,8561-8562,8575,8580-8671.

^h Other carcinomas include histologies 8012-8015,8030-8046,8170-8180,8230-8249,8508,8510-8513,8561-8562,8575,8580-8671.

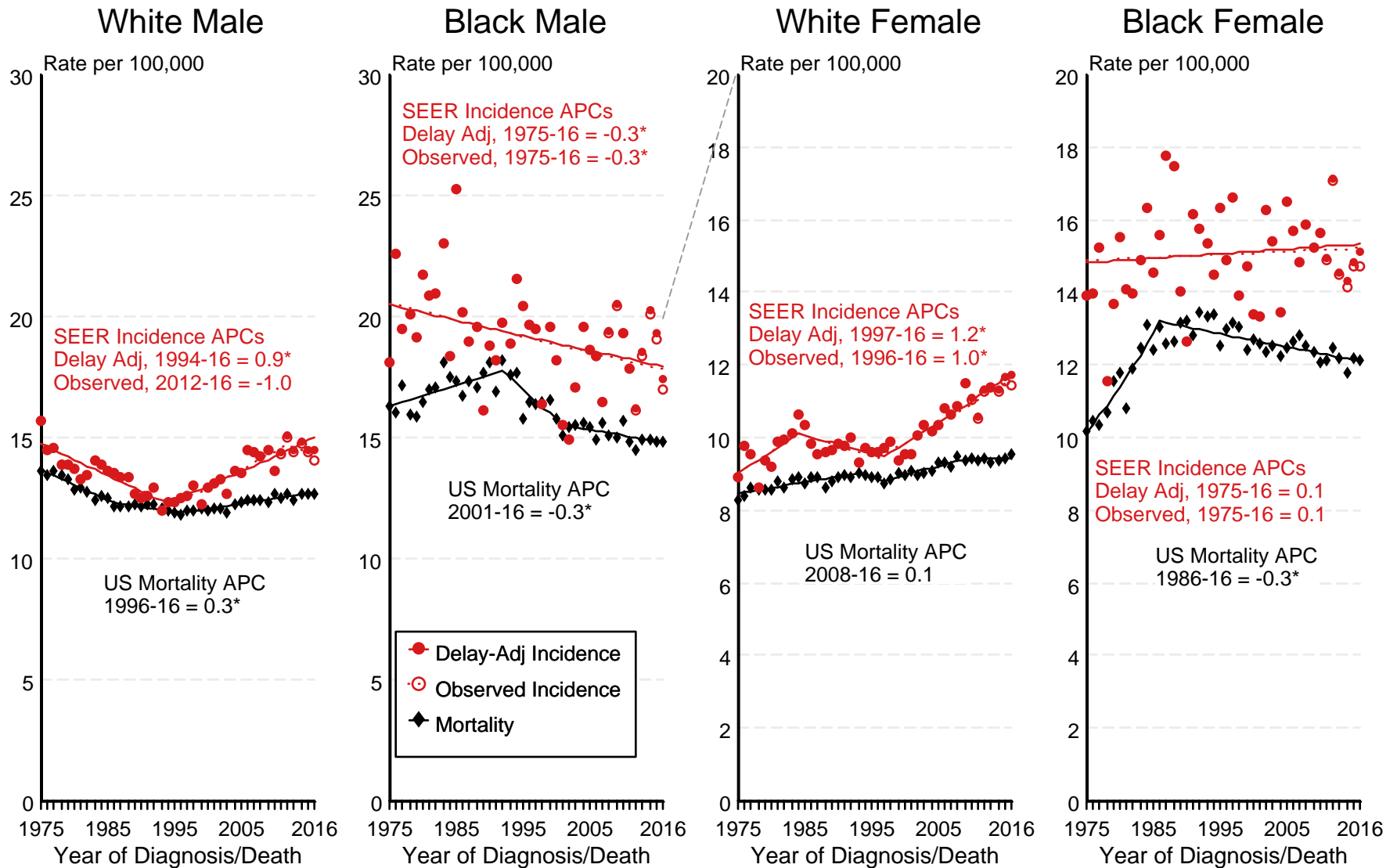
ⁱ Sarcoma and other soft tissue tumors include histologies 8680-8713,8800-8921,8990-8991,9040-9044,9120-9136,9150-9252,9370-9373,9540-9582.

^j Other specific types include histologies 8720-8790,8930-8936,8950-9030,9060-9110,9260-9365,9380-9539.

- Statistic not shown due to fewer than 16 cases during the time period.

Figure 22.1

SEER Observed Incidence, SEER Delay Adjusted Incidence and US Death Rates^a Cancer of the Pancreas, by Race and Sex



Source: SEER 9 areas and US Mortality Files (National Center for Health Statistics, CDC).

^a Rates are age-adjusted to the 2000 US Std Population (19 age groups - Census P25-1103).

Regression lines and APCs are calculated using the Joinpoint Regression Program Version 4.7, February 2019, National Cancer Institute.

The APC is the Annual Percent Change for the regression line segments. The APC shown on the graph is for the most recent trend.

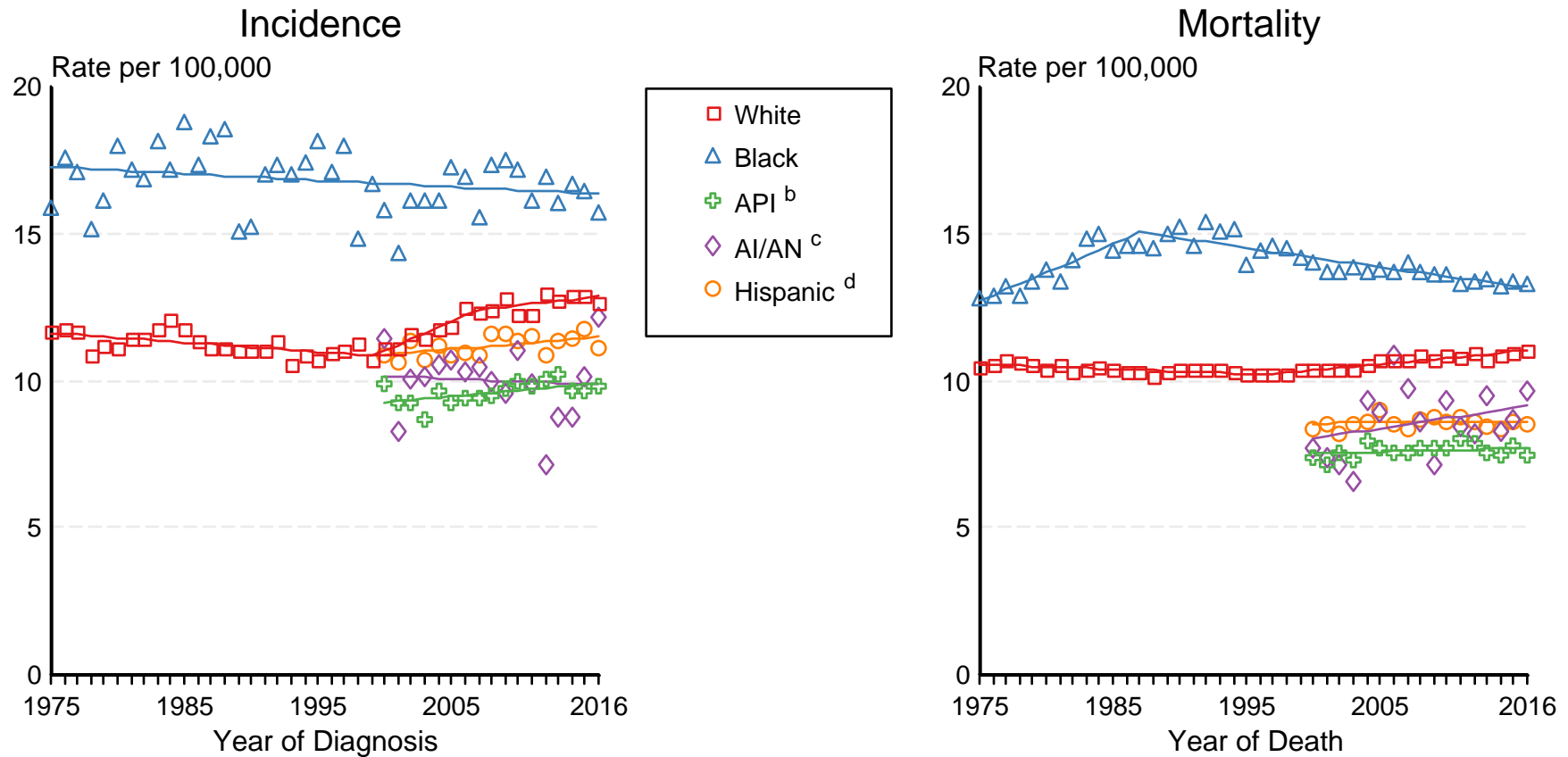
* The APC is significantly different from zero ($p < 0.05$).

Figure 22.2

SEER Incidence and US Death Rates^a Cancer of the Pancreas, Both Sexes

Joinpoint Analyses for Whites and Blacks from 1975-2016

and for Asian/Pacific Islanders, American Indians/Alaska Natives and Hispanics from 2000-2016



Source: Incidence data for whites and blacks are from the SEER 9 areas (San Francisco, Connecticut, Detroit, Hawaii, Iowa, New Mexico, Seattle, Utah, Atlanta). Incidence data for Asian/Pacific Islanders, American Indians/Alaska Natives and Hispanics are from the SEER 21 areas (SEER 9 areas, San Jose-Monterey, Los Angeles, Alaska Native Registry, Rural Georgia, California excluding SF/SJM/LA, Kentucky, Louisiana, New Jersey, Georgia excluding ATL/RG, Idaho, New York and Massachusetts).

Mortality data are from US Mortality Files, National Center for Health Statistics, CDC.

^a Rates are age-adjusted to the 2000 US Std Population (19 age groups - Census P25-1103).

Regression lines are calculated using the Joinpoint Regression Program Version 4.7, February 2019, National Cancer Institute. Joinpoint analyses for Whites and Blacks during the 1975-2016 period allow a maximum of 5 joinpoints. Analyses for other ethnic groups during the period 2000-2016 allow a maximum of 3 joinpoints.

^b API = Asian/Pacific Islander.

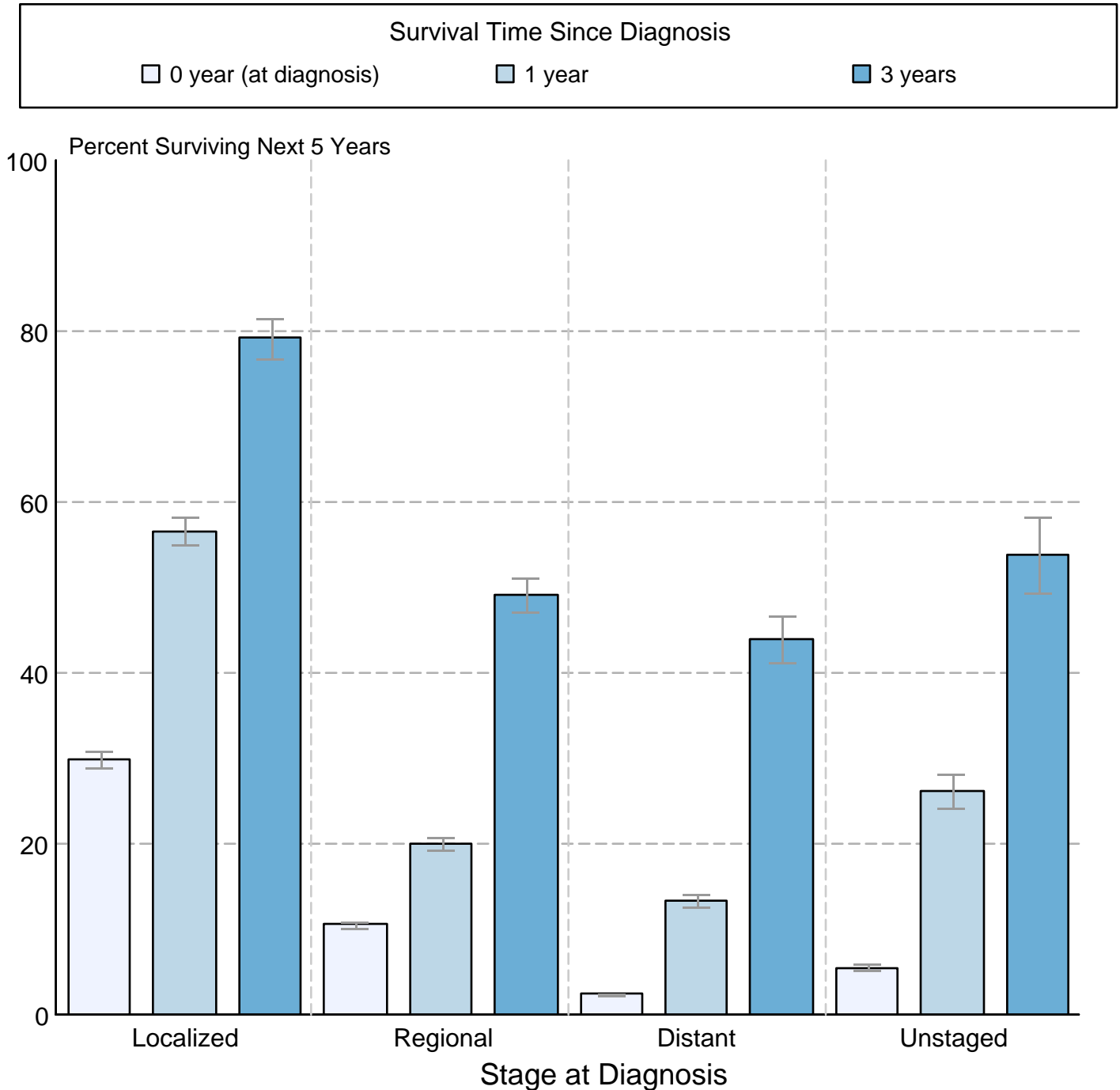
^c AI/AN = American Indian/Alaska Native. Rates for American Indian/Alaska Native are based on the Purchased/Referred Care Delivery Area (PRCDA) counties.

^d Hispanic is not mutually exclusive from whites, blacks, Asian/Pacific Islanders, and American Indians/Alaska Natives. Incidence data for Hispanics are based on NHIA and exclude cases from the Alaska Native Registry.

Figure 22.3

Cancer of the Pancreas 5-Year SEER Conditional Relative Survival and 95% Confidence Intervals

Probability of surviving the next 5 years given the cohort
has already survived 0, 1, or 3 years
2000-2015 by stage at diagnosis



Source: SEER 18 areas (San Francisco, Connecticut, Detroit, Hawaii, Iowa, New Mexico, Seattle, Utah, Atlanta, San Jose-Monterey, Los Angeles, Alaska Native Registry, Rural Georgia, California excluding SF/SJM/LA, Kentucky, Louisiana, New Jersey and Georgia excluding ATL/RG).
Percent surviving is not shown if based on less than 25 cases.
Confidence intervals are not shown if length of the confidence interval is greater than 5 times the standard error.