

Table II-1
ALL SITES (Invasive)

TRENDS IN SEER INCIDENCE AND U.S. MORTALITY, BY RACE AND SEX

	All Races			Whites			Blacks		
	Total	Males	Females	Total	Males	Females	Total	Males	Females
<u>INCIDENCE TRENDS (expressed in percents)§:</u>									
<u>1973-94</u>									
All Ages									
Percent Change (PC)	23.4	32.8	13.0	22.6	29.8	13.8	31.2	46.7	17.9
Est. Annual PC (EAPC)	1.2★	1.6★	0.8★	1.2★	1.5★	0.9★	1.4★	1.8★	1.0★
Under 65									
Percent Change (PC)	15.1	29.8	3.8	14.4	27.9	3.9	25.6	39.5	14.0
Est. Annual PC (EAPC)	0.8★	1.4★	0.4★	0.8★	1.4★	0.4★	1.1★	1.4★	0.7★
65 and over									
Percent Change (PC)	31.5	34.7	25.7	30.5	31.0	27.2	36.8	52.4	22.9
Est. Annual PC (EAPC)	1.6★	1.7★	1.4★	1.6★	1.6★	1.5★	1.7★	2.1★	1.4★
<u>1975-79 - ALL AGES</u>									
Percent Change (PC)	1.3	3.8	-1.2	1.2	3.7	-1.1	3.7	7.0	0.8
Est. Annual PC (EAPC)	0.5	1.3★	-0.3	0.5	1.3★	-0.3	1.2★	2.4★	0.2
<u>1990-94 - ALL AGES</u>									
Percent Change (PC)	-1.1	-1.4	-2.0	-2.6	-3.7	-2.8	3.8	6.7	-1.3
Est. Annual PC (EAPC)	-0.3	-0.4	-0.6	-0.8	-1.1	-0.8	1.2	2.1	-0.3
<u>MORTALITY TRENDS (expressed in percents)*:</u>									
<u>1973-94</u>									
All Ages									
Percent Change (PC)	5.4	4.4	7.6	5.0	3.2	7.7	13.9	19.9	12.3
Est. Annual PC (EAPC)	0.3★	0.3★	0.4★	0.3★	0.2★	0.4★	0.7★	1.0★	0.7★
Under 65									
Percent Change (PC)	-9.4	-10.0	-9.0	-9.6	-10.7	-8.7	-5.8	-3.1	-7.6
Est. Annual PC (EAPC)	-0.4★	-0.4★	-0.4★	-0.4★	-0.5★	-0.4★	-0.2★	-0.1	-0.2
65 and over									
Percent Change (PC)	16.8	13.2	22.9	15.8	11.4	22.6	33.3	39.2	35.6
Est. Annual PC (EAPC)	0.8★	0.6★	1.1★	0.8★	0.5★	1.1★	1.5★	1.8★	1.6★
<u>1975-79 - ALL AGES</u>									
Percent Change (PC)	1.6	2.4	1.2	1.5	2.1	1.0	3.6	5.0	3.0
Est. Annual PC (EAPC)	0.6★	0.8★	0.4	0.5★	0.7★	0.4	1.2★	1.6★	1.0★
<u>1990-94 - ALL AGES</u>									
Percent Change (PC)	-1.1	-2.2	-0.3	-1.0	-2.1	-0.2	-1.8	-2.7	-0.6
Est. Annual PC (EAPC)	-0.4★◆	-0.7★◆	-0.1◇	-0.3★◆	-0.7★◆	0.0	-0.7★◆	-1.0★◆	-0.2◆

§ The Est. Annual PC is the Estimated Annual Percent Change (EAPC) over the time interval.
SEER Program.

§

*

NCHS public use tape.

★

The EAPC is significantly different from zero ($p < .05$).

◆

The EAPC for 1990-94 is significantly different from the EAPC for 1975-79 ($p < .05$).

◇

The EAPC for 1990-94 is significantly different from the EAPC for 1975-79 ($p < .10$).

-

Statistic could not be calculated.

Table II-2
 ALL SITES EXCLUDING LUNG AND BRONCHUS (Invasive)
 TRENDS IN SEER INCIDENCE AND U.S. MORTALITY, BY RACE AND SEX

	All Races			Whites			Blacks		
	Total	Males	Females	Total	Males	Females	Total	Males	Females
<u>INCIDENCE TRENDS (expressed in percents)§:</u>									
<u>1973-94</u>									
All Ages									
Percent Change (PC)	22.2	40.2	5.7	21.0	36.7	6.1	32.0	58.4	9.6
Est. Annual PC (EAPC)	1.2★	1.9★	0.5★	1.2★	1.8★	0.5★	1.4★	2.2★	0.6★
Under 65									
Percent Change (PC)	16.8	43.0	0.0	15.8	40.8	-0.1	29.8	58.4	8.5
Est. Annual PC (EAPC)	0.9★	1.9★	0.2	0.9★	1.9★	0.2	1.2★	2.0★	0.5★
65 and over									
Percent Change (PC)	27.4	38.5	13.6	26.0	34.2	14.5	34.1	58.4	10.9
Est. Annual PC (EAPC)	1.5★	1.9★	0.9★	1.4★	1.8★	0.9★	1.6★	2.3★	0.8★
<u>1975-79 - ALL AGES</u>									
Percent Change (PC)	0.1	3.4	-2.8	0.1	3.4	-2.7	2.6	7.2	-1.2
Est. Annual PC (EAPC)	0.1	1.2★	-0.9★	0.1	1.2★	-0.8★	0.8	2.4★	-0.5
<u>1990-94 - ALL AGES</u>									
Percent Change (PC)	-0.6	-0.3	-2.3	-2.4	-3.0	-3.2	5.9	10.4	-1.1
Est. Annual PC (EAPC)	-0.1	0.0	-0.7	-0.7	-0.8	-0.9★	1.8	3.1	-0.3
<u>MORTALITY TRENDS (expressed in percents)*:</u>									
<u>1973-94</u>									
All Ages									
Percent Change (PC)	-4.4	0.4	-8.4	-5.2	-0.8	-8.9	5.5	15.1	-0.3
Est. Annual PC (EAPC)	-0.2★	0.1★	-0.4★	-0.2★	0.0	-0.4★	0.3★	0.7★	0.1★
Under 65									
Percent Change (PC)	-15.4	-9.6	-20.2	-16.1	-10.6	-20.6	-10.2	-2.0	-16.7
Est. Annual PC (EAPC)	-0.8★	-0.4★	-1.0★	-0.8★	-0.5★	-1.1★	-0.4★	-0.1	-0.7★
65 and over									
Percent Change (PC)	3.4	5.9	2.1	2.3	4.3	1.1	19.5	26.9	18.0
Est. Annual PC (EAPC)	0.2★	0.3★	0.1★	0.1★	0.2★	0.1★	0.9★	1.3★	0.9★
<u>1975-79 - ALL AGES</u>									
Percent Change (PC)	-0.5	0.8	-1.4	-0.7	0.6	-1.6	1.4	2.6	0.9
Est. Annual PC (EAPC)	-0.1	0.3★	-0.5	-0.2	0.2	-0.5	0.5	0.9★	0.3
<u>1990-94 - ALL AGES</u>									
Percent Change (PC)	-1.4	-1.1	-1.9	-1.4	-1.0	-2.0	-1.6	-1.8	-1.4
Est. Annual PC (EAPC)	-0.4★◇	-0.4★◆	-0.6★	-0.4★	-0.3★◆	-0.6★	-0.6◆	-0.7◆	-0.5◆

The Est. Annual PC is the Estimated Annual Percent Change (EAPC) over the time interval.
 SEER Program.

§

*

NCHS public use tape.

★

The EAPC is significantly different from zero (p<.05).

◆

The EAPC for 1990-94 is significantly different from the EAPC for 1975-79 (p<.05).

◇

The EAPC for 1990-94 is significantly different from the EAPC for 1975-79 (p<.10).

-

Statistic could not be calculated.

Table II-3
ALL SITES (Invasive)

SEER INCIDENCE RATES, AGE-ADJUSTED AND AGE-SPECIFIC RATES, BY RACE AND SEX

	All Races			Whites			Blacks		
	Total	Males	Females	Total	Males	Females	Total	Males	Females
<u>AGE-ADJUSTED RATES</u>									
<u>YEAR OF DIAGNOSIS:</u>									
1973	319.9	365.0	293.5	319.6	364.3	295.0	353.1	441.6	283.5
1974	332.9	372.6	311.8	333.8	373.6	314.3	350.0	427.0	289.8
1975	332.6	378.7	307.5	333.5	379.5	310.1	356.6	438.0	296.5
1976	337.9	389.8	308.3	339.3	389.5	312.8	355.3	455.8	282.3
1977	337.5	393.7	304.4	338.4	393.6	307.6	365.3	470.0	291.3
1978	337.6	395.7	303.2	339.3	395.9	307.9	363.0	471.5	284.6
1979	341.3	401.6	305.3	341.8	401.4	308.0	375.4	484.6	298.7
1980	345.6	409.1	307.0	346.1	407.3	311.0	390.4	510.3	304.7
1981	351.7	414.0	314.1	352.9	412.2	319.3	395.3	528.3	300.7
1982	351.5	413.4	314.5	353.3	412.8	320.0	389.5	516.2	300.0
1983	357.4	421.7	318.2	359.3	420.7	324.1	406.8	534.8	318.3
1984	364.3	425.6	327.8	366.1	425.1	333.0	410.1	538.5	321.7
1985	372.0	430.9	336.8	374.7	430.6	343.2	408.0	531.4	323.7
1986	374.1	436.3	336.3	376.5	437.4	341.3	411.8	532.0	330.2
1987	387.3	455.3	345.6	391.4	456.9	353.2	416.7	547.7	328.1
1988	384.5	451.4	343.5	388.5	453.7	350.2	420.3	542.4	338.1
1989	387.3	458.9	341.7	391.8	460.8	349.6	412.1	542.5	325.0
1990	398.6	478.2	347.7	402.6	479.5	355.1	434.6	574.4	341.7
1991	416.4	515.0	350.8	419.9	515.1	357.9	453.7	620.1	342.9
1992	424.6	534.7	348.9	425.4	530.3	354.4	469.2	654.3	342.9
1993	410.0	507.1	341.7	407.2	495.7	346.0	468.2	656.2	336.8
1994	395.8	472.3	342.5	393.7	462.0	347.1	454.2	618.0	339.0
<u>AGE-ADJUSTED RATES, 1990-94</u>									
<u>AGE AT DIAGNOSIS:</u>									
All ages	409.0	501.2	346.3	409.6	496.1	352.0	456.0	624.7	340.6
Under 65	205.6	208.7	203.6	205.4	205.2	206.4	239.8	284.7	204.2
65 and over	2265.2	3170.6	1648.1	2273.6	3151.1	1680.9	2429.3	3727.8	1585.8
All ages (world std.) ⁸	328.5	389.9	285.8	329.1	385.9	290.6	368.8	492.0	282.1
<u>AGE-SPECIFIC RATES, 1990-94</u>									
<u>AGE AT DIAGNOSIS:</u>									
0-4	20.2	21.5	18.9	21.1	22.4	19.7	15.7	16.6	14.8
5-9	10.8	11.7	9.8	10.9	12.1	9.6	10.4	10.5	10.2
10-14	12.2	12.7	11.7	12.2	12.6	11.9	11.8	11.6	12.0
15-19	20.8	21.1	20.5	21.7	22.8	20.6	14.7	13.1	16.3
20-24	34.5	33.0	36.0	36.4	35.8	37.1	24.2	21.0	27.2
25-29	59.5	59.4	59.6	62.4	62.8	62.0	46.1	45.9	46.2
30-34	92.2	89.3	95.1	94.2	92.4	96.0	82.4	78.4	86.0
35-39	139.9	119.8	159.8	141.1	121.8	160.6	135.7	121.4	148.1
40-44	212.2	163.5	259.7	209.4	160.3	258.3	241.2	204.8	272.7
45-49	345.0	270.8	417.7	340.5	261.2	419.9	415.1	388.4	438.3
50-54	548.6	506.1	589.5	541.2	487.0	594.4	676.1	766.3	598.9
55-59	854.6	911.7	801.3	846.6	883.0	811.6	1077.1	1390.5	824.4
60-64	1291.4	1544.5	1064.9	1300.2	1523.1	1095.4	1541.5	2136.4	1071.2
65-69	1848.2	2440.3	1359.0	1861.5	2420.7	1394.4	2103.7	3079.3	1359.3
70-74	2325.6	3210.2	1646.4	2339.5	3188.6	1686.9	2581.1	4006.8	1593.3
75-79	2603.1	3694.2	1865.7	2611.1	3673.2	1899.5	2634.9	4119.5	1722.2
80-84	2684.0	3969.4	1971.9	2680.0	3947.8	1997.7	2710.7	4336.2	1853.3
85+	2486.6	3870.3	1949.6	2471.6	3866.0	1952.0	2442.1	3809.8	1855.3

§ SEER Program. Rates are per 100,000 and are age-adjusted to the 1970 U.S. standard population, except where noted.

8 SEER Program. Rates are per 100,000 and are age-adjusted to the world standard population.

Table II-4
 ALL SITES EXCLUDING LUNG AND BRONCHUS (Invasive)

SEER INCIDENCE RATES, AGE-ADJUSTED AND AGE-SPECIFIC RATES, BY RACE AND SEX

	All Races			Whites			Blacks		
	Total	Males	Females	Total	Males	Females	Total	Males	Females
AGE-ADJUSTED RATES									
YEAR OF DIAGNOSIS:									
1973	277.5	291.9	275.3	278.0	291.9	277.2	294.3	336.8	262.5
1974	289.0	298.1	291.9	290.4	299.5	294.5	291.1	324.9	268.1
1975	287.3	302.5	286.0	288.4	303.6	288.3	300.0	336.8	275.9
1976	290.1	310.4	284.5	292.1	311.1	288.9	292.8	345.0	257.1
1977	288.6	312.9	279.7	290.2	313.7	283.0	301.1	361.2	262.4
1978	287.4	313.7	277.1	289.5	314.8	281.4	298.1	358.2	257.6
1979	290.3	320.2	277.5	291.3	320.6	280.1	310.0	373.1	269.3
1980	293.3	324.7	278.9	294.9	325.0	282.8	314.5	379.3	270.9
1981	297.9	329.5	283.3	299.5	328.9	288.1	322.0	402.2	267.6
1982	296.7	328.4	282.2	298.7	329.0	286.7	318.3	392.7	268.6
1983	302.4	337.6	284.9	304.8	338.5	289.7	330.9	403.9	283.6
1984	307.5	339.1	293.2	310.4	340.9	298.2	327.3	397.9	282.0
1985	315.8	347.0	301.5	319.1	348.6	307.3	328.9	400.2	283.5
1986	317.2	352.7	299.3	320.2	355.5	303.6	330.4	397.9	287.1
1987	328.8	370.1	307.0	332.8	372.6	313.4	342.2	423.6	289.8
1988	325.8	368.1	303.1	329.7	371.4	308.6	342.5	416.7	295.2
1989	329.3	376.8	301.7	333.9	379.8	308.5	334.2	419.6	279.5
1990	340.0	396.7	306.1	343.9	398.8	312.6	357.9	455.7	294.7
1991	356.8	433.2	307.7	360.7	435.0	313.8	371.8	494.1	293.0
1992	365.0	453.0	305.8	366.4	451.1	310.2	387.0	525.8	294.1
1993	352.4	428.8	299.7	349.8	419.1	302.7	393.0	541.0	290.5
1994	339.9	398.4	300.1	338.0	389.4	303.8	379.8	507.4	291.0
AGE-ADJUSTED RATES, 1990-94									
AGE AT DIAGNOSIS:									
All ages	350.7	421.8	303.8	351.6	418.3	308.6	378.0	505.0	292.6
Under 65	178.9	176.0	182.5	179.3	174.3	184.9	197.8	224.1	177.4
65 and over	1919.3	2665.3	1411.3	1924.4	2645.6	1437.4	2022.3	3068.9	1344.3
All ages (world std.) ⁸	282.5	328.4	251.9	283.5	326.0	255.9	305.3	396.2	242.6
AGE-SPECIFIC RATES, 1990-94									
AGE AT DIAGNOSIS:									
0-4	20.2	21.5	18.9	21.0	22.3	19.7	15.7	16.6	14.8
5-9	10.8	11.7	9.8	10.9	12.1	9.6	10.4	10.5	10.2
10-14	12.2	12.7	11.7	12.2	12.5	11.9	11.8	11.6	12.0
15-19	20.7	21.0	20.4	21.6	22.7	20.5	14.6	13.1	16.1
20-24	34.1	32.7	35.6	36.1	35.5	36.6	23.7	20.1	27.2
25-29	58.9	58.8	59.0	61.9	62.3	61.4	45.0	44.7	45.3
30-34	90.4	87.2	93.5	92.5	90.4	94.6	78.8	74.6	82.5
35-39	134.8	113.7	155.5	136.7	116.8	156.7	124.7	107.0	140.0
40-44	199.2	148.5	248.6	197.8	147.6	247.8	213.4	166.5	254.0
45-49	310.5	231.3	388.0	308.3	226.0	390.7	350.3	302.3	392.2
50-54	471.0	415.6	524.2	467.3	404.9	528.7	539.1	569.9	512.8
55-59	713.6	741.0	688.0	708.4	722.1	695.2	860.4	1070.5	691.0
60-64	1064.7	1251.8	897.3	1072.0	1235.9	921.5	1227.9	1675.0	874.4
65-69	1526.8	2005.6	1131.1	1537.5	1989.8	1159.7	1688.2	2466.2	1094.7
70-74	1950.4	2687.2	1384.7	1962.4	2673.1	1416.1	2100.1	3225.1	1320.7
75-79	2212.0	3115.0	1601.7	2211.0	3083.6	1626.3	2254.6	3470.8	1506.9
80-84	2334.7	3388.9	1750.7	2327.2	3357.7	1772.5	2341.9	3657.0	1648.1
85+	2253.3	3403.1	1807.0	2242.1	3392.5	1813.3	2214.4	3385.6	1711.9

§ SEER Program. Rates are per 100,000 and are age-adjusted to the 1970 U.S. standard population, except where noted.

8 SEER Program. Rates are per 100,000 and are age-adjusted to the world standard population.

Table II-5
ALL SITES (Invasive)

U.S. MORTALITY RATES, AGE-ADJUSTED AND AGE-SPECIFIC RATES*, BY RACE AND SEX

	All Races			Whites			Blacks		
	Total	Males	Females	Total	Males	Females	Total	Males	Females
AGE-ADJUSTED RATES									
YEAR OF DEATH:									
1973	162.0	205.3	131.4	159.3	201.5	129.7	197.0	257.2	151.4
1974	163.1	207.8	131.7	160.5	203.9	130.4	196.6	261.1	148.3
1975	162.3	207.7	130.6	159.6	203.4	129.6	196.8	266.0	145.4
1976	164.5	210.5	132.5	161.8	205.9	131.5	201.0	272.2	148.1
1977	165.1	211.8	132.9	162.0	206.8	131.6	204.8	278.6	151.1
1978	166.1	213.6	133.5	163.0	208.5	132.3	205.4	281.3	150.5
1979	166.1	214.6	132.8	163.0	209.6	131.5	206.7	283.6	151.8
1980	168.0	216.4	135.0	164.6	210.8	133.5	212.2	290.7	156.6
1981	167.4	215.1	135.1	164.0	209.1	133.8	212.5	294.4	155.0
1982	169.0	217.2	136.5	165.5	211.2	135.2	215.5	299.0	157.5
1983	169.6	218.0	137.1	166.0	211.7	135.7	218.3	303.0	159.8
1984	170.9	218.8	138.9	167.1	212.0	137.5	221.7	309.4	161.5
1985	171.3	219.2	139.3	167.7	212.5	138.1	221.1	308.5	161.8
1986	171.5	219.1	139.7	168.0	212.8	138.3	221.9	308.5	164.0
1987	171.6	219.4	139.6	168.0	212.9	138.1	223.0	311.3	164.5
1988	171.9	219.2	140.2	168.2	212.7	138.8	223.2	311.7	164.8
1989	173.0	220.2	141.4	169.2	213.0	140.2	226.6	320.0	165.2
1990	173.3	220.8	141.6	169.4	213.7	140.1	229.0	321.8	168.8
1991	173.4	220.0	142.2	169.6	213.3	140.6	227.7	317.3	169.7
1992	172.1	217.7	141.5	168.4	211.2	139.9	225.1	311.8	169.4
1993	172.0	217.1	141.6	168.3	210.3	140.1	226.1	314.6	169.1
1994	170.8	214.2	141.4	167.4	207.9	140.1	222.2	307.0	167.5
AGE-ADJUSTED RATES, 1990-94									
AGE AT DEATH:									
All ages	172.3	217.9	141.7	168.6	211.2	140.2	226.0	314.4	168.9
Under 65	72.4	80.3	65.3	69.7	76.2	63.9	105.2	130.9	85.0
65 and over	1083.9	1473.6	838.4	1071.1	1443.4	836.6	1328.8	1989.0	934.4
All ages (world std.)N	132.4	163.6	110.6	129.2	158.1	109.2	176.6	240.2	134.1
AGE-SPECIFIC RATES, 1990-94									
AGE AT DEATH:									
0-4	3.1	3.3	2.8	3.1	3.3	2.8	3.0	3.2	2.8
5-9	3.1	3.4	2.7	3.1	3.4	2.8	2.9	3.2	2.6
10-14	2.9	3.3	2.5	3.0	3.4	2.5	2.7	3.0	2.5
15-19	4.2	4.9	3.5	4.3	5.0	3.5	4.3	4.8	3.9
20-24	5.5	6.5	4.6	5.5	6.5	4.5	6.2	6.9	5.5
25-29	8.8	9.2	8.3	8.5	9.1	7.9	11.0	10.6	11.3
30-34	15.7	15.0	16.4	15.0	14.5	15.6	21.5	19.9	22.8
35-39	29.4	26.2	32.5	27.8	24.9	30.7	43.5	38.5	47.9
40-44	56.0	51.1	60.7	52.5	47.4	57.6	88.6	87.9	89.3
45-49	109.6	106.7	112.4	103.4	98.1	108.6	177.4	201.5	157.2
50-54	202.9	214.5	191.9	192.8	199.0	186.8	316.4	389.5	256.6
55-59	342.6	389.0	300.0	329.2	367.0	293.8	506.3	657.9	386.9
60-64	537.0	646.3	440.8	524.9	623.1	436.7	726.4	976.5	537.3
65-69	761.2	956.8	601.8	748.4	929.6	598.9	987.2	1368.8	707.8
70-74	1006.9	1306.1	780.5	992.6	1273.1	778.3	1283.3	1869.1	891.9
75-79	1252.2	1701.7	954.6	1242.4	1672.3	955.9	1471.7	2243.1	1015.7
80-84	1516.9	2207.8	1142.8	1501.4	2170.8	1139.9	1811.8	2907.6	1248.5
85+	1773.0	2779.6	1386.1	1761.3	2754.2	1384.9	1980.8	3257.1	1454.5

* NCHS public use tape. Rates are per 100,000 and are age-adjusted to the 1970 U.S. standard population, except where noted.

N NCHS public use tape. Rates are per 100,000 and are age-adjusted to the world standard population.

Table II-6
ALL SITES EXCLUDING LUNG AND BRONCHUS (Invasive)
 U.S. MORTALITY RATES, AGE-ADJUSTED AND AGE-SPECIFIC RATES*, BY RACE AND SEX

	All Races			Whites			Blacks		
	Total	Males	Females	Total	Males	Females	Total	Males	Females
<u>AGE-ADJUSTED RATES</u>									
<u>YEAR OF DEATH:</u>									
1973	127.3	142.9	118.1	124.9	139.9	116.5	156.1	182.0	137.8
1974	127.1	143.7	117.4	125.0	140.7	116.1	154.1	182.6	134.0
1975	125.5	142.6	115.5	123.2	139.3	114.3	153.6	186.3	130.5
1976	126.4	143.8	116.2	124.1	140.2	115.0	156.3	190.2	132.2
1977	125.9	143.6	115.6	123.5	140.0	114.2	157.0	190.8	133.7
1978	125.7	144.1	115.0	123.2	140.3	113.6	156.9	192.4	132.6
1979	125.0	144.5	113.5	122.5	140.8	112.0	157.3	193.9	132.5
1980	125.5	144.9	114.1	122.8	140.8	112.6	160.4	198.0	135.1
1981	124.4	143.4	113.4	121.7	139.1	112.0	159.4	198.9	133.0
1982	124.8	144.3	113.5	122.0	139.9	112.0	160.9	201.1	134.5
1983	124.7	145.0	112.7	121.7	140.4	111.1	162.6	205.0	134.8
1984	125.2	144.8	113.7	122.1	140.0	112.1	164.7	207.3	137.1
1985	124.8	145.0	112.9	121.7	140.2	111.3	163.6	206.9	135.8
1986	124.5	144.9	112.5	121.5	140.4	110.8	163.6	205.9	136.9
1987	123.5	144.3	111.3	120.5	139.7	109.5	163.3	206.7	136.2
1988	123.3	144.4	110.8	120.2	139.7	109.0	163.3	207.6	135.5
1989	123.7	145.5	110.6	120.5	140.4	109.0	165.0	213.4	134.9
1990	123.3	145.6	110.0	120.0	140.5	108.1	166.4	214.7	137.1
1991	123.3	145.5	110.0	120.1	140.7	108.0	166.1	212.5	137.7
1992	122.1	144.8	108.5	119.0	140.1	106.4	163.6	209.2	136.0
1993	121.9	144.5	108.1	118.6	139.6	106.0	165.2	212.1	136.7
1994	121.2	143.3	107.6	118.2	138.7	105.7	162.1	207.6	134.3
<u>AGE-ADJUSTED RATES, 1990-94</u>									
<u>AGE AT DEATH:</u>									
All ages	122.4	144.7	108.8	119.2	139.9	106.8	164.6	211.2	136.3
Under 65	50.5	51.1	50.0	48.4	48.4	48.4	74.0	82.1	67.9
65 and over	778.4	999.4	645.5	765.3	974.8	639.8	991.6	1389.5	761.2
All ages (world std.)N	93.4	107.5	84.7	90.8	103.7	82.9	127.6	159.0	107.8
<u>AGE-SPECIFIC RATES, 1990-94</u>									
<u>AGE AT DEATH:</u>									
0-4	3.0	3.3	2.8	3.1	3.3	2.8	3.0	3.1	2.8
5-9	3.1	3.4	2.7	3.1	3.4	2.8	2.9	3.2	2.6
10-14	2.9	3.3	2.4	3.0	3.4	2.5	2.7	2.9	2.5
15-19	4.2	4.9	3.5	4.2	5.0	3.4	4.3	4.7	3.8
20-24	5.5	6.4	4.5	5.4	6.4	4.4	6.1	6.8	5.4
25-29	8.5	8.9	8.1	8.3	8.9	7.7	10.7	10.3	11.0
30-34	14.7	13.8	15.5	14.1	13.5	14.8	19.7	17.5	21.7
35-39	25.9	22.1	29.6	24.6	21.2	28.0	37.4	30.2	43.6
40-44	46.2	39.1	53.2	43.6	36.7	50.4	70.9	62.0	78.6
45-49	82.3	72.8	91.5	77.8	67.5	87.8	130.3	130.3	130.4
50-54	141.1	135.1	146.8	133.5	125.2	141.6	220.3	240.9	203.5
55-59	225.0	232.3	218.3	214.5	218.1	211.2	339.9	394.6	296.9
60-64	345.0	380.5	313.6	334.5	364.8	307.2	483.4	586.2	405.6
65-69	494.6	574.4	429.6	482.6	554.8	423.0	671.3	847.5	542.2
70-74	683.5	830.2	572.5	669.5	805.1	565.9	911.9	1226.7	701.6
75-79	901.8	1153.2	735.3	889.4	1127.0	731.1	1118.5	1593.5	837.6
80-84	1178.4	1613.7	942.7	1161.6	1579.5	935.8	1467.7	2211.6	1085.3
85+	1515.7	2256.8	1230.8	1504.3	2229.9	1229.2	1719.2	2723.0	1305.3

* NCHS public use tape. Rates are per 100,000 and are age-adjusted to the 1970 U.S. standard population, except where noted.

N NCHS public use tape. Rates are per 100,000 and are age-adjusted to the world standard population.

Table II-7
ALL SITES (Invasive)

SURVIVAL RATES, BY RACE, SEX, DIAGNOSIS YEAR AND AGE

	<u>All Races</u>			<u>Whites</u>			<u>Blacks</u>		
	<u>Total</u>	<u>Males</u>	<u>Females</u>	<u>Total</u>	<u>Males</u>	<u>Females</u>	<u>Total</u>	<u>Males</u>	<u>Females</u>
<u>5-YR RELATIVE SURVIVAL RATES</u>									
YEAR OF DIAGNOSIS:									
1960-63 ^a	-	-	-	39	-	-	27	-	-
1970-73 ^a	-	-	-	43	-	-	31	-	-
1974-76 ^b	49.4	40.9	56.8	50.4	42.0	57.6	38.9	31.3	46.8
1977-79 ^b	49.9	43.2	56.2	51.0	44.5	57.0	39.1	32.3	46.5
1980-82 ^b	50.9	45.2	56.2	52.0	46.6	57.0	39.6	34.2	45.8
1983-85 ^b	52.8	47.3	58.0	54.2	49.0	59.1	39.7	34.5	45.4
1986-93 ^b	57.9 S	54.6 S	61.0 S	59.5 S	56.5 S	62.3 S	44.4 S	41.1 S	47.9
<u>5-YR RELATIVE SURVIVAL RATES, 1986-93^b</u>									
AGE AT DIAGNOSIS:									
<45	67.1	54.6	77.1	69.1	56.8	79.2	51.2	36.9	61.7
45-54	60.4	48.2	69.2	62.7	51.1	71.0	43.0	31.4	54.0
55-64	56.4	52.1	60.9	58.1	54.0	62.4	43.4	40.6	46.7
65-74	57.4	58.3	56.0	58.8	59.9	57.3	44.7	47.4	40.7
75+	52.3	55.0	49.7	53.7	56.6	51.0	39.8	42.2	37.0
Under 65	60.4	51.9	68.1	62.3	54.1	69.7	45.5	37.3	53.8
65 and over	55.4	57.0	53.3	56.8	58.6	54.6	43.0	45.7	39.3

^a

^b

Rates are based on End Results data from a series of hospital registries and one population-based registry.

Rates are from the SEER Program. They are based on data from population-based registries in Connecticut, New Mexico, Utah, Iowa, Hawaii, Atlanta, Detroit, Seattle-Puget Sound and San Francisco-Oakland. Rates are based on follow-up of patients through 1994.

S The difference in rates between 1974-76 and 1986-93 is statistically significant ($p < .05$).

↑ The standard error of the survival rate is between 5 and 10 percentage points.

↑↑ The standard error of the survival rate is greater than 10 percentage points.

- Statistic could not be calculated.

Table II-8
ALL SITES EXCLUDING LUNG AND BRONCHUS (Invasive)
SURVIVAL RATES, BY RACE, SEX, DIAGNOSIS YEAR AND AGE

	<u>All Races</u>			<u>Whites</u>			<u>Blacks</u>		
	<u>Total</u>	<u>Males</u>	<u>Females</u>	<u>Total</u>	<u>Males</u>	<u>Females</u>	<u>Total</u>	<u>Males</u>	<u>Females</u>
<u>5-YR RELATIVE SURVIVAL RATES</u>									
YEAR OF DIAGNOSIS:									
1960-63 ^a	-	-	-	-	-	-	-	-	-
1970-73 ^a	-	-	-	-	-	-	-	-	-
1974-76 ^b	55.2	48.9	59.9	56.2	50.1	60.7	44.6	38.6	49.6
1977-79 ^b	56.2	51.7	59.8	57.3	53.1	60.6	45.2	40.4	49.5
1980-82 ^b	57.5	54.1	60.4	58.7	55.6	61.3	46.0	42.4	49.5
1983-85 ^b	59.7	56.2	62.6	61.2	58.0	63.9	46.3	43.0	49.3
1986-93 ^b	65.1S	63.2S	66.8S	66.8S	65.1S	68.2S	51.4S	49.5S	53.0S
<u>5-YR RELATIVE SURVIVAL RATES, 1986-93^b</u>									
AGE AT DIAGNOSIS:									
<45	68.8	56.4	78.5	70.6	58.4	80.5	53.9	39.8	63.6
45-54	67.4	56.4	74.5	69.5	59.0	76.2	51.2	40.0	60.0
55-64	65.6	62.7	68.4	67.4	64.6	70.1	52.0	50.9	52.9
65-74	66.4	68.8	63.3	68.0	70.4	64.8	53.3	57.6	47.1
75+	58.6	63.1	54.4	60.2	65.0	55.8	44.7	48.9	40.3
Under 65	67.0	59.4	73.3	68.9	61.5	75.1	52.4	45.0	58.7
65 and over	63.2	66.6	59.4	64.8	68.3	60.8	50.1	54.6	44.3

^a^b

Rates are based on End Results data from a series of hospital registries and one population-based registry.

Rates are from the SEER Program. They are based on data from population-based registries in Connecticut, New Mexico, Utah, Iowa, Hawaii, Atlanta, Detroit, Seattle-Puget Sound and San Francisco-Oakland. Rates are based on follow-up of patients through 1994.

S The difference in rates between 1974-76 and 1986-93 is statistically significant ($p < .05$).

↑ The standard error of the survival rate is between 5 and 10 percentage points.

↑↑ The standard error of the survival rate is greater than 10 percentage points.

- Statistic could not be calculated.

Table II-9
ALL SITES (Invasive)

INCIDENCE, MORTALITY, AND SURVIVAL RATES

By Year of Diagnosis/Death

All Races, Males and Females

Year of Diagnosis/Death

	1973	1974	1975	1976	1977	1978	1979	1980	1981	1982	1983	1984	1985	1986	1987	1988	1989	1990	1991	1992	1993	1994
Incidence																						
SEER	319.9	332.9	332.6	337.9	337.5	337.6	341.3	345.6	351.7	351.5	357.4	364.3	372.0	374.1	387.3	384.5	387.3	398.6	416.4	424.6	410.0	395.8
Mortality																						
U.S.	162.0	163.1	162.3	164.5	165.1	166.1	166.1	168.0	167.4	169.0	169.6	170.9	171.3	171.5	171.6	171.9	173.0	173.3	173.4	172.1	172.0	170.8
SEER	161.5	164.4	163.4	164.5	164.0	163.3	164.4	164.4	164.2	166.2	166.3	165.3	168.0	164.6	164.3	165.4	166.9	162.3	166.1	163.6	162.1	162.0
Relative Survival Rates (SEER)																						
1-year	66.6	68.8	69.0	69.7	69.9	70.2	70.3	70.6	71.1	71.5	72.1	72.2	73.0	73.6	74.3	74.4	74.9	75.8	77.3	77.7	76.7	
2-year	56.8	59.2	59.7	60.0	60.3	60.5	60.5	61.0	61.8	61.7	62.5	62.7	63.9	64.4	65.5	65.8	66.4	67.4	69.3	70.1		
3-year	51.8	54.3	54.9	55.3	55.2	55.5	55.3	55.9	56.8	56.7	57.6	57.9	59.1	59.8	60.8	61.5	62.0	63.2	65.2			
4-year	48.7	50.9	51.8	52.1	52.1	52.3	52.1	52.6	53.3	53.6	54.4	54.8	56.0	56.8	58.1	58.8	59.2	60.5				
5-year	46.4	48.7	49.5	49.9	49.9	50.0	49.9	50.2	51.1	51.2	52.1	52.4	53.8	54.7	56.0	56.7	57.1					
6-year	44.6	46.9	47.6	48.2	48.3	48.3	48.2	48.4	49.5	49.4	50.3	50.9	52.2	53.1	54.3	55.0						
7-year	43.3	45.7	46.4	46.9	47.0	46.9	46.7	47.1	47.9	47.9	48.7	49.6	50.9	51.8	52.7							
8-year	42.3	44.7	45.4	45.9	45.8	45.8	45.7	46.0	46.8	46.9	47.5	48.5	49.8	50.7								
9-year	41.5	43.9	44.7	45.0	44.9	44.8	44.9	45.0	45.8	46.2	46.6	47.4	48.7									
10-year	40.8	43.1	43.8	44.3	44.2	44.0	44.1	44.2	45.0	45.6	45.9	46.5										
11-year	40.4	42.6	43.3	43.6	43.6	43.4	43.4	43.6	44.4	44.9	45.1											
12-year	39.8	42.1	42.9	43.2	43.0	42.9	42.9	43.1	43.9	44.2												
13-year	39.5	41.8	42.6	42.9	42.8	42.7	42.4	42.7	43.4													
14-year	39.2	41.4	42.4	42.6	42.4	42.3	42.0	42.3														
15-year	38.9	41.0	42.1	42.3	42.1	41.9	41.6															
16-year	38.6	40.9	41.8	42.1	41.8	41.6																
17-year	38.6	40.9	41.7	42.0	41.6																	
18-year	38.5	40.9	41.7	41.8																		
19-year	38.4	40.8	41.6																			
20-year	38.4	40.6																				
21-year	38.3																					

Note: Incidence and mortality rates are per 100,000 and are age-adjusted to the 1970 U.S. standard population.

Survival rates are relative rates expressed as percents.

Table II-10
ALL SITES (Invasive)

INCIDENCE, MORTALITY, AND SURVIVAL RATES

By Year of Diagnosis/Death

All Races, Males

Year of Diagnosis/Death

	1973	1974	1975	1976	1977	1978	1979	1980	1981	1982	1983	1984	1985	1986	1987	1988	1989	1990	1991	1992	1993	1994
Incidence																						
SEER	365.0	372.6	378.7	389.8	393.7	395.7	401.6	409.1	414.0	413.4	421.7	425.6	430.9	436.3	455.3	451.4	458.9	478.2	515.0	534.7	507.1	472.3
Mortality																						
U.S.	205.3	207.8	207.7	210.5	211.8	213.6	214.6	216.4	215.1	217.2	218.0	218.8	219.2	219.1	219.4	219.2	220.2	220.8	220.0	217.7	217.1	214.2
SEER	204.5	207.2	207.9	208.4	206.3	208.9	210.4	209.7	206.2	209.4	210.7	208.5	211.2	207.3	204.9	206.4	206.2	203.1	205.1	204.4	200.8	201.5
Relative Survival Rates (SEER)																						
1-year	59.8	61.8	62.8	63.8	64.8	64.8	65.7	66.3	67.1	67.5	68.4	68.1	69.1	69.9	71.1	71.4	72.1	73.8	76.4	77.4	76.0	
2-year	48.9	51.2	52.4	52.8	54.1	54.1	55.1	55.9	57.0	56.9	57.9	57.5	59.0	59.6	61.5	61.8	63.1	64.8	68.1	69.7		
3-year	43.5	45.6	47.0	47.8	48.6	48.7	49.6	50.4	51.7	51.8	52.8	52.3	54.0	54.7	56.5	57.1	58.3	60.5	64.3			
4-year	40.1	42.0	43.7	44.5	45.3	45.3	46.1	47.0	48.1	48.3	49.4	49.0	50.5	51.4	53.4	54.0	55.2	57.6				
5-year	37.6	39.6	40.9	42.1	42.8	42.9	43.8	44.3	45.7	45.6	47.0	46.5	48.2	49.3	51.3	51.8	52.9					
6-year	35.5	37.7	38.8	40.1	41.1	41.2	42.0	42.5	43.9	43.6	45.2	44.8	46.6	47.5	49.6	49.9						
7-year	34.0	36.4	37.4	38.8	39.7	39.4	40.3	41.0	42.2	42.0	43.5	43.6	45.1	46.1	47.8							
8-year	32.8	35.1	36.1	37.4	38.3	38.3	39.2	39.7	41.1	40.9	42.1	42.3	43.9	44.8								
9-year	31.8	34.0	35.0	36.3	37.1	37.2	38.2	38.6	40.1	40.1	41.1	41.1	42.8									
10-year	30.8	33.0	33.9	35.3	36.3	36.0	37.3	37.7	39.2	39.4	40.3	40.3										
11-year	30.2	32.3	33.2	34.4	35.3	35.2	36.4	37.1	38.3	38.8	39.5											
12-year	29.7	31.7	32.5	33.8	34.7	34.7	35.7	36.5	37.6	38.1												
13-year	29.1	31.2	32.2	33.2	34.4	34.2	35.1	36.3	37.2													
14-year	28.5	30.5	31.8	32.8	33.8	33.9	34.4	35.8														
15-year	28.2	30.1	31.4	32.5	33.4	33.2	34.0															
16-year	27.8	29.9	31.0	32.0	33.0	32.7																
17-year	27.7	29.9	30.8	31.7	32.8																	
18-year	27.4	29.9	30.6	31.3																		
19-year	27.4	29.9	30.6																			
20-year	27.1	29.7																				
21-year	27.1																					

Note: Incidence and mortality rates are per 100,000 and are age-adjusted to the 1970 U.S. standard population.

Survival rates are relative rates expressed as percents.

Table II-11
ALL SITES (Invasive)

INCIDENCE, MORTALITY, AND SURVIVAL RATES

By Year of Diagnosis/Death

All Races, Females

Year of Diagnosis/Death

	1973	1974	1975	1976	1977	1978	1979	1980	1981	1982	1983	1984	1985	1986	1987	1988	1989	1990	1991	1992	1993	1994
Incidence																						
SEER	293.5	311.8	307.5	308.3	304.4	303.2	305.3	307.0	314.1	314.5	318.2	327.8	336.8	336.3	345.6	343.5	341.7	347.7	350.8	348.9	341.7	342.5
Mortality																						
U.S.	131.4	131.7	130.6	132.5	132.9	133.5	132.8	135.0	135.1	136.5	137.1	138.9	139.3	139.7	139.6	140.2	141.4	141.6	142.2	141.5	141.6	141.4
SEER	131.4	134.8	132.7	134.6	135.2	132.4	133.3	133.9	136.1	137.8	136.8	136.3	139.3	136.0	137.3	138.1	141.0	135.2	140.7	136.3	136.1	135.3
Relative Survival Rates (SEER)																						
1-year	73.2	75.2	74.9	75.5	74.9	75.6	74.9	75.1	75.2	75.5	75.8	76.3	76.9	77.4	77.5	77.6	77.8	77.9	78.4	78.1	77.6	
2-year	64.4	66.6	66.5	66.8	66.4	66.8	65.8	66.2	66.5	66.5	67.1	67.8	68.6	69.1	69.5	69.8	69.9	70.3	70.5	70.5		
3-year	59.6	62.0	62.1	62.3	61.5	62.1	60.9	61.2	61.6	61.5	62.3	63.3	64.1	64.8	65.1	65.9	65.8	66.1	66.2			
4-year	56.4	58.7	59.0	59.1	58.4	59.0	57.8	58.1	58.3	58.8	59.3	60.2	61.1	62.1	62.6	63.5	63.2	63.5				
5-year	54.2	56.5	57.0	57.0	56.3	56.7	55.6	55.8	56.3	56.5	56.9	57.9	58.9	59.9	60.5	61.5	61.2					
6-year	52.5	54.7	55.2	55.3	54.8	54.9	53.9	54.0	54.6	54.7	55.0	56.5	57.3	58.4	58.7	59.9						
7-year	51.2	53.3	54.0	54.0	53.5	53.5	52.5	52.8	53.0	53.3	53.5	55.1	56.0	57.0	57.3							
8-year	50.2	52.4	53.1	53.0	52.4	52.3	51.5	51.6	51.8	52.2	52.3	54.0	55.0	56.0								
9-year	49.4	51.6	52.5	52.2	51.5	51.4	50.6	50.6	50.8	51.5	51.5	52.9	53.8									
10-year	48.8	50.8	51.6	51.6	50.8	50.7	49.8	49.8	49.9	50.9	50.7	51.7										
11-year	48.3	50.2	51.0	50.9	50.2	50.1	49.2	49.1	49.6	50.0	49.7											
12-year	47.5	49.8	50.6	50.3	49.6	49.5	48.7	48.5	49.1	49.2												
13-year	47.1	49.3	50.2	50.1	49.3	49.3	48.3	47.9	48.4													
14-year	46.8	48.9	49.9	49.7	48.9	48.8	47.9	47.4														
15-year	46.4	48.4	49.5	49.4	48.5	48.4	47.3															
16-year	46.0	48.1	49.1	49.2	48.2	48.1																
17-year	45.8	48.0	48.9	49.0	47.9																	
18-year	45.7	47.8	48.8	48.7																		
19-year	45.3	47.5	48.6																			
20-year	45.3	47.1																				
21-year	45.1																					

Note: Incidence and mortality rates are per 100,000 and are age-adjusted to the 1970 U.S. standard population.

Survival rates are relative rates expressed as percents.

Table II-12
ALL SITES EXCLUDING LUNG AND BRONCHUS (Invasive)

INCIDENCE, MORTALITY, AND SURVIVAL RATES

By Year of Diagnosis/Death

All Races, Males and Females

Year of Diagnosis/Death

	1973	1974	1975	1976	1977	1978	1979	1980	1981	1982	1983	1984	1985	1986	1987	1988	1989	1990	1991	1992	1993	1994
Incidence																						
SEER	277.5	289.0	287.3	290.1	288.6	287.4	290.3	293.3	297.9	296.7	302.4	307.5	315.8	317.2	328.8	325.8	329.3	340.0	356.8	365.0	352.4	339.9
Mortality																						
U.S.	127.3	127.1	125.5	126.4	125.9	125.7	125.0	125.5	124.4	124.8	124.7	125.2	124.8	124.5	123.5	123.3	123.7	123.3	123.3	122.1	121.9	121.2
SEER	127.2	129.7	127.9	127.3	126.6	125.2	125.0	124.4	124.0	124.8	123.8	123.2	124.7	122.2	120.6	120.9	122.1	118.1	120.3	118.8	117.6	117.6
Relative Survival Rates (SEER)																						
1-year	72.0	74.0	74.5	75.2	75.4	75.7	76.0	76.3	77.1	77.3	77.9	78.2	78.8	79.3	80.1	80.2	80.6	81.5	82.9	83.3	82.4	
2-year	62.7	65.1	65.9	66.3	66.8	67.1	67.1	67.8	68.8	68.7	69.5	69.9	70.9	71.4	72.7	73.0	73.6	74.6	76.3	77.1		
3-year	57.7	60.1	61.1	61.5	61.7	62.1	61.9	62.7	63.9	63.7	64.6	65.1	66.3	67.0	68.3	68.9	69.4	70.6	72.4			
4-year	54.2	56.6	57.8	58.3	58.4	58.7	58.6	59.3	60.2	60.5	61.3	62.0	63.0	64.1	65.4	66.2	66.5	67.9				
5-year	51.8	54.2	55.4	55.9	56.1	56.3	56.2	56.7	57.9	58.0	58.9	59.5	60.7	61.9	63.2	64.1	64.3					
6-year	49.8	52.3	53.4	54.1	54.3	54.5	54.3	54.8	56.1	56.0	56.9	57.8	59.0	60.2	61.4	62.3						
7-year	48.4	50.9	52.1	52.7	52.9	52.9	52.7	53.4	54.4	54.4	55.2	56.5	57.6	58.7	59.7							
8-year	47.3	49.8	51.0	51.6	51.7	51.7	51.7	52.2	53.3	53.4	53.9	55.3	56.5	57.6								
9-year	46.4	49.0	50.1	50.6	50.6	50.7	50.8	51.1	52.2	52.6	53.0	54.1	55.3									
10-year	45.7	48.1	49.2	49.8	49.9	49.8	50.0	50.3	51.3	52.0	52.2	53.0										
11-year	45.2	47.5	48.6	49.1	49.2	49.1	49.2	49.6	50.7	51.2	51.3											
12-year	44.6	47.0	48.1	48.6	48.6	48.6	48.7	49.1	50.1	50.4												
13-year	44.2	46.6	47.8	48.3	48.3	48.3	48.1	48.6	49.5													
14-year	43.8	46.1	47.5	48.0	47.9	48.0	47.6	48.2														
15-year	43.5	45.7	47.2	47.7	47.7	47.6	47.5	47.1														
16-year	43.2	45.5	46.8	47.4	47.2	47.1																
17-year	43.0	45.5	46.7	47.2	46.9																	
18-year	42.9	45.4	46.7	46.9																		
19-year	42.8	45.3	46.6																			
20-year	42.8	44.9																				
21-year	42.6																					

Note: Incidence and mortality rates are per 100,000 and are age-adjusted to the 1970 U.S. standard population.

Survival rates are relative rates expressed as percents.

Table II-13
ALL SITES EXCLUDING LUNG AND BRONCHUS (Invasive)

INCIDENCE, MORTALITY, AND SURVIVAL RATES

By Year of Diagnosis/Death

All Races, Males

Year of Diagnosis/Death

	1973	1974	1975	1976	1977	1978	1979	1980	1981	1982	1983	1984	1985	1986	1987	1988	1989	1990	1991	1992	1993	1994
Incidence																						
SEER	291.9	298.1	302.5	310.4	312.9	313.7	320.2	324.7	329.5	328.4	337.6	339.1	347.0	352.7	370.1	368.1	376.8	396.7	433.2	453.0	428.8	398.4
Mortality																						
U.S.	142.9	143.7	142.6	143.8	143.6	144.1	144.5	144.9	143.4	144.3	145.0	144.8	145.0	144.9	144.3	144.4	145.5	145.6	145.5	144.8	144.5	143.3
SEER	143.1	146.9	146.1	144.7	143.2	144.7	145.0	143.8	140.9	143.8	143.8	143.2	144.6	142.5	139.4	140.7	140.9	139.2	140.6	141.1	138.6	139.9
Relative Survival Rates (SEER)																						
1-year	67.7	69.4	70.6	71.5	72.7	72.4	73.7	74.2	75.3	75.4	76.1	75.9	76.9	77.2	78.5	78.5	79.2	80.9	83.1	83.9	82.6	
2-year	57.3	59.6	61.2	61.5	63.1	63.1	64.2	65.1	66.7	66.2	67.2	66.8	68.2	68.6	70.4	70.5	71.7	73.3	76.4	77.7		
3-year	51.7	53.9	55.7	56.4	57.6	57.7	58.6	59.6	61.4	61.1	62.1	61.6	63.3	63.7	65.6	65.9	67.1	69.2	72.8			
4-year	47.9	50.0	52.1	52.9	54.0	54.1	54.8	56.0	57.4	57.3	58.5	58.2	59.8	60.4	62.4	62.8	63.8	66.4				
5-year	45.0	47.3	49.0	50.2	51.3	51.5	52.3	53.0	54.8	54.4	55.8	55.5	57.2	58.1	60.1	60.5	61.3					
6-year	42.6	45.2	46.7	48.0	49.2	49.6	50.3	50.9	52.8	52.2	53.8	53.6	55.4	56.1	58.3	58.5						
7-year	40.9	43.7	45.1	46.5	47.6	47.6	48.4	49.2	50.9	50.4	51.9	52.3	53.8	54.5	56.2							
8-year	39.5	42.2	43.5	45.0	46.0	46.3	47.1	47.9	49.7	49.2	50.4	50.9	52.5	53.2								
9-year	38.5	41.0	42.2	43.7	44.7	45.1	46.1	46.7	48.6	48.3	49.4	49.6	51.2									
10-year	37.4	39.9	40.9	42.5	43.9	43.8	45.1	45.8	47.5	47.6	48.5	48.6										
11-year	36.6	39.0	40.2	41.5	42.8	42.8	44.1	45.1	46.5	46.9	47.5											
12-year	36.1	38.2	39.4	40.9	42.2	42.2	43.3	44.5	45.6	46.0												
13-year	35.5	37.6	39.0	40.2	41.7	41.7	42.5	44.2	45.3													
14-year	34.9	36.9	38.6	39.8	41.0	41.3	41.7	43.7														
15-year	34.5	36.5	38.2	39.5	40.6	41.2																
16-year	33.9	36.2	37.7	38.9	40.1	39.9																
17-year	33.8	36.2	37.4	38.4	39.8																	
18-year	33.5	36.2	37.2	38.0																		
19-year	33.5	36.2	37.1																			
20-year	33.1	35.9																				
21-year	33.1																					

Note: Incidence and mortality rates are per 100,000 and are age-adjusted to the 1970 U.S. standard population.

Survival rates are relative rates expressed as percents.

Table II-14
ALL SITES EXCLUDING LUNG AND BRONCHUS (Invasive)

INCIDENCE, MORTALITY, AND SURVIVAL RATES

By Year of Diagnosis/Death

All Races, Females

Year of Diagnosis/Death

	1973	1974	1975	1976	1977	1978	1979	1980	1981	1982	1983	1984	1985	1986	1987	1988	1989	1990	1991	1992	1993	1994
Incidence																						
SEER	275.3	291.9	286.0	284.5	279.7	277.1	277.5	278.9	283.3	282.2	284.9	293.2	301.5	299.3	307.0	303.1	301.7	306.1	307.7	305.8	299.7	300.1
Mortality																						
U.S.	118.1	117.4	115.5	116.2	115.6	115.0	113.5	114.1	113.4	113.5	112.7	113.7	112.9	112.5	111.3	110.8	110.6	110.0	110.0	108.5	108.1	107.6
SEER	118.3	119.9	117.5	117.4	117.1	114.0	113.4	113.3	114.5	114.2	112.2	111.3	113.0	110.1	109.7	109.2	111.2	105.3	108.4	104.9	104.7	103.6
Relative Survival Rates (SEER)																						
1-year	75.4	77.6	77.6	78.3	77.7	78.4	78.0	78.2	78.6	79.0	79.4	80.2	80.5	81.3	81.7	81.9	82.1	82.2	82.8	82.7	82.1	
2-year	67.1	69.4	69.7	70.2	69.8	70.4	69.6	70.2	70.7	70.9	71.5	72.6	73.3	74.0	74.9	75.3	75.5	75.8	76.2	76.4		
3-year	62.4	64.8	65.3	65.7	65.1	65.8	64.8	65.3	65.9	66.0	66.8	68.2	68.8	70.0	70.7	71.7	71.6	71.9	72.1			
4-year	59.1	61.4	62.1	62.5	61.9	62.6	61.6	62.2	62.5	63.2	63.8	65.1	65.8	67.3	68.1	69.3	69.0	69.4				
5-year	56.8	59.2	60.1	60.3	59.8	60.2	59.3	59.8	60.5	61.0	61.4	62.7	63.6	65.1	66.0	67.3	67.0					
6-year	55.1	57.3	58.3	58.6	58.2	58.4	57.6	58.0	58.8	59.1	59.4	61.3	62.0	63.6	64.2	65.7						
7-year	53.7	55.9	57.0	57.3	56.9	57.0	56.1	56.7	57.2	57.6	57.9	59.8	60.7	62.2	62.7							
8-year	52.7	55.0	56.1	56.3	55.8	55.8	55.2	55.5	56.0	56.6	56.7	58.8	59.6	61.1								
9-year	51.9	54.2	55.5	55.4	54.9	54.9	54.3	54.5	55.0	55.9	55.9	57.6	58.4									
10-year	51.3	53.4	54.7	54.9	54.2	54.2	53.5	53.7	54.1	55.3	55.1	56.4										
11-year	50.8	52.8	54.0	54.2	53.6	53.6	53.0	53.0	53.7	54.4	54.1											
12-year	50.0	52.4	53.6	53.6	53.0	53.0	52.5	52.4	53.3	53.6												
13-year	49.6	51.9	53.2	53.4	52.6	52.8	52.0	51.8	52.5													
14-year	49.3	51.5	52.9	53.1	52.3	52.4	51.6	51.4														
15-year	48.8	51.0	52.4	52.7	52.0	51.9	51.1															
16-year	48.5	50.7	52.1	52.5	51.6	51.6																
17-year	48.3	50.5	51.9	52.3	51.3																	
18-year	48.2	50.3	51.9	52.0																		
19-year	47.8	50.0	51.6																			
20-year	47.8	49.5																				
21-year	47.5																					

Note: Incidence and mortality rates are per 100,000 and are age-adjusted to the 1970 U.S. standard population.

Survival rates are relative rates expressed as percents.

Table II-15

ALL SITES (Invasive)

AGE-SPECIFIC CANCER SEER INCIDENCE RATES§ AND 22-YEAR TRENDS, 1973-94

By Race, Sex and Age Group

Sex/Age	All Races				Whites				Blacks			
	Average	Rate [⊕]	% Change	EAPC	Average	Rate [⊕]	% Change	EAPC	Average	Rate [⊕]	% Change	EAPC
	1973-74	93-94	73-94	73-94	1973-74	93-94	73-94	73-94	1973-74	93-94	73-94	73-94
Males & Females	326.4	402.9	23.4	1.2★	326.7	400.5	22.6	1.2★	351.6	461.2	31.2	1.4★
0-54:	99.7	108.4	8.8	0.6★	98.6	107.1	8.6	0.6★	111.5	123.3	10.5	0.5★
0-14	12.8	14.2	10.5	0.8★	13.3	14.3	7.6	0.7★	10.3	13.0	25.5	1.4★
15-34	36.9	46.1	24.8	1.3★	36.9	47.1	27.7	1.5★	35.9	39.2	9.4	0.5
35-44	160.5	171.0	6.5	0.8★	157.5	169.4	7.5	0.9★	180.7	181.9	0.7	0.3
45-54	418.9	443.3	5.8	0.3★	413.4	432.9	4.7	0.3★	491.8	558.6	13.6	0.5★
55-64	872.6	1060.3	21.5	1.0★	877.4	1053.3	20.0	1.0★	945.6	1336.7	41.4	1.6★
65+:	1679.8	2208.9	31.5	1.6★	1686.8	2201.1	30.5	1.6★	1769.6	2421.3	36.8	1.7★
65-74	1469.6	2034.4	38.4	1.8★	1474.2	2031.8	37.8	1.9★	1612.1	2352.1	45.9	2.1★
75+	2022.4	2493.5	23.3	1.3★	2033.3	2477.0	21.8	1.3★	2026.3	2534.0	25.1	1.3★
Males	368.8	489.7	32.8	1.6★	368.9	478.8	29.8	1.5★	434.3	637.1	46.7	1.8★
0-54:	78.6	95.4	21.5	1.1★	76.9	93.2	21.3	1.2★	103.3	125.0	21.0	0.9★
0-14	14.2	14.9	5.0	0.7★	14.7	15.0	2.2	0.6★	10.3	13.5	30.3	1.6★
15-34	31.1	44.9	44.3	2.3★	31.9	46.7	46.6	2.5★	24.5	37.4	52.5	2.7★
35-44	103.5	136.3	31.8	1.9★	100.8	134.4	33.3	2.1★	135.4	157.9	16.7	1.1★
45-54	337.6	387.0	14.6	0.6★	325.0	368.1	13.3	0.6★	508.1	597.9	17.7	0.5★
55-64	898.0	1222.9	36.2	1.5★	892.7	1187.3	33.0	1.5★	1194.8	1836.9	53.7	1.8★
65+:	2259.0	3043.7	34.7	1.7★	2278.8	2984.9	31.0	1.6★	2444.0	3725.5	52.4	2.1★
65-74	1867.8	2749.4	47.2	2.1★	1879.2	2692.4	43.3	2.0★	2172.2	3620.7	66.7	2.5★
75+	2896.7	3523.3	21.6	1.3★	2930.0	3461.6	18.1	1.2★	2887.1	3896.3	35.0	1.7★
Females	302.6	342.1	13.0	0.8★	304.6	346.6	13.8	0.9★	286.7	337.9	17.9	1.0★
0-54:	120.0	121.1	0.9	0.2★	119.7	121.0	1.1	0.3★	118.6	122.0	2.8	0.1
0-14	11.4	13.4	17.5	0.8★	11.8	13.5	14.5	0.8★	10.4	12.5	20.6	1.2★
15-34	42.7	47.3	10.8	0.5★	41.9	47.5	13.3	0.7★	45.9	41.0	-10.7	-0.7
35-44	215.9	204.9	-5.1	0.1	213.3	204.5	-4.2	0.2	220.0	202.7	-7.9	-0.2
45-54	496.1	498.0	0.4	0.2	497.8	497.3	-0.1	0.2	476.6	525.1	10.2	0.4★
55-64	849.6	912.6	7.4	0.5★	864.2	928.3	7.4	0.6★	720.4	938.8	30.3	1.4★
65+:	1294.1	1626.2	25.7	1.4★	1302.7	1657.4	27.2	1.5★	1263.0	1551.7	22.9	1.4★
65-74	1161.0	1461.9	25.9	1.5★	1169.2	1498.9	28.2	1.5★	1136.0	1420.9	25.1	1.7★
75+	1510.9	1894.0	25.4	1.3★	1520.4	1915.7	26.0	1.3★	1469.9	1764.8	20.1	1.0★

The EAPC is the Estimated Annual Percent Change over the time interval.

§ SEER Program. Rates are per 100,000 and are age-adjusted to the 1970 U.S. standard population. Each rate has been age-adjusted by 5-year age groups.

⊕ The Average Rate is the Average Annual Rate over the specified two-year period.

★ The EAPC is significantly different from zero ($p < .05$).

- Statistic could not be calculated.

Table II-16

ALL SITES (Invasive)

AGE-SPECIFIC CANCER U.S. MORTALITY RATES* AND 22-YEAR TRENDS, 1973-94

By Race, Sex and Age Group

Sex/Age	All Races				Whites				Blacks			
	Average	Rate [⊕]	% Change	EAPC	Average	Rate [⊕]	% Change	EAPC	Average	Rate [⊕]	% Change	EAPC
	1973-74	93-94	73-94	73-94	1973-74	93-94	73-94	73-94	1973-74	93-94	73-94	73-94
Males & Females	162.6	171.4	5.4	0.3★	159.9	167.8	5.0	0.3★	196.8	224.2	13.9	0.7★
0-54:	39.0	30.9	-20.8	-1.1★	37.3	29.4	-21.3	-1.1★	56.9	47.1	-17.2	-0.9★
0-14	5.4	2.9	-46.0	-3.0★	5.5	3.0	-46.6	-3.0★	4.8	2.8	-41.5	-2.6★
15-34	10.4	7.6	-26.7	-1.5★	10.3	7.4	-28.1	-1.6★	11.5	9.4	-18.1	-0.8★
35-44	56.0	42.0	-25.0	-1.3★	53.2	39.6	-25.6	-1.3★	83.0	64.0	-22.9	-1.1★
45-54	180.3	150.1	-16.7	-0.9★	171.1	142.2	-16.9	-0.9★	278.7	238.8	-14.3	-0.8★
55-64	425.7	424.9	-0.2	0.1	414.3	413.2	-0.3	0.1	564.8	589.4	4.4	0.4★
65+:	932.3	1088.9	16.8	0.8★	928.9	1076.1	15.8	0.8★	1003.3	1337.8	33.3	1.5★
65-74	764.9	869.0	13.6	0.7★	754.5	856.2	13.5	0.7★	911.3	1116.2	22.5	1.2★
75+	1205.1	1447.2	20.1	0.9★	1213.3	1434.5	18.2	0.8★	1153.3	1698.9	47.3	1.9★
Males	206.6	215.7	4.4	0.3★	202.7	209.1	3.2	0.2★	259.2	310.8	19.9	1.0★
0-54:	39.3	31.2	-20.7	-1.2★	37.3	29.2	-21.7	-1.2★	62.4	53.1	-15.0	-0.9★
0-14	6.0	3.2	-46.4	-3.1★	6.2	3.3	-47.1	-3.1★	5.2	3.0	-42.6	-2.8★
15-34	11.2	8.1	-27.8	-1.6★	11.3	8.0	-29.7	-1.7★	10.9	9.5	-12.8	-0.7★
35-44	50.1	38.6	-22.9	-1.3★	47.5	36.2	-23.8	-1.3★	76.9	61.0	-20.7	-1.2★
45-54	185.0	153.8	-16.9	-0.9★	172.3	142.2	-17.5	-1.0★	324.6	283.3	-12.7	-0.7★
55-64	510.9	497.2	-2.7	0.0	492.5	475.8	-3.4	0.0	738.6	781.9	5.9	0.3★
65+:	1296.1	1467.6	13.2	0.6★	1290.6	1437.2	11.4	0.5★	1428.3	1988.0	39.2	1.8★
65-74	1033.7	1101.9	6.6	0.3★	1018.6	1072.8	5.3	0.3★	1251.9	1574.5	25.8	1.3★
75+	1723.7	2063.5	19.7	0.9★	1733.9	2031.1	17.1	0.8★	1715.8	2661.9	55.1	2.3★
Females	131.5	141.5	7.6	0.4★	130.1	140.1	7.7	0.4★	149.8	168.3	12.3	0.7★
0-54:	38.7	30.6	-20.9	-1.1★	37.4	29.5	-21.0	-1.1★	52.1	42.2	-19.1	-0.9★
0-14	4.7	2.6	-45.6	-2.8★	4.8	2.6	-45.9	-2.8★	4.4	2.6	-40.3	-2.5★
15-34	9.6	7.2	-25.6	-1.4★	9.4	6.9	-26.4	-1.5★	11.9	9.3	-22.3	-0.9★
35-44	61.7	45.3	-26.5	-1.3★	58.7	42.9	-26.9	-1.4★	88.1	66.6	-24.4	-1.0★
45-54	175.9	146.7	-16.6	-0.9★	170.1	142.3	-16.4	-0.8★	240.0	202.2	-15.7	-0.8★
55-64	350.7	360.0	2.7	0.2★	345.2	355.9	3.1	0.2★	420.6	441.7	5.0	0.5★
65+:	690.3	848.7	22.9	1.1★	691.1	847.0	22.6	1.1★	700.3	949.3	35.6	1.6★
65-74	559.7	685.1	22.4	1.1★	554.0	683.2	23.3	1.2★	647.3	794.4	22.7	1.3★
75+	903.3	1115.4	23.5	1.0★	914.5	1114.0	21.8	1.0★	786.7	1201.8	52.8	2.0★

The EAPC is the Estimated Annual Percent Change over the time interval.

* NCHS public use tape. Rates are per 100,000 and are age-adjusted to the 1970 U.S. standard population. Each rate has been age-adjusted by 5-year age groups.

⊕ The Average Rate is the Average Annual Rate over the specified two-year period.

★ The EAPC is significantly different from zero ($p < .05$).

- Statistic could not be calculated.

Table II-17

ALL SITES EXCLUDING LUNG AND BRONCHUS (Invasive)

AGE-SPECIFIC CANCER SEER INCIDENCE RATES§ AND 22-YEAR TRENDS, 1973-94

By Race, Sex and Age Group

Sex/Age	All Races				Whites				Blacks			
	Average	Rate⊕	% Change	EAPC	Average	Rate⊕	% Change	EAPC	Average	Rate⊕	% Change	EAPC
	1973-74	93-94	73-94	73-94	1973-74	93-94	73-94	73-94	1973-74	93-94	73-94	73-94
Males & Females	283.2	346.2	22.2	1.2★	284.2	343.9	21.0	1.2★	292.7	386.4	32.0	1.4★
0-54:	89.2	99.7	11.8	0.8★	88.7	99.0	11.7	0.8★	93.4	107.3	14.9	0.7★
0-14	12.8	14.2	10.8	0.8★	13.2	14.3	7.8	0.7★	10.2	13.0	26.9	1.4★
15-34	36.3	45.4	25.3	1.4★	36.3	46.5	28.3	1.5★	35.1	38.3	9.1	0.5
35-44	146.8	162.1	10.4	1.0★	144.5	161.4	11.7	1.2★	159.4	163.2	2.4	0.6★
45-54	360.2	392.3	8.9	0.5★	357.7	384.9	7.6	0.5★	386.7	466.3	20.6	0.7★
55-64	727.4	889.2	22.2	1.1★	734.2	882.9	20.3	1.0★	740.6	1085.0	46.5	1.6★
65+:	1462.8	1864.1	27.4	1.5★	1470.7	1852.4	26.0	1.4★	1512.2	2028.0	34.1	1.6★
65-74	1242.5	1693.1	36.3	1.8★	1247.4	1687.1	35.3	1.8★	1328.8	1924.1	44.8	2.0★
75+	1821.8	2142.8	17.6	1.1★	1834.6	2121.7	15.6	1.0★	1811.3	2197.5	21.3	1.1★
Males	295.0	413.6	40.2	1.9★	295.7	404.3	36.7	1.8★	330.9	524.2	58.4	2.2★
0-54:	64.0	85.5	33.6	1.7★	63.2	84.3	33.4	1.8★	75.4	103.5	37.3	1.5★
0-14	14.2	14.9	5.1	0.7★	14.7	15.0	2.3	0.6★	10.3	13.5	30.3	1.7★
15-34	30.3	44.2	45.7	2.4★	31.2	46.1	47.8	2.5★	23.0	36.2	57.5	2.8★
35-44	86.1	126.1	46.4	2.6★	84.7	125.7	48.3	2.7★	105.3	133.6	26.8	2.0★
45-54	253.5	328.2	29.5	1.3★	245.8	315.0	28.2	1.3★	344.0	473.0	37.5	1.2★
55-64	670.1	1011.8	51.0	2.0★	668.8	982.8	47.0	1.9★	841.7	1474.2	75.2	2.3★
65+:	1841.8	2550.5	38.5	1.9★	1856.8	2492.4	34.2	1.8★	1952.9	3094.1	58.4	2.3★
65-74	1452.7	2287.1	57.4	2.5★	1458.7	2236.4	53.3	2.4★	1642.3	2950.4	79.6	2.8★
75+	2476.0	2979.6	20.3	1.3★	2505.5	2909.6	16.1	1.2★	2459.0	3328.2	35.3	1.6★
Females	283.6	299.9	5.7	0.5★	285.8	303.3	6.1	0.5★	265.3	290.7	9.6	0.6★
0-54:	113.4	113.7	0.2	0.2	113.4	113.7	0.3	0.3★	109.3	110.7	1.3	0.1
0-14	11.3	13.4	18.2	0.8★	11.8	13.5	15.0	0.8★	10.1	12.5	23.3	1.2★
15-34	42.1	46.7	10.8	0.5★	41.3	46.9	13.5	0.7★	45.7	40.2	-12.1	-0.8
35-44	205.5	197.3	-4.0	0.2	203.3	197.2	-3.0	0.3★	206.3	189.0	-8.4	-0.1
45-54	461.6	454.5	-1.5	0.1	464.5	454.4	-2.2	0.1	425.1	460.7	8.4	0.3
55-64	781.1	778.1	-0.4	0.2	795.1	790.0	-0.6	0.2	649.7	775.4	19.4	0.9★
65+:	1218.4	1383.8	13.6	0.9★	1228.4	1406.7	14.5	0.9★	1188.9	1318.2	10.9	0.8★
65-74	1081.2	1217.6	12.6	0.9★	1090.0	1244.1	14.1	1.0★	1063.4	1170.1	10.0	1.0★
75+	1442.0	1654.7	14.8	0.8★	1454.1	1671.7	15.0	0.9★	1393.5	1559.5	11.9	0.6★

The EAPC is the Estimated Annual Percent Change over the time interval.

§ SEER Program. Rates are per 100,000 and are age-adjusted to the 1970 U.S. standard population. Each rate has been age-adjusted by 5-year age groups.

⊕ The Average Rate is the Average Annual Rate over the specified two-year period.

★ The EAPC is significantly different from zero ($p < .05$).

- Statistic could not be calculated.

Table II-18

ALL SITES EXCLUDING LUNG AND BRONCHUS (Invasive)

AGE-SPECIFIC CANCER U.S. MORTALITY RATES* AND 22-YEAR TRENDS, 1973-94

By Race, Sex and Age Group

Sex/Age	All Races				Whites				Blacks			
	Average	Rate [⊕]	% Change	EAPC	Average	Rate [⊕]	% Change	EAPC	Average	Rate [⊕]	% Change	EAPC
	1973-74	93-94	73-94	73-94	1973-74	93-94	73-94	73-94	1973-74	93-94	73-94	73-94
Males & Females	127.2	121.6	-4.4	-0.2★	125.0	118.4	-5.2	-0.2★	155.1	163.7	5.5	0.3★
0-54:	30.7	24.1	-21.5	-1.1★	29.5	22.9	-22.4	-1.2★	43.2	36.0	-16.7	-0.8★
0-14	5.4	2.9	-46.1	-3.0★	5.5	2.9	-46.6	-3.0★	4.8	2.8	-41.5	-2.7★
15-34	10.0	7.3	-26.7	-1.5★	10.0	7.2	-28.1	-1.6★	11.0	9.0	-18.4	-0.8★
35-44	45.3	35.6	-21.5	-1.0★	43.2	33.6	-22.1	-1.0★	65.8	52.7	-19.8	-0.8★
45-54	133.0	108.9	-18.1	-1.0★	126.7	103.0	-18.7	-1.0★	200.3	172.3	-14.0	-0.7★
55-64	306.7	276.1	-10.0	-0.4★	297.4	265.9	-10.6	-0.5★	415.6	397.9	-4.3	-0.1
65+:	752.4	778.0	3.4	0.2★	747.7	764.8	2.3	0.1★	831.8	993.8	19.5	0.9★
65-74	580.4	574.4	-1.0	0.0	569.0	561.8	-1.3	0.0	726.8	773.7	6.5	0.5★
75+	1032.7	1109.9	7.5	0.3★	1038.9	1095.8	5.5	0.2★	1002.9	1352.4	34.9	1.4★
Males	143.3	143.9	0.4	0.1★	140.3	139.1	-0.8	0.0	182.3	209.8	15.1	0.7★
0-54:	26.9	22.7	-15.8	-0.8★	25.8	21.4	-17.1	-0.9★	39.4	36.2	-8.2	-0.5★
0-14	6.0	3.2	-46.4	-3.1★	6.2	3.3	-47.1	-3.1★	5.2	3.0	-42.2	-2.8★
15-34	10.7	7.7	-27.6	-1.6★	10.9	7.7	-29.5	-1.7★	10.1	9.0	-11.4	-0.6★
35-44	35.1	30.7	-12.6	-0.6★	33.7	29.2	-13.5	-0.6★	49.7	44.7	-10.0	-0.5★
45-54	113.0	101.8	-9.9	-0.5★	105.8	94.6	-10.6	-0.6★	190.8	181.2	-5.0	-0.3★
55-64	312.2	296.9	-4.9	-0.1★	299.1	282.0	-5.7	-0.2★	465.6	478.1	2.7	0.1
65+:	941.7	996.8	5.9	0.3★	932.4	972.4	4.3	0.2★	1091.8	1385.5	26.9	1.3★
65-74	683.2	682.5	-0.1	0.0	665.9	660.8	-0.8	0.0	896.1	1006.0	12.3	0.7★
75+	1362.9	1509.0	10.7	0.5★	1366.6	1480.3	8.3	0.4★	1410.8	2003.9	42.0	1.8★
Females	117.8	107.9	-8.4	-0.4★	116.3	105.9	-8.9	-0.4★	135.9	135.5	-0.3	0.1★
0-54:	34.2	25.4	-25.6	-1.4★	33.0	24.4	-26.1	-1.4★	46.3	35.8	-22.6	-1.1★
0-14	4.7	2.5	-45.7	-2.8★	4.8	2.6	-46.1	-2.9★	4.4	2.6	-40.6	-2.5★
15-34	9.3	6.9	-25.8	-1.4★	9.1	6.7	-26.5	-1.5★	11.6	8.9	-23.5	-0.9★
35-44	55.2	40.4	-26.8	-1.3★	52.4	38.1	-27.3	-1.3★	79.2	59.7	-24.6	-0.9★
45-54	151.6	115.7	-23.6	-1.3★	146.4	111.2	-24.0	-1.3★	208.3	165.0	-20.8	-1.1★
55-64	302.1	257.4	-14.8	-0.7★	296.2	251.3	-15.2	-0.8★	374.3	336.3	-10.2	-0.3★
65+:	632.2	645.6	2.1	0.1★	632.2	639.4	1.1	0.1★	650.1	767.0	18.0	0.9★
65-74	502.5	489.3	-2.6	-0.1	496.1	482.9	-2.7	-0.1★	595.7	611.0	2.6	0.4★
75+	843.5	900.2	6.7	0.3★	854.0	894.5	4.7	0.2★	738.7	1021.1	38.2	1.5★

The EAPC is the Estimated Annual Percent Change over the time interval.

* NCHS public use tape. Rates are per 100,000 and are age-adjusted to the 1970 U.S. standard population. Each rate has been age-adjusted by 5-year age groups.

⊕ The Average Rate is the Average Annual Rate over the specified two-year period.

★ The EAPC is significantly different from zero ($p < .05$).

- Statistic could not be calculated.

Table II-19

TOTAL DEATHS FROM ALL CAUSES AND TOTAL DEATHS ATTRIBUTED TO
ACQUIRED IMMUNE DEFICIENCY SYNDROME[⊕] BY SITE AND SEX

All Cancers Diagnosed Between 1973-94, All Deaths Occurred Between 1983-94

Surveillance, Epidemiology and End Results Program[§]

All Races and All Ages

Diagnosed Cancer Site	Males			Females		
	Total Deaths	Total AIDS Deaths	Percent AIDS Deaths	Total Deaths	Total AIDS Deaths	Percent AIDS Deaths
Oral cavity & Pharynx	14,984	422	2.82	6,079	1	0.02
Digestive system	88,024	174	0.20	76,262	9	0.01
Respiratory system	97,668	147	0.15	50,710	9	0.02
Bone & Joint	684	2	0.29	440	0	0.00
Soft tissue (incl heart)	1,878	58	3.09	1,404	2	0.14
Skin (ex basal & squamous)	13,305	4,984	37.46	4,131	20	0.48
Breast	618	1	0.16	72,537	13	0.02
Female genital system	-	-	-	39,404	16	0.04
Cervix uteri	-	-	-	6,849	10	0.15
Corpus & Uterus, NOS	-	-	-	15,746	3	0.02
Ovary	-	-	-	14,142	1	0.01
Vagina	-	-	-	580	0	0.00
Vulva	-	-	-	1,516	2	0.13
Male genital system	76,264	101	0.13	-	-	-
Prostate	74,520	22	0.03	-	-	-
Testis	965	30	3.11	-	-	-
Penis	625	38	6.08	-	-	-
Urinary system	30,164	17	0.06	12,623	0	0.00
Eye & Orbit	591	2	0.34	456	0	0.00
Brain & Other nervous	7,362	7	0.10	5,703	0	0.00
Endocrine system	1,483	5	0.34	1,945	1	0.05
Lymphomas	16,753	1,709	10.20	12,683	76	0.60
Non-Hodgkin's lymphomas	14,761	1,650	11.18	11,515	71	0.62
Multiple myeloma	5,689	9	0.16	5,297	0	0.00
Leukemias	13,270	18	0.14	9,994	3	0.03
Miscellaneous	13,366	52	0.39	14,240	6	0.04
All Sites	382,103	7,708	2.02	313,908	156	0.05

[⊕] All deaths were coded using the International Classification of Diseases, 9th Revision. Deaths attributed to Acquired Immune Deficiency Syndrome (AIDS) were those coded 042.0 - 044.9 (the code for Human Immunodeficiency Virus (HIV) Infection beginning in 1986), 279.1 (the temporary HIV code from 1983-86) and 795.8 (the code for serologic or viral culture findings for HIV, although not a code generally associated with cause of death it is, on rare occasions, used).

[§] SEER Program. Diagnosed cancer cases and deaths are based on data from population-based registries in Connecticut, New Mexico, Utah, Iowa, Hawaii, Atlanta, Detroit, Seattle-Puget Sound and San Francisco-Oakland.

Table II-20

TOTAL DEATHS FROM ALL CAUSES AND TOTAL DEATHS ATTRIBUTED TO
ACQUIRED IMMUNE DEFICIENCY SYNDROME[⊕] BY SITE AND AGE

All Cancers Diagnosed Between 1973-94, All Deaths Occurred Between 1983-94

Surveillance, Epidemiology and End Results Programs[§]

All Races, Males

Diagnosed Cancer Site	Under 35 Years			Under 45 Years			Under 55 Years		
	Total Deaths	Total AIDS Deaths	Percent AIDS Deaths	Total Deaths	Total AIDS Deaths	Percent AIDS Deaths	Total Deaths	Total AIDS Deaths	Percent AIDS Deaths
Oral cavity & Pharynx	410	177	43.17	1,245	355	28.51	3,606	411	11.40
Digestive system	831	58	6.98	3,326	111	3.34	10,568	149	1.41
Respiratory system	385	51	13.25	2,675	111	4.15	12,601	139	1.10
Bone & Joint	302	1	0.33	356	1	0.28	414	2	0.48
Soft tissue (incl heart)	349	24	6.88	537	44	8.19	741	55	7.42
Skin (ex basal & squamous)	3,011	1,832	60.84	6,663	4,137	62.09	8,459	4,816	56.93
Breast	3	1	33.33	28	1	3.57	79	1	1.27
Male genital system	487	30	6.16	795	68	8.55	2,149	80	3.72
Prostate	13	0	0.00	88	1	1.14	1,256	2	0.16
Testis	450	19	4.22	630	28	4.44	753	30	3.98
Penis	16	8	50.00	60	31	51.67	116	38	32.76
Urinary system	178	0	0.00	694	8	1.15	2,842	13	0.46
Eye & Orbit	34	0	0.00	64	1	1.56	139	2	1.44
Brain & Other nervous	1,211	4	0.33	1,982	7	0.35	3,066	7	0.23
Endocrine system	203	3	1.48	329	5	1.52	535	5	0.93
Lymphomas	2,032	553	27.21	3,974	1,239	31.18	6,079	1,594	26.22
Non-Hodgkin's lymphomas	1,367	523	38.26	3,056	1,192	39.01	4,893	1,537	31.41
Multiple myeloma	27	0	0.00	211	3	1.42	699	4	0.57
Leukemias	1,449	5	0.35	2,136	14	0.66	3,283	16	0.49
Miscellaneous	225	23	10.22	709	39	5.50	1,827	44	2.41
All Sites	11,137	2,762	24.80	25,724	6,144	23.88	57,087	7,338	12.85

[⊕] All deaths were coded using the International Classification of Diseases, 9th Revision. Deaths attributed to Acquired Immune Deficiency Syndrome (AIDS) were those coded 042.0 - 044.9 (the code for Human Immunodeficiency Virus (HIV) Infection beginning in 1986), 279.1 (the temporary HIV code from 1983-86) and 795.8 (the code for serologic or viral culture findings for HIV, although not a code generally associated with cause of death it is, on rare occasions, used).

[§] SEER Program. Diagnosed cancer cases and deaths are based on data from population-based registries in Connecticut, New Mexico, Utah, Iowa, Hawaii, Atlanta, Detroit, Seattle-Puget Sound and San Francisco-Oakland.

Table II-21
5-YEAR RELATIVE SURVIVAL RATES, BY RACE, SEX, DIAGNOSIS YEAR AND AGE

ALL SITES (Invasive)

	<u>All Races</u>			<u>Whites</u>			<u>Blacks</u>		
	<u>Total</u>	<u>Males</u>	<u>Females</u>	<u>Total</u>	<u>Males</u>	<u>Females</u>	<u>Total</u>	<u>Males</u>	<u>Females</u>
<u>AGES <35</u>									
YEAR OF DIAGNOSIS:									
1974-76 ^b	67.9	60.8	73.5	68.7	61.7	74.4	61.2	52.2	66.7
1977-79 ^b	71.3	65.1	76.1	72.2	66.6	76.8	64.1	49.7	71.4
1980-82 ^b	73.2	69.3	76.4	74.4	70.9	77.4	63.3	55.8	68.1
1983-85 ^b	71.8	65.7	77.3	73.2	67.2	78.9	59.0	50.5	64.9
1986-93 ^b	70.5 S	61.5	79.6 S	72.3 S	63.5 S	81.5 S	54.9 S	43.1 S	64.7
<u>AGES <45</u>									
YEAR OF DIAGNOSIS:									
1974-76 ^b	65.8	57.2	71.2	67.1	59.0	72.2	55.3	41.0	63.0
1977-79 ^b	68.0	60.3	73.0	69.6	62.8	74.1	55.4	38.9	64.2
1980-82 ^b	69.5	63.1	73.8	71.1	65.6	74.9	56.8	43.2	65.0
1983-85 ^b	68.5	59.9	74.6	70.3	61.9	76.5	53.6	42.0	60.5
1986-93 ^b	67.1 S	54.6 S	77.1 S	69.1 S	56.8 S	79.2 S	51.2 S	36.9	61.7
<u>AGES <55</u>									
YEAR OF DIAGNOSIS:									
1974-76 ^b	59.5	47.4	67.3	61.0	49.3	68.5	45.4	31.9	55.1
1977-79 ^b	60.2	49.1	67.8	62.0	51.7	69.1	44.7	30.5	55.4
1980-82 ^b	61.9	52.7	68.4	63.6	55.4	69.5	46.9	33.7	57.3
1983-85 ^b	63.1	53.0	70.3	65.1	55.5	72.0	46.8	35.0	55.9
1986-93 ^b	64.0 S	51.7 S	73.3 S	66.1 S	54.3 S	75.2 S	47.3 S	34.1 S	58.2 S

ALL SITES EXCLUDING LUNG AND BRONCHUS (Invasive)

	<u>All Races</u>			<u>Whites</u>			<u>Blacks</u>		
	<u>Total</u>	<u>Males</u>	<u>Females</u>	<u>Total</u>	<u>Males</u>	<u>Females</u>	<u>Total</u>	<u>Males</u>	<u>Females</u>
<u>AGES <35</u>									
YEAR OF DIAGNOSIS:									
1974-76 ^b	68.2	61.1	73.8	69.1	62.1	74.7	61.3	52.2	66.6
1977-79 ^b	71.7	65.6	76.5	72.5	67.0	77.1	65.0	51.3	71.7
1980-82 ^b	73.5	69.7	76.7	74.7	71.3	77.7	63.6	55.8	68.5
1983-85 ^b	72.2	66.1	77.7	73.5	67.5	79.2	59.7	51.5	65.3
1986-93 ^b	70.9 S	61.9	79.9 S	72.6 S	63.8 S	81.7 S	55.8 S	44.0 S	65.4
<u>AGES <45</u>									
YEAR OF DIAGNOSIS:									
1974-76 ^b	68.1	60.2	72.9	69.2	61.8	73.8	58.7	45.0	65.2
1977-79 ^b	70.4	63.7	74.6	71.8	65.8	75.7	58.8	44.2	65.7
1980-82 ^b	71.9	66.4	75.5	73.4	68.6	76.6	60.2	47.8	66.8
1983-85 ^b	70.7	62.7	76.2	72.3	64.4	78.0	56.8	46.2	62.6
1986-93 ^b	68.8 S	56.4 S	78.5 S	70.6 S	58.4 S	80.5 S	53.9 S	39.8 S	63.6
<u>AGES <55</u>									
YEAR OF DIAGNOSIS:									
1974-76 ^b	64.8	54.8	70.3	66.1	56.7	71.4	51.5	38.9	58.5
1977-79 ^b	65.6	56.7	71.0	67.3	59.1	72.3	51.1	38.1	59.0
1980-82 ^b	67.3	60.1	72.0	69.0	62.7	73.1	52.7	40.5	60.7
1983-85 ^b	68.0	59.5	73.6	69.8	61.6	75.3	53.1	42.5	59.8
1986-93 ^b	68.2 S	56.4 S	76.7 S	70.1 S	58.7 S	78.5 S	52.7	39.9	62.1 S

^b Rates are from the SEER Program. They are based on data from population-based registries in Connecticut, New Mexico, Utah, Iowa, Hawaii, Atlanta, Detroit, Seattle-Puget Sound and San Francisco-Oakland. Rates are based on follow-up of patients through 1994.

S The difference in rates between 1974-76 and 1986-93 is statistically significant (p<.05).

† The standard error of the survival rate is between 5 and 10 percentage points.

‡ The standard error of the survival rate is greater than 10 percentage points.

- Statistic could not be calculated.

Table II-22
ALL SITES (Invasive)

Percent Diagnosed With Cancer In 10, 20 and 30 Years and In Remaining Lifetime,
 Given Cancer Free At Current Age By Race and Sex

Lifetime Risk (Percent) of Being Diagnosed With Cancer and
 Lifetime Risk (Percent) of Dying From Cancer

SEER Areas, 1992-94

All Races

Current Age	Males				Females			
	+10 yrs	+20 yrs	+30 yrs	Eventually	+10 yrs	+20 yrs	+30 yrs	Eventually
0	0.16	0.32	0.75	46.64	0.14	0.30	0.77	38.00
10	0.16	0.60	1.54	47.08	0.17	0.63	1.82	38.24
20	0.44	1.39	3.31	47.33	0.47	1.66	4.67	38.24
30	0.97	2.93	8.92	47.86	1.20	4.24	10.07	38.13
40	2.03	8.23	22.46	48.53	3.10	9.05	18.11	37.65
50	6.56	21.60	38.83	49.19	6.21	15.68	26.48	36.09
60	17.10	36.69	46.65	48.46	10.38	22.21	30.39	32.75

Lifetime Risk of Being Diagnosed = 46.64% Lifetime Risk of Being Diagnosed = 38.00%
 Lifetime Risk of Dying = 23.85% Lifetime Risk of Dying = 20.63%

Whites

Current Age	Males				Females			
	+10 yrs	+20 yrs	+30 yrs	Eventually	+10 yrs	+20 yrs	+30 yrs	Eventually
0	0.16	0.33	0.79	46.65	0.14	0.31	0.78	38.70
10	0.17	0.63	1.59	46.99	0.17	0.64	1.83	38.88
20	0.46	1.43	3.31	47.16	0.48	1.67	4.68	38.88
30	0.98	2.89	8.69	47.53	1.21	4.24	10.13	38.73
40	1.97	7.96	22.12	48.04	3.09	9.09	18.41	38.21
50	6.30	21.20	38.29	48.47	6.25	15.96	26.98	36.59
60	16.79	36.06	45.83	47.52	10.61	22.65	30.85	33.14

Lifetime Risk of Being Diagnosed = 46.65% Lifetime Risk of Being Diagnosed = 38.70%
 Lifetime Risk of Dying = 24.11% Lifetime Risk of Dying = 21.01%

Blacks

Current Age	Males				Females			
	+10 yrs	+20 yrs	+30 yrs	Eventually	+10 yrs	+20 yrs	+30 yrs	Eventually
0	0.14	0.26	0.59	41.84	0.12	0.26	0.64	32.07
10	0.12	0.46	1.36	42.83	0.14	0.53	1.58	32.62
20	0.34	1.25	3.64	43.41	0.39	1.44	4.56	32.65
30	0.95	3.44	11.52	44.96	1.07	4.23	9.88	32.70
40	2.66	11.30	26.39	47.03	3.26	9.08	17.24	32.60
50	9.71	26.67	42.30	49.88	6.23	14.96	23.81	31.40
60	21.61	41.51	49.19	51.17	9.96	20.05	26.34	28.70

Lifetime Risk of Being Diagnosed = 41.84% Lifetime Risk of Being Diagnosed = 32.07%
 Lifetime Risk of Dying = 23.28% Lifetime Risk of Dying = 19.87%

Table II-23
ALL SITES (Invasive)

AVERAGE ANNUAL AGE-ADJUSTED CANCER MORTALITY* RATES BY STATE, 1990-94

All Races, Males and Females

State	Rate	SE	Rank	PD	State	Rate	SE	Rank	PD
TOTAL U.S.	172.3	0.11							
High Five States									
District of Columbia	217.7 \oplus *	2.56	(01)	26.3					
Delaware	195.9 \oplus *	2.25	(02)	13.7					
Louisiana	193.5 \oplus *	0.93	(03)	12.3					
Kentucky	192.4 \oplus *	0.94	(04)	11.7					
Maryland	188.9 \oplus *	0.86	(05)	9.6					
Low Five States									
Idaho	147.5 \oplus *	1.59	(47)	-14.4					
Colorado	146.9 \oplus *	0.93	(48)	-14.7					
New Mexico	145.8 \oplus *	1.33	(49)	-15.4					
Hawaii	135.9 \oplus *	1.49	(50)	-21.1					
Utah	125.0 \oplus *	1.28	(51)	-27.5					
Alabama	179.3 \oplus	0.86	(18)	4.1	Montana	161.3 \oplus *	1.80	(38)	-6.4
Alaska	170.8	3.55	(29)	-0.9	Nebraska	155.6 \oplus *	1.28	(44)	-9.7
Arizona	160.0 \oplus *	0.85	(39)	-7.1	Nevada	185.0 \oplus *	1.63	(07)	7.4
Arkansas	180.2 \oplus	1.09	(13)	4.6	New Hampshire	180.8	1.74	(11)	4.9
California	161.5 \oplus *	0.33	(37)	-6.3	New Jersey	182.8 \oplus *	0.62	(09)	6.1
Colorado	146.9 \oplus *	0.93	(48)	-14.7	New Mexico	145.8 \oplus *	1.33	(49)	-15.4
Connecticut	164.5 \oplus	0.90	(36)	-4.5	New York	172.2	0.40	(28)	-0.1
Delaware	195.9 \oplus *	2.25	(02)	13.7	North Carolina	174.6	0.67	(26)	1.3
District of Columbia	217.7 \oplus *	2.56	(01)	26.3	North Dakota	156.3 \oplus *	2.01	(42)	-9.3
Florida	167.4 \oplus	0.42	(32)	-2.8	Ohio	180.6 \oplus	0.53	(12)	4.8
Georgia	176.0 \oplus	0.73	(25)	2.1	Oklahoma	170.0	0.94	(31)	-1.3
Hawaii	135.9 \oplus *	1.49	(50)	-21.1	Oregon	167.4 \oplus	0.97	(33)	-2.8
Idaho	147.5 \oplus *	1.59	(47)	-14.4	Pennsylvania	178.5 \oplus	0.48	(19)	3.6
Illinois	180.1 \oplus	0.52	(14)	4.5	Rhode Island	177.7	1.69	(21)	3.1
Indiana	177.4 \oplus	0.74	(22)	3.0	South Carolina	178.5 \oplus	0.96	(20)	3.6
Iowa	159.9 \oplus *	0.94	(40)	-7.2	South Dakota	153.9 \oplus *	1.89	(45)	-10.7
Kansas	159.2 \oplus *	1.04	(41)	-7.6	Tennessee	180.0 \oplus	0.79	(15)	4.5
Kentucky	192.4 \oplus *	0.94	(04)	11.7	Texas	170.6	0.45	(30)	-1.0
Louisiana	193.5 \oplus *	0.93	(03)	12.3	Utah	125.0 \oplus *	1.28	(51)	-27.5
Maine	185.9 \oplus *	1.58	(06)	7.9	Vermont	174.0	2.36	(27)	1.0
Maryland	188.9 \oplus *	0.86	(05)	9.6	Virginia	179.3 \oplus	0.74	(17)	4.1
Massachusetts	179.6 \oplus	0.71	(16)	4.2	Washington	164.6 \oplus	0.77	(35)	-4.5
Michigan	176.7 \oplus	0.58	(23)	2.6	West Virginia	184.4 \oplus *	1.24	(08)	7.0
Minnesota	156.2 \oplus *	0.79	(43)	-9.3	Wisconsin	165.0 \oplus	0.75	(34)	-4.2
Mississippi	181.2 \oplus *	1.12	(10)	5.2	Wyoming	151.2 \oplus *	2.50	(46)	-12.2
Missouri	176.5 \oplus	0.75	(24)	2.4					

* NCHS public use tape. Rates are per 100,000 and are age-adjusted to the 1970 U.S. standard population.

SE Standard error of the rate.

PD Percent difference between state rate and total U.S. rate.

* Absolute difference between state rate and total U.S. rate is 5% or more.

\oplus Difference between state rate and total U.S. rate is statistically significant ($p \leq .0002$).

Table II-24
ALL SITES (Invasive)

AVERAGE ANNUAL AGE-ADJUSTED CANCER MORTALITY* RATES BY STATE, 1990-94

All Races, Males

State	Rate	SE	Rank	PD	State	Rate	SE	Rank	PD
TOTAL U.S.	217.9	0.19							
High Five States									
District of Columbia	294.8 \oplus *	4.66	(01)	35.3					
Louisiana	260.4 \oplus *	1.67	(02)	19.5					
Kentucky	252.4 \oplus *	1.65	(03)	15.8					
Delaware	249.4 \oplus *	3.90	(04)	14.5					
Mississippi	249.2 \oplus *	2.01	(05)	14.4					
Low Five States									
Colorado	181.3 \oplus *	1.58	(47)	-16.8					
New Mexico	181.1 \oplus *	2.23	(48)	-16.9					
Idaho	178.5 \oplus *	2.58	(49)	-18.1					
Hawaii	166.2 \oplus *	2.39	(50)	-23.7					
Utah	151.3 \oplus *	2.11	(51)	-30.6					
Alabama	242.3 \oplus *	1.54	(07)	11.2	Montana	198.0 \oplus *	2.94	(39)	-9.1
Alaska	203.1 \oplus *	5.85	(34)	-6.8	Nebraska	196.7 \oplus *	2.14	(41)	-9.7
Arizona	197.6 \oplus *	1.41	(40)	-9.3	Nevada	222.6	2.69	(25)	2.2
Arkansas	238.4 \oplus *	1.89	(11)	9.4	New Hampshire	222.4	2.94	(26)	2.1
California	194.2 \oplus *	0.54	(43)	-10.9	New Jersey	227.4 \oplus	1.06	(19)	4.4
Colorado	181.3 \oplus *	1.58	(47)	-16.8	New Mexico	181.1 \oplus *	2.23	(48)	-16.9
Connecticut	204.6 \oplus *	1.54	(33)	-6.1	New York	212.7 \oplus	0.69	(30)	-2.4
Delaware	249.4 \oplus *	3.90	(04)	14.5	North Carolina	234.9 \oplus *	1.21	(15)	7.8
District of Columbia	294.8 \oplus *	4.66	(01)	35.3	North Dakota	194.3 \oplus *	3.27	(42)	-10.8
Florida	208.6 \oplus	0.70	(31)	-4.3	Ohio	229.7 \oplus *	0.91	(16)	5.4
Georgia	240.4 \oplus *	1.35	(09)	10.3	Oklahoma	219.3	1.62	(28)	0.6
Hawaii	166.2 \oplus *	2.39	(50)	-23.7	Oregon	202.1 \oplus *	1.58	(36)	-7.3
Idaho	178.5 \oplus *	2.58	(49)	-18.1	Pennsylvania	225.0 \oplus	0.82	(23)	3.3
Illinois	228.0 \oplus	0.90	(18)	4.6	Rhode Island	226.8	2.93	(20)	4.1
Indiana	228.9 \oplus *	1.29	(17)	5.0	South Carolina	243.4 \oplus *	1.76	(06)	11.7
Iowa	202.1 \oplus *	1.58	(35)	-7.3	South Dakota	192.2 \oplus *	3.10	(45)	-11.8
Kansas	201.2 \oplus *	1.75	(37)	-7.7	Tennessee	241.2 \oplus *	1.40	(08)	10.7
Kentucky	252.4 \oplus *	1.65	(03)	15.8	Texas	221.0	0.78	(27)	1.4
Louisiana	260.4 \oplus *	1.67	(02)	19.5	Utah	151.3 \oplus *	2.11	(51)	-30.6
Maine	235.8 \oplus *	2.70	(13)	8.2	Vermont	216.6	3.99	(29)	-0.6
Maryland	239.8 \oplus *	1.50	(10)	10.1	Virginia	235.6 \oplus *	1.31	(14)	8.1
Massachusetts	225.2 \oplus	1.22	(22)	3.4	Washington	199.8 \oplus *	1.28	(38)	-8.3
Michigan	222.7	0.99	(24)	2.2	West Virginia	236.1 \oplus *	2.14	(12)	8.4
Minnesota	193.5 \oplus *	1.32	(44)	-11.2	Wisconsin	206.7 \oplus *	1.26	(32)	-5.1
Mississippi	249.2 \oplus *	2.01	(05)	14.4	Wyoming	184.5 \oplus *	4.17	(46)	-15.3
Missouri	226.6 \oplus	1.29	(21)	4.0					

* NCHS public use tape. Rates are per 100,000 and are age-adjusted to the 1970 U.S. standard population.

SE Standard error of the rate.

PD Percent difference between state rate and total U.S. rate.

* Absolute difference between state rate and total U.S. rate is 5% or more.

 \oplus Difference between state rate and total U.S. rate is statistically significant ($p \leq .0002$).

Table II-25
ALL SITES (Invasive)

AVERAGE ANNUAL AGE-ADJUSTED CANCER MORTALITY* RATES BY STATE, 1990-94

All Races, Females

State	Rate	SE	Rank	PD	State	Rate	SE	Rank	PD
TOTAL U.S.	141.7	0.13							
High Five States									
District of Columbia	169.7 \oplus *	2.99	(01)	19.8					
Delaware	159.4 \oplus *	2.73	(02)	12.5					
Nevada	156.5 \oplus *	2.06	(03)	10.4					
Maryland	155.8 \oplus *	1.04	(04)	10.0					
New Hampshire	154.7 \oplus *	2.20	(05)	9.2					
Low Five States									
Idaho	125.2 \oplus *	2.03	(47)	-11.6					
Colorado	124.3 \oplus *	1.15	(48)	-12.3					
New Mexico	120.1 \oplus *	1.64	(49)	-15.2					
Hawaii	109.3 \oplus *	1.85	(50)	-22.9					
Utah	106.6 \oplus *	1.62	(51)	-24.8					
Alabama	137.4	1.01	(29)	-3.0	Montana	134.3*	2.27	(38)	-5.2
Alaska	144.1	4.42	(19)	1.7	Nebraska	127.3 \oplus *	1.58	(45)	-10.2
Arizona	132.0 \oplus *	1.06	(40)	-6.8	Nevada	156.5 \oplus *	2.06	(03)	10.4
Arkansas	139.0	1.31	(27)	-1.9	New Hampshire	154.7 \oplus *	2.20	(05)	9.2
California	139.5	0.41	(25)	-1.6	New Jersey	154.1 \oplus *	0.76	(06)	8.8
Colorado	124.3 \oplus *	1.15	(48)	-12.3	New Mexico	120.1 \oplus *	1.64	(49)	-15.2
Connecticut	138.8	1.12	(28)	-2.0	New York	146.9 \oplus	0.50	(16)	3.7
Delaware	159.4 \oplus *	2.73	(02)	12.5	North Carolina	135.4 \oplus	0.79	(36)	-4.4
District of Columbia	169.7 \oplus *	2.99	(01)	19.8	North Dakota	129.4*	2.56	(43)	-8.7
Florida	136.9 \oplus	0.52	(30)	-3.4	Ohio	148.5 \oplus	0.64	(14)	4.8
Georgia	134.9 \oplus	0.85	(37)	-4.8	Oklahoma	136.4	1.15	(32)	-3.7
Hawaii	109.3 \oplus *	1.85	(50)	-22.9	Oregon	143.4	1.23	(21)	1.2
Idaho	125.2 \oplus *	2.03	(47)	-11.6	Pennsylvania	148.7 \oplus	0.59	(12)	4.9
Illinois	148.9 \oplus *	0.64	(11)	5.1	Rhode Island	147.2	2.08	(15)	3.9
Indiana	143.7	0.89	(20)	1.4	South Carolina	136.1	1.12	(33)	-4.0
Iowa	132.2 \oplus *	1.17	(39)	-6.7	South Dakota	126.7 \oplus *	2.38	(46)	-10.6
Kansas	130.7 \oplus *	1.28	(42)	-7.8	Tennessee	139.0	0.92	(26)	-1.9
Kentucky	151.9 \oplus *	1.13	(08)	7.2	Texas	136.0 \oplus	0.53	(34)	-4.0
Louisiana	148.6 \oplus	1.09	(13)	4.9	Utah	106.6 \oplus *	1.62	(51)	-24.8
Maine	152.9 \oplus *	1.94	(07)	7.9	Vermont	144.2	2.91	(18)	1.8
Maryland	155.8 \oplus *	1.04	(04)	10.0	Virginia	142.6	0.88	(23)	0.6
Massachusetts	151.7 \oplus *	0.88	(09)	7.1	Washington	140.2	0.98	(24)	-1.1
Michigan	146.2 \oplus	0.71	(17)	3.2	West Virginia	149.9 \oplus *	1.51	(10)	5.8
Minnesota	131.6 \oplus *	1.00	(41)	-7.1	Wisconsin	136.8 \oplus	0.93	(31)	-3.5
Mississippi	135.7	1.29	(35)	-4.2	Wyoming	129.1*	3.18	(44)	-8.9
Missouri	142.7	0.91	(22)	0.7					

* NCHS public use tape. Rates are per 100,000 and are age-adjusted to the 1970 U.S. standard population.

SE Standard error of the rate.

PD Percent difference between state rate and total U.S. rate.

* Absolute difference between state rate and total U.S. rate is 5% or more.

 \oplus Difference between state rate and total U.S. rate is statistically significant ($p \leq .0002$).

Table II-26
ALL SITES EXCLUDING LUNG AND BRONCHUS (Invasive)

AVERAGE ANNUAL AGE-ADJUSTED CANCER MORTALITY* RATES BY STATE, 1990-94

All Races, Males and Females

State	Rate	SE	Rank	PD	State	Rate	SE	Rank	PD
TOTAL U.S.	122.4	0.09							
High Five States									
District of Columbia	164.5 \oplus *	2.21	(01)	34.4					
Delaware	136.0 \oplus *	1.87	(02)	11.1					
New Jersey	134.3 \oplus *	0.53	(03)	9.7					
Maryland	134.2 \oplus *	0.72	(04)	9.6					
Louisiana	132.2 \oplus *	0.76	(05)	8.0					
Low Five States									
Idaho	109.8 \oplus *	1.36	(47)	-10.3					
Wyoming	109.8 \oplus *	2.12	(48)	-10.3					
Colorado	109.8 \oplus *	0.80	(49)	-10.3					
Utah	103.0 \oplus *	1.16	(50)	-15.8					
Hawaii	101.7 \oplus *	1.28	(51)	-16.9					
Alabama	125.0	0.71	(19)	2.1	Montana	117.7	1.53	(33)	-3.8
Alaska	117.4	2.95	(34)	-4.1	Nebraska	112.6 \oplus *	1.08	(45)	-8.0
Arizona	113.9 \oplus *	0.72	(42)	-6.9	Nevada	126.1	1.35	(14)	3.0
Arkansas	118.3	0.88	(31)	-3.3	New Hampshire	129.6*	1.47	(09)	5.9
California	116.7 \oplus	0.28	(35)	-4.7	New Jersey	134.3 \oplus *	0.53	(03)	9.7
Colorado	109.8 \oplus *	0.80	(49)	-10.3	New Mexico	110.6 \oplus *	1.16	(46)	-9.6
Connecticut	120.5	0.77	(29)	-1.6	New York	126.6 \oplus	0.34	(12)	3.4
Delaware	136.0 \oplus *	1.87	(02)	11.1	North Carolina	121.2	0.56	(26)	-1.0
District of Columbia	164.5 \oplus *	2.21	(01)	34.4	North Dakota	118.1	1.73	(32)	-3.5
Florida	115.8 \oplus *	0.35	(38)	-5.4	Ohio	126.5 \oplus	0.44	(13)	3.3
Georgia	121.3	0.60	(25)	-0.9	Oklahoma	114.4 \oplus *	0.77	(41)	-6.5
Hawaii	101.7 \oplus *	1.28	(51)	-16.9	Oregon	115.9 \oplus *	0.80	(37)	-5.3
Idaho	109.8 \oplus *	1.36	(47)	-10.3	Pennsylvania	129.9 \oplus *	0.40	(08)	6.1
Illinois	129.5 \oplus *	0.44	(10)	5.8	Rhode Island	127.4	1.42	(11)	4.1
Indiana	122.4	0.61	(24)	0.0	South Carolina	125.4	0.80	(18)	2.5
Iowa	115.0 \oplus *	0.79	(40)	-6.0	South Dakota	113.6 \oplus *	1.61	(43)	-7.2
Kansas	113.3 \oplus *	0.87	(44)	-7.4	Tennessee	120.7	0.64	(28)	-1.4
Kentucky	124.7	0.75	(20)	1.9	Texas	118.9 \oplus	0.37	(30)	-2.9
Louisiana	132.2 \oplus *	0.76	(05)	8.0	Utah	103.0 \oplus *	1.16	(50)	-15.8
Maine	130.4 \oplus *	1.31	(07)	6.5	Vermont	124.3	1.98	(21)	1.6
Maryland	134.2 \oplus *	0.72	(04)	9.6	Virginia	126.0 \oplus	0.61	(15)	2.9
Massachusetts	131.4 \oplus *	0.60	(06)	7.4	Washington	115.3 \oplus *	0.64	(39)	-5.8
Michigan	125.7 \oplus	0.49	(16)	2.7	West Virginia	123.0	1.01	(23)	0.5
Minnesota	116.6 \oplus	0.68	(36)	-4.7	Wisconsin	123.1	0.64	(22)	0.6
Mississippi	125.6	0.92	(17)	2.6	Wyoming	109.8 \oplus *	2.12	(48)	-10.3
Missouri	121.1	0.62	(27)	-1.1					

* NCHS public use tape. Rates are per 100,000 and are age-adjusted to the 1970 U.S. standard population.

SE Standard error of the rate.

PD Percent difference between state rate and total U.S. rate.

* Absolute difference between state rate and total U.S. rate is 5% or more.

\oplus Difference between state rate and total U.S. rate is statistically significant ($p \leq .0002$).

Table II-27
ALL SITES EXCLUDING LUNG AND BRONCHUS (Invasive)

AVERAGE ANNUAL AGE-ADJUSTED CANCER MORTALITY* RATES BY STATE, 1990-94

All Races, Males

State	Rate	SE	Rank	PD
TOTAL U.S.	144.7	0.15		
High Five States				
District of Columbia	213.6 \oplus *	3.96	(01)	47.6
Delaware	163.3 \oplus *	3.17	(02)	12.9
Louisiana	163.0 \oplus *	1.32	(03)	12.6
Maryland	161.3 \oplus *	1.24	(04)	11.5
New Jersey	157.9 \oplus *	0.89	(05)	9.1
Low Five States				
Idaho	128.1 \oplus *	2.18	(47)	-11.5
Wyoming	128.1*	3.48	(48)	-11.5
Colorado	128.1 \oplus *	1.32	(49)	-11.5
Hawaii	119.1 \oplus *	2.01	(50)	-17.7
Utah	118.8 \oplus *	1.86	(51)	-17.9

State	Rate	SE	Rank	PD	State	Rate	SE	Rank	PD
Alabama	152.7 \oplus *	1.22	(12)	5.5	Montana	138.1	2.45	(33)	-4.6
Alaska	134.3*	4.81	(40)	-7.2	Nebraska	131.8 \oplus *	1.74	(45)	-8.9
Arizona	134.1 \oplus *	1.16	(41)	-7.3	Nevada	148.3	2.22	(21)	2.5
Arkansas	141.2	1.45	(31)	-2.4	New Hampshire	150.0	2.41	(16)	3.7
California	134.8 \oplus *	0.45	(36)	-6.8	New Jersey	157.9 \oplus *	0.89	(05)	9.1
Colorado	128.1 \oplus *	1.32	(49)	-11.5	New Mexico	131.7 \oplus *	1.90	(46)	-9.0
Connecticut	143.3	1.29	(29)	-1.0	New York	147.2	0.57	(22)	1.7
Delaware	163.3 \oplus *	3.17	(02)	12.9	North Carolina	148.3	0.97	(18)	2.5
District of Columbia	213.6 \oplus *	3.96	(01)	47.6	North Dakota	138.2	2.74	(32)	-4.5
Florida	136.3 \oplus *	0.56	(35)	-5.8	Ohio	148.9 \oplus	0.74	(17)	2.9
Georgia	151.0 \oplus	1.07	(15)	4.4	Oklahoma	134.4 \oplus *	1.26	(38)	-7.1
Hawaii	119.1 \oplus *	2.01	(50)	-17.7	Oregon	134.4 \oplus *	1.29	(37)	-7.1
Idaho	128.1 \oplus *	2.18	(47)	-11.5	Pennsylvania	152.6 \oplus *	0.67	(13)	5.5
Illinois	152.9 \oplus *	0.74	(11)	5.7	Rhode Island	151.5	2.38	(14)	4.7
Indiana	145.5	1.02	(25)	0.6	South Carolina	157.3 \oplus *	1.42	(07)	8.7
Iowa	134.4 \oplus *	1.29	(39)	-7.1	South Dakota	133.8*	2.57	(42)	-7.5
Kansas	132.4 \oplus *	1.41	(44)	-8.5	Tennessee	145.1	1.09	(27)	0.3
Kentucky	148.3	1.26	(19)	2.5	Texas	143.4	0.63	(28)	-0.9
Louisiana	163.0 \oplus *	1.32	(03)	12.6	Utah	118.8 \oplus *	1.86	(51)	-17.9
Maine	155.9 \oplus *	2.19	(09)	7.7	Vermont	146.0	3.27	(23)	0.9
Maryland	161.3 \oplus *	1.24	(04)	11.5	Virginia	154.4 \oplus *	1.06	(10)	6.7
Massachusetts	157.5 \oplus *	1.02	(06)	8.8	Washington	133.5 \oplus *	1.04	(43)	-7.7
Michigan	148.3	0.81	(20)	2.5	West Virginia	145.3	1.68	(26)	0.4
Minnesota	137.5 \oplus *	1.11	(34)	-5.0	Wisconsin	146.0	1.05	(24)	0.9
Mississippi	157.2 \oplus *	1.59	(08)	8.6	Wyoming	128.1*	3.48	(48)	-11.5
Missouri	143.3	1.02	(30)	-1.0					

* NCHS public use tape. Rates are per 100,000 and are age-adjusted to the 1970 U.S. standard population.

SE Standard error of the rate.

PD Percent difference between state rate and total U.S. rate.

* Absolute difference between state rate and total U.S. rate is 5% or more.

\oplus Difference between state rate and total U.S. rate is statistically significant ($p \leq .0002$).

Table II-28
 ALL SITES EXCLUDING LUNG AND BRONCHUS (Invasive)

AVERAGE ANNUAL AGE-ADJUSTED CANCER MORTALITY* RATES BY STATE, 1990-94

All Races, Females

State	Rate	SE	Rank	PD	State	Rate	SE	Rank	PD
TOTAL U.S.	108.8	0.12							
High Five States									
District of Columbia	135.2 \oplus *	2.66	(01)	24.3					
New Jersey	120.5 \oplus *	0.67	(02)	10.8					
Delaware	119.2*	2.35	(03)	9.6					
New Hampshire	118.6 \oplus *	1.91	(04)	9.0					
Maryland	118.3 \oplus *	0.90	(05)	8.7					
Low Five States									
Colorado	99.1 \oplus *	1.02	(47)	-8.9					
Idaho	97.8 \oplus *	1.78	(48)	-10.1					
New Mexico	96.0 \oplus *	1.46	(49)	-11.8					
Utah	92.9 \oplus *	1.50	(50)	-14.6					
Hawaii	86.6 \oplus *	1.65	(51)	-20.4					
Alabama	108.5	0.89	(22)	-0.3	Montana	103.7	1.98	(37)	-4.7
Alaska	104.3	3.76	(32)	-4.1	Nebraska	100.9 \oplus *	1.40	(43)	-7.3
Arizona	99.8 \oplus *	0.92	(45)	-8.3	Nevada	110.8	1.73	(15)	1.8
Arkansas	104.1	1.12	(35)	-4.3	New Hampshire	118.6 \oplus *	1.91	(04)	9.0
California	105.7 \oplus	0.36	(28)	-2.8	New Jersey	120.5 \oplus *	0.67	(02)	10.8
Colorado	99.1 \oplus *	1.02	(47)	-8.9	New Mexico	96.0 \oplus *	1.46	(49)	-11.8
Connecticut	106.7	0.98	(24)	-1.9	New York	115.0 \oplus *	0.44	(10)	5.7
Delaware	119.2*	2.35	(03)	9.6	North Carolina	105.5	0.69	(29)	-3.0
District of Columbia	135.2 \oplus *	2.66	(01)	24.3	North Dakota	105.5	2.28	(30)	-3.0
Florida	101.6 \oplus *	0.45	(42)	-6.6	Ohio	113.6 \oplus	0.56	(12)	4.4
Georgia	104.6 \oplus	0.74	(31)	-3.9	Oklahoma	102.5 \oplus *	0.99	(40)	-5.8
Hawaii	86.6 \oplus *	1.65	(51)	-20.4	Oregon	104.2	1.04	(33)	-4.2
Idaho	97.8 \oplus *	1.78	(48)	-10.1	Pennsylvania	117.0 \oplus *	0.52	(06)	7.5
Illinois	116.0 \oplus *	0.56	(08)	6.6	Rhode Island	114.4*	1.82	(11)	5.1
Indiana	109.1	0.77	(21)	0.3	South Carolina	106.6	0.98	(25)	-2.0
Iowa	103.9	1.03	(36)	-4.5	South Dakota	100.4*	2.10	(44)	-7.7
Kansas	101.8 \oplus *	1.12	(41)	-6.4	Tennessee	106.4	0.80	(26)	-2.2
Kentucky	110.7	0.96	(16)	1.7	Texas	103.6 \oplus	0.46	(39)	-4.8
Louisiana	113.3	0.94	(13)	4.1	Utah	92.9 \oplus *	1.50	(50)	-14.6
Maine	115.2*	1.67	(09)	5.9	Vermont	110.1	2.52	(17)	1.2
Maryland	118.3 \oplus *	0.90	(05)	8.7	Virginia	109.3	0.76	(19)	0.5
Massachusetts	116.9 \oplus *	0.76	(07)	7.4	Washington	103.7 \oplus	0.83	(38)	-4.7
Michigan	112.3 \oplus	0.62	(14)	3.2	West Virginia	109.9	1.29	(18)	1.0
Minnesota	104.2 \oplus	0.88	(34)	-4.2	Wisconsin	109.1	0.83	(20)	0.3
Mississippi	106.3	1.14	(27)	-2.3	Wyoming	99.7*	2.78	(46)	-8.4
Missouri	107.7	0.79	(23)	-1.0					

* NCHS public use tape. Rates are per 100,000 and are age-adjusted to the 1970 U.S. standard population.

SE Standard error of the rate.

PD Percent difference between state rate and total U.S. rate.

* Absolute difference between state rate and total U.S. rate is 5% or more.

\oplus Difference between state rate and total U.S. rate is statistically significant ($p \leq .0002$).

Table II-29
ALL SITES (Invasive)AGE-ADJUSTED SEER INCIDENCE RATES§, SEER MORTALITY RATES*, AND 5-YEAR RELATIVE SURVIVAL RATES‡
By Registry, Race and Sex

	All Races			Whites			Blacks		
	Total	Males	Females	Total	Males	Females	Total	Males	Females
<u>SEER INCIDENCE RATES§, 1990-94</u>									
REGISTRY									
Standard 9 registries	409.0	501.2	346.3	409.6	496.1	352.0	456.0	624.7	340.6
San Francisco-Oakland	412.6	502.4	349.7	433.2	519.4	372.8	451.8	603.1	344.3
Connecticut	413.0	493.0	362.8	411.9	487.0	365.9	440.3	599.7	334.5
Metropolitan Detroit	454.0	583.4	369.0	440.8	554.3	369.2	472.6	647.3	350.8
Hawaii	363.0	425.7	309.8	468.9	557.4	391.0	-	-	-
Iowa	392.8	474.4	340.4	390.3	470.2	339.4	-	-	-
New Mexico	346.2	422.4	290.0	356.5	435.4	298.4	-	-	-
Seattle-Puget Sound	422.3	504.6	365.3	419.2	495.8	366.5	451.5	632.3	299.8
Utah	344.1	425.8	283.8	344.6	425.2	285.1	-	-	-
Metropolitan Atlanta	424.0	554.8	343.2	408.4	517.0	342.3	448.1	641.1	334.1
San Jose-Monterey	381.1	448.9	339.3	391.1	457.6	351.3	431.4	562.4	321.8
Los Angeles	384.8	470.7	328.3	390.9	469.0	340.3	420.2	561.8	325.7
<u>SEER MORTALITY RATES*, 1990-94</u>									
REGISTRY									
Standard 9 registries	163.2	203.0	136.7	161.7	199.4	137.1	220.5	298.7	168.2
San Francisco-Oakland	164.5	199.4	141.6	167.4	198.7	147.7	223.1	289.4	177.6
Connecticut	164.5	204.6	138.8	162.3	200.5	138.3	209.0	291.8	155.0
Metropolitan Detroit	184.0	234.9	151.6	175.0	221.4	146.5	222.0	295.2	171.8
Hawaii	135.9	166.2	109.3	177.0	211.3	146.4	-	-	-
Iowa	159.9	202.1	132.2	159.1	200.9	131.8	-	-	-
New Mexico	145.8	181.1	120.1	148.1	184.2	121.9	-	-	-
Seattle-Puget Sound	165.7	200.6	142.0	166.3	200.0	143.8	204.6	289.2	134.0
Utah	125.0	151.3	106.6	125.3	151.5	107.1	-	-	-
Metropolitan Atlanta	174.4	233.4	139.2	160.5	208.8	131.6	229.6	338.3	169.2
San Jose-Monterey	151.7	183.2	131.1	157.0	188.4	137.4	205.6	271.8	158.5
Los Angeles	159.7	192.4	138.6	159.8	188.5	142.0	211.5	276.9	169.0
<u>SURVIVAL RATES‡, 1986-93</u>									
REGISTRY									
Standard 9 registries	57.9	54.6	61.0	59.5	56.5	62.3	44.4	41.1	47.9
San Francisco-Oakland	54.8	48.8	60.9	56.7	50.8	62.8	44.4	40.7	48.7
Connecticut	56.8	53.3	60.0	57.5	54.2	60.5	44.7	38.7	50.7
Metropolitan Detroit	55.0	52.9	56.9	57.9	55.9	59.7	43.8	42.1	45.5
Hawaii	58.8	53.8	64.1	62.7	59.3	66.6	-	-	-
Iowa	58.8	55.2	62.2	59.0	55.4	62.3	-	-	-
New Mexico	59.5	57.8	61.0	60.4	58.8	61.9	-	-	-
Seattle-Puget Sound	62.4	61.3	63.5	63.0	62.2	63.9	49.2	46.7	52.8
Utah	65.4	65.5	65.2	65.6	65.8	65.3	-	-	-
Metropolitan Atlanta	57.0	51.7	62.0	60.9	55.8	65.8	44.0	38.4	49.4

Note: San Jose-Monterey and Los Angeles are new SEER areas as of 1992 and their data are only used in this table and not other tables in this section.

- § SEER Program. Incidence rates are per 100,000 and are age-adjusted to the 1970 U.S. standard population.
 * NCHS public use tape. Mortality rates are per 100,000 and are age-adjusted to the 1970 U.S. standard population.
 ‡ Survival rates are relative rates expressed as percents and are based on follow-up of patients through 1994.
 † The standard error of the survival rate is between 5 and 10 percentage points.
 ‡ The standard error of the survival rate is greater than 10 percentage points.
 - Statistic could not be calculated or populations are inadequate.

Table II-30
ALL SITES EXCLUDING LUNG AND BRONCHUS (Invasive)AGE-ADJUSTED SEER INCIDENCE RATES§, SEER MORTALITY RATES*, AND 5-YEAR RELATIVE SURVIVAL RATES‡
By Registry, Race and Sex

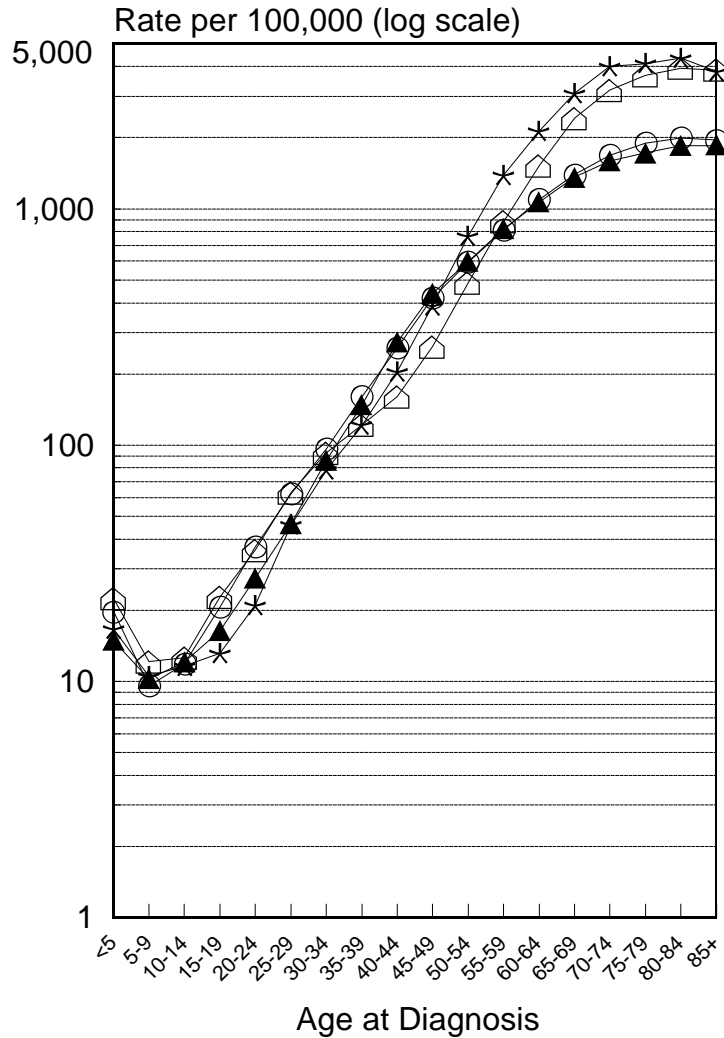
	All Races			Whites			Blacks		
	Total	Males	Females	Total	Males	Females	Total	Males	Females
<u>SEER INCIDENCE RATES§, 1990-94</u>									
REGISTRY									
Standard 9 registries	350.7	421.8	303.8	351.6	418.3	308.6	378.0	505.0	292.6
San Francisco-Oakland	355.4	429.2	304.5	374.8	447.8	324.2	371.0	488.2	289.2
Connecticut	354.0	414.1	317.7	353.3	409.5	320.3	372.8	495.3	292.9
Metropolitan Detroit	381.1	481.2	317.0	370.5	457.8	317.1	389.4	520.4	299.1
Hawaii	316.3	361.9	278.4	403.9	477.4	339.9	-	-	-
Iowa	335.6	390.8	302.9	333.6	387.3	301.9	-	-	-
New Mexico	305.7	367.2	261.0	314.3	378.1	268.0	-	-	-
Seattle-Puget Sound	359.6	423.6	316.6	356.3	415.3	317.0	373.2	514.5	258.6
Utah	316.6	385.8	266.3	317.2	385.7	267.5	-	-	-
Metropolitan Atlanta	358.6	458.3	299.1	344.4	426.8	296.5	378.4	522.9	295.2
San Jose-Monterey	330.1	382.4	299.6	337.7	389.3	308.6	372.0	478.5	283.6
Los Angeles	333.0	401.7	289.1	339.2	402.6	299.2	350.8	457.9	280.9
<u>SEER MORTALITY RATES*, 1990-94</u>									
REGISTRY									
Standard 9 registries	118.5	139.9	105.4	117.0	137.4	105.0	159.2	201.4	132.5
San Francisco-Oakland	120.0	141.7	106.7	121.5	141.9	109.7	160.3	197.0	136.2
Connecticut	120.5	143.3	106.7	118.7	140.3	105.8	157.1	206.3	126.2
Metropolitan Detroit	130.7	157.0	115.6	124.2	148.2	111.1	158.3	196.2	133.5
Hawaii	101.7	119.1	86.6	129.4	152.5	109.3	-	-	-
Iowa	115.0	134.4	103.9	114.5	133.6	103.6	-	-	-
New Mexico	110.6	131.7	96.0	111.5	132.8	97.0	-	-	-
Seattle-Puget Sound	117.0	135.5	105.5	116.9	134.6	106.3	148.5	199.4	108.2
Utah	103.0	118.8	92.9	103.5	119.3	93.4	-	-	-
Metropolitan Atlanta	122.0	152.4	106.0	109.9	134.1	97.3	168.8	228.3	138.9
San Jose-Monterey	112.5	129.6	102.3	115.9	133.0	106.1	154.9	195.1	126.5
Los Angeles	118.6	136.5	108.1	118.6	134.5	110.0	153.6	187.6	133.1
<u>SURVIVAL RATES‡, 1986-93</u>									
REGISTRY									
Standard 9 registries	65.1	63.2	66.8	66.8	65.1	68.2	51.4	49.5	53.0
San Francisco-Oakland	61.3	55.2	67.2	63.1	56.9	69.3	51.1	48.2	54.1
Connecticut	64.1	62.0	65.9	64.9	62.9	66.5	51.3	46.6	55.5
Metropolitan Detroit	62.9	62.7	63.0	65.9	65.7	65.8	51.2	51.2	51.0
Hawaii	65.2	61.3	69.2	69.9	66.9	73.1	-	-	-
Iowa	66.7	65.5	67.5	66.8	65.7	67.6	-	-	-
New Mexico	65.9	65.6	66.1	67.1	66.8	67.2	-	-	-
Seattle-Puget Sound	70.2	70.4	70.0	70.9	71.3	70.6	56.3	55.0	57.9
Utah	69.7	71.2	68.1	69.9	71.4	68.1	-	-	-
Metropolitan Atlanta	64.6	60.9	67.6	68.9	65.3	72.0	50.1	46.2	53.3

Note: San Jose-Monterey and Los Angeles are new SEER areas as of 1992 and their data are only used in this table and not other tables in this section.

- § SEER Program. Incidence rates are per 100,000 and are age-adjusted to the 1970 U.S. standard population.
 * NCHS public use tape. Mortality rates are per 100,000 and are age-adjusted to the 1970 U.S. standard population.
 ‡ Survival rates are relative rates expressed as percents and are based on follow-up of patients through 1994.
 † The standard error of the survival rate is between 5 and 10 percentage points.
 ‡ The standard error of the survival rate is greater than 10 percentage points.
 - Statistic could not be calculated or populations are inadequate.

Age-Specific Incidence Rates, 1990-94 By Race and Sex

All Sites



- White Males
- White Females
- * Black Males
- ▲ Black Females

All Sites Except Lung & Bronchus

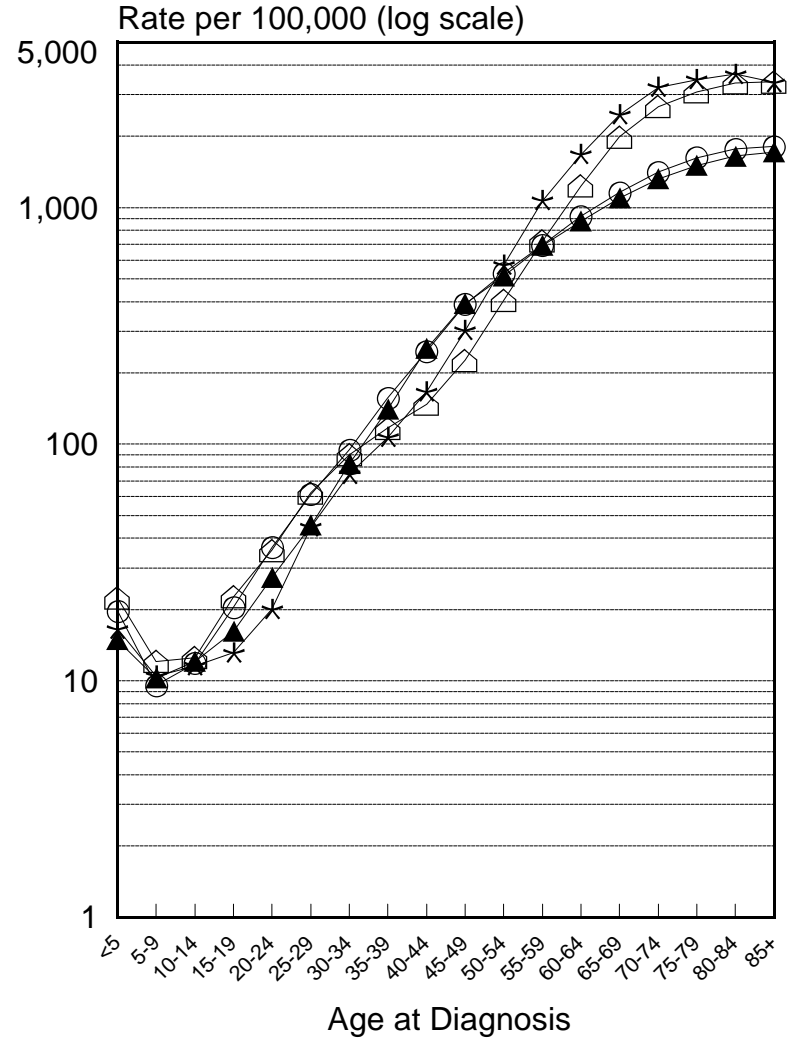
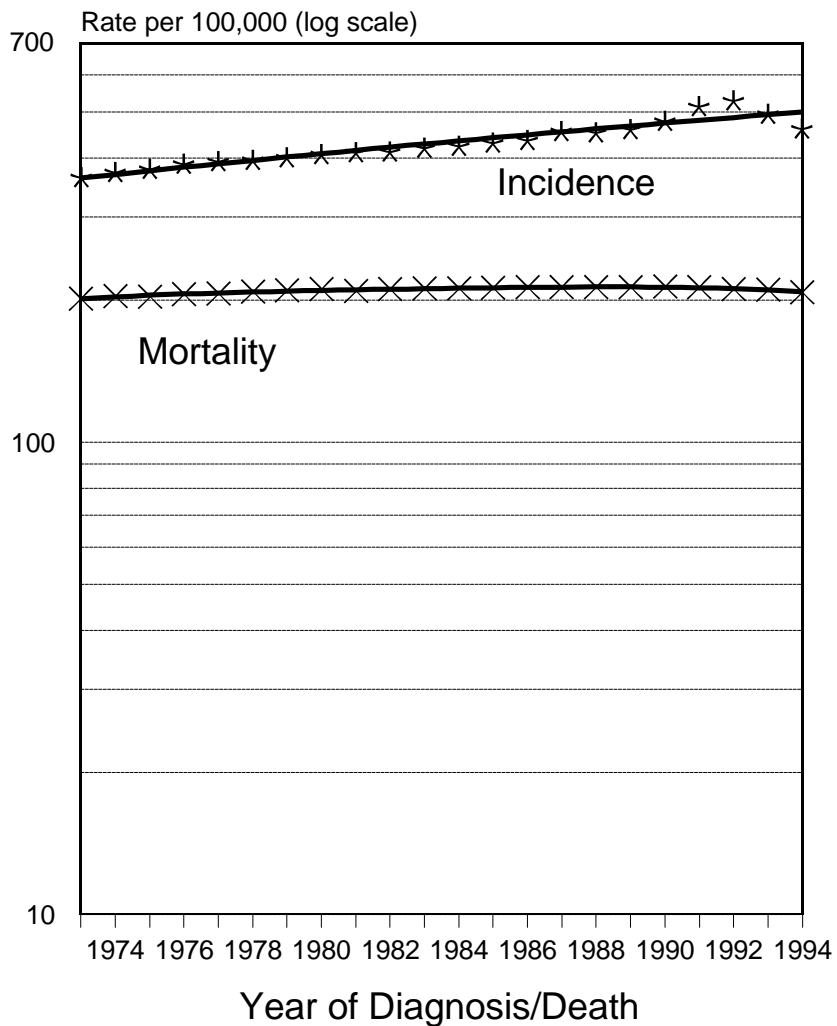


Figure II-1

SEER Incidence and U.S. Mortality All Cancers, Male By Race

White



Black

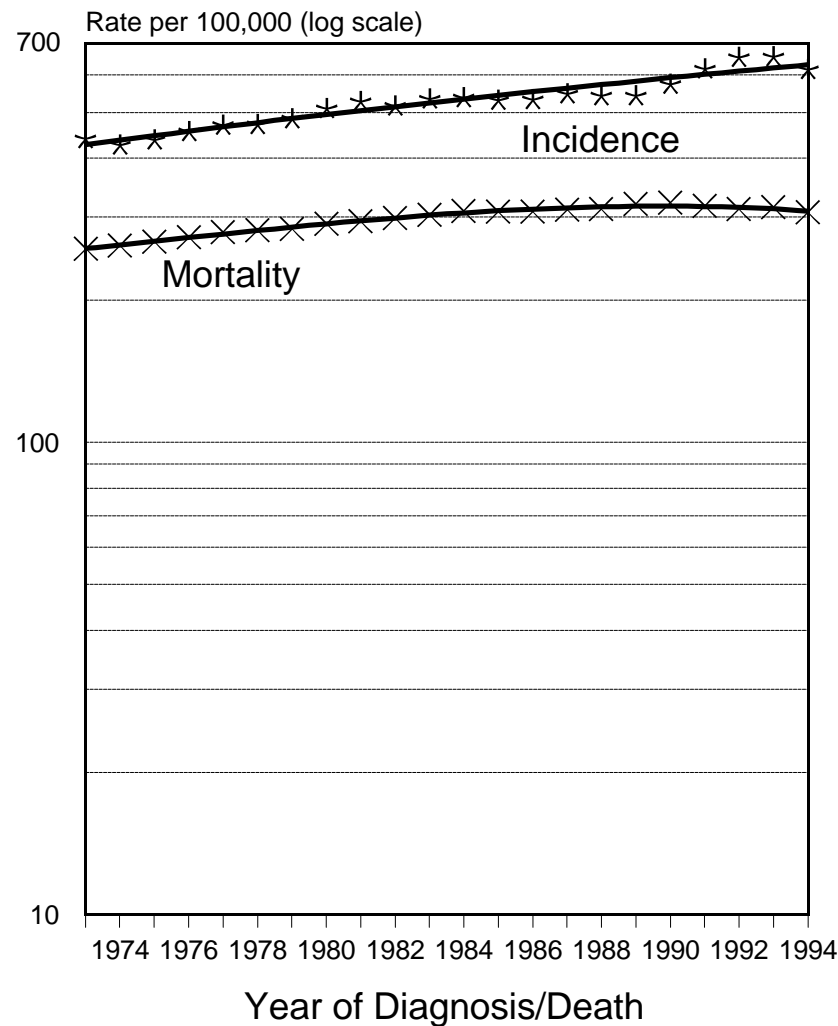


Figure II-2

SEER Incidence and U.S. Mortality All Cancers, Female By Race

White

Black

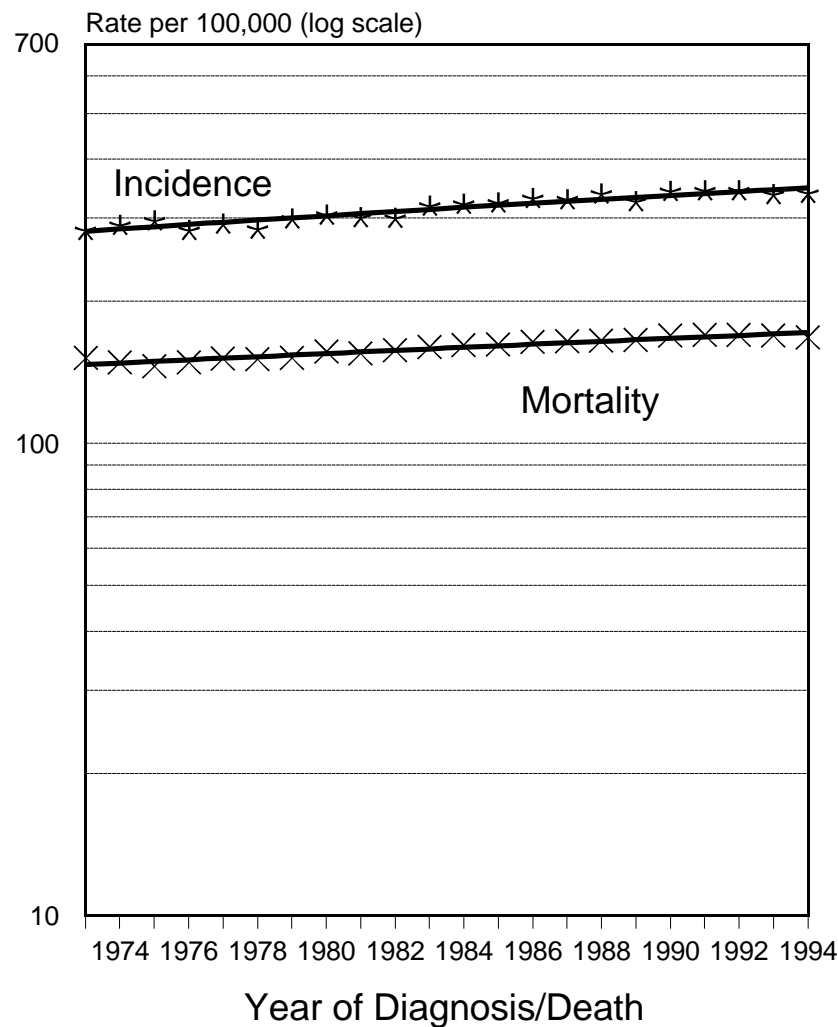
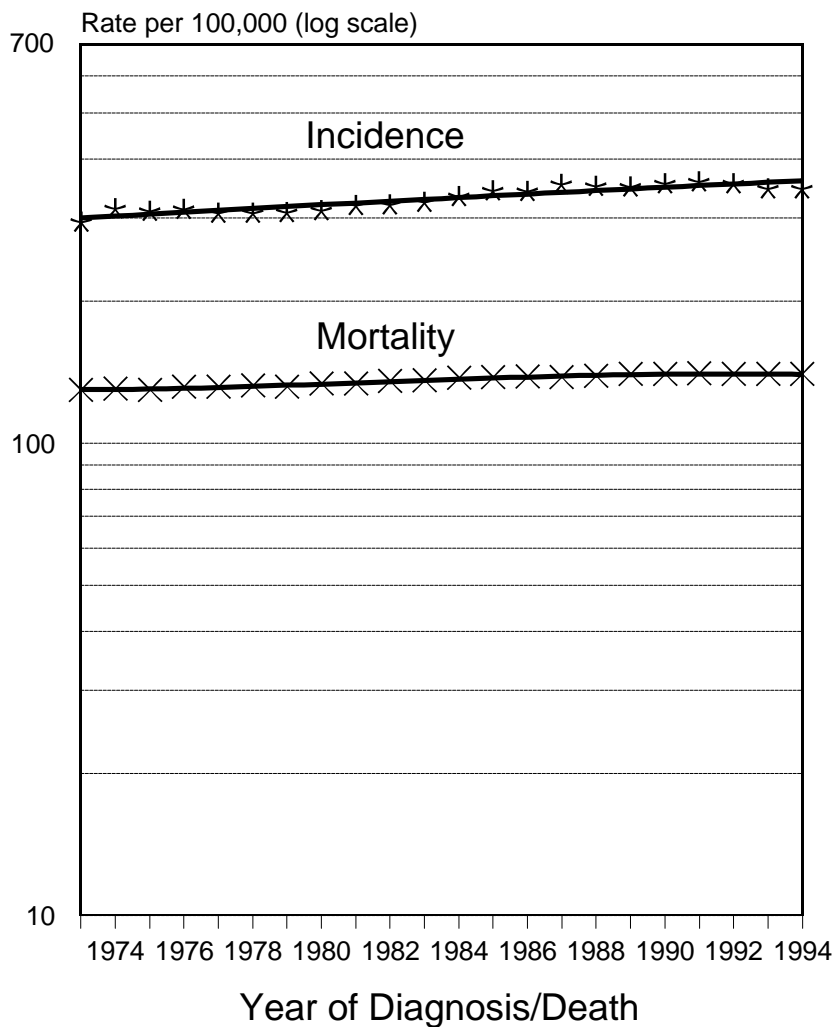
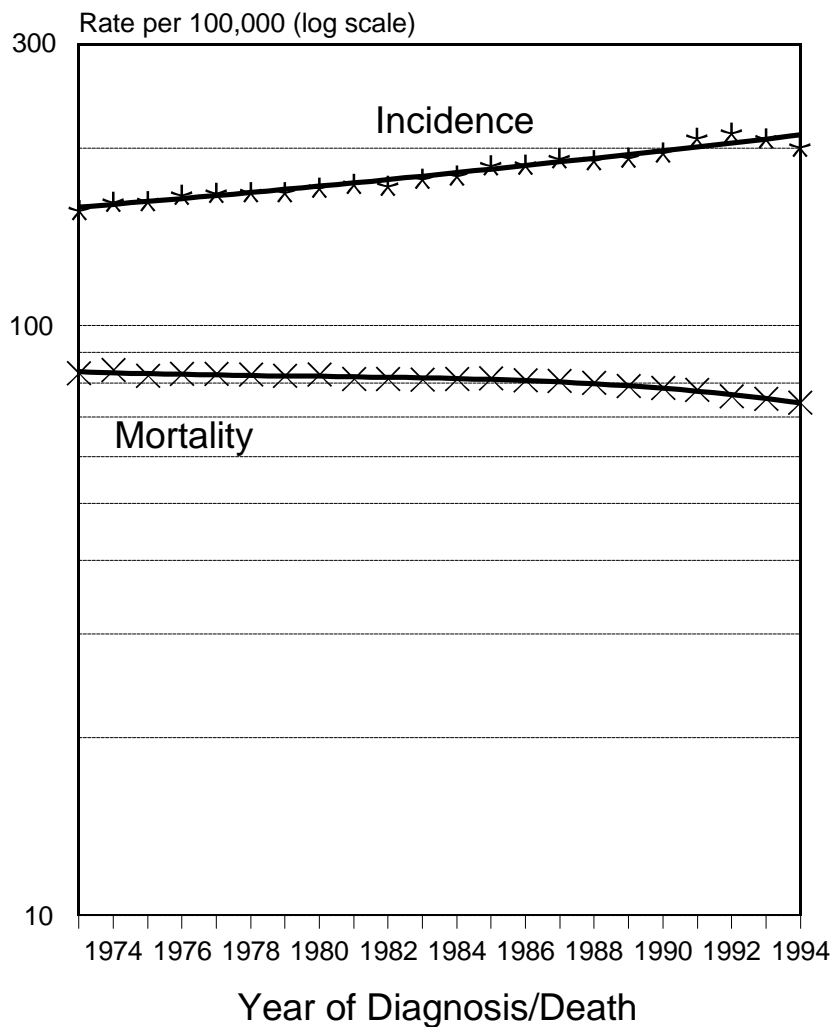


Figure II-3

SEER Incidence and U.S. Mortality All Cancers, Male, Under 65 Years of Age By Race

White



Black

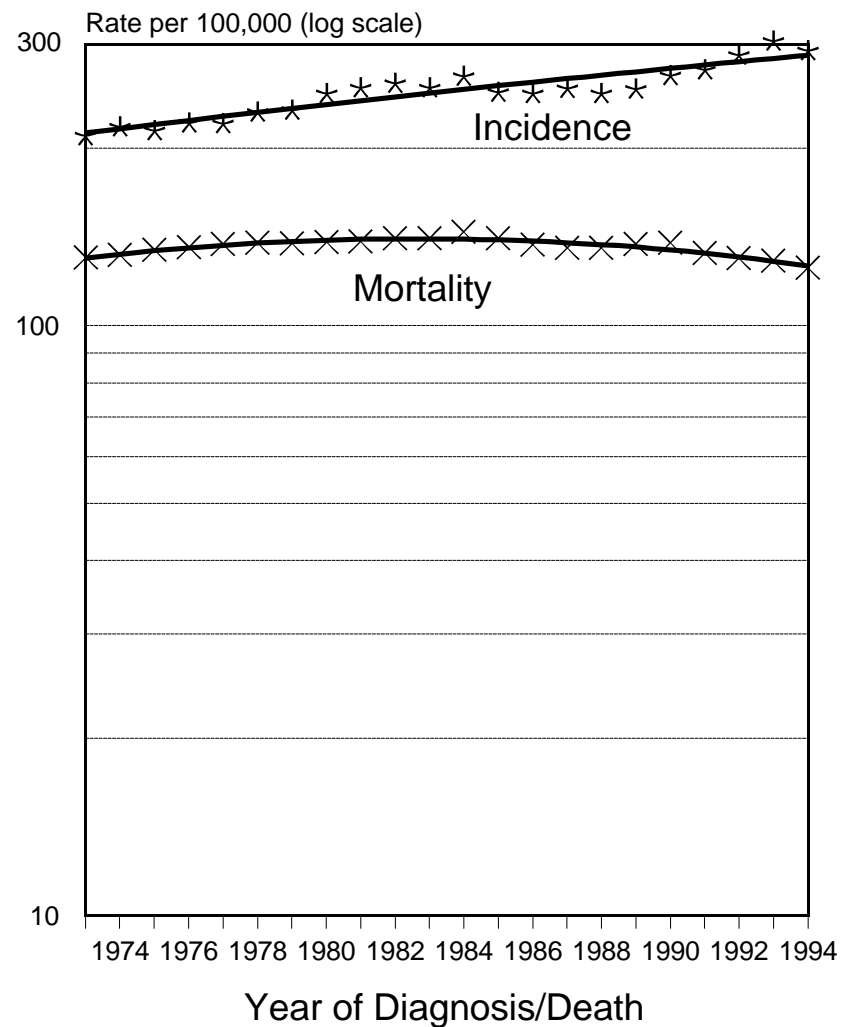


Figure II-4

SEER Incidence and U.S. Mortality All Cancers, Female, Under 65 Years of Age By Race

White

Black

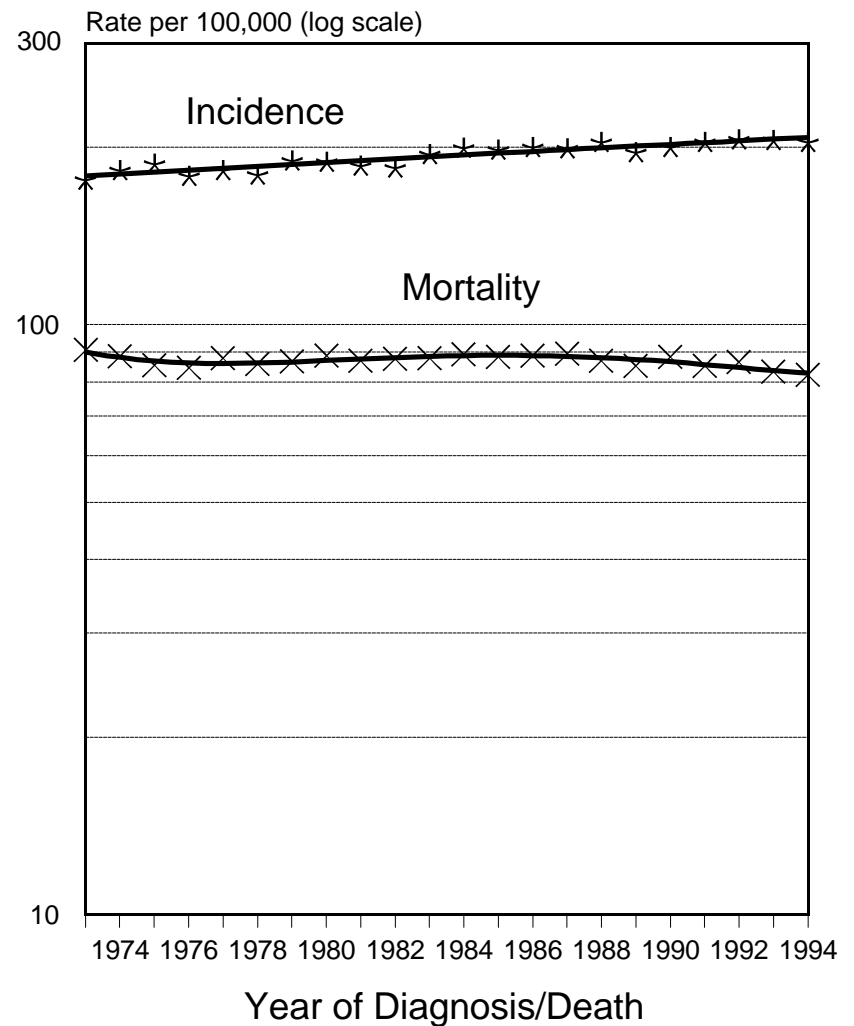
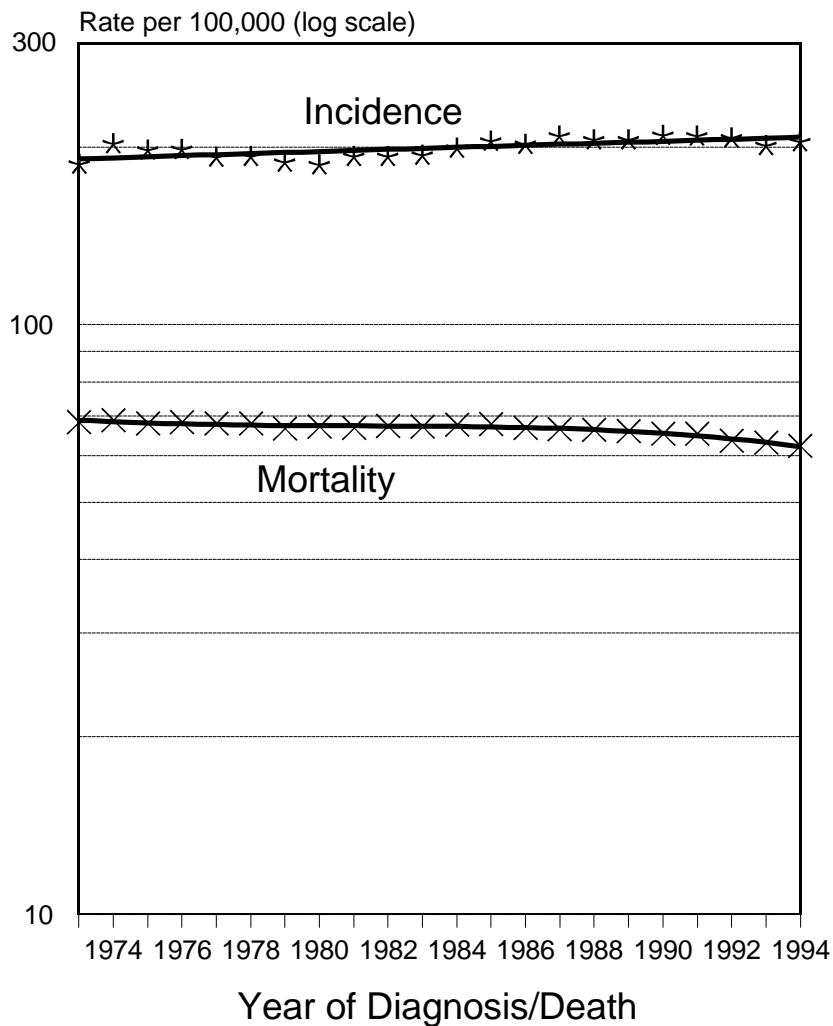
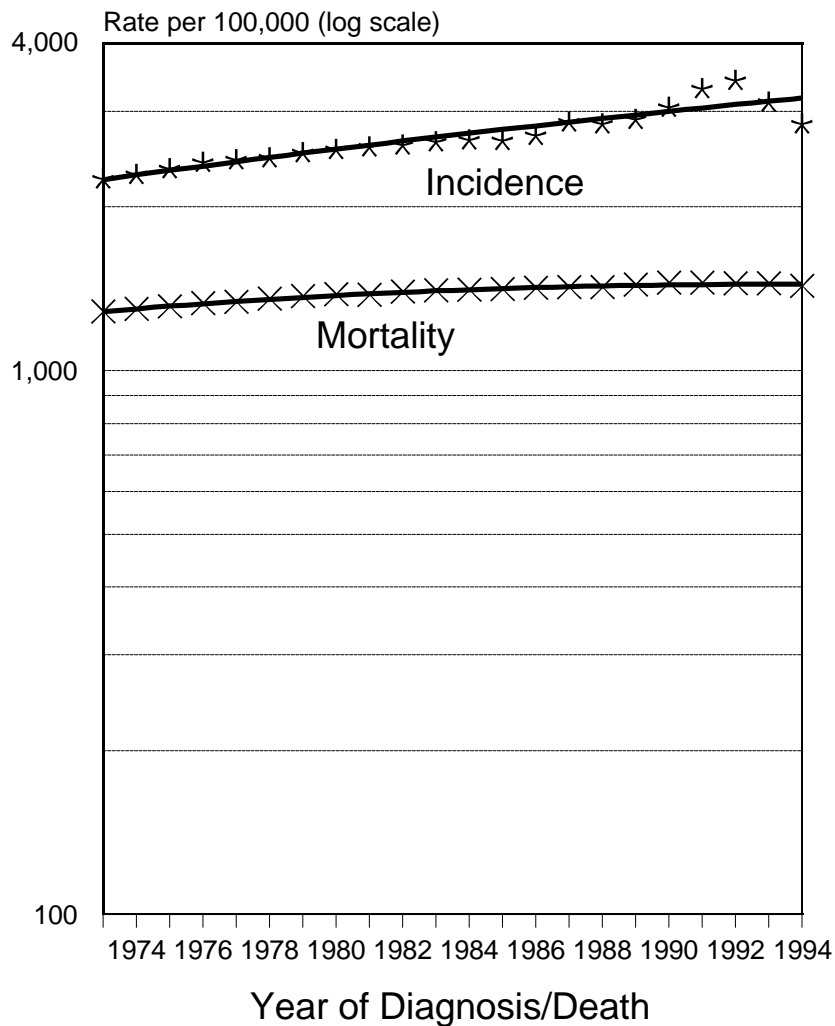


Figure II-5

SEER Incidence and U.S. Mortality All Cancers, Male, 65 Years of Age and Over By Race

White



Black

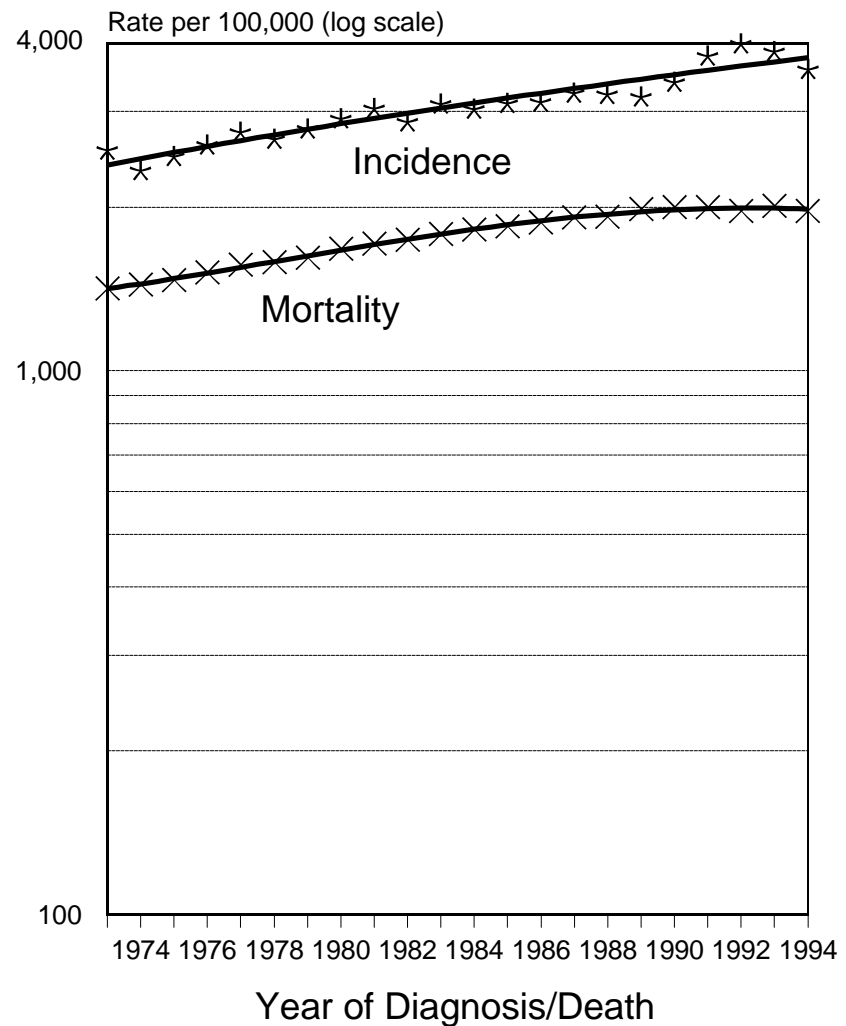


Figure II-6

SEER Incidence and U.S. Mortality All Cancers, Female, 65 Years of Age and Over By Race

White

Black

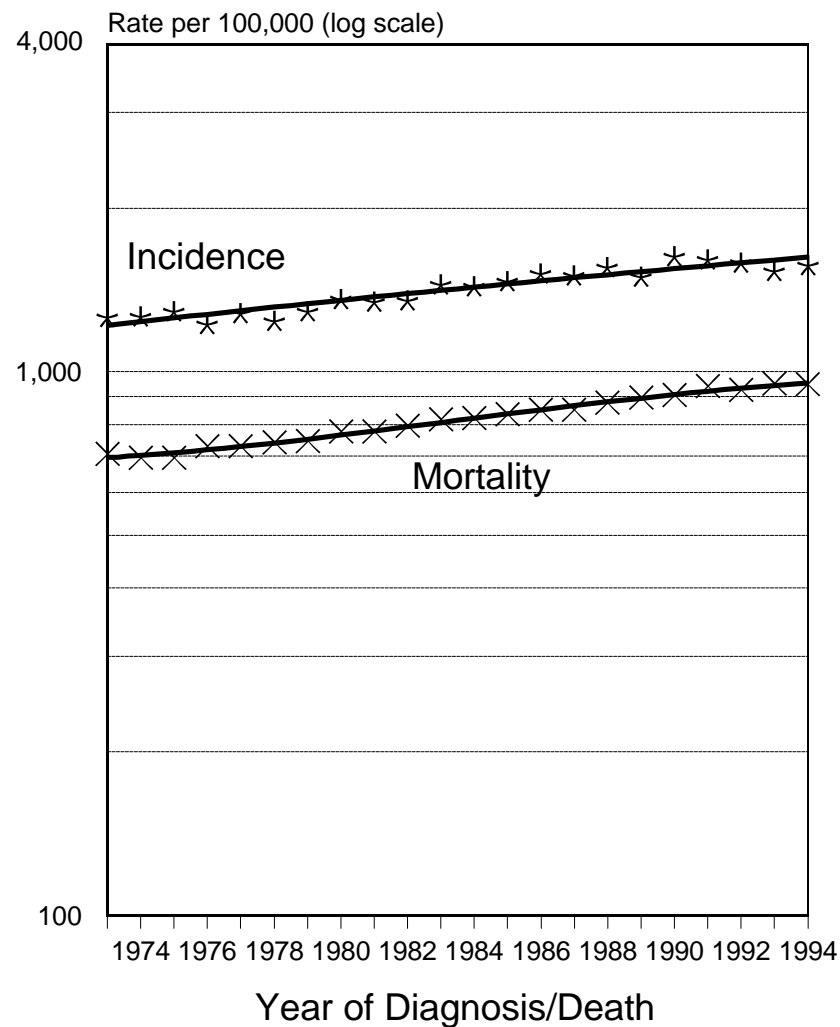
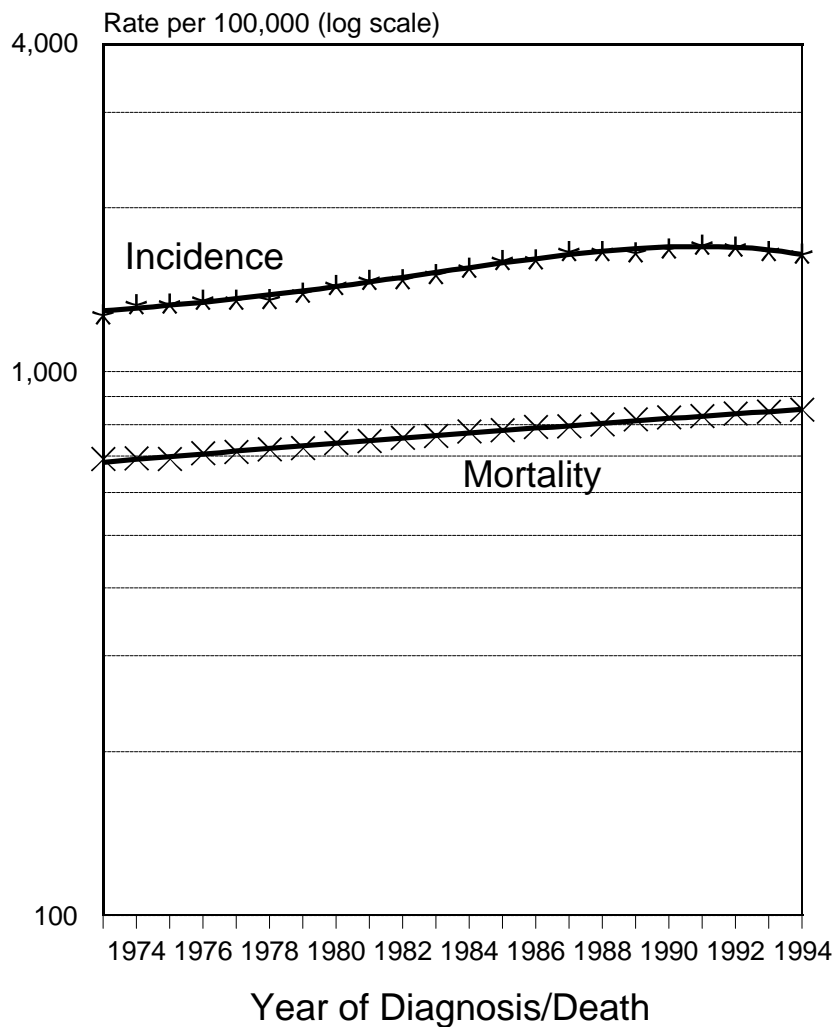


Figure II-7

SEER Incidence and U.S. Mortality All Cancers Except Lung & Bronchus, Male By Race

White

Black

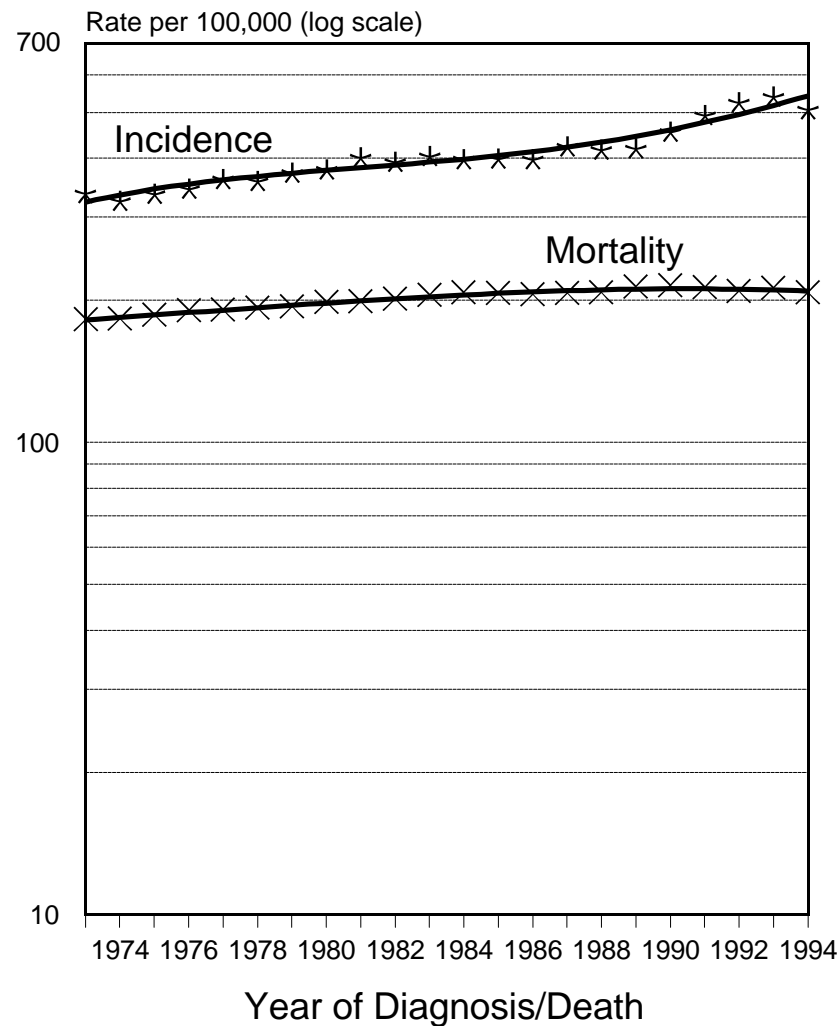
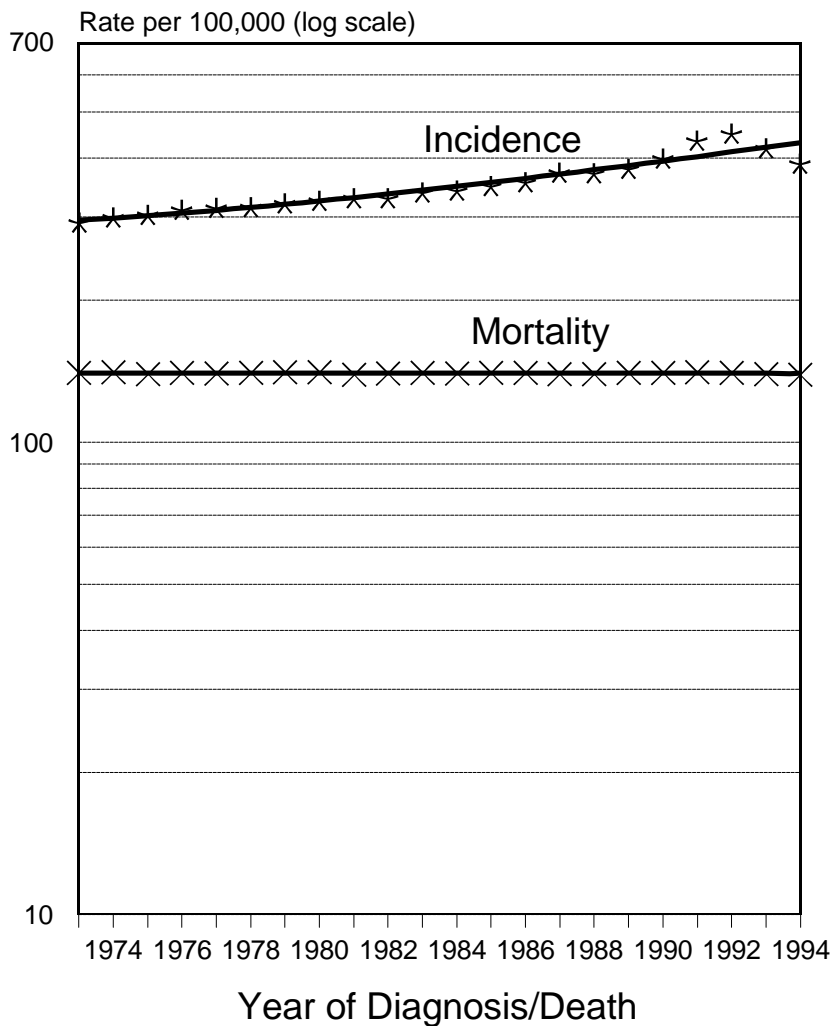
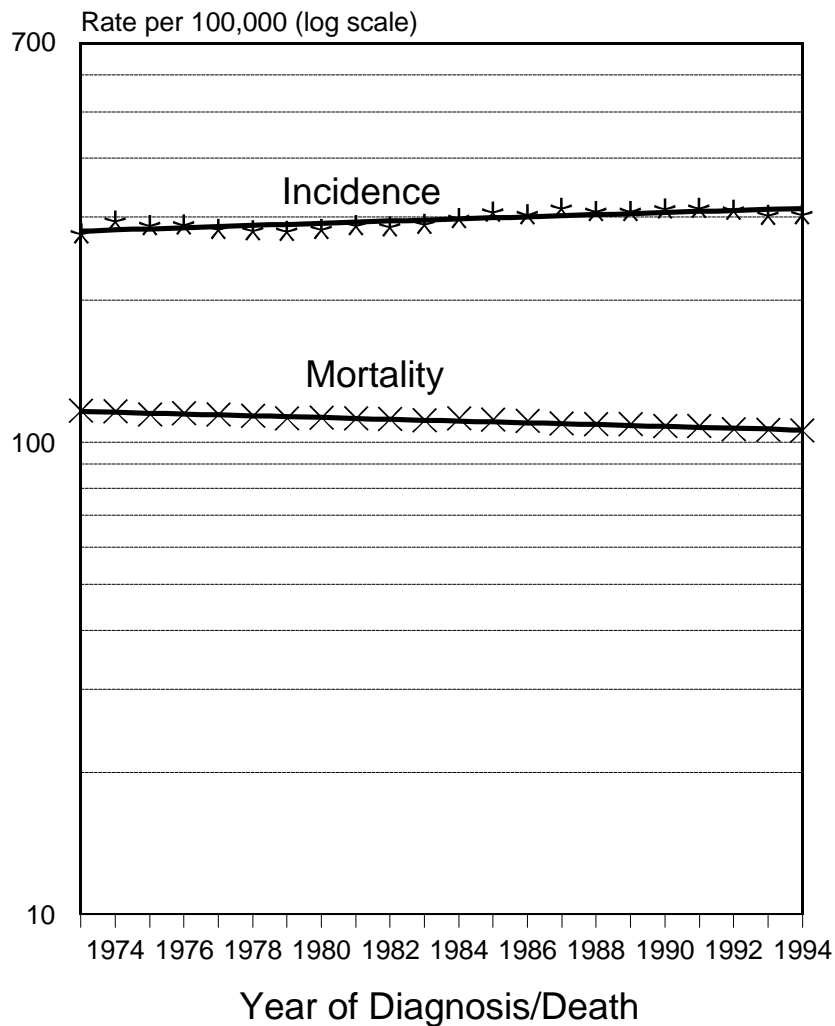


Figure II-8

SEER Incidence and U.S. Mortality All Cancers Except Lung & Bronchus, Female By Race

White



Black

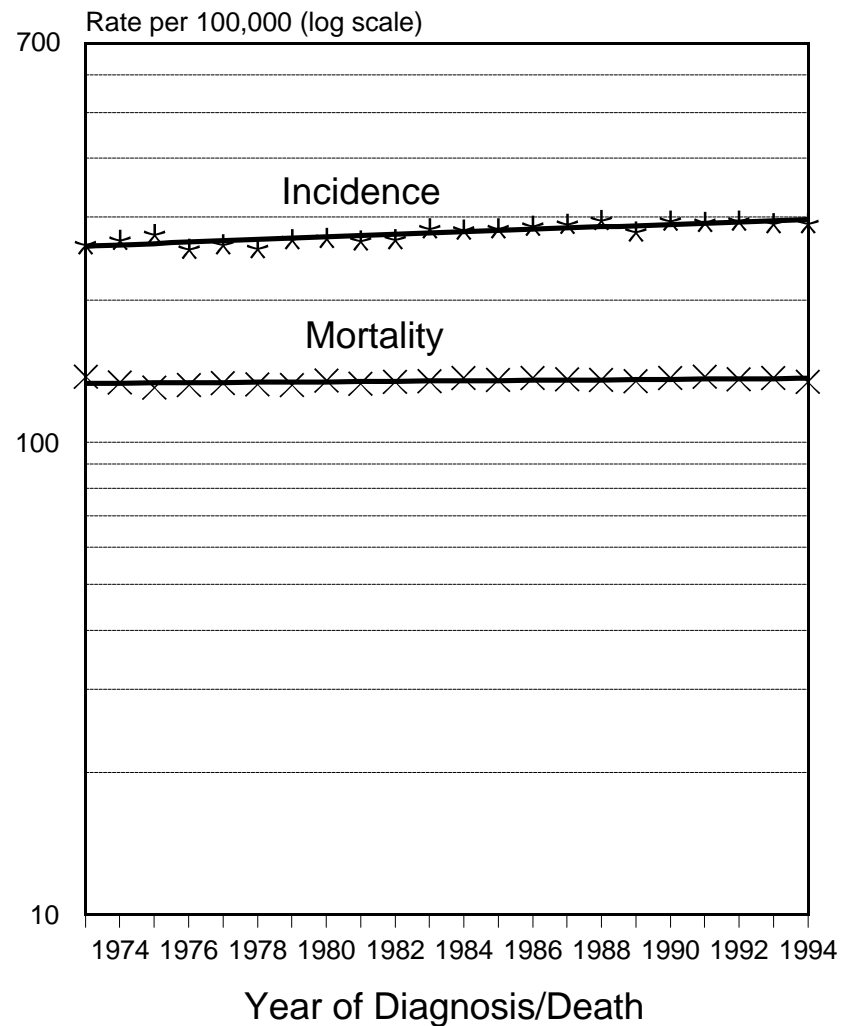
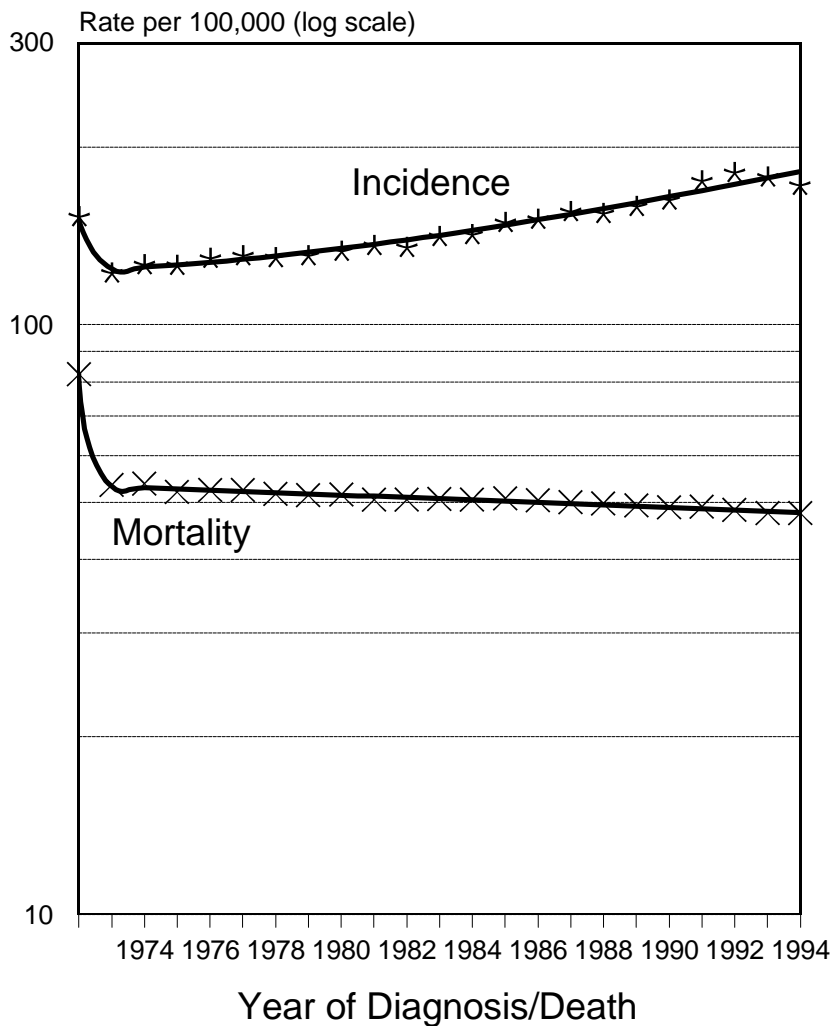


Figure II-9

SEER Incidence and U.S. Mortality All Cancers Except Lung & Bronchus, Male Under 65 Years of Age, By Race

White



Black

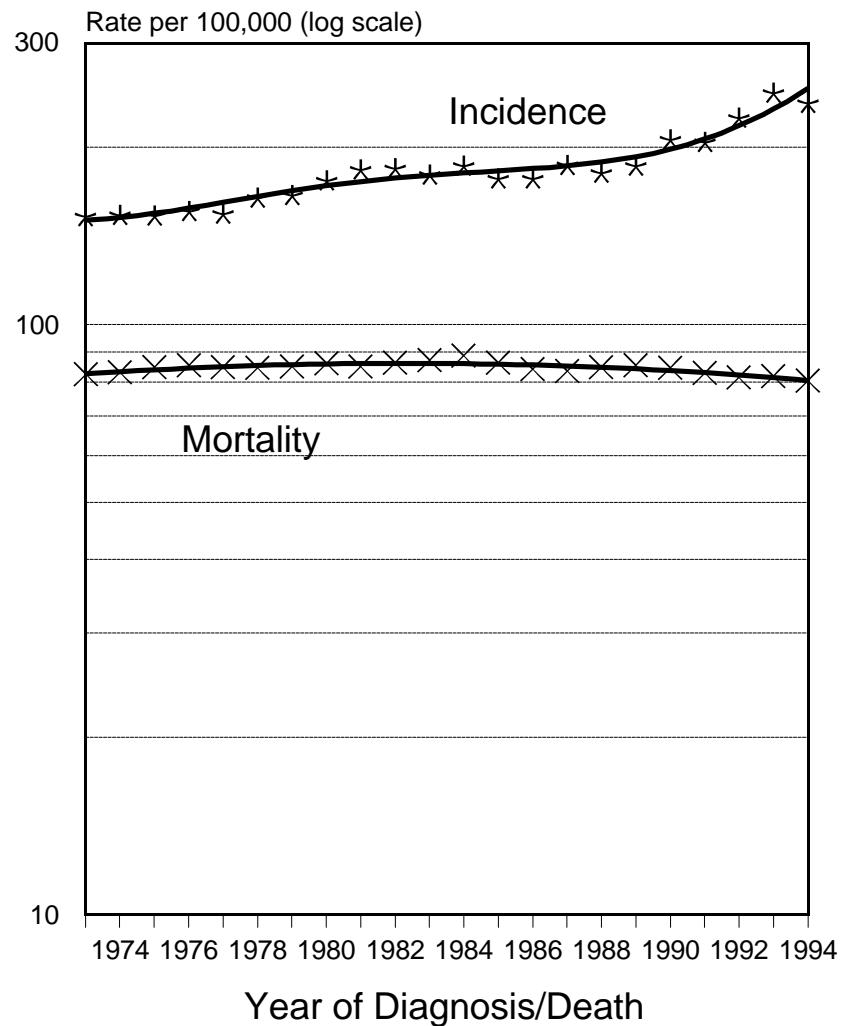


Figure II-10

SEER Incidence and U.S. Mortality All Cancers Except Lung & Bronchus, Female Under 65 Years of Age, By Race

White

Black

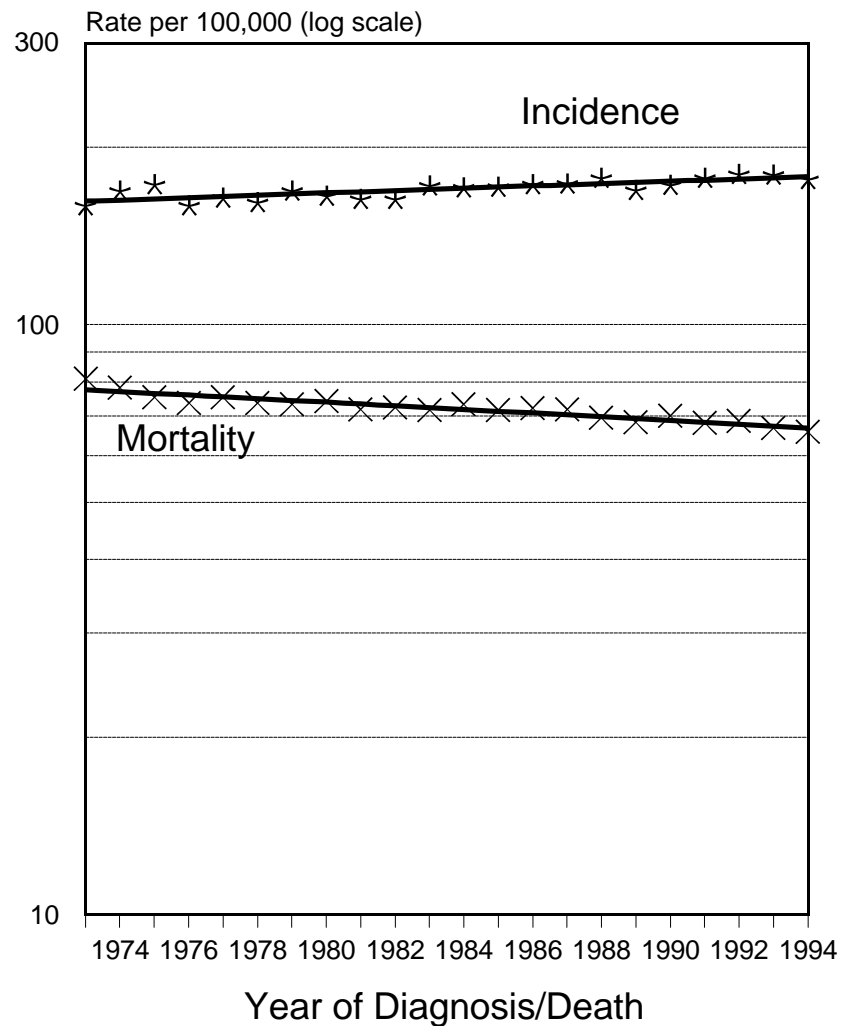
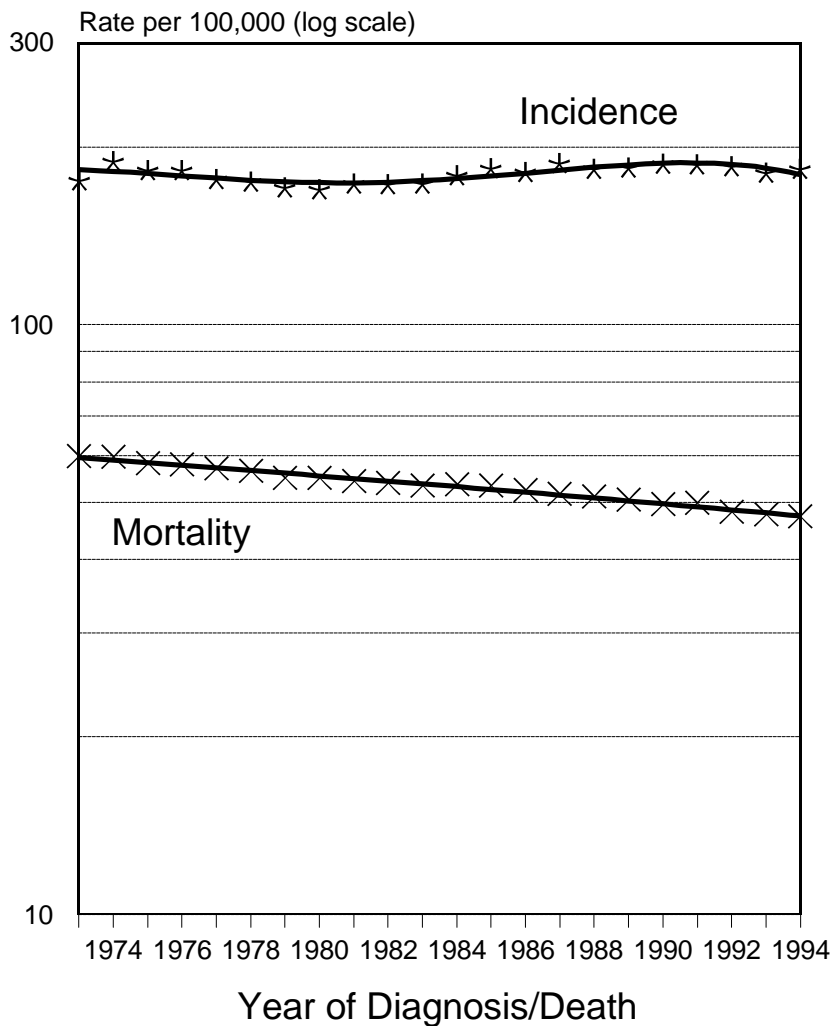
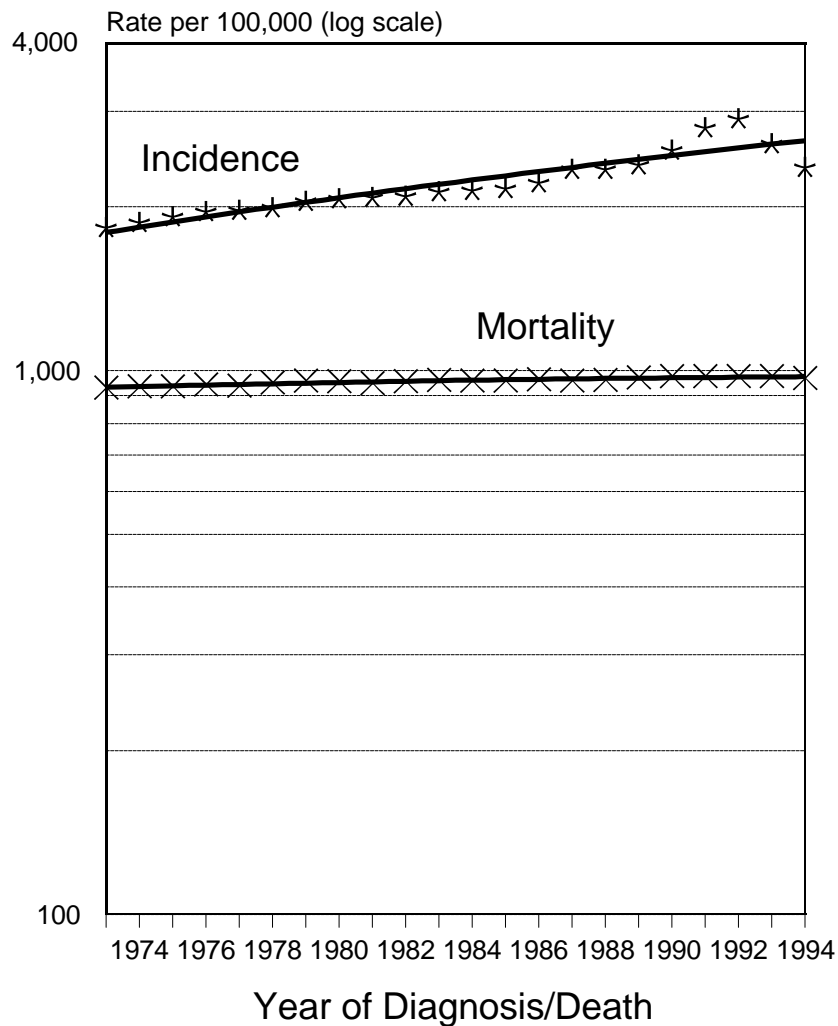


Figure II-11

SEER Incidence and U.S. Mortality All Cancers Except Lung & Bronchus, Male 65 Years of Age and Over, By Race

White



Black

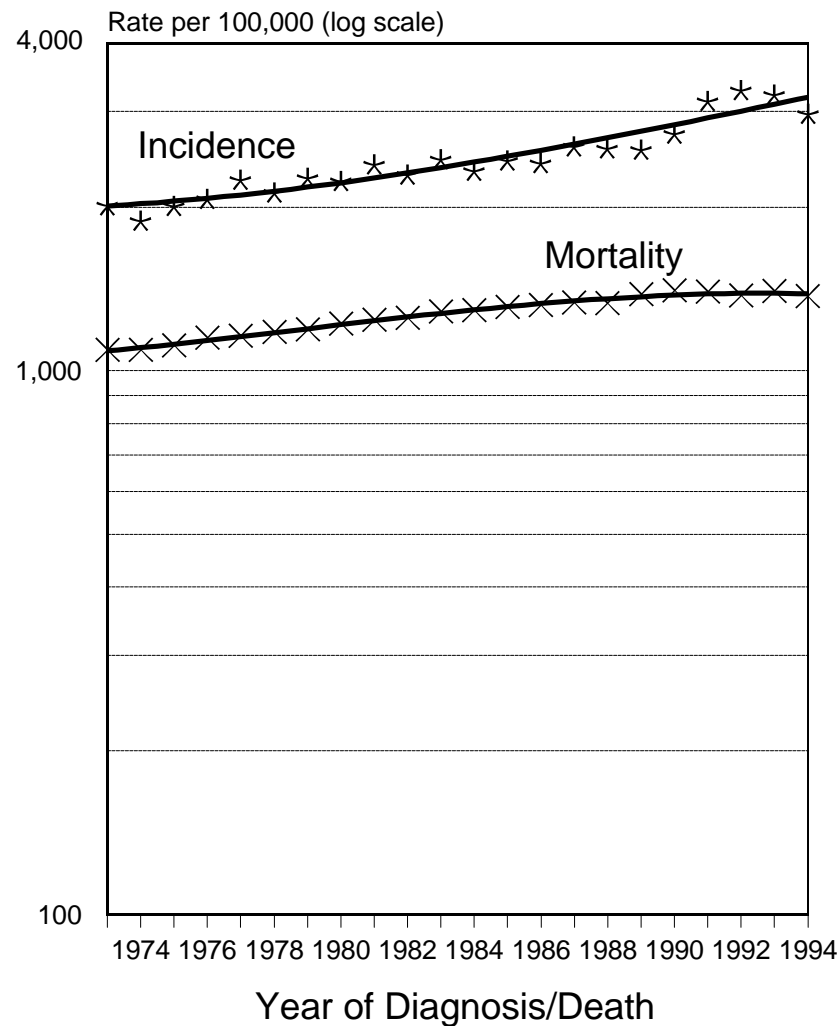
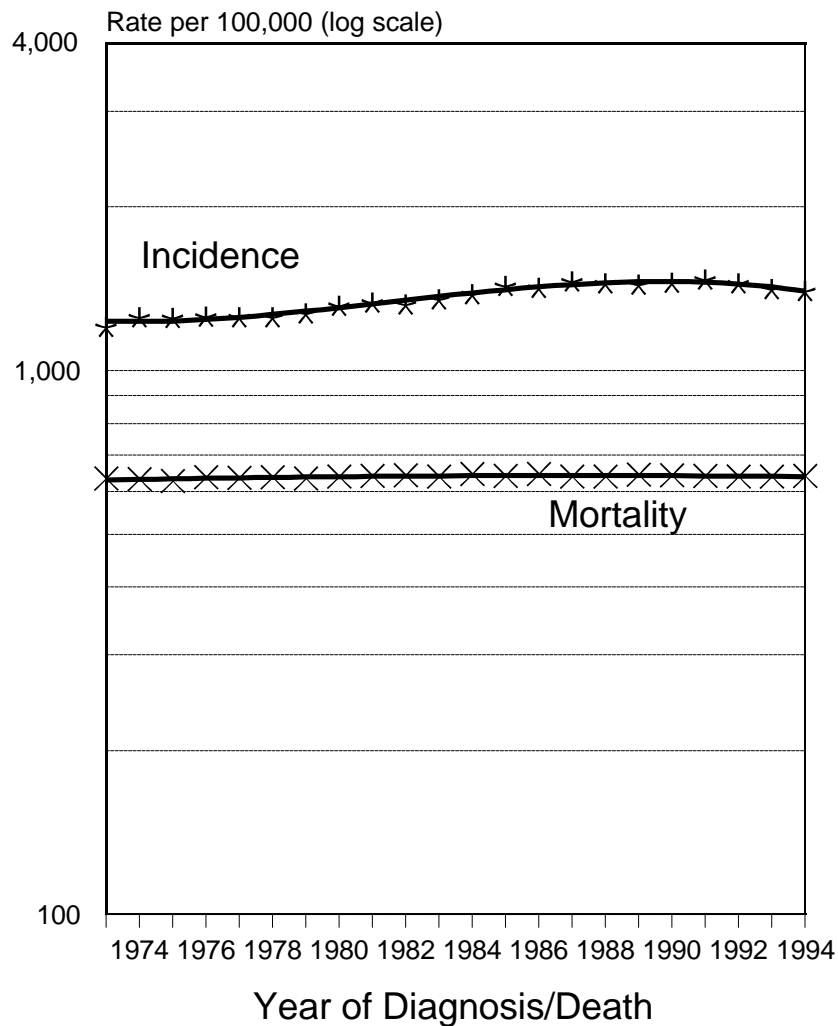


Figure II-12

SEER Incidence and U.S. Mortality All Cancers Except Lung & Bronchus, Female 65 Years of Age and Over, By Race

White



Black

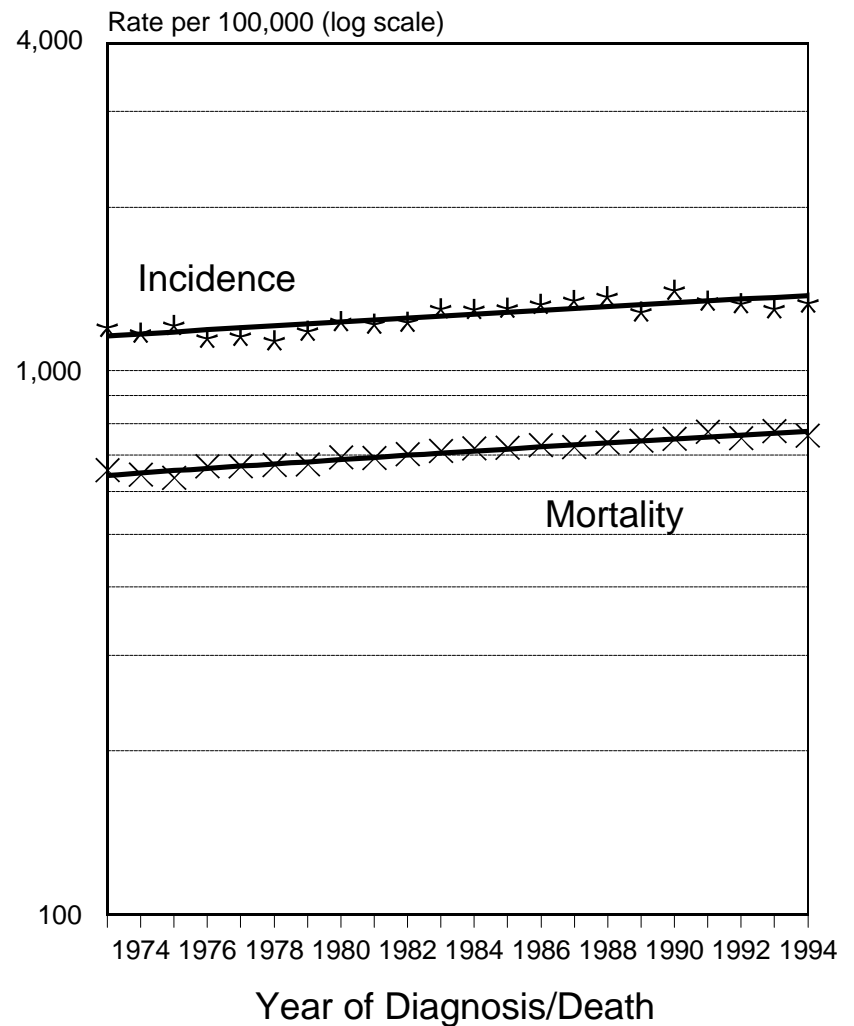
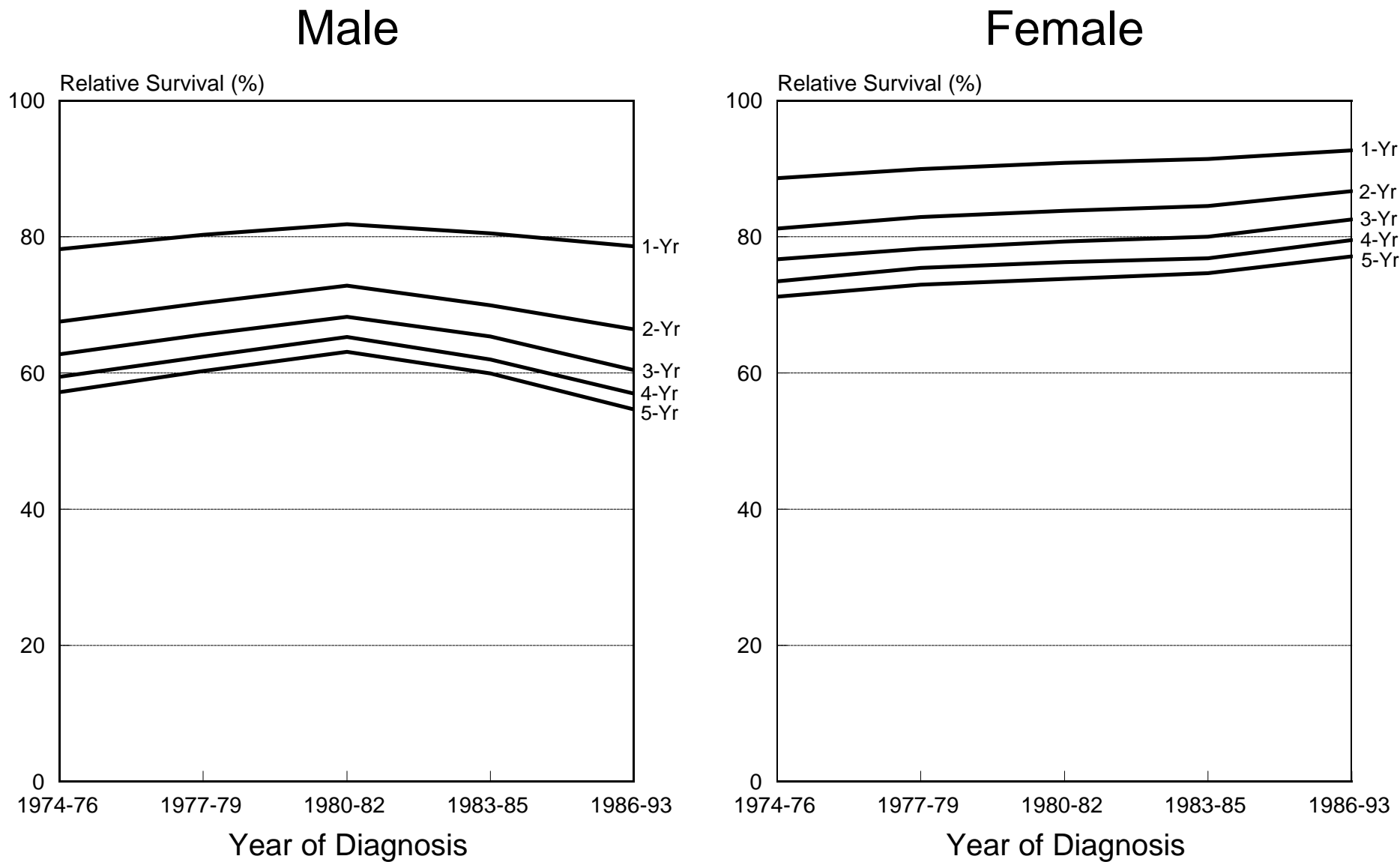


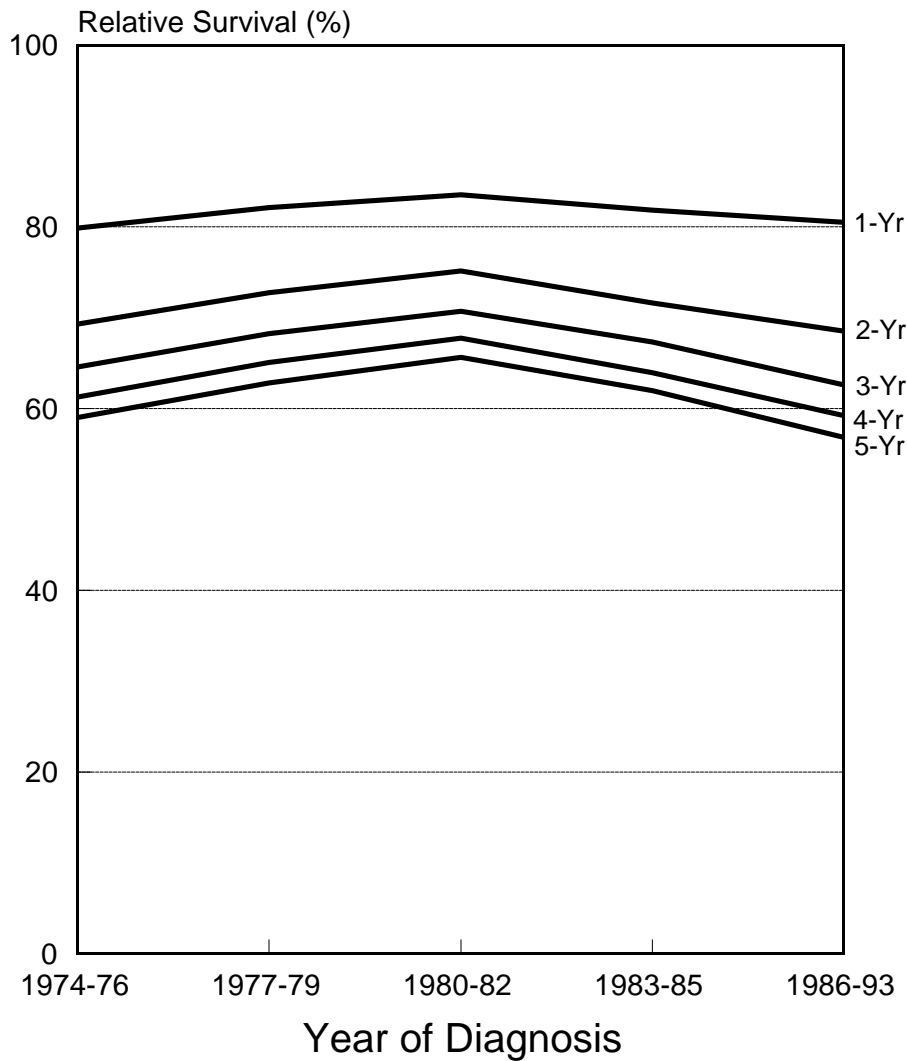
Figure II-13

1 to 5-Year Relative Survival Rates All Cancers, Under 45 Years of Age 1974-76 to 1986-93



1 to 5-Year Relative Survival Rates All Cancers, White, Under 45 Years of Age 1974-76 to 1986-93

Male



Female

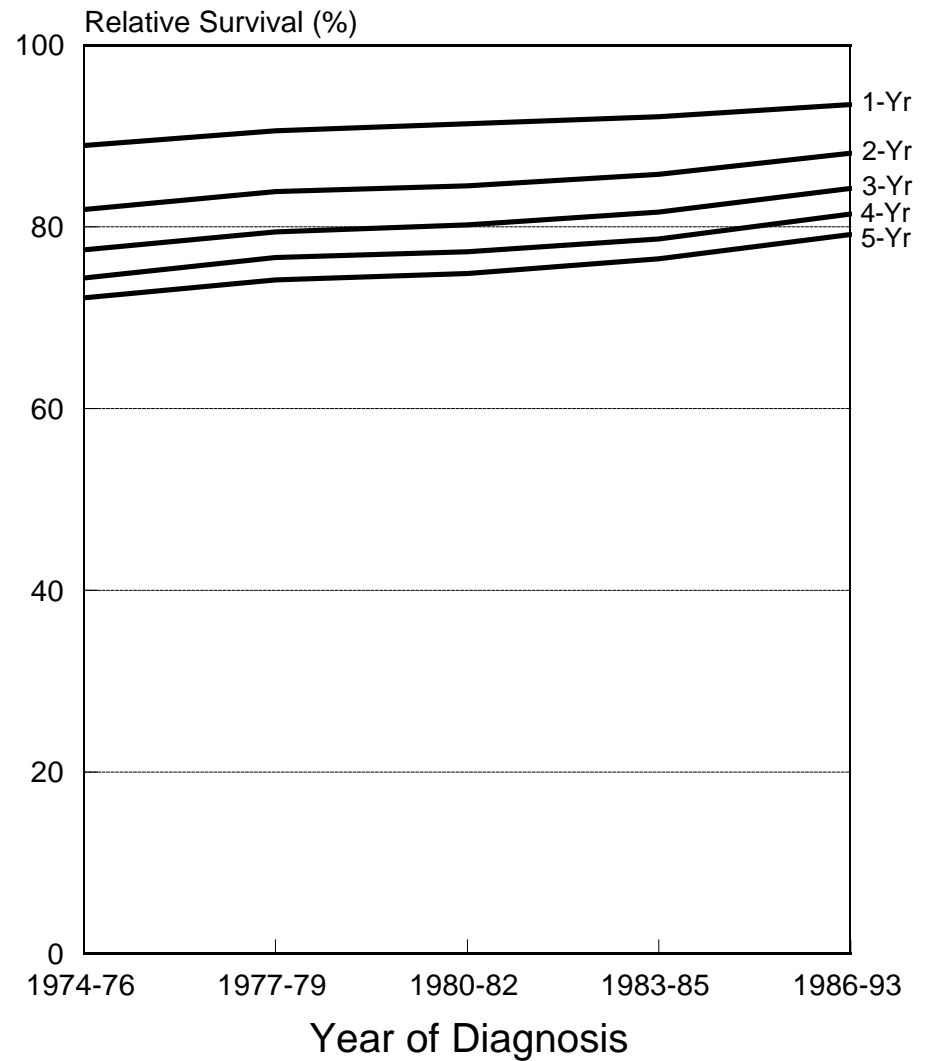
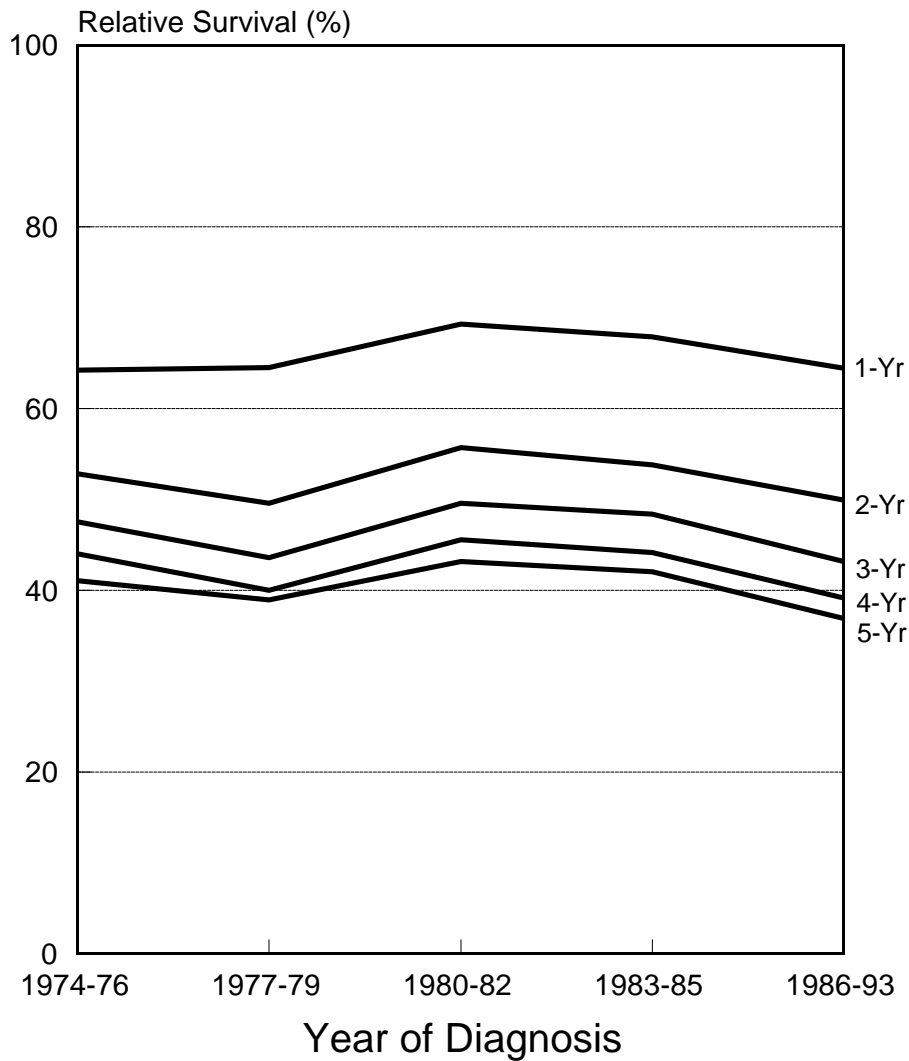


Figure II-15

1 to 5-Year Relative Survival Rates All Cancers, Black, Under 45 Years of Age 1974-76 to 1986-93

Male



Female

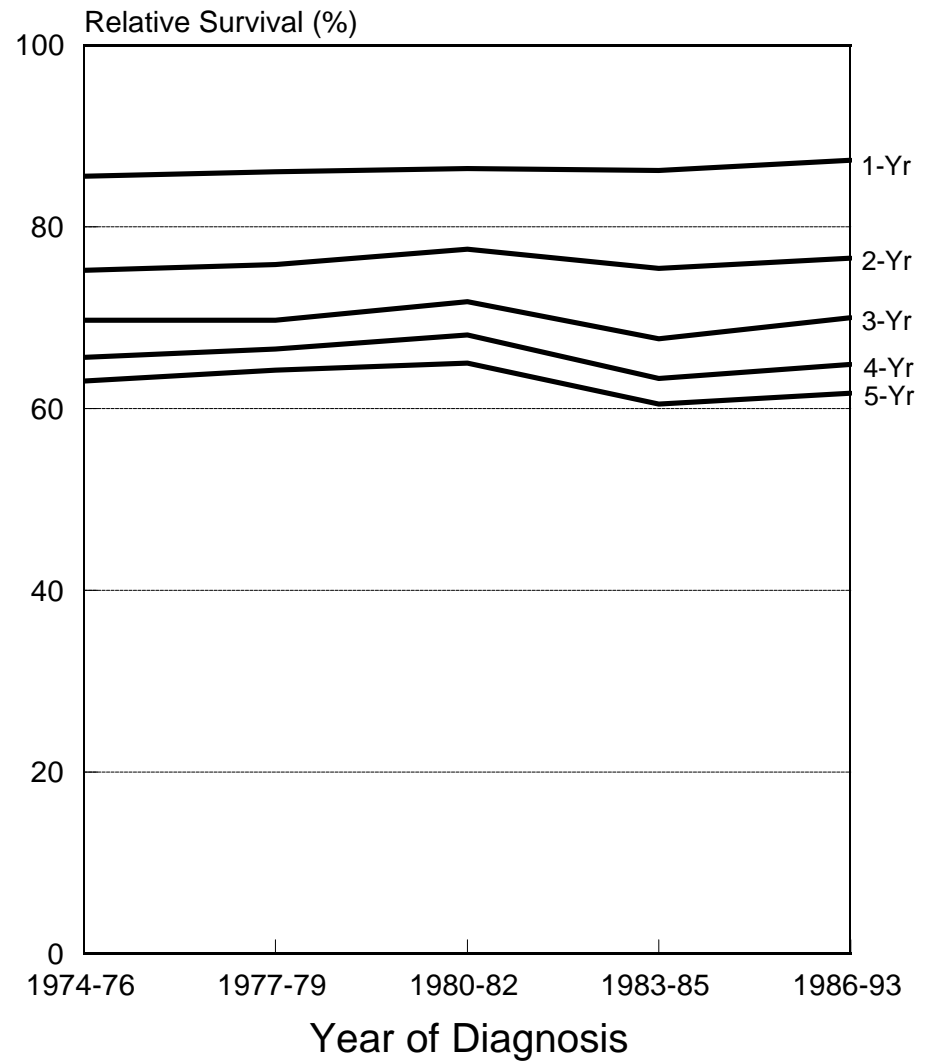


Figure II-16

1 to 5-Year Relative Survival Rates All Cancers Except Lung & Bronchus, Under 45 Years of Age 1974-76 to 1986-93

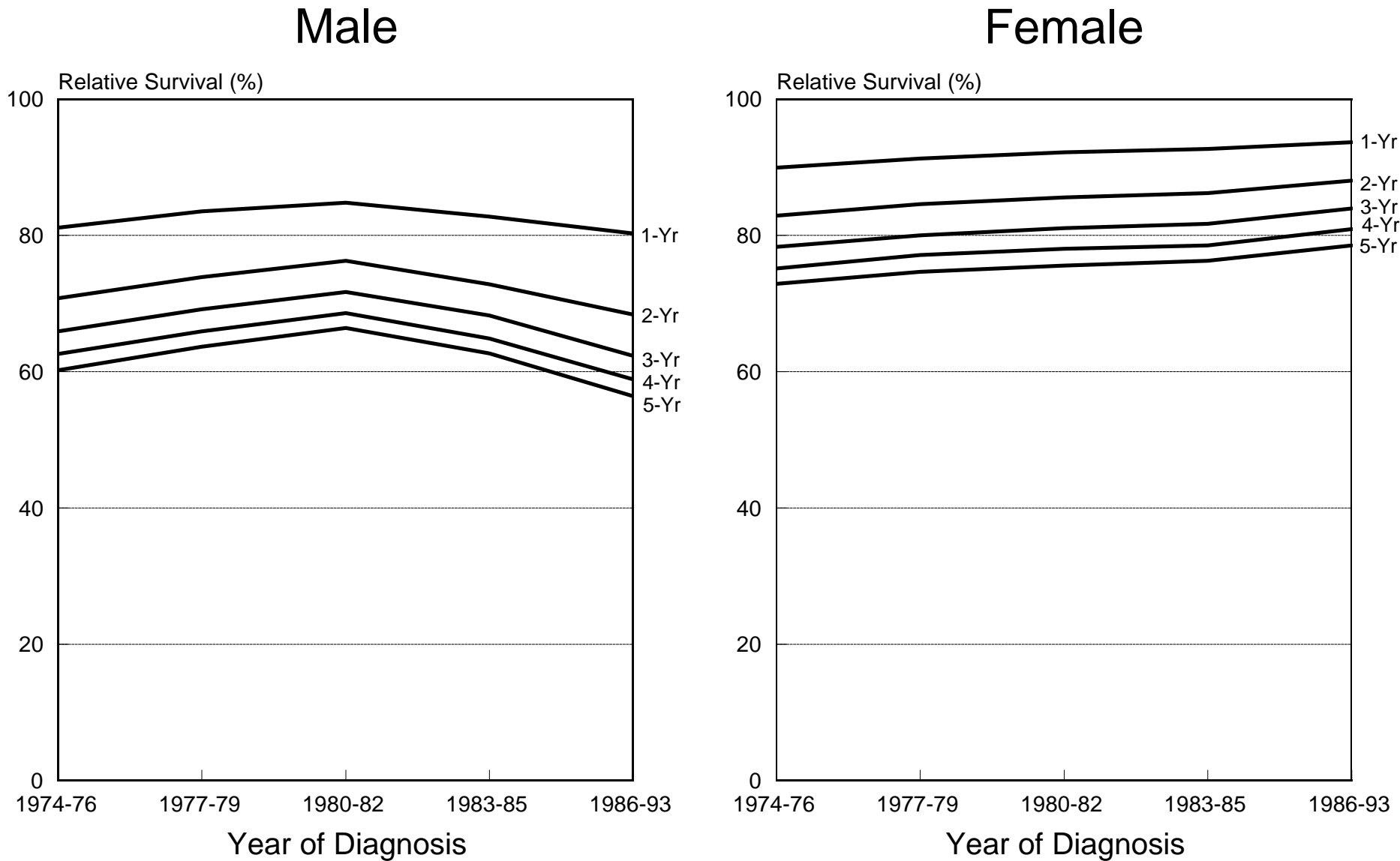


Figure II-17

1 to 5-Year Relative Survival Rates All Cancers Except Lung & Bronchus, White, Under 45 Years of Age 1974-76 to 1986-93

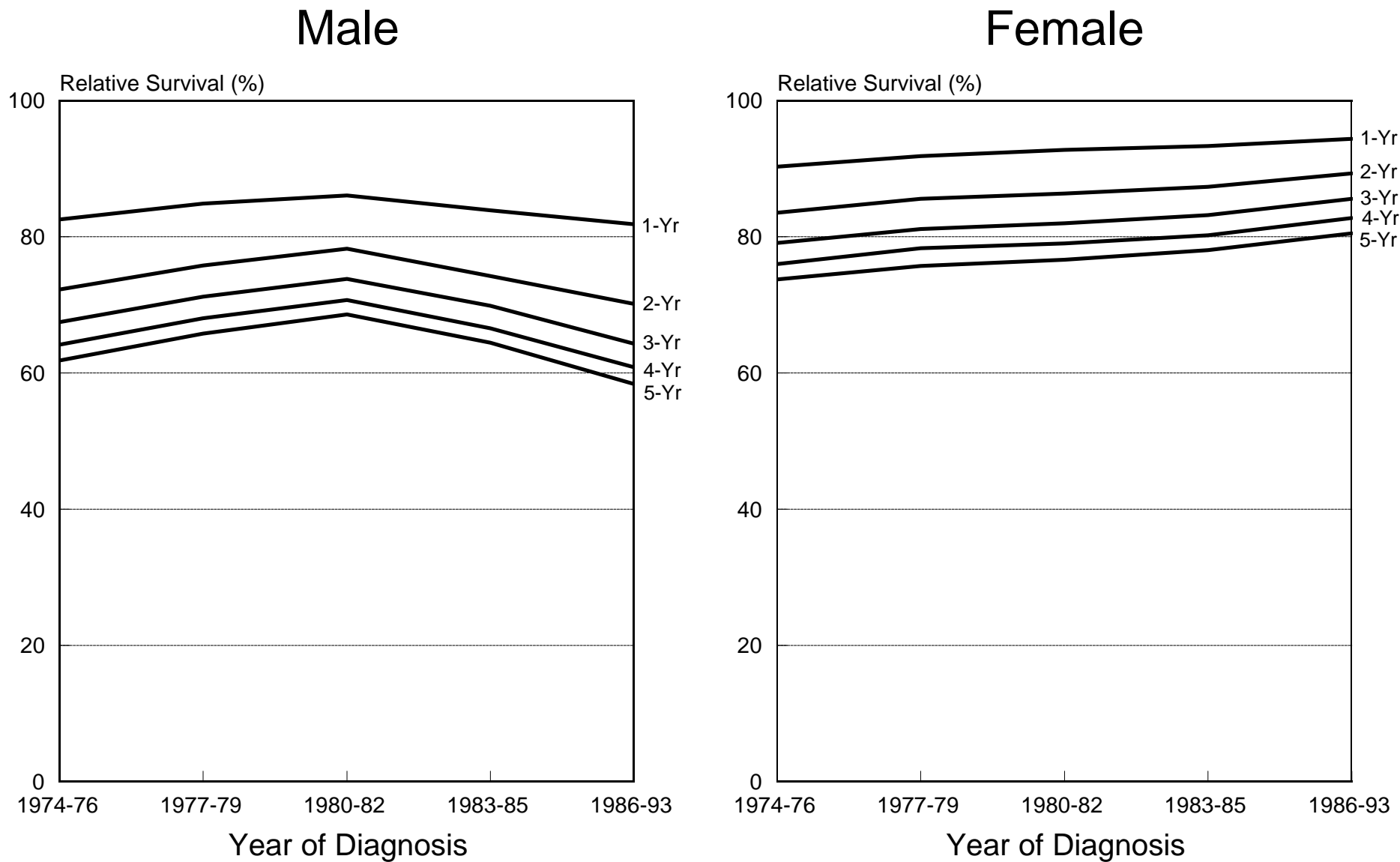


Figure II-18

1 to 5-Year Relative Survival Rates

All Cancers Except Lung & Bronchus, Black, Under 45 Years of Age

1974-76 to 1986-93

