

Table II-1
ALL SITES (Invasive)

TRENDS IN SEER INCIDENCE^a AND U.S. MORTALITY^b USING THE JOINPOINT REGRESSION PROGRAM, 1975-2002
WITH UP TO THREE JOINPOINTS BY RACE AND SEX

		<u>Joinpoint Segment 1</u>		<u>Joinpoint Segment 2</u>		<u>Joinpoint Segment 3</u>		<u>Joinpoint Segment 4</u>	
		<u>Year</u>	<u>APC</u>	<u>Year</u>	<u>APC</u>	<u>Year</u>	<u>APC</u>	<u>Year</u>	<u>APC</u>
<u>SEER Cancer Incidence^a</u>									
All Races	Male and Female	1975-1983	0.9 ^c	1983-1992	1.8 ^c	1992-1995	-1.6	1995-2002	0.0
All Races	Male	1975-1989	1.3 ^c	1989-1992	5.1 ^c	1992-1995	-4.6 ^c	1995-2002	-0.2
All Races	Female	1975-1979	-0.2	1979-1987	1.5 ^c	1987-1999	0.3 ^c	1999-2002	-0.8
White	Male and Female	1975-1982	0.9 ^c	1982-1992	1.8 ^c	1992-1995	-1.7	1995-2002	0.1
White	Male	1975-1989	1.4 ^c	1989-1992	4.9 ^c	1992-1995	-4.8 ^c	1995-2002	0.0
White	Female	1975-1979	-0.2	1979-1987	1.6 ^c	1987-2002	0.3 ^c		
Black	Male and Female	1975-1983	1.7 ^c	1983-1989	0.6	1989-1992	4.2 ^c	1992-2002	-1.1 ^c
Black	Male	1975-1981	2.8 ^c	1981-1989	0.6	1989-1992	6.8 ^c	1992-2002	-1.9 ^c
Black	Female	1975-1991	1.1 ^c	1991-2002	-0.2				
<u>SEER Delay-Adjusted Incidence^a</u>									
All Races	Male and Female	1975-1983	0.9 ^c	1983-1992	1.8 ^c	1992-1995	-1.7	1995-2002	0.3
All Races	Male	1975-1989	1.3 ^c	1989-1992	5.2 ^c	1992-1995	-4.7 ^c	1995-2002	0.2
All Races	Female	1975-1979	-0.2	1979-1987	1.5 ^c	1987-2002	0.3 ^c		
White	Male and Female	1975-1982	0.8 ^c	1982-1992	1.9 ^c	1992-1995	-1.7	1995-2002	0.6 ^c
White	Male	1975-1989	1.4 ^c	1989-1992	5.1 ^c	1992-1995	-4.9 ^c	1995-2002	0.5 ^c
White	Female	1975-1979	-0.2	1979-1987	1.6 ^c	1987-2002	0.5 ^c		
Black	Male and Female	1975-1989	1.2 ^c	1989-1992	3.5	1992-2002	-0.7 ^c		
Black	Male	1975-1981	2.8 ^c	1981-1989	0.7	1989-1992	6.6 ^c	1992-2002	-1.6 ^c
Black	Female	1975-1991	1.1 ^c	1991-2002	0.1				
<u>U.S. Cancer Mortality^b</u>									
All Races	Male and Female	1975-1990	0.5 ^c	1990-1993	-0.3	1993-2002	-1.1 ^c		
All Races	Male	1975-1979	1.0 ^c	1979-1990	0.3 ^c	1990-1993	-0.4	1993-2002	-1.5 ^c
All Races	Female	1975-1992	0.5 ^c	1992-2002	-0.8 ^c				
White	Male and Female	1975-1990	0.4 ^c	1990-1993	-0.3	1993-2002	-1.0 ^c		
White	Male	1975-1979	0.9 ^c	1979-1990	0.3 ^c	1990-1993	-0.4	1993-2002	-1.4 ^c
White	Female	1975-1991	0.6 ^c	1991-2002	-0.6 ^c				
Black	Male and Female	1975-1983	1.3 ^c	1983-1991	0.7 ^c	1991-1995	-0.8	1995-2002	-1.7 ^c
Black	Male	1975-1982	1.8 ^c	1982-1990	1.0 ^c	1990-1994	-0.6	1994-2002	-2.2 ^c
Black	Female	1975-1992	1.0 ^c	1992-2002	-0.9 ^c				

Joinpoint Regression Program Version 3.0, April 2005, National Cancer Institute. (<http://srab.cancer.gov/joinpoint/>).

The APC is the Annual Percent Change based on rates age-adjusted to the 2000 US Std Population (19 age groups - Census P25-1130).

^a Trends are from the SEER 9 areas.

^b Trends are from the NCHS public use data file for the total US.

^c The APC is significantly different from zero (p<.05).

Table II-2
ALL SITES (Invasive)

SEER INCIDENCE RATES, AGE-ADJUSTED AND AGE-SPECIFIC RATES^a, BY RACE AND SEX

	All Races			Whites			Blacks		
	Total	Males	Females	Total	Males	Females	Total	Males	Females
<u>AGE-ADJUSTED RATES</u>									
YEAR OF DIAGNOSIS:									
1975	400.2	466.5	365.7	401.9	468.3	369.5	425.8	524.3	356.3
1976	407.2	481.0	367.2	409.6	481.7	373.1	427.3	552.7	340.5
1977	407.6	486.3	363.5	409.1	486.9	367.7	442.4	577.4	351.8
1978	407.2	488.3	362.0	409.7	489.8	367.8	436.2	570.4	343.8
1979	412.3	496.3	365.3	413.8	497.4	369.3	451.4	589.9	358.8
1980	417.6	505.5	367.6	419.1	504.9	372.9	466.6	614.0	365.8
1981	425.0	510.6	376.8	427.4	510.6	383.5	472.2	633.3	362.5
1982	424.2	510.8	376.0	427.4	512.0	383.1	465.2	622.1	359.2
1983	430.9	519.7	380.5	434.0	520.5	387.7	486.4	644.8	381.8
1984	439.6	525.0	392.1	443.1	527.0	399.1	487.0	643.5	384.3
1985	448.4	530.6	402.8	452.7	532.7	410.9	487.8	641.8	387.4
1986	451.0	537.9	401.9	455.4	542.3	408.5	493.1	642.2	396.5
1987	467.9	563.0	413.1	474.6	568.3	423.2	500.3	665.5	393.1
1988	463.6	558.0	409.0	469.8	564.4	417.5	503.7	657.4	404.0
1989	467.5	566.7	408.0	474.7	573.0	418.2	491.9	659.9	384.3
1990	481.4	592.3	414.8	488.2	598.5	424.2	520.5	699.4	406.9
1991	502.3	636.8	418.1	509.5	643.5	427.5	548.7	764.4	412.2
1992	510.0	657.3	414.5	515.8	661.7	423.1	566.4	806.0	411.3
1993	493.0	621.4	408.0	496.2	619.0	416.7	566.5	815.3	402.8
1994	482.7	588.8	412.8	486.2	586.0	422.0	555.1	778.8	407.2
1995	475.7	569.9	413.8	480.5	567.9	424.8	538.9	741.5	403.2
1996	477.3	569.8	416.8	482.3	570.1	426.5	535.9	720.3	413.7
1997	484.2	572.9	426.6	491.1	573.1	439.3	533.3	728.2	405.9
1998	485.5	569.3	431.5	493.5	572.1	444.4	527.8	710.7	409.7
1999	486.6	575.5	427.5	493.8	575.9	440.3	532.7	712.8	414.5
2000	480.2	571.7	417.5	490.2	574.6	433.5	517.8	699.3	396.3
2001	478.9	566.3	418.4	489.5	571.4	433.8	502.0	670.4	387.8
2002	471.4	553.2	415.1	479.0	555.7	426.6	517.3	672.4	412.9
<u>AGE-ADJUSTED RATES, 1998-2002</u>									
AGE AT DIAGNOSIS:									
All ages	480.4	567.0	421.9	489.1	569.7	435.6	519.3	692.5	404.1
Under 65	228.2	224.3	232.9	231.7	223.8	240.6	256.5	300.7	220.5
65 and over	2,223.4	2,935.2	1,728.1	2,267.9	2,960.8	1,783.7	2,335.8	3,400.7	1,673.1
All ages(IARC world std) ^b	325.7	371.0	292.7	332.1	372.7	303.1	356.7	465.2	279.5
<u>AGE-SPECIFIC RATES, 1998-2002</u>									
AGE AT DIAGNOSIS:									
<1	22.2	21.0	23.6	23.1	22.0	24.3	18.5	-	22.9
1-4	20.6	21.3	19.8	22.5	23.0	21.9	13.2	12.6	13.7
5-9	11.5	12.6	10.4	12.4	13.5	11.1	8.8	9.7	7.8
10-14	12.8	13.3	12.3	13.7	14.1	13.3	9.2	9.6	8.8
15-19	20.6	21.3	19.8	22.6	23.2	21.8	13.4	14.1	12.6
20-24	35.3	33.6	37.1	39.2	37.4	41.1	22.6	19.2	25.8
25-29	54.3	47.4	61.5	58.9	51.6	66.7	41.3	36.2	45.8
30-34	83.1	64.3	102.3	86.9	68.3	106.7	72.3	53.7	89.0
35-39	127.8	93.0	162.7	131.4	95.5	168.6	117.2	90.3	141.0
40-44	209.7	151.2	267.5	212.7	151.7	274.6	215.9	181.7	246.0
45-49	344.7	273.1	414.3	345.1	267.6	422.5	390.5	379.3	400.2
50-54	558.1	527.8	587.2	560.4	518.2	602.1	665.9	779.3	569.9
55-59	903.8	974.4	836.4	909.7	959.9	860.7	1,094.6	1,423.3	817.1
60-64	1,334.4	1,581.0	1,107.7	1,357.0	1,576.6	1,150.2	1,583.6	2,181.5	1,102.1
65-69	1,833.3	2,322.1	1,414.0	1,880.9	2,342.3	1,474.2	2,055.2	2,929.3	1,403.2
70-74	2,235.3	2,945.2	1,675.1	2,291.0	2,972.2	1,741.7	2,376.3	3,518.4	1,601.1
75-79	2,471.8	3,280.4	1,901.0	2,516.5	3,299.3	1,963.1	2,600.2	3,814.6	1,845.0
80-84	2,515.7	3,344.4	2,010.4	2,556.1	3,380.2	2,055.7	2,474.1	3,538.0	1,910.8
85+	2,292.5	3,197.6	1,904.6	2,311.5	3,232.1	1,928.1	2,253.4	3,323.0	1,843.9

^a SEER 9 areas. Rates are per 100,000 and are age-adjusted to the 2000 US Std Population (19 age groups - Census P25-1130), unless noted.

^b SEER 9 areas. Rates are per 100,000 and are age-adjusted to the IARC world standard population.

- Statistic not shown. Rate based on less than 25 cases for the time interval.

Table II-3
ALL SITES (Invasive)U.S. DEATH RATES, AGE-ADJUSTED AND AGE-SPECIFIC RATES^a, BY RACE AND SEX

	All Races			Whites			Blacks		
	Total	Males	Females	Total	Males	Females	Total	Males	Females
<u>AGE-ADJUSTED RATES</u>									
<u>YEAR OF DEATH:</u>									
1975	199.1	258.4	160.0	196.3	254.0	159.0	235.5	320.5	174.2
1976	202.3	262.2	162.7	199.4	257.5	161.7	241.8	328.4	179.1
1977	203.0	264.2	162.9	199.7	258.8	161.6	246.4	337.9	181.6
1978	204.4	267.1	163.8	201.1	261.6	162.5	247.2	340.9	181.5
1979	204.5	268.7	163.1	201.2	263.2	161.7	249.0	344.7	182.7
1980	207.0	271.1	165.8	203.3	265.0	164.2	256.2	353.9	189.2
1981	206.4	269.8	165.9	202.6	263.3	164.6	256.8	358.6	187.5
1982	208.3	272.9	167.4	204.5	266.3	166.1	260.4	364.9	190.2
1983	209.2	274.1	168.3	205.2	267.2	166.7	263.8	369.3	193.2
1984	210.9	275.1	170.5	206.7	267.6	169.0	268.1	377.9	195.7
1985	211.3	275.7	171.0	207.3	268.2	169.6	268.1	377.8	196.3
1986	211.8	276.0	171.6	207.7	268.8	170.0	269.4	378.9	199.1
1987	211.9	276.3	171.5	207.8	269.0	169.9	271.1	383.2	199.9
1988	212.6	276.9	172.5	208.5	269.5	170.9	271.6	384.2	200.4
1989	214.3	278.5	174.3	210.0	270.2	172.9	275.9	395.3	200.9
1990	214.9	279.8	174.7	210.4	271.5	172.9	279.3	399.1	205.4
1991	215.1	279.1	175.3	210.6	271.2	173.4	279.0	395.9	207.4
1992	213.5	276.5	174.4	209.2	268.9	172.6	274.9	389.2	205.8
1993	213.4	275.9	174.6	209.2	267.9	172.8	277.1	394.8	206.3
1994	211.7	272.1	174.1	207.8	264.7	172.6	272.0	385.2	204.1
1995	209.9	268.5	173.4	206.1	261.5	171.7	269.5	379.0	204.5
1996	207.0	263.7	171.2	203.4	256.8	169.8	265.3	373.7	200.9
1997	203.6	258.1	169.0	199.9	251.6	167.3	262.1	363.2	202.5
1998	200.8	253.6	166.9	197.6	247.6	165.4	255.7	353.1	198.4
1999	200.7	252.8	167.2	197.8	247.1	165.9	253.8	349.2	197.5
2000	198.6	248.1	166.6	196.2	243.0	165.9	248.1	341.1	193.2
2001	195.7	243.8	164.2	193.4	239.1	163.3	244.0	332.4	191.9
2002	193.5	239.9	162.7	191.6	236.0	161.9	240.2	322.9	190.9
<u>AGE-ADJUSTED RATES, 1998-2002</u>									
<u>AGE AT DEATH:</u>									
All ages	197.8	247.5	165.5	195.3	242.5	164.5	248.1	339.4	194.3
Under 65	65.7	70.8	61.1	63.6	67.9	59.6	93.3	108.7	80.8
65 and over	1,110.9	1,468.4	887.3	1,105.3	1,449.1	889.0	1,318.7	1,933.7	978.4
All ages(IARC world std) ^b	119.1	143.2	101.7	117.1	139.8	100.7	153.9	201.3	123.0
<u>AGE-SPECIFIC RATES, 1998-2002</u>									
<u>AGE AT DEATH:</u>									
<1	1.9	2.0	1.9	2.0	2.2	1.8	1.5	-	1.9
1-4	2.6	2.8	2.5	2.7	2.9	2.5	2.4	2.5	2.4
5-9	2.5	2.6	2.3	2.5	2.7	2.4	2.4	2.7	2.1
10-14	2.5	2.8	2.3	2.5	2.7	2.3	2.6	3.0	2.3
15-19	3.6	4.3	3.0	3.6	4.3	3.0	3.8	4.5	3.1
20-24	5.1	5.9	4.3	5.1	6.0	4.2	5.5	6.2	4.8
25-29	7.2	7.4	7.0	7.1	7.3	6.8	8.8	8.6	8.9
30-34	12.8	11.6	14.0	12.4	11.4	13.4	16.4	13.6	18.9
35-39	24.8	21.2	28.4	23.7	20.5	27.0	34.8	27.8	41.1
40-44	49.0	44.6	53.3	46.5	42.4	50.6	72.5	66.3	77.9
45-49	92.9	92.7	93.1	87.8	86.9	88.7	142.7	151.1	135.5
50-54	165.6	174.3	157.2	158.6	164.3	153.1	249.4	290.7	214.4
55-59	286.9	319.8	256.1	278.3	306.2	251.7	413.2	509.1	334.8
60-64	461.6	536.7	393.6	453.6	520.8	391.6	615.8	790.8	478.5
65-69	685.9	830.8	561.6	680.0	816.2	560.9	858.0	1,128.8	657.5
70-74	953.6	1,194.3	764.0	947.0	1,174.5	764.6	1,178.3	1,632.1	876.4
75-79	1,213.8	1,578.2	959.4	1,207.5	1,554.6	962.3	1,454.0	2,122.3	1,052.1
80-84	1,479.2	2,010.9	1,164.0	1,474.9	1,987.6	1,168.5	1,699.1	2,638.8	1,225.1
85+	1,769.0	2,623.6	1,416.0	1,765.9	2,606.9	1,419.2	1,951.3	3,190.6	1,484.3

^a NCHS public use data file for the total US. Rates are per 100,000 and are age-adjusted to the 2000 US Std Population (19 age groups - Census P25-1130), unless noted.

^b NCHS public use data file for the total US. Rates are per 100,000 and are age-adjusted to the IARC world standard population.

- Statistic not shown. Rate based on less than 25 cases for the time interval.

Table II-4
ALL SITES (Invasive)

SURVIVAL RATES, BY RACE, SEX, DIAGNOSIS YEAR AND AGE

	All Races			Whites			Blacks		
	Total	Males	Females	Total	Males	Females	Total	Males	Females
<u>5-YR RELATIVE SURVIVAL RATES</u>									
YEAR OF DIAGNOSIS:									
1960-1963 ^a	-	-	-	39	-	-	27	-	-
1970-1973 ^a	-	-	-	43	-	-	31	-	-
1974-1976 ^b	49.6	41.0	57.0	50.6	42.1	57.8	39.2	31.6	47.1
1977-1979 ^b	50.1	43.4	56.3	51.2	44.7	57.1	39.3	32.4	46.8
1980-1982 ^b	51.0	45.3	56.3	52.1	46.7	57.1	39.9	34.4	46.2
1983-1985 ^b	52.5	46.8	57.8	53.9	48.5	58.9	39.9	34.6	45.6
1986-1988 ^b	55.4	50.2	60.4	56.8	51.9	61.5	42.8	37.9	48.0
1989-1991 ^b	58.8	56.1	61.6	60.3	57.9	62.9	46.3	43.5	49.3
1992-1994 ^b	62.4	62.2	62.7	63.9	63.9	64.0	52.1	53.4	50.5
1995-2001 ^b	65.0 ^d	65.0 ^d	65.0 ^d	66.4 ^d	66.5 ^d	66.3 ^d	56.0 ^d	58.4 ^d	53.2 ^d
<u>5-YR PERIOD SURVIVAL RATES^{bc}</u>									
YEAR OF DIAGNOSIS:									
1995-2001	66.3	66.6	66.1	67.8	68.2	67.3	57.2	60.1	54.0
<u>5-YR RELATIVE SURVIVAL RATES, 1995-2001^b</u>									
AGE AT DIAGNOSIS:									
<45	76.4	69.8	81.0	79.1	73.3	83.2	59.9	50.5	66.5
45-54	69.9	62.6	75.5	72.1	65.0	77.5	57.0	53.3	60.9
55-64	67.0	66.6	67.4	68.5	68.1	68.9	58.7	62.3	53.3
65-74	63.6	67.3	58.9	64.7	68.2	60.1	56.9	65.0	45.2
75+	53.7	58.4	49.7	54.9	59.5	51.0	44.7	52.9	37.6
Under 65	70.3	66.2	74.1	72.3	68.4	75.8	58.5	56.9	60.2
65 and over	59.6	64.1	54.6	60.6	65.0	55.8	52.4	61.2	41.9

^a Rates are based on End Results data from a series of hospital registries and one population-based registry.

^b Rates are from the SEER 9 areas (San Francisco, Connecticut, Detroit, Hawaii, Iowa, New Mexico, Seattle, Utah, Atlanta). Rates are based on follow-up of patients into 2002.

^c Period survival provides a more up-to-date estimate of survival by piecing together the most recent conditional survival estimates from several cohorts. It is computed here using three calendar year blocks (1999-2001: 0-1 year survival), (1998-2000: 1-2 year survival), (1997-1999: 2-3 year survival), (1996-1998: 3-4 year survival), (1995-1997: 4-5 years survival).

^d The difference in rates between 1974-1976 and 1995-2001 is statistically significant ($p < .05$).

^e The standard error of the survival rate is between 5 and 10 percentage points.

^f The standard error of the survival rate is greater than 10 percentage points.

- Statistic could not be calculated.

Table II-5
ALL SITES (Invasive)

SURVIVAL RATES^a

By Year of Diagnosis

All Races, Males and Females

Year of Diagnosis

	1975- 1979	1980- 1984	1985	1986	1987	1988	1989	1990	1991	1992	1993	1994	1995	1996	1997	1998	1999	2000	2001
Relative Survival Rates (SEER ^b)																			
1-year	69.9	71.6	73.0	73.5	74.2	74.2	74.7	75.7	77.3	77.9	77.3	77.0	77.1	77.6	78.3	78.6	79.2	79.5	80.1
2-year	60.3	62.1	63.7	64.2	65.3	65.4	66.2	67.3	69.2	70.4	70.0	69.6	69.9	70.8	71.5	72.0	72.8	73.2	
3-year	55.4	57.1	58.9	59.5	60.5	61.1	61.7	63.0	65.2	66.7	66.3	66.1	66.5	67.5	68.2	68.9	69.7		
4-year	52.2	53.8	55.6	56.5	57.7	58.3	58.8	60.4	62.7	64.4	64.1	63.8	64.3	65.4	66.2	66.9			
5-year	50.0	51.4	53.4	54.3	55.6	56.2	56.8	58.6	60.9	62.7	62.4	62.3	62.9	64.0	64.8				
6-year	48.3	49.6	51.8	52.7	53.9	54.6	55.3	57.1	59.4	61.4	61.3	61.1	61.8	62.9					
7-year	47.0	48.1	50.4	51.4	52.4	53.2	54.0	55.8	58.2	60.2	60.1	60.1	60.9						
8-year	45.9	46.9	49.3	50.4	51.4	52.2	52.9	54.8	57.2	59.2	59.3	59.4							
9-year	45.0	45.9	48.3	49.5	50.4	51.3	52.2	53.9	56.4	58.6	58.5								
10-year	44.2	45.1	47.5	48.7	49.8	50.6	51.5	53.1	55.8	57.8									
11-year	43.5	44.4	46.9	48.1	49.1	50.0	50.9	52.5	55.2										
12-year	43.0	43.9	46.4	47.6	48.5	49.3	50.3	51.9											
13-year	42.6	43.5	46.0	47.2	47.9	48.7	49.8												
14-year	42.2	43.1	45.6	46.7	47.6	48.4													
15-year	41.9	42.8	45.2	46.2	47.2														
16-year	41.6	42.4	44.9	45.9															
17-year	41.4	42.2	44.4																
18-year	41.3	42.0																	
19-year	41.3																		
20-year	41.2																		

^a Survival rates are relative rates expressed as percents.
^b Rates are from the SEER 9 areas.

Table II-6
ALL SITES (Invasive)

SURVIVAL RATES^a

By Year of Diagnosis

All Races, Males

Year of Diagnosis

	1975- 1979	1980- 1984	1985	1986	1987	1988	1989	1990	1991	1992	1993	1994	1995	1996	1997	1998	1999	2000	2001
Relative Survival Rates (SEER ^b)																			
1-year	64.5	67.6	69.0	69.7	70.9	71.1	72.0	73.8	76.3	77.5	76.6	76.2	76.0	76.9	77.5	77.4	78.6	79.2	79.7
2-year	53.8	57.1	58.8	59.3	61.2	61.4	62.9	64.6	68.1	70.0	69.4	68.4	68.6	70.1	70.8	71.0	72.1	73.1	
3-year	48.5	51.9	53.6	54.3	56.0	56.5	58.0	60.3	64.2	66.6	65.9	65.1	65.4	66.9	67.9	68.0	69.3		
4-year	45.1	48.4	50.0	50.9	52.9	53.3	54.8	57.4	61.6	64.5	63.8	62.9	63.4	65.0	66.1	66.2			
5-year	42.7	45.8	47.6	48.7	50.7	51.1	52.5	55.5	59.7	62.9	62.2	61.5	62.1	63.8	64.8				
6-year	40.8	43.8	45.9	46.8	49.0	49.3	50.8	53.9	58.2	61.5	61.2	60.4	61.1	62.9					
7-year	39.3	42.2	44.3	45.4	47.1	47.6	49.3	52.4	56.9	60.3	60.1	59.5	60.4						
8-year	38.0	40.8	43.2	44.2	45.8	46.3	48.1	51.2	55.7	59.2	59.4	58.7							
9-year	36.9	39.7	42.1	43.0	44.7	45.3	47.1	50.3	54.9	58.4	58.5								
10-year	35.8	38.9	41.1	42.2	43.9	44.4	46.2	49.4	54.2	57.5									
11-year	34.9	38.1	40.4	41.5	43.0	43.8	45.5	48.5	53.3										
12-year	34.2	37.4	39.6	40.8	42.3	43.0	44.8	47.9											
13-year	33.6	36.9	39.2	40.2	41.7	42.1	44.0												
14-year	33.1	36.4	38.5	39.7	41.4	41.7													
15-year	32.6	36.1	38.0	39.1	40.9														
16-year	32.2	35.7	37.7	38.7															
17-year	31.9	35.4	37.3																
18-year	31.6	35.3																	
19-year	31.6																		
20-year	31.5																		

^a Survival rates are relative rates expressed as percents.
^b Rates are from the SEER 9 areas.

Table II-7
ALL SITES (Invasive)

SURVIVAL RATES^a

By Year of Diagnosis

All Races, Females

Year of Diagnosis

	1975- 1979	1980- 1984	1985	1986	1987	1988	1989	1990	1991	1992	1993	1994	1995	1996	1997	1998	1999	2000	2001
Relative Survival Rates (SEER ^b)																			
1-year	75.3	75.7	77.0	77.4	77.5	77.4	77.7	77.8	78.4	78.3	78.0	78.0	78.4	78.4	79.1	79.8	79.8	79.9	80.4
2-year	66.6	67.0	68.6	69.0	69.5	69.5	69.6	70.1	70.5	70.9	70.8	71.0	71.3	71.6	72.1	73.1	73.4	73.3	
3-year	61.9	62.1	64.0	64.6	65.0	65.6	65.5	66.0	66.3	66.9	66.9	67.2	67.6	68.0	68.6	69.7	70.1		
4-year	58.8	59.0	61.0	61.9	62.4	63.2	62.9	63.4	63.9	64.3	64.4	64.7	65.3	65.8	66.3	67.5			
5-year	56.7	56.7	58.8	59.7	60.4	61.2	61.0	61.8	62.1	62.5	62.6	63.1	63.7	64.1	64.7				
6-year	55.0	54.9	57.2	58.2	58.7	59.7	59.6	60.3	60.7	61.2	61.3	61.7	62.5	62.9					
7-year	53.7	53.5	55.9	56.9	57.4	58.4	58.5	59.1	59.6	60.0	60.2	60.6	61.4						
8-year	52.7	52.3	54.8	56.0	56.6	57.5	57.4	58.2	58.7	59.3	59.2	60.1							
9-year	51.8	51.4	53.8	55.2	55.6	56.7	56.9	57.3	57.9	58.8	58.5								
10-year	51.1	50.5	53.0	54.4	55.1	56.0	56.3	56.6	57.4	58.2									
11-year	50.4	49.8	52.4	53.8	54.4	55.4	55.8	56.1	57.0										
12-year	49.8	49.3	51.9	53.3	53.9	54.8	55.2	55.5											
13-year	49.5	48.8	51.5	52.9	53.1	54.3	54.8												
14-year	49.1	48.4	51.2	52.4	52.7	53.9													
15-year	48.7	48.0	50.7	51.9	52.3														
16-year	48.4	47.6	50.3	51.4															
17-year	48.2	47.2	49.7																
18-year	48.0	47.0																	
19-year	47.8																		
20-year	47.6																		

^a Survival rates are relative rates expressed as percents.
^b Rates are from the SEER 9 areas.

Table II-8
ALL SITES (Invasive)

Percent Diagnosed With Cancer In 10, 20 and 30 Years and In Remaining Lifetime,
 Given Cancer Free At Current Age By Race and Sex

Lifetime Risk (Percent) of Being Diagnosed (13 SEER Areas) With Cancer and
 Lifetime Risk (Percent) of Dying (Total U.S.) From Cancer

2000-2002

All Races

Current Age	Males				Females			
	+10 yrs	+20 yrs	+30 yrs	Eventually	+10 yrs	+20 yrs	+30 yrs	Eventually
0	0.17	0.35	0.71	45.67	0.16	0.32	0.78	38.09
10	0.18	0.55	1.28	46.18	0.16	0.63	1.86	38.41
20	0.37	1.11	3.07	46.32	0.47	1.70	4.72	38.39
30	0.75	2.74	9.13	46.65	1.25	4.29	10.14	38.24
40	2.04	8.57	22.40	46.95	3.10	9.06	18.27	37.70
50	6.86	21.40	37.36	47.20	6.23	15.86	26.66	36.18
60	16.46	34.54	43.87	45.68	10.54	22.38	30.69	32.80

Lifetime Risk of Being Diagnosed = 45.67% Lifetime Risk of Being Diagnosed = 38.09%
 Lifetime Risk of Dying = 23.56% Lifetime Risk of Dying = 19.93%

Whites

Current Age	Males				Females			
	+10 yrs	+20 yrs	+30 yrs	Eventually	+10 yrs	+20 yrs	+30 yrs	Eventually
0	0.19	0.38	0.78	46.11	0.17	0.35	0.85	39.45
10	0.20	0.60	1.36	46.53	0.18	0.68	1.96	39.72
20	0.41	1.17	3.13	46.64	0.51	1.79	4.89	39.69
30	0.78	2.77	9.10	46.90	1.30	4.42	10.49	39.51
40	2.03	8.51	22.52	47.12	3.18	9.36	19.04	38.93
50	6.79	21.48	37.59	47.28	6.46	16.56	27.81	37.35
60	16.56	34.72	43.91	45.64	11.07	23.38	31.79	33.82

Lifetime Risk of Being Diagnosed = 46.11% Lifetime Risk of Being Diagnosed = 39.45%
 Lifetime Risk of Dying = 23.62% Lifetime Risk of Dying = 20.16%

Blacks

Current Age	Males				Females			
	+10 yrs	+20 yrs	+30 yrs	Eventually	+10 yrs	+20 yrs	+30 yrs	Eventually
0	0.11	0.22	0.47	42.50	0.11	0.22	0.55	31.88
10	0.11	0.37	1.08	43.58	0.12	0.45	1.51	32.52
20	0.26	0.98	3.50	43.92	0.34	1.40	4.17	32.53
30	0.74	3.33	12.03	44.91	1.07	3.87	9.24	32.53
40	2.69	11.73	27.16	45.90	2.87	8.36	16.67	32.23
50	9.87	26.72	40.57	47.18	5.84	14.66	23.80	31.19
60	21.00	38.26	45.05	46.50	9.94	20.25	26.80	28.58

Lifetime Risk of Being Diagnosed = 42.50% Lifetime Risk of Being Diagnosed = 31.88%
 Lifetime Risk of Dying = 24.21% Lifetime Risk of Dying = 19.43%

Devcan Version 6.0, April 2005, National Cancer Institute (<http://srab.cancer.gov/devcan/>).

Source: Incidence data are from the SEER 13 areas (San Francisco, Connecticut, Detroit, Hawaii, Iowa, New Mexico, Seattle, Utah, Atlanta, San Jose-Monterey, Los Angeles, Alaska Native Registry, Rural Georgia). Mortality data are from the NCHS public use data file for the total US.

Table II-9
ALL SITES (Invasive)

SEER INCIDENCE AND U.S. MORTALITY
AGE-ADJUSTED RATES AND TRENDS^a
By Race/Ethnicity and Sex

Incidence^b

RACE/ETHNICITY	Rate 1998-2002			Trend 1992-2002		
	Rate per 100,000 persons			APC (%)		
	Total	Males	Females	Total	Males	Females
All Races	469.7	553.3	413.5	-0.6 ^e	-1.3 ^e	0.1
White	479.7	556.4	429.3	-0.4 ^e	-1.3 ^e	0.2
White Hispanic ^c	362.7	431.9	320.8	-0.5 ^e	-1.0 ^e	0.0
White Non-Hispanic ^c	490.6	562.4	443.0	-0.3	-1.2 ^e	0.3
Black	512.3	682.6	398.5	-1.0 ^e	-1.7 ^e	-0.2
Asian/Pacific Islander	335.6	383.5	303.6	-0.6 ^e	-1.2 ^e	0.3
Amer Ind/Alaska Nat	233.6	255.4	220.5	-2.7 ^e	-3.8 ^e	-1.7 ^e
Hispanic ^c	352.4	420.7	310.9	-0.4 ^e	-0.9 ^e	0.1

Mortality^d

RACE/ETHNICITY	Rate 1998-2002			Trend 1992-2002		
	Rate per 100,000 persons			APC (%)		
	Total	Males	Females	Total	Males	Females
All Races	197.8	247.5	165.5	-1.0 ^e	-1.5 ^e	-0.7 ^e
White	195.3	242.5	164.5	-0.9 ^e	-1.4 ^e	-0.7 ^e
White Hispanic ^c	138.5	175.2	113.8	-0.6 ^e	-0.9 ^e	-0.4 ^e
White Non-Hispanic ^c	199.1	247.3	167.4	-0.8 ^e	-1.3 ^e	-0.6 ^e
Black	248.1	339.4	194.3	-1.5 ^e	-2.0 ^e	-0.8 ^e
Asian/Pacific Islander	119.9	148.0	99.4	-1.7 ^e	-2.0 ^e	-1.1 ^e
Amer Ind/Alaska Nat	132.4	159.7	113.8	-0.7	-1.2	-0.3
Hispanic ^c	135.2	171.4	111.0	-0.6 ^e	-0.9 ^e	-0.4 ^e

- The APC is the Annual Percent Change over the time interval.
- Statistic not shown. Rate based on less than 25 cases for the time interval. Trend based on less than 10 cases for at least one year within the time interval.
- ^a Rates are age-adjusted to the 2000 US Std Population (19 age groups - Census P25-1130). Trends are based on rates age-adjusted to the 2000 US Std Population (19 age groups - Census P25-1130).
- ^b Incidence data are from the 13 SEER areas (San Francisco, Connecticut, Detroit, Hawaii, Iowa, New Mexico, Seattle, Utah, Atlanta, San Jose-Monterey, Los Angeles, Alaska Native Registry and Rural Georgia).
- ^c Hispanic and Non-Hispanic are not mutually exclusive from Whites, Blacks, Asian Pacific Islanders, and American Indians/Alaska Natives. Incidence data for Hispanics and Non-Hispanics do not include cases from Detroit, Hawaii, Alaska Native Registry and Rural Georgia. For mortality, information is included for all states except Connecticut, Maine, Maryland, Minnesota, New Hampshire, New York, North Dakota, Oklahoma and Vermont.
- ^d Mortality data are analyzed from a public use file provided by the National Center for Health Statistics (NCHS).
- ^e The APC is significantly different from zero (p<.05).

Table II-10
ALL SITES (Invasive)

AGE-ADJUSTED SEER INCIDENCE RATES AND SEER DEATH RATES^a
By Registry, Race and Sex

	All Races			Whites			Blacks		
	Total	Males	Females	Total	Males	Females	Total	Males	Females
<u>SEER INCIDENCE RATES^b, 1998-2002</u>									
REGISTRY									
13 SEER Areas	469.7	553.3	413.5	479.7	556.4	429.3	512.3	682.6	398.5
11 SEER Areas	469.8	553.4	413.6	479.8	556.6	429.5	513.7	683.7	400.0
9 SEER Areas	480.4	567.0	421.9	489.1	569.7	435.6	519.3	692.5	404.1
San Francisco-Oakland	459.5	530.6	411.6	482.8	545.7	441.5	485.8	611.3	397.9
Connecticut	508.8	597.9	450.5	509.8	593.3	456.0	481.8	636.1	382.4
Metropolitan Detroit	540.1	672.4	452.7	535.1	649.6	461.9	572.2	775.6	436.8
Hawaii	422.5	479.9	381.3	509.6	574.7	455.5	376.3	467.5	260.0
Iowa	476.7	557.0	426.0	473.6	551.9	424.6	522.2	660.0	418.4
New Mexico	407.4	477.4	355.1	421.5	492.2	368.6	375.0	510.9	260.9
Seattle-Puget Sound	506.4	582.9	454.6	519.7	594.2	469.4	518.5	663.3	399.0
Utah	406.3	481.9	350.3	411.6	487.8	355.2	386.4	515.5	270.8
Metropolitan Atlanta	466.8	566.3	402.5	468.1	545.3	419.9	487.0	669.0	379.8
San Jose-Monterey	434.2	497.1	393.8	459.4	519.9	421.7	417.7	554.6	298.5
Los Angeles	445.6	524.4	393.3	453.5	519.8	411.3	504.5	669.0	394.2
<u>SEER DEATH RATES^c, 1998-2002</u>									
REGISTRY									
13 SEER Areas	182.9	223.5	156.5	183.9	222.9	158.9	239.3	315.1	193.9
11 SEER Areas	182.7	223.3	156.5	183.8	222.9	158.9	239.4	314.5	194.6
9 SEER Areas	186.7	229.7	158.8	186.9	228.4	160.3	240.9	319.1	193.8
San Francisco-Oakland	180.9	216.8	157.4	186.7	219.0	166.3	252.0	327.9	205.0
Connecticut	189.1	232.3	162.6	188.5	230.5	162.7	217.3	300.5	171.6
Metropolitan Detroit	210.0	261.6	178.3	201.7	249.5	172.9	248.7	321.9	202.8
Hawaii	155.2	192.4	125.6	183.1	219.5	152.0	133.6	143.2	125.9
Iowa	189.3	239.3	157.5	188.7	238.4	157.1	284.6	376.3	223.9
New Mexico	171.2	209.5	144.1	173.4	211.7	146.3	205.1	275.2	160.6
Seattle-Puget Sound	193.9	234.1	166.9	196.8	236.0	170.7	241.2	314.8	188.1
Utah	150.6	186.6	125.7	150.6	186.6	125.9	210.9	302.2	148.8
Metropolitan Atlanta	193.3	245.7	162.6	181.2	225.1	154.9	235.5	329.3	186.9
San Jose-Monterey	161.8	190.3	143.3	170.7	199.5	152.6	208.3	256.1	170.2
Los Angeles	174.9	210.3	152.0	175.9	208.9	155.1	237.8	306.2	198.1

^a Incidence and death rates are per 100,000 and are age-adjusted to the 2000 US Std Population (19 age groups - Census P25-1130).

^b The SEER 9 areas are San Francisco, Connecticut, Detroit, Hawaii, Iowa, New Mexico, Seattle, Utah, and Atlanta. The SEER 11 areas comprise the SEER 9 areas plus San Jose-Monterey and Los Angeles. The SEER 13 areas comprise the SEER 11 areas plus the Alaska Native Registry and Rural Georgia.

^c NCHS public use data file for the total US with analyses limited to the SEER geographic areas.

- Statistic could not be calculated or populations are inadequate.

Table II-11
ALL SITES (Invasive)

AVERAGE ANNUAL AGE-ADJUSTED CANCER DEATH^a RATES BY STATE, ALL RACES, 1998-2002

Males and Females

State	Rate	SE	Rank	PD
TOTAL U.S.	197.8	0.12		
High Five States				
District of Columbia	238.7 ^{bc}	2.93	(01)	20.7
Louisiana	228.1 ^{bc}	1.05	(02)	15.3
Kentucky	226.9 ^{bc}	1.06	(03)	14.7
Mississippi	221.5 ^{bc}	1.28	(04)	12.0
West Virginia	220.9 ^{bc}	1.44	(05)	11.7
Low Five States				
Arizona	175.2 ^{bc}	0.83	(47)	-11.4
Colorado	172.1 ^{bc}	1.00	(48)	-13.0
New Mexico	171.2 ^{bc}	1.43	(49)	-13.4
Hawaii	155.2 ^{bc}	1.57	(50)	-21.5
Utah	150.6 ^{bc}	1.39	(51)	-23.9

Males

State	Rate	SE	Rank	PD
TOTAL U.S.	247.5	0.21		
High Five States				
District of Columbia	308.2 ^{bc}	5.39	(01)	24.5
Mississippi	303.8 ^{bc}	2.40	(02)	22.7
Louisiana	300.1 ^{bc}	1.94	(03)	21.3
Kentucky	297.7 ^{bc}	1.95	(04)	20.3
Alabama	285.8 ^{bc}	1.81	(05)	15.5
Low Five States				
Arizona	211.1 ^{bc}	1.39	(47)	-14.7
New Mexico	209.5 ^{bc}	2.44	(48)	-15.4
Colorado	209.5 ^{bc}	1.75	(49)	-15.4
Hawaii	192.4 ^{bc}	2.60	(50)	-22.3
Utah	186.6 ^{bc}	2.40	(51)	-24.6

Females

State	Rate	SE	Rank	PD
TOTAL U.S.	165.5	0.14		
High Five States				
District of Columbia	195.6 ^{bc}	3.44	(01)	18.2
West Virginia	184.3 ^{bc}	1.75	(02)	11.4
Louisiana	181.4 ^{bc}	1.23	(03)	9.6
Kentucky	181.3 ^{bc}	1.25	(04)	9.5
Delaware	179.5 ^{bc}	2.82	(05)	8.5
Low Five States				
Arizona	148.9 ^{bc}	1.03	(47)	-10.0
Colorado	148.7 ^{bc}	1.23	(48)	-10.2
New Mexico	144.1 ^{bc}	1.75	(49)	-12.9
Utah	125.7 ^{bc}	1.70	(50)	-24.0
Hawaii	125.6 ^{bc}	1.92	(51)	-24.1

For additional detailed cancer statistics by state, please visit the State Cancer Profiles website. <http://statecancerprofiles.cancer.gov/>

- ^a NCHS public use data file. Rates are per 100,000 and are age-adjusted to the 2000 US Std Population (19 age groups - Census P25-1130).
^b Absolute percent difference between state rate and total U.S. rate is 5% or more.
^c Difference between state rate and total U.S. rate is statistically significant (p<=.0002).
SE Standard error of the rate.
PD Percent difference between state rate and total U.S. rate.

Table II-12
ALL SITES (Invasive)Estimated United States Cancer Prevalence Counts^a on January 1, 2002
By Race/Ethnicity, Sex and Years Since Diagnosis

Years Since Diagnosis	0 to <5	5 to <10	10 to <15	15 to <20	20 to <25	0 to <12 ^e	0 to <27 ^e	>=27 ^g	Complete ^h
Race/Sex									
All Races ^b	3,867,003	2,460,330	1,504,635	872,558	553,193	7,039,730	9,430,525	715,799	10,146,324
Males	1,957,153	1,233,741	639,238	309,137	172,896	3,517,811	4,356,626	147,269	4,503,895
Females	1,909,850	1,226,589	865,397	563,421	380,297	3,521,919	5,073,899	568,530	5,642,429
White ^b	3,370,258	2,174,781	1,364,398	794,145	506,445	6,189,259	8,368,124	635,007	9,003,131
Males	1,693,011	1,082,602	582,459	282,797	159,821	3,072,611	3,841,476	136,108	3,977,584
Females	1,677,247	1,092,179	781,939	511,348	346,624	3,116,648	4,526,648	498,899	5,025,547
Black ^b	349,752	201,255	97,676	53,097	31,475	599,087	742,995	39,343	782,338
Males	190,761	111,002	40,814	17,758	8,479	323,678	371,112	4,700	375,812
Females	158,991	90,253	56,862	35,339	22,996	275,409	371,883	34,643	406,526
Asian/Pacific Islander ^c	85,392	45,835	+	+	+	143,180	+	+	+
Males	37,395	18,926	+	+	+	60,654	+	+	+
Females	47,997	26,909	+	+	+	82,526	+	+	+
Hispanic ^d	185,695	105,516	+	+	+	319,960	+	+	+
Males	90,068	48,833	+	+	+	150,533	+	+	+
Females	95,627	56,683	+	+	+	169,427	+	+	+

Estimated prevalence percent^a on January 1, 2002, of the SEER 11 population diagnosed in the previous 10 years
By Age at Prevalence, Race/Ethnicity and Sex

Age at Prevalence	Age Specific (Crude)										Age-Adjusted ^f
	All Ages	0-9	10-19	20-29	30-39	40-49	50-59	60-69	70-79	80+	All Ages
Race/Sex											
All Races ^c	1.9552%	0.0765%	0.1025%	0.2064%	0.5256%	1.2483%	3.0137%	6.6073%	10.6061%	10.3405%	2.1145%
Males	1.9759%	0.0817%	0.1068%	0.1924%	0.4097%	0.8369%	2.5015%	7.6417%	14.6397%	15.1464%	2.4520%
Females	1.9350%	0.0710%	0.0979%	0.2211%	0.6448%	1.6542%	3.4996%	5.6874%	7.5704%	7.7514%	1.9148%
White ^c	2.1304%	0.0829%	0.1107%	0.2286%	0.5705%	1.3074%	3.1268%	6.9174%	11.0039%	10.5126%	2.1990%
Males	2.1231%	0.0884%	0.1151%	0.2136%	0.4516%	0.8832%	2.5559%	7.8285%	14.8780%	15.1483%	2.5028%
Females	2.1378%	0.0771%	0.1061%	0.2449%	0.6976%	1.7393%	3.6836%	6.0862%	8.0453%	8.0534%	2.0279%
Black ^c	1.4290%	0.0483%	0.0762%	0.1323%	0.3787%	1.0515%	2.9796%	6.9895%	10.6640%	9.0076%	2.0344%
Males	1.6402%	0.0492%	0.0800%	0.1181%	0.2628%	0.7536%	3.1344%	9.9353%	17.5275%	15.5995%	2.8308%
Females	1.2376%	0.0474%	0.0723%	0.1453%	0.4814%	1.3122%	2.8505%	4.6668%	6.1474%	5.9275%	1.5338%
Asian/Pacific Islander ^c	1.2329%	0.0657%	0.0792%	0.1298%	0.3354%	0.9396%	2.0542%	3.8217%	6.7362%	7.8294%	1.4017%
Males	1.1367%	0.0732%	0.0813%	0.1147%	0.2206%	0.4810%	1.3014%	3.8179%	9.1878%	11.1826%	1.4881%
Females	1.3230%	0.0578%	0.0770%	0.1445%	0.4437%	1.3521%	2.7151%	3.8247%	4.9208%	5.5284%	1.3704%
Hispanic ^d	0.7567%	0.0715%	0.0945%	0.1365%	0.3567%	0.8798%	1.9654%	4.3340%	7.5704%	7.5473%	1.4752%
Males	0.6890%	0.0757%	0.0991%	0.1278%	0.2583%	0.4818%	1.4325%	5.0228%	11.0553%	11.4012%	1.7291%
Females	0.8280%	0.0672%	0.0896%	0.1467%	0.4688%	1.2851%	2.4551%	3.7662%	5.0898%	5.4259%	1.3473%

^a US 2002 cancer prevalence counts are based on 2002 cancer prevalence proportions from the SEER registries and 1/1/2002 US population estimates based on the average of 2001 and 2002 population estimates from the US Bureau of the Census. Prevalence was calculated using the First Malignant Primary Only for a person.

^{b c d} Statistics based on (b) SEER 9 Areas (c) SEER 11 Areas and Rural Georgia (d) SEER 11 Areas excluding Hawaii and Detroit.

^e Maximum limited-duration prevalence: 27 years for 1975-2002 SEER 9 data; 12 years for 1990-2002 SEER 11 data (used to calculate prevalence for Hispanics and Asian Pacific Islanders).

^f Percentages are age-adjusted to the 2000 US standard population by 5-year age groups.

^{g h} (g) Cases diagnosed more than 27 years ago were estimated using the completeness index method (Capocaccia et. al. 1997, Merrill et. al. 2000). (h) Complete prevalence is obtained by summing 0 to <27 and >=27.

- Statistic not shown. Statistic based on fewer than 5 cases estimated alive in SEER for the time interval.

+ Not available.

SEER Incidence, Delay Adjusted Incidence and US Death Rates+ All Cancer Sites, by Race and Sex

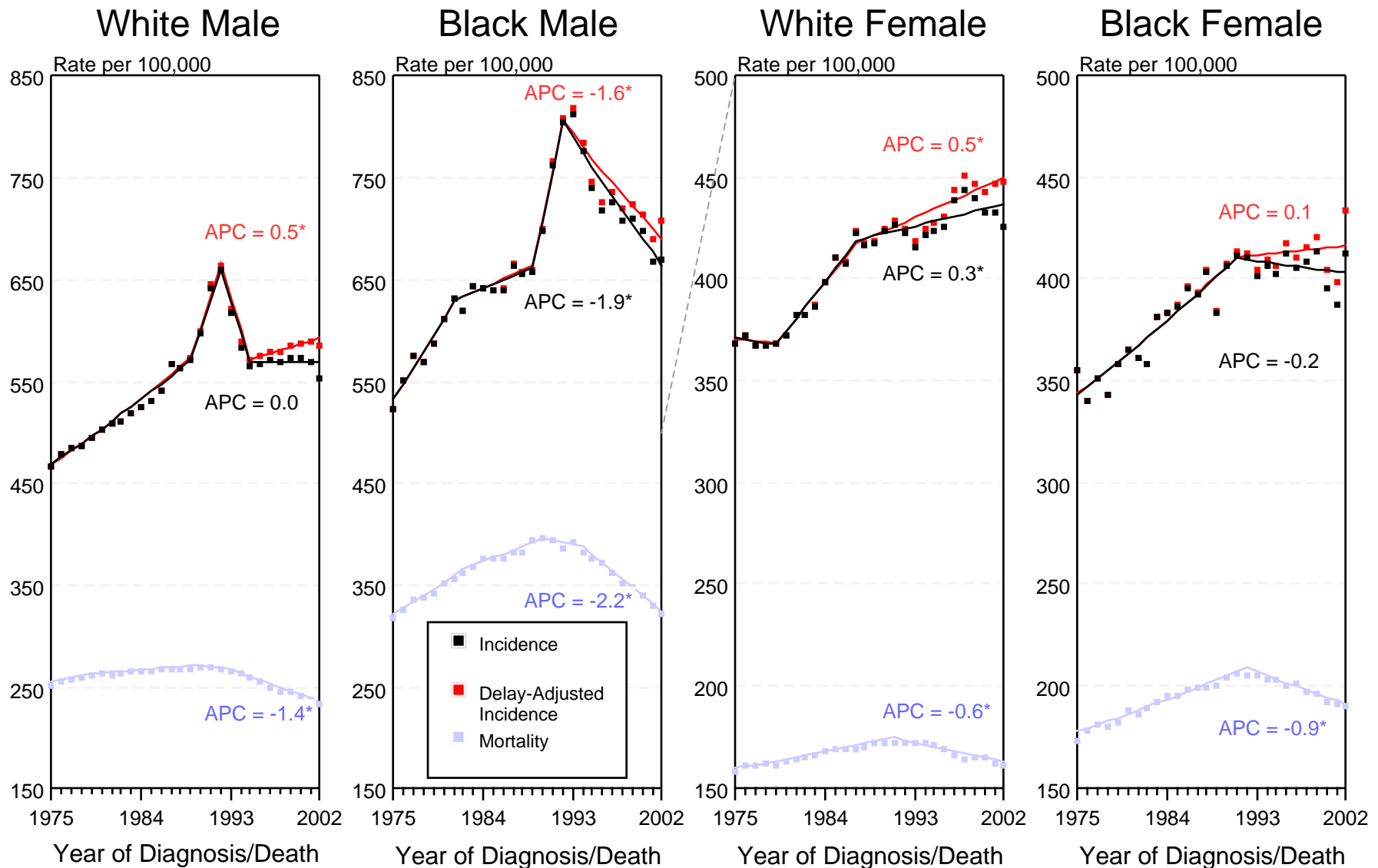


Figure II-1

+ Source: SEER 9 areas and NCHS public use data file for the total US. Rates are age-adjusted to the 2000 US Std Population (19 age groups - Census P25-1103). Regression lines and APCs are calculated using the Joinpoint Regression Program Version 3.0, April 2005, National Cancer Institute.

The APC is the Annual Percent Change for the regression line segments. The APC shown on the graph is for the most recent trend.

* The APC is significantly different from zero ($p < 0.05$).

SEER Incidence and US Death Rates+ All Cancer Sites, Under 65 Years of Age, by Race and Sex

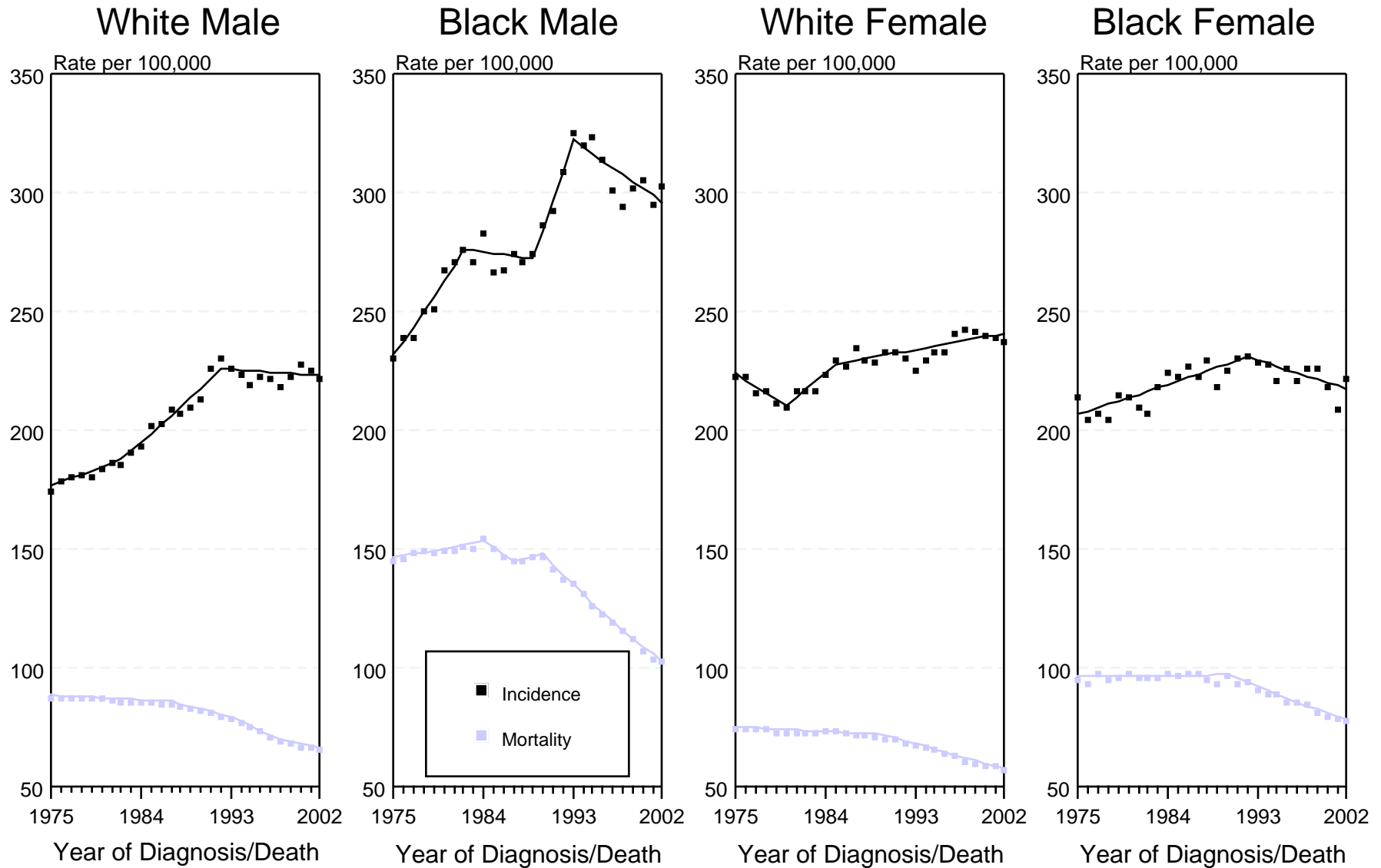


Figure II-2

+ Source: SEER 9 areas and NCHS public use data file for the total US. Rates are age-adjusted to the 2000 US Std Population (19 age groups - Census P25-1103). Regression lines are calculated using the Joinpoint Regression Program Version 3.0, April 2005, National Cancer Institute.

SEER Incidence and US Death Rates+ All Cancer Sites, Ages 65 and Over, by Race and Sex

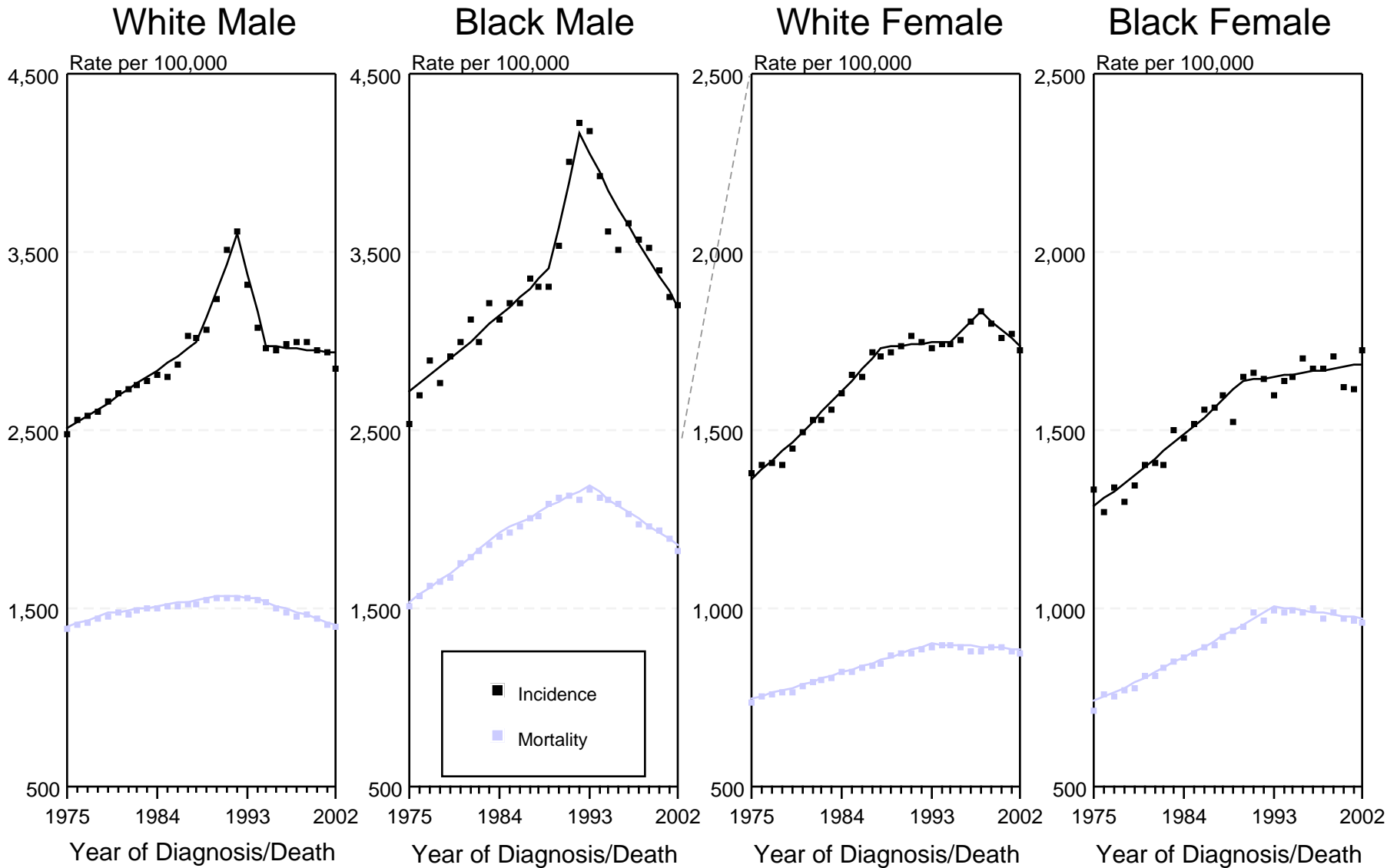


Figure II-3

+ Source: SEER 9 areas and NCHS public use data file for the total US. Rates are age-adjusted to the 2000 US Std Population (19 age groups - Census P25-1103). Regression lines are calculated using the Joinpoint Regression Program Version 3.0, April 2005, National Cancer Institute.

SEER Incidence and US Death Rates + All Cancer Sites, Both Sexes

Joinpoint Analyses for 1975-2002 for Whites and Blacks

Rates for 1992-2002 for Asian/Pacific Islander, American Indian/Alaska Native and Hispanic

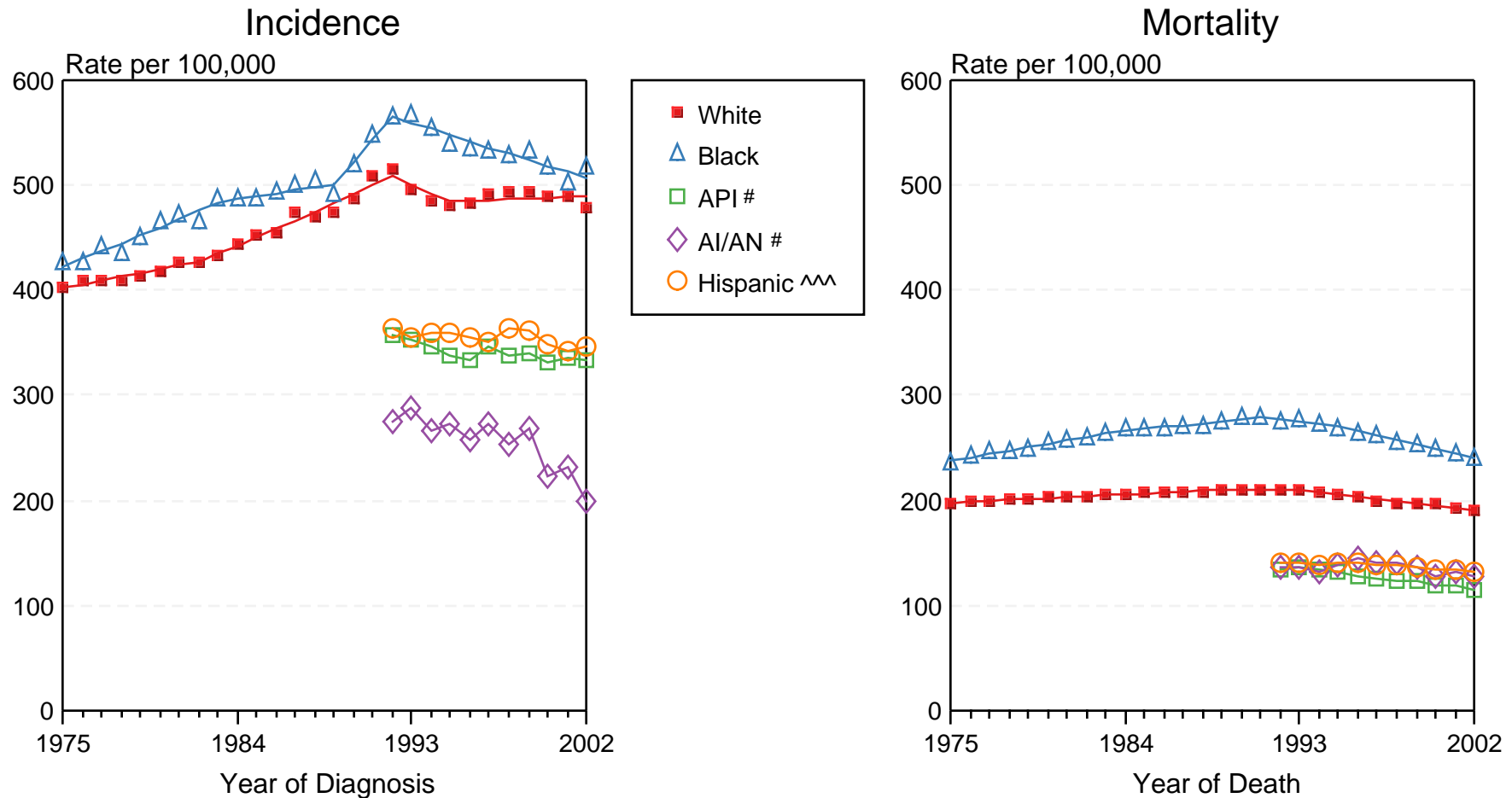


Figure 11-4

+ Source: Incidence data for whites and blacks is from the SEER 9 areas (San Francisco, Connecticut, Detroit, Hawaii, Iowa, New Mexico, Seattle, Utah, Atlanta). Incidence data for Asian/Pacific Islanders, American Indian/Alaska Natives and Hispanics is from the SEER 13 Areas (SEER 9 Areas, San Jose-Monterey, Los Angeles, Alaska Native Registry and Rural Georgia). Mortality data is from NCHS public use data file for the total US. Rates are age-adjusted to the 2000 US Std Population (19 age groups - Census P25-1103). Regression lines for whites and blacks are calculated using the Joinpoint Regression Program Version 3.0, April 2005, National Cancer Institute.

API = Asian/Pacific Islander. AI/AN = American Indian/Alaska Native.

^^ Hispanic is not mutually exclusive from Whites, Blacks, Asian/Pacific Islanders, and American Indians/Alaska Natives. Incidence data for Hispanics excludes cases from Detroit, Hawaii, Alaska Native Registry and Rural Georgia. Mortality data for Hispanics excludes cases from Connecticut, Maine, Maryland, Minnesota, Oklahoma, New Hampshire, New York, North Dakota, and Vermont.