

Table XIII-1
LEUKEMIA (Invasive)

TRENDS IN SEER INCIDENCE^a AND U.S. MORTALITY^b USING THE JOINTPOINT REGRESSION PROGRAM, 1975-2002
WITH UP TO THREE JOINTPOINTS BY RACE AND SEX

		<u>Jointpoint Segment 1</u>		<u>Jointpoint Segment 2</u>		<u>Jointpoint Segment 3</u>		<u>Jointpoint Segment 4</u>	
		Year	APC	Year	APC	Year	APC	Year	APC
<u>SEER Cancer Incidence^a</u>									
All Races	Male and Female	1975-2002	-0.1 ^c						
All Races	Male	1975-2002	-0.3 ^c						
All Races	Female	1975-2002	-0.1						
White	Male and Female	1975-2002	0.0						
White	Male	1975-2002	-0.2 ^c						
White	Female	1975-2002	0.0						
Black	Male and Female	1975-2002	-0.7 ^c						
Black	Male	1975-2002	-0.7 ^c						
Black	Female	1975-2002	-0.6 ^c						
<u>SEER Delay-Adjusted Incidence^a</u>									
All Races	Male and Female	1975-2002	0.2 ^c						
All Races	Male	1975-2002	0.1						
All Races	Female	1975-2002	0.2 ^c						
White	Male and Female	1975-2002	0.5 ^c						
White	Male	1975-2002	0.3 ^c						
White	Female	1975-2002	0.5 ^c						
Black	Male and Female	1975-2002	-0.2						
Black	Male	1975-2002	-0.2						
Black	Female	1975-2002	-0.1						
<u>U.S. Cancer Mortality^b</u>									
All Races	Male and Female	1975-1980	0.6	1980-1988	-0.6 ^c	1988-1991	0.7	1991-2002	-0.6 ^c
All Races	Male	1975-1995	-0.2 ^c	1995-2002	-0.7 ^c				
All Races	Female	1975-1980	0.8	1980-2002	-0.4 ^c				
White	Male and Female	1975-1980	0.5	1980-1988	-0.7 ^c	1988-1991	0.7	1991-2002	-0.5 ^c
White	Male	1975-2002	-0.3 ^c						
White	Female	1975-1980	0.7	1980-2002	-0.4 ^c				
Black	Male and Female	1975-1991	0.6 ^c	1991-2002	-1.0 ^c				
Black	Male	1975-1991	1.0 ^c	1991-2002	-1.2 ^c				
Black	Female	1975-1983	1.4 ^c	1983-2002	-0.4 ^c				

Jointpoint Regression Program Version 3.0, April 2005, National Cancer Institute. (<http://srab.cancer.gov/jointpoint/>).

The APC is the Annual Percent Change based on rates age-adjusted to the 2000 US Std Population (19 age groups - Census P25-1130).

^a Trends are from the SEER 9 areas.

^b Trends are from the NCHS public use data file for the total US.

^c The APC is significantly different from zero (p<.05).

Table XIII-2
LEUKEMIASEER INCIDENCE RATES, AGE-ADJUSTED AND AGE-SPECIFIC RATES^a, BY RACE AND SEX

	All Races			Whites			Blacks		
	Total	Males	Females	Total	Males	Females	Total	Males	Females
<u>AGE-ADJUSTED RATES</u>									
<u>YEAR OF DIAGNOSIS:</u>									
1975	12.8	16.9	10.0	13.1	17.5	10.1	11.5	16.2	8.5
1976	13.5	18.5	10.2	13.8	19.1	10.3	11.3	14.2	9.4
1977	12.7	16.3	10.2	13.2	17.0	10.5	10.2	13.6	7.9
1978	12.9	17.2	9.8	13.5	18.3	10.2	9.2	11.4	7.5
1979	12.5	16.8	9.7	13.0	17.5	10.0	10.6	13.6	8.6
1980	12.9	17.4	9.8	13.3	17.9	10.1	12.2	16.0	9.5
1981	12.4	16.5	9.6	12.7	17.1	9.8	12.2	14.5	10.3
1982	13.2	18.2	9.7	13.5	18.8	10.0	10.8	15.2	7.9
1983	13.1	17.8	9.9	13.5	18.4	10.1	12.5	16.0	10.1
1984	13.0	17.0	10.1	13.4	17.9	10.3	10.6	11.8	9.6
1985	13.3	17.7	10.4	13.7	18.2	10.6	12.2	16.8	9.3
1986	12.8	17.4	9.5	13.3	18.3	9.9	10.4	13.1	8.4
1987	13.3	17.7	10.3	13.8	18.4	10.6	12.6	17.6	9.3
1988	12.9	17.3	9.6	13.3	18.1	9.9	11.6	13.9	9.6
1989	13.3	17.6	10.4	13.9	18.2	10.9	11.2	15.9	7.9
1990	12.8	17.2	9.7	13.4	18.1	10.1	11.1	14.6	8.7
1991	13.0	16.7	10.2	13.5	17.5	10.5	10.9	12.1	10.2
1992	12.9	17.4	9.7	13.5	18.5	9.9	10.7	13.9	8.4
1993	12.9	16.9	10.0	13.4	17.7	10.2	11.6	15.2	9.0
1994	12.8	16.7	10.0	13.4	17.6	10.4	9.8	12.6	7.8
1995	13.4	17.5	10.3	14.2	18.6	10.9	9.7	13.3	7.2
1996	12.8	16.6	10.1	13.3	17.2	10.5	10.6	13.7	8.6
1997	12.8	17.1	9.6	13.6	18.1	10.2	10.1	13.8	7.7
1998	12.8	16.6	9.9	13.5	17.4	10.5	9.7	14.1	6.9
1999	12.3	16.3	9.2	12.8	17.0	9.7	9.8	13.2	7.6
2000	12.7	16.4	10.0	13.3	17.2	10.4	11.0	13.2	9.4
2001	12.8	16.7	9.9	13.5	17.5	10.5	10.4	12.5	8.9
2002	11.7	15.4	8.9	12.5	16.4	9.4	7.5	9.4	6.2
<u>AGE-ADJUSTED RATES, 1998-2002</u>									
<u>AGE AT DIAGNOSIS:</u>									
All ages	12.4	16.3	9.6	13.1	17.1	10.1	9.6	12.4	7.8
Under 65	6.0	7.2	4.9	6.3	7.4	5.1	4.5	5.6	3.5
65 and over	57.0	79.3	42.2	60.5	84.0	44.7	45.5	59.6	37.5
All ages(IARC world std) ^b	8.9	11.2	7.0	9.4	11.8	7.4	6.7	8.4	5.4
<u>AGE-SPECIFIC RATES, 1998-2002</u>									
<u>AGE AT DIAGNOSIS:</u>									
<1	4.0	3.6	4.4	4.2	3.9	4.4	-	-	-
1-4	8.5	9.2	7.7	9.5	10.3	8.7	3.9	-	-
5-9	3.8	3.9	3.6	4.1	4.5	3.7	2.2	-	-
10-14	2.5	2.9	2.1	2.6	2.9	2.4	1.9	-	-
15-19	2.7	3.0	2.3	2.8	3.3	2.3	-	-	-
20-24	2.4	2.6	2.1	2.5	2.8	2.3	-	-	-
25-29	2.5	2.8	2.3	2.6	2.7	2.4	2.5	-	-
30-34	2.9	3.5	2.3	2.8	3.3	2.4	2.8	3.9	-
35-39	3.6	4.2	2.9	3.5	4.0	3.0	3.5	4.5	-
40-44	4.6	5.5	3.6	4.7	5.3	4.1	4.1	6.9	-
45-49	7.1	8.1	6.0	7.3	8.4	6.2	6.2	7.5	5.0
50-54	10.1	12.3	8.0	10.3	12.7	8.0	8.3	10.4	6.5
55-59	16.2	20.9	11.7	16.9	22.2	11.7	12.5	14.9	10.4
60-64	24.5	31.4	18.1	26.0	33.1	19.3	15.8	22.9	-
65-69	35.8	47.7	25.7	38.0	50.0	27.5	33.6	42.0	27.4
70-74	49.2	69.9	32.9	52.9	75.0	35.1	39.9	52.8	31.1
75-79	64.1	87.2	47.8	68.3	92.7	51.1	43.2	55.2	35.7
80-84	76.9	105.7	59.4	81.1	111.2	62.8	58.6	71.4	51.8
85+	84.9	124.4	67.9	88.4	130.9	70.7	72.5	106.6	59.5

^a SEER 9 areas. Rates are per 100,000 and are age-adjusted to the 2000 US Std Population (19 age groups - Census P25-1130), unless noted.

^b SEER 9 areas. Rates are per 100,000 and are age-adjusted to the IARC world standard population.

- Statistic not shown. Rate based on less than 25 cases for the time interval.

Table XIII-3
ACUTE LYMPHOCYTIC LEUKEMIA

SEER INCIDENCE RATES, AGE-ADJUSTED AND AGE-SPECIFIC RATES^a, BY RACE AND SEX

	All Races			Whites			Blacks		
	Total	Males	Females	Total	Males	Females	Total	Males	Females
<u>AGE-ADJUSTED RATES</u>									
YEAR OF DIAGNOSIS:									
1975	0.9	1.1	0.8	1.0	1.2	0.8	-	-	-
1976	1.1	1.3	0.9	1.1	1.3	0.9	-	-	-
1977	1.1	1.3	0.9	1.2	1.4	1.0	-	-	-
1978	1.0	1.2	0.8	1.1	1.3	0.9	-	-	-
1979	1.0	1.2	0.9	1.1	1.2	1.0	-	-	-
1980	1.1	1.4	0.9	1.2	1.5	0.9	-	-	-
1981	1.2	1.3	1.2	1.3	1.4	1.2	-	-	-
1982	1.2	1.5	1.0	1.3	1.6	1.0	-	-	-
1983	1.3	1.5	1.1	1.4	1.7	1.2	-	-	-
1984	1.3	1.5	1.2	1.3	1.5	1.2	-	-	-
1985	1.3	1.5	1.1	1.4	1.6	1.1	-	-	-
1986	1.3	1.7	1.0	1.4	1.8	1.0	-	-	-
1987	1.3	1.5	1.2	1.3	1.6	1.2	-	-	-
1988	1.4	1.8	1.1	1.5	1.8	1.1	-	-	-
1989	1.6	1.8	1.4	1.7	1.9	1.5	1.0	-	-
1990	1.4	1.7	1.1	1.5	1.8	1.3	-	-	-
1991	1.4	1.7	1.1	1.5	1.9	1.1	-	-	-
1992	1.4	1.6	1.1	1.4	1.7	1.1	0.9	-	-
1993	1.3	1.4	1.1	1.4	1.6	1.1	-	-	-
1994	1.2	1.5	0.9	1.3	1.6	1.0	-	-	-
1995	1.5	1.8	1.2	1.6	1.9	1.3	0.9	-	-
1996	1.4	1.6	1.2	1.4	1.7	1.2	0.8	-	-
1997	1.3	1.5	1.2	1.5	1.6	1.3	0.8	-	-
1998	1.5	1.6	1.3	1.6	1.7	1.4	0.9	-	-
1999	1.3	1.5	1.1	1.4	1.6	1.2	-	-	-
2000	1.4	1.5	1.3	1.5	1.6	1.5	0.9	-	-
2001	1.4	1.6	1.3	1.6	1.8	1.3	-	-	-
2002	1.4	1.7	1.2	1.6	1.9	1.2	-	-	-
<u>AGE-ADJUSTED RATES, 1998-2002</u>									
AGE AT DIAGNOSIS:									
All ages	1.4	1.6	1.2	1.5	1.7	1.3	0.7	0.8	0.7
Under 65	1.4	1.6	1.2	1.6	1.7	1.4	0.7	0.8	0.6
65 and over	1.2	1.4	1.1	1.3	1.5	1.2	-	-	-
All ages(IARC world std) ^b	1.8	1.9	1.6	1.9	2.1	1.7	0.9	0.9	0.8
<u>AGE-SPECIFIC RATES, 1998-2002</u>									
AGE AT DIAGNOSIS:									
<1	1.8	-	2.8	1.9	-	-	-	-	-
1-4	7.2	7.9	6.5	8.2	8.9	7.6	2.9	-	-
5-9	3.1	3.3	3.0	3.5	3.8	3.1	1.7	-	-
10-14	1.7	2.0	1.4	1.9	2.0	1.7	-	-	-
15-19	1.4	1.7	1.1	1.6	1.9	1.2	-	-	-
20-24	0.7	1.0	-	0.8	1.0	-	-	-	-
25-29	0.5	0.6	-	0.6	-	-	-	-	-
30-34	0.6	0.8	-	0.6	0.8	-	-	-	-
35-39	0.5	0.6	-	0.5	0.7	-	-	-	-
40-44	0.4	0.5	-	0.4	-	-	-	-	-
45-49	0.6	0.6	0.5	0.6	0.6	-	-	-	-
50-54	0.9	1.1	0.7	0.9	1.1	-	-	-	-
55-59	0.9	0.9	0.9	0.9	-	1.0	-	-	-
60-64	0.9	1.2	-	0.9	-	-	-	-	-
65-69	1.1	-	-	1.2	-	-	-	-	-
70-74	1.1	-	-	1.1	-	-	-	-	-
75-79	1.2	-	-	1.3	-	-	-	-	-
80-84	1.3	-	-	1.4	-	-	-	-	-
85+	1.6	-	-	1.7	-	-	-	-	-

^a SEER 9 areas. Rates are per 100,000 and are age-adjusted to the 2000 US Std Population (19 age groups - Census P25-1130), unless noted.

^b SEER 9 areas. Rates are per 100,000 and are age-adjusted to the IARC world standard population.

- Statistic not shown. Rate based on less than 25 cases for the time interval.

Table XIII-4
CHRONIC LYMPHOCYTIC LEUKEMIA

SEER INCIDENCE RATES, AGE-ADJUSTED AND AGE-SPECIFIC RATES^a, BY RACE AND SEX

	All Races			Whites			Blacks		
	Total	Males	Females	Total	Males	Females	Total	Males	Females
<u>AGE-ADJUSTED RATES</u>									
YEAR OF DIAGNOSIS:									
1975	4.3	5.9	3.3	4.5	6.1	3.4	4.8	6.9	-
1976	4.6	6.8	3.1	4.8	7.2	3.2	4.3	-	-
1977	4.2	5.7	3.1	4.4	6.0	3.3	3.9	5.8	-
1978	4.4	5.9	3.4	4.7	6.4	3.6	3.3	-	-
1979	4.0	5.7	2.9	4.3	6.1	3.1	3.1	-	-
1980	4.5	6.3	3.3	4.7	6.5	3.4	4.5	7.1	-
1981	4.3	6.3	2.9	4.5	6.6	3.0	3.8	5.4	-
1982	4.3	6.1	3.0	4.5	6.4	3.2	3.8	6.7	-
1983	4.4	6.4	3.1	4.7	6.8	3.2	4.2	6.1	-
1984	4.4	6.3	3.1	4.7	6.8	3.3	3.5	4.5	-
1985	4.4	6.1	3.3	4.7	6.5	3.5	4.1	6.1	-
1986	4.5	6.3	3.2	4.8	6.8	3.5	2.8	4.2	-
1987	4.6	6.7	3.0	4.9	7.2	3.3	4.0	6.1	-
1988	4.4	6.3	3.1	4.6	6.7	3.2	4.4	5.2	3.5
1989	4.6	6.3	3.4	4.9	6.8	3.6	3.8	5.3	2.8
1990	4.5	6.2	3.3	4.8	6.6	3.5	4.4	5.9	3.4
1991	4.5	6.1	3.4	4.9	6.6	3.6	3.4	3.7	3.2
1992	4.5	6.6	3.1	4.9	7.2	3.3	3.2	5.0	-
1993	4.3	5.9	3.1	4.5	6.3	3.3	4.4	6.6	2.9
1994	4.4	5.9	3.2	4.7	6.4	3.5	3.2	4.1	-
1995	4.4	6.2	3.0	4.7	6.7	3.3	3.3	5.3	-
1996	4.4	5.9	3.3	4.7	6.3	3.6	3.4	5.2	-
1997	4.1	5.7	3.0	4.5	6.2	3.3	3.1	4.9	-
1998	3.8	5.5	2.7	4.2	5.9	2.9	2.6	3.4	-
1999	3.7	5.4	2.4	4.0	5.8	2.6	3.3	5.4	-
2000	3.8	5.3	2.6	4.2	5.9	2.8	2.9	3.8	2.3
2001	4.1	5.8	2.9	4.5	6.4	3.1	2.7	3.2	2.4
2002	3.7	5.2	2.5	4.0	5.7	2.7	2.1	2.9	-
<u>AGE-ADJUSTED RATES, 1998-2002</u>									
AGE AT DIAGNOSIS:									
All ages	3.8	5.5	2.6	4.2	5.9	2.8	2.7	3.7	2.1
Under 65	1.3	1.8	0.8	1.4	1.9	0.9	0.8	1.2	0.5
65 and over	21.3	30.9	14.9	23.2	33.6	16.2	15.8	21.5	12.7
All ages(IARC world std) ^b	2.3	3.3	1.6	2.5	3.6	1.7	1.7	2.3	1.2
<u>AGE-SPECIFIC RATES, 1998-2002</u>									
AGE AT DIAGNOSIS:									
<1	-	-	-	-	-	-	-	-	-
1-4	-	-	-	-	-	-	-	-	-
5-9	-	-	-	-	-	-	-	-	-
10-14	-	-	-	-	-	-	-	-	-
15-19	-	-	-	-	-	-	-	-	-
20-24	-	-	-	-	-	-	-	-	-
25-29	-	-	-	-	-	-	-	-	-
30-34	-	-	-	-	-	-	-	-	-
35-39	0.3	-	-	0.3	-	-	-	-	-
40-44	0.7	1.1	-	0.8	1.1	-	-	-	-
45-49	1.8	2.3	1.3	2.0	2.5	1.5	-	-	-
50-54	3.4	4.6	2.2	3.6	5.0	2.2	-	-	-
55-59	6.6	9.4	4.0	7.3	10.4	4.3	4.6	-	-
60-64	9.7	13.1	6.6	10.7	14.1	7.5	-	-	-
65-69	14.2	19.8	9.5	15.3	21.2	10.1	12.3	-	-
70-74	18.6	27.3	11.8	20.3	29.4	12.9	16.1	21.6	-
75-79	23.3	32.6	16.7	25.5	35.8	18.1	15.4	-	-
80-84	28.2	40.5	20.6	30.7	44.5	22.3	19.1	-	-
85+	31.3	48.5	23.9	33.9	53.2	25.8	-	-	-

^a SEER 9 areas. Rates are per 100,000 and are age-adjusted to the 2000 US Std Population (19 age groups - Census P25-1130), unless noted.

^b SEER 9 areas. Rates are per 100,000 and are age-adjusted to the IARC world standard population.

- Statistic not shown. Rate based on less than 25 cases for the time interval.

Table XIII-5
ACUTE MYELOID LEUKEMIA

SEER INCIDENCE RATES, AGE-ADJUSTED AND AGE-SPECIFIC RATES^a, BY RACE AND SEX

	All Races			Whites			Blacks		
	Total	Males	Females	Total	Males	Females	Total	Males	Females
<u>AGE-ADJUSTED RATES</u>									
YEAR OF DIAGNOSIS:									
1975	3.4	4.2	3.0	3.5	4.3	3.0	2.5	-	-
1976	3.5	4.4	2.9	3.5	4.5	2.9	2.6	-	-
1977	3.5	4.2	3.1	3.6	4.4	3.1	1.9	-	-
1978	3.4	4.4	2.7	3.5	4.6	2.8	2.7	-	-
1979	3.3	4.1	2.8	3.4	4.2	2.9	3.4	-	3.4
1980	3.1	4.1	2.4	3.2	4.1	2.5	2.9	-	-
1981	3.2	4.0	2.6	3.2	4.1	2.7	3.1	-	-
1982	3.4	4.8	2.6	3.5	4.9	2.6	2.5	-	-
1983	3.2	4.2	2.5	3.2	4.3	2.4	2.9	-	-
1984	3.3	4.1	2.7	3.4	4.2	2.8	2.4	-	-
1985	3.3	4.1	2.9	3.2	4.0	2.8	3.7	4.9	3.0
1986	3.0	3.9	2.4	2.9	3.9	2.4	3.2	4.0	2.7
1987	3.0	4.0	2.5	3.0	4.0	2.5	3.0	4.7	-
1988	3.0	3.8	2.5	3.1	3.9	2.5	2.8	3.1	2.5
1989	3.2	4.0	2.6	3.3	4.0	2.8	2.2	3.8	-
1990	3.0	3.9	2.4	3.1	4.0	2.5	2.5	-	-
1991	3.3	3.9	2.9	3.4	3.9	3.0	3.3	4.4	2.6
1992	3.2	3.9	2.8	3.3	4.0	2.7	3.0	3.0	3.0
1993	3.5	4.3	2.9	3.5	4.5	2.9	2.5	-	2.5
1994	3.4	4.1	3.0	3.5	4.2	3.0	2.9	3.2	2.7
1995	3.7	4.2	3.3	3.8	4.3	3.4	2.5	-	2.6
1996	3.5	4.3	2.9	3.5	4.3	2.9	3.2	4.0	2.7
1997	3.5	4.5	2.8	3.6	4.8	2.9	3.0	3.7	2.6
1998	3.9	4.9	3.2	4.0	5.0	3.3	3.1	4.6	2.1
1999	3.7	4.5	3.2	3.8	4.6	3.3	3.0	3.4	2.8
2000	4.0	4.9	3.4	4.0	5.0	3.4	4.3	4.8	3.9
2001	4.0	4.8	3.3	4.1	4.9	3.5	3.4	4.1	3.0
2002	3.5	4.4	2.9	3.7	4.6	3.0	2.8	3.0	2.6
<u>AGE-ADJUSTED RATES, 1998-2002</u>									
AGE AT DIAGNOSIS:									
All ages	3.8	4.7	3.2	3.9	4.8	3.3	3.3	4.0	2.9
Under 65	1.8	2.0	1.6	1.8	2.0	1.6	1.5	1.8	1.3
65 and over	17.9	23.7	14.1	18.6	24.4	14.7	15.8	19.1	14.0
All ages(IARC world std) ^b	2.6	3.1	2.2	2.7	3.2	2.3	2.2	2.6	2.0
<u>AGE-SPECIFIC RATES, 1998-2002</u>									
AGE AT DIAGNOSIS:									
<1	-	-	-	-	-	-	-	-	-
1-4	0.8	0.8	0.7	0.8	-	-	-	-	-
5-9	0.5	-	-	0.5	-	-	-	-	-
10-14	0.7	0.7	0.6	0.6	0.7	-	-	-	-
15-19	0.9	1.0	0.9	0.9	1.1	0.8	-	-	-
20-24	1.2	1.2	1.1	1.3	1.4	1.2	-	-	-
25-29	1.2	1.2	1.2	1.2	1.2	1.3	-	-	-
30-34	1.1	1.2	1.1	1.2	1.2	1.1	-	-	-
35-39	1.4	1.3	1.5	1.4	1.2	1.5	-	-	-
40-44	1.7	1.8	1.6	1.8	1.8	1.8	-	-	-
45-49	2.3	2.4	2.3	2.2	2.2	2.3	2.4	-	-
50-54	2.7	3.0	2.4	2.7	3.0	2.4	-	-	-
55-59	4.8	5.5	4.2	4.8	5.7	3.9	-	-	-
60-64	7.5	9.1	6.0	7.7	9.5	6.1	5.8	-	-
65-69	11.3	14.4	8.7	12.2	15.3	9.5	9.7	-	-
70-74	17.0	22.2	12.9	17.9	23.5	13.3	13.6	-	-
75-79	21.5	27.4	17.3	22.3	28.0	18.2	16.3	-	-
80-84	23.6	30.7	19.3	23.6	29.6	20.0	22.6	-	-
85+	21.7	32.7	17.0	22.0	34.1	17.0	25.3	-	-

^a SEER 9 areas. Rates are per 100,000 and are age-adjusted to the 2000 US Std Population (19 age groups - Census P25-1130), unless noted.
^b SEER 9 areas. Rates are per 100,000 and are age-adjusted to the IARC world standard population.
- Statistic not shown. Rate based on less than 25 cases for the time interval.

Table XIII-6
CHRONIC MYELOID LEUKEMIA

SEER INCIDENCE RATES, AGE-ADJUSTED AND AGE-SPECIFIC RATES^a, BY RACE AND SEX

	All Races			Whites			Blacks		
	Total	Males	Females	Total	Males	Females	Total	Males	Females
<u>AGE-ADJUSTED RATES</u>									
YEAR OF DIAGNOSIS:									
1975	2.0	2.9	1.3	2.0	3.0	1.3	-	-	-
1976	1.9	2.5	1.6	1.9	2.4	1.5	1.9	-	-
1977	1.7	2.1	1.4	1.7	2.1	1.4	-	-	-
1978	1.7	2.3	1.3	1.7	2.3	1.4	-	-	-
1979	1.9	2.5	1.4	1.9	2.5	1.5	1.9	-	-
1980	1.7	2.1	1.5	1.7	2.1	1.5	1.5	-	-
1981	1.6	2.0	1.4	1.6	1.9	1.4	2.4	-	-
1982	1.7	2.2	1.4	1.7	2.2	1.3	1.7	-	-
1983	1.7	2.2	1.3	1.6	2.1	1.3	2.5	-	-
1984	1.7	2.4	1.2	1.6	2.4	1.1	2.6	-	-
1985	2.0	2.8	1.4	2.0	2.8	1.5	2.1	-	-
1986	1.7	2.2	1.3	1.7	2.3	1.3	1.5	-	-
1987	1.9	2.3	1.6	1.9	2.4	1.6	2.1	-	-
1988	1.9	2.5	1.5	1.9	2.6	1.5	2.1	-	-
1989	1.7	2.2	1.3	1.7	2.2	1.3	2.2	-	-
1990	1.7	2.5	1.2	1.7	2.5	1.2	2.5	3.6	-
1991	1.9	2.4	1.5	1.9	2.5	1.5	1.6	-	-
1992	1.8	2.2	1.5	1.8	2.3	1.5	1.5	-	-
1993	1.9	2.5	1.5	2.0	2.5	1.6	2.3	3.6	-
1994	1.8	2.4	1.4	1.9	2.5	1.5	1.7	-	-
1995	1.9	2.5	1.3	1.9	2.7	1.4	1.5	-	-
1996	1.8	2.4	1.4	1.8	2.5	1.3	2.0	-	-
1997	1.8	2.6	1.3	1.9	2.7	1.3	1.7	-	-
1998	1.6	1.9	1.4	1.7	1.9	1.5	1.6	-	-
1999	1.8	2.4	1.3	1.7	2.4	1.3	1.6	-	-
2000	1.7	2.3	1.3	1.7	2.3	1.3	1.5	-	-
2001	1.7	2.2	1.3	1.7	2.2	1.3	1.7	2.5	-
2002	1.4	1.8	1.1	1.5	1.9	1.2	1.0	-	-
<u>AGE-ADJUSTED RATES, 1998-2002</u>									
AGE AT DIAGNOSIS:									
All ages	1.6	2.1	1.3	1.7	2.1	1.3	1.5	1.9	1.2
Under 65	0.8	0.9	0.7	0.8	0.9	0.7	0.8	1.1	0.6
65 and over	7.4	10.3	5.5	7.8	10.8	5.7	6.0	7.2	5.2
All ages(IARC world std) ^b	1.1	1.4	0.8	1.1	1.4	0.9	1.0	1.4	0.8
<u>AGE-SPECIFIC RATES, 1998-2002</u>									
AGE AT DIAGNOSIS:									
<1	-	-	-	-	-	-	-	-	-
1-4	-	-	-	-	-	-	-	-	-
5-9	-	-	-	-	-	-	-	-	-
10-14	-	-	-	-	-	-	-	-	-
15-19	-	-	-	-	-	-	-	-	-
20-24	0.3	-	-	-	-	-	-	-	-
25-29	0.6	0.7	-	0.5	-	-	-	-	-
30-34	0.8	1.0	0.6	0.7	0.8	-	-	-	-
35-39	0.8	1.0	0.5	0.8	0.9	-	-	-	-
40-44	1.0	1.2	0.9	0.9	1.0	0.9	-	-	-
45-49	1.3	1.4	1.2	1.3	1.5	1.2	-	-	-
50-54	1.6	1.7	1.5	1.6	1.6	1.6	-	-	-
55-59	1.7	2.1	1.4	1.8	2.2	1.4	-	-	-
60-64	3.2	3.8	2.6	3.2	3.7	2.7	-	-	-
65-69	4.6	6.2	3.3	4.5	6.2	3.0	-	-	-
70-74	5.8	8.9	3.3	6.5	9.7	3.8	-	-	-
75-79	8.2	11.3	6.1	8.6	11.8	6.4	-	-	-
80-84	11.2	15.0	8.9	12.1	16.3	9.6	-	-	-
85+	11.4	15.2	9.7	11.3	14.8	9.9	-	-	-

^a SEER 9 areas. Rates are per 100,000 and are age-adjusted to the 2000 US Std Population (19 age groups - Census P25-1130), unless noted.

^b SEER 9 areas. Rates are per 100,000 and are age-adjusted to the IARC world standard population.

- Statistic not shown. Rate based on less than 25 cases for the time interval.

Table XIII-7
LEUKEMIAU.S. DEATH RATES, AGE-ADJUSTED AND AGE-SPECIFIC RATES^a, BY RACE AND SEX

	All Races			Whites			Blacks		
	Total	Males	Females	Total	Males	Females	Total	Males	Females
<u>AGE-ADJUSTED RATES</u>									
YEAR OF DEATH:									
1975	8.1	11.0	6.2	8.3	11.3	6.3	6.6	8.6	5.1
1976	8.1	10.9	6.2	8.3	11.2	6.3	6.8	8.5	5.5
1977	8.1	10.8	6.3	8.3	11.1	6.3	6.8	8.8	5.5
1978	8.0	10.8	6.1	8.2	11.1	6.3	6.7	9.2	4.9
1979	8.3	11.1	6.4	8.4	11.4	6.5	7.0	8.9	5.7
1980	8.4	11.2	6.5	8.5	11.5	6.6	7.0	9.1	5.7
1981	8.1	10.9	6.2	8.2	11.2	6.3	7.1	8.9	5.9
1982	8.2	11.0	6.3	8.3	11.3	6.4	7.1	9.4	5.7
1983	8.1	10.9	6.3	8.2	11.2	6.3	7.2	9.2	5.9
1984	8.1	10.7	6.4	8.2	10.9	6.5	7.1	9.2	5.7
1985	8.1	10.8	6.3	8.2	11.0	6.4	7.1	9.6	5.4
1986	8.0	10.7	6.2	8.1	11.0	6.2	7.3	9.3	5.9
1987	7.8	10.3	6.1	7.9	10.5	6.2	7.2	9.4	5.9
1988	7.8	10.6	6.0	8.0	10.8	6.1	7.2	9.8	5.6
1989	8.0	10.6	6.2	8.1	10.8	6.3	7.4	10.3	5.5
1990	8.0	10.7	6.2	8.1	10.9	6.3	7.4	10.0	5.8
1991	8.0	10.5	6.3	8.1	10.6	6.4	7.4	10.0	5.8
1992	8.0	10.7	6.1	8.1	10.9	6.2	7.2	9.4	5.7
1993	7.9	10.7	6.1	8.0	10.8	6.2	7.4	9.8	5.8
1994	7.9	10.6	6.0	8.0	10.8	6.1	7.1	9.6	5.5
1995	7.9	10.8	6.0	8.0	11.0	6.0	7.2	9.8	5.5
1996	7.8	10.5	6.1	8.0	10.7	6.1	7.5	10.1	5.9
1997	7.7	10.4	5.9	7.9	10.7	6.0	6.8	9.2	5.3
1998	7.6	10.1	5.8	7.7	10.3	5.9	7.0	9.4	5.6
1999	7.7	10.2	6.0	7.9	10.5	6.1	6.7	8.8	5.4
2000	7.7	10.3	5.9	7.9	10.5	6.0	6.7	9.1	5.3
2001	7.6	10.1	5.9	7.8	10.4	6.0	6.7	8.8	5.4
2002	7.5	10.1	5.7	7.7	10.4	5.8	6.7	8.8	5.4
<u>AGE-ADJUSTED RATES, 1998-2002</u>									
AGE AT DEATH:									
All ages	7.6	10.2	5.8	7.8	10.4	6.0	6.8	8.9	5.4
Under 65	2.5	3.0	2.1	2.5	3.0	2.1	2.7	3.4	2.2
65 and over	42.9	59.9	32.0	44.3	61.9	32.9	34.6	47.7	27.3
All ages(IARC world std) ^b	4.6	5.9	3.5	4.7	6.0	3.6	4.3	5.6	3.4
<u>AGE-SPECIFIC RATES, 1998-2002</u>									
AGE AT DEATH:									
<1	0.7	0.6	0.7	0.7	0.7	0.8	-	-	-
1-4	0.8	0.8	0.8	0.9	0.9	0.9	0.6	0.7	0.6
5-9	0.7	0.8	0.6	0.7	0.8	0.7	0.6	0.7	0.5
10-14	0.8	1.0	0.7	0.9	0.9	0.8	0.8	1.0	0.6
15-19	1.1	1.3	0.9	1.2	1.4	0.9	1.1	1.3	0.8
20-24	1.3	1.5	1.0	1.3	1.6	1.0	1.2	1.3	1.1
25-29	1.1	1.3	1.0	1.1	1.3	0.9	1.3	1.5	1.1
30-34	1.3	1.5	1.1	1.3	1.4	1.1	1.5	2.0	1.1
35-39	1.6	1.8	1.4	1.6	1.7	1.4	1.9	2.3	1.5
40-44	2.0	2.3	1.8	2.0	2.3	1.8	2.3	2.5	2.0
45-49	3.1	3.5	2.7	3.0	3.4	2.7	3.8	4.5	3.3
50-54	4.5	5.3	3.8	4.5	5.2	3.8	5.4	6.5	4.5
55-59	7.8	9.5	6.2	7.8	9.6	6.1	8.7	10.7	7.0
60-64	13.1	16.7	9.8	13.3	16.9	9.9	13.8	17.9	10.5
65-69	21.2	28.5	15.0	21.9	29.3	15.4	19.8	26.7	14.7
70-74	33.2	45.9	23.2	34.4	47.3	24.0	28.5	39.7	21.0
75-79	46.8	65.2	33.9	48.3	67.4	34.8	37.3	50.7	29.2
80-84	62.8	89.0	47.3	64.8	91.9	48.7	47.7	65.3	38.9
85+	81.0	115.5	66.7	83.7	119.9	68.8	60.4	84.6	51.3

^a NCHS public use data file for the total US. Rates are per 100,000 and are age-adjusted to the 2000 US Std Population (19 age groups - Census P25-1130), unless noted.^b NCHS public use data file for the total US. Rates are per 100,000 and are age-adjusted to the IARC world standard population.

- Statistic not shown. Rate based on less than 25 cases for the time interval.

Table XIII-8
LEUKEMIA

SURVIVAL RATES, BY RACE, SEX, DIAGNOSIS YEAR AND AGE

	All Races			Whites			Blacks		
	Total	Males	Females	Total	Males	Females	Total	Males	Females
<u>5-YR RELATIVE SURVIVAL RATES</u>									
YEAR OF DIAGNOSIS:									
1960-1963 ^a	-	-	-	14	-	-	-	-	-
1970-1973 ^a	-	-	-	22	-	-	-	-	-
1974-1976 ^b	34.4	33.2	36.0	35.2	33.9	36.8	31.1	31.9	30.1
1977-1979 ^b	37.4	36.6	38.3	38.2	37.4	39.1	30.5	29.1	31.9
1980-1982 ^b	38.8	38.5	39.2	39.5	39.6	39.5	33.2	30.4	36.7
1983-1985 ^b	40.8	40.2	41.5	42.1	41.7	42.7	33.5	32.3	35.0
1986-1988 ^b	43.4	44.5	42.0	44.5	45.8	42.6	37.9	36.2	39.7
1989-1991 ^b	45.1	44.9	45.3	46.5	46.9	45.8	34.8	29.8	40.5
1992-1994 ^b	47.9	49.0	46.4	49.5	50.7	48.0	39.9	38.5	41.2
1995-2001 ^b	47.6 ^d	48.3 ^d	46.7 ^d	49.1 ^d	49.6 ^d	48.4 ^d	38.1	39.2	36.9
<u>5-YR PERIOD SURVIVAL RATES^{bc}</u>									
YEAR OF DIAGNOSIS:									
1995-2001	47.1	47.8	46.2	48.9	49.6	47.8	35.5	35.0	36.0
<u>5-YR RELATIVE SURVIVAL RATES, 1995-2001^b</u>									
AGE AT DIAGNOSIS:									
<45	63.4	63.0	64.0	65.8	65.4	66.4	48.9	48.4	49.5
45-54	54.8	56.4	52.4	57.1	57.8	55.9	43.1	45.4 ^e	41.0 ^e
55-64	51.8	51.7	51.8	54.7	54.7	54.5	30.2	22.5 ^e	38.2 ^e
65-74	40.7	39.7	42.1	42.7	41.2	44.8	29.5	32.0 ^e	27.3 ^e
75+	28.3	27.4	29.1	29.6	28.2	30.6	21.6	23.8 ^e	18.0 ^e
Under 65	58.2	58.2	58.1	60.4	60.2	60.7	43.9	43.1	44.9
65 and over	34.7	34.5	34.9	36.2	35.7	36.8	26.5	30.2	22.8

^a Rates are based on End Results data from a series of hospital registries and one population-based registry.

^b Rates are from the SEER 9 areas (San Francisco, Connecticut, Detroit, Hawaii, Iowa, New Mexico, Seattle, Utah, Atlanta). Rates are based on follow-up of patients into 2002.

^c Period survival provides a more up-to-date estimate of survival by piecing together the most recent conditional survival estimates from several cohorts. It is computed here using three calendar year blocks (1999-2001: 0-1 year survival), (1998-2000: 1-2 year survival), (1997-1999: 2-3 year survival), (1996-1998: 3-4 year survival), (1995-1997: 4-5 years survival).

^d The difference in rates between 1974-1976 and 1995-2001 is statistically significant ($p < .05$).

^e The standard error of the survival rate is between 5 and 10 percentage points.

^f The standard error of the survival rate is greater than 10 percentage points.

- Statistic could not be calculated.

Table XIII-9
LYMPHOCYTIC LEUKEMIA

SURVIVAL RATES, BY RACE, SEX, DIAGNOSIS YEAR AND AGE

	All Races			Whites			Blacks		
	Total	Males	Females	Total	Males	Females	Total	Males	Females
ACUTE LYMPHOCYTIC LEUKEMIA									
<u>5-YR RELATIVE SURVIVAL RATES</u>									
YEAR OF DIAGNOSIS:									
1974-1976 ^a	38.3	34.2	43.9	38.6	34.3	44.7	27.7 ^d	-	-
1977-1979 ^a	51.2	47.8	55.7	52.1	49.5	55.6	40.9 ^d	-	-
1980-1982 ^a	53.2	49.4	58.2	53.3	49.7	58.4	39.4 ^d	34.0 ^d	44.6 ^e
1983-1985 ^a	51.1	48.0	55.1	52.4	49.2	56.5	35.0 ^d	37.5 ^d	-
1986-1988 ^a	55.3	53.7	57.6	55.6	53.7	58.4	46.9 ^d	41.2 ^d	50.9 ^d
1989-1991 ^a	58.8	57.4	60.6	59.6	58.7	60.6	49.5 ^d	52.8 ^d	46.3 ^d
1992-1994 ^a	60.2	56.6	65.1	59.8	56.6	64.2	57.1 ^d	49.0 ^d	64.5 ^d
1995-2001 ^a	64.6 ^c	64.1 ^c	65.3 ^c	65.9 ^c	65.2 ^c	66.7 ^c	54.4 ^c	54.2 ^d	54.8 ^d
<u>5-YR PERIOD SURVIVAL RATES^{ab}</u>									
YEAR OF DIAGNOSIS:									
1995-2001	62.9	62.5	63.6	64.9	64.7	65.2	48.8	46.7	52.0
<u>5-YR RELATIVE SURVIVAL RATES, 1995-2001^a</u>									
AGE AT DIAGNOSIS:									
<45	74.4	73.1	76.1	76.3	75.0	77.9	60.3	58.8 ^d	62.7 ^d
45-54	27.9	25.0 ^d	32.7 ^d	26.2	23.6 ^d	31.8 ^d	-	-	-
55-64	19.8	18.8 ^d	20.3 ^d	19.6 ^d	20.1 ^d	18.4 ^d	-	-	-
65-74	8.6	5.7	11.7 ^d	10.6	6.9	14.8 ^d	-	-	-
75+	7.3	5.6 ^d	7.5 ^d	6.5	-	8.8 ^d	-	-	-
Under 65	68.7	67.4	70.6	70.2	68.7	72.2	56.2	55.0 ^d	58.1 ^d
65 and over	7.9	5.7	9.6	8.6	4.8	11.6	-	-	-
CHRONIC LYMPHOCYTIC LEUKEMIA									
<u>5-YR RELATIVE SURVIVAL RATES</u>									
YEAR OF DIAGNOSIS:									
1974-1976 ^a	68.2	65.6	71.6	68.5	65.6	72.3	62.8 ^d	63.8 ^d	61.0 ^d
1977-1979 ^a	70.2	68.4	72.3	71.3	69.3	73.9	51.2 ^d	53.3 ^d	48.4 ^d
1980-1982 ^a	68.5	67.9	69.5	69.3	69.2	69.4	58.4 ^d	51.6 ^d	70.1 ^d
1983-1985 ^a	73.6	72.0	75.7	74.0	72.4	76.2	68.0 ^d	72.4	66.3 ^d
1986-1988 ^a	73.7	72.6	75.3	74.6	73.8	75.8	64.8	61.7 ^d	69.5 ^d
1989-1991 ^a	73.5	72.6	74.8	74.7	73.6	76.0	56.1	51.2 ^d	61.3 ^d
1992-1994 ^a	76.5	77.6	75.0	77.9	79.3	76.0	56.7 ^d	52.9 ^d	62.2 ^d
1995-2001 ^a	74.2 ^c	73.0 ^c	76.0	75.5 ^c	74.3 ^c	77.1	57.5	53.8 ^d	62.2 ^d
<u>5-YR PERIOD SURVIVAL RATES^{ab}</u>									
YEAR OF DIAGNOSIS:									
1995-2001	73.9	72.6	75.5	75.2	73.9	76.7	55.9	51.3	61.1
<u>5-YR RELATIVE SURVIVAL RATES, 1995-2001^a</u>									
AGE AT DIAGNOSIS:									
<45	83.7	84.9	80.6 ^d	87.0	86.5	88.5 ^d	-	-	-
45-54	84.2	83.1	86.4	86.0	84.8	88.3	68.1 ^d	61.2 ^e	-
55-64	83.7	79.5	91.8	85.8	82.8	91.6	57.7 ^d	38.3 ^e	89.8 ^d
65-74	75.8	72.3	80.9	76.8	72.7	82.6	58.7 ^d	59.4 ^d	59.7 ^e
75+	59.5	57.3	61.1	60.5	57.5	62.6	44.9 ^d	48.4 ^e	37.2 ^e
Under 65	83.9	81.4	89.1	86.0	84.0	90.3	61.5 ^d	49.3 ^d	79.8 ^d
65 and over	68.4	66.7	70.3	69.3	67.0	71.7	54.1 ^d	57.9 ^d	50.0 ^d

^a Rates are from the SEER 9 areas (San Francisco, Connecticut, Detroit, Hawaii, Iowa, New Mexico, Seattle, Utah, Atlanta). Rates are based on follow-up of patients into 2002.

^b Period survival provides a more up-to-date estimate of survival by piecing together the most recent conditional survival estimates from several cohorts. It is computed here using three calendar year blocks (1999-2001: 0-1 year survival), (1998-2000: 1-2 year survival), (1997-1999: 2-3 year survival), (1996-1998: 3-4 year survival), (1995-1997: 4-5 years survival).

^c The difference in rates between 1974-1976 and 1995-2001 is statistically significant (p<.05).

^d The standard error of the survival rate is between 5 and 10 percentage points.

^e The standard error of the survival rate is greater than 10 percentage points.

- Statistic could not be calculated.

Table XIII-10
MYELOID LEUKEMIA

SURVIVAL RATES, BY RACE, SEX, DIAGNOSIS YEAR AND AGE

	All Races			Whites			Blacks		
	Total	Males	Females	Total	Males	Females	Total	Males	Females
ACUTE MYELOID LEUKEMIA									
<u>5-YR RELATIVE SURVIVAL RATES</u>									
YEAR OF DIAGNOSIS:									
1974-1976 ^a	6.0	5.5	6.4	6.1	6.1	6.2	7.1	2.6	10.5
1977-1979 ^a	8.5	7.7	9.5	7.7	6.6	8.9	15.5	14.8 ^d	16.2 ^d
1980-1982 ^a	8.6	7.6	9.9	7.9	6.2	9.9	11.0	13.9 ^d	7.9
1983-1985 ^a	11.3	10.7	12.0	10.9	10.5	11.4	9.9	9.1	10.5
1986-1988 ^a	11.7	9.2	14.4	11.7	9.7	13.8	10.8	4.8	16.7
1989-1991 ^a	13.7	11.9	15.8	13.1	11.9	14.5	12.0	7.9	17.6 ^d
1992-1994 ^a	17.7	16.6	18.9	17.7	16.3	19.4	16.1	17.0 ^d	15.1
1995-2001 ^a	19.8 ^c	18.8 ^c	20.9 ^c	19.2 ^c	17.9 ^c	20.6 ^c	22.2 ^c	25.5 ^c	19.2
<u>5-YR PERIOD SURVIVAL RATES^{ab}</u>									
YEAR OF DIAGNOSIS:									
1995-2001	20.9	20.4	21.4	21.0	20.6	21.4	19.4	20.0	18.8
<u>5-YR RELATIVE SURVIVAL RATES, 1995-2001^a</u>									
AGE AT DIAGNOSIS:									
<45	45.5	44.0	47.1	46.4	44.9	48.2	39.3	42.4 ^d	35.7 ^d
45-54	26.0	25.9	26.2	26.5	24.3	29.3	20.3 ^d	23.8 ^d	15.7 ^d
55-64	17.4	13.9	21.1	17.9	14.0	22.1	10.4 ^d	-	-
65-74	5.3	4.0	6.8	5.7	4.0	7.4	3.7	6.1 ^d	-
75+	1.9	1.2	2.4	1.5	1.0	1.9	3.1	-	5.1
Under 65	33.1	31.2	35.2	33.0	30.4	36.2	30.4	33.2	27.4
65 and over	3.7	2.8	4.5	3.7	2.7	4.4	3.6	3.3	4.2
CHRONIC MYELOID LEUKEMIA									
<u>5-YR RELATIVE SURVIVAL RATES</u>									
YEAR OF DIAGNOSIS:									
1974-1976 ^a	22.6	19.7	26.5	22.2	18.6	27.0	24.8 ^d	27.8 ^d	20.1 ^d
1977-1979 ^a	23.7	22.3	25.6	23.3	22.4	24.5	25.3 ^d	18.4 ^d	33.5 ^d
1980-1982 ^a	31.1	28.2	34.1	32.1	30.4	33.8	26.5 ^d	18.2 ^d	36.4 ^d
1983-1985 ^a	24.6	21.9	28.2	25.3	22.3	29.2	23.2	20.6 ^d	26.1 ^d
1986-1988 ^a	29.1	29.5	28.6	28.7	29.3	27.8	37.3 ^d	32.7 ^d	42.3 ^d
1989-1991 ^a	33.0	30.7	36.1	33.1	32.2	34.1	32.4 ^d	20.3 ^d	47.1 ^d
1992-1994 ^a	36.5	36.5	36.5	36.7	36.9	36.5	39.3 ^d	36.9 ^d	43.2 ^d
1995-2001 ^a	39.0 ^c	38.3 ^c	40.1 ^c	39.0 ^c	37.6 ^c	41.2 ^c	34.8	33.9 ^d	35.3 ^d
<u>5-YR PERIOD SURVIVAL RATES^{ab}</u>									
YEAR OF DIAGNOSIS:									
1995-2001	39.3	37.1	42.6	38.6	36.0	42.6	40.5	38.7	42.1
<u>5-YR RELATIVE SURVIVAL RATES, 1995-2001^a</u>									
AGE AT DIAGNOSIS:									
<45	59.4	56.1	65.6	60.3	55.9	68.7	52.0 ^d	45.8 ^d	61.3 ^e
45-54	54.1	48.1	60.8	54.4	47.5	62.2	49.4 ^d	-	-
55-64	44.8	46.5	42.7 ^d	48.1	48.0	49.4 ^d	8.1 ^d	-	-
65-74	25.1	25.2	25.1	25.7	25.4	26.3	17.3 ^d	19.4 ^e	-
75+	14.5	12.7	16.4	14.5	11.5	17.0	16.5 ^e	-	-
Under 65	53.8	51.4	57.7	55.0	51.3	60.9	42.9 ^d	40.8 ^d	44.9 ^d
65 and over	20.1	19.8	20.3	20.3	19.6	21.2	18.1 ^d	18.8 ^d	15.8 ^d

^a Rates are from the SEER 9 areas (San Francisco, Connecticut, Detroit, Hawaii, Iowa, New Mexico, Seattle, Utah, Atlanta). Rates are based on follow-up of patients into 2002.

^b Period survival provides a more up-to-date estimate of survival by piecing together the most recent conditional survival estimates from several cohorts. It is computed here using three calendar year blocks (1999-2001: 0-1 year survival), (1998-2000: 1-2 year survival), (1997-1999: 2-3 year survival), (1996-1998: 3-4 year survival), (1995-1997: 4-5 years survival).

^c The difference in rates between 1974-1976 and 1995-2001 is statistically significant (p<.05).

^d The standard error of the survival rate is between 5 and 10 percentage points.

^e The standard error of the survival rate is greater than 10 percentage points.

- Statistic could not be calculated.

Table XIII-11

LEUKEMIASURVIVAL RATES^a

By Year of Diagnosis

All Races, Males and Females

Year of Diagnosis

	1975- 1979	1980- 1984	1985	1986	1987	1988	1989	1990	1991	1992	1993	1994	1995	1996	1997	1998	1999	2000	2001
Relative Survival Rates (SEER ^b)																			
1-year	61.4	63.7	64.8	65.0	64.6	66.8	65.1	67.1	66.6	67.6	67.7	66.8	68.2	68.1	67.5	65.7	64.9	65.0	67.6
2-year	50.9	53.5	55.8	55.4	54.4	57.1	56.3	56.5	57.2	58.6	58.4	58.1	58.8	59.3	59.3	56.9	57.3	56.6	
3-year	44.6	47.8	49.5	49.5	49.1	51.5	51.3	51.7	51.7	53.8	54.8	53.8	54.3	54.8	54.9	52.9	53.4		
4-year	39.9	43.1	45.8	45.6	45.5	48.0	46.8	48.3	47.4	50.4	51.3	50.5	50.9	51.5	51.0	49.2			
5-year	35.9	39.2	42.6	42.4	42.4	45.3	44.2	46.0	45.0	47.6	48.1	48.0	48.4	48.3	48.4				
6-year	32.8	36.7	40.2	40.2	40.6	43.1	41.4	42.5	43.1	45.3	46.2	45.6	46.4	46.4					
7-year	30.8	34.4	38.2	38.1	37.9	40.3	38.8	40.1	40.7	42.6	43.6	43.7	45.3						
8-year	28.7	32.4	36.2	35.9	35.8	37.9	37.1	38.1	38.5	40.7	42.6	41.4							
9-year	27.0	30.8	33.9	34.4	34.2	36.5	35.4	36.8	37.3	39.1	41.3								
10-year	25.7	29.5	33.0	33.3	32.7	35.4	34.1	35.5	36.3	38.4									
11-year	24.4	28.5	31.3	31.9	31.8	33.6	32.7	34.2	35.0										
12-year	23.4	27.5	30.8	31.2	30.4	32.7	32.3	32.6											
13-year	22.8	26.7	30.4	30.8	29.5	31.8	31.9												
14-year	22.1	26.4	29.6	30.2	29.5	31.2													
15-year	21.7	25.9	29.3	29.5	29.5														
16-year	21.0	25.3	28.8	28.8															
17-year	20.7	24.7	28.3																
18-year	20.4	24.5																	
19-year	20.0																		
20-year	19.5																		

^a Survival rates are relative rates expressed as percents.
^b Rates are from the SEER 9 areas.

Table XIII-12

LEUKEMIASURVIVAL RATES^a

By Year of Diagnosis

All Races, Males

Year of Diagnosis

	1975- 1979	1980- 1984	1985	1986	1987	1988	1989	1990	1991	1992	1993	1994	1995	1996	1997	1998	1999	2000	2001
Relative Survival Rates (SEER ^b)																			
1-year	61.2	64.0	65.5	64.9	66.2	68.0	65.3	67.9	67.8	68.3	68.8	68.8	69.8	69.6	68.5	65.7	66.0	66.7	69.7
2-year	50.4	53.5	55.8	55.2	56.9	58.1	57.5	56.6	58.3	59.1	59.9	59.4	60.5	61.2	60.7	57.6	58.4	58.4	
3-year	43.7	47.4	48.7	48.8	51.2	52.3	52.1	51.1	52.5	53.9	56.3	54.4	56.0	56.9	55.3	53.8	54.4		
4-year	39.0	42.6	44.8	45.1	48.0	48.8	47.7	47.5	47.3	50.8	53.0	52.0	52.3	53.5	50.8	49.7			
5-year	34.9	38.7	42.4	42.0	44.4	46.7	45.4	44.1	45.1	48.6	49.3	49.2	48.9	49.5	48.5				
6-year	31.8	36.1	39.8	40.2	41.9	44.3	42.6	40.3	43.6	45.7	47.5	46.3	46.3	47.5					
7-year	29.6	33.8	37.6	37.7	39.0	41.8	39.5	38.1	41.0	42.6	44.7	44.4	45.4						
8-year	27.2	31.5	35.5	35.4	37.6	39.3	37.8	35.7	39.0	40.8	43.7	41.6							
9-year	25.3	29.8	33.2	33.4	36.3	37.5	36.1	34.7	37.8	39.6	42.7								
10-year	24.0	28.7	32.1	32.1	34.4	36.1	34.6	33.0	36.6	39.1									
11-year	22.6	27.7	30.4	31.3	33.5	34.9	33.2	31.8	35.0										
12-year	21.5	27.2	29.9	30.6	31.9	34.0	33.1	30.4											
13-year	21.1	26.6	29.7	30.4	30.8	33.3	32.8												
14-year	20.4	26.4	29.6	30.3	30.8	32.6													
15-year	20.0	25.9	28.5	29.5	30.8														
16-year	19.4	25.2	27.8	29.5															
17-year	19.1	24.6	27.7																
18-year	18.7	24.2																	
19-year	18.3																		
20-year	17.4																		

^a Survival rates are relative rates expressed as percents.
^b Rates are from the SEER 9 areas.

Table XIII-13

LEUKEMIASURVIVAL RATES^a

By Year of Diagnosis

All Races, Females

Year of Diagnosis

	1975- 1979	1980- 1984	1985	1986	1987	1988	1989	1990	1991	1992	1993	1994	1995	1996	1997	1998	1999	2000	2001
Relative Survival Rates (SEER ^b)																			
1-year	61.6	63.3	63.9	65.2	62.4	65.1	64.8	66.1	65.0	66.7	66.2	64.2	66.0	66.1	66.2	65.8	63.3	62.8	64.6
2-year	51.5	53.5	55.7	55.5	51.1	55.8	54.9	56.2	55.7	57.9	56.6	56.3	56.4	56.9	57.5	56.0	55.8	54.2	
3-year	45.6	48.3	50.4	50.5	46.3	50.3	50.3	52.4	50.6	53.7	52.8	53.1	51.9	52.1	54.2	51.8	52.0		
4-year	41.0	43.8	47.0	46.2	42.3	46.9	45.8	49.3	47.5	49.8	49.2	48.6	49.0	48.9	51.2	48.5			
5-year	37.2	39.8	42.9	42.9	39.8	43.4	42.8	48.5	44.8	46.3	46.6	46.4	47.7	46.7	48.4				
6-year	34.0	37.6	40.7	40.2	38.9	41.4	39.9	45.3	42.6	44.6	44.4	44.8	46.5	45.1					
7-year	32.3	35.2	39.0	38.6	36.5	38.3	38.0	42.7	40.3	42.4	42.2	42.9	45.1						
8-year	30.6	33.6	37.2	36.6	33.6	36.1	36.2	41.3	37.9	40.6	41.2	41.1							
9-year	29.1	32.1	34.6	35.5	31.5	35.0	34.5	39.6	36.6	38.5	39.5								
10-year	27.7	30.5	34.1	34.8	30.6	34.1	33.2	38.8	35.9	37.5									
11-year	26.7	29.5	32.3	32.7	29.7	31.7	32.2	37.1	34.9										
12-year	25.6	27.9	31.6	31.9	28.7	30.8	31.3	35.4											
13-year	24.7	26.9	31.2	31.3	27.6	29.3	30.9												
14-year	24.2	26.6	29.6	30.0	27.6	29.3													
15-year	23.6	25.9	29.6	29.3	27.6														
16-year	22.9	25.4	29.6	28.0															
17-year	22.5	24.8	29.1																
18-year	22.3	24.7																	
19-year	22.0																		
20-year	21.9																		

^a Survival rates are relative rates expressed as percents.
^b Rates are from the SEER 9 areas.

Table XIII-14

LEUKEMIA

Percent Diagnosed With Cancer In 10, 20 and 30 Years and In Remaining Lifetime,
Given Cancer Free At Current Age By Race and Sex

Lifetime Risk (Percent) of Being Diagnosed (13 SEER Areas) With Cancer and
Lifetime Risk (Percent) of Dying (Total U.S.) From Cancer

2000-2002

All Races

Current Age	Males				Females			
	+10 yrs	+20 yrs	+30 yrs	Eventually	+10 yrs	+20 yrs	+30 yrs	Eventually
0	0.06	0.09	0.12	1.50	0.05	0.08	0.10	1.07
10	0.03	0.06	0.10	1.46	0.03	0.05	0.08	1.03
20	0.03	0.07	0.13	1.44	0.02	0.05	0.10	1.01
30	0.04	0.10	0.25	1.43	0.03	0.07	0.17	0.99
40	0.07	0.22	0.53	1.42	0.05	0.14	0.32	0.97
50	0.16	0.48	0.95	1.40	0.09	0.28	0.57	0.94
60	0.35	0.85	1.24	1.34	0.19	0.50	0.80	0.89

Lifetime Risk of Being Diagnosed = 1.50%
Lifetime Risk of Dying = 0.97%

Lifetime Risk of Being Diagnosed = 1.07%
Lifetime Risk of Dying = 0.72%

Whites

Current Age	Males				Females			
	+10 yrs	+20 yrs	+30 yrs	Eventually	+10 yrs	+20 yrs	+30 yrs	Eventually
0	0.06	0.10	0.13	1.61	0.06	0.09	0.11	1.14
10	0.04	0.06	0.10	1.57	0.03	0.05	0.08	1.09
20	0.03	0.07	0.13	1.54	0.02	0.05	0.10	1.07
30	0.04	0.11	0.27	1.53	0.03	0.08	0.17	1.05
40	0.07	0.23	0.56	1.51	0.05	0.14	0.34	1.03
50	0.17	0.51	1.01	1.49	0.10	0.30	0.61	1.00
60	0.37	0.91	1.32	1.42	0.21	0.54	0.85	0.94

Lifetime Risk of Being Diagnosed = 1.61%
Lifetime Risk of Dying = 1.02%

Lifetime Risk of Being Diagnosed = 1.14%
Lifetime Risk of Dying = 0.75%

Blacks

Current Age	Males				Females			
	+10 yrs	+20 yrs	+30 yrs	Eventually	+10 yrs	+20 yrs	+30 yrs	Eventually
0	0.03	0.04	0.06	0.87	0.03	0.05	0.06	0.79
10	0.02	0.04	0.07	0.87	0.02	0.04	0.06	0.78
20	0.02	0.06	0.12	0.86	0.02	0.04	0.08	0.76
30	0.04	0.10	0.22	0.86	0.02	0.06	0.13	0.75
40	0.07	0.18	0.42	0.85	0.04	0.11	0.26	0.74
50	0.12	0.38	0.64	0.84	0.07	0.24	0.47	0.73
60	0.30	0.60	0.79	0.83	0.18	0.43	0.64	0.72

Lifetime Risk of Being Diagnosed = 0.87%
Lifetime Risk of Dying = 0.64%

Lifetime Risk of Being Diagnosed = 0.79%
Lifetime Risk of Dying = 0.54%

Devcan Version 6.0, April 2005, National Cancer Institute (<http://srab.cancer.gov/devcan/>).

Source: Incidence data are from the SEER 13 areas (San Francisco, Connecticut, Detroit, Hawaii, Iowa, New Mexico, Seattle, Utah, Atlanta, San Jose-Monterey, Los Angeles, Alaska Native Registry, Rural Georgia). Mortality data are from the NCHS public use data file for the total US.

Table XIII-15
LEUKEMIA (Invasive)

SEER INCIDENCE AND U.S. MORTALITY
AGE-ADJUSTED RATES AND TRENDS^a
By Race/Ethnicity and Sex

Incidence^b

RACE/ETHNICITY	Rate 1998-2002			Trend 1992-2002		
	Rate per 100,000 persons			APC (%)		
	Total	Males	Females	Total	Males	Females
All Races	12.2	15.9	9.4	-0.9 ^e	-1.1 ^e	-0.8 ^e
White	12.9	16.9	9.9	-0.8 ^e	-1.1 ^e	-0.5
White Hispanic ^c	9.6	11.8	7.9	-0.7	-0.6	-0.7
White Non-Hispanic ^c	12.9	17.1	9.7	-0.7 ^e	-0.9 ^e	-0.7
Black	9.7	12.4	7.8	-1.4	-1.6	-1.2
Asian/Pacific Islander	7.6	9.8	6.0	-1.3 ^e	-0.3	-2.2 ^e
Amer Ind/Alaska Nat	5.1	5.5	4.8	2.4	-	-
Hispanic ^c	9.2	11.4	7.6	-0.7	-0.6	-0.6

Mortality^d

RACE/ETHNICITY	Rate 1998-2002			Trend 1992-2002		
	Rate per 100,000 persons			APC (%)		
	Total	Males	Females	Total	Males	Females
All Races	7.6	10.2	5.8	-0.6 ^e	-0.7 ^e	-0.6 ^e
White	7.8	10.4	6.0	-0.5 ^e	-0.6 ^e	-0.5 ^e
White Hispanic ^c	5.4	6.8	4.4	-0.1	0.3	-0.7
White Non-Hispanic ^c	7.9	10.6	6.0	-0.5 ^e	-0.6 ^e	-0.4 ^e
Black	6.8	8.9	5.4	-1.0 ^e	-1.1 ^e	-0.7 ^e
Asian/Pacific Islander	4.1	5.3	3.2	-1.4	-1.1	-1.6
Amer Ind/Alaska Nat	3.9	5.1	3.0	-1.8	-3.3	-1.2
Hispanic ^c	5.3	6.6	4.3	-0.1	0.2	-0.6

- The APC is the Annual Percent Change over the time interval.
- Statistic not shown. Rate based on less than 25 cases for the time interval. Trend based on less than 10 cases for at least one year within the time interval.
- ^a Rates are age-adjusted to the 2000 US Std Population (19 age groups - Census P25-1130). Trends are based on rates age-adjusted to the 2000 US Std Population (19 age groups - Census P25-1130).
- ^b Incidence data are from the 13 SEER areas (San Francisco, Connecticut, Detroit, Hawaii, Iowa, New Mexico, Seattle, Utah, Atlanta, San Jose-Monterey, Los Angeles, Alaska Native Registry and Rural Georgia).
- ^c Hispanic and Non-Hispanic are not mutually exclusive from Whites, Blacks, Asian Pacific Islanders, and American Indians/Alaska Natives. Incidence data for Hispanics and Non-Hispanics do not include cases from Detroit, Hawaii, Alaska Native Registry and Rural Georgia. For mortality, information is included for all states except Connecticut, Maine, Maryland, Minnesota, New Hampshire, New York, North Dakota, Oklahoma and Vermont.
- ^d Mortality data are analyzed from a public use file provided by the National Center for Health Statistics (NCHS).
- ^e The APC is significantly different from zero (p<.05).

Table XIII-16

ALL LEUKEMIAAGE-ADJUSTED SEER INCIDENCE RATES AND SEER DEATH RATES^a
By Registry, Race and Sex

	All Races			Whites			Blacks		
	Total	Males	Females	Total	Males	Females	Total	Males	Females
<u>SEER INCIDENCE RATES^b, 1998-2002</u>									
REGISTRY									
13 SEER Areas	12.2	15.9	9.4	12.9	16.9	9.9	9.7	12.4	7.8
11 SEER Areas	12.2	15.9	9.4	12.9	16.9	9.9	9.7	12.5	7.8
9 SEER Areas	12.4	16.3	9.6	13.1	17.1	10.1	9.6	12.4	7.8
San Francisco-Oakland	10.6	13.7	8.3	11.5	14.4	9.4	9.2	12.0	7.2
Connecticut	12.0	15.7	9.3	12.2	15.9	9.6	8.6	11.5	7.2
Metropolitan Detroit	14.0	17.2	11.6	14.9	18.5	12.2	10.5	12.3	9.2
Hawaii	10.4	13.1	8.2	13.2	16.2	10.2	-	-	-
Iowa	14.5	19.8	10.5	14.4	19.8	10.5	12.8	-	-
New Mexico	11.8	15.6	8.7	12.3	16.1	9.2	-	-	-
Seattle-Puget Sound	13.8	18.5	10.3	14.2	19.0	10.6	9.1	11.9	6.9
Utah	11.8	15.2	9.1	11.9	15.4	9.1	-	-	-
Metropolitan Atlanta	10.6	14.2	8.0	11.7	15.1	9.0	8.9	13.4	6.3
San Jose-Monterey	10.9	14.2	8.3	11.7	15.5	8.9	-	-	-
Los Angeles	11.5	15.1	8.9	12.4	16.3	9.5	9.9	12.6	8.0
<u>SEER DEATH RATES^c, 1998-2002</u>									
REGISTRY									
13 SEER Areas	7.3	9.7	5.6	7.7	10.3	5.9	7.0	8.9	5.7
11 SEER Areas	7.3	9.8	5.6	7.7	10.3	5.9	7.0	8.9	5.7
9 SEER Areas	7.5	10.0	5.7	7.8	10.4	5.9	7.1	9.3	5.6
San Francisco-Oakland	6.9	9.2	5.2	7.4	9.7	5.8	6.8	9.3	5.0
Connecticut	7.1	9.5	5.5	7.2	9.6	5.6	5.6	8.0	4.2
Metropolitan Detroit	8.3	10.9	6.6	8.5	11.4	6.6	7.3	9.0	6.3
Hawaii	6.0	7.5	4.8	8.5	9.9	6.9	-	-	-
Iowa	8.4	11.7	6.0	8.3	11.7	6.0	-	-	-
New Mexico	6.6	8.9	4.8	6.8	9.1	5.0	-	-	-
Seattle-Puget Sound	7.9	10.6	6.0	8.2	10.8	6.3	6.0	-	-
Utah	7.5	9.9	5.8	7.6	10.0	5.7	-	-	-
Metropolitan Atlanta	7.4	10.1	5.7	7.7	10.5	5.8	7.2	9.7	5.7
San Jose-Monterey	6.4	8.5	4.9	7.1	9.5	5.4	-	-	-
Los Angeles	7.0	9.2	5.4	7.5	10.0	5.7	7.0	8.1	6.0

^a Incidence and death rates are per 100,000 and are age-adjusted to the 2000 US Std Population (19 age groups - Census P25-1130).

^b The SEER 9 areas are San Francisco, Connecticut, Detroit, Hawaii, Iowa, New Mexico, Seattle, Utah, and Atlanta. The SEER 11 areas comprise the SEER 9 areas plus San Jose-Monterey and Los Angeles. The SEER 13 areas comprise the SEER 11 areas plus the Alaska Native Registry and Rural Georgia.

^c NCHS public use data file for the total US with analyses limited to the SEER geographic areas.

- Statistic could not be calculated or populations are inadequate.

Table XIII-17
LEUKEMIA

AVERAGE ANNUAL AGE-ADJUSTED CANCER DEATH^a RATES BY STATE, ALL RACES, 1998-2002

Males and Females

State	Rate	SE	Rank	PD
TOTAL U.S.	7.6	0.02		
High Five States				
North Dakota	8.5	0.48	(01)	11.8
Iowa	8.4	0.22	(02)	10.5
Wisconsin	8.3 ^c	0.17	(03)	9.2
Montana	8.3	0.41	(04)	9.2
Minnesota	8.3 ^c	0.18	(05)	9.2
Low Five States				
Arizona	7.0 ^c	0.17	(47)	-7.9
Rhode Island	6.9	0.34	(48)	-9.2
New Mexico	6.6 ^c	0.28	(49)	-13.2
District of Columbia	6.2 ^b	0.47	(50)	-18.4
Hawaii	6.0 ^{bc}	0.31	(51)	-21.1

Males

State	Rate	SE	Rank	PD
TOTAL U.S.	10.2	0.04		
High Five States				
North Dakota	12.6 ^b	0.90	(01)	23.5
Iowa	11.7 ^c	0.41	(02)	14.7
Delaware	11.5	0.86	(03)	12.7
Minnesota	11.4	0.34	(04)	11.8
Arkansas	11.3	0.44	(05)	10.8
Low Five States				
California	9.4 ^c	0.12	(47)	-7.8
Arizona	9.0 ^c	0.29	(48)	-11.8
New Mexico	8.9	0.51	(49)	-12.7
District of Columbia	8.8	0.93	(50)	-13.7
Hawaii	7.5 ^{bc}	0.51	(51)	-26.5

Females

State	Rate	SE	Rank	PD
TOTAL U.S.	5.8	0.03		
High Five States				
Wisconsin	6.7 ^{bc}	0.21	(01)	15.5
Mississippi	6.5	0.29	(02)	12.1
Indiana	6.5	0.19	(03)	12.1
Tennessee	6.4	0.20	(04)	10.3
Illinois	6.4 ^c	0.14	(05)	10.3
Low Five States				
Maine	5.2	0.36	(47)	-10.3
Rhode Island	5.1	0.39	(48)	-12.1
Hawaii	4.8 ^b	0.38	(49)	-17.2
New Mexico	4.8 ^b	0.32	(50)	-17.2
District of Columbia	4.7 ^b	0.53	(51)	-19.0

For additional detailed cancer statistics by state, please visit the State Cancer Profiles website. <http://statecancerprofiles.cancer.gov/>

- ^a NCHS public use data file. Rates are per 100,000 and are age-adjusted to the 2000 US Std Population (19 age groups - Census P25-1130).
^b Absolute percent difference between state rate and total U.S. rate is 15% or more.
^c Difference between state rate and total U.S. rate is statistically significant (p<=.0002).
SE Standard error of the rate.
PD Percent difference between state rate and total U.S. rate.

Table XIII-18
LEUKEMIA (Invasive)Estimated United States Cancer Prevalence Counts^a on January 1, 2002
By Race/Ethnicity, Sex and Years Since Diagnosis

Years Since Diagnosis	0 to <5	5 to <10	10 to <15	15 to <20	20 to <25	0 to <12 ^e	0 to <27 ^e	>=27 ^g	Complete ^h
Race/Sex									
All Races ^b	80,095	47,653	27,123	16,503	9,867	140,112	183,579	6,286	189,865
Males	46,350	27,039	15,161	9,198	4,956	80,080	103,787	2,647	106,434
Females	33,745	20,614	11,962	7,305	4,911	60,032	79,792	3,639	83,431
White ^b	71,241	42,767	24,655	15,106	9,042	125,286	164,974	5,451	170,425
Males	41,371	24,359	14,002	8,416	4,606	71,939	93,791	2,275	96,066
Females	29,870	18,408	10,653	6,690	4,436	53,347	71,183	3,176	74,359
Black ^b	5,432	2,862	1,410	803	516	8,923	11,173	632	11,805
Males	2,761	1,445	612	464	208	4,444	5,540	299	5,839
Females	2,671	1,417	798	339	308	4,479	5,633	333	5,966
Asian/Pacific Islander ^c	1,632	1,002	+	+	+	2,929	+	+	+
Males	988	537	+	+	+	1,682	+	+	+
Females	644	465	+	+	+	1,247	+	+	+
Hispanic ^d	6,091	3,663	+	+	+	10,747	+	+	+
Males	3,389	2,129	+	+	+	6,110	+	+	+
Females	2,702	1,534	+	+	+	4,637	+	+	+

Estimated prevalence percent^a on January 1, 2002, of the SEER 11 population diagnosed in the previous 10 years
By Age at Prevalence, Race/Ethnicity and Sex

Age at Prevalence	Age Specific (Crude)										Age-Adjusted ^f
	All Ages	0-9	10-19	20-29	30-39	40-49	50-59	60-69	70-79	80+	All Ages
Race/Sex											
All Races ^c	0.0403%	0.0286%	0.0289%	0.0125%	0.0142%	0.0231%	0.0487%	0.0982%	0.1506%	0.1626%	0.0425%
Males	0.0472%	0.0310%	0.0303%	0.0136%	0.0172%	0.0287%	0.0629%	0.1325%	0.2032%	0.2159%	0.0535%
Females	0.0336%	0.0260%	0.0274%	0.0114%	0.0112%	0.0176%	0.0352%	0.0677%	0.1110%	0.1339%	0.0334%
White ^c	0.0453%	0.0319%	0.0317%	0.0139%	0.0149%	0.0242%	0.0525%	0.1087%	0.1662%	0.1774%	0.0464%
Males	0.0527%	0.0343%	0.0331%	0.0155%	0.0173%	0.0300%	0.0679%	0.1466%	0.2229%	0.2371%	0.0583%
Females	0.0379%	0.0294%	0.0302%	0.0121%	0.0123%	0.0183%	0.0375%	0.0740%	0.1228%	0.1458%	0.0365%
Black ^c	0.0218%	0.0113%	0.0178%	0.0069%	0.0108%	0.0172%	0.0351%	0.0645%	0.0947%	0.0891%	0.0266%
Males	0.0244%	0.0123%	0.0190%	0.0048%	0.0143%	0.0217%	0.0429%	0.0834%	0.1195%	0.0961%	0.0318%
Females	0.0195%	0.0103%	0.0165%	0.0088%	0.0077%	0.0134%	0.0286%	0.0496%	0.0784%	0.0858%	0.0226%
Asian/Pacific Islander ^c	0.0217%	0.0273%	0.0246%	0.0102%	0.0126%	0.0167%	0.0245%	0.0380%	0.0447%	0.0439%	0.0229%
Males	0.0260%	0.0319%	0.0261%	0.0102%	0.0178%	0.0208%	0.0274%	0.0476%	0.0634%	0.0689%	0.0280%
Females	0.0177%	0.0226%	0.0229%	0.0102%	0.0077%	0.0130%	0.0220%	0.0301%	0.0309%	0.0268%	0.0184%
Hispanic ^d	0.0261%	0.0315%	0.0353%	0.0126%	0.0151%	0.0189%	0.0305%	0.0488%	0.0698%	0.0785%	0.0303%
Males	0.0286%	0.0325%	0.0392%	0.0143%	0.0178%	0.0220%	0.0358%	0.0621%	0.0868%	0.0869%	0.0350%
Females	0.0234%	0.0305%	0.0313%	0.0105%	0.0121%	0.0157%	0.0257%	0.0378%	0.0578%	0.0738%	0.0261%

^a US 2002 cancer prevalence counts are based on 2002 cancer prevalence proportions from the SEER registries and 1/1/2002 US population estimates based on the average of 2001 and 2002 population estimates from the US Bureau of the Census. Prevalence was calculated using the First Malignant Primary Only for a person.

^{b c d} Statistics based on b) SEER 9 Areas c) SEER 11 Areas and Rural Georgia d) SEER 11 Areas excluding Hawaii and Detroit.

^e Maximum limited-duration prevalence: 27 years for 1975-2002 SEER 9 data; 12 years for 1990-2002 SEER 11 data (used to calculate prevalence for Hispanics and Asian Pacific Islanders).

^f Percentages are age-adjusted to the 2000 US standard population by 5-year age groups.

^{g h} (g) Cases diagnosed more than 27 years ago were estimated using the completeness index method (Capocaccia et. al. 1997, Merrill et. al. 2000). (h) Complete prevalence is obtained by summing 0 to <27 and >=27.

- Statistic not shown. Statistic based on fewer than 5 cases estimated alive in SEER for the time interval.

+ Not available.

Table XIII-19
ACUTE LYMPHOCYTIC LEUKEMIA (Invasive)

Estimated United States Cancer Prevalence Counts^a on January 1, 2002
By Race/Ethnicity, Sex and Years Since Diagnosis

Years Since Diagnosis	0 to <5	5 to <10	10 to <15	15 to <20	20 to <25	0 to <12 ^e	0 to <27 ^e	>=27 ^g	Complete ^h
Race/Sex									
All Races ^b	13,598	10,017	8,594	6,594	4,892	27,251	44,730	+	+
Males	7,581	5,647	4,766	3,624	2,423	15,222	24,523	+	+
Females	6,017	4,370	3,828	2,970	2,469	12,029	20,207	+	+
White ^b	11,907	8,636	7,567	5,955	4,457	23,807	39,500	+	+
Males	6,596	4,922	4,283	3,284	2,249	13,350	21,789	+	+
Females	5,311	3,714	3,284	2,671	2,208	10,457	17,711	+	+
Black ^b	913	730	574	329	229	1,859	2,815	+	+
Males	508	372	248	197	86	968	1,439	+	+
Females	405	358	326	132	143	891	1,376	+	+
Asian/Pacific Islander ^c	510	441	+	+	+	1,083	+	+	+
Males	312	241	+	+	+	614	+	+	+
Females	198	200	+	+	+	469	+	+	+
Hispanic ^d	2,997	2,087	+	+	+	5,632	+	+	+
Males	1,647	1,255	+	+	+	3,202	+	+	+
Females	1,350	832	+	+	+	2,430	+	+	+

Estimated prevalence percent^a on January 1, 2002, of the SEER 11 population diagnosed in the previous 10 years
By Age at Prevalence, Race/Ethnicity and Sex

Age at Prevalence	Age Specific (Crude)										Age-Adjusted ^f
	All Ages	0-9	10-19	20-29	30-39	40-49	50-59	60-69	70-79	80+	All Ages
Race/Sex											
All Races ^c	0.0090%	0.0248%	0.0242%	0.0060%	0.0027%	0.0017%	0.0021%	0.0019%	0.0014%	0.0010%	0.0090%
Males	0.0103%	0.0269%	0.0256%	0.0075%	0.0035%	0.0018%	0.0025%	0.0024%	0.0018%	0.0012%	0.0099%
Females	0.0078%	0.0225%	0.0227%	0.0044%	0.0018%	0.0017%	0.0017%	0.0015%	0.0012%	0.0009%	0.0080%
White ^c	0.0099%	0.0280%	0.0271%	0.0071%	0.0029%	0.0019%	0.0022%	0.0020%	0.0015%	0.0010%	0.0101%
Males	0.0112%	0.0301%	0.0287%	0.0090%	0.0037%	0.0019%	0.0026%	0.0027%	0.0017%	-	0.0111%
Females	0.0087%	0.0259%	0.0255%	0.0051%	0.0020%	0.0019%	0.0019%	0.0014%	0.0013%	0.0010%	0.0091%
Black ^c	0.0045%	0.0089%	0.0128%	0.0020%	0.0015%	-	-	-	-	-	0.0039%
Males	0.0052%	0.0097%	0.0137%	-	0.0020%	-	-	-	-	-	0.0043%
Females	0.0039%	0.0080%	0.0120%	0.0024%	-	-	-	-	-	-	0.0036%
Asian/Pacific Islander ^c	0.0073%	0.0222%	0.0194%	0.0036%	0.0025%	0.0016%	0.0023%	0.0020%	-	-	0.0076%
Males	0.0087%	0.0266%	0.0204%	0.0041%	0.0038%	0.0017%	0.0030%	-	-	-	0.0087%
Females	0.0059%	0.0175%	0.0185%	0.0031%	0.0012%	0.0015%	-	0.0030%	-	-	0.0064%
Hispanic ^d	0.0138%	0.0284%	0.0305%	0.0067%	0.0037%	0.0030%	0.0033%	0.0018%	-	-	0.0110%
Males	0.0153%	0.0294%	0.0340%	0.0081%	0.0048%	0.0031%	0.0039%	-	-	-	0.0123%
Females	0.0122%	0.0272%	0.0268%	0.0050%	0.0023%	0.0028%	0.0028%	-	-	-	0.0097%

^a US 2002 cancer prevalence counts are based on 2002 cancer prevalence proportions from the SEER registries and 1/1/2002 US population estimates based on the average of 2001 and 2002 population estimates from the US Bureau of the Census. Prevalence was calculated using the First Malignant Primary Only for a person.

^{b c d} Statistics based on b) SEER 9 Areas c) SEER 11 Areas and Rural Georgia d) SEER 11 Areas excluding Hawaii and Detroit.

^e Maximum limited-duration prevalence: 27 years for 1975-2002 SEER 9 data; 12 years for 1990-2002 SEER 11 data (used to calculate prevalence for Hispanics and Asian Pacific Islanders).

^f Percentages are age-adjusted to the 2000 US standard population by 5-year age groups.

^{g h} (g) Cases diagnosed more than 27 years ago were estimated using the completeness index method (Capocaccia et. al. 1997, Merrill et. al. 2000). (h) Complete prevalence is obtained by summing 0 to <27 and >=27.

- Statistic not shown. Statistic based on fewer than 5 cases estimated alive in SEER for the time interval.

+ Not available.

SEER Incidence, Delay Adjusted Incidence and US Death Rates+ Leukemia, by Race and Sex

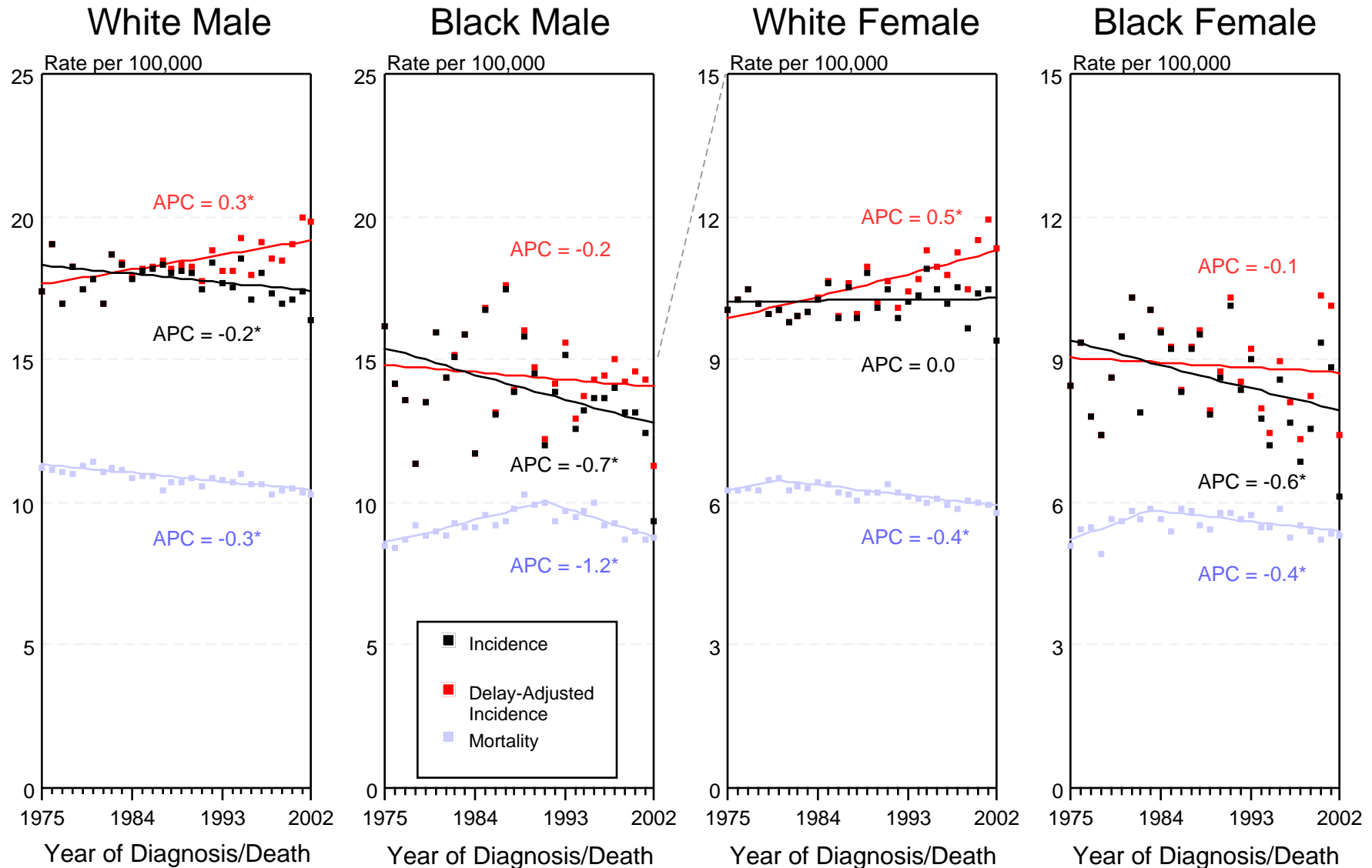


Figure XIII-1

+ Source: SEER 9 areas and NCHS public use data file for the total US. Rates are age-adjusted to the 2000 US Std Population (19 age groups - Census P25-1103). Regression lines and APCs are calculated using the Joinpoint Regression Program Version 3.0, April 2005, National Cancer Institute.

The APC is the Annual Percent Change for the regression line segments. The APC shown on the graph is for the most recent trend.

* The APC is significantly different from zero ($p < 0.05$).

SEER Incidence Rates+ Lymphocytic and Myeloid Leukemia (Acute and Chronic), by Sex

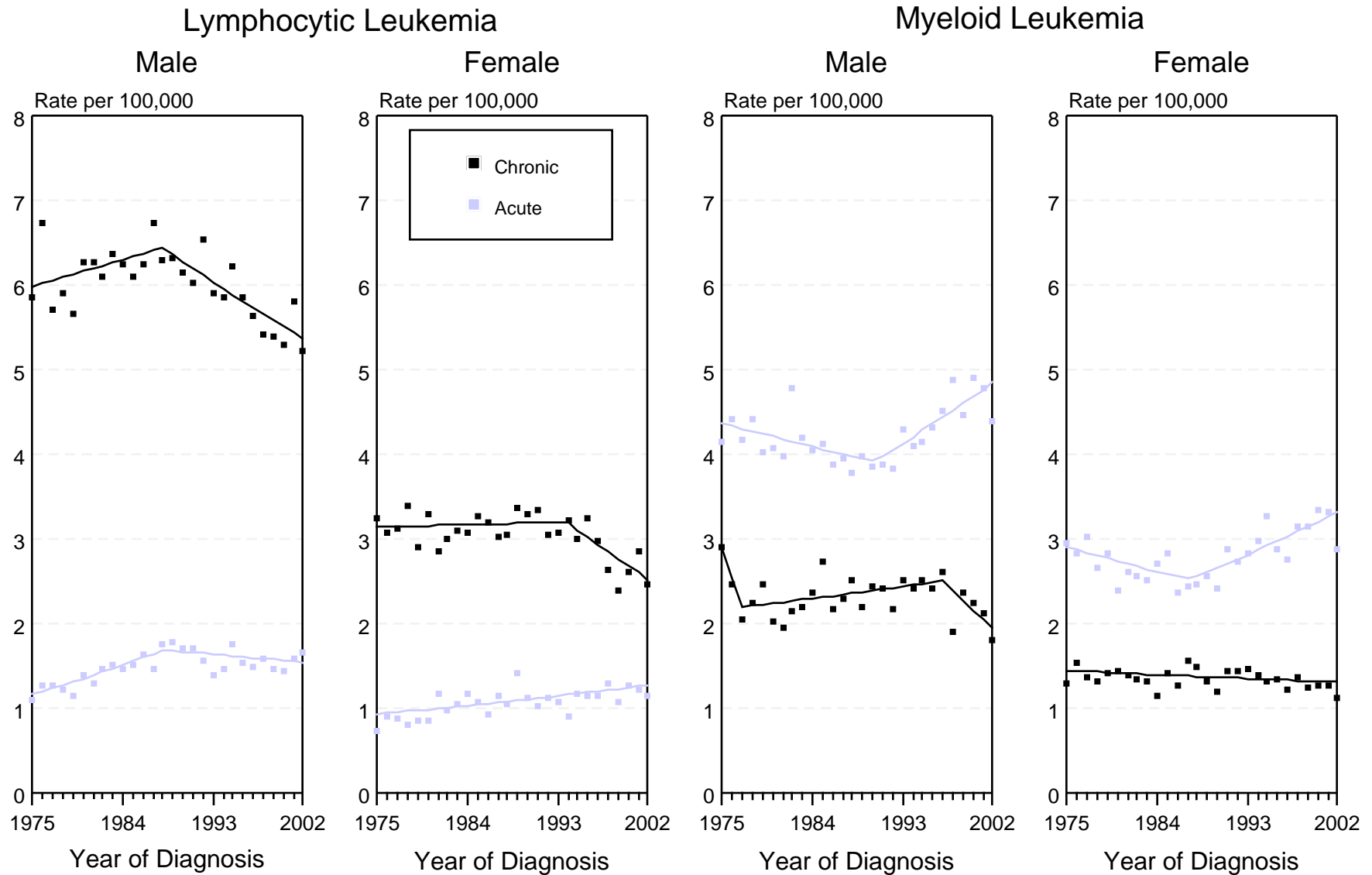


Figure XIII-2

+ Source: SEER 9 areas. Rates are age-adjusted to the 2000 US Std Population (19 age groups - Census P25-1103).
Regression lines are calculated using the Joinpoint Regression Program Version 3.0, April 2005, National Cancer Institute.

SEER Incidence and US Death Rates + Leukemia, Both Sexes

Joinpoint Analyses for 1975-2002 for Whites and Blacks

Rates for 1992-2002 for Asian/Pacific Islander, American Indian/Alaska Native and Hispanic

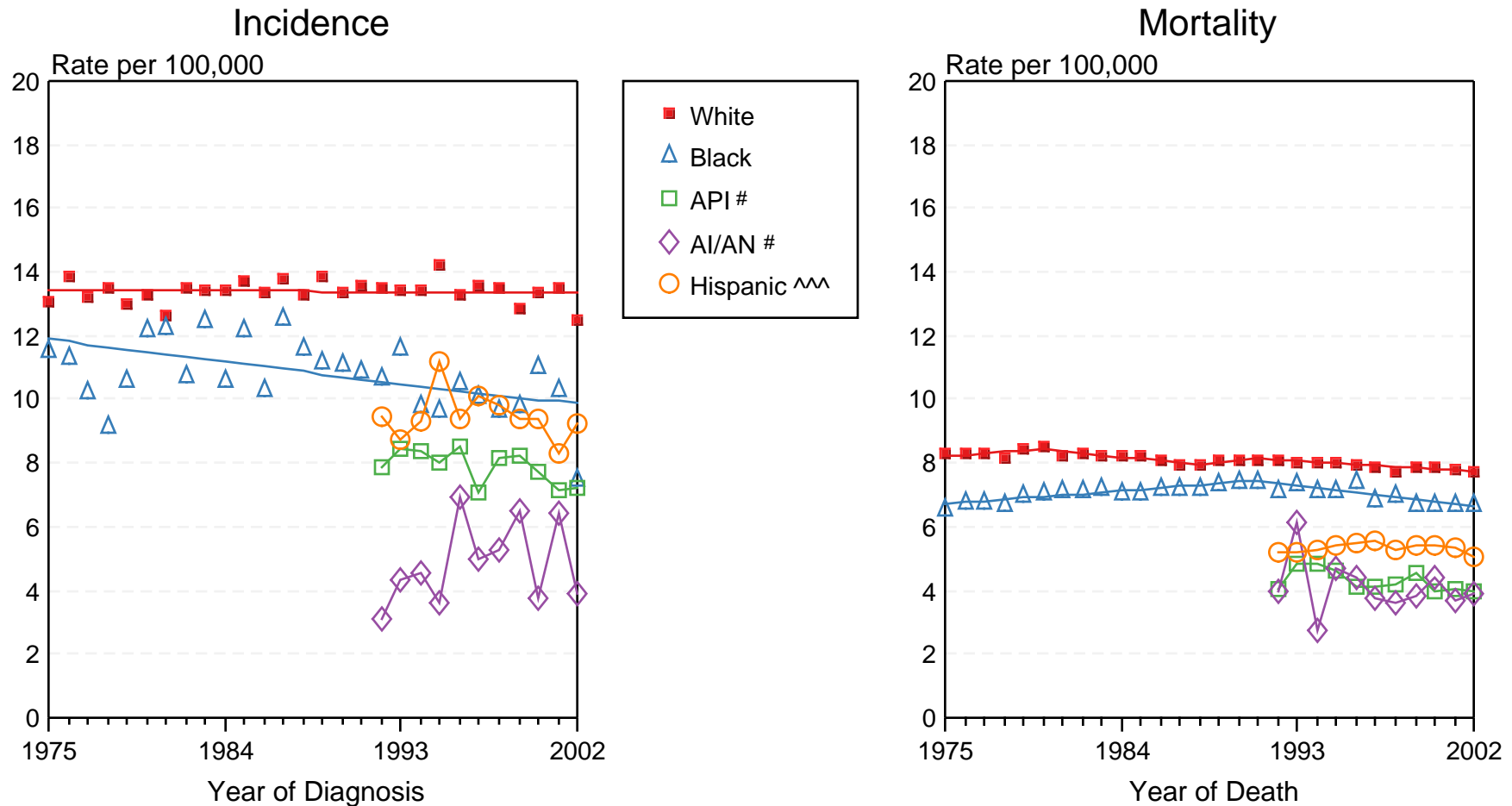


Figure XIII-3

+ Source: Incidence data for whites and blacks is from the SEER 9 areas (San Francisco, Connecticut, Detroit, Hawaii, Iowa, New Mexico, Seattle, Utah, Atlanta). Incidence data for Asian/Pacific Islanders, American Indian/Alaska Natives and Hispanics is from the SEER 13 Areas (SEER 9 Areas, San Jose-Monterey, Los Angeles, Alaska Native Registry and Rural Georgia). Mortality data is from NCHS public use data file for the total US. Rates are age-adjusted to the 2000 US Std Population (19 age groups - Census P25-1103). Regression lines for whites and blacks are calculated using the Joinpoint Regression Program Version 3.0, April 2005, National Cancer Institute.

API = Asian/Pacific Islander. AI/AN = American Indian/Alaska Native.

^^ Hispanic is not mutually exclusive from Whites, Blacks, Asian/Pacific Islanders, and American Indians/Alaska Natives. Incidence data for Hispanics excludes cases from Detroit, Hawaii, Alaska Native Registry and Rural Georgia. Mortality data for Hispanics excludes cases from Connecticut, Maine, Maryland, Minnesota, Oklahoma, New Hampshire, New York, North Dakota, and Vermont.