

Table XIX-1
NON-HODGKIN LYMPHOMA (Invasive)

TRENDS IN SEER INCIDENCE^a AND U.S. MORTALITY^b USING THE JOINTPOINT REGRESSION PROGRAM, 1975-2003
WITH UP TO THREE JOINTPOINTS BY RACE AND SEX

		<u>Jointpoint Segment 1</u>		<u>Jointpoint Segment 2</u>		<u>Jointpoint Segment 3</u>		<u>Jointpoint Segment 4</u>	
		Year	APC	Year	APC	Year	APC	Year	APC
<u>SEER Cancer Incidence^a</u>									
All Races	Male and Female	1975-1991	3.6*	1991-2003	0.4*				
All Races	Male	1975-1991	4.3*	1991-2003	0.0				
All Races	Female	1975-1990	2.9*	1990-2003	1.0*				
White	Male and Female	1975-1991	3.7*	1991-2003	0.4*				
White	Male	1975-1991	4.3*	1991-2003	0.0				
White	Female	1975-1990	2.9*	1990-2003	1.0*				
Black	Male and Female	1975-1995	4.4*	1995-2003	-1.1				
Black	Male	1975-1995	5.4*	1995-2003	-3.1*				
Black	Female	1975-2003	2.7*						
<u>SEER Delay-Adjusted Incidence^a</u>									
All Races	Male and Female	1975-1991	3.6*	1991-2003	0.6*				
All Races	Male	1975-1991	4.3*	1991-2003	0.2				
All Races	Female	1975-1990	2.8*	1990-2003	1.3*				
White	Male and Female	1975-1990	3.8*	1990-2003	0.9*				
White	Male	1975-1990	4.5*	1990-2003	0.5*				
White	Female	1975-1988	3.1*	1988-2003	1.5*				
Black	Male and Female	1975-1995	4.4*	1995-2003	-0.6				
Black	Male	1975-1995	5.5*	1995-2003	-2.6				
Black	Female	1975-2003	2.9*						
<u>U.S. Cancer Mortality^b</u>									
All Races	Male and Female	1975-1991	2.5*	1991-1997	1.6*	1997-2003	-3.2*		
All Races	Male	1975-1981	1.8*	1981-1990	3.0*	1990-1997	1.6*	1997-2003	-2.8*
All Races	Female	1975-1995	2.2*	1995-1998	-0.3	1998-2003	-3.7*		
White	Male and Female	1975-1991	2.5*	1991-1997	1.6*	1997-2003	-3.1*		
White	Male	1975-1996	2.5*	1996-2003	-2.4*				
White	Female	1975-1997	2.1*	1997-2003	-3.8*				
Black	Male and Female	1975-1997	2.6*	1997-2003	-3.7*				
Black	Male	1975-1997	2.7*	1997-2003	-4.7*				
Black	Female	1975-1996	2.7*	1996-2003	-1.8*				

Jointpoint Regression Program Version 3.1, April 2006, National Cancer Institute. (<http://srab.cancer.gov/jointpoint/>).

The APC is the Annual Percent Change based on rates age-adjusted to the 2000 US Std Population (19 age groups - Census P25-1130).

^a Trends are from the SEER 9 areas (San Francisco, Connecticut, Detroit, Hawaii, Iowa, New Mexico, Seattle, Utah, and Atlanta).

^b Trends are from the NCHS public use data file for the total US.

* The APC is significantly different from zero (p<.05).

Table XIX-2
NON-HODGKIN LYMPHOMA

AGE ADJUSTED SEER INCIDENCE^a RATES BY YEAR, RACE AND SEX

	All Races			Whites			Blacks		
	Total	Males	Females	Total	Males	Females	Total	Males	Females
<u>AGE-ADJUSTED RATES</u>									
YEAR OF DIAGNOSIS:									
1975	11.1	12.9	9.6	11.6	13.5	10.1	6.4	7.3	5.3
1976	11.2	12.8	10.0	11.6	13.2	10.5	6.0	7.4	4.9
1977	11.2	12.9	9.8	11.6	13.5	10.2	6.6	7.2	6.1
1978	11.9	14.3	10.1	12.5	14.8	10.7	7.2	9.5	5.2
1979	12.5	14.2	11.2	13.0	14.6	11.8	8.4	11.8	5.9
1980	12.6	15.0	10.8	12.9	15.2	11.2	8.8	10.9	7.2
1981	13.6	15.9	11.8	14.0	16.3	12.3	7.4	10.5	5.0
1982	13.4	15.6	11.6	14.0	16.4	12.0	10.3	10.2	10.0
1983	14.0	16.6	11.9	14.6	17.5	12.4	10.3	10.9	9.6
1984	15.2	18.3	12.8	15.9	19.1	13.5	9.4	12.5	6.9
1985	15.5	18.3	13.2	16.3	19.2	13.8	9.9	12.0	8.3
1986	15.9	19.4	13.0	16.8	20.6	13.7	10.6	13.1	8.5
1987	16.7	20.8	13.4	17.7	22.1	14.0	10.4	10.4	10.1
1988	17.2	21.3	14.0	18.2	22.4	14.9	11.6	15.8	8.5
1989	17.3	21.6	13.8	18.3	23.0	14.4	11.6	14.1	9.8
1990	18.5	23.0	14.8	19.4	24.0	15.5	13.8	17.5	10.8
1991	18.8	23.7	14.6	19.6	24.8	15.3	14.0	18.8	10.3
1992	18.6	23.0	15.0	19.6	23.9	15.8	13.6	18.7	9.6
1993	18.8	23.5	15.0	19.6	24.3	15.7	14.0	19.2	9.6
1994	19.9	24.9	15.8	20.6	25.5	16.5	14.3	21.3	8.6
1995	19.8	25.3	15.3	20.5	26.0	15.9	16.5	23.3	11.2
1996	19.3	24.2	15.4	20.2	25.1	16.1	15.1	18.9	11.8
1997	19.9	24.4	16.4	20.8	25.1	17.4	16.1	23.6	10.9
1998	19.4	22.8	16.6	20.4	23.9	17.5	13.9	16.2	12.0
1999	19.7	24.3	16.1	20.7	25.2	17.0	13.7	17.8	10.6
2000	19.5	24.0	15.8	20.6	25.2	16.8	13.8	18.3	10.5
2001	19.6	24.1	16.0	20.4	25.1	16.6	15.2	17.7	13.1
2002	19.7	23.6	16.6	20.7	24.8	17.4	14.1	16.7	12.0
2003	19.8	23.6	16.9	20.8	24.7	17.7	15.4	18.5	13.1
1975-2003	17.0	20.8	14.0	17.7	21.6	14.6	12.4	15.8	9.7

^a SEER 9 areas (San Francisco, Connecticut, Detroit, Hawaii, Iowa, New Mexico, Seattle, Utah, and Atlanta). Rates are per 100,000 and are age-adjusted to the 2000 US Std Population (19 age groups - Census P25-1130).
- Statistic not shown. Rate based on less than 16 cases for the time interval.

Table XIX-3
NON-HODGKIN LYMPHOMA

AGE-ADJUSTED U.S. DEATH^a RATES BY YEAR, RACE AND SEX

	All Races			Whites			Blacks		
	Total	Males	Females	Total	Males	Females	Total	Males	Females
<u>AGE-ADJUSTED RATES</u>									
YEAR OF DEATH:									
1975	5.6	6.9	4.6	5.8	7.2	4.8	3.7	4.8	2.9
1976	5.7	6.9	4.8	5.9	7.1	5.0	3.5	4.5	2.8
1977	5.8	6.9	4.9	6.0	7.1	5.1	3.9	4.9	3.1
1978	5.9	7.3	4.9	6.2	7.5	5.1	3.9	5.4	2.8
1979	5.9	7.4	4.9	6.2	7.7	5.1	3.6	4.5	3.0
1980	6.2	7.5	5.3	6.5	7.7	5.5	4.0	5.1	3.1
1981	6.2	7.4	5.3	6.4	7.7	5.5	4.0	5.0	3.3
1982	6.6	8.0	5.5	6.8	8.3	5.7	4.1	5.2	3.3
1983	6.7	8.1	5.6	6.9	8.4	5.8	4.3	5.8	3.2
1984	6.8	8.2	5.8	7.1	8.5	6.0	4.2	5.3	3.4
1985	7.1	8.8	5.8	7.3	9.2	6.0	4.6	5.6	3.9
1986	7.3	9.0	6.0	7.6	9.3	6.3	4.9	6.6	3.7
1987	7.3	8.8	6.1	7.6	9.1	6.4	4.7	6.3	3.6
1988	7.5	9.3	6.2	7.8	9.6	6.5	5.0	6.8	3.7
1989	7.8	9.7	6.4	8.1	10.0	6.7	5.3	7.1	4.1
1990	7.9	10.0	6.3	8.2	10.3	6.6	5.4	7.1	4.2
1991	8.2	10.1	6.7	8.5	10.5	7.0	5.7	7.2	4.6
1992	8.2	10.3	6.7	8.5	10.7	7.0	5.6	7.2	4.5
1993	8.2	10.1	6.9	8.6	10.5	7.2	5.7	7.5	4.4
1994	8.6	10.8	7.1	9.0	11.2	7.4	5.5	6.8	4.6
1995	8.7	10.8	7.2	9.1	11.2	7.5	5.8	7.6	4.5
1996	8.8	10.9	7.1	9.1	11.3	7.5	6.2	8.2	4.7
1997	8.9	11.0	7.3	9.2	11.4	7.6	6.3	8.4	4.9
1998	8.7	10.9	7.1	9.0	11.3	7.4	6.0	7.5	4.9
1999	8.3	10.4	6.9	8.7	10.7	7.2	5.7	7.4	4.4
2000	8.2	10.2	6.7	8.5	10.6	7.0	5.2	6.6	4.2
2001	7.9	9.9	6.4	8.2	10.3	6.7	5.6	7.3	4.5
2002	7.6	9.6	6.2	7.9	10.0	6.4	5.4	6.9	4.4
2003	7.3	9.3	5.9	7.6	9.7	6.1	4.9	5.8	4.3
1975-2003	7.5	9.3	6.2	7.8	9.7	6.5	5.1	6.5	4.0

^a NCHS public use data file for the total US. Rates are per 100,000 and are age-adjusted to the 2000 US Std Population (19 age groups - Census P25-1130).

- Statistic not shown. Rate based on less than 16 cases for the time interval.

Table XIX-4
NON-HODGKIN LYMPHOMA

SEER INCIDENCE^a AND U.S. DEATH^b RATES, AGE-ADJUSTED AND AGE-SPECIFIC RATES, BY RACE AND SEX

	All Races			Whites			Blacks		
	Total	Males	Females	Total	Males	Females	Total	Males	Females
<u>SEER INCIDENCE</u>									
<u>AGE AT DIAGNOSIS</u>									
AGE-ADJUSTED RATES, 2000-2003									
All ages	19.1	23.0	16.1	19.9	23.8	16.8	14.3	17.6	11.7
Under 65	9.5	11.3	7.7	9.7	11.6	7.9	9.2	11.6	7.1
65 and over	85.9	103.4	74.1	90.3	108.5	78.1	49.3	58.8	43.0
All ages(IARC world std) ^c	12.9	15.3	10.7	13.4	15.9	11.2	10.3	12.8	8.3
AGE-SPECIFIC RATES, 2000-2003									
<1	-	-	-	-	-	-	-	-	-
1-4	0.6	0.8	0.4	0.6	0.8	0.4	-	-	-
5-9	0.9	1.3	0.6	1.0	1.4	0.5	0.9	1.1	-
10-14	1.2	1.5	0.8	1.2	1.5	0.8	0.9	1.3	-
15-19	1.8	2.5	1.1	1.9	2.6	1.1	1.7	2.0	1.3
20-24	2.4	2.9	1.9	2.3	2.8	1.8	2.8	2.6	3.0
25-29	3.4	3.9	2.8	3.3	3.9	2.7	4.0	5.0	3.1
30-34	4.9	6.0	3.8	4.9	6.0	3.8	6.3	7.7	4.9
35-39	7.4	9.2	5.5	7.3	8.9	5.6	10.3	13.5	7.4
40-44	10.3	13.1	7.5	10.4	13.0	7.8	12.2	17.5	7.3
45-49	15.5	18.9	12.3	15.7	19.2	12.3	17.0	20.7	13.8
50-54	22.1	26.3	18.1	22.7	27.2	18.4	22.2	27.6	17.6
55-59	32.0	36.7	27.7	33.3	37.8	28.9	26.4	33.2	20.7
60-64	44.5	51.2	38.4	47.7	54.3	41.6	29.9	35.7	25.2
65-69	62.6	72.4	54.1	67.0	76.5	58.8	40.9	52.9	31.8
70-74	79.3	92.8	68.6	83.5	97.6	72.1	49.4	60.8	41.4
75-79	99.2	118.9	85.4	103.8	124.2	89.5	56.0	63.7	51.2
80-84	108.7	133.0	93.7	114.0	139.8	98.0	49.2	55.6	45.8
85+	101.3	132.6	87.2	104.9	138.5	90.0	56.2	63.2	53.5
<u>U.S. MORTALITY</u>									
<u>AGE AT DEATH</u>									
AGE-ADJUSTED RATES, 2000-2003									
All ages	7.7	9.8	6.3	8.1	10.1	6.5	5.3	6.6	4.3
Under 65	2.3	2.9	1.7	2.3	3.0	1.8	2.4	3.2	1.8
65 and over	45.3	56.9	37.7	47.6	59.8	39.6	25.0	30.7	21.6
All ages(IARC world std) ^c	4.4	5.6	3.5	4.6	5.8	3.6	3.5	4.4	2.8
AGE-SPECIFIC RATES, 2000-2003									
<1	-	-	-	-	-	-	-	-	-
1-4	0.0	0.1	-	0.0	-	-	-	-	-
5-9	0.1	0.1	0.1	0.1	0.1	0.1	-	-	-
10-14	0.1	0.2	0.1	0.1	0.2	0.1	0.2	0.2	-
15-19	0.3	0.4	0.2	0.2	0.4	0.1	0.4	0.3	0.4
20-24	0.5	0.6	0.4	0.5	0.6	0.4	0.6	0.7	0.5
25-29	0.6	0.7	0.5	0.5	0.7	0.4	1.0	0.9	1.0
30-34	0.8	1.0	0.6	0.7	0.9	0.5	1.2	1.7	0.8
35-39	1.2	1.6	0.9	1.2	1.5	0.8	1.7	2.3	1.1
40-44	1.9	2.5	1.4	1.9	2.5	1.3	2.4	3.2	1.7
45-49	3.2	4.2	2.3	3.2	4.2	2.3	4.0	5.2	3.0
50-54	5.2	6.7	3.8	5.3	6.8	3.8	5.8	7.8	4.2
55-59	9.2	11.6	7.0	9.6	11.9	7.3	8.5	11.2	6.3
60-64	15.2	18.8	11.9	15.9	19.5	12.5	12.6	16.0	10.0
65-69	23.2	29.4	17.9	24.4	30.9	18.6	16.9	21.0	13.9
70-74	35.0	43.4	28.3	36.7	45.2	29.7	23.6	30.6	18.9
75-79	50.9	62.3	42.8	53.6	65.5	45.0	26.1	30.3	23.7
80-84	68.3	85.1	58.2	71.9	89.5	61.2	33.2	38.9	30.2
85+	78.9	103.8	68.2	83.2	109.6	71.9	34.1	43.3	30.6

^a SEER 17 areas. Rates are per 100,000 and are age-adjusted to the 2000 US Std Population (19 age groups - Census P25-1130), unless noted.

^b NCHS public use data file for the total US. Rates are per 100,000 and are age-adjusted to the 2000 US Std Population (19 age groups - Census P25-1130), unless noted.

^c Rates are per 100,000 and are age-adjusted to the IARC world standard population.

- Statistic not shown. Rate based on less than 16 cases for the time interval.

Table XIX-5
NON-HODGKIN LYMPHOMA

SURVIVAL RATES, BY RACE, SEX, DIAGNOSIS YEAR AND AGE

	All Races			Whites			Blacks		
	Total	Males	Females	Total	Males	Females	Total	Males	Females
<u>5-YR RELATIVE SURVIVAL RATES</u>									
YEAR OF DIAGNOSIS:									
1960-1963 ^a	-	-	-	31	31	31	-	-	-
1970-1973 ^a	-	-	-	41	39	43	-	-	-
1975-1977 ^b	47.8	46.6	49.0	48.3	47.7	48.9	48.4	41.4	56.1 ^f
1978-1980 ^b	49.8	47.9	51.7	49.9	48.3	51.6	52.1	48.0	57.7
1981-1983 ^b	52.4	52.0	52.8	52.7	52.4	53.0	50.4	49.5	51.5
1984-1986 ^b	53.1	51.3	55.2	53.7	51.9	55.6	47.5	44.9	51.0
1987-1989 ^b	52.2	48.5	56.7	52.7	49.2	57.1	47.5	42.6	53.5
1990-1992 ^b	51.9	47.4	57.6	52.9	48.4	58.6	42.2	38.2	47.8
1993-1995 ^b	53.8	49.6	59.2	54.8	51.0	59.6	42.1	35.6	54.5
1996-2002 ^b	62.9 ^e	61.3 ^e	64.9 ^e	64.0 ^e	62.5 ^e	65.8 ^e	56.3	52.9	60.7
<u>5-YR PERIOD SURVIVAL RATES^{cd}</u>									
YEAR OF DIAGNOSIS:									
1996-2002	64.2	62.3	66.3	65.3	63.6	67.2	55.0	52.1	58.5
<u>5-YR RELATIVE SURVIVAL RATES, 1996-2002^c</u>									
AGE AT DIAGNOSIS:									
<45	69.0	64.9	76.5	71.7	67.3	79.8	54.2	49.5	62.6
45-54	71.4	67.2	77.6	73.2	69.4	79.1	58.0	52.7	65.5
55-64	67.5	63.7	72.3	69.0	65.6	73.3	56.4	48.5	65.1
65-74	59.5	56.1	63.0	60.2	56.3	64.2	52.2	52.2	51.9
75+	46.9	46.5	47.2	47.8	47.2	48.2	38.0	45.6 ^f	32.7 ^f
Under 65	69.3	65.3	75.3	71.2	67.5	77.0	56.0	50.6	64.2
65 and over	53.8	52.2	55.1	54.5	52.6	56.1	46.9	50.1	44.1

^a Rates are based on End Results data from a series of hospital registries and one population-based registry.

^b Rates are from the SEER 9 areas (San Francisco, Connecticut, Detroit, Hawaii, Iowa, New Mexico, Seattle, Utah, Atlanta).

Rates are based on follow-up of patients into 2003.

^c Rates are from the SEER 17 areas (San Francisco, Connecticut, Detroit, Hawaii, Iowa, New Mexico, Seattle, Utah, Atlanta, San Jose-Monterey, Los Angeles, Alaska Native Registry, Rural Georgia, California excluding SF/SJM/LA, Kentucky, Louisiana and New Jersey). California excluding SF/SJM/LA, Kentucky, Louisiana, and New Jersey contribute cases for diagnosis years 2000-2002. The remaining 13 SEER Areas contribute cases for the entire period 1996-2002. Rates are based on follow-up of patients into 2003.

^d Period survival provides a more up-to-date estimate of survival by piecing together the most recent conditional survival estimates from several cohorts. It is computed here using three calendar year blocks (2000-2002: 0-1 year survival), (1999-2001: 1-2 year survival), (1998-2000: 2-3 year survival), (1997-1999: 3-4 year survival), (1996-1998: 4-5 years survival).

^e The difference in rates between 1975-1977 and 1996-2002 is statistically significant ($p < .05$).

^f The standard error of the survival rate is between 5 and 10 percentage points.

^g The standard error of the survival rate is greater than 10 percentage points.

- Statistic could not be calculated due to fewer than 16 cases during the time period.

Table XIX-6
NON-HODGKIN LYMPHOMA

SURVIVAL RATES^a

By Year of Diagnosis

All Races, Males and Females

Year of Diagnosis

	1975- 1979	1980- 1984	1985	1986	1987	1988	1989	1990	1991	1992	1993	1994	1995	1996	1997	1998	1999	2000	2001	2002
Relative Survival Rates (SEER ^b)																				
1-year	71.2	74.1	72.9	71.0	73.1	71.9	71.4	70.7	70.4	71.4	71.9	71.3	70.6	73.7	76.5	77.1	78.0	77.4	79.1	81.3
2-year	61.0	64.7	64.2	62.6	64.1	62.9	63.2	61.7	61.5	62.8	63.9	63.7	62.4	66.3	69.0	70.5	71.6	71.9	73.8	
3-year	55.6	59.7	59.8	58.6	59.4	59.1	58.0	57.1	57.3	58.6	59.4	59.4	58.0	63.0	65.7	67.3	67.8	68.7		
4-year	51.8	56.0	56.2	54.8	56.2	55.1	54.5	53.2	54.8	55.5	56.6	56.2	55.5	59.9	63.2	65.0	65.8			
5-year	48.4	52.6	53.6	51.5	53.0	52.3	51.3	51.0	52.1	52.5	54.1	54.1	53.2	57.5	61.1	62.8				
6-year	45.3	49.6	51.4	48.8	50.2	50.3	48.7	48.7	49.4	50.3	52.1	52.4	51.2	56.0	59.1					
7-year	42.9	47.3	48.5	47.1	48.0	48.3	46.7	46.2	46.7	48.0	50.6	50.8	49.7	54.3						
8-year	40.9	45.5	46.6	45.0	45.7	46.3	44.0	44.4	44.6	46.7	48.8	49.2	48.3							
9-year	39.3	43.7	45.1	43.0	43.8	44.7	42.6	43.3	43.1	45.9	47.6	47.8								
10-year	38.1	42.1	43.5	41.5	42.8	43.6	40.8	42.5	42.1	44.5	46.6									
11-year	36.9	41.0	42.4	40.9	41.7	42.6	39.5	41.0	41.0	43.4										
12-year	36.0	39.9	41.3	39.7	40.5	41.3	38.1	39.8	40.3											
13-year	35.3	39.0	39.9	38.5	39.9	40.5	37.5	38.8												
14-year	34.4	38.2	38.9	38.0	39.1	40.1	36.8													
15-year	33.4	37.3	38.5	37.2	38.4	39.3														
16-year	32.6	36.6	37.6	36.5	38.2															
17-year	32.4	36.1	36.8	36.5																
18-year	32.2	35.8	36.4																	
19-year	31.7	35.3																		
20-year	31.3																			

^a Survival rates are relative rates expressed as percents.

^b Rates are from the SEER 9 areas (San Francisco, Connecticut, Detroit, Hawaii, Iowa, New Mexico, Seattle, Utah, and Atlanta).

Table XIX-7
NON-HODGKIN LYMPHOMA

SURVIVAL RATES^a

By Year of Diagnosis

All Races, Males

Year of Diagnosis

	1975- 1979	1980- 1984	1985	1986	1987	1988	1989	1990	1991	1992	1993	1994	1995	1996	1997	1998	1999	2000	2001	2002
Relative Survival Rates (SEER ^b)																				
1-year	70.4	73.7	71.7	70.2	69.7	68.8	68.5	66.5	66.8	68.4	68.6	68.0	67.2	71.9	75.8	75.5	76.7	76.6	78.4	81.3
2-year	60.2	64.8	63.1	61.7	60.9	60.1	59.3	57.6	57.3	58.3	59.6	60.1	59.0	64.1	67.7	69.0	70.1	71.0	72.3	
3-year	54.3	59.3	58.2	57.6	56.2	55.6	54.1	52.6	52.8	54.5	54.9	55.5	54.8	60.8	64.7	65.8	65.4	67.8		
4-year	50.5	55.3	53.8	53.1	52.7	51.4	50.3	48.8	50.2	50.9	52.0	52.3	52.2	57.4	62.1	63.8	63.1			
5-year	46.8	51.9	50.6	49.8	49.8	48.8	47.1	46.7	48.1	47.1	49.3	50.0	49.5	55.1	60.0	61.5				
6-year	44.1	48.7	48.0	46.6	47.0	46.9	44.4	45.1	45.5	45.5	47.4	48.7	47.7	53.0	58.2					
7-year	41.8	46.4	45.1	44.7	45.6	45.3	41.7	42.5	42.9	43.3	46.8	47.3	46.3	51.2						
8-year	40.0	44.6	43.2	42.3	43.1	44.1	39.5	41.1	40.7	42.2	45.2	45.4	44.7							
9-year	38.1	42.9	41.4	40.5	40.8	42.8	38.3	39.9	39.2	41.3	44.2	43.8								
10-year	36.9	41.1	40.3	39.0	39.8	41.8	37.0	39.3	38.4	39.8	43.5									
11-year	35.9	39.8	39.3	38.1	38.9	40.8	35.6	38.2	37.6	39.5										
12-year	35.2	39.0	38.0	37.3	37.9	39.9	34.2	36.9	37.2											
13-year	34.2	38.4	36.6	36.2	37.8	39.3	33.9	35.9												
14-year	33.1	37.8	36.0	35.2	37.0	39.3	32.9													
15-year	31.8	37.1	35.9	34.1	36.4	38.6														
16-year	31.2	36.2	35.6	34.1	36.0															
17-year	30.9	35.8	34.7	34.1																
18-year	30.9	35.7	34.4																	
19-year	30.7	35.6																		
20-year	30.6																			

^a Survival rates are relative rates expressed as percents.

^b Rates are from the SEER 9 areas (San Francisco, Connecticut, Detroit, Hawaii, Iowa, New Mexico, Seattle, Utah, and Atlanta).

Table XIX-8
NON-HODGKIN LYMPHOMA

SURVIVAL RATES^a

By Year of Diagnosis

All Races, Females

Year of Diagnosis

	1975- 1979	1980- 1984	1985	1986	1987	1988	1989	1990	1991	1992	1993	1994	1995	1996	1997	1998	1999	2000	2001	2002
Relative Survival Rates (SEER ^b)																				
1-year	72.0	74.5	74.1	72.1	77.3	75.6	74.9	75.9	75.1	75.1	75.9	75.5	75.3	76.1	77.3	78.9	79.4	78.3	79.9	81.4
2-year	61.8	64.7	65.5	63.7	68.1	66.3	68.0	66.7	67.2	68.4	69.4	68.2	67.0	69.1	70.5	72.2	73.5	73.0	75.6	
3-year	56.8	60.0	61.4	59.8	63.2	63.4	62.8	62.7	63.2	63.8	65.0	64.5	62.3	65.7	66.9	68.9	70.7	69.8		
4-year	53.2	56.6	58.8	56.9	60.5	59.4	59.7	58.6	60.8	61.3	62.5	61.3	60.0	62.9	64.5	66.3	69.0			
5-year	49.9	53.3	56.8	53.6	57.0	56.6	56.5	56.2	57.3	59.3	60.1	59.3	58.1	60.5	62.5	64.2				
6-year	46.5	50.5	55.1	51.5	54.0	54.1	54.1	53.2	54.7	56.2	58.0	57.3	55.9	59.9	60.2					
7-year	44.1	48.3	52.3	50.0	51.0	51.9	52.8	50.7	51.7	53.9	55.3	55.2	54.3	58.4						
8-year	41.9	46.4	50.4	48.2	49.0	48.9	49.7	48.4	49.8	52.4	53.5	54.1	53.0							
9-year	40.5	44.5	49.1	46.0	47.3	47.0	47.9	47.3	48.5	51.7	52.0	53.0								
10-year	39.4	43.1	47.1	44.4	46.4	45.7	45.7	46.5	47.1	50.4	50.5									
11-year	37.9	42.2	45.9	44.4	45.2	44.5	44.4	44.4	45.6	48.2										
12-year	36.8	40.8	45.1	42.5	43.7	42.9	43.0	43.3	44.5											
13-year	36.4	39.6	43.6	41.2	42.5	41.6	42.2	42.4												
14-year	35.6	38.7	42.0	40.8	41.6	41.0	41.7													
15-year	34.8	37.5	40.9	40.8	40.7	40.2														
16-year	34.0	37.0	39.6	39.4	40.7															
17-year	33.8	36.4	39.1	39.3																
18-year	33.5	35.8	38.5																	
19-year	32.7	35.1																		
20-year	32.0																			

^a Survival rates are relative rates expressed as percents.

^b Rates are from the SEER 9 areas (San Francisco, Connecticut, Detroit, Hawaii, Iowa, New Mexico, Seattle, Utah, and Atlanta).

Table XIX-9

NON-HODGKIN LYMPHOMANUMBER OF CASES

By SEER Location and Year of Diagnosis, 1975-2003

All Races, Males, All Ages

SEER Location	Year of Diagnosis												
	1975- 1979	1980- 1981	1982- 1983	1984- 1985	1986- 1987	1988- 1989	1990- 1991	1992- 1993	1994- 1995	1996- 1997	1998- 1999	2000- 2001	2002- 2003
SEER 9 ^b	5222	2504	2701	3171	3627	3987	4573	4728	5301	5235	5217	5491	5576
SEER 9 except SF-Oakland	4280	2086	2265	2597	2819	3084	3506	3690	4140	4227	4327	4456	4659
San Francisco- Oakland SMSA ^c	942	418	436	574	808	903	1067	1038	1161	1008	890	1035	917
San Francisco City/County	246	96	122	209	325	393	469	411	448	352	213	255	217

AGE-ADJUSTED CANCER INCIDENCE RATES^a

By SEER Location and Year of Diagnosis, 1975-2003

All Races, Males, All Ages

SEER Location	Year of Diagnosis												
	1975- 1979	1980- 1981	1982- 1983	1984- 1985	1986- 1987	1988- 1989	1990- 1991	1992- 1993	1994- 1995	1996- 1997	1998- 1999	2000- 2001	2002- 2003
SEER 9 ^b	13.4	15.5	16.1	18.3	20.1	21.5	23.4	23.2	25.1	24.3	23.6	24.0	23.6
SEER 9 except SF-Oakland	13.2	15.4	16.1	18.0	18.8	20.0	21.7	21.8	23.5	23.4	23.3	23.2	23.5
San Francisco- Oakland SMSA ^c	14.8	15.8	16.0	19.5	26.7	28.5	31.8	30.6	33.3	28.7	24.9	28.2	24.2
San Francisco City/County	14.4	14.4	17.5	29.1	44.3	51.9	61.2	52.4	57.1	44.5	27.4	32.2	26.3

^a Rates are per 100,000 males and are age-adjusted to the 2000 US Std Population (19 age groups - Census P25-1130).^b The SEER 9 areas are San Francisco-Oakland SMSA, Connecticut, Detroit, Hawaii, Iowa, New Mexico, Seattle, Utah and Atlanta.^c The San Francisco-Oakland SMSA represents 15% of all persons in the SEER areas. For this age group, all SEER areas may not be generalizable to the United States for Non-Hodgkin Lymphoma.

- Statistic not shown. Rate based on less than 4 cases for the time interval.

Table XIX-10

NON-HODGKIN LYMPHOMANUMBER OF CASES

By SEER Location and Year of Diagnosis, 1975-2003

All Races, Males, Ages 0-19

Year of Diagnosis

SEER Location	1975- 1979	1980- 1981	1982- 1983	1984- 1985	1986- 1987	1988- 1989	1990- 1991	1992- 1993	1994- 1995	1996- 1997	1998- 1999	2000- 2001	2002- 2003
SEER 9 ^b	220	89	108	89	94	85	100	88	118	105	105	121	127
SEER 9 except SF-Oakland	188	80	95	80	80	77	86	73	105	84	93	100	115
San Francisco- Oakland SMSA ^c	32	9	13	9	14	8	14	15	13	21	12	21	12
San Francisco City/County	9	<4	<4	<4	<4	0	<4	<4	<4	<4	<4	0	<4

AGE-ADJUSTED CANCER INCIDENCE RATES^a

By SEER Location and Year of Diagnosis, 1975-2003

All Races, Males, Ages 0-19

Year of Diagnosis

SEER Location	1975- 1979	1980- 1981	1982- 1983	1984- 1985	1986- 1987	1988- 1989	1990- 1991	1992- 1993	1994- 1995	1996- 1997	1998- 1999	2000- 2001	2002- 2003
SEER 9 ^b	1.2	1.3	1.6	1.3	1.4	1.3	1.5	1.3	1.6	1.4	1.4	1.6	1.6
SEER 9 except SF-Oakland	1.2	1.3	1.6	1.4	1.4	1.3	1.5	1.2	1.7	1.3	1.4	1.5	1.7
San Francisco- Oakland SMSA ^c	1.4	1.0	1.5	1.0	1.6	0.9	1.5	1.6	1.3	2.1	1.2	2.0	1.2
San Francisco City/County	2.3	-	-	-	-	0.0	-	-	-	-	-	0.0	-

^a Rates are per 100,000 males aged 0-19 and are age-adjusted to the 2000 US Std Population (19 age groups - Census P25-1130).^b The SEER 9 areas are San Francisco-Oakland SMSA, Connecticut, Detroit, Hawaii, Iowa, New Mexico, Seattle, Utah and Atlanta.^c The San Francisco-Oakland SMSA represents 15% of all persons in the SEER areas. For this age group, all SEER areas may not be generalizable to the United States for Non-Hodgkin Lymphoma.

- Statistic not shown. Rate based on less than 4 cases for the time interval.

Table XIX-11

NON-HODGKIN LYMPHOMANUMBER OF CASES

By SEER Location and Year of Diagnosis, 1975-2003

All Races, Males, Ages 20-54

SEER Location	Year of Diagnosis												
	1975- 1979	1980- 1981	1982- 1983	1984- 1985	1986- 1987	1988- 1989	1990- 1991	1992- 1993	1994- 1995	1996- 1997	1998- 1999	2000- 2001	2002- 2003
SEER 9 ^b	1464	686	721	955	1211	1408	1766	1830	2078	1752	1602	1663	1566
SEER 9 except SF-Oakland	1205	561	587	728	826	918	1192	1291	1473	1308	1264	1298	1264
San Francisco- Oakland SMSA ^c	259	125	134	227	385	490	574	539	605	444	338	365	302
San Francisco City/County	59	29	34	104	215	288	335	303	316	224	105	114	110

AGE-ADJUSTED CANCER INCIDENCE RATES^a

By SEER Location and Year of Diagnosis, 1975-2003

All Races, Males, Ages 20-54

SEER Location	Year of Diagnosis												
	1975- 1979	1980- 1981	1982- 1983	1984- 1985	1986- 1987	1988- 1989	1990- 1991	1992- 1993	1994- 1995	1996- 1997	1998- 1999	2000- 2001	2002- 2003
SEER 9 ^b	6.9	7.9	8.2	10.4	12.4	13.5	15.9	15.6	16.8	13.7	12.1	12.1	11.2
SEER 9 except SF-Oakland	6.9	7.8	8.1	9.7	10.3	10.8	13.1	13.3	14.3	12.2	11.4	11.3	10.8
San Francisco- Oakland SMSA ^c	7.0	8.5	8.9	13.8	22.7	26.4	29.7	26.8	29.7	21.2	15.5	16.2	13.2
San Francisco City/County	6.8	8.8	9.4	26.9	56.6	71.5	81.7	72.3	74.2	50.8	23.0	24.8	23.3

^a Rates are per 100,000 males aged 20-54 and are age-adjusted to the 2000 US Std Population (19 age groups - Census P25-1130).

^b The SEER 9 areas are San Francisco-Oakland SMSA, Connecticut, Detroit, Hawaii, Iowa, New Mexico, Seattle, Utah and Atlanta.

^c The San Francisco-Oakland SMSA represents 15% of all persons in the SEER areas. For this age group, all SEER areas may not be generalizable to the United States for Non-Hodgkin Lymphoma.

- Statistic not shown. Rate based on less than 4 cases for the time interval.

Table XIX-12

NON-HODGKIN LYMPHOMANUMBER OF CASES

By SEER Location and Year of Diagnosis, 1975-2003

All Races, Males, Ages 55+

SEER Location	Year of Diagnosis												
	1975- 1979	1980- 1981	1982- 1983	1984- 1985	1986- 1987	1988- 1989	1990- 1991	1992- 1993	1994- 1995	1996- 1997	1998- 1999	2000- 2001	2002- 2003
SEER 9 ^b	3538	1729	1872	2127	2322	2494	2707	2810	3105	3378	3510	3707	3883
SEER 9 except SF-Oakland	2887	1445	1583	1789	1913	2089	2228	2326	2562	2835	2970	3058	3280
San Francisco- Oakland SMSA ^c	651	284	289	338	409	405	479	484	543	543	540	649	603
San Francisco City/County	178	65	87	104	108	105	132	107	129	125	106	141	106

AGE-ADJUSTED CANCER INCIDENCE RATES^a

By SEER Location and Year of Diagnosis, 1975-2003

All Races, Males, Ages 55+

SEER Location	Year of Diagnosis												
	1975- 1979	1980- 1981	1982- 1983	1984- 1985	1986- 1987	1988- 1989	1990- 1991	1992- 1993	1994- 1995	1996- 1997	1998- 1999	2000- 2001	2002- 2003
SEER 9 ^b	45.2	52.1	53.9	59.6	63.3	67.2	70.2	70.6	75.8	79.9	80.2	82.1	82.3
SEER 9 except SF-Oakland	44.0	52.0	54.3	59.9	62.1	66.6	68.8	69.2	74.2	79.5	80.5	80.4	82.5
San Francisco- Oakland SMSA ^c	51.0	52.7	52.0	57.5	70.0	70.3	77.5	78.3	84.7	81.8	78.7	91.3	80.9
San Francisco City/County	48.2	44.6	59.2	72.7	73.4	75.7	93.3	75.3	90.6	86.5	72.7	93.0	67.3

^a Rates are per 100,000 males aged 55+ and are age-adjusted to the 2000 US Std Population (19 age groups - Census P25-1130).^b The SEER 9 areas are San Francisco-Oakland SMSA, Connecticut, Detroit, Hawaii, Iowa, New Mexico, Seattle, Utah and Atlanta.^c The San Francisco-Oakland SMSA represents 15% of all persons in the SEER areas. For this age group, all SEER areas may not be generalizable to the United States for Non-Hodgkin Lymphoma.

- Statistic not shown. Rate based on less than 4 cases for the time interval.

Table XIX-13
NON-HODGKIN LYMPHOMA

Percent Diagnosed With Cancer In 10, 20 and 30 Years and In Remaining Lifetime,
Given Cancer Free At Current Age By Race and Sex

Lifetime Risk (Percent) of Being Diagnosed (17 SEER Areas) With Cancer and
Lifetime Risk (Percent) of Dying (Total U.S.) From Cancer

2001-2003

Race/ Ethnicity	Current Age	Males				Females			
		+10 yrs	+20 yrs	+30 yrs	Eventually	+10 yrs	+20 yrs	+30 yrs	Eventually
All Races	0	0.01	0.03	0.06	2.14	0.00	0.01	0.04	1.83
	10	0.02	0.06	0.13	2.16	0.01	0.03	0.08	1.85
	20	0.04	0.11	0.26	2.15	0.02	0.07	0.17	1.84
	30	0.07	0.23	0.52	2.14	0.05	0.14	0.36	1.83
	40	0.16	0.45	0.96	2.11	0.10	0.32	0.73	1.80
	50	0.31	0.83	1.50	2.03	0.23	0.64	1.21	1.74
White	0	0.01	0.03	0.06	2.24	0.00	0.01	0.04	1.92
	10	0.02	0.06	0.13	2.26	0.01	0.03	0.08	1.94
	20	0.04	0.11	0.26	2.25	0.02	0.07	0.17	1.93
	30	0.07	0.23	0.53	2.25	0.05	0.14	0.37	1.92
	40	0.16	0.46	1.00	2.21	0.10	0.33	0.77	1.89
	50	0.31	0.87	1.58	2.13	0.23	0.68	1.28	1.83
Black	0	0.01	0.02	0.06	1.25	0.00	0.01	0.04	1.07
	10	0.02	0.06	0.16	1.27	0.01	0.04	0.10	1.08
	20	0.04	0.14	0.32	1.27	0.03	0.09	0.19	1.08
	30	0.10	0.29	0.54	1.26	0.06	0.16	0.34	1.06
	40	0.19	0.45	0.76	1.19	0.11	0.28	0.52	1.01
	50	0.29	0.62	0.92	1.08	0.19	0.44	0.73	0.95
Asian/ Pacific Islander	0	0.01	0.02	0.05	1.91	0.00	0.02	0.04	1.60
	10	0.02	0.05	0.09	1.92	0.01	0.03	0.06	1.61
	20	0.03	0.07	0.17	1.91	0.02	0.05	0.11	1.60
	30	0.04	0.14	0.32	1.89	0.03	0.09	0.25	1.58
	40	0.10	0.28	0.63	1.86	0.07	0.23	0.48	1.56
	50	0.19	0.55	1.12	1.80	0.16	0.42	0.89	1.51
Hispanic ^a	0	0.01	0.03	0.06	1.96	0.00	0.01	0.03	1.77
	10	0.02	0.05	0.11	1.98	0.01	0.02	0.06	1.79
	20	0.03	0.09	0.22	1.97	0.02	0.05	0.13	1.78
	30	0.06	0.19	0.42	1.97	0.04	0.11	0.30	1.77
	40	0.14	0.36	0.75	1.93	0.07	0.27	0.63	1.75
	50	0.24	0.64	1.26	1.86	0.20	0.57	1.12	1.70
60	0.43	1.10	1.59	1.73	0.38	0.96	1.42	1.55	

Race/Ethnicity	Lifetime Risk of Developing		Lifetime Risk of Dying	
	Males	Females	Males	Females
All Races	2.14%	1.83%	0.93%	0.79%
White	2.24%	1.92%	0.99%	0.83%
Black	1.25%	1.07%	0.49%	0.44%
Asian/Pacific Islander	1.91%	1.60%	0.87%	0.70%
Hispanic ^a	1.96%	1.77%	0.79%	0.72%

Devcan Version 6.1.0, April 2006, National Cancer Institute (<http://srab.cancer.gov/devcan/>).

Source: Incidence data are from the SEER 17 areas (San Francisco, Connecticut, Detroit, Hawaii, Iowa, New Mexico, Seattle, Utah, Atlanta, San Jose-Monterey, Los Angeles, Alaska Native Registry, Rural Georgia, California excluding SF/SJM/LA, Kentucky, Louisiana and New Jersey). Mortality data are from the NCHS public use data file for the total US.

^a Hispanic is not mutually exclusive from Whites, Blacks, Asian/Pacific Islanders, and American Indians/Alaska Natives. Underlying incidence data for Hispanics are based on NHIA and exclude cases from Hawaii, Seattle, Alaska Native Registry and Kentucky. Underlying mortality data for Hispanics exclude deaths from Minnesota, New Hampshire and North Dakota.

Table XIX-14
NON-HODGKIN LYMPHOMA (Invasive)

SEER INCIDENCE AND U.S. MORTALITY
AGE-ADJUSTED RATES AND TRENDS^a
By Race/Ethnicity and Sex

SEER Incidence

RACE/ETHNICITY	Rate 2000-2003 ^b			Trend 1994-2003 ^c		
	Rate per 100,000 persons			APC (%)		
	Total	Males	Females	Total	Males	Females
All Races	19.1	23.0	16.1	-0.1	-0.8*	0.8*
White	19.9	23.8	16.8	-0.1	-0.7*	0.8*
White Hispanic ^d	16.4	19.3	14.1	-0.8*	-1.2	-0.2
White Non-Hispanic ^d	20.4	24.4	17.1	-0.2	-0.9*	0.8*
Black	14.3	17.6	11.7	-0.1	-1.9*	2.5*
Asian/Pacific Islander	13.2	15.7	11.3	-0.1	-0.8	0.9
Amer Ind/Alaska Nat ^e	12.4	15.0	10.1	3.3	-	-
Hispanic ^d	16.1	18.9	13.9	-0.8*	-1.1	-0.2

U.S. Mortality^f

RACE/ETHNICITY	Rate 2000-2003			Trend 1994-2003		
	Rate per 100,000 persons			APC (%)		
	Total	Males	Females	Total	Males	Females
All Races	7.7	9.8	6.3	-1.9*	-1.7*	-2.1*
White	8.1	10.1	6.5	-1.9*	-1.7*	-2.2*
White Hispanic ^d	6.1	7.3	5.1	-2.1*	-3.0*	-1.1
White Non-Hispanic ^d	8.2	10.3	6.6	-1.9*	-1.6*	-2.2*
Black	5.3	6.6	4.3	-1.7*	-2.2	-1.0
Asian/Pacific Islander	4.8	5.9	4.0	-1.9*	-2.2*	-1.3
Amer Ind/Alaska Nat	4.4	4.8	4.0	-1.9	-3.9	-0.7
Hispanic ^d	5.9	7.1	4.9	-2.1*	-3.0*	-1.0

- The APC is the Annual Percent Change over the time interval.
- Statistic not shown. Rate based on less than 16 cases for the time interval. Trend based on less than 10 cases for at least one year within the time interval.
- ^a Rates are age-adjusted to the 2000 US Std Population (19 age groups - Census P25-1130). Trends are based on rates age-adjusted to the 2000 US Std Population (19 age groups - Census P25-1130).
- ^b Incidence data used in calculating the rates are from the 17 SEER areas (San Francisco, Connecticut, Detroit, Hawaii, Iowa, New Mexico, Seattle, Utah, Atlanta, San Jose-Monterey, Los Angeles, Alaska Native Registry, Rural Georgia, California excluding SF/SJM/LA, Kentucky, Louisiana and New Jersey).
- ^c Incidence data used in calculating the trends are from the 13 SEER areas (San Francisco, Connecticut, Detroit, Hawaii, Iowa, New Mexico, Seattle, Utah, Atlanta, San Jose-Monterey, Los Angeles, Alaska Native Registry and Rural Georgia).
- ^d Hispanic and Non-Hispanic are not mutually exclusive from Whites, Blacks, Asian/Pacific Islanders, and American Indians/Alaska Natives. Incidence data for Hispanics and Non-Hispanics are based on NHIA and exclude cases from Hawaii, Seattle, Alaska Native Registry and Kentucky. The 2000-2003 Hispanic and Non-Hispanic death rates exclude deaths from Minnesota, New Hampshire and North Dakota. The 1994-2003 Hispanic and Non-Hispanic mortality trends exclude deaths from Maine, Minnesota, New Hampshire, North Dakota, and Oklahoma.
- ^e Incidence data for American Indians/Alaska Natives include cases from Connecticut, Detroit, Iowa, New Mexico, Seattle, Utah, Atlanta, and the Alaska Native Registry. Incidence rates are for diagnosis years 1999-2002. Incidence trends are for diagnosis years 1994-2002.
- ^f Mortality data are analyzed from a public use file provided by the National Center for Health Statistics (NCHS).
- * The APC is significantly different from zero (p<.05).

Table XIX-15
NON-HODGKIN LYMPHOMA

AGE-ADJUSTED SEER INCIDENCE RATES^a
By Registry, Race/Ethnicity and Sex

	All Races			Whites		Blacks		Asian/Pacific Islanders		Hispanics ^b	
	Total	Males	Females	Males	Females	Males	Females	Males	Females	Males	Females
<u>SEER INCIDENCE RATES^a, 2000-2003</u>											
REGISTRY											
17 SEER Areas ^c	19.1	23.0	16.1	23.8	16.8	17.6	11.7	15.7	11.3	18.9	13.9
13 SEER Areas ^c	19.3	23.3	16.0	24.6	16.9	17.8	12.0	16.0	11.8	18.7	13.4
11 SEER Areas ^c	19.3	23.4	16.0	24.6	16.9	17.9	12.1	16.0	11.8	18.7	13.4
9 SEER Areas ^c	19.7	23.8	16.3	25.0	17.1	17.8	12.2	16.2	11.7	18.1	13.3
San Francisco-Oakland	20.5	26.2	15.8	28.1	17.4	22.9	11.5	17.7	11.7	24.9	16.3
Connecticut	19.8	23.8	16.7	24.5	16.9	14.5	13.3	-	-	22.3	15.1
Metropolitan Detroit	20.8	25.0	17.7	26.4	19.0	19.0	12.2	14.0	12.4	17.5	-
Hawaii	15.4	18.2	13.2	21.9	15.1	-	-	16.5	12.0	-	-
Iowa	19.2	22.3	16.7	22.3	16.6	-	-	-	-	-	-
New Mexico	15.6	18.2	13.4	18.6	13.8	-	-	-	-	13.5	10.6
Seattle-Puget Sound	22.3	27.6	18.1	28.9	18.8	14.6	13.3	15.7	12.8	-	-
Utah	18.9	22.9	15.4	23.3	15.6	-	-	-	-	17.8	14.7
Metropolitan Atlanta	17.6	20.9	15.1	22.7	16.1	16.0	12.1	11.2	10.0	6.2	15.2
San Jose-Monterey	19.7	22.7	17.2	24.9	18.0	13.8	-	13.8	12.7	21.3	17.9
Los Angeles	18.0	22.0	14.9	23.2	15.6	18.0	11.7	16.4	11.9	18.8	12.9
Rural Georgia	15.6	17.0	14.1	19.8	19.2	-	-	-	-	-	-
California exclud. SF/SJM/LA	17.9	21.3	15.1	21.8	15.5	16.1	11.2	14.9	9.6	17.4	14.4
Kentucky	18.9	21.4	16.8	21.3	17.0	19.1	10.2	-	-	-	-
Louisiana	18.6	22.6	15.5	24.5	17.1	16.0	10.7	-	-	19.8	15.4
New Jersey	21.2	25.6	17.9	26.1	18.6	19.5	12.2	13.0	10.0	25.8	14.3

^a Rates are per 100,000 and are age-adjusted to the 2000 US Std Population (19 age groups - Census P25-1130)

^b Hispanic is not mutually exclusive from Whites, Blacks, Asian/Pacific Islanders, and American Indians/Alaska Natives. Incidence data for Hispanics are based on NHIA and exclude cases from Hawaii, Seattle, Alaska Native Registry and Kentucky.

^c The SEER 9 areas are San Francisco, Connecticut, Detroit, Hawaii, Iowa, New Mexico, Seattle, Utah and Atlanta.

The SEER 11 areas comprise the SEER 9 areas plus San Jose-Monterey and Los Angeles.

The SEER 13 areas comprise the SEER 11 areas plus the Alaska Native Registry and Rural Georgia.

The SEER 17 areas comprise the SEER 13 areas plus California excluding SF/SJM/LA, Kentucky, Louisiana and New Jersey

- Statistic not shown. Rate based on less than 16 cases for the time interval.

Table XIX-16
NON-HODGKIN LYMPHOMA

AGE-ADJUSTED SEER DEATH RATES^a
By Registry, Race/Ethnicity and Sex

	All Races			Whites		Blacks		Asian/Pacific Islanders		Hispanics ^b	
	Total	Males	Females	Males	Females	Males	Females	Males	Females	Males	Females
<u>SEER DEATH RATES^a, 2000-2003</u>											
REGISTRY											
17 SEER Areas ^c	7.6	9.7	6.1	10.2	6.4	6.9	4.2	6.5	4.4	7.2	4.7
13 SEER Areas ^c	7.4	9.5	5.9	10.2	6.3	6.4	4.1	6.7	4.5	7.0	4.8
11 SEER Areas ^c	7.5	9.5	5.9	10.2	6.3	6.4	4.1	6.7	4.5	7.0	4.8
9 SEER Areas ^c	7.7	9.9	6.1	10.5	6.4	6.5	4.0	6.9	4.8	7.9	4.8
San Francisco-Oakland	7.6	10.1	5.9	11.4	6.4	7.6	3.7	6.4	5.1	9.5	5.1
Connecticut	7.6	9.5	6.2	9.9	6.3	5.7	4.3	-	-	-	-
Metropolitan Detroit	7.8	10.1	6.1	10.9	6.5	7.3	4.3	-	-	-	-
Hawaii	5.9	7.7	4.5	8.6	5.2	-	-	7.4	4.2	-	-
Iowa	8.6	10.7	7.2	10.8	7.2	-	-	-	-	-	-
New Mexico	7.0	8.9	5.4	9.0	5.4	-	-	-	-	6.7	5.5
Seattle-Puget Sound	8.4	11.3	6.2	11.6	6.3	-	-	8.0	5.5	13.6	-
Utah	7.6	10.0	5.8	10.2	5.7	-	-	-	-	-	-
Metropolitan Atlanta	6.8	8.5	5.7	9.1	6.3	5.9	3.8	-	-	-	-
San Jose-Monterey	7.0	8.2	5.9	8.6	6.4	-	-	7.0	3.4	5.2	4.6
Los Angeles	6.8	8.5	5.5	9.2	5.9	6.0	4.2	6.3	4.2	6.6	4.7
Rural Georgia	5.0	-	-	-	-	-	-	-	-	-	-
California exclud. SF/SJM/LA	7.4	9.4	5.9	9.7	6.1	6.6	3.9	6.4	3.9	7.4	4.9
Kentucky	8.1	10.5	6.5	10.5	6.6	10.2	4.1	-	-	-	-
Louisiana	8.0	9.8	6.7	10.7	7.3	6.7	4.9	-	-	-	-
New Jersey	8.1	10.4	6.4	10.7	6.7	8.3	4.0	5.6	4.3	7.9	3.8
Total U.S.	7.7	9.8	6.3	10.1	6.5	6.6	4.3	5.9	4.0	7.1	4.9

^a NCHS public use data file for the total US. Rates are per 100,000 and are age-adjusted to the 2000 US Std Population (19 age groups - Census P25-1130).

^b Hispanic is not mutually exclusive from Whites, Blacks, Asian/Pacific Islanders, and American Indians/Alaska Natives. The 2000-2003 Hispanic death rates do not include deaths from Minnesota, New Hampshire and North Dakota.

^c The SEER 9 areas are San Francisco, Connecticut, Detroit, Hawaii, Iowa, New Mexico, Seattle, Utah and Atlanta.

The SEER 11 areas comprise the SEER 9 areas plus San Jose-Monterey and Los Angeles.

The SEER 13 areas comprise the SEER 11 areas plus the Alaska Native Registry and Rural Georgia.

The SEER 17 areas comprise the SEER 13 areas plus California excluding SF/SJM/LA, Kentucky, Louisiana and New Jersey

- Statistic not shown. Rate based on less than 16 cases for the time interval.

Table XVIV-17
NON-HODGKIN LYMPHOMAAVERAGE ANNUAL AGE-ADJUSTED CANCER DEATH^a RATES BY STATE, ALL RACES, 2000-2003

Males and Females

State	Rate	SE	Rank	PD	State	Rate	SE	Rank	PD
TOTAL U.S.	7.7	0.03							
High Five States									
Kansas	8.7	0.28	(01)	13.0					
Vermont	8.7	0.58	(02)	13.0					
Indiana	8.7 ^c	0.19	(03)	13.0					
Oregon	8.6 ^c	0.24	(04)	11.7					
Minnesota	8.6 ^c	0.21	(05)	11.7					
Low Five States									
New Mexico	7.0	0.32	(47)	-9.1					
Georgia	6.9 ^c	0.16	(48)	-10.4					
Mississippi	6.8 ^c	0.25	(49)	-11.7					
District of Columbia	6.6	0.54	(50)	-14.3					
Hawaii	5.9 ^{bc}	0.33	(51)	-23.4					
Alabama	7.6	0.20	(32)	-1.3	Montana	7.4	0.43	(38)	-3.9
Alaska	7.9	0.81	(25)	2.6	Nebraska	7.9	0.33	(24)	2.6
Arizona	7.4	0.19	(39)	-3.9	Nevada	7.1	0.31	(46)	-7.8
Arkansas	7.7	0.26	(30)	0.0	New Hampshire	8.4	0.41	(13)	9.1
California	7.2 ^c	0.08	(42)	-6.5	New Jersey	8.1	0.15	(21)	5.2
Colorado	7.6	0.23	(33)	-1.3	New Mexico	7.0	0.32	(47)	-9.1
Connecticut	7.6	0.22	(34)	-1.3	New York	7.2 ^c	0.10	(43)	-6.5
Delaware	8.1	0.50	(20)	5.2	North Carolina	7.4	0.15	(36)	-3.9
District of Columbia	6.6	0.54	(50)	-14.3	North Dakota	8.2	0.53	(18)	6.5
Florida	7.3 ^c	0.09	(40)	-5.2	Ohio	8.6 ^c	0.13	(08)	11.7
Georgia	6.9 ^c	0.16	(48)	-10.4	Oklahoma	8.2	0.24	(17)	6.5
Hawaii	5.9 ^{bc}	0.33	(51)	-23.4	Oregon	8.6 ^c	0.24	(04)	11.7
Idaho	7.9	0.40	(23)	2.6	Pennsylvania	8.3 ^c	0.12	(16)	7.8
Illinois	7.9	0.13	(26)	2.6	Rhode Island	8.6	0.42	(07)	11.7
Indiana	8.7 ^c	0.19	(03)	13.0	South Carolina	7.1	0.21	(44)	-7.8
Iowa	8.6	0.25	(06)	11.7	South Dakota	8.6	0.50	(09)	11.7
Kansas	8.7	0.28	(01)	13.0	Tennessee	8.4	0.19	(11)	9.1
Kentucky	8.1	0.22	(19)	5.2	Texas	7.5	0.10	(35)	-2.6
Louisiana	8.0	0.22	(22)	3.9	Utah	7.6	0.35	(31)	-1.3
Maine	7.9	0.36	(27)	2.6	Vermont	8.7	0.58	(02)	13.0
Maryland	7.2	0.19	(41)	-6.5	Virginia	7.4	0.17	(37)	-3.9
Massachusetts	7.7	0.17	(29)	0.0	Washington	8.4	0.19	(14)	9.1
Michigan	8.5 ^c	0.15	(10)	10.4	West Virginia	8.3	0.31	(15)	7.8
Minnesota	8.6 ^c	0.21	(05)	11.7	Wisconsin	7.8	0.18	(28)	1.3
Mississippi	6.8 ^c	0.25	(49)	-11.7	Wyoming	7.1	0.61	(45)	-7.8
Missouri	8.4 ^c	0.19	(12)	9.1					

^a NCHS public use data file. Rates are per 100,000 and are age-adjusted to the 2000 US Std Population (19 age groups - Census P25-1130).

^b Absolute percent difference between state rate and total U.S. rate is 15% or more.

^c Difference between state rate and total U.S. rate is statistically significant ($p \leq .0002$).

SE Standard error of the rate.

PD Percent difference between state rate and total U.S. rate.

Table XVIV-18
NON-HODGKIN LYMPHOMAAVERAGE ANNUAL AGE-ADJUSTED CANCER DEATH^a RATES BY STATE, ALL RACES, 2000-2003

Males

State	Rate	SE	Rank	PD	State	Rate	SE	Rank	PD
TOTAL U.S.	9.8	0.05							
HHigh Five States									
Vermont	11.7 ^b	1.06	(01)	19.4					
Washington	11.1 ^c	0.35	(02)	13.3					
Delaware	11.0	0.91	(03)	12.2					
Minnesota	10.9	0.37	(04)	11.2					
Indiana	10.9	0.33	(05)	11.2					
LLow Five States									
Arizona	8.8	0.31	(47)	-10.2					
South Carolina	8.7	0.38	(48)	-11.2					
Georgia	8.4 ^c	0.29	(49)	-14.3					
Wyoming	7.8 ^b	1.00	(50)	-20.4					
Hawaii	7.7 ^{bc}	0.57	(51)	-21.4					
Alabama	9.3	0.36	(37)	-5.1	Montana	9.9	0.77	(27)	1.0
Alaska	9.4	1.37	(35)	-4.1	Nebraska	9.7	0.56	(29)	-1.0
Arizona	8.8	0.31	(47)	-10.2	Nevada	8.9	0.55	(46)	-9.2
Arkansas	10.1	0.46	(21)	3.1	New Hampshire	10.5	0.72	(12)	7.1
California	9.2 ^c	0.14	(40)	-6.1	New Jersey	10.4	0.27	(18)	6.1
Colorado	9.5	0.41	(31)	-3.1	New Mexico	8.9	0.55	(45)	-9.2
Connecticut	9.5	0.39	(30)	-3.1	New York	9.2	0.17	(41)	-6.1
Delaware	11.0	0.91	(03)	12.2	North Carolina	9.4	0.28	(34)	-4.1
District of Columbia	8.9	1.03	(43)	-9.2	North Dakota	10.5	0.91	(15)	7.1
Florida	9.3	0.16	(38)	-5.1	Ohio	10.7 ^c	0.23	(10)	9.2
Georgia	8.4 ^c	0.29	(49)	-14.3	Oklahoma	10.3	0.42	(20)	5.1
Hawaii	7.7 ^{bc}	0.57	(51)	-21.4	Oregon	10.5	0.41	(13)	7.1
Idaho	9.2	0.66	(39)	-6.1	Pennsylvania	10.5	0.21	(16)	7.1
Illinois	9.9	0.23	(25)	1.0	Rhode Island	10.5	0.74	(14)	7.1
Indiana	10.9	0.33	(05)	11.2	South Carolina	8.7	0.38	(48)	-11.2
Iowa	10.7	0.44	(09)	9.2	South Dakota	10.3	0.85	(19)	5.1
Kansas	10.8	0.48	(07)	10.2	Tennessee	10.7	0.35	(08)	9.2
Kentucky	10.5	0.41	(17)	7.1	Texas	9.1	0.18	(42)	-7.1
Louisiana	9.8	0.39	(28)	0.0	Utah	10.0	0.60	(23)	2.0
Maine	10.1	0.65	(22)	3.1	Vermont	11.7 ^b	1.06	(01)	19.4
Maryland	9.4	0.34	(32)	-4.1	Virginia	9.4	0.30	(36)	-4.1
Massachusetts	9.4	0.29	(33)	-4.1	Washington	11.1 ^c	0.35	(02)	13.3
Michigan	10.9 ^c	0.26	(06)	11.2	West Virginia	10.0	0.53	(24)	2.0
Minnesota	10.9	0.37	(04)	11.2	Wisconsin	9.9	0.33	(26)	1.0
Mississippi	8.9	0.45	(44)	-9.2	Wyoming	7.8 ^b	1.00	(50)	-20.4
Missouri	10.6	0.33	(11)	8.2					

^a NCHS public use data file. Rates are per 100,000 and are age-adjusted to the 2000 US Std Population (19 age groups - Census P25-1130).

^b Absolute percent difference between state rate and total U.S. rate is 15% or more.

^c Difference between state rate and total U.S. rate is statistically significant ($p \leq .0002$).

SE Standard error of the rate.

PD Percent difference between state rate and total U.S. rate.

Table XVIV-19
NON-HODGKIN LYMPHOMAAVERAGE ANNUAL AGE-ADJUSTED CANCER DEATH^a RATES BY STATE, ALL RACES, 2000-2003

Females

State	Rate	SE	Rank	PD	State	Rate	SE	Rank	PD
TOTAL U.S.	6.3	0.03							
High Five States									
Oregon	7.3 ^b	0.30	(01)	15.9					
Kansas	7.2	0.34	(02)	14.3					
Iowa	7.2	0.31	(03)	14.3					
South Dakota	7.1	0.60	(04)	12.7					
Indiana	7.1 ^c	0.22	(05)	12.7					
Low Five States									
Montana	5.6	0.50	(47)	-11.1					
New Mexico	5.4	0.37	(48)	-14.3					
Mississippi	5.3 ^b	0.29	(49)	-15.9					
District of Columbia	5.0 ^b	0.60	(50)	-20.6					
Hawaii	4.5 ^{bc}	0.39	(51)	-28.6					
Alabama	6.3	0.24	(30)	0.0	Montana	5.6	0.50	(47)	-11.1
Alaska	6.5	1.00	(22)	3.2	Nebraska	6.6	0.39	(20)	4.8
Arizona	6.2	0.23	(31)	-1.6	Nevada	5.7	0.38	(46)	-9.5
Arkansas	6.0	0.30	(38)	-4.8	New Hampshire	6.7	0.49	(15)	6.3
California	5.8 ^c	0.09	(41)	-7.9	New Jersey	6.4	0.17	(24)	1.6
Colorado	6.3	0.28	(28)	0.0	New Mexico	5.4	0.37	(48)	-14.3
Connecticut	6.2	0.26	(33)	-1.6	New York	5.8 ^c	0.11	(43)	-7.9
Delaware	5.9	0.56	(39)	-6.3	North Carolina	6.0	0.18	(36)	-4.8
District of Columbia	5.0 ^b	0.60	(50)	-20.6	North Dakota	6.3	0.62	(27)	0.0
Florida	5.7 ^c	0.11	(44)	-9.5	Ohio	7.0 ^c	0.16	(07)	11.1
Georgia	5.9	0.19	(40)	-6.3	Oklahoma	6.6	0.28	(18)	4.8
Hawaii	4.5 ^{bc}	0.39	(51)	-28.6	Oregon	7.3 ^b	0.30	(01)	15.9
Idaho	6.7	0.50	(14)	6.3	Pennsylvania	6.7	0.14	(13)	6.3
Illinois	6.4	0.15	(25)	1.6	Rhode Island	7.0	0.50	(06)	11.1
Indiana	7.1 ^c	0.22	(05)	12.7	South Carolina	6.1	0.26	(35)	-3.2
Iowa	7.2	0.31	(03)	14.3	South Dakota	7.1	0.60	(04)	12.7
Kansas	7.2	0.34	(02)	14.3	Tennessee	6.8	0.23	(11)	7.9
Kentucky	6.5	0.26	(23)	3.2	Texas	6.2	0.12	(32)	-1.6
Louisiana	6.7	0.26	(16)	6.3	Utah	5.8	0.40	(42)	-7.9
Maine	6.3	0.43	(29)	0.0	Vermont	6.6	0.66	(21)	4.8
Maryland	5.7	0.22	(45)	-9.5	Virginia	6.0	0.20	(37)	-4.8
Massachusetts	6.6	0.20	(19)	4.8	Washington	6.4	0.22	(26)	1.6
Michigan	6.8	0.17	(12)	7.9	West Virginia	7.0	0.38	(08)	11.1
Minnesota	6.9	0.25	(10)	9.5	Wisconsin	6.2	0.22	(34)	-1.6
Mississippi	5.3 ^b	0.29	(49)	-15.9	Wyoming	6.7	0.80	(17)	6.3
Missouri	7.0	0.22	(09)	11.1					

^a NCHS public use data file. Rates are per 100,000 and are age-adjusted to the 2000 US Std Population (19 age groups - Census P25-1130).

^b Absolute percent difference between state rate and total U.S. rate is 15% or more.

^c Difference between state rate and total U.S. rate is statistically significant ($p \leq .0002$).

SE Standard error of the rate.

PD Percent difference between state rate and total U.S. rate.

Table XIX-20
NON-HODGKIN LYMPHOMA (Invasive)

Estimated United States Cancer Prevalence Counts^a on January 1, 2003
By Race/Ethnicity, Sex and Years Since Diagnosis

Years Since Diagnosis	0 to <5	5 to <10	10 to <15	15 to <20	20 to <25	0 to <13 ^e	0 to <28 ^e	>=28 ^g	Complete ^h
Race/Sex									
All Races ^b	159,781	90,954	49,972	29,129	15,558	283,945	350,868	13,617	364,485
Males	83,817	47,332	25,739	15,059	7,956	148,234	182,423	7,214	189,637
Females	75,964	43,622	24,233	14,070	7,602	135,711	168,445	6,403	174,848
White ^b	142,460	80,931	45,275	26,644	14,245	253,405	314,595	13,744	328,339
Males	74,940	41,785	23,320	13,762	7,290	132,119	163,496	7,685	171,181
Females	67,520	39,146	21,955	12,882	6,955	121,286	151,099	6,059	157,158
Black ^b	10,915	6,245	3,139	1,604	949	19,314	23,165	985	24,150
Males	5,497	3,521	1,613	849	466	10,150	12,018	448	12,466
Females	5,418	2,724	1,526	755	483	9,164	11,147	537	11,684
Asian/Pacific Islander ^c	3,608	1,987	+	+	+	6,244	+	+	+
Males	1,898	985	+	+	+	3,222	+	+	+
Females	1,710	1,002	+	+	+	3,022	+	+	+
Hispanic ^d	8,981	4,524	+	+	+	15,073	+	+	+
Males	4,837	2,377	+	+	+	8,001	+	+	+
Females	4,144	2,147	+	+	+	7,072	+	+	+

Estimated prevalence percent^a on January 1, 2003, of the SEER 11 population diagnosed in the previous 10 years
By Age at Prevalence, Race/Ethnicity and Sex

Age at Prevalence	Age Specific (Crude)										Age-Adjusted ^f
	All Ages	0-9	10-19	20-29	30-39	40-49	50-59	60-69	70-79	80+	All Ages
Race/Sex											
All Races ^c	0.0776%	0.0022%	0.0091%	0.0143%	0.0296%	0.0636%	0.1292%	0.2350%	0.3539%	0.3527%	0.0820%
Males	0.0824%	0.0031%	0.0125%	0.0173%	0.0346%	0.0766%	0.1497%	0.2650%	0.3971%	0.3955%	0.0941%
Females	0.0729%	0.0014%	0.0056%	0.0112%	0.0245%	0.0508%	0.1098%	0.2082%	0.3214%	0.3295%	0.0714%
White ^c	0.0861%	0.0025%	0.0095%	0.0145%	0.0312%	0.0663%	0.1378%	0.2568%	0.3805%	0.3697%	0.0874%
Males	0.0907%	0.0033%	0.0129%	0.0175%	0.0364%	0.0799%	0.1586%	0.2884%	0.4247%	0.4133%	0.0999%
Females	0.0814%	0.0016%	0.0059%	0.0112%	0.0256%	0.0525%	0.1176%	0.2279%	0.3466%	0.3464%	0.0762%
Black ^c	0.0448%	0.0012%	0.0068%	0.0150%	0.0301%	0.0602%	0.1090%	0.1431%	0.1808%	0.1567%	0.0556%
Males	0.0501%	0.0018%	0.0096%	0.0176%	0.0353%	0.0741%	0.1378%	0.1595%	0.2030%	0.1804%	0.0656%
Females	0.0401%	-	0.0039%	0.0127%	0.0255%	0.0480%	0.0852%	0.1303%	0.1661%	0.1455%	0.0474%
Asian/Pacific Islander ^c	0.0496%	0.0016%	0.0094%	0.0119%	0.0180%	0.0407%	0.0752%	0.1387%	0.2506%	0.2778%	0.0547%
Males	0.0520%	0.0022%	0.0122%	0.0149%	0.0208%	0.0485%	0.0807%	0.1501%	0.2831%	0.3064%	0.0614%
Females	0.0474%	-	0.0064%	0.0088%	0.0154%	0.0337%	0.0704%	0.1292%	0.2270%	0.2585%	0.0490%
Hispanic ^d	0.0346%	0.0022%	0.0079%	0.0089%	0.0210%	0.0470%	0.0906%	0.1679%	0.2701%	0.2568%	0.0602%
Males	0.0356%	0.0030%	0.0111%	0.0115%	0.0253%	0.0543%	0.1011%	0.1714%	0.2982%	0.2279%	0.0649%
Females	0.0334%	0.0013%	0.0044%	0.0059%	0.0162%	0.0394%	0.0808%	0.1650%	0.2500%	0.2730%	0.0553%

- ^a US 2003 cancer prevalence counts are based on 2003 cancer prevalence proportions from the SEER registries and 1/1/2003 US population estimates based on the average of 2002 and 2003 population estimates from the US Bureau of the Census. Prevalence was calculated using the First Malignant Primary Only for a person.
- ^{b c d} Statistics based on (b) SEER 9 Areas (c) SEER 11 Areas and Rural Georgia (d) NHIA for Hispanic for SEER 11 Areas and Rural Georgia excluding Hawaii and Seattle.
- ^e Maximum limited-duration prevalence: 28 years for 1975-2003 SEER 9 data; 13 years for 1990-2003 SEER 11 data (used to calculate prevalence for Hispanics and Asian Pacific Islanders).
- ^f Percentages are age-adjusted to the 2000 US standard population by 5-year age groups.
- ^{g h} (g) Cases diagnosed more than 28 years ago were estimated using the completeness index method (Capocaccia et. al. 1997, Merrill et. al. 2000). (h) Complete prevalence is obtained by summing 0 to <28 and >=28.
- Statistic not shown. Statistic based on fewer than 5 cases estimated alive in SEER for the time interval.
- + Not available.

SEER Incidence, Delay Adjusted Incidence and US Death Rates⁺ Non-Hodgkin Lymphoma, by Race and Sex

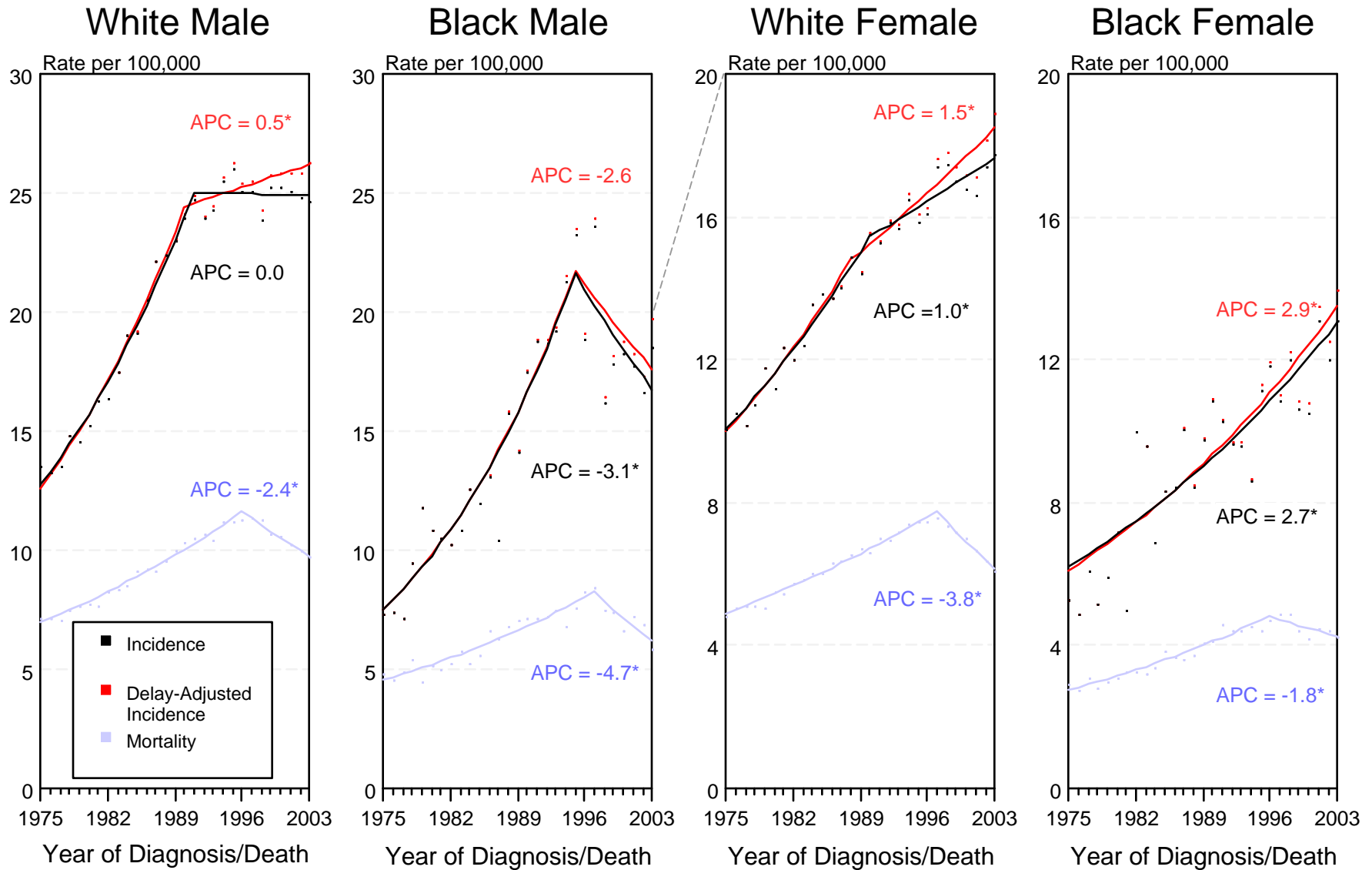


Figure XIX-1

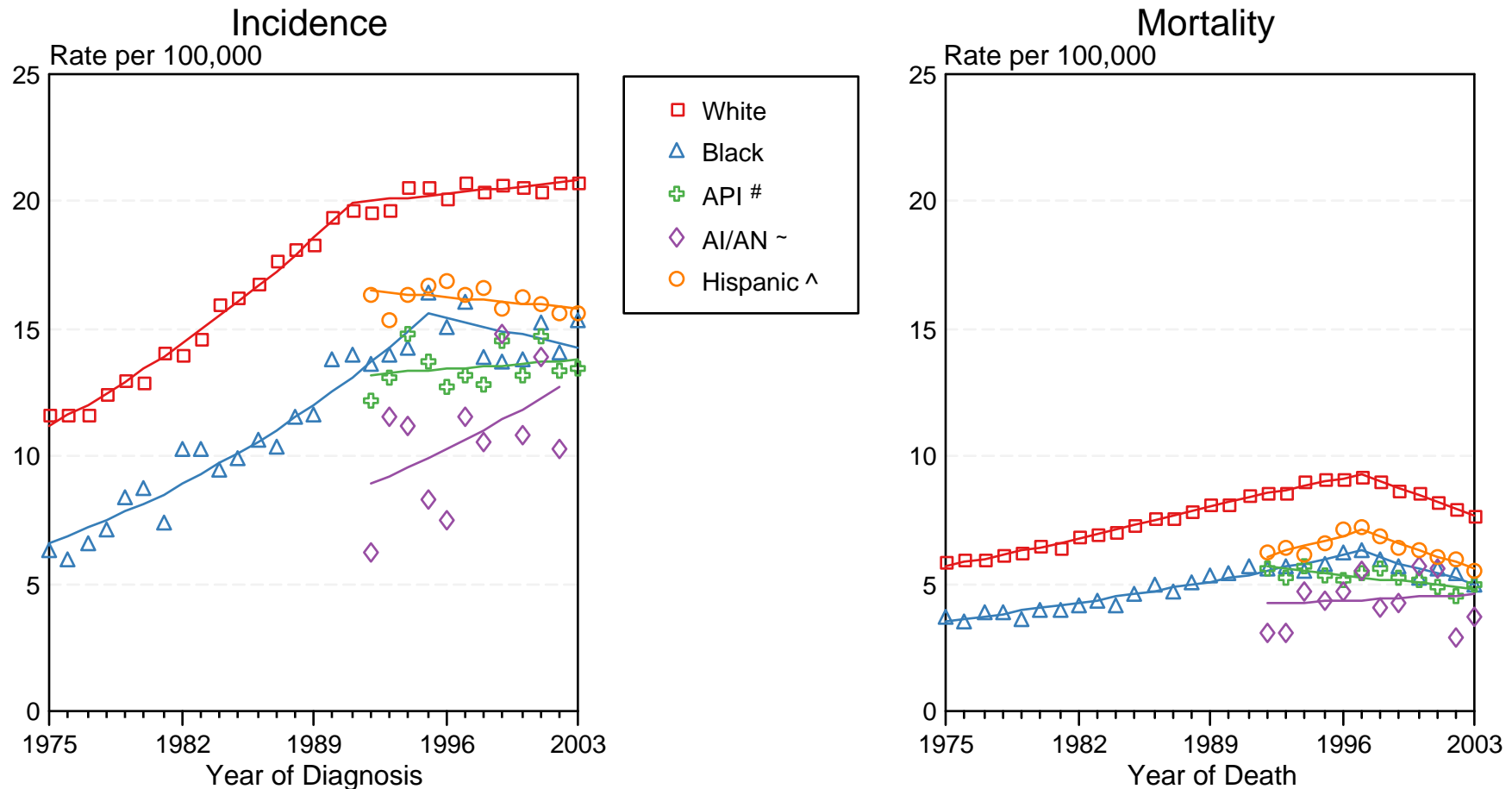
⁺ Source: SEER 9 areas and NCHS public use data file for the total US. Rates are age-adjusted to the 2000 US Std Population (19 age groups - Census P25-1103). Regression lines and APCs are calculated using the Joinpoint Regression Program Version 3.1, April 2006, National Cancer Institute.

The APC is the Annual Percent Change for the regression line segments. The APC shown on the graph is for the most recent trend.

* The APC is significantly different from zero ($p < 0.05$).

SEER Incidence and US Death Rates* Non-Hodgkin Lymphoma, Both Sexes

Joinpoint Analyses for Whites and Blacks from 1975-2003
and for Asian/Pacific Islanders, American Indians/Alaska Natives and Hispanics from 1992-2003



Source: Incidence data for Whites and Blacks are from the SEER 9 areas (San Francisco, Connecticut, Detroit, Hawaii, Iowa, New Mexico, Seattle, Utah, Atlanta). Incidence data for Asian/Pacific Islanders and Hispanics are from the SEER 13 Areas (SEER 9 Areas, San Jose-Monterey, Los Angeles, Alaska Native Registry and Rural Georgia). Mortality data are from NCHS public use data file for the total US.

* Rates are age-adjusted to the 2000 US Std Population (19 age groups - Census P25-1103).

Regression lines are calculated using the Joinpoint Regression Program Version 3.1, April 2006, National Cancer Institute.

API = Asian/Pacific Islander.

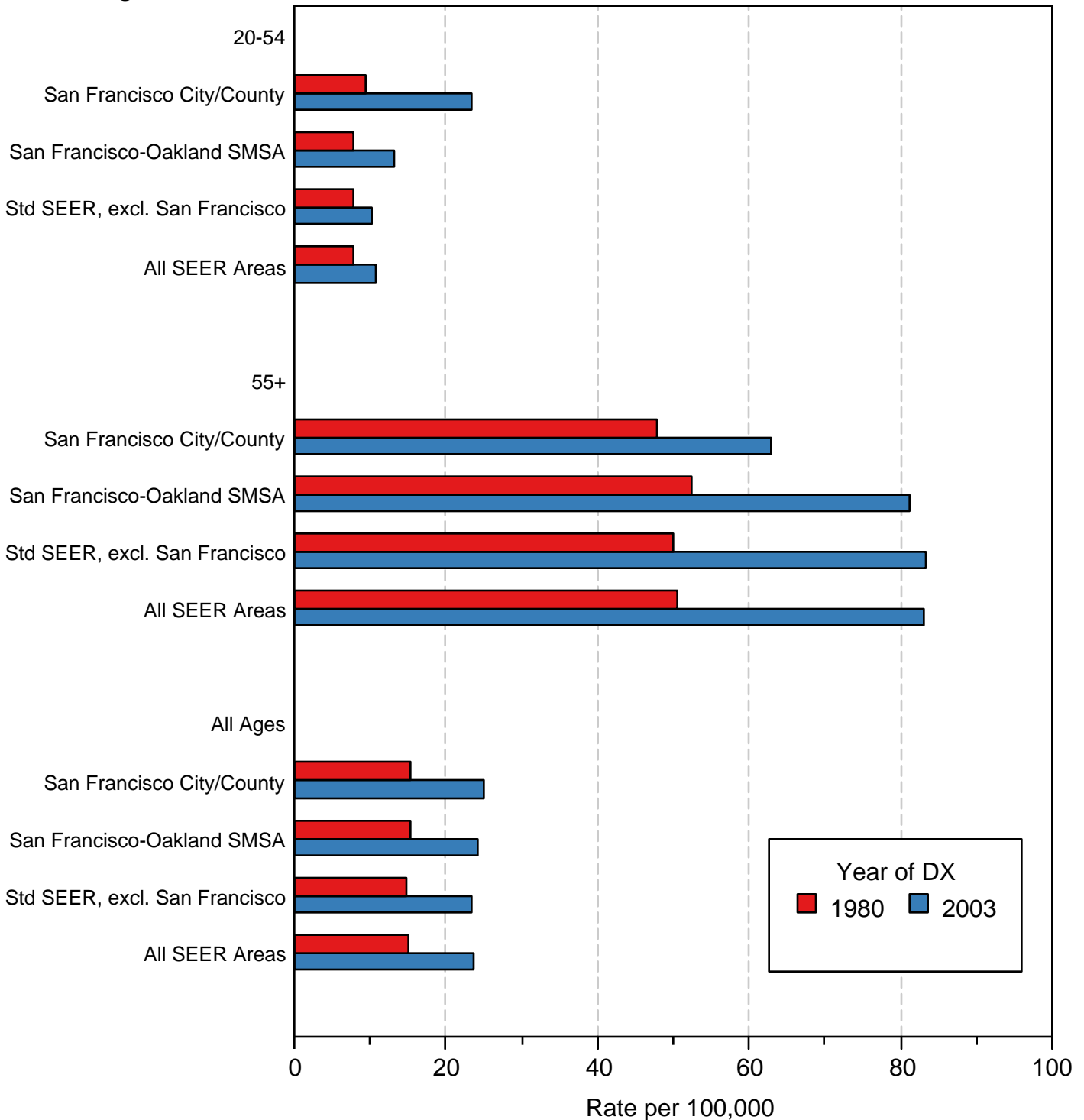
~ AI/AN = American Indian/Alaska Native. Incidence data for AI/AN include cases from Connecticut, Detroit, Iowa, New Mexico, Seattle, Utah, Atlanta and the Alaska Native Registry for the time period 1992-2002. Mortality data are from the entire US for the time period 1992-2003.

^ Hispanic is not mutually exclusive from Whites, Blacks, Asian/Pacific Islanders, and American Indians/Alaska Natives. Incidence data for Hispanics are based on NHIA and exclude cases from Hawaii, Seattle, and the Alaska Native Registry. Mortality data for Hispanics exclude cases from Connecticut, Maine, Maryland, Minnesota, New Hampshire, New York, North Dakota, Oklahoma, and Vermont.

Figure XIX-3

Non-Hodgkin Lymphoma Incidence Rates, 1980 vs 2003 Males

Age/Area



Source: SEER 9 areas. Rates are age-adjusted to the 2000 US Std Population (19 age groups - Census P25-1103).

Non-Hodgkin Lymphoma SEER Incidence by Age 1975-1977 vs 2001-2003 All Races, Males

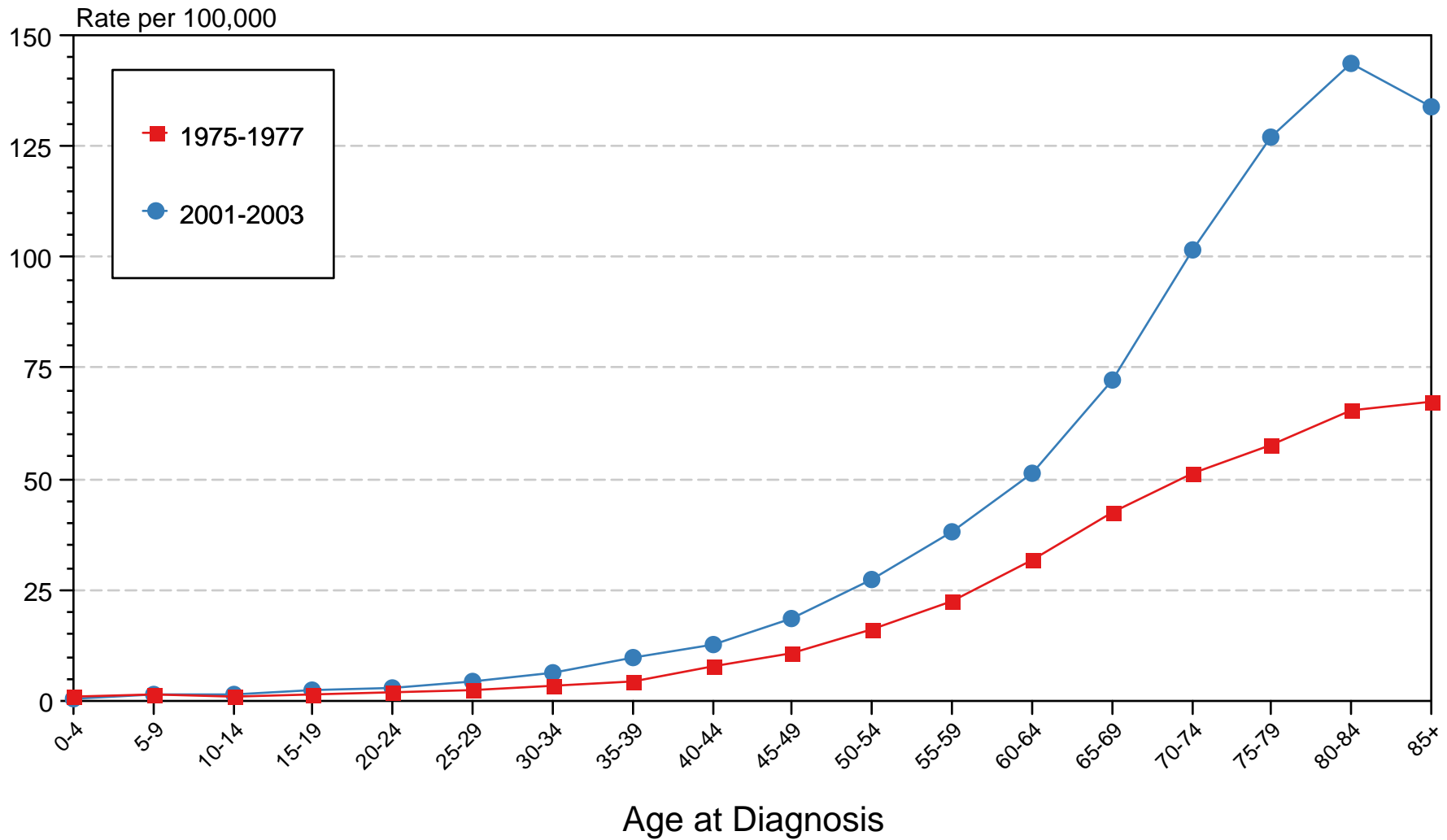


Figure XIX-4

Source: SEER 9 areas. Rates are age-adjusted to the 2000 US Std Population (19 age groups - Census P25-1103).