

Table 24.1
Cancer of the Stomach (Invasive)

Trends in SEER Incidence^{ab} and U.S. Mortality^c Using the Joinpoint Regression Program,
1975-2010 With up to Five Joinpoints, 1992-2010 With up to Three Joinpoints,
Both Sexes by Race/Ethnicity

	JP Trend 1		JP Trend 2		JP Trend 3		JP Trend 4		JP Trend 5		JP Trend 6		AAPC ^d	
	Years	APC	Years	APC	Years	APC	Years	APC	Years	APC	Years	APC	2001-10	2006-10
<u>SEER 9 Delay-Adjusted Incidence^a, 1975-2010</u>														
All Races	1975-10	-1.6*											-1.6*	-1.6*
White	1975-10	-1.8*											-1.8*	-1.8*
Black	1975-82	0.9	1982-10	-1.6*									-1.6*	-1.6*
<u>SEER 13 Delay-Adjusted Incidence^b, 1992-2010</u>														
All Races	1992-10	-1.2*											-1.2*	-1.2*
White	1992-10	-1.1*											-1.1*	-1.1*
Black	1992-10	-1.6*											-1.6*	-1.6*
<u>SEER 9 Observed Incidence^a, 1975-2010</u>														
All Races	1975-10	-1.6*											-1.6*	-1.6*
White	1975-97	-2.0*	1997-10	-1.3*									-1.3*	-1.3*
Black	1975-10	-1.4*											-1.4*	-1.4*
<u>SEER 13 Observed Incidence^b, 1992-2010</u>														
All Races	1992-10	-1.3*											-1.3*	-1.3*
White	1992-10	-1.2*											-1.2*	-1.2*
White NH ^{ef}	1992-10	-1.6*											-1.6*	-1.6*
Black	1992-10	-1.7*											-1.7*	-1.7*
Black NH ^{ef}	1992-10	-1.7*											-1.7*	-1.7*
API ^e	1992-10	-3.0*											-3.0*	-3.0*
AI/AN ^{eg}	1992-10	-0.4											-0.4	-0.4
Hispanic ^f	1992-10	-1.3*											-1.3*	-1.3*
<u>U.S. Cancer Mortality^c, 1975-2010</u>														
All Races	1975-87	-2.5*	1987-90	-0.3	1990-10	-3.0*							-3.0*	-3.0*
White	1975-87	-2.8*	1987-90	-0.9	1990-10	-3.1*							-3.1*	-3.1*
Black	1975-95	-1.3*	1995-10	-3.3*									-3.3*	-3.3*
<u>U.S. Cancer Mortality^c, 1992-2010</u>														
All Races	1992-10	-3.0*											-3.0*	-3.0*
White	1992-10	-3.1*											-3.1*	-3.1*
White NH ^{ef}	1992-10	-3.4*											-3.4*	-3.4*
Black	1992-10	-3.1*											-3.1*	-3.1*
Black NH ^{ef}	1992-10	-2.9*											-2.9*	-2.9*
API ^e	1992-10	-3.7*											-3.7*	-3.7*
AI/AN ^{eg}	1992-02	0.8	2002-10	-5.2*									-4.6*	-5.2*
Hispanic ^f	1992-10	-2.2*											-2.2*	-2.2*

Joinpoint Regression Program Version 4.0.3, April 2013, National Cancer Institute. (<http://surveillance.cancer.gov/joinpoint/>).

The APC is the Annual Percent Change based on rates age-adjusted to the 2000 US Std Population (19 age groups - Census P25-1130).

^a Trends are from the SEER 9 areas (San Francisco, Connecticut, Detroit, Hawaii, Iowa, New Mexico, Seattle, Utah, and Atlanta).

^b Trends are from the SEER 13 areas (SEER 9 Areas, Los Angeles, San Jose-Monterey, Rural Georgia, and the Alaska Native Registry).

^c Trends are from US Mortality Files, National Center for Health Statistics, Centers for Disease Control and Prevention.

^d The AAPC is the Average Annual Percent Change and is based on the APCs calculated by Joinpoint.

^e API - Asian/Pacific Islander, AI/AN - American Indian/Alaska Native, NH - Non-Hispanic

^f Hispanic and Non-Hispanic are not mutually exclusive from whites, blacks, Asian/Pacific Islanders, and American Indians/Alaska

Natives. Incidence data for Hispanics and Non-Hispanics are based on NHIA and exclude cases from the Alaska Native Registry.

The Hispanic and Non-Hispanic mortality trends exclude deaths from CT, DC, ME, MD, MN, NH, NY, ND, SC, OK and VT.

^g Data for American Indian/Alaska Native are based on the CHSDA (Contract Health Service Delivery Area) counties.

* The APC/AAPC is significantly different from zero ($p < .05$).

- Joinpoint regression line analysis could not be performed on data series.

Table 24.2
Cancer of the Stomach (Invasive)

Trends in SEER Incidence^{ab} and U.S. Mortality^c Using the Joinpoint Regression Program,
1975-2010 With up to Five Joinpoints, 1992-2010 With up to Three Joinpoints,
Males by Race/Ethnicity

	JP Trend 1		JP Trend 2		JP Trend 3		JP Trend 4		JP Trend 5		JP Trend 6		AAPC ^d	
	Years	APC	Years	APC	Years	APC	Years	APC	Years	APC	Years	APC	2001-10	2006-10
<u>SEER 9 Delay-Adjusted Incidence^a, 1975-2010</u>														
All Races	1975-80	-0.2	1980-10	-1.8*									-1.8*	-1.8*
White	1975-10	-1.8*											-1.8*	-1.8*
Black	1975-82	2.3	1982-10	-2.0*									-2.0*	-2.0*
<u>SEER 13 Delay-Adjusted Incidence^b, 1992-2010</u>														
All Races	1992-10	-1.7*											-1.7*	-1.7*
White	1992-10	-1.6*											-1.6*	-1.6*
Black	1992-10	-2.1*											-2.1*	-2.1*
<u>SEER 9 Observed Incidence^a, 1975-2010</u>														
All Races	1975-80	-0.1	1980-10	-1.8*									-1.8*	-1.8*
White	1975-10	-1.8*											-1.8*	-1.8*
Black	1975-82	2.2	1982-10	-2.0*									-2.0*	-2.0*
<u>SEER 13 Observed Incidence^b, 1992-2010</u>														
All Races	1992-10	-1.7*											-1.7*	-1.7*
White	1992-10	-1.6*											-1.6*	-1.6*
White NH ^{ef}	1992-10	-2.0*											-2.0*	-2.0*
Black	1992-10	-2.2*											-2.2*	-2.2*
Black NH ^{ef}	1992-10	-2.1*											-2.1*	-2.1*
API ^e	1992-10	-3.0*											-3.0*	-3.0*
AI/AN ^{eg}	1992-10	-0.7											-0.7	-0.7
Hispanic ^f	1992-10	-1.6*											-1.6*	-1.6*
<u>U.S. Cancer Mortality^c, 1975-2010</u>														
All Races	1975-87	-2.4*	1987-90	-0.3	1990-10	-3.4*							-3.4*	-3.4*
White	1975-93	-2.3*	1993-10	-3.6*									-3.6*	-3.6*
Black	1975-93	-1.1*	1993-10	-3.3*									-3.3*	-3.3*
<u>U.S. Cancer Mortality^c, 1992-2010</u>														
All Races	1992-94	-1.5	1994-06	-3.6*	2006-10	-2.6*							-3.1*	-2.6*
White	1992-94	-1.8	1994-06	-3.8*	2006-10	-2.7*							-3.3*	-2.7*
White NH ^{ef}	1992-94	-0.9	1994-10	-3.9*									-3.9*	-3.9*
Black	1992-10	-3.1*											-3.1*	-3.1*
Black NH ^{ef}	1992-10	-3.0*											-3.0*	-3.0*
API ^e	1992-10	-3.5*											-3.5*	-3.5*
AI/AN ^{eg}	1992-10	-1.9*											-1.9*	-1.9*
Hispanic ^f	1992-10	-2.4*											-2.4*	-2.4*

Joinpoint Regression Program Version 4.0.3, April 2013, National Cancer Institute. (<http://surveillance.cancer.gov/joinpoint/>).

The APC is the Annual Percent Change based on rates age-adjusted to the 2000 US Std Population (19 age groups - Census P25-1130).

Trends are from the SEER 9 areas (San Francisco, Connecticut, Detroit, Hawaii, Iowa, New Mexico, Seattle, Utah, and Atlanta).

Trends are from the SEER 13 areas (SEER 9 Areas, Los Angeles, San Jose-Monterey, Rural Georgia, and the Alaska Native Registry).

Trends are from US Mortality Files, National Center for Health Statistics, Centers for Disease Control and Prevention.

The AAPC is the Average Annual Percent Change and is based on the APCs calculated by Joinpoint.

API - Asian/Pacific Islander, AI/AN - American Indian/Alaska Native, NH - Non-Hispanic

Hispanic and Non-Hispanic are not mutually exclusive from whites, blacks, Asian/Pacific Islanders, and American Indians/Alaska

Natives. Incidence data for Hispanics and Non-Hispanics are based on NHIA and exclude cases from the Alaska Native Registry.

The Hispanic and Non-Hispanic mortality trends exclude deaths from CT, DC, ME, MD, MN, NH, NY, ND, SC, OK and VT.

Data for American Indian/Alaska Native are based on the CHSDA (Contract Health Service Delivery Area) counties.

* The APC/AAPC is significantly different from zero ($p < .05$).

- Joinpoint regression line analysis could not be performed on data series.

Table 24.3
Cancer of the Stomach (Invasive)

Trends in SEER Incidence^{ab} and U.S. Mortality^c Using the Joinpoint Regression Program,
1975-2010 With up to Five Joinpoints, 1992-2010 With up to Three Joinpoints,
Females by Race/Ethnicity

	JP Trend 1		JP Trend 2		JP Trend 3		JP Trend 4		JP Trend 5		JP Trend 6		AAPC ^d	
	Years	APC	Years	APC	Years	APC	Years	APC	Years	APC	Years	APC	2001-10	2006-10
<u>SEER 9 Delay-Adjusted Incidence^a, 1975-2010</u>														
All Races	1975-10	-1.5*											-1.5*	-1.5*
White	1975-10	-1.9*											-1.9*	-1.9*
Black	1975-10	-0.8*											-0.8*	-0.8*
<u>SEER 13 Delay-Adjusted Incidence^b, 1992-2010</u>														
All Races	1992-10	-0.7*											-0.7*	-0.7*
White	1992-10	-0.8*											-0.8*	-0.8*
Black	1992-10	-0.9*											-0.9*	-0.9*
<u>SEER 9 Observed Incidence^a, 1975-2010</u>														
All Races	1975-10	-1.5*											-1.5*	-1.5*
White	1975-10	-1.9*											-1.9*	-1.9*
Black	1975-10	-0.9*											-0.9*	-0.9*
<u>SEER 13 Observed Incidence^b, 1992-2010</u>														
All Races	1992-10	-0.8*											-0.8*	-0.8*
White	1992-10	-0.9*											-0.9*	-0.9*
White NH ^{ef}	1992-10	-1.6*											-1.6*	-1.6*
Black	1992-10	-1.1*											-1.1*	-1.1*
Black NH ^{ef}	1992-10	-1.1*											-1.1*	-1.1*
API ^e	1992-10	-2.6*											-2.6*	-2.6*
AI/AN ^{eg}	1992-10	0.3											0.3	0.3
Hispanic ^f	1992-10	-1.1*											-1.1*	-1.1*
<u>U.S. Cancer Mortality^c, 1975-2010</u>														
All Races	1975-87	-2.8*	1987-90	-0.4	1990-10	-2.7*							-2.7*	-2.7*
White	1975-87	-3.1*	1987-90	-1.2	1990-10	-2.8*							-2.8*	-2.8*
Black	1975-98	-1.1*	1998-10	-3.6*									-3.6*	-3.6*
<u>U.S. Cancer Mortality^c, 1992-2010</u>														
All Races	1992-10	-2.7*											-2.7*	-2.7*
White	1992-10	-2.8*											-2.8*	-2.8*
White NH ^{ef}	1992-10	-3.1*											-3.1*	-3.1*
Black	1992-10	-3.0*											-3.0*	-3.0*
Black NH ^{ef}	1992-10	-2.7*											-2.7*	-2.7*
API ^e	1992-10	-3.7*											-3.7*	-3.7*
AI/AN ^{eg}	1992-98	7.7	1998-10	-5.0*									-5.0*	-5.0*
Hispanic ^f	1992-10	-1.9*											-1.9*	-1.9*

Joinpoint Regression Program Version 4.0.3, April 2013, National Cancer Institute. (<http://surveillance.cancer.gov/joinpoint/>).

The APC is the Annual Percent Change based on rates age-adjusted to the 2000 US Std Population (19 age groups - Census P25-1130).

Trends are from the SEER 9 areas (San Francisco, Connecticut, Detroit, Hawaii, Iowa, New Mexico, Seattle, Utah, and Atlanta).

Trends are from the SEER 13 areas (SEER 9 Areas, Los Angeles, San Jose-Monterey, Rural Georgia, and the Alaska Native Registry).

Trends are from US Mortality Files, National Center for Health Statistics, Centers for Disease Control and Prevention.

The AAPC is the Average Annual Percent Change and is based on the APCs calculated by Joinpoint.

API - Asian/Pacific Islander, AI/AN - American Indian/Alaska Native, NH - Non-Hispanic

Hispanic and Non-Hispanic are not mutually exclusive from whites, blacks, Asian/Pacific Islanders, and American Indians/Alaska

Natives. Incidence data for Hispanics and Non-Hispanics are based on NHIA and exclude cases from the Alaska Native Registry.

The Hispanic and Non-Hispanic mortality trends exclude deaths from CT, DC, ME, MD, MN, NH, NY, ND, SC, OK and VT.

Data for American Indian/Alaska Native are based on the CHSDA (Contract Health Service Delivery Area) counties.

* The APC/AAPC is significantly different from zero ($p < .05$).

- Joinpoint regression line analysis could not be performed on data series.

Table 24.4
Cancer of the Stomach (Invasive)

Delay-adjusted SEER Incidence^a Rates by Year, Race and Sex

Year of Diagnosis:	All Races			Whites			Blacks		
	Total	Males	Females	Total	Males	Females	Total	Males	Females
1975	11.67	17.14	7.85	10.66	15.98	6.99	17.05	24.76	11.46
1976	12.21	17.52	8.33	11.18	15.98	7.68	15.82	23.55	10.12
1977	11.54	16.58	7.87	10.34	15.02	6.98	17.34	24.68	11.63
1978	11.49	16.49	7.95	10.29	14.99	6.98	17.59	22.94	13.46
1979	12.00	17.41	8.25	10.76	15.58	7.49	18.51	28.20	11.73
1980	11.29	17.13	7.17	10.32	15.68	6.56	15.12	26.32	7.32
1981	11.14	16.60	7.39	10.06	15.07	6.70	17.60	27.84	10.39
1982	10.92	16.29	7.12	9.71	14.58	6.34	19.03	31.17	10.33
1983	10.95	15.86	7.46	9.54	13.69	6.60	18.01	27.78	11.16
1984	10.58	15.32	7.32	9.43	13.90	6.42	16.59	21.85	12.53
1985	10.22	15.09	6.87	8.93	13.33	5.97	16.44	23.50	11.34
1986	10.21	15.01	6.81	9.06	13.53	5.88	16.47	23.17	11.88
1987	10.20	15.06	6.81	8.98	13.26	5.96	17.06	26.68	10.69
1988	10.19	15.50	6.46	8.80	13.58	5.47	16.22	24.76	10.09
1989	10.00	15.15	6.33	8.73	13.47	5.35	15.78	23.16	10.66
1990	9.27	13.73	6.19	7.96	11.92	5.20	14.44	21.79	9.43
1991	9.71	14.20	6.58	8.31	12.32	5.52	16.49	25.77	10.42
1992	9.20	13.37	6.17	7.98	11.68	5.25	14.02	19.90	9.85
1993	9.02	13.61	5.79	7.67	11.61	4.88	14.37	23.71	8.38
1994	9.02	13.60	5.71	7.69	11.76	4.76	15.04	24.75	8.77
1995	8.34	12.58	5.24	7.24	11.23	4.35	13.42	18.98	9.59
1996	8.49	12.60	5.54	7.32	11.02	4.68	14.49	22.60	8.91
1997	8.62	12.71	5.63	7.17	10.81	4.51	15.70	22.37	10.94
1998	8.59	12.23	5.93	7.18	10.52	4.75	15.00	20.18	11.46
1999	8.59	12.06	6.03	7.39	10.51	5.04	13.02	18.17	9.86
2000	8.12	11.74	5.43	6.81	9.90	4.47	12.87	19.87	8.19
2001	7.78	11.29	5.14	6.49	9.67	4.05	13.03	18.54	9.03
2002	7.98	11.30	5.52	6.72	9.89	4.36	13.12	15.65	11.10
2003	7.81	10.87	5.49	6.59	9.32	4.45	13.44	18.50	10.08
2004	7.92	11.33	5.32	7.00	10.02	4.64	11.17	16.98	7.43
2005	7.50	10.72	5.03	6.47	9.26	4.26	11.57	18.19	7.47
2006	7.61	10.71	5.21	6.55	9.35	4.32	12.60	17.25	9.27
2007	7.30	10.52	4.82	6.24	9.20	3.88	11.67	17.79	7.73
2008	7.28	10.18	5.01	6.12	8.84	3.90	13.03	18.50	9.59
2009	7.46	10.49	5.13	6.32	9.24	3.98	11.61	15.31	9.40
2010	7.08	9.64	5.02	6.19	8.70	4.11	10.42	13.67	8.23

Additional information on the model used to delay-adjust SEER Incidence rates can be found at [\(http://surveillance.cancer.gov/delay/\)](http://surveillance.cancer.gov/delay/).

^a SEER 9 areas (San Francisco, Connecticut, Detroit, Hawaii, Iowa, New Mexico, Seattle, Utah, and Atlanta). Rates are per 100,000 and are age-adjusted to the 2000 US Std Population (19 age groups - Census P25-1130).

- Delay-adjusted rate is not shown for observed rates based on less than 16 cases for the time interval.

Table 24.5
Cancer of the Stomach (Invasive)

Age-adjusted SEER Incidence^a Rates by Year, Race and Sex

Year of Diagnosis:	All Races			Whites			Blacks		
	Total	Males	Females	Total	Males	Females	Total	Males	Females
1975-2010	9.06	13.12	6.07	7.91	11.60	5.18	14.31	21.00	9.74
1975	11.67	17.14	7.85	10.66	15.98	6.99	17.05	24.76	11.46
1976	12.21	17.52	8.33	11.18	15.98	7.68	15.82	23.55	10.12
1977	11.54	16.58	7.87	10.34	15.02	6.98	17.34	24.68	11.63
1978	11.49	16.49	7.95	10.29	14.99	6.98	17.59	22.94	13.46
1979	12.00	17.41	8.25	10.76	15.58	7.49	18.51	28.20	11.73
1980	11.29	17.13	7.17	10.32	15.68	6.56	15.12	26.32	7.32
1981	11.14	16.60	7.39	10.06	15.07	6.70	17.60	27.84	10.39
1982	10.92	16.29	7.12	9.71	14.58	6.34	19.03	31.17	10.33
1983	10.95	15.86	7.46	9.54	13.69	6.60	18.01	27.78	11.16
1984	10.58	15.32	7.32	9.43	13.90	6.42	16.59	21.84	12.53
1985	10.22	15.09	6.87	8.93	13.32	5.97	16.44	23.50	11.34
1986	10.21	15.01	6.81	9.06	13.53	5.88	16.47	23.17	11.88
1987	10.20	15.06	6.81	8.98	13.26	5.96	17.06	26.68	10.69
1988	10.19	15.50	6.46	8.80	13.58	5.47	16.22	24.75	10.09
1989	10.00	15.15	6.33	8.73	13.47	5.35	15.78	23.16	10.66
1990	9.27	13.73	6.19	7.95	11.92	5.20	14.44	21.78	9.43
1991	9.71	14.20	6.58	8.30	12.32	5.52	16.49	25.77	10.42
1992	9.20	13.37	6.16	7.97	11.68	5.25	14.02	19.90	9.84
1993	9.02	13.61	5.79	7.67	11.61	4.88	14.37	23.70	8.38
1994	9.01	13.60	5.71	7.69	11.75	4.76	15.03	24.74	8.76
1995	8.34	12.58	5.23	7.24	11.23	4.34	13.41	18.97	9.58
1996	8.49	12.60	5.53	7.32	11.02	4.68	14.48	22.59	8.91
1997	8.61	12.71	5.63	7.16	10.80	4.51	15.68	22.35	10.92
1998	8.58	12.22	5.93	7.17	10.52	4.75	14.98	20.16	11.45
1999	8.58	12.06	6.02	7.39	10.50	5.04	13.00	18.15	9.84
2000	8.12	11.73	5.42	6.80	9.88	4.47	12.85	19.84	8.17
2001	7.78	11.28	5.13	6.48	9.66	4.04	13.00	18.51	9.01
2002	7.97	11.29	5.51	6.71	9.87	4.35	13.08	15.61	11.06
2003	7.80	10.86	5.48	6.57	9.30	4.43	13.40	18.45	10.04
2004	7.90	11.31	5.31	6.97	10.00	4.62	11.13	16.92	7.39
2005	7.48	10.70	5.02	6.45	9.23	4.24	11.52	18.11	7.43
2006	7.59	10.68	5.19	6.52	9.31	4.30	12.52	17.16	9.21
2007	7.27	10.48	4.79	6.20	9.15	3.85	11.58	17.68	7.67
2008	7.24	10.13	4.98	6.08	8.79	3.86	12.92	18.35	9.49
2009	7.41	10.43	5.09	6.26	9.17	3.94	11.48	15.16	9.28
2010	6.97	9.51	4.93	6.07	8.54	4.01	10.17	13.38	8.02

^a SEER 9 areas (San Francisco, Connecticut, Detroit, Hawaii, Iowa, New Mexico, Seattle, Utah, and Atlanta). Rates are per 100,000 and are age-adjusted to the 2000 US Std Population (19 age groups - Census P25-1130).
- Statistic not shown. Rate based on less than 16 cases for the time interval.

Table 24.6
Cancer of the Stomach (Invasive)

Age-adjusted U.S. Death^a Rates by Year, Race and Sex

Year of Death:	All Races			Whites			Blacks		
	Total	Males	Females	Total	Males	Females	Total	Males	Females
1975-2010	5.36	7.64	3.74	4.83	6.89	3.36	9.81	14.60	6.64
1975	8.51	12.27	5.94	7.93	11.37	5.62	13.87	21.05	8.61
1976	8.30	12.02	5.73	7.74	11.17	5.41	13.52	20.22	8.59
1977	7.91	11.48	5.45	7.33	10.68	5.05	13.36	19.46	9.00
1978	7.73	11.02	5.46	7.19	10.24	5.12	12.61	18.67	8.31
1979	7.56	10.98	5.23	6.99	10.17	4.85	12.86	18.73	8.71
1980	7.36	10.57	5.15	6.82	9.76	4.80	12.16	18.27	7.96
1981	7.25	10.58	4.98	6.68	9.80	4.56	12.48	18.06	8.60
1982	7.02	10.26	4.86	6.46	9.37	4.53	12.17	19.24	7.44
1983	6.83	9.90	4.76	6.24	9.02	4.38	12.27	18.39	8.08
1984	6.78	9.89	4.68	6.21	9.07	4.28	11.92	17.95	7.93
1985	6.51	9.54	4.44	5.96	8.75	4.07	11.54	17.03	7.82
1986	6.36	9.44	4.24	5.77	8.58	3.83	11.39	17.39	7.42
1987	6.18	9.11	4.18	5.62	8.32	3.77	11.29	16.97	7.55
1988	6.08	8.81	4.17	5.51	7.92	3.82	11.05	17.02	7.07
1989	6.21	9.18	4.16	5.60	8.28	3.77	11.49	17.73	7.33
1990	6.07	8.86	4.16	5.45	7.95	3.73	11.46	17.24	7.71
1991	6.00	8.86	4.01	5.39	7.97	3.59	11.55	17.64	7.55
1992	5.63	8.14	3.90	5.01	7.30	3.43	10.71	15.55	7.53
1993	5.62	8.19	3.83	5.03	7.34	3.41	10.70	16.26	7.11
1994	5.41	7.87	3.70	4.81	7.04	3.26	10.26	15.37	6.97
1995	5.35	7.70	3.71	4.72	6.89	3.21	10.36	14.89	7.37
1996	5.13	7.43	3.54	4.53	6.60	3.10	9.99	15.09	6.80
1997	4.94	7.16	3.37	4.34	6.33	2.92	9.66	14.64	6.50
1998	4.81	6.83	3.39	4.25	6.06	2.97	9.29	13.72	6.42
1999	4.64	6.59	3.25	4.05	5.78	2.79	9.25	13.73	6.47
2000	4.55	6.38	3.24	3.97	5.63	2.79	8.95	12.77	6.49
2001	4.37	6.11	3.10	3.84	5.39	2.70	8.32	12.06	5.86
2002	4.26	5.98	3.01	3.71	5.29	2.56	8.48	12.20	6.15
2003	4.15	5.75	2.98	3.65	5.05	2.60	7.89	11.56	5.48
2004	4.01	5.59	2.87	3.52	4.91	2.50	7.61	11.31	5.26
2005	3.82	5.29	2.74	3.32	4.59	2.38	7.29	10.89	5.02
2006	3.69	5.08	2.68	3.22	4.47	2.29	6.90	9.97	4.96
2007	3.64	5.05	2.60	3.17	4.39	2.24	6.94	10.52	4.69
2008	3.55	4.87	2.52	3.07	4.23	2.16	6.91	10.03	4.90
2009	3.43	4.71	2.45	2.98	4.09	2.11	6.41	9.41	4.41
2010	3.42	4.64	2.49	2.99	4.03	2.19	6.33	9.33	4.37

^a US Mortality Files, National Center for Health Statistics, Centers for Disease Control and Prevention.
Rates are per 100,000 and are age-adjusted to the 2000 US Std Population (19 age groups - Census P25-1130).
- Statistic not shown. Rate based on less than 16 cases for the time interval.

Table 24.7
Cancer of the Stomach (Invasive)SEER Incidence^a and U.S. Death^b Rates, Age-Adjusted and Age-Specific Rates, by Race and Sex

	All Races			Whites			Blacks		
	Total	Males	Females	Total	Males	Females	Total	Males	Females
<u>SEER Incidence</u>									
<u>Age at Diagnosis</u>									
Age-Adjusted Rates, 2006-2010									
All ages	7.5	10.4	5.3	6.6	9.2	4.5	11.6	16.1	8.7
Under 65	2.9	3.7	2.2	2.6	3.4	1.8	4.2	5.3	3.3
65 and over	39.4	56.4	27.2	34.2	49.6	22.8	62.7	90.5	45.8
All ages (IARC world std) ^c	4.7	6.3	3.3	4.1	5.7	2.7	7.1	9.6	5.2
Age-Specific Rates, 2006-2010									
<1	-	-	-	-	-	-	-	-	-
1-4	-	-	-	-	-	-	-	-	-
5-9	-	-	-	-	-	-	-	-	-
10-14	-	-	-	-	-	-	-	-	-
15-19	0.1	-	-	-	-	-	-	-	-
20-24	0.2	0.2	0.2	0.2	0.2	0.2	-	-	-
25-29	0.5	0.4	0.6	0.4	0.4	0.5	0.5	-	-
30-34	1.0	1.0	1.0	1.0	1.1	1.0	1.0	-	1.2
35-39	1.8	1.9	1.8	1.6	1.8	1.4	2.3	2.4	2.2
40-44	3.0	3.2	2.8	2.6	2.8	2.4	4.2	4.9	3.5
45-49	5.0	6.0	4.0	4.4	5.5	3.4	6.9	8.3	5.7
50-54	7.8	10.0	5.6	6.8	8.9	4.6	12.5	15.7	9.7
55-59	11.2	15.2	7.4	9.9	13.9	6.1	16.7	21.7	12.4
60-64	16.6	23.5	10.2	15.1	21.9	8.7	24.2	34.0	16.2
65-69	25.6	36.6	16.0	22.3	32.6	13.2	39.1	58.6	24.0
70-74	35.1	50.3	22.6	30.2	44.0	18.5	55.6	78.8	38.9
75-79	43.7	62.7	29.4	38.5	55.7	25.2	65.5	94.0	47.4
80-84	52.1	72.8	38.6	45.5	64.4	33.1	78.4	111.7	60.8
85+	56.9	82.9	44.3	47.9	70.9	36.7	106.6	153.9	88.0
<u>U.S. Mortality</u>									
<u>Age at Death</u>									
Age-Adjusted Rates, 2006-2010									
All ages	3.5	4.9	2.5	3.1	4.2	2.2	6.7	9.8	4.7
Under 65	1.2	1.6	0.9	1.1	1.4	0.8	2.1	3.0	1.4
65 and over	19.6	27.6	14.0	17.1	24.2	12.1	38.1	57.2	26.9
All ages (IARC world std) ^c	2.1	2.8	1.5	1.8	2.4	1.3	3.9	5.6	2.6
Age-Specific Rates, 2006-2010									
<1	-	-	-	-	-	-	-	-	-
1-4	-	-	-	-	-	-	-	-	-
5-9	-	-	-	-	-	-	-	-	-
10-14	-	-	-	-	-	-	-	-	-
15-19	0.0	-	-	-	-	-	-	-	-
20-24	0.1	0.1	0.1	0.1	0.1	0.1	-	-	-
25-29	0.2	0.2	0.2	0.2	0.2	0.2	0.3	0.3	0.3
30-34	0.4	0.4	0.4	0.4	0.4	0.4	0.6	0.7	0.5
35-39	0.8	0.8	0.8	0.7	0.8	0.6	1.1	1.1	1.2
40-44	1.3	1.4	1.2	1.1	1.2	1.0	2.1	2.4	1.8
45-49	2.1	2.6	1.6	1.8	2.2	1.4	3.4	4.6	2.3
50-54	3.2	4.2	2.3	2.7	3.6	1.9	5.8	8.2	3.7
55-59	4.7	6.4	3.1	3.9	5.4	2.5	8.8	12.5	5.7
60-64	6.9	9.8	4.3	6.0	8.4	3.7	13.3	20.4	7.5
65-69	10.4	14.7	6.5	8.9	12.7	5.5	19.8	29.3	12.5
70-74	15.0	21.1	9.9	13.0	18.3	8.5	28.7	42.9	18.7
75-79	21.0	29.6	14.4	18.2	25.6	12.4	40.7	64.7	25.9
80-84	27.6	38.6	20.5	24.3	33.8	18.0	55.9	83.4	41.5
85+	37.9	53.4	30.5	33.7	48.0	27.0	72.9	105.3	60.5

^a SEER 18 areas. Rates are per 100,000 and are age-adjusted to the 2000 US Std Population (19 age groups - Census P25-1130), unless noted.

^b US Mortality Files, National Center for Health Statistics, Centers for Disease Control and Prevention.

^c Rates are per 100,000 and are age-adjusted to the 2000 US Std Population (19 age groups - Census P25-1130), unless noted.

- Rates are per 100,000 and are age-adjusted to the IARC world standard population.

- Statistic not shown. Rate based on less than 16 cases for the time interval.

Table 24.8
Cancer of the Stomach (Invasive)

5-Year Relative and Period Survival (Percent) by Race, Sex, Diagnosis Year, Stage and Age

	All Races			Whites			Blacks		
	Total	Males	Females	Total	Males	Females	Total	Males	Females
5-Year Relative Survival (Percent)									
Year of Diagnosis:									
1960-1963 ^a	-	-	-	11	10	13	8	5	14
1970-1973 ^a	-	-	-	13	12	14	13	15	10
1975-1977 ^b	15.2	14.4	16.6	14.1	13.1	15.8	16.1	16.1	16.1
1978-1980 ^b	16.1	14.3	19.0	15.4	13.6	18.2	16.4	15.6	18.0
1981-1983 ^b	17.2	16.4	18.7	16.2	15.4	17.6	16.4	16.2	16.7
1984-1986 ^b	17.6	15.6	20.9	16.8	14.3	20.8	19.1	16.9	22.0
1987-1989 ^b	19.7	17.0	24.4	18.3	15.5	23.2	18.8	16.6	22.5
1990-1992 ^b	20.9	18.0	25.4	18.8	16.0	23.2	22.7	21.9	23.7
1993-1995 ^b	21.0	20.1	22.5	19.9	18.9	21.7	19.3	17.5	21.9
1996-1998 ^b	22.2	21.1	24.1	20.3	18.6	23.3	22.4	20.2	25.0
1999-2002 ^b	24.5	23.3	26.4	23.1	21.5	25.8	24.2	23.9	24.7
2003-2009 ^b	28.8 ^f	26.7 ^f	32.0 ^f	27.7 ^f	26.1 ^f	30.5 ^f	29.0 ^f	24.9 ^f	34.7 ^f
5-Year Period Survival (Percent) ^{cd}									
2009	28.8	27.2	31.2	27.4	25.7	30.0	27.9	25.7	30.7
Stage Distribution (%) 2003-2009 ^{ee}									
All Stages									
Number of cases	34,999	21,030	13,969	24,633	15,202	9,431	4,847	2,724	2,123
Percent	100%	100%	100%	100%	100%	100%	100%	100%	100%
Localized	25	23	28	24	23	28	25	23	28
Regional	30	32	27	30	32	26	29	31	28
Distant	34	36	32	35	37	34	34	37	30
Unstaged	11	9	13	11	9	13	11	9	14
5-Year Relative Survival (Percent), 2003-2009 ^c									
Age at Diagnosis:									
Ages <45	31.3	27.3	35.7	30.0	24.7	36.1	30.9	25.5	36.4
Ages 45-54	30.8	28.7	34.5	28.7	26.6	32.5	31.0	26.8	37.8
Ages 55-64	30.5	28.3	35.2	28.5	26.7	32.7	31.7	28.4	37.1
Ages 65-74	30.5	28.5	34.2	29.6	27.7	33.4	27.6	24.3	32.7
Ages 75+	21.8	19.7	24.0	20.9	18.4	23.6	17.8	15.8	19.2
Ages <65	30.8	28.3	35.1	28.8	26.4	33.5	31.3	27.5	37.1
Ages 65+	25.5	23.9	27.5	24.5	22.8	26.8	22.6	20.6	24.6
Stage ^e :									
All Stages	27.7	25.8	30.4	26.2	24.4	29.2	26.7	24.2	29.8
Localized	63.2	60.6	66.3	62.0	59.3	65.6	59.2	56.2	62.0
Regional	28.4	27.9	29.3	27.2	26.6	28.3	25.1	24.7	25.6
Distant	3.9	3.8	4.0	3.5	3.5	3.6	5.2	4.5	6.4
Unstaged	19.4	16.4	22.7	17.4	14.6	20.6	22.7	18.2	26.4

^a Based on End Results data from a series of hospital registries and one population-based registry.^b SEER 9 areas (San Francisco, Connecticut, Detroit, Hawaii, Iowa, New Mexico, Seattle, Utah, Atlanta).

Based on follow-up of patients into 2010.

^c SEER 18 areas (San Francisco, Connecticut, Detroit, Hawaii, Iowa, New Mexico, Seattle, Utah, Atlanta, San Jose-Monterey, Los Angeles, Alaska Native Registry, Rural Georgia, California excluding SF/SJM/LA, Kentucky, Louisiana, New Jersey and Georgia excluding ATL/RG).

Based on follow-up of patients into 2010.

^d Period survival provides a 2009 estimate of survival by piecing together the most recent conditional survival estimates from several cohorts. It is computed here using three year calendar blocks (2007-2009: 0-1 year survival), (2006-2008: 1-2 year survival), (2005-2007: 2-3 year survival), (2004-2006: 3-4 year survival), (2003-2005: 4-5 years survival).^e Stage at diagnosis is classified using SEER Summary Stage 2000.^f The difference between 1975-1977 and 2003-2009 is statistically significant (p<.05).^g The standard error is between 5 and 10 percentage points.^h The standard error is greater than 10 percentage points.

- Statistic could not be calculated due to fewer than 25 cases during the time period.

Table 24.9
Cancer of the Stomach (Invasive)
SEER^a Relative Survival (Percent)
By Year of Diagnosis

All Races, Males and Females

Year of Diagnosis

	1975- 1979	1980- 1984	1985- 1989	1990	1991	1992	1993	1994	1995	1996	1997	1998	1999	2000	2001	2002	2003	2004	2005	2006	2007	2008	2009
Survival Time																							
1-year	38.7	41.5	43.8	45.2	43.3	46.3	44.1	45.3	45.7	45.5	45.3	47.8	46.4	47.2	48.6	49.9	50.5	53.0	50.1	52.3	51.8	55.4	55.2
2-year	24.8	26.7	29.1	31.4	29.7	31.9	30.2	32.7	31.3	32.0	32.5	33.5	33.9	32.7	33.3	35.4	38.3	38.3	36.3	39.7	39.3	41.3	
3-year	19.7	21.0	23.4	24.8	24.6	25.9	23.7	26.5	26.4	26.8	26.2	28.3	27.6	26.9	29.0	30.2	33.4	32.8	31.6	34.2	33.5		
4-year	17.3	18.3	20.6	22.2	22.0	23.5	20.7	23.9	23.2	23.7	23.3	25.1	24.8	24.6	27.4	27.0	30.3	29.8	28.0	32.8			
5-year	15.6	16.6	19.3	20.0	20.4	22.1	19.1	22.0	21.9	22.2	21.8	22.7	23.0	22.9	26.3	26.1	27.8	28.0	25.9				
6-year	14.6	15.8	18.4	18.2	19.0	21.1	18.1	20.0	20.6	20.5	20.7	21.8	21.1	22.1	25.2	24.5	26.4	26.3					
7-year	14.0	15.1	17.6	17.5	18.5	19.6	17.1	19.0	19.5	20.0	20.0	21.0	19.9	21.3	24.2	23.9	25.7						
8-year	13.5	14.4	17.0	17.2	18.0	18.3	15.9	17.8	19.4	19.8	19.4	20.4	18.9	20.6	22.7	22.6							
9-year	13.1	14.1	16.5	16.1	17.2	17.6	15.3	17.8	19.0	19.3	19.4	19.6	18.4	19.8	22.2								
10-year	12.7	13.9	15.8	15.4	16.6	17.0	14.5	16.7	18.1	18.9	18.4	18.6	17.8	19.4									
11-year	12.3	13.4	15.3	15.0	16.6	16.1	14.1	16.6	17.7	17.6	17.8	18.5	17.0										
12-year	12.0	12.8	15.0	14.7	16.6	15.7	13.8	16.2	17.2	17.1	17.8	17.7											
13-year	11.6	12.8	14.9	14.7	16.2	15.5	13.3	15.5	16.7	15.9	17.7												
14-year	11.2	12.8	14.6	14.7	15.9	15.3	12.9	15.3	16.4	15.6													
15-year	10.8	12.3	14.3	14.5	15.5	14.8	12.6	15.0	16.4														
16-year	10.5	11.9	14.0	14.0	14.4	14.4	11.9	15.0															
17-year	10.2	11.6	13.8	13.8	14.1	14.4	11.1																
18-year	9.8	11.4	13.7	12.9	13.3	13.8																	
19-year	9.5	11.2	13.3	12.6	13.2																		
20-year	9.2	10.8	13.1	12.6																			

^a Based on the SEER 9 areas (San Francisco, Connecticut, Detroit, Hawaii, Iowa, New Mexico, Seattle, Utah, and Atlanta).

Table 24.10
Cancer of the Stomach (Invasive)
SEER^a Relative Survival (Percent)
By Year of Diagnosis

All Races, Males

Year of Diagnosis

	1975- 1979	1980- 1984	1985- 1989	1990	1991	1992	1993	1994	1995	1996	1997	1998	1999	2000	2001	2002	2003	2004	2005	2006	2007	2008	2009
Survival Time																							
1-year	38.1	41.1	42.8	44.9	40.8	44.4	42.3	45.3	46.5	43.7	45.6	49.3	46.3	46.3	49.4	48.1	49.7	53.4	51.7	52.2	50.9	53.6	55.1
2-year	23.8	25.8	27.5	30.3	26.3	29.6	27.8	32.4	31.5	28.9	31.0	35.5	33.7	32.8	33.1	32.7	36.1	37.7	37.0	37.5	37.0	38.9	
3-year	18.5	20.0	21.4	23.5	21.3	24.1	22.0	25.6	25.9	23.8	24.9	29.6	27.3	27.1	28.6	27.0	31.3	30.8	31.5	32.8	31.7		
4-year	16.1	17.1	18.2	20.2	18.3	21.8	19.4	23.4	22.4	21.6	21.7	25.6	24.2	24.4	26.6	24.6	27.8	27.4	27.5	31.3			
5-year	14.5	15.4	16.7	17.7	16.0	20.4	18.0	21.5	20.8	20.2	19.9	23.2	22.1	22.2	25.6	23.4	25.1	26.1	25.3				
6-year	13.4	14.6	15.9	16.5	14.3	19.0	16.8	19.2	19.7	19.1	18.7	22.4	20.4	21.2	23.8	21.9	23.8	24.1					
7-year	12.6	13.9	15.0	15.7	13.4	17.9	15.3	18.1	18.7	18.7	17.8	21.3	18.6	20.1	22.9	21.0	23.5						
8-year	12.3	13.2	14.5	14.9	12.7	16.6	14.1	17.1	18.6	18.6	17.8	20.8	17.7	19.2	21.4	20.0							
9-year	12.2	13.0	13.9	14.2	12.2	15.7	13.4	16.8	18.5	17.9	17.6	20.0	16.8	17.9	21.3								
10-year	11.8	12.9	13.4	13.4	11.6	15.1	12.1	15.5	17.2	17.4	16.7	19.1	16.4	17.7									
11-year	11.4	12.4	12.8	12.4	11.6	14.6	12.1	15.5	17.1	15.6	16.0	19.1	15.8										
12-year	11.3	11.8	12.6	12.2	11.6	14.2	11.6	15.0	16.6	14.9	15.8	18.4											
13-year	11.0	11.8	12.6	12.2	10.7	14.1	11.6	13.8	16.0	14.7	15.8												
14-year	10.4	11.8	12.3	11.8	10.2	13.4	10.9	13.4	15.4	14.6													
15-year	9.9	11.3	12.0	11.2	9.3	12.6	10.4	12.9	15.3														
16-year	9.8	10.8	11.7	10.6	9.0	12.6	9.8	12.9															
17-year	9.4	10.4	11.5	10.5	9.0	12.6	9.1																
18-year	8.8	10.3	11.3	10.2	8.9	12.2																	
19-year	8.7	10.2	10.9	9.4	8.8																		
20-year	8.6	9.8	10.9	9.4																			

^a Based on the SEER 9 areas (San Francisco, Connecticut, Detroit, Hawaii, Iowa, New Mexico, Seattle, Utah, and Atlanta).

Table 24.11
Cancer of the Stomach (Invasive)
SEER^a Relative Survival (Percent)
By Year of Diagnosis

All Races, Females

Year of Diagnosis

	1975- 1979	1980- 1984	1985- 1989	1990	1991	1992	1993	1994	1995	1996	1997	1998	1999	2000	2001	2002	2003	2004	2005	2006	2007	2008	2009
Survival Time																							
1-year	39.7	42.3	45.5	45.7	47.2	49.5	47.2	45.1	44.4	48.6	44.9	45.6	46.5	48.6	47.3	52.5	51.8	52.3	47.2	52.4	53.3	58.4	55.3
2-year	26.5	28.1	31.9	33.3	35.1	35.6	34.3	33.3	31.1	37.2	34.9	30.6	34.1	32.6	33.8	39.3	41.6	39.4	35.1	43.1	43.1	45.3	
3-year	21.6	22.6	26.7	27.0	29.8	28.8	26.6	27.9	27.4	31.7	28.3	26.3	28.1	26.5	29.6	35.0	36.6	35.9	31.7	36.3	36.4		
4-year	19.2	20.1	24.6	25.2	27.7	26.3	22.7	24.7	24.5	27.2	26.0	24.2	25.6	24.9	28.9	30.5	34.2	33.6	29.0	35.0			
5-year	17.4	18.7	23.6	23.7	27.4	24.7	21.0	23.0	23.5	25.6	24.8	21.9	24.2	23.9	27.5	30.1	32.0	31.1	26.9				
6-year	16.6	17.9	22.6	21.0	26.4	24.3	20.5	21.2	22.2	22.9	23.8	20.7	22.1	23.6	27.2	28.3	30.4	29.7					
7-year	16.2	17.2	21.8	20.4	26.1	22.3	20.0	20.5	20.9	21.7	23.1	20.5	21.8	23.0	26.4	28.1	29.0						
8-year	15.2	16.3	21.3	20.3	26.1	21.1	19.1	19.1	20.5	21.2	22.0	19.9	20.6	22.6	24.7	26.4							
9-year	14.6	15.9	20.8	18.8	24.9	20.5	18.3	19.1	19.6	21.2	22.0	18.8	20.6	22.6	23.4								
10-year	14.3	15.4	19.9	18.8	24.1	20.0	18.2	18.7	19.3	21.2	21.0	17.6	19.6	22.0									
11-year	13.7	14.9	19.5	18.6	24.1	18.4	17.3	18.2	18.8	20.9	20.6	17.4	18.5										
12-year	13.3	14.6	18.9	18.6	24.1	17.9	17.3	18.0	18.1	20.4	20.6	16.6											
13-year	12.6	14.5	18.7	18.6	24.1	17.6	16.2	18.0	17.8	17.8	20.5												
14-year	12.4	14.3	18.4	18.6	24.1	17.6	16.2	18.0	17.8	17.3													
15-year	12.2	13.9	18.1	18.6	24.1	17.6	16.0	18.0	17.8														
16-year	11.7	13.6	17.8	18.6	22.6	17.3	15.4	18.0															
17-year	11.4	13.4	17.6	18.6	21.3	17.1	14.2																
18-year	11.3	13.2	17.6	17.0	19.7	16.3																	
19-year	10.9	12.8	17.2	17.0	19.7																		
20-year	10.2	12.3	16.5	17.0																			

^a Based on the SEER 9 areas (San Francisco, Connecticut, Detroit, Hawaii, Iowa, New Mexico, Seattle, Utah, and Atlanta).

Table 24.12
Cancer of the Stomach (Invasive)

Risk of Being Diagnosed With Cancer in 10, 20 and 30 Years,
Lifetime Risk of Being Diagnosed with Cancer Given Alive and Cancer-Free at Current Age, and
Lifetime Risk of Dying from Cancer Given Alive at Current Age
Both Sexes, 2008-2010 By Race/Ethnicity

Race/ Ethnicity	Current Age	Risk of Being Diagnosed with Cancer				Risk of Dying from Cancer	Race/ Ethnicity	Current Age	Risk of Being Diagnosed with Cancer				Risk of Dying from Cancer
		+10 yrs	+20 yrs	+30 yrs	Ever				+10 yrs	+20 yrs	+30 yrs	Ever	
All Races	0	0.00	0.00	0.00	0.86	0.41	Asian/ Pacific Islander	0	0.00	0.00	0.00	1.85	1.19
	10	0.00	0.00	0.02	0.87	0.42		10	0.00	0.00	0.02	1.87	1.20
	20	0.00	0.02	0.06	0.88	0.42		20	0.00	0.02	0.07	1.87	1.20
	30	0.01	0.05	0.14	0.88	0.42		30	0.02	0.07	0.19	1.87	1.20
	40	0.04	0.13	0.31	0.88	0.42		40	0.05	0.17	0.45	1.87	1.20
	50	0.09	0.28	0.56	0.86	0.42		50	0.12	0.41	0.92	1.84	1.19
	60	0.20	0.49	0.74	0.81	0.40		60	0.29	0.82	1.43	1.77	1.16
	70	0.34	0.61	-	0.70	0.37		70	0.56	1.22	-	1.58	1.09
80	0.37	-	-	0.49	0.30	80	0.79	-	-	1.24	0.95		
White	0	0.00	0.00	0.00	0.75	0.36	American Indian/ Alaska Native ^a	0	0.00	0.00	0.01	0.99	0.54
	10	0.00	0.00	0.02	0.76	0.37		10	0.00	0.01	0.04	1.00	0.54
	20	0.00	0.02	0.05	0.76	0.37		20	0.01	0.04	0.08	1.00	0.55
	30	0.01	0.05	0.13	0.77	0.37		30	0.03	0.07	0.19	1.01	0.56
	40	0.04	0.12	0.28	0.76	0.37		40	0.04	0.16	0.34	1.01	0.56
	50	0.08	0.25	0.49	0.74	0.36		50	0.13	0.31	0.68	1.00	0.56
	60	0.17	0.44	0.64	0.70	0.35		60	0.20	0.59	0.87	0.94	0.55
	70	0.30	0.53	-	0.60	0.32		70	0.45	0.77	-	0.85	0.47
80	0.32	-	-	0.41	0.26	80	0.43	-	-	0.54	0.35		
Black	0	0.00	0.00	0.00	1.12	0.68	Hispanic ^b	0	0.00	0.00	0.01	1.52	0.81
	10	0.00	0.00	0.02	1.15	0.70		10	0.00	0.01	0.03	1.53	0.82
	20	0.00	0.02	0.07	1.15	0.70		20	0.01	0.03	0.09	1.54	0.83
	30	0.02	0.07	0.20	1.17	0.71		30	0.02	0.08	0.21	1.54	0.83
	40	0.05	0.18	0.43	1.17	0.71		40	0.06	0.18	0.46	1.53	0.82
	50	0.13	0.39	0.76	1.17	0.72		50	0.13	0.41	0.87	1.50	0.81
	60	0.28	0.69	1.01	1.14	0.71		60	0.29	0.78	1.23	1.44	0.78
	70	0.50	0.89	-	1.04	0.68		70	0.53	1.03	-	1.26	0.72
80	0.58	-	-	0.81	0.58	80	0.64	-	-	0.93	0.59		

Devcan 6.7.0, June 2013, National Cancer Institute (<http://surveillance.cancer.gov/devcan/>).

Source: Incidence data are from the SEER 18 areas (San Francisco, Connecticut, Detroit, Hawaii, Iowa, New Mexico, Seattle, Utah, Atlanta, San Jose-Monterey, Los Angeles, Alaska Native Registry, Rural Georgia, California excluding SF/SJM/LA, Kentucky, Louisiana, New Jersey, and Georgia excluding ATL/RG). Mortality data are from the NCHS public use data file for the total US.

^a Underlying incidence and mortality data for American Indian/Alaska Native are based on the CHSDA (Contract Health Service Delivery Area) counties.

^b Hispanic is not mutually exclusive from whites, blacks, Asian/Pacific Islanders, and American Indians/Alaska Natives. Underlying incidence data for Hispanics are based on NHIA and exclude cases from the Alaska Native Registry. Underlying mortality data for Hispanics exclude deaths from the District of Columbia, Minnesota, New Hampshire, North Dakota and South Carolina.

- Statistic could not be calculated.

A percent of 0.00 represents a value that is below 0.005.

Table 24.13
Cancer of the Stomach (Invasive)

Risk of Being Diagnosed With Cancer in 10, 20 and 30 Years,
Lifetime Risk of Being Diagnosed with Cancer Given Alive and Cancer-Free at Current Age, and
Lifetime Risk of Dying from Cancer Given Alive at Current Age
Males, 2008-2010 By Race/Ethnicity

Race/ Ethnicity	Current Age	Risk of Being Diagnosed with Cancer				Risk of Dying from Cancer	Race/ Ethnicity	Current Age	Risk of Being Diagnosed with Cancer				Risk of Dying from Cancer
		+10 yrs	+20 yrs	+30 yrs	Ever				+10 yrs	+20 yrs	+30 yrs	Ever	
All Races	0	0.00	0.00	0.00	1.08	0.50	Asian/ Pacific Islander	0	0.00	0.00	0.00	2.17	1.38
	10	0.00	0.00	0.02	1.09	0.51		10	0.00	0.00	0.02	2.19	1.40
	20	0.00	0.02	0.06	1.10	0.51		20	0.00	0.02	0.07	2.19	1.40
	30	0.01	0.06	0.18	1.11	0.52		30	0.01	0.06	0.21	2.20	1.40
	40	0.05	0.16	0.41	1.11	0.52		40	0.05	0.19	0.56	2.20	1.40
	50	0.12	0.38	0.75	1.10	0.52		50	0.15	0.51	1.17	2.19	1.40
	60	0.28	0.68	0.97	1.06	0.50		60	0.38	1.06	1.76	2.12	1.37
	70	0.47	0.81	-	0.91	0.46		70	0.75	1.51	-	1.91	1.29
80	0.50	-	-	0.64	0.37	80	0.97	-	-	1.47	1.08		
White	0	0.00	0.00	0.00	0.97	0.44	American Indian/ Alaska Native ^a	0	0.00	0.00	0.01	1.16	0.64
	10	0.00	0.00	0.02	0.98	0.45		10	0.00	0.01	0.03	1.18	0.65
	20	0.00	0.02	0.06	0.98	0.45		20	0.01	0.02	0.05	1.18	0.66
	30	0.01	0.06	0.16	0.99	0.45		30	0.01	0.04	0.20	1.20	0.68
	40	0.04	0.15	0.38	0.99	0.45		40	0.03	0.19	0.38	1.22	0.69
	50	0.11	0.34	0.68	0.98	0.45		50	0.17	0.37	0.88	1.25	0.71
	60	0.25	0.61	0.87	0.93	0.44		60	0.22	0.77	1.09	1.17	0.69
	70	0.42	0.72	-	0.80	0.40		70	0.65	1.02	-	1.12	0.59
80	0.44	-	-	0.55	0.32	80	0.54	-	-	0.68	0.43		
Black	0	0.00	0.00	0.00	1.32	0.83	Hispanic ^b	0	0.00	0.00	0.01	1.86	0.96
	10	0.00	0.00	0.02	1.35	0.86		10	0.00	0.01	0.03	1.88	0.98
	20	0.00	0.02	0.08	1.36	0.86		20	0.00	0.03	0.09	1.89	0.98
	30	0.02	0.08	0.23	1.39	0.88		30	0.02	0.09	0.24	1.90	0.99
	40	0.06	0.22	0.56	1.41	0.89		40	0.07	0.22	0.58	1.90	0.99
	50	0.17	0.52	0.99	1.41	0.90		50	0.16	0.53	1.13	1.88	0.98
	60	0.40	0.92	1.28	1.40	0.90		60	0.40	1.03	1.61	1.83	0.96
	70	0.67	1.12	-	1.29	0.87		70	0.71	1.37	-	1.62	0.89
80	0.75	-	-	1.02	0.73	80	0.88	-	-	1.22	0.74		

Devcan 6.7.0, June 2013, National Cancer Institute (<http://surveillance.cancer.gov/devcan/>).

Source: Incidence data are from the SEER 18 areas (San Francisco, Connecticut, Detroit, Hawaii, Iowa, New Mexico, Seattle, Utah, Atlanta, San Jose-Monterey, Los Angeles, Alaska Native Registry, Rural Georgia, California excluding SF/SJM/LA, Kentucky, Louisiana, New Jersey, and Georgia excluding ATL/RG). Mortality data are from the NCHS public use data file for the total US.

^a Underlying incidence and mortality data for American Indian/Alaska Native are based on the CHSDA (Contract Health Service Delivery Area) counties.

^b Hispanic is not mutually exclusive from whites, blacks, Asian/Pacific Islanders, and American Indians/Alaska Natives. Underlying incidence data for Hispanics are based on NHIA and exclude cases from the Alaska Native Registry. Underlying mortality data for Hispanics exclude deaths from the District of Columbia, Minnesota, New Hampshire, North Dakota and South Carolina.

- Statistic could not be calculated.
A percent of 0.00 represents a value that is below 0.005.

Table 24.14
Cancer of the Stomach (Invasive)

Risk of Being Diagnosed With Cancer in 10, 20 and 30 Years,
Lifetime Risk of Being Diagnosed with Cancer Given Alive and Cancer-Free at Current Age, and
Lifetime Risk of Dying from Cancer Given Alive at Current Age
Females, 2008-2010 By Race/Ethnicity

Race/ Ethnicity	Current Age	Risk of Being Diagnosed with Cancer				Risk of Dying from Cancer	Race/ Ethnicity	Current Age	Risk of Being Diagnosed with Cancer				Risk of Dying from Cancer
		+10 yrs	+20 yrs	+30 yrs	Ever				+10 yrs	+20 yrs	+30 yrs	Ever	
All Races	0	0.00	0.00	0.00	0.67	0.34	Asian/ Pacific Islander	0	0.00	0.00	0.00	1.59	1.03
	10	0.00	0.00	0.02	0.67	0.34		10	0.00	0.00	0.02	1.60	1.04
	20	0.00	0.02	0.05	0.68	0.34		20	0.00	0.02	0.07	1.60	1.04
	30	0.01	0.05	0.11	0.67	0.34		30	0.02	0.07	0.17	1.60	1.04
	40	0.03	0.10	0.21	0.67	0.34		40	0.05	0.15	0.36	1.59	1.03
	50	0.06	0.18	0.38	0.64	0.33		50	0.10	0.32	0.71	1.55	1.02
	60	0.12	0.33	0.53	0.61	0.32		60	0.22	0.62	1.16	1.49	0.99
	70	0.23	0.45	-	0.53	0.30		70	0.42	0.99	-	1.34	0.95
80	0.29	-	-	0.39	0.25	80	0.66	-	-	1.07	0.87		
White	0	0.00	0.00	0.00	0.56	0.29	American Indian/ Alaska Native ^a	0	0.00	0.00	0.01	0.84	0.43
	10	0.00	0.00	0.02	0.56	0.29		10	0.00	0.01	0.05	0.85	0.43
	20	0.00	0.02	0.05	0.56	0.30		20	0.01	0.05	0.11	0.85	0.44
	30	0.01	0.04	0.09	0.56	0.30		30	0.05	0.10	0.18	0.86	0.44
	40	0.03	0.08	0.18	0.55	0.29		40	0.06	0.14	0.30	0.82	0.44
	50	0.05	0.15	0.32	0.53	0.29		50	0.08	0.25	0.50	0.79	0.43
	60	0.10	0.28	0.44	0.50	0.28		60	0.18	0.44	0.69	0.75	0.41
	70	0.19	0.38	-	0.44	0.26		70	0.29	0.57	-	0.64	0.37
80	0.24	-	-	0.32	0.22	80	0.36	-	-	0.45	0.29		
Black	0	0.00	0.00	0.01	0.96	0.56	Hispanic ^b	0	0.00	0.00	0.01	1.24	0.69
	10	0.00	0.01	0.02	0.98	0.57		10	0.00	0.01	0.03	1.25	0.70
	20	0.00	0.02	0.07	0.98	0.57		20	0.01	0.03	0.09	1.25	0.70
	30	0.02	0.06	0.16	0.99	0.58		30	0.02	0.08	0.18	1.25	0.70
	40	0.05	0.15	0.31	0.98	0.57		40	0.06	0.15	0.35	1.23	0.69
	50	0.10	0.27	0.57	0.97	0.57		50	0.10	0.30	0.65	1.19	0.67
	60	0.18	0.50	0.81	0.93	0.57		60	0.21	0.57	0.92	1.13	0.64
	70	0.37	0.73	-	0.88	0.55		70	0.39	0.78	-	0.99	0.59
80	0.49	-	-	0.70	0.50	80	0.47	-	-	0.74	0.50		

Devcan 6.7.0, June 2013, National Cancer Institute (<http://surveillance.cancer.gov/devcan/>).

Source: Incidence data are from the SEER 18 areas (San Francisco, Connecticut, Detroit, Hawaii, Iowa, New Mexico, Seattle, Utah, Atlanta, San Jose-Monterey, Los Angeles, Alaska Native Registry, Rural Georgia, California excluding SF/SJM/LA, Kentucky, Louisiana, New Jersey, and Georgia excluding ATL/RG). Mortality data are from the NCHS public use data file for the total US.

^a Underlying incidence and mortality data for American Indian/Alaska Native are based on the CHSDA (Contract Health Service Delivery Area) counties.

^b Hispanic is not mutually exclusive from whites, blacks, Asian/Pacific Islanders, and American Indians/Alaska Natives. Underlying incidence data for Hispanics are based on NHIA and exclude cases from the Alaska Native Registry. Underlying mortality data for Hispanics exclude deaths from the District of Columbia, Minnesota, New Hampshire, North Dakota and South Carolina.

- Statistic could not be calculated.

A percent of 0.00 represents a value that is below 0.005.

Table 24.15
Cancer of the Stomach (Invasive)

SEER Incidence and U.S. Mortality
Age-Adjusted Rates and Trends^a
By Race/Ethnicity and Sex

SEER Incidence	SEER 18 Areas ^b			SEER 13 Areas ^b			SEER 9 Areas ^b		
	Rate 2006-2010			Trend 2001-2010 ^c			Trend 2001-2010 ^d		
	Rate per 100,000 persons			AAPC (%)			AAPC (%)		
RACE/ETHNICITY	Total	Males	Females	Total	Males	Females	Total	Males	Females
All Races	7.5	10.4	5.3	-1.3*	-1.7*	-0.8*	-1.6*	-1.8*	-1.5*
White	6.6	9.2	4.5	-1.2*	-1.6*	-0.9*	-1.3*	-1.8*	-1.9*
White Hispanic ^e	11.7	15.6	8.9	-1.3*	-1.6*	-1.1*	-	-	-
White Non-Hispanic ^e	5.8	8.3	3.8	-1.6*	-2.0*	-1.6*	-	-	-
Black	11.6	16.1	8.7	-1.7*	-2.2*	-1.1*	-1.4*	-2.0*	-0.9*
Asian/Pacific Islander	11.9	15.5	9.3	-3.0*	-3.0*	-2.6*	-	-	-
Amer Ind/Alaska Nat ^f	10.0	13.1	7.7	-0.4	-0.7	-	-	-	-
Hispanic ^e	11.3	14.9	8.6	-1.3*	-1.6*	-1.1*	-	-	-
<u>U.S. Mortality^g</u>									
RACE/ETHNICITY	Rate 2006-2010			Trend 2001-2010 ^h					
	Rate per 100,000 persons			AAPC (%)					
	Total	Males	Females	Total	Males	Females			
All Races	3.5	4.9	2.5	-3.0*	-3.1*	-2.7*			
White	3.1	4.2	2.2	-3.1*	-3.3*	-2.8*			
White Hispanic ^e	6.0	8.0	4.6	-2.1*	-2.3*	-1.8*			
White Non-Hispanic ^e	2.8	3.9	1.9	-3.4*	-3.9*	-3.1*			
Black	6.7	9.8	4.7	-3.1*	-3.1*	-3.0*			
Asian/Pacific Islander	6.6	8.7	5.1	-3.7*	-3.5*	-3.7*			
Amer Ind/Alaska Nat									
Total U.S.	3.8	5.5	2.6	-3.0*	-2.7*	-3.7*			
CHSDA Counties	5.6	8.1	3.8	-4.6*	-1.9*	-5.0*			
Non-CHSDA Counties	1.6	2.4	1.1	-	-	-			
Hispanic ^e	5.7	7.6	4.4	-2.2*	-2.4*	-1.9*			

The AAPC is the Average Annual Percent Change over the time interval. The AAPCs are calculated by the Joinpoint Regression Program Version 4.0.3, April 2013, National Cancer Institute.

- Statistic not shown. Rate based on less than 16 cases for the time interval.

Trend based on less than 10 cases for at least one year within the time interval.

a Rates are age-adjusted to the 2000 US Std Population (19 age groups - Census P25-1130). Trends

are based on rates age-adjusted to the 2000 US Std Population (19 age groups - Census P25-1130).

b The SEER 9 areas are San Francisco, Connecticut, Detroit, Hawaii, Iowa, New Mexico, Seattle, Utah, and Atlanta.

The SEER 13 areas comprise the SEER 9 areas plus San Jose-Monterey, Los Angeles, the Alaska Native Registry, and Rural Georgia.

The SEER 18 areas comprise the SEER 13 areas plus California excluding SF/SJM/LA, Kentucky, Louisiana, New Jersey, and Georgia excluding ATL/RG.

c The 2001-2010 AAPC estimates are based on a Joinpoint analysis with up to 3 Joinpoints over diagnosis years 1992-2010.

d The 2001-2010 AAPC estimates are based on a Joinpoint analysis with up to 5 Joinpoints over diagnosis years 1975-2010.

e Hispanic and Non-Hispanic are not mutually exclusive from whites, blacks, Asian/Pacific Islanders, and American Indians/Alaska Natives. Incidence data for Hispanics and Non-Hispanics are based on NHIA and exclude cases from the Alaska Native Registry. The 2006-2010 Hispanic and Non-Hispanic death rates exclude deaths from the District of Columbia, North Dakota, and South Carolina. The 2001-2010 Hispanic and Non-Hispanic mortality trends exclude deaths from Connecticut, the District of Columbia, Maine, Maryland, Minnesota, New Hampshire, New York, North Dakota, Oklahoma, South Carolina and Vermont.

f Incidence data for American Indian/Alaska Native are based on the CHSDA(Contract Health Service Delivery Area) counties.

g US Mortality Files, National Center for Health Statistics, CDC.

h The 2001-2010 mortality AAPCs are based on a Joinpoint analysis using years of death 1992-2010.

* The APC is significantly different from zero (p<.05).

Table 24.16
Cancer of the Stomach (Invasive)

Age-Adjusted SEER Incidence Rates^a
By Registry, Race and Sex

	All Races			Whites			Blacks		
	Total	Males	Females	Total	Males	Females	Total	Males	Females
<u>SEER Incidence Rates^a, 2006-2010</u>									
California	7.87	10.63	5.69	7.04	9.65	4.94	10.07	13.56	7.53
Greater Bay Area	7.96	10.63	5.88	6.86	9.35	4.84	10.64	13.91	8.35
San Francisco-Oakland	8.02	10.96	5.75	6.70	9.53	4.39	11.40	15.17	8.75
San Jose-Monterey	7.82	9.97	6.12	7.13	9.03	5.61	-	-	-
Los Angeles	10.21	13.57	7.66	9.09	11.97	6.84	10.67	14.34	8.12
Greater California	6.75	9.31	4.69	6.29	8.85	4.21	9.06	12.50	6.35
Connecticut	8.12	11.73	5.35	7.69	11.08	5.07	12.88	20.06	8.30
Detroit	8.46	12.13	5.75	7.39	10.84	4.70	12.19	17.57	8.80
Georgia	6.79	9.21	4.97	5.18	7.18	3.60	11.55	16.54	8.55
Atlanta	7.58	10.08	5.71	5.37	7.48	3.65	11.60	16.11	8.89
Rural Georgia	6.53	8.54	5.29	5.62	-	-	8.45	-	-
Greater Georgia	6.49	8.88	4.69	5.11	7.08	3.57	11.77	17.03	8.60
Hawaii	10.38	13.79	7.71	5.44	7.66	3.18	-	-	-
Iowa	5.23	7.68	3.27	5.13	7.65	3.11	9.31	-	-
Kentucky	5.89	8.14	4.12	5.69	7.90	3.92	8.55	12.09	6.29
Louisiana	8.25	11.17	6.00	6.08	8.44	4.18	14.76	20.41	10.95
New Jersey	8.22	11.47	5.79	7.60	10.85	5.12	11.72	15.70	9.16
New Mexico	7.20	10.29	4.63	6.85	9.82	4.34	-	-	-
Seattle-Puget Sound	6.54	9.26	4.33	5.65	8.30	3.47	10.32	12.61	7.88
Utah	4.47	5.97	3.14	4.30	5.79	2.98	-	-	-
9 SEER Areas ^b	7.30	10.24	5.00	6.23	8.98	4.00	11.71	16.30	8.73
11 SEER Areas ^b	7.97	10.95	5.66	6.87	9.60	4.68	11.37	15.66	8.53
13 SEER Areas ^b	7.99	10.97	5.68	6.87	9.59	4.68	11.32	15.64	8.47
18 SEER Areas ^b	7.53	10.36	5.34	6.59	9.23	4.48	11.61	16.08	8.66

^a Rates are per 100,000 and are age-adjusted to the 2000 US Std Population (19 age groups - Census P25-1130)

^b The SEER 9 areas are San Francisco, Connecticut, Detroit, Hawaii, Iowa, New Mexico, Seattle, Utah and Atlanta.

The SEER 11 areas comprise the SEER 9 areas plus San Jose-Monterey and Los Angeles.

The SEER 13 areas comprise the SEER 11 areas plus the Alaska Native Registry and Rural Georgia.

The SEER 18 areas comprise the SEER 13 areas plus California excluding SF/SJM/LA, Kentucky, Louisiana, New Jersey and Georgia excluding ATL/RG.

- Statistic not shown. Rate based on less than 16 cases for the time interval.

Table 24.17
Cancer of the Stomach (Invasive)

Age-Adjusted SEER Death Rates^a
By Registry, Race and Sex

	All Races			Whites			Blacks		
	Total	Males	Females	Total	Males	Females	Total	Males	Females
<u>SEER Death Rates^a, 2006-2010</u>									
California	4.43	5.85	3.34	3.93	5.21	2.92	6.51	8.50	5.08
Greater Bay Area	4.41	5.85	3.36	3.73	4.90	2.87	6.34	8.75	4.77
San Francisco-Oakland	4.44	6.18	3.18	3.64	5.05	2.57	6.62	9.26	4.86
San Jose-Monterey	4.32	5.16	3.71	3.90	4.63	3.39	-	-	-
Los Angeles	5.71	7.32	4.51	5.05	6.37	4.06	7.17	9.06	5.73
Greater California	3.83	5.18	2.78	3.53	4.85	2.48	6.06	8.06	4.61
Connecticut	3.94	5.77	2.56	3.76	5.48	2.43	5.98	9.63	3.72
Detroit	4.18	5.86	2.96	3.36	4.68	2.34	7.10	10.68	4.89
Georgia	3.72	4.97	2.84	2.72	3.57	2.08	6.89	10.33	4.92
Atlanta	4.20	5.82	3.13	2.81	3.98	1.95	7.16	10.53	5.45
Rural Georgia	3.11	-	-	-	-	-	-	-	-
Greater Georgia	3.54	4.66	2.73	2.69	3.47	2.10	6.91	10.40	4.80
Hawaii	6.03	8.14	4.42	3.92	5.42	2.50	-	-	-
Iowa	2.47	3.51	1.66	2.43	3.48	1.60	-	-	-
Kentucky	3.04	4.25	2.13	2.87	4.01	2.00	5.43	8.36	3.54
Louisiana	4.80	6.80	3.29	3.26	4.84	2.03	9.53	13.46	6.91
New Jersey	4.16	5.76	3.02	3.77	5.33	2.63	6.85	9.49	5.18
New Mexico	4.27	6.02	2.84	4.03	5.76	2.59	-	-	-
Seattle-Puget Sound	3.29	4.44	2.40	2.84	3.96	1.95	4.59	5.70	-
Utah	2.31	2.99	1.74	2.21	2.86	1.67	-	-	-
9 SEER Areas ^b	3.81	5.30	2.69	3.15	4.44	2.15	6.59	9.57	4.78
11 SEER Areas ^b	4.26	5.74	3.15	3.60	4.86	2.62	6.71	9.37	5.02
13 SEER Areas ^b	4.26	5.73	3.15	3.58	4.82	2.61	6.67	9.34	4.97
18 SEER Areas ^b	4.07	5.52	2.98	3.48	4.76	2.49	7.02	9.92	5.16
Total U.S.	3.54	4.86	2.55	3.08	4.24	2.20	6.69	9.84	4.66

^a US Mortality Files, National Center for Health Statistics, Centers for Disease Control and Prevention. Rates are per 100,000 and are age-adjusted to the 2000 US Std Population (19 age groups - Census P25-1130).

^b The SEER 9 areas are San Francisco, Connecticut, Detroit, Hawaii, Iowa, New Mexico, Seattle, Utah and Atlanta. The SEER 11 areas comprise the SEER 9 areas plus San Jose-Monterey and Los Angeles.

The SEER 13 areas comprise the SEER 11 areas plus the Alaska Native Registry and Rural Georgia.

The SEER 18 areas comprise the SEER 13 areas plus California excluding SF/SJM/LA, Kentucky, Louisiana, New Jersey and Georgia excluding ATL/RG.

- Statistic not shown. Rate based on less than 16 cases for the time interval.

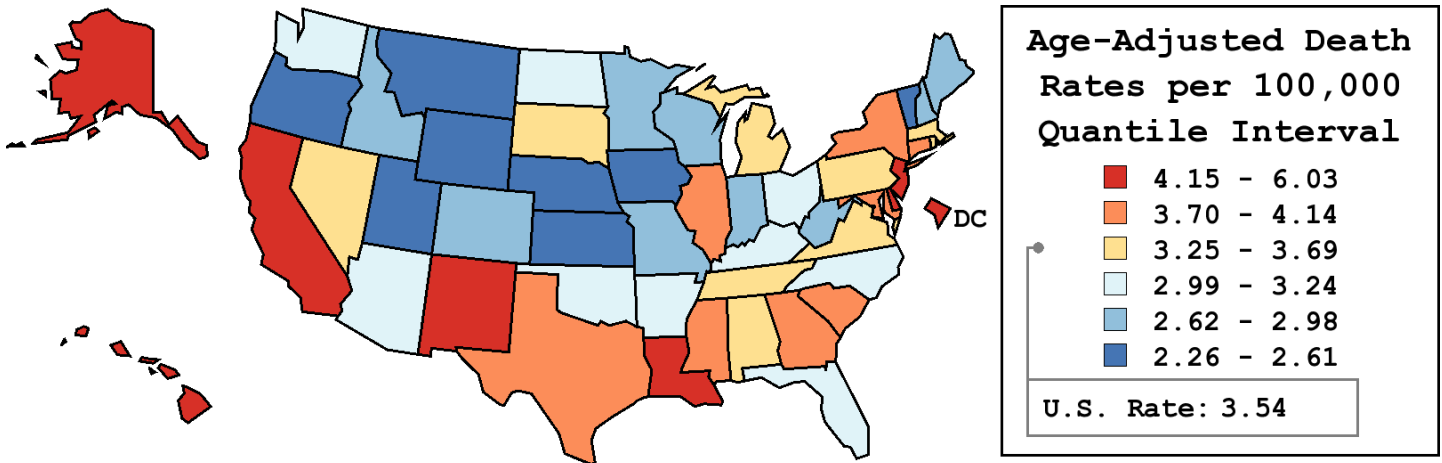
Table 24.18
Cancer of the Stomach (Invasive)

Age-Adjusted Cancer Death^a Rates By State, All Races, 2006-2010

Males and Females

State	Rate	SE	Rank	PD
TOTAL U.S.	3.54	0.02		
High Five States				
Hawaii	6.03	0.28	(01)	70.08 ^c
Louisiana	4.80	0.15	(02)	35.46 ^c
Alaska	4.45	0.46	(03)	25.64 ^c
D.C.	4.43	0.40	(04)	24.96 ^c
California	4.43	0.05	(05)	24.90 ^c
Low Five States				
Montana	2.52	0.21	(47)	-28.85 ^c
Iowa	2.47	0.12	(48)	-30.38 ^c
Wyoming	2.44	0.30	(49)	-31.15 ^c
Utah	2.31	0.15	(50)	-34.83 ^c
Vermont	2.26	0.25	(51)	-36.23 ^c

State	Rate	SE	Rank	PD	State	Rate	SE	Rank	PD
Alabama	3.69	0.12	(17)	4.19	Montana	2.52	0.21	(47)	-28.85 ^c
Alaska	4.45	0.46	(03)	25.64 ^c	Nebraska	2.54	0.16	(46)	-28.28 ^c
Arizona	2.99	0.10	(34)	-15.54 ^c	Nevada	3.41	0.17	(20)	-3.92
Arkansas	3.12	0.14	(31)	-12.06	New Hampshire	2.80	0.20	(40)	-21.08 ^c
California	4.43	0.05	(05)	24.90 ^c	New Jersey	4.16	0.09	(08)	17.44 ^c
Colorado	2.85	0.12	(37)	-19.60 ^c	New Mexico	4.27	0.20	(06)	20.50 ^c
Connecticut	3.94	0.14	(12)	11.28	New York	4.13	0.06	(10)	16.40 ^c
Delaware	4.18	0.30	(07)	17.85 ^c	North Carolina	3.24	0.08	(26)	-8.61
D.C.	4.43	0.40	(04)	24.96 ^c	North Dakota	3.22	0.29	(27)	-9.18
Florida	3.10	0.05	(32)	-12.45	Ohio	3.20	0.07	(29)	-9.64
Georgia	3.72	0.10	(16)	5.01	Oklahoma	3.16	0.13	(30)	-10.79
Hawaii	6.03	0.28	(01)	70.08 ^c	Oregon	2.61	0.11	(45)	-26.39 ^c
Idaho	2.73	0.19	(42)	-22.92 ^c	Pennsylvania	3.34	0.07	(24)	-5.80
Illinois	3.81	0.08	(14)	7.49	Rhode Island	3.37	0.23	(22)	-4.81
Indiana	2.72	0.09	(43)	-23.29 ^c	South Carolina	4.08	0.13	(11)	14.99
Iowa	2.47	0.12	(48)	-30.38 ^c	South Dakota	3.40	0.27	(21)	-4.05
Kansas	2.61	0.13	(44)	-26.25 ^c	Tennessee	3.46	0.10	(19)	-2.47
Kentucky	3.04	0.12	(33)	-14.27	Texas	3.84	0.06	(13)	8.37
Louisiana	4.80	0.15	(02)	35.46 ^c	Utah	2.31	0.15	(50)	-34.83 ^c
Maine	2.82	0.19	(39)	-20.55 ^c	Vermont	2.26	0.25	(51)	-36.23 ^c
Maryland	3.77	0.12	(15)	6.37	Virginia	3.26	0.09	(25)	-8.05
Massachusetts	3.55	0.10	(18)	0.10	Washington	3.21	0.10	(28)	-9.43
Michigan	3.34	0.08	(23)	-5.67	West Virginia	2.78	0.16	(41)	-21.70 ^c
Minnesota	2.85	0.10	(38)	-19.73 ^c	Wisconsin	2.98	0.10	(35)	-15.99 ^c
Mississippi	4.14	0.17	(09)	16.75 ^c	Wyoming	2.44	0.30	(49)	-31.15 ^c
Missouri	2.87	0.09	(36)	-18.97 ^c					



^a US Mortality Files, National Center for Health Statistics, Centers for Disease Control and Prevention. Rates are per 100,000 and are age-adjusted to the 2000 US Std Population (19 age groups - Census P25-1130).
^b Difference between state rate and total U.S. rate is statistically significant (p<=.0002).
^c Absolute percent difference between state rate and total U.S. rate is 15% or more.
SE Standard error of the rate.
PD Percent difference between state rate and total U.S. rate.
- Statistic not shown. Rate based on less than 16 cases for the time interval.

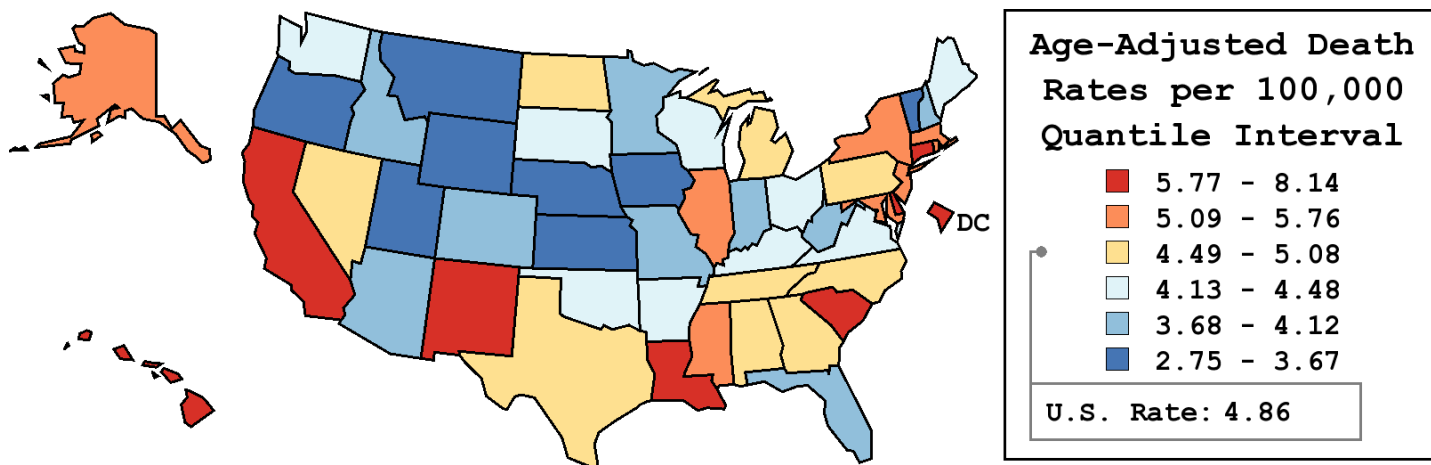
Table 24.19
Cancer of the Stomach (Invasive)

Age-Adjusted Cancer Death^a Rates By State, All Races, 2006-2010

Males

State	Rate	SE	Rank	PD
TOTAL U.S.	4.86	0.03		
High Five States				
Hawaii	8.14	0.50	(01)	67.38 ^c
Louisiana	6.80	0.27	(02)	39.74 ^c
D.C.	6.26	0.74	(03)	28.79 ^c
Delaware	6.13	0.54	(04)	25.98 ^c
New Mexico	6.02	0.37	(05)	23.84 ^c
Low Five States				
Montana	3.54	0.38	(47)	-27.26 ^c
Iowa	3.51	0.21	(48)	-27.92 ^c
Vermont	3.24	0.47	(49)	-33.41 ^c
Utah	2.99	0.26	(50)	-38.45 ^c
Wyoming	2.75	0.47	(51)	-43.36 ^c

State	Rate	SE	Rank	PD	State	Rate	SE	Rank	PD
Alabama	4.99	0.22	(19)	2.68	Montana	3.54	0.38	(47)	-27.26 ^c
Alaska	5.45	0.76	(12)	12.14	Nebraska	3.57	0.29	(46)	-26.63 ^c
Arizona	3.93	0.17	(38)	-19.20 ^c	Nevada	4.52	0.30	(24)	-6.97
Arkansas	4.18	0.25	(33)	-13.98	New Hampshire	3.82	0.35	(41)	-21.45 ^c
California	5.85	0.09	(07)	20.20 ^c	New Jersey	5.76	0.17	(09)	18.40 ^c
Colorado	3.85	0.21	(40)	-20.93 ^c	New Mexico	6.02	0.37	(05)	23.84 ^c
Connecticut	5.77	0.26	(08)	18.65 ^c	New York	5.71	0.12	(10)	17.42 ^c
Delaware	6.13	0.54	(04)	25.98 ^c	North Carolina	4.52	0.15	(25)	-7.07
D.C.	6.26	0.74	(03)	28.79 ^c	North Dakota	4.64	0.52	(23)	-4.55
Florida	4.12	0.09	(35)	-15.20 ^c	Ohio	4.48	0.13	(26)	-7.94
Georgia	4.97	0.18	(20)	2.28	Oklahoma	4.45	0.23	(27)	-8.51
Hawaii	8.14	0.50	(01)	67.38 ^c	Oregon	3.58	0.20	(45)	-26.48 ^c
Idaho	3.72	0.34	(43)	-23.51 ^c	Pennsylvania	4.79	0.12	(21)	-1.42
Illinois	5.25	0.14	(14)	7.91	Rhode Island	5.24	0.45	(15)	7.71
Indiana	3.88	0.17	(39)	-20.16 ^c	South Carolina	5.87	0.25	(06)	20.67 ^c
Iowa	3.51	0.21	(48)	-27.92 ^c	South Dakota	4.43	0.47	(28)	-8.93
Kansas	3.67	0.24	(44)	-24.60 ^c	Tennessee	5.03	0.20	(18)	3.43
Kentucky	4.25	0.22	(32)	-12.52	Texas	5.08	0.11	(17)	4.46
Louisiana	6.80	0.27	(02)	39.74 ^c	Utah	2.99	0.26	(50)	-38.45 ^c
Maine	4.17	0.35	(34)	-14.22	Vermont	3.24	0.47	(49)	-33.41 ^c
Maryland	5.25	0.22	(13)	7.93	Virginia	4.42	0.17	(29)	-9.15
Massachusetts	5.09	0.19	(16)	4.77	Washington	4.35	0.18	(30)	-10.55
Michigan	4.79	0.15	(22)	-1.60	West Virginia	3.78	0.28	(42)	-22.31 ^c
Minnesota	4.10	0.19	(36)	-15.71 ^c	Wisconsin	4.33	0.18	(31)	-10.86
Mississippi	5.61	0.31	(11)	15.36 ^c	Wyoming	2.75	0.47	(51)	-43.36 ^c
Missouri	3.95	0.17	(37)	-18.84 ^c					



^a US Mortality Files, National Center for Health Statistics, Centers for Disease Control and Prevention. Rates are per 100,000 and are age-adjusted to the 2000 US Std Population (19 age groups - Census P25-1130).
^b Difference between state rate and total U.S. rate is statistically significant (p<=.0002).
^c Absolute percent difference between state rate and total U.S. rate is 15% or more.
SE Standard error of the rate.
PD Percent difference between state rate and total U.S. rate.
- Statistic not shown. Rate based on less than 16 cases for the time interval.

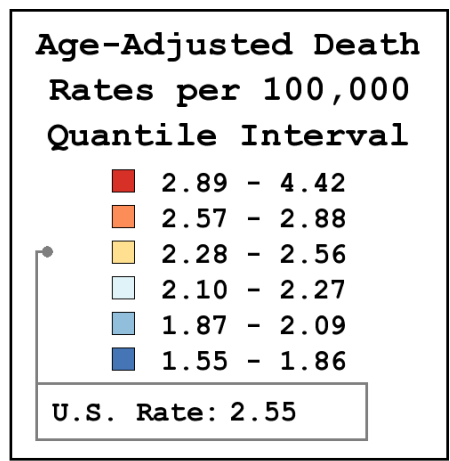
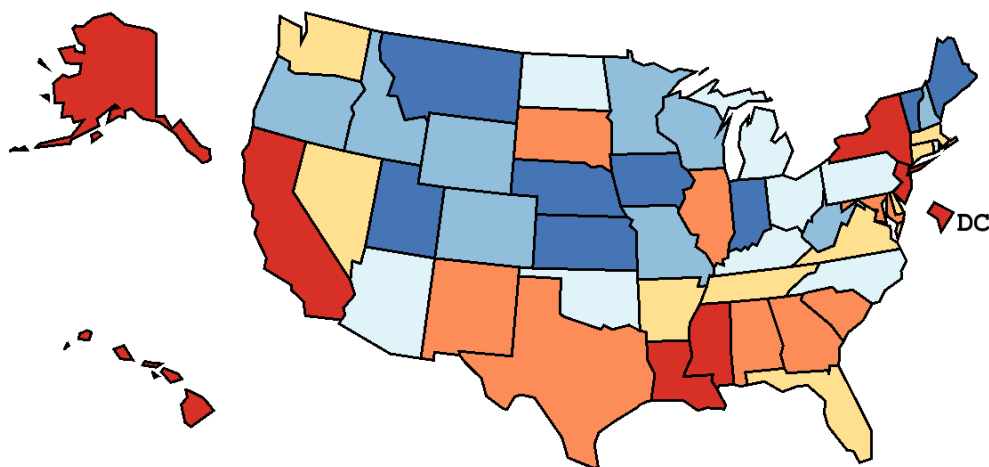
Table 24.20
Cancer of the Stomach (Invasive)

Age-Adjusted Cancer Death^a Rates By State, All Races, 2006-2010

Females

State	Rate	SE	Rank	PD
TOTAL U.S.	2.55	0.02		
High Five States				
Hawaii	4.42	0.33	(01)	73.73 ^c
Alaska	3.47	0.56	(02)	36.42 ^c
California	3.34	0.06	(03)	31.29 ^c
Louisiana	3.29	0.16	(04)	29.15 ^c
Mississippi	3.12	0.19	(05)	22.64 ^c
Low Five States				
Utah	1.74	0.18	(47)	-31.67 ^c
Nebraska	1.72	0.18	(48)	-32.40 ^c
Montana	1.68	0.23	(49)	-34.15 ^c
Iowa	1.66	0.13	(50)	-34.86 ^c
Vermont	1.55	0.28	(51)	-39.07 ^c

State	Rate	SE	Rank	PD	State	Rate	SE	Rank	PD
Alabama	2.73	0.14	(14)	7.17	Montana	1.68	0.23	(49)	-34.15 ^c
Alaska	3.47	0.56	(02)	36.42 ^c	Nebraska	1.72	0.18	(48)	-32.40 ^c
Arizona	2.24	0.11	(29)	-11.93	Nevada	2.50	0.20	(19)	-1.83
Arkansas	2.30	0.16	(24)	-9.61	New Hampshire	1.92	0.22	(41)	-24.74 ^c
California	3.34	0.06	(03)	31.29 ^c	New Jersey	3.02	0.10	(07)	18.61 ^c
Colorado	2.04	0.13	(37)	-19.79 ^c	New Mexico	2.84	0.23	(10)	11.58
Connecticut	2.56	0.15	(17)	0.48	New York	2.99	0.07	(08)	17.55 ^c
Delaware	2.54	0.31	(18)	-0.12	North Carolina	2.27	0.09	(26)	-10.78
D.C.	3.06	0.44	(06)	20.11 ^c	North Dakota	2.15	0.32	(33)	-15.45 ^c
Florida	2.28	0.06	(25)	-10.47	Ohio	2.25	0.08	(27)	-11.46
Georgia	2.84	0.11	(11)	11.38	Oklahoma	2.16	0.14	(32)	-15.24 ^c
Hawaii	4.42	0.33	(01)	73.73 ^c	Oregon	1.88	0.13	(43)	-26.05 ^c
Idaho	1.89	0.22	(42)	-25.77 ^c	Pennsylvania	2.24	0.07	(30)	-12.06
Illinois	2.76	0.09	(13)	8.39	Rhode Island	2.19	0.25	(31)	-13.96
Indiana	1.84	0.10	(45)	-27.56 ^c	South Carolina	2.67	0.14	(15)	4.84
Iowa	1.66	0.13	(50)	-34.86 ^c	South Dakota	2.61	0.32	(16)	2.35
Kansas	1.86	0.15	(44)	-27.03 ^c	Tennessee	2.33	0.11	(22)	-8.49
Kentucky	2.13	0.13	(34)	-16.44 ^c	Texas	2.88	0.07	(09)	12.98
Louisiana	3.29	0.16	(04)	29.15 ^c	Utah	1.74	0.18	(47)	-31.67 ^c
Maine	1.76	0.20	(46)	-31.06 ^c	Vermont	1.55	0.28	(51)	-39.07 ^c
Maryland	2.77	0.13	(12)	8.73	Virginia	2.37	0.10	(21)	-6.71
Massachusetts	2.41	0.11	(20)	-5.45	Washington	2.31	0.11	(23)	-9.23
Michigan	2.25	0.09	(28)	-11.50	West Virginia	2.06	0.18	(36)	-19.17 ^c
Minnesota	1.92	0.11	(40)	-24.55 ^c	Wisconsin	1.97	0.11	(39)	-22.52 ^c
Mississippi	3.12	0.19	(05)	22.64 ^c	Wyoming	2.09	0.38	(35)	-17.72 ^c
Missouri	2.04	0.11	(38)	-20.03 ^c					



^a US Mortality Files, National Center for Health Statistics, Centers for Disease Control and Prevention. Rates are per 100,000 and are age-adjusted to the 2000 US Std Population (19 age groups - Census P25-1130).
^b Difference between state rate and total U.S. rate is statistically significant (p<=.0002).
^c Absolute percent difference between state rate and total U.S. rate is 15% or more.
SE Standard error of the rate.
PD Percent difference between state rate and total U.S. rate.
- Statistic not shown. Rate based on less than 16 cases for the time interval.

Table 24.21
Cancer of the Stomach (Invasive)

Estimated United States Cancer Prevalence Counts^a on January 1, 2010
By Race/Ethnicity, Sex and Years Since Diagnosis

Years Since Diagnosis		0 to <5	5 to <10	10 to <15	15 to <20	20 to <25	25 to <30	0 to <18 ^e	0 to <35 ^e	>=35 ^g	Complete ^h
<u>Race</u>	<u>Sex</u>										
All Races ^b	Both Sexes	35,420	15,772	8,440	4,999	3,645	1,726	64,632	70,821	1,448	72,269
	Males	21,286	8,829	4,744	2,527	1,825	857	37,387	40,560	826	41,386
	Females	14,134	6,943	3,696	2,472	1,820	869	27,245	30,261	622	30,883
White ^b	Both Sexes	26,260	11,637	6,058	3,688	2,809	1,276	47,643	52,416	1,156	53,572
	Males	16,450	6,700	3,393	1,779	1,426	695	28,322	30,856	635	31,491
	Females	9,810	4,937	2,665	1,909	1,383	581	19,321	21,560	521	22,081
Black ^b	Both Sexes	5,652	2,502	1,341	626	459	271	10,121	10,904	206	11,110
	Males	2,842	1,238	671	401	213	113	5,152	5,519	120	5,639
	Females	2,810	1,264	670	225	246	158	4,969	5,385	86	5,471
Asian/ Pacific Islander ^c	Both Sexes	3,206	1,595	943	+	+	+	6,146	+	+	+
	Males	1,806	853	567	+	+	+	3,449	+	+	+
	Females	1,400	742	376	+	+	+	2,697	+	+	+
Hispanic ^d	Both Sexes	5,061	2,000	1,112	+	+	+	8,175	+	+	+
	Males	2,908	1,086	517	+	+	+	4,512	+	+	+
	Females	2,153	914	595	+	+	+	3,663	+	+	+

Estimated prevalence percent^a on January 1, 2010, of the SEER 11 population diagnosed in the previous 18 years
By Age at Prevalence, Race/Ethnicity and Sex

Age at Prevalence		All Ages	0-9	10-19	20-29	30-39	40-49	50-59	60-69	70-79	80+	Age-Adjusted ^f All Ages
<u>Race</u>	<u>Sex</u>											
All Races ^c	Both Sexes	0.0219%	-	-	0.0005%	0.0031%	0.0120%	0.0279%	0.0592%	0.1164%	0.1535%	0.0218%
	Males	0.0255%	-	-	0.0003%	0.0032%	0.0132%	0.0350%	0.0764%	0.1587%	0.2050%	0.0283%
	Females	0.0185%	-	-	0.0008%	0.0029%	0.0108%	0.0212%	0.0436%	0.0826%	0.1236%	0.0167%
White ^c	Both Sexes	0.0185%	-	-	0.0006%	0.0028%	0.0105%	0.0232%	0.0485%	0.0907%	0.1133%	0.0174%
	Males	0.0220%	-	-	0.0004%	0.0030%	0.0118%	0.0298%	0.0647%	0.1267%	0.1508%	0.0229%
	Females	0.0150%	-	-	0.0008%	0.0026%	0.0092%	0.0168%	0.0334%	0.0612%	0.0914%	0.0128%
Black ^c	Both Sexes	0.0216%	-	-	-	0.0037%	0.0142%	0.0396%	0.0778%	0.1425%	0.1982%	0.0279%
	Males	0.0226%	-	-	-	0.0038%	0.0149%	0.0437%	0.0959%	0.1775%	0.2519%	0.0339%
	Females	0.0208%	-	-	-	0.0036%	0.0135%	0.0360%	0.0635%	0.1184%	0.1728%	0.0240%
Asian/ Pacific Islander ^c	Both Sexes	0.0419%	-	-	-	0.0039%	0.0184%	0.0446%	0.1076%	0.2484%	0.4104%	0.0447%
	Males	0.0489%	-	-	-	0.0038%	0.0198%	0.0579%	0.1349%	0.3373%	0.5580%	0.0588%
	Females	0.0355%	-	-	-	0.0040%	0.0172%	0.0332%	0.0848%	0.1807%	0.3191%	0.0345%
Hispanic ^d	Both Sexes	0.0167%	-	-	0.0008%	0.0045%	0.0152%	0.0362%	0.0854%	0.1652%	0.2185%	0.0307%
	Males	0.0181%	-	-	-	0.0049%	0.0153%	0.0449%	0.1108%	0.2139%	0.2667%	0.0382%
	Females	0.0153%	-	-	0.0011%	0.0042%	0.0152%	0.0279%	0.0639%	0.1294%	0.1900%	0.0250%

^a US 2010 cancer prevalence counts are based on 2010 cancer prevalence proportions from the SEER registries and 1/1/2010 US population estimates based on the average of 2009 and 2010 population estimates from the US Bureau of the Census. Prevalence was calculated using the First Malignant Primary Only for a person.

^{b c d} Statistics based on (b) SEER 9 Areas (c) SEER 11 Areas and Rural Georgia (d) NHIA for Hispanic for SEER 11 Areas and Rural Georgia.

^e Maximum limited-duration prevalence: 35 years for 1975-2010 SEER 9 data; 18 years for 1992-2010 SEER 11 data (used to calculate prevalence for Hispanics and Asian Pacific Islanders).

^f Percentages are age-adjusted to the 2000 US Standard Population (19 age groups - Census P25-1130) by 5-year age groups.

^{g h i} (g) Cases diagnosed more than 35 years ago were estimated using the completeness index method (Capocaccia et. al. 1997, Merrill et. al. 2000). (h) Complete prevalence is obtained by summing 0 to <35 and >=35. (i) Age-specific completeness index was approximated using empirical data from historical Connecticut tumor registry.

- Statistic not shown. Statistic based on fewer than 5 cases estimated alive in SEER for the time interval.

+ Not available.

Table 24.22

Cancer of the Stomach (Invasive)

Percent Distribution and Counts by Histology among Histologically Confirmed Cases, 2006-2010
Both Sexes by Race

Histology ^a	All Races		White		Black		Asian/Pacific Islander		American Indian/ Alaska Native ^b		Hispanic ^c	
	Count	Percent	Count	Percent	Count	Percent	Count	Percent	Count	Percent	Count	Percent
Carcinoma	28,642	93.7%	20,397	94.2%	3,916	90.5%	3,921	94.7%	206	94.9%	4,968	96.2%
Epidermoid carcinoma ^d (8051-8131)	256	0.8%	184	0.8%	49	1.1%	20	0.5%	-	-	25	0.5%
Squamous cell carcinoma (8070-8078,8083-8084)	244	0.8%	176	0.8%	47	1.1%	18	0.4%	-	-	20	0.4%
Adenocarcinoma (8050,8140-8147, 8160-8162,8180-8221, 8250-8507,8514,8520-8551, 8560,8570-8574, 8576,8940-8941)	25,739	84.2%	18,222	84.1%	3,478	80.4%	3,713	89.7%	181	83.4%	4,464	86.4%
Adenocarcinoma, NOS (8140)	14,887	48.7%	10,900	50.3%	2,018	46.6%	1,798	43.4%	91	41.9%	2,195	42.5%
Adenocarcinoma, intestinal type (8144)	2,504	8.2%	1,483	6.8%	368	8.5%	604	14.6%	33	15.2%	446	8.6%
Carcinoma, diffuse type (8145)	1,027	3.4%	648	3.0%	122	2.8%	243	5.9%	-	-	211	4.1%
Linitus plastica (8142)	211	0.7%	161	0.7%	24	0.6%	23	0.6%	-	-	61	1.2%
Mucinous adenocarcinoma (8470-8473,8480,8482)	445	1.5%	314	1.4%	81	1.9%	47	1.1%	-	-	67	1.3%
Mucin-producing adenocarcinoma (8481)	181	0.6%	134	0.6%	32	0.7%	-	-	-	-	23	0.4%
Signet ring adenocarcinoma (8490)	5,224	17.1%	3,718	17.2%	683	15.8%	752	18.2%	38	17.5%	1,231	23.8%
Other adenocarcinomas ^e	1,260	4.1%	864	4.0%	150	3.5%	231	5.6%	-	-	230	4.5%
Other specific carcinomas (8012-8015,8030-8046, 8150-8155,8170-8175, 8230-8249,8508,8510-8513, 8561-8562,8575,8580-8671)	1,867	6.1%	1,445	6.7%	262	6.1%	100	2.4%	-	-	354	6.9%
Unspecified, Carcinoma, NOS (8010-8011,8020-8022)	780	2.6%	546	2.5%	127	2.9%	88	2.1%	-	-	125	2.4%

Source: SEER 18 areas (San Francisco, Connecticut, Detroit, Hawaii, Iowa, New Mexico, Seattle, Utah, Atlanta, San Jose-Monterey, Los Angeles, Alaska Native Registry, Rural Georgia, California excluding SF/SJM/LA, Kentucky, Louisiana, New Jersey and Georgia excluding ATL/RG).

Percents may not sum to 100 due to rounding.

^a Excludes Kaposi Sarcoma, mesothelioma, lymphomas, leukemias, myelomas, lymphoreticular, and immunoproliferative diseases.

^b Estimates for American Indian/Alaska Native are based on the CHSDA (Contract Health Service Delivery Area) counties.

^c Hispanic is not mutually exclusive from whites, blacks, Asian/Pacific Islanders, and American Indians/Alaska Natives.

Underlying incidence data for Hispanics are based on NHIA and exclude cases from the Alaska Native Registry.

^d Epidermoid carcinoma includes squamous, basal, and transitional cell carcinomas.

^e Other adenocarcinomas includes histologies 8050, 8141, 8143, 8146-8147, 8160-8162, 8180-8221, 8250-8469, 8474-8479, 8483-8489, 8491-8507, 8514, 8520-8551, 8560, 8570-8574, 8576, 8940-8941.

- Statistic not shown due to fewer than 16 cases during the time period.

Table 24.22 - continued

Cancer of the Stomach (Invasive)

Percent Distribution and Counts by Histology among Histologically Confirmed Cases, 2001-2005
Both Sexes by Race

Histology ^a	All Races		White		Black		Asian/Pacific Islander		American Indian/ Alaska Native ^b		Hispanic ^c	
	Count	Percent	Count	Percent	Count	Percent	Count	Percent	Count	Percent	Count	Percent
Sarcoma and other soft tissue tumors (8680-8713,8800-8921, 8990-8991,9040-9044, 9120-9136,9150-9252, 9370-9373,9540-9582)	71	0.2%	51	0.2%	-	-	-	-	-	-	-	-
Other specific types (8720-8790,8930-8936, 8950-8983,9000-9030, 9060-9110,9260-9365, 9380-9539)	1,707	5.6%	1,108	5.1%	381	8.8%	197	4.8%	-	-	169	3.3%
Unspecified (8000-8005)	147	0.5%	104	0.5%	17	0.4%	19	0.5%	-	-	21	0.4%
Total ^d	30,568	100.0%	21,661	100.0%	4,328	100.0%	4,141	100.0%	217	100.0%	5,166	100.0%

Source: SEER 18 areas (San Francisco, Connecticut, Detroit, Hawaii, Iowa, New Mexico, Seattle, Utah, Atlanta, San Jose-Monterey, Los Angeles, Alaska Native Registry, Rural Georgia, California excluding SF/SJM/LA, Kentucky, Louisiana, New Jersey and Georgia excluding ATL/RG).

Percents may not sum to 100 due to rounding.

^a Excludes Kaposi Sarcoma, mesothelioma, lymphomas, leukemias, myelomas, lymphoreticular, and immunoproliferative diseases.

^b Estimates for American Indian/Alaska Native are based on the CHSDA(Contract Health Service Delivery Area) counties.

^c Hispanic is not mutually exclusive from whites, blacks, Asian/Pacific Islanders, and American Indians/Alaska Natives.

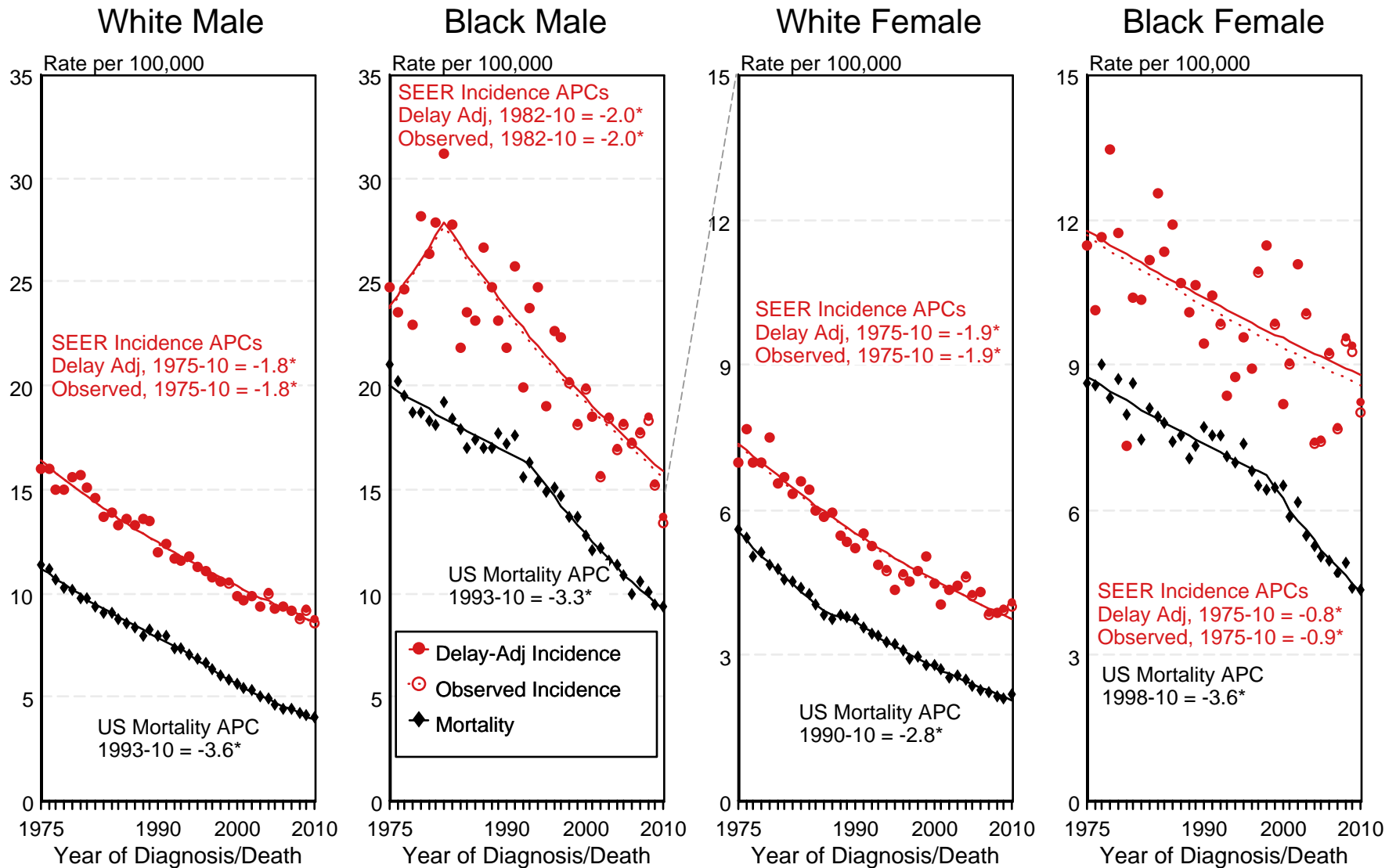
Underlying incidence data for Hispanics are based on NHIA and exclude cases from the Alaska Native Registry.

^d Total includes carcinoma cases from the previous page.

- Statistic not shown due to fewer than 16 cases during the time period.

Figure 24.1

SEER Observed Incidence, SEER Delay Adjusted Incidence and US Death Rates^a Cancer of the Stomach, by Race and Sex



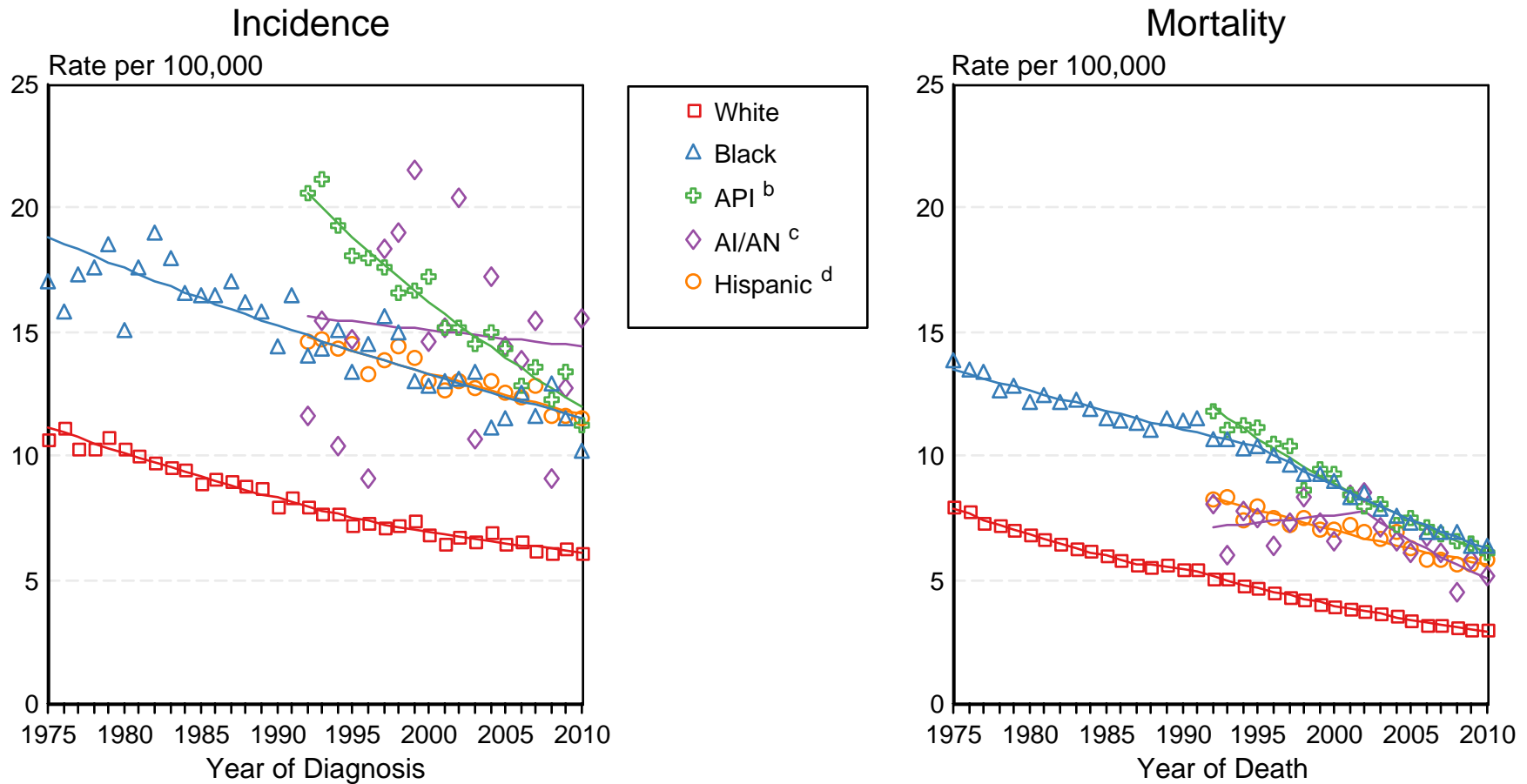
^a Source: SEER 9 areas and US Mortality Files (National Center for Health Statistics, CDC). Rates are age-adjusted to the 2000 US Std Population (19 age groups - Census P25-1103). Regression lines and APCs are calculated using the Joinpoint Regression Program Version 4.0.3, April 2013, National Cancer Institute. The APC is the Annual Percent Change for the regression line segments. The APC shown on the graph is for the most recent trend.
* The APC is significantly different from zero ($p < 0.05$).

Figure 24.2

SEER Incidence and US Death Rates^a Cancer of the Stomach, Both Sexes

Joinpoint Analyses for Whites and Blacks from 1975-2010

and for Asian/Pacific Islanders, American Indians/Alaska Natives and Hispanics from 1992-2010



Source: Incidence data for whites and blacks are from the SEER 9 areas (San Francisco, Connecticut, Detroit, Hawaii, Iowa, New Mexico, Seattle, Utah, Atlanta). Incidence data for Asian/Pacific Islanders, American Indians/Alaska Natives and Hispanics are from the SEER 13 Areas (SEER 9 Areas, San Jose-Monterey, Los Angeles, Alaska Native Registry and Rural Georgia). Mortality data are from US Mortality Files, National Center for Health Statistics, CDC.

^a Rates are age-adjusted to the 2000 US Std Population (19 age groups - Census P25-1103).

Regression lines are calculated using the Joinpoint Regression Program Version 4.0.3, April 2013, National Cancer Institute. Joinpoint analyses for Whites and Blacks during the 1975-2010 period allow a maximum of 5 joinpoints. Analyses for other ethnic groups during the period 1992-2010 allow a maximum of 3 joinpoints.

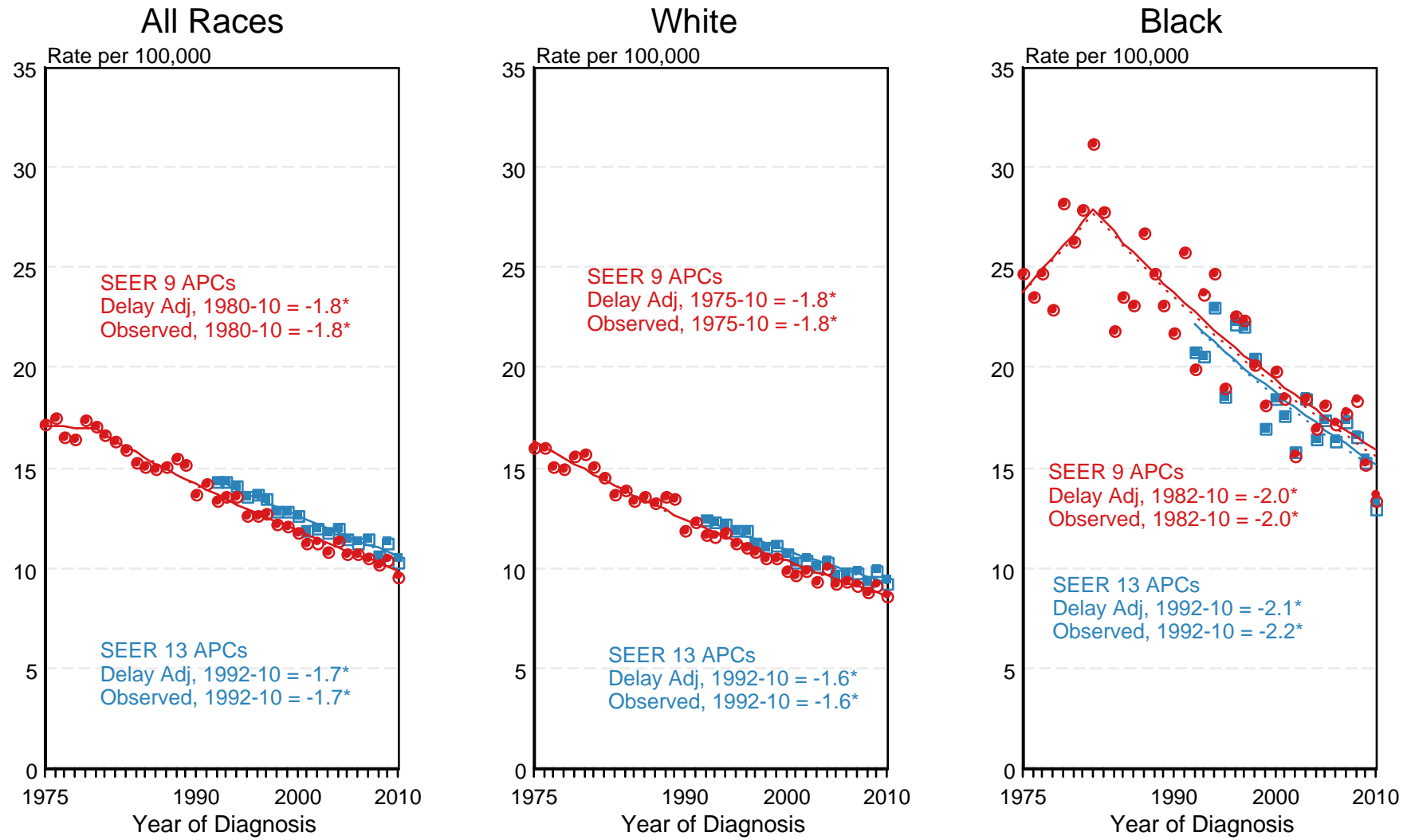
^b API = Asian/Pacific Islander.

^c AI/AN = American Indian/Alaska Native. Rates for American Indian/Alaska Native are based on the CHSDA(Contract Health Service Delivery Area) counties.

^d Hispanic is not mutually exclusive from whites, blacks, Asian/Pacific Islanders, and American Indians/Alaska Natives. Incidence data for Hispanics are based on NHIA and exclude cases from the Alaska Native Registry. Mortality data for Hispanics exclude cases from Connecticut, the District of Columbia, Maine, Maryland, Minnesota, New Hampshire, New York, North Dakota, South Carolina, Oklahoma, and Vermont.

Figure 24.3

SEER Observed Incidence and SEER Delay Adjusted Incidence Rates^a SEER 9 Areas Compared to SEER 13 Areas Cancer of the Stomach, Male, by Race

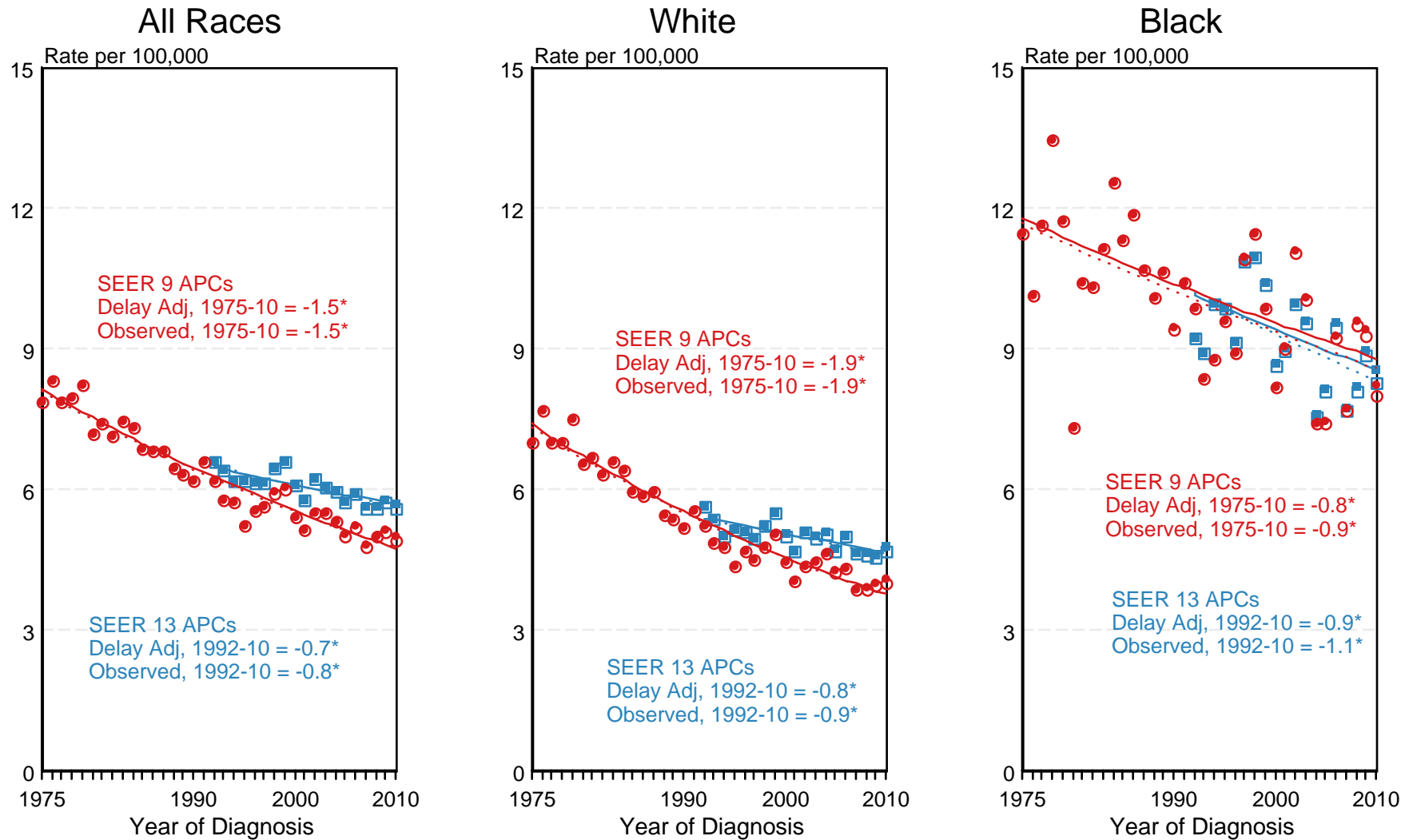


● SEER 9 Delay-Adj. Incidence
 ○ SEER 9 Observed Incidence
 ■ SEER 13 Delay-Adj. Incidence
 □ SEER 13 Observed Incidence

^a Source: SEER 9 areas and SEER 13 areas. Rates are age-adjusted to the 2000 US Std Population (19 age groups - Census P25-1103). Regression lines and APCs are calculated using the Joinpoint Regression Program Version 4.0.3, April 2013, National Cancer Institute. The APC is the Annual Percent Change for the regression line segments. The APC shown on the graph is for the most recent trend.
* The APC is significantly different from zero (p < 0.05).

Figure 24.4

SEER Observed Incidence and SEER Delay Adjusted Incidence Rates^a SEER 9 Areas Compared to SEER 13 Areas Cancer of the Stomach, Female, by Race



● SEER 9 Delay-Adj. Incidence
 ○ SEER 9 Observed Incidence
 ■ SEER 13 Delay-Adj. Incidence
 □ SEER 13 Observed Incidence

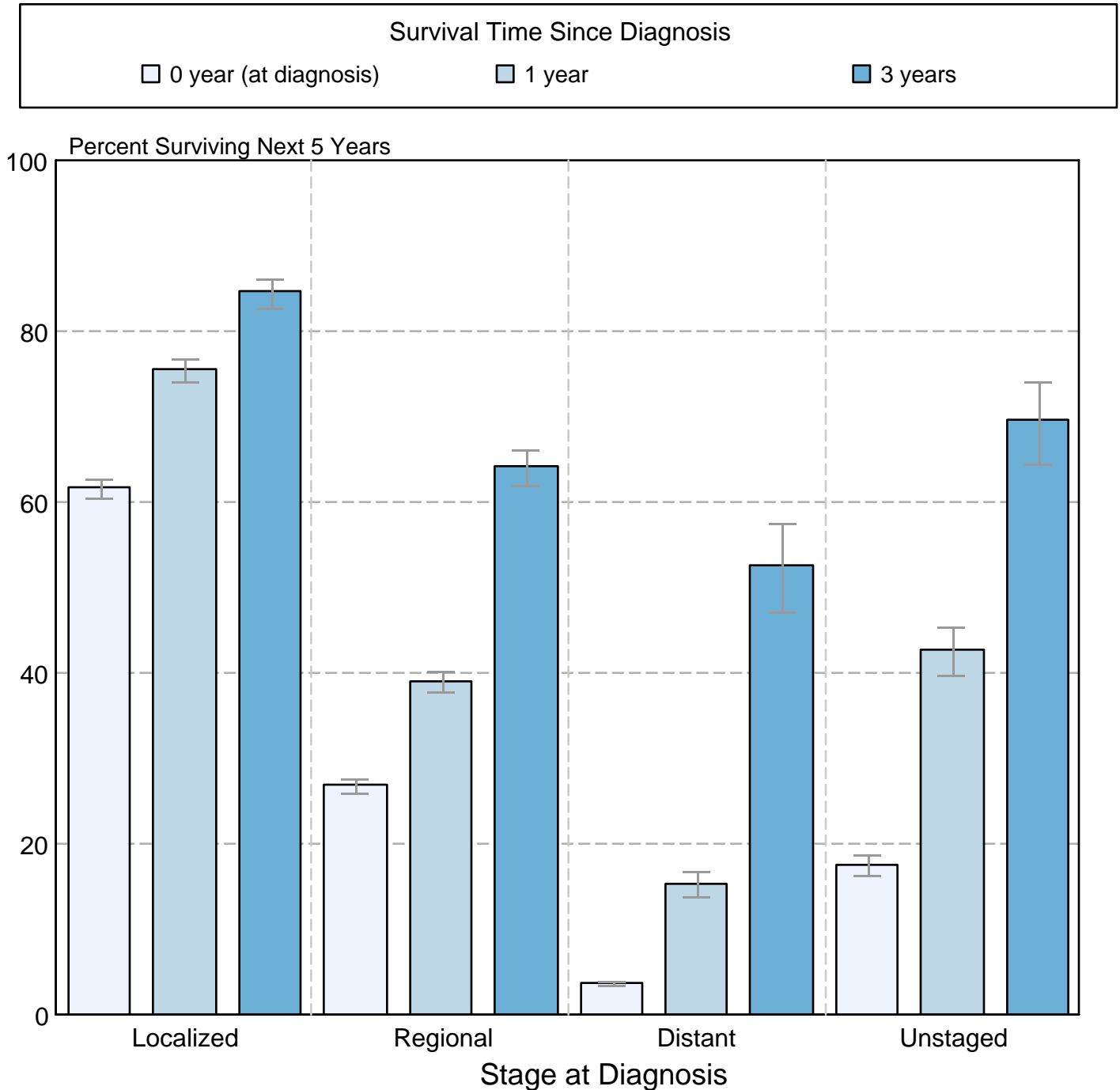
^a Source: SEER 9 areas and SEER 13 areas. Rates are age-adjusted to the 2000 US Std Population (19 age groups - Census P25-1103). Regression lines and APCs are calculated using the Joinpoint Regression Program Version 4.0.3, April 2013, National Cancer Institute. The APC is the Annual Percent Change for the regression line segments. The APC shown on the graph is for the most recent trend. * The APC is significantly different from zero ($p < 0.05$).

Figure 24.5

Cancer of the Stomach

5-Year SEER Conditional Relative Survival and 95% Confidence Intervals

Probability of surviving the next 5 years given the cohort
has already survived 0, 1, or 3 years
1998-2009 by stage at diagnosis



Source: SEER 18 areas (San Francisco, Connecticut, Detroit, Hawaii, Iowa, New Mexico, Seattle, Utah, Atlanta, San Jose-Monterey, Los Angeles, Alaska Native Registry, Rural Georgia, California excluding SF/SJM/LA, Kentucky, Louisiana, New Jersey and Georgia excluding ATL/RG). California excluding SF/SJM/LA, Kentucky, Louisiana, New Jersey and Georgia excluding ATL/RG contribute cases for diagnosis years 2000-2009. The remaining 13 SEER Areas contribute cases for the entire period 1998-2009. Percent surviving is not shown if based on less than 25 cases. Confidence intervals are not shown if length of the confidence interval is greater than 5 times the standard error.