

Table 27.1  
Cancer of the Urinary Bladder (Invasive and *In Situ*)

Trends in SEER Incidence<sup>ab</sup> and U.S. Mortality<sup>c</sup> Using the Joinpoint Regression Program,  
1975-2012 With up to Five Joinpoints, 1992-2012 With up to Three Joinpoints,  
Both Sexes by Race/Ethnicity

	JP Trend 1		JP Trend 2		JP Trend 3		JP Trend 4		JP Trend 5		JP Trend 6		AAPC <sup>d</sup>	
	Years	APC	Years	APC	Years	APC	Years	APC	Years	APC	Years	APC	2003-12	2008-12
<u>SEER 9 Delay-Adjusted Incidence<sup>a</sup>, 1975-2012</u>														
All Races	1975-86	0.7*	1986-07	0.2*	2007-12	-0.8							-0.3	-0.8
White	1975-87	1.0*	1987-96	0.0	1996-00	1.4	2000-12	-0.2					-0.2	-0.2
Black	1975-12	0.3*											0.3*	0.3*
<u>SEER 13 Delay-Adjusted Incidence<sup>b</sup>, 1992-2012</u>														
All Races	1992-05	0.2	2005-12	-0.7*									-0.5*	-0.7*
White	1992-04	0.4*	2004-12	-0.4									-0.4	-0.4
Black	1992-12	0.3											0.3	0.3
<u>SEER 9 Observed Incidence<sup>a</sup>, 1975-2012</u>														
All Races	1975-86	0.7*	1986-07	0.2*	2007-12	-1.2*							-0.6*	-1.2*
White	1975-86	0.9*	1986-07	0.3*	2007-12	-1.2*							-0.5*	-1.2*
Black	1975-12	0.2*											0.2*	0.2*
<u>SEER 13 Observed Incidence<sup>b</sup>, 1992-2012</u>														
All Races	1992-07	0.1	2007-12	-1.5*									-0.8*	-1.5*
White	1992-05	0.3*	2005-12	-0.9*									-0.6*	-0.9*
White NH <sup>ef</sup>	1992-04	0.5*	2004-12	-0.6*									-0.5*	-0.6*
Black	1992-12	0.2											0.2	0.2
Black NH <sup>ef</sup>	1992-12	0.2											0.2	0.2
API <sup>e</sup>	1992-08	0.4	2008-12	-3.4*									-1.3*	-3.4*
AI/AN <sup>eg</sup>	1992-12	1.5											1.5	1.5
Hispanic <sup>f</sup>	1992-12	-0.2											-0.2	-0.2
<u>U.S. Cancer Mortality<sup>c</sup>, 1975-2012</u>														
All Races	1975-77	0.2	1977-87	-2.2*	1987-12	0.0							0.0	0.0
White	1975-77	0.1	1977-87	-2.1*	1987-00	0.0	2000-12	0.3*					0.3*	0.3*
Black	1975-12	-1.0*											-1.0*	-1.0*
<u>U.S. Cancer Mortality<sup>c</sup>, 1992-2012</u>														
All Races	1992-12	0.0											0.0	0.0
White	1992-99	-0.2	1999-12	0.3*									0.3*	0.3*
White NH <sup>ef</sup>	1992-12	0.3*											0.3*	0.3*
Black	1992-12	-1.0*											-1.0*	-1.0*
Black NH <sup>ef</sup>	1992-12	-0.9*											-0.9*	-0.9*
API <sup>e</sup>	1992-12	-0.7											-0.7	-0.7
AI/AN <sup>eg</sup>	1992-12	2.5*											2.5*	2.5*
Hispanic <sup>f</sup>	1992-12	-0.2											-0.2	-0.2

Joinpoint Regression Program Version 4.2.0, April 2015, National Cancer Institute. (<http://surveillance.cancer.gov/joinpoint/>).

The APC is the Annual Percent Change based on rates age-adjusted to the 2000 US Std Population (19 age groups - Census P25-1130).

Trends are from the SEER 9 areas (San Francisco, Connecticut, Detroit, Hawaii, Iowa, New Mexico, Seattle, Utah, and Atlanta).

Trends are from the SEER 13 areas (SEER 9 Areas, Los Angeles, San Jose-Monterey, Rural Georgia, and the Alaska Native Registry).

Trends are from US Mortality Files, National Center for Health Statistics, Centers for Disease Control and Prevention.

The AAPC is the Average Annual Percent Change and is based on the APCs calculated by Joinpoint.

API - Asian/Pacific Islander, AI/AN - American Indian/Alaska Native, NH - Non-Hispanic

Hispanic and Non-Hispanic are not mutually exclusive from whites, blacks, Asian/Pacific Islanders, and American Indians/Alaska

Natives. Incidence data for Hispanics and Non-Hispanics are based on NHIA and exclude cases from the Alaska Native Registry.

The Hispanic and Non-Hispanic mortality trends exclude deaths from New Hampshire and Oklahoma.

Data for American Indian/Alaska Native are based on the CHSDA (Contract Health Service Delivery Area) counties.

\* The APC/AAPC is significantly different from zero ( $p < .05$ ).

- Joinpoint regression line analysis could not be performed on data series.

Table 27.2  
Cancer of the Urinary Bladder (Invasive and *In Situ*)

Trends in SEER Incidence<sup>ab</sup> and U.S. Mortality<sup>c</sup> Using the Joinpoint Regression Program,  
1975-2012 With up to Five Joinpoints, 1992-2012 With up to Three Joinpoints,  
Males by Race/Ethnicity

	JP Trend 1		JP Trend 2		JP Trend 3		JP Trend 4		JP Trend 5		JP Trend 6		AAPC <sup>d</sup>	
	Years	APC	Years	APC	Years	APC	Years	APC	Years	APC	Years	APC	2003-12	2008-12
<u>SEER 9 Delay-Adjusted Incidence<sup>a</sup>, 1975-2012</u>														
All Races	1975-86	0.8*	1986-07	0.1	2007-12	-0.8							-0.4	-0.8
White	1975-87	1.2*	1987-95	-0.5	1995-00	1.3	2000-12	-0.3					-0.3	-0.3
Black	1975-12	0.5*											0.5*	0.5*
<u>SEER 13 Delay-Adjusted Incidence<sup>b</sup>, 1992-2012</u>														
All Races	1992-07	0.1	2007-12	-1.2*									-0.6*	-1.2*
White	1992-12	0.0											0.0	0.0
Black	1992-12	0.6*											0.6*	0.6*
<u>SEER 9 Observed Incidence<sup>a</sup>, 1975-2012</u>														
All Races	1975-86	0.8*	1986-07	0.1	2007-12	-1.3*							-0.7*	-1.3*
White	1975-86	1.0*	1986-07	0.2	2007-12	-1.3*							-0.7*	-1.3*
Black	1975-12	0.4*											0.4*	0.4*
<u>SEER 13 Observed Incidence<sup>b</sup>, 1992-2012</u>														
All Races	1992-07	0.1	2007-12	-1.7*									-0.9*	-1.7*
White	1992-07	0.2	2007-12	-1.6*									-0.8*	-1.6*
White NH <sup>ef</sup>	1992-07	0.3*	2007-12	-1.4*									-0.6*	-1.4*
Black	1992-12	0.5*											0.5*	0.5*
Black NH <sup>ef</sup>	1992-12	0.5*											0.5*	0.5*
API <sup>e</sup>	1992-07	1.0*	2007-12	-3.3*									-1.4	-3.3*
AI/AN <sup>eg</sup>	1992-12	1.7											1.7	1.7
Hispanic <sup>f</sup>	1992-12	-0.2											-0.2	-0.2
<u>U.S. Cancer Mortality<sup>c</sup>, 1975-2012</u>														
All Races	1975-83	-1.4*	1983-87	-2.8*	1987-93	0.2	1993-97	-1.1	1997-12	0.0			0.0	0.0
White	1975-82	-1.4*	1982-87	-2.3*	1987-01	-0.2*	2001-12	0.2					0.2	0.2
Black	1975-12	-1.0*											-1.0*	-1.0*
<u>U.S. Cancer Mortality<sup>c</sup>, 1992-2012</u>														
All Races	1992-97	-0.9*	1997-12	0.0									0.0	0.0
White	1992-99	-0.5*	1999-12	0.2*									0.2*	0.2*
White NH <sup>ef</sup>	1992-99	-0.4	1999-12	0.3*									0.3*	0.3*
Black	1992-12	-0.8*											-0.8*	-0.8*
Black NH <sup>ef</sup>	1992-12	-0.7*											-0.7*	-0.7*
API <sup>e</sup>	1992-12	0.1											0.1	0.1
AI/AN <sup>eg</sup>	1992-12	4.2*											4.2*	4.2*
Hispanic <sup>f</sup>	1992-12	-0.4											-0.4	-0.4

Joinpoint Regression Program Version 4.2.0, April 2015, National Cancer Institute. (<http://surveillance.cancer.gov/joinpoint/>).  
<sup>a</sup> The APC is the Annual Percent Change based on rates age-adjusted to the 2000 US Std Population (19 age groups - Census P25-1130).  
<sup>b</sup> Trends are from the SEER 9 areas (San Francisco, Connecticut, Detroit, Hawaii, Iowa, New Mexico, Seattle, Utah, and Atlanta).  
<sup>c</sup> Trends are from the SEER 13 areas (SEER 9 Areas, Los Angeles, San Jose-Monterey, Rural Georgia, and the Alaska Native Registry).  
<sup>d</sup> Trends are from US Mortality Files, National Center for Health Statistics, Centers for Disease Control and Prevention.  
<sup>e</sup> The AAPC is the Average Annual Percent Change and is based on the APCs calculated by Joinpoint.  
<sup>f</sup> API - Asian/Pacific Islander, AI/AN - American Indian/Alaska Native, NH - Non-Hispanic  
Hispanic and Non-Hispanic are not mutually exclusive from whites, blacks, Asian/Pacific Islanders, and American Indians/Alaska Natives. Incidence data for Hispanics and Non-Hispanics are based on NHIA and exclude cases from the Alaska Native Registry.  
The Hispanic and Non-Hispanic mortality trends exclude deaths from New Hampshire and Oklahoma.  
<sup>g</sup> Data for American Indian/Alaska Native are based on the CHSDA (Contract Health Service Delivery Area) counties.  
\* The APC/AAPC is significantly different from zero (p<.05).  
- Joinpoint regression line analysis could not be performed on data series.

Table 27.3  
Cancer of the Urinary Bladder (Invasive and *In Situ*)

Trends in SEER Incidence<sup>ab</sup> and U.S. Mortality<sup>c</sup> Using the Joinpoint Regression Program,  
1975-2012 With up to Five Joinpoints, 1992-2012 With up to Three Joinpoints,  
Females by Race/Ethnicity

	JP Trend 1		JP Trend 2		JP Trend 3		JP Trend 4		JP Trend 5		JP Trend 6		AAPC <sup>d</sup>	
	Years	APC	Years	APC	Years	APC	Years	APC	Years	APC	Years	APC	2003-12	2008-12
<u>SEER 9 Delay-Adjusted Incidence<sup>a</sup>, 1975-2012</u>														
All Races	1975-02	0.2*	2002-12	-0.9*									-0.9*	-0.9*
White	1975-01	0.4*	2001-12	-0.7*									-0.7*	-0.7*
Black	1975-12	0.1											0.1	0.1
<u>SEER 13 Delay-Adjusted Incidence<sup>b</sup>, 1992-2012</u>														
All Races	1992-04	-0.2	2004-12	-1.1*									-1.0*	-1.1*
White	1992-03	0.0	2003-12	-0.8*									-0.8*	-0.8*
Black	1992-05	1.0	2005-12	-3.4*									-2.5*	-3.4*
<u>SEER 9 Observed Incidence<sup>a</sup>, 1975-2012</u>														
All Races	1975-02	0.2*	2002-12	-1.0*									-1.0*	-1.0*
White	1975-02	0.4*	2002-12	-1.0*									-1.0*	-1.0*
Black	1975-04	0.6*	2004-12	-3.1									-2.7	-3.1
<u>SEER 13 Observed Incidence<sup>b</sup>, 1992-2012</u>														
All Races	1992-04	-0.2	2004-12	-1.2*									-1.1*	-1.2*
White	1992-03	0.0	2003-12	-1.0*									-1.0*	-1.0*
White NH <sup>ef</sup>	1992-03	0.2	2003-12	-0.9*									-0.9*	-0.9*
Black	1992-05	1.0	2005-12	-3.7*									-2.7*	-3.7*
Black NH <sup>ef</sup>	1992-05	1.1	2005-12	-3.8*									-2.7*	-3.8*
API <sup>e</sup>	1992-12	-0.1											-0.1	-0.1
AI/AN <sup>eg</sup>	1992-12	4.2											4.2	4.2
Hispanic <sup>f</sup>	1992-12	-0.4											-0.4	-0.4
<u>U.S. Cancer Mortality<sup>c</sup>, 1975-2012</u>														
All Races	1975-86	-1.7*	1986-12	-0.4*									-0.4*	-0.4*
White	1975-86	-1.8*	1986-12	-0.2*									-0.2*	-0.2*
Black	1975-12	-1.0*											-1.0*	-1.0*
<u>U.S. Cancer Mortality<sup>c</sup>, 1992-2012</u>														
All Races	1992-12	-0.5*											-0.5*	-0.5*
White	1992-12	-0.3*											-0.3*	-0.3*
White NH <sup>ef</sup>	1992-12	-0.2*											-0.2*	-0.2*
Black	1992-12	-1.2*											-1.2*	-1.2*
Black NH <sup>ef</sup>	1992-12	-1.1*											-1.1*	-1.1*
API <sup>e</sup>	1992-12	-1.6*											-1.6*	-1.6*
AI/AN <sup>eg</sup>	-	-											-	-
Hispanic <sup>f</sup>	1992-12	0.0											0.0	0.0

Joinpoint Regression Program Version 4.2.0, April 2015, National Cancer Institute. (<http://surveillance.cancer.gov/joinpoint/>).

The APC is the Annual Percent Change based on rates age-adjusted to the 2000 US Std Population (19 age groups - Census P25-1130).

Trends are from the SEER 9 areas (San Francisco, Connecticut, Detroit, Hawaii, Iowa, New Mexico, Seattle, Utah, and Atlanta).

Trends are from the SEER 13 areas (SEER 9 Areas, Los Angeles, San Jose-Monterey, Rural Georgia, and the Alaska Native Registry).

Trends are from US Mortality Files, National Center for Health Statistics, Centers for Disease Control and Prevention.

The AAPC is the Average Annual Percent Change and is based on the APCs calculated by Joinpoint.

API - Asian/Pacific Islander, AI/AN - American Indian/Alaska Native, NH - Non-Hispanic

Hispanic and Non-Hispanic are not mutually exclusive from whites, blacks, Asian/Pacific Islanders, and American Indians/Alaska

Natives. Incidence data for Hispanics and Non-Hispanics are based on NHIA and exclude cases from the Alaska Native Registry.

The Hispanic and Non-Hispanic mortality trends exclude deaths from New Hampshire and Oklahoma.

Data for American Indian/Alaska Native are based on the CHSDA (Contract Health Service Delivery Area) counties.

\* The APC/AAPC is significantly different from zero ( $p < .05$ ).

- Joinpoint regression line analysis could not be performed on data series.

Table 27.4  
Cancer of the Urinary Bladder (Invasive and *In Situ*)

Delay-adjusted SEER Incidence<sup>a</sup> Rates by Year, Race and Sex

Year of Diagnosis:	All Races			Whites			Blacks		
	Total	Males	Females	Total	Males	Females	Total	Males	Females
1975	19.32	34.37	8.88	20.23	36.39	9.17	10.56	16.34	6.26
1976	19.69	34.39	9.44	20.73	36.70	9.72	12.48	18.16	8.59
1977	18.99	33.40	8.88	20.01	35.61	9.18	13.45	22.67	7.06
1978	19.99	35.36	9.44	21.07	37.83	9.74	11.73	19.36	6.39
1979	19.98	35.35	9.39	21.30	38.19	9.84	10.35	15.61	6.54
1980	20.42	37.14	8.92	21.53	39.81	9.08	13.27	18.23	9.87
1981	20.69	36.38	9.73	21.94	38.77	10.29	11.60	20.72	5.48
1982	20.09	35.79	9.53	21.38	38.30	10.17	12.19	21.77	5.60
1983	20.04	35.99	9.01	21.31	38.69	9.41	12.17	18.70	7.57
1984	20.86	37.72	9.18	22.34	40.88	9.63	11.49	18.93	6.24
1985	20.67	36.37	9.87	22.11	39.30	10.36	13.06	20.33	8.14
1986	21.04	37.95	9.42	22.46	40.86	9.95	12.94	22.16	6.63
1987	21.66	39.52	9.24	23.17	42.82	9.58	13.22	21.78	7.41
1988	20.86	38.10	8.99	22.71	41.85	9.68	11.29	17.99	6.45
1989	21.02	37.41	9.63	22.72	40.91	10.17	11.37	17.61	7.16
1990	21.08	37.49	9.64	22.63	40.78	10.03	12.69	18.59	8.75
1991	20.92	37.63	9.33	22.71	41.26	9.89	12.81	19.44	8.50
1992	21.25	37.52	9.81	22.95	40.73	10.50	12.48	20.82	6.89
1993	21.25	37.65	9.72	22.85	40.52	10.41	14.32	24.76	7.85
1994	20.81	36.88	9.46	22.62	40.26	10.19	12.34	20.30	6.89
1995	20.64	36.23	9.56	22.45	39.51	10.29	11.85	18.23	7.39
1996	20.82	36.71	9.54	22.68	40.12	10.27	12.43	20.32	7.28
1997	21.09	37.15	9.59	22.98	40.68	10.23	12.76	20.15	8.21
1998	21.61	38.57	9.43	23.62	42.25	10.13	12.03	20.55	6.52
1999	21.78	38.26	9.96	23.68	41.74	10.57	14.60	22.49	9.55
2000	21.86	38.84	9.56	23.95	42.52	10.36	13.24	20.46	8.56
2001	21.79	38.60	9.67	24.13	42.63	10.65	11.74	18.76	7.24
2002	21.30	37.24	9.71	23.38	40.80	10.56	12.81	18.20	9.13
2003	21.61	37.86	9.78	23.84	41.68	10.64	13.01	21.33	7.50
2004	21.59	38.07	9.57	23.77	41.83	10.39	13.82	22.86	8.32
2005	22.03	38.93	9.64	24.18	42.81	10.33	14.09	23.19	8.13
2006	21.45	38.05	9.23	23.67	41.98	9.96	11.80	18.16	7.58
2007	22.02	39.41	9.04	24.36	43.37	9.89	13.16	21.63	7.74
2008	21.48	37.80	9.38	23.66	41.48	10.21	12.98	22.31	6.85
2009	21.04	37.30	8.84	23.07	40.74	9.52	13.10	22.56	6.99
2010	21.52	37.86	9.23	24.05	42.09	10.10	12.54	21.28	6.85
2011	20.66	36.24	8.85	23.16	40.35	9.80	12.77	21.71	7.09
2012	21.27	37.36	9.15	23.57	41.10	10.07	13.51	24.28	6.39

Additional information on the model used to delay-adjust SEER Incidence rates can be found at [\(http://surveillance.cancer.gov/delay/\)](http://surveillance.cancer.gov/delay/).

<sup>a</sup> SEER 9 areas (San Francisco, Connecticut, Detroit, Hawaii, Iowa, New Mexico, Seattle, Utah, and Atlanta). Rates are per 100,000 and are age-adjusted to the 2000 US Std Population (19 age groups - Census P25-1130).

- Delay-adjusted rate is not shown for observed rates based on less than 16 cases for the time interval.

Table 27.5  
Cancer of the Urinary Bladder (Invasive and *In Situ*)

Age-adjusted SEER Incidence<sup>a</sup> Rates by Year, Race and Sex

Year of Diagnosis:	All Races			Whites			Blacks		
	Total	Males	Females	Total	Males	Females	Total	Males	Females
1975-2012	20.97	37.29	9.35	22.74	40.61	9.98	12.65	20.53	7.44
1975	19.32	34.37	8.88	20.23	36.39	9.17	10.56	16.34	6.26
1976	19.69	34.39	9.44	20.73	36.70	9.72	12.48	18.16	8.59
1977	18.99	33.40	8.88	20.01	35.61	9.18	13.45	22.67	7.06
1978	19.99	35.36	9.44	21.07	37.83	9.74	11.73	19.36	6.39
1979	19.98	35.35	9.39	21.30	38.19	9.84	10.35	15.61	6.54
1980	20.42	37.14	8.92	21.53	39.81	9.08	13.27	18.23	9.87
1981	20.69	36.38	9.73	21.94	38.77	10.29	11.60	20.72	5.48
1982	20.09	35.79	9.53	21.38	38.30	10.17	12.19	21.77	5.60
1983	20.04	35.99	9.01	21.31	38.69	9.41	12.17	18.70	7.57
1984	20.86	37.72	9.18	22.34	40.88	9.63	11.49	18.93	6.24
1985	20.67	36.37	9.87	22.11	39.30	10.36	13.06	20.33	8.14
1986	21.04	37.95	9.42	22.46	40.86	9.95	12.94	22.16	6.63
1987	21.66	39.52	9.24	23.17	42.82	9.58	13.22	21.78	7.41
1988	20.86	38.10	8.99	22.71	41.85	9.68	11.29	17.99	6.45
1989	21.02	37.41	9.63	22.72	40.91	10.17	11.37	17.61	7.16
1990	21.08	37.49	9.64	22.63	40.78	10.03	12.69	18.59	8.75
1991	20.92	37.63	9.33	22.71	41.26	9.89	12.81	19.44	8.50
1992	21.25	37.52	9.81	22.95	40.73	10.50	12.48	20.82	6.89
1993	21.25	37.65	9.72	22.85	40.52	10.41	14.32	24.76	7.85
1994	20.81	36.88	9.46	22.62	40.26	10.19	12.34	20.30	6.89
1995	20.64	36.23	9.56	22.45	39.51	10.29	11.85	18.23	7.39
1996	20.82	36.71	9.54	22.68	40.12	10.27	12.43	20.32	7.28
1997	21.09	37.15	9.59	22.98	40.68	10.23	12.76	20.15	8.21
1998	21.61	38.57	9.43	23.61	42.23	10.13	12.03	20.54	6.52
1999	21.78	38.25	9.96	23.66	41.71	10.57	14.59	22.48	9.55
2000	21.85	38.82	9.56	23.92	42.47	10.35	13.22	20.43	8.56
2001	21.78	38.58	9.66	24.09	42.56	10.63	11.72	18.72	7.23
2002	21.28	37.20	9.70	23.33	40.70	10.54	12.79	18.15	9.11
2003	21.59	37.81	9.77	23.78	41.56	10.62	12.97	21.26	7.48
2004	21.55	38.00	9.56	23.69	41.67	10.36	13.77	22.76	8.30
2005	21.98	38.83	9.63	24.08	42.61	10.29	14.02	23.07	8.11
2006	21.39	37.93	9.22	23.54	41.73	9.92	11.73	18.04	7.55
2007	21.93	39.24	9.02	24.20	43.06	9.84	13.07	21.48	7.70
2008	21.37	37.58	9.35	23.46	41.11	10.14	12.86	22.08	6.80
2009	20.88	37.00	8.80	22.81	40.25	9.44	12.95	22.26	6.93
2010	21.28	37.37	9.16	23.66	41.36	9.98	12.32	20.86	6.76
2011	20.30	35.55	8.75	22.62	39.34	9.64	12.49	21.17	6.98
2012	20.60	36.07	8.95	22.64	39.36	9.77	13.00	23.30	6.20

<sup>a</sup> SEER 9 areas (San Francisco, Connecticut, Detroit, Hawaii, Iowa, New Mexico, Seattle, Utah, and Atlanta). Rates are per 100,000 and are age-adjusted to the 2000 US Std Population (19 age groups - Census P25-1130).  
- Statistic not shown. Rate based on less than 16 cases for the time interval.

Table 27.6  
Cancer of the Urinary Bladder (Invasive)

Age-adjusted U.S. Death<sup>a</sup> Rates by Year, Race and Sex

Year of Death:	All Races			Whites			Blacks		
	Total	Males	Females	Total	Males	Females	Total	Males	Females
1975-2012	4.58	8.07	2.38	4.70	8.39	2.36	4.16	6.10	3.00
1975	5.50	9.77	2.76	5.56	10.11	2.68	4.96	6.85	3.63
1976	5.59	9.79	2.88	5.64	10.05	2.83	5.29	7.80	3.54
1977	5.52	9.67	2.89	5.58	9.94	2.83	5.19	7.57	3.57
1978	5.44	9.54	2.86	5.51	9.83	2.82	4.94	7.22	3.40
1979	5.25	9.34	2.71	5.30	9.59	2.66	5.00	7.61	3.28
1980	5.17	9.16	2.73	5.24	9.51	2.66	4.72	6.21	3.71
1981	5.07	9.02	2.66	5.13	9.28	2.61	4.89	7.20	3.40
1982	4.99	8.95	2.58	5.04	9.23	2.50	4.86	6.83	3.56
1983	4.88	8.79	2.54	4.93	9.04	2.50	4.72	7.17	3.19
1984	4.74	8.49	2.49	4.78	8.73	2.43	4.74	6.89	3.39
1985	4.67	8.43	2.44	4.73	8.67	2.40	4.48	6.86	3.02
1986	4.53	8.10	2.41	4.60	8.41	2.34	4.25	5.83	3.29
1987	4.41	7.87	2.34	4.46	8.09	2.28	4.37	6.50	3.11
1988	4.41	7.76	2.41	4.47	8.02	2.34	4.30	5.89	3.33
1989	4.48	7.99	2.37	4.52	8.18	2.31	4.61	7.02	3.20
1990	4.49	7.97	2.42	4.55	8.22	2.37	4.44	6.44	3.24
1991	4.42	7.89	2.34	4.48	8.14	2.28	4.40	6.58	3.12
1992	4.46	7.89	2.43	4.52	8.11	2.38	4.35	6.66	3.08
1993	4.47	8.05	2.31	4.55	8.32	2.27	4.17	6.36	2.93
1994	4.47	7.86	2.42	4.54	8.13	2.37	4.34	6.36	3.19
1995	4.35	7.78	2.28	4.45	8.08	2.23	4.05	5.77	3.09
1996	4.41	7.79	2.37	4.51	8.08	2.33	4.16	5.89	3.14
1997	4.39	7.59	2.42	4.50	7.88	2.40	4.00	5.88	2.98
1998	4.38	7.71	2.32	4.49	8.02	2.29	3.95	5.58	3.03
1999	4.36	7.66	2.28	4.47	7.95	2.24	4.01	5.84	2.96
2000	4.32	7.60	2.27	4.48	7.94	2.27	3.74	5.68	2.69
2001	4.35	7.62	2.27	4.48	7.97	2.24	3.74	5.17	2.93
2002	4.43	7.61	2.39	4.56	7.94	2.36	3.99	5.67	3.08
2003	4.30	7.49	2.23	4.45	7.82	2.22	3.76	5.60	2.72
2004	4.42	7.73	2.28	4.60	8.13	2.28	3.69	5.20	2.82
2005	4.42	7.73	2.25	4.58	8.07	2.26	3.78	6.00	2.60
2006	4.41	7.72	2.22	4.57	8.09	2.21	3.87	5.79	2.81
2007	4.44	7.72	2.25	4.62	8.10	2.25	3.84	5.59	2.82
2008	4.41	7.62	2.25	4.61	8.04	2.28	3.38	4.83	2.52
2009	4.37	7.67	2.16	4.57	8.05	2.18	3.60	5.56	2.46
2010	4.43	7.72	2.20	4.64	8.12	2.22	3.66	5.62	2.53
2011	4.42	7.62	2.22	4.64	8.05	2.24	3.59	5.19	2.63
2012	4.38	7.63	2.13	4.61	8.06	2.18	3.46	5.29	2.36

<sup>a</sup> US Mortality Files, National Center for Health Statistics, Centers for Disease Control and Prevention.  
Rates are per 100,000 and are age-adjusted to the 2000 US Std Population (19 age groups - Census P25-1130).  
- Statistic not shown. Rate based on less than 16 cases for the time interval.

Table 27.7  
Cancer of the Urinary Bladder (Invasive and *In Situ*)

SEER Incidence<sup>a</sup> and U.S. Death<sup>b</sup> Rates, Age-Adjusted and Age-Specific Rates, by Race and Sex

	All Races			Whites			Blacks		
	Total	Males	Females	Total	Males	Females	Total	Males	Females
<u>SEER Incidence</u>									
<u>Age at Diagnosis</u>									
Age-Adjusted Rates, 2008-2012									
All ages	20.3	35.8	8.7	22.2	39.0	9.4	12.6	21.4	6.9
Under 65	5.3	8.2	2.5	5.9	9.0	2.8	3.5	5.5	1.7
65 and over	124.2	226.6	51.7	135.4	246.3	55.2	76.0	131.2	42.6
All ages (IARC world std) <sup>c</sup>	11.7	19.9	5.1	12.9	21.7	5.6	7.4	12.2	3.8
Age-Specific Rates, 2008-2012									
<1	-	-	-	-	-	-	-	-	-
1-4	-	-	-	-	-	-	-	-	-
5-9	-	-	-	-	-	-	-	-	-
10-14	-	-	-	-	-	-	-	-	-
15-19	0.1	-	-	0.1	-	-	-	-	-
20-24	0.2	0.3	-	0.2	0.4	-	-	-	-
25-29	0.4	0.5	0.2	0.4	0.6	0.3	-	-	-
30-34	0.7	1.0	0.4	0.9	1.2	0.5	-	-	-
35-39	1.3	1.8	0.8	1.5	2.1	1.0	0.8	1.3	-
40-44	3.0	4.2	1.7	3.4	4.7	2.0	1.6	2.6	-
45-49	6.4	9.6	3.2	7.2	10.8	3.6	3.7	5.5	2.1
50-54	13.0	19.5	6.7	14.2	21.1	7.4	9.5	14.2	5.3
55-59	24.6	39.1	11.0	27.0	42.6	12.0	17.0	27.2	8.3
60-64	43.9	70.5	19.5	48.6	77.0	21.7	28.2	47.0	12.8
65-69	74.3	123.1	31.1	81.7	134.9	33.5	46.8	75.2	24.7
70-74	106.6	182.9	43.1	118.0	200.7	47.7	65.7	112.4	31.9
75-79	145.8	258.0	60.2	160.1	281.8	64.9	85.6	144.9	47.5
80-84	174.8	329.2	72.0	187.6	353.7	74.9	111.9	192.3	68.4
85+	175.1	372.2	76.6	186.3	400.4	79.2	104.0	199.6	65.4
<u>U.S. Mortality</u>									
<u>Age at Death</u>									
Age-Adjusted Rates, 2008-2012									
All ages	4.4	7.7	2.2	4.6	8.1	2.2	3.5	5.3	2.5
Under 65	0.7	1.1	0.4	0.7	1.1	0.4	0.7	1.0	0.5
65 and over	30.0	53.3	14.8	31.5	56.2	15.0	23.2	35.3	16.5
All ages (IARC world std) <sup>c</sup>	2.2	3.6	1.1	2.3	3.8	1.1	1.8	2.7	1.3
Age-Specific Rates, 2008-2012									
<1	-	-	-	-	-	-	-	-	-
1-4	-	-	-	-	-	-	-	-	-
5-9	-	-	-	-	-	-	-	-	-
10-14	-	-	-	-	-	-	-	-	-
15-19	-	-	-	-	-	-	-	-	-
20-24	-	-	-	-	-	-	-	-	-
25-29	0.0	-	-	-	-	-	-	-	-
30-34	0.0	0.1	-	0.0	0.1	-	-	-	-
35-39	0.1	0.1	0.1	0.1	0.1	0.1	0.1	-	-
40-44	0.3	0.4	0.2	0.3	0.4	0.2	0.3	0.4	0.2
45-49	0.8	1.1	0.5	0.8	1.1	0.5	0.8	1.0	0.6
50-54	1.7	2.5	1.0	1.8	2.6	1.0	2.0	2.6	1.4
55-59	3.4	5.3	1.6	3.5	5.5	1.6	3.6	5.0	2.4
60-64	6.2	9.8	2.8	6.5	10.5	2.9	5.4	7.8	3.4
65-69	11.0	17.7	5.1	11.6	18.7	5.2	9.5	14.4	5.7
70-74	18.1	29.5	8.6	19.2	31.4	8.6	15.0	20.8	10.8
75-79	29.9	49.8	14.7	31.5	52.6	14.9	23.5	34.2	16.7
80-84	47.4	83.8	23.1	49.6	87.6	23.6	34.8	58.0	22.4
85+	76.6	151.9	40.0	79.7	159.8	40.4	56.5	87.3	44.3

<sup>a</sup> SEER 18 areas. Rates are per 100,000 and are age-adjusted to the 2000 US Std Population (19 age groups - Census P25-1130), unless noted.

<sup>b</sup> US Mortality Files, National Center for Health Statistics, Centers for Disease Control and Prevention.

<sup>c</sup> Rates are per 100,000 and are age-adjusted to the 2000 US Std Population (19 age groups - Census P25-1130), unless noted.

<sup>c</sup> Rates are per 100,000 and are age-adjusted to the IARC world standard population.

- Statistic not shown. Rate based on less than 16 cases for the time interval.

Table 27.8  
Cancer of the Urinary Bladder (Invasive and *In Situ*)

5-Year Relative and Period Survival (Percent) by Race, Sex, Diagnosis Year, Stage and Age

	All Races			Whites			Blacks		
	Total	Males	Females	Total	Males	Females	Total	Males	Females
5-Year Relative Survival (Percent)									
Year of Diagnosis:									
1960-1963 <sup>a</sup>	-	-	-	53	53	53	24	24	24
1970-1973 <sup>a</sup>	-	-	-	61	61	60	36	38	27
1975-1977 <sup>b</sup>	72.3	73.7	68.2	73.2	74.3	70.1	50.3	56.5	38.1 <sup>g</sup>
1978-1980 <sup>b</sup>	73.9	75.1	70.3	74.7	75.4	72.2	54.5	62.6	40.1
1981-1983 <sup>b</sup>	76.7	78.1	72.7	77.4	78.5	74.0	59.5	64.9	47.0 <sup>g</sup>
1984-1986 <sup>b</sup>	76.7	78.1	72.6	77.2	78.5	73.5	59.4	62.3	52.8
1987-1989 <sup>b</sup>	79.0	81.3	71.9	79.8	81.9	73.1	62.6	67.5	52.9
1990-1992 <sup>b</sup>	79.2	81.7	71.8	80.2	82.5	73.1	63.2	65.9	58.5
1993-1995 <sup>b</sup>	80.2	82.0	75.0	81.0	82.5	76.9	60.5	67.7	46.2
1996-1998 <sup>b</sup>	79.1	80.3	75.4	79.7	81.0	75.9	62.7	65.6	56.0
1999-2001 <sup>b</sup>	80.0	80.9	77.3	81.0	81.5	79.5	67.3	71.5	60.0
2002-2004 <sup>b</sup>	79.9	81.7	74.8	80.8	82.4	76.3	61.3	66.4	52.5
2005-2011 <sup>b</sup>	79.0 <sup>f</sup>	80.5 <sup>f</sup>	74.2 <sup>f</sup>	79.4 <sup>f</sup>	80.8 <sup>f</sup>	75.1 <sup>f</sup>	66.7 <sup>f</sup>	71.3 <sup>f</sup>	57.7 <sup>f</sup>
5-Year Period Survival (Percent) <sup>cd</sup>									
2011	77.4	78.6	73.7	78.0	78.9	74.8	64.4	69.0	55.2
Stage Distribution (%) 2005-2011 <sup>ce</sup>									
All Stages									
Number of cases	87,517	65,948	21,569	77,741	59,015	18,726	4,745	3,134	1,611
Percent	100%	100%	100%	100%	100%	100%	100%	100%	100%
In Situ	51	52	50	52	52	51	40	44	32
Localized	35	35	33	34	35	33	38	37	40
Regional	7	7	8	7	7	8	11	9	14
Distant	4	4	5	4	4	5	7	7	9
Unstaged	3	2	3	2	2	3	4	3	4
5-Year Relative Survival (Percent), 2005-2011 <sup>c</sup>									
Age at Diagnosis:									
Ages <45	88.3	89.8	84.1	89.0	90.0	86.0	75.5	80.2	57.3 <sup>g</sup>
Ages 45-54	84.4	84.9	82.7	85.1	85.1	85.0	70.4	74.7	59.3
Ages 55-64	82.5	82.8	81.7	83.1	83.0	83.1	70.4	72.9	62.5
Ages 65-74	79.2	80.1	76.2	80.0	80.7	77.2	65.2	68.1	59.1
Ages 75+	70.5	72.9	64.1	71.1	73.3	65.2	54.1	60.0	46.4
Ages <65	83.5	83.9	82.2	84.1	84.1	83.9	71.0	74.3	61.2
Ages 65+	74.2	76.2	68.6	74.9	76.6	69.7	59.5	64.5	51.8
Stage <sup>e</sup> :									
All Stages	77.4	78.9	72.9	78.0	79.2	74.1	64.3	69.2	54.7
In Situ	95.9	95.7	96.7	96.2	95.8	97.2	90.2	91.1	86.9
Localized	69.9	72.1	62.8	70.2	72.2	63.4	61.0	66.6	51.4
Regional	34.0	35.9	29.0	34.5	36.4	29.3	25.6	25.1	26.8
Distant	5.4	5.6	5.0	5.4	5.4	5.4	5.5	6.2	5.1
Unstaged	47.4	52.1	37.3	44.9	49.5	34.6	42.8	51.0 <sup>g</sup>	29.6 <sup>g</sup>

<sup>a</sup> Based on End Results data from a series of hospital registries and one population-based registry.

<sup>b</sup> SEER 9 areas (San Francisco, Connecticut, Detroit, Hawaii, Iowa, New Mexico, Seattle, Utah, Atlanta).

Based on follow-up of patients into 2012.

<sup>c</sup> SEER 18 areas (San Francisco, Connecticut, Detroit, Hawaii, Iowa, New Mexico, Seattle, Utah, Atlanta, San Jose-Monterey, Los Angeles, Alaska Native Registry, Rural Georgia, California excluding SF/SJM/LA, Kentucky, Louisiana, New Jersey and Georgia excluding ATL/RG).

Based on follow-up of patients into 2012.

<sup>d</sup> Period survival provides a 2011 estimate of survival by piecing together the most recent conditional survival estimates from several cohorts. It is computed here using three year calendar blocks (2009-2011: 0-1 year survival), (2008-2010: 1-2 year survival), (2007-2009: 2-3 year survival), (2006-2008: 3-4 year survival), (2005-2007: 4-5 years survival).

<sup>e</sup> Stage at diagnosis is classified using SEER Summary Stage 2000. Stage distribution percentages may not sum to 100 due to rounding.

<sup>f</sup> The difference between 1975-1977 and 2005-2011 is statistically significant ( $p < .05$ ).

<sup>g</sup> The standard error is between 5 and 10 percentage points.

<sup>h</sup> The standard error is greater than 10 percentage points.

- Statistic could not be calculated due to fewer than 25 cases during the time period.



Table 27.9  
Cancer of the Urinary Bladder (Invasive and *In Situ*)

SEER<sup>a</sup> Relative Survival (Percent)  
By Year of Diagnosis

All Races, Males and Females

Year of Diagnosis

	1975- 1979	1980- 1984	1985- 1989	1990- 1994	1995	1996	1997	1998	1999	2000	2001	2002	2003	2004	2005	2006	2007	2008	2009	2010	2011
Survival Time																					
1-year	87.0	88.7	89.9	89.9	90.8	89.6	91.2	90.8	90.0	90.9	90.9	89.7	90.3	90.8	90.5	91.2	90.2	89.1	89.4	89.1	90.3
2-year	80.8	83.5	85.1	85.4	86.5	85.4	86.2	86.5	85.1	86.5	86.4	85.6	85.7	86.1	85.4	86.6	85.1	84.7	83.6	85.0	
3-year	77.7	80.4	82.2	82.9	84.1	83.3	83.1	83.4	82.3	83.6	84.6	83.5	83.5	83.5	82.5	83.8	82.0	81.7	81.2		
4-year	74.8	78.0	80.0	81.2	81.8	81.2	80.8	81.3	80.4	81.6	82.4	81.1	81.5	81.5	81.0	82.3	80.3	79.3			
5-year	73.0	76.1	78.1	79.4	81.1	79.6	78.5	79.1	78.1	80.3	81.5	79.8	79.7	80.0	79.9	80.6	78.8				
6-year	71.1	74.4	76.4	78.0	79.3	78.3	76.9	77.5	76.7	79.3	80.0	78.4	78.3	78.1	78.4	79.6					
7-year	69.0	73.0	74.9	76.3	77.5	77.3	75.8	76.3	75.6	77.8	78.3	77.3	77.2	75.8	77.7						
8-year	67.5	71.8	73.3	74.9	76.2	76.0	74.7	74.7	74.3	76.3	77.1	76.0	75.8	74.2							
9-year	65.8	70.0	72.1	73.5	74.6	74.1	73.2	73.4	73.1	75.4	75.8	74.5	74.8								
10-year	63.8	68.9	70.7	72.1	73.7	72.6	72.1	71.7	72.6	73.5	74.3	73.5									
11-year	62.1	67.5	69.6	70.9	73.0	71.6	71.2	70.8	71.4	71.5	73.6										
12-year	60.7	66.1	68.1	69.8	71.7	69.9	70.1	68.6	69.4	70.4											
13-year	59.6	65.1	66.8	69.0	69.3	68.8	69.8	67.8	68.1												
14-year	58.5	63.5	65.3	68.0	67.8	67.2	68.5	67.0													
15-year	57.2	62.2	64.0	66.3	67.0	67.0	67.1														
16-year	56.1	60.5	62.6	65.0	65.7	66.6															
17-year	55.0	59.6	61.7	63.7	64.2																
18-year	54.3	58.5	60.7	62.6																	
19-year	53.6	57.6	60.0																		
20-year	52.8	57.1	59.4																		

<sup>a</sup> Based on the SEER 9 areas (San Francisco, Connecticut, Detroit, Hawaii, Iowa, New Mexico, Seattle, Utah, and Atlanta).

Table 27.10  
Cancer of the Urinary Bladder (Invasive and *In Situ*)

SEER<sup>a</sup> Relative Survival (Percent)  
By Year of Diagnosis

All Races, Males

Year of Diagnosis

	1975- 1979	1980- 1984	1985- 1989	1990- 1994	1995	1996	1997	1998	1999	2000	2001	2002	2003	2004	2005	2006	2007	2008	2009	2010	2011
Survival Time																					
1-year	88.9	89.9	91.7	91.7	92.2	91.1	92.9	92.5	91.7	92.1	91.5	91.8	91.8	91.9	92.1	92.5	91.6	90.8	90.5	90.9	91.8
2-year	82.8	85.1	87.0	87.5	88.0	87.1	88.2	88.3	86.8	87.8	86.8	88.3	87.2	87.7	87.1	88.1	86.6	86.5	84.6	87.0	
3-year	79.5	81.9	84.2	85.2	85.5	84.9	85.2	84.7	84.2	84.6	85.3	86.1	84.9	85.1	84.3	85.4	83.2	83.8	82.1		
4-year	76.5	79.4	81.9	83.4	83.1	82.7	82.6	82.6	81.9	82.5	83.1	83.3	82.8	83.2	82.8	83.9	81.2	80.9			
5-year	74.3	77.4	80.1	81.6	82.9	81.0	79.9	80.2	79.2	81.0	82.3	82.0	81.0	82.0	81.9	82.4	79.7				
6-year	72.3	75.8	78.4	80.1	80.9	79.6	77.9	78.8	77.6	80.2	80.7	80.6	79.3	80.1	80.7	81.4					
7-year	70.0	74.4	76.6	78.2	79.2	78.4	76.7	77.8	76.5	78.3	78.6	79.7	77.8	77.5	79.8						
8-year	68.3	73.2	74.9	76.8	77.8	76.9	75.8	75.9	75.1	76.6	77.6	78.3	76.3	75.7							
9-year	66.4	71.4	73.7	75.3	75.6	75.5	74.2	74.8	74.4	75.3	76.8	76.6	75.1								
10-year	64.2	70.2	72.3	73.9	74.7	73.8	73.2	73.1	74.1	73.0	75.4	75.6									
11-year	62.2	68.9	71.3	72.7	74.0	72.5	72.2	72.0	73.2	70.8	74.6										
12-year	60.9	67.4	69.6	71.6	72.5	70.6	70.7	69.7	71.8	69.5											
13-year	59.5	66.4	68.3	70.8	70.6	69.6	69.9	68.8	70.5												
14-year	58.4	64.6	66.7	70.1	68.8	67.6	68.0	68.3													
15-year	57.1	63.1	65.3	68.4	68.0	67.3	66.3														
16-year	55.8	61.3	63.9	67.1	66.1	67.1															
17-year	54.6	60.3	63.1	65.8	64.9																
18-year	53.6	59.3	61.8	64.9																	
19-year	52.8	58.6	61.2																		
20-year	52.0	58.2	60.6																		

<sup>a</sup> Based on the SEER 9 areas (San Francisco, Connecticut, Detroit, Hawaii, Iowa, New Mexico, Seattle, Utah, and Atlanta).

Table 27.11  
Cancer of the Urinary Bladder (Invasive and *In Situ*)

SEER<sup>a</sup> Relative Survival (Percent)  
By Year of Diagnosis

All Races, Females

Year of Diagnosis

	1975- 1979	1980- 1984	1985- 1989	1990- 1994	1995	1996	1997	1998	1999	2000	2001	2002	2003	2004	2005	2006	2007	2008	2009	2010	2011
Survival Time																					
1-year	81.3	85.0	84.9	84.9	86.7	85.2	86.1	85.9	85.0	87.5	89.3	83.7	85.8	87.5	86.1	87.0	85.3	84.2	85.9	83.7	85.7
2-year	75.3	79.0	79.7	79.2	82.4	80.7	80.5	81.2	80.2	82.3	85.0	77.9	81.2	81.3	80.4	81.7	80.0	79.1	80.5	78.9	
3-year	72.6	75.8	76.4	76.1	80.0	78.9	77.3	79.3	77.1	80.6	82.4	76.1	79.3	78.8	77.4	79.1	77.9	75.7	78.6		
4-year	70.1	73.7	74.4	74.7	78.2	76.9	75.7	77.6	75.8	78.8	80.3	74.6	77.5	76.4	75.9	77.2	77.0	74.0			
5-year	69.1	72.1	72.3	73.0	75.9	75.9	74.5	75.7	74.8	78.3	79.0	73.6	76.1	74.2	74.2	75.2	75.8				
6-year	67.6	70.5	70.7	71.7	74.8	74.6	73.7	73.6	74.1	76.5	77.9	72.1	75.3	72.0	71.8	74.0					
7-year	66.0	68.8	69.9	70.6	72.8	74.0	72.9	72.1	72.9	76.1	77.4	69.8	75.0	70.8	71.0						
8-year	65.1	67.7	68.6	69.5	71.9	73.0	71.3	71.1	72.0	75.2	75.2	69.6	74.3	69.6							
9-year	64.1	66.0	67.4	68.3	71.4	69.9	70.2	69.1	69.3	75.2	72.6	68.6	73.8								
10-year	62.4	64.8	66.0	66.7	70.7	69.3	68.7	67.6	68.2	74.3	71.1	67.7									
11-year	61.4	63.3	64.8	65.6	70.0	68.8	68.0	67.1	65.6	73.3	70.6										
12-year	60.1	62.4	63.7	64.6	69.3	67.7	68.0	65.1	62.9	72.8											
13-year	59.5	61.3	62.5	63.7	65.6	66.6	68.0	64.5	61.3												
14-year	58.1	60.3	61.1	62.0	64.8	65.8	68.0	62.9													
15-year	56.8	59.3	60.1	60.2	64.2	65.8	68.0														
16-year	56.7	58.3	58.9	58.9	64.1	64.8															
17-year	55.7	57.3	57.6	57.8	62.2																
18-year	55.5	56.0	57.2	56.2																	
19-year	55.3	54.6	56.3																		
20-year	54.3	53.9	55.5																		

<sup>a</sup> Based on the SEER 9 areas (San Francisco, Connecticut, Detroit, Hawaii, Iowa, New Mexico, Seattle, Utah, and Atlanta).

Table 27.12  
Cancer of the Urinary Bladder (Invasive and In Situ)

Risk of Being Diagnosed With Cancer in 10, 20 and 30 Years,  
Lifetime Risk of Being Diagnosed with Cancer Given Alive and Cancer-Free at Current Age, and  
Lifetime Risk of Dying from Cancer Given Alive at Current Age  
Both Sexes, 2010-2012 By Race/Ethnicity

Race/ Ethnicity	Current Age	Risk of Being Diagnosed with Cancer				Risk of Dying from Cancer	Race/ Ethnicity	Current Age	Risk of Being Diagnosed with Cancer				Risk of Dying from Cancer
		+10 yrs	+20 yrs	+30 yrs	Ever				+10 yrs	+20 yrs	+30 yrs	Ever	
All Races	0	0.00	0.00	0.00	2.41	0.61	Asian/ Pacific Islander	0	0.00	0.00	0.00	1.47	0.41
	10	0.00	0.00	0.01	2.44	0.61		10	0.00	0.00	0.01	1.48	0.42
	20	0.00	0.01	0.06	2.44	0.62		20	0.00	0.00	0.02	1.48	0.42
	30	0.01	0.06	0.23	2.46	0.62		30	0.00	0.02	0.09	1.48	0.42
	40	0.05	0.22	0.72	2.48	0.63		40	0.01	0.09	0.30	1.49	0.42
	50	0.18	0.69	1.55	2.50	0.64		50	0.07	0.28	0.71	1.49	0.42
	60	0.54	1.46	2.25	2.46	0.65		60	0.22	0.66	1.18	1.46	0.43
	70	1.04	1.94	-	2.18	0.65		70	0.47	1.03	-	1.33	0.43
80	1.22	-	-	1.54	0.59	80	0.67	-	-	1.04	0.41		
White	0	0.00	0.00	0.00	2.62	0.64	American Indian/ Alaska Native <sup>a</sup>	0	0.00	0.00	0.01	1.00	0.26
	10	0.00	0.00	0.02	2.64	0.64		10	0.00	0.01	0.01	1.01	0.27
	20	0.00	0.02	0.07	2.65	0.65		20	0.01	0.01	0.02	1.02	0.27
	30	0.01	0.06	0.26	2.67	0.65		30	0.00	0.01	0.11	1.03	0.28
	40	0.05	0.25	0.79	2.69	0.66		40	0.01	0.11	0.25	1.05	0.28
	50	0.20	0.76	1.71	2.70	0.67		50	0.10	0.24	0.53	1.08	0.29
	60	0.59	1.60	2.44	2.65	0.68		60	0.15	0.45	0.87	1.05	0.31
	70	1.15	2.10	-	2.34	0.67		70	0.35	0.82	-	1.03	0.29
80	1.30	-	-	1.63	0.61	80	0.65	-	-	0.92	0.29		
Black	0	0.00	0.00	0.00	1.28	0.42	Hispanic <sup>b</sup>	0	0.00	0.00	0.00	1.61	0.42
	10	0.00	0.00	0.01	1.31	0.43		10	0.00	0.00	0.01	1.62	0.43
	20	0.00	0.01	0.04	1.31	0.43		20	0.00	0.01	0.03	1.63	0.43
	30	0.01	0.04	0.15	1.33	0.44		30	0.01	0.03	0.12	1.63	0.43
	40	0.03	0.15	0.44	1.35	0.44		40	0.02	0.11	0.38	1.64	0.43
	50	0.13	0.43	0.89	1.37	0.46		50	0.09	0.37	0.86	1.65	0.44
	60	0.33	0.84	1.24	1.36	0.47		60	0.29	0.80	1.37	1.62	0.45
	70	0.61	1.10	-	1.25	0.48		70	0.56	1.19	-	1.47	0.45
80	0.71	-	-	0.93	0.46	80	0.79	-	-	1.15	0.42		

Devcan 6.8.0, August 2014, National Cancer Institute (<http://surveillance.cancer.gov/devcan/>).

Source: Incidence data are from the SEER 18 areas (San Francisco, Connecticut, Detroit, Hawaii, Iowa, New Mexico, Seattle, Utah, Atlanta, San Jose-Monterey, Los Angeles, Alaska Native Registry, Rural Georgia, California excluding SF/SJM/LA, Kentucky, Louisiana, New Jersey, and Georgia excluding ATL/RG). Mortality data are from the NCHS public use data file for the total US.

<sup>a</sup> Underlying incidence and mortality data for American Indian/Alaska Native are based on the CHSDA (Contract Health Service Delivery Area) counties.

<sup>b</sup> Hispanic is not mutually exclusive from whites, blacks, Asian/Pacific Islanders, and American Indians/Alaska Natives. Underlying incidence data for Hispanics are based on NHIA and exclude cases from the Alaska Native Registry.

- Statistic could not be calculated.

A percent of 0.00 represents a value that is below 0.005.

Table 27.13  
Cancer of the Urinary Bladder (Invasive and In Situ)

Risk of Being Diagnosed With Cancer in 10, 20 and 30 Years,  
Lifetime Risk of Being Diagnosed with Cancer Given Alive and Cancer-Free at Current Age, and  
Lifetime Risk of Dying from Cancer Given Alive at Current Age  
Males, 2010-2012 By Race/Ethnicity

Race/ Ethnicity	Current Age	Risk of Being Diagnosed with Cancer				Risk of Dying from Cancer	Race/ Ethnicity	Current Age	Risk of Being Diagnosed with Cancer				Risk of Dying from Cancer
		+10 yrs	+20 yrs	+30 yrs	Ever				+10 yrs	+20 yrs	+30 yrs	Ever	
All Races	0	0.00	0.00	0.01	3.84	0.92	Asian/ Pacific Islander	0	0.00	0.00	0.00	2.34	0.64
	10	0.00	0.00	0.02	3.89	0.94		10	0.00	0.00	0.01	2.36	0.65
	20	0.00	0.02	0.09	3.90	0.94		20	0.00	0.01	0.03	2.36	0.65
	30	0.02	0.08	0.35	3.95	0.95		30	0.00	0.02	0.14	2.37	0.65
	40	0.07	0.34	1.12	3.99	0.97		40	0.02	0.13	0.49	2.38	0.65
	50	0.28	1.09	2.50	4.05	0.99		50	0.12	0.47	1.19	2.40	0.66
	60	0.87	2.39	3.72	4.06	1.03		60	0.37	1.12	1.98	2.38	0.67
	70	1.78	3.34	-	3.74	1.05		70	0.81	1.75	-	2.19	0.68
80	2.27	-	-	2.85	1.03	80	1.18	-	-	1.73	0.68		
White	0	0.00	0.00	0.01	4.16	0.98	American Indian/ Alaska Native <sup>a</sup>	0	0.00	0.00	0.00	1.67	0.46
	10	0.00	0.01	0.02	4.21	0.99		10	0.00	0.00	0.01	1.69	0.47
	20	0.00	0.02	0.10	4.22	0.99		20	0.00	0.01	0.02	1.71	0.47
	30	0.02	0.09	0.39	4.27	1.01		30	0.00	0.01	0.16	1.74	0.48
	40	0.08	0.37	1.23	4.32	1.02		40	0.01	0.16	0.36	1.79	0.50
	50	0.31	1.19	2.74	4.37	1.05		50	0.16	0.37	0.84	1.86	0.53
	60	0.95	2.62	4.04	4.38	1.08		60	0.23	0.74	1.45	1.86	0.56
	70	1.95	3.61	-	4.01	1.10		70	0.61	1.45	-	1.93	0.59
80	2.43	-	-	3.01	1.07	80	1.23	-	-	1.93	0.70		
Black	0	0.00	0.00	0.00	1.86	0.52	Hispanic <sup>b</sup>	0	0.00	0.00	0.00	2.58	0.63
	10	0.00	0.00	0.01	1.90	0.53		10	0.00	0.00	0.01	2.61	0.64
	20	0.00	0.01	0.05	1.91	0.53		20	0.00	0.01	0.04	2.62	0.64
	30	0.01	0.05	0.23	1.95	0.54		30	0.01	0.04	0.18	2.64	0.65
	40	0.05	0.23	0.68	1.99	0.55		40	0.03	0.17	0.59	2.66	0.65
	50	0.19	0.66	1.36	2.04	0.57		50	0.14	0.57	1.39	2.69	0.67
	60	0.52	1.31	1.88	2.07	0.60		60	0.45	1.32	2.30	2.70	0.69
	70	1.00	1.73	-	1.96	0.63		70	0.98	2.09	-	2.54	0.70
80	1.18	-	-	1.56	0.65	80	1.49	-	-	2.08	0.69		

Devcan 6.8.0, August 2014, National Cancer Institute (<http://surveillance.cancer.gov/devcan/>).

Source: Incidence data are from the SEER 18 areas (San Francisco, Connecticut, Detroit, Hawaii, Iowa, New Mexico, Seattle, Utah, Atlanta, San Jose-Monterey, Los Angeles, Alaska Native Registry, Rural Georgia, California excluding SF/SJM/LA, Kentucky, Louisiana, New Jersey, and Georgia excluding ATL/RG). Mortality data are from the NCHS public use data file for the total US.

<sup>a</sup> Underlying incidence and mortality data for American Indian/Alaska Native are based on the CHSDA (Contract Health Service Delivery Area) counties.

<sup>b</sup> Hispanic is not mutually exclusive from whites, blacks, Asian/Pacific Islanders, and American Indians/Alaska Natives. Underlying incidence data for Hispanics are based on NHIA and exclude cases from the Alaska Native Registry.

- Statistic could not be calculated.

A percent of 0.00 represents a value that is below 0.005.

Table 27.14  
Cancer of the Urinary Bladder (Invasive and In Situ)

Risk of Being Diagnosed With Cancer in 10, 20 and 30 Years,  
Lifetime Risk of Being Diagnosed with Cancer Given Alive and Cancer-Free at Current Age, and  
Lifetime Risk of Dying from Cancer Given Alive at Current Age  
Females, 2010-2012 By Race/Ethnicity

Race/ Ethnicity	Current Age	Risk of Being Diagnosed with Cancer				Risk of Dying from Cancer	Race/ Ethnicity	Current Age	Risk of Being Diagnosed with Cancer				Risk of Dying from Cancer
		+10 yrs	+20 yrs	+30 yrs	Ever				+10 yrs	+20 yrs	+30 yrs	Ever	
All Races	0	0.00	0.00	0.00	1.14	0.34	Asian/ Pacific Islander	0	0.00	0.00	0.00	0.75	0.23
	10	0.00	0.00	0.01	1.15	0.35		10	0.00	0.00	0.00	0.76	0.24
	20	0.00	0.01	0.03	1.15	0.35		20	0.00	0.00	0.01	0.76	0.24
	30	0.01	0.03	0.12	1.16	0.35		30	0.00	0.01	0.05	0.76	0.24
	40	0.02	0.11	0.33	1.16	0.35		40	0.01	0.04	0.13	0.76	0.24
	50	0.09	0.31	0.68	1.16	0.36		50	0.04	0.12	0.31	0.76	0.24
	60	0.23	0.62	0.99	1.12	0.36		60	0.09	0.28	0.55	0.74	0.24
	70	0.43	0.83	-	0.98	0.35		70	0.20	0.49	-	0.68	0.24
80	0.52	-	-	0.70	0.32	80	0.33	-	-	0.56	0.23		
White	0	0.00	0.00	0.00	1.21	0.35	American Indian/ Alaska Native <sup>a</sup>	0	0.00	0.00	0.01	0.42	0.11
	10	0.00	0.00	0.01	1.22	0.35		10	0.00	0.01	0.01	0.43	0.11
	20	0.00	0.01	0.04	1.22	0.35		20	0.01	0.01	0.03	0.43	0.11
	30	0.01	0.04	0.13	1.23	0.35		30	0.00	0.02	0.06	0.42	0.11
	40	0.03	0.12	0.36	1.23	0.36		40	0.01	0.06	0.14	0.43	0.12
	50	0.09	0.34	0.74	1.23	0.36		50	0.05	0.13	0.24	0.43	0.12
	60	0.26	0.68	1.06	1.18	0.36		60	0.08	0.20	0.39	0.40	0.12
	70	0.47	0.88	-	1.02	0.36		70	0.14	0.34	-	0.35	0.09
80	0.54	-	-	0.72	0.32	80	0.27	-	-	0.28	0.05		
Black	0	0.00	0.00	0.00	0.81	0.35	Hispanic <sup>b</sup>	0	0.00	0.00	0.00	0.80	0.26
	10	0.00	0.00	0.00	0.82	0.36		10	0.00	0.00	0.01	0.80	0.27
	20	0.00	0.00	0.02	0.82	0.36		20	0.00	0.01	0.02	0.81	0.27
	30	0.00	0.02	0.08	0.83	0.36		30	0.00	0.02	0.06	0.81	0.27
	40	0.02	0.08	0.23	0.84	0.36		40	0.01	0.06	0.19	0.81	0.27
	50	0.07	0.22	0.49	0.85	0.37		50	0.04	0.18	0.40	0.80	0.27
	60	0.17	0.45	0.74	0.84	0.38		60	0.14	0.37	0.62	0.78	0.27
	70	0.33	0.66	-	0.77	0.38		70	0.24	0.51	-	0.69	0.27
80	0.45	-	-	0.61	0.36	80	0.33	-	-	0.54	0.26		

Devcan 6.8.0, August 2014, National Cancer Institute (<http://surveillance.cancer.gov/devcan/>).

Source: Incidence data are from the SEER 18 areas (San Francisco, Connecticut, Detroit, Hawaii, Iowa, New Mexico, Seattle, Utah, Atlanta, San Jose-Monterey, Los Angeles, Alaska Native Registry, Rural Georgia, California excluding SF/SJM/LA, Kentucky, Louisiana, New Jersey, and Georgia excluding ATL/RG). Mortality data are from the NCHS public use data file for the total US.

<sup>a</sup> Underlying incidence and mortality data for American Indian/Alaska Native are based on the CHSDA (Contract Health Service Delivery Area) counties.

<sup>b</sup> Hispanic is not mutually exclusive from whites, blacks, Asian/Pacific Islanders, and American Indians/Alaska Natives. Underlying incidence data for Hispanics are based on NHIA and exclude cases from the Alaska Native Registry.

- Statistic could not be calculated.

A percent of 0.00 represents a value that is below 0.005.

Table 27.15  
Cancer of the Urinary Bladder

SEER Incidence (Invasive and *In Situ*) and U.S. Mortality  
Age-Adjusted Rates and Trends<sup>a</sup>  
By Race/Ethnicity and Sex

SEER Incidence	SEER 18 Areas <sup>b</sup>			SEER 13 Areas <sup>b</sup>			SEER 9 Areas <sup>b</sup>		
	Rate 2008-2012			Trend 2003-2012 <sup>c</sup>			Trend 2003-2012 <sup>d</sup>		
	Rate per 100,000 persons			AAPC (%)			AAPC (%)		
RACE/ETHNICITY	Total	Males	Females	Total	Males	Females	Total	Males	Females
All Races	20.3	35.8	8.7	-0.8*	-0.9*	-1.1*	-0.6*	-0.7*	-1.0*
White	22.2	39.0	9.4	-0.6*	-0.8*	-1.0*	-0.5*	-0.7*	-1.0*
White Hispanic <sup>e</sup>	11.5	20.2	5.2	-0.2	-0.2	-0.4	-	-	-
White Non-Hispanic <sup>e</sup>	23.8	41.7	10.1	-0.5*	-0.6*	-0.9*	-	-	-
Black	12.6	21.4	6.9	0.2	0.5*	-2.7*	0.2*	0.4*	-2.7
Asian/Pacific Islander	9.0	15.8	4.0	-1.3*	-1.4	-0.1	-	-	-
Amer Ind/Alaska Nat <sup>f</sup>	8.5	15.6	3.4	1.5	1.7	4.2	-	-	-
Hispanic <sup>e</sup>	11.2	19.6	5.1	-0.2	-0.2	-0.4	-	-	-
<u>U.S. Mortality<sup>g</sup></u>									
	Rate 2008-2012			Trend 2003-2012 <sup>h</sup>					
	Rate per 100,000 persons			AAPC (%)					
RACE/ETHNICITY	Total	Males	Females	Total	Males	Females			
All Races	4.4	7.7	2.2	0.0	0.0	-0.5*			
White	4.6	8.1	2.2	0.3*	0.2*	-0.3*			
White Hispanic <sup>e</sup>	2.4	4.1	1.3	0.0	-0.3	0.1			
White Non-Hispanic <sup>e</sup>	4.8	8.4	2.3	0.3*	0.3*	-0.2*			
Black	3.5	5.3	2.5	-1.0*	-0.8*	-1.2*			
Asian/Pacific Islander	1.7	3.0	0.9	-0.7	0.1	-1.6*			
Amer Ind/Alaska Nat									
Total U.S.	2.0	3.3	1.1	1.4	2.0*	-0.4			
CHSDA Counties	2.3	4.2	1.1	2.5*	4.2*	-			
Non-CHSDA Counties	1.6	2.2	1.1	-0.4	-0.8	-			
Hispanic <sup>e</sup>	2.3	3.9	1.3	-0.2	-0.4	0.0			

The AAPC is the Average Annual Percent Change over the time interval. The AAPCs are calculated by the Joinpoint Regression Program Version 4.2.0, April 2015, National Cancer Institute.

- Statistic not shown. Rate based on less than 16 cases for the time interval.

Trend based on less than 10 cases for at least one year within the time interval.

a Rates are age-adjusted to the 2000 US Std Population (19 age groups - Census P25-1130). Trends are based on rates age-adjusted to the 2000 US Std Population (19 age groups - Census P25-1130).

b The SEER 9 areas are San Francisco, Connecticut, Detroit, Hawaii, Iowa, New Mexico, Seattle, Utah, and Atlanta.

The SEER 13 areas comprise the SEER 9 areas plus San Jose-Monterey, Los Angeles, the Alaska Native Registry, and Rural Georgia.

The SEER 18 areas comprise the SEER 13 areas plus California excluding SF/SJM/LA, Kentucky, Louisiana, New Jersey, and Georgia excluding ATL/RG.

c The 2003-2012 AAPC estimates are based on a Joinpoint analysis with up to 3 Joinpoints over diagnosis years 1992-2012.

d The 2003-2012 AAPC estimates are based on a Joinpoint analysis with up to 5 Joinpoints over diagnosis years 1975-2012.

e Hispanic and Non-Hispanic are not mutually exclusive from whites, blacks, Asian/Pacific Islanders, and American Indians/Alaska Natives. Incidence data for Hispanics and Non-Hispanics are based on NHIA and exclude cases from the Alaska Native Registry. The 2003-2012 Hispanic and Non-Hispanic mortality trends exclude deaths from New Hampshire and Oklahoma.

f Incidence data for American Indian/Alaska Native are based on the CHSDA (Contract Health Service Delivery Area) counties.

g US Mortality Files, National Center for Health Statistics, CDC.

h The 2003-2012 mortality AAPCs are based on a Joinpoint analysis using years of death 1992-2012.

\* The APC is significantly different from zero (p<.05).

Table 27.16  
Cancer of the Urinary Bladder (Invasive and *In Situ*)

Age-Adjusted SEER Incidence Rates<sup>a</sup>  
By Registry, Race and Sex

	All Races			Whites			Blacks		
	Total	Males	Females	Total	Males	Females	Total	Males	Females
<u>SEER Incidence Rates<sup>a</sup>, 2008-2012</u>									
California	18.52	32.63	7.76	20.34	35.71	8.44	13.54	22.57	7.05
Greater Bay Area	18.20	31.50	8.12	21.40	36.89	9.41	15.29	25.79	7.97
San Francisco-Oakland	18.32	31.76	8.24	21.82	37.54	9.71	15.37	26.40	8.00
San Jose-Monterey	17.96	30.96	7.89	20.66	35.75	8.89	14.79	20.84	-
Los Angeles	16.75	30.02	6.95	18.68	33.42	7.60	13.59	23.74	6.75
Greater California	19.44	34.17	8.01	20.68	36.22	8.49	12.49	19.42	6.93
Connecticut	27.26	47.26	12.57	28.55	49.41	13.03	12.34	19.09	8.14
Detroit	24.00	42.60	10.86	27.21	47.83	12.19	13.05	22.48	6.96
Georgia	18.83	34.03	8.02	21.38	38.14	8.83	11.12	19.27	6.19
Atlanta	17.15	32.18	7.10	20.37	37.38	8.23	11.37	21.18	5.67
Rural Georgia	13.29	22.70	6.28	16.23	26.45	7.99	-	-	-
Greater Georgia	19.73	35.13	8.51	21.88	38.70	9.08	11.24	18.57	6.73
Hawaii	14.06	24.08	6.14	23.48	39.11	8.68	-	-	-
Iowa	22.52	40.44	8.83	22.27	40.07	8.65	14.56	29.07	-
Kentucky	22.95	40.76	9.83	23.19	41.08	9.94	15.77	27.72	7.94
Louisiana	18.96	33.67	8.05	21.48	37.91	8.75	12.06	20.52	6.50
New Jersey	24.07	42.09	11.25	26.31	45.80	12.19	13.27	22.47	7.70
New Mexico	14.92	26.07	5.98	15.66	27.26	6.25	10.01	-	-
Seattle-Puget Sound	22.72	39.21	9.87	23.95	41.06	10.41	10.83	16.91	4.94
Utah	17.01	30.70	5.79	17.30	31.32	5.75	-	-	-
9 SEER Areas <sup>b</sup>	20.88	36.70	9.00	23.04	40.27	9.79	12.72	21.95	6.73
11 SEER Areas <sup>b</sup>	19.81	34.92	8.48	22.02	38.65	9.29	12.99	22.41	6.77
13 SEER Areas <sup>b</sup>	19.77	34.86	8.47	22.00	38.61	9.29	12.88	22.23	6.72
18 SEER Areas <sup>b</sup>	20.32	35.81	8.74	22.23	39.00	9.43	12.64	21.40	6.87

<sup>a</sup> Rates are per 100,000 and are age-adjusted to the 2000 US Std Population (19 age groups - Census P25-1130)

<sup>b</sup> The SEER 9 areas are San Francisco, Connecticut, Detroit, Hawaii, Iowa, New Mexico, Seattle, Utah and Atlanta.

The SEER 11 areas comprise the SEER 9 areas plus San Jose-Monterey and Los Angeles.

The SEER 13 areas comprise the SEER 11 areas plus the Alaska Native Registry and Rural Georgia.

The SEER 18 areas comprise the SEER 13 areas plus California excluding SF/SJM/LA, Kentucky, Louisiana, New Jersey and Georgia excluding ATL/RG.

- Statistic not shown. Rate based on less than 16 cases for the time interval.



Table 27.17  
Cancer of the Urinary Bladder

Age-Adjusted SEER Death Rates<sup>a</sup>  
By Registry, Race and Sex

	All Races			Whites			Blacks		
	Total	Males	Females	Total	Males	Females	Total	Males	Females
<u>SEER Death Rates<sup>a</sup>, 2008-2012</u>									
California	3.94	6.76	1.96	4.33	7.48	2.09	3.89	5.54	2.82
Greater Bay Area	3.52	6.10	1.76	4.09	7.13	1.99	4.47	7.32	2.82
San Francisco-Oakland	3.58	6.31	1.74	4.15	7.37	1.95	4.52	7.35	2.91
San Jose-Monterey	3.41	5.69	1.79	3.98	6.71	2.06	-	-	-
Los Angeles	3.59	6.11	1.89	3.93	6.75	2.00	3.65	5.01	2.76
Greater California	4.24	7.27	2.07	4.55	7.85	2.16	3.83	5.09	2.92
Connecticut	4.83	8.46	2.44	5.01	8.86	2.44	2.87	3.33	2.50
Detroit	4.99	8.80	2.56	5.39	9.65	2.63	3.88	5.87	2.64
Georgia	4.37	7.66	2.30	4.69	8.32	2.28	3.45	5.18	2.51
Atlanta	4.04	7.15	2.18	4.69	8.36	2.31	2.77	4.23	2.01
Rural Georgia	3.00	-	-	3.60	-	-	-	-	-
Greater Georgia	4.55	7.97	2.35	4.72	8.41	2.26	3.93	5.83	2.88
Hawaii	2.56	4.73	0.96	4.62	8.07	1.79	-	-	-
Iowa	4.52	8.17	2.04	4.54	8.21	2.05	-	-	-
Kentucky	4.82	8.52	2.37	4.87	8.60	2.37	4.64	8.13	2.80
Louisiana	4.18	7.09	2.29	4.44	7.73	2.19	3.53	5.13	2.65
New Jersey	4.90	8.59	2.54	5.24	9.16	2.70	3.51	5.59	2.29
New Mexico	3.81	6.60	1.73	4.02	6.87	1.86	-	-	-
Seattle-Puget Sound	4.84	8.39	2.36	5.07	8.80	2.43	4.03	5.98	-
Utah	3.91	6.69	1.84	3.98	6.81	1.87	-	-	-
9 SEER Areas <sup>b</sup>	4.29	7.54	2.09	4.69	8.27	2.22	3.57	5.45	2.45
11 SEER Areas <sup>b</sup>	4.09	7.12	2.03	4.50	7.88	2.17	3.61	5.36	2.52
13 SEER Areas <sup>b</sup>	4.08	7.10	2.03	4.49	7.85	2.17	3.58	5.33	2.51
18 SEER Areas <sup>b</sup>	4.29	7.45	2.15	4.63	8.09	2.25	3.67	5.48	2.60
Total U.S.	4.40	7.65	2.19	4.61	8.07	2.22	3.54	5.30	2.50

<sup>a</sup> US Mortality Files, National Center for Health Statistics, Centers for Disease Control and Prevention. Rates are per 100,000 and are age-adjusted to the 2000 US Std Population (19 age groups - Census P25-1130).

<sup>b</sup> The SEER 9 areas are San Francisco, Connecticut, Detroit, Hawaii, Iowa, New Mexico, Seattle, Utah and Atlanta. The SEER 11 areas comprise the SEER 9 areas plus San Jose-Monterey and Los Angeles.

The SEER 13 areas comprise the SEER 11 areas plus the Alaska Native Registry and Rural Georgia.

The SEER 18 areas comprise the SEER 13 areas plus California excluding SF/SJM/LA, Kentucky, Louisiana, New Jersey and Georgia excluding ATL/RG.

- Statistic not shown. Rate based on less than 16 cases for the time interval.

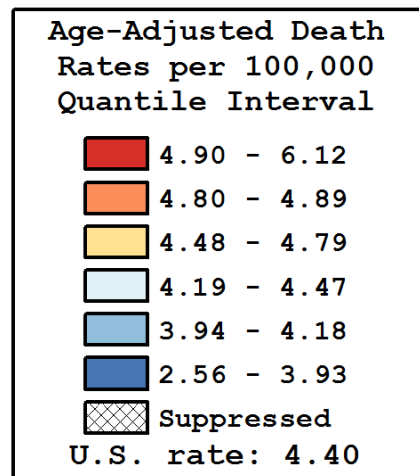
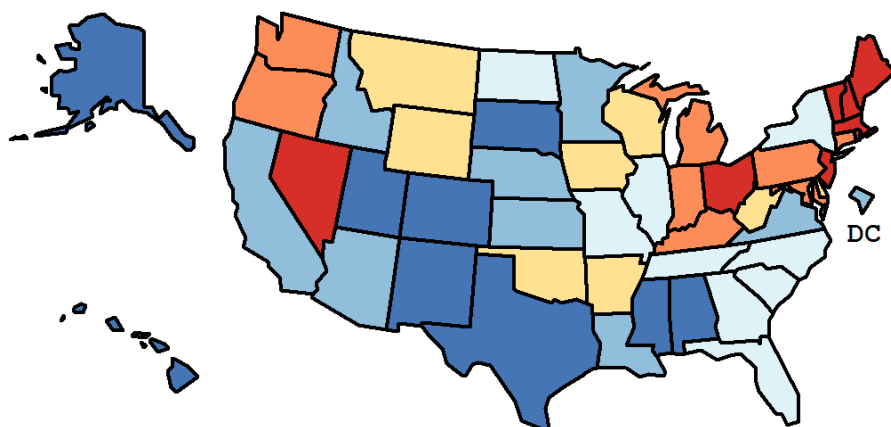
Table 27.18  
Cancer of the Urinary Bladder (Invasive)

Age-Adjusted Cancer Death<sup>a</sup> Rates By State, All Races, 2008-2012

Males and Females

State	Rate	SE	Rank(CI) <sup>d</sup>	PD
TOTAL U.S.	4.40	0.02		
High Five States				
Maine	6.12 <sup>b</sup>	0.27	01(01,04)	38.87 <sup>c</sup>
Vermont	5.69	0.40	02(01,21)	29.25 <sup>c</sup>
Nevada	5.32 <sup>b</sup>	0.21	03(01,18)	20.80 <sup>c</sup>
Massachusetts	5.16 <sup>b</sup>	0.12	04(02,14)	17.15 <sup>c</sup>
Ohio	5.04 <sup>b</sup>	0.09	05(03,16)	14.36
Low Five States				
South Dakota	3.79	0.28	47(20,50)	-13.97
Alaska	3.76	0.44	48(05,51)	-14.61
Texas	3.70 <sup>b</sup>	0.06	49(43,50)	-16.01 <sup>c</sup>
Mississippi	3.59 <sup>b</sup>	0.15	50(38,50)	-18.41 <sup>c</sup>
Hawaii	2.56 <sup>b</sup>	0.18	51(50,51)	-41.79 <sup>c</sup>

State	Rate	SE	Rank(CI) <sup>d</sup>	PD	State	Rate	SE	Rank(CI) <sup>d</sup>	PD
Alabama	3.93 <sup>b</sup>	0.12	43(29,50)	-10.87	Montana	4.79	0.28	17(02,42)	8.75
Alaska	3.76	0.44	48(05,51)	-14.61	Nebraska	4.05	0.20	39(18,50)	-8.04
Arizona	4.12	0.11	37(25,47)	-6.44	Nevada	5.32 <sup>b</sup>	0.21	03(01,18)	20.80 <sup>c</sup>
Arkansas	4.53	0.17	21(06,41)	2.85	New Hampshire	5.00	0.26	06(02,34)	13.47
California	3.94 <sup>b</sup>	0.05	42(37,48)	-10.60	New Jersey	4.90 <sup>b</sup>	0.10	08(04,21)	11.15
Colorado	3.85 <sup>b</sup>	0.13	45(32,50)	-12.61	New Mexico	3.81	0.19	46(28,50)	-13.39
Connecticut	4.83	0.15	13(03,28)	9.58	New York	4.43	0.06	27(18,34)	0.68
Delaware	4.69	0.30	18(02,46)	6.47	North Carolina	4.20	0.09	33(23,44)	-4.73
D.C.	4.00	0.38	41(04,50)	-9.06	North Dakota	4.45	0.33	26(02,50)	0.97
Florida	4.47	0.06	25(17,32)	1.45	Ohio	5.04 <sup>b</sup>	0.09	05(03,16)	14.36
Georgia	4.37	0.10	29(17,40)	-0.75	Oklahoma	4.48	0.15	24(09,41)	1.74
Hawaii	2.56 <sup>b</sup>	0.18	51(50,51)	-41.79 <sup>c</sup>	Oregon	4.85	0.15	10(03,27)	10.12
Idaho	4.18	0.23	36(10,50)	-5.14	Pennsylvania	4.81 <sup>b</sup>	0.08	15(05,22)	9.32
Illinois	4.40	0.08	28(18,37)	-0.07	Rhode Island	4.90	0.28	07(02,39)	11.23
Indiana	4.80	0.12	16(04,26)	9.00	South Carolina	4.29	0.13	30(17,44)	-2.60
Iowa	4.52	0.16	23(07,40)	2.56	South Dakota	3.79	0.28	47(20,50)	-13.97
Kansas	4.09	0.16	38(20,49)	-7.21	Tennessee	4.25	0.11	32(19,44)	-3.43
Kentucky	4.82	0.15	14(03,28)	9.42	Texas	3.70 <sup>b</sup>	0.06	49(43,50)	-16.01 <sup>c</sup>
Louisiana	4.18	0.14	34(20,47)	-5.10	Utah	3.91	0.20	44(22,50)	-11.13
Maine	6.12 <sup>b</sup>	0.27	01(01,04)	38.87 <sup>c</sup>	Vermont	5.69	0.40	02(01,21)	29.25 <sup>c</sup>
Maryland	4.89 <sup>b</sup>	0.13	09(03,24)	10.98	Virginia	4.18	0.10	35(22,45)	-5.12
Massachusetts	5.16 <sup>b</sup>	0.12	04(02,14)	17.15 <sup>c</sup>	Washington	4.84 <sup>b</sup>	0.12	11(04,25)	9.88
Michigan	4.84 <sup>b</sup>	0.09	12(04,22)	9.80	West Virginia	4.53	0.20	22(05,42)	2.83
Minnesota	4.04	0.12	40(27,48)	-8.30	Wisconsin	4.65	0.12	20(06,32)	5.63
Mississippi	3.59 <sup>b</sup>	0.15	50(38,50)	-18.41 <sup>c</sup>	Wyoming	4.68	0.41	19(02,50)	6.30
Missouri	4.27	0.11	31(19,43)	-3.08					



<sup>a</sup> US Mortality Files, National Center for Health Statistics, Centers for Disease Control and Prevention. Rates are per 100,000 and are age-adjusted to the 2000 US Std Population (19 age groups - Census P25-1130).

<sup>b</sup> Difference between state rate and total U.S. rate is statistically significant ( $p < .0002$ ).

<sup>c</sup> Absolute percent difference between state rate and total U.S. rate is 15% or more.

<sup>d</sup> Rank of state level death rate and the 95% confidence intervals (low, high) for the rank.

SE Standard error of the rate.

PD Percent difference between state rate and total U.S. rate.

- Statistic not shown. Rate based on less than 16 cases for the time interval.

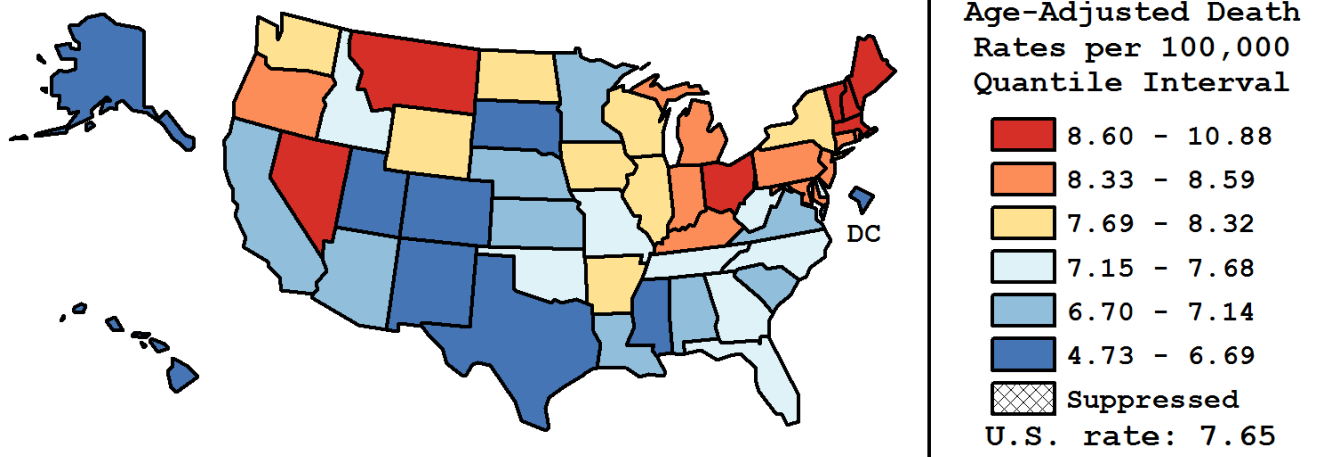
Table 27.19  
Cancer of the Urinary Bladder (Invasive)

Age-Adjusted Cancer Death<sup>a</sup> Rates By State, All Races, 2008-2012

Males

State	Rate	SE	Rank(CI) <sup>d</sup>	PD
TOTAL U.S.	7.65	0.03		
High Five States				
Maine	10.88 <sup>b</sup>	0.56	01(01,03)	42.19 <sup>c</sup>
Vermont	9.61	0.80	02(01,33)	25.49 <sup>c</sup>
New Hampshire	8.91	0.55	03(01,32)	16.44 <sup>c</sup>
Massachusetts	8.88 <sup>b</sup>	0.24	04(02,19)	15.96 <sup>c</sup>
Ohio	8.80 <sup>b</sup>	0.18	05(02,18)	14.92
Low Five States				
Texas	6.40 <sup>b</sup>	0.13	47(41,50)	-16.41 <sup>c</sup>
Mississippi	6.33 <sup>b</sup>	0.34	48(30,50)	-17.27 <sup>c</sup>
D.C.	5.78	0.74	49(18,51)	-24.55 <sup>c</sup>
Alaska	5.74	0.82	50(11,51)	-25.03 <sup>c</sup>
Hawaii	4.73 <sup>b</sup>	0.37	51(49,51)	-38.15 <sup>c</sup>

State	Rate	SE	Rank(CI) <sup>d</sup>	PD	State	Rate	SE	Rank(CI) <sup>d</sup>	PD
Alabama	7.10	0.27	36(20,48)	-7.29	Montana	8.66	0.59	07(01,41)	13.10
Alaska	5.74	0.82	50(11,51)	-25.03 <sup>c</sup>	Nebraska	7.03	0.41	40(16,49)	-8.15
Arizona	7.08	0.22	38(23,47)	-7.47	Nevada	8.67	0.42	06(02,29)	13.23
Arkansas	7.81	0.35	20(04,42)	2.09	New Hampshire	8.91	0.55	03(01,32)	16.44 <sup>c</sup>
California	6.76 <sup>b</sup>	0.10	42(35,47)	-11.69	New Jersey	8.59 <sup>b</sup>	0.21	09(02,22)	12.23
Colorado	6.60 <sup>b</sup>	0.27	44(29,50)	-13.71	New Mexico	6.60	0.38	45(22,50)	-13.75
Connecticut	8.46	0.32	16(02,29)	10.49	New York	7.81	0.14	21(16,31)	1.99
Delaware	7.49	0.61	30(02,50)	-2.18	North Carolina	7.32	0.20	31(21,44)	-4.41
D.C.	5.78	0.74	49(18,51)	-24.55 <sup>c</sup>	North Dakota	7.71	0.66	24(02,49)	0.67
Florida	7.66	0.12	26(19,33)	0.11	Ohio	8.80 <sup>b</sup>	0.18	05(02,18)	14.92
Georgia	7.66	0.23	27(14,39)	0.08	Oklahoma	7.62	0.31	28(08,43)	-0.51
Hawaii	4.73 <sup>b</sup>	0.37	51(49,51)	-38.15 <sup>c</sup>	Oregon	8.47	0.31	15(02,27)	10.69
Idaho	7.26	0.47	32(08,49)	-5.21	Pennsylvania	8.59 <sup>b</sup>	0.16	08(03,20)	12.28
Illinois	7.73	0.17	23(15,36)	1.06	Rhode Island	8.49	0.58	12(01,41)	10.94
Indiana	8.47	0.25	14(02,25)	10.72	South Carolina	7.07	0.28	39(20,48)	-7.58
Iowa	8.17	0.33	19(03,36)	6.72	South Dakota	6.50	0.56	46(15,51)	-15.08 <sup>c</sup>
Kansas	6.94	0.33	41(20,49)	-9.39	Tennessee	7.68	0.25	25(12,40)	0.29
Kentucky	8.52	0.31	11(02,27)	11.30	Texas	6.40 <sup>b</sup>	0.13	47(41,50)	-16.41 <sup>c</sup>
Louisiana	7.09	0.29	37(20,49)	-7.43	Utah	6.69	0.40	43(20,50)	-12.53
Maine	10.88 <sup>b</sup>	0.56	01(01,03)	42.19 <sup>c</sup>	Vermont	9.61	0.80	02(01,33)	25.49 <sup>c</sup>
Maryland	8.58	0.28	10(02,25)	12.16	Virginia	7.14	0.22	34(22,46)	-6.72
Massachusetts	8.88 <sup>b</sup>	0.24	04(02,19)	15.96 <sup>c</sup>	Washington	8.31	0.25	18(03,27)	8.57
Michigan	8.48 <sup>b</sup>	0.20	13(03,23)	10.81	West Virginia	7.49	0.40	29(07,47)	-2.17
Minnesota	7.13	0.25	35(22,47)	-6.87	Wisconsin	8.32	0.25	17(03,28)	8.69
Mississippi	6.33 <sup>b</sup>	0.34	48(30,50)	-17.27 <sup>c</sup>	Wyoming	7.78	0.80	22(02,50)	1.68
Missouri	7.22	0.23	33(21,46)	-5.72					



<sup>a</sup> US Mortality Files, National Center for Health Statistics, Centers for Disease Control and Prevention. Rates are per 100,000 and are age-adjusted to the 2000 US Std Population (19 age groups - Census P25-1130).

<sup>b</sup> Difference between state rate and total U.S. rate is statistically significant ( $p < .0002$ ).

<sup>c</sup> Absolute percent difference between state rate and total U.S. rate is 15% or more.

<sup>d</sup> Rank of state level death rate and the 95% confidence intervals (low, high) for the rank.

SE Standard error of the rate.

PD Percent difference between state rate and total U.S. rate.

- Statistic not shown. Rate based on less than 16 cases for the time interval.

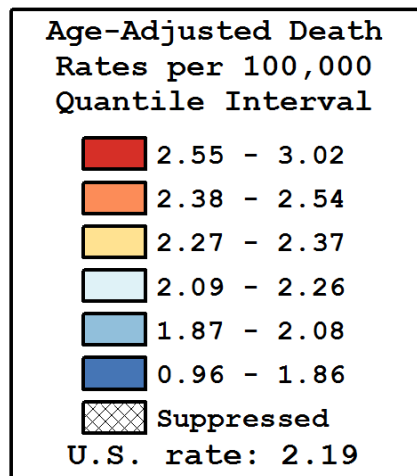
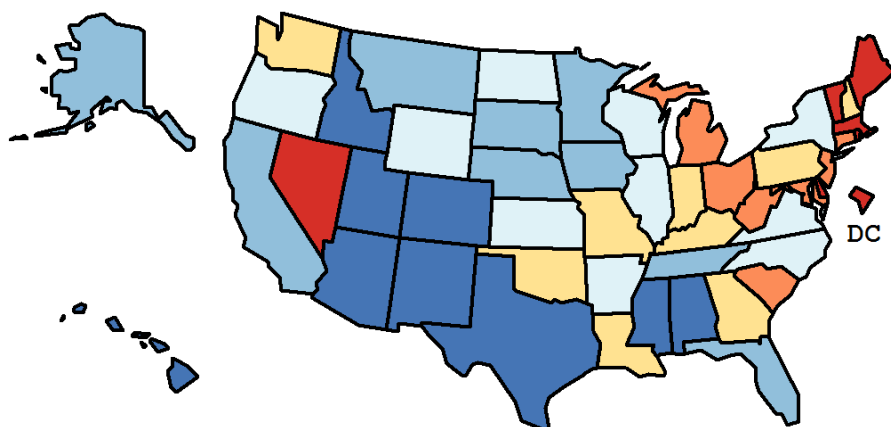
Table 27.20  
Cancer of the Urinary Bladder (Invasive)

Age-Adjusted Cancer Death<sup>a</sup> Rates By State, All Races, 2008-2012

Females

State	Rate	SE	Rank(CI) <sup>d</sup>	PD
TOTAL U.S.	2.19	0.02		
High Five States				
D.C.	3.02	0.43	01(01,46)	37.51 <sup>c</sup>
Delaware	2.84	0.31	02(01,39)	29.45 <sup>c</sup>
Vermont	2.81	0.37	03(01,45)	28.26 <sup>c</sup>
Massachusetts	2.76 <sup>b</sup>	0.11	04(01,15)	25.94 <sup>c</sup>
Maine	2.75	0.24	05(01,35)	25.57 <sup>c</sup>
Low Five States				
Colorado	1.84	0.12	47(28,50)	-16.24 <sup>c</sup>
Texas	1.84 <sup>b</sup>	0.06	48(36,50)	-16.30 <sup>c</sup>
Idaho	1.81	0.21	49(10,50)	-17.64 <sup>c</sup>
New Mexico	1.73	0.17	50(22,50)	-21.11 <sup>c</sup>
Hawaii	0.96 <sup>b</sup>	0.14	51(50,51)	-56.20 <sup>c</sup>

State	Rate	SE	Rank(CI) <sup>d</sup>	PD	State	Rate	SE	Rank(CI) <sup>d</sup>	PD
Alabama	1.86	0.11	43(26,50)	-15.27 <sup>c</sup>	Montana	1.93	0.24	40(05,50)	-12.06
Alaska	2.06	0.46	35(01,51)	-6.23	Nebraska	2.03	0.19	37(07,50)	-7.59
Arizona	1.84 <sup>b</sup>	0.10	44(30,50)	-15.93 <sup>c</sup>	Nevada	2.70	0.20	06(01,32)	23.35 <sup>c</sup>
Arkansas	2.26	0.15	25(04,46)	3.19	New Hampshire	2.27	0.23	22(02,49)	3.66
California	1.96 <sup>b</sup>	0.04	39(32,46)	-10.50	New Jersey	2.54 <sup>b</sup>	0.09	08(02,27)	15.88 <sup>c</sup>
Colorado	1.84	0.12	47(28,50)	-16.24 <sup>c</sup>	New Mexico	1.73	0.17	50(22,50)	-21.11 <sup>c</sup>
Connecticut	2.44	0.14	13(02,37)	11.19	New York	2.26	0.06	24(12,35)	3.21
Delaware	2.84	0.31	02(01,39)	29.45 <sup>c</sup>	North Carolina	2.20	0.09	30(11,41)	0.46
D.C.	3.02	0.43	01(01,46)	37.51 <sup>c</sup>	North Dakota	2.09	0.30	33(01,50)	-4.64
Florida	2.08	0.05	34(23,42)	-5.06	Ohio	2.54 <sup>b</sup>	0.08	10(03,22)	15.65 <sup>c</sup>
Georgia	2.30	0.10	19(07,37)	4.70	Oklahoma	2.29	0.14	20(04,43)	4.53
Hawaii	0.96 <sup>b</sup>	0.14	51(50,51)	-56.20 <sup>c</sup>	Oregon	2.22	0.13	29(06,45)	1.04
Idaho	1.81	0.21	49(10,50)	-17.64 <sup>c</sup>	Pennsylvania	2.32	0.07	18(08,34)	5.95
Illinois	2.23	0.08	27(11,39)	1.51	Rhode Island	2.60	0.26	07(01,43)	18.62 <sup>c</sup>
Indiana	2.34	0.11	17(05,37)	6.88	South Carolina	2.45	0.13	11(02,35)	11.85
Iowa	2.04	0.14	36(13,50)	-7.17	South Dakota	1.90	0.26	41(04,50)	-13.13
Kansas	2.15	0.16	32(06,49)	-2.06	Tennessee	2.00	0.10	38(20,49)	-8.91
Kentucky	2.37	0.13	16(03,39)	7.95	Texas	1.84 <sup>b</sup>	0.06	48(36,50)	-16.30 <sup>c</sup>
Louisiana	2.29	0.13	21(05,43)	4.22	Utah	1.84	0.18	46(14,50)	-16.06 <sup>c</sup>
Maine	2.75	0.24	05(01,35)	25.57 <sup>c</sup>	Vermont	2.81	0.37	03(01,45)	28.26 <sup>c</sup>
Maryland	2.54	0.12	09(02,29)	15.76 <sup>c</sup>	Virginia	2.22	0.10	28(09,42)	1.11
Massachusetts	2.76 <sup>b</sup>	0.11	04(01,15)	25.94 <sup>c</sup>	Washington	2.37	0.11	15(04,36)	8.27
Michigan	2.40	0.09	14(05,32)	9.33	West Virginia	2.44	0.19	12(01,43)	11.48
Minnesota	1.90	0.11	42(27,50)	-13.28	Wisconsin	2.16	0.11	31(10,45)	-1.44
Mississippi	1.84	0.14	45(21,50)	-15.99 <sup>c</sup>	Wyoming	2.25	0.39	26(01,50)	2.81
Missouri	2.27	0.11	23(06,39)	3.61					



<sup>a</sup> US Mortality Files, National Center for Health Statistics, Centers for Disease Control and Prevention. Rates are per 100,000 and are age-adjusted to the 2000 US Std Population (19 age groups - Census P25-1130).

<sup>b</sup> Difference between state rate and total U.S. rate is statistically significant ( $p < .0002$ ).

<sup>c</sup> Absolute percent difference between state rate and total U.S. rate is 15% or more.

<sup>d</sup> Rank of state level death rate and the 95% confidence intervals (low, high) for the rank.

SE Standard error of the rate.

PD Percent difference between state rate and total U.S. rate.

- Statistic not shown. Rate based on less than 16 cases for the time interval.

Table 27.21  
Cancer of the Urinary Bladder (Invasive and *In Situ*)

Estimated United States Cancer Prevalence Counts<sup>a</sup> on January 1, 2012  
By Race/Ethnicity, Sex and Years Since Diagnosis

Years Since Diagnosis		0 to <5	5 to <10	10 to <15	15 to <20	20 to <25	25 to <30	0 to <20 <sup>e</sup>	0 to <37 <sup>e</sup>	>=37 <sup>g</sup>	Complete <sup>h</sup>
<u>Race</u>	<u>Sex</u>										
All Races <sup>b</sup>	Both Sexes	201,191	137,251	93,700	60,683	36,747	22,208	509,716	567,531	9,872	577,403
	Males	153,198	102,629	69,335	44,678	27,365	16,037	382,334	424,112	6,373	430,485
	Females	47,993	34,622	24,365	16,005	9,382	6,171	127,382	143,419	3,499	146,918
White <sup>b</sup>	Both Sexes	183,732	127,045	87,671	57,113	35,092	21,111	471,627	526,751	7,746	534,497
	Males	140,619	95,528	65,102	41,940	26,132	15,166	355,088	394,869	4,905	399,774
	Females	43,113	31,517	22,569	15,173	8,960	5,945	116,539	131,882	2,841	134,723
Black <sup>b</sup>	Both Sexes	9,462	5,372	3,390	2,240	1,025	654	20,936	22,532	171	22,703
	Males	6,575	3,529	2,191	1,740	758	540	14,335	15,551	139	15,690
	Females	2,887	1,843	1,199	500	267	114	6,601	6,981	32	7,013
Asian/ Pacific Islander <sup>c</sup>	Both Sexes	3,723	2,419	1,330	+	+	+	8,273	+	+	+
	Males	2,817	1,874	961	+	+	+	6,271	+	+	+
	Females	906	545	369	+	+	+	2,002	+	+	+
Hispanic <sup>d</sup>	Both Sexes	7,902	4,846	2,952	+	+	+	17,563	+	+	+
	Males	5,846	3,688	2,221	+	+	+	13,089	+	+	+
	Females	2,056	1,158	731	+	+	+	4,474	+	+	+

Estimated prevalence percent<sup>a</sup> on January 1, 2012, of the SEER<sup>c</sup> population diagnosed in the previous 20 years  
By Age at Prevalence, Race/Ethnicity and Sex

Age at Prevalence	Race	Sex	Age Specific (Crude)								Age-Adjusted <sup>f</sup>		
			All Ages	0-9	10-19	20-29	30-39	40-49	50-59	60-69	70-79	80+	All Ages
	All Races <sup>c</sup>	Both Sexes	0.1341%	0.0002%	0.0004%	0.0015%	0.0070%	0.0275%	0.1093%	0.3531%	0.8054%	1.1910%	0.1312%
		Males	0.2049%	0.0002%	0.0005%	0.0020%	0.0098%	0.0414%	0.1721%	0.5765%	1.3785%	2.3179%	0.2296%
		Females	0.0650%	-	0.0002%	0.0009%	0.0041%	0.0138%	0.0492%	0.1511%	0.3409%	0.5247%	0.0570%
	White <sup>c</sup>	Both Sexes	0.1618%	0.0002%	0.0004%	0.0017%	0.0085%	0.0320%	0.1243%	0.4052%	0.9282%	1.3163%	0.1490%
		Males	0.2454%	-	0.0006%	0.0024%	0.0117%	0.0469%	0.1927%	0.6519%	1.5715%	2.5648%	0.2581%
		Females	0.0784%	-	-	0.0010%	0.0050%	0.0166%	0.0566%	0.1748%	0.3936%	0.5697%	0.0647%
	Black <sup>c</sup>	Both Sexes	0.0496%	-	-	-	0.0030%	0.0164%	0.0663%	0.1838%	0.3749%	0.5505%	0.0647%
		Males	0.0721%	-	-	-	0.0047%	0.0263%	0.1086%	0.3101%	0.6198%	0.9906%	0.1104%
		Females	0.0291%	-	-	-	0.0014%	0.0076%	0.0295%	0.0846%	0.2034%	0.3369%	0.0343%
	Asian/ Pacific Islander <sup>c</sup>	Both Sexes	0.0576%	-	-	-	0.0026%	0.0101%	0.0472%	0.1437%	0.3333%	0.6561%	0.0595%
		Males	0.0906%	-	-	-	0.0033%	0.0170%	0.0781%	0.2450%	0.6012%	1.2223%	0.1068%
		Females	0.0274%	-	-	-	0.0021%	0.0040%	0.0205%	0.0600%	0.1262%	0.3102%	0.0254%
	Hispanic <sup>d</sup>	Both Sexes	0.0344%	-	-	0.0013%	0.0036%	0.0147%	0.0503%	0.1615%	0.3976%	0.6415%	0.0660%
		Males	0.0505%	-	-	0.0016%	0.0050%	0.0195%	0.0774%	0.2613%	0.7170%	1.2369%	0.1171%
		Females	0.0180%	-	-	0.0009%	0.0023%	0.0096%	0.0243%	0.0758%	0.1610%	0.2852%	0.0295%

<sup>a</sup> US 2012 cancer prevalence counts are based on 2012 cancer prevalence proportions from the SEER registries and 1/1/2012 US population estimates based on the average of 2011 and 2012 population estimates from the US Bureau of the Census.

<sup>b c d</sup> Prevalence was calculated using the First Malignant Primary Only for a person. Statistics based on (b) SEER 9 Areas (c) SEER 11 Areas and Rural Georgia (d) NHIA for Hispanic for SEER 11 Areas and Rural Georgia.

<sup>e</sup> Maximum limited-duration prevalence: 37 years for 1975-2012 SEER 9 data; 20 years for 1992-2012 SEER 11 data (used to calculate prevalence for Hispanics and Asian Pacific Islanders).

<sup>f</sup> Percentages are age-adjusted to the 2000 US Standard Population (19 age groups - Census P25-1130) by 5-year age groups.

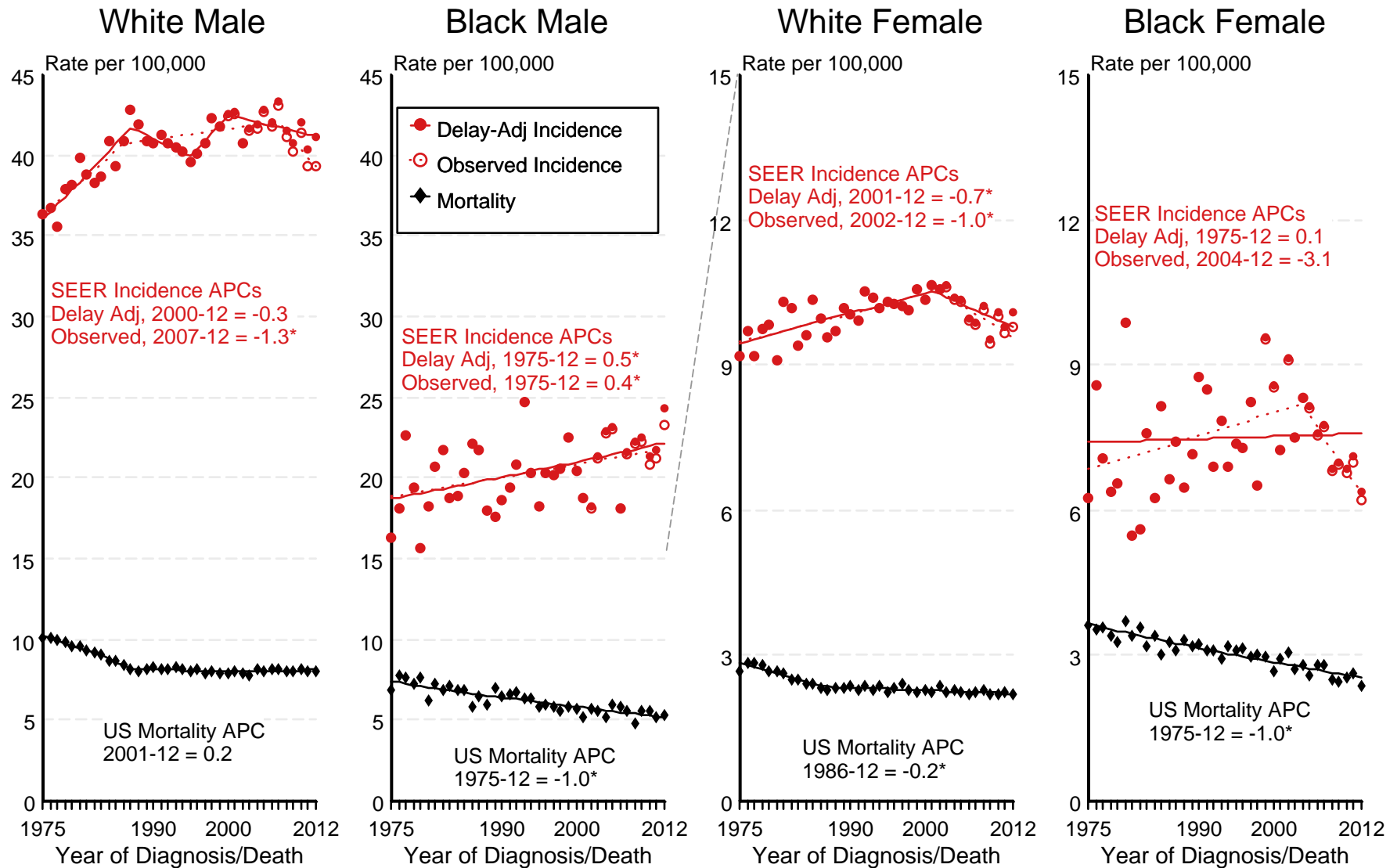
<sup>g h i</sup> (g) Cases diagnosed more than 37 years ago were estimated using the completeness index method (Capocaccia et. al. 1997, Merrill et. al. 2000). (h) Complete prevalence is obtained by summing 0 to <37 and >=37. (i) Age-specific completeness index was approximated using empirical data from historical Connecticut tumor registry.

- Statistic not shown. Statistic based on fewer than 5 cases estimated alive in SEER for the time interval.

+ Not available.

Figure 27.1

# SEER Observed Incidence, SEER Delay Adjusted Incidence and US Death Rates<sup>a</sup> Cancer of the Urinary Bladder, by Race and Sex



Source: SEER 9 areas and US Mortality Files (National Center for Health Statistics, CDC).

<sup>a</sup> Rates are age-adjusted to the 2000 US Std Population (19 age groups - Census P25-1103).

Regression lines and APCs are calculated using the Joinpoint Regression Program Version 4.1.0, April 2014, National Cancer Institute.

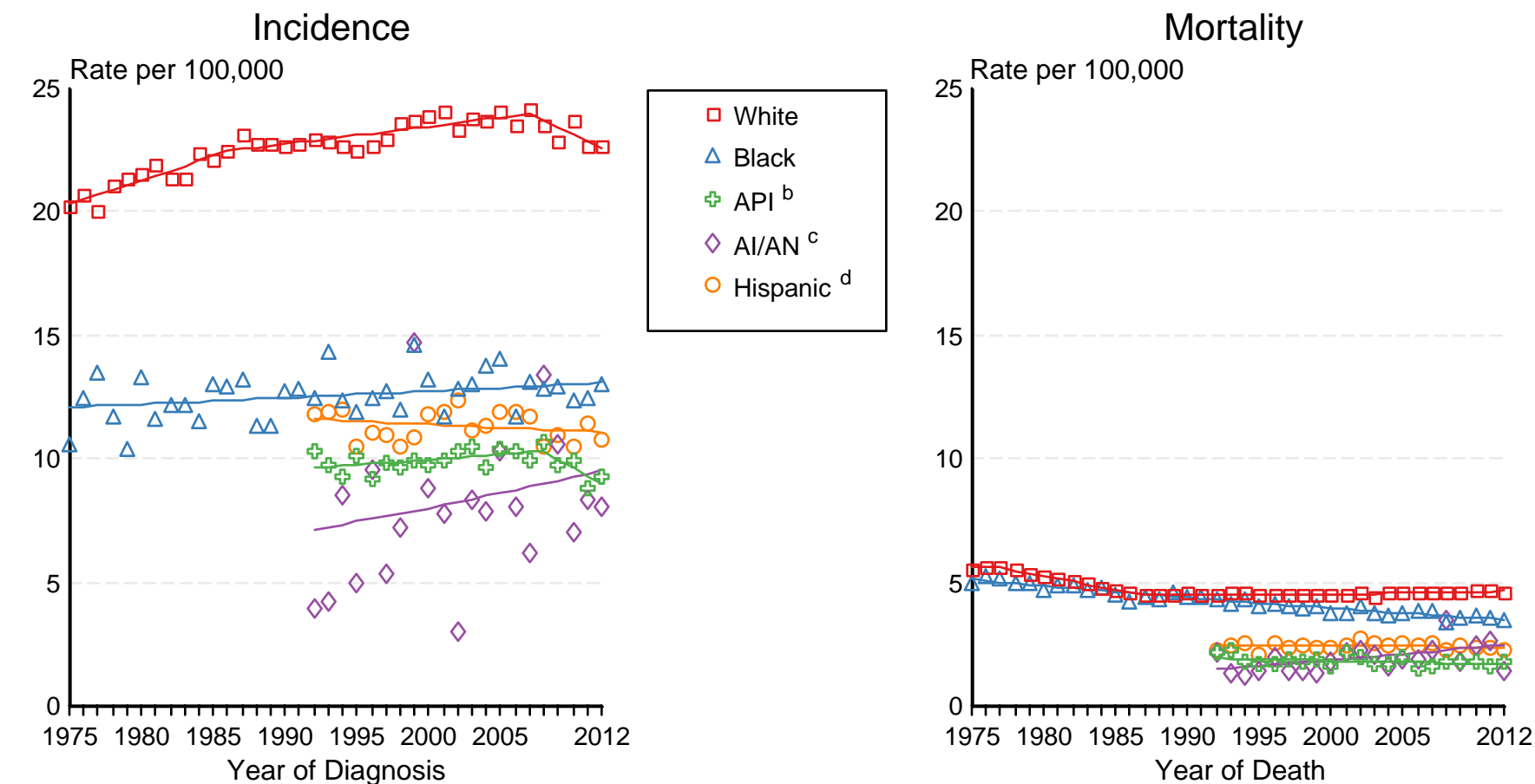
The APC is the Annual Percent Change for the regression line segments. The APC shown on the graph is for the most recent trend.

\* The APC is significantly different from zero ( $p < 0.05$ ).

Figure 27.2

# SEER Incidence and US Death Rates<sup>a</sup> Cancer of the Urinary Bladder, Both Sexes

Joinpoint Analyses for Whites and Blacks from 1975-2012  
and for Asian/Pacific Islanders, American Indians/Alaska Natives and Hispanics from 1992-2012



Source: Incidence data for whites and blacks are from the SEER 9 areas (San Francisco, Connecticut, Detroit, Hawaii, Iowa, New Mexico, Seattle, Utah, Atlanta). Incidence data for Asian/Pacific Islanders, American Indians/Alaska Natives and Hispanics are from the SEER 13 Areas (SEER 9 Areas, San Jose-Monterey, Los Angeles, Alaska Native Registry and Rural Georgia). Mortality data are from US Mortality Files, National Center for Health Statistics, CDC.

<sup>a</sup> Rates are age-adjusted to the 2000 US Std Population (19 age groups - Census P25-1103). Regression lines are calculated using the Joinpoint Regression Program Version 4.1.0, April 2014, National Cancer Institute. Joinpoint analyses for Whites and Blacks during the 1975-2012 period allow a maximum of 5 joinpoints. Analyses for other ethnic groups during the period 1992-2012 allow a maximum of 3 joinpoints.

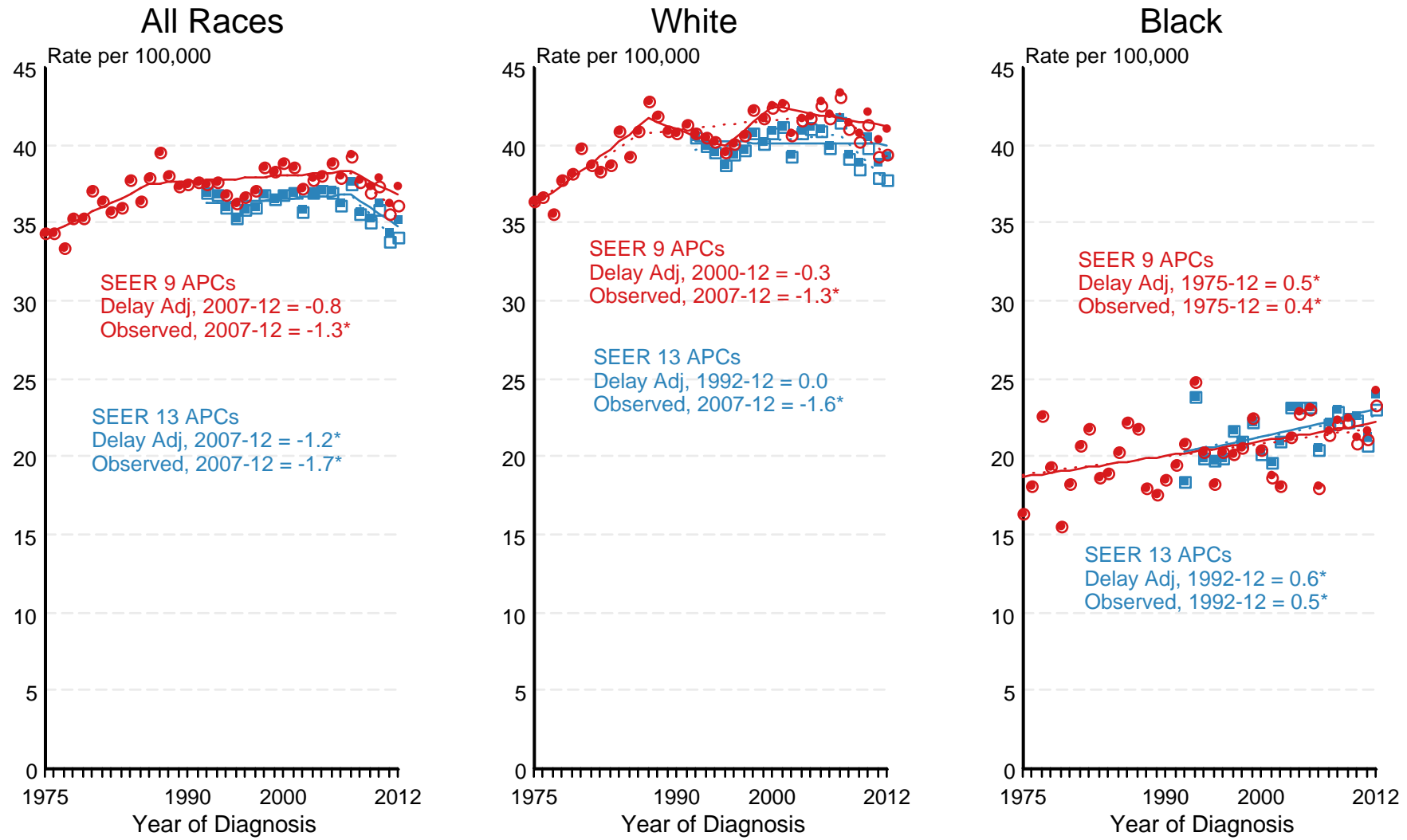
<sup>b</sup> API = Asian/Pacific Islander.

<sup>c</sup> AI/AN = American Indian/Alaska Native. Rates for American Indian/Alaska Native are based on the CHSDA(Contract Health Service Delivery Area) counties.

<sup>d</sup> Hispanic is not mutually exclusive from whites, blacks, Asian/Pacific Islanders, and American Indians/Alaska Natives. Incidence data for Hispanics are based on NHIA and exclude cases from the Alaska Native Registry. Mortality data for Hispanics exclude cases from New Hampshire and Oklahoma.

Figure 27.3

# SEER Observed Incidence and SEER Delay Adjusted Incidence Rates<sup>a</sup> SEER 9 Areas Compared to SEER 13 Areas Cancer of the Urinary Bladder, Male, by Race



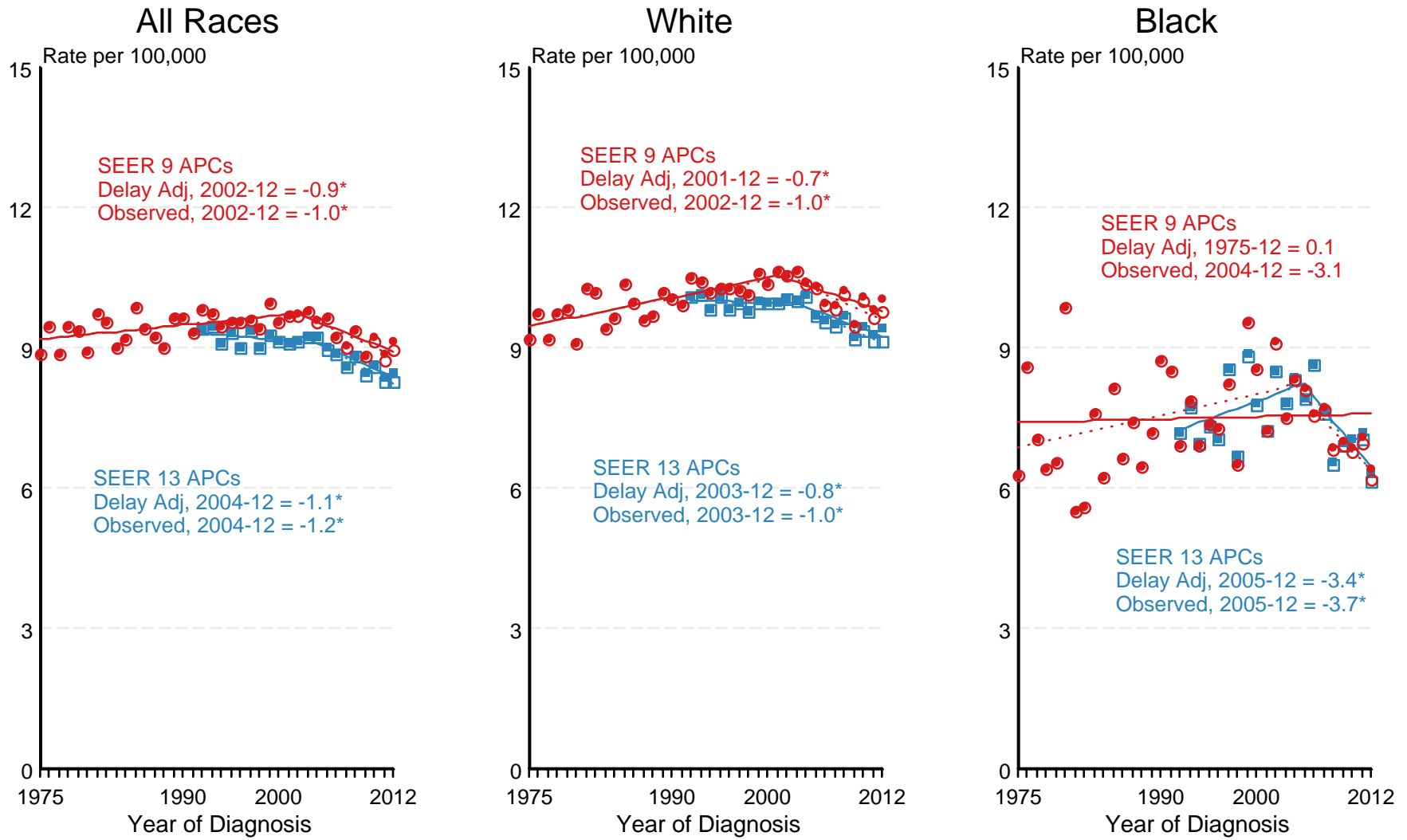
● SEER 9 Delay-Adj. Incidence   
 ○ SEER 9 Observed Incidence   
 ■ SEER 13 Delay-Adj. Incidence   
 □ SEER 13 Observed Incidence

Source: SEER 9 areas and SEER 13 areas.  
<sup>a</sup> Rates are age-adjusted to the 2000 US Std Population (19 age groups - Census P25-1103).  
 Regression lines and APCs are calculated using the Joinpoint Regression Program Version 4.2.0, April 2015, National Cancer Institute.  
 The APC is the Annual Percent Change for the regression line segments. The APC shown on the graph is for the most recent trend.  
 \* The APC is significantly different from zero ( $p < 0.05$ ).



Figure 27.4

# SEER Observed Incidence and SEER Delay Adjusted Incidence Rates<sup>a</sup> SEER 9 Areas Compared to SEER 13 Areas Cancer of the Urinary Bladder, Female, by Race



● SEER 9 Delay-Adj. Incidence   
 ○ SEER 9 Observed Incidence   
 ■ SEER 13 Delay-Adj. Incidence   
 □ SEER 13 Observed Incidence

Source: SEER 9 areas and SEER 13 areas.

<sup>a</sup> Rates are age-adjusted to the 2000 US Std Population (19 age groups - Census P25-1103).

Regression lines and APCs are calculated using the Joinpoint Regression Program Version 4.2.0, April 2015, National Cancer Institute.

The APC is the Annual Percent Change for the regression line segments. The APC shown on the graph is for the most recent trend.

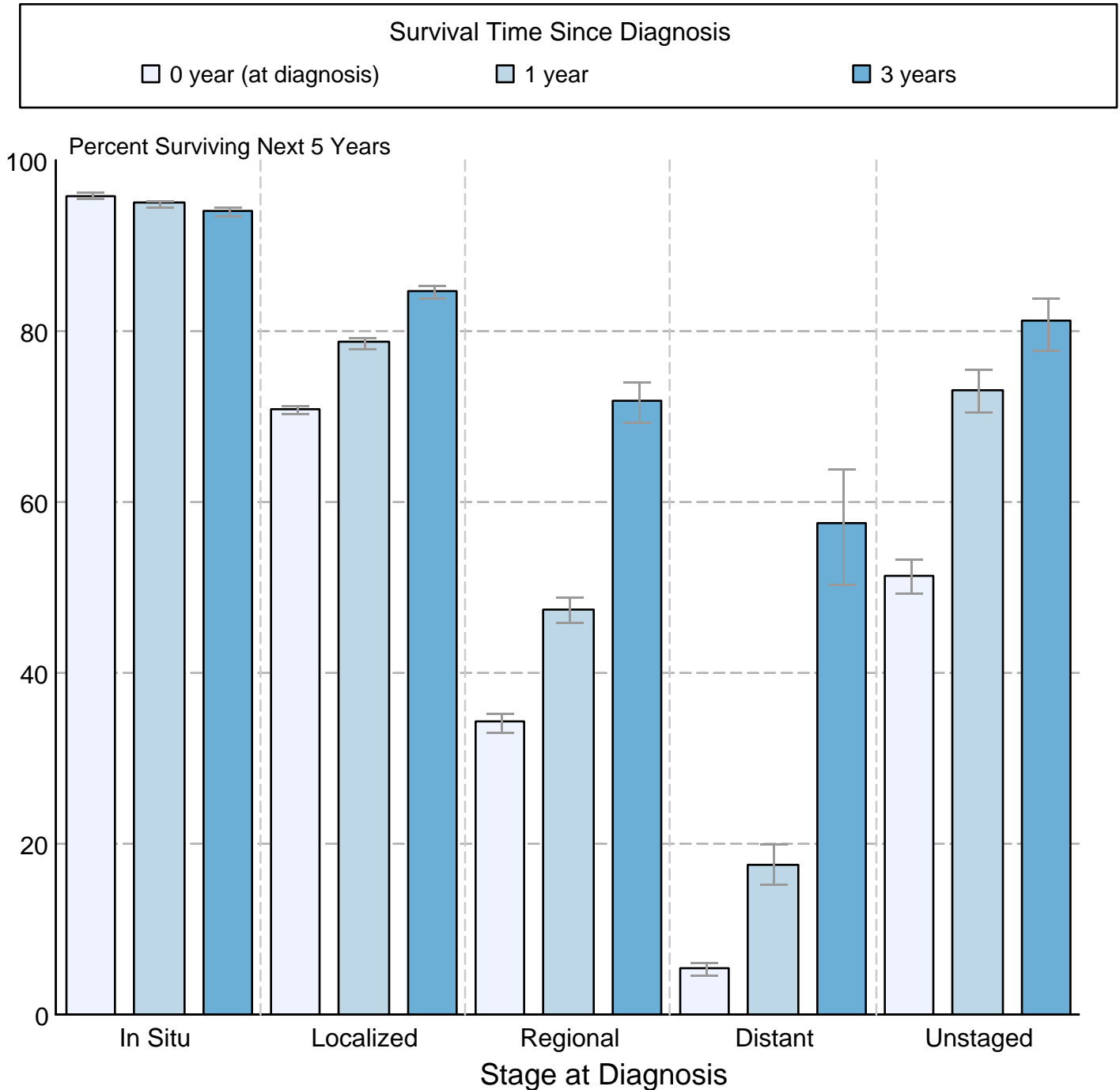
\* The APC is significantly different from zero ( $p < 0.05$ ).

Figure 27.5

## Cancer of the Urinary Bladder

### 5-Year SEER Conditional Relative Survival and 95% Confidence Intervals

Probability of surviving the next 5 years given the cohort  
has already survived 0, 1, or 3 years  
1998-2011 by stage at diagnosis



Source: SEER 18 areas (San Francisco, Connecticut, Detroit, Hawaii, Iowa, New Mexico, Seattle, Utah, Atlanta, San Jose-Monterey, Los Angeles, Alaska Native Registry, Rural Georgia, California excluding SF/SJM/LA, Kentucky, Louisiana, New Jersey and Georgia excluding ATL/RG). California excluding SF/SJM/LA, Kentucky, Louisiana, New Jersey and Georgia excluding ATL/RG contribute cases for diagnosis years 2000 and later. The remaining 13 SEER Areas contribute cases for the entire time period. Percent surviving is not shown if based on less than 25 cases. Confidence intervals are not shown if length of the confidence interval is greater than 5 times the standard error.