

Table 1.5
Age-Adjusted SEER Incidence and U.S. Death Rates and 5-Year Relative Survival (Percent)
By Primary Cancer Site, Sex and Time Period

All Races

Site	Incidence ^a (2008-2012)			US Mortality ^b (2008-2012)			Survival ^c (%) (2005-2011)		
	Total	Males	Females	Total	Males	Females	Total	Males	Females
All Sites	454.8	516.6	411.2	171.2	207.9	145.4	66.5	66.8	66.2
Oral Cavity & Pharynx:	11.0	16.5	6.3	2.5	3.8	1.4	63.2	62.3	65.3
Lip	0.7	1.1	0.3	0.0	0.0	0.0	90.2	90.9	87.5
Tongue	3.3	4.9	1.8	0.6	0.9	0.4	63.4	63.6	62.8
Salivary gland	1.3	1.7	1.0	0.2	0.4	0.1	72.7	65.5	82.5
Floor of mouth	0.6	0.8	0.3	0.0	0.0	0.0	50.5	48.4	55.7
Gum & other oral cavity	1.5	1.8	1.3	0.4	0.4	0.3	59.6	56.5	63.2
Nasopharynx	0.6	0.9	0.4	0.2	0.3	0.1	59.6	58.1	63.2
Tonsil	1.9	3.2	0.6	0.2	0.4	0.1	71.7	72.6	67.5
Oropharynx	0.4	0.7	0.2	0.2	0.4	0.1	41.7	43.4	35.7
Hypopharynx	0.6	1.1	0.2	0.1	0.2	0.0	32.2	31.8	34.0
Other oral cavity & pharynx	0.2	0.3	0.1	0.5	0.8	0.2	39.3	41.9	32.7
Digestive System:	83.3	101.7	68.1	42.2	54.2	32.5	44.3	42.4	46.6
Esophagus	4.4	7.6	1.7	4.2	7.5	1.5	17.9	17.9	17.7
Stomach	7.4	10.1	5.3	3.4	4.6	2.4	29.3	27.6	31.9
Small intestine	2.2	2.6	1.9	0.4	0.4	0.3	65.5	65.1	66.0
Colon & Rectum:	42.4	48.9	37.1	15.5	18.6	13.1	64.9	65.0	64.9
Colon	30.1	33.5	27.4	-	-	-	64.2	64.6	63.9
Rectum	12.3	15.3	9.7	-	-	-	66.6	65.9	67.4
Anus, anal canal & anorectum	1.8	1.5	2.0	0.2	0.2	0.3	65.7	60.1	69.3
Liver & intrahepatic bile duct	8.2	12.7	4.3	6.0	8.8	3.5	17.2	16.8	18.3
Gallbladder	1.2	0.8	1.4	0.6	0.5	0.7	17.9	16.0	18.7
Other biliary	1.9	2.4	1.5	0.4	0.5	0.4	16.5	17.4	15.4
Pancreas	12.4	14.0	11.0	10.9	12.6	9.6	7.2	7.0	7.3
Retroperitoneum	0.4	0.4	0.4	0.1	0.1	0.1	55.4	54.5	56.3
Peritoneum, omentum & mesentery	0.6	0.1	1.0	0.3	0.1	0.4	33.2	44.5	32.3
Other digestive system	0.6	0.7	0.5	0.3	0.4	0.2	10.3	9.1	11.5
Respiratory System:	62.8	77.1	52.0	48.6	62.1	38.4	20.4	19.4	21.6
Nose, nasal cavity & middle ear	0.7	0.9	0.5	0.1	0.2	0.1	55.3	55.6	54.7
Larynx	3.2	5.8	1.2	1.1	1.9	0.4	60.6	61.5	56.9
Lung & bronchus	58.7	70.1	50.2	47.2	59.8	37.8	17.4	14.8	20.3
Pleura ^d	0.0	0.0	0.0	0.1	0.1	0.0	23.0	18.8	29.0
Trachea & other respiratory organs	0.2	0.3	0.1	0.1	0.1	0.0	51.6	53.6	46.4
Bones & joints	0.9	1.1	0.8	0.4	0.5	0.3	66.7	64.6	69.3
Soft tissue (including heart)	3.4	4.0	2.9	1.3	1.5	1.2	64.9	64.1	65.8
Skin (excl. basal & squamous):	23.5	31.0	18.2	3.6	5.6	2.1	90.9	89.1	93.3
Melanoma of the skin	21.6	28.2	16.8	2.7	4.1	1.7	91.5	89.7	93.8
Other non-epithelial skin	2.0	2.8	1.4	0.9	1.5	0.4	84.3	82.2	87.0
Breast	67.2	1.2	124.8	12.2	0.3	21.9	89.4	82.7	89.4
Breast (<i>in situ</i>)	16.7	0.1	31.7	-	-	-	100.0	100.0	100.0

Note: Incidence and death rates are per 100,000 and are age-adjusted to the 2000 US Std Population (19 age groups - Census P25-1130).

^a SEER 18 areas (San Francisco, Connecticut, Detroit, Hawaii, Iowa, New Mexico, Seattle, Utah, Atlanta, San Jose-Monterey, Los Angeles, Alaska Native Registry, Rural Georgia, California excluding SF/SJM/LA, Kentucky, Louisiana, New Jersey and Georgia excluding ATL/RG).

^b US Mortality Files, National Center for Health Statistics, Centers for Disease Control and Prevention.

^c SEER 18 areas. Based on follow-up of patients into 2012.

^d Mesotheliomas of the Pleura are included in the separate group Mesothelioma for incidence but are included in the Pleura grouping for mortality.

- Statistic could not be calculated due to less than 16 cases in the time interval.

Table 1.5 - continued
 Age-Adjusted SEER Incidence and U.S. Death Rates and 5-Year Relative Survival (Percent)
 By Primary Cancer Site, Sex and Time Period

All Races

Site	Incidence ^a (2008-2012)			US Mortality ^b (2008-2012)			Survival ^c (%) (2005-2011)		
	Total	Males	Females	Total	Males	Females	Total	Males	Females
Female Genital System:	26.2	-	49.1	8.5	-	15.4	68.9	-	68.9
Cervix uteri	4.0	-	7.7	1.2	-	2.3	67.8	-	67.8
Corpus uteri	13.0	-	24.4	1.1	-	1.9	83.0	-	83.0
Uterus, NOS	0.4	-	0.7	1.4	-	2.5	27.2	-	27.2
Ovary ^d	6.5	-	12.1	4.3	-	7.7	45.6	-	45.6
Vagina	0.4	-	0.7	0.1	-	0.2	49.4	-	49.4
Vulva	1.3	-	2.4	0.3	-	0.5	71.2	-	71.2
Other female genital system	0.6	-	1.0	0.1	-	0.3	57.3	-	57.3
Male Genital System:	66.1	144.7	-	8.7	21.9	-	98.6	98.6	-
Prostate	62.7	137.9	-	8.5	21.4	-	98.9	98.9	-
Testis	2.8	5.6	-	0.1	0.3	-	95.3	95.3	-
Penis	0.4	0.9	-	0.1	0.2	-	68.9	68.9	-
Other male genital system	0.1	0.3	-	0.0	0.0	-	87.6	87.6	-
Urinary System:	36.8	58.5	20.1	8.6	13.7	4.9	75.0	76.0	72.9
Urinary bladder	20.3	35.8	8.7	4.4	7.7	2.2	77.4	78.9	72.9
Kidney & renal pelvis	15.6	21.3	10.8	3.9	5.7	2.5	73.2	72.6	74.1
Ureter	0.5	0.8	0.4	0.1	0.1	0.1	47.9	48.6	47.0
Other urinary system	0.3	0.5	0.2	0.1	0.2	0.1	50.0	54.4	42.2
Eye & Orbit	0.8	1.0	0.7	0.1	0.1	0.1	82.2	82.6	81.6
Brain & Nervous System: ^e	6.4	7.7	5.4	4.3	5.3	3.5	33.3	32.4	34.5
Brain	6.0	7.2	5.0	-	-	-	30.3	29.8	30.9
Cranial nerves & other nervous system	0.4	0.4	0.4	-	-	-	77.6	76.5	78.6
Endocrine System:	14.2	7.5	20.7	0.8	0.8	0.8	96.0	91.7	97.4
Thyroid	13.5	6.7	20.0	0.5	0.5	0.5	97.9	95.7	98.5
Other endocrine & thymus	0.7	0.8	0.7	0.3	0.3	0.3	64.8	65.2	64.5
Lymphoma:	22.3	26.9	18.7	6.5	8.4	5.1	72.3	71.0	73.8
Hodgkin lymphoma	2.7	3.0	2.4	0.4	0.5	0.3	85.9	85.1	86.9
Non-Hodgkin lymphoma	19.7	23.9	16.3	6.2	7.9	4.8	70.0	68.6	71.6
Myeloma	6.3	7.9	5.1	3.3	4.2	2.7	46.6	47.7	45.2
Leukemia:	13.3	17.0	10.4	7.0	9.4	5.2	58.5	59.6	57.1
Lymphocytic:	6.6	8.8	4.9	1.9	2.7	1.3	77.6	78.1	76.8
Acute lymphocytic	1.7	1.9	1.5	0.4	0.5	0.4	67.5	67.5	67.6
Chronic lymphocytic	4.5	6.2	3.2	1.4	2.0	0.9	81.7	81.7	81.8
Other lymphocytic	0.4	0.6	0.2	0.1	0.2	0.1	80.6	85.3	67.1
Myeloid & Monocytic:	6.1	7.5	5.0	3.4	4.5	2.6	37.5	37.3	37.6
Acute myeloid	4.0	4.8	3.3	2.8	3.7	2.2	25.9	24.8	27.1
Chronic myeloid	1.7	2.2	1.3	0.3	0.4	0.2	63.2	63.0	63.3
Acute monocytic	0.2	0.3	0.2	0.0	0.0	0.0	23.5	22.1	25.2
Other myeloid & monocytic	0.2	0.2	0.1	0.2	0.3	0.2	33.2	32.3	34.3
Other leukemia:	0.6	0.7	0.5	1.6	2.2	1.3	32.5	32.4	32.5
Other acute leukemia	0.2	0.3	0.2	0.6	0.8	0.5	19.6	19.7	19.5
Aleukemic, subleukemic & NOS	0.4	0.4	0.3	1.0	1.4	0.8	41.3	42.0	40.5
Kaposi Sarcoma ^f	0.5	1.0	0.1	-	-	-	72.9	72.2	77.4
Mesothelioma ^f	1.0	1.8	0.4	-	-	-	9.2	7.4	14.7
Ill-defined & unspecified	8.6	10.0	7.6	12.6	16.0	10.1	17.9	21.7	14.1

Note: Incidence and death rates are per 100,000 and are age-adjusted to the 2000 US Std Population (19 age groups - Census P25-1130).

^a SEER 18 areas (San Francisco, Connecticut, Detroit, Hawaii, Iowa, New Mexico, Seattle, Utah, Atlanta, San Jose-Monterey, Los Angeles, Alaska Native Registry, Rural Georgia, California excluding SF/SJM/LA, Kentucky, Louisiana, New Jersey and Georgia excluding ATL/RG).

^b US Mortality Files, National Center for Health Statistics, Centers for Disease Control and Prevention.

^c SEER 18 areas. Based on follow-up of patients into 2012.

^d Ovary excludes borderline cases or histologies 8442, 8451, 8462, 8472, and 8473.

^e Due to coding changes, Brain & Nervous System mortality are no longer shown separately.

^f Rate not shown for mortality. Category did not exist in mortality coding until 1999.

- Statistic could not be calculated due to less than 16 cases in the time interval.

Table 1.6
Age-Adjusted SEER Incidence and U.S. Death Rates and 5-Year Relative Survival (Percent)
By Primary Cancer Site, Sex and Time Period

Site	Whites								
	Incidence ^a (2008-2012)			US Mortality ^b (2008-2012)			Survival ^c (%) (2005-2011)		
	Total	Males	Females	Total	Males	Females	Total	Males	Females
All Sites	463.3	519.8	423.9	170.9	206.4	145.6	67.2	67.3	67.0
Oral Cavity & Pharynx:	11.5	17.1	6.4	2.4	3.7	1.3	64.8	64.4	65.9
Lip	0.8	1.3	0.4	0.0	0.0	0.0	90.3	90.8	88.2
Tongue	3.5	5.3	1.9	0.6	0.9	0.4	65.2	65.7	64.0
Salivary gland	1.3	1.8	1.0	0.2	0.4	0.1	71.5	64.0	82.5
Floor of mouth	0.6	0.8	0.4	0.0	0.0	0.0	51.8	49.8	56.7
Gum & other oral cavity	1.5	1.8	1.3	0.4	0.4	0.3	59.6	56.9	62.9
Nasopharynx	0.4	0.6	0.2	0.1	0.2	0.1	56.6	56.3	57.0
Tonsil	2.1	3.5	0.7	0.2	0.4	0.1	73.4	74.2	69.4
Oropharynx	0.4	0.7	0.2	0.2	0.3	0.1	45.5	47.8	37.1
Hypopharynx	0.6	1.0	0.2	0.1	0.1	0.0	35.1	35.3	34.5
Other oral cavity & pharynx	0.2	0.4	0.1	0.4	0.7	0.2	43.0	46.1	35.1
Digestive System:	80.7	98.5	65.9	40.9	52.5	31.3	44.9	43.0	47.3
Esophagus	4.6	8.0	1.7	4.3	7.7	1.5	18.6	18.8	18.0
Stomach	6.6	9.2	4.5	2.9	4.0	2.1	28.0	26.2	31.0
Small intestine	2.1	2.5	1.8	0.3	0.4	0.3	66.5	66.2	66.8
Colon & Rectum:	41.5	47.8	36.3	15.0	18.0	12.7	65.6	65.7	65.4
Colon	29.5	32.9	26.8	-	-	-	65.3	65.6	64.9
Rectum	12.0	15.0	9.5	-	-	-	66.4	66.0	67.0
Anus, anal canal & anorectum	1.9	1.5	2.3	0.2	0.2	0.3	67.0	61.7	70.2
Liver & intrahepatic bile duct	7.2	11.2	3.7	5.5	8.1	3.3	16.5	16.1	17.5
Gallbladder	1.1	0.8	1.4	0.6	0.4	0.7	18.0	16.4	18.7
Other biliary	1.8	2.3	1.4	0.4	0.5	0.4	16.6	17.9	14.9
Pancreas	12.3	14.0	10.8	10.8	12.5	9.4	7.1	6.9	7.3
Retroperitoneum	0.4	0.4	0.4	0.1	0.1	0.1	55.2	53.5	56.9
Peritoneum, omentum & mesentery	0.7	0.1	1.1	0.3	0.1	0.4	32.9	43.8	32.1
Other digestive system	0.6	0.6	0.5	0.3	0.4	0.2	10.7	9.9	11.3
Respiratory System:	64.4	77.2	54.5	49.2	61.9	39.6	20.7	19.8	21.8
Nose, nasal cavity & middle ear	0.7	0.9	0.5	0.1	0.2	0.1	57.3	58.6	55.6
Larynx	3.3	5.8	1.2	1.0	1.8	0.4	61.6	62.6	57.6
Lung & bronchus	60.2	70.3	52.7	47.9	59.7	39.1	17.7	15.1	20.5
Pleura ^d	0.0	0.1	0.0	0.1	0.1	0.0	18.9	19.5	18.0
Trachea & other respiratory organs	0.2	0.3	0.1	0.1	0.1	0.0	51.7	54.2	44.4
Bones & joints	1.0	1.2	0.8	0.4	0.5	0.4	67.0	64.6	69.9
Soft tissue (including heart)	3.4	4.1	2.9	1.3	1.6	1.1	65.8	64.8	67.0
Skin (excl. basal & squamous):	27.7	36.0	21.7	4.1	6.3	2.4	90.6	88.7	93.1
Melanoma of the skin	25.6	33.0	20.2	3.1	4.6	2.0	91.2	89.4	93.6
Other non-epithelial skin	2.1	3.0	1.5	1.0	1.7	0.5	82.3	79.8	85.5
Breast	68.1	1.2	127.9	11.8	0.3	21.3	90.6	84.5	90.6
Breast (<i>in situ</i>)	16.6	0.1	31.9	-	-	-	100.0	100.0	100.0

Note: Incidence and death rates are per 100,000 and are age-adjusted to the 2000 US Std Population (19 age groups - Census P25-1130).

^a SEER 18 areas (San Francisco, Connecticut, Detroit, Hawaii, Iowa, New Mexico, Seattle, Utah, Atlanta, San Jose-Monterey, Los Angeles, Alaska Native Registry, Rural Georgia, California excluding SF/SJM/LA, Kentucky, Louisiana, New Jersey and Georgia excluding ATL/RG).

^b US Mortality Files, National Center for Health Statistics, Centers for Disease Control and Prevention.

^c SEER 18 areas. Based on follow-up of patients into 2012.

^d Mesotheliomas of the Pleura are included in the separate group Mesothelioma for incidence but are included in the Pleura grouping for mortality.

- Statistic could not be calculated due to less than 16 cases in the time interval.

Table 1.6 - continued
 Age-Adjusted SEER Incidence and U.S. Death Rates and 5-Year Relative Survival (Percent)
 By Primary Cancer Site, Sex and Time Period

Site	Whites								
	Incidence ^a (2008-2012)			US Mortality ^b (2008-2012)			Survival ^c (%) (2005-2011)		
	Total	Males	Females	Total	Males	Females	Total	Males	Females
Female Genital System:	26.7	-	50.8	8.3	-	15.2	70.2	-	70.2
Cervix uteri	3.9	-	7.7	1.1	-	2.1	69.2	-	69.2
Corpus uteri	13.3	-	25.2	1.0	-	1.8	85.0	-	85.0
Uterus, NOS	0.3	-	0.6	1.3	-	2.3	28.7	-	28.7
Ovary ^d	6.8	-	12.8	4.4	-	8.0	45.5	-	45.5
Vagina	0.4	-	0.7	0.1	-	0.2	50.4	-	50.4
Vulva	1.4	-	2.6	0.3	-	0.5	70.5	-	70.5
Other female genital system	0.6	-	1.1	0.1	-	0.3	56.6	-	56.6
Male Genital System:	63.9	138.2	-	8.1	20.3	-	98.9	98.9	-
Prostate	60.0	130.4	-	7.9	19.8	-	99.2	99.2	-
Testis	3.4	6.7	-	0.1	0.3	-	95.4	95.4	-
Penis	0.4	0.9	-	0.1	0.2	-	67.5	67.5	-
Other male genital system	0.1	0.3	-	0.0	0.0	-	88.1	88.1	-
Urinary System:	39.2	62.2	21.1	8.9	14.3	4.9	75.6	76.4	73.6
Urinary bladder	22.2	39.0	9.4	4.6	8.1	2.2	78.0	79.2	74.1
Kidney & renal pelvis	16.1	21.9	11.1	4.0	5.9	2.6	73.4	72.9	74.2
Ureter	0.6	0.9	0.4	0.1	0.2	0.1	48.6	49.6	47.1
Other urinary system	0.3	0.5	0.2	0.1	0.2	0.1	50.3	52.9	44.9
Eye & Orbit	0.9	1.1	0.8	0.1	0.1	0.1	81.4	82.1	80.6
Brain & Nervous System: ^e	7.1	8.4	5.9	4.7	5.7	3.8	32.1	31.5	33.0
Brain	6.7	8.0	5.5	-	-	-	29.2	29.0	29.5
Cranial nerves & other nervous system	0.4	0.4	0.4	-	-	-	78.8	77.2	80.4
Endocrine System:	15.0	7.9	22.0	0.8	0.8	0.7	96.4	92.5	97.6
Thyroid	14.3	7.2	21.3	0.5	0.5	0.5	98.1	95.9	98.7
Other endocrine & thymus	0.7	0.8	0.6	0.3	0.3	0.3	64.8	66.2	63.3
Lymphoma:	23.5	28.1	19.7	6.8	8.7	5.3	72.8	71.7	74.1
Hodgkin lymphoma	2.9	3.2	2.6	0.4	0.5	0.3	86.1	85.6	86.8
Non-Hodgkin lymphoma	20.6	24.9	17.1	6.4	8.2	5.0	70.6	69.4	72.0
Myeloma	5.8	7.5	4.5	3.1	4.0	2.4	46.4	48.1	44.2
Leukemia:	14.0	17.9	10.9	7.2	9.7	5.4	58.9	59.8	57.7
Lymphocytic:	7.2	9.4	5.4	2.0	2.8	1.4	77.9	78.4	77.2
Acute lymphocytic	1.9	2.1	1.7	0.5	0.6	0.4	67.6	67.4	67.8
Chronic lymphocytic	4.9	6.6	3.5	1.4	2.1	0.9	81.8	81.8	81.8
Other lymphocytic	0.4	0.7	0.2	0.1	0.2	0.1	81.6	85.7	69.4
Myeloid & Monocytic:	6.2	7.8	5.0	3.5	4.6	2.7	36.5	36.3	36.7
Acute myeloid	4.1	5.0	3.4	2.9	3.8	2.3	25.2	24.0	26.5
Chronic myeloid	1.7	2.2	1.3	0.3	0.4	0.2	62.0	62.1	61.8
Acute monocytic	0.2	0.3	0.2	0.0	0.0	0.0	24.4	23.2	25.9
Other myeloid & monocytic	0.2	0.2	0.1	0.2	0.3	0.2	32.2	31.3	33.4
Other leukemia:	0.6	0.7	0.5	1.7	2.2	1.3	32.1	31.1	33.1
Other acute leukemia	0.2	0.3	0.2	0.6	0.8	0.5	17.6	17.6	17.8
Aleukemic, subleukemic & NOS	0.4	0.4	0.3	1.1	1.4	0.8	42.3	42.0	42.5
Kaposi Sarcoma ^f	0.5	0.9	0.1	-	-	-	77.8	76.7	86.2
Mesothelioma ^f	1.1	2.0	0.5	-	-	-	9.3	7.4	15.1
Ill-defined & unspecified	8.8	10.2	7.6	12.7	16.1	10.1	18.6	23.0	14.0

Note: Incidence and death rates are per 100,000 and are age-adjusted to the 2000 US Std Population (19 age groups - Census P25-1130).

^a SEER 18 areas (San Francisco, Connecticut, Detroit, Hawaii, Iowa, New Mexico, Seattle, Utah, Atlanta, San Jose-Monterey, Los Angeles, Alaska Native Registry, Rural Georgia, California excluding SF/SJM/LA, Kentucky, Louisiana, New Jersey and Georgia excluding ATL/RG).

^b US Mortality Files, National Center for Health Statistics, Centers for Disease Control and Prevention.

^c SEER 18 areas. Based on follow-up of patients into 2012.

^d Ovary excludes borderline cases or histologies 8442, 8451, 8462, 8472, and 8473.

^e Due to coding changes, Brain & Nervous System mortality are no longer shown separately.

^f Rate not shown for mortality. Category did not exist in mortality coding until 1999.

- Statistic could not be calculated due to less than 16 cases in the time interval.

Table 1.7
Age-Adjusted SEER Incidence and U.S. Death Rates and 5-Year Relative Survival (Percent)
By Primary Cancer Site, Sex and Time Period

Site	Blacks								
	Incidence ^a (2008-2012)			US Mortality ^b (2008-2012)			Survival ^c (%) (2005-2011)		
	Total	Males	Females	Total	Males	Females	Total	Males	Females
All Sites	478.0	590.1	401.2	202.0	261.5	166.3	60.5	63.5	57.2
Oral Cavity & Pharynx:	9.3	14.6	5.2	2.9	5.0	1.3	44.6	40.5	53.3
Lip	0.1	0.1	0.1	-	-	-	75.7	67.9	84.5
Tongue	2.2	3.6	1.1	0.5	0.9	0.3	38.3	36.8	41.0
Salivary gland	1.0	1.1	1.0	0.2	0.3	0.1	74.9	66.4	81.4
Floor of mouth	0.5	0.9	0.3	0.0	0.0	-	34.6	32.6	40.8
Gum & other oral cavity	1.4	1.7	1.1	0.3	0.5	0.2	53.3	46.5	60.6
Nasopharynx	0.6	1.1	0.3	0.3	0.4	0.1	52.4	50.5	57.6
Tonsil	1.7	3.0	0.6	0.3	0.5	0.1	52.1	53.1	47.6
Oropharynx	0.6	1.0	0.2	0.4	0.6	0.2	22.2	21.9	22.4
Hypopharynx	0.9	1.7	0.3	0.1	0.3	0.1	17.5	15.7	27.3
Other oral cavity & pharynx	0.3	0.4	0.2	0.8	1.5	0.3	22.2	25.4	15.3
Digestive System:	103.6	127.9	85.9	55.9	73.5	43.5	39.5	36.1	43.1
Esophagus	4.6	7.6	2.5	4.0	7.0	2.0	12.2	11.0	15.1
Stomach	10.9	14.6	8.4	6.3	9.2	4.4	28.2	24.9	32.2
Small intestine	3.6	4.4	3.1	0.6	0.7	0.5	63.4	61.6	64.9
Colon & Rectum:	52.3	61.2	46.0	21.4	26.9	17.8	58.1	56.6	59.5
Colon	39.1	44.6	35.3	-	-	-	56.5	55.4	57.4
Rectum	13.2	16.6	10.7	-	-	-	62.7	59.6	66.1
Anus, anal canal & anorectum	1.9	2.1	1.6	0.3	0.3	0.2	56.9	50.7	62.4
Liver & intrahepatic bile duct	9.8	16.2	4.8	7.9	12.5	4.3	12.4	11.2	15.7
Gallbladder	1.5	1.3	1.7	0.9	0.8	1.0	14.2	11.7	15.2
Other biliary	1.7	2.0	1.5	0.4	0.4	0.4	12.6	10.5	14.4
Pancreas	15.7	17.2	14.4	13.5	15.0	12.3	6.6	6.4	6.7
Retroperitoneum	0.4	0.4	0.4	0.0	0.0	0.0	49.1	49.7	48.3
Peritoneum, omentum & mesentery	0.4	0.1	0.6	0.2	0.1	0.2	34.1	41.4	31.9
Other digestive system	0.8	1.0	0.6	0.4	0.5	0.3	9.4	7.4	11.1
Respiratory System:	72.5	100.8	53.1	52.8	77.1	36.6	17.6	16.8	18.8
Nose, nasal cavity & middle ear	0.6	0.8	0.4	0.2	0.2	0.1	43.3	40.9	47.2
Larynx	4.7	8.8	1.7	1.8	3.6	0.6	53.3	53.8	51.2
Lung & bronchus	67.0	90.9	50.8	50.6	73.1	35.8	14.3	12.0	17.1
Pleura ^d	-	-	-	0.0	0.1	0.0	-	-	-
Trachea & other respiratory organs	0.2	0.3	0.1	0.1	0.1	0.1	51.5	54.0	46.6
Bones & joints	0.8	0.9	0.6	0.4	0.6	0.3	65.2	63.4	67.1
Soft tissue (including heart)	3.3	3.5	3.2	1.5	1.5	1.5	60.7	60.9	60.5
Skin (excl. basal & squamous):	2.2	2.3	2.0	0.8	1.2	0.6	83.8	82.5	84.3
Melanoma of the skin	1.1	1.2	1.0	0.4	0.5	0.4	69.4	60.9	75.0
Other non-epithelial skin	1.1	1.2	1.0	0.4	0.7	0.2	94.4	96.9	91.2
Breast	70.8	1.7	124.4	17.8	0.5	30.2	79.5	70.4	79.6
Breast (<i>in situ</i>)	17.2	0.3	30.6	-	-	-	100.0	91.6	100.0

Note: Incidence and death rates are per 100,000 and are age-adjusted to the 2000 US Std Population (19 age groups - Census P25-1130).

^a SEER 18 areas (San Francisco, Connecticut, Detroit, Hawaii, Iowa, New Mexico, Seattle, Utah, Atlanta, San Jose-Monterey, Los Angeles, Alaska Native Registry, Rural Georgia, California excluding SF/SJM/LA, Kentucky, Louisiana, New Jersey and Georgia excluding ATL/RG).

^b US Mortality Files, National Center for Health Statistics, Centers for Disease Control and Prevention.

^c SEER 18 areas. Based on follow-up of patients into 2012.

^d Mesotheliomas of the Pleura are included in the separate group Mesothelioma for incidence but are included in the Pleura grouping for mortality.

- Statistic could not be calculated due to less than 16 cases in the time interval.

Table 1.7 - continued
Age-Adjusted SEER Incidence and U.S. Death Rates and 5-Year Relative Survival (Percent)
By Primary Cancer Site, Sex and Time Period

Site	Blacks								
	Incidence ^a (2008-2012)			US Mortality ^b (2008-2012)			Survival ^c (%) (2005-2011)		
	Total	Males	Females	Total	Males	Females	Total	Males	Females
Female Genital System:	26.4	-	46.6	11.3	-	19.1	55.3	-	55.3
Cervix uteri	5.1	-	9.2	2.2	-	4.0	58.2	-	58.2
Corpus uteri	12.8	-	22.5	1.8	-	3.0	63.7	-	63.7
Uterus, NOS	0.9	-	1.5	2.8	-	4.7	22.1	-	22.1
Ovary ^d	5.6	-	9.8	3.9	-	6.7	35.7	-	35.7
Vagina	0.6	-	1.0	0.2	-	0.3	47.3	-	47.3
Vulva	1.0	-	1.8	0.2	-	0.3	73.5	-	73.5
Other female genital system	0.5	-	0.9	0.2	-	0.3	55.4	-	55.4
Male Genital System:	92.4	217.3	-	16.7	46.7	-	96.8	96.8	-
Prostate	91.2	214.5	-	16.6	46.3	-	96.9	96.9	-
Testis	0.7	1.5	-	0.1	0.1	-	92.3	92.3	-
Penis	0.4	1.0	-	0.1	0.2	-	66.7	66.7	-
Other male genital system	0.1	0.2	-	0.0	0.1	-	77.1	77.1	-
Urinary System:	31.4	47.5	20.2	7.5	11.1	5.2	68.4	69.8	66.0
Urinary bladder	12.6	21.4	6.9	3.5	5.3	2.5	64.3	69.2	54.7
Kidney & renal pelvis	18.1	25.1	12.8	3.8	5.6	2.5	71.6	70.6	73.1
Ureter	0.3	0.4	0.2	0.1	0.1	0.0	34.4	32.9	36.0
Other urinary system	0.4	0.6	0.3	0.1	0.1	0.1	40.5	51.8	29.9
Eye & Orbit	0.2	0.3	0.2	0.0	0.0	0.0	85.2	83.2	88.3
Brain & Nervous System: ^e	4.1	4.9	3.6	2.5	3.1	2.1	38.6	35.6	41.7
Brain	3.7	4.5	3.2	-	-	-	35.3	32.9	37.8
Cranial nerves & other nervous system	0.4	0.4	0.4	-	-	-	71.7	69.4	73.4
Endocrine System:	8.9	4.5	12.7	0.9	0.8	0.9	92.9	83.5	95.4
Thyroid	8.0	3.5	11.8	0.5	0.4	0.6	97.0	94.1	97.5
Other endocrine & thymus	0.9	1.0	0.9	0.4	0.4	0.3	61.1	54.8	67.3
Lymphoma:	17.3	20.8	14.4	4.7	6.1	3.7	66.9	63.2	71.1
Hodgkin lymphoma	2.7	3.0	2.4	0.3	0.4	0.3	83.1	79.8	86.6
Non-Hodgkin lymphoma	14.6	17.8	12.1	4.4	5.7	3.5	62.8	59.1	67.2
Myeloma	12.8	15.1	11.2	6.2	7.6	5.3	47.3	46.9	47.7
Leukemia:	10.6	13.5	8.5	6.0	7.9	4.7	52.3	54.0	50.4
Lymphocytic:	4.5	6.2	3.2	1.6	2.4	1.1	67.9	68.6	67.0
Acute lymphocytic	1.0	1.2	0.8	0.3	0.4	0.2	63.7	66.6	58.9
Chronic lymphocytic	3.2	4.6	2.3	1.2	1.9	0.8	70.8	69.6	72.3
Other lymphocytic	0.3	0.4	0.1	0.1	0.1	0.1	55.9	63.4	33.7
Myeloid & Monocytic:	5.4	6.4	4.7	2.7	3.4	2.2	41.2	41.3	41.0
Acute myeloid	3.5	4.0	3.1	2.2	2.7	1.8	28.3	27.7	28.7
Chronic myeloid	1.6	2.0	1.4	0.3	0.4	0.3	64.3	64.0	64.5
Acute monocytic	0.1	0.2	0.1	0.0	-	-	25.3	16.0	32.7
Other myeloid & monocytic	0.1	0.2	0.1	0.1	0.2	0.1	41.8	40.6	42.3
Other leukemia:	0.7	0.9	0.6	1.7	2.1	1.4	28.8	31.9	25.5
Other acute leukemia	0.2	0.3	0.2	0.5	0.6	0.4	25.3	26.4	23.9
Aleukemic, subleukemic & NOS	0.5	0.6	0.4	1.2	1.5	1.0	30.1	34.3	26.2
Kaposi Sarcoma ^f	1.1	2.2	0.2	-	-	-	58.3	58.4	55.7
Mesothelioma ^f	0.5	1.0	0.2	-	-	-	10.5	8.2	17.7
Ill-defined & unspecified	9.8	11.0	8.9	14.2	18.7	11.2	13.3	12.8	13.6

Note: Incidence and death rates are per 100,000 and are age-adjusted to the 2000 US Std Population (19 age groups - Census P25-1130).

^a SEER 18 areas (San Francisco, Connecticut, Detroit, Hawaii, Iowa, New Mexico, Seattle, Utah, Atlanta, San Jose-Monterey, Los Angeles, Alaska Native Registry, Rural Georgia, California excluding SF/SJM/LA, Kentucky, Louisiana, New Jersey and Georgia excluding ATL/RG).

^b US Mortality Files, National Center for Health Statistics, Centers for Disease Control and Prevention.

^c SEER 18 areas. Based on follow-up of patients into 2012.

^d Ovary excludes borderline cases or histologies 8442, 8451, 8462, 8472, and 8473.

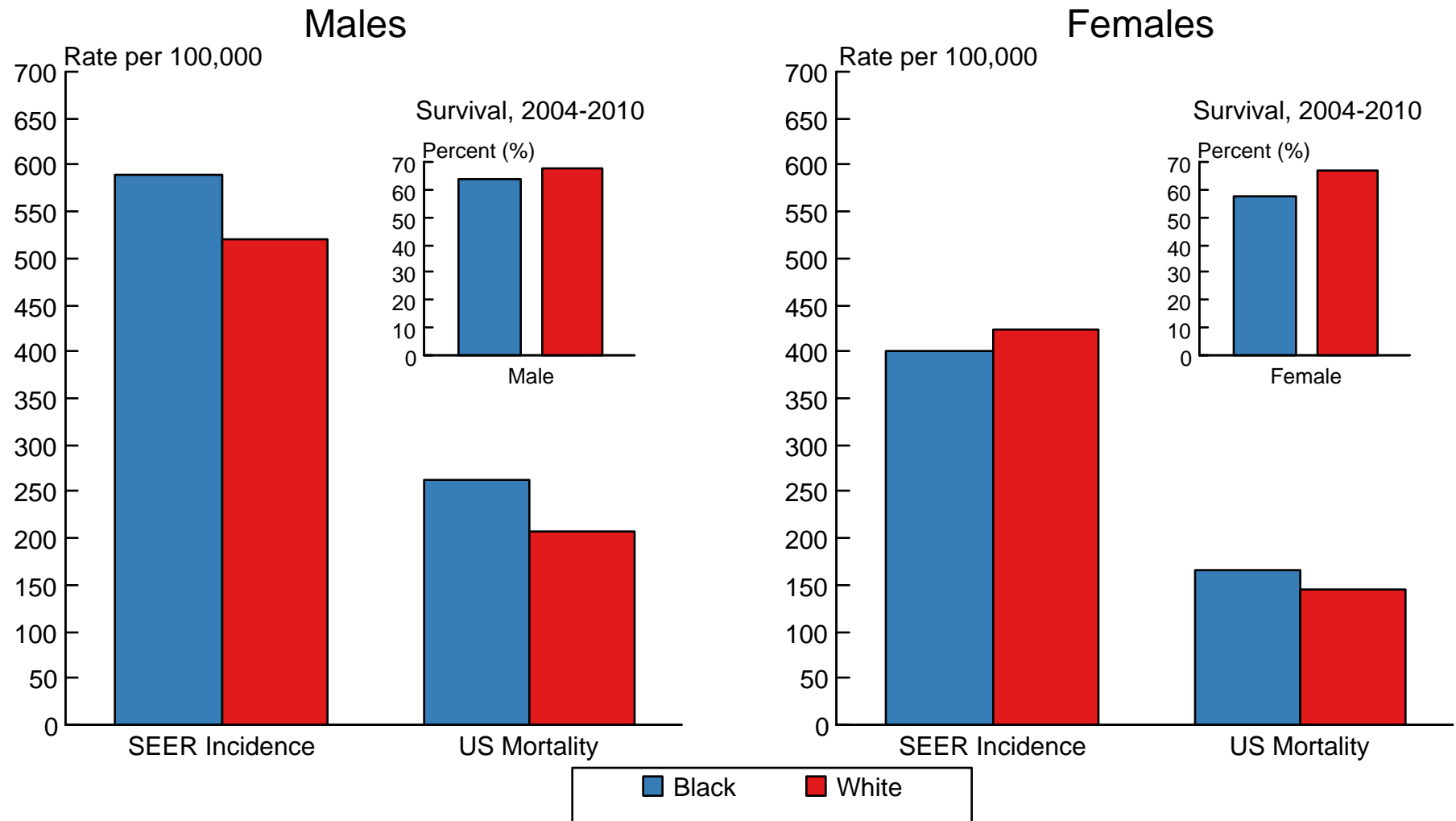
^e Due to coding changes, Brain & Nervous System mortality are no longer shown separately.

^f Rate not shown for mortality. Category did not exist in mortality coding until 1999.

- Statistic could not be calculated due to less than 16 cases in the time interval.

Figure 1.9

SEER Incidence^a and US Death Rates,^b 2008-2012 5-Year Relative Survival,^c 2005-2011 All Cancer Combined, by Race and Sex



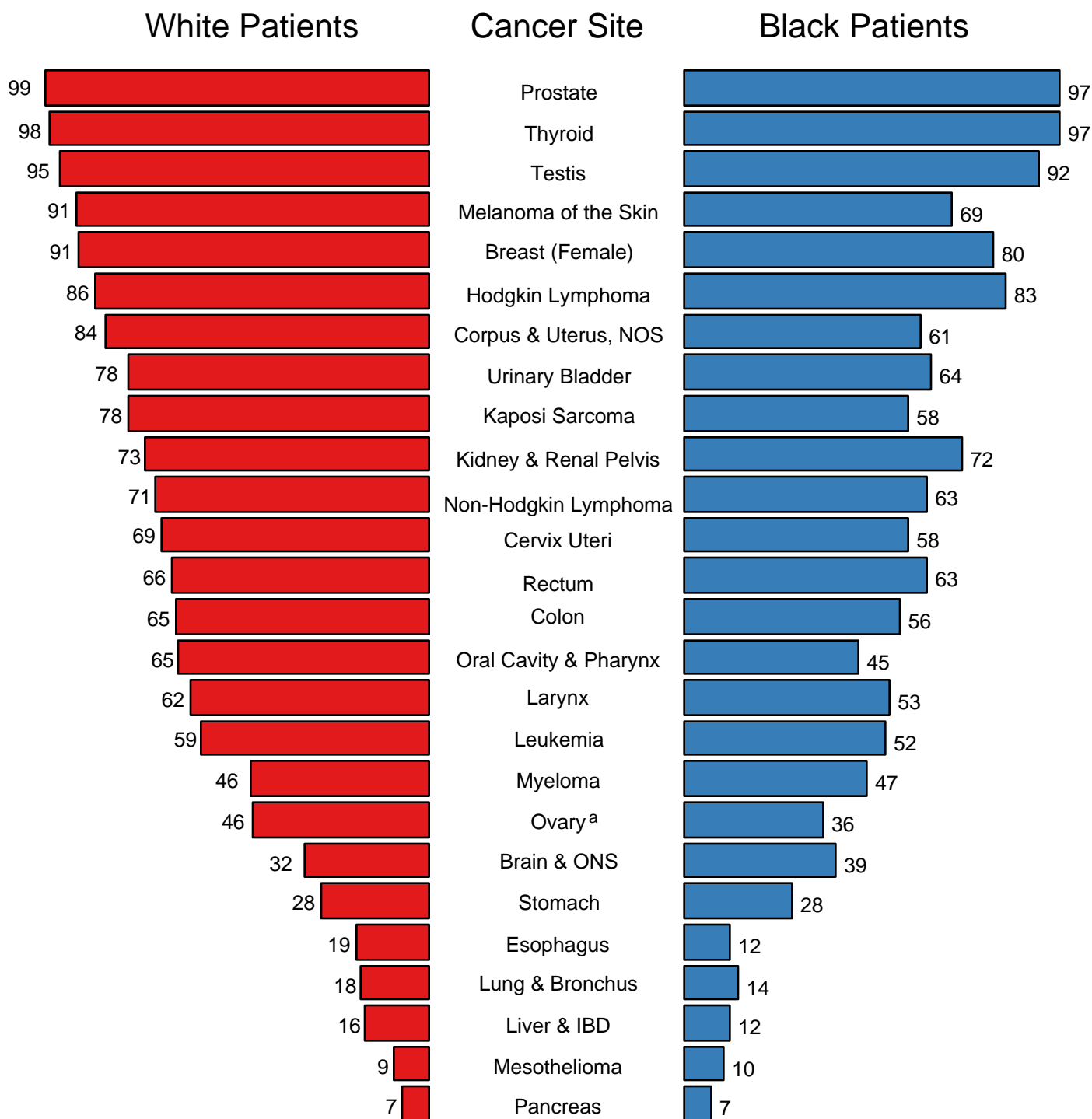
^a Incidence rates are from the SEER 18 areas (San Francisco, Connecticut, Detroit, Hawaii, Iowa, New Mexico, Seattle, Utah, Atlanta, San Jose-Monterey, Los Angeles, Alaska Native Registry, Rural Georgia, California excluding SF/SJM/LA, Kentucky, Louisiana, New Jersey and Georgia excluding ATL/RG) and are age-adjusted to the 2000 US Std Population (19 age groups - Census P25-1103).

^b Death rates are from the US Mortality Files, National Center for Health Statistics, Centers for Disease Control and Prevention and are age-adjusted to the 2000 US Std Population (19 age groups - Census P25-1103).

^c Survival rates are from the SEER 18 areas (San Francisco, Connecticut, Detroit, Hawaii, Iowa, New Mexico, Seattle, Utah, Atlanta, San Jose-Monterey, Los Angeles, Alaska Native Registry, Rural Georgia, California excluding SF/SJM/LA, Kentucky, Louisiana, New Jersey and Georgia excluding ATL/RG).

Figure 1.11

5-Year Relative Survival (%) SEER Program, 2005-2011 Both Sexes, by Race and Cancer Site



Source: SEER 18 areas (San Francisco, Connecticut, Detroit, Hawaii, Iowa, New Mexico, Seattle, Utah, Atlanta, San Jose-Monterey, Los Angeles, Alaska Native Registry, Rural Georgia, California excluding SF/SJM/LA, Kentucky, Louisiana, New Jersey and Georgia excluding ATL/RG).

^a Ovary excludes borderline cases or histologies 8442, 8451, 8462, 8472, and 8473.

Table 2.8
All Cancer Sites (Invasive)

5-Year Relative and Period Survival (Percent) by Race, Sex, Diagnosis Year and Age

	All Races			Whites			Blacks		
	Total	Males	Females	Total	Males	Females	Total	Males	Females
5-Year Relative Survival (Percent)									
Year of Diagnosis:									
1960-1963 ^a	-	-	-	39	-	-	27	-	-
1970-1973 ^a	-	-	-	43	-	-	31	-	-
1975-1977 ^b	48.9	41.7	55.8	49.8	42.7	56.5	39.1	32.7	46.2
1978-1980 ^b	49.0	43.1	54.9	50.0	44.3	55.6	39.0	33.3	45.6
1981-1983 ^b	50.1	45.2	55.1	51.3	46.5	55.9	38.8	34.2	44.4
1984-1986 ^b	52.4	47.1	57.6	53.6	48.5	58.5	40.2	35.5	45.5
1987-1989 ^b	55.3	51.1	59.6	56.6	52.8	60.6	43.0	38.9	47.7
1990-1992 ^b	59.9	59.1	60.9	61.4	60.8	62.0	47.8	47.6	48.2
1993-1995 ^b	61.3	60.8	61.8	62.4	62.0	62.8	52.7	54.4	50.6
1996-1998 ^b	63.3	62.9	63.6	64.3	64.0	64.6	55.2	57.9	52.0
1999-2001 ^b	65.9	66.2	65.7	67.1	67.5	66.8	57.9	61.0	54.2
2002-2004 ^b	67.0	67.6	66.4	68.3	68.9	67.6	59.4	63.1	55.2
2005-2011 ^b	68.7 ^e	69.3 ^e	68.1 ^e	69.7 ^e	70.2 ^e	69.2 ^e	62.2 ^e	65.4 ^e	58.5 ^e
5-Year Period Survival (Percent) ^{cd}									
2011	67.1	67.2	67.0	67.6	67.5	67.8	61.4	64.2	58.2
5-Year Relative Survival (Percent), 2005-2011 ^c									
Age at Diagnosis:									
Ages <45	81.6	77.0	84.5	83.1	78.9	86.0	70.3	64.6	73.6
Ages 45-54	73.4	68.0	77.8	74.8	69.1	79.4	63.6	62.2	65.1
Ages 55-64	70.2	69.9	70.4	71.0	70.6	71.6	63.3	66.0	59.0
Ages 65-74	66.2	69.2	61.9	66.8	69.5	62.9	61.0	66.8	52.5
Ages 75+	51.6	55.6	47.7	52.2	55.7	48.8	44.2	52.0	37.8
Ages <65	73.5	70.5	76.4	74.6	71.5	77.7	64.7	64.7	64.8
Ages 65+	59.1	63.2	54.2	59.6	63.3	55.2	54.2	61.8	45.5

^a Based on End Results data from a series of hospital registries and one population-based registry.
^b SEER 9 areas (San Francisco, Connecticut, Detroit, Hawaii, Iowa, New Mexico, Seattle, Utah, Atlanta).
Based on follow-up of patients into 2012.
^c SEER 18 areas (San Francisco, Connecticut, Detroit, Hawaii, Iowa, New Mexico, Seattle, Utah, Atlanta, San Jose-Monterey, Los Angeles, Alaska Native Registry, Rural Georgia, California excluding SF/SJM/LA, Kentucky, Louisiana, New Jersey and Georgia excluding ATL/RG).
Based on follow-up of patients into 2012.
^d Period survival provides a 2011 estimate of survival by piecing together the most recent conditional survival estimates from several cohorts. It is computed here using three year calendar blocks (2009-2011: 0-1 year survival), (2008-2010: 1-2 year survival), (2007-2009: 2-3 year survival), (2006-2008: 3-4 year survival), (2005-2007: 4-5 years survival).
^e The difference between 1975-1977 and 2005-2011 is statistically significant (p<.05).
^f The standard error is between 5 and 10 percentage points.
^g The standard error is greater than 10 percentage points.
- Statistic could not be calculated due to fewer than 25 cases during the time period.

Table 3.8
Cancer of the Brain and Other Nervous System (Invasive)

5-Year Relative and Period Survival (Percent) by Race, Sex, Diagnosis Year, Stage and Age

	All Races			Whites			Blacks		
	Total	Males	Females	Total	Males	Females	Total	Males	Females
5-Year Relative Survival (Percent)									
Year of Diagnosis:									
1960-1963 ^a	-	-	-	18	16	21	19	17	21
1970-1973 ^a	-	-	-	20	18	22	19	19	19
1975-1977 ^b	22.4	20.7	24.7	21.8	20.2	24.0	25.4	19.6	34.7 ^g
1978-1980 ^b	23.6	22.4	25.1	23.0	22.0	24.3	28.2	28.7	27.5
1981-1983 ^b	24.1	23.0	25.4	23.3	22.4	24.4	30.8	31.7	29.2 ^g
1984-1986 ^b	26.9	25.6	28.5	26.1	24.7	27.8	30.8	32.8	28.3
1987-1989 ^b	28.9	27.3	31.0	28.2	26.3	30.7	31.6	33.5	29.3
1990-1992 ^b	30.1	30.5	29.7	29.1	29.3	28.7	39.5	40.7	38.1
1993-1995 ^b	32.3	33.0	31.3	30.9	31.4	30.3	41.4	46.1	36.3
1996-1998 ^b	31.2	30.5	32.0	30.4	30.0	30.9	36.0	33.8	38.3
1999-2001 ^b	33.8	30.9	37.5	32.9	30.3	36.3	38.7	33.8	45.2
2002-2004 ^b	34.9	34.1	35.9	34.1	33.8	34.4	39.2	32.8	45.9
2005-2011 ^b	34.9 ^f	34.0 ^f	36.0 ^f	33.4 ^f	32.7 ^f	34.2 ^f	40.2 ^f	37.2 ^f	42.9
5-Year Period Survival (Percent) ^{cd}									
2011	33.8	33.0	34.7	32.5	31.9	33.2	38.8	36.7	40.8
Stage Distribution (%) 2005-2011 ^{ce}									
All Stages									
Number of cases	33,151	18,451	14,700	28,615	16,058	12,557	2,333	1,189	1,144
Percent	100%	100%	100%	100%	100%	100%	100%	100%	100%
Localized	77	78	75	77	78	75	77	78	75
Regional	16	16	16	16	16	16	15	14	16
Distant	2	2	2	2	2	2	3	3	4
Unstaged	5	4	6	5	4	6	5	5	5
5-Year Relative Survival (Percent), 2005-2011 ^c									
Age at Diagnosis:									
Ages <45	67.4	65.2	70.2	67.9	66.0	70.5	62.5	57.9	66.8
Ages 45-54	31.4	28.8	35.2	31.0	28.5	34.8	30.9	28.0	34.3
Ages 55-64	15.8	14.6	17.6	15.4	13.9	17.6	17.3	16.5	17.3
Ages 65-74	9.1	7.5	10.9	9.1	7.7	10.8	6.3	5.0	7.3
Ages 75+	4.8	5.2	4.4	4.1	4.9	3.5	10.3	6.2	12.9
Ages <65	44.8	42.2	48.4	43.9	41.4	47.3	46.6	42.5	51.0
Ages 65+	6.9	6.5	7.4	6.6	6.4	6.8	8.2	5.7	10.1
Stage ^e :									
All Stages	33.3	32.4	34.5	32.1	31.5	33.0	38.6	35.6	41.7
Localized	36.3	34.8	38.2	35.1	33.9	36.7	40.9	37.6	44.2
Regional	21.7	21.8	21.5	20.6	21.1	20.0	29.1	25.3	31.9
Distant	37.4	36.7	38.0	37.2	37.1	36.9	31.6 ^g	31.1 ^g	32.3 ^g
Unstaged	23.3	24.5	22.1	21.1	22.3	19.9	38.2 ^g	33.7 ^g	41.8 ^g

^a Based on End Results data from a series of hospital registries and one population-based registry.

^b SEER 9 areas (San Francisco, Connecticut, Detroit, Hawaii, Iowa, New Mexico, Seattle, Utah, Atlanta).

Based on follow-up of patients into 2012.

^c SEER 18 areas (San Francisco, Connecticut, Detroit, Hawaii, Iowa, New Mexico, Seattle, Utah, Atlanta, San Jose-Monterey, Los Angeles, Alaska Native Registry, Rural Georgia, California excluding SF/SJM/LA, Kentucky, Louisiana, New Jersey and Georgia excluding ATL/RG).

Based on follow-up of patients into 2012.

^d Period survival provides a 2011 estimate of survival by piecing together the most recent conditional survival estimates from several cohorts. It is computed here using three year calendar blocks (2009-2011: 0-1 year survival), (2008-2010: 1-2 year survival), (2007-2009: 2-3 year survival), (2006-2008: 3-4 year survival), (2005-2007: 4-5 years survival).

^e Stage at diagnosis is classified using SEER Summary Stage 2000. Stage distribution percentages may not sum to 100 due to rounding.

^f The difference between 1975-1977 and 2005-2011 is statistically significant ($p < .05$).

^g The standard error is between 5 and 10 percentage points.

^h The standard error is greater than 10 percentage points.

- Statistic could not be calculated due to fewer than 25 cases during the time period.

Table 4.13
Cancer of the Female Breast (Invasive)

5-Year Relative and Period Survival (Percent) by Race, Diagnosis Year, Stage and Age

	All Races, Females			White Females			Black Females		
	All	<50	50+	All	<50	50+	All	<50	50+
5-Year Relative Survival (Percent)									
Year of Diagnosis:									
1960-1963 ^a	-	-	-	63	-	-	46	-	-
1970-1973 ^a	-	-	-	68	-	-	51	-	-
1975-1977 ^b	74.8	76.5	74.3	75.6	77.7	74.9	62.1	62.4	62.0
1978-1980 ^b	74.4	75.5	74.1	75.1	76.1	74.8	63.3	67.1	61.4
1981-1983 ^b	76.1	77.4	75.7	77.1	78.5	76.7	63.4	65.1	62.6
1984-1986 ^b	78.9	77.8	79.3	80.0	79.5	80.2	65.0	63.9	65.8
1987-1989 ^b	84.0	81.4	85.0	85.1	82.7	85.9	71.1	69.6	71.9
1990-1992 ^b	85.2	83.4	85.9	86.5	85.1	87.0	71.5	70.1	72.3
1993-1995 ^b	86.3	84.3	87.1	87.6	86.2	88.1	72.7	70.3	74.1
1996-1998 ^b	88.2	86.5	88.8	89.3	88.2	89.7	76.1	73.9	77.5
1999-2001 ^b	89.7	88.1	90.2	90.8	89.9	91.1	78.7	76.8	79.9
2002-2004 ^b	89.9	89.2	90.2	91.4	91.1	91.5	77.8	77.4	78.0
2005-2011 ^b	90.7 ^f	91.0 ^f	90.6 ^f	92.0 ^f	92.4 ^f	91.9 ^f	80.5 ^f	81.8 ^f	79.9 ^f
5-Year Period Survival (Percent) ^{cd}									
2011	89.6	89.7	89.7	90.8	90.9	90.8	80.4	81.0	80.3
Stage Distribution (%) 2005-2011 ^{ce}									
All Stages									
Number of cases	325,952	79,410	246,542	261,587	59,419	202,168	35,116	10,606	24,510
Percent	100%	100%	100%	100%	100%	100%	100%	100%	100%
Localized	61	54	63	62	55	64	53	47	55
Regional	32	40	29	31	39	29	37	43	34
Distant	6	5	6	5	4	5	9	8	9
Unstaged	2	1	2	2	1	2	2	1	2
5-Year Relative Survival (Percent), 2005-2011 ^c									
Age at Diagnosis:									
Ages <45	88.2	-	-	89.6	-	-	78.6	-	-
Ages 45-54	90.5	-	-	91.7	-	-	81.2	-	-
Ages 55-64	90.0	-	-	91.1	-	-	80.6	-	-
Ages 65-74	90.9	-	-	91.9	-	-	81.6	-	-
Ages 75+	86.6	-	-	87.9	-	-	72.9	-	-
Ages <65	89.8	-	-	91.0	-	-	80.3	-	-
Ages 65+	88.9	-	-	90.0	-	-	78.0	-	-
Stage ^e :									
All Stages	89.4	89.5	89.4	90.6	90.8	90.6	79.6	80.3	79.3
Localized	98.6	96.7	99.1	99.2	97.1	99.7	94.3	93.6	94.6
Regional	84.9	86.6	84.2	86.3	88.2	85.5	74.9	76.2	74.2
Distant	25.9	35.6	23.1	27.1	38.6	24.3	17.1	23.7	14.4
Unstaged	51.7	74.2	46.8	49.5	75.1	44.6	50.6	65.1	46.1
<i>In Situ</i> ^j	100.0	100.0	100.0	100.0	100.0	100.0	100.0	99.9	100.0

^a Based on End Results data from a series of hospital registries and one population-based registry.

^b SEER 9 areas (San Francisco, Connecticut, Detroit, Hawaii, Iowa, New Mexico, Seattle, Utah, Atlanta).

Based on follow-up of patients into 2012.

^c SEER 18 areas (San Francisco, Connecticut, Detroit, Hawaii, Iowa, New Mexico, Seattle, Utah, Atlanta, San Jose-Monterey, Los Angeles, Alaska Native Registry, Rural Georgia, California excluding SF/SJM/LA, Kentucky, Louisiana, New Jersey and Georgia excluding ATL/RG).

Based on follow-up of patients into 2012.

^d Period survival provides a 2011 estimate of survival by piecing together the most recent conditional survival estimates

from several cohorts. It is computed here using three year calendar blocks (2009-2011: 0-1 year survival), (2008-2010: 1-2 year survival), (2007-2009: 2-3 year survival), (2006-2008: 3-4 year survival), (2005-2007: 4-5 years survival).

^e Stage at diagnosis is classified using SEER Summary Stage 2000. Stage distribution percentages may not sum to 100 due to rounding.

^f The difference between 1975-1977 and 2005-2011 is statistically significant ($p < .05$).

^g The standard error is between 5 and 10 percentage points.

^h The standard error is greater than 10 percentage points.

^j *In situ* cases are not included in the All Stages group.

- Statistic could not be calculated due to fewer than 25 cases during the time period.

Table 5.8
Cancer of the Cervix Uteri (Invasive)

5-Year Relative and Period Survival (Percent) by Race, Diagnosis Year, Stage and Age

	All Races, Females			White Females			Black Females		
	All	<50	50+	All	<50	50+	All	<50	50+
5-Year Relative Survival (Percent)									
Year of Diagnosis:									
1960-1963 ^a	-	-	-	58	-	-	47	-	-
1970-1973 ^a	-	-	-	64	-	-	61	-	-
1975-1977 ^b	69.1	82.5	57.8	69.7	83.9	58.1	64.6	75.6	55.1
1978-1980 ^b	67.4	78.4	57.8	68.1	79.7	58.2	61.0	70.5	52.0
1981-1983 ^b	66.9	79.5	54.7	67.8	80.8	55.1	59.2	73.6	46.2
1984-1986 ^b	67.1	77.8	55.3	68.7	79.4	56.3	57.9	68.0	48.4
1987-1989 ^b	70.1	79.6	58.2	72.5	82.6	58.6	57.0	62.7	52.0
1990-1992 ^b	69.6	79.1	56.8	70.9	81.3	56.3	57.9	63.5	50.8
1993-1995 ^b	72.6	81.8	59.8	74.2	83.5	60.1	62.9	70.7	53.6
1996-1998 ^b	72.6	80.9	60.3	73.6	82.7	59.2	64.7	67.8	60.8
1999-2001 ^b	72.4	83.8	56.4	73.3	85.6	55.0	66.0	73.9	56.6
2002-2004 ^b	69.0	79.1	55.7	70.1	81.1	54.5	64.0	71.8	54.4
2005-2011 ^b	69.3	79.1 ^f	56.6	71.0	81.5	56.8	59.6 ^f	65.6 ^f	53.2
5-Year Period Survival (Percent) ^{cd}									
2011	67.4	77.0	56.1	68.7	78.3	56.7	58.2	66.5	50.5
Stage Distribution (%) 2005-2011 ^{ce}									
All Stages									
Number of cases	22,125	12,084	10,041	16,685	9,380	7,305	3,037	1,488	1,549
Percent	100%	100%	100%	100%	100%	100%	100%	100%	100%
Localized	46	58	32	48	60	32	38	48	29
Regional	36	30	44	35	29	44	41	37	45
Distant	13	8	18	13	8	18	16	11	21
Unstaged	4	3	5	4	3	5	5	5	6
5-Year Relative Survival (Percent), 2005-2011 ^c									
Age at Diagnosis:									
Ages <45	79.2	-	-	80.7	-	-	67.5	-	-
Ages 45-54	67.0	-	-	68.4	-	-	57.0	-	-
Ages 55-64	60.0	-	-	60.7	-	-	52.2	-	-
Ages 65-74	56.9	-	-	55.9	-	-	55.2	-	-
Ages 75+	36.2	-	-	35.7	-	-	35.1	-	-
Ages <65	71.7	-	-	73.2	-	-	60.9	-	-
Ages 65+	48.5	-	-	47.9	-	-	46.5	-	-
Stage ^e :									
All Stages	67.8	77.1	56.4	69.2	78.6	56.8	58.2	65.3	51.1
Localized	91.5	93.6	86.8	92.0	94.0	87.2	85.2	88.5	79.5
Regional	57.4	61.5	54.0	58.2	63.4	53.8	51.5	50.3	52.7
Distant	16.5	18.8	15.2	18.0	21.6	15.9	11.4	9.3	12.4
Unstaged	53.2	74.8	36.8	53.5	73.9	37.4	49.7	70.9 ^g	34.0 ^g

^a Based on End Results data from a series of hospital registries and one population-based registry.

^b SEER 9 areas (San Francisco, Connecticut, Detroit, Hawaii, Iowa, New Mexico, Seattle, Utah, Atlanta).
Based on follow-up of patients into 2012.

^c SEER 18 areas (San Francisco, Connecticut, Detroit, Hawaii, Iowa, New Mexico, Seattle, Utah, Atlanta, San Jose-Monterey, Los Angeles, Alaska Native Registry, Rural Georgia, California excluding SF/SJM/LA, Kentucky, Louisiana, New Jersey and Georgia excluding ATL/RG).
Based on follow-up of patients into 2012.

^d Period survival provides a 2011 estimate of survival by piecing together the most recent conditional survival estimates from several cohorts. It is computed here using three year calendar blocks (2009-2011: 0-1 year survival), (2008-2010: 1-2 year survival), (2007-2009: 2-3 year survival), (2006-2008: 3-4 year survival), (2005-2007: 4-5 years survival).

^e Stage at diagnosis is classified using SEER Summary Stage 2000. Stage distribution percentages may not sum to 100 due to rounding.

^f The difference between 1975-1977 and 2005-2011 is statistically significant ($p < .05$).

^g The standard error is between 5 and 10 percentage points.

^h The standard error is greater than 10 percentage points.

- Statistic could not be calculated due to fewer than 25 cases during the time period.

Table 6.12
Cancer of the Colon and Rectum (Invasive)

5-Year Relative and Period Survival (Percent) by Race, Sex, Diagnosis Year, Stage and Age

	All Races			Whites			Blacks		
	Total	Males	Females	Total	Males	Females	Total	Males	Females
5-Year Relative Survival (Percent)									
Year of Diagnosis:									
1960-1963 ^a	-	-	-	-	-	-	-	-	-
1970-1973 ^a	-	-	-	-	-	-	-	-	-
1975-1977 ^b	49.8	49.0	50.6	50.0	49.4	50.7	44.6	43.3	45.9
1978-1980 ^b	51.2	50.2	52.1	51.5	50.6	52.5	45.4	43.3	46.8
1981-1983 ^b	54.0	53.8	54.2	54.4	54.4	54.3	46.4	42.8	49.5
1984-1986 ^b	57.7	57.7	57.6	58.3	58.5	58.2	48.4	47.5	49.0
1987-1989 ^b	59.5	59.8	59.3	60.0	60.5	59.5	52.3	49.9	54.4
1990-1992 ^b	61.1	61.0	61.3	61.9	61.7	62.1	52.9	54.5	51.5
1993-1995 ^b	59.9	59.7	60.0	60.4	60.3	60.6	51.7	51.2	52.1
1996-1998 ^b	62.4	62.4	62.5	63.0	62.8	63.1	54.0	55.1	53.0
1999-2001 ^b	65.1	66.0	64.1	66.5	67.4	65.6	54.0	55.2	53.0
2002-2004 ^b	65.8	65.7	65.8	66.7	67.1	66.4	56.5	55.4	57.4
2005-2011 ^b	66.1 ^f	66.4 ^f	65.9 ^f	66.9 ^f	67.4 ^f	66.4 ^f	58.7 ^f	56.6 ^f	60.5 ^f
5-Year Period Survival (Percent) ^{cd}									
2011	65.2	65.1	65.2	65.8	65.9	65.7	58.3	56.6	59.9
Stage Distribution (%) 2005-2011 ^{ce}									
All Stages									
Number of cases	210,149	107,908	102,241	164,806	85,338	79,468	25,256	12,081	13,175
Percent	100%	100%	100%	100%	100%	100%	100%	100%	100%
Localized	39	40	39	40	40	39	38	38	38
Regional	36	35	36	36	36	36	32	33	32
Distant	20	21	20	20	20	20	25	25	24
Unstaged	5	4	5	4	4	5	5	5	5
5-Year Relative Survival (Percent), 2005-2011 ^c									
Age at Diagnosis:									
Ages <45	67.7	65.7	69.9	69.5	67.1	72.1	58.9	55.2	62.3
Ages 45-54	70.8	69.5	72.4	71.7	70.5	73.2	63.8	61.0	66.6
Ages 55-64	68.4	67.8	69.2	69.0	68.5	69.8	62.2	60.4	64.3
Ages 65-74	67.5	66.9	68.1	68.1	67.7	68.7	58.9	56.0	61.5
Ages 75+	57.1	57.2	57.1	58.4	58.3	58.4	46.6	45.0	47.4
Ages <65	69.1	68.1	70.5	70.0	69.0	71.4	62.3	59.9	64.9
Ages 65+	61.6	62.1	61.1	62.4	62.9	62.0	52.9	51.5	54.0
Stage ^e :									
All Stages	64.9	65.0	64.9	65.6	65.7	65.4	58.1	56.6	59.5
Localized	90.1	89.9	90.3	90.4	90.1	90.7	86.9	86.3	87.4
Regional	70.8	70.7	71.0	71.4	71.5	71.4	64.7	61.8	67.4
Distant	13.1	12.6	13.6	13.7	13.1	14.5	9.1	8.6	9.6
Unstaged	34.5	37.0	32.2	31.6	34.3	29.3	40.2	42.4	38.1

^a Based on End Results data from a series of hospital registries and one population-based registry.

^b SEER 9 areas (San Francisco, Connecticut, Detroit, Hawaii, Iowa, New Mexico, Seattle, Utah, Atlanta).

Based on follow-up of patients into 2012.

^c SEER 18 areas (San Francisco, Connecticut, Detroit, Hawaii, Iowa, New Mexico, Seattle, Utah, Atlanta, San Jose-Monterey, Los Angeles, Alaska Native Registry, Rural Georgia, California excluding SF/SJM/LA, Kentucky, Louisiana, New Jersey and Georgia excluding ATL/RG).

Based on follow-up of patients into 2012.

^d Period survival provides a 2011 estimate of survival by piecing together the most recent conditional survival estimates from several cohorts. It is computed here using three year calendar blocks (2009-2011: 0-1 year survival), (2008-2010: 1-2 year survival), (2007-2009: 2-3 year survival), (2006-2008: 3-4 year survival), (2005-2007: 4-5 years survival).

^e Stage at diagnosis is classified using SEER Summary Stage 2000. Stage distribution percentages may not sum to 100 due to rounding.

^f The difference between 1975-1977 and 2005-2011 is statistically significant ($p < .05$).

^g The standard error is between 5 and 10 percentage points.

^h The standard error is greater than 10 percentage points.

- Statistic could not be calculated due to fewer than 25 cases during the time period.

Table 6.13
Cancer of the Colon (Invasive)

5-Year Relative and Period Survival (Percent) by Race, Sex, Diagnosis Year, Stage and Age

	All Races			Whites			Blacks		
	Total	Males	Females	Total	Males	Females	Total	Males	Females
5-Year Relative Survival (Percent)									
Year of Diagnosis:									
1960-1963 ^a	-	-	-	43	42	44	34	32	35
1970-1973 ^a	-	-	-	49	47	50	37	36	38
1975-1977 ^b	50.6	50.1	51.1	50.9	50.5	51.2	44.7	44.0	45.3
1978-1980 ^b	52.3	51.2	53.2	52.4	51.3	53.4	48.8	47.4	49.8
1981-1983 ^b	55.2	55.6	54.8	55.4	56.2	54.8	48.5	44.6	51.5
1984-1986 ^b	58.3	58.8	57.8	59.0	59.6	58.5	49.1	48.9	49.3
1987-1989 ^b	60.2	60.7	59.6	60.6	61.4	59.9	52.3	50.7	53.6
1990-1992 ^b	62.0	62.3	61.7	62.7	63.0	62.4	53.4	54.6	52.3
1993-1995 ^b	59.8	60.1	59.5	60.4	60.7	60.2	51.1	51.1	51.0
1996-1998 ^b	62.4	62.4	61.9	62.8	62.9	62.8	53.6	55.8	51.9
1999-2001 ^b	64.9	66.1	63.7	66.6	67.8	65.5	52.3	53.4	51.5
2002-2004 ^b	64.7	64.6	64.9	65.7	65.7	65.6	55.4	54.9	55.9
2005-2011 ^b	65.3 ^f	65.8 ^f	64.9 ^f	66.5 ^f	67.2 ^f	65.8 ^f	56.4 ^f	55.1 ^f	57.4 ^f
5-Year Period Survival (Percent) ^{cd}									
2011	64.4	64.7	64.1	65.4	65.8	65.0	56.6	55.5	57.5
Stage Distribution (%) 2005-2011 ^{ce}									
All Stages									
Number of cases	147,022	71,936	75,086	115,564	57,037	58,527	18,523	8,555	9,968
Percent	100%	100%	100%	100%	100%	100%	100%	100%	100%
Localized	38	39	37	38	39	37	35	35	35
Regional	37	36	37	37	36	38	34	34	34
Distant	22	22	21	21	21	21	26	27	26
Unstaged	4	4	4	4	4	4	4	4	4
5-Year Relative Survival (Percent), 2005-2011 ^c									
Age at Diagnosis:									
Ages <45	66.4	65.6	67.2	69.0	67.7	70.4	57.1	54.0	59.7
Ages 45-54	68.5	67.8	69.3	69.7	69.1	70.5	60.9	59.1	62.6
Ages 55-64	67.3	67.1	67.5	68.2	68.1	68.4	60.4	59.1	61.7
Ages 65-74	67.5	67.1	67.9	68.5	68.2	68.9	57.7	55.5	59.6
Ages 75+	58.5	58.5	58.5	59.9	59.9	59.9	47.4	45.6	48.4
Ages <65	67.6	67.1	68.1	68.8	68.4	69.4	60.1	58.5	61.8
Ages 65+	62.1	62.6	61.7	63.2	63.7	62.8	52.5	51.2	53.4
Stage ^e :									
All Stages	64.2	64.6	63.9	65.3	65.6	64.9	56.5	55.4	57.4
Localized	91.1	91.3	91.0	91.7	91.8	91.6	87.0	86.6	87.3
Regional	71.2	70.9	71.4	71.8	71.8	71.8	65.4	62.6	67.8
Distant	13.0	12.5	13.4	13.7	13.0	14.3	8.7	8.0	9.3
Unstaged	26.9	30.6	24.1	25.2	28.8	22.3	30.5	35.9	26.4

^a Based on End Results data from a series of hospital registries and one population-based registry.

^b SEER 9 areas (San Francisco, Connecticut, Detroit, Hawaii, Iowa, New Mexico, Seattle, Utah, Atlanta).

Based on follow-up of patients into 2012.

^c SEER 18 areas (San Francisco, Connecticut, Detroit, Hawaii, Iowa, New Mexico, Seattle, Utah, Atlanta, San Jose-Monterey, Los Angeles, Alaska Native Registry, Rural Georgia, California excluding SF/SJM/LA, Kentucky, Louisiana, New Jersey and Georgia excluding ATL/RG).

Based on follow-up of patients into 2012.

^d Period survival provides a 2011 estimate of survival by piecing together the most recent conditional survival estimates from several cohorts. It is computed here using three year calendar blocks (2009-2011: 0-1 year survival), (2008-2010: 1-2 year survival), (2007-2009: 2-3 year survival), (2006-2008: 3-4 year survival), (2005-2007: 4-5 years survival).

^e Stage at diagnosis is classified using SEER Summary Stage 2000. Stage distribution percentages may not sum to 100 due to rounding.

^f The difference between 1975-1977 and 2005-2011 is statistically significant (p<.05).

^g The standard error is between 5 and 10 percentage points.

^h The standard error is greater than 10 percentage points.

- Statistic could not be calculated due to fewer than 25 cases during the time period.

Table 6.14
Cancer of the Rectum (Invasive)

5-Year Relative and Period Survival (Percent) by Race, Sex, Diagnosis Year, Stage and Age

	All Races			Whites			Blacks		
	Total	Males	Females	Total	Males	Females	Total	Males	Females
5-Year Relative Survival (Percent)									
Year of Diagnosis:									
1960-1963 ^a	-	-	-	38	36	41	27	28	27
1970-1973 ^a	-	-	-	45	43	48	30	20	40
1975-1977 ^b	48.1	47.0	49.4	48.2	47.3	49.3	44.4	41.4	46.8
1978-1980 ^b	48.9	48.3	49.5	49.7	49.3	50.1	34.6	33.5	35.5
1981-1983 ^b	51.3	50.1	52.8	52.0	50.9	53.2	40.1	37.7	42.4
1984-1986 ^b	56.2	55.5	57.1	56.9	56.3	57.7	45.9	43.4	48.2
1987-1989 ^b	58.1	57.9	58.4	58.7	58.9	58.4	52.3	47.7	56.9
1990-1992 ^b	59.2	58.3	60.3	59.8	58.9	61.1	51.3	53.8	48.5
1993-1995 ^b	60.1	58.9	61.6	60.5	59.4	61.9	53.8	51.4	56.4
1996-1998 ^b	63.2	62.4	64.3	63.5	62.8	64.4	55.1	53.6	56.4
1999-2001 ^b	65.8	66.1	65.4	66.4	66.5	66.3	59.1	60.0	58.2
2002-2004 ^b	68.3	68.1	68.7	69.4	70.0	68.7	59.7	56.9	62.4
2005-2011 ^b	68.0 ^f	67.5 ^f	68.7 ^f	68.1 ^f	67.9 ^f	68.2 ^f	64.9 ^f	60.2 ^f	69.6 ^f
5-Year Period Survival (Percent) ^{cd}									
2011	66.9	66.0	68.1	66.7	66.0	67.5	63.0	59.2	67.4
Stage Distribution (%) 2005-2011 ^{ce}									
All Stages									
Number of cases	63,127	35,972	27,155	49,242	28,301	20,941	6,733	3,526	3,207
Percent	100%	100%	100%	100%	100%	100%	100%	100%	100%
Localized	44	43	45	43	42	44	46	43	49
Regional	33	34	32	34	35	33	27	29	25
Distant	18	18	17	18	18	17	19	21	17
Unstaged	6	5	6	5	5	6	8	7	8
5-Year Relative Survival (Percent), 2005-2011 ^c									
Age at Diagnosis:									
Ages <45	69.7	65.9	74.1	70.2	66.1	74.9	62.0	57.0	67.7
Ages 45-54	74.2	71.8	77.6	74.4	72.4	77.3	69.3	64.1	75.4
Ages 55-64	70.5	69.0	73.0	70.5	69.1	72.8	67.1	63.5	71.9
Ages 65-74	67.4	66.6	68.7	67.1	66.6	68.0	63.0	57.7	68.4
Ages 75+	52.2	53.0	51.5	52.8	53.4	52.2	43.1	42.5	43.1
Ages <65	71.8	69.6	75.0	71.9	69.9	74.9	67.2	62.7	72.7
Ages 65+	60.0	60.8	59.0	59.9	60.8	58.9	54.4	52.3	56.0
Stage ^e :									
All Stages	66.6	65.9	67.4	66.4	66.0	67.0	62.7	59.6	66.1
Localized	88.1	87.6	88.9	87.7	86.9	88.6	86.8	85.5	87.8
Regional	69.9	70.1	69.7	70.6	70.8	70.2	62.2	59.3	65.8
Distant	13.5	12.9	14.4	14.0	13.2	15.0	10.7	10.5	10.9
Unstaged	47.2	46.4	48.0	43.3	42.8	43.8	54.2	50.0	57.1

^a Based on End Results data from a series of hospital registries and one population-based registry.

^b SEER 9 areas (San Francisco, Connecticut, Detroit, Hawaii, Iowa, New Mexico, Seattle, Utah, Atlanta).

Based on follow-up of patients into 2012.

^c SEER 18 areas (San Francisco, Connecticut, Detroit, Hawaii, Iowa, New Mexico, Seattle, Utah, Atlanta, San Jose-Monterey, Los Angeles, Alaska Native Registry, Rural Georgia, California excluding SF/SJM/LA, Kentucky, Louisiana, New Jersey and Georgia excluding ATL/RG).

Based on follow-up of patients into 2012.

^d Period survival provides a 2011 estimate of survival by piecing together the most recent conditional survival estimates from several cohorts. It is computed here using three year calendar blocks (2009-2011: 0-1 year survival), (2008-2010: 1-2 year survival), (2007-2009: 2-3 year survival), (2006-2008: 3-4 year survival), (2005-2007: 4-5 years survival).

^e Stage at diagnosis is classified using SEER Summary Stage 2000. Stage distribution percentages may not sum to 100 due to rounding.

^f The difference between 1975-1977 and 2005-2011 is statistically significant ($p < .05$).

^g The standard error is between 5 and 10 percentage points.

^h The standard error is greater than 10 percentage points.

- Statistic could not be calculated due to fewer than 25 cases during the time period.

Table 7.8
Cancer of the Corpus and Uterus, NOS (Invasive)

5-Year Relative and Period Survival (Percent) by Race, Diagnosis Year, Stage and Age

	All Races, Females			White Females			Black Females		
	All	<50	50+	All	<50	50+	All	<50	50+
5-Year Relative Survival (Percent)									
Year of Diagnosis:									
1960-1963 ^a	-	-	-	73	-	-	31	-	-
1970-1973 ^a	-	-	-	81	-	-	44	-	-
1975-1977 ^b	86.9	92.7	86.2	88.0	93.3	87.4	60.2	84.4 ^g	55.6
1978-1980 ^b	82.5	91.7	81.3	83.7	93.1	82.6	54.9	82.3 ^g	49.5
1981-1983 ^b	80.7	91.3	79.4	82.2	92.3	81.0	50.7	82.8 ^g	45.6
1984-1986 ^b	82.4	93.6	81.0	84.0	93.9	82.8	56.2	83.5 ^g	52.7
1987-1989 ^b	82.2	89.8	81.1	83.9	90.9	82.9	56.7	82.8 ^g	52.9
1990-1992 ^b	83.7	90.1	82.7	85.8	92.2	84.9	54.0	72.9 ^g	50.2
1993-1995 ^b	83.2	90.0	82.0	84.9	91.5	83.8	58.6	81.9	53.9
1996-1998 ^b	83.5	90.1	82.3	85.1	91.3	84.2	61.4	81.9	57.0
1999-2001 ^b	84.1	88.7	83.2	85.9	89.9	85.2	60.9	70.9	58.3
2002-2004 ^b	82.9	90.0	81.5	85.2	92.4	84.0	59.9	77.8	55.2
2005-2011 ^b	83.3 ^f	88.5 ^f	82.3 ^f	85.3 ^f	90.1 ^f	84.6 ^f	65.6 ^f	77.3	63.4 ^f
5-Year Period Survival (Percent) ^{cd}									
2011	81.6	88.9	80.3	84.0	90.1	83.0	61.6	79.8	58.7
Stage Distribution (%) 2005-2011 ^{ce}									
All Stages									
Number of cases	68,599	10,290	58,309	55,772	7,805	47,967	6,661	941	5,720
Percent	100%	100%	100%	100%	100%	100%	100%	100%	100%
Localized	67	71	67	69	72	69	53	64	51
Regional	21	18	21	20	17	20	26	19	27
Distant	8	7	9	8	7	8	16	12	16
Unstaged	4	4	3	3	3	3	5	5	5
5-Year Relative Survival (Percent), 2005-2011 ^c									
Age at Diagnosis:									
Ages <45	89.5	-	-	90.6	-	-	79.5	-	-
Ages 45-54	88.3	-	-	90.0	-	-	71.0	-	-
Ages 55-64	84.6	-	-	87.0	-	-	63.9	-	-
Ages 65-74	77.8	-	-	80.9	-	-	56.9	-	-
Ages 75+	67.4	-	-	70.4	-	-	40.1	-	-
Ages <65	86.4	-	-	88.4	-	-	68.2	-	-
Ages 65+	73.7	-	-	76.6	-	-	51.4	-	-
Stage ^e :									
All Stages	81.7	88.8	80.4	83.9	90.1	82.9	61.5	77.8	58.6
Localized	95.3	96.7	95.1	96.3	97.2	96.1	85.3	91.8	83.9
Regional	68.2	81.9	66.1	70.8	83.8	68.9	48.8	65.7	46.8
Distant	16.9	29.0	15.0	18.5	30.4	16.7	8.9	20.1	7.4
Unstaged	48.5	88.3	41.2	48.3	88.2	41.8	35.8	86.0 ^g	26.8

^a Based on End Results data from a series of hospital registries and one population-based registry.

^b SEER 9 areas (San Francisco, Connecticut, Detroit, Hawaii, Iowa, New Mexico, Seattle, Utah, Atlanta).
Based on follow-up of patients into 2012.

^c SEER 18 areas (San Francisco, Connecticut, Detroit, Hawaii, Iowa, New Mexico, Seattle, Utah, Atlanta, San Jose-Monterey, Los Angeles, Alaska Native Registry, Rural Georgia, California excluding SF/SJM/LA, Kentucky, Louisiana, New Jersey and Georgia excluding ATL/RG).
Based on follow-up of patients into 2012.

^d Period survival provides a 2011 estimate of survival by piecing together the most recent conditional survival estimates from several cohorts. It is computed here using three year calendar blocks (2009-2011: 0-1 year survival), (2008-2010: 1-2 year survival), (2007-2009: 2-3 year survival), (2006-2008: 3-4 year survival), (2005-2007: 4-5 years survival).

^e Stage at diagnosis is classified using SEER Summary Stage 2000. Stage distribution percentages may not sum to 100 due to rounding.

^f The difference between 1975-1977 and 2005-2011 is statistically significant ($p < .05$).

^g The standard error is between 5 and 10 percentage points.

^h The standard error is greater than 10 percentage points.

- Statistic could not be calculated due to fewer than 25 cases during the time period.

Table 8.8
Cancer of the Esophagus (Invasive)

5-Year Relative and Period Survival (Percent) by Race, Sex, Diagnosis Year, Stage and Age

	All Races			Whites			Blacks		
	Total	Males	Females	Total	Males	Females	Total	Males	Females
5-Year Relative Survival (Percent)									
Year of Diagnosis:									
1960-1963 ^a	-	-	-	4	4	6	1	0	2
1970-1973 ^a	-	-	-	4	4	4	4	4	3
1975-1977 ^b	5.0	4.0	7.5	5.5	4.8	7.0	3.5	2.0	7.7
1978-1980 ^b	5.0	4.8	5.6	5.3	5.3	5.2	4.3	3.4	6.8
1981-1983 ^b	6.6	6.0	8.2	7.3	6.5	9.0	4.3	3.7	6.5
1984-1986 ^b	9.5	8.4	12.1	10.2	9.0	13.0	8.7	8.2	9.9
1987-1989 ^b	9.5	9.4	9.7	10.5	11.0	9.4	6.6	5.3	10.2
1990-1992 ^b	12.1	11.7	13.4	12.9	12.3	14.8	9.1	9.4	8.4
1993-1995 ^b	12.1	12.2	11.6	13.4	13.6	12.7	7.6	7.8	6.9
1996-1998 ^b	13.4	13.1	14.4	14.2	14.0	14.7	10.2	8.5	13.6
1999-2001 ^b	18.1	17.7	19.6	18.8	18.6	19.8	12.8	11.1	16.3
2002-2004 ^b	18.2	17.9	19.0	19.5	19.6	19.4	11.0	8.0	16.5
2005-2011 ^b	20.1 ^f	20.2 ^f	19.8 ^f	21.0 ^f	21.2 ^f	20.5 ^f	13.6 ^f	12.6 ^f	15.7 ^f
5-Year Period Survival (Percent) ^{cd}									
2011	18.3	18.5	17.6	19.1	19.5	17.5	11.7	9.9	15.4
Stage Distribution (%) 2005-2011 ^{ce}									
All Stages									
Number of cases	20,668	16,257	4,411	17,206	13,802	3,404	2,279	1,569	710
Percent	100%	100%	100%	100%	100%	100%	100%	100%	100%
Localized	21	20	23	21	20	23	18	17	20
Regional	31	31	29	31	31	29	32	32	33
Distant	38	39	32	38	39	31	38	40	34
Unstaged	11	10	16	11	9	17	12	11	13
5-Year Relative Survival (Percent), 2005-2011 ^c									
Age at Diagnosis:									
Ages <45	20.7	22.3	12.2	20.9	22.8	8.5	16.0	13.3 ^g	22.2 ^g
Ages 45-54	20.7	19.9	24.6	22.8	21.3	30.4	10.6	10.8	10.2
Ages 55-64	19.6	19.1	22.4	20.8	20.5	22.6	12.6	10.1	20.6
Ages 65-74	20.1	19.9	20.8	20.7	20.6	21.2	14.3	12.9	16.4
Ages 75+	11.6	11.9	10.9	11.7	12.0	11.1	9.9	10.7	8.2
Ages <65	20.1	19.6	22.5	21.4	20.9	24.3	12.2	10.5	16.8
Ages 65+	15.9	16.3	14.8	16.3	16.7	14.8	12.5	11.9	13.0
Stage ^e :									
All Stages	17.9	17.9	17.7	18.6	18.8	18.0	12.2	11.0	15.1
Localized	40.4	42.2	34.2	42.2	44.1	35.4	24.5	23.3	26.5
Regional	21.6	21.7	21.4	22.5	22.5	22.8	15.2	15.5	14.2
Distant	4.2	4.0	5.3	4.2	4.1	4.7	4.2	2.5	8.6
Unstaged	12.0	12.1	11.7	11.6	12.3	10.0	10.7	8.8	14.3 ^g

^a Based on End Results data from a series of hospital registries and one population-based registry.

^b SEER 9 areas (San Francisco, Connecticut, Detroit, Hawaii, Iowa, New Mexico, Seattle, Utah, Atlanta).

Based on follow-up of patients into 2012.

^c SEER 18 areas (San Francisco, Connecticut, Detroit, Hawaii, Iowa, New Mexico, Seattle, Utah, Atlanta, San Jose-Monterey, Los Angeles, Alaska Native Registry, Rural Georgia, California excluding SF/SJM/LA, Kentucky, Louisiana, New Jersey and Georgia excluding ATL/RG).

Based on follow-up of patients into 2012.

^d Period survival provides a 2011 estimate of survival by piecing together the most recent conditional survival estimates from several cohorts. It is computed here using three year calendar blocks (2009-2011: 0-1 year survival), (2008-2010: 1-2 year survival), (2007-2009: 2-3 year survival), (2006-2008: 3-4 year survival), (2005-2007: 4-5 years survival).

^e Stage at diagnosis is classified using SEER Summary Stage 2000. Stage distribution percentages may not sum to 100 due to rounding.

^f The difference between 1975-1977 and 2005-2011 is statistically significant ($p < .05$).

^g The standard error is between 5 and 10 percentage points.

^h The standard error is greater than 10 percentage points.

- Statistic could not be calculated due to fewer than 25 cases during the time period.

Table 9.8
Hodgkin Lymphoma

5-Year Relative and Period Survival (Percent) by Race, Sex, Diagnosis Year and Age

	All Races			Whites			Blacks		
	Total	Males	Females	Total	Males	Females	Total	Males	Females
5-Year Relative Survival (Percent)									
Year of Diagnosis:									
1960-1963 ^a	-	-	-	40	34	48	-	-	-
1970-1973 ^a	-	-	-	67	66	69	-	-	-
1975-1977 ^b	71.8	69.9	74.3	72.1	70.2	74.5	70.1	68.5 ^g	73.3 ^g
1978-1980 ^b	71.7	70.3	73.5	71.8	69.8	74.3	70.6	74.7 ^g	63.1 ^g
1981-1983 ^b	74.2	72.9	75.8	74.6	73.7	75.6	71.8	69.6 ^g	75.9 ^g
1984-1986 ^b	78.2	76.4	80.6	78.7	76.8	81.1	74.7	75.7 ^g	72.1 ^g
1987-1989 ^b	79.2	76.6	82.5	79.7	76.8	83.3	72.3	70.9 ^g	74.0 ^g
1990-1992 ^b	81.7	79.2	84.7	82.8	81.0	85.0	74.2	64.9	84.3
1993-1995 ^b	81.7	79.2	84.7	82.1	80.0	84.7	78.3	74.0	83.0
1996-1998 ^b	85.1	84.4	85.9	85.7	84.3	87.3	81.1	84.3	77.7
1999-2001 ^b	85.0	82.7	87.9	85.7	83.9	87.8	81.3	75.1	89.6
2002-2004 ^b	86.2	85.2	87.2	87.7	87.0	88.4	79.0	74.2	82.6
2005-2011 ^b	88.3 ^f	87.3 ^f	89.5 ^f	88.9 ^f	88.5 ^f	89.1 ^f	85.5 ^f	80.1 ^f	91.6 ^f
5-Year Period Survival (Percent) ^{cd}									
2011	85.8	84.6	87.3	86.3	85.5	87.2	81.9	77.4	87.0
Stage Distribution (%) 2005-2011 ^{ce}									
All Stages									
Number of cases	14,979	8,183	6,796	12,174	6,676	5,498	1,851	989	862
Percent	100%	100%	100%	100%	100%	100%	100%	100%	100%
Localized	16	17	15	16	18	14	19	20	19
Regional	41	36	47	42	36	48	33	27	39
Distant	39	43	34	38	42	33	45	51	39
Unstaged	4	4	5	4	4	5	3	3	3
5-Year Relative Survival (Percent), 2005-2011 ^c									
Age at Diagnosis:									
Ages <45	94.1	93.3	95.1	94.9	94.4	95.4	88.6	84.9	92.7
Ages 45-54	86.0	84.2	88.7	87.4	86.1	89.5	76.7	71.0	85.4
Ages 55-64	77.3	77.7	76.7	79.1	80.0	77.5	63.8	56.4 ^g	70.9 ^g
Ages 65-74	64.3	62.5	66.5	63.8	61.2	67.2	70.1 ^g	77.6 ^g	61.6 ^g
Ages 75+	41.5	39.1	43.1	41.8	38.6	43.8	49.0 ^h	-	39.7 ^h
Ages <65	91.0	89.9	92.4	91.9	91.2	92.8	84.3	80.0	89.3
Ages 65+	53.6	52.9	54.3	53.2	51.5	54.8	65.0 ^g	76.1 ^g	54.0 ^g
Stage ^e :									
All Stages	85.9	85.1	86.9	86.1	85.6	86.8	83.1	79.8	86.6
Localized	91.0	92.1	89.4	91.3	92.3	89.8	88.5	88.4	87.7
Regional	92.8	92.3	93.3	93.1	92.6	93.5	90.0	89.1	90.7
Distant	76.9	76.6	77.4	76.7	76.9	76.2	76.0	71.4	82.6
Unstaged	80.8	78.8	82.6	80.9	79.1	82.5	71.9 ^g	71.5 ^h	-

^a Based on End Results data from a series of hospital registries and one population-based registry.

^b SEER 9 areas (San Francisco, Connecticut, Detroit, Hawaii, Iowa, New Mexico, Seattle, Utah, Atlanta).

Based on follow-up of patients into 2012.

^c SEER 18 areas (San Francisco, Connecticut, Detroit, Hawaii, Iowa, New Mexico, Seattle, Utah, Atlanta, San Jose-Monterey, Los Angeles, Alaska Native Registry, Rural Georgia, California excluding SF/SJM/LA, Kentucky, Louisiana, New Jersey and Georgia excluding ATL/RG).

Based on follow-up of patients into 2012.

^d Period survival provides a 2011 estimate of survival by piecing together the most recent conditional survival estimates from several cohorts. It is computed here using three year calendar blocks (2009-2011: 0-1 year survival), (2008-2010: 1-2 year survival), (2007-2009: 2-3 year survival), (2006-2008: 3-4 year survival), (2005-2007: 4-5 years survival).

^e Stage at diagnosis is classified using SEER Summary Stage 2000. Stage distribution percentages may not sum to 100 due to rounding.

^f The difference between 1975-1977 and 2005-2011 is statistically significant (p<.05).

^g The standard error is between 5 and 10 percentage points.

^h The standard error is greater than 10 percentage points.

- Statistic could not be calculated due to fewer than 25 cases during the time period.

Table 10.6
Kaposi Sarcoma

5-Year Relative and Period Survival (Percent) by Race, Sex, Diagnosis Year, Stage and Age

	All Races			Whites			Blacks		
	Total	Males	Females	Total	Males	Females	Total	Males	Females
5-Year Relative Survival (Percent)									
Year of Diagnosis:									
1960-1963 ^a	-	-	-	-	-	-	-	-	-
1970-1973 ^a	-	-	-	-	-	-	-	-	-
1975-1977 ^b	80.7 ^f	80.1 ^f	-	79.9 ^f	79.0 ^f	-	-	-	-
1978-1980 ^b	78.1 ^f	79.0 ^f	73.1 ^g	77.7 ^f	78.0 ^f	72.5 ^g	-	-	-
1981-1983 ^b	35.7	33.3	64.4 ^g	34.1	31.7	64.2 ^g	-	-	-
1984-1986 ^b	13.0	11.7	70.5 ^g	12.7	11.4	70.2 ^g	16.8	15.7	-
1987-1989 ^b	9.9	9.2	68.5 ^g	9.4	8.8	72.3 ^g	12.4	11.3	-
1990-1992 ^b	9.2	8.5	52.6 ^f	8.8	8.1	53.7 ^f	11.5	10.5	-
1993-1995 ^b	21.8	21.0	53.8 ^f	22.2	21.4	62.1 ^g	17.1	16.3	-
1996-1998 ^b	52.3	51.4	72.2 ^g	57.0	55.7	86.5 ^f	39.9	39.3	-
1999-2001 ^b	57.9	57.4	61.0 ^f	64.5	62.8	79.2 ^f	43.0	44.5	-
2002-2004 ^b	64.4	63.4	72.2 ^f	75.3	73.8	80.3 ^g	41.6	41.8	-
2005-2011 ^b	73.5 ^e	73.2 ^e	73.1 ^f	80.0	79.8	77.3 ^f	59.8	60.0	-
5-Year Period Survival (Percent) ^{cd}									
2011	73.7	73.0	78.5	78.7	77.1	89.2	59.9	60.9	-
5-Year Relative Survival (Percent), 2005-2011 ^c									
Age at Diagnosis:									
Ages <45	67.3	67.9	46.3 ^f	73.0	73.1	-	55.6	56.6	37.3 ^g
Ages 45-54	68.0	68.1	-	70.8	70.6	-	59.0	59.8	-
Ages 55-64	80.6	78.7	-	82.0	80.2	-	63.8 ^f	56.2 ^g	-
Ages 65-74	85.6	83.1	88.4 ^f	86.0	83.7 ^f	90.1 ^f	-	-	-
Ages 75+	87.3	88.6	81.4 ^f	87.7	89.2	82.1 ^f	-	-	-
Ages <65	69.0	69.2	63.8 ^f	73.7	73.4	85.2 ^f	56.8	57.4	49.4 ^f
Ages 65+	87.6	88.2	84.5 ^f	88.0	88.6	85.0 ^f	78.7 ^g	-	-

^a Based on End Results data from a series of hospital registries and one population-based registry.
^b SEER 9 areas (San Francisco, Connecticut, Detroit, Hawaii, Iowa, New Mexico, Seattle, Utah, Atlanta).
Based on follow-up of patients into 2012.
^c SEER 18 areas (San Francisco, Connecticut, Detroit, Hawaii, Iowa, New Mexico, Seattle, Utah, Atlanta, San Jose-Monterey, Los Angeles, Alaska Native Registry, Rural Georgia, California excluding SF/SJM/LA, Kentucky, Louisiana, New Jersey and Georgia excluding ATL/RG).
Based on follow-up of patients into 2012.
^d Period survival provides a 2011 estimate of survival by piecing together the most recent conditional survival estimates from several cohorts. It is computed here using three year calendar blocks (2009-2011: 0-1 year survival), (2008-2010: 1-2 year survival), (2007-2009: 2-3 year survival), (2006-2008: 3-4 year survival), (2005-2007: 4-5 years survival).
^e The difference between 1975-1977 and 2005-2011 is statistically significant (p<.05).
^f The standard error is between 5 and 10 percentage points.
^g The standard error is greater than 10 percentage points.
- Statistic could not be calculated due to fewer than 25 cases during the time period.

Table 11.8
Cancer of the Kidney and Renal Pelvis (Invasive)

5-Year Relative and Period Survival (Percent) by Race, Sex, Diagnosis Year, Stage and Age

	All Races			Whites			Blacks		
	Total	Males	Females	Total	Males	Females	Total	Males	Females
5-Year Relative Survival (Percent)									
Year of Diagnosis:									
1960-1963 ^a	-	-	-	37	36	39	38	38	37
1970-1973 ^a	-	-	-	46	44	50	44	40	49
1975-1977 ^b	50.1	50.2	49.8	49.8	50.1	49.3	48.8	47.9	50.4 ^g
1978-1980 ^b	52.9	52.7	53.3	52.6	52.8	52.1	56.8	51.9	62.8 ^g
1981-1983 ^b	50.0	51.0	48.3	49.9	51.1	47.7	50.6	50.2	51.2
1984-1986 ^b	54.5	55.0	53.7	54.7	55.4	53.5	52.3	49.2	57.0
1987-1989 ^b	56.7	57.0	56.1	57.3	58.0	56.0	54.5	52.7	56.7
1990-1992 ^b	60.1	60.5	59.6	60.6	61.2	59.8	56.9	55.2	58.8
1993-1995 ^b	61.4	61.6	61.1	61.9	62.7	60.7	57.5	54.1	62.1
1996-1998 ^b	62.5	62.8	61.9	62.0	62.5	61.1	66.9	68.1	64.5
1999-2001 ^b	64.8	63.3	67.3	64.9	63.6	67.0	63.9	59.2	69.2
2002-2004 ^b	69.2	69.4	68.9	69.4	69.8	68.7	64.9	64.3	65.7
2005-2011 ^b	74.3 ^f	73.4 ^f	75.9 ^f	74.4 ^f	73.6 ^f	75.7 ^f	73.6 ^f	71.7 ^f	76.5 ^f
5-Year Period Survival (Percent) ^{cd}									
2011	73.6	73.0	74.6	73.9	73.3	74.9	71.8	71.0	73.0
Stage Distribution (%) 2005-2011 ^{ce}									
All Stages									
Number of cases	70,499	43,663	26,836	57,927	36,042	21,885	7,837	4,651	3,186
Percent	100%	100%	100%	100%	100%	100%	100%	100%	100%
Localized	65	63	67	64	62	66	70	69	73
Regional	16	17	15	17	18	15	12	12	11
Distant	16	17	15	16	17	15	15	17	13
Unstaged	3	3	4	3	3	4	3	3	3
5-Year Relative Survival (Percent), 2005-2011 ^c									
Age at Diagnosis:									
Ages <45	86.4	84.8	88.7	88.2	86.5	90.6	76.5	75.3	78.3
Ages 45-54	79.7	77.6	83.9	80.3	78.2	84.6	75.8	73.6	79.8
Ages 55-64	74.6	72.7	78.3	74.9	72.9	78.8	73.5	72.0	76.1
Ages 65-74	72.0	71.3	73.2	72.5	71.7	73.7	70.6	70.1	71.3
Ages 75+	58.7	60.5	56.8	59.1	61.4	56.3	55.6	50.8	58.9
Ages <65	78.5	76.5	82.4	79.1	76.9	83.1	74.9	73.2	77.9
Ages 65+	66.0	66.9	64.8	66.3	67.3	64.8	65.2	64.4	66.1
Stage ^e :									
All Stages	73.2	72.6	74.1	73.4	72.9	74.2	71.6	70.6	73.1
Localized	92.1	92.1	92.1	92.6	92.6	92.7	89.0	89.4	88.4
Regional	65.4	67.0	62.3	66.2	67.7	63.4	57.4	58.9	55.2
Distant	11.8	11.5	12.4	11.9	12.0	11.9	9.1	7.2	13.2
Unstaged	36.2	38.6	32.8	35.3	36.8	33.0	34.7	40.1 ^g	27.6 ^g

^a Based on End Results data from a series of hospital registries and one population-based registry.

^b SEER 9 areas (San Francisco, Connecticut, Detroit, Hawaii, Iowa, New Mexico, Seattle, Utah, Atlanta).

Based on follow-up of patients into 2012.

^c SEER 18 areas (San Francisco, Connecticut, Detroit, Hawaii, Iowa, New Mexico, Seattle, Utah, Atlanta, San Jose-Monterey, Los Angeles, Alaska Native Registry, Rural Georgia, California excluding SF/SJM/LA, Kentucky, Louisiana, New Jersey and Georgia excluding ATL/RG).

Based on follow-up of patients into 2012.

^d Period survival provides a 2011 estimate of survival by piecing together the most recent conditional survival estimates from several cohorts. It is computed here using three year calendar blocks (2009-2011: 0-1 year survival), (2008-2010: 1-2 year survival), (2007-2009: 2-3 year survival), (2006-2008: 3-4 year survival), (2005-2007: 4-5 years survival).

^e Stage at diagnosis is classified using SEER Summary Stage 2000. Stage distribution percentages may not sum to 100 due to rounding.

^f The difference between 1975-1977 and 2005-2011 is statistically significant ($p < .05$).

^g The standard error is between 5 and 10 percentage points.

^h The standard error is greater than 10 percentage points.

- Statistic could not be calculated due to fewer than 25 cases during the time period.

Table 12.8
Cancer of the Larynx (Invasive)

5-Year Relative and Period Survival (Percent) by Race, Sex, Diagnosis Year, Stage and Age

	All Races			Whites			Blacks		
	Total	Males	Females	Total	Males	Females	Total	Males	Females
5-Year Relative Survival (Percent)									
Year of Diagnosis:									
1960-1963 ^a	-	-	-	53	54	46	-	-	-
1970-1973 ^a	-	-	-	62	63	56	-	-	-
1975-1977 ^b	66.0	66.6	62.6	66.7	67.4	62.3	58.2	57.1	63.3 ^g
1978-1980 ^b	65.2	65.4	64.1	66.1	66.3	64.9	56.9	57.2	55.8 ^g
1981-1983 ^b	68.1	68.3	66.9	69.5	69.7	68.5	56.2	57.3	50.7 ^g
1984-1986 ^b	65.2	65.8	62.2	67.0	67.6	63.9	52.8	53.1	51.1 ^g
1987-1989 ^b	65.5	66.6	61.1	67.0	68.5	60.6	55.9	54.1	61.3 ^g
1990-1992 ^b	65.7	66.6	62.3	67.6	68.4	64.4	53.5	54.0	51.3 ^g
1993-1995 ^b	63.6	65.3	56.6	65.2	67.0	57.6	53.1	54.5	47.4 ^g
1996-1998 ^b	64.9	66.7	58.7	66.9	68.5	61.1	53.8	56.8	45.0 ^g
1999-2001 ^b	63.3	64.3	59.7	65.3	66.4	60.8	50.0	49.1	53.0 ^g
2002-2004 ^b	61.7	62.0	60.5	64.2	64.1	64.6	50.5	53.4	41.4 ^g
2005-2011 ^b	62.6 ^f	63.1 ^f	60.2	64.6	65.1	62.7	50.5	51.0	48.1
5-Year Period Survival (Percent) ^{cd}									
2011	60.2	61.2	56.3	61.2	62.2	57.0	52.9	53.7	49.5
Stage Distribution (%) 2005-2011 ^{ce}									
All Stages									
Number of cases	16,286	13,168	3,118	13,139	10,611	2,528	2,443	1,951	492
Percent	100%	100%	100%	100%	100%	100%	100%	100%	100%
Localized	55	57	49	57	59	51	45	47	36
Regional	21	19	29	21	19	29	24	22	33
Distant	19	19	18	17	17	16	28	28	27
Unstaged	4	5	4	5	5	4	3	3	4
5-Year Relative Survival (Percent), 2005-2011 ^c									
Age at Diagnosis:									
Ages <45	74.1	72.9	76.9	78.0	77.7	78.6	58.9 ^g	58.0 ^g	59.1 ^h
Ages 45-54	61.4	60.8	63.7	63.6	62.5	67.8	51.0	51.7	48.3 ^g
Ages 55-64	60.6	60.8	59.6	62.3	62.7	60.6	51.9	51.0	55.0
Ages 65-74	61.4	63.6	51.2	61.5	63.8	51.0	56.3	58.0	49.7 ^g
Ages 75+	55.4	58.2	44.5	55.3	58.4	43.1	52.9 ^g	55.5 ^g	43.8 ^g
Ages <65	61.8	61.5	62.9	63.8	63.5	65.1	52.0	51.7	52.9
Ages 65+	59.0	61.5	48.7	59.0	61.6	48.0	55.5	57.4	48.1
Stage ^e :									
All Stages	60.6	61.5	56.9	61.6	62.6	57.6	53.3	53.8	51.2
Localized	75.9	76.8	71.5	75.7	76.7	70.9	74.2	74.4	72.9
Regional	44.5	43.2	48.2	45.4	44.0	49.3	40.8	39.8	43.3
Distant	35.2	35.5	34.3	36.3	36.7	34.6	30.5	30.1	31.6
Unstaged	55.7	57.3	49.1 ^g	56.8	58.9	47.3 ^g	50.7 ^g	49.4 ^g	-

^a Based on End Results data from a series of hospital registries and one population-based registry.^b SEER 9 areas (San Francisco, Connecticut, Detroit, Hawaii, Iowa, New Mexico, Seattle, Utah, Atlanta).

Based on follow-up of patients into 2012.

^c SEER 18 areas (San Francisco, Connecticut, Detroit, Hawaii, Iowa, New Mexico, Seattle, Utah, Atlanta, San Jose-Monterey, Los Angeles, Alaska Native Registry, Rural Georgia, California excluding SF/SJM/LA, Kentucky, Louisiana, New Jersey and Georgia excluding ATL/RG).

Based on follow-up of patients into 2012.

^d Period survival provides a 2011 estimate of survival by piecing together the most recent conditional survival estimates from several cohorts. It is computed here using three year calendar blocks (2009-2011: 0-1 year survival), (2008-2010: 1-2 year survival), (2007-2009: 2-3 year survival), (2006-2008: 3-4 year survival), (2005-2007: 4-5 years survival).^e Stage at diagnosis is classified using SEER Summary Stage 2000. Stage distribution percentages may not sum to 100 due to rounding.^f The difference between 1975-1977 and 2005-2011 is statistically significant (p<.05).^g The standard error is between 5 and 10 percentage points.^h The standard error is greater than 10 percentage points.

- Statistic could not be calculated due to fewer than 25 cases during the time period.

Table 13.14
Leukemia

5-Year Relative and Period Survival (Percent) by Race, Sex, Diagnosis Year and Age

	All Races			Whites			Blacks		
	Total	Males	Females	Total	Males	Females	Total	Males	Females
5-Year Relative Survival (Percent)									
Year of Diagnosis:									
1960-1963 ^a	-	-	-	14	-	-	-	-	-
1970-1973 ^a	-	-	-	22	-	-	-	-	-
1975-1977 ^b	34.1	33.0	35.6	34.5	33.6	35.8	33.2	30.0	36.7
1978-1980 ^b	36.1	35.0	37.5	36.7	35.8	38.1	28.2	27.3	29.3
1981-1983 ^b	37.3	36.9	37.7	38.0	37.7	38.4	33.9	33.4	34.3
1984-1986 ^b	40.5	40.1	41.1	41.6	41.3	42.0	32.7	31.5	34.1
1987-1989 ^b	42.8	43.9	41.3	43.8	45.4	41.7	35.0	32.7	37.8
1990-1992 ^b	45.1	44.5	46.0	46.4	46.2	46.6	35.7	30.5	41.3
1993-1995 ^b	47.4	48.2	46.2	48.4	49.3	47.2	41.2	41.4	40.9
1996-1998 ^b	48.1	48.3	47.8	49.4	49.3	49.5	38.5	39.0	37.7
1999-2001 ^b	50.6	51.6	49.3	51.6	52.6	50.4	43.2	43.9	42.3
2002-2004 ^b	57.7	57.7	57.6	58.5	58.6	58.3	53.0	53.2	52.6
2005-2011 ^b	61.7 ^e	63.1 ^e	59.7 ^e	62.5 ^e	63.6 ^e	60.9 ^e	55.4 ^e	59.1 ^e	50.5 ^e
5-Year Period Survival (Percent) ^{cd}									
2011	59.4	60.2	58.4	59.7	60.4	58.8	54.4	54.9	53.7
5-Year Relative Survival (Percent), 2005-2011 ^c									
Age at Diagnosis:									
Ages <45	73.5	73.3	73.9	74.6	74.1	75.3	64.8	66.4	62.8
Ages 45-54	67.2	69.2	64.1	68.3	70.1	65.3	59.3	59.8	58.5
Ages 55-64	65.7	65.9	65.4	66.5	66.5	66.4	56.1	55.6	56.5
Ages 65-74	55.5	55.4	55.7	56.5	55.9	57.4	44.8	44.4	44.9
Ages 75+	38.1	38.6	37.6	38.9	39.4	38.4	28.1	27.3	28.6
Ages <65	69.6	69.8	69.2	70.4	70.5	70.4	61.1	61.7	60.3
Ages 65+	45.5	46.5	44.4	46.3	47.0	45.4	36.3	37.0	35.7

^a Based on End Results data from a series of hospital registries and one population-based registry.

^b SEER 9 areas (San Francisco, Connecticut, Detroit, Hawaii, Iowa, New Mexico, Seattle, Utah, Atlanta).

Based on follow-up of patients into 2012.

^c SEER 18 areas (San Francisco, Connecticut, Detroit, Hawaii, Iowa, New Mexico, Seattle, Utah, Atlanta, San Jose-Monterey, Los Angeles, Alaska Native Registry, Rural Georgia, California excluding SF/SJM/LA, Kentucky, Louisiana, New Jersey and Georgia excluding ATL/RG).

Based on follow-up of patients into 2012.

^d Period survival provides a 2011 estimate of survival by piecing together the most recent conditional survival estimates from several cohorts. It is computed here using three year calendar blocks (2009-2011: 0-1 year survival), (2008-2010: 1-2 year survival), (2007-2009: 2-3 year survival), (2006-2008: 3-4 year survival), (2005-2007: 4-5 years survival).

^e The difference between 1975-1977 and 2005-2011 is statistically significant (p<.05).

^f The standard error is between 5 and 10 percentage points.

^g The standard error is greater than 10 percentage points.

- Statistic could not be calculated due to fewer than 25 cases during the time period.

Table 13.15
Lymphocytic Leukemia

5-Year Relative and Period Survival (Percent) by Race, Sex, Diagnosis Year and Age

	All Races			Whites			Blacks		
	Total	Males	Females	Total	Males	Females	Total	Males	Females
<u>Acute Lymphocytic Leukemia</u>									
5-Year Relative Survival (Percent)									
Year of Diagnosis:									
1975-1977 ^a	40.6	36.9	45.6	40.8	37.4	45.7	33.5 ^e	-	-
...									
1984-1986 ^a	52.0	49.1	56.1	52.8	49.3	57.7	36.0 ^e	43.5 ^e	27.3 ^e
1987-1989 ^a	54.3	53.7	55.0	54.8	54.7	54.9	44.7 ^e	42.0 ^e	47.1 ^e
1990-1992 ^a	58.0	54.5	63.1	57.7	54.9	62.0	57.1 ^e	50.4 ^e	63.3 ^e
1993-1995 ^a	60.1	57.9	63.3	59.6	57.8	62.3	53.2 ^e	45.9 ^e	63.8 ^e
1996-1998 ^a	65.4	64.3	66.9	66.3	64.2	68.9	55.6 ^e	59.1 ^e	50.2 ^e
1999-2001 ^a	63.4	63.4	63.5	64.8	65.2	64.2	56.0 ^e	48.8 ^e	63.0 ^e
2002-2004 ^a	67.1	65.9	68.8	67.4	66.3	69.1	64.5 ^e	59.4 ^e	69.7 ^e
2005-2011 ^a	70.1 ^d	69.6 ^d	70.7 ^d	70.7 ^d	69.7 ^d	72.0 ^d	63.3 ^d	68.1	54.8 ^e
5-Year Period Survival (Percent) ^{bc}									
2011	68.4	67.6	69.4	68.4	67.6	69.4	67.4	68.3	65.3
5-Year Relative Survival (Percent), 2005-2011 ^b									
Age at Diagnosis:									
Ages <45	78.7	77.5	80.4	79.1	77.9	80.6	73.7	73.7	73.6
Ages 45-54	31.6	34.3	28.1	30.6	32.6	27.7	30.8 ^e	42.4 ^f	-
Ages 55-64	27.0	23.1	31.3	28.0	23.8	32.6	17.1 ^e	-	-
Ages 65-74	21.2	22.3	20.0	21.1	21.8	20.3	-	-	-
Ages 75+	6.8	8.3	4.7	6.2	7.9	4.1	0.0	-	-
Ages <65	72.0	71.2	73.0	72.1	71.2	73.2	68.2	69.8	65.3
Ages 65+	14.7	16.1	13.1	14.5	15.9	12.7	-	-	-
<u>Chronic Lymphocytic Leukemia</u>									
5-Year Relative Survival (Percent)									
Year of Diagnosis:									
1975-1977 ^a	67.1	64.7	70.3	67.9	65.4	71.2	56.9 ^e	55.1 ^e	59.0 ^e
...									
1984-1986 ^a	72.3	71.0	73.9	72.6	71.3	74.3	67.0 ^e	64.4 ^e	68.4 ^e
1987-1989 ^a	72.6	72.5	72.8	73.7	73.7	73.6	58.1	55.5 ^e	61.5 ^e
1990-1992 ^a	74.0	71.6	77.3	75.1	72.9	78.2	52.2	43.4 ^e	60.9 ^e
1993-1995 ^a	76.9	76.8	77.0	78.0	77.8	78.2	63.0	63.6 ^e	62.1 ^e
1996-1998 ^a	75.1	73.5	77.4	76.1	74.6	78.2	57.7 ^e	51.5 ^e	65.3 ^e
1999-2001 ^a	78.0	77.4	78.9	78.7	78.0	79.8	65.6	63.8 ^e	66.7 ^e
2002-2004 ^a	83.4	82.5	84.7	83.9	82.9	85.2	75.3	72.2 ^e	79.4 ^e
2005-2011 ^a	84.8 ^d	84.7 ^d	84.9 ^d	84.8 ^d	84.8 ^d	84.8 ^d	80.5 ^d	80.8 ^d	79.1 ^d
5-Year Period Survival (Percent) ^{bc}									
2011	81.8	82.0	81.5	81.8	82.2	81.3	70.3	68.1	73.1
5-Year Relative Survival (Percent), 2005-2011 ^b									
Age at Diagnosis:									
Ages <45	93.7	92.4	95.8	93.2	91.6	95.8	93.4 ^e	96.5	-
Ages 45-54	92.6	92.3	93.0	93.7	93.3	94.4	76.1	77.6 ^e	73.0 ^e
Ages 55-64	89.2	87.9	91.5	89.2	88.1	91.2	81.1	77.0	88.5
Ages 65-74	84.7	82.8	87.7	85.2	82.9	88.8	69.4	66.4	72.6 ^e
Ages 75+	69.5	69.6	69.5	69.6	70.1	69.1	56.1	50.3 ^e	60.1 ^e
Ages <65	90.5	89.5	92.2	90.8	89.8	92.4	80.3	78.6	83.1
Ages 65+	76.4	76.2	76.6	76.5	76.4	76.8	63.3	60.2	65.9

^a SEER 9 areas (San Francisco, Connecticut, Detroit, Hawaii, Iowa, New Mexico, Seattle, Utah, Atlanta).

Based on follow-up of patients into 2012.

^b SEER 18 areas (San Francisco, Connecticut, Detroit, Hawaii, Iowa, New Mexico, Seattle, Utah, Atlanta, San Jose-Monterey, Los Angeles, Alaska Native Registry, Rural Georgia, California excluding SF/SJM/LA, Kentucky, Louisiana, New Jersey and Georgia excluding ATL/RG).

Based on follow-up of patients into 2012.

^c Period survival provides a 2011 estimate of survival by piecing together the most recent conditional survival estimates from several cohorts. It is computed here using three year calendar blocks (2009-2011: 0-1 year survival),

(2008-2010: 1-2 year survival), (2007-2009: 2-3 year survival), (2006-2008: 3-4 year survival), (2005-2007: 4-5 years survival).

^d The difference between 1975-1977 and 2005-2011 is statistically significant (p<.05).

^e The standard error is between 5 and 10 percentage points.

^f The standard error is greater than 10 percentage points.

- Statistic could not be calculated due to fewer than 25 cases during the time period.

Table 13.16
Myeloid Leukemia

5-Year Relative and Period Survival (Percent) by Race, Sex, Diagnosis Year and Age

	All Races			Whites			Blacks		
	Total	Males	Females	Total	Males	Females	Total	Males	Females
<u>Acute Myeloid Leukemia</u>									
5-Year Relative Survival (Percent)									
Year of Diagnosis:									
1975-1977 ^a	6.2	5.5	7.0	5.8	5.4	6.2	10.1	8.2	11.7
...									
1984-1986 ^a	10.6	9.2	12.3	10.2	8.9	11.8	9.8	6.7	12.9
1987-1989 ^a	11.4	9.1	14.1	11.3	9.6	13.2	9.2	4.4	15.7 ^e
1990-1992 ^a	13.7	12.6	15.1	13.4	12.2	14.9	13.5	12.9	13.9
1993-1995 ^a	16.2	14.9	17.5	15.4	14.2	16.8	21.5	20.6 ^e	22.0
1996-1998 ^a	16.9	16.0	18.2	15.6	14.4	17.1	22.1	25.2	18.2
1999-2001 ^a	19.2	18.7	19.7	18.7	17.6	19.9	19.3	24.8	14.2
2002-2004 ^a	23.3	20.8	26.3	23.1	20.7	26.0	25.0	26.5	23.2
2005-2011 ^a	26.0 ^d	25.3 ^d	26.7 ^d	25.3 ^d	24.4 ^d	26.4 ^d	26.9 ^d	26.3 ^d	27.6 ^d
5-Year Period Survival (Percent) ^{bc}									
2011	27.0	25.7	28.4	26.2	24.9	27.8	31.3	31.1	31.4
5-Year Relative Survival (Percent), 2005-2011 ^b									
Age at Diagnosis:									
Ages <45	56.6	55.0	58.3	57.7	55.9	59.7	49.1	47.9	50.3
Ages 45-54	40.0	38.1	42.2	40.6	38.3	43.3	40.9	37.3 ^e	44.1
Ages 55-64	29.0	28.0	30.4	29.6	28.3	31.5	21.1	20.4	22.1
Ages 65-74	11.5	9.9	13.5	11.6	9.9	13.8	9.8	6.6	12.7
Ages 75+	1.8	1.6	2.0	1.9	1.8	1.9	1.4	-	1.8
Ages <65	44.0	41.9	46.5	44.4	42.0	47.3	40.3	38.0	42.5
Ages 65+	5.8	5.3	6.2	5.8	5.4	6.1	5.4	4.3	6.2
<u>Chronic Myeloid Leukemia</u>									
5-Year Relative Survival (Percent)									
Year of Diagnosis:									
1975-1977 ^a	21.6	19.3	24.7	20.4	18.4	23.0	27.7 ^e	21.6 ^e	35.5 ^e
...									
1984-1986 ^a	22.4	20.2	25.6	22.9	20.2	26.8	21.4	20.3 ^e	22.2 ^e
1987-1989 ^a	30.2	30.5	29.8	30.1	30.8	29.1	33.3 ^e	28.1 ^e	41.3 ^e
1990-1992 ^a	30.7	29.6	32.1	30.3	30.0	30.6	34.9 ^e	25.5 ^e	44.9 ^e
1993-1995 ^a	35.3	35.0	35.7	35.0	35.0	35.0	35.6 ^e	32.8 ^e	40.2 ^e
1996-1998 ^a	37.0	37.8	36.0	37.8	37.5	38.1	31.0	30.4 ^e	31.4 ^e
1999-2001 ^a	47.1	45.5	49.2	45.8	44.0	48.2	48.1 ^e	48.1 ^e	48.1 ^e
2002-2004 ^a	53.7	52.1	55.9	51.9	50.5	53.6	62.0 ^e	60.2 ^e	64.0 ^e
2005-2011 ^a	63.2 ^d	63.8 ^d	62.4 ^d	62.2 ^d	62.8 ^d	61.5 ^d	62.3 ^d	64.9 ^{de}	57.9 ^e
5-Year Period Survival (Percent) ^{bc}									
2011	64.2	63.6	64.9	63.1	62.7	63.8	66.6	67.8	65.6
5-Year Relative Survival (Percent), 2005-2011 ^b									
Age at Diagnosis:									
Ages <45	87.3	86.7	88.3	88.8	87.9	90.3	74.9	75.7	73.6 ^e
Ages 45-54	83.0	81.7	85.0	83.4	83.5	83.1	79.1	71.6 ^e	87.6 ^e
Ages 55-64	71.9	69.6	75.4	71.6	69.3	75.5	68.6	66.1 ^e	70.9 ^e
Ages 65-74	52.6	50.3	56.1	52.1	49.6	55.7	56.3 ^e	59.0 ^e	53.9 ^f
Ages 75+	26.5	26.2	26.8	26.6	25.9	27.3	17.4 ^e	14.0 ^e	19.6 ^e
Ages <65	81.3	79.9	83.4	81.7	80.5	83.7	74.2	72.0	76.5
Ages 65+	37.8	37.5	38.2	37.5	36.9	38.3	36.2 ^e	39.3 ^e	34.0 ^e

^a SEER 9 areas (San Francisco, Connecticut, Detroit, Hawaii, Iowa, New Mexico, Seattle, Utah, Atlanta).
Based on follow-up of patients into 2012.

^b SEER 18 areas (San Francisco, Connecticut, Detroit, Hawaii, Iowa, New Mexico, Seattle, Utah, Atlanta, San Jose-Monterey, Los Angeles, Alaska Native Registry, Rural Georgia, California excluding SF/SJM/LA, Kentucky, Louisiana, New Jersey and Georgia excluding ATL/RG).
Based on follow-up of patients into 2012.

^c Period survival provides a 2011 estimate of survival by piecing together the most recent conditional survival estimates from several cohorts. It is computed here using three year calendar blocks (2009-2011: 0-1 year survival), (2008-2010: 1-2 year survival), (2007-2009: 2-3 year survival), (2006-2008: 3-4 year survival), (2005-2007: 4-5 years survival).
The difference between 1975-1977 and 2005-2011 is statistically significant (p<.05).

^d The standard error is between 5 and 10 percentage points.

^e The standard error is greater than 10 percentage points.

- Statistic could not be calculated due to fewer than 25 cases during the time period.

Table 14.8
Cancer of the Liver and Intrahepatic Bile Duct (Invasive)

5-Year Relative and Period Survival (Percent) by Race, Sex, Diagnosis Year, Stage and Age

	All Races			Whites			Blacks		
	Total	Males	Females	Total	Males	Females	Total	Males	Females
5-Year Relative Survival (Percent)									
Year of Diagnosis:									
1960-1963 ^a	-	-	-	-	-	-	-	-	-
1970-1973 ^a	-	-	-	-	-	-	-	-	-
1975-1977 ^b	3.4	1.8	6.3	3.4	2.0	5.8	1.8	0.0	5.6
1978-1980 ^b	3.3	2.2	5.4	3.3	2.2	4.8	3.6	3.0	5.0
1981-1983 ^b	3.6	2.9	5.0	3.8	3.0	5.2	2.8	2.1	4.7
1984-1986 ^b	5.7	3.7	9.5	5.7	3.7	9.1	4.4	2.1	9.1
1987-1989 ^b	4.9	3.2	8.0	5.7	3.4	9.4	2.7	1.6	4.9
1990-1992 ^b	5.6	4.9	7.0	6.2	5.1	8.3	2.6	2.0	3.6
1993-1995 ^b	5.6	5.3	6.1	5.2	4.9	5.7	4.0	2.8	7.3
1996-1998 ^b	8.5	8.3	9.1	8.4	7.6	10.2	4.6	5.9	2.0
1999-2001 ^b	11.2	10.7	12.2	10.2	9.5	11.6	7.6	6.8	9.5
2002-2004 ^b	14.7	14.7	14.5	14.0	14.4	12.8	9.6	7.3	15.8
2005-2011 ^b	18.3 ^f	18.2 ^f	18.4 ^f	17.6 ^f	17.8 ^f	17.1 ^f	13.0 ^f	11.8	16.7 ^f
5-Year Period Survival (Percent) ^{cd}									
2011	18.3	17.8	19.7	17.7	17.3	18.6	13.0	11.5	17.4
Stage Distribution (%) 2005-2011 ^{ce}									
All Stages									
Number of cases	40,095	29,199	10,896	27,645	20,272	7,373	5,000	3,708	1,292
Percent	100%	100%	100%	100%	100%	100%	100%	100%	100%
Localized	43	43	42	42	43	41	41	41	42
Regional	27	28	25	26	27	24	29	29	27
Distant	18	18	18	18	18	18	20	21	20
Unstaged	13	12	15	14	12	16	10	9	12
5-Year Relative Survival (Percent), 2005-2011 ^c									
Age at Diagnosis:									
Ages <45	36.5	33.8	42.2	40.8	37.6	46.7	23.8	23.2	25.1 ^g
Ages 45-54	20.1	19.0	25.5	20.1	19.1	24.9	12.3	10.9	17.9
Ages 55-64	19.4	17.9	25.7	19.6	18.1	26.1	12.4	10.9	19.1
Ages 65-74	15.7	15.1	16.9	13.7	13.0	15.3	11.7	10.9	13.2
Ages 75+	6.9	7.0	6.7	5.2	5.2	5.2	5.2	5.0	5.2
Ages <65	21.1	19.5	27.9	21.4	19.7	28.6	13.4	11.8	19.7
Ages 65+	11.6	11.7	11.2	9.6	9.6	9.5	9.4	9.1	9.8
Stage ^e :									
All Stages	17.2	16.8	18.3	16.5	16.1	17.5	12.4	11.2	15.7
Localized	30.5	30.1	31.6	29.1	28.7	30.3	23.7	21.9	29.1
Regional	10.7	10.2	12.1	10.8	10.2	12.4	5.9	5.2	8.0
Distant	3.1	2.4	5.1	3.3	2.5	5.6	1.7	1.3	3.4
Unstaged	6.1	5.9	6.5	5.6	5.5	5.8	4.9	4.2	6.3

^a Based on End Results data from a series of hospital registries and one population-based registry.

^b SEER 9 areas (San Francisco, Connecticut, Detroit, Hawaii, Iowa, New Mexico, Seattle, Utah, Atlanta).

Based on follow-up of patients into 2012.

^c SEER 18 areas (San Francisco, Connecticut, Detroit, Hawaii, Iowa, New Mexico, Seattle, Utah, Atlanta, San Jose-Monterey, Los Angeles, Alaska Native Registry, Rural Georgia, California excluding SF/SJM/LA, Kentucky, Louisiana, New Jersey and Georgia excluding ATL/RG).

Based on follow-up of patients into 2012.

^d Period survival provides a 2011 estimate of survival by piecing together the most recent conditional survival estimates from several cohorts. It is computed here using three year calendar blocks (2009-2011: 0-1 year survival), (2008-2010: 1-2 year survival), (2007-2009: 2-3 year survival), (2006-2008: 3-4 year survival), (2005-2007: 4-5 years survival).

^e Stage at diagnosis is classified using SEER Summary Stage 2000. Stage distribution percentages may not sum to 100 due to rounding.

^f The difference between 1975-1977 and 2005-2011 is statistically significant ($p < .05$).

^g The standard error is between 5 and 10 percentage points.

^h The standard error is greater than 10 percentage points.

- Statistic could not be calculated due to fewer than 25 cases during the time period.

Table 15.12
Cancer of the Lung and Bronchus (Invasive)

5-Year Relative and Period Survival (Percent) by Race, Sex, Diagnosis Year, Stage and Age

	All Races			Whites			Blacks		
	Total	Males	Females	Total	Males	Females	Total	Males	Females
5-Year Relative Survival (Percent)									
Year of Diagnosis:									
1960-1963 ^a	-	-	-	8	7	11	5	5	6
1970-1973 ^a	-	-	-	10	9	14	7	6	10
1975-1977 ^b	12.2	11.1	15.3	12.2	11.1	15.4	11.3	10.6	13.8
1978-1980 ^b	12.8	11.3	16.3	12.9	11.5	16.2	11.7	9.7	17.8
1981-1983 ^b	13.1	11.5	16.4	13.3	11.7	16.6	11.3	10.1	14.9
1984-1986 ^b	12.8	11.2	16.0	13.0	11.2	16.3	11.1	10.3	12.8
1987-1989 ^b	13.0	11.9	14.9	13.3	12.0	15.3	10.9	10.8	11.1
1990-1992 ^b	13.6	12.1	15.9	13.9	12.4	16.2	10.4	9.3	12.6
1993-1995 ^b	14.3	12.5	16.9	14.5	12.6	17.1	12.8	11.2	15.7
1996-1998 ^b	14.6	12.9	16.8	14.8	13.0	17.0	12.4	10.8	15.0
1999-2001 ^b	15.2	13.1	17.9	15.5	13.3	18.0	12.6	10.7	15.2
2002-2004 ^b	16.1	14.1	18.4	16.5	14.4	18.8	13.2	12.7	13.9
2005-2011 ^b	18.4 ^f	15.8 ^f	21.2 ^f	18.8 ^f	16.2 ^f	21.4 ^f	15.5 ^f	13.2 ^f	18.1 ^f
5-Year Period Survival (Percent) ^{cd}									
2011	18.0	15.3	21.1	18.3	15.6	21.2	15.0	12.4	18.2
Stage Distribution (%) 2005-2011 ^{ce}									
All Stages									
Number of cases	266,845	141,478	125,367	218,982	114,549	104,433	30,047	16,792	13,255
Percent	100%	100%	100%	100%	100%	100%	100%	100%	100%
Localized	16	14	17	16	15	18	13	12	15
Regional	22	22	22	22	22	22	22	22	23
Distant	57	59	55	56	58	54	61	62	59
Unstaged	5	5	6	5	5	6	4	4	4
5-Year Relative Survival (Percent), 2005-2011 ^c									
Age at Diagnosis:									
Ages <45	30.5	26.6	34.2	32.1	27.4	36.7	25.1	23.5	26.9
Ages 45-54	20.3	16.1	25.0	21.2	16.9	26.0	15.6	12.1	20.2
Ages 55-64	19.6	16.4	23.8	20.0	16.8	24.1	15.5	13.0	19.3
Ages 65-74	18.4	15.6	21.8	18.8	16.0	22.0	14.9	12.3	18.2
Ages 75+	12.8	11.1	14.4	13.1	11.4	14.7	9.0	7.5	10.2
Ages <65	20.4	16.8	24.9	21.0	17.3	25.4	16.1	13.3	20.1
Ages 65+	15.6	13.5	17.8	15.9	13.8	18.1	12.4	10.6	14.5
Stage ^e :									
All Stages	17.4	14.8	20.3	17.7	15.1	20.5	14.3	12.0	17.1
Localized	54.8	49.1	60.0	55.3	49.7	60.2	47.3	41.8	52.8
Regional	27.4	24.8	30.2	27.5	25.2	30.1	24.3	21.4	27.7
Distant	4.2	3.5	5.0	4.0	3.3	4.8	4.1	3.4	4.9
Unstaged	7.5	6.7	8.3	7.1	6.1	8.0	9.1	8.9	9.4

^a Based on End Results data from a series of hospital registries and one population-based registry.

^b SEER 9 areas (San Francisco, Connecticut, Detroit, Hawaii, Iowa, New Mexico, Seattle, Utah, Atlanta).

Based on follow-up of patients into 2012.

^c SEER 18 areas (San Francisco, Connecticut, Detroit, Hawaii, Iowa, New Mexico, Seattle, Utah, Atlanta, San Jose-Monterey, Los Angeles, Alaska Native Registry, Rural Georgia, California excluding SF/SJM/LA, Kentucky, Louisiana, New Jersey and Georgia excluding ATL/RG).

Based on follow-up of patients into 2012.

^d Period survival provides a 2011 estimate of survival by piecing together the most recent conditional survival estimates from several cohorts. It is computed here using three year calendar blocks (2009-2011: 0-1 year survival), (2008-2010: 1-2 year survival), (2007-2009: 2-3 year survival), (2006-2008: 3-4 year survival), (2005-2007: 4-5 years survival).

^e Stage at diagnosis is classified using SEER Summary Stage 2000. Stage distribution percentages may not sum to 100 due to rounding.

^f The difference between 1975-1977 and 2005-2011 is statistically significant ($p < .05$).

^g The standard error is between 5 and 10 percentage points.

^h The standard error is greater than 10 percentage points.

- Statistic could not be calculated due to fewer than 25 cases during the time period.

Table 15.13
Small Cell Cancer of the Lung and Bronchus (Invasive)

5-Year Relative and Period Survival (Percent) by Race, Sex, Diagnosis Year, Stage and Age

	All Races			Whites			Blacks		
	Total	Males	Females	Total	Males	Females	Total	Males	Females
5-Year Relative Survival (Percent)									
Year of Diagnosis:									
1975-1977 ^a	3.6	3.1	4.8	3.7	3.1	4.9	3.7	3.8	3.6
1978-1980 ^a	4.2	3.2	6.4	4.3	3.3	6.4	3.1	2.4	5.0
1981-1983 ^a	4.5	3.5	6.2	4.6	3.6	6.1	5.0	3.7	8.2
1984-1986 ^a	4.5	3.5	6.2	4.7	3.6	6.4	3.5	2.2	5.6
1987-1989 ^a	5.0	3.9	6.6	5.1	3.8	6.8	4.0	3.3	5.1
1990-1992 ^a	5.4	4.5	6.4	5.4	4.5	6.6	4.2	3.9	4.4
1993-1995 ^a	6.4	5.1	7.9	6.3	5.0	7.6	6.7	4.0	10.4
1996-1998 ^a	5.9	5.2	6.5	6.0	5.4	6.7	3.6	2.6	4.5
1999-2001 ^a	5.7	4.8	6.7	5.6	4.3	6.9	5.2	6.0	4.2
2002-2004 ^a	6.4	4.7	8.1	6.5	4.4	8.4	5.3	5.3	5.1
2005-2011 ^a	6.9 ^e	5.6 ^e	8.2 ^e	6.8 ^e	5.6 ^e	8.1 ^e	6.7 ^e	5.0 ^e	7.8
5-Year Period Survival (Percent) ^{bc}									
2011	6.5	5.4	7.6	6.4	5.2	7.6	7.1	6.8	7.5
Stage Distribution (%) 2005-2011 ^{bd}									
All Stages									
Number of cases	35,010	17,673	17,337	30,527	15,210	15,317	3,034	1,551	1,483
Percent	100%	100%	100%	100%	100%	100%	100%	100%	100%
Localized	4	4	5	4	4	5	4	4	4
Regional	20	18	22	20	18	22	21	19	23
Distant	73	75	71	73	75	71	73	76	70
Unstaged	2	2	2	2	2	2	2	2	2
5-Year Relative Survival (Percent), 2005-2011 ^b									
Age at Diagnosis:									
Ages <45	11.1	10.5	11.9	9.9	9.0	10.9	17.1 ^f	17.8 ^f	16.2 ^f
Ages 45-54	9.5	8.1	10.9	9.2	7.4	11.2	9.1	9.6	8.8
Ages 55-64	8.3	6.3	10.5	8.2	6.3	10.2	8.4	5.0	12.2
Ages 65-74	5.8	4.7	6.9	5.8	4.5	7.0	5.8	5.4	6.1
Ages 75+	3.5	3.4	3.6	3.5	3.4	3.6	4.0	4.9	3.3
Ages <65	8.7	6.9	10.6	8.5	6.7	10.5	9.1	7.2	11.2
Ages 65+	4.8	4.1	5.5	4.8	4.0	5.5	5.2	5.5	5.0
Stage ^d :									
All Stages	6.5	5.4	7.6	6.4	5.2	7.5	7.2	6.4	8.0
Localized	27.3	24.2	30.1	27.5	24.5	30.3	25.4	22.0 ^f	28.5 ^f
Regional	14.7	12.9	16.3	14.6	12.6	16.3	15.3	14.9	15.5
Distant	2.8	2.4	3.3	2.7	2.2	3.2	3.7	3.0	4.4
Unstaged	8.2	6.8	9.5	8.0	5.6	10.2	9.8	25.5 ^f	4.1

Note: Small Cell Cancer of the Lung and Bronchus includes histologies 8002, 8041-8045.

^a SEER 9 areas (San Francisco, Connecticut, Detroit, Hawaii, Iowa, New Mexico, Seattle, Utah, Atlanta).
Based on follow-up of patients into 2012.

^b SEER 18 areas (San Francisco, Connecticut, Detroit, Hawaii, Iowa, New Mexico, Seattle, Utah, Atlanta, San Jose-Monterey, Los Angeles, Alaska Native Registry, Rural Georgia, California excluding SF/SJM/LA, Kentucky, Louisiana, New Jersey and Georgia excluding ATL/RG).
Based on follow-up of patients into 2012.

^c Period survival provides a 2011 estimate of survival by piecing together the most recent conditional survival estimates from several cohorts. It is computed here using three year calendar blocks (2009-2011: 0-1 year survival), (2008-2010: 1-2 year survival), (2007-2009: 2-3 year survival), (2006-2008: 3-4 year survival), (2005-2007: 4-5 years survival).

^d Stage at diagnosis is classified using SEER Summary Stage 2000. Stage distribution percentages may not sum to 100 due to rounding.

^e The difference between 1975-1977 and 2005-2011 is statistically significant ($p < .05$).

^f The standard error is between 5 and 10 percentage points.

^g The standard error is greater than 10 percentage points.

- Statistic could not be calculated due to fewer than 25 cases during the time period.

Table 15.14
Non-Small Cell Cancer of the Lung and Bronchus (Invasive)

5-Year Relative and Period Survival (Percent) by Race, Sex, Diagnosis Year, Stage and Age

	All Races			Whites			Blacks		
	Total	Males	Females	Total	Males	Females	Total	Males	Females
5-Year Relative Survival (Percent)									
Year of Diagnosis:									
1975-1977 ^a	16.4	14.8	21.0	16.7	15.0	21.4	13.5	12.4	17.7
1978-1980 ^a	16.7	14.8	21.4	17.0	15.2	21.5	14.2	11.6	22.8
1981-1983 ^a	17.1	15.0	21.8	17.5	15.4	22.1	13.9	12.2	19.2
1984-1986 ^a	16.5	14.3	20.9	17.0	14.7	21.5	13.2	11.9	16.4
1987-1989 ^a	16.9	15.2	19.8	17.4	15.5	20.6	13.2	12.9	14.0
1990-1992 ^a	17.6	15.5	21.1	18.3	16.1	21.7	12.8	11.1	16.0
1993-1995 ^a	18.7	16.1	22.5	19.3	16.5	23.2	15.1	13.3	18.5
1996-1998 ^a	19.4	16.7	22.9	19.9	17.1	23.5	15.3	12.9	19.3
1999-2001 ^a	20.0	16.8	24.0	20.7	17.5	24.6	14.7	12.0	18.6
2002-2004 ^a	19.6	17.0	22.8	20.4	17.6	23.7	14.9	13.8	16.5
2005-2011 ^a	22.3 ^e	19.0 ^e	26.0 ^e	23.1 ^e	19.8 ^e	26.8 ^e	17.5 ^e	14.6 ^e	21.0
5-Year Period Survival (Percent) ^{bc}									
2011	22.1	18.4	26.3	22.7	19.0	26.9	17.1	13.7	21.5
Stage Distribution (%) 2005-2011 ^{bd}									
All Stages									
Number of cases	199,144	107,357	91,787	160,916	85,793	75,123	23,746	13,402	10,344
Percent	100%	100%	100%	100%	100%	100%	100%	100%	100%
Localized	19	16	21	19	17	22	15	13	17
Regional	24	24	24	24	25	24	23	23	24
Distant	55	57	53	54	56	51	60	62	57
Unstaged	3	2	3	3	2	3	2	2	2
5-Year Relative Survival (Percent), 2005-2011 ^b									
Age at Diagnosis:									
Ages <45	32.3	28.0	36.3	34.9	29.7	39.6	24.7	22.0	27.6
Ages 45-54	22.6	17.7	28.2	24.2	19.1	29.8	16.5	12.3	21.9
Ages 55-64	22.9	19.1	28.0	23.7	19.9	28.8	17.0	14.3	21.2
Ages 65-74	22.3	18.7	26.6	23.0	19.4	27.2	17.4	14.1	21.8
Ages 75+	17.2	14.5	19.9	17.8	15.0	20.5	11.5	8.9	13.8
Ages <65	23.4	19.2	28.6	24.5	20.2	29.8	17.3	14.1	21.9
Ages 65+	19.9	16.8	23.3	20.5	17.4	23.8	15.2	12.4	18.4
Stage ^d :									
All Stages	21.2	17.8	25.3	22.0	18.4	25.9	16.3	13.3	20.1
Localized	58.7	52.8	64.1	59.3	53.5	64.5	50.4	44.5	56.4
Regional	30.6	27.3	34.6	31.1	27.9	34.8	26.2	22.7	30.7
Distant	4.7	3.9	5.8	4.6	3.7	5.7	4.3	3.6	5.3
Unstaged	12.8	10.4	15.3	12.4	9.7	15.1	12.0	9.3	15.9

Note: Non-Small Cell Cancer of the Lung and Bronchus includes histologies 8003-8004, 8012-8015, 8021-8022, 8030-8035, 8046, 8050-8052, 8070-8076, 8078, 8082-8084, 8090, 8094, 8120, 8123, 8140-8141, 8143-8145, 8147, 8190, 8200-8201, 8211, 8240-8241, 8243-8246, 8249-8255, 8260, 8290, 8310, 8320, 8323, 8333, 8401, 8430, 8440, 8470-8471, 8480-8481, 8490, 8503, 8507, 8525, 8550, 8560, 8562, 8570-8572, 8574-8576.

^a SEER 9 areas (San Francisco, Connecticut, Detroit, Hawaii, Iowa, New Mexico, Seattle, Utah, Atlanta).

Based on follow-up of patients into 2012.

^b SEER 18 areas (San Francisco, Connecticut, Detroit, Hawaii, Iowa, New Mexico, Seattle, Utah, Atlanta, San Jose-Monterey, Los Angeles, Alaska Native Registry, Rural Georgia, California excluding SF/SJM/LA, Kentucky, Louisiana, New Jersey and Georgia excluding ATL/RG).

Based on follow-up of patients into 2012.

^c Period survival provides a 2011 estimate of survival by piecing together the most recent conditional survival estimates from several cohorts. It is computed here using three year calendar blocks (2009-2011: 0-1 year survival), (2008-2010: 1-2 year survival), (2007-2009: 2-3 year survival), (2006-2008: 3-4 year survival), (2005-2007: 4-5 years survival).

^d Stage at diagnosis is classified using SEER Summary Stage 2000. Stage distribution percentages may not sum to 100 due to rounding.

^e The difference between 1975-1977 and 2005-2011 is statistically significant ($p < .05$).

^f The standard error is between 5 and 10 percentage points.

^g The standard error is greater than 10 percentage points.

- Statistic could not be calculated due to fewer than 25 cases during the time period.

Table 16.8
Melanoma of the Skin (Invasive)

5-Year Relative and Period Survival (Percent) by Race, Sex, Diagnosis Year, Stage and Age

	All Races			Whites			Blacks		
	Total	Males	Females	Total	Males	Females	Total	Males	Females
5-Year Relative Survival (Percent)									
Year of Diagnosis:									
1960-1963 ^a	-	-	-	60	51	68	-	-	-
1970-1973 ^a	-	-	-	68	62	75	-	-	-
1975-1977 ^b	81.9	77.6	86.3	82.0	77.8	86.2	56.7 ^g	-	-
1978-1980 ^b	82.7	77.7	87.7	82.8	77.8	87.8	59.8 ^h	-	-
1981-1983 ^b	82.8	78.4	87.2	82.7	78.4	87.2	61.9 ^g	-	-
1984-1986 ^b	86.5	82.5	91.0	86.3	82.1	90.9	71.2 ^h	-	-
1987-1989 ^b	88.1	84.9	91.5	87.9	84.9	91.3	78.6 ^g	-	89.5 ^g
1990-1992 ^b	89.2	86.9	91.7	89.2	86.9	91.7	59.6 ^g	-	-
1993-1995 ^b	89.7	87.2	92.6	89.5	86.9	92.6	69.5 ^g	66.6 ^g	-
1996-1998 ^b	90.9	89.5	92.6	90.8	89.2	92.6	73.9 ^g	68.0 ^h	78.6 ^g
1999-2001 ^b	92.1	90.1	94.5	92.2	90.2	94.6	73.2 ^g	69.6 ^g	76.1 ^g
2002-2004 ^b	93.1	91.1	95.4	93.1	91.0	95.5	72.0 ^g	-	70.4 ^g
2005-2011 ^b	93.1 ^f	91.5 ^f	95.0 ^f	93.1 ^f	91.6 ^f	95.0 ^f	69.8	57.0 ^g	78.1 ^g
5-Year Period Survival (Percent) ^{cd}									
2011	91.5	89.5	94.0	91.2	89.1	93.8	70.5	64.9	73.7
Stage Distribution (%) 2005-2011 ^{ce}									
All Stages									
Number of cases	95,820	53,606	42,214	89,722	50,478	39,244	468	200	268
Percent	100%	100%	100%	100%	100%	100%	100%	100%	100%
Localized	84	82	86	84	82	86	55	47	61
Regional	9	10	7	9	10	8	25	29	23
Distant	4	5	3	4	5	3	15	19	12
Unstaged	3	3	3	3	3	3	5	6	4
5-Year Relative Survival (Percent), 2005-2011 ^c									
Age at Diagnosis:									
Ages <45	94.7	91.6	96.7	94.5	91.4	96.6	85.4	70.0 ^g	92.1
Ages 45-54	92.7	90.3	95.3	92.4	89.9	95.2	66.0 ^g	59.1 ^h	70.7 ^g
Ages 55-64	91.1	89.6	93.6	90.8	89.3	93.3	66.8 ^g	59.5 ^g	78.4 ^g
Ages 65-74	91.1	89.8	93.6	91.0	89.6	93.7	61.6 ^g	56.5 ^g	65.5 ^g
Ages 75+	86.5	86.9	85.7	86.1	86.7	85.2	62.6 ^g	59.8 ^h	61.9 ^g
Ages <65	92.8	90.3	95.4	92.5	90.0	95.3	73.8	62.5 ^g	82.6
Ages 65+	88.9	88.5	89.6	88.7	88.3	89.4	62.1 ^g	57.9 ^g	63.8 ^g
Stage ^e :									
All Stages	91.5	89.7	93.8	91.2	89.4	93.6	69.4	60.9	75.0
Localized	98.3	97.9	98.8	98.1	97.7	98.7	90.9	91.0	89.9
Regional	63.0	60.5	67.2	63.3	61.0	67.3	49.5 ^g	38.4 ^g	59.7 ^g
Distant	16.6	15.2	19.6	16.5	15.1	19.5	23.3 ^g	21.8 ^g	28.9 ^g
Unstaged	80.2	77.4	83.7	79.3	76.2	83.2	-	-	-

^a Based on End Results data from a series of hospital registries and one population-based registry.

^b SEER 9 areas (San Francisco, Connecticut, Detroit, Hawaii, Iowa, New Mexico, Seattle, Utah, Atlanta).

Based on follow-up of patients into 2012.

^c SEER 18 areas (San Francisco, Connecticut, Detroit, Hawaii, Iowa, New Mexico, Seattle, Utah, Atlanta, San Jose-Monterey, Los Angeles, Alaska Native Registry, Rural Georgia, California excluding SF/SJM/LA, Kentucky, Louisiana, New Jersey and Georgia excluding ATL/RG).

Based on follow-up of patients into 2012.

^d Period survival provides a 2011 estimate of survival by piecing together the most recent conditional survival estimates from several cohorts. It is computed here using three year calendar blocks (2009-2011: 0-1 year survival), (2008-2010: 1-2 year survival), (2007-2009: 2-3 year survival), (2006-2008: 3-4 year survival), (2005-2007: 4-5 years survival).

^e Stage at diagnosis is classified using SEER Summary Stage 2000. Stage distribution percentages may not sum to 100 due to rounding.

^f The difference between 1975-1977 and 2005-2011 is statistically significant ($p < .05$).

^g The standard error is between 5 and 10 percentage points.

^h The standard error is greater than 10 percentage points.

- Statistic could not be calculated due to fewer than 25 cases during the time period.

Table 17.4
Mesothelioma

5-Year Relative and Period Survival (Percent) by Race, Sex, Diagnosis Year, Stage and Age

	All Races			Whites			Blacks		
	Total	Males	Females	Total	Males	Females	Total	Males	Females
5-Year Relative Survival (Percent)									
Year of Diagnosis:									
1960-1963 ^a	-	-	-	-	-	-	-	-	-
1970-1973 ^a	-	-	-	-	-	-	-	-	-
1975-1977 ^b	9.7	3.0	26.7	10.4	3.3	27.4 ^f	-	-	-
1978-1980 ^b	5.9	5.3	8.1	5.7	4.9	8.7	-	-	-
1981-1983 ^b	7.7	5.3	15.1	8.1	5.4	16.2	-	-	-
1984-1986 ^b	6.6	4.3	13.9	6.1	3.7	14.1	-	-	-
1987-1989 ^b	6.2	4.6	12.2	6.3	4.8	12.1	4.8	-	-
1990-1992 ^b	7.7	4.2	20.6	7.4	4.1	20.1	10.2 ^f	8.5 ^f	-
1993-1995 ^b	6.5	3.2	18.7	5.9	2.8	18.0	9.0	8.0 ^f	-
1996-1998 ^b	9.8	8.2	15.2	9.8	8.0	16.2	11.3 ^f	-	-
1999-2001 ^b	7.2	5.1	15.3	6.5	4.8	13.1	-	-	-
2002-2004 ^b	6.4	4.7	11.6	5.9	4.3	10.9	7.9 ^f	-	-
2005-2011 ^b	8.8	6.5 ^e	15.6	9.3	6.8 ^e	17.4	4.8	5.8 ^f	-
5-Year Period Survival (Percent) ^{cd}									
2011	9.1	7.8	12.9	9.2	7.8	13.5	10.3	8.9	13.3
5-Year Relative Survival (Percent), 2005-2011 ^c									
Age at Diagnosis:									
Ages <45	49.0	48.4 ^f	49.7 ^f	48.0	46.6 ^f	50.4 ^f	-	-	-
Ages 45-54	17.2	13.4	22.8	17.6	13.8	23.2 ^f	18.7 ^f	-	-
Ages 55-64	12.6	10.6	18.9	13.6	11.0	21.8	3.9	6.0 ^f	-
Ages 65-74	8.0	6.8	12.7	8.3	7.2	12.7	9.5	7.7 ^f	-
Ages 75+	3.4	2.8	5.0	3.3	2.6	5.5	3.2	4.7	-
Ages <65	18.3	15.0	25.7	18.8	15.4	27.2	16.3	11.4 ^f	27.0 ^f
Ages 65+	5.4	4.5	8.2	5.5	4.6	8.6	6.2	6.2	6.8

^a Based on End Results data from a series of hospital registries and one population-based registry.^b SEER 9 areas (San Francisco, Connecticut, Detroit, Hawaii, Iowa, New Mexico, Seattle, Utah, Atlanta).

Based on follow-up of patients into 2012.

^c SEER 18 areas (San Francisco, Connecticut, Detroit, Hawaii, Iowa, New Mexico, Seattle, Utah, Atlanta, San Jose-Monterey, Los Angeles, Alaska Native Registry, Rural Georgia, California excluding SF/SJM/LA, Kentucky, Louisiana, New Jersey and Georgia excluding ATL/RG).

Based on follow-up of patients into 2012.

^d Period survival provides a 2011 estimate of survival by piecing together the most recent conditional survival estimates from several cohorts. It is computed here using three year calendar blocks (2009-2011: 0-1 year survival), (2008-2010: 1-2 year survival), (2007-2009: 2-3 year survival), (2006-2008: 3-4 year survival), (2005-2007: 4-5 years survival).^e The difference between 1975-1977 and 2005-2011 is statistically significant (p<.05).^f The standard error is between 5 and 10 percentage points.^g The standard error is greater than 10 percentage points.

- Statistic could not be calculated due to fewer than 25 cases during the time period.

Table 18.8
Myeloma

5-Year Relative and Period Survival (Percent) by Race, Sex, Diagnosis Year and Age

	All Races			Whites			Blacks		
	Total	Males	Females	Total	Males	Females	Total	Males	Females
5-Year Relative Survival (Percent)									
Year of Diagnosis:									
1960-1963 ^a	-	-	-	12	13	10	-	-	-
1970-1973 ^a	-	-	-	19	20	17	-	-	-
1975-1977 ^b	24.7	24.1	25.4	24.3	23.7	24.8	29.5	29.3	29.5
1978-1980 ^b	25.9	24.4	27.5	24.8	24.1	25.5	32.5	27.4	37.5
1981-1983 ^b	27.5	25.7	29.3	27.2	25.4	28.9	28.9	29.6	27.9
1984-1986 ^b	27.2	27.6	26.9	25.9	25.7	26.2	31.8	33.3	30.3
1987-1989 ^b	27.2	28.9	25.5	26.9	29.1	24.5	30.0	29.7	30.3
1990-1992 ^b	29.3	30.5	27.9	28.3	29.6	26.9	34.4	38.1	31.0
1993-1995 ^b	31.7	32.1	31.2	30.5	31.2	29.7	35.4	34.9	35.7
1996-1998 ^b	32.4	34.4	30.2	32.1	34.1	29.8	31.4	33.0	30.2
1999-2001 ^b	34.3	36.5	31.7	34.2	36.5	31.3	34.1	36.7	32.0
2002-2004 ^b	42.1	43.0	41.0	42.9	44.2	41.2	40.1	40.2	40.0
2005-2011 ^b	48.5 ^f	49.4 ^f	47.4 ^f	48.1 ^f	49.8 ^f	46.0 ^f	49.5 ^f	47.5 ^f	51.3 ^f
5-Year Period Survival (Percent) ^{cd}									
2011	48.5	49.5	47.2	48.1	49.5	46.3	50.0	49.8	50.2
Stage Distribution (%) 2005-2011 ^{ce}									
All Stages									
Number of cases	29,234	15,887	13,347	21,397	12,005	9,392	5,755	2,773	2,982
Percent	100%	100%	100%	100%	100%	100%	100%	100%	100%
Localized	5	6	4	5	6	4	4	5	4
Regional	0	0	0	0	0	0	0	0	0
Distant	95	94	96	95	94	96	96	95	96
Unstaged	0	0	0	0	0	0	0	0	0
5-Year Relative Survival (Percent), 2005-2011 ^c									
Age at Diagnosis:									
Ages <45	71.1	71.2	71.1	69.8	70.0	69.5	71.5	72.1	70.8
Ages 45-54	63.6	62.3	65.3	65.8	65.2	66.7	56.4	51.5	62.2
Ages 55-64	55.8	55.9	55.5	56.0	56.7	55.1	54.6	53.3	55.9
Ages 65-74	44.9	44.4	45.5	45.5	45.1	46.1	43.4	41.4	45.2
Ages 75+	28.2	29.7	26.9	28.6	30.9	26.4	26.2	27.8	25.5
Ages <65	59.8	59.6	60.2	60.4	60.7	60.0	57.4	54.9	60.2
Ages 65+	36.2	37.4	35.1	36.5	38.1	34.7	35.9	36.2	35.7
Stage ^e :									
All Stages	46.6	47.7	45.2	46.4	48.1	44.2	47.3	46.9	47.7
Localized	68.6	72.4	61.8	69.4	73.8	60.8	61.3	62.3 ^g	59.5 ^g
Regional	-	-	-	-	-	-	-	-	-
Distant	45.4	46.2	44.5	45.1	46.5	43.5	46.7	46.1	47.3
Unstaged	-	-	-	-	-	-	-	-	-

^a Based on End Results data from a series of hospital registries and one population-based registry.

^b SEER 9 areas (San Francisco, Connecticut, Detroit, Hawaii, Iowa, New Mexico, Seattle, Utah, Atlanta).

Based on follow-up of patients into 2012.

^c SEER 18 areas (San Francisco, Connecticut, Detroit, Hawaii, Iowa, New Mexico, Seattle, Utah, Atlanta, San Jose-Monterey, Los Angeles, Alaska Native Registry, Rural Georgia, California excluding SF/SJM/LA, Kentucky, Louisiana, New Jersey and Georgia excluding ATL/RG).

Based on follow-up of patients into 2012.

^d Period survival provides a 2011 estimate of survival by piecing together the most recent conditional survival estimates from several cohorts. It is computed here using three year calendar blocks (2009-2011: 0-1 year survival), (2008-2010: 1-2 year survival), (2007-2009: 2-3 year survival), (2006-2008: 3-4 year survival), (2005-2007: 4-5 years survival).

^e Stage at diagnosis is classified using SEER Summary Stage 2000. Stage distribution percentages may not sum to 100 due to rounding.

^f The difference between 1975-1977 and 2005-2011 is statistically significant ($p < .05$).

^g The standard error is between 5 and 10 percentage points.

^h The standard error is greater than 10 percentage points.

- Statistic could not be calculated due to fewer than 25 cases during the time period.

Table 19.8
Non-Hodgkin Lymphoma

5-Year Relative and Period Survival (Percent) by Race, Sex, Diagnosis Year and Age

	All Races			Whites			Blacks		
	Total	Males	Females	Total	Males	Females	Total	Males	Females
5-Year Relative Survival (Percent)									
Year of Diagnosis:									
1960-1963 ^a	-	-	-	31	31	31	-	-	-
1970-1973 ^a	-	-	-	41	39	43	-	-	-
1975-1977 ^b	46.5	45.6	47.5	46.8	46.3	47.3	48.6	42.6	55.3 ^g
1978-1980 ^b	47.9	46.1	49.8	47.9	46.2	49.5	51.3	47.3	56.7
1981-1983 ^b	50.5	50.2	50.9	50.7	50.4	51.0	49.4	49.0	49.8
1984-1986 ^b	51.5	49.9	53.3	51.9	50.4	53.6	46.8	44.5	49.9
1987-1989 ^b	50.9	47.6	54.9	51.3	48.1	55.2	45.9	41.7	51.0
1990-1992 ^b	50.7	46.7	55.7	51.5	47.6	56.4	42.2	38.2	47.7
1993-1995 ^b	52.5	48.7	57.4	53.2	49.7	57.6	42.1	35.7	54.0
1996-1998 ^b	58.8	57.0	61.0	59.4	57.6	61.4	54.7	53.2	56.9
1999-2001 ^b	63.9	61.4	66.9	64.9	62.8	67.5	55.7	48.9	63.8
2002-2004 ^b	69.7	68.5	71.2	71.0	70.1	72.1	63.5	60.9	66.5
2005-2011 ^b	71.9 ^f	70.8 ^f	73.3 ^f	73.0 ^f	72.1 ^f	74.0 ^f	64.0 ^f	59.2 ^f	69.0 ^f
5-Year Period Survival (Percent) ^{cd}									
2011	70.6	69.1	72.3	71.1	69.8	72.7	63.7	60.3	67.6
Stage Distribution (%) 2005-2011 ^{ce}									
All Stages									
Number of cases	93,276	50,477	42,799	77,757	42,131	35,626	7,576	4,093	3,483
Percent	100%	100%	100%	100%	100%	100%	100%	100%	100%
Localized	28	27	29	27	26	29	28	25	31
Regional	15	15	15	15	15	15	15	14	15
Distant	50	51	47	50	52	48	51	55	47
Unstaged	8	7	8	7	7	8	7	6	7
5-Year Relative Survival (Percent), 2005-2011 ^c									
Age at Diagnosis:									
Ages <45	80.4	78.0	84.2	82.3	79.7	86.5	67.2	64.7	71.0
Ages 45-54	78.2	74.9	83.0	80.1	77.2	84.5	62.5	57.2	70.2
Ages 55-64	75.7	72.7	79.7	76.6	73.8	80.4	66.4	60.9	73.7
Ages 65-74	70.6	67.8	73.8	71.2	68.5	74.3	64.8	56.3	71.6
Ages 75+	54.2	53.2	55.1	54.9	53.7	55.9	45.1	42.3	46.1
Ages <65	77.7	74.9	81.8	79.1	76.4	83.1	65.5	61.2	71.7
Ages 65+	61.7	60.4	62.9	62.2	61.0	63.4	56.2	51.3	59.2
Stage ^e :									
All Stages	70.0	68.6	71.6	70.6	69.4	72.0	62.8	59.1	67.2
Localized	82.0	81.7	82.3	82.5	82.5	82.4	77.1	73.0	80.8
Regional	73.8	73.2	74.6	74.4	74.0	74.9	68.7	66.8	70.5
Distant	62.4	60.8	64.4	63.5	61.8	65.5	53.6	50.9	57.3
Unstaged	68.6	67.1	70.1	67.4	66.0	68.9	60.8	57.3	64.1

^a Based on End Results data from a series of hospital registries and one population-based registry.

^b SEER 9 areas (San Francisco, Connecticut, Detroit, Hawaii, Iowa, New Mexico, Seattle, Utah, Atlanta).
Based on follow-up of patients into 2012.

^c SEER 18 areas (San Francisco, Connecticut, Detroit, Hawaii, Iowa, New Mexico, Seattle, Utah, Atlanta, San Jose-Monterey, Los Angeles, Alaska Native Registry, Rural Georgia, California excluding SF/SJM/LA, Kentucky, Louisiana, New Jersey and Georgia excluding ATL/RG).
Based on follow-up of patients into 2012.

^d Period survival provides a 2011 estimate of survival by piecing together the most recent conditional survival estimates from several cohorts. It is computed here using three year calendar blocks (2009-2011: 0-1 year survival), (2008-2010: 1-2 year survival), (2007-2009: 2-3 year survival), (2006-2008: 3-4 year survival), (2005-2007: 4-5 years survival).

^e Stage at diagnosis is classified using SEER Summary Stage 2000. Stage distribution percentages may not sum to 100 due to rounding.

^f The difference between 1975-1977 and 2005-2011 is statistically significant (p<.05).

^g The standard error is between 5 and 10 percentage points.

^h The standard error is greater than 10 percentage points.

- Statistic could not be calculated due to fewer than 25 cases during the time period.

Table 20.10
Cancer of the Oral Cavity and Pharynx (Invasive)

5-Year Relative and Period Survival (Percent) by Race, Sex, Diagnosis Year, Stage and Age

	All Races			Whites			Blacks		
	Total	Males	Females	Total	Males	Females	Total	Males	Females
5-Year Relative Survival (Percent)									
Year of Diagnosis:									
1960-1963 ^a	-	-	-	45	-	-	-	-	-
1970-1973 ^a	-	-	-	43	-	-	-	-	-
1975-1977 ^b	52.5	51.5	54.9	54.0	53.7	54.9	36.0	29.7	49.0
1978-1980 ^b	53.3	51.8	56.5	55.4	54.4	57.3	34.8	29.7	45.8
1981-1983 ^b	51.7	50.0	55.2	54.0	52.8	56.5	30.9	25.3	45.9
1984-1986 ^b	54.0	51.6	59.0	56.3	54.7	59.3	35.1	29.5	49.4
1987-1989 ^b	53.6	51.0	58.8	55.9	54.0	59.8	34.0	30.0	44.2
1990-1992 ^b	55.4	53.1	60.0	57.9	56.4	60.9	32.9	28.2	45.7
1993-1995 ^b	57.6	56.2	60.5	60.0	59.4	61.3	37.9	33.0	50.3
1996-1998 ^b	57.7	56.2	60.9	59.8	59.1	61.3	35.9	30.9	48.9
1999-2001 ^b	60.3	59.2	62.5	62.2	62.0	62.7	44.6	39.4	57.1
2002-2004 ^b	63.8	63.1	65.6	65.6	65.6	65.5	48.1	42.8	58.4
2005-2011 ^b	66.3 ^f	65.8 ^f	67.4 ^f	68.1 ^f	68.0 ^f	68.3 ^f	44.9 ^f	42.1 ^f	51.1
5-Year Period Survival (Percent) ^{cd}									
2011	64.3	63.5	66.1	65.8	65.5	66.6	46.3	42.7	54.1
Stage Distribution (%) 2005-2011 ^{ce}									
All Stages									
Number of cases	52,240	36,950	15,290	42,755	30,550	12,205	4,896	3,367	1,529
Percent	100%	100%	100%	100%	100%	100%	100%	100%	100%
Localized	31	26	42	32	27	43	20	15	31
Regional	47	51	38	47	51	38	49	53	41
Distant	18	19	15	16	17	14	27	29	23
Unstaged	5	4	6	5	4	6	4	3	5
5-Year Relative Survival (Percent), 2005-2011 ^c									
Age at Diagnosis:									
Ages <45	78.4	75.0	83.9	80.6	78.0	85.1	67.0	56.8	79.2
Ages 45-54	68.4	67.4	71.6	71.2	70.2	75.0	44.5	42.8	47.6
Ages 55-64	64.3	63.3	67.8	66.4	65.6	69.2	41.8	39.5	49.5
Ages 65-74	58.5	57.0	62.1	60.4	59.3	63.1	38.3	33.7	48.6
Ages 75+	49.4	48.9	50.1	50.4	50.1	50.8	31.0	26.3	35.9
Ages <65	68.1	66.4	73.0	70.2	68.8	74.6	47.6	43.3	57.5
Ages 65+	54.4	53.8	55.5	55.8	55.5	56.2	36.0	32.0	43.4
Stage ^e :									
All Stages	63.2	62.3	65.3	64.8	64.4	65.9	44.6	40.5	53.3
Localized	83.0	82.1	84.5	83.0	82.2	84.2	77.1	72.0	82.1
Regional	61.5	62.8	57.5	63.3	65.0	57.7	42.3	41.0	45.9
Distant	37.7	37.7	38.0	38.7	38.9	37.9	25.2	23.9	28.9
Unstaged	47.9	47.3	49.0	47.3	47.3	47.1	38.2	33.6 ^g	43.3 ^g

^a Based on End Results data from a series of hospital registries and one population-based registry.

^b SEER 9 areas (San Francisco, Connecticut, Detroit, Hawaii, Iowa, New Mexico, Seattle, Utah, Atlanta).

Based on follow-up of patients into 2012.

^c SEER 18 areas (San Francisco, Connecticut, Detroit, Hawaii, Iowa, New Mexico, Seattle, Utah, Atlanta, San Jose-Monterey, Los Angeles, Alaska Native Registry, Rural Georgia, California excluding SF/SJM/LA, Kentucky, Louisiana, New Jersey and Georgia excluding ATL/RG).

Based on follow-up of patients into 2012.

^d Period survival provides a 2011 estimate of survival by piecing together the most recent conditional survival estimates from several cohorts. It is computed here using three year calendar blocks (2009-2011: 0-1 year survival), (2008-2010: 1-2 year survival), (2007-2009: 2-3 year survival), (2006-2008: 3-4 year survival), (2005-2007: 4-5 years survival).

^e Stage at diagnosis is classified using SEER Summary Stage 2000. Stage distribution percentages may not sum to 100 due to rounding.

^f The difference between 1975-1977 and 2005-2011 is statistically significant ($p < .05$).

^g The standard error is between 5 and 10 percentage points.

^h The standard error is greater than 10 percentage points.

- Statistic could not be calculated due to fewer than 25 cases during the time period.

Table 21.8
Cancer of the Ovary(Invasive)

5-Year Relative and Period Survival (Percent) by Race, Diagnosis Year, Stage and Age

	All Races, Females			White Females			Black Females		
	All	<65	65+	All	<65	65+	All	<65	65+
5-Year Relative Survival (Percent)									
Year of Diagnosis:									
1960-1963 ^a	-	-	-	32	-	-	32	-	-
1970-1973 ^a	-	-	-	36	-	-	32	-	-
1975-1977 ^b	36.0	44.2	21.4	35.3	43.6	21.1	41.9	48.9	24.9 ^g
1978-1980 ^b	37.6	47.2	22.1	36.8	46.4	22.3	38.8	49.2	12.8
1981-1983 ^b	38.8	50.2	23.1	38.4	50.2	23.1	37.5	45.4	22.6
1984-1986 ^b	38.4	49.4	24.1	37.5	48.5	23.7	39.4	52.2	21.2
1987-1989 ^b	38.2	51.1	23.5	38.1	51.2	23.9	33.7	46.9	17.1
1990-1992 ^b	40.5	55.3	24.2	40.4	56.0	24.1	35.6	49.1	16.9
1993-1995 ^b	41.5	55.7	26.5	40.6	55.4	25.9	41.5	54.8	26.9
1996-1998 ^b	43.8	57.0	28.3	43.2	56.5	28.4	38.9	53.1	20.4
1999-2001 ^b	43.8	55.8	28.9	43.5	56.3	28.9	35.4	43.9	21.9
2002-2004 ^b	43.8	56.9	26.9	43.3	56.8	27.2	36.3	46.2	20.2
2005-2011 ^b	45.9 ^f	58.7 ^f	28.6 ^f	45.6 ^f	58.9 ^f	29.1 ^f	37.7	46.8	22.6
5-Year Period Survival (Percent) ^{cd}									
2011	45.8	58.7	28.4	45.9	59.3	29.1	35.6	46.2	20.9
Stage Distribution (%) 2005-2011 ^{ce}									
All Stages									
Number of cases	33,935	19,183	14,752	28,099	15,369	12,730	2,837	1,666	1,171
Percent	100%	100%	100%	100%	100%	100%	100%	100%	100%
Localized	15	20	7	14	20	7	15	20	8
Regional	19	23	14	19	23	14	15	17	12
Distant	60	54	69	61	54	69	63	58	69
Unstaged	6	3	10	6	3	10	8	5	12
5-Year Relative Survival (Percent), 2005-2011 ^c									
Age at Diagnosis:									
Ages <45	75.8	-	-	76.9	-	-	63.5	-	-
Ages 45-54	58.2	-	-	59.0	-	-	43.2	-	-
Ages 55-64	48.7	-	-	49.5	-	-	33.7	-	-
Ages 65-74	38.5	-	-	39.6	-	-	25.8	-	-
Ages 75+	19.6	-	-	19.7	-	-	16.6	-	-
Ages <65	58.3	-	-	58.8	-	-	45.4	-	-
Ages 65+	28.4	-	-	28.9	-	-	21.5	-	-
Stage ^e :									
All Stages	45.6	58.3	28.4	45.5	58.8	28.9	35.7	45.4	21.5
Localized	92.1	93.3	87.3	92.5	94.0	87.4	86.4	87.1	82.0 ^g
Regional	73.2	80.3	57.4	73.6	80.9	58.6	55.0	63.1	37.0 ^g
Distant	28.3	37.0	19.1	28.7	37.9	19.6	20.5	25.9	14.2
Unstaged	22.9	51.1	10.3	22.1	50.6	10.5	24.5	49.9 ^g	7.0

Ovary excludes borderline cases or histologies 8442, 8451, 8462, 8472, and 8473.

^a Based on End Results data from a series of hospital registries and one population-based registry.

^b SEER 9 areas (San Francisco, Connecticut, Detroit, Hawaii, Iowa, New Mexico, Seattle, Utah, Atlanta).

Based on follow-up of patients into 2012.

^c SEER 18 areas (San Francisco, Connecticut, Detroit, Hawaii, Iowa, New Mexico, Seattle, Utah, Atlanta, San Jose-Monterey, Los Angeles, Alaska Native Registry, Rural Georgia, California excluding SF/SJM/LA, Kentucky, Louisiana, New Jersey and Georgia excluding ATL/RG).

Based on follow-up of patients into 2012.

^d Period survival provides a 2011 estimate of survival by piecing together the most recent conditional survival estimates from several cohorts. It is computed here using three year calendar blocks (2009-2011: 0-1 year survival), (2008-2010: 1-2 year survival), (2007-2009: 2-3 year survival), (2006-2008: 3-4 year survival), (2005-2007: 4-5 years survival).

^e Stage at diagnosis is classified using SEER Summary Stage 2000. Stage distribution percentages may not sum to 100 due to rounding.

^f The difference between 1975-1977 and 2005-2011 is statistically significant (p<.05).

^g The standard error is between 5 and 10 percentage points.

^h The standard error is greater than 10 percentage points.

- Statistic could not be calculated due to fewer than 25 cases during the time period.

Table 22.8
Cancer of the Pancreas (Invasive)

5-Year Relative and Period Survival (Percent) by Race, Sex, Diagnosis Year, Stage and Age

	All Races			Whites			Blacks		
	Total	Males	Females	Total	Males	Females	Total	Males	Females
5-Year Relative Survival (Percent)									
Year of Diagnosis:									
1960-1963 ^a	-	-	-	1	1	2	1	0	3
1970-1973 ^a	-	-	-	2	2	2	2	0	3
1975-1977 ^b	2.5	2.6	2.2	2.5	2.7	2.3	2.3	2.5	1.9
1978-1980 ^b	2.9	2.7	3.0	2.5	2.6	2.5	5.7	4.5	7.0
1981-1983 ^b	2.7	2.4	3.1	2.5	2.1	3.0	3.6	3.7	3.2
1984-1986 ^b	2.9	2.3	3.5	2.6	2.1	3.1	4.7	3.9	5.3
1987-1989 ^b	3.5	3.3	3.7	3.2	3.1	3.3	5.5	5.1	5.8
1990-1992 ^b	4.3	4.1	4.5	4.4	4.2	4.5	3.6	3.2	4.0
1993-1995 ^b	4.0	3.6	4.3	3.9	3.5	4.2	3.6	3.3	3.7
1996-1998 ^b	4.4	4.6	4.1	4.1	4.7	3.6	3.4	3.1	3.5
1999-2001 ^b	5.1	5.2	5.0	4.9	5.4	4.4	5.6	3.7	7.4
2002-2004 ^b	5.5	5.1	5.9	5.6	5.5	5.8	4.3	3.0	5.5
2005-2011 ^b	7.8 ^f	8.1 ^f	7.6 ^f	7.8 ^f	7.9 ^f	7.7 ^f	7.2 ^f	8.5 ^f	6.1 ^f
5-Year Period Survival (Percent) ^{cd}									
2011	7.9	8.0	7.9	7.9	7.9	7.8	7.2	7.4	7.1
Stage Distribution (%) 2005-2011 ^{ce}									
All Stages									
Number of cases	56,808	28,345	28,463	45,281	22,908	22,373	6,920	3,184	3,736
Percent	100%	100%	100%	100%	100%	100%	100%	100%	100%
Localized	9	8	10	9	8	10	9	8	11
Regional	28	28	28	29	29	28	26	25	26
Distant	53	55	50	52	55	50	56	59	54
Unstaged	10	9	11	10	9	12	8	7	10
5-Year Relative Survival (Percent), 2005-2011 ^c									
Age at Diagnosis:									
Ages <45	27.4	23.4	32.1	27.1	23.6	31.4	26.6	21.5	31.4
Ages 45-54	11.8	10.2	14.1	11.6	9.7	14.6	12.0	11.6	12.4
Ages 55-64	8.1	7.2	9.4	8.4	7.7	9.5	5.5	4.5	6.9
Ages 65-74	6.7	6.6	6.8	6.8	6.6	7.0	5.2	4.5	5.7
Ages 75+	3.6	3.4	3.7	3.6	3.3	3.8	2.7	3.4	2.3
Ages <65	10.8	9.4	12.8	10.8	9.5	12.8	9.4	8.0	11.2
Ages 65+	4.9	5.0	4.8	4.9	5.0	4.9	3.9	4.1	3.8
Stage ^e :									
All Stages	7.2	7.0	7.3	7.1	6.9	7.3	6.6	6.4	6.7
Localized	27.1	27.0	27.0	26.1	26.2	25.8	25.4	23.4	26.6
Regional	10.7	11.1	10.3	11.0	11.2	10.7	10.0	11.6	8.4
Distant	2.4	2.4	2.5	2.4	2.4	2.4	1.8	1.4	2.2
Unstaged	4.4	5.0	4.0	3.9	4.3	3.6	7.4	9.5	5.7

^a Based on End Results data from a series of hospital registries and one population-based registry.

^b SEER 9 areas (San Francisco, Connecticut, Detroit, Hawaii, Iowa, New Mexico, Seattle, Utah, Atlanta).

Based on follow-up of patients into 2012.

^c SEER 18 areas (San Francisco, Connecticut, Detroit, Hawaii, Iowa, New Mexico, Seattle, Utah, Atlanta, San Jose-Monterey, Los Angeles, Alaska Native Registry, Rural Georgia, California excluding SF/SJM/LA, Kentucky, Louisiana, New Jersey and Georgia excluding ATL/RG).

Based on follow-up of patients into 2012.

^d Period survival provides a 2011 estimate of survival by piecing together the most recent conditional survival estimates from several cohorts. It is computed here using three year calendar blocks (2009-2011: 0-1 year survival), (2008-2010: 1-2 year survival), (2007-2009: 2-3 year survival), (2006-2008: 3-4 year survival), (2005-2007: 4-5 years survival).

^e Stage at diagnosis is classified using SEER Summary Stage 2000. Stage distribution percentages may not sum to 100 due to rounding.

^f The difference between 1975-1977 and 2005-2011 is statistically significant ($p < .05$).

^g The standard error is between 5 and 10 percentage points.

^h The standard error is greater than 10 percentage points.

- Statistic could not be calculated due to fewer than 25 cases during the time period.

Table 23.8
Cancer of the Prostate (Invasive)

5-Year Relative and Period Survival (Percent) by Race, Diagnosis Year, Stage and Age

	All Races, Males			White Males			Black Males		
	All	<65	65+	All	<65	65+	All	<65	65+
5-Year Relative Survival (Percent)									
Year of Diagnosis:									
1960-1963 ^a	-	-	-	50	-	-	35	-	-
1970-1973 ^a	-	-	-	63	-	-	55	-	-
1975-1977 ^b	67.7	73.4	66.0	68.5	75.2	66.5	60.7	62.0	60.1
1978-1980 ^b	70.1	75.1	68.6	71.2	76.7	69.6	62.1	65.0	60.6
1981-1983 ^b	72.0	75.9	70.8	73.0	77.5	71.8	62.8	65.0	61.9
1984-1986 ^b	75.1	77.3	74.6	76.3	79.0	75.7	65.6	67.2	64.9
1987-1989 ^b	82.8	83.2	82.7	84.3	84.7	84.3	71.2	72.8	70.6
1990-1992 ^b	92.9	93.0	92.9	94.1	94.0	94.1	84.4	86.7	83.5
1993-1995 ^b	95.2	95.8	94.9	95.9	96.6	95.6	91.6	93.1	90.7
1996-1998 ^b	97.3	98.5	96.7	97.8	98.9	97.2	94.9	96.7	93.5
1999-2001 ^b	99.3	99.1	99.3	99.7	99.5	99.6	97.3	98.0	96.2
2002-2004 ^b	99.6	99.5	99.7	99.8	99.6	99.7	97.7	99.1	95.9
2005-2011 ^b	99.4 ^f	99.4 ^f	99.3 ^f	99.7 ^f	99.8 ^f	99.6 ^f	97.6 ^f	98.0 ^f	97.1 ^f
5-Year Period Survival (Percent) ^{cd}									
2011	98.9	99.0	98.7	99.1	99.4	99.0	97.1	97.7	96.3
Stage Distribution (%) 2005-2011 ^{ce}									
All Stages									
Number of cases	368,254	162,137	206,117	284,635	122,209	162,426	53,594	29,190	24,404
Percent	100%	100%	100%	100%	100%	100%	100%	100%	100%
Localized	80	80	81	81	80	82	82	81	82
Regional	12	16	9	12	17	9	10	13	6
Distant	4	3	5	4	3	5	5	4	7
Unstaged	4	2	5	3	1	4	3	1	4
5-Year Relative Survival (Percent), 2005-2011 ^c									
Age at Diagnosis:									
Ages <45	96.2	-	-	95.5	-	-	97.6	-	-
Ages 45-54	98.1	-	-	98.2	-	-	97.5	-	-
Ages 55-64	99.3	-	-	99.6	-	-	97.8	-	-
Ages 65-74	100.0	-	-	100.0	-	-	97.6	-	-
Ages 75+	95.6	-	-	95.7	-	-	91.4	-	-
Ages <65	99.0	-	-	99.3	-	-	97.8	-	-
Ages 65+	98.8	-	-	99.1	-	-	95.9	-	-
Stage ^e :									
All Stages	98.9	99.0	98.8	99.2	99.3	99.1	96.9	97.8	95.9
Localized	100.0	100.0	100.0	100.0	100.0	100.0	100.0	100.0	100.0
Regional	100.0	99.8	100.0	100.0	99.8	100.0	100.0	100.0	99.5
Distant	28.2	31.7	26.7	27.4	31.0	26.0	28.3	31.7	25.8
Unstaged	77.3	88.4	74.2	73.0	87.3	69.4	66.7	79.3	61.3

^a Based on End Results data from a series of hospital registries and one population-based registry.

^b SEER 9 areas (San Francisco, Connecticut, Detroit, Hawaii, Iowa, New Mexico, Seattle, Utah, Atlanta).

Based on follow-up of patients into 2012.

^c SEER 18 areas (San Francisco, Connecticut, Detroit, Hawaii, Iowa, New Mexico, Seattle, Utah, Atlanta, San Jose-Monterey, Los Angeles, Alaska Native Registry, Rural Georgia, California excluding SF/SJM/LA, Kentucky, Louisiana, New Jersey and Georgia excluding ATL/RG).

Based on follow-up of patients into 2012.

^d Period survival provides a 2011 estimate of survival by piecing together the most recent conditional survival estimates from several cohorts. It is computed here using three year calendar blocks (2009-2011: 0-1 year survival), (2008-2010: 1-2 year survival), (2007-2009: 2-3 year survival), (2006-2008: 3-4 year survival), (2005-2007: 4-5 years survival).

^e Stage at diagnosis is classified using SEER Summary Stage 2000. Stage distribution percentages may not sum to 100 due to rounding.

^f The difference between 1975-1977 and 2005-2011 is statistically significant ($p < .05$).

^g The standard error is between 5 and 10 percentage points.

^h The standard error is greater than 10 percentage points.

- Statistic could not be calculated due to fewer than 25 cases during the time period.

Table 24.8
Cancer of the Stomach (Invasive)

5-Year Relative and Period Survival (Percent) by Race, Sex, Diagnosis Year, Stage and Age

	All Races			Whites			Blacks		
	Total	Males	Females	Total	Males	Females	Total	Males	Females
5-Year Relative Survival (Percent)									
Year of Diagnosis:									
1960-1963 ^a	-	-	-	11	10	13	8	5	14
1970-1973 ^a	-	-	-	13	12	14	13	15	10
1975-1977 ^b	15.2	14.3	16.6	14.1	13.1	15.8	16.1	16.1	16.1
1978-1980 ^b	16.1	14.3	19.0	15.4	13.6	18.3	16.4	15.6	18.0
1981-1983 ^b	17.2	16.4	18.7	16.2	15.4	17.6	16.4	16.2	16.7
1984-1986 ^b	17.6	15.5	21.0	16.8	14.3	20.9	19.1	16.9	22.1
1987-1989 ^b	19.7	17.0	24.3	18.3	15.6	23.1	18.8	16.6	22.5
1990-1992 ^b	20.9	18.0	25.4	18.8	16.0	23.2	22.7	22.0	23.7
1993-1995 ^b	21.0	20.1	22.6	19.9	18.9	21.8	19.3	17.5	22.0
1996-1998 ^b	22.2	21.0	24.1	20.2	18.4	23.2	22.5	20.2	25.3
1999-2001 ^b	24.1	23.4	25.2	22.2	21.0	24.3	23.0	25.0	20.1
2002-2004 ^b	27.3	24.9	31.0	25.8	23.7	29.3	29.3	24.9	34.5
2005-2011 ^b	29.9 ^f	28.0 ^f	33.0 ^f	29.1 ^f	27.6 ^f	31.6 ^f	28.3 ^f	22.8 ^f	35.5 ^f
5-Year Period Survival (Percent) ^{cd}									
2011	30.3	28.7	32.8	29.1	27.4	32.1	28.9	26.4	31.9
Stage Distribution (%) 2005-2011 ^{ce}									
All Stages									
Number of cases	35,310	21,298	14,012	24,774	15,433	9,341	4,920	2,710	2,210
Percent	100%	100%	100%	100%	100%	100%	100%	100%	100%
Localized	26	24	29	26	23	29	27	24	30
Regional	29	31	26	28	30	25	28	29	27
Distant	35	36	33	36	37	34	35	38	31
Unstaged	10	9	12	10	9	13	11	9	13
5-Year Relative Survival (Percent), 2005-2011 ^c									
Age at Diagnosis:									
Ages <45	33.1	29.4	36.8	32.2	27.0	38.0	29.9	25.8	33.7
Ages 45-54	33.3	31.7	35.9	31.4	29.8	34.6	35.3	31.5	40.7
Ages 55-64	32.1	30.1	36.4	30.7	28.9	35.2	31.1	27.6	37.2
Ages 65-74	32.1	29.0	38.0	30.8	27.9	36.8	30.8	26.1	38.2
Ages 75+	22.7	21.4	24.1	22.1	20.6	23.7	17.7	12.9	20.9
Ages <65	32.6	30.5	36.3	31.2	28.9	35.6	32.3	28.6	37.7
Ages 65+	26.7	25.1	29.0	25.7	24.1	28.2	24.3	20.7	28.1
Stage ^e :									
All Stages	29.3	27.6	31.9	28.0	26.2	31.0	28.2	24.9	32.2
Localized	65.4	62.8	68.7	64.9	62.0	68.8	61.0	56.2	65.6
Regional	29.9	30.1	29.5	28.3	28.6	27.8	26.9	27.0	26.7
Distant	4.5	4.5	4.4	4.4	4.4	4.3	5.3	4.9	5.8
Unstaged	21.3	18.0	24.8	19.4	16.2	22.9	25.6	18.7	31.2

^a Based on End Results data from a series of hospital registries and one population-based registry.^b SEER 9 areas (San Francisco, Connecticut, Detroit, Hawaii, Iowa, New Mexico, Seattle, Utah, Atlanta).

Based on follow-up of patients into 2012.

^c SEER 18 areas (San Francisco, Connecticut, Detroit, Hawaii, Iowa, New Mexico, Seattle, Utah, Atlanta, San Jose-Monterey, Los Angeles, Alaska Native Registry, Rural Georgia, California excluding SF/SJM/LA, Kentucky, Louisiana, New Jersey and Georgia excluding ATL/RG).

Based on follow-up of patients into 2012.

^d Period survival provides a 2011 estimate of survival by piecing together the most recent conditional survival estimates from several cohorts. It is computed here using three year calendar blocks (2009-2011: 0-1 year survival), (2008-2010: 1-2 year survival), (2007-2009: 2-3 year survival), (2006-2008: 3-4 year survival), (2005-2007: 4-5 years survival).^e Stage at diagnosis is classified using SEER Summary Stage 2000. Stage distribution percentages may not sum to 100 due to rounding.^f The difference between 1975-1977 and 2005-2011 is statistically significant (p<.05).^g The standard error is between 5 and 10 percentage points.^h The standard error is greater than 10 percentage points.

- Statistic could not be calculated due to fewer than 25 cases during the time period.

Table 25.8
Cancer of the Testis (Invasive)

5-Year Relative and Period Survival (Percent) by Race, Diagnosis Year, Stage and Age

	All Races, Males			White Males			Black Males		
	All	<50	50+	All	<50	50+	All	<50	50+
5-Year Relative Survival (Percent)									
Year of Diagnosis:									
1960-1963 ^a	-	-	-	63	-	-	-	-	-
1970-1973 ^a	-	-	-	72	-	-	-	-	-
1975-1977 ^b	82.6	83.3	77.6	82.5	83.2	77.3	-	-	-
1978-1980 ^b	88.9	89.6	82.2	89.2	89.9	83.1	73.1 ^g	78.0 ^g	-
1981-1983 ^b	92.0	92.5	85.7	92.2	92.7	86.4	87.7 ^g	84.7 ^g	-
1984-1986 ^b	92.6	93.6	80.4	92.9	94.0	80.6	87.0 ^g	89.4 ^g	-
1987-1989 ^b	95.1	95.0	95.7	95.4	95.4	95.3	88.4 ^g	87.8 ^g	-
1990-1992 ^b	95.8	95.8	93.7	96.2	96.1	94.6	84.2 ^g	89.0 ^g	-
1993-1995 ^b	95.8	96.4	86.7	96.1	96.6	87.7	88.0	89.4	-
1996-1998 ^b	95.6	96.3	86.6	95.8	96.4	86.6	89.0	90.3	-
1999-2001 ^b	96.2	96.4	91.8	96.5	96.7	92.7	87.6	89.0	-
2002-2004 ^b	96.0	96.5	89.8	96.5	97.0	90.9	84.7 ^g	84.8 ^g	-
2005-2011 ^b	96.7 ^f	96.8 ^f	95.7 ^f	97.2 ^f	97.3 ^f	96.6 ^f	90.6	90.4	-
5-Year Period Survival (Percent) ^{cd}									
2011	95.2	95.4	93.5	95.1	95.3	93.6	93.8	94.7	-
Stage Distribution (%) 2005-2011 ^{ce}									
All Stages									
Number of cases	15,463	13,747	1,716	13,964	12,394	1,570	452	397	55
Percent	100%	100%	100%	100%	100%	100%	100%	100%	100%
Localized	68	68	68	68	68	68	62	62	64
Regional	18	19	18	19	19	18	21	21	20
Distant	12	13	11	12	13	11	15	15	13
Unstaged	1	1	3	1	1	3	2	2	4
5-Year Relative Survival (Percent), 2005-2011 ^c									
Age at Diagnosis:									
Ages <45	95.4	-	-	95.6	-	-	92.3	-	-
Ages 45-54	95.6	-	-	95.6	-	-	92.6	-	-
Ages 55-64	92.9	-	-	92.8	-	-	-	-	-
Ages 65-74	88.7	-	-	89.6	-	-	-	-	-
Ages 75+	85.0 ^h	-	-	85.3 ^h	-	-	-	-	-
Ages <65	95.4	-	-	95.5	-	-	92.9	-	-
Ages 65+	87.7	-	-	88.4	-	-	-	-	-
Stage ^e :									
All Stages	95.3	95.4	94.1	95.4	95.5	94.3	92.3	92.8	87.5 ^g
Localized	99.2	99.1	99.6	99.2	99.1	99.6	98.9	99.2	95.1 ^g
Regional	96.3	96.5	94.2	96.4	96.7	94.0	90.7	91.3	-
Distant	73.8	74.9	63.8	74.3	75.4	64.7	67.2 ^g	68.0 ^g	-
Unstaged	77.4	82.0	64.8 ^g	76.3	81.2	63.8 ^h	-	-	-

^a Based on End Results data from a series of hospital registries and one population-based registry.

^b SEER 9 areas (San Francisco, Connecticut, Detroit, Hawaii, Iowa, New Mexico, Seattle, Utah, Atlanta).

Based on follow-up of patients into 2012.

^c SEER 18 areas (San Francisco, Connecticut, Detroit, Hawaii, Iowa, New Mexico, Seattle, Utah, Atlanta, San Jose-Monterey, Los Angeles, Alaska Native Registry, Rural Georgia, California excluding SF/SJM/LA, Kentucky, Louisiana, New Jersey and Georgia excluding ATL/RG).

Based on follow-up of patients into 2012.

^d Period survival provides a 2011 estimate of survival by piecing together the most recent conditional survival estimates from several cohorts. It is computed here using three year calendar blocks (2009-2011: 0-1 year survival), (2008-2010: 1-2 year survival), (2007-2009: 2-3 year survival), (2006-2008: 3-4 year survival), (2005-2007: 4-5 years survival).

^e Stage at diagnosis is classified using SEER Summary Stage 2000. Stage distribution percentages may not sum to 100 due to rounding.

^f The difference between 1975-1977 and 2005-2011 is statistically significant ($p < .05$).

^g The standard error is between 5 and 10 percentage points.

^h The standard error is greater than 10 percentage points.

- Statistic could not be calculated due to fewer than 25 cases during the time period.

Table 26.8
Cancer of the Thyroid (Invasive)

5-Year Relative and Period Survival (Percent) by Race, Sex, Diagnosis Year, Stage and Age

	All Races			Whites			Blacks		
	Total	Males	Females	Total	Males	Females	Total	Males	Females
5-Year Relative Survival (Percent)									
Year of Diagnosis:									
1960-1963 ^a	-	-	-	83	75	87	-	-	-
1970-1973 ^a	-	-	-	86	82	87	-	-	-
1975-1977 ^b	92.1	91.1	92.5	91.8	90.7	92.2	89.8	-	91.0
1978-1980 ^b	92.1	87.2	93.6	91.5	87.5	92.7	90.2	68.0 ^h	95.5
1981-1983 ^b	93.6	92.2	93.9	93.0	90.9	93.7	96.4	100.0	93.2
1984-1986 ^b	93.1	89.8	94.2	93.1	89.4	94.3	89.3	85.5 ^g	90.3
1987-1989 ^b	94.4	91.6	95.2	94.1	91.5	95.0	92.3	91.2 ^g	92.3
1990-1992 ^b	94.3	90.5	95.5	94.9	91.6	96.0	85.8	84.5 ^g	86.2
1993-1995 ^b	95.4	91.6	96.6	95.5	91.5	96.8	93.2	88.1 ^g	94.3
1996-1998 ^b	95.6	90.9	97.0	95.9	91.3	97.3	95.0	86.1 ^g	96.4
1999-2001 ^b	96.4	94.3	97.0	96.8	95.0	97.4	92.0	88.4 ^g	92.4
2002-2004 ^b	97.2	93.9	98.2	97.4	94.1	98.3	95.9	94.1	95.9
2005-2011 ^b	98.2 ^f	96.5 ^f	98.7 ^f	98.5 ^f	96.9 ^f	98.9 ^f	97.0 ^f	91.0	97.7 ^f
5-Year Period Survival (Percent) ^{cd}									
2011	98.2	95.9	98.8	98.3	96.1	99.0	97.8	95.3	98.3
Stage Distribution (%) 2005-2011 ^{ce}									
All Stages									
Number of cases	63,459	14,478	48,981	51,618	12,205	39,413	4,197	741	3,456
Percent	100%	100%	100%	100%	100%	100%	100%	100%	100%
Localized	68	59	71	68	59	71	78	71	80
Regional	26	32	24	26	33	24	15	19	14
Distant	4	7	3	4	7	3	5	9	4
Unstaged	2	2	2	2	2	2	2	1	2
5-Year Relative Survival (Percent), 2005-2011 ^c									
Age at Diagnosis:									
Ages <45	99.6	98.8	99.8	99.7	98.9	99.9	98.8	96.5	99.3
Ages 45-54	99.1	96.8	99.6	99.1	96.9	99.7	98.8	95.4	99.2
Ages 55-64	97.4	95.3	98.3	97.8	95.7	98.6	96.2	90.7	97.1
Ages 65-74	95.1	91.1	96.6	95.5	91.6	97.2	93.0	88.1	92.7
Ages 75+	85.6	85.4	85.4	86.7	86.3	86.5	75.3	65.2 ^g	76.4
Ages <65	99.0	97.2	99.5	99.1	97.4	99.6	98.4	95.0	98.9
Ages 65+	91.9	89.4	92.8	92.6	90.1	93.5	88.2	83.5	89.2
Stage ^e :									
All Stages	97.9	95.7	98.5	98.1	95.9	98.7	97.0	94.1	97.5
Localized	99.9	99.8	99.9	99.9	99.8	100.0	99.6	98.6	99.8
Regional	97.8	96.3	98.3	97.9	96.5	98.5	95.5	93.2	96.1
Distant	54.1	48.7	57.5	54.3	47.9	58.8	46.2	46.8 ^g	46.0 ^g
Unstaged	87.7	82.0	89.4	86.1	81.4	87.6	88.6	-	89.3

^a Based on End Results data from a series of hospital registries and one population-based registry.^b SEER 9 areas (San Francisco, Connecticut, Detroit, Hawaii, Iowa, New Mexico, Seattle, Utah, Atlanta).

Based on follow-up of patients into 2012.

^c SEER 18 areas (San Francisco, Connecticut, Detroit, Hawaii, Iowa, New Mexico, Seattle, Utah, Atlanta, San Jose-Monterey, Los Angeles, Alaska Native Registry, Rural Georgia, California excluding SF/SJM/LA, Kentucky, Louisiana, New Jersey and Georgia excluding ATL/RG).

Based on follow-up of patients into 2012.

^d Period survival provides a 2011 estimate of survival by piecing together the most recent conditional survival estimates from several cohorts. It is computed here using three year calendar blocks (2009-2011: 0-1 year survival), (2008-2010: 1-2 year survival), (2007-2009: 2-3 year survival), (2006-2008: 3-4 year survival), (2005-2007: 4-5 years survival).^e Stage at diagnosis is classified using SEER Summary Stage 2000. Stage distribution percentages may not sum to 100 due to rounding.^f The difference between 1975-1977 and 2005-2011 is statistically significant (p<.05).^g The standard error is between 5 and 10 percentage points.^h The standard error is greater than 10 percentage points.

- Statistic could not be calculated due to fewer than 25 cases during the time period.

Table 27.8
Cancer of the Urinary Bladder (Invasive and *In Situ*)

5-Year Relative and Period Survival (Percent) by Race, Sex, Diagnosis Year, Stage and Age

	All Races			Whites			Blacks		
	Total	Males	Females	Total	Males	Females	Total	Males	Females
5-Year Relative Survival (Percent)									
Year of Diagnosis:									
1960-1963 ^a	-	-	-	53	53	53	24	24	24
1970-1973 ^a	-	-	-	61	61	60	36	38	27
1975-1977 ^b	72.3	73.7	68.2	73.2	74.3	70.1	50.3	56.5	38.1 ^g
1978-1980 ^b	73.9	75.1	70.3	74.7	75.4	72.2	54.5	62.6	40.1
1981-1983 ^b	76.7	78.1	72.7	77.4	78.5	74.0	59.5	64.9	47.0 ^g
1984-1986 ^b	76.7	78.1	72.6	77.2	78.5	73.5	59.4	62.3	52.8
1987-1989 ^b	79.0	81.3	71.9	79.8	81.9	73.1	62.6	67.5	52.9
1990-1992 ^b	79.2	81.7	71.8	80.2	82.5	73.1	63.2	65.9	58.5
1993-1995 ^b	80.2	82.0	75.0	81.0	82.5	76.9	60.5	67.7	46.2
1996-1998 ^b	79.1	80.3	75.4	79.7	81.0	75.9	62.7	65.6	56.0
1999-2001 ^b	80.0	80.9	77.3	81.0	81.5	79.5	67.3	71.5	60.0
2002-2004 ^b	79.9	81.7	74.8	80.8	82.4	76.3	61.3	66.4	52.5
2005-2011 ^b	79.0 ^f	80.5 ^f	74.2 ^f	79.4 ^f	80.8 ^f	75.1 ^f	66.7 ^f	71.3 ^f	57.7 ^f
5-Year Period Survival (Percent) ^{cd}									
2011	77.4	78.6	73.7	78.0	78.9	74.8	64.4	69.0	55.2
Stage Distribution (%) 2005-2011 ^{ce}									
All Stages									
Number of cases	87,517	65,948	21,569	77,741	59,015	18,726	4,745	3,134	1,611
Percent	100%	100%	100%	100%	100%	100%	100%	100%	100%
In Situ	51	52	50	52	52	51	40	44	32
Localized	35	35	33	34	35	33	38	37	40
Regional	7	7	8	7	7	8	11	9	14
Distant	4	4	5	4	4	5	7	7	9
Unstaged	3	2	3	2	2	3	4	3	4
5-Year Relative Survival (Percent), 2005-2011 ^c									
Age at Diagnosis:									
Ages <45	88.3	89.8	84.1	89.0	90.0	86.0	75.5	80.2	57.3 ^g
Ages 45-54	84.4	84.9	82.7	85.1	85.1	85.0	70.4	74.7	59.3
Ages 55-64	82.5	82.8	81.7	83.1	83.0	83.1	70.4	72.9	62.5
Ages 65-74	79.2	80.1	76.2	80.0	80.7	77.2	65.2	68.1	59.1
Ages 75+	70.5	72.9	64.1	71.1	73.3	65.2	54.1	60.0	46.4
Ages <65	83.5	83.9	82.2	84.1	84.1	83.9	71.0	74.3	61.2
Ages 65+	74.2	76.2	68.6	74.9	76.6	69.7	59.5	64.5	51.8
Stage ^e :									
All Stages	77.4	78.9	72.9	78.0	79.2	74.1	64.3	69.2	54.7
In Situ	95.9	95.7	96.7	96.2	95.8	97.2	90.2	91.1	86.9
Localized	69.9	72.1	62.8	70.2	72.2	63.4	61.0	66.6	51.4
Regional	34.0	35.9	29.0	34.5	36.4	29.3	25.6	25.1	26.8
Distant	5.4	5.6	5.0	5.4	5.4	5.4	5.5	6.2	5.1
Unstaged	47.4	52.1	37.3	44.9	49.5	34.6	42.8	51.0 ^g	29.6 ^g

^a Based on End Results data from a series of hospital registries and one population-based registry.

^b SEER 9 areas (San Francisco, Connecticut, Detroit, Hawaii, Iowa, New Mexico, Seattle, Utah, Atlanta).

Based on follow-up of patients into 2012.

^c SEER 18 areas (San Francisco, Connecticut, Detroit, Hawaii, Iowa, New Mexico, Seattle, Utah, Atlanta, San Jose-Monterey, Los Angeles, Alaska Native Registry, Rural Georgia, California excluding SF/SJM/LA, Kentucky, Louisiana, New Jersey and Georgia excluding ATL/RG).

Based on follow-up of patients into 2012.

^d Period survival provides a 2011 estimate of survival by piecing together the most recent conditional survival estimates from several cohorts. It is computed here using three year calendar blocks (2009-2011: 0-1 year survival), (2008-2010: 1-2 year survival), (2007-2009: 2-3 year survival), (2006-2008: 3-4 year survival), (2005-2007: 4-5 years survival).

^e Stage at diagnosis is classified using SEER Summary Stage 2000. Stage distribution percentages may not sum to 100 due to rounding.

^f The difference between 1975-1977 and 2005-2011 is statistically significant ($p < .05$).

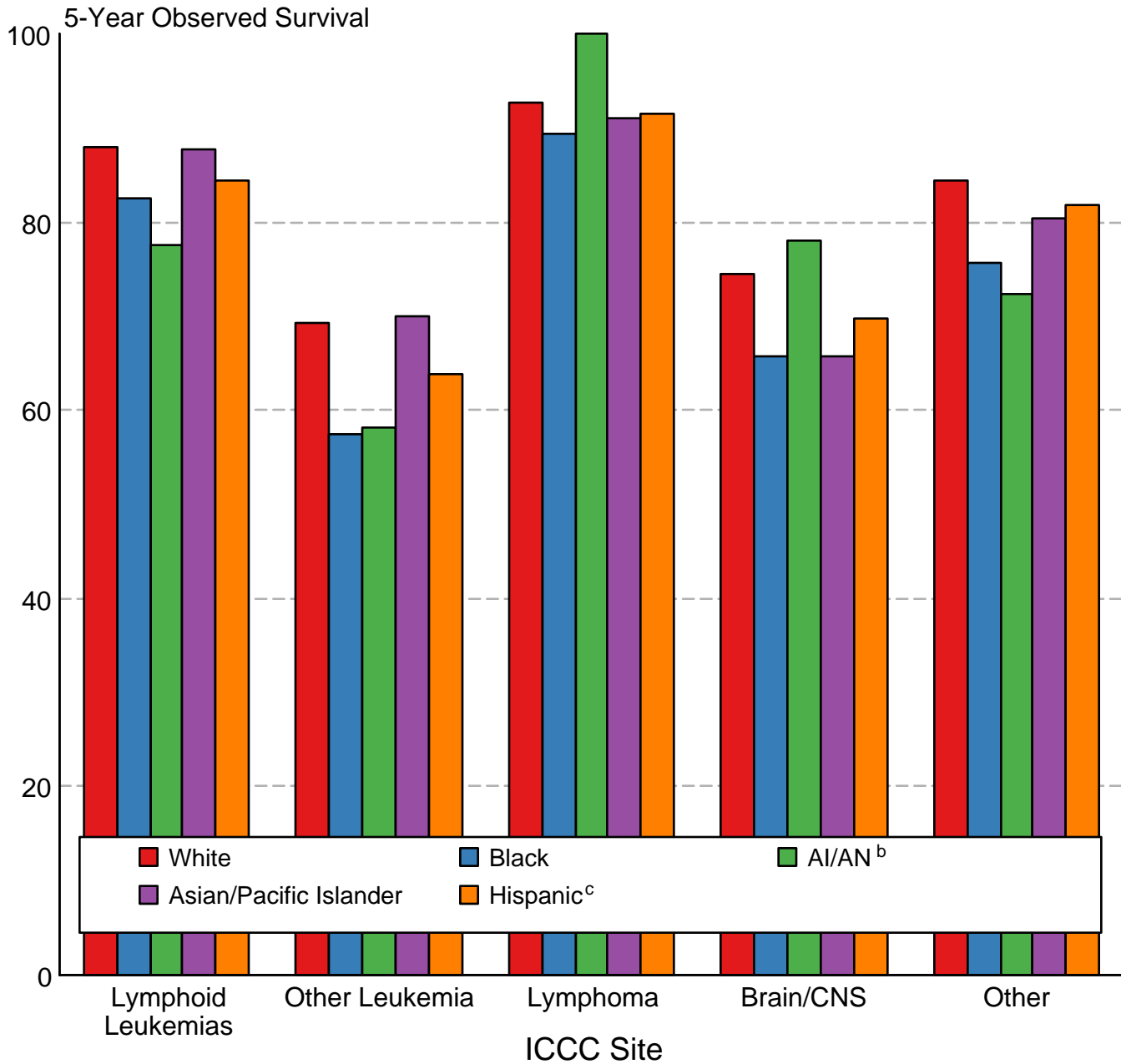
^g The standard error is between 5 and 10 percentage points.

^h The standard error is greater than 10 percentage points.

- Statistic could not be calculated due to fewer than 25 cases during the time period.

Figure 29.3

Childhood Cancer 5-Year Observed Survival (%) by ICCC Group^a and Race/Ethnicity Both Sexes, Under 20 Years of Age, 2005-2011



Source: SEER 18 areas (San Francisco, Connecticut, Detroit, Hawaii, Iowa, New Mexico, Seattle, Utah, Atlanta, San Jose-Monterey, Los Angeles, Alaska Native Registry, Rural Georgia, California excluding SF/SJM/LA, Kentucky, Louisiana, New Jersey and Georgia excluding ATL/RG).

International Classification of Childhood Cancer is based on ICD-O-3. Steliarova-Foucher E, Stiller C, Lacour B, Kaatsch P. International Classification of Childhood Cancer, Third Edition. Cancer. April 1, 2005; Vol 103, No. 7, pg 1457-1467.

^a Excludes myelodysplastic syndromes (MDS) and benign brain tumors.

^b American Indian/Alaska Native. Survival data for American Indian/Alaska Native are based on the CHSDA (Contract Health Service Delivery Area) counties.

^c Hispanic is not mutually exclusive from whites, blacks, Asian/Pacific Islanders, and American Indians/Alaska Natives. Survival data for Hispanics are based on NHIA and excludes cases from the Alaska Native Registry.