

Table 27.1
Cancer of the Urinary Bladder (Invasive and *In Situ*)

Trends in SEER Incidence^{ab} and U.S. Mortality^c Using the Joinpoint Regression Program,
1975-2013 With up to Five Joinpoints, 1992-2013 With up to Four Joinpoints,
Both Sexes by Race/Ethnicity

	JP Trend 1		JP Trend 2		JP Trend 3		JP Trend 4		JP Trend 5		JP Trend 6		AAPC ^d	
	Years	APC	Years	APC	Years	APC	Years	APC	Years	APC	Years	APC	2004-13	2009-13
<u>SEER 9 Delay-Adjusted Incidence^a, 1975-2013</u>														
All Races	1975-86	0.7*	1986-07	0.2*	2007-13	-1.0*							-0.6*	-1.0*
White	1975-86	0.9*	1986-07	0.3*	2007-13	-0.9*							-0.5*	-0.9*
Black	1975-13	0.3*											0.3*	0.3*
<u>SEER 13 Delay-Adjusted Incidence^b, 1992-2013</u>														
All Races	1992-07	0.1	2007-13	-1.3*									-0.8*	-1.3*
White	1992-07	0.2*	2007-13	-1.1*									-0.6*	-1.1*
Black	1992-13	0.4*											0.4*	0.4*
<u>SEER 9 Observed Incidence^a, 1975-2013</u>														
All Races	1975-86	0.7*	1986-07	0.2*	2007-13	-1.3*							-0.8*	-1.3*
White	1975-86	0.9*	1986-07	0.3*	2007-13	-1.3*							-0.7*	-1.3*
Black	1975-13	0.2*											0.2*	0.2*
<u>SEER 13 Observed Incidence^b, 1992-2013</u>														
All Races	1992-07	0.1	2007-13	-1.6*									-1.0*	-1.6*
White	1992-07	0.2*	2007-13	-1.5*									-0.9*	-1.5*
White NH ^{ef}	1992-07	0.4*	2007-13	-1.3*									-0.7*	-1.3*
Black	1992-13	0.2											0.2	0.2
Black NH ^{ef}	1992-13	0.3											0.3	0.3
API ^e	1992-08	0.5*	2008-13	-3.3*									-1.7*	-3.3*
AI/AN ^{eg}	1992-13	1.2											1.2	1.2
Hispanic ^f	1992-13	-0.4											-0.4	-0.4
<u>U.S. Cancer Mortality^c, 1975-2013</u>														
All Races	1975-77	0.0	1977-87	-2.1*	1987-00	-0.2*	2000-13	0.1					0.1	0.1
White	1975-77	0.1	1977-87	-2.1*	1987-00	0.0	2000-13	0.3*					0.3*	0.3*
Black	1975-13	-1.0*											-1.0*	-1.0*
<u>U.S. Cancer Mortality^c, 1992-2013</u>														
All Races	1992-13	0.0											0.0	0.0
White	1992-99	-0.2	1999-13	0.3*									0.3*	0.3*
White NH ^{ef}	1992-13	0.3*											0.3*	0.3*
Black	1992-13	-0.9*											-0.9*	-0.9*
Black NH ^{ef}	1992-13	-0.9*											-0.9*	-0.9*
API ^e	1992-13	-0.6											-0.6	-0.6
AI/AN ^{eg}	1992-13	2.4*											2.4*	2.4*
Hispanic ^f	1992-13	-0.2											-0.2	-0.2

Joinpoint Regression Program Version 4.3.0.0, April 2016, National Cancer Institute. (<http://surveillance.cancer.gov/joinpoint/>).

The APC is the Annual Percent Change based on rates age-adjusted to the 2000 US Std Population (19 age groups - Census P25-1130).

Trends are from the SEER 9 areas (San Francisco, Connecticut, Detroit, Hawaii, Iowa, New Mexico, Seattle, Utah, and Atlanta).

Trends are from the SEER 13 areas (SEER 9 Areas, Los Angeles, San Jose-Monterey, Rural Georgia, and the Alaska Native Registry).

Trends are from US Mortality Files, National Center for Health Statistics, Centers for Disease Control and Prevention.

The AAPC is the Average Annual Percent Change and is based on the APCs calculated by Joinpoint.

API - Asian/Pacific Islander, AI/AN - American Indian/Alaska Native, NH - Non-Hispanic

Hispanic and Non-Hispanic are not mutually exclusive from whites, blacks, Asian/Pacific Islanders, and American Indians/Alaska

Natives. Incidence data for Hispanics and Non-Hispanics are based on NHIA and exclude cases from the Alaska Native Registry.

The Hispanic and Non-Hispanic mortality trends exclude deaths from New Hampshire and Oklahoma.

Data for American Indian/Alaska Native are based on the CHSDA (Contract Health Service Delivery Area) counties.

* The APC/AAPC is significantly different from zero ($p < .05$).

- Joinpoint regression line analysis could not be performed on data series.

Table 27.2
Cancer of the Urinary Bladder (Invasive and *In Situ*)

Trends in SEER Incidence^{ab} and U.S. Mortality^c Using the Joinpoint Regression Program,
1975-2013 With up to Five Joinpoints, 1992-2013 With up to Four Joinpoints,
Males by Race/Ethnicity

	JP Trend 1		JP Trend 2		JP Trend 3		JP Trend 4		JP Trend 5		JP Trend 6		AAPC ^d	
	Years	APC	Years	APC	Years	APC	Years	APC	Years	APC	Years	APC	2004-13	2009-13
<u>SEER 9 Delay-Adjusted Incidence^a, 1975-2013</u>														
All Races	1975-86	0.8*	1986-07	0.1	2007-13	-1.0*							-0.7*	-1.0*
White	1975-87	1.2*	1987-94	-0.4	1994-07	0.4*	2007-13	-1.2*					-0.7*	-1.2*
Black	1975-13	0.5*											0.5*	0.5*
<u>SEER 13 Delay-Adjusted Incidence^b, 1992-2013</u>														
All Races	1992-07	0.1	2007-13	-1.4*									-0.9*	-1.4*
White	1992-07	0.2	2007-13	-1.3*									-0.8*	-1.3*
Black	1992-13	0.7*											0.7*	0.7*
<u>SEER 9 Observed Incidence^a, 1975-2013</u>														
All Races	1975-86	0.8*	1986-07	0.1	2007-13	-1.4*							-0.9*	-1.4*
White	1975-86	1.0*	1986-07	0.2	2007-13	-1.4*							-0.9*	-1.4*
Black	1975-13	0.4*											0.4*	0.4*
<u>SEER 13 Observed Incidence^b, 1992-2013</u>														
All Races	1992-07	0.1	2007-13	-1.8*									-1.1*	-1.8*
White	1992-07	0.2	2007-13	-1.7*									-1.1*	-1.7*
White NH ^{ef}	1992-07	0.3*	2007-13	-1.5*									-0.9*	-1.5*
Black	1992-13	0.5*											0.5*	0.5*
Black NH ^{ef}	1992-13	0.5*											0.5*	0.5*
API ^e	1992-08	0.8*	2008-13	-3.8*									-1.8*	-3.8*
AI/AN ^{eg}	1992-13	1.4											1.4	1.4
Hispanic ^f	1992-13	-0.3											-0.3	-0.3
<u>U.S. Cancer Mortality^c, 1975-2013</u>														
All Races	1975-83	-1.4*	1983-87	-2.8*	1987-93	0.2	1993-97	-1.1	1997-13	0.0			0.0	0.0
White	1975-82	-1.4*	1982-87	-2.3*	1987-01	-0.2*	2001-13	0.2*					0.2*	0.2*
Black	1975-13	-0.9*											-0.9*	-0.9*
<u>U.S. Cancer Mortality^c, 1992-2013</u>														
All Races	1992-97	-0.9*	1997-13	0.0									0.0	0.0
White	1992-99	-0.5*	1999-13	0.2*									0.2*	0.2*
White NH ^{ef}	1992-99	-0.4	1999-13	0.3*									0.3*	0.3*
Black	1992-13	-0.8*											-0.8*	-0.8*
Black NH ^{ef}	1992-13	-0.7*											-0.7*	-0.7*
API ^e	1992-13	0.0											0.0	0.0
AI/AN ^{eg}	1992-13	3.5*											3.5*	3.5*
Hispanic ^f	1992-13	-0.3											-0.3	-0.3

Joinpoint Regression Program Version 4.3.0.0, April 2016, National Cancer Institute. (<http://surveillance.cancer.gov/joinpoint/>).

The APC is the Annual Percent Change based on rates age-adjusted to the 2000 US Std Population (19 age groups - Census P25-1130).

Trends are from the SEER 9 areas (San Francisco, Connecticut, Detroit, Hawaii, Iowa, New Mexico, Seattle, Utah, and Atlanta).

Trends are from the SEER 13 areas (SEER 9 Areas, Los Angeles, San Jose-Monterey, Rural Georgia, and the Alaska Native Registry).

Trends are from US Mortality Files, National Center for Health Statistics, Centers for Disease Control and Prevention.

The AAPC is the Average Annual Percent Change and is based on the APCs calculated by Joinpoint.

API - Asian/Pacific Islander, AI/AN - American Indian/Alaska Native, NH - Non-Hispanic

Hispanic and Non-Hispanic are not mutually exclusive from whites, blacks, Asian/Pacific Islanders, and American Indians/Alaska

Natives. Incidence data for Hispanics and Non-Hispanics are based on NHIA and exclude cases from the Alaska Native Registry.

The Hispanic and Non-Hispanic mortality trends exclude deaths from New Hampshire and Oklahoma.

Data for American Indian/Alaska Native are based on the CHSDA (Contract Health Service Delivery Area) counties.

* The APC/AAPC is significantly different from zero ($p < .05$).

- Joinpoint regression line analysis could not be performed on data series.

Table 27.3
Cancer of the Urinary Bladder (Invasive and *In Situ*)

Trends in SEER Incidence^{ab} and U.S. Mortality^c Using the Joinpoint Regression Program,
1975-2013 With up to Five Joinpoints, 1992-2013 With up to Four Joinpoints,
Females by Race/Ethnicity

	JP Trend 1		JP Trend 2		JP Trend 3		JP Trend 4		JP Trend 5		JP Trend 6		AAPC ^d	
	Years	APC	Years	APC	Years	APC	Years	APC	Years	APC	Years	APC	2004-13	2009-13
<u>SEER 9 Delay-Adjusted Incidence^a, 1975-2013</u>														
All Races	1975-02	0.2*	2002-13	-1.0*									-1.0*	-1.0*
White	1975-02	0.4*	2002-13	-0.9*									-0.9*	-0.9*
Black	1975-13	0.1											0.1	0.1
<u>SEER 13 Delay-Adjusted Incidence^b, 1992-2013</u>														
All Races	1992-04	-0.2	2004-13	-1.2*									-1.2*	-1.2*
White	1992-04	-0.1	2004-13	-1.1*									-1.1*	-1.1*
Black	1992-13	-0.2											-0.2	-0.2
<u>SEER 9 Observed Incidence^a, 1975-2013</u>														
All Races	1975-03	0.2*	2003-13	-1.2*									-1.2*	-1.2*
White	1975-02	0.4*	2002-13	-1.0*									-1.0*	-1.0*
Black	1975-13	0.1											0.1	0.1
<u>SEER 13 Observed Incidence^b, 1992-2013</u>														
All Races	1992-04	-0.2	2004-13	-1.3*									-1.3*	-1.3*
White	1992-04	0.0	2004-13	-1.3*									-1.3*	-1.3*
White NH ^{ef}	1992-04	0.1	2004-13	-1.1*									-1.1*	-1.1*
Black	1992-13	-0.4											-0.4	-0.4
Black NH ^{ef}	1992-13	-0.3											-0.3	-0.3
API ^e	1992-13	-0.2											-0.2	-0.2
AI/AN ^{eg}	1992-13	3.6											3.6	3.6
Hispanic ^f	1992-13	-0.6*											-0.6*	-0.6*
<u>U.S. Cancer Mortality^c, 1975-2013</u>														
All Races	1975-86	-1.7*	1986-13	-0.4*									-0.4*	-0.4*
White	1975-86	-1.7*	1986-13	-0.3*									-0.3*	-0.3*
Black	1975-13	-1.0*											-1.0*	-1.0*
<u>U.S. Cancer Mortality^c, 1992-2013</u>														
All Races	1992-13	-0.5*											-0.5*	-0.5*
White	1992-13	-0.3*											-0.3*	-0.3*
White NH ^{ef}	1992-13	-0.2*											-0.2*	-0.2*
Black	1992-13	-1.3*											-1.3*	-1.3*
Black NH ^{ef}	1992-13	-1.2*											-1.2*	-1.2*
API ^e	1992-13	-1.3*											-1.3*	-1.3*
AI/AN ^{eg}	-	-											-	-
Hispanic ^f	1992-13	-0.2											-0.2	-0.2

Joinpoint Regression Program Version 4.3.0.0, April 2016, National Cancer Institute. (<http://surveillance.cancer.gov/joinpoint/>).

The APC is the Annual Percent Change based on rates age-adjusted to the 2000 US Std Population (19 age groups - Census P25-1130).

Trends are from the SEER 9 areas (San Francisco, Connecticut, Detroit, Hawaii, Iowa, New Mexico, Seattle, Utah, and Atlanta).

Trends are from the SEER 13 areas (SEER 9 Areas, Los Angeles, San Jose-Monterey, Rural Georgia, and the Alaska Native Registry).

Trends are from US Mortality Files, National Center for Health Statistics, Centers for Disease Control and Prevention.

The AAPC is the Average Annual Percent Change and is based on the APCs calculated by Joinpoint.

API - Asian/Pacific Islander, AI/AN - American Indian/Alaska Native, NH - Non-Hispanic

Hispanic and Non-Hispanic are not mutually exclusive from whites, blacks, Asian/Pacific Islanders, and American Indians/Alaska

Natives. Incidence data for Hispanics and Non-Hispanics are based on NHIA and exclude cases from the Alaska Native Registry.

The Hispanic and Non-Hispanic mortality trends exclude deaths from New Hampshire and Oklahoma.

Data for American Indian/Alaska Native are based on the CHSDA (Contract Health Service Delivery Area) counties.

* The APC/AAPC is significantly different from zero ($p < .05$).

- Joinpoint regression line analysis could not be performed on data series.

Table 27.4
Cancer of the Urinary Bladder (Invasive and *In Situ*)

Delay-adjusted SEER Incidence^a Rates by Year, Race and Sex

Year of Diagnosis:	All Races			Whites			Blacks		
	Total	Males	Females	Total	Males	Females	Total	Males	Females
1975	19.32	34.37	8.88	20.23	36.39	9.17	10.56	16.34	6.26
1976	19.69	34.38	9.44	20.73	36.70	9.72	12.48	18.16	8.59
1977	18.99	33.40	8.88	20.01	35.61	9.18	13.45	22.67	7.06
1978	19.99	35.37	9.43	21.07	37.85	9.73	11.73	19.36	6.39
1979	19.98	35.35	9.39	21.30	38.19	9.84	10.35	15.61	6.54
1980	20.42	37.14	8.92	21.53	39.81	9.08	13.27	18.23	9.87
1981	20.69	36.38	9.73	21.94	38.77	10.29	11.60	20.72	5.48
1982	20.09	35.79	9.53	21.38	38.30	10.17	12.19	21.77	5.60
1983	20.04	35.99	9.01	21.31	38.69	9.41	12.17	18.70	7.57
1984	20.86	37.72	9.18	22.34	40.88	9.63	11.49	18.93	6.24
1985	20.67	36.37	9.86	22.11	39.30	10.36	13.06	20.33	8.14
1986	21.03	37.95	9.42	22.46	40.86	9.95	12.94	22.16	6.63
1987	21.66	39.52	9.24	23.17	42.82	9.58	13.22	21.78	7.41
1988	20.86	38.10	8.99	22.71	41.85	9.68	11.29	17.99	6.45
1989	21.02	37.41	9.63	22.72	40.91	10.17	11.37	17.61	7.16
1990	21.08	37.49	9.64	22.63	40.78	10.03	12.69	18.59	8.75
1991	20.92	37.63	9.33	22.72	41.28	9.89	12.81	19.44	8.50
1992	21.25	37.51	9.81	22.95	40.73	10.50	12.48	20.82	6.89
1993	21.26	37.68	9.72	22.85	40.55	10.39	14.32	24.76	7.85
1994	20.81	36.88	9.46	22.61	40.24	10.19	12.34	20.30	6.89
1995	20.64	36.23	9.56	22.45	39.51	10.29	11.85	18.23	7.39
1996	20.83	36.73	9.54	22.70	40.16	10.27	12.48	20.43	7.28
1997	21.09	37.17	9.58	22.98	40.70	10.21	12.76	20.15	8.21
1998	21.61	38.58	9.43	23.62	42.25	10.13	12.03	20.54	6.52
1999	21.78	38.27	9.95	23.68	41.76	10.56	14.59	22.48	9.55
2000	21.85	38.82	9.56	23.94	42.50	10.36	13.18	20.33	8.56
2001	21.78	38.59	9.66	24.09	42.57	10.63	11.78	18.86	7.23
2002	21.29	37.22	9.70	23.33	40.71	10.53	12.83	18.26	9.11
2003	21.60	37.84	9.77	23.81	41.62	10.63	12.97	21.26	7.48
2004	21.56	38.02	9.56	23.69	41.68	10.36	13.77	22.76	8.30
2005	22.01	38.89	9.63	24.13	42.70	10.32	14.06	23.13	8.12
2006	21.43	38.02	9.22	23.61	41.88	9.93	11.85	18.30	7.58
2007	21.99	39.38	9.02	24.31	43.30	9.85	13.14	21.53	7.75
2008	21.50	37.81	9.40	23.65	41.43	10.22	12.97	22.36	6.80
2009	21.04	37.31	8.84	23.03	40.67	9.50	13.24	22.81	7.04
2010	21.45	37.69	9.22	23.92	41.84	10.07	12.49	21.11	6.85
2011	20.58	36.10	8.82	23.04	40.13	9.76	12.87	21.88	7.13
2012	21.02	36.85	9.09	23.26	40.40	10.06	13.19	23.92	6.08
2013	20.39	35.85	8.60	22.63	39.58	9.33	14.39	23.18	8.70

Additional information on the model used to delay-adjust SEER Incidence rates can be found at [\(http://surveillance.cancer.gov/delay/\)](http://surveillance.cancer.gov/delay/).

^a SEER 9 areas (San Francisco, Connecticut, Detroit, Hawaii, Iowa, New Mexico, Seattle, Utah, and Atlanta). Rates are per 100,000 and are age-adjusted to the 2000 US Std Population (19 age groups - Census P25-1130).

- Delay-adjusted rate is not shown for observed rates based on less than 16 cases for the time interval.

Table 27.5
Cancer of the Urinary Bladder (Invasive and *In Situ*)
Age-adjusted SEER Incidence^a Rates by Year, Race and Sex

Year of Diagnosis:	All Races			Whites			Blacks		
	Total	Males	Females	Total	Males	Females	Total	Males	Females
1975-2013	20.94	37.23	9.32	22.73	40.57	9.95	12.70	20.61	7.46
1975	19.32	34.37	8.88	20.23	36.39	9.17	10.56	16.34	6.26
1976	19.69	34.38	9.44	20.73	36.70	9.72	12.48	18.16	8.59
1977	18.99	33.40	8.88	20.01	35.61	9.18	13.45	22.67	7.06
1978	19.99	35.37	9.43	21.07	37.85	9.73	11.73	19.36	6.39
1979	19.98	35.35	9.39	21.30	38.19	9.84	10.35	15.61	6.54
1980	20.42	37.14	8.92	21.53	39.81	9.08	13.27	18.23	9.87
1981	20.69	36.38	9.73	21.94	38.77	10.29	11.60	20.72	5.48
1982	20.09	35.79	9.53	21.38	38.30	10.17	12.19	21.77	5.60
1983	20.04	35.99	9.01	21.31	38.69	9.41	12.17	18.70	7.57
1984	20.86	37.72	9.18	22.34	40.88	9.63	11.49	18.93	6.24
1985	20.67	36.37	9.86	22.11	39.30	10.36	13.06	20.33	8.14
1986	21.03	37.95	9.42	22.46	40.86	9.95	12.94	22.16	6.63
1987	21.66	39.52	9.24	23.17	42.82	9.58	13.22	21.78	7.41
1988	20.86	38.10	8.99	22.71	41.85	9.68	11.29	17.99	6.45
1989	21.02	37.41	9.63	22.72	40.91	10.17	11.37	17.61	7.16
1990	21.08	37.49	9.64	22.63	40.78	10.03	12.69	18.59	8.75
1991	20.92	37.63	9.33	22.72	41.28	9.89	12.81	19.44	8.50
1992	21.25	37.51	9.81	22.95	40.73	10.50	12.48	20.82	6.89
1993	21.26	37.68	9.72	22.85	40.55	10.39	14.32	24.76	7.85
1994	20.81	36.88	9.46	22.61	40.24	10.19	12.34	20.30	6.89
1995	20.64	36.23	9.56	22.45	39.51	10.29	11.85	18.23	7.39
1996	20.83	36.73	9.54	22.70	40.16	10.27	12.48	20.43	7.28
1997	21.09	37.17	9.58	22.98	40.70	10.21	12.76	20.15	8.21
1998	21.61	38.58	9.43	23.62	42.25	10.13	12.03	20.54	6.52
1999	21.78	38.27	9.95	23.68	41.76	10.56	14.59	22.48	9.55
2000	21.85	38.82	9.56	23.94	42.50	10.36	13.18	20.33	8.56
2001	21.78	38.59	9.66	24.09	42.57	10.63	11.78	18.86	7.23
2002	21.29	37.22	9.70	23.33	40.71	10.53	12.83	18.26	9.11
2003	21.60	37.84	9.77	23.81	41.62	10.63	12.97	21.26	7.48
2004	21.56	38.02	9.56	23.69	41.68	10.36	13.77	22.76	8.30
2005	21.98	38.84	9.63	24.10	42.64	10.31	14.02	23.07	8.11
2006	21.38	37.93	9.20	23.55	41.76	9.91	11.78	18.20	7.55
2007	21.91	39.24	8.99	24.21	43.10	9.83	13.02	21.32	7.70
2008	21.40	37.63	9.38	23.52	41.17	10.19	12.82	22.08	6.73
2009	20.93	37.09	8.81	22.87	40.37	9.46	13.03	22.45	6.93
2010	21.31	37.43	9.18	23.72	41.46	10.02	12.29	20.75	6.76
2011	20.38	35.71	8.76	22.75	39.60	9.66	12.57	21.37	6.97
2012	20.70	36.27	8.98	22.83	39.62	9.90	12.85	23.29	5.94
2013	19.83	34.83	8.38	21.88	38.23	9.04	13.88	22.32	8.41

^a SEER 9 areas (San Francisco, Connecticut, Detroit, Hawaii, Iowa, New Mexico, Seattle, Utah, and Atlanta). Rates are per 100,000 and are age-adjusted to the 2000 US Std Population (19 age groups - Census P25-1130).
- Statistic not shown. Rate based on less than 16 cases for the time interval.

Table 27.6
Cancer of the Urinary Bladder (Invasive)

Age-adjusted U.S. Death^a Rates by Year, Race and Sex

Year of Death:	All Races			Whites			Blacks		
	Total	Males	Females	Total	Males	Females	Total	Males	Females
1975-2013	4.58	8.06	2.37	4.70	8.38	2.35	4.13	6.07	2.98
1975	5.50	9.77	2.76	5.56	10.11	2.68	4.96	6.85	3.63
1976	5.59	9.79	2.88	5.64	10.05	2.83	5.29	7.80	3.54
1977	5.52	9.67	2.89	5.58	9.94	2.83	5.19	7.57	3.57
1978	5.44	9.54	2.86	5.51	9.83	2.82	4.94	7.22	3.40
1979	5.25	9.34	2.71	5.30	9.59	2.66	5.00	7.61	3.28
1980	5.17	9.16	2.73	5.24	9.51	2.66	4.72	6.21	3.71
1981	5.07	9.02	2.66	5.13	9.28	2.61	4.89	7.20	3.40
1982	4.99	8.95	2.58	5.04	9.23	2.50	4.86	6.83	3.56
1983	4.88	8.79	2.54	4.93	9.04	2.50	4.72	7.17	3.19
1984	4.74	8.49	2.49	4.78	8.73	2.43	4.74	6.89	3.39
1985	4.67	8.43	2.44	4.73	8.67	2.40	4.48	6.86	3.02
1986	4.53	8.10	2.41	4.60	8.41	2.34	4.25	5.83	3.29
1987	4.41	7.87	2.34	4.46	8.09	2.28	4.37	6.50	3.11
1988	4.41	7.76	2.41	4.47	8.02	2.34	4.30	5.89	3.33
1989	4.48	7.99	2.37	4.52	8.18	2.31	4.61	7.02	3.20
1990	4.49	7.97	2.42	4.55	8.22	2.37	4.44	6.44	3.24
1991	4.42	7.89	2.34	4.48	8.14	2.28	4.40	6.58	3.12
1992	4.46	7.89	2.43	4.52	8.11	2.38	4.35	6.66	3.08
1993	4.47	8.05	2.31	4.55	8.32	2.27	4.17	6.36	2.93
1994	4.47	7.86	2.42	4.54	8.13	2.37	4.34	6.36	3.19
1995	4.35	7.78	2.28	4.45	8.08	2.23	4.05	5.77	3.09
1996	4.41	7.79	2.37	4.51	8.08	2.33	4.16	5.89	3.14
1997	4.39	7.59	2.42	4.50	7.88	2.40	4.00	5.88	2.98
1998	4.38	7.71	2.32	4.49	8.02	2.29	3.95	5.58	3.03
1999	4.36	7.66	2.28	4.47	7.95	2.24	4.01	5.84	2.96
2000	4.32	7.60	2.27	4.48	7.94	2.27	3.74	5.68	2.69
2001	4.35	7.62	2.27	4.48	7.97	2.24	3.74	5.17	2.93
2002	4.43	7.61	2.39	4.56	7.94	2.36	3.99	5.67	3.08
2003	4.30	7.49	2.23	4.45	7.82	2.22	3.76	5.60	2.72
2004	4.42	7.73	2.28	4.60	8.13	2.28	3.69	5.20	2.82
2005	4.42	7.73	2.25	4.58	8.07	2.26	3.78	6.00	2.60
2006	4.41	7.72	2.22	4.57	8.09	2.21	3.87	5.79	2.81
2007	4.44	7.72	2.25	4.62	8.10	2.25	3.84	5.59	2.82
2008	4.41	7.62	2.25	4.61	8.04	2.28	3.38	4.83	2.52
2009	4.37	7.67	2.16	4.57	8.05	2.18	3.60	5.56	2.46
2010	4.43	7.72	2.20	4.63	8.12	2.22	3.66	5.62	2.53
2011	4.42	7.63	2.22	4.64	8.06	2.24	3.59	5.18	2.62
2012	4.38	7.62	2.13	4.61	8.06	2.18	3.46	5.27	2.36
2013	4.42	7.68	2.14	4.65	8.13	2.17	3.52	5.39	2.39

^a US Mortality Files, National Center for Health Statistics, Centers for Disease Control and Prevention. Rates are per 100,000 and are age-adjusted to the 2000 US Std Population (19 age groups - Census P25-1130).
- Statistic not shown. Rate based on less than 16 cases for the time interval.

Table 27.7
Cancer of the Urinary Bladder (Invasive and *In Situ*)
SEER Incidence^a and U.S. Death^b Rates, Age-Adjusted and Age-Specific Rates, by Race and Sex

	All Races			Whites			Blacks		
	Total	Males	Females	Total	Males	Females	Total	Males	Females
<u>SEER Incidence</u>									
<u>Age at Diagnosis</u>									
Age-Adjusted Rates, 2009-2013									
All ages	20.1	35.3	8.6	22.0	38.5	9.2	12.6	21.2	6.9
Under 65	5.2	8.0	2.5	5.7	8.8	2.7	3.5	5.5	1.7
65 and over	123.0	224.0	50.8	134.3	244.1	54.2	75.9	129.9	43.0
All ages (IARC world std) ^c	11.5	19.6	5.0	12.7	21.4	5.4	7.4	12.1	3.9
Age-Specific Rates, 2009-2013									
<1	-	-	-	-	-	-	-	-	-
1-4	-	-	-	-	-	-	-	-	-
5-9	-	-	-	-	-	-	-	-	-
10-14	-	-	-	-	-	-	-	-	-
15-19	0.1	0.1	-	0.1	-	-	-	-	-
20-24	0.2	0.3	-	0.2	0.3	-	-	-	-
25-29	0.4	0.5	0.2	0.4	0.6	0.2	-	-	-
30-34	0.7	1.0	0.4	0.8	1.2	0.5	-	-	-
35-39	1.4	1.9	0.8	1.5	2.1	1.0	0.9	1.3	-
40-44	2.9	4.2	1.7	3.3	4.6	2.0	1.8	2.8	0.8
45-49	6.2	9.3	3.1	7.0	10.5	3.4	4.1	6.3	2.1
50-54	12.7	19.2	6.4	14.0	20.9	7.1	9.1	13.4	5.2
55-59	24.0	37.9	10.8	26.3	41.3	11.7	17.3	27.2	8.7
60-64	42.7	68.4	19.0	47.2	74.7	21.3	27.5	46.1	12.2
65-69	74.1	123.2	30.5	81.6	135.2	32.9	47.8	77.0	25.1
70-74	104.0	177.9	42.1	115.3	195.8	46.5	64.5	108.7	32.5
75-79	143.8	254.6	58.7	158.3	279.2	63.0	84.6	140.2	48.5
80-84	173.7	326.5	70.5	187.4	352.4	73.5	111.9	192.3	67.8
85+	175.4	370.4	76.7	187.0	397.9	79.9	105.2	200.8	65.9
<u>U.S. Mortality</u>									
<u>Age at Death</u>									
Age-Adjusted Rates, 2009-2013									
All ages	4.4	7.7	2.2	4.6	8.1	2.2	3.6	5.4	2.5
Under 65	0.7	1.0	0.4	0.7	1.1	0.4	0.7	1.0	0.5
65 and over	30.1	53.4	14.7	31.6	56.4	14.9	23.3	36.0	16.3
All ages (IARC world std) ^c	2.2	3.6	1.1	2.3	3.8	1.1	1.8	2.7	1.2
Age-Specific Rates, 2009-2013									
<1	-	-	-	-	-	-	-	-	-
1-4	-	-	-	-	-	-	-	-	-
5-9	-	-	-	-	-	-	-	-	-
10-14	-	-	-	-	-	-	-	-	-
15-19	-	-	-	-	-	-	-	-	-
20-24	-	-	-	-	-	-	-	-	-
25-29	0.0	-	-	-	-	-	-	-	-
30-34	0.0	0.1	0.0	0.0	0.1	-	-	-	-
35-39	0.1	0.1	0.1	0.1	0.1	0.1	0.2	-	-
40-44	0.3	0.3	0.2	0.3	0.4	0.2	0.3	0.4	-
45-49	0.8	1.0	0.5	0.8	1.1	0.5	0.7	1.0	0.5
50-54	1.7	2.5	0.9	1.7	2.6	0.9	1.9	2.6	1.2
55-59	3.4	5.2	1.6	3.5	5.5	1.6	3.7	5.1	2.6
60-64	6.2	9.8	2.8	6.5	10.4	2.8	5.8	8.4	3.6
65-69	10.7	17.4	4.8	11.3	18.3	5.0	9.2	14.3	5.2
70-74	18.2	29.5	8.5	19.2	31.5	8.6	15.2	21.5	10.6
75-79	29.7	49.6	14.3	31.4	52.6	14.6	23.2	33.7	16.5
80-84	47.8	84.6	22.9	50.2	88.7	23.5	34.4	57.1	22.3
85+	77.5	152.9	40.2	80.6	160.7	40.6	58.7	93.4	44.8

^a SEER 18 areas. Rates are per 100,000 and are age-adjusted to the 2000 US Std Population (19 age groups - Census P25-1130), unless noted.

^b US Mortality Files, National Center for Health Statistics, Centers for Disease Control and Prevention.

^c Rates are per 100,000 and are age-adjusted to the 2000 US Std Population (19 age groups - Census P25-1130), unless noted.

- Rates are per 100,000 and are age-adjusted to the IARC world standard population.

- Statistic not shown. Rate based on less than 16 cases for the time interval.

Table 27.8
Cancer of the Urinary Bladder (Invasive and *In Situ*)

5-Year Relative and Period Survival (Percent) by Race, Sex, Diagnosis Year, Stage and Age

	All Races			Whites			Blacks		
	Total	Males	Females	Total	Males	Females	Total	Males	Females
5-Year Relative Survival (Percent)									
Year of Diagnosis:									
1960-1963 ^a	-	-	-	53	53	53	24	24	24
1970-1973 ^a	-	-	-	61	61	60	36	38	27
1975-1977 ^b	72.3	73.7	68.3	73.3	74.3	70.2	50.3	56.5	38.1 ^g
1978-1980 ^b	73.9	75.1	70.4	74.7	75.4	72.3	54.5	62.6	40.1
1981-1983 ^b	76.7	78.1	72.7	77.4	78.5	74.0	59.5	64.9	47.0 ^g
1984-1986 ^b	76.7	78.1	72.6	77.2	78.5	73.6	59.4	62.3	52.8
1987-1989 ^b	79.0	81.3	71.9	79.8	82.0	73.1	62.6	67.5	52.9
1990-1992 ^b	79.2	81.7	71.9	80.2	82.6	73.1	63.1	65.7	58.5
1993-1995 ^b	80.3	82.1	75.1	81.1	82.5	76.9	60.5	67.7	46.2
1996-1998 ^b	79.1	80.4	75.4	79.8	81.1	75.9	62.7	65.6	56.0
1999-2001 ^b	80.0	80.9	77.3	81.0	81.5	79.5	67.4	71.6	60.0
2002-2005 ^b	79.9	81.7	74.6	80.8	82.4	75.9	63.2	67.4	55.6
2006-2012 ^b	78.5 ^f	79.9 ^f	74.1 ^f	78.9 ^f	80.2 ^f	74.9 ^f	66.1 ^f	70.9 ^f	55.7 ^f
5-Year Period Survival (Percent) ^{cd}									
2012	77.2	78.6	73.1	77.8	78.8	74.4	63.5	68.8	52.7
Stage Distribution (%) 2006-2012 ^{ce}									
All Stages									
Number of cases	88,593	66,870	21,723	78,556	59,732	18,824	4,837	3,213	1,624
Percent	100%	100%	100%	100%	100%	100%	100%	100%	100%
In Situ	51	52	50	52	52	51	40	44	32
Localized	34	35	33	34	35	33	37	36	39
Regional	7	7	8	7	7	8	11	9	15
Distant	4	4	6	4	4	5	8	7	9
Unstaged	3	2	3	2	2	3	4	3	5
5-Year Relative Survival (Percent), 2006-2012 ^c									
Age at Diagnosis:									
Ages <45	88.1	89.4	84.5	88.6	89.7	85.7	75.7	78.2	66.4 ^g
Ages 45-54	84.4	85.2	82.2	85.5	85.8	84.4	69.6	73.7	59.0
Ages 55-64	82.6	82.9	81.5	83.2	83.3	82.8	68.4	70.4	62.0
Ages 65-74	79.5	80.4	76.3	80.2	80.9	77.3	65.0	69.2	57.1
Ages 75+	70.4	72.7	64.3	70.9	72.9	65.3	54.6	60.9	46.2
Ages <65	83.5	84.0	82.0	84.2	84.4	83.5	69.5	72.2	61.2
Ages 65+	74.3	76.2	68.8	74.9	76.6	69.8	59.8	65.7	50.7
Stage ^e :									
All Stages	77.5	78.9	73.0	78.0	79.2	74.1	63.9	68.8	53.9
In Situ	95.9	95.6	96.7	96.1	95.7	97.0	89.9	90.4	87.8
Localized	70.2	72.5	63.0	70.5	72.6	63.4	60.8	66.6	50.2
Regional	34.5	36.4	29.5	34.9	36.8	29.4	26.8	24.2	29.1
Distant	5.2	5.4	4.6	5.1	5.1	5.0	5.1	6.2	4.1
Unstaged	45.9	50.5	35.5	44.5	48.9	34.0	38.0	48.8 ^g	21.5 ^g

^a Based on End Results data from a series of hospital registries and one population-based registry.

^b SEER 9 areas (San Francisco, Connecticut, Detroit, Hawaii, Iowa, New Mexico, Seattle, Utah, Atlanta).

Based on follow-up of patients into 2013.

^c SEER 18 areas (San Francisco, Connecticut, Detroit, Hawaii, Iowa, New Mexico, Seattle, Utah, Atlanta, San Jose-Monterey, Los Angeles, Alaska Native Registry, Rural Georgia, California excluding SF/SJM/LA, Kentucky, Louisiana, New Jersey and Georgia excluding ATL/RG).

Based on follow-up of patients into 2013.

^d Period survival provides a 2012 estimate of survival by piecing together the most recent conditional survival estimates from several cohorts. It is computed here using three year calendar blocks (2010-2012: 0-1 year survival), (2009-2011: 1-2 year survival), (2008-2010: 2-3 year survival), (2007-2009: 3-4 year survival), (2006-2008: 4-5 years survival).

^e Stage at diagnosis is classified using SEER Summary Stage 2000. Stage distribution percentages may not sum to 100 due to rounding.

^f The difference between 1975-1977 and 2006-2012 is statistically significant ($p < .05$).

^g The standard error is between 5 and 10 percentage points.

^h The standard error is greater than 10 percentage points.

- Statistic could not be calculated due to fewer than 25 cases during the time period.

Table 27.9
Cancer of the Urinary Bladder (Invasive and *In Situ*)

SEER^a Relative Survival (Percent)
By Year of Diagnosis

All Races, Males and Females

Year of Diagnosis

	1975- 1979	1980- 1984	1985- 1989	1990- 1994	1995	1996	1997	1998	1999	2000	2001	2002	2003	2004	2005	2006	2007	2008	2009	2010	2011	2012
Survival Time																						
1-year	87.0	88.7	90.0	90.0	90.6	89.7	91.3	90.9	89.9	90.9	91.0	89.8	90.3	90.8	90.6	91.2	90.1	89.2	89.5	89.2	90.4	89.0
2-year	80.8	83.5	85.1	85.3	86.5	85.5	86.3	86.5	85.0	86.5	86.4	85.6	85.6	86.1	85.5	86.5	85.0	84.7	83.7	85.0	85.9	
3-year	77.6	80.4	82.2	82.8	84.0	83.4	83.1	83.4	82.3	83.6	84.5	83.5	83.4	83.6	82.6	83.8	82.0	81.8	81.3	81.6		
4-year	74.8	78.0	80.0	81.1	81.8	81.1	80.7	81.3	80.4	81.6	82.4	81.1	81.4	81.5	81.0	82.3	80.3	79.3	79.3			
5-year	73.0	76.1	78.1	79.5	81.1	79.6	78.5	79.2	78.1	80.3	81.5	79.9	79.7	80.0	80.0	80.7	78.9	77.5				
6-year	71.1	74.5	76.4	78.0	79.3	78.3	76.9	77.5	76.7	79.4	80.1	78.4	78.3	78.1	78.5	79.7	76.8					
7-year	68.9	72.9	74.9	76.3	77.4	77.3	75.8	76.3	75.7	77.8	78.3	77.3	77.1	75.9	77.7	77.7						
8-year	67.5	71.8	73.3	74.9	76.2	75.9	74.7	74.7	74.3	76.3	77.1	76.0	75.8	74.1	75.6							
9-year	65.8	70.0	72.1	73.5	74.6	74.1	73.2	73.4	73.1	75.4	75.9	74.6	74.8	72.9								
10-year	63.8	68.9	70.7	72.1	73.7	72.7	72.2	71.7	72.6	73.5	74.5	73.6	73.8									
11-year	62.1	67.5	69.6	70.9	73.0	71.6	71.2	70.8	71.5	71.6	73.7	72.2										
12-year	60.7	66.1	68.1	69.8	71.7	69.9	70.2	68.6	69.6	70.4	72.6											
13-year	59.7	65.1	66.8	69.0	69.3	68.8	69.8	67.8	68.1	69.0												
14-year	58.5	63.6	65.3	68.0	67.7	67.2	68.6	67.0	67.0													
15-year	57.1	62.2	64.0	66.3	67.1	67.1	67.1	66.5														
16-year	56.1	60.5	62.6	65.0	65.8	66.7	65.3															
17-year	55.1	59.6	61.7	63.8	64.2	65.4																
18-year	54.3	58.5	60.7	62.7	63.3																	
19-year	53.6	57.7	60.0	61.4																		
20-year	52.8	57.1	59.4																			

^a Based on the SEER 9 areas (San Francisco, Connecticut, Detroit, Hawaii, Iowa, New Mexico, Seattle, Utah, and Atlanta).

Table 27.10
Cancer of the Urinary Bladder (Invasive and *In Situ*)

SEER^a Relative Survival (Percent)
By Year of Diagnosis

All Races, Males

Year of Diagnosis

	1975- 1979	1980- 1984	1985- 1989	1990- 1994	1995	1996	1997	1998	1999	2000	2001	2002	2003	2004	2005	2006	2007	2008	2009	2010	2011	2012
Survival Time																						
1-year	89.0	89.9	91.7	91.7	92.1	91.2	93.0	92.6	91.7	92.1	91.6	91.9	91.8	91.9	92.1	92.5	91.6	90.8	90.6	90.9	91.8	90.7
2-year	82.7	85.1	87.0	87.5	87.9	87.1	88.3	88.3	86.8	87.9	86.9	88.3	87.2	87.7	87.2	88.1	86.5	86.6	84.7	87.0	87.5	
3-year	79.5	82.0	84.2	85.1	85.5	84.9	85.1	84.7	84.2	84.6	85.2	86.1	84.8	85.2	84.3	85.3	83.2	83.8	82.1	83.6		
4-year	76.5	79.4	81.9	83.4	83.1	82.6	82.4	82.6	81.9	82.5	83.0	83.4	82.8	83.2	82.7	83.9	81.3	80.8	80.3			
5-year	74.3	77.4	80.1	81.7	82.9	80.9	79.9	80.3	79.3	81.0	82.3	82.0	80.9	82.0	82.0	82.5	79.8	78.9				
6-year	72.3	75.8	78.4	80.1	80.9	79.6	78.0	78.7	77.6	80.2	80.8	80.6	79.2	80.1	80.7	81.4	77.7					
7-year	70.0	74.4	76.5	78.2	79.2	78.4	76.7	77.8	76.6	78.3	78.5	79.7	77.7	77.5	79.8	79.0						
8-year	68.3	73.2	74.9	76.8	77.8	76.9	75.9	76.0	75.2	76.6	77.7	78.3	76.3	75.6	77.7							
9-year	66.4	71.4	73.7	75.3	75.6	75.5	74.3	74.8	74.4	75.2	76.9	76.7	75.1	74.4								
10-year	64.2	70.3	72.3	73.9	74.7	73.9	73.2	73.0	74.1	73.0	75.5	75.6	73.8									
11-year	62.2	68.9	71.2	72.7	73.9	72.6	72.3	72.1	73.3	70.9	74.6	73.9										
12-year	60.8	67.4	69.5	71.6	72.5	70.7	70.8	69.7	72.0	69.4	73.8											
13-year	59.6	66.4	68.3	70.8	70.6	69.6	69.9	68.8	70.6	67.7												
14-year	58.4	64.6	66.7	70.1	68.7	67.7	68.2	68.3	69.6													
15-year	57.1	63.1	65.3	68.4	68.0	67.4	66.4	67.6														
16-year	55.8	61.2	63.8	67.1	66.1	67.1	64.4															
17-year	54.6	60.3	63.1	65.8	64.8	66.0																
18-year	53.6	59.3	61.8	64.9	64.0																	
19-year	52.8	58.6	61.2	63.5																		
20-year	52.0	58.1	60.7																			

^a Based on the SEER 9 areas (San Francisco, Connecticut, Detroit, Hawaii, Iowa, New Mexico, Seattle, Utah, and Atlanta).

Table 27.11
Cancer of the Urinary Bladder (Invasive and *In Situ*)

SEER^a Relative Survival (Percent)
By Year of Diagnosis

All Races, Females

Year of Diagnosis

	1975- 1979	1980- 1984	1985- 1989	1990- 1994	1995	1996	1997	1998	1999	2000	2001	2002	2003	2004	2005	2006	2007	2008	2009	2010	2011	2012
Survival Time																						
1-year	81.4	85.0	85.0	85.0	86.7	85.3	86.3	85.9	84.8	87.5	89.3	83.6	85.8	87.5	86.2	87.1	85.2	84.2	86.1	83.9	85.8	83.5
2-year	75.2	79.0	79.7	79.2	82.4	80.8	80.5	81.2	80.1	82.3	85.0	77.9	81.1	81.3	80.6	81.8	79.9	79.1	80.9	79.0	80.7	
3-year	72.6	75.9	76.4	76.1	79.8	78.9	77.2	79.3	77.0	80.6	82.3	76.1	79.3	78.8	77.5	79.1	77.9	75.8	78.7	75.3		
4-year	70.2	73.7	74.4	74.7	78.2	76.9	75.6	77.6	75.8	78.8	80.3	74.5	77.6	76.4	76.0	77.2	77.0	74.2	76.2			
5-year	69.2	72.1	72.3	73.0	76.0	75.7	74.5	75.9	74.7	78.3	78.9	73.6	76.0	74.1	74.3	75.3	75.8	73.1				
6-year	67.7	70.5	70.8	71.7	74.8	74.5	73.7	73.6	74.0	76.5	77.9	71.9	75.3	72.0	72.0	74.2	73.9					
7-year	65.9	68.8	70.0	70.6	72.6	74.0	72.9	72.0	72.8	76.1	77.5	69.8	75.1	70.9	71.3	73.9						
8-year	65.2	67.6	68.6	69.4	71.9	72.9	71.2	71.1	71.9	75.2	75.4	69.5	74.4	69.7	69.5							
9-year	64.1	66.0	67.4	68.3	71.4	70.0	70.1	69.1	69.2	75.2	72.8	68.6	73.9	68.2								
10-year	62.5	64.8	66.1	66.7	70.7	69.3	68.6	67.5	68.2	74.4	71.5	67.8	73.3									
11-year	61.5	63.3	64.8	65.6	70.0	68.8	67.9	67.2	65.6	73.5	71.1	67.0										
12-year	60.1	62.5	63.8	64.6	69.3	67.8	67.9	65.3	62.9	73.0	69.3											
13-year	59.6	61.3	62.5	63.7	65.6	66.6	67.9	64.6	61.2	72.9												
14-year	58.1	60.3	61.2	62.0	64.7	65.8	67.9	63.0	59.9													
15-year	56.8	59.4	60.2	60.2	64.3	65.8	67.9	62.8														
16-year	56.7	58.3	59.0	58.9	64.1	65.1	67.8															
17-year	55.8	57.4	57.7	57.9	62.3	63.5																
18-year	55.4	56.1	57.2	56.4	61.4																	
19-year	55.3	54.7	56.4	55.5																		
20-year	54.3	54.0	55.6																			

^a Based on the SEER 9 areas (San Francisco, Connecticut, Detroit, Hawaii, Iowa, New Mexico, Seattle, Utah, and Atlanta).

Table 27.12
Cancer of the Urinary Bladder (Invasive and In Situ)

Risk of Being Diagnosed With Cancer in 10, 20 and 30 Years,
Lifetime Risk of Being Diagnosed with Cancer Given Alive and Cancer-Free at Current Age, and
Lifetime Risk of Dying from Cancer Given Alive at Current Age
Both Sexes, 2011-2013 By Race/Ethnicity

Race/ Ethnicity	Current Age	Risk of Being Diagnosed with Cancer				Risk of Dying from Cancer	Race/ Ethnicity	Current Age	Risk of Being Diagnosed with Cancer				Risk of Dying from Cancer
		+10 yrs	+20 yrs	+30 yrs	Ever				+10 yrs	+20 yrs	+30 yrs	Ever	
All Races	0	0.00	0.00	0.00	2.38	0.61	Asian/ Pacific Islander	0	0.00	0.00	0.00	1.45	0.42
	10	0.00	0.00	0.01	2.41	0.62		10	0.00	0.00	0.01	1.46	0.42
	20	0.00	0.01	0.06	2.41	0.62		20	0.00	0.01	0.02	1.46	0.42
	30	0.01	0.06	0.23	2.43	0.63		30	0.00	0.02	0.09	1.47	0.42
	40	0.05	0.22	0.70	2.45	0.63		40	0.01	0.09	0.28	1.47	0.42
	50	0.18	0.67	1.52	2.46	0.64		50	0.07	0.27	0.67	1.47	0.43
	60	0.52	1.42	2.21	2.43	0.66		60	0.20	0.61	1.17	1.44	0.43
	70	1.02	1.92	-	2.16	0.66		70	0.44	1.04	-	1.33	0.43
80	1.21	-	-	1.54	0.60	80	0.71	-	-	1.06	0.41		
White	0	0.00	0.00	0.00	2.58	0.64	American Indian/ Alaska Native ^a	0	0.00	0.00	0.01	1.19	0.26
	10	0.00	0.00	0.02	2.61	0.65		10	0.00	0.01	0.01	1.20	0.27
	20	0.00	0.02	0.07	2.61	0.65		20	0.01	0.01	0.02	1.20	0.27
	30	0.01	0.06	0.25	2.63	0.66		30	0.01	0.02	0.11	1.22	0.27
	40	0.05	0.24	0.77	2.65	0.66		40	0.01	0.10	0.28	1.24	0.28
	50	0.19	0.74	1.67	2.67	0.67		50	0.10	0.29	0.72	1.28	0.29
	60	0.58	1.57	2.41	2.62	0.69		60	0.20	0.66	1.12	1.27	0.31
	70	1.13	2.08	-	2.32	0.68		70	0.53	1.04	-	1.21	0.30
80	1.29	-	-	1.63	0.62	80	0.71	-	-	0.94	0.27		
Black	0	0.00	0.00	0.00	1.28	0.42	Hispanic ^b	0	0.00	0.00	0.00	1.60	0.44
	10	0.00	0.00	0.01	1.30	0.43		10	0.00	0.00	0.01	1.61	0.44
	20	0.00	0.01	0.04	1.31	0.43		20	0.00	0.01	0.03	1.62	0.44
	30	0.01	0.04	0.15	1.32	0.44		30	0.01	0.03	0.12	1.62	0.45
	40	0.03	0.15	0.44	1.34	0.45		40	0.02	0.11	0.36	1.63	0.45
	50	0.12	0.43	0.88	1.36	0.46		50	0.09	0.35	0.85	1.63	0.45
	60	0.33	0.83	1.23	1.36	0.47		60	0.27	0.79	1.36	1.62	0.46
	70	0.59	1.09	-	1.24	0.48		70	0.57	1.20	-	1.48	0.46
80	0.72	-	-	0.94	0.46	80	0.79	-	-	1.14	0.44		

Devcan 6.7.4, August 2016, National Cancer Institute (<http://surveillance.cancer.gov/devcan/>).

Source: Incidence data are from the SEER 18 areas (San Francisco, Connecticut, Detroit, Hawaii, Iowa, New Mexico, Seattle, Utah, Atlanta, San Jose-Monterey, Los Angeles, Alaska Native Registry, Rural Georgia, California excluding SF/SJM/LA, Kentucky, Louisiana, New Jersey, and Georgia excluding ATL/RG). Mortality data are from the NCHS public use data file for the total US.

^a Underlying incidence and mortality data for American Indian/Alaska Native are based on the CHSDA (Contract Health Service Delivery Area) counties.

^b Hispanic is not mutually exclusive from whites, blacks, Asian/Pacific Islanders, and American Indians/Alaska Natives. Underlying incidence data for Hispanics are based on NHIA and exclude cases from the Alaska Native Registry.

- Statistic could not be calculated.

A percent of 0.00 represents a value that is below 0.005.

Table 27.13
Cancer of the Urinary Bladder (Invasive and In Situ)

Risk of Being Diagnosed With Cancer in 10, 20 and 30 Years,
Lifetime Risk of Being Diagnosed with Cancer Given Alive and Cancer-Free at Current Age, and
Lifetime Risk of Dying from Cancer Given Alive at Current Age
Males, 2011-2013 By Race/Ethnicity

Race/ Ethnicity	Current Age	Risk of Being Diagnosed with Cancer				Risk of Dying from Cancer	Race/ Ethnicity	Current Age	Risk of Being Diagnosed with Cancer				Risk of Dying from Cancer
		+10 yrs	+20 yrs	+30 yrs	Ever				+10 yrs	+20 yrs	+30 yrs	Ever	
All Races	0	0.00	0.00	0.01	3.78	0.93	Asian/ Pacific Islander	0	0.00	0.00	0.00	2.36	0.64
	10	0.00	0.01	0.02	3.83	0.94		10	0.00	0.00	0.01	2.38	0.65
	20	0.00	0.02	0.09	3.84	0.95		20	0.00	0.01	0.03	2.39	0.65
	30	0.02	0.08	0.34	3.88	0.96		30	0.01	0.03	0.15	2.40	0.65
	40	0.07	0.33	1.09	3.93	0.97		40	0.02	0.14	0.46	2.41	0.65
	50	0.27	1.05	2.43	3.99	1.00		50	0.12	0.45	1.12	2.43	0.66
	60	0.84	2.33	3.65	4.00	1.04		60	0.34	1.03	1.95	2.40	0.67
	70	1.74	3.28	-	3.70	1.06		70	0.76	1.76	-	2.24	0.68
80	2.23	-	-	2.83	1.04	80	1.26	-	-	1.86	0.67		
White	0	0.00	0.00	0.01	4.10	0.99	American Indian/ Alaska Native ^a	0	0.00	0.00	0.00	1.89	0.45
	10	0.00	0.01	0.02	4.14	1.00		10	0.00	0.00	0.01	1.92	0.45
	20	0.01	0.02	0.10	4.15	1.00		20	0.00	0.01	0.01	1.93	0.46
	30	0.02	0.09	0.37	4.20	1.01		30	0.01	0.01	0.14	1.97	0.47
	40	0.08	0.36	1.19	4.25	1.03		40	0.01	0.14	0.43	2.02	0.49
	50	0.29	1.15	2.67	4.30	1.05		50	0.14	0.44	1.12	2.12	0.51
	60	0.92	2.56	3.96	4.32	1.09		60	0.33	1.07	1.82	2.17	0.55
	70	1.91	3.55	-	3.97	1.11		70	0.88	1.76	-	2.17	0.58
80	2.39	-	-	2.99	1.08	80	1.29	-	-	1.89	0.65		
Black	0	0.00	0.00	0.00	1.84	0.52	Hispanic ^b	0	0.00	0.00	0.00	2.56	0.68
	10	0.00	0.00	0.01	1.88	0.53		10	0.00	0.00	0.01	2.59	0.68
	20	0.00	0.01	0.06	1.89	0.54		20	0.00	0.01	0.05	2.60	0.69
	30	0.01	0.06	0.23	1.93	0.55		30	0.01	0.04	0.17	2.62	0.69
	40	0.05	0.23	0.68	1.97	0.56		40	0.03	0.16	0.55	2.64	0.70
	50	0.19	0.66	1.33	2.01	0.58		50	0.13	0.53	1.35	2.66	0.71
	60	0.53	1.28	1.86	2.04	0.61		60	0.42	1.29	2.24	2.68	0.74
	70	0.95	1.68	-	1.91	0.63		70	0.98	2.05	-	2.55	0.75
80	1.19	-	-	1.56	0.65	80	1.43	-	-	2.10	0.76		

Devcan 6.7.4, August 2016, National Cancer Institute (<http://surveillance.cancer.gov/devcan/>).

Source: Incidence data are from the SEER 18 areas (San Francisco, Connecticut, Detroit, Hawaii, Iowa, New Mexico, Seattle, Utah, Atlanta, San Jose-Monterey, Los Angeles, Alaska Native Registry, Rural Georgia, California excluding SF/SJM/LA, Kentucky, Louisiana, New Jersey, and Georgia excluding ATL/RG). Mortality data are from the NCHS public use data file for the total US.

^a Underlying incidence and mortality data for American Indian/Alaska Native are based on the CHSDA (Contract Health Service Delivery Area) counties.

^b Hispanic is not mutually exclusive from whites, blacks, Asian/Pacific Islanders, and American Indians/Alaska Natives. Underlying incidence data for Hispanics are based on NHIA and exclude cases from the Alaska Native Registry.

- Statistic could not be calculated.

A percent of 0.00 represents a value that is below 0.005.

Table 27.14
Cancer of the Urinary Bladder (Invasive and In Situ)

Risk of Being Diagnosed With Cancer in 10, 20 and 30 Years,
Lifetime Risk of Being Diagnosed with Cancer Given Alive and Cancer-Free at Current Age, and
Lifetime Risk of Dying from Cancer Given Alive at Current Age
Females, 2011-2013 By Race/Ethnicity

Race/ Ethnicity	Current Age	Risk of Being Diagnosed with Cancer				Risk of Dying from Cancer	Race/ Ethnicity	Current Age	Risk of Being Diagnosed with Cancer				Risk of Dying from Cancer
		+10 yrs	+20 yrs	+30 yrs	Ever				+10 yrs	+20 yrs	+30 yrs	Ever	
All Races	0	0.00	0.00	0.00	1.13	0.34	Asian/ Pacific Islander	0	0.00	0.00	0.00	0.70	0.24
	10	0.00	0.00	0.01	1.14	0.35		10	0.00	0.00	0.01	0.71	0.24
	20	0.00	0.01	0.03	1.14	0.35		20	0.00	0.01	0.01	0.71	0.24
	30	0.01	0.03	0.11	1.14	0.35		30	0.00	0.01	0.05	0.71	0.24
	40	0.02	0.11	0.32	1.15	0.35		40	0.01	0.04	0.12	0.71	0.25
	50	0.08	0.30	0.67	1.14	0.36		50	0.03	0.12	0.30	0.71	0.25
	60	0.23	0.61	0.98	1.11	0.36		60	0.09	0.27	0.55	0.69	0.25
	70	0.43	0.83	-	0.97	0.36		70	0.19	0.49	-	0.63	0.25
80	0.52	-	-	0.70	0.33	80	0.34	-	-	0.51	0.24		
White	0	0.00	0.00	0.00	1.20	0.35	American Indian/ Alaska Native ^a	0	0.00	0.00	0.01	0.56	0.12
	10	0.00	0.00	0.01	1.21	0.35		10	0.00	0.01	0.02	0.57	0.13
	20	0.00	0.01	0.04	1.21	0.35		20	0.01	0.02	0.04	0.57	0.13
	30	0.01	0.03	0.12	1.22	0.35		30	0.01	0.03	0.08	0.56	0.13
	40	0.03	0.12	0.35	1.22	0.36		40	0.01	0.07	0.15	0.56	0.13
	50	0.09	0.33	0.73	1.21	0.36		50	0.06	0.14	0.34	0.57	0.13
	60	0.25	0.67	1.05	1.17	0.36		60	0.09	0.30	0.53	0.54	0.13
	70	0.46	0.88	-	1.02	0.36		70	0.24	0.49	-	0.49	0.12
80	0.54	-	-	0.72	0.33	80	0.33	-	-	0.33	0.05		
Black	0	0.00	0.00	0.00	0.81	0.35	Hispanic ^b	0	0.00	0.00	0.00	0.81	0.26
	10	0.00	0.00	0.00	0.82	0.36		10	0.00	0.00	0.01	0.81	0.26
	20	0.00	0.00	0.02	0.83	0.36		20	0.00	0.01	0.02	0.81	0.26
	30	0.00	0.02	0.08	0.83	0.36		30	0.00	0.02	0.06	0.81	0.26
	40	0.01	0.08	0.23	0.84	0.36		40	0.01	0.06	0.19	0.81	0.27
	50	0.06	0.22	0.49	0.85	0.37		50	0.04	0.18	0.41	0.81	0.27
	60	0.17	0.46	0.75	0.84	0.38		60	0.14	0.38	0.65	0.79	0.27
	70	0.33	0.67	-	0.78	0.38		70	0.26	0.55	-	0.70	0.27
80	0.46	-	-	0.61	0.36	80	0.35	-	-	0.53	0.25		

Devcan 6.7.4, August 2016, National Cancer Institute (<http://surveillance.cancer.gov/devcan/>).

Source: Incidence data are from the SEER 18 areas (San Francisco, Connecticut, Detroit, Hawaii, Iowa, New Mexico, Seattle, Utah, Atlanta, San Jose-Monterey, Los Angeles, Alaska Native Registry, Rural Georgia, California excluding SF/SJM/LA, Kentucky, Louisiana, New Jersey, and Georgia excluding ATL/RG). Mortality data are from the NCHS public use data file for the total US.

^a Underlying incidence and mortality data for American Indian/Alaska Native are based on the CHSDA (Contract Health Service Delivery Area) counties.

^b Hispanic is not mutually exclusive from whites, blacks, Asian/Pacific Islanders, and American Indians/Alaska Natives. Underlying incidence data for Hispanics are based on NHIA and exclude cases from the Alaska Native Registry.

- Statistic could not be calculated.

A percent of 0.00 represents a value that is below 0.005.

Table 27.15
Cancer of the Urinary Bladder

SEER Incidence (Invasive and *In Situ*) and U.S. Mortality
Age-Adjusted Rates and Trends^a
By Race/Ethnicity and Sex

SEER Incidence	SEER 18 Areas ^b			SEER 13 Areas ^b			SEER 9 Areas ^b		
	Rate 2009-2013			Trend 2004-2013 ^c			Trend 2004-2013 ^d		
	Rate per 100,000 persons			AAPC (%)			AAPC (%)		
RACE/ETHNICITY	Total	Males	Females	Total	Males	Females	Total	Males	Females
All Races	20.1	35.3	8.6	-1.0*	-1.1*	-1.3*	-0.8*	-0.9*	-1.2*
White	22.0	38.5	9.2	-0.9*	-1.1*	-1.3*	-0.7*	-0.9*	-1.0*
White Hispanic ^e	11.4	19.9	5.2	-0.3	-0.3	-0.6	-	-	-
White Non-Hispanic ^e	23.6	41.3	9.9	-0.7*	-0.9*	-1.1*	-	-	-
Black	12.6	21.2	6.9	0.2	0.5*	-0.4	0.2*	0.4*	0.1
Asian/Pacific Islander	8.8	15.5	3.9	-1.7*	-1.8*	-0.2	-	-	-
Amer Ind/Alaska Nat ^f	8.1	14.4	3.5	1.2	1.4	3.6	-	-	-
Hispanic ^e	11.1	19.4	5.0	-0.4	-0.3	-0.6*	-	-	-
<u>U.S. Mortality^g</u>									
	Rate 2009-2013			Trend 2004-2013 ^h					
	Rate per 100,000 persons			AAPC (%)					
RACE/ETHNICITY	Total	Males	Females	Total	Males	Females			
All Races	4.4	7.7	2.2	0.0	0.0	-0.5*			
White	4.6	8.1	2.2	0.3*	0.2*	-0.3*			
White Hispanic ^e	2.5	4.2	1.3	0.0	-0.2	-0.1			
White Non-Hispanic ^e	4.8	8.4	2.3	0.3*	0.3*	-0.2*			
Black	3.6	5.4	2.5	-0.9*	-0.8*	-1.3*			
Asian/Pacific Islander	1.7	2.9	0.9	-0.6	0.0	-1.3*			
Amer Ind/Alaska Nat									
Total U.S.	1.8	3.1	1.0	1.1	1.5	-0.3			
CHSDA Counties	2.1	3.8	1.1	2.4*	3.5*	-			
Non-CHSDA Counties	1.5	2.4	0.9	-1.0	-1.1	-			
Hispanic ^e	2.3	4.0	1.2	-0.2	-0.3	-0.2			

The AAPC is the Average Annual Percent Change over the time interval. The AAPCs are calculated by the Joinpoint Regression Program Version 4.3.0.0, April 2016, National Cancer Institute.

- Statistic not shown. Rate based on less than 16 cases for the time interval.

Trend based on less than 10 cases for at least one year within the time interval.

^a Rates are age-adjusted to the 2000 US Std Population (19 age groups - Census P25-1130). Trends are based on rates age-adjusted to the 2000 US Std Population (19 age groups - Census P25-1130).

^b The SEER 9 areas are San Francisco, Connecticut, Detroit, Hawaii, Iowa, New Mexico, Seattle, Utah, and Atlanta.

The SEER 13 areas comprise the SEER 9 areas plus San Jose-Monterey, Los Angeles, the Alaska Native Registry, and Rural Georgia.

The SEER 18 areas comprise the SEER 13 areas plus California excluding SF/SJM/LA, Kentucky, Louisiana, New Jersey, and Georgia excluding ATL/RG.

^c The 2004-2013 AAPC estimates are based on a Joinpoint analysis with up to 4 Joinpoints over diagnosis years 1992-2013.

^d The 2004-2013 AAPC estimates are based on a Joinpoint analysis with up to 5 Joinpoints over diagnosis years 1975-2013.

^e Hispanic and Non-Hispanic are not mutually exclusive from whites, blacks, Asian/Pacific Islanders, and American Indians/Alaska Natives. Incidence data for Hispanics and Non-Hispanics are based on NHIA and exclude cases from the Alaska Native Registry. The 2004-2013 Hispanic and Non-Hispanic mortality trends exclude deaths from New Hampshire and Oklahoma.

^f Incidence data for American Indian/Alaska Native are based on the CHSDA (Contract Health Service Delivery Area) counties.

^g US Mortality Files, National Center for Health Statistics, CDC.

^h The 2004-2013 mortality AAPCs are based on a Joinpoint analysis using years of death 1992-2013.

* The APC is significantly different from zero (p<.05).

Table 27.16
Cancer of the Urinary Bladder (Invasive and *In Situ*)

Age-Adjusted SEER Incidence Rates^a
By Registry, Race and Sex

	All Races			Whites			Blacks		
	Total	Males	Females	Total	Males	Females	Total	Males	Females
<u>SEER Incidence Rates^a, 2009-2013</u>									
California	18.17	32.00	7.57	20.01	35.09	8.26	13.33	22.14	7.00
Greater Bay Area	17.79	31.02	7.68	21.02	36.46	8.97	14.54	24.29	7.79
San Francisco-Oakland	17.81	31.21	7.67	21.37	37.03	9.15	14.29	24.34	7.57
San Jose-Monterey	17.75	30.68	7.71	20.43	35.50	8.65	16.56	23.92	-
Los Angeles	16.40	29.36	6.77	18.36	32.82	7.39	13.36	23.24	6.71
Greater California	19.11	33.49	7.90	20.35	35.54	8.40	12.65	19.78	6.97
Connecticut	27.30	47.42	12.51	28.56	49.42	13.00	13.29	22.39	7.70
Detroit	23.96	42.43	10.76	26.94	47.63	11.66	13.96	22.68	8.31
Georgia	18.54	33.61	7.73	21.09	37.78	8.48	10.87	18.56	6.17
Atlanta	17.03	32.02	6.94	20.23	37.13	8.04	11.46	21.30	5.76
Rural Georgia	13.65	22.93	6.49	15.99	25.99	7.70	7.36	-	-
Greater Georgia	19.35	34.58	8.17	21.54	38.31	8.70	10.69	17.19	6.62
Hawaii	13.71	23.33	6.09	22.44	37.38	8.18	-	-	-
Iowa	22.23	39.70	8.79	22.06	39.48	8.62	15.47	29.99	-
Kentucky	22.65	40.04	9.74	23.06	40.68	9.92	15.31	27.30	7.07
Louisiana	19.24	34.23	8.00	21.68	38.50	8.55	12.53	21.03	6.84
New Jersey	23.77	41.65	10.98	25.88	45.17	11.82	12.76	21.81	7.31
New Mexico	14.36	24.79	5.96	15.15	26.01	6.28	9.94	-	-
Seattle-Puget Sound	22.41	38.81	9.63	23.85	40.90	10.36	10.28	17.07	3.89
Utah	16.86	30.17	5.80	17.16	30.76	5.78	-	-	-
SEER 9 Areas ^b	20.62	36.24	8.82	22.80	39.84	9.61	12.94	22.04	7.02
SEER 13 Areas ^b	19.49	34.36	8.29	21.75	38.15	9.10	13.03	22.24	6.95
SEER 18 Areas ^b	20.05	35.31	8.57	21.96	38.52	9.24	12.62	21.22	6.94

^a Rates are per 100,000 and are age-adjusted to the 2000 US Std Population (19 age groups - Census P25-1130)

^b The SEER 9 areas are San Francisco, Connecticut, Detroit, Hawaii, Iowa, New Mexico, Seattle, Utah and Atlanta.

The SEER 13 areas comprise the SEER 9 areas plus San Jose-Monterey, Los Angeles, the Alaska Native Registry and Rural Georgia.

The SEER 18 areas comprise the SEER 13 areas plus California excluding SF/SJM/LA, Kentucky, Louisiana, New Jersey and Georgia excluding ATL/RG.

- Statistic not shown. Rate based on less than 16 cases for the time interval.

Table 27.17
Cancer of the Urinary Bladder

Age-Adjusted SEER Death Rates^a
By Registry, Race and Sex

	All Races			Whites			Blacks		
	Total	Males	Females	Total	Males	Females	Total	Males	Females
<u>SEER Death Rates^a, 2009-2013</u>									
California	3.96	6.81	1.95	4.38	7.56	2.09	3.97	5.69	2.83
Greater Bay Area	3.52	6.09	1.72	4.14	7.17	1.99	4.47	7.28	2.78
San Francisco-Oakland	3.59	6.30	1.71	4.21	7.35	1.98	4.42	7.38	2.66
San Jose-Monterey	3.38	5.70	1.74	4.02	6.85	2.00	-	-	-
Los Angeles	3.54	6.11	1.79	3.88	6.76	1.89	3.75	5.54	2.57
Greater California	4.32	7.36	2.12	4.63	7.97	2.20	3.93	4.90	3.21
Connecticut	4.92	8.53	2.53	5.14	8.97	2.57	2.49	2.83	2.20
Detroit	4.98	8.72	2.57	5.31	9.47	2.58	4.18	6.22	2.89
Georgia	4.45	7.93	2.20	4.80	8.69	2.16	3.47	5.10	2.53
Atlanta	4.11	7.58	1.98	4.70	8.85	1.96	2.96	4.52	2.11
Rural Georgia	2.97	-	-	3.37	-	-	-	-	-
Greater Georgia	4.63	8.20	2.29	4.86	8.76	2.21	3.84	5.55	2.83
Hawaii	2.68	4.96	0.98	4.69	8.30	-	-	-	-
Iowa	4.43	7.99	2.03	4.44	8.02	2.02	-	-	-
Kentucky	4.80	8.42	2.38	4.85	8.49	2.38	4.62	8.30	2.74
Louisiana	4.16	7.02	2.27	4.33	7.54	2.12	3.84	5.50	2.86
New Jersey	4.85	8.49	2.50	5.22	9.14	2.64	3.31	5.34	2.16
New Mexico	3.99	6.98	1.78	4.18	7.21	1.90	-	-	-
Seattle-Puget Sound	4.88	8.37	2.44	5.14	8.80	2.55	4.70	8.03	-
Utah	3.95	6.84	1.77	4.03	6.96	1.80	-	-	-
SEER 9 Areas ^b	4.33	7.59	2.09	4.72	8.30	2.23	3.73	5.76	2.47
SEER 13 Areas ^b	4.09	7.12	2.00	4.50	7.87	2.14	3.74	5.67	2.52
SEER 18 Areas ^b	4.31	7.47	2.14	4.66	8.13	2.24	3.76	5.60	2.63
Total U.S.	4.41	7.66	2.17	4.62	8.08	2.20	3.56	5.40	2.47

^a US Mortality Files, National Center for Health Statistics, Centers for Disease Control and Prevention.
Rates are per 100,000 and are age-adjusted to the 2000 US Std Population (19 age groups - Census P25-1130).

^b The SEER 9 areas are San Francisco, Connecticut, Detroit, Hawaii, Iowa, New Mexico, Seattle, Utah and Atlanta.
The SEER 13 areas comprise the SEER 9 areas plus San Jose-Monterey, Los Angeles, the Alaska Native Registry and Rural Georgia.
The SEER 18 areas comprise the SEER 13 areas plus California excluding SF/SJM/LA, Kentucky, Louisiana, New Jersey and Georgia excluding ATL/RG.

- Statistic not shown. Rate based on less than 16 cases for the time interval.

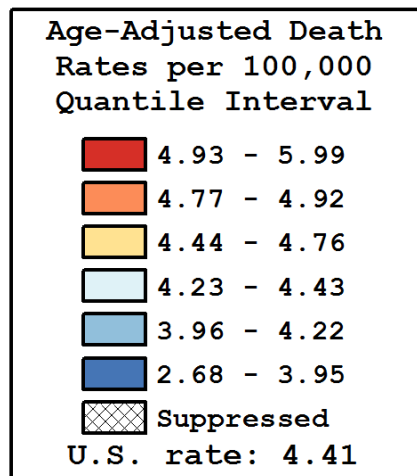
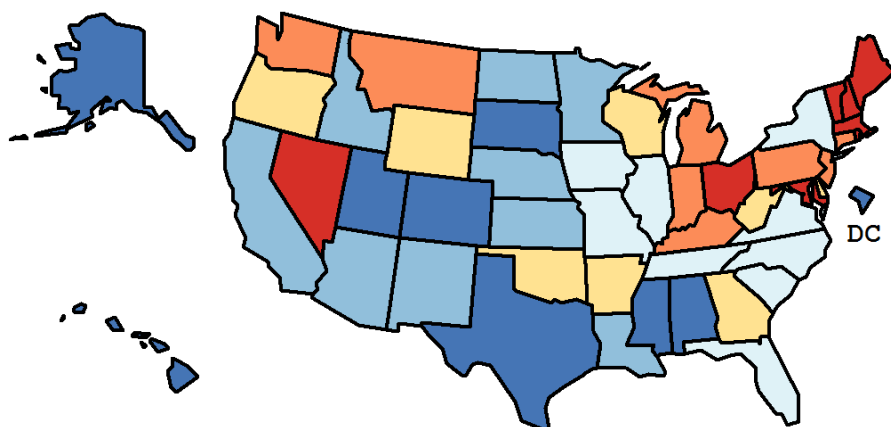
Table 27.18
Cancer of the Urinary Bladder (Invasive)

Age-Adjusted Cancer Death^a Rates By State, All Races, 2009-2013

Males and Females

State	Rate	SE	Rank(CI) ^d	PD
TOTAL U.S.	4.41	0.02		
High Five States				
Maine	5.99	0.26	01(01,04)	35.96 ^c
Vermont	5.60	0.39	02(01,25)	27.09 ^c
Nevada	5.28	0.21	03(01,19)	19.84 ^c
New Hampshire	5.13	0.26	04(01,29)	16.35 ^c
Ohio	5.11	0.09	05(02,14)	15.85 ^c
Low Five States				
Mississippi	3.71	0.16	47(33,50)	-15.79 ^c
Texas	3.71	0.06	48(42,50)	-15.83 ^c
South Dakota	3.70	0.27	49(21,50)	-16.04 ^c
Alaska	3.28	0.40	50(21,51)	-25.65 ^c
Hawaii	2.68	0.18	51(50,51)	-39.18 ^c

State	Rate	SE	Rank(CI) ^d	PD	State	Rate	SE	Rank(CI) ^d	PD
Alabama	3.91	0.12	45(31,50)	-11.30	Montana	4.91	0.28	10(02,38)	11.34
Alaska	3.28	0.40	50(21,51)	-25.65 ^c	Nebraska	4.03	0.20	40(20,50)	-8.65
Arizona	4.07	0.11	37(25,48)	-7.67	Nevada	5.28	0.21	03(01,19)	19.84 ^c
Arkansas	4.56	0.17	21(06,38)	3.49	New Hampshire	5.13	0.26	04(01,29)	16.35 ^c
California	3.96	0.05	42(35,47)	-10.03	New Jersey	4.85	0.10	13(04,22)	10.00
Colorado	3.93	0.13	44(28,50)	-10.91	New Mexico	3.99	0.19	41(20,50)	-9.37
Connecticut	4.92	0.15	09(02,24)	11.65	New York	4.38	0.06	27(20,36)	-0.54
Delaware	4.62	0.30	20(02,47)	4.85	North Carolina	4.27	0.09	30(21,42)	-3.08
D.C.	3.85	0.37	46(08,51)	-12.68	North Dakota	4.22	0.32	34(03,50)	-4.26
Florida	4.42	0.06	26(19,34)	0.27	Ohio	5.11	0.09	05(02,14)	15.85 ^c
Georgia	4.45	0.10	24(14,36)	0.98	Oklahoma	4.53	0.15	23(08,38)	2.77
Hawaii	2.68	0.18	51(50,51)	-39.18 ^c	Oregon	4.76	0.15	17(04,30)	8.06
Idaho	4.21	0.23	35(08,49)	-4.38	Pennsylvania	4.84	0.08	15(05,22)	9.91
Illinois	4.34	0.08	28(20,38)	-1.42	Rhode Island	4.94	0.28	08(01,36)	12.18
Indiana	4.86	0.12	12(03,23)	10.30	South Carolina	4.25	0.13	32(19,45)	-3.56
Iowa	4.43	0.15	25(11,42)	0.51	South Dakota	3.70	0.27	49(21,50)	-16.04 ^c
Kansas	4.06	0.16	38(21,49)	-7.75	Tennessee	4.25	0.11	31(20,44)	-3.48
Kentucky	4.80	0.14	16(03,27)	8.98	Texas	3.71	0.06	48(42,50)	-15.83 ^c
Louisiana	4.16	0.14	36(20,47)	-5.61	Utah	3.95	0.20	43(21,50)	-10.35
Maine	5.99	0.26	01(01,04)	35.96 ^c	Vermont	5.60	0.39	02(01,25)	27.09 ^c
Maryland	4.99	0.13	07(02,21)	13.23	Virginia	4.23	0.10	33(21,44)	-4.02
Massachusetts	5.02	0.11	06(02,20)	13.90	Washington	4.88	0.12	11(03,22)	10.80
Michigan	4.85	0.09	14(04,22)	9.98	West Virginia	4.62	0.20	19(03,40)	4.90
Minnesota	4.04	0.12	39(25,48)	-8.25	Wisconsin	4.69	0.12	18(06,30)	6.32
Mississippi	3.71	0.16	47(33,50)	-15.79 ^c	Wyoming	4.55	0.40	22(02,50)	3.25
Missouri	4.28	0.11	29(19,43)	-2.79					



^a US Mortality Files, National Center for Health Statistics, Centers for Disease Control and Prevention. Rates are per 100,000 and are age-adjusted to the 2000 US Std Population (19 age groups - Census P25-1130).

^b Difference between state rate and total U.S. rate is statistically significant ($p < .0002$).

^c Absolute percent difference between state rate and total U.S. rate is 15% or more.

^d Rank of state level death rate and the 95% confidence intervals (low, high) for the rank.

SE Standard error of the rate.

PD Percent difference between state rate and total U.S. rate.

- Statistic not shown. Rate based on less than 16 cases for the time interval.

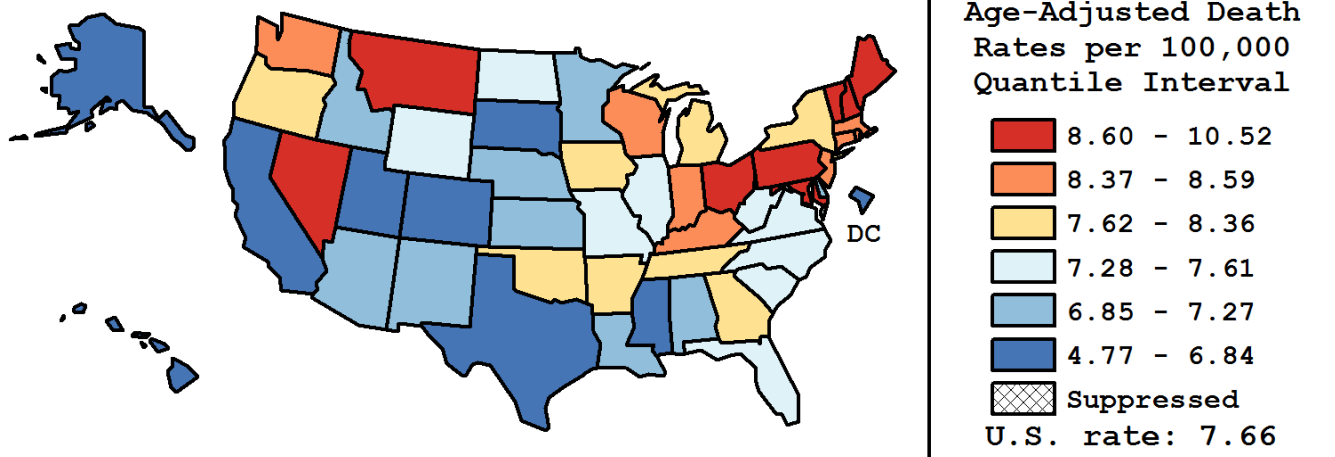
Table 27.19
Cancer of the Urinary Bladder (Invasive)

Age-Adjusted Cancer Death^a Rates By State, All Races, 2009-2013

Males

State	Rate	SE	Rank(CI) ^d	PD
TOTAL U.S.	7.66	0.03		
High Five States				
Maine	10.52	0.54	01(01,05)	37.33 ^c
Vermont	9.41	0.79	02(01,39)	22.85 ^c
New Hampshire	9.24	0.55	03(01,25)	20.62 ^c
Ohio	8.93	0.18	04(02,15)	16.52 ^c
Maryland	8.92	0.28	05(02,19)	16.43 ^c
Low Five States				
South Dakota	6.50	0.56	47(16,51)	-15.16 ^c
Texas	6.43	0.12	48(41,49)	-16.02 ^c
D.C.	5.13	0.69	49(31,51)	-33.06 ^c
Hawaii	4.96	0.38	50(48,51)	-35.32 ^c
Alaska	4.77	0.72	51(34,51)	-37.71 ^c

State	Rate	SE	Rank(CI) ^d	PD	State	Rate	SE	Rank(CI) ^d	PD
Alabama	7.12	0.27	36(20,48)	-7.10	Montana	8.77	0.58	07(01,37)	14.40
Alaska	4.77	0.72	51(34,51)	-37.71 ^c	Nebraska	6.98	0.40	42(17,49)	-8.96
Arizona	7.00	0.21	40(25,48)	-8.63	Nevada	8.78	0.41	06(01,27)	14.62
Arkansas	7.93	0.34	21(04,41)	3.45	New Hampshire	9.24	0.55	03(01,25)	20.62 ^c
California	6.81	0.10	44(34,47)	-11.16	New Jersey	8.49	0.21	13(03,23)	10.75
Colorado	6.72	0.27	45(27,49)	-12.26	New Mexico	6.98	0.39	41(17,49)	-8.85
Connecticut	8.53	0.32	11(02,27)	11.26	New York	7.75	0.13	22(17,33)	1.09
Delaware	7.21	0.59	35(04,49)	-5.90	North Carolina	7.45	0.20	29(19,42)	-2.83
D.C.	5.13	0.69	49(31,51)	-33.06 ^c	North Dakota	7.43	0.64	30(02,49)	-3.07
Florida	7.60	0.11	26(19,35)	-0.81	Ohio	8.93	0.18	04(02,15)	16.52 ^c
Georgia	7.93	0.23	20(08,34)	3.50	Oklahoma	7.73	0.31	23(09,43)	0.83
Hawaii	4.96	0.38	50(48,51)	-35.32 ^c	Oregon	8.32	0.30	18(03,30)	8.64
Idaho	7.27	0.46	34(08,48)	-5.09	Pennsylvania	8.64	0.16	08(03,19)	12.76
Illinois	7.53	0.17	27(18,39)	-1.69	Rhode Island	8.49	0.58	12(01,42)	10.86
Indiana	8.59	0.25	09(02,23)	12.10	South Carolina	7.29	0.28	31(17,47)	-4.85
Iowa	7.99	0.32	19(05,38)	4.33	South Dakota	6.50	0.56	47(16,51)	-15.16 ^c
Kansas	7.03	0.33	37(19,48)	-8.29	Tennessee	7.65	0.24	24(14,41)	-0.20
Kentucky	8.42	0.31	14(02,30)	9.88	Texas	6.43	0.12	48(41,49)	-16.02 ^c
Louisiana	7.02	0.28	39(21,48)	-8.37	Utah	6.84	0.40	43(19,49)	-10.79
Maine	10.52	0.54	01(01,05)	37.33 ^c	Vermont	9.41	0.79	02(01,39)	22.85 ^c
Maryland	8.92	0.28	05(02,19)	16.43 ^c	Virginia	7.28	0.22	32(20,45)	-4.98
Massachusetts	8.54	0.24	10(02,23)	11.48	Washington	8.37	0.24	16(03,26)	9.30
Michigan	8.36	0.19	17(04,24)	9.16	West Virginia	7.46	0.39	28(09,48)	-2.67
Minnesota	7.02	0.24	38(23,48)	-8.33	Wisconsin	8.40	0.25	15(03,27)	9.70
Mississippi	6.58	0.34	46(25,49)	-14.07	Wyoming	7.61	0.78	25(02,49)	-0.70
Missouri	7.28	0.23	33(20,46)	-5.02					



^a US Mortality Files, National Center for Health Statistics, Centers for Disease Control and Prevention. Rates are per 100,000 and are age-adjusted to the 2000 US Std Population (19 age groups - Census P25-1130).

^b Difference between state rate and total U.S. rate is statistically significant ($p < .0002$).

^c Absolute percent difference between state rate and total U.S. rate is 15% or more.

^d Rank of state level death rate and the 95% confidence intervals (low, high) for the rank.

SE Standard error of the rate.

PD Percent difference between state rate and total U.S. rate.

- Statistic not shown. Rate based on less than 16 cases for the time interval.

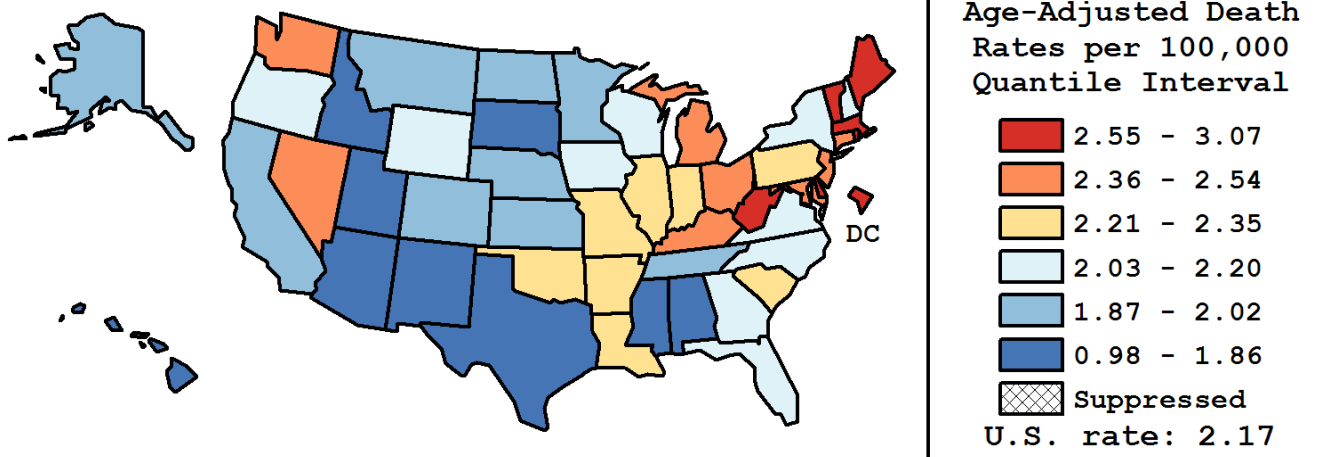
Table 27.20
Cancer of the Urinary Bladder (Invasive)

Age-Adjusted Cancer Death^a Rates By State, All Races, 2009-2013

Females

State	Rate	SE	Rank(CI) ^d	PD
TOTAL U.S.	2.17	0.01		
High Five States				
D.C.	3.07	0.43	01(01,40)	41.45 ^c
Delaware	2.96	0.32	02(01,34)	36.53 ^c
Vermont	2.93	0.38	03(01,42)	35.06 ^c
Maine	2.78	0.24	04(01,32)	27.90 ^c
Massachusetts	2.73	0.11	05(01,16)	25.72 ^c
Low Five States				
New Mexico	1.78	0.17	47(17,50)	-18.08 ^c
Utah	1.77	0.18	48(17,50)	-18.36 ^c
Alabama	1.77	0.11	49(31,50)	-18.56 ^c
South Dakota	1.76	0.25	50(07,51)	-19.15 ^c
Hawaii	0.98	0.14	51(50,51)	-54.68 ^c

State	Rate	SE	Rank(CI) ^d	PD	State	Rate	SE	Rank(CI) ^d	PD
Alabama	1.77	0.11	49(31,50)	-18.56 ^c	Montana	2.00	0.25	36(04,50)	-7.81
Alaska	1.94	0.43	40(01,51)	-10.85	Nebraska	2.01	0.19	35(07,50)	-7.33
Arizona	1.81	0.10	44(31,50)	-16.59 ^c	Nevada	2.54	0.19	08(01,37)	16.84 ^c
Arkansas	2.21	0.15	23(05,45)	1.99	New Hampshire	2.18	0.23	28(02,50)	0.23
California	1.95	0.04	39(30,45)	-9.95	New Jersey	2.50	0.09	11(03,25)	15.03 ^c
Colorado	1.88	0.12	41(21,50)	-13.21	New Mexico	1.78	0.17	47(17,50)	-18.08 ^c
Connecticut	2.53	0.14	09(02,32)	16.76 ^c	New York	2.19	0.06	26(14,37)	1.07
Delaware	2.96	0.32	02(01,34)	36.53 ^c	North Carolina	2.20	0.09	25(11,40)	1.34
D.C.	3.07	0.43	01(01,40)	41.45 ^c	North Dakota	1.87	0.29	42(04,51)	-14.04
Florida	2.04	0.05	32(24,43)	-6.21	Ohio	2.52	0.08	10(03,22)	16.16 ^c
Georgia	2.20	0.09	24(10,40)	1.47	Oklahoma	2.27	0.14	18(05,43)	4.68
Hawaii	0.98	0.14	51(50,51)	-54.68 ^c	Oregon	2.14	0.13	30(09,47)	-1.47
Idaho	1.81	0.20	45(12,50)	-16.63 ^c	Pennsylvania	2.31	0.07	17(09,33)	6.33
Illinois	2.25	0.08	22(10,37)	3.46	Rhode Island	2.67	0.27	06(01,42)	22.92 ^c
Indiana	2.35	0.11	16(05,36)	8.45	South Carolina	2.25	0.13	21(06,42)	3.79
Iowa	2.03	0.14	33(12,49)	-6.71	South Dakota	1.76	0.25	50(07,51)	-19.15 ^c
Kansas	2.02	0.15	34(10,50)	-6.92	Tennessee	1.99	0.10	38(18,49)	-8.52
Kentucky	2.38	0.13	15(03,37)	9.57	Texas	1.81	0.05	46(37,50)	-16.82 ^c
Louisiana	2.27	0.13	19(05,42)	4.40	Utah	1.77	0.18	48(17,50)	-18.36 ^c
Maine	2.78	0.24	04(01,32)	27.90 ^c	Vermont	2.93	0.38	03(01,42)	35.06 ^c
Maryland	2.47	0.12	13(03,32)	13.79	Virginia	2.19	0.10	27(10,42)	0.93
Massachusetts	2.73	0.11	05(01,16)	25.72 ^c	Washington	2.38	0.11	14(04,34)	9.80
Michigan	2.48	0.09	12(04,25)	14.14	West Virginia	2.61	0.20	07(01,36)	20.21 ^c
Minnesota	1.99	0.11	37(17,49)	-8.18	Wisconsin	2.16	0.11	29(10,44)	-0.38
Mississippi	1.86	0.14	43(19,50)	-14.23	Wyoming	2.12	0.37	31(01,50)	-2.19
Missouri	2.26	0.11	20(07,39)	4.32					



^a US Mortality Files, National Center for Health Statistics, Centers for Disease Control and Prevention. Rates are per 100,000 and are age-adjusted to the 2000 US Std Population (19 age groups - Census P25-1130).

^b Difference between state rate and total U.S. rate is statistically significant ($p < .0002$).

^c Absolute percent difference between state rate and total U.S. rate is 15% or more.

^d Rank of state level death rate and the 95% confidence intervals (low, high) for the rank.

SE Standard error of the rate.

PD Percent difference between state rate and total U.S. rate.

- Statistic not shown. Rate based on less than 16 cases for the time interval.

Table 27.21
Cancer of the Urinary Bladder (Invasive and *In Situ*)

Estimated United States Cancer Prevalence Counts^a on January 1, 2013
By Race/Ethnicity, Sex and Years Since Diagnosis

Years Since Diagnosis		0 to <5	5 to <10	10 to <15	15 to <20	20 to <25	25 to <30	0 to <21 ^e	0 to <38 ^e	>=38 ^g	Complete ^h
<u>Race</u>	<u>Sex</u>										
All Races ^b	Both Sexes	203,937	140,089	94,287	62,385	37,347	22,853	525,220	578,563	8,863	587,426
	Males	154,968	105,240	70,014	45,589	27,601	16,956	393,949	432,356	5,712	438,068
	Females	48,969	34,849	24,273	16,796	9,746	5,897	131,271	146,207	3,151	149,358
White ^b	Both Sexes	185,397	129,466	88,061	58,758	35,511	21,630	484,832	535,590	6,980	542,570
	Males	141,682	97,696	65,571	42,906	26,240	15,989	365,004	401,493	4,407	405,900
	Females	43,715	31,770	22,490	15,852	9,271	5,641	119,828	134,097	2,573	136,670
Black ^b	Both Sexes	10,121	5,389	3,603	2,124	1,104	792	22,057	23,605	158	23,763
	Males	7,173	3,625	2,368	1,599	791	658	15,307	16,483	129	16,612
	Females	2,948	1,764	1,235	525	313	134	6,750	7,122	29	7,151
Asian/ Pacific Islander ^c	Both Sexes	3,918	2,595	1,376	+	+	+	8,879	+	+	+
	Males	2,973	1,998	1,038	+	+	+	6,739	+	+	+
	Females	945	597	338	+	+	+	2,140	+	+	+
Hispanic ^d	Both Sexes	8,143	5,179	3,082	+	+	+	18,583	+	+	+
	Males	6,039	3,950	2,274	+	+	+	13,843	+	+	+
	Females	2,104	1,229	808	+	+	+	4,740	+	+	+

Estimated prevalence percent^a on January 1, 2013, of the SEER^c population diagnosed in the previous 21 years
By Age at Prevalence, Race/Ethnicity and Sex

Age at Prevalence		Age Specific (Crude)									Age-Adjusted ^f	
		All Ages	0-9	10-19	20-29	30-39	40-49	50-59	60-69	70-79	80+	All Ages
<u>Race</u>	<u>Sex</u>											
All Races ^c	Both Sexes	0.1372%	0.0003%	0.0004%	0.0015%	0.0068%	0.0266%	0.1080%	0.3510%	0.8108%	1.2231%	0.1320%
	Males	0.2098%	0.0003%	0.0005%	0.0019%	0.0096%	0.0397%	0.1691%	0.5737%	1.3877%	2.3637%	0.2306%
	Females	0.0665%	0.0002%	0.0002%	0.0010%	0.0040%	0.0136%	0.0494%	0.1499%	0.3408%	0.5416%	0.0574%
White ^c	Both Sexes	0.1657%	0.0002%	0.0004%	0.0016%	0.0082%	0.0315%	0.1223%	0.4019%	0.9379%	1.3573%	0.1502%
	Males	0.2514%	-	0.0006%	0.0022%	0.0113%	0.0455%	0.1885%	0.6467%	1.5860%	2.6237%	0.2596%
	Females	0.0803%	0.0003%	-	0.0009%	0.0048%	0.0169%	0.0568%	0.1730%	0.3958%	0.5910%	0.0654%
Black ^c	Both Sexes	0.0516%	-	-	0.0011%	0.0034%	0.0152%	0.0661%	0.1892%	0.3745%	0.5758%	0.0659%
	Males	0.0760%	-	-	-	0.0053%	0.0258%	0.1071%	0.3243%	0.6406%	1.0403%	0.1141%
	Females	0.0293%	-	-	0.0015%	0.0016%	0.0060%	0.0303%	0.0837%	0.1887%	0.3473%	0.0336%
Asian/ Pacific Islander ^c	Both Sexes	0.0593%	-	-	-	0.0026%	0.0090%	0.0495%	0.1439%	0.3314%	0.6678%	0.0598%
	Males	0.0932%	-	-	-	0.0034%	0.0150%	0.0830%	0.2477%	0.5933%	1.2399%	0.1073%
	Females	0.0282%	-	-	-	0.0018%	0.0037%	0.0206%	0.0586%	0.1278%	0.3174%	0.0255%
Hispanic ^d	Both Sexes	0.0357%	-	-	0.0012%	0.0037%	0.0144%	0.0521%	0.1622%	0.3861%	0.6519%	0.0658%
	Males	0.0525%	-	-	0.0016%	0.0050%	0.0192%	0.0807%	0.2599%	0.6959%	1.2539%	0.1166%
	Females	0.0186%	-	-	0.0007%	0.0024%	0.0094%	0.0247%	0.0779%	0.1565%	0.2895%	0.0294%

^a US 2013 cancer prevalence counts are based on 2013 cancer prevalence proportions from the SEER registries and 1/1/2013 US population estimates based on the average of 2012 and 2013 population estimates from the US Bureau of the Census. Prevalence was calculated using the First Malignant Primary Only for a person.

^{b c d} Statistics based on (b) SEER 9 Areas (c) SEER 13 Areas excluding the Alaska Native Registry

(d) NHIA for Hispanic for SEER 13 Areas excluding the Alaska Native Registry.

^e Maximum limited-duration prevalence: 38 years for 1975-2013 SEER 9 data; 21 years for 1992-2013 SEER 13 data (excluding the Alaska Native Registry) used to calculate prevalence for Hispanics and Asian Pacific Islanders.

^f Percentages are age-adjusted to the 2000 US Standard Population (19 age groups - Census P25-1130) by 5-year age groups.

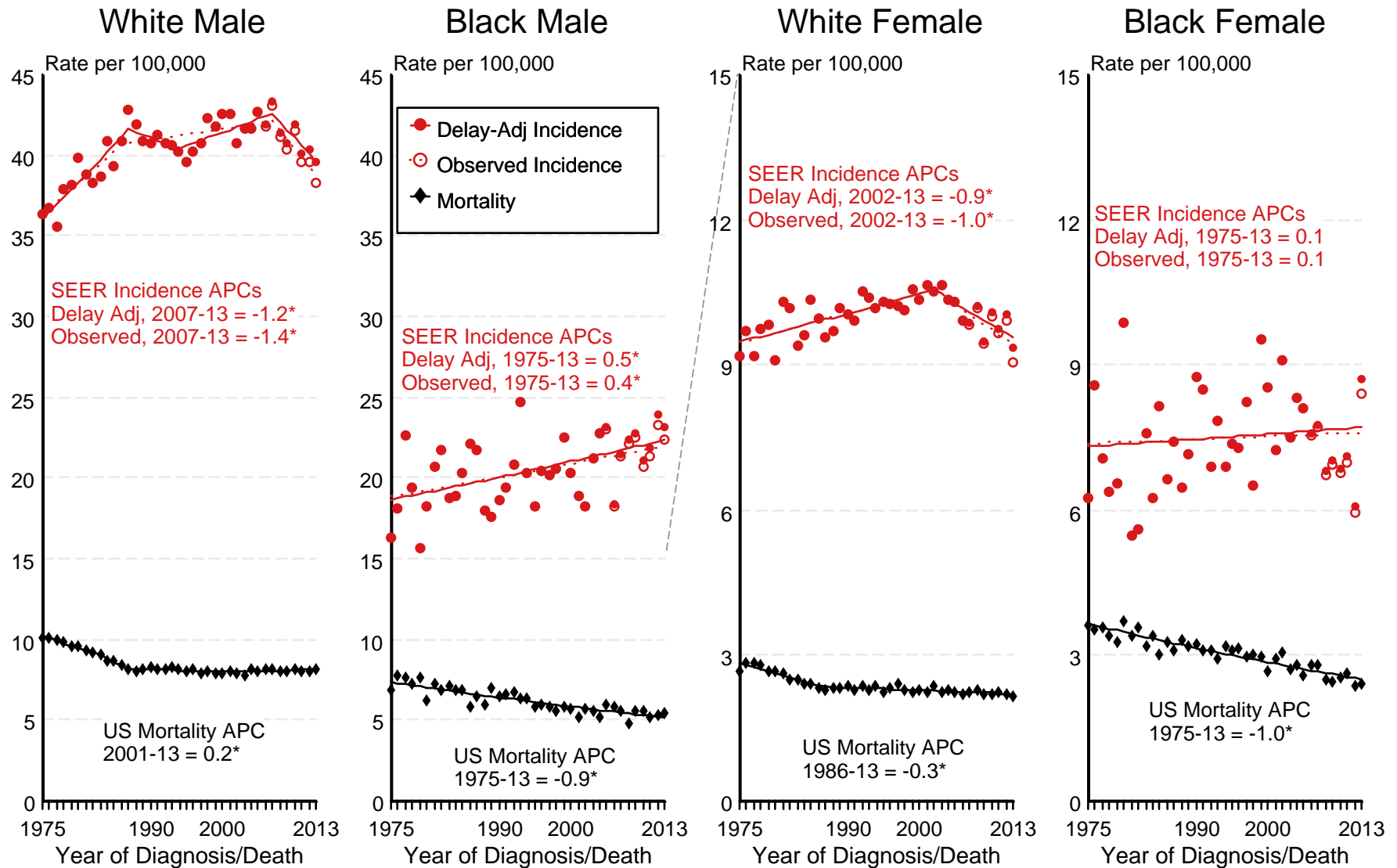
^{g h i} (g) Cases diagnosed more than 38 years ago were estimated using the completeness index method (Capocaccia et. al. 1997, Merrill et. al. 2000). (h) Complete prevalence is obtained by summing 0 to <38 and >=38. (i) Age-specific completeness index was approximated using empirical data from historical Connecticut tumor registry.

- Statistic not shown. Statistic based on fewer than 5 cases estimated alive in SEER for the time interval.

+ Not available.

Figure 27.1

SEER Observed Incidence, SEER Delay Adjusted Incidence and US Death Rates^a Cancer of the Urinary Bladder, by Race and Sex



Source: SEER 9 areas and US Mortality Files (National Center for Health Statistics, CDC).

^a Rates are age-adjusted to the 2000 US Std Population (19 age groups - Census P25-1103).

Regression lines and APCs are calculated using the Joinpoint Regression Program Version 4.3.0.0, April 2016, National Cancer Institute.

The APC is the Annual Percent Change for the regression line segments. The APC shown on the graph is for the most recent trend.

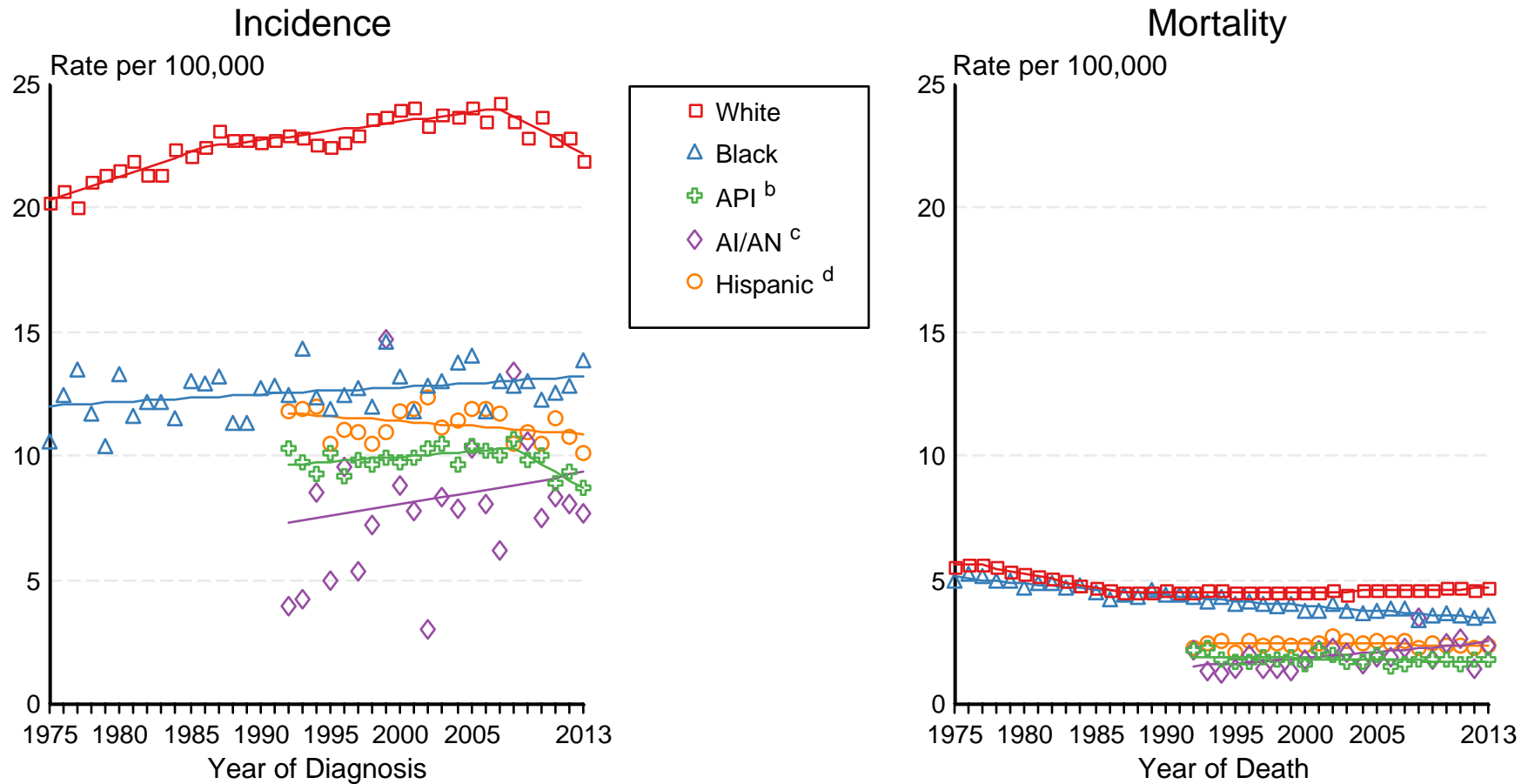
* The APC is significantly different from zero ($p < 0.05$).

Figure 27.2

SEER Incidence and US Death Rates^a Cancer of the Urinary Bladder, Both Sexes

Joinpoint Analyses for Whites and Blacks from 1975-2013

and for Asian/Pacific Islanders, American Indians/Alaska Natives and Hispanics from 1992-2013

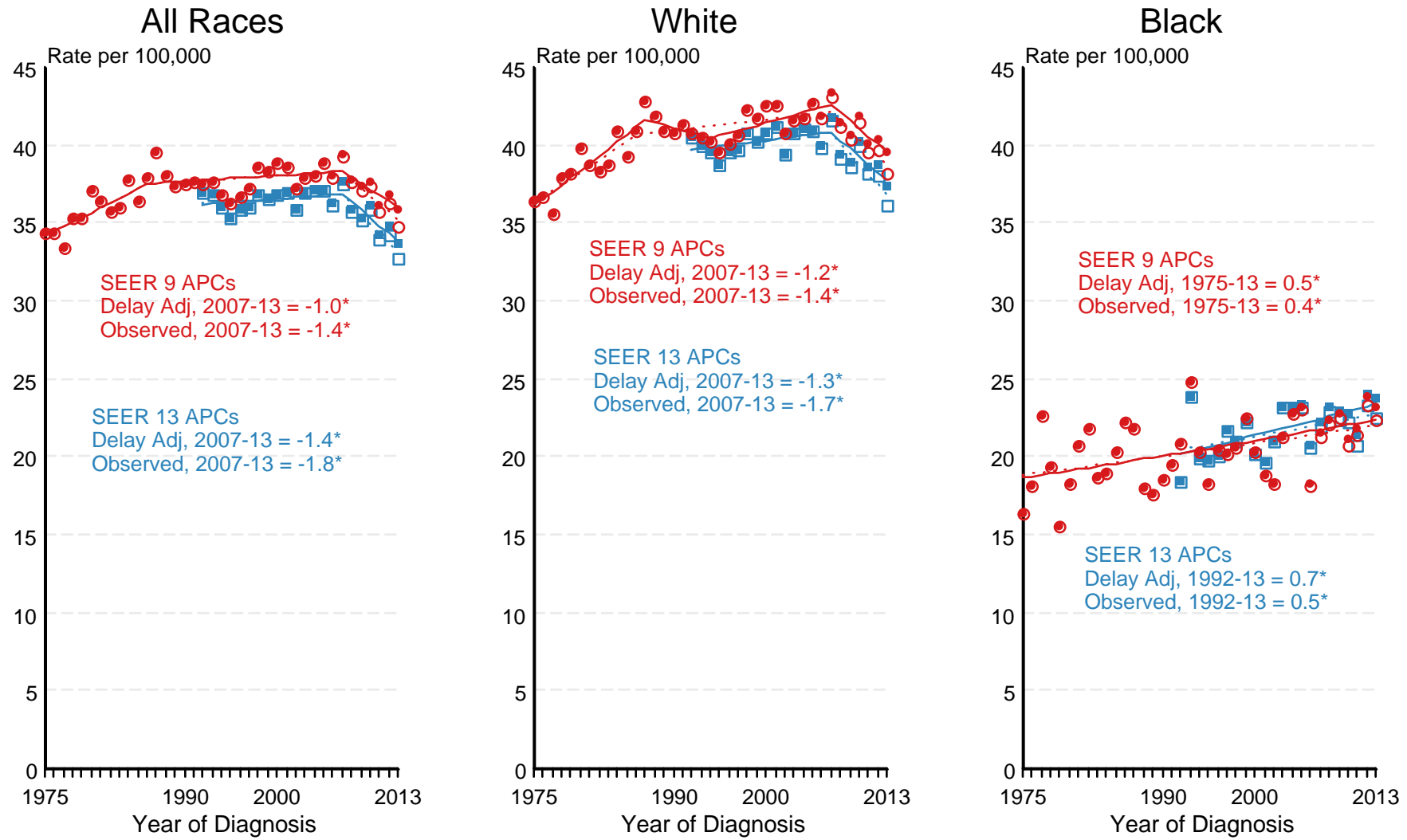


Source: Incidence data for whites and blacks are from the SEER 9 areas (San Francisco, Connecticut, Detroit, Hawaii, Iowa, New Mexico, Seattle, Utah, Atlanta). Incidence data for Asian/Pacific Islanders, American Indians/Alaska Natives and Hispanics are from the SEER 13 Areas (SEER 9 Areas, San Jose-Monterey, Los Angeles, Alaska Native Registry and Rural Georgia). Mortality data are from US Mortality Files, National Center for Health Statistics, CDC.

- ^a Rates are age-adjusted to the 2000 US Std Population (19 age groups - Census P25-1103). Regression lines are calculated using the Joinpoint Regression Program Version 4.3.0.0, April 2016, National Cancer Institute. Joinpoint analyses for Whites and Blacks during the 1975-2013 period allow a maximum of 5 joinpoints. Analyses for other ethnic groups during the period 1992-2013 allow a maximum of 4 joinpoints.
- ^b API = Asian/Pacific Islander.
- ^c AI/AN = American Indian/Alaska Native. Rates for American Indian/Alaska Native are based on the CHSDA(Contract Health Service Delivery Area) counties.
- ^d Hispanic is not mutually exclusive from whites, blacks, Asian/Pacific Islanders, and American Indians/Alaska Natives. Incidence data for Hispanics are based on NHIA and exclude cases from the Alaska Native Registry. Mortality data for Hispanics exclude cases from New Hampshire and Oklahoma.

Figure 27.3

SEER Observed Incidence and SEER Delay Adjusted Incidence Rates^a SEER 9 Areas Compared to SEER 13 Areas Cancer of the Urinary Bladder, Male, by Race



● SEER 9 Delay-Adj. Incidence ○ SEER 9 Observed Incidence ■ SEER 13 Delay-Adj. Incidence □ SEER 13 Observed Incidence

Source: SEER 9 areas and SEER 13 areas.

^a Rates are age-adjusted to the 2000 US Std Population (19 age groups - Census P25-1103).

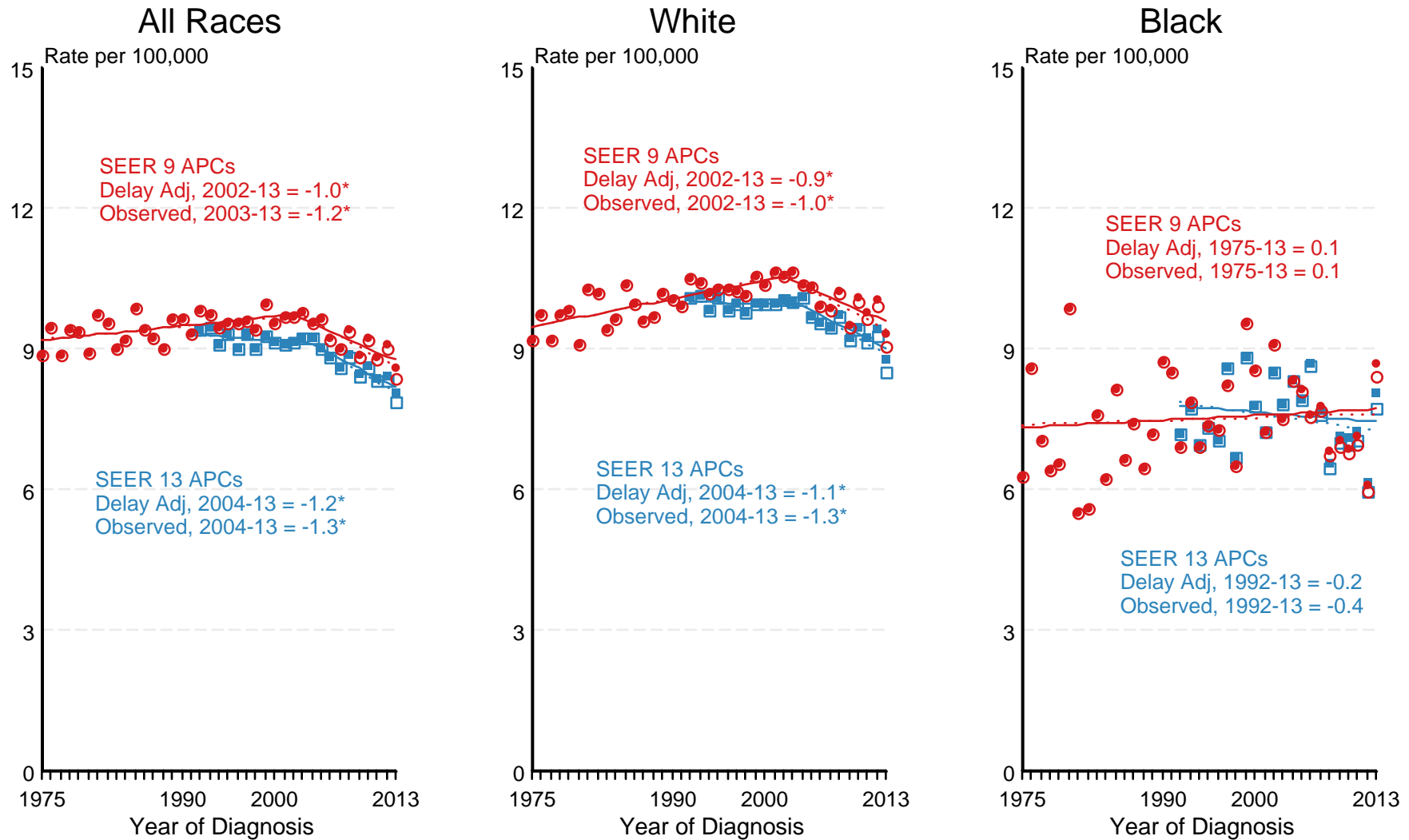
Regression lines and APCs are calculated using the Joinpoint Regression Program Version 4.3.0.0, April 2016, National Cancer Institute.

The APC is the Annual Percent Change for the regression line segments. The APC shown on the graph is for the most recent trend.

* The APC is significantly different from zero (p < 0.05).

Figure 27.4

SEER Observed Incidence and SEER Delay Adjusted Incidence Rates^a SEER 9 Areas Compared to SEER 13 Areas Cancer of the Urinary Bladder, Female, by Race



● SEER 9 Delay-Adj. Incidence
 ○ SEER 9 Observed Incidence
 ■ SEER 13 Delay-Adj. Incidence
 □ SEER 13 Observed Incidence

Source: SEER 9 areas and SEER 13 areas.

^a Rates are age-adjusted to the 2000 US Std Population (19 age groups - Census P25-1103).

Regression lines and APCs are calculated using the Joinpoint Regression Program Version 4.3.0.0, April 2016, National Cancer Institute.

The APC is the Annual Percent Change for the regression line segments. The APC shown on the graph is for the most recent trend.

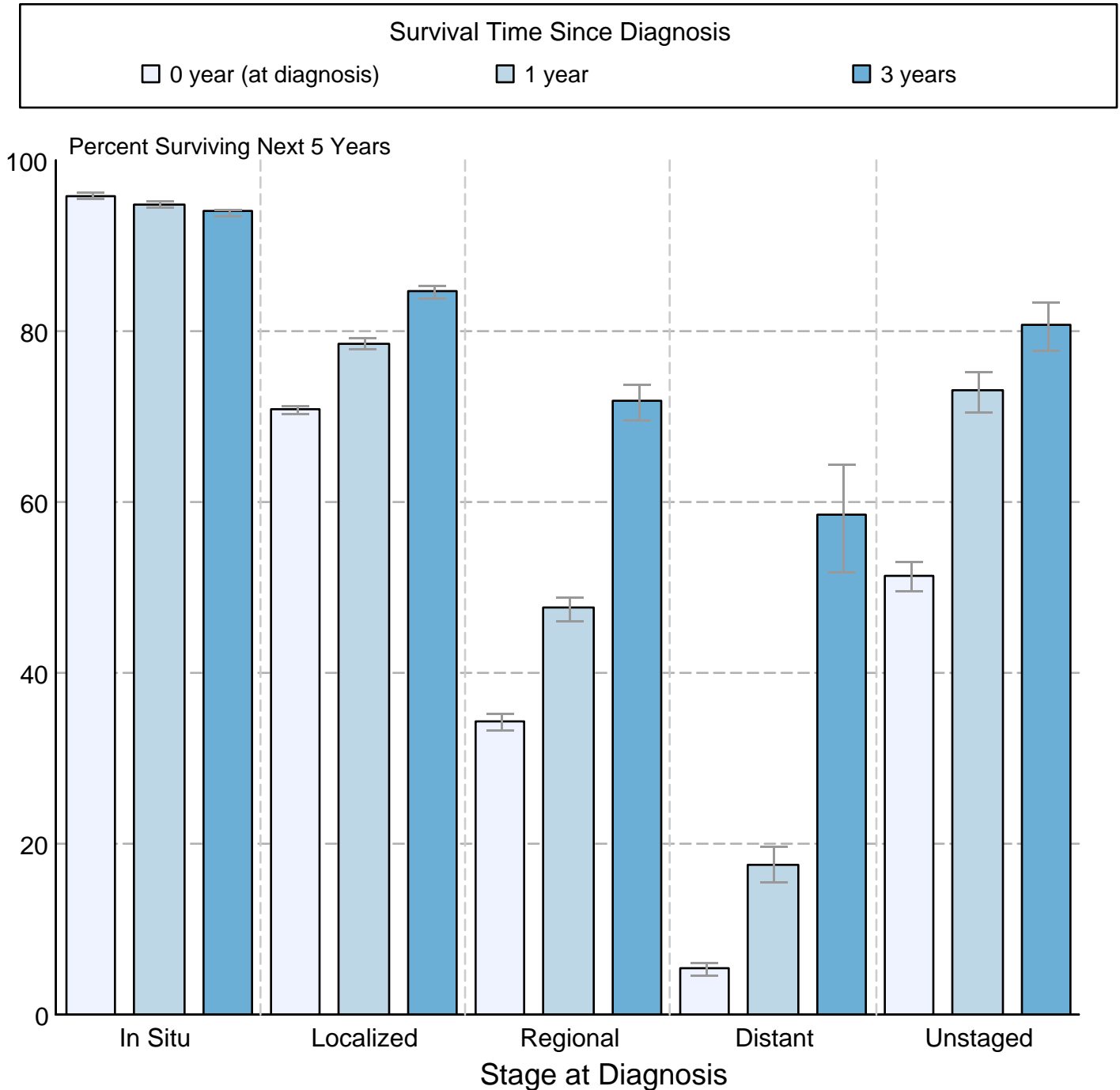
* The APC is significantly different from zero ($p < 0.05$).

Figure 27.5

Cancer of the Urinary Bladder

5-Year SEER Conditional Relative Survival and 95% Confidence Intervals

Probability of surviving the next 5 years given the cohort
has already survived 0, 1, or 3 years
1998-2012 by stage at diagnosis



Source: SEER 18 areas (San Francisco, Connecticut, Detroit, Hawaii, Iowa, New Mexico, Seattle, Utah, Atlanta, San Jose-Monterey, Los Angeles, Alaska Native Registry, Rural Georgia, California excluding SF/SJM/LA, Kentucky, Louisiana, New Jersey and Georgia excluding ATL/RG). California excluding SF/SJM/LA, Kentucky, Louisiana, New Jersey and Georgia excluding ATL/RG contribute cases for diagnosis years 2000 and later. The remaining 13 SEER Areas contribute cases for the entire time period. Percent surviving is not shown if based on less than 25 cases. Confidence intervals are not shown if length of the confidence interval is greater than 5 times the standard error.