

Table 2.1
All Cancer Sites (Invasive)

Trends in SEER Incidence^{ab} and U.S. Mortality^c Using the Joinpoint Regression Program,
1975-2014 With up to Five Joinpoints, 1992-2014 With up to Four Joinpoints,
Both Sexes by Race/Ethnicity

	JP Trend 1		JP Trend 2		JP Trend 3		JP Trend 4		JP Trend 5		JP Trend 6		AAPC ^d	
	Years	APC	Years	APC	Years	APC	Years	APC	Years	APC	Years	APC	2005-14	2010-14
<u>SEER 9 Delay-Adjusted Incidence^a, 1975-2014</u>														
All Races	1975-89	1.2*	1989-92	2.8	1992-95	-2.4	1995-98	1.1	1998-09	-0.3*	2009-14	-1.4*	-0.9*	-1.4*
White	1975-82	0.8*	1982-92	1.8*	1992-95	-2.1	1995-98	1.3	1998-09	-0.2*	2009-14	-1.3*	-0.8*	-1.3*
Black	1975-84	1.6*	1984-89	0.4	1989-92	4.2*	1992-05	-0.7*	2005-08	0.8	2008-14	-2.1*	-1.2*	-2.1*
<u>SEER 13 Delay-Adjusted Incidence^b, 1992-2014</u>														
All Races	1992-94	-3.1*	1994-99	0.4	1999-05	-0.7*	2005-08	0.5	2008-14	-1.6*			-0.9*	-1.6*
White	1992-94	-3.1*	1994-01	0.4	2001-04	-1.2	2004-08	0.4	2008-14	-1.5*			-0.9*	-1.5*
Black	1992-11	-0.6*	2011-14	-3.2*									-1.5*	-2.6*
<u>SEER 9 Observed Incidence^a, 1975-2014</u>														
All Races	1975-89	1.2*	1989-92	2.8	1992-95	-2.4	1995-98	1.1	1998-09	-0.3*	2009-14	-1.8*	-1.1*	-1.8*
White	1975-82	0.8*	1982-92	1.8*	1992-95	-2.1	1995-98	1.3	1998-09	-0.3*	2009-14	-1.8*	-1.1*	-1.8*
Black	1975-84	1.6*	1984-89	0.5	1989-92	3.9	1992-09	-0.6*	2009-12	-1.7	2012-14	-4.6*	-1.9*	-3.2*
<u>SEER 13 Observed Incidence^b, 1992-2014</u>														
All Races	1992-94	-3.1*	1994-99	0.4	1999-04	-0.7*	2004-09	-0.1	2009-14	-2.1*			-1.2*	-2.1*
White	1992-94	-3.1*	1994-01	0.4*	2001-04	-1.3	2004-08	0.4	2008-14	-1.9*			-1.1*	-1.9*
White NH ^{ef}	1992-94	-3.0*	1994-01	0.5*	2001-04	-1.2	2004-08	0.5	2008-14	-1.8*			-1.0*	-1.8*
Black	1992-10	-0.6*	2010-14	-3.4*									-1.9*	-3.4*
Black NH ^{ef}	1992-10	-0.6*	2010-14	-3.3*									-1.8*	-3.3*
API ^e	1992-10	-0.4*	2010-14	-2.3*									-1.2*	-2.3*
AI/AN ^{eg}	1992-10	0.3	2010-14	-3.1									-1.2	-3.1
Hispanic ^f	1992-09	-0.1	2009-14	-2.0*									-1.2*	-2.0*
<u>U.S. Cancer Mortality^c, 1975-2014</u>														
All Races	1975-84	0.5*	1984-91	0.3*	1991-94	-0.5	1994-98	-1.3*	1998-01	-0.8*	2001-14	-1.5*	-1.5*	-1.5*
White	1975-90	0.4*	1990-94	-0.3	1994-98	-1.2*	1998-01	-0.6	2001-14	-1.4*			-1.4*	-1.4*
Black	1975-84	1.3*	1984-92	0.6*	1992-99	-1.3*	1999-14	-2.1*					-2.1*	-2.1*
<u>U.S. Cancer Mortality^c, 1992-2014</u>														
All Races	1992-01	-1.0*	2001-14	-1.5*									-1.5*	-1.5*
White	1992-94	-0.3	1994-98	-1.2*	1998-01	-0.6	2001-14	-1.4*					-1.4*	-1.4*
White NH ^{ef}	1992-94	0.2	1994-98	-1.2*	1998-01	-0.5	2001-14	-1.4*					-1.4*	-1.4*
Black	1992-99	-1.3*	1999-14	-2.1*									-2.1*	-2.1*
Black NH ^{ef}	1992-94	0.0	1994-01	-1.6*	2001-14	-2.0*							-2.0*	-2.0*
API ^e	1992-14	-1.4*											-1.4*	-1.4*
AI/AN ^{eg}	1992-04	0.4	2004-14	-1.1*									-1.1*	-1.1*
Hispanic ^f	1992-99	0.0	1999-14	-1.3*									-1.3*	-1.3*

Joinpoint Regression Program Version 4.4, January 2017, National Cancer Institute. (<https://surveillance.cancer.gov/joinpoint/>).

The APC is the Annual Percent Change based on rates age-adjusted to the 2000 US Std Population (19 age groups - Census P25-1130).

Trends are from the SEER 9 areas (San Francisco, Connecticut, Detroit, Hawaii, Iowa, New Mexico, Seattle, Utah, and Atlanta).

Trends are from the SEER 13 areas (SEER 9 Areas, Los Angeles, San Jose-Monterey, Rural Georgia, and the Alaska Native Registry).

Trends are from US Mortality Files, National Center for Health Statistics, Centers for Disease Control and Prevention.

The AAPC is the Average Annual Percent Change and is based on the APCs calculated by Joinpoint.

API - Asian/Pacific Islander, AI/AN - American Indian/Alaska Native, NH - Non-Hispanic

Hispanic and Non-Hispanic are not mutually exclusive from whites, blacks, Asian/Pacific Islanders, and American Indians/Alaska

Natives. Incidence data for Hispanics and Non-Hispanics are based on NHIA and exclude cases from the Alaska Native Registry.

The Hispanic and Non-Hispanic mortality trends exclude deaths from New Hampshire and Oklahoma.

Data for American Indian/Alaska Native are based on the CHSDA (Contract Health Service Delivery Area) counties.

* The APC/AAPC is significantly different from zero ($p < .05$).

- Joinpoint regression line analysis could not be performed on data series.

Table 2.2
All Cancer Sites (Invasive)

Trends in SEER Incidence^{ab} and U.S. Mortality^c Using the Joinpoint Regression Program,
1975-2014 With up to Five Joinpoints, 1992-2014 With up to Four Joinpoints,
Males by Race/Ethnicity

	JP Trend 1		JP Trend 2		JP Trend 3		JP Trend 4		JP Trend 5		JP Trend 6		AAPC ^d	
	Years	APC	Years	APC	Years	APC	Years	APC	Years	APC	Years	APC	2005-14	2010-14
<u>SEER 9 Delay-Adjusted Incidence^a, 1975-2014</u>														
All Races	1975-89	1.3*	1989-92	5.2*	1992-95	-4.8*	1995-00	0.4	2000-09	-0.7*	2009-14	-2.7*	-1.8*	-2.7*
White	1975-89	1.4*	1989-92	5.0*	1992-95	-5.2*	1995-99	0.8	1999-08	-0.4*	2008-14	-2.4*	-1.7*	-2.4*
Black	1975-81	2.8*	1981-89	0.6	1989-92	6.8*	1992-05	-1.5*	2005-08	0.8	2008-14	-3.7*	-2.2*	-3.7*
<u>SEER 13 Delay-Adjusted Incidence^b, 1992-2014</u>														
All Races	1992-94	-5.7*	1994-09	-0.5*	2009-14	-3.1*							-2.0*	-3.1*
White	1992-94	-6.3*	1994-08	-0.3*	2008-14	-2.7*							-1.9*	-2.7*
Black	1992-10	-1.3*	2010-14	-4.3*									-2.7*	-4.3*
<u>SEER 9 Observed Incidence^a, 1975-2014</u>														
All Races	1975-89	1.3*	1989-92	5.2*	1992-95	-4.8*	1995-00	0.4	2000-09	-0.7*	2009-14	-3.1*	-2.1*	-3.1*
White	1975-89	1.4*	1989-92	5.0*	1992-95	-5.1*	1995-00	0.7	2000-09	-0.7*	2009-14	-3.1*	-2.0*	-3.1*
Black	1975-81	2.9*	1981-89	0.6	1989-92	7.5*	1992-96	-2.6*	1996-09	-1.1*	2009-14	-4.3*	-2.9*	-4.3*
<u>SEER 13 Observed Incidence^b, 1992-2014</u>														
All Races	1992-94	-5.7*	1994-09	-0.5*	2009-14	-3.5*							-2.2*	-3.5*
White	1992-94	-6.2*	1994-08	-0.3*	2008-14	-3.0*							-2.1*	-3.0*
White NH ^{ef}	1992-94	-6.3*	1994-08	-0.2*	2008-14	-2.9*							-2.0*	-2.9*
Black	1992-09	-1.3*	2009-14	-4.4*									-3.1*	-4.4*
Black NH ^{ef}	1992-09	-1.3*	2009-14	-4.3*									-3.0*	-4.3*
API ^e	1992-95	-2.7	1995-07	-0.5*	2007-14	-3.0*							-2.5*	-3.0*
AI/AN ^{eg}	1992-14	-0.6*											-0.6*	-0.6*
Hispanic ^f	1992-09	-0.5*	2009-14	-4.0*									-2.5*	-4.0*
<u>U.S. Cancer Mortality^c, 1975-2014</u>														
All Races	1975-79	1.0*	1979-90	0.3*	1990-93	-0.5	1993-01	-1.5*	2001-14	-1.8*			-1.8*	-1.8*
White	1975-79	0.9*	1979-91	0.2*	1991-94	-0.8	1994-97	-1.8*	1997-00	-1.0*	2000-14	-1.7*	-1.7*	-1.7*
Black	1975-82	1.8*	1982-90	1.0*	1990-93	-0.2	1993-01	-2.0*	2001-14	-2.7*			-2.7*	-2.7*
<u>U.S. Cancer Mortality^c, 1992-2014</u>														
All Races	1992-01	-1.4*	2001-14	-1.8*									-1.8*	-1.8*
White	1992-01	-1.3*	2001-14	-1.7*									-1.7*	-1.7*
White NH ^{ef}	1992-94	-0.2	1994-97	-1.8*	1997-00	-0.9	2000-14	-1.6*					-1.6*	-1.6*
Black	1992-94	-0.5	1994-01	-2.1*	2001-14	-2.7*							-2.7*	-2.7*
Black NH ^{ef}	1992-94	-0.1	1994-02	-2.1*	2002-14	-2.6*							-2.6*	-2.6*
API ^e	1992-14	-1.7*											-1.7*	-1.7*
AI/AN ^{eg}	1992-14	-0.3*											-0.3*	-0.3*
Hispanic ^f	1992-98	0.0	1998-14	-1.6*									-1.6*	-1.6*

Joinpoint Regression Program Version 4.4, January 2017, National Cancer Institute. (<https://surveillance.cancer.gov/joinpoint/>).

The APC is the Annual Percent Change based on rates age-adjusted to the 2000 US Std Population (19 age groups - Census P25-1130).

Trends are from the SEER 9 areas (San Francisco, Connecticut, Detroit, Hawaii, Iowa, New Mexico, Seattle, Utah, and Atlanta).

Trends are from the SEER 13 areas (SEER 9 Areas, Los Angeles, San Jose-Monterey, Rural Georgia, and the Alaska Native Registry).

Trends are from US Mortality Files, National Center for Health Statistics, Centers for Disease Control and Prevention.

The AAPC is the Average Annual Percent Change and is based on the APCs calculated by Joinpoint.

API - Asian/Pacific Islander, AI/AN - American Indian/Alaska Native, NH - Non-Hispanic

Hispanic and Non-Hispanic are not mutually exclusive from whites, blacks, Asian/Pacific Islanders, and American Indians/Alaska

Natives. Incidence data for Hispanics and Non-Hispanics are based on NHIA and exclude cases from the Alaska Native Registry.

The Hispanic and Non-Hispanic mortality trends exclude deaths from New Hampshire and Oklahoma.

Data for American Indian/Alaska Native are based on the CHSDA (Contract Health Service Delivery Area) counties.

* The APC/AAPC is significantly different from zero ($p < .05$).

- Joinpoint regression line analysis could not be performed on data series.

Table 2.3
All Cancer Sites (Invasive)

Trends in SEER Incidence^{ab} and U.S. Mortality^c Using the Joinpoint Regression Program,
1975-2014 With up to Five Joinpoints, 1992-2014 With up to Four Joinpoints,
Females by Race/Ethnicity

	JP Trend 1		JP Trend 2		JP Trend 3		JP Trend 4		JP Trend 5		JP Trend 6		AAPC ^d	
	Years	APC	Years	APC	Years	APC	Years	APC	Years	APC	Years	APC	2005-14	2010-14
<u>SEER 9 Delay-Adjusted Incidence^a, 1975-2014</u>														
All Races	1975-79	-0.3	1979-87	1.6*	1987-95	0.1	1995-98	1.5	1998-03	-0.6	2003-14	0.1	0.1	0.1
White	1975-79	-0.2	1979-87	1.7*	1987-95	0.1	1995-98	1.7	1998-03	-0.5	2003-14	0.1	0.1	0.1
Black	1975-91	1.1*	1991-14	0.1									0.1	0.1
<u>SEER 13 Delay-Adjusted Incidence^b, 1992-2014</u>														
All Races	1992-98	0.8*	1998-03	-0.6	2003-14	0.0							0.0	0.0
White	1992-94	-0.3	1994-98	1.4*	1998-03	-0.7	2003-14	0.0					0.0	0.0
Black	1992-14	0.1											0.1	0.1
<u>SEER 9 Observed Incidence^a, 1975-2014</u>														
All Races	1975-79	-0.3	1979-87	1.6*	1987-95	0.1	1995-98	1.2	1998-14	-0.2*			-0.2*	-0.2*
White	1975-79	-0.2	1979-87	1.7*	1987-95	0.1	1995-98	1.4	1998-14	-0.2*			-0.2*	-0.2*
Black	1975-91	1.1*	1991-12	0.1	2012-14	-3.6							-0.7	-1.8
<u>SEER 13 Observed Incidence^b, 1992-2014</u>														
All Races	1992-94	-0.3	1994-98	1.2*	1998-04	-0.7*	2004-09	0.3	2009-14	-0.8*			-0.3	-0.8*
White	1992-94	-0.3	1994-98	1.4*	1998-04	-0.7*	2004-08	0.4	2008-14	-0.6*			-0.3	-0.6*
White NH ^{ef}	1992-94	0.0	1994-98	1.6*	1998-04	-0.6*	2004-08	0.5	2008-14	-0.6*			-0.2	-0.6*
Black	1992-11	0.1	2011-14	-2.3*									-0.7*	-1.7*
Black NH ^{ef}	1992-11	0.1	2011-14	-2.2*									-0.7*	-1.6*
API ^e	1992-14	0.1											0.1	0.1
AI/AN ^{eg}	1992-14	0.4*											0.4*	0.4*
Hispanic ^f	1992-14	0.1*											0.1*	0.1*
<u>U.S. Cancer Mortality^c, 1975-2014</u>														
All Races	1975-90	0.6*	1990-94	-0.2	1994-02	-0.8*	2002-14	-1.4*					-1.4*	-1.4*
White	1975-90	0.6*	1990-95	-0.2	1995-98	-1.2*	1998-01	-0.2	2001-14	-1.3*			-1.3*	-1.3*
Black	1975-91	1.0*	1991-99	-0.6*	1999-14	-1.6*							-1.6*	-1.6*
<u>U.S. Cancer Mortality^c, 1992-2014</u>														
All Races	1992-94	-0.2	1994-02	-0.8*	2002-14	-1.4*							-1.4*	-1.4*
White	1992-95	-0.2	1995-98	-1.2*	1998-01	-0.2	2001-14	-1.3*					-1.3*	-1.3*
White NH ^{ef}	1992-94	0.6	1994-98	-1.0*	1998-01	-0.2	2001-14	-1.3*					-1.3*	-1.3*
Black	1992-99	-0.6*	1999-14	-1.6*									-1.6*	-1.6*
Black NH ^{ef}	1992-99	-0.5*	1999-14	-1.5*									-1.5*	-1.5*
API ^e	1992-14	-1.0*											-1.0*	-1.0*
AI/AN ^{eg}	1992-04	0.7	2004-14	-1.5*									-1.5*	-1.5*
Hispanic ^f	1992-99	0.1	1999-14	-1.0*									-1.0*	-1.0*

Joinpoint Regression Program Version 4.4, January 2017, National Cancer Institute. (<https://surveillance.cancer.gov/joinpoint/>).
^a The APC is the Annual Percent Change based on rates age-adjusted to the 2000 US Std Population (19 age groups - Census P25-1130).
^b Trends are from the SEER 9 areas (San Francisco, Connecticut, Detroit, Hawaii, Iowa, New Mexico, Seattle, Utah, and Atlanta).
^c Trends are from the SEER 13 areas (SEER 9 Areas, Los Angeles, San Jose-Monterey, Rural Georgia, and the Alaska Native Registry).
^d Trends are from US Mortality Files, National Center for Health Statistics, Centers for Disease Control and Prevention.
^e The AAPC is the Average Annual Percent Change and is based on the APCs calculated by Joinpoint.
^f API - Asian/Pacific Islander, AI/AN - American Indian/Alaska Native, NH - Non-Hispanic
^f Hispanic and Non-Hispanic are not mutually exclusive from whites, blacks, Asian/Pacific Islanders, and American Indians/Alaska Natives. Incidence data for Hispanics and Non-Hispanics are based on NHIA and exclude cases from the Alaska Native Registry.
^f The Hispanic and Non-Hispanic mortality trends exclude deaths from New Hampshire and Oklahoma.
^g Data for American Indian/Alaska Native are based on the CHSDA (Contract Health Service Delivery Area) counties.
* The APC/AAPC is significantly different from zero (p<.05).
- Joinpoint regression line analysis could not be performed on data series.

Table 2.4
All Cancer Sites (Invasive)

Delay-adjusted SEER Incidence^a Rates by Year, Race and Sex

Year of Diagnosis:	All Races			Whites			Blacks		
	Total	Males	Females	Total	Males	Females	Total	Males	Females
1975	400.43	466.81	365.88	402.16	468.58	369.63	426.43	525.33	356.62
1976	407.40	481.09	367.45	409.74	481.91	373.14	427.58	553.03	340.80
1977	407.72	486.45	363.70	409.28	487.11	367.85	442.94	577.58	352.63
1978	407.28	488.34	362.18	409.75	489.68	367.92	436.68	570.87	344.27
1979	412.50	496.45	365.51	414.10	497.60	369.65	451.70	589.85	359.28
1980	418.07	505.81	368.12	419.47	505.17	373.36	467.52	615.22	366.53
1981	425.27	510.79	377.15	427.65	510.75	383.88	472.99	634.35	363.04
1982	424.47	511.05	376.19	427.73	512.45	383.37	465.25	622.11	359.37
1983	431.09	519.91	380.70	434.28	520.88	387.85	487.29	646.27	382.29
1984	439.98	525.43	392.45	443.60	527.66	399.51	488.31	643.87	386.24
1985	448.86	531.17	403.18	453.45	533.52	411.45	489.22	643.65	388.44
1986	451.31	538.14	402.25	455.96	542.83	409.09	493.80	643.53	396.74
1987	468.02	563.20	413.25	474.87	568.84	423.25	501.02	666.13	394.09
1988	463.89	558.41	409.31	470.20	564.95	417.80	504.15	657.76	404.59
1989	467.84	567.08	408.42	475.15	573.53	418.57	492.87	661.08	385.14
1990	482.07	592.81	415.63	488.89	599.30	424.81	522.36	699.96	409.72
1991	503.08	637.43	418.97	510.54	644.51	428.55	549.31	765.08	412.81
1992	510.70	658.34	414.88	516.81	663.44	423.39	569.94	810.89	413.89
1993	493.46	622.26	408.28	496.86	620.16	416.97	568.93	819.19	404.39
1994	483.62	589.84	413.66	487.47	587.55	423.17	558.29	784.12	409.22
1995	477.26	572.08	415.07	482.27	570.27	426.24	544.16	751.68	405.01
1996	479.42	572.83	418.31	484.94	574.03	428.19	541.85	729.07	417.70
1997	486.71	576.02	428.56	493.49	576.49	440.96	542.49	742.64	411.86
1998	488.66	573.24	434.24	496.53	576.18	446.62	540.03	727.26	419.46
1999	490.86	581.05	430.88	498.50	582.62	443.56	542.57	725.94	422.19
2000	486.81	580.94	422.54	496.71	584.40	437.82	529.85	715.38	405.80
2001	490.47	582.13	427.39	501.13	587.77	442.34	522.61	701.79	401.89
2002	488.29	575.49	428.58	497.87	581.49	441.03	537.08	701.07	427.66
2003	476.12	560.98	417.82	486.36	565.39	432.67	521.87	684.12	414.05
2004	477.29	559.16	420.65	486.98	564.26	433.68	526.06	687.36	419.88
2005	473.32	549.99	420.12	484.94	558.31	434.39	511.02	646.95	421.17
2006	477.60	557.79	420.39	489.30	565.25	435.28	512.46	650.44	417.88
2007	484.26	569.72	422.58	495.02	575.68	436.97	522.56	674.50	418.21
2008	478.36	551.63	426.25	488.64	556.83	440.43	523.16	672.45	421.87
2009	477.65	543.11	431.27	487.88	549.26	444.48	517.40	649.56	427.97
2010	468.26	533.00	421.78	479.12	539.62	435.91	499.54	623.99	413.70
2011	463.49	521.58	422.61	474.57	528.61	436.93	494.57	601.22	421.50
2012	451.81	493.98	423.80	461.66	499.97	437.17	491.91	585.22	427.68
2013	447.35	487.02	421.58	458.46	493.81	436.73	477.87	570.72	413.59
2014	446.93	480.24	426.55	460.29	489.38	444.02	453.78	526.22	405.66

Additional information on the model used to delay-adjust SEER Incidence rates can be found at [\(https://surveillance.cancer.gov/delay/\)](https://surveillance.cancer.gov/delay/).

^a SEER 9 areas (San Francisco, Connecticut, Detroit, Hawaii, Iowa, New Mexico, Seattle, Utah, and Atlanta).
Rates are per 100,000 and are age-adjusted to the 2000 US Std Population (19 age groups - Census P25-1130).
- Delay-adjusted rate is not shown for observed rates based on less than 16 cases for the time interval.

Table 2.5
All Cancer Sites (Invasive)

Age-adjusted SEER Incidence^a Rates by Year, Race and Sex

Year of Diagnosis:	All Races			Whites			Blacks		
	Total	Males	Females	Total	Males	Females	Total	Males	Females
1975-2014	462.63	544.92	409.23	469.10	548.52	419.00	504.13	657.18	402.00
1975	400.43	466.81	365.88	402.16	468.58	369.63	426.43	525.33	356.62
1976	407.40	481.09	367.45	409.74	481.91	373.14	427.58	553.03	340.80
1977	407.72	486.45	363.70	409.28	487.11	367.85	442.94	577.58	352.63
1978	407.28	488.34	362.18	409.75	489.68	367.92	436.68	570.87	344.27
1979	412.50	496.45	365.51	414.10	497.60	369.65	451.70	589.85	359.28
1980	418.07	505.81	368.12	419.47	505.17	373.36	467.52	615.22	366.53
1981	425.27	510.79	377.15	427.65	510.75	383.88	472.99	634.35	363.04
1982	424.47	511.05	376.19	427.73	512.45	383.37	465.25	622.11	359.37
1983	431.09	519.91	380.70	434.28	520.88	387.85	487.29	646.27	382.29
1984	439.98	525.43	392.45	443.60	527.66	399.51	488.31	643.87	386.24
1985	448.86	531.17	403.18	453.45	533.52	411.45	489.22	643.65	388.44
1986	451.31	538.14	402.25	455.96	542.83	409.09	493.80	643.53	396.74
1987	468.02	563.20	413.25	474.87	568.84	423.25	501.02	666.13	394.09
1988	463.89	558.41	409.31	470.20	564.95	417.80	504.15	657.76	404.59
1989	467.84	567.08	408.42	475.15	573.53	418.57	492.87	661.08	385.14
1990	482.07	592.81	415.63	488.89	599.30	424.81	522.36	699.96	409.72
1991	503.08	637.43	418.97	510.54	644.51	428.55	549.31	765.08	412.81
1992	510.70	658.34	414.88	516.81	663.44	423.39	569.94	810.89	413.89
1993	493.46	622.26	408.28	496.86	620.16	416.97	568.93	819.19	404.39
1994	483.62	589.84	413.66	487.47	587.55	423.17	558.29	784.12	409.22
1995	477.26	572.08	415.07	482.27	570.27	426.24	544.16	751.68	405.01
1996	479.42	572.83	418.31	484.94	574.03	428.19	541.85	729.07	417.70
1997	486.71	576.02	428.56	493.49	576.49	440.96	542.49	742.64	411.86
1998	488.66	573.24	434.24	496.53	576.18	446.62	540.03	727.26	419.46
1999	490.86	581.05	430.88	498.50	582.62	443.56	542.57	725.94	422.19
2000	486.81	580.94	422.54	496.71	584.40	437.82	529.85	715.38	405.80
2001	490.47	582.13	427.39	501.13	587.77	442.34	522.61	701.79	401.89
2002	488.29	575.49	428.58	497.87	581.49	441.03	537.08	701.07	427.66
2003	476.12	560.98	417.82	486.36	565.39	432.67	521.87	684.12	414.05
2004	477.29	559.16	420.65	486.98	564.26	433.68	526.06	687.36	419.88
2005	473.32	549.99	420.12	484.94	558.31	434.39	511.02	646.95	421.17
2006	476.98	557.06	419.85	488.57	564.40	434.63	511.04	648.62	416.73
2007	483.01	568.24	421.49	493.56	573.97	435.68	519.65	670.70	415.92
2008	476.50	549.48	424.61	486.46	554.33	438.48	518.74	666.69	418.36
2009	475.18	540.28	429.06	484.98	545.98	441.84	511.69	642.27	423.33
2010	465.24	529.56	419.07	475.57	535.61	432.69	492.58	615.15	408.05
2011	459.92	517.54	419.37	470.36	523.90	433.07	486.44	591.26	414.64
2012	446.93	488.63	419.24	455.90	493.73	431.72	481.50	572.44	418.87
2013	440.51	479.55	415.16	450.25	484.95	428.93	464.80	554.71	402.53
2014	435.23	467.48	415.53	446.05	474.07	430.42	434.85	503.74	389.07

^a SEER 9 areas (San Francisco, Connecticut, Detroit, Hawaii, Iowa, New Mexico, Seattle, Utah, and Atlanta).
Rates are per 100,000 and are age-adjusted to the 2000 US Std Population (19 age groups - Census P25-1130).
- Statistic not shown. Rate based on less than 16 cases for the time interval.

Table 2.6
All Cancer Sites (Invasive)

Age-adjusted U.S. Death^a Rates by Year, Race and Sex

Year of Death:	All Races			Whites			Blacks		
	Total	Males	Females	Total	Males	Females	Total	Males	Females
1975-2014	195.08	246.08	161.37	193.02	241.89	160.77	239.45	326.08	185.55
1975	199.14	258.43	160.03	196.33	254.00	158.99	235.50	320.45	174.17
1976	202.30	262.23	162.70	199.38	257.50	161.69	241.76	328.45	179.10
1977	203.02	264.23	162.94	199.67	258.78	161.61	246.38	337.95	181.60
1978	204.42	267.07	163.76	201.14	261.65	162.54	247.24	340.91	181.53
1979	204.53	268.65	163.06	201.20	263.24	161.70	248.98	344.67	182.73
1980	206.96	271.08	165.75	203.27	265.03	164.17	256.18	353.91	189.25
1981	206.40	269.78	165.90	202.64	263.27	164.55	256.77	358.65	187.47
1982	208.32	272.89	167.45	204.54	266.28	166.11	260.36	364.86	190.17
1983	209.21	274.09	168.27	205.17	267.22	166.69	263.75	369.32	193.24
1984	210.91	275.08	170.55	206.66	267.55	169.02	268.15	377.93	195.67
1985	211.35	275.68	170.96	207.25	268.25	169.58	268.06	377.82	196.31
1986	211.79	276.04	171.59	207.73	268.83	170.01	269.45	378.92	199.05
1987	211.91	276.34	171.54	207.78	268.96	169.87	271.12	383.24	199.91
1988	212.62	276.89	172.53	208.48	269.46	170.94	271.59	384.17	200.36
1989	214.30	278.50	174.25	209.96	270.25	172.88	275.87	395.28	200.87
1990	214.95	279.82	174.65	210.41	271.48	172.89	279.30	399.14	205.39
1991	215.06	279.15	175.30	210.62	271.19	173.41	278.97	395.85	207.39
1992	213.46	276.51	174.39	209.24	268.91	172.58	274.93	389.20	205.80
1993	213.45	275.89	174.55	209.16	267.89	172.82	277.09	394.76	206.29
1994	211.74	272.12	174.11	207.83	264.73	172.62	271.96	385.20	204.06
1995	209.89	268.50	173.35	206.09	261.46	171.73	269.51	379.02	204.53
1996	207.00	263.75	171.21	203.40	256.83	169.85	265.28	373.70	200.94
1997	203.55	258.13	169.00	199.94	251.58	167.35	262.14	363.18	202.53
1998	200.82	253.63	166.93	197.56	247.62	165.38	255.66	353.13	198.38
1999	200.72	252.75	167.24	197.75	247.14	165.92	253.80	349.23	197.54
2000	198.79	248.46	166.70	196.37	243.37	165.98	248.07	341.20	193.21
2001	196.29	245.05	164.61	193.98	240.31	163.75	244.34	334.14	192.12
2002	194.36	241.63	163.38	192.38	237.62	162.56	240.81	325.80	191.45
2003	190.89	235.81	161.16	189.10	232.16	160.40	235.16	314.60	188.76
2004	186.84	230.27	157.92	185.21	226.60	157.41	228.98	307.30	183.51
2005	185.23	228.09	156.46	183.87	224.94	156.04	224.83	300.33	180.94
2006	182.03	222.56	154.63	181.10	220.02	154.52	218.93	290.16	177.31
2007	179.26	219.33	152.00	178.30	216.64	151.91	216.23	286.57	175.47
2008	176.32	215.34	149.27	175.69	213.21	149.37	209.37	275.26	170.41
2009	173.40	211.17	147.12	173.03	209.33	147.48	205.39	268.91	167.41
2010	171.75	208.80	145.73	171.36	207.16	145.86	202.85	264.15	166.19
2011	168.73	204.27	143.49	168.54	203.30	143.45	199.04	253.59	166.03
2012	166.31	200.52	141.77	166.42	199.86	142.04	194.09	247.18	161.72
2013	163.14	196.39	139.20	163.52	195.93	139.83	189.66	240.27	158.50
2014	161.30	193.56	137.91	161.90	193.57	138.55	186.40	234.14	156.97

^a US Mortality Files, National Center for Health Statistics, Centers for Disease Control and Prevention.
Rates are per 100,000 and are age-adjusted to the 2000 US Std Population (19 age groups - Census P25-1130).
- Statistic not shown. Rate based on less than 16 cases for the time interval.

Table 2.7
All Cancer Sites (Invasive)

SEER Incidence^a and U.S. Death^b Rates, Age-Adjusted and Age-Specific Rates, by Race and Sex

	All Races			Whites			Blacks		
	Total	Males	Females	Total	Males	Females	Total	Males	Females
<u>SEER Incidence</u>									
<u>Age at Diagnosis</u>									
Age-Adjusted Rates, 2010-2014									
All ages	442.7	492.4	408.7	451.8	497.1	421.5	459.3	549.7	397.4
Under 65	218.5	206.4	231.3	221.7	206.6	237.7	236.8	253.1	224.1
65 and over	1,992.2	2,469.2	1,635.1	2,042.7	2,505.3	1,691.9	1,997.4	2,600.4	1,595.2
All ages (WHO world std) ^c	335.3	363.9	315.4	341.9	366.7	325.4	352.6	416.8	306.8
Age-Specific Rates, 2010-2014									
<1	23.3	22.9	23.7	23.6	23.8	23.4	19.5	17.1	22.0
1-4	21.8	22.6	21.0	23.2	23.7	22.6	16.9	17.5	16.2
5-9	12.7	13.7	11.7	13.4	14.8	12.0	10.8	9.8	11.8
10-14	14.0	14.5	13.5	14.7	15.0	14.4	11.8	12.9	10.8
15-19	22.5	23.4	21.6	24.4	25.4	23.4	15.0	15.5	14.6
20-24	36.1	35.1	37.1	39.9	38.7	41.1	22.0	21.6	22.4
25-29	58.2	49.3	67.5	63.2	54.2	72.9	41.2	31.6	50.3
30-34	91.0	67.1	115.2	96.3	71.7	122.1	73.4	51.0	93.9
35-39	135.6	90.1	181.0	140.9	95.2	188.0	120.1	76.5	159.1
40-44	216.9	143.2	289.9	221.7	145.9	299.4	207.4	149.9	259.1
45-49	348.1	264.4	430.4	352.1	265.2	440.2	367.0	322.3	407.1
50-54	555.0	516.1	592.6	557.3	511.5	602.7	622.6	658.0	591.0
55-59	815.3	873.4	760.5	816.0	857.7	775.6	976.9	1,184.9	796.9
60-64	1,161.6	1,339.2	998.7	1,166.9	1,322.3	1,020.4	1,394.1	1,794.7	1,067.0
65-69	1,636.7	1,971.3	1,339.5	1,659.5	1,964.7	1,381.6	1,838.4	2,443.6	1,368.2
70-74	1,952.7	2,389.2	1,585.9	2,003.6	2,417.5	1,648.3	2,025.5	2,667.4	1,560.1
75-79	2,203.9	2,709.7	1,812.1	2,274.3	2,764.3	1,886.0	2,153.9	2,749.7	1,764.4
80-84	2,299.2	2,880.9	1,900.9	2,371.3	2,946.3	1,968.6	2,102.4	2,710.2	1,764.7
85+	2,136.9	2,840.9	1,775.5	2,188.4	2,921.6	1,810.4	1,898.0	2,423.6	1,678.6
<u>U.S. Mortality</u>									
<u>Age at Death</u>									
Age-Adjusted Rates, 2010-2014									
All ages	166.1	200.5	141.5	166.2	199.8	141.9	194.2	247.3	161.8
Under 65	52.8	56.7	49.2	51.9	55.6	48.3	69.5	76.1	64.2
65 and over	949.6	1,194.7	779.8	956.8	1,196.3	788.5	1,055.6	1,430.7	836.4
All ages (WHO world std) ^c	113.3	133.7	97.8	113.1	132.9	97.8	136.0	168.7	114.8
Age-Specific Rates, 2010-2014									
<1	1.6	1.5	1.6	1.6	1.7	1.6	1.4	0.9	1.9
1-4	2.2	2.3	2.0	2.2	2.4	2.1	2.1	2.3	1.9
5-9	2.2	2.3	2.0	2.2	2.5	2.0	2.0	2.0	2.1
10-14	2.2	2.3	2.0	2.2	2.3	2.1	2.1	2.3	1.9
15-19	2.9	3.4	2.4	3.0	3.5	2.4	2.8	3.2	2.4
20-24	4.2	5.0	3.5	4.3	5.1	3.5	4.3	4.8	3.7
25-29	6.4	6.8	5.9	6.4	7.0	5.9	7.1	7.0	7.2
30-34	10.8	10.0	11.5	10.6	10.1	11.2	13.6	11.5	15.6
35-39	19.5	16.8	22.1	19.1	16.9	21.4	25.2	19.5	30.3
40-44	36.6	31.6	41.5	36.1	31.6	40.6	46.5	36.9	55.0
45-49	73.6	69.9	77.2	72.4	69.4	75.4	94.3	86.3	101.4
50-54	140.3	146.5	134.4	137.4	143.7	131.3	186.1	195.1	178.1
55-59	234.4	265.5	205.2	229.3	258.3	201.3	317.6	372.0	271.2
60-64	359.3	418.6	304.7	353.7	408.5	302.1	482.0	597.4	388.1
65-69	533.1	625.1	450.9	532.0	618.2	453.3	667.9	841.3	533.8
70-74	764.1	913.6	637.2	768.9	911.8	645.0	896.6	1,159.4	708.3
75-79	1,031.8	1,265.4	848.7	1,042.8	1,270.3	860.6	1,131.3	1,492.4	899.0
80-84	1,331.0	1,704.2	1,074.6	1,343.2	1,709.0	1,086.4	1,421.6	1,986.5	1,114.4
85+	1,667.8	2,320.1	1,339.7	1,686.3	2,337.6	1,354.8	1,684.9	2,541.4	1,338.2

^a SEER 18 areas. Rates are per 100,000 and are age-adjusted to the 2000 US Std Population (19 age groups - Census P25-1130), unless noted.

^b US Mortality Files, National Center for Health Statistics, Centers for Disease Control and Prevention.

^c Rates are per 100,000 and are age-adjusted to the 2000 US Std Population (19 age groups - Census P25-1130), unless noted.

^d Rates are per 100,000 and are age-adjusted to the world (WHO 2000-2025) standard million.

- Statistic not shown. Rate based on less than 16 cases for the time interval.

Table 2.8
All Cancer Sites (Invasive)

5-Year Relative and Period Survival (Percent) by Race, Sex, Diagnosis Year and Age

	All Races			Whites			Blacks		
	Total	Males	Females	Total	Males	Females	Total	Males	Females
5-Year Relative Survival (Percent)									
Year of Diagnosis:									
1960-1963 ^a	-	-	-	39	-	-	27	-	-
1970-1973 ^a	-	-	-	43	-	-	31	-	-
1975-1977 ^b	48.9	41.7	55.9	49.8	42.7	56.5	39.0	32.7	46.2
1978-1980 ^b	49.0	43.1	55.0	50.0	44.3	55.6	39.0	33.3	45.6
1981-1983 ^b	50.2	45.2	55.1	51.3	46.6	56.0	38.8	34.2	44.4
1984-1986 ^b	52.4	47.2	57.6	53.6	48.6	58.6	40.2	35.5	45.5
1987-1989 ^b	55.3	51.1	59.6	56.7	52.8	60.6	43.0	38.9	47.7
1990-1992 ^b	59.9	59.1	60.9	61.4	60.8	62.1	47.9	47.6	48.2
1993-1995 ^b	61.3	60.8	61.8	62.4	62.0	62.8	52.8	54.5	50.6
1996-1998 ^b	63.3	63.0	63.6	64.4	64.1	64.7	55.2	57.9	52.1
1999-2001 ^b	66.0	66.3	65.7	67.2	67.5	66.8	58.0	61.1	54.3
2002-2006 ^b	67.5	68.1	66.9	68.8	69.4	68.2	59.9	63.6	55.8
2007-2013 ^b	69.2 ^e	69.2 ^e	69.1 ^e	70.1 ^e	70.1 ^e	70.1 ^e	63.3 ^e	65.9 ^e	60.3 ^e
5-Year Period Survival (Percent) ^{cd}									
2013	67.2	66.5	67.8	67.6	66.7	68.5	61.8	63.9	59.4
5-Year Relative Survival (Percent), 2007-2013 ^c									
Age at Diagnosis:									
Ages <45	82.3	77.8	85.1	83.7	79.5	86.5	72.0	66.7	75.1
Ages 45-54	74.1	68.9	78.3	75.2	69.7	79.8	65.5	64.4	66.7
Ages 55-64	70.4	69.8	71.0	71.2	70.5	72.2	63.4	65.7	59.9
Ages 65-74	66.7	69.1	63.3	67.1	69.2	64.2	61.5	66.5	54.3
Ages 75+	51.3	54.2	48.5	51.8	54.1	49.6	44.1	50.6	38.9
Ages <65	73.9	70.8	76.8	74.9	71.7	78.0	65.6	65.4	65.8
Ages 65+	59.5	62.8	55.5	59.8	62.7	56.5	54.7	61.3	47.1

^a Based on End Results data from a series of hospital registries and one population-based registry.
^b SEER 9 areas (San Francisco, Connecticut, Detroit, Hawaii, Iowa, New Mexico, Seattle, Utah, Atlanta).
Based on follow-up of patients into 2014.
^c SEER 18 areas (San Francisco, Connecticut, Detroit, Hawaii, Iowa, New Mexico, Seattle, Utah, Atlanta, San Jose-Monterey, Los Angeles, Alaska Native Registry, Rural Georgia, California excluding SF/SJM/LA, Kentucky, Louisiana, New Jersey and Georgia excluding ATL/RG).
Based on follow-up of patients into 2014.
^d Period survival provides a 2013 estimate of survival by piecing together the most recent conditional survival estimates from several cohorts. It is computed here using three year calendar blocks (2010-2012: 0-1 year survival), (2009-2011: 1-2 year survival), (2008-2010: 2-3 year survival), (2007-2009: 3-4 year survival), (2006-2008: 4-5 years survival).
The difference between 1975-1977 and 2007-2013 is statistically significant (p<.05).
^e The standard error is between 5 and 10 percentage points.
^f The standard error is greater than 10 percentage points.
^g -
- Statistic could not be calculated due to fewer than 25 cases during the time period.

Table 2.9
All Cancer Sites (Invasive)

SEER^a Relative Survival (Percent)
By Year of Diagnosis

All Races, Males and Females

Year of Diagnosis

	1975- 1979	1980- 1984	1985- 1989	1990- 1994	1995	1996	1997	1998	1999	2000	2001	2002	2003	2004	2005	2006	2007	2008	2009	2010	2011	2012	2013
Survival Time																							
1-year	69.2	70.7	73.2	76.4	76.6	77.1	77.7	78.0	78.7	79.0	79.5	79.8	79.5	80.1	80.4	80.9	81.4	81.6	81.9	81.8	82.0	81.7	81.9
2-year	59.8	61.3	64.5	68.8	69.3	70.2	70.9	71.4	72.2	72.7	73.4	73.9	73.5	74.1	74.3	75.3	75.7	75.8	76.0	76.1	76.3	75.6	
3-year	54.7	56.2	59.8	64.9	65.7	66.7	67.4	68.0	68.9	69.6	70.3	70.8	70.3	70.9	71.2	72.2	72.6	72.6	72.9	72.9	73.0		
4-year	51.4	52.8	56.7	62.3	63.3	64.3	65.1	65.7	66.8	67.5	68.2	68.8	68.3	68.8	69.3	70.2	70.7	70.6	70.8	70.8			
5-year	48.9	50.2	54.4	60.4	61.6	62.5	63.3	64.0	65.2	66.0	66.8	67.3	66.7	67.3	67.7	68.6	69.2	69.0	69.3				
6-year	47.0	48.2	52.6	58.9	60.2	61.2	61.9	62.7	63.9	64.8	65.6	66.1	65.5	66.1	66.5	67.6	68.0	67.8					
7-year	45.4	46.5	51.0	57.5	59.0	60.1	61.0	61.7	62.9	63.7	64.6	65.1	64.4	65.0	65.5	66.6	67.0						
8-year	44.1	45.1	49.8	56.4	58.0	59.2	60.1	60.8	61.9	62.7	63.7	64.3	63.6	64.2	64.6	65.7							
9-year	42.9	43.9	48.6	55.4	57.2	58.2	59.1	59.8	61.2	62.0	63.0	63.5	62.8	63.4	63.9								
10-year	41.8	42.9	47.7	54.5	56.4	57.4	58.4	59.0	60.5	61.3	62.3	62.9	61.9	62.6									
11-year	40.8	41.9	46.8	53.7	55.6	56.8	57.7	58.4	59.7	60.4	61.6	62.2	61.2										
12-year	40.0	41.1	45.9	52.9	54.8	56.1	57.1	57.7	59.1	59.8	60.9	61.6											
13-year	39.3	40.3	45.1	52.3	53.9	55.5	56.5	57.0	58.4	59.1	60.3												
14-year	38.7	39.6	44.4	51.6	53.2	54.8	55.9	56.5	57.7	58.5													
15-year	38.0	39.0	43.8	51.0	52.6	54.2	55.3	55.9	57.2														
16-year	37.4	38.2	43.2	50.4	52.0	53.7	54.5	55.3															
17-year	36.9	37.7	42.7	49.8	51.4	53.0	54.0																
18-year	36.4	37.1	42.1	49.2	50.8	52.6																	
19-year	36.0	36.6	41.7	48.6	50.2																		
20-year	35.5	36.1	41.3	48.1																			
21-year	35.0	35.6	40.8																				
22-year	34.6	35.2	40.4																				
23-year	34.1	34.7	39.9																				
24-year	33.7	34.3	39.4																				
25-year	33.2	33.9	39.0																				
26-year	32.8	33.5																					
27-year	32.5	33.1																					
28-year	32.1	32.7																					
29-year	31.8	32.4																					
30-year	31.4	31.9																					

^a Based on the SEER 9 areas (San Francisco, Connecticut, Detroit, Hawaii, Iowa, New Mexico, Seattle, Utah, and Atlanta).

Table 2.10
All Cancer Sites (Invasive)

SEER^a Relative Survival (Percent)
By Year of Diagnosis

All Races, Males

Year of Diagnosis

	1975- 1979	1980- 1984	1985- 1989	1990- 1994	1995	1996	1997	1998	1999	2000	2001	2002	2003	2004	2005	2006	2007	2008	2009	2010	2011	2012	2013
Survival Time																							
1-year	63.7	66.6	69.9	75.5	75.3	76.2	76.9	76.8	78.0	78.6	79.1	79.2	79.0	79.7	80.0	80.9	81.4	81.3	81.6	81.3	81.4	80.3	80.5
2-year	53.4	56.4	60.4	67.7	68.0	69.4	70.2	70.4	71.5	72.5	73.0	73.5	73.0	73.9	74.1	75.5	75.9	75.6	75.6	75.7	75.6	74.1	
3-year	48.2	51.2	55.5	64.1	64.7	66.1	67.0	67.1	68.5	69.5	70.3	70.8	70.2	71.0	71.2	72.6	73.2	72.7	72.8	72.8	72.4		
4-year	44.7	47.7	52.2	61.6	62.4	63.8	64.9	65.0	66.6	67.6	68.5	69.1	68.4	69.2	69.5	70.7	71.4	70.7	70.9	70.8			
5-year	42.2	45.0	49.9	59.8	60.9	62.3	63.2	63.5	65.2	66.3	67.4	67.9	67.2	68.0	68.1	69.4	70.2	69.5	69.6				
6-year	40.2	43.0	48.1	58.4	59.5	61.1	61.9	62.2	64.1	65.2	66.4	67.0	66.0	66.9	67.0	68.5	69.1	68.4					
7-year	38.5	41.3	46.4	57.0	58.5	60.0	61.1	61.3	63.2	64.2	65.5	66.2	65.1	65.9	66.0	67.6	68.1						
8-year	37.1	39.9	45.0	55.9	57.6	59.2	60.2	60.5	62.3	63.2	64.8	65.4	64.4	65.2	65.2	66.9							
9-year	35.8	38.6	43.8	54.9	56.8	58.4	59.4	59.6	61.6	62.6	64.3	64.9	63.5	64.4	64.6								
10-year	34.6	37.6	42.8	53.9	55.9	57.6	58.8	58.9	61.0	62.0	63.6	64.3	62.7	63.7									
11-year	33.5	36.5	41.9	53.1	55.2	56.9	58.1	58.2	60.4	61.0	62.9	63.5	62.0										
12-year	32.6	35.7	40.9	52.3	54.3	56.2	57.5	57.4	59.7	60.4	62.5	63.0											
13-year	31.8	34.9	40.1	51.7	53.5	55.7	56.8	56.9	59.2	59.7	61.9												
14-year	31.1	34.1	39.3	51.0	52.6	55.0	56.1	56.4	58.5	59.1													
15-year	30.4	33.4	38.5	50.3	51.9	54.5	55.6	56.0	57.9														
16-year	29.7	32.6	37.9	49.7	51.3	53.9	54.9	55.4															
17-year	29.0	32.0	37.4	49.0	50.7	53.3	54.1																
18-year	28.4	31.4	36.8	48.4	50.3	53.0																	
19-year	28.0	30.9	36.3	47.8	49.6																		
20-year	27.6	30.3	35.9	47.3																			
21-year	27.1	29.8	35.4																				
22-year	26.6	29.3	35.0																				
23-year	26.1	28.9	34.5																				
24-year	25.5	28.5	34.0																				
25-year	25.1	28.1	33.5																				
26-year	24.6	27.7																					
27-year	24.3	27.4																					
28-year	23.9	27.0																					
29-year	23.6	26.7																					
30-year	23.2	26.4																					

^a Based on the SEER 9 areas (San Francisco, Connecticut, Detroit, Hawaii, Iowa, New Mexico, Seattle, Utah, and Atlanta).

Table 2.11
All Cancer Sites (Invasive)

SEER^a Relative Survival (Percent)
By Year of Diagnosis

All Races, Females

Year of Diagnosis

	1975- 1979	1980- 1984	1985- 1989	1990- 1994	1995	1996	1997	1998	1999	2000	2001	2002	2003	2004	2005	2006	2007	2008	2009	2010	2011	2012	2013
Survival Time																							
1-year	74.6	74.9	76.7	77.5	77.9	77.9	78.6	79.3	79.4	79.5	80.0	80.4	80.0	80.4	80.8	80.9	81.3	81.9	82.2	82.2	82.7	83.1	83.3
2-year	66.0	66.2	68.7	70.0	70.8	71.0	71.6	72.5	73.0	73.0	73.9	74.4	73.9	74.2	74.6	75.2	75.6	76.1	76.4	76.5	77.0	77.1	
3-year	61.2	61.2	64.2	65.9	66.9	67.3	67.9	69.0	69.4	69.6	70.2	70.9	70.5	70.9	71.3	71.9	72.0	72.6	73.0	73.1	73.7		
4-year	57.9	57.9	61.3	63.2	64.3	64.8	65.3	66.5	67.1	67.3	68.0	68.5	68.1	68.4	69.0	69.6	69.9	70.4	70.7	70.7			
5-year	55.6	55.3	59.0	61.2	62.4	62.8	63.5	64.6	65.2	65.7	66.2	66.6	66.2	66.6	67.2	67.8	68.2	68.5	69.1				
6-year	53.6	53.4	57.3	59.6	60.9	61.3	62.0	63.2	63.8	64.4	64.9	65.3	65.0	65.2	66.0	66.5	66.8	67.1					
7-year	52.1	51.7	55.8	58.2	59.6	60.2	60.9	62.1	62.6	63.2	63.6	64.1	63.7	64.1	64.9	65.4	65.8						
8-year	50.8	50.3	54.6	57.1	58.6	59.1	59.9	61.2	61.6	62.1	62.6	63.1	62.8	63.2	64.0	64.5							
9-year	49.7	49.2	53.5	56.1	57.6	58.1	58.9	60.2	60.8	61.3	61.7	62.2	62.0	62.3	63.1								
10-year	48.7	48.1	52.5	55.2	56.9	57.3	58.1	59.2	60.0	60.6	61.0	61.6	61.1	61.6									
11-year	47.8	47.1	51.7	54.4	56.0	56.7	57.3	58.6	59.1	59.8	60.3	60.9	60.4										
12-year	47.0	46.3	50.9	53.7	55.3	56.1	56.8	58.0	58.4	59.1	59.4	60.1											
13-year	46.4	45.6	50.1	53.0	54.5	55.3	56.2	57.2	57.7	58.4	58.7												
14-year	45.7	44.9	49.5	52.4	53.9	54.6	55.7	56.6	57.0	57.9													
15-year	45.1	44.3	48.8	51.8	53.4	54.0	55.0	55.9	56.5														
16-year	44.6	43.6	48.3	51.3	52.8	53.5	54.2	55.3															
17-year	44.1	43.0	47.8	50.6	52.2	52.8	53.9																
18-year	43.6	42.5	47.3	50.1	51.4	52.2																	
19-year	43.2	42.0	46.9	49.5	50.9																		
20-year	42.7	41.5	46.4	48.9																			
21-year	42.2	41.0	46.0																				
22-year	41.8	40.6	45.5																				
23-year	41.3	40.1	45.0																				
24-year	40.9	39.6	44.6																				
25-year	40.4	39.2	44.1																				
26-year	40.0	38.9																					
27-year	39.6	38.3																					
28-year	39.3	37.9																					
29-year	38.9	37.5																					
30-year	38.6	37.0																					

^a Based on the SEER 9 areas (San Francisco, Connecticut, Detroit, Hawaii, Iowa, New Mexico, Seattle, Utah, and Atlanta).

Table 2.12
All Cancer Sites (Invasive)

Risk of Being Diagnosed With Cancer in 10, 20 and 30 Years,
Lifetime Risk of Being Diagnosed with Cancer Given Alive and Cancer-Free at Current Age, and
Lifetime Risk of Dying from Cancer Given Alive at Current Age
Both Sexes, 2012-2014 By Race/Ethnicity

Race/ Ethnicity	Current Age	Risk of Being Diagnosed with Cancer				Risk of Dying from Cancer	Race/ Ethnicity	Current Age	Risk of Being Diagnosed with Cancer				Risk of Dying from Cancer
		+10 yrs	+20 yrs	+30 yrs	Ever				+10 yrs	+20 yrs	+30 yrs	Ever	
All Races	0	0.17	0.36	0.82	38.53	20.23	Asian/ Pacific Islander	0	0.15	0.30	0.62	33.57	18.11
	10	0.19	0.65	1.74	38.83	20.45		10	0.15	0.47	1.31	33.71	18.23
	20	0.47	1.56	4.13	38.82	20.49		20	0.32	1.16	3.25	33.65	18.24
	30	1.11	3.71	9.42	38.84	20.62		30	0.85	2.95	7.00	33.55	18.26
	40	2.66	8.49	18.46	38.56	20.73		40	2.13	6.23	13.29	33.11	18.23
	50	6.12	16.55	28.16	37.61	20.71		50	4.22	11.49	20.59	31.91	18.04
	60	11.59	24.47	32.74	34.96	20.08		60	7.73	17.39	25.65	29.42	17.41
	70	15.84	26.00	-	28.74	18.07		70	10.91	20.22	-	24.48	16.01
	80	15.05	-	-	19.10	14.01	80	11.79	-	-	17.17	13.19	
White	0	0.18	0.38	0.88	38.71	20.35	American Indian/ Alaska Native ^a	0	0.12	0.24	0.56	27.74	16.69
	10	0.20	0.70	1.84	38.96	20.54		10	0.12	0.44	1.20	27.93	16.91
	20	0.51	1.65	4.24	38.94	20.58		20	0.32	1.09	2.66	27.97	16.98
	30	1.16	3.78	9.48	38.93	20.70		30	0.78	2.38	6.24	28.18	17.24
	40	2.69	8.51	18.50	38.62	20.81		40	1.65	5.64	12.41	28.26	17.58
	50	6.10	16.57	28.33	37.65	20.79		50	4.20	11.35	19.53	28.08	17.97
	60	11.61	24.67	32.92	35.00	20.16		60	7.90	16.93	23.87	26.37	17.84
	70	16.04	26.18	-	28.74	18.13		70	10.83	19.17	-	22.17	16.43
	80	15.11	-	-	18.92	14.00	80	11.83	-	-	16.09	13.06	
Black	0	0.14	0.28	0.58	35.69	20.47	Hispanic ^b	0	0.16	0.33	0.72	35.29	17.50
	10	0.14	0.45	1.37	36.29	20.88		10	0.18	0.57	1.44	35.50	17.65
	20	0.32	1.24	3.81	36.35	20.94		20	0.39	1.27	3.22	35.47	17.67
	30	0.94	3.54	9.98	36.59	21.15		30	0.88	2.85	7.30	35.43	17.73
	40	2.68	9.29	19.94	36.61	21.35		40	2.00	6.52	14.72	35.11	17.76
	50	7.00	18.28	28.59	35.94	21.42		50	4.67	13.15	23.47	34.24	17.67
	60	12.97	24.82	31.33	33.27	20.79		60	9.17	20.33	28.68	31.98	17.18
	70	15.59	24.14	-	26.69	18.67		70	13.10	22.91	-	26.79	15.73
	80	13.58	-	-	17.63	14.77	80	13.38	-	-	18.68	12.77	

Devcan 6.7.5, April 2017, National Cancer Institute (<https://surveillance.cancer.gov/devcan/>).

Source: Incidence data are from the SEER 18 areas (San Francisco, Connecticut, Detroit, Hawaii, Iowa, New Mexico, Seattle, Utah, Atlanta, San Jose-Monterey, Los Angeles, Alaska Native Registry, Rural Georgia, California excluding SF/SJM/LA, Kentucky, Louisiana, New Jersey, and Georgia excluding ATL/RG). Mortality data are from the NCHS public use data file for the total US.

^a Underlying incidence and mortality data for American Indian/Alaska Native are based on the CHSDA (Contract Health Service Delivery Area) counties.

^b Hispanic is not mutually exclusive from whites, blacks, Asian/Pacific Islanders, and American Indians/Alaska Natives. Underlying incidence data for Hispanics are based on NHIA and exclude cases from the Alaska Native Registry.

- Statistic could not be calculated.

A percent of 0.00 represents a value that is below 0.005.

Table 2.13
All Cancer Sites (Invasive)

Risk of Being Diagnosed With Cancer in 10, 20 and 30 Years,
Lifetime Risk of Being Diagnosed with Cancer Given Alive and Cancer-Free at Current Age, and
Lifetime Risk of Dying from Cancer Given Alive at Current Age
Males, 2012-2014 By Race/Ethnicity

Race/ Ethnicity	Current Age	Risk of Being Diagnosed with Cancer				Risk of Dying from Cancer	Race/ Ethnicity	Current Age	Risk of Being Diagnosed with Cancer				Risk of Dying from Cancer
		+10 yrs	+20 yrs	+30 yrs	Ever				+10 yrs	+20 yrs	+30 yrs	Ever	
All Races	0	0.18	0.37	0.77	39.66	22.03	Asian/ Pacific Islander	0	0.14	0.31	0.58	33.94	20.35
	10	0.20	0.60	1.35	40.01	22.29		10	0.17	0.44	0.94	34.11	20.50
	20	0.41	1.16	3.05	40.04	22.36		20	0.28	0.78	2.02	34.06	20.52
	30	0.77	2.69	8.42	40.25	22.59		30	0.50	1.75	5.28	34.04	20.57
	40	1.96	7.83	19.16	40.38	22.84		40	1.26	4.83	12.55	33.90	20.60
	50	6.14	17.99	30.83	40.20	23.05		50	3.65	11.56	21.82	33.44	20.51
	60	13.35	27.80	36.29	38.36	22.74		60	8.42	19.34	28.12	31.71	20.01
	70	18.59	29.52	-	32.18	21.00		70	12.61	22.74	-	26.89	18.68
80	17.54	-	-	21.81	17.11	80	13.51	-	-	19.03	15.83		
White	0	0.19	0.39	0.83	39.42	22.11	American Indian/ Alaska Native ^a	0	0.14	0.27	0.57	26.63	17.65
	10	0.21	0.65	1.44	39.70	22.34		10	0.13	0.44	0.98	26.83	17.92
	20	0.45	1.24	3.14	39.72	22.40		20	0.31	0.85	2.01	26.90	18.02
	30	0.81	2.73	8.35	39.89	22.61		30	0.55	1.73	5.14	27.23	18.41
	40	1.97	7.71	18.87	39.97	22.85		40	1.23	4.76	11.68	27.64	18.94
	50	6.01	17.69	30.54	39.76	23.05		50	3.74	11.08	19.90	28.01	19.64
	60	13.12	27.57	36.00	37.93	22.74		60	8.22	18.10	25.10	27.18	19.93
	70	18.50	29.30	-	31.77	20.98		70	12.22	20.89	-	23.46	18.77
80	17.37	-	-	21.34	17.01	80	13.10	-	-	16.99	15.35		
Black	0	0.13	0.27	0.53	37.67	22.55	Hispanic ^b	0	0.16	0.35	0.70	36.60	19.72
	10	0.14	0.41	1.03	38.39	23.03		10	0.19	0.54	1.12	36.85	19.91
	20	0.26	0.89	3.03	38.54	23.15		20	0.35	0.93	2.22	36.85	19.95
	30	0.64	2.82	10.06	39.07	23.52		30	0.58	1.89	6.05	36.95	20.08
	40	2.25	9.72	22.84	39.62	23.96		40	1.33	5.56	14.66	36.97	20.20
	50	7.94	21.90	33.27	39.76	24.40		50	4.37	13.77	25.68	36.82	20.30
	60	16.54	30.00	36.08	37.70	24.29		60	10.26	23.26	32.08	35.42	20.09
	70	19.33	28.06	-	30.38	22.67		70	15.79	26.50	-	30.56	18.86
80	15.69	-	-	19.88	19.37	80	15.72	-	-	21.68	15.87		

Devcan 6.7.5, April 2017, National Cancer Institute (<https://surveillance.cancer.gov/devcan/>).

Source: Incidence data are from the SEER 18 areas (San Francisco, Connecticut, Detroit, Hawaii, Iowa, New Mexico, Seattle, Utah, Atlanta, San Jose-Monterey, Los Angeles, Alaska Native Registry, Rural Georgia, California excluding SF/SJM/LA, Kentucky, Louisiana, New Jersey, and Georgia excluding ATL/RG). Mortality data are from the NCHS public use data file for the total US.

^a Underlying incidence and mortality data for American Indian/Alaska Native are based on the CHSDA (Contract Health Service Delivery Area) counties.

^b Hispanic is not mutually exclusive from whites, blacks, Asian/Pacific Islanders, and American Indians/Alaska Natives. Underlying incidence data for Hispanics are based on NHIA and exclude cases from the Alaska Native Registry.

- Statistic could not be calculated.

A percent of 0.00 represents a value that is below 0.005.

Table 2.14
All Cancer Sites (Invasive)

Risk of Being Diagnosed With Cancer in 10, 20 and 30 Years,
Lifetime Risk of Being Diagnosed with Cancer Given Alive and Cancer-Free at Current Age, and
Lifetime Risk of Dying from Cancer Given Alive at Current Age
Females, 2012-2014 By Race/Ethnicity

Race/ Ethnicity	Current Age	Risk of Being Diagnosed with Cancer				Risk of Dying from Cancer	Race/ Ethnicity	Current Age	Risk of Being Diagnosed with Cancer				Risk of Dying from Cancer
		+10 yrs	+20 yrs	+30 yrs	Ever				+10 yrs	+20 yrs	+30 yrs	Ever	
All Races	0	0.17	0.35	0.87	37.65	18.76	Asian/ Pacific Islander	0	0.16	0.30	0.66	33.43	16.40
	10	0.18	0.71	2.14	37.90	18.94		10	0.14	0.50	1.65	33.53	16.50
	20	0.53	1.97	5.22	37.85	18.96		20	0.36	1.51	4.36	33.46	16.50
	30	1.45	4.73	10.43	37.67	19.01		30	1.16	4.02	8.53	33.29	16.50
	40	3.35	9.17	17.82	37.00	19.01		40	2.90	7.47	13.98	32.58	16.43
	50	6.10	15.17	25.65	35.28	18.79		50	4.72	11.46	19.56	30.70	16.15
	60	9.94	21.41	29.55	31.97	17.94		60	7.14	15.74	23.62	27.56	15.45
	70	13.55	23.16	-	26.01	15.86		70	9.52	18.26	-	22.62	14.07
80	13.35	-	-	17.31	12.01	80	10.62	-	-	15.92	11.43		
White	0	0.17	0.36	0.93	38.25	18.90	American Indian/ Alaska Native ^a	0	0.11	0.22	0.54	28.97	15.89
	10	0.19	0.76	2.26	38.47	19.06		10	0.10	0.43	1.43	29.13	16.07
	20	0.57	2.07	5.40	38.41	19.07		20	0.33	1.33	3.33	29.14	16.12
	30	1.52	4.87	10.65	38.21	19.12		30	1.01	3.04	7.34	29.20	16.26
	40	3.43	9.34	18.17	37.51	19.12		40	2.08	6.50	13.15	28.96	16.43
	50	6.20	15.47	26.23	35.75	18.90		50	4.64	11.63	19.22	28.23	16.56
	60	10.16	21.95	30.11	32.38	18.05		60	7.61	15.90	22.85	25.71	16.11
	70	13.94	23.60	-	26.28	15.95		70	9.68	17.79	-	21.14	14.65
80	13.53	-	-	17.29	12.02	80	10.98	-	-	15.51	11.58		
Black	0	0.15	0.28	0.64	34.01	19.00	Hispanic ^b	0	0.15	0.31	0.75	34.62	15.89
	10	0.13	0.50	1.69	34.51	19.34		10	0.17	0.60	1.79	34.81	16.01
	20	0.37	1.56	4.53	34.50	19.36		20	0.44	1.63	4.27	34.74	16.01
	30	1.21	4.20	9.91	34.46	19.43		30	1.20	3.86	8.60	34.55	16.01
	40	3.07	8.91	17.39	34.03	19.45		40	2.70	7.52	14.91	33.88	15.95
	50	6.16	15.11	24.52	32.66	19.25		50	4.99	12.65	21.65	32.30	15.70
	60	10.02	20.57	27.45	29.68	18.31		60	8.21	17.86	25.88	29.28	15.03
	70	12.95	21.40	-	24.14	16.13		70	11.01	20.16	-	24.04	13.56
80	12.35	-	-	16.35	12.43	80	11.83	-	-	16.84	10.90		

Devcan 6.7.5, April 2017, National Cancer Institute (<https://surveillance.cancer.gov/devcan/>).

Source: Incidence data are from the SEER 18 areas (San Francisco, Connecticut, Detroit, Hawaii, Iowa, New Mexico, Seattle, Utah, Atlanta, San Jose-Monterey, Los Angeles, Alaska Native Registry, Rural Georgia, California excluding SF/SJM/LA, Kentucky, Louisiana, New Jersey, and Georgia excluding ATL/RG). Mortality data are from the NCHS public use data file for the total US.

^a Underlying incidence and mortality data for American Indian/Alaska Native are based on the CHSDA (Contract Health Service Delivery Area) counties.

^b Hispanic is not mutually exclusive from whites, blacks, Asian/Pacific Islanders, and American Indians/Alaska Natives. Underlying incidence data for Hispanics are based on NHIA and exclude cases from the Alaska Native Registry.

- Statistic could not be calculated.

A percent of 0.00 represents a value that is below 0.005.

Table 2.15
All Cancer Sites (Invasive)

SEER Incidence and U.S. Mortality
Age-Adjusted Rates and Trends^a
By Race/Ethnicity and Sex

SEER Incidence	SEER 18 Areas ^b			SEER 13 Areas ^b			SEER 9 Areas ^b		
	Rate 2010-2014			Trend 2005-2014 ^c			Trend 2005-2014 ^d		
	Rate per 100,000 persons			AAPC (%)			AAPC (%)		
RACE/ETHNICITY	Total	Males	Females	Total	Males	Females	Total	Males	Females
All Races	442.7	492.4	408.7	-1.2*	-2.2*	-0.3	-1.1*	-2.1*	-0.2*
White	451.8	497.1	421.5	-1.1*	-2.1*	-0.3	-1.1*	-2.0*	-0.2*
White Hispanic ^e	350.3	380.1	334.6	-1.2*	-2.6*	0.1*	-	-	-
White Non-Hispanic ^e	472.0	518.8	440.0	-1.0*	-2.0*	-0.2	-	-	-
Black	459.3	549.7	397.4	-1.9*	-3.1*	-0.7*	-1.9*	-2.9*	-0.7
Asian/Pacific Islander	298.8	308.6	296.1	-1.2*	-2.5*	0.1	-	-	-
Amer Ind/Alaska Nat ^f	316.0	331.4	308.9	-1.2	-0.6*	0.4*	-	-	-
Hispanic ^e	340.6	372.2	323.3	-1.2*	-2.5*	0.1*	-	-	-
<u>U.S. Mortality^g</u>									
	Rate 2010-2014			Trend 2005-2014 ^h					
	Rate per 100,000 persons			AAPC (%)					
RACE/ETHNICITY	Total	Males	Females	Total	Males	Females			
All Races	166.1	200.5	141.5	-1.5*	-1.8*	-1.4*			
White	166.2	199.8	141.9	-1.4*	-1.7*	-1.3*			
White Hispanic ^e	122.7	150.3	103.3	-1.1*	-1.4*	-0.9*			
White Non-Hispanic ^e	170.2	204.1	145.5	-1.4*	-1.6*	-1.3*			
Black	194.2	247.3	161.8	-2.1*	-2.7*	-1.6*			
Asian/Pacific Islander	102.8	122.7	88.8	-1.4*	-1.7*	-1.0*			
Amer Ind/Alaska Nat									
Total U.S.	112.6	135.8	95.6	-2.2*	-1.4*	-2.3*			
CHSDA Counties	152.4	184.0	129.3	-1.1*	-0.3*	-1.5*			
Non-CHSDA Counties	68.8	83.7	58.0	-2.8*	-3.3*	-2.6*			
Hispanic ^e	116.2	142.6	97.7	-1.3*	-1.6*	-1.0*			

The AAPC is the Average Annual Percent Change over the time interval. The AAPCs are calculated by the Joinpoint Regression Program Version 4.3.0.0, April 2016, National Cancer Institute.

- Statistic not shown. Rate based on less than 16 cases for the time interval.

Trend based on less than 10 cases for at least one year within the time interval.

a Rates are age-adjusted to the 2000 US Std Population (19 age groups - Census P25-1130). Trends are based on rates age-adjusted to the 2000 US Std Population (19 age groups - Census P25-1130).

b The SEER 9 areas are San Francisco, Connecticut, Detroit, Hawaii, Iowa, New Mexico, Seattle, Utah, and Atlanta.

The SEER 13 areas comprise the SEER 9 areas plus San Jose-Monterey, Los Angeles, the Alaska Native Registry, and Rural Georgia.

The SEER 18 areas comprise the SEER 13 areas plus California excluding SF/SJM/LA, Kentucky, Louisiana, New Jersey, and Georgia excluding ATL/RG.

c The 2005-2014 AAPC estimates are based on a Joinpoint analysis with up to 4 Joinpoints over diagnosis years 1992-2014.

d The 2005-2014 AAPC estimates are based on a Joinpoint analysis with up to 5 Joinpoints over diagnosis years 1975-2014.

e Hispanic and Non-Hispanic are not mutually exclusive from whites, blacks, Asian/Pacific Islanders, and American Indians/Alaska Natives. Incidence data for Hispanics and Non-Hispanics are based on NHIA and exclude cases from the Alaska Native Registry. The 2005-2014 Hispanic and Non-Hispanic mortality trends exclude deaths from New Hampshire and Oklahoma.

f Incidence data for American Indian/Alaska Native are based on the CHSDA (Contract Health Service Delivery Area) counties.

g US Mortality Files, National Center for Health Statistics, CDC.

h The 2005-2014 mortality AAPCs are based on a Joinpoint analysis using years of death 1992-2014.

* The APC is significantly different from zero (p<.05).

Table 2.16
All Cancer Sites (Invasive)

Age-Adjusted SEER Incidence Rates^a
By Registry, Race and Sex

	All Races			Whites			Blacks		
	Total	Males	Females	Total	Males	Females	Total	Males	Females
<u>SEER Incidence Rates^a, 2010-2014</u>									
California	409.45	449.80	382.47	422.83	460.24	398.39	430.67	497.71	382.22
Greater Bay Area	413.96	455.95	385.97	443.87	485.19	416.81	456.31	532.12	399.76
San Francisco-Oakland	418.89	460.17	391.57	447.59	486.62	422.59	464.96	547.34	404.64
San Jose-Monterey	404.62	448.14	375.09	437.32	482.58	406.79	403.15	445.44	365.77
Los Angeles	388.31	425.68	364.96	396.52	429.07	377.29	433.62	498.73	390.05
Greater California	417.50	458.39	389.38	427.10	465.06	401.55	416.30	480.85	365.71
Connecticut	475.80	515.88	451.02	478.03	512.99	457.84	434.22	515.48	380.95
Detroit	499.99	571.19	450.64	499.58	559.40	460.20	517.20	630.51	440.27
Georgia	452.47	522.67	403.51	455.93	515.15	414.96	452.90	558.57	385.59
Atlanta	449.00	516.59	404.20	458.54	511.74	425.37	454.98	557.61	391.55
Rural Georgia	441.59	512.90	390.21	437.05	488.68	397.54	442.88	557.84	374.05
Greater Georgia	455.11	526.21	404.71	456.04	517.92	412.01	452.54	558.53	383.58
Hawaii	411.90	434.70	401.36	480.18	511.47	454.85	396.93	459.86	315.22
Iowa	466.33	517.11	432.10	465.42	513.89	433.15	474.62	531.44	434.21
Kentucky	510.81	578.21	464.06	510.28	573.73	466.85	501.99	593.02	438.88
Louisiana	478.70	565.38	414.12	475.09	551.44	417.89	499.21	617.55	416.66
New Jersey	478.38	530.49	445.10	489.53	536.48	460.83	444.30	524.98	393.78
New Mexico	373.80	398.39	357.32	379.74	402.31	364.81	327.36	370.48	290.90
Seattle-Puget Sound	469.34	511.19	441.33	481.31	521.26	454.74	458.83	528.76	395.11
Utah	403.57	449.05	368.77	405.02	450.02	370.55	399.44	491.98	304.24
SEER 9 Areas ^b	449.10	495.55	417.61	459.22	501.53	431.35	470.92	565.32	406.21
SEER 13 Areas ^b	433.00	477.46	403.29	444.72	485.53	418.18	460.49	546.83	401.26
SEER 18 Areas ^b	442.69	492.36	408.70	451.84	497.14	421.52	459.32	549.73	397.39

^a Rates are per 100,000 and are age-adjusted to the 2000 US Std Population (19 age groups - Census P25-1130)

^b The SEER 9 areas are San Francisco, Connecticut, Detroit, Hawaii, Iowa, New Mexico, Seattle, Utah and Atlanta.

The SEER 13 areas comprise the SEER 9 areas plus San Jose-Monterey, Los Angeles, the Alaska Native Registry and Rural Georgia.

The SEER 18 areas comprise the SEER 13 areas plus California excluding SF/SJM/LA, Kentucky, Louisiana, New Jersey and Georgia excluding ATL/RG.

- Statistic not shown. Rate based on less than 16 cases for the time interval.

Table 2.17
All Cancer Sites (Invasive)

Age-Adjusted SEER Death Rates^a
By Registry, Race and Sex

	All Races			Whites			Blacks		
	Total	Males	Females	Total	Males	Females	Total	Males	Females
<u>SEER Death Rates^a, 2010-2014</u>									
California	149.72	176.86	130.43	155.63	183.09	135.93	188.27	225.39	165.08
Greater Bay Area	139.85	164.24	122.81	148.16	172.12	131.46	192.42	231.26	168.01
San Francisco-Oakland	142.56	167.11	125.57	149.37	172.96	133.01	198.15	240.88	171.48
San Jose-Monterey	134.53	158.65	117.35	145.91	170.51	128.62	154.36	173.16	142.43
Los Angeles	145.14	171.43	127.11	148.56	174.41	130.51	193.38	232.88	170.55
Greater California	155.24	183.66	134.61	160.36	189.41	139.18	181.07	214.44	157.92
Connecticut	153.38	182.70	133.58	154.40	183.29	134.75	158.89	200.32	134.25
Detroit	179.47	214.96	155.75	173.85	207.31	151.23	209.89	260.48	178.46
Georgia	169.67	212.42	140.57	166.92	206.25	138.73	186.69	250.62	151.14
Atlanta	155.50	191.20	133.30	146.99	177.54	127.04	181.39	240.51	151.08
Rural Georgia	183.22	235.68	146.98	168.87	205.48	142.10	213.23	319.30	153.94
Greater Georgia	176.16	221.52	144.29	174.14	216.54	143.08	190.47	255.81	152.28
Hawaii	137.61	167.34	114.99	159.58	184.02	137.01	158.00	194.84	117.29
Iowa	168.93	206.72	142.23	168.64	206.24	142.08	224.83	268.69	195.60
Kentucky	201.52	249.61	167.15	201.89	250.20	167.10	214.69	268.09	181.40
Louisiana	190.96	237.81	157.16	180.78	222.54	149.99	223.51	291.92	178.67
New Jersey	161.27	191.42	141.67	164.65	195.16	144.48	182.00	226.02	157.70
New Mexico	146.55	176.20	123.87	149.13	178.68	126.30	163.07	203.11	131.35
Seattle-Puget Sound	158.75	187.82	137.78	161.86	190.21	141.31	180.96	224.69	146.40
Utah	128.56	151.04	111.23	128.93	151.67	111.36	144.27	151.88	135.09
SEER 9 Areas ^b	154.97	185.13	133.82	156.54	185.98	135.64	189.78	238.21	160.41
SEER 13 Areas ^b	151.98	181.06	131.62	154.54	183.01	134.34	190.27	236.75	162.26
SEER 18 Areas ^b	160.32	192.38	137.68	162.83	194.47	140.20	193.70	244.35	162.62
Total U.S.	166.12	200.49	141.53	166.24	199.79	141.86	194.16	247.33	161.75

^a US Mortality Files, National Center for Health Statistics, Centers for Disease Control and Prevention. Rates are per 100,000 and are age-adjusted to the 2000 US Std Population (19 age groups - Census P25-1130).

^b The SEER 9 areas are San Francisco, Connecticut, Detroit, Hawaii, Iowa, New Mexico, Seattle, Utah and Atlanta. The SEER 13 areas comprise the SEER 9 areas plus San Jose-Monterey, Los Angeles, the Alaska Native Registry and Rural Georgia. The SEER 18 areas comprise the SEER 13 areas plus California excluding SF/SJM/LA, Kentucky, Louisiana, New Jersey and Georgia excluding ATL/RG.

- Statistic not shown. Rate based on less than 16 cases for the time interval.

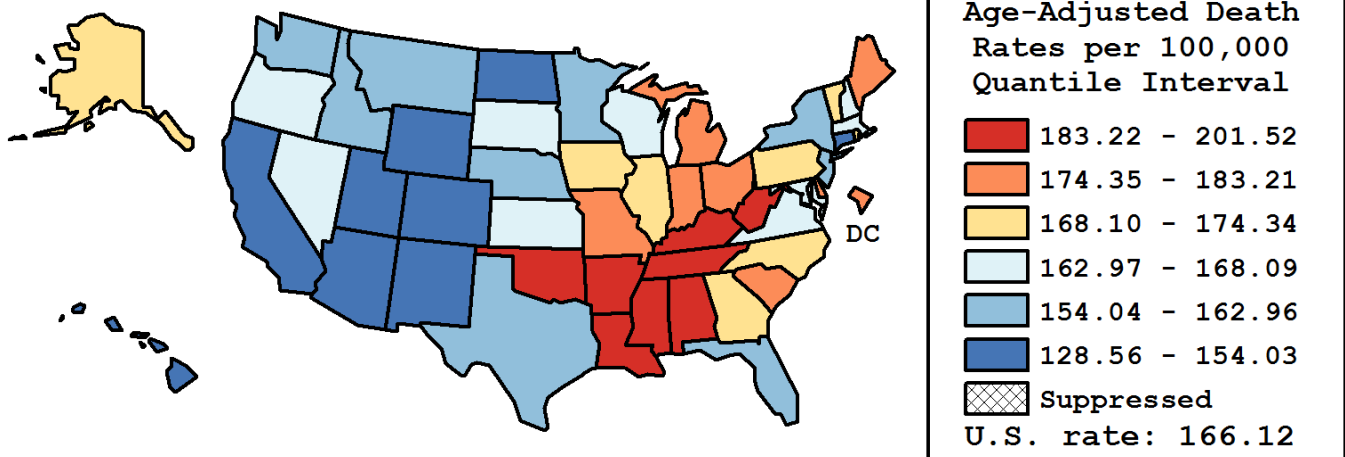
Table 2.18
All Cancer Sites (Invasive)

Age-Adjusted Cancer Death^a Rates by State, All Races, 2010-2014

Males and Females

State	Rate	SE	Rank(CI) ^d	PD
TOTAL U.S.	166.12	0.10		
High Five States				
Kentucky	201.52	0.91	01(01,01)	21.32 ^c
Mississippi	197.26	1.12	02(02,03)	18.75 ^c
West Virginia	194.47	1.28	03(02,04)	17.07 ^c
Louisiana	190.96	0.90	04(03,06)	14.96 ^c
Arkansas	189.15	1.06	05(04,07)	13.87 ^c
Low Five States				
Arizona	147.45	0.63	47(46,48)	-11.24 ^c
New Mexico	146.55	1.14	48(46,48)	-11.78 ^c
Colorado	142.31	0.77	49(49,49)	-14.33 ^c
Hawaii	137.61	1.31	50(50,50)	-17.16 ^c
Utah	128.56	1.09	51(51,51)	-22.61 ^c

State	Rate	SE	Rank(CI) ^d	PD	State	Rate	SE	Rank(CI) ^d	PD
Alabama	184.43	0.83	08(07,10)	11.03 ^c	Montana	157.81	1.61	38(34,44)	-5.00 ^c
Alaska	172.16	2.72	19(12,31)	3.64	Nebraska	162.96	1.26	34(28,37)	-1.90
Arizona	147.45	0.63	47(46,48)	-11.24 ^c	Nevada	167.25	1.11	28(21,32)	0.68
Arkansas	189.15	1.06	05(04,07)	13.87 ^c	New Hampshire	166.10	1.48	30(21,35)	-0.01
California	149.72	0.28	46(45,47)	-9.87 ^c	New Jersey	161.27	0.57	36(33,37)	-2.92
Colorado	142.31	0.77	49(49,49)	-14.33 ^c	New Mexico	146.55	1.14	48(46,48)	-11.78 ^c
Connecticut	153.38	0.85	45(42,45)	-7.67 ^c	New York	157.75	0.38	40(38,43)	-5.04 ^c
Delaware	174.66	1.80	16(12,23)	5.15 ^c	North Carolina	171.98	0.57	20(17,22)	3.53
D.C.	179.01	2.48	12(08,20)	7.76 ^c	North Dakota	154.03	1.96	43(37,46)	-7.28 ^c
Florida	157.56	0.35	41(38,43)	-5.15 ^c	Ohio	181.65	0.52	10(09,12)	9.35 ^c
Georgia	169.67	0.61	23(20,26)	2.14	Oklahoma	187.17	0.95	07(05,08)	12.67 ^c
Hawaii	137.61	1.31	50(50,50)	-17.16 ^c	Oregon	167.26	0.87	27(22,32)	0.69
Idaho	156.05	1.38	42(37,45)	-6.06 ^c	Pennsylvania	174.34	0.47	17(15,20)	4.95
Illinois	173.76	0.51	18(15,20)	4.60	Rhode Island	169.76	1.65	22(16,31)	2.19
Indiana	183.21	0.72	09(08,11)	10.29 ^c	South Carolina	177.81	0.82	14(11,16)	7.04 ^c
Iowa	168.93	0.96	24(20,29)	1.70	South Dakota	163.40	1.84	32(24,39)	-1.64
Kansas	167.51	1.03	26(21,32)	0.84	Tennessee	188.16	0.73	06(04,07)	13.27 ^c
Kentucky	201.52	0.91	01(01,01)	21.32 ^c	Texas	159.47	0.37	37(36,39)	-4.00
Louisiana	190.96	0.90	04(03,06)	14.96 ^c	Utah	128.56	1.09	51(51,51)	-22.61 ^c
Maine	178.14	1.43	13(10,18)	7.24 ^c	Vermont	170.76	2.13	21(14,31)	2.80
Maryland	165.34	0.74	31(26,33)	-0.47	Virginia	166.21	0.63	29(25,32)	0.06
Massachusetts	162.98	0.65	33(31,36)	-1.89	Washington	161.82	0.67	35(32,37)	-2.59
Michigan	175.52	0.56	15(13,18)	5.66 ^c	West Virginia	194.47	1.28	03(02,04)	17.07 ^c
Minnesota	157.79	0.73	39(37,43)	-5.01 ^c	Wisconsin	168.09	0.72	25(21,30)	1.19
Mississippi	197.26	1.12	02(02,03)	18.75 ^c	Wyoming	153.57	2.27	44(37,48)	-7.55 ^c
Missouri	180.48	0.72	11(09,13)	8.65 ^c					



^a US Mortality Files, National Center for Health Statistics, Centers for Disease Control and Prevention. Rates are per 100,000 and are age-adjusted to the 2000 US Std Population (19 age groups - Census P25-1130).

^b Difference between state rate and total U.S. rate is statistically significant ($p \leq .0002$).

^c Absolute percent difference between state rate and total U.S. rate is 5% or more.

^d Rank of state level death rate and the 95% confidence intervals (low, high) for the rank.

SE Standard error of the rate.

PD Percent difference between state rate and total U.S. rate.

- Statistic not shown. Rate based on less than 16 cases for the time interval.

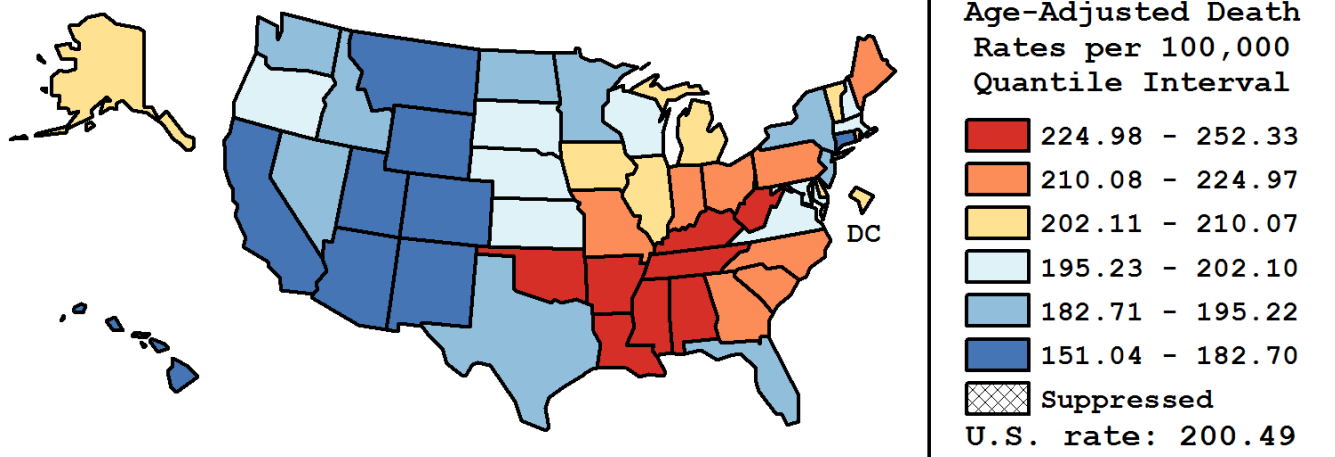
Table 2.19
All Cancer Sites (Invasive)

Age-Adjusted Cancer Death^a Rates by State, All Races, 2010-2014

Males

State	Rate	SE	Rank(CI) ^d	PD
TOTAL U.S.	200.49	0.17		
High Five States				
Mississippi	252.33	1.97	01(01,02)	25.85 ^c
Kentucky	249.61	1.57	02(01,02)	24.50 ^c
Louisiana	237.81	1.55	03(03,07)	18.61 ^c
Arkansas	237.08	1.80	04(03,07)	18.25 ^c
West Virginia	236.63	2.15	05(03,07)	18.02 ^c
Low Five States				
New Mexico	176.20	1.88	47(44,48)	-12.12 ^c
Arizona	174.22	1.02	48(45,48)	-13.11 ^c
Hawaii	167.34	2.14	49(48,50)	-16.54 ^c
Colorado	166.46	1.27	50(49,50)	-16.97 ^c
Utah	151.04	1.76	51(51,51)	-24.67 ^c

State	Rate	SE	Rank(CI) ^d	PD	State	Rate	SE	Rank(CI) ^d	PD
Alabama	235.78	1.45	07(03,07)	17.60 ^c	Montana	182.59	2.57	44(38,47)	-8.93 ^c
Alaska	203.77	4.51	23(13,38)	1.63	Nebraska	197.23	2.10	30(23,37)	-1.63
Arizona	174.22	1.02	48(45,48)	-13.11 ^c	Nevada	194.09	1.79	35(27,39)	-3.19
Arkansas	237.08	1.80	04(03,07)	18.25 ^c	New Hampshire	197.42	2.45	29(23,38)	-1.53
California	176.86	0.47	46(44,48)	-11.79 ^c	New Jersey	191.42	0.96	37(34,40)	-4.53
Colorado	166.46	1.27	50(49,50)	-16.97 ^c	New Mexico	176.20	1.88	47(44,48)	-12.12 ^c
Connecticut	182.70	1.43	43(41,45)	-8.88 ^c	New York	187.26	0.64	41(39,43)	-6.60 ^c
Delaware	208.39	3.01	21(12,28)	3.94	North Carolina	215.13	1.00	14(12,16)	7.30 ^c
D.C.	210.07	4.24	17(10,29)	4.78	North Dakota	189.71	3.27	38(27,44)	-5.38 ^c
Florida	189.43	0.57	39(36,41)	-5.52 ^c	Ohio	219.70	0.88	11(10,13)	9.58 ^c
Georgia	212.42	1.09	15(13,20)	5.95 ^c	Oklahoma	227.29	1.59	08(08,10)	13.36 ^c
Hawaii	167.34	2.14	49(48,50)	-16.54 ^c	Oregon	196.37	1.41	33(26,36)	-2.05
Idaho	185.40	2.24	42(36,45)	-7.53 ^c	Pennsylvania	210.62	0.79	16(14,21)	5.05 ^c
Illinois	208.46	0.86	20(16,23)	3.98	Rhode Island	209.37	2.82	18(12,26)	4.43
Indiana	224.97	1.23	09(08,10)	12.21 ^c	South Carolina	223.11	1.43	10(08,11)	11.28 ^c
Iowa	206.72	1.60	22(16,25)	3.11	South Dakota	196.84	3.02	31(22,40)	-1.82
Kansas	201.02	1.71	27(21,32)	0.26	Tennessee	236.32	1.26	06(03,07)	17.87 ^c
Kentucky	249.61	1.57	02(01,02)	24.50 ^c	Texas	195.22	0.63	34(29,36)	-2.63
Louisiana	237.81	1.55	03(03,07)	18.61 ^c	Utah	151.04	1.76	51(51,51)	-24.67 ^c
Maine	215.71	2.38	13(10,20)	7.59 ^c	Vermont	202.53	3.51	24(15,35)	1.02
Maryland	198.15	1.25	28(25,34)	-1.17	Virginia	201.97	1.08	26(22,29)	0.74
Massachusetts	196.65	1.11	32(26,35)	-1.92	Washington	191.47	1.11	36(33,40)	-4.50
Michigan	209.29	0.93	19(15,23)	4.39	West Virginia	236.63	2.15	05(03,07)	18.02 ^c
Minnesota	188.82	1.22	40(36,42)	-5.82 ^c	Wisconsin	202.10	1.19	25(22,29)	0.80
Mississippi	252.33	1.97	01(01,02)	25.85 ^c	Wyoming	177.97	3.64	45(40,49)	-11.24 ^c
Missouri	216.71	1.21	12(11,15)	8.09 ^c					



^a US Mortality Files, National Center for Health Statistics, Centers for Disease Control and Prevention. Rates are per 100,000 and are age-adjusted to the 2000 US Std Population (19 age groups - Census P25-1130).

^b Difference between state rate and total U.S. rate is statistically significant ($p \leq .0002$).

^c Absolute percent difference between state rate and total U.S. rate is 5% or more.

^d Rank of state level death rate and the 95% confidence intervals (low, high) for the rank.

SE Standard error of the rate.

PD Percent difference between state rate and total U.S. rate.

- Statistic not shown. Rate based on less than 16 cases for the time interval.

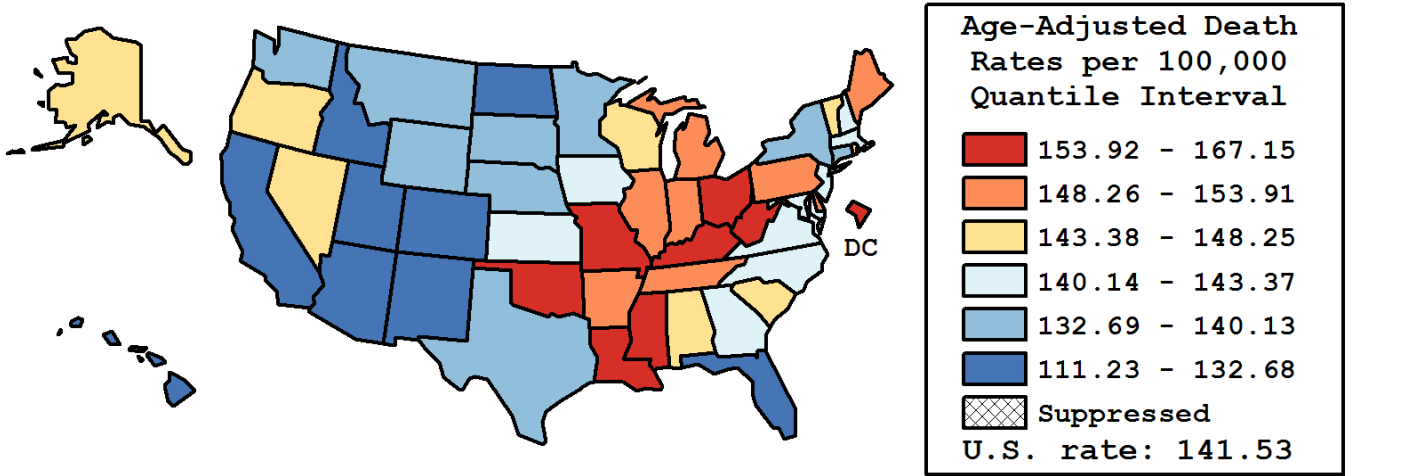
Table 2.20
All Cancer Sites (Invasive)

Age-Adjusted Cancer Death^a Rates by State, All Races, 2010-2014

Females

State	Rate	SE	Rank(CI) ^d	PD
TOTAL U.S.	141.53	0.12		
High Five States				
Kentucky	167.15	1.12	01(01,03)	18.10 ^c
West Virginia	163.34	1.60	02(01,04)	15.41 ^c
D.C.	159.98	3.10	03(01,13)	13.04 ^c
Mississippi	158.58	1.34	04(02,09)	12.05 ^c
Oklahoma	157.45	1.18	05(03,10)	11.25 ^c
Low Five States				
Arizona	126.29	0.80	47(46,49)	-10.77 ^c
Colorado	125.10	0.96	48(46,49)	-11.60 ^c
New Mexico	123.87	1.42	49(46,49)	-12.47 ^c
Hawaii	114.99	1.64	50(50,51)	-18.75 ^c
Utah	111.23	1.37	51(50,51)	-21.41 ^c

State	Rate	SE	Rank(CI) ^d	PD	State	Rate	SE	Rank(CI) ^d	PD
Alabama	148.25	0.99	17(13,22)	4.75	Montana	138.20	2.08	37(22,44)	-2.35
Alaska	146.66	3.39	19(05,38)	3.63	Nebraska	138.33	1.58	36(25,41)	-2.26
Arizona	126.29	0.80	47(46,49)	-10.77 ^c	Nevada	145.38	1.42	22(15,31)	2.72
Arkansas	153.78	1.29	10(05,15)	8.66 ^c	New Hampshire	143.34	1.85	26(16,37)	1.28
California	130.43	0.36	45(43,46)	-7.84 ^c	New Jersey	141.67	0.71	30(23,36)	0.10
Colorado	125.10	0.96	48(46,49)	-11.60 ^c	New Mexico	123.87	1.42	49(46,49)	-12.47 ^c
Connecticut	133.58	1.07	41(38,45)	-5.62 ^c	New York	138.14	0.47	38(34,39)	-2.39
Delaware	150.48	2.25	13(05,24)	6.33 ^c	North Carolina	142.07	0.69	29(22,34)	0.38
D.C.	159.98	3.10	03(01,13)	13.04 ^c	North Dakota	128.13	2.45	46(39,49)	-9.46 ^c
Florida	132.68	0.44	43(40,45)	-6.25 ^c	Ohio	155.06	0.65	07(05,12)	9.56 ^c
Georgia	140.57	0.74	32(26,37)	-0.68	Oklahoma	157.45	1.18	05(03,10)	11.25 ^c
Hawaii	114.99	1.64	50(50,51)	-18.75 ^c	Oregon	145.98	1.10	20(16,27)	3.14
Idaho	132.65	1.74	44(37,46)	-6.27 ^c	Pennsylvania	149.39	0.58	16(13,19)	5.55 ^c
Illinois	150.33	0.63	15(11,18)	6.22 ^c	Rhode Island	143.55	2.03	24(15,37)	1.43
Indiana	153.75	0.89	11(06,14)	8.64 ^c	South Carolina	145.84	1.00	21(16,27)	3.04
Iowa	142.23	1.20	28(20,37)	0.50	South Dakota	138.55	2.32	35(21,44)	-2.11
Kansas	143.08	1.29	27(18,36)	1.10	Tennessee	153.91	0.88	09(06,14)	8.75 ^c
Kentucky	167.15	1.12	01(01,03)	18.10 ^c	Texas	133.27	0.46	42(39,45)	-5.84 ^c
Louisiana	157.16	1.09	06(03,10)	11.05 ^c	Utah	111.23	1.37	51(50,51)	-21.41 ^c
Maine	150.40	1.78	14(07,22)	6.27 ^c	Vermont	146.89	2.66	18(08,35)	3.79
Maryland	143.37	0.91	25(19,33)	1.30	Virginia	141.31	0.78	31(24,36)	-0.15
Massachusetts	140.27	0.81	33(26,38)	-0.89	Washington	140.13	0.85	34(26,38)	-0.99
Michigan	151.68	0.70	12(09,16)	7.17 ^c	West Virginia	163.34	1.60	02(01,04)	15.41 ^c
Minnesota	135.81	0.92	39(36,42)	-4.04	Wisconsin	144.05	0.90	23(19,30)	1.78
Mississippi	158.58	1.34	04(02,09)	12.05 ^c	Wyoming	134.99	2.93	40(24,46)	-4.62
Missouri	154.50	0.90	08(05,13)	9.16 ^c					



^a US Mortality Files, National Center for Health Statistics, Centers for Disease Control and Prevention. Rates are per 100,000 and are age-adjusted to the 2000 US Std Population (19 age groups - Census P25-1130).

^b Difference between state rate and total U.S. rate is statistically significant ($p \leq .0002$).

^c Absolute percent difference between state rate and total U.S. rate is 5% or more.

^d Rank of state level death rate and the 95% confidence intervals (low, high) for the rank.

SE Standard error of the rate.

PD Percent difference between state rate and total U.S. rate.

- Statistic not shown. Rate based on less than 16 cases for the time interval.

Table 2.21
All Cancer Sites (Invasive)

Estimated United States Cancer Prevalence Counts^a on January 1, 2014
By Race/Ethnicity, Sex and Years Since Diagnosis

WARNING: The Prevalence Estimates presented on this page utilize a different tumor selection criteria from previous CSR releases and are NOT directly comparable to estimates from previous CSR releases.
Please see the Prevalence Comparison Chapter of this CSR for more information.

Years Since Diagnosis		0 to <5	5 to <10	10 to <15	15 to <20	20 to <25	25 to <30	0 to <22 ^a	0 to <39 ^e	>=39 ^g	Complete ^h
<u>Race</u>	<u>Sex</u>										
All Races ^b	Both Sexes	4,811,335	3,458,926	2,487,009	1,607,842	979,134	572,214	13,168,343	14,407,575	331,144	14,738,719
	Males	2,398,374	1,760,830	1,211,624	716,170	389,057	183,754	6,416,572	6,804,930	67,693	6,872,623
	Females	2,412,961	1,698,096	1,275,385	891,672	590,077	388,460	6,751,771	7,602,645	263,451	7,866,096
White ^b	Both Sexes	4,023,367	2,962,254	2,170,661	1,417,248	879,656	518,734	11,293,349	12,418,373	288,481	12,706,854
	Males	2,002,155	1,500,367	1,051,300	628,853	352,400	168,856	5,480,191	5,837,863	63,500	5,901,363
	Females	2,021,212	1,461,887	1,119,361	788,395	527,256	349,878	5,813,158	6,580,510	224,981	6,805,491
Black ^b	Both Sexes	512,252	326,396	212,690	125,208	63,844	33,107	1,230,198	1,301,463	20,638	1,322,101
	Males	265,247	178,106	114,764	61,405	24,687	8,967	641,281	659,527	1,614	661,141
	Females	247,005	148,290	97,926	63,803	39,157	24,140	588,917	641,936	19,024	660,960
Asian/ Pacific Islander ^c	Both Sexes	163,354	104,909	68,579	41,293	+	+	387,801	+	+	+
	Males	66,872	43,218	26,311	14,086	+	+	153,629	+	+	+
	Females	96,482	61,691	42,268	27,207	+	+	234,172	+	+	+
Hispanic ^d	Both Sexes	360,571	234,592	153,660	93,427	+	+	865,806	+	+	+
	Males	164,021	109,492	68,272	38,406	+	+	389,118	+	+	+
	Females	196,550	125,100	85,388	55,021	+	+	476,688	+	+	+

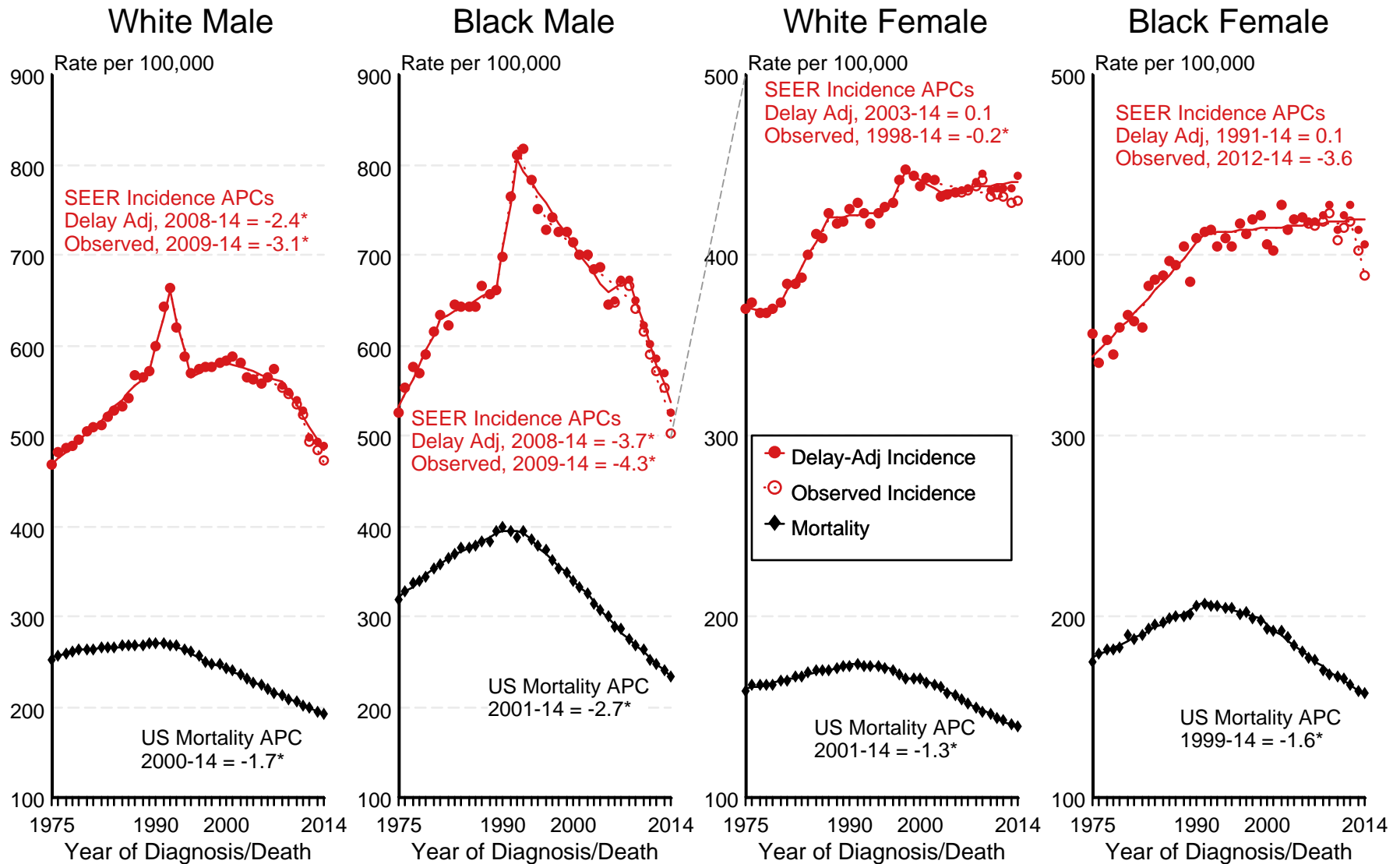
Estimated prevalence percent^a on January 1, 2014, of the SEER^c population diagnosed in the previous 22 years
By Age at Prevalence, Race/Ethnicity and Sex

Age at Prevalence		All Ages	0-9	10-19	20-29	Age Specific (Crude)					Age-Adjusted ^f	
						30-39	40-49	50-59	60-69	70-79	80+	All Ages
<u>Race</u>	<u>Sex</u>											
All Races ^c	Both Sexes	3.6726%	0.0859%	0.1918%	0.3568%	0.8240%	2.0056%	4.6050%	9.8334%	17.1858%	20.0608%	3.4366%
	Males	3.5781%	0.0885%	0.2024%	0.3478%	0.6534%	1.3766%	3.6863%	10.1455%	21.1175%	27.7173%	3.7334%
	Females	3.7649%	0.0832%	0.1808%	0.3662%	0.9961%	2.6288%	5.4871%	9.5517%	13.9675%	15.4474%	3.2830%
White ^c	Both Sexes	4.0665%	0.0929%	0.2108%	0.4063%	0.9283%	2.1632%	4.8293%	10.2825%	18.1910%	21.1239%	3.6387%
	Males	3.9322%	0.0947%	0.2229%	0.3990%	0.7455%	1.5103%	3.8325%	10.4111%	21.9237%	28.6276%	3.8915%
	Females	4.2003%	0.0910%	0.1981%	0.4142%	1.1209%	2.8389%	5.8188%	10.1621%	15.0517%	16.5393%	3.5245%
Black ^c	Both Sexes	2.7570%	0.0667%	0.1364%	0.2260%	0.5605%	1.6357%	4.3487%	10.2399%	17.0707%	17.5782%	3.2346%
	Males	2.9887%	0.0698%	0.1395%	0.2172%	0.4110%	1.1550%	4.1546%	12.8883%	24.8996%	29.2823%	4.1795%
	Females	2.5457%	0.0635%	0.1332%	0.2346%	0.6924%	2.0569%	4.5183%	8.1676%	11.6193%	11.7790%	2.6610%
Asian/ Pacific Islander ^c	Both Sexes	2.3212%	0.0657%	0.1414%	0.2206%	0.5032%	1.4265%	3.2873%	6.2783%	10.3231%	13.4483%	2.2360%
	Males	1.9548%	0.0706%	0.1490%	0.2038%	0.3371%	0.7341%	2.0281%	5.3728%	11.6467%	18.1039%	2.1377%
	Females	2.6577%	0.0606%	0.1335%	0.2377%	0.6543%	2.0388%	4.3723%	7.0195%	9.2902%	10.5876%	2.3681%
Hispanic ^d	Both Sexes	1.6302%	0.0792%	0.1831%	0.2931%	0.6247%	1.4179%	3.2774%	6.9661%	12.2766%	14.5657%	2.4873%
	Males	1.4427%	0.0820%	0.1948%	0.2973%	0.4845%	0.8960%	2.3041%	6.7216%	15.4395%	21.0468%	2.6791%
	Females	1.8206%	0.0762%	0.1711%	0.2884%	0.7740%	1.9601%	4.2201%	7.1779%	9.9162%	10.6486%	2.4322%

- ^a US 2014 cancer prevalence counts are based on 2014 cancer prevalence proportions from the SEER registries and 1/1/2014 US population estimates based on the average of 2013 and 2014 population estimates from the US Bureau of the Census.
^{b c d} Prevalence was calculated using the first invasive tumor for each cancer site diagnosed during the previous 39/22 years. Statistics based on (b) SEER 9 Areas (c) SEER 13 Areas excluding the Alaska Native Registry
^e (d) NHIA for Hispanic for SEER 13 Areas excluding the Alaska Native Registry.
^f Maximum limited-duration prevalence: 39 years for 1975-2014 SEER 9 data; 22 years for 1992-2014 SEER 13 data (excluding the Alaska Native Registry) used to calculate prevalence for Hispanics and Asian Pacific Islanders.
^{g h i} Percentages are age-adjusted to the 2000 US Standard Population (19 age groups - Census P25-1130) by 5-year age groups. (g) Cases diagnosed more than 39 years ago were estimated using the completeness index method (Capocaccia et. al. 1997, Merrill et. al. 2000). (h) Complete prevalence is obtained by summing 0 to <39 and >=39. (i) Age-specific completeness index was approximated using empirical data from historical Connecticut tumor registry.
- Statistic not shown. Statistic based on fewer than 5 cases estimated alive in SEER for the time interval.
+ Not available.

Figure 2.1

SEER Observed Incidence, SEER Delay Adjusted Incidence and US Death Rates^a All Cancer Sites, by Race and Sex



Source: SEER 9 areas and US Mortality Files (National Center for Health Statistics, CDC).

^a Rates are age-adjusted to the 2000 US Std Population (19 age groups - Census P25-1103).

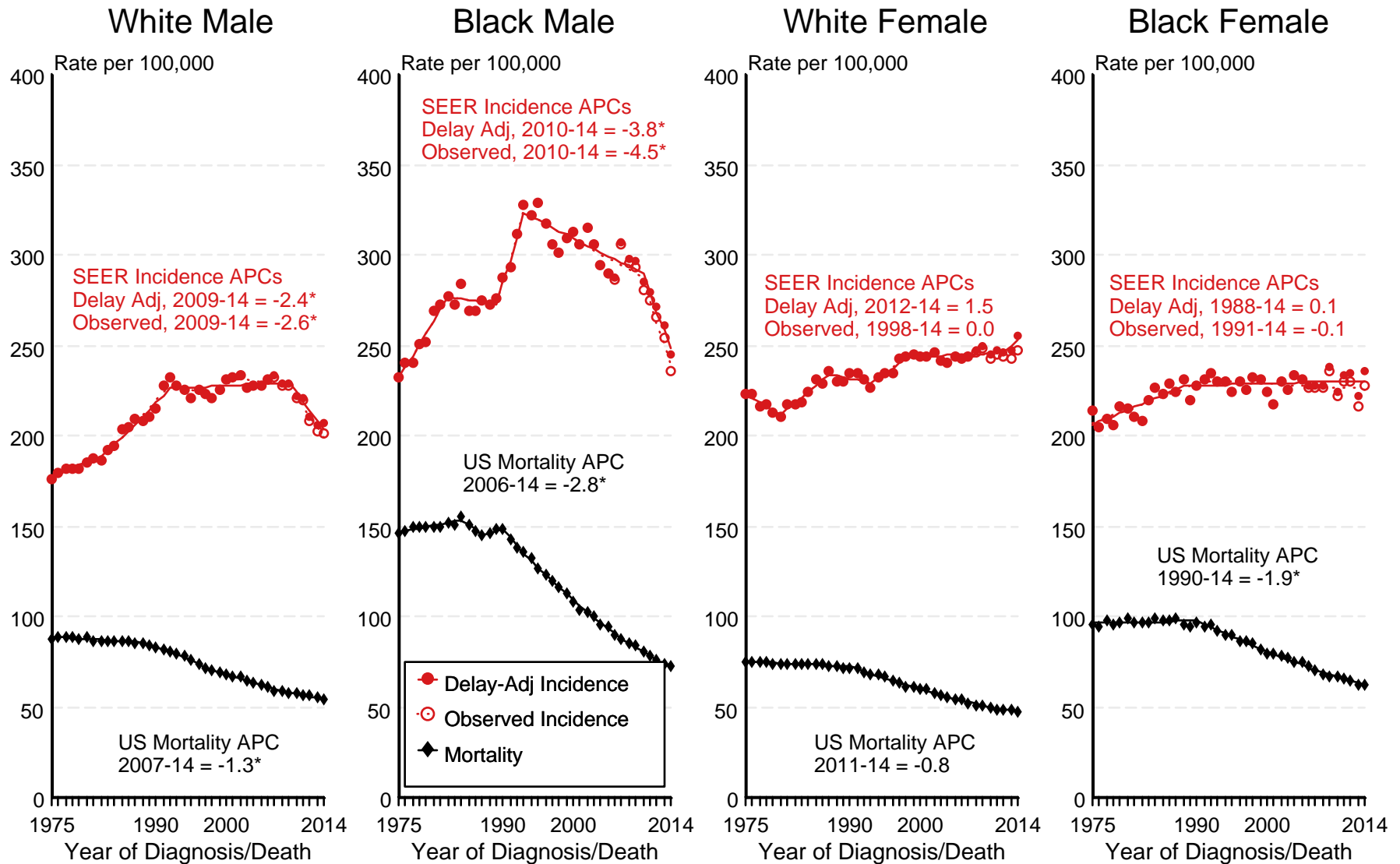
Regression lines and APCs are calculated using the Joinpoint Regression Program Version 4.4, January 2017, National Cancer Institute.

The APC is the Annual Percent Change for the regression line segments. The APC shown on the graph is for the most recent trend.

* The APC is significantly different from zero ($p < 0.05$).

Figure 2.2

SEER Observed Incidence, SEER Delay Adjusted Incidence and US Death Rates^a All Cancer Sites, Under 65 Years of Age, by Race and Sex



Source: SEER 9 areas and US Mortality Files (National Center for Health Statistics, CDC).

^a Rates are age-adjusted to the 2000 US Std Population (19 age groups - Census P25-1103).

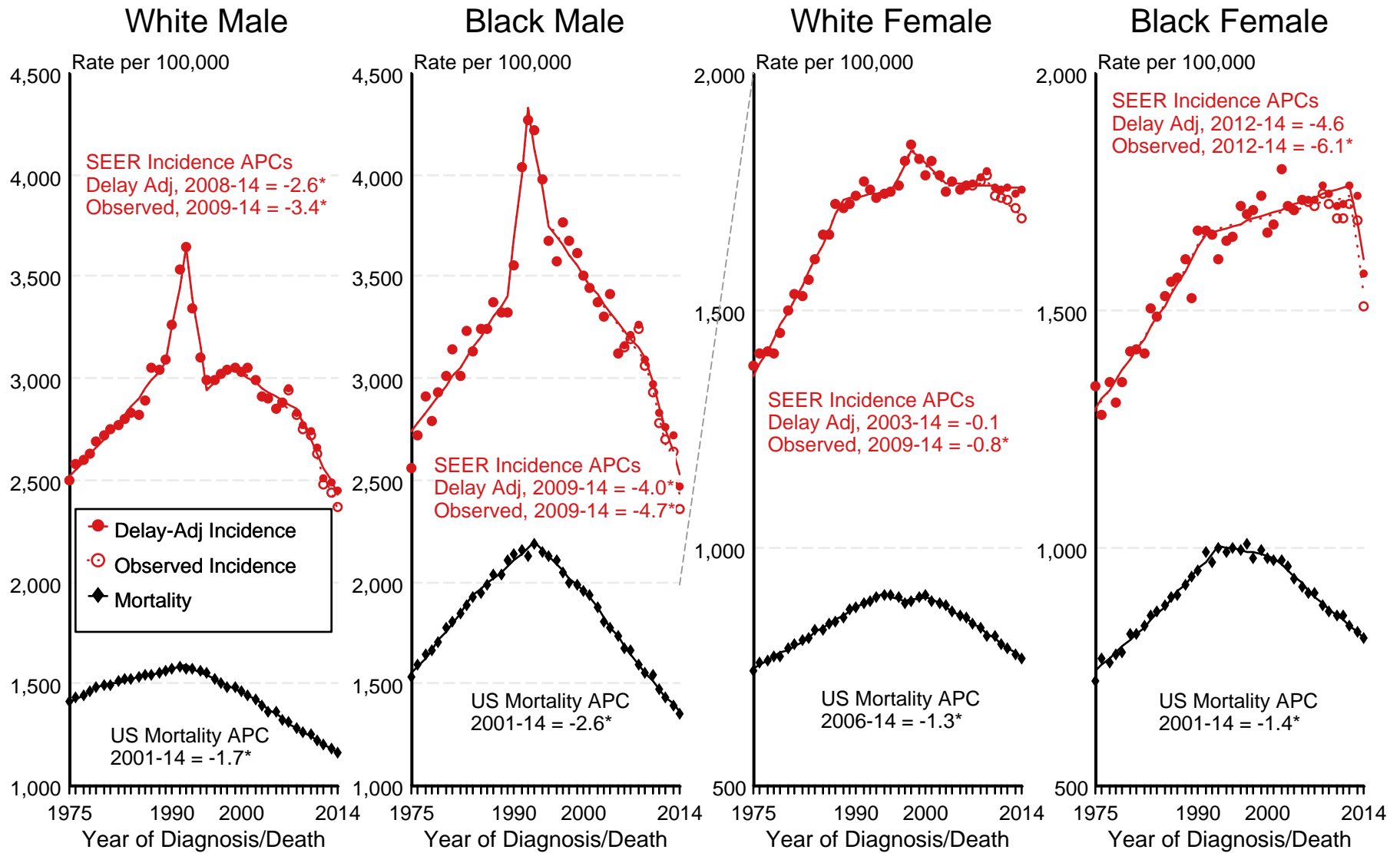
Regression lines and APCs are calculated using the Joinpoint Regression Program Version 4.4, January 2017, National Cancer Institute.

The APC is the Annual Percent Change for the regression line segments. The APC shown on the graph is for the most recent trend.

* The APC is significantly different from zero ($p < 0.05$).

Figure 2.3

SEER Observed Incidence, SEER Delay Adjusted Incidence and US Death Rates^a All Cancer Sites, Ages 65 and Over, by Race and Sex



Source: SEER 9 areas and US Mortality Files (National Center for Health Statistics, CDC).

^a Rates are age-adjusted to the 2000 US Std Population (19 age groups - Census P25-1103).

Regression lines and APCs are calculated using the Joinpoint Regression Program Version 4.4, January 2017, National Cancer Institute.

The APC is the Annual Percent Change for the regression line segments. The APC shown on the graph is for the most recent trend.

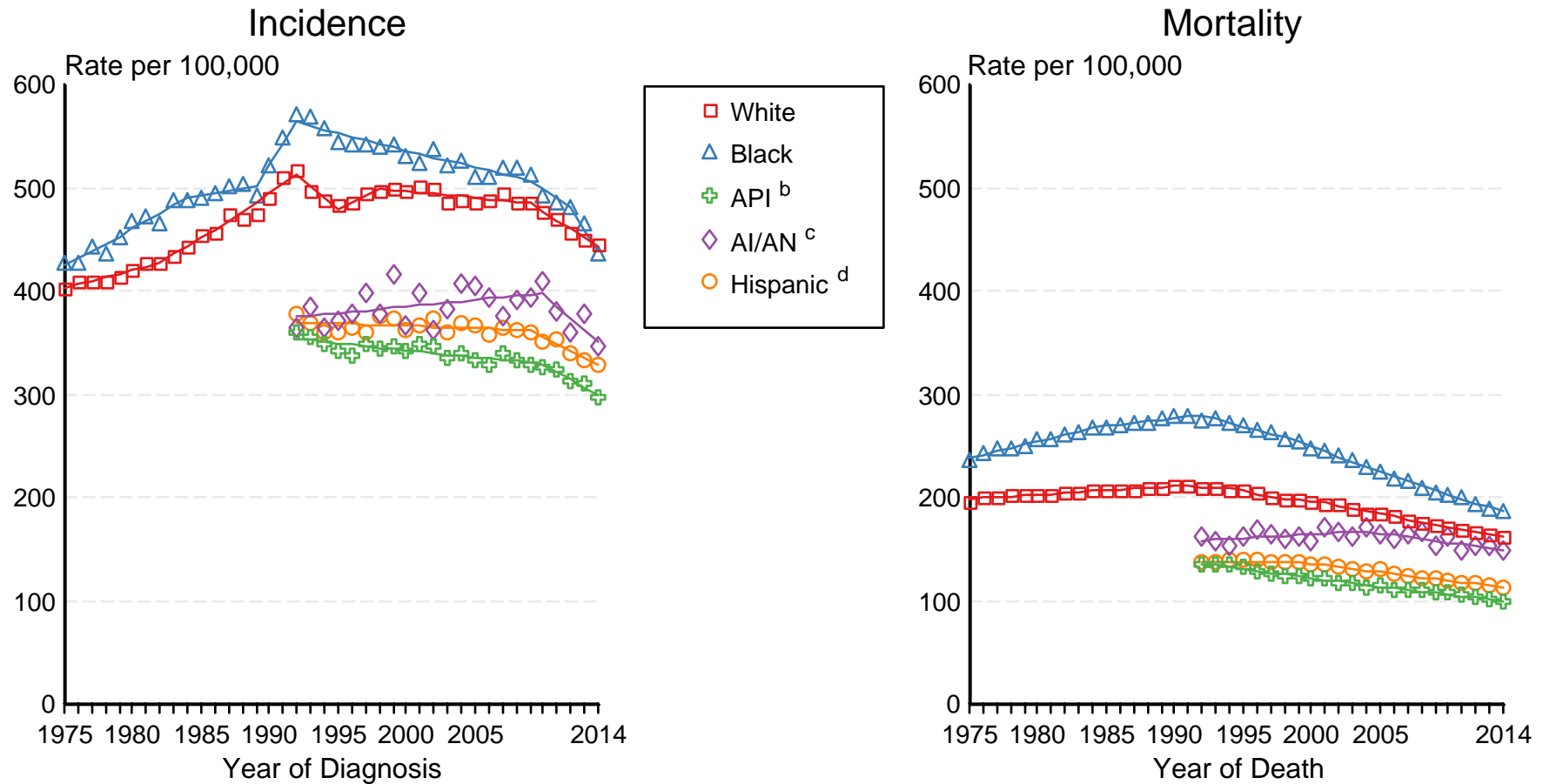
* The APC is significantly different from zero ($p < 0.05$).

Figure 2.4

SEER Incidence and US Death Rates^a All Cancer Sites, Both Sexes

Joinpoint Analyses for Whites and Blacks from 1975-2014

and for Asian/Pacific Islanders, American Indians/Alaska Natives and Hispanics from 1992-2014



Source: Incidence data for whites and blacks are from the SEER 9 areas (San Francisco, Connecticut, Detroit, Hawaii, Iowa, New Mexico, Seattle, Utah, Atlanta). Incidence data for Asian/Pacific Islanders, American Indians/Alaska Natives and Hispanics are from the SEER 13 Areas (SEER 9 Areas, San Jose-Monterey, Los Angeles, Alaska Native Registry and Rural Georgia). Mortality data are from US Mortality Files, National Center for Health Statistics, CDC.

^a Rates are age-adjusted to the 2000 US Std Population (19 age groups - Census P25-1103).

Regression lines are calculated using the Joinpoint Regression Program Version 4.4, January 2017, National Cancer Institute. Joinpoint analyses for Whites and Blacks during the 1975-2014 period allow a maximum of 5 joinpoints. Analyses for other ethnic groups during the period 1992-2014 allow a maximum of 4 joinpoints.

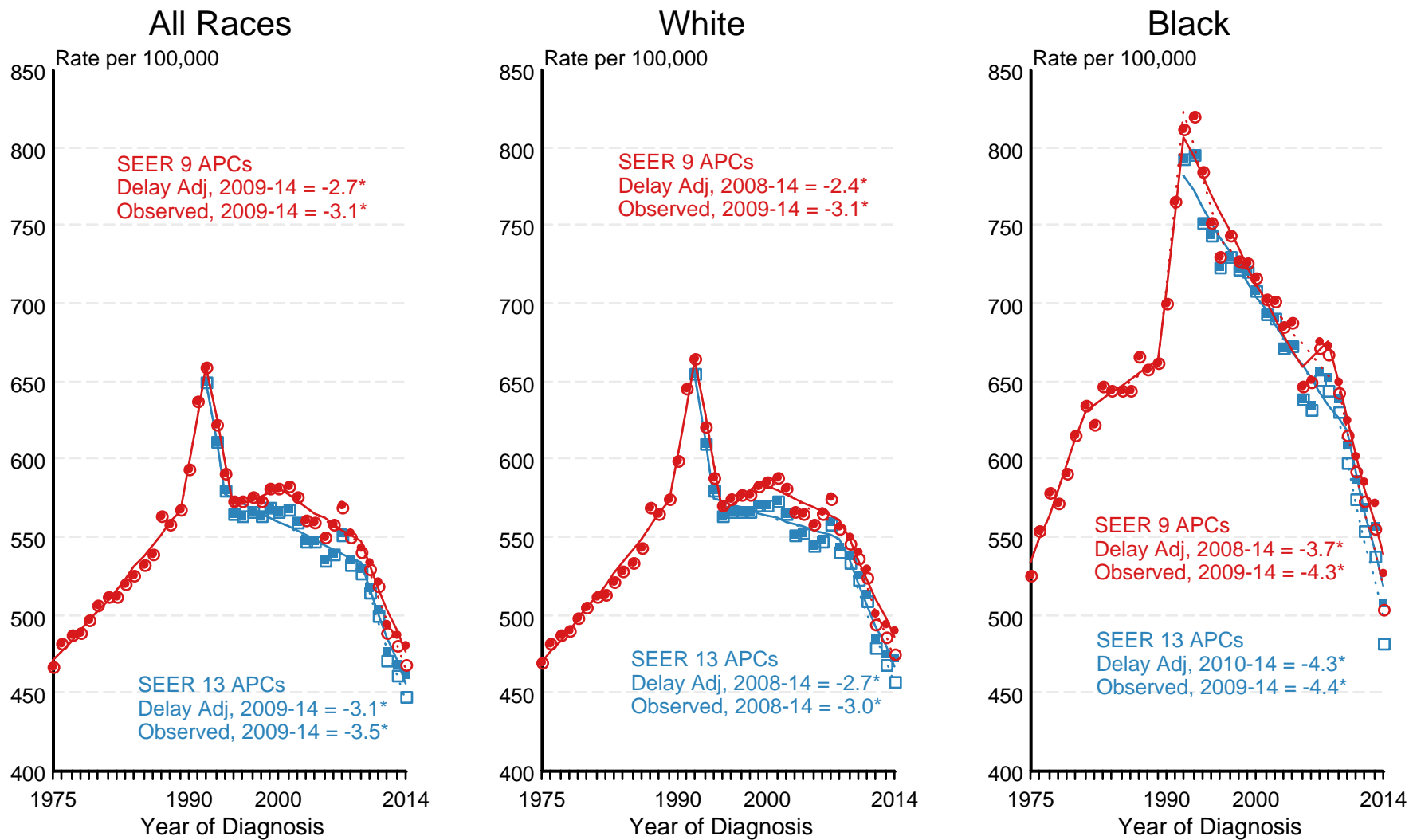
^b API = Asian/Pacific Islander.

^c AI/AN = American Indian/Alaska Native. Rates for American Indian/Alaska Native are based on the CHSDA(Contract Health Service Delivery Area) counties.

^d Hispanic is not mutually exclusive from whites, blacks, Asian/Pacific Islanders, and American Indians/Alaska Natives. Incidence data for Hispanics are based on NHIA and exclude cases from the Alaska Native Registry. Mortality data for Hispanics exclude cases from New Hampshire and Oklahoma.

Figure 2.5

SEER Observed Incidence and SEER Delay Adjusted Incidence Rates^a SEER 9 Areas Compared to SEER 13 Areas All Cancer Sites, Males, by Race



● SEER 9 Delay-Adj. Incidence ○ SEER 9 Observed Incidence ■ SEER 13 Delay-Adj. Incidence □ SEER 13 Observed Incidence

Source: SEER 9 areas and SEER 13 areas.

^a Rates are age-adjusted to the 2000 US Std Population (19 age groups - Census P25-1103).

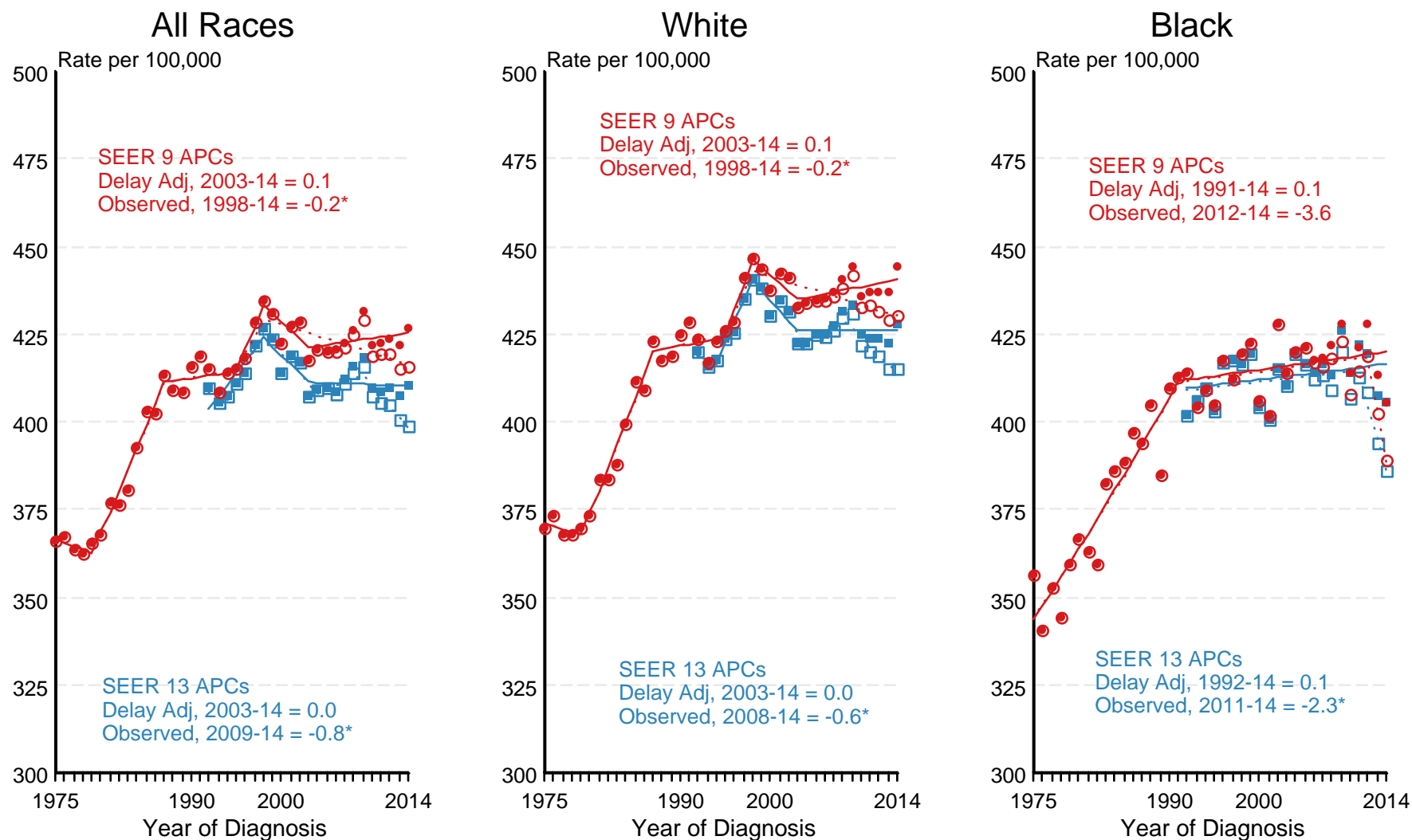
Regression lines and APCs are calculated using the Joinpoint Regression Program Version 4.4, January 2017, National Cancer Institute.

The APC is the Annual Percent Change for the regression line segments. The APC shown on the graph is for the most recent trend.

* The APC is significantly different from zero ($p < 0.05$).

Figure 2.6

SEER Observed Incidence and SEER Delay Adjusted Incidence Rates^a SEER 9 Areas Compared to SEER 13 Areas All Cancer Sites, Female, by Race



● SEER 9 Delay-Adj. Incidence
 ○ SEER 9 Observed Incidence
 ■ SEER 13 Delay-Adj. Incidence
 □ SEER 13 Observed Incidence

Source: SEER 9 areas and SEER 13 areas.

^a Rates are age-adjusted to the 2000 US Std Population (19 age groups - Census P25-1103).
 Regression lines and APCs are calculated using the Joinpoint Regression Program Version 4.4, January 2017, National Cancer Institute.
 The APC is the Annual Percent Change for the regression line segments. The APC shown on the graph is for the most recent trend.

* The APC is significantly different from zero ($p < 0.05$).