

Table 26.1  
Cancer of the Thyroid (Invasive)

Trends in SEER Incidence<sup>ab</sup> and U.S. Mortality<sup>c</sup> Using the Joinpoint Regression Program,  
1975-2014 With up to Five Joinpoints, 1992-2014 With up to Four Joinpoints,  
Both Sexes by Race/Ethnicity

	JP Trend 1		JP Trend 2		JP Trend 3		JP Trend 4		JP Trend 5		JP Trend 6		AAPC <sup>d</sup>	
	Years	APC	Years	APC	Years	APC	Years	APC	Years	APC	Years	APC	2005-14	2010-14
<u>SEER 9 Delay-Adjusted Incidence<sup>a</sup>, 1975-2014</u>														
All Races	1975-77	6.3	1977-80	-6.6	1980-97	2.4*	1997-09	6.7*	2009-14	1.7*			3.9*	1.7*
White	1975-77	7.5	1977-80	-6.7	1980-97	2.7*	1997-09	7.0*	2009-14	1.5*			3.9*	1.5*
Black	1975-95	1.0	1995-14	5.9*									5.9*	5.9*
<u>SEER 13 Delay-Adjusted Incidence<sup>b</sup>, 1992-2014</u>														
All Races	1992-98	2.9*	1998-09	6.6*	2009-14	1.9*							3.9*	1.9*
White	1992-98	3.6*	1998-09	6.8*	2009-14	1.7*							3.9*	1.7*
Black	1992-95	-4.4	1995-11	6.8*	2011-14	0.2							4.5*	1.8
<u>SEER 9 Observed Incidence<sup>a</sup>, 1975-2014</u>														
All Races	1975-77	6.3	1977-80	-6.6	1980-97	2.4*	1997-09	6.7*	2009-14	1.5*			3.8*	1.5*
White	1975-77	7.5	1977-80	-6.7	1980-97	2.7*	1997-09	7.0*	2009-14	1.2*			3.8*	1.2*
Black	1975-89	-1.0	1989-14	5.2*									5.2*	5.2*
<u>SEER 13 Observed Incidence<sup>b</sup>, 1992-2014</u>														
All Races	1992-98	3.0*	1998-09	6.6*	2009-14	1.6*							3.8*	1.6*
White	1992-98	3.6*	1998-09	6.8*	2009-14	1.4*							3.7*	1.4*
White NH <sup>ef</sup>	1992-98	4.3*	1998-09	7.0*	2009-14	1.1							3.7*	1.1
Black	1992-95	-4.2	1995-11	6.7*	2011-14	-0.4							4.3*	1.3
Black NH <sup>ef</sup>	1992-95	-4.6	1995-11	6.8*	2011-14	-0.3							4.4*	1.5
API <sup>e</sup>	1992-00	0.6	2000-11	5.2*	2011-14	-1.1							3.1*	0.5
AI/AN <sup>eg</sup>	1992-14	3.9*											3.9*	3.9*
Hispanic <sup>f</sup>	1992-95	-3.8	1995-14	4.7*									4.7*	4.7*
<u>U.S. Cancer Mortality<sup>c</sup>, 1975-2014</u>														
All Races	1975-88	-2.1*	1988-14	0.7*									0.7*	0.7*
White	1975-88	-2.2*	1988-14	0.7*									0.7*	0.7*
Black	1975-14	0.1											0.1	0.1
<u>U.S. Cancer Mortality<sup>c</sup>, 1992-2014</u>														
All Races	1992-14	0.7*											0.7*	0.7*
White	1992-14	0.7*											0.7*	0.7*
White NH <sup>ef</sup>	1992-14	0.7*											0.7*	0.7*
Black	1992-14	1.0*											1.0*	1.0*
Black NH <sup>ef</sup>	1992-14	1.1*											1.1*	1.1*
API <sup>e</sup>	1992-14	-0.6											-0.6	-0.6
AI/AN <sup>eg</sup>	1992-14	1.3											1.3	1.3
Hispanic <sup>f</sup>	1992-14	0.0											0.0	0.0

Joinpoint Regression Program Version 4.4, January 2017, National Cancer Institute. (<https://surveillance.cancer.gov/joinpoint/>).

The APC is the Annual Percent Change based on rates age-adjusted to the 2000 US Std Population (19 age groups - Census P25-1130).

Trends are from the SEER 9 areas (San Francisco, Connecticut, Detroit, Hawaii, Iowa, New Mexico, Seattle, Utah, and Atlanta).

Trends are from the SEER 13 areas (SEER 9 Areas, Los Angeles, San Jose-Monterey, Rural Georgia, and the Alaska Native Registry).

Trends are from US Mortality Files, National Center for Health Statistics, Centers for Disease Control and Prevention.

The AAPC is the Average Annual Percent Change and is based on the APCs calculated by Joinpoint.

API - Asian/Pacific Islander, AI/AN - American Indian/Alaska Native, NH - Non-Hispanic

Hispanic and Non-Hispanic are not mutually exclusive from whites, blacks, Asian/Pacific Islanders, and American Indians/Alaska

Natives. Incidence data for Hispanics and Non-Hispanics are based on NHIA and exclude cases from the Alaska Native Registry.

The Hispanic and Non-Hispanic mortality trends exclude deaths from New Hampshire and Oklahoma.

Data for American Indian/Alaska Native are based on the CHSDA (Contract Health Service Delivery Area) counties.

\* The APC/AAPC is significantly different from zero ( $p < .05$ ).

- Joinpoint regression line analysis could not be performed on data series.

Table 26.2  
Cancer of the Thyroid (Invasive)

Trends in SEER Incidence<sup>ab</sup> and U.S. Mortality<sup>c</sup> Using the Joinpoint Regression Program,  
1975-2014 With up to Five Joinpoints, 1992-2014 With up to Four Joinpoints,  
Males by Race/Ethnicity

	JP Trend 1		JP Trend 2		JP Trend 3		JP Trend 4		JP Trend 5		JP Trend 6		AAPC <sup>d</sup>	
	Years	APC	Years	APC	Years	APC	Years	APC	Years	APC	Years	APC	2005-14	2010-14
<u>SEER 9 Delay-Adjusted Incidence<sup>a</sup>, 1975-2014</u>														
All Races	1975-80	-4.6	1980-97	1.8*	1997-12	5.5*	2012-14	-1.5					3.9*	2.0
White	1975-77	10.3	1977-80	-9.0	1980-97	2.5*	1997-12	5.7*	2012-14	-2.2			3.9*	1.7
Black	1975-14	3.2*											3.2*	3.2*
<u>SEER 13 Delay-Adjusted Incidence<sup>b</sup>, 1992-2014</u>														
All Races	1992-96	-1.4	1996-09	5.6*	2009-14	2.7*							4.0*	2.7*
White	1992-96	-0.4	1996-09	5.9*	2009-14	2.2							3.8*	2.2
Black	1992-95	-10.2	1995-14	5.0*									5.0*	5.0*
<u>SEER 9 Observed Incidence<sup>a</sup>, 1975-2014</u>														
All Races	1975-80	-4.6	1980-97	1.8*	1997-12	5.5*	2012-14	-1.9					3.8*	1.7
White	1975-77	10.4	1977-80	-9.1	1980-97	2.5*	1997-12	5.6*	2012-14	-2.9			3.7*	1.3
Black	1975-14	3.1*											3.1*	3.1*
<u>SEER 13 Observed Incidence<sup>b</sup>, 1992-2014</u>														
All Races	1992-96	-1.3	1996-09	5.6*	2009-14	2.5*							3.9*	2.5*
White	1992-96	-0.4	1996-09	5.9*	2009-14	2.0							3.7*	2.0
White NH <sup>ef</sup>	1992-96	0.0	1996-09	6.2*	2009-14	1.8							3.8*	1.8
Black	1992-14	4.0*											4.0*	4.0*
Black NH <sup>ef</sup>	1992-14	4.1*											4.1*	4.1*
API <sup>e</sup>	1992-03	0.6	2003-14	5.6*									5.6*	5.6*
AI/AN <sup>eg</sup>	1992-14	3.5*											3.5*	3.5*
Hispanic <sup>f</sup>	1992-14	4.1*											4.1*	4.1*
<u>U.S. Cancer Mortality<sup>c</sup>, 1975-2014</u>														
All Races	1975-83	-3.1*	1983-14	1.2*									1.2*	1.2*
White	1975-84	-2.5*	1984-14	1.2*									1.2*	1.2*
Black	1975-14	0.4											0.4	0.4
<u>U.S. Cancer Mortality<sup>c</sup>, 1992-2014</u>														
All Races	1992-14	1.4*											1.4*	1.4*
White	1992-14	1.4*											1.4*	1.4*
White NH <sup>ef</sup>	1992-14	1.4*											1.4*	1.4*
Black	1992-14	1.3*											1.3*	1.3*
Black NH <sup>ef</sup>	1992-14	1.4*											1.4*	1.4*
API <sup>e</sup>	1992-14	0.0											0.0	0.0
AI/AN <sup>eg</sup>	-	-											-	-
Hispanic <sup>f</sup>	1992-14	0.9											0.9	0.9

Joinpoint Regression Program Version 4.4, January 2017, National Cancer Institute. (<https://surveillance.cancer.gov/joinpoint/>).

The APC is the Annual Percent Change based on rates age-adjusted to the 2000 US Std Population (19 age groups - Census P25-1130).

Trends are from the SEER 9 areas (San Francisco, Connecticut, Detroit, Hawaii, Iowa, New Mexico, Seattle, Utah, and Atlanta).

Trends are from the SEER 13 areas (SEER 9 Areas, Los Angeles, San Jose-Monterey, Rural Georgia, and the Alaska Native Registry).

Trends are from US Mortality Files, National Center for Health Statistics, Centers for Disease Control and Prevention.

The AAPC is the Average Annual Percent Change and is based on the APCs calculated by Joinpoint.

API - Asian/Pacific Islander, AI/AN - American Indian/Alaska Native, NH - Non-Hispanic

Hispanic and Non-Hispanic are not mutually exclusive from whites, blacks, Asian/Pacific Islanders, and American Indians/Alaska

Natives. Incidence data for Hispanics and Non-Hispanics are based on NHIA and exclude cases from the Alaska Native Registry.

The Hispanic and Non-Hispanic mortality trends exclude deaths from New Hampshire and Oklahoma.

Data for American Indian/Alaska Native are based on the CHSDA (Contract Health Service Delivery Area) counties.

\* The APC/AAPC is significantly different from zero ( $p < .05$ ).

- Joinpoint regression line analysis could not be performed on data series.

a  
b  
c  
d  
e  
f  
g  
\*  
-

Table 26.3  
Cancer of the Thyroid (Invasive)

Trends in SEER Incidence<sup>ab</sup> and U.S. Mortality<sup>c</sup> Using the Joinpoint Regression Program,  
1975-2014 With up to Five Joinpoints, 1992-2014 With up to Four Joinpoints,  
Females by Race/Ethnicity

	JP Trend 1		JP Trend 2		JP Trend 3		JP Trend 4		JP Trend 5		JP Trend 6		AAPC <sup>d</sup>	
	Years	APC	Years	APC	Years	APC	Years	APC	Years	APC	Years	APC	2005-14	2010-14
<u>SEER 9 Delay-Adjusted Incidence<sup>a</sup>, 1975-2014</u>														
All Races	1975-77	6.6	1977-80	-5.2	1980-93	2.3*	1993-99	4.5*	1999-09	7.1*	2009-14	1.3*	3.9*	1.3*
White	1975-81	-1.1	1981-93	2.4*	1993-99	5.2*	1999-09	7.4*	2009-14	1.2			3.9*	1.2
Black	1975-91	-0.4	1991-14	5.9*									5.9*	5.9*
<u>SEER 13 Delay-Adjusted Incidence<sup>b</sup>, 1992-2014</u>														
All Races	1992-99	4.1*	1999-09	6.9*	2009-14	1.7*							4.0*	1.7*
White	1992-98	4.4*	1998-09	7.0*	2009-14	1.6*							4.0*	1.6*
Black	1992-98	2.8	1998-11	7.6*	2011-14	-0.8							4.7*	1.3
<u>SEER 9 Observed Incidence<sup>a</sup>, 1975-2014</u>														
All Races	1975-77	6.6	1977-80	-5.2	1980-93	2.2*	1993-99	4.5*	1999-09	7.1*	2009-14	1.1*	3.7*	1.1*
White	1975-82	-0.9	1982-96	2.8*	1996-09	7.2*	2009-14	1.1					3.7*	1.1
Black	1975-91	-0.3	1991-14	5.8*									5.8*	5.8*
<u>SEER 13 Observed Incidence<sup>b</sup>, 1992-2014</u>														
All Races	1992-99	4.1*	1999-09	6.9*	2009-14	1.4*							3.8*	1.4*
White	1992-98	4.4*	1998-09	7.0*	2009-14	1.3*							3.8*	1.3*
White NH <sup>ef</sup>	1992-99	5.6*	1999-09	7.2*	2009-14	1.0							3.7*	1.0
Black	1992-98	2.9	1998-11	7.4*	2011-14	-1.3							4.4*	0.8
Black NH <sup>ef</sup>	1992-98	2.7	1998-11	7.6*	2011-14	-1.4							4.6*	0.8
API <sup>e</sup>	1992-99	0.4	1999-11	5.0*	2011-14	-2.2							2.6*	-0.4
AI/AN <sup>eg</sup>	1992-14	3.9*											3.9*	3.9*
Hispanic <sup>f</sup>	1992-95	-2.4	1995-14	4.8*									4.8*	4.8*
<u>U.S. Cancer Mortality<sup>c</sup>, 1975-2014</u>														
All Races	1975-88	-2.6*	1988-14	0.4*									0.4*	0.4*
White	1975-88	-2.8*	1988-14	0.3*									0.3*	0.3*
Black	1975-95	-1.1*	1995-14	0.9*									0.9*	0.9*
<u>U.S. Cancer Mortality<sup>c</sup>, 1992-2014</u>														
All Races	1992-94	-5.3	1994-14	0.5*									0.5*	0.5*
White	1992-14	0.3*											0.3*	0.3*
White NH <sup>ef</sup>	1992-14	0.2											0.2	0.2
Black	1992-14	0.9*											0.9*	0.9*
Black NH <sup>ef</sup>	1992-14	1.1*											1.1*	1.1*
API <sup>e</sup>	1992-03	-4.1*	2003-08	8.0	2008-14	-7.3*							-2.5	-7.3*
AI/AN <sup>eg</sup>	1992-14	-0.9											-0.9	-0.9
Hispanic <sup>f</sup>	1992-14	-0.5											-0.5	-0.5

Joinpoint Regression Program Version 4.4, January 2017, National Cancer Institute. (<https://surveillance.cancer.gov/joinpoint/>).  
<sup>a</sup> The APC is the Annual Percent Change based on rates age-adjusted to the 2000 US Std Population (19 age groups - Census P25-1130).  
<sup>b</sup> Trends are from the SEER 9 areas (San Francisco, Connecticut, Detroit, Hawaii, Iowa, New Mexico, Seattle, Utah, and Atlanta).  
<sup>c</sup> Trends are from the SEER 13 areas (SEER 9 Areas, Los Angeles, San Jose-Monterey, Rural Georgia, and the Alaska Native Registry).  
<sup>d</sup> Trends are from US Mortality Files, National Center for Health Statistics, Centers for Disease Control and Prevention.  
<sup>e</sup> The AAPC is the Average Annual Percent Change and is based on the APCs calculated by Joinpoint.  
<sup>f</sup> API - Asian/Pacific Islander, AI/AN - American Indian/Alaska Native, NH - Non-Hispanic  
<sup>f</sup> Hispanic and Non-Hispanic are not mutually exclusive from whites, blacks, Asian/Pacific Islanders, and American Indians/Alaska Natives. Incidence data for Hispanics and Non-Hispanics are based on NHIA and exclude cases from the Alaska Native Registry.  
<sup>f</sup> The Hispanic and Non-Hispanic mortality trends exclude deaths from New Hampshire and Oklahoma.  
<sup>g</sup> Data for American Indian/Alaska Native are based on the CHSDA (Contract Health Service Delivery Area) counties.  
\* The APC/AAPC is significantly different from zero (p<.05).  
- Joinpoint regression line analysis could not be performed on data series.

Table 26.4  
Cancer of the Thyroid (Invasive)

Delay-adjusted SEER Incidence<sup>a</sup> Rates by Year, Race and Sex

Year of Diagnosis:	All Races			Whites			Blacks		
	Total	Males	Females	Total	Males	Females	Total	Males	Females
1975	4.84	3.12	6.44	4.64	2.77	6.37	2.97	1.56	4.21
1976	4.79	2.94	6.56	4.67	2.88	6.41	3.37	1.33	5.00
1977	5.45	3.50	7.33	5.35	3.44	7.22	3.84	1.75	5.59
1978	5.09	3.14	6.95	4.95	2.97	6.83	2.95	1.68	4.07
1979	4.48	2.68	6.17	4.45	2.58	6.21	3.24	1.93	4.30
1980	4.33	2.39	6.15	4.30	2.28	6.21	2.37	1.11	3.43
1981	4.42	2.52	6.24	4.39	2.48	6.28	2.39	1.04	3.44
1982	4.63	3.00	6.15	4.53	2.87	6.09	3.29	2.02	4.34
1983	4.71	2.80	6.50	4.74	2.61	6.73	3.02	2.15	3.77
1984	4.85	2.65	6.93	4.73	2.58	6.81	3.02	1.73	4.08
1985	5.13	3.09	7.09	5.08	3.09	7.04	2.86	1.89	3.66
1986	5.33	3.07	7.50	5.25	3.10	7.37	3.35	1.19	5.09
1987	5.04	2.81	7.12	5.02	2.86	7.04	2.82	0.97	4.30
1988	4.93	2.94	6.88	4.89	3.00	6.78	2.53	1.80	3.21
1989	5.37	2.98	7.66	5.46	3.21	7.70	2.63	0.62	4.14
1990	5.49	2.93	7.95	5.55	2.99	8.07	3.76	2.28	4.91
1991	5.49	3.19	7.69	5.69	3.31	8.02	3.22	2.07	4.20
1992	5.88	3.52	8.13	5.88	3.52	8.18	4.20	3.09	5.13
1993	5.64	3.58	7.64	5.74	3.68	7.77	3.38	2.07	4.56
1994	6.09	3.39	8.75	6.24	3.44	9.02	3.75	1.78	5.35
1995	6.23	3.37	9.02	6.42	3.59	9.23	3.08	1.20	4.61
1996	6.52	3.47	9.51	6.72	3.61	9.82	3.89	1.79	5.80
1997	6.78	3.66	9.80	7.05	3.77	10.34	3.98	2.44	5.24
1998	6.98	3.71	10.12	7.21	3.95	10.42	3.85	1.50	5.79
1999	7.35	3.87	10.68	7.56	4.08	10.99	4.59	1.60	7.01
2000	7.62	4.04	11.10	8.06	4.38	11.78	4.57	2.18	6.55
2001	8.31	4.33	12.18	8.67	4.61	12.77	4.93	2.52	6.88
2002	9.25	4.95	13.44	9.76	5.27	14.29	5.52	2.85	7.68
2003	9.65	4.72	14.46	10.36	5.05	15.69	5.30	2.82	7.51
2004	10.15	5.23	14.95	10.82	5.54	16.14	6.37	3.33	8.90
2005	10.98	5.82	15.98	11.95	6.48	17.43	5.92	2.76	8.68
2006	11.34	5.86	16.65	12.18	6.38	18.02	6.66	3.16	9.49
2007	12.43	6.12	18.57	13.30	6.56	20.10	7.35	3.24	10.72
2008	13.27	6.62	19.74	14.29	7.11	21.53	7.12	4.51	9.55
2009	14.52	7.10	21.67	15.60	7.76	23.43	8.71	3.41	13.27
2010	14.01	6.68	21.11	14.85	7.31	22.45	8.72	3.44	13.09
2011	14.87	7.44	22.08	15.84	8.01	23.70	9.14	3.83	13.50
2012	15.09	8.11	21.94	15.97	8.75	23.33	9.72	4.32	14.27
2013	15.26	7.84	22.52	16.50	8.49	24.64	9.26	4.05	13.72
2014	15.27	7.80	22.58	16.35	8.35	24.46	9.77	4.33	14.44

Additional information on the model used to delay-adjust SEER Incidence rates can be found at [\(https://surveillance.cancer.gov/delay/\)](https://surveillance.cancer.gov/delay/).

<sup>a</sup> SEER 9 areas (San Francisco, Connecticut, Detroit, Hawaii, Iowa, New Mexico, Seattle, Utah, and Atlanta). Rates are per 100,000 and are age-adjusted to the 2000 US Std Population (19 age groups - Census P25-1130).

- Delay-adjusted rate is not shown for observed rates based on less than 16 cases for the time interval.

Table 26.5  
Cancer of the Thyroid (Invasive)

Age-adjusted SEER Incidence<sup>a</sup> Rates by Year, Race and Sex

Year of Diagnosis:	All Races			Whites			Blacks		
	Total	Males	Females	Total	Males	Females	Total	Males	Females
1975-2014	8.49	4.56	12.29	8.69	4.72	12.61	5.35	2.56	7.69
1975	4.84	3.12	6.44	4.64	2.77	6.37	2.97	-	4.21
1976	4.79	2.94	6.56	4.67	2.88	6.41	3.37	-	5.00
1977	5.45	3.50	7.33	5.35	3.44	7.22	3.84	-	5.59
1978	5.09	3.14	6.95	4.95	2.97	6.83	2.95	-	4.07
1979	4.48	2.68	6.17	4.45	2.58	6.21	3.24	-	4.30
1980	4.33	2.39	6.15	4.30	2.28	6.21	2.37	-	3.43
1981	4.42	2.52	6.24	4.39	2.48	6.28	2.39	-	3.44
1982	4.63	3.00	6.15	4.53	2.87	6.09	3.29	-	4.34
1983	4.71	2.80	6.50	4.74	2.61	6.73	3.02	2.15	3.77
1984	4.85	2.65	6.93	4.73	2.58	6.81	3.02	-	4.08
1985	5.13	3.09	7.09	5.08	3.09	7.04	2.86	-	3.66
1986	5.33	3.07	7.50	5.25	3.10	7.37	3.35	-	5.09
1987	5.04	2.81	7.12	5.02	2.86	7.04	2.82	-	4.30
1988	4.93	2.94	6.88	4.89	3.00	6.78	2.53	-	3.21
1989	5.37	2.98	7.66	5.46	3.21	7.70	2.63	-	4.14
1990	5.49	2.93	7.95	5.55	2.99	8.07	3.76	2.28	4.91
1991	5.49	3.19	7.69	5.69	3.31	8.02	3.22	2.07	4.20
1992	5.88	3.52	8.13	5.88	3.52	8.18	4.20	3.09	5.13
1993	5.64	3.58	7.64	5.74	3.68	7.77	3.38	2.07	4.56
1994	6.09	3.39	8.75	6.24	3.44	9.02	3.75	1.78	5.35
1995	6.23	3.37	9.02	6.42	3.59	9.23	3.08	-	4.61
1996	6.52	3.47	9.51	6.72	3.61	9.82	3.89	1.79	5.80
1997	6.78	3.66	9.80	7.05	3.77	10.34	3.98	2.44	5.24
1998	6.98	3.71	10.12	7.21	3.95	10.42	3.85	1.50	5.79
1999	7.35	3.87	10.68	7.56	4.08	10.99	4.59	1.60	7.01
2000	7.62	4.04	11.10	8.06	4.38	11.78	4.57	2.18	6.55
2001	8.31	4.33	12.18	8.67	4.61	12.77	4.93	2.52	6.88
2002	9.25	4.95	13.44	9.76	5.27	14.29	5.52	2.85	7.68
2003	9.65	4.72	14.46	10.36	5.05	15.69	5.30	2.82	7.51
2004	10.15	5.23	14.95	10.82	5.54	16.14	6.37	3.33	8.90
2005	10.98	5.82	15.98	11.95	6.48	17.43	5.92	2.76	8.68
2006	11.33	5.86	16.63	12.17	6.37	18.00	6.64	3.15	9.47
2007	12.41	6.11	18.53	13.27	6.54	20.05	7.32	3.22	10.67
2008	13.23	6.60	19.68	14.24	7.08	21.45	7.07	4.48	9.48
2009	14.46	7.07	21.59	15.53	7.72	23.31	8.63	3.38	13.15
2010	13.95	6.65	21.01	14.76	7.27	22.32	8.62	3.40	12.94
2011	14.79	7.40	21.95	15.72	7.95	23.52	9.01	3.77	13.32
2012	14.97	8.05	21.77	15.82	8.67	23.10	9.56	4.25	14.04
2013	15.12	7.76	22.31	16.30	8.39	24.33	9.06	3.97	13.42
2014	15.04	7.68	22.23	16.02	8.18	23.96	9.49	4.20	14.03

<sup>a</sup> SEER 9 areas (San Francisco, Connecticut, Detroit, Hawaii, Iowa, New Mexico, Seattle, Utah, and Atlanta). Rates are per 100,000 and are age-adjusted to the 2000 US Std Population (19 age groups - Census P25-1130).  
- Statistic not shown. Rate based on less than 16 cases for the time interval.

Table 26.6  
Cancer of the Thyroid (Invasive)

Age-adjusted U.S. Death<sup>a</sup> Rates by Year, Race and Sex

Year of Death:	All Races			Whites			Blacks		
	Total	Males	Females	Total	Males	Females	Total	Males	Females
1975-2014	0.48	0.45	0.50	0.48	0.45	0.48	0.48	0.35	0.56
1975	0.55	0.39	0.65	0.55	0.40	0.65	0.47	0.35	0.56
1976	0.56	0.49	0.61	0.56	0.49	0.60	0.52	0.42	0.60
1977	0.57	0.46	0.63	0.56	0.46	0.62	0.67	0.53	0.74
1978	0.55	0.44	0.61	0.55	0.45	0.61	0.48	0.33	0.60
1979	0.53	0.43	0.58	0.53	0.45	0.58	0.47	0.28	0.60
1980	0.48	0.38	0.53	0.49	0.40	0.54	0.42	0.29	0.51
1981	0.50	0.42	0.55	0.50	0.43	0.54	0.48	0.26	0.62
1982	0.48	0.37	0.53	0.47	0.37	0.53	0.48	0.38	0.54
1983	0.44	0.34	0.50	0.45	0.35	0.50	0.41	0.28	0.49
1984	0.47	0.38	0.52	0.47	0.39	0.51	0.47	-	0.64
1985	0.45	0.39	0.48	0.44	0.39	0.46	0.49	0.34	0.58
1986	0.46	0.39	0.49	0.45	0.39	0.49	0.48	0.34	0.57
1987	0.45	0.40	0.48	0.45	0.41	0.47	0.48	0.33	0.58
1988	0.44	0.41	0.45	0.44	0.42	0.44	0.44	0.33	0.50
1989	0.44	0.41	0.44	0.43	0.41	0.43	0.51	0.40	0.56
1990	0.44	0.37	0.48	0.44	0.38	0.47	0.45	0.30	0.54
1991	0.43	0.38	0.46	0.42	0.39	0.43	0.50	0.37	0.58
1992	0.46	0.38	0.50	0.46	0.39	0.48	0.41	0.30	0.48
1993	0.46	0.39	0.50	0.46	0.40	0.48	0.46	0.26	0.58
1994	0.42	0.38	0.44	0.42	0.38	0.44	0.37	0.30	0.40
1995	0.44	0.41	0.44	0.44	0.43	0.44	0.40	0.27	0.46
1996	0.45	0.42	0.47	0.45	0.43	0.46	0.44	0.33	0.49
1997	0.46	0.45	0.46	0.45	0.45	0.44	0.49	0.37	0.55
1998	0.44	0.38	0.47	0.43	0.39	0.45	0.43	0.27	0.53
1999	0.45	0.44	0.45	0.45	0.45	0.44	0.44	0.39	0.47
2000	0.48	0.47	0.48	0.47	0.48	0.45	0.51	0.34	0.59
2001	0.48	0.47	0.48	0.47	0.48	0.46	0.51	0.41	0.58
2002	0.48	0.45	0.48	0.48	0.46	0.48	0.48	0.39	0.52
2003	0.45	0.43	0.46	0.46	0.45	0.46	0.38	0.29	0.44
2004	0.48	0.47	0.47	0.48	0.48	0.47	0.45	0.40	0.48
2005	0.48	0.48	0.49	0.48	0.50	0.46	0.51	0.30	0.64
2006	0.49	0.46	0.51	0.50	0.48	0.50	0.47	0.28	0.60
2007	0.50	0.51	0.48	0.48	0.51	0.46	0.50	0.40	0.56
2008	0.52	0.50	0.52	0.52	0.52	0.51	0.46	0.40	0.51
2009	0.52	0.51	0.52	0.51	0.52	0.50	0.57	0.41	0.66
2010	0.51	0.50	0.51	0.50	0.51	0.48	0.49	0.45	0.53
2011	0.51	0.52	0.49	0.51	0.54	0.48	0.44	0.32	0.51
2012	0.48	0.51	0.46	0.48	0.52	0.45	0.49	0.41	0.54
2013	0.52	0.53	0.50	0.51	0.54	0.48	0.52	0.39	0.61
2014	0.50	0.49	0.50	0.50	0.52	0.48	0.56	0.38	0.66

<sup>a</sup> US Mortality Files, National Center for Health Statistics, Centers for Disease Control and Prevention. Rates are per 100,000 and are age-adjusted to the 2000 US Std Population (19 age groups - Census P25-1130).  
- Statistic not shown. Rate based on less than 16 cases for the time interval.

Table 26.7  
Cancer of the Thyroid (Invasive)SEER Incidence<sup>a</sup> and U.S. Death<sup>b</sup> Rates, Age-Adjusted and Age-Specific Rates, by Race and Sex

	All Races			Whites			Blacks		
	Total	Males	Females	Total	Males	Females	Total	Males	Females
<u>SEER Incidence</u>									
<u>Age at Diagnosis</u>									
Age-Adjusted Rates, 2010-2014									
All ages	14.2	7.1	21.0	14.9	7.6	22.4	8.7	3.7	13.0
Under 65	12.9	5.7	20.0	13.7	6.1	21.5	7.4	2.7	11.7
65 and over	23.0	17.0	28.0	23.5	17.7	28.4	17.6	10.8	22.2
All ages (WHO world std) <sup>c</sup>	12.5	6.0	18.8	13.2	6.4	20.1	7.4	3.1	11.3
Age-Specific Rates, 2010-2014									
<1	-	-	-	-	-	-	-	-	-
1-4	-	-	-	-	-	-	-	-	-
5-9	0.2	-	0.2	0.2	-	0.3	-	-	-
10-14	0.8	0.4	1.3	0.9	0.5	1.4	-	-	-
15-19	2.9	0.9	4.9	3.2	1.0	5.6	1.1	-	1.9
20-24	5.8	1.9	9.9	6.7	2.1	11.7	1.5	-	2.7
25-29	10.3	3.2	17.6	11.5	3.6	19.9	4.3	1.3	7.2
30-34	15.3	5.4	25.3	16.6	5.9	27.9	6.8	1.6	11.5
35-39	19.7	7.5	32.0	20.9	8.0	34.1	11.1	3.0	18.4
40-44	21.6	8.7	34.4	22.8	9.2	36.6	13.5	5.0	21.2
45-49	23.2	10.6	35.5	24.5	11.6	37.5	14.3	4.8	22.9
50-54	25.4	11.9	38.4	26.7	12.7	40.5	14.9	5.7	23.2
55-59	25.4	13.9	36.2	26.9	15.0	38.3	16.2	7.5	23.7
60-64	25.3	16.0	33.8	26.0	17.1	34.4	19.4	8.8	28.1
65-69	28.7	19.3	37.1	29.0	19.9	37.3	22.7	13.3	30.1
70-74	26.1	19.5	31.7	26.9	20.5	32.5	19.9	14.4	23.8
75-79	22.9	17.1	27.4	23.6	17.8	28.2	16.3	9.9	20.5
80-84	17.1	14.4	19.0	17.4	14.9	19.2	11.1	-	13.3
85+	11.1	9.6	11.9	10.9	10.1	11.3	11.3	-	14.4
<u>U.S. Mortality</u>									
<u>Age at Death</u>									
Age-Adjusted Rates, 2010-2014									
All ages	0.5	0.5	0.5	0.5	0.5	0.5	0.5	0.4	0.6
Under 65	0.1	0.2	0.1	0.1	0.2	0.1	0.2	0.1	0.2
65 and over	3.0	2.9	3.0	2.9	3.0	2.9	2.9	2.2	3.2
All ages (WHO world std) <sup>c</sup>	0.3	0.3	0.3	0.3	0.4	0.3	0.3	0.3	0.4
Age-Specific Rates, 2010-2014									
<1	-	-	-	-	-	-	-	-	-
1-4	-	-	-	-	-	-	-	-	-
5-9	-	-	-	-	-	-	-	-	-
10-14	-	-	-	-	-	-	-	-	-
15-19	-	-	-	-	-	-	-	-	-
20-24	-	-	-	-	-	-	-	-	-
25-29	0.0	-	-	0.0	-	-	-	-	-
30-34	0.0	-	0.0	0.0	-	-	-	-	-
35-39	0.0	0.0	0.0	0.0	0.0	0.0	-	-	-
40-44	0.1	0.1	0.1	0.1	0.1	0.1	0.1	-	-
45-49	0.2	0.3	0.2	0.2	0.3	0.1	0.2	-	0.3
50-54	0.4	0.4	0.3	0.3	0.4	0.3	0.5	0.4	0.5
55-59	0.6	0.7	0.6	0.6	0.7	0.6	0.5	0.4	0.6
60-64	1.1	1.2	1.0	1.1	1.2	0.9	1.3	0.9	1.6
65-69	1.6	1.7	1.5	1.6	1.7	1.5	1.6	1.4	1.7
70-74	2.3	2.2	2.3	2.2	2.2	2.2	2.5	1.9	2.9
75-79	3.2	3.2	3.1	3.1	3.2	3.0	2.9	2.9	2.9
80-84	4.2	4.1	4.2	4.1	4.2	4.1	3.9	2.6	4.6
85+	5.7	5.3	5.9	5.7	5.5	5.8	5.1	3.1	6.0

<sup>a</sup> SEER 18 areas. Rates are per 100,000 and are age-adjusted to the 2000 US Std Population (19 age groups - Census P25-1130), unless noted.<sup>b</sup> US Mortality Files, National Center for Health Statistics, Centers for Disease Control and Prevention. Rates are per 100,000 and are age-adjusted to the 2000 US Std Population (19 age groups - Census P25-1130), unless noted.<sup>c</sup> Rates are per 100,000 and are age-adjusted to the world (WHO 2000-2025) standard million.

- Statistic not shown. Rate based on less than 16 cases for the time interval.

Table 26.8  
Cancer of the Thyroid (Invasive)

5-Year Relative and Period Survival (Percent) by Race, Sex, Diagnosis Year, Stage and Age

	All Races			Whites			Blacks		
	Total	Males	Females	Total	Males	Females	Total	Males	Females
5-Year Relative Survival (Percent)									
Year of Diagnosis:									
1960-1963 <sup>a</sup>	-	-	-	83	75	87	-	-	-
1970-1973 <sup>a</sup>	-	-	-	86	82	87	-	-	-
1975-1977 <sup>b</sup>	92.1	91.1	92.5	91.8	90.7	92.2	89.8	-	91.0
1978-1980 <sup>b</sup>	92.1	87.2	93.6	91.5	87.5	92.7	90.2	68.0 <sup>h</sup>	95.5
1981-1983 <sup>b</sup>	93.6	92.2	93.9	93.1	90.9	93.7	96.4	100.0	93.2
1984-1986 <sup>b</sup>	93.2	89.8	94.3	93.2	89.4	94.4	89.3	85.5 <sup>g</sup>	90.3
1987-1989 <sup>b</sup>	94.4	91.6	95.2	94.1	91.5	94.9	92.3	91.2 <sup>g</sup>	92.3
1990-1992 <sup>b</sup>	94.3	90.5	95.5	94.9	91.6	96.0	85.8	84.5 <sup>g</sup>	86.2
1993-1995 <sup>b</sup>	95.4	91.6	96.7	95.6	91.5	96.9	93.2	87.8 <sup>g</sup>	94.3
1996-1998 <sup>b</sup>	95.6	91.0	96.9	95.9	91.3	97.3	95.0	86.5 <sup>g</sup>	96.4
1999-2001 <sup>b</sup>	96.5	94.3	97.1	96.9	95.0	97.4	92.0	88.4 <sup>g</sup>	92.4
2002-2006 <sup>b</sup>	97.6	94.9	98.4	97.8	95.1	98.5	96.6	95.0	96.7
2007-2013 <sup>b</sup>	98.2 <sup>f</sup>	96.2 <sup>f</sup>	98.7 <sup>f</sup>	98.4 <sup>f</sup>	96.5 <sup>f</sup>	99.0 <sup>f</sup>	96.9 <sup>f</sup>	90.8	97.9 <sup>f</sup>
5-Year Period Survival (Percent) <sup>cd</sup>									
2013	98.3	95.8	98.9	98.5	96.2	99.0	97.0	94.4	97.6
Stage Distribution (%) 2007-2013 <sup>ce</sup>									
All Stages									
Number of cases	70,959	16,221	54,738	57,251	13,549	43,702	4,758	829	3,929
Percent	100%	100%	100%	100%	100%	100%	100%	100%	100%
Localized	68	59	70	68	58	71	80	72	81
Regional	27	33	25	27	34	25	14	18	13
Distant	4	7	3	4	6	3	4	7	4
Unstaged	2	2	2	2	2	2	2	2	2
5-Year Relative Survival (Percent), 2007-2013 <sup>c</sup>									
Age at Diagnosis:									
Ages <45	99.8	99.3	99.9	99.8	99.3	99.9	99.2	98.1	99.4
Ages 45-54	99.1	96.7	99.7	99.1	96.8	99.7	99.4	97.2	99.6
Ages 55-64	97.7	95.0	98.6	97.9	95.4	98.8	96.3	91.3	97.1
Ages 65-74	95.9	92.1	97.2	96.1	92.7	97.4	93.3	83.8 <sup>g</sup>	95.7
Ages 75+	86.9	85.9	87.0	88.1	87.6	88.1	76.3	63.7 <sup>g</sup>	77.5
Ages <65	99.1	97.3	99.6	99.2	97.4	99.7	98.7	96.1	99.0
Ages 65+	93.1	90.2	93.9	93.8	91.1	94.4	88.9	81.4	91.1
Stage <sup>e</sup> :									
All Stages	98.2	95.8	98.8	98.4	96.1	98.9	97.2	93.7	97.9
Localized	99.9	99.8	99.9	99.9	99.9	100.0	99.7	98.9	99.8
Regional	98.0	96.5	98.5	98.2	96.8	98.7	94.9	90.0	96.3
Distant	56.4	50.2	60.2	56.7	50.3	60.8	48.8	35.1 <sup>g</sup>	53.9
Unstaged	88.6	84.0	90.0	87.6	85.7	88.2	87.2	-	89.9

<sup>a</sup> Based on End Results data from a series of hospital registries and one population-based registry.<sup>b</sup> SEER 9 areas (San Francisco, Connecticut, Detroit, Hawaii, Iowa, New Mexico, Seattle, Utah, Atlanta).

Based on follow-up of patients into 2014.

<sup>c</sup> SEER 18 areas (San Francisco, Connecticut, Detroit, Hawaii, Iowa, New Mexico, Seattle, Utah, Atlanta, San Jose-Monterey, Los Angeles, Alaska Native Registry, Rural Georgia, California excluding SF/SJM/LA, Kentucky, Louisiana, New Jersey and Georgia excluding ATL/RG).

Based on follow-up of patients into 2014.

<sup>d</sup> Period survival provides a 2013 estimate of survival by piecing together the most recent conditional survival estimates from several cohorts. It is computed here using three year calendar blocks (2010-2012: 0-1 year survival), (2009-2011: 1-2 year survival), (2008-2010: 2-3 year survival), (2007-2009: 3-4 year survival), (2006-2008: 4-5 years survival).<sup>e</sup> Stage at diagnosis is classified using SEER Summary Stage 2000. Stage distribution percentages may not sum to 100 due to rounding.<sup>f</sup> The difference between 1975-1977 and 2007-2013 is statistically significant (p<.05).<sup>g</sup> The standard error is between 5 and 10 percentage points.<sup>h</sup> The standard error is greater than 10 percentage points.

- Statistic could not be calculated due to fewer than 25 cases during the time period.



Table 26.9  
Cancer of the Thyroid (Invasive)  
SEER<sup>a</sup> Relative Survival (Percent)  
By Year of Diagnosis

All Races, Males and Females

Year of Diagnosis

	1975- 1979	1980- 1984	1985- 1989	1990- 1994	1995	1996	1997	1998	1999	2000	2001	2002	2003	2004	2005	2006	2007	2008	2009	2010	2011	2012	2013
Survival Time																							
1-year	94.9	95.1	95.9	96.2	96.7	96.8	96.4	97.7	97.2	97.7	97.6	97.1	97.9	98.3	97.7	98.5	98.5	98.3	98.8	98.9	98.7	98.8	98.2
2-year	93.5	94.5	95.2	95.7	96.1	96.6	96.2	97.1	97.0	97.1	97.4	97.1	97.9	97.9	97.3	98.4	98.1	98.2	98.7	98.6	98.6	98.6	98.4
3-year	92.9	93.7	94.8	95.3	96.0	96.0	96.2	96.9	97.0	97.0	97.0	97.1	97.6	97.9	97.3	98.3	98.1	98.2	98.7	98.5	98.6		
4-year	92.5	93.4	94.3	95.0	95.9	95.4	95.6	96.3	97.0	97.0	97.0	97.1	97.4	97.7	97.3	98.3	97.9	98.0	98.7	98.4			
5-year	92.1	93.3	94.1	94.7	95.8	94.9	95.3	96.2	96.8	96.3	96.2	97.1	97.3	97.3	97.3	98.2	97.9	97.8	98.6				
6-year	91.6	93.1	93.8	94.3	95.8	94.8	95.2	95.8	96.3	96.3	96.2	96.7	97.0	97.2	97.3	98.2	97.9	97.8					
7-year	91.4	92.7	93.4	94.1	95.6	94.5	95.2	95.8	96.1	96.2	96.1	96.5	96.8	96.9	97.3	98.1	97.9						
8-year	91.1	92.6	93.3	94.1	95.5	94.2	95.1	95.8	96.0	95.9	95.9	96.3	96.7	96.7	97.3	98.0							
9-year	90.7	92.3	93.1	93.9	95.5	93.7	94.9	95.8	95.6	95.9	95.3	96.3	96.7	96.7	97.3								
10-year	90.5	92.0	92.8	93.6	95.1	93.6	94.9	95.8	95.3	95.8	95.3	96.3	96.7	96.7									
11-year	90.3	91.7	92.7	93.3	95.0	93.3	94.9	95.8	95.0	95.8	95.3	96.1	96.7										
12-year	90.3	91.4	92.6	93.0	95.0	93.0	94.9	95.8	94.7	95.8	95.3	95.9											
13-year	90.0	91.2	92.4	93.0	95.0	92.8	94.9	95.0	94.7	95.8	95.3												
14-year	89.9	91.1	92.4	92.7	95.0	92.6	94.9	94.6	94.5	95.8													
15-year	89.7	90.7	92.3	92.3	94.2	92.3	94.9	94.1	94.4														
16-year	89.6	90.6	92.3	92.2	93.7	92.3	94.9	93.8															
17-year	89.5	90.6	92.2	92.2	93.7	92.3	94.9																
18-year	89.3	90.5	92.2	92.1	93.7	92.3																	
19-year	89.2	90.5	91.9	92.1	93.7																		
20-year	89.2	90.5	91.9	92.1																			

<sup>a</sup> Based on the SEER 9 areas (San Francisco, Connecticut, Detroit, Hawaii, Iowa, New Mexico, Seattle, Utah, and Atlanta).

Table 26.10  
Cancer of the Thyroid (Invasive)  
SEER<sup>a</sup> Relative Survival (Percent)  
By Year of Diagnosis

All Races, Males

Year of Diagnosis

	1975- 1979	1980- 1984	1985- 1989	1990- 1994	1995	1996	1997	1998	1999	2000	2001	2002	2003	2004	2005	2006	2007	2008	2009	2010	2011	2012	2013
Survival Time																							
1-year	94.6	92.5	94.8	94.6	93.4	93.7	91.8	97.2	96.5	96.5	96.1	95.1	95.6	96.7	97.0	96.4	97.3	96.8	98.3	97.8	97.3	97.9	96.6
2-year	92.5	92.0	93.7	93.2	91.9	93.4	90.9	95.4	96.2	95.1	95.4	94.9	95.3	95.1	95.4	96.1	96.5	96.1	98.2	96.3	96.9	97.2	
3-year	91.5	90.8	93.5	92.4	91.7	92.1	90.9	94.7	96.2	95.1	94.2	94.9	94.2	94.8	95.4	96.1	96.5	96.1	98.2	96.1	96.6		
4-year	90.5	90.4	92.1	91.8	91.4	91.7	89.5	93.7	96.2	95.1	93.6	94.6	93.5	94.3	95.4	96.1	96.4	95.8	98.2	95.6			
5-year	89.9	90.2	91.6	91.0	91.2	89.8	88.2	93.7	96.2	94.0	92.3	94.3	93.2	94.0	95.4	95.7	96.3	95.2	97.9				
6-year	89.6	89.8	91.1	90.6	90.3	89.8	88.0	93.5	95.8	94.0	92.0	93.8	91.7	93.9	95.4	95.7	96.3	95.2					
7-year	89.4	89.3	90.0	90.4	88.7	89.5	88.0	93.3	95.4	93.5	91.9	92.4	91.7	92.8	95.4	95.3	96.3						
8-year	89.3	89.3	89.6	90.1	88.7	88.5	87.8	93.3	95.2	93.5	91.1	91.5	91.7	92.5	95.2	95.3							
9-year	88.8	88.6	88.5	89.9	88.7	86.7	86.9	93.3	93.0	93.5	89.8	91.0	91.7	92.0	95.2								
10-year	88.3	87.9	88.4	89.7	87.4	86.4	86.9	93.3	92.6	93.5	89.6	91.0	91.7	91.4									
11-year	87.5	87.2	88.4	89.5	86.2	84.8	86.5	93.3	92.6	93.5	89.6	90.1	91.7										
12-year	87.5	86.4	88.3	88.7	86.0	84.1	86.5	93.1	92.6	93.5	89.5	89.9											
13-year	87.3	86.2	87.8	88.2	86.0	83.1	86.5	93.1	92.6	92.7	89.5												
14-year	87.3	86.2	87.7	87.8	85.8	82.7	86.5	93.1	92.6	92.7													
15-year	86.7	85.4	87.7	87.2	85.8	82.7	86.5	93.1	92.6														
16-year	86.6	85.3	87.7	86.9	85.8	82.7	86.5	92.3															
17-year	86.6	84.9	87.7	86.9	85.8	82.7	86.5																
18-year	86.6	84.6	87.7	86.5	85.8	82.7																	
19-year	86.6	84.6	87.7	86.4	85.8																		
20-year	86.6	84.6	87.7	86.4																			

<sup>a</sup> Based on the SEER 9 areas (San Francisco, Connecticut, Detroit, Hawaii, Iowa, New Mexico, Seattle, Utah, and Atlanta).

Table 26.11  
Cancer of the Thyroid (Invasive)  
SEER<sup>a</sup> Relative Survival (Percent)  
By Year of Diagnosis

All Races, Females

Year of Diagnosis

	1975- 1979	1980- 1984	1985- 1989	1990- 1994	1995	1996	1997	1998	1999	2000	2001	2002	2003	2004	2005	2006	2007	2008	2009	2010	2011	2012	2013
Survival Time																							
1-year	95.0	96.0	96.3	96.8	97.8	97.7	97.7	97.9	97.4	98.0	98.0	97.7	98.6	98.8	97.9	99.0	98.9	98.7	98.9	99.1	99.1	99.0	98.7
2-year	93.9	95.3	95.7	96.6	97.4	97.5	97.7	97.6	97.3	97.7	98.0	97.7	98.5	98.7	97.9	99.0	98.5	98.7	98.8	99.1	99.1	98.8	
3-year	93.3	94.7	95.2	96.3	97.3	97.1	97.7	97.5	97.3	97.5	97.7	97.7	98.5	98.7	97.9	98.9	98.5	98.7	98.8	99.1	99.1		
4-year	93.1	94.4	95.0	96.1	97.3	96.5	97.5	97.1	97.1	97.5	97.7	97.7	98.5	98.7	97.9	98.9	98.3	98.6	98.7	99.1			
5-year	92.7	94.3	94.9	95.9	97.2	96.4	97.4	96.9	96.8	97.0	97.3	97.7	98.4	98.3	97.9	98.9	98.3	98.5	98.7				
6-year	92.3	94.2	94.7	95.5	97.2	96.1	97.3	96.5	96.5	97.0	97.3	97.6	98.3	98.1	97.9	98.9	98.3	98.5					
7-year	92.1	93.8	94.5	95.4	97.2	95.9	97.3	96.5	96.2	97.0	97.3	97.6	98.1	98.0	97.9	98.9	98.3						
8-year	91.7	93.7	94.5	95.4	97.2	95.9	97.3	96.5	96.1	96.6	97.3	97.6	98.0	97.9	97.9	98.7							
9-year	91.3	93.6	94.5	95.3	97.2	95.8	97.3	96.5	96.1	96.6	97.0	97.6	97.9	97.9	97.9								
10-year	91.2	93.4	94.2	94.9	97.2	95.7	97.3	96.5	95.9	96.4	97.0	97.6	97.7	97.9									
11-year	91.2	93.2	94.0	94.6	97.2	95.7	97.3	96.5	95.7	96.4	97.0	97.6	97.7										
12-year	91.1	93.1	93.9	94.5	97.2	95.5	97.3	96.5	95.1	96.4	97.0	97.6											
13-year	90.9	92.9	93.9	94.4	97.2	95.5	97.3	95.5	94.8	96.4	97.0												
14-year	90.8	92.8	93.9	94.3	97.2	95.5	97.3	94.9	94.5	96.4													
15-year	90.7	92.4	93.8	94.0	96.6	95.0	97.3	94.2	94.3														
16-year	90.6	92.3	93.7	93.9	95.7	95.0	97.3	94.1															
17-year	90.4	92.3	93.5	93.9	95.7	94.9	97.1																
18-year	89.9	92.3	93.4	93.8	95.7	94.9																	
19-year	89.8	92.3	93.2	93.8	95.6																		
20-year	89.8	92.3	93.2	93.8																			

<sup>a</sup> Based on the SEER 9 areas (San Francisco, Connecticut, Detroit, Hawaii, Iowa, New Mexico, Seattle, Utah, and Atlanta).

Table 26.12  
Cancer of the Thyroid (Invasive)

Risk of Being Diagnosed With Cancer in 10, 20 and 30 Years,  
Lifetime Risk of Being Diagnosed with Cancer Given Alive and Cancer-Free at Current Age, and  
Lifetime Risk of Dying from Cancer Given Alive at Current Age  
Both Sexes, 2012-2014 By Race/Ethnicity

Race/ Ethnicity	Current Age	Risk of Being Diagnosed with Cancer				Risk of Dying from Cancer	Race/ Ethnicity	Current Age	Risk of Being Diagnosed with Cancer				Risk of Dying from Cancer
		+10 yrs	+20 yrs	+30 yrs	Ever				+10 yrs	+20 yrs	+30 yrs	Ever	
All Races	0	0.00	0.02	0.10	1.21	0.06	Asian/ Pacific Islander	0	0.00	0.02	0.09	1.26	0.10
	10	0.02	0.10	0.28	1.22	0.06		10	0.02	0.09	0.26	1.27	0.10
	20	0.08	0.26	0.48	1.20	0.06		20	0.07	0.24	0.46	1.25	0.10
	30	0.18	0.40	0.64	1.13	0.06		30	0.17	0.39	0.62	1.19	0.10
	40	0.23	0.47	0.71	0.97	0.06		40	0.23	0.46	0.71	1.03	0.10
	50	0.25	0.49	0.68	0.76	0.06		50	0.24	0.50	0.68	0.81	0.10
	60	0.26	0.45	0.53	0.54	0.06		60	0.27	0.46	0.56	0.60	0.10
	70	0.22	0.30	-	0.32	0.06		70	0.20	0.31	-	0.35	0.09
80	0.11	-	-	0.13	0.05	80	0.13	-	-	0.17	0.07		
White	0	0.00	0.03	0.12	1.27	0.06	American Indian/ Alaska Native <sup>a</sup>	0	0.00	0.02	0.05	0.86	0.07
	10	0.02	0.12	0.31	1.28	0.06		10	0.01	0.05	0.14	0.86	0.07
	20	0.09	0.28	0.52	1.26	0.06		20	0.03	0.13	0.25	0.85	0.07
	30	0.19	0.43	0.68	1.18	0.06		30	0.09	0.22	0.37	0.83	0.07
	40	0.24	0.49	0.74	1.00	0.06		40	0.13	0.28	0.45	0.76	0.07
	50	0.26	0.51	0.70	0.78	0.06		50	0.16	0.34	0.51	0.66	0.08
	60	0.26	0.46	0.54	0.55	0.06		60	0.19	0.37	0.51	0.54	0.07
	70	0.23	0.31	-	0.32	0.06		70	0.21	0.36	-	0.39	0.07
80	0.11	-	-	0.13	0.05	80	0.21	-	-	0.25	0.09		
Black	0	0.00	0.01	0.04	0.73	0.06	Hispanic <sup>b</sup>	0	0.00	0.02	0.09	1.14	0.09
	10	0.01	0.04	0.12	0.74	0.06		10	0.02	0.09	0.23	1.15	0.09
	20	0.03	0.12	0.25	0.74	0.06		20	0.07	0.21	0.39	1.14	0.09
	30	0.09	0.22	0.37	0.71	0.06		30	0.14	0.33	0.54	1.07	0.09
	40	0.14	0.29	0.46	0.64	0.06		40	0.19	0.41	0.64	0.94	0.09
	50	0.15	0.33	0.46	0.52	0.06		50	0.22	0.46	0.66	0.77	0.09
	60	0.20	0.34	0.39	0.40	0.06		60	0.24	0.45	0.55	0.57	0.09
	70	0.17	0.23	-	0.25	0.06		70	0.23	0.33	-	0.36	0.08
80	0.09	-	-	0.12	0.05	80	0.13	-	-	0.16	0.06		

Devcan 6.7.5, April 2017, National Cancer Institute (<https://surveillance.cancer.gov/devcan/>).

Source: Incidence data are from the SEER 18 areas (San Francisco, Connecticut, Detroit, Hawaii, Iowa, New Mexico, Seattle, Utah, Atlanta, San Jose-Monterey, Los Angeles, Alaska Native Registry, Rural Georgia, California excluding SF/SJM/LA, Kentucky, Louisiana, New Jersey, and Georgia excluding ATL/RG). Mortality data are from the NCHS public use data file for the total US.

<sup>a</sup> Underlying incidence and mortality data for American Indian/Alaska Native are based on the CHSDA (Contract Health Service Delivery Area) counties.

<sup>b</sup> Hispanic is not mutually exclusive from whites, blacks, Asian/Pacific Islanders, and American Indians/Alaska Natives. Underlying incidence data for Hispanics are based on NHIA and exclude cases from the Alaska Native Registry.

- Statistic could not be calculated.

A percent of 0.00 represents a value that is below 0.005.

Table 26.13  
Cancer of the Thyroid (Invasive)

Risk of Being Diagnosed With Cancer in 10, 20 and 30 Years,  
Lifetime Risk of Being Diagnosed with Cancer Given Alive and Cancer-Free at Current Age, and  
Lifetime Risk of Dying from Cancer Given Alive at Current Age  
Males, 2012-2014 By Race/Ethnicity

Race/ Ethnicity	Current Age	Risk of Being Diagnosed with Cancer				Risk of Dying from Cancer	Race/ Ethnicity	Current Age	Risk of Being Diagnosed with Cancer				Risk of Dying from Cancer
		+10 yrs	+20 yrs	+30 yrs	Ever				+10 yrs	+20 yrs	+30 yrs	Ever	
All Races	0	0.00	0.01	0.04	0.63	0.06	Asian/ Pacific Islander	0	0.00	0.01	0.03	0.66	0.08
	10	0.01	0.04	0.10	0.63	0.06		10	0.01	0.03	0.10	0.67	0.08
	20	0.03	0.09	0.19	0.63	0.06		20	0.03	0.09	0.19	0.66	0.08
	30	0.07	0.16	0.28	0.61	0.06		30	0.07	0.17	0.28	0.64	0.08
	40	0.10	0.22	0.37	0.55	0.06		40	0.10	0.21	0.36	0.57	0.08
	50	0.13	0.28	0.41	0.47	0.06		50	0.11	0.27	0.39	0.48	0.08
	60	0.16	0.30	0.36	0.37	0.06		60	0.16	0.29	0.37	0.38	0.08
	70	0.16	0.23	-	0.24	0.05		70	0.14	0.22	-	0.24	0.07
80	0.09	-	-	0.11	0.04	80	0.10	-	-	0.12	0.05		
White	0	0.00	0.01	0.04	0.66	0.06	American Indian/ Alaska Native <sup>a</sup>	0	0.00	0.00	0.02	0.37	0.05
	10	0.01	0.04	0.11	0.67	0.06		10	0.00	0.02	0.06	0.37	0.05
	20	0.03	0.10	0.20	0.66	0.06		20	0.01	0.05	0.09	0.37	0.05
	30	0.07	0.17	0.30	0.64	0.06		30	0.04	0.08	0.14	0.36	0.05
	40	0.10	0.24	0.39	0.58	0.06		40	0.04	0.10	0.18	0.33	0.05
	50	0.14	0.30	0.43	0.49	0.06		50	0.06	0.15	0.23	0.31	0.06
	60	0.17	0.32	0.37	0.38	0.06		60	0.09	0.18	0.26	0.27	0.06
	70	0.17	0.23	-	0.24	0.05		70	0.11	0.20	-	0.21	0.06
80	0.09	-	-	0.11	0.04	80	0.13	-	-	0.14	0.06		
Black	0	0.00	0.00	0.01	0.31	0.03	Hispanic <sup>b</sup>	0	0.00	0.01	0.02	0.50	0.06
	10	0.00	0.01	0.03	0.32	0.04		10	0.01	0.02	0.06	0.51	0.06
	20	0.01	0.03	0.08	0.32	0.04		20	0.02	0.06	0.12	0.50	0.06
	30	0.02	0.07	0.13	0.31	0.04		30	0.04	0.10	0.19	0.49	0.06
	40	0.05	0.11	0.20	0.30	0.04		40	0.06	0.16	0.28	0.46	0.07
	50	0.07	0.16	0.24	0.26	0.04		50	0.09	0.22	0.33	0.40	0.07
	60	0.10	0.19	0.22	0.22	0.04		60	0.13	0.25	0.31	0.32	0.06
	70	0.11	0.14	-	0.15	0.03		70	0.14	0.20	-	0.22	0.05
80	0.05	-	-	0.05	0.02	80	0.09	-	-	0.10	0.04		

Devcan 6.7.5, April 2017, National Cancer Institute (<https://surveillance.cancer.gov/devcan/>).

Source: Incidence data are from the SEER 18 areas (San Francisco, Connecticut, Detroit, Hawaii, Iowa, New Mexico, Seattle, Utah, Atlanta, San Jose-Monterey, Los Angeles, Alaska Native Registry, Rural Georgia, California excluding SF/SJM/LA, Kentucky, Louisiana, New Jersey, and Georgia excluding ATL/RG). Mortality data are from the NCHS public use data file for the total US.

<sup>a</sup> Underlying incidence and mortality data for American Indian/Alaska Native are based on the CHSDA (Contract Health Service Delivery Area) counties.

<sup>b</sup> Hispanic is not mutually exclusive from whites, blacks, Asian/Pacific Islanders, and American Indians/Alaska Natives. Underlying incidence data for Hispanics are based on NHIA and exclude cases from the Alaska Native Registry.

- Statistic could not be calculated.

A percent of 0.00 represents a value that is below 0.005.

Table 26.14  
Cancer of the Thyroid (Invasive)

Risk of Being Diagnosed With Cancer in 10, 20 and 30 Years,  
Lifetime Risk of Being Diagnosed with Cancer Given Alive and Cancer-Free at Current Age, and  
Lifetime Risk of Dying from Cancer Given Alive at Current Age  
Females, 2012-2014 By Race/Ethnicity

Race/ Ethnicity	Current Age	Risk of Being Diagnosed with Cancer				Risk of Dying from Cancer	Race/ Ethnicity	Current Age	Risk of Being Diagnosed with Cancer				Risk of Dying from Cancer
		+10 yrs	+20 yrs	+30 yrs	Ever				+10 yrs	+20 yrs	+30 yrs	Ever	
All Races	0	0.00	0.04	0.18	1.79	0.07	Asian/ Pacific Islander	0	0.00	0.03	0.15	1.80	0.12
	10	0.04	0.18	0.46	1.81	0.07		10	0.03	0.15	0.41	1.81	0.12
	20	0.14	0.43	0.78	1.78	0.07		20	0.12	0.38	0.71	1.78	0.12
	30	0.29	0.64	1.00	1.65	0.07		30	0.26	0.59	0.93	1.67	0.12
	40	0.36	0.72	1.04	1.37	0.07		40	0.34	0.68	1.02	1.42	0.12
	50	0.37	0.70	0.93	1.04	0.07		50	0.34	0.69	0.92	1.10	0.12
	60	0.35	0.59	0.68	0.70	0.07		60	0.36	0.59	0.72	0.77	0.12
	70	0.27	0.37	-	0.39	0.06		70	0.25	0.38	-	0.44	0.11
80	0.13	-	-	0.15	0.05	80	0.15	-	-	0.21	0.09		
White	0	0.00	0.04	0.20	1.89	0.07	American Indian/ Alaska Native <sup>a</sup>	0	0.00	0.03	0.08	1.34	0.09
	10	0.04	0.20	0.51	1.91	0.07		10	0.02	0.08	0.23	1.35	0.09
	20	0.16	0.47	0.85	1.87	0.07		20	0.06	0.20	0.41	1.33	0.09
	30	0.32	0.69	1.07	1.72	0.07		30	0.15	0.36	0.59	1.29	0.09
	40	0.38	0.76	1.09	1.42	0.07		40	0.21	0.45	0.71	1.16	0.09
	50	0.39	0.73	0.97	1.07	0.07		50	0.25	0.52	0.77	0.98	0.09
	60	0.35	0.60	0.69	0.71	0.07		60	0.28	0.54	0.72	0.77	0.08
	70	0.28	0.38	-	0.39	0.06		70	0.29	0.49	-	0.54	0.08
80	0.13	-	-	0.15	0.05	80	0.26	-	-	0.32	0.09		
Black	0	0.00	0.01	0.07	1.11	0.08	Hispanic <sup>b</sup>	0	0.00	0.03	0.16	1.79	0.11
	10	0.01	0.07	0.21	1.13	0.08		10	0.03	0.16	0.41	1.80	0.11
	20	0.05	0.20	0.42	1.12	0.08		20	0.13	0.37	0.69	1.77	0.11
	30	0.14	0.36	0.58	1.07	0.08		30	0.25	0.56	0.91	1.65	0.11
	40	0.22	0.45	0.70	0.94	0.08		40	0.32	0.67	0.99	1.41	0.11
	50	0.23	0.49	0.65	0.74	0.08		50	0.35	0.69	0.96	1.11	0.11
	60	0.28	0.46	0.53	0.55	0.08		60	0.35	0.63	0.75	0.78	0.11
	70	0.21	0.29	-	0.32	0.07		70	0.30	0.44	-	0.47	0.10
80	0.11	-	-	0.15	0.06	80	0.16	-	-	0.21	0.07		

Devcan 6.7.5, April 2017, National Cancer Institute (<https://surveillance.cancer.gov/devcan/>).

Source: Incidence data are from the SEER 18 areas (San Francisco, Connecticut, Detroit, Hawaii, Iowa, New Mexico, Seattle, Utah, Atlanta, San Jose-Monterey, Los Angeles, Alaska Native Registry, Rural Georgia, California excluding SF/SJM/LA, Kentucky, Louisiana, New Jersey, and Georgia excluding ATL/RG). Mortality data are from the NCHS public use data file for the total US.

<sup>a</sup> Underlying incidence and mortality data for American Indian/Alaska Native are based on the CHSDA (Contract Health Service Delivery Area) counties.

<sup>b</sup> Hispanic is not mutually exclusive from whites, blacks, Asian/Pacific Islanders, and American Indians/Alaska Natives. Underlying incidence data for Hispanics are based on NHIA and exclude cases from the Alaska Native Registry.

- Statistic could not be calculated.

A percent of 0.00 represents a value that is below 0.005.

Table 26.15  
Cancer of the Thyroid (Invasive)

SEER Incidence and U.S. Mortality  
Age-Adjusted Rates and Trends<sup>a</sup>  
By Race/Ethnicity and Sex

SEER Incidence	SEER 18 Areas <sup>b</sup>			SEER 13 Areas <sup>b</sup>			SEER 9 Areas <sup>b</sup>		
	Rate 2010-2014			Trend 2005-2014 <sup>c</sup>			Trend 2005-2014 <sup>d</sup>		
	Rate per 100,000 persons			AAPC (%)			AAPC (%)		
	Total	Males	Females	Total	Males	Females	Total	Males	Females
RACE/ETHNICITY									
All Races	14.2	7.1	21.0	3.8*	3.9*	3.8*	3.8*	3.8*	3.7*
White	14.9	7.6	22.4	3.7*	3.7*	3.8*	3.8*	3.7*	3.7*
White Hispanic <sup>e</sup>	12.8	5.4	20.1	4.8*	4.1*	4.2*	-	-	-
White Non-Hispanic <sup>e</sup>	15.8	8.3	23.4	3.7*	3.8*	3.7*	-	-	-
Black	8.7	3.7	13.0	4.3*	4.0*	4.4*	5.2*	3.1*	5.8*
Asian/Pacific Islander	13.7	6.6	19.9	3.1*	5.6*	2.6*	-	-	-
Amer Ind/Alaska Nat <sup>f</sup>	9.3	4.2	14.1	3.9*	3.5*	3.9*	-	-	-
Hispanic <sup>e</sup>	12.3	5.2	19.3	4.7*	4.1*	4.8*	-	-	-
U.S. Mortality <sup>g</sup>									
	Rate 2010-2014			Trend 2005-2014 <sup>h</sup>					
	Rate per 100,000 persons			AAPC (%)					
	Total	Males	Females	Total	Males	Females			
RACE/ETHNICITY									
All Races	0.5	0.5	0.5	0.7*	1.4*	0.5*			
White	0.5	0.5	0.5	0.7*	1.4*	0.3*			
White Hispanic <sup>e</sup>	0.6	0.5	0.7	0.1	1.1	-0.4			
White Non-Hispanic <sup>e</sup>	0.5	0.5	0.5	0.7*	1.4*	0.2			
Black	0.5	0.4	0.6	1.0*	1.3*	0.9*			
Asian/Pacific Islander	0.6	0.5	0.7	-0.6	0.0	-2.5			
Amer Ind/Alaska Nat									
Total U.S.	0.4	0.4	0.4	1.8	-	-0.3			
CHSDA Counties	0.5	-	0.5	1.3	-	-0.9			
Non-CHSDA Counties	-	-	-	-	-	-			
Hispanic <sup>e</sup>	0.6	0.5	0.7	0.0	0.9	-0.5			

The AAPC is the Average Annual Percent Change over the time interval. The AAPCs are calculated by the Joinpoint Regression Program Version 4.3.0.0, April 2016, National Cancer Institute.

- Statistic not shown. Rate based on less than 16 cases for the time interval.

Trend based on less than 10 cases for at least one year within the time interval.

<sup>a</sup> Rates are age-adjusted to the 2000 US Std Population (19 age groups - Census P25-1130). Trends are based on rates age-adjusted to the 2000 US Std Population (19 age groups - Census P25-1130).

<sup>b</sup> The SEER 9 areas are San Francisco, Connecticut, Detroit, Hawaii, Iowa, New Mexico, Seattle, Utah, and Atlanta.

The SEER 13 areas comprise the SEER 9 areas plus San Jose-Monterey, Los Angeles, the Alaska Native Registry, and Rural Georgia.

The SEER 18 areas comprise the SEER 13 areas plus California excluding SF/SJM/LA, Kentucky, Louisiana, New Jersey, and Georgia excluding ATL/RG.

<sup>c</sup> The 2005-2014 AAPC estimates are based on a Joinpoint analysis with up to 4 Joinpoints over diagnosis years 1992-2014.

<sup>d</sup> The 2005-2014 AAPC estimates are based on a Joinpoint analysis with up to 5 Joinpoints over diagnosis years 1975-2014.

<sup>e</sup> Hispanic and Non-Hispanic are not mutually exclusive from whites, blacks, Asian/Pacific Islanders, and American Indians/Alaska Natives. Incidence data for Hispanics and Non-Hispanics are based on NHIA and exclude cases from the Alaska Native Registry. The 2005-2014 Hispanic and Non-Hispanic mortality trends exclude deaths from New Hampshire and Oklahoma.

<sup>f</sup> Incidence data for American Indian/Alaska Native are based on the CHSDA (Contract Health Service Delivery Area) counties.

<sup>g</sup> US Mortality Files, National Center for Health Statistics, CDC.

<sup>h</sup> The 2005-2014 mortality AAPCs are based on a Joinpoint analysis using years of death 1992-2014.

\* The APC is significantly different from zero (p<.05).

Table 26.16  
Cancer of the Thyroid (Invasive)

Age-Adjusted SEER Incidence Rates<sup>a</sup>  
By Registry, Race and Sex

	All Races			Whites			Blacks		
	Total	Males	Females	Total	Males	Females	Total	Males	Females
<u>SEER Incidence Rates<sup>a</sup>, 2010-2014</u>									
California	12.67	6.17	19.05	12.96	6.35	19.66	7.90	3.65	11.81
Greater Bay Area	11.40	5.86	16.93	11.83	6.31	17.63	5.49	2.60	8.20
San Francisco-Oakland	11.27	6.06	16.43	11.92	6.78	17.36	5.32	2.54	7.79
San Jose-Monterey	11.66	5.51	17.90	11.73	5.53	18.18	6.67	-	10.73
Los Angeles	13.40	6.46	20.03	13.72	6.60	20.84	9.30	4.41	13.31
Greater California	12.78	6.14	19.35	12.98	6.25	19.76	7.60	3.43	11.84
Connecticut	19.55	9.56	29.06	19.94	9.74	29.79	11.87	5.66	17.17
Detroit	16.07	7.99	23.57	17.94	8.91	26.85	10.97	5.05	15.60
Georgia	11.42	5.88	16.65	13.11	7.03	19.23	7.52	2.75	11.37
Atlanta	12.00	6.42	17.10	14.17	8.24	20.22	8.34	2.98	12.48
Rural Georgia	9.03	5.01	13.00	11.00	-	16.07	6.06	-	-
Greater Georgia	11.23	5.62	16.59	12.77	6.57	18.96	6.91	2.54	10.56
Hawaii	15.48	8.01	23.22	14.04	8.72	20.74	-	-	-
Iowa	13.64	7.27	20.09	13.81	7.32	20.34	6.73	-	9.19
Kentucky	14.62	7.47	21.59	15.06	7.75	22.18	9.55	3.55	15.11
Louisiana	13.19	6.71	19.38	15.02	7.91	22.15	9.11	3.30	13.97
New Jersey	19.18	10.00	27.91	20.80	11.02	30.37	9.41	4.38	13.51
New Mexico	15.24	7.21	23.09	15.85	7.33	24.26	7.94	-	-
Seattle-Puget Sound	13.88	7.13	20.63	13.92	7.40	20.58	9.33	2.65	16.85
Utah	18.93	9.11	28.85	19.34	9.23	29.55	-	-	-
SEER 9 Areas <sup>b</sup>	14.78	7.52	21.86	15.73	8.10	23.45	9.15	3.92	13.55
SEER 13 Areas <sup>b</sup>	14.23	7.14	21.13	14.99	7.60	22.46	9.14	4.03	13.45
SEER 18 Areas <sup>b</sup>	14.16	7.09	21.04	14.95	7.57	22.35	8.69	3.68	12.99

<sup>a</sup> Rates are per 100,000 and are age-adjusted to the 2000 US Std Population (19 age groups - Census P25-1130)

<sup>b</sup> The SEER 9 areas are San Francisco, Connecticut, Detroit, Hawaii, Iowa, New Mexico, Seattle, Utah and Atlanta.

The SEER 13 areas comprise the SEER 9 areas plus San Jose-Monterey, Los Angeles, the Alaska Native Registry and Rural Georgia.

The SEER 18 areas comprise the SEER 13 areas plus California excluding SF/SJM/LA, Kentucky, Louisiana, New Jersey and Georgia excluding ATL/RG.

- Statistic not shown. Rate based on less than 16 cases for the time interval.



Table 26.17  
Cancer of the Thyroid (Invasive)

Age-Adjusted SEER Death Rates<sup>a</sup>  
By Registry, Race and Sex

	All Races			Whites			Blacks		
	Total	Males	Females	Total	Males	Females	Total	Males	Females
<u>SEER Death Rates<sup>a</sup>, 2010-2014</u>									
California	0.60	0.54	0.64	0.59	0.55	0.61	0.44	0.35	0.48
Greater Bay Area	0.52	0.46	0.55	0.49	0.43	0.54	-	-	-
San Francisco-Oakland	0.52	0.46	0.56	0.51	0.47	0.55	-	-	-
San Jose-Monterey	0.52	0.46	0.55	0.45	-	0.52	-	-	-
Los Angeles	0.68	0.64	0.70	0.68	0.65	0.70	0.53	-	-
Greater California	0.59	0.52	0.64	0.58	0.54	0.60	-	-	-
Connecticut	0.45	0.44	0.44	0.44	0.41	0.44	-	-	-
Detroit	0.56	0.57	0.56	0.54	0.61	0.49	0.63	-	0.80
Georgia	0.40	0.38	0.40	0.41	0.42	0.38	0.38	-	0.46
Atlanta	0.43	0.45	0.41	0.46	0.52	0.40	-	-	-
Rural Georgia	-	-	-	-	-	-	-	-	-
Greater Georgia	0.38	0.36	0.39	0.39	0.39	0.36	0.44	-	0.54
Hawaii	0.67	0.58	0.76	-	-	-	-	-	-
Iowa	0.53	0.56	0.50	0.51	0.56	0.46	-	-	-
Kentucky	0.52	0.50	0.54	0.52	0.51	0.54	-	-	-
Louisiana	0.44	0.40	0.47	0.45	0.42	0.46	0.35	-	-
New Jersey	0.49	0.52	0.48	0.51	0.56	0.48	0.39	-	0.50
New Mexico	0.55	0.46	0.62	0.58	0.51	0.64	-	-	-
Seattle-Puget Sound	0.52	0.48	0.55	0.49	0.52	0.47	-	-	-
Utah	0.55	0.69	0.43	0.57	0.72	0.45	-	-	-
SEER 9 Areas <sup>b</sup>	0.52	0.51	0.52	0.50	0.52	0.48	0.48	0.37	0.54
SEER 13 Areas <sup>b</sup>	0.55	0.53	0.56	0.54	0.54	0.53	0.49	0.40	0.53
SEER 18 Areas <sup>b</sup>	0.54	0.51	0.55	0.53	0.53	0.52	0.44	0.31	0.51
Total U.S.	0.50	0.51	0.49	0.50	0.52	0.47	0.50	0.39	0.57

<sup>a</sup> US Mortality Files, National Center for Health Statistics, Centers for Disease Control and Prevention. Rates are per 100,000 and are age-adjusted to the 2000 US Std Population (19 age groups - Census P25-1130).

<sup>b</sup> The SEER 9 areas are San Francisco, Connecticut, Detroit, Hawaii, Iowa, New Mexico, Seattle, Utah and Atlanta. The SEER 13 areas comprise the SEER 9 areas plus San Jose-Monterey, Los Angeles, the Alaska Native Registry and Rural Georgia. The SEER 18 areas comprise the SEER 13 areas plus California excluding SF/SJM/LA, Kentucky, Louisiana, New Jersey and Georgia excluding ATL/RG.

- Statistic not shown. Rate based on less than 16 cases for the time interval.

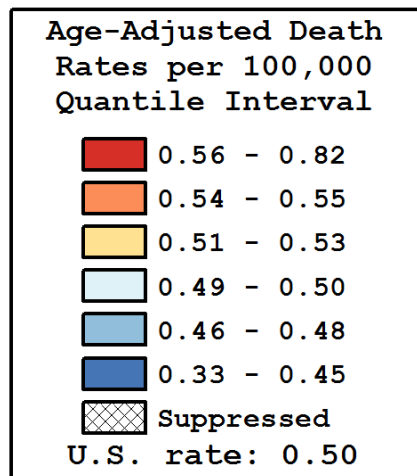
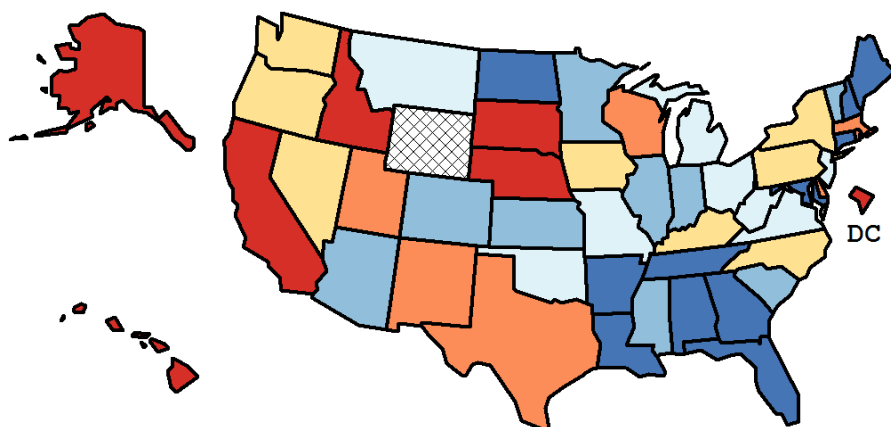
Table 26.18  
Cancer of the Thyroid (Invasive)

Age-Adjusted Cancer Death<sup>a</sup> Rates By State, All Races, 2010-2014

Males and Females

State	Rate	SE	Rank(CI) <sup>d</sup>	PD
TOTAL U.S.	0.50	0.01		
High Five States				
D.C.	0.82	0.17	01(01,47)	62.91 <sup>c</sup>
Hawaii	0.67	0.09	02(01,43)	34.00 <sup>c</sup>
Idaho	0.64	0.09	03(01,47)	27.78 <sup>c</sup>
Alaska	0.62	0.17	04(01,50)	23.34 <sup>c</sup>
Nebraska	0.62	0.08	05(01,45)	23.03 <sup>c</sup>
Low Five States				
Florida	0.42	0.02	46(29,49)	-16.17 <sup>c</sup>
Maine	0.41	0.07	47(04,50)	-18.18 <sup>c</sup>
Tennessee	0.40	0.03	48(22,50)	-20.25 <sup>c</sup>
Georgia	0.40	0.03	49(28,50)	-21.24 <sup>c</sup>
New Hampshire	0.33	0.07	50(15,50)	-34.94 <sup>c</sup>

State	Rate	SE	Rank(CI) <sup>d</sup>	PD	State	Rate	SE	Rank(CI) <sup>d</sup>	PD
Alabama	0.45	0.04	40(09,50)	-9.85	Montana	0.50	0.09	23(01,50)	-0.73
Alaska	0.62	0.17	04(01,50)	23.34 <sup>c</sup>	Nebraska	0.62	0.08	05(01,45)	23.03 <sup>c</sup>
Arizona	0.48	0.04	33(07,48)	-4.81	Nevada	0.51	0.06	22(02,49)	1.10
Arkansas	0.45	0.05	41(06,50)	-10.68	New Hampshire	0.33	0.07	50(15,50)	-34.94 <sup>c</sup>
California	0.60	0.02	06(02,15)	18.91 <sup>c</sup>	New Jersey	0.49	0.03	26(07,46)	-1.69
Colorado	0.46	0.04	36(06,50)	-8.21	New Mexico	0.55	0.07	10(01,49)	9.27
Connecticut	0.45	0.05	42(07,50)	-10.74	New York	0.53	0.02	15(05,35)	6.02
Delaware	0.55	0.10	08(01,50)	10.19	North Carolina	0.52	0.03	18(05,41)	4.26
D.C.	0.82	0.17	01(01,47)	62.91 <sup>c</sup>	North Dakota	0.42	0.10	45(02,50)	-15.98 <sup>c</sup>
Florida	0.42	0.02	46(29,49)	-16.17 <sup>c</sup>	Ohio	0.49	0.03	28(08,45)	-2.12
Georgia	0.40	0.03	49(28,50)	-21.24 <sup>c</sup>	Oklahoma	0.49	0.05	29(03,49)	-2.62
Hawaii	0.67	0.09	02(01,43)	34.00 <sup>c</sup>	Oregon	0.53	0.05	16(02,47)	5.61
Idaho	0.64	0.09	03(01,47)	27.78 <sup>c</sup>	Pennsylvania	0.52	0.03	21(06,39)	2.63
Illinois	0.48	0.03	31(10,46)	-4.80	Rhode Island	0.54	0.10	13(01,50)	7.96
Indiana	0.47	0.04	35(08,49)	-6.60	South Carolina	0.46	0.04	37(07,50)	-8.50
Iowa	0.53	0.05	17(02,48)	5.16	South Dakota	0.56	0.11	07(01,50)	11.13
Kansas	0.46	0.05	39(05,50)	-9.34	Tennessee	0.40	0.03	48(22,50)	-20.25 <sup>c</sup>
Kentucky	0.52	0.05	19(03,47)	3.60	Texas	0.54	0.02	14(05,33)	7.38
Louisiana	0.44	0.04	44(08,50)	-12.30	Utah	0.55	0.07	12(01,49)	8.44
Maine	0.41	0.07	47(04,50)	-18.18 <sup>c</sup>	Vermont	0.46	0.10	38(01,50)	-8.77
Maryland	0.45	0.04	43(09,50)	-10.78	Virginia	0.49	0.03	30(07,48)	-3.45
Massachusetts	0.55	0.04	09(03,40)	9.37	Washington	0.52	0.04	20(04,46)	2.78
Michigan	0.50	0.03	24(06,45)	-0.94	West Virginia	0.50	0.06	25(02,50)	-1.48
Minnesota	0.48	0.04	32(06,49)	-4.80	Wisconsin	0.55	0.04	11(02,41)	9.24
Mississippi	0.47	0.06	34(03,50)	-5.86	Wyoming	-	-	-(-,-)	-
Missouri	0.49	0.04	27(05,47)	-1.76					



<sup>a</sup> US Mortality Files, National Center for Health Statistics, Centers for Disease Control and Prevention. Rates are per 100,000 and are age-adjusted to the 2000 US Std Population (19 age groups - Census P25-1130).

<sup>b</sup> Difference between state rate and total U.S. rate is statistically significant ( $p < .0002$ ).

<sup>c</sup> Absolute percent difference between state rate and total U.S. rate is 15% or more.

<sup>d</sup> Rank of state level death rate and the 95% confidence intervals (low, high) for the rank.

SE Standard error of the rate.

PD Percent difference between state rate and total U.S. rate.

- Statistic not shown. Rate based on less than 16 cases for the time interval.

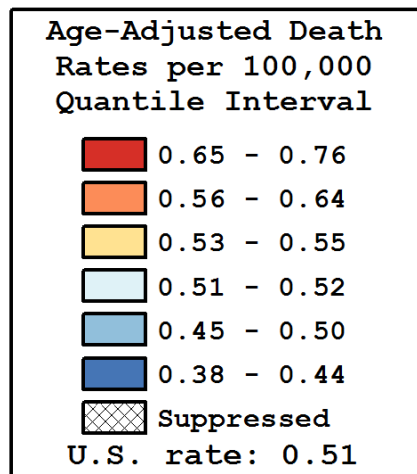
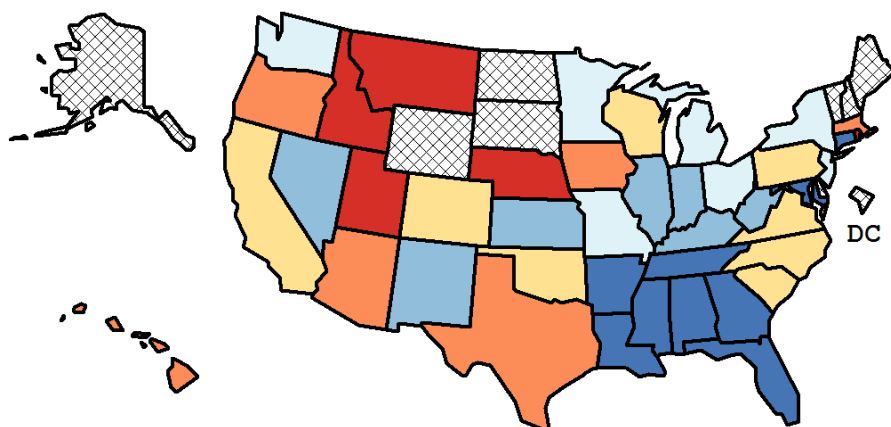
Table 26.19  
Cancer of the Thyroid (Invasive)

Age-Adjusted Cancer Death<sup>a</sup> Rates By State, All Races, 2010-2014

Males

State	Rate	SE	Rank(CI) <sup>d</sup>	PD
TOTAL U.S.	0.51	0.01		
High Five States				
Rhode Island	0.76	0.17	01(01,42)	48.72 <sup>c</sup>
Idaho	0.70	0.14	02(01,41)	37.43 <sup>c</sup>
Utah	0.69	0.12	03(01,39)	35.42 <sup>c</sup>
Montana	0.67	0.15	04(01,42)	31.57 <sup>c</sup>
Nebraska	0.66	0.12	05(01,41)	29.58 <sup>c</sup>
Low Five States				
Florida	0.42	0.03	38(24,42)	-18.02 <sup>c</sup>
Louisiana	0.40	0.07	39(08,42)	-21.26 <sup>c</sup>
Maryland	0.39	0.05	40(13,42)	-24.33 <sup>c</sup>
Arkansas	0.38	0.07	41(09,42)	-25.84 <sup>c</sup>
Georgia	0.38	0.04	42(21,42)	-26.24 <sup>c</sup>

State	Rate	SE	Rank(CI) <sup>d</sup>	PD	State	Rate	SE	Rank(CI) <sup>d</sup>	PD
Alabama	0.44	0.06	35(06,42)	-13.77	Montana	0.67	0.15	04(01,42)	31.57 <sup>c</sup>
Alaska	-	-	-(-,-)	-	Nebraska	0.66	0.12	05(01,41)	29.58 <sup>c</sup>
Arizona	0.56	0.06	10(02,38)	10.60	Nevada	0.48	0.08	29(02,42)	-5.79
Arkansas	0.38	0.07	41(09,42)	-25.84 <sup>c</sup>	New Hampshire	-	-	-(-,-)	-
California	0.54	0.03	15(05,31)	6.08	New Jersey	0.52	0.05	24(04,40)	1.33
Colorado	0.53	0.07	16(01,41)	4.19	New Mexico	0.46	0.09	32(02,42)	-9.18
Connecticut	0.44	0.07	34(05,42)	-12.83	New York	0.52	0.03	20(05,35)	2.90
Delaware	-	-	-(-,-)	-	North Carolina	0.55	0.05	12(02,36)	8.63
D.C.	-	-	-(-,-)	-	North Dakota	-	-	-(-,-)	-
Florida	0.42	0.03	38(24,42)	-18.02 <sup>c</sup>	Ohio	0.51	0.04	26(05,39)	-0.68
Georgia	0.38	0.04	42(21,42)	-26.24 <sup>c</sup>	Oklahoma	0.53	0.08	19(02,42)	3.23
Hawaii	0.58	0.12	09(01,42)	13.10	Oregon	0.64	0.08	06(01,37)	24.78 <sup>c</sup>
Idaho	0.70	0.14	02(01,41)	37.43 <sup>c</sup>	Pennsylvania	0.53	0.04	18(04,36)	3.65
Illinois	0.48	0.04	31(08,41)	-6.86	Rhode Island	0.76	0.17	01(01,42)	48.72 <sup>c</sup>
Indiana	0.48	0.06	30(05,42)	-6.42	South Carolina	0.53	0.07	17(02,41)	3.86
Iowa	0.56	0.08	11(01,42)	8.92	South Dakota	-	-	-(-,-)	-
Kansas	0.48	0.08	28(03,42)	-5.69	Tennessee	0.44	0.05	36(09,42)	-14.31
Kentucky	0.50	0.07	27(02,42)	-1.50	Texas	0.58	0.03	08(02,28)	14.63
Louisiana	0.40	0.07	39(08,42)	-21.26 <sup>c</sup>	Utah	0.69	0.12	03(01,39)	35.42 <sup>c</sup>
Maine	-	-	-(-,-)	-	Vermont	-	-	-(-,-)	-
Maryland	0.39	0.05	40(13,42)	-24.33 <sup>c</sup>	Virginia	0.55	0.06	13(02,38)	8.05
Massachusetts	0.62	0.06	07(01,33)	21.46 <sup>c</sup>	Washington	0.52	0.06	23(03,40)	2.20
Michigan	0.52	0.05	25(04,39)	1.10	West Virginia	0.45	0.09	33(02,42)	-12.08
Minnesota	0.52	0.06	22(02,41)	2.33	Wisconsin	0.55	0.06	14(02,39)	6.84
Mississippi	0.43	0.08	37(04,42)	-16.19 <sup>c</sup>	Wyoming	-	-	-(-,-)	-
Missouri	0.52	0.06	21(03,40)	2.63					



<sup>a</sup> US Mortality Files, National Center for Health Statistics, Centers for Disease Control and Prevention. Rates are per 100,000 and are age-adjusted to the 2000 US Std Population (19 age groups - Census P25-1130).

<sup>b</sup> Difference between state rate and total U.S. rate is statistically significant ( $p < .0002$ ).

<sup>c</sup> Absolute percent difference between state rate and total U.S. rate is 15% or more.

<sup>d</sup> Rank of state level death rate and the 95% confidence intervals (low, high) for the rank.

SE Standard error of the rate.

PD Percent difference between state rate and total U.S. rate.

- Statistic not shown. Rate based on less than 16 cases for the time interval.

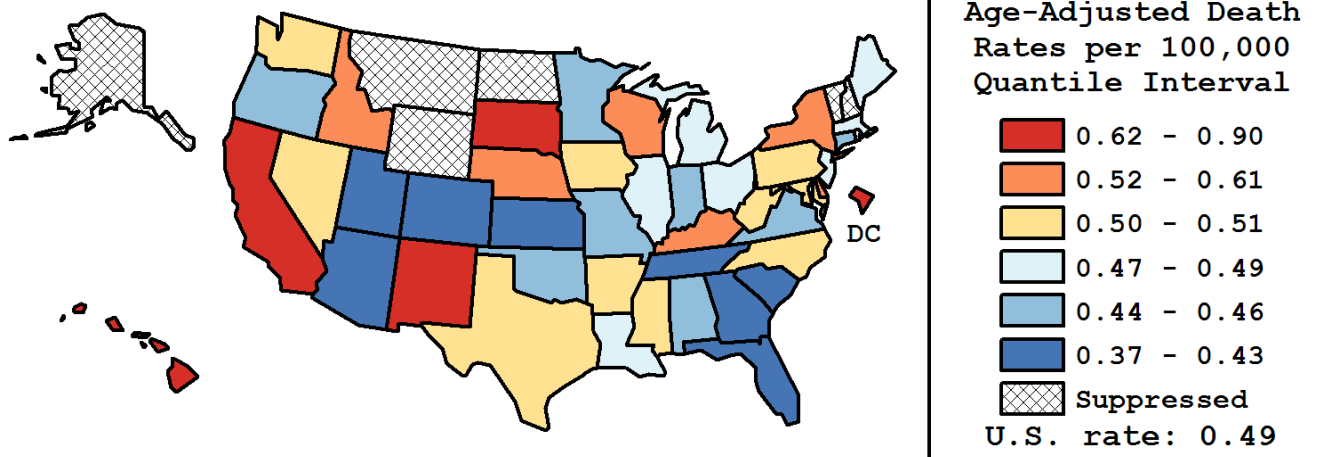
Table 26.20  
Cancer of the Thyroid (Invasive)

Age-Adjusted Cancer Death<sup>a</sup> Rates By State, All Races, 2010-2014

Females

State	Rate	SE	Rank(CI) <sup>d</sup>	PD
TOTAL U.S.	0.49	0.01		
High Five States				
D.C.	0.90	0.22	01(01,44)	82.49 <sup>c</sup>
Hawaii	0.76	0.13	02(01,37)	54.03 <sup>c</sup>
California	0.64	0.02	03(01,10)	29.51 <sup>c</sup>
South Dakota	0.63	0.16	04(01,44)	27.91 <sup>c</sup>
New Mexico	0.62	0.10	05(01,43)	25.02 <sup>c</sup>
Low Five States				
Colorado	0.41	0.06	40(07,44)	-16.45 <sup>c</sup>
Arizona	0.41	0.05	41(10,44)	-16.77 <sup>c</sup>
South Carolina	0.40	0.05	42(08,44)	-18.31 <sup>c</sup>
Georgia	0.40	0.04	43(15,44)	-19.56 <sup>c</sup>
Tennessee	0.37	0.04	44(18,44)	-24.63 <sup>c</sup>

State	Rate	SE	Rank(CI) <sup>d</sup>	PD	State	Rate	SE	Rank(CI) <sup>d</sup>	PD
Alabama	0.46	0.05	30(05,44)	-7.30	Montana	-	-	-(-,-)	-
Alaska	-	-	-(-,-)	-	Nebraska	0.52	0.09	11(01,44)	6.24
Arizona	0.41	0.05	41(10,44)	-16.77 <sup>c</sup>	Nevada	0.51	0.08	13(02,44)	3.29
Arkansas	0.50	0.07	19(02,44)	1.06	New Hampshire	-	-	-(-,-)	-
California	0.64	0.02	03(01,10)	29.51 <sup>c</sup>	New Jersey	0.48	0.04	24(05,42)	-2.17
Colorado	0.41	0.06	40(07,44)	-16.45 <sup>c</sup>	New Mexico	0.62	0.10	05(01,43)	25.02 <sup>c</sup>
Connecticut	0.44	0.06	36(05,44)	-11.57	New York	0.54	0.03	10(04,30)	8.51
Delaware	0.54	0.13	08(01,44)	9.63	North Carolina	0.50	0.04	17(04,41)	2.17
D.C.	0.90	0.22	01(01,44)	82.49 <sup>c</sup>	North Dakota	-	-	-(-,-)	-
Florida	0.42	0.02	39(18,43)	-13.98	Ohio	0.48	0.04	26(07,41)	-3.63
Georgia	0.40	0.04	43(15,44)	-19.56 <sup>c</sup>	Oklahoma	0.45	0.06	31(04,44)	-7.76
Hawaii	0.76	0.13	02(01,37)	54.03 <sup>c</sup>	Oregon	0.45	0.06	33(05,44)	-8.63
Idaho	0.61	0.12	06(01,44)	22.93 <sup>c</sup>	Pennsylvania	0.51	0.03	15(05,37)	2.57
Illinois	0.47	0.04	27(07,42)	-4.59	Rhode Island	-	-	-(-,-)	-
Indiana	0.45	0.05	32(06,44)	-8.42	South Carolina	0.40	0.05	42(08,44)	-18.31 <sup>c</sup>
Iowa	0.50	0.07	20(03,44)	0.85	South Dakota	0.63	0.16	04(01,44)	27.91 <sup>c</sup>
Kansas	0.43	0.07	37(04,44)	-12.50	Tennessee	0.37	0.04	44(18,44)	-24.63 <sup>c</sup>
Kentucky	0.54	0.06	09(02,42)	9.23	Texas	0.50	0.03	18(06,36)	1.94
Louisiana	0.47	0.06	28(04,44)	-5.36	Utah	0.43	0.08	38(03,44)	-12.70
Maine	0.49	0.10	22(01,44)	-0.37	Vermont	-	-	-(-,-)	-
Maryland	0.50	0.05	21(03,43)	0.75	Virginia	0.44	0.04	35(08,44)	-10.68
Massachusetts	0.49	0.05	23(04,43)	-1.53	Washington	0.51	0.05	12(03,42)	3.85
Michigan	0.48	0.04	25(06,42)	-2.87	West Virginia	0.50	0.08	16(02,44)	2.19
Minnesota	0.45	0.05	34(06,44)	-8.80	Wisconsin	0.54	0.05	07(02,40)	9.65
Mississippi	0.51	0.08	14(02,44)	2.66	Wyoming	-	-	-(-,-)	-
Missouri	0.46	0.05	29(06,44)	-6.67					



<sup>a</sup> US Mortality Files, National Center for Health Statistics, Centers for Disease Control and Prevention. Rates are per 100,000 and are age-adjusted to the 2000 US Std Population (19 age groups - Census P25-1130).

<sup>b</sup> Difference between state rate and total U.S. rate is statistically significant ( $p < .0002$ ).

<sup>c</sup> Absolute percent difference between state rate and total U.S. rate is 15% or more.

<sup>d</sup> Rank of state level death rate and the 95% confidence intervals (low, high) for the rank.

SE Standard error of the rate.

PD Percent difference between state rate and total U.S. rate.

- Statistic not shown. Rate based on less than 16 cases for the time interval.

Table 26.21  
Cancer of the Thyroid (Invasive)Estimated United States Cancer Prevalence Counts<sup>a</sup> on January 1, 2014  
By Race/Ethnicity, Sex and Years Since Diagnosis

WARNING: The Prevalence Estimates presented on this page utilize a different tumor selection criteria from previous CSR releases and are NOT directly comparable to estimates from previous CSR releases.  
Please see the Prevalence Comparison Chapter of this CSR for more information.

Years Since Diagnosis		0 to <5	5 to <10	10 to <15	15 to <20	20 to <25	25 to <30	0 to <22 <sup>a</sup>	0 to <39 <sup>e</sup>	>=39 <sup>g</sup>	Complete <sup>h</sup>
<u>Race</u>	<u>Sex</u>										
All Races <sup>b</sup>	Both Sexes	226,991	159,919	101,742	67,827	47,814	35,901	595,737	686,315	40,331	726,646
	Males	53,812	35,995	21,736	14,223	10,331	7,184	134,433	152,987	9,592	162,579
	Females	173,179	123,924	80,006	53,604	37,483	28,717	461,304	533,328	30,739	564,067
White <sup>b</sup>	Both Sexes	193,727	139,728	89,361	60,146	42,882	32,245	518,105	599,904	36,481	636,385
	Males	47,604	32,209	19,593	12,903	9,472	6,571	120,243	137,248	8,006	145,254
	Females	146,123	107,519	69,768	47,243	33,410	25,674	397,862	462,656	28,475	491,131
Black <sup>b</sup>	Both Sexes	16,106	9,857	5,930	3,350	2,297	1,568	37,190	41,208	1,731	42,939
	Males	2,673	1,795	1,066	596	478	283	6,527	7,188	207	7,395
	Females	13,433	8,062	4,864	2,754	1,819	1,285	30,663	34,020	1,524	35,544
Asian/ Pacific Islander <sup>c</sup>	Both Sexes	11,618	7,327	4,766	3,068	+	+	27,710	+	+	+
	Males	2,340	1,306	838	483	+	+	5,129	+	+	+
Hispanic <sup>d</sup>	Both Sexes	9,278	6,021	3,928	2,585	+	+	22,581	+	+	+
	Males	24,208	15,450	9,560	5,966	+	+	57,122	+	+	+
Hispanic <sup>d</sup>	Males	4,379	2,540	1,628	940	+	+	9,798	+	+	+
	Females	19,829	12,910	7,932	5,026	+	+	47,324	+	+	+

Estimated prevalence percent<sup>a</sup> on January 1, 2014, of the SEER<sup>c</sup> population diagnosed in the previous 22 years  
By Age at Prevalence, Race/Ethnicity and Sex

Age at Prevalence		All Ages	0-9	10-19	20-29	Age Specific (Crude)					Age-Adjusted <sup>f</sup>	
						30-39	40-49	50-59	60-69	70-79	80+	All Ages
<u>Race</u>	<u>Sex</u>											
All Races <sup>c</sup>	Both Sexes	0.1707%	0.0002%	0.0058%	0.0442%	0.1470%	0.2623%	0.3288%	0.3550%	0.3624%	0.2522%	0.1619%
	Males	0.0761%	0.0002%	0.0025%	0.0148%	0.0475%	0.1012%	0.1414%	0.1896%	0.2345%	0.1767%	0.0744%
	Females	0.2630%	0.0003%	0.0093%	0.0751%	0.2474%	0.4220%	0.5087%	0.5044%	0.4671%	0.2978%	0.2451%
White <sup>c</sup>	Both Sexes	0.1878%	0.0003%	0.0067%	0.0508%	0.1653%	0.2884%	0.3577%	0.3710%	0.3751%	0.2582%	0.1750%
	Males	0.0862%	0.0003%	0.0031%	0.0175%	0.0525%	0.1129%	0.1567%	0.2058%	0.2519%	0.1838%	0.0816%
	Females	0.2891%	0.0003%	0.0104%	0.0863%	0.2841%	0.4700%	0.5573%	0.5257%	0.4788%	0.3036%	0.2676%
Black <sup>c</sup>	Both Sexes	0.0845%	-	0.0012%	0.0145%	0.0616%	0.1385%	0.1715%	0.2392%	0.2691%	0.1728%	0.0911%
	Males	0.0305%	-	0.0037%	0.0145%	0.0450%	0.0632%	0.0990%	0.1449%	0.1333%	0.0370%	
	Females	0.1338%	-	0.0019%	0.0250%	0.1032%	0.2205%	0.2662%	0.3490%	0.3555%	0.1924%	0.1359%
Asian/ Pacific Islander <sup>c</sup>	Both Sexes	0.1539%	-	0.0052%	0.0361%	0.1232%	0.2299%	0.2915%	0.3362%	0.3397%	0.2512%	0.1452%
	Males	0.0601%	-	0.0097%	0.0436%	0.0843%	0.1120%	0.1491%	0.1806%	0.1489%	0.0601%	
Hispanic <sup>d</sup>	Both Sexes	0.2400%	-	0.0091%	0.0630%	0.1956%	0.3586%	0.4461%	0.4894%	0.4638%	0.3142%	0.2180%
	Males	0.1076%	-	0.0064%	0.0349%	0.1194%	0.1897%	0.2715%	0.3129%	0.3381%	0.2582%	0.1347%
	Females	0.0364%	-	0.0028%	0.0098%	0.0304%	0.0590%	0.0885%	0.1333%	0.1993%	0.1457%	0.0519%
		0.1800%	-	0.0101%	0.0622%	0.2142%	0.3256%	0.4488%	0.4684%	0.4417%	0.3261%	0.2137%

- <sup>a</sup> US 2014 cancer prevalence counts are based on 2014 cancer prevalence proportions from the SEER registries and 1/1/2014 US population estimates based on the average of 2013 and 2014 population estimates from the US Bureau of the Census.  
<sup>b c d</sup> Prevalence was calculated using the first invasive tumor for each cancer site diagnosed during the previous 39/22 years. Statistics based on (b) SEER 9 Areas (c) SEER 13 Areas excluding the Alaska Native Registry  
<sup>e</sup> (d) NHIA for Hispanic for SEER 13 Areas excluding the Alaska Native Registry.  
<sup>f</sup> Maximum limited-duration prevalence: 39 years for 1975-2014 SEER 9 data; 22 years for 1992-2014 SEER 13 data (excluding the Alaska Native Registry) used to calculate prevalence for Hispanics and Asian Pacific Islanders.  
<sup>g h i</sup> Percentages are age-adjusted to the 2000 US Standard Population (19 age groups - Census P25-1130) by 5-year age groups. (g) Cases diagnosed more than 39 years ago were estimated using the completeness index method (Capocaccia et. al. 1997, Merrill et. al. 2000). (h) Complete prevalence is obtained by summing 0 to <39 and >=39. (i) Age-specific completeness index was approximated using empirical data from historical Connecticut tumor registry.  
- Statistic not shown. Statistic based on fewer than 5 cases estimated alive in SEER for the time interval.  
+ Not available.

Table 26.22

## Cancer of the Thyroid (Invasive)

Percent Distribution and Counts by Histology among Histologically Confirmed Cases, 2010-2014  
Both Sexes by Race

Histology <sup>a</sup>	All Races		White		Black		Asian/Pacific Islander		American Indian/ Alaska Native <sup>b</sup>		Hispanic <sup>c</sup>	
	Count	Percent	Count	Percent	Count	Percent	Count	Percent	Count	Percent	Count	Percent
Carcinoma	63,229	99.7%	50,846	99.7%	4,408	99.6%	6,519	99.8%	300	100.0%	10,006	99.7%
Epidermoid carcinoma <sup>d</sup> (8051-8131)	67	0.1%	55	0.1%	-	-	-	-	-	-	-	-
Adenocarcinoma <sup>e</sup>	61,228	96.5%	49,226	96.5%	4,235	95.7%	6,337	97.0%	294	98.0%	9,705	96.7%
Papillary adenocarcinoma (8050,8260,8340-8344, 8350,8450)	56,724	89.4%	45,722	89.7%	3,721	84.1%	5,959	91.2%	266	88.7%	9,104	90.7%
Follicular carcinoma (8330-8332,8335)	2,939	4.6%	2,248	4.4%	363	8.2%	260	4.0%	-	-	420	4.2%
Oxyphilic (8290)	1,242	2.0%	1,010	2.0%	116	2.6%	81	1.2%	-	-	142	1.4%
Other specific carcinomas <sup>f</sup>	1,096	1.7%	922	1.8%	88	2.0%	74	1.1%	-	-	172	1.7%
Medullary carcinoma (8510)	1,056	1.7%	888	1.7%	85	1.9%	71	1.1%	-	-	167	1.7%
Carcinoma, NOS (8004,8010-8012, 8020-8022,8030-8032)	838	1.3%	643	1.3%	82	1.9%	99	1.5%	-	-	121	1.2%
Anaplastic carcinoma (8004,8012,8020-8021, 8030-8032)	514	0.8%	407	0.8%	43	1.0%	60	0.9%	-	-	72	0.7%
Sarcoma and other soft tissue tumors <sup>g</sup>	18	0.0%	-	-	-	-	-	-	-	-	-	-
Other specific types <sup>h</sup>	-	-	-	-	-	-	-	-	-	-	-	-
Unspecified (8000-8003,8005)	171	0.3%	125	0.2%	-	-	16	0.2%	-	-	26	0.3%
Total	63,426	100.0%	50,993	100.0%	4,426	100.0%	6,535	100.0%	300	100.0%	10,038	100.0%

Source: SEER 18 areas (San Francisco, Connecticut, Detroit, Hawaii, Iowa, New Mexico, Seattle, Utah, Atlanta, San Jose-Monterey, Los Angeles, Alaska Native Registry, Rural Georgia, California excluding SF/SJM/LA, Kentucky, Louisiana, New Jersey and Georgia excluding ATL/RG).

Percents may not sum to 100 due to rounding.

<sup>a</sup> Excludes Kaposi Sarcoma, mesothelioma, lymphomas, leukemias, myelomas, lymphoreticular, and immunoproliferative diseases.

<sup>b</sup> Estimates for American Indian/Alaska Native are based on the CHSDA (Contract Health Service Delivery Area) counties.

<sup>c</sup> Hispanic is not mutually exclusive from whites, blacks, Asian/Pacific Islanders, and American Indians/Alaska Natives.

Underlying incidence data for Hispanics are based on NHIA and exclude cases from the Alaska Native Registry.

<sup>d</sup> Epidermoid carcinoma includes squamous, basal, and transitional cell carcinomas.

<sup>e</sup> Adenocarcinoma includes histologies 8050, 8140-8147, 8160-8162, 8180-8221, 8250-8507, 8514, 8520-8551, 8560, 8570-8574, 8576, 8940-8941.

<sup>f</sup> Other specific carcinomas include histologies 8013-8015, 8033-8046, 8150-8155, 8170-8171, 8230-8249, 8510, 8512, 8561-8562, 8575, 8580-8671.

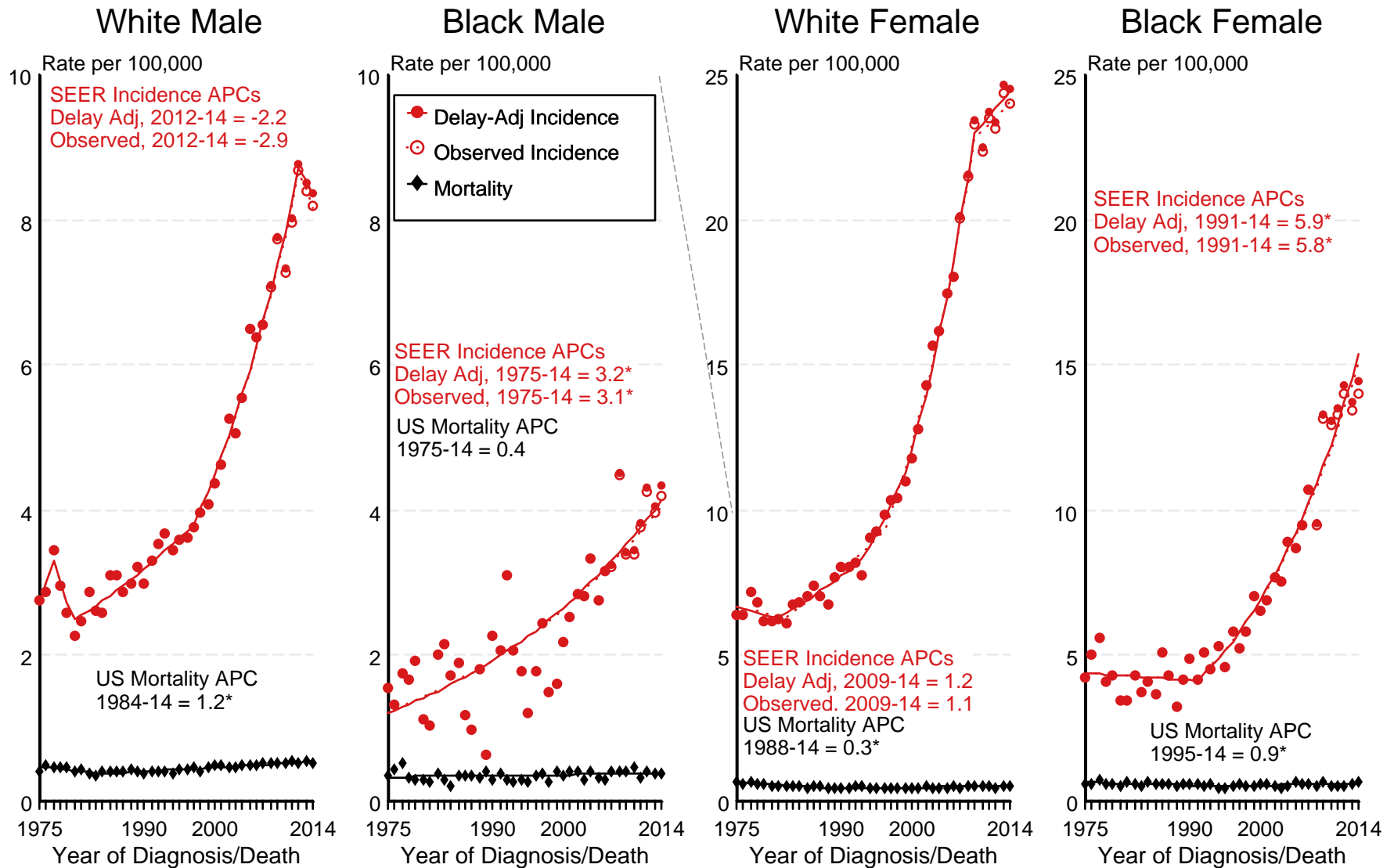
<sup>g</sup> Sarcoma and other soft tissue tumors include histologies 8680-8713, 8800-8921, 8990-8991, 9040-9044, 9120-9136, 9150-9252, 9370-9373, 9540-9582.

<sup>h</sup> Other specific types include histologies 8720-8790, 8930-8936, 8950-8983, 9000-9030, 9060-9110, 9260-9365, 9380-9539.

- Statistic not shown due to fewer than 16 cases during the time period.

Figure 26.1

# SEER Observed Incidence, SEER Delay Adjusted Incidence and US Death Rates<sup>a</sup> Cancer of the Thyroid, by Race and Sex



Source: SEER 9 areas and US Mortality Files (National Center for Health Statistics, CDC).

<sup>a</sup> Rates are age-adjusted to the 2000 US Std Population (19 age groups - Census P25-1103).

Regression lines and APCs are calculated using the Joinpoint Regression Program Version 4.4, January 2017, National Cancer Institute.

The APC is the Annual Percent Change for the regression line segments. The APC shown on the graph is for the most recent trend.

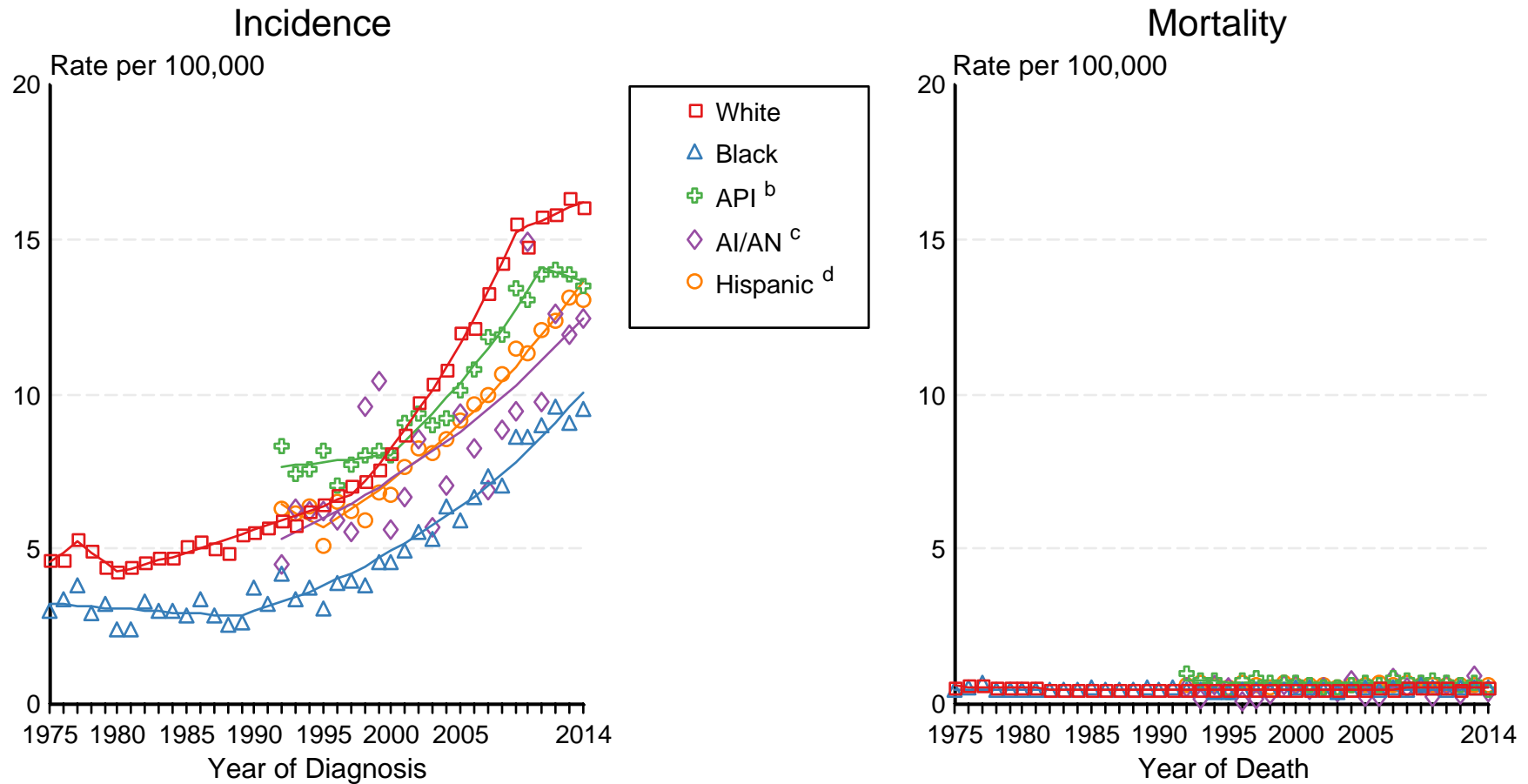
\* The APC is significantly different from zero ( $p < 0.05$ ).

Figure 26.2

# SEER Incidence and US Death Rates<sup>a</sup> Cancer of the Thyroid, Both Sexes

Joinpoint Analyses for Whites and Blacks from 1975-2014

and for Asian/Pacific Islanders, American Indians/Alaska Natives and Hispanics from 1992-2014



Source: Incidence data for whites and blacks are from the SEER 9 areas (San Francisco, Connecticut, Detroit, Hawaii, Iowa, New Mexico, Seattle, Utah, Atlanta). Incidence data for Asian/Pacific Islanders, American Indians/Alaska Natives and Hispanics are from the SEER 13 Areas (SEER 9 Areas, San Jose-Monterey, Los Angeles, Alaska Native Registry and Rural Georgia). Mortality data are from US Mortality Files, National Center for Health Statistics, CDC.

<sup>a</sup> Rates are age-adjusted to the 2000 US Std Population (19 age groups - Census P25-1103).

Regression lines are calculated using the Joinpoint Regression Program Version 4.4, January 2017, National Cancer Institute. Joinpoint analyses for Whites and Blacks during the 1975-2014 period allow a maximum of 5 joinpoints. Analyses for other ethnic groups during the period 1992-2014 allow a maximum of 4 joinpoints.

<sup>b</sup> API = Asian/Pacific Islander.

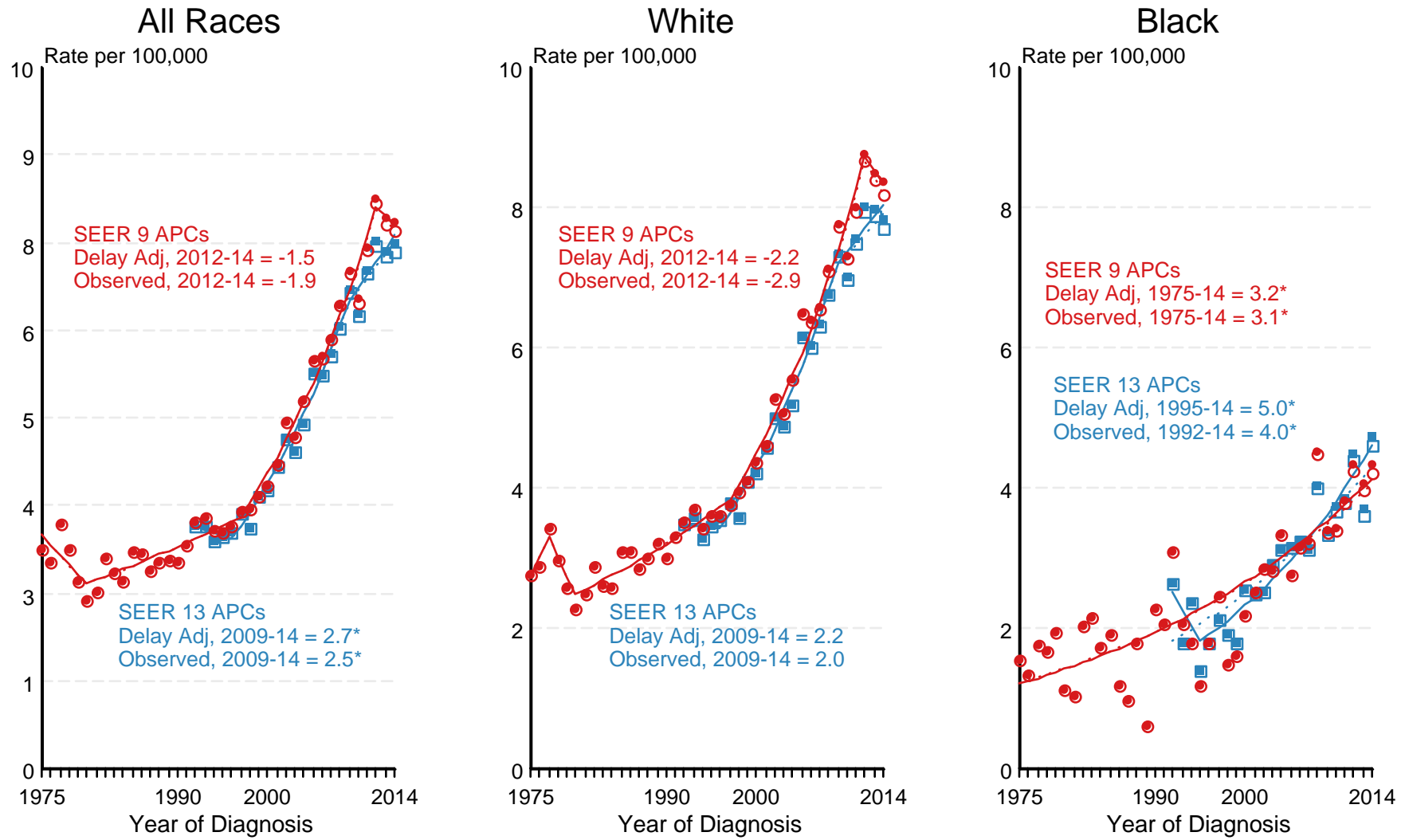
<sup>c</sup> AI/AN = American Indian/Alaska Native. Rates for American Indian/Alaska Native are based on the CHSDA(Contract Health Service Delivery Area) counties.

<sup>d</sup> Hispanic is not mutually exclusive from whites, blacks, Asian/Pacific Islanders, and American Indians/Alaska Natives. Incidence data for Hispanics are based on NHIA and exclude cases from the Alaska Native Registry. Mortality data for Hispanics exclude cases from New Hampshire and Oklahoma.



Figure 26.3

# SEER Observed Incidence and SEER Delay Adjusted Incidence Rates<sup>a</sup> SEER 9 Areas Compared to SEER 13 Areas Cancer of the Thyroid, Male, by Race

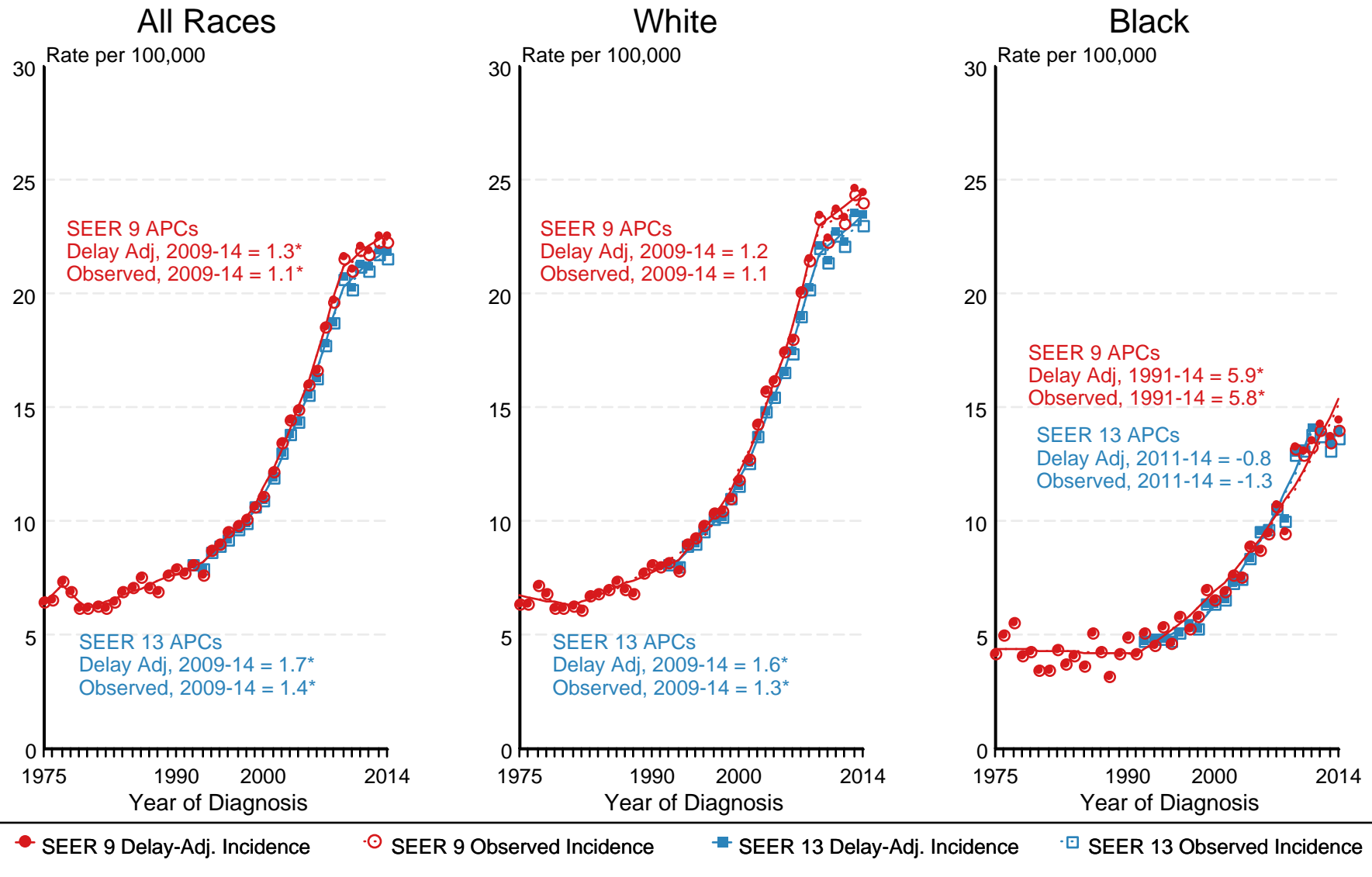


● SEER 9 Delay-Adj. Incidence   
 ○ SEER 9 Observed Incidence   
 ■ SEER 13 Delay-Adj. Incidence   
 □ SEER 13 Observed Incidence

Source: SEER 9 areas and SEER 13 areas.  
<sup>a</sup> Rates are age-adjusted to the 2000 US Std Population (19 age groups - Census P25-1103).  
 Regression lines and APCs are calculated using the Joinpoint Regression Program Version 4.4, January 2017, National Cancer Institute.  
 The APC is the Annual Percent Change for the regression line segments. The APC shown on the graph is for the most recent trend.  
 \* The APC is significantly different from zero ( $p < 0.05$ ).

Figure 26.4

# SEER Observed Incidence and SEER Delay Adjusted Incidence Rates<sup>a</sup> SEER 9 Areas Compared to SEER 13 Areas Cancer of the Thyroid, Female, by Race



Source: SEER 9 areas and SEER 13 areas.

<sup>a</sup> Rates are age-adjusted to the 2000 US Std Population (19 age groups - Census P25-1103).

Regression lines and APCs are calculated using the Joinpoint Regression Program Version 4.4, January 2017, National Cancer Institute. The APC is the Annual Percent Change for the regression line segments. The APC shown on the graph is for the most recent trend.

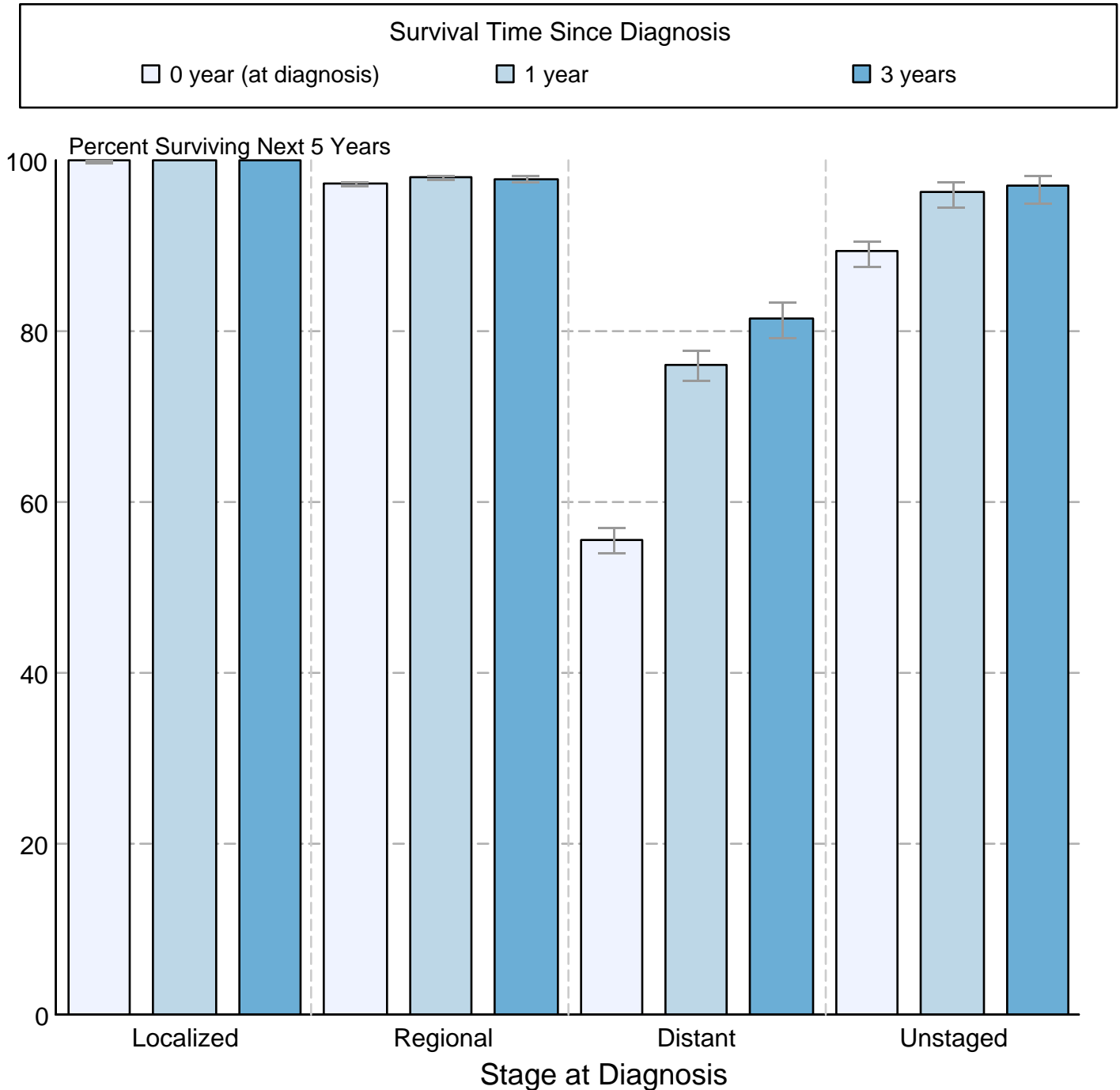
\* The APC is significantly different from zero ( $p < 0.05$ ).

Figure 26.5

## Cancer of the Thyroid

### 5-Year SEER Conditional Relative Survival and 95% Confidence Intervals

Probability of surviving the next 5 years given the cohort  
has already survived 0, 1, or 3 years  
1998-2013 by stage at diagnosis



Source: SEER 18 areas (San Francisco, Connecticut, Detroit, Hawaii, Iowa, New Mexico, Seattle, Utah, Atlanta, San Jose-Monterey, Los Angeles, Alaska Native Registry, Rural Georgia, California excluding SF/SJM/LA, Kentucky, Louisiana, New Jersey and Georgia excluding ATL/RG). California excluding SF/SJM/LA, Kentucky, Louisiana, New Jersey and Georgia excluding ATL/RG contribute cases for diagnosis years 2000 and later. The remaining 13 SEER Areas contribute cases for the entire time period. Percent surviving is not shown if based on less than 25 cases. Confidence intervals are not shown if length of the confidence interval is greater than 5 times the standard error.