

Table 14.1  
Cancer of the Liver and Intrahepatic Bile Duct (Invasive)

Trends in SEER Incidence<sup>ab</sup> and U.S. Mortality<sup>c</sup> Using the Joinpoint Regression Program,  
1975-2017 With up to Five Joinpoints, 2000-2017 With up to Three Joinpoints,  
Both Sexes by Race/Ethnicity

	JP Trend 1		JP Trend 2		JP Trend 3		JP Trend 4		JP Trend 5		JP Trend 6		AAPC <sup>d</sup>	
	Years	APC	Years	APC	Years	APC	Years	APC	Years	APC	Years	APC	2008-17	2013-17
<u>SEER 9 Delay-Adjusted Incidence<sup>a</sup>, 1975-2017</u>														
All Races	1975-84	1.3*	1984-98	4.8*	1998-01	0.6	2001-11	4.3*	2011-17	0.9			2.0*	0.9
White	1975-87	1.6*	1987-98	5.4*	1998-01	-0.8	2001-11	4.9*	2011-17	1.7*			2.7*	1.7*
Black	1975-02	2.9*	2002-09	6.2*	2009-17	0.4							1.0	0.4
<u>SEER 21 Delay-Adjusted Incidence<sup>b</sup>, 2000-2017</u>														
All Races	2000-02	1.9	2002-07	4.8*	2007-15	2.5*	2015-17	-1.4					1.6*	0.5
White	2000-02	0.6	2002-06	5.6*	2006-14	3.4*	2014-17	0.0					2.2*	0.9
White NH <sup>ef</sup>	2000-14	3.8*	2014-17	0.1									2.5*	1.0
Black	2000-12	4.2*	2012-17	-0.5									1.5*	-0.5
Black NH <sup>ef</sup>	2000-09	5.0*	2009-17	1.0									1.4*	1.0
API <sup>e</sup>	2000-07	0.9	2007-17	-1.9*									-1.9*	-1.9*
AI/AN <sup>eg</sup>	2000-17	3.4*											3.4*	3.4*
Hispanic <sup>f</sup>	2000-14	2.6*	2014-17	-2.2									1.0	-1.0
<u>U.S. Cancer Mortality<sup>c</sup>, 1975-2017</u>														
All Races	1975-80	0.2	1980-87	2.0*	1987-95	3.8*	1995-07	1.9*	2007-13	3.2*	2013-17	0.6	2.0*	0.6
White	1975-78	-1.2	1978-87	1.6*	1987-96	3.9*	1996-00	0.5	2000-13	2.8*	2013-17	1.4*	2.2*	1.4*
Black	1975-88	0.8*	1988-95	3.2*	1995-00	0.3	2000-13	2.5*	2013-17	0.1			1.4*	0.1
<u>U.S. Cancer Mortality<sup>c</sup>, 2000-2017</u>														
All Races	2000-04	2.7*	2004-07	1.6	2007-13	3.1*	2013-17	0.7*					2.0*	0.7*
White	2000-08	2.4*	2008-13	3.3*	2013-17	1.1*							2.3*	1.1*
White NH <sup>ef</sup>	2000-08	2.3*	2008-12	3.6*	2012-17	1.3*							2.3*	1.3*
Black	2000-13	2.5*	2013-17	0.1									1.4*	0.1
Black NH <sup>ef</sup>	2000-13	2.6*	2013-17	0.1									1.5*	0.1
API <sup>e</sup>	2000-17	-1.2*											-1.2*	-1.2*
AI/AN <sup>eg</sup>	2000-17	1.8*											1.8*	1.8*
Hispanic <sup>f</sup>	2000-17	1.4*											1.4*	1.4*

Joinpoint Regression Program Version 4.8, April 2020, National Cancer Institute. (<https://surveillance.cancer.gov/joinpoint/>).

The APC is the Annual Percent Change based on rates age-adjusted to the 2000 US Std Population (19 age groups - Census P25-1130).

<sup>a</sup> Trends are from the SEER 9 areas (San Francisco, Connecticut, Detroit, Hawaii, Iowa, New Mexico, Seattle, Utah, and Atlanta).

<sup>b</sup> Trends are from the SEER 21 areas (SEER 9 areas, Los Angeles, Alaska Native Registry, Rural Georgia, California excluding SF/SJM/LA, Kentucky, Louisiana, New Jersey, Georgia excluding ATL/RG, Idaho, New York and Massachusetts).

<sup>c</sup> Trends are from US Mortality Files, National Center for Health Statistics, Centers for Disease Control and Prevention.

<sup>d</sup> The AAPC is the Average Annual Percent Change and is based on the APCs calculated by Joinpoint.

<sup>e</sup> API - Asian/Pacific Islander, AI/AN - American Indian/Alaska Native, NH - Non-Hispanic

<sup>f</sup> Hispanic and Non-Hispanic are not mutually exclusive from whites, blacks, Asian/Pacific Islanders, and American Indians/Alaska Natives. Incidence data for Hispanics and Non-Hispanics are based on NHIA and exclude cases from the Alaska Native Registry.

<sup>g</sup> Data for American Indian/Alaska Native are based on the Purchased/Referred Care Delivery Area (PRCDA) counties.

\* The APC/AAPC is significantly different from zero ( $p < .05$ ).

- Joinpoint regression line analysis could not be performed on data series.

Table 14.2  
Cancer of the Liver and Intrahepatic Bile Duct (Invasive)

Trends in SEER Incidence<sup>ab</sup> and U.S. Mortality<sup>c</sup> Using the Joinpoint Regression Program,  
1975-2017 With up to Five Joinpoints, 2000-2017 With up to Three Joinpoints,  
Males by Race/Ethnicity

	JP Trend 1		JP Trend 2		JP Trend 3		JP Trend 4		JP Trend 5		JP Trend 6		AAPC <sup>d</sup>	
	Years	APC	Years	APC	Years	APC	Years	APC	Years	APC	Years	APC	2008-17	2013-17
<u>SEER 9 Delay-Adjusted Incidence<sup>a</sup>, 1975-2017</u>														
All Races	1975-84	2.2*	1984-11	3.9*	2011-17	0.7							1.7*	0.7
White	1975-87	1.8*	1987-98	5.4*	1998-01	-0.7	2001-11	5.0*	2011-17	1.0			2.3*	1.0
Black	1975-02	3.1*	2002-09	6.6*	2009-17	0.0							0.8	0.0
<u>SEER 21 Delay-Adjusted Incidence<sup>b</sup>, 2000-2017</u>														
All Races	2000-08	4.3*	2008-15	2.1*	2015-17	-1.3							1.3*	0.4
White	2000-02	0.3	2002-06	6.3*	2006-14	3.0*	2014-17	-0.3					1.9*	0.5
White NH <sup>ef</sup>	2000-02	-1.0	2002-05	7.0	2005-14	3.3*	2014-17	-0.1					2.1*	0.7
Black	2000-09	5.0*	2009-17	0.9									1.4*	0.9
Black NH <sup>ef</sup>	2000-09	4.9*	2009-17	1.0									1.4*	1.0
API <sup>e</sup>	2000-17	-0.9*											-0.9*	-0.9*
AI/AN <sup>eg</sup>	2000-17	3.8*											3.8*	3.8*
Hispanic <sup>f</sup>	2000-10	3.5*	2010-17	-0.2									0.6	-0.2
<u>U.S. Cancer Mortality<sup>c</sup>, 1975-2017</u>														
All Races	1975-85	1.5*	1985-96	3.8*	1996-99	0.3	1999-13	2.7*	2013-17	0.6			1.7*	0.6
White	1975-85	1.4*	1985-95	3.9*	1995-06	2.0*	2006-12	3.4*	2012-17	1.1*			2.1*	1.1*
Black	1975-01	1.6*	2001-12	3.0*	2012-17	-0.2							1.2*	-0.2
<u>U.S. Cancer Mortality<sup>c</sup>, 2000-2017</u>														
All Races	2000-13	2.7*	2013-17	0.6									1.7*	0.6
White	2000-07	2.3*	2007-12	3.5*	2012-17	1.1*							2.1*	1.1*
White NH <sup>ef</sup>	2000-07	2.2*	2007-12	3.5*	2012-17	1.0*							2.1*	1.0*
Black	2000-12	2.9*	2012-17	-0.1									1.2*	-0.1
Black NH <sup>ef</sup>	2000-12	3.0*	2012-17	-0.2									1.2*	-0.2
API <sup>e</sup>	2000-03	0.5	2003-06	-3.3	2006-13	0.2	2013-17	-3.4*					-1.4*	-3.4*
AI/AN <sup>eg</sup>	2000-17	2.3*											2.3*	2.3*
Hispanic <sup>f</sup>	2000-17	1.3*											1.3*	1.3*

Joinpoint Regression Program Version 4.8, April 2020, National Cancer Institute. (<https://surveillance.cancer.gov/joinpoint/>).

The APC is the Annual Percent Change based on rates age-adjusted to the 2000 US Std Population (19 age groups - Census P25-1130).

<sup>a</sup> Trends are from the SEER 9 areas (San Francisco, Connecticut, Detroit, Hawaii, Iowa, New Mexico, Seattle, Utah, and Atlanta).

<sup>b</sup> Trends are from the SEER 21 areas (SEER 9 areas, Los Angeles, Alaska Native Registry, Rural Georgia, California excluding SF/SJM/LA, Kentucky, Louisiana, New Jersey, Georgia excluding ATL/RG, Idaho, New York and Massachusetts).

<sup>c</sup> Trends are from US Mortality Files, National Center for Health Statistics, Centers for Disease Control and Prevention.

<sup>d</sup> The AAPC is the Average Annual Percent Change and is based on the APCs calculated by Joinpoint.

<sup>e</sup> API - Asian/Pacific Islander, AI/AN - American Indian/Alaska Native, NH - Non-Hispanic

<sup>f</sup> Hispanic and Non-Hispanic are not mutually exclusive from whites, blacks, Asian/Pacific Islanders, and American Indians/Alaska Natives. Incidence data for Hispanics and Non-Hispanics are based on NHIA and exclude cases from the Alaska Native Registry.

<sup>g</sup> Data for American Indian/Alaska Native are based on the Purchased/Referred Care Delivery Area (PRCDA) counties.

\* The APC/AAPC is significantly different from zero ( $p < .05$ ).

- Joinpoint regression line analysis could not be performed on data series.

Table 14.3  
Cancer of the Liver and Intrahepatic Bile Duct (Invasive)

Trends in SEER Incidence<sup>ab</sup> and U.S. Mortality<sup>c</sup> Using the Joinpoint Regression Program,  
1975-2017 With up to Five Joinpoints, 2000-2017 With up to Three Joinpoints,  
Females by Race/Ethnicity

	JP Trend 1		JP Trend 2		JP Trend 3		JP Trend 4		JP Trend 5		JP Trend 6		AAPC <sup>d</sup>	
	Years	APC	Years	APC	Years	APC	Years	APC	Years	APC	Years	APC	2008-17	2013-17
<u>SEER 9 Delay-Adjusted Incidence<sup>a</sup>, 1975-2017</u>														
All Races	1975-83	0.6	1983-96	4.2*	1996-17	2.8*							2.8*	2.8*
White	1975-85	0.8	1985-99	4.0*	1999-02	-1.9	2002-17	3.9*					3.9*	3.9*
Black	1975-17	2.8*											2.8*	2.8*
<u>SEER 21 Delay-Adjusted Incidence<sup>b</sup>, 2000-2017</u>														
All Races	2000-14	3.2*	2014-17	0.3									2.2*	1.0
White	2000-17	3.3*											3.3*	3.3*
White NH <sup>ef</sup>	2000-17	3.1*											3.1*	3.1*
Black	2000-13	3.9*	2013-17	-1.6									1.4	-1.6
Black NH <sup>ef</sup>	2000-13	3.8*	2013-17	-1.8									1.3	-1.8
API <sup>e</sup>	2000-17	-1.1*											-1.1*	-1.1*
AI/AN <sup>eg</sup>	2000-17	2.6*											2.6*	2.6*
Hispanic <sup>f</sup>	2000-17	2.3*											2.3*	2.3*
<u>U.S. Cancer Mortality<sup>c</sup>, 1975-2017</u>														
All Races	1975-84	0.2	1984-95	3.1*	1995-08	1.2*	2008-13	3.3*	2013-17	1.3*			2.4*	1.3*
White	1975-87	0.6*	1987-96	3.5*	1996-01	-0.3	2001-17	2.3*					2.3*	2.3*
Black	1975-17	1.5*											1.5*	1.5*
<u>U.S. Cancer Mortality<sup>c</sup>, 2000-2017</u>														
All Races	2000-04	2.4*	2004-08	0.7	2008-13	3.3*	2013-17	1.3*					2.4*	1.3*
White	2000-05	2.4*	2005-08	0.7	2008-13	3.4*	2013-17	1.7*					2.6*	1.7*
White NH <sup>ef</sup>	2000-17	2.2*											2.2*	2.2*
Black	2000-17	1.7*											1.7*	1.7*
Black NH <sup>ef</sup>	2000-17	1.8*											1.8*	1.8*
API <sup>e</sup>	2000-17	-1.4*											-1.4*	-1.4*
AI/AN <sup>eg</sup>	2000-17	0.8											0.8	0.8
Hispanic <sup>f</sup>	2000-17	1.2*											1.2*	1.2*

Joinpoint Regression Program Version 4.8, April 2020, National Cancer Institute. (<https://surveillance.cancer.gov/joinpoint/>).

The APC is the Annual Percent Change based on rates age-adjusted to the 2000 US Std Population (19 age groups - Census P25-1130).

<sup>a</sup> Trends are from the SEER 9 areas (San Francisco, Connecticut, Detroit, Hawaii, Iowa, New Mexico, Seattle, Utah, and Atlanta).

<sup>b</sup> Trends are from the SEER 21 areas (SEER 9 areas, Los Angeles, Alaska Native Registry, Rural Georgia, California excluding SF/SJM/LA, Kentucky, Louisiana, New Jersey, Georgia excluding ATL/RG, Idaho, New York and Massachusetts).

<sup>c</sup> Trends are from US Mortality Files, National Center for Health Statistics, Centers for Disease Control and Prevention.

<sup>d</sup> The AAPC is the Average Annual Percent Change and is based on the APCs calculated by Joinpoint.

<sup>e</sup> API - Asian/Pacific Islander, AI/AN - American Indian/Alaska Native, NH - Non-Hispanic

<sup>f</sup> Hispanic and Non-Hispanic are not mutually exclusive from whites, blacks, Asian/Pacific Islanders, and American Indians/Alaska Natives. Incidence data for Hispanics and Non-Hispanics are based on NHIA and exclude cases from the Alaska Native Registry.

<sup>g</sup> Data for American Indian/Alaska Native are based on the Purchased/Referred Care Delivery Area (PRCDA) counties.

\* The APC/AAPC is significantly different from zero (p<.05).

- Joinpoint regression line analysis could not be performed on data series.

Table 14.4  
Cancer of the Liver and Intrahepatic Bile Duct (Invasive)  
Delay-adjusted SEER Incidence<sup>a</sup> Rates by Year, Race and Sex

Year of Diagnosis:	All Races			Whites			Blacks		
	Total	Males	Females	Total	Males	Females	Total	Males	Females
1975-1979	2.67	4.05	1.64	2.23	3.31	1.45	4.08	6.32	2.29
1980	2.63	3.94	1.67	2.26	3.28	1.56	3.62	5.01	2.47
1981	2.93	4.65	1.66	2.49	3.88	1.51	4.59	7.09	2.53
1982	2.94	4.37	1.88	2.40	3.48	1.64	3.85	5.40	2.63
1983	2.91	4.68	1.58	2.38	3.74	1.41	4.11	6.30	2.33
1984	2.86	4.27	1.87	2.32	3.41	1.61	3.34	5.26	1.91
1985	3.16	5.09	1.73	2.60	4.15	1.51	3.91	7.51	1.27
1986	3.20	4.78	2.02	2.61	3.89	1.70	5.03	7.56	3.20
1987	3.39	4.84	2.21	2.66	3.64	1.87	5.46	7.69	3.73
1988	3.39	5.45	1.82	2.71	4.25	1.59	4.84	8.86	1.82
1989	3.60	5.58	2.17	2.86	4.28	1.89	5.28	9.07	2.60
1990	3.94	6.04	2.30	3.06	4.66	1.86	6.50	10.61	3.47
1991	4.33	6.68	2.58	3.53	5.55	2.12	5.95	9.24	3.48
1992	4.00	6.09	2.39	3.19	4.83	1.94	5.63	8.42	3.43
1993	4.51	7.16	2.48	3.70	5.91	2.07	6.19	10.12	3.09
1994	4.45	6.99	2.48	3.60	5.60	2.09	5.05	9.52	1.86
1995	4.55	6.80	2.81	3.57	5.37	2.24	6.10	8.58	4.04
1996	5.42	8.29	3.14	4.41	6.76	2.63	6.72	10.96	3.55
1997	5.37	8.05	3.17	4.39	6.56	2.61	7.47	11.37	4.52
1998	5.48	8.34	3.14	4.54	6.95	2.57	6.51	9.64	4.06
1999	5.84	8.87	3.35	4.75	7.22	2.73	7.78	12.32	4.39
2000	5.63	8.51	3.23	4.69	7.05	2.73	7.00	11.73	3.52
2001	5.61	8.69	3.14	4.35	6.60	2.55	7.89	13.79	3.40
2002	5.76	8.76	3.25	4.64	7.05	2.59	7.40	11.95	3.89
2003	6.16	9.46	3.33	5.00	7.73	2.66	7.77	12.52	3.99
2004	6.46	10.11	3.35	5.17	8.04	2.68	9.46	15.89	4.53
2005	6.86	10.45	3.76	5.52	8.58	2.89	9.43	14.98	4.89
2006	7.20	11.09	3.81	5.86	9.20	2.93	9.78	15.27	5.33
2007	7.46	11.64	3.83	6.02	9.45	3.00	10.11	17.55	4.50
2008	7.66	11.77	4.13	6.39	9.73	3.46	11.01	19.22	4.88
2009	8.07	12.55	4.17	6.61	10.25	3.37	11.89	19.53	5.83
2010	8.20	12.55	4.41	6.77	10.38	3.57	11.92	19.56	6.03
2011	8.63	13.28	4.56	7.25	11.12	3.80	11.75	19.79	5.35
2012	8.68	13.49	4.49	7.40	11.59	3.66	12.23	20.61	5.80
2013	8.78	13.45	4.68	7.54	11.44	4.01	11.95	19.65	5.92
2014	8.91	13.52	4.83	7.70	11.75	4.02	11.63	19.40	5.76
2015	9.23	14.13	4.98	7.89	11.90	4.30	12.47	20.62	6.29
2016	9.08	13.65	5.05	7.85	11.79	4.29	12.39	19.17	7.15
2017	9.03	13.69	4.99	7.98	11.89	4.47	11.83	20.03	5.78

Reference: [Cancer Incidence Rates Adjusted for Reporting Delay](#).

Individual rates for diagnosis years 1975-1979 available in web browser version of [Cancer Statistics Review](#).

SEER 9 areas (San Francisco, Connecticut, Detroit, Hawaii, Iowa, New Mexico, Seattle, Utah, and Atlanta).

Rates are per 100,000 and are age-adjusted to the 2000 US Std Population (19 age groups - Census P25-1130).

Delay-adjusted rate is not shown for observed rates based on less than 16 cases for the time interval.

<sup>a</sup>

-

Table 14.5  
Cancer of the Liver and Intrahepatic Bile Duct (Invasive)  
Age-adjusted SEER Incidence<sup>a</sup> Rates by Year, Race and Sex

Year of Diagnosis:	All Races			Whites			Blacks		
	Total	Males	Females	Total	Males	Females	Total	Males	Females
1975-2017	5.87	9.09	3.21	4.79	7.41	2.63	8.51	13.93	4.33
1975-1979	2.67	4.05	1.64	2.23	3.31	1.45	4.08	6.32	2.29
1980	2.63	3.94	1.67	2.26	3.28	1.56	3.62	5.01	2.47
1981	2.93	4.65	1.66	2.49	3.88	1.51	4.59	7.09	2.53
1982	2.94	4.37	1.88	2.40	3.48	1.64	3.85	5.40	2.63
1983	2.91	4.68	1.58	2.38	3.74	1.41	4.11	6.30	2.33
1984	2.86	4.27	1.87	2.32	3.41	1.61	3.34	5.26	1.91
1985	3.16	5.09	1.73	2.60	4.15	1.51	3.91	7.51	-
1986	3.20	4.78	2.02	2.61	3.89	1.70	5.03	7.56	3.20
1987	3.39	4.84	2.21	2.66	3.64	1.87	5.46	7.69	3.73
1988	3.39	5.45	1.82	2.71	4.25	1.59	4.84	8.86	-
1989	3.60	5.58	2.17	2.86	4.28	1.89	5.28	9.07	2.60
1990	3.94	6.04	2.30	3.06	4.66	1.86	6.50	10.61	3.47
1991	4.33	6.68	2.58	3.53	5.55	2.12	5.95	9.24	3.48
1992	4.00	6.09	2.39	3.19	4.83	1.94	5.63	8.42	3.43
1993	4.51	7.16	2.48	3.70	5.91	2.07	6.19	10.12	3.09
1994	4.45	6.99	2.48	3.60	5.60	2.09	5.05	9.52	1.86
1995	4.55	6.80	2.81	3.57	5.37	2.24	6.10	8.58	4.04
1996	5.42	8.29	3.14	4.41	6.76	2.63	6.72	10.96	3.55
1997	5.37	8.05	3.17	4.39	6.56	2.61	7.47	11.37	4.52
1998	5.48	8.34	3.14	4.54	6.95	2.57	6.51	9.64	4.06
1999	5.84	8.87	3.35	4.75	7.22	2.73	7.78	12.32	4.39
2000	5.63	8.51	3.23	4.69	7.05	2.73	7.00	11.73	3.52
2001	5.61	8.69	3.14	4.35	6.60	2.55	7.89	13.79	3.40
2002	5.76	8.76	3.25	4.64	7.05	2.59	7.40	11.95	3.89
2003	6.16	9.46	3.33	5.00	7.73	2.66	7.77	12.52	3.99
2004	6.46	10.11	3.35	5.17	8.04	2.68	9.46	15.89	4.53
2005	6.86	10.45	3.76	5.52	8.58	2.89	9.43	14.98	4.89
2006	7.20	11.09	3.81	5.86	9.20	2.93	9.78	15.27	5.33
2007	7.46	11.64	3.83	6.02	9.45	3.00	10.11	17.55	4.50
2008	7.66	11.77	4.13	6.39	9.73	3.46	11.01	19.22	4.88
2009	8.06	12.54	4.16	6.60	10.24	3.37	11.87	19.50	5.82
2010	8.18	12.52	4.40	6.76	10.36	3.56	11.89	19.51	6.01
2011	8.60	13.24	4.54	7.22	11.08	3.79	11.71	19.72	5.33
2012	8.65	13.43	4.47	7.37	11.54	3.65	12.17	20.51	5.77
2013	8.74	13.38	4.65	7.50	11.38	3.99	11.88	19.53	5.89
2014	8.86	13.44	4.80	7.65	11.67	4.00	11.55	19.27	5.72
2015	9.14	13.99	4.93	7.80	11.76	4.25	12.33	20.38	6.22
2016	8.92	13.42	4.96	7.71	11.58	4.20	12.15	18.79	7.01
2017	8.66	13.13	4.78	7.61	11.34	4.27	11.29	19.11	5.52

<sup>a</sup> Individual rates for diagnosis years 1975-1979 available in web browser version of [Cancer Statistics Review](#).  
SEER 9 areas (San Francisco, Connecticut, Detroit, Hawaii, Iowa, New Mexico, Seattle, Utah, and Atlanta).  
Rates are per 100,000 and are age-adjusted to the 2000 US Std Population (19 age groups - Census P25-1130).  
- Statistic not shown. Rate based on less than 16 cases for the time interval.

Table 14.6  
Cancer of the Liver and Intrahepatic Bile Duct (Invasive)

Age-adjusted U.S. Death<sup>a</sup> Rates by Year, Race and Sex

Year of Death:	All Races			Whites			Blacks		
	Total	Males	Females	Total	Males	Females	Total	Males	Females
1975-2017	4.73	6.96	2.96	4.33	6.32	2.76	6.58	10.28	3.84
1975-1979	2.78	3.85	1.99	2.57	3.49	1.91	4.45	6.79	2.68
1980	2.78	3.88	2.00	2.56	3.51	1.91	4.49	6.78	2.78
1981	2.87	4.11	1.99	2.67	3.76	1.91	4.40	6.67	2.73
1982	2.94	4.20	2.05	2.69	3.79	1.93	4.69	7.16	2.93
1983	2.92	4.20	2.00	2.63	3.72	1.87	4.80	7.27	3.00
1984	3.02	4.35	2.07	2.74	3.85	1.98	4.82	7.93	2.65
1985	3.11	4.40	2.19	2.85	3.94	2.08	4.57	7.18	2.74
1986	3.15	4.53	2.15	2.88	4.08	2.03	4.72	7.26	2.90
1987	3.20	4.56	2.20	2.92	4.14	2.04	4.76	6.90	3.23
1988	3.30	4.82	2.21	3.02	4.38	2.08	4.76	7.24	3.03
1989	3.44	5.02	2.29	3.13	4.51	2.15	5.10	8.00	3.09
1990	3.61	5.27	2.43	3.27	4.74	2.25	5.29	7.81	3.59
1991	3.69	5.32	2.51	3.35	4.80	2.32	5.29	7.97	3.48
1992	3.91	5.71	2.59	3.56	5.17	2.40	5.45	8.50	3.32
1993	4.04	5.82	2.74	3.71	5.32	2.56	5.49	8.10	3.59
1994	4.13	6.02	2.73	3.77	5.42	2.55	5.72	8.90	3.53
1995	4.36	6.31	2.91	3.97	5.71	2.69	6.21	9.30	4.11
1996	4.44	6.46	2.91	4.08	5.87	2.73	5.90	9.07	3.68
1997	4.50	6.53	2.97	4.11	5.91	2.75	6.02	8.89	3.92
1998	4.59	6.74	2.92	4.19	6.08	2.73	6.38	10.13	3.70
1999	4.52	6.50	2.95	4.15	5.95	2.73	5.95	8.76	3.82
2000	4.64	6.80	2.94	4.22	6.15	2.71	6.08	9.54	3.58
2001	4.72	6.94	2.98	4.33	6.37	2.73	6.25	9.12	4.08
2002	4.88	7.18	3.03	4.49	6.53	2.84	6.33	9.96	3.65
2003	5.02	7.39	3.12	4.58	6.73	2.85	6.65	10.30	4.03
2004	5.13	7.42	3.23	4.68	6.73	2.98	6.92	10.67	4.11
2005	5.27	7.78	3.21	4.84	7.09	2.99	6.97	11.18	3.79
2006	5.30	7.72	3.29	4.88	7.04	3.09	6.96	10.92	3.91
2007	5.37	7.91	3.26	4.98	7.23	3.09	7.01	11.32	3.81
2008	5.57	8.34	3.26	5.15	7.63	3.05	7.35	11.92	3.94
2009	5.78	8.58	3.43	5.34	7.86	3.21	7.76	12.17	4.33
2010	5.91	8.74	3.54	5.47	8.00	3.32	7.73	12.28	4.26
2011	6.13	9.05	3.64	5.68	8.34	3.39	8.11	12.77	4.54
2012	6.34	9.37	3.77	5.91	8.65	3.54	8.27	13.26	4.46
2013	6.47	9.55	3.85	6.04	8.80	3.64	8.39	13.46	4.55
2014	6.49	9.49	3.93	6.05	8.79	3.68	8.39	13.06	4.79
2015	6.60	9.66	3.99	6.21	8.96	3.81	8.36	13.37	4.53
2016	6.67	9.70	4.08	6.28	9.06	3.85	8.52	13.01	5.11
2017	6.65	9.70	4.06	6.29	9.08	3.87	8.42	13.18	4.81

<sup>a</sup> Individual rates for years of death 1975-1979 available in web browser version of [Cancer Statistics Review](#).  
US Mortality Files, National Center for Health Statistics, Centers for Disease Control and Prevention.  
Rates are per 100,000 and are age-adjusted to the 2000 US Std Population (19 age groups - Census P25-1130).  
- Statistic not shown. Rate based on less than 16 cases for the time interval.

Table 14.7  
Cancer of the Liver and Intrahepatic Bile Duct (Invasive)  
SEER Incidence<sup>a</sup> and U.S. Death<sup>b</sup> Rates, Age-Adjusted and Age-Specific Rates, by Race and Sex

	All Races			Whites			Blacks		
	Total	Males	Females	Total	Males	Females	Total	Males	Females
<u>SEER Incidence</u>									
<u>Age at Diagnosis</u>									
Age-Adjusted Rates, 2013-2017									
All ages	9.0	13.8	4.8	8.1	12.4	4.4	10.7	17.7	5.4
Under 65	4.6	7.2	2.1	4.1	6.4	1.9	6.1	10.0	2.8
65 and over	39.3	58.7	23.9	35.9	53.3	21.9	42.8	71.3	23.0
All ages (WHO world std) <sup>c</sup>	7.0	10.8	3.6	6.3	9.6	3.3	8.8	14.6	4.2
Age-Specific Rates, 2013-2017									
<1	1.5	1.8	1.3	1.5	1.7	1.2	1.4	-	-
1-4	0.6	0.8	0.5	0.7	0.8	0.5	0.4	-	-
5-9	0.1	0.1	0.1	0.1	-	-	-	-	-
10-14	0.1	0.2	-	0.1	0.2	-	-	-	-
15-19	0.2	0.1	0.2	0.2	0.2	0.2	-	-	-
20-24	0.2	0.2	0.2	0.2	0.2	0.2	-	-	-
25-29	0.3	0.4	0.2	0.3	0.4	0.2	0.4	0.5	-
30-34	0.5	0.7	0.4	0.4	0.4	0.4	0.8	1.4	-
35-39	1.0	1.2	0.7	0.7	0.7	0.7	1.4	2.0	0.8
40-44	1.8	2.5	1.2	1.4	1.8	1.0	2.1	2.8	1.5
45-49	4.2	6.4	2.1	3.7	5.5	1.9	3.8	5.6	2.2
50-54	11.0	17.3	4.9	10.3	16.2	4.6	11.1	17.0	6.0
55-59	24.4	39.7	9.8	22.4	36.2	9.1	31.6	52.0	14.1
60-64	37.2	60.9	15.5	32.9	53.6	13.5	61.2	106.4	24.6
65-69	39.6	63.0	19.0	34.9	54.5	17.0	63.3	113.6	25.0
70-74	37.3	55.8	21.7	34.0	50.3	20.0	41.3	69.6	21.3
75-79	42.1	59.9	28.2	39.5	56.5	26.0	33.7	51.0	22.5
80-84	42.3	62.0	28.6	39.6	58.1	26.3	33.2	53.1	22.0
85+	34.4	49.4	26.5	31.6	45.6	24.1	28.0	37.4	24.1
<u>U.S. Mortality</u>									
<u>Age at Death</u>									
Age-Adjusted Rates, 2013-2017									
All ages	6.6	9.6	4.0	6.2	9.0	3.8	8.4	13.2	4.8
Under 65	2.8	4.4	1.4	2.6	3.9	1.3	4.2	6.8	2.0
65 and over	32.6	46.1	22.0	31.1	43.6	21.1	37.9	58.0	24.1
All ages (WHO world std) <sup>c</sup>	4.3	6.5	2.4	4.0	5.9	2.3	6.0	9.7	3.1
Age-Specific Rates, 2013-2017									
<1	-	-	-	-	-	-	-	-	-
1-4	0.1	0.1	0.1	0.1	0.2	0.1	-	-	-
5-9	0.0	0.1	0.0	0.0	0.0	-	-	-	-
10-14	0.0	-	0.0	0.0	-	0.0	-	-	-
15-19	0.0	0.1	0.0	0.0	0.1	0.0	-	-	-
20-24	0.1	0.1	0.1	0.1	0.1	0.1	0.1	-	-
25-29	0.1	0.2	0.1	0.1	0.2	0.1	0.2	0.3	-
30-34	0.3	0.4	0.2	0.2	0.3	0.2	0.5	0.7	0.3
35-39	0.6	0.7	0.4	0.4	0.5	0.4	0.9	1.4	0.4
40-44	1.1	1.4	0.8	0.9	1.1	0.7	1.4	1.9	0.9
45-49	2.6	3.7	1.5	2.3	3.3	1.3	2.7	3.8	1.8
50-54	6.8	10.3	3.4	6.5	9.8	3.2	8.4	12.5	4.8
55-59	15.4	24.5	6.9	14.3	22.6	6.4	22.4	36.4	10.3
60-64	23.7	38.0	10.5	21.3	33.8	9.6	40.6	70.4	16.2
65-69	25.6	39.1	13.4	23.3	35.1	12.6	41.9	72.1	18.4
70-74	28.0	39.9	17.9	26.6	37.4	17.1	34.2	53.5	20.2
75-79	35.5	48.2	25.4	34.5	47.0	24.3	35.2	48.1	26.7
80-84	41.7	56.9	31.0	40.3	54.9	29.6	40.4	58.3	30.3
85+	42.0	57.9	33.5	40.8	56.2	32.5	38.5	52.5	32.6

<sup>a</sup> SEER 21 areas. Rates are per 100,000 and are age-adjusted to the 2000 US Std Population (19 age groups - Census P25-1130), unless noted.

<sup>b</sup> US Mortality Files, National Center for Health Statistics, Centers for Disease Control and Prevention.

<sup>c</sup> Rates are per 100,000 and are age-adjusted to the 2000 US Std Population (19 age groups - Census P25-1130), unless noted.

- Rates are per 100,000 and are age-adjusted to the world (WHO 2000-2025) standard million.

- Statistic not shown. Rate based on less than 16 cases for the time interval.

Table 14.8  
Cancer of the Liver and Intrahepatic Bile Duct (Invasive)

5-Year Relative and Period Survival (Percent) by Race, Sex, Diagnosis Year, Stage and Age

	All Races			Whites			Blacks		
	Total	Males	Females	Total	Males	Females	Total	Males	Females
5-Year Relative Survival (Percent)									
Year of Diagnosis:									
1960-1963 <sup>a</sup>	-	-	-	-	-	-	-	-	-
1970-1973 <sup>a</sup>	-	-	-	-	-	-	-	-	-
1975-1977 <sup>b</sup>	3.4	1.8	6.3	3.4	2.0	5.8	1.8	0.0	5.6
1978-1980 <sup>b</sup>	3.3	2.2	5.4	3.3	2.2	4.8	3.6	3.0	5.0
1981-1983 <sup>b</sup>	3.7	2.9	5.2	4.0	3.0	5.5	2.8	2.1	4.7
1984-1986 <sup>b</sup>	5.6	3.6	9.5	5.7	3.7	9.1	4.4	2.1	9.1
1987-1989 <sup>b</sup>	4.9	3.2	8.0	5.7	3.4	9.4	2.7	1.6	4.9
1990-1992 <sup>b</sup>	5.6	5.0	7.0	6.3	5.1	8.3	2.6	2.0	3.6
1993-1995 <sup>b</sup>	5.5	5.3	6.0	5.2	4.9	5.7	4.0	2.8	7.3
1996-1998 <sup>b</sup>	8.6	8.3	9.1	8.4	7.6	10.2	4.6	5.9	2.0
1999-2001 <sup>b</sup>	11.3	10.9	12.1	10.3	9.6	11.7	7.6	6.8	9.5
2002-2004 <sup>b</sup>	14.8	14.9	14.7	14.1	14.6	13.0	9.6	7.3	15.8
2005-2009 <sup>b</sup>	17.6	17.7	17.3	16.8	17.1	16.2	12.7	12.4	13.6
2010-2016 <sup>b</sup>	20.8 <sup>f</sup>	20.8 <sup>f</sup>	20.9 <sup>f</sup>	19.9 <sup>f</sup>	20.2 <sup>f</sup>	19.0 <sup>f</sup>	18.7 <sup>f</sup>	18.3	19.7 <sup>f</sup>
5-Year Period Survival (Percent) <sup>cd</sup>									
2016	20.6	20.3	21.1	19.5	19.5	19.8	18.4	17.8	19.9
Stage Distribution (%) 2010-2016 <sup>ce</sup>									
All Stages									
Number of cases	51,112	37,202	13,910	35,853	26,237	9,616	6,689	4,952	1,737
Percent	100%	100%	100%	100%	100%	100%	100%	100%	100%
Localized	44	44	44	44	45	43	42	41	44
Regional	27	27	24	26	27	25	29	30	27
Distant	18	18	19	18	17	19	19	20	18
Unstaged/Unknown	11	10	12	11	11	13	9	9	10
5-Year Relative Survival (Percent), 2010-2016 <sup>c</sup>									
Age at Diagnosis:									
Ages <45	41.6	39.0	46.2	49.3	47.7	51.9	26.4	24.2	30.1 <sup>g</sup>
Ages 45-54	21.3	19.7	27.5	20.5	18.9	26.7	17.3	15.1	23.6
Ages 55-64	21.9	21.2	24.7	21.4	21.0	23.1	17.6	15.8	24.2
Ages 65-74	18.5	17.9	19.8	16.7	16.3	17.4	17.1	17.2	16.9
Ages 75+	9.8	9.7	10.0	8.1	8.0	8.2	8.5	7.1	9.5
Ages <65	23.0	21.7	27.7	22.7	21.6	27.0	18.1	16.1	24.7
Ages 65+	14.9	14.9	14.7	13.1	13.3	12.6	14.8	15.1	14.0
Stage <sup>e</sup> :									
All Stages	19.6	19.3	20.5	18.7	18.6	18.9	17.1	15.9	20.5
Localized	34.2	33.8	35.1	32.5	32.4	32.9	30.0	28.1	34.9
Regional	12.0	11.6	13.4	12.0	11.6	13.3	10.5	9.9	12.2
Distant	2.5	2.1	3.5	2.7	2.2	3.7	2.3	2.0	3.4
Unstaged/Unknown	7.0	6.4	8.1	5.7	5.4	6.4	9.3	8.9	10.3

<sup>a</sup> Based on End Results data from a series of hospital registries and one population-based registry.

<sup>b</sup> SEER 9 areas (San Francisco, Connecticut, Detroit, Hawaii, Iowa, New Mexico, Seattle, Utah, Atlanta).

Based on follow-up of patients into 2017. [Expected survival rates](#) are derived from the U.S. Annual Life Tables.

<sup>c</sup> SEER 18 areas (San Francisco, Connecticut, Detroit, Hawaii, Iowa, New Mexico, Seattle, Utah, Atlanta, San Jose-Monterey, Los Angeles, Alaska Native Registry, Rural Georgia, California excluding SF/SJM/LA, Kentucky, Louisiana, New Jersey and Georgia excluding ATL/RG). Expected survival rates are derived from life tables by socio-economic status, geography and race developed by the SEER program.

Based on follow-up of patients into 2017.

<sup>d</sup> Period survival provides a 2016 estimate of survival by piecing together the most recent conditional survival estimates from several cohorts. It is computed here using three year calendar blocks (2010-2012: 0-1 year survival), (2009-2011: 1-2 year survival), (2008-2010: 2-3 year survival), (2007-2009: 3-4 year survival), (2006-2008: 4-5 years survival).

<sup>e</sup> Stage at diagnosis is classified using SEER Summary Stage 2000. Stage distribution percentages may not sum to 100 due to rounding.

<sup>f</sup> The difference between 1975-1977 and 2010-2016 is statistically significant (p<.05).

<sup>g</sup> The standard error is between 5 and 10 percentage points.

<sup>h</sup> The standard error is greater than 10 percentage points.

- Statistic could not be calculated due to fewer than 25 cases during the time period.



Table 14.9  
Cancer of the Liver and Intrahepatic Bile Duct (Invasive)

SEER<sup>a</sup> Relative Survival (Percent)  
By Year of Diagnosis

All Races, Males and Females

Year of Diagnosis

	1975- 1979	1980- 1984	1985- 1989	1990- 1994	1995	1996	1997	1998	1999	2000	2001	2002	2003	2004	2005	2006	2007	2008	2009	2010	2011	2012	2013	2014	2015	2016
Survival Time																										
1-year	13.7	14.9	17.8	21.4	23.4	24.7	27.7	26.8	27.7	29.0	31.2	32.9	36.3	38.3	39.1	39.2	42.1	44.8	44.6	48.4	47.0	46.5	49.0	49.1	52.5	52.5
2-year	6.6	8.3	9.8	12.4	13.7	15.0	17.4	17.0	17.8	19.9	21.7	22.3	24.8	26.3	27.0	28.8	30.3	32.5	31.2	36.1	33.5	32.4	35.3	36.8	39.3	
3-year	4.8	6.1	7.3	8.7	9.5	10.9	12.5	13.1	14.3	15.4	16.0	17.6	20.5	20.7	21.2	23.4	24.0	25.8	24.3	27.9	26.3	24.8	27.3	29.5		
4-year	4.1	4.6	6.3	6.9	6.9	9.2	10.1	10.7	12.0	12.4	13.8	15.5	17.1	17.6	18.4	19.9	21.0	21.6	19.8	22.6	22.7	20.5	23.2			
5-year	3.4	3.8	5.3	5.6	5.7	8.2	8.2	9.4	10.1	11.7	12.0	14.1	15.6	14.7	16.8	17.1	18.5	18.7	17.0	19.4	20.3	18.0				
6-year	3.0	3.6	5.0	5.0	4.9	7.1	7.4	8.4	9.1	10.8	11.0	12.0	15.0	13.3	15.4	15.6	16.5	16.9	15.3	17.3	18.6					
7-year	2.8	3.1	4.8	4.6	4.4	6.7	6.7	7.0	8.3	10.0	9.9	11.4	13.3	12.7	14.1	14.6	14.6	15.6	14.5	15.8						
8-year	2.7	2.9	4.4	4.4	4.2	6.5	5.9	6.6	7.8	9.6	8.9	10.4	12.3	12.1	13.5	13.7	13.7	14.3	13.1							
9-year	2.5	2.9	4.2	4.3	4.1	6.0	5.7	5.6	7.5	9.4	8.5	10.1	11.7	11.6	12.4	13.0	13.0	13.6								
10-year	2.5	2.9	4.0	4.2	3.6	5.7	5.5	5.5	7.4	9.0	7.9	9.3	11.2	10.8	11.7	12.6	12.0									
11-year	2.5	2.7	4.0	4.0	3.2	5.6	5.5	4.8	6.9	8.7	7.8	8.7	10.9	10.3	11.6	12.1										
12-year	2.5	2.7	3.8	3.9	3.1	5.3	5.5	4.6	6.8	8.6	7.6	8.1	10.6	9.9	11.6											
13-year	2.3	2.5	3.8	3.8	3.1	5.1	5.5	4.5	6.6	8.4	7.5	7.6	10.2	9.7												
14-year	2.3	2.5	3.7	3.7	3.1	4.9	5.5	4.5	6.1	8.4	7.2	7.4	10.0													
15-year	2.2	2.5	3.7	3.7	3.0	4.1	5.1	4.5	5.9	8.3	6.8	7.2														
16-year	2.2	2.4	3.7	3.6	3.0	4.0	4.8	4.5	5.4	8.2	6.6															
17-year	2.1	2.4	3.7	3.5	2.9	4.0	4.6	4.4	5.3	8.1																
18-year	2.0	2.3	3.7	3.4	2.8	4.0	4.4	4.1	5.3																	
19-year	2.0	2.2	3.7	3.3	2.8	4.0	4.4	4.1																		
20-year	2.0	2.2	3.7	3.3	2.8	3.9	4.4																			

<sup>a</sup> Based on the SEER 9 areas (San Francisco, Connecticut, Detroit, Hawaii, Iowa, New Mexico, Seattle, Utah, and Atlanta). [Expected survival rates](#) are derived from the U.S. Annual Life Tables.

Table 14.10  
Cancer of the Liver and Intrahepatic Bile Duct (Invasive)

SEER<sup>a</sup> Relative Survival (Percent)  
By Year of Diagnosis

All Races, Males

Year of Diagnosis

	1975- 1979	1980- 1984	1985- 1989	1990- 1994	1995	1996	1997	1998	1999	2000	2001	2002	2003	2004	2005	2006	2007	2008	2009	2010	2011	2012	2013	2014	2015	2016
Survival Time																										
1-year	11.3	12.8	14.8	20.2	21.9	24.7	26.8	25.4	28.7	28.5	30.7	32.2	35.3	37.5	40.0	39.4	41.3	45.5	45.5	49.2	46.9	46.5	48.5	49.5	52.6	52.5
2-year	4.8	6.5	7.3	11.4	12.2	16.0	16.6	16.2	17.8	19.3	20.6	21.3	24.8	25.6	27.8	29.7	29.8	33.0	31.8	36.8	33.5	32.3	35.0	37.1	39.3	
3-year	3.2	4.9	5.2	8.1	9.0	11.3	12.1	12.1	13.8	15.6	15.3	18.0	20.1	19.9	21.7	23.8	24.2	26.1	24.5	29.0	26.6	24.4	26.8	29.9		
4-year	2.7	3.4	4.5	6.3	6.2	9.4	9.7	10.6	11.4	12.4	12.9	15.8	16.9	17.5	18.6	20.0	20.5	22.0	19.8	23.0	23.0	20.2	22.7			
5-year	2.0	2.8	3.5	5.2	5.0	8.0	8.0	8.9	10.1	11.4	11.1	14.5	15.8	14.4	17.0	17.0	18.2	19.0	17.4	19.9	20.4	17.7				
6-year	1.7	2.6	3.3	4.8	4.3	7.0	7.5	7.7	9.0	10.6	10.2	12.2	15.0	13.0	15.6	15.4	16.1	17.0	15.6	17.4	18.8					
7-year	1.4	2.2	3.3	4.3	3.7	6.6	6.9	6.2	8.3	10.1	9.3	11.3	13.4	12.3	14.1	14.5	14.0	15.9	14.6	16.1						
8-year	1.4	1.9	3.0	4.1	3.5	6.5	5.7	6.1	7.7	10.0	8.1	10.2	12.2	11.7	13.3	13.7	13.2	14.9	12.9							
9-year	1.3	1.9	3.0	3.9	3.4	6.0	5.6	5.3	7.5	9.9	7.6	9.7	11.4	11.3	12.2	12.9	12.7	14.2								
10-year	1.3	1.9	2.9	3.8	2.8	5.6	5.6	5.3	7.4	9.6	7.1	8.7	10.7	10.4	11.7	12.7	11.9									
11-year	1.3	1.8	2.9	3.7	2.3	5.3	5.6	4.4	6.9	9.3	7.1	7.9	10.5	9.8	11.6	12.1										
12-year	1.3	1.7	2.7	3.6	2.1	5.1	5.6	4.3	6.9	9.2	7.0	7.4	10.1	9.6	11.6											
13-year	1.1	1.4	2.7	3.5	2.1	5.0	5.6	4.3	6.8	8.8	6.8	7.0	9.8	9.4												
14-year	1.1	1.4	2.6	3.5	2.1	4.6	5.5	4.2	6.3	8.8	6.2	6.6	9.5													
15-year	1.0	1.4	2.6	3.5	2.1	4.0	5.2	4.2	6.3	8.8	5.6	6.5														
16-year	1.0	1.4	2.6	3.4	2.1	4.0	4.6	4.1	5.9	8.6	5.5															
17-year	1.0	1.4	2.6	3.4	2.1	4.0	4.3	4.0	5.8	8.5																
18-year	1.0	1.4	2.6	3.3	2.1	4.0	3.9	3.7	5.7																	
19-year	1.0	1.4	2.6	3.2	2.1	4.0	3.9	3.7																		
20-year	1.0	1.4	2.6	3.2	2.1	4.0	3.9																			

<sup>a</sup> Based on the SEER 9 areas (San Francisco, Connecticut, Detroit, Hawaii, Iowa, New Mexico, Seattle, Utah, and Atlanta). [Expected survival rates](#) are derived from the U.S. Annual Life Tables.

Table 14.11  
Cancer of the Liver and Intrahepatic Bile Duct (Invasive)

SEER<sup>a</sup> Relative Survival (Percent)  
By Year of Diagnosis

All Races, Females

Year of Diagnosis

	1975- 1979	1980- 1984	1985- 1989	1990- 1994	1995	1996	1997	1998	1999	2000	2001	2002	2003	2004	2005	2006	2007	2008	2009	2010	2011	2012	2013	2014	2015	2016
Survival Time																										
1-year	18.4	19.0	23.7	24.0	26.3	24.6	29.6	29.7	25.6	30.1	32.4	34.5	38.6	40.7	37.0	38.7	44.5	43.0	42.3	46.4	47.3	46.6	50.4	48.2	52.4	52.4
2-year	10.0	11.7	14.5	14.3	16.5	12.9	18.9	18.7	17.9	21.2	24.5	24.7	24.7	28.0	25.1	26.5	32.0	31.4	29.5	34.0	33.5	32.8	36.3	35.7	39.3	
3-year	7.8	8.3	11.4	10.1	10.4	9.9	13.2	15.2	15.3	15.1	17.8	16.7	21.5	22.9	20.2	22.5	23.6	24.9	23.7	25.0	25.6	25.9	28.7	28.3		
4-year	6.6	6.8	9.9	8.1	8.3	8.7	11.0	10.8	13.3	12.3	15.9	14.9	17.7	18.1	17.8	19.6	22.3	20.7	19.7	21.3	21.9	21.4	24.4			
5-year	6.1	5.7	8.8	6.3	7.0	8.5	8.4	10.2	10.3	12.1	14.0	13.3	15.1	15.5	16.2	17.3	19.4	17.9	15.8	18.0	20.0	19.2				
6-year	5.4	5.3	8.4	5.6	6.0	7.3	7.3	9.9	9.2	11.1	12.7	11.8	14.9	14.3	14.8	15.9	17.8	16.9	14.6	17.1	18.0					
7-year	5.4	4.9	7.7	5.1	5.7	6.7	6.2	8.7	8.2	9.7	11.3	11.6	13.1	13.9	13.9	14.9	16.1	15.0	14.2	14.7						
8-year	5.2	4.7	7.0	5.1	5.4	6.4	6.2	7.5	8.0	9.0	10.8	10.8	12.6	13.1	13.9	13.7	15.1	13.0	13.6							
9-year	4.9	4.6	6.6	5.0	5.4	5.9	5.8	6.2	7.4	8.1	10.6	10.8	12.1	12.3	12.8	13.1	13.6	12.2								
10-year	4.9	4.5	6.2	5.0	5.1	5.9	5.2	5.9	7.4	7.9	9.5	10.5	12.1	12.1	11.6	12.6	12.2									
11-year	4.9	4.5	6.0	4.5	4.8	5.9	5.2	5.6	6.9	7.4	9.2	10.3	11.9	11.7	11.5	12.2										
12-year	4.5	4.5	6.0	4.4	4.8	5.7	5.2	5.3	6.4	7.4	9.0	9.8	11.7	10.6	11.1											
13-year	4.4	4.4	5.8	4.4	4.8	5.4	5.2	5.0	6.0	7.4	9.0	9.0	11.2	10.4												
14-year	4.4	4.4	5.8	4.2	4.8	5.4	5.2	5.0	5.4	7.4	9.0	9.0	11.2													
15-year	4.4	4.3	5.8	4.0	4.5	4.3	5.0	5.0	5.0	7.3	9.0	8.6														
16-year	4.3	4.3	5.8	4.0	4.5	3.9	5.0	5.0	4.3	7.3	8.9															
17-year	4.0	4.1	5.8	3.8	4.1	3.9	5.0	5.0	4.3	7.2																
18-year	3.8	3.9	5.7	3.6	3.7	3.9	5.0	5.0	4.3																	
19-year	3.8	3.6	5.7	3.6	3.7	3.5	5.0	5.0																		
20-year	3.8	3.6	5.6	3.4	3.7	3.5	5.0																			

<sup>a</sup> Based on the SEER 9 areas (San Francisco, Connecticut, Detroit, Hawaii, Iowa, New Mexico, Seattle, Utah, and Atlanta). [Expected survival rates](#) are derived from the U.S. Annual Life Tables.

Table 14.12  
Cancer of the Liver and Intrahepatic Bile Duct (Invasive)

Risk of Being Diagnosed With Cancer in 10, 20 and 30 Years,  
Lifetime Risk of Being Diagnosed with Cancer Given Alive and Cancer-Free at Current Age, and  
Lifetime Risk of Dying from Cancer Given Alive at Current Age  
Both Sexes, 2015-2017 By Race/Ethnicity

Race/ Ethnicity	Current Age	Risk of Being Diagnosed with Cancer				Risk of Dying from Cancer	Race/ Ethnicity	Current Age	Risk of Being Diagnosed with Cancer				Risk of Dying from Cancer
		+10 yrs	+20 yrs	+30 yrs	Ever				+10 yrs	+20 yrs	+30 yrs	Ever	
All Races	0	0.01	0.01	0.01	1.03	0.78	Asian/ Pacific Islander	0	0.01	0.01	0.01	1.79	1.43
	10	0.00	0.00	0.01	1.03	0.79		10	0.00	0.00	0.02	1.80	1.45
	20	0.00	0.01	0.04	1.04	0.79		20	0.00	0.02	0.08	1.80	1.45
	30	0.01	0.04	0.20	1.04	0.80		30	0.02	0.07	0.26	1.80	1.45
	40	0.03	0.19	0.52	1.05	0.81		40	0.06	0.25	0.66	1.80	1.45
	50	0.16	0.50	0.80	1.04	0.81		50	0.19	0.61	1.14	1.76	1.43
	60	0.36	0.68	0.88	0.93	0.75		60	0.42	0.97	1.43	1.61	1.35
	70	0.36	0.59	-	0.64	0.58		70	0.58	1.08	-	1.27	1.18
80	0.30	-	-	0.37	0.40	80	0.58	-	-	0.81	0.89		
White	0	0.01	0.01	0.01	0.93	0.74	American Indian/ Alaska Native <sup>a</sup>	0	0.01	0.01	0.01	1.62	1.13
	10	0.00	0.00	0.01	0.94	0.75		10	0.00	0.00	0.01	1.63	1.14
	20	0.00	0.01	0.04	0.94	0.75		20	0.00	0.01	0.07	1.63	1.15
	30	0.01	0.03	0.18	0.94	0.76		30	0.01	0.07	0.35	1.66	1.17
	40	0.03	0.17	0.47	0.95	0.76		40	0.06	0.34	0.96	1.69	1.20
	50	0.15	0.45	0.73	0.95	0.77		50	0.30	0.94	1.38	1.70	1.24
	60	0.32	0.61	0.80	0.84	0.71		60	0.69	1.17	1.43	1.51	1.17
	70	0.33	0.54	-	0.59	0.56		70	0.55	0.84	-	0.94	0.97
80	0.28	-	-	0.34	0.38	80	0.39	-	-	0.52	0.63		
Black	0	0.00	0.01	0.01	1.10	0.87	Hispanic <sup>b</sup>	0	0.01	0.01	0.01	1.76	1.31
	10	0.00	0.00	0.02	1.11	0.89		10	0.00	0.00	0.01	1.76	1.33
	20	0.00	0.01	0.04	1.12	0.89		20	0.00	0.01	0.05	1.77	1.33
	30	0.01	0.04	0.23	1.13	0.90		30	0.01	0.05	0.28	1.78	1.34
	40	0.03	0.22	0.71	1.14	0.92		40	0.04	0.27	0.76	1.79	1.35
	50	0.20	0.71	0.98	1.15	0.93		50	0.24	0.74	1.26	1.78	1.35
	60	0.56	0.85	0.99	1.03	0.86		60	0.52	1.07	1.47	1.62	1.27
	70	0.35	0.52	-	0.57	0.58		70	0.60	1.04	-	1.20	1.05
80	0.23	-	-	0.30	0.38	80	0.54	-	-	0.74	0.75		

Devcan 6.7.8, April 2020, National Cancer Institute (<https://surveillance.cancer.gov/devcan/>).

Source: Incidence data are from the SEER 21 areas (San Francisco, Connecticut, Detroit, Hawaii, Iowa, New Mexico, Seattle, Utah, Atlanta, San Jose-Monterey, Los Angeles, Alaska Native Registry, Rural Georgia, California excluding SF/SJM/LA, Kentucky, Louisiana, New Jersey, Georgia excluding ATL/RG, Idaho, New York and Massachusetts). Mortality data are from the NCHS public use data file for the total US.

<sup>a</sup> Underlying incidence and mortality data for American Indian/Alaska Native are based on the PRCDA (Purchased/Referred Care Delivery Areas) counties.

<sup>b</sup> Hispanic is not mutually exclusive from whites, blacks, Asian/Pacific Islanders, and American Indians/Alaska Natives. Underlying incidence data for Hispanics are based on NHIA and exclude cases from the Alaska Native Registry.

- Statistic could not be calculated.

A percent of 0.00 represents a value that is below 0.005.

Table 14.13  
Cancer of the Liver and Intrahepatic Bile Duct (Invasive)

Risk of Being Diagnosed With Cancer in 10, 20 and 30 Years,  
Lifetime Risk of Being Diagnosed with Cancer Given Alive and Cancer-Free at Current Age, and  
Lifetime Risk of Dying from Cancer Given Alive at Current Age  
Males, 2015-2017 By Race/Ethnicity

Race/ Ethnicity	Current Age	Risk of Being Diagnosed with Cancer				Risk of Dying from Cancer	Race/ Ethnicity	Current Age	Risk of Being Diagnosed with Cancer				Risk of Dying from Cancer
		+10 yrs	+20 yrs	+30 yrs	Ever				+10 yrs	+20 yrs	+30 yrs	Ever	
All Races	0	0.01	0.01	0.01	1.46	1.03	Asian/ Pacific Islander	0	0.01	0.01	0.02	2.54	1.93
	10	0.00	0.01	0.02	1.46	1.04		10	0.00	0.01	0.03	2.55	1.95
	20	0.00	0.01	0.06	1.47	1.04		20	0.01	0.03	0.12	2.56	1.95
	30	0.01	0.06	0.30	1.48	1.06		30	0.02	0.12	0.45	2.56	1.96
	40	0.05	0.30	0.81	1.50	1.07		40	0.10	0.43	1.08	2.56	1.96
	50	0.26	0.79	1.21	1.50	1.08		50	0.34	1.00	1.73	2.50	1.93
	60	0.57	1.02	1.28	1.33	0.99		60	0.68	1.45	2.02	2.24	1.80
	70	0.52	0.82	-	0.88	0.74		70	0.83	1.46	-	1.70	1.52
80	0.42	-	-	0.50	0.50	80	0.78	-	-	1.07	1.15		
White	0	0.01	0.01	0.01	1.31	0.97	American Indian/ Alaska Native <sup>a</sup>	0	0.01	0.01	0.01	2.28	1.37
	10	0.00	0.00	0.01	1.31	0.98		10	0.00	0.00	0.02	2.29	1.39
	20	0.00	0.01	0.05	1.32	0.98		20	0.00	0.02	0.10	2.31	1.40
	30	0.01	0.04	0.27	1.33	0.99		30	0.02	0.10	0.50	2.35	1.43
	40	0.04	0.27	0.72	1.35	1.01		40	0.08	0.50	1.41	2.42	1.49
	50	0.24	0.70	1.09	1.35	1.02		50	0.44	1.40	2.02	2.46	1.55
	60	0.50	0.91	1.15	1.19	0.93		60	1.06	1.74	2.08	2.22	1.44
	70	0.47	0.75	-	0.80	0.70		70	0.80	1.20	-	1.36	1.13
80	0.39	-	-	0.46	0.48	80	0.56	-	-	0.79	0.75		
Black	0	0.00	0.01	0.01	1.64	1.21	Hispanic <sup>b</sup>	0	0.01	0.01	0.01	2.36	1.66
	10	0.00	0.01	0.02	1.67	1.23		10	0.00	0.00	0.01	2.37	1.67
	20	0.00	0.02	0.06	1.68	1.24		20	0.00	0.01	0.07	2.38	1.68
	30	0.02	0.06	0.36	1.71	1.27		30	0.01	0.07	0.43	2.40	1.70
	40	0.04	0.35	1.16	1.73	1.29		40	0.06	0.43	1.18	2.43	1.72
	50	0.32	1.17	1.59	1.77	1.32		50	0.38	1.15	1.85	2.43	1.72
	60	0.94	1.41	1.58	1.61	1.23		60	0.81	1.56	2.04	2.16	1.60
	70	0.58	0.80	-	0.83	0.77		70	0.84	1.38	-	1.53	1.27
80	0.34	-	-	0.38	0.48	80	0.71	-	-	0.90	0.88		

Devcan 6.7.8, April 2020, National Cancer Institute (<https://surveillance.cancer.gov/devcan/>).

Source: Incidence data are from the SEER 21 areas (San Francisco, Connecticut, Detroit, Hawaii, Iowa, New Mexico, Seattle, Utah, Atlanta, San Jose-Monterey, Los Angeles, Alaska Native Registry, Rural Georgia, California excluding SF/SJM/LA, Kentucky, Louisiana, New Jersey, Georgia excluding ATL/RG, Idaho, New York and Massachusetts). Mortality data are from the NCHS public use data file for the total US.

<sup>a</sup> Underlying incidence and mortality data for American Indian/Alaska Native are based on the PRCDA (Purchased/Referred Care Delivery Areas) counties.

<sup>b</sup> Hispanic is not mutually exclusive from whites, blacks, Asian/Pacific Islanders, and American Indians/Alaska Natives. Underlying incidence data for Hispanics are based on NHIA and exclude cases from the Alaska Native Registry.

- Statistic could not be calculated.

A percent of 0.00 represents a value that is below 0.005.

Table 14.14

## Cancer of the Liver and Intrahepatic Bile Duct (Invasive)

Risk of Being Diagnosed With Cancer in 10, 20 and 30 Years,  
Lifetime Risk of Being Diagnosed with Cancer Given Alive and Cancer-Free at Current Age, and  
Lifetime Risk of Dying from Cancer Given Alive at Current Age  
Females, 2015-2017 By Race/Ethnicity

Race/ Ethnicity	Current Age	Risk of Being Diagnosed with Cancer				Risk of Dying from Cancer	Race/ Ethnicity	Current Age	Risk of Being Diagnosed with Cancer				Risk of Dying from Cancer
		+10 yrs	+20 yrs	+30 yrs	Ever				+10 yrs	+20 yrs	+30 yrs	Ever	
All Races	0	0.00	0.01	0.01	0.62	0.54	Asian/ Pacific Islander	0	0.00	0.01	0.01	1.15	1.02
	10	0.00	0.00	0.01	0.62	0.55		10	0.00	0.00	0.01	1.16	1.03
	20	0.00	0.01	0.03	0.62	0.55		20	0.00	0.01	0.03	1.16	1.03
	30	0.01	0.02	0.09	0.62	0.55		30	0.01	0.03	0.10	1.16	1.03
	40	0.02	0.08	0.24	0.62	0.55		40	0.02	0.09	0.29	1.15	1.03
	50	0.07	0.23	0.42	0.62	0.55		50	0.07	0.27	0.63	1.14	1.03
	60	0.17	0.37	0.53	0.57	0.52		60	0.21	0.57	0.94	1.09	1.00
	70	0.22	0.39	-	0.45	0.45		70	0.38	0.77	-	0.93	0.92
80	0.22	-	-	0.28	0.33	80	0.45	-	-	0.63	0.72		
White	0	0.01	0.01	0.01	0.57	0.52	American Indian/ Alaska Native <sup>a</sup>	0	0.01	0.01	0.01	1.00	0.89
	10	0.00	0.00	0.01	0.57	0.52		10	0.00	0.00	0.01	0.99	0.90
	20	0.00	0.01	0.02	0.57	0.52		20	0.00	0.01	0.04	1.00	0.90
	30	0.01	0.02	0.08	0.57	0.52		30	0.00	0.04	0.19	1.01	0.91
	40	0.02	0.08	0.22	0.57	0.53		40	0.03	0.19	0.52	1.02	0.93
	50	0.06	0.20	0.38	0.56	0.53		50	0.17	0.51	0.79	1.02	0.95
	60	0.15	0.33	0.48	0.52	0.50		60	0.36	0.66	0.86	0.90	0.94
	70	0.20	0.36	-	0.41	0.43		70	0.34	0.55	-	0.60	0.84
80	0.20	-	-	0.26	0.31	80	0.27	-	-	0.34	0.54		
Black	0	0.00	0.00	0.01	0.61	0.57	Hispanic <sup>b</sup>	0	0.00	0.01	0.01	1.21	1.00
	10	0.00	0.00	0.01	0.62	0.58		10	0.00	0.00	0.01	1.21	1.01
	20	0.00	0.01	0.03	0.62	0.58		20	0.00	0.01	0.03	1.21	1.01
	30	0.01	0.02	0.11	0.62	0.59		30	0.01	0.02	0.12	1.21	1.01
	40	0.02	0.11	0.32	0.62	0.59		40	0.02	0.11	0.37	1.21	1.02
	50	0.09	0.31	0.47	0.62	0.59		50	0.09	0.36	0.73	1.21	1.02
	60	0.24	0.40	0.52	0.57	0.56		60	0.27	0.66	0.99	1.15	0.99
	70	0.19	0.32	-	0.38	0.45		70	0.42	0.78	-	0.95	0.88
80	0.17	-	-	0.25	0.33	80	0.43	-	-	0.63	0.66		

Devcan 6.7.8, April 2020, National Cancer Institute (<https://surveillance.cancer.gov/devcan/>).

Source: Incidence data are from the SEER 21 areas (San Francisco, Connecticut, Detroit, Hawaii, Iowa, New Mexico, Seattle, Utah, Atlanta, San Jose-Monterey, Los Angeles, Alaska Native Registry, Rural Georgia, California excluding SF/SJM/LA, Kentucky, Louisiana, New Jersey, Georgia excluding ATL/RG, Idaho, New York and Massachusetts). Mortality data are from the NCHS public use data file for the total US.

<sup>a</sup> Underlying incidence and mortality data for American Indian/Alaska Native are based on the PRCA (Purchased/Referred Care Delivery Areas) counties.

<sup>b</sup> Hispanic is not mutually exclusive from whites, blacks, Asian/Pacific Islanders, and American Indians/Alaska Natives. Underlying incidence data for Hispanics are based on NHIA and exclude cases from the Alaska Native Registry.

- Statistic could not be calculated.

A percent of 0.00 represents a value that is below 0.005.

Table 14.15  
Cancer of the Liver and Intrahepatic Bile Duct (Invasive)

SEER Incidence and U.S. Mortality  
Age-Adjusted Rates and Trends<sup>a</sup>  
By Race/Ethnicity and Sex

SEER Incidence	SEER 21 Areas <sup>b</sup>			SEER 21 Areas <sup>b</sup>			SEER 9 Areas <sup>b</sup>		
	Rate 2013-2017			Trend 2008-2017 <sup>c</sup>			Trend 2008-2017 <sup>d</sup>		
	Rate per 100,000 persons			AAPC (%)			AAPC (%)		
Race/Ethnicity	Total	Males	Females	Total	Males	Females	Total	Males	Females
All Races	9.0	13.8	4.8	1.1*	0.8	1.7*	1.7*	1.4*	2.7*
White	8.1	12.4	4.4	1.7*	1.2*	2.3*	2.4*	1.9*	3.7*
White Hispanic <sup>e</sup>	14.2	21.1	8.3	0.2	-0.5	0.8	-	-	-
White Non-Hispanic <sup>e</sup>	7.2	11.0	3.8	2.0*	1.3*	2.9*	-	-	-
Black	10.7	17.7	5.4	1.1	0.9	1.0	0.7	0.4	2.8*
Asian/Pacific Islander	12.9	19.9	7.2	-2.3*	-2.1*	-3.0	-	-	-
Amer Ind/Alaska Nat <sup>f</sup>	14.9	21.6	9.0	2.9*	3.3*	2.1*	-	-	-
Hispanic <sup>e</sup>	13.7	20.3	8.1	0.5	0.2	2.1*	-	-	-
<u>U.S. Mortality<sup>g</sup></u>									
Race/Ethnicity	Rate 2013-2017			Trend 2008-2017 <sup>h</sup>					
	Rate per 100,000 persons			AAPC (%)					
	Total	Males	Females	Total	Males	Females			
All Races	6.6	9.6	4.0	2.0*	1.7*	2.4*			
White	6.2	9.0	3.8	2.3*	2.1*	2.6*			
White Hispanic <sup>e</sup>	9.9	14.1	6.4	1.5*	0.9*	1.3*			
White Non-Hispanic <sup>e</sup>	5.8	8.4	3.5	2.3*	2.1*	2.2*			
Black	8.4	13.2	4.8	1.4*	1.2*	1.7*			
Asian/Pacific Islander	9.1	13.5	5.6	-1.2*	-1.4*	-1.4*			
Amer Ind/Alaska Nat									
Total U.S.	7.5	10.4	5.0	1.2*	1.6*	0.5			
PRCDA Counties	10.6	14.8	7.1	1.8*	2.3*	0.8			
Non-PRCDA Counties	4.0	5.7	2.4	1.0	1.2	0.6			
Hispanic <sup>e</sup>	9.3	13.3	6.0	1.4*	1.3*	1.2*			

The AAPC is the Average Annual Percent Change over the time interval. The AAPCs are calculated by the Joinpoint Regression Program Version 4.8, April 2020, National Cancer Institute.

Statistic not shown. Rate based on less than 16 cases for the time interval.

Trend based on less than 10 cases for at least one year within the time interval.

Rates are age-adjusted to the 2000 US Std Population (19 age groups - Census P25-1130). Trends are based on rates age-adjusted to the 2000 US Std Population (19 age groups - Census P25-1130).

The SEER 9 areas are San Francisco, Connecticut, Detroit, Hawaii, Iowa, New Mexico, Seattle, Utah, and Atlanta.

The SEER 21 areas comprise the SEER 9 areas plus San Jose-Monterey, Los Angeles, the Alaska Native Registry, Rural Georgia, California excluding SF/SJM/LA, Kentucky, Louisiana, New Jersey, Georgia excluding ATL/RG, Idaho, New York and Massachusetts.

The 2008-2017 AAPC estimates are based on a Joinpoint analysis with up to 3 Joinpoints over diagnosis years 2000-2017.

The 2008-2017 AAPC estimates are based on a Joinpoint analysis with up to 5 Joinpoints over diagnosis years 1975-2017.

Hispanic and Non-Hispanic are not mutually exclusive from whites, blacks, Asian/Pacific Islanders, and American Indians/Alaska Natives. Incidence data for Hispanics and Non-Hispanics are based on NHIA and exclude cases from the Alaska Native Registry.

Incidence data for American Indian/Alaska Native are based on the Purchased/Referred Care Delivery Area (PRCDA) counties.

US Mortality Files, National Center for Health Statistics, CDC.

The 2008-2017 mortality AAPCs are based on a Joinpoint analysis using years of death 2000-2017.

The APC is significantly different from zero (p<.05).

Table 14.16  
Cancer of the Liver and Intrahepatic Bile Duct (Invasive)

Age-Adjusted SEER Incidence Rates<sup>a</sup>  
By Registry, Race and Sex

	All Races			Whites			Blacks		
	Total	Males	Females	Total	Males	Females	Total	Males	Females
<u>SEER Incidence Rates<sup>a</sup>, 2013-2017</u>									
California	9.87	14.78	5.53	9.14	13.51	5.17	11.03	17.64	5.62
Greater Bay Area	10.58	16.07	5.70	9.18	13.55	5.13	13.83	22.97	6.31
San Francisco-Oakland	10.65	16.41	5.59	9.13	13.66	4.93	13.32	22.88	5.68
San Jose-Monterey	10.44	15.45	5.91	9.28	13.35	5.48	17.37	23.94	10.88
Los Angeles	9.43	13.85	5.69	8.89	12.76	5.49	9.69	14.92	5.71
Greater California	9.82	14.77	5.39	9.24	13.83	5.06	10.93	17.47	5.15
Connecticut	7.88	12.45	3.96	7.39	11.79	3.59	9.97	15.81	5.59
Detroit	8.32	12.79	4.57	7.14	10.97	3.84	12.36	20.25	6.66
Georgia	8.18	12.59	4.47	7.76	11.73	4.25	8.67	14.08	4.60
Atlanta	8.64	13.37	4.82	6.97	10.50	3.92	10.21	16.89	5.49
Rural Georgia	7.43	11.50	4.12	9.25	13.38	-	-	-	-
Greater Georgia	8.04	12.34	4.34	8.07	12.23	4.38	7.67	12.30	4.01
Hawaii	11.21	16.78	6.23	8.64	12.49	4.42	-	-	-
Idaho	7.33	10.90	4.02	6.97	10.41	3.74	-	-	-
Iowa	6.77	9.92	3.93	6.33	9.23	3.73	18.72	29.42	7.64
Kentucky	8.51	12.97	4.66	8.33	12.66	4.55	10.63	16.90	5.54
Louisiana	9.97	16.26	4.50	8.54	13.42	4.18	12.76	22.61	4.94
Massachusetts	8.03	12.95	3.93	7.28	11.72	3.57	10.77	17.62	5.27
New Jersey	7.80	12.27	4.09	7.46	11.62	3.95	8.95	14.92	4.57
New Mexico	10.41	15.87	5.44	9.93	15.20	5.11	8.57	11.23	-
New York	9.09	14.21	4.81	7.93	12.27	4.24	11.05	18.54	5.69
Seattle-Puget Sound	9.81	14.74	5.36	8.38	12.54	4.56	17.72	25.40	9.48
Utah	6.19	8.90	3.72	5.75	8.30	3.42	-	-	-
SEER 9 Areas <sup>b</sup>	8.87	13.49	4.83	7.66	11.56	4.15	11.87	19.46	6.10
SEER 13 Areas <sup>b</sup>	9.08	13.67	5.09	7.99	11.89	4.49	11.40	18.42	6.03
SEER 18 Areas <sup>b</sup>	9.05	13.78	4.93	8.29	12.47	4.54	10.62	17.47	5.27
SEER 21 Areas <sup>b</sup>	8.97	13.75	4.83	8.13	12.35	4.41	10.74	17.74	5.38

<sup>a</sup> Rates are per 100,000 and are age-adjusted to the 2000 US Std Population (19 age groups - Census P25-1130)

<sup>b</sup> The SEER 9 areas are San Francisco, Connecticut, Detroit, Hawaii, Iowa, New Mexico, Seattle, Utah and Atlanta.

The SEER 13 areas comprise the SEER 9 areas plus San Jose-Monterey, Los Angeles, the Alaska Native Registry and Rural Georgia.

The SEER 18 areas comprise the SEER 13 areas plus California excluding SF/SJM/LA, Kentucky, Louisiana, New Jersey and Georgia excluding ATL/RG.

The SEER 21 areas comprise the SEER 18 areas plus Idaho, New York and Massachusetts.

- Statistic not shown. Rate based on less than 16 cases for the time interval.



Table 14.17  
Cancer of the Liver And Intrahepatic Bile Duct (Invasive)

Age-Adjusted SEER Death Rates<sup>a</sup>  
By Registry, Race and Sex

	All Races			Whites			Blacks		
	Total	Males	Females	Total	Males	Females	Total	Males	Females
<u>SEER Death Rates<sup>a</sup>, 2013-2017</u>									
California	7.76	11.13	4.87	7.30	10.30	4.66	8.64	13.01	5.11
Greater Bay Area	7.48	11.12	4.37	6.50	9.46	3.90	10.18	16.41	5.11
San Francisco-Oakland	7.52	11.45	4.22	6.47	9.73	3.64	10.60	17.58	5.10
San Jose-Monterey	7.40	10.47	4.67	6.55	8.98	4.34	7.46	9.49	-
Los Angeles	8.15	11.50	5.42	7.81	10.68	5.38	8.03	11.24	5.59
Greater California	7.68	10.98	4.80	7.34	10.42	4.60	8.54	13.09	4.63
Connecticut	5.66	8.37	3.42	5.40	8.06	3.18	8.01	11.41	5.50
Detroit	6.30	9.12	3.97	5.60	7.95	3.57	8.68	13.55	5.25
Georgia	6.41	9.39	3.96	6.12	8.78	3.83	6.98	10.94	4.11
Atlanta	6.35	9.25	4.07	5.24	7.41	3.50	7.57	11.84	4.57
Rural Georgia	5.58	6.78	4.44	6.52	7.41	-	-	-	-
Greater Georgia	6.51	9.58	3.93	6.45	9.35	3.92	6.72	10.56	3.88
Hawaii	8.36	12.38	4.81	6.64	9.79	3.17	-	-	-
Idaho	5.84	8.15	3.72	5.66	7.97	3.54	-	-	-
Iowa	5.37	7.66	3.37	5.10	7.26	3.22	13.41	19.91	-
Kentucky	6.68	9.67	4.17	6.56	9.46	4.12	8.20	12.18	4.97
Louisiana	8.82	13.54	4.82	7.55	11.38	4.24	11.79	18.80	6.27
Massachusetts	6.52	10.06	3.66	6.23	9.51	3.57	7.94	12.94	4.00
New Jersey	5.84	8.69	3.55	5.72	8.50	3.45	6.87	10.82	4.03
New Mexico	8.01	11.65	4.76	7.90	11.62	4.53	6.71	-	-
New York	6.05	9.17	3.53	5.65	8.43	3.37	6.92	11.46	3.80
Seattle-Puget Sound	6.80	9.86	4.09	6.09	8.77	3.69	10.83	15.02	6.42
Utah	4.81	6.59	3.20	4.47	6.09	2.99	-	-	-
SEER 9 Areas <sup>b</sup>	6.50	9.51	3.94	5.77	8.35	3.51	8.65	13.58	4.99
SEER 13 Areas <sup>b</sup>	6.91	9.98	4.30	6.22	8.84	3.93	8.42	12.83	5.09
SEER 18 Areas <sup>b</sup>	7.03	10.21	4.32	6.54	9.38	4.07	8.42	13.04	4.87
SEER 21 Areas <sup>b</sup>	6.81	9.99	4.13	6.35	9.21	3.90	8.02	12.66	4.55
Total U.S.	6.58	9.63	3.98	6.18	8.95	3.78	8.43	13.24	4.77

<sup>a</sup> US Mortality Files, National Center for Health Statistics, Centers for Disease Control and Prevention. Rates are per 100,000 and are age-adjusted to the 2000 US Std Population (19 age groups - Census P25-1130).

<sup>b</sup> The SEER 9 areas are San Francisco, Connecticut, Detroit, Hawaii, Iowa, New Mexico, Seattle, Utah and Atlanta.

The SEER 13 areas comprise the SEER 9 areas plus San Jose-Monterey, Los Angeles, the Alaska Native Registry and Rural Georgia. The SEER 18 areas comprise the SEER 13 areas plus California excluding SF/SJM/LA, Kentucky, Louisiana, New Jersey and Georgia excluding ATL/RG.

The SEER 21 areas comprise the SEER 18 areas plus Idaho, New York and Massachusetts.

- Statistic not shown. Rate based on less than 16 cases for the time interval.

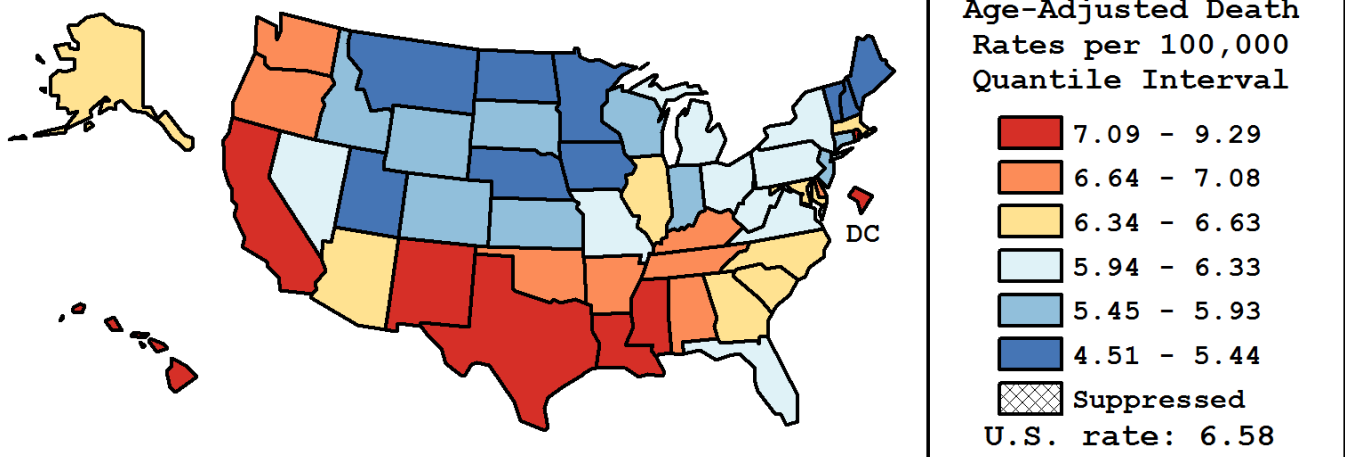
Table 14.18  
Cancer of the Liver and Intrahepatic Bile Duct (Invasive)

Age-Adjusted Cancer Death<sup>a</sup> Rates By State, All Races, 2013-2017

Males and Females

State	Rate	SE	Rank(CI) <sup>d</sup>	PD
TOTAL U.S.	6.58	0.02		
High Five States				
D.C.	9.29	0.53	01(01,06)	41.13 <sup>c</sup>
Louisiana	8.82	0.18	02(01,04)	33.98 <sup>c</sup>
Hawaii	8.36	0.31	03(01,08)	26.98 <sup>c</sup>
Texas	8.21	0.08	04(02,06)	24.67 <sup>c</sup>
New Mexico	8.01	0.25	05(02,09)	21.71 <sup>c</sup>
Low Five States				
Maine	5.12	0.24	47(35,51)	-22.26 <sup>c</sup>
Utah	4.81	0.20	48(42,51)	-26.90 <sup>c</sup>
North Dakota	4.64	0.33	49(38,51)	-29.55 <sup>c</sup>
Vermont	4.56	0.33	50(40,51)	-30.76 <sup>c</sup>
Nebraska	4.51	0.20	51(46,51)	-31.55 <sup>c</sup>

State	Rate	SE	Rank(CI) <sup>d</sup>	PD	State	Rate	SE	Rank(CI) <sup>d</sup>	PD
Alabama	7.08	0.15	09(07,17)	7.50	Montana	5.44	0.29	43(24,50)	-17.35 <sup>c</sup>
Alaska	6.63	0.47	17(05,45)	0.63	Nebraska	4.51	0.20	51(46,51)	-31.55 <sup>c</sup>
Arizona	6.42	0.12	21(13,32)	-2.55	Nevada	6.28	0.20	27(12,39)	-4.60
Arkansas	6.80	0.19	14(08,27)	3.26	New Hampshire	5.33	0.25	46(30,50)	-19.02 <sup>c</sup>
California	7.76	0.06	07(04,08)	17.84 <sup>c</sup>	New Jersey	5.84	0.10	37(29,42)	-11.34
Colorado	5.49	0.14	41(35,47)	-16.61 <sup>c</sup>	New Mexico	8.01	0.25	05(02,09)	21.71 <sup>c</sup>
Connecticut	5.66	0.16	38(29,46)	-14.02	New York	6.05	0.07	31(25,37)	-8.10
Delaware	6.92	0.34	11(05,34)	5.04	North Carolina	6.59	0.11	18(11,27)	0.04
D.C.	9.29	0.53	01(01,06)	41.13 <sup>c</sup>	North Dakota	4.64	0.33	49(38,51)	-29.55 <sup>c</sup>
Florida	6.27	0.07	28(20,32)	-4.82	Ohio	6.06	0.09	30(24,38)	-8.03
Georgia	6.41	0.11	23(13,31)	-2.60	Oklahoma	7.01	0.18	10(08,20)	6.42
Hawaii	8.36	0.31	03(01,08)	26.98 <sup>c</sup>	Oregon	6.73	0.16	15(08,27)	2.19
Idaho	5.84	0.25	36(17,47)	-11.29	Pennsylvania	6.33	0.09	26(17,32)	-3.93
Illinois	6.37	0.09	24(16,31)	-3.28	Rhode Island	7.19	0.33	08(04,27)	9.28
Indiana	5.93	0.12	34(25,42)	-9.99	South Carolina	6.42	0.15	22(12,34)	-2.56
Iowa	5.37	0.17	45(35,49)	-18.39 <sup>c</sup>	South Dakota	5.46	0.33	42(21,51)	-17.11 <sup>c</sup>
Kansas	5.85	0.19	35(22,45)	-11.16	Tennessee	6.91	0.13	12(08,20)	4.99
Kentucky	6.68	0.16	16(09,29)	1.47	Texas	8.21	0.08	04(02,06)	24.67 <sup>c</sup>
Louisiana	8.82	0.18	02(01,04)	33.98 <sup>c</sup>	Utah	4.81	0.20	48(42,51)	-26.90 <sup>c</sup>
Maine	5.12	0.24	47(35,51)	-22.26 <sup>c</sup>	Vermont	4.56	0.33	50(40,51)	-30.76 <sup>c</sup>
Maryland	6.56	0.14	19(11,29)	-0.37	Virginia	6.00	0.11	33(24,40)	-8.92
Massachusetts	6.52	0.13	20(11,30)	-0.97	Washington	6.81	0.13	13(08,22)	3.48
Michigan	6.04	0.10	32(24,39)	-8.21	West Virginia	6.33	0.23	25(10,39)	-3.80
Minnesota	5.39	0.13	44(36,48)	-18.12 <sup>c</sup>	Wisconsin	5.52	0.13	40(34,47)	-16.12 <sup>c</sup>
Mississippi	7.84	0.21	06(03,09)	19.08 <sup>c</sup>	Wyoming	5.59	0.40	39(13,51)	-15.12 <sup>c</sup>
Missouri	6.22	0.13	29(16,37)	-5.46					



<sup>a</sup> US Mortality Files, National Center for Health Statistics, Centers for Disease Control and Prevention. Rates are per 100,000 and are age-adjusted to the 2000 US Std Population (19 age groups - Census P25-1130).

<sup>b</sup> Difference between state rate and total U.S. rate is statistically significant ( $p < .0002$ ).

<sup>c</sup> Absolute percent difference between state rate and total U.S. rate is 15% or more.

<sup>d</sup> Rank of state level death rate and the 95% confidence intervals (low, high) for the rank.

SE Standard error of the rate.

PD Percent difference between state rate and total U.S. rate.

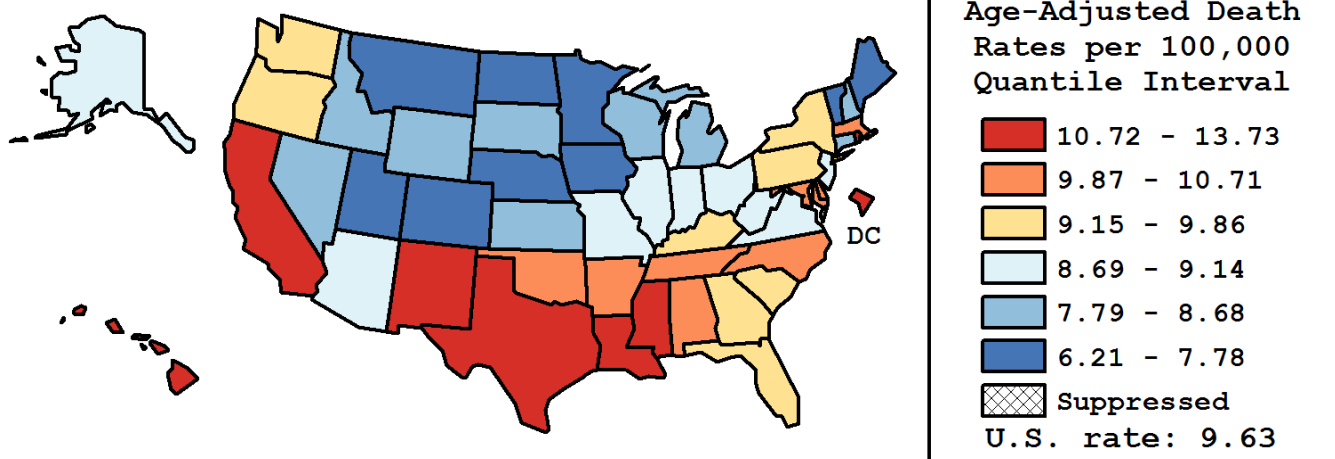
- Statistic not shown. Rate based on less than 16 cases for the time interval.

Table 14.19  
Cancer of the Liver and Intrahepatic Bile Duct (Invasive)  
Age-Adjusted Cancer Death<sup>a</sup> Rates By State, All Races, 2013-2017

Males

State	Rate	SE	Rank(CI) <sup>d</sup>	PD
TOTAL U.S.	9.63	0.03		
High Five States				
D.C.	13.73	0.97	01(01,08)	42.51 <sup>c</sup>
Louisiana	13.54	0.34	02(01,03)	40.54 <sup>c</sup>
Hawaii	12.38	0.55	03(01,09)	28.56 <sup>c</sup>
Texas	11.99	0.14	04(02,07)	24.54 <sup>c</sup>
Mississippi	11.68	0.39	05(02,10)	21.28 <sup>c</sup>
Low Five States				
Montana	7.45	0.48	47(28,51)	-22.63 <sup>c</sup>
Utah	6.59	0.34	48(45,51)	-31.56 <sup>c</sup>
Nebraska	6.51	0.36	49(44,51)	-32.37 <sup>c</sup>
Vermont	6.37	0.58	50(40,51)	-33.82 <sup>c</sup>
North Dakota	6.21	0.58	51(41,51)	-35.50 <sup>c</sup>

State	Rate	SE	Rank(CI) <sup>d</sup>	PD	State	Rate	SE	Rank(CI) <sup>d</sup>	PD
Alabama	10.71	0.29	09(05,17)	11.20	Montana	7.45	0.48	47(28,51)	-22.63 <sup>c</sup>
Alaska	9.12	0.78	26(05,48)	-5.28	Nebraska	6.51	0.36	49(44,51)	-32.37 <sup>c</sup>
Arizona	9.14	0.22	25(17,36)	-5.05	Nevada	8.68	0.34	34(19,44)	-9.93
Arkansas	10.06	0.35	14(07,28)	4.43	New Hampshire	8.46	0.47	37(15,47)	-12.20
California	11.13	0.11	07(05,10)	15.56 <sup>c</sup>	New Jersey	8.69	0.19	33(23,41)	-9.82
Colorado	7.65	0.24	45(37,48)	-20.52 <sup>c</sup>	New Mexico	11.65	0.45	06(02,12)	20.93 <sup>c</sup>
Connecticut	8.37	0.29	38(23,46)	-13.05	New York	9.17	0.13	24(19,33)	-4.74
Delaware	10.17	0.61	12(04,37)	5.59	North Carolina	9.95	0.19	15(09,23)	3.31
D.C.	13.73	0.97	01(01,08)	42.51 <sup>c</sup>	North Dakota	6.21	0.58	51(41,51)	-35.50 <sup>c</sup>
Florida	9.25	0.12	23(18,31)	-3.91	Ohio	8.73	0.16	31(24,40)	-9.40
Georgia	9.39	0.20	22(14,32)	-2.55	Oklahoma	10.25	0.31	11(07,23)	6.45
Hawaii	12.38	0.55	03(01,09)	28.56 <sup>c</sup>	Oregon	9.65	0.28	20(09,31)	0.17
Idaho	8.15	0.43	40(21,48)	-15.43 <sup>c</sup>	Pennsylvania	9.42	0.16	21(15,30)	-2.17
Illinois	8.92	0.17	29(20,38)	-7.36	Rhode Island	10.89	0.61	08(03,27)	13.10
Indiana	8.70	0.22	32(22,42)	-9.69	South Carolina	9.86	0.27	17(09,28)	2.38
Iowa	7.66	0.29	44(35,49)	-20.47 <sup>c</sup>	South Dakota	8.06	0.59	41(16,50)	-16.35 <sup>c</sup>
Kansas	8.32	0.33	39(23,47)	-13.57	Tennessee	10.40	0.24	10(07,19)	8.01
Kentucky	9.67	0.29	19(10,32)	0.40	Texas	11.99	0.14	04(02,07)	24.54 <sup>c</sup>
Louisiana	13.54	0.34	02(01,03)	40.54 <sup>c</sup>	Utah	6.59	0.34	48(45,51)	-31.56 <sup>c</sup>
Maine	7.64	0.43	46(29,50)	-20.65 <sup>c</sup>	Vermont	6.37	0.58	50(40,51)	-33.82 <sup>c</sup>
Maryland	9.93	0.25	16(08,26)	3.13	Virginia	8.86	0.20	30(20,40)	-7.97
Massachusetts	10.06	0.24	13(08,23)	4.50	Washington	9.76	0.23	18(10,28)	1.29
Michigan	8.50	0.17	35(27,42)	-11.73	West Virginia	9.04	0.40	28(11,42)	-6.10
Minnesota	7.78	0.23	43(36,48)	-19.25 <sup>c</sup>	Wisconsin	7.95	0.22	42(34,47)	-17.42 <sup>c</sup>
Mississippi	11.68	0.39	05(02,10)	21.28 <sup>c</sup>	Wyoming	8.50	0.71	36(09,50)	-11.78
Missouri	9.09	0.23	27(16,38)	-5.64					



<sup>a</sup> US Mortality Files, National Center for Health Statistics, Centers for Disease Control and Prevention. Rates are per 100,000 and are age-adjusted to the 2000 US Std Population (19 age groups - Census P25-1130).

<sup>b</sup> Difference between state rate and total U.S. rate is statistically significant ( $p < .0002$ ).

<sup>c</sup> Absolute percent difference between state rate and total U.S. rate is 15% or more.

<sup>d</sup> Rank of state level death rate and the 95% confidence intervals (low, high) for the rank.

SE Standard error of the rate.

PD Percent difference between state rate and total U.S. rate.

- Statistic not shown. Rate based on less than 16 cases for the time interval.

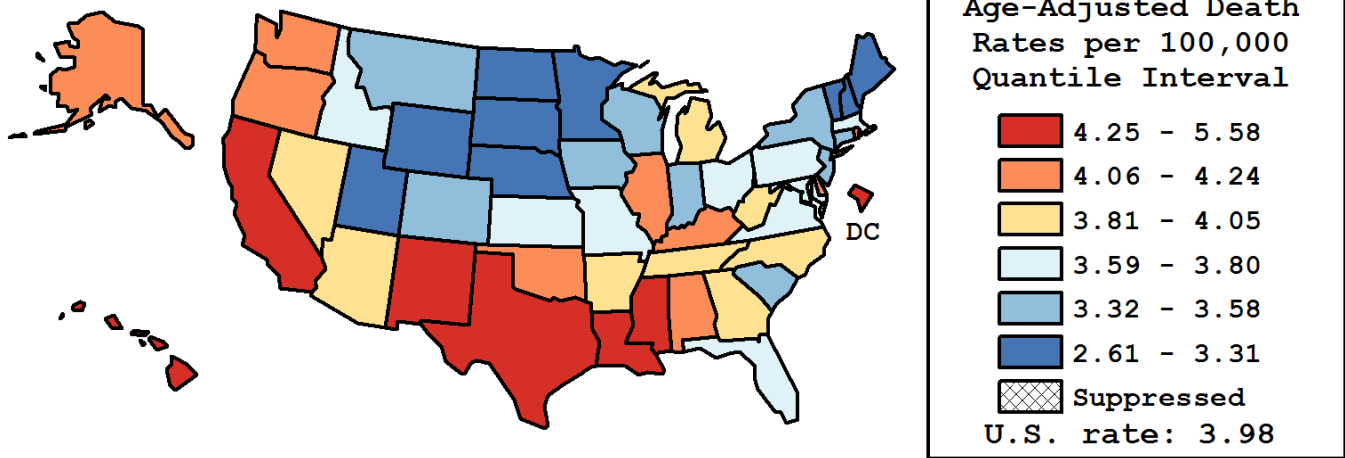
Table 14.20  
Cancer of the Liver and Intrahepatic Bile Duct (Invasive)

Age-Adjusted Cancer Death<sup>a</sup> Rates By State, All Races, 2013-2017

Females

State	Rate	SE	Rank(CI) <sup>d</sup>	PD
TOTAL U.S.	3.98	0.02		
High Five States				
D.C.	5.58	0.56	01(01,17)	40.09 <sup>c</sup>
Texas	4.91	0.08	02(01,08)	23.20 <sup>c</sup>
California	4.87	0.07	03(01,08)	22.26 <sup>c</sup>
Louisiana	4.82	0.19	04(01,11)	21.03 <sup>c</sup>
Hawaii	4.81	0.32	05(01,23)	20.67 <sup>c</sup>
Low Five States				
Maine	2.97	0.24	47(27,51)	-25.55 <sup>c</sup>
Vermont	2.91	0.37	48(16,51)	-26.93 <sup>c</sup>
Wyoming	2.83	0.40	49(17,51)	-28.85 <sup>c</sup>
Nebraska	2.78	0.22	50(38,51)	-30.18 <sup>c</sup>
New Hampshire	2.61	0.25	51(40,51)	-34.38 <sup>c</sup>

State	Rate	SE	Rank(CI) <sup>d</sup>	PD	State	Rate	SE	Rank(CI) <sup>d</sup>	PD
Alabama	4.10	0.16	15(06,33)	2.85	Montana	3.50	0.32	39(07,50)	-12.24
Alaska	4.06	0.53	16(01,50)	1.95	Nebraska	2.78	0.22	50(38,51)	-30.18 <sup>c</sup>
Arizona	3.99	0.13	19(08,36)	0.14	Nevada	4.01	0.22	18(05,43)	0.74
Arkansas	4.05	0.21	17(06,41)	1.66	New Hampshire	2.61	0.25	51(40,51)	-34.38 <sup>c</sup>
California	4.87	0.07	03(01,08)	22.26 <sup>c</sup>	New Jersey	3.55	0.11	36(22,45)	-10.98
Colorado	3.53	0.15	38(16,47)	-11.47	New Mexico	4.76	0.27	06(01,19)	-19.42 <sup>c</sup>
Connecticut	3.42	0.17	41(19,48)	-14.12	New York	3.53	0.07	37(26,44)	-11.45
Delaware	4.17	0.35	12(01,46)	4.60	North Carolina	3.83	0.11	24(12,38)	-3.86
D.C.	5.58	0.56	01(01,17)	40.09 <sup>c</sup>	North Dakota	3.13	0.36	45(11,51)	-21.46 <sup>c</sup>
Florida	3.69	0.07	31(20,40)	-7.42	Ohio	3.80	0.10	25(13,38)	-4.73
Georgia	3.96	0.12	20(09,34)	-0.54	Oklahoma	4.12	0.18	13(06,34)	3.53
Hawaii	4.81	0.32	05(01,23)	20.67 <sup>c</sup>	Oregon	4.12	0.18	14(06,35)	3.32
Idaho	3.72	0.28	30(07,48)	-6.53	Pennsylvania	3.74	0.09	28(16,40)	-6.04
Illinois	4.24	0.10	09(06,21)	6.44	Rhode Island	4.24	0.35	08(01,45)	6.47
Indiana	3.58	0.13	34(17,45)	-10.15	South Carolina	3.57	0.15	35(16,46)	-10.49
Iowa	3.37	0.18	42(21,49)	-15.48 <sup>c</sup>	South Dakota	3.01	0.33	46(15,51)	-24.39 <sup>c</sup>
Kansas	3.73	0.21	29(09,46)	-6.45	Tennessee	3.95	0.14	21(08,36)	-0.79
Kentucky	4.17	0.17	11(06,32)	4.67	Texas	4.91	0.08	02(01,08)	23.20 <sup>c</sup>
Louisiana	4.82	0.19	04(01,11)	21.03 <sup>c</sup>	Utah	3.20	0.22	44(21,51)	-19.67 <sup>c</sup>
Maine	2.97	0.24	47(27,51)	-25.55 <sup>c</sup>	Vermont	2.91	0.37	48(16,51)	-26.93 <sup>c</sup>
Maryland	3.78	0.14	26(11,42)	-5.02	Virginia	3.59	0.12	33(20,45)	-9.97
Massachusetts	3.66	0.13	32(15,44)	-8.16	Washington	4.21	0.14	10(06,26)	5.60
Michigan	3.92	0.11	22(09,34)	-1.53	West Virginia	3.91	0.24	23(06,45)	-1.84
Minnesota	3.31	0.14	43(27,49)	-16.93 <sup>c</sup>	Wisconsin	3.44	0.14	40(22,47)	-13.67
Mississippi	4.69	0.22	07(01,17)	17.80 <sup>c</sup>	Wyoming	2.83	0.40	49(17,51)	-28.85 <sup>c</sup>
Missouri	3.77	0.14	27(11,42)	-5.27					



<sup>a</sup> US Mortality Files, National Center for Health Statistics, Centers for Disease Control and Prevention. Rates are per 100,000 and are age-adjusted to the 2000 US Std Population (19 age groups - Census P25-1130).

<sup>b</sup> Difference between state rate and total U.S. rate is statistically significant ( $p < .0002$ ).

<sup>c</sup> Absolute percent difference between state rate and total U.S. rate is 15% or more.

<sup>d</sup> Rank of state level death rate and the 95% confidence intervals (low, high) for the rank.

SE Standard error of the rate.

PD Percent difference between state rate and total U.S. rate.

- Statistic not shown. Rate based on less than 16 cases for the time interval.

Table 14.21  
Cancer of the Liver and Intrahepatic Bile Duct (Invasive)

Estimated United States Cancer Prevalence Counts<sup>a</sup> on January 1, 2017  
By Race/Ethnicity, Sex and Years Since Diagnosis

Years Since Diagnosis		0 to 5	> 5 to 10	> 10 to 15	> 15 to 20	> 20 to 25	<=25 <sup>b</sup>		> 25 <sup>d</sup>	Complete <sup>e</sup>
<u>Race</u>	<u>Sex</u>									
All Races	Both Sexes	59,658	16,682	6,951	2,563	1,124	86,978	2,972	89,950	
	Males	42,348	11,786	4,810	1,574	690	61,209	836	62,044	
	Females	17,310	4,896	2,141	989	433	25,769	2,137	27,905	
White	Both Sexes	44,649	12,441	5,179	1,867	863	65,001	+	+	
	Males	31,790	8,787	3,654	1,103	548	45,882	+	+	
	Females	12,860	3,654	1,525	764	315	19,119	+	+	
Black	Both Sexes	8,690	1,858	571	147	67	11,334	+	+	
	Males	6,211	1,311	293	84	18	7,917	+	+	
	Females	2,478	547	278	63	50	3,416	+	+	
Asian/ Pacific Islander	Both Sexes	4,884	2,010	1,025	455	126	8,501	+	+	
	Males	3,325	1,418	732	326	94	5,895	+	+	
	Females	1,560	592	293	129	32	2,606	+	+	
Hispanic	Both Sexes	8,666	2,428	927	314	188	12,523	+	+	
	Males	6,061	1,655	679	167	136	8,699	+	+	
	Females	2,605	773	248	147	52	3,825	+	+	

Estimated prevalence percent<sup>a</sup> on January 1, 2017, of the SEER population diagnosed in the previous 25 years  
By Age at Prevalence, Race/Ethnicity and Sex

Age at Prevalence		Age Specific (Crude)										Age-Adjusted <sup>c</sup>
		All Ages	0-9	10-19	20-29	30-39	40-49	50-59	60-69	70-79	80+	All Ages
<u>Race</u>	<u>Sex</u>											
All Races	Both Sexes	0.0268	0.0031	0.0035	0.0021	0.0021	0.0064	0.0323	0.1052	0.0930	0.0647	0.0213
	Males	0.0383	0.0032	0.0037	0.0024	0.0023	0.0083	0.0487	0.1685	0.1354	0.0970	0.0315
	Females	0.0157	0.0030	0.0032	0.0018	0.0019	0.0046	0.0165	0.0478	0.0575	0.0446	0.0123
White	Both Sexes	0.0257	0.0033	0.0039	0.0023	0.0019	0.0057	0.0299	0.0934	0.0829	0.0576	0.0193
	Males	0.0366	0.0032	0.0042	0.0025	0.0021	0.0074	0.0453	0.1482	0.1198	0.0861	0.0282
	Females	0.0150	0.0034	0.0035	0.0020	0.0018	0.0040	0.0148	0.0427	0.0514	0.0396	0.0113
Black	Both Sexes	0.0249	0.0013	0.0013	0.0009	0.0026	0.0056	0.0306	0.1570	0.1028	0.0507	0.0242
	Males	0.0362	0.0017	0.0013	0.0014	0.0027	0.0063	0.0410	0.2689	0.1651	0.0808	0.0385
	Females	0.0144	0.0008	0.0013	0.0005	0.0026	0.0051	0.0215	0.0677	0.0593	0.0356	0.0134
Asian/ Pacific Islander	Both Sexes	0.0408	0.0039	0.0042	0.0019	0.0027	0.0139	0.0592	0.1541	0.2310	0.2139	0.0426
	Males	0.0590	0.0046	0.0044	0.0020	0.0034	0.0204	0.0986	0.2580	0.3396	0.3139	0.0653
	Females	0.0240	0.0032	0.0040	0.0018	0.0021	0.0082	0.0252	0.0704	0.1442	0.1487	0.0244
Hispanic	Both Sexes	0.0215	0.0037	0.0037	0.0019	0.0013	0.0068	0.0480	0.1359	0.1578	0.0942	0.0303
	Males	0.0296	0.0041	0.0042	0.0020	0.0014	0.0092	0.0752	0.2142	0.2306	0.1261	0.0449
	Females	0.0133	0.0032	0.0033	0.0018	0.0011	0.0044	0.0212	0.0664	0.1018	0.0744	0.0178

<sup>a</sup> US 2017 cancer prevalence counts are based on 2017 cancer prevalence proportions from the SEER 13 Areas (excluding the Alaska Native Registry) and 1/1/2017 US population estimates based on the average of 2016 and 2017 population estimates from the US Bureau of the Census.

<sup>b</sup> Prevalence was calculated using the first invasive tumor for each cancer site diagnosed during the previous 25 years. Maximum limited-duration prevalence is 25 years for 1992-2017 data.

<sup>c</sup> Percentages are age-adjusted to the 2000 US Standard Population (19 age groups - Census P25-1130) by 5-year age groups.

<sup>d</sup> Cases diagnosed more than 25 years ago were estimated using the completeness index method (Capocaccia et. al. 1997, Merrill et. al. 2000).

<sup>e</sup> Complete prevalence is obtained by summing <=25 and > 25.

- Statistic not shown. Statistic based on fewer than 5 cases estimated alive in SEER for the time interval.

+ Not available.

Table 14.22

## Cancer of the Liver and Intrahepatic Bile Duct (Invasive)

Percent Distribution and Counts by Histology among Histologically Confirmed Cases, 2013-2017  
Both Sexes by Race

Histology <sup>a</sup>	All Races		White		Black		Asian/Pacific Islander		American Indian/ Alaska Native <sup>b</sup>		Hispanic <sup>c</sup>	
	Count	Percent	Count	Percent	Count	Percent	Count	Percent	Count	Percent	Count	Percent
Carcinoma (8010-8576)	34,621	97.6%	24,847	97.5%	4,650	97.8%	4,527	97.8%	288	96.3%	5,883	96.7%
Hepatocellular carcinoma <sup>d</sup> (8170-8175)	24,131	68.0%	16,573	65.1%	3,608	75.9%	3,480	75.2%	233	77.9%	4,285	70.4%
Cholangiocarcinoma (8032-8033,8070-8071, 8140-8141,8160,8260, 8480-8481,8490,8560)	9,215	26.0%	7,362	28.9%	856	18.0%	893	19.3%	46	15.4%	1,405	23.1%
Other carcinoma <sup>e</sup>	1,260	3.6%	904	3.5%	186	3.9%	147	3.2%	-	-	191	3.1%
Other specific carcinoma <sup>f</sup>	900	2.5%	655	2.6%	117	2.5%	113	2.4%	-	-	132	2.2%
Unspecified, Carcinoma, NOS (8010,8020-8022,8031, 8046,8050)	360	1.0%	249	1.0%	69	1.5%	34	0.7%	-	-	59	1.0%
Hepatoblastoma (8970)	304	0.9%	219	0.9%	38	0.8%	35	0.8%	-	-	92	1.5%
Sarcoma <sup>g</sup>	297	0.8%	224	0.9%	29	0.6%	40	0.9%	-	-	45	0.7%
Hemangiosarcoma (9120)	141	0.4%	108	0.4%	-	-	21	0.5%	-	-	19	0.3%
Other sarcomas <sup>h</sup>	156	0.4%	116	0.5%	18	0.4%	19	0.4%	-	-	26	0.4%
Other specific types (8720,8980,8991,9061, 9064,9070-9071,9080, 9100)	55	0.2%	38	0.1%	-	-	-	-	-	-	-	-
Unspecified (8000-8004)	195	0.5%	143	0.6%	25	0.5%	20	0.4%	-	-	49	0.8%
Total <sup>d</sup>	35,481	100.0%	25,477	100.0%	4,754	100.0%	4,629	100.0%	299	100.0%	6,086	100.0%

Source: SEER 21 areas (San Francisco, Connecticut, Detroit, Hawaii, Iowa, New Mexico, Seattle, Utah, Atlanta, San Jose-Monterey, Los Angeles, Alaska Native Registry, Rural Georgia, California excluding SF/SJM/LA, Kentucky, Louisiana, New Jersey, Georgia excluding ATL/RG, Idaho, New York and Massachusetts).

Percentages may not sum to 100 due to rounding.

<sup>a</sup> Excludes Kaposi Sarcoma, mesothelioma, lymphomas, leukemias, myelomas, lymphoreticular, and immunoproliferative diseases.

<sup>b</sup> Estimates for American Indian/Alaska Native are based on the Purchased/Referred Care Delivery Area (PRCDA) counties.

<sup>c</sup> Hispanic is not mutually exclusive from whites, blacks, Asian/Pacific Islanders, and American Indians/Alaska Natives.

Underlying incidence data for Hispanics are based on NHIA and exclude cases from the Alaska Native Registry.

<sup>d</sup> Epidermoid carcinoma arising from liver parenchyma are referred to as hepatocellular carcinoma.

<sup>e</sup> Other carcinoma include histologies 8010, 8012-8013, 8020-8022, 8031, 8035, 8041-8042, 8046, 8050, 8124, 8142, 8154, 8161-8162, 8180, 8190, 8211, 8240, 8246, 8249, 8255, 8290, 8310, 8323, 8337, 8440, 8450, 8453, 8470-8471, 8500, 8503, 8510, 8521, 8550, 8574, 8576.

<sup>f</sup> Other specific carcinoma include histologies 8012-8013, 8035, 8041-8042, 8124, 8142, 8154, 8161-8162, 8180, 8190, 8211, 8240, 8246, 8249, 8255, 8290, 8310, 8323, 8337, 8440, 8450, 8453, 8470-8471, 8500, 8503, 8510, 8521, 8550, 8574, 8576.

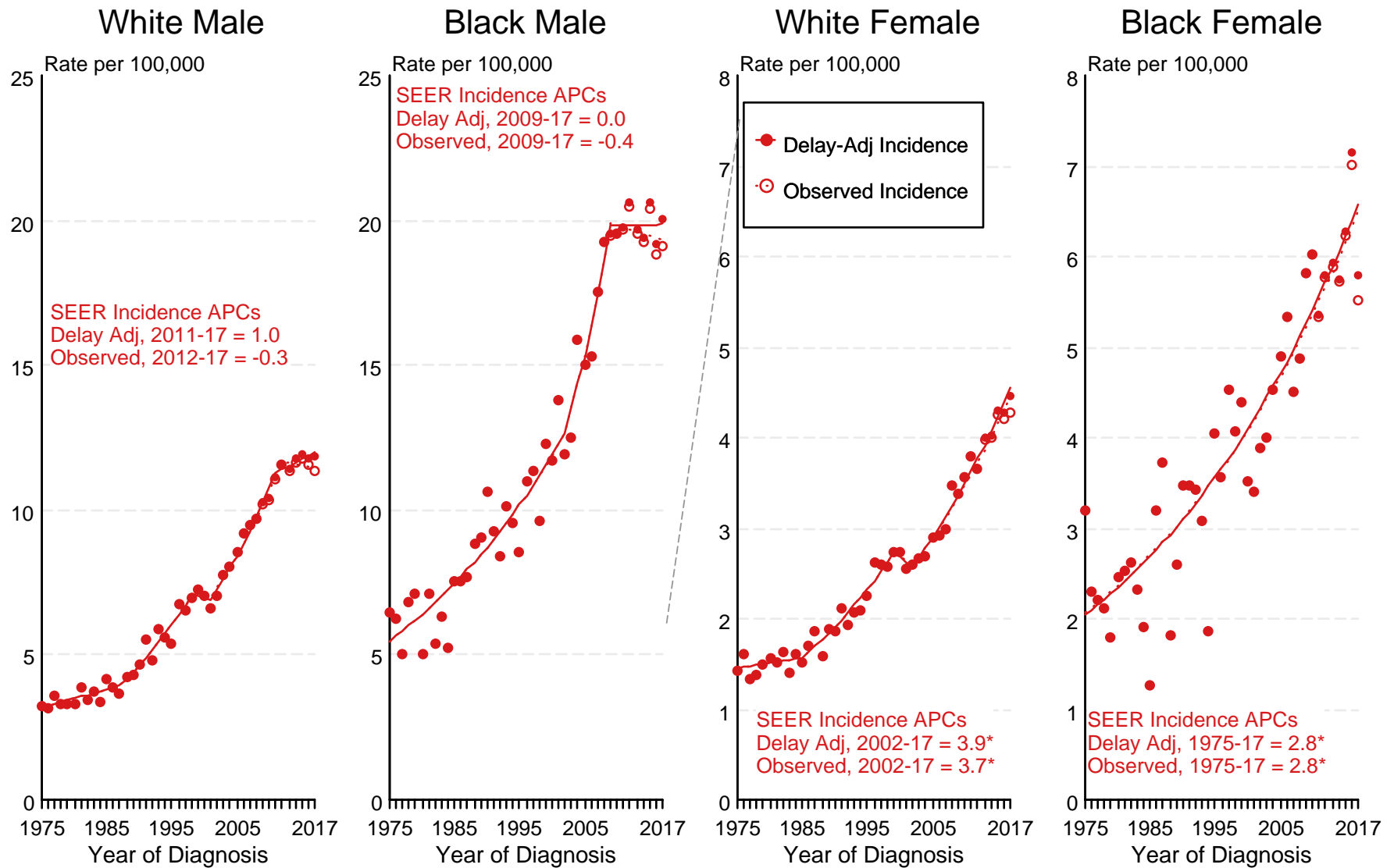
<sup>g</sup> Sarcoma includes histologies 8800-8806, 8810, 8815, 8830, 8850, 8852, 8854, 8890-8891, 8894-8896, 8900, 8910, 8920, 8935-8936, 8940, 8963, 8990, 9040-9041, 9044, 9120, 9124, 9130, 9133, 9150, 9180, 9220, 9260, 9364, 9473, 9500, 9540, 9560, 9581.

<sup>h</sup> Other sarcomas include histologies 8800-8806, 8810, 8815, 8830, 8850, 8852, 8854, 8890-8891, 8894-8896, 8900, 8910, 8920, 8935-8936, 8940, 8963, 8990, 9040-9041, 9044, 9124, 9130, 9133, 9150, 9180, 9220, 9260, 9364, 9473, 9500, 9540, 9560, 9581.

- Statistic not shown due to fewer than 16 cases during the time period.

Figure 14.1

# SEER Observed Incidence and Delay Adjusted Incidence Rates<sup>a</sup> Cancer of the Liver and Intrahepatic Bile Duct, by Race and Sex



Source: SEER 9 areas.

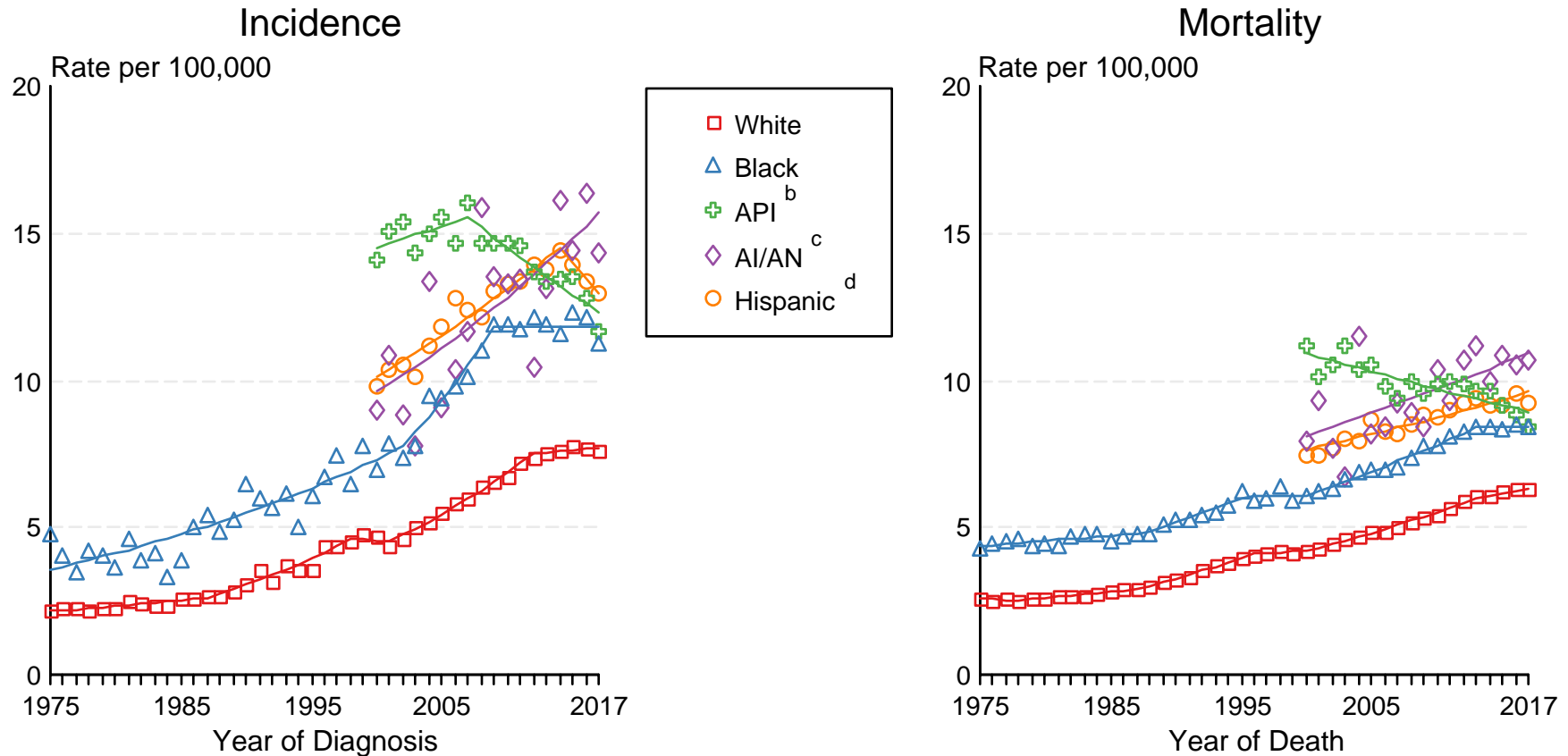
<sup>a</sup> Rates are age-adjusted to the 2000 US Std Population (19 age groups - Census P25-1103). Regression lines and APCs are calculated using the Joinpoint Regression Program Version 4.8, April 2020, National Cancer Institute. The APC is the Annual Percent Change for the regression line segments. The APC shown on the graph is for the most recent trend.

\* The APC is significantly different from zero ( $p < 0.05$ ).

Figure 14.2

# SEER Incidence and US Death Rates<sup>a</sup> Cancer of the Liver and Intrahepatic Bile Duct, Both Sexes

Joinpoint Analyses for Whites and Blacks from 1975-2017  
and for Asian/Pacific Islanders, American Indians/Alaska Natives and Hispanics from 2000-2017



Source: Incidence data for whites and blacks are from the SEER 9 areas (San Francisco, Connecticut, Detroit, Hawaii, Iowa, New Mexico, Seattle, Utah, Atlanta). Incidence data for Asian/Pacific Islanders, American Indians/Alaska Natives and Hispanics are from the SEER 21 areas (SEER 9 areas, San Jose-Monterey, Los Angeles, Alaska Native Registry, Rural Georgia, California excluding SF/SJM/LA, Kentucky, Louisiana, New Jersey, Georgia excluding ATL/RG, Idaho, New York and Massachusetts).

Mortality data are from US Mortality Files, National Center for Health Statistics, CDC.

<sup>a</sup> Rates are age-adjusted to the 2000 US Std Population (19 age groups - Census P25-1103).

Regression lines are calculated using the Joinpoint Regression Program Version 4.8, April 2020, National Cancer Institute. Joinpoint analyses for Whites and Blacks during the 1975-2017 period allow a maximum of 5 joinpoints. Analyses for other ethnic groups during the period 2000-2017 allow a maximum of 3 joinpoints.

<sup>b</sup> API = Asian/Pacific Islander.

<sup>c</sup> AI/AN = American Indian/Alaska Native. Rates for American Indian/Alaska Native are based on the Purchased/Referred Care Delivery Area (PRCDA) counties.

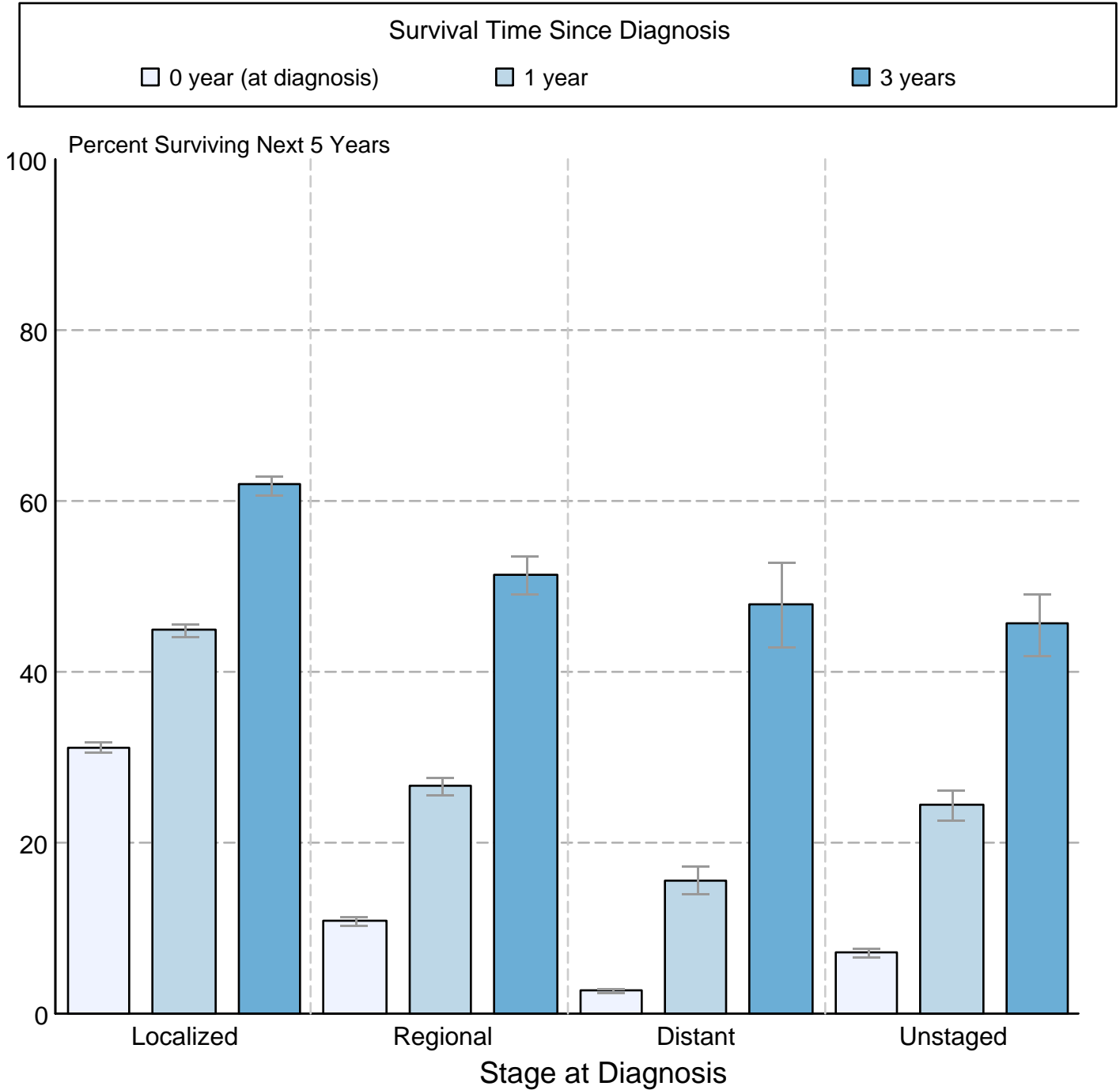
<sup>d</sup> Hispanic is not mutually exclusive from whites, blacks, Asian/Pacific Islanders, and American Indians/Alaska Natives. Incidence data for Hispanics are based on NHIA and exclude cases from the Alaska Native Registry.



Figure 14.3

## Cancer of the Liver and Intrahepatic Bile Duct 5-Year SEER Conditional Relative Survival and 95% Confidence Intervals

Probability of surviving the next 5 years given the cohort  
has already survived 0, 1, or 3 years  
2000-2015 by stage at diagnosis



Source: SEER 18 areas (San Francisco, Connecticut, Detroit, Hawaii, Iowa, New Mexico, Seattle, Utah, Atlanta, San Jose-Monterey, Los Angeles, Alaska Native Registry, Rural Georgia, California excluding SF/SJM/LA, Kentucky, Louisiana, New Jersey and Georgia excluding ATL/RG).

Percent surviving is not shown if based on less than 25 cases.

Confidence intervals are not shown if length of the confidence interval is greater than 5 times the standard error.