

Table 6.1
Cancer of the Colon and Rectum (Invasive)

Trends in SEER Incidence^{ab} and U.S. Mortality^c Using the Joinpoint Regression Program,
1975-2012 With up to Five Joinpoints, 1992-2012 With up to Three Joinpoints,
Both Sexes by Race/Ethnicity

	JP Trend 1		JP Trend 2		JP Trend 3		JP Trend 4		JP Trend 5		JP Trend 6		AAPC ^d	
	Years	APC	Years	APC	Years	APC	Years	APC	Years	APC	Years	APC	2003-12	2008-12
<u>SEER 9 Delay-Adjusted Incidence^a, 1975-2012</u>														
All Races	1975-85	0.8*	1985-95	-1.8*	1995-98	1.5	1998-08	-2.3*	2008-12	-3.7*			-3.0*	-3.7*
White	1975-85	0.8*	1985-95	-2.0*	1995-98	1.6	1998-07	-2.5*	2007-12	-3.6*			-3.1*	-3.6*
Black	1975-80	3.3*	1980-04	-0.2	2004-12	-3.5*							-3.1*	-3.5*
<u>SEER 13 Delay-Adjusted Incidence^b, 1992-2012</u>														
All Races	1992-95	-2.1*	1995-98	1.6	1998-08	-2.2*	2008-12	-3.7*					-2.9*	-3.7*
White	1992-95	-2.2*	1995-98	1.7	1998-08	-2.4*	2008-12	-3.8*					-3.0*	-3.8*
Black	1992-04	-0.1	2004-12	-3.3*									-2.9*	-3.3*
<u>SEER 9 Observed Incidence^a, 1975-2012</u>														
All Races	1975-85	0.8*	1985-95	-1.8*	1995-98	1.5	1998-08	-2.3*	2008-12	-4.1*			-3.1*	-4.1*
White	1975-85	0.8*	1985-95	-2.0*	1995-98	1.7	1998-08	-2.5*	2008-12	-4.3*			-3.3*	-4.3*
Black	1975-80	3.3*	1980-04	-0.2	2004-12	-3.6*							-3.3*	-3.6*
<u>SEER 13 Observed Incidence^b, 1992-2012</u>														
All Races	1992-95	-2.1*	1995-98	1.6	1998-08	-2.2*	2008-12	-4.1*					-3.0*	-4.1*
White	1992-95	-2.2*	1995-98	1.7	1998-08	-2.4*	2008-12	-4.3*					-3.2*	-4.3*
White NH ^{ef}	1992-95	-2.2*	1995-98	1.8	1998-08	-2.5*	2008-12	-4.3*					-3.3*	-4.3*
Black	1992-04	-0.1	2004-12	-3.4*									-3.1*	-3.4*
Black NH ^{ef}	1992-03	-0.1	2003-09	-2.3*	2009-12	-5.5*							-3.4*	-4.7*
API ^e	1992-02	-0.3	2002-12	-2.5*									-2.5*	-2.5*
AI/AN ^{eg}	1992-12	-0.4											-0.4	-0.4
Hispanic ^f	1992-98	1.1	1998-08	-0.5	2008-12	-3.7*							-1.9*	-3.7*
<u>U.S. Cancer Mortality^c, 1975-2012</u>														
All Races	1975-84	-0.5*	1984-02	-1.8*	2002-05	-3.8*	2005-12	-2.5*					-2.8*	-2.5*
White	1975-84	-0.7*	1984-02	-1.9*	2002-05	-3.8*	2005-12	-2.5*					-2.8*	-2.5*
Black	1975-90	0.6*	1990-01	-0.8*	2001-12	-2.9*							-2.9*	-2.9*
<u>U.S. Cancer Mortality^c, 1992-2012</u>														
All Races	1992-02	-1.8*	2002-05	-3.7*	2005-12	-2.5*							-2.8*	-2.5*
White	1992-02	-1.9*	2002-05	-3.8*	2005-12	-2.5*							-2.8*	-2.5*
White NH ^{ef}	1992-02	-1.8*	2002-05	-3.9*	2005-12	-2.5*							-2.8*	-2.5*
Black	1992-01	-0.7*	2001-12	-2.9*									-2.9*	-2.9*
Black NH ^{ef}	1992-01	-0.6*	2001-12	-2.8*									-2.8*	-2.8*
API ^e	1992-12	-1.7*											-1.7*	-1.7*
AI/AN ^{eg}	1992-96	8.8	1996-12	-0.8									-0.8	-0.8
Hispanic ^f	1992-01	0.3	2001-12	-1.8*									-1.8*	-1.8*

Joinpoint Regression Program Version 4.2.0, April 2015, National Cancer Institute. (<http://surveillance.cancer.gov/joinpoint/>).

The APC is the Annual Percent Change based on rates age-adjusted to the 2000 US Std Population (19 age groups - Census P25-1130).

Trends are from the SEER 9 areas (San Francisco, Connecticut, Detroit, Hawaii, Iowa, New Mexico, Seattle, Utah, and Atlanta).

Trends are from the SEER 13 areas (SEER 9 Areas, Los Angeles, San Jose-Monterey, Rural Georgia, and the Alaska Native Registry).

Trends are from US Mortality Files, National Center for Health Statistics, Centers for Disease Control and Prevention.

The AAPC is the Average Annual Percent Change and is based on the APCs calculated by Joinpoint.

API - Asian/Pacific Islander, AI/AN - American Indian/Alaska Native, NH - Non-Hispanic

Hispanic and Non-Hispanic are not mutually exclusive from whites, blacks, Asian/Pacific Islanders, and American Indians/Alaska

Natives. Incidence data for Hispanics and Non-Hispanics are based on NHIA and exclude cases from the Alaska Native Registry.

The Hispanic and Non-Hispanic mortality trends exclude deaths from New Hampshire and Oklahoma.

Data for American Indian/Alaska Native are based on the CHSDA (Contract Health Service Delivery Area) counties.

* The APC/AAPC is significantly different from zero ($p < .05$).

- Joinpoint regression line analysis could not be performed on data series.

Table 6.2
Cancer of the Colon and Rectum (Invasive)

Trends in SEER Incidence^{ab} and U.S. Mortality^c Using the Joinpoint Regression Program,
1975-2012 With up to Five Joinpoints, 1992-2012 With up to Three Joinpoints,
Males by Race/Ethnicity

	JP Trend 1		JP Trend 2		JP Trend 3		JP Trend 4		JP Trend 5		JP Trend 6		AAPC ^d	
	Years	APC	Years	APC	Years	APC	Years	APC	Years	APC	Years	APC	2003-12	2008-12
<u>SEER 9 Delay-Adjusted Incidence^a, 1975-2012</u>														
All Races	1975-85	1.1*	1985-91	-1.2*	1991-95	-3.2*	1995-98	2.2	1998-12	-3.0*			-3.0*	-3.0*
White	1975-85	1.1*	1985-91	-1.4*	1991-95	-3.3*	1995-98	2.0	1998-07	-2.9*	2007-12	-3.8*	-3.4*	-3.8*
Black	1975-80	4.6*	1980-03	0.0	2003-12	-3.2*							-3.2*	-3.2*
<u>SEER 13 Delay-Adjusted Incidence^b, 1992-2012</u>														
All Races	1992-95	-2.6*	1995-98	1.4	1998-08	-2.5*	2008-12	-3.6*					-3.0*	-3.6*
White	1992-95	-2.8*	1995-98	1.5	1998-08	-2.7*	2008-12	-3.9*					-3.3*	-3.9*
Black	1992-03	-0.1	2003-12	-3.0*									-3.0*	-3.0*
<u>SEER 9 Observed Incidence^a, 1975-2012</u>														
All Races	1975-85	1.1*	1985-91	-1.2*	1991-95	-3.2*	1995-98	2.0	1998-08	-2.8*	2008-12	-4.1*	-3.4*	-4.1*
White	1975-85	1.1*	1985-91	-1.4*	1991-95	-3.3*	1995-98	2.0	1998-07	-2.9*	2007-12	-4.2*	-3.6*	-4.2*
Black	1975-80	4.6*	1980-03	0.0	2003-12	-3.4*							-3.4*	-3.4*
<u>SEER 13 Observed Incidence^b, 1992-2012</u>														
All Races	1992-95	-2.6*	1995-98	1.4	1998-08	-2.5*	2008-12	-4.0*					-3.2*	-4.0*
White	1992-95	-2.8*	1995-98	1.5	1998-08	-2.8*	2008-12	-4.4*					-3.5*	-4.4*
White NH ^{ef}	1992-95	-2.9*	1995-98	1.5	1998-08	-2.9*	2008-12	-4.5*					-3.6*	-4.5*
Black	1992-03	-0.1	2003-12	-3.2*									-3.2*	-3.2*
Black NH ^{ef}	1992-04	-0.2	2004-12	-3.4*									-3.1*	-3.4*
API ^e	1992-01	-0.4	2001-12	-2.5*									-2.5*	-2.5*
AI/AN ^{eg}	1992-12	-0.1											-0.1	-0.1
Hispanic ^f	1992-98	1.4	1998-08	-0.8	2008-12	-3.4*							-2.0*	-3.4*
<u>U.S. Cancer Mortality^c, 1975-2012</u>														
All Races	1975-78	0.8	1978-84	-0.3	1984-90	-1.3*	1990-02	-2.0*	2002-05	-3.9*	2005-12	-2.6*	-2.9*	-2.6*
White	1975-79	0.6	1979-87	-0.8*	1987-02	-2.1*	2002-05	-4.1*	2005-12	-2.6*			-3.0*	-2.6*
Black	1975-90	1.2*	1990-02	-0.7*	2002-12	-2.7*							-2.7*	-2.7*
<u>U.S. Cancer Mortality^c, 1992-2012</u>														
All Races	1992-02	-2.0*	2002-05	-3.9*	2005-12	-2.6*							-2.9*	-2.6*
White	1992-02	-2.1*	2002-05	-4.1*	2005-12	-2.6*							-2.9*	-2.6*
White NH ^{ef}	1992-02	-2.1*	2002-05	-4.1*	2005-12	-2.7*							-3.0*	-2.7*
Black	1992-02	-0.8*	2002-12	-2.7*									-2.7*	-2.7*
Black NH ^{ef}	1992-02	-0.7*	2002-12	-2.5*									-2.5*	-2.5*
API ^e	1992-12	-1.8*											-1.8*	-1.8*
AI/AN ^{eg}	1992-96	15.7	1996-12	-1.4*									-1.4*	-1.4*
Hispanic ^f	1992-98	0.8	1998-12	-1.5*									-1.5*	-1.5*

Joinpoint Regression Program Version 4.2.0, April 2015, National Cancer Institute. (<http://surveillance.cancer.gov/joinpoint/>).

The APC is the Annual Percent Change based on rates age-adjusted to the 2000 US Std Population (19 age groups - Census P25-1130).

Trends are from the SEER 9 areas (San Francisco, Connecticut, Detroit, Hawaii, Iowa, New Mexico, Seattle, Utah, and Atlanta).

Trends are from the SEER 13 areas (SEER 9 Areas, Los Angeles, San Jose-Monterey, Rural Georgia, and the Alaska Native Registry).

Trends are from US Mortality Files, National Center for Health Statistics, Centers for Disease Control and Prevention.

The AAPC is the Average Annual Percent Change and is based on the APCs calculated by Joinpoint.

API - Asian/Pacific Islander, AI/AN - American Indian/Alaska Native, NH - Non-Hispanic

Hispanic and Non-Hispanic are not mutually exclusive from whites, blacks, Asian/Pacific Islanders, and American Indians/Alaska

Natives. Incidence data for Hispanics and Non-Hispanics are based on NHIA and exclude cases from the Alaska Native Registry.

The Hispanic and Non-Hispanic mortality trends exclude deaths from New Hampshire and Oklahoma.

Data for American Indian/Alaska Native are based on the CHSDA (Contract Health Service Delivery Area) counties.

* The APC/AAPC is significantly different from zero ($p < .05$).

- Joinpoint regression line analysis could not be performed on data series.

Table 6.3
Cancer of the Colon and Rectum (Invasive)

Trends in SEER Incidence^{ab} and U.S. Mortality^c Using the Joinpoint Regression Program,
1975-2012 With up to Five Joinpoints, 1992-2012 With up to Three Joinpoints,
Females by Race/Ethnicity

	JP Trend 1		JP Trend 2		JP Trend 3		JP Trend 4		JP Trend 5		JP Trend 6		AAPC ^d	
	Years	APC	Years	APC	Years	APC	Years	APC	Years	APC	Years	APC	2003-12	2008-12
<u>SEER 9 Delay-Adjusted Incidence^a, 1975-2012</u>														
All Races	1975-85	0.3	1985-95	-1.9*	1995-98	1.8	1998-08	-2.1*	2008-12	-3.8*			-2.8*	-3.8*
White	1975-85	0.3	1985-95	-2.1*	1995-98	2.4	1998-12	-2.5*					-2.5*	-2.5*
Black	1975-05	-0.1	2005-12	-4.3*									-3.3*	-4.3*
<u>SEER 13 Delay-Adjusted Incidence^b, 1992-2012</u>														
All Races	1992-95	-1.8*	1995-98	1.8	1998-08	-2.0*	2008-12	-3.8*					-2.8*	-3.8*
White	1992-95	-1.7	1995-98	1.8	1998-08	-2.1*	2008-12	-3.7*					-2.9*	-3.7*
Black	1992-06	-0.3	2006-12	-4.5*									-3.1*	-4.5*
<u>SEER 9 Observed Incidence^a, 1975-2012</u>														
All Races	1975-85	0.3	1985-95	-1.9*	1995-98	1.8	1998-08	-2.1*	2008-12	-4.1*			-3.0*	-4.1*
White	1975-85	0.3	1985-95	-2.1*	1995-98	2.0	1998-08	-2.3*	2008-12	-4.0*			-3.0*	-4.0*
Black	1975-05	-0.1	2005-12	-4.5*									-3.5*	-4.5*
<u>SEER 13 Observed Incidence^b, 1992-2012</u>														
All Races	1992-95	-1.8*	1995-98	1.8	1998-08	-2.0*	2008-12	-4.1*					-2.9*	-4.1*
White	1992-95	-1.7	1995-98	1.8	1998-08	-2.2*	2008-12	-4.1*					-3.0*	-4.1*
White NH ^{ef}	1992-95	-1.8	1995-98	2.0	1998-08	-2.3*	2008-12	-4.1*					-3.1*	-4.1*
Black	1992-00	0.5	2000-09	-1.6*	2009-12	-7.1*							-3.5*	-5.8*
Black NH ^{ef}	1992-00	0.4	2000-09	-1.5*	2009-12	-7.1*							-3.4*	-5.7*
API ^e	1992-10	-1.0*	2010-12	-9.3									-2.9*	-5.2
AI/AN ^{eg}	1992-12	-0.6											-0.6	-0.6
Hispanic ^f	1992-07	0.1	2007-12	-3.4*									-1.9*	-3.4*
<u>U.S. Cancer Mortality^c, 1975-2012</u>														
All Races	1975-84	-1.0*	1984-01	-1.8*	2001-12	-2.9*							-2.9*	-2.9*
White	1975-84	-1.2*	1984-01	-2.0*	2001-12	-2.9*							-2.9*	-2.9*
Black	1975-85	0.7*	1985-01	-0.7*	2001-12	-3.3*							-3.3*	-3.3*
<u>U.S. Cancer Mortality^c, 1992-2012</u>														
All Races	1992-01	-1.7*	2001-12	-2.9*									-2.9*	-2.9*
White	1992-00	-1.8*	2000-12	-2.9*									-2.9*	-2.9*
White NH ^{ef}	1992-00	-1.7*	2000-12	-2.9*									-2.9*	-2.9*
Black	1992-01	-0.7*	2001-12	-3.3*									-3.3*	-3.3*
Black NH ^{ef}	1992-01	-0.6*	2001-12	-3.3*									-3.3*	-3.3*
API ^e	1992-12	-1.5*											-1.5*	-1.5*
AI/AN ^{eg}	1992-12	0.0											0.0	0.0
Hispanic ^f	1992-02	0.3	2002-12	-2.2*									-2.2*	-2.2*

Joinpoint Regression Program Version 4.2.0, April 2015, National Cancer Institute. (<http://surveillance.cancer.gov/joinpoint/>).

The APC is the Annual Percent Change based on rates age-adjusted to the 2000 US Std Population (19 age groups - Census P25-1130).

Trends are from the SEER 9 areas (San Francisco, Connecticut, Detroit, Hawaii, Iowa, New Mexico, Seattle, Utah, and Atlanta).

Trends are from the SEER 13 areas (SEER 9 Areas, Los Angeles, San Jose-Monterey, Rural Georgia, and the Alaska Native Registry).

Trends are from US Mortality Files, National Center for Health Statistics, Centers for Disease Control and Prevention.

The AAPC is the Average Annual Percent Change and is based on the APCs calculated by Joinpoint.

API - Asian/Pacific Islander, AI/AN - American Indian/Alaska Native, NH - Non-Hispanic

Hispanic and Non-Hispanic are not mutually exclusive from whites, blacks, Asian/Pacific Islanders, and American Indians/Alaska

Natives. Incidence data for Hispanics and Non-Hispanics are based on NHIA and exclude cases from the Alaska Native Registry.

The Hispanic and Non-Hispanic mortality trends exclude deaths from New Hampshire and Oklahoma.

Data for American Indian/Alaska Native are based on the CHSDA (Contract Health Service Delivery Area) counties.

* The APC/AAPC is significantly different from zero ($p < .05$).

- Joinpoint regression line analysis could not be performed on data series.

a
b
c
d
e
f
g
*
-

Table 6.4
Cancer of the Colon (Invasive) and Cancer of the Rectum (Invasive)

Trends in SEER 9 Observed Incidence^a Using the Joinpoint Regression Program,
1975-2012 With up to Five Joinpoints,
By Race and Sex

		JP Trend 1		JP Trend 2		JP Trend 3		JP Trend 4		JP Trend 5		JP Trend 6		AAPC ^d
		Years	APC	Years	APC	Years	APC	Years	APC	Years	APC	Years	APC	2008-12
<u>SEER 9 Observed Incidence^a for Cancer of the Colon, 1975-2012</u>														
All Races	Both Sexes	1975-85	1.1*	1985-95	-1.6*	1995-01	-0.2	2001-12	-3.3*					-3.3*
All Races	Male	1975-85	1.7*	1985-91	-1.2*	1991-95	-3.1*	1995-98	1.3	1998-04	-2.5*	2004-12	-3.8*	-3.8*
All Races	Female	1975-85	0.6*	1985-93	-1.8*	1993-02	-0.3	2002-12	-3.2*					-3.2*
White	Both Sexes	1975-85	1.1*	1985-95	-1.9*	1995-98	1.4	1998-08	-2.5*	2008-12	-4.7*			-4.7*
White	Male	1975-85	1.7*	1985-91	-1.4*	1991-95	-3.1*	1995-98	1.6	1998-08	-3.0*	2008-12	-4.9*	-4.9*
White	Female	1975-85	0.6*	1985-93	-2.1*	1993-01	-0.1	2001-12	-3.1*					-3.1*
Black	Both Sexes	1975-80	3.6*	1980-03	-0.1	2003-12	-3.8*							-3.8*
Black	Male	1975-87	1.8*	1987-03	-0.4	2003-12	-3.8*							-3.8*
Black	Female	1975-04	-0.1	2004-12	-4.5*									-4.5*
<u>SEER 9 Observed Incidence^a for Cancer of the Rectum, 1975-2012</u>														
All Races	Both Sexes	1975-87	-0.3	1987-95	-2.4*	1995-98	2.6	1998-12	-2.3*					-2.3*
All Races	Male	1975-89	-0.3	1989-94	-3.6*	1994-98	1.8	1998-12	-2.6*					-2.6*
All Races	Female	1975-84	-0.2	1984-95	-2.2*	1995-98	2.4	1998-12	-2.1*					-2.1*
White	Both Sexes	1975-85	-0.1	1985-95	-2.3*	1995-98	2.5	1998-12	-2.7*					-2.7*
White	Male	1975-89	-0.3	1989-94	-3.9*	1994-99	1.1	1999-12	-3.2*					-3.2*
White	Female	1975-84	-0.2	1984-95	-2.3*	1995-98	2.4	1998-12	-2.4*					-2.4*
Black	Both Sexes	1975-09	-0.1	2009-12	-6.4									-4.9
Black	Male	1975-08	0.0	2008-12	-5.0									-5.0
Black	Female	1975-12	-0.3*											-0.3*

Joinpoint Regression Program Version 4.2.0, April 2015, National Cancer Institute. (<http://surveillance.cancer.gov/joinpoint/>).
The APC is the Annual Percent Change based on rates age-adjusted to the 2000 US Std Population (19 age groups - Census P25-1130).
Trends are from the SEER 9 areas (San Francisco, Connecticut, Detroit, Hawaii, Iowa, New Mexico, Seattle, Utah, and Atlanta).
The AAPC is the Average Annual Percent Change and is based on the APCs calculated by Joinpoint.
* The APC/AAPC is significantly different from zero (p<.05).
- Joinpoint regression line analysis could not be performed on data series.

Table 6.5
Cancer of the Colon and Rectum (Invasive)

Delay-adjusted SEER Incidence^a Rates by Year, Race and Sex

Year of Diagnosis:	All Races			Whites			Blacks		
	Total	Males	Females	Total	Males	Females	Total	Males	Females
1975	59.53	68.44	53.66	60.18	69.75	54.05	56.85	59.33	54.66
1976	61.34	71.72	54.12	62.13	72.66	55.00	55.04	58.53	51.28
1977	62.40	73.48	54.95	63.19	74.32	55.75	60.69	75.66	51.47
1978	62.03	72.34	55.25	62.78	73.87	55.60	62.04	65.70	60.42
1979	62.37	74.11	54.58	62.94	75.19	54.94	58.57	61.79	56.16
1980	63.75	74.55	56.54	63.95	74.88	56.83	70.83	79.71	64.23
1981	64.25	75.83	56.50	64.88	76.70	57.15	62.76	72.77	55.94
1982	62.79	75.18	54.51	63.44	76.24	55.05	61.25	68.97	55.92
1983	63.66	75.56	55.61	64.26	76.56	56.04	66.79	75.80	61.13
1984	64.82	77.65	56.08	65.83	79.26	56.74	62.46	70.42	58.20
1985	66.30	79.19	57.31	67.19	80.20	58.34	64.06	74.39	56.39
1986	64.18	77.78	54.70	64.56	78.87	54.72	64.66	73.09	58.75
1987	62.71	77.48	52.67	62.88	78.18	52.62	66.28	77.63	59.01
1988	61.37	75.19	51.81	61.55	75.77	51.73	62.97	72.41	56.59
1989	61.70	74.98	52.42	61.94	75.42	52.65	64.47	79.41	54.67
1990	60.70	74.36	51.28	60.65	74.75	51.02	66.87	75.15	61.66
1991	59.48	72.91	50.04	59.29	73.11	49.65	65.65	76.42	58.16
1992	58.00	70.40	49.22	57.81	70.65	48.69	65.66	78.59	57.57
1993	56.79	68.43	48.30	56.31	68.06	47.78	64.49	78.12	55.25
1994	55.64	66.29	47.73	55.37	66.32	47.18	64.44	75.27	57.98
1995	54.04	63.82	46.93	53.68	63.37	46.60	61.98	71.38	55.97
1996	54.78	65.58	46.68	54.72	65.92	46.33	58.68	66.66	53.21
1997	56.40	68.08	47.94	56.35	67.85	48.00	64.58	77.55	56.17
1998	56.78	67.08	49.31	56.67	67.20	48.99	63.31	74.50	56.30
1999	55.47	65.74	47.83	55.27	65.85	47.15	63.18	71.90	58.08
2000	54.14	63.68	46.76	53.75	63.04	46.47	64.38	74.06	58.07
2001	53.60	63.06	46.22	52.98	62.63	45.34	64.32	74.81	57.61
2002	53.18	61.56	46.65	52.31	60.32	45.93	63.22	74.08	56.55
2003	50.83	59.51	43.95	50.26	58.60	43.49	62.61	75.36	54.72
2004	49.92	58.64	43.19	49.10	57.94	42.14	62.55	74.40	54.75
2005	47.86	55.33	41.92	47.46	55.18	41.18	58.26	65.02	54.57
2006	46.90	53.33	41.69	46.18	52.70	40.73	58.12	65.15	53.57
2007	46.42	53.36	40.74	45.57	52.25	40.03	57.70	65.45	52.18
2008	45.34	51.67	40.10	44.62	50.67	39.55	54.69	64.41	47.59
2009	43.36	49.07	38.69	42.13	47.63	37.49	53.70	60.78	49.30
2010	41.12	47.32	36.10	39.93	46.05	34.79	49.60	56.79	44.85
2011	39.96	45.84	35.14	38.94	44.20	34.49	48.27	56.31	42.69
2012	39.30	44.66	34.78	38.58	43.33	34.44	48.05	57.43	41.42

Additional information on the model used to delay-adjust SEER Incidence rates can be found at [\(http://surveillance.cancer.gov/delay/\)](http://surveillance.cancer.gov/delay/).

^a SEER 9 areas (San Francisco, Connecticut, Detroit, Hawaii, Iowa, New Mexico, Seattle, Utah, and Atlanta).
Rates are per 100,000 and are age-adjusted to the 2000 US Std Population (19 age groups - Census P25-1130).
- Delay-adjusted rate is not shown for observed rates based on less than 16 cases for the time interval.

Table 6.6
Cancer of the Colon and Rectum (Invasive)

Age-adjusted SEER Incidence^a Rates by Year, Race and Sex

Year of Diagnosis:	All Races			Whites			Blacks		
	Total	Males	Females	Total	Males	Females	Total	Males	Females
1975-2012	54.41	63.90	47.34	54.45	64.00	47.30	60.22	69.56	54.08
1975	59.53	68.44	53.66	60.18	69.75	54.05	56.85	59.33	54.66
1976	61.34	71.72	54.12	62.13	72.66	55.00	55.04	58.53	51.28
1977	62.40	73.48	54.95	63.19	74.32	55.75	60.69	75.66	51.47
1978	62.03	72.34	55.25	62.78	73.87	55.60	62.04	65.70	60.42
1979	62.37	74.11	54.58	62.94	75.19	54.94	58.57	61.79	56.16
1980	63.75	74.55	56.54	63.95	74.88	56.83	70.83	79.71	64.23
1981	64.25	75.83	56.50	64.88	76.70	57.15	62.76	72.77	55.94
1982	62.79	75.18	54.51	63.44	76.24	55.05	61.25	68.97	55.92
1983	63.66	75.56	55.61	64.26	76.56	56.04	66.79	75.80	61.13
1984	64.82	77.65	56.08	65.83	79.26	56.74	62.46	70.42	58.20
1985	66.30	79.19	57.31	67.19	80.20	58.34	64.06	74.39	56.39
1986	64.18	77.78	54.70	64.56	78.87	54.72	64.66	73.09	58.75
1987	62.71	77.48	52.67	62.88	78.18	52.62	66.28	77.63	59.01
1988	61.37	75.19	51.81	61.55	75.77	51.73	62.97	72.41	56.59
1989	61.70	74.98	52.42	61.94	75.42	52.65	64.47	79.41	54.67
1990	60.70	74.36	51.28	60.65	74.75	51.02	66.87	75.15	61.66
1991	59.48	72.91	50.04	59.29	73.11	49.65	65.65	76.42	58.16
1992	58.00	70.40	49.22	57.81	70.65	48.69	65.66	78.59	57.57
1993	56.79	68.43	48.30	56.31	68.06	47.78	64.49	78.12	55.25
1994	55.64	66.29	47.73	55.37	66.32	47.18	64.44	75.27	57.98
1995	54.04	63.82	46.93	53.68	63.37	46.60	61.98	71.38	55.97
1996	54.78	65.58	46.68	54.72	65.92	46.33	58.68	66.66	53.21
1997	56.40	68.08	47.94	56.35	67.85	48.00	64.58	77.55	56.17
1998	56.78	67.07	49.31	56.66	67.19	48.99	63.31	74.49	56.30
1999	55.47	65.74	47.83	55.26	65.83	47.15	63.17	71.89	58.07
2000	54.13	63.67	46.76	53.73	63.02	46.46	64.37	74.04	58.06
2001	53.58	63.04	46.21	52.95	62.59	45.31	64.30	74.78	57.59
2002	53.16	61.53	46.64	52.27	60.27	45.90	63.19	74.04	56.52
2003	50.80	59.48	43.93	50.21	58.53	43.45	62.57	75.31	54.68
2004	49.88	58.59	43.17	49.03	57.86	42.08	62.49	74.32	54.70
2005	47.81	55.26	41.88	47.37	55.07	41.11	58.18	64.92	54.50
2006	46.84	53.24	41.64	46.07	52.56	40.65	58.01	65.03	53.47
2007	46.34	53.25	40.68	45.43	52.08	39.91	57.55	65.27	52.05
2008	45.23	51.51	40.02	44.44	50.44	39.40	54.49	64.17	47.42
2009	43.20	48.85	38.58	41.88	47.32	37.30	53.41	60.44	49.04
2010	40.88	46.99	35.92	39.59	45.62	34.54	49.24	56.38	44.54
2011	39.56	45.30	34.86	38.41	43.53	34.09	47.70	55.62	42.21
2012	38.51	43.66	34.17	37.61	42.13	33.66	47.02	56.16	40.55

^a SEER 9 areas (San Francisco, Connecticut, Detroit, Hawaii, Iowa, New Mexico, Seattle, Utah, and Atlanta). Rates are per 100,000 and are age-adjusted to the 2000 US Std Population (19 age groups - Census P25-1130).
- Statistic not shown. Rate based on less than 16 cases for the time interval.

Table 6.7
Cancer of the Colon (Invasive)

Age-adjusted SEER Incidence^a Rates by Year, Race and Sex

Year of Diagnosis:	All Races			Whites			Blacks		
	Total	Males	Females	Total	Males	Females	Total	Males	Females
1975-2012	39.21	44.38	35.42	39.21	44.45	35.36	46.06	52.12	42.22
1975	41.35	45.40	38.91	41.73	46.13	39.15	42.83	44.14	41.64
1976	43.04	47.75	39.94	43.43	48.19	40.38	43.08	43.60	41.91
1977	43.96	49.54	40.35	44.65	50.07	41.16	45.39	58.33	37.66
1978	43.84	49.10	40.59	44.10	49.84	40.63	47.65	48.81	47.67
1979	43.77	50.21	39.61	44.10	51.03	39.71	44.68	45.73	43.84
1980	45.57	50.67	42.34	45.58	50.88	42.33	55.19	58.35	52.85
1981	45.48	51.34	41.73	45.89	51.94	42.13	46.85	50.60	44.36
1982	45.76	53.45	40.68	46.07	54.09	40.85	48.27	52.48	45.19
1983	46.10	53.01	41.63	46.40	53.46	41.86	50.26	58.65	45.25
1984	46.51	54.57	41.32	47.03	55.55	41.58	48.75	54.18	46.05
1985	47.88	55.06	42.95	48.39	55.61	43.62	50.01	57.49	44.33
1986	46.79	54.37	41.56	47.05	55.17	41.49	49.36	55.41	45.46
1987	45.24	54.43	39.17	45.14	54.49	39.09	51.42	59.99	45.73
1988	44.30	52.60	38.67	44.29	52.87	38.43	48.76	54.02	45.29
1989	44.38	52.45	38.96	44.47	52.49	39.18	48.95	60.41	41.62
1990	44.19	51.99	38.92	44.05	52.01	38.73	52.14	57.98	48.56
1991	43.59	51.84	37.90	43.30	51.85	37.40	51.74	57.75	47.67
1992	42.30	49.64	37.24	42.04	49.74	36.70	51.04	60.45	45.43
1993	41.60	48.95	36.32	41.06	48.61	35.66	51.16	60.58	45.02
1994	40.85	46.95	36.36	40.62	47.02	35.83	50.12	57.06	46.30
1995	39.66	45.07	35.85	39.29	44.65	35.48	48.82	55.07	45.34
1996	39.38	45.40	34.89	39.30	45.81	34.41	44.72	48.54	42.22
1997	41.10	48.37	35.98	41.08	48.21	36.13	49.27	59.13	42.65
1998	41.06	46.86	37.05	40.93	47.08	36.59	47.96	54.98	44.16
1999	39.80	45.47	35.66	39.57	45.45	35.09	48.53	54.88	44.94
2000	39.38	44.45	35.49	38.97	43.89	35.16	51.06	57.47	47.05
2001	39.23	44.11	35.51	38.81	43.84	34.88	49.09	55.90	44.82
2002	38.71	43.32	35.14	37.92	42.19	34.53	49.65	57.19	45.00
2003	36.97	41.45	33.38	36.57	40.70	33.16	47.82	56.87	42.33
2004	36.34	41.41	32.55	35.76	40.97	31.77	47.66	55.32	42.73
2005	34.48	38.03	31.68	34.22	38.06	31.12	44.41	48.97	42.28
2006	33.96	37.36	31.20	33.45	36.89	30.57	44.94	49.58	41.85
2007	33.06	36.18	30.57	32.68	35.77	30.21	42.40	46.25	39.50
2008	32.73	35.95	30.07	32.43	35.59	29.77	40.17	45.64	36.22
2009	30.88	33.33	28.91	30.14	32.58	28.07	39.40	44.09	36.85
2010	28.92	32.23	26.25	28.21	31.47	25.46	35.82	39.99	33.26
2011	28.03	30.91	25.67	27.31	29.87	25.12	35.68	41.21	31.96
2012	27.44	29.80	25.49	27.02	28.97	25.31	35.08	41.00	31.01

^a SEER 9 areas (San Francisco, Connecticut, Detroit, Hawaii, Iowa, New Mexico, Seattle, Utah, and Atlanta). Rates are per 100,000 and are age-adjusted to the 2000 US Std Population (19 age groups - Census P25-1130).
- Statistic not shown. Rate based on less than 16 cases for the time interval.

Table 6.8
Cancer of the Rectum (Invasive)

Age-adjusted SEER Incidence^a Rates by Year, Race and Sex

Year of Diagnosis:	All Races			Whites			Blacks		
	Total	Males	Females	Total	Males	Females	Total	Males	Females
1975-2012	15.21	19.52	11.91	15.24	19.55	11.95	14.16	17.43	11.86
1975	18.18	23.04	14.75	18.45	23.62	14.89	14.02	15.19	13.01
1976	18.30	23.97	14.18	18.70	24.48	14.63	11.96	14.93	9.37
1977	18.44	23.94	14.60	18.54	24.26	14.59	15.30	17.33	13.81
1978	18.19	23.25	14.66	18.67	24.03	14.97	14.39	16.89	12.76
1979	18.60	23.89	14.97	18.84	24.16	15.23	13.90	16.06	12.31
1980	18.18	23.88	14.20	18.37	24.00	14.51	15.65	21.36	11.38
1981	18.77	24.49	14.77	19.00	24.76	15.02	15.92	22.17	11.59
1982	17.02	21.73	13.83	17.36	22.15	14.19	12.98	16.49	10.73
1983	17.56	22.54	13.98	17.85	23.09	14.18	16.54	17.15	15.89
1984	18.31	23.08	14.76	18.80	23.72	15.16	13.71	16.24	12.15
1985	18.42	24.13	14.36	18.79	24.59	14.72	14.05	16.90	12.06
1986	17.39	23.41	13.13	17.52	23.70	13.23	15.31	17.68	13.28
1987	17.47	23.05	13.49	17.74	23.69	13.53	14.87	17.64	13.29
1988	17.07	22.59	13.14	17.26	22.90	13.30	14.21	18.38	11.30
1989	17.32	22.52	13.45	17.47	22.93	13.47	15.52	19.00	13.05
1990	16.51	22.37	12.36	16.60	22.74	12.28	14.73	17.16	13.10
1991	15.88	21.07	12.14	15.99	21.25	12.25	13.91	18.68	10.50
1992	15.70	20.75	11.97	15.77	20.91	11.98	14.62	18.14	12.14
1993	15.19	19.48	11.98	15.25	19.44	12.12	13.32	17.54	10.22
1994	14.79	19.34	11.37	14.75	19.29	11.35	14.32	18.21	11.68
1995	14.38	18.76	11.07	14.39	18.73	11.12	13.16	16.31	10.63
1996	15.39	20.18	11.79	15.42	20.11	11.92	13.95	18.12	10.99
1997	15.30	19.70	11.96	15.27	19.63	11.88	15.31	18.42	13.52
1998	15.72	20.21	12.26	15.74	20.11	12.40	15.35	19.52	12.14
1999	15.66	20.27	12.17	15.69	20.39	12.05	14.64	17.01	13.13
2000	14.75	19.22	11.27	14.76	19.12	11.29	13.31	16.57	11.01
2001	14.35	18.92	10.70	14.14	18.75	10.43	15.21	18.88	12.77
2002	14.46	18.21	11.50	14.35	18.08	11.37	13.53	16.86	11.52
2003	13.83	18.02	10.54	13.63	17.84	10.29	14.75	18.44	12.35
2004	13.54	17.17	10.62	13.27	16.88	10.31	14.83	19.01	11.97
2005	13.33	17.23	10.20	13.15	17.02	10.00	13.77	15.96	12.22
2006	12.88	15.89	10.44	12.62	15.67	10.08	13.08	15.45	11.62
2007	13.28	17.07	10.11	12.75	16.30	9.71	15.15	19.02	12.55
2008	12.49	15.56	9.96	12.01	14.85	9.64	14.31	18.53	11.20
2009	12.32	15.52	9.67	11.74	14.74	9.23	14.01	16.36	12.19
2010	11.96	14.76	9.67	11.38	14.15	9.08	13.42	16.39	11.27
2011	11.53	14.39	9.19	11.10	13.67	8.97	12.02	14.41	10.25
2012	11.07	13.86	8.68	10.59	13.16	8.35	11.94	15.16	9.54

^a SEER 9 areas (San Francisco, Connecticut, Detroit, Hawaii, Iowa, New Mexico, Seattle, Utah, and Atlanta). Rates are per 100,000 and are age-adjusted to the 2000 US Std Population (19 age groups - Census P25-1130).
- Statistic not shown. Rate based on less than 16 cases for the time interval.

Table 6.9
Cancer of the Colon and Rectum (Invasive)

Age-adjusted U.S. Death^a Rates by Year, Race and Sex

Year of Death:	All Races			Whites			Blacks		
	Total	Males	Females	Total	Males	Females	Total	Males	Females
1975-2012	21.84	26.24	18.72	21.58	25.99	18.43	26.91	32.36	23.42
1975	28.09	32.84	24.96	28.30	33.24	25.06	26.79	30.09	24.55
1976	28.58	33.34	25.44	28.74	33.76	25.45	28.23	31.16	26.26
1977	28.19	33.21	24.87	28.34	33.49	24.97	27.61	31.44	24.92
1978	28.54	33.75	25.13	28.70	34.12	25.17	27.91	31.20	25.66
1979	28.15	33.56	24.63	28.25	33.92	24.57	28.16	31.57	25.96
1980	28.05	33.74	24.35	28.12	33.99	24.32	28.81	33.18	25.89
1981	27.52	32.95	23.97	27.53	33.16	23.85	28.93	32.83	26.32
1982	27.24	32.96	23.55	27.21	33.11	23.42	29.11	33.71	26.12
1983	27.12	33.08	23.23	27.13	33.32	23.11	28.67	32.90	25.82
1984	27.35	33.02	23.61	27.30	33.12	23.49	29.58	34.65	26.22
1985	26.93	32.66	23.11	26.75	32.74	22.77	30.49	34.10	28.04
1986	26.16	32.05	22.31	26.00	32.01	22.07	29.82	35.36	26.35
1987	25.89	31.91	21.95	25.68	31.85	21.63	29.85	35.10	26.48
1988	25.28	31.08	21.46	25.08	31.04	21.16	29.18	34.29	25.88
1989	25.01	30.80	21.16	24.70	30.52	20.82	30.05	36.37	26.07
1990	24.65	30.77	20.64	24.25	30.43	20.18	30.77	37.64	26.59
1991	24.01	29.64	20.30	23.63	29.35	19.85	30.02	35.80	26.50
1992	23.62	29.32	19.85	23.25	28.99	19.42	29.47	36.23	25.43
1993	23.31	28.56	19.77	22.88	28.18	19.28	29.77	35.84	26.04
1994	22.92	28.28	19.28	22.50	27.89	18.84	29.04	35.66	24.88
1995	22.59	27.65	19.14	22.11	27.16	18.64	29.54	36.30	25.47
1996	21.86	26.71	18.51	21.39	26.29	17.98	28.59	34.52	24.86
1997	21.47	26.23	18.11	20.95	25.68	17.59	28.84	35.07	24.80
1998	21.19	25.62	18.03	20.68	25.13	17.48	28.31	33.90	24.78
1999	20.93	25.48	17.75	20.43	24.99	17.20	28.51	34.50	24.70
2000	20.67	25.08	17.50	20.16	24.46	17.02	28.15	34.98	23.88
2001	20.16	24.37	17.12	19.61	23.83	16.52	27.75	33.39	24.26
2002	19.76	24.01	16.63	19.24	23.39	16.13	27.08	33.73	22.96
2003	19.15	23.18	16.19	18.61	22.62	15.62	26.64	32.49	22.92
2004	18.10	21.81	15.34	17.61	21.28	14.85	25.01	30.64	21.41
2005	17.56	21.22	14.83	17.00	20.60	14.27	25.13	30.87	21.45
2006	17.28	20.70	14.73	16.77	20.04	14.27	24.43	31.28	20.30
2007	16.91	20.23	14.36	16.43	19.66	13.90	23.56	29.29	19.87
2008	16.46	19.64	13.98	15.96	18.99	13.54	22.84	28.73	18.95
2009	15.81	19.06	13.28	15.37	18.57	12.84	21.89	26.98	18.54
2010	15.51	18.75	12.99	15.04	18.15	12.58	21.50	27.46	17.62
2011	15.11	18.06	12.77	14.64	17.50	12.32	21.10	26.19	17.71
2012	14.70	17.60	12.38	14.30	17.05	12.05	19.92	25.49	16.20

^a US Mortality Files, National Center for Health Statistics, Centers for Disease Control and Prevention. Rates are per 100,000 and are age-adjusted to the 2000 US Std Population (19 age groups - Census P25-1130).
- Statistic not shown. Rate based on less than 16 cases for the time interval.

Table 6.10
Cancer of the Colon and Rectum (Invasive)

SEER Incidence^a and U.S. Death^b Rates, Age-Adjusted and Age-Specific Rates, by Race and Sex

	All Races			Whites			Blacks		
	Total	Males	Females	Total	Males	Females	Total	Males	Females
<u>SEER Incidence</u>									
<u>Age at Diagnosis</u>									
Age-Adjusted Rates, 2008-2012									
All ages	42.4	48.9	37.1	41.5	47.8	36.3	52.3	61.2	46.0
Under 65	17.9	20.3	15.7	17.1	19.5	14.9	23.5	26.3	21.2
65 and over	211.4	246.2	185.1	210.1	243.8	184.2	250.7	302.3	217.4
All ages (IARC world std) ^c	26.7	30.9	23.1	25.9	30.0	22.3	34.0	39.5	29.8
Age-Specific Rates, 2008-2012									
<1	-	-	-	-	-	-	-	-	-
1-4	-	-	-	-	-	-	-	-	-
5-9	-	-	-	-	-	-	-	-	-
10-14	0.1	-	-	-	-	-	-	-	-
15-19	0.4	0.3	0.4	0.4	0.3	0.4	-	-	-
20-24	1.0	1.1	0.9	1.1	1.2	1.0	0.7	0.7	0.7
25-29	2.4	2.4	2.4	2.4	2.5	2.3	2.2	1.9	2.5
30-34	4.8	5.0	4.6	4.9	5.2	4.6	4.5	3.8	5.1
35-39	9.0	8.9	9.0	9.2	9.1	9.2	9.0	8.6	9.3
40-44	17.1	17.8	16.3	16.7	17.5	15.8	19.7	19.9	19.6
45-49	30.7	33.2	28.2	29.5	32.0	27.0	38.4	41.9	35.3
50-54	57.8	64.5	51.3	54.3	61.3	47.3	76.8	82.6	71.5
55-59	69.9	82.1	58.5	65.7	77.4	54.4	98.2	114.1	84.6
60-64	96.4	116.9	77.5	91.4	110.7	73.1	138.0	165.7	115.2
65-69	138.1	167.1	112.4	133.0	161.2	107.6	183.9	221.4	154.9
70-74	185.4	220.9	155.9	182.7	216.6	153.8	233.8	291.8	191.7
75-79	231.9	266.3	205.7	231.9	264.7	206.3	276.7	321.1	248.3
80-84	280.0	319.8	253.5	281.8	319.1	256.5	306.3	394.7	258.5
85+	311.9	353.7	291.0	315.8	359.0	294.3	323.7	363.9	307.5
<u>U.S. Mortality</u>									
<u>Age at Death</u>									
Age-Adjusted Rates, 2008-2012									
All ages	15.5	18.6	13.1	15.0	18.0	12.7	21.4	26.9	17.8
Under 65	4.9	5.8	4.0	4.6	5.5	3.8	7.5	9.0	6.2
65 and over	88.8	107.0	75.5	87.1	104.6	74.1	117.7	151.1	97.5
All ages (IARC world std) ^c	8.8	10.6	7.3	8.5	10.2	7.0	12.7	15.9	10.4
Age-Specific Rates, 2008-2012									
<1	-	-	-	-	-	-	-	-	-
1-4	-	-	-	-	-	-	-	-	-
5-9	-	-	-	-	-	-	-	-	-
10-14	-	-	-	-	-	-	-	-	-
15-19	0.0	0.1	-	0.0	0.0	-	-	-	-
20-24	0.2	0.2	0.2	0.2	0.2	0.2	0.3	0.3	0.2
25-29	0.5	0.5	0.4	0.4	0.5	0.4	0.6	0.6	0.6
30-34	1.0	1.1	1.0	1.0	1.1	0.9	1.3	1.4	1.3
35-39	2.2	2.5	1.9	2.1	2.5	1.8	3.1	3.3	3.0
40-44	4.2	4.6	3.7	4.0	4.4	3.6	5.8	6.6	5.2
45-49	7.9	8.9	7.0	7.5	8.4	6.5	12.1	14.0	10.4
50-54	13.6	15.9	11.5	12.8	15.0	10.6	21.0	24.5	17.9
55-59	20.7	25.3	16.5	19.5	23.8	15.3	32.7	40.2	26.3
60-64	30.9	38.3	24.1	29.3	36.4	22.6	48.5	60.7	38.5
65-69	43.7	54.9	33.7	41.9	52.6	32.3	67.1	88.1	51.0
70-74	63.8	79.2	50.7	61.9	76.8	49.0	91.0	118.8	71.1
75-79	89.3	109.1	74.1	87.6	106.5	72.7	120.2	156.3	97.4
80-84	125.6	150.1	109.3	123.6	147.4	107.3	162.9	205.4	140.3
85+	196.7	226.0	182.5	195.8	223.9	182.0	227.6	284.8	205.1

^a SEER 18 areas. Rates are per 100,000 and are age-adjusted to the 2000 US Std Population (19 age groups - Census P25-1130), unless noted.

^b US Mortality Files, National Center for Health Statistics, Centers for Disease Control and Prevention.

^c Rates are per 100,000 and are age-adjusted to the 2000 US Std Population (19 age groups - Census P25-1130), unless noted.

- Rates are per 100,000 and are age-adjusted to the IARC world standard population.

- Statistic not shown. Rate based on less than 16 cases for the time interval.

Table 6.11
Cancer of the Colon (Invasive) and Cancer of the Rectum (Invasive)
SEER Incidence^a Rates, Age-Adjusted and Age-Specific Rates, by Race and Sex

	All Races			Whites			Blacks		
	Total	Males	Females	Total	Males	Females	Total	Males	Females
<u>Cancer of the Colon</u>									
<u>Age at Diagnosis</u>									
Age-Adjusted Rates, 2008-2012									
All ages	30.1	33.5	27.4	29.5	32.9	26.8	39.1	44.6	35.3
Under 65	11.1	12.2	10.1	10.6	11.6	9.5	16.0	17.2	15.0
65 and over	161.5	181.1	146.6	160.9	179.6	146.5	198.5	234.2	175.4
All ages (IARC world std) ^b	18.3	20.4	16.4	17.7	19.8	15.9	24.8	28.1	22.4
Age-Specific Rates, 2008-2012									
<1	-	-	-	-	-	-	-	-	-
1-4	-	-	-	-	-	-	-	-	-
5-9	-	-	-	-	-	-	-	-	-
10-14	0.1	-	-	-	-	-	-	-	-
15-19	0.3	0.3	0.3	0.3	0.2	0.3	-	-	-
20-24	0.7	0.8	0.6	0.7	0.8	0.6	0.5	-	-
25-29	1.4	1.4	1.5	1.5	1.4	1.5	1.3	1.0	1.5
30-34	2.9	2.9	2.9	3.1	3.1	3.0	2.8	2.4	3.3
35-39	5.4	5.2	5.5	5.4	5.4	5.4	5.9	5.0	6.6
40-44	10.1	10.1	10.1	9.7	9.9	9.4	13.3	12.4	14.1
45-49	18.2	18.7	17.6	17.1	17.7	16.6	26.1	27.1	25.3
50-54	34.3	37.4	31.3	32.1	35.7	28.5	49.3	51.6	47.3
55-59	44.1	49.9	38.7	41.1	46.5	35.9	67.9	77.1	60.1
60-64	64.5	75.5	54.4	60.9	71.3	51.0	98.2	112.5	86.6
65-69	96.9	113.6	82.2	93.1	109.3	78.5	139.2	164.5	119.6
70-74	137.9	158.4	120.7	135.8	155.4	119.1	185.2	223.5	157.5
75-79	178.8	197.9	164.1	179.3	196.7	165.6	220.0	252.9	198.9
80-84	220.9	242.5	206.5	223.5	242.8	210.3	243.7	311.3	207.1
85+	254.0	276.9	242.5	257.7	281.8	245.7	267.0	289.1	258.1
<u>Cancer of the Rectum</u>									
<u>Age at Diagnosis</u>									
Age-Adjusted Rates, 2008-2012									
All ages	12.3	15.3	9.7	12.0	15.0	9.5	13.2	16.6	10.7
Under 65	6.8	8.1	5.6	6.6	7.8	5.4	7.5	9.1	6.2
65 and over	49.9	65.1	38.5	49.2	64.3	37.7	52.3	68.1	42.0
All ages (IARC world std) ^b	8.4	10.4	6.6	8.2	10.1	6.5	9.2	11.4	7.4
Age-Specific Rates, 2008-2012									
<1	-	-	-	-	-	-	-	-	-
1-4	-	-	-	-	-	-	-	-	-
5-9	-	-	-	-	-	-	-	-	-
10-14	-	-	-	-	-	-	-	-	-
15-19	0.1	-	0.1	0.1	-	-	-	-	-
20-24	0.3	0.4	0.3	0.4	0.4	0.3	-	-	-
25-29	0.9	1.0	0.8	0.9	1.1	0.8	0.9	0.9	0.9
30-34	1.9	2.1	1.7	1.9	2.1	1.6	1.7	1.5	1.8
35-39	3.6	3.7	3.5	3.7	3.6	3.9	3.1	3.5	2.7
40-44	7.0	7.7	6.2	7.0	7.6	6.4	6.4	7.5	5.5
45-49	12.5	14.5	10.6	12.4	14.2	10.5	12.3	14.8	10.0
50-54	23.5	27.1	20.0	22.2	25.6	18.9	27.4	31.0	24.2
55-59	25.8	32.3	19.8	24.6	31.0	18.5	30.3	37.0	24.5
60-64	31.9	41.5	23.0	30.5	39.4	22.1	39.7	53.3	28.6
65-69	41.2	53.5	30.3	39.9	51.9	29.0	44.7	56.9	35.3
70-74	47.5	62.4	35.1	46.9	61.3	34.7	48.6	68.3	34.2
75-79	53.2	68.4	41.5	52.7	68.0	40.6	56.8	68.3	49.4
80-84	59.1	77.3	46.9	58.3	76.3	46.1	62.6	83.4	51.4
85+	57.9	76.8	48.5	58.1	77.2	48.5	56.7	74.8	49.4

^a SEER 18 areas. Rates are per 100,000 and are age-adjusted to the 2000 US Std Population (19 age groups - Census P25-1130), unless noted.

^b Rates are per 100,000 and are age-adjusted to the IARC world standard population.

- Statistic not shown. Rate based on less than 16 cases for the time interval.

Table 6.12
Cancer of the Colon and Rectum (Invasive)

5-Year Relative and Period Survival (Percent) by Race, Sex, Diagnosis Year, Stage and Age

	All Races			Whites			Blacks		
	Total	Males	Females	Total	Males	Females	Total	Males	Females
5-Year Relative Survival (Percent)									
Year of Diagnosis:									
1960-1963 ^a	-	-	-	-	-	-	-	-	-
1970-1973 ^a	-	-	-	-	-	-	-	-	-
1975-1977 ^b	49.8	49.0	50.6	50.0	49.4	50.7	44.6	43.3	45.9
1978-1980 ^b	51.2	50.2	52.1	51.5	50.6	52.5	45.4	43.3	46.8
1981-1983 ^b	54.0	53.8	54.2	54.4	54.4	54.3	46.4	42.8	49.5
1984-1986 ^b	57.7	57.7	57.6	58.3	58.5	58.2	48.4	47.5	49.0
1987-1989 ^b	59.5	59.8	59.3	60.0	60.5	59.5	52.3	49.9	54.4
1990-1992 ^b	61.1	61.0	61.3	61.9	61.7	62.1	52.9	54.5	51.5
1993-1995 ^b	59.9	59.7	60.0	60.4	60.3	60.6	51.7	51.2	52.1
1996-1998 ^b	62.4	62.4	62.5	63.0	62.8	63.1	54.0	55.1	53.0
1999-2001 ^b	65.1	66.0	64.1	66.5	67.4	65.6	54.0	55.2	53.0
2002-2004 ^b	65.8	65.7	65.8	66.7	67.1	66.4	56.5	55.4	57.4
2005-2011 ^b	66.1 ^f	66.4 ^f	65.9 ^f	66.9 ^f	67.4 ^f	66.4 ^f	58.7 ^f	56.6 ^f	60.5 ^f
5-Year Period Survival (Percent) ^{cd}									
2011	65.2	65.1	65.2	65.8	65.9	65.7	58.3	56.6	59.9
Stage Distribution (%) 2005-2011 ^{ce}									
All Stages									
Number of cases	210,149	107,908	102,241	164,806	85,338	79,468	25,256	12,081	13,175
Percent	100%	100%	100%	100%	100%	100%	100%	100%	100%
Localized	39	40	39	40	40	39	38	38	38
Regional	36	35	36	36	36	36	32	33	32
Distant	20	21	20	20	20	20	25	25	24
Unstaged	5	4	5	4	4	5	5	5	5
5-Year Relative Survival (Percent), 2005-2011 ^c									
Age at Diagnosis:									
Ages <45	67.7	65.7	69.9	69.5	67.1	72.1	58.9	55.2	62.3
Ages 45-54	70.8	69.5	72.4	71.7	70.5	73.2	63.8	61.0	66.6
Ages 55-64	68.4	67.8	69.2	69.0	68.5	69.8	62.2	60.4	64.3
Ages 65-74	67.5	66.9	68.1	68.1	67.7	68.7	58.9	56.0	61.5
Ages 75+	57.1	57.2	57.1	58.4	58.3	58.4	46.6	45.0	47.4
Ages <65	69.1	68.1	70.5	70.0	69.0	71.4	62.3	59.9	64.9
Ages 65+	61.6	62.1	61.1	62.4	62.9	62.0	52.9	51.5	54.0
Stage ^e :									
All Stages	64.9	65.0	64.9	65.6	65.7	65.4	58.1	56.6	59.5
Localized	90.1	89.9	90.3	90.4	90.1	90.7	86.9	86.3	87.4
Regional	70.8	70.7	71.0	71.4	71.5	71.4	64.7	61.8	67.4
Distant	13.1	12.6	13.6	13.7	13.1	14.5	9.1	8.6	9.6
Unstaged	34.5	37.0	32.2	31.6	34.3	29.3	40.2	42.4	38.1

^a Based on End Results data from a series of hospital registries and one population-based registry.

^b SEER 9 areas (San Francisco, Connecticut, Detroit, Hawaii, Iowa, New Mexico, Seattle, Utah, Atlanta).

Based on follow-up of patients into 2012.

^c SEER 18 areas (San Francisco, Connecticut, Detroit, Hawaii, Iowa, New Mexico, Seattle, Utah, Atlanta, San Jose-Monterey, Los Angeles, Alaska Native Registry, Rural Georgia, California excluding SF/SJM/LA, Kentucky, Louisiana, New Jersey and Georgia excluding ATL/RG).

Based on follow-up of patients into 2012.

^d Period survival provides a 2011 estimate of survival by piecing together the most recent conditional survival estimates from several cohorts. It is computed here using three year calendar blocks (2009-2011: 0-1 year survival), (2008-2010: 1-2 year survival), (2007-2009: 2-3 year survival), (2006-2008: 3-4 year survival), (2005-2007: 4-5 years survival).

^e Stage at diagnosis is classified using SEER Summary Stage 2000. Stage distribution percentages may not sum to 100 due to rounding.

^f The difference between 1975-1977 and 2005-2011 is statistically significant ($p < .05$).

^g The standard error is between 5 and 10 percentage points.

^h The standard error is greater than 10 percentage points.

- Statistic could not be calculated due to fewer than 25 cases during the time period.

Table 6.13
Cancer of the Colon (Invasive)

5-Year Relative and Period Survival (Percent) by Race, Sex, Diagnosis Year, Stage and Age

	All Races			Whites			Blacks		
	Total	Males	Females	Total	Males	Females	Total	Males	Females
5-Year Relative Survival (Percent)									
Year of Diagnosis:									
1960-1963 ^a	-	-	-	43	42	44	34	32	35
1970-1973 ^a	-	-	-	49	47	50	37	36	38
1975-1977 ^b	50.6	50.1	51.1	50.9	50.5	51.2	44.7	44.0	45.3
1978-1980 ^b	52.3	51.2	53.2	52.4	51.3	53.4	48.8	47.4	49.8
1981-1983 ^b	55.2	55.6	54.8	55.4	56.2	54.8	48.5	44.6	51.5
1984-1986 ^b	58.3	58.8	57.8	59.0	59.6	58.5	49.1	48.9	49.3
1987-1989 ^b	60.2	60.7	59.6	60.6	61.4	59.9	52.3	50.7	53.6
1990-1992 ^b	62.0	62.3	61.7	62.7	63.0	62.4	53.4	54.6	52.3
1993-1995 ^b	59.8	60.1	59.5	60.4	60.7	60.2	51.1	51.1	51.0
1996-1998 ^b	62.4	62.4	61.9	62.8	62.9	62.8	53.6	55.8	51.9
1999-2001 ^b	64.9	66.1	63.7	66.6	67.8	65.5	52.3	53.4	51.5
2002-2004 ^b	64.7	64.6	64.9	65.7	65.7	65.6	55.4	54.9	55.9
2005-2011 ^b	65.3 ^f	65.8 ^f	64.9 ^f	66.5 ^f	67.2 ^f	65.8 ^f	56.4 ^f	55.1 ^f	57.4 ^f
5-Year Period Survival (Percent) ^{cd}									
2011	64.4	64.7	64.1	65.4	65.8	65.0	56.6	55.5	57.5
Stage Distribution (%) 2005-2011 ^{ce}									
All Stages									
Number of cases	147,022	71,936	75,086	115,564	57,037	58,527	18,523	8,555	9,968
Percent	100%	100%	100%	100%	100%	100%	100%	100%	100%
Localized	38	39	37	38	39	37	35	35	35
Regional	37	36	37	37	36	38	34	34	34
Distant	22	22	21	21	21	21	26	27	26
Unstaged	4	4	4	4	4	4	4	4	4
5-Year Relative Survival (Percent), 2005-2011 ^c									
Age at Diagnosis:									
Ages <45	66.4	65.6	67.2	69.0	67.7	70.4	57.1	54.0	59.7
Ages 45-54	68.5	67.8	69.3	69.7	69.1	70.5	60.9	59.1	62.6
Ages 55-64	67.3	67.1	67.5	68.2	68.1	68.4	60.4	59.1	61.7
Ages 65-74	67.5	67.1	67.9	68.5	68.2	68.9	57.7	55.5	59.6
Ages 75+	58.5	58.5	58.5	59.9	59.9	59.9	47.4	45.6	48.4
Ages <65	67.6	67.1	68.1	68.8	68.4	69.4	60.1	58.5	61.8
Ages 65+	62.1	62.6	61.7	63.2	63.7	62.8	52.5	51.2	53.4
Stage ^e :									
All Stages	64.2	64.6	63.9	65.3	65.6	64.9	56.5	55.4	57.4
Localized	91.1	91.3	91.0	91.7	91.8	91.6	87.0	86.6	87.3
Regional	71.2	70.9	71.4	71.8	71.8	71.8	65.4	62.6	67.8
Distant	13.0	12.5	13.4	13.7	13.0	14.3	8.7	8.0	9.3
Unstaged	26.9	30.6	24.1	25.2	28.8	22.3	30.5	35.9	26.4

^a Based on End Results data from a series of hospital registries and one population-based registry.

^b SEER 9 areas (San Francisco, Connecticut, Detroit, Hawaii, Iowa, New Mexico, Seattle, Utah, Atlanta).

Based on follow-up of patients into 2012.

^c SEER 18 areas (San Francisco, Connecticut, Detroit, Hawaii, Iowa, New Mexico, Seattle, Utah, Atlanta, San Jose-Monterey, Los Angeles, Alaska Native Registry, Rural Georgia, California excluding SF/SJM/LA, Kentucky, Louisiana, New Jersey and Georgia excluding ATL/RG).

Based on follow-up of patients into 2012.

^d Period survival provides a 2011 estimate of survival by piecing together the most recent conditional survival estimates from several cohorts. It is computed here using three year calendar blocks (2009-2011: 0-1 year survival), (2008-2010: 1-2 year survival), (2007-2009: 2-3 year survival), (2006-2008: 3-4 year survival), (2005-2007: 4-5 years survival).

^e Stage at diagnosis is classified using SEER Summary Stage 2000. Stage distribution percentages may not sum to 100 due to rounding.

^f The difference between 1975-1977 and 2005-2011 is statistically significant (p<.05).

^g The standard error is between 5 and 10 percentage points.

^h The standard error is greater than 10 percentage points.

- Statistic could not be calculated due to fewer than 25 cases during the time period.

Table 6.14
Cancer of the Rectum (Invasive)

5-Year Relative and Period Survival (Percent) by Race, Sex, Diagnosis Year, Stage and Age

	All Races			Whites			Blacks		
	Total	Males	Females	Total	Males	Females	Total	Males	Females
5-Year Relative Survival (Percent)									
Year of Diagnosis:									
1960-1963 ^a	-	-	-	38	36	41	27	28	27
1970-1973 ^a	-	-	-	45	43	48	30	20	40
1975-1977 ^b	48.1	47.0	49.4	48.2	47.3	49.3	44.4	41.4	46.8
1978-1980 ^b	48.9	48.3	49.5	49.7	49.3	50.1	34.6	33.5	35.5
1981-1983 ^b	51.3	50.1	52.8	52.0	50.9	53.2	40.1	37.7	42.4
1984-1986 ^b	56.2	55.5	57.1	56.9	56.3	57.7	45.9	43.4	48.2
1987-1989 ^b	58.1	57.9	58.4	58.7	58.9	58.4	52.3	47.7	56.9
1990-1992 ^b	59.2	58.3	60.3	59.8	58.9	61.1	51.3	53.8	48.5
1993-1995 ^b	60.1	58.9	61.6	60.5	59.4	61.9	53.8	51.4	56.4
1996-1998 ^b	63.2	62.4	64.3	63.5	62.8	64.4	55.1	53.6	56.4
1999-2001 ^b	65.8	66.1	65.4	66.4	66.5	66.3	59.1	60.0	58.2
2002-2004 ^b	68.3	68.1	68.7	69.4	70.0	68.7	59.7	56.9	62.4
2005-2011 ^b	68.0 ^f	67.5 ^f	68.7 ^f	68.1 ^f	67.9 ^f	68.2 ^f	64.9 ^f	60.2 ^f	69.6 ^f
5-Year Period Survival (Percent) ^{cd}									
2011	66.9	66.0	68.1	66.7	66.0	67.5	63.0	59.2	67.4
Stage Distribution (%) 2005-2011 ^{ce}									
All Stages									
Number of cases	63,127	35,972	27,155	49,242	28,301	20,941	6,733	3,526	3,207
Percent	100%	100%	100%	100%	100%	100%	100%	100%	100%
Localized	44	43	45	43	42	44	46	43	49
Regional	33	34	32	34	35	33	27	29	25
Distant	18	18	17	18	18	17	19	21	17
Unstaged	6	5	6	5	5	6	8	7	8
5-Year Relative Survival (Percent), 2005-2011 ^c									
Age at Diagnosis:									
Ages <45	69.7	65.9	74.1	70.2	66.1	74.9	62.0	57.0	67.7
Ages 45-54	74.2	71.8	77.6	74.4	72.4	77.3	69.3	64.1	75.4
Ages 55-64	70.5	69.0	73.0	70.5	69.1	72.8	67.1	63.5	71.9
Ages 65-74	67.4	66.6	68.7	67.1	66.6	68.0	63.0	57.7	68.4
Ages 75+	52.2	53.0	51.5	52.8	53.4	52.2	43.1	42.5	43.1
Ages <65	71.8	69.6	75.0	71.9	69.9	74.9	67.2	62.7	72.7
Ages 65+	60.0	60.8	59.0	59.9	60.8	58.9	54.4	52.3	56.0
Stage ^e :									
All Stages	66.6	65.9	67.4	66.4	66.0	67.0	62.7	59.6	66.1
Localized	88.1	87.6	88.9	87.7	86.9	88.6	86.8	85.5	87.8
Regional	69.9	70.1	69.7	70.6	70.8	70.2	62.2	59.3	65.8
Distant	13.5	12.9	14.4	14.0	13.2	15.0	10.7	10.5	10.9
Unstaged	47.2	46.4	48.0	43.3	42.8	43.8	54.2	50.0	57.1

^a Based on End Results data from a series of hospital registries and one population-based registry.

^b SEER 9 areas (San Francisco, Connecticut, Detroit, Hawaii, Iowa, New Mexico, Seattle, Utah, Atlanta).

Based on follow-up of patients into 2012.

^c SEER 18 areas (San Francisco, Connecticut, Detroit, Hawaii, Iowa, New Mexico, Seattle, Utah, Atlanta, San Jose-Monterey, Los Angeles, Alaska Native Registry, Rural Georgia, California excluding SF/SJM/LA, Kentucky, Louisiana, New Jersey and Georgia excluding ATL/RG).

Based on follow-up of patients into 2012.

^d Period survival provides a 2011 estimate of survival by piecing together the most recent conditional survival estimates from several cohorts. It is computed here using three year calendar blocks (2009-2011: 0-1 year survival), (2008-2010: 1-2 year survival), (2007-2009: 2-3 year survival), (2006-2008: 3-4 year survival), (2005-2007: 4-5 years survival).

^e Stage at diagnosis is classified using SEER Summary Stage 2000. Stage distribution percentages may not sum to 100 due to rounding.

^f The difference between 1975-1977 and 2005-2011 is statistically significant ($p < .05$).

^g The standard error is between 5 and 10 percentage points.

^h The standard error is greater than 10 percentage points.

- Statistic could not be calculated due to fewer than 25 cases during the time period.

Table 6.15
Cancer of the Colon and Rectum (Invasive)

SEER^a Relative Survival (Percent)
By Year of Diagnosis

All Races, Males and Females

Year of Diagnosis

	1975- 1979	1980- 1984	1985- 1989	1990- 1994	1995	1996	1997	1998	1999	2000	2001	2002	2003	2004	2005	2006	2007	2008	2009	2010	2011
Survival Time																					
1-year	74.0	77.1	79.9	80.9	79.5	81.3	80.2	81.9	82.4	81.9	83.0	83.2	82.5	83.5	83.9	83.5	84.1	84.6	84.1	84.0	83.7
2-year	63.0	66.8	71.1	72.4	71.4	73.3	72.4	74.5	74.7	74.4	75.6	76.9	75.9	76.5	76.9	77.1	77.1	78.1	77.1	77.1	
3-year	56.9	60.5	65.7	67.2	65.8	68.5	67.3	69.5	70.0	70.2	71.1	72.2	70.8	71.5	72.5	72.1	72.3	73.2	72.1		
4-year	53.0	56.4	61.9	63.3	62.0	65.0	64.2	66.3	66.9	68.2	69.0	67.7	68.3	68.8	68.8	68.4	68.9	69.9			
5-year	50.4	53.7	59.3	60.7	59.7	62.5	61.5	63.2	64.5	64.7	66.0	66.2	65.3	65.7	66.1	66.1	66.5				
6-year	48.6	51.7	57.5	59.0	57.3	61.2	59.8	61.4	63.1	63.0	64.1	64.5	63.5	63.8	64.4	64.4					
7-year	47.4	50.3	56.0	57.4	55.6	60.2	58.8	60.1	61.9	61.6	62.2	63.0	62.1	62.7	62.7						
8-year	46.4	49.3	55.0	56.2	54.9	59.4	58.0	59.3	60.7	60.2	61.2	61.9	61.2	61.6							
9-year	45.7	48.4	54.1	55.4	54.6	58.7	57.2	58.0	59.8	59.4	60.2	60.7	59.9								
10-year	45.1	47.8	53.3	54.6	53.9	58.0	56.4	57.3	59.2	58.8	59.5	60.3									
11-year	44.5	47.2	52.8	54.1	53.0	57.4	55.6	56.4	58.4	57.8	59.0										
12-year	44.1	46.7	52.4	53.5	52.3	57.3	55.2	56.2	57.8	57.3											
13-year	43.6	46.4	51.6	53.0	51.6	56.6	54.9	55.6	57.5												
14-year	43.1	45.9	51.4	52.6	51.1	55.7	54.0	55.3													
15-year	42.8	45.6	50.8	52.1	50.5	55.1	53.3														
16-year	42.4	45.2	50.6	52.1	49.9	54.7															
17-year	41.9	44.7	50.0	51.5	49.3																
18-year	41.5	44.3	49.6	50.9																	
19-year	41.5	43.8	49.3																		
20-year	41.3	43.6	48.9																		
21-year	40.9	42.8	48.8																		
22-year	40.6	42.3	48.6																		
23-year	40.1	42.2	48.0																		
24-year	39.7	41.8																			
25-year	39.4	41.3																			
26-year	38.9	40.7																			
27-year	38.4	40.3																			
28-year	38.3	39.7																			
29-year	37.8																				
30-year	37.2																				

^a Based on the SEER 9 areas (San Francisco, Connecticut, Detroit, Hawaii, Iowa, New Mexico, Seattle, Utah, and Atlanta).

Table 6.16
Cancer of the Colon and Rectum (Invasive)

SEER^a Relative Survival (Percent)
By Year of Diagnosis

All Races, Males

Year of Diagnosis

	1975- 1979	1980- 1984	1985- 1989	1990- 1994	1995	1996	1997	1998	1999	2000	2001	2002	2003	2004	2005	2006	2007	2008	2009	2010	2011
Survival Time																					
1-year	74.0	77.9	80.9	81.7	81.1	82.6	81.2	82.0	83.4	83.5	85.0	83.2	83.2	84.4	84.6	84.6	85.5	86.3	85.4	85.3	84.1
2-year	63.0	67.2	72.4	73.2	72.7	75.0	73.5	74.4	75.4	76.3	77.4	76.6	76.3	77.8	77.9	78.2	78.4	79.2	78.4	78.3	
3-year	56.3	60.6	66.7	67.9	67.0	69.6	68.3	68.8	70.5	71.9	72.8	72.1	71.1	72.5	73.1	73.0	73.3	74.0	73.0		
4-year	52.2	56.2	62.5	63.5	63.1	65.4	65.2	65.3	67.5	68.9	69.9	68.7	67.9	69.1	68.8	68.7	69.5	70.3			
5-year	49.3	53.3	59.7	60.4	60.0	62.4	62.3	62.4	64.9	66.0	67.3	65.7	65.4	66.1	65.8	66.5	66.8				
6-year	47.2	51.2	57.8	58.5	57.3	61.0	60.3	60.2	63.7	63.7	64.9	63.5	62.9	64.2	63.7	64.6					
7-year	45.9	49.6	56.2	56.8	55.6	59.8	59.6	58.7	62.5	61.9	63.1	61.7	61.5	62.6	61.5						
8-year	44.8	48.4	55.3	55.4	55.1	59.4	58.3	57.4	61.1	60.0	62.3	60.4	60.2	61.5							
9-year	44.1	47.5	54.2	54.5	54.6	58.9	57.3	56.1	60.0	59.6	61.3	59.4	58.9								
10-year	43.3	46.7	53.5	53.6	53.9	58.0	56.6	55.5	59.1	58.5	60.4	59.2									
11-year	42.8	46.1	53.1	53.1	53.0	57.2	55.8	54.5	58.5	57.7	59.5										
12-year	42.1	45.6	52.5	52.7	52.1	57.0	55.5	54.0	57.8	57.0											
13-year	41.7	45.4	51.8	51.9	51.6	56.6	55.2	53.4	57.2												
14-year	41.0	44.7	51.7	51.4	50.7	55.6	54.5	53.2													
15-year	40.7	44.5	51.1	50.9	49.7	55.3	54.3														
16-year	40.3	44.3	51.0	50.9	49.1	55.1															
17-year	39.7	43.6	50.5	50.4	48.7																
18-year	39.4	43.3	50.1	49.8																	
19-year	39.3	42.8	49.7																		
20-year	39.2	42.5	49.4																		
21-year	38.9	41.6	49.3																		
22-year	38.5	41.0	49.3																		
23-year	38.0	40.8	48.6																		
24-year	37.7	40.3																			
25-year	37.2	39.9																			
26-year	36.3	39.1																			
27-year	35.9	38.7																			
28-year	35.7	38.3																			
29-year	35.2																				
30-year	34.2																				

^a Based on the SEER 9 areas (San Francisco, Connecticut, Detroit, Hawaii, Iowa, New Mexico, Seattle, Utah, and Atlanta).

Table 6.17
Cancer of the Colon and Rectum (Invasive)

SEER^a Relative Survival (Percent)
By Year of Diagnosis

All Races, Females

Year of Diagnosis

	1975- 1979	1980- 1984	1985- 1989	1990- 1994	1995	1996	1997	1998	1999	2000	2001	2002	2003	2004	2005	2006	2007	2008	2009	2010	2011
Survival Time																					
1-year	73.9	76.2	78.9	80.0	78.0	79.9	79.3	81.9	81.3	80.2	81.0	83.3	81.8	82.5	83.2	82.4	82.6	82.9	82.8	82.7	83.2
2-year	63.0	66.4	69.8	71.6	70.0	71.6	71.1	74.6	73.9	72.5	73.7	77.1	75.4	75.2	75.9	76.0	75.8	77.1	75.8	75.7	
3-year	57.4	60.3	64.6	66.5	64.6	67.4	66.2	70.1	69.5	68.5	69.3	72.4	70.5	70.5	71.8	71.3	71.1	72.3	71.2		
4-year	53.8	56.7	61.2	63.0	60.9	64.7	63.1	67.2	66.2	64.9	66.5	69.3	67.5	67.5	68.8	68.0	68.3	69.4			
5-year	51.4	54.0	58.9	60.9	59.4	62.7	60.6	64.1	64.2	63.5	64.7	66.8	65.3	65.2	66.4	65.6	66.2				
6-year	49.8	52.3	57.2	59.5	57.3	61.5	59.2	62.7	62.4	62.4	63.2	65.4	64.1	63.4	65.1	64.2					
7-year	48.7	51.0	55.7	58.1	55.5	60.6	57.9	61.4	61.4	61.3	61.3	64.2	62.6	62.9	64.0						
8-year	47.9	50.1	54.6	57.1	54.8	59.3	57.6	61.1	60.2	60.4	60.1	63.6	62.2	61.8							
9-year	47.3	49.3	53.9	56.3	54.5	58.5	57.0	59.8	59.5	59.2	59.1	61.9	60.9								
10-year	46.7	48.7	53.0	55.6	53.8	58.0	56.1	59.0	59.3	59.1	58.6	61.3									
11-year	46.1	48.2	52.5	55.0	53.0	57.6	55.4	58.3	58.4	58.0	58.3										
12-year	45.9	47.7	52.3	54.4	52.4	57.5	54.7	58.2	57.8	57.4											
13-year	45.5	47.4	51.4	54.1	51.6	56.7	54.4	57.7	57.7												
14-year	45.1	47.0	51.0	53.7	51.5	55.9	53.5	57.4													
15-year	44.6	46.6	50.5	53.4	51.2	55.0	52.1														
16-year	44.2	45.9	50.0	53.3	50.6	54.3															
17-year	44.0	45.6	49.4	52.5	49.8																
18-year	43.4	45.2	49.1	52.0																	
19-year	43.4	44.7	48.8																		
20-year	43.1	44.5	48.4																		
21-year	42.7	43.9	48.3																		
22-year	42.5	43.5	47.9																		
23-year	41.9	43.3	47.4																		
24-year	41.6	43.1																			
25-year	41.4	42.4																			
26-year	41.1	42.2																			
27-year	40.6	41.7																			
28-year	40.5	41.0																			
29-year	39.9																				
30-year	39.8																				

^a Based on the SEER 9 areas (San Francisco, Connecticut, Detroit, Hawaii, Iowa, New Mexico, Seattle, Utah, and Atlanta).

Table 6.18
Cancer of the Colon and Rectum (Invasive)

Risk of Being Diagnosed With Cancer in 10, 20 and 30 Years,
Lifetime Risk of Being Diagnosed with Cancer Given Alive and Cancer-Free at Current Age, and
Lifetime Risk of Dying from Cancer Given Alive at Current Age
Both Sexes, 2010-2012 By Race/Ethnicity

Race/ Ethnicity	Current Age	Risk of Being Diagnosed with Cancer				Risk of Dying from Cancer	Race/ Ethnicity	Current Age	Risk of Being Diagnosed with Cancer				Risk of Dying from Cancer
		+10 yrs	+20 yrs	+30 yrs	Ever				+10 yrs	+20 yrs	+30 yrs	Ever	
All Races	0	0.00	0.00	0.02	4.51	1.90	Asian/ Pacific Islander	0	0.00	0.00	0.01	4.89	2.05
	10	0.00	0.02	0.09	4.56	1.92		10	0.00	0.01	0.07	4.93	2.06
	20	0.02	0.09	0.33	4.57	1.93		20	0.01	0.06	0.28	4.93	2.06
	30	0.07	0.31	0.88	4.59	1.94		30	0.05	0.27	0.80	4.94	2.07
	40	0.24	0.82	1.76	4.58	1.95		40	0.22	0.75	1.65	4.92	2.07
	50	0.59	1.56	2.92	4.46	1.94		50	0.54	1.46	2.74	4.77	2.04
	60	1.03	2.48	3.73	4.11	1.88		60	0.95	2.27	3.68	4.37	1.97
	70	1.65	3.07	-	3.51	1.74		70	1.42	2.94	-	3.68	1.85
80	1.94	-	-	2.54	1.49	80	1.83	-	-	2.72	1.63		
White	0	0.00	0.00	0.02	4.41	1.85	American Indian/ Alaska Native ^a	0	0.00	0.00	0.03	4.18	1.86
	10	0.00	0.02	0.09	4.45	1.87		10	0.00	0.03	0.09	4.22	1.88
	20	0.02	0.09	0.32	4.46	1.88		20	0.03	0.10	0.32	4.25	1.90
	30	0.07	0.30	0.84	4.48	1.89		30	0.07	0.30	0.81	4.29	1.93
	40	0.23	0.77	1.68	4.46	1.90		40	0.23	0.76	1.72	4.32	1.96
	50	0.56	1.48	2.83	4.34	1.89		50	0.55	1.55	2.95	4.26	1.98
	60	0.99	2.41	3.66	4.02	1.83		60	1.07	2.58	3.49	3.98	1.95
	70	1.62	3.04	-	3.45	1.70		70	1.74	2.78	-	3.34	1.80
80	1.93	-	-	2.50	1.46	80	1.44	-	-	2.22	1.63		
Black	0	0.00	0.00	0.02	4.76	2.25	Hispanic ^b	0	0.00	0.00	0.02	4.40	1.88
	10	0.00	0.02	0.09	4.85	2.30		10	0.00	0.02	0.07	4.44	1.89
	20	0.02	0.09	0.37	4.87	2.31		20	0.01	0.07	0.25	4.45	1.90
	30	0.07	0.36	1.10	4.92	2.33		30	0.06	0.24	0.74	4.46	1.91
	40	0.29	1.04	2.24	4.94	2.35		40	0.18	0.69	1.57	4.44	1.91
	50	0.78	2.03	3.49	4.84	2.35		50	0.51	1.41	2.66	4.34	1.91
	60	1.37	2.98	4.10	4.46	2.29		60	0.94	2.25	3.53	4.01	1.85
	70	1.95	3.32	-	3.75	2.12		70	1.44	2.87	-	3.39	1.72
80	2.01	-	-	2.66	1.83	80	1.81	-	-	2.48	1.49		

Devcan 6.8.0, August 2014, National Cancer Institute (<http://surveillance.cancer.gov/devcan/>).

Source: Incidence data are from the SEER 18 areas (San Francisco, Connecticut, Detroit, Hawaii, Iowa, New Mexico, Seattle, Utah, Atlanta, San Jose-Monterey, Los Angeles, Alaska Native Registry, Rural Georgia, California excluding SF/SJM/LA, Kentucky, Louisiana, New Jersey, and Georgia excluding ATL/RG). Mortality data are from the NCHS public use data file for the total US.

^a Underlying incidence and mortality data for American Indian/Alaska Native are based on the CHSDA (Contract Health Service Delivery Area) counties.

^b Hispanic is not mutually exclusive from whites, blacks, Asian/Pacific Islanders, and American Indians/Alaska Natives. Underlying incidence data for Hispanics are based on NHIA and exclude cases from the Alaska Native Registry.

- Statistic could not be calculated.

A percent of 0.00 represents a value that is below 0.005.

Table 6.19
Cancer of the Colon and Rectum (Invasive)

Risk of Being Diagnosed With Cancer in 10, 20 and 30 Years,
Lifetime Risk of Being Diagnosed with Cancer Given Alive and Cancer-Free at Current Age, and
Lifetime Risk of Dying from Cancer Given Alive at Current Age
Males, 2010-2012 By Race/Ethnicity

Race/ Ethnicity	Current Age	Risk of Being Diagnosed with Cancer				Risk of Dying from Cancer	Race/ Ethnicity	Current Age	Risk of Being Diagnosed with Cancer				Risk of Dying from Cancer
		+10 yrs	+20 yrs	+30 yrs	Ever				+10 yrs	+20 yrs	+30 yrs	Ever	
All Races	0	0.00	0.00	0.02	4.69	1.99	Asian/ Pacific Islander	0	0.00	0.00	0.01	5.27	2.13
	10	0.00	0.02	0.09	4.75	2.02		10	0.00	0.01	0.07	5.31	2.15
	20	0.02	0.09	0.34	4.77	2.03		20	0.01	0.06	0.29	5.32	2.15
	30	0.07	0.32	0.96	4.80	2.05		30	0.05	0.28	0.89	5.34	2.16
	40	0.26	0.90	2.00	4.81	2.06		40	0.23	0.85	1.94	5.32	2.16
	50	0.67	1.80	3.27	4.71	2.06		50	0.63	1.75	3.24	5.19	2.14
	60	1.22	2.81	4.04	4.36	2.01		60	1.17	2.72	4.17	4.75	2.07
	70	1.87	3.30	-	3.68	1.86		70	1.71	3.30	-	3.94	1.93
80	2.08	-	-	2.63	1.57	80	2.01	-	-	2.82	1.69		
White	0	0.00	0.00	0.02	4.57	1.95	American Indian/ Alaska Native ^a	0	0.00	0.00	0.03	4.42	1.80
	10	0.00	0.02	0.09	4.62	1.97		10	0.00	0.03	0.10	4.47	1.83
	20	0.02	0.09	0.33	4.64	1.98		20	0.03	0.10	0.34	4.51	1.85
	30	0.07	0.32	0.92	4.67	2.00		30	0.08	0.32	0.88	4.58	1.89
	40	0.25	0.86	1.91	4.67	2.01		40	0.25	0.83	1.98	4.63	1.94
	50	0.64	1.72	3.16	4.57	2.01		50	0.61	1.83	3.25	4.61	1.96
	60	1.17	2.73	3.94	4.25	1.96		60	1.33	2.89	4.05	4.38	1.94
	70	1.83	3.24	-	3.60	1.81		70	1.85	3.23	-	3.63	1.73
80	2.06	-	-	2.58	1.53	80	2.02	-	-	2.60	1.51		
Black	0	0.00	0.00	0.02	4.87	2.40	Hispanic ^b	0	0.00	0.00	0.02	4.72	2.11
	10	0.00	0.02	0.08	4.98	2.46		10	0.00	0.02	0.07	4.77	2.13
	20	0.02	0.08	0.37	5.01	2.47		20	0.01	0.07	0.26	4.79	2.14
	30	0.07	0.36	1.17	5.09	2.52		30	0.05	0.25	0.80	4.82	2.16
	40	0.30	1.13	2.51	5.15	2.56		40	0.20	0.75	1.81	4.82	2.17
	50	0.87	2.31	3.85	5.08	2.57		50	0.57	1.65	3.10	4.74	2.17
	60	1.62	3.36	4.48	4.75	2.53		60	1.15	2.68	4.03	4.43	2.13
	70	2.22	3.66	-	4.00	2.37		70	1.75	3.28	-	3.73	1.98
80	2.33	-	-	2.89	2.06	80	2.05	-	-	2.66	1.71		

Devcan 6.8.0, August 2014, National Cancer Institute (<http://surveillance.cancer.gov/devcan/>).

Source: Incidence data are from the SEER 18 areas (San Francisco, Connecticut, Detroit, Hawaii, Iowa, New Mexico, Seattle, Utah, Atlanta, San Jose-Monterey, Los Angeles, Alaska Native Registry, Rural Georgia, California excluding SF/SJM/LA, Kentucky, Louisiana, New Jersey, and Georgia excluding ATL/RG). Mortality data are from the NCHS public use data file for the total US.

^a Underlying incidence and mortality data for American Indian/Alaska Native are based on the CHSDA (Contract Health Service Delivery Area) counties.

^b Hispanic is not mutually exclusive from whites, blacks, Asian/Pacific Islanders, and American Indians/Alaska Natives. Underlying incidence data for Hispanics are based on NHIA and exclude cases from the Alaska Native Registry.

- Statistic could not be calculated.

A percent of 0.00 represents a value that is below 0.005.

Table 6.20
Cancer of the Colon and Rectum (Invasive)

Risk of Being Diagnosed With Cancer in 10, 20 and 30 Years,
Lifetime Risk of Being Diagnosed with Cancer Given Alive and Cancer-Free at Current Age, and
Lifetime Risk of Dying from Cancer Given Alive at Current Age
Females, 2010-2012 By Race/Ethnicity

Race/ Ethnicity	Current Age	Risk of Being Diagnosed with Cancer				Risk of Dying from Cancer	Race/ Ethnicity	Current Age	Risk of Being Diagnosed with Cancer				Risk of Dying from Cancer
		+10 yrs	+20 yrs	+30 yrs	Ever				+10 yrs	+20 yrs	+30 yrs	Ever	
All Races	0	0.00	0.00	0.02	4.35	1.81	Asian/ Pacific Islander	0	0.00	0.00	0.01	4.57	1.98
	10	0.00	0.02	0.09	4.39	1.83		10	0.00	0.01	0.06	4.60	1.99
	20	0.02	0.09	0.31	4.40	1.83		20	0.01	0.06	0.27	4.61	1.99
	30	0.07	0.30	0.79	4.40	1.84		30	0.05	0.25	0.71	4.60	1.99
	40	0.23	0.73	1.53	4.37	1.84		40	0.20	0.67	1.41	4.57	1.99
	50	0.51	1.33	2.59	4.23	1.83		50	0.47	1.21	2.32	4.42	1.97
	60	0.86	2.18	3.46	3.90	1.77		60	0.77	1.90	3.29	4.05	1.90
	70	1.46	2.88	-	3.37	1.65		70	1.20	2.67	-	3.48	1.79
80	1.84	-	-	2.47	1.44	80	1.71	-	-	2.65	1.59		
White	0	0.00	0.00	0.02	4.25	1.77	American Indian/ Alaska Native ^a	0	0.00	0.00	0.03	3.96	1.89
	10	0.00	0.02	0.09	4.29	1.79		10	0.00	0.03	0.09	3.99	1.92
	20	0.02	0.09	0.31	4.30	1.79		20	0.03	0.09	0.30	4.01	1.93
	30	0.07	0.29	0.75	4.30	1.80		30	0.06	0.28	0.75	4.02	1.95
	40	0.22	0.69	1.45	4.26	1.80		40	0.22	0.70	1.46	4.03	1.96
	50	0.48	1.26	2.51	4.13	1.78		50	0.49	1.28	2.68	3.93	1.97
	60	0.82	2.12	3.40	3.82	1.73		60	0.83	2.30	3.01	3.62	1.93
	70	1.45	2.87	-	3.33	1.62		70	1.64	2.43	-	3.11	1.83
80	1.85	-	-	2.45	1.41	80	1.04	-	-	1.94	1.69		
Black	0	0.00	0.00	0.02	4.68	2.13	Hispanic ^b	0	0.00	0.00	0.02	4.11	1.69
	10	0.00	0.02	0.10	4.76	2.17		10	0.00	0.02	0.07	4.14	1.70
	20	0.02	0.10	0.37	4.76	2.18		20	0.01	0.07	0.24	4.15	1.71
	30	0.08	0.36	1.03	4.78	2.19		30	0.06	0.23	0.68	4.15	1.71
	40	0.28	0.97	2.01	4.76	2.20		40	0.17	0.62	1.35	4.11	1.71
	50	0.71	1.79	3.18	4.64	2.19		50	0.46	1.20	2.27	4.00	1.69
	60	1.17	2.67	3.81	4.24	2.11		60	0.76	1.88	3.12	3.66	1.64
	70	1.76	3.08	-	3.58	1.95		70	1.20	2.55	-	3.13	1.54
80	1.83	-	-	2.53	1.71	80	1.63	-	-	2.34	1.35		

Devcan 6.8.0, August 2014, National Cancer Institute (<http://surveillance.cancer.gov/devcan/>).

Source: Incidence data are from the SEER 18 areas (San Francisco, Connecticut, Detroit, Hawaii, Iowa, New Mexico, Seattle, Utah, Atlanta, San Jose-Monterey, Los Angeles, Alaska Native Registry, Rural Georgia, California excluding SF/SJM/LA, Kentucky, Louisiana, New Jersey, and Georgia excluding ATL/RG). Mortality data are from the NCHS public use data file for the total US.

^a Underlying incidence and mortality data for American Indian/Alaska Native are based on the CHSDA (Contract Health Service Delivery Area) counties.

^b Hispanic is not mutually exclusive from whites, blacks, Asian/Pacific Islanders, and American Indians/Alaska Natives. Underlying incidence data for Hispanics are based on NHIA and exclude cases from the Alaska Native Registry.

- Statistic could not be calculated.

A percent of 0.00 represents a value that is below 0.005.

Table 6.21
Cancer of the Colon and Rectum (Invasive)

SEER Incidence and U.S. Mortality
Age-Adjusted Rates and Trends^a
By Race/Ethnicity and Sex

SEER Incidence	SEER 18 Areas ^b			SEER 13 Areas ^b			SEER 9 Areas ^b		
	Rate 2008-2012			Trend 2003-2012 ^c			Trend 2003-2012 ^d		
	Rate per 100,000 persons			AAPC (%)			AAPC (%)		
RACE/ETHNICITY	Total	Males	Females	Total	Males	Females	Total	Males	Females
All Races	42.4	48.9	37.1	-3.0*	-3.2*	-2.9*	-3.1*	-3.4*	-3.0*
White	41.5	47.8	36.3	-3.2*	-3.5*	-3.0*	-3.3*	-3.6*	-3.0*
White Hispanic ^e	37.0	44.9	30.8	-1.8*	-1.9*	-1.8*	-	-	-
White Non-Hispanic ^e	42.4	48.4	37.2	-3.3*	-3.6*	-3.1*	-	-	-
Black	52.3	61.2	46.0	-3.1*	-3.2*	-3.5*	-3.3*	-3.4*	-3.5*
Asian/Pacific Islander	36.1	42.2	31.3	-2.5*	-2.5*	-2.9*	-	-	-
Amer Ind/Alaska Nat ^f	40.3	46.3	35.7	-0.4	-0.1	-0.6	-	-	-
Hispanic ^e	35.8	43.3	30.0	-1.9*	-2.0*	-1.9*	-	-	-
<u>U.S. Mortality^g</u>									
	Rate 2008-2012			Trend 2003-2012 ^h					
	Rate per 100,000 persons			AAPC (%)					
RACE/ETHNICITY	Total	Males	Females	Total	Males	Females			
All Races	15.5	18.6	13.1	-2.8*	-2.9*	-2.9*			
White	15.0	18.0	12.7	-2.8*	-2.9*	-2.9*			
White Hispanic ^e	12.9	16.5	10.1	-1.5*	-1.3*	-2.0*			
White Non-Hispanic ^e	15.2	18.2	12.9	-2.8*	-3.0*	-2.9*			
Black	21.4	26.9	17.8	-2.9*	-2.7*	-3.3*			
Asian/Pacific Islander	11.0	13.0	9.4	-1.7*	-1.8*	-1.5*			
Amer Ind/Alaska Nat									
Total U.S.	12.5	14.0	11.2	-1.5*	-2.3*	-0.8			
CHSDA Counties	17.1	18.8	15.6	-0.8	-1.4*	0.0			
Non-CHSDA Counties	7.2	8.7	6.2	-1.9*	-3.0*	-1.5*			
Hispanic ^e	12.2	15.6	9.6	-1.8*	-1.5*	-2.2*			

The AAPC is the Average Annual Percent Change over the time interval. The AAPCs are calculated by the Joinpoint Regression Program Version 4.2.0, April 2015, National Cancer Institute.

- Statistic not shown. Rate based on less than 16 cases for the time interval.

Trend based on less than 10 cases for at least one year within the time interval.

a Rates are age-adjusted to the 2000 US Std Population (19 age groups - Census P25-1130). Trends are based on rates age-adjusted to the 2000 US Std Population (19 age groups - Census P25-1130).

b The SEER 9 areas are San Francisco, Connecticut, Detroit, Hawaii, Iowa, New Mexico, Seattle, Utah, and Atlanta.

The SEER 13 areas comprise the SEER 9 areas plus San Jose-Monterey, Los Angeles, the Alaska Native Registry, and Rural Georgia.

The SEER 18 areas comprise the SEER 13 areas plus California excluding SF/SJM/LA, Kentucky, Louisiana, New Jersey, and Georgia excluding ATL/RG.

c The 2003-2012 AAPC estimates are based on a Joinpoint analysis with up to 3 Joinpoints over diagnosis years 1992-2012.

d The 2003-2012 AAPC estimates are based on a Joinpoint analysis with up to 5 Joinpoints over diagnosis years 1975-2012.

e Hispanic and Non-Hispanic are not mutually exclusive from whites, blacks, Asian/Pacific Islanders, and American Indians/Alaska Natives. Incidence data for Hispanics and Non-Hispanics are based on NHIA and exclude cases from the Alaska Native Registry. The 2003-2012 Hispanic and Non-Hispanic mortality trends exclude deaths from New Hampshire and Oklahoma.

f Incidence data for American Indian/Alaska Native are based on the CHSDA (Contract Health Service Delivery Area) counties.

g US Mortality Files, National Center for Health Statistics, CDC.

h The 2003-2012 mortality AAPCs are based on a Joinpoint analysis using years of death 1992-2012.

* The APC is significantly different from zero (p<.05).

Table 6.22
Cancer of the Colon (Invasive) and Cancer of the Rectum (Invasive)

SEER Incidence
Age-Adjusted Rates and Trends^a
By Race/Ethnicity and Sex

Cancer of the Colon <u>SEER Incidence</u>	SEER 18 Areas ^b Rate 2008-2012			SEER 13 Areas ^b Trend 2003-2012 ^c AAPC (%)			SEER 9 Areas ^b Trend 2003-2012 ^d AAPC (%)		
	Rate per 100,000 persons			Total			Total		
	Total	Males	Females	Total	Males	Females	Total	Males	Females
RACE/ETHNICITY									
All Races	30.1	33.5	27.4	-3.3*	-3.5*	-3.3*	-3.3*	-3.6*	-3.2*
White	29.5	32.9	26.8	-3.5*	-3.7*	-3.3*	-3.5*	-3.9*	-3.1*
White Hispanic ^e	25.5	29.7	22.3	-2.1*	-2.1*	-2.1*	-	-	-
White Non-Hispanic ^e	30.2	33.4	27.5	-3.5*	-3.8*	-3.0*	-	-	-
Black	39.1	44.6	35.3	-3.5*	-3.5*	-3.6*	-3.8*	-3.8*	-4.0*
Asian/Pacific Islander	23.9	26.6	21.8	-2.9*	-3.1*	-3.0*	-	-	-
Amer Ind/Alaska Nat ^f	28.4	31.3	26.6	-0.7	-0.8	-0.5	-	-	-
Hispanic ^e	24.7	28.7	21.6	-2.2*	-2.2*	-2.2*	-	-	-
Cancer of the Rectum <u>SEER Incidence</u>	SEER 18 Areas ^b Rate 2008-2012			SEER 13 Areas ^b Trend 2003-2012 ^c AAPC (%)			SEER 9 Areas ^b Trend 2003-2012 ^d AAPC (%)		
	Rate per 100,000 persons			Total			Total		
	Total	Males	Females	Total	Males	Females	Total	Males	Females
RACE/ETHNICITY									
All Races	12.3	15.3	9.7	-2.2*	-2.4*	-2.0*	-2.3*	-2.6*	-2.1*
White	12.0	15.0	9.5	-2.5*	-2.8*	-2.0*	-2.7*	-3.2*	-2.4*
White Hispanic ^e	11.5	15.2	8.6	-0.7*	-0.9*	-0.7*	-	-	-
White Non-Hispanic ^e	12.2	15.0	9.7	-2.7*	-3.0*	-2.5*	-	-	-
Black	13.2	16.6	10.7	-2.5*	-1.0*	-0.5	-2.2	-2.2	-0.3*
Asian/Pacific Islander	12.2	15.6	9.5	-1.2*	-1.3*	-0.9*	-	-	-
Amer Ind/Alaska Nat ^f	11.9	15.0	9.1	0.3	1.1	-0.8	-	-	-
Hispanic ^e	11.2	14.6	8.3	-0.8*	-0.9*	-0.7*	-	-	-

The AAPC is the Average Annual Percent Change over the time interval. The AAPCs are calculated by the Joinpoint Regression Program Version 4.2.0, April 2015, National Cancer Institute.

- Statistic not shown. Rate based on less than 16 cases for the time interval.

Trend based on less than 10 cases for at least one year within the time interval.

a Rates are age-adjusted to the 2000 US Std Population (19 age groups - Census P25-1130). Trends

are based on rates age-adjusted to the 2000 US Std Population (19 age groups - Census P25-1130).

b The SEER 9 areas are San Francisco, Connecticut, Detroit, Hawaii, Iowa, New Mexico, Seattle, Utah, and Atlanta.

The SEER 13 areas comprise the SEER 9 areas plus San Jose-Monterey, Los Angeles, the Alaska Native Registry, and Rural Georgia.

The SEER 18 areas comprise the SEER 13 areas plus California excluding SF/SJM/LA, Kentucky, Louisiana, New Jersey, and Georgia excluding ATL/RG.

c The 2003-2012 AAPC estimates are based on a Joinpoint analysis with up to 3 Joinpoints over diagnosis years 1992-2012.

d The 2003-2012 AAPC estimates are based on a Joinpoint analysis with up to 5 Joinpoints over diagnosis years 1975-2012.

e Hispanic and Non-Hispanic are not mutually exclusive from whites, blacks, Asian/Pacific Islanders, and American Indians/Alaska Natives. Incidence data for Hispanics and Non-Hispanics are based on NHIA and exclude cases from the Alaska Native Registry.

f Incidence data for American Indian/Alaska Native are based on the CHSDA (Contract Health Service Delivery Area) counties.

* The APC is significantly different from zero (p<.05).

Table 6.23
Cancer of the Colon and Rectum (Invasive)

Age-Adjusted SEER Incidence Rates^a
By Registry, Race and Sex

	All Races			Whites			Blacks		
	Total	Males	Females	Total	Males	Females	Total	Males	Females
<u>SEER Incidence Rates^a, 2008-2012</u>									
California	40.04	46.02	35.08	39.56	45.45	34.58	51.39	59.17	45.64
Greater Bay Area	39.71	44.27	35.89	39.85	44.22	36.06	48.93	56.18	44.01
San Francisco-Oakland	41.18	45.88	37.30	41.08	45.29	37.42	49.75	58.12	44.12
San Jose-Monterey	36.85	41.16	33.13	37.71	42.36	33.71	43.14	44.34	42.65
Los Angeles	41.34	48.52	35.69	39.72	46.75	34.08	54.37	62.67	48.47
Greater California	39.57	45.53	34.53	39.46	45.37	34.39	49.78	57.47	43.58
Connecticut	41.69	48.21	36.45	40.86	47.09	35.77	48.99	60.00	41.82
Detroit	44.27	50.61	39.48	41.77	47.92	36.91	53.98	62.69	48.21
Georgia	42.29	49.64	36.66	39.89	46.95	34.31	50.60	59.94	44.21
Atlanta	40.84	47.57	35.80	37.14	43.68	32.02	49.23	57.34	43.83
Rural Georgia	45.48	51.31	41.50	37.07	41.57	33.25	62.31	75.21	55.56
Greater Georgia	43.03	50.64	37.14	41.04	48.39	35.22	51.22	60.92	44.36
Hawaii	45.59	55.09	37.22	42.93	49.15	36.29	32.65	36.96	-
Iowa	47.16	54.18	41.12	47.06	54.03	41.05	53.82	57.85	50.29
Kentucky	51.41	60.53	44.14	50.96	60.23	43.57	58.25	65.28	52.42
Louisiana	50.15	59.65	42.73	47.04	56.17	39.60	59.98	72.13	51.63
New Jersey	44.44	50.96	39.38	44.43	51.01	39.22	48.77	56.84	43.51
New Mexico	35.85	41.19	31.29	35.87	41.24	31.27	27.07	26.27	27.05
Seattle-Puget Sound	39.17	43.84	35.25	38.71	43.01	35.02	40.77	45.97	36.16
Utah	32.81	36.65	29.43	32.72	36.68	29.22	45.54	43.18	-
9 SEER Areas ^b	41.39	47.14	36.64	40.30	45.69	35.74	50.21	58.38	44.60
11 SEER Areas ^b	41.09	47.06	36.21	40.00	45.66	35.26	51.19	59.28	45.57
13 SEER Areas ^b	41.19	47.17	36.31	39.99	45.64	35.25	51.33	59.50	45.67
18 SEER Areas ^b	42.40	48.87	37.13	41.53	47.82	36.30	52.25	61.16	46.03

^a Rates are per 100,000 and are age-adjusted to the 2000 US Std Population (19 age groups - Census P25-1130)

^b The SEER 9 areas are San Francisco, Connecticut, Detroit, Hawaii, Iowa, New Mexico, Seattle, Utah and Atlanta.

The SEER 11 areas comprise the SEER 9 areas plus San Jose-Monterey and Los Angeles.

The SEER 13 areas comprise the SEER 11 areas plus the Alaska Native Registry and Rural Georgia.

The SEER 18 areas comprise the SEER 13 areas plus California excluding SF/SJM/LA, Kentucky, Louisiana, New Jersey and Georgia excluding ATL/RG.

- Statistic not shown. Rate based on less than 16 cases for the time interval.

Table 6.24
Cancer of the Colon and Rectum (Invasive)

Age-Adjusted SEER Death Rates^a
By Registry, Race and Sex

	All Races			Whites			Blacks		
	Total	Males	Females	Total	Males	Females	Total	Males	Females
<u>SEER Death Rates^a, 2008-2012</u>									
California	14.22	16.77	12.19	14.19	16.80	12.09	21.60	25.11	19.06
Greater Bay Area	13.44	15.56	11.77	13.54	15.81	11.68	20.82	23.73	18.99
San Francisco-Oakland	14.06	16.36	12.25	14.08	16.71	11.96	21.11	24.17	19.15
San Jose-Monterey	12.21	14.00	10.77	12.53	14.22	11.14	18.74	21.70	17.13
Los Angeles	14.62	17.61	12.35	14.18	17.11	11.90	22.74	26.97	19.77
Greater California	14.30	16.82	12.26	14.38	16.97	12.27	20.85	23.95	18.35
Connecticut	12.68	14.79	11.05	12.60	14.74	10.93	14.95	18.02	12.82
Detroit	16.61	19.85	14.34	15.31	18.15	13.26	22.24	28.49	18.27
Georgia	15.76	19.49	13.10	14.38	17.85	11.79	20.91	26.86	17.44
Atlanta	14.99	18.89	12.38	12.79	16.10	10.44	20.32	26.88	16.72
Rural Georgia	19.25	27.39	13.67	15.79	21.79	11.44	25.60	40.55	16.80
Greater Georgia	16.04	19.56	13.45	14.94	18.36	12.32	21.16	26.32	18.05
Hawaii	13.40	16.77	10.68	13.06	15.14	11.00	-	-	-
Iowa	16.71	19.78	14.35	16.64	19.71	14.26	24.98	25.74	25.21
Kentucky	18.10	21.77	15.17	17.86	21.57	14.93	23.35	25.91	20.53
Louisiana	18.46	22.69	15.14	16.65	20.34	13.65	24.26	31.17	19.42
New Jersey	16.26	19.58	13.79	16.03	19.27	13.57	21.82	28.21	17.79
New Mexico	14.82	18.01	12.16	14.82	18.07	12.11	21.56	17.84	24.65
Seattle-Puget Sound	13.56	15.80	11.75	13.59	15.74	11.82	17.12	20.91	14.20
Utah	11.62	13.19	10.22	11.50	13.02	10.13	-	-	-
9 SEER Areas ^b	14.44	17.09	12.37	14.09	16.63	12.07	20.34	25.20	17.22
11 SEER Areas ^b	14.35	17.02	12.28	14.02	16.59	11.99	20.94	25.57	17.89
13 SEER Areas ^b	14.38	17.07	12.30	14.01	16.57	11.98	20.98	25.77	17.83
18 SEER Areas ^b	15.13	18.03	12.87	14.79	17.60	12.55	21.65	26.74	18.22
Total U.S.	15.50	18.59	13.07	15.05	18.03	12.66	21.41	26.92	17.77

^a US Mortality Files, National Center for Health Statistics, Centers for Disease Control and Prevention. Rates are per 100,000 and are age-adjusted to the 2000 US Std Population (19 age groups - Census P25-1130).

^b The SEER 9 areas are San Francisco, Connecticut, Detroit, Hawaii, Iowa, New Mexico, Seattle, Utah and Atlanta. The SEER 11 areas comprise the SEER 9 areas plus San Jose-Monterey and Los Angeles.

The SEER 13 areas comprise the SEER 11 areas plus the Alaska Native Registry and Rural Georgia.

The SEER 18 areas comprise the SEER 13 areas plus California excluding SF/SJM/LA, Kentucky, Louisiana, New Jersey and Georgia excluding ATL/RG.

- Statistic not shown. Rate based on less than 16 cases for the time interval.

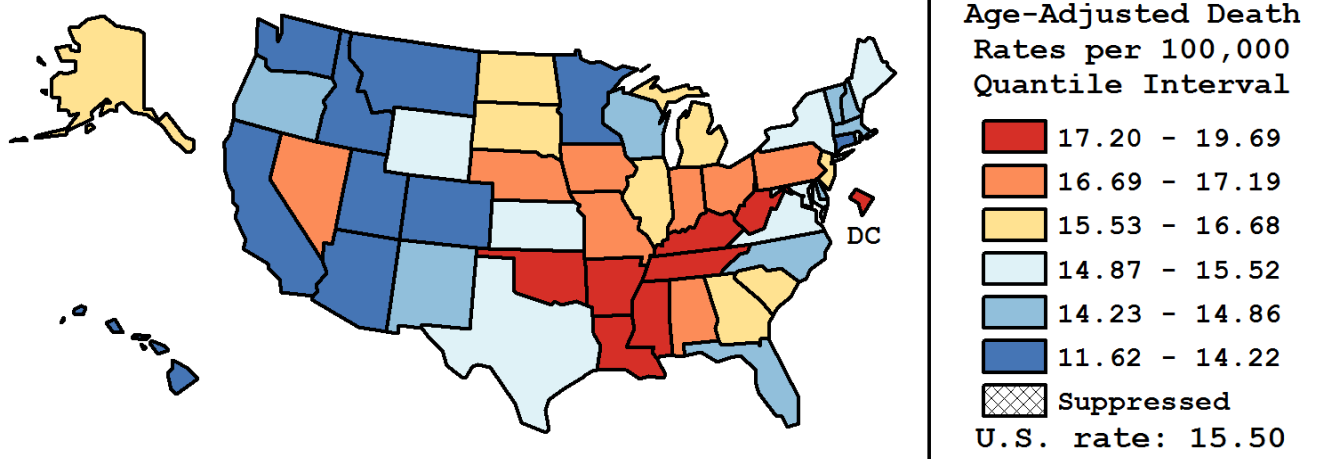
Table 6.25
Cancer of the Colon and Rectum (Invasive)

Age-Adjusted Cancer Death^a Rates By State, All Races, 2008-2012

Males and Females

State	Rate	SE	Rank(CI) ^d	PD
TOTAL U.S.	15.50	0.03		
High Five States				
Mississippi	19.69 ^b	0.36	01(01,03)	27.01 ^c
Arkansas	18.54 ^b	0.34	02(01,08)	19.65 ^c
Louisiana	18.46 ^b	0.28	03(01,07)	19.12 ^c
West Virginia	18.43 ^b	0.40	04(01,10)	18.89 ^c
Kentucky	18.10 ^b	0.28	05(02,10)	16.76 ^c
Low Five States				
Arizona	13.44 ^b	0.20	47(43,50)	-13.31 ^c
Hawaii	13.40 ^b	0.41	48(36,50)	-13.54 ^c
Colorado	13.37 ^b	0.24	49(42,50)	-13.76 ^c
Connecticut	12.68 ^b	0.25	50(47,51)	-18.16 ^c
Utah	11.62 ^b	0.34	51(50,51)	-25.01 ^c

State	Rate	SE	Rank(CI) ^d	PD	State	Rate	SE	Rank(CI) ^d	PD
Alabama	17.19 ^b	0.26	09(05,18)	10.94 ^c	Montana	14.22	0.49	42(23,50)	-8.22
Alaska	15.84	0.86	21(03,48)	2.19	Nebraska	16.96 ^b	0.41	12(04,23)	9.41
Arizona	13.44 ^b	0.20	47(43,50)	-13.31 ^c	Nevada	17.15 ^b	0.37	10(04,21)	10.67 ^c
Arkansas	18.54 ^b	0.34	02(01,08)	19.65 ^c	New Hampshire	14.43	0.44	39(22,49)	-6.90
California	14.22 ^b	0.09	43(36,46)	-8.27	New Jersey	16.26 ^b	0.18	18(13,24)	4.92
Colorado	13.37 ^b	0.24	49(42,50)	-13.76 ^c	New Mexico	14.82	0.37	34(21,46)	-4.37
Connecticut	12.68 ^b	0.25	50(47,51)	-18.16 ^c	New York	15.08 ^b	0.12	31(24,37)	-2.71
Delaware	14.60	0.54	37(19,49)	-5.81	North Carolina	14.75 ^b	0.17	35(27,42)	-4.85
D.C.	17.47	0.78	08(01,29)	12.72 ^c	North Dakota	15.97	0.63	20(05,43)	3.07
Florida	14.40 ^b	0.11	40(33,45)	-7.07	Ohio	17.00 ^b	0.16	11(07,18)	9.70
Georgia	15.76	0.19	22(18,29)	1.66	Oklahoma	17.60 ^b	0.30	06(03,16)	13.58 ^c
Hawaii	13.40 ^b	0.41	48(36,50)	-13.54 ^c	Oregon	14.86	0.26	33(23,44)	-4.13
Idaho	13.75 ^b	0.42	46(30,50)	-11.31 ^c	Pennsylvania	16.73 ^b	0.15	14(09,20)	7.94
Illinois	16.68 ^b	0.16	17(09,21)	7.64	Rhode Island	15.08	0.49	30(16,47)	-2.70
Indiana	16.73 ^b	0.22	15(07,21)	7.92	South Carolina	16.18	0.26	19(11,27)	4.42
Iowa	16.71 ^b	0.30	16(06,23)	7.82	South Dakota	15.69	0.57	23(08,43)	1.26
Kansas	15.52	0.32	25(17,37)	0.16	Tennessee	17.56 ^b	0.23	07(04,13)	13.27 ^c
Kentucky	18.10 ^b	0.28	05(02,10)	16.76 ^c	Texas	15.38	0.12	26(21,32)	-0.77
Louisiana	18.46 ^b	0.28	03(01,07)	19.12 ^c	Utah	11.62 ^b	0.34	51(50,51)	-25.01 ^c
Maine	15.19	0.43	28(17,45)	-2.02	Vermont	14.65	0.63	36(16,49)	-5.46
Maryland	15.36	0.23	27(20,36)	-0.90	Virginia	15.12	0.20	29(22,38)	-2.44
Massachusetts	14.27 ^b	0.20	41(32,47)	-7.90	Washington	14.09 ^b	0.20	44(34,48)	-9.10
Michigan	15.57	0.17	24(19,32)	0.46	West Virginia	18.43 ^b	0.40	04(01,10)	18.89 ^c
Minnesota	13.94 ^b	0.22	45(36,49)	-10.03 ^c	Wisconsin	14.52 ^b	0.21	38(28,45)	-6.30
Mississippi	19.69 ^b	0.36	01(01,03)	27.01 ^c	Wyoming	14.98	0.72	32(09,49)	-3.33
Missouri	16.77 ^b	0.22	13(07,21)	8.20					



^a US Mortality Files, National Center for Health Statistics, Centers for Disease Control and Prevention. Rates are per 100,000 and are age-adjusted to the 2000 US Std Population (19 age groups - Census P25-1130).

^b Difference between state rate and total U.S. rate is statistically significant ($p < .0002$).

^c Absolute percent difference between state rate and total U.S. rate is 10% or more.

^d Rank of state level death rate and the 95% confidence intervals (low, high) for the rank.

SE Standard error of the rate.

PD Percent difference between state rate and total U.S. rate.

- Statistic not shown. Rate based on less than 16 cases for the time interval.

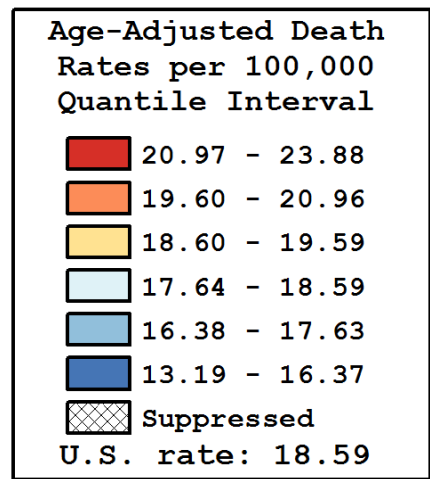
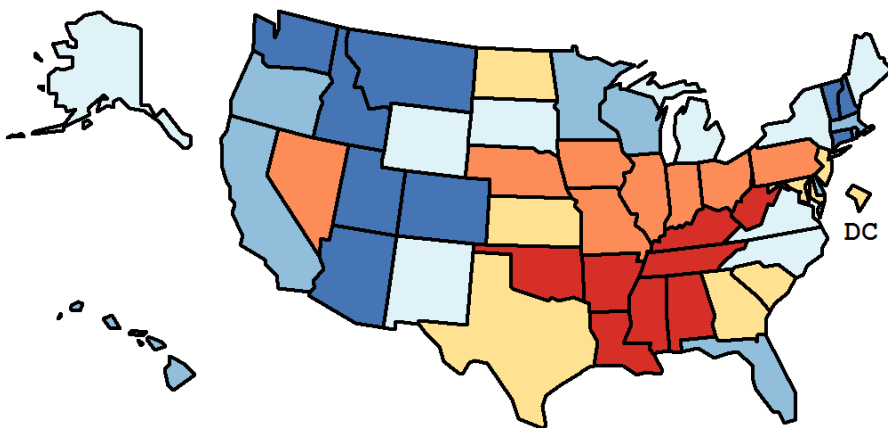
Table 6.26
Cancer of the Colon and Rectum (Invasive)

Age-Adjusted Cancer Death^a Rates By State, All Races, 2008-2012

Males

State	Rate	SE	Rank(CI) ^d	PD
TOTAL U.S.	18.59	0.05		
High Five States				
Mississippi	23.88 ^b	0.62	01(01,05)	28.43 ^c
West Virginia	22.88 ^b	0.69	02(01,10)	23.06 ^c
Arkansas	22.72 ^b	0.57	03(01,09)	22.18 ^c
Louisiana	22.69 ^b	0.49	04(01,08)	22.04 ^c
Kentucky	21.77 ^b	0.48	05(02,13)	17.10 ^c
Low Five States				
Idaho	15.97 ^b	0.68	47(29,50)	-14.08 ^c
Arizona	15.88 ^b	0.32	48(39,50)	-14.61 ^c
Colorado	15.30 ^b	0.40	49(42,50)	-17.73 ^c
Connecticut	14.79 ^b	0.41	50(45,51)	-20.44 ^c
Utah	13.19 ^b	0.53	51(49,51)	-29.09 ^c

State	Rate	SE	Rank(CI) ^d	PD	State	Rate	SE	Rank(CI) ^d	PD
Alabama	21.24 ^b	0.45	08(03,16)	14.26 ^c	Montana	16.12	0.78	46(25,50)	-13.32 ^c
Alaska	18.01	1.38	29(04,50)	-3.14	Nebraska	19.84	0.67	15(05,32)	6.73
Arizona	15.88 ^b	0.32	48(39,50)	-14.61 ^c	Nevada	20.96 ^b	0.62	09(03,22)	12.71 ^c
Arkansas	22.72 ^b	0.57	03(01,09)	22.18 ^c	New Hampshire	16.22	0.73	45(26,50)	-12.76 ^c
California	16.77 ^b	0.15	40(35,46)	-9.78	New Jersey	19.58	0.31	18(11,26)	5.29
Colorado	15.30 ^b	0.40	49(42,50)	-17.73 ^c	New Mexico	18.01	0.62	30(15,45)	-3.14
Connecticut	14.79 ^b	0.41	50(45,51)	-20.44 ^c	New York	17.88 ^b	0.20	33(25,37)	-3.85
Delaware	17.45	0.90	35(13,50)	-6.12	North Carolina	17.99	0.30	31(22,38)	-3.26
D.C.	18.72	1.27	23(03,49)	0.67	North Dakota	19.59	1.06	17(03,42)	5.37
Florida	17.19 ^b	0.18	38(31,43)	-7.53	Ohio	20.88 ^b	0.28	10(05,16)	12.29 ^c
Georgia	19.49	0.34	20(11,27)	4.82	Oklahoma	21.70 ^b	0.50	06(02,14)	16.70 ^c
Hawaii	16.77	0.69	41(22,50)	-9.80	Oregon	17.29	0.43	37(25,46)	-7.00
Idaho	15.97 ^b	0.68	47(29,50)	-14.08 ^c	Pennsylvania	20.16 ^b	0.25	14(09,21)	8.41
Illinois	20.28 ^b	0.27	13(08,20)	9.07	Rhode Island	17.63	0.83	34(13,49)	-5.18
Indiana	20.32 ^b	0.38	12(06,22)	9.27	South Carolina	19.57	0.44	19(10,29)	5.25
Iowa	19.78	0.50	16(07,29)	6.39	South Dakota	18.46	0.94	26(08,47)	-0.73
Kansas	18.68	0.53	24(12,39)	0.46	Tennessee	21.33 ^b	0.39	07(03,15)	14.74 ^c
Kentucky	21.77 ^b	0.48	05(02,13)	17.10 ^c	Texas	18.95	0.20	21(17,29)	1.89
Louisiana	22.69 ^b	0.49	04(01,08)	22.04 ^c	Utah	13.19 ^b	0.53	51(49,51)	-29.09 ^c
Maine	18.36	0.72	27(11,45)	-1.25	Vermont	16.24	1.03	44(19,51)	-12.68 ^c
Maryland	18.86	0.39	22(15,34)	1.42	Virginia	17.90	0.33	32(22,40)	-3.72
Massachusetts	17.15 ^b	0.33	39(27,46)	-7.77	Washington	16.37 ^b	0.33	43(35,49)	-11.98 ^c
Michigan	18.59	0.28	25(18,33)	0.00	West Virginia	22.88 ^b	0.69	02(01,10)	23.06 ^c
Minnesota	16.54 ^b	0.37	42(32,48)	-11.03 ^c	Wisconsin	17.37	0.36	36(25,45)	-6.56
Mississippi	23.88 ^b	0.62	01(01,05)	28.43 ^c	Wyoming	18.27	1.19	28(06,50)	-1.76
Missouri	20.51 ^b	0.38	11(05,21)	10.33 ^c					



^a US Mortality Files, National Center for Health Statistics, Centers for Disease Control and Prevention. Rates are per 100,000 and are age-adjusted to the 2000 US Std Population (19 age groups - Census P25-1130).

^b Difference between state rate and total U.S. rate is statistically significant ($p < .0002$).

^c Absolute percent difference between state rate and total U.S. rate is 10% or more.

^d Rank of state level death rate and the 95% confidence intervals (low, high) for the rank.

SE Standard error of the rate.

PD Percent difference between state rate and total U.S. rate.

- Statistic not shown. Rate based on less than 16 cases for the time interval.

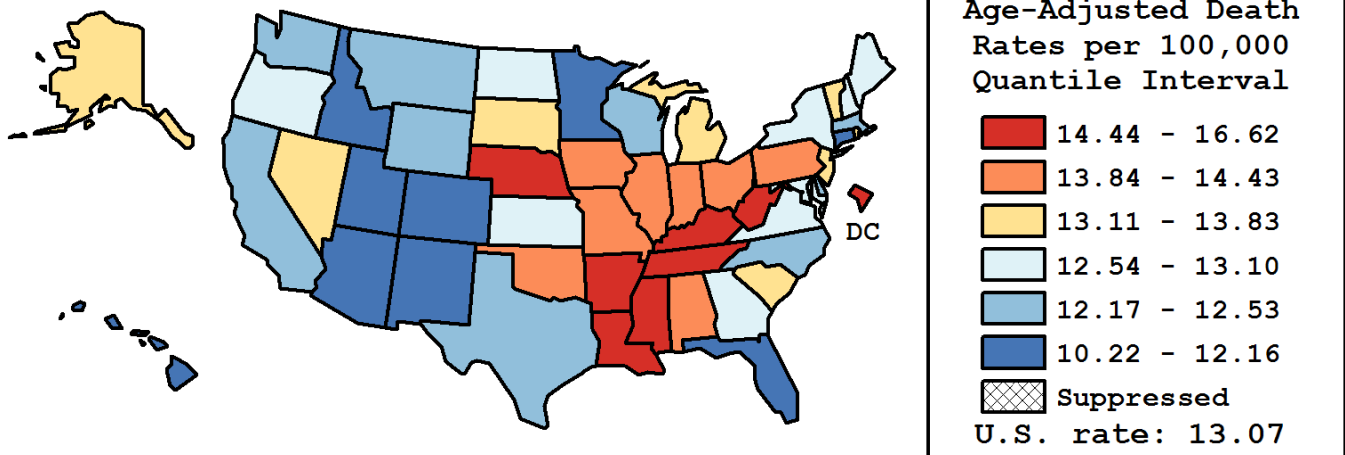
Table 6.27
Cancer of the Colon and Rectum (Invasive)

Age-Adjusted Cancer Death^a Rates By State, All Races, 2008-2012

Females

State	Rate	SE	Rank(CI) ^d	PD
TOTAL U.S.	13.07	0.04		
High Five States				
D.C.	16.62 ^b	1.00	01(01,19)	27.21 ^c
Mississippi	16.52 ^b	0.43	02(01,05)	26.38 ^c
Arkansas	15.28 ^b	0.41	03(01,14)	16.96 ^c
Kentucky	15.17 ^b	0.34	04(02,13)	16.09 ^c
Louisiana	15.14 ^b	0.34	05(02,13)	15.82 ^c
Low Five States				
Idaho	11.82	0.53	47(21,51)	-9.57
Arizona	11.33 ^b	0.25	48(41,50)	-13.29 ^c
Connecticut	11.05 ^b	0.30	49(42,51)	-15.45 ^c
Hawaii	10.68 ^b	0.50	50(39,51)	-18.29 ^c
Utah	10.22 ^b	0.43	51(46,51)	-21.79 ^c

State	Rate	SE	Rank(CI) ^d	PD	State	Rate	SE	Rank(CI) ^d	PD
Alabama	14.13	0.31	11(05,24)	8.17	Montana	12.46	0.63	35(10,50)	-4.67
Alaska	13.74	1.09	19(01,50)	5.16	Nebraska	14.59	0.51	08(02,26)	11.64 ^c
Arizona	11.33 ^b	0.25	48(41,50)	-13.29 ^c	Nevada	13.83	0.46	17(04,35)	5.86
Arkansas	15.28 ^b	0.41	03(01,14)	16.96 ^c	New Hampshire	13.03	0.56	27(06,48)	-0.25
California	12.19 ^b	0.11	42(32,46)	-6.72	New Jersey	13.79	0.22	18(08,26)	5.56
Colorado	11.83 ^b	0.30	45(30,50)	-9.48	New Mexico	12.16	0.45	43(20,50)	-6.97
Connecticut	11.05 ^b	0.30	49(42,51)	-15.45 ^c	New York	13.01	0.14	28(20,35)	-0.45
Delaware	12.20	0.65	39(11,51)	-6.64	North Carolina	12.30 ^b	0.21	37(28,47)	-5.85
D.C.	16.62 ^b	1.00	01(01,19)	27.21 ^c	North Dakota	13.08	0.77	26(03,50)	0.07
Florida	12.06 ^b	0.13	44(33,47)	-7.69	Ohio	14.06 ^b	0.19	13(07,23)	7.56
Georgia	13.10	0.23	25(17,36)	0.24	Oklahoma	14.43 ^b	0.36	09(03,23)	10.41 ^c
Hawaii	10.68 ^b	0.50	50(39,51)	-18.29 ^c	Oregon	12.83	0.33	31(17,45)	-1.79
Idaho	11.82	0.53	47(21,51)	-9.57	Pennsylvania	14.11 ^b	0.18	12(07,22)	8.00
Illinois	14.00 ^b	0.19	14(07,23)	7.15	Rhode Island	13.11	0.60	24(05,48)	0.31
Indiana	13.95	0.27	15(06,26)	6.76	South Carolina	13.39	0.31	20(10,35)	2.50
Iowa	14.35	0.37	10(03,24)	9.79	South Dakota	13.18	0.70	23(03,49)	0.87
Kansas	12.84	0.39	30(13,46)	-1.75	Tennessee	14.76 ^b	0.28	07(03,17)	12.93 ^c
Kentucky	15.17 ^b	0.34	04(02,13)	16.09 ^c	Texas	12.53 ^b	0.14	34(26,42)	-4.11
Louisiana	15.14 ^b	0.34	05(02,13)	15.82 ^c	Utah	10.22 ^b	0.43	51(46,51)	-21.79 ^c
Maine	12.78	0.52	32(10,48)	-2.17	Vermont	13.30	0.80	21(03,49)	1.77
Maryland	12.76	0.27	33(19,44)	-2.38	Virginia	12.93	0.24	29(18,40)	-1.06
Massachusetts	12.19 ^b	0.24	41(27,48)	-6.68	Washington	12.20	0.25	40(26,48)	-6.66
Michigan	13.24	0.21	22(16,34)	1.36	West Virginia	14.99 ^b	0.48	06(01,21)	14.73 ^c
Minnesota	11.82 ^b	0.27	46(32,49)	-9.52	Wisconsin	12.31	0.26	36(24,47)	-5.79
Mississippi	16.52 ^b	0.43	02(01,05)	26.38 ^c	Wyoming	12.22	0.90	38(06,51)	-6.51
Missouri	13.90	0.27	16(07,27)	6.35					



^a US Mortality Files, National Center for Health Statistics, Centers for Disease Control and Prevention. Rates are per 100,000 and are age-adjusted to the 2000 US Std Population (19 age groups - Census P25-1130).

^b Difference between state rate and total U.S. rate is statistically significant ($p < .0002$).

^c Absolute percent difference between state rate and total U.S. rate is 10% or more.

^d Rank of state level death rate and the 95% confidence intervals (low, high) for the rank.

SE Standard error of the rate.

PD Percent difference between state rate and total U.S. rate.

- Statistic not shown. Rate based on less than 16 cases for the time interval.

Table 6.28
Cancer of the Colon and Rectum (Invasive)

Estimated United States Cancer Prevalence Counts^a on January 1, 2012
By Race/Ethnicity, Sex and Years Since Diagnosis

Years Since Diagnosis		0 to <5	5 to <10	10 to <15	15 to <20	20 to <25	25 to <30	0 to <20 ^e	0 to <37 ^e	>=37 ^g	Complete ^h
<u>Race</u>	<u>Sex</u>										
All Races ^b	Both Sexes	398,737	281,172	199,881	118,333	77,219	45,038	1,033,951	1,149,814	19,115	1,168,929
	Males	204,170	140,415	100,896	58,365	37,777	20,275	521,903	573,302	6,599	579,901
	Females	194,567	140,757	98,985	59,968	39,442	24,763	512,048	576,512	12,516	589,028
White ^b	Both Sexes	324,290	236,784	171,603	101,740	67,233	39,748	865,509	967,504	16,749	984,253
	Males	167,409	120,619	87,557	50,622	33,369	17,992	442,016	487,849	5,865	493,714
	Females	156,881	116,165	84,046	51,118	33,864	21,756	423,493	479,655	10,884	490,539
Black ^b	Both Sexes	47,802	28,970	18,851	10,912	6,993	3,772	109,787	119,414	1,456	120,870
	Males	22,482	11,967	8,317	4,755	2,949	1,443	49,065	52,531	452	52,983
	Females	25,320	17,003	10,534	6,157	4,044	2,329	60,722	66,883	1,004	67,887
Asian/ Pacific Islander ^c	Both Sexes	18,283	11,130	6,965	+	+	+	40,533	+	+	+
	Males	9,532	5,669	3,500	+	+	+	20,817	+	+	+
	Females	8,751	5,461	3,465	+	+	+	19,716	+	+	+
Hispanic ^d	Both Sexes	31,428	17,484	10,149	+	+	+	64,639	+	+	+
	Males	16,954	9,073	5,339	+	+	+	34,188	+	+	+
	Females	14,474	8,411	4,810	+	+	+	30,451	+	+	+

Estimated prevalence percent^a on January 1, 2012, of the SEER^c population diagnosed in the previous 20 years
By Age at Prevalence, Race/Ethnicity and Sex

Age at Prevalence	Race	Sex	Age Specific (Crude)								Age-Adjusted ^f		
			All Ages	0-9	10-19	20-29	30-39	40-49	50-59	60-69	70-79	80+	All Ages
	All Races ^c	Both Sexes	0.2958%	-	0.0004%	0.0051%	0.0263%	0.1096%	0.3496%	0.7612%	1.5234%	2.3653%	0.2845%
		Males	0.3032%	-	0.0004%	0.0048%	0.0265%	0.1172%	0.3837%	0.8917%	1.8042%	2.6637%	0.3268%
		Females	0.2886%	-	0.0004%	0.0055%	0.0260%	0.1021%	0.3169%	0.6432%	1.2958%	2.1888%	0.2507%
	White ^c	Both Sexes	0.3079%	-	0.0004%	0.0057%	0.0271%	0.1077%	0.3325%	0.7303%	1.5176%	2.3849%	0.2804%
		Males	0.3158%	-	0.0003%	0.0052%	0.0268%	0.1140%	0.3684%	0.8607%	1.8043%	2.6787%	0.3227%
		Females	0.3000%	-	0.0005%	0.0063%	0.0275%	0.1011%	0.2969%	0.6085%	1.2793%	2.2093%	0.2456%
	Black ^c	Both Sexes	0.2516%	-	-	0.0035%	0.0226%	0.1193%	0.4202%	0.9605%	1.6861%	2.2680%	0.3153%
		Males	0.2384%	-	-	0.0043%	0.0225%	0.1213%	0.4308%	1.0773%	1.8373%	2.4198%	0.3410%
		Females	0.2636%	-	-	0.0028%	0.0226%	0.1177%	0.4109%	0.8688%	1.5802%	2.1943%	0.2975%
	Asian/ Pacific Islander ^c	Both Sexes	0.2724%	-	-	0.0026%	0.0231%	0.1051%	0.3620%	0.7564%	1.4121%	2.2434%	0.2738%
		Males	0.2889%	-	-	0.0021%	0.0249%	0.1239%	0.4029%	0.8950%	1.7160%	2.6145%	0.3231%
		Females	0.2574%	-	-	0.0031%	0.0214%	0.0884%	0.3269%	0.6418%	1.1771%	2.0167%	0.2366%
	Hispanic ^d	Both Sexes	0.1270%	-	-	0.0032%	0.0204%	0.0805%	0.2775%	0.6417%	1.2106%	1.7552%	0.2253%
		Males	0.1318%	-	-	0.0031%	0.0214%	0.0848%	0.2982%	0.7645%	1.5577%	2.1268%	0.2714%
		Females	0.1222%	-	-	0.0032%	0.0192%	0.0760%	0.2576%	0.5362%	0.9535%	1.5327%	0.1911%

^a US 2012 cancer prevalence counts are based on 2012 cancer prevalence proportions from the SEER registries and 1/1/2012 US population estimates based on the average of 2011 and 2012 population estimates from the US Bureau of the Census.

^{b c d} Prevalence was calculated using the First Malignant Primary Only for a person. Statistics based on (b) SEER 9 Areas (c) SEER 11 Areas and Rural Georgia (d) NHIA for Hispanic for SEER 11 Areas and Rural Georgia.

^e Maximum limited-duration prevalence: 37 years for 1975-2012 SEER 9 data; 20 years for 1992-2012 SEER 11 data (used to calculate prevalence for Hispanics and Asian Pacific Islanders).

^f Percentages are age-adjusted to the 2000 US Standard Population (19 age groups - Census P25-1130) by 5-year age groups.

^{g h i} (g) Cases diagnosed more than 37 years ago were estimated using the completeness index method (Capocaccia et. al. 1997, Merrill et. al. 2000). (h) Complete prevalence is obtained by summing 0 to <37 and >=37. (i) Age-specific completeness index was approximated using empirical data from historical Connecticut tumor registry.

- Statistic not shown. Statistic based on fewer than 5 cases estimated alive in SEER for the time interval.

+ Not available.

Table 6.29

Cancer of the Colon And Rectum (Invasive)

Percent Distribution and Counts by Histology among Histologically Confirmed Cases, 2008-2012
Both Sexes by Race

Histology ^a	All Races		White		Black		Asian/Pacific Islander		American Indian/ Alaska Native ^b		Hispanic ^c	
	Count	Percent	Count	Percent	Count	Percent	Count	Percent	Count	Percent	Count	Percent
Carcinoma	180,720	99.4%	141,644	99.5%	21,747	99.4%	14,393	99.4%	976	99.7%	18,469	99.4%
Epidermoid carcinoma ^d (8051-8131)	1,113	0.6%	942	0.7%	130	0.6%	21	0.1%	-	-	96	0.5%
Squamous cell carcinoma (8070-8078,8083-8084)	1,054	0.6%	893	0.6%	125	0.6%	21	0.1%	-	-	90	0.5%
Adenocarcinoma (8050,8140-8147, 8160-8162,8180-8221, 8250-8507,8520-8551,8560, 8570-8574,8576,8940-8941)	169,224	93.1%	133,801	94.0%	19,702	90.1%	13,345	92.2%	905	92.4%	17,173	92.4%
Adenocarcinoma, NOS (8140)	116,238	63.9%	91,560	64.3%	13,674	62.5%	9,533	65.8%	660	67.4%	11,872	63.9%
Adenocarcinoma in adenomatous polyp (8210)	15,009	8.3%	11,773	8.3%	1,624	7.4%	1,283	8.9%	85	8.7%	1,345	7.2%
Adenocarcinoma in villous adenoma (8261)	4,443	2.4%	3,585	2.5%	464	2.1%	330	2.3%	18	1.8%	575	3.1%
Mucinous adenocarcinoma (8470-8473,8480,8482)	11,678	6.4%	9,649	6.8%	1,221	5.6%	698	4.8%	53	5.4%	1,269	6.8%
Mucin-producing adenocarcinoma (8481)	1,855	1.0%	1,502	1.1%	253	1.2%	93	0.6%	-	-	172	0.9%
Signet ring adenocarcinoma (8490)	2,039	1.1%	1,675	1.2%	197	0.9%	144	1.0%	-	-	214	1.2%
Other adenocarcinomas ^e	17,962	9.9%	14,057	9.9%	2,269	10.4%	1,264	8.7%	78	8.0%	1,726	9.3%
Other specific carcinomas (8012-8015,8030-8046, 8150-8155,8170-8175, 8230-8249,8508,8510-8513, 8561-8562,8575,8580-8671)	8,787	4.8%	5,665	4.0%	1,711	7.8%	914	6.3%	50	5.1%	1,033	5.6%
Neuroendocrine carcinoid (8240-8245)	6,693	3.7%	4,080	2.9%	1,409	6.4%	758	5.2%	42	4.3%	842	4.5%
Other ^f	2,094	1.2%	1,585	1.1%	302	1.4%	156	1.1%	-	-	191	1.0%
Unspecified, Carcinoma, NOS (8010-8011, 8020-8022)	1,596	0.9%	1,236	0.9%	204	0.9%	113	0.8%	19	1.9%	167	0.9%

Source: SEER 18 areas (San Francisco, Connecticut, Detroit, Hawaii, Iowa, New Mexico, Seattle, Utah, Atlanta, San Jose-Monterey, Los Angeles, Alaska Native Registry, Rural Georgia, California excluding SF/SJM/LA, Kentucky, Louisiana, New Jersey and Georgia excluding ATL/RG).

Percents may not sum to 100 due to rounding.

^a Excludes Kaposi Sarcoma, mesothelioma, lymphomas, leukemias, myelomas, lymphoreticular, and immunoproliferative diseases.

^b Estimates for American Indian/Alaska Native are based on the CHSDA(Contract Health Service Delivery Area) counties.

^c Hispanic is not mutually exclusive from whites, blacks, Asian/Pacific Islanders, and American Indians/Alaska Natives.

^d Underlying incidence data for Hispanics are based on NHIA and exclude cases from the Alaska Native Registry.

^e Epidermoid carcinoma includes squamous, basal, and transitional cell carcinomas.

^f Includes histologies 8050, 8141-8147, 8160-8162, 8180-8204, 8211-8221, 8250-8260, 8262-8264, 8270-8463, 8500-8507, 8514, 8520-8551, 8560, 8570-8574, 8576, 8940-8941.

^f Includes histologies 8012-8015, 8030-8046, 8150-8155, 8170-8175, 8230-8231, 8246-8249, 8508, 8510-8513, 8561-8562, 8575, 8580-8671.

- Statistic not shown due to fewer than 16 cases during the time period.

Table 6.29 - continued

Cancer of the Colon And Rectum (Invasive)

Percent Distribution and Counts by Histology among Histologically Confirmed Cases, 2008-2012
Both Sexes by Race

Histology ^a	All Races		White		Black		Asian/Pacific Islander		American Indian/ Alaska Native ^b		Hispanic ^c	
	Count	Percent	Count	Percent	Count	Percent	Count	Percent	Count	Percent	Count	Percent
Sarcoma and other soft tissue tumors (8680-8713,8800-8921, 8990-8991,9040-9044, 9120-9136,9150-9252, 9370-9373,9540-9582)	110	0.1%	89	0.1%	-	-	-	-	-	-	16	0.1%
Other specific types (8720-8790,8930-8936, 8950-8983,9000-9030, 9060-9110,9260-9365, 9380-9539)	293	0.2%	202	0.1%	45	0.2%	44	0.3%	-	-	32	0.2%
Unspecified (8000-8005)	648	0.4%	480	0.3%	61	0.3%	40	0.3%	-	-	66	0.4%
Total ^d	181,771	100.0%	142,415	100.0%	21,868	100.0%	14,481	100.0%	979	100.0%	18,583	100.0%

Source: SEER 18 areas (San Francisco, Connecticut, Detroit, Hawaii, Iowa, New Mexico, Seattle, Utah, Atlanta, San Jose-Monterey, Los Angeles, Alaska Native Registry, Rural Georgia, California excluding SF/SJM/LA, Kentucky, Louisiana, New Jersey and Georgia excluding ATL/RG).

Percents may not sum to 100 due to rounding.

^a Excludes Kaposi Sarcoma, mesothelioma, lymphomas, leukemias, myelomas, lymphoreticular, and immunoproliferative diseases.

^b Estimates for American Indian/Alaska Native are based on the CHSDA(Contract Health Service Delivery Area) counties.

^c Hispanic is not mutually exclusive from whites, blacks, Asian/Pacific Islanders, and American Indians/Alaska Natives.

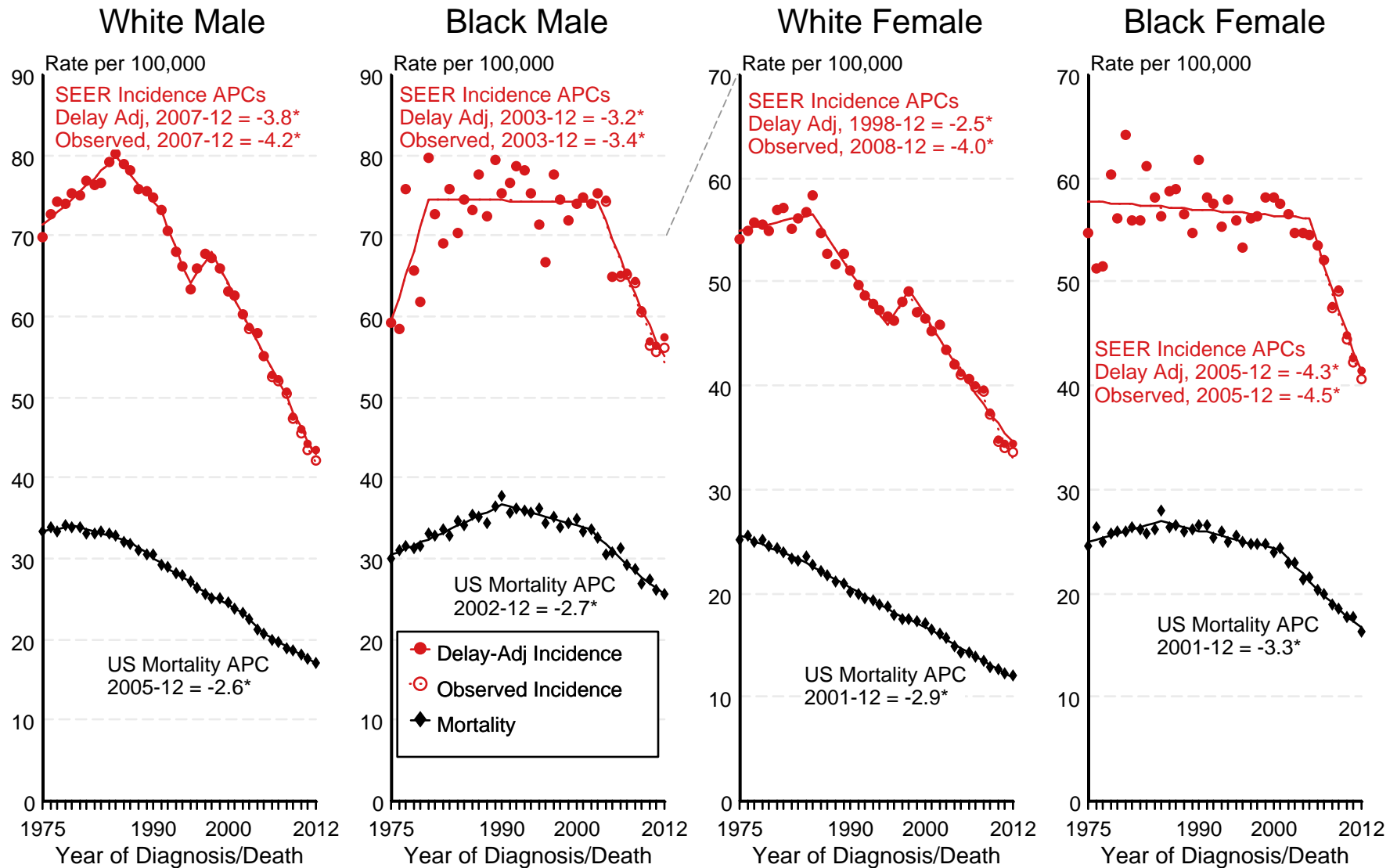
Underlying incidence data for Hispanics are based on NHIA and exclude cases from the Alaska Native Registry.

^d Total includes carcinoma cases from the previous page.

- Statistic not shown due to fewer than 16 cases during the time period.

Figure 6.1

SEER Observed Incidence, SEER Delay Adjusted Incidence and US Death Rates^a Cancer of the Colon and Rectum, by Race and Sex



Source: SEER 9 areas and US Mortality Files (National Center for Health Statistics, CDC).

^a Rates are age-adjusted to the 2000 US Std Population (19 age groups - Census P25-1103).

Regression lines and APCs are calculated using the Joinpoint Regression Program Version 4.2.0, April 2015, National Cancer Institute.

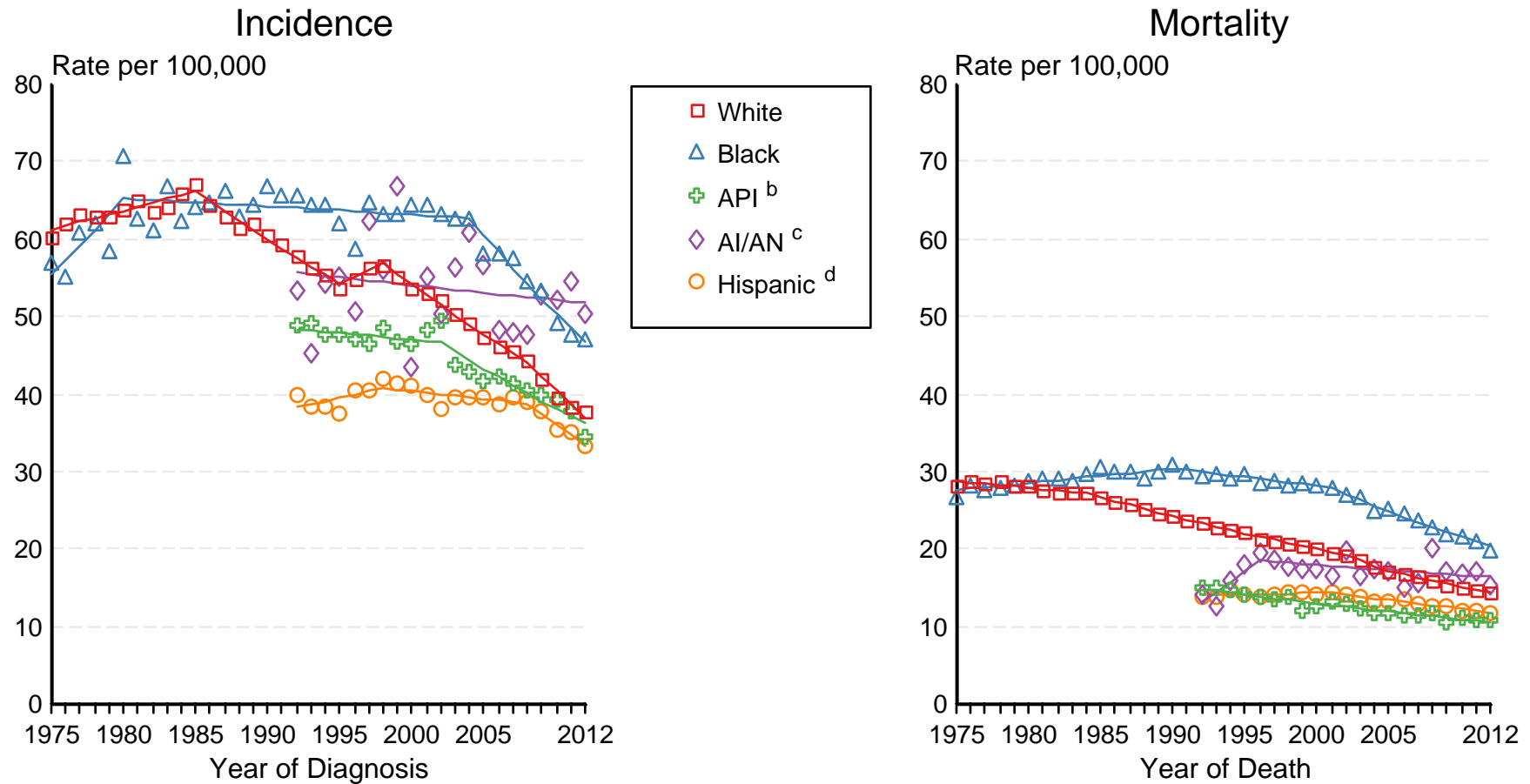
The APC is the Annual Percent Change for the regression line segments. The APC shown on the graph is for the most recent trend.

* The APC is significantly different from zero ($p < 0.05$).

Figure 6.2

SEER Incidence and US Death Rates^a Cancer of the Colon and Rectum, Both Sexes

Joinpoint Analyses for Whites and Blacks from 1975-2012
and for Asian/Pacific Islanders, American Indians/Alaska Natives and Hispanics from 1992-2012

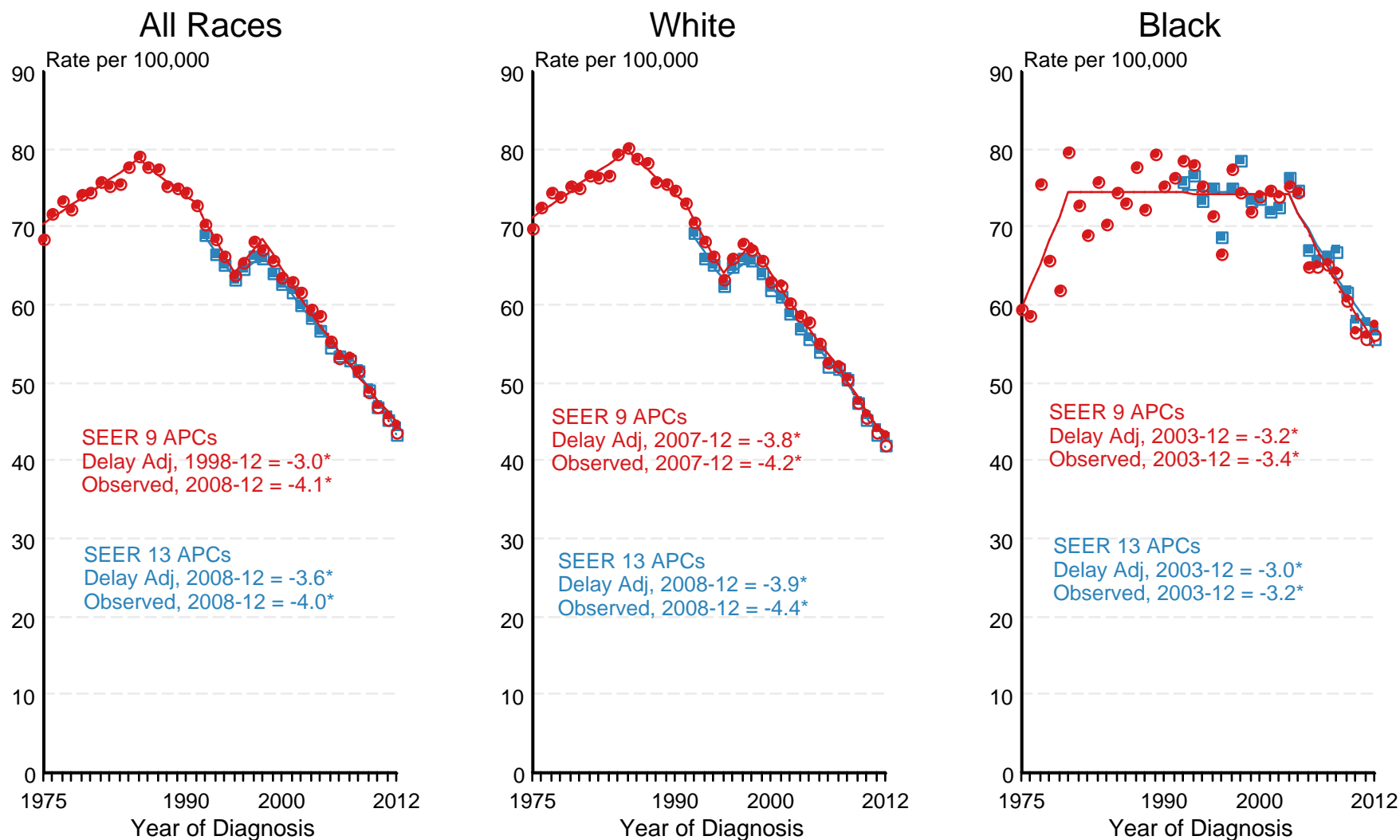


Source: Incidence data for whites and blacks are from the SEER 9 areas (San Francisco, Connecticut, Detroit, Hawaii, Iowa, New Mexico, Seattle, Utah, Atlanta). Incidence data for Asian/Pacific Islanders, American Indians/Alaska Natives and Hispanics are from the SEER 13 Areas (SEER 9 Areas, San Jose-Monterey, Los Angeles, Alaska Native Registry and Rural Georgia). Mortality data are from US Mortality Files, National Center for Health Statistics, CDC.

- ^a Rates are age-adjusted to the 2000 US Std Population (19 age groups - Census P25-1103). Regression lines are calculated using the Joinpoint Regression Program Version 4.2.0, April 2015, National Cancer Institute. Joinpoint analyses for Whites and Blacks during the 1975-2012 period allow a maximum of 5 joinpoints. Analyses for other ethnic groups during the period 1992-2012 allow a maximum of 3 joinpoints.
- ^b API = Asian/Pacific Islander.
- ^c AI/AN = American Indian/Alaska Native. Rates for American Indian/Alaska Native are based on the CHSDA(Contract Health Service Delivery Area) counties.
- ^d Hispanic is not mutually exclusive from whites, blacks, Asian/Pacific Islanders, and American Indians/Alaska Natives. Incidence data for Hispanics are based on NHIA and exclude cases from the Alaska Native Registry. Mortality data for Hispanics exclude cases from New Hampshire and Oklahoma.

Figure 6.3

SEER Observed Incidence and SEER Delay Adjusted Incidence Rates^a SEER 9 Areas Compared to SEER 13 Areas Cancer of the Colon and Rectum, Male, by Race



● SEER 9 Delay-Adj. Incidence ○ SEER 9 Observed Incidence ■ SEER 13 Delay-Adj. Incidence □ SEER 13 Observed Incidence

Source: SEER 9 areas and SEER 13 areas.

^a Rates are age-adjusted to the 2000 US Std Population (19 age groups - Census P25-1103).

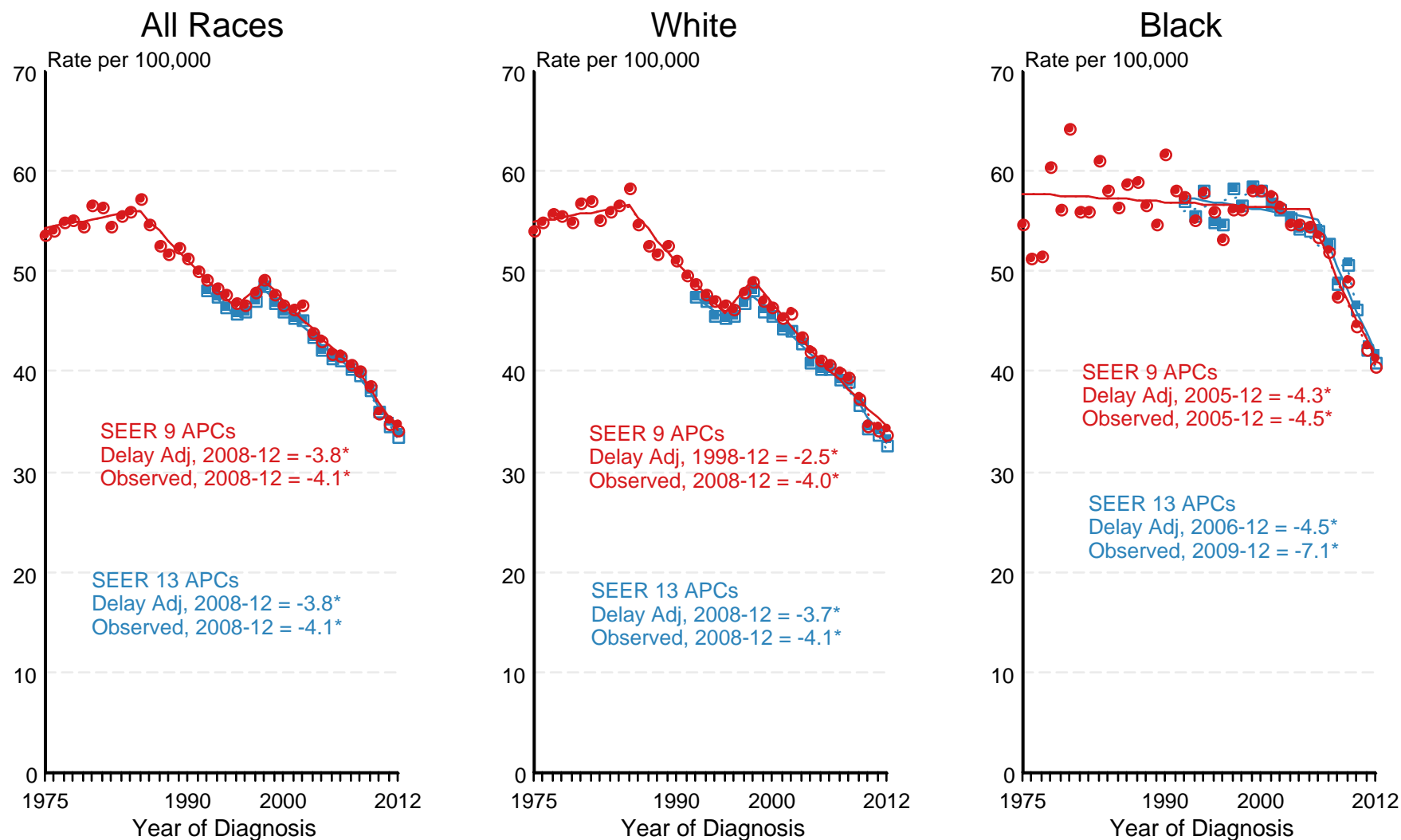
Regression lines and APCs are calculated using the Joinpoint Regression Program Version 4.2.0, April 2015, National Cancer Institute.

The APC is the Annual Percent Change for the regression line segments. The APC shown on the graph is for the most recent trend.

* The APC is significantly different from zero ($p < 0.05$).

Figure 6.4

SEER Observed Incidence and SEER Delay Adjusted Incidence Rates^a SEER 9 Areas Compared to SEER 13 Areas Cancer of the Colon and Rectum, Female, by Race



● SEER 9 Delay-Adj. Incidence
 ○ SEER 9 Observed Incidence
 ■ SEER 13 Delay-Adj. Incidence
 □ SEER 13 Observed Incidence

Source: SEER 9 areas and SEER 13 areas.

^a Rates are age-adjusted to the 2000 US Std Population (19 age groups - Census P25-1103).

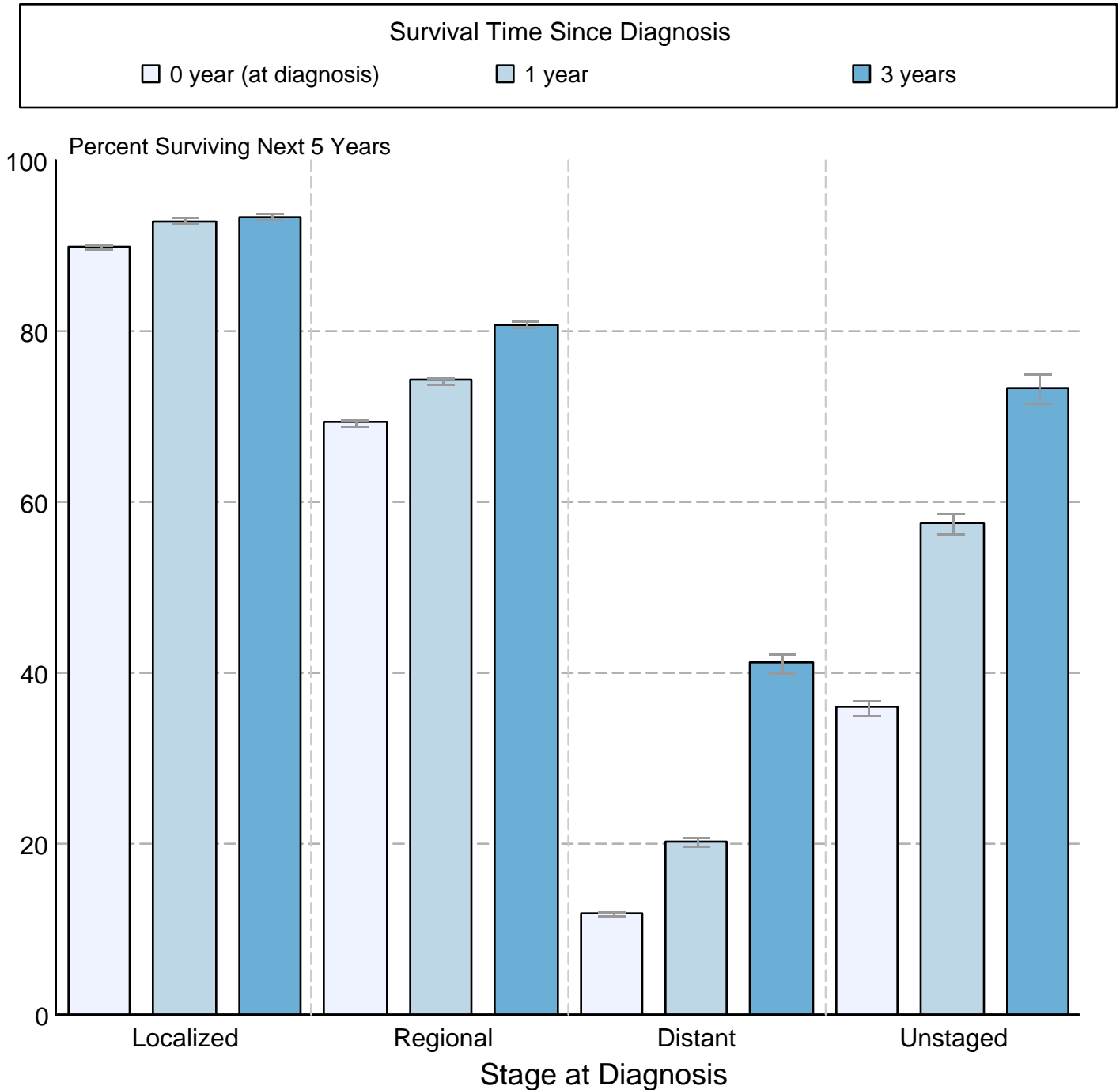
Regression lines and APCs are calculated using the Joinpoint Regression Program Version 4.2.0, April 2015, National Cancer Institute.

The APC is the Annual Percent Change for the regression line segments. The APC shown on the graph is for the most recent trend.

* The APC is significantly different from zero ($p < 0.05$).

Figure 6.5

Cancer of the Colon and Rectum 5-Year SEER Conditional Relative Survival and 95% Confidence Intervals Probability of surviving the next 5 years given the cohort has already survived 0, 1, or 3 years 1998-2011 by stage at diagnosis



Source: SEER 18 areas (San Francisco, Connecticut, Detroit, Hawaii, Iowa, New Mexico, Seattle, Utah, Atlanta, San Jose-Monterey, Los Angeles, Alaska Native Registry, Rural Georgia, California excluding SF/SJM/LA, Kentucky, Louisiana, New Jersey and Georgia excluding ATL/RG). California excluding SF/SJM/LA, Kentucky, Louisiana, New Jersey and Georgia excluding ATL/RG contribute cases for diagnosis years 2000 and later. The remaining 13 SEER Areas contribute cases for the entire time period. Percent surviving is not shown if based on less than 25 cases. Confidence intervals are not shown if length of the confidence interval is greater than 5 times the standard error.