

Table 8.1
Cancer of the Esophagus (Invasive)

Trends in SEER Incidence^{ab} and U.S. Mortality^c Using the Joinpoint Regression Program,
1975-2012 With up to Five Joinpoints, 1992-2012 With up to Three Joinpoints,
Both Sexes by Race/Ethnicity

	JP Trend 1		JP Trend 2		JP Trend 3		JP Trend 4		JP Trend 5		JP Trend 6		AAPC ^d	
	Years	APC	Years	APC	Years	APC	Years	APC	Years	APC	Years	APC	2003-12	2008-12
<u>SEER 9 Delay-Adjusted Incidence^a, 1975-2012</u>														
All Races	1975-04	0.6*	2004-12	-1.3*									-1.1*	-1.3*
White	1975-04	1.4*	2004-12	-0.4									-0.2	-0.4
Black	1975-86	1.2	1986-12	-4.6*									-4.6*	-4.6*
<u>SEER 13 Delay-Adjusted Incidence^b, 1992-2012</u>														
All Races	1992-12	-0.4*											-0.4*	-0.4*
White	1992-12	0.5*											0.5*	0.5*
Black	1992-12	-4.6*											-4.6*	-4.6*
<u>SEER 9 Observed Incidence^a, 1975-2012</u>														
All Races	1975-04	0.6*	2004-12	-1.4*									-1.2*	-1.4*
White	1975-04	1.4*	2004-12	-0.5									-0.3	-0.5
Black	1975-86	1.2	1986-12	-4.6*									-4.6*	-4.6*
<u>SEER 13 Observed Incidence^b, 1992-2012</u>														
All Races	1992-12	-0.4*											-0.4*	-0.4*
White	1992-12	0.5*											0.5*	0.5*
White NH ^{ef}	1992-04	1.7*	2004-12	-0.8									-0.5	-0.8
Black	1992-12	-4.7*											-4.7*	-4.7*
Black NH ^{ef}	1992-12	-4.7*											-4.7*	-4.7*
API ^e	1992-12	-1.8*											-1.8*	-1.8*
AI/AN ^{eg}	1992-12	-1.8											-1.8	-1.8
Hispanic ^f	1992-12	-1.0*											-1.0*	-1.0*
<u>U.S. Cancer Mortality^c, 1975-2012</u>														
All Races	1975-02	0.7*	2002-12	-0.8*									-0.8*	-0.8*
White	1975-83	0.4	1983-02	1.7*	2002-12	-0.2							-0.2	-0.2
Black	1975-82	1.1*	1982-93	-1.6*	1993-12	-4.5*							-4.5*	-4.5*
<u>U.S. Cancer Mortality^c, 1992-2012</u>														
All Races	1992-03	0.5*	2003-12	-0.8*									-0.8*	-0.8*
White	1992-02	1.7*	2002-12	-0.2									-0.2	-0.2
White NH ^{ef}	1992-02	1.9*	2002-12	0.0									0.0	0.0
Black	1992-12	-4.4*											-4.4*	-4.4*
Black NH ^{ef}	1992-12	-4.4*											-4.4*	-4.4*
API ^e	1992-12	-1.9*											-1.9*	-1.9*
AI/AN ^{eg}	1992-04	4.0*	2004-12	-3.1									-2.4	-3.1
Hispanic ^f	1992-12	-0.8*											-0.8*	-0.8*

Joinpoint Regression Program Version 4.2.0, April 2015, National Cancer Institute. (<http://surveillance.cancer.gov/joinpoint/>).
^a The APC is the Annual Percent Change based on rates age-adjusted to the 2000 US Std Population (19 age groups - Census P25-1130).
^b Trends are from the SEER 9 areas (San Francisco, Connecticut, Detroit, Hawaii, Iowa, New Mexico, Seattle, Utah, and Atlanta).
^c Trends are from the SEER 13 areas (SEER 9 Areas, Los Angeles, San Jose-Monterey, Rural Georgia, and the Alaska Native Registry).
^d Trends are from US Mortality Files, National Center for Health Statistics, Centers for Disease Control and Prevention.
^e The AAPC is the Average Annual Percent Change and is based on the APCs calculated by Joinpoint.
^f API - Asian/Pacific Islander, AI/AN - American Indian/Alaska Native, NH - Non-Hispanic
Hispanic and Non-Hispanic are not mutually exclusive from whites, blacks, Asian/Pacific Islanders, and American Indians/Alaska Natives. Incidence data for Hispanics and Non-Hispanics are based on NHIA and exclude cases from the Alaska Native Registry.
The Hispanic and Non-Hispanic mortality trends exclude deaths from New Hampshire and Oklahoma.
^g Data for American Indian/Alaska Native are based on the CHSDA (Contract Health Service Delivery Area) counties.
* The APC/AAPC is significantly different from zero (p<.05).
- Joinpoint regression line analysis could not be performed on data series.

Table 8.2
Cancer of the Esophagus (Invasive)

Trends in SEER Incidence^{ab} and U.S. Mortality^c Using the Joinpoint Regression Program,
1975-2012 With up to Five Joinpoints, 1992-2012 With up to Three Joinpoints,
Males by Race/Ethnicity

	JP Trend 1		JP Trend 2		JP Trend 3		JP Trend 4		JP Trend 5		JP Trend 6		AAPC ^d	
	Years	APC	Years	APC	Years	APC	Years	APC	Years	APC	Years	APC	2003-12	2008-12
<u>SEER 9 Delay-Adjusted Incidence^a, 1975-2012</u>														
All Races	1975-04	0.8*	2004-12	-1.3*									-1.0*	-1.3*
White	1975-04	1.7*	2004-12	-0.5									-0.2	-0.5
Black	1975-86	1.2	1986-12	-4.9*									-4.9*	-4.9*
<u>SEER 13 Delay-Adjusted Incidence^b, 1992-2012</u>														
All Races	1992-12	-0.2											-0.2	-0.2
White	1992-12	0.7*											0.7*	0.7*
Black	1992-12	-4.8*											-4.8*	-4.8*
<u>SEER 9 Observed Incidence^a, 1975-2012</u>														
All Races	1975-04	0.8*	2004-12	-1.4*									-1.1*	-1.4*
White	1975-04	1.7*	2004-12	-0.6									-0.3	-0.6
Black	1975-86	1.3	1986-12	-4.9*									-4.9*	-4.9*
<u>SEER 13 Observed Incidence^b, 1992-2012</u>														
All Races	1992-12	-0.2											-0.2	-0.2
White	1992-01	2.0*	2001-12	-0.2									-0.2	-0.2
White NH ^{ef}	1992-04	1.9*	2004-12	-0.6									-0.3	-0.6
Black	1992-12	-4.9*											-4.9*	-4.9*
Black NH ^{ef}	1992-12	-4.9*											-4.9*	-4.9*
API ^e	1992-12	-2.1*											-2.1*	-2.1*
AI/AN ^{eg}	1992-12	-3.2											-3.2	-3.2
Hispanic ^f	1992-12	-1.1*											-1.1*	-1.1*
<u>U.S. Cancer Mortality^c, 1975-2012</u>														
All Races	1975-85	0.7*	1985-94	1.2*	1994-05	0.4*	2005-12	-1.0*					-0.7*	-1.0*
White	1975-82	0.3	1982-99	1.9*	1999-05	1.0*	2005-12	-0.5*					-0.2	-0.5*
Black	1975-84	0.8*	1984-93	-1.9*	1993-12	-4.7*							-4.7*	-4.7*
<u>U.S. Cancer Mortality^c, 1992-2012</u>														
All Races	1992-05	0.5*	2005-12	-1.1*									-0.7*	-1.1*
White	1992-05	1.4*	2005-12	-0.7*									-0.2	-0.7*
White NH ^{ef}	1992-04	1.7*	2004-12	-0.4									-0.1	-0.4
Black	1992-12	-4.6*											-4.6*	-4.6*
Black NH ^{ef}	1992-12	-4.5*											-4.5*	-4.5*
API ^e	1992-12	-2.1*											-2.1*	-2.1*
AI/AN ^{eg}	1992-05	3.1*	2005-12	-6.2									-4.2	-6.2
Hispanic ^f	1992-12	-0.8*											-0.8*	-0.8*

Joinpoint Regression Program Version 4.2.0, April 2015, National Cancer Institute. (<http://surveillance.cancer.gov/joinpoint/>).
^a The APC is the Annual Percent Change based on rates age-adjusted to the 2000 US Std Population (19 age groups - Census P25-1130).
^b Trends are from the SEER 9 areas (San Francisco, Connecticut, Detroit, Hawaii, Iowa, New Mexico, Seattle, Utah, and Atlanta).
^c Trends are from the SEER 13 areas (SEER 9 Areas, Los Angeles, San Jose-Monterey, Rural Georgia, and the Alaska Native Registry).
^d Trends are from US Mortality Files, National Center for Health Statistics, Centers for Disease Control and Prevention.
^e The AAPC is the Average Annual Percent Change and is based on the APCs calculated by Joinpoint.
^f API - Asian/Pacific Islander, AI/AN - American Indian/Alaska Native, NH - Non-Hispanic
Hispanic and Non-Hispanic are not mutually exclusive from whites, blacks, Asian/Pacific Islanders, and American Indians/Alaska Natives. Incidence data for Hispanics and Non-Hispanics are based on NHIA and exclude cases from the Alaska Native Registry.
The Hispanic and Non-Hispanic mortality trends exclude deaths from New Hampshire and Oklahoma.
^g Data for American Indian/Alaska Native are based on the CHSDA (Contract Health Service Delivery Area) counties.
* The APC/AAPC is significantly different from zero (p<.05).
- Joinpoint regression line analysis could not be performed on data series.

Table 8.3
Cancer of the Esophagus (Invasive)

Trends in SEER Incidence^{ab} and U.S. Mortality^c Using the Joinpoint Regression Program,
1975-2012 With up to Five Joinpoints, 1992-2012 With up to Three Joinpoints,
Females by Race/Ethnicity

	JP Trend 1		JP Trend 2		JP Trend 3		JP Trend 4		JP Trend 5		JP Trend 6		AAPC ^d	
	Years	APC	Years	APC	Years	APC	Years	APC	Years	APC	Years	APC	2003-12	2008-12
<u>SEER 9 Delay-Adjusted Incidence^a, 1975-2012</u>														
All Races	1975-12	-0.5*											-0.5*	-0.5*
White	1975-12	0.0											0.0	0.0
Black	1975-81	8.3	1981-12	-3.2*									-3.2*	-3.2*
<u>SEER 13 Delay-Adjusted Incidence^b, 1992-2012</u>														
All Races	1992-12	-1.2*											-1.2*	-1.2*
White	1992-12	-0.6*											-0.6*	-0.6*
Black	1992-12	-4.2*											-4.2*	-4.2*
<u>SEER 9 Observed Incidence^a, 1975-2012</u>														
All Races	1975-12	-0.5*											-0.5*	-0.5*
White	1975-12	-0.1											-0.1	-0.1
Black	1975-81	8.3	1981-12	-3.2*									-3.2*	-3.2*
<u>SEER 13 Observed Incidence^b, 1992-2012</u>														
All Races	1992-12	-1.2*											-1.2*	-1.2*
White	1992-12	-0.6*											-0.6*	-0.6*
White NH ^{ef}	1992-12	-0.4											-0.4	-0.4
Black	1992-12	-4.2*											-4.2*	-4.2*
Black NH ^{ef}	1992-12	-4.2*											-4.2*	-4.2*
API ^e	1992-12	-0.4											-0.4	-0.4
AI/AN ^{eg}	-	-											-	-
Hispanic ^f	1992-12	-1.1											-1.1	-1.1
<u>U.S. Cancer Mortality^c, 1975-2012</u>														
All Races	1975-00	0.1	2000-12	-1.6*									-1.6*	-1.6*
White	1975-02	0.4*	2002-12	-1.1*									-1.1*	-1.1*
Black	1975-92	-0.2	1992-12	-4.1*									-4.1*	-4.1*
<u>U.S. Cancer Mortality^c, 1992-2012</u>														
All Races	1992-01	0.0	2001-12	-1.6*									-1.6*	-1.6*
White	1992-01	0.8*	2001-12	-1.1*									-1.1*	-1.1*
White NH ^{ef}	1992-01	1.0*	2001-12	-0.9*									-0.9*	-0.9*
Black	1992-12	-4.1*											-4.1*	-4.1*
Black NH ^{ef}	1992-12	-4.0*											-4.0*	-4.0*
API ^e	1992-12	-1.3*											-1.3*	-1.3*
AI/AN ^{eg}	1992-12	3.5*											3.5*	3.5*
Hispanic ^f	1992-96	10.5	1996-12	-2.5*									-2.5*	-2.5*

Joinpoint Regression Program Version 4.2.0, April 2015, National Cancer Institute. (<http://surveillance.cancer.gov/joinpoint/>).

The APC is the Annual Percent Change based on rates age-adjusted to the 2000 US Std Population (19 age groups - Census P25-1130).

^a Trends are from the SEER 9 areas (San Francisco, Connecticut, Detroit, Hawaii, Iowa, New Mexico, Seattle, Utah, and Atlanta).

^b Trends are from the SEER 13 areas (SEER 9 Areas, Los Angeles, San Jose-Monterey, Rural Georgia, and the Alaska Native Registry).

^c Trends are from US Mortality Files, National Center for Health Statistics, Centers for Disease Control and Prevention.

^d The AAPC is the Average Annual Percent Change and is based on the APCs calculated by Joinpoint.

^e API - Asian/Pacific Islander, AI/AN - American Indian/Alaska Native, NH - Non-Hispanic

^f Hispanic and Non-Hispanic are not mutually exclusive from whites, blacks, Asian/Pacific Islanders, and American Indians/Alaska

Natives. Incidence data for Hispanics and Non-Hispanics are based on NHIA and exclude cases from the Alaska Native Registry.

The Hispanic and Non-Hispanic mortality trends exclude deaths from New Hampshire and Oklahoma.

^g Data for American Indian/Alaska Native are based on the CHSDA (Contract Health Service Delivery Area) counties.

* The APC/AAPC is significantly different from zero ($p < .05$).

- Joinpoint regression line analysis could not be performed on data series.

Table 8.4
Cancer of the Esophagus (Invasive)

Delay-adjusted SEER Incidence^a Rates by Year, Race and Sex

Year of Diagnosis:	All Races			Whites			Blacks		
	Total	Males	Females	Total	Males	Females	Total	Males	Females
1975	4.14	6.79	2.12	3.55	5.64	1.99	10.95	20.07	3.70
1976	4.30	6.86	2.34	3.72	5.94	2.09	10.64	16.67	5.61
1977	4.06	6.57	2.19	3.33	5.26	1.92	12.02	20.89	5.44
1978	4.12	6.95	1.91	3.41	5.66	1.69	13.05	24.41	4.33
1979	4.42	7.43	2.21	3.73	6.22	1.98	12.94	23.04	5.24
1980	4.27	6.87	2.28	3.54	5.75	1.86	12.32	18.79	7.41
1981	4.14	6.46	2.36	3.31	5.17	1.94	13.53	21.28	7.46
1982	4.26	6.81	2.28	3.46	5.46	1.96	13.61	22.72	6.41
1983	4.29	7.42	1.95	3.57	6.11	1.77	12.23	22.22	4.26
1984	4.18	6.66	2.24	3.52	5.60	1.92	12.00	19.85	5.98
1985	4.45	7.43	2.22	3.74	6.26	1.89	12.75	22.22	5.81
1986	4.64	7.49	2.46	3.89	6.23	2.18	14.07	24.02	6.31
1987	4.55	7.53	2.25	3.91	6.40	2.02	11.44	20.13	4.81
1988	4.43	7.32	2.21	3.87	6.31	2.02	11.18	19.49	4.99
1989	4.40	7.30	2.21	3.77	6.20	1.96	10.49	17.29	5.39
1990	4.82	8.25	2.19	4.19	7.24	1.90	12.49	21.33	5.83
1991	4.56	7.45	2.35	4.16	6.75	2.19	10.21	17.78	4.88
1992	4.60	8.01	2.00	4.21	7.39	1.80	10.69	18.23	5.32
1993	4.61	7.66	2.25	4.20	6.91	2.10	10.03	17.50	4.64
1994	4.50	7.70	2.06	4.16	7.16	1.87	9.20	14.68	5.13
1995	4.36	7.08	2.20	4.07	6.63	2.06	8.44	13.78	4.37
1996	4.80	8.12	2.20	4.39	7.47	1.98	9.69	16.36	4.81
1997	4.69	7.79	2.22	4.59	7.74	2.02	7.15	10.96	4.46
1998	4.73	8.18	2.04	4.52	7.92	1.87	7.86	12.65	4.32
1999	4.93	8.40	2.17	4.90	8.40	2.07	7.17	11.52	4.08
2000	4.78	7.99	2.17	4.72	8.02	2.02	7.04	10.58	4.44
2001	4.82	8.47	1.92	4.83	8.43	1.93	6.40	11.59	2.61
2002	4.63	7.95	1.99	4.62	8.09	1.82	6.37	10.04	3.65
2003	4.65	8.05	1.96	4.74	8.23	1.93	6.43	10.20	3.79
2004	5.31	9.00	2.38	5.44	9.28	2.34	6.10	8.90	4.04
2005	4.63	8.12	1.85	4.79	8.47	1.79	5.18	8.56	2.88
2006	4.74	7.97	2.10	4.90	8.26	2.09	5.42	8.78	2.95
2007	4.71	8.10	1.99	4.88	8.42	1.98	5.24	8.36	2.92
2008	4.67	8.19	1.79	4.88	8.58	1.79	4.69	7.91	2.25
2009	4.63	7.79	2.06	4.96	8.50	2.00	4.66	6.69	3.36
2010	4.41	7.67	1.73	4.57	7.96	1.69	4.71	7.54	2.78
2011	4.49	7.78	1.81	4.94	8.62	1.88	3.31	4.76	2.15
2012	4.43	7.65	1.75	4.85	8.34	1.86	3.70	6.35	1.73

Additional information on the model used to delay-adjust SEER Incidence rates can be found at <http://surveillance.cancer.gov/delay/>.

^a SEER 9 areas (San Francisco, Connecticut, Detroit, Hawaii, Iowa, New Mexico, Seattle, Utah, and Atlanta). Rates are per 100,000 and are age-adjusted to the 2000 US Std Population (19 age groups - Census P25-1130).

- Delay-adjusted rate is not shown for observed rates based on less than 16 cases for the time interval.

Table 8.5
Cancer of the Esophagus (Invasive)

Age-adjusted SEER Incidence^a Rates by Year, Race and Sex

Year of Diagnosis:	All Races			Whites			Blacks		
	Total	Males	Females	Total	Males	Females	Total	Males	Females
1975-2012	4.55	7.69	2.10	4.31	7.33	1.95	8.14	13.51	4.14
1975	4.14	6.79	2.12	3.55	5.64	1.99	10.95	20.07	3.70
1976	4.30	6.86	2.34	3.72	5.94	2.09	10.64	16.67	5.61
1977	4.06	6.57	2.19	3.33	5.26	1.92	12.02	20.89	5.44
1978	4.12	6.95	1.91	3.41	5.66	1.69	13.05	24.41	4.33
1979	4.42	7.43	2.21	3.73	6.22	1.98	12.94	23.04	5.24
1980	4.27	6.87	2.28	3.54	5.75	1.86	12.32	18.79	7.41
1981	4.14	6.46	2.36	3.31	5.17	1.94	13.53	21.28	7.46
1982	4.26	6.81	2.28	3.46	5.46	1.96	13.61	22.72	6.41
1983	4.29	7.42	1.95	3.57	6.11	1.77	12.23	22.22	4.26
1984	4.18	6.66	2.24	3.52	5.60	1.92	12.00	19.85	5.98
1985	4.45	7.43	2.22	3.74	6.26	1.89	12.75	22.22	5.81
1986	4.64	7.49	2.46	3.89	6.23	2.18	14.07	24.02	6.31
1987	4.55	7.53	2.25	3.91	6.40	2.02	11.44	20.13	4.81
1988	4.43	7.32	2.21	3.87	6.31	2.02	11.18	19.49	4.99
1989	4.40	7.30	2.21	3.77	6.20	1.96	10.49	17.29	5.39
1990	4.82	8.25	2.19	4.19	7.24	1.90	12.49	21.33	5.83
1991	4.56	7.45	2.35	4.16	6.75	2.19	10.21	17.78	4.88
1992	4.60	8.01	2.00	4.21	7.39	1.80	10.69	18.23	5.32
1993	4.61	7.66	2.25	4.20	6.91	2.10	10.03	17.50	4.64
1994	4.50	7.70	2.06	4.16	7.16	1.87	9.20	14.68	5.13
1995	4.36	7.08	2.20	4.07	6.63	2.06	8.44	13.78	4.37
1996	4.80	8.12	2.20	4.39	7.47	1.98	9.69	16.36	4.81
1997	4.69	7.79	2.22	4.59	7.74	2.02	7.15	10.96	4.46
1998	4.73	8.18	2.04	4.52	7.92	1.87	7.86	12.65	4.32
1999	4.93	8.40	2.17	4.90	8.40	2.07	7.17	11.52	4.08
2000	4.78	7.99	2.17	4.72	8.02	2.02	7.04	10.58	4.44
2001	4.82	8.47	1.92	4.83	8.42	1.93	6.40	11.59	2.61
2002	4.63	7.95	1.99	4.62	8.09	1.82	6.37	10.04	3.65
2003	4.65	8.05	1.96	4.74	8.23	1.93	6.43	10.20	3.79
2004	5.31	9.00	2.38	5.44	9.28	2.34	6.10	8.90	4.04
2005	4.63	8.11	1.85	4.79	8.47	1.79	5.18	8.56	2.88
2006	4.74	7.96	2.10	4.89	8.25	2.08	5.42	8.78	2.95
2007	4.71	8.09	1.99	4.87	8.42	1.98	5.23	8.36	2.92
2008	4.67	8.19	1.79	4.88	8.57	1.79	4.69	7.90	2.25
2009	4.63	7.79	2.05	4.96	8.48	2.00	4.66	6.68	3.36
2010	4.40	7.65	1.73	4.56	7.94	1.69	4.69	7.51	2.78
2011	4.45	7.73	1.80	4.90	8.54	1.87	3.29	4.73	2.14
2012	4.35	7.51	1.72	4.75	8.17	1.83	3.63	6.23	1.70

^a SEER 9 areas (San Francisco, Connecticut, Detroit, Hawaii, Iowa, New Mexico, Seattle, Utah, and Atlanta). Rates are per 100,000 and are age-adjusted to the 2000 US Std Population (19 age groups - Census P25-1130).
- Statistic not shown. Rate based on less than 16 cases for the time interval.

Table 8.6
Cancer of the Esophagus (Invasive)

Age-adjusted U.S. Death^a Rates by Year, Race and Sex

Year of Death:	All Races			Whites			Blacks		
	Total	Males	Females	Total	Males	Females	Total	Males	Females
1975-2012	4.15	7.30	1.74	3.87	6.88	1.58	7.21	12.62	3.32
1975	3.69	6.36	1.71	3.11	5.37	1.47	9.70	17.01	4.06
1976	3.74	6.39	1.76	3.11	5.32	1.50	10.18	17.73	4.35
1977	3.70	6.26	1.78	3.07	5.20	1.51	10.08	17.57	4.35
1978	3.79	6.41	1.82	3.17	5.35	1.55	10.03	17.59	4.30
1979	3.76	6.40	1.79	3.12	5.28	1.53	10.32	18.55	4.17
1980	3.85	6.60	1.82	3.17	5.49	1.50	10.60	18.30	4.88
1981	3.82	6.58	1.78	3.16	5.44	1.51	10.45	18.72	4.35
1982	3.84	6.52	1.84	3.17	5.37	1.56	10.49	18.60	4.51
1983	3.85	6.64	1.79	3.22	5.59	1.50	10.21	17.95	4.52
1984	3.93	6.74	1.86	3.28	5.63	1.56	10.60	18.80	4.65
1985	3.86	6.72	1.72	3.26	5.71	1.46	9.93	17.72	4.26
1986	3.94	6.76	1.84	3.34	5.76	1.57	10.19	17.96	4.55
1987	3.97	6.88	1.80	3.41	5.96	1.53	9.67	17.13	4.37
1988	4.05	7.04	1.80	3.47	6.01	1.58	9.95	18.40	3.89
1989	4.11	7.15	1.82	3.56	6.23	1.57	9.75	17.32	4.29
1990	4.10	7.16	1.81	3.58	6.32	1.55	9.35	16.33	4.37
1991	4.13	7.24	1.81	3.64	6.43	1.57	9.23	16.54	4.14
1992	4.17	7.30	1.81	3.74	6.61	1.57	8.65	15.10	4.11
1993	4.19	7.33	1.82	3.75	6.60	1.59	8.99	16.00	4.07
1994	4.27	7.59	1.77	3.87	6.94	1.56	8.57	15.28	3.88
1995	4.26	7.56	1.76	3.92	7.00	1.58	8.04	14.45	3.51
1996	4.31	7.52	1.86	4.01	7.06	1.67	7.77	13.57	3.72
1997	4.25	7.50	1.77	4.00	7.11	1.60	7.26	12.84	3.39
1998	4.36	7.65	1.84	4.13	7.31	1.66	7.11	12.21	3.56
1999	4.35	7.69	1.77	4.19	7.44	1.65	6.54	11.56	3.06
2000	4.39	7.71	1.83	4.27	7.56	1.69	6.44	10.93	3.26
2001	4.43	7.85	1.79	4.30	7.66	1.68	6.41	11.30	3.01
2002	4.41	7.82	1.75	4.35	7.77	1.64	5.89	10.15	2.92
2003	4.38	7.75	1.75	4.34	7.71	1.66	5.68	9.64	2.87
2004	4.36	7.74	1.73	4.35	7.77	1.63	5.36	8.98	2.85
2005	4.44	7.95	1.67	4.48	8.07	1.61	4.99	8.76	2.34
2006	4.41	7.84	1.69	4.47	7.99	1.64	4.77	8.25	2.34
2007	4.27	7.66	1.59	4.35	7.81	1.55	4.66	8.24	2.23
2008	4.22	7.54	1.58	4.31	7.74	1.52	4.46	7.64	2.27
2009	4.18	7.47	1.55	4.30	7.71	1.53	4.05	7.19	1.87
2010	4.26	7.54	1.61	4.40	7.79	1.61	4.19	7.38	1.99
2011	4.15	7.42	1.52	4.33	7.76	1.51	3.79	6.55	1.86
2012	4.10	7.31	1.49	4.28	7.67	1.46	3.73	6.20	1.94

^a US Mortality Files, National Center for Health Statistics, Centers for Disease Control and Prevention.
Rates are per 100,000 and are age-adjusted to the 2000 US Std Population (19 age groups - Census P25-1130).
- Statistic not shown. Rate based on less than 16 cases for the time interval.

Table 8.7
Cancer of the Esophagus (Invasive)

SEER Incidence^a and U.S. Death^b Rates, Age-Adjusted and Age-Specific Rates, by Race and Sex

	All Races			Whites			Blacks		
	Total	Males	Females	Total	Males	Females	Total	Males	Females
<u>SEER Incidence</u>									
<u>Age at Diagnosis</u>									
Age-Adjusted Rates, 2008-2012									
All ages	4.4	7.6	1.7	4.6	8.0	1.7	4.6	7.6	2.5
Under 65	1.8	3.0	0.6	1.8	3.2	0.6	2.2	3.4	1.2
65 and over	22.3	39.0	9.6	23.4	41.3	9.7	21.6	36.7	11.8
All ages (IARC world std) ^c	2.8	4.9	1.1	3.0	5.2	1.0	3.2	5.1	1.7
Age-Specific Rates, 2008-2012									
<1	-	-	-	-	-	-	-	-	-
1-4	-	-	-	-	-	-	-	-	-
5-9	-	-	-	-	-	-	-	-	-
10-14	-	-	-	-	-	-	-	-	-
15-19	-	-	-	-	-	-	-	-	-
20-24	-	-	-	-	-	-	-	-	-
25-29	0.1	-	-	-	-	-	-	-	-
30-34	0.1	0.2	-	0.1	0.2	-	-	-	-
35-39	0.3	0.5	0.1	0.4	0.7	-	-	-	-
40-44	0.9	1.5	0.4	1.0	1.7	0.3	1.1	1.2	1.1
45-49	2.4	4.1	0.8	2.5	4.3	0.8	2.8	4.7	1.1
50-54	4.9	8.0	1.9	5.0	8.3	1.7	6.8	9.6	4.3
55-59	8.5	14.3	3.0	8.7	15.0	2.7	11.3	16.8	6.5
60-64	13.7	24.3	4.0	14.4	25.4	4.0	16.2	27.9	6.7
65-69	18.3	32.1	6.0	19.3	34.1	5.8	18.8	30.4	9.8
70-74	21.1	36.0	8.7	22.2	38.5	8.4	23.0	36.4	13.3
75-79	25.6	45.0	10.7	26.9	47.1	11.0	25.3	45.8	12.1
80-84	25.9	45.2	13.1	27.3	47.7	13.5	22.7	43.6	11.5
85+	23.5	43.0	13.7	24.3	45.2	13.8	17.3	27.5	13.1
<u>U.S. Mortality</u>									
<u>Age at Death</u>									
Age-Adjusted Rates, 2008-2012									
All ages	4.2	7.5	1.5	4.3	7.7	1.5	4.0	7.0	2.0
Under 65	1.6	2.8	0.5	1.6	2.9	0.4	1.8	2.9	0.8
65 and over	22.1	39.9	9.0	23.0	41.4	9.0	19.5	34.9	9.9
All ages (IARC world std) ^c	2.6	4.7	0.9	2.7	4.8	0.9	2.7	4.6	1.3
Age-Specific Rates, 2008-2012									
<1	-	-	-	-	-	-	-	-	-
1-4	-	-	-	-	-	-	-	-	-
5-9	-	-	-	-	-	-	-	-	-
10-14	-	-	-	-	-	-	-	-	-
15-19	-	-	-	-	-	-	-	-	-
20-24	0.0	-	-	-	-	-	-	-	-
25-29	0.0	0.1	-	0.1	0.1	-	-	-	-
30-34	0.1	0.2	0.0	0.1	0.2	-	-	-	-
35-39	0.3	0.5	0.1	0.3	0.6	0.1	0.2	0.3	-
40-44	0.8	1.4	0.3	0.9	1.5	0.3	0.7	1.0	0.4
45-49	2.1	3.6	0.6	2.2	3.8	0.6	2.3	3.6	1.1
50-54	4.5	7.7	1.4	4.6	8.0	1.2	5.2	8.0	2.8
55-59	7.8	13.6	2.4	7.9	13.9	2.2	9.3	15.2	4.3
60-64	12.1	21.6	3.4	12.4	22.1	3.2	14.0	24.2	5.8
65-69	16.1	28.6	5.0	16.6	29.5	4.9	17.0	29.8	7.2
70-74	20.3	35.8	7.2	21.1	37.3	7.2	19.6	34.2	9.3
75-79	24.7	43.9	9.9	25.8	45.8	10.0	20.9	36.3	11.2
80-84	27.8	50.7	12.6	28.9	52.6	12.8	22.2	40.9	12.3
85+	28.0	53.9	15.5	29.1	55.9	15.9	19.4	38.5	11.9

^a SEER 18 areas. Rates are per 100,000 and are age-adjusted to the 2000 US Std Population (19 age groups - Census P25-1130), unless noted.

^b US Mortality Files, National Center for Health Statistics, Centers for Disease Control and Prevention.

^c Rates are per 100,000 and are age-adjusted to the 2000 US Std Population (19 age groups - Census P25-1130), unless noted.

^c Rates are per 100,000 and are age-adjusted to the IARC world standard population.

- Statistic not shown. Rate based on less than 16 cases for the time interval.

Table 8.8
Cancer of the Esophagus (Invasive)

5-Year Relative and Period Survival (Percent) by Race, Sex, Diagnosis Year, Stage and Age

	All Races			Whites			Blacks		
	Total	Males	Females	Total	Males	Females	Total	Males	Females
5-Year Relative Survival (Percent)									
Year of Diagnosis:									
1960-1963 ^a	-	-	-	4	4	6	1	0	2
1970-1973 ^a	-	-	-	4	4	4	4	4	3
1975-1977 ^b	5.0	4.0	7.5	5.5	4.8	7.0	3.5	2.0	7.7
1978-1980 ^b	5.0	4.8	5.6	5.3	5.3	5.2	4.3	3.4	6.8
1981-1983 ^b	6.6	6.0	8.2	7.3	6.5	9.0	4.3	3.7	6.5
1984-1986 ^b	9.5	8.4	12.1	10.2	9.0	13.0	8.7	8.2	9.9
1987-1989 ^b	9.5	9.4	9.7	10.5	11.0	9.4	6.6	5.3	10.2
1990-1992 ^b	12.1	11.7	13.4	12.9	12.3	14.8	9.1	9.4	8.4
1993-1995 ^b	12.1	12.2	11.6	13.4	13.6	12.7	7.6	7.8	6.9
1996-1998 ^b	13.4	13.1	14.4	14.2	14.0	14.7	10.2	8.5	13.6
1999-2001 ^b	18.1	17.7	19.6	18.8	18.6	19.8	12.8	11.1	16.3
2002-2004 ^b	18.2	17.9	19.0	19.5	19.6	19.4	11.0	8.0	16.5
2005-2011 ^b	20.1 ^f	20.2 ^f	19.8 ^f	21.0 ^f	21.2 ^f	20.5 ^f	13.6 ^f	12.6 ^f	15.7 ^f
5-Year Period Survival (Percent) ^{cd}									
2011	18.3	18.5	17.6	19.1	19.5	17.5	11.7	9.9	15.4
Stage Distribution (%) 2005-2011 ^{ce}									
All Stages									
Number of cases	20,668	16,257	4,411	17,206	13,802	3,404	2,279	1,569	710
Percent	100%	100%	100%	100%	100%	100%	100%	100%	100%
Localized	21	20	23	21	20	23	18	17	20
Regional	31	31	29	31	31	29	32	32	33
Distant	38	39	32	38	39	31	38	40	34
Unstaged	11	10	16	11	9	17	12	11	13
5-Year Relative Survival (Percent), 2005-2011 ^c									
Age at Diagnosis:									
Ages <45	20.7	22.3	12.2	20.9	22.8	8.5	16.0	13.3 ^g	22.2 ^g
Ages 45-54	20.7	19.9	24.6	22.8	21.3	30.4	10.6	10.8	10.2
Ages 55-64	19.6	19.1	22.4	20.8	20.5	22.6	12.6	10.1	20.6
Ages 65-74	20.1	19.9	20.8	20.7	20.6	21.2	14.3	12.9	16.4
Ages 75+	11.6	11.9	10.9	11.7	12.0	11.1	9.9	10.7	8.2
Ages <65	20.1	19.6	22.5	21.4	20.9	24.3	12.2	10.5	16.8
Ages 65+	15.9	16.3	14.8	16.3	16.7	14.8	12.5	11.9	13.0
Stage ^e :									
All Stages	17.9	17.9	17.7	18.6	18.8	18.0	12.2	11.0	15.1
Localized	40.4	42.2	34.2	42.2	44.1	35.4	24.5	23.3	26.5
Regional	21.6	21.7	21.4	22.5	22.5	22.8	15.2	15.5	14.2
Distant	4.2	4.0	5.3	4.2	4.1	4.7	4.2	2.5	8.6
Unstaged	12.0	12.1	11.7	11.6	12.3	10.0	10.7	8.8	14.3 ^g

^a Based on End Results data from a series of hospital registries and one population-based registry.

^b SEER 9 areas (San Francisco, Connecticut, Detroit, Hawaii, Iowa, New Mexico, Seattle, Utah, Atlanta).

Based on follow-up of patients into 2012.

^c SEER 18 areas (San Francisco, Connecticut, Detroit, Hawaii, Iowa, New Mexico, Seattle, Utah, Atlanta, San Jose-Monterey, Los Angeles, Alaska Native Registry, Rural Georgia, California excluding SF/SJM/LA, Kentucky, Louisiana, New Jersey and Georgia excluding ATL/RG).

Based on follow-up of patients into 2012.

^d Period survival provides a 2011 estimate of survival by piecing together the most recent conditional survival estimates from several cohorts. It is computed here using three year calendar blocks (2009-2011: 0-1 year survival), (2008-2010: 1-2 year survival), (2007-2009: 2-3 year survival), (2006-2008: 3-4 year survival), (2005-2007: 4-5 years survival).

^e Stage at diagnosis is classified using SEER Summary Stage 2000. Stage distribution percentages may not sum to 100 due to rounding.

^f The difference between 1975-1977 and 2005-2011 is statistically significant (p<.05).

^g The standard error is between 5 and 10 percentage points.

^h The standard error is greater than 10 percentage points.

- Statistic could not be calculated due to fewer than 25 cases during the time period.

Table 8.9
Cancer of the Esophagus (Invasive)

SEER^a Relative Survival (Percent)
By Year of Diagnosis

All Races, Males and Females

Year of Diagnosis

	1975- 1979	1980- 1984	1985- 1989	1990- 1994	1995	1996	1997	1998	1999	2000	2001	2002	2003	2004	2005	2006	2007	2008	2009	2010	2011
Survival Time																					
1-year	26.0	29.8	34.7	38.3	40.7	41.9	40.1	40.5	44.4	45.6	46.2	41.8	46.8	48.2	45.2	47.6	50.2	47.7	48.5	49.5	49.2
2-year	11.4	14.3	19.0	21.8	22.9	24.2	23.7	24.2	26.9	28.3	29.1	25.9	30.4	30.2	31.2	30.5	33.1	32.2	30.6	34.0	
3-year	7.7	10.0	13.5	16.3	16.8	18.6	17.7	18.4	20.8	23.6	23.1	20.9	23.9	25.8	24.2	25.2	26.9	24.3	24.4		
4-year	5.9	8.2	10.8	13.7	13.3	15.9	14.4	14.2	18.3	20.6	19.3	17.9	20.0	22.3	21.4	21.8	23.3	21.6			
5-year	4.9	7.0	9.5	12.2	11.6	15.0	12.5	12.6	17.4	18.9	17.9	16.8	17.1	20.3	18.9	20.0	21.6				
6-year	4.3	6.1	8.5	11.1	10.8	13.8	11.4	11.7	15.9	17.9	15.8	15.3	14.3	19.8	17.4	18.6					
7-year	3.8	5.6	7.7	10.2	10.2	12.9	10.8	11.3	14.8	16.7	14.8	14.9	13.1	18.3	15.6						
8-year	3.4	4.9	7.1	9.5	9.7	12.3	9.9	9.8	14.3	15.8	13.8	13.6	12.8	17.9							
9-year	3.2	4.5	6.4	9.0	8.9	11.5	9.5	9.6	13.4	15.5	13.5	13.1	12.6								
10-year	2.9	4.3	6.0	8.3	8.5	10.7	9.3	9.4	12.9	15.1	13.3	13.0									
11-year	2.7	3.9	5.4	7.8	7.7	9.7	9.1	9.1	12.7	14.2	12.2										
12-year	2.6	3.8	4.9	7.1	7.2	9.4	7.7	8.5	11.8	14.0											
13-year	2.4	3.5	4.6	7.0	6.9	9.4	7.1	8.5	10.9												
14-year	2.4	3.4	4.3	6.6	5.7	9.0	6.5	8.4													
15-year	2.4	3.4	4.2	6.2	5.4	8.7	6.2														
16-year	2.3	3.2	3.7	5.9	4.8	7.8															
17-year	2.3	3.0	3.2	5.5	4.8																
18-year	2.2	2.7	3.1	5.3																	
19-year	2.2	2.5	2.9																		
20-year	2.2	2.4	2.6																		

^a Based on the SEER 9 areas (San Francisco, Connecticut, Detroit, Hawaii, Iowa, New Mexico, Seattle, Utah, and Atlanta).

Table 8.10
Cancer of the Esophagus (Invasive)

SEER^a Relative Survival (Percent)
By Year of Diagnosis

All Races, Males

Year of Diagnosis

	1975- 1979	1980- 1984	1985- 1989	1990- 1994	1995	1996	1997	1998	1999	2000	2001	2002	2003	2004	2005	2006	2007	2008	2009	2010	2011
Survival Time																					
1-year	24.0	29.2	33.9	38.7	40.3	43.0	40.7	40.9	43.8	46.9	47.1	43.1	46.3	47.6	46.3	48.5	51.8	48.7	49.8	48.4	48.7
2-year	10.0	13.8	18.4	21.6	23.0	24.6	24.7	24.6	26.4	28.7	29.4	26.4	29.9	30.2	31.1	30.9	33.4	32.8	30.9	33.2	
3-year	6.8	9.2	13.1	16.4	16.7	18.2	18.5	18.6	20.6	23.5	23.2	21.3	23.2	25.8	24.1	25.9	27.3	24.7	25.2		
4-year	5.1	7.3	10.3	13.4	13.2	15.0	15.3	14.2	18.0	19.6	19.4	18.1	19.5	22.4	20.8	22.8	23.5	21.9			
5-year	4.2	6.0	9.3	12.0	11.8	13.9	13.2	12.1	17.2	17.3	18.4	16.8	16.7	20.0	18.4	21.0	21.9				
6-year	3.7	5.1	8.4	10.8	11.0	12.9	11.9	11.5	16.0	16.4	16.2	15.4	13.8	19.3	17.1	19.4					
7-year	3.3	4.5	7.6	10.2	10.7	11.9	11.6	11.2	14.9	15.4	15.4	15.3	12.6	18.3	15.2						
8-year	3.0	4.0	7.0	9.3	10.1	11.4	10.5	9.4	14.7	14.6	14.6	13.7	12.1	17.9							
9-year	2.8	3.6	6.5	8.8	9.6	10.6	10.2	9.3	14.0	14.3	14.2	13.3	12.1								
10-year	2.7	3.4	6.2	7.9	9.2	9.9	9.9	9.3	13.2	14.0	13.8	13.3									
11-year	2.5	3.3	5.7	7.5	8.4	8.9	9.7	9.0	13.1	13.1	13.0										
12-year	2.4	3.2	5.0	6.8	7.7	8.6	8.6	8.8	12.7	12.8											
13-year	2.3	3.0	4.6	6.8	7.2	8.6	8.0	8.8	11.7												
14-year	2.2	3.0	4.2	6.6	6.3	8.3	7.1	8.8													
15-year	2.2	3.0	4.0	6.1	5.9	8.3	6.6														
16-year	2.2	2.8	3.4	5.9	5.3	8.0															
17-year	2.2	2.8	2.9	5.5	5.3																
18-year	2.2	2.5	2.8	5.3																	
19-year	2.1	2.3	2.5																		
20-year	2.1	2.2	2.3																		

^a Based on the SEER 9 areas (San Francisco, Connecticut, Detroit, Hawaii, Iowa, New Mexico, Seattle, Utah, and Atlanta).

Table 8.11
Cancer of the Esophagus (Invasive)

SEER^a Relative Survival (Percent)
By Year of Diagnosis

All Races, Females

Year of Diagnosis

	1975- 1979	1980- 1984	1985- 1989	1990- 1994	1995	1996	1997	1998	1999	2000	2001	2002	2003	2004	2005	2006	2007	2008	2009	2010	2011
Survival Time																					
1-year	31.2	31.2	36.6	37.2	41.8	38.5	38.3	39.4	46.6	41.6	42.9	37.7	48.5	50.1	41.2	44.9	44.7	44.0	44.2	54.0	51.3
2-year	15.1	15.5	20.7	22.4	22.7	23.0	21.1	22.5	28.6	27.0	27.9	24.3	32.4	30.2	31.5	29.3	31.8	29.7	29.9	37.2	
3-year	10.0	12.0	14.5	16.2	17.0	19.9	15.1	17.6	21.3	24.2	22.7	19.6	26.2	25.7	24.5	22.8	25.4	22.4	21.6		
4-year	7.9	10.5	12.3	14.5	13.7	18.2	11.7	14.3	18.9	23.8	18.6	17.3	21.8	22.1	23.5	18.2	22.2	20.5			
5-year	6.5	9.3	10.1	12.9	10.7	18.2	10.6	14.1	17.9	23.8	16.1	16.9	18.6	21.1	20.6	16.5	20.7				
6-year	5.9	8.6	8.5	11.8	9.9	16.4	9.8	12.3	15.2	22.6	14.2	14.8	16.3	20.8	18.4	15.8					
7-year	5.2	8.3	8.0	10.2	9.0	15.8	8.1	11.7	14.0	20.7	12.3	13.4	14.9	18.2	16.8						
8-year	4.4	7.1	7.3	10.0	8.7	14.8	8.1	10.8	12.0	19.6	10.7	13.1	14.9	17.6							
9-year	4.0	6.5	6.3	9.5	7.1	14.2	7.4	10.4	10.9	18.7	10.7	12.3	14.0								
10-year	3.5	6.5	5.3	9.2	6.6	12.8	7.4	9.5	10.9	18.3	10.7	12.0									
11-year	3.3	5.4	4.8	8.8	5.6	11.8	7.4	9.3	10.1	17.7	9.4										
12-year	3.1	5.2	4.6	7.9	5.6	11.4	5.2	7.6	8.1	17.3											
13-year	2.8	4.7	4.6	7.0	5.6	11.4	4.6	7.6	7.5												
14-year	2.8	4.5	4.5	6.4	3.9	10.9	4.6	6.6													
15-year	2.8	4.5	4.5	6.1	3.9	9.0	4.6														
16-year	2.7	3.9	4.2	5.5	3.3	7.1															
17-year	2.4	3.2	3.9	5.4	3.3																
18-year	2.2	3.0	3.8	5.2																	
19-year	2.2	2.8	3.7																		
20-year	2.2	2.8	3.3																		

^a Based on the SEER 9 areas (San Francisco, Connecticut, Detroit, Hawaii, Iowa, New Mexico, Seattle, Utah, and Atlanta).

Table 8.12
Cancer of the Esophagus (Invasive)

Risk of Being Diagnosed With Cancer in 10, 20 and 30 Years,
Lifetime Risk of Being Diagnosed with Cancer Given Alive and Cancer-Free at Current Age, and
Lifetime Risk of Dying from Cancer Given Alive at Current Age
Both Sexes, 2010-2012 By Race/Ethnicity

Race/ Ethnicity	Current Age	Risk of Being Diagnosed with Cancer				Risk of Dying from Cancer	Race/ Ethnicity	Current Age	Risk of Being Diagnosed with Cancer				Risk of Dying from Cancer
		+10 yrs	+20 yrs	+30 yrs	Ever				+10 yrs	+20 yrs	+30 yrs	Ever	
All Races	0	0.00	0.00	0.00	0.50	0.49	Asian/ Pacific Islander	0	0.00	0.00	0.00	0.33	0.29
	10	0.00	0.00	0.00	0.50	0.50		10	0.00	0.00	0.00	0.34	0.29
	20	0.00	0.00	0.02	0.51	0.50		20	0.00	0.00	0.01	0.34	0.29
	30	0.00	0.02	0.08	0.51	0.50		30	0.00	0.01	0.04	0.34	0.29
	40	0.02	0.08	0.21	0.51	0.51		40	0.01	0.04	0.10	0.34	0.30
	50	0.06	0.20	0.37	0.51	0.50		50	0.03	0.09	0.19	0.34	0.29
	60	0.15	0.32	0.44	0.47	0.47		60	0.07	0.17	0.25	0.32	0.28
	70	0.20	0.33	-	0.37	0.38		70	0.11	0.20	-	0.26	0.25
80	0.18	-	-	0.23	0.26	80	0.11	-	-	0.19	0.19		
White	0	0.00	0.00	0.00	0.52	0.51	American Indian/ Alaska Native ^a	0	0.00	0.00	0.00	0.27	0.36
	10	0.00	0.00	0.00	0.53	0.52		10	0.00	0.00	0.01	0.28	0.37
	20	0.00	0.00	0.02	0.53	0.52		20	0.00	0.01	0.03	0.28	0.37
	30	0.00	0.02	0.08	0.53	0.52		30	0.00	0.03	0.08	0.28	0.37
	40	0.02	0.08	0.23	0.54	0.53		40	0.02	0.08	0.15	0.28	0.38
	50	0.07	0.21	0.39	0.53	0.52		50	0.06	0.13	0.18	0.27	0.39
	60	0.15	0.34	0.46	0.49	0.49		60	0.08	0.13	0.22	0.22	0.37
	70	0.21	0.35	-	0.38	0.40		70	0.06	0.17	-	0.17	0.33
80	0.19	-	-	0.23	0.27	80	0.14	-	-	0.14	0.29		
Black	0	0.00	0.00	0.00	0.44	0.40	Hispanic ^b	0	0.00	0.00	0.00	0.37	0.34
	10	0.00	0.00	0.00	0.45	0.40		10	0.00	0.00	0.00	0.38	0.34
	20	0.00	0.00	0.02	0.45	0.41		20	0.00	0.00	0.01	0.38	0.34
	30	0.00	0.02	0.10	0.45	0.41		30	0.00	0.01	0.05	0.38	0.34
	40	0.02	0.10	0.23	0.46	0.42		40	0.01	0.05	0.13	0.38	0.35
	50	0.08	0.22	0.37	0.46	0.42		50	0.04	0.12	0.24	0.38	0.35
	60	0.15	0.31	0.39	0.41	0.38		60	0.08	0.21	0.32	0.35	0.33
	70	0.19	0.29	-	0.32	0.30		70	0.13	0.26	-	0.29	0.29
80	0.15	-	-	0.18	0.19	80	0.16	-	-	0.20	0.23		

Devcan 6.8.0, August 2014, National Cancer Institute (<http://surveillance.cancer.gov/devcan/>).

Source: Incidence data are from the SEER 18 areas (San Francisco, Connecticut, Detroit, Hawaii, Iowa, New Mexico, Seattle, Utah, Atlanta, San Jose-Monterey, Los Angeles, Alaska Native Registry, Rural Georgia, California excluding SF/SJM/LA, Kentucky, Louisiana, New Jersey, and Georgia excluding ATL/RG). Mortality data are from the NCHS public use data file for the total US.

^a Underlying incidence and mortality data for American Indian/Alaska Native are based on the CHSDA (Contract Health Service Delivery Area) counties.

^b Hispanic is not mutually exclusive from whites, blacks, Asian/Pacific Islanders, and American Indians/Alaska Natives. Underlying incidence data for Hispanics are based on NHIA and exclude cases from the Alaska Native Registry.

- Statistic could not be calculated.

A percent of 0.00 represents a value that is below 0.005.

Table 8.13
Cancer of the Esophagus (Invasive)

Risk of Being Diagnosed With Cancer in 10, 20 and 30 Years,
Lifetime Risk of Being Diagnosed with Cancer Given Alive and Cancer-Free at Current Age, and
Lifetime Risk of Dying from Cancer Given Alive at Current Age
Males, 2010-2012 By Race/Ethnicity

Race/ Ethnicity	Current Age	Risk of Being Diagnosed with Cancer				Risk of Dying from Cancer	Race/ Ethnicity	Current Age	Risk of Being Diagnosed with Cancer				Risk of Dying from Cancer
		+10 yrs	+20 yrs	+30 yrs	Ever				+10 yrs	+20 yrs	+30 yrs	Ever	
All Races	0	0.00	0.00	0.00	0.80	0.79	Asian/ Pacific Islander	0	0.00	0.00	0.00	0.55	0.45
	10	0.00	0.00	0.00	0.81	0.80		10	0.00	0.00	0.00	0.55	0.46
	20	0.00	0.00	0.03	0.81	0.80		20	0.00	0.00	0.01	0.55	0.46
	30	0.00	0.03	0.13	0.82	0.81		30	0.00	0.01	0.06	0.56	0.46
	40	0.03	0.13	0.36	0.83	0.82		40	0.01	0.06	0.18	0.56	0.46
	50	0.11	0.34	0.61	0.82	0.82		50	0.05	0.17	0.33	0.55	0.46
	60	0.25	0.54	0.73	0.77	0.78		60	0.12	0.29	0.43	0.52	0.44
	70	0.34	0.56	-	0.61	0.64		70	0.18	0.33	-	0.43	0.38
80	0.31	-	-	0.38	0.44	80	0.18	-	-	0.31	0.30		
White	0	0.00	0.00	0.00	0.84	0.83	American Indian/ Alaska Native ^a	0	0.00	0.00	0.00	0.42	0.46
	10	0.00	0.00	0.00	0.85	0.84		10	0.00	0.00	0.01	0.43	0.47
	20	0.00	0.00	0.04	0.85	0.84		20	0.00	0.01	0.04	0.43	0.47
	30	0.00	0.04	0.14	0.86	0.85		30	0.00	0.03	0.13	0.44	0.49
	40	0.03	0.14	0.38	0.87	0.86		40	0.03	0.14	0.24	0.45	0.50
	50	0.11	0.36	0.65	0.87	0.86		50	0.11	0.21	0.27	0.43	0.51
	60	0.27	0.58	0.77	0.81	0.81		60	0.11	0.18	0.35	0.36	0.49
	70	0.36	0.58	-	0.63	0.67		70	0.08	0.28	-	0.29	0.42
80	0.32	-	-	0.39	0.45	80	0.29	-	-	0.30	0.37		
Black	0	0.00	0.00	0.00	0.63	0.60	Hispanic ^b	0	0.00	0.00	0.00	0.62	0.57
	10	0.00	0.00	0.00	0.65	0.61		10	0.00	0.00	0.00	0.63	0.57
	20	0.00	0.00	0.03	0.65	0.61		20	0.00	0.00	0.02	0.63	0.58
	30	0.00	0.03	0.14	0.66	0.63		30	0.00	0.02	0.09	0.63	0.58
	40	0.03	0.15	0.35	0.68	0.64		40	0.02	0.09	0.22	0.64	0.59
	50	0.12	0.34	0.56	0.68	0.64		50	0.07	0.21	0.41	0.63	0.59
	60	0.24	0.49	0.61	0.62	0.60		60	0.14	0.36	0.55	0.60	0.57
	70	0.32	0.47	-	0.48	0.47		70	0.25	0.46	-	0.51	0.50
80	0.24	-	-	0.27	0.31	80	0.28	-	-	0.35	0.40		

Devcan 6.8.0, August 2014, National Cancer Institute (<http://surveillance.cancer.gov/devcan/>).

Source: Incidence data are from the SEER 18 areas (San Francisco, Connecticut, Detroit, Hawaii, Iowa, New Mexico, Seattle, Utah, Atlanta, San Jose-Monterey, Los Angeles, Alaska Native Registry, Rural Georgia, California excluding SF/SJM/LA, Kentucky, Louisiana, New Jersey, and Georgia excluding ATL/RG). Mortality data are from the NCHS public use data file for the total US.

^a Underlying incidence and mortality data for American Indian/Alaska Native are based on the CHSDA (Contract Health Service Delivery Area) counties.

^b Hispanic is not mutually exclusive from whites, blacks, Asian/Pacific Islanders, and American Indians/Alaska Natives. Underlying incidence data for Hispanics are based on NHIA and exclude cases from the Alaska Native Registry.

- Statistic could not be calculated.

A percent of 0.00 represents a value that is below 0.005.

Table 8.14
Cancer of the Esophagus (Invasive)

Risk of Being Diagnosed With Cancer in 10, 20 and 30 Years,
Lifetime Risk of Being Diagnosed with Cancer Given Alive and Cancer-Free at Current Age, and
Lifetime Risk of Dying from Cancer Given Alive at Current Age
Females, 2010-2012 By Race/Ethnicity

Race/ Ethnicity	Current Age	Risk of Being Diagnosed with Cancer				Risk of Dying from Cancer	Race/ Ethnicity	Current Age	Risk of Being Diagnosed with Cancer				Risk of Dying from Cancer
		+10 yrs	+20 yrs	+30 yrs	Ever				+10 yrs	+20 yrs	+30 yrs	Ever	
All Races	0	0.00	0.00	0.00	0.22	0.21	Asian/ Pacific Islander	0	0.00	0.00	0.00	0.15	0.16
	10	0.00	0.00	0.00	0.22	0.21		10	0.00	0.00	0.00	0.16	0.16
	20	0.00	0.00	0.01	0.22	0.21		20	0.00	0.00	0.00	0.16	0.16
	30	0.00	0.01	0.03	0.23	0.21		30	0.00	0.00	0.01	0.16	0.16
	40	0.01	0.03	0.07	0.23	0.22		40	0.00	0.01	0.03	0.16	0.16
	50	0.02	0.07	0.14	0.22	0.22		50	0.01	0.03	0.08	0.15	0.16
	60	0.05	0.12	0.19	0.21	0.21		60	0.02	0.07	0.11	0.15	0.16
	70	0.08	0.16	-	0.18	0.18		70	0.05	0.10	-	0.14	0.15
80	0.09	-	-	0.12	0.14	80	0.05	-	-	0.10	0.12		
White	0	0.00	0.00	0.00	0.22	0.21	American Indian/ Alaska Native ^a	0	0.00	0.00	0.00	0.13	0.26
	10	0.00	0.00	0.00	0.22	0.21		10	0.00	0.00	0.01	0.13	0.27
	20	0.00	0.00	0.01	0.22	0.21		20	0.00	0.01	0.02	0.13	0.27
	30	0.00	0.01	0.03	0.22	0.21		30	0.01	0.02	0.03	0.13	0.27
	40	0.01	0.03	0.07	0.22	0.22		40	0.01	0.03	0.07	0.13	0.27
	50	0.02	0.07	0.14	0.22	0.22		50	0.02	0.06	0.10	0.12	0.28
	60	0.05	0.12	0.19	0.21	0.21		60	0.04	0.08	0.11	0.11	0.27
	70	0.08	0.16	-	0.18	0.18		70	0.05	0.08	-	0.08	0.27
80	0.10	-	-	0.13	0.14	80	0.04	-	-	0.04	0.25		
Black	0	0.00	0.00	0.00	0.26	0.22	Hispanic ^b	0	0.00	0.00	0.00	0.16	0.15
	10	0.00	0.00	0.00	0.27	0.23		10	0.00	0.00	0.00	0.16	0.15
	20	0.00	0.00	0.01	0.27	0.23		20	0.00	0.00	0.01	0.16	0.15
	30	0.00	0.01	0.06	0.27	0.23		30	0.00	0.00	0.02	0.16	0.15
	40	0.01	0.06	0.12	0.27	0.23		40	0.00	0.02	0.05	0.16	0.15
	50	0.05	0.12	0.20	0.27	0.23		50	0.01	0.04	0.09	0.16	0.15
	60	0.07	0.16	0.22	0.24	0.21		60	0.03	0.08	0.13	0.15	0.15
	70	0.10	0.17	-	0.19	0.18		70	0.05	0.11	-	0.13	0.13
80	0.09	-	-	0.12	0.13	80	0.08	-	-	0.10	0.12		

Devcan 6.8.0, August 2014, National Cancer Institute (<http://surveillance.cancer.gov/devcan/>).

Source: Incidence data are from the SEER 18 areas (San Francisco, Connecticut, Detroit, Hawaii, Iowa, New Mexico, Seattle, Utah, Atlanta, San Jose-Monterey, Los Angeles, Alaska Native Registry, Rural Georgia, California excluding SF/SJM/LA, Kentucky, Louisiana, New Jersey, and Georgia excluding ATL/RG). Mortality data are from the NCHS public use data file for the total US.

^a Underlying incidence and mortality data for American Indian/Alaska Native are based on the CHSDA (Contract Health Service Delivery Area) counties.

^b Hispanic is not mutually exclusive from whites, blacks, Asian/Pacific Islanders, and American Indians/Alaska Natives. Underlying incidence data for Hispanics are based on NHIA and exclude cases from the Alaska Native Registry.

- Statistic could not be calculated.

A percent of 0.00 represents a value that is below 0.005.

Table 8.15
Cancer of the Esophagus (Invasive)

SEER Incidence and U.S. Mortality
Age-Adjusted Rates and Trends^a
By Race/Ethnicity and Sex

SEER Incidence	SEER 18 Areas ^b			SEER 13 Areas ^b			SEER 9 Areas ^b		
	Rate 2008-2012			Trend 2003-2012 ^c			Trend 2003-2012 ^d		
	Rate per 100,000 persons			AAPC (%)			AAPC (%)		
RACE/ETHNICITY	Total	Males	Females	Total	Males	Females	Total	Males	Females
All Races	4.4	7.6	1.7	-0.4*	-0.2	-1.2*	-1.2*	-1.1*	-0.5*
White	4.6	8.0	1.7	0.5*	-0.2	-0.6*	-0.3	-0.3	-0.1
White Hispanic ^e	3.0	5.4	1.0	-1.0*	-1.1*	-1.0	-	-	-
White Non-Hispanic ^e	4.8	8.4	1.8	-0.5	-0.3	-0.4	-	-	-
Black	4.6	7.6	2.5	-4.7*	-4.9*	-4.2*	-4.6*	-4.9*	-3.2*
Asian/Pacific Islander	2.2	3.6	1.0	-1.8*	-2.1*	-0.4	-	-	-
Amer Ind/Alaska Nat ^f	3.1	4.9	1.6	-1.8	-3.2	-	-	-	-
Hispanic ^e	2.9	5.2	1.0	-1.0*	-1.1*	-1.1	-	-	-
<u>U.S. Mortality^g</u>									
RACE/ETHNICITY	Rate 2008-2012			Trend 2003-2012 ^h					
	Rate per 100,000 persons			AAPC (%)					
	Total	Males	Females	Total	Males	Females			
All Races	4.2	7.5	1.5	-0.8*	-0.7*	-1.6*			
White	4.3	7.7	1.5	-0.2	-0.2	-1.1*			
White Hispanic ^e	2.4	4.5	0.8	-0.7*	-0.7*	-2.4*			
White Non-Hispanic ^e	4.5	8.0	1.6	0.0	-0.1	-0.9*			
Black	4.0	7.0	2.0	-4.4*	-4.6*	-4.1*			
Asian/Pacific Islander	1.7	2.8	0.8	-1.9*	-2.1*	-1.3*			
Amer Ind/Alaska Nat									
Total U.S.	2.5	4.2	1.1	-3.7*	-4.9*	0.8			
CHSDA Counties	3.4	5.6	1.8	-2.4	-4.2	3.5*			
Non-CHSDA Counties	1.4	2.5	-	-2.7*	-2.1	-4.6			
Hispanic ^e	2.3	4.3	0.8	-0.8*	-0.8*	-2.5*			

The AAPC is the Average Annual Percent Change over the time interval. The AAPCs are calculated by the Joinpoint Regression Program Version 4.2.0, April 2015, National Cancer Institute.

- Statistic not shown. Rate based on less than 16 cases for the time interval.

Trend based on less than 10 cases for at least one year within the time interval.

a Rates are age-adjusted to the 2000 US Std Population (19 age groups - Census P25-1130). Trends are based on rates age-adjusted to the 2000 US Std Population (19 age groups - Census P25-1130).

b The SEER 9 areas are San Francisco, Connecticut, Detroit, Hawaii, Iowa, New Mexico, Seattle, Utah, and Atlanta.

The SEER 13 areas comprise the SEER 9 areas plus San Jose-Monterey, Los Angeles, the Alaska Native Registry, and Rural Georgia.

The SEER 18 areas comprise the SEER 13 areas plus California excluding SF/SJM/LA, Kentucky, Louisiana, New Jersey, and Georgia excluding ATL/RG.

c The 2003-2012 AAPC estimates are based on a Joinpoint analysis with up to 3 Joinpoints over diagnosis years 1992-2012.

d The 2003-2012 AAPC estimates are based on a Joinpoint analysis with up to 5 Joinpoints over diagnosis years 1975-2012.

e Hispanic and Non-Hispanic are not mutually exclusive from whites, blacks, Asian/Pacific Islanders, and American Indians/Alaska Natives. Incidence data for Hispanics and Non-Hispanics are based on NHIA and exclude cases from the Alaska Native Registry. The 2003-2012 Hispanic and Non-Hispanic mortality trends exclude deaths from New Hampshire and Oklahoma.

f Incidence data for American Indian/Alaska Native are based on the CHSDA (Contract Health Service Delivery Area) counties.

g US Mortality Files, National Center for Health Statistics, CDC.

h The 2003-2012 mortality AAPCs are based on a Joinpoint analysis using years of death 1992-2012.

* The APC is significantly different from zero (p<.05).

Table 8.16
Cancer of the Esophagus (Invasive)
Age-Adjusted SEER Incidence Rates^a
By Registry, Race and Sex

	All Races			Whites			Blacks		
	Total	Males	Females	Total	Males	Females	Total	Males	Females
<u>SEER Incidence Rates^a, 2008-2012</u>									
California	3.89	6.61	1.65	4.23	7.26	1.69	3.72	5.60	2.35
Greater Bay Area	4.01	6.44	1.99	4.62	7.55	2.14	3.91	4.64	3.24
San Francisco-Oakland	4.08	6.38	2.16	4.70	7.50	2.30	3.99	4.47	3.53
San Jose-Monterey	3.87	6.58	1.65	4.49	7.64	1.87	-	-	-
Los Angeles	3.31	5.67	1.47	3.53	6.11	1.45	3.91	6.48	2.22
Greater California	4.11	7.08	1.62	4.39	7.61	1.66	3.43	5.26	2.01
Connecticut	5.03	8.94	1.92	5.09	9.09	1.87	4.62	8.34	2.23
Detroit	5.12	8.74	2.24	5.25	9.08	2.11	5.09	8.43	2.76
Georgia	4.50	7.84	1.79	4.36	7.70	1.51	5.13	8.81	2.60
Atlanta	3.90	6.42	2.01	4.15	6.77	2.02	3.73	6.25	2.07
Rural Georgia	5.99	11.31	-	4.70	8.61	-	8.72	17.67	-
Greater Georgia	4.77	8.43	1.73	4.46	8.04	1.37	6.04	10.24	3.02
Hawaii	3.59	6.57	1.07	5.58	9.23	1.86	-	-	-
Iowa	5.22	9.50	1.59	5.29	9.64	1.60	-	-	-
Kentucky	4.86	8.69	1.62	4.87	8.76	1.55	5.05	8.15	2.63
Louisiana	4.99	8.74	1.96	4.96	8.81	1.72	5.12	8.68	2.55
New Jersey	4.66	8.07	1.99	4.77	8.35	1.90	4.98	8.14	2.83
New Mexico	3.84	6.77	1.32	4.09	7.15	1.44	-	-	-
Seattle-Puget Sound	4.97	8.53	2.00	5.27	9.05	2.07	2.25	2.84	-
Utah	3.19	5.80	0.88	3.25	5.93	0.86	-	-	-
9 SEER Areas ^b	4.50	7.77	1.82	4.81	8.34	1.84	4.17	6.57	2.43
11 SEER Areas ^b	4.20	7.24	1.73	4.53	7.86	1.76	4.10	6.56	2.36
13 SEER Areas ^b	4.21	7.26	1.73	4.53	7.86	1.76	4.16	6.71	2.35
18 SEER Areas ^b	4.36	7.55	1.74	4.56	7.97	1.71	4.64	7.58	2.53

^a Rates are per 100,000 and are age-adjusted to the 2000 US Std Population (19 age groups - Census P25-1130)

^b The SEER 9 areas are San Francisco, Connecticut, Detroit, Hawaii, Iowa, New Mexico, Seattle, Utah and Atlanta.

The SEER 11 areas comprise the SEER 9 areas plus San Jose-Monterey and Los Angeles.

The SEER 13 areas comprise the SEER 11 areas plus the Alaska Native Registry and Rural Georgia.

The SEER 18 areas comprise the SEER 13 areas plus California excluding SF/SJM/LA, Kentucky, Louisiana, New Jersey and Georgia excluding ATL/RG.

- Statistic not shown. Rate based on less than 16 cases for the time interval.

Table 8.17
Cancer of the Esophagus (Invasive)

Age-Adjusted SEER Death Rates^a
By Registry, Race and Sex

	All Races			Whites			Blacks		
	Total	Males	Females	Total	Males	Females	Total	Males	Females
<u>SEER Death Rates^a, 2008-2012</u>									
California	3.47	6.05	1.41	3.87	6.78	1.49	2.91	4.59	1.71
Greater Bay Area	3.33	5.46	1.60	3.83	6.39	1.71	3.80	5.11	2.83
San Francisco-Oakland	3.40	5.51	1.69	3.90	6.39	1.82	3.87	5.18	2.95
San Jose-Monterey	3.20	5.40	1.43	3.71	6.39	1.53	-	-	-
Los Angeles	2.91	5.10	1.22	3.28	5.82	1.28	2.69	4.44	1.54
Greater California	3.78	6.67	1.43	4.11	7.26	1.51	2.73	4.57	1.32
Connecticut	4.11	7.37	1.59	4.18	7.49	1.61	3.65	6.63	-
Detroit	4.37	7.73	1.78	4.64	8.24	1.78	3.75	6.49	1.85
Georgia	3.76	6.64	1.46	3.60	6.40	1.26	4.50	7.99	2.12
Atlanta	3.22	5.35	1.62	3.49	5.79	1.63	2.90	4.72	1.65
Rural Georgia	5.30	9.20	-	3.88	6.38	-	8.03	15.73	-
Greater Georgia	4.00	7.18	1.42	3.66	6.64	1.14	5.52	9.88	2.48
Hawaii	3.08	5.58	0.97	4.28	6.95	1.62	-	-	-
Iowa	4.76	8.78	1.46	4.80	8.86	1.46	-	-	-
Kentucky	4.43	8.02	1.47	4.42	8.02	1.41	5.10	8.69	2.55
Louisiana	4.34	7.62	1.70	4.28	7.59	1.54	4.58	7.85	2.15
New Jersey	3.98	7.03	1.63	4.18	7.40	1.64	3.88	6.88	1.91
New Mexico	3.37	5.80	1.30	3.57	6.12	1.38	-	-	-
Seattle-Puget Sound	4.41	7.72	1.70	4.77	8.36	1.78	2.14	-	-
Utah	2.91	5.15	0.97	2.97	5.29	0.96	-	-	-
9 SEER Areas ^b	3.88	6.81	1.53	4.19	7.37	1.59	3.36	5.48	1.85
11 SEER Areas ^b	3.63	6.36	1.46	3.98	7.00	1.52	3.20	5.22	1.76
13 SEER Areas ^b	3.65	6.38	1.46	3.99	7.01	1.52	3.25	5.36	1.76
18 SEER Areas ^b	3.82	6.74	1.48	4.06	7.18	1.50	3.86	6.57	1.92
Total U.S.	4.18	7.45	1.55	4.33	7.73	1.53	4.04	6.96	1.98

^a US Mortality Files, National Center for Health Statistics, Centers for Disease Control and Prevention. Rates are per 100,000 and are age-adjusted to the 2000 US Std Population (19 age groups - Census P25-1130).

^b The SEER 9 areas are San Francisco, Connecticut, Detroit, Hawaii, Iowa, New Mexico, Seattle, Utah and Atlanta. The SEER 11 areas comprise the SEER 9 areas plus San Jose-Monterey and Los Angeles.

The SEER 13 areas comprise the SEER 11 areas plus the Alaska Native Registry and Rural Georgia.

The SEER 18 areas comprise the SEER 13 areas plus California excluding SF/SJM/LA, Kentucky, Louisiana, New Jersey and Georgia excluding ATL/RG.

- Statistic not shown. Rate based on less than 16 cases for the time interval.

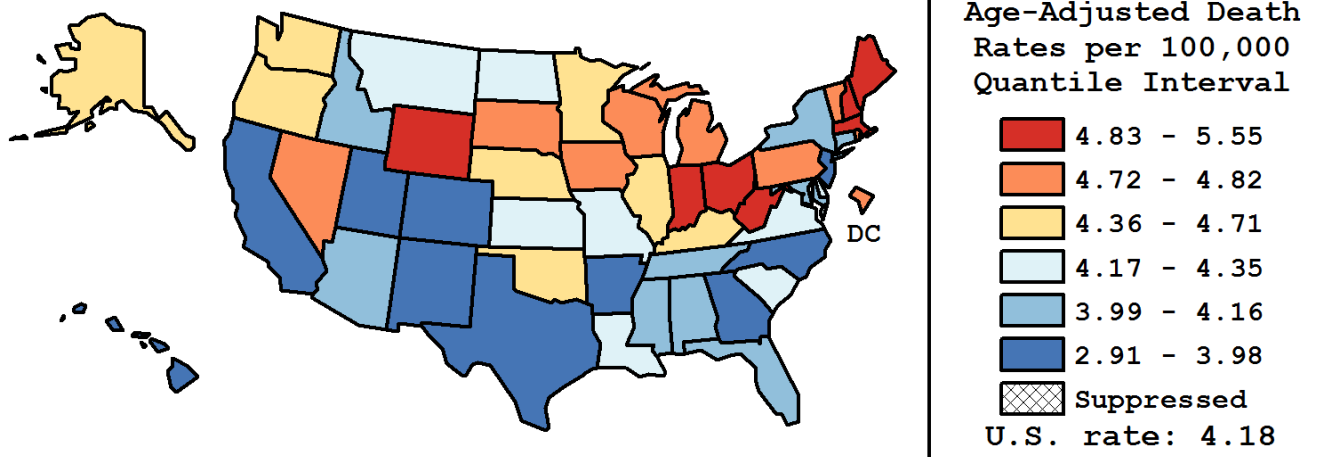
Table 8.18
Cancer of the Esophagus (Invasive)

Age-Adjusted Cancer Death^a Rates By State, All Races, 2008-2012

Males and Females

State	Rate	SE	Rank(CI) ^d	PD
TOTAL U.S.	4.18	0.02		
High Five States				
New Hampshire	5.55 ^b	0.27	01(01,13)	32.76 ^c
Maine	5.47 ^b	0.25	02(01,14)	30.88 ^c
Ohio	5.03 ^b	0.09	03(02,14)	20.35 ^c
West Virginia	4.97 ^b	0.21	04(01,26)	18.95 ^c
Indiana	4.93 ^b	0.12	05(02,19)	17.99 ^c
Low Five States				
California	3.47 ^b	0.04	47(46,50)	-16.94 ^c
Texas	3.38 ^b	0.06	48(46,50)	-19.10 ^c
New Mexico	3.37 ^b	0.18	49(43,51)	-19.52 ^c
Hawaii	3.08 ^b	0.20	50(46,51)	-26.41 ^c
Utah	2.91 ^b	0.17	51(48,51)	-30.47 ^c

State	Rate	SE	Rank(CI) ^d	PD	State	Rate	SE	Rank(CI) ^d	PD
Alabama	4.06	0.12	39(22,46)	-2.99	Montana	4.29	0.27	30(03,47)	2.50
Alaska	4.46	0.44	22(01,50)	6.68	Nebraska	4.62	0.22	18(02,40)	10.61
Arizona	4.07	0.11	37(23,46)	-2.67	Nevada	4.78	0.19	11(02,31)	14.43
Arkansas	3.89	0.15	44(26,48)	-7.07	New Hampshire	5.55 ^b	0.27	01(01,13)	32.76 ^c
California	3.47 ^b	0.04	47(46,50)	-16.94 ^c	New Jersey	3.98	0.09	42(28,46)	-4.74
Colorado	3.98	0.13	43(25,46)	-4.91	New Mexico	3.37 ^b	0.18	49(43,51)	-19.52 ^c
Connecticut	4.11	0.14	36(19,46)	-1.80	New York	4.01	0.06	41(30,45)	-4.17
Delaware	4.32	0.29	27(03,47)	3.22	North Carolina	3.82 ^b	0.09	45(35,47)	-8.76
D.C.	4.73	0.41	16(01,46)	13.09	North Dakota	4.35	0.34	25(02,48)	4.07
Florida	4.04	0.06	40(29,44)	-3.49	Ohio	5.03 ^b	0.09	03(02,14)	20.35 ^c
Georgia	3.76 ^b	0.09	46(36,47)	-10.04	Oklahoma	4.49	0.15	20(07,37)	7.45
Hawaii	3.08 ^b	0.20	50(46,51)	-26.41 ^c	Oregon	4.39	0.14	24(10,41)	4.91
Idaho	4.16	0.23	34(09,47)	-0.49	Pennsylvania	4.81 ^b	0.08	10(04,20)	14.94
Illinois	4.46	0.08	21(13,31)	6.75	Rhode Island	4.78	0.28	12(01,41)	14.40
Indiana	4.93 ^b	0.12	05(02,19)	17.99 ^c	South Carolina	4.30	0.13	29(15,42)	2.94
Iowa	4.76 ^b	0.16	15(02,28)	13.81	South Dakota	4.82	0.32	09(01,43)	15.27 ^c
Kansas	4.23	0.17	31(14,46)	1.06	Tennessee	4.16	0.11	33(20,44)	-0.43
Kentucky	4.43	0.14	23(09,39)	5.97	Texas	3.38 ^b	0.06	48(46,50)	-19.10 ^c
Louisiana	4.34	0.14	26(12,42)	3.76	Utah	2.91 ^b	0.17	51(48,51)	-30.47 ^c
Maine	5.47 ^b	0.25	02(01,14)	30.88 ^c	Vermont	4.77	0.36	14(01,45)	14.03
Maryland	4.07	0.12	38(23,46)	-2.75	Virginia	4.18	0.10	32(21,43)	-0.03
Massachusetts	4.93 ^b	0.12	06(02,19)	17.91 ^c	Washington	4.71 ^b	0.12	17(04,27)	12.56
Michigan	4.82 ^b	0.09	08(03,20)	15.36 ^c	West Virginia	4.97 ^b	0.21	04(01,26)	18.95 ^c
Minnesota	4.58	0.13	19(06,32)	9.42	Wisconsin	4.77 ^b	0.12	13(03,24)	14.19
Mississippi	4.14	0.16	35(16,46)	-1.08	Wyoming	4.90	0.41	07(01,45)	17.26 ^c
Missouri	4.31	0.11	28(15,41)	2.97					



^a US Mortality Files, National Center for Health Statistics, Centers for Disease Control and Prevention. Rates are per 100,000 and are age-adjusted to the 2000 US Std Population (19 age groups - Census P25-1130).

^b Difference between state rate and total U.S. rate is statistically significant ($p < .0002$).

^c Absolute percent difference between state rate and total U.S. rate is 15% or more.

^d Rank of state level death rate and the 95% confidence intervals (low, high) for the rank.

SE Standard error of the rate.

PD Percent difference between state rate and total U.S. rate.

- Statistic not shown. Rate based on less than 16 cases for the time interval.

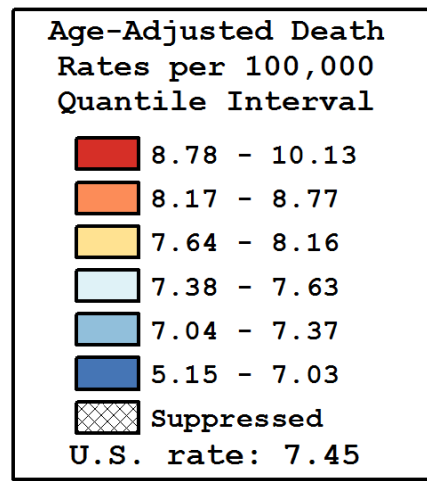
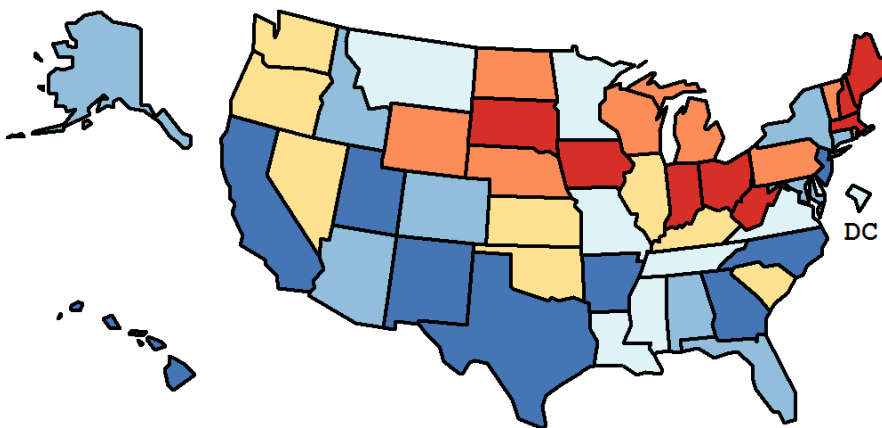
Table 8.19
Cancer of the Esophagus (Invasive)

Age-Adjusted Cancer Death^a Rates By State, All Races, 2008-2012

Males

State	Rate	SE	Rank(CI) ^d	PD
TOTAL U.S.	7.45	0.03		
High Five States				
New Hampshire	10.13 ^b	0.56	01(01,13)	35.94 ^c
Maine	9.85 ^b	0.51	02(01,14)	32.15 ^c
Ohio	9.14 ^b	0.18	03(01,13)	22.62 ^c
West Virginia	9.09 ^b	0.42	04(01,23)	21.93 ^c
Indiana	8.97 ^b	0.24	05(02,16)	20.28 ^c
Low Five States				
Texas	6.10 ^b	0.11	47(45,50)	-18.12 ^c
California	6.05 ^b	0.09	48(45,50)	-18.85 ^c
New Mexico	5.80 ^b	0.34	49(43,51)	-22.26 ^c
Hawaii	5.58 ^b	0.40	50(43,51)	-25.20 ^c
Utah	5.15 ^b	0.33	51(47,51)	-30.95 ^c

State	Rate	SE	Rank(CI) ^d	PD	State	Rate	SE	Rank(CI) ^d	PD
Alabama	7.30	0.25	37(17,46)	-2.13	Montana	7.40	0.52	33(06,49)	-0.75
Alaska	7.10	0.82	40(02,51)	-4.71	Nebraska	8.35	0.43	13(02,40)	11.95
Arizona	7.10	0.21	41(23,46)	-4.79	Nevada	8.08	0.37	18(04,41)	8.33
Arkansas	6.79	0.30	45(23,49)	-8.87	New Hampshire	10.13 ^b	0.56	01(01,13)	35.94 ^c
California	6.05 ^b	0.09	48(45,50)	-18.85 ^c	New Jersey	7.03	0.18	43(26,46)	-5.72
Colorado	7.08	0.26	42(20,46)	-5.04	New Mexico	5.80 ^b	0.34	49(43,51)	-22.26 ^c
Connecticut	7.37	0.29	34(15,46)	-1.07	New York	7.13	0.12	39(27,45)	-4.37
Delaware	7.43	0.57	32(03,49)	-0.33	North Carolina	7.00	0.18	44(28,46)	-6.09
D.C.	7.46	0.81	30(01,51)	0.06	North Dakota	8.26	0.70	15(01,46)	10.85
Florida	7.15	0.11	38(28,45)	-4.13	Ohio	9.14 ^b	0.18	03(01,13)	22.62 ^c
Georgia	6.64 ^b	0.19	46(35,48)	-10.89	Oklahoma	8.07	0.30	19(06,36)	8.19
Hawaii	5.58 ^b	0.40	50(43,51)	-25.20 ^c	Oregon	7.65	0.28	23(12,44)	2.65
Idaho	7.33	0.45	35(09,48)	-1.61	Pennsylvania	8.77 ^b	0.16	09(03,17)	17.62 ^c
Illinois	8.01	0.17	21(11,30)	7.41	Rhode Island	8.72	0.59	10(01,41)	16.95 ^c
Indiana	8.97 ^b	0.24	05(02,16)	20.28 ^c	South Carolina	7.65	0.26	24(12,44)	2.62
Iowa	8.78 ^b	0.33	08(02,24)	17.72 ^c	South Dakota	8.96	0.65	06(01,40)	20.22 ^c
Kansas	7.79	0.34	22(08,44)	4.51	Tennessee	7.52	0.22	29(16,44)	0.87
Kentucky	8.02	0.28	20(07,36)	7.56	Texas	6.10 ^b	0.11	47(45,50)	-18.12 ^c
Louisiana	7.62	0.27	27(12,44)	2.26	Utah	5.15 ^b	0.33	51(47,51)	-30.95 ^c
Maine	9.85 ^b	0.51	02(01,14)	32.15 ^c	Vermont	8.22	0.71	16(01,47)	10.30
Maryland	7.32	0.24	36(18,46)	-1.82	Virginia	7.62	0.21	26(14,41)	2.26
Massachusetts	8.94 ^b	0.24	07(02,17)	19.91 ^c	Washington	8.16	0.23	17(07,31)	9.48
Michigan	8.65 ^b	0.19	11(03,19)	16.04 ^c	West Virginia	9.09 ^b	0.42	04(01,23)	21.93 ^c
Minnesota	7.63	0.25	25(12,43)	2.42	Wisconsin	8.38 ^b	0.24	12(04,26)	12.44
Mississippi	7.44	0.33	31(12,46)	-0.18	Wyoming	8.32	0.79	14(01,47)	11.62
Missouri	7.53	0.22	28(15,44)	1.04					



^a US Mortality Files, National Center for Health Statistics, Centers for Disease Control and Prevention. Rates are per 100,000 and are age-adjusted to the 2000 US Std Population (19 age groups - Census P25-1130).

^b Difference between state rate and total U.S. rate is statistically significant ($p < .0002$).

^c Absolute percent difference between state rate and total U.S. rate is 15% or more.

^d Rank of state level death rate and the 95% confidence intervals (low, high) for the rank.

SE Standard error of the rate.

PD Percent difference between state rate and total U.S. rate.

- Statistic not shown. Rate based on less than 16 cases for the time interval.

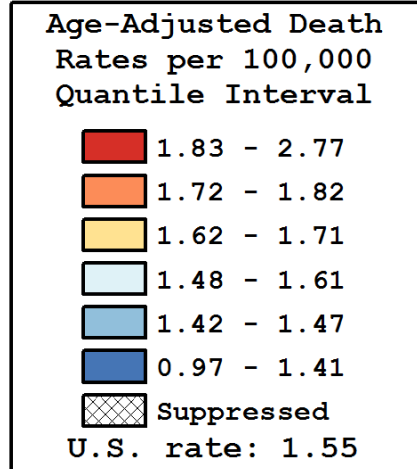
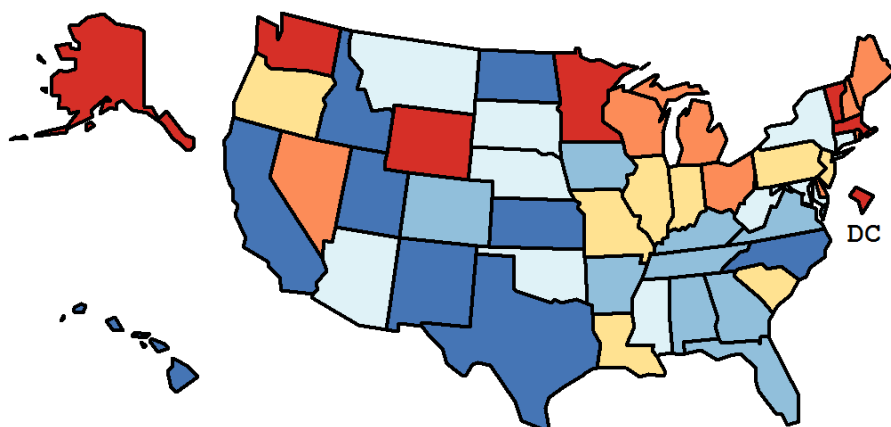
Table 8.20
Cancer of the Esophagus (Invasive)

Age-Adjusted Cancer Death^a Rates By State, All Races, 2008-2012

Females

State	Rate	SE	Rank(CI) ^d	PD
TOTAL U.S.	1.55	0.01		
High Five States				
D.C.	2.77	0.41	01(01,20)	78.92 ^c
Minnesota	2.05 ^b	0.12	02(01,16)	32.74 ^c
Vermont	1.95	0.31	03(01,49)	25.77 ^c
Alaska	1.88	0.40	04(01,51)	21.72 ^c
Wyoming	1.85	0.34	05(01,50)	19.22 ^c
Low Five States				
Kansas	1.28	0.12	47(20,51)	-17.23 ^c
Texas	1.17 ^b	0.04	48(43,51)	-24.16 ^c
North Dakota	1.03	0.22	49(10,51)	-33.24 ^c
Utah	0.97 ^b	0.13	50(41,51)	-37.16 ^c
Hawaii	0.97 ^b	0.15	51(35,51)	-37.62 ^c

State	Rate	SE	Rank(CI) ^d	PD	State	Rate	SE	Rank(CI) ^d	PD
Alabama	1.47	0.10	34(11,48)	-5.06	Montana	1.49	0.22	32(02,51)	-3.92
Alaska	1.88	0.40	04(01,51)	21.72 ^c	Nebraska	1.61	0.17	25(02,49)	4.15
Arizona	1.48	0.09	33(12,48)	-4.40	Nevada	1.82	0.16	08(01,42)	17.66 ^c
Arkansas	1.45	0.13	40(07,49)	-6.38	New Hampshire	1.76	0.20	14(01,48)	13.72
California	1.41 ^b	0.04	43(29,46)	-9.07	New Jersey	1.63	0.08	23(06,41)	5.37
Colorado	1.42	0.11	42(11,49)	-8.37	New Mexico	1.30	0.15	46(11,51)	-15.71 ^c
Connecticut	1.59	0.12	27(04,47)	2.39	New York	1.61	0.05	26(11,37)	3.81
Delaware	1.77	0.24	12(01,49)	14.16	North Carolina	1.34	0.07	45(28,49)	-13.42
D.C.	2.77	0.41	01(01,20)	78.92 ^c	North Dakota	1.03	0.22	49(10,51)	-33.24 ^c
Florida	1.45	0.05	39(23,45)	-6.05	Ohio	1.81 ^b	0.07	09(03,26)	16.75 ^c
Georgia	1.46	0.08	36(16,47)	-5.39	Oklahoma	1.55	0.12	28(05,48)	-0.11
Hawaii	0.97 ^b	0.15	51(35,51)	-37.62 ^c	Oregon	1.66	0.12	21(03,44)	7.10
Idaho	1.37	0.18	44(05,51)	-11.33	Pennsylvania	1.67	0.06	20(06,33)	8.09
Illinois	1.71	0.07	16(04,32)	10.15	Rhode Island	1.80	0.22	10(01,47)	16.19 ^c
Indiana	1.70	0.09	17(03,38)	10.04	South Carolina	1.64	0.11	22(04,44)	5.85
Iowa	1.46	0.12	38(08,49)	-5.92	South Dakota	1.51	0.24	30(02,51)	-2.36
Kansas	1.28	0.12	47(20,51)	-17.23 ^c	Tennessee	1.46	0.09	37(13,48)	-5.79
Kentucky	1.47	0.11	35(10,48)	-5.17	Texas	1.17 ^b	0.04	48(43,51)	-24.16 ^c
Louisiana	1.70	0.11	19(03,42)	9.74	Utah	0.97 ^b	0.13	50(41,51)	-37.16 ^c
Maine	1.78	0.20	11(01,47)	15.17 ^c	Vermont	1.95	0.31	03(01,49)	25.77 ^c
Maryland	1.53	0.10	29(08,47)	-0.88	Virginia	1.44	0.08	41(17,48)	-7.25
Massachusetts	1.83	0.09	06(02,28)	18.19 ^c	Washington	1.83	0.10	07(02,31)	17.95 ^c
Michigan	1.72	0.07	15(04,34)	10.96	West Virginia	1.61	0.16	24(02,48)	4.16
Minnesota	2.05 ^b	0.12	02(01,16)	32.74 ^c	Wisconsin	1.77	0.10	13(02,33)	14.11
Mississippi	1.51	0.13	31(05,49)	-2.58	Wyoming	1.85	0.34	05(01,50)	19.22 ^c
Missouri	1.70	0.10	18(03,39)	9.88					



^a US Mortality Files, National Center for Health Statistics, Centers for Disease Control and Prevention. Rates are per 100,000 and are age-adjusted to the 2000 US Std Population (19 age groups - Census P25-1130).

^b Difference between state rate and total U.S. rate is statistically significant ($p < .0002$).

^c Absolute percent difference between state rate and total U.S. rate is 15% or more.

^d Rank of state level death rate and the 95% confidence intervals (low, high) for the rank.

SE Standard error of the rate.

PD Percent difference between state rate and total U.S. rate.

- Statistic not shown. Rate based on less than 16 cases for the time interval.

Table 8.21
Cancer of the Esophagus (Invasive)

Estimated United States Cancer Prevalence Counts^a on January 1, 2012
By Race/Ethnicity, Sex and Years Since Diagnosis

Years Since Diagnosis		0 to <5	5 to <10	10 to <15	15 to <20	20 to <25	25 to <30	0 to <20 ^e	0 to <37 ^e	>=37 ^g	Complete ^h
<u>Race</u>	<u>Sex</u>										
All Races ^b	Both Sexes	21,344	7,819	4,025	1,560	584	237	35,130	35,667	114	35,781
	Males	16,607	6,020	3,180	1,254	420	185	27,341	27,750	58	27,808
	Females	4,737	1,799	845	306	164	52	7,789	7,917	56	7,973
White ^b	Both Sexes	19,188	7,012	3,600	1,367	519	206	31,500	31,990	89	32,079
	Males	15,216	5,539	2,926	1,105	377	157	25,036	25,405	52	25,457
	Females	3,972	1,473	674	262	142	49	6,464	6,585	37	6,622
Black ^b	Both Sexes	1,544	591	298	147	51	28	2,619	2,659	27	2,686
	Males	930	320	165	111	38	28	1,551	1,591	7	1,598
	Females	614	271	133	36	13	0	1,068	1,068	20	1,088
Asian/ Pacific Islander ^c	Both Sexes	431	123	89	+	+	+	676	+	+	+
	Males	316	84	66	+	+	+	489	+	+	+
	Females	115	39	23	+	+	+	187	+	+	+
Hispanic ^d	Both Sexes	974	247	123	+	+	+	1,430	+	+	+
	Males	794	207	106	+	+	+	1,175	+	+	+
	Females	180	40	17	+	+	+	255	+	+	+

Estimated prevalence percent^a on January 1, 2012, of the SEER^c population diagnosed in the previous 20 years
By Age at Prevalence, Race/Ethnicity and Sex

Age at Prevalence		All Ages	0-9	10-19	20-29	30-39	40-49	50-59	60-69	70-79	80+	Age-Adjusted ^f All Ages
<u>Race</u>	<u>Sex</u>											
All Races ^c	Both Sexes	0.0092%	-	-	0.0001%	0.0004%	0.0025%	0.0118%	0.0330%	0.0517%	0.0458%	0.0088%
	Males	0.0144%	-	-	-	0.0005%	0.0041%	0.0189%	0.0571%	0.0873%	0.0840%	0.0150%
	Females	0.0042%	-	-	-	0.0002%	0.0009%	0.0050%	0.0111%	0.0229%	0.0232%	0.0037%
White ^c	Both Sexes	0.0108%	-	-	-	0.0005%	0.0029%	0.0130%	0.0379%	0.0563%	0.0488%	0.0097%
	Males	0.0171%	-	-	-	0.0007%	0.0050%	0.0208%	0.0658%	0.0968%	0.0890%	0.0167%
	Females	0.0045%	-	-	-	-	0.0007%	0.0052%	0.0118%	0.0227%	0.0247%	0.0038%
Black ^c	Both Sexes	0.0057%	-	-	-	-	0.0009%	0.0123%	0.0238%	0.0423%	0.0322%	0.0069%
	Males	0.0072%	-	-	-	-	-	0.0168%	0.0316%	0.0574%	0.0646%	0.0100%
	Females	0.0043%	-	-	-	-	-	0.0083%	0.0177%	0.0317%	0.0164%	0.0048%
Asian/ Pacific Islander ^c	Both Sexes	0.0045%	-	-	-	-	0.0018%	0.0055%	0.0115%	0.0315%	0.0314%	0.0047%
	Males	0.0068%	-	-	-	-	0.0019%	0.0095%	0.0211%	0.0496%	0.0553%	0.0077%
	Females	0.0024%	-	-	-	-	0.0018%	0.0021%	0.0035%	0.0174%	0.0169%	0.0024%
Hispanic ^d	Both Sexes	0.0028%	-	-	-	0.0004%	0.0019%	0.0063%	0.0149%	0.0275%	0.0329%	0.0049%
	Males	0.0045%	-	-	-	0.0007%	0.0032%	0.0110%	0.0261%	0.0548%	0.0624%	0.0091%
	Females	0.0010%	-	-	-	-	-	0.0018%	0.0052%	0.0073%	0.0152%	0.0016%

^a US 2012 cancer prevalence counts are based on 2012 cancer prevalence proportions from the SEER registries and 1/1/2012 US population estimates based on the average of 2011 and 2012 population estimates from the US Bureau of the Census. Prevalence was calculated using the First Malignant Primary Only for a person.

^{b c d} Statistics based on (b) SEER 9 Areas (c) SEER 11 Areas and Rural Georgia (d) NHIA for Hispanic for SEER 11 Areas and Rural Georgia.

^e Maximum limited-duration prevalence: 37 years for 1975-2012 SEER 9 data; 20 years for 1992-2012 SEER 11 data (used to calculate prevalence for Hispanics and Asian Pacific Islanders).

^f Percentages are age-adjusted to the 2000 US Standard Population (19 age groups - Census P25-1130) by 5-year age groups.

^{g h i} (g) Cases diagnosed more than 37 years ago were estimated using the completeness index method (Capocaccia et. al. 1997, Merrill et. al. 2000). (h) Complete prevalence is obtained by summing 0 to <37 and >=37. (i) Age-specific completeness index was approximated using empirical data from historical Connecticut tumor registry.

- Statistic not shown. Statistic based on fewer than 5 cases estimated alive in SEER for the time interval.

+ Not available.

Table 8.22

Cancer of the Esophagus (Invasive)

Percent Distribution and Counts by Histology among Histologically Confirmed Cases, 2008-2012
Both Sexes by Race

Histology ^a	All Races		White		Black		Asian/Pacific Islander		American Indian/ Alaska Native ^b		Hispanic ^c	
	Count	Percent	Count	Percent	Count	Percent	Count	Percent	Count	Percent	Count	Percent
Carcinoma	18,629	99.0%	15,657	99.0%	1,957	99.2%	822	99.0%	78	100.0%	1,392	98.8%
Epidermoid carcinoma ^d (8051-8131)	6,214	33.0%	4,016	25.4%	1,571	79.7%	567	68.3%	26	33.3%	509	36.1%
Squamous cell carcinoma (8070-8078, 8083-8084)	6,195	32.9%	4,003	25.3%	1,565	79.4%	567	68.3%	26	33.3%	508	36.1%
Adenocarcinoma ^e	11,565	61.5%	10,912	69.0%	313	15.9%	221	26.6%	47	60.3%	818	58.1%
Other specific carcinomas ^f	282	1.5%	235	1.5%	31	1.6%	-	-	-	-	20	1.4%
Unspecified, Carcinoma, NOS (8010-8011,8020-8022)	568	3.0%	494	3.1%	42	2.1%	22	2.7%	-	-	45	3.2%
Other specific types ^g	59	0.3%	50	0.3%	-	-	-	-	-	-	-	-
Unspecified (8000-8005)	121	0.6%	103	0.7%	-	-	-	-	-	-	-	-
Total	18,809	100.0%	15,810	100.0%	1,972	100.0%	830	100.0%	78	100.0%	1,409	100.0%

Source: SEER 18 areas (San Francisco, Connecticut, Detroit, Hawaii, Iowa, New Mexico, Seattle, Utah, Atlanta, San Jose-Monterey, Los Angeles, Alaska Native Registry, Rural Georgia, California excluding SF/SJM/LA, Kentucky, Louisiana, New Jersey and Georgia excluding ATL/RG).

Percents may not sum to 100 due to rounding.

^a Excludes Kaposi Sarcoma, mesothelioma, lymphomas, leukemias, myelomas, lymphoreticular, and immunoproliferative diseases.

^b Estimates for American Indian/Alaska Native are based on the CHSDA (Contract Health Service Delivery Area) counties.

^c Hispanic is not mutually exclusive from whites, blacks, Asian/Pacific Islanders, and American Indians/Alaska Natives.

^d Underlying incidence data for Hispanics are based on NHIA and exclude cases from the Alaska Native Registry.

^e Epidermoid carcinoma includes squamous, basal, and transitional cell carcinomas.

^f Adenocarcinoma is defined as histologies 8050, 8140-8147, 8160-8162, 8180-8221, 8250-8507, 8514, 8520-8551, 8560, 8570-8574, 8576, 8940-8941.

^g Other specific carcinomas is defined as histologies 8012-8015, 8030-8046, 8150-8155, 8170-8175, 8230-8249, 8508, 8510-8513, 8561-8562, 8575, 8580-8671.

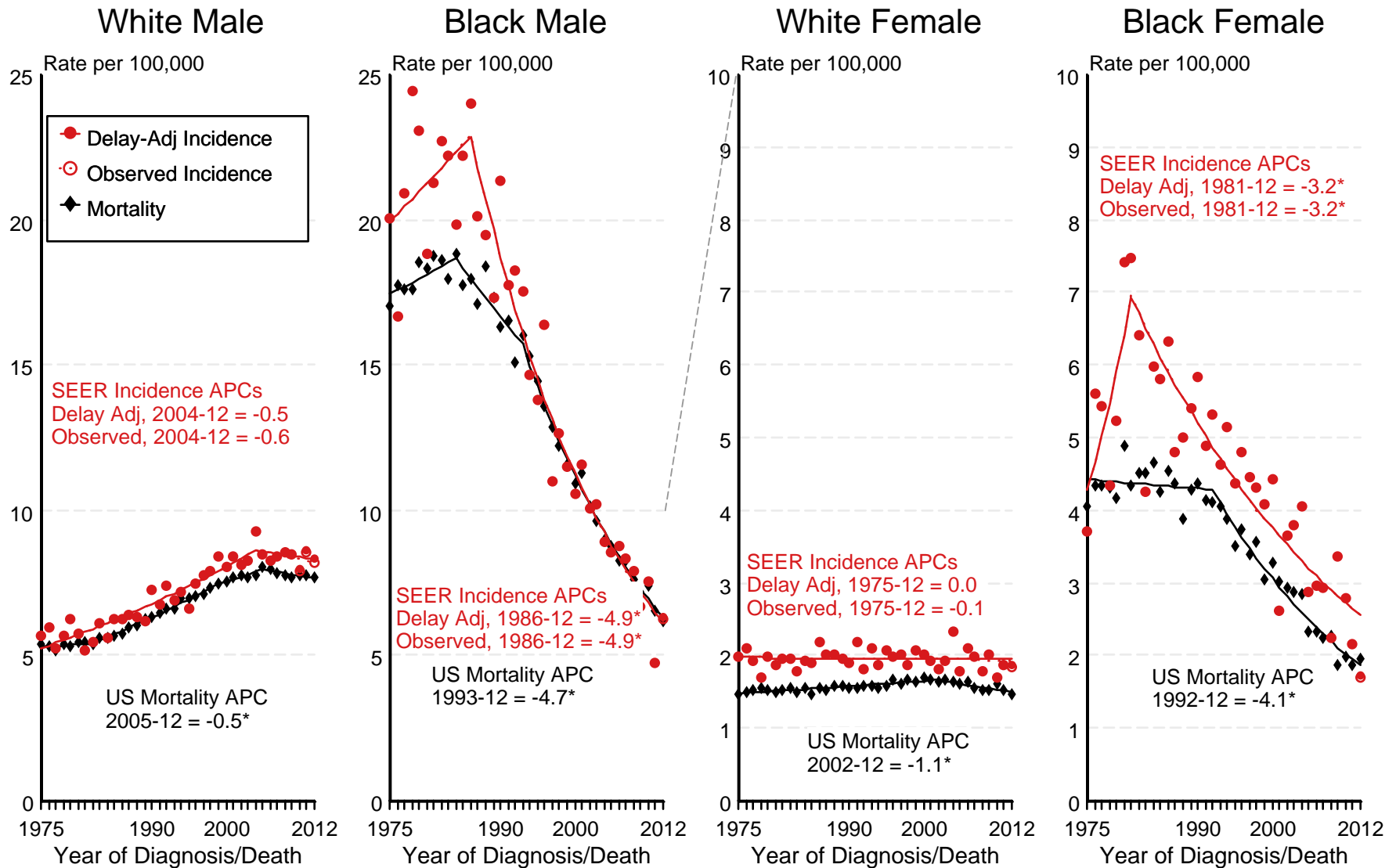
^h Other specific types includes sarcomas and other soft tissue tumors.

ⁱ Other specific types is defined as histologies 8680-8713, 8720-8790, 8800-8921, 8930-8936, 8950-9030, 9040-9044, 9060-9110, 9120-9136, 9150-9252, 9260-9365, 9370-9373, 9380-9539, 9540-9582.

- Statistic not shown due to fewer than 16 cases during the time period.

Figure 8.1

SEER Observed Incidence, SEER Delay Adjusted Incidence and US Death Rates^a Cancer of the Esophagus, by Race and Sex



Source: SEER 9 areas and US Mortality Files (National Center for Health Statistics, CDC).

^a Rates are age-adjusted to the 2000 US Std Population (19 age groups - Census P25-1103).

Regression lines and APCs are calculated using the Joinpoint Regression Program Version 4.2.0, April 2015, National Cancer Institute.

The APC is the Annual Percent Change for the regression line segments. The APC shown on the graph is for the most recent trend.

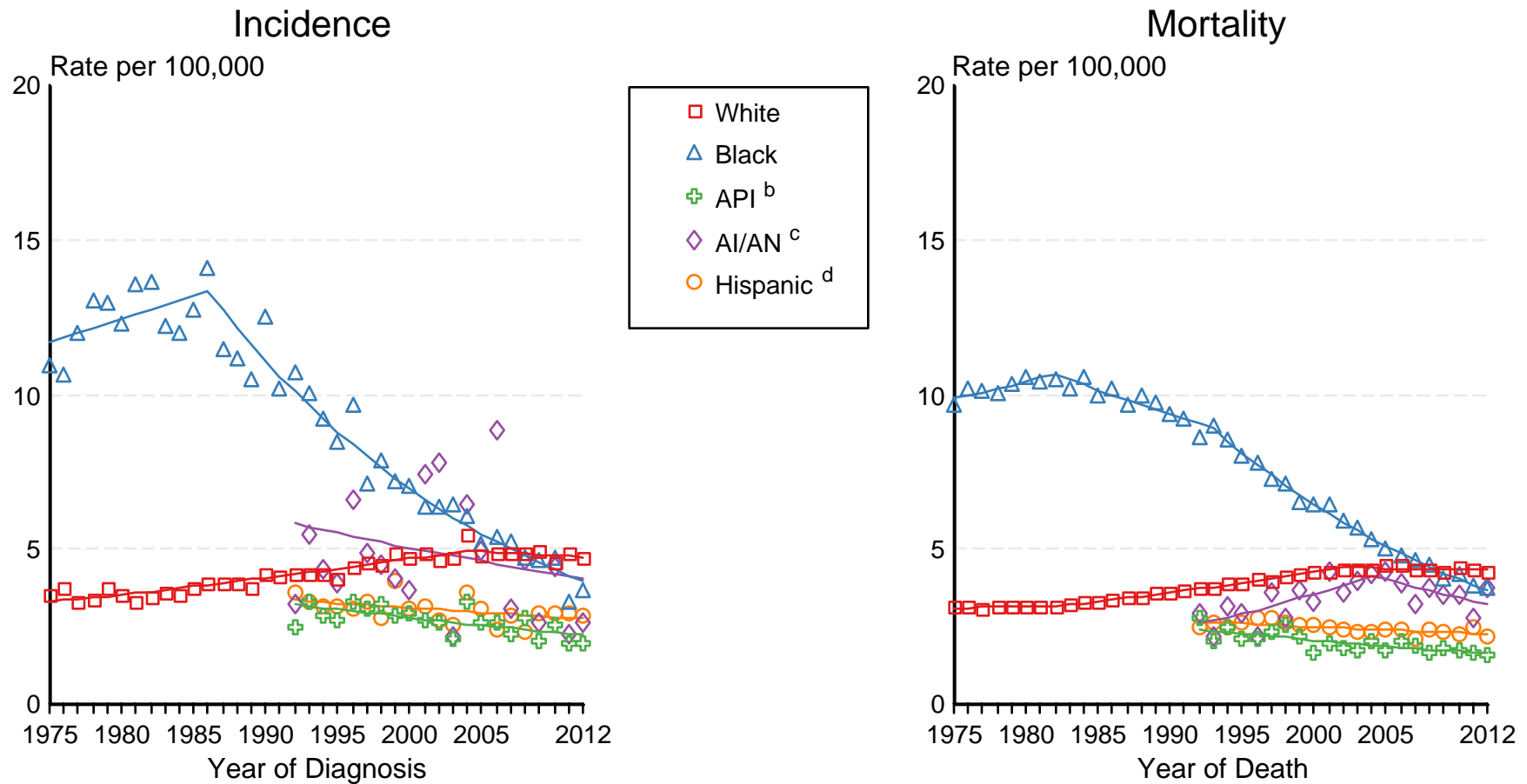
* The APC is significantly different from zero ($p < 0.05$).

Figure 8.2

SEER Incidence and US Death Rates^a Cancer of the Esophagus, Both Sexes

Joinpoint Analyses for Whites and Blacks from 1975-2012

and for Asian/Pacific Islanders, American Indians/Alaska Natives and Hispanics from 1992-2012



Source: Incidence data for whites and blacks are from the SEER 9 areas (San Francisco, Connecticut, Detroit, Hawaii, Iowa, New Mexico, Seattle, Utah, Atlanta). Incidence data for Asian/Pacific Islanders, American Indians/Alaska Natives and Hispanics are from the SEER 13 Areas (SEER 9 Areas, San Jose-Monterey, Los Angeles, Alaska Native Registry and Rural Georgia). Mortality data are from US Mortality Files, National Center for Health Statistics, CDC.

^a Rates are age-adjusted to the 2000 US Std Population (19 age groups - Census P25-1103).

Regression lines are calculated using the Joinpoint Regression Program Version 4.2.0, April 2015, National Cancer Institute. Joinpoint analyses for Whites and Blacks during the 1975-2012 period allow a maximum of 5 joinpoints. Analyses for other ethnic groups during the period 1992-2012 allow a maximum of 3 joinpoints.

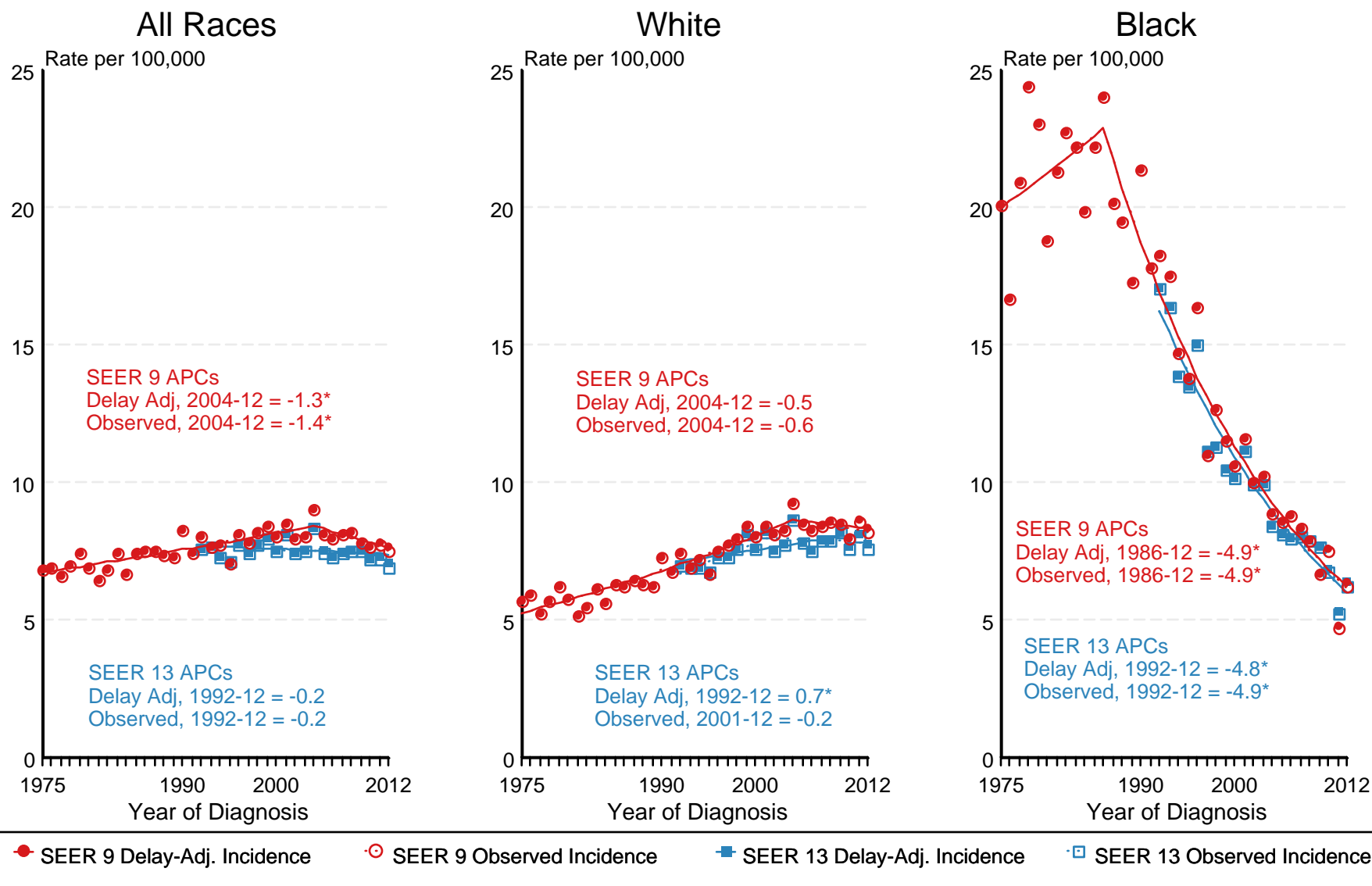
^b API = Asian/Pacific Islander.

^c AI/AN = American Indian/Alaska Native. Rates for American Indian/Alaska Native are based on the CHSDA(Contract Health Service Delivery Area) counties.

^d Hispanic is not mutually exclusive from whites, blacks, Asian/Pacific Islanders, and American Indians/Alaska Natives. Incidence data for Hispanics are based on NHIA and exclude cases from the Alaska Native Registry. Mortality data for Hispanics exclude cases from New Hampshire and Oklahoma.

Figure 8.3

SEER Observed Incidence and SEER Delay Adjusted Incidence Rates^a SEER 9 Areas Compared to SEER 13 Areas Cancer of the Esophagus, Male, by Race



Source: SEER 9 areas and SEER 13 areas.

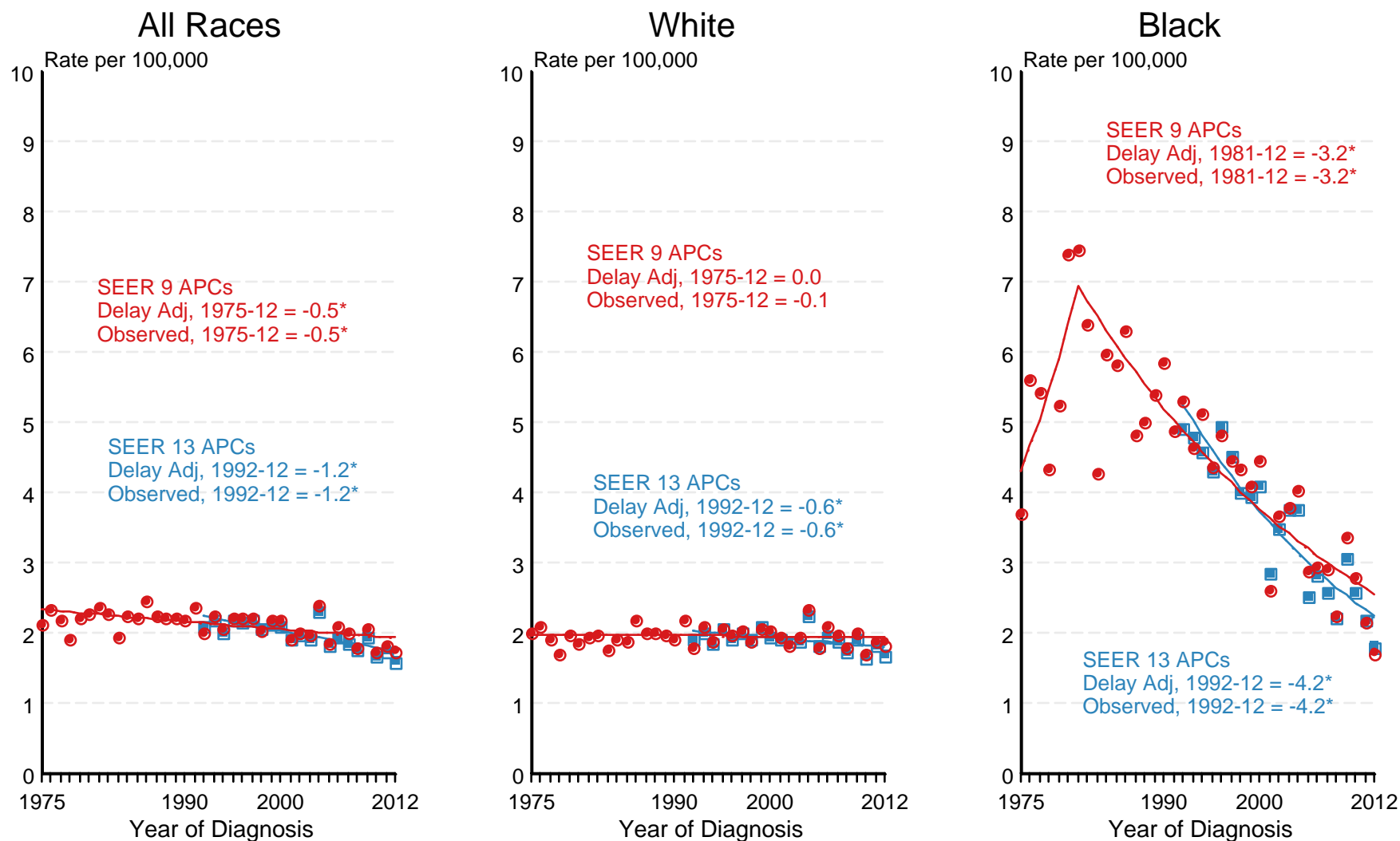
^a Rates are age-adjusted to the 2000 US Std Population (19 age groups - Census P25-1103).

Regression lines and APCs are calculated using the Joinpoint Regression Program Version 4.2.0, April 2015, National Cancer Institute. The APC is the Annual Percent Change for the regression line segments. The APC shown on the graph is for the most recent trend.

* The APC is significantly different from zero ($p < 0.05$).

Figure 8.4

SEER Observed Incidence and SEER Delay Adjusted Incidence Rates^a SEER 9 Areas Compared to SEER 13 Areas Cancer of the Esophagus, Female, by Race



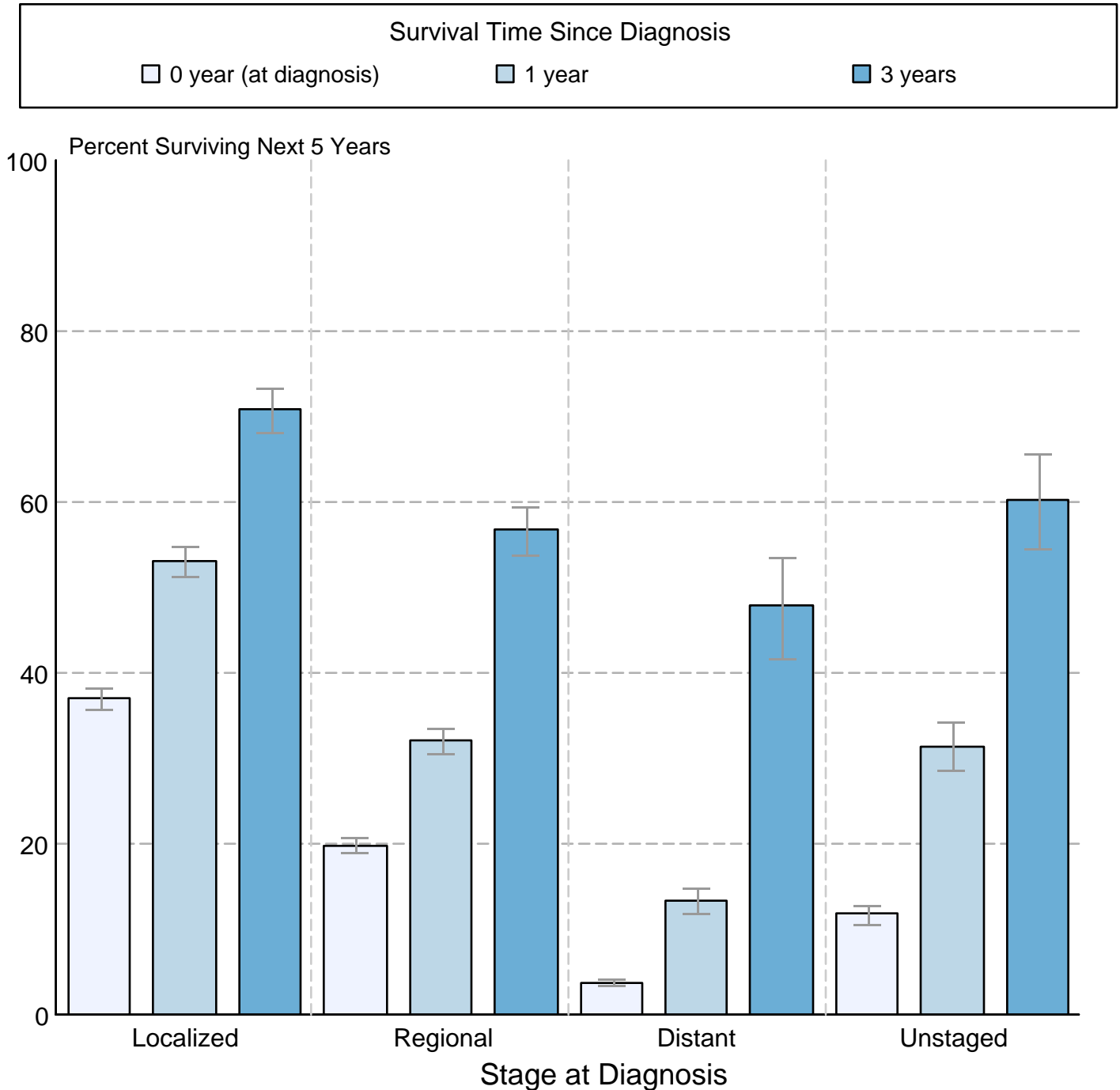
● SEER 9 Delay-Adj. Incidence
 ○ SEER 9 Observed Incidence
 ■ SEER 13 Delay-Adj. Incidence
 □ SEER 13 Observed Incidence

^a Source: SEER 9 areas and SEER 13 areas.
 Rates are age-adjusted to the 2000 US Std Population (19 age groups - Census P25-1103).
 Regression lines and APCs are calculated using the Joinpoint Regression Program Version 4.2.0, April 2015, National Cancer Institute.
 The APC is the Annual Percent Change for the regression line segments. The APC shown on the graph is for the most recent trend.
 * The APC is significantly different from zero ($p < 0.05$).

Figure 8.5

Cancer of the Esophagus 5-Year SEER Conditional Relative Survival and 95% Confidence Intervals

Probability of surviving the next 5 years given the cohort
has already survived 0, 1, or 3 years
1998-2011 by stage at diagnosis



Source: SEER 18 areas (San Francisco, Connecticut, Detroit, Hawaii, Iowa, New Mexico, Seattle, Utah, Atlanta, San Jose-Monterey, Los Angeles, Alaska Native Registry, Rural Georgia, California excluding SF/SJM/LA, Kentucky, Louisiana, New Jersey and Georgia excluding ATL/RG). California excluding SF/SJM/LA, Kentucky, Louisiana, New Jersey and Georgia excluding ATL/RG contribute cases for diagnosis years 2000 and later. The remaining 13 SEER Areas contribute cases for the entire time period. Percent surviving is not shown if based on less than 25 cases. Confidence intervals are not shown if length of the confidence interval is greater than 5 times the standard error.