

Table 2.1  
All Cancer Sites (Invasive)

Trends in SEER Incidence<sup>ab</sup> and U.S. Mortality<sup>c</sup> Using the Joinpoint Regression Program,  
1975-2012 With up to Five Joinpoints, 1992-2012 With up to Three Joinpoints,  
Both Sexes by Race/Ethnicity

	JP Trend 1		JP Trend 2		JP Trend 3		JP Trend 4		JP Trend 5		JP Trend 6		AAPC <sup>d</sup>	
	Years	APC	Years	APC	Years	APC	Years	APC	Years	APC	Years	APC	2003-12	2008-12
<u>SEER 9 Delay-Adjusted Incidence<sup>a</sup>, 1975-2012</u>														
All Races	1975-89	1.2*	1989-92	2.8	1992-95	-2.4	1995-98	1.1	1998-09	-0.3*	2009-12	-1.3	-0.6*	-1.0*
White	1975-82	0.8*	1982-92	1.8*	1992-95	-2.1	1995-98	1.3	1998-09	-0.2	2009-12	-1.3	-0.6*	-1.0*
Black	1975-84	1.6*	1984-89	0.4	1989-92	4.7*	1992-95	-1.7	1995-09	-0.5*	2009-12	-1.5*	-0.8*	-1.2*
<u>SEER 13 Delay-Adjusted Incidence<sup>b</sup>, 1992-2012</u>														
All Races	1992-94	-3.1*	1994-98	0.4	1998-09	-0.3*	2009-12	-1.5*					-0.7*	-1.2*
White	1992-94	-3.3*	1994-98	0.6	1998-09	-0.2*	2009-12	-1.5*					-0.7*	-1.2*
Black	1992-09	-0.6*	2009-12	-1.7*									-0.9*	-1.4*
<u>SEER 9 Observed Incidence<sup>a</sup>, 1975-2012</u>														
All Races	1975-89	1.2*	1989-92	2.8	1992-95	-2.4	1995-98	1.1	1998-09	-0.3*	2009-12	-2.0*	-0.9*	-1.6*
White	1975-82	0.8*	1982-92	1.8*	1992-95	-2.1	1995-98	1.3	1998-09	-0.3*	2009-12	-2.2*	-0.9*	-1.7*
Black	1975-84	1.6*	1984-89	0.4	1989-92	4.7*	1992-95	-1.6	1995-09	-0.5*	2009-12	-2.4*	-1.2*	-1.9*
<u>SEER 13 Observed Incidence<sup>b</sup>, 1992-2012</u>														
All Races	1992-94	-3.1*	1994-98	0.4	1998-09	-0.4*	2009-12	-2.3*					-1.0*	-1.8*
White	1992-94	-3.3*	1994-98	0.6	1998-09	-0.3*	2009-12	-2.4*					-1.0*	-1.9*
White NH <sup>ef</sup>	1992-94	-3.1*	1994-99	0.6	1999-09	-0.3*	2009-12	-2.3*					-1.0*	-1.8*
Black	1992-09	-0.6*	2009-12	-2.6*									-1.3*	-2.1*
Black NH <sup>ef</sup>	1992-09	-0.6*	2009-12	-2.4*									-1.2*	-2.0*
API <sup>e</sup>	1992-12	-0.5*											-0.5*	-0.5*
AI/AN <sup>eg</sup>	1992-12	0.1											0.1	0.1
Hispanic <sup>f</sup>	1992-08	-0.1	2008-12	-1.7*									-0.8*	-1.7*
<u>U.S. Cancer Mortality<sup>c</sup>, 1975-2012</u>														
All Races	1975-84	0.5*	1984-91	0.3*	1991-94	-0.5	1994-98	-1.3*	1998-01	-0.8	2001-12	-1.5*	-1.5*	-1.5*
White	1975-90	0.4*	1990-94	-0.3	1994-98	-1.2*	1998-01	-0.6	2001-12	-1.4*			-1.4*	-1.4*
Black	1975-83	1.3*	1983-91	0.7*	1991-95	-0.8*	1995-01	-1.6*	2001-12	-2.1*			-2.1*	-2.1*
<u>U.S. Cancer Mortality<sup>c</sup>, 1992-2012</u>														
All Races	1992-01	-1.0*	2001-12	-1.5*									-1.5*	-1.5*
White	1992-94	-0.3	1994-98	-1.2*	1998-01	-0.6	2001-12	-1.4*					-1.4*	-1.4*
White NH <sup>ef</sup>	1992-94	0.2	1994-98	-1.2*	1998-01	-0.5	2001-12	-1.4*					-1.4*	-1.4*
Black	1992-99	-1.3*	1999-12	-2.1*									-2.1*	-2.1*
Black NH <sup>ef</sup>	1992-94	0.0	1994-01	-1.6*	2001-12	-2.0*							-2.0*	-2.0*
API <sup>e</sup>	1992-04	-1.5*	2004-12	-1.1*									-1.1*	-1.1*
AI/AN <sup>eg</sup>	1992-04	0.4	2004-12	-1.2*									-1.0*	-1.2*
Hispanic <sup>f</sup>	1992-98	0.1	1998-12	-1.2*									-1.2*	-1.2*

Joinpoint Regression Program Version 4.2.0, April 2015, National Cancer Institute. (<http://surveillance.cancer.gov/joinpoint/>).  
<sup>a</sup> The APC is the Annual Percent Change based on rates age-adjusted to the 2000 US Std Population (19 age groups - Census P25-1130).  
<sup>b</sup> Trends are from the SEER 9 areas (San Francisco, Connecticut, Detroit, Hawaii, Iowa, New Mexico, Seattle, Utah, and Atlanta).  
<sup>c</sup> Trends are from the SEER 13 areas (SEER 9 Areas, Los Angeles, San Jose-Monterey, Rural Georgia, and the Alaska Native Registry).  
<sup>d</sup> Trends are from US Mortality Files, National Center for Health Statistics, Centers for Disease Control and Prevention.  
<sup>e</sup> The AAPC is the Average Annual Percent Change and is based on the APCs calculated by Joinpoint.  
<sup>f</sup> API - Asian/Pacific Islander, AI/AN - American Indian/Alaska Native, NH - Non-Hispanic  
Hispanic and Non-Hispanic are not mutually exclusive from whites, blacks, Asian/Pacific Islanders, and American Indians/Alaska Natives. Incidence data for Hispanics and Non-Hispanics are based on NHIA and exclude cases from the Alaska Native Registry.  
The Hispanic and Non-Hispanic mortality trends exclude deaths from New Hampshire and Oklahoma.  
<sup>g</sup> Data for American Indian/Alaska Native are based on the CHSDA (Contract Health Service Delivery Area) counties.  
\* The APC/AAPC is significantly different from zero (p<.05).  
- Joinpoint regression line analysis could not be performed on data series.

Table 2.2  
All Cancer Sites (Invasive)

Trends in SEER Incidence<sup>ab</sup> and U.S. Mortality<sup>c</sup> Using the Joinpoint Regression Program,  
1975-2012 With up to Five Joinpoints, 1992-2012 With up to Three Joinpoints,  
Males by Race/Ethnicity

	JP Trend 1		JP Trend 2		JP Trend 3		JP Trend 4		JP Trend 5		JP Trend 6		AAPC <sup>d</sup>	
	Years	APC	Years	APC	Years	APC	Years	APC	Years	APC	Years	APC	2003-12	2008-12
<u>SEER 9 Delay-Adjusted Incidence<sup>a</sup>, 1975-2012</u>														
All Races	1975-89	1.3*	1989-92	5.2*	1992-95	-4.9*	1995-99	0.6	1999-09	-0.6*	2009-12	-2.7*	-1.3*	-2.2*
White	1975-89	1.4*	1989-92	5.0*	1992-95	-5.1*	1995-00	0.7	2000-09	-0.6*	2009-12	-2.6*	-1.2*	-2.1*
Black	1975-81	2.8*	1981-89	0.6	1989-92	6.7*	1992-05	-1.5*	2005-08	0.5	2008-12	-3.4*	-1.7*	-3.4*
<u>SEER 13 Delay-Adjusted Incidence<sup>b</sup>, 1992-2012</u>														
All Races	1992-94	-5.8*	1994-09	-0.5*	2009-12	-3.1*							-1.4*	-2.5*
White	1992-94	-6.3*	1994-08	-0.3*	2008-12	-2.4*							-1.2*	-2.4*
Black	1992-09	-1.3*	2009-12	-3.3*									-2.0*	-2.8*
<u>SEER 9 Observed Incidence<sup>a</sup>, 1975-2012</u>														
All Races	1975-89	1.3*	1989-92	5.2*	1992-95	-4.8*	1995-00	0.4	2000-09	-0.7*	2009-12	-3.5*	-1.7*	-2.8*
White	1975-89	1.4*	1989-92	5.0*	1992-95	-5.1*	1995-00	0.7	2000-09	-0.7*	2009-12	-3.6*	-1.7*	-2.9*
Black	1975-81	2.8*	1981-89	0.6	1989-92	6.8*	1992-05	-1.6*	2005-08	0.4	2008-12	-4.1*	-2.1*	-4.1*
<u>SEER 13 Observed Incidence<sup>b</sup>, 1992-2012</u>														
All Races	1992-94	-5.7*	1994-09	-0.5*	2009-12	-4.1*							-1.7*	-3.2*
White	1992-94	-6.0*	1994-09	-0.4*	2009-12	-4.2*							-1.7*	-3.3*
White NH <sup>ef</sup>	1992-94	-6.1*	1994-09	-0.3*	2009-12	-4.2*							-1.6*	-3.2*
Black	1992-09	-1.4*	2009-12	-4.5*									-2.4*	-3.7*
Black NH <sup>ef</sup>	1992-09	-1.3*	2009-12	-4.3*									-2.3*	-3.6*
API <sup>e</sup>	1992-07	-0.7*	2007-12	-2.8*									-1.9*	-2.8*
AI/AN <sup>eg</sup>	1992-12	-0.4											-0.4	-0.4
Hispanic <sup>f</sup>	1992-09	-0.5*	2009-12	-4.1*									-1.7*	-3.2*
<u>U.S. Cancer Mortality<sup>c</sup>, 1975-2012</u>														
All Races	1975-79	1.0*	1979-90	0.3*	1990-93	-0.5	1993-01	-1.5*	2001-12	-1.8*			-1.8*	-1.8*
White	1975-79	0.9*	1979-91	0.2*	1991-94	-0.8	1994-97	-1.8*	1997-00	-1.0*	2000-12	-1.7*	-1.7*	-1.7*
Black	1975-82	1.8*	1982-90	1.0*	1990-93	-0.2	1993-01	-2.0*	2001-12	-2.7*			-2.7*	-2.7*
<u>U.S. Cancer Mortality<sup>c</sup>, 1992-2012</u>														
All Races	1992-01	-1.4*	2001-12	-1.8*									-1.8*	-1.8*
White	1992-01	-1.3*	2001-12	-1.7*									-1.7*	-1.7*
White NH <sup>ef</sup>	1992-94	-0.2	1994-97	-1.8*	1997-00	-0.9	2000-12	-1.6*					-1.6*	-1.6*
Black	1992-94	-0.5	1994-01	-2.1*	2001-12	-2.7*							-2.7*	-2.7*
Black NH <sup>ef</sup>	1992-94	-0.2	1994-01	-2.1*	2001-12	-2.5*							-2.5*	-2.5*
API <sup>e</sup>	1992-12	-1.6*											-1.6*	-1.6*
AI/AN <sup>eg</sup>	1992-12	-0.3											-0.3	-0.3
Hispanic <sup>f</sup>	1992-95	1.7	1995-12	-1.4*									-1.4*	-1.4*

Joinpoint Regression Program Version 4.2.0, April 2015, National Cancer Institute. (<http://surveillance.cancer.gov/joinpoint/>).

The APC is the Annual Percent Change based on rates age-adjusted to the 2000 US Std Population (19 age groups - Census P25-1130).

Trends are from the SEER 9 areas (San Francisco, Connecticut, Detroit, Hawaii, Iowa, New Mexico, Seattle, Utah, and Atlanta).

Trends are from the SEER 13 areas (SEER 9 Areas, Los Angeles, San Jose-Monterey, Rural Georgia, and the Alaska Native Registry).

Trends are from US Mortality Files, National Center for Health Statistics, Centers for Disease Control and Prevention.

The AAPC is the Average Annual Percent Change and is based on the APCs calculated by Joinpoint.

API - Asian/Pacific Islander, AI/AN - American Indian/Alaska Native, NH - Non-Hispanic

Hispanic and Non-Hispanic are not mutually exclusive from whites, blacks, Asian/Pacific Islanders, and American Indians/Alaska

Natives. Incidence data for Hispanics and Non-Hispanics are based on NHIA and exclude cases from the Alaska Native Registry.

The Hispanic and Non-Hispanic mortality trends exclude deaths from New Hampshire and Oklahoma.

Data for American Indian/Alaska Native are based on the CHSDA (Contract Health Service Delivery Area) counties.

\* The APC/AAPC is significantly different from zero ( $p < .05$ ).

- Joinpoint regression line analysis could not be performed on data series.

Table 2.3  
All Cancer Sites (Invasive)

Trends in SEER Incidence<sup>ab</sup> and U.S. Mortality<sup>c</sup> Using the Joinpoint Regression Program,  
1975-2012 With up to Five Joinpoints, 1992-2012 With up to Three Joinpoints,  
Females by Race/Ethnicity

	JP Trend 1		JP Trend 2		JP Trend 3		JP Trend 4		JP Trend 5		JP Trend 6		AAPC <sup>d</sup>	
	Years	APC	Years	APC	Years	APC	Years	APC	Years	APC	Years	APC	2003-12	2008-12
<u>SEER 9 Delay-Adjusted Incidence<sup>a</sup>, 1975-2012</u>														
All Races	1975-79	-0.3	1979-87	1.6*	1987-95	0.1	1995-98	1.5	1998-03	-0.6	2003-12	0.2	0.2	0.2
White	1975-79	-0.2	1979-87	1.7*	1987-95	0.1	1995-98	1.7	1998-04	-0.4	2004-12	0.2	0.1	0.2
Black	1975-91	1.1*	1991-12	0.1*									0.1*	0.1*
<u>SEER 13 Delay-Adjusted Incidence<sup>b</sup>, 1992-2012</u>														
All Races	1992-98	0.8*	1998-03	-0.6	2003-12	0.0							0.0	0.0
White	1992-94	-0.3	1994-98	1.4*	1998-03	-0.7	2003-12	0.1					0.1	0.1
Black	1992-12	0.1											0.1	0.1
<u>SEER 9 Observed Incidence<sup>a</sup>, 1975-2012</u>														
All Races	1975-79	-0.3	1979-87	1.6*	1987-95	0.1	1995-98	1.1	1998-12	-0.2*			-0.2*	-0.2*
White	1975-79	-0.2	1979-87	1.7*	1987-95	0.1	1995-98	1.5	1998-12	-0.2*			-0.2*	-0.2*
Black	1975-91	1.1*	1991-12	0.0									0.0	0.0
<u>SEER 13 Observed Incidence<sup>b</sup>, 1992-2012</u>														
All Races	1992-98	0.7*	1998-12	-0.3*									-0.3*	-0.3*
White	1992-98	0.8*	1998-12	-0.3*									-0.3*	-0.3*
White NH <sup>ef</sup>	1992-98	1.2*	1998-04	-0.5	2004-09	0.3	2009-12	-1.2					-0.3	-0.8
Black	1992-12	0.0											0.0	0.0
Black NH <sup>ef</sup>	1992-12	0.1											0.1	0.1
API <sup>e</sup>	1992-12	0.1											0.1	0.1
AI/AN <sup>eg</sup>	1992-12	0.6*											0.6*	0.6*
Hispanic <sup>f</sup>	1992-12	0.1											0.1	0.1
<u>U.S. Cancer Mortality<sup>c</sup>, 1975-2012</u>														
All Races	1975-90	0.6*	1990-94	-0.2	1994-02	-0.8*	2002-12	-1.4*					-1.4*	-1.4*
White	1975-90	0.6*	1990-95	-0.2	1995-98	-1.2*	1998-01	-0.2	2001-12	-1.3*			-1.3*	-1.3*
Black	1975-91	1.0*	1991-99	-0.6*	1999-12	-1.6*							-1.6*	-1.6*
<u>U.S. Cancer Mortality<sup>c</sup>, 1992-2012</u>														
All Races	1992-95	-0.2	1995-98	-1.2*	1998-01	-0.4	2001-12	-1.4*					-1.4*	-1.4*
White	1992-95	-0.2	1995-98	-1.2*	1998-01	-0.2	2001-12	-1.3*					-1.3*	-1.3*
White NH <sup>ef</sup>	1992-94	0.6	1994-98	-1.0*	1998-01	-0.2	2001-12	-1.3*					-1.3*	-1.3*
Black	1992-02	-0.8*	2002-09	-1.9*	2009-12	-1.0							-1.6*	-1.2*
Black NH <sup>ef</sup>	1992-95	0.0	1995-02	-0.9*	2002-09	-1.7*	2009-12	-1.0					-1.5*	-1.2*
API <sup>e</sup>	1992-12	-0.9*											-0.9*	-0.9*
AI/AN <sup>eg</sup>	1992-04	0.6	2004-12	-1.4*									-1.2*	-1.4*
Hispanic <sup>f</sup>	1992-00	0.0	2000-12	-1.1*									-1.1*	-1.1*

Joinpoint Regression Program Version 4.2.0, April 2015, National Cancer Institute. (<http://surveillance.cancer.gov/joinpoint/>).  
<sup>a</sup> The APC is the Annual Percent Change based on rates age-adjusted to the 2000 US Std Population (19 age groups - Census P25-1130).  
<sup>b</sup> Trends are from the SEER 9 areas (San Francisco, Connecticut, Detroit, Hawaii, Iowa, New Mexico, Seattle, Utah, and Atlanta).  
<sup>c</sup> Trends are from the SEER 13 areas (SEER 9 Areas, Los Angeles, San Jose-Monterey, Rural Georgia, and the Alaska Native Registry).  
<sup>d</sup> Trends are from US Mortality Files, National Center for Health Statistics, Centers for Disease Control and Prevention.  
<sup>e</sup> The AAPC is the Average Annual Percent Change and is based on the APCs calculated by Joinpoint.  
<sup>f</sup> API - Asian/Pacific Islander, AI/AN - American Indian/Alaska Native, NH - Non-Hispanic  
<sup>f</sup> Hispanic and Non-Hispanic are not mutually exclusive from whites, blacks, Asian/Pacific Islanders, and American Indians/Alaska Natives. Incidence data for Hispanics and Non-Hispanics are based on NHIA and exclude cases from the Alaska Native Registry.  
<sup>f</sup> The Hispanic and Non-Hispanic mortality trends exclude deaths from New Hampshire and Oklahoma.  
<sup>g</sup> Data for American Indian/Alaska Native are based on the CHSDA (Contract Health Service Delivery Area) counties.  
\* The APC/AAPC is significantly different from zero (p<.05).  
- Joinpoint regression line analysis could not be performed on data series.

Table 2.4  
All Cancer Sites (Invasive)

Delay-adjusted SEER Incidence<sup>a</sup> Rates by Year, Race and Sex

Year of Diagnosis:	All Races			Whites			Blacks		
	Total	Males	Females	Total	Males	Females	Total	Males	Females
1975	400.42	466.80	365.87	402.12	468.54	369.59	426.52	525.51	356.63
1976	407.43	481.13	367.47	409.73	481.89	373.16	427.61	552.95	340.93
1977	407.76	486.48	363.75	409.31	487.15	367.87	442.85	577.58	352.49
1978	407.29	488.36	362.18	409.75	489.70	367.92	436.46	570.74	343.97
1979	412.51	496.45	365.52	414.11	497.61	369.66	451.70	589.85	359.28
1980	418.10	505.86	368.14	419.51	505.25	373.37	467.53	615.10	366.65
1981	425.31	510.90	377.15	427.70	510.85	383.92	473.00	634.29	363.12
1982	424.52	511.05	376.28	427.76	512.44	383.43	465.31	622.11	359.48
1983	431.13	519.92	380.76	434.34	520.94	387.90	487.29	646.27	382.29
1984	440.01	525.44	392.48	443.63	527.67	399.55	488.26	643.87	386.15
1985	448.88	531.20	403.20	453.44	533.49	411.46	489.09	643.51	388.31
1986	451.36	538.14	402.33	455.96	542.80	409.12	493.74	643.53	396.65
1987	468.03	563.22	413.26	474.81	568.76	423.20	501.09	666.31	394.09
1988	463.88	558.40	409.31	470.21	564.97	417.81	504.07	657.70	404.51
1989	467.85	567.06	408.44	475.13	573.48	418.57	492.71	661.14	384.78
1990	482.04	592.76	415.62	488.87	599.28	424.79	522.15	699.85	409.42
1991	503.08	637.45	418.97	510.48	644.44	428.51	549.27	765.03	412.78
1992	510.67	658.20	414.93	516.79	663.34	423.43	569.41	809.60	413.90
1993	493.44	622.19	408.30	496.84	620.13	416.96	568.83	819.13	404.25
1994	483.60	589.81	413.65	487.42	587.45	423.16	558.37	784.22	409.29
1995	477.14	571.94	414.98	482.12	570.07	426.14	543.64	750.72	404.82
1996	479.30	572.65	418.23	484.72	573.73	428.04	541.57	728.39	417.75
1997	486.56	575.78	428.50	493.34	576.21	440.93	541.99	742.20	411.30
1998	488.54	573.21	434.06	496.39	576.07	446.47	539.83	727.37	418.99
1999	490.87	581.12	430.85	498.68	582.90	443.67	542.52	726.02	422.03
2000	486.83	580.94	422.57	496.88	584.54	438.03	530.16	715.88	406.01
2001	490.63	582.32	427.53	501.63	588.49	442.69	522.80	702.31	401.88
2002	488.63	575.97	428.84	498.75	582.72	441.66	537.26	701.49	427.70
2003	476.55	561.70	418.04	487.39	566.99	433.28	522.31	684.56	414.39
2004	477.98	560.21	421.09	488.38	566.34	434.57	527.36	689.07	420.91
2005	474.29	551.53	420.67	486.69	560.94	435.50	512.40	648.97	422.05
2006	478.18	558.82	420.64	490.45	567.26	435.77	512.78	651.27	417.92
2007	484.70	570.69	422.58	496.19	577.68	437.47	522.12	674.71	417.33
2008	478.68	552.57	426.05	489.64	558.86	440.56	521.99	671.55	420.49
2009	477.84	543.98	430.89	488.50	550.74	444.36	515.46	647.71	425.85
2010	469.44	535.24	422.10	480.68	542.18	436.65	498.37	624.17	411.63
2011	466.07	526.01	423.70	477.99	534.23	438.51	494.01	603.06	419.23
2012	457.19	501.81	427.25	468.60	510.25	441.42	493.07	587.82	427.47

Additional information on the model used to delay-adjust SEER Incidence rates can be found at [\(http://surveillance.cancer.gov/delay/\)](http://surveillance.cancer.gov/delay/).

<sup>a</sup> SEER 9 areas (San Francisco, Connecticut, Detroit, Hawaii, Iowa, New Mexico, Seattle, Utah, and Atlanta).  
Rates are per 100,000 and are age-adjusted to the 2000 US Std Population (19 age groups - Census P25-1130).  
- Delay-adjusted rate is not shown for observed rates based on less than 16 cases for the time interval.

Table 2.5  
All Cancer Sites (Invasive)

Age-adjusted SEER Incidence<sup>a</sup> Rates by Year, Race and Sex

	All Races			Whites			Blacks		
	Total	Males	Females	Total	Males	Females	Total	Males	Females
Year of Diagnosis:									
1975-2012	464.08	549.89	408.62	470.03	552.75	418.08	507.86	667.09	401.81
1975	400.42	466.80	365.87	402.12	468.54	369.59	426.52	525.51	356.63
1976	407.43	481.13	367.47	409.73	481.89	373.16	427.61	552.95	340.93
1977	407.76	486.48	363.75	409.31	487.15	367.87	442.85	577.58	352.49
1978	407.29	488.36	362.18	409.75	489.70	367.92	436.46	570.74	343.97
1979	412.51	496.45	365.52	414.11	497.61	369.66	451.70	589.85	359.28
1980	418.10	505.86	368.14	419.51	505.25	373.37	467.53	615.10	366.65
1981	425.31	510.90	377.15	427.70	510.85	383.92	473.00	634.29	363.12
1982	424.52	511.05	376.28	427.76	512.44	383.43	465.31	622.11	359.48
1983	431.13	519.92	380.76	434.34	520.94	387.90	487.29	646.27	382.29
1984	440.01	525.44	392.48	443.63	527.67	399.55	488.26	643.87	386.15
1985	448.88	531.20	403.20	453.44	533.49	411.46	489.09	643.51	388.31
1986	451.36	538.14	402.33	455.96	542.80	409.12	493.74	643.53	396.65
1987	468.03	563.22	413.26	474.81	568.76	423.20	501.09	666.31	394.09
1988	463.88	558.40	409.31	470.21	564.97	417.81	504.07	657.70	404.51
1989	467.85	567.06	408.44	475.13	573.48	418.57	492.71	661.14	384.78
1990	482.04	592.76	415.62	488.87	599.28	424.79	522.15	699.85	409.42
1991	503.08	637.45	418.97	510.48	644.44	428.51	549.27	765.03	412.78
1992	510.67	658.20	414.93	516.79	663.34	423.43	569.41	809.60	413.90
1993	493.44	622.19	408.30	496.84	620.13	416.96	568.83	819.13	404.25
1994	483.60	589.81	413.65	487.42	587.45	423.16	558.37	784.22	409.29
1995	477.14	571.94	414.98	482.12	570.07	426.14	543.64	750.72	404.82
1996	479.30	572.65	418.23	484.72	573.73	428.04	541.57	728.39	417.75
1997	486.56	575.78	428.50	493.34	576.21	440.93	541.99	742.20	411.30
1998	488.46	573.09	434.01	496.22	575.82	446.36	539.64	727.06	418.89
1999	490.69	580.85	430.73	498.32	582.36	443.44	542.12	725.34	421.80
2000	486.52	580.49	422.38	496.28	583.66	437.65	529.50	714.78	405.65
2001	490.18	581.65	427.24	500.76	587.20	442.13	521.85	700.74	401.36
2002	487.99	575.02	428.43	497.58	581.00	440.91	535.92	699.34	426.92
2003	475.70	560.45	417.49	485.89	564.81	432.29	520.60	681.81	413.38
2004	476.85	558.56	420.34	486.45	563.56	433.29	525.10	685.44	419.58
2005	472.82	549.40	419.69	484.27	557.48	433.88	509.63	644.63	420.35
2006	476.24	556.05	419.35	487.40	562.90	433.74	509.29	645.84	415.79
2007	482.18	567.08	420.90	492.36	572.22	434.93	517.68	667.75	414.65
2008	475.50	548.10	423.87	485.01	552.35	437.40	516.56	663.10	417.15
2009	473.70	538.23	428.00	482.73	542.74	440.37	508.93	637.79	421.67
2010	463.56	527.12	417.98	472.79	531.30	431.16	489.86	611.43	406.08
2011	457.59	514.51	417.57	466.87	519.13	430.57	482.50	586.32	411.39
2012	442.88	483.23	416.27	450.35	486.43	427.62	474.34	561.52	414.08

<sup>a</sup> SEER 9 areas (San Francisco, Connecticut, Detroit, Hawaii, Iowa, New Mexico, Seattle, Utah, and Atlanta). Rates are per 100,000 and are age-adjusted to the 2000 US Std Population (19 age groups - Census P25-1130).  
- Statistic not shown. Rate based on less than 16 cases for the time interval.

Table 2.6  
All Cancer Sites (Invasive)

Age-adjusted U.S. Death<sup>a</sup> Rates by Year, Race and Sex

Year of Death:	All Races			Whites			Blacks		
	Total	Males	Females	Total	Males	Females	Total	Males	Females
1975-2012	197.52	250.08	163.04	195.17	245.45	162.26	243.79	333.75	187.85
1975	199.14	258.43	160.03	196.33	254.00	158.99	235.50	320.45	174.17
1976	202.30	262.23	162.70	199.38	257.50	161.69	241.76	328.45	179.10
1977	203.02	264.23	162.94	199.67	258.78	161.61	246.38	337.95	181.60
1978	204.42	267.07	163.76	201.14	261.65	162.54	247.24	340.91	181.53
1979	204.53	268.65	163.06	201.20	263.24	161.70	248.98	344.67	182.73
1980	206.96	271.08	165.75	203.27	265.03	164.17	256.18	353.91	189.25
1981	206.40	269.78	165.90	202.64	263.27	164.55	256.77	358.65	187.47
1982	208.32	272.89	167.45	204.54	266.28	166.11	260.36	364.86	190.17
1983	209.21	274.09	168.27	205.17	267.22	166.69	263.75	369.32	193.24
1984	210.91	275.08	170.55	206.66	267.55	169.02	268.15	377.93	195.67
1985	211.35	275.68	170.96	207.25	268.25	169.58	268.06	377.82	196.31
1986	211.79	276.04	171.59	207.73	268.83	170.01	269.45	378.92	199.05
1987	211.91	276.34	171.54	207.78	268.96	169.87	271.12	383.24	199.91
1988	212.62	276.89	172.53	208.48	269.46	170.94	271.59	384.17	200.36
1989	214.30	278.50	174.25	209.96	270.25	172.88	275.87	395.28	200.87
1990	214.95	279.82	174.65	210.41	271.48	172.89	279.30	399.14	205.39
1991	215.06	279.15	175.30	210.62	271.19	173.41	278.97	395.85	207.39
1992	213.46	276.51	174.39	209.24	268.91	172.58	274.93	389.20	205.80
1993	213.45	275.89	174.55	209.16	267.89	172.82	277.09	394.76	206.29
1994	211.74	272.12	174.11	207.83	264.73	172.62	271.96	385.20	204.06
1995	209.89	268.50	173.35	206.09	261.46	171.73	269.51	379.02	204.53
1996	207.00	263.75	171.21	203.40	256.83	169.85	265.28	373.70	200.94
1997	203.55	258.13	169.00	199.94	251.58	167.35	262.14	363.18	202.53
1998	200.82	253.63	166.93	197.56	247.62	165.38	255.66	353.13	198.38
1999	200.72	252.75	167.24	197.75	247.14	165.92	253.80	349.23	197.54
2000	198.79	248.46	166.70	196.37	243.37	165.98	248.07	341.20	193.21
2001	196.29	245.05	164.61	193.98	240.31	163.75	244.34	334.14	192.12
2002	194.36	241.63	163.38	192.38	237.62	162.56	240.81	325.80	191.45
2003	190.89	235.81	161.16	189.10	232.16	160.40	235.16	314.60	188.76
2004	186.84	230.27	157.92	185.21	226.60	157.41	228.98	307.30	183.51
2005	185.23	228.09	156.46	183.87	224.94	156.04	224.83	300.33	180.94
2006	182.03	222.56	154.63	181.10	220.02	154.52	218.93	290.16	177.31
2007	179.26	219.33	152.00	178.30	216.64	151.91	216.23	286.57	175.47
2008	176.32	215.34	149.27	175.69	213.21	149.37	209.37	275.26	170.41
2009	173.40	211.17	147.12	173.03	209.33	147.48	205.39	268.91	167.41
2010	171.76	208.80	145.75	171.37	207.16	145.86	202.89	264.19	166.22
2011	168.71	204.24	143.49	168.48	203.22	143.42	199.17	253.83	166.13
2012	166.40	200.61	141.86	166.44	199.87	142.08	194.41	247.81	161.94

<sup>a</sup> US Mortality Files, National Center for Health Statistics, Centers for Disease Control and Prevention.  
Rates are per 100,000 and are age-adjusted to the 2000 US Std Population (19 age groups - Census P25-1130).  
- Statistic not shown. Rate based on less than 16 cases for the time interval.

Table 2.7  
All Cancer Sites (Invasive)

SEER Incidence<sup>a</sup> and U.S. Death<sup>b</sup> Rates, Age-Adjusted and Age-Specific Rates, by Race and Sex

	All Races			Whites			Blacks		
	Total	Males	Females	Total	Males	Females	Total	Males	Females
<u>SEER Incidence</u>									
<u>Age at Diagnosis</u>									
Age-Adjusted Rates, 2008-2012									
All ages	454.8	516.6	411.2	463.3	519.8	423.9	478.0	590.1	401.2
Under 65	222.3	214.7	230.7	225.6	214.8	237.4	243.2	267.7	223.4
65 and over	2,062.0	2,603.7	1,659.2	2,106.1	2,627.8	1,712.9	2,101.5	2,818.6	1,630.1
All ages (IARC world std) <sup>c</sup>	309.3	341.0	285.7	314.9	342.5	294.7	331.7	403.5	279.1
Age-Specific Rates, 2008-2012									
<1	23.2	23.9	22.6	23.8	24.2	23.3	20.2	20.6	19.9
1-4	21.9	22.9	20.8	23.6	24.3	22.8	16.2	17.3	14.9
5-9	12.7	14.0	11.4	13.4	14.9	11.8	11.1	11.1	11.1
10-14	13.5	14.0	13.1	14.2	14.6	13.8	12.2	13.2	11.2
15-19	22.1	22.9	21.3	24.2	25.2	23.1	14.2	14.8	13.7
20-24	35.9	34.6	37.3	39.6	38.6	40.7	22.8	22.3	23.4
25-29	57.5	48.3	67.0	62.3	52.9	72.3	41.0	31.7	49.8
30-34	89.2	65.8	113.0	94.6	70.1	120.3	74.0	50.6	95.2
35-39	134.9	89.7	179.9	140.3	95.2	186.9	119.7	76.1	158.7
40-44	217.2	147.4	286.5	222.1	150.6	295.4	209.6	156.5	257.4
45-49	354.5	276.4	431.2	360.1	277.1	443.7	370.2	335.8	401.2
50-54	564.2	536.9	590.5	565.3	529.7	600.5	647.2	707.4	593.4
55-59	831.6	914.0	754.2	832.2	897.7	769.0	1,008.0	1,260.3	792.1
60-64	1,205.8	1,417.3	1,011.4	1,213.5	1,401.4	1,036.2	1,447.5	1,908.7	1,070.5
65-69	1,700.0	2,092.0	1,353.0	1,723.3	2,085.7	1,395.2	1,917.2	2,609.0	1,381.2
70-74	2,030.3	2,543.5	1,602.3	2,078.4	2,567.4	1,662.4	2,136.4	2,886.7	1,592.6
75-79	2,282.5	2,870.3	1,833.8	2,344.1	2,905.6	1,905.0	2,247.8	2,982.0	1,776.6
80-84	2,359.1	2,993.8	1,936.6	2,415.1	3,032.2	1,996.1	2,221.2	2,966.4	1,818.3
85+	2,200.8	2,944.3	1,829.2	2,239.1	3,000.1	1,858.4	2,045.0	2,687.5	1,784.9
<u>U.S. Mortality</u>									
<u>Age at Death</u>									
Age-Adjusted Rates, 2008-2012									
All ages	171.2	207.9	145.4	170.9	206.4	145.6	202.0	261.5	166.3
Under 65	54.3	58.5	50.5	53.2	57.1	49.5	72.6	80.6	66.1
65 and over	979.2	1,240.5	801.7	984.4	1,238.3	809.4	1,096.8	1,512.4	859.3
All ages (IARC world std) <sup>c</sup>	100.7	118.4	87.2	100.2	117.1	87.0	123.5	153.5	103.5
Age-Specific Rates, 2008-2012									
<1	1.7	1.9	1.5	1.7	1.9	1.5	1.7	2.0	1.4
1-4	2.3	2.4	2.1	2.4	2.5	2.3	2.1	2.2	1.9
5-9	2.2	2.4	2.1	2.3	2.5	2.1	2.2	2.1	2.2
10-14	2.1	2.3	2.0	2.2	2.3	2.1	2.1	2.1	2.1
15-19	2.9	3.4	2.4	3.0	3.5	2.5	2.8	3.3	2.4
20-24	4.5	5.4	3.6	4.6	5.5	3.6	4.8	5.4	4.1
25-29	6.6	7.1	6.1	6.6	7.1	6.0	7.6	7.6	7.5
30-34	11.0	10.2	11.8	10.8	10.2	11.5	13.6	11.6	15.5
35-39	19.9	17.3	22.6	19.5	17.3	21.7	26.3	19.9	31.9
40-44	38.0	33.0	43.0	37.2	32.8	41.8	49.6	40.1	58.1
45-49	77.6	74.4	80.6	75.8	73.3	78.4	102.7	95.8	108.8
50-54	145.0	153.2	137.0	141.2	148.9	133.6	197.1	212.9	183.2
55-59	237.9	270.6	207.1	231.7	261.7	202.9	329.6	393.6	275.3
60-64	369.6	428.3	315.5	364.5	418.1	314.0	491.7	613.2	392.7
65-69	558.8	656.0	472.2	557.3	648.4	474.5	697.2	880.9	556.2
70-74	792.3	949.6	659.7	796.0	946.2	666.9	928.5	1,205.9	730.7
75-79	1,068.0	1,321.9	872.2	1,077.1	1,322.0	884.0	1,173.5	1,585.3	913.9
80-84	1,362.6	1,764.6	1,094.1	1,371.2	1,764.0	1,103.4	1,476.4	2,104.1	1,143.0
85+	1,695.5	2,383.4	1,361.1	1,707.7	2,389.3	1,373.0	1,753.9	2,727.6	1,371.3

<sup>a</sup> SEER 18 areas. Rates are per 100,000 and are age-adjusted to the 2000 US Std Population (19 age groups - Census P25-1130), unless noted.

<sup>b</sup> US Mortality Files, National Center for Health Statistics, Centers for Disease Control and Prevention.

<sup>c</sup> Rates are per 100,000 and are age-adjusted to the 2000 US Std Population (19 age groups - Census P25-1130), unless noted.

<sup>d</sup> Rates are per 100,000 and are age-adjusted to the IARC world standard population.

- Statistic not shown. Rate based on less than 16 cases for the time interval.

Table 2.8  
All Cancer Sites (Invasive)

5-Year Relative and Period Survival (Percent) by Race, Sex, Diagnosis Year and Age

	All Races			Whites			Blacks		
	Total	Males	Females	Total	Males	Females	Total	Males	Females
5-Year Relative Survival (Percent)									
Year of Diagnosis:									
1960-1963 <sup>a</sup>	-	-	-	39	-	-	27	-	-
1970-1973 <sup>a</sup>	-	-	-	43	-	-	31	-	-
1975-1977 <sup>b</sup>	48.9	41.7	55.8	49.8	42.7	56.5	39.1	32.7	46.2
1978-1980 <sup>b</sup>	49.0	43.1	54.9	50.0	44.3	55.6	39.0	33.3	45.6
1981-1983 <sup>b</sup>	50.1	45.2	55.1	51.3	46.5	55.9	38.8	34.2	44.4
1984-1986 <sup>b</sup>	52.4	47.1	57.6	53.6	48.5	58.5	40.2	35.5	45.5
1987-1989 <sup>b</sup>	55.3	51.1	59.6	56.6	52.8	60.6	43.0	38.9	47.7
1990-1992 <sup>b</sup>	59.9	59.1	60.9	61.4	60.8	62.0	47.8	47.6	48.2
1993-1995 <sup>b</sup>	61.3	60.8	61.8	62.4	62.0	62.8	52.7	54.4	50.6
1996-1998 <sup>b</sup>	63.3	62.9	63.6	64.3	64.0	64.6	55.2	57.9	52.0
1999-2001 <sup>b</sup>	65.9	66.2	65.7	67.1	67.5	66.8	57.9	61.0	54.2
2002-2004 <sup>b</sup>	67.0	67.6	66.4	68.3	68.9	67.6	59.4	63.1	55.2
2005-2011 <sup>b</sup>	68.7 <sup>e</sup>	69.3 <sup>e</sup>	68.1 <sup>e</sup>	69.7 <sup>e</sup>	70.2 <sup>e</sup>	69.2 <sup>e</sup>	62.2 <sup>e</sup>	65.4 <sup>e</sup>	58.5 <sup>e</sup>
5-Year Period Survival (Percent) <sup>cd</sup>									
2011	67.1	67.2	67.0	67.6	67.5	67.8	61.4	64.2	58.2
5-Year Relative Survival (Percent), 2005-2011 <sup>c</sup>									
Age at Diagnosis:									
Ages <45	81.6	77.0	84.5	83.1	78.9	86.0	70.3	64.6	73.6
Ages 45-54	73.4	68.0	77.8	74.8	69.1	79.4	63.6	62.2	65.1
Ages 55-64	70.2	69.9	70.4	71.0	70.6	71.6	63.3	66.0	59.0
Ages 65-74	66.2	69.2	61.9	66.8	69.5	62.9	61.0	66.8	52.5
Ages 75+	51.6	55.6	47.7	52.2	55.7	48.8	44.2	52.0	37.8
Ages <65	73.5	70.5	76.4	74.6	71.5	77.7	64.7	64.7	64.8
Ages 65+	59.1	63.2	54.2	59.6	63.3	55.2	54.2	61.8	45.5

<sup>a</sup> Based on End Results data from a series of hospital registries and one population-based registry.  
<sup>b</sup> SEER 9 areas (San Francisco, Connecticut, Detroit, Hawaii, Iowa, New Mexico, Seattle, Utah, Atlanta).  
Based on follow-up of patients into 2012.  
<sup>c</sup> SEER 18 areas (San Francisco, Connecticut, Detroit, Hawaii, Iowa, New Mexico, Seattle, Utah, Atlanta, San Jose-Monterey, Los Angeles, Alaska Native Registry, Rural Georgia, California excluding SF/SJM/LA, Kentucky, Louisiana, New Jersey and Georgia excluding ATL/RG).  
Based on follow-up of patients into 2012.  
<sup>d</sup> Period survival provides a 2011 estimate of survival by piecing together the most recent conditional survival estimates from several cohorts. It is computed here using three year calendar blocks (2009-2011: 0-1 year survival), (2008-2010: 1-2 year survival), (2007-2009: 2-3 year survival), (2006-2008: 3-4 year survival), (2005-2007: 4-5 years survival).  
<sup>e</sup> The difference between 1975-1977 and 2005-2011 is statistically significant (p<.05).  
<sup>f</sup> The standard error is between 5 and 10 percentage points.  
<sup>g</sup> The standard error is greater than 10 percentage points.  
- Statistic could not be calculated due to fewer than 25 cases during the time period.



Table 2.9  
All Cancer Sites (Invasive)  
SEER<sup>a</sup> Relative Survival (Percent)  
By Year of Diagnosis  
All Races, Males and Females

Survival Time	Year of Diagnosis																				
	1975- 1979	1980- 1984	1985- 1989	1990- 1994	1995	1996	1997	1998	1999	2000	2001	2002	2003	2004	2005	2006	2007	2008	2009	2010	2011
1-year	69.2	70.7	73.2	76.3	76.6	77.0	77.6	77.9	78.8	79.0	79.4	79.7	79.5	80.0	80.3	80.8	81.4	81.5	81.7	81.6	81.9
2-year	59.8	61.3	64.4	68.8	69.4	70.1	70.9	71.4	72.3	72.7	73.4	73.9	73.5	74.0	74.3	75.3	75.7	75.7	75.7	75.9	
3-year	54.8	56.2	59.8	64.9	65.8	66.6	67.4	68.1	68.9	69.5	70.3	70.8	70.3	70.9	71.2	72.2	72.5	72.4	72.6		
4-year	51.4	52.8	56.7	62.3	63.3	64.3	65.1	65.7	66.8	67.4	68.2	68.7	68.2	68.7	69.2	70.1	70.5	70.4			
5-year	48.9	50.1	54.4	60.4	61.6	62.5	63.3	64.0	65.2	65.9	66.7	67.2	66.7	67.2	67.6	68.5	69.0				
6-year	47.0	48.2	52.6	58.9	60.2	61.1	61.9	62.7	63.9	64.7	65.6	66.1	65.4	66.0	66.3	67.4					
7-year	45.4	46.5	51.0	57.5	59.0	60.1	60.9	61.6	62.9	63.6	64.6	65.1	64.3	64.9	65.3						
8-year	44.1	45.1	49.8	56.4	58.1	59.1	60.0	60.8	61.9	62.6	63.7	64.2	63.5	64.1							
9-year	42.9	43.9	48.6	55.4	57.2	58.2	59.1	59.8	61.1	61.9	62.9	63.4	62.6								
10-year	41.8	42.8	47.6	54.5	56.4	57.4	58.4	59.0	60.4	61.2	62.2	62.8									
11-year	40.8	41.9	46.8	53.7	55.6	56.7	57.7	58.3	59.6	60.3	61.5										
12-year	40.0	41.0	45.9	52.9	54.8	56.1	57.1	57.6	59.0	59.6											
13-year	39.3	40.3	45.1	52.2	53.9	55.4	56.4	56.9	58.3												
14-year	38.7	39.6	44.4	51.6	53.2	54.7	55.7	56.3													
15-year	38.0	38.9	43.7	50.9	52.5	54.1	55.2														
16-year	37.4	38.2	43.1	50.4	51.9	53.5															
17-year	36.8	37.6	42.6	49.7	51.3																
18-year	36.3	37.1	42.1	49.1																	
19-year	35.9	36.5	41.6																		
20-year	35.5	36.0	41.2																		
21-year	35.0	35.5	40.7																		
22-year	34.5	35.1	40.3																		
23-year	34.1	34.6	39.7																		
24-year	33.6	34.2																			
25-year	33.1	33.7																			
26-year	32.7	33.3																			
27-year	32.4	32.9																			
28-year	32.0	32.5																			
29-year	31.7																				
30-year	31.3																				

<sup>a</sup> Based on the SEER 9 areas (San Francisco, Connecticut, Detroit, Hawaii, Iowa, New Mexico, Seattle, Utah, and Atlanta).

Table 2.10  
All Cancer Sites (Invasive)

SEER<sup>a</sup> Relative Survival (Percent)  
By Year of Diagnosis

All Races, Males

Year of Diagnosis

	1975- 1979	1980- 1984	1985- 1989	1990- 1994	1995	1996	1997	1998	1999	2000	2001	2002	2003	2004	2005	2006	2007	2008	2009	2010	2011
Survival Time																					
1-year	63.7	66.6	69.8	75.4	75.4	76.2	76.8	76.7	78.1	78.5	79.0	79.1	79.0	79.7	79.9	80.8	81.5	81.2	81.4	81.1	81.2
2-year	53.4	56.4	60.4	67.7	68.1	69.4	70.2	70.4	71.6	72.4	73.0	73.5	73.0	73.8	74.0	75.4	75.9	75.4	75.3	75.6	
3-year	48.2	51.2	55.5	64.1	64.7	66.0	67.0	67.1	68.5	69.4	70.3	70.8	70.2	70.9	71.2	72.5	73.1	72.5	72.5		
4-year	44.8	47.7	52.3	61.6	62.4	63.8	64.9	65.0	66.6	67.6	68.5	69.1	68.4	69.2	69.4	70.6	71.3	70.6			
5-year	42.2	45.0	49.9	59.8	60.9	62.3	63.1	63.4	65.2	66.2	67.3	67.8	67.1	67.9	68.0	69.3	70.0				
6-year	40.2	43.0	48.1	58.3	59.5	61.0	61.8	62.2	64.1	65.1	66.3	66.9	66.0	66.8	66.9	68.4					
7-year	38.5	41.3	46.4	57.0	58.5	60.0	61.0	61.2	63.2	64.1	65.5	66.1	65.1	65.8	65.9						
8-year	37.1	39.9	45.0	55.9	57.6	59.2	60.2	60.5	62.3	63.2	64.7	65.3	64.3	65.1							
9-year	35.8	38.6	43.8	54.8	56.8	58.3	59.4	59.5	61.5	62.6	64.2	64.8	63.4								
10-year	34.6	37.5	42.8	53.9	55.9	57.5	58.7	58.9	60.9	61.9	63.4	64.2									
11-year	33.5	36.5	41.8	53.1	55.2	56.8	58.1	58.2	60.3	60.9	62.8										
12-year	32.6	35.7	40.9	52.3	54.3	56.1	57.5	57.4	59.7	60.4											
13-year	31.8	34.9	40.0	51.6	53.4	55.5	56.7	56.8	59.1												
14-year	31.1	34.1	39.3	50.9	52.5	54.9	56.0	56.3													
15-year	30.4	33.4	38.5	50.2	51.8	54.3	55.6														
16-year	29.7	32.6	37.9	49.6	51.2	53.8															
17-year	29.0	32.0	37.3	48.9	50.6																
18-year	28.4	31.4	36.7	48.3																	
19-year	28.0	30.8	36.2																		
20-year	27.5	30.3	35.8																		
21-year	27.0	29.7	35.3																		
22-year	26.5	29.2	34.9																		
23-year	26.1	28.8	34.4																		
24-year	25.5	28.4																			
25-year	25.0	28.0																			
26-year	24.5	27.5																			
27-year	24.2	27.2																			
28-year	23.8	26.9																			
29-year	23.5																				
30-year	23.1																				

<sup>a</sup> Based on the SEER 9 areas (San Francisco, Connecticut, Detroit, Hawaii, Iowa, New Mexico, Seattle, Utah, and Atlanta).

Table 2.11  
All Cancer Sites (Invasive)

SEER<sup>a</sup> Relative Survival (Percent)  
By Year of Diagnosis

All Races, Females

Year of Diagnosis

	1975- 1979	1980- 1984	1985- 1989	1990- 1994	1995	1996	1997	1998	1999	2000	2001	2002	2003	2004	2005	2006	2007	2008	2009	2010	2011
Survival Time																					
1-year	74.6	74.8	76.7	77.4	78.0	77.9	78.5	79.2	79.5	79.4	79.9	80.3	80.1	80.3	80.6	80.8	81.4	81.8	82.1	82.0	82.6
2-year	66.0	66.2	68.6	70.0	70.8	70.9	71.6	72.6	73.0	72.9	73.8	74.4	73.9	74.2	74.5	75.1	75.5	76.0	76.2	76.3	
3-year	61.3	61.2	64.2	65.9	66.9	67.3	67.9	69.0	69.4	69.6	70.2	70.9	70.4	70.8	71.2	71.8	71.9	72.4	72.7		
4-year	58.0	57.9	61.3	63.2	64.3	64.8	65.4	66.5	67.1	67.3	68.0	68.4	68.1	68.3	68.9	69.5	69.7	70.2			
5-year	55.6	55.3	59.0	61.1	62.4	62.8	63.5	64.5	65.2	65.6	66.1	66.6	66.1	66.5	67.1	67.6	67.9				
6-year	53.6	53.4	57.3	59.5	60.9	61.3	62.0	63.2	63.7	64.4	64.8	65.2	64.9	65.1	65.8	66.3					
7-year	52.1	51.7	55.8	58.2	59.6	60.2	60.9	62.0	62.6	63.1	63.6	64.0	63.6	64.0	64.7						
8-year	50.8	50.3	54.6	57.1	58.6	59.1	59.9	61.1	61.5	62.1	62.6	63.0	62.6	63.0							
9-year	49.7	49.1	53.4	56.1	57.6	58.1	58.9	60.1	60.7	61.2	61.6	62.0	61.8								
10-year	48.7	48.1	52.5	55.2	56.9	57.3	58.0	59.2	59.9	60.4	60.9	61.4									
11-year	47.8	47.1	51.6	54.4	56.0	56.7	57.3	58.5	59.0	59.6	60.1										
12-year	47.0	46.3	50.8	53.6	55.3	56.1	56.7	58.0	58.3	58.9											
13-year	46.3	45.6	50.1	53.0	54.4	55.2	56.1	57.1	57.6												
14-year	45.7	44.9	49.4	52.3	53.9	54.5	55.5	56.4													
15-year	45.1	44.3	48.8	51.8	53.3	53.9	54.8														
16-year	44.6	43.6	48.2	51.2	52.7	53.3															
17-year	44.0	43.0	47.7	50.5	52.1																
18-year	43.6	42.5	47.2	49.9																	
19-year	43.2	41.9	46.8																		
20-year	42.7	41.5	46.3																		
21-year	42.1	40.9	45.8																		
22-year	41.7	40.5	45.3																		
23-year	41.3	40.0	44.8																		
24-year	40.8	39.5																			
25-year	40.3	39.0																			
26-year	39.9	38.7																			
27-year	39.5	38.1																			
28-year	39.2	37.6																			
29-year	38.8																				
30-year	38.4																				

<sup>a</sup> Based on the SEER 9 areas (San Francisco, Connecticut, Detroit, Hawaii, Iowa, New Mexico, Seattle, Utah, and Atlanta).

Table 2.12  
All Cancer Sites (Invasive)

Risk of Being Diagnosed With Cancer in 10, 20 and 30 Years,  
Lifetime Risk of Being Diagnosed with Cancer Given Alive and Cancer-Free at Current Age, and  
Lifetime Risk of Dying from Cancer Given Alive at Current Age  
Both Sexes, 2010-2012 By Race/Ethnicity

Race/ Ethnicity	Current Age	Risk of Being Diagnosed with Cancer				Risk of Dying from Cancer	Race/ Ethnicity	Current Age	Risk of Being Diagnosed with Cancer				Risk of Dying from Cancer
		+10 yrs	+20 yrs	+30 yrs	Ever				+10 yrs	+20 yrs	+30 yrs	Ever	
All Races	0	0.17	0.35	0.80	39.65	20.68	Asian/ Pacific Islander	0	0.13	0.27	0.56	34.50	18.56
	10	0.18	0.64	1.70	39.97	20.91		10	0.13	0.43	1.25	34.67	18.68
	20	0.46	1.53	4.12	39.98	20.96		20	0.30	1.11	3.16	34.63	18.69
	30	1.09	3.71	9.54	40.01	21.09		30	0.82	2.88	6.98	34.55	18.71
	40	2.68	8.64	19.08	39.76	21.20		40	2.08	6.24	13.55	34.14	18.69
	50	6.24	17.19	29.32	38.86	21.18		50	4.28	11.81	21.42	33.01	18.49
	60	12.16	25.64	34.05	36.24	20.51		60	8.00	18.22	26.79	30.53	17.83
	70	16.68	27.08	-	29.79	18.39		70	11.56	21.27	-	25.50	16.34
80	15.64	-	-	19.72	14.17	80	12.45	-	-	17.88	13.38		
White	0	0.18	0.38	0.86	39.83	20.78	American Indian/ Alaska Native <sup>a</sup>	0	0.11	0.22	0.51	28.75	17.08
	10	0.19	0.69	1.80	40.10	20.98		10	0.11	0.40	1.16	28.97	17.32
	20	0.50	1.62	4.24	40.09	21.02		20	0.29	1.06	2.70	29.05	17.40
	30	1.13	3.79	9.60	40.10	21.15		30	0.78	2.45	6.27	29.28	17.66
	40	2.71	8.65	19.13	39.81	21.26		40	1.72	5.65	12.85	29.35	17.99
	50	6.22	17.21	29.48	38.89	21.23		50	4.14	11.73	20.48	29.12	18.36
	60	12.19	25.81	34.19	36.26	20.57		60	8.36	18.00	24.61	27.51	18.14
	70	16.84	27.20	-	29.75	18.43		70	11.64	19.62	-	23.13	16.60
80	15.65	-	-	19.51	14.13	80	11.56	-	-	16.63	13.16		
Black	0	0.14	0.27	0.58	37.29	21.06	Hispanic <sup>b</sup>	0	0.16	0.33	0.70	36.25	17.71
	10	0.13	0.45	1.37	37.91	21.49		10	0.17	0.55	1.36	36.47	17.86
	20	0.32	1.25	3.87	37.99	21.56		20	0.38	1.20	3.15	36.45	17.88
	30	0.94	3.61	10.28	38.25	21.78		30	0.83	2.80	7.27	36.42	17.95
	40	2.74	9.59	20.80	38.31	21.98		40	2.00	6.54	15.04	36.15	17.98
	50	7.27	19.15	30.05	37.71	22.05		50	4.70	13.50	24.34	35.33	17.89
	60	13.71	26.29	33.15	35.13	21.38		60	9.52	21.25	29.93	33.14	17.38
	70	16.70	25.79	-	28.43	19.19		70	13.85	24.09	-	27.89	15.90
80	14.72	-	-	18.99	15.15	80	14.16	-	-	19.41	12.88		

Devcan 6.8.0, August 2014, National Cancer Institute (<http://surveillance.cancer.gov/devcan/>).

Source: Incidence data are from the SEER 18 areas (San Francisco, Connecticut, Detroit, Hawaii, Iowa, New Mexico, Seattle, Utah, Atlanta, San Jose-Monterey, Los Angeles, Alaska Native Registry, Rural Georgia, California excluding SF/SJM/LA, Kentucky, Louisiana, New Jersey, and Georgia excluding ATL/RG). Mortality data are from the NCHS public use data file for the total US.

<sup>a</sup> Underlying incidence and mortality data for American Indian/Alaska Native are based on the CHSDA (Contract Health Service Delivery Area) counties.

<sup>b</sup> Hispanic is not mutually exclusive from whites, blacks, Asian/Pacific Islanders, and American Indians/Alaska Natives. Underlying incidence data for Hispanics are based on NHIA and exclude cases from the Alaska Native Registry.

- Statistic could not be calculated.

A percent of 0.00 represents a value that is below 0.005.

Table 2.13  
All Cancer Sites (Invasive)

Risk of Being Diagnosed With Cancer in 10, 20 and 30 Years,  
Lifetime Risk of Being Diagnosed with Cancer Given Alive and Cancer-Free at Current Age, and  
Lifetime Risk of Dying from Cancer Given Alive at Current Age  
Males, 2010-2012 By Race/Ethnicity

Race/ Ethnicity	Current Age	Risk of Being Diagnosed with Cancer				Risk of Dying from Cancer	Race/ Ethnicity	Current Age	Risk of Being Diagnosed with Cancer				Risk of Dying from Cancer
		+10 yrs	+20 yrs	+30 yrs	Ever				+10 yrs	+20 yrs	+30 yrs	Ever	
All Races	0	0.18	0.36	0.76	42.05	22.62	Asian/ Pacific Islander	0	0.15	0.28	0.51	36.15	20.84
	10	0.18	0.58	1.32	42.44	22.90		10	0.13	0.37	0.84	36.35	20.99
	20	0.40	1.14	3.12	42.50	22.98		20	0.24	0.71	1.94	36.33	21.00
	30	0.75	2.76	8.82	42.75	23.21		30	0.48	1.72	5.38	36.36	21.06
	40	2.05	8.25	20.51	42.91	23.46		40	1.25	4.96	13.23	36.26	21.08
	50	6.49	19.35	33.20	42.82	23.68		50	3.80	12.27	23.65	35.87	21.01
	60	14.52	30.18	38.99	41.04	23.35		60	9.03	21.15	30.60	34.17	20.49
	70	20.41	31.89	-	34.56	21.50		70	14.08	25.06	-	29.20	19.07
80	19.00	-	-	23.42	17.42	80	14.99	-	-	20.65	16.03		
White	0	0.19	0.39	0.82	41.71	22.68	American Indian/ Alaska Native <sup>a</sup>	0	0.14	0.25	0.51	28.31	18.45
	10	0.20	0.64	1.42	42.03	22.92		10	0.11	0.38	0.91	28.58	18.74
	20	0.44	1.23	3.21	42.07	22.98		20	0.27	0.81	1.91	28.71	18.88
	30	0.80	2.81	8.74	42.27	23.20		30	0.55	1.68	5.11	29.11	19.28
	40	2.05	8.12	20.21	42.39	23.44		40	1.16	4.71	12.38	29.51	19.82
	50	6.35	19.02	32.84	42.26	23.64		50	3.75	11.87	21.23	29.98	20.49
	60	14.28	29.85	38.54	40.46	23.31		60	9.07	19.54	26.91	29.32	20.76
	70	20.19	31.46	-	33.96	21.43		70	13.07	22.27	-	25.29	19.52
80	18.64	-	-	22.76	17.29	80	14.20	-	-	18.84	16.20		
Black	0	0.14	0.27	0.53	40.77	23.42	Hispanic <sup>b</sup>	0	0.18	0.35	0.69	38.84	20.13
	10	0.13	0.40	1.00	41.55	23.94		10	0.18	0.52	1.06	39.11	20.33
	20	0.26	0.87	3.16	41.73	24.07		20	0.34	0.88	2.24	39.13	20.37
	30	0.62	2.96	10.80	42.35	24.47		30	0.55	1.92	6.27	39.26	20.50
	40	2.41	10.49	24.72	42.98	24.92		40	1.39	5.82	15.78	39.34	20.63
	50	8.61	23.77	36.26	43.24	25.38		50	4.57	14.88	27.77	39.24	20.75
	60	18.11	33.04	39.70	41.38	25.27		60	11.28	25.38	34.86	37.93	20.51
	70	21.86	31.61	-	34.07	23.61		70	17.35	29.01	-	32.79	19.21
80	18.20	-	-	22.80	20.12	80	17.57	-	-	23.27	16.17		

Devcan 6.8.0, August 2014, National Cancer Institute (<http://surveillance.cancer.gov/devcan/>).

Source: Incidence data are from the SEER 18 areas (San Francisco, Connecticut, Detroit, Hawaii, Iowa, New Mexico, Seattle, Utah, Atlanta, San Jose-Monterey, Los Angeles, Alaska Native Registry, Rural Georgia, California excluding SF/SJM/LA, Kentucky, Louisiana, New Jersey, and Georgia excluding ATL/RG). Mortality data are from the NCHS public use data file for the total US.

<sup>a</sup> Underlying incidence and mortality data for American Indian/Alaska Native are based on the CHSDA (Contract Health Service Delivery Area) counties.

<sup>b</sup> Hispanic is not mutually exclusive from whites, blacks, Asian/Pacific Islanders, and American Indians/Alaska Natives. Underlying incidence data for Hispanics are based on NHIA and exclude cases from the Alaska Native Registry.

- Statistic could not be calculated.

A percent of 0.00 represents a value that is below 0.005.

Table 2.14  
All Cancer Sites (Invasive)

Risk of Being Diagnosed With Cancer in 10, 20 and 30 Years,  
Lifetime Risk of Being Diagnosed with Cancer Given Alive and Cancer-Free at Current Age, and  
Lifetime Risk of Dying from Cancer Given Alive at Current Age  
Females, 2010-2012 By Race/Ethnicity

Race/ Ethnicity	Current Age	Risk of Being Diagnosed with Cancer				Risk of Dying from Cancer	Race/ Ethnicity	Current Age	Risk of Being Diagnosed with Cancer				Risk of Dying from Cancer
		+10 yrs	+20 yrs	+30 yrs	Ever				+10 yrs	+20 yrs	+30 yrs	Ever	
All Races	0	0.16	0.34	0.85	37.58	19.13	Asian/ Pacific Islander	0	0.12	0.26	0.61	33.28	16.79
	10	0.18	0.69	2.10	37.84	19.32		10	0.13	0.49	1.61	33.41	16.89
	20	0.52	1.93	5.14	37.80	19.34		20	0.36	1.48	4.25	33.35	16.89
	30	1.42	4.66	10.28	37.62	19.38		30	1.13	3.91	8.41	33.18	16.89
	40	3.31	9.04	17.74	36.97	19.38		40	2.83	7.39	13.87	32.49	16.82
	50	6.01	15.12	25.67	35.28	19.15		50	4.71	11.42	19.54	30.67	16.53
	60	9.97	21.51	29.66	32.02	18.27		60	7.11	15.73	23.67	27.54	15.78
	70	13.63	23.26	-	26.06	16.09		70	9.55	18.34	-	22.63	14.31
80	13.45	-	-	17.35	12.13	80	10.75	-	-	15.99	11.57		
White	0	0.17	0.36	0.91	38.25	19.25	American Indian/ Alaska Native <sup>a</sup>	0	0.09	0.19	0.51	29.40	16.07
	10	0.19	0.75	2.21	38.48	19.42		10	0.10	0.42	1.42	29.58	16.26
	20	0.56	2.03	5.32	38.42	19.44		20	0.32	1.32	3.51	29.60	16.31
	30	1.48	4.80	10.50	38.23	19.48		30	1.02	3.23	7.42	29.65	16.44
	40	3.39	9.21	18.10	37.54	19.48		40	2.28	6.57	13.33	29.38	16.60
	50	6.10	15.43	26.27	35.81	19.25		50	4.51	11.61	19.83	28.47	16.73
	60	10.20	22.06	30.25	32.49	18.38		60	7.72	16.64	22.69	26.04	16.16
	70	14.03	23.73	-	26.38	16.17		70	10.47	17.57	-	21.49	14.57
80	13.65	-	-	17.38	12.12	80	9.78	-	-	15.18	11.43		
Black	0	0.14	0.27	0.64	34.30	19.37	Hispanic <sup>b</sup>	0	0.15	0.31	0.73	34.38	15.92
	10	0.13	0.50	1.72	34.78	19.72		10	0.16	0.58	1.70	34.57	16.04
	20	0.38	1.59	4.54	34.77	19.75		20	0.42	1.54	4.12	34.51	16.04
	30	1.23	4.20	9.82	34.74	19.82		30	1.13	3.72	8.33	34.32	16.05
	40	3.04	8.79	17.35	34.30	19.84		40	2.64	7.31	14.51	33.70	15.99
	50	6.07	15.10	24.67	32.99	19.61		50	4.84	12.29	21.44	32.15	15.74
	60	10.12	20.83	27.88	30.15	18.64		60	7.98	17.77	25.84	29.25	15.07
	70	13.19	21.87	-	24.66	16.40		70	11.16	20.36	-	24.24	13.58
80	12.82	-	-	16.94	12.64	80	11.95	-	-	16.99	10.88		

Devcan 6.8.0, August 2014, National Cancer Institute (<http://surveillance.cancer.gov/devcan/>).

Source: Incidence data are from the SEER 18 areas (San Francisco, Connecticut, Detroit, Hawaii, Iowa, New Mexico, Seattle, Utah, Atlanta, San Jose-Monterey, Los Angeles, Alaska Native Registry, Rural Georgia, California excluding SF/SJM/LA, Kentucky, Louisiana, New Jersey, and Georgia excluding ATL/RG). Mortality data are from the NCHS public use data file for the total US.

<sup>a</sup> Underlying incidence and mortality data for American Indian/Alaska Native are based on the CHSDA (Contract Health Service Delivery Area) counties.

<sup>b</sup> Hispanic is not mutually exclusive from whites, blacks, Asian/Pacific Islanders, and American Indians/Alaska Natives. Underlying incidence data for Hispanics are based on NHIA and exclude cases from the Alaska Native Registry.

- Statistic could not be calculated.

A percent of 0.00 represents a value that is below 0.005.

Table 2.15  
All Cancer Sites (Invasive)

SEER Incidence and U.S. Mortality  
Age-Adjusted Rates and Trends<sup>a</sup>  
By Race/Ethnicity and Sex

SEER Incidence	SEER 18 Areas <sup>b</sup>			SEER 13 Areas <sup>b</sup>			SEER 9 Areas <sup>b</sup>		
	Rate 2008-2012			Trend 2003-2012 <sup>c</sup>			Trend 2003-2012 <sup>d</sup>		
	Rate per 100,000 persons			AAPC (%)			AAPC (%)		
	Total	Males	Females	Total	Males	Females	Total	Males	Females
RACE/ETHNICITY									
All Races	454.8	516.6	411.2	-1.0*	-1.7*	-0.3*	-0.9*	-1.7*	-0.2*
White	463.3	519.8	423.9	-1.0*	-1.7*	-0.3*	-0.9*	-1.7*	-0.2*
White Hispanic <sup>e</sup>	360.8	404.3	334.5	-0.8*	-1.7*	0.2*	-	-	-
White Non-Hispanic <sup>e</sup>	482.4	540.0	441.6	-1.0*	-1.6*	-0.3	-	-	-
Black	478.0	590.1	401.2	-1.3*	-2.4*	0.0	-1.2*	-2.1*	0.0
Asian/Pacific Islander	306.8	325.4	297.5	-0.5*	-1.9*	0.1	-	-	-
Amer Ind/Alaska Nat <sup>f</sup>	319.7	340.8	308.8	0.1	-0.4	0.6*	-	-	-
Hispanic <sup>e</sup>	349.9	395.0	322.2	-0.8*	-1.7*	0.1	-	-	-
U.S. Mortality <sup>g</sup>									
	Rate 2008-2012			Trend 2003-2012 <sup>h</sup>					
	Rate per 100,000 persons			AAPC (%)					
	Total	Males	Females	Total	Males	Females			
RACE/ETHNICITY									
All Races	171.2	207.9	145.4	-1.5*	-1.8*	-1.4*			
White	170.9	206.4	145.6	-1.4*	-1.7*	-1.3*			
White Hispanic <sup>e</sup>	125.8	155.7	105.0	-1.1*	-1.3*	-0.9*			
White Non-Hispanic <sup>e</sup>	174.8	210.6	149.2	-1.4*	-1.6*	-1.3*			
Black	202.0	261.5	166.3	-2.1*	-2.7*	-1.6*			
Asian/Pacific Islander	106.6	128.4	91.2	-1.1*	-1.6*	-0.9*			
Amer Ind/Alaska Nat									
Total U.S.	117.4	140.3	100.9	-1.9*	-1.3*	-1.9*			
CHSDA Counties	156.1	186.7	133.9	-1.0*	-0.3	-1.2*			
Non-CHSDA Counties	73.1	87.7	62.8	-2.8*	-3.4*	-2.2*			
Hispanic <sup>e</sup>	119.3	148.0	99.4	-1.2*	-1.4*	-1.1*			

The AAPC is the Average Annual Percent Change over the time interval. The AAPCs are calculated by the Joinpoint Regression Program Version 4.2.0, April 2015, National Cancer Institute.

- Statistic not shown. Rate based on less than 16 cases for the time interval.

Trend based on less than 10 cases for at least one year within the time interval.

a Rates are age-adjusted to the 2000 US Std Population (19 age groups - Census P25-1130). Trends are based on rates age-adjusted to the 2000 US Std Population (19 age groups - Census P25-1130).

b The SEER 9 areas are San Francisco, Connecticut, Detroit, Hawaii, Iowa, New Mexico, Seattle, Utah, and Atlanta.

The SEER 13 areas comprise the SEER 9 areas plus San Jose-Monterey, Los Angeles, the Alaska Native Registry, and Rural Georgia.

The SEER 18 areas comprise the SEER 13 areas plus California excluding SF/SJM/LA, Kentucky, Louisiana, New Jersey, and Georgia excluding ATL/RG.

c The 2003-2012 AAPC estimates are based on a Joinpoint analysis with up to 3 Joinpoints over diagnosis years 1992-2012.

d The 2003-2012 AAPC estimates are based on a Joinpoint analysis with up to 5 Joinpoints over diagnosis years 1975-2012.

e Hispanic and Non-Hispanic are not mutually exclusive from whites, blacks, Asian/Pacific Islanders, and American Indians/Alaska Natives. Incidence data for Hispanics and Non-Hispanics are based on NHIA and exclude cases from the Alaska Native Registry. The 2003-2012 Hispanic and Non-Hispanic mortality trends exclude deaths from New Hampshire and Oklahoma.

f Incidence data for American Indian/Alaska Native are based on the CHSDA (Contract Health Service Delivery Area) counties.

g US Mortality Files, National Center for Health Statistics, CDC.

h The 2003-2012 mortality AAPCs are based on a Joinpoint analysis using years of death 1992-2012.

\* The APC is significantly different from zero (p<.05).

Table 2.16  
All Cancer Sites (Invasive)

Age-Adjusted SEER Incidence Rates<sup>a</sup>  
By Registry, Race and Sex

	All Races			Whites			Blacks		
	Total	Males	Females	Total	Males	Females	Total	Males	Females
<u>SEER Incidence Rates<sup>a</sup>, 2008-2012</u>									
California	424.95	476.72	388.83	437.31	485.28	404.24	456.50	541.70	394.13
Greater Bay Area	431.74	485.32	394.60	463.44	518.25	425.24	479.48	570.26	411.88
San Francisco-Oakland	436.53	488.42	400.94	466.57	518.21	431.16	489.34	585.74	419.18
San Jose-Monterey	422.52	479.56	382.10	457.79	518.10	414.79	413.85	475.60	355.95
Los Angeles	405.49	455.10	372.66	413.76	457.42	385.77	458.62	547.07	398.46
Greater California	431.47	483.36	394.39	439.07	486.50	405.66	443.83	522.24	381.11
Connecticut	488.13	544.40	450.23	489.29	539.06	456.91	454.97	561.05	384.83
Detroit	512.92	601.04	451.59	508.77	582.69	459.22	539.56	681.05	444.11
Georgia	461.10	544.65	402.32	465.55	536.72	415.45	465.74	596.33	383.00
Atlanta	462.00	543.96	406.51	471.22	537.34	427.62	473.88	599.42	396.55
Rural Georgia	449.42	529.39	392.04	456.15	513.60	414.24	438.71	575.31	354.65
Greater Georgia	461.30	545.46	401.31	464.01	537.57	411.21	461.43	593.91	375.92
Hawaii	419.53	456.03	397.54	496.74	545.60	454.37	402.30	449.63	328.84
Iowa	473.30	533.57	431.54	471.06	528.36	431.78	491.50	566.17	437.28
Kentucky	510.94	586.47	458.75	507.71	577.73	460.07	518.74	620.04	448.98
Louisiana	485.64	584.89	411.28	482.30	570.88	415.10	508.78	643.79	415.09
New Jersey	487.42	553.14	443.49	501.41	561.90	461.95	462.99	571.20	393.82
New Mexico	388.09	423.37	362.10	393.34	427.33	368.07	321.91	365.63	278.75
Seattle-Puget Sound	484.24	535.05	448.56	494.06	541.91	460.64	485.75	560.38	415.44
Utah	411.30	472.49	362.97	413.51	474.77	364.95	414.42	491.72	336.07
9 SEER Areas <sup>b</sup>	462.22	521.37	420.61	471.16	525.60	433.29	493.61	609.98	413.95
11 SEER Areas <sup>b</sup>	447.20	504.31	407.47	458.31	511.17	421.96	483.76	591.83	409.38
13 SEER Areas <sup>b</sup>	447.31	504.40	407.60	458.30	511.16	421.93	483.12	591.64	408.54
18 SEER Areas <sup>b</sup>	454.77	516.63	411.20	463.27	519.79	423.91	478.03	590.08	401.20

<sup>a</sup> Rates are per 100,000 and are age-adjusted to the 2000 US Std Population (19 age groups - Census P25-1130)

<sup>b</sup> The SEER 9 areas are San Francisco, Connecticut, Detroit, Hawaii, Iowa, New Mexico, Seattle, Utah and Atlanta.

The SEER 11 areas comprise the SEER 9 areas plus San Jose-Monterey and Los Angeles.

The SEER 13 areas comprise the SEER 11 areas plus the Alaska Native Registry and Rural Georgia.

The SEER 18 areas comprise the SEER 13 areas plus California excluding SF/SJM/LA, Kentucky, Louisiana, New Jersey and Georgia excluding ATL/RG.

- Statistic not shown. Rate based on less than 16 cases for the time interval.



Table 2.17  
All Cancer Sites (Invasive)

Age-Adjusted SEER Death Rates<sup>a</sup>  
By Registry, Race and Sex

	All Races			Whites			Blacks		
	Total	Males	Females	Total	Males	Females	Total	Males	Females
<u>SEER Death Rates<sup>a</sup>, 2008-2012</u>									
California	155.15	183.36	135.26	160.52	188.80	140.44	198.47	239.66	172.99
Greater Bay Area	146.13	171.08	128.84	154.14	178.75	136.98	202.85	247.11	176.33
San Francisco-Oakland	149.14	174.85	131.47	155.52	180.35	138.26	208.41	256.92	179.41
San Jose-Monterey	140.18	163.72	123.57	151.56	175.78	134.56	164.75	184.46	152.97
Los Angeles	151.35	179.73	131.90	153.62	180.75	134.84	204.58	248.79	178.79
Greater California	160.01	189.24	139.04	164.91	194.64	143.50	189.80	225.69	164.98
Connecticut	159.92	192.16	138.45	160.60	192.33	139.33	167.53	213.25	141.13
Detroit	184.70	222.47	160.00	178.33	213.36	155.29	218.03	273.80	183.70
Georgia	173.17	218.19	143.46	169.70	210.33	141.53	192.30	262.61	154.40
Atlanta	158.47	194.44	136.61	149.91	180.01	130.69	186.13	247.87	155.30
Rural Georgia	184.35	243.64	144.20	172.85	215.09	142.40	209.94	321.06	147.80
Greater Georgia	179.64	227.71	147.05	176.73	220.76	145.63	196.72	270.47	155.25
Hawaii	139.29	171.73	114.84	159.11	187.49	134.36	163.40	194.49	118.08
Iowa	171.32	209.05	145.30	171.05	208.37	145.37	226.29	286.90	186.65
Kentucky	204.37	253.64	169.98	204.08	253.07	169.66	229.09	290.87	190.59
Louisiana	196.85	247.35	161.00	187.40	232.49	154.64	228.04	301.58	180.75
New Jersey	167.60	198.99	147.43	170.00	200.48	150.26	192.40	247.45	161.39
New Mexico	151.03	181.02	128.08	153.71	183.95	130.37	167.13	199.74	139.47
Seattle-Puget Sound	166.49	198.27	144.02	169.66	200.39	147.81	196.18	242.06	161.98
Utah	127.63	153.02	108.61	128.16	153.77	108.94	140.27	147.57	132.83
9 SEER Areas <sup>b</sup>	159.88	191.85	137.83	161.19	192.24	139.58	197.94	250.63	166.62
11 SEER Areas <sup>b</sup>	156.89	187.59	135.71	159.19	189.09	138.38	199.06	249.05	169.32
13 SEER Areas <sup>b</sup>	157.20	188.05	135.88	159.33	189.29	138.42	199.06	249.94	168.79
18 SEER Areas <sup>b</sup>	165.39	199.03	142.00	167.43	200.21	144.39	201.96	258.49	167.77
Total U.S.	171.22	207.86	145.43	170.92	206.41	145.58	202.04	261.52	166.32

<sup>a</sup> US Mortality Files, National Center for Health Statistics, Centers for Disease Control and Prevention. Rates are per 100,000 and are age-adjusted to the 2000 US Std Population (19 age groups - Census P25-1130).

<sup>b</sup> The SEER 9 areas are San Francisco, Connecticut, Detroit, Hawaii, Iowa, New Mexico, Seattle, Utah and Atlanta. The SEER 11 areas comprise the SEER 9 areas plus San Jose-Monterey and Los Angeles.

The SEER 13 areas comprise the SEER 11 areas plus the Alaska Native Registry and Rural Georgia.

The SEER 18 areas comprise the SEER 13 areas plus California excluding SF/SJM/LA, Kentucky, Louisiana, New Jersey and Georgia excluding ATL/RG.

- Statistic not shown. Rate based on less than 16 cases for the time interval.

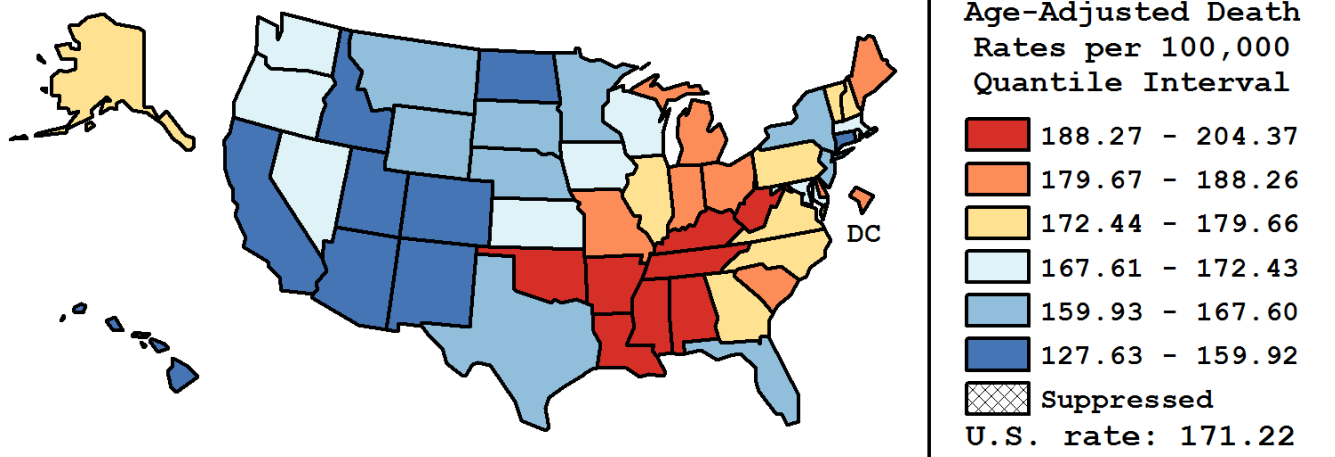
Table 2.18  
All Cancer Sites (Invasive)

Age-Adjusted Cancer Death<sup>a</sup> Rates by State, All Races, 2008-2012

Males and Females

State	Rate	SE	Rank(CI) <sup>d</sup>	PD
TOTAL U.S.	171.22	0.10		
High Five States				
Kentucky	204.37 <sup>b</sup>	0.94	01(01,01)	19.36 <sup>c</sup>
Mississippi	199.87 <sup>b</sup>	1.14	02(02,04)	16.74 <sup>c</sup>
West Virginia	197.63 <sup>b</sup>	1.31	03(02,05)	15.43 <sup>c</sup>
Louisiana	196.85 <sup>b</sup>	0.93	04(02,05)	14.97 <sup>c</sup>
Arkansas	194.40 <sup>b</sup>	1.09	05(03,07)	13.54 <sup>c</sup>
Low Five States				
New Mexico	151.03 <sup>b</sup>	1.18	47(46,49)	-11.79 <sup>c</sup>
Arizona	150.85 <sup>b</sup>	0.66	48(47,48)	-11.90 <sup>c</sup>
Colorado	147.79 <sup>b</sup>	0.81	49(48,49)	-13.68 <sup>c</sup>
Hawaii	139.29 <sup>b</sup>	1.34	50(50,50)	-18.65 <sup>c</sup>
Utah	127.63 <sup>b</sup>	1.11	51(51,51)	-25.46 <sup>c</sup>

State	Rate	SE	Rank(CI) <sup>d</sup>	PD	State	Rate	SE	Rank(CI) <sup>d</sup>	PD
Alabama	191.17 <sup>b</sup>	0.85	07(05,09)	11.66 <sup>c</sup>	Montana	160.42 <sup>b</sup>	1.66	41(36,45)	-6.30 <sup>c</sup>
Alaska	178.21	2.89	19(11,32)	4.08	Nebraska	165.96 <sup>b</sup>	1.29	35(32,40)	-3.07
Arizona	150.85 <sup>b</sup>	0.66	48(47,48)	-11.90 <sup>c</sup>	Nevada	172.38	1.17	26(20,33)	0.68
Arkansas	194.40 <sup>b</sup>	1.09	05(03,07)	13.54 <sup>c</sup>	New Hampshire	172.75	1.54	23(19,34)	0.90
California	155.15 <sup>b</sup>	0.30	46(44,46)	-9.38 <sup>c</sup>	New Jersey	167.60 <sup>b</sup>	0.59	34(32,36)	-2.11
Colorado	147.79 <sup>b</sup>	0.81	49(48,49)	-13.68 <sup>c</sup>	New Mexico	151.03 <sup>b</sup>	1.18	47(46,49)	-11.79 <sup>c</sup>
Connecticut	159.92 <sup>b</sup>	0.88	43(40,45)	-6.60 <sup>c</sup>	New York	162.28 <sup>b</sup>	0.39	40(38,43)	-5.22 <sup>c</sup>
Delaware	181.95 <sup>b</sup>	1.89	15(10,20)	6.27 <sup>c</sup>	North Carolina	176.18 <sup>b</sup>	0.60	20(19,22)	2.90
D.C.	186.97 <sup>b</sup>	2.57	10(05,17)	9.20 <sup>c</sup>	North Dakota	158.57 <sup>b</sup>	2.01	45(37,46)	-7.38 <sup>c</sup>
Florida	163.18 <sup>b</sup>	0.36	39(37,41)	-4.69	Ohio	186.92 <sup>b</sup>	0.53	11(09,12)	9.17 <sup>c</sup>
Georgia	173.17	0.64	22(20,30)	1.14	Oklahoma	190.64 <sup>b</sup>	0.97	08(05,10)	11.34 <sup>c</sup>
Hawaii	139.29 <sup>b</sup>	1.34	50(50,50)	-18.65 <sup>c</sup>	Oregon	172.43	0.90	25(20,32)	0.71
Idaho	158.72 <sup>b</sup>	1.43	44(39,46)	-7.30 <sup>c</sup>	Pennsylvania	179.66 <sup>b</sup>	0.48	17(15,19)	4.93
Illinois	178.86 <sup>b</sup>	0.52	18(15,20)	4.46	Rhode Island	172.05	1.68	28(19,34)	0.49
Indiana	188.26 <sup>b</sup>	0.74	09(08,11)	9.95 <sup>c</sup>	South Carolina	183.28 <sup>b</sup>	0.86	14(11,16)	7.05 <sup>c</sup>
Iowa	171.32	0.97	30(21,33)	0.06	South Dakota	165.35	1.88	36(30,43)	-3.43
Kansas	170.48	1.06	31(22,34)	-0.43	Tennessee	193.18 <sup>b</sup>	0.75	06(05,08)	12.83 <sup>c</sup>
Kentucky	204.37 <sup>b</sup>	0.94	01(01,01)	19.36 <sup>c</sup>	Texas	164.57 <sup>b</sup>	0.39	37(35,39)	-3.88
Louisiana	196.85 <sup>b</sup>	0.93	04(02,05)	14.97 <sup>c</sup>	Utah	127.63 <sup>b</sup>	1.11	51(51,51)	-25.46 <sup>c</sup>
Maine	183.33 <sup>b</sup>	1.48	13(10,18)	7.08 <sup>c</sup>	Vermont	173.72	2.18	21(17,34)	1.46
Maryland	171.75	0.77	29(21,33)	0.31	Virginia	172.55	0.66	24(20,31)	0.78
Massachusetts	170.30	0.68	32(26,34)	-0.53	Washington	169.64	0.71	33(27,35)	-0.92
Michigan	179.95 <sup>b</sup>	0.57	16(14,19)	5.10 <sup>c</sup>	West Virginia	197.63 <sup>b</sup>	1.31	03(02,05)	15.43 <sup>c</sup>
Minnesota	164.03 <sup>b</sup>	0.76	38(35,41)	-4.20	Wisconsin	172.32	0.74	27(21,32)	0.64
Mississippi	199.87 <sup>b</sup>	1.14	02(02,04)	16.74 <sup>c</sup>	Wyoming	160.36 <sup>b</sup>	2.38	42(35,46)	-6.34 <sup>c</sup>
Missouri	184.13 <sup>b</sup>	0.74	12(11,15)	7.54 <sup>c</sup>					



<sup>a</sup> US Mortality Files, National Center for Health Statistics, Centers for Disease Control and Prevention. Rates are per 100,000 and are age-adjusted to the 2000 US Std Population (19 age groups - Census P25-1130).

<sup>b</sup> Difference between state rate and total U.S. rate is statistically significant ( $p \leq .0002$ ).

<sup>c</sup> Absolute percent difference between state rate and total U.S. rate is 5% or more.

<sup>d</sup> Rank of state level death rate and the 95% confidence intervals (low, high) for the rank.

SE Standard error of the rate.

PD Percent difference between state rate and total U.S. rate.

- Statistic not shown. Rate based on less than 16 cases for the time interval.

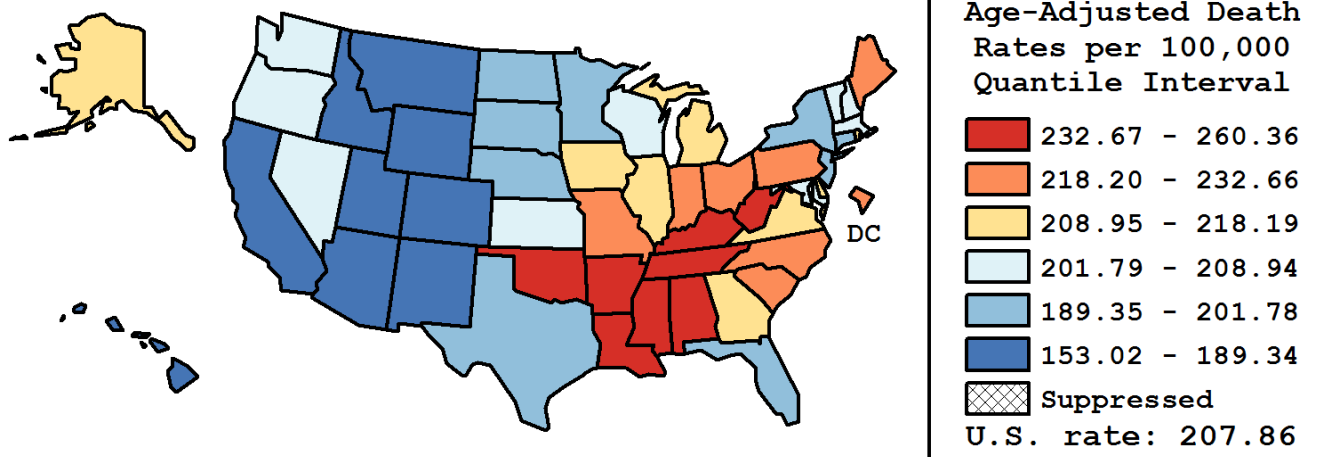
Table 2.19  
All Cancer Sites (Invasive)

Age-Adjusted Cancer Death<sup>a</sup> Rates by State, All Races, 2008-2012

Males

State	Rate	SE	Rank(CI) <sup>d</sup>	PD
TOTAL U.S.	207.86	0.17		
High Five States				
Mississippi	260.36 <sup>b</sup>	2.05	01(01,02)	25.26 <sup>c</sup>
Kentucky	253.64 <sup>b</sup>	1.62	02(01,03)	22.03 <sup>c</sup>
Louisiana	247.35 <sup>b</sup>	1.62	03(02,07)	19.00 <sup>c</sup>
Alabama	246.84 <sup>b</sup>	1.52	04(03,07)	18.76 <sup>c</sup>
Arkansas	246.48 <sup>b</sup>	1.88	05(02,07)	18.58 <sup>c</sup>
Low Five States				
New Mexico	181.02 <sup>b</sup>	1.96	47(44,48)	-12.91 <sup>c</sup>
Arizona	180.04 <sup>b</sup>	1.08	48(46,48)	-13.38 <sup>c</sup>
Colorado	173.84 <sup>b</sup>	1.35	49(48,50)	-16.37 <sup>c</sup>
Hawaii	171.73 <sup>b</sup>	2.22	50(49,50)	-17.38 <sup>c</sup>
Utah	153.02 <sup>b</sup>	1.84	51(51,51)	-26.38 <sup>c</sup>

State	Rate	SE	Rank(CI) <sup>d</sup>	PD	State	Rate	SE	Rank(CI) <sup>d</sup>	PD
Alabama	246.84 <sup>b</sup>	1.52	04(03,07)	18.76 <sup>c</sup>	Montana	188.46 <sup>b</sup>	2.68	44(39,47)	-9.33 <sup>c</sup>
Alaska	211.37	4.81	23(12,38)	1.69	Nebraska	200.86	2.15	35(27,40)	-3.36
Arizona	180.04 <sup>b</sup>	1.08	48(46,48)	-13.38 <sup>c</sup>	Nevada	201.92	1.91	32(26,39)	-2.86
Arkansas	246.48 <sup>b</sup>	1.88	05(02,07)	18.58 <sup>c</sup>	New Hampshire	208.30	2.59	26(20,35)	0.22
California	183.36 <sup>b</sup>	0.49	46(44,47)	-11.78 <sup>c</sup>	New Jersey	198.99 <sup>b</sup>	1.00	36(33,40)	-4.26
Colorado	173.84 <sup>b</sup>	1.35	49(48,50)	-16.37 <sup>c</sup>	New Mexico	181.02 <sup>b</sup>	1.96	47(44,48)	-12.91 <sup>c</sup>
Connecticut	192.16 <sup>b</sup>	1.49	42(39,45)	-7.55 <sup>c</sup>	New York	193.77 <sup>b</sup>	0.66	41(39,43)	-6.78 <sup>c</sup>
Delaware	218.13	3.18	18(12,25)	4.94	North Carolina	222.23 <sup>b</sup>	1.05	15(12,17)	6.91 <sup>c</sup>
D.C.	227.13 <sup>b</sup>	4.48	12(08,21)	9.27 <sup>c</sup>	North Dakota	198.06	3.39	37(26,44)	-4.72
Florida	197.14 <sup>b</sup>	0.59	38(35,40)	-5.15 <sup>c</sup>	Ohio	228.19 <sup>b</sup>	0.91	11(10,13)	9.78 <sup>c</sup>
Georgia	218.19 <sup>b</sup>	1.15	17(14,22)	4.97	Oklahoma	233.58 <sup>b</sup>	1.65	08(08,11)	12.37 <sup>c</sup>
Hawaii	171.73 <sup>b</sup>	2.22	50(49,50)	-17.38 <sup>c</sup>	Oregon	203.58	1.47	31(26,36)	-2.06
Idaho	189.34 <sup>b</sup>	2.34	43(39,46)	-8.91 <sup>c</sup>	Pennsylvania	218.51 <sup>b</sup>	0.81	16(15,20)	5.13 <sup>c</sup>
Illinois	215.90 <sup>b</sup>	0.89	20(16,22)	3.87	Rhode Island	216.12	2.91	19(13,27)	3.98
Indiana	232.43 <sup>b</sup>	1.27	10(08,11)	11.82 <sup>c</sup>	South Carolina	232.66 <sup>b</sup>	1.51	09(08,12)	11.93 <sup>c</sup>
Iowa	209.05	1.63	24(21,31)	0.58	South Dakota	196.91 <sup>b</sup>	3.08	40(28,45)	-5.27 <sup>c</sup>
Kansas	206.13	1.76	29(23,35)	-0.83	Tennessee	245.91 <sup>b</sup>	1.33	06(03,07)	18.31 <sup>c</sup>
Kentucky	253.64 <sup>b</sup>	1.62	02(01,03)	22.03 <sup>c</sup>	Texas	201.78 <sup>b</sup>	0.67	34(30,37)	-2.92
Louisiana	247.35 <sup>b</sup>	1.62	03(02,07)	19.00 <sup>c</sup>	Utah	153.02 <sup>b</sup>	1.84	51(51,51)	-26.38 <sup>c</sup>
Maine	223.77 <sup>b</sup>	2.49	13(10,19)	7.65 <sup>c</sup>	Vermont	206.21	3.63	28(19,40)	-0.79
Maryland	207.37	1.31	27(22,31)	-0.23	Virginia	211.54	1.14	22(20,27)	1.77
Massachusetts	205.54	1.16	30(24,33)	-1.12	Washington	201.83 <sup>b</sup>	1.17	33(29,38)	-2.90
Michigan	215.86 <sup>b</sup>	0.96	21(16,22)	3.85	West Virginia	242.52 <sup>b</sup>	2.21	07(03,08)	16.68 <sup>c</sup>
Minnesota	196.96 <sup>b</sup>	1.27	39(34,42)	-5.24 <sup>c</sup>	Wisconsin	208.94	1.24	25(22,30)	0.52
Mississippi	260.36 <sup>b</sup>	2.05	01(01,02)	25.26 <sup>c</sup>	Wyoming	187.01 <sup>b</sup>	3.85	45(37,48)	-10.03 <sup>c</sup>
Missouri	222.74 <sup>b</sup>	1.25	14(12,17)	7.16 <sup>c</sup>					



<sup>a</sup> US Mortality Files, National Center for Health Statistics, Centers for Disease Control and Prevention. Rates are per 100,000 and are age-adjusted to the 2000 US Std Population (19 age groups - Census P25-1130).

<sup>b</sup> Difference between state rate and total U.S. rate is statistically significant ( $p \leq .0002$ ).

<sup>c</sup> Absolute percent difference between state rate and total U.S. rate is 5% or more.

<sup>d</sup> Rank of state level death rate and the 95% confidence intervals (low, high) for the rank.

SE Standard error of the rate.

PD Percent difference between state rate and total U.S. rate.

- Statistic not shown. Rate based on less than 16 cases for the time interval.

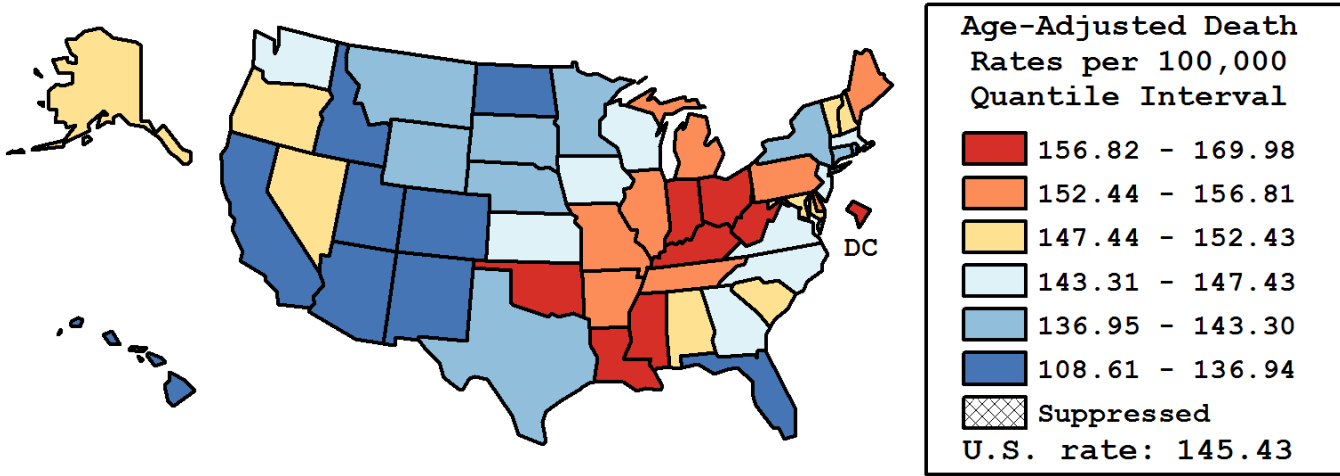
Table 2.20  
All Cancer Sites (Invasive)

Age-Adjusted Cancer Death<sup>a</sup> Rates by State, All Races, 2008-2012

Females

State	Rate	SE	Rank(CI) <sup>d</sup>	PD
TOTAL U.S.	145.43	0.13		
High Five States				
Kentucky	169.98 <sup>b</sup>	1.14	01(01,02)	16.88 <sup>c</sup>
West Virginia	165.19 <sup>b</sup>	1.62	02(01,04)	13.59 <sup>c</sup>
D.C.	161.62 <sup>b</sup>	3.15	03(01,17)	11.13 <sup>c</sup>
Louisiana	161.00 <sup>b</sup>	1.12	04(02,09)	10.71 <sup>c</sup>
Oklahoma	159.62 <sup>b</sup>	1.20	05(03,12)	9.76 <sup>c</sup>
Low Five States				
Colorado	129.42 <sup>b</sup>	1.01	47(45,49)	-11.01 <sup>c</sup>
New Mexico	128.08 <sup>b</sup>	1.47	48(46,49)	-11.93 <sup>c</sup>
Arizona	128.07 <sup>b</sup>	0.83	49(46,49)	-11.93 <sup>c</sup>
Hawaii	114.84 <sup>b</sup>	1.66	50(50,51)	-21.03 <sup>c</sup>
Utah	108.61 <sup>b</sup>	1.39	51(50,51)	-25.32 <sup>c</sup>

State	Rate	SE	Rank(CI) <sup>d</sup>	PD	State	Rate	SE	Rank(CI) <sup>d</sup>	PD
Alabama	152.43 <sup>b</sup>	1.02	17(12,21)	4.81	Montana	138.64	2.11	40(31,45)	-4.67
Alaska	151.50	3.59	18(03,37)	4.18	Nebraska	140.80	1.61	38(30,44)	-3.18
Arizona	128.07 <sup>b</sup>	0.83	49(46,49)	-11.93 <sup>c</sup>	Nevada	149.01	1.49	21(16,32)	2.46
Arkansas	156.57 <sup>b</sup>	1.32	11(04,17)	7.66 <sup>c</sup>	New Hampshire	147.58	1.91	24(16,36)	1.48
California	135.26 <sup>b</sup>	0.37	44(42,46)	-6.99 <sup>c</sup>	New Jersey	147.43	0.73	25(19,31)	1.38
Colorado	129.42 <sup>b</sup>	1.01	47(45,49)	-11.01 <sup>c</sup>	New Mexico	128.08 <sup>b</sup>	1.47	48(46,49)	-11.93 <sup>c</sup>
Connecticut	138.45 <sup>b</sup>	1.10	41(36,44)	-4.80	New York	141.74 <sup>b</sup>	0.48	36(33,40)	-2.54
Delaware	156.26 <sup>b</sup>	2.35	12(03,20)	7.45 <sup>c</sup>	North Carolina	144.95	0.72	31(25,36)	-0.33
D.C.	161.62 <sup>b</sup>	3.15	03(01,17)	11.13 <sup>c</sup>	North Dakota	130.16 <sup>b</sup>	2.49	46(42,49)	-10.50 <sup>c</sup>
Florida	136.94 <sup>b</sup>	0.45	43(39,44)	-5.84 <sup>c</sup>	Ohio	158.47 <sup>b</sup>	0.66	06(03,12)	8.97 <sup>c</sup>
Georgia	143.46	0.76	33(28,38)	-1.35	Oklahoma	159.62 <sup>b</sup>	1.20	05(03,12)	9.76 <sup>c</sup>
Hawaii	114.84 <sup>b</sup>	1.66	50(50,51)	-21.03 <sup>c</sup>	Oregon	149.77 <sup>b</sup>	1.14	20(16,27)	2.99
Idaho	134.88 <sup>b</sup>	1.80	45(39,47)	-7.25 <sup>c</sup>	Pennsylvania	153.34 <sup>b</sup>	0.60	16(12,19)	5.44 <sup>c</sup>
Illinois	154.37 <sup>b</sup>	0.64	15(10,18)	6.15 <sup>c</sup>	Rhode Island	143.30	2.04	34(20,41)	-1.46
Indiana	157.84 <sup>b</sup>	0.91	08(03,14)	8.53 <sup>c</sup>	South Carolina	148.79	1.03	22(17,30)	2.31
Iowa	145.30	1.22	30(21,36)	-0.08	South Dakota	142.77	2.38	35(20,44)	-1.83
Kansas	144.68	1.31	32(21,38)	-0.52	Tennessee	156.69 <sup>b</sup>	0.90	10(05,15)	7.74 <sup>c</sup>
Kentucky	169.98 <sup>b</sup>	1.14	01(01,02)	16.88 <sup>c</sup>	Texas	137.70 <sup>b</sup>	0.48	42(38,44)	-5.31 <sup>c</sup>
Louisiana	161.00 <sup>b</sup>	1.12	04(02,09)	10.71 <sup>c</sup>	Utah	108.61 <sup>b</sup>	1.39	51(50,51)	-25.32 <sup>c</sup>
Maine	154.60 <sup>b</sup>	1.83	14(04,21)	6.31 <sup>c</sup>	Vermont	149.89	2.73	19(08,36)	3.07
Maryland	147.97	0.94	23(18,31)	1.75	Virginia	145.79	0.80	29(22,34)	0.25
Massachusetts	147.10	0.84	26(19,33)	1.15	Washington	146.40	0.89	28(20,34)	0.67
Michigan	155.02 <sup>b</sup>	0.71	13(09,18)	6.59 <sup>c</sup>	West Virginia	165.19 <sup>b</sup>	1.62	02(01,04)	13.59 <sup>c</sup>
Minnesota	141.13 <sup>b</sup>	0.96	37(32,41)	-2.96	Wisconsin	146.83	0.92	27(19,33)	0.97
Mississippi	158.45 <sup>b</sup>	1.35	07(03,15)	8.96 <sup>c</sup>	Wyoming	140.27	3.05	39(20,46)	-3.55
Missouri	156.81 <sup>b</sup>	0.92	09(05,16)	7.82 <sup>c</sup>					



<sup>a</sup> US Mortality Files, National Center for Health Statistics, Centers for Disease Control and Prevention. Rates are per 100,000 and are age-adjusted to the 2000 US Std Population (19 age groups - Census P25-1130).

<sup>b</sup> Difference between state rate and total U.S. rate is statistically significant ( $p \leq .0002$ ).

<sup>c</sup> Absolute percent difference between state rate and total U.S. rate is 5% or more.

<sup>d</sup> Rank of state level death rate and the 95% confidence intervals (low, high) for the rank.

SE Standard error of the rate.

PD Percent difference between state rate and total U.S. rate.

- Statistic not shown. Rate based on less than 16 cases for the time interval.

Table 2.21  
All Cancer Sites (Invasive)

Estimated United States Cancer Prevalence Counts<sup>a</sup> on January 1, 2012  
By Race/Ethnicity, Sex and Years Since Diagnosis

Years Since Diagnosis		0 to <5	5 to <10	10 to <15	15 to <20	20 to <25	25 to <30	0 to <20 <sup>e</sup>	0 to <37 <sup>e</sup>	>=37 <sup>g</sup>	Complete <sup>h</sup>
<u>Race</u>	<u>Sex</u>										
All Races <sup>b</sup>	Both Sexes	4,660,390	3,220,696	2,297,725	1,454,626	861,141	505,137	12,037,276	13,405,317	370,934	13,776,251
	Males	2,395,057	1,636,053	1,105,506	654,928	315,984	163,447	5,951,188	6,387,558	76,971	6,464,529
	Females	2,265,333	1,584,643	1,192,219	799,698	545,157	341,690	6,086,088	7,017,759	293,963	7,311,722
White <sup>b</sup>	Both Sexes	3,913,280	2,780,192	2,013,548	1,287,998	779,233	458,563	10,359,308	11,601,795	324,151	11,925,946
	Males	2,003,404	1,405,324	962,849	578,882	289,312	150,214	5,096,308	5,497,887	72,025	5,569,912
	Females	1,909,876	1,374,868	1,050,699	709,116	489,921	308,349	5,263,000	6,103,908	252,126	6,356,034
Black <sup>b</sup>	Both Sexes	487,189	296,165	190,445	110,608	52,052	29,576	1,109,887	1,189,165	22,527	1,211,692
	Males	261,563	162,329	101,649	53,718	17,259	7,999	588,391	609,432	1,907	611,339
	Females	225,626	133,836	88,796	56,890	34,793	21,577	521,496	579,733	20,620	600,353
Asian/ Pacific Islander <sup>c</sup>	Both Sexes	147,701	90,366	58,598	+	+	+	330,690	+	+	+
	Males	62,926	37,188	22,375	+	+	+	134,340	+	+	+
	Females	84,775	53,178	36,223	+	+	+	196,350	+	+	+
Hispanic <sup>d</sup>	Both Sexes	327,526	204,575	131,420	+	+	+	742,005	+	+	+
	Males	155,663	95,961	59,027	+	+	+	342,644	+	+	+
	Females	171,863	108,614	72,393	+	+	+	399,361	+	+	+

Estimated prevalence percent<sup>a</sup> on January 1, 2012, of the SEER<sup>c</sup> population diagnosed in the previous 20 years  
By Age at Prevalence, Race/Ethnicity and Sex

Age at Prevalence		Age Specific (Crude)									Age-Adjusted <sup>f</sup>	
		All Ages	0-9	10-19	20-29	30-39	40-49	50-59	60-69	70-79	80+	All Ages
<u>Race</u>	<u>Sex</u>											
All Races <sup>c</sup>	Both Sexes	3.3439%	0.0867%	0.1870%	0.3323%	0.7825%	1.9172%	4.3781%	9.4329%	15.9290%	17.8982%	3.2158%
	Males	3.3276%	0.0907%	0.1973%	0.3215%	0.6175%	1.3317%	3.5697%	10.0706%	20.3717%	25.5905%	3.5875%
	Females	3.3597%	0.0826%	0.1762%	0.3436%	0.9482%	2.4979%	5.1523%	8.8564%	12.3280%	13.3496%	3.0004%
White <sup>c</sup>	Both Sexes	3.6851%	0.0946%	0.2067%	0.3762%	0.8788%	2.0546%	4.5798%	9.8605%	16.7896%	18.5683%	3.3871%
	Males	3.6345%	0.0977%	0.2199%	0.3648%	0.7023%	1.4504%	3.7052%	10.3218%	21.0546%	26.0188%	3.7143%
	Females	3.7355%	0.0914%	0.1929%	0.3884%	1.0646%	2.6790%	5.4452%	9.4296%	13.2452%	14.1132%	3.2085%
Black <sup>c</sup>	Both Sexes	2.5129%	0.0631%	0.1280%	0.2137%	0.5347%	1.5799%	4.1368%	9.8340%	15.9616%	16.0571%	3.0533%
	Males	2.7904%	0.0677%	0.1266%	0.2103%	0.3830%	1.1080%	4.0489%	12.8776%	24.1031%	27.6383%	4.0581%
	Females	2.2601%	0.0582%	0.1294%	0.2170%	0.6672%	1.9962%	4.2134%	7.4455%	10.2639%	10.4330%	2.4333%
Asian/ Pacific Islander <sup>c</sup>	Both Sexes	2.1407%	0.0676%	0.1360%	0.2033%	0.4844%	1.3780%	3.1398%	5.8799%	9.8282%	12.7380%	2.1271%
	Males	1.8597%	0.0748%	0.1430%	0.1837%	0.3286%	0.7281%	1.9350%	5.2145%	11.7196%	17.9383%	2.1145%
	Females	2.3981%	0.0600%	0.1287%	0.2229%	0.6243%	1.9531%	4.1756%	6.4300%	8.3655%	9.5615%	2.1951%
Hispanic <sup>d</sup>	Both Sexes	1.4540%	0.0814%	0.1769%	0.2627%	0.5666%	1.3533%	3.1080%	6.6182%	11.5132%	13.4762%	2.3397%
	Males	1.3163%	0.0864%	0.1864%	0.2626%	0.4401%	0.8479%	2.2370%	6.7085%	15.3104%	20.1082%	2.6149%
	Females	1.5950%	0.0763%	0.1670%	0.2628%	0.7018%	1.8807%	3.9425%	6.5406%	8.7002%	9.5071%	2.2195%

<sup>a</sup> US 2012 cancer prevalence counts are based on 2012 cancer prevalence proportions from the SEER registries and 1/1/2012 US population estimates based on the average of 2011 and 2012 population estimates from the US Bureau of the Census. Prevalence was calculated using the First Malignant Primary Only for a person.

<sup>b c d</sup> Statistics based on (b) SEER 9 Areas (c) SEER 11 Areas and Rural Georgia (d) NHIA for Hispanic for SEER 11 Areas and Rural Georgia.

<sup>e</sup> Maximum limited-duration prevalence: 37 years for 1975-2012 SEER 9 data; 20 years for 1992-2012 SEER 11 data (used to calculate prevalence for Hispanics and Asian Pacific Islanders).

<sup>f</sup> Percentages are age-adjusted to the 2000 US Standard Population (19 age groups - Census P25-1130) by 5-year age groups.

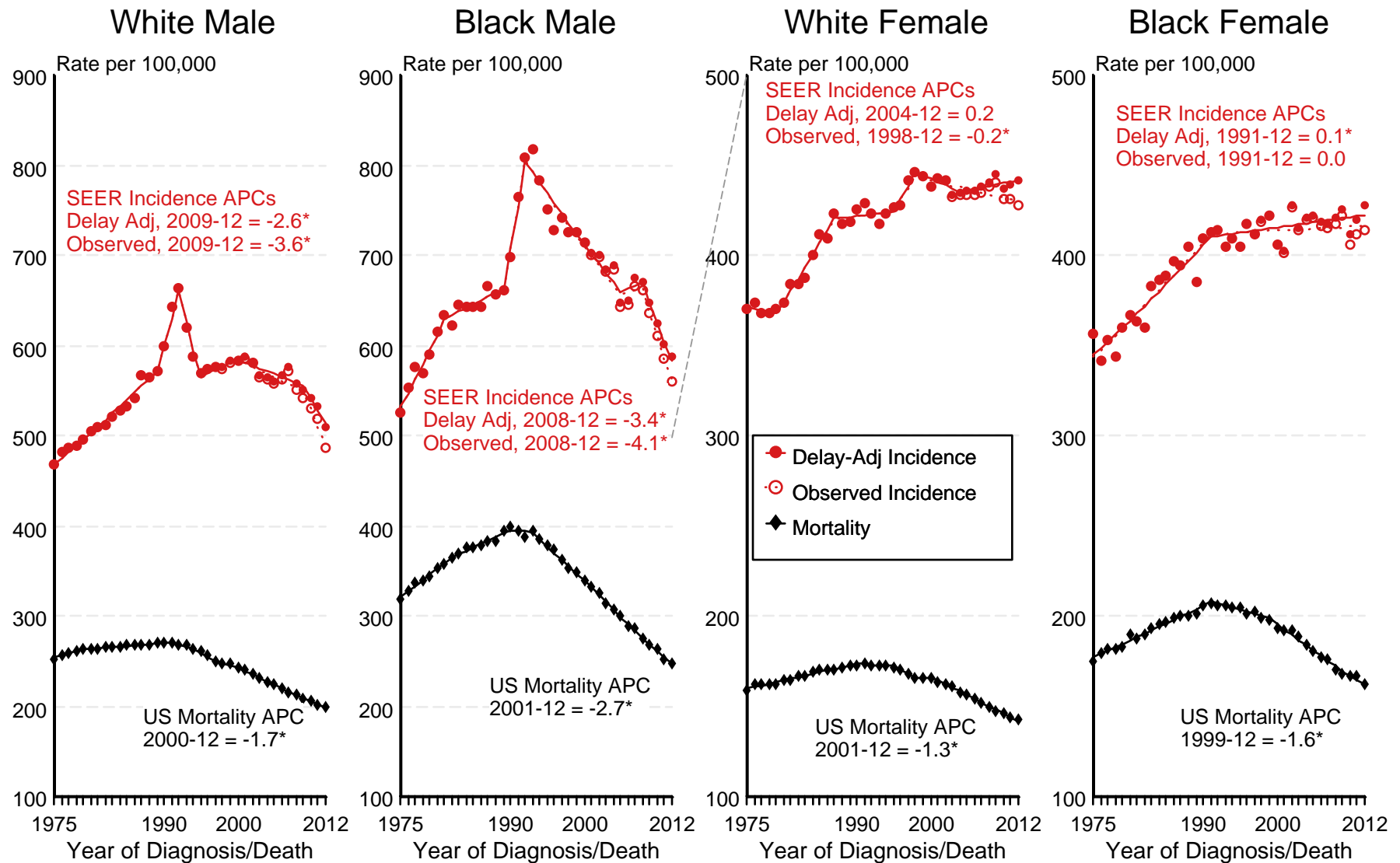
<sup>g h i</sup> (g) Cases diagnosed more than 37 years ago were estimated using the completeness index method (Capocaccia et. al. 1997, Merrill et. al. 2000). (h) Complete prevalence is obtained by summing 0 to <37 and >=37. (i) Age-specific completeness index was approximated using empirical data from historical Connecticut tumor registry.

- Statistic not shown. Statistic based on fewer than 5 cases estimated alive in SEER for the time interval.

+ Not available.

Figure 2.1

# SEER Observed Incidence, SEER Delay Adjusted Incidence and US Death Rates<sup>a</sup> All Cancer Sites, by Race and Sex



Source: SEER 9 areas and US Mortality Files (National Center for Health Statistics, CDC).

<sup>a</sup> Rates are age-adjusted to the 2000 US Std Population (19 age groups - Census P25-1103).

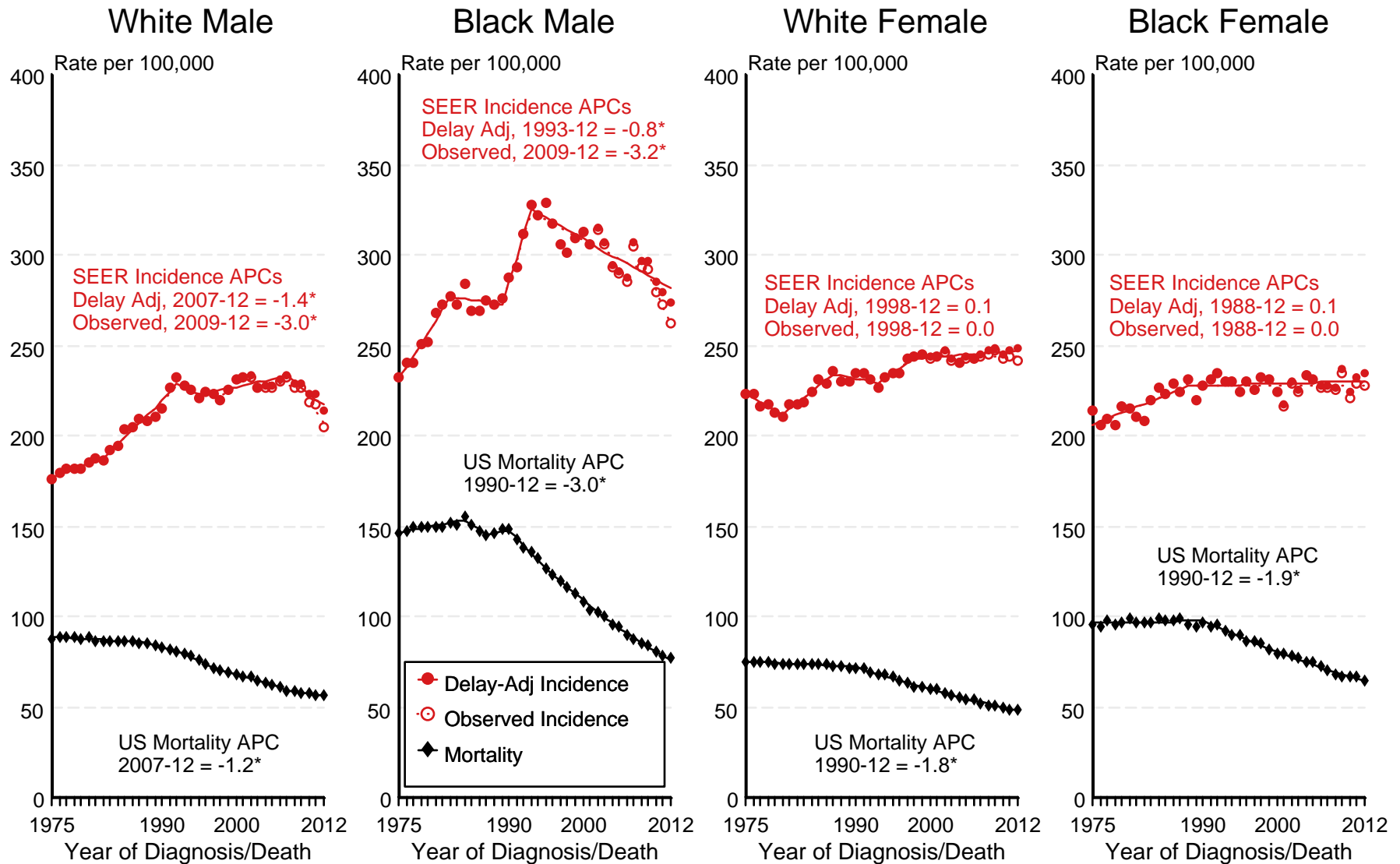
Regression lines and APCs are calculated using the Joinpoint Regression Program Version 4.2.0, April 2015, National Cancer Institute.

The APC is the Annual Percent Change for the regression line segments. The APC shown on the graph is for the most recent trend.

\* The APC is significantly different from zero ( $p < 0.05$ ).

Figure 2.2

# SEER Observed Incidence, SEER Delay Adjusted Incidence and US Death Rates<sup>a</sup> All Cancer Sites, Under 65 Years of Age, by Race and Sex



Source: SEER 9 areas and US Mortality Files (National Center for Health Statistics, CDC).

<sup>a</sup> Rates are age-adjusted to the 2000 US Std Population (19 age groups - Census P25-1103).

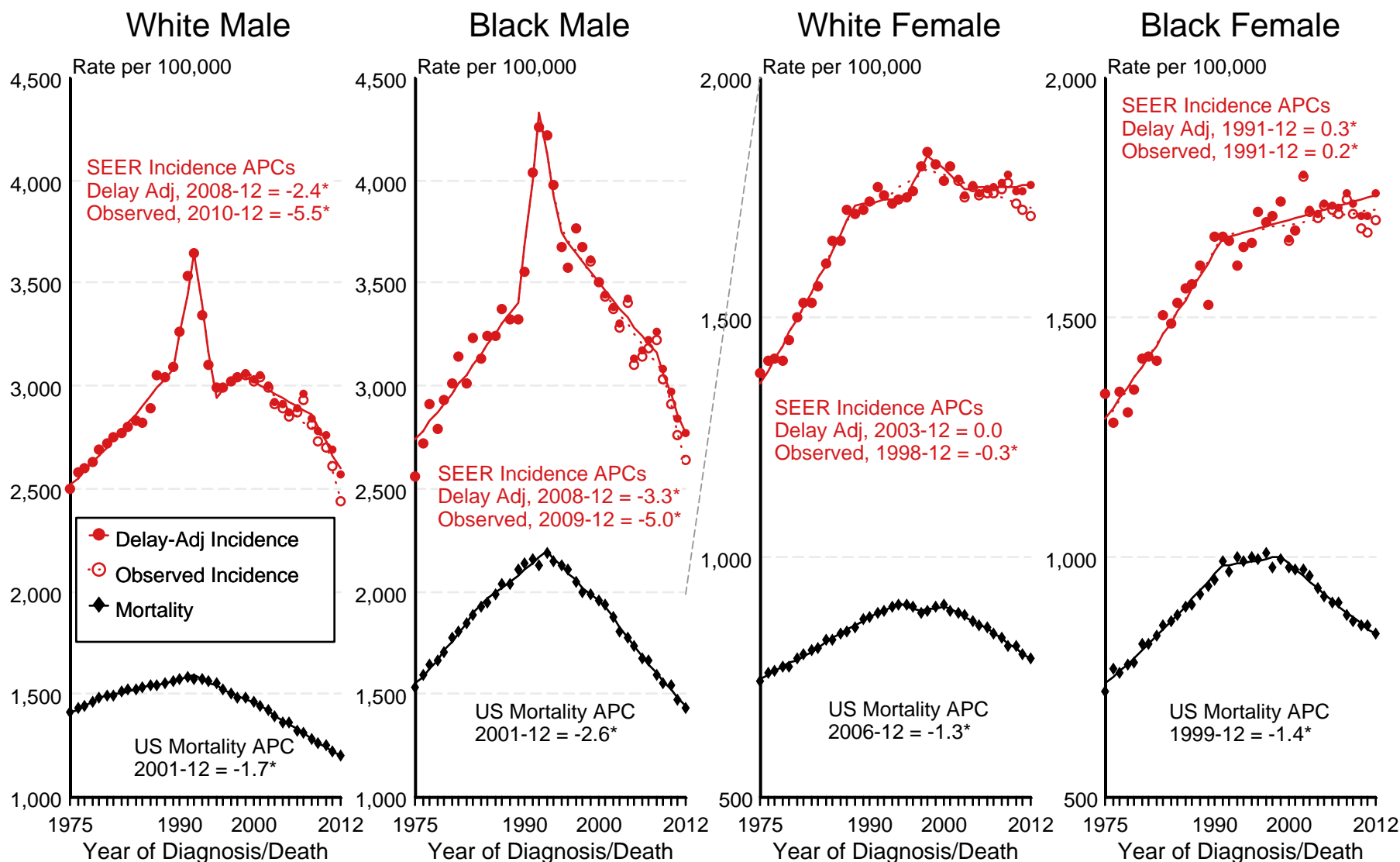
Regression lines and APCs are calculated using the Joinpoint Regression Program Version 4.2.0, April 2015, National Cancer Institute.

The APC is the Annual Percent Change for the regression line segments. The APC shown on the graph is for the most recent trend.

\* The APC is significantly different from zero ( $p < 0.05$ ).

Figure 2.3

# SEER Observed Incidence, SEER Delay Adjusted Incidence and US Death Rates<sup>a</sup> All Cancer Sites, Ages 65 and Over, by Race and Sex



Source: SEER 9 areas and US Mortality Files (National Center for Health Statistics, CDC).

<sup>a</sup> Rates are age-adjusted to the 2000 US Std Population (19 age groups - Census P25-1103).

Regression lines and APCs are calculated using the Joinpoint Regression Program Version 4.2.0, April 2015, National Cancer Institute.

The APC is the Annual Percent Change for the regression line segments. The APC shown on the graph is for the most recent trend.

\* The APC is significantly different from zero ( $p < 0.05$ ).

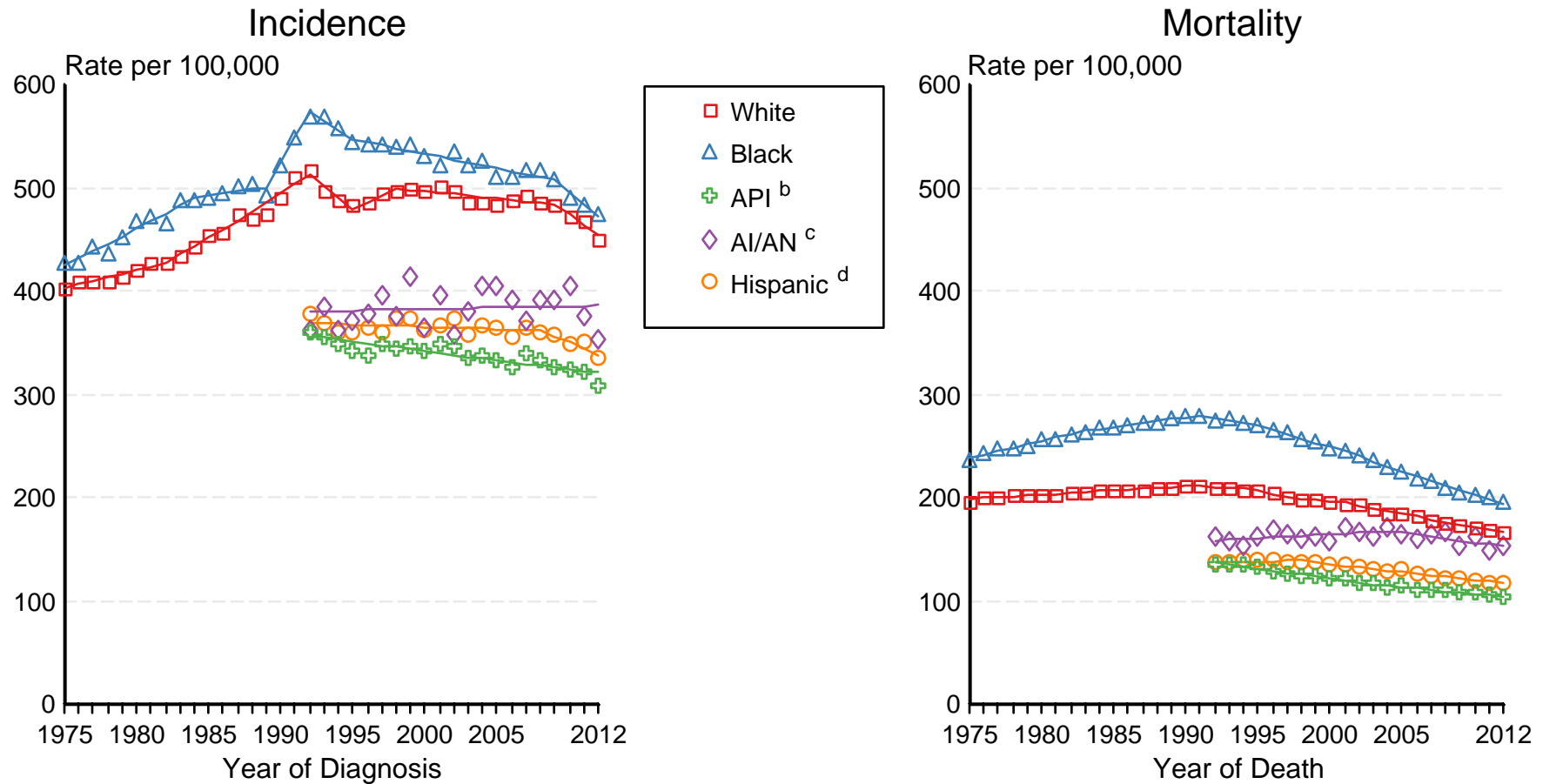


Figure 2.4

# SEER Incidence and US Death Rates<sup>a</sup> All Cancer Sites, Both Sexes

Joinpoint Analyses for Whites and Blacks from 1975-2012

and for Asian/Pacific Islanders, American Indians/Alaska Natives and Hispanics from 1992-2012



Source: Incidence data for whites and blacks are from the SEER 9 areas (San Francisco, Connecticut, Detroit, Hawaii, Iowa, New Mexico, Seattle, Utah, Atlanta). Incidence data for Asian/Pacific Islanders, American Indians/Alaska Natives and Hispanics are from the SEER 13 Areas (SEER 9 Areas, San Jose-Monterey, Los Angeles, Alaska Native Registry and Rural Georgia). Mortality data are from US Mortality Files, National Center for Health Statistics, CDC.

<sup>a</sup> Rates are age-adjusted to the 2000 US Std Population (19 age groups - Census P25-1103).

Regression lines are calculated using the Joinpoint Regression Program Version 4.2.0, April 2015, National Cancer Institute. Joinpoint analyses for Whites and Blacks during the 1975-2012 period allow a maximum of 5 joinpoints. Analyses for other ethnic groups during the period 1992-2012 allow a maximum of 3 joinpoints.

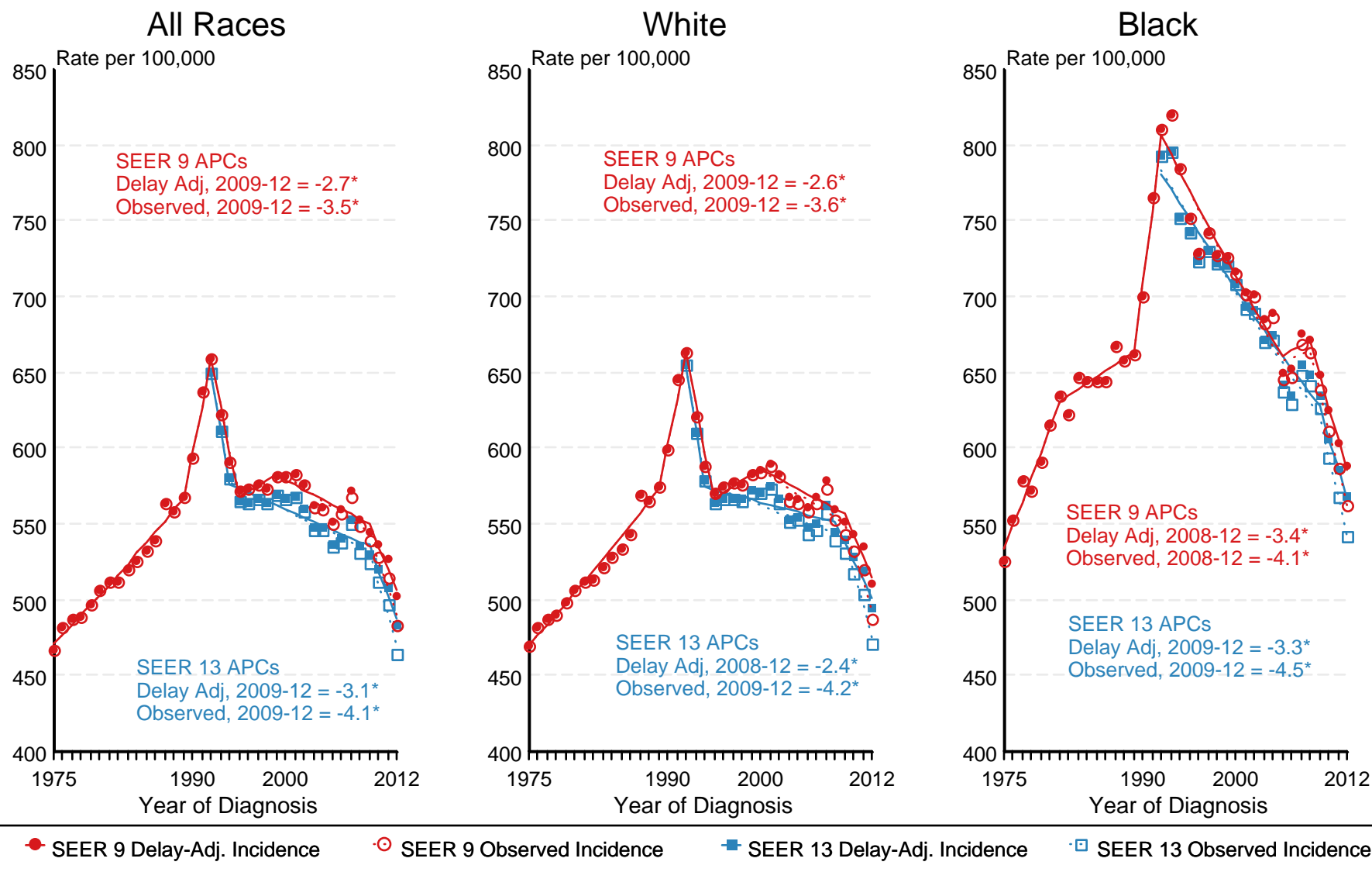
<sup>b</sup> API = Asian/Pacific Islander.

<sup>c</sup> AI/AN = American Indian/Alaska Native. Rates for American Indian/Alaska Native are based on the CHSDA(Contract Health Service Delivery Area) counties.

<sup>d</sup> Hispanic is not mutually exclusive from whites, blacks, Asian/Pacific Islanders, and American Indians/Alaska Natives. Incidence data for Hispanics are based on NHIA and exclude cases from the Alaska Native Registry. Mortality data for Hispanics exclude cases from New Hampshire and Oklahoma.

Figure 2.5

# SEER Observed Incidence and SEER Delay Adjusted Incidence Rates<sup>a</sup> SEER 9 Areas Compared to SEER 13 Areas All Cancer Sites, Males, by Race



Source: SEER 9 areas and SEER 13 areas.

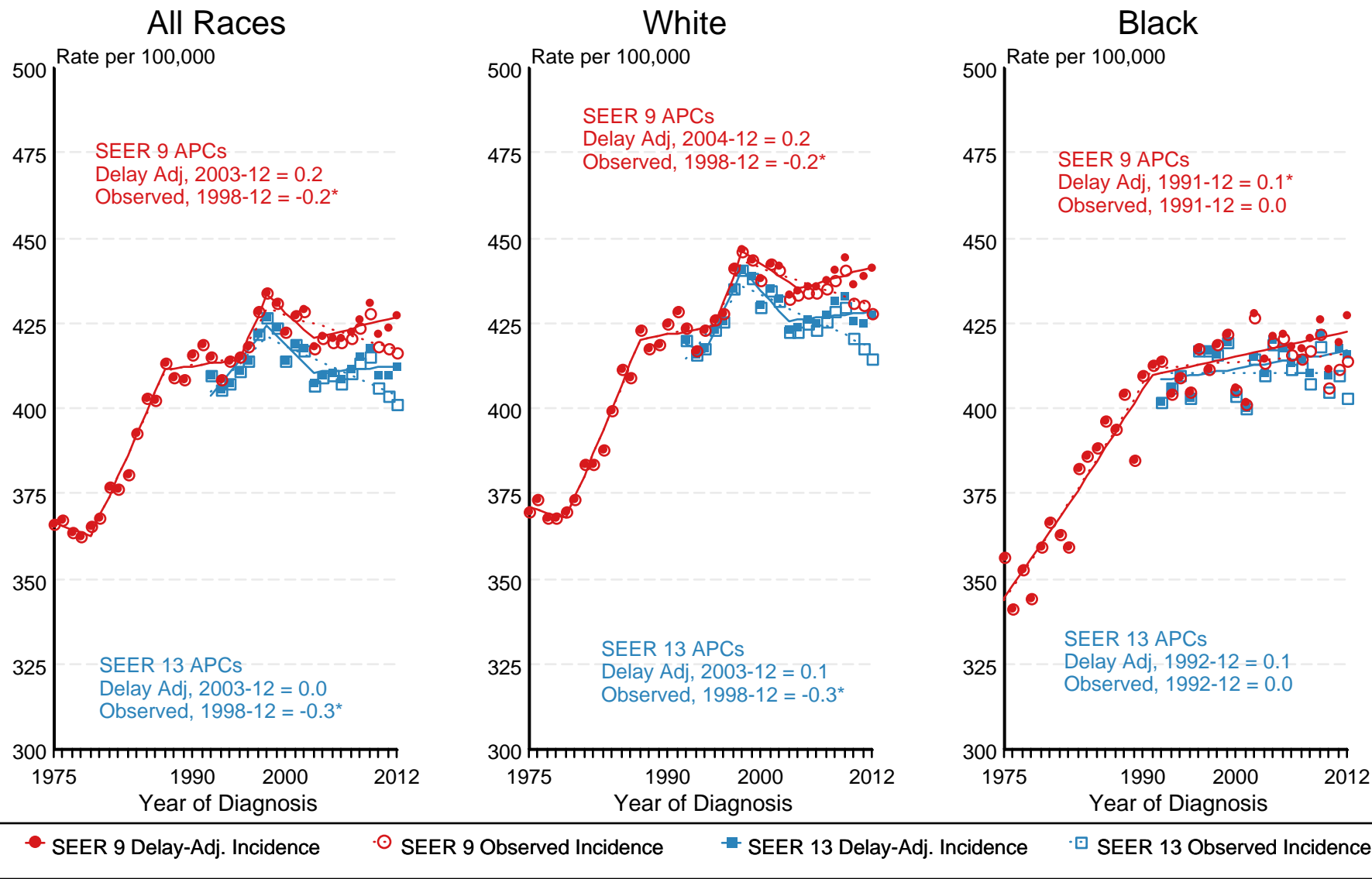
<sup>a</sup> Rates are age-adjusted to the 2000 US Std Population (19 age groups - Census P25-1103).

Regression lines and APCs are calculated using the Joinpoint Regression Program Version 4.2.0, April 2015, National Cancer Institute. The APC is the Annual Percent Change for the regression line segments. The APC shown on the graph is for the most recent trend.

\* The APC is significantly different from zero ( $p < 0.05$ ).

Figure 2.6

# SEER Observed Incidence and SEER Delay Adjusted Incidence Rates<sup>a</sup> SEER 9 Areas Compared to SEER 13 Areas All Cancer Sites, Female, by Race



Source: SEER 9 areas and SEER 13 areas.

<sup>a</sup> Rates are age-adjusted to the 2000 US Std Population (19 age groups - Census P25-1103).

Regression lines and APCs are calculated using the Joinpoint Regression Program Version 4.2.0, April 2015, National Cancer Institute.

The APC is the Annual Percent Change for the regression line segments. The APC shown on the graph is for the most recent trend.

\* The APC is significantly different from zero ( $p < 0.05$ ).