

Table 11.1
Cancer of the Kidney and Renal Pelvis (Invasive)

Trends in SEER Incidence^{ab} and U.S. Mortality^c Using the Joinpoint Regression Program,
1975-2012 With up to Five Joinpoints, 1992-2012 With up to Three Joinpoints,
Both Sexes by Race/Ethnicity

	JP Trend 1		JP Trend 2		JP Trend 3		JP Trend 4		JP Trend 5		JP Trend 6		AAPC ^d	
	Years	APC	Years	APC	Years	APC	Years	APC	Years	APC	Years	APC	2003-12	2008-12
<u>SEER 9 Delay-Adjusted Incidence^a, 1975-2012</u>														
All Races	1975-94	2.3*	1994-97	-0.5	1997-08	3.2*	2008-12	-0.1					1.7*	-0.1
White	1975-92	2.3*	1992-97	0.3	1997-07	3.2*	2007-12	0.5					1.7*	0.5
Black	1975-12	2.9*											2.9*	2.9*
<u>SEER 13 Delay-Adjusted Incidence^b, 1992-2012</u>														
All Races	1992-99	1.4*	1999-08	3.3*	2008-12	-0.2							1.7*	-0.2
White	1992-97	0.9	1997-08	3.1*	2008-12	0.1							1.7*	0.1
Black	1992-12	2.6*											2.6*	2.6*
<u>SEER 9 Observed Incidence^a, 1975-2012</u>														
All Races	1975-94	2.3*	1994-97	-0.5	1997-08	3.1*	2008-12	-0.8					1.4*	-0.8
White	1975-92	2.3*	1992-97	0.3	1997-07	3.2*	2007-12	-0.1					1.4*	-0.1
Black	1975-12	2.8*											2.8*	2.8*
<u>SEER 13 Observed Incidence^b, 1992-2012</u>														
All Races	1992-99	1.3*	1999-08	3.3*	2008-12	-1.0							1.4*	-1.0
White	1992-97	0.9	1997-08	3.1*	2008-12	-0.7							1.4*	-0.7
White NH ^{ef}	1992-97	0.8	1997-08	3.0*	2008-12	-0.5							1.4*	-0.5
Black	1992-10	2.8*	2010-12	-4.7									1.1	-1.0
Black NH ^{ef}	1992-05	2.1*	2005-08	8.2	2008-12	-3.0							1.7	-3.0
API ^e	1992-04	2.0*	2004-07	7.6	2007-12	-1.0							2.1	-1.0
AI/AN ^{eg}	1992-12	1.5*											1.5*	1.5*
Hispanic ^f	1992-08	3.1*	2008-12	-1.0									1.3	-1.0
<u>U.S. Cancer Mortality^c, 1975-2012</u>														
All Races	1975-95	1.0*	1995-12	-0.7*									-0.7*	-0.7*
White	1975-95	0.9*	1995-12	-0.6*									-0.6*	-0.6*
Black	1975-94	2.3*	1994-12	-0.9*									-0.9*	-0.9*
<u>U.S. Cancer Mortality^c, 1992-2012</u>														
All Races	1992-02	-0.1	2002-12	-0.9*									-0.9*	-0.9*
White	1992-12	-0.5*											-0.5*	-0.5*
White NH ^{ef}	1992-02	-0.1	2002-12	-0.8*									-0.8*	-0.8*
Black	1992-95	2.9	1995-12	-0.9*									-0.9*	-0.9*
Black NH ^{ef}	1992-95	2.9	1995-12	-0.8*									-0.8*	-0.8*
API ^e	1992-12	0.1											0.1	0.1
AI/AN ^{eg}	1992-12	0.1											0.1	0.1
Hispanic ^f	1992-12	0.0											0.0	0.0

Joinpoint Regression Program Version 4.2.0, April 2015, National Cancer Institute. (<http://surveillance.cancer.gov/joinpoint/>).

The APC is the Annual Percent Change based on rates age-adjusted to the 2000 US Std Population (19 age groups - Census P25-1130).

Trends are from the SEER 9 areas (San Francisco, Connecticut, Detroit, Hawaii, Iowa, New Mexico, Seattle, Utah, and Atlanta).

Trends are from the SEER 13 areas (SEER 9 Areas, Los Angeles, San Jose-Monterey, Rural Georgia, and the Alaska Native Registry).

Trends are from US Mortality Files, National Center for Health Statistics, Centers for Disease Control and Prevention.

The AAPC is the Average Annual Percent Change and is based on the APCs calculated by Joinpoint.

API - Asian/Pacific Islander, AI/AN - American Indian/Alaska Native, NH - Non-Hispanic

Hispanic and Non-Hispanic are not mutually exclusive from whites, blacks, Asian/Pacific Islanders, and American Indians/Alaska

Natives. Incidence data for Hispanics and Non-Hispanics are based on NHIA and exclude cases from the Alaska Native Registry.

The Hispanic and Non-Hispanic mortality trends exclude deaths from New Hampshire and Oklahoma.

Data for American Indian/Alaska Native are based on the CHSDA (Contract Health Service Delivery Area) counties.

* The APC/AAPC is significantly different from zero ($p < .05$).

- Joinpoint regression line analysis could not be performed on data series.

Table 11.2
Cancer of the Kidney and Renal Pelvis (Invasive)

Trends in SEER Incidence^{ab} and U.S. Mortality^c Using the Joinpoint Regression Program,
1975-2012 With up to Five Joinpoints, 1992-2012 With up to Three Joinpoints,
Males by Race/Ethnicity

	JP Trend 1		JP Trend 2		JP Trend 3		JP Trend 4		JP Trend 5		JP Trend 6		AAPC ^d	
	Years	APC	Years	APC	Years	APC	Years	APC	Years	APC	Years	APC	2003-12	2008-12
<u>SEER 9 Delay-Adjusted Incidence^a, 1975-2012</u>														
All Races	1975-04	1.8*	2004-08	4.1*	2008-12	-0.2							1.9*	-0.2
White	1975-89	2.2*	1989-97	0.7	1997-08	2.8*	2008-12	0.4					1.7*	0.4
Black	1975-12	2.9*											2.9*	2.9*
<u>SEER 13 Delay-Adjusted Incidence^b, 1992-2012</u>														
All Races	1992-99	1.1*	1999-08	3.2*	2008-12	-0.1							1.7*	-0.1
White	1992-97	0.8	1997-08	2.9*	2008-12	0.1							1.7*	0.1
Black	1992-12	2.6*											2.6*	2.6*
<u>SEER 9 Observed Incidence^a, 1975-2012</u>														
All Races	1975-04	1.8*	2004-08	4.1*	2008-12	-1.0							1.6	-1.0
White	1975-89	2.2*	1989-97	0.7	1997-08	2.7*	2008-12	-0.5					1.3*	-0.5
Black	1975-12	2.9*											2.9*	2.9*
<u>SEER 13 Observed Incidence^b, 1992-2012</u>														
All Races	1992-04	1.9*	2004-08	4.4*	2008-12	-1.4							1.5*	-1.4
White	1992-97	0.8	1997-08	2.9*	2008-12	-0.8							1.3*	-0.8
White NH ^{ef}	1992-99	1.4*	1999-08	3.0*	2008-12	-0.3							1.5*	-0.3
Black	1992-12	2.5*											2.5*	2.5*
Black NH ^{ef}	1992-12	2.5*											2.5*	2.5*
API ^e	1992-12	2.4*											2.4*	2.4*
AI/AN ^{eg}	1992-12	1.5*											1.5*	1.5*
Hispanic ^f	1992-08	3.1*	2008-12	-2.6									0.5	-2.6
<u>U.S. Cancer Mortality^c, 1975-2012</u>														
All Races	1975-91	1.1*	1991-01	-0.1	2001-12	-0.8*							-0.8*	-0.8*
White	1975-91	1.0*	1991-02	-0.1	2002-12	-0.7*							-0.7*	-0.7*
Black	1975-91	3.1*	1991-12	-0.6*									-0.6*	-0.6*
<u>U.S. Cancer Mortality^c, 1992-2012</u>														
All Races	1992-01	-0.1	2001-12	-0.8*									-0.8*	-0.8*
White	1992-02	-0.1	2002-12	-0.7*									-0.7*	-0.7*
White NH ^{ef}	1992-12	-0.4*											-0.4*	-0.4*
Black	1992-12	-0.7*											-0.7*	-0.7*
Black NH ^{ef}	1992-12	-0.6*											-0.6*	-0.6*
API ^e	1992-12	0.4											0.4	0.4
AI/AN ^{eg}	1992-12	-0.3											-0.3	-0.3
Hispanic ^f	1992-12	-0.1											-0.1	-0.1

Joinpoint Regression Program Version 4.2.0, April 2015, National Cancer Institute. (<http://surveillance.cancer.gov/joinpoint/>).

The APC is the Annual Percent Change based on rates age-adjusted to the 2000 US Std Population (19 age groups - Census P25-1130). Trends are from the SEER 9 areas (San Francisco, Connecticut, Detroit, Hawaii, Iowa, New Mexico, Seattle, Utah, and Atlanta).

Trends are from the SEER 13 areas (SEER 9 Areas, Los Angeles, San Jose-Monterey, Rural Georgia, and the Alaska Native Registry).

Trends are from US Mortality Files, National Center for Health Statistics, Centers for Disease Control and Prevention.

The AAPC is the Average Annual Percent Change and is based on the APCs calculated by Joinpoint.

API - Asian/Pacific Islander, AI/AN - American Indian/Alaska Native, NH - Non-Hispanic

Hispanic and Non-Hispanic are not mutually exclusive from whites, blacks, Asian/Pacific Islanders, and American Indians/Alaska Natives. Incidence data for Hispanics and Non-Hispanics are based on NHIA and exclude cases from the Alaska Native Registry.

The Hispanic and Non-Hispanic mortality trends exclude deaths from New Hampshire and Oklahoma.

Data for American Indian/Alaska Native are based on the CHSDA (Contract Health Service Delivery Area) counties.

* The APC/AAPC is significantly different from zero ($p < .05$).

- Joinpoint regression line analysis could not be performed on data series.

Table 11.3
Cancer of the Kidney and Renal Pelvis (Invasive)

Trends in SEER Incidence^{ab} and U.S. Mortality^c Using the Joinpoint Regression Program,
1975-2012 With up to Five Joinpoints, 1992-2012 With up to Three Joinpoints,
Females by Race/Ethnicity

	JP Trend 1		JP Trend 2		JP Trend 3		JP Trend 4		JP Trend 5		JP Trend 6		AAPC ^d	
	Years	APC	Years	APC	Years	APC	Years	APC	Years	APC	Years	APC	2003-12	2008-12
<u>SEER 9 Delay-Adjusted Incidence^a, 1975-2012</u>														
All Races	1975-93	2.7*	1993-99	0.7	1999-06	4.1*	2006-12	0.1					1.4*	0.1
White	1975-92	2.8*	1992-99	0.7	1999-06	4.2*	2006-12	0.0					1.4*	0.0
Black	1975-12	2.8*											2.8*	2.8*
<u>SEER 13 Delay-Adjusted Incidence^b, 1992-2012</u>														
All Races	1992-00	1.6*	2000-07	3.6*	2007-12	-0.1							1.5*	-0.1
White	1992-97	0.6	1997-07	3.3*	2007-12	0.2							1.6*	0.2
Black	1992-12	2.4*											2.4*	2.4*
<u>SEER 9 Observed Incidence^a, 1975-2012</u>														
All Races	1975-93	2.7*	1993-99	0.8	1999-07	3.8*	2007-12	-0.9					1.2	-0.9
White	1975-92	2.8*	1992-99	0.7	1999-06	4.2*	2006-12	-0.3					1.2	-0.3
Black	1975-12	2.7*											2.7*	2.7*
<u>SEER 13 Observed Incidence^b, 1992-2012</u>														
All Races	1992-98	1.2	1998-08	3.1*	2008-12	-1.3							1.2*	-1.3
White	1992-97	0.6	1997-07	3.3*	2007-12	-0.3							1.3*	-0.3
White NH ^{ef}	1992-97	0.1	1997-07	3.3*	2007-12	-0.8							1.0*	-0.8
Black	1992-12	2.3*											2.3*	2.3*
Black NH ^{ef}	1992-12	2.4*											2.4*	2.4*
API ^e	1992-07	3.9*	2007-12	-1.2									1.1	-1.2
AI/AN ^{eg}	1992-12	1.5											1.5	1.5
Hispanic ^f	1992-12	2.7*											2.7*	2.7*
<u>U.S. Cancer Mortality^c, 1975-2012</u>														
All Races	1975-95	1.1*	1995-12	-1.0*									-1.0*	-1.0*
White	1975-95	1.0*	1995-12	-0.9*									-0.9*	-0.9*
Black	1975-95	2.3*	1995-12	-1.0*									-1.0*	-1.0*
<u>U.S. Cancer Mortality^c, 1992-2012</u>														
All Races	1992-05	-0.5*	2005-12	-1.6*									-1.3*	-1.6*
White	1992-05	-0.4*	2005-12	-1.6*									-1.3*	-1.6*
White NH ^{ef}	1992-05	-0.4*	2005-12	-1.7*									-1.4*	-1.7*
Black	1992-12	-0.6*											-0.6*	-0.6*
Black NH ^{ef}	1992-12	-0.6*											-0.6*	-0.6*
API ^e	1992-12	-0.1											-0.1	-0.1
AI/AN ^{eg}	1992-12	-0.1											-0.1	-0.1
Hispanic ^f	1992-12	0.1											0.1	0.1

Joinpoint Regression Program Version 4.2.0, April 2015, National Cancer Institute. (<http://surveillance.cancer.gov/joinpoint/>).

The APC is the Annual Percent Change based on rates age-adjusted to the 2000 US Std Population (19 age groups - Census P25-1130).

Trends are from the SEER 9 areas (San Francisco, Connecticut, Detroit, Hawaii, Iowa, New Mexico, Seattle, Utah, and Atlanta).

Trends are from the SEER 13 areas (SEER 9 Areas, Los Angeles, San Jose-Monterey, Rural Georgia, and the Alaska Native Registry).

Trends are from US Mortality Files, National Center for Health Statistics, Centers for Disease Control and Prevention.

The AAPC is the Average Annual Percent Change and is based on the APCs calculated by Joinpoint.

API - Asian/Pacific Islander, AI/AN - American Indian/Alaska Native, NH - Non-Hispanic

Hispanic and Non-Hispanic are not mutually exclusive from whites, blacks, Asian/Pacific Islanders, and American Indians/Alaska

Natives. Incidence data for Hispanics and Non-Hispanics are based on NHIA and exclude cases from the Alaska Native Registry.

The Hispanic and Non-Hispanic mortality trends exclude deaths from New Hampshire and Oklahoma.

Data for American Indian/Alaska Native are based on the CHSDA (Contract Health Service Delivery Area) counties.

* The APC/AAPC is significantly different from zero ($p < .05$).

- Joinpoint regression line analysis could not be performed on data series.

Table 11.4
Cancer of the Kidney and Renal Pelvis (Invasive)

Delay-adjusted SEER Incidence^a Rates by Year, Race and Sex

Year of Diagnosis:	All Races			Whites			Blacks		
	Total	Males	Females	Total	Males	Females	Total	Males	Females
1975	7.08	10.34	4.52	7.33	10.82	4.63	6.17	8.24	4.31
1976	7.97	11.20	5.48	8.13	11.48	5.59	7.75	11.68	4.69
1977	8.06	11.42	5.49	8.13	11.68	5.48	8.51	11.10	6.39
1978	7.84	11.82	4.83	7.97	12.09	4.88	8.01	11.01	5.65
1979	7.63	11.12	5.05	7.85	11.59	5.10	7.26	8.22	6.30
1980	8.06	11.69	5.38	8.36	12.21	5.55	5.97	7.95	4.36
1981	8.49	12.83	5.30	8.57	13.03	5.32	10.00	15.77	5.82
1982	8.36	11.82	5.73	8.53	12.02	5.88	7.59	11.20	4.90
1983	8.94	13.25	5.66	9.24	13.78	5.80	8.81	13.53	5.52
1984	9.19	13.13	6.20	9.48	13.62	6.34	8.96	12.01	6.79
1985	8.94	13.12	5.75	9.22	13.59	5.92	8.62	11.69	6.21
1986	9.66	13.83	6.55	9.83	14.10	6.66	9.95	14.74	6.49
1987	9.90	14.07	6.73	10.08	14.35	6.87	11.06	15.60	7.51
1988	9.94	13.99	6.97	10.11	14.31	7.06	11.60	15.36	8.79
1989	10.31	14.49	7.15	10.59	15.05	7.22	10.78	15.06	7.82
1990	10.44	14.72	7.14	10.70	14.98	7.44	10.51	15.94	6.61
1991	10.65	15.07	7.18	10.82	15.25	7.34	12.24	18.19	7.79
1992	10.80	15.34	7.41	11.09	15.63	7.73	10.98	16.39	7.18
1993	10.76	14.70	7.63	10.86	14.76	7.74	12.77	17.29	9.44
1994	11.30	15.67	7.86	11.56	16.01	8.05	12.68	17.94	8.66
1995	11.12	15.48	7.66	11.13	15.40	7.71	14.21	21.51	9.19
1996	11.35	15.82	7.91	11.46	16.21	7.78	13.89	17.38	11.30
1997	10.96	15.12	7.64	11.01	15.11	7.71	13.69	19.65	9.37
1998	11.81	16.41	8.19	12.09	16.72	8.44	12.70	17.43	9.03
1999	11.46	15.99	7.82	11.63	16.22	7.89	13.79	19.09	9.95
2000	12.52	17.51	8.54	12.75	18.05	8.42	14.83	19.17	12.00
2001	12.61	17.58	8.61	12.81	17.80	8.77	15.59	22.96	10.31
2002	12.94	17.87	8.92	13.20	18.13	9.13	15.36	22.53	10.35
2003	13.57	18.31	9.73	13.91	18.51	10.15	14.61	21.73	9.36
2004	13.65	18.55	9.68	13.99	18.96	9.88	16.03	22.57	11.16
2005	14.05	19.38	9.73	14.27	19.60	9.86	17.09	25.05	11.53
2006	14.68	19.33	10.81	15.02	19.78	10.97	16.17	21.22	12.38
2007	15.61	21.43	10.77	15.77	21.47	10.96	18.96	26.83	13.12
2008	16.00	21.85	11.14	15.99	21.62	11.21	20.66	30.61	13.71
2009	15.41	21.37	10.40	15.56	21.48	10.43	19.36	28.92	12.57
2010	15.10	21.05	10.08	15.18	20.96	10.22	19.66	28.63	12.82
2011	15.73	21.74	10.64	16.02	22.08	10.76	18.63	25.89	13.14
2012	15.91	21.68	11.01	16.16	21.76	11.31	19.15	27.23	12.99

Additional information on the model used to delay-adjust SEER Incidence rates can be found at [\(http://surveillance.cancer.gov/delay/\)](http://surveillance.cancer.gov/delay/).

^a SEER 9 areas (San Francisco, Connecticut, Detroit, Hawaii, Iowa, New Mexico, Seattle, Utah, and Atlanta). Rates are per 100,000 and are age-adjusted to the 2000 US Std Population (19 age groups - Census P25-1130).

- Delay-adjusted rate is not shown for observed rates based on less than 16 cases for the time interval.

Table 11.5
Cancer of the Kidney and Renal Pelvis (Invasive)
Age-adjusted SEER Incidence^a Rates by Year, Race and Sex

Year of Diagnosis:	All Races			Whites			Blacks		
	Total	Males	Females	Total	Males	Females	Total	Males	Females
1975-2012	11.70	16.37	8.00	11.79	16.51	8.05	13.80	19.60	9.53
1975	7.08	10.34	4.52	7.33	10.82	4.63	6.17	8.24	4.31
1976	7.97	11.20	5.48	8.13	11.48	5.59	7.75	11.68	4.69
1977	8.06	11.42	5.49	8.13	11.68	5.48	8.51	11.10	6.39
1978	7.84	11.82	4.83	7.97	12.09	4.88	8.01	11.01	5.65
1979	7.63	11.12	5.05	7.85	11.59	5.10	7.26	8.22	6.30
1980	8.06	11.69	5.38	8.36	12.21	5.55	5.97	7.95	4.36
1981	8.49	12.83	5.30	8.57	13.03	5.32	10.00	15.77	5.82
1982	8.36	11.82	5.73	8.53	12.02	5.88	7.59	11.20	4.90
1983	8.94	13.25	5.66	9.24	13.78	5.80	8.81	13.53	5.52
1984	9.19	13.13	6.20	9.48	13.62	6.34	8.96	12.01	6.79
1985	8.94	13.12	5.75	9.22	13.59	5.92	8.62	11.69	6.21
1986	9.66	13.83	6.55	9.83	14.10	6.66	9.95	14.74	6.49
1987	9.90	14.07	6.73	10.08	14.35	6.87	11.06	15.60	7.51
1988	9.94	13.99	6.97	10.11	14.31	7.06	11.60	15.36	8.79
1989	10.31	14.49	7.15	10.59	15.05	7.22	10.78	15.06	7.82
1990	10.44	14.72	7.14	10.70	14.98	7.44	10.51	15.94	6.61
1991	10.65	15.07	7.18	10.82	15.25	7.34	12.24	18.19	7.79
1992	10.80	15.34	7.41	11.09	15.63	7.73	10.98	16.39	7.18
1993	10.76	14.70	7.63	10.86	14.76	7.74	12.77	17.29	9.44
1994	11.30	15.67	7.86	11.56	16.01	8.05	12.68	17.94	8.66
1995	11.12	15.48	7.66	11.13	15.40	7.71	14.21	21.51	9.19
1996	11.35	15.82	7.91	11.46	16.21	7.78	13.89	17.38	11.30
1997	10.96	15.12	7.64	11.01	15.11	7.71	13.69	19.65	9.37
1998	11.81	16.41	8.19	12.09	16.71	8.44	12.70	17.43	9.03
1999	11.45	15.98	7.82	11.62	16.22	7.89	13.79	19.08	9.95
2000	12.51	17.51	8.53	12.74	18.04	8.41	14.83	19.16	12.00
2001	12.60	17.57	8.61	12.81	17.79	8.77	15.58	22.94	10.31
2002	12.93	17.85	8.92	13.19	18.11	9.13	15.35	22.51	10.34
2003	13.56	18.29	9.72	13.90	18.49	10.14	14.60	21.70	9.36
2004	13.63	18.52	9.67	13.97	18.93	9.87	16.02	22.54	11.16
2005	14.03	19.35	9.72	14.24	19.56	9.85	17.06	25.01	11.52
2006	14.65	19.29	10.79	14.98	19.72	10.95	16.14	21.16	12.36
2007	15.57	21.36	10.74	15.72	21.39	10.93	18.90	26.73	13.09
2008	15.93	21.75	11.10	15.91	21.50	11.17	20.56	30.44	13.67
2009	15.31	21.21	10.35	15.44	21.29	10.38	19.22	28.68	12.51
2010	14.92	20.76	9.99	14.99	20.63	10.13	19.41	28.21	12.70
2011	15.43	21.26	10.48	15.69	21.54	10.60	18.28	25.34	12.95
2012	15.34	20.81	10.70	15.53	20.78	10.98	18.46	26.13	12.60

^a SEER 9 areas (San Francisco, Connecticut, Detroit, Hawaii, Iowa, New Mexico, Seattle, Utah, and Atlanta). Rates are per 100,000 and are age-adjusted to the 2000 US Std Population (19 age groups - Census P25-1130).
- Statistic not shown. Rate based on less than 16 cases for the time interval.

Table 11.6
Cancer of the Kidney and Renal Pelvis (Invasive)
Age-adjusted U.S. Death^a Rates by Year, Race and Sex

Year of Death:	All Races			Whites			Blacks		
	Total	Males	Females	Total	Males	Females	Total	Males	Females
1975-2012	4.05	5.89	2.68	4.12	5.99	2.72	3.82	5.64	2.57
1975	3.61	5.18	2.43	3.70	5.30	2.49	2.81	4.15	1.82
1976	3.61	5.23	2.41	3.69	5.35	2.45	2.92	4.24	1.92
1977	3.68	5.35	2.45	3.78	5.51	2.50	2.88	4.03	1.99
1978	3.69	5.43	2.41	3.76	5.52	2.46	3.17	4.83	1.93
1979	3.63	5.32	2.40	3.71	5.46	2.43	2.95	4.17	2.04
1980	3.68	5.46	2.38	3.77	5.61	2.44	2.96	4.19	2.01
1981	3.73	5.40	2.51	3.80	5.50	2.56	3.18	4.60	2.14
1982	3.85	5.68	2.54	3.92	5.80	2.56	3.40	4.83	2.37
1983	3.85	5.57	2.60	3.93	5.69	2.67	3.26	4.85	2.15
1984	3.90	5.75	2.57	3.96	5.88	2.60	3.45	4.86	2.45
1985	3.96	5.76	2.66	4.00	5.79	2.71	3.83	6.00	2.35
1986	4.05	5.83	2.78	4.11	5.94	2.82	3.68	5.34	2.52
1987	4.14	6.04	2.77	4.23	6.15	2.83	3.66	5.49	2.42
1988	4.03	5.86	2.71	4.09	5.93	2.76	3.78	5.82	2.41
1989	4.16	6.08	2.79	4.22	6.15	2.83	3.99	6.05	2.64
1990	4.19	6.16	2.77	4.23	6.22	2.79	4.20	6.35	2.76
1991	4.30	6.18	2.95	4.34	6.24	2.98	4.34	6.35	2.97
1992	4.29	6.24	2.88	4.37	6.33	2.94	3.97	5.94	2.61
1993	4.16	6.09	2.75	4.22	6.18	2.77	4.07	6.09	2.75
1994	4.27	6.20	2.89	4.32	6.25	2.92	4.24	6.40	2.81
1995	4.34	6.19	2.99	4.39	6.28	3.01	4.38	6.26	3.14
1996	4.27	6.19	2.84	4.33	6.29	2.88	4.15	5.93	2.93
1997	4.27	6.19	2.86	4.32	6.23	2.91	4.32	6.55	2.84
1998	4.26	6.19	2.81	4.34	6.27	2.88	4.01	6.28	2.46
1999	4.06	5.90	2.68	4.10	5.96	2.71	4.15	6.10	2.82
2000	4.22	6.14	2.79	4.30	6.24	2.84	4.13	6.28	2.74
2001	4.27	6.24	2.80	4.34	6.33	2.84	4.26	6.45	2.82
2002	4.23	6.16	2.77	4.33	6.30	2.81	4.06	5.86	2.85
2003	4.20	6.09	2.75	4.28	6.21	2.80	4.11	6.12	2.75
2004	4.13	5.94	2.74	4.24	6.08	2.80	3.99	5.87	2.72
2005	4.13	5.95	2.74	4.22	6.04	2.81	4.04	6.11	2.61
2006	4.00	5.76	2.66	4.09	5.86	2.73	3.88	5.90	2.52
2007	4.02	5.81	2.65	4.08	5.88	2.69	4.08	5.98	2.78
2008	3.99	5.83	2.56	4.07	5.93	2.60	3.87	5.73	2.58
2009	3.93	5.75	2.51	4.01	5.83	2.55	3.95	5.80	2.65
2010	3.92	5.71	2.52	4.04	5.86	2.58	3.65	5.24	2.53
2011	3.94	5.70	2.55	4.05	5.88	2.57	3.78	5.42	2.70
2012	3.83	5.65	2.40	3.95	5.79	2.47	3.62	5.60	2.25

^a US Mortality Files, National Center for Health Statistics, Centers for Disease Control and Prevention.
Rates are per 100,000 and are age-adjusted to the 2000 US Std Population (19 age groups - Census P25-1130).
- Statistic not shown. Rate based on less than 16 cases for the time interval.

Table 11.7
Cancer of the Kidney and Renal Pelvis (Invasive)

SEER Incidence^a and U.S. Death^b Rates, Age-Adjusted and Age-Specific Rates, by Race and Sex

	All Races			Whites			Blacks		
	Total	Males	Females	Total	Males	Females	Total	Males	Females
<u>SEER Incidence</u>									
<u>Age at Diagnosis</u>									
Age-Adjusted Rates, 2008-2012									
All ages	15.6	21.3	10.8	16.1	21.9	11.1	18.1	25.1	12.8
Under 65	8.4	11.2	5.8	8.7	11.4	6.1	10.0	13.9	6.7
65 and over	65.1	91.6	44.9	67.1	94.4	45.9	73.8	102.4	54.7
All ages (IARC world std) ^c	11.0	14.9	7.6	11.3	15.2	7.9	13.1	18.0	9.1
Age-Specific Rates, 2008-2012									
<1	1.6	1.8	1.4	1.5	1.5	1.5	2.1	-	-
1-4	2.0	1.8	2.1	2.0	2.0	2.1	2.2	2.1	2.3
5-9	0.6	0.5	0.7	0.5	0.5	0.6	0.9	-	1.3
10-14	0.1	0.1	0.1	0.1	-	-	-	-	-
15-19	0.2	0.2	0.2	0.2	0.2	0.2	-	-	-
20-24	0.5	0.4	0.5	0.5	0.4	0.5	0.7	0.7	0.8
25-29	1.2	1.2	1.2	1.3	1.3	1.3	1.5	1.4	1.6
30-34	2.7	3.1	2.3	2.9	3.1	2.6	2.8	3.7	1.9
35-39	5.1	6.2	4.0	5.3	6.2	4.3	5.3	6.9	3.8
40-44	9.1	11.9	6.4	9.6	12.4	6.8	9.9	13.7	6.5
45-49	14.8	19.6	10.0	15.4	20.3	10.4	15.9	21.4	11.0
50-54	22.3	29.7	15.2	22.9	29.9	15.9	27.1	39.3	16.2
55-59	31.9	44.1	20.4	32.5	44.6	20.9	40.5	56.6	26.8
60-64	44.2	61.1	28.7	45.0	61.6	29.4	55.2	79.0	35.7
65-69	60.1	83.3	39.6	61.4	84.7	40.3	76.8	108.0	52.7
70-74	68.5	94.5	46.8	71.1	98.2	48.0	79.5	107.5	59.2
75-79	71.2	98.6	50.2	73.5	102.0	51.3	76.8	103.5	59.7
80-84	68.6	99.6	47.9	70.6	101.9	49.4	70.1	105.2	51.1
85+	54.2	82.6	40.1	55.9	86.3	40.8	54.1	74.8	45.7
<u>U.S. Mortality</u>									
<u>Age at Death</u>									
Age-Adjusted Rates, 2008-2012									
All ages	3.9	5.7	2.5	4.0	5.9	2.6	3.8	5.6	2.5
Under 65	1.3	1.9	0.8	1.4	2.0	0.8	1.4	2.1	0.9
65 and over	21.9	31.9	14.6	22.5	32.8	14.9	20.0	29.6	14.1
All ages (IARC world std) ^c	2.4	3.4	1.5	2.4	3.5	1.5	2.4	3.5	1.5
Age-Specific Rates, 2008-2012									
<1	-	-	-	-	-	-	-	-	-
1-4	0.1	0.1	0.1	0.1	0.1	0.1	-	-	-
5-9	0.1	0.1	0.1	0.1	0.1	0.1	0.1	-	-
10-14	0.0	0.0	0.0	0.0	-	0.0	0.1	-	-
15-19	0.0	0.0	0.0	0.0	-	-	-	-	-
20-24	0.1	0.1	0.1	0.1	0.0	0.1	0.3	0.3	0.2
25-29	0.1	0.1	0.1	0.1	0.1	-	0.3	0.5	0.2
30-34	0.2	0.2	0.1	0.1	0.2	0.1	0.4	0.5	0.3
35-39	0.4	0.5	0.2	0.3	0.4	0.2	0.5	0.7	0.4
40-44	0.8	1.1	0.4	0.8	1.1	0.4	0.9	1.4	0.4
45-49	1.9	2.8	1.0	1.9	2.9	1.0	2.2	3.1	1.4
50-54	3.7	5.4	2.0	3.8	5.5	2.1	3.5	5.2	2.0
55-59	6.1	9.0	3.5	6.3	9.2	3.5	6.3	9.3	3.8
60-64	9.4	13.9	5.3	9.7	14.2	5.5	9.2	13.7	5.4
65-69	13.4	19.6	7.9	13.8	20.1	8.1	13.2	19.5	8.3
70-74	18.1	26.1	11.5	18.7	26.7	11.9	16.8	25.2	10.8
75-79	23.5	33.7	15.6	24.3	34.7	16.1	20.8	31.3	14.1
80-84	29.1	42.0	20.5	29.9	43.2	20.9	25.2	36.6	19.1
85+	36.9	56.5	27.3	37.6	57.9	27.6	34.0	49.6	27.9

^a SEER 18 areas. Rates are per 100,000 and are age-adjusted to the 2000 US Std Population (19 age groups - Census P25-1130), unless noted.

^b US Mortality Files, National Center for Health Statistics, Centers for Disease Control and Prevention.

^c Rates are per 100,000 and are age-adjusted to the 2000 US Std Population (19 age groups - Census P25-1130), unless noted.

- Rates are per 100,000 and are age-adjusted to the IARC world standard population.

- Statistic not shown. Rate based on less than 16 cases for the time interval.

Table 11.8
Cancer of the Kidney and Renal Pelvis (Invasive)

5-Year Relative and Period Survival (Percent) by Race, Sex, Diagnosis Year, Stage and Age

	All Races			Whites			Blacks		
	Total	Males	Females	Total	Males	Females	Total	Males	Females
5-Year Relative Survival (Percent)									
Year of Diagnosis:									
1960-1963 ^a	-	-	-	37	36	39	38	38	37
1970-1973 ^a	-	-	-	46	44	50	44	40	49
1975-1977 ^b	50.1	50.2	49.8	49.8	50.1	49.3	48.8	47.9	50.4 ^g
1978-1980 ^b	52.9	52.7	53.3	52.6	52.8	52.1	56.8	51.9	62.8 ^g
1981-1983 ^b	50.0	51.0	48.3	49.9	51.1	47.7	50.6	50.2	51.2
1984-1986 ^b	54.5	55.0	53.7	54.7	55.4	53.5	52.3	49.2	57.0
1987-1989 ^b	56.7	57.0	56.1	57.3	58.0	56.0	54.5	52.7	56.7
1990-1992 ^b	60.1	60.5	59.6	60.6	61.2	59.8	56.9	55.2	58.8
1993-1995 ^b	61.4	61.6	61.1	61.9	62.7	60.7	57.5	54.1	62.1
1996-1998 ^b	62.5	62.8	61.9	62.0	62.5	61.1	66.9	68.1	64.5
1999-2001 ^b	64.8	63.3	67.3	64.9	63.6	67.0	63.9	59.2	69.2
2002-2004 ^b	69.2	69.4	68.9	69.4	69.8	68.7	64.9	64.3	65.7
2005-2011 ^b	74.3 ^f	73.4 ^f	75.9 ^f	74.4 ^f	73.6 ^f	75.7 ^f	73.6 ^f	71.7 ^f	76.5 ^f
5-Year Period Survival (Percent) ^{cd}									
2011	73.6	73.0	74.6	73.9	73.3	74.9	71.8	71.0	73.0
Stage Distribution (%) 2005-2011 ^{ce}									
All Stages									
Number of cases	70,499	43,663	26,836	57,927	36,042	21,885	7,837	4,651	3,186
Percent	100%	100%	100%	100%	100%	100%	100%	100%	100%
Localized	65	63	67	64	62	66	70	69	73
Regional	16	17	15	17	18	15	12	12	11
Distant	16	17	15	16	17	15	15	17	13
Unstaged	3	3	4	3	3	4	3	3	3
5-Year Relative Survival (Percent), 2005-2011 ^c									
Age at Diagnosis:									
Ages <45	86.4	84.8	88.7	88.2	86.5	90.6	76.5	75.3	78.3
Ages 45-54	79.7	77.6	83.9	80.3	78.2	84.6	75.8	73.6	79.8
Ages 55-64	74.6	72.7	78.3	74.9	72.9	78.8	73.5	72.0	76.1
Ages 65-74	72.0	71.3	73.2	72.5	71.7	73.7	70.6	70.1	71.3
Ages 75+	58.7	60.5	56.8	59.1	61.4	56.3	55.6	50.8	58.9
Ages <65	78.5	76.5	82.4	79.1	76.9	83.1	74.9	73.2	77.9
Ages 65+	66.0	66.9	64.8	66.3	67.3	64.8	65.2	64.4	66.1
Stage ^e :									
All Stages	73.2	72.6	74.1	73.4	72.9	74.2	71.6	70.6	73.1
Localized	92.1	92.1	92.1	92.6	92.6	92.7	89.0	89.4	88.4
Regional	65.4	67.0	62.3	66.2	67.7	63.4	57.4	58.9	55.2
Distant	11.8	11.5	12.4	11.9	12.0	11.9	9.1	7.2	13.2
Unstaged	36.2	38.6	32.8	35.3	36.8	33.0	34.7	40.1 ^g	27.6 ^g

^a Based on End Results data from a series of hospital registries and one population-based registry.

^b SEER 9 areas (San Francisco, Connecticut, Detroit, Hawaii, Iowa, New Mexico, Seattle, Utah, Atlanta).

Based on follow-up of patients into 2012.

^c SEER 18 areas (San Francisco, Connecticut, Detroit, Hawaii, Iowa, New Mexico, Seattle, Utah, Atlanta, San Jose-Monterey, Los Angeles, Alaska Native Registry, Rural Georgia, California excluding SF/SJM/LA, Kentucky, Louisiana, New Jersey and Georgia excluding ATL/RG).

Based on follow-up of patients into 2012.

^d Period survival provides a 2011 estimate of survival by piecing together the most recent conditional survival estimates from several cohorts. It is computed here using three year calendar blocks (2009-2011: 0-1 year survival), (2008-2010: 1-2 year survival), (2007-2009: 2-3 year survival), (2006-2008: 3-4 year survival), (2005-2007: 4-5 years survival).

^e Stage at diagnosis is classified using SEER Summary Stage 2000. Stage distribution percentages may not sum to 100 due to rounding.

^f The difference between 1975-1977 and 2005-2011 is statistically significant ($p < .05$).

^g The standard error is between 5 and 10 percentage points.

^h The standard error is greater than 10 percentage points.

- Statistic could not be calculated due to fewer than 25 cases during the time period.

Table 11.9
Cancer of the Kidney and Renal Pelvis (Invasive)

SEER^a Relative Survival (Percent)
By Year of Diagnosis

All Races, Males and Females

Year of Diagnosis

	1975- 1979	1980- 1984	1985- 1989	1990- 1994	1995	1996	1997	1998	1999	2000	2001	2002	2003	2004	2005	2006	2007	2008	2009	2010	2011
Survival Time																					
1-year	69.0	70.4	72.9	76.3	76.9	77.0	76.3	77.8	77.9	79.6	81.1	79.5	81.7	85.0	83.9	85.0	86.2	85.2	86.4	86.4	85.5
2-year	60.4	61.7	65.0	69.2	69.6	70.4	70.0	71.1	71.7	73.7	73.8	74.8	76.1	79.6	80.0	81.7	82.4	81.2	81.9	81.4	
3-year	56.4	57.0	60.8	65.8	65.4	67.3	66.0	67.3	67.6	69.3	70.9	71.2	73.2	76.3	77.6	78.4	80.2	78.9	79.0		
4-year	53.0	54.0	57.8	63.2	63.2	64.2	63.6	64.5	64.6	67.4	68.1	69.0	71.1	73.4	75.9	75.8	77.6	76.3			
5-year	50.9	52.0	55.8	60.7	61.4	62.5	61.7	63.2	62.4	65.4	66.4	67.5	68.9	71.1	74.4	73.5	74.9				
6-year	49.3	49.7	53.9	59.1	59.3	60.5	59.7	61.2	60.4	63.9	64.9	65.3	67.8	69.2	72.9	72.1					
7-year	47.4	48.6	52.3	57.4	58.0	58.9	58.0	59.5	59.0	62.1	63.1	63.4	66.1	67.8	71.9						
8-year	46.3	47.4	51.1	56.1	56.8	58.5	55.9	57.9	57.2	60.1	61.8	61.7	64.6	65.8							
9-year	45.0	46.0	49.6	55.0	55.3	57.8	53.9	56.6	55.6	58.7	60.6	60.2	63.2								
10-year	44.0	44.9	47.9	53.2	54.3	55.8	53.0	55.5	53.8	56.7	59.2	59.1									
11-year	43.1	43.6	46.5	51.7	52.2	54.9	51.9	54.9	52.6	55.6	57.2										
12-year	42.2	42.7	45.3	50.6	50.6	53.5	51.1	54.3	51.8	54.8											
13-year	41.5	42.0	44.3	49.4	49.1	51.7	49.9	53.4	51.0												
14-year	40.5	41.3	43.0	48.1	48.1	50.2	49.4	52.1													
15-year	39.6	40.9	42.1	47.4	47.0	48.8	48.6														
16-year	39.2	40.3	41.1	46.7	46.7	47.9															
17-year	38.6	39.7	40.2	45.9	45.5																
18-year	37.6	39.2	39.2	44.8																	
19-year	36.7	38.2	38.4																		
20-year	36.0	37.3	37.8																		

^a Based on the SEER 9 areas (San Francisco, Connecticut, Detroit, Hawaii, Iowa, New Mexico, Seattle, Utah, and Atlanta).

Table 11.10
Cancer of the Kidney and Renal Pelvis (Invasive)

SEER^a Relative Survival (Percent)
By Year of Diagnosis

All Races, Males

Year of Diagnosis

	1975- 1979	1980- 1984	1985- 1989	1990- 1994	1995	1996	1997	1998	1999	2000	2001	2002	2003	2004	2005	2006	2007	2008	2009	2010	2011
Survival Time																					
1-year	69.6	70.4	73.2	77.4	79.1	77.9	77.9	78.4	77.3	79.1	80.5	80.0	80.6	85.5	84.0	84.8	86.2	85.1	86.2	86.5	85.7
2-year	60.8	61.8	65.4	69.5	71.2	71.7	70.9	72.1	70.8	72.7	73.4	75.0	75.7	80.5	80.6	81.3	82.2	80.6	81.6	80.6	
3-year	56.4	57.4	61.4	66.3	67.0	68.0	66.7	67.9	66.7	67.8	70.3	70.7	73.3	77.0	77.9	77.8	79.5	78.0	78.6		
4-year	53.0	54.4	58.3	63.5	64.3	64.8	64.2	65.0	63.5	65.7	67.5	68.3	70.6	74.8	75.7	74.6	76.5	75.5			
5-year	51.0	52.4	56.3	60.8	62.3	63.0	61.7	63.7	61.4	62.7	65.5	67.1	69.0	72.0	74.0	72.6	73.4				
6-year	49.5	50.1	53.9	59.0	59.4	61.8	59.4	61.3	58.7	61.4	63.5	65.0	68.0	69.8	71.9	70.5					
7-year	47.3	48.9	52.2	57.4	58.3	60.1	57.5	59.4	57.6	59.5	61.0	63.1	66.2	68.0	70.6						
8-year	45.8	47.7	50.8	56.1	57.1	59.2	54.5	57.3	55.5	57.5	59.5	61.4	64.4	66.1							
9-year	44.8	46.3	48.8	55.1	55.9	58.7	52.5	56.3	53.6	55.7	58.7	60.2	63.0								
10-year	43.4	45.2	47.5	53.4	54.6	56.2	52.1	55.2	51.4	54.1	57.1	58.9									
11-year	42.4	44.0	45.6	51.9	53.1	55.5	50.4	54.5	50.1	53.0	55.4										
12-year	41.3	43.2	44.1	50.8	50.7	53.6	49.2	53.2	49.4	52.7											
13-year	40.6	42.5	42.9	49.6	49.1	52.2	48.6	52.9	49.0												
14-year	39.5	41.4	41.6	48.4	48.9	50.5	48.0	51.9													
15-year	38.4	41.2	40.9	47.7	47.4	48.5	46.7														
16-year	38.0	40.3	39.5	47.1	47.4	47.1															
17-year	37.5	39.9	38.8	46.2	46.0																
18-year	36.5	39.5	37.7	45.1																	
19-year	35.5	38.5	36.8																		
20-year	34.7	37.3	36.2																		

^a Based on the SEER 9 areas (San Francisco, Connecticut, Detroit, Hawaii, Iowa, New Mexico, Seattle, Utah, and Atlanta).

Table 11.11
Cancer of the Kidney and Renal Pelvis (Invasive)

SEER^a Relative Survival (Percent)
By Year of Diagnosis

All Races, Females

Year of Diagnosis

	1975- 1979	1980- 1984	1985- 1989	1990- 1994	1995	1996	1997	1998	1999	2000	2001	2002	2003	2004	2005	2006	2007	2008	2009	2010	2011
Survival Time																					
1-year	67.9	70.4	72.2	74.6	73.4	75.7	73.8	76.9	78.8	80.5	82.1	78.7	83.5	84.3	83.6	85.2	86.3	85.4	86.6	86.2	85.1
2-year	59.6	61.4	64.2	68.7	67.2	68.5	68.5	69.5	73.2	75.5	74.4	74.5	76.6	78.3	79.2	82.2	82.8	82.1	82.6	82.8	
3-year	56.2	56.4	59.8	65.1	62.9	66.1	64.9	66.4	68.9	71.6	71.9	71.9	73.0	75.2	77.2	79.2	81.3	80.2	79.9		
4-year	53.1	53.3	57.0	62.7	61.5	63.3	62.7	63.8	66.3	70.2	69.2	70.1	71.7	71.3	76.2	77.5	79.3	77.5			
5-year	50.6	51.2	55.0	60.5	59.8	61.6	61.4	62.3	64.0	69.7	67.7	68.0	68.8	69.7	75.0	75.0	77.3				
6-year	49.0	49.0	53.7	59.2	58.9	58.5	60.1	61.1	63.1	67.7	66.9	65.8	67.4	68.4	74.4	74.3					
7-year	47.7	48.0	52.4	57.5	57.3	57.1	58.6	59.5	61.1	66.4	66.2	63.8	65.9	67.5	73.7						
8-year	46.9	46.8	51.5	56.1	56.3	57.1	57.7	58.7	59.8	64.3	65.4	62.2	64.8	65.1							
9-year	45.2	45.5	50.7	54.8	54.1	56.4	56.0	56.9	58.8	63.4	63.8	60.1	63.5								
10-year	44.9	44.3	48.6	52.8	53.7	55.2	54.3	55.8	57.4	60.9	62.6	59.2									
11-year	44.2	42.9	47.8	51.4	50.8	54.1	53.9	55.4	56.5	59.9	60.1										
12-year	43.5	42.0	47.1	50.2	50.2	53.0	53.9	55.4	55.5	58.2											
13-year	43.0	41.1	46.4	49.2	48.9	50.9	52.0	54.0	54.2												
14-year	42.1	40.7	45.0	47.7	46.7	49.5	51.3	52.1													
15-year	41.3	40.3	43.9	46.9	46.0	49.0	51.3														
16-year	41.0	40.3	43.3	46.1	44.9	48.8															
17-year	40.4	39.3	42.1	45.4	44.5																
18-year	39.3	38.7	41.5	44.5																	
19-year	38.4	37.6	40.7																		
20-year	38.1	37.1	40.1																		

^a Based on the SEER 9 areas (San Francisco, Connecticut, Detroit, Hawaii, Iowa, New Mexico, Seattle, Utah, and Atlanta).

Table 11.12
Cancer of the Kidney and Renal Pelvis (Invasive)

Risk of Being Diagnosed With Cancer in 10, 20 and 30 Years,
Lifetime Risk of Being Diagnosed with Cancer Given Alive and Cancer-Free at Current Age, and
Lifetime Risk of Dying from Cancer Given Alive at Current Age
Both Sexes, 2010-2012 By Race/Ethnicity

Race/ Ethnicity	Current Age	Risk of Being Diagnosed with Cancer				Risk of Dying from Cancer	Race/ Ethnicity	Current Age	Risk of Being Diagnosed with Cancer				Risk of Dying from Cancer
		+10 yrs	+20 yrs	+30 yrs	Ever				+10 yrs	+20 yrs	+30 yrs	Ever	
All Races	0	0.01	0.01	0.02	1.60	0.47	Asian/ Pacific Islander	0	0.00	0.01	0.01	1.04	0.33
	10	0.00	0.01	0.05	1.61	0.48		10	0.00	0.01	0.03	1.05	0.33
	20	0.01	0.05	0.16	1.61	0.48		20	0.01	0.03	0.09	1.05	0.33
	30	0.04	0.16	0.40	1.62	0.48		30	0.02	0.08	0.21	1.05	0.33
	40	0.12	0.36	0.79	1.60	0.49		40	0.06	0.19	0.42	1.03	0.33
	50	0.25	0.69	1.18	1.52	0.49		50	0.13	0.36	0.67	0.98	0.33
	60	0.47	0.98	1.28	1.34	0.47		60	0.24	0.56	0.80	0.88	0.31
	70	0.59	0.92	-	0.99	0.41		70	0.34	0.60	-	0.69	0.28
80	0.45	-	-	0.55	0.31	80	0.31	-	-	0.42	0.23		
White	0	0.01	0.01	0.02	1.65	0.49	American Indian/ Alaska Native ^a	0	0.01	0.01	0.01	1.81	0.74
	10	0.00	0.01	0.05	1.66	0.49		10	0.00	0.00	0.05	1.82	0.75
	20	0.01	0.05	0.17	1.66	0.49		20	0.00	0.05	0.16	1.83	0.75
	30	0.04	0.16	0.42	1.67	0.50		30	0.05	0.16	0.47	1.86	0.76
	40	0.12	0.38	0.82	1.64	0.50		40	0.11	0.43	0.93	1.85	0.78
	50	0.26	0.71	1.22	1.56	0.50		50	0.33	0.85	1.45	1.81	0.79
	60	0.48	1.01	1.32	1.38	0.48		60	0.56	1.19	1.45	1.58	0.79
	70	0.61	0.95	-	1.02	0.42		70	0.73	1.02	-	1.17	0.71
80	0.46	-	-	0.56	0.31	80	0.40	-	-	0.61	0.51		
Black	0	0.01	0.02	0.03	1.59	0.39	Hispanic ^b	0	0.01	0.01	0.02	1.75	0.51
	10	0.00	0.01	0.05	1.60	0.40		10	0.00	0.01	0.04	1.76	0.51
	20	0.01	0.05	0.17	1.61	0.40		20	0.01	0.04	0.15	1.76	0.51
	30	0.04	0.16	0.44	1.62	0.40		30	0.04	0.14	0.39	1.77	0.52
	40	0.12	0.41	0.90	1.61	0.40		40	0.11	0.36	0.81	1.75	0.52
	50	0.30	0.81	1.28	1.54	0.40		50	0.25	0.71	1.23	1.67	0.51
	60	0.56	1.08	1.31	1.37	0.39		60	0.48	1.03	1.39	1.48	0.49
	70	0.62	0.91	-	0.97	0.35		70	0.61	1.00	-	1.10	0.43
80	0.41	-	-	0.51	0.27	80	0.50	-	-	0.63	0.33		

Devcan 6.8.0, August 2014, National Cancer Institute (<http://surveillance.cancer.gov/devcan/>).

Source: Incidence data are from the SEER 18 areas (San Francisco, Connecticut, Detroit, Hawaii, Iowa, New Mexico, Seattle, Utah, Atlanta, San Jose-Monterey, Los Angeles, Alaska Native Registry, Rural Georgia, California excluding SF/SJM/LA, Kentucky, Louisiana, New Jersey, and Georgia excluding ATL/RG). Mortality data are from the NCHS public use data file for the total US.

^a Underlying incidence and mortality data for American Indian/Alaska Native are based on the CHSDA (Contract Health Service Delivery Area) counties.

^b Hispanic is not mutually exclusive from whites, blacks, Asian/Pacific Islanders, and American Indians/Alaska Natives. Underlying incidence data for Hispanics are based on NHIA and exclude cases from the Alaska Native Registry.

- Statistic could not be calculated.

A percent of 0.00 represents a value that is below 0.005.

Table 11.13
Cancer of the Kidney and Renal Pelvis (Invasive)

Risk of Being Diagnosed With Cancer in 10, 20 and 30 Years,
Lifetime Risk of Being Diagnosed with Cancer Given Alive and Cancer-Free at Current Age, and
Lifetime Risk of Dying from Cancer Given Alive at Current Age
Males, 2010-2012 By Race/Ethnicity

Race/ Ethnicity	Current Age	Risk of Being Diagnosed with Cancer				Risk of Dying from Cancer	Race/ Ethnicity	Current Age	Risk of Being Diagnosed with Cancer				Risk of Dying from Cancer
		+10 yrs	+20 yrs	+30 yrs	Ever				+10 yrs	+20 yrs	+30 yrs	Ever	
All Races	0	0.01	0.01	0.02	2.03	0.62	Asian/ Pacific Islander	0	0.00	0.00	0.01	1.39	0.42
	10	0.00	0.01	0.06	2.05	0.62		10	0.00	0.01	0.04	1.40	0.42
	20	0.01	0.06	0.21	2.06	0.63		20	0.01	0.04	0.12	1.40	0.42
	30	0.05	0.20	0.52	2.07	0.63		30	0.03	0.11	0.30	1.40	0.42
	40	0.15	0.48	1.05	2.06	0.64		40	0.09	0.27	0.60	1.38	0.42
	50	0.34	0.92	1.55	1.97	0.64		50	0.19	0.52	0.94	1.32	0.42
	60	0.63	1.31	1.68	1.75	0.62		60	0.35	0.78	1.10	1.18	0.40
	70	0.79	1.22	-	1.31	0.54		70	0.47	0.82	-	0.90	0.36
80	0.62	-	-	0.75	0.42	80	0.44	-	-	0.54	0.28		
White	0	0.01	0.01	0.02	2.09	0.64	American Indian/ Alaska Native ^a	0	0.01	0.01	0.01	2.21	0.84
	10	0.00	0.01	0.06	2.10	0.64		10	0.00	0.01	0.07	2.23	0.85
	20	0.01	0.06	0.21	2.11	0.65		20	0.01	0.07	0.19	2.24	0.86
	30	0.05	0.20	0.54	2.13	0.65		30	0.06	0.19	0.50	2.29	0.88
	40	0.16	0.49	1.07	2.11	0.66		40	0.13	0.45	1.10	2.29	0.90
	50	0.35	0.94	1.59	2.02	0.66		50	0.34	1.02	1.83	2.27	0.92
	60	0.64	1.34	1.72	1.80	0.63		60	0.74	1.63	2.03	2.11	0.91
	70	0.82	1.26	-	1.35	0.56		70	1.05	1.53	-	1.62	0.79
80	0.64	-	-	0.77	0.43	80	0.69	-	-	0.82	0.43		
Black	0	0.01	0.02	0.03	1.96	0.49	Hispanic ^b	0	0.01	0.01	0.01	2.14	0.65
	10	0.00	0.01	0.07	1.99	0.50		10	0.00	0.01	0.05	2.15	0.65
	20	0.01	0.07	0.22	2.00	0.50		20	0.01	0.04	0.18	2.16	0.65
	30	0.05	0.22	0.59	2.02	0.51		30	0.04	0.17	0.47	2.17	0.66
	40	0.17	0.55	1.20	2.02	0.51		40	0.13	0.43	0.99	2.16	0.66
	50	0.40	1.08	1.65	1.94	0.52		50	0.30	0.87	1.54	2.07	0.66
	60	0.77	1.41	1.68	1.73	0.51		60	0.60	1.31	1.76	1.87	0.64
	70	0.82	1.16	-	1.23	0.46		70	0.80	1.31	-	1.44	0.56
80	0.55	-	-	0.67	0.36	80	0.67	-	-	0.85	0.42		

Devcan 6.8.0, August 2014, National Cancer Institute (<http://surveillance.cancer.gov/devcan/>).

Source: Incidence data are from the SEER 18 areas (San Francisco, Connecticut, Detroit, Hawaii, Iowa, New Mexico, Seattle, Utah, Atlanta, San Jose-Monterey, Los Angeles, Alaska Native Registry, Rural Georgia, California excluding SF/SJM/LA, Kentucky, Louisiana, New Jersey, and Georgia excluding ATL/RG). Mortality data are from the NCHS public use data file for the total US.

^a Underlying incidence and mortality data for American Indian/Alaska Native are based on the CHSDA (Contract Health Service Delivery Area) counties.

^b Hispanic is not mutually exclusive from whites, blacks, Asian/Pacific Islanders, and American Indians/Alaska Natives. Underlying incidence data for Hispanics are based on NHIA and exclude cases from the Alaska Native Registry.

- Statistic could not be calculated.

A percent of 0.00 represents a value that is below 0.005.

Table 11.14
Cancer of the Kidney and Renal Pelvis (Invasive)

Risk of Being Diagnosed With Cancer in 10, 20 and 30 Years,
Lifetime Risk of Being Diagnosed with Cancer Given Alive and Cancer-Free at Current Age, and
Lifetime Risk of Dying from Cancer Given Alive at Current Age
Females, 2010-2012 By Race/Ethnicity

Race/ Ethnicity	Current Age	Risk of Being Diagnosed with Cancer				Risk of Dying from Cancer	Race/ Ethnicity	Current Age	Risk of Being Diagnosed with Cancer				Risk of Dying from Cancer
		+10 yrs	+20 yrs	+30 yrs	Ever				+10 yrs	+20 yrs	+30 yrs	Ever	
All Races	0	0.01	0.01	0.02	1.20	0.34	Asian/ Pacific Islander	0	0.01	0.01	0.01	0.76	0.25
	10	0.00	0.01	0.04	1.20	0.35		10	0.00	0.01	0.02	0.75	0.25
	20	0.01	0.04	0.12	1.20	0.35		20	0.01	0.02	0.06	0.75	0.25
	30	0.03	0.11	0.28	1.19	0.35		30	0.01	0.05	0.13	0.75	0.25
	40	0.08	0.25	0.55	1.17	0.35		40	0.04	0.11	0.26	0.74	0.25
	50	0.17	0.48	0.84	1.11	0.35		50	0.08	0.22	0.44	0.71	0.25
	60	0.32	0.69	0.93	0.98	0.34		60	0.15	0.37	0.55	0.64	0.24
	70	0.42	0.67	-	0.74	0.30		70	0.24	0.43	-	0.52	0.23
80	0.33	-	-	0.41	0.24	80	0.22	-	-	0.33	0.20		
White	0	0.01	0.02	0.02	1.24	0.35	American Indian/ Alaska Native ^a	0	0.01	0.01	0.01	1.44	0.63
	10	0.00	0.01	0.05	1.23	0.35		10	0.00	0.00	0.04	1.44	0.63
	20	0.01	0.05	0.13	1.23	0.36		20	0.00	0.04	0.13	1.45	0.64
	30	0.04	0.12	0.29	1.23	0.36		30	0.04	0.13	0.44	1.46	0.64
	40	0.08	0.26	0.56	1.20	0.36		40	0.09	0.41	0.77	1.45	0.66
	50	0.18	0.49	0.86	1.14	0.36		50	0.33	0.70	1.09	1.39	0.67
	60	0.32	0.71	0.95	1.01	0.34		60	0.39	0.81	0.95	1.12	0.67
	70	0.43	0.69	-	0.75	0.31		70	0.46	0.61	-	0.81	0.64
80	0.34	-	-	0.42	0.24	80	0.20	-	-	0.46	0.56		
Black	0	0.02	0.02	0.03	1.26	0.31	Hispanic ^b	0	0.01	0.01	0.02	1.42	0.39
	10	0.00	0.01	0.04	1.27	0.31		10	0.00	0.01	0.04	1.42	0.40
	20	0.01	0.04	0.13	1.27	0.31		20	0.01	0.04	0.12	1.42	0.40
	30	0.03	0.12	0.31	1.27	0.31		30	0.03	0.12	0.31	1.42	0.40
	40	0.09	0.29	0.64	1.26	0.31		40	0.08	0.28	0.63	1.39	0.40
	50	0.21	0.57	0.96	1.21	0.31		50	0.20	0.56	0.96	1.33	0.40
	60	0.39	0.81	1.01	1.08	0.30		60	0.37	0.79	1.08	1.16	0.38
	70	0.48	0.72	-	0.80	0.28		70	0.45	0.76	-	0.85	0.34
80	0.33	-	-	0.43	0.23	80	0.38	-	-	0.49	0.27		

Devcan 6.8.0, August 2014, National Cancer Institute (<http://surveillance.cancer.gov/devcan/>).

Source: Incidence data are from the SEER 18 areas (San Francisco, Connecticut, Detroit, Hawaii, Iowa, New Mexico, Seattle, Utah, Atlanta, San Jose-Monterey, Los Angeles, Alaska Native Registry, Rural Georgia, California excluding SF/SJM/LA, Kentucky, Louisiana, New Jersey, and Georgia excluding ATL/RG). Mortality data are from the NCHS public use data file for the total US.

^a Underlying incidence and mortality data for American Indian/Alaska Native are based on the CHSDA (Contract Health Service Delivery Area) counties.

^b Hispanic is not mutually exclusive from whites, blacks, Asian/Pacific Islanders, and American Indians/Alaska Natives. Underlying incidence data for Hispanics are based on NHIA and exclude cases from the Alaska Native Registry.

- Statistic could not be calculated.

A percent of 0.00 represents a value that is below 0.005.

Table 11.15
Cancer of the Kidney and Renal Pelvis (Invasive)

SEER Incidence and U.S. Mortality
Age-Adjusted Rates and Trends^a
By Race/Ethnicity and Sex

SEER Incidence	SEER 18 Areas ^b			SEER 13 Areas ^b			SEER 9 Areas ^b		
	Rate 2008-2012			Trend 2003-2012 ^c			Trend 2003-2012 ^d		
	Rate per 100,000 persons			AAPC (%)			AAPC (%)		
RACE/ETHNICITY	Total	Males	Females	Total	Males	Females	Total	Males	Females
All Races	15.6	21.3	10.8	1.4*	1.5*	1.2*	1.4*	1.6	1.2
White	16.1	21.9	11.1	1.4*	1.3*	1.3*	1.4*	1.3*	1.2
White Hispanic ^e	16.1	21.2	12.1	1.2	0.4	2.8*	-	-	-
White Non-Hispanic ^e	16.1	22.1	11.0	1.4*	1.5*	1.0*	-	-	-
Black	18.1	25.1	12.8	1.1	2.5*	2.3*	2.8*	2.9*	2.7*
Asian/Pacific Islander	8.2	11.6	5.5	2.1	2.4*	1.1	-	-	-
Amer Ind/Alaska Nat ^f	18.8	24.8	13.9	1.5*	1.5*	1.5	-	-	-
Hispanic ^e	15.4	20.2	11.6	1.3	0.5	2.7*	-	-	-
<u>U.S. Mortality^g</u>									
	Rate 2008-2012			Trend 2003-2012 ^h					
	Rate per 100,000 persons			AAPC (%)					
RACE/ETHNICITY	Total	Males	Females	Total	Males	Females			
All Races	3.9	5.7	2.5	-0.9*	-0.8*	-1.3*			
White	4.0	5.9	2.6	-0.5*	-0.7*	-1.3*			
White Hispanic ^e	3.7	5.3	2.5	0.1	0.0	0.2			
White Non-Hispanic ^e	4.0	5.9	2.6	-0.8*	-0.4*	-1.4*			
Black	3.8	5.6	2.5	-0.9*	-0.7*	-0.6*			
Asian/Pacific Islander	1.9	2.9	1.2	0.1	0.4	-0.1			
Amer Ind/Alaska Nat									
Total U.S.	4.4	5.8	3.2	-0.8	-5.1	-1.1			
CHSDA Counties	6.6	8.7	4.7	0.1	-0.3	-0.1			
Non-CHSDA Counties	1.9	2.6	1.3	-1.9	-0.9	-2.6			
Hispanic ^e	3.5	5.0	2.4	0.0	-0.1	0.1			

The AAPC is the Average Annual Percent Change over the time interval. The AAPCs are calculated by the Joinpoint Regression Program Version 4.2.0, April 2015, National Cancer Institute.

- Statistic not shown. Rate based on less than 16 cases for the time interval.

Trend based on less than 10 cases for at least one year within the time interval.

a Rates are age-adjusted to the 2000 US Std Population (19 age groups - Census P25-1130). Trends are based on rates age-adjusted to the 2000 US Std Population (19 age groups - Census P25-1130).

b The SEER 9 areas are San Francisco, Connecticut, Detroit, Hawaii, Iowa, New Mexico, Seattle, Utah, and Atlanta.

The SEER 13 areas comprise the SEER 9 areas plus San Jose-Monterey, Los Angeles, the Alaska Native Registry, and Rural Georgia.

The SEER 18 areas comprise the SEER 13 areas plus California excluding SF/SJM/LA, Kentucky, Louisiana, New Jersey, and Georgia excluding ATL/RG.

c The 2003-2012 AAPC estimates are based on a Joinpoint analysis with up to 3 Joinpoints over diagnosis years 1992-2012.

d The 2003-2012 AAPC estimates are based on a Joinpoint analysis with up to 5 Joinpoints over diagnosis years 1975-2012.

e Hispanic and Non-Hispanic are not mutually exclusive from whites, blacks, Asian/Pacific Islanders, and American Indians/Alaska Natives. Incidence data for Hispanics and Non-Hispanics are based on NHIA and exclude cases from the Alaska Native Registry. The 2003-2012 Hispanic and Non-Hispanic mortality trends exclude deaths from New Hampshire and Oklahoma.

f Incidence data for American Indian/Alaska Native are based on the CHSDA (Contract Health Service Delivery Area) counties.

g US Mortality Files, National Center for Health Statistics, CDC.

h The 2003-2012 mortality AAPCs are based on a Joinpoint analysis using years of death 1992-2012.

* The APC is significantly different from zero (p<.05).

Table 11.16
Cancer of the Kidney and Renal Pelvis (Invasive)

Age-Adjusted SEER Incidence Rates^a
By Registry, Race and Sex

	All Races			Whites			Blacks		
	Total	Males	Females	Total	Males	Females	Total	Males	Females
<u>SEER Incidence Rates^a, 2008-2012</u>									
California	14.29	19.64	9.75	15.26	20.77	10.51	17.40	24.07	11.91
Greater Bay Area	13.27	18.29	8.95	14.75	20.11	9.99	17.22	24.23	11.68
San Francisco-Oakland	13.08	18.24	8.67	14.38	19.88	9.52	17.65	25.14	11.88
San Jose-Monterey	13.62	18.33	9.48	15.38	20.48	10.80	13.75	18.41	-
Los Angeles	13.56	19.03	9.09	14.64	20.27	9.95	16.30	22.88	11.26
Greater California	14.99	20.40	10.34	15.65	21.17	10.89	18.72	25.06	12.92
Connecticut	15.35	21.93	9.91	15.20	21.63	9.84	15.21	22.18	9.91
Detroit	18.69	25.75	13.02	17.80	23.92	12.75	22.80	34.16	14.82
Georgia	15.29	20.95	10.75	15.35	21.08	10.52	16.12	21.98	12.06
Atlanta	14.67	20.55	10.02	14.22	19.91	9.32	16.91	24.25	12.07
Rural Georgia	15.10	19.51	11.10	16.93	21.92	12.44	12.32	15.44	-
Greater Georgia	15.66	21.24	11.19	15.83	21.62	11.00	15.73	20.70	12.23
Hawaii	13.49	18.39	9.21	15.47	21.07	9.49	-	-	-
Iowa	17.60	24.14	11.96	17.44	23.99	11.80	25.46	29.62	21.06
Kentucky	19.64	26.15	14.18	19.63	26.12	14.18	22.27	29.81	16.23
Louisiana	20.91	27.55	15.27	21.51	28.20	15.62	20.52	27.20	15.32
New Jersey	15.48	21.73	10.37	16.00	22.43	10.66	16.03	22.77	11.16
New Mexico	13.69	17.47	10.37	12.99	16.55	9.83	11.88	16.80	-
Seattle-Puget Sound	16.28	22.52	10.92	16.54	22.59	11.27	22.46	30.26	13.74
Utah	12.89	16.58	9.65	12.93	16.65	9.68	-	-	-
9 SEER Areas ^b	15.38	21.14	10.52	15.51	21.14	10.65	19.15	27.66	12.87
11 SEER Areas ^b	14.87	20.50	10.14	15.31	20.90	10.51	18.38	26.31	12.44
13 SEER Areas ^b	14.88	20.51	10.16	15.32	20.90	10.52	18.30	26.17	12.40
18 SEER Areas ^b	15.60	21.34	10.79	16.08	21.86	11.13	18.10	25.08	12.79

^a Rates are per 100,000 and are age-adjusted to the 2000 US Std Population (19 age groups - Census P25-1130)

^b The SEER 9 areas are San Francisco, Connecticut, Detroit, Hawaii, Iowa, New Mexico, Seattle, Utah and Atlanta.

The SEER 11 areas comprise the SEER 9 areas plus San Jose-Monterey and Los Angeles.

The SEER 13 areas comprise the SEER 11 areas plus the Alaska Native Registry and Rural Georgia.

The SEER 18 areas comprise the SEER 13 areas plus California excluding SF/SJM/LA, Kentucky, Louisiana, New Jersey and Georgia excluding ATL/RG.

- Statistic not shown. Rate based on less than 16 cases for the time interval.

Table 11.17
Cancer of the Kidney and Renal Pelvis (Invasive)

Age-Adjusted SEER Death Rates^a
By Registry, Race and Sex

	All Races			Whites			Blacks		
	Total	Males	Females	Total	Males	Females	Total	Males	Females
<u>SEER Death Rates^a, 2008-2012</u>									
California	3.52	5.09	2.27	3.78	5.44	2.43	3.66	5.37	2.30
Greater Bay Area	3.07	4.44	1.98	3.44	4.91	2.22	3.30	4.75	2.13
San Francisco-Oakland	3.02	4.36	1.96	3.41	4.89	2.20	3.29	4.60	2.30
San Jose-Monterey	3.18	4.58	2.03	3.50	4.95	2.28	-	-	-
Los Angeles	3.31	4.72	2.20	3.53	5.06	2.31	3.62	5.23	2.43
Greater California	3.78	5.48	2.40	3.98	5.74	2.53	3.88	5.85	2.22
Connecticut	3.27	4.94	2.00	3.39	5.11	2.07	2.33	3.26	-
Detroit	4.00	5.92	2.58	4.14	6.08	2.68	3.79	5.87	2.39
Georgia	3.51	5.39	2.13	3.55	5.41	2.11	3.53	5.53	2.28
Atlanta	3.16	4.72	2.06	3.16	4.47	2.11	3.34	5.73	2.09
Rural Georgia	3.14	-	-	3.15	-	-	-	-	-
Greater Georgia	3.67	5.70	2.15	3.69	5.76	2.11	3.67	5.64	2.33
Hawaii	2.68	4.20	1.45	2.55	3.91	-	-	-	-
Iowa	4.59	6.93	2.79	4.59	6.94	2.79	-	-	-
Kentucky	4.62	6.52	3.15	4.62	6.57	3.10	5.09	6.25	4.21
Louisiana	5.14	7.28	3.42	5.18	7.32	3.40	5.22	7.43	3.60
New Jersey	3.38	5.14	2.06	3.54	5.35	2.15	3.21	5.05	2.02
New Mexico	4.48	6.02	3.16	4.25	5.70	3.01	-	-	-
Seattle-Puget Sound	3.75	5.59	2.22	3.91	5.76	2.33	4.93	6.35	-
Utah	3.56	5.08	2.29	3.59	5.15	2.28	-	-	-
9 SEER Areas ^b	3.63	5.36	2.28	3.81	5.58	2.39	3.45	5.20	2.27
11 SEER Areas ^b	3.54	5.18	2.25	3.74	5.44	2.37	3.50	5.20	2.30
13 SEER Areas ^b	3.55	5.18	2.26	3.74	5.44	2.37	3.50	5.16	2.32
18 SEER Areas ^b	3.73	5.46	2.37	3.89	5.68	2.46	3.82	5.65	2.51
Total U.S.	3.92	5.73	2.51	4.02	5.86	2.55	3.77	5.56	2.54

^a US Mortality Files, National Center for Health Statistics, Centers for Disease Control and Prevention. Rates are per 100,000 and are age-adjusted to the 2000 US Std Population (19 age groups - Census P25-1130).

^b The SEER 9 areas are San Francisco, Connecticut, Detroit, Hawaii, Iowa, New Mexico, Seattle, Utah and Atlanta. The SEER 11 areas comprise the SEER 9 areas plus San Jose-Monterey and Los Angeles.

The SEER 13 areas comprise the SEER 11 areas plus the Alaska Native Registry and Rural Georgia.

The SEER 18 areas comprise the SEER 13 areas plus California excluding SF/SJM/LA, Kentucky, Louisiana, New Jersey and Georgia excluding ATL/RG.

- Statistic not shown. Rate based on less than 16 cases for the time interval.

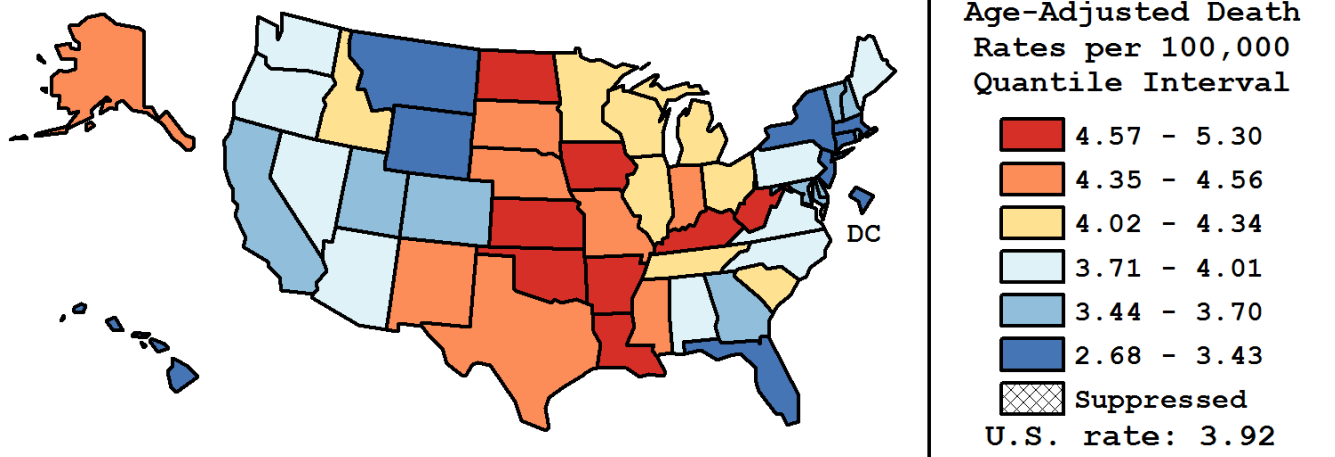
Table 11.18
Cancer of the Kidney and Renal Pelvis (Invasive)

Age-Adjusted Cancer Death^a Rates By State, All Races, 2008-2012

Males and Females

State	Rate	SE	Rank(CI) ^d	PD
TOTAL U.S.	3.92	0.02		
High Five States				
Oklahoma	5.30 ^b	0.16	01(01,04)	35.23 ^c
Louisiana	5.14 ^b	0.15	02(01,07)	31.05 ^c
North Dakota	4.96	0.36	03(01,29)	26.46 ^c
Arkansas	4.65 ^b	0.17	04(02,22)	18.54 ^c
Kentucky	4.62 ^b	0.14	05(02,20)	17.77 ^c
Low Five States				
Wyoming	3.30	0.33	47(15,51)	-15.95 ^c
Massachusetts	3.29 ^b	0.09	48(37,50)	-16.05 ^c
Connecticut	3.27 ^b	0.13	49(35,50)	-16.63 ^c
D.C.	2.79 ^b	0.31	50(32,51)	-28.74 ^c
Hawaii	2.68 ^b	0.18	51(46,51)	-31.71 ^c

State	Rate	SE	Rank(CI) ^d	PD	State	Rate	SE	Rank(CI) ^d	PD
Alabama	3.96	0.12	28(15,37)	0.94	Montana	3.43	0.24	43(20,51)	-12.54
Alaska	4.44	0.45	14(01,49)	13.29	Nebraska	4.43	0.21	15(02,32)	12.86
Arizona	3.75	0.10	33(22,43)	-4.48	Nevada	3.76	0.17	32(16,48)	-4.09
Arkansas	4.65 ^b	0.17	04(02,22)	18.54 ^c	New Hampshire	3.66	0.22	35(14,50)	-6.67
California	3.52 ^b	0.04	39(34,45)	-10.16	New Jersey	3.38 ^b	0.08	45(35,49)	-13.81
Colorado	3.47 ^b	0.12	42(30,49)	-11.65	New Mexico	4.48	0.20	13(02,30)	14.18
Connecticut	3.27 ^b	0.13	49(35,50)	-16.63 ^c	New York	3.30 ^b	0.06	46(39,50)	-15.76 ^c
Delaware	3.50	0.26	41(15,51)	-10.80	North Carolina	3.97	0.09	27(18,36)	1.19
D.C.	2.79 ^b	0.31	50(32,51)	-28.74 ^c	North Dakota	4.96	0.36	03(01,29)	26.46 ^c
Florida	3.42 ^b	0.05	44(36,48)	-12.79	Ohio	4.27 ^b	0.08	19(09,26)	8.83
Georgia	3.51 ^b	0.09	40(32,48)	-10.43	Oklahoma	5.30 ^b	0.16	01(01,04)	35.23 ^c
Hawaii	2.68 ^b	0.18	51(46,51)	-31.71 ^c	Oregon	3.94	0.13	29(15,40)	0.47
Idaho	4.07	0.23	24(05,44)	3.66	Pennsylvania	3.98	0.07	26(19,34)	1.51
Illinois	4.13	0.08	22(14,30)	5.20	Rhode Island	3.55	0.24	38(17,50)	-9.61
Indiana	4.56 ^b	0.12	09(03,20)	16.22 ^c	South Carolina	4.07	0.13	23(12,35)	3.73
Iowa	4.59 ^b	0.16	07(02,22)	17.06 ^c	South Dakota	4.41	0.31	16(01,40)	12.40
Kansas	4.57 ^b	0.17	08(02,24)	16.53 ^c	Tennessee	4.19	0.11	20(09,31)	6.79
Kentucky	4.62 ^b	0.14	05(02,20)	17.77 ^c	Texas	4.54 ^b	0.06	11(04,17)	15.78 ^c
Louisiana	5.14 ^b	0.15	02(01,07)	31.05 ^c	Utah	3.56	0.19	37(21,50)	-9.20
Maine	4.01	0.22	25(05,45)	2.32	Vermont	3.56	0.31	36(10,51)	-9.13
Maryland	3.70	0.11	34(24,45)	-5.64	Virginia	3.81	0.10	31(21,41)	-2.98
Massachusetts	3.29 ^b	0.09	48(37,50)	-16.05 ^c	Washington	3.92	0.11	30(18,38)	-0.13
Michigan	4.13	0.09	21(13,31)	5.37	West Virginia	4.62	0.20	06(01,26)	17.71 ^c
Minnesota	4.27	0.12	18(06,29)	8.87	Wisconsin	4.34 ^b	0.12	17(04,26)	10.59
Mississippi	4.55 ^b	0.17	10(02,25)	16.05 ^c	Wyoming	3.30	0.33	47(15,51)	-15.95 ^c
Missouri	4.51 ^b	0.12	12(03,21)	14.92					



^a US Mortality Files, National Center for Health Statistics, Centers for Disease Control and Prevention. Rates are per 100,000 and are age-adjusted to the 2000 US Std Population (19 age groups - Census P25-1130).

^b Difference between state rate and total U.S. rate is statistically significant ($p < .0002$).

^c Absolute percent difference between state rate and total U.S. rate is 15% or more.

^d Rank of state level death rate and the 95% confidence intervals (low, high) for the rank.

SE Standard error of the rate.

PD Percent difference between state rate and total U.S. rate.

- Statistic not shown. Rate based on less than 16 cases for the time interval.

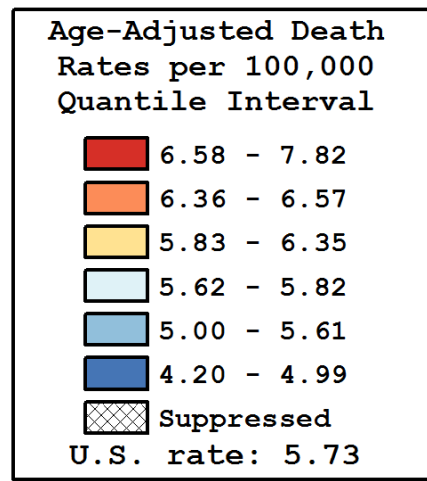
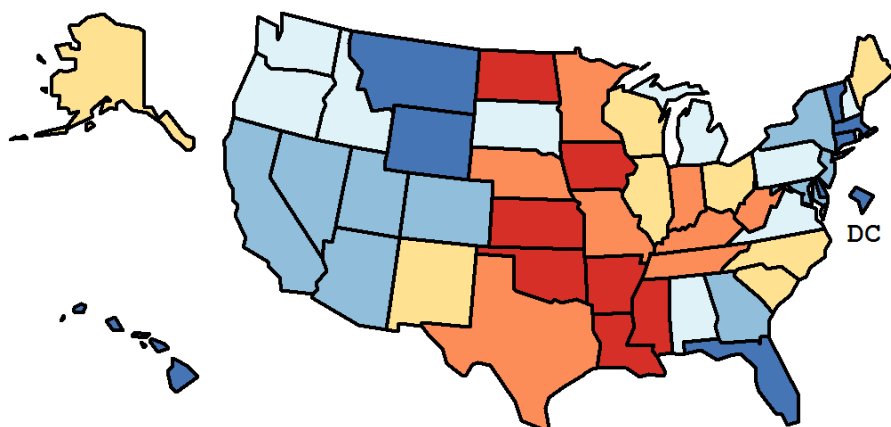
Table 11.19
Cancer of the Kidney and Renal Pelvis (Invasive)

Age-Adjusted Cancer Death^a Rates By State, All Races, 2008-2012

Males

State	Rate	SE	Rank(CI) ^d	PD
TOTAL U.S.	5.73	0.03		
High Five States				
Oklahoma	7.82 ^b	0.30	01(01,05)	36.52 ^c
North Dakota	7.29	0.66	02(01,35)	27.37 ^c
Louisiana	7.28 ^b	0.27	03(01,13)	27.08 ^c
Iowa	6.93 ^b	0.30	04(01,20)	20.97 ^c
Mississippi	6.76	0.32	05(01,26)	18.08 ^c
Low Five States				
Wyoming	4.81	0.59	47(08,51)	-15.93 ^c
Delaware	4.72	0.47	48(20,51)	-17.64 ^c
Massachusetts	4.69 ^b	0.17	49(37,51)	-18.09 ^c
D.C.	4.65	0.63	50(09,51)	-18.80 ^c
Hawaii	4.20 ^b	0.34	51(37,51)	-26.72 ^c

State	Rate	SE	Rank(CI) ^d	PD	State	Rate	SE	Rank(CI) ^d	PD
Alabama	5.82	0.23	25(11,41)	1.62	Montana	4.99	0.43	43(14,51)	-12.85
Alaska	5.99	0.79	21(01,51)	4.65	Nebraska	6.46	0.38	13(02,37)	12.80
Arizona	5.44	0.19	35(21,46)	-5.03	Nevada	5.28	0.30	37(17,50)	-7.80
Arkansas	6.67	0.30	06(01,27)	16.57 ^c	New Hampshire	5.72	0.42	30(04,49)	-0.09
California	5.09 ^b	0.08	39(34,48)	-11.16	New Jersey	5.14 ^b	0.16	38(30,49)	-10.23
Colorado	5.07	0.22	41(26,50)	-11.38	New Mexico	6.02	0.35	20(03,44)	5.20
Connecticut	4.94	0.24	45(28,51)	-13.64	New York	5.02 ^b	0.11	42(35,49)	-12.40
Delaware	4.72	0.47	48(20,51)	-17.64 ^c	North Carolina	6.13	0.17	18(07,32)	7.02
D.C.	4.65	0.63	50(09,51)	-18.80 ^c	North Dakota	7.29	0.66	02(01,35)	27.37 ^c
Florida	4.98 ^b	0.09	44(36,49)	-12.97	Ohio	5.94	0.14	23(13,35)	3.72
Georgia	5.39	0.18	36(23,46)	-5.86	Oklahoma	7.82 ^b	0.30	01(01,05)	36.52 ^c
Hawaii	4.20 ^b	0.34	51(37,51)	-26.72 ^c	Oregon	5.69	0.24	32(13,44)	-0.61
Idaho	5.81	0.40	27(04,49)	1.50	Pennsylvania	5.67	0.13	33(19,39)	-1.03
Illinois	5.95	0.15	22(13,34)	3.95	Rhode Island	5.82	0.48	26(02,50)	1.60
Indiana	6.57 ^b	0.21	09(03,24)	14.71	South Carolina	6.33	0.25	17(03,31)	10.65
Iowa	6.93 ^b	0.30	04(01,20)	20.97 ^c	South Dakota	5.82	0.53	24(02,50)	1.70
Kansas	6.65	0.31	07(01,29)	16.12 ^c	Tennessee	6.37	0.21	15(03,28)	11.33
Kentucky	6.52	0.26	11(02,29)	13.91	Texas	6.53 ^b	0.12	10(04,20)	14.11
Louisiana	7.28 ^b	0.27	03(01,13)	27.08 ^c	Utah	5.08	0.33	40(19,51)	-11.24
Maine	6.11	0.41	19(02,46)	6.71	Vermont	4.82	0.55	46(12,51)	-15.88 ^c
Maryland	5.61	0.21	34(16,44)	-2.03	Virginia	5.74	0.18	29(15,40)	0.27
Massachusetts	4.69 ^b	0.17	49(37,51)	-18.09 ^c	Washington	5.80	0.20	28(13,39)	1.24
Michigan	5.70	0.15	31(17,39)	-0.51	West Virginia	6.52	0.36	12(01,35)	13.83
Minnesota	6.40	0.23	14(03,30)	11.86	Wisconsin	6.35	0.21	16(04,29)	10.86
Mississippi	6.76	0.32	05(01,26)	18.08 ^c	Wyoming	4.81	0.59	47(08,51)	-15.93 ^c
Missouri	6.57 ^b	0.21	08(02,24)	14.71					



^a US Mortality Files, National Center for Health Statistics, Centers for Disease Control and Prevention. Rates are per 100,000 and are age-adjusted to the 2000 US Std Population (19 age groups - Census P25-1130).

^b Difference between state rate and total U.S. rate is statistically significant ($p < .0002$).

^c Absolute percent difference between state rate and total U.S. rate is 15% or more.

^d Rank of state level death rate and the 95% confidence intervals (low, high) for the rank.

SE Standard error of the rate.

PD Percent difference between state rate and total U.S. rate.

- Statistic not shown. Rate based on less than 16 cases for the time interval.

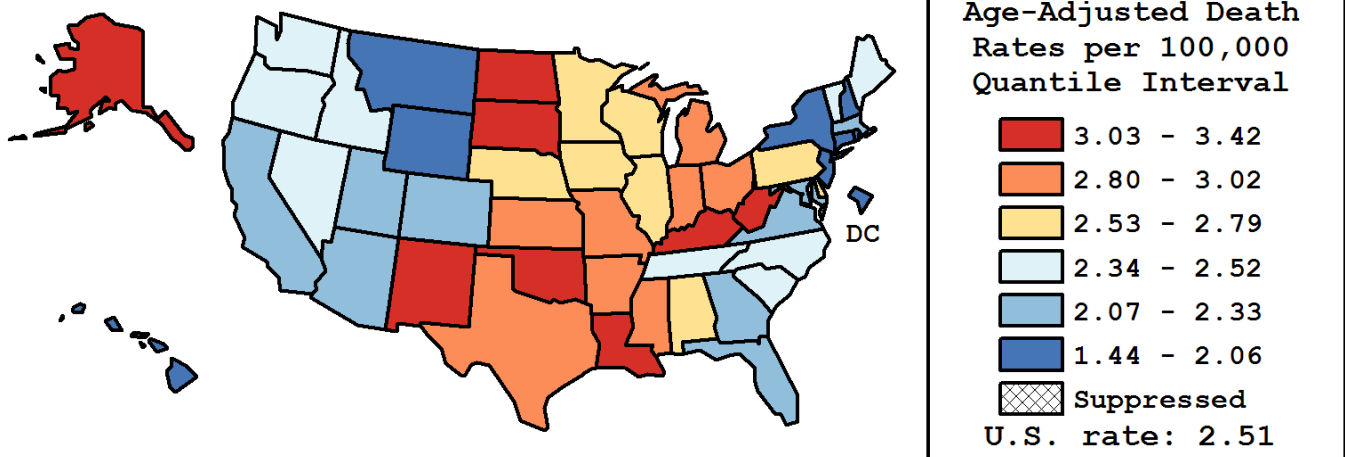
Table 11.20
Cancer of the Kidney And Renal Pelvis (Invasive)

Age-Adjusted Cancer Death^a Rates By State, All Races, 2008-2012

Females

State	Rate	SE	Rank(CI) ^d	PD
TOTAL U.S.	2.51	0.02		
High Five States				
Louisiana	3.42 ^b	0.16	01(01,12)	36.38 ^c
Oklahoma	3.31 ^b	0.17	02(01,17)	31.93 ^c
South Dakota	3.21	0.35	03(01,39)	28.11 ^c
New Mexico	3.16	0.23	04(01,27)	26.17 ^c
West Virginia	3.15	0.22	05(01,27)	25.59 ^c
Low Five States				
Rhode Island	1.99	0.24	47(19,51)	-20.69 ^c
Wyoming	1.98	0.36	48(05,51)	-20.91 ^c
New Hampshire	1.94	0.22	49(21,51)	-22.60 ^c
Hawaii	1.45 ^b	0.19	50(45,51)	-42.32 ^c
D.C.	1.44 ^b	0.29	51(29,51)	-42.40 ^c

State	Rate	SE	Rank(CI) ^d	PD	State	Rate	SE	Rank(CI) ^d	PD
Alabama	2.55	0.13	24(11,41)	1.72	Montana	2.03	0.25	45(14,51)	-19.12 ^c
Alaska	3.07	0.52	07(01,50)	22.60 ^c	Nebraska	2.70	0.22	20(02,45)	7.56
Arizona	2.31	0.11	35(21,47)	-7.95	Nevada	2.41	0.19	31(09,49)	-3.91
Arkansas	3.02	0.18	09(01,28)	20.55 ^c	New Hampshire	1.94	0.22	49(21,51)	-22.60 ^c
California	2.27 ^b	0.05	38(28,44)	-9.56	New Jersey	2.06 ^b	0.09	43(33,49)	-17.95 ^c
Colorado	2.14	0.13	41(24,50)	-14.59	New Mexico	3.16	0.23	04(01,27)	26.17 ^c
Connecticut	2.00 ^b	0.13	46(28,50)	-20.29 ^c	New York	2.05 ^b	0.06	44(36,49)	-18.20 ^c
Delaware	2.58	0.30	22(01,49)	2.87	North Carolina	2.41	0.09	30(19,43)	-3.88
D.C.	1.44 ^b	0.29	51(29,51)	-42.40 ^c	North Dakota	3.07	0.38	08(01,46)	22.46 ^c
Florida	2.15 ^b	0.06	40(32,48)	-14.11	Ohio	2.96 ^b	0.09	11(03,21)	18.27 ^c
Georgia	2.13 ^b	0.09	42(28,49)	-14.80	Oklahoma	3.31 ^b	0.17	02(01,17)	31.93 ^c
Hawaii	1.45 ^b	0.19	50(45,51)	-42.32 ^c	Oregon	2.50	0.15	27(10,44)	-0.20
Idaho	2.52	0.25	25(03,49)	0.55	Pennsylvania	2.67	0.08	21(11,30)	6.55
Illinois	2.75	0.09	18(08,28)	9.64	Rhode Island	1.99	0.24	47(19,51)	-20.69 ^c
Indiana	2.97 ^b	0.12	10(02,24)	18.69 ^c	South Carolina	2.37	0.13	32(17,47)	-5.40
Iowa	2.79	0.17	17(03,36)	11.33	South Dakota	3.21	0.35	03(01,39)	28.11 ^c
Kansas	2.91	0.19	14(01,32)	16.32 ^c	Tennessee	2.50	0.11	28(14,41)	-0.24
Kentucky	3.15 ^b	0.15	06(01,21)	25.54 ^c	Texas	2.94 ^b	0.07	12(04,20)	17.29 ^c
Louisiana	3.42 ^b	0.16	01(01,12)	36.38 ^c	Utah	2.29	0.20	37(12,49)	-8.70
Maine	2.44	0.23	29(05,49)	-2.69	Vermont	2.51	0.35	26(01,50)	0.10
Maryland	2.30	0.12	36(20,47)	-8.17	Virginia	2.33	0.10	34(21,46)	-6.99
Massachusetts	2.26	0.10	39(23,48)	-9.95	Washington	2.37	0.11	33(18,45)	-5.46
Michigan	2.89 ^b	0.10	15(04,24)	15.42 ^c	West Virginia	3.15	0.22	05(01,27)	25.59 ^c
Minnesota	2.58	0.13	23(10,40)	2.80	Wisconsin	2.70	0.12	19(07,34)	7.62
Mississippi	2.81	0.18	16(03,36)	12.26	Wyoming	1.98	0.36	48(05,51)	-20.91 ^c
Missouri	2.92	0.12	13(02,26)	16.73 ^c					



^a US Mortality Files, National Center for Health Statistics, Centers for Disease Control and Prevention. Rates are per 100,000 and are age-adjusted to the 2000 US Std Population (19 age groups - Census P25-1130).

^b Difference between state rate and total U.S. rate is statistically significant ($p < .0002$).

^c Absolute percent difference between state rate and total U.S. rate is 15% or more.

^d Rank of state level death rate and the 95% confidence intervals (low, high) for the rank.

SE Standard error of the rate.

PD Percent difference between state rate and total U.S. rate.

- Statistic not shown. Rate based on less than 16 cases for the time interval.

Table 11.21
Cancer of the Kidney And Renal Pelvis (Invasive)

Estimated United States Cancer Prevalence Counts^a on January 1, 2012
By Race/Ethnicity, Sex and Years Since Diagnosis

Years Since Diagnosis		0 to <5	5 to <10	10 to <15	15 to <20	20 to <25	25 to <30	0 to <20 ^e	0 to <37 ^e	>=37 ^g	Complete ^h
<u>Race</u>	<u>Sex</u>										
All Races ^b	Both Sexes	154,353	93,811	51,100	31,248	18,187	9,960	339,047	365,660	10,265	375,925
	Males	94,867	55,938	29,534	18,295	10,017	5,667	203,620	217,927	5,756	223,683
	Females	59,486	37,873	21,566	12,953	8,170	4,293	135,427	147,733	4,509	152,242
White ^b	Both Sexes	127,833	80,333	43,767	27,102	16,237	8,794	286,582	310,261	11,564	321,825
	Males	79,042	48,043	25,733	16,331	9,050	5,094	173,577	186,613	5,093	191,706
	Females	48,791	32,290	18,034	10,771	7,187	3,700	113,005	123,648	6,471	130,119
Black ^b	Both Sexes	18,611	9,480	5,438	3,156	1,524	938	37,425	39,819	2,023	41,842
	Males	10,872	5,572	2,698	1,432	750	432	21,002	22,005	689	22,694
	Females	7,739	3,908	2,740	1,724	774	506	16,423	17,814	1,334	19,148
Asian/ Pacific Islander ^c	Both Sexes	4,049	2,099	1,081	+	+	+	7,755	+	+	+
	Males	2,508	1,272	643	+	+	+	4,743	+	+	+
	Females	1,541	827	438	+	+	+	3,012	+	+	+
Hispanic ^d	Both Sexes	14,872	7,921	4,151	+	+	+	29,087	+	+	+
	Males	8,530	4,456	2,294	+	+	+	16,449	+	+	+
	Females	6,342	3,465	1,857	+	+	+	12,638	+	+	+

Estimated prevalence percent^a on January 1, 2012, of the SEER^c population diagnosed in the previous 20 years
By Age at Prevalence, Race/Ethnicity and Sex

Age at Prevalence		All Ages	0-9	10-19	20-29	30-39	40-49	50-59	60-69	70-79	80+	Age-Adjusted ^f All Ages
<u>Race</u>	<u>Sex</u>											
All Races ^c	Both Sexes	0.0942%	0.0073%	0.0107%	0.0059%	0.0150%	0.0572%	0.1417%	0.2885%	0.4291%	0.3900%	0.0897%
	Males	0.1156%	0.0068%	0.0096%	0.0054%	0.0162%	0.0712%	0.1839%	0.3902%	0.5855%	0.5452%	0.1181%
	Females	0.0734%	0.0078%	0.0119%	0.0064%	0.0138%	0.0434%	0.1014%	0.1967%	0.3023%	0.2982%	0.0660%
White ^c	Both Sexes	0.1038%	0.0076%	0.0115%	0.0063%	0.0156%	0.0612%	0.1486%	0.3034%	0.4595%	0.4058%	0.0947%
	Males	0.1270%	0.0069%	0.0109%	0.0057%	0.0161%	0.0759%	0.1900%	0.4051%	0.6256%	0.5734%	0.1241%
	Females	0.0808%	0.0082%	0.0122%	0.0069%	0.0150%	0.0460%	0.1076%	0.2084%	0.3214%	0.3056%	0.0697%
Black ^c	Both Sexes	0.0830%	0.0089%	0.0124%	0.0085%	0.0164%	0.0606%	0.1604%	0.3225%	0.4353%	0.3802%	0.0959%
	Males	0.0988%	0.0101%	0.0085%	0.0072%	0.0187%	0.0744%	0.2159%	0.4464%	0.5737%	0.4852%	0.1243%
	Females	0.0686%	0.0077%	0.0164%	0.0097%	0.0144%	0.0485%	0.1121%	0.2252%	0.3385%	0.3292%	0.0746%
Asian/ Pacific Islander ^c	Both Sexes	0.0501%	0.0040%	0.0040%	0.0017%	0.0078%	0.0300%	0.0756%	0.1593%	0.2211%	0.2720%	0.0495%
	Males	0.0637%	0.0025%	0.0033%	0.0023%	0.0093%	0.0367%	0.1063%	0.2310%	0.3114%	0.3728%	0.0679%
	Females	0.0377%	0.0057%	0.0046%	0.0012%	0.0065%	0.0240%	0.0493%	0.0999%	0.1513%	0.2104%	0.0352%
Hispanic ^d	Both Sexes	0.0570%	0.0060%	0.0087%	0.0037%	0.0150%	0.0549%	0.1353%	0.2792%	0.4475%	0.4576%	0.0910%
	Males	0.0633%	0.0051%	0.0072%	0.0026%	0.0141%	0.0630%	0.1622%	0.3609%	0.6133%	0.5830%	0.1147%
	Females	0.0505%	0.0069%	0.0102%	0.0050%	0.0159%	0.0465%	0.1095%	0.2091%	0.3248%	0.3826%	0.0724%

^a US 2012 cancer prevalence counts are based on 2012 cancer prevalence proportions from the SEER registries and 1/1/2012 US population estimates based on the average of 2011 and 2012 population estimates from the US Bureau of the Census. Prevalence was calculated using the First Malignant Primary Only for a person.

^{b c d} Statistics based on (b) SEER 9 Areas (c) SEER 11 Areas and Rural Georgia (d) NHIA for Hispanic for SEER 11 Areas and Rural Georgia.

^e Maximum limited-duration prevalence: 37 years for 1975-2012 SEER 9 data; 20 years for 1992-2012 SEER 11 data (used to calculate prevalence for Hispanics and Asian Pacific Islanders).

^f Percentages are age-adjusted to the 2000 US Standard Population (19 age groups - Census P25-1130) by 5-year age groups.

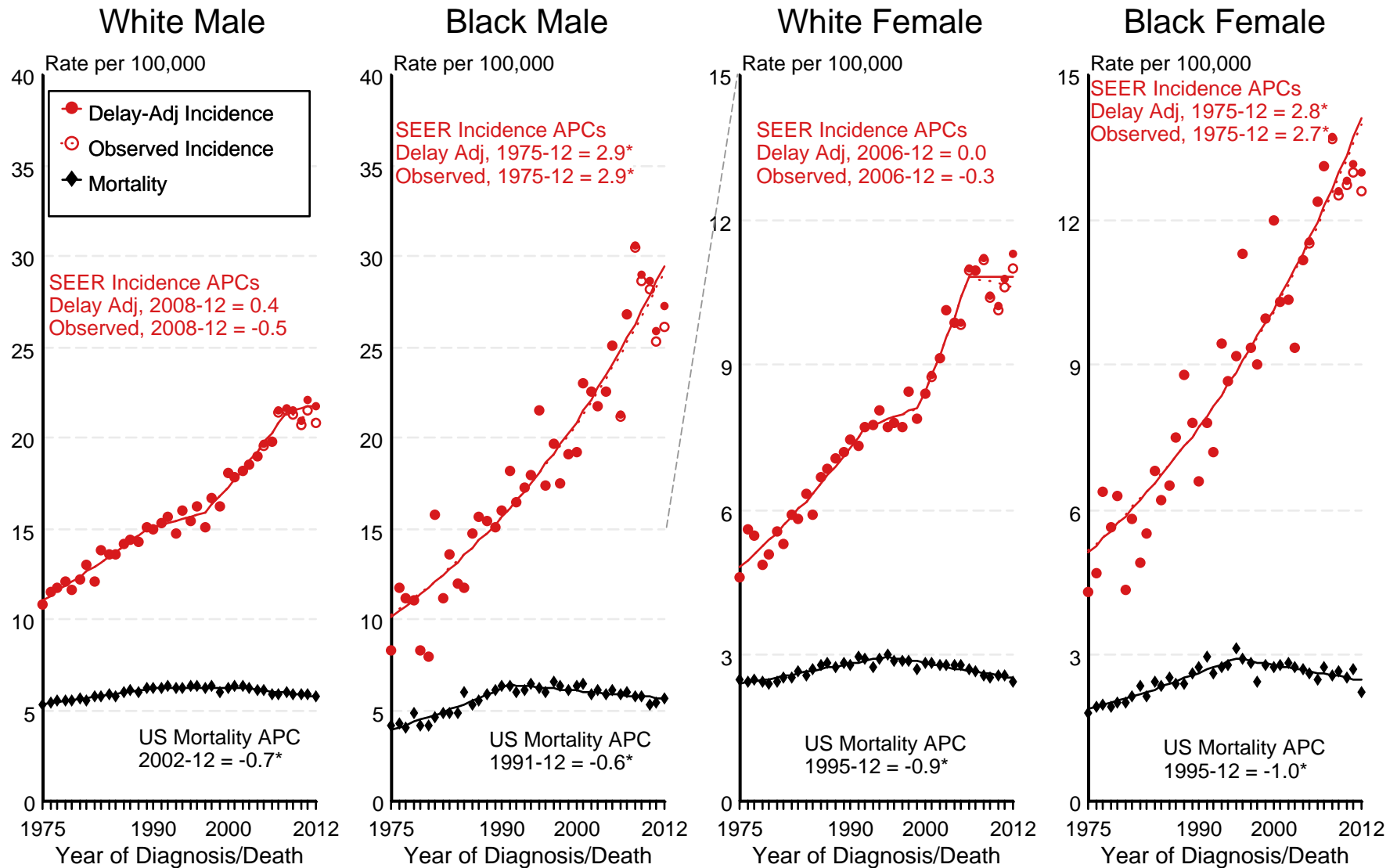
^{g h i} (g) Cases diagnosed more than 37 years ago were estimated using the completeness index method (Capocaccia et. al. 1997, Merrill et. al. 2000). (h) Complete prevalence is obtained by summing 0 to <37 and >=37. (i) Age-specific completeness index was approximated using empirical data from historical Connecticut tumor registry.

- Statistic not shown. Statistic based on fewer than 5 cases estimated alive in SEER for the time interval.

+ Not available.

Figure 11.1

SEER Observed Incidence, SEER Delay Adjusted Incidence and US Death Rates^a Cancer of the Kidney and Renal Pelvis, by Race and Sex



Source: SEER 9 areas and US Mortality Files (National Center for Health Statistics, CDC).

^a Rates are age-adjusted to the 2000 US Std Population (19 age groups - Census P25-1103).

Regression lines and APCs are calculated using the Joinpoint Regression Program Version 4.2.0, April 2015, National Cancer Institute.

The APC is the Annual Percent Change for the regression line segments. The APC shown on the graph is for the most recent trend.

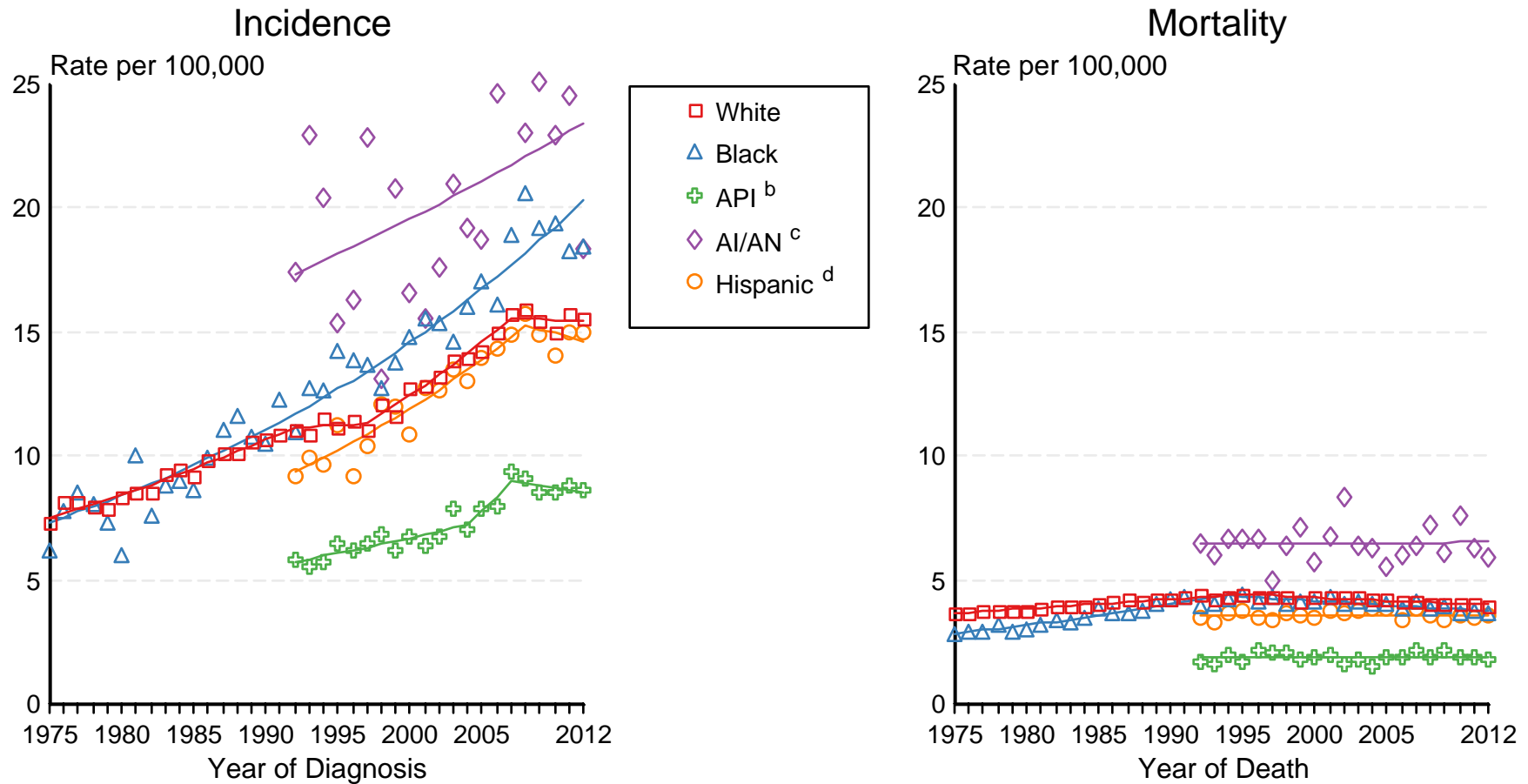
* The APC is significantly different from zero ($p < 0.05$).

Figure 11.2

SEER Incidence and US Death Rates^a Cancer of the Kidney and Renal Pelvis, Both Sexes

Joinpoint Analyses for Whites and Blacks from 1975-2012

and for Asian/Pacific Islanders, American Indians/Alaska Natives and Hispanics from 1992-2012

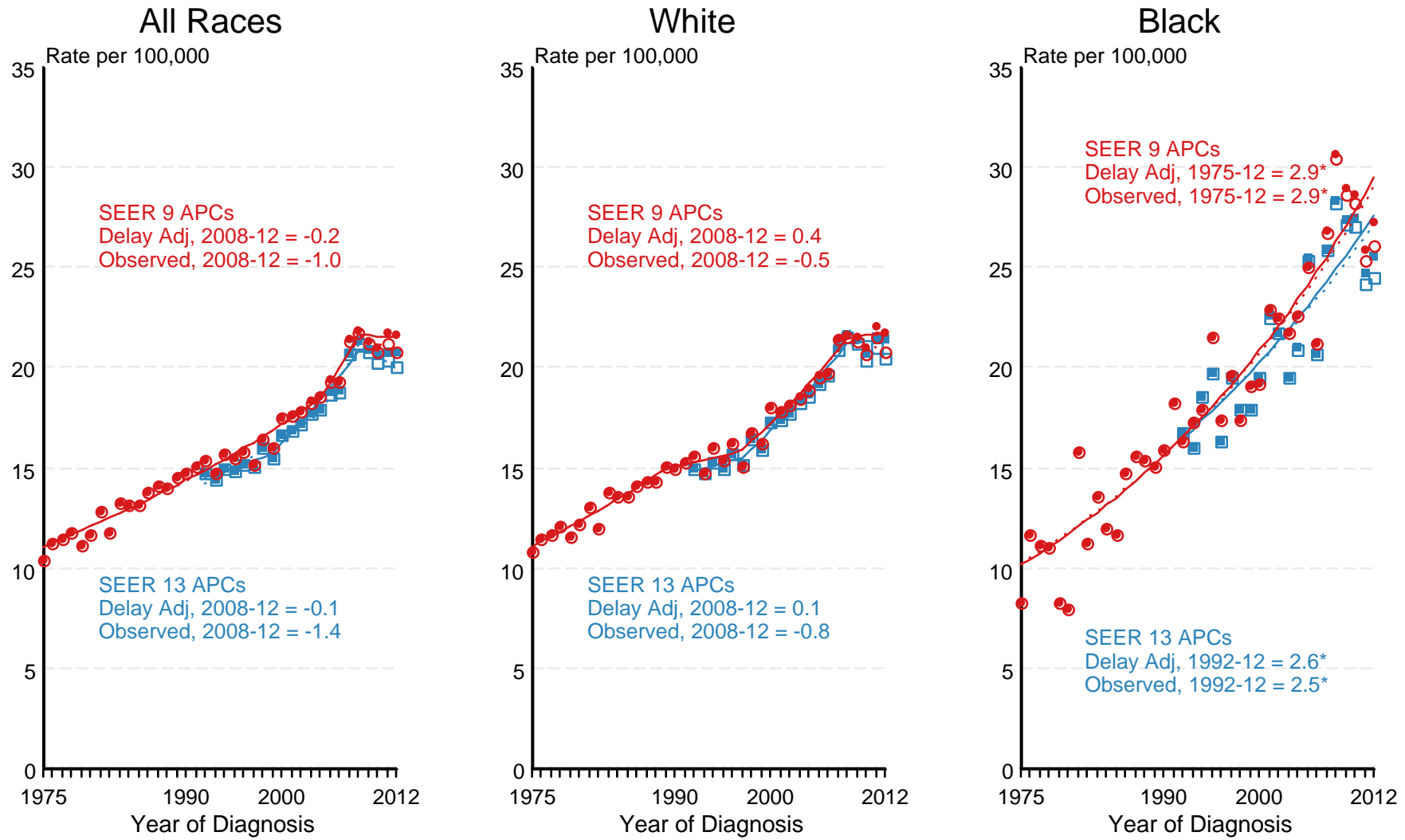


Source: Incidence data for whites and blacks are from the SEER 9 areas (San Francisco, Connecticut, Detroit, Hawaii, Iowa, New Mexico, Seattle, Utah, Atlanta). Incidence data for Asian/Pacific Islanders, American Indians/Alaska Natives and Hispanics are from the SEER 13 Areas (SEER 9 Areas, San Jose-Monterey, Los Angeles, Alaska Native Registry and Rural Georgia). Mortality data are from US Mortality Files, National Center for Health Statistics, CDC.

- ^a Rates are age-adjusted to the 2000 US Std Population (19 age groups - Census P25-1103). Regression lines are calculated using the Joinpoint Regression Program Version 4.2.0, April 2015, National Cancer Institute. Joinpoint analyses for Whites and Blacks during the 1975-2012 period allow a maximum of 5 joinpoints. Analyses for other ethnic groups during the period 1992-2012 allow a maximum of 3 joinpoints.
- ^b API = Asian/Pacific Islander.
- ^c AI/AN = American Indian/Alaska Native. Rates for American Indian/Alaska Native are based on the CHSDA(Contract Health Service Delivery Area) counties.
- ^d Hispanic is not mutually exclusive from whites, blacks, Asian/Pacific Islanders, and American Indians/Alaska Natives. Incidence data for Hispanics are based on NHIA and exclude cases from the Alaska Native Registry. Mortality data for Hispanics exclude cases from New Hampshire and Oklahoma.

Figure 11.3

SEER Observed Incidence and SEER Delay Adjusted Incidence Rates^a SEER 9 Areas Compared to SEER 13 Areas Cancer of the Kidney and Renal Pelvis, Male, by Race

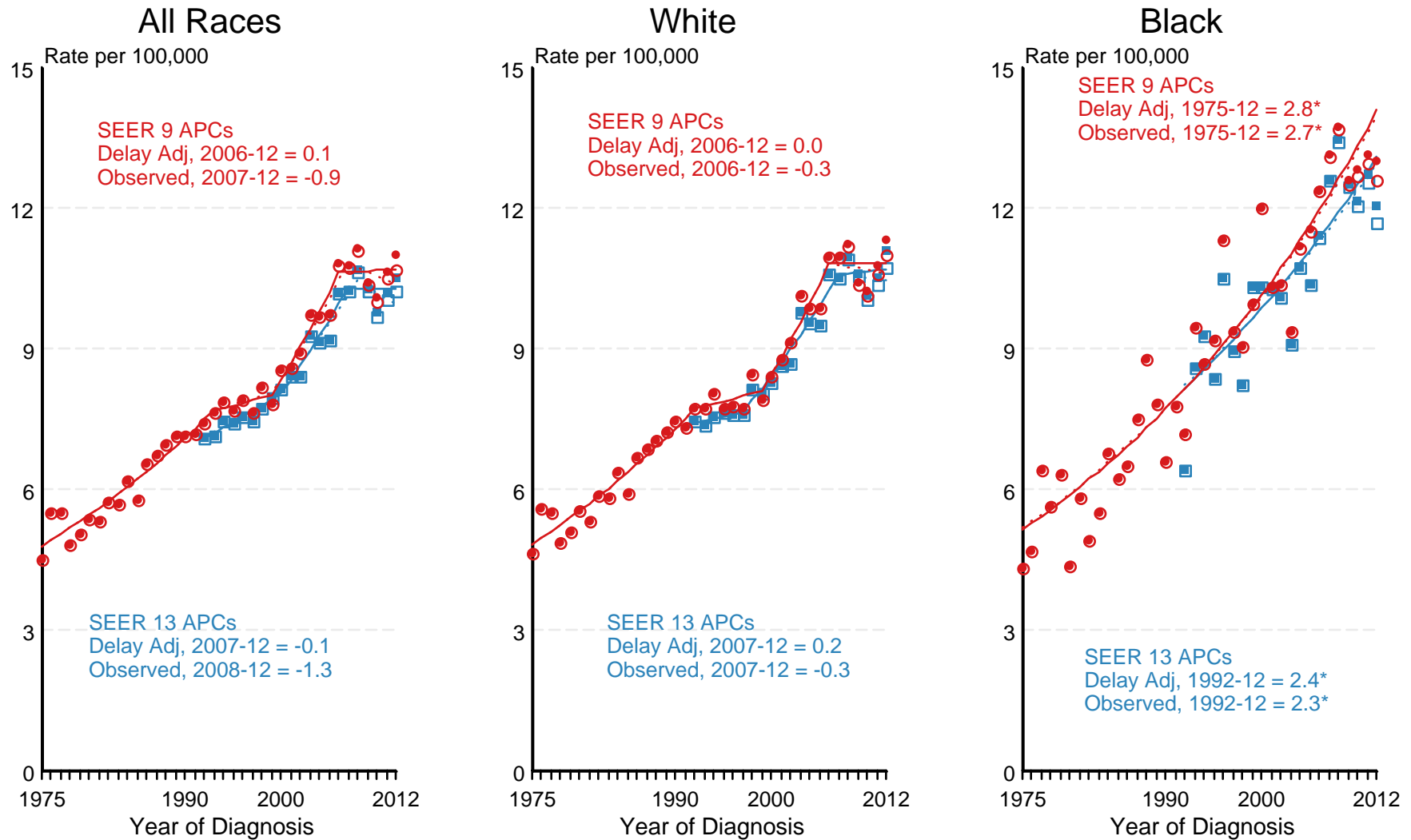


● SEER 9 Delay-Adj. Incidence
 ○ SEER 9 Observed Incidence
 ■ SEER 13 Delay-Adj. Incidence
 □ SEER 13 Observed Incidence

Source: SEER 9 areas and SEER 13 areas.
^a Rates are age-adjusted to the 2000 US Std Population (19 age groups - Census P25-1103).
 Regression lines and APCs are calculated using the Joinpoint Regression Program Version 4.2.0, April 2015, National Cancer Institute.
 The APC is the Annual Percent Change for the regression line segments. The APC shown on the graph is for the most recent trend.
 * The APC is significantly different from zero ($p < 0.05$).

Figure 11.4

SEER Observed Incidence and SEER Delay Adjusted Incidence Rates^a SEER 9 Areas Compared to SEER 13 Areas Cancer of the Kidney and Renal Pelvis, Female, by Race

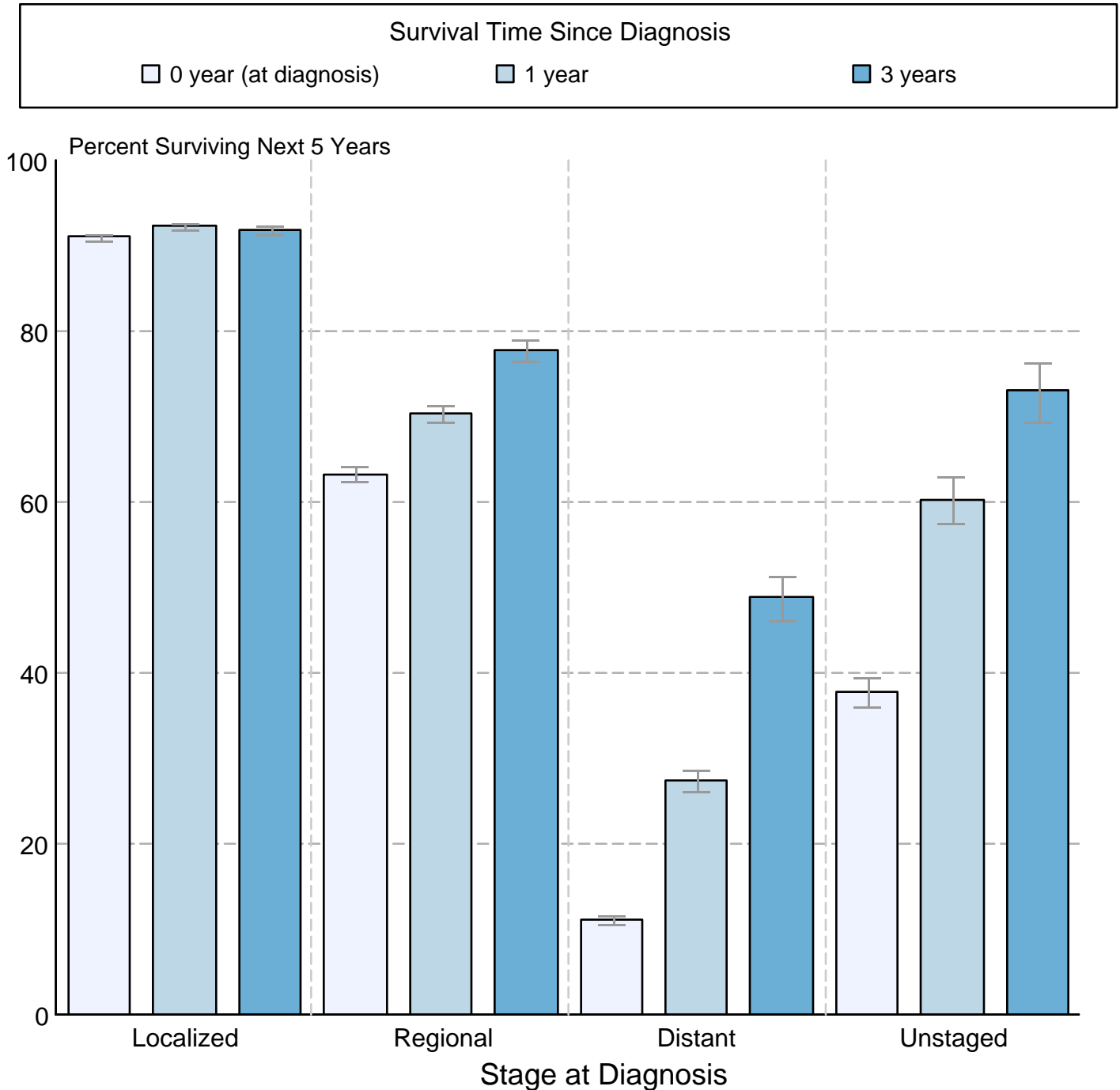


● SEER 9 Delay-Adj. Incidence
 ○ SEER 9 Observed Incidence
 ■ SEER 13 Delay-Adj. Incidence
 □ SEER 13 Observed Incidence

Source: SEER 9 areas and SEER 13 areas.
^a Rates are age-adjusted to the 2000 US Std Population (19 age groups - Census P25-1103).
 Regression lines and APCs are calculated using the Joinpoint Regression Program Version 4.2.0, April 2015, National Cancer Institute.
 The APC is the Annual Percent Change for the regression line segments. The APC shown on the graph is for the most recent trend.
 * The APC is significantly different from zero ($p < 0.05$).

Figure 11.5

Cancer of the Kidney and Renal Pelvis
5-Year SEER Conditional Relative Survival and
95% Confidence Intervals
 Probability of surviving the next 5 years given the cohort
 has already survived 0, 1, or 3 years
 1998-2011 by stage at diagnosis



Source: SEER 18 areas (San Francisco, Connecticut, Detroit, Hawaii, Iowa, New Mexico, Seattle, Utah, Atlanta, San Jose-Monterey, Los Angeles, Alaska Native Registry, Rural Georgia, California excluding SF/SJM/LA, Kentucky, Louisiana, New Jersey and Georgia excluding ATL/RG). California excluding SF/SJM/LA, Kentucky, Louisiana, New Jersey and Georgia excluding ATL/RG contribute cases for diagnosis years 2000 and later. The remaining 13 SEER Areas contribute cases for the entire time period. Percent surviving is not shown if based on less than 25 cases. Confidence intervals are not shown if length of the confidence interval is greater than 5 times the standard error.