

Table 9.1
Hodgkin Lymphoma

Trends in SEER Incidence^{ab} and U.S. Mortality^c Using the Joinpoint Regression Program,
1975-2017 With up to Five Joinpoints, 2000-2017 With up to Three Joinpoints,
Both Sexes by Race/Ethnicity

	JP Trend 1		JP Trend 2		JP Trend 3		JP Trend 4		JP Trend 5		JP Trend 6		AAPC ^d	
	Years	APC	Years	APC	Years	APC	Years	APC	Years	APC	Years	APC	2008-17	2013-17
<u>SEER 9 Delay-Adjusted Incidence^a, 1975-2017</u>														
All Races	1975-03	-0.2	2003-07	2.3	2007-17	-2.1*							-2.1*	-2.1*
White	1975-88	0.6*	1988-01	-0.9*	2001-07	2.0	2007-17	-2.3*					-2.3*	-2.3*
Black	1975-17	1.0*											1.0*	1.0*
<u>SEER 21 Delay-Adjusted Incidence^b, 2000-2017</u>														
All Races	2000-07	0.8*	2007-17	-1.5*									-1.5*	-1.5*
White	2000-06	1.1	2006-17	-1.5*									-1.5*	-1.5*
White NH ^{ef}	2000-06	0.9	2006-17	-1.4*									-1.4*	-1.4*
Black	2000-08	2.4*	2008-17	-1.0									-1.0	-1.0
Black NH ^{ef}	2000-08	2.6*	2008-17	-1.1									-1.1	-1.1
API ^e	2000-17	0.5											0.5	0.5
AI/AN ^{eg}	2000-17	3.1*											3.1*	3.1*
Hispanic ^f	2000-17	-0.6											-0.6	-0.6
<u>U.S. Cancer Mortality^c, 1975-2017</u>														
All Races	1975-79	-6.5*	1979-98	-3.5*	1998-09	-2.2*	2009-17	-4.6*					-4.3*	-4.6*
White	1975-79	-6.2*	1979-96	-3.6*	1996-10	-2.3*	2010-17	-4.8*					-4.2*	-4.8*
Black	1975-14	-2.9*	2014-17	-10.6									-5.5*	-8.7
<u>U.S. Cancer Mortality^c, 2000-2017</u>														
All Races	2000-09	-2.1*	2009-17	-4.6*									-4.3*	-4.6*
White	2000-10	-2.3*	2010-17	-4.8*									-4.2*	-4.8*
White NH ^{ef}	2000-09	-2.3*	2009-17	-5.0*									-4.7*	-5.0*
Black	2000-17	-3.0*											-3.0*	-3.0*
Black NH ^{ef}	2000-17	-2.9*											-2.9*	-2.9*
API ^e	2000-17	-3.3*											-3.3*	-3.3*
AI/AN ^{eg}	-	-											-	-
Hispanic ^f	2000-17	-1.6*											-1.6*	-1.6*

Joinpoint Regression Program Version 4.8, April 2020, National Cancer Institute. (<https://surveillance.cancer.gov/joinpoint/>).

The APC is the Annual Percent Change based on rates age-adjusted to the 2000 US Std Population (19 age groups - Census P25-1130).

^a Trends are from the SEER 9 areas (San Francisco, Connecticut, Detroit, Hawaii, Iowa, New Mexico, Seattle, Utah, and Atlanta).

^b Trends are from the SEER 21 areas (SEER 9 areas, Los Angeles, Alaska Native Registry, Rural Georgia, California excluding SF/SJM/LA, Kentucky, Louisiana, New Jersey, Georgia excluding ATL/RG, Idaho, New York and Massachusetts).

^c Trends are from US Mortality Files, National Center for Health Statistics, Centers for Disease Control and Prevention.

^d The AAPC is the Average Annual Percent Change and is based on the APCs calculated by Joinpoint.

^e API - Asian/Pacific Islander, AI/AN - American Indian/Alaska Native, NH - Non-Hispanic

^f Hispanic and Non-Hispanic are not mutually exclusive from whites, blacks, Asian/Pacific Islanders, and American Indians/Alaska Natives. Incidence data for Hispanics and Non-Hispanics are based on NHIA and exclude cases from the Alaska Native Registry.

^g Data for American Indian/Alaska Native are based on the Purchased/Referred Care Delivery Area (PRCDA) counties.

* The APC/AAPC is significantly different from zero (p<.05).

- Joinpoint regression line analysis could not be performed on data series.

Table 9.2
Hodgkin Lymphoma

Trends in SEER Incidence^{ab} and U.S. Mortality^c Using the Joinpoint Regression Program,
1975-2017 With up to Five Joinpoints, 2000-2017 With up to Three Joinpoints,
Males by Race/Ethnicity

	JP Trend 1		JP Trend 2		JP Trend 3		JP Trend 4		JP Trend 5		JP Trend 6		AAPC ^d	
	Years	APC	Years	APC	Years	APC	Years	APC	Years	APC	Years	APC	2008-17	2013-17
<u>SEER 9 Delay-Adjusted Incidence^a, 1975-2017</u>														
All Races	1975-15	-0.3*	2015-17	-8.8									-2.3	-4.7
White	1975-04	-0.6*	2004-07	4.0	2007-17	-2.3*							-2.3*	-2.3*
Black	1975-17	0.6*											0.6*	0.6*
<u>SEER 21 Delay-Adjusted Incidence^b, 2000-2017</u>														
All Races	2000-07	0.9	2007-17	-1.7*									-1.7*	-1.7*
White	2000-06	1.2	2006-17	-1.7*									-1.7*	-1.7*
White NH ^{ef}	2000-17	-0.7*											-0.7*	-0.7*
Black	2000-17	0.1											0.1	0.1
Black NH ^{ef}	2000-14	1.0	2014-17	-7.1									-1.8	-5.2
API ^e	2000-17	0.5											0.5	0.5
AI/AN ^{eg}	2000-17	0.3											0.3	0.3
Hispanic ^f	2000-17	-1.3*											-1.3*	-1.3*
<u>U.S. Cancer Mortality^c, 1975-2017</u>														
All Races	1975-97	-4.0*	1997-11	-2.2*	2011-17	-4.9*							-4.0*	-4.9*
White	1975-97	-4.1*	1997-10	-2.0*	2010-17	-4.4*							-3.9*	-4.4*
Black	1975-17	-3.3*											-3.3*	-3.3*
<u>U.S. Cancer Mortality^c, 2000-2017</u>														
All Races	2000-17	-2.9*											-2.9*	-2.9*
White	2000-17	-2.8*											-2.8*	-2.8*
White NH ^{ef}	2000-17	-3.0*											-3.0*	-3.0*
Black	2000-17	-2.9*											-2.9*	-2.9*
Black NH ^{ef}	2000-17	-2.8*											-2.8*	-2.8*
API ^e	2000-17	-2.2											-2.2	-2.2
AI/AN ^{eg}	-	-											-	-
Hispanic ^f	2000-17	-2.2*											-2.2*	-2.2*

Joinpoint Regression Program Version 4.8, April 2020, National Cancer Institute. (<https://surveillance.cancer.gov/joinpoint/>).

The APC is the Annual Percent Change based on rates age-adjusted to the 2000 US Std Population (19 age groups - Census P25-1130).

^a Trends are from the SEER 9 areas (San Francisco, Connecticut, Detroit, Hawaii, Iowa, New Mexico, Seattle, Utah, and Atlanta).

^b Trends are from the SEER 21 areas (SEER 9 areas, Los Angeles, Alaska Native Registry, Rural Georgia, California excluding SF/SJM/LA, Kentucky, Louisiana, New Jersey, Georgia excluding ATL/RG, Idaho, New York and Massachusetts).

^c Trends are from US Mortality Files, National Center for Health Statistics, Centers for Disease Control and Prevention.

^d The AAPC is the Average Annual Percent Change and is based on the APCs calculated by Joinpoint.

^e API - Asian/Pacific Islander, AI/AN - American Indian/Alaska Native, NH - Non-Hispanic

^f Hispanic and Non-Hispanic are not mutually exclusive from whites, blacks, Asian/Pacific Islanders, and American Indians/Alaska Natives. Incidence data for Hispanics and Non-Hispanics are based on NHIA and exclude cases from the Alaska Native Registry.

^g Data for American Indian/Alaska Native are based on the Purchased/Referred Care Delivery Area (PRCDA) counties.

* The APC/AAPC is significantly different from zero (p<.05).

- Joinpoint regression line analysis could not be performed on data series.

Table 9.3
Hodgkin Lymphoma

Trends in SEER Incidence^{ab} and U.S. Mortality^c Using the Joinpoint Regression Program,
1975-2017 With up to Five Joinpoints, 2000-2017 With up to Three Joinpoints,
Females by Race/Ethnicity

	JP Trend 1		JP Trend 2		JP Trend 3		JP Trend 4		JP Trend 5		JP Trend 6		AAPC ^d	
	Years	APC	Years	APC	Years	APC	Years	APC	Years	APC	Years	APC	2008-17	2013-17
<u>SEER 9 Delay-Adjusted Incidence^a, 1975-2017</u>														
All Races	1975-07	0.4*	2007-17	-2.0*									-2.0*	-2.0*
White	1975-07	0.4*	2007-17	-2.2*									-2.2*	-2.2*
Black	1975-92	4.4*	1992-17	0.6									0.6	0.6
<u>SEER 21 Delay-Adjusted Incidence^b, 2000-2017</u>														
All Races	2000-04	2.2	2004-17	-1.1*									-1.1*	-1.1*
White	2000-05	1.4	2005-17	-1.3*									-1.3*	-1.3*
White NH ^{ef}	2000-17	-0.8*											-0.8*	-0.8*
Black	2000-17	0.8											0.8	0.8
Black NH ^{ef}	2000-17	0.8											0.8	0.8
API ^e	2000-17	0.4											0.4	0.4
AI/AN ^{eg}	-	-											-	-
Hispanic ^f	2000-17	0.2											0.2	0.2
<u>U.S. Cancer Mortality^c, 1975-2017</u>														
All Races	1975-85	-4.9*	1985-09	-2.6*	2009-17	-5.0*							-4.7*	-5.0*
White	1975-85	-5.0*	1985-09	-2.5*	2009-17	-5.0*							-4.8*	-5.0*
Black	1975-17	-2.6*											-2.6*	-2.6*
<u>U.S. Cancer Mortality^c, 2000-2017</u>														
All Races	2000-17	-3.7*											-3.7*	-3.7*
White	2000-17	-3.7*											-3.7*	-3.7*
White NH ^{ef}	2000-17	-4.1*											-4.1*	-4.1*
Black	2000-17	-3.1*											-3.1*	-3.1*
Black NH ^{ef}	2000-17	-3.0*											-3.0*	-3.0*
API ^e	2000-17	-4.1*											-4.1*	-4.1*
AI/AN ^{eg}	-	-											-	-
Hispanic ^f	2000-17	-0.8											-0.8	-0.8

Joinpoint Regression Program Version 4.8, April 2020, National Cancer Institute. (<https://surveillance.cancer.gov/joinpoint/>).

The APC is the Annual Percent Change based on rates age-adjusted to the 2000 US Std Population (19 age groups - Census P25-1130).

^a Trends are from the SEER 9 areas (San Francisco, Connecticut, Detroit, Hawaii, Iowa, New Mexico, Seattle, Utah, and Atlanta).

^b Trends are from the SEER 21 areas (SEER 9 areas, Los Angeles, Alaska Native Registry, Rural Georgia, California excluding SF/SJM/LA, Kentucky, Louisiana, New Jersey, Georgia excluding ATL/RG, Idaho, New York and Massachusetts).

^c Trends are from US Mortality Files, National Center for Health Statistics, Centers for Disease Control and Prevention.

^d The AAPC is the Average Annual Percent Change and is based on the APCs calculated by Joinpoint.

^e API - Asian/Pacific Islander, AI/AN - American Indian/Alaska Native, NH - Non-Hispanic

^f Hispanic and Non-Hispanic are not mutually exclusive from whites, blacks, Asian/Pacific Islanders, and American Indians/Alaska Natives. Incidence data for Hispanics and Non-Hispanics are based on NHIA and exclude cases from the Alaska Native Registry.

^g Data for American Indian/Alaska Native are based on the Purchased/Referred Care Delivery Area (PRCDA) counties.

* The APC/AAPC is significantly different from zero ($p < .05$).

- Joinpoint regression line analysis could not be performed on data series.

Table 9.4
Hodgkin Lymphoma

Delay-adjusted SEER Incidence^a Rates by Year, Race and Sex

Year of Diagnosis:	All Races			Whites			Blacks		
	Total	Males	Females	Total	Males	Females	Total	Males	Females
1975-1979	2.91	3.63	2.30	3.11	3.81	2.52	2.23	3.36	1.27
1980	2.77	3.31	2.27	2.98	3.53	2.48	1.82	2.07	1.54
1981	2.92	3.58	2.34	3.23	3.92	2.62	1.43	1.94	0.98
1982	2.92	3.50	2.45	3.13	3.67	2.69	2.58	3.15	2.04
1983	3.02	3.72	2.39	3.33	4.00	2.70	2.11	3.85	0.96
1984	3.06	3.72	2.47	3.38	4.02	2.79	2.07	3.31	1.12
1985	2.98	3.51	2.50	3.31	3.85	2.83	1.74	2.26	1.27
1986	2.73	3.33	2.22	2.92	3.51	2.41	2.27	2.80	1.90
1987	3.04	3.71	2.50	3.33	4.00	2.77	2.12	2.78	1.54
1988	3.10	3.60	2.67	3.43	4.00	2.94	1.94	1.93	1.93
1989	3.06	3.68	2.54	3.35	3.97	2.84	2.16	3.15	1.37
1990	3.06	3.51	2.63	3.30	3.83	2.78	3.02	3.23	2.81
1991	3.03	3.51	2.61	3.35	3.84	2.91	2.44	2.77	2.08
1992	2.87	3.12	2.68	3.05	3.24	2.91	2.66	2.71	2.61
1993	2.86	3.27	2.50	3.08	3.48	2.75	2.98	3.70	2.46
1994	2.85	3.15	2.59	3.15	3.49	2.82	2.15	2.41	1.99
1995	2.77	3.23	2.37	3.06	3.52	2.66	2.32	2.93	1.78
1996	2.86	3.33	2.42	3.15	3.64	2.69	2.46	3.19	1.83
1997	2.82	2.95	2.71	3.07	3.22	2.93	2.58	2.42	2.72
1998	2.79	3.11	2.53	3.13	3.45	2.86	2.15	2.46	1.89
1999	2.86	3.08	2.69	3.09	3.23	3.01	2.58	3.14	2.12
2000	2.82	3.31	2.36	3.07	3.55	2.62	2.42	3.08	1.83
2001	2.57	2.95	2.23	2.74	3.14	2.37	2.48	3.17	1.98
2002	2.96	3.27	2.71	3.15	3.45	2.91	2.97	3.23	2.82
2003	2.72	3.13	2.37	3.02	3.46	2.62	2.42	2.82	2.23
2004	2.95	3.06	2.89	3.12	3.20	3.10	3.17	3.25	3.13
2005	3.03	3.52	2.62	3.24	3.74	2.83	3.24	3.54	2.95
2006	3.01	3.32	2.70	3.23	3.51	2.93	3.16	3.93	2.51
2007	3.18	3.68	2.74	3.44	3.90	3.02	3.33	4.10	2.68
2008	2.96	3.38	2.59	3.22	3.61	2.88	3.09	3.71	2.55
2009	2.95	3.22	2.71	3.23	3.50	3.00	2.64	3.22	2.12
2010	2.80	3.27	2.38	3.03	3.53	2.55	2.57	3.09	2.13
2011	2.74	3.17	2.35	2.91	3.34	2.52	2.94	3.55	2.39
2012	2.74	3.06	2.43	2.94	3.29	2.61	2.83	2.89	2.74
2013	2.68	3.09	2.33	2.83	3.18	2.53	2.92	3.62	2.32
2014	2.83	3.35	2.37	3.01	3.50	2.55	3.01	3.50	2.56
2015	2.67	3.07	2.30	2.83	3.13	2.54	3.16	4.30	2.24
2016	2.63	3.00	2.28	2.81	3.24	2.38	2.95	3.27	2.67
2017	2.33	2.53	2.14	2.50	2.71	2.30	2.56	2.72	2.41

Reference: [Cancer Incidence Rates Adjusted for Reporting Delay](#).

Individual rates for diagnosis years 1975-1979 available in web browser version of [Cancer Statistics Review](#).

SEER 9 areas (San Francisco, Connecticut, Detroit, Hawaii, Iowa, New Mexico, Seattle, Utah, and Atlanta).

Rates are per 100,000 and are age-adjusted to the 2000 US Std Population (19 age groups - Census P25-1130).

Delay-adjusted rate is not shown for observed rates based on less than 16 cases for the time interval.

^a

-

Table 9.5
Hodgkin Lymphoma

Age-adjusted SEER Incidence^a Rates by Year, Race and Sex

Year of Diagnosis:	All Races			Whites			Blacks		
	Total	Males	Females	Total	Males	Females	Total	Males	Females
1975-2017	2.86	3.30	2.47	3.10	3.54	2.71	2.59	3.15	2.13
1975-1979	2.91	3.63	2.30	3.11	3.81	2.52	2.23	3.36	1.27
1980	2.77	3.31	2.27	2.98	3.53	2.48	1.82	2.07	1.54
1981	2.92	3.58	2.34	3.23	3.92	2.62	1.43	1.94	-
1982	2.92	3.50	2.45	3.13	3.67	2.69	2.58	3.15	2.04
1983	3.02	3.72	2.39	3.33	4.00	2.70	2.11	3.85	-
1984	3.06	3.72	2.47	3.38	4.02	2.79	2.07	3.31	-
1985	2.98	3.51	2.50	3.31	3.85	2.83	1.74	2.26	-
1986	2.73	3.33	2.22	2.92	3.51	2.41	2.27	2.80	1.90
1987	3.04	3.71	2.50	3.33	4.00	2.77	2.12	2.78	1.54
1988	3.10	3.60	2.67	3.43	4.00	2.94	1.94	1.93	1.93
1989	3.06	3.68	2.54	3.35	3.97	2.84	2.16	3.15	1.37
1990	3.06	3.51	2.63	3.30	3.83	2.78	3.02	3.23	2.81
1991	3.03	3.51	2.61	3.35	3.84	2.91	2.44	2.77	2.08
1992	2.87	3.12	2.68	3.05	3.24	2.91	2.66	2.71	2.61
1993	2.86	3.27	2.50	3.08	3.48	2.75	2.98	3.70	2.46
1994	2.85	3.15	2.59	3.15	3.49	2.82	2.15	2.41	1.99
1995	2.77	3.23	2.37	3.06	3.52	2.66	2.32	2.93	1.78
1996	2.86	3.33	2.42	3.15	3.64	2.69	2.46	3.19	1.83
1997	2.82	2.95	2.71	3.07	3.22	2.93	2.58	2.42	2.72
1998	2.79	3.11	2.53	3.13	3.45	2.86	2.15	2.46	1.89
1999	2.86	3.08	2.69	3.09	3.23	3.01	2.58	3.14	2.12
2000	2.82	3.31	2.36	3.07	3.55	2.62	2.42	3.08	1.83
2001	2.57	2.95	2.23	2.74	3.14	2.37	2.48	3.17	1.98
2002	2.96	3.27	2.71	3.15	3.45	2.91	2.97	3.23	2.82
2003	2.72	3.13	2.37	3.02	3.46	2.62	2.42	2.82	2.23
2004	2.95	3.06	2.89	3.12	3.20	3.10	3.17	3.25	3.13
2005	3.03	3.52	2.62	3.24	3.74	2.83	3.24	3.54	2.95
2006	3.01	3.32	2.70	3.23	3.51	2.93	3.16	3.93	2.51
2007	3.18	3.68	2.74	3.44	3.90	3.02	3.33	4.10	2.68
2008	2.96	3.38	2.59	3.22	3.61	2.88	3.09	3.71	2.55
2009	2.94	3.21	2.71	3.23	3.49	3.00	2.63	3.21	2.12
2010	2.80	3.26	2.38	3.02	3.52	2.54	2.56	3.07	2.12
2011	2.73	3.16	2.34	2.90	3.33	2.51	2.92	3.52	2.37
2012	2.72	3.05	2.42	2.93	3.28	2.59	2.80	2.86	2.71
2013	2.66	3.07	2.31	2.81	3.17	2.52	2.88	3.57	2.29
2014	2.81	3.32	2.35	2.99	3.48	2.53	2.96	3.44	2.52
2015	2.65	3.04	2.28	2.80	3.10	2.52	3.10	4.23	2.20
2016	2.60	2.97	2.26	2.77	3.20	2.36	2.88	3.20	2.60
2017	2.29	2.49	2.11	2.45	2.66	2.25	2.48	2.63	2.33

^a Individual rates for diagnosis years 1975-1979 available in web browser version of [Cancer Statistics Review](#).

SEER 9 areas (San Francisco, Connecticut, Detroit, Hawaii, Iowa, New Mexico, Seattle, Utah, and Atlanta).

Rates are per 100,000 and are age-adjusted to the 2000 US Std Population (19 age groups - Census P25-1130).

- Statistic not shown. Rate based on less than 16 cases for the time interval.

Table 9.6
Hodgkin Lymphoma

Age-adjusted U.S. Death^a Rates by Year, Race and Sex

Year of Death:	All Races			Whites			Blacks		
	Total	Males	Females	Total	Males	Females	Total	Males	Females
1975-2017	0.57	0.72	0.45	0.60	0.75	0.48	0.48	0.64	0.36
1975-1979	1.13	1.45	0.86	1.16	1.48	0.90	0.89	1.27	0.59
1980	0.98	1.23	0.76	1.01	1.27	0.80	0.75	1.09	0.48
1981	0.93	1.15	0.74	0.96	1.19	0.76	0.74	0.88	0.62
1982	0.88	1.09	0.70	0.92	1.15	0.72	0.70	0.78	0.62
1983	0.85	1.09	0.65	0.88	1.13	0.68	0.64	0.90	0.45
1984	0.86	1.18	0.60	0.88	1.19	0.63	0.79	1.18	0.47
1985	0.77	0.98	0.58	0.78	1.00	0.60	0.71	0.96	0.51
1986	0.78	1.00	0.58	0.80	1.04	0.60	0.65	0.85	0.49
1987	0.74	0.96	0.56	0.77	0.98	0.58	0.67	0.94	0.46
1988	0.67	0.88	0.50	0.69	0.91	0.51	0.59	0.75	0.48
1989	0.71	0.92	0.54	0.73	0.94	0.56	0.66	0.92	0.47
1990	0.66	0.85	0.50	0.69	0.88	0.52	0.56	0.81	0.36
1991	0.65	0.83	0.51	0.66	0.83	0.51	0.67	0.89	0.49
1992	0.65	0.83	0.50	0.67	0.86	0.52	0.58	0.77	0.45
1993	0.61	0.79	0.47	0.63	0.80	0.50	0.57	0.83	0.39
1994	0.56	0.66	0.47	0.56	0.66	0.48	0.55	0.73	0.41
1995	0.55	0.67	0.44	0.56	0.68	0.46	0.53	0.73	0.36
1996	0.53	0.64	0.44	0.55	0.65	0.46	0.47	0.63	0.36
1997	0.53	0.62	0.46	0.54	0.63	0.47	0.54	0.67	0.43
1998	0.48	0.61	0.36	0.49	0.62	0.37	0.48	0.66	0.33
1999	0.51	0.63	0.41	0.53	0.66	0.43	0.41	0.55	0.30
2000	0.46	0.55	0.39	0.48	0.57	0.41	0.35	0.42	0.30
2001	0.47	0.56	0.38	0.48	0.59	0.39	0.42	0.52	0.35
2002	0.47	0.58	0.38	0.49	0.60	0.41	0.40	0.57	0.27
2003	0.46	0.55	0.39	0.48	0.57	0.41	0.36	0.47	0.27
2004	0.43	0.55	0.34	0.44	0.57	0.35	0.40	0.47	0.34
2005	0.42	0.51	0.36	0.43	0.51	0.37	0.42	0.55	0.32
2006	0.44	0.56	0.33	0.45	0.57	0.35	0.41	0.56	0.30
2007	0.41	0.51	0.33	0.43	0.53	0.35	0.36	0.45	0.29
2008	0.37	0.45	0.31	0.39	0.47	0.33	0.33	0.39	0.28
2009	0.40	0.48	0.32	0.41	0.49	0.34	0.39	0.48	0.30
2010	0.38	0.49	0.29	0.40	0.51	0.31	0.30	0.36	0.26
2011	0.36	0.47	0.27	0.37	0.48	0.28	0.35	0.50	0.24
2012	0.34	0.42	0.27	0.35	0.43	0.28	0.33	0.41	0.26
2013	0.32	0.41	0.25	0.34	0.42	0.26	0.28	0.34	0.24
2014	0.31	0.40	0.24	0.32	0.40	0.25	0.31	0.42	0.23
2015	0.32	0.40	0.24	0.33	0.43	0.24	0.27	0.30	0.25
2016	0.27	0.35	0.21	0.29	0.37	0.22	0.21	0.32	0.14
2017	0.27	0.33	0.21	0.28	0.35	0.23	0.22	0.29	0.17

^a Individual rates for years of death 1975-1979 available in web browser version of [Cancer Statistics Review](#).
US Mortality Files, National Center for Health Statistics, Centers for Disease Control and Prevention.
Rates are per 100,000 and are age-adjusted to the 2000 US Std Population (19 age groups - Census P25-1130).
- Statistic not shown. Rate based on less than 16 cases for the time interval.

Table 9.7
Hodgkin LymphomaSEER Incidence^a and U.S. Death^b Rates, Age-Adjusted and Age-Specific Rates, by Race and Sex

	All Races			Whites			Blacks		
	Total	Males	Females	Total	Males	Females	Total	Males	Females
<u>SEER Incidence</u>									
<u>Age at Diagnosis</u>									
Age-Adjusted Rates, 2013-2017									
All ages	2.6	2.9	2.3	2.8	3.1	2.5	2.7	3.1	2.3
Under 65	2.5	2.7	2.2	2.6	2.8	2.4	2.6	3.0	2.3
65 and over	3.6	4.4	3.0	3.9	4.7	3.2	2.7	3.3	2.4
All ages (WHO world std) ^c	2.5	2.8	2.3	2.7	2.9	2.5	2.5	2.9	2.2
Age-Specific Rates, 2013-2017									
<1	-	-	-	-	-	-	-	-	-
1-4	0.1	-	-	-	-	-	-	-	-
5-9	0.4	0.5	0.2	0.3	0.5	0.2	0.5	0.7	-
10-14	1.3	1.4	1.1	1.3	1.4	1.1	1.2	1.1	1.3
15-19	3.2	3.2	3.3	3.6	3.4	3.7	2.7	2.8	2.5
20-24	4.2	4.0	4.5	4.7	4.3	5.0	3.0	2.9	3.1
25-29	4.0	3.9	4.0	4.4	4.3	4.5	3.4	3.8	3.0
30-34	3.5	3.7	3.3	3.7	3.9	3.4	3.7	3.8	3.6
35-39	2.9	3.1	2.7	3.1	3.3	2.9	3.4	3.8	3.0
40-44	2.7	3.2	2.3	2.8	3.1	2.5	3.6	4.4	2.8
45-49	2.5	3.1	2.0	2.6	3.2	2.0	3.5	4.1	3.0
50-54	2.5	3.1	1.8	2.4	2.9	1.8	3.8	5.1	2.8
55-59	2.6	3.5	1.8	2.8	3.7	1.9	2.7	3.4	2.2
60-64	2.7	3.3	2.2	2.8	3.4	2.2	3.1	3.8	2.5
65-69	3.3	4.0	2.6	3.4	4.1	2.8	3.1	3.9	2.4
70-74	3.7	4.3	3.2	4.1	4.8	3.5	2.8	3.1	2.5
75-79	4.1	5.0	3.5	4.4	5.3	3.7	3.1	3.4	2.9
80-84	3.9	4.9	3.3	4.2	5.2	3.5	2.5	-	-
85+	2.8	3.8	2.3	3.0	4.1	2.4	-	-	-
<u>U.S. Mortality</u>									
<u>Age at Death</u>									
Age-Adjusted Rates, 2013-2017									
All ages	0.3	0.4	0.2	0.3	0.4	0.2	0.3	0.3	0.2
Under 65	0.1	0.2	0.1	0.1	0.2	0.1	0.2	0.2	0.1
65 and over	1.3	1.7	1.1	1.4	1.8	1.1	0.8	1.0	0.7
All ages (WHO world std) ^c	0.2	0.2	0.1	0.2	0.3	0.2	0.2	0.2	0.1
Age-Specific Rates, 2013-2017									
<1	-	-	-	-	-	-	-	-	-
1-4	-	-	-	-	-	-	-	-	-
5-9	-	-	-	-	-	-	-	-	-
10-14	-	-	-	-	-	-	-	-	-
15-19	0.0	0.0	0.0	0.0	0.0	-	-	-	-
20-24	0.1	0.1	0.1	0.1	0.1	0.1	0.1	-	-
25-29	0.2	0.2	0.1	0.1	0.2	0.1	0.2	0.2	-
30-34	0.2	0.2	0.1	0.2	0.2	0.1	0.3	0.4	-
35-39	0.1	0.2	0.1	0.1	0.2	0.1	0.2	0.3	-
40-44	0.2	0.2	0.1	0.2	0.2	0.1	0.2	-	-
45-49	0.2	0.3	0.2	0.2	0.3	0.2	0.3	0.4	-
50-54	0.3	0.4	0.2	0.3	0.4	0.2	0.3	0.5	-
55-59	0.4	0.5	0.2	0.4	0.5	0.2	0.4	0.5	0.4
60-64	0.5	0.6	0.3	0.5	0.6	0.3	0.4	0.6	-
65-69	0.7	0.9	0.5	0.8	1.0	0.6	0.5	0.6	0.4
70-74	1.0	1.4	0.7	1.1	1.5	0.8	0.6	-	0.5
75-79	1.5	1.8	1.3	1.6	1.9	1.4	0.9	1.3	-
80-84	2.0	2.5	1.7	2.1	2.6	1.8	1.3	-	1.3
85+	2.3	3.1	1.8	2.4	3.3	1.9	1.4	2.3	1.1

^a SEER 21 areas. Rates are per 100,000 and are age-adjusted to the 2000 US Std Population (19 age groups - Census P25-1130), unless noted.

^b US Mortality Files, National Center for Health Statistics, Centers for Disease Control and Prevention.

^c Rates are per 100,000 and are age-adjusted to the 2000 US Std Population (19 age groups - Census P25-1130), unless noted.

- Rates are per 100,000 and are age-adjusted to the world (WHO 2000-2025) standard million.

- Statistic not shown. Rate based on less than 16 cases for the time interval.

Table 9.8
Hodgkin Lymphoma

5-Year Relative and Period Survival (Percent) by Race, Sex, Diagnosis Year and Age

	All Races			Whites			Blacks		
	Total	Males	Females	Total	Males	Females	Total	Males	Females
5-Year Relative Survival (Percent)									
Year of Diagnosis:									
1960-1963 ^a	-	-	-	40	34	48	-	-	-
1970-1973 ^a	-	-	-	67	66	69	-	-	-
1975-1977 ^b	71.8	69.9	74.3	72.1	70.1	74.5	70.1	68.5 ^g	73.3 ^g
1978-1980 ^b	71.6	70.3	73.4	71.7	69.8	74.2	70.6	74.7 ^g	63.1 ^g
1981-1983 ^b	74.3	72.9	76.0	74.6	73.7	75.7	71.8	69.6 ^g	75.9 ^g
1984-1986 ^b	78.4	76.6	80.7	78.8	77.0	81.2	74.9	76.0 ^g	72.1 ^g
1987-1989 ^b	79.2	76.6	82.5	79.7	76.8	83.3	72.3	70.9 ^g	74.0 ^g
1990-1992 ^b	81.7	79.3	84.6	82.8	81.1	84.9	74.3	65.2	84.3
1993-1995 ^b	81.7	79.3	84.6	82.2	80.0	84.7	78.4	74.2	83.0
1996-1998 ^b	85.2	84.5	85.9	85.8	84.5	87.3	81.2	84.4	77.7
1999-2001 ^b	85.1	82.8	87.9	85.7	84.0	87.8	81.6	75.6	89.7
2002-2004 ^b	86.2	85.2	87.2	87.7	86.9	88.5	79.2	74.4	82.8
2005-2009 ^b	88.2	87.2	89.5	88.7	88.3	89.3	85.3	81.2	90.0
2010-2016 ^b	89.6 ^f	88.3 ^f	91.3 ^f	90.3 ^f	89.1 ^f	91.7 ^f	86.7 ^f	83.5 ^f	90.8 ^f
5-Year Period Survival (Percent) ^{cd}									
2016	87.5	86.5	88.9	87.9	86.8	89.4	84.5	83.0	86.2
Stage Distribution (%) 2010-2016 ^{ce}									
All Stages									
Number of cases	14,617	8,122	6,495	11,580	6,436	5,144	1,902	1,048	854
Percent	100%	100%	100%	100%	100%	100%	100%	100%	100%
Localized	14	15	13	14	15	13	15	15	15
Regional	39	35	45	41	36	47	31	26	37
Distant	42	45	37	41	44	36	51	56	44
Unstaged/Unknown	5	5	4	4	5	4	3	3	3
5-Year Relative Survival (Percent), 2010-2016 ^c									
Age at Diagnosis:									
Ages <45	95.1	94.6	95.7	95.8	95.5	96.2	90.7	88.2	93.4
Ages 45-54	87.2	85.2	90.6	88.5	86.9	91.2	81.8	78.8	85.8
Ages 55-64	79.5	78.2	81.4	80.5	79.4	81.8	70.1	66.6 ^g	73.7 ^g
Ages 65-74	67.0	64.1	70.8	66.4	62.8	71.0	72.8 ^g	75.5 ^g	67.9 ^g
Ages 75+	49.4	50.8	48.0	49.5	49.3	49.3	52.9 ^g	-	-
Ages <65	91.9	90.7	93.4	92.7	91.7	93.9	86.7	84.0	90.0
Ages 65+	59.6	59.0	60.1	59.2	57.5	60.8	67.9 ^g	73.6 ^g	61.5 ^g
Stage ^e :									
All Stages	87.4	86.5	88.6	87.5	86.6	88.6	85.4	83.3	87.7
Localized	91.3	92.2	90.0	91.1	91.8	90.0	90.9	92.4	88.8
Regional	93.8	92.7	94.9	93.9	92.7	95.0	92.8	90.4	94.3
Distant	80.6	80.4	80.8	80.7	80.8	80.4	79.2	76.9	82.8
Unstaged/Unknown	81.3	79.1	83.9	79.7	76.1	84.5	78.3 ^g	84.1 ^g	71.8 ^g

^a Based on End Results data from a series of hospital registries and one population-based registry.
^b SEER 9 areas (San Francisco, Connecticut, Detroit, Hawaii, Iowa, New Mexico, Seattle, Utah, Atlanta).
Based on follow-up of patients into 2017. [Expected survival rates](#) are derived from the U.S. Annual Life Tables.
^c SEER 18 areas (San Francisco, Connecticut, Detroit, Hawaii, Iowa, New Mexico, Seattle, Utah, Atlanta, San Jose-Monterey, Los Angeles, Alaska Native Registry, Rural Georgia, California excluding SF/SJM/LA, Kentucky, Louisiana, New Jersey and Georgia excluding ATL/RG). Expected survival rates are derived from life tables by socio-economic status, geography and race developed by the SEER program.
Based on follow-up of patients into 2017.
^d Period survival provides a 2016 estimate of survival by piecing together the most recent conditional survival estimates from several cohorts. It is computed here using three year calendar blocks (2010-2012: 0-1 year survival), (2009-2011: 1-2 year survival), (2008-2010: 2-3 year survival), (2007-2009: 3-4 year survival), (2006-2008: 4-5 years survival).
^e Stage at diagnosis is classified using SEER Summary Stage 2000. Stage distribution percentages may not sum to 100 due to rounding.
^f The difference between 1975-1977 and 2010-2016 is statistically significant (p<.05).
^g The standard error is between 5 and 10 percentage points.
^h The standard error is greater than 10 percentage points.
- Statistic could not be calculated due to fewer than 25 cases during the time period.

Table 9.9
Hodgkin Lymphoma

SEER^a Relative Survival (Percent)
By Year of Diagnosis

All Races, Males and Females

Year of Diagnosis

	1975- 1979	1980- 1984	1985- 1989	1990- 1994	1995	1996	1997	1998	1999	2000	2001	2002	2003	2004	2005	2006	2007	2008	2009	2010	2011	2012	2013	2014	2015	2016
Survival Time																										
1-year	86.9	89.4	90.7	92.1	92.8	91.6	93.5	94.6	91.0	92.4	94.0	92.9	93.2	91.3	93.5	92.4	93.5	94.7	92.3	91.9	93.7	94.5	93.8	93.9	93.0	94.3
2-year	80.8	83.6	86.3	87.7	88.6	88.2	90.6	90.5	87.8	90.6	90.8	90.0	92.2	89.4	91.1	90.1	92.5	92.8	89.6	90.8	92.5	92.9	92.4	93.3	92.4	
3-year	76.5	80.1	83.0	85.1	86.7	86.8	89.5	88.3	85.4	88.7	88.5	88.4	90.1	87.3	90.5	89.0	90.8	91.7	88.4	89.8	91.4	91.4	91.3	92.5		
4-year	73.7	77.4	80.6	83.2	83.5	84.6	88.6	86.6	84.2	87.9	86.6	86.2	88.1	86.1	89.6	88.5	89.2	90.8	87.3	88.7	90.1	90.7	91.0			
5-year	71.4	74.8	79.0	81.6	82.2	83.3	87.3	84.9	83.4	86.4	85.2	85.2	87.5	85.9	88.3	88.1	88.6	90.5	85.7	86.8	89.8	90.3				
6-year	69.0	72.3	77.5	80.0	80.2	81.8	86.1	83.8	82.2	85.6	84.3	84.7	87.0	84.9	87.9	86.9	87.1	89.7	84.6	85.6	88.6					
7-year	67.1	70.7	75.2	78.6	79.0	80.1	85.4	83.0	80.9	84.9	84.3	83.4	86.4	84.3	87.4	86.3	85.4	88.0	83.8	85.5						
8-year	65.0	69.3	74.1	77.8	78.5	79.4	84.9	82.4	80.0	83.9	83.8	82.3	85.7	83.4	85.8	86.2	84.2	87.4	82.9							
9-year	62.9	67.9	73.3	76.9	77.3	78.3	84.8	81.5	79.0	83.0	82.8	81.3	84.8	83.1	85.5	85.8	84.2	86.6								
10-year	61.7	66.8	72.6	76.1	76.8	76.8	84.1	80.2	78.3	83.0	81.9	80.5	84.5	82.6	85.4	85.3	84.2									
11-year	60.4	65.8	71.7	75.5	75.7	75.8	83.6	79.6	78.0	82.9	81.3	79.0	84.1	82.4	84.9	84.9										
12-year	59.5	64.7	70.9	74.8	75.6	74.9	83.2	79.2	77.6	82.4	81.3	78.3	83.5	81.9	84.6											
13-year	58.7	63.8	69.7	74.1	75.5	74.4	82.0	79.0	76.4	82.0	79.6	77.5	82.3	81.2												
14-year	57.5	62.7	68.7	73.6	75.5	73.6	80.5	78.4	76.3	81.2	79.5	77.5	81.9													
15-year	56.5	61.9	67.5	73.1	75.4	73.3	79.7	77.2	75.7	78.9	78.0	76.9														
16-year	55.7	60.9	66.9	72.6	75.2	73.3	79.5	77.1	74.1	77.9	77.2															
17-year	54.7	59.5	66.3	72.0	74.9	72.6	78.4	76.7	73.4	77.3																
18-year	53.9	58.6	65.6	71.3	73.9	72.1	77.4	76.1	73.2																	
19-year	53.2	58.1	64.9	70.4	73.9	71.8	76.6	75.6																		
20-year	52.1	57.0	64.2	69.9	73.5	70.9	76.3																			

^a Based on the SEER 9 areas (San Francisco, Connecticut, Detroit, Hawaii, Iowa, New Mexico, Seattle, Utah, and Atlanta). [Expected survival rates](#) are derived from the U.S. Annual Life Tables.

Table 9.10
Hodgkin Lymphoma

SEER^a Relative Survival (Percent)
By Year of Diagnosis

All Races, Males

Year of Diagnosis

	1975- 1979	1980- 1984	1985- 1989	1990- 1994	1995	1996	1997	1998	1999	2000	2001	2002	2003	2004	2005	2006	2007	2008	2009	2010	2011	2012	2013	2014	2015	2016
Survival Time																										
1-year	85.9	89.4	89.8	91.2	92.2	92.7	92.1	94.3	89.3	90.9	92.9	90.8	93.0	89.5	93.6	91.5	92.7	93.5	93.1	90.3	92.9	93.5	91.9	93.5	92.0	92.4
2-year	80.2	83.6	84.8	85.9	88.0	88.7	88.9	91.0	86.4	88.4	89.1	88.5	92.2	87.9	91.0	89.0	91.6	91.4	89.5	89.5	91.8	92.1	90.0	92.9	90.8	
3-year	75.3	80.4	81.4	83.1	85.4	87.1	87.7	88.8	83.6	85.5	86.6	86.7	89.9	86.2	90.2	88.5	89.5	90.6	88.0	88.1	90.7	90.8	89.0	92.6		
4-year	71.7	77.3	78.4	80.8	81.1	85.1	87.2	86.5	82.8	83.8	85.2	84.9	86.8	85.7	88.9	87.4	87.9	89.2	87.2	87.2	89.5	90.2	88.7			
5-year	69.2	74.1	76.5	79.1	80.2	83.1	86.1	84.5	82.5	81.9	83.7	83.8	86.1	85.7	87.6	86.8	87.2	89.2	84.9	85.3	88.9	89.7				
6-year	66.5	71.4	74.7	77.2	78.9	81.9	83.8	83.6	80.5	81.0	82.2	83.0	86.1	83.7	86.9	85.4	85.3	88.2	84.0	84.0	87.5					
7-year	64.3	69.8	71.9	76.1	77.6	79.8	83.2	82.2	78.7	80.3	81.9	81.2	85.2	83.5	85.8	85.0	83.4	85.5	82.8	83.4						
8-year	62.4	68.3	70.6	74.9	76.5	78.7	82.5	81.8	77.5	79.2	81.4	80.1	84.3	82.6	83.2	85.0	82.3	84.7	81.8							
9-year	59.9	67.1	69.4	73.9	75.4	77.6	82.5	80.4	76.1	78.9	79.7	79.2	82.9	82.6	82.9	84.9	82.3	83.5								
10-year	58.9	65.8	68.7	73.3	75.4	75.4	81.7	78.3	75.3	78.9	78.3	78.6	82.3	81.5	82.9	84.5	82.3									
11-year	57.5	64.8	67.3	72.7	74.3	74.3	81.1	77.7	75.2	78.0	77.4	76.1	81.8	81.3	82.9	84.3										
12-year	56.4	63.5	66.2	72.0	74.3	72.7	81.0	77.3	74.2	77.4	77.1	75.4	81.0	80.7	82.9											
13-year	55.8	62.8	64.5	71.1	74.3	72.2	78.9	77.1	71.7	76.7	75.9	74.1	79.7	79.6												
14-year	54.4	61.4	63.4	70.7	74.3	70.8	77.6	76.1	71.5	75.7	75.9	74.1	78.9													
15-year	53.2	60.7	62.3	70.1	74.3	70.3	76.5	73.4	70.4	73.3	74.7	73.4														
16-year	52.5	59.7	61.4	69.6	74.3	70.3	76.2	73.3	70.1	72.2	74.0															
17-year	51.2	58.3	60.9	69.0	74.3	69.9	75.3	72.7	68.5	71.6																
18-year	50.2	57.3	60.1	68.3	73.2	69.1	73.6	71.7	68.4																	
19-year	49.6	56.8	59.6	67.5	73.2	68.8	72.4	70.6																		
20-year	48.6	55.5	58.6	67.3	72.8	68.0	71.8																			

^a Based on the SEER 9 areas (San Francisco, Connecticut, Detroit, Hawaii, Iowa, New Mexico, Seattle, Utah, and Atlanta). [Expected survival rates](#) are derived from the U.S. Annual Life Tables.

Table 9.11
Hodgkin Lymphoma

SEER^a Relative Survival (Percent)
By Year of Diagnosis

All Races, Females

Year of Diagnosis

	1975- 1979	1980- 1984	1985- 1989	1990- 1994	1995	1996	1997	1998	1999	2000	2001	2002	2003	2004	2005	2006	2007	2008	2009	2010	2011	2012	2013	2014	2015	2016
Survival Time																										
1-year	88.2	89.4	91.8	93.0	93.7	90.0	95.1	94.9	92.9	94.5	95.3	95.2	93.4	93.1	93.4	93.4	94.5	96.1	91.4	93.8	94.8	95.6	96.4	94.4	94.4	96.5
2-year	81.6	83.7	88.3	89.9	89.4	87.4	92.3	89.9	89.4	93.5	92.7	91.6	92.2	90.9	91.1	91.3	93.5	94.2	89.7	92.5	93.3	93.6	95.6	93.7	94.4	
3-year	78.2	79.7	85.0	87.6	88.1	86.3	91.3	87.7	87.5	93.1	90.8	90.2	90.2	88.4	90.7	89.5	92.5	93.0	88.8	91.8	92.2	91.9	94.0	92.0		
4-year	76.3	77.6	83.2	86.0	86.6	84.0	89.8	86.8	85.7	93.1	88.5	87.6	89.6	86.3	90.4	89.5	90.7	92.6	87.3	90.6	90.8	91.2	93.9			
5-year	74.4	75.7	82.1	84.6	84.7	83.6	88.6	85.3	84.4	92.5	87.1	86.7	89.1	86.2	89.1	89.5	90.2	91.8	86.3	88.6	90.8	90.9				
6-year	72.3	73.4	81.0	83.4	81.8	81.5	88.5	84.0	83.9	92.0	86.8	86.6	88.1	85.9	89.1	88.6	89.3	91.4	85.2	87.8	89.8					
7-year	70.8	71.9	79.3	81.7	80.7	80.5	87.7	83.7	83.2	91.1	86.8	85.8	87.8	85.1	89.1	87.6	87.9	91.2	84.9	87.8						
8-year	68.5	70.7	78.4	81.3	80.7	80.2	87.2	83.2	82.6	90.3	86.8	84.7	87.2	84.1	89.0	87.1	86.7	90.7	83.9							
9-year	67.0	69.0	78.1	80.3	79.6	78.9	86.7	82.7	82.2	88.5	86.7	83.4	87.1	83.3	88.5	86.8	86.4	90.1								
10-year	65.5	68.2	77.6	79.3	78.3	78.4	86.6	82.3	81.3	88.5	86.6	82.5	86.9	83.3	87.8	86.0	86.3									
11-year	64.3	67.2	77.2	78.9	77.5	77.6	86.2	81.7	80.8	88.5	86.5	82.2	86.8	83.3	87.0	85.3										
12-year	63.6	66.4	76.8	78.1	77.0	77.5	85.2	81.3	80.8	88.5	86.5	81.2	86.5	83.0	86.7											
13-year	62.5	65.2	76.1	77.6	76.2	77.2	85.1	80.9	80.8	88.5	84.2	81.1	85.5	82.8												
14-year	61.6	64.3	75.2	77.1	76.2	76.9	83.6	80.9	80.8	88.5	84.0	81.1	85.3													
15-year	60.8	63.4	74.1	76.6	76.0	76.9	82.9	80.9	80.8	86.5	82.3	80.6														
16-year	60.1	62.4	73.6	76.1	75.9	76.9	82.6	80.9	78.4	85.6	81.2															
17-year	59.5	61.1	72.9	75.5	75.3	75.9	81.6	80.9	78.4	85.2																
18-year	58.7	60.4	72.5	75.0	74.6	75.7	81.3	80.9	78.2																	
19-year	58.0	59.6	71.6	73.9	74.4	75.6	80.8	80.8																		
20-year	56.8	59.0	71.2	73.0	74.3	74.6	80.8																			

^a Based on the SEER 9 areas (San Francisco, Connecticut, Detroit, Hawaii, Iowa, New Mexico, Seattle, Utah, and Atlanta). [Expected survival rates](#) are derived from the U.S. Annual Life Tables.

Table 9.12
Hodgkin Lymphoma

Risk of Being Diagnosed With Cancer in 10, 20 and 30 Years,
Lifetime Risk of Being Diagnosed with Cancer Given Alive and Cancer-Free at Current Age, and
Lifetime Risk of Dying from Cancer Given Alive at Current Age
Both Sexes, 2015-2017 By Race/Ethnicity

Race/ Ethnicity	Current Age	Risk of Being Diagnosed with Cancer					Risk of Dying from Cancer	Race/ Ethnicity	Current Age	Risk of Being Diagnosed with Cancer					Risk of Dying from Cancer
		+10 yrs	+20 yrs	+30 yrs	Ever	+10 yrs				+20 yrs	+30 yrs	Ever			
All Races	0	0.00	0.03	0.06	0.21	0.03	Asian/ Pacific Islander	0	0.00	0.02	0.04	0.11	0.02		
	10	0.02	0.06	0.09	0.21	0.03		10	0.02	0.04	0.05	0.11	0.02		
	20	0.04	0.07	0.10	0.19	0.03		20	0.02	0.04	0.05	0.10	0.02		
	30	0.03	0.06	0.08	0.15	0.03		30	0.01	0.02	0.03	0.08	0.02		
	40	0.03	0.05	0.08	0.12	0.03		40	0.01	0.02	0.03	0.06	0.02		
	50	0.02	0.05	0.08	0.10	0.03		50	0.01	0.02	0.04	0.05	0.02		
	60	0.03	0.06	0.08	0.08	0.03		60	0.01	0.03	0.04	0.04	0.02		
	70	0.03	0.05	-	0.06	0.03		70	0.02	0.03	-	0.03	0.02		
80	0.03	-	-	0.03	0.02	80	0.01	-	-	0.02	0.01				
White	0	0.00	0.03	0.07	0.23	0.03	American Indian/ Alaska Native ^a	0	0.00	0.01	0.03	0.11	0.04		
	10	0.02	0.07	0.10	0.22	0.03		10	0.01	0.02	0.04	0.11	0.04		
	20	0.04	0.08	0.10	0.20	0.03		20	0.01	0.03	0.03	0.10	0.04		
	30	0.03	0.06	0.08	0.16	0.03		30	0.01	0.02	0.03	0.09	0.04		
	40	0.03	0.05	0.08	0.13	0.03		40	0.01	0.02	0.04	0.08	0.04		
	50	0.02	0.05	0.08	0.10	0.03		50	0.01	0.03	0.05	0.08	0.04		
	60	0.03	0.06	0.08	0.08	0.03		60	0.02	0.04	0.07	0.07	0.04		
	70	0.04	0.06	-	0.06	0.03		70	0.03	0.06	-	0.06	0.03		
80	0.03	-	-	0.03	0.02	80	0.04	-	-	0.04	0.04				
Black	0	0.00	0.02	0.05	0.19	0.02	Hispanic ^b	0	0.00	0.02	0.05	0.21	0.05		
	10	0.02	0.05	0.08	0.19	0.02		10	0.02	0.04	0.07	0.21	0.05		
	20	0.03	0.06	0.10	0.18	0.02		20	0.03	0.05	0.07	0.19	0.05		
	30	0.03	0.07	0.10	0.15	0.02		30	0.02	0.04	0.06	0.17	0.05		
	40	0.03	0.06	0.09	0.12	0.02		40	0.02	0.04	0.07	0.14	0.05		
	50	0.03	0.06	0.08	0.09	0.02		50	0.02	0.05	0.09	0.13	0.05		
	60	0.03	0.05	0.06	0.06	0.02		60	0.03	0.07	0.10	0.11	0.05		
	70	0.03	0.04	-	0.04	0.01		70	0.04	0.08	-	0.08	0.05		
80	0.01	-	-	0.02	0.01	80	0.04	-	-	0.05	0.03				

Devcan 6.7.8, April 2020, National Cancer Institute (<https://surveillance.cancer.gov/devcan/>).

Source: Incidence data are from the SEER 21 areas (San Francisco, Connecticut, Detroit, Hawaii, Iowa, New Mexico, Seattle, Utah, Atlanta, San Jose-Monterey, Los Angeles, Alaska Native Registry, Rural Georgia, California excluding SF/SJM/LA, Kentucky, Louisiana, New Jersey, Georgia excluding ATL/RG, Idaho, New York and Massachusetts). Mortality data are from the NCHS public use data file for the total US.

^a Underlying incidence and mortality data for American Indian/Alaska Native are based on the PRCD (Purchased/Referred Care Delivery Areas) counties.

^b Hispanic is not mutually exclusive from whites, blacks, Asian/Pacific Islanders, and American Indians/Alaska Natives. Underlying incidence data for Hispanics are based on NHIA and exclude cases from the Alaska Native Registry.

- Statistic could not be calculated.

A percent of 0.00 represents a value that is below 0.005.

Table 9.13
Hodgkin Lymphoma

Risk of Being Diagnosed With Cancer in 10, 20 and 30 Years,
Lifetime Risk of Being Diagnosed with Cancer Given Alive and Cancer-Free at Current Age, and
Lifetime Risk of Dying from Cancer Given Alive at Current Age
Males, 2015-2017 By Race/Ethnicity

Race/ Ethnicity	Current Age	Risk of Being Diagnosed with Cancer				Risk of Dying from Cancer	Race/ Ethnicity	Current Age	Risk of Being Diagnosed with Cancer				Risk of Dying from Cancer
		+10 yrs	+20 yrs	+30 yrs	Ever				+10 yrs	+20 yrs	+30 yrs	Ever	
All Races	0	0.00	0.03	0.06	0.23	0.04	Asian/ Pacific Islander	0	0.00	0.02	0.04	0.13	0.02
	10	0.02	0.06	0.09	0.23	0.04		10	0.02	0.04	0.05	0.13	0.02
	20	0.04	0.07	0.10	0.21	0.04		20	0.02	0.04	0.05	0.11	0.03
	30	0.03	0.06	0.09	0.17	0.04		30	0.02	0.03	0.04	0.09	0.02
	40	0.03	0.06	0.09	0.14	0.04		40	0.01	0.02	0.04	0.08	0.02
	50	0.03	0.06	0.09	0.11	0.04		50	0.01	0.03	0.05	0.07	0.02
	60	0.03	0.07	0.09	0.09	0.03		60	0.02	0.04	0.05	0.06	0.02
	70	0.04	0.06	-	0.06	0.03		70	0.03	0.04	-	0.04	0.02
80	0.03	-	-	0.04	0.03	80	0.01	-	-	0.02	0.01		
White	0	0.00	0.03	0.07	0.24	0.04	American Indian/ Alaska Native ^a	0	0.00	0.01	0.02	0.09	0.03
	10	0.02	0.07	0.10	0.24	0.04		10	0.01	0.02	0.03	0.09	0.04
	20	0.04	0.08	0.11	0.22	0.04		20	0.01	0.02	0.03	0.08	0.04
	30	0.04	0.07	0.10	0.18	0.04		30	0.01	0.02	0.03	0.07	0.03
	40	0.03	0.06	0.09	0.15	0.04		40	0.02	0.02	0.04	0.06	0.03
	50	0.03	0.06	0.10	0.12	0.04		50	0.01	0.02	0.03	0.05	0.04
	60	0.04	0.07	0.09	0.09	0.04		60	0.02	0.03	0.05	0.05	0.04
	70	0.04	0.06	-	0.07	0.03		70	0.01	0.03	-	0.03	0.03
80	0.03	-	-	0.04	0.03	80	0.04	-	-	0.04	0.05		
Black	0	0.00	0.02	0.05	0.21	0.03	Hispanic ^b	0	0.00	0.02	0.04	0.22	0.05
	10	0.02	0.05	0.08	0.21	0.03		10	0.02	0.04	0.06	0.22	0.05
	20	0.03	0.06	0.10	0.19	0.03		20	0.02	0.05	0.07	0.21	0.05
	30	0.03	0.07	0.11	0.16	0.02		30	0.02	0.05	0.07	0.18	0.05
	40	0.04	0.08	0.10	0.13	0.02		40	0.02	0.05	0.09	0.16	0.05
	50	0.04	0.07	0.09	0.10	0.02		50	0.03	0.07	0.11	0.14	0.05
	60	0.03	0.06	0.07	0.07	0.02		60	0.04	0.09	0.12	0.12	0.05
	70	0.03	0.04	-	0.04	0.02		70	0.05	0.09	-	0.09	0.05
80	0.02	-	-	0.02	0.02	80	0.05	-	-	0.05	0.03		

Devcan 6.7.8, April 2020, National Cancer Institute (<https://surveillance.cancer.gov/devcan/>).

Source: Incidence data are from the SEER 21 areas (San Francisco, Connecticut, Detroit, Hawaii, Iowa, New Mexico, Seattle, Utah, Atlanta, San Jose-Monterey, Los Angeles, Alaska Native Registry, Rural Georgia, California excluding SF/SJM/LA, Kentucky, Louisiana, New Jersey, Georgia excluding ATL/RG, Idaho, New York and Massachusetts). Mortality data are from the NCHS public use data file for the total US.

^a Underlying incidence and mortality data for American Indian/Alaska Native are based on the PRCA (Purchased/Referred Care Delivery Areas) counties.

^b Hispanic is not mutually exclusive from whites, blacks, Asian/Pacific Islanders, and American Indians/Alaska Natives. Underlying incidence data for Hispanics are based on NHIA and exclude cases from the Alaska Native Registry.

- Statistic could not be calculated.

A percent of 0.00 represents a value that is below 0.005.

Table 9.14
Hodgkin Lymphoma

Risk of Being Diagnosed With Cancer in 10, 20 and 30 Years,
Lifetime Risk of Being Diagnosed with Cancer Given Alive and Cancer-Free at Current Age, and
Lifetime Risk of Dying from Cancer Given Alive at Current Age
Females, 2015-2017 By Race/Ethnicity

Race/ Ethnicity	Current Age	Risk of Being Diagnosed with Cancer					Risk of Dying from Cancer	Race/ Ethnicity	Current Age	Risk of Being Diagnosed with Cancer					Risk of Dying from Cancer
		+10 yrs	+20 yrs	+30 yrs	Ever	+10 yrs				+20 yrs	+30 yrs	Ever			
All Races	0	0.00	0.02	0.06	0.19	0.03	Asian/ Pacific Islander	0	0.00	0.02	0.04	0.10	0.02		
	10	0.02	0.06	0.09	0.19	0.03		10	0.01	0.04	0.05	0.10	0.02		
	20	0.04	0.07	0.09	0.17	0.03		20	0.02	0.04	0.04	0.09	0.02		
	30	0.03	0.05	0.07	0.13	0.03		30	0.01	0.02	0.03	0.06	0.02		
	40	0.02	0.04	0.06	0.10	0.03		40	0.01	0.01	0.02	0.05	0.01		
	50	0.02	0.04	0.07	0.08	0.03		50	0.01	0.02	0.03	0.04	0.01		
	60	0.02	0.05	0.07	0.07	0.03		60	0.01	0.02	0.03	0.04	0.01		
	70	0.03	0.05	-	0.05	0.02		70	0.01	0.02	-	0.03	0.01		
80	0.02	-	-	0.03	0.02	80	0.01	-	-	0.01	0.01				
White	0	0.00	0.03	0.07	0.21	0.03	American Indian/ Alaska Native ^a	0	0.00	0.01	0.03	0.14	0.04		
	10	0.03	0.07	0.10	0.21	0.03		10	0.01	0.03	0.04	0.14	0.04		
	20	0.04	0.08	0.10	0.18	0.03		20	0.02	0.03	0.04	0.13	0.04		
	30	0.03	0.05	0.07	0.14	0.03		30	0.02	0.02	0.03	0.11	0.04		
	40	0.02	0.04	0.06	0.11	0.03		40	0.00	0.01	0.03	0.10	0.04		
	50	0.02	0.04	0.07	0.09	0.03		50	0.01	0.03	0.07	0.10	0.04		
	60	0.02	0.05	0.07	0.07	0.03		60	0.02	0.06	0.09	0.09	0.04		
	70	0.03	0.05	-	0.05	0.02		70	0.04	0.07	-	0.08	0.04		
80	0.02	-	-	0.03	0.02	80	0.04	-	-	0.04	0.04				
Black	0	0.00	0.02	0.05	0.18	0.02	Hispanic ^b	0	0.00	0.02	0.05	0.19	0.05		
	10	0.02	0.05	0.08	0.18	0.02		10	0.02	0.05	0.07	0.19	0.05		
	20	0.03	0.06	0.09	0.16	0.02		20	0.03	0.05	0.07	0.18	0.05		
	30	0.03	0.06	0.09	0.13	0.02		30	0.02	0.04	0.06	0.15	0.05		
	40	0.03	0.05	0.08	0.10	0.02		40	0.02	0.03	0.06	0.12	0.05		
	50	0.02	0.05	0.07	0.08	0.02		50	0.02	0.04	0.08	0.11	0.05		
	60	0.02	0.05	0.05	0.06	0.02		60	0.03	0.06	0.09	0.10	0.05		
	70	0.02	0.03	-	0.03	0.01		70	0.04	0.07	-	0.07	0.05		
80	0.01	-	-	0.01	0.01	80	0.04	-	-	0.04	0.04				

Devcan 6.7.8, April 2020, National Cancer Institute (<https://surveillance.cancer.gov/devcan/>).

Source: Incidence data are from the SEER 21 areas (San Francisco, Connecticut, Detroit, Hawaii, Iowa, New Mexico, Seattle, Utah, Atlanta, San Jose-Monterey, Los Angeles, Alaska Native Registry, Rural Georgia, California excluding SF/SJM/LA, Kentucky, Louisiana, New Jersey, Georgia excluding ATL/RG, Idaho, New York and Massachusetts). Mortality data are from the NCHS public use data file for the total US.

^a Underlying incidence and mortality data for American Indian/Alaska Native are based on the PRCA (Purchased/Referred Care Delivery Areas) counties.

^b Hispanic is not mutually exclusive from whites, blacks, Asian/Pacific Islanders, and American Indians/Alaska Natives. Underlying incidence data for Hispanics are based on NHIA and exclude cases from the Alaska Native Registry.

- Statistic could not be calculated.

A percent of 0.00 represents a value that is below 0.005.

Table 9.15
Hodgkin Lymphoma

SEER Incidence and U.S. Mortality
Age-Adjusted Rates and Trends^a
By Race/Ethnicity and Sex

SEER Incidence	SEER 21 Areas ^b			SEER 21 Areas ^b			SEER 9 Areas ^b		
	Rate 2013-2017			Trend 2008-2017 ^c			Trend 2008-2017 ^d		
	Rate per 100,000 persons			AAPC (%)			AAPC (%)		
Race/Ethnicity	Total	Males	Females	Total	Males	Females	Total	Males	Females
All Races	2.6	2.9	2.3	-1.7*	-1.8*	-1.2*	-2.3*	-2.5	-2.1*
White	2.8	3.1	2.5	-1.9*	-2.0*	-1.8*	-2.4*	-2.5*	-2.3*
White Hispanic ^e	2.4	2.7	2.2	-3.0	-4.0*	-0.2	-	-	-
White Non-Hispanic ^e	3.0	3.3	2.7	-1.6*	-1.6*	-0.9*	-	-	-
Black	2.7	3.1	2.3	-1.4*	-2.1	0.6	0.9*	0.5*	-1.0
Asian/Pacific Islander	1.3	1.5	1.1	0.2	0.3	0.2	-	-	-
Amer Ind/Alaska Nat ^f	1.3	1.2	1.3	2.6*	-0.2	-	-	-	-
Hispanic ^e	2.4	2.6	2.1	-0.8*	-1.5*	0.0	-	-	-
<u>U.S. Mortality^g</u>									
U.S. Mortality ^g	Rate 2013-2017			Trend 2008-2017 ^h					
	Rate per 100,000 persons			AAPC (%)					
	Total	Males	Females	Total	Males	Females			
All Races	0.3	0.4	0.2	-4.3*	-2.9*	-3.7*			
White	0.3	0.4	0.2	-4.2*	-2.8*	-3.7*			
White Hispanic ^e	0.4	0.5	0.3	-1.5*	-2.1*	-0.8			
White Non-Hispanic ^e	0.3	0.4	0.2	-4.7*	-3.0*	-4.1*			
Black	0.3	0.3	0.2	-3.0*	-2.9*	-3.1*			
Asian/Pacific Islander	0.1	0.2	0.1	-3.3*	-2.2	-4.1*			
Amer Ind/Alaska Nat									
Total U.S.	0.2	-	-	-2.2	-	-			
PRCDA Counties	0.2	-	-	-	-	-			
Non-PRCDA Counties	-	-	-	-	-	-			
Hispanic ^e	0.4	0.5	0.3	-1.6*	-2.2*	-0.8			

The AAPC is the Average Annual Percent Change over the time interval. The AAPCs are calculated by the Joinpoint Regression Program Version 4.8, April 2020, National Cancer Institute.

Statistic not shown. Rate based on less than 16 cases for the time interval.

Trend based on less than 10 cases for at least one year within the time interval.

Rates are age-adjusted to the 2000 US Std Population (19 age groups - Census P25-1130). Trends are based on rates age-adjusted to the 2000 US Std Population (19 age groups - Census P25-1130).

The SEER 9 areas are San Francisco, Connecticut, Detroit, Hawaii, Iowa, New Mexico, Seattle, Utah, and Atlanta.

The SEER 21 areas comprise the SEER 9 areas plus San Jose-Monterey, Los Angeles, the Alaska Native Registry, Rural Georgia, California excluding SF/SJM/LA, Kentucky, Louisiana, New Jersey, Georgia excluding ATL/RG, Idaho, New York and Massachusetts.

The 2008-2017 AAPC estimates are based on a Joinpoint analysis with up to 3 Joinpoints over diagnosis years 2000-2017.

The 2008-2017 AAPC estimates are based on a Joinpoint analysis with up to 5 Joinpoints over diagnosis years 1975-2017.

Hispanic and Non-Hispanic are not mutually exclusive from whites, blacks, Asian/Pacific Islanders, and American Indians/Alaska Natives. Incidence data for Hispanics and Non-Hispanics are based on NHIA and exclude cases from the Alaska Native Registry.

Incidence data for American Indian/Alaska Native are based on the Purchased/Referred Care Delivery Area (PRCDA) counties.

US Mortality Files, National Center for Health Statistics, CDC.

The 2008-2017 mortality AAPCs are based on a Joinpoint analysis using years of death 2000-2017.

The APC is significantly different from zero (p<.05).

Table 9.16
Hodgkin Lymphoma

Age-Adjusted SEER Incidence Rates^a
By Registry, Race and Sex

	All Races			Whites			Blacks		
	Total	Males	Females	Total	Males	Females	Total	Males	Females
<u>SEER Incidence Rates^a, 2013-2017</u>									
California	2.20	2.48	1.94	2.40	2.67	2.14	2.14	2.38	1.91
Greater Bay Area	2.27	2.62	1.93	2.67	3.01	2.33	2.50	2.83	2.14
San Francisco-Oakland	2.28	2.55	2.03	2.67	2.92	2.41	2.45	2.56	2.32
San Jose-Monterey	2.27	2.75	1.79	2.71	3.17	2.25	-	-	-
Los Angeles	2.04	2.34	1.78	2.24	2.59	1.92	2.00	2.19	1.88
Greater California	2.26	2.52	2.02	2.40	2.62	2.18	2.11	2.30	1.89
Connecticut	3.25	3.80	2.78	3.20	3.69	2.76	2.97	4.06	2.24
Detroit	2.93	3.44	2.46	3.16	3.57	2.77	2.74	3.72	1.93
Georgia	2.43	2.72	2.16	2.44	2.68	2.23	2.59	3.05	2.19
Atlanta	2.60	2.90	2.36	2.50	2.76	2.27	3.04	3.51	2.68
Rural Georgia	2.72	-	-	-	-	-	-	-	-
Greater Georgia	2.32	2.62	2.04	2.43	2.66	2.22	2.16	2.59	1.75
Hawaii	1.52	1.84	1.23	2.55	2.87	2.16	-	-	-
Idaho	2.42	2.66	2.16	2.45	2.69	2.20	-	-	-
Iowa	3.01	3.40	2.64	2.98	3.38	2.61	4.41	-	-
Kentucky	2.61	3.05	2.21	2.63	3.04	2.27	2.75	3.55	1.99
Louisiana	2.79	3.14	2.47	2.90	3.14	2.67	2.62	3.15	2.14
Massachusetts	2.66	2.87	2.49	2.82	2.97	2.71	2.17	2.63	1.73
New Jersey	3.21	3.55	2.93	3.42	3.79	3.09	2.94	2.97	2.94
New Mexico	2.32	2.94	1.76	2.48	3.11	1.91	-	-	-
New York	3.23	3.52	2.99	3.46	3.72	3.23	3.03	3.33	2.82
Seattle-Puget Sound	2.53	2.93	2.14	2.61	2.95	2.28	3.29	3.89	2.56
Utah	2.32	2.42	2.23	2.42	2.52	2.33	-	-	-
SEER 9 Areas ^b	2.60	2.98	2.26	2.77	3.12	2.44	2.86	3.41	2.39
SEER 13 Areas ^b	2.44	2.80	2.11	2.63	2.98	2.29	2.70	3.21	2.28
SEER 18 Areas ^b	2.49	2.82	2.19	2.64	2.95	2.35	2.57	2.99	2.20
SEER 21 Areas ^b	2.62	2.94	2.34	2.78	3.07	2.52	2.66	3.05	2.32

^a Rates are per 100,000 and are age-adjusted to the 2000 US Std Population (19 age groups - Census P25-1130)

^b The SEER 9 areas are San Francisco, Connecticut, Detroit, Hawaii, Iowa, New Mexico, Seattle, Utah and Atlanta.

The SEER 13 areas comprise the SEER 9 areas plus San Jose-Monterey, Los Angeles, the Alaska Native Registry and Rural Georgia.

The SEER 18 areas comprise the SEER 13 areas plus California excluding SF/SJM/LA, Kentucky, Louisiana, New Jersey and Georgia

excluding ATL/RG.

The SEER 21 areas comprise the SEER 18 areas plus Idaho, New York and Massachusetts.

- Statistic not shown. Rate based on less than 16 cases for the time interval.

Table 9.17
Hodgkin Lymphoma

Age-Adjusted SEER Death Rates^a
By Registry, Race and Sex

	All Races			Whites			Blacks		
	Total	Males	Females	Total	Males	Females	Total	Males	Females
<u>SEER Death Rates^a, 2013-2017</u>									
California	0.33	0.41	0.27	0.37	0.44	0.30	0.31	0.41	0.25
Greater Bay Area	0.24	0.29	0.20	0.29	0.32	0.27	-	-	-
San Francisco-Oakland	0.23	0.30	0.17	0.27	0.33	0.21	-	-	-
San Jose-Monterey	0.26	0.27	0.25	0.33	-	0.36	-	-	-
Los Angeles	0.32	0.37	0.27	0.37	0.44	0.31	-	-	-
Greater California	0.37	0.47	0.29	0.39	0.49	0.31	0.48	0.60	-
Connecticut	0.25	0.38	0.13	0.27	0.42	-	-	-	-
Detroit	0.31	0.35	0.27	0.31	0.33	0.30	0.32	-	-
Georgia	0.28	0.37	0.20	0.29	0.40	0.18	0.29	0.35	0.23
Atlanta	0.28	0.35	0.22	0.27	-	-	0.31	-	-
Rural Georgia	-	-	-	-	-	-	-	-	-
Greater Georgia	0.28	0.38	0.19	0.30	0.41	0.18	0.25	-	-
Hawaii	0.24	-	-	-	-	-	-	-	-
Idaho	0.28	-	0.34	0.30	-	0.36	-	-	-
Iowa	0.27	0.36	0.19	0.28	0.36	0.20	-	-	-
Kentucky	0.33	0.47	0.23	0.35	0.50	0.24	-	-	-
Louisiana	0.35	0.38	0.34	0.39	0.39	0.39	0.25	-	-
Massachusetts	0.23	0.30	0.18	0.24	0.30	0.19	-	-	-
New Jersey	0.26	0.35	0.19	0.29	0.40	0.21	-	-	-
New Mexico	0.37	0.49	0.27	0.38	0.50	0.26	-	-	-
New York	0.29	0.35	0.25	0.32	0.38	0.28	0.22	0.29	0.17
Seattle-Puget Sound	0.20	0.27	0.15	0.21	0.27	0.16	-	-	-
Utah	0.25	0.30	-	0.26	0.30	-	-	-	-
SEER 9 Areas ^b	0.26	0.34	0.19	0.27	0.35	0.20	0.24	0.30	0.19
SEER 13 Areas ^b	0.27	0.34	0.21	0.29	0.36	0.23	0.25	0.33	0.19
SEER 18 Areas ^b	0.30	0.38	0.23	0.32	0.41	0.25	0.26	0.34	0.20
SEER 21 Areas ^b	0.29	0.37	0.23	0.32	0.39	0.25	0.24	0.33	0.18
Total U.S.	0.30	0.38	0.23	0.31	0.39	0.24	0.26	0.33	0.20

^a US Mortality Files, National Center for Health Statistics, Centers for Disease Control and Prevention. Rates are per 100,000 and are age-adjusted to the 2000 US Std Population (19 age groups - Census P25-1130).

^b The SEER 9 areas are San Francisco, Connecticut, Detroit, Hawaii, Iowa, New Mexico, Seattle, Utah and Atlanta. The SEER 13 areas comprise the SEER 9 areas plus San Jose-Monterey, Los Angeles, the Alaska Native Registry and Rural Georgia. The SEER 18 areas comprise the SEER 13 areas plus California excluding SF/SJM/LA, Kentucky, Louisiana, New Jersey and Georgia excluding ATL/RG.

The SEER 21 areas comprise the SEER 18 areas plus Idaho, New York and Massachusetts.

- Statistic not shown. Rate based on less than 16 cases for the time interval.

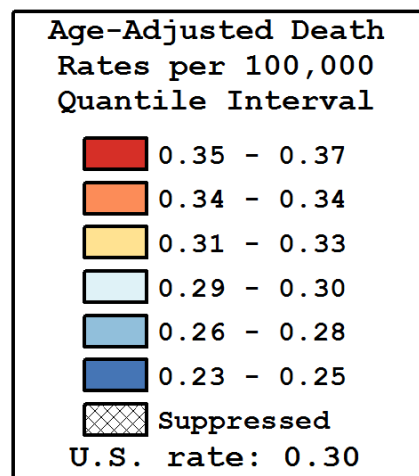
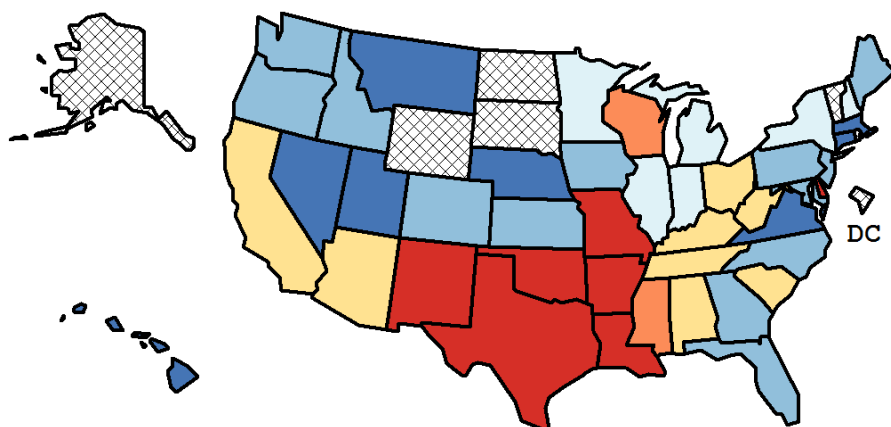
Table 9.18
Hodgkin Lymphoma

Age-Adjusted Cancer Death^a Rates By State, All Races, 2013-2017

Males and Females

State	Rate	SE	Rank(CI) ^d	PD
TOTAL U.S.	0.30	0.00		
High Five States				
New Mexico	0.37	0.06	01(01,42)	25.50 ^c
Oklahoma	0.36	0.04	02(01,39)	20.05 ^c
Louisiana	0.35	0.04	03(01,37)	19.41 ^c
Arkansas	0.35	0.05	04(01,41)	19.12 ^c
Delaware	0.35	0.08	05(01,44)	17.59 ^c
Low Five States				
Connecticut	0.25	0.04	40(05,44)	-15.98 ^c
Hawaii	0.24	0.06	41(01,44)	-19.55 ^c
Nevada	0.23	0.04	42(06,44)	-21.07 ^c
Massachusetts	0.23	0.02	43(17,44)	-21.45 ^c
Nebraska	0.23	0.05	44(03,44)	-22.30 ^c

State	Rate	SE	Rank(CI) ^d	PD	State	Rate	SE	Rank(CI) ^d	PD
Alabama	0.31	0.03	15(01,42)	4.51	Montana	0.25	0.07	38(01,44)	-15.26 ^c
Alaska	-	-	-(-,-)	-	Nebraska	0.23	0.05	44(03,44)	-22.30 ^c
Arizona	0.31	0.03	16(02,41)	4.20	Nevada	0.23	0.04	42(06,44)	-21.07 ^c
Arkansas	0.35	0.05	04(01,41)	19.12 ^c	New Hampshire	0.30	0.07	18(01,44)	0.61
California	0.33	0.01	10(03,22)	11.92	New Jersey	0.26	0.02	36(10,44)	-11.77
Colorado	0.27	0.03	33(05,44)	-10.67	New Mexico	0.37	0.06	01(01,42)	25.50 ^c
Connecticut	0.25	0.04	40(05,44)	-15.98 ^c	New York	0.29	0.02	23(08,38)	-1.97
Delaware	0.35	0.08	05(01,44)	17.59 ^c	North Carolina	0.28	0.02	28(07,43)	-6.95
D.C.	-	-	-(-,-)	-	North Dakota	-	-	-(-,-)	-
Florida	0.28	0.01	27(11,40)	-5.73	Ohio	0.31	0.02	17(03,38)	3.52
Georgia	0.28	0.02	26(05,42)	-4.95	Oklahoma	0.36	0.04	02(01,39)	20.05 ^c
Hawaii	0.24	0.06	41(01,44)	-19.55 ^c	Oregon	0.28	0.03	29(03,44)	-7.11
Idaho	0.28	0.06	24(01,44)	-4.00	Pennsylvania	0.26	0.02	35(14,43)	-11.41
Illinois	0.29	0.02	22(06,40)	-1.91	Rhode Island	-	-	-(-,-)	-
Indiana	0.29	0.03	21(03,43)	-1.81	South Carolina	0.32	0.04	14(01,41)	9.31
Iowa	0.27	0.04	30(02,44)	-7.85	South Dakota	-	-	-(-,-)	-
Kansas	0.28	0.04	25(01,44)	-4.91	Tennessee	0.33	0.03	12(01,37)	10.34
Kentucky	0.33	0.04	11(01,41)	11.11	Texas	0.35	0.02	06(01,21)	17.01 ^c
Louisiana	0.35	0.04	03(01,37)	19.41 ^c	Utah	0.25	0.05	39(02,44)	-15.74 ^c
Maine	0.27	0.06	31(01,44)	-9.16	Vermont	-	-	-(-,-)	-
Maryland	0.26	0.03	34(06,44)	-11.00	Virginia	0.25	0.02	37(12,44)	-15.09 ^c
Massachusetts	0.23	0.02	43(17,44)	-21.45 ^c	Washington	0.27	0.03	32(08,44)	-10.51
Michigan	0.29	0.02	19(04,41)	-1.03	West Virginia	0.33	0.06	13(01,44)	9.75
Minnesota	0.29	0.03	20(02,43)	-1.66	Wisconsin	0.34	0.03	09(01,36)	14.89
Mississippi	0.34	0.05	08(01,42)	15.56 ^c	Wyoming	-	-	-(-,-)	-
Missouri	0.35	0.03	07(01,35)	16.78 ^c					



^a US Mortality Files, National Center for Health Statistics, Centers for Disease Control and Prevention. Rates are per 100,000 and are age-adjusted to the 2000 US Std Population (19 age groups - Census P25-1130).

^b Difference between state rate and total U.S. rate is statistically significant ($p < .0002$).

^c Absolute percent difference between state rate and total U.S. rate is 15% or more.

^d Rank of state level death rate and the 95% confidence intervals (low, high) for the rank.

SE Standard error of the rate.

PD Percent difference between state rate and total U.S. rate.

- Statistic not shown. Rate based on less than 16 cases for the time interval.

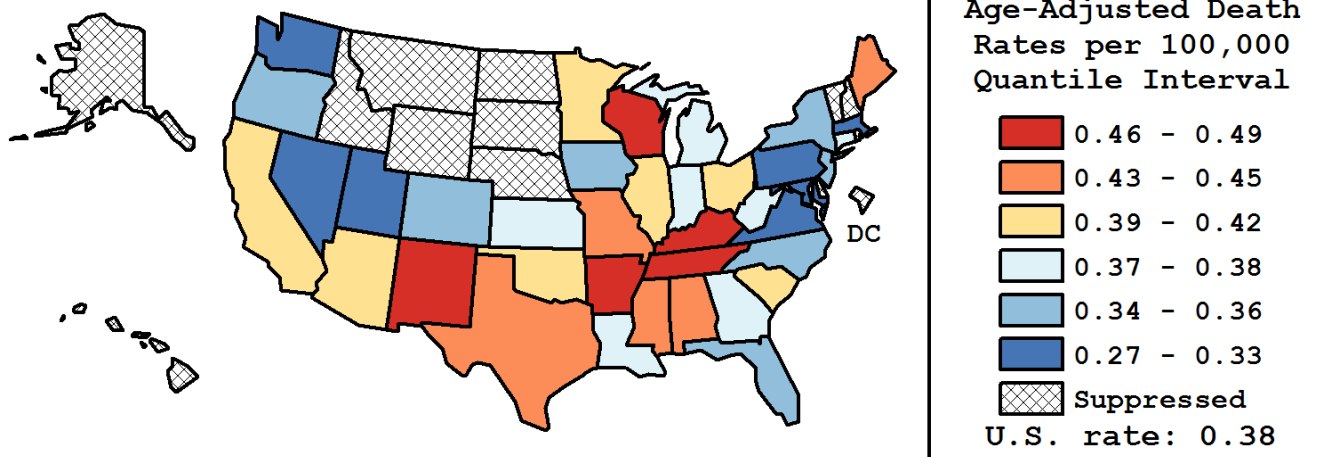
Table 9.19
Hodgkin Lymphoma

Age-Adjusted Cancer Death^a Rates By State, All Races, 2013-2017

Males

State	Rate	SE	Rank(CI) ^d	PD
TOTAL U.S.	0.38	0.01		
High Five States				
New Mexico	0.49	0.10	01(01,37)	28.72 ^c
Wisconsin	0.48	0.06	02(01,31)	27.13 ^c
Arkansas	0.48	0.08	03(01,36)	26.48 ^c
Kentucky	0.47	0.07	04(01,35)	24.33 ^c
Tennessee	0.46	0.05	05(01,32)	21.08 ^c
Low Five States				
Pennsylvania	0.31	0.03	34(15,38)	-18.22 ^c
Utah	0.30	0.07	35(02,38)	-20.40 ^c
Massachusetts	0.30	0.04	36(11,38)	-20.80 ^c
Virginia	0.27	0.04	37(17,38)	-27.51 ^c
Nevada	0.27	0.06	38(07,38)	-28.70 ^c

State	Rate	SE	Rank(CI) ^d	PD	State	Rate	SE	Rank(CI) ^d	PD
Alabama	0.44	0.06	09(01,36)	16.54 ^c	Montana	-	-	-(-,-)	-
Alaska	-	-	-(-,-)	-	Nebraska	-	-	-(-,-)	-
Arizona	0.40	0.05	16(01,36)	7.15	Nevada	0.27	0.06	38(07,38)	-28.70 ^c
Arkansas	0.48	0.08	03(01,36)	26.48 ^c	New Hampshire	-	-	-(-,-)	-
California	0.41	0.02	13(04,27)	8.38	New Jersey	0.35	0.04	27(05,38)	-6.80
Colorado	0.34	0.05	30(03,38)	-10.60	New Mexico	0.49	0.10	01(01,37)	28.72 ^c
Connecticut	0.38	0.06	19(01,38)	1.54	New York	0.35	0.03	28(11,37)	-8.57
Delaware	-	-	-(-,-)	-	North Carolina	0.36	0.04	26(05,37)	-5.10
D.C.	-	-	-(-,-)	-	North Dakota	-	-	-(-,-)	-
Florida	0.34	0.02	31(13,37)	-11.05	Ohio	0.42	0.04	12(01,32)	11.28
Georgia	0.37	0.04	23(03,37)	-1.17	Oklahoma	0.42	0.07	11(01,37)	12.51
Hawaii	-	-	-(-,-)	-	Oregon	0.34	0.05	29(03,38)	-10.09
Idaho	-	-	-(-,-)	-	Pennsylvania	0.31	0.03	34(15,38)	-18.22 ^c
Illinois	0.41	0.04	14(02,33)	8.06	Rhode Island	-	-	-(-,-)	-
Indiana	0.38	0.05	21(02,38)	0.03	South Carolina	0.40	0.06	17(01,38)	4.81
Iowa	0.36	0.07	25(01,38)	-4.03	South Dakota	-	-	-(-,-)	-
Kansas	0.37	0.07	24(01,38)	-2.00	Tennessee	0.46	0.05	05(01,32)	21.08 ^c
Kentucky	0.47	0.07	04(01,35)	24.33 ^c	Texas	0.45	0.03	06(01,22)	19.89 ^c
Louisiana	0.38	0.06	20(01,38)	0.56	Utah	0.30	0.07	35(02,38)	-20.40 ^c
Maine	0.44	0.11	08(01,38)	16.70 ^c	Vermont	-	-	-(-,-)	-
Maryland	0.32	0.05	33(06,38)	-16.32 ^c	Virginia	0.27	0.04	37(17,38)	-27.51 ^c
Massachusetts	0.30	0.04	36(11,38)	-20.80 ^c	Washington	0.33	0.04	32(06,38)	-13.93
Michigan	0.38	0.04	18(03,36)	1.91	West Virginia	0.37	0.09	22(01,38)	-1.02
Minnesota	0.41	0.06	15(01,37)	7.98	Wisconsin	0.48	0.06	02(01,31)	27.13 ^c
Mississippi	0.45	0.08	07(01,37)	19.86 ^c	Wyoming	-	-	-(-,-)	-
Missouri	0.43	0.05	10(01,35)	14.18					



^a US Mortality Files, National Center for Health Statistics, Centers for Disease Control and Prevention. Rates are per 100,000 and are age-adjusted to the 2000 US Std Population (19 age groups - Census P25-1130).

^b Difference between state rate and total U.S. rate is statistically significant ($p < .0002$).

^c Absolute percent difference between state rate and total U.S. rate is 15% or more.

^d Rank of state level death rate and the 95% confidence intervals (low, high) for the rank.

SE Standard error of the rate.

PD Percent difference between state rate and total U.S. rate.

- Statistic not shown. Rate based on less than 16 cases for the time interval.

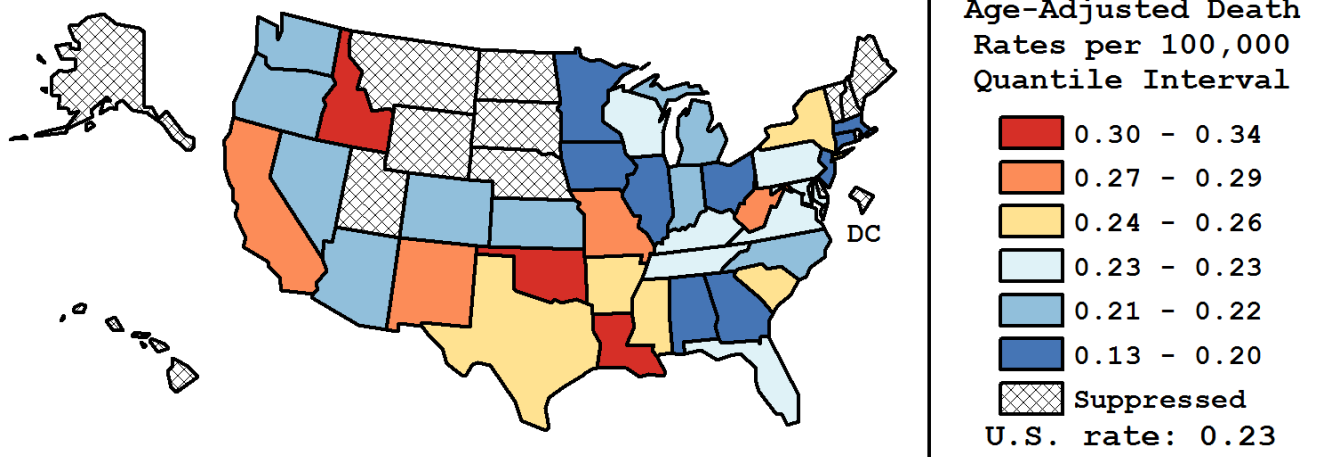
Table 9.20
Hodgkin Lymphoma

Age-Adjusted Cancer Death^a Rates By State, All Races, 2013-2017

Females

State	Rate	SE	Rank(CI) ^d	PD
TOTAL U.S.	0.23	0.00		
High Five States				
Idaho	0.34	0.09	01(01,37)	49.68 ^c
Louisiana	0.34	0.05	02(01,27)	46.09 ^c
Oklahoma	0.30	0.05	03(01,34)	29.78 ^c
West Virginia	0.29	0.07	04(01,37)	24.65 ^c
Missouri	0.28	0.04	05(01,34)	19.75 ^c
Low Five States				
Georgia	0.20	0.03	33(06,37)	-14.17
Iowa	0.19	0.04	34(03,37)	-15.25 ^c
New Jersey	0.19	0.03	35(08,37)	-18.18 ^c
Massachusetts	0.18	0.03	36(10,37)	-23.77 ^c
Connecticut	0.13	0.03	37(17,37)	-44.06 ^c

State	Rate	SE	Rank(CI) ^d	PD	State	Rate	SE	Rank(CI) ^d	PD
Alabama	0.20	0.04	31(03,37)	-12.42	Montana	-	-	-(-,-)	-
Alaska	-	-	-(-,-)	-	Nebraska	-	-	-(-,-)	-
Arizona	0.22	0.03	22(03,36)	-3.89	Nevada	0.22	0.05	24(01,37)	-5.62
Arkansas	0.26	0.06	09(01,37)	14.30	New Hampshire	-	-	-(-,-)	-
California	0.27	0.02	06(02,22)	16.06 ^c	New Jersey	0.19	0.03	35(08,37)	-18.18 ^c
Colorado	0.21	0.04	28(03,37)	-10.65	New Mexico	0.27	0.06	07(01,37)	15.74 ^c
Connecticut	0.13	0.03	37(17,37)	-44.06 ^c	New York	0.25	0.02	12(03,30)	7.72
Delaware	-	-	-(-,-)	-	North Carolina	0.21	0.03	27(05,37)	-9.46
D.C.	-	-	-(-,-)	-	North Dakota	-	-	-(-,-)	-
Florida	0.23	0.02	15(04,32)	1.34	Ohio	0.20	0.02	29(06,36)	-10.94
Georgia	0.20	0.03	33(06,37)	-14.17	Oklahoma	0.30	0.05	03(01,34)	29.78 ^c
Hawaii	-	-	-(-,-)	-	Oregon	0.22	0.04	20(01,37)	-3.46
Idaho	0.34	0.09	01(01,37)	49.68 ^c	Pennsylvania	0.23	0.02	17(03,35)	-0.71
Illinois	0.20	0.02	32(08,37)	-13.46	Rhode Island	-	-	-(-,-)	-
Indiana	0.22	0.04	21(02,37)	-3.66	South Carolina	0.25	0.04	11(01,36)	10.79
Iowa	0.19	0.04	34(03,37)	-15.25 ^c	South Dakota	-	-	-(-,-)	-
Kansas	0.21	0.05	25(01,37)	-7.59	Tennessee	0.23	0.03	19(02,37)	-1.51
Kentucky	0.23	0.04	16(01,37)	0.57	Texas	0.26	0.02	08(02,25)	14.87
Louisiana	0.34	0.05	02(01,27)	46.09 ^c	Utah	-	-	-(-,-)	-
Maine	-	-	-(-,-)	-	Vermont	-	-	-(-,-)	-
Maryland	0.23	0.04	18(02,37)	-1.04	Virginia	0.23	0.03	14(02,36)	1.70
Massachusetts	0.18	0.03	36(10,37)	-23.77 ^c	Washington	0.21	0.03	26(03,37)	-8.08
Michigan	0.22	0.03	23(04,36)	-4.35	West Virginia	0.29	0.07	04(01,37)	24.65 ^c
Minnesota	0.20	0.04	30(03,37)	-10.95	Wisconsin	0.23	0.04	13(02,37)	1.78
Mississippi	0.26	0.06	10(01,37)	13.39	Wyoming	-	-	-(-,-)	-
Missouri	0.28	0.04	05(01,34)	19.75 ^c					



^a US Mortality Files, National Center for Health Statistics, Centers for Disease Control and Prevention. Rates are per 100,000 and are age-adjusted to the 2000 US Std Population (19 age groups - Census P25-1130).

^b Difference between state rate and total U.S. rate is statistically significant ($p < .0002$).

^c Absolute percent difference between state rate and total U.S. rate is 15% or more.

^d Rank of state level death rate and the 95% confidence intervals (low, high) for the rank.

SE Standard error of the rate.

PD Percent difference between state rate and total U.S. rate.

- Statistic not shown. Rate based on less than 16 cases for the time interval.

Table 9.21
Hodgkin LymphomaEstimated United States Cancer Prevalence Counts^a on January 1, 2017
By Race/Ethnicity, Sex and Years Since Diagnosis

Years Since Diagnosis		0 to 5	> 5 to 10	> 10 to 15	> 15 to 20	> 20 to 25	<=25 ^b		> 25 ^d	Complete ^e
Race	Sex									
All Races	Both Sexes	37,871	34,834	31,045	26,309	22,612	152,671		62,860	215,531
	Males	21,103	18,693	15,900	13,296	11,208	80,200		30,566	110,766
	Females	16,768	16,140	15,145	13,013	11,404	72,471		32,294	104,765
White	Both Sexes	30,738	28,984	26,160	22,837	19,902	128,619		59,871	188,491
	Males	17,198	15,626	13,547	11,517	9,940	67,828		30,377	98,206
	Females	13,540	13,358	12,613	11,319	9,961	60,791		29,494	90,285
Black	Both Sexes	5,116	4,343	3,700	2,695	2,188	18,042		5,210	23,252
	Males	2,779	2,296	1,722	1,327	1,040	9,164		3,405	12,569
	Females	2,337	2,047	1,978	1,368	1,148	8,878		1,806	10,683
Asian/ Pacific Islander	Both Sexes	1,133	963	766	466	286	3,614		+	+
	Males	615	485	373	256	103	1,831		+	+
	Females	518	478	392	211	183	1,782		+	+
Hispanic	Both Sexes	4,969	4,134	3,161	2,590	1,640	16,495		+	+
	Males	2,761	2,163	1,740	1,422	897	8,982		+	+
	Females	2,208	1,971	1,421	1,168	744	7,512		+	+

Estimated prevalence percent^a on January 1, 2017, of the SEER population diagnosed in the previous 25 years
By Age at Prevalence, Race/Ethnicity and Sex

Age at Prevalence		Age Specific (Crude)										Age-Adjusted ^c
		All Ages	0-9	10-19	20-29	30-39	40-49	50-59	60-69	70-79	80+	All Ages
Race	Sex											
All Races	Both Sexes	0.0471	0.0006	0.0101	0.0423	0.0733	0.0830	0.0674	0.0535	0.0491	0.0396	0.0467
	Males	0.0502	0.0009	0.0114	0.0438	0.0699	0.0854	0.0755	0.0644	0.0598	0.0485	0.0497
	Females	0.0441	0.0003	0.0086	0.0406	0.0767	0.0807	0.0596	0.0436	0.0402	0.0341	0.0441
White	Both Sexes	0.0508	0.0005	0.0103	0.0460	0.0798	0.0894	0.0711	0.0560	0.0522	0.0426	0.0501
	Males	0.0541	0.0007	0.0112	0.0481	0.0751	0.0917	0.0789	0.0668	0.0628	0.0520	0.0528
	Females	0.0476	0.0003	0.0093	0.0437	0.0847	0.0871	0.0635	0.0460	0.0432	0.0367	0.0478
Black	Both Sexes	0.0396	0.0009	0.0098	0.0339	0.0622	0.0770	0.0651	0.0504	0.0367	0.0233	0.0414
	Males	0.0419	0.0018	0.0122	0.0322	0.0615	0.0769	0.0760	0.0629	0.0499	0.0329	0.0447
	Females	0.0375	-	0.0073	0.0356	0.0629	0.0771	0.0556	0.0404	0.0274	0.0184	0.0387
Asian/ Pacific Islander	Both Sexes	0.0173	0.0005	0.0077	0.0202	0.0291	0.0247	0.0186	0.0163	0.0159	0.0107	0.0165
	Males	0.0183	0.0008	0.0106	0.0228	0.0300	0.0231	0.0193	0.0165	0.0226	0.0106	0.0177
	Females	0.0164	-	0.0047	0.0175	0.0283	0.0260	0.0179	0.0161	0.0105	0.0108	0.0155
Hispanic	Both Sexes	0.0284	0.0005	0.0088	0.0312	0.0461	0.0453	0.0408	0.0444	0.0490	0.0409	0.0315
	Males	0.0306	0.0008	0.0097	0.0336	0.0451	0.0485	0.0459	0.0557	0.0573	0.0574	0.0347
	Females	0.0261	0.0002	0.0078	0.0287	0.0472	0.0421	0.0357	0.0343	0.0426	0.0306	0.0287

^a US 2017 cancer prevalence counts are based on 2017 cancer prevalence proportions from the SEER 13 Areas (excluding the Alaska Native Registry) and 1/1/2017 US population estimates based on the average of 2016 and 2017 population estimates from the US Bureau of the Census.

^b Prevalence was calculated using the first invasive tumor for each cancer site diagnosed during the previous 25 years. Maximum limited-duration prevalence is 25 years for 1992-2017 data.

^c Percentages are age-adjusted to the 2000 US Standard Population (19 age groups - Census P25-1130) by 5-year age groups.

^d Cases diagnosed more than 25 years ago were estimated using the completeness index method (Capocaccia et. al. 1997, Merrill et. al. 2000).

^e Complete prevalence is obtained by summing <=25 and > 25.

- Statistic not shown. Statistic based on fewer than 5 cases estimated alive in SEER for the time interval.

+ Not available.

Table 9.22
All Lymphoid Neoplasms With Detailed Hodgkin Lymphoma Subtypes^a

SEER^b Incidence Rates and Annual Percent Change by Age at Diagnosis

All Races, Both Sexes, 2008-2017

Site	All Ages			Ages 0-19			Ages 20-64			Ages 65+		
	Rate	Count	APC	Rate	Count	APC	Rate	Count	APC	Rate	Count	APC
Lymphoid Neoplasm	37.3	462,841	-0.6*	6.2	18,828	0.3	24.8	192,178	-0.5*	166.5	251,835	-0.7*
1 Hodgkin Lymphoma	2.7	32,038	-1.6*	1.3	3,908	-0.5	3.2	22,321	-1.5*	3.8	5,809	-2.7*
1(a) Classical Hodgkin lymphoma	2.5	29,670	-2.1*	1.2	3,580	-1.1	3.0	20,665	-2.1*	3.6	5,425	-3.0*
1(a)1. Lymphocyte-rich/mixed cellularity/ lymphocyte-depleted	0.4	4,637	-6.6*	0.1	394	-2.8	0.4	3,012	-6.1*	0.8	1,231	-8.8*
1(a)1.1 Lymphocyte-rich	0.1	1,022	-5.3*	0.0	84	1.4	0.1	702	-5.9*	0.2	236	-4.9
1(a)1.2 Mixed cellularity	0.3	3,335	-6.5*	0.1	297	-3.1	0.3	2,155	-5.8*	0.6	883	-8.7*
1(a)1.3 Lymphocyte-depleted	0.0	280	-13.2*	-	-	-	0.0	155	-9.0	0.1	112	-17.1*
1(a)2. Nodular sclerosis	1.4	16,283	-3.2*	0.8	2,536	-2.0	1.7	12,004	-3.1*	1.2	1,743	-5.4*
1(a)3. Classical Hodgkin lymphoma, NOS ^c	0.7	8,750	2.5*	0.2	650	4.5*	0.8	5,649	2.4*	1.6	2,451	2.0
1(b) Nodular lymphocyte predominant Hodgkin Lymphoma	0.2	2,368	5.1*	0.1	328	5.9	0.2	1,656	5.8*	0.2	384	1.8
2 Non-Hodgkin lymphoma	33.8	420,388	-0.4	4.8	14,658	0.4	21.1	166,410	-0.3*	158.3	239,320	-0.5
3 Composite Hodgkin lymphoma and Non-Hodgkin lymphoma	0.1	922	24.4*	0.0	23	-	0.1	406	20.9*	0.3	493	27.0*
4 Lymphoid neoplasm, NOS ^c	0.8	9,493	-5.7*	0.1	239	8.9*	0.4	3,041	-5.2*	4.0	6,213	-6.5*

^a The APC is the Annual Percent Change over the time interval.

Morton LM, Turner JJ, Cerhan JR, Linet MS, Treseler PA, Clarke CA, Jack A, Cozen W, Maynadié M, Spinelli JJ, Costantini AS, Rüdiger T, Scarpa A, Zheng T, Weisenburger DD. Proposed classification of lymphoid neoplasms for epidemiologic research from the Pathology Working Group of the International Lymphoma Epidemiology Consortium (InterLymph). *Blood*. 2007;110:695-708.

^b SEER 21 areas (San Francisco, Connecticut, Detroit, Hawaii, Iowa, New Mexico, Seattle, Utah, Atlanta, San Jose-Monterey, Los Angeles, Alaska Native Registry, Rural Georgia, California excluding SF/SJM/LA, Kentucky, Louisiana, New Jersey, Georgia excluding ATL/RG, Idaho, New York and Massachusetts).

^c NOS = Not otherwise specified.

* The APC is significantly different from zero (p<.05).

- Statistic not shown. Rate based on less than 16 cases for the time interval.

Trend based on less than 10 cases for at least one year within the time interval.

Table 9.23
All Lymphoid Neoplasms With Detailed Hodgkin Lymphoma Subtypes^a

SEER^b Incidence Rates and Annual Percent Change by Age at Diagnosis

All Races, Males, 2008-2017

Site	All Ages			Ages 0-19			Ages 20-64			Ages 65+		
	Rate	Count	APC	Rate	Count	APC	Rate	Count	APC	Rate	Count	APC
Lymphoid Neoplasm	46.2	258,947	-0.6*	7.0	10,934	0.4	29.4	111,596	-0.7*	213.2	136,417	-0.6
1 Hodgkin Lymphoma	3.1	17,536	-1.7*	1.3	2,081	-0.5	3.6	12,370	-1.6*	4.7	3,085	-3.0*
1(a) Classical Hodgkin lymphoma	2.8	15,991	-2.3*	1.1	1,813	-1.4*	3.2	11,286	-2.2*	4.4	2,892	-3.2*
1(a)1. Lymphocyte-rich/mixed cellularity/ lymphocyte-depleted	0.5	2,938	-6.4*	0.2	271	-3.9	0.6	2,043	-5.8*	1.0	624	-8.7*
1(a)1.1 Lymphocyte-rich	0.1	609	-3.7*	0.0	58	-2.0	0.1	450	-3.9*	0.2	101	-3.0
1(a)1.2 Mixed cellularity	0.4	2,152	-6.5*	0.1	207	-3.5	0.4	1,482	-6.0*	0.7	463	-8.6*
1(a)1.3 Lymphocyte-depleted	0.0	177	-13.6*	-	-	-	0.0	111	-9.2	0.1	60	-16.5*
1(a)2. Nodular sclerosis	1.4	8,064	-3.6*	0.8	1,190	-2.1	1.7	5,938	-3.4*	1.4	936	-6.5*
1(a)3. Classical Hodgkin lymphoma, NOS ^c	0.9	4,989	2.3*	0.2	352	4.5*	0.9	3,305	2.3*	2.1	1,332	1.8
1(b) Nodular lymphocyte predominant Hodgkin Lymphoma	0.3	1,545	4.5*	0.2	268	5.6	0.3	1,084	5.1*	0.3	193	0.6
2 Non-Hodgkin lymphoma	42.1	235,884	-0.4	5.6	8,696	0.4	25.3	97,214	-0.5*	203.1	129,974	-0.5
3 Composite Hodgkin lymphoma and Non-Hodgkin lymphoma	0.1	521	23.9*	-	-	-	0.1	247	19.5*	0.4	259	27.0*
4 Lymphoid neoplasm, NOS ^c	0.9	5,006	-6.1*	0.1	142	8.4	0.5	1,765	-5.9*	5.0	3,099	-6.8*

^a The APC is the Annual Percent Change over the time interval.

Morton LM, Turner JJ, Cerhan JR, Linet MS, Treseler PA, Clarke CA, Jack A, Cozen W, Maynadié M, Spinelli JJ, Costantini AS, Rüdiger T, Scarpa A, Zheng T, Weisenburger DD. Proposed classification of lymphoid neoplasms for epidemiologic research from the Pathology Working Group of the International Lymphoma Epidemiology Consortium (InterLymph). *Blood*. 2007;110:695-708.

^b SEER 21 areas (San Francisco, Connecticut, Detroit, Hawaii, Iowa, New Mexico, Seattle, Utah, Atlanta, San Jose-Monterey, Los Angeles, Alaska Native Registry, Rural Georgia, California excluding SF/SJM/LA, Kentucky, Louisiana, New Jersey, Georgia excluding ATL/RG, Idaho, New York and Massachusetts).

^c NOS = Not otherwise specified.

* The APC is significantly different from zero (p<.05).

- Statistic not shown. Rate based on less than 16 cases for the time interval.

Trend based on less than 10 cases for at least one year within the time interval.

Table 9.24

All Lymphoid Neoplasms With Detailed Hodgkin Lymphoma Subtypes^aSEER^b Incidence Rates and Annual Percent Change by Age at Diagnosis

All Races, Females, 2008-2017

Site	All Ages			Ages 0-19			Ages 20-64			Ages 65+		
	Rate	Count	APC	Rate	Count	APC	Rate	Count	APC	Rate	Count	APC
Lymphoid Neoplasm	30.2	203,894	-0.6*	5.3	7,894	0.3	20.4	80,582	-0.2	132.7	115,418	-0.9*
1 Hodgkin Lymphoma	2.4	14,502	-1.5*	1.2	1,827	-0.5	2.9	9,951	-1.5*	3.2	2,724	-2.4*
1(a) Classical Hodgkin lymphoma	2.3	13,679	-2.0*	1.2	1,767	-0.8	2.7	9,379	-2.0*	3.0	2,533	-2.8*
1(a)1. Lymphocyte-rich/mixed cellularity/ lymphocyte-depleted	0.3	1,699	-7.1*	0.1	123	-0.3	0.3	969	-6.7*	0.7	607	-8.9*
1(a)1.1 Lymphocyte-rich	0.1	413	-7.3*	0.0	26	-	0.1	252	-9.0*	0.2	135	-5.8
1(a)1.2 Mixed cellularity	0.2	1,183	-6.5*	0.1	90	-2.4	0.2	673	-5.4*	0.5	420	-8.9*
1(a)1.3 Lymphocyte-depleted	0.0	103	-13.1*	-	-	-	0.0	44	-	0.1	52	-16.7*
1(a)2. Nodular sclerosis	1.4	8,219	-2.9*	0.9	1,346	-1.9	1.8	6,066	-2.9*	0.9	807	-4.3*
1(a)3. Classical Hodgkin lymphoma, NOS ^c	0.6	3,761	2.6*	0.2	298	4.6*	0.7	2,344	2.5*	1.3	1,119	2.1
1(b) Nodular lymphocyte predominant Hodgkin Lymphoma	0.1	823	6.4*	0.0	60	6.7	0.2	572	7.0*	0.2	191	2.8
2 Non-Hodgkin lymphoma	27.1	184,504	-0.4*	4.0	5,962	0.4	17.1	69,196	0.0	125.9	109,346	-0.8*
3 Composite Hodgkin lymphoma and Non-Hodgkin lymphoma	0.1	401	25.0*	-	-	-	0.0	159	21.9*	0.3	234	26.2*
4 Lymphoid neoplasm, NOS ^c	0.6	4,487	-5.4*	0.1	97	9.5	0.3	1,276	-4.3*	3.4	3,114	-6.4*

^a The APC is the Annual Percent Change over the time interval.

Morton LM, Turner JJ, Cerhan JR, Linet MS, Treseler PA, Clarke CA, Jack A, Cozen W, Maynadié M, Spinelli JJ, Costantini AS, Rüdiger T, Scarpa A, Zheng T, Weisenburger DD. Proposed classification of lymphoid neoplasms for epidemiologic research from the Pathology Working Group of the International Lymphoma Epidemiology Consortium (InterLymph). *Blood*. 2007;110:695-708.

^b SEER 21 areas (San Francisco, Connecticut, Detroit, Hawaii, Iowa, New Mexico, Seattle, Utah, Atlanta, San Jose-Monterey, Los Angeles, Alaska Native Registry, Rural Georgia, California excluding SF/SJM/LA, Kentucky, Louisiana, New Jersey, Georgia excluding ATL/RG, Idaho, New York and Massachusetts).

^c NOS = Not otherwise specified.

* The APC is significantly different from zero (p<.05).

- Statistic not shown. Rate based on less than 16 cases for the time interval.

Trend based on less than 10 cases for at least one year within the time interval.

Table 9.25
All Lymphoid Neoplasms With Detailed Hodgkin Lymphoma Subtypes^a
SEER^b 5-Year Relative Survival (Percent) by Age at Diagnosis
All Races, Both Sexes, 2010-2016

Site	All Ages		Ages 0-19		Ages 20-64		Ages 65+	
	Count	Percent (95% C.I.)	Percent (95% C.I.)	Percent (95% C.I.)	Percent (95% C.I.)	Percent (95% C.I.)	Percent (95% C.I.)	
Lymphoid Neoplasm	188,530	72.2 (71.9 , 72.5)	90.7 (90.1 , 91.4)	79.4 (79.0 , 79.7)	62.9 (62.4 , 63.4)			
1 Hodgkin Lymphoma	14,617	87.4 (86.7 , 88.1)	98.0 (97.0 , 98.6)	90.8 (90.1 , 91.5)	59.6 (56.5 , 62.5)			
1(a) Classical Hodgkin lymphoma	13,594	86.6 (85.9 , 87.3)	97.7 (96.7 , 98.4)	90.4 (89.7 , 91.1)	56.8 (53.6 , 59.8)			
1(a)1. Lymphocyte-rich/mixed cellularity/ lymphocyte-depleted	2,016	84.0 (81.8 , 85.9)	98.9 (95.0 , 99.8)	88.2 (86.0 , 90.1)	64.0 (57.3 , 69.9)			
1(a)1.1 Lymphocyte-rich	414	90.2 (85.4 , 93.4)	96.7 (78.2 , 99.6)	95.2 (90.6 , 97.5)	68.0 (50.6 , 80.4)			
1(a)1.2 Mixed cellularity	1,484	84.0 (81.5 , 86.2)	99.3 (93.3 , 99.9)	87.6 (85.0 , 89.9)	65.3 (57.5 , 72.1)			
1(a)1.3 Lymphocyte-depleted	118	60.5 (50.0 , 69.4)	100.0 (- , -)	67.6 (54.1 , 77.9)	32.8 (18.3 , 48.1)			
1(a)2. Nodular sclerosis	7,568	91.5 (90.7 , 92.3)	98.4 (97.3 , 99.1)	93.1 (92.3 , 93.9)	62.5 (57.0 , 67.5)			
1(a)3. Classical Hodgkin lymphoma, NOS ^c	4,010	78.5 (76.9 , 80.0)	94.4 (90.3 , 96.8)	85.8 (84.1 , 87.3)	48.3 (43.5 , 52.9)			
1(b) Nodular lymphocyte predominant Hodgkin Lymphoma	1,023	97.1 (95.2 , 98.3)	100.0 (- , -)	96.2 (93.9 , 97.7)	94.6 (84.3 , 98.2)			
2 Non-Hodgkin lymphoma	170,050	71.2 (70.9 , 71.5)	89.1 (88.2 , 89.8)	77.9 (77.6 , 78.3)	63.5 (63.0 , 64.0)			
3 Composite Hodgkin lymphoma and Non-Hodgkin lymphoma	384	74.7 (67.4 , 80.5)	100.0 (- , -)	82.0 (75.2 , 87.2)	59.9 (43.1 , 73.2)			
4 Lymphoid neoplasm, NOS ^c	3,479	52.0 (49.9 , 54.1)	82.3 (74.0 , 88.2)	67.1 (64.2 , 69.8)	39.9 (37.0 , 42.7)			

^a Morton LM, Turner JJ, Cerhan JR, Linet MS, Treseler PA, Clarke CA, Jack A, Cozen W, Maynadié M, Spinelli JJ, Costantini AS, Rüdiger T, Scarpa A, Zheng T, Weisenburger DD. Proposed classification of lymphoid neoplasms for epidemiologic research from the Pathology Working Group of the International Lymphoma Epidemiology Consortium (InterLymph). *Blood*. 2007;110:695-708.

^b SEER 18 areas (San Francisco, Connecticut, Detroit, Hawaii, Iowa, New Mexico, Seattle, Utah, Atlanta, San Jose-Monterey, Los Angeles, Alaska Native Registry, Rural Georgia, California excluding SF/SJM/LA, Kentucky, Louisiana, New Jersey and Georgia excluding ATL/RG). [Expected survival rates](#) are derived from life tables by socio-economic status, geography and race developed by the SEER program.

^c NOS = Not otherwise specified.

- Statistic not displayed due to less than 25 cases.

Table 9.26
All Lymphoid Neoplasms With Detailed Hodgkin Lymphoma Subtypes^a

SEER^b 5-Year Relative Survival (Percent) by Age at Diagnosis

All Races, Males, 2010-2016

Site	All Ages		Ages 0-19		Ages 20-64		Ages 65+	
	Count	Percent (95% C.I.)	Percent (95% C.I.)	Percent (95% C.I.)	Percent (95% C.I.)	Percent (95% C.I.)	Percent (95% C.I.)	
Lymphoid Neoplasm	105,719	71.7 (71.3 , 72.1)	90.5 (89.6 , 91.3)	77.6 (77.2 , 78.1)	62.7 (62.0 , 63.4)			
1 Hodgkin Lymphoma	8,122	86.5 (85.5 , 87.4)	97.8 (96.3 , 98.7)	89.5 (88.4 , 90.4)	59.0 (54.8 , 62.9)			
1(a) Classical Hodgkin lymphoma	7,416	85.3 (84.3 , 86.3)	97.4 (95.7 , 98.5)	88.8 (87.7 , 89.8)	55.6 (51.3 , 59.7)			
1(a)1. Lymphocyte-rich/mixed cellularity/ lymphocyte-depleted	1,310	84.1 (81.5 , 86.3)	99.3 (93.6 , 99.9)	87.3 (84.5 , 89.6)	61.2 (52.2 , 69.1)			
1(a)1.1 Lymphocyte-rich	252	89.6 (84.3 , 93.2)	95.8 (72.9 , 99.4)	94.7 (89.3 , 97.4)	58.3 (36.6 , 74.9)			
1(a)1.2 Mixed cellularity	985	84.3 (81.3 , 86.9)	100.0 (- , -)	87.1 (83.8 , 89.8)	62.8 (52.0 , 71.9)			
1(a)1.3 Lymphocyte-depleted	73	59.9 (46.2 , 71.2)	100.0 (- , -)	60.4 (43.9 , 73.3)	43.3 (20.8 , 64.0)			
1(a)2. Nodular sclerosis	3,799	90.4 (89.1 , 91.6)	98.3 (96.2 , 99.3)	92.2 (90.9 , 93.4)	60.3 (52.3 , 67.3)			
1(a)3. Classical Hodgkin lymphoma, NOS ^c	2,307	77.3 (75.0 , 79.3)	92.4 (85.1 , 96.1)	83.4 (81.1 , 85.5)	48.8 (41.9 , 55.3)			
1(b) Nodular lymphocyte predominant Hodgkin Lymphoma	706	97.6 (95.0 , 98.9)	100.0 (- , -)	96.0 (92.9 , 97.8)	98.1 (40.5 , 100.0)			
2 Non-Hodgkin lymphoma	95,555	70.8 (70.4 , 71.2)	88.9 (87.8 , 89.9)	76.3 (75.8 , 76.8)	63.3 (62.6 , 64.0)			
3 Composite Hodgkin lymphoma and Non-Hodgkin lymphoma	210	76.2 (67.6 , 82.7)	100.0 (- , -)	80.9 (71.7 , 87.3)	63.8 (44.0 , 78.3)			
4 Lymphoid neoplasm, NOS ^c	1,832	50.0 (47.0 , 52.8)	82.2 (71.1 , 89.3)	59.7 (55.6 , 63.5)	39.5 (35.4 , 43.5)			

^a Morton LM, Turner JJ, Cerhan JR, Linet MS, Treseler PA, Clarke CA, Jack A, Cozen W, Maynadié M, Spinelli JJ, Costantini AS, Rüdiger T, Scarpa A, Zheng T, Weisenburger DD. Proposed classification of lymphoid neoplasms for epidemiologic research from the Pathology Working Group of the International Lymphoma Epidemiology Consortium (InterLymph). *Blood*. 2007;110:695-708.

^b SEER 18 areas (San Francisco, Connecticut, Detroit, Hawaii, Iowa, New Mexico, Seattle, Utah, Atlanta, San Jose-Monterey, Los Angeles, Alaska Native Registry, Rural Georgia, California excluding SF/SJM/LA, Kentucky, Louisiana, New Jersey and Georgia excluding ATL/RG). [Expected survival rates](#) are derived from life tables by socio-economic status, geography and race developed by the SEER program.

^c NOS = Not otherwise specified.

- Statistic not displayed due to less than 25 cases.

Table 9.27
All Lymphoid Neoplasms With Detailed Hodgkin Lymphoma Subtypes^a
SEER^b 5-Year Relative Survival (Percent) by Age at Diagnosis
All Races, Females, 2010-2016

Site	All Ages		Ages 0-19		Ages 20-64		Ages 65+	
	Count	Percent (95% C.I.)	Percent (95% C.I.)	Percent (95% C.I.)	Percent (95% C.I.)	Percent (95% C.I.)		
Lymphoid Neoplasm	82,811	72.8 (72.4 , 73.2)	91.1 (90.1 , 92.0)	81.8 (81.4 , 82.3)	63.1 (62.4 , 63.8)			
1 Hodgkin Lymphoma	6,495	88.6 (87.6 , 89.5)	98.1 (96.8 , 98.9)	92.5 (91.6 , 93.4)	60.1 (55.6 , 64.2)			
1(a) Classical Hodgkin lymphoma	6,178	88.2 (87.2 , 89.1)	98.0 (96.7 , 98.8)	92.4 (91.4 , 93.3)	58.0 (53.4 , 62.2)			
1(a)1. Lymphocyte-rich/mixed cellularity/ lymphocyte-depleted	706	83.7 (79.8 , 86.9)	97.7 (84.0 , 99.7)	90.2 (86.3 , 93.0)	66.5 (56.5 , 74.7)			
1(a)1.1 Lymphocyte-rich	162	90.5 (80.6 , 95.4)	100.0 (- , -)	94.7 (84.4 , 98.3)	76.7 (47.3 , 91.1)			
1(a)1.2 Mixed cellularity	499	83.3 (78.6 , 87.0)	96.9 (79.5 , 99.6)	88.6 (83.7 , 92.1)	68.1 (56.2 , 77.4)			
1(a)1.3 Lymphocyte-depleted	45	59.0 (42.9 , 72.0)	100.0 (- , -)	84.6 (58.5 , 94.9)	21.5 (6.6 , 42.0)			
1(a)2. Nodular sclerosis	3,769	92.6 (91.5 , 93.6)	98.4 (96.9 , 99.2)	94.0 (92.8 , 95.0)	64.7 (56.7 , 71.7)			
1(a)3. Classical Hodgkin lymphoma, NOS ^c	1,703	80.1 (77.7 , 82.4)	96.6 (91.9 , 98.6)	89.0 (86.6 , 91.0)	47.7 (40.9 , 54.2)			
1(b) Nodular lymphocyte predominant Hodgkin Lymphoma	317	95.8 (91.5 , 97.9)	100.0 (- , -)	95.9 (89.9 , 98.4)	89.7 (75.6 , 95.9)			
2 Non-Hodgkin lymphoma	74,495	71.8 (71.4 , 72.3)	89.3 (88.0 , 90.5)	80.3 (79.7 , 80.8)	63.7 (63.0 , 64.4)			
3 Composite Hodgkin lymphoma and Non-Hodgkin lymphoma	174	70.4 (57.6 , 80.0)	- (- , -)	83.5 (71.7 , 90.7)	52.9 (29.3 , 71.8)			
4 Lymphoid neoplasm, NOS ^c	1,647	54.1 (51.1 , 57.1)	82.4 (67.2 , 91.0)	76.7 (72.6 , 80.3)	40.0 (36.0 , 43.9)			

^a Morton LM, Turner JJ, Cerhan JR, Linet MS, Treseler PA, Clarke CA, Jack A, Cozen W, Maynadié M, Spinelli JJ, Costantini AS, Rüdiger T, Scarpa A, Zheng T, Weisenburger DD. Proposed classification of lymphoid neoplasms for epidemiologic research from the Pathology Working Group of the International Lymphoma Epidemiology Consortium (InterLymph). *Blood*. 2007;110:695-708.

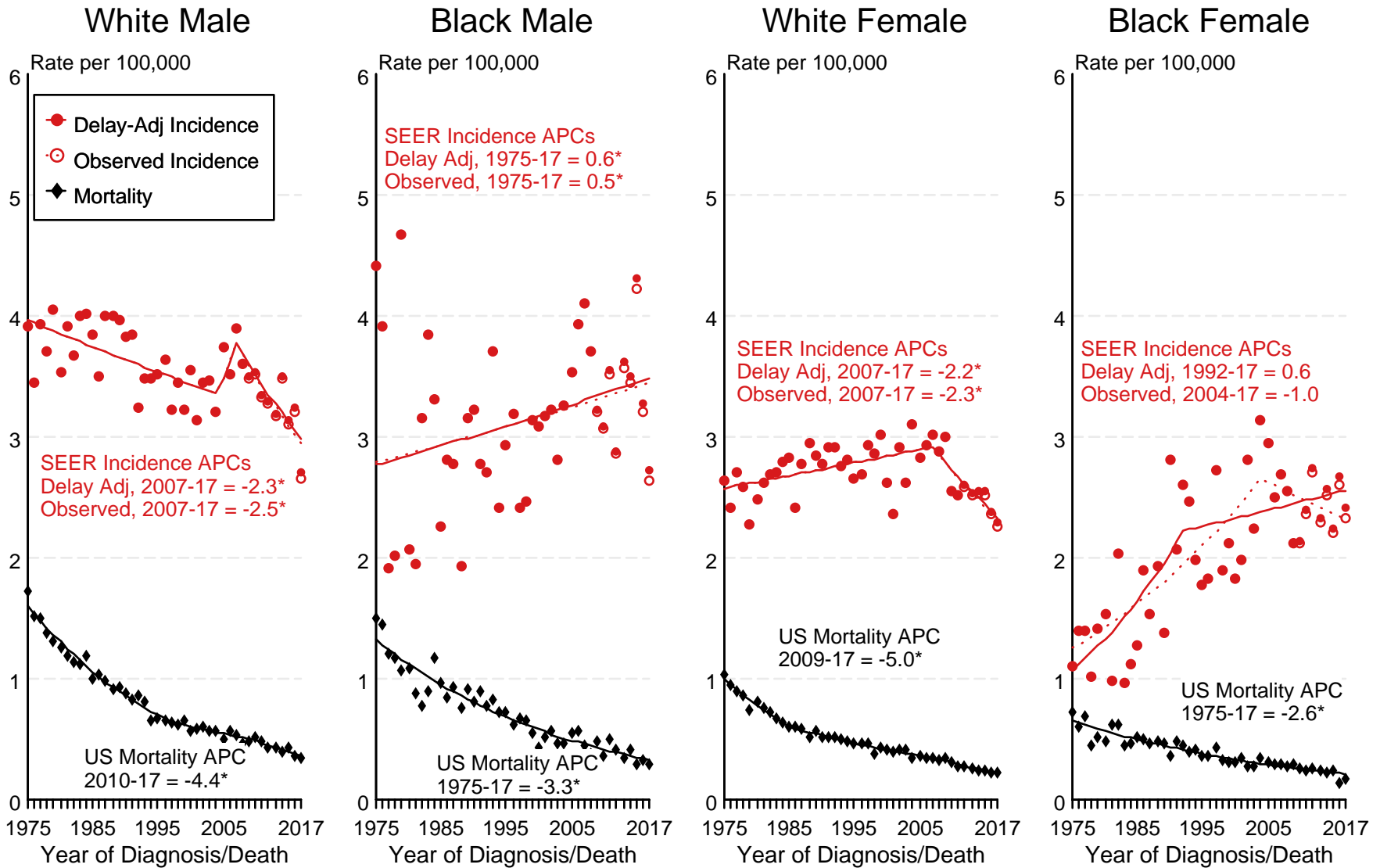
^b SEER 18 areas (San Francisco, Connecticut, Detroit, Hawaii, Iowa, New Mexico, Seattle, Utah, Atlanta, San Jose-Monterey, Los Angeles, Alaska Native Registry, Rural Georgia, California excluding SF/SJM/LA, Kentucky, Louisiana, New Jersey and Georgia excluding ATL/RG). [Expected survival rates](#) are derived from life tables by socio-economic status, geography and race developed by the SEER program.

^c NOS = Not otherwise specified.

- Statistic not displayed due to less than 25 cases.

Figure 9.1

SEER Observed Incidence, SEER Delay Adjusted Incidence and US Death Rates^a Hodgkin Lymphoma, by Race and Sex



Source: SEER 9 areas and US Mortality Files (National Center for Health Statistics, CDC).

^a Rates are age-adjusted to the 2000 US Std Population (19 age groups - Census P25-1103).

Regression lines and APCs are calculated using the Joinpoint Regression Program Version 4.8, April 2020, National Cancer Institute.

The APC is the Annual Percent Change for the regression line segments. The APC shown on the graph is for the most recent trend.

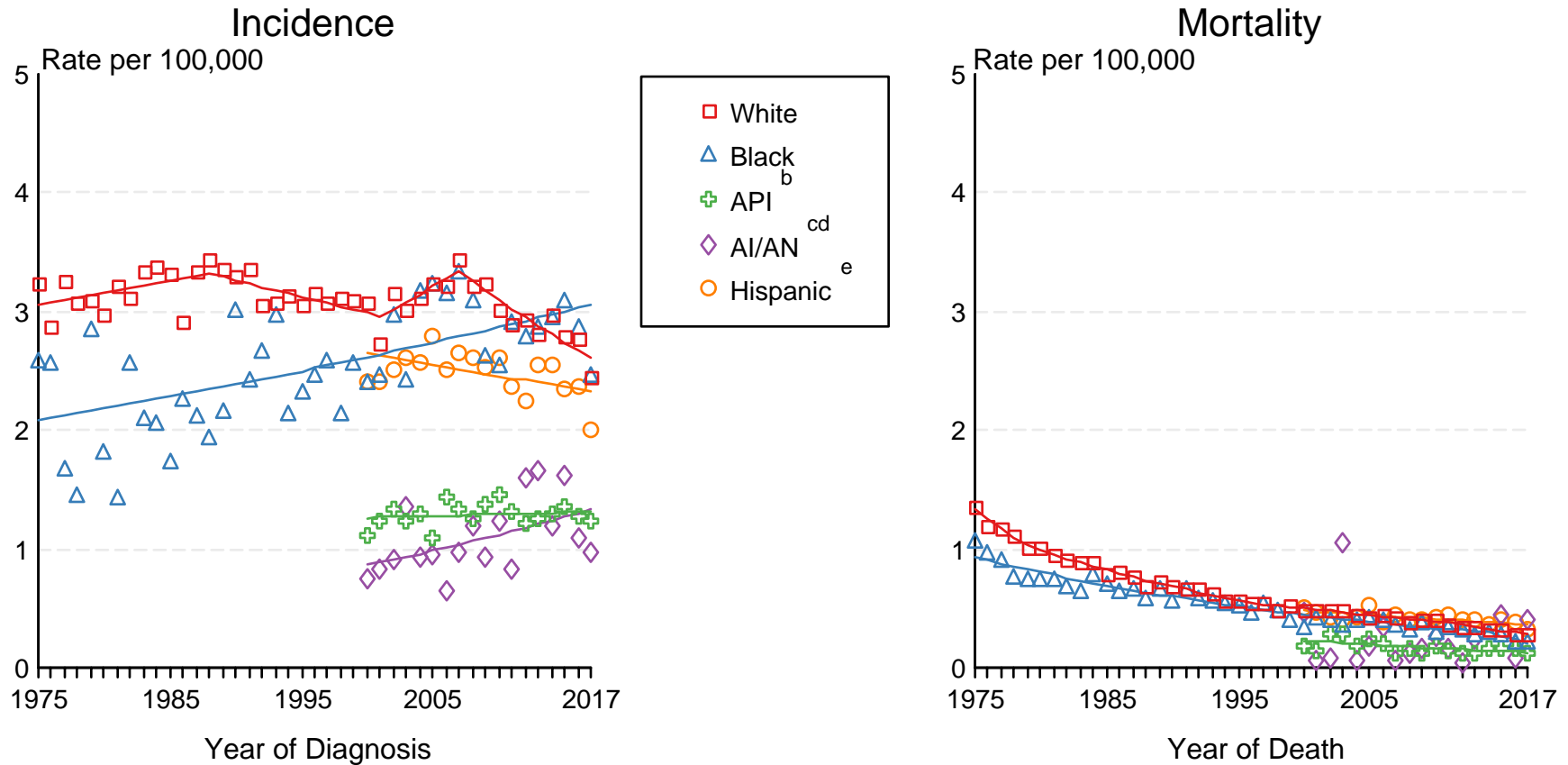
* The APC is significantly different from zero ($p < 0.05$).

Figure 9.2

SEER Incidence and US Death Rates^a Hodgkin Lymphoma, Both Sexes

Joinpoint Analyses for Whites and Blacks from 1975-2017

and for Asian/Pacific Islanders, American Indians/Alaska Natives and Hispanics from 2000-2017



Source: Incidence data for whites and blacks are from the SEER 9 areas (San Francisco, Connecticut, Detroit, Hawaii, Iowa, New Mexico, Seattle, Utah, Atlanta). Incidence data for Asian/Pacific Islanders, American Indians/Alaska Natives and Hispanics are from the SEER 21 areas (SEER 9 areas, San Jose-Monterey, Los Angeles, Alaska Native Registry, Rural Georgia, California excluding SF/SJM/LA, Kentucky, Louisiana, New Jersey, Georgia excluding ATL/RG, Idaho, New York and Massachusetts).

Mortality data are from US Mortality Files, National Center for Health Statistics, CDC.

^a Rates are age-adjusted to the 2000 US Std Population (19 age groups - Census P25-1103).

Regression lines are calculated using the Joinpoint Regression Program Version 4.8, April 2020, National Cancer Institute. Joinpoint analyses for Whites and Blacks during the 1975-2017 period allow a maximum of 5 joinpoints. Analyses for other ethnic groups during the period 2000-2015 allow a maximum of 3 joinpoints.

^b API = Asian/Pacific Islander.

^c AI/AN = American Indian/Alaska Native. Rates for American Indian/Alaska Native are based on the Purchased/Referred Care Delivery Area (PRCDA) counties.

^d Joinpoint could not fit a regression line for American Indian/Alaska Native Incidence due to insufficient data.

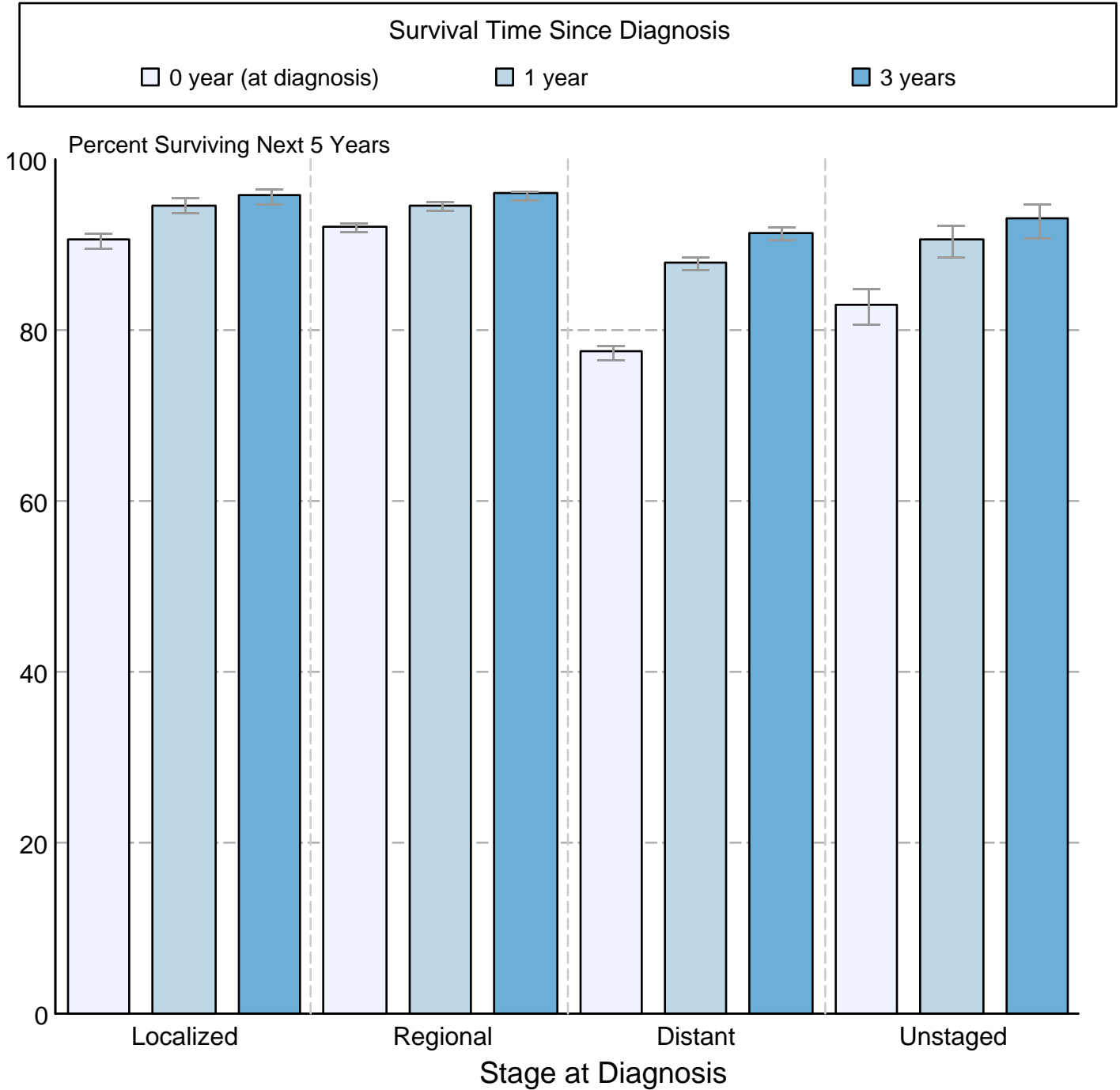
^e Hispanic is not mutually exclusive from whites, blacks, Asian/Pacific Islanders, and American Indians/Alaska Natives. Incidence data for Hispanics are based on NHIA and exclude cases from the Alaska Native Registry.

Figure 9.3

Hodgkin Lymphoma

5-Year SEER Conditional Relative Survival and 95% Confidence Intervals

Probability of surviving the next 5 years given the cohort
has already survived 0, 1, or 3 years
2000-2015 by stage at diagnosis



Source: SEER 18 areas (San Francisco, Connecticut, Detroit, Hawaii, Iowa, New Mexico, Seattle, Utah, Atlanta, San Jose-Monterey, Los Angeles, Alaska Native Registry, Rural Georgia, California excluding SF/SJM/LA, Kentucky, Louisiana, New Jersey and Georgia excluding ATL/RG).
 Percent surviving is not shown if based on less than 25 cases.
 Confidence intervals are not shown if length of the confidence interval is greater than 5 times the standard error.