

Table XIII-1
LEUKEMIA (Invasive)

TRENDS IN SEER INCIDENCE^a AND U.S. MORTALITY^b USING THE JOINPOINT REGRESSION PROGRAM, 1975-2001
WITH UP TO THREE JOINPOINTS BY RACE AND SEX

		<u>Joinpoint Segment 1</u>		<u>Joinpoint Segment 2</u>		<u>Joinpoint Segment 3</u>		<u>Joinpoint Segment 4</u>	
		Year	APC	Year	APC	Year	APC	Year	APC
<u>SEER Cancer Incidence^a</u>									
All Races	Male and Female	1975-1995	0.0	1995-2001	-1.1 ^c				
All Races	Male	1975-1988	0.2	1988-2001	-0.7 ^c				
All Races	Female	1975-2001	-0.1						
White	Male and Female	1975-1995	0.1	1995-2001	-1.1 ^c				
White	Male	1975-1995	0.0	1995-2001	-1.5 ^c				
White	Female	1975-2001	0.0						
Black	Male and Female	1975-2001	-0.5 ^c						
Black	Male	1975-2001	-0.5						
Black	Female	1975-2001	-0.5						
<u>SEER Delay-Adjusted Incidence^a</u>									
All Races	Male and Female	1975-1999	0.2 ^c	1999-2001	3.8				
All Races	Male	1975-2001	0.1						
All Races	Female	1975-1999	0.2 ^c	1999-2001	5.0				
White	Male and Female	1975-1999	0.4 ^c	1999-2001	4.4				
White	Male	1975-2001	0.3 ^c						
White	Female	1975-1999	0.4 ^c	1999-2001	5.7				
Black	Male and Female	1975-2001	0.0						
Black	Male	1975-2001	0.0						
Black	Female	1975-1999	-0.4	1999-2001	15.5				
<u>U.S. Cancer Mortality^b</u>									
All Races	Male and Female	1975-1980	0.6	1980-1988	-0.6 ^c	1988-1991	0.7	1991-2001	-0.5 ^c
All Races	Male	1975-1995	-0.2 ^c	1995-2001	-0.8 ^c				
All Races	Female	1975-1980	0.8	1980-2001	-0.4 ^c				
White	Male and Female	1975-1979	0.4	1979-2001	-0.3 ^c				
White	Male	1975-2001	-0.3 ^c						
White	Female	1975-2001	-0.3 ^c						
Black	Male and Female	1975-1991	0.6 ^c	1991-2001	-1.0 ^c				
Black	Male	1975-1991	1.0 ^c	1991-2001	-1.2 ^c				
Black	Female	1975-1983	1.4 ^c	1983-2001	-0.4 ^c				

Joinpoint Regression Program Version 2.7, September 2003, National Cancer Institute. (<http://srab.cancer.gov/joinpoint/>).

^a The APC is the Annual Percent Change based on rates age-adjusted to the 2000 U.S. standard population by 5-year age groups. Trends are from the SEER 9 areas.

^b Trends are from the NCHS public use data file for the total US.

^c The APC is significantly different from zero (p<.05).

Table XIII-2
LEUKEMIASEER INCIDENCE RATES, AGE-ADJUSTED AND AGE-SPECIFIC RATES^a, BY RACE AND SEX

	All Races			Whites			Blacks		
	Total	Males	Females	Total	Males	Females	Total	Males	Females
<u>AGE-ADJUSTED RATES</u>									
<u>YEAR OF DIAGNOSIS:</u>									
1975	12.8	16.9	10.0	13.1	17.5	10.1	11.5	16.2	8.5
1976	13.5	18.5	10.2	13.8	19.1	10.3	11.3	14.2	9.4
1977	12.7	16.3	10.2	13.2	17.0	10.5	10.2	13.6	7.7
1978	12.8	17.2	9.8	13.5	18.3	10.2	9.2	11.4	7.5
1979	12.5	16.8	9.7	13.0	17.5	10.0	10.6	13.6	8.6
1980	12.9	17.3	9.8	13.3	17.9	10.1	12.2	16.0	9.5
1981	12.4	16.5	9.6	12.7	17.0	9.8	12.2	14.5	10.2
1982	13.1	18.2	9.7	13.5	18.8	9.9	10.7	15.1	7.9
1983	13.1	17.8	9.9	13.5	18.4	10.0	12.5	16.0	10.1
1984	12.9	17.0	10.1	13.4	17.8	10.3	10.6	11.8	9.6
1985	13.3	17.6	10.4	13.7	18.2	10.6	12.2	16.8	9.3
1986	12.8	17.4	9.5	13.3	18.3	9.9	10.4	13.1	8.4
1987	13.3	17.6	10.3	13.7	18.3	10.6	12.6	17.6	9.3
1988	12.8	17.3	9.6	13.3	18.1	9.9	11.6	13.9	9.6
1989	13.3	17.5	10.3	13.9	18.2	10.9	11.0	15.6	7.8
1990	12.7	17.1	9.7	13.3	18.0	10.1	11.1	14.6	8.6
1991	13.0	16.7	10.2	13.5	17.5	10.5	11.0	12.3	10.2
1992	12.9	17.4	9.7	13.5	18.5	9.9	10.7	13.9	8.4
1993	12.8	16.8	9.9	13.4	17.6	10.2	11.4	15.2	8.8
1994	12.8	16.6	10.0	13.4	17.5	10.4	9.8	12.6	7.7
1995	13.3	17.5	10.2	14.1	18.5	10.8	9.5	12.9	7.2
1996	12.7	16.5	10.0	13.2	17.1	10.4	10.5	13.7	8.4
1997	12.7	16.9	9.6	13.4	18.0	10.2	9.9	13.6	7.5
1998	12.6	16.4	9.8	13.3	17.2	10.4	9.6	14.0	6.9
1999	12.1	16.1	9.1	12.6	16.8	9.5	9.6	12.7	7.5
2000	12.4	15.9	9.8	13.0	16.6	10.2	10.7	12.6	9.2
2001	12.2	15.7	9.5	12.8	16.5	10.0	10.3	12.3	9.0
<u>AGE-ADJUSTED RATES, 1997-2001</u>									
<u>AGE AT DIAGNOSIS:</u>									
All ages	12.4	16.2	9.6	13.0	17.0	10.1	10.0	13.0	8.0
Under 65	6.0	7.1	4.9	6.2	7.4	5.1	4.7	5.7	3.9
65 and over	56.7	79.0	42.0	60.1	83.5	44.5	46.8	63.7	36.8
All ages(IARC world std) ^b	8.8	11.1	7.0	9.3	11.7	7.4	6.9	8.7	5.6
<u>AGE-SPECIFIC RATES, 1997-2001</u>									
<u>AGE AT DIAGNOSIS:</u>									
<1	3.6	3.2	4.1	3.6	-	3.9	-	-	-
1-4	8.2	8.7	7.6	9.1	9.6	8.6	3.6	-	-
5-9	3.9	4.0	3.7	4.3	4.6	4.0	2.2	-	-
10-14	2.5	2.9	2.1	2.5	2.7	2.3	2.4	-	-
15-19	2.3	2.5	2.1	2.5	2.8	2.1	-	-	-
20-24	2.5	2.8	2.2	2.7	3.0	2.4	-	-	-
25-29	2.6	2.9	2.3	2.5	2.7	2.3	2.4	-	-
30-34	2.8	3.5	2.1	2.8	3.4	2.1	2.8	3.9	-
35-39	3.6	4.3	2.9	3.5	4.1	2.9	3.9	4.9	-
40-44	4.4	5.5	3.4	4.6	5.5	3.7	4.1	6.1	-
45-49	7.0	7.9	6.1	7.1	8.1	6.1	7.0	7.8	6.3
50-54	10.7	13.3	8.3	11.1	13.7	8.5	9.2	12.2	6.7
55-59	16.5	20.5	12.6	17.1	21.4	12.9	13.5	16.2	11.3
60-64	23.8	31.0	17.2	25.5	33.0	18.4	15.6	19.4	12.5
65-69	36.2	48.4	25.9	38.8	51.3	27.9	32.8	44.6	24.0
70-74	49.7	69.4	34.2	53.1	73.5	36.9	40.1	56.6	28.9
75-79	62.5	85.7	46.1	66.8	92.0	49.1	47.1	63.5	36.9
80-84	75.2	105.0	57.2	78.7	110.2	59.9	59.0	74.5	51.0
85+	85.3	124.4	68.8	88.1	130.0	71.0	76.8	107.8	65.0

^a SEER 9 areas. Rates are per 100,000 and are age-adjusted to the 2000 U.S. standard population by 5-year age groups, unless noted.

^b SEER 9 areas. Rates are per 100,000 and are age-adjusted to the IARC world standard population.

- Statistic not shown. Rate based on less than 25 cases for the time interval.

Table XIII-3
ACUTE LYMPHOCYTIC LEUKEMIA

SEER INCIDENCE RATES, AGE-ADJUSTED AND AGE-SPECIFIC RATES^a, BY RACE AND SEX

	All Races			Whites			Blacks		
	Total	Males	Females	Total	Males	Females	Total	Males	Females
<u>AGE-ADJUSTED RATES</u>									
YEAR OF DIAGNOSIS:									
1975	0.9	1.1	0.8	1.0	1.2	0.8	-	-	-
1976	1.1	1.3	0.9	1.1	1.3	0.9	-	-	-
1977	1.1	1.3	0.9	1.2	1.4	1.0	-	-	-
1978	1.0	1.2	0.8	1.1	1.3	0.9	-	-	-
1979	1.0	1.2	0.9	1.1	1.2	1.0	-	-	-
1980	1.1	1.4	0.9	1.2	1.5	0.9	-	-	-
1981	1.2	1.3	1.2	1.3	1.4	1.2	-	-	-
1982	1.2	1.5	1.0	1.3	1.6	1.0	-	-	-
1983	1.3	1.5	1.1	1.4	1.7	1.2	-	-	-
1984	1.3	1.5	1.2	1.3	1.5	1.2	-	-	-
1985	1.3	1.5	1.1	1.4	1.6	1.1	-	-	-
1986	1.3	1.7	1.0	1.4	1.8	1.0	-	-	-
1987	1.3	1.5	1.2	1.3	1.6	1.2	-	-	-
1988	1.4	1.8	1.1	1.5	1.8	1.1	-	-	-
1989	1.6	1.8	1.4	1.7	1.9	1.5	1.0	-	-
1990	1.4	1.7	1.1	1.5	1.8	1.3	-	-	-
1991	1.4	1.7	1.1	1.5	1.9	1.1	-	-	-
1992	1.3	1.6	1.1	1.4	1.7	1.1	0.9	-	-
1993	1.3	1.4	1.1	1.4	1.6	1.1	-	-	-
1994	1.2	1.5	0.9	1.3	1.6	1.0	-	-	-
1995	1.5	1.8	1.2	1.6	1.9	1.3	0.9	-	-
1996	1.4	1.6	1.2	1.4	1.7	1.2	0.8	-	-
1997	1.3	1.5	1.2	1.5	1.6	1.3	0.8	-	-
1998	1.5	1.6	1.3	1.6	1.7	1.4	0.9	-	-
1999	1.3	1.5	1.1	1.4	1.6	1.2	-	-	-
2000	1.4	1.5	1.3	1.5	1.6	1.5	0.8	-	-
2001	1.4	1.6	1.2	1.5	1.7	1.3	-	-	-
<u>AGE-ADJUSTED RATES, 1997-2001</u>									
AGE AT DIAGNOSIS:									
All ages	1.4	1.5	1.2	1.5	1.7	1.3	0.8	0.8	0.7
Under 65	1.4	1.6	1.2	1.5	1.7	1.4	0.8	0.9	0.7
65 and over	1.2	1.4	1.1	1.3	1.6	1.1	-	-	-
All ages(IARC world std) ^b	1.7	1.9	1.5	1.9	2.0	1.7	0.9	1.0	0.8
<u>AGE-SPECIFIC RATES, 1997-2001</u>									
AGE AT DIAGNOSIS:									
<1	1.8	-	-	-	-	-	-	-	-
1-4	6.9	7.4	6.5	7.8	8.2	7.4	2.7	-	-
5-9	3.3	3.5	3.1	3.7	4.1	3.4	1.9	-	-
10-14	1.6	1.8	1.4	1.7	1.8	1.6	-	-	-
15-19	1.2	1.4	1.0	1.4	1.6	1.0	-	-	-
20-24	0.8	1.0	-	0.8	1.0	-	-	-	-
25-29	0.5	0.6	-	0.5	-	-	-	-	-
30-34	0.6	0.9	-	0.6	0.8	-	-	-	-
35-39	0.5	0.6	-	0.5	0.6	-	-	-	-
40-44	0.3	-	-	0.4	-	-	-	-	-
45-49	0.6	0.6	0.5	0.6	-	-	-	-	-
50-54	0.9	1.0	0.7	0.9	1.1	-	-	-	-
55-59	0.8	-	0.9	0.8	-	1.0	-	-	-
60-64	1.0	1.2	-	1.0	-	-	-	-	-
65-69	1.1	-	-	1.2	-	-	-	-	-
70-74	1.1	-	-	1.1	-	-	-	-	-
75-79	1.1	-	-	1.2	-	-	-	-	-
80-84	1.5	-	-	1.7	-	-	-	-	-
85+	1.7	-	-	1.8	-	-	-	-	-

^a SEER 9 areas. Rates are per 100,000 and are age-adjusted to the 2000 U.S. standard population by 5-year age groups, unless noted.

^b SEER 9 areas. Rates are per 100,000 and are age-adjusted to the IARC world standard population.

- Statistic not shown. Rate based on less than 25 cases for the time interval.

Table XIII-4
CHRONIC LYMPHOCYTIC LEUKEMIA

SEER INCIDENCE RATES, AGE-ADJUSTED AND AGE-SPECIFIC RATES^a, BY RACE AND SEX

	All Races			Whites			Blacks		
	Total	Males	Females	Total	Males	Females	Total	Males	Females
<u>AGE-ADJUSTED RATES</u>									
YEAR OF DIAGNOSIS:									
1975	4.3	5.9	3.3	4.5	6.1	3.4	4.8	6.9	-
1976	4.6	6.7	3.1	4.8	7.1	3.2	4.3	-	-
1977	4.2	5.7	3.1	4.4	6.0	3.3	3.8	5.8	-
1978	4.4	5.9	3.4	4.7	6.4	3.6	3.3	-	-
1979	4.0	5.7	2.9	4.3	6.1	3.1	3.1	-	-
1980	4.5	6.3	3.3	4.7	6.5	3.4	4.5	7.1	-
1981	4.2	6.3	2.9	4.4	6.6	3.0	3.7	5.4	-
1982	4.3	6.1	3.0	4.5	6.4	3.2	3.7	6.5	-
1983	4.4	6.4	3.1	4.7	6.8	3.2	4.2	6.1	-
1984	4.4	6.2	3.1	4.7	6.7	3.3	3.5	4.5	-
1985	4.4	6.1	3.3	4.7	6.5	3.5	4.1	6.1	-
1986	4.5	6.3	3.2	4.8	6.7	3.5	2.8	4.2	-
1987	4.6	6.7	3.0	4.9	7.1	3.3	4.0	6.1	-
1988	4.4	6.3	3.0	4.6	6.7	3.1	4.4	5.2	3.5
1989	4.6	6.3	3.4	4.9	6.8	3.6	3.8	5.3	-
1990	4.5	6.1	3.3	4.8	6.6	3.5	4.4	5.9	3.4
1991	4.5	6.1	3.4	4.9	6.6	3.6	3.5	3.9	3.2
1992	4.5	6.5	3.1	4.9	7.2	3.3	3.2	5.0	-
1993	4.2	5.8	3.0	4.5	6.2	3.2	4.3	6.6	2.7
1994	4.3	5.8	3.2	4.7	6.3	3.5	3.1	4.1	-
1995	4.3	6.2	3.0	4.7	6.7	3.2	3.2	4.9	-
1996	4.3	5.8	3.2	4.6	6.2	3.5	3.3	5.2	-
1997	4.1	5.5	2.9	4.4	6.0	3.2	3.0	4.7	-
1998	3.7	5.3	2.6	4.0	5.7	2.8	2.6	-	-
1999	3.6	5.2	2.3	3.8	5.6	2.5	3.1	4.9	-
2000	3.6	5.0	2.5	4.0	5.5	2.7	2.6	3.3	2.1
2001	3.9	5.4	2.7	4.2	5.9	2.9	2.7	3.1	2.4
<u>AGE-ADJUSTED RATES, 1997-2001</u>									
AGE AT DIAGNOSIS:									
All ages	3.8	5.3	2.6	4.1	5.8	2.8	2.8	3.9	2.1
Under 65	1.3	1.7	0.8	1.4	1.9	0.9	0.9	1.2	0.6
65 and over	21.0	29.9	15.0	22.8	32.5	16.4	15.9	22.3	12.2
All ages(IARC world std) ^b	2.3	3.2	1.6	2.5	3.5	1.7	1.7	2.3	1.2
<u>AGE-SPECIFIC RATES, 1997-2001</u>									
AGE AT DIAGNOSIS:									
<1	-	-	-	-	-	-	-	-	-
1-4	-	-	-	-	-	-	-	-	-
5-9	-	-	-	-	-	-	-	-	-
10-14	-	-	-	-	-	-	-	-	-
15-19	-	-	-	-	-	-	-	-	-
20-24	-	-	-	-	-	-	-	-	-
25-29	-	-	-	-	-	-	-	-	-
30-34	-	-	-	-	-	-	-	-	-
35-39	0.3	0.5	-	0.3	-	-	-	-	-
40-44	0.7	1.0	-	0.7	1.1	-	-	-	-
45-49	1.7	2.1	1.4	1.9	2.3	1.4	-	-	-
50-54	3.6	5.0	2.2	3.8	5.3	2.3	3.2	-	-
55-59	6.6	9.2	4.2	7.3	10.2	4.5	4.5	-	-
60-64	9.2	12.5	6.1	10.1	13.6	6.8	-	-	-
65-69	14.1	19.4	9.5	15.4	21.0	10.5	10.9	-	-
70-74	18.8	26.7	12.5	20.3	28.5	13.8	16.2	22.7	-
75-79	22.7	31.6	16.4	24.9	34.9	17.9	16.5	-	-
80-84	27.2	39.0	20.1	29.3	42.3	21.6	19.7	-	-
85+	30.6	46.3	24.0	33.0	50.6	25.8	-	-	-

^a SEER 9 areas. Rates are per 100,000 and are age-adjusted to the 2000 U.S. standard population by 5-year age groups, unless noted.

^b SEER 9 areas. Rates are per 100,000 and are age-adjusted to the IARC world standard population.

- Statistic not shown. Rate based on less than 25 cases for the time interval.

Table XIII-5
ACUTE MYELOID LEUKEMIA

SEER INCIDENCE RATES, AGE-ADJUSTED AND AGE-SPECIFIC RATES^a, BY RACE AND SEX

	All Races			Whites			Blacks		
	Total	Males	Females	Total	Males	Females	Total	Males	Females
<u>AGE-ADJUSTED RATES</u>									
<u>YEAR OF DIAGNOSIS:</u>									
1975	3.4	4.2	3.0	3.5	4.3	3.0	2.5	-	-
1976	3.5	4.4	2.9	3.5	4.5	2.9	2.6	-	-
1977	3.5	4.2	3.1	3.6	4.4	3.1	1.9	-	-
1978	3.4	4.4	2.7	3.5	4.6	2.8	2.7	-	-
1979	3.3	4.1	2.8	3.4	4.2	2.9	3.4	-	3.4
1980	3.1	4.1	2.4	3.2	4.1	2.5	2.9	-	-
1981	3.2	4.0	2.6	3.2	4.1	2.7	3.1	-	-
1982	3.4	4.8	2.6	3.5	4.9	2.6	2.5	-	-
1983	3.2	4.2	2.5	3.2	4.3	2.4	2.9	-	-
1984	3.3	4.1	2.7	3.4	4.2	2.8	2.4	-	-
1985	3.3	4.1	2.9	3.2	4.0	2.8	3.7	4.9	3.0
1986	3.0	3.9	2.4	2.9	3.9	2.4	3.2	4.0	2.7
1987	3.0	4.0	2.5	3.0	4.0	2.5	3.0	4.7	-
1988	3.0	3.8	2.5	3.1	3.9	2.5	2.8	3.1	2.5
1989	3.2	4.0	2.6	3.3	4.0	2.8	2.2	3.8	-
1990	3.0	3.9	2.4	3.1	4.0	2.5	2.5	-	-
1991	3.3	3.9	2.9	3.4	3.9	3.0	3.3	4.4	2.6
1992	3.2	3.9	2.8	3.3	4.1	2.7	3.0	3.0	3.0
1993	3.4	4.3	2.9	3.5	4.5	2.8	2.5	-	2.5
1994	3.4	4.1	3.0	3.5	4.2	3.0	2.9	3.2	2.7
1995	3.7	4.2	3.3	3.8	4.3	3.4	2.5	-	2.6
1996	3.5	4.3	2.9	3.5	4.3	2.9	3.2	4.0	2.7
1997	3.5	4.5	2.8	3.6	4.8	2.9	3.0	3.7	2.6
1998	3.9	4.9	3.2	4.0	5.0	3.3	3.0	4.6	2.0
1999	3.7	4.5	3.2	3.8	4.6	3.3	3.0	3.4	2.7
2000	4.0	4.9	3.4	4.0	4.9	3.3	4.3	4.8	3.9
2001	3.9	4.7	3.2	4.0	4.7	3.4	3.5	4.3	3.0
<u>AGE-ADJUSTED RATES, 1997-2001</u>									
<u>AGE AT DIAGNOSIS:</u>									
All ages	3.8	4.7	3.1	3.9	4.8	3.2	3.4	4.2	2.9
Under 65	1.8	2.0	1.6	1.8	2.0	1.6	1.5	1.7	1.4
65 and over	17.7	23.7	13.7	18.4	24.3	14.4	16.2	21.2	13.2
All ages(IARC world std) ^b	2.6	3.1	2.2	2.7	3.2	2.3	2.3	2.7	2.0
<u>AGE-SPECIFIC RATES, 1997-2001</u>									
<u>AGE AT DIAGNOSIS:</u>									
<1	-	-	-	-	-	-	-	-	-
1-4	0.8	0.8	-	0.7	-	-	-	-	-
5-9	0.4	-	-	0.5	-	-	-	-	-
10-14	0.7	0.9	0.6	0.7	0.8	-	-	-	-
15-19	0.8	0.8	0.8	0.8	0.9	-	-	-	-
20-24	1.2	1.3	1.2	1.3	1.5	1.2	-	-	-
25-29	1.2	1.2	1.2	1.2	1.2	1.2	-	-	-
30-34	1.0	1.1	0.9	1.1	1.2	1.0	-	-	-
35-39	1.4	1.3	1.5	1.4	1.2	1.5	-	-	-
40-44	1.7	1.9	1.6	1.8	1.9	1.7	-	-	-
45-49	2.4	2.4	2.4	2.2	2.2	2.3	2.6	-	-
50-54	2.9	3.4	2.5	3.0	3.4	2.6	-	-	-
55-59	4.8	5.3	4.4	4.8	5.4	4.3	-	-	-
60-64	7.2	9.0	5.6	7.7	9.6	5.9	-	-	-
65-69	11.5	14.8	8.7	12.4	15.7	9.4	11.1	-	-
70-74	17.2	23.0	12.7	18.1	23.9	13.5	13.4	-	-
75-79	20.7	26.8	16.4	21.8	28.0	17.4	16.0	-	-
80-84	23.1	30.5	18.7	22.9	29.2	19.2	23.3	-	-
85+	20.8	31.1	16.5	20.9	32.2	16.3	25.3	-	-

^a SEER 9 areas. Rates are per 100,000 and are age-adjusted to the 2000 U.S. standard population by 5-year age groups, unless noted.

^b SEER 9 areas. Rates are per 100,000 and are age-adjusted to the IARC world standard population.

- Statistic not shown. Rate based on less than 25 cases for the time interval.

Table XIII-6
CHRONIC MYELOID LEUKEMIA

SEER INCIDENCE RATES, AGE-ADJUSTED AND AGE-SPECIFIC RATES^a, BY RACE AND SEX

	All Races			Whites			Blacks		
	Total	Males	Females	Total	Males	Females	Total	Males	Females
<u>AGE-ADJUSTED RATES</u>									
YEAR OF DIAGNOSIS:									
1975	2.0	2.9	1.3	2.0	3.0	1.3	-	-	-
1976	1.9	2.5	1.6	1.9	2.4	1.5	1.9	-	-
1977	1.7	2.1	1.4	1.7	2.1	1.4	-	-	-
1978	1.7	2.3	1.3	1.7	2.3	1.4	-	-	-
1979	1.9	2.5	1.4	1.9	2.5	1.5	1.9	-	-
1980	1.7	2.1	1.5	1.7	2.1	1.5	1.5	-	-
1981	1.6	2.0	1.4	1.6	1.9	1.4	2.4	-	-
1982	1.7	2.2	1.4	1.7	2.2	1.3	1.7	-	-
1983	1.7	2.2	1.3	1.6	2.1	1.3	2.5	-	-
1984	1.7	2.4	1.2	1.6	2.4	1.1	2.6	-	-
1985	2.0	2.8	1.4	2.0	2.8	1.5	2.1	-	-
1986	1.7	2.2	1.3	1.7	2.3	1.3	1.5	-	-
1987	1.9	2.3	1.6	1.9	2.4	1.6	2.1	-	-
1988	1.9	2.5	1.5	1.9	2.6	1.5	2.1	-	-
1989	1.7	2.2	1.3	1.7	2.2	1.3	2.2	-	-
1990	1.7	2.5	1.2	1.7	2.5	1.2	2.5	3.6	-
1991	1.9	2.4	1.5	1.9	2.5	1.4	1.6	-	-
1992	1.8	2.2	1.5	1.8	2.3	1.5	1.5	-	-
1993	1.9	2.5	1.5	2.0	2.5	1.6	2.3	3.6	-
1994	1.8	2.4	1.4	1.9	2.5	1.5	1.7	-	-
1995	1.9	2.5	1.3	1.9	2.7	1.3	1.5	-	-
1996	1.8	2.4	1.4	1.8	2.5	1.3	2.0	-	-
1997	1.8	2.6	1.3	1.9	2.7	1.3	1.7	-	-
1998	1.6	1.9	1.4	1.7	2.0	1.5	1.6	-	-
1999	1.7	2.3	1.3	1.7	2.3	1.2	1.6	-	-
2000	1.7	2.2	1.3	1.7	2.2	1.3	1.5	-	-
2001	1.6	2.0	1.2	1.6	2.0	1.3	1.7	2.4	-
<u>AGE-ADJUSTED RATES, 1997-2001</u>									
AGE AT DIAGNOSIS:									
All ages	1.7	2.2	1.3	1.7	2.2	1.3	1.6	2.2	1.2
Under 65	0.8	1.0	0.7	0.8	0.9	0.7	0.9	1.2	0.7
65 and over	7.6	10.8	5.4	7.9	11.3	5.6	6.3	8.8	4.7
All ages(IARC world std) ^b	1.1	1.4	0.8	1.1	1.4	0.9	1.1	1.5	0.8
<u>AGE-SPECIFIC RATES, 1997-2001</u>									
AGE AT DIAGNOSIS:									
<1	-	-	-	-	-	-	-	-	-
1-4	-	-	-	-	-	-	-	-	-
5-9	-	-	-	-	-	-	-	-	-
10-14	-	-	-	-	-	-	-	-	-
15-19	-	-	-	-	-	-	-	-	-
20-24	0.3	-	-	-	-	-	-	-	-
25-29	0.6	0.8	-	0.6	0.7	-	-	-	-
30-34	0.8	1.0	0.5	0.7	0.9	-	-	-	-
35-39	0.8	1.1	0.6	0.8	1.0	0.6	-	-	-
40-44	0.9	1.2	0.7	0.9	1.1	0.7	-	-	-
45-49	1.3	1.4	1.3	1.3	1.5	1.2	-	-	-
50-54	1.7	1.7	1.7	1.8	1.6	1.9	-	-	-
55-59	2.1	2.4	1.7	2.0	2.2	1.7	-	-	-
60-64	3.2	3.9	2.5	3.3	3.8	2.7	-	-	-
65-69	4.8	6.8	3.2	4.9	7.0	3.1	-	-	-
70-74	6.1	9.3	3.6	6.7	9.9	4.1	-	-	-
75-79	7.8	11.1	5.5	8.0	11.5	5.6	-	-	-
80-84	10.9	15.9	7.8	11.6	17.0	8.4	-	-	-
85+	12.5	16.8	10.7	12.4	16.3	10.9	-	-	-

^a SEER 9 areas. Rates are per 100,000 and are age-adjusted to the 2000 U.S. standard population by 5-year age groups, unless noted.

^b SEER 9 areas. Rates are per 100,000 and are age-adjusted to the IARC world standard population.

- Statistic not shown. Rate based on less than 25 cases for the time interval.

Table XIII-7
LEUKEMIAU.S. DEATH RATES, AGE-ADJUSTED AND AGE-SPECIFIC RATES^a, BY RACE AND SEX

	All Races			Whites			Blacks		
	Total	Males	Females	Total	Males	Females	Total	Males	Females
<u>AGE-ADJUSTED RATES</u>									
<u>YEAR OF DEATH:</u>									
1975	8.1	11.0	6.2	8.3	11.3	6.3	6.6	8.6	5.1
1976	8.1	10.9	6.2	8.3	11.2	6.3	6.8	8.5	5.5
1977	8.1	10.8	6.3	8.3	11.1	6.3	6.8	8.8	5.5
1978	8.0	10.8	6.1	8.2	11.1	6.3	6.7	9.2	4.9
1979	8.3	11.1	6.4	8.4	11.4	6.5	7.0	8.9	5.7
1980	8.4	11.2	6.5	8.5	11.5	6.6	7.0	9.1	5.7
1981	8.1	10.9	6.2	8.2	11.2	6.3	7.1	8.9	5.9
1982	8.2	11.0	6.3	8.3	11.3	6.4	7.1	9.4	5.7
1983	8.1	10.9	6.3	8.2	11.2	6.3	7.2	9.2	5.9
1984	8.1	10.7	6.4	8.2	10.9	6.5	7.1	9.2	5.7
1985	8.1	10.8	6.3	8.2	11.0	6.4	7.1	9.6	5.4
1986	8.0	10.7	6.2	8.1	11.0	6.2	7.3	9.3	5.9
1987	7.8	10.3	6.1	7.9	10.5	6.2	7.2	9.4	5.9
1988	7.8	10.6	6.0	8.0	10.8	6.1	7.2	9.8	5.6
1989	8.0	10.6	6.2	8.1	10.8	6.3	7.4	10.3	5.5
1990	8.0	10.7	6.2	8.1	10.9	6.3	7.4	10.0	5.8
1991	8.0	10.5	6.3	8.1	10.6	6.4	7.4	10.0	5.8
1992	8.0	10.7	6.1	8.1	10.9	6.2	7.2	9.4	5.7
1993	7.9	10.7	6.1	8.0	10.8	6.2	7.4	9.8	5.8
1994	7.9	10.6	6.0	8.0	10.8	6.1	7.1	9.6	5.5
1995	7.9	10.8	6.0	8.0	11.0	6.0	7.2	9.8	5.5
1996	7.8	10.5	6.1	8.0	10.7	6.1	7.5	10.1	5.9
1997	7.7	10.4	5.9	7.9	10.7	6.0	6.8	9.2	5.3
1998	7.6	10.1	5.8	7.7	10.3	5.9	7.0	9.4	5.6
1999	7.7	10.2	6.0	7.9	10.5	6.1	6.7	8.8	5.4
2000	7.7	10.3	5.9	7.9	10.5	6.0	6.7	9.1	5.3
2001	7.6	10.1	5.9	7.8	10.4	6.0	6.7	8.8	5.4
<u>AGE-ADJUSTED RATES, 1997-2001</u>									
<u>AGE AT DEATH:</u>									
All ages	7.6	10.2	5.9	7.8	10.5	6.0	6.8	9.0	5.4
Under 65	2.6	3.0	2.1	2.6	3.0	2.1	2.8	3.5	2.3
65 and over	42.8	59.9	32.0	44.2	61.9	32.9	34.4	47.6	27.0
All ages(IARC world std) ^b	4.6	6.0	3.6	4.7	6.1	3.6	4.4	5.7	3.4
<u>AGE-SPECIFIC RATES, 1997-2001</u>									
<u>AGE AT DEATH:</u>									
<1	0.7	0.7	0.8	0.8	0.8	0.9	-	-	-
1-4	0.9	0.9	0.8	0.9	0.9	0.9	0.7	0.8	0.6
5-9	0.7	0.8	0.6	0.7	0.8	0.7	0.6	0.7	0.6
10-14	0.9	1.0	0.7	0.9	1.0	0.8	0.8	1.0	0.6
15-19	1.1	1.3	0.9	1.1	1.3	0.9	1.0	1.3	0.8
20-24	1.3	1.6	1.0	1.3	1.6	1.0	1.3	1.6	1.1
25-29	1.2	1.4	1.0	1.1	1.3	0.9	1.5	1.7	1.2
30-34	1.3	1.5	1.1	1.3	1.4	1.1	1.6	2.0	1.1
35-39	1.6	1.8	1.4	1.6	1.7	1.4	2.0	2.4	1.7
40-44	2.1	2.4	1.9	2.1	2.3	1.8	2.5	2.9	2.1
45-49	3.2	3.6	2.7	3.1	3.6	2.7	3.8	4.4	3.3
50-54	4.6	5.4	3.9	4.6	5.3	3.9	5.5	6.7	4.4
55-59	8.0	9.7	6.4	8.1	9.8	6.4	8.5	10.5	6.9
60-64	13.3	17.0	9.9	13.5	17.1	10.1	14.0	18.7	10.4
65-69	21.4	28.9	15.0	22.0	29.7	15.3	19.9	26.5	15.0
70-74	33.4	45.9	23.6	34.4	47.2	24.2	29.2	40.9	21.5
75-79	46.7	64.9	34.0	48.3	67.1	35.1	36.5	50.5	28.0
80-84	62.1	88.6	46.6	64.0	91.5	47.8	47.6	64.8	39.0
85+	80.7	115.8	66.5	83.4	120.2	68.6	58.4	82.7	49.3

^a NCHS public use data file for the total US. Rates are per 100,000 and are age-adjusted to the 2000 U.S. standard population by 5-year age groups, unless noted.^b NCHS public use data file for the total US. Rates are per 100,000 and are age-adjusted to the IARC world standard population.

- Statistic not shown. Rate based on less than 25 cases for the time interval.

Table XIII-8
LEUKEMIA

	All Races			Whites			Blacks		
	Total	Males	Females	Total	Males	Females	Total	Males	Females
<u>5-YR RELATIVE SURVIVAL RATES</u>									
YEAR OF DIAGNOSIS:									
1960-1963 ^a	-	-	-	14	-	-	-	-	-
1970-1973 ^a	-	-	-	22	-	-	-	-	-
1974-1976 ^b	34.4	33.2	36.0	35.2	33.9	36.8	31.2	32.2	30.2
1977-1979 ^b	37.3	36.5	38.2	38.1	37.3	39.1	30.4	29.2	31.6
1980-1982 ^b	38.7	38.4	39.1	39.5	39.6	39.5	32.9	30.1	36.2
1983-1985 ^b	40.8	40.3	41.5	42.1	41.7	42.6	33.6	32.3	35.0
1986-1988 ^b	43.2	44.3	41.8	44.3	45.7	42.5	38.0	36.3	39.8
1989-1991 ^b	45.1	44.9	45.4	46.4	46.9	45.8	34.9	30.1	40.3
1992-1994 ^b	47.6	48.7	46.1	49.2	50.4	47.6	39.4	38.6	40.3
1995-2000 ^b	46.4 ^c	47.0 ^c	45.7 ^c	47.8 ^c	48.1 ^c	47.3 ^c	38.6	39.1	38.1
<u>5-YR RELATIVE SURVIVAL RATES, 1995-2000^b</u>									
AGE AT DIAGNOSIS:									
<45	62.5	61.9	63.3	64.6	63.9	65.6	50.0	48.9	51.5
45-54	55.0	57.2	51.6	57.2	58.4	55.3	44.6 ^d	47.7 ^d	40.2 ^d
55-64	49.3	49.8	48.6	51.9	52.3	51.2	33.7 ^d	31.2 ^d	36.6 ^d
65-74	39.8	38.4	41.7	41.9	40.3	44.3	27.1	27.2 ^d	27.9 ^d
75+	27.7	26.1	29.0	28.8	26.8	30.4	22.5	23.2 ^d	22.2 ^d
Under 65	57.1	57.4	56.7	59.1	59.1	59.2	45.6	45.4	45.7
65 and over	33.9	33.2	34.6	35.5	34.5	36.5	25.1	25.8	25.1

- ^a Rates are based on End Results data from a series of hospital registries and one population-based registry.
- ^b Rates are from the SEER 9 areas. They are based on data from population-based registries in Connecticut, New Mexico, Utah, Iowa, Hawaii, Atlanta, Detroit, Seattle-Puget Sound and San Francisco-Oakland. Rates are based on follow-up of patients into 2001.
- ^c The difference in rates between 1974-1976 and 1995-2000 is statistically significant ($p < .05$).
- ^d The standard error of the survival rate is between 5 and 10 percentage points.
- ^e The standard error of the survival rate is greater than 10 percentage points.
- Statistic could not be calculated.

Table XIII-9
LYMPHOCYTIC LEUKEMIA

SURVIVAL RATES, BY RACE, SEX, DIAGNOSIS YEAR AND AGE

	All Races			Whites			Blacks		
	Total	Males	Females	Total	Males	Females	Total	Males	Females
ACUTE LYMPHOCYTIC LEUKEMIA									
<u>5-YR RELATIVE SURVIVAL RATES</u>									
YEAR OF DIAGNOSIS:									
1974-1976 ^a	38.3	34.3	43.9	38.6	34.4	44.6	27.7 ^c	-	-
1977-1979 ^a	51.0	47.6	55.8	52.1	49.5	55.7	40.9 ^c	-	-
1980-1982 ^a	53.2	49.5	58.2	53.4	49.8	58.5	39.5 ^c	34.1 ^c	44.6 ^d
1983-1985 ^a	51.3	48.1	55.4	52.4	49.3	56.5	35.2 ^c	37.8 ^c	-
1986-1988 ^a	55.2	53.7	57.5	55.7	53.8	58.5	46.9 ^c	41.5 ^c	50.9 ^c
1989-1991 ^a	58.9	57.4	60.9	59.6	58.7	60.8	49.6 ^c	53.0 ^c	46.3 ^c
1992-1994 ^b	60.2	56.7	64.7	59.7	56.8	63.7	57.4 ^c	49.3 ^c	64.7 ^c
1995-2000 ^b	64.8 ^b	64.6 ^b	65.2 ^b	66.0 ^b	65.4 ^b	66.8 ^b	54.3 ^b	56.0 ^c	52.0 ^c
ACUTE LYMPHOCYTIC LEUKEMIA									
<u>5-YR RELATIVE SURVIVAL RATES, 1995-2000^a</u>									
AGE AT DIAGNOSIS:									
<45	74.4	73.1	76.3	76.3	74.7	78.4	59.8 ^c	60.7 ^c	58.7 ^c
45-54	29.6	28.9 ^c	31.2 ^c	25.0 ^c	24.0 ^c	27.1 ^c	-	-	-
55-64	18.7 ^c	21.2 ^c	14.5 ^c	19.9 ^c	24.0 ^c	14.0 ^c	-	-	-
65-74	8.7	7.1	10.8 ^c	10.8	8.5 ^c	14.0 ^c	-	-	-
75+	5.8	3.9 ^c	-	-	-	-	-	-	-
Under 65	69.1	68.0	70.6	70.4	69.0	72.5	56.0	56.9 ^c	54.9 ^c
65 and over	7.6	6.5	8.6	8.0	5.7	10.1	-	-	-
CHRONIC LYMPHOCYTIC LEUKEMIA									
<u>5-YR RELATIVE SURVIVAL RATES</u>									
YEAR OF DIAGNOSIS:									
1974-1976 ^a	68.2	65.6	71.7	68.6	65.7	72.4	63.1 ^c	64.5 ^c	61.3 ^c
1977-1979 ^a	70.1	68.4	72.3	71.3	69.3	73.9	51.0 ^c	53.8 ^c	47.6 ^c
1980-1982 ^a	68.4	67.8	69.4	69.3	69.2	69.4	57.5 ^c	50.7 ^c	69.2 ^c
1983-1985 ^a	73.6	72.1	75.6	74.0	72.4	76.2	68.0 ^c	65.9 ^c	67.4 ^c
1986-1988 ^a	73.4	72.3	75.1	74.4	73.5	75.7	65.1	61.9 ^c	69.8 ^c
1989-1991 ^a	73.5	72.5	74.8	74.7	73.6	76.1	56.9	52.2 ^c	62.0 ^c
1992-1994 ^a	76.0	77.1	74.5	77.5	78.9	75.6	55.8 ^c	53.0 ^c	60.2 ^c
1995-2000 ^a	72.7 ^b	70.6 ^b	75.6	73.8 ^b	71.6 ^b	76.7	58.7	54.5 ^c	65.2 ^c
CHRONIC LYMPHOCYTIC LEUKEMIA									
<u>5-YR RELATIVE SURVIVAL RATES, 1995-2000^a</u>									
AGE AT DIAGNOSIS:									
<45	81.3	82.1	79.6 ^c	84.7	82.8 ^c	90.6 ^c	-	-	-
45-54	83.4	82.9	84.1	85.3	84.0	87.8	69.6 ^c	68.9 ^d	-
55-64	80.9	76.2	89.9	82.2	78.6	89.2	64.6 ^c	47.3 ^d	-
65-74	75.4	71.3	81.4	76.6	72.1	82.9	57.5 ^c	53.1 ^d	63.1 ^d
75+	58.6	54.6	61.9	59.4	54.9	63.0	46.9 ^d	45.2 ^d	45.5 ^d
Under 65	81.8	79.2	87.1	83.5	81.0	88.8	64.8 ^c	58.3 ^c	74.4 ^d
65 and over	67.7	64.7	71.0	68.5	65.2	72.2	53.5 ^c	50.6 ^c	54.7 ^c

^a Rates are from the SEER 9 areas. They are based on data from population-based registries in Connecticut, New Mexico, Utah, Iowa, Hawaii, Atlanta, Detroit, Seattle-Puget Sound and San Francisco-Oakland. Rates are based on follow-up of patients into 2001.

^b The difference in rates between 1974-1976 and 1995-2000 is statistically significant (p<.05).

^c The standard error of the survival rate is between 5 and 10 percentage points.

^d The standard error of the survival rate is greater than 10 percentage points.

- Statistic could not be calculated.

Table XIII-10
MYELOID LEUKEMIA

SURVIVAL RATES, BY RACE, SEX, DIAGNOSIS YEAR AND AGE

	All Races			Whites			Blacks		
	Total	Males	Females	Total	Males	Females	Total	Males	Females
ACUTE MYELOID LEUKEMIA									
<u>5-YR RELATIVE SURVIVAL RATES</u>									
YEAR OF DIAGNOSIS:									
1974-1976 ^a	6.0	5.5	6.4	6.1	6.1	6.2	7.3	2.7	10.7
1977-1979 ^a	8.4	7.5	9.4	7.6	6.4	8.8	15.7	15.0 ^c	16.4 ^c
1980-1982 ^a	8.6	7.6	9.9	7.9	6.2	10.0	11.3	14.1 ^c	8.1
1983-1985 ^a	11.4	10.8	12.1	11.0	10.7	11.4	9.9	9.1	10.7
1986-1988 ^a	11.7	9.2	14.5	11.7	9.7	14.0	11.0	4.9	16.9
1989-1991 ^a	13.8	11.9	16.0	13.2	11.9	14.6	12.0	7.9	17.6 ^c
1992-1994 ^b	17.7	16.5	18.9	17.8	16.3	19.4	16.5	17.3 ^c	15.3
1995-2000 ^b	19.5 ^b	18.3 ^b	20.8 ^b	18.7 ^b	17.5 ^b	20.0 ^b	24.0 ^b	25.0 ^b	22.6
ACUTE MYELOID LEUKEMIA									
<u>5-YR RELATIVE SURVIVAL RATES, 1995-2000^a</u>									
AGE AT DIAGNOSIS:									
<45	44.9	43.4	46.6	44.8	43.6	46.0	43.8	42.6 ^c	45.2 ^c
45-54	26.5	26.3	26.8	27.1	25.6	29.1	22.6 ^c	24.1 ^c	-
55-64	16.9	14.1	19.9	17.6	14.8	20.7	13.3 ^c	-	-
65-74	5.3	3.8	7.3	5.7	3.9	8.0	3.0	4.6	-
75+	2.3	1.2	3.0	1.8	0.8	2.4	2.5	-	4.1
Under 65	32.7	31.2	34.6	32.3	30.5	34.4	34.2	34.1 ^c	34.2 ^c
65 and over	3.8	2.7	5.0	3.7	2.5	4.9	3.1	2.7	3.4
CHRONIC MYELOID LEUKEMIA									
<u>5-YR RELATIVE SURVIVAL RATES</u>									
YEAR OF DIAGNOSIS:									
1974-1976 ^a	22.6	19.7	26.5	22.2	18.7	27.0	24.9 ^c	28.3 ^c	20.2 ^c
1977-1979 ^a	23.6	22.3	25.2	23.2	22.4	24.2	25.4 ^c	18.4 ^c	33.8 ^c
1980-1982 ^a	31.1	28.3	34.2	32.2	30.4	34.0	26.7 ^c	18.3 ^c	36.8 ^c
1983-1985 ^a	24.7	22.1	28.2	25.4	22.6	29.2	23.2	20.7 ^c	26.1 ^c
1986-1988 ^a	29.1	29.7	28.3	28.7	29.5	27.6	37.4 ^c	33.4 ^c	42.4 ^c
1989-1991 ^a	33.0	30.6	36.1	33.2	32.4	34.3	31.5 ^c	19.9 ^c	45.8 ^c
1992-1994 ^a	36.6	36.6	36.5	36.8	37.0	36.5	39.9 ^c	37.4 ^c	44.1 ^c
1995-2000 ^a	36.7 ^b	36.9 ^b	36.5	36.8 ^b	36.4 ^b	37.6 ^b	33.4	33.2 ^c	34.0 ^c
CHRONIC MYELOID LEUKEMIA									
<u>5-YR RELATIVE SURVIVAL RATES, 1995-2000^a</u>									
AGE AT DIAGNOSIS:									
<45	56.8	53.1	64.2	56.7	51.9	66.8	55.2 ^c	46.9 ^c	-
45-54	54.3	49.5 ^c	59.9 ^c	55.8	50.3 ^c	62.2 ^c	46.0 ^d	-	-
55-64	39.9	42.4 ^c	36.4 ^c	42.6	43.7 ^c	42.3 ^c	6.4 ^c	-	-
65-74	23.7	25.0	22.0	24.8	26.1	23.1	15.9 ^c	18.9 ^d	-
75+	12.6	12.7	12.6	12.3	11.1	13.5	12.8 ^d	-	-
Under 65	51.1	49.0	54.5	52.0	48.8	57.9	43.8 ^c	41.6 ^c	46.9 ^c
65 and over	18.4	19.6	16.9	18.8	19.5	17.9	15.0 ^c	18.6 ^c	11.4 ^c

^a Rates are from the SEER 9 areas. They are based on data from population-based registries in Connecticut, New Mexico, Utah, Iowa, Hawaii, Atlanta, Detroit, Seattle-Puget Sound and San Francisco-Oakland. Rates are based on follow-up of patients into 2001.

^b The difference in rates between 1974-1976 and 1995-2000 is statistically significant (p<.05).

^c The standard error of the survival rate is between 5 and 10 percentage points.

^d The standard error of the survival rate is greater than 10 percentage points.

- Statistic could not be calculated.

Table XIII-11

LEUKEMIASURVIVAL RATES^a

By Year of Diagnosis

All Races, Males and Females

Year of Diagnosis

	1975- 1979	1980- 1984	1985	1986	1987	1988	1989	1990	1991	1992	1993	1994	1995	1996	1997	1998	1999	2000	
Relative Survival Rates (SEER ^b)																			
1-year	61.4	63.7	64.9	65.0	64.4	66.7	65.2	67.0	66.6	67.6	67.3	66.6	67.9	67.9	67.2	65.2	64.2	63.8	
2-year	50.8	53.5	55.8	55.3	54.2	57.0	56.3	56.4	57.3	58.6	58.0	57.9	58.5	59.0	58.9	56.2	56.4		
3-year	44.5	47.7	49.5	49.4	48.9	51.3	51.3	51.5	51.8	53.8	54.2	53.6	53.9	54.5	54.3	52.0			
4-year	39.9	43.1	45.8	45.5	45.3	47.8	46.8	48.3	47.5	50.3	50.7	50.3	50.4	51.0	50.3				
5-year	35.8	39.2	42.6	42.3	42.3	45.1	44.2	46.0	45.1	47.6	47.5	47.7	47.8	47.7					
6-year	32.7	36.7	40.2	40.1	40.4	42.9	41.4	42.4	43.2	45.2	45.5	45.3	45.5						
7-year	30.7	34.4	38.1	38.0	37.7	40.0	38.8	39.9	40.8	42.5	42.8	43.2							
8-year	28.7	32.4	36.1	35.9	35.6	37.7	37.0	37.9	38.6	40.6	41.7								
9-year	26.9	30.8	33.7	34.4	33.9	36.2	35.3	36.5	37.5	39.1									
10-year	25.6	29.4	32.9	33.2	32.4	35.0	33.9	35.3	36.3										
11-year	24.4	28.4	31.1	31.8	31.5	33.2	32.6	33.9											
12-year	23.3	27.4	30.6	31.2	30.0	32.2	32.0												
13-year	22.7	26.6	30.3	30.6	29.1	31.3													
14-year	22.1	26.3	29.4	30.0	29.1														
15-year	21.6	25.8	28.9	29.3															
16-year	20.9	25.1	28.3																
17-year	20.5	24.5																	
18-year	20.2																		
19-year	19.9																		
20-year	19.3																		

^a Survival rates are relative rates expressed as percents.
^b Rates are from the SEER 9 areas.

Table XIII-12

LEUKEMIASURVIVAL RATES^a

By Year of Diagnosis

All Races, Males

Year of Diagnosis

	1975- 1979	1980- 1984	1985	1986	1987	1988	1989	1990	1991	1992	1993	1994	1995	1996	1997	1998	1999	2000
Relative Survival Rates (SEER ^b)																		
1-year	61.2	64.0	65.6	64.9	66.0	67.9	65.4	67.7	67.8	68.3	68.5	68.6	69.6	69.4	68.1	65.2	65.3	65.6
2-year	50.3	53.5	55.8	55.2	56.6	57.9	57.4	56.5	58.4	59.1	59.5	59.2	60.3	60.9	60.2	56.9	57.4	
3-year	43.7	47.4	48.7	48.7	50.9	52.1	52.1	51.0	52.6	53.9	55.9	54.1	55.7	56.7	54.8	52.9		
4-year	39.0	42.6	44.8	45.1	47.7	48.6	47.7	47.5	47.4	50.8	52.5	51.8	51.8	53.1	50.1			
5-year	34.8	38.7	42.4	42.0	44.3	46.6	45.3	44.1	45.2	48.6	48.7	48.8	48.4	49.0				
6-year	31.8	36.1	39.8	40.1	41.6	44.3	42.6	40.2	43.6	45.7	46.9	45.9	45.5					
7-year	29.5	33.8	37.5	37.6	38.6	41.6	39.4	37.9	41.1	42.7	43.9	43.8						
8-year	27.2	31.5	35.4	35.4	37.2	39.1	37.7	35.5	39.1	40.8	42.8							
9-year	25.3	29.8	33.1	33.3	35.9	37.4	35.9	34.3	38.0	39.7								
10-year	23.9	28.7	32.0	32.0	33.8	35.9	34.4	32.7	36.6									
11-year	22.5	27.6	30.2	31.2	32.9	34.8	32.9	31.6										
12-year	21.5	27.2	29.8	30.4	31.2	33.7	32.7											
13-year	21.1	26.5	29.6	30.2	29.9	33.3												
14-year	20.4	26.3	29.3	30.2	29.9													
15-year	20.0	25.8	28.2	29.2														
16-year	19.3	25.1	27.2															
17-year	19.1	24.5																
18-year	18.7																	
19-year	18.3																	
20-year	17.3																	

^a Survival rates are relative rates expressed as percents.
^b Rates are from the SEER 9 areas.

Table XIII-13

LEUKEMIASURVIVAL RATES^a

By Year of Diagnosis

All Races, Females

Year of Diagnosis

	1975- 1979	1980- 1984	1985	1986	1987	1988	1989	1990	1991	1992	1993	1994	1995	1996	1997	1998	1999	2000
Relative Survival Rates (SEER ^b)																		
1-year	61.7	63.3	64.0	65.0	62.3	65.0	64.9	66.0	65.0	66.7	65.8	64.1	65.6	65.9	65.9	65.3	62.7	61.6
2-year	51.4	53.4	55.7	55.4	51.0	55.6	54.9	56.1	55.8	57.9	56.1	56.2	56.0	56.5	57.1	55.4	54.9	
3-year	45.6	48.2	50.4	50.4	46.2	50.2	50.3	52.3	50.7	53.6	52.2	52.9	51.4	51.7	53.7	51.0		
4-year	41.0	43.8	47.0	46.1	42.2	46.6	45.8	49.3	47.7	49.7	48.5	48.4	48.4	48.4	50.6			
5-year	37.2	39.8	42.9	42.7	39.7	43.1	42.8	48.5	45.0	46.1	45.9	46.2	47.0	46.0				
6-year	34.0	37.5	40.6	40.1	38.9	41.0	39.9	45.2	42.7	44.6	43.6	44.6	45.6					
7-year	32.2	35.1	38.9	38.6	36.5	37.9	37.9	42.6	40.4	42.1	41.3	42.5						
8-year	30.4	33.5	37.1	36.5	33.5	35.7	36.2	41.1	38.0	40.2	40.3							
9-year	28.9	32.0	34.5	35.8	31.4	34.6	34.4	39.4	36.8	38.3								
10-year	27.6	30.4	34.0	34.7	30.5	33.9	33.3	38.5	35.9									
11-year	26.5	29.4	32.2	32.6	29.7	31.1	32.1	36.8										
12-year	25.4	27.8	31.7	32.3	28.7	30.3	31.1											
13-year	24.6	26.8	31.2	31.1	28.2	28.5												
14-year	24.1	26.4	29.5	29.8	28.1													
15-year	23.4	25.7	29.5	29.5														
16-year	22.7	25.2	29.5															
17-year	22.3	24.5																
18-year	22.1																	
19-year	21.7																	
20-year	21.7																	

^a Survival rates are relative rates expressed as percents.
^b Rates are from the SEER 9 areas.

Table XIII-14

LEUKEMIA

Percent Diagnosed With Cancer In 10, 20 and 30 Years and In Remaining Lifetime,
Given Cancer Free At Current Age By Race and Sex

Lifetime Risk (Percent) of Being Diagnosed (12 SEER Areas) With Cancer and
Lifetime Risk (Percent) of Dying (Total U.S.) From Cancer

1999-2001

All Races

Current Age	Males				Females			
	+10 yrs	+20 yrs	+30 yrs	Eventually	+10 yrs	+20 yrs	+30 yrs	Eventually
0	0.06	0.09	0.11	1.47	0.05	0.08	0.10	1.04
10	0.03	0.06	0.09	1.43	0.03	0.05	0.08	1.01
20	0.03	0.06	0.13	1.41	0.02	0.05	0.09	0.98
30	0.04	0.10	0.25	1.40	0.03	0.07	0.17	0.96
40	0.07	0.22	0.52	1.39	0.05	0.14	0.32	0.94
50	0.16	0.47	0.94	1.37	0.10	0.28	0.56	0.92
60	0.34	0.85	1.22	1.31	0.19	0.48	0.77	0.86

Lifetime Risk of Being Diagnosed = 1.47%
Lifetime Risk of Dying = 0.96%

Lifetime Risk of Being Diagnosed = 1.04%
Lifetime Risk of Dying = 0.72%

Whites

Current Age	Males				Females			
	+10 yrs	+20 yrs	+30 yrs	Eventually	+10 yrs	+20 yrs	+30 yrs	Eventually
0	0.07	0.10	0.13	1.58	0.06	0.09	0.11	1.11
10	0.03	0.06	0.10	1.53	0.03	0.05	0.08	1.06
20	0.03	0.07	0.13	1.51	0.02	0.05	0.10	1.03
30	0.04	0.10	0.26	1.49	0.03	0.08	0.17	1.01
40	0.07	0.23	0.56	1.48	0.05	0.15	0.33	0.99
50	0.17	0.51	1.01	1.46	0.10	0.29	0.59	0.96
60	0.36	0.90	1.30	1.39	0.20	0.52	0.82	0.90

Lifetime Risk of Being Diagnosed = 1.58%
Lifetime Risk of Dying = 1.01%

Lifetime Risk of Being Diagnosed = 1.11%
Lifetime Risk of Dying = 0.75%

Blacks

Current Age	Males				Females			
	+10 yrs	+20 yrs	+30 yrs	Eventually	+10 yrs	+20 yrs	+30 yrs	Eventually
0	0.03	0.04	0.06	0.88	0.03	0.04	0.06	0.79
10	0.02	0.04	0.07	0.88	0.02	0.04	0.06	0.78
20	0.02	0.05	0.12	0.87	0.02	0.04	0.08	0.77
30	0.04	0.11	0.22	0.88	0.02	0.06	0.15	0.75
40	0.07	0.19	0.43	0.87	0.04	0.12	0.28	0.74
50	0.13	0.39	0.67	0.86	0.09	0.25	0.49	0.73
60	0.30	0.64	0.83	0.85	0.17	0.44	0.63	0.71

Lifetime Risk of Being Diagnosed = 0.88%
Lifetime Risk of Dying = 0.63%

Lifetime Risk of Being Diagnosed = 0.79%
Lifetime Risk of Dying = 0.54%

Table XIII-15
LEUKEMIA (Invasive)

AGE-ADJUSTED SEER INCIDENCE AND U.S. DEATH RATES

By Race/Ethnicity and Sex

Incidence^a

RACE/ETHNICITY	Rate 1997-2001			Trend 1992-2001		
	Rate per 100,000 persons			APC (%)		
	Total	Males	Females	Total	Males	Females
All Races	12.1	15.9	9.4	-1.0 ^d	-1.3 ^d	-0.8 ^d
White	12.9	16.9	9.9	-0.9 ^d	-1.3 ^d	-0.5
White Hispanic ^b	9.6	11.8	7.9	-1.2	-1.0	-1.3
White Non-Hispanic ^b	12.8	17.0	9.7	-0.9 ^d	-1.2 ^d	-0.7
Black	9.9	12.8	7.9	-0.9	-1.2	-0.5
Asian/Pacific Islander	7.5	9.6	5.9	-1.4	-0.1	-2.9 ^d
Amer Ind/Alaska Nat	5.0	5.6	4.5	3.3	-	-
Hispanic ^b	9.2	11.4	7.6	-1.2	-0.9	-1.3

Mortality^c

RACE/ETHNICITY	Rate 1997-2001			Trend 1992-2001		
	Rate per 100,000 persons			APC (%)		
	Total	Males	Females	Total	Males	Females
All Races	7.6	10.2	5.9	-0.5 ^d	-0.7 ^d	-0.5 ^d
White	7.8	10.5	6.0	-0.4 ^d	-0.6 ^d	-0.4 ^d
White Hispanic ^b	5.5	7.0	4.4	0.2	0.7	-0.5
White Non-Hispanic ^b	7.9	10.6	6.1	-0.4 ^d	-0.7 ^d	-0.3 ^d
Black	6.8	9.0	5.4	-1.0 ^d	-1.1 ^d	-0.8 ^d
Asian/Pacific Islander	4.2	5.3	3.3	-1.4	-1.2	-1.4
Amer Ind/Alaska Nat	3.9	4.8	3.1	-2.1	-3.9	-1.2
Hispanic ^b	5.4	6.8	4.3	0.2	0.7	-0.4

The APC is the Annual Percent Change over the time interval.

- Statistic not shown. Rate based on less than 25 cases for the time interval. Trend based on less than 10 cases for at least one year within the time interval.

^a Incidence data are from the 12 SEER areas (San Francisco, Connecticut, Detroit, Hawaii, Iowa, New Mexico, Seattle, Utah, Atlanta, San Jose-Monterey, Los Angeles, and Alaska Native Registry).

^b Hispanic and Non-Hispanic are not mutually exclusive from Whites, Blacks, Asian Pacific Islanders, and American Indians/Alaska Natives. Incidence data for Hispanics and Non-Hispanics do not include cases from Detroit, Hawaii and Alaska Native Registry. For mortality, information is included for all states except Connecticut, Maine, Maryland, Oklahoma, New York, New Hampshire, North Dakota and Vermont.

^c Mortality data are analyzed from a public use file provided by the National Center for Health Statistics (NCHS).

^d The APC is significantly different from zero (p<.05).

Table XIII-16

ALL LEUKEMIAAGE-ADJUSTED SEER INCIDENCE RATES^a AND SEER DEATH RATES^b
By Registry, Race and Sex

	<u>All Races</u>			<u>Whites</u>			<u>Blacks</u>		
	<u>Total</u>	<u>Males</u>	<u>Females</u>	<u>Total</u>	<u>Males</u>	<u>Females</u>	<u>Total</u>	<u>Males</u>	<u>Females</u>
<u>SEER INCIDENCE RATES^a, 1997-2001</u>									
REGISTRY									
12 registries	12.1	15.9	9.4	12.9	16.9	9.9	9.9	12.8	7.9
11 registries	12.2	15.9	9.4	12.9	16.9	9.9	9.9	12.8	7.9
9 registries	12.4	16.2	9.6	13.0	17.0	10.1	10.0	13.0	8.0
San Francisco-Oakland	10.7	13.9	8.3	11.7	14.8	9.4	9.2	12.2	7.2
Connecticut	12.1	15.8	9.5	12.3	16.0	9.6	9.6	12.4	8.2
Metropolitan Detroit	14.1	17.5	11.6	14.9	18.7	12.2	10.8	13.3	9.1
Hawaii	10.3	12.5	8.4	13.7	16.4	11.1	-	-	-
Iowa	14.1	19.4	10.2	14.0	19.4	10.1	14.0	-	-
New Mexico	11.3	14.8	8.4	11.8	15.1	9.0	-	-	-
Seattle-Puget Sound	14.1	18.8	10.6	14.4	19.2	10.9	11.2	14.4	8.9
Utah	11.4	14.6	8.9	11.5	14.7	8.9	-	-	-
Metropolitan Atlanta	10.3	13.8	7.8	11.1	14.7	8.5	9.0	12.8	6.8
San Jose-Monterey	10.9	13.8	8.5	11.8	15.2	9.2	-	-	-
Los Angeles	11.6	15.3	8.9	12.5	16.6	9.5	9.7	12.4	7.8
<u>SEER DEATH RATES^b, 1997-2001</u>									
REGISTRY									
12 registries	7.4	9.8	5.7	7.7	10.4	5.9	7.0	8.9	5.7
11 registries	7.4	9.9	5.7	7.7	10.4	5.9	7.0	8.9	5.7
9 registries	7.5	10.0	5.7	7.7	10.4	5.9	7.1	9.1	5.7
San Francisco-Oakland	6.9	9.3	5.2	7.4	9.9	5.8	6.5	8.7	4.9
Connecticut	7.3	9.8	5.6	7.4	9.9	5.7	5.7	8.0	4.2
Metropolitan Detroit	8.1	10.8	6.4	8.3	11.2	6.3	7.6	9.5	6.4
Hawaii	5.8	7.2	4.6	7.7	9.1	6.4	-	-	-
Iowa	8.2	11.4	6.1	8.2	11.4	6.0	-	-	-
New Mexico	6.6	8.8	4.9	6.8	8.9	5.0	-	-	-
Seattle-Puget Sound	7.9	10.5	6.1	8.1	10.8	6.3	6.5	-	-
Utah	7.5	9.9	5.7	7.5	9.9	5.7	-	-	-
Metropolitan Atlanta	7.4	9.8	5.9	7.7	10.3	6.1	6.9	8.6	5.7
San Jose-Monterey	6.7	9.3	4.9	7.3	10.1	5.4	-	-	-
Los Angeles	7.2	9.6	5.6	7.8	10.5	5.9	7.0	8.5	5.8

Note: San Jose-Monterey and Los Angeles are new SEER areas as of 1992 and their data are only used in tables where indicated.

^a SEER 9 areas. Incidence rates are per 100,000 and are age-adjusted to the 2000 U.S. standard population by 5-year age groups.

^b NCHS public use data file for the total US. Death rates are per 100,000 and are age-adjusted to the 2000 U.S. standard population by 5-year age groups.

- Statistic could not be calculated or populations are inadequate.

Table XIII-17
LEUKEMIA

AVERAGE ANNUAL AGE-ADJUSTED CANCER DEATH^a RATES BY STATE, ALL RACES, 1997-2001

Males and Females

State	Rate	SE	Rank	PD
TOTAL U.S.	7.6	0.02		
High Five States				
North Dakota	8.9 ^b	0.49	(01)	17.1
Wisconsin	8.5 ^c	0.18	(02)	11.8
West Virginia	8.5	0.29	(03)	11.8
Louisiana	8.3	0.20	(04)	9.2
Montana	8.3	0.42	(05)	9.2
Low Five States				
Maine	7.0	0.32	(47)	-7.9
Arizona	6.8 ^c	0.17	(48)	-10.5
New Mexico	6.6	0.29	(49)	-13.2
District of Columbia	6.3 ^b	0.48	(50)	-17.1
Hawaii	5.8 ^{bc}	0.31	(51)	-23.7

Males

State	Rate	SE	Rank	PD
TOTAL U.S.	10.2	0.04		
High Five States				
North Dakota	13.1 ^b	0.92	(01)	28.4
Delaware	11.7	0.90	(02)	14.7
South Dakota	11.5	0.81	(03)	12.7
Iowa	11.4	0.41	(04)	11.8
Minnesota	11.4	0.35	(05)	11.8
Low Five States				
Maine	9.1	0.57	(47)	-10.8
New Mexico	8.8	0.50	(48)	-13.7
Arizona	8.7 ^c	0.28	(49)	-14.7
Alaska	8.4 ^b	1.27	(50)	-17.6
Hawaii	7.2 ^{bc}	0.51	(51)	-29.4

Females

State	Rate	SE	Rank	PD
TOTAL U.S.	5.9	0.03		
High Five States				
Wisconsin	6.7 ^c	0.21	(01)	13.6
West Virginia	6.6	0.33	(02)	11.9
Indiana	6.5	0.19	(03)	10.2
Tennessee	6.5	0.20	(04)	10.2
Illinois	6.4 ^c	0.14	(05)	8.5
Low Five States				
New Hampshire	5.4	0.40	(47)	-8.5
Arizona	5.4	0.20	(48)	-8.5
New Mexico	4.9 ^b	0.32	(49)	-16.9
Hawaii	4.6 ^b	0.38	(50)	-22.0
District of Columbia	4.5 ^b	0.51	(51)	-23.7

For additional detailed cancer statistics by state, please visit the State Cancer Profiles website. <http://statecancerprofiles.cancer.gov/>

- ^a NCHS public use data file. Rates are per 100,000 and are age-adjusted to the 2000 U.S. standard population by 5-year age groups.
- ^b Absolute percent difference between state rate and total U.S. rate is 15% or more.
- ^c Difference between state rate and total U.S. rate is statistically significant (p<=.0002).
- SE Standard error of the rate.
- PD Percent difference between state rate and total U.S. rate.

Table XIII-18
LEUKEMIA (Invasive)Estimated United States Cancer Prevalence Counts^a on January 1, 2001
By Race/Ethnicity, Sex and Years Since Diagnosis

Years Since Diagnosis	0 to <5	5 to <10	10 to <15	15 to <20	20 to <25	0 to <11 ^e	0 to <26 ^e	>=26 ^g	Complete ^h
<u>Race/Sex</u>									
All Races ^b	76,511	45,977	25,608	15,529	9,150	128,514	173,859	6,611	180,470
Males	43,969	26,162	14,350	8,429	4,548	73,260	97,991	2,778	100,769
Females	32,542	19,815	11,258	7,100	4,602	55,254	75,868	3,833	79,701
White ^b	67,895	41,550	23,305	14,180	8,479	114,916	156,446	5,736	162,182
Males	39,112	23,826	13,242	7,718	4,291	65,845	88,701	2,403	91,104
Females	28,783	17,724	10,063	6,462	4,188	49,071	67,745	3,333	71,078
Black ^b	5,353	2,741	1,266	827	417	8,394	10,644	642	11,286
Males	2,809	1,371	556	464	158	4,276	5,380	298	5,678
Females	2,544	1,370	710	363	259	4,118	5,264	344	5,608
Asian/Pacific Islander ^c	1,607	884	+	+	+	2,661	+	+	+
Males	931	459	+	+	+	1,474	+	+	+
Females	676	425	+	+	+	1,187	+	+	+
Hispanic ^d	5,832	3,423	+	+	+	9,719	+	+	+
Males	3,289	1,985	+	+	+	5,584	+	+	+
Females	2,543	1,438	+	+	+	4,135	+	+	+

Estimated prevalence percent^a on January 1, 2001, of the SEER 11 population diagnosed in the previous 10 years
By Age at Prevalence, Race/Ethnicity and Sex

Age at Prevalence	Age Specific (Crude)										Age-Adjusted ^f
	All Ages	0-9	10-19	20-29	30-39	40-49	50-59	60-69	70-79	80+	All Ages
<u>Race/Sex</u>											
All Races ^c	0.0393%	0.0289%	0.0278%	0.0124%	0.0138%	0.0217%	0.0490%	0.0959%	0.1487%	0.1571%	0.0417%
Males	0.0457%	0.0311%	0.0290%	0.0141%	0.0164%	0.0270%	0.0624%	0.1286%	0.2011%	0.2084%	0.0523%
Females	0.0330%	0.0267%	0.0265%	0.0106%	0.0111%	0.0166%	0.0364%	0.0670%	0.1095%	0.1298%	0.0330%
White ^c	0.0441%	0.0323%	0.0309%	0.0138%	0.0139%	0.0229%	0.0525%	0.1057%	0.1643%	0.1702%	0.0454%
Males	0.0512%	0.0341%	0.0321%	0.0160%	0.0162%	0.0288%	0.0673%	0.1413%	0.2216%	0.2288%	0.0570%
Females	0.0370%	0.0303%	0.0296%	0.0115%	0.0115%	0.0169%	0.0382%	0.0735%	0.1208%	0.1396%	0.0358%
Black ^c	0.0217%	0.0120%	0.0175%	0.0067%	0.0114%	0.0167%	0.0357%	0.0662%	0.0910%	0.0886%	0.0266%
Males	0.0243%	0.0147%	0.0180%	0.0061%	0.0145%	0.0182%	0.0444%	0.0885%	0.1126%	0.0949%	0.0318%
Females	0.0193%	0.0092%	0.0170%	0.0073%	0.0086%	0.0154%	0.0284%	0.0486%	0.0768%	0.0857%	0.0225%
Asian/Pacific Islander ^c	0.0213%	0.0286%	0.0212%	0.0090%	0.0137%	0.0154%	0.0268%	0.0327%	0.0480%	0.0485%	0.0226%
Males	0.0247%	0.0324%	0.0231%	0.0093%	0.0174%	0.0178%	0.0281%	0.0375%	0.0715%	0.0662%	0.0269%
Females	0.0181%	0.0247%	0.0192%	0.0087%	0.0101%	0.0133%	0.0255%	0.0288%	0.0303%	0.0362%	0.0190%
Hispanic ^d	0.0256%	0.0323%	0.0329%	0.0127%	0.0144%	0.0168%	0.0310%	0.0476%	0.0763%	0.0823%	0.0301%
Males	0.0283%	0.0339%	0.0347%	0.0152%	0.0169%	0.0195%	0.0378%	0.0618%	0.1050%	0.0953%	0.0357%
Females	0.0228%	0.0307%	0.0310%	0.0097%	0.0116%	0.0141%	0.0248%	0.0360%	0.0559%	0.0752%	0.0253%

^a US 2001 cancer prevalence counts are based on 2001 cancer prevalence proportions from the SEER registries and 1/1/2001 US population estimates based on the average of 2000 and 2001 population estimates from the US Bureau of the Census. Prevalence was calculated using the First Malignant Primary Only for a person.

^{b c d} Statistics based on b) SEER 9 Areas c) SEER 11 Areas d) SEER 11 Areas excluding Hawaii and Detroit.

^e Maximum limited-duration prevalence: 26 years for 1975-2001 SEER 9 data; 11 years for 1990-2001 SEER 11 data (used to calculate prevalence for Hispanics and Asian Pacific Islanders).

^f Percentages are age-adjusted to the 2000 US standard population by 5-year age groups.

^{g h} (g) Cases diagnosed 26 years or more ago were estimated using the completeness index method (Capocaccia et. al. 1997, Merrill et. al. 2000). (h) Complete prevalence is obtained by summing 0 to <26 and >=26.

- Statistic not shown. Statistic based on fewer than 5 cases estimated alive in SEER for the time interval.

+ Not available.

Table XIII-19
ACUTE LYMPHOCYTIC LEUKEMIA (Invasive)

Estimated United States Cancer Prevalence Counts^a on January 1, 2001
By Race/Ethnicity, Sex and Years Since Diagnosis

Years Since Diagnosis	0 to <5	5 to <10	10 to <15	15 to <20	20 to <25	0 to <11 ^e	0 to <26 ^e	>=26 ^g	Complete ^h
<u>Race/Sex</u>									
All Races ^b	13,506	9,779	8,068	6,298	4,270	24,934	42,330	+	+
Males	7,536	5,514	4,541	3,203	2,171	13,915	23,174	+	+
Females	5,970	4,265	3,527	3,095	2,099	11,019	19,156	+	+
White ^b	11,699	8,487	7,098	5,703	3,919	21,673	37,299	+	+
Males	6,473	4,871	4,034	2,932	2,033	12,135	20,539	+	+
Females	5,226	3,616	3,064	2,771	1,886	9,538	16,760	+	+
Black ^b	1,015	755	503	315	177	1,828	2,780	+	+
Males	605	357	247	159	75	988	1,459	+	+
Females	410	398	256	156	102	840	1,321	+	+
Asian/Pacific Islander ^c	522	375	+	+	+	984	+	+	+
Males	335	180	+	+	+	557	+	+	+
Females	187	195	+	+	+	427	+	+	+
Hispanic ^d	2,991	1,882	+	+	+	5,121	+	+	+
Males	1,666	1,100	+	+	+	2,926	+	+	+
Females	1,325	782	+	+	+	2,195	+	+	+

Estimated prevalence percent^a on January 1, 2001, of the SEER 11 population diagnosed in the previous 10 years
By Age at Prevalence, Race/Ethnicity and Sex

Age at Prevalence	Age Specific (Crude)										Age-Adjusted ^f
	All Ages	0-9	10-19	20-29	30-39	40-49	50-59	60-69	70-79	80+	All Ages
<u>Race/Sex</u>											
All Races ^c	0.0090%	0.0252%	0.0234%	0.0059%	0.0027%	0.0016%	0.0020%	0.0017%	0.0014%	0.0007%	0.0088%
Males	0.0102%	0.0272%	0.0246%	0.0076%	0.0034%	0.0017%	0.0023%	0.0020%	0.0018%	-	0.0097%
Females	0.0078%	0.0231%	0.0221%	0.0041%	0.0021%	0.0015%	0.0016%	0.0014%	0.0012%	0.0007%	0.0079%
White ^c	0.0099%	0.0284%	0.0266%	0.0068%	0.0030%	0.0018%	0.0020%	0.0017%	0.0015%	0.0007%	0.0100%
Males	0.0111%	0.0302%	0.0281%	0.0087%	0.0037%	0.0019%	0.0023%	0.0022%	0.0017%	-	0.0109%
Females	0.0087%	0.0265%	0.0250%	0.0048%	0.0023%	0.0017%	0.0017%	0.0012%	0.0013%	0.0008%	0.0090%
Black ^c	0.0047%	0.0096%	0.0127%	0.0026%	0.0014%	-	0.0012%	-	-	-	0.0041%
Males	0.0056%	0.0118%	0.0126%	0.0029%	0.0021%	-	-	-	-	-	0.0046%
Females	0.0040%	0.0073%	0.0129%	0.0023%	-	-	-	-	-	-	0.0036%
Asian/Pacific Islander ^c	0.0071%	0.0238%	0.0160%	0.0036%	0.0024%	0.0021%	0.0021%	0.0017%	-	-	0.0073%
Males	0.0084%	0.0275%	0.0173%	0.0047%	0.0026%	0.0024%	0.0027%	-	-	-	0.0083%
Females	0.0058%	0.0199%	0.0145%	0.0025%	0.0023%	0.0018%	-	-	-	-	0.0063%
Hispanic ^d	0.0137%	0.0294%	0.0284%	0.0065%	0.0041%	0.0023%	0.0033%	0.0023%	-	-	0.0109%
Males	0.0151%	0.0312%	0.0305%	0.0082%	0.0053%	0.0027%	0.0038%	-	-	-	0.0118%
Females	0.0122%	0.0274%	0.0263%	0.0045%	0.0027%	0.0020%	0.0030%	-	-	-	0.0097%

^a US 2001 cancer prevalence counts are based on 2001 cancer prevalence proportions from the SEER registries and 1/1/2001 US population estimates based on the average of 2000 and 2001 population estimates from the US Bureau of the Census. Prevalence was calculated using the First Malignant Primary Only for a person.

^{b c d} Statistics based on b) SEER 9 Areas c) SEER 11 Areas d) SEER 11 Areas excluding Hawaii and Detroit.

^e Maximum limited-duration prevalence: 26 years for 1975-2001 SEER 9 data; 11 years for 1990-2001 SEER 11 data (used to calculate prevalence for Hispanics and Asian Pacific Islanders).

^f Percentages are age-adjusted to the 2000 US standard population by 5-year age groups.

^{g h} (g) Cases diagnosed 26 years or more ago were estimated using the completeness index method (Capocaccia et. al. 1997, Merrill et. al. 2000). (h) Complete prevalence is obtained by summing 0 to <26 and >=26.

- Statistic not shown. Statistic based on fewer than 5 cases estimated alive in SEER for the time interval.

+ Not available.

SEER Incidence, Delay Adjusted Incidence and US Death Rates+ Leukemia, by Race and Sex

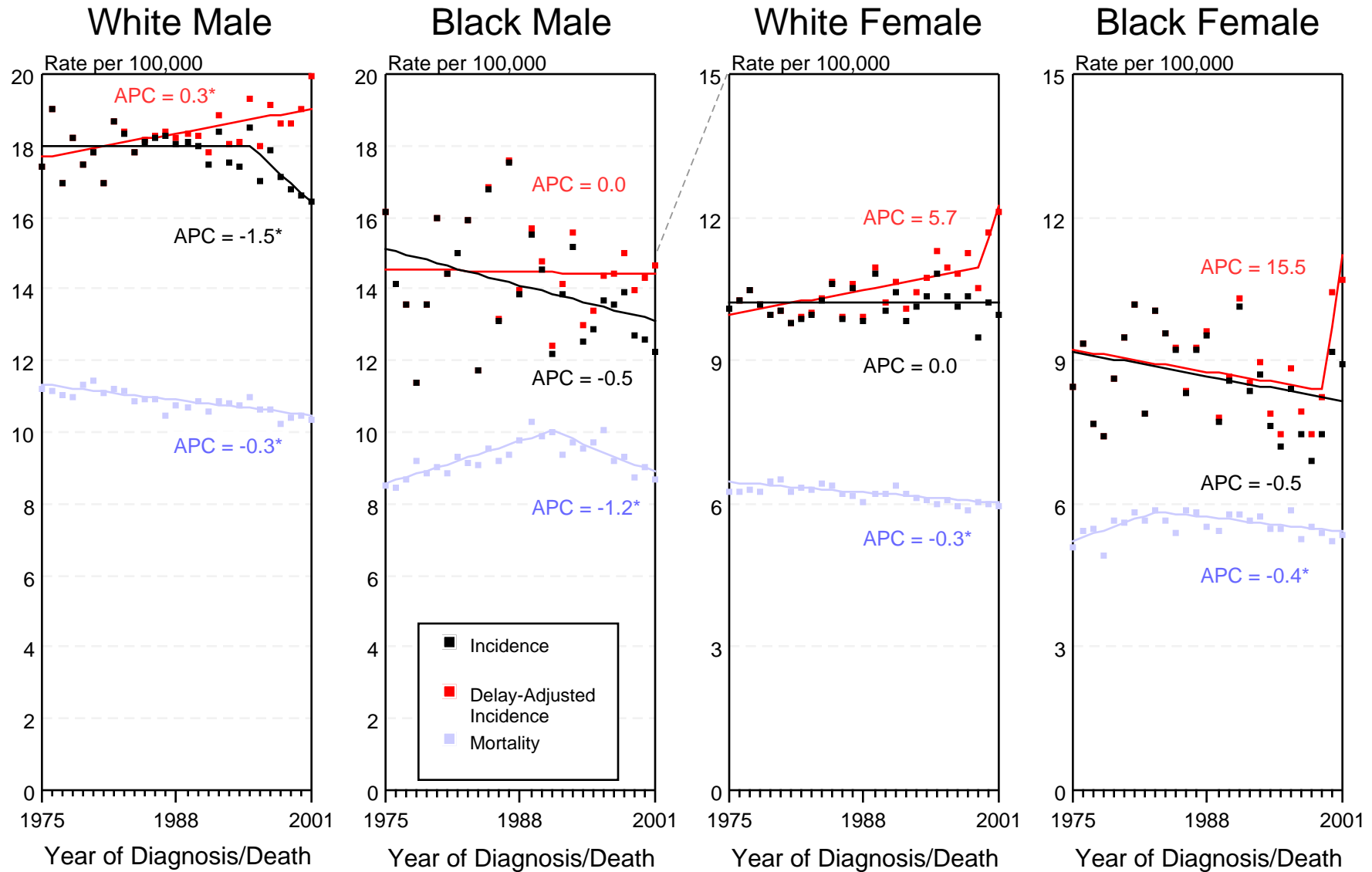


Figure XIII-1

+ Source: SEER 9 areas and NCHS public use data file for the total US. Rates are age-adjusted to the 2000 US standard million population by 5-year age groups. Regression lines and APCs are calculated using the Joinpoint Regression Program Version 2.7, September 2003, National Cancer Institute.

The APC is the Annual Percent Change for the regression line segments. The APC shown on the graph is for the most recent trend.

* The APC is significantly different from zero ($p < 0.05$).

SEER Incidence Rates⁺ Lymphocytic and Myeloid Leukemia (Acute and Chronic), by Sex

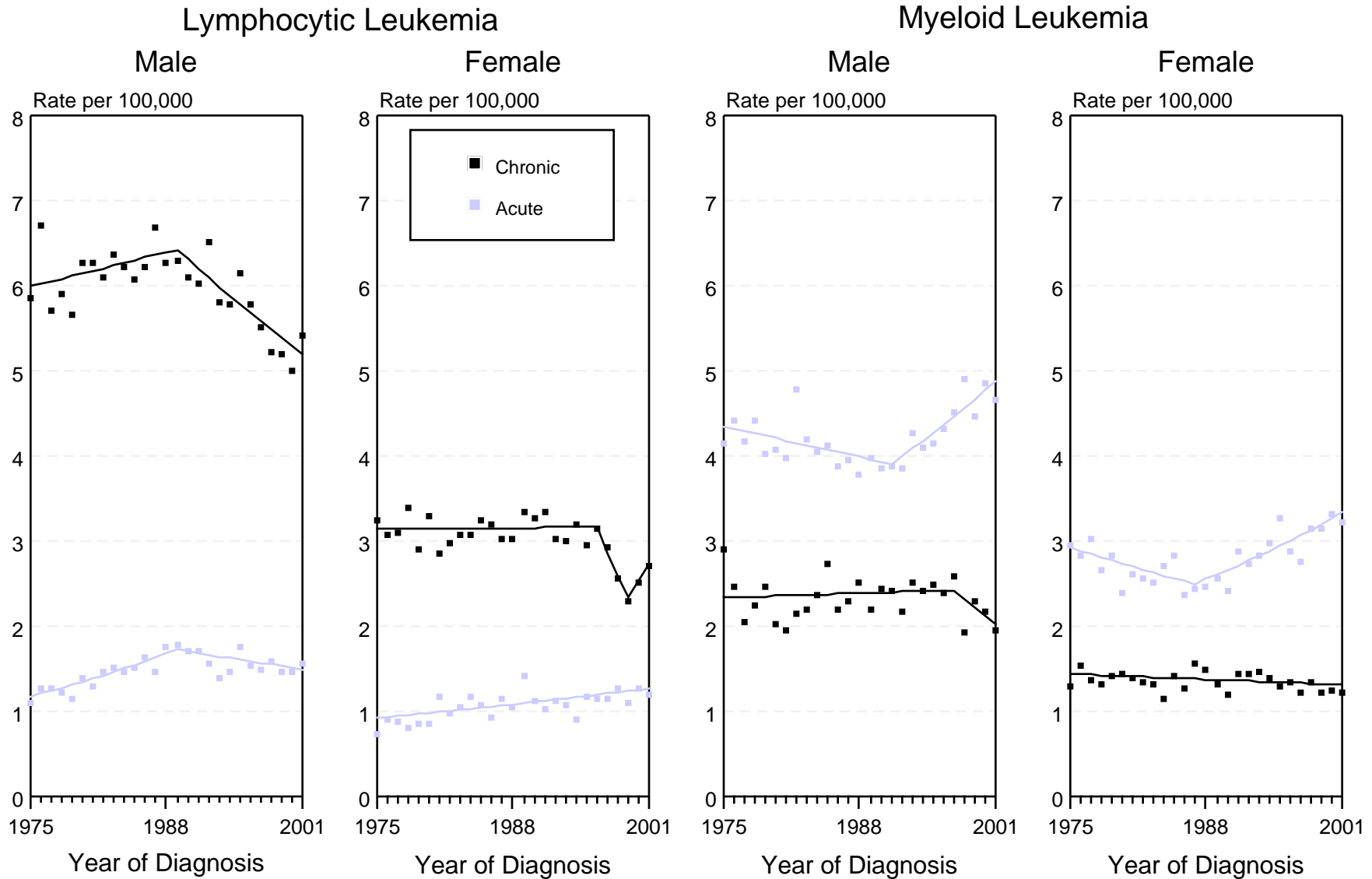


Figure XIII-2

⁺ Source: SEER 9 areas. Rates are age-adjusted to the 2000 U.S. standard million population by 5-year age groups. Regression lines are calculated using the Joinpoint Regression Program Version 2.7, September 2003, National Cancer Institute.