

Table VI-1
COLON AND RECTUM CANCER (Invasive)

TRENDS IN SEER INCIDENCE^a AND U.S. MORTALITY^b USING THE JOINPOINT REGRESSION PROGRAM, 1975-2002
WITH UP TO THREE JOINPOINTS BY RACE AND SEX

		Joinpoint Segment 1		Joinpoint Segment 2		Joinpoint Segment 3		Joinpoint Segment 4	
		Year	APC	Year	APC	Year	APC	Year	APC
<u>SEER Cancer Incidence^a</u>									
All Races	Male and Female	1975-1985	0.8 ^c	1985-1995	-1.8 ^c	1995-1998	1.1	1998-2002	-2.2 ^c
All Races	Male	1975-1986	1.1 ^c	1986-1995	-2.1 ^c	1995-1998	1.0	1998-2002	-2.9 ^c
All Races	Female	1975-1985	0.3 ^c	1985-1995	-1.8 ^c	1995-1998	1.5	1998-2002	-1.9 ^c
White	Male and Female	1975-1985	0.8 ^c	1985-1995	-2.0 ^c	1995-1998	1.4	1998-2002	-2.7 ^c
White	Male	1975-1986	1.1 ^c	1986-1995	-2.3 ^c	1995-1998	1.3	1998-2002	-3.5 ^c
White	Female	1975-1985	0.3	1985-1995	-2.0 ^c	1995-1998	1.8	1998-2002	-2.3 ^c
Black	Male and Female	1975-1980	3.3 ^c	1980-2002	-0.2				
Black	Male	1975-1980	4.6	1980-2002	-0.1				
Black	Female	1975-2002	-0.1						
<u>SEER Delay-Adjusted Incidence^a</u>									
All Races	Male and Female	1975-1985	0.8 ^c	1985-1995	-1.8 ^c	1995-1998	1.1	1998-2002	-1.8 ^c
All Races	Male	1975-1986	1.1 ^c	1986-1995	-2.1 ^c	1995-1998	1.0	1998-2002	-2.5 ^c
All Races	Female	1975-1985	0.3 ^c	1985-1995	-1.8 ^c	1995-1998	1.5	1998-2002	-1.5 ^c
White	Male and Female	1975-1985	0.8 ^c	1985-1995	-1.9 ^c	1995-1998	1.4	1998-2002	-2.2 ^c
White	Male	1975-1986	1.1 ^c	1986-1995	-2.3 ^c	1995-1998	1.3	1998-2002	-2.9 ^c
White	Female	1975-1985	0.3	1985-1995	-2.0 ^c	1995-1998	1.9	1998-2002	-1.7 ^c
Black	Male and Female	1975-1980	3.2 ^c	1980-2002	-0.1				
Black	Male	1975-1980	4.4	1980-2002	0.0				
Black	Female	1975-2002	0.0						
<u>U.S. Cancer Mortality^b</u>									
All Races	Male and Female	1975-1984	-0.5 ^c	1984-2002	-1.8 ^c				
All Races	Male	1975-1978	0.8	1978-1984	-0.4	1984-1990	-1.3 ^c	1990-2002	-2.0 ^c
All Races	Female	1975-1984	-1.0 ^c	1984-2002	-1.8 ^c				
White	Male and Female	1975-1984	-0.6 ^c	1984-2002	-1.9 ^c				
White	Male	1975-1978	0.7	1978-1984	-0.5	1984-1990	-1.5 ^c	1990-2002	-2.2 ^c
White	Female	1975-1984	-1.2 ^c	1984-2002	-2.0 ^c				
Black	Male and Female	1975-1990	0.7 ^c	1990-2002	-0.9 ^c				
Black	Male	1975-1990	1.2 ^c	1990-2002	-0.7 ^c				
Black	Female	1975-1985	0.8 ^c	1985-2002	-0.8 ^c				

Joinpoint Regression Program Version 3.0, April 2005, National Cancer Institute. (<http://srab.cancer.gov/joinpoint/>).

The APC is the Annual Percent Change based on rates age-adjusted to the 2000 US Std Population (19 age groups - Census P25-1130).

^a Trends are from the SEER 9 areas.

^b Trends are from the NCHS public use data file for the total US.

^c The APC is significantly different from zero (p<.05).

Table VI-2
COLON CANCER (Invasive) AND RECTUM CANCER (Invasive)

TRENDS IN SEER INCIDENCE^a USING THE JOINPOINT REGRESSION PROGRAM, 1975-2002
WITH UP TO THREE JOINPOINTS BY RACE AND SEX

		<u>Joinpoint Segment 1</u>		<u>Joinpoint Segment 2</u>		<u>Joinpoint Segment 3</u>		<u>Joinpoint Segment 4</u>	
		<u>Year</u>	<u>APC</u>	<u>Year</u>	<u>APC</u>	<u>Year</u>	<u>APC</u>	<u>Year</u>	<u>APC</u>
<u>SEER Cancer Incidence for Colon^a</u>									
All Races	Male and Female	1975-1985	1.2 ^b	1985-1995	-1.7 ^b	1995-1998	0.6	1998-2002	-2.0 ^b
All Races	Male	1975-1985	1.7 ^b	1985-2002	-1.5 ^b				
All Races	Female	1975-1985	0.7 ^b	1985-1988	-3.1	1988-2002	-0.8 ^b		
White	Male and Female	1975-1985	1.1 ^b	1985-1995	-1.9 ^b	1995-1998	1.0	1998-2002	-2.4 ^b
White	Male	1975-1986	1.6 ^b	1986-1995	-2.2 ^b	1995-1998	0.8	1998-2002	-3.5 ^b
White	Female	1975-1985	0.5 ^b	1985-1993	-2.0 ^b	1993-2002	-0.5		
Black	Male and Female	1975-1980	3.6 ^b	1980-2002	-0.2				
Black	Male	1975-1987	1.8 ^b	1987-2002	-0.5				
Black	Female	1975-2002	-0.1						
<u>SEER Cancer Incidence for Rectum^a</u>									
All Races	Male and Female	1975-1987	-0.3	1987-1995	-2.4 ^b	1995-1998	2.8	1998-2002	-3.0 ^b
All Races	Male	1975-1989	-0.3	1989-1994	-3.5 ^b	1994-1999	1.2	1999-2002	-4.1 ^b
All Races	Female	1975-1984	-0.2	1984-1995	-2.2 ^b	1995-1998	2.8	1998-2002	-3.0 ^b
White	Male and Female	1975-1985	-0.1	1985-1995	-2.3 ^b	1995-1998	2.7	1998-2002	-3.3 ^b
White	Male	1975-1989	-0.3	1989-1994	-4.0 ^b	1994-1999	1.3	1999-2002	-4.6 ^b
White	Female	1975-1984	-0.2	1984-1995	-2.3 ^b	1995-1998	3.0	1998-2002	-3.5 ^b
Black	Male and Female	1975-2002	-0.1						
Black	Male	1975-2002	0.1						
Black	Female	1975-2002	-0.3						

Joinpoint Regression Program Version 3.0, April 2005, National Cancer Institute. (<http://srab.cancer.gov/joinpoint/>).

The APC is the Annual Percent Change based on rates age-adjusted to the 2000 US Std Population (19 age groups - Census P25-1130).

^a Trends are from the SEER 9 areas.

^b The APC is significantly different from zero (p<.05).

Table VI-3
COLON AND RECTUM CANCER (Invasive)

SEER INCIDENCE RATES, AGE-ADJUSTED AND AGE-SPECIFIC RATES^a, BY RACE AND SEX

	All Races			Whites			Blacks		
	Total	Males	Females	Total	Males	Females	Total	Males	Females
<u>AGE-ADJUSTED RATES</u>									
<u>YEAR OF DIAGNOSIS:</u>									
1975	59.5	68.3	53.6	60.1	69.7	54.0	56.8	59.2	54.7
1976	61.3	71.7	54.1	62.1	72.6	55.0	55.1	58.5	51.3
1977	62.4	73.5	54.9	63.2	74.3	55.7	60.7	75.8	51.4
1978	62.0	72.3	55.2	62.7	73.9	55.5	62.2	65.7	60.6
1979	62.3	74.1	54.5	62.9	75.2	54.9	58.8	62.2	56.3
1980	63.7	74.5	56.5	63.9	74.8	56.8	70.4	79.2	63.8
1981	64.2	75.8	56.4	64.9	76.7	57.1	62.7	72.7	55.9
1982	62.8	75.2	54.5	63.4	76.2	55.0	61.3	69.0	55.9
1983	63.6	75.6	55.6	64.2	76.5	56.0	66.6	75.5	61.1
1984	64.8	77.6	56.0	65.8	79.2	56.7	62.1	70.1	57.8
1985	66.2	79.0	57.4	67.1	80.0	58.4	63.8	74.0	56.3
1986	64.2	77.8	54.7	64.5	78.9	54.7	64.4	72.6	58.6
1987	62.7	77.5	52.6	62.9	78.2	52.6	66.0	77.2	58.9
1988	61.4	75.2	51.8	61.5	75.8	51.7	63.0	72.3	56.8
1989	61.7	74.9	52.5	62.0	75.3	52.8	64.3	79.1	54.6
1990	60.7	74.3	51.2	60.6	74.7	51.0	66.6	74.7	61.5
1991	59.4	72.8	50.0	59.2	73.1	49.6	65.7	76.3	58.3
1992	58.0	70.4	49.2	57.8	70.7	48.7	65.4	78.3	57.3
1993	56.8	68.4	48.3	56.4	68.4	47.8	64.2	77.6	55.1
1994	55.7	66.3	47.7	55.5	66.4	47.2	64.0	74.8	57.5
1995	54.0	63.7	46.9	53.6	63.3	46.6	61.9	71.0	56.0
1996	54.7	65.4	46.6	54.6	65.7	46.3	58.4	66.5	52.8
1997	56.3	68.0	47.9	56.4	67.8	48.1	63.7	76.6	55.3
1998	56.6	66.8	49.2	56.5	67.0	48.9	62.5	73.5	55.7
1999	55.3	65.4	47.8	55.1	65.4	47.2	63.0	71.8	57.8
2000	53.7	63.2	46.4	53.4	62.7	46.2	63.4	73.0	57.0
2001	52.7	61.9	45.5	52.1	61.3	44.8	62.7	73.2	55.9
2002	51.9	59.9	45.6	50.9	58.5	44.8	61.6	72.9	54.5
<u>AGE-ADJUSTED RATES, 1998-2002</u>									
<u>AGE AT DIAGNOSIS:</u>									
All ages	54.0	63.3	46.9	53.6	62.9	46.4	62.6	72.9	56.2
Under 65	18.5	21.4	15.8	17.8	20.7	15.0	24.9	27.7	22.5
65 and over	299.2	353.0	261.8	301.0	354.5	263.4	323.8	385.2	288.9
All ages(IARC world std) ^b	32.8	38.5	28.1	32.3	38.0	27.5	39.4	45.1	35.5
<u>AGE-SPECIFIC RATES, 1998-2002</u>									
<u>AGE AT DIAGNOSIS:</u>									
<1	-	-	-	-	-	-	-	-	-
1-4	-	-	-	-	-	-	-	-	-
5-9	-	-	-	-	-	-	-	-	-
10-14	-	-	-	-	-	-	-	-	-
15-19	-	-	-	-	-	-	-	-	-
20-24	0.7	0.7	0.8	0.7	0.8	-	-	-	-
25-29	1.7	1.6	1.8	1.5	1.5	1.5	2.5	-	-
30-34	3.6	3.7	3.5	3.6	3.8	3.5	3.1	-	-
35-39	7.5	8.2	6.7	7.0	7.6	6.3	9.6	10.7	8.6
40-44	13.5	14.0	13.1	12.8	13.5	12.1	17.0	17.6	16.4
45-49	26.8	28.6	25.1	25.2	27.2	23.2	36.0	36.2	35.9
50-54	50.4	58.5	42.5	47.4	55.5	39.3	69.1	78.0	61.6
55-59	80.8	97.2	65.3	78.3	95.4	61.6	110.4	122.4	100.2
60-64	129.4	155.3	105.5	126.7	151.1	103.7	176.4	209.2	150.0
65-69	195.2	233.0	162.7	194.5	232.9	160.7	223.4	244.0	207.9
70-74	258.7	309.4	218.7	260.6	311.2	219.7	277.3	324.3	245.4
75-79	334.4	394.4	292.0	335.2	392.5	294.7	385.5	467.6	334.4
80-84	398.3	467.7	356.0	402.4	473.1	359.5	420.0	495.5	380.0
85+	437.0	503.6	408.5	442.6	509.3	414.8	422.5	551.3	373.2

^a SEER 9 areas. Rates are per 100,000 and are age-adjusted to the 2000 US Std Population (19 age groups - Census P25-1130), unless noted.

^b SEER 9 areas. Rates are per 100,000 and are age-adjusted to the IARC world standard population.

- Statistic not shown. Rate based on less than 25 cases for the time interval.

Table VI-4
COLON CANCER (Invasive)

SEER INCIDENCE RATES, AGE-ADJUSTED AND AGE-SPECIFIC RATES^a, BY RACE AND SEX

	All Races			Whites			Blacks		
	Total	Males	Females	Total	Males	Females	Total	Males	Females
<u>AGE-ADJUSTED RATES</u>									
<u>YEAR OF DIAGNOSIS:</u>									
1975	41.3	45.4	38.9	41.7	46.1	39.1	42.8	44.0	41.6
1976	43.1	47.8	39.9	43.4	48.2	40.4	43.1	43.6	42.0
1977	44.0	49.5	40.3	44.7	50.1	41.2	45.4	58.4	37.7
1978	43.8	49.1	40.6	44.1	49.9	40.6	47.8	48.8	47.9
1979	43.8	50.2	39.6	44.1	51.0	39.7	44.9	46.1	44.1
1980	45.5	50.6	42.3	45.6	50.9	42.3	55.0	58.0	52.7
1981	45.4	51.3	41.7	45.9	52.0	42.1	46.8	50.5	44.3
1982	45.7	53.4	40.7	46.0	54.1	40.8	48.3	52.5	45.2
1983	46.1	53.0	41.7	46.4	53.4	41.9	50.2	58.5	45.2
1984	46.5	54.6	41.3	47.0	55.5	41.6	48.6	54.0	45.8
1985	47.9	54.9	43.0	48.4	55.5	43.7	49.8	57.2	44.2
1986	46.8	54.3	41.5	47.0	55.2	41.5	49.1	54.9	45.5
1987	45.2	54.5	39.1	45.1	54.6	39.0	51.2	59.6	45.6
1988	44.3	52.6	38.7	44.3	52.9	38.4	48.9	54.0	45.6
1989	44.4	52.4	39.0	44.5	52.5	39.3	48.9	60.3	41.6
1990	44.2	51.9	38.9	44.0	51.9	38.7	52.1	58.0	48.5
1991	43.6	51.8	37.9	43.3	51.9	37.4	51.8	57.8	47.8
1992	42.3	49.7	37.2	42.1	49.8	36.7	50.8	60.2	45.2
1993	41.6	49.0	36.3	41.1	48.7	35.7	51.1	60.2	45.1
1994	40.9	47.0	36.3	40.7	47.1	35.9	49.6	56.5	45.8
1995	39.6	45.0	35.8	39.2	44.6	35.4	48.7	54.6	45.4
1996	39.3	45.3	34.8	39.2	45.7	34.3	44.6	48.4	42.1
1997	41.0	48.3	35.9	41.1	48.2	36.2	48.6	58.3	42.0
1998	40.9	46.6	36.9	40.8	46.9	36.5	47.4	54.0	43.9
1999	39.7	45.2	35.7	39.4	45.1	35.1	48.3	54.8	44.6
2000	39.0	44.1	35.2	38.7	43.6	34.9	50.1	56.4	46.2
2001	38.5	43.1	35.0	38.1	42.8	34.4	47.8	54.3	43.6
2002	37.7	42.1	34.2	36.9	40.9	33.6	48.3	56.3	43.3
<u>AGE-ADJUSTED RATES, 1998-2002</u>									
<u>AGE AT DIAGNOSIS:</u>									
All ages	39.1	44.1	35.4	38.8	43.8	34.9	48.4	55.2	44.3
Under 65	11.9	13.2	10.6	11.3	12.8	9.9	17.5	19.0	16.3
65 and over	227.6	257.8	206.9	228.4	258.1	207.9	262.0	305.4	237.9
All ages(IARC world std) ^b	23.0	26.0	20.6	22.6	25.6	20.1	29.7	33.3	27.4
<u>AGE-SPECIFIC RATES, 1998-2002</u>									
<u>AGE AT DIAGNOSIS:</u>									
<1	-	-	-	-	-	-	-	-	-
1-4	-	-	-	-	-	-	-	-	-
5-9	-	-	-	-	-	-	-	-	-
10-14	-	-	-	-	-	-	-	-	-
15-19	-	-	-	-	-	-	-	-	-
20-24	0.5	-	-	0.5	-	-	-	-	-
25-29	1.1	1.0	1.2	1.0	1.0	1.1	-	-	-
30-34	2.1	2.2	2.0	2.1	2.2	2.0	2.1	-	-
35-39	4.5	4.8	4.2	4.2	4.4	3.9	5.8	5.8	5.8
40-44	8.4	8.5	8.3	7.9	8.3	7.5	12.1	11.8	12.4
45-49	16.1	16.7	15.5	15.1	16.2	13.9	24.1	22.2	25.7
50-54	31.1	34.4	28.0	29.0	32.6	25.5	47.3	52.1	43.3
55-59	51.3	59.7	43.3	48.8	58.0	39.9	80.0	88.1	73.1
60-64	88.7	102.2	76.4	86.5	98.9	74.9	128.6	149.3	111.8
65-69	137.1	155.7	121.2	135.2	153.7	119.0	174.1	187.4	164.2
70-74	192.4	219.7	170.7	193.4	220.8	171.4	218.2	245.6	199.6
75-79	255.0	291.4	229.3	255.8	289.9	231.7	308.0	367.7	270.8
80-84	312.6	351.2	289.0	315.3	354.9	291.2	352.2	401.7	326.0
85+	354.2	395.0	336.7	358.5	398.3	341.9	361.8	469.1	320.7

^a SEER 9 areas. Rates are per 100,000 and are age-adjusted to the 2000 US Std Population (19 age groups - Census P25-1130), unless noted.

^b SEER 9 areas. Rates are per 100,000 and are age-adjusted to the IARC world standard population.

- Statistic not shown. Rate based on less than 25 cases for the time interval.

Table VI-5
RECTUM CANCER (Invasive)

SEER INCIDENCE RATES, AGE-ADJUSTED AND AGE-SPECIFIC RATES^a, BY RACE AND SEX

	All Races			Whites			Blacks		
	Total	Males	Females	Total	Males	Females	Total	Males	Females
<u>AGE-ADJUSTED RATES</u>									
YEAR OF DIAGNOSIS:									
1975	18.1	23.0	14.7	18.4	23.6	14.9	14.0	15.2	13.0
1976	18.3	23.9	14.2	18.7	24.4	14.6	12.0	14.9	9.4
1977	18.4	23.9	14.6	18.5	24.2	14.5	15.3	17.3	13.8
1978	18.1	23.2	14.6	18.6	24.0	14.9	14.4	16.9	12.8
1979	18.6	23.9	14.9	18.8	24.2	15.2	13.8	16.1	12.2
1980	18.1	23.8	14.2	18.3	24.0	14.5	15.4	21.2	11.1
1981	18.8	24.5	14.8	19.0	24.7	15.0	15.9	22.2	11.6
1982	17.0	21.7	13.8	17.4	22.2	14.2	13.0	16.5	10.7
1983	17.5	22.6	13.9	17.8	23.1	14.1	16.4	16.9	15.9
1984	18.3	23.0	14.7	18.8	23.7	15.1	13.6	16.1	12.0
1985	18.4	24.1	14.4	18.8	24.5	14.7	14.0	16.8	12.1
1986	17.4	23.4	13.1	17.5	23.7	13.2	15.2	17.7	13.2
1987	17.5	23.1	13.5	17.7	23.7	13.5	14.9	17.6	13.3
1988	17.1	22.6	13.1	17.3	22.9	13.3	14.1	18.4	11.2
1989	17.3	22.5	13.5	17.5	22.9	13.5	15.5	18.9	13.1
1990	16.5	22.4	12.3	16.6	22.8	12.3	14.5	16.7	13.0
1991	15.9	21.0	12.1	16.0	21.2	12.2	13.9	18.5	10.5
1992	15.7	20.7	12.0	15.8	20.9	12.0	14.6	18.1	12.1
1993	15.2	19.5	12.0	15.3	19.4	12.1	13.1	17.3	10.0
1994	14.8	19.4	11.4	14.8	19.3	11.3	14.4	18.3	11.7
1995	14.4	18.7	11.1	14.4	18.7	11.1	13.2	16.4	10.6
1996	15.4	20.1	11.8	15.4	20.0	11.9	13.8	18.1	10.7
1997	15.3	19.7	12.0	15.3	19.6	11.9	15.1	18.4	13.3
1998	15.7	20.1	12.2	15.7	20.1	12.4	15.1	19.4	11.8
1999	15.6	20.2	12.1	15.7	20.4	12.0	14.7	17.0	13.2
2000	14.7	19.1	11.2	14.7	19.1	11.3	13.2	16.7	10.8
2001	14.2	18.7	10.6	14.0	18.5	10.4	14.9	18.9	12.3
2002	14.2	17.8	11.3	14.1	17.6	11.2	13.2	16.6	11.2
<u>AGE-ADJUSTED RATES, 1998-2002</u>									
AGE AT DIAGNOSIS:									
All ages	14.9	19.2	11.5	14.8	19.1	11.5	14.2	17.7	11.9
Under 65	6.7	8.2	5.2	6.5	7.9	5.1	7.3	8.7	6.2
65 and over	71.6	95.3	55.0	72.5	96.4	55.5	61.8	79.8	51.0
All ages(IARC world std) ^b	9.8	12.5	7.5	9.7	12.4	7.4	9.7	11.8	8.1
<u>AGE-SPECIFIC RATES, 1998-2002</u>									
AGE AT DIAGNOSIS:									
<1	-	-	-	-	-	-	-	-	-
1-4	-	-	-	-	-	-	-	-	-
5-9	-	-	-	-	-	-	-	-	-
10-14	-	-	-	-	-	-	-	-	-
15-19	-	-	-	-	-	-	-	-	-
20-24	-	-	-	-	-	-	-	-	-
25-29	0.6	0.6	0.6	0.5	-	-	-	-	-
30-34	1.5	1.5	1.5	1.5	1.5	1.5	-	-	-
35-39	3.0	3.4	2.5	2.8	3.2	2.4	3.8	4.9	-
40-44	5.1	5.5	4.8	4.9	5.2	4.6	4.8	5.8	4.0
45-49	10.7	11.9	9.6	10.1	11.0	9.3	12.0	13.9	10.2
50-54	19.2	24.1	14.5	18.3	22.9	13.8	21.8	25.9	18.3
55-59	29.5	37.5	22.0	29.5	37.4	21.8	30.4	34.3	27.1
60-64	40.7	53.2	29.2	40.2	52.2	28.8	47.8	59.8	38.1
65-69	58.1	77.4	41.5	59.3	79.2	41.7	49.3	56.7	43.8
70-74	66.3	89.6	47.9	67.1	90.4	48.3	59.1	78.7	45.8
75-79	79.3	102.9	62.7	79.4	102.6	63.0	77.5	100.0	63.6
80-84	85.7	116.4	67.0	87.2	118.2	68.3	67.8	93.8	54.0
85+	82.8	108.6	71.8	84.1	111.0	72.9	60.7	82.2	52.5

^a SEER 9 areas. Rates are per 100,000 and are age-adjusted to the 2000 US Std Population (19 age groups - Census P25-1130), unless noted.

^b SEER 9 areas. Rates are per 100,000 and are age-adjusted to the IARC world standard population.

- Statistic not shown. Rate based on less than 25 cases for the time interval.

Table VI-6
COLON AND RECTUM CANCER (Invasive)U.S. DEATH RATES, AGE-ADJUSTED AND AGE-SPECIFIC RATES^a, BY RACE AND SEX

	All Races			Whites			Blacks		
	Total	Males	Females	Total	Males	Females	Total	Males	Females
<u>AGE-ADJUSTED RATES</u>									
YEAR OF DEATH:									
1975	28.1	32.8	25.0	28.3	33.2	25.1	26.8	30.1	24.6
1976	28.6	33.3	25.4	28.7	33.8	25.5	28.2	31.2	26.3
1977	28.2	33.2	24.9	28.3	33.5	25.0	27.6	31.4	24.9
1978	28.5	33.7	25.1	28.7	34.1	25.2	27.9	31.2	25.7
1979	28.1	33.6	24.6	28.2	33.9	24.6	28.2	31.6	26.0
1980	28.1	33.7	24.4	28.1	34.0	24.3	28.8	33.2	25.9
1981	27.5	33.0	24.0	27.5	33.2	23.9	28.9	32.8	26.3
1982	27.2	33.0	23.6	27.2	33.1	23.4	29.1	33.7	26.1
1983	27.1	33.1	23.2	27.1	33.3	23.1	28.7	32.9	25.8
1984	27.3	33.0	23.6	27.3	33.1	23.5	29.6	34.6	26.2
1985	26.9	32.7	23.1	26.8	32.7	22.8	30.5	34.1	28.0
1986	26.2	32.1	22.3	26.0	32.0	22.1	29.8	35.4	26.3
1987	25.9	31.9	22.0	25.7	31.8	21.6	29.8	35.1	26.5
1988	25.3	31.1	21.5	25.1	31.0	21.2	29.2	34.3	25.9
1989	25.0	30.8	21.2	24.7	30.5	20.8	30.1	36.4	26.1
1990	24.6	30.8	20.6	24.3	30.4	20.2	30.8	37.6	26.6
1991	24.0	29.6	20.3	23.6	29.4	19.8	30.0	35.8	26.5
1992	23.6	29.3	19.9	23.2	29.0	19.4	29.5	36.2	25.4
1993	23.3	28.6	19.8	22.9	28.2	19.3	29.8	35.8	26.0
1994	22.9	28.3	19.3	22.5	27.9	18.8	29.0	35.7	24.9
1995	22.6	27.7	19.1	22.1	27.2	18.6	29.5	36.3	25.5
1996	21.9	26.7	18.5	21.4	26.3	18.0	28.6	34.5	24.9
1997	21.5	26.2	18.1	20.9	25.7	17.6	28.8	35.1	24.8
1998	21.2	25.6	18.0	20.7	25.1	17.5	28.3	33.9	24.8
1999	20.9	25.5	17.8	20.4	25.0	17.2	28.5	34.5	24.7
2000	20.6	25.0	17.5	20.1	24.4	17.0	28.1	35.0	23.9
2001	20.1	24.2	17.0	19.5	23.7	16.4	27.7	33.2	24.2
2002	19.6	23.8	16.5	19.1	23.2	16.0	26.9	33.4	22.8
<u>AGE-ADJUSTED RATES, 1998-2002</u>									
AGE AT DEATH:									
All ages	20.5	24.8	17.4	20.0	24.3	16.8	27.9	34.0	24.1
Under 65	5.6	6.7	4.7	5.3	6.3	4.4	9.0	10.6	7.6
65 and over	123.0	150.1	105.0	121.2	148.2	103.0	158.5	195.2	137.5
All ages(IARC world std) ^b	11.5	13.9	9.6	11.1	13.5	9.2	16.3	19.8	13.9
<u>AGE-SPECIFIC RATES, 1998-2002</u>									
AGE AT DEATH:									
<1	-	-	-	-	-	-	-	-	-
1-4	-	-	-	-	-	-	-	-	-
5-9	-	-	-	-	-	-	-	-	-
10-14	-	-	-	-	-	-	-	-	-
15-19	0.1	0.1	-	0.1	0.1	-	-	-	-
20-24	0.2	0.2	0.2	0.2	0.2	0.2	0.3	0.4	-
25-29	0.4	0.5	0.4	0.4	0.4	0.4	0.6	0.6	0.5
30-34	1.0	1.0	0.9	0.9	1.0	0.8	1.3	1.6	1.1
35-39	2.0	2.2	1.8	1.8	2.0	1.6	3.2	3.5	2.9
40-44	4.0	4.3	3.6	3.7	4.0	3.3	6.5	7.2	5.8
45-49	8.0	8.9	7.2	7.3	8.2	6.4	13.9	15.3	12.7
50-54	14.7	17.0	12.4	13.7	16.1	11.4	24.2	28.0	21.0
55-59	25.2	30.6	20.1	23.8	29.1	18.8	40.4	49.6	32.9
60-64	41.5	51.1	32.8	39.9	49.3	31.2	62.8	76.8	51.8
65-69	63.3	79.0	49.8	61.5	77.2	47.8	88.6	109.8	73.0
70-74	90.7	113.1	73.1	88.8	111.3	70.8	124.3	151.9	106.0
75-79	124.8	155.9	103.0	122.6	153.6	100.8	167.7	210.3	142.1
80-84	171.6	209.4	149.2	169.2	206.4	147.0	221.2	279.9	191.6
85+	262.2	304.8	244.6	261.5	304.3	243.9	295.0	348.7	274.8

^a NCHS public use data file for the total US. Rates are per 100,000 and are age-adjusted to the 2000 US Std Population (19 age groups - Census P25-1130), unless noted.

^b NCHS public use data file for the total US. Rates are per 100,000 and are age-adjusted to the IARC world standard population.

- Statistic not shown. Rate based on less than 25 cases for the time interval.

Table VI-7
COLON AND RECTUM CANCER (Invasive)

SURVIVAL RATES, BY RACE, SEX, DIAGNOSIS YEAR, STAGE AND AGE

	All Races			Whites			Blacks		
	Total	Males	Females	Total	Males	Females	Total	Males	Females
<u>5-YR RELATIVE SURVIVAL RATES</u>									
YEAR OF DIAGNOSIS:									
1960-1963 ^a	-	-	-	-	-	-	-	-	-
1970-1973 ^a	-	-	-	-	-	-	-	-	-
1974-1976 ^b	49.7	48.7	50.7	50.0	49.0	50.8	45.1	42.0	47.8
1977-1979 ^b	52.0	50.8	53.1	52.3	51.3	53.3	45.8	43.8	47.1
1980-1982 ^b	54.4	53.8	54.9	54.8	54.4	55.2	46.8	43.9	49.1
1983-1985 ^b	56.8	56.7	56.9	57.6	57.5	57.6	48.1	47.0	49.0
1986-1988 ^b	60.3	60.6	60.0	60.9	61.4	60.4	52.8	51.4	54.0
1989-1991 ^b	61.9	62.1	61.7	62.5	62.8	62.1	54.2	54.5	53.8
1992-1994 ^b	61.8	61.8	61.9	62.8	62.8	62.8	52.2	50.9	53.3
1995-2001 ^b	64.1 ^d	64.7 ^d	63.5 ^d	65.0 ^d	65.6 ^d	64.4 ^d	55.0 ^d	55.9 ^d	54.3 ^d
1995-2001 ^b									
All Stages	64.1	64.7	63.5	65.0	65.6	64.4	55.0	55.9	54.3
Localized	90.4	91.6	89.2	90.8	92.0	89.6	84.1	86.1	82.3
Regional	67.9	67.9	67.9	68.8	68.8	68.8	61.0	61.6	60.5
Distant	9.7	9.5	10.0	9.9	9.8	10.1	8.1	8.4	7.7
Unstaged	35.4	39.7	31.4	35.1	39.5	31.2	39.4	43.2 ^e	34.6 ^e
<u>5-YR PERIOD SURVIVAL RATES^{bc}</u>									
YEAR OF DIAGNOSIS:									
1995-2001	65.6	66.3	64.9	66.7	67.5	65.8	55.3	54.8	55.8
<u>STAGE DISTRIBUTION (%) 1995-2001^b</u>									
All Stages									
Number of cases	74,133	37,243	36,890	61,280	30,872	30,408	6,868	3,142	3,726
Percent	100%	100%	100%	100%	100%	100%	100%	100%	100%
Localized	39	40	38	39	40	38	35	35	35
Regional	38	37	38	38	37	39	35	34	36
Distant	19	19	19	19	19	18	24	25	24
Unstaged	5	4	5	5	4	5	6	6	6
<u>5-YR RELATIVE SURVIVAL RATES, 1995-2001^b</u>									
AGE AT DIAGNOSIS:									
<45	64.0	64.6	63.2	65.9	65.0	67.0	55.8	61.9	50.0
45-54	66.1	66.0	66.3	66.9	66.5	67.4	61.9	62.2	61.2
55-64	66.2	66.3	66.1	66.9	67.4	66.3	58.2	57.0	59.4
65-74	66.0	65.5	66.5	66.7	65.9	67.5	56.1	56.0	56.1
75+	60.3	62.1	59.1	61.5	63.7	60.1	44.4	42.9	45.4
Under 65	65.8	65.9	65.7	66.7	66.8	66.7	59.1	59.8	58.3
65 and over	63.2	64.2	62.5	64.1	65.1	63.4	51.0	50.9	51.1

^a Rates are based on End Results data from a series of hospital registries and one population-based registry.

^b Rates are from the SEER 9 areas (San Francisco, Connecticut, Detroit, Hawaii, Iowa, New Mexico, Seattle, Utah, Atlanta). Rates are based on follow-up of patients into 2002.

^c Period survival provides a more up-to-date estimate of survival by piecing together the most recent conditional survival estimates from several cohorts. It is computed here using three calendar year blocks (1999-2001: 0-1 year survival), (1998-2000: 1-2 year survival), (1997-1999: 2-3 year survival), (1996-1998: 3-4 year survival), (1995-1997: 4-5 years survival).

^d The difference in rates between 1974-1976 and 1995-2001 is statistically significant (p<.05).

^e The standard error of the survival rate is between 5 and 10 percentage points.

^f The standard error of the survival rate is greater than 10 percentage points.

- Statistic could not be calculated.

Table VI-8
COLON CANCER (Invasive)

SURVIVAL RATES, BY RACE, SEX, DIAGNOSIS YEAR, STAGE AND AGE

	All Races			Whites			Blacks		
	Total	Males	Females	Total	Males	Females	Total	Males	Females
<u>5-YR RELATIVE SURVIVAL RATES</u>									
YEAR OF DIAGNOSIS:									
1960-1963 ^a	-	-	-	43	42	44	34	32	35
1970-1973 ^a	-	-	-	49	47	50	37	36	38
1974-1976 ^b	50.3	49.4	51.1	50.5	49.7	51.2	46.3	45.0	47.3
1977-1979 ^b	52.9	51.8	53.8	53.1	52.0	53.9	48.1	45.9	49.7
1980-1982 ^b	55.3	55.5	55.2	55.6	55.8	55.4	49.5	47.0	51.2
1983-1985 ^b	57.6	58.0	57.3	58.3	58.8	57.9	49.4	48.4	50.2
1986-1988 ^b	61.0	61.8	60.2	61.6	62.6	60.7	53.1	52.9	53.3
1989-1991 ^b	62.6	63.1	62.1	63.2	63.8	62.6	54.0	53.9	54.1
1992-1994 ^b	62.1	62.5	61.8	63.1	63.5	62.7	51.9	50.5	53.0
1995-2001 ^b	63.9 ^d	65.1 ^d	62.9 ^d	64.9 ^d	66.1 ^d	63.9 ^d	54.7 ^d	56.3 ^d	53.6 ^d
1995-2001 ^b									
All Stages	63.9	65.1	62.9	64.9	66.1	63.9	54.7	56.3	53.6
Localized	91.8	93.7	90.0	92.4	94.4	90.4	85.7	88.4	83.1
Regional	69.6	70.4	69.0	70.6	71.5	69.8	62.7	64.0	61.8
Distant	10.4	10.3	10.4	10.6	10.6	10.6	8.3	9.1	7.5
Unstaged	30.4	35.9	25.8	30.8	36.2	26.5	31.1	35.7 ^e	25.3 ^e
<u>5-YR PERIOD SURVIVAL RATES^{bc}</u>									
YEAR OF DIAGNOSIS:									
1995-2001	65.3	66.6	64.1	66.7	68.2	65.3	54.1	54.6	53.9
<u>STAGE DISTRIBUTION (%) 1995-2001^b</u>									
All Stages									
Number of cases	52,772	25,132	27,640	43,617	20,872	22,745	5,173	2,260	2,913
Percent	100%	100%	100%	100%	100%	100%	100%	100%	100%
Localized	37	38	36	37	38	36	33	33	33
Regional	39	38	40	39	38	40	36	36	37
Distant	21	21	20	20	21	19	26	26	25
Unstaged	4	4	5	4	4	5	5	5	5
<u>5-YR RELATIVE SURVIVAL RATES, 1995-2001^b</u>									
AGE AT DIAGNOSIS:									
<45	63.0	65.6	60.1	65.3	65.3	65.4	55.1	65.9	45.8
45-54	64.1	64.8	63.3	64.8	65.5	64.0	60.4	59.9	60.4
55-64	65.7	66.1	65.3	66.6	67.4	65.6	56.8	56.8	56.4
65-74	65.5	65.6	65.5	66.5	66.5	66.5	57.6	58.0	57.2
75+	61.4	63.9	60.0	62.8	65.6	61.1	44.9	44.0	45.6
Under 65	64.8	65.6	63.9	65.9	66.5	65.1	57.8	59.5	56.0
65 and over	63.5	65.0	62.5	64.6	66.2	63.4	52.0	52.6	51.7

^a Rates are based on End Results data from a series of hospital registries and one population-based registry.

^b Rates are from the SEER 9 areas (San Francisco, Connecticut, Detroit, Hawaii, Iowa, New Mexico, Seattle, Utah, Atlanta). Rates are based on follow-up of patients into 2002.

^c Period survival provides a more up-to-date estimate of survival by piecing together the most recent conditional survival estimates from several cohorts. It is computed here using three calendar year blocks (1999-2001: 0-1 year survival), (1998-2000: 1-2 year survival), (1997-1999: 2-3 year survival), (1996-1998: 3-4 year survival), (1995-1997: 4-5 years survival).

^d The difference in rates between 1974-1976 and 1995-2001 is statistically significant ($p < .05$).

^e The standard error of the survival rate is between 5 and 10 percentage points.

^f The standard error of the survival rate is greater than 10 percentage points.

- Statistic could not be calculated.

Table VI-9
RECTUM CANCER (Invasive)

SURVIVAL RATES, BY RACE, SEX, DIAGNOSIS YEAR, STAGE AND AGE

	All Races			Whites			Blacks		
	Total	Males	Females	Total	Males	Females	Total	Males	Females
<u>5-YR RELATIVE SURVIVAL RATES</u>									
YEAR OF DIAGNOSIS:									
1960-1963 ^a	-	-	-	38	36	41	27	28	27
1970-1973 ^a	-	-	-	45	43	48	30	20	40
1974-1976 ^b	48.5	47.5	49.6	48.8	47.9	49.9	41.8	34.5	48.5
1977-1979 ^b	49.9	48.9	51.1	50.7	49.9	51.6	38.9	38.5	39.2
1980-1982 ^b	52.2	50.6	54.1	53.1	51.6	54.7	38.3	36.3	40.8
1983-1985 ^b	55.0	54.2	55.9	55.8	55.0	56.7	44.0	43.0	44.9
1986-1988 ^b	58.7	58.1	59.3	59.3	59.1	59.5	51.2	46.5	55.8
1989-1991 ^b	60.3	60.1	60.5	60.7	60.7	60.8	54.7	56.5	52.9
1992-1994 ^b	61.2	60.2	62.3	62.1	61.2	63.2	53.2	51.8	54.7
1995-2001 ^b	64.7 ^d	64.1 ^d	65.4 ^d	65.1 ^d	64.5 ^d	65.9 ^d	56.0 ^d	55.0 ^d	57.0 ^d
1995-2001 ^b									
All Stages	64.7	64.1	65.4	65.1	64.5	65.9	56.0	55.0	57.0
Localized	87.7	88.0	87.4	87.9	87.9	87.9	80.6	81.4	79.4
Regional	63.4	62.5	64.6	64.2	63.1	65.6	54.5	54.1	54.8
Distant	7.9	7.6	8.2	7.9	7.9	8.0	7.4	6.7	8.2
Unstaged	43.0	44.4	41.1	41.6	43.4	39.3	52.9 ^e	52.6 ^e	53.2 ^e
<u>5-YR PERIOD SURVIVAL RATES^{bc}</u>									
YEAR OF DIAGNOSIS:									
1995-2001	66.3	65.6	67.2	66.6	66.0	67.3	58.8	55.2	62.6
<u>STAGE DISTRIBUTION (%) 1995-2001^b</u>									
All Stages									
Number of cases	21,361	12,111	9,250	17,663	10,000	7,663	1,695	882	813
Percent	100%	100%	100%	100%	100%	100%	100%	100%	100%
Localized	45	44	45	45	44	45	41	41	42
Regional	34	35	34	35	35	34	30	30	31
Distant	15	15	15	15	15	14	20	21	18
Unstaged	6	6	7	6	5	7	9	8	9
<u>5-YR RELATIVE SURVIVAL RATES, 1995-2001^b</u>									
AGE AT DIAGNOSIS:									
<45	65.4	62.8	68.4	66.7	64.5	69.2	57.0	54.2 ^e	60.4 ^e
45-54	69.3	67.5	72.1	70.1	67.9	73.5	64.7	66.1	62.4 ^e
55-64	67.3	66.7	68.2	67.5	67.3	67.8	61.9	56.8	68.5
65-74	67.0	65.2	69.6	67.2	64.8	70.6	50.2	48.9 ^e	50.1
75+	56.4	57.1	55.9	57.4	58.3	56.6	43.1	39.2 ^e	45.4 ^e
Under 65	67.6	66.3	69.5	68.2	67.1	69.9	61.9	59.7	64.7
65 and over	62.4	62.2	62.5	62.8	62.4	63.3	47.3	45.5	48.6

a

Rates are based on End Results data from a series of hospital registries and one population-based registry.

b

Rates are from the SEER 9 areas (San Francisco, Connecticut, Detroit, Hawaii, Iowa, New Mexico, Seattle, Utah, Atlanta). Rates are based on follow-up of patients into 2002.

c

Period survival provides a more up-to-date estimate of survival by piecing together the most recent conditional survival estimates from several cohorts. It is computed here using three calendar year blocks (1999-2001: 0-1 year survival), (1998-2000: 1-2 year survival), (1997-1999: 2-3 year survival), (1996-1998: 3-4 year survival), (1995-1997: 4-5 years survival).

d

The difference in rates between 1974-1976 and 1995-2001 is statistically significant (p<.05).

e

The standard error of the survival rate is between 5 and 10 percentage points.

f

The standard error of the survival rate is greater than 10 percentage points.

-

Statistic could not be calculated.

Table VI-10
COLON AND RECTUM CANCER (Invasive)

SURVIVAL RATES^a

By Year of Diagnosis

All Races, Males and Females

Year of Diagnosis

	1975- 1979	1980- 1984	1985	1986	1987	1988	1989	1990	1991	1992	1993	1994	1995	1996	1997	1998	1999	2000	2001
Relative Survival Rates (SEER ^b)																			
1-year	74.7	78.1	80.0	81.3	80.9	80.3	81.3	81.9	82.5	81.8	80.9	81.8	80.2	82.1	81.2	82.8	83.0	82.7	83.7
2-year	63.7	67.9	70.9	72.0	71.9	71.8	72.3	73.5	74.0	73.4	72.8	73.2	72.2	74.4	73.4	75.7	75.5	75.4	
3-year	57.5	61.5	65.0	66.6	66.4	66.4	67.7	68.4	68.5	67.9	67.9	68.4	66.8	69.7	68.5	70.6	71.2		
4-year	53.8	57.6	61.3	62.8	62.4	62.9	63.7	64.2	65.0	64.4	64.1	64.4	63.2	66.3	65.8	67.8			
5-year	51.3	54.9	59.0	60.4	60.1	60.4	61.0	62.0	62.8	62.4	61.5	61.6	61.1	64.2	63.1				
6-year	49.6	53.0	57.2	58.4	58.4	58.8	59.7	60.6	61.0	61.0	60.1	60.2	58.9	63.0					
7-year	48.6	51.6	56.0	56.9	56.7	57.5	58.3	59.2	59.6	59.5	58.6	59.0	57.4						
8-year	47.7	50.6	55.2	55.7	56.1	56.6	57.3	58.0	58.5	58.1	57.7	58.2							
9-year	47.2	49.9	54.2	55.1	55.3	55.9	56.5	57.4	57.5	57.5	56.9								
10-year	46.6	49.3	53.6	54.8	54.8	55.2	55.8	57.0	57.1	56.9									
11-year	46.1	48.8	53.1	54.6	54.7	54.7	55.1	56.7	56.9										
12-year	45.7	48.5	53.0	54.5	54.3	54.1	55.0	56.4											
13-year	45.4	48.3	52.8	54.1	53.2	53.3	54.7												
14-year	44.9	48.0	52.6	53.7	53.2	53.2													
15-year	44.7	47.9	51.8	53.6	52.9														
16-year	44.4	47.5	51.8	53.3															
17-year	44.2	47.2	51.2																
18-year	43.8	47.0																	
19-year	43.8																		
20-year	43.8																		

^a Survival rates are relative rates expressed as percents.
^b Rates are from the SEER 9 areas.

Table VI-11
COLON AND RECTUM CANCER (Invasive)

SURVIVAL RATES^a

By Year of Diagnosis

All Races, Males

Year of Diagnosis

	1975- 1979	1980- 1984	1985	1986	1987	1988	1989	1990	1991	1992	1993	1994	1995	1996	1997	1998	1999	2000	2001
Relative Survival Rates (SEER ^b)																			
1-year	74.7	79.0	81.1	82.6	81.8	81.1	82.1	83.1	83.3	82.8	81.6	82.9	81.8	83.5	82.2	83.1	84.2	84.6	85.9
2-year	63.8	68.3	72.2	73.2	73.1	73.3	73.3	74.4	75.0	74.3	73.5	74.1	73.6	76.1	74.9	75.9	76.4	77.6	
3-year	57.0	61.7	66.4	67.5	67.2	67.4	68.5	69.6	69.3	68.6	68.5	69.6	68.0	71.1	69.7	70.4	72.0		
4-year	52.9	57.3	62.2	63.6	62.7	62.8	64.3	65.0	65.3	64.6	64.3	64.8	64.4	67.0	67.2	67.3			
5-year	50.2	54.4	59.4	61.0	60.3	60.5	61.5	62.2	62.7	62.3	61.4	61.5	61.6	64.6	64.5				
6-year	48.2	52.3	57.5	58.5	58.9	58.7	60.0	60.7	60.3	61.0	60.3	60.0	59.0	63.4					
7-year	47.0	50.7	55.8	57.3	57.0	57.3	58.7	59.0	58.6	59.7	58.9	59.0	57.6						
8-year	46.1	49.6	55.3	56.3	56.2	56.5	58.1	57.8	57.6	58.2	58.3	57.7							
9-year	45.5	48.8	54.2	55.6	55.4	55.7	57.1	57.7	57.0	57.6	57.0								
10-year	44.7	48.1	53.6	55.4	55.1	55.4	56.3	57.5	56.7	57.2									
11-year	44.3	47.6	53.3	55.4	55.0	55.4	55.6	57.4	56.7										
12-year	43.7	47.2	53.2	55.3	54.3	55.0	55.5	57.3											
13-year	43.3	47.2	53.0	55.1	53.9	54.6	55.3												
14-year	42.8	46.8	52.8	54.8	53.9	54.6													
15-year	42.6	46.7	52.6	54.4	53.9														
16-year	42.3	46.7	52.4	54.4															
17-year	42.1	46.6	52.4																
18-year	41.9	46.6																	
19-year	41.9																		
20-year	41.9																		

^a Survival rates are relative rates expressed as percents.
^b Rates are from the SEER 9 areas.

Table VI-12
COLON AND RECTUM CANCER (Invasive)

SURVIVAL RATES^a

By Year of Diagnosis

All Races, Females

Year of Diagnosis

	1975- 1979	1980- 1984	1985	1986	1987	1988	1989	1990	1991	1992	1993	1994	1995	1996	1997	1998	1999	2000	2001
Relative Survival Rates (SEER ^b)																			
1-year	74.8	77.2	78.8	80.0	79.9	79.4	80.5	80.6	81.7	80.7	80.2	80.7	78.7	80.7	80.1	82.5	81.8	80.8	81.5
2-year	63.7	67.5	69.5	70.7	70.7	70.2	71.4	72.5	73.0	72.4	72.1	72.2	70.9	72.6	72.0	75.4	74.6	73.1	
3-year	58.1	61.4	63.6	65.6	65.5	65.4	66.8	67.2	67.6	67.1	67.2	67.2	65.6	68.3	67.3	70.9	70.4		
4-year	54.5	57.8	60.5	62.0	62.1	63.0	63.2	63.4	64.8	64.2	63.8	64.1	62.0	65.7	64.4	68.3			
5-year	52.3	55.4	58.6	59.9	59.8	60.3	60.5	61.7	62.9	62.5	61.5	61.8	60.7	63.9	61.8				
6-year	50.9	53.7	57.0	58.2	58.0	58.9	59.3	60.6	61.6	61.0	59.9	60.3	58.8	62.6					
7-year	49.9	52.4	56.1	56.5	56.5	57.6	57.9	59.4	60.6	59.3	58.3	59.0	57.1						
8-year	49.2	51.6	55.1	55.1	55.9	56.7	56.5	58.2	59.4	58.1	57.2	58.6							
9-year	48.7	51.0	54.2	54.6	55.2	56.0	55.9	57.1	58.0	57.5	56.8								
10-year	48.2	50.4	53.6	53.9	54.4	55.1	55.2	56.5	57.4	56.5									
11-year	47.7	49.9	52.9	53.7	54.3	53.8	54.5	55.9	56.8										
12-year	47.4	49.6	52.8	53.7	54.2	53.2	54.5	55.6											
13-year	47.2	49.3	52.6	53.2	52.6	52.1	54.1												
14-year	46.8	49.0	52.3	52.4	52.4	51.2													
15-year	46.4	48.7	51.2	52.4	51.5														
16-year	46.0	47.9	50.7	52.2															
17-year	45.9	47.7	50.0																
18-year	45.4	47.3																	
19-year	45.4																		
20-year	45.4																		

^a Survival rates are relative rates expressed as percents.
^b Rates are from the SEER 9 areas.

Table VI-13
COLON AND RECTUM CANCER (Invasive)

Percent Diagnosed With Cancer In 10, 20 and 30 Years and In Remaining Lifetime,
 Given Cancer Free At Current Age By Race and Sex

Lifetime Risk (Percent) of Being Diagnosed (13 SEER Areas) With Cancer and
 Lifetime Risk (Percent) of Dying (Total U.S.) From Cancer

2000-2002

All Races

Current Age	Males				Females			
	+10 yrs	+20 yrs	+30 yrs	Eventually	+10 yrs	+20 yrs	+30 yrs	Eventually
0	0.00	0.00	0.01	5.84	0.00	0.00	0.01	5.51
10	0.00	0.01	0.07	5.91	0.00	0.01	0.06	5.57
20	0.01	0.07	0.28	5.95	0.01	0.06	0.25	5.58
30	0.06	0.27	0.95	6.01	0.05	0.24	0.74	5.60
40	0.22	0.90	2.39	6.05	0.19	0.70	1.78	5.59
50	0.71	2.25	4.31	6.05	0.52	1.63	3.36	5.52
60	1.66	3.89	5.43	5.77	1.16	2.98	4.73	5.25

Lifetime Risk of Being Diagnosed = 5.84%
 Lifetime Risk of Dying = 2.36%

Lifetime Risk of Being Diagnosed = 5.51%
 Lifetime Risk of Dying = 2.23%

Whites

Current Age	Males				Females			
	+10 yrs	+20 yrs	+30 yrs	Eventually	+10 yrs	+20 yrs	+30 yrs	Eventually
0	0.00	0.00	0.01	5.84	0.00	0.00	0.01	5.48
10	0.00	0.01	0.07	5.91	0.00	0.01	0.06	5.53
20	0.01	0.07	0.27	5.94	0.01	0.06	0.23	5.54
30	0.06	0.26	0.91	5.99	0.05	0.22	0.70	5.55
40	0.20	0.87	2.35	6.03	0.18	0.66	1.72	5.54
50	0.69	2.22	4.30	6.03	0.49	1.58	3.32	5.47
60	1.65	3.88	5.41	5.74	1.14	2.96	4.72	5.21

Lifetime Risk of Being Diagnosed = 5.84%
 Lifetime Risk of Dying = 2.36%

Lifetime Risk of Being Diagnosed = 5.48%
 Lifetime Risk of Dying = 2.20%

Blacks

Current Age	Males				Females			
	+10 yrs	+20 yrs	+30 yrs	Eventually	+10 yrs	+20 yrs	+30 yrs	Eventually
0	0.00	0.00	0.01	4.99	0.00	0.00	0.02	5.41
10	0.00	0.01	0.08	5.13	0.00	0.02	0.08	5.53
20	0.01	0.08	0.34	5.18	0.02	0.08	0.32	5.54
30	0.07	0.34	1.17	5.30	0.06	0.31	1.00	5.57
40	0.28	1.13	2.63	5.41	0.25	0.96	2.28	5.60
50	0.91	2.53	4.25	5.51	0.73	2.11	3.82	5.58
60	1.88	3.88	5.06	5.35	1.51	3.38	4.86	5.31

Lifetime Risk of Being Diagnosed = 4.99%
 Lifetime Risk of Dying = 2.46%

Lifetime Risk of Being Diagnosed = 5.41%
 Lifetime Risk of Dying = 2.51%

Devcan Version 6.0, April 2005, National Cancer Institute (<http://srab.cancer.gov/devcan/>).

Source: Incidence data are from the SEER 13 areas (San Francisco, Connecticut, Detroit, Hawaii, Iowa, New Mexico, Seattle, Utah, Atlanta, San Jose-Monterey, Los Angeles, Alaska Native Registry, Rural Georgia). Mortality data are from the NCHS public use data file for the total US.

Table VI-14
COLON AND RECTUM CANCER (Invasive)

SEER INCIDENCE AND U.S. MORTALITY
AGE-ADJUSTED RATES AND TRENDS^a
By Race/Ethnicity and Sex

Incidence^b

RACE/ETHNICITY	Rate 1998-2002 Rate per 100,000 persons			Trend 1992-2002 APC (%)		
	Total	Males	Females	Total	Males	Females
All Races	52.9	62.1	46.0	-0.8 ^e	-1.2 ^e	-0.6 ^e
White	52.5	61.7	45.3	-0.9 ^e	-1.3 ^e	-0.7 ^e
White Hispanic ^c	40.1	49.7	33.1	-0.1	-0.1	-0.3
White Non-Hispanic ^c	53.6	62.6	46.5	-0.8 ^e	-1.2 ^e	-0.6
Black	62.4	72.5	56.0	-0.3	-0.5	-0.1
Asian/Pacific Islander	46.8	56.0	39.7	-0.3	-0.4	0.0
Amer Ind/Alaska Nat	34.2	36.7	32.2	-1.8	-2.7	-1.0
Hispanic ^c	39.0	48.3	32.3	-0.1	0.0	-0.2

Mortality^d

RACE/ETHNICITY	Rate 1998-2002 Rate per 100,000 persons			Trend 1992-2002 APC (%)		
	Total	Males	Females	Total	Males	Females
All Races	20.5	24.8	17.4	-1.8 ^e	-2.0 ^e	-1.8 ^e
White	20.0	24.3	16.8	-1.9 ^e	-2.2 ^e	-1.9 ^e
White Hispanic ^c	14.5	18.2	11.8	-0.2	-0.4	0.0
White Non-Hispanic ^c	20.1	24.4	16.9	-1.8 ^e	-2.1 ^e	-1.8 ^e
Black	27.9	34.0	24.1	-0.8 ^e	-0.8 ^e	-0.9 ^e
Asian/Pacific Islander	12.8	15.8	10.6	-1.9 ^e	-1.5 ^e	-2.2 ^e
Amer Ind/Alaska Nat	13.7	16.2	11.8	0.7	1.7	-0.2
Hispanic ^c	14.2	17.7	11.6	-0.2	-0.4	0.1

- The APC is the Annual Percent Change over the time interval.
- Statistic not shown. Rate based on less than 25 cases for the time interval. Trend based on less than 10 cases for at least one year within the time interval.
- ^a Rates are age-adjusted to the 2000 US Std Population (19 age groups - Census P25-1130). Trends are based on rates age-adjusted to the 2000 US Std Population (19 age groups - Census P25-1130).
- ^b Incidence data are from the 13 SEER areas (San Francisco, Connecticut, Detroit, Hawaii, Iowa, New Mexico, Seattle, Utah, Atlanta, San Jose-Monterey, Los Angeles, Alaska Native Registry and Rural Georgia).
- ^c Hispanic and Non-Hispanic are not mutually exclusive from Whites, Blacks, Asian Pacific Islanders, and American Indians/Alaska Natives. Incidence data for Hispanics and Non-Hispanics do not include cases from Detroit, Hawaii, Alaska Native Registry and Rural Georgia. For mortality, information is included for all states except Connecticut, Maine, Maryland, Minnesota, New Hampshire, New York, North Dakota, Oklahoma and Vermont.
- ^d Mortality data are analyzed from a public use file provided by the National Center for Health Statistics (NCHS).
- ^e The APC is significantly different from zero (p<.05).

Table VI-15
COLON CANCER (Invasive) and RECTUM CANCER (Invasive)

SEER INCIDENCE
AGE-ADJUSTED RATES AND TRENDS^a
 By Race/Ethnicity and Sex

Colon Incidence^b

RACE/ETHNICITY	Rate 1998-2002			Trend 1992-2002		
	Rate per 100,000 persons			APC (%)		
	Total	Males	Females	Total	Males	Females
All Races	38.3	43.4	34.5	-0.9 ^d	-1.3 ^d	-0.6 ^d
White	37.9	43.1	34.0	-1.0 ^d	-1.4 ^d	-0.7 ^d
White Hispanic ^c	27.8	33.4	23.9	0.1	0.3	-0.3
White Non-Hispanic ^c	39.0	44.1	35.1	-0.9 ^d	-1.4 ^d	-0.6 ^d
Black	48.4	55.0	44.4	-0.3	-0.4	-0.2
Asian/Pacific Islander	31.7	36.2	28.3	-0.3	-0.4	0.0
Amer Ind/Alaska Nat	24.3	24.5	24.1	-2.9	-4.5	-1.5
Hispanic ^c	27.2	32.4	23.4	0.2	0.4	-0.2

Rectum Incidence^b

RACE/ETHNICITY	Rate 1998-2002			Trend 1992-2002		
	Rate per 100,000 persons			APC (%)		
	Total	Males	Females	Total	Males	Females
All Races	14.6	18.7	11.5	-0.6	-0.9 ^d	-0.5
White	14.6	18.6	11.4	-0.7	-1.0 ^d	-0.6
White Hispanic ^c	12.3	16.4	9.3	-0.6	-1.0	-0.1
White Non-Hispanic ^c	14.6	18.5	11.5	-0.6	-0.9 ^d	-0.7
Black	14.0	17.4	11.6	-0.4	-1.0	0.4
Asian/Pacific Islander	15.1	19.8	11.3	-0.3	-0.5	0.0
Amer Ind/Alaska Nat	9.9	12.2	8.0	0.6	0.7	-
Hispanic ^c	11.9	15.9	9.0	-0.5	-0.9	-0.2

- The APC is the Annual Percent Change over the time interval.
- Statistic not shown. Rate based on less than 25 cases for the time interval. Trend based on less than 10 cases for at least one year within the time interval.
- ^a Rates are age-adjusted to the 2000 US Std Population (19 age groups - Census P25-1130). Trends are based on rates age-adjusted to the 2000 US Std Population (19 age groups - Census P25-1130).
- ^b Incidence data are from the 13 SEER areas (San Francisco, Connecticut, Detroit, Hawaii, Iowa, New Mexico, Seattle, Utah, Atlanta, San Jose-Monterey, Los Angeles, Alaska Native Registry and Rural Georgia).
- ^c Hispanic and Non-Hispanic are not mutually exclusive from Whites, Blacks, Asian Pacific Islanders, and American Indians/Alaska Natives. Incidence data for Hispanics and Non-Hispanics do not include cases from Detroit, Hawaii, Alaska Native Registry and Rural Georgia.
- ^d The APC is significantly different from zero (p<.05).

Table VI-16
COLON AND RECTUM CANCER (Invasive)

AGE-ADJUSTED SEER INCIDENCE RATES AND SEER DEATH RATES^a
By Registry, Race and Sex

	All Races			Whites			Blacks		
	Total	Males	Females	Total	Males	Females	Total	Males	Females
<u>SEER INCIDENCE RATES^b, 1998-2002</u>									
REGISTRY									
13 SEER Areas	52.9	62.1	46.0	52.5	61.7	45.3	62.4	72.5	56.0
11 SEER Areas	52.9	62.0	45.9	52.5	61.7	45.4	62.5	72.6	56.0
9 SEER Areas	54.0	63.3	46.9	53.6	62.9	46.4	62.6	72.9	56.2
San Francisco-Oakland	50.3	58.9	43.8	50.3	59.4	43.2	53.0	61.2	47.6
Connecticut	59.7	70.5	51.9	59.4	70.6	51.1	60.1	61.5	58.9
Metropolitan Detroit	58.6	69.0	51.1	56.1	66.3	48.5	69.2	81.5	61.4
Hawaii	53.8	66.1	43.4	50.2	60.0	40.6	-	-	-
Iowa	62.9	73.9	54.6	62.8	73.8	54.5	69.4	89.3	56.4
New Mexico	42.3	51.3	34.8	43.4	52.6	35.7	40.7	49.5	-
Seattle-Puget Sound	50.5	58.8	44.0	50.9	59.2	44.3	56.6	60.0	52.7
Utah	42.4	48.3	37.7	42.6	48.4	37.9	-	-	-
Metropolitan Atlanta	50.5	58.2	45.1	47.2	54.2	41.8	62.1	74.9	55.3
San Jose-Monterey	46.8	55.1	40.3	48.2	56.7	41.5	51.3	62.2	38.2
Los Angeles	50.7	59.5	44.1	49.7	58.6	42.8	62.5	72.1	56.6
<u>SEER DEATH RATES^c, 1998-2002</u>									
REGISTRY									
13 SEER Areas	18.6	22.4	15.9	18.4	22.1	15.6	26.8	32.4	23.4
11 SEER Areas	18.6	22.4	15.9	18.4	22.1	15.6	26.8	32.5	23.4
9 SEER Areas	19.0	22.9	16.3	18.8	22.6	16.0	26.5	32.1	23.2
San Francisco-Oakland	18.0	21.5	15.5	18.1	21.3	15.7	25.6	32.7	21.1
Connecticut	20.1	24.4	17.3	20.0	24.3	17.1	23.2	26.6	21.1
Metropolitan Detroit	21.0	25.8	17.9	19.6	24.4	16.3	27.4	32.5	24.4
Hawaii	16.2	20.7	12.5	16.6	19.5	13.6	-	-	-
Iowa	21.2	25.9	17.9	21.2	25.8	17.9	31.0	46.4	-
New Mexico	17.6	21.2	14.6	17.9	21.3	15.0	25.4	-	-
Seattle-Puget Sound	17.8	21.2	15.3	18.0	21.4	15.3	23.3	24.4	22.2
Utah	16.1	18.9	14.2	16.1	18.8	14.2	-	-	-
Metropolitan Atlanta	18.5	21.1	16.8	15.6	17.5	14.1	27.8	34.3	24.5
San Jose-Monterey	16.0	19.2	13.6	16.6	20.0	13.9	30.9	31.5	28.5
Los Angeles	17.9	21.6	15.2	17.3	20.9	14.7	27.2	33.4	23.6

^a Incidence and death rates are per 100,000 and are age-adjusted to the 2000 US Std Population (19 age groups - Census P25-1130).

^b The SEER 9 areas are San Francisco, Connecticut, Detroit, Hawaii, Iowa, New Mexico, Seattle, Utah, and Atlanta. The SEER 11 areas comprise the SEER 9 areas plus San Jose-Monterey and Los Angeles. The SEER 13 areas comprise the SEER 11 areas plus the Alaska Native Registry and Rural Georgia.

^c NCHS public use data file for the total US with analyses limited to the SEER geographic areas.

- Statistic could not be calculated or populations are inadequate.

Table VI-17
COLON AND RECTUM CANCER (Invasive)

AVERAGE ANNUAL AGE-ADJUSTED CANCER DEATH^a RATES BY STATE, ALL RACES, 1998-2002

Males and Females

State	Rate	SE	Rank	PD
TOTAL U.S.	20.5	0.04		
High Five States				
District of Columbia	26.4 ^{bc}	0.97	(01)	28.8
Louisiana	23.8 ^{bc}	0.34	(02)	16.1
Kentucky	23.2 ^{bc}	0.34	(03)	13.2
West Virginia	23.2 ^{bc}	0.47	(04)	13.2
Pennsylvania	22.9 ^{bc}	0.18	(05)	11.7
Low Five States				
New Mexico	17.6 ^{bc}	0.46	(47)	-14.1
Arizona	17.4 ^{bc}	0.26	(48)	-15.1
Idaho	17.1 ^{bc}	0.54	(49)	-16.6
Hawaii	16.2 ^{bc}	0.51	(50)	-21.0
Utah	16.1 ^{bc}	0.46	(51)	-21.5

Males

State	Rate	SE	Rank	PD
TOTAL U.S.	24.8	0.07		
High Five States				
District of Columbia	31.6 ^{bc}	1.75	(01)	27.4
Louisiana	30.6 ^{bc}	0.62	(02)	23.4
Kentucky	28.7 ^{bc}	0.62	(03)	15.7
West Virginia	28.2 ^{bc}	0.83	(04)	13.7
Illinois	28.0 ^{bc}	0.35	(05)	12.9
Low Five States				
California	21.0 ^{bc}	0.19	(47)	-15.3
Arizona	21.0 ^{bc}	0.44	(48)	-15.3
Idaho	20.9 ^{bc}	0.91	(49)	-15.7
Hawaii	20.7 ^{bc}	0.85	(50)	-16.5
Utah	18.9 ^{bc}	0.77	(51)	-23.8

Females

State	Rate	SE	Rank	PD
TOTAL U.S.	17.4	0.05		
High Five States				
District of Columbia	23.2 ^{bc}	1.17	(01)	33.3
West Virginia	19.7 ^{bc}	0.56	(02)	13.2
Kentucky	19.5 ^{bc}	0.41	(03)	12.1
Wyoming	19.4 ^b	1.22	(04)	11.5
Pennsylvania	19.4 ^{bc}	0.21	(05)	11.5
Low Five States				
New Mexico	14.6 ^{bc}	0.56	(47)	-16.1
Arizona	14.4 ^{bc}	0.32	(48)	-17.2
Utah	14.2 ^{bc}	0.57	(49)	-18.4
Idaho	14.0 ^{bc}	0.65	(50)	-19.5
Hawaii	12.5 ^{bc}	0.60	(51)	-28.2

For additional detailed cancer statistics by state, please visit the State Cancer Profiles website. <http://statecancerprofiles.cancer.gov/>

- ^a NCHS public use data file. Rates are per 100,000 and are age-adjusted to the 2000 US Std Population (19 age groups - Census P25-1130).
- ^b Absolute percent difference between state rate and total U.S. rate is 10% or more.
- ^c Difference between state rate and total U.S. rate is statistically significant (p<=.0002).
- SE Standard error of the rate.
- PD Percent difference between state rate and total U.S. rate.

Table VI-18
COLON AND RECTUM CANCER (Invasive)

Estimated United States Cancer Prevalence Counts^a on January 1, 2002
By Race/Ethnicity, Sex and Years Since Diagnosis

Years Since Diagnosis	0 to <5	5 to <10	10 to <15	15 to <20	20 to <25	0 to <12 ^e	0 to <27 ^e	>=27 ^g	Complete ^h
Race/Sex									
All Races ^b	409,449	233,819	164,608	105,937	60,690	717,979	990,228	61,454	1,051,682
Males	205,302	115,014	81,422	49,292	25,427	357,337	482,617	22,650	505,267
Females	204,147	118,805	83,186	56,645	35,263	360,642	507,611	38,804	546,415
White ^b	354,178	205,555	146,219	94,980	54,726	625,996	869,716	55,060	924,776
Males	179,123	101,610	73,028	44,397	23,072	313,727	426,783	20,481	447,264
Females	175,055	103,945	73,191	50,583	31,654	312,269	442,933	34,579	477,512
Black ^b	38,946	19,764	13,345	7,960	4,126	64,804	85,307	4,222	89,529
Males	17,373	8,868	5,736	3,291	1,469	29,037	37,125	1,438	38,563
Females	21,573	10,896	7,609	4,669	2,657	35,767	48,182	2,784	50,966
Asian/Pacific Islander ^c	11,564	5,902	+	+	+	19,126	+	+	+
Males	6,084	3,083	+	+	+	10,002	+	+	+
Females	5,480	2,819	+	+	+	9,124	+	+	+
Hispanic ^d	17,876	8,640	+	+	+	29,325	+	+	+
Males	9,787	4,508	+	+	+	15,707	+	+	+
Females	8,089	4,132	+	+	+	13,618	+	+	+

Estimated prevalence percent^a on January 1, 2002, of the SEER 11 population diagnosed in the previous 10 years
By Age at Prevalence, Race/Ethnicity and Sex

Age at Prevalence	Age Specific (Crude)										Age-Adjusted ^f
	All Ages	0-9	10-19	20-29	30-39	40-49	50-59	60-69	70-79	80+	All Ages
Race/Sex											
All Races ^c	0.1989%	-	0.0003%	0.0032%	0.0186%	0.0702%	0.2410%	0.6585%	1.2399%	1.6908%	0.2187%
Males	0.2019%	-	0.0003%	0.0032%	0.0192%	0.0735%	0.2748%	0.7965%	1.4955%	1.8970%	0.2560%
Females	0.1960%	-	0.0003%	0.0032%	0.0179%	0.0669%	0.2090%	0.5358%	1.0476%	1.5797%	0.1898%
White ^c	0.2110%	-	0.0004%	0.0030%	0.0181%	0.0663%	0.2321%	0.6572%	1.2564%	1.7179%	0.2186%
Males	0.2131%	-	0.0005%	0.0030%	0.0187%	0.0692%	0.2677%	0.7971%	1.5182%	1.9269%	0.2567%
Females	0.2089%	-	0.0003%	0.0030%	0.0175%	0.0633%	0.1974%	0.5296%	1.0564%	1.6070%	0.1886%
Black ^c	0.1524%	-	-	0.0034%	0.0188%	0.0858%	0.3050%	0.7552%	1.2340%	1.4591%	0.2281%
Males	0.1455%	-	-	0.0032%	0.0176%	0.0892%	0.3357%	0.8635%	1.3518%	1.5542%	0.2509%
Females	0.1587%	-	-	0.0035%	0.0199%	0.0827%	0.2794%	0.6699%	1.1566%	1.4147%	0.2123%
Asian/Pacific Islander ^c	0.1715%	-	-	0.0039%	0.0203%	0.0786%	0.2393%	0.5840%	1.1048%	1.5703%	0.2034%
Males	0.1856%	-	-	0.0037%	0.0227%	0.0867%	0.2643%	0.7168%	1.4009%	1.8144%	0.2437%
Females	0.1583%	-	-	0.0042%	0.0181%	0.0713%	0.2173%	0.4742%	0.8855%	1.4029%	0.1726%
Hispanic ^d	0.0680%	-	0.0004%	0.0025%	0.0130%	0.0490%	0.1720%	0.4679%	0.8932%	1.1132%	0.1542%
Males	0.0704%	-	-	0.0028%	0.0132%	0.0495%	0.1962%	0.6103%	1.1889%	1.2247%	0.1892%
Females	0.0655%	-	-	0.0021%	0.0128%	0.0484%	0.1497%	0.3505%	0.6828%	1.0519%	0.1281%

^a US 2002 cancer prevalence counts are based on 2002 cancer prevalence proportions from the SEER registries and 1/1/2002 US population estimates based on the average of 2001 and 2002 population estimates from the US Bureau of the Census. Prevalence was calculated using the First Malignant Primary Only for a person.

^{b c d} Statistics based on b) SEER 9 Areas c) SEER 11 Areas and Rural Georgia d) SEER 11 Areas excluding Hawaii and Detroit.

^e Maximum limited-duration prevalence: 27 years for 1975-2002 SEER 9 data; 12 years for 1990-2002 SEER 11 data (used to calculate prevalence for Hispanics and Asian Pacific Islanders).

^f Percentages are age-adjusted to the 2000 US standard population by 5-year age groups.

^{g h} (g) Cases diagnosed more than 27 years ago were estimated using the completeness index method (Capocaccia et. al. 1997, Merrill et. al. 2000). (h) Complete prevalence is obtained by summing 0 to <27 and >=27.

- Statistic not shown. Statistic based on fewer than 5 cases estimated alive in SEER for the time interval.

+ Not available.

SEER Incidence, Delay Adjusted Incidence and US Death Rates+ Colon and Rectum Cancer, by Race and Sex

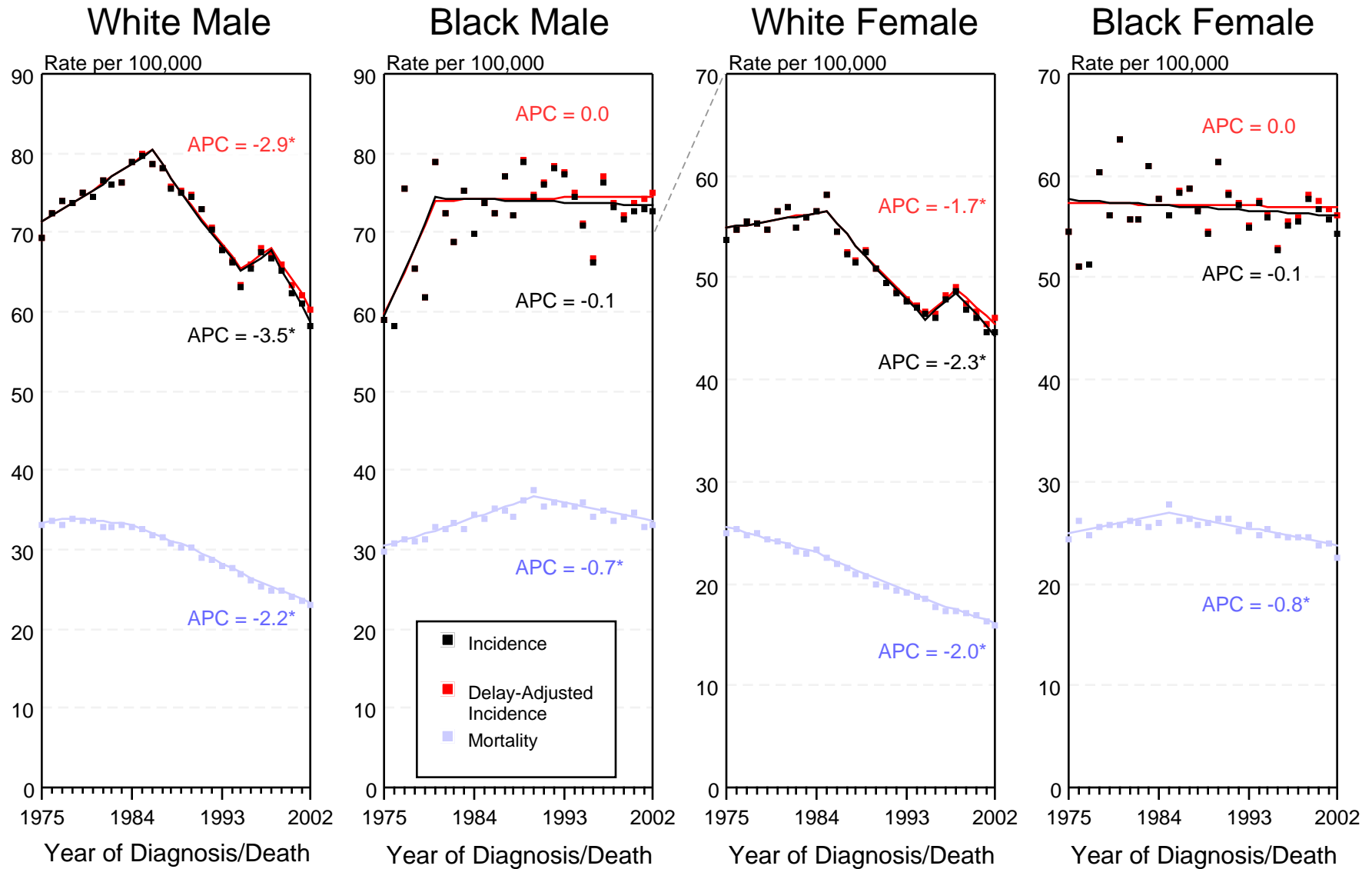


Figure VI-1

+ Source: SEER 9 areas and NCHS public use data file for the total US. Rates are age-adjusted to the 2000 US Std Population (19 age groups - Census P25-1103). Regression lines and APCs are calculated using the Joinpoint Regression Program Version 3.0, April 2005, National Cancer Institute.

The APC is the Annual Percent Change for the regression line segments. The APC shown on the graph is for the most recent trend.

* The APC is significantly different from zero ($p < 0.05$).

SEER Incidence and US Death Rates + Colon and Rectum Cancer, Both Sexes

Joinpoint Analyses for 1975-2002 for Whites and Blacks

Rates for 1992-2002 for Asian/Pacific Islander, American Indian/Alaska Native and Hispanic

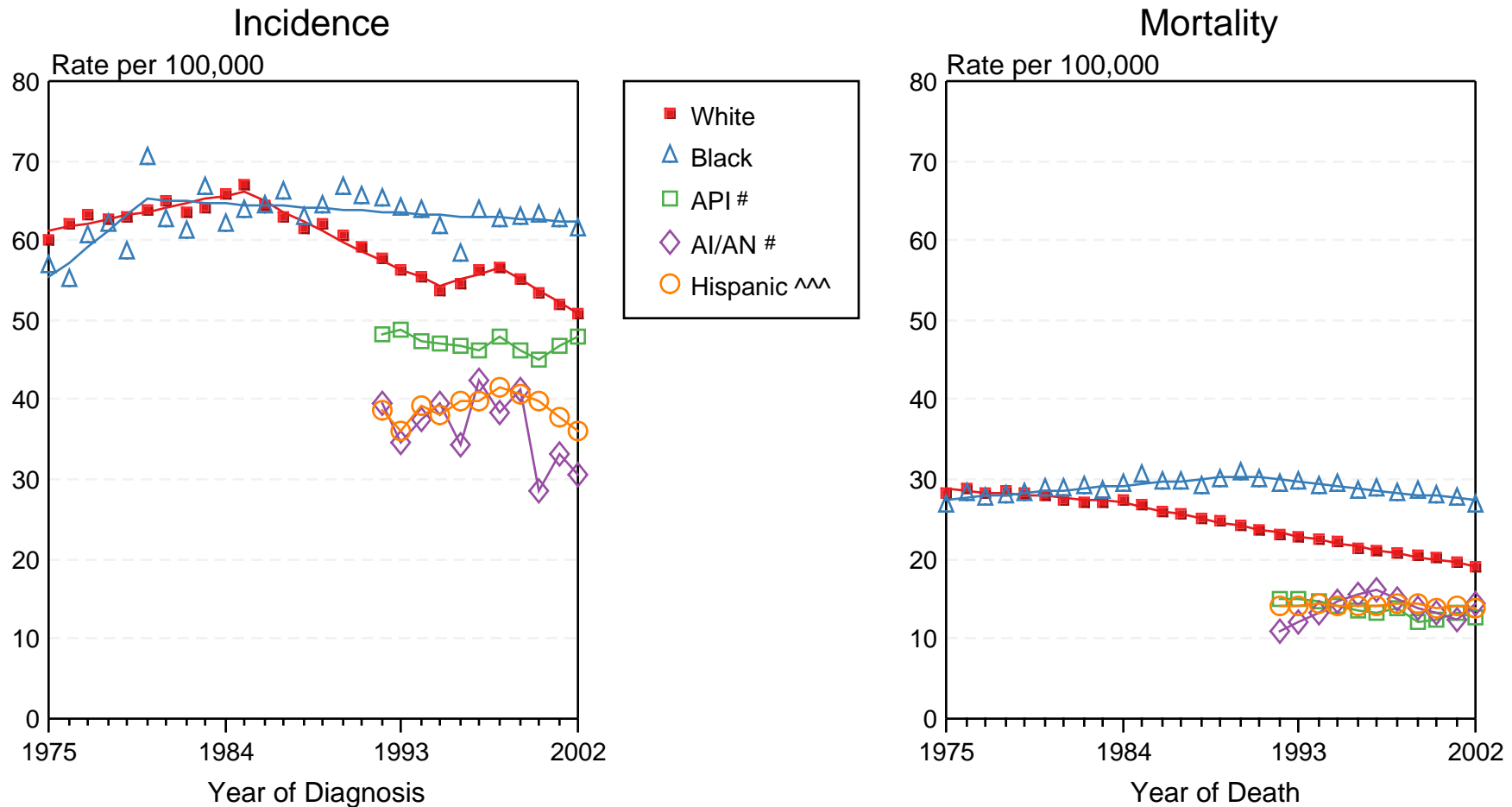


Figure VI-2

+ Source: Incidence data for whites and blacks is from the SEER 9 areas (San Francisco, Connecticut, Detroit, Hawaii, Iowa, New Mexico, Seattle, Utah, Atlanta). Incidence data for Asian/Pacific Islanders, American Indian/Alaska Natives and Hispanics is from the SEER 13 Areas (SEER 9 Areas, San Jose-Monterey, Los Angeles, Alaska Native Registry and Rural Georgia). Mortality data is from NCHS public use data file for the total US. Rates are age-adjusted to the 2000 US Std Population (19 age groups - Census P25-1103). Regression lines for whites and blacks are calculated using the Joinpoint Regression Program Version 3.0, April 2005, National Cancer Institute.

API = Asian/Pacific Islander. AI/AN = American Indian/Alaska Native.

^^ Hispanic is not mutually exclusive from Whites, Blacks, Asian/Pacific Islanders, and American Indians/Alaska Natives. Incidence data for Hispanics excludes cases from Detroit, Hawaii, Alaska Native Registry and Rural Georgia. Mortality data for Hispanics excludes cases from Connecticut, Maine, Maryland, Minnesota, Oklahoma, New Hampshire, New York, North Dakota, and Vermont.