

Table XXI-1
OVARY CANCER (Invasive)TRENDS IN SEER INCIDENCE^a AND U.S. MORTALITY^b USING THE JOINPOINT REGRESSION PROGRAM, 1975-2005
WITH UP TO THREE JOINPOINTS BY RACE AND AGE

		Joinpoint Trend 1		Joinpoint Trend 2		Joinpoint Trend 3		Joinpoint Trend 4		AAPC ^c	
		Years	APC	Years	APC	Years	APC	Years	APC	1996-2005	2001-2005
<u>SEER Cancer Incidence^a</u>											
All Races	All Ages	1975-1985	0.1	1985-2001	-0.7*	2001-2005	-3.0*			-1.7*	-3.0*
All Races	Under 65	1975-2005	-1.2*							-1.2*	-1.2*
All Races	65 and Over	1975-1990	1.4*	1990-2005	-1.1*					-1.1*	-1.1*
White	All Ages	1975-1985	0.3	1985-2001	-0.6*	2001-2005	-3.4*			-1.9*	-3.4*
White	Under 65	1975-2005	-1.2*							-1.2*	-1.2*
White	65 and Over	1975-1990	1.5*	1990-2005	-1.0*					-1.0*	-1.0*
Black	All Ages	1975-2005	-0.5*							-0.5*	-0.5*
Black	Under 65	1975-2005	-1.0*							-1.0*	-1.0*
Black	65 and Over	1975-2005	0.1							0.1	0.1
<u>SEER Delay-Adjusted Incidence^a</u>											
All Races	All Ages	1975-1985	0.1	1985-2001	-0.7*	2001-2005	-2.4*			-1.4*	-2.4*
All Races	Under 65	1975-2005	-1.1*							-1.1*	-1.1*
All Races	65 and Over	1975-1990	1.4*	1990-2005	-1.0*					-1.0*	-1.0*
White	All Ages	1975-1985	0.3	1985-2001	-0.6*	2001-2005	-2.7*			-1.5*	-2.7*
White	Under 65	1975-2005	-1.1*							-1.1*	-1.1*
White	65 and Over	1975-1990	1.5*	1990-2005	-0.8*					-0.8*	-0.8*
Black	All Ages	1975-2005	-0.4*							-0.4*	-0.4*
Black	Under 65	1975-2005	-0.9*							-0.9*	-0.9*
Black	65 and Over	1975-2005	0.2							0.2	0.2
<u>U.S. Cancer Mortality^b</u>											
All Races	All Ages	1975-1982	-1.2*	1982-1992	0.4	1992-1996	-1.3	1996-2005	-0.2	-0.2	-0.2
All Races	Under 65	1975-1980	-3.3*	1980-1998	-1.5*	1998-2005	-0.7*			-0.9*	-0.7*
All Races	65 and Over	1975-1985	0.7*	1985-1991	1.8*	1991-2005	-0.1			-0.1	-0.1
White	All Ages	1975-1981	-1.4*	1981-1991	0.2	1991-2005	-0.4*			-0.4*	-0.4*
White	Under 65	1975-1981	-3.1*	1981-2005	-1.3*					-1.3*	-1.3*
White	65 and Over	1975-1984	0.6*	1984-1991	1.6*	1991-2005	0.0			0.0	0.0
Black	All Ages	1975-2005	0.0							0.0	0.0
Black	Under 65	1975-1995	-1.9*	1995-2005	0.0					0.0	0.0
Black	65 and Over	1975-1991	2.3*	1991-2005	-0.5					-0.5	-0.5

Ovary excludes borderline cases or histologies 8442, 8451, 8462, 8472, and 8473.

Joinpoint Regression Program Version 3.3.1, April 2008, National Cancer Institute. (<http://srab.cancer.gov/joinpoint/>).

The APC is the Annual Percent Change based on rates age-adjusted to the 2000 US Std Population (19 age groups - Census P25-1130).

Trends are from the SEER 9 areas (San Francisco, Connecticut, Detroit, Hawaii, Iowa, New Mexico, Seattle, Utah, and Atlanta).

Trends are from US Mortality Files, National Center for Health Statistics, Centers for Disease Control and Prevention.

The AAPC is the Average Annual Percent Change and is based on the APCs calculated by Joinpoint over the time range of 1975-2005.

The APC/AAPC is significantly different from zero ($p < .05$).

Table XXI-1a
OVARY CANCER (Invasive)

TRENDS IN SEER INCIDENCE^a AND U.S. MORTALITY^b USING THE JOINTPOINT REGRESSION PROGRAM, 1975-2005
 WITH UP TO FOUR JOINTPOINTS BY RACE AND AGE

		Joinpoint Trend 1		Joinpoint Trend 2		Joinpoint Trend 3		Joinpoint Trend 4		Joinpoint Trend 5		AAPC ^c
		Years	APC	Years	APC	Years	APC	Years	APC	Years	APC	2001-2005
<u>SEER Cancer Incidence^a</u>												
All Races	All Ages	1975-1985	0.1	1985-2001	-0.7*	2001-2005	-3.0*					-3.0*
All Races	Under 65	1975-2005	-1.2*									-1.2*
All Races	65 and Over	1975-1990	1.4*	1990-2005	-1.1*							-1.1*
White	All Ages	1975-1985	0.3	1985-2001	-0.6*	2001-2005	-3.4*					-3.4*
White	Under 65	1975-2005	-1.2*									-1.2*
White	65 and Over	1975-1990	1.5*	1990-2005	-1.0*							-1.0*
Black	All Ages	1975-2005	-0.5*									-0.5*
Black	Under 65	1975-2005	-1.0*									-1.0*
Black	65 and Over	1975-2005	0.1									0.1
<u>SEER Delay-Adjusted Incidence^a</u>												
All Races	All Ages	1975-1985	0.1	1985-2001	-0.7*	2001-2005	-2.4*					-2.4*
All Races	Under 65	1975-2005	-1.1*									-1.1*
All Races	65 and Over	1975-1990	1.4*	1990-2005	-1.0*							-1.0*
White	All Ages	1975-1985	0.3	1985-2001	-0.6*	2001-2005	-2.7*					-2.7*
White	Under 65	1975-2005	-1.1*									-1.1*
White	65 and Over	1975-1990	1.5*	1990-2005	-0.8*							-0.8*
Black	All Ages	1975-2005	-0.4*									-0.4*
Black	Under 65	1975-2005	-0.9*									-0.9*
Black	65 and Over	1975-2005	0.2									0.2
<u>U.S. Cancer Mortality^b</u>												
All Races	All Ages	1975-1982	-1.2*	1982-1992	0.3*	1992-1998	-1.2*	1998-2002	0.8	2002-2005	-1.5	-0.9
All Races	Under 65	1975-1982	-2.9*	1982-1994	-1.3*	1994-1998	-2.6*	1998-2002	0.6	2002-2005	-2.1*	-1.4
All Races	65 and Over	1975-1985	0.7*	1985-1991	1.8*	1991-2005	-0.1					-0.1
White	All Ages	1975-1981	-1.5*	1981-1992	0.3	1992-1998	-1.1*	1998-2002	0.8	2002-2005	-1.6	-1.0
White	Under 65	1975-1980	-3.3*	1980-1998	-1.5*	1998-2005	-0.8*					-0.8*
White	65 and Over	1975-1984	0.6*	1984-1991	1.6*	1991-2005	0.0					0.0
Black	All Ages	1975-2005	0.0									0.0
Black	Under 65	1975-1995	-1.9*	1995-2005	0.0							0.0
Black	65 and Over	1975-1991	2.3*	1991-2005	-0.5							-0.5

Ovary excludes borderline cases or histologies 8442, 8451, 8462, 8472, and 8473.

Joinpoint Regression Program Version 3.3.1, April 2008, National Cancer Institute. (<http://srab.cancer.gov/joinpoint/>).

The APC is the Annual Percent Change based on rates age-adjusted to the 2000 US Std Population (19 age groups - Census P25-1130).

^a Trends are from the SEER 9 areas (San Francisco, Connecticut, Detroit, Hawaii, Iowa, New Mexico, Seattle, Utah, and Atlanta).

^b Trends are from US Mortality Files, National Center for Health Statistics, Centers for Disease Control and Prevention.

^c The AAPC is the Average Annual Percent Change and is based on the APCs calculated by Joinpoint over the time range of 1975-2005.

* The APC/AAPC is significantly different from zero ($p < .05$).

Table XXI-2
OVARY CANCER (Invasive)

AGE-ADJUSTED SEER INCIDENCE^a RATES BY YEAR, RACE AND AGE

	<u>All Races, Females</u>			<u>White Females</u>			<u>Black Females</u>		
	All	<65	65+	All	<65	65+	All	<65	65+
<u>SEER INCIDENCE RATES</u>									
<u>YEAR OF DIAGNOSIS:</u>									
1975	16.3	11.6	48.9	16.8	12.0	49.8	11.7	7.4	41.6
1976	15.9	11.2	47.9	16.6	11.9	49.5	11.4	7.4	39.3
1977	15.6	11.2	46.2	16.2	11.6	48.1	11.3	8.7	29.7
1978	15.4	10.8	47.2	16.2	11.4	49.3	10.0	6.1	36.8
1979	15.4	10.7	47.8	15.8	10.9	49.9	11.9	9.1	31.8
1980	15.4	10.6	48.6	16.2	11.2	50.9	11.7	7.4	41.6
1981	15.4	10.5	49.5	16.0	10.9	51.5	11.7	7.6	40.1
1982	15.6	10.1	53.4	16.1	10.5	55.1	12.3	7.4	46.2
1983	16.0	10.4	54.2	16.4	10.7	55.8	13.1	9.2	39.9
1984	16.2	11.0	52.8	17.1	11.7	54.7	11.0	5.9	46.3
1985	16.5	10.8	56.4	17.4	11.4	59.1	11.3	7.3	39.3
1986	15.0	9.9	50.5	15.7	10.5	51.8	10.6	6.2	41.5
1987	16.1	10.2	57.6	17.0	10.8	59.8	11.8	6.3	50.3
1988	15.3	9.6	54.7	16.0	10.1	57.0	11.6	6.6	45.6
1989	15.5	9.5	56.8	16.5	10.3	59.5	11.0	5.4	49.5
1990	15.4	9.4	56.5	16.3	10.1	59.2	10.2	5.7	41.7
1991	15.7	9.7	57.6	16.5	10.3	59.7	11.0	5.5	49.5
1992	14.9	9.3	53.4	15.6	9.7	56.6	11.2	7.8	35.2
1993	15.2	9.1	57.4	16.0	9.6	60.4	11.6	6.6	46.3
1994	14.5	8.9	53.1	15.0	9.2	55.3	12.4	6.5	53.5
1995	14.6	8.7	54.8	15.3	9.3	57.0	10.3	4.9	47.7
1996	14.1	8.4	53.6	15.3	9.2	57.1	9.0	4.5	40.1
1997	14.7	9.2	52.7	15.4	9.7	55.0	10.6	5.6	44.9
1998	14.3	8.8	52.3	15.0	9.2	55.4	10.7	6.0	43.4
1999	14.6	8.7	55.9	15.4	8.9	60.2	10.7	6.2	41.4
2000	14.2	9.0	50.5	15.2	9.6	53.5	10.6	5.4	46.6
2001	14.5	9.1	51.4	15.5	9.7	55.4	9.4	6.2	31.3
2002	13.7	7.9	53.8	14.3	8.2	56.4	10.3	5.5	43.6
2003	13.4	8.3	49.1	13.9	8.7	50.1	11.8	6.0	52.5
2004	12.9	7.8	48.2	13.6	8.0	51.9	9.8	6.1	34.9
2005	12.5	7.8	44.7	13.1	7.9	48.6	10.2	6.9	33.6
1975-2005	14.9	9.5	52.5	15.7	10.0	55.0	11.0	6.4	42.5

Ovary excludes borderline cases or histologies 8442, 8451, 8462, 8472, and 8473.

^a SEER 9 areas (San Francisco, Connecticut, Detroit, Hawaii, Iowa, New Mexico, Seattle, Utah, and Atlanta). Rates are per 100,000 and are age-adjusted to the 2000 US Std Population (19 age groups - Census P25-1130).

- Statistic not shown. Rate based on less than 16 cases for the time interval.

Table XXI-3
OVARY CANCER (Invasive)

AGE-ADJUSTED U.S. DEATH^a RATES BY YEAR, RACE AND AGE

	<u>All Races, Females</u>			<u>White Females</u>			<u>Black Females</u>		
	<u>All</u>	<u><65</u>	<u>65+</u>	<u>All</u>	<u><65</u>	<u>65+</u>	<u>All</u>	<u><65</u>	<u>65+</u>
<u>U.S. DEATH RATES</u>									
<u>YEAR OF DEATH:</u>									
1975	9.8	5.8	37.5	10.2	6.0	38.8	7.2	4.6	24.6
1976	10.0	5.7	39.7	10.3	5.9	40.6	8.0	4.6	31.5
1977	9.6	5.5	38.0	9.9	5.6	39.1	7.4	4.3	29.2
1978	9.6	5.4	38.0	9.8	5.6	38.9	7.4	4.2	29.3
1979	9.3	5.1	38.6	9.6	5.2	39.7	7.5	4.4	28.9
1980	9.3	5.0	39.1	9.5	5.1	40.0	7.9	4.2	33.2
1981	9.2	4.9	38.9	9.5	5.1	39.8	7.4	3.7	32.4
1982	9.2	4.8	39.8	9.5	5.0	40.7	7.4	3.6	33.5
1983	9.2	4.7	40.3	9.4	4.8	41.4	7.7	4.1	32.3
1984	9.1	4.6	40.1	9.4	4.8	40.9	7.6	3.8	33.8
1985	9.1	4.6	40.2	9.3	4.7	41.3	7.3	3.7	31.9
1986	9.2	4.6	41.6	9.5	4.7	42.6	7.4	3.7	33.4
1987	9.2	4.5	41.9	9.5	4.6	42.8	7.6	3.5	35.5
1988	9.3	4.4	43.2	9.6	4.6	44.1	7.9	3.7	36.9
1989	9.2	4.3	43.2	9.5	4.5	44.3	7.4	3.3	36.2
1990	9.3	4.3	44.4	9.6	4.5	45.2	7.9	3.3	39.2
1991	9.5	4.3	45.4	9.7	4.5	46.1	8.4	3.4	42.5
1992	9.5	4.2	45.5	9.7	4.4	46.5	8.2	3.6	40.0
1993	9.1	4.0	44.1	9.3	4.2	44.9	7.7	3.0	40.4
1994	9.4	4.1	45.6	9.7	4.3	46.7	7.8	3.2	39.7
1995	9.1	4.0	44.8	9.5	4.2	46.1	7.4	2.9	38.0
1996	8.9	3.8	43.7	9.1	4.0	44.8	7.3	2.9	37.9
1997	8.9	3.8	44.7	9.2	3.9	45.6	7.9	3.1	41.2
1998	8.7	3.7	43.6	9.0	3.8	45.0	7.4	3.2	36.1
1999	8.8	3.7	43.6	9.1	3.9	44.8	7.4	3.1	37.3
2000	8.9	3.7	45.0	9.2	3.8	46.6	7.1	2.9	36.5
2001	9.0	3.7	45.4	9.3	3.9	46.9	7.5	3.2	37.4
2002	9.0	3.8	45.2	9.4	4.0	46.7	7.4	3.1	37.3
2003	8.8	3.7	44.6	9.2	3.8	46.1	7.5	3.1	37.4
2004	8.8	3.5	44.9	9.1	3.6	46.4	7.7	3.1	38.9
2005	8.6	3.6	43.6	9.0	3.7	45.1	7.3	2.9	37.5
1975-2005	9.2	4.3	42.9	9.5	4.5	44.0	7.6	3.4	36.2

^a US Mortality Files, National Center for Health Statistics, Centers for Disease Control and Prevention. Rates are per 100,000 and are age-adjusted to the 2000 US Std Population (19 age groups - Census P25-1130).
 - Statistic not shown. Rate based on less than 16 cases for the time interval.

Table XXI-4
OVARY CANCER (Invasive)

SEER INCIDENCE^a AND U.S. DEATH^b RATES, AGE-ADJUSTED AND AGE-SPECIFIC RATES, BY RACE

	Incidence ^a			US Death ^b		
	All Races, Females	White Females	Black Females	All Races, Females	White Females	Black Females
<u>AGE-ADJUSTED RATES, 2001-2005</u>						
AGE AT DIAGNOSIS/DEATH:						
All ages	13.3	14.1	10.1	8.8	9.2	7.5
Under 65	8.2	8.6	5.8	3.7	3.8	3.1
65 and over	48.9	51.7	39.6	44.7	46.2	37.7
All ages(IARC world std) ^c	9.5	10.1	7.1	5.6	5.9	4.8
<u>AGE-SPECIFIC RATES, 2001-2005</u>						
AGE AT DIAGNOSIS/DEATH:						
<1	-	-	-	-	-	-
1-4	-	-	-	-	-	-
5-9	0.3	0.3	-	-	-	-
10-14	0.7	0.8	-	-	-	-
15-19	1.5	1.6	1.1	0.1	0.1	-
20-24	1.7	1.7	1.0	0.2	0.2	0.2
25-29	2.1	2.1	1.6	0.3	0.4	0.4
30-34	3.1	3.0	2.9	0.6	0.6	0.6
35-39	5.1	5.1	5.0	1.2	1.3	1.4
40-44	8.9	9.2	6.0	2.8	2.8	2.4
45-49	15.8	16.4	11.0	5.8	6.1	4.9
50-54	22.2	23.5	15.0	10.4	10.9	8.4
55-59	28.8	30.8	18.5	16.0	16.7	13.4
60-64	37.2	40.0	27.9	24.1	25.1	19.9
65-69	41.3	44.1	32.7	32.3	33.6	28.0
70-74	47.4	50.6	36.4	40.2	41.6	35.5
75-79	53.3	56.8	37.6	50.2	52.0	41.5
80-84	57.8	59.8	52.3	59.0	61.0	45.7
85+	51.0	52.3	50.3	55.3	56.7	47.7

^a Ovary excludes borderline cases or histologies 8442, 8451, 8462, 8472, and 8473. SEER 17 areas. Rates are per 100,000 and are age-adjusted to the 2000 US Std Population (19 age groups - Census P25-1130), unless noted.

^b US Mortality Files, National Center for Health Statistics, Centers for Disease Control and Prevention. Rates are per 100,000 and are age-adjusted to the 2000 US Std Population (19 age groups - Census P25-1130), unless noted.

^c Rates are per 100,000 and are age-adjusted to the IARC world standard population.

- Statistic not shown. Rate based on less than 16 cases for the time interval.

Table XXI-5
OVARY CANCER (Invasive)

SURVIVAL RATES, BY RACE, DIAGNOSIS YEAR, STAGE AND AGE

	All Races, Females			White Females			Black Females		
	All	<65	65+	All	<65	65+	All	<65	65+
<u>5-YR RELATIVE SURVIVAL RATES</u>									
YEAR OF DIAGNOSIS:									
1960-1963 ^a	-	-	-	32	-	-	32	-	-
1970-1973 ^a	-	-	-	36	-	-	32	-	-
1975-1977 ^b	37.2	44.4	21.9	36.5	43.7	21.6	43.1	49.2	25.5 ^f
1978-1980 ^b	38.9	47.5	22.6	38.1	46.6	22.8	40.3	49.7	13.0
1981-1983 ^b	40.7	50.5	24.5	40.4	50.5	24.5	38.9	45.7	23.4 ^f
1984-1986 ^b	39.8	49.7	24.9	38.9	48.7	24.6	40.5	52.4	21.3
1987-1989 ^b	39.9	51.3	24.7	39.9	51.4	25.1	35.2	47.3	17.9
1990-1992 ^b	42.5	55.6	25.6	42.4	56.2	25.5	37.8	49.8	17.7
1993-1995 ^b	43.5	55.9	28.1	42.7	55.6	27.5	43.3	55.3	27.5
1996-2004 ^b	45.6 ^e	56.5 ^e	29.8 ^e	45.3 ^e	56.6 ^e	29.9 ^e	38.3	47.8	21.2
<u>5-YR PERIOD SURVIVAL RATES^{cd}</u>									
YEAR OF DIAGNOSIS:									
1996-2004	46.0	56.7	29.9	45.8	56.8	30.2	39.0	48.4	22.0
<u>STAGE DISTRIBUTION (%) 1996-2004^c</u>									
All Stages									
Number of cases	31,403	16,985	14,418	26,771	14,023	12,748	2,186	1,272	914
Percent	100%	100%	100%	100%	100%	100%	100%	100%	100%
Localized	19	27	9	18	26	9	17	24	9
Regional	7	8	6	7	8	6	7	7	7
Distant	67	61	75	68	62	75	67	63	72
Unstaged	7	4	10	7	4	10	9	6	12
<u>5-YR RELATIVE SURVIVAL RATES, 1996-2004^c</u>									
AGE AT DIAGNOSIS:									
<45	73.0	-	-	73.5	-	-	68.7	-	-
45-54	56.0	-	-	56.7	-	-	43.0	-	-
55-64	45.9	-	-	46.2	-	-	35.3	-	-
65-74	35.6	-	-	36.0	-	-	23.1	-	-
75+	22.3	-	-	22.7	-	-	16.0	-	-
Under 65	56.5	-	-	56.6	-	-	48.7	-	-
65 and over	29.4	-	-	29.7	-	-	20.3	-	-
STAGE:									
All Stages	45.5	56.5	29.4	45.3	56.6	29.7	38.4	48.7	20.3
Localized	92.7	93.0	92.1	92.7	93.1	91.5	92.5	94.4	85.5 ^f
Regional	71.1	76.8	59.2	71.8	78.1	59.0	58.5 ^f	64.4 ^f	45.9 ^g
Distant	30.6	38.6	21.1	30.9	39.1	21.7	22.7	29.7	11.9
Unstaged	26.0	46.7	12.4	26.0	47.2	13.4	23.0	45.5 ^f	0.0

Ovary excludes borderline cases or histologies 8442, 8451, 8462, 8472, and 8473.

- ^a Rates are based on End Results data from a series of hospital registries and one population-based registry.
- ^b Rates are from the SEER 9 areas (San Francisco, Connecticut, Detroit, Hawaii, Iowa, New Mexico, Seattle, Utah, Atlanta).
- ^c Rates are based on follow-up of patients into 2005.
- ^c Rates are from the SEER 17 areas (San Francisco, Connecticut, Detroit, Hawaii, Iowa, New Mexico, Seattle, Utah, Atlanta, San Jose-Monterey, Los Angeles, Alaska Native Registry, Rural Georgia, California excluding SF/SJM/LA, Kentucky, Louisiana and New Jersey). California excluding SF/SJM/LA, Kentucky, Louisiana, and New Jersey contribute cases for diagnosis years 2000-2004. The remaining 13 SEER Areas contribute cases for the entire period 1996-2004. Rates are based on follow-up of patients into 2005.
- ^d Period survival provides a more up-to-date estimate of survival by piecing together the most recent conditional survival estimates from several cohorts. It is computed here using three calendar year blocks (2002-2004: 0-1 year survival), (2001-2003: 1-2 year survival), (2000-2002: 2-3 year survival), (1999-2001: 3-4 year survival), (1998-2000: 4-5 years survival).
- ^e The difference in rates between 1975-1977 and 1996-2004 is statistically significant (p<.05).
- ^f The standard error of the survival rate is between 5 and 10 percentage points.
- ^g The standard error of the survival rate is greater than 10 percentage points.
- Statistic could not be calculated due to fewer than 16 cases during the time period.

Table XXI-6
OVARY CANCER (Invasive)

SURVIVAL RATES^a

By Year of Diagnosis

All Races, Females

Year of Diagnosis

	1975- 1979	1980- 1984	1985	1986	1987	1988	1989	1990	1991	1992	1993	1994	1995	1996	1997	1998	1999	2000	2001	2002	2003	2004
Relative Survival Rates (SEER ^b)																						
1-year	65.2	70.7	72.2	69.2	70.8	69.7	71.8	72.3	72.9	74.9	72.7	72.3	74.0	74.8	77.3	75.9	74.5	77.4	76.7	76.3	76.5	75.8
2-year	49.7	54.1	55.6	52.4	54.2	56.6	56.2	57.9	59.1	60.9	59.2	61.6	61.2	62.5	66.3	65.1	62.7	65.0	66.2	64.3	67.0	
3-year	43.0	46.9	48.3	46.2	46.7	49.4	47.3	49.4	49.9	52.1	49.9	54.4	52.3	53.9	57.7	56.4	54.2	55.6	57.0	55.0		
4-year	39.7	42.7	43.0	42.2	42.8	44.8	41.5	45.2	44.8	47.8	44.2	48.6	47.7	47.6	50.2	51.7	49.2	48.6	51.5			
5-year	37.8	40.5	40.1	38.6	39.4	41.4	38.8	42.1	41.7	43.8	40.3	46.1	44.3	43.8	45.7	47.0	44.5	44.5				
6-year	36.7	38.8	38.1	37.2	38.0	39.6	36.5	40.5	39.5	41.5	38.6	42.8	41.1	40.7	42.6	44.5	42.2					
7-year	35.6	38.2	36.7	36.0	37.4	38.6	35.7	39.4	38.1	40.2	38.0	41.2	39.6	39.5	40.4	42.9						
8-year	35.0	37.1	36.1	35.5	36.7	38.0	34.4	38.3	37.0	39.6	37.1	40.6	38.2	38.6	39.3							
9-year	34.7	36.3	35.5	35.2	36.3	37.5	34.4	37.7	36.6	39.3	36.3	39.1	37.0	38.3								
10-year	34.6	35.9	35.3	34.9	36.2	37.2	34.3	37.6	36.1	39.3	35.6	38.4	36.7									
11-year	34.5	35.9	35.0	34.9	36.1	36.7	34.3	37.3	35.8	39.1	35.1	37.6										
12-year	34.2	35.6	35.0	34.7	35.9	36.6	34.0	37.3	35.6	38.6	35.0											
13-year	34.1	35.3	35.0	34.7	35.7	35.9	33.7	37.3	35.6	38.4												
14-year	34.1	35.3	35.0	34.7	35.7	35.2	33.7	37.3	35.6													
15-year	33.8	35.3	35.0	34.7	35.7	35.2	33.7	37.3														
16-year	33.8	35.3	35.0	34.7	35.7	35.2	33.7															
17-year	33.8	35.3	35.0	34.7	35.7	35.2																
18-year	33.8	35.3	35.0	34.7	35.7																	
19-year	33.8	35.3	35.0	34.7																		
20-year	33.8	35.3	35.0																			

Ovary excludes borderline cases or histologies 8442, 8451, 8462, 8472, and 8473.

^a Survival rates are relative rates expressed as percents.

^b Rates are from the SEER 9 areas (San Francisco, Connecticut, Detroit, Hawaii, Iowa, New Mexico, Seattle, Utah, and Atlanta).

Table XXI-7
 OVARY CANCER (Invasive)

Risk of Being Diagnosed With Cancer in 10, 20 and 30 Years, Lifetime Risk of Being Diagnosed with Cancer, and
 Lifetime Risk of Dying from Cancer Given Cancer Free At Current Age
 Females, 2003-2005 By Race/Ethnicity

Race/ Ethnicity	Current Age	Risk of Being Diagnosed with Cancer				Risk of Dying from Cancer	
		+10 yrs Percent (95% C.I.)	+20 yrs Percent (95% C.I.)	+30 yrs Percent (95% C.I.)	Eventually Percent (95% C.I.)	Eventually Percent (95% C.I.)	
All Races	0	0.00 (0.00, 0.00)	0.01 (0.01, 0.01)	0.03 (0.03, 0.03)	1.39 (1.37, 1.42)	1.05 (1.04, 1.06)	
	10	0.01 (0.01, 0.01)	0.03 (0.03, 0.03)	0.07 (0.07, 0.07)	1.41 (1.38, 1.43)	1.06 (1.05, 1.07)	
	20	0.02 (0.02, 0.02)	0.06 (0.06, 0.06)	0.18 (0.17, 0.18)	1.40 (1.38, 1.42)	1.06 (1.05, 1.07)	
	30	0.04 (0.04, 0.04)	0.16 (0.15, 0.17)	0.40 (0.39, 0.41)	1.39 (1.36, 1.41)	1.07 (1.06, 1.08)	
	40	0.12 (0.12, 0.13)	0.36 (0.35, 0.37)	0.69 (0.68, 0.71)	1.36 (1.34, 1.38)	1.07 (1.06, 1.08)	
	50	0.24 (0.24, 0.25)	0.58 (0.57, 0.60)	0.95 (0.93, 0.97)	1.27 (1.24, 1.29)	1.05 (1.04, 1.06)	
	60	0.36 (0.35, 0.37)	0.74 (0.72, 0.76)	1.01 (0.99, 1.03)	1.07 (1.05, 1.10)	0.96 (0.95, 0.97)	
	70	0.43 (0.42, 0.44)	0.73 (0.71, 0.75)	- (- , -)	0.80 (0.78, 0.82)	0.79 (0.78, 0.80)	
80	0.40 (0.39, 0.42)	- (- , -)	- (- , -)	0.50 (0.48, 0.52)	0.53 (0.52, 0.54)		
White	0	0.00 (0.00, 0.00)	0.01 (0.01, 0.02)	0.03 (0.03, 0.04)	1.47 (1.45, 1.50)	1.10 (1.09, 1.11)	
	10	0.01 (0.01, 0.01)	0.03 (0.03, 0.03)	0.07 (0.07, 0.07)	1.48 (1.46, 1.51)	1.11 (1.10, 1.12)	
	20	0.02 (0.02, 0.02)	0.06 (0.06, 0.06)	0.18 (0.18, 0.19)	1.48 (1.45, 1.50)	1.11 (1.10, 1.12)	
	30	0.04 (0.04, 0.04)	0.16 (0.16, 0.17)	0.41 (0.40, 0.43)	1.46 (1.44, 1.49)	1.11 (1.10, 1.13)	
	40	0.12 (0.12, 0.13)	0.38 (0.37, 0.39)	0.74 (0.72, 0.75)	1.44 (1.41, 1.46)	1.11 (1.10, 1.13)	
	50	0.26 (0.25, 0.27)	0.62 (0.61, 0.64)	1.01 (0.99, 1.04)	1.34 (1.31, 1.36)	1.09 (1.08, 1.10)	
	60	0.38 (0.37, 0.40)	0.79 (0.77, 0.81)	1.07 (1.04, 1.09)	1.13 (1.11, 1.16)	1.00 (0.99, 1.01)	
	70	0.46 (0.44, 0.47)	0.77 (0.74, 0.79)	- (- , -)	0.84 (0.81, 0.86)	0.81 (0.80, 0.82)	
80	0.41 (0.40, 0.43)	- (- , -)	- (- , -)	0.51 (0.49, 0.53)	0.54 (0.53, 0.55)		
Black	0	0.00 (0.00, 0.00)	0.01 (0.01, 0.02)	0.03 (0.02, 0.03)	0.97 (0.91, 1.03)	0.77 (0.75, 0.80)	
	10	0.01 (0.01, 0.01)	0.03 (0.02, 0.03)	0.06 (0.05, 0.07)	0.99 (0.93, 1.05)	0.79 (0.76, 0.82)	
	20	0.02 (0.01, 0.02)	0.05 (0.04, 0.06)	0.14 (0.12, 0.15)	0.98 (0.92, 1.05)	0.79 (0.77, 0.82)	
	30	0.04 (0.03, 0.04)	0.12 (0.11, 0.14)	0.28 (0.26, 0.31)	0.97 (0.91, 1.04)	0.80 (0.77, 0.82)	
	40	0.09 (0.08, 0.10)	0.25 (0.23, 0.27)	0.49 (0.46, 0.53)	0.95 (0.89, 1.02)	0.80 (0.77, 0.83)	
	50	0.17 (0.15, 0.19)	0.42 (0.39, 0.46)	0.67 (0.62, 0.72)	0.90 (0.84, 0.97)	0.79 (0.77, 0.82)	
	60	0.28 (0.25, 0.31)	0.54 (0.49, 0.59)	0.74 (0.68, 0.81)	0.80 (0.74, 0.87)	0.75 (0.72, 0.78)	
	70	0.32 (0.28, 0.36)	0.56 (0.50, 0.62)	- (- , -)	0.63 (0.56, 0.70)	0.63 (0.60, 0.66)	
80	0.36 (0.30, 0.42)	- (- , -)	- (- , -)	0.46 (0.39, 0.53)	0.43 (0.40, 0.47)		

Ovary excludes borderline cases or histologies 8442, 8451, 8462, 8472, and 8473.

Devcan Version 7.0.0, April 2008, National Cancer Institute (<http://srab.cancer.gov/devcan/>).

Source: Incidence data are from the SEER 17 areas (San Francisco, Connecticut, Detroit, Hawaii, Iowa, New Mexico, Seattle, Utah, Atlanta, San Jose-Monterey, Los Angeles, Alaska Native Registry, Rural Georgia, California excluding SF/SJM/LA, Kentucky, Louisiana and New Jersey). Mortality data are from the NCHS public use data file for the total US.

- Statistic could not be calculated.

A percent or confidence interval value of 0.00 represents a value that is below 0.005.

Table XXI-7 - continued
OVARY CANCER (Invasive)

Risk of Being Diagnosed With Cancer in 10, 20 and 30 Years, Lifetime Risk of Being Diagnosed with Cancer, and
 Lifetime Risk of Dying from Cancer Given Cancer Free At Current Age
 2003-2005 By Race/Ethnicity

Race/ Ethnicity	Current Age	Risk of Being Diagnosed with Cancer				Risk of Dying from Cancer	
		+10 yrs Percent (95% C.I.)	+20 yrs Percent (95% C.I.)	+30 yrs Percent (95% C.I.)	Eventually Percent (95% C.I.)	Eventually Percent (95% C.I.)	
Asian/ Pacific Islander	0	0.00 (0.00, 0.00)	0.01 (0.01, 0.02)	0.03 (0.02, 0.04)	1.09 (1.01, 1.19)	0.67 (0.62, 0.75)	
	10	0.01 (0.01, 0.01)	0.03 (0.02, 0.04)	0.08 (0.06, 0.09)	1.10 (1.02, 1.20)	0.68 (0.62, 0.75)	
	20	0.02 (0.02, 0.03)	0.07 (0.06, 0.08)	0.19 (0.18, 0.21)	1.09 (1.01, 1.19)	0.68 (0.62, 0.75)	
	30	0.04 (0.04, 0.05)	0.17 (0.15, 0.19)	0.37 (0.34, 0.40)	1.07 (0.99, 1.17)	0.68 (0.62, 0.75)	
	40	0.13 (0.11, 0.14)	0.33 (0.30, 0.35)	0.54 (0.50, 0.58)	1.03 (0.95, 1.13)	0.67 (0.62, 0.75)	
	50	0.20 (0.18, 0.22)	0.41 (0.38, 0.45)	0.65 (0.60, 0.71)	0.92 (0.84, 1.02)	0.64 (0.59, 0.72)	
	60	0.22 (0.19, 0.25)	0.47 (0.42, 0.52)	0.68 (0.61, 0.75)	0.73 (0.66, 0.84)	0.57 (0.51, 0.65)	
	70	0.26 (0.23, 0.30)	0.49 (0.43, 0.56)	- (- , -)	0.55 (0.48, 0.65)	0.45 (0.39, 0.53)	
	80	0.27 (0.22, 0.33)	- (- , -)	- (- , -)	0.34 (0.27, 0.45)	0.30 (0.24, 0.38)	
American Indian/ Alaska Native ^a	0	0.00 (0.00, 0.05)	0.01 (0.00, 0.06)	0.02 (0.00, 0.07)	1.08 (0.80, 1.66)	0.76 (0.60, 1.00)	
	10	0.01 (0.00, 0.03)	0.02 (0.00, 0.05)	0.03 (0.01, 0.07)	1.09 (0.81, 1.68)	0.78 (0.61, 1.02)	
	20	0.01 (0.00, 0.03)	0.02 (0.01, 0.05)	0.12 (0.07, 0.19)	1.09 (0.81, 1.68)	0.78 (0.61, 1.02)	
	30	0.01 (0.00, 0.04)	0.11 (0.07, 0.18)	0.31 (0.22, 0.43)	1.09 (0.81, 1.69)	0.79 (0.62, 1.03)	
	40	0.10 (0.06, 0.16)	0.30 (0.21, 0.42)	0.65 (0.48, 0.86)	1.10 (0.81, 1.71)	0.80 (0.63, 1.04)	
	50	0.21 (0.13, 0.31)	0.56 (0.40, 0.77)	0.73 (0.53, 1.00)	1.03 (0.74, 1.66)	0.78 (0.61, 1.04)	
	60	0.38 (0.24, 0.57)	0.56 (0.37, 0.81)	0.81 (0.55, 1.18)	0.87 (0.58, 1.53)	0.70 (0.52, 0.97)	
	70	0.21 (0.10, 0.40)	0.50 (0.27, 0.87)	- (- , -)	0.57 (0.30, 1.30)	0.60 (0.41, 0.91)	
	80	0.39 (0.17, 0.80)	- (- , -)	- (- , -)	0.48 (0.21, 1.43)	0.45 (0.23, 0.85)	
Hispanic ^b	0	0.00 (0.00, 0.00)	0.02 (0.01, 0.02)	0.04 (0.03, 0.04)	1.34 (1.26, 1.44)	0.83 (0.79, 0.88)	
	10	0.02 (0.01, 0.02)	0.03 (0.03, 0.04)	0.06 (0.06, 0.07)	1.35 (1.27, 1.45)	0.84 (0.80, 0.89)	
	20	0.02 (0.02, 0.02)	0.05 (0.04, 0.06)	0.15 (0.14, 0.16)	1.34 (1.26, 1.44)	0.85 (0.80, 0.89)	
	30	0.03 (0.03, 0.04)	0.13 (0.12, 0.14)	0.33 (0.31, 0.35)	1.33 (1.25, 1.42)	0.85 (0.80, 0.90)	
	40	0.10 (0.09, 0.11)	0.30 (0.28, 0.32)	0.58 (0.54, 0.62)	1.31 (1.22, 1.40)	0.84 (0.80, 0.89)	
	50	0.20 (0.18, 0.22)	0.49 (0.45, 0.52)	0.85 (0.80, 0.91)	1.22 (1.14, 1.32)	0.82 (0.78, 0.87)	
	60	0.29 (0.27, 0.33)	0.67 (0.62, 0.73)	0.97 (0.90, 1.05)	1.06 (0.97, 1.16)	0.76 (0.71, 0.81)	
	70	0.41 (0.37, 0.46)	0.74 (0.67, 0.82)	- (- , -)	0.83 (0.75, 0.93)	0.64 (0.59, 0.69)	
	80	0.41 (0.35, 0.48)	- (- , -)	- (- , -)	0.53 (0.44, 0.63)	0.46 (0.41, 0.52)	

Ovary excludes borderline cases or histologies 8442, 8451, 8462, 8472, and 8473.

Devcan Version 7.0.0, April 2008, National Cancer Institute (<http://srab.cancer.gov/devcan/>).

Source: Incidence data are from the SEER 17 areas (San Francisco, Connecticut, Detroit, Hawaii, Iowa, New Mexico, Seattle, Utah, Atlanta, San Jose-Monterey, Los Angeles, Alaska Native Registry, Rural Georgia, California excluding SF/SJM/LA, Kentucky, Louisiana and New Jersey). Mortality data are from the NCHS public use data file for the total US.

^a Underlying incidence and mortality data for American Indian/Alaska Native are based on the CHSDA (Contract Health Service Delivery Area) counties.

^b Hispanic is not mutually exclusive from whites, blacks, Asian/Pacific Islanders, and American Indians/Alaska Natives. Underlying incidence data for Hispanics are based on NHIA and exclude cases from the Alaska Native Registry and Kentucky. Underlying mortality data for Hispanics exclude deaths from Minnesota, New Hampshire and North Dakota.

- Statistic could not be calculated.

A percent or confidence interval value of 0.00 represents a value that is below 0.005.

Table XXI-8
OVARY CANCER (Invasive)

SEER INCIDENCE AND U.S. MORTALITY
AGE-ADJUSTED RATES AND TRENDS^a
 By Race/Ethnicity and Sex

<u>SEER Incidence</u>	Rate 2001-2005 ^b	Seer 13 Areas ^c	SEER 9 Areas ^d
	Rate per 100,000 persons	Trend 1996-2005	Trend 1996-2005
	Females	AAPC (%)	AAPC (%)
RACE/ETHNICITY	Females	Females	Females
All Races	13.3	-1.5*	-1.7*
White	14.1	-1.6*	-1.9*
White Hispanic ^e	12.1	-0.5	-
White Non-Hispanic ^e	14.5	-1.7*	-
Black	10.1	-0.6	-0.5*
Asian/Pacific Islander	9.8	-0.1	-
Amer Ind/Alaska Nat ^f	11.3	-	-
Hispanic ^e	11.7	-0.3	-
<u>U.S. Mortality</u> ^g	Rate 2001-2005	Trend 1996-2005 ^h	
	Rate per 100,000 persons	AAPC (%)	
	Females	Females	
RACE/ETHNICITY			
All Races	8.8	-0.5*	
White	9.2	-0.4*	
White Hispanic ^e	6.3	-0.4	
White Non-Hispanic ^e	9.4	-0.2	
Black	7.5	-0.5*	
Asian/Pacific Islander	4.9	0.2	
Amer Ind/Alaska Nat			
Total U.S.	5.7	-0.1	
CHSDA Counties	7.5	1.0	
Non-CHSDA Counties	3.4	-	
Hispanic ^e	6.0	-0.4	

The AAPC is the Average Annual Percent Change over the time interval. The AAPCs are calculated by the Joinpoint Regression Program Version 3.3, April 2008, National Cancer Institute.

- Statistic not shown. Rate based on less than 16 cases for the time interval. Trend based on less than 10 cases for at least one year within the time interval.

a Rates are age-adjusted to the 2000 US Std Population (19 age groups - Census P25-1130). Trends are based on rates age-adjusted to the 2000 US Std Population (19 age groups - Census P25-1130).

b Incidence data used in calculating the 2001-2005 rates are from the SEER 17 areas (San Francisco, Connecticut, Detroit, Hawaii, Iowa, New Mexico, Seattle, Utah, Atlanta, San Jose-Monterey, Los Angeles, Alaska Native Registry, Rural Georgia, California excluding SF/SJM/LA, Kentucky, Louisiana and New Jersey).

c The SEER 13 areas are San Francisco, Connecticut, Detroit, Hawaii, Iowa, New Mexico, Seattle, Utah, Atlanta, San Jose-Monterey, Los Angeles, Alaska Native Registry and Rural Georgia. The 1996-2005 AAPC trends are based on a Joinpoint analysis using diagnosis years 1992-2005.

d The SEER 9 areas are San Francisco, Connecticut, Detroit, Hawaii, Iowa, New Mexico, Seattle, Utah, and Atlanta. The 1996-2005 AAPC trends are based on a Joinpoint analysis using diagnosis years 1975-2005.

e Hispanic and Non-Hispanic are not mutually exclusive from whites, blacks, Asian/Pacific Islanders, and American Indians/Alaska Natives. Incidence data for Hispanics and Non-Hispanics are based on NHIA and exclude cases from the Alaska Native Registry and Kentucky. The 2001-2005 Hispanic and Non-Hispanic death rates exclude deaths from Minnesota, New Hampshire and North Dakota. The 1996-2005 Hispanic and Non-Hispanic mortality trends exclude deaths from Connecticut, Maine, Maryland, Minnesota, New Hampshire, New York, North Dakota, Oklahoma and Vermont.

f Incidence data for American Indian/Alaska Native are based on the CHSDA(Contract Health Service Delivery Area) counties.

g US Mortality Files, National Center for Health Statistics, CDC.

h The 1996-2005 mortality AAPCs are based on a Joinpoint analysis using years of death 1992-2005.

* The APC is significantly different from zero (p<.05).

Table XXI-9
 OVARY CANCER (Invasive)

AGE-ADJUSTED SEER INCIDENCE RATES^a
 By Registry, Race/Ethnicity and Age

	All Races			Whites			Blacks		
	All Ages	Ages <65	Ages 65+	All Ages	Ages <65	Ages 65+	All Ages	Ages <65	Ages 65+
<u>SEER INCIDENCE RATES^a, 2001-2005</u>									
REGISTRY									
Atlanta & Rural Georgia	12.9	7.5	49.8	13.6	7.7	54.1	11.6	7.5	40.1
Atlanta	12.8	7.5	49.0	13.5	7.7	53.4	11.5	7.5	38.8
Rural Georgia	14.0	7.2	61.0	13.7	-	65.8	13.8	-	-
California	13.2	8.2	47.9	14.0	8.6	51.7	9.4	5.7	35.1
Greater Bay Area	13.0	8.4	44.5	13.8	8.5	50.6	9.3	6.4	29.2
San Francisco-Oakland	13.3	8.6	45.2	14.1	8.6	51.8	9.5	6.6	29.8
San Jose-Monterey	12.5	8.0	43.1	13.4	8.3	48.5	-	-	-
Los Angeles	13.2	8.4	46.3	14.3	9.0	51.3	9.6	5.5	37.7
Greater California	13.3	8.0	49.9	13.9	8.4	52.1	9.2	5.5	35.1
Connecticut	13.8	8.7	48.6	14.3	9.2	49.6	7.4	4.4	28.4
Detroit	13.4	8.2	49.8	14.5	9.2	51.3	10.7	5.6	46.3
Hawaii	10.7	7.3	33.8	13.0	8.4	45.0	-	-	-
Iowa	13.6	8.4	49.4	13.6	8.4	49.6	-	-	-
Kentucky	12.3	7.7	44.1	12.5	7.8	44.9	9.2	5.8	32.8
Louisiana	11.9	6.6	48.5	12.7	7.2	50.2	10.2	5.3	44.1
New Jersey	14.9	9.6	51.4	15.7	10.3	53.4	10.6	6.0	42.0
New Mexico	12.7	7.7	47.0	12.9	7.9	47.4	-	-	-
Seattle-Puget Sound	14.9	8.2	60.5	15.4	8.5	63.2	9.3	5.2	-
Utah	13.2	7.6	51.6	13.3	7.7	52.3	-	-	-
9 SEER Areas ^b	13.4	8.2	49.4	14.1	8.5	52.5	10.3	6.1	39.1
11 SEER Areas ^b	13.3	8.2	48.4	14.1	8.6	52.0	10.1	6.0	38.5
13 SEER Areas ^b	13.3	8.2	48.4	14.1	8.6	52.1	10.1	6.0	38.8
17 SEER Areas ^b	13.3	8.2	48.9	14.1	8.6	51.7	10.1	5.8	39.6

Ovary excludes borderline cases or histologies 8442, 8451, 8462, 8472, and 8473.

^a Rates are per 100,000 and are age-adjusted to the 2000 US Std Population (19 age groups - Census P25-1130)

^b The SEER 9 areas are San Francisco, Connecticut, Detroit, Hawaii, Iowa, New Mexico, Seattle, Utah and Atlanta.

The SEER 11 areas comprise the SEER 9 areas plus San Jose-Monterey and Los Angeles.

The SEER 13 areas comprise the SEER 11 areas plus the Alaska Native Registry and Rural Georgia.

The SEER 17 areas comprise the SEER 13 areas plus California excluding SF/SJM/LA, Kentucky, Louisiana and New Jersey.

- Statistic not shown. Rate based on less than 16 cases for the time interval.

Table XXI-10
 OVARY CANCER (Invasive)

AGE-ADJUSTED SEER DEATH RATES^a
 By Registry, Race/Ethnicity and Age

	All Races			Whites			Blacks		
	All Ages	Ages <65	Ages 65+	All Ages	Ages <65	Ages 65+	All Ages	Ages <65	Ages 65+
<u>SEER DEATH RATES^a, 2001-2005</u>									
REGISTRY									
Atlanta & Rural Georgia	8.9	3.0	49.1	9.5	3.1	53.3	7.7	3.1	39.6
Atlanta	8.8	3.0	49.3	9.5	3.0	54.0	7.6	3.1	38.5
Rural Georgia	9.7	-	45.5	10.2	-	-	-	-	-
California	8.9	3.7	45.1	9.6	4.0	48.9	7.4	2.9	38.9
Greater Bay Area	8.4	3.5	41.9	9.5	3.8	48.3	7.0	2.9	34.9
San Francisco-Oakland	8.6	3.7	42.7	9.8	4.0	49.8	7.1	3.1	34.7
San Jose-Monterey	7.8	3.2	40.1	8.8	3.6	45.4	-	-	-
Los Angeles	9.0	3.8	44.6	9.9	4.1	49.6	8.3	3.2	43.5
Greater California	9.1	3.7	46.5	9.6	3.9	48.8	6.5	2.5	34.2
Connecticut	8.4	3.3	43.7	8.8	3.6	44.9	4.9	-	26.1
Detroit	8.9	3.8	43.9	9.2	3.9	45.5	8.1	3.5	40.0
Hawaii	7.0	3.3	32.5	9.9	4.3	48.7	-	-	-
Iowa	9.4	3.6	49.6	9.5	3.6	50.0	-	-	-
Kentucky	8.7	3.9	42.1	8.9	4.0	42.9	6.0	-	31.5
Louisiana	8.3	3.2	43.6	8.5	3.3	44.6	8.0	3.2	41.6
New Jersey	9.4	4.1	46.1	9.8	4.3	48.4	7.7	3.7	34.8
New Mexico	8.2	3.2	42.9	8.2	3.1	43.6	-	-	-
Seattle-Puget Sound	10.5	3.5	58.7	11.0	3.7	61.8	9.3	-	-
Utah	8.7	3.6	44.2	8.8	3.7	44.6	-	-	-
9 SEER Areas ^b	8.9	3.5	46.3	9.4	3.6	49.6	7.4	3.1	37.5
11 SEER Areas ^b	8.9	3.5	45.6	9.5	3.7	49.4	7.6	3.1	39.1
13 SEER Areas ^b	8.8	3.5	45.5	9.5	3.7	49.2	7.6	3.1	39.2
17 SEER Areas ^b	8.9	3.6	45.5	9.5	3.8	48.3	7.5	3.1	38.2
Total U.S.	8.8	3.7	44.7	9.2	3.8	46.2	7.5	3.1	37.7

^a US Mortality Files, National Center for Health Statistics, Centers for Disease Control and Prevention. Rates are per 100,000 and are age-adjusted to the 2000 US Std Population (19 age groups - Census P25-1130).

^b The SEER 9 areas are San Francisco, Connecticut, Detroit, Hawaii, Iowa, New Mexico, Seattle, Utah and Atlanta.

The SEER 11 areas comprise the SEER 9 areas plus San Jose-Monterey and Los Angeles.

The SEER 13 areas comprise the SEER 11 areas plus the Alaska Native Registry and Rural Georgia.

The SEER 17 areas comprise the SEER 13 areas plus California excluding SF/SJM/LA, Kentucky, Louisiana and New Jersey.

- Statistic not shown. Rate based on less than 16 cases for the time interval.

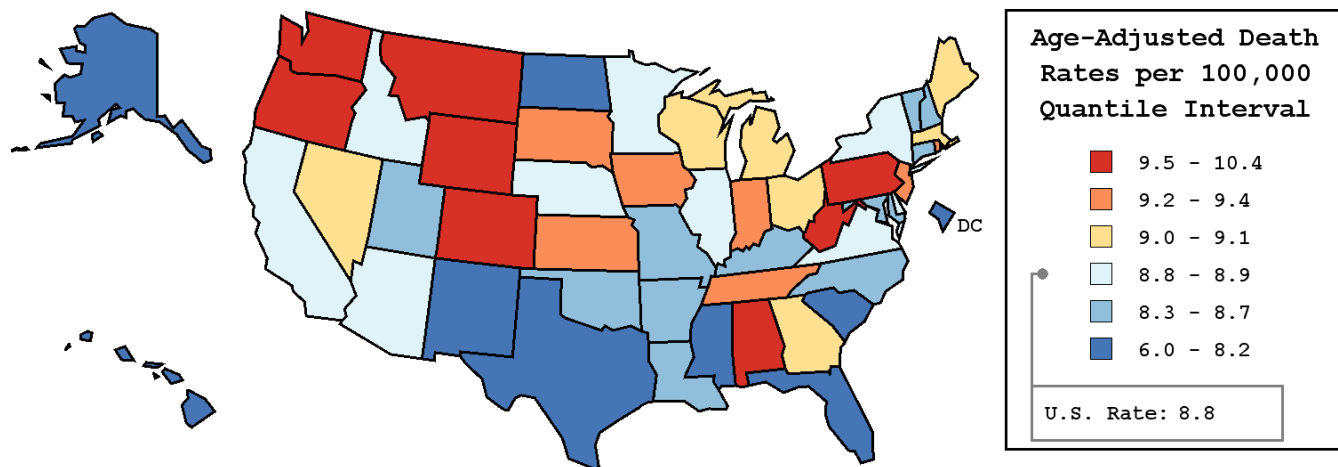
Table XXI-11
OVARY CANCER (Invasive)

AVERAGE ANNUAL AGE-ADJUSTED CANCER DEATH^a RATES BY STATE, ALL RACES, 2001-2005

Females

State	Rate	SE	Rank	PD
TOTAL U.S.	8.8	0.03		
High Five States				
Wyoming	10.4	0.88	(01)	18.2 ^c
Washington	10.3 ^b	0.25	(02)	17.0 ^c
Oregon	10.0 ^b	0.31	(03)	13.6
West Virginia	9.6	0.40	(04)	9.1
Alabama	9.6	0.27	(05)	9.1
Low Five States				
Mississippi	7.9	0.31	(47)	-10.2
South Carolina	7.9 ^b	0.26	(48)	-10.2
North Dakota	7.9	0.64	(49)	-10.2
Hawaii	7.0 ^b	0.44	(50)	-20.5 ^c
Alaska	6.0 ^b	0.78	(51)	-31.8 ^c

State	Rate	SE	Rank	PD	State	Rate	SE	Rank	PD
Alabama	9.6	0.27	(05)	9.1	Montana	9.5	0.59	(06)	8.0
Alaska	6.0 ^b	0.78	(51)	-31.8 ^c	Nebraska	8.8	0.42	(31)	0.0
Arizona	8.9	0.24	(28)	1.1	Nevada	9.1	0.41	(17)	3.4
Arkansas	8.3	0.32	(41)	-5.7	New Hampshire	8.7	0.49	(34)	-1.1
California	8.9	0.10	(24)	1.1	New Jersey	9.4	0.19	(11)	6.8
Colorado	9.5	0.30	(08)	8.0	New Mexico	8.2	0.40	(43)	-6.8
Connecticut	8.4	0.28	(38)	-4.5	New York	8.9	0.12	(27)	1.1
Delaware	8.8	0.60	(30)	0.0	North Carolina	8.7	0.19	(35)	-1.1
D.C.	8.0	0.69	(45)	-9.1	North Dakota	7.9	0.64	(49)	-10.2
Florida	8.2 ^b	0.12	(44)	-6.8	Ohio	9.1	0.16	(18)	3.4
Georgia	9.0	0.21	(22)	2.3	Oklahoma	8.4	0.29	(39)	-4.5
Hawaii	7.0 ^b	0.44	(50)	-20.5 ^c	Oregon	10.0 ^b	0.31	(03)	13.6
Idaho	8.9	0.51	(23)	1.1	Pennsylvania	9.5 ^b	0.15	(07)	8.0
Illinois	8.8	0.16	(29)	0.0	Rhode Island	9.4	0.54	(10)	6.8
Indiana	9.4	0.23	(12)	6.8	South Carolina	7.9 ^b	0.26	(48)	-10.2
Iowa	9.4	0.32	(09)	6.8	South Dakota	9.3	0.64	(13)	5.7
Kansas	9.2	0.34	(15)	4.5	Tennessee	9.2	0.23	(14)	4.5
Kentucky	8.7	0.27	(33)	-1.1	Texas	8.0 ^b	0.12	(46)	-9.1
Louisiana	8.3	0.26	(40)	-5.7	Utah	8.7	0.43	(32)	-1.1
Maine	9.1	0.47	(16)	3.4	Vermont	8.3	0.67	(42)	-5.7
Maryland	8.6	0.24	(36)	-2.3	Virginia	8.9	0.21	(26)	1.1
Massachusetts	9.0	0.22	(21)	2.3	Washington	10.3 ^b	0.25	(02)	17.0 ^c
Michigan	9.0	0.18	(20)	2.3	West Virginia	9.6	0.40	(04)	9.1
Minnesota	8.9	0.26	(25)	1.1	Wisconsin	9.1	0.24	(19)	3.4
Mississippi	7.9	0.31	(47)	-10.2	Wyoming	10.4	0.88	(01)	18.2 ^c
Missouri	8.6	0.22	(37)	-2.3					



^a US Mortality Files, National Center for Health Statistics, Centers for Disease Control and Prevention. Rates are per 100,000 and are age-adjusted to the 2000 US Std Population (19 age groups - Census P25-1130).
^b Difference between state rate and total U.S. rate is statistically significant ($p \leq .0002$).
^c Absolute percent difference between state rate and total U.S. rate is 15% or more.
SE Standard error of the rate.
PD Percent difference between state rate and total U.S. rate.

Table XXI-12
OVARY CANCER (Invasive)

Estimated United States Cancer Prevalence Counts^a on January 1, 2005
 By Race/Ethnicity and Years Since Diagnosis

Years Since Diagnosis	0 to <5	5 to <10	10 to <15	15 to <20	20 to <25	25 to <30	0 to <15 ^e	0 to <30 ^e	>=30 ^g	Complete ^h
<u>Race</u>										
All Races ^b	53,959	29,988	22,631	18,687	14,732	11,235	106,578	151,232	23,004	174,236
White ^b	47,957	26,541	20,135	16,969	13,263	9,994	94,633	134,859	19,944	154,803
Black ^b	3,431	1,927	1,493	1,122	947	912	6,850	9,831	1,987	11,818
Asian/Pacific Islander ^c	1,899	1,060	750	+	+	+	3,710	+	+	+
Hispanic ^d	3,936	1,956	1,356	+	+	+	7,248	+	+	+

Estimated prevalence percent^a on January 1, 2005, of the SEER 11 population diagnosed in the previous 15 years
 By Age at Prevalence and Race/Ethnicity

Age at Prevalence	All Ages	Age Specific (Crude)									Age-Adjusted ^f	
		0-9	10-19	20-29	30-39	40-49	50-59	60-69	70-79	80+	All Ages	
<u>Race</u>												
All Races ^c	0.0671%	0.0004%	0.0053%	0.0160%	0.0268%	0.0636%	0.1349%	0.2043%	0.2159%	0.1635%	0.0648%	
White ^c	0.0741%	0.0005%	0.0054%	0.0162%	0.0268%	0.0670%	0.1446%	0.2245%	0.2345%	0.1740%	0.0693%	
Black ^c	0.0346%	-	0.0048%	0.0105%	0.0233%	0.0419%	0.0747%	0.1054%	0.1249%	0.1174%	0.0394%	
Asian/Pacific Islander ^c	0.0563%	-	0.0055%	0.0205%	0.0286%	0.0614%	0.1242%	0.1507%	0.1564%	0.0949%	0.0543%	
Hispanic ^d	0.0356%	0.0007%	0.0057%	0.0168%	0.0218%	0.0473%	0.1043%	0.1580%	0.1794%	0.1310%	0.0519%	

- ^a Ovary excludes borderline cases or histologies 8442, 8451, 8462, 8472, and 8473.
 US 2005 cancer prevalence counts are based on 2005 cancer prevalence proportions from the SEER registries and 1/1/2005 US population estimates based on the average of 2004 and 2005 population estimates from the US Bureau of the Census. Prevalence was calculated using the First Malignant Primary Only for a person.
- ^{b c d} Statistics based on (b) SEER 9 Areas (c) SEER 11 Areas and Rural Georgia (d) NHIA for Hispanic for SEER 11 Areas and Rural Georgia.
- ^e Maximum limited-duration prevalence: 30 years for 1975-2005 SEER 9 data; 15 years for 1990-2005 SEER 11 data (used to calculate prevalence for Hispanics and Asian Pacific Islanders).
- ^f Percentages are age-adjusted to the 2000 US Standard Population (19 age groups - Census P25-1130) by 5-year age groups.
- ^{g h} (g) Cases diagnosed more than 30 years ago were estimated using the completeness index method (Capocaccia et. al. 1997, Merrill et. al. 2000). (h) Complete prevalence is obtained by summing 0 to <30 and >=30.
- Statistic not shown. Statistic based on fewer than 5 cases estimated alive in SEER for the time interval.
- + Not available.

Table XXI-13

OVARY CANCER(Invasive)

Percent Distribution and Counts by Histology among Histologically Confirmed Cases, 2001-2005
Females by Race

Histology ^a	All Races		White		Black		API		AI/AN		Hispanic ^b	
	Count	Percent	Count	Percent	Count	Percent	Count	Percent	Count	Percent	Count	Percent
Carcinoma												
Epidermoid carcinoma ^c (8051-8131)	180	0.7%	135	0.6%	-	-	29	1.8%	-	-	25	1.0%
Adenocarcinoma ^d	20,802	85.1%	17,919	85.7%	1,303	79.3%	1,395	84.9%	83	79.8%	2,018	77.6%
Adenocarcinoma, NOS (8140)	3,279	13.4%	2,777	13.3%	308	18.7%	165	10.0%	-	-	331	12.7%
Papillary adenocarcinoma, NOS (8050,8260)	797	3.3%	673	3.2%	82	5.0%	37	2.3%	-	-	61	2.3%
Clear cell adenocarcinoma (8310,9110)	1,204	4.9%	987	4.7%	41	2.5%	163	9.9%	-	-	113	4.3%
Endometrioid carcinoma (8380-8383,8570)	2,717	11.1%	2,301	11.0%	131	8.0%	255	15.5%	-	-	252	9.7%
Cystadenocarcinoma, NOS (8440,8450)	182	0.7%	148	0.7%	21	1.3%	-	-	-	-	-	-
Serous cystadenocarcinoma (8441)	2,312	9.5%	2,006	9.6%	115	7.0%	173	10.5%	-	-	192	7.4%
Papillary serous cystadenocarcinoma (8460-8462)	7,690	31.5%	6,853	32.8%	427	26.0%	353	21.5%	28	26.9%	731	28.1%
Mucinous cystadenocarcinoma (8470-8473)	638	2.6%	519	2.5%	38	2.3%	70	4.3%	-	-	96	3.7%
Mucinous adenocarcinoma (8480,8482)	871	3.6%	696	3.3%	84	5.1%	76	4.6%	-	-	107	4.1%
Mucin-producing adenocarcinoma(8481)	94	0.4%	80	0.4%	-	-	-	-	-	-	-	-
Other	1,018	4.2%	879	4.2%	47	2.9%	87	5.3%	-	-	107	4.1%
Other specific carcinomas ^e	526	2.2%	410	2.0%	86	5.2%	26	1.6%	-	-	83	3.2%
Stromal cell tumor (8620-8631,8650)	309	1.3%	225	1.1%	67	4.1%	-	-	-	-	52	2.0%
Other	178	0.7%	152	0.7%	-	-	-	-	-	-	28	1.1%
Unspecified, "Carcinoma, NOS" (8010,8020-8022)	1,069	4.4%	913	4.4%	80	4.9%	55	3.3%	-	-	124	4.8%

Source: SEER 17 areas (San Francisco, Connecticut, Detroit, Hawaii, Iowa, New Mexico, Seattle, Utah, Atlanta, San Jose-Monterey, Los Angeles, Alaska Native Registry, Rural Georgia, California excluding SF/SJM/LA, Kentucky, Louisiana and New Jersey). Percents may not sum to 100 due to rounding.

- Statistic not shown due to fewer than 16 cases during the time period.

^a Excludes Kaposi Sarcoma, mesothelioma, lymphomas, leukemias, myelomas, lymphoreticular, and immunoproliferative diseases.

^b Hispanic is not mutually exclusive from whites, blacks, Asian/Pacific Islanders, and American Indians/Alaska Natives.

Underlying incidence data for Hispanics are based on NHIA and exclude cases from the Alaska Native Registry and Kentucky.

^c Epidermoid carcinoma includes squamous, basal, and transitional cell carcinomas.

^d Adenocarcinoma includes histologies 8050, 8140-8147, 8160-8162, 8180-8221, 8250-8507, 8514, 8520-8551, 8560, 8570-8574, 8576, 8940-8941, 9110.

^e Other specific carcinomas includes histologies 8011-8015, 8030-8046, 8150-8155, 8170-8175, 8230-8231, 8247-8249, 8508, 8510-8513, 8561-8562, 8575, 8580-8671.

Table XXI-13 - continued

OVARY CANCER(Invasive)

Percent Distribution and Counts by Histology among Histologically Confirmed Cases, 2001-2005
Females by Race

Histology ^a	All Races		White		Black		API		AI/AN		Hispanic ^b	
	Count	Percent	Count	Percent	Count	Percent	Count	Percent	Count	Percent	Count	Percent
Sarcoma and other soft tissue tumors (8680-8713,8800-8921,8990-8991,9040-9044,9120-9136,9141-9340,9540-9582)	81	0.3%	61	0.3%	18	1.1%	-	-	-	-	-	-
Other specific types (8240-8246,8720-8790,8930-8936,8950-8983,9000-9030,9060-9105,9350-9364,9380-9513,9530-9539)	1,583	6.5%	1,313	6.3%	123	7.5%	131	8.0%	-	-	306	11.8%
Mullerian mixed tumor (8950-8951,8980)	677	2.8%	596	2.8%	36	2.2%	40	2.4%	-	-	63	2.4%
Teratoma, malignant (9080-9085,9102)	336	1.4%	251	1.2%	37	2.3%	44	2.7%	-	-	108	4.2%
Other	570	2.3%	466	2.2%	50	3.0%	47	2.9%	-	-	135	5.2%
Unspecified (8000-8005)	191	0.8%	163	0.8%	19	1.2%	-	-	-	-	32	1.2%
Total ^c	24,432	100.0%	20,914	100.0%	1,643	100.0%	1,643	100.0%	104	100.0%	2,602	100.0%

Source: SEER 17 areas (San Francisco, Connecticut, Detroit, Hawaii, Iowa, New Mexico, Seattle, Utah, Atlanta, San Jose-Monterey, Los Angeles, Alaska Native Registry, Rural Georgia, California excluding SF/SJM/LA, Kentucky, Louisiana and New Jersey). Percents may not sum to 100 due to rounding.

- Statistic not shown due to fewer than 16 cases during the time period.

^a Excludes Kaposi Sarcoma, mesothelioma, lymphomas, leukemias, myelomas, lymphoreticular, and immunoproliferative diseases.

^b Hispanic is not mutually exclusive from whites, blacks, Asian/Pacific Islanders, and American Indians/Alaska Natives.

Underlying incidence data for Hispanics are based on NHIA and exclude cases from the Alaska Native Registry and Kentucky.

^c Total includes carcinoma cases from the previous page.

SEER Incidence, Delay Adjusted Incidence and US Death Rates^a Ovary Cancer, by Race

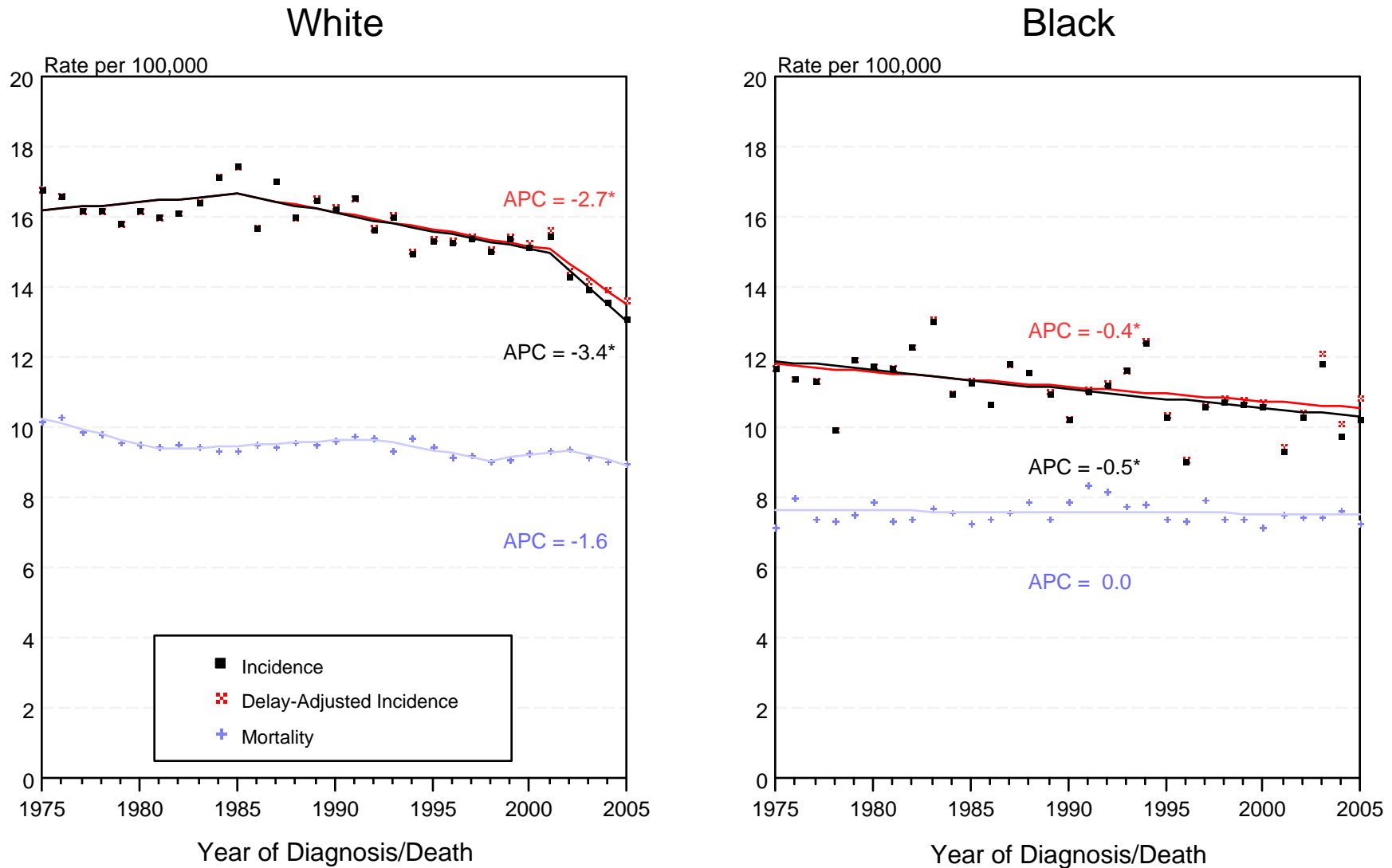


Figure XXI-1

^a Source: SEER 9 areas and US Mortality Files (National Center for Health Statistics, CDC). Rates are age-adjusted to the 2000 US Std Population (19 age groups - Census P25-1103). Ovary excludes borderline cases or histologies 8442, 8451, 8462, 8472, and 8473. Regression lines and APCs are calculated using the Joinpoint Regression Program Version 3.3.1, April 2008, National Cancer Institute. The APC is the Annual Percent Change for the regression line segments. The APC shown on the graph is for the most recent trend.

* The APC is significantly different from zero ($p < 0.05$).

SEER Incidence, Delay Adjusted Incidence and US Death Rates^a Ovary Cancer, by Age and Race

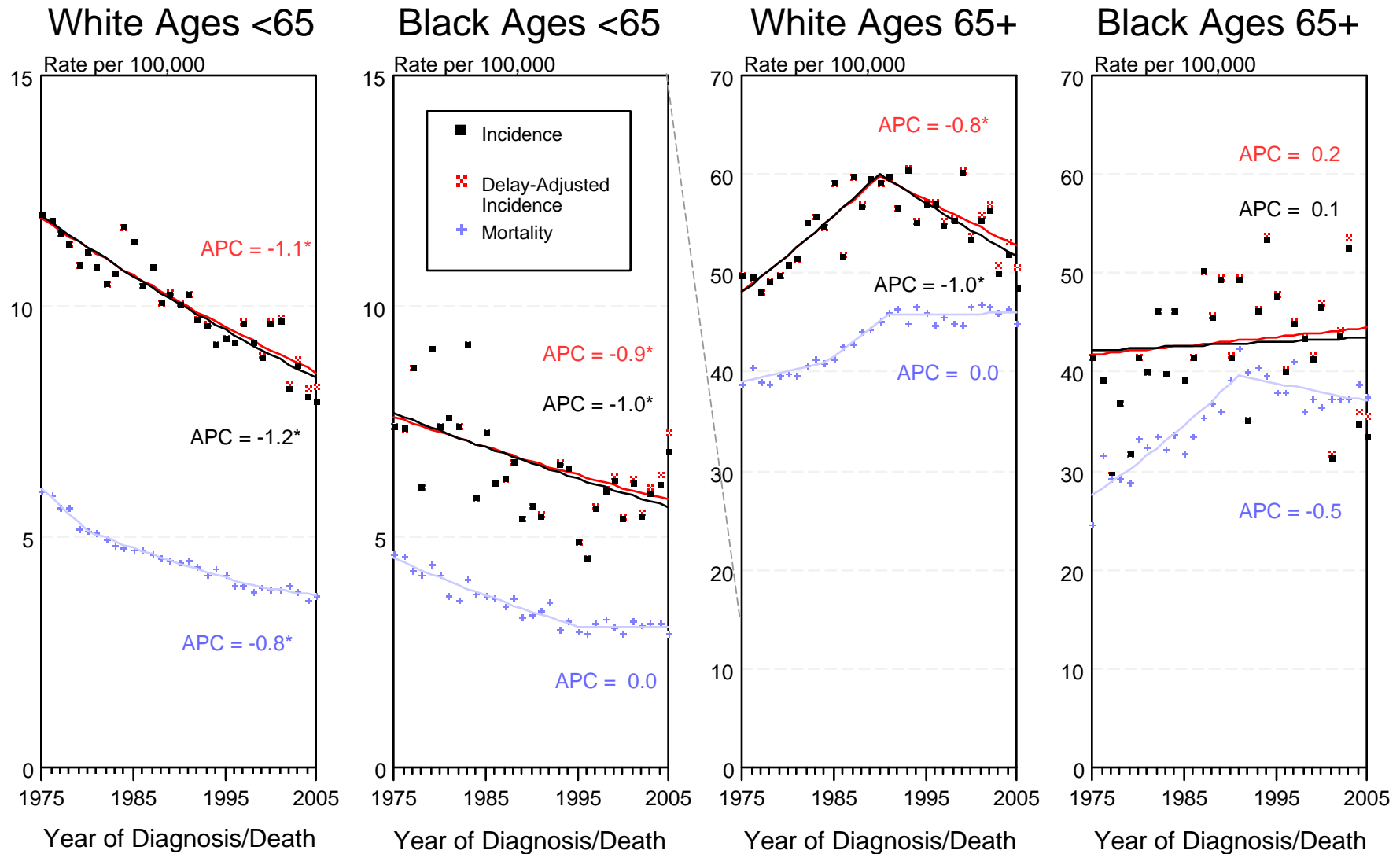


Figure XXI-2

^a Source: SEER 9 areas and US Mortality Files (National Center for Health Statistics, CDC). Rates are age-adjusted to the 2000 US Std Population (19 age groups - Census P25-1103). Ovary excludes borderline cases or histologies 8442, 8451, 8462, 8472, and 8473. Regression lines and APCs are calculated using the Joinpoint Regression Program Version 3.3.1, April 2008, National Cancer Institute. The APC is the Annual Percent Change for the regression line segments. The APC shown on the graph is for the most recent trend.

* The APC is significantly different from zero ($p < 0.05$).

SEER Incidence and US Death Rates^a Ovary Cancer

Joinpoint Analyses for Whites and Blacks from 1975-2005
and for Asian/Pacific Islanders, American Indians/Alaska Natives and Hispanics from 1992-2005

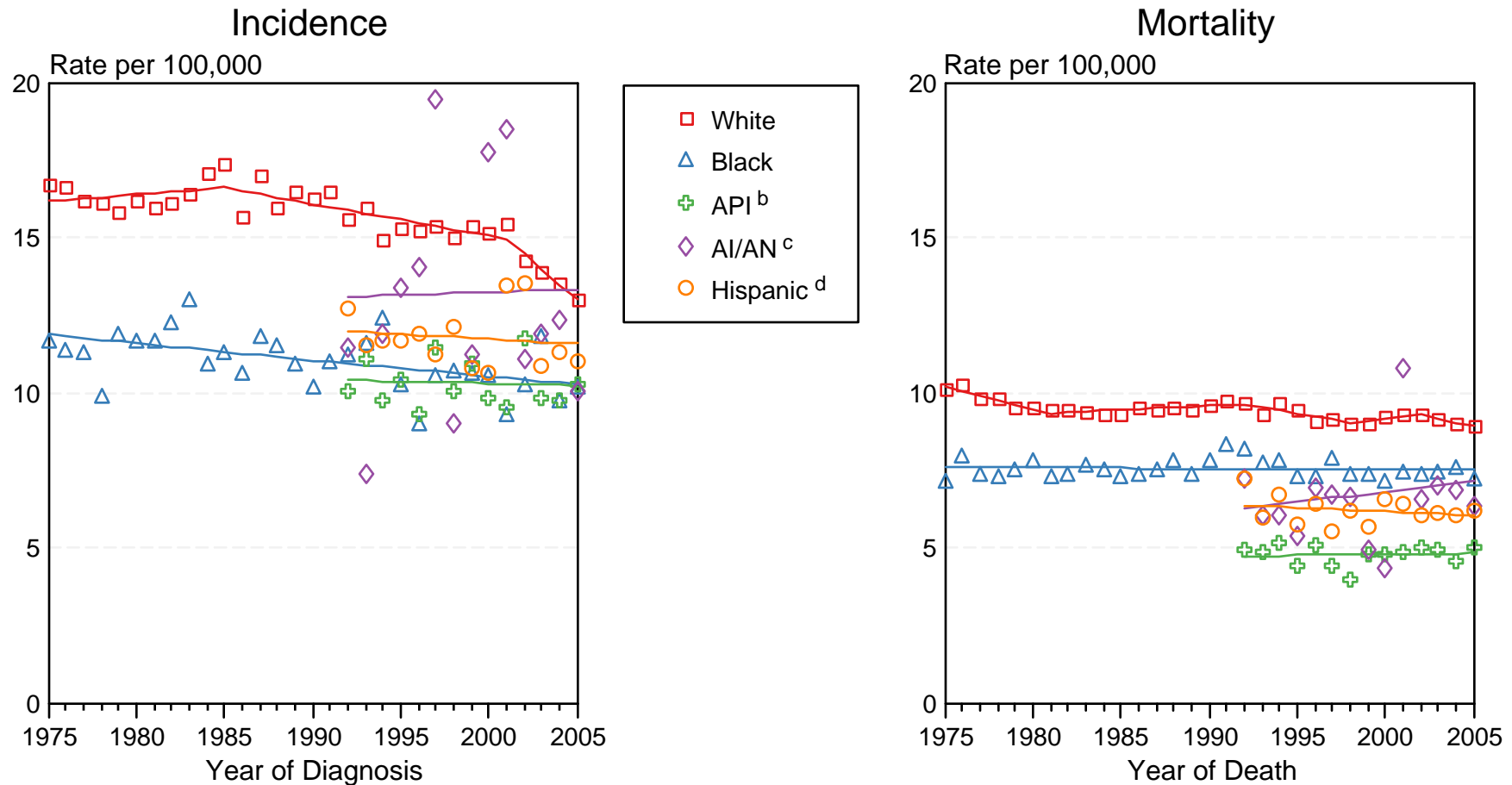


Figure XXI-3

Source: Incidence data for whites and blacks are from the SEER 9 areas (San Francisco, Connecticut, Detroit, Hawaii, Iowa, New Mexico, Seattle, Utah, Atlanta). Incidence data for Asian/Pacific Islanders, American Indians/Alaska Natives and Hispanics are from the SEER 13 Areas (SEER 9 Areas, San Jose-Monterey, Los Angeles, Alaska Native Registry and Rural Georgia). Ovary excludes borderline cases or histologies 8442, 8451, 8462, 8472, and 8473. Mortality data are from US Mortality Files, National Center for Health Statistics, CDC.

^a Rates are age-adjusted to the 2000 US Std Population (19 age groups - Census P25-1103).

Regression lines are calculated using the Joinpoint Regression Program Version 3.3.1, April 2008, National Cancer Institute. Joinpoint analyses for Whites and Blacks during the 1975-2005 period allow a maximum of 4 joinpoints. Analyses for other ethnic groups during the period 1992-2005 allow a maximum of 3 joinpoints.

^b API = Asian/Pacific Islander.

^c AI/AN = American Indian/Alaska Native. Rates for American Indian/Alaska Native are based on the CHSDA(Contract Health Service Delivery Area) counties.

^d Hispanic is not mutually exclusive from whites, blacks, Asian/Pacific Islanders, and American Indians/Alaska Natives. Incidence data for Hispanics are based on NHIA and exclude cases from the Alaska Native Registry. Mortality data for Hispanics exclude cases from Connecticut, Maine, Maryland, Minnesota, New Hampshire, New York, North Dakota, Oklahoma, and Vermont.