

Table 24.1
Cancer of the Stomach (Invasive)

Trends in SEER Incidence^{ab} and U.S. Mortality^c Using the Joinpoint Regression Program,
1975-2006 With up to Four Joinpoints, 1992-2006 With up to Two Joinpoints,
Both Sexes by Race/Ethnicity

	<u>Joinpoint Trend 1</u>		<u>Joinpoint Trend 2</u>		<u>Joinpoint Trend 3</u>		<u>Joinpoint Trend 4</u>		<u>Joinpoint Trend 5</u>		<u>AAPC^d</u>	
	Years	APC	Years	APC	Years	APC	Years	APC	Years	APC	1997-2006	2002-2006
<u>SEER 9 Delay-Adjusted Incidence^a, 1975-2006</u>												
All Races	1975-2006	-1.6*									-1.6*	-1.6*
White	1975-2006	-1.8*									-1.8*	-1.8*
Black	1975-2006	-1.4*									-1.4*	-1.4*
<u>SEER 13 Delay-Adjusted Incidence^b, 1992-2006</u>												
All Races	1992-2006	-1.4*									-1.4*	-1.4*
White	1992-2006	-1.3*									-1.3*	-1.3*
Black	1992-2006	-1.8*									-1.8*	-1.8*
<u>SEER 9 Observed Incidence^a, 1975-2006</u>												
All Races	1975-2006	-1.6*									-1.6*	-1.6*
White	1975-2006	-1.9*									-1.9*	-1.9*
Black	1975-2006	-1.4*									-1.4*	-1.4*
<u>SEER 13 Observed Incidence^b, 1992-2006</u>												
All Races	1992-2006	-1.4*									-1.4*	-1.4*
White	1992-2006	-1.4*									-1.4*	-1.4*
White NH ^{ef}	1992-2006	-1.8*									-1.8*	-1.8*
Black	1992-2006	-1.9*									-1.9*	-1.9*
Black NH ^{ef}	1992-2006	-1.9*									-1.9*	-1.9*
API ^e	1992-2006	-3.2*									-3.2*	-3.2*
AI/AN ^{eg}	1992-2006	0.6									0.6	0.6
Hispanic ^f	1992-2006	-1.7*									-1.7*	-1.7*
<u>U.S. Cancer Mortality^c, 1975-2006</u>												
All Races	1975-1987	-2.6*	1987-1990	-0.2	1990-2006	-3.1*					-3.1*	-3.1*
White	1975-1987	-2.8*	1987-1990	-0.7	1990-2006	-3.3*					-3.3*	-3.3*
Black	1975-1987	-1.6*	1987-1990	1.0	1990-2000	-2.5*	2000-2006	-4.2*			-3.7*	-4.2*
<u>U.S. Cancer Mortality^c, 1992-2006</u>												
All Races	1992-1995	-2.1*	1995-2006	-3.3*							-3.3*	-3.3*
White	1992-2006	-3.2*									-3.2*	-3.2*
White NH ^{ef}	1992-1995	-2.1*	1995-2006	-3.7*							-3.7*	-3.7*
Black	1992-1999	-2.3*	1999-2006	-4.1*							-3.7*	-4.1*
Black NH ^{ef}	1992-2000	-2.0*	2000-2006	-4.3*							-3.6*	-4.3*
API ^e	1992-2006	-3.9*									-3.9*	-3.9*
AI/AN ^{eg}	1992-2006	-1.0									-1.0	-1.0
Hispanic ^f	1992-2004	-1.8*	2004-2006	-7.7							-3.2*	-4.8*

Joinpoint Regression Program Version 3.3.1, April 2008, National Cancer Institute. (<http://srab.cancer.gov/joinpoint/>).

The APC is the Annual Percent Change based on rates age-adjusted to the 2000 US Std Population (19 age groups - Census P25-1130).

^a Trends are from the SEER 9 areas (San Francisco, Connecticut, Detroit, Hawaii, Iowa, New Mexico, Seattle, Utah, and Atlanta).

^b Trends are from the SEER 13 areas (SEER 9 Areas, Los Angeles, San Jose-Monterey, Rural Georgia, and the Alaska Native Registry).

^c Trends are from US Mortality Files, National Center for Health Statistics, Centers for Disease Control and Prevention.

^d The AAPC is the Average Annual Percent Change and is based on the APCs calculated by Joinpoint.

^e API - Asian/Pacific Islander, AI/AN - American Indian/Alaska Native, NH - Non-Hispanic

^f Hispanic and Non-Hispanic are not mutually exclusive from whites, blacks, Asian/Pacific Islanders, and American Indians/Alaska

Natives. Incidence data for Hispanics and Non-Hispanics are based on NHIA and exclude cases from the Alaska Native Registry.

The Hispanic and Non-Hispanic mortality trends exclude deaths from CT, DC, ME, MD, MN, NH, NY, ND, OK and VT.

^g Data for American Indian/Alaska Native are based on the CHSDA (Contract Health Service Delivery Area) counties.

* The APC/AAPC is significantly different from zero ($p < .05$).

- Joinpoint regression line analysis could not be performed on data series.

Table 24.2
Cancer of the Stomach (Invasive)

Trends in SEER Incidence^{ab} and U.S. Mortality^c Using the Joinpoint Regression Program,
1975-2006 With up to Four Joinpoints, 1992-2006 With up to Two Joinpoints,
Males by Race/Ethnicity

	Joinpoint Trend 1		Joinpoint Trend 2		Joinpoint Trend 3		Joinpoint Trend 4		Joinpoint Trend 5		AAPC ^d	
	Years	APC	Years	APC	Years	APC	Years	APC	Years	APC	1997-2006	2002-2006
<u>SEER 9 Delay-Adjusted Incidence^a, 1975-2006</u>												
All Races	1975-1988	-1.2*	1988-2006	-2.0*							-2.0*	-2.0*
White	1975-2006	-1.9*									-1.9*	-1.9*
Black	1975-1982	2.3	1982-2006	-2.1*							-2.1*	-2.1*
<u>SEER 13 Delay-Adjusted Incidence^b, 1992-2006</u>												
All Races	1992-2006	-1.9*									-1.9*	-1.9*
White	1992-2006	-1.9*									-1.9*	-1.9*
Black	1992-2006	-2.4*									-2.4*	-2.4*
<u>SEER 9 Observed Incidence^a, 1975-2006</u>												
All Races	1975-1988	-1.2*	1988-2006	-2.0*							-2.0*	-2.0*
White	1975-2006	-1.9*									-1.9*	-1.9*
Black	1975-1982	2.4	1982-2006	-2.2*							-2.2*	-2.2*
<u>SEER 13 Observed Incidence^b, 1992-2006</u>												
All Races	1992-2006	-2.0*									-2.0*	-2.0*
White	1992-2006	-2.0*									-2.0*	-2.0*
White NH ^{ef}	1992-2006	-2.2*									-2.2*	-2.2*
Black	1992-2006	-2.5*									-2.5*	-2.5*
Black NH ^{ef}	1992-2006	-2.5*									-2.5*	-2.5*
API ^e	1992-2006	-3.0*									-3.0*	-3.0*
AI/AN ^{eg}	1992-2006	0.5									0.5	0.5
Hispanic ^f	1992-2006	-2.6*									-2.6*	-2.6*
<u>U.S. Cancer Mortality^c, 1975-2006</u>												
All Races	1975-1994	-2.1*	1994-2006	-3.7*							-3.7*	-3.7*
White	1975-1994	-2.3*	1994-2006	-3.9*							-3.9*	-3.9*
Black	1975-1994	-1.2*	1994-2006	-3.6*							-3.6*	-3.6*
<u>U.S. Cancer Mortality^c, 1992-2006</u>												
All Races	1992-1994	-1.3	1994-2006	-3.7*							-3.7*	-3.7*
White	1992-1994	-1.6	1994-2006	-3.9*							-3.9*	-3.9*
White NH ^{ef}	1992-1995	-1.6	1995-2006	-4.2*							-4.2*	-4.2*
Black	1992-1996	-1.3	1996-2006	-3.9*							-3.9*	-3.9*
Black NH ^{ef}	1992-2006	-3.1*									-3.1*	-3.1*
API ^e	1992-2006	-3.9*									-3.9*	-3.9*
AI/AN ^{eg}	1992-2006	-0.6									-0.6	-0.6
Hispanic ^f	1992-2004	-2.1*	2004-2006	-10.1*							-4.0*	-6.2*

Joinpoint Regression Program Version 3.3.1, April 2008, National Cancer Institute. (<http://srab.cancer.gov/joinpoint/>).

The APC is the Annual Percent Change based on rates age-adjusted to the 2000 US Std Population (19 age groups - Census P25-1130).

^a Trends are from the SEER 9 areas (San Francisco, Connecticut, Detroit, Hawaii, Iowa, New Mexico, Seattle, Utah, and Atlanta).

^b Trends are from the SEER 13 areas (SEER 9 Areas, Los Angeles, San Jose-Monterey, Rural Georgia, and the Alaska Native Registry).

^c Trends are from US Mortality Files, National Center for Health Statistics, Centers for Disease Control and Prevention.

^d The AAPC is the Average Annual Percent Change and is based on the APCs calculated by Joinpoint.

^e API - Asian/Pacific Islander, AI/AN - American Indian/Alaska Native, NH - Non-Hispanic

^f Hispanic and Non-Hispanic are not mutually exclusive from whites, blacks, Asian/Pacific Islanders, and American Indians/Alaska

Natives. Incidence data for Hispanics and Non-Hispanics are based on NHIA and exclude cases from the Alaska Native Registry.

The Hispanic and Non-Hispanic mortality trends exclude deaths from CT, DC, ME, MD, MN, NH, NY, ND, OK and VT.

^g Data for American Indian/Alaska Native are based on the CHSDA (Contract Health Service Delivery Area) counties.

* The APC/AAPC is significantly different from zero ($p < .05$).

- Joinpoint regression line analysis could not be performed on data series.

Table 24.3
Cancer of the Stomach (Invasive)

Trends in SEER Incidence^{ab} and U.S. Mortality^c Using the Joinpoint Regression Program,
1975-2006 With up to Four Joinpoints, 1992-2006 With up to Two Joinpoints,
Females by Race/Ethnicity

	Joinpoint Trend 1		Joinpoint Trend 2		Joinpoint Trend 3		Joinpoint Trend 4		Joinpoint Trend 5		AAPC ^d	
	Years	APC	Years	APC	Years	APC	Years	APC	Years	APC	1997-2006	2002-2006
<u>SEER 9 Delay-Adjusted Incidence^a, 1975-2006</u>												
All Races	1975-2006	-1.6*									-1.6*	-1.6*
White	1975-1995	-2.3*	1995-2006	-0.9							-0.9*	-0.9*
Black	1975-2006	-0.9*									-0.9*	-0.9*
<u>SEER 13 Delay-Adjusted Incidence^b, 1992-2006</u>												
All Races	1992-2006	-0.8*									-0.8*	-0.8*
White	1992-2006	-0.7*									-0.7*	-0.7*
Black	1992-2006	-1.0									-1.0	-1.0
<u>SEER 9 Observed Incidence^a, 1975-2006</u>												
All Races	1975-2006	-1.6*									-1.6*	-1.6*
White	1975-2006	-2.0*									-2.0*	-2.0*
Black	1975-2006	-1.0*									-1.0*	-1.0*
<u>SEER 13 Observed Incidence^b, 1992-2006</u>												
All Races	1992-2006	-0.8*									-0.8*	-0.8*
White	1992-2006	-0.9*									-0.9*	-0.9*
White NH ^{ef}	1992-2006	-1.5*									-1.5*	-1.5*
Black	1992-2006	-1.1									-1.1	-1.1
Black NH ^{ef}	1992-2006	-1.1									-1.1	-1.1
API ^e	1992-2006	-3.1*									-3.1*	-3.1*
AI/AN ^{eg}	1992-2006	1.1									1.1	1.1
Hispanic ^f	1992-2006	-0.7*									-0.7*	-0.7*
<u>U.S. Cancer Mortality^c, 1975-2006</u>												
All Races	1975-1987	-2.8*	1987-1990	-0.3	1990-2006	-2.7*					-2.7*	-2.7*
White	1975-1987	-3.1*	1987-1990	-1.0	1990-2006	-2.9*					-2.9*	-2.9*
Black	1975-1999	-1.2*	1999-2006	-4.4*							-3.7*	-4.4*
<u>U.S. Cancer Mortality^c, 1992-2006</u>												
All Races	1992-2006	-2.7*									-2.7*	-2.7*
White	1992-2006	-2.9*									-2.9*	-2.9*
White NH ^{ef}	1992-2006	-3.2*									-3.2*	-3.2*
Black	1992-2000	-2.0*	2000-2006	-4.4*							-3.6*	-4.4*
Black NH ^{ef}	1992-2000	-1.3*	2000-2006	-4.8*							-3.6*	-4.8*
API ^e	1992-2006	-3.7*									-3.7*	-3.7*
AI/AN ^{eg}	1992-2002	3.4	2002-2006	-16.7*							-6.1	-16.7*
Hispanic ^f	1992-2006	-1.8*									-1.8*	-1.8*

Joinpoint Regression Program Version 3.3.1, April 2008, National Cancer Institute. (<http://srab.cancer.gov/joinpoint/>).

The APC is the Annual Percent Change based on rates age-adjusted to the 2000 US Std Population (19 age groups - Census P25-1130).

^a Trends are from the SEER 9 areas (San Francisco, Connecticut, Detroit, Hawaii, Iowa, New Mexico, Seattle, Utah, and Atlanta).

^b Trends are from the SEER 13 areas (SEER 9 Areas, Los Angeles, San Jose-Monterey, Rural Georgia, and the Alaska Native Registry).

^c Trends are from US Mortality Files, National Center for Health Statistics, Centers for Disease Control and Prevention.

^d The AAPC is the Average Annual Percent Change and is based on the APCs calculated by Joinpoint.

^e API - Asian/Pacific Islander, AI/AN - American Indian/Alaska Native, NH - Non-Hispanic

^f Hispanic and Non-Hispanic are not mutually exclusive from whites, blacks, Asian/Pacific Islanders, and American Indians/Alaska

Natives. Incidence data for Hispanics and Non-Hispanics are based on NHIA and exclude cases from the Alaska Native Registry.

The Hispanic and Non-Hispanic mortality trends exclude deaths from CT, DC, ME, MD, MN, NH, NY, ND, OK and VT.

^g Data for American Indian/Alaska Native are based on the CHSDA (Contract Health Service Delivery Area) counties.

* The APC/AAPC is significantly different from zero ($p < .05$).

- Joinpoint regression line analysis could not be performed on data series.

Table 24.4
Cancer of the Stomach (Invasive)

Age-adjusted SEER Incidence^a Rates by Year, Race and Sex

Year of Diagnosis:	All Races			Whites			Blacks		
	Total	Males	Females	Total	Males	Females	Total	Males	Females
1975	11.68	17.14	7.85	10.66	15.98	6.99	17.05	24.76	11.46
1976	12.21	17.52	8.33	11.18	15.99	7.68	15.82	23.55	10.12
1977	11.54	16.58	7.87	10.34	15.02	6.98	17.34	24.68	11.63
1978	11.49	16.49	7.95	10.29	15.00	6.98	17.59	22.94	13.46
1979	12.00	17.40	8.25	10.76	15.58	7.49	18.51	28.20	11.73
1980	11.29	17.13	7.18	10.33	15.68	6.57	15.12	26.32	7.32
1981	11.14	16.60	7.39	10.06	15.07	6.70	17.61	27.84	10.42
1982	10.92	16.29	7.12	9.71	14.58	6.33	19.03	31.17	10.33
1983	10.95	15.86	7.46	9.54	13.69	6.60	18.01	27.78	11.16
1984	10.57	15.32	7.31	9.43	13.90	6.42	16.47	21.84	12.35
1985	10.22	15.09	6.88	8.95	13.35	5.98	16.44	23.50	11.34
1986	10.21	15.00	6.81	9.06	13.52	5.88	16.47	23.17	11.88
1987	10.20	15.06	6.81	8.99	13.27	5.96	17.06	26.68	10.69
1988	10.19	15.49	6.47	8.80	13.58	5.47	16.22	24.75	10.09
1989	10.00	15.15	6.33	8.73	13.47	5.35	15.78	23.16	10.66
1990	9.27	13.73	6.19	7.95	11.92	5.20	14.44	21.78	9.43
1991	9.70	14.19	6.58	8.30	12.32	5.51	16.49	25.62	10.52
1992	9.19	13.37	6.14	7.96	11.66	5.23	14.02	19.90	9.84
1993	9.01	13.61	5.78	7.66	11.61	4.87	14.37	23.70	8.38
1994	9.01	13.60	5.70	7.70	11.76	4.76	15.03	24.74	8.76
1995	8.33	12.57	5.23	7.25	11.24	4.35	13.33	18.88	9.50
1996	8.49	12.60	5.53	7.32	11.02	4.69	14.48	22.59	8.91
1997	8.61	12.71	5.62	7.16	10.80	4.50	15.68	22.35	10.92
1998	8.57	12.22	5.91	7.16	10.54	4.71	14.98	20.16	11.45
1999	8.60	12.07	6.03	7.40	10.52	5.05	13.00	18.17	9.84
2000	8.10	11.68	5.42	6.79	9.87	4.47	12.83	19.79	8.16
2001	7.73	11.20	5.11	6.44	9.59	4.02	12.91	18.30	9.01
2002	7.91	11.21	5.46	6.68	9.83	4.32	12.84	15.44	10.81
2003	7.69	10.73	5.37	6.50	9.24	4.35	13.03	17.90	9.72
2004	7.79	11.13	5.26	6.90	9.87	4.58	10.78	16.14	7.26
2005	7.31	10.45	4.89	6.33	9.07	4.14	10.94	17.14	7.01
2006	7.34	10.30	5.05	6.31	8.99	4.18	11.88	16.37	8.75
1975-2006	9.34	13.61	6.24	8.17	12.04	5.35	14.74	21.75	9.90

^a SEER 9 areas (San Francisco, Connecticut, Detroit, Hawaii, Iowa, New Mexico, Seattle, Utah, and Atlanta).
Rates are per 100,000 and are age-adjusted to the 2000 US Std Population (19 age groups - Census P25-1130).
- Statistic not shown. Rate based on less than 16 cases for the time interval.

Table 24.5
Cancer of the Stomach (Invasive)

Age-adjusted U.S. Death^a Rates by Year, Race and Sex

Year of Death:	All Races			Whites			Blacks		
	Total	Males	Females	Total	Males	Females	Total	Males	Females
1975	8.51	12.27	5.94	7.93	11.37	5.62	13.87	21.05	8.61
1976	8.30	12.02	5.73	7.74	11.17	5.41	13.52	20.22	8.59
1977	7.91	11.48	5.45	7.33	10.68	5.05	13.36	19.46	9.00
1978	7.73	11.02	5.46	7.19	10.24	5.12	12.61	18.67	8.31
1979	7.56	10.98	5.23	6.99	10.17	4.85	12.86	18.73	8.71
1980	7.36	10.57	5.15	6.82	9.76	4.80	12.16	18.27	7.96
1981	7.25	10.58	4.98	6.68	9.80	4.56	12.48	18.06	8.60
1982	7.02	10.26	4.86	6.46	9.37	4.53	12.17	19.24	7.44
1983	6.83	9.90	4.76	6.24	9.02	4.38	12.27	18.39	8.08
1984	6.78	9.89	4.68	6.21	9.07	4.28	11.92	17.95	7.93
1985	6.51	9.54	4.44	5.96	8.75	4.07	11.54	17.03	7.82
1986	6.36	9.44	4.24	5.77	8.58	3.83	11.39	17.39	7.42
1987	6.18	9.11	4.18	5.62	8.32	3.77	11.29	16.97	7.55
1988	6.08	8.81	4.17	5.51	7.92	3.82	11.05	17.02	7.07
1989	6.21	9.18	4.16	5.60	8.28	3.77	11.49	17.73	7.33
1990	6.07	8.86	4.16	5.45	7.95	3.73	11.46	17.24	7.71
1991	6.00	8.86	4.01	5.39	7.97	3.59	11.55	17.64	7.55
1992	5.63	8.14	3.90	5.01	7.30	3.43	10.71	15.55	7.53
1993	5.62	8.19	3.83	5.03	7.34	3.41	10.70	16.26	7.11
1994	5.41	7.87	3.70	4.81	7.04	3.26	10.26	15.37	6.97
1995	5.35	7.70	3.71	4.72	6.89	3.21	10.36	14.89	7.37
1996	5.13	7.43	3.54	4.53	6.60	3.10	9.99	15.09	6.80
1997	4.94	7.16	3.37	4.34	6.33	2.92	9.66	14.64	6.50
1998	4.81	6.83	3.39	4.25	6.06	2.97	9.29	13.72	6.42
1999	4.64	6.59	3.25	4.05	5.78	2.79	9.25	13.73	6.47
2000	4.54	6.38	3.23	3.97	5.62	2.78	8.94	12.75	6.49
2001	4.36	6.08	3.09	3.83	5.37	2.70	8.29	12.00	5.83
2002	4.24	5.94	3.00	3.69	5.26	2.55	8.42	12.04	6.10
2003	4.13	5.71	2.96	3.62	5.01	2.58	7.82	11.43	5.41
2004	3.98	5.54	2.84	3.49	4.86	2.48	7.56	11.19	5.21
2005	3.79	5.25	2.71	3.30	4.56	2.36	7.22	10.71	4.96
2006	3.67	5.04	2.65	3.20	4.44	2.27	6.84	9.86	4.89
1975-2006	5.67	8.13	3.94	5.12	7.35	3.54	10.37	15.46	7.00

^a US Mortality Files, National Center for Health Statistics, Centers for Disease Control and Prevention.
Rates are per 100,000 and are age-adjusted to the 2000 US Std Population (19 age groups - Census P25-1130).
- Statistic not shown. Rate based on less than 16 cases for the time interval.

Table 24.6
Cancer of the Stomach (Invasive)SEER Incidence^a and U.S. Death^b Rates, Age-Adjusted and Age-Specific Rates, by Race and Sex

	All Races			Whites			Blacks		
	Total	Males	Females	Total	Males	Females	Total	Males	Females
<u>SEER Incidence</u>									
<u>Age at Diagnosis</u>									
Age-Adjusted Rates, 2002-2006									
All ages	7.9	11.0	5.5	6.9	9.8	4.7	12.1	16.8	9.0
Under 65	3.0	3.8	2.1	2.6	3.4	1.8	4.2	5.5	3.1
65 and over	42.2	61.0	29.1	36.9	53.9	24.8	66.8	94.4	49.6
All ages (IARC world std) ^c	4.9	6.7	3.4	4.3	6.0	2.9	7.3	10.1	5.2
Age-Specific Rates, 2002-2006									
<1	-	-	-	-	-	-	-	-	-
1-4	-	-	-	-	-	-	-	-	-
5-9	-	-	-	-	-	-	-	-	-
10-14	-	-	-	-	-	-	-	-	-
15-19	-	-	-	-	-	-	-	-	-
20-24	0.2	0.2	0.2	0.2	0.2	-	-	-	-
25-29	0.5	0.5	0.4	0.4	0.4	0.4	-	-	-
30-34	1.0	1.0	1.0	0.9	1.0	0.9	0.9	-	1.1
35-39	1.8	1.9	1.7	1.6	1.7	1.5	2.0	2.2	1.8
40-44	2.9	3.2	2.6	2.4	2.8	2.1	4.3	5.2	3.4
45-49	4.9	6.1	3.7	4.3	5.4	3.3	6.4	8.4	4.7
50-54	7.8	9.9	5.7	6.8	8.8	4.8	11.6	14.5	9.1
55-59	11.7	15.9	7.7	10.2	14.3	6.3	16.7	22.7	11.7
60-64	17.4	25.0	10.4	15.6	22.8	8.9	27.0	39.3	17.2
65-69	27.7	39.9	17.1	24.2	35.1	14.6	41.6	63.6	24.8
70-74	37.0	52.8	24.3	32.4	47.0	20.4	55.4	76.6	40.6
75-79	46.6	67.3	31.8	40.8	60.2	26.8	72.0	104.1	52.2
80-84	57.9	84.8	41.1	51.2	75.3	36.2	91.8	131.7	69.9
85+	59.2	85.7	46.8	50.7	73.9	39.9	107.9	139.3	95.0
<u>U.S. Mortality</u>									
<u>Age at Death</u>									
Age-Adjusted Rates, 2002-2006									
All ages	4.0	5.5	2.8	3.5	4.8	2.4	7.6	11.0	5.3
Under 65	1.3	1.7	0.9	1.1	1.5	0.8	2.4	3.4	1.5
65 and over	22.2	31.5	15.9	19.6	28.0	13.9	43.2	63.4	31.2
All ages (IARC world std) ^c	2.3	3.2	1.6	2.0	2.8	1.4	4.4	6.4	2.9
Age-Specific Rates, 2002-2006									
<1	-	-	-	-	-	-	-	-	-
1-4	-	-	-	-	-	-	-	-	-
5-9	-	-	-	-	-	-	-	-	-
10-14	-	-	-	-	-	-	-	-	-
15-19	0.0	-	-	-	-	-	-	-	-
20-24	0.1	0.1	0.1	0.1	0.1	0.1	0.1	-	-
25-29	0.2	0.2	0.2	0.2	0.2	0.2	0.3	0.4	-
30-34	0.4	0.4	0.4	0.4	0.4	0.3	0.7	0.6	0.7
35-39	0.8	0.8	0.7	0.7	0.7	0.6	1.0	1.0	1.0
40-44	1.3	1.5	1.1	1.1	1.2	0.9	2.4	3.0	1.8
45-49	2.1	2.6	1.6	1.8	2.2	1.3	3.9	5.3	2.6
50-54	3.5	4.6	2.3	2.9	3.9	2.0	6.4	9.3	4.0
55-59	5.2	7.2	3.2	4.5	6.4	2.7	9.5	14.2	5.7
60-64	7.9	11.2	5.0	6.8	9.5	4.3	15.5	24.3	8.7
65-69	11.9	16.9	7.5	10.2	14.5	6.4	23.7	35.9	14.6
70-74	17.5	24.8	11.6	15.4	21.7	10.2	32.8	51.1	20.4
75-79	23.8	33.5	16.8	21.0	29.8	14.5	47.1	69.2	33.9
80-84	31.2	44.7	22.9	27.7	39.8	20.2	61.5	90.4	46.3
85+	41.5	59.0	33.7	37.4	53.6	30.1	79.4	108.1	68.1

^a SEER 17 areas. Rates are per 100,000 and are age-adjusted to the 2000 US Std Population (19 age groups - Census P25-1130), unless noted.

^b US Mortality Files, National Center for Health Statistics, Centers for Disease Control and Prevention.

^c Rates are per 100,000 and are age-adjusted to the 2000 US Std Population (19 age groups - Census P25-1130), unless noted.

- Rates are per 100,000 and are age-adjusted to the IARC world standard population.

- Statistic not shown. Rate based on less than 16 cases for the time interval.

Table 24.7
Cancer of the Stomach (Invasive)

Survival Rates, by Race, Sex, Diagnosis Year, Stage and Age

	All Races			Whites			Blacks		
	Total	Males	Females	Total	Males	Females	Total	Males	Females
5-Year Relative Survival Rates									
Year of Diagnosis:									
1960-1963 ^a	-	-	-	11	10	13	8	5	14
1970-1973 ^a	-	-	-	13	12	14	13	15	10
1975-1977 ^b	15.9	15.0	17.2	14.8	13.7	16.4	16.3	16.4	16.1
1978-1980 ^b	16.8	14.9	19.9	16.2	14.3	19.1	16.9	16.0	18.6
1981-1983 ^b	18.0	17.1	19.6	16.9	16.1	18.3	17.2	16.8	17.7
1984-1986 ^b	18.4	16.2	21.8	17.6	15.1	21.6	20.0	17.5	23.4
1987-1989 ^b	20.7	17.5	26.0	19.1	16.1	24.5	20.0	17.2	24.5
1990-1992 ^b	21.7	18.6	26.6	19.3	16.4	24.0	23.8	22.9	24.9
1993-1995 ^b	21.7	20.5	23.9	20.6	19.3	23.1	19.9	17.9	23.0
1996-1998 ^b	23.1	21.7	25.3	21.0	19.1	24.4	23.8	21.0	27.0
1999-2005 ^b	26.5 ^e	24.9 ^e	28.9 ^e	25.3 ^e	23.4 ^e	28.5 ^e	26.1 ^e	25.1 ^e	27.2 ^e
5-Year Period Survival Rates^{cd}									
Year of Diagnosis:									
1999-2005	27.2	25.5	29.8	25.4	23.7	28.2	27.0	23.7	31.0
Stage Distribution (%) 1999-2005^c									
All Stages									
Number of cases	30,671	18,517	12,154	21,925	13,542	8,383	3,782	2,100	1,682
Percent	100%	100%	100%	100%	100%	100%	100%	100%	100%
Localized	23	22	24	23	22	24	23	21	25
Regional	32	34	30	32	33	29	31	32	29
Distant	33	34	32	34	35	33	33	35	30
Unstaged	11	10	14	12	10	14	13	11	16
5-Year Relative Survival Rates, 1999-2005^c									
Age at Diagnosis:									
Ages <45	30.0	28.7	31.6	28.1	26.6	30.1	38.0	34.0	43.2
Ages 45-54	28.5	26.2	32.6	26.3	24.0	30.8	30.2	27.2	35.0
Ages 55-64	26.4	24.3	30.9	24.2	22.7	28.0	27.3	22.8	35.1
Ages 65-74	26.4	24.5	29.6	25.0	23.0	28.7	22.1	19.9	24.9
Ages 75+	21.9	20.2	23.6	20.9	19.6	22.3	16.1	12.3	18.4
Ages <65	27.8	25.7	31.6	25.6	23.7	29.4	30.9	26.9	37.4
Ages 65+	24.1	22.5	26.1	22.9	21.4	25.0	19.3	17.2	21.3
Stage:									
All Stages	25.7	24.0	28.3	24.1	22.5	26.7	25.2	22.6	28.4
Localized	62.5	59.4	66.5	60.3	56.9	65.1	57.8	56.9	58.3
Regional	26.6	25.8	27.8	24.8	24.6	25.3	28.3	25.4	32.2
Distant	3.4	3.3	3.6	3.2	3.1	3.2	3.2	2.3	4.3
Unstaged	16.8	12.7	21.2	15.5	11.0	20.6	16.0	11.5	19.8

^a Rates are based on End Results data from a series of hospital registries and one population-based registry.

^b Rates are from the SEER 9 areas (San Francisco, Connecticut, Detroit, Hawaii, Iowa, New Mexico, Seattle, Utah, Atlanta).

Rates are based on follow-up of patients into 2006.

^c Rates are from the SEER 17 areas (San Francisco, Connecticut, Detroit, Hawaii, Iowa, New Mexico, Seattle, Utah, Atlanta, San Jose-Monterey, Los Angeles, Alaska Native Registry, Rural Georgia, California excluding SF/SJM/LA, Kentucky, Louisiana and New Jersey). California excluding SF/SJM/LA, Kentucky, Louisiana, and New Jersey contribute cases for diagnosis years 2000-2005.

The remaining 13 SEER Areas contribute cases for the entire period 1999-2005. Rates are based on follow-up of patients into 2006.

^d Period survival provides a more up-to-date estimate of survival by piecing together the most recent conditional survival estimates from several cohorts. It is computed here using three year calendar blocks (2003-2005: 0-1 year survival),

(2002-2004: 1-2 year survival), (2001-2003: 2-3 year survival), (2000-2002: 3-4 year survival), (1999-2001: 4-5 years survival).

^e The difference in rates between 1975-1977 and 1999-2005 is statistically significant ($p < .05$).

^f The standard error of the survival rate is between 5 and 10 percentage points.

^g The standard error of the survival rate is greater than 10 percentage points.

- Statistic could not be calculated due to fewer than 25 cases during the time period.

Table 24.8
Cancer of the Stomach (Invasive)

Survival Rates^a
By Year of Diagnosis

All Races, Males and Females

Year of Diagnosis

	1975- 1979	1980- 1984	1985- 1989	1990	1991	1992	1993	1994	1995	1996	1997	1998	1999	2000	2001	2002	2003	2004	2005
Relative Survival Rates (SEER ^b)																			
1-year	39.8	42.9	45.2	46.5	44.7	47.4	45.3	46.3	47.2	46.7	46.0	49.2	47.8	48.6	49.8	50.8	51.6	53.8	51.3
2-year	25.5	27.5	30.0	32.6	30.7	32.6	31.0	33.6	32.1	32.4	33.4	34.4	34.8	33.3	34.2	36.0	39.5	38.2	
3-year	20.3	21.9	24.0	25.5	25.3	26.5	24.5	27.0	27.0	27.5	26.7	29.0	28.6	27.7	29.7	31.0	34.6		
4-year	17.9	19.1	21.2	22.9	22.8	24.1	21.4	24.4	23.8	24.2	24.0	26.2	26.0	25.3	28.5	27.7			
5-year	16.3	17.5	20.1	20.8	21.4	22.8	20.1	22.6	22.5	22.7	22.6	24.0	24.7	23.7	27.5				
6-year	15.4	16.8	19.2	19.1	19.9	21.8	19.2	20.8	21.4	20.9	21.5	23.0	22.9	23.1					
7-year	14.9	16.1	18.5	18.4	19.4	20.4	18.2	19.8	20.3	20.4	20.8	22.5	22.0						
8-year	14.3	15.5	18.0	18.0	18.9	19.2	17.2	18.8	20.3	20.2	20.3	22.1							
9-year	14.0	15.3	17.6	16.9	18.1	18.4	16.5	18.8	20.0	19.9	20.2								
10-year	13.8	15.1	16.9	16.3	17.7	17.8	15.8	18.0	19.3	19.4									
11-year	13.3	14.7	16.5	16.0	17.7	17.0	15.6	17.8	19.1										
12-year	13.2	14.3	16.3	15.7	17.7	16.6	15.4	17.7											
13-year	13.0	14.3	16.2	15.7	17.4	16.6	15.2												
14-year	12.6	14.3	16.0	15.7	17.2	16.6													
15-year	12.3	14.0	15.8	15.7	17.0														
16-year	12.1	13.6	15.7	15.7															
17-year	11.9	13.4	15.6																
18-year	11.6	13.2																	
19-year	11.4	13.2																	
20-year	11.2	12.8																	

^a Survival rates are relative rates expressed as percents.
^b Rates are from the SEER 9 areas (San Francisco, Connecticut, Detroit, Hawaii, Iowa, New Mexico, Seattle, Utah, and Atlanta).

Table 24.9
Cancer of the Stomach (Invasive)

Survival Rates^a
By Year of Diagnosis

All Races, Males

Year of Diagnosis

	1975- 1979	1980- 1984	1985- 1989	1990	1991	1992	1993	1994	1995	1996	1997	1998	1999	2000	2001	2002	2003	2004	2005
Relative Survival Rates (SEER ^b)																			
1-year	39.3	42.3	44.2	46.2	42.8	45.7	43.8	46.5	48.0	44.7	46.3	50.8	47.4	47.7	50.7	49.0	51.2	54.2	52.8
2-year	24.5	26.6	28.2	31.4	27.2	30.5	28.5	32.9	32.1	29.1	31.9	36.4	34.3	33.4	33.7	33.4	37.3	37.3	
3-year	19.1	20.9	21.9	24.1	21.7	24.6	22.9	26.0	26.1	24.5	25.2	30.2	27.9	27.6	29.2	27.7	32.5		
4-year	16.6	17.8	18.7	20.8	18.7	22.3	20.1	23.6	22.7	21.7	22.1	26.6	25.0	24.8	27.5	25.5			
5-year	15.1	16.1	17.3	18.3	16.6	20.9	18.6	21.6	21.1	20.5	20.3	24.4	23.4	22.8	26.7				
6-year	14.1	15.3	16.5	17.1	14.8	19.5	17.5	19.6	20.0	19.2	19.1	23.5	21.9	21.6					
7-year	13.6	14.6	15.7	16.4	13.9	18.3	16.0	18.5	19.0	18.9	18.2	22.8	20.1						
8-year	13.2	14.1	15.2	15.5	13.1	17.1	14.8	17.6	19.0	18.9	18.1	22.3							
9-year	13.1	13.9	14.7	14.8	12.6	16.1	14.2	17.4	19.0	18.1	17.9								
10-year	12.7	13.8	14.2	14.0	12.1	15.5	13.0	16.4	18.0	17.7									
11-year	12.4	13.5	13.7	13.3	12.1	15.1	13.0	16.3	17.9										
12-year	12.3	12.9	13.6	13.0	12.1	14.7	12.7	16.1											
13-year	12.3	12.9	13.5	13.0	11.4	14.7	12.7												
14-year	11.6	12.9	13.2	12.9	11.0	14.2													
15-year	11.2	12.5	12.9	12.5	10.2														
16-year	11.0	12.0	12.7	12.0															
17-year	10.8	11.7	12.5																
18-year	10.2	11.5																	
19-year	10.2	11.5																	
20-year	10.2	11.2																	

^a Survival rates are relative rates expressed as percents.
^b Rates are from the SEER 9 areas (San Francisco, Connecticut, Detroit, Hawaii, Iowa, New Mexico, Seattle, Utah, and Atlanta).

Table 24.10
Cancer of the Stomach (Invasive)

Survival Rates^a
By Year of Diagnosis

All Races, Females

Year of Diagnosis

	1975- 1979	1980- 1984	1985- 1989	1990	1991	1992	1993	1994	1995	1996	1997	1998	1999	2000	2001	2002	2003	2004	2005
Relative Survival Rates (SEER ^b)																			
1-year	40.7	43.8	46.9	47.1	47.8	50.2	47.7	46.1	45.7	50.1	45.6	46.9	48.3	50.0	48.3	53.4	52.1	53.1	48.6
2-year	27.2	29.1	33.0	34.6	36.0	36.2	35.2	35.0	32.1	38.0	35.8	31.4	35.7	33.2	35.1	39.9	42.8	39.7	
3-year	22.2	23.5	27.6	27.8	31.0	29.6	27.1	28.6	28.5	32.5	29.2	27.2	29.7	27.7	30.5	36.0	37.7		
4-year	19.8	21.1	25.5	26.1	29.0	27.1	23.4	25.7	25.6	28.3	27.1	25.4	27.4	26.2	30.2	31.0			
5-year	18.1	19.7	24.9	24.7	28.8	25.7	22.5	24.3	24.9	26.5	26.0	23.4	26.5	25.2	28.9				
6-year	17.3	19.2	23.8	22.1	27.7	25.6	22.0	22.7	23.8	23.9	25.1	22.0	24.6	25.2					
7-year	17.0	18.6	23.2	21.5	27.6	23.8	21.5	22.1	22.6	22.7	24.6	21.9	24.6						
8-year	16.1	17.7	22.7	21.5	27.6	22.6	21.0	20.8	22.4	22.0	23.8	21.6							
9-year	15.5	17.5	22.4	19.7	26.8	22.1	20.4	20.8	21.4	22.0	23.8								
10-year	15.4	17.2	21.5	19.7	26.2	21.7	20.4	20.6	21.2	22.0									
11-year	14.8	16.7	21.2	19.7	26.2	20.2	19.9	20.3	20.7										
12-year	14.5	16.7	20.9	19.7	26.2	19.7	19.9	20.1											
13-year	14.0	16.6	20.6	19.7	26.2	19.7	19.4												
14-year	13.9	16.6	20.6	19.7	26.2	19.7													
15-year	13.9	16.2	20.6	19.7	26.2														
16-year	13.5	16.1	20.5	19.7															
17-year	13.5	15.9	20.5																
18-year	13.5	15.9																	
19-year	13.1	15.7																	
20-year	12.5	15.3																	

^a Survival rates are relative rates expressed as percents.
^b Rates are from the SEER 9 areas (San Francisco, Connecticut, Detroit, Hawaii, Iowa, New Mexico, Seattle, Utah, and Atlanta).

Table 24.11
Cancer of the Stomach (Invasive)

Risk of Being Diagnosed With Cancer in 10, 20 and 30 Years,
Lifetime Risk of Being Diagnosed with Cancer Given Alive and Cancer-Free at Current Age, and
Lifetime Risk of Dying from Cancer Given Alive at Current Age
Both Sexes, 2004-2006 By Race/Ethnicity

Race/ Ethnicity	Current Age	Risk of Being Diagnosed with Cancer						Risk of Dying from Cancer	
		+10 yrs Percent (95% C.I.)	+20 yrs Percent (95% C.I.)	+30 yrs Percent (95% C.I.)	Eventually Percent (95% C.I.)	Eventually Percent (95% C.I.)			
All Races	0	0.00 (0.00, 0.00)	0.00 (0.00, 0.00)	0.00 (0.00, 0.00)	0.89 (0.87, 0.90)	0.44 (0.44, 0.45)			
	10	0.00 (0.00, 0.00)	0.00 (0.00, 0.00)	0.02 (0.02, 0.02)	0.90 (0.88, 0.91)	0.45 (0.44, 0.45)			
	20	0.00 (0.00, 0.00)	0.02 (0.02, 0.02)	0.06 (0.05, 0.06)	0.90 (0.89, 0.91)	0.45 (0.44, 0.45)			
	30	0.01 (0.01, 0.02)	0.05 (0.05, 0.06)	0.14 (0.14, 0.15)	0.91 (0.89, 0.92)	0.45 (0.45, 0.46)			
	40	0.04 (0.04, 0.04)	0.13 (0.13, 0.13)	0.32 (0.32, 0.33)	0.90 (0.89, 0.92)	0.45 (0.45, 0.46)			
	50	0.09 (0.09, 0.10)	0.29 (0.28, 0.30)	0.58 (0.57, 0.59)	0.89 (0.87, 0.90)	0.45 (0.44, 0.45)			
	60	0.21 (0.20, 0.22)	0.52 (0.51, 0.53)	0.77 (0.76, 0.79)	0.84 (0.83, 0.86)	0.43 (0.43, 0.44)			
	70	0.35 (0.35, 0.36)	0.65 (0.63, 0.66)	- (- , -)	0.73 (0.71, 0.74)	0.40 (0.39, 0.40)			
White	0	0.00 (0.00, 0.00)	0.00 (0.00, 0.00)	0.00 (0.00, 0.00)	0.78 (0.76, 0.79)	0.39 (0.39, 0.40)			
	10	0.00 (0.00, 0.00)	0.00 (0.00, 0.00)	0.02 (0.02, 0.02)	0.79 (0.77, 0.80)	0.40 (0.39, 0.40)			
	20	0.00 (0.00, 0.00)	0.02 (0.01, 0.02)	0.05 (0.05, 0.05)	0.79 (0.77, 0.80)	0.40 (0.39, 0.40)			
	30	0.01 (0.01, 0.01)	0.05 (0.05, 0.05)	0.13 (0.12, 0.13)	0.79 (0.78, 0.81)	0.40 (0.40, 0.41)			
	40	0.03 (0.03, 0.04)	0.12 (0.11, 0.12)	0.28 (0.28, 0.29)	0.79 (0.77, 0.80)	0.40 (0.39, 0.40)			
	50	0.08 (0.08, 0.09)	0.26 (0.25, 0.26)	0.51 (0.50, 0.52)	0.77 (0.76, 0.79)	0.40 (0.39, 0.40)			
	60	0.18 (0.18, 0.19)	0.45 (0.44, 0.47)	0.67 (0.66, 0.69)	0.73 (0.72, 0.75)	0.38 (0.38, 0.39)			
	70	0.31 (0.30, 0.32)	0.56 (0.55, 0.57)	- (- , -)	0.63 (0.61, 0.64)	0.35 (0.35, 0.36)			
Black	0	0.00 (0.00, 0.00)	0.00 (0.00, 0.00)	0.00 (0.00, 0.00)	1.09 (1.04, 1.15)	0.69 (0.67, 0.71)			
	10	0.00 (0.00, 0.00)	0.00 (0.00, 0.00)	0.02 (0.02, 0.02)	1.12 (1.07, 1.17)	0.71 (0.69, 0.73)			
	20	0.00 (0.00, 0.00)	0.02 (0.02, 0.02)	0.07 (0.06, 0.08)	1.13 (1.07, 1.18)	0.72 (0.70, 0.73)			
	30	0.02 (0.01, 0.02)	0.07 (0.06, 0.08)	0.19 (0.17, 0.20)	1.14 (1.09, 1.20)	0.72 (0.70, 0.74)			
	40	0.05 (0.05, 0.06)	0.17 (0.16, 0.19)	0.44 (0.41, 0.46)	1.15 (1.10, 1.21)	0.73 (0.71, 0.75)			
	50	0.13 (0.12, 0.14)	0.40 (0.38, 0.43)	0.76 (0.72, 0.80)	1.15 (1.10, 1.21)	0.74 (0.72, 0.76)			
	60	0.31 (0.29, 0.33)	0.71 (0.67, 0.75)	1.04 (0.98, 1.09)	1.15 (1.09, 1.21)	0.74 (0.72, 0.76)			
	70	0.49 (0.46, 0.53)	0.90 (0.85, 0.96)	- (- , -)	1.04 (0.98, 1.11)	0.70 (0.68, 0.73)			
80	0.64 (0.58, 0.70)	- (- , -)	- (- , -)	0.86 (0.78, 0.94)	0.61 (0.58, 0.64)				

Devcan Version 6.4.0, April 2009, National Cancer Institute (<http://srab.cancer.gov/devcan/>).

Source: Incidence data are from the SEER 17 areas (San Francisco, Connecticut, Detroit, Hawaii, Iowa, New Mexico, Seattle, Utah, Atlanta, San Jose-Monterey, Los Angeles, Alaska Native Registry, Rural Georgia, California excluding SF/SJM/LA, Kentucky, Louisiana and New Jersey). Mortality data are from the NCHS public use data file for the total US.

- Statistic could not be calculated.

A percent or confidence interval value of 0.00 represents a value that is below 0.005.

Table 24.11 - continued
Cancer of the Stomach (Invasive)

Risk of Being Diagnosed With Cancer in 10, 20 and 30 Years,
Lifetime Risk of Being Diagnosed with Cancer Given Alive and Cancer-Free at Current Age, and
Lifetime Risk of Dying from Cancer Given Alive at Current Age
Both Sexes, 2004-2006 By Race/Ethnicity

Race/ Ethnicity	Current Age	Risk of Being Diagnosed with Cancer				Risk of Dying from Cancer	
		+10 yrs Percent (95% C.I.)	+20 yrs Percent (95% C.I.)	+30 yrs Percent (95% C.I.)	Eventually Percent (95% C.I.)	Eventually Percent (95% C.I.)	
Asian/ Pacific Islander	0	0.00 (0.00, 0.00)	0.00 (0.00, 0.00)	0.01 (0.00, 0.01)	1.99 (1.89, 2.09)	1.20 (1.12, 1.28)	
	10	0.00 (0.00, 0.00)	0.01 (0.00, 0.01)	0.03 (0.02, 0.03)	2.00 (1.90, 2.11)	1.21 (1.13, 1.29)	
	20	0.00 (0.00, 0.01)	0.02 (0.02, 0.03)	0.09 (0.08, 0.10)	2.01 (1.91, 2.12)	1.21 (1.14, 1.29)	
	30	0.02 (0.02, 0.02)	0.08 (0.07, 0.09)	0.22 (0.20, 0.24)	2.01 (1.91, 2.12)	1.21 (1.14, 1.30)	
	40	0.06 (0.06, 0.07)	0.20 (0.19, 0.22)	0.52 (0.49, 0.55)	2.00 (1.90, 2.11)	1.21 (1.13, 1.29)	
	50	0.14 (0.13, 0.15)	0.46 (0.44, 0.49)	1.04 (0.99, 1.09)	1.97 (1.87, 2.08)	1.19 (1.11, 1.27)	
	60	0.33 (0.31, 0.36)	0.93 (0.88, 0.98)	1.60 (1.52, 1.68)	1.89 (1.79, 2.01)	1.15 (1.08, 1.24)	
	70	0.65 (0.61, 0.69)	1.37 (1.29, 1.45)	- (- , -)	1.69 (1.58, 1.81)	1.07 (0.99, 1.16)	
	80	0.89 (0.82, 0.96)	- (- , -)	- (- , -)	1.28 (1.16, 1.41)	0.88 (0.78, 0.98)	
American Indian/ Alaska Native ^a	0	0.00 (0.00, 0.02)	0.00 (0.00, 0.02)	0.00 (0.00, 0.03)	1.24 (0.96, 1.70)	0.69 (0.56, 0.86)	
	10	0.00 (0.00, 0.01)	0.00 (0.00, 0.02)	0.03 (0.02, 0.06)	1.26 (0.98, 1.74)	0.70 (0.57, 0.88)	
	20	0.00 (0.00, 0.02)	0.03 (0.02, 0.06)	0.11 (0.07, 0.15)	1.27 (0.98, 1.75)	0.71 (0.58, 0.89)	
	30	0.03 (0.01, 0.06)	0.11 (0.07, 0.15)	0.24 (0.18, 0.31)	1.29 (1.00, 1.77)	0.72 (0.59, 0.90)	
	40	0.08 (0.05, 0.12)	0.21 (0.16, 0.28)	0.50 (0.39, 0.63)	1.29 (0.99, 1.79)	0.73 (0.59, 0.92)	
	50	0.14 (0.10, 0.20)	0.44 (0.34, 0.57)	0.79 (0.63, 0.99)	1.26 (0.96, 1.78)	0.72 (0.58, 0.92)	
	60	0.32 (0.23, 0.44)	0.71 (0.54, 0.91)	1.05 (0.81, 1.34)	1.21 (0.89, 1.76)	0.73 (0.58, 0.94)	
	70	0.45 (0.31, 0.63)	0.85 (0.61, 1.16)	- (- , -)	1.03 (0.69, 1.67)	0.69 (0.52, 0.94)	
	80	0.55 (0.33, 0.88)	- (- , -)	- (- , -)	0.81 (0.41, 1.65)	0.61 (0.39, 0.95)	
Hispanic ^b	0	0.00 (0.00, 0.00)	0.00 (0.00, 0.00)	0.01 (0.00, 0.01)	1.49 (1.42, 1.57)	0.84 (0.81, 0.88)	
	10	0.00 (0.00, 0.00)	0.01 (0.00, 0.01)	0.03 (0.02, 0.03)	1.51 (1.43, 1.59)	0.85 (0.82, 0.89)	
	20	0.01 (0.00, 0.01)	0.03 (0.02, 0.03)	0.09 (0.08, 0.09)	1.51 (1.44, 1.60)	0.86 (0.82, 0.90)	
	30	0.02 (0.02, 0.03)	0.08 (0.07, 0.09)	0.21 (0.20, 0.23)	1.52 (1.45, 1.60)	0.86 (0.82, 0.90)	
	40	0.06 (0.05, 0.06)	0.19 (0.18, 0.20)	0.48 (0.46, 0.51)	1.51 (1.44, 1.60)	0.86 (0.82, 0.90)	
	50	0.14 (0.13, 0.15)	0.43 (0.41, 0.46)	0.90 (0.86, 0.94)	1.49 (1.41, 1.57)	0.85 (0.81, 0.89)	
	60	0.31 (0.29, 0.33)	0.80 (0.76, 0.84)	1.23 (1.17, 1.29)	1.42 (1.34, 1.51)	0.81 (0.78, 0.86)	
	70	0.54 (0.51, 0.58)	1.02 (0.96, 1.09)	- (- , -)	1.24 (1.15, 1.33)	0.75 (0.71, 0.80)	
	80	0.63 (0.57, 0.69)	- (- , -)	- (- , -)	0.90 (0.81, 1.01)	0.60 (0.55, 0.65)	

Devcan Version 6.4.0, April 2009, National Cancer Institute (<http://srab.cancer.gov/devcan/>).

Source: Incidence data are from the SEER 17 areas (San Francisco, Connecticut, Detroit, Hawaii, Iowa, New Mexico, Seattle, Utah, Atlanta, San Jose-Monterey, Los Angeles, Alaska Native Registry, Rural Georgia, California excluding SF/SJM/LA, Kentucky, Louisiana and New Jersey). Mortality data are from the NCHS public use data file for the total US.

^a Underlying incidence and mortality data for American Indian/Alaska Native are based on the CHSDA (Contract Health Service Delivery Area) counties.

^b Hispanic is not mutually exclusive from whites, blacks, Asian/Pacific Islanders, and American Indians/Alaska Natives.

Underlying incidence data for Hispanics are based on NHIA and exclude cases from the Alaska Native Registry.

Underlying mortality data for Hispanics exclude deaths from the District of Columbia, Minnesota, New Hampshire and North Dakota.

- Statistic could not be calculated.

A percent or confidence interval value of 0.00 represents a value that is below 0.005.

Table 24.11 - continued
Cancer of the Stomach (Invasive)

Risk of Being Diagnosed With Cancer in 10, 20 and 30 Years,
Lifetime Risk of Being Diagnosed with Cancer Given Alive and Cancer-Free at Current Age, and
Lifetime Risk of Dying from Cancer Given Alive at Current Age
Males, 2004-2006 By Race/Ethnicity

Race/ Ethnicity	Current Age	Risk of Being Diagnosed with Cancer						Risk of Dying from Cancer	
		+10 yrs Percent (95% C.I.)	+20 yrs Percent (95% C.I.)	+30 yrs Percent (95% C.I.)	Eventually Percent (95% C.I.)	Eventually Percent (95% C.I.)			
All Races	0	0.00 (0.00, 0.00)	0.00 (0.00, 0.00)	0.00 (0.00, 0.00)	1.11 (1.09, 1.14)	0.54 (0.53, 0.54)			
	10	0.00 (0.00, 0.00)	0.00 (0.00, 0.00)	0.02 (0.02, 0.02)	1.13 (1.11, 1.15)	0.54 (0.54, 0.55)			
	20	0.00 (0.00, 0.00)	0.02 (0.02, 0.02)	0.06 (0.06, 0.07)	1.13 (1.11, 1.16)	0.55 (0.54, 0.56)			
	30	0.01 (0.01, 0.02)	0.06 (0.06, 0.07)	0.18 (0.17, 0.19)	1.15 (1.12, 1.17)	0.55 (0.55, 0.56)			
	40	0.05 (0.05, 0.05)	0.17 (0.16, 0.17)	0.43 (0.42, 0.44)	1.15 (1.13, 1.17)	0.56 (0.55, 0.57)			
	50	0.12 (0.12, 0.13)	0.40 (0.38, 0.41)	0.78 (0.77, 0.80)	1.14 (1.12, 1.17)	0.56 (0.55, 0.57)			
	60	0.29 (0.28, 0.30)	0.71 (0.70, 0.73)	1.03 (1.01, 1.05)	1.10 (1.07, 1.12)	0.54 (0.54, 0.55)			
	70	0.50 (0.48, 0.51)	0.87 (0.85, 0.90)	- (- , -)	0.95 (0.93, 0.98)	0.50 (0.49, 0.51)			
	80	0.56 (0.54, 0.59)	- (- , -)	- (- , -)	0.68 (0.66, 0.71)	0.41 (0.40, 0.42)			
White	0	0.00 (0.00, 0.00)	0.00 (0.00, 0.00)	0.00 (0.00, 0.00)	0.99 (0.97, 1.01)	0.48 (0.47, 0.49)			
	10	0.00 (0.00, 0.00)	0.00 (0.00, 0.00)	0.02 (0.02, 0.02)	1.00 (0.98, 1.03)	0.49 (0.48, 0.49)			
	20	0.00 (0.00, 0.00)	0.02 (0.02, 0.02)	0.06 (0.05, 0.06)	1.01 (0.98, 1.03)	0.49 (0.48, 0.50)			
	30	0.01 (0.01, 0.02)	0.06 (0.05, 0.06)	0.16 (0.16, 0.17)	1.02 (0.99, 1.04)	0.49 (0.49, 0.50)			
	40	0.04 (0.04, 0.05)	0.15 (0.14, 0.16)	0.38 (0.37, 0.40)	1.02 (0.99, 1.04)	0.50 (0.49, 0.50)			
	50	0.11 (0.11, 0.12)	0.35 (0.34, 0.37)	0.70 (0.68, 0.72)	1.01 (0.98, 1.04)	0.50 (0.49, 0.50)			
	60	0.26 (0.25, 0.27)	0.63 (0.61, 0.65)	0.91 (0.88, 0.93)	0.96 (0.94, 0.99)	0.48 (0.47, 0.49)			
	70	0.44 (0.42, 0.46)	0.76 (0.74, 0.79)	- (- , -)	0.83 (0.80, 0.86)	0.45 (0.44, 0.46)			
	80	0.49 (0.46, 0.51)	- (- , -)	- (- , -)	0.59 (0.56, 0.62)	0.37 (0.36, 0.38)			
Black	0	0.00 (0.00, 0.00)	0.00 (0.00, 0.00)	0.00 (0.00, 0.01)	1.27 (1.20, 1.36)	0.83 (0.80, 0.86)			
	10	0.00 (0.00, 0.00)	0.00 (0.00, 0.00)	0.02 (0.01, 0.02)	1.31 (1.23, 1.39)	0.85 (0.82, 0.88)			
	20	0.00 (0.00, 0.00)	0.02 (0.01, 0.02)	0.08 (0.07, 0.09)	1.32 (1.24, 1.41)	0.86 (0.83, 0.89)			
	30	0.02 (0.01, 0.02)	0.08 (0.07, 0.10)	0.23 (0.21, 0.25)	1.35 (1.27, 1.44)	0.88 (0.85, 0.91)			
	40	0.07 (0.06, 0.08)	0.22 (0.20, 0.24)	0.59 (0.54, 0.63)	1.37 (1.29, 1.47)	0.89 (0.86, 0.93)			
	50	0.16 (0.14, 0.18)	0.55 (0.51, 0.60)	1.00 (0.93, 1.07)	1.39 (1.30, 1.49)	0.91 (0.87, 0.94)			
	60	0.45 (0.41, 0.50)	0.96 (0.89, 1.04)	1.33 (1.24, 1.43)	1.42 (1.32, 1.53)	0.93 (0.89, 0.97)			
	70	0.68 (0.61, 0.75)	1.17 (1.07, 1.28)	- (- , -)	1.28 (1.17, 1.41)	0.88 (0.84, 0.93)			
	80	0.86 (0.75, 0.98)	- (- , -)	- (- , -)	1.06 (0.92, 1.23)	0.77 (0.72, 0.84)			

Devcan Version 6.4.0, April 2009, National Cancer Institute (<http://srab.cancer.gov/devcan/>).

Source: Incidence data are from the SEER 17 areas (San Francisco, Connecticut, Detroit, Hawaii, Iowa, New Mexico, Seattle, Utah, Atlanta, San Jose-Monterey, Los Angeles, Alaska Native Registry, Rural Georgia, California excluding SF/SJM/LA, Kentucky, Louisiana and New Jersey). Mortality data are from the NCHS public use data file for the total US.

- Statistic could not be calculated.

A percent or confidence interval value of 0.00 represents a value that is below 0.005.

Table 24.11 - continued
Cancer of the Stomach (Invasive)

Risk of Being Diagnosed With Cancer in 10, 20 and 30 Years,
Lifetime Risk of Being Diagnosed with Cancer Given Alive and Cancer-Free at Current Age, and
Lifetime Risk of Dying from Cancer Given Alive at Current Age
Males, 2004-2006 By Race/Ethnicity

Race/ Ethnicity	Current Age	Risk of Being Diagnosed with Cancer				Risk of Dying from Cancer	
		+10 yrs Percent (95% C.I.)	+20 yrs Percent (95% C.I.)	+30 yrs Percent (95% C.I.)	Eventually Percent (95% C.I.)	Eventually Percent (95% C.I.)	
Asian/ Pacific Islander	0	0.00 (0.00, 0.00)	0.00 (0.00, 0.00)	0.00 (0.00, 0.01)	2.43 (2.28, 2.59)	1.42 (1.31, 1.55)	
	10	0.00 (0.00, 0.00)	0.00 (0.00, 0.01)	0.02 (0.02, 0.03)	2.45 (2.30, 2.62)	1.43 (1.32, 1.56)	
	20	0.00 (0.00, 0.01)	0.02 (0.02, 0.03)	0.09 (0.08, 0.10)	2.46 (2.31, 2.63)	1.44 (1.33, 1.57)	
	30	0.02 (0.01, 0.02)	0.09 (0.07, 0.10)	0.26 (0.23, 0.28)	2.47 (2.32, 2.64)	1.45 (1.33, 1.57)	
	40	0.07 (0.06, 0.08)	0.24 (0.22, 0.27)	0.67 (0.62, 0.72)	2.47 (2.32, 2.64)	1.44 (1.33, 1.57)	
	50	0.17 (0.15, 0.19)	0.61 (0.56, 0.66)	1.38 (1.29, 1.47)	2.44 (2.29, 2.62)	1.44 (1.32, 1.57)	
	60	0.45 (0.41, 0.50)	1.26 (1.17, 1.35)	2.13 (2.00, 2.27)	2.37 (2.21, 2.55)	1.40 (1.28, 1.54)	
	70	0.89 (0.81, 0.97)	1.86 (1.72, 2.00)	- (- , -)	2.12 (1.96, 2.31)	1.30 (1.18, 1.45)	
	80	1.26 (1.13, 1.40)	- (- , -)	- (- , -)	1.61 (1.43, 1.82)	1.06 (0.92, 1.23)	
American Indian/ Alaska Native ^a	0	0.00 (0.00, 0.04)	0.00 (0.00, 0.04)	0.01 (0.00, 0.05)	1.67 (1.10, 2.82)	0.98 (0.75, 1.34)	
	10	0.00 (0.00, 0.02)	0.01 (0.00, 0.03)	0.04 (0.02, 0.09)	1.70 (1.13, 2.88)	1.00 (0.76, 1.37)	
	20	0.01 (0.00, 0.03)	0.04 (0.02, 0.09)	0.14 (0.09, 0.22)	1.72 (1.14, 2.91)	1.01 (0.77, 1.39)	
	30	0.03 (0.01, 0.08)	0.14 (0.08, 0.21)	0.28 (0.20, 0.40)	1.75 (1.16, 2.97)	1.04 (0.79, 1.43)	
	40	0.11 (0.06, 0.17)	0.26 (0.18, 0.37)	0.66 (0.49, 0.88)	1.78 (1.17, 3.04)	1.06 (0.81, 1.46)	
	50	0.16 (0.10, 0.25)	0.59 (0.42, 0.81)	1.08 (0.80, 1.42)	1.77 (1.12, 3.09)	1.08 (0.81, 1.51)	
	60	0.47 (0.30, 0.68)	1.00 (0.72, 1.37)	1.41 (1.02, 1.95)	1.76 (1.07, 3.21)	1.14 (0.84, 1.62)	
	70	0.64 (0.40, 0.99)	1.14 (0.73, 1.72)	- (- , -)	1.55 (0.79, 3.31)	1.15 (0.80, 1.74)	
	80	0.71 (0.32, 1.40)	- (- , -)	- (- , -)	1.31 (0.39, 3.87)	1.14 (0.66, 2.01)	
Hispanic ^b	0	0.00 (0.00, 0.00)	0.00 (0.00, 0.00)	0.01 (0.00, 0.01)	1.74 (1.62, 1.87)	1.01 (0.95, 1.08)	
	10	0.00 (0.00, 0.00)	0.01 (0.00, 0.01)	0.03 (0.02, 0.03)	1.76 (1.64, 1.90)	1.03 (0.97, 1.10)	
	20	0.01 (0.00, 0.01)	0.03 (0.02, 0.03)	0.09 (0.08, 0.10)	1.77 (1.65, 1.91)	1.03 (0.97, 1.10)	
	30	0.02 (0.02, 0.02)	0.08 (0.08, 0.09)	0.24 (0.22, 0.26)	1.78 (1.67, 1.92)	1.04 (0.98, 1.12)	
	40	0.06 (0.06, 0.07)	0.22 (0.20, 0.24)	0.59 (0.55, 0.64)	1.79 (1.67, 1.93)	1.05 (0.98, 1.12)	
	50	0.16 (0.15, 0.18)	0.54 (0.50, 0.59)	1.13 (1.06, 1.20)	1.77 (1.65, 1.92)	1.05 (0.98, 1.12)	
	60	0.41 (0.37, 0.45)	1.03 (0.96, 1.10)	1.54 (1.44, 1.65)	1.72 (1.59, 1.87)	1.02 (0.95, 1.10)	
	70	0.71 (0.65, 0.78)	1.30 (1.20, 1.41)	- (- , -)	1.50 (1.36, 1.67)	0.96 (0.88, 1.05)	
	80	0.82 (0.72, 0.93)	- (- , -)	- (- , -)	1.10 (0.94, 1.31)	0.79 (0.69, 0.90)	

Devcan Version 6.4.0, April 2009, National Cancer Institute (<http://srab.cancer.gov/devcan/>).

Source: Incidence data are from the SEER 17 areas (San Francisco, Connecticut, Detroit, Hawaii, Iowa, New Mexico, Seattle, Utah, Atlanta, San Jose-Monterey, Los Angeles, Alaska Native Registry, Rural Georgia, California excluding SF/SJM/LA, Kentucky, Louisiana and New Jersey). Mortality data are from the NCHS public use data file for the total US.

^a Underlying incidence and mortality data for American Indian/Alaska Native are based on the CHSDA (Contract Health Service Delivery Area) counties.

^b Hispanic is not mutually exclusive from whites, blacks, Asian/Pacific Islanders, and American Indians/Alaska Natives.

Underlying incidence data for Hispanics are based on NHIA and exclude cases from the Alaska Native Registry.

Underlying mortality data for Hispanics exclude deaths from the District of Columbia, Minnesota, New Hampshire and North Dakota.

- Statistic could not be calculated.

A percent or confidence interval value of 0.00 represents a value that is below 0.005.

Table 24.11 - continued
Cancer of the Stomach (Invasive)

Risk of Being Diagnosed With Cancer in 10, 20 and 30 Years,
Lifetime Risk of Being Diagnosed with Cancer Given Alive and Cancer-Free at Current Age, and
Lifetime Risk of Dying from Cancer Given Alive at Current Age
Females, 2004-2006 By Race/Ethnicity

Race/ Ethnicity	Current Age	Risk of Being Diagnosed with Cancer						Risk of Dying from Cancer	
		+10 yrs Percent (95% C.I.)	+20 yrs Percent (95% C.I.)	+30 yrs Percent (95% C.I.)	Eventually Percent (95% C.I.)	Eventually Percent (95% C.I.)			
All Races	0	0.00 (0.00, 0.00)	0.00 (0.00, 0.00)	0.00 (0.00, 0.00)	0.68 (0.67, 0.70)	0.36 (0.35, 0.36)			
	10	0.00 (0.00, 0.00)	0.00 (0.00, 0.00)	0.02 (0.02, 0.02)	0.69 (0.67, 0.71)	0.36 (0.36, 0.37)			
	20	0.00 (0.00, 0.00)	0.02 (0.02, 0.02)	0.05 (0.05, 0.05)	0.69 (0.68, 0.71)	0.36 (0.36, 0.37)			
	30	0.01 (0.01, 0.02)	0.05 (0.04, 0.05)	0.11 (0.10, 0.11)	0.69 (0.68, 0.71)	0.36 (0.36, 0.37)			
	40	0.03 (0.03, 0.03)	0.10 (0.09, 0.10)	0.22 (0.21, 0.23)	0.68 (0.67, 0.70)	0.36 (0.35, 0.37)			
	50	0.06 (0.06, 0.07)	0.19 (0.18, 0.20)	0.40 (0.39, 0.41)	0.67 (0.65, 0.68)	0.35 (0.35, 0.36)			
	60	0.13 (0.13, 0.14)	0.35 (0.34, 0.36)	0.56 (0.54, 0.57)	0.63 (0.61, 0.65)	0.34 (0.34, 0.35)			
	70	0.24 (0.23, 0.25)	0.47 (0.46, 0.49)	- (- , -)	0.55 (0.54, 0.57)	0.32 (0.31, 0.32)			
	80	0.30 (0.29, 0.32)	- (- , -)	- (- , -)	0.41 (0.40, 0.43)	0.26 (0.26, 0.27)			
White	0	0.00 (0.00, 0.00)	0.00 (0.00, 0.00)	0.00 (0.00, 0.00)	0.58 (0.57, 0.60)	0.31 (0.31, 0.32)			
	10	0.00 (0.00, 0.00)	0.00 (0.00, 0.00)	0.02 (0.01, 0.02)	0.59 (0.57, 0.61)	0.32 (0.31, 0.32)			
	20	0.00 (0.00, 0.00)	0.02 (0.01, 0.02)	0.04 (0.04, 0.05)	0.59 (0.57, 0.61)	0.32 (0.31, 0.33)			
	30	0.01 (0.01, 0.01)	0.04 (0.04, 0.04)	0.09 (0.09, 0.10)	0.59 (0.57, 0.61)	0.32 (0.31, 0.33)			
	40	0.03 (0.03, 0.03)	0.08 (0.08, 0.09)	0.19 (0.18, 0.20)	0.58 (0.57, 0.60)	0.32 (0.31, 0.32)			
	50	0.05 (0.05, 0.06)	0.16 (0.16, 0.17)	0.34 (0.33, 0.35)	0.57 (0.55, 0.58)	0.31 (0.31, 0.32)			
	60	0.11 (0.11, 0.12)	0.30 (0.29, 0.31)	0.48 (0.46, 0.49)	0.54 (0.52, 0.55)	0.30 (0.30, 0.31)			
	70	0.20 (0.19, 0.21)	0.40 (0.39, 0.42)	- (- , -)	0.47 (0.45, 0.49)	0.28 (0.27, 0.29)			
	80	0.26 (0.25, 0.28)	- (- , -)	- (- , -)	0.35 (0.33, 0.37)	0.23 (0.23, 0.24)			
Black	0	0.00 (0.00, 0.00)	0.00 (0.00, 0.00)	0.00 (0.00, 0.01)	0.93 (0.87, 1.00)	0.58 (0.55, 0.60)			
	10	0.00 (0.00, 0.00)	0.00 (0.00, 0.01)	0.02 (0.01, 0.03)	0.95 (0.89, 1.02)	0.59 (0.57, 0.62)			
	20	0.00 (0.00, 0.01)	0.02 (0.01, 0.03)	0.06 (0.05, 0.07)	0.95 (0.89, 1.03)	0.59 (0.57, 0.62)			
	30	0.02 (0.01, 0.02)	0.06 (0.05, 0.07)	0.15 (0.13, 0.17)	0.96 (0.89, 1.03)	0.59 (0.57, 0.62)			
	40	0.04 (0.03, 0.05)	0.14 (0.12, 0.15)	0.31 (0.28, 0.34)	0.96 (0.89, 1.03)	0.60 (0.57, 0.62)			
	50	0.10 (0.08, 0.11)	0.28 (0.25, 0.31)	0.56 (0.51, 0.61)	0.95 (0.88, 1.03)	0.60 (0.57, 0.62)			
	60	0.19 (0.17, 0.22)	0.50 (0.45, 0.55)	0.80 (0.74, 0.87)	0.93 (0.86, 1.01)	0.60 (0.57, 0.63)			
	70	0.36 (0.32, 0.41)	0.72 (0.65, 0.79)	- (- , -)	0.87 (0.79, 0.96)	0.58 (0.55, 0.61)			
	80	0.51 (0.45, 0.58)	- (- , -)	- (- , -)	0.74 (0.65, 0.84)	0.52 (0.48, 0.55)			

Devcan Version 6.4.0, April 2009, National Cancer Institute (<http://srab.cancer.gov/devcan/>).

Source: Incidence data are from the SEER 17 areas (San Francisco, Connecticut, Detroit, Hawaii, Iowa, New Mexico, Seattle, Utah, Atlanta, San Jose-Monterey, Los Angeles, Alaska Native Registry, Rural Georgia, California excluding SF/SJM/LA, Kentucky, Louisiana and New Jersey). Mortality data are from the NCHS public use data file for the total US.

- Statistic could not be calculated.

A percent or confidence interval value of 0.00 represents a value that is below 0.005.

Table 24.11 - continued
Cancer of the Stomach (Invasive)

Risk of Being Diagnosed With Cancer in 10, 20 and 30 Years,
Lifetime Risk of Being Diagnosed with Cancer Given Alive and Cancer-Free at Current Age, and
Lifetime Risk of Dying from Cancer Given Alive at Current Age
Females, 2004-2006 By Race/Ethnicity

Race/ Ethnicity	Current Age	Risk of Being Diagnosed with Cancer					Risk of Dying from Cancer	
		+10 yrs Percent (95% C.I.)	+20 yrs Percent (95% C.I.)	+30 yrs Percent (95% C.I.)	Eventually Percent (95% C.I.)	Eventually Percent (95% C.I.)		
Asian/ Pacific Islander	0	0.00 (0.00, 0.00)	0.00 (0.00, 0.01)	0.01 (0.00, 0.01)	1.62 (1.48, 1.77)	1.01 (0.91, 1.13)		
	10	0.00 (0.00, 0.01)	0.01 (0.00, 0.01)	0.03 (0.02, 0.04)	1.63 (1.49, 1.78)	1.02 (0.92, 1.14)		
	20	0.01 (0.00, 0.01)	0.03 (0.02, 0.04)	0.08 (0.07, 0.10)	1.63 (1.49, 1.79)	1.02 (0.92, 1.14)		
	30	0.02 (0.02, 0.03)	0.08 (0.07, 0.09)	0.19 (0.17, 0.21)	1.63 (1.49, 1.78)	1.02 (0.92, 1.14)		
	40	0.06 (0.05, 0.07)	0.17 (0.15, 0.19)	0.39 (0.36, 0.43)	1.61 (1.48, 1.77)	1.01 (0.91, 1.13)		
	50	0.11 (0.10, 0.13)	0.34 (0.31, 0.37)	0.77 (0.71, 0.83)	1.57 (1.44, 1.73)	0.99 (0.89, 1.11)		
	60	0.23 (0.20, 0.26)	0.67 (0.61, 0.73)	1.16 (1.07, 1.25)	1.50 (1.36, 1.66)	0.95 (0.85, 1.08)		
	70	0.47 (0.42, 0.52)	0.99 (0.90, 1.08)	- (- , -)	1.35 (1.21, 1.52)	0.89 (0.79, 1.02)		
80	0.62 (0.54, 0.70)	- (- , -)	- (- , -)	1.04 (0.89, 1.23)	0.74 (0.62, 0.88)			
American Indian/ Alaska Native ^a	0	0.00 (0.00, 0.04)	0.00 (0.00, 0.04)	0.00 (0.00, 0.04)	0.89 (0.62, 1.52)	0.45 (0.31, 0.68)		
	10	0.00 (0.00, 0.02)	0.00 (0.00, 0.02)	0.03 (0.01, 0.07)	0.90 (0.63, 1.54)	0.46 (0.32, 0.69)		
	20	0.00 (0.00, 0.02)	0.03 (0.01, 0.07)	0.08 (0.04, 0.14)	0.91 (0.64, 1.55)	0.46 (0.32, 0.69)		
	30	0.03 (0.01, 0.07)	0.08 (0.04, 0.14)	0.19 (0.12, 0.29)	0.92 (0.64, 1.57)	0.47 (0.33, 0.70)		
	40	0.05 (0.02, 0.10)	0.17 (0.10, 0.26)	0.35 (0.23, 0.51)	0.90 (0.63, 1.57)	0.47 (0.32, 0.71)		
	50	0.12 (0.06, 0.20)	0.30 (0.19, 0.47)	0.54 (0.36, 0.78)	0.88 (0.60, 1.56)	0.44 (0.30, 0.69)		
	60	0.20 (0.10, 0.34)	0.45 (0.28, 0.68)	0.75 (0.49, 1.11)	0.80 (0.52, 1.52)	0.42 (0.27, 0.69)		
	70	0.28 (0.14, 0.51)	0.63 (0.36, 1.02)	- (- , -)	0.69 (0.40, 1.50)	0.37 (0.21, 0.68)		
80	0.45 (0.21, 0.87)	- (- , -)	- (- , -)	0.54 (0.25, 1.58)	0.29 (0.10, 0.70)			
Hispanic ^b	0	0.00 (0.00, 0.00)	0.00 (0.00, 0.00)	0.01 (0.00, 0.01)	1.29 (1.19, 1.40)	0.71 (0.66, 0.76)		
	10	0.00 (0.00, 0.00)	0.01 (0.00, 0.01)	0.03 (0.03, 0.04)	1.30 (1.20, 1.41)	0.72 (0.67, 0.77)		
	20	0.01 (0.00, 0.01)	0.03 (0.02, 0.04)	0.08 (0.07, 0.09)	1.30 (1.21, 1.41)	0.72 (0.67, 0.77)		
	30	0.02 (0.02, 0.03)	0.08 (0.07, 0.09)	0.19 (0.17, 0.20)	1.30 (1.20, 1.41)	0.72 (0.67, 0.77)		
	40	0.05 (0.05, 0.06)	0.16 (0.15, 0.18)	0.38 (0.35, 0.41)	1.28 (1.19, 1.40)	0.71 (0.66, 0.76)		
	50	0.11 (0.10, 0.13)	0.33 (0.30, 0.36)	0.70 (0.65, 0.75)	1.25 (1.15, 1.36)	0.69 (0.65, 0.74)		
	60	0.23 (0.20, 0.25)	0.61 (0.56, 0.66)	0.97 (0.90, 1.05)	1.18 (1.08, 1.29)	0.66 (0.61, 0.71)		
	70	0.42 (0.37, 0.46)	0.81 (0.74, 0.89)	- (- , -)	1.04 (0.93, 1.16)	0.60 (0.55, 0.66)		
80	0.49 (0.43, 0.56)	- (- , -)	- (- , -)	0.77 (0.66, 0.91)	0.48 (0.43, 0.55)			

Devcan Version 6.4.0, April 2009, National Cancer Institute (<http://srab.cancer.gov/devcan/>).

Source: Incidence data are from the SEER 17 areas (San Francisco, Connecticut, Detroit, Hawaii, Iowa, New Mexico, Seattle, Utah, Atlanta, San Jose-Monterey, Los Angeles, Alaska Native Registry, Rural Georgia, California excluding SF/SJM/LA, Kentucky, Louisiana and New Jersey). Mortality data are from the NCHS public use data file for the total US.

^a Underlying incidence and mortality data for American Indian/Alaska Native are based on the CHSDA (Contract Health Service Delivery Area) counties.

^b Hispanic is not mutually exclusive from whites, blacks, Asian/Pacific Islanders, and American Indians/Alaska Natives.

Underlying incidence data for Hispanics are based on NHIA and exclude cases from the Alaska Native Registry.

Underlying mortality data for Hispanics exclude deaths from the District of Columbia, Minnesota, New Hampshire and North Dakota.

- Statistic could not be calculated.

A percent or confidence interval value of 0.00 represents a value that is below 0.005.

Table 24.12
Cancer of the Stomach (Invasive)

SEER Incidence and U.S. Mortality
Age-Adjusted Rates and Trends^a
By Race/Ethnicity and Sex

SEER Incidence	SEER 17 Areas ^b			SEER 13 Areas ^b			SEER 9 Areas ^b		
	Rate 2002-2006			Trend 1997-2006 ^c			Trend 1997-2006 ^d		
	Rate per 100,000 persons			AAPC (%)			AAPC (%)		
RACE/ETHNICITY	Total	Males	Females	Total	Males	Females	Total	Males	Females
All Races	7.9	11.0	5.5	-1.4*	-2.0*	-0.8*	-1.6*	-2.0*	-1.6*
White	6.9	9.8	4.7	-1.4*	-2.0*	-0.9*	-1.9*	-1.9*	-2.0*
White Hispanic ^e	12.0	15.3	9.5	-1.9*	-2.8*	-0.9*	-	-	-
White Non-Hispanic ^e	6.2	9.0	4.0	-1.8*	-2.2*	-1.5*	-	-	-
Black	12.1	16.8	9.0	-1.9*	-2.5*	-1.1	-1.4*	-2.2*	-1.0*
Asian/Pacific Islander	13.4	18.0	10.0	-3.2*	-3.0*	-3.1*	-	-	-
Amer Ind/Alaska Nat ^f	11.2	15.5	7.9	0.6	0.5	-	-	-	-
Hispanic ^e	11.7	14.9	9.3	-1.7*	-2.6*	-0.7*	-	-	-
<u>U.S. Mortality^g</u>									
	Rate 2002-2006			Trend 1997-2006 ^h					
	Rate per 100,000 persons			AAPC (%)					
RACE/ETHNICITY	Total	Males	Females	Total	Males	Females			
All Races	4.0	5.5	2.8	-3.3*	-3.7*	-2.7*			
White	3.5	4.8	2.4	-3.2*	-3.9*	-2.9*			
White Hispanic ^e	6.5	8.6	5.0	-2.3*	-3.9*	-1.8*			
White Non-Hispanic ^e	3.2	4.5	2.2	-3.7*	-4.2*	-3.2*			
Black	7.6	11.0	5.3	-3.7*	-3.9*	-3.6*			
Asian/Pacific Islander	7.4	9.6	5.8	-3.9*	-3.9*	-3.7*			
Amer Ind/Alaska Nat									
Total U.S.	4.5	6.4	3.2	-2.6*	-1.8*	-3.4*			
CHSDA Counties	6.7	9.8	4.6	-1.0	-0.6	-6.1			
Non-CHSDA Counties	1.8	2.3	1.4	-	-	-			
Hispanic ^e	6.3	8.3	4.8	-3.2*	-4.0*	-1.8*			

The AAPC is the Average Annual Percent Change over the time interval. The AAPCs are calculated by the Joinpoint Regression Program Version 3.3, April 2008, National Cancer Institute.

- Statistic not shown. Rate based on less than 16 cases for the time interval.

Trend based on less than 10 cases for at least one year within the time interval.

a Rates are age-adjusted to the 2000 US Std Population (19 age groups - Census P25-1130). Trends

are based on rates age-adjusted to the 2000 US Std Population (19 age groups - Census P25-1130).

b The SEER 9 areas are San Francisco, Connecticut, Detroit, Hawaii, Iowa, New Mexico, Seattle, Utah and Atlanta.

The SEER 13 areas comprise the SEER 9 areas plus San Jose-Monterey, Los Angeles, the Alaska Native Registry and Rural Georgia.

The SEER 17 areas comprise the SEER 13 areas plus California excluding SF/SJM/LA, Kentucky, Louisiana and New Jersey.

c The 1997-2006 AAPC estimates are based on a Joinpoint analysis with up to 2 Joinpoints over diagnosis years 1992-2006.

d The 1997-2006 AAPC estimates are based on a Joinpoint analysis with up to 4 Joinpoints over diagnosis years 1975-2006.

e Hispanic and Non-Hispanic are not mutually exclusive from whites, blacks, Asian/Pacific Islanders, and American Indians/Alaska Natives. Incidence data for Hispanics and Non-Hispanics are based on NHIA and exclude cases from the Alaska Native Registry. The 2002-2006 Hispanic and Non-Hispanic death rates exclude deaths from the District of Columbia, Minnesota, New Hampshire and North Dakota. The 1997-2006 Hispanic and Non-Hispanic mortality trends exclude deaths from Connecticut, the District of Columbia, Maine, Maryland, Minnesota, New Hampshire, New York, North Dakota, Oklahoma and Vermont.

f Incidence data for American Indian/Alaska Native are based on the CHSDA(Contract Health Service Delivery Area) counties.

g US Mortality Files, National Center for Health Statistics, CDC.

h The 1997-2006 mortality AAPCs are based on a Joinpoint analysis using years of death 1992-2006.

* The APC is significantly different from zero (p<.05).

Table 24.13
Cancer of the Stomach (Invasive)

Age-Adjusted SEER Incidence Rates^a
By Registry, Race and Sex

	All Races			Whites			Blacks		
	Total	Males	Females	Total	Males	Females	Total	Males	Females
<u>SEER Incidence Rates^a, 2002-2006</u>									
Atlanta & Rural Georgia	6.47	8.78	4.73	4.66	6.30	3.28	10.11	14.72	7.30
Atlanta	6.51	8.65	4.90	4.65	6.19	3.36	10.32	14.56	7.74
Rural Georgia	5.97	10.68	-	5.07	8.51	-	7.88	-	-
California	8.12	11.10	5.84	7.15	9.89	5.02	10.85	14.70	8.17
Greater Bay Area	8.37	11.54	5.99	7.02	9.71	4.94	10.61	14.64	7.65
San Francisco-Oakland	8.26	11.60	5.75	6.79	9.59	4.59	10.96	15.15	7.89
San Jose-Monterey	8.61	11.44	6.49	7.46	9.94	5.57	6.91	-	-
Los Angeles	10.19	13.54	7.74	8.72	11.50	6.63	11.63	15.64	9.01
Greater California	7.03	9.82	4.85	6.56	9.31	4.38	10.00	13.68	7.28
Connecticut	8.66	12.79	5.64	8.21	12.19	5.28	14.91	22.49	9.92
Detroit	8.68	12.48	5.85	7.60	11.17	4.87	12.73	17.43	9.51
Hawaii	12.04	16.43	8.60	7.55	11.28	4.41	-	-	-
Iowa	5.55	8.18	3.51	5.41	7.94	3.46	10.28	17.68	-
Kentucky	5.79	8.22	3.94	5.50	7.93	3.65	9.92	11.89	8.41
Louisiana	8.46	11.63	6.11	6.29	8.84	4.30	15.00	20.93	11.12
New Jersey	8.97	12.88	6.07	8.29	11.96	5.54	12.52	17.81	9.03
New Mexico	7.70	10.28	5.63	7.36	9.81	5.37	-	-	-
Seattle-Puget Sound	6.62	9.27	4.51	5.95	8.54	3.82	10.45	14.98	7.30
Utah	4.95	6.78	3.39	4.75	6.66	3.14	-	-	-
9 SEER Areas ^b	7.60	10.75	5.20	6.53	9.39	4.31	11.86	16.58	8.67
11 SEER Areas ^b	8.23	11.40	5.84	7.04	9.85	4.87	11.73	16.22	8.72
13 SEER Areas ^b	8.25	11.44	5.85	7.04	9.85	4.86	11.67	16.22	8.62
17 SEER Areas ^b	7.91	11.04	5.54	6.94	9.81	4.73	12.10	16.77	8.96

^a Rates are per 100,000 and are age-adjusted to the 2000 US Std Population (19 age groups - Census P25-1130)

^b The SEER 9 areas are San Francisco, Connecticut, Detroit, Hawaii, Iowa, New Mexico, Seattle, Utah and Atlanta.

The SEER 11 areas comprise the SEER 9 areas plus San Jose-Monterey and Los Angeles.

The SEER 13 areas comprise the SEER 11 areas plus the Alaska Native Registry and Rural Georgia.

The SEER 17 areas comprise the SEER 13 areas plus California excluding SF/SJM/LA, Kentucky, Louisiana and New Jersey.

- Statistic not shown. Rate based on less than 16 cases for the time interval.

Table 24.14
Cancer of the Stomach (Invasive)

Age-Adjusted SEER Death Rates^a
By Registry, Race and Sex

	All Races			Whites			Blacks		
	Total	Males	Females	Total	Males	Females	Total	Males	Females
<u>SEER Death Rates^a, 2002-2006</u>									
Atlanta & Rural Georgia	3.70	5.27	2.66	2.34	3.04	1.87	6.70	10.90	4.29
Atlanta	3.73	5.28	2.72	2.34	3.03	1.89	6.88	11.08	4.49
Rural Georgia	3.27	-	-	-	-	-	-	-	-
California	4.78	6.43	3.56	4.22	5.70	3.12	7.42	10.43	5.31
Greater Bay Area	4.91	6.63	3.67	4.08	5.57	2.99	8.19	11.66	5.71
San Francisco-Oakland	4.97	6.70	3.72	4.01	5.50	2.90	8.59	12.02	6.11
San Jose-Monterey	4.80	6.51	3.58	4.21	5.70	3.14	-	-	-
Los Angeles	5.98	7.89	4.63	5.18	6.73	4.08	7.71	10.55	5.74
Greater California	4.16	5.69	3.00	3.88	5.33	2.76	6.40	9.53	4.25
Connecticut	4.52	6.33	3.16	4.28	6.10	2.90	7.90	10.24	6.44
Detroit	4.50	6.18	3.28	3.66	4.98	2.69	7.72	10.93	5.55
Hawaii	7.17	9.71	5.19	4.13	6.56	2.29	-	-	-
Iowa	2.81	3.95	1.96	2.75	3.87	1.91	-	-	-
Kentucky	3.43	4.96	2.32	3.25	4.74	2.17	5.94	8.01	4.31
Louisiana	4.92	7.09	3.32	3.33	4.83	2.16	9.83	14.60	6.75
New Jersey	4.80	6.75	3.44	4.42	6.28	3.11	7.76	10.87	5.82
New Mexico	4.80	6.94	3.15	4.55	6.49	3.02	-	-	-
Seattle-Puget Sound	3.49	4.72	2.58	3.06	4.16	2.20	6.33	11.29	-
Utah	2.69	3.28	2.19	2.57	3.08	2.14	-	-	-
9 SEER Areas ^b	4.19	5.76	3.03	3.46	4.78	2.47	7.53	10.99	5.26
11 SEER Areas ^b	4.62	6.27	3.42	3.87	5.23	2.86	7.55	10.84	5.35
13 SEER Areas ^b	4.62	6.27	3.42	3.85	5.21	2.85	7.51	10.83	5.29
17 SEER Areas ^b	4.49	6.16	3.26	3.87	5.33	2.78	7.79	11.24	5.51
Total U.S.	3.95	5.48	2.83	3.46	4.82	2.45	7.55	11.02	5.30

^a US Mortality Files, National Center for Health Statistics, Centers for Disease Control and Prevention.
Rates are per 100,000 and are age-adjusted to the 2000 US Std Population (19 age groups - Census P25-1130).

^b The SEER 9 areas are San Francisco, Connecticut, Detroit, Hawaii, Iowa, New Mexico, Seattle, Utah and Atlanta.
The SEER 11 areas comprise the SEER 9 areas plus San Jose-Monterey and Los Angeles.
The SEER 13 areas comprise the SEER 11 areas plus the Alaska Native Registry and Rural Georgia.
The SEER 17 areas comprise the SEER 13 areas plus California excluding SF/SJM/LA, Kentucky, Louisiana and New Jersey.
- Statistic not shown. Rate based on less than 16 cases for the time interval.

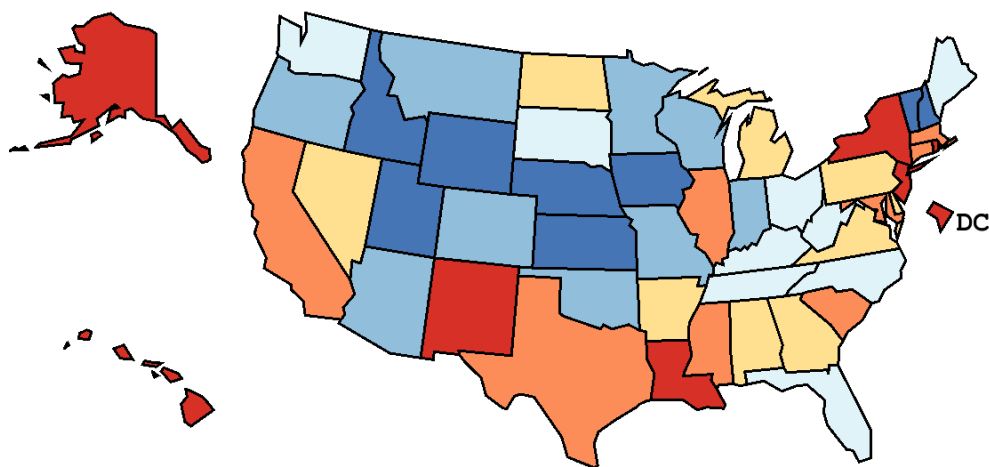
Table 24.15
Cancer of the Stomach (Invasive)

Age-Adjusted Cancer Death^a Rates By State, All Races, 2002-2006

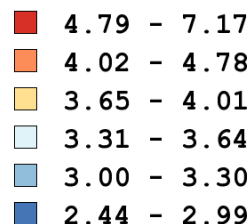
Males and Females

State	Rate	SE	Rank	PD
TOTAL U.S.	3.95	0.02		
High Five States				
Hawaii	7.17	0.32	(01)	81.42 ^c
D.C.	5.65	0.44	(02)	42.95 ^c
Louisiana	4.92	0.15	(03)	24.40 ^c
Alaska	4.89	0.52	(04)	23.70 ^c
Rhode Island	4.86	0.28	(05)	22.97 ^c
Low Five States				
Iowa	2.81	0.13	(47)	-29.02 ^c
Idaho	2.71	0.20	(48)	-31.48 ^c
Utah	2.69	0.17	(49)	-32.00 ^c
Nebraska	2.54	0.16	(50)	-35.88 ^c
Vermont	2.44	0.27	(51)	-38.37 ^c

State	Rate	SE	Rank	PD	State	Rate	SE	Rank	PD
Alabama	3.89	0.13	(18)	-1.63	Montana	3.14	0.25	(41)	-20.65 ^c
Alaska	4.89	0.52	(04)	23.70 ^c	Nebraska	2.54	0.16	(50)	-35.88 ^c
Arizona	3.29	0.11	(36)	-16.84 ^c	Nevada	3.82	0.19	(21)	-3.29
Arkansas	3.70	0.16	(25)	-6.29	New Hampshire	2.99	0.21	(44)	-24.32 ^c
California	4.78	0.05	(09)	20.94 ^c	New Jersey	4.80	0.10	(07)	21.46 ^c
Colorado	3.26	0.13	(37)	-17.45 ^c	New Mexico	4.80	0.23	(08)	21.41 ^c
Connecticut	4.52	0.15	(10)	14.36	New York	4.85	0.07	(06)	22.68 ^c
Delaware	3.84	0.30	(19)	-2.97	North Carolina	3.64	0.09	(26)	-7.94
D.C.	5.65	0.44	(02)	42.95 ^c	North Dakota	4.01	0.34	(17)	1.54
Florida	3.56	0.06	(27)	-9.98	Ohio	3.50	0.08	(29)	-11.57
Georgia	3.83	0.10	(20)	-3.03	Oklahoma	3.23	0.13	(38)	-18.42 ^c
Hawaii	7.17	0.32	(01)	81.42 ^c	Oregon	3.14	0.13	(40)	-20.62 ^c
Idaho	2.71	0.20	(48)	-31.48 ^c	Pennsylvania	3.80	0.07	(22)	-3.95
Illinois	4.34	0.08	(13)	9.69	Rhode Island	4.86	0.28	(05)	22.97 ^c
Indiana	3.07	0.10	(43)	-22.41 ^c	South Carolina	4.39	0.14	(11)	10.94
Iowa	2.81	0.13	(47)	-29.02 ^c	South Dakota	3.32	0.28	(34)	-16.13 ^c
Kansas	2.90	0.14	(46)	-26.56 ^c	Tennessee	3.47	0.11	(31)	-12.17
Kentucky	3.43	0.13	(32)	-13.18	Texas	4.29	0.07	(14)	8.59
Louisiana	4.92	0.15	(03)	24.40 ^c	Utah	2.69	0.17	(49)	-32.00 ^c
Maine	3.33	0.21	(33)	-15.67 ^c	Vermont	2.44	0.27	(51)	-38.37 ^c
Maryland	4.02	0.12	(16)	1.65	Virginia	3.76	0.10	(23)	-4.83
Massachusetts	4.11	0.11	(15)	3.99	Washington	3.48	0.11	(30)	-12.01
Michigan	3.74	0.09	(24)	-5.51	West Virginia	3.51	0.18	(28)	-11.19
Minnesota	3.10	0.11	(42)	-21.55 ^c	Wisconsin	3.19	0.10	(39)	-19.30 ^c
Mississippi	4.38	0.18	(12)	10.89	Wyoming	2.91	0.34	(45)	-26.28 ^c
Missouri	3.30	0.10	(35)	-16.49 ^c					



Age-Adjusted Death Rates per 100,000 Quantile Interval



U.S. Rate: 3.95

^a US Mortality Files, National Center for Health Statistics, Centers for Disease Control and Prevention. Rates are per 100,000 and are age-adjusted to the 2000 US Std Population (19 age groups - Census P25-1130).
^b Difference between state rate and total U.S. rate is statistically significant ($p \leq .0002$).
^c Absolute percent difference between state rate and total U.S. rate is 15% or more.
SE Standard error of the rate.
PD Percent difference between state rate and total U.S. rate.

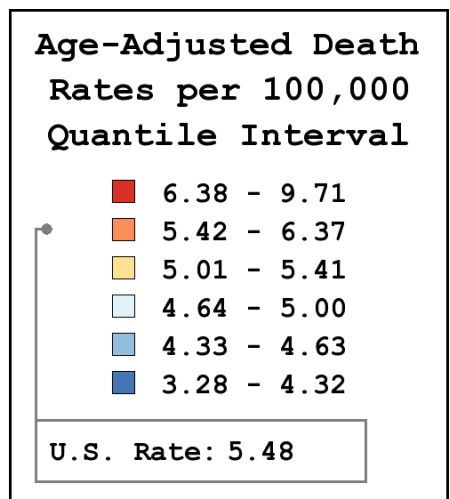
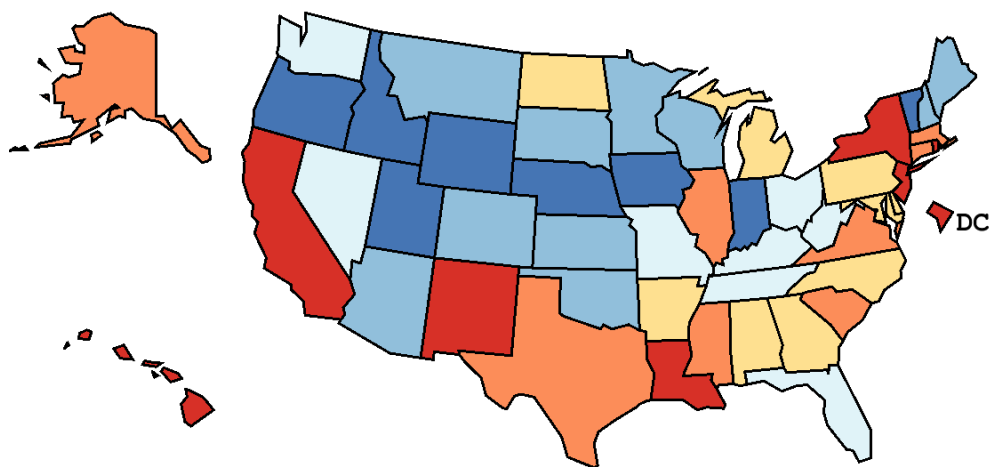
Table 24.16
Cancer of the Stomach (Invasive)

Age-Adjusted Cancer Death^a Rates By State, All Races, 2002-2006

Males

State	Rate	SE	Rank	PD
TOTAL U.S.	5.48	0.03		
High Five States				
Hawaii	9.71	0.56	(01)	77.08 ^c
D.C.	8.08	0.85	(02)	47.32 ^c
Rhode Island	7.67	0.56	(03)	39.93 ^c
Louisiana	7.09	0.29	(04)	29.19 ^c
New Mexico	6.94	0.41	(05)	26.54 ^c
Low Five States				
Wyoming	3.95	0.60	(47)	-28.06 ^c
Idaho	3.85	0.36	(48)	-29.88 ^c
Nebraska	3.48	0.30	(49)	-36.47 ^c
Vermont	3.40	0.50	(50)	-37.94 ^c
Utah	3.28	0.29	(51)	-40.17 ^c

State	Rate	SE	Rank	PD	State	Rate	SE	Rank	PD
Alabama	5.41	0.24	(17)	-1.27	Montana	4.37	0.44	(42)	-20.33 ^c
Alaska	6.37	0.89	(09)	16.08 ^c	Nebraska	3.48	0.30	(49)	-36.47 ^c
Arizona	4.41	0.18	(40)	-19.64 ^c	Nevada	4.96	0.33	(27)	-9.60
Arkansas	5.01	0.28	(25)	-8.68	New Hampshire	4.63	0.41	(35)	-15.63 ^c
California	6.43	0.10	(08)	17.32 ^c	New Jersey	6.75	0.19	(06)	23.00 ^c
Colorado	4.47	0.24	(38)	-18.53 ^c	New Mexico	6.94	0.41	(05)	26.54 ^c
Connecticut	6.33	0.28	(10)	15.49 ^c	New York	6.69	0.13	(07)	22.04 ^c
Delaware	5.31	0.54	(21)	-3.16	North Carolina	5.16	0.18	(24)	-6.00
D.C.	8.08	0.85	(02)	47.32 ^c	North Dakota	5.22	0.57	(23)	-4.85
Florida	4.88	0.10	(30)	-11.08	Ohio	4.94	0.14	(29)	-9.90
Georgia	5.31	0.19	(20)	-3.11	Oklahoma	4.45	0.24	(39)	-18.88 ^c
Hawaii	9.71	0.56	(01)	77.08 ^c	Oregon	4.04	0.22	(45)	-26.30 ^c
Idaho	3.85	0.36	(48)	-29.88 ^c	Pennsylvania	5.41	0.13	(18)	-1.40
Illinois	6.11	0.16	(13)	11.46	Rhode Island	7.67	0.56	(03)	39.93 ^c
Indiana	4.32	0.18	(44)	-21.17 ^c	South Carolina	6.23	0.27	(12)	13.65
Iowa	3.95	0.23	(46)	-27.99 ^c	South Dakota	4.63	0.50	(34)	-15.57 ^c
Kansas	4.35	0.27	(43)	-20.65 ^c	Tennessee	4.72	0.20	(31)	-13.94
Kentucky	4.96	0.24	(28)	-9.63	Texas	5.92	0.12	(15)	7.92
Louisiana	7.09	0.29	(04)	29.19 ^c	Utah	3.28	0.29	(51)	-40.17 ^c
Maine	4.61	0.38	(36)	-16.02 ^c	Vermont	3.40	0.50	(50)	-37.94 ^c
Maryland	5.33	0.23	(19)	-2.78	Virginia	5.52	0.20	(16)	0.69
Massachusetts	6.00	0.21	(14)	9.48	Washington	4.65	0.19	(33)	-15.17 ^c
Michigan	5.26	0.16	(22)	-4.04	West Virginia	5.00	0.34	(26)	-8.89
Minnesota	4.37	0.20	(41)	-20.29 ^c	Wisconsin	4.57	0.19	(37)	-16.59 ^c
Mississippi	6.30	0.33	(11)	14.86	Wyoming	3.95	0.60	(47)	-28.06 ^c
Missouri	4.66	0.19	(32)	-15.11 ^c					



^a US Mortality Files, National Center for Health Statistics, Centers for Disease Control and Prevention. Rates are per 100,000 and are age-adjusted to the 2000 US Std Population (19 age groups - Census P25-1130).

^b Difference between state rate and total U.S. rate is statistically significant ($p \leq .0002$).

^c Absolute percent difference between state rate and total U.S. rate is 15% or more.

SE Standard error of the rate.

PD Percent difference between state rate and total U.S. rate.

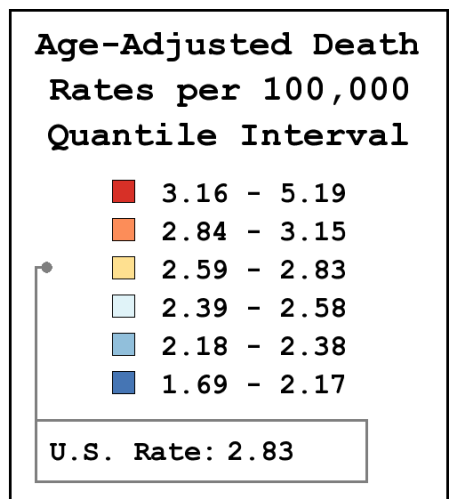
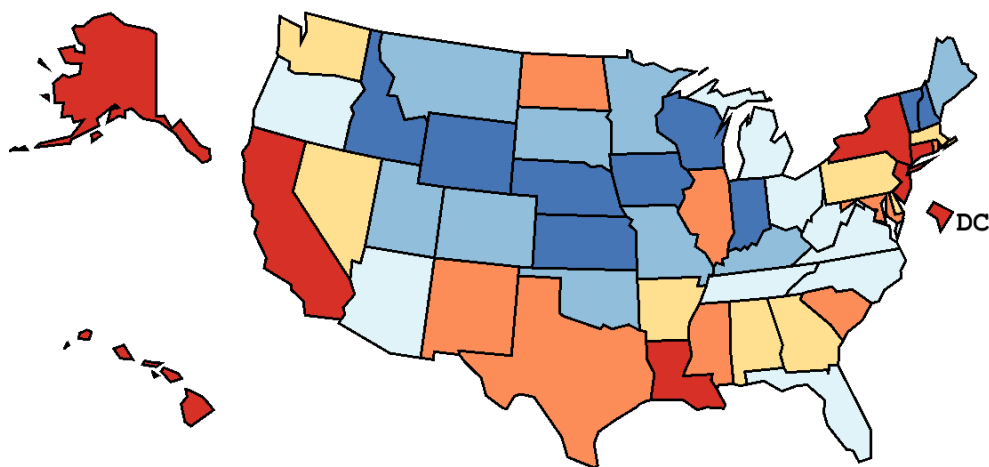
Table 24.17
Cancer of the Stomach (Invasive)

Age-Adjusted Cancer Death^a Rates By State, All Races, 2002-2006

Females

State	Rate	SE	Rank	PD
TOTAL U.S.	2.83	0.02		
High Five States				
Hawaii	5.19	0.37	(01)	83.53 ^c
D.C.	3.87	0.47	(02)	36.76 ^c
New York	3.59	0.08	(03)	26.84 ^c
California	3.56	0.06	(04)	26.00 ^c
Alaska	3.55	0.60	(05)	25.47 ^c
Low Five States				
Nebraska	1.85	0.19	(47)	-34.56 ^c
Kansas	1.77	0.15	(48)	-37.34 ^c
Vermont	1.74	0.31	(49)	-38.40 ^c
Idaho	1.73	0.22	(50)	-38.82 ^c
New Hampshire	1.69	0.21	(51)	-40.31 ^c

State	Rate	SE	Rank	PD	State	Rate	SE	Rank	PD
Alabama	2.77	0.14	(20)	-1.99	Montana	2.18	0.28	(42)	-22.89 ^c
Alaska	3.55	0.60	(05)	25.47 ^c	Nebraska	1.85	0.19	(47)	-34.56 ^c
Arizona	2.41	0.12	(33)	-14.93	Nevada	2.83	0.23	(17)	0.03
Arkansas	2.73	0.18	(21)	-3.35	New Hampshire	1.69	0.21	(51)	-40.31 ^c
California	3.56	0.06	(04)	26.00 ^c	New Jersey	3.44	0.11	(06)	21.73 ^c
Colorado	2.38	0.15	(34)	-15.78 ^c	New Mexico	3.15	0.25	(09)	11.38
Connecticut	3.16	0.17	(08)	11.88	New York	3.59	0.08	(03)	26.84 ^c
Delaware	2.72	0.33	(22)	-3.69	North Carolina	2.54	0.10	(28)	-10.15
D.C.	3.87	0.47	(02)	36.76 ^c	North Dakota	3.00	0.39	(14)	6.24
Florida	2.51	0.06	(29)	-11.37	Ohio	2.48	0.08	(30)	-12.26
Georgia	2.81	0.11	(18)	-0.80	Oklahoma	2.26	0.15	(39)	-20.21 ^c
Hawaii	5.19	0.37	(01)	83.53 ^c	Oregon	2.44	0.15	(32)	-13.61
Idaho	1.73	0.22	(50)	-38.82 ^c	Pennsylvania	2.65	0.08	(23)	-6.46
Illinois	3.08	0.09	(11)	9.00	Rhode Island	3.02	0.29	(13)	6.96
Indiana	2.17	0.11	(43)	-23.23 ^c	South Carolina	2.96	0.15	(15)	4.64
Iowa	1.96	0.14	(46)	-30.85 ^c	South Dakota	2.30	0.32	(37)	-18.54 ^c
Kansas	1.77	0.15	(48)	-37.34 ^c	Tennessee	2.58	0.12	(25)	-8.63
Kentucky	2.32	0.14	(36)	-17.94 ^c	Texas	3.07	0.08	(12)	8.40
Louisiana	3.32	0.16	(07)	17.54 ^c	Utah	2.19	0.21	(40)	-22.40 ^c
Maine	2.38	0.23	(35)	-15.95 ^c	Vermont	1.74	0.31	(49)	-38.40 ^c
Maryland	3.09	0.14	(10)	9.19	Virginia	2.57	0.11	(27)	-9.02
Massachusetts	2.79	0.12	(19)	-1.19	Washington	2.59	0.12	(24)	-8.42
Michigan	2.58	0.09	(26)	-8.76	West Virginia	2.48	0.20	(31)	-12.34
Minnesota	2.19	0.12	(41)	-22.40 ^c	Wisconsin	2.17	0.11	(44)	-23.24 ^c
Mississippi	2.94	0.19	(16)	4.10	Wyoming	2.08	0.39	(45)	-26.40 ^c
Missouri	2.29	0.11	(38)	-18.93 ^c					



^a US Mortality Files, National Center for Health Statistics, Centers for Disease Control and Prevention. Rates are per 100,000 and are age-adjusted to the 2000 US Std Population (19 age groups - Census P25-1130).
^b Difference between state rate and total U.S. rate is statistically significant ($p \leq .0002$).
^c Absolute percent difference between state rate and total U.S. rate is 15% or more.
SE Standard error of the rate.
PD Percent difference between state rate and total U.S. rate.

Table 24.18
Cancer of the Stomach (Invasive)

Estimated United States Cancer Prevalence Counts^a on January 1, 2006
By Race/Ethnicity, Sex and Years Since Diagnosis

Years Since Diagnosis		0 to <5	5 to <10	10 to <15	15 to <20	20 to <25	25 to <30	0 to <16 ^e	0 to <31 ^e	>=31 ^g	Complete ^h
<u>Race</u>	<u>Sex</u>										
All Races ^b	Both Sexes	31,763	12,887	7,717	5,264	2,760	1,529	53,464	62,024	2,098	64,122
	Males	19,112	7,354	4,149	2,604	1,427	813	31,117	35,526	1,199	36,725
	Females	12,651	5,533	3,568	2,660	1,333	716	22,347	26,498	899	27,397
White ^b	Both Sexes	24,366	9,461	5,842	3,972	2,127	1,286	40,474	47,124	1,708	48,832
	Males	14,951	5,420	3,072	1,994	1,129	694	23,834	27,305	922	28,227
	Females	9,415	4,041	2,770	1,978	998	592	16,640	19,819	786	20,605
Black ^b	Both Sexes	4,497	1,951	987	706	393	107	7,561	8,665	270	8,935
	Males	2,436	1,017	606	320	212	69	4,095	4,671	165	4,836
	Females	2,061	934	381	386	181	38	3,466	3,994	105	4,099
Asian/ Pacific Islander ^c	Both Sexes	2,743	1,313	811	+	+	+	5,002	+	+	+
	Males	1,549	758	454	+	+	+	2,836	+	+	+
	Females	1,194	555	357	+	+	+	2,166	+	+	+
Hispanic ^d	Both Sexes	3,790	1,519	853	+	+	+	6,293	+	+	+
	Males	2,048	754	380	+	+	+	3,235	+	+	+
	Females	1,742	765	473	+	+	+	3,058	+	+	+

Estimated prevalence percent^a on January 1, 2006, of the SEER 11 population diagnosed in the previous 16 years
By Age at Prevalence, Race/Ethnicity and Sex

Age at Prevalence		Age Specific (Crude)									Age-Adjusted ^f	
		All Ages	0-9	10-19	20-29	30-39	40-49	50-59	60-69	70-79	80+	All Ages
<u>Race</u>	<u>Sex</u>											
All Races ^c	Both Sexes	0.0198%	-	-	0.0005%	0.0031%	0.0103%	0.0263%	0.0558%	0.1130%	0.1469%	0.0207%
	Males	0.0228%	-	-	0.0004%	0.0033%	0.0111%	0.0322%	0.0757%	0.1525%	0.1989%	0.0271%
	Females	0.0169%	-	-	0.0005%	0.0030%	0.0095%	0.0206%	0.0378%	0.0826%	0.1180%	0.0158%
White ^c	Both Sexes	0.0165%	-	-	0.0004%	0.0029%	0.0084%	0.0211%	0.0454%	0.0873%	0.1118%	0.0163%
	Males	0.0190%	-	-	0.0004%	0.0030%	0.0094%	0.0263%	0.0624%	0.1184%	0.1484%	0.0214%
	Females	0.0139%	-	-	0.0005%	0.0027%	0.0073%	0.0161%	0.0296%	0.0627%	0.0917%	0.0123%
Black ^c	Both Sexes	0.0187%	-	-	0.0007%	0.0032%	0.0147%	0.0370%	0.0727%	0.1306%	0.1688%	0.0256%
	Males	0.0208%	-	-	-	0.0043%	0.0161%	0.0436%	0.0960%	0.1750%	0.2371%	0.0332%
	Females	0.0167%	-	-	-	0.0023%	0.0136%	0.0314%	0.0546%	0.1012%	0.1356%	0.0205%
Asian/ Pacific Islander ^c	Both Sexes	0.0422%	-	-	-	0.0043%	0.0177%	0.0484%	0.1104%	0.2666%	0.4071%	0.0463%
	Males	0.0492%	-	-	-	0.0039%	0.0179%	0.0602%	0.1512%	0.3654%	0.5381%	0.0609%
	Females	0.0355%	-	-	-	0.0046%	0.0176%	0.0381%	0.0759%	0.1942%	0.3208%	0.0354%
Hispanic ^d	Both Sexes	0.0142%	-	-	0.0007%	0.0042%	0.0132%	0.0331%	0.0705%	0.1566%	0.2043%	0.0279%
	Males	0.0141%	-	-	0.0006%	0.0036%	0.0128%	0.0369%	0.0957%	0.1855%	0.2192%	0.0323%
	Females	0.0143%	-	-	0.0009%	0.0049%	0.0135%	0.0294%	0.0493%	0.1355%	0.1956%	0.0244%

^a US 2006 cancer prevalence counts are based on 2006 cancer prevalence proportions from the SEER registries and 1/1/2006 US population estimates based on the average of 2005 and 2006 population estimates from the US Bureau of the Census. Prevalence was calculated using the First Malignant Primary Only for a person.

^{b c d} Statistics based on (b) SEER 9 Areas (c) SEER 11 Areas and Rural Georgia (d) NHIA for Hispanic for SEER 11 Areas and Rural Georgia.

^e Maximum limited-duration prevalence: 31 years for 1975-2006 SEER 9 data; 16 years for 1990-2006 SEER 11 data (used to calculate prevalence for Hispanics and Asian Pacific Islanders).

^f Percentages are age-adjusted to the 2000 US Standard Population (19 age groups - Census P25-1130) by 5-year age groups.

^{g h i} (g) Cases diagnosed more than 31 years ago were estimated using the completeness index method (Capocaccia et. al. 1997, Merrill et. al. 2000). (h) Complete prevalence is obtained by summing 0 to <31 and >=31. (i) Age-specific completeness index was approximated using empirical data from historical Connecticut tumor registry.

- Statistic not shown. Statistic based on fewer than 5 cases estimated alive in SEER for the time interval.

+ Not available.

Table 24.19

Cancer of the Stomach (Invasive)

Percent Distribution and Counts by Histology among Histologically Confirmed Cases, 2002-2006
Both Sexes by Race

Histology ^a	All Races		White		Black		Asian/Pacific Islander		American Indian/ Alaska Native ^b		Hispanic ^c	
	Count	Percent	Count	Percent	Count	Percent	Count	Percent	Count	Percent	Count	Percent
Carcinoma	26,350	94.8%	19,134	95.1%	3,144	91.8%	3,728	95.7%	198	98.0%	4,306	96.9%
Epidermoid carcinoma ^d (8051-8131)	206	0.7%	155	0.8%	38	1.1%	-	-	-	-	16	0.4%
Squamous cell carcinoma (8070-8078,8083-8084)	199	0.7%	150	0.7%	37	1.1%	-	-	-	-	-	-
Adenocarcinoma (8050,8140-8147, 8160-8162,8180-8221, 8250-8507,8514,8520-8551, 8560,8570-8574, 8576,8940-8941)	24,084	86.6%	17,359	86.3%	2,856	83.4%	3,575	91.8%	179	88.6%	3,943	88.7%
Adenocarcinoma, NOS (8140)	13,920	50.1%	10,353	51.5%	1,699	49.6%	1,700	43.6%	110	54.5%	1,959	44.1%
Adenocarcinoma, intestinal type (8144)	2,124	7.6%	1,249	6.2%	268	7.8%	579	14.9%	16	7.9%	355	8.0%
Carcinoma, diffuse type (8145)	754	2.7%	467	2.3%	78	2.3%	198	5.1%	-	-	157	3.5%
Linitus plastica (8142)	352	1.3%	265	1.3%	35	1.0%	49	1.3%	-	-	87	2.0%
Mucinous adenocarcinoma (8470-8473,8480,8482)	484	1.7%	351	1.7%	65	1.9%	61	1.6%	-	-	55	1.2%
Mucin-producing adenocarcinoma (8481)	291	1.0%	218	1.1%	46	1.3%	21	0.5%	-	-	36	0.8%
Signet ring adenocarcinoma (8490)	5,052	18.2%	3,681	18.3%	532	15.5%	780	20.0%	32	15.8%	1,097	24.7%
Other adenocarcinomas ^e	1,107	4.0%	775	3.9%	133	3.9%	187	4.8%	-	-	197	4.4%
Other specific carcinomas (8012-8015,8030-8046, 8150-8155,8170-8175, 8230-8249,8508,8510-8513, 8561-8562,8575,8580-8671)	1,349	4.9%	1,088	5.4%	162	4.7%	64	1.6%	-	-	232	5.2%
Unspecified, Carcinoma, NOS (8010-8011,8020-8022)	711	2.6%	532	2.6%	88	2.6%	77	2.0%	-	-	115	2.6%

Source: SEER 17 areas (San Francisco, Connecticut, Detroit, Hawaii, Iowa, New Mexico, Seattle, Utah, Atlanta, San Jose-Monterey, Los Angeles, Alaska Native Registry, Rural Georgia, California excluding SF/SJM/LA, Kentucky, Louisiana and New Jersey). Percents may not sum to 100 due to rounding.

^a Excludes Kaposi Sarcoma, mesothelioma, lymphomas, leukemias, myelomas, lymphoreticular, and immunoproliferative diseases.

^b Estimates for American Indian/Alaska Native are based on the CHSDA (Contract Health Service Delivery Area) counties.

^c Hispanic is not mutually exclusive from whites, blacks, Asian/Pacific Islanders, and American Indians/Alaska Natives.

^d Underlying incidence data for Hispanics are based on NHIA and exclude cases from the Alaska Native Registry.

^e Epidermoid carcinoma includes squamous, basal, and transitional cell carcinomas.

^e Other adenocarcinomas includes histologies 8050, 8141, 8143, 8146-8147, 8160-8162, 8180-8221, 8250-8469, 8474-8479, 8483-8489, 8491-8507, 8514, 8520-8551, 8560, 8570-8574, 8576, 8940-8941.

- Statistic not shown due to fewer than 16 cases during the time period.

Table XXIV-19 - continued

STOMACH CANCER(Invasive)

Percent Distribution and Counts by Histology among Histologically Confirmed Cases, 2001-2005
Both Sexes by Race

Histology ^a	<u>All Races</u>		<u>White</u>		<u>Black</u>		<u>Asian/Pacific Islander</u>		<u>American Indian/ Alaska Native^b</u>		<u>Hispanic^c</u>	
	Count	Percent	Count	Percent	Count	Percent	Count	Percent	Count	Percent	Count	Percent
Sarcoma and other soft tissue tumors (8680-8713,8800-8921, 8990-8991,9040-9044, 9120-9136,9150-9252, 9370-9373,9540-9582)	80	0.3%	63	0.3%	-	-	-	-	-	-	-	-
Other specific types (8720-8790,8930-8936, 8950-8983,9000-9030, 9060-9110,9260-9365, 9380-9539)	1,228	4.4%	817	4.1%	250	7.3%	150	3.9%	-	-	105	2.4%
Unspecified (8000-8005)	142	0.5%	106	0.5%	20	0.6%	-	-	-	-	22	0.5%
Total ^d	27,800	100.0%	20,120	100.0%	3,426	100.0%	3,896	100.0%	202	100.0%	4,443	100.0%

Source: SEER 17 areas (San Francisco, Connecticut, Detroit, Hawaii, Iowa, New Mexico, Seattle, Utah, Atlanta, San Jose-Monterey, Los Angeles, Alaska Native Registry, Rural Georgia, California excluding SF/SJM/LA, Kentucky, Louisiana and New Jersey). Percents may not sum to 100 due to rounding.

^a Excludes Kaposi Sarcoma, mesothelioma, lymphomas, leukemias, myelomas, lymphoreticular, and immunoproliferative diseases.

^b Estimates for American Indian/Alaska Native are based on the CHSDA(Contract Health Service Delivery Area) counties.

^c Hispanic is not mutually exclusive from whites, blacks, Asian/Pacific Islanders, and American Indians/Alaska Natives.

Underlying incidence data for Hispanics are based on NHIA and exclude cases from the Alaska Native Registry.

^d Total includes carcinoma cases from the previous page.

- Statistic not shown due to fewer than 16 cases during the time period.

SEER Observed Incidence, SEER Delay Adjusted Incidence and US Death Rates^a Cancer of the Stomach, by Race and Sex

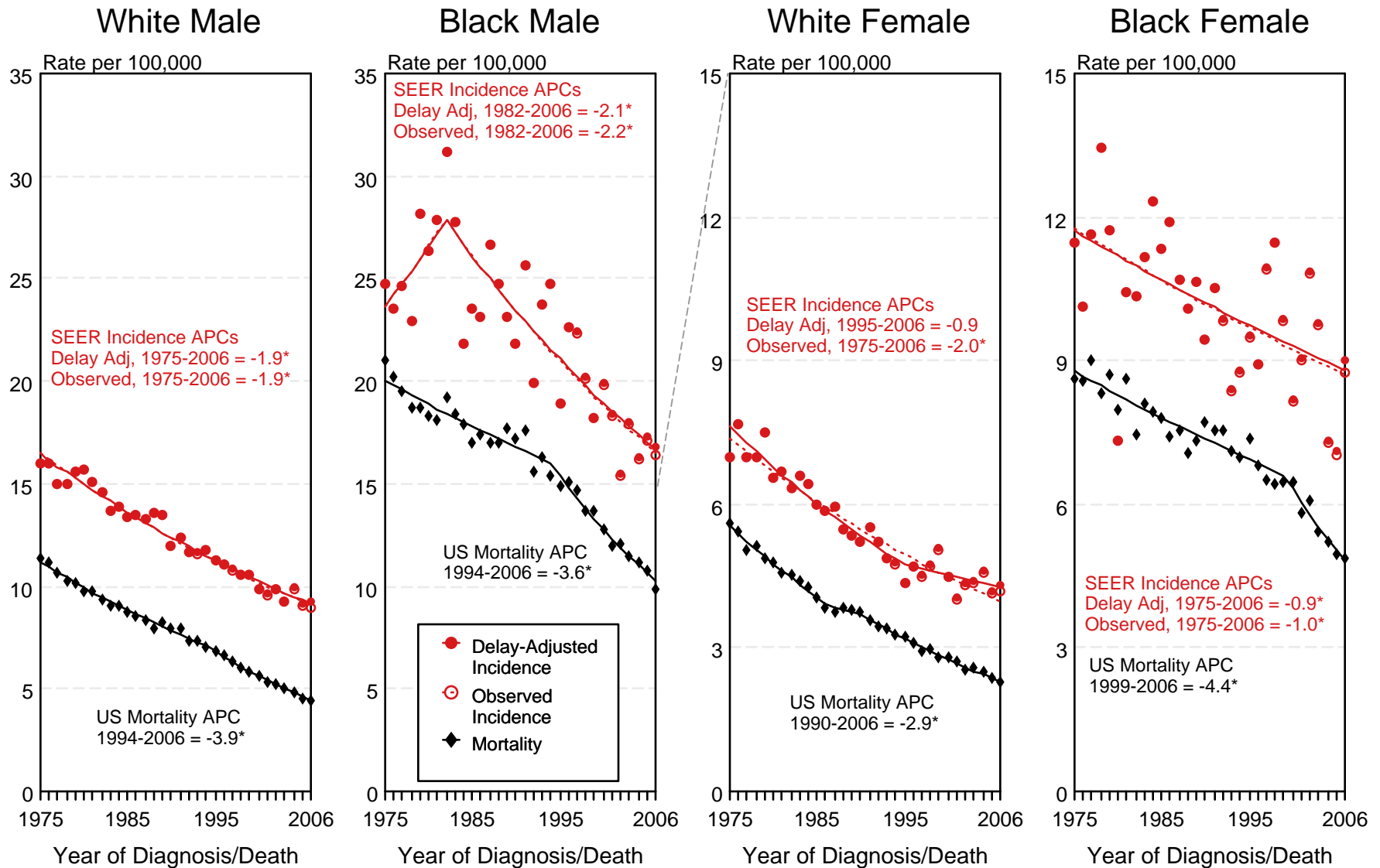


Figure 24.1

^a Source: SEER 9 areas and US Mortality Files (National Center for Health Statistics, CDC). Rates are age-adjusted to the 2000 US Std Population (19 age groups - Census P25-1103). Regression lines and APCs are calculated using the Joinpoint Regression Program Version 3.3.1, April 2008, National Cancer Institute. The APC is the Annual Percent Change for the regression line segments. The APC shown on the graph is for the most recent trend.
* The APC is significantly different from zero ($p < 0.05$).

SEER Incidence and US Death Rates^a Cancer of the Stomach, Both Sexes

Joinpoint Analyses for Whites and Blacks from 1975-2006
and for Asian/Pacific Islanders, American Indians/Alaska Natives and Hispanics from 1992-2006

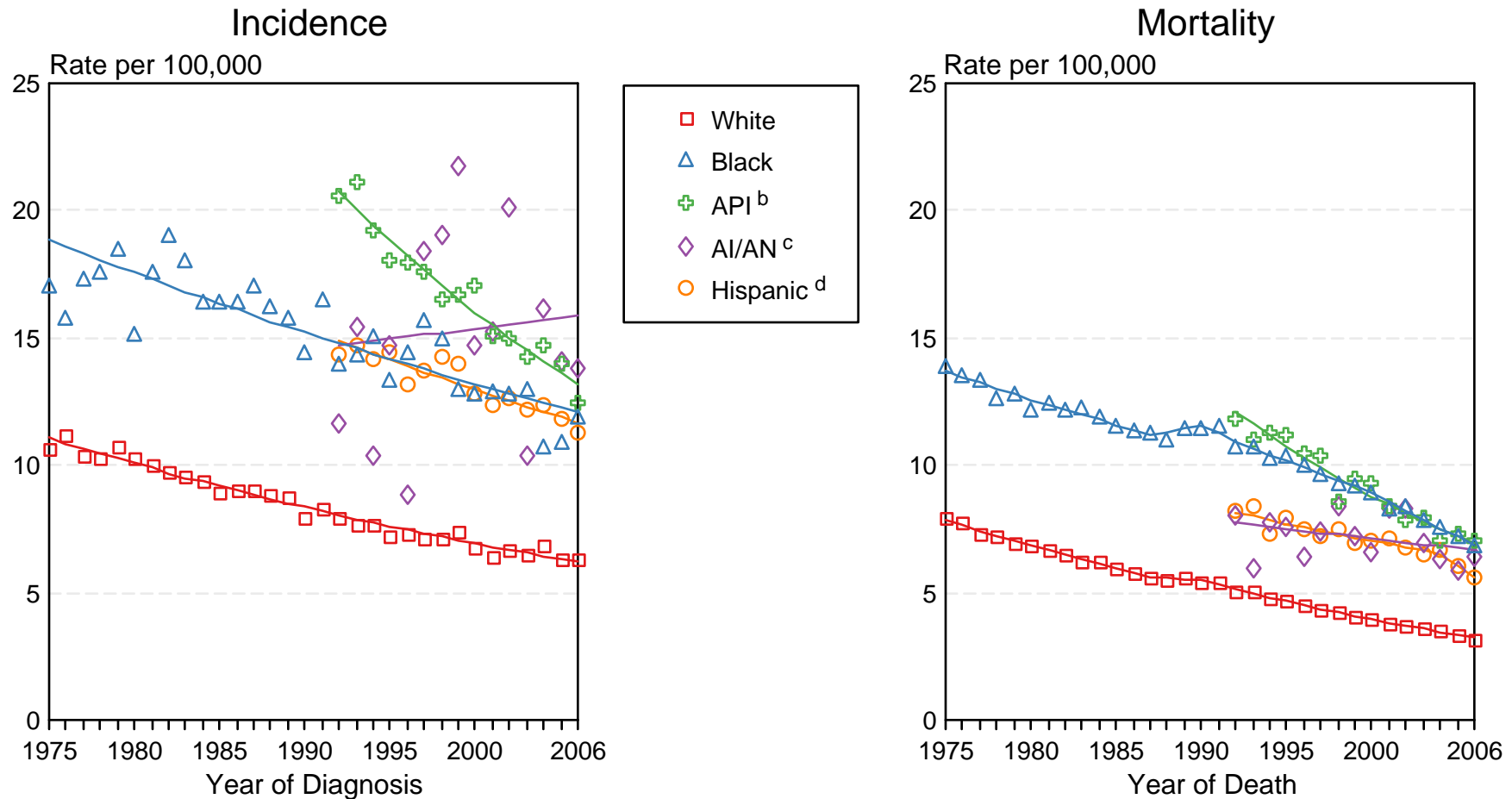


Figure 24.2

Source: Incidence data for whites and blacks are from the SEER 9 areas (San Francisco, Connecticut, Detroit, Hawaii, Iowa, New Mexico, Seattle, Utah, Atlanta). Incidence data for Asian/Pacific Islanders, American Indians/Alaska Natives and Hispanics are from the SEER 13 Areas (SEER 9 Areas, San Jose-Monterey, Los Angeles, Alaska Native Registry and Rural Georgia). Mortality data are from US Mortality Files, National Center for Health Statistics, CDC.

^a Rates are age-adjusted to the 2000 US Std Population (19 age groups - Census P25-1103).

Regression lines are calculated using the Joinpoint Regression Program Version 3.3.1, April 2008, National Cancer Institute. Joinpoint analyses for Whites and Blacks during the 1975-2006 period allow a maximum of 4 joinpoints. Analyses for other ethnic groups during the period 1992-2006 allow a maximum of 2 joinpoints.

^b API = Asian/Pacific Islander.

^c AI/AN = American Indian/Alaska Native. Rates for American Indian/Alaska Native are based on the CHSDA(Contract Health Service Delivery Area) counties.

^d Hispanic is not mutually exclusive from whites, blacks, Asian/Pacific Islanders, and American Indians/Alaska Natives. Incidence data for Hispanics are based on NHIA and exclude cases from the Alaska Native Registry. Mortality data for Hispanics exclude cases from Connecticut, the District of Columbia, Maine, Maryland, Minnesota, New Hampshire, New York, North Dakota, Oklahoma, and Vermont.

SEER Observed Incidence and SEER Delay Adjusted Incidence Rates^a SEER 9 Areas Compared to SEER 13 Areas Cancer of the Stomach, Male, by Race

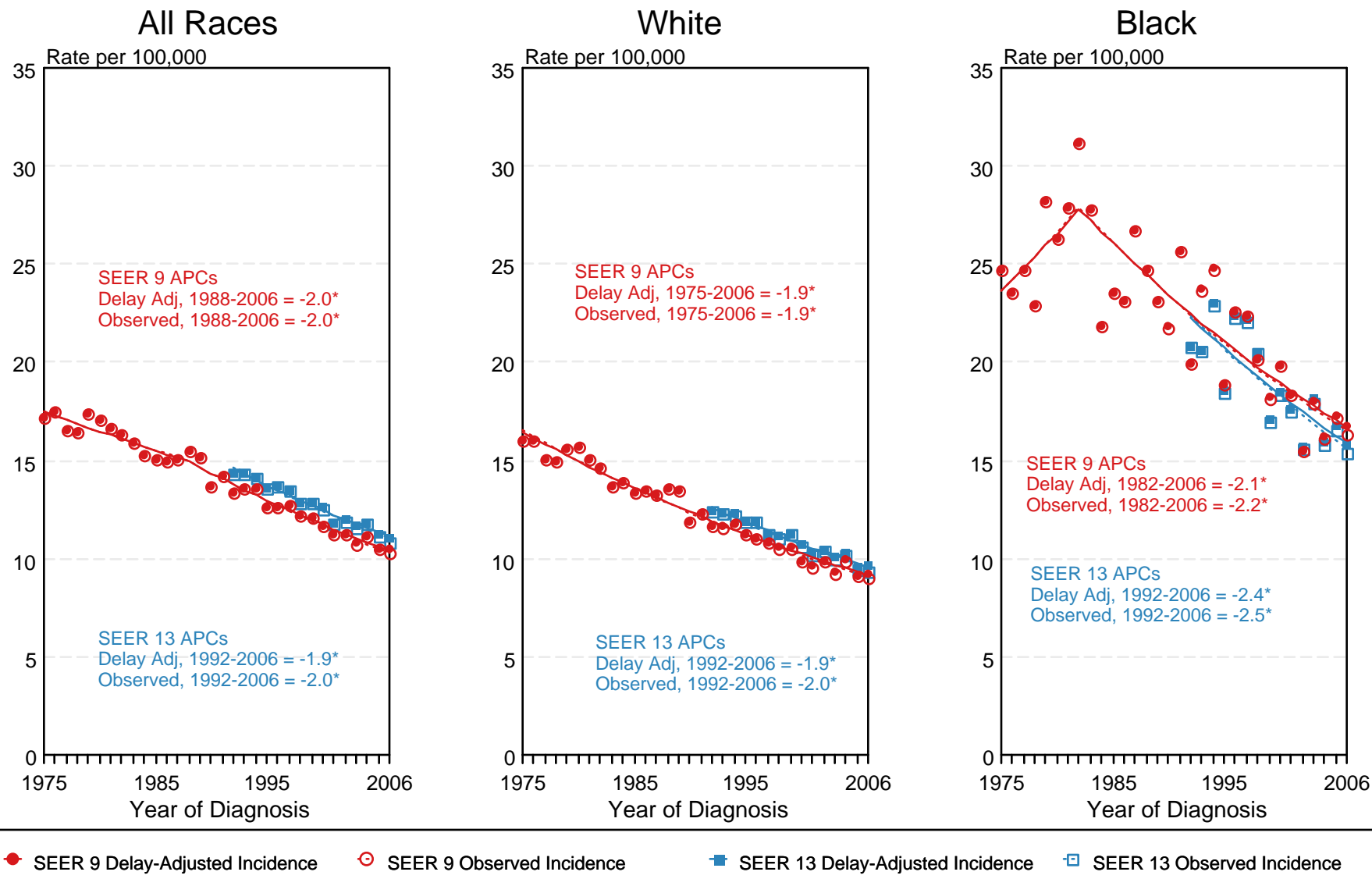


Figure 24.3

^a Source: SEER 9 areas and SEER 13 areas.
Rates are age-adjusted to the 2000 US Std Population (19 age groups - Census P25-1103).
Regression lines and APCs are calculated using the Joinpoint Regression Program Version 3.3.1, April 2008, National Cancer Institute.
The APC is the Annual Percent Change for the regression line segments. The APC shown on the graph is for the most recent trend.
* The APC is significantly different from zero ($p < 0.05$).

SEER Observed Incidence and SEER Delay Adjusted Incidence Rates^a SEER 9 Areas Compared to SEER 13 Areas Cancer of the Stomach, Female, by Race

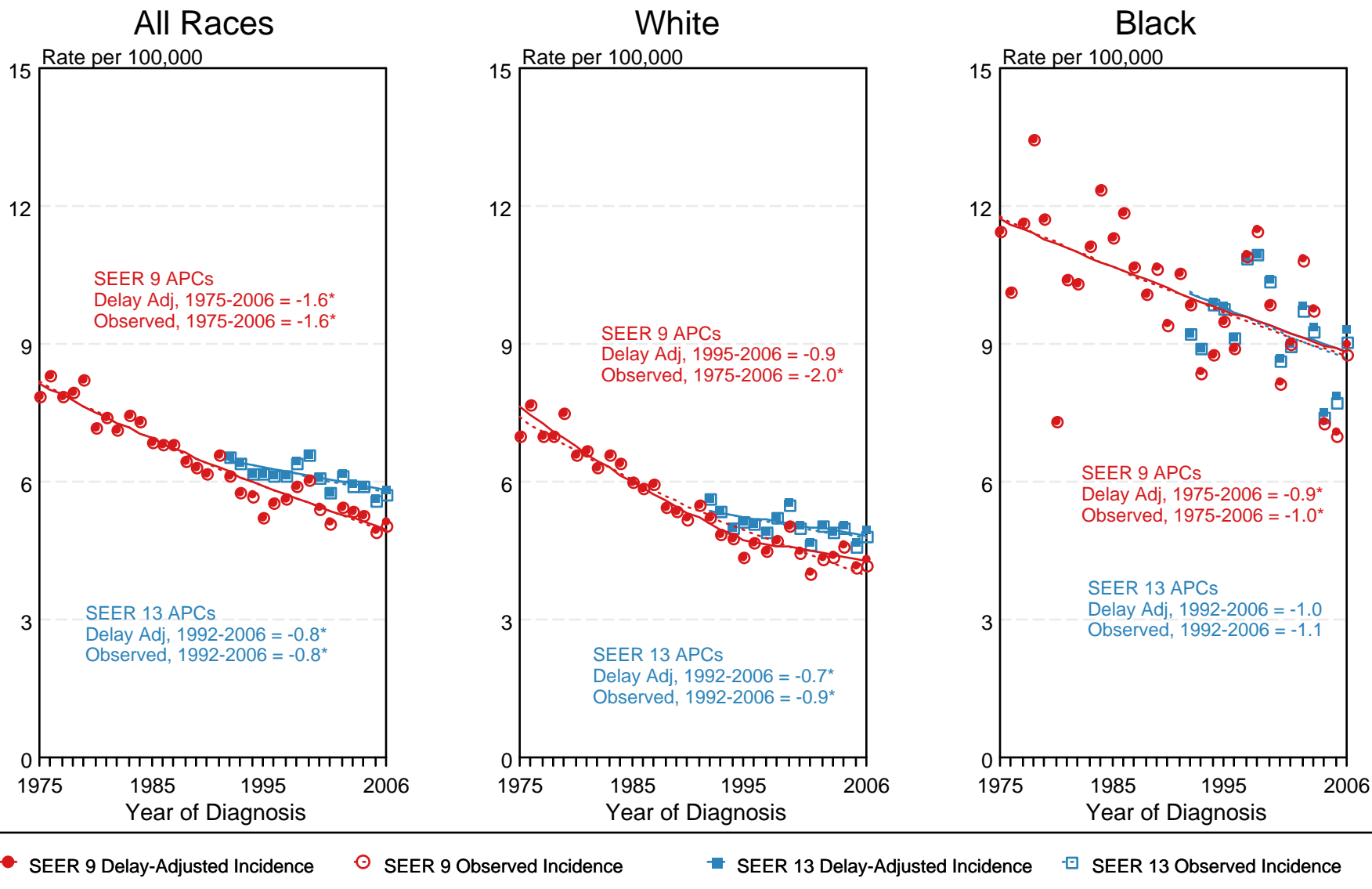


Figure 24.4

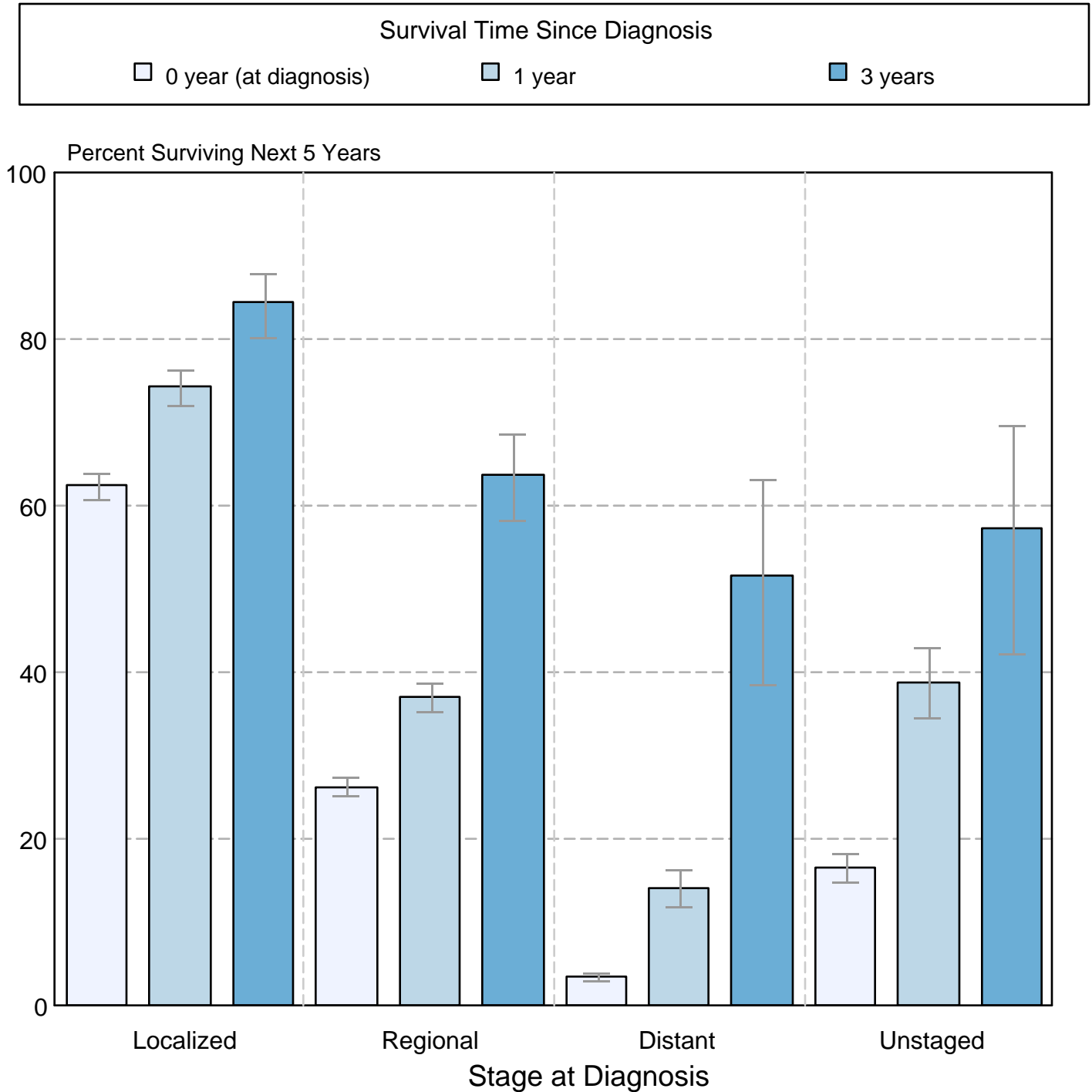
^a Source: SEER 9 areas and SEER 13 areas. Rates are age-adjusted to the 2000 US Std Population (19 age groups - Census P25-1103). Regression lines and APCs are calculated using the Joinpoint Regression Program Version 3.3.1, April 2008, National Cancer Institute. The APC is the Annual Percent Change for the regression line segments. The APC shown on the graph is for the most recent trend.
* The APC is significantly different from zero ($p < 0.05$).

Figure 24.5

Cancer of the Stomach

5-Year SEER Conditional Relative Survival Rates and 95% Confidence Intervals

Probability of surviving the next 5 years given the cohort
has already survived 0, 1, or 3 years
1998-2005 by stage at diagnosis



Source: SEER 17 areas (San Francisco, Connecticut, Detroit, Hawaii, Iowa, New Mexico, Seattle, Utah, Atlanta, San Jose-Monterey, Los Angeles, Alaska Native Registry, Rural Georgia, California excluding SF/SJM/LA, Kentucky, Louisiana, and New Jersey). California excluding SF/SJM/LA, Kentucky, Louisiana, and New Jersey contribute cases for diagnosis years 2000-2006. The remaining 13 SEER Areas contribute cases for the entire period 1998-2005. Percent surviving is not shown if based on less than 25 cases. Confidence intervals are not shown if length of the confidence interval is greater than 5 times the standard error.