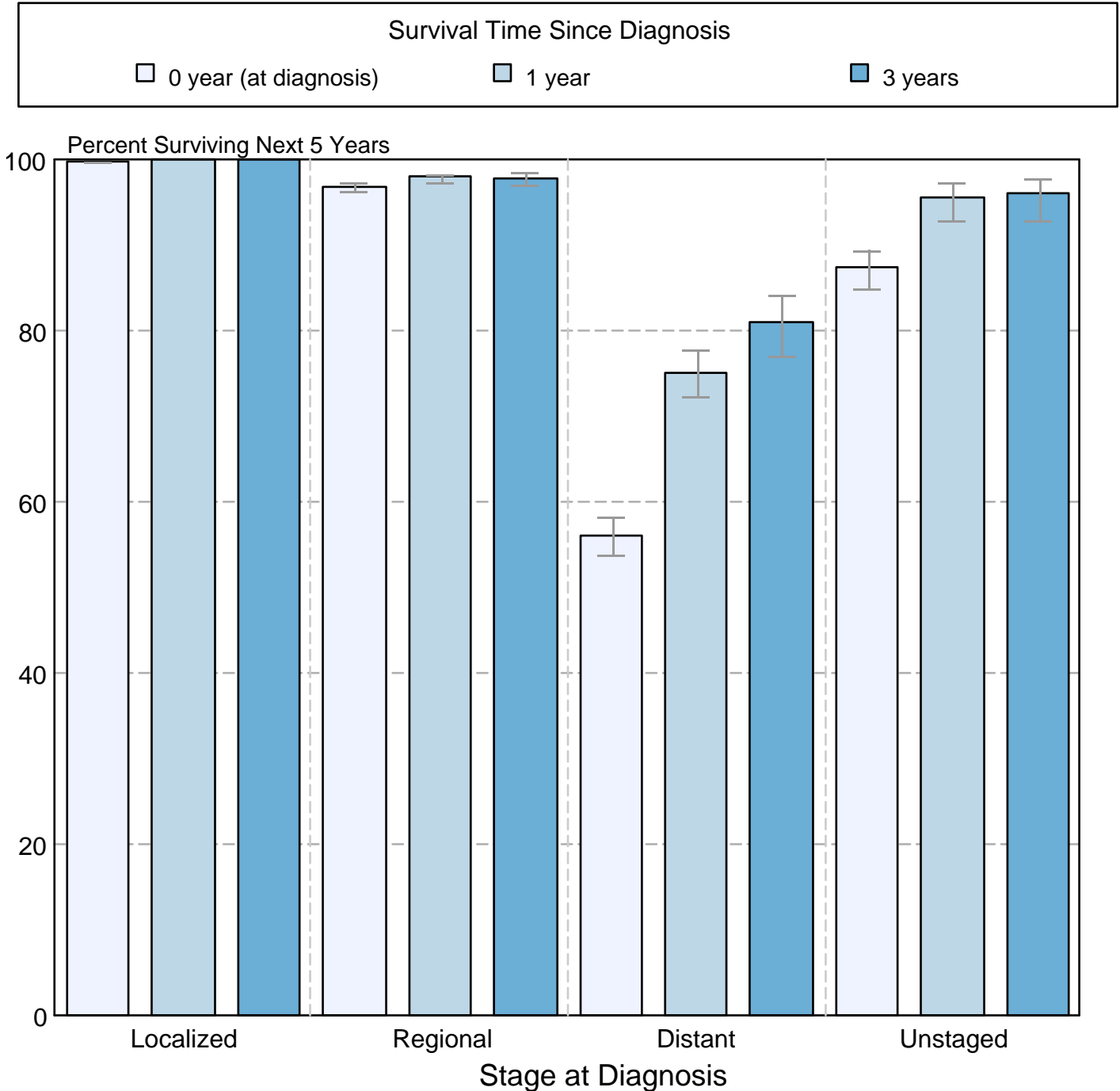


Figure 26.5

Cancer of the Thyroid
5-Year SEER Conditional Relative Survival and
95% Confidence Intervals
 Probability of surviving the next 5 years given the cohort
 has already survived 0, 1, or 3 years
 1998-2007 by stage at diagnosis



Source: SEER 17 areas (San Francisco, Connecticut, Detroit, Hawaii, Iowa, New Mexico, Seattle, Utah, Atlanta, San Jose-Monterey, Los Angeles, Alaska Native Registry, Rural Georgia, California excluding SF/SJM/LA, Kentucky, Louisiana, and New Jersey). California excluding SF/SJM/LA, Kentucky, Louisiana, and New Jersey contribute cases for diagnosis years 2000-2007. The remaining 13 SEER Areas contribute cases for the entire period 1998-2007.

Percent surviving is not shown if based on less than 25 cases.

Confidence intervals are not shown if length of the confidence interval is greater than 5 times the standard error.