

Table 2.1  
All Cancer Sites (Invasive)

Trends in SEER Incidence<sup>ab</sup> and U.S. Mortality<sup>c</sup> Using the Joinpoint Regression Program,  
1975-2010 With up to Five Joinpoints, 1992-2010 With up to Three Joinpoints,  
Both Sexes by Race/Ethnicity

	JP Trend 1		JP Trend 2		JP Trend 3		JP Trend 4		JP Trend 5		JP Trend 6		AAPC <sup>d</sup>	
	Years	APC	Years	APC	Years	APC	Years	APC	Years	APC	Years	APC	2001-10	2006-10
<u>SEER 9 Delay-Adjusted Incidence<sup>a</sup>, 1975-2010</u>														
All Races	1975-89	1.2*	1989-92	2.9*	1992-95	-2.5	1995-98	1.2	1998-10	-0.3*			-0.3*	-0.3*
White	1975-82	0.8*	1982-92	1.8*	1992-95	-2.2	1995-98	1.5	1998-10	-0.3*			-0.3*	-0.3*
Black	1975-84	1.6*	1984-89	0.4	1989-92	4.7*	1992-95	-1.6	1995-10	-0.5*			-0.5*	-0.5*
<u>SEER 13 Delay-Adjusted Incidence<sup>b</sup>, 1992-2010</u>														
All Races	1992-94	-3.2*	1994-98	0.4	1998-10	-0.4*							-0.4*	-0.4*
White	1992-94	-3.2*	1994-99	0.5	1999-10	-0.4*							-0.4*	-0.4*
Black	1992-10	-0.6*											-0.6*	-0.6*
<u>SEER 9 Observed Incidence<sup>a</sup>, 1975-2010</u>														
All Races	1975-89	1.2*	1989-92	2.8	1992-95	-2.3	1995-99	0.8	1999-10	-0.5*			-0.5*	-0.5*
White	1975-82	0.9*	1982-92	1.8*	1992-95	-2.1	1995-99	1.1	1999-10	-0.5*			-0.5*	-0.5*
Black	1975-84	1.6*	1984-89	0.4	1989-92	4.7*	1992-95	-1.7	1995-08	-0.5*	2008-10	-2.5	-1.0*	-1.5*
<u>SEER 13 Observed Incidence<sup>b</sup>, 1992-2010</u>														
All Races	1992-94	-3.1	1994-99	0.3	1999-10	-0.6*							-0.6*	-0.6*
White	1992-94	-3.3	1994-99	0.6	1999-10	-0.5*							-0.5*	-0.5*
White NH <sup>ef</sup>	1992-94	-3.2	1994-99	0.7	1999-10	-0.4*							-0.4*	-0.4*
Black	1992-10	-0.7*											-0.7*	-0.7*
Black NH <sup>ef</sup>	1992-10	-0.7*											-0.7*	-0.7*
API <sup>e</sup>	1992-10	-0.5*											-0.5*	-0.5*
AI/AN <sup>eg</sup>	1992-10	0.2											0.2	0.2
Hispanic <sup>f</sup>	1992-08	-0.1	2008-10	-2.8									-0.7	-1.5
<u>U.S. Cancer Mortality<sup>c</sup>, 1975-2010</u>														
All Races	1975-84	0.5*	1984-91	0.3*	1991-94	-0.5	1994-98	-1.3*	1998-01	-0.8	2001-10	-1.5*	-1.5*	-1.5*
White	1975-90	0.4*	1990-94	-0.3	1994-98	-1.2*	1998-01	-0.6	2001-10	-1.4*			-1.4*	-1.4*
Black	1975-83	1.3*	1983-91	0.7*	1991-95	-0.8*	1995-02	-1.7*	2002-10	-2.2*			-2.1*	-2.2*
<u>U.S. Cancer Mortality<sup>c</sup>, 1992-2010</u>														
All Races	1992-01	-1.0*	2001-10	-1.5*									-1.5*	-1.5*
White	1992-94	-0.3	1994-98	-1.2*	1998-01	-0.6	2001-10	-1.4*					-1.4*	-1.4*
White NH <sup>ef</sup>	1992-94	-0.1	1994-97	-1.3*	1997-01	-0.6*	2001-10	-1.3*					-1.3*	-1.3*
Black	1992-99	-1.3*	1999-10	-2.1*									-2.1*	-2.1*
Black NH <sup>ef</sup>	1992-01	-1.3*	2001-10	-2.1*									-2.1*	-2.1*
API <sup>e</sup>	1992-10	-1.4*											-1.4*	-1.4*
AI/AN <sup>eg</sup>	1992-10	0.0											0.0	0.0
Hispanic <sup>f</sup>	1992-01	-0.4*	2001-10	-1.5*									-1.5*	-1.5*

Joinpoint Regression Program Version 4.0.3, April 2013, National Cancer Institute. (<http://surveillance.cancer.gov/joinpoint/>).

The APC is the Annual Percent Change based on rates age-adjusted to the 2000 US Std Population (19 age groups - Census P25-1130).

Trends are from the SEER 9 areas (San Francisco, Connecticut, Detroit, Hawaii, Iowa, New Mexico, Seattle, Utah, and Atlanta).

Trends are from the SEER 13 areas (SEER 9 Areas, Los Angeles, San Jose-Monterey, Rural Georgia, and the Alaska Native Registry).

Trends are from US Mortality Files, National Center for Health Statistics, Centers for Disease Control and Prevention.

The AAPC is the Average Annual Percent Change and is based on the APCs calculated by Joinpoint.

API - Asian/Pacific Islander, AI/AN - American Indian/Alaska Native, NH - Non-Hispanic

Hispanic and Non-Hispanic are not mutually exclusive from whites, blacks, Asian/Pacific Islanders, and American Indians/Alaska

Natives. Incidence data for Hispanics and Non-Hispanics are based on NHIA and exclude cases from the Alaska Native Registry.

The Hispanic and Non-Hispanic mortality trends exclude deaths from CT, DC, ME, MD, MN, NH, NY, ND, SC, OK and VT.

Data for American Indian/Alaska Native are based on the CHSDA (Contract Health Service Delivery Area) counties.

\* The APC/AAPC is significantly different from zero ( $p < .05$ ).

- Joinpoint regression line analysis could not be performed on data series.

Table 2.2  
All Cancer Sites (Invasive)

Trends in SEER Incidence<sup>ab</sup> and U.S. Mortality<sup>c</sup> Using the Joinpoint Regression Program,  
1975-2010 With up to Five Joinpoints, 1992-2010 With up to Three Joinpoints,  
Males by Race/Ethnicity

	JP Trend 1		JP Trend 2		JP Trend 3		JP Trend 4		JP Trend 5		JP Trend 6		AAPC <sup>d</sup>	
	Years	APC	Years	APC	Years	APC	Years	APC	Years	APC	Years	APC	2001-10	2006-10
<u>SEER 9 Delay-Adjusted Incidence<sup>a</sup>, 1975-2010</u>														
All Races	1975-89	1.3*	1989-92	5.2*	1992-95	-4.9*	1995-00	0.5	2000-10	-0.8*			-0.8*	-0.8*
White	1975-89	1.4*	1989-92	5.1*	1992-95	-5.2*	1995-00	0.8	2000-10	-0.7*			-0.7*	-0.7*
Black	1975-81	2.8*	1981-89	0.6	1989-92	7.4*	1992-96	-2.5*	1996-10	-1.1*			-1.1*	-1.1*
<u>SEER 13 Delay-Adjusted Incidence<sup>b</sup>, 1992-2010</u>														
All Races	1992-94	-5.6*	1994-10	-0.6*									-0.6*	-0.6*
White	1992-94	-6.3*	1994-07	-0.3*	2007-10	-1.8							-0.8*	-1.4*
Black	1992-10	-1.4*											-1.4*	-1.4*
<u>SEER 9 Observed Incidence<sup>a</sup>, 1975-2010</u>														
All Races	1975-89	1.3*	1989-92	5.2*	1992-95	-4.9*	1995-00	0.5	2000-10	-0.9*			-0.9*	-0.9*
White	1975-89	1.4*	1989-92	5.0*	1992-95	-5.2*	1995-99	0.9	1999-07	-0.5*	2007-10	-2.2*	-1.1*	-1.8*
Black	1975-81	2.8*	1981-89	0.7	1989-92	6.4	1992-10	-1.5*					-1.5*	-1.5*
<u>SEER 13 Observed Incidence<sup>b</sup>, 1992-2010</u>														
All Races	1992-94	-5.8*	1994-07	-0.5*	2007-10	-2.2*							-1.1*	-1.8*
White	1992-94	-6.2*	1994-07	-0.4*	2007-10	-2.4*							-1.0*	-1.9*
White NH <sup>ef</sup>	1992-94	-6.3*	1994-07	-0.3*	2007-10	-2.3*							-0.9*	-1.8*
Black	1992-10	-1.5*											-1.5*	-1.5*
Black NH <sup>ef</sup>	1992-10	-1.4*											-1.4*	-1.4*
API <sup>e</sup>	1992-96	-2.7*	1996-00	0.4	2000-07	-1.0*	2007-10	-3.0*					-1.7*	-2.5*
AI/AN <sup>eg</sup>	1992-10	-0.2											-0.2	-0.2
Hispanic <sup>f</sup>	1992-07	-0.5*	2007-10	-2.5*									-1.2*	-2.0*
<u>U.S. Cancer Mortality<sup>c</sup>, 1975-2010</u>														
All Races	1975-79	1.0*	1979-90	0.3*	1990-93	-0.5	1993-01	-1.5*	2001-10	-1.8*			-1.8*	-1.8*
White	1975-79	0.9*	1979-91	0.2*	1991-94	-0.8	1994-97	-1.7*	1997-01	-1.2*	2001-10	-1.7*	-1.7*	-1.7*
Black	1975-82	1.8*	1982-90	1.0*	1990-93	-0.3	1993-00	-2.0*	2000-10	-2.6*			-2.6*	-2.6*
<u>U.S. Cancer Mortality<sup>c</sup>, 1992-2010</u>														
All Races	1992-01	-1.4*	2001-10	-1.8*									-1.8*	-1.8*
White	1992-01	-1.3*	2001-10	-1.7*									-1.7*	-1.7*
White NH <sup>ef</sup>	1992-02	-1.3*	2002-10	-1.6*									-1.6*	-1.6*
Black	1992-96	-1.2*	1996-10	-2.5*									-2.5*	-2.5*
Black NH <sup>ef</sup>	1992-00	-1.8*	2000-10	-2.5*									-2.5*	-2.5*
API <sup>e</sup>	1992-10	-1.6*											-1.6*	-1.6*
AI/AN <sup>eg</sup>	1992-10	-0.1											-0.1	-0.1
Hispanic <sup>f</sup>	1992-98	-0.2	1998-10	-1.6*									-1.6*	-1.6*

Joinpoint Regression Program Version 4.0.3, April 2013, National Cancer Institute. (<http://surveillance.cancer.gov/joinpoint/>).

The APC is the Annual Percent Change based on rates age-adjusted to the 2000 US Std Population (19 age groups - Census P25-1130).

Trends are from the SEER 9 areas (San Francisco, Connecticut, Detroit, Hawaii, Iowa, New Mexico, Seattle, Utah, and Atlanta).

Trends are from the SEER 13 areas (SEER 9 Areas, Los Angeles, San Jose-Monterey, Rural Georgia, and the Alaska Native Registry).

Trends are from US Mortality Files, National Center for Health Statistics, Centers for Disease Control and Prevention.

The AAPC is the Average Annual Percent Change and is based on the APCs calculated by Joinpoint.

API - Asian/Pacific Islander, AI/AN - American Indian/Alaska Native, NH - Non-Hispanic

Hispanic and Non-Hispanic are not mutually exclusive from whites, blacks, Asian/Pacific Islanders, and American Indians/Alaska

Natives. Incidence data for Hispanics and Non-Hispanics are based on NHIA and exclude cases from the Alaska Native Registry.

The Hispanic and Non-Hispanic mortality trends exclude deaths from CT, DC, ME, MD, MN, NH, NY, ND, SC, OK and VT.

Data for American Indian/Alaska Native are based on the CHSDA (Contract Health Service Delivery Area) counties.

\* The APC/AAPC is significantly different from zero ( $p < .05$ ).

- Joinpoint regression line analysis could not be performed on data series.

Table 2.3  
All Cancer Sites (Invasive)

Trends in SEER Incidence<sup>ab</sup> and U.S. Mortality<sup>c</sup> Using the Joinpoint Regression Program,  
1975-2010 With up to Five Joinpoints, 1992-2010 With up to Three Joinpoints,  
Females by Race/Ethnicity

	JP Trend 1		JP Trend 2		JP Trend 3		JP Trend 4		JP Trend 5		JP Trend 6		AAPC <sup>d</sup>	
	Years	APC	Years	APC	Years	APC	Years	APC	Years	APC	Years	APC	2001-10	2006-10
<u>SEER 9 Delay-Adjusted Incidence<sup>a</sup>, 1975-2010</u>														
All Races	1975-79	-0.3	1979-87	1.6*	1987-95	0.1	1995-98	1.5	1998-04	-0.5	2004-10	0.3	0.0	0.3
White	1975-79	-0.2	1979-87	1.7*	1987-95	0.1	1995-98	1.7	1998-04	-0.4	2004-10	0.2	0.0	0.2
Black	1975-90	1.2*	1990-10	0.2*									0.2*	0.2*
<u>SEER 13 Delay-Adjusted Incidence<sup>b</sup>, 1992-2010</u>														
All Races	1992-94	-0.4	1994-98	1.2	1998-03	-0.8*	2003-10	0.1					-0.1	0.1
White	1992-94	-0.3	1994-98	1.4*	1998-04	-0.6*	2004-10	0.3					0.0	0.3
Black	1992-10	0.1											0.1	0.1
<u>SEER 9 Observed Incidence<sup>a</sup>, 1975-2010</u>														
All Races	1975-79	-0.3	1979-87	1.6*	1987-95	0.1	1995-98	1.2	1998-10	-0.3*			-0.3*	-0.3*
White	1975-79	-0.2	1979-87	1.7*	1987-95	0.1	1995-98	1.5	1998-10	-0.3*			-0.3*	-0.3*
Black	1975-91	1.1*	1991-10	0.0									0.0	0.0
<u>SEER 13 Observed Incidence<sup>b</sup>, 1992-2010</u>														
All Races	1992-98	0.7*	1998-10	-0.3*									-0.3*	-0.3*
White	1992-98	0.9*	1998-10	-0.3*									-0.3*	-0.3*
White NH <sup>ef</sup>	1992-98	1.0*	1998-10	-0.2*									-0.2*	-0.2*
Black	1992-10	0.0											0.0	0.0
Black NH <sup>ef</sup>	1992-10	0.0											0.0	0.0
API <sup>e</sup>	1992-10	0.1											0.1	0.1
AI/AN <sup>eg</sup>	1992-10	0.7*											0.7*	0.7*
Hispanic <sup>f</sup>	1992-08	0.2*	2008-10	-2.2									-0.3	-1.0
<u>U.S. Cancer Mortality<sup>c</sup>, 1975-2010</u>														
All Races	1975-90	0.6*	1990-94	-0.2	1994-02	-0.8*	2002-10	-1.4*					-1.4*	-1.4*
White	1975-90	0.6*	1990-95	-0.2	1995-98	-1.2*	1998-01	-0.2	2001-10	-1.3*			-1.3*	-1.3*
Black	1975-92	1.0*	1992-02	-0.9*	2002-10	-1.8*							-1.7*	-1.8*
<u>U.S. Cancer Mortality<sup>c</sup>, 1992-2010</u>														
All Races	1992-95	-0.2	1995-98	-1.2*	1998-01	-0.4	2001-10	-1.4*					-1.4*	-1.4*
White	1992-95	-0.2	1995-98	-1.2*	1998-01	-0.2	2001-10	-1.3*					-1.3*	-1.3*
White NH <sup>ef</sup>	1992-94	0.3	1994-98	-1.0*	1998-01	-0.1	2001-10	-1.3*					-1.3*	-1.3*
Black	1992-02	-0.8*	2002-10	-1.8*									-1.7*	-1.8*
Black NH <sup>ef</sup>	1992-02	-0.7*	2002-10	-1.7*									-1.6*	-1.7*
API <sup>e</sup>	1992-10	-1.0*											-1.0*	-1.0*
AI/AN <sup>eg</sup>	1992-10	0.1											0.1	0.1
Hispanic <sup>f</sup>	1992-01	-0.2	2001-10	-1.4*									-1.4*	-1.4*

Joinpoint Regression Program Version 4.0.3, April 2013, National Cancer Institute. (<http://surveillance.cancer.gov/joinpoint/>).  
<sup>a</sup> The APC is the Annual Percent Change based on rates age-adjusted to the 2000 US Std Population (19 age groups - Census P25-1130).  
<sup>b</sup> Trends are from the SEER 9 areas (San Francisco, Connecticut, Detroit, Hawaii, Iowa, New Mexico, Seattle, Utah, and Atlanta).  
<sup>c</sup> Trends are from the SEER 13 areas (SEER 9 Areas, Los Angeles, San Jose-Monterey, Rural Georgia, and the Alaska Native Registry).  
<sup>d</sup> Trends are from US Mortality Files, National Center for Health Statistics, Centers for Disease Control and Prevention.  
<sup>e</sup> The AAPC is the Average Annual Percent Change and is based on the APCs calculated by Joinpoint.  
<sup>f</sup> API - Asian/Pacific Islander, AI/AN - American Indian/Alaska Native, NH - Non-Hispanic  
Hispanic and Non-Hispanic are not mutually exclusive from whites, blacks, Asian/Pacific Islanders, and American Indians/Alaska Natives. Incidence data for Hispanics and Non-Hispanics are based on NHIA and exclude cases from the Alaska Native Registry.  
The Hispanic and Non-Hispanic mortality trends exclude deaths from CT, DC, ME, MD, MN, NH, NY, ND, SC, OK and VT.  
<sup>g</sup> Data for American Indian/Alaska Native are based on the CHSDA (Contract Health Service Delivery Area) counties.  
\* The APC/AAPC is significantly different from zero (p<.05).  
- Joinpoint regression line analysis could not be performed on data series.

Table 2.4  
All Cancer Sites (Invasive)

Delay-adjusted SEER Incidence<sup>a</sup> Rates by Year, Race and Sex

Year of Diagnosis:	All Races			Whites			Blacks		
	Total	Males	Females	Total	Males	Females	Total	Males	Females
1975	400.44	466.85	365.86	402.12	468.61	369.55	426.53	525.51	356.64
1976	407.40	481.12	367.43	409.72	481.86	373.16	427.31	552.85	340.41
1977	407.77	486.55	363.72	409.34	487.20	367.90	442.64	577.58	352.06
1978	407.33	488.39	362.23	409.84	489.80	368.00	436.29	570.52	343.84
1979	412.55	496.47	365.61	414.17	497.64	369.77	451.71	589.96	359.29
1980	418.06	505.82	368.10	419.48	505.21	373.36	467.54	615.22	366.55
1981	425.30	510.88	377.15	427.73	510.90	383.94	472.74	633.91	362.94
1982	424.53	511.13	376.24	427.86	512.56	383.53	465.18	621.92	359.40
1983	431.24	520.06	380.83	434.46	521.08	388.02	487.02	646.06	381.95
1984	440.15	525.62	392.60	443.81	527.89	399.70	488.27	643.76	386.27
1985	449.06	531.48	403.34	453.66	533.79	411.65	489.19	643.76	388.35
1986	451.59	538.45	402.51	456.20	543.11	409.32	493.97	644.17	396.59
1987	468.23	563.45	413.44	475.06	569.04	423.44	501.28	666.55	394.30
1988	464.03	558.61	409.39	470.47	565.32	418.00	504.07	657.88	404.40
1989	468.04	567.41	408.56	475.43	573.91	418.81	492.86	661.84	384.62
1990	482.27	593.05	415.80	489.21	599.67	425.11	522.03	700.12	409.02
1991	503.38	637.86	419.23	510.88	645.00	428.84	549.32	765.32	412.74
1992	510.96	658.65	415.13	517.22	663.94	423.79	569.21	809.35	413.75
1993	493.80	622.60	408.65	497.41	620.82	417.45	568.74	818.85	404.39
1994	483.93	590.22	413.92	487.92	588.15	423.53	558.61	784.46	409.49
1995	477.41	572.22	415.26	482.78	570.92	426.66	543.37	749.57	405.26
1996	479.70	573.20	418.53	485.55	574.81	428.70	541.30	727.86	417.76
1997	486.98	576.29	428.87	494.43	577.51	441.89	541.50	741.65	410.90
1998	488.85	573.54	434.36	497.83	577.71	447.79	536.93	724.14	416.39
1999	491.21	581.48	431.20	499.82	584.22	444.71	541.73	724.89	421.59
2000	486.96	581.00	422.75	497.96	585.71	439.08	528.68	714.24	404.60
2001	490.69	582.21	427.73	502.67	589.51	443.78	522.17	700.58	401.99
2002	488.59	575.81	428.91	499.80	583.76	442.76	536.88	701.23	427.26
2003	476.45	561.28	418.20	488.44	567.92	434.46	521.84	683.61	414.23
2004	477.66	559.52	421.03	489.40	567.10	435.81	527.29	687.63	421.78
2005	473.67	550.42	420.45	487.46	561.35	436.60	510.93	644.94	422.25
2006	477.26	557.25	420.22	490.96	567.01	436.89	511.46	647.75	418.29
2007	483.45	568.54	421.98	496.54	577.11	438.53	521.04	671.02	418.12
2008	477.19	549.89	425.48	489.79	557.63	441.83	521.55	668.95	421.59
2009	475.93	540.74	430.05	487.38	548.00	444.64	512.50	641.84	424.92
2010	467.64	530.91	422.31	479.58	537.84	438.21	497.52	620.42	412.71

Additional information on the model used to delay-adjust SEER Incidence rates can be found at <http://surveillance.cancer.gov/delay/>.

<sup>a</sup> SEER 9 areas (San Francisco, Connecticut, Detroit, Hawaii, Iowa, New Mexico, Seattle, Utah, and Atlanta).  
Rates are per 100,000 and are age-adjusted to the 2000 US Std Population (19 age groups - Census P25-1130).  
- Delay-adjusted rate is not shown for observed rates based on less than 16 cases for the time interval.

Table 2.5  
All Cancer Sites (Invasive)

Age-adjusted SEER Incidence<sup>a</sup> Rates by Year, Race and Sex

Year of Diagnosis:	All Races			Whites			Blacks		
	Total	Males	Females	Total	Males	Females	Total	Males	Females
1975-2010	464.56	553.17	407.65	470.43	555.86	417.20	508.16	672.16	399.24
1975	400.44	466.85	365.86	402.12	468.61	369.55	426.53	525.51	356.64
1976	407.40	481.12	367.43	409.72	481.86	373.16	427.31	552.85	340.41
1977	407.77	486.55	363.72	409.34	487.20	367.90	442.64	577.58	352.06
1978	407.33	488.39	362.23	409.84	489.80	368.00	436.29	570.52	343.84
1979	412.55	496.47	365.61	414.17	497.64	369.77	451.71	589.96	359.29
1980	418.06	505.82	368.10	419.48	505.21	373.36	467.54	615.22	366.55
1981	425.30	510.88	377.15	427.73	510.90	383.94	472.74	633.91	362.94
1982	424.51	511.10	376.22	427.84	512.53	383.51	465.14	621.86	359.38
1983	431.18	520.00	380.79	434.42	521.02	387.98	486.95	645.95	381.89
1984	440.06	525.52	392.53	443.73	527.79	399.64	488.15	643.59	386.18
1985	448.95	531.34	403.24	453.56	533.67	411.57	489.03	643.53	388.23
1986	451.44	538.27	402.38	456.07	542.94	409.21	493.75	643.87	396.43
1987	468.05	563.22	413.29	474.88	568.82	423.30	501.00	666.16	394.10
1988	463.81	558.35	409.21	470.26	565.05	417.82	503.73	657.40	404.15
1989	467.79	567.10	408.34	475.17	573.58	418.60	492.46	661.26	384.33
1990	481.97	592.68	415.55	488.88	599.24	424.85	521.51	699.38	408.65
1991	503.03	637.40	418.94	510.49	644.48	428.54	548.71	764.40	412.31
1992	510.56	658.12	414.82	516.76	663.30	423.44	568.46	808.22	413.25
1993	493.37	622.04	408.30	496.89	620.13	417.05	567.86	817.52	403.82
1994	483.46	589.63	413.52	487.33	587.37	423.05	557.61	782.98	408.81
1995	476.90	571.59	414.82	482.09	570.05	426.09	542.24	747.92	404.48
1996	479.13	572.50	418.05	484.73	573.78	428.03	540.00	726.00	416.83
1997	486.35	575.53	428.33	493.45	576.29	441.08	539.99	739.45	409.83
1998	488.19	572.75	433.78	496.76	576.39	446.89	535.30	721.81	415.21
1999	490.38	580.47	430.49	498.38	582.43	443.51	539.56	721.82	420.01
2000	486.04	579.89	421.98	496.27	583.60	437.68	526.20	710.72	402.82
2001	489.68	580.98	426.86	500.65	587.01	442.11	519.31	696.54	399.92
2002	487.48	574.46	427.95	497.43	580.83	440.79	533.43	696.50	424.68
2003	475.18	559.75	417.11	485.69	564.54	432.15	517.90	678.19	411.28
2004	476.14	557.70	419.72	486.11	563.09	433.05	522.60	681.22	418.23
2005	471.86	548.27	418.88	483.55	556.61	433.29	505.56	637.84	418.04
2006	475.02	554.58	418.29	486.24	561.28	432.91	505.08	639.30	413.34
2007	480.55	565.07	419.50	490.79	570.11	433.71	513.30	660.63	412.22
2008	473.43	545.48	422.19	482.94	549.48	435.95	512.31	656.60	414.46
2009	470.46	534.42	425.19	479.12	538.31	437.45	501.62	627.67	416.29
2010	457.54	519.27	413.32	465.44	521.40	425.80	479.73	597.48	398.51

<sup>a</sup> SEER 9 areas (San Francisco, Connecticut, Detroit, Hawaii, Iowa, New Mexico, Seattle, Utah, and Atlanta). Rates are per 100,000 and are age-adjusted to the 2000 US Std Population (19 age groups - Census P25-1130).  
- Statistic not shown. Rate based on less than 16 cases for the time interval.

Table 2.6  
All Cancer Sites (Invasive)

Age-adjusted U.S. Death<sup>a</sup> Rates by Year, Race and Sex

Year of Death:	All Races			Whites			Blacks		
	Total	Males	Females	Total	Males	Females	Total	Males	Females
1975-2010	199.81	253.90	164.58	197.20	248.85	163.68	247.86	341.01	189.91
1975	199.14	258.43	160.03	196.33	254.00	158.99	235.50	320.45	174.17
1976	202.30	262.23	162.70	199.38	257.50	161.69	241.76	328.45	179.10
1977	203.02	264.23	162.94	199.67	258.78	161.61	246.38	337.95	181.60
1978	204.42	267.07	163.76	201.14	261.65	162.54	247.24	340.91	181.53
1979	204.53	268.65	163.06	201.20	263.24	161.70	248.98	344.67	182.73
1980	206.96	271.08	165.75	203.27	265.03	164.17	256.18	353.91	189.25
1981	206.40	269.78	165.90	202.64	263.27	164.55	256.77	358.65	187.47
1982	208.32	272.89	167.45	204.54	266.28	166.11	260.36	364.86	190.17
1983	209.21	274.09	168.27	205.17	267.22	166.69	263.75	369.32	193.24
1984	210.91	275.08	170.55	206.66	267.55	169.02	268.15	377.93	195.67
1985	211.35	275.68	170.96	207.25	268.25	169.58	268.06	377.82	196.31
1986	211.79	276.04	171.59	207.73	268.83	170.01	269.45	378.92	199.05
1987	211.91	276.34	171.54	207.78	268.96	169.87	271.12	383.24	199.91
1988	212.62	276.89	172.53	208.48	269.46	170.94	271.59	384.17	200.36
1989	214.30	278.50	174.25	209.96	270.25	172.88	275.87	395.28	200.87
1990	214.95	279.82	174.65	210.41	271.48	172.89	279.30	399.14	205.39
1991	215.06	279.15	175.30	210.62	271.19	173.41	278.97	395.85	207.39
1992	213.46	276.51	174.39	209.24	268.91	172.58	274.93	389.20	205.80
1993	213.45	275.89	174.55	209.16	267.89	172.82	277.09	394.76	206.29
1994	211.74	272.12	174.11	207.83	264.73	172.62	271.96	385.20	204.06
1995	209.89	268.50	173.35	206.09	261.46	171.73	269.51	379.02	204.53
1996	207.00	263.75	171.21	203.40	256.83	169.85	265.28	373.70	200.94
1997	203.55	258.13	169.00	199.94	251.58	167.35	262.14	363.18	202.53
1998	200.82	253.63	166.93	197.56	247.62	165.38	255.66	353.13	198.38
1999	200.72	252.75	167.24	197.75	247.14	165.92	253.80	349.23	197.54
2000	198.79	248.46	166.70	196.37	243.37	165.98	248.07	341.20	193.21
2001	196.29	245.05	164.61	193.98	240.31	163.75	244.34	334.14	192.12
2002	194.36	241.63	163.38	192.38	237.62	162.56	240.81	325.80	191.45
2003	190.89	235.81	161.16	189.10	232.16	160.40	235.16	314.60	188.76
2004	186.84	230.27	157.92	185.21	226.60	157.41	228.98	307.30	183.51
2005	185.23	228.09	156.46	183.87	224.94	156.04	224.83	300.33	180.94
2006	182.03	222.56	154.63	181.10	220.02	154.52	218.93	290.16	177.31
2007	179.26	219.33	152.00	178.30	216.64	151.91	216.23	286.57	175.47
2008	176.32	215.34	149.27	175.69	213.21	149.37	209.37	275.26	170.41
2009	173.40	211.17	147.12	173.03	209.33	147.48	205.39	268.91	167.41
2010	171.76	208.79	145.75	171.36	207.13	145.86	202.95	264.38	166.26

<sup>a</sup> US Mortality Files, National Center for Health Statistics, Centers for Disease Control and Prevention. Rates are per 100,000 and are age-adjusted to the 2000 US Std Population (19 age groups - Census P25-1130).  
- Statistic not shown. Rate based on less than 16 cases for the time interval.

Table 2.7  
All Cancer Sites (Invasive)

SEER Incidence<sup>a</sup> and U.S. Death<sup>b</sup> Rates, Age-Adjusted and Age-Specific Rates, by Race and Sex

	All Races			Whites			Blacks		
	Total	Males	Females	Total	Males	Females	Total	Males	Females
<u>SEER Incidence</u>									
<u>Age at Diagnosis</u>									
Age-Adjusted Rates, 2006-2010									
All ages	463.0	535.9	411.2	471.9	539.1	424.4	483.6	610.4	397.5
Under 65	224.2	220.2	229.1	228.1	220.8	236.5	244.2	273.9	220.3
65 and over	2,113.7	2,717.9	1,669.8	2,157.0	2,739.5	1,723.1	2,138.6	2,936.3	1,622.8
All ages (IARC world std) <sup>c</sup>	314.3	353.0	285.1	320.5	354.9	294.7	334.6	415.7	275.5
Age-Specific Rates, 2006-2010									
<1	23.6	25.0	22.2	24.3	25.2	23.3	19.4	22.2	16.5
1-4	21.6	23.0	20.1	23.3	24.7	21.7	15.8	16.5	15.2
5-9	12.3	13.3	11.4	13.1	14.2	12.0	9.5	10.1	9.0
10-14	13.4	14.2	12.7	14.3	15.2	13.3	11.1	11.2	11.0
15-19	21.1	22.2	20.0	23.1	24.4	21.7	14.3	14.8	13.7
20-24	35.7	34.4	37.2	39.5	38.5	40.6	22.7	20.8	24.6
25-29	56.3	48.0	64.8	61.1	52.5	70.2	41.4	34.2	48.1
30-34	86.5	64.2	109.1	91.7	68.5	116.1	72.5	49.3	93.4
35-39	131.6	88.5	174.7	137.2	93.3	182.7	115.0	76.0	149.8
40-44	216.8	149.2	283.8	221.5	152.5	292.0	211.8	156.4	261.8
45-49	354.9	280.0	428.2	360.9	281.2	441.1	366.5	332.1	397.4
50-54	566.0	547.7	583.6	568.0	540.5	595.3	654.6	727.8	589.2
55-59	847.7	945.4	756.0	852.0	932.0	774.7	1,016.4	1,299.4	776.5
60-64	1,243.0	1,482.2	1,023.2	1,256.3	1,471.1	1,053.9	1,468.4	1,980.0	1,051.0
65-69	1,742.0	2,181.8	1,354.7	1,770.9	2,181.2	1,402.0	1,940.7	2,697.0	1,355.7
70-74	2,080.5	2,659.2	1,603.4	2,130.3	2,684.5	1,663.6	2,154.7	2,976.2	1,564.8
75-79	2,340.5	3,010.3	1,837.3	2,401.0	3,044.8	1,905.9	2,267.4	3,070.1	1,760.2
80-84	2,407.6	3,104.0	1,956.8	2,454.1	3,131.9	2,009.0	2,284.2	3,112.9	1,844.7
85+	2,269.6	3,069.2	1,880.5	2,297.9	3,102.8	1,906.8	2,151.2	2,947.4	1,837.0
<u>U.S. Mortality</u>									
<u>Age at Death</u>									
Age-Adjusted Rates, 2006-2010									
All ages	176.4	215.3	149.7	175.8	213.1	149.8	210.3	276.6	171.2
Under 65	56.1	60.3	52.2	54.8	58.6	51.2	76.0	85.2	68.4
65 and over	1,008.4	1,286.7	823.3	1,012.0	1,280.9	830.6	1,138.9	1,599.6	881.7
All ages (IARC world std) <sup>c</sup>	104.1	122.6	90.1	103.3	120.9	89.8	128.6	161.7	106.8
Age-Specific Rates, 2006-2010									
<1	1.7	1.9	1.5	1.8	2.0	1.6	1.6	1.8	1.4
1-4	2.3	2.4	2.1	2.3	2.5	2.2	2.1	2.3	2.0
5-9	2.3	2.4	2.2	2.4	2.5	2.2	2.2	2.1	2.3
10-14	2.2	2.2	2.1	2.2	2.3	2.2	2.1	2.0	2.1
15-19	3.0	3.5	2.5	3.0	3.5	2.5	3.0	3.4	2.5
20-24	4.6	5.6	3.6	4.7	5.7	3.6	5.0	5.6	4.4
25-29	6.7	7.2	6.2	6.7	7.3	6.1	7.9	8.1	7.8
30-34	11.2	10.4	12.1	11.2	10.4	12.0	13.8	12.0	15.3
35-39	20.4	17.4	23.3	19.9	17.3	22.6	26.7	20.3	32.3
40-44	40.2	35.2	45.2	39.1	34.5	43.8	53.9	45.4	61.5
45-49	81.1	78.1	84.0	78.7	76.0	81.3	111.5	106.5	115.9
50-54	148.0	157.7	138.7	143.5	152.1	135.1	206.4	227.8	187.6
55-59	242.7	274.6	212.8	236.0	264.2	209.0	340.6	412.8	279.7
60-64	384.9	443.7	330.7	380.0	433.7	329.5	511.7	636.2	410.8
65-69	583.2	686.8	491.5	581.8	679.1	494.1	724.5	919.4	575.7
70-74	819.8	983.9	682.8	823.2	978.7	690.9	951.2	1,249.2	740.6
75-79	1,102.6	1,372.8	897.8	1,109.5	1,368.9	908.6	1,222.2	1,676.0	941.7
80-84	1,396.1	1,831.4	1,113.7	1,402.2	1,826.6	1,122.2	1,531.9	2,220.9	1,171.1
85+	1,724.3	2,455.7	1,380.4	1,730.3	2,449.1	1,389.3	1,842.0	2,972.3	1,409.8

<sup>a</sup> SEER 18 areas. Rates are per 100,000 and are age-adjusted to the 2000 US Std Population (19 age groups - Census P25-1130), unless noted.

<sup>b</sup> US Mortality Files, National Center for Health Statistics, Centers for Disease Control and Prevention.

<sup>c</sup> Rates are per 100,000 and are age-adjusted to the 2000 US Std Population (19 age groups - Census P25-1130), unless noted.

<sup>d</sup> Rates are per 100,000 and are age-adjusted to the IARC world standard population.

- Statistic not shown. Rate based on less than 16 cases for the time interval.

Table 2.8  
All Cancer Sites (Invasive)

5-Year Relative and Period Survival (Percent) by Race, Sex, Diagnosis Year and Age

	All Races			Whites			Blacks		
	Total	Males	Females	Total	Males	Females	Total	Males	Females
5-Year Relative Survival (Percent)									
Year of Diagnosis:									
1960-1963 <sup>a</sup>	-	-	-	39	-	-	27	-	-
1970-1973 <sup>a</sup>	-	-	-	43	-	-	31	-	-
1975-1977 <sup>b</sup>	48.9	41.7	55.8	49.8	42.7	56.5	39.0	32.7	46.2
1978-1980 <sup>b</sup>	49.0	43.1	54.9	50.0	44.3	55.6	38.9	33.3	45.5
1981-1983 <sup>b</sup>	50.2	45.2	55.1	51.3	46.5	56.0	38.8	34.1	44.3
1984-1986 <sup>b</sup>	52.4	47.1	57.6	53.6	48.6	58.5	40.1	35.4	45.4
1987-1989 <sup>b</sup>	55.3	51.1	59.6	56.6	52.8	60.6	42.9	38.8	47.7
1990-1992 <sup>b</sup>	59.9	59.1	60.9	61.3	60.8	62.0	47.7	47.5	48.1
1993-1995 <sup>b</sup>	61.2	60.8	61.7	62.4	62.0	62.8	52.6	54.3	50.5
1996-1998 <sup>b</sup>	63.3	63.0	63.6	64.3	64.0	64.7	55.0	57.7	51.9
1999-2002 <sup>b</sup>	66.3	66.7	65.9	67.5	67.9	67.1	58.1	61.7	54.0
2003-2009 <sup>b</sup>	68.1 <sup>e</sup>	68.8 <sup>e</sup>	67.3 <sup>e</sup>	69.2 <sup>e</sup>	69.9 <sup>e</sup>	68.4 <sup>e</sup>	60.8 <sup>e</sup>	64.4 <sup>e</sup>	56.9 <sup>e</sup>
5-Year Period Survival (Percent) <sup>cd</sup>									
2009	66.7	67.3	66.1	67.3	67.8	66.8	60.2	63.1	57.0
5-Year Relative Survival (Percent), 2003-2009 <sup>c</sup>									
Age at Diagnosis:									
Ages <45	80.6	75.7	83.8	82.2	77.7	85.2	69.0	62.2	73.0
Ages 45-54	72.5	67.0	77.1	74.0	68.3	78.8	61.6	59.9	63.3
Ages 55-64	69.4	69.4	69.4	70.3	70.0	70.6	62.3	65.6	57.4
Ages 65-74	65.2	68.5	60.4	65.7	68.7	61.5	60.0	66.5	50.5
Ages 75+	52.1	56.7	47.6	52.8	56.9	48.8	43.2	50.7	36.9
Ages <65	72.7	69.8	75.7	73.9	70.8	77.0	63.4	63.3	63.6
Ages 65+	58.7	63.2	53.3	59.2	63.3	54.3	53.1	60.9	43.8

<sup>a</sup> Based on End Results data from a series of hospital registries and one population-based registry.  
<sup>b</sup> SEER 9 areas (San Francisco, Connecticut, Detroit, Hawaii, Iowa, New Mexico, Seattle, Utah, Atlanta).  
Based on follow-up of patients into 2010.  
<sup>c</sup> SEER 18 areas (San Francisco, Connecticut, Detroit, Hawaii, Iowa, New Mexico, Seattle, Utah, Atlanta, San Jose-Monterey, Los Angeles, Alaska Native Registry, Rural Georgia, California excluding SF/SJM/LA, Kentucky, Louisiana, New Jersey and Georgia excluding ATL/RG).  
Based on follow-up of patients into 2010.  
<sup>d</sup> Period survival provides a 2009 estimate of survival by piecing together the most recent conditional survival estimates from several cohorts. It is computed here using three year calendar blocks (2007-2009: 0-1 year survival), (2006-2008: 1-2 year survival), (2005-2007: 2-3 year survival), (2004-2006: 3-4 year survival), (2003-2005: 4-5 years survival).  
<sup>e</sup> The difference between 1975-1977 and 2003-2009 is statistically significant (p<.05).  
<sup>f</sup> The standard error is between 5 and 10 percentage points.  
<sup>g</sup> The standard error is greater than 10 percentage points.  
- Statistic could not be calculated due to fewer than 25 cases during the time period.



Table 2.9  
All Cancer Sites (Invasive)

SEER<sup>a</sup> Relative Survival (Percent)  
By Year of Diagnosis

All Races, Males and Females

Year of Diagnosis

	1975- 1979	1980- 1984	1985- 1989	1990	1991	1992	1993	1994	1995	1996	1997	1998	1999	2000	2001	2002	2003	2004	2005	2006	2007	2008	2009
Survival Time																							
1-year	69.2	70.7	73.2	74.9	76.6	77.2	76.6	76.3	76.5	77.0	77.7	78.0	78.7	79.0	79.5	79.7	79.5	80.0	80.3	80.8	81.3	81.4	81.7
2-year	59.7	61.3	64.4	66.7	68.7	69.9	69.4	69.0	69.3	70.1	70.9	71.4	72.2	72.7	73.4	73.9	73.4	74.0	74.2	75.2	75.6	75.6	
3-year	54.7	56.2	59.8	62.4	64.6	66.1	65.6	65.3	65.7	66.6	67.4	68.0	68.9	69.5	70.3	70.8	70.2	70.9	71.1	72.1	72.5		
4-year	51.4	52.8	56.7	59.6	62.0	63.7	63.1	62.8	63.3	64.2	65.1	65.7	66.8	67.4	68.2	68.7	68.2	68.7	69.1	70.0			
5-year	48.9	50.1	54.4	57.7	60.0	61.8	61.2	61.0	61.5	62.5	63.3	64.0	65.2	66.0	66.8	67.3	66.7	67.2	67.6				
6-year	47.0	48.2	52.6	56.0	58.4	60.3	59.9	59.5	60.1	61.1	61.9	62.7	63.9	64.8	65.7	66.1	65.5	66.0					
7-year	45.4	46.5	51.0	54.5	57.1	58.9	58.5	58.2	59.0	60.1	61.0	61.7	62.9	63.7	64.6	65.2	64.4						
8-year	44.1	45.1	49.7	53.3	55.8	57.9	57.4	57.3	58.0	59.2	60.1	60.8	61.9	62.6	63.8	64.3							
9-year	42.9	43.9	48.6	52.2	54.8	56.9	56.4	56.4	57.2	58.2	59.2	59.9	61.2	62.0	63.1								
10-year	41.8	42.8	47.6	51.2	54.0	56.1	55.5	55.5	56.4	57.4	58.5	59.1	60.5	61.3									
11-year	40.8	41.8	46.7	50.3	53.3	55.3	54.7	54.7	55.6	56.8	57.7	58.4	59.8										
12-year	40.0	41.0	45.9	49.5	52.5	54.6	53.9	53.9	54.8	56.1	57.1	57.8											
13-year	39.3	40.3	45.1	48.9	51.8	53.9	53.3	53.3	54.0	55.4	56.5												
14-year	38.6	39.5	44.4	48.1	51.2	53.3	52.6	52.5	53.3	54.8													
15-year	38.0	38.9	43.7	47.5	50.5	52.7	51.9	52.1	52.7														
16-year	37.4	38.2	43.1	46.9	49.8	52.2	51.3	51.5															
17-year	36.8	37.6	42.6	46.3	49.3	51.5	50.6																
18-year	36.3	37.1	42.1	45.7	48.7	51.0																	
19-year	35.9	36.5	41.6	45.2	48.0																		
20-year	35.4	36.0	41.2	44.6																			
21-year	34.9	35.5	40.7																				
22-year	34.5	35.1																					
23-year	34.1	34.6																					
24-year	33.6	34.2																					
25-year	33.1	33.7																					
26-year	32.7	33.3																					
27-year	32.4																						
28-year	32.0																						
29-year	31.7																						
30-year	31.3																						

<sup>a</sup> Based on the SEER 9 areas (San Francisco, Connecticut, Detroit, Hawaii, Iowa, New Mexico, Seattle, Utah, and Atlanta).

Table 2.10  
All Cancer Sites (Invasive)

SEER<sup>a</sup> Relative Survival (Percent)  
By Year of Diagnosis

All Races, Males

Year of Diagnosis

	1975- 1979	1980- 1984	1985- 1989	1990	1991	1992	1993	1994	1995	1996	1997	1998	1999	2000	2001	2002	2003	2004	2005	2006	2007	2008	2009
Survival Time																							
1-year	63.7	66.6	69.9	73.0	75.7	76.9	76.0	75.4	75.3	76.2	76.9	76.8	78.0	78.6	79.1	79.2	79.0	79.7	79.9	80.8	81.3	81.2	81.3
2-year	53.4	56.4	60.4	64.2	67.6	69.6	68.8	67.8	68.0	69.4	70.2	70.3	71.5	72.5	73.0	73.5	73.0	73.8	74.0	75.4	75.8	75.4	
3-year	48.2	51.2	55.5	59.9	63.8	66.2	65.3	64.4	64.6	66.1	67.0	67.1	68.4	69.5	70.3	70.8	70.1	71.0	71.1	72.5	73.1		
4-year	44.7	47.7	52.2	57.1	61.2	64.0	63.1	61.9	62.4	63.8	64.8	65.0	66.6	67.6	68.5	69.1	68.4	69.2	69.4	70.7			
5-year	42.2	45.0	49.9	55.0	59.3	62.3	61.3	60.3	60.8	62.3	63.1	63.5	65.2	66.3	67.3	67.9	67.2	68.0	68.2				
6-year	40.2	43.0	48.1	53.4	57.7	60.9	60.1	58.9	59.5	61.1	61.8	62.3	64.1	65.1	66.4	67.0	66.1	67.0					
7-year	38.5	41.3	46.4	51.8	56.3	59.6	58.8	57.8	58.5	60.0	61.1	61.3	63.2	64.2	65.6	66.3	65.3						
8-year	37.1	39.8	45.0	50.5	55.0	58.4	57.9	56.7	57.6	59.2	60.2	60.5	62.4	63.3	64.9	65.6							
9-year	35.8	38.6	43.8	49.4	54.1	57.4	56.7	55.8	56.8	58.4	59.4	59.7	61.6	62.7	64.5								
10-year	34.6	37.5	42.8	48.3	53.2	56.5	55.9	55.0	56.0	57.6	58.9	59.0	61.1	62.2									
11-year	33.5	36.5	41.8	47.3	52.4	55.8	55.0	54.2	55.2	56.9	58.2	58.4	60.6										
12-year	32.6	35.6	40.9	46.5	51.7	55.1	54.3	53.3	54.4	56.2	57.6	57.7											
13-year	31.8	34.9	40.0	45.9	51.0	54.4	53.5	52.8	53.5	55.7	57.0												
14-year	31.1	34.1	39.3	45.2	50.4	53.8	52.8	51.9	52.7	55.2													
15-year	30.3	33.4	38.5	44.5	49.6	53.1	52.1	51.5	52.1														
16-year	29.7	32.6	37.8	43.8	48.9	52.6	51.6	50.9															
17-year	29.0	32.0	37.3	43.1	48.4	51.9	51.0																
18-year	28.4	31.4	36.7	42.5	47.9	51.3																	
19-year	28.0	30.8	36.2	42.2	47.3																		
20-year	27.5	30.3	35.8	41.6																			
21-year	27.0	29.7	35.3																				
22-year	26.5	29.2																					
23-year	26.1	28.8																					
24-year	25.5	28.4																					
25-year	25.0	28.0																					
26-year	24.6	27.5																					
27-year	24.2																						
28-year	23.9																						
29-year	23.5																						
30-year	23.1																						

<sup>a</sup> Based on the SEER 9 areas (San Francisco, Connecticut, Detroit, Hawaii, Iowa, New Mexico, Seattle, Utah, and Atlanta).

Table 2.11  
All Cancer Sites (Invasive)

SEER<sup>a</sup> Relative Survival (Percent)  
By Year of Diagnosis

All Races, Females

Year of Diagnosis

	1975- 1979	1980- 1984	1985- 1989	1990	1991	1992	1993	1994	1995	1996	1997	1998	1999	2000	2001	2002	2003	2004	2005	2006	2007	2008	2009
Survival Time																							
1-year	74.6	74.9	76.7	77.1	77.7	77.6	77.4	77.4	77.9	77.9	78.6	79.2	79.4	79.4	79.9	80.3	80.0	80.4	80.6	80.8	81.2	81.7	82.0
2-year	66.0	66.1	68.6	69.5	69.9	70.2	70.1	70.3	70.7	70.9	71.6	72.5	73.0	72.9	73.8	74.4	73.9	74.2	74.5	75.0	75.4	75.8	
3-year	61.2	61.2	64.2	65.2	65.5	66.1	66.1	66.4	66.9	67.3	67.8	68.9	69.4	69.6	70.2	70.8	70.4	70.8	71.1	71.7	71.7		
4-year	57.9	57.9	61.3	62.4	62.9	63.3	63.2	63.7	64.2	64.7	65.3	66.5	67.1	67.3	68.0	68.4	68.1	68.2	68.8	69.3			
5-year	55.5	55.3	59.0	60.6	60.9	61.2	61.1	61.7	62.4	62.8	63.5	64.5	65.2	65.6	66.2	66.6	66.1	66.5	67.0				
6-year	53.6	53.4	57.2	58.9	59.2	59.6	59.6	60.1	60.9	61.2	62.0	63.2	63.8	64.4	64.9	65.2	64.8	65.0					
7-year	52.1	51.7	55.7	57.4	57.9	58.2	58.2	58.8	59.6	60.2	60.9	62.1	62.6	63.1	63.6	64.0	63.6						
8-year	50.8	50.3	54.5	56.4	56.7	57.3	56.9	57.9	58.6	59.1	60.0	61.1	61.6	62.0	62.6	63.0							
9-year	49.7	49.1	53.4	55.2	55.7	56.4	56.0	57.1	57.6	58.1	58.9	60.1	60.7	61.2	61.6								
10-year	48.7	48.1	52.5	54.3	54.9	55.6	55.1	56.1	57.0	57.3	58.1	59.2	60.0	60.5									
11-year	47.8	47.1	51.6	53.4	54.2	54.7	54.3	55.2	56.1	56.7	57.4	58.5	59.0										
12-year	47.0	46.3	50.8	52.7	53.4	53.9	53.6	54.5	55.4	56.0	56.8	57.9											
13-year	46.3	45.5	50.0	51.9	52.8	53.3	53.0	53.9	54.5	55.2	56.1												
14-year	45.7	44.9	49.4	51.2	52.1	52.8	52.4	53.2	53.9	54.5													
15-year	45.0	44.2	48.8	50.6	51.5	52.2	51.8	52.7	53.4														
16-year	44.5	43.5	48.2	50.2	50.8	51.7	51.0	52.2															
17-year	44.0	43.0	47.7	49.5	50.3	51.1	50.2																
18-year	43.6	42.4	47.2	48.9	49.6	50.6																	
19-year	43.1	41.9	46.8	48.3	48.9																		
20-year	42.6	41.5	46.3	47.7																			
21-year	42.1	40.9	45.8																				
22-year	41.7	40.5																					
23-year	41.2	40.0																					
24-year	40.8	39.5																					
25-year	40.3	39.0																					
26-year	39.9	38.7																					
27-year	39.5																						
28-year	39.1																						
29-year	38.8																						
30-year	38.3																						

<sup>a</sup> Based on the SEER 9 areas (San Francisco, Connecticut, Detroit, Hawaii, Iowa, New Mexico, Seattle, Utah, and Atlanta).

Table 2.12  
All Cancer Sites (Invasive)

Risk of Being Diagnosed With Cancer in 10, 20 and 30 Years,  
Lifetime Risk of Being Diagnosed with Cancer Given Alive and Cancer-Free at Current Age, and  
Lifetime Risk of Dying from Cancer Given Alive at Current Age  
Both Sexes, 2008-2010 By Race/Ethnicity

Race/ Ethnicity	Current Age	Risk of Being Diagnosed with Cancer				Risk of Dying from Cancer	Race/ Ethnicity	Current Age	Risk of Being Diagnosed with Cancer				Risk of Dying from Cancer
		+10 yrs	+20 yrs	+30 yrs	Ever				+10 yrs	+20 yrs	+30 yrs	Ever	
All Races	0	0.18	0.35	0.80	40.76	20.93	Asian/ Pacific Islander	0	0.14	0.27	0.56	35.09	18.71
	10	0.18	0.63	1.69	41.12	21.18		10	0.13	0.42	1.22	35.28	18.84
	20	0.46	1.52	4.13	41.15	21.23		20	0.29	1.09	3.09	35.25	18.85
	30	1.08	3.73	9.71	41.21	21.37		30	0.80	2.82	6.94	35.18	18.87
	40	2.71	8.82	19.66	41.00	21.48		40	2.04	6.22	13.66	34.80	18.85
	50	6.42	17.78	30.35	40.17	21.46		50	4.30	11.96	21.88	33.72	18.66
	60	12.66	26.66	35.34	37.60	20.78		60	8.15	18.70	27.44	31.28	18.02
	70	17.46	28.30	-	31.11	18.58		70	12.00	21.93	-	26.30	16.55
80	16.59	-	-	20.90	14.28	80	12.92	-	-	18.60	13.54		
White	0	0.19	0.38	0.86	41.08	21.05	American Indian/ Alaska Native <sup>a</sup>	0	0.09	0.21	0.49	29.44	17.42
	10	0.19	0.69	1.79	41.39	21.27		10	0.12	0.40	1.09	29.73	17.66
	20	0.50	1.61	4.27	41.40	21.32		20	0.28	0.97	2.77	29.83	17.77
	30	1.13	3.82	9.81	41.42	21.45		30	0.70	2.53	6.58	30.08	18.03
	40	2.75	8.87	19.79	41.17	21.55		40	1.88	6.05	13.48	30.25	18.36
	50	6.42	17.88	30.61	40.31	21.52		50	4.41	12.25	21.55	29.95	18.73
	60	12.75	26.91	35.55	37.70	20.85		60	8.66	18.93	25.50	28.22	18.43
	70	17.65	28.43	-	31.11	18.62		70	12.48	20.45	-	23.75	16.87
80	16.58	-	-	20.69	14.23	80	11.69	-	-	16.53	13.47		
Black	0	0.14	0.26	0.57	37.66	21.11	Hispanic <sup>b</sup>	0	0.17	0.34	0.71	37.76	17.66
	10	0.13	0.45	1.35	38.39	21.58		10	0.17	0.54	1.34	38.03	17.82
	20	0.32	1.22	3.84	38.50	21.66		20	0.37	1.18	3.12	38.02	17.85
	30	0.92	3.58	10.37	38.79	21.89		30	0.81	2.78	7.30	38.03	17.92
	40	2.73	9.71	21.07	38.91	22.11		40	2.00	6.59	15.42	37.81	17.96
	50	7.42	19.49	30.62	38.46	22.19		50	4.76	13.90	25.26	37.09	17.88
	60	14.02	26.95	34.06	36.05	21.55		60	9.91	22.23	31.49	35.06	17.37
	70	17.33	26.88	-	29.54	19.33		70	14.64	25.65	-	29.89	15.87
80	15.79	-	-	20.20	15.32	80	15.51	-	-	21.48	12.83		

Devcan 6.7.0, June 2013, National Cancer Institute (<http://surveillance.cancer.gov/devcan/>).

Source: Incidence data are from the SEER 18 areas (San Francisco, Connecticut, Detroit, Hawaii, Iowa, New Mexico, Seattle, Utah, Atlanta, San Jose-Monterey, Los Angeles, Alaska Native Registry, Rural Georgia, California excluding SF/SJM/LA, Kentucky, Louisiana, New Jersey, and Georgia excluding ATL/RG). Mortality data are from the NCHS public use data file for the total US.

<sup>a</sup> Underlying incidence and mortality data for American Indian/Alaska Native are based on the CHSDA (Contract Health Service Delivery Area) counties.

<sup>b</sup> Hispanic is not mutually exclusive from whites, blacks, Asian/Pacific Islanders, and American Indians/Alaska Natives. Underlying incidence data for Hispanics are based on NHIA and exclude cases from the Alaska Native Registry. Underlying mortality data for Hispanics exclude deaths from the District of Columbia, Minnesota, New Hampshire, North Dakota and South Carolina.

- Statistic could not be calculated.

A percent of 0.00 represents a value that is below 0.005.

Table 2.13  
All Cancer Sites (Invasive)

Risk of Being Diagnosed With Cancer in 10, 20 and 30 Years,  
Lifetime Risk of Being Diagnosed with Cancer Given Alive and Cancer-Free at Current Age, and  
Lifetime Risk of Dying from Cancer Given Alive at Current Age  
Males, 2008-2010 By Race/Ethnicity

Race/ Ethnicity	Current Age	Risk of Being Diagnosed with Cancer				Risk of Dying from Cancer	Race/ Ethnicity	Current Age	Risk of Being Diagnosed with Cancer				Risk of Dying from Cancer
		+10 yrs	+20 yrs	+30 yrs	Ever				+10 yrs	+20 yrs	+30 yrs	Ever	
All Races	0	0.19	0.37	0.76	43.92	22.94	Asian/ Pacific Islander	0	0.16	0.29	0.52	37.06	21.16
	10	0.19	0.58	1.33	44.37	23.24		10	0.13	0.37	0.85	37.28	21.32
	20	0.40	1.15	3.18	44.46	23.33		20	0.24	0.72	1.93	37.28	21.34
	30	0.76	2.82	9.17	44.76	23.57		30	0.49	1.70	5.46	37.31	21.40
	40	2.11	8.59	21.51	44.98	23.82		40	1.23	5.02	13.62	37.23	21.42
	50	6.81	20.37	35.02	45.00	24.06		50	3.89	12.70	24.57	36.88	21.34
	60	15.39	32.01	41.22	43.33	23.73		60	9.40	22.07	31.77	35.21	20.84
	70	21.96	34.13	-	36.91	21.82		70	14.83	26.19	-	30.22	19.41
80	20.78	-	-	25.55	17.69	80	15.81	-	-	21.43	16.26		
White	0	0.20	0.40	0.82	43.72	22.99	American Indian/ Alaska Native <sup>a</sup>	0	0.10	0.22	0.46	30.38	18.65
	10	0.20	0.64	1.42	44.09	23.25		10	0.12	0.37	0.82	30.72	18.94
	20	0.44	1.23	3.27	44.16	23.33		20	0.25	0.70	1.93	30.87	19.10
	30	0.80	2.88	9.10	44.41	23.56		30	0.46	1.72	5.58	31.34	19.51
	40	2.12	8.48	21.29	44.57	23.79		40	1.30	5.29	13.73	31.96	20.06
	50	6.68	20.12	34.76	44.55	24.01		50	4.22	13.15	23.62	32.43	20.77
	60	15.20	31.77	40.84	42.85	23.67		60	9.98	21.69	29.16	31.54	20.87
	70	21.78	33.70	-	36.33	21.72		70	14.79	24.22	-	27.22	19.67
80	20.34	-	-	24.83	17.53	80	14.84	-	-	19.56	16.37		
Black	0	0.15	0.28	0.54	42.13	23.65	Hispanic <sup>b</sup>	0	0.19	0.37	0.70	41.11	20.26
	10	0.14	0.40	1.01	43.05	24.23		10	0.18	0.52	1.05	41.44	20.48
	20	0.27	0.88	3.21	43.27	24.37		20	0.34	0.87	2.25	41.49	20.53
	30	0.63	3.01	11.22	43.97	24.80		30	0.54	1.93	6.42	41.69	20.68
	40	2.46	10.93	25.61	44.70	25.28		40	1.42	5.98	16.50	41.83	20.82
	50	9.06	24.76	37.84	45.18	25.77		50	4.72	15.63	29.48	41.87	20.96
	60	18.99	34.80	41.98	43.68	25.71		60	11.97	27.19	37.39	40.79	20.77
	70	23.60	34.32	-	36.85	24.13		70	18.93	31.63	-	35.86	19.48
80	20.91	-	-	25.87	20.68	80	19.71	-	-	26.27	16.47		

Devcan 6.7.0, June 2013, National Cancer Institute (<http://surveillance.cancer.gov/devcan/>).

Source: Incidence data are from the SEER 18 areas (San Francisco, Connecticut, Detroit, Hawaii, Iowa, New Mexico, Seattle, Utah, Atlanta, San Jose-Monterey, Los Angeles, Alaska Native Registry, Rural Georgia, California excluding SF/SJM/LA, Kentucky, Louisiana, New Jersey, and Georgia excluding ATL/RG). Mortality data are from the NCHS public use data file for the total US.

<sup>a</sup> Underlying incidence and mortality data for American Indian/Alaska Native are based on the CHSDA (Contract Health Service Delivery Area) counties.

<sup>b</sup> Hispanic is not mutually exclusive from whites, blacks, Asian/Pacific Islanders, and American Indians/Alaska Natives. Underlying incidence data for Hispanics are based on NHIA and exclude cases from the Alaska Native Registry. Underlying mortality data for Hispanics exclude deaths from the District of Columbia, Minnesota, New Hampshire, North Dakota and South Carolina.

- Statistic could not be calculated.  
A percent of 0.00 represents a value that is below 0.005.

Table 2.14  
All Cancer Sites (Invasive)

Risk of Being Diagnosed With Cancer in 10, 20 and 30 Years,  
Lifetime Risk of Being Diagnosed with Cancer Given Alive and Cancer-Free at Current Age, and  
Lifetime Risk of Dying from Cancer Given Alive at Current Age  
Females, 2008-2010 By Race/Ethnicity

Race/ Ethnicity	Current Age	Risk of Being Diagnosed with Cancer				Risk of Dying from Cancer	Race/ Ethnicity	Current Age	Risk of Being Diagnosed with Cancer				Risk of Dying from Cancer
		+10 yrs	+20 yrs	+30 yrs	Ever				+10 yrs	+20 yrs	+30 yrs	Ever	
All Races	0	0.16	0.33	0.84	38.00	19.34	Asian/ Pacific Islander	0	0.12	0.25	0.59	33.59	16.77
	10	0.17	0.68	2.06	38.29	19.55		10	0.13	0.47	1.55	33.74	16.87
	20	0.51	1.90	5.10	38.26	19.57		20	0.34	1.42	4.14	33.69	16.88
	30	1.40	4.63	10.28	38.10	19.62		30	1.09	3.82	8.27	33.54	16.87
	40	3.30	9.07	17.90	37.47	19.61		40	2.77	7.28	13.73	32.89	16.81
	50	6.04	15.30	25.98	35.83	19.38		50	4.67	11.32	19.65	31.12	16.55
	60	10.14	21.83	30.18	32.61	18.48		60	7.06	15.88	23.88	28.05	15.83
	70	13.87	23.77	-	26.66	16.23		70	9.79	18.67	-	23.29	14.40
80	13.97	-	-	18.04	12.19	80	10.97	-	-	16.69	11.65		
White	0	0.18	0.36	0.91	38.80	19.52	American Indian/ Alaska Native <sup>a</sup>	0	0.08	0.20	0.51	28.80	16.52
	10	0.18	0.74	2.19	39.05	19.70		10	0.12	0.44	1.37	29.04	16.72
	20	0.56	2.01	5.31	39.01	19.72		20	0.32	1.25	3.61	29.08	16.77
	30	1.47	4.80	10.55	38.82	19.77		30	0.95	3.34	7.59	29.13	16.91
	40	3.40	9.28	18.36	38.15	19.76		40	2.45	6.80	13.27	28.88	17.06
	50	6.17	15.69	26.66	36.46	19.52		50	4.59	11.40	19.70	27.84	17.16
	60	10.42	22.42	30.82	33.14	18.62		60	7.45	16.51	22.42	25.41	16.59
	70	14.27	24.25	-	27.00	16.32		70	10.63	17.57	-	21.07	14.90
80	14.17	-	-	18.08	12.18	80	9.64	-	-	14.50	11.77		
Black	0	0.12	0.24	0.60	33.78	19.24	Hispanic <sup>b</sup>	0	0.16	0.32	0.72	35.25	15.73
	10	0.12	0.49	1.66	34.35	19.62		10	0.16	0.57	1.66	35.47	15.86
	20	0.37	1.54	4.42	34.36	19.64		20	0.41	1.51	4.06	35.42	15.86
	30	1.18	4.10	9.62	34.34	19.72		30	1.11	3.67	8.25	35.25	15.87
	40	2.98	8.63	17.05	33.94	19.75		40	2.60	7.25	14.57	34.66	15.81
	50	5.98	14.87	24.37	32.74	19.53		50	4.81	12.39	21.69	33.19	15.56
	60	9.98	20.64	27.78	30.03	18.59		60	8.12	18.08	26.64	30.41	14.86
	70	13.17	22.00	-	24.78	16.29		70	11.39	21.18	-	25.49	13.35
80	13.18	-	-	17.34	12.60	80	12.87	-	-	18.53	10.63		

Devcan 6.7.0, June 2013, National Cancer Institute (<http://surveillance.cancer.gov/devcan/>).

Source: Incidence data are from the SEER 18 areas (San Francisco, Connecticut, Detroit, Hawaii, Iowa, New Mexico, Seattle, Utah, Atlanta, San Jose-Monterey, Los Angeles, Alaska Native Registry, Rural Georgia, California excluding SF/SJM/LA, Kentucky, Louisiana, New Jersey, and Georgia excluding ATL/RG). Mortality data are from the NCHS public use data file for the total US.

<sup>a</sup> Underlying incidence and mortality data for American Indian/Alaska Native are based on the CHSDA (Contract Health Service Delivery Area) counties.

<sup>b</sup> Hispanic is not mutually exclusive from whites, blacks, Asian/Pacific Islanders, and American Indians/Alaska Natives. Underlying incidence data for Hispanics are based on NHIA and exclude cases from the Alaska Native Registry. Underlying mortality data for Hispanics exclude deaths from the District of Columbia, Minnesota, New Hampshire, North Dakota and South Carolina.

- Statistic could not be calculated.

A percent of 0.00 represents a value that is below 0.005.

Table 2.15  
All Cancer Sites (Invasive)

SEER Incidence and U.S. Mortality  
Age-Adjusted Rates and Trends<sup>a</sup>  
By Race/Ethnicity and Sex

SEER Incidence	SEER 18 Areas <sup>b</sup>			SEER 13 Areas <sup>b</sup>			SEER 9 Areas <sup>b</sup>		
	Rate 2006-2010			Trend 2001-2010 <sup>c</sup>			Trend 2001-2010 <sup>d</sup>		
	Rate per 100,000 persons			AAPC (%)			AAPC (%)		
RACE/ETHNICITY	Total	Males	Females	Total	Males	Females	Total	Males	Females
All Races	463.0	535.9	411.2	-0.6*	-1.1*	-0.3*	-0.5*	-0.9*	-0.3*
White	471.9	539.1	424.4	-0.5*	-1.0*	-0.3*	-0.5*	-1.1*	-0.3*
White Hispanic <sup>e</sup>	367.1	419.3	334.4	-0.7	-1.1*	0.1	-	-	-
White Non-Hispanic <sup>e</sup>	490.3	558.9	441.2	-0.4*	-0.9*	-0.2*	-	-	-
Black	483.6	610.4	397.5	-0.7*	-1.5*	0.0	-1.0*	-1.5*	0.0
Asian/Pacific Islander	307.4	335.0	291.5	-0.5*	-1.7*	0.1	-	-	-
Amer Ind/Alaska Nat <sup>f</sup>	323.6	351.3	306.5	0.2	-0.2	0.7*	-	-	-
Hispanic <sup>e</sup>	356.7	409.7	323.2	-0.7	-1.2*	-0.3	-	-	-
<u>U.S. Mortality<sup>g</sup></u>									
	Rate 2006-2010			Trend 2001-2010 <sup>h</sup>					
	Rate per 100,000 persons			AAPC (%)					
RACE/ETHNICITY	Total	Males	Females	Total	Males	Females			
All Races	176.4	215.3	149.7	-1.5*	-1.8*	-1.4*			
White	175.8	213.1	149.8	-1.4*	-1.7*	-1.3*			
White Hispanic <sup>e</sup>	127.9	159.4	106.4	-1.3*	-1.4*	-1.2*			
White Non-Hispanic <sup>e</sup>	179.8	217.3	153.6	-1.3*	-1.6*	-1.3*			
Black	210.3	276.6	171.2	-2.1*	-2.5*	-1.7*			
Asian/Pacific Islander	108.8	132.4	92.1	-1.4*	-1.6*	-1.0*			
Amer Ind/Alaska Nat									
Total U.S.	123.2	147.8	106.0	-0.8*	-1.1*	-0.7*			
CHSDA Counties	160.4	191.0	139.0	0.0	-0.1	0.1			
Non-CHSDA Counties	78.9	96.8	66.3	-2.6*	-3.1*	-2.1*			
Hispanic <sup>e</sup>	121.8	152.1	101.2	-1.5*	-1.6*	-1.4*			

The AAPC is the Average Annual Percent Change over the time interval. The AAPCs are calculated by the Joinpoint Regression Program Version 4.0.3, April 2013, National Cancer Institute.

- Statistic not shown. Rate based on less than 16 cases for the time interval.

Trend based on less than 10 cases for at least one year within the time interval.

a Rates are age-adjusted to the 2000 US Std Population (19 age groups - Census P25-1130). Trends

are based on rates age-adjusted to the 2000 US Std Population (19 age groups - Census P25-1130).

b The SEER 9 areas are San Francisco, Connecticut, Detroit, Hawaii, Iowa, New Mexico, Seattle, Utah, and Atlanta.

The SEER 13 areas comprise the SEER 9 areas plus San Jose-Monterey, Los Angeles, the Alaska Native Registry, and Rural Georgia.

The SEER 18 areas comprise the SEER 13 areas plus California excluding SF/SJM/LA, Kentucky, Louisiana, New Jersey, and Georgia excluding ATL/RG.

c The 2001-2010 AAPC estimates are based on a Joinpoint analysis with up to 3 Joinpoints over diagnosis years 1992-2010.

d The 2001-2010 AAPC estimates are based on a Joinpoint analysis with up to 5 Joinpoints over diagnosis years 1975-2010.

e Hispanic and Non-Hispanic are not mutually exclusive from whites, blacks, Asian/Pacific Islanders, and American Indians/Alaska Natives. Incidence data for Hispanics and Non-Hispanics are based on NHIA and exclude cases from the Alaska Native Registry. The 2006-2010 Hispanic and Non-Hispanic death rates exclude deaths from the District of Columbia, North Dakota, and South Carolina. The 2001-2010 Hispanic and Non-Hispanic mortality trends exclude deaths from Connecticut, the District of Columbia, Maine, Maryland, Minnesota, New Hampshire, New York, North Dakota, Oklahoma, South Carolina and Vermont.

f Incidence data for American Indian/Alaska Native are based on the CHSDA(Contract Health Service Delivery Area) counties.

g US Mortality Files, National Center for Health Statistics, CDC.

h The 2001-2010 mortality AAPCs are based on a Joinpoint analysis using years of death 1992-2010.

\* The APC is significantly different from zero (p<.05).

Table 2.16  
All Cancer Sites (Invasive)

Age-Adjusted SEER Incidence Rates<sup>a</sup>  
By Registry, Race and Sex

	All Races			Whites			Blacks		
	Total	Males	Females	Total	Males	Females	Total	Males	Females
<u>SEER Incidence Rates<sup>a</sup>, 2006-2010</u>									
California	435.45	497.27	391.66	449.38	507.36	408.56	458.52	554.17	388.52
Greater Bay Area	442.23	505.05	398.03	478.64	543.99	432.24	479.38	580.31	404.59
San Francisco-Oakland	447.26	509.95	403.28	482.59	546.86	437.12	488.30	593.97	411.99
San Jose-Monterey	432.43	495.62	387.60	471.51	538.70	423.59	415.85	488.37	347.47
Los Angeles	417.74	479.01	376.31	427.46	481.44	391.76	467.77	572.24	397.12
Greater California	441.20	502.69	396.67	449.57	506.71	408.53	437.70	520.61	370.55
Connecticut	498.70	566.99	451.50	500.32	562.20	458.53	463.15	586.08	379.55
Detroit	520.69	621.52	451.03	514.92	599.61	458.24	545.92	700.13	443.12
Georgia	464.58	560.14	397.53	466.91	547.23	410.36	471.59	623.97	375.70
Atlanta	471.10	567.53	404.97	478.61	555.64	426.60	484.43	633.71	391.84
Rural Georgia	467.45	569.95	392.52	486.98	560.95	430.86	427.72	586.36	326.69
Greater Georgia	461.91	556.86	394.93	462.55	544.48	404.23	465.47	618.17	368.48
Hawaii	422.43	474.63	387.18	501.78	567.04	444.77	386.64	430.29	315.16
Iowa	476.37	544.01	429.64	472.81	537.27	428.72	506.44	617.75	424.38
Kentucky	514.73	600.49	455.36	513.67	596.16	456.70	521.12	641.94	442.47
Louisiana	486.13	593.22	407.02	482.46	578.72	410.13	512.15	658.99	412.74
New Jersey	495.55	571.71	444.15	507.62	577.91	461.00	473.11	593.06	396.30
New Mexico	399.40	453.78	357.19	404.49	458.19	362.36	323.61	366.46	276.43
Seattle-Puget Sound	496.70	562.65	448.90	507.81	570.34	462.44	504.63	604.50	414.77
Utah	413.16	487.29	353.80	416.24	489.98	357.05	372.47	444.62	303.31
9 SEER Areas <sup>b</sup>	471.16	543.24	419.62	480.65	547.61	433.04	501.90	635.32	410.81
11 SEER Areas <sup>b</sup>	456.94	526.35	407.88	468.94	533.61	423.51	492.05	616.58	406.65
13 SEER Areas <sup>b</sup>	457.06	526.48	408.00	469.01	533.71	423.53	491.08	616.19	405.41
18 SEER Areas <sup>b</sup>	462.97	535.87	411.21	471.86	539.09	424.40	483.61	610.35	397.52

<sup>a</sup> Rates are per 100,000 and are age-adjusted to the 2000 US Std Population (19 age groups - Census P25-1130)

<sup>b</sup> The SEER 9 areas are San Francisco, Connecticut, Detroit, Hawaii, Iowa, New Mexico, Seattle, Utah and Atlanta.

The SEER 11 areas comprise the SEER 9 areas plus San Jose-Monterey and Los Angeles.

The SEER 13 areas comprise the SEER 11 areas plus the Alaska Native Registry and Rural Georgia.

The SEER 18 areas comprise the SEER 13 areas plus California excluding SF/SJM/LA, Kentucky, Louisiana, New Jersey and Georgia excluding ATL/RG.

- Statistic not shown. Rate based on less than 16 cases for the time interval.



Table 2.17  
All Cancer Sites (Invasive)

Age-Adjusted SEER Death Rates<sup>a</sup>  
By Registry, Race and Sex

	All Races			Whites			Blacks		
	Total	Males	Females	Total	Males	Females	Total	Males	Females
<u>SEER Death Rates<sup>a</sup>, 2006-2010</u>									
California	160.33	189.83	139.81	165.57	194.82	145.15	206.19	252.08	177.83
Greater Bay Area	151.62	177.48	134.13	159.27	184.73	142.02	215.40	258.19	190.68
San Francisco-Oakland	155.00	182.33	136.58	161.21	187.92	143.00	220.58	265.71	194.82
San Jose-Monterey	144.91	167.92	129.21	155.76	179.03	140.19	179.55	207.37	159.66
Los Angeles	156.12	185.44	136.35	158.44	185.30	140.43	212.69	264.20	182.30
Greater California	165.29	196.07	143.39	170.07	201.27	147.80	193.43	234.92	164.80
Connecticut	166.35	199.53	144.75	166.75	199.03	145.79	176.88	225.43	147.62
Detroit	190.46	229.09	165.86	183.32	219.50	159.99	225.82	282.24	192.05
Georgia	179.18	228.32	147.83	175.03	218.64	145.80	200.37	281.11	158.10
Atlanta	164.93	202.99	142.56	156.00	187.15	136.97	193.89	262.29	160.17
Rural Georgia	191.27	251.31	150.79	181.65	226.84	147.86	214.02	313.88	158.38
Greater Georgia	185.22	238.24	150.55	181.74	229.36	149.25	204.87	291.84	157.87
Hawaii	143.68	178.37	117.11	167.41	197.87	141.72	158.65	177.89	125.52
Iowa	174.32	212.61	148.39	174.08	212.00	148.41	237.69	319.63	186.17
Kentucky	209.49	262.69	173.29	208.62	260.82	172.85	242.48	321.25	194.73
Louisiana	201.30	254.70	164.42	190.87	238.33	157.32	237.15	316.78	187.29
New Jersey	175.00	207.79	154.26	177.02	208.82	156.77	202.08	260.32	169.15
New Mexico	155.46	187.39	131.56	158.36	191.35	133.40	158.96	191.14	131.66
Seattle-Puget Sound	172.64	204.37	150.54	175.80	206.52	154.40	207.42	245.97	178.28
Utah	131.33	157.14	112.34	131.95	157.70	113.00	134.51	167.62	108.43
9 SEER Areas <sup>b</sup>	165.39	198.35	143.07	166.48	198.47	144.70	206.85	261.28	175.04
11 SEER Areas <sup>b</sup>	162.21	193.81	140.82	164.33	194.82	143.64	207.90	261.20	176.56
13 SEER Areas <sup>b</sup>	162.51	194.19	141.03	164.46	194.96	143.71	207.83	261.83	176.08
18 SEER Areas <sup>b</sup>	170.91	206.08	146.89	172.67	206.69	149.25	210.50	272.71	173.56
Total U.S.	176.44	215.27	149.67	175.80	213.12	149.75	210.34	276.61	171.22

<sup>a</sup> US Mortality Files, National Center for Health Statistics, Centers for Disease Control and Prevention. Rates are per 100,000 and are age-adjusted to the 2000 US Std Population (19 age groups - Census P25-1130).

<sup>b</sup> The SEER 9 areas are San Francisco, Connecticut, Detroit, Hawaii, Iowa, New Mexico, Seattle, Utah and Atlanta. The SEER 11 areas comprise the SEER 9 areas plus San Jose-Monterey and Los Angeles.

The SEER 13 areas comprise the SEER 11 areas plus the Alaska Native Registry and Rural Georgia.

The SEER 18 areas comprise the SEER 13 areas plus California excluding SF/SJM/LA, Kentucky, Louisiana, New Jersey and Georgia excluding ATL/RG.

- Statistic not shown. Rate based on less than 16 cases for the time interval.

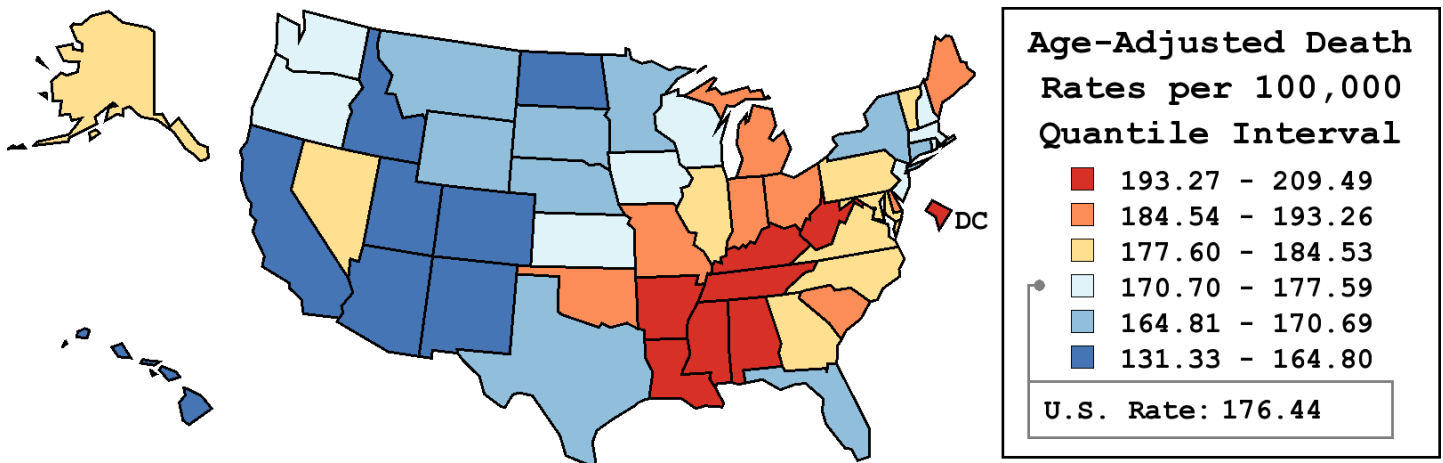
Table 2.18  
All Cancer Sites (Invasive)

Age-Adjusted Cancer Death<sup>a</sup> Rates by State, All Races, 2006-2010

Males and Females

State	Rate	SE	Rank	PD
TOTAL U.S.	176.44	0.11		
High Five States				
Kentucky	209.49	0.96	(01)	18.73 <sup>c</sup>
Mississippi	203.54	1.17	(02)	15.36 <sup>c</sup>
Louisiana	201.30	0.96	(03)	14.09 <sup>c</sup>
West Virginia	201.16	1.33	(04)	14.01 <sup>c</sup>
Tennessee	199.07	0.78	(05)	12.82 <sup>c</sup>
Low Five States				
New Mexico	155.46	1.23	(47)	-11.89 <sup>c</sup>
Arizona	155.19	0.69	(48)	-12.04 <sup>c</sup>
Colorado	152.84	0.85	(49)	-13.37 <sup>c</sup>
Hawaii	143.68	1.38	(50)	-18.57 <sup>c</sup>
Utah	131.33	1.16	(51)	-25.57 <sup>c</sup>

State	Rate	SE	Rank	PD	State	Rate	SE	Rank	PD
Alabama	196.45	0.88	(08)	11.34 <sup>c</sup>	Montana	166.34	1.72	(43)	-5.72 <sup>c</sup>
Alaska	182.47	3.04	(20)	3.42	Nebraska	170.69	1.32	(35)	-3.26
Arizona	155.19	0.69	(48)	-12.04 <sup>c</sup>	Nevada	179.00	1.24	(23)	1.45
Arkansas	198.04	1.11	(07)	12.24 <sup>c</sup>	New Hampshire	177.31	1.59	(28)	0.49
California	160.33	0.31	(46)	-9.13 <sup>c</sup>	New Jersey	175.00	0.61	(32)	-0.82
Colorado	152.84	0.85	(49)	-13.37 <sup>c</sup>	New Mexico	155.46	1.23	(47)	-11.89 <sup>c</sup>
Connecticut	166.35	0.91	(42)	-5.72 <sup>c</sup>	New York	166.60	0.40	(41)	-5.58 <sup>c</sup>
Delaware	187.71	1.96	(14)	6.38 <sup>c</sup>	North Carolina	182.81	0.62	(19)	3.61
D.C.	198.95	2.68	(06)	12.76 <sup>c</sup>	North Dakota	164.80	2.07	(44)	-6.60 <sup>c</sup>
Florida	168.35	0.38	(39)	-4.58	Ohio	192.36	0.55	(11)	9.02 <sup>c</sup>
Georgia	179.18	0.67	(22)	1.55	Oklahoma	193.26	0.99	(09)	9.53 <sup>c</sup>
Hawaii	143.68	1.38	(50)	-18.57 <sup>c</sup>	Oregon	176.29	0.93	(29)	-0.09
Idaho	162.81	1.49	(45)	-7.73 <sup>c</sup>	Pennsylvania	184.53	0.49	(17)	4.58
Illinois	183.92	0.53	(18)	4.24	Rhode Island	177.45	1.71	(27)	0.57
Indiana	192.59	0.76	(10)	9.15 <sup>c</sup>	South Carolina	187.62	0.89	(15)	6.33 <sup>c</sup>
Iowa	174.32	0.99	(34)	-1.20	South Dakota	168.38	1.92	(38)	-4.57
Kansas	174.68	1.08	(33)	-1.00	Tennessee	199.07	0.78	(05)	12.82 <sup>c</sup>
Kentucky	209.49	0.96	(01)	18.73 <sup>c</sup>	Texas	169.69	0.41	(36)	-3.83
Louisiana	201.30	0.96	(03)	14.09 <sup>c</sup>	Utah	131.33	1.16	(51)	-25.57 <sup>c</sup>
Maine	187.73	1.51	(13)	6.40 <sup>c</sup>	Vermont	177.88	2.24	(25)	0.82
Maryland	178.99	0.80	(24)	1.45	Virginia	179.31	0.69	(21)	1.62
Massachusetts	177.59	0.70	(26)	0.65	Washington	175.02	0.74	(31)	-0.81
Michigan	185.09	0.59	(16)	4.90	West Virginia	201.16	1.33	(04)	14.01 <sup>c</sup>
Minnesota	168.86	0.79	(37)	-4.30	Wisconsin	175.58	0.75	(30)	-0.49
Mississippi	203.54	1.17	(02)	15.36 <sup>c</sup>	Wyoming	167.80	2.49	(40)	-4.90
Missouri	189.17	0.76	(12)	7.21 <sup>c</sup>					



<sup>a</sup> US Mortality Files, National Center for Health Statistics, Centers for Disease Control and Prevention. Rates are per 100,000 and are age-adjusted to the 2000 US Std Population (19 age groups - Census P25-1130).  
<sup>b</sup> Difference between state rate and total U.S. rate is statistically significant ( $p \leq .0002$ ).  
<sup>c</sup> Absolute percent difference between state rate and total U.S. rate is 5% or more.  
SE Standard error of the rate.  
PD Percent difference between state rate and total U.S. rate.  
- Statistic not shown. Rate based on less than 16 cases for the time interval.

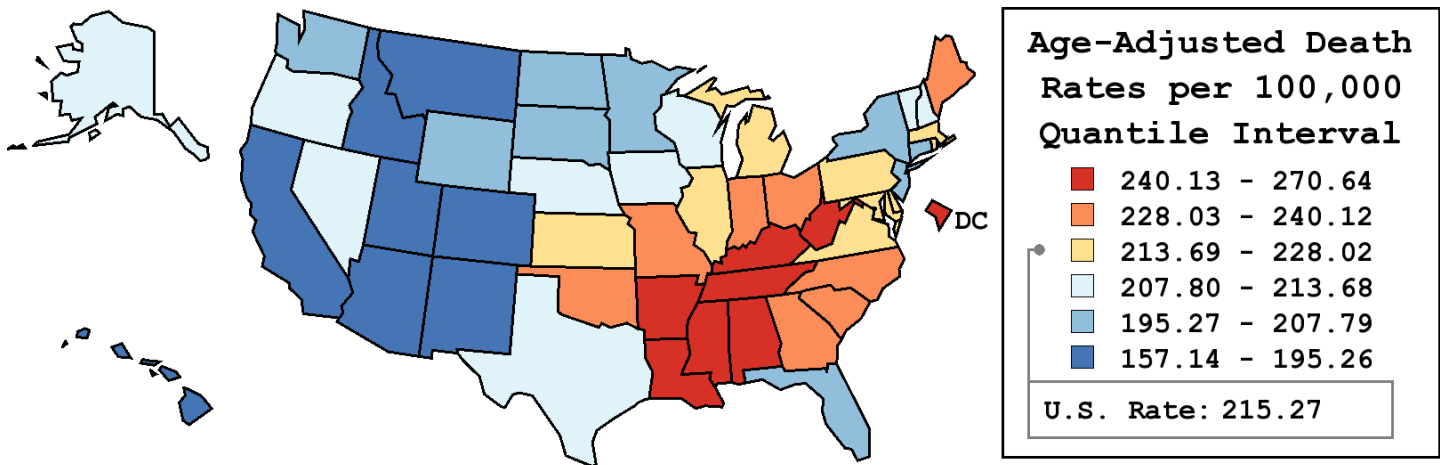
Table 2.19  
All Cancer Sites (Invasive)

Age-Adjusted Cancer Death<sup>a</sup> Rates by State, All Races, 2006-2010

Males

State	Rate	SE	Rank	PD
TOTAL U.S.	215.27	0.18		
High Five States				
Mississippi	270.64	2.15	(01)	25.73 <sup>c</sup>
Kentucky	262.69	1.69	(02)	22.03 <sup>c</sup>
Tennessee	256.44	1.40	(03)	19.13 <sup>c</sup>
Alabama	255.38	1.59	(04)	18.64 <sup>c</sup>
Louisiana	254.70	1.69	(05)	18.32 <sup>c</sup>
Low Five States				
New Mexico	187.39	2.05	(47)	-12.95 <sup>c</sup>
Arizona	185.97	1.14	(48)	-13.61 <sup>c</sup>
Colorado	181.37	1.43	(49)	-15.75 <sup>c</sup>
Hawaii	178.37	2.31	(50)	-17.14 <sup>c</sup>
Utah	157.14	1.93	(51)	-27.00 <sup>c</sup>

State	Rate	SE	Rank	PD	State	Rate	SE	Rank	PD
Alabama	255.38	1.59	(04)	18.64 <sup>c</sup>	Montana	195.26	2.80	(44)	-9.29 <sup>c</sup>
Alaska	210.49	5.02	(31)	-2.22	Nebraska	208.40	2.23	(34)	-3.19
Arizona	185.97	1.14	(48)	-13.61 <sup>c</sup>	Nevada	211.41	2.04	(30)	-1.79
Arkansas	250.59	1.93	(06)	16.41 <sup>c</sup>	New Hampshire	211.65	2.67	(29)	-1.68
California	189.83	0.51	(46)	-11.81 <sup>c</sup>	New Jersey	207.79	1.04	(35)	-3.47
Colorado	181.37	1.43	(49)	-15.75 <sup>c</sup>	New Mexico	187.39	2.05	(47)	-12.95 <sup>c</sup>
Connecticut	199.53	1.54	(42)	-7.31 <sup>c</sup>	New York	199.72	0.68	(41)	-7.22 <sup>c</sup>
Delaware	228.02	3.34	(17)	5.92 <sup>c</sup>	North Carolina	232.19	1.11	(13)	7.86 <sup>c</sup>
D.C.	248.47	4.75	(07)	15.42 <sup>c</sup>	North Dakota	203.58	3.48	(40)	-5.43 <sup>c</sup>
Florida	204.50	0.62	(38)	-5.00 <sup>c</sup>	Ohio	236.51	0.94	(12)	9.87 <sup>c</sup>
Georgia	228.32	1.22	(16)	6.06 <sup>c</sup>	Oklahoma	238.80	1.70	(11)	10.93 <sup>c</sup>
Hawaii	178.37	2.31	(50)	-17.14 <sup>c</sup>	Oregon	208.47	1.53	(33)	-3.16
Idaho	192.88	2.44	(45)	-10.40 <sup>c</sup>	Pennsylvania	225.63	0.84	(18)	4.82
Illinois	223.28	0.92	(19)	3.72	Rhode Island	221.79	2.97	(21)	3.03
Indiana	238.83	1.32	(10)	10.95 <sup>c</sup>	South Carolina	240.12	1.59	(09)	11.54 <sup>c</sup>
Iowa	212.61	1.67	(27)	-1.23	South Dakota	206.80	3.22	(37)	-3.93
Kansas	214.41	1.82	(25)	-0.40	Tennessee	256.44	1.40	(03)	19.13 <sup>c</sup>
Kentucky	262.69	1.69	(02)	22.03 <sup>c</sup>	Texas	209.32	0.71	(32)	-2.76
Louisiana	254.70	1.69	(05)	18.32 <sup>c</sup>	Utah	157.14	1.93	(51)	-27.00 <sup>c</sup>
Maine	231.11	2.59	(14)	7.36 <sup>c</sup>	Vermont	212.02	3.76	(28)	-1.51
Maryland	216.93	1.38	(23)	0.78	Virginia	221.11	1.20	(22)	2.71
Massachusetts	216.58	1.21	(24)	0.61	Washington	207.21	1.22	(36)	-3.74
Michigan	223.00	0.99	(20)	3.59	West Virginia	246.92	2.27	(08)	14.70 <sup>c</sup>
Minnesota	203.86	1.33	(39)	-5.30 <sup>c</sup>	Wisconsin	213.68	1.28	(26)	-0.74
Mississippi	270.64	2.15	(01)	25.73 <sup>c</sup>	Wyoming	196.05	4.06	(43)	-8.93 <sup>c</sup>
Missouri	231.09	1.30	(15)	7.35 <sup>c</sup>					



<sup>a</sup> US Mortality Files, National Center for Health Statistics, Centers for Disease Control and Prevention. Rates are per 100,000 and are age-adjusted to the 2000 US Std Population (19 age groups - Census P25-1130).  
<sup>b</sup> Difference between state rate and total U.S. rate is statistically significant (p<=.0002).  
<sup>c</sup> Absolute percent difference between state rate and total U.S. rate is 5% or more.  
SE Standard error of the rate.  
PD Percent difference between state rate and total U.S. rate.  
- Statistic not shown. Rate based on less than 16 cases for the time interval.

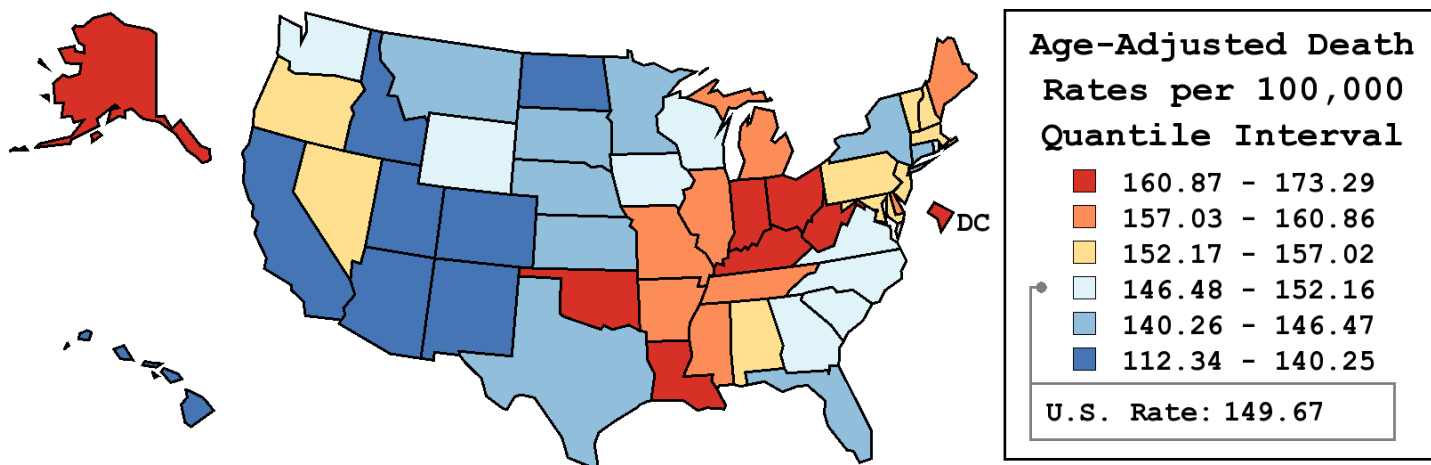
Table 2.20  
All Cancer Sites (Invasive)

Age-Adjusted Cancer Death<sup>a</sup> Rates by State, All Races, 2006-2010

Females

State	Rate	SE	Rank	PD
TOTAL U.S.	149.67	0.13		
High Five States				
Kentucky	173.29	1.17	(01)	15.78 <sup>c</sup>
West Virginia	168.59	1.64	(02)	12.64 <sup>c</sup>
D.C.	167.63	3.23	(03)	12.00 <sup>c</sup>
Louisiana	164.42	1.15	(04)	9.86 <sup>c</sup>
Ohio	162.60	0.67	(05)	8.64 <sup>c</sup>
Low Five States				
Colorado	133.17	1.05	(47)	-11.02 <sup>c</sup>
Arizona	131.68	0.86	(48)	-12.02 <sup>c</sup>
New Mexico	131.56	1.52	(49)	-12.10 <sup>c</sup>
Hawaii	117.11	1.70	(50)	-21.75 <sup>c</sup>
Utah	112.34	1.45	(51)	-24.94 <sup>c</sup>

State	Rate	SE	Rank	PD	State	Rate	SE	Rank	PD
Alabama	156.42	1.04	(18)	4.51	Montana	145.07	2.20	(37)	-3.07
Alaska	160.98	3.85	(07)	7.56 <sup>c</sup>	Nebraska	143.80	1.63	(40)	-3.92
Arizona	131.68	0.86	(48)	-12.02 <sup>c</sup>	Nevada	153.58	1.56	(23)	2.61
Arkansas	160.86	1.35	(09)	7.48 <sup>c</sup>	New Hampshire	154.18	1.99	(21)	3.02
California	139.81	0.38	(45)	-6.58 <sup>c</sup>	New Jersey	154.26	0.76	(19)	3.07
Colorado	133.17	1.05	(47)	-11.02 <sup>c</sup>	New Mexico	131.56	1.52	(49)	-12.10 <sup>c</sup>
Connecticut	144.75	1.13	(39)	-3.29	New York	145.37	0.49	(36)	-2.87
Delaware	159.29	2.42	(13)	6.43 <sup>c</sup>	North Carolina	149.93	0.75	(29)	0.18
D.C.	167.63	3.23	(03)	12.00 <sup>c</sup>	North Dakota	137.18	2.58	(46)	-8.34 <sup>c</sup>
Florida	140.73	0.47	(43)	-5.97 <sup>c</sup>	Ohio	162.60	0.67	(05)	8.64 <sup>c</sup>
Georgia	147.83	0.80	(33)	-1.23	Oklahoma	160.98	1.22	(08)	7.56 <sup>c</sup>
Hawaii	117.11	1.70	(50)	-21.75 <sup>c</sup>	Oregon	153.41	1.17	(24)	2.50
Idaho	140.25	1.88	(44)	-6.29 <sup>c</sup>	Pennsylvania	157.02	0.61	(17)	4.91
Illinois	158.52	0.66	(15)	5.92 <sup>c</sup>	Rhode Island	149.57	2.09	(31)	-0.06
Indiana	161.53	0.93	(06)	7.93 <sup>c</sup>	South Carolina	151.69	1.07	(27)	1.35
Iowa	148.39	1.24	(32)	-0.85	South Dakota	141.26	2.39	(42)	-5.61 <sup>c</sup>
Kansas	146.47	1.33	(35)	-2.13	Tennessee	160.35	0.93	(10)	7.14 <sup>c</sup>
Kentucky	173.29	1.17	(01)	15.78 <sup>c</sup>	Texas	141.81	0.50	(41)	-5.25 <sup>c</sup>
Louisiana	164.42	1.15	(04)	9.86 <sup>c</sup>	Utah	112.34	1.45	(51)	-24.94 <sup>c</sup>
Maine	158.31	1.87	(16)	5.77 <sup>c</sup>	Vermont	154.25	2.81	(20)	3.07
Maryland	153.99	0.98	(22)	2.89	Virginia	151.38	0.84	(28)	1.14
Massachusetts	152.48	0.86	(25)	1.88	Washington	152.16	0.93	(26)	1.67
Michigan	159.46	0.73	(12)	6.54 <sup>c</sup>	West Virginia	168.59	1.64	(02)	12.64 <sup>c</sup>
Minnesota	145.04	0.99	(38)	-3.09	Wisconsin	149.72	0.94	(30)	0.03
Mississippi	159.09	1.37	(14)	6.30 <sup>c</sup>	Wyoming	146.75	3.17	(34)	-1.95
Missouri	160.20	0.94	(11)	7.04 <sup>c</sup>					



<sup>a</sup> US Mortality Files, National Center for Health Statistics, Centers for Disease Control and Prevention. Rates are per 100,000 and are age-adjusted to the 2000 US Std Population (19 age groups - Census P25-1130).  
<sup>b</sup> Difference between state rate and total U.S. rate is statistically significant ( $p \leq .0002$ ).  
<sup>c</sup> Absolute percent difference between state rate and total U.S. rate is 5% or more.  
SE Standard error of the rate.  
PD Percent difference between state rate and total U.S. rate.  
- Statistic not shown. Rate based on less than 16 cases for the time interval.

Table 2.21  
All Cancer Sites (Invasive)

Estimated United States Cancer Prevalence Counts<sup>a</sup> on January 1, 2010  
By Race/Ethnicity, Sex and Years Since Diagnosis

Years Since Diagnosis		0 to <5	5 to <10	10 to <15	15 to <20	20 to <25	25 to <30	0 to <18 <sup>e</sup>	0 to <35 <sup>e</sup>	>=35 <sup>g</sup>	Complete <sup>h</sup>
<u>Race</u>	<u>Sex</u>										
All Races <sup>b</sup>	Both Sexes	4,511,266	3,100,895	2,115,695	1,341,528	776,939	454,693	11,069,385	12,600,627	427,287	13,027,914
	Males	2,332,050	1,572,925	998,128	593,178	268,188	144,398	5,496,281	5,990,343	88,631	6,078,974
	Females	2,179,216	1,527,970	1,117,567	748,350	508,751	310,295	5,573,104	6,610,284	338,656	6,948,940
White <sup>b</sup>	Both Sexes	3,822,952	2,699,375	1,859,648	1,200,350	705,111	415,002	9,582,325	10,975,277	375,017	11,350,294
	Males	1,968,442	1,361,458	872,314	532,143	245,842	133,749	4,734,357	5,189,363	82,898	5,272,261
	Females	1,854,510	1,337,917	987,334	668,207	459,269	281,253	4,847,968	5,785,914	292,119	6,078,033
Black <sup>b</sup>	Both Sexes	454,240	274,223	172,669	94,496	45,620	26,053	995,627	1,084,133	25,176	1,109,309
	Males	244,991	152,451	89,843	43,171	14,121	6,671	530,455	554,560	2,277	556,837
	Females	209,249	121,772	82,826	51,325	31,499	19,382	465,172	529,573	22,899	552,472
Asian/ Pacific Islander <sup>c</sup>	Both Sexes	131,655	80,549	49,631	+	+	+	280,924	+	+	+
	Males	56,813	33,143	18,552	+	+	+	115,176	+	+	+
	Females	74,842	47,406	31,079	+	+	+	165,748	+	+	+
Hispanic <sup>d</sup>	Both Sexes	298,868	183,359	113,698	+	+	+	595,926	+	+	+
	Males	143,051	86,170	50,138	+	+	+	279,359	+	+	+
	Females	155,817	97,189	63,560	+	+	+	316,567	+	+	+

Estimated prevalence percent<sup>a</sup> on January 1, 2010, of the SEER 11 population diagnosed in the previous 18 years  
By Age at Prevalence, Race/Ethnicity and Sex

Age at Prevalence		Age Specific (Crude)									Age-Adjusted <sup>f</sup>	
		All Ages	0-9	10-19	20-29	30-39	40-49	50-59	60-69	70-79	80+	All Ages
<u>Race</u>	<u>Sex</u>											
All Races <sup>c</sup>	Both Sexes	2.8371%	0.0848%	0.1635%	0.2848%	0.7167%	1.7097%	3.8957%	8.4802%	13.8744%	14.4502%	2.8019%
	Males	2.8615%	0.0897%	0.1723%	0.2731%	0.5580%	1.1719%	3.2482%	9.4103%	18.3650%	20.6809%	3.1737%
	Females	2.8134%	0.0796%	0.1543%	0.2970%	0.8759%	2.2425%	4.5132%	7.6391%	10.2898%	10.8412%	2.5744%
White <sup>c</sup>	Both Sexes	3.1221%	0.0930%	0.1823%	0.3226%	0.8024%	1.8281%	4.0711%	8.8786%	14.5767%	14.8617%	2.9449%
	Males	3.1171%	0.0984%	0.1936%	0.3096%	0.6357%	1.2672%	3.3618%	9.6546%	18.9306%	20.8081%	3.2756%
	Females	3.1271%	0.0874%	0.1705%	0.3365%	0.9776%	2.4052%	4.7703%	8.1555%	11.0145%	11.3939%	2.7498%
Black <sup>c</sup>	Both Sexes	2.1287%	0.0592%	0.1108%	0.1776%	0.4923%	1.4068%	3.7539%	8.8626%	13.8728%	12.9297%	2.6643%
	Males	2.3998%	0.0631%	0.1105%	0.1696%	0.3486%	0.9964%	3.7865%	12.0610%	21.6295%	21.9777%	3.5887%
	Females	1.8825%	0.0551%	0.1111%	0.1851%	0.6172%	1.7701%	3.7258%	6.3343%	8.5405%	8.6493%	2.0848%
Asian/ Pacific Islander <sup>c</sup>	Both Sexes	1.8066%	0.0648%	0.1125%	0.1714%	0.4444%	1.2280%	2.7556%	5.1339%	8.6692%	10.6803%	1.8554%
	Males	1.6079%	0.0694%	0.1175%	0.1589%	0.2824%	0.6460%	1.7332%	4.8329%	10.7492%	15.4330%	1.8966%
	Females	1.9885%	0.0600%	0.1072%	0.1836%	0.5898%	1.7450%	3.6315%	5.3847%	7.0857%	7.7430%	1.8755%
Hispanic <sup>d</sup>	Both Sexes	1.2175%	0.0795%	0.1532%	0.2142%	0.5087%	1.1942%	2.7535%	5.9179%	10.0925%	11.2607%	2.0455%
	Males	1.1171%	0.0848%	0.1630%	0.2108%	0.3928%	0.7214%	2.0261%	6.3201%	14.0475%	16.7861%	2.3340%
	Females	1.3203%	0.0740%	0.1430%	0.2180%	0.6319%	1.6852%	3.4420%	5.5772%	7.1880%	7.9935%	1.9028%

<sup>a</sup> US 2010 cancer prevalence counts are based on 2010 cancer prevalence proportions from the SEER registries and 1/1/2010 US population estimates based on the average of 2009 and 2010 population estimates from the US Bureau of the Census. Prevalence was calculated using the First Malignant Primary Only for a person.

<sup>b c d</sup> Statistics based on (b) SEER 9 Areas (c) SEER 11 Areas and Rural Georgia (d) NHIA for Hispanic for SEER 11 Areas and Rural Georgia.

<sup>e</sup> Maximum limited-duration prevalence: 35 years for 1975-2010 SEER 9 data; 18 years for 1992-2010 SEER 11 data (used to calculate prevalence for Hispanics and Asian Pacific Islanders).

<sup>f</sup> Percentages are age-adjusted to the 2000 US Standard Population (19 age groups - Census P25-1130) by 5-year age groups.

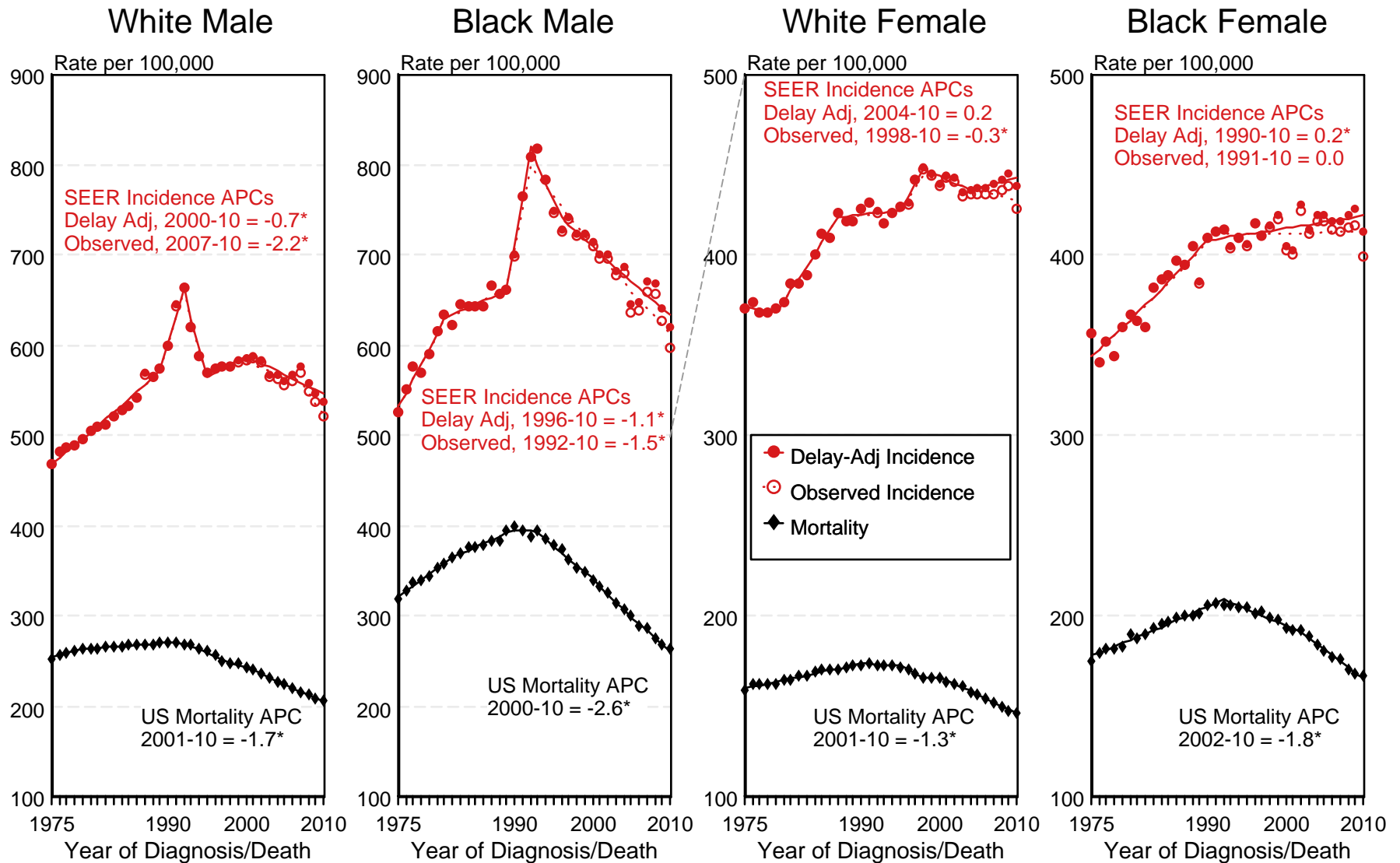
<sup>g h i</sup> (g) Cases diagnosed more than 35 years ago were estimated using the completeness index method (Capocaccia et. al. 1997, Merrill et. al. 2000). (h) Complete prevalence is obtained by summing 0 to <35 and >=35. (i) Age-specific completeness index was approximated using empirical data from historical Connecticut tumor registry.

- Statistic not shown. Statistic based on fewer than 5 cases estimated alive in SEER for the time interval.

+ Not available.

Figure 2.1

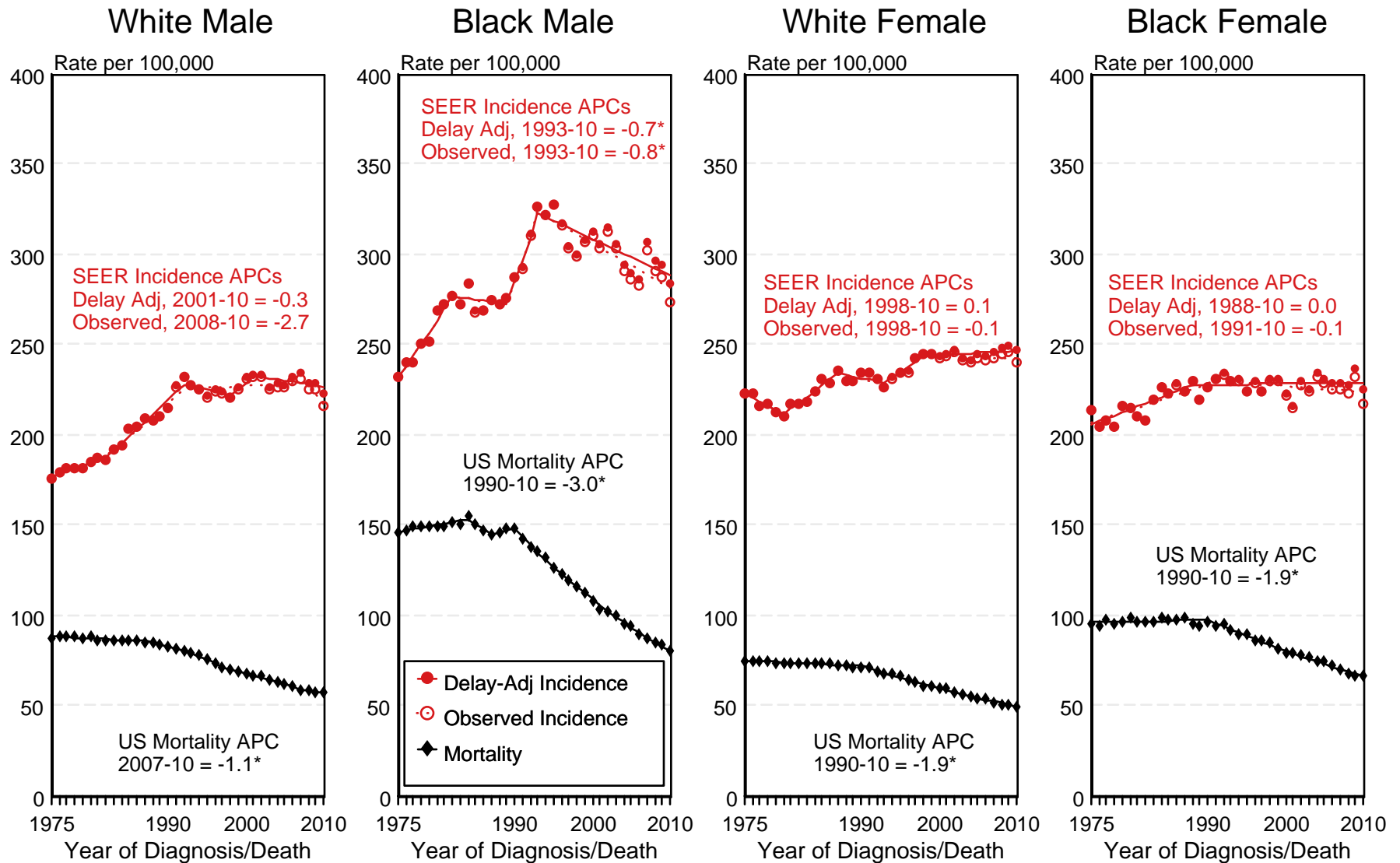
# SEER Observed Incidence, SEER Delay Adjusted Incidence and US Death Rates<sup>a</sup> All Cancer Sites, by Race and Sex



<sup>a</sup> Source: SEER 9 areas and US Mortality Files (National Center for Health Statistics, CDC). Rates are age-adjusted to the 2000 US Std Population (19 age groups - Census P25-1103). Regression lines and APCs are calculated using the Joinpoint Regression Program Version 4.0.3, April 2013, National Cancer Institute. The APC is the Annual Percent Change for the regression line segments. The APC shown on the graph is for the most recent trend.  
\* The APC is significantly different from zero ( $p < 0.05$ ).

Figure 2.2

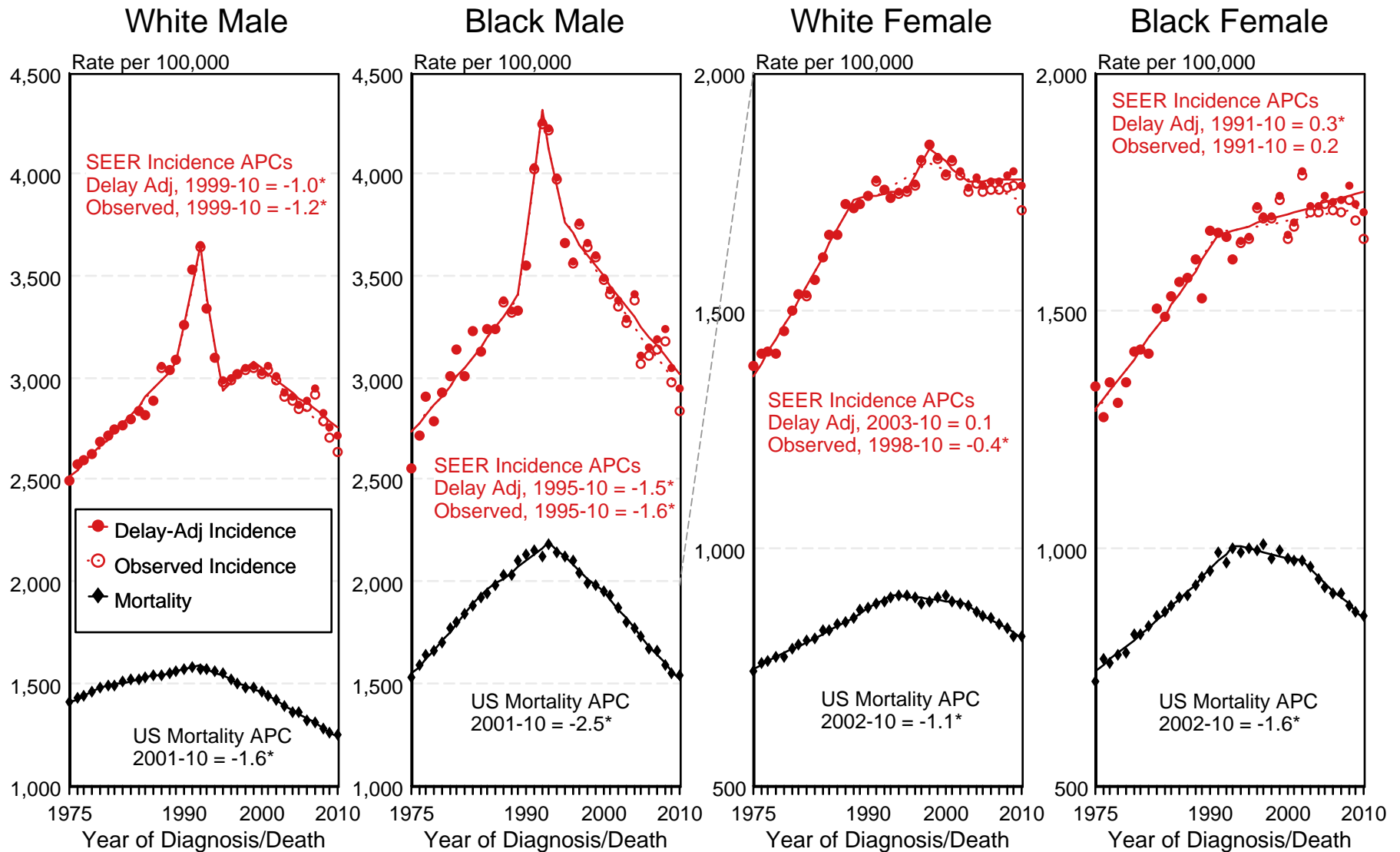
# SEER Observed Incidence, SEER Delay Adjusted Incidence and US Death Rates<sup>a</sup> All Cancer Sites, Under 65 Years of Age, by Race and Sex



<sup>a</sup> Source: SEER 9 areas and US Mortality Files (National Center for Health Statistics, CDC). Rates are age-adjusted to the 2000 US Std Population (19 age groups - Census P25-1103). Regression lines and APCs are calculated using the Joinpoint Regression Program Version 4.0.3, April 2013, National Cancer Institute. The APC is the Annual Percent Change for the regression line segments. The APC shown on the graph is for the most recent trend.  
\* The APC is significantly different from zero ( $p < 0.05$ ).

Figure 2.3

# SEER Observed Incidence, SEER Delay Adjusted Incidence and US Death Rates<sup>a</sup> All Cancer Sites, Ages 65 and Over, by Race and Sex



<sup>a</sup> Source: SEER 9 areas and US Mortality Files (National Center for Health Statistics, CDC). Rates are age-adjusted to the 2000 US Std Population (19 age groups - Census P25-1103). Regression lines and APCs are calculated using the Joinpoint Regression Program Version 4.0.3, April 2013, National Cancer Institute. The APC is the Annual Percent Change for the regression line segments. The APC shown on the graph is for the most recent trend.  
\* The APC is significantly different from zero ( $p < 0.05$ ).

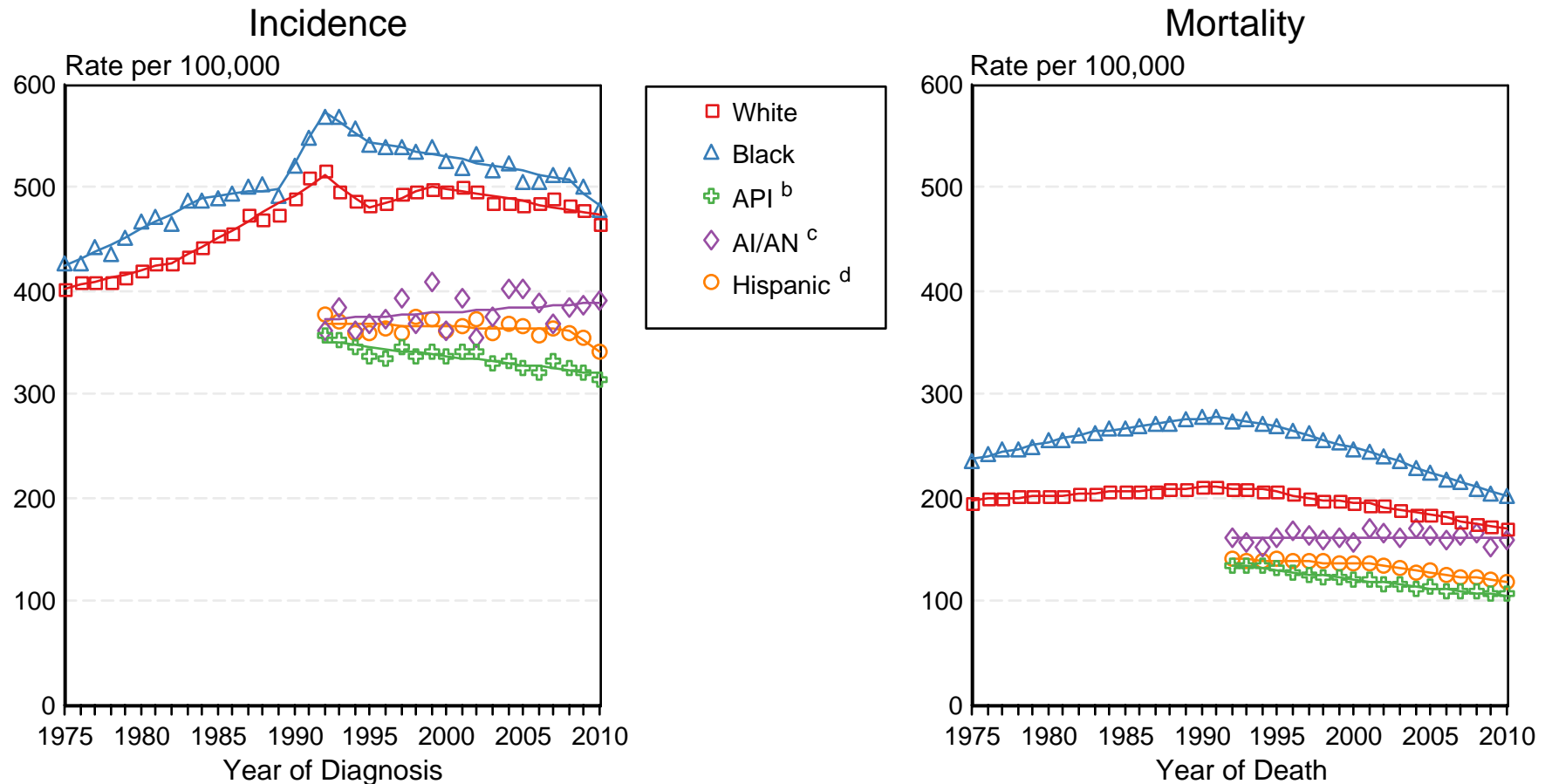


Figure 2.4

# SEER Incidence and US Death Rates<sup>a</sup> All Cancer Sites, Both Sexes

Joinpoint Analyses for Whites and Blacks from 1975-2010

and for Asian/Pacific Islanders, American Indians/Alaska Natives and Hispanics from 1992-2010



Source: Incidence data for whites and blacks are from the SEER 9 areas (San Francisco, Connecticut, Detroit, Hawaii, Iowa, New Mexico, Seattle, Utah, Atlanta). Incidence data for Asian/Pacific Islanders, American Indians/Alaska Natives and Hispanics are from the SEER 13 Areas (SEER 9 Areas, San Jose-Monterey, Los Angeles, Alaska Native Registry and Rural Georgia). Mortality data are from US Mortality Files, National Center for Health Statistics, CDC.

<sup>a</sup> Rates are age-adjusted to the 2000 US Std Population (19 age groups - Census P25-1103). Regression lines are calculated using the Joinpoint Regression Program Version 4.0.3, April 2013, National Cancer Institute. Joinpoint analyses for Whites and Blacks during the 1975-2010 period allow a maximum of 5 joinpoints. Analyses for other ethnic groups during the period 1992-2010 allow a maximum of 3 joinpoints.

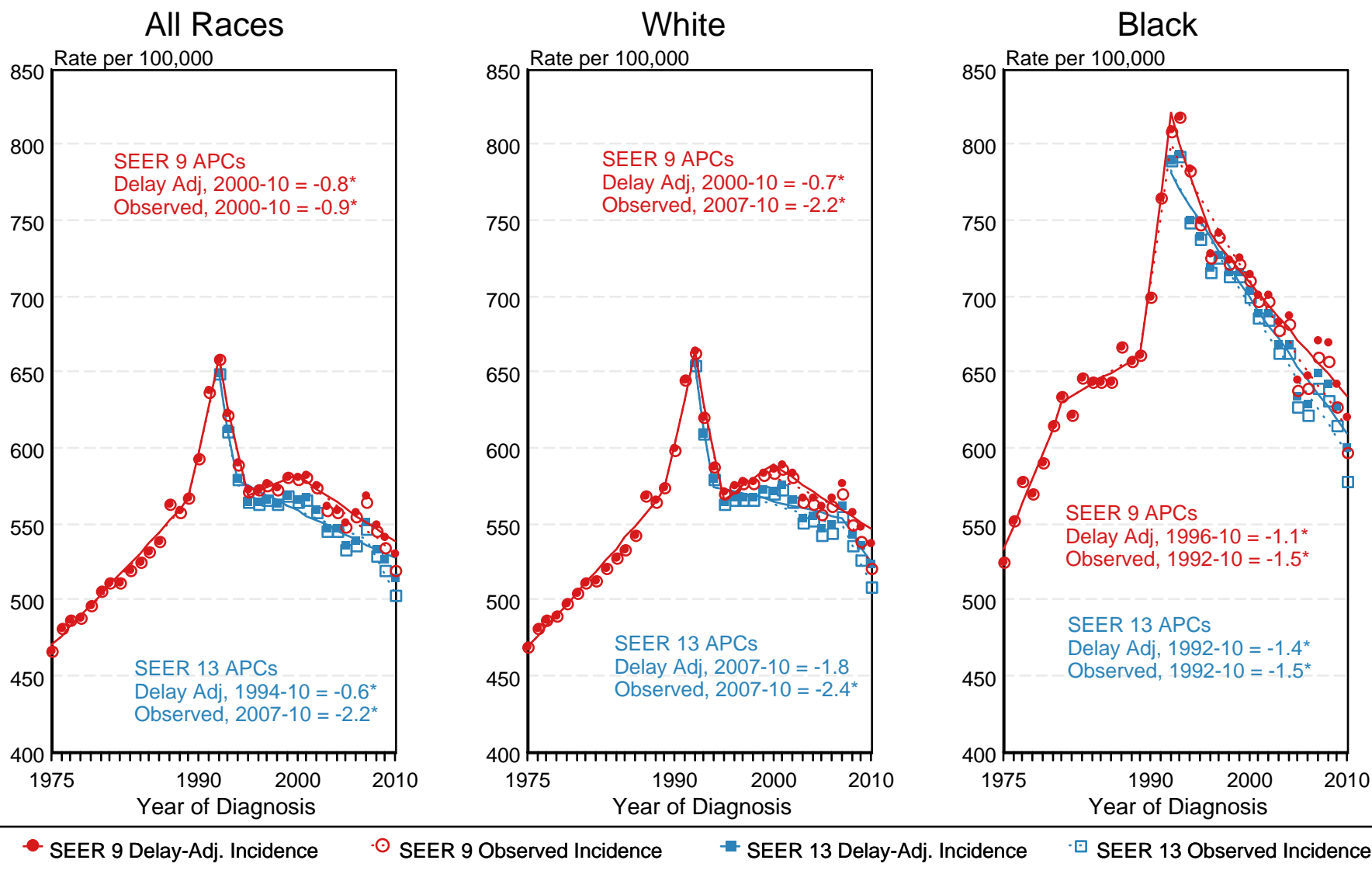
<sup>b</sup> API = Asian/Pacific Islander.

<sup>c</sup> AI/AN = American Indian/Alaska Native. Rates for American Indian/Alaska Native are based on the CHSDA (Contract Health Service Delivery Area) counties.

<sup>d</sup> Hispanic is not mutually exclusive from whites, blacks, Asian/Pacific Islanders, and American Indians/Alaska Natives. Incidence data for Hispanics are based on NHIA and exclude cases from the Alaska Native Registry. Mortality data for Hispanics exclude cases from Connecticut, the District of Columbia, Maine, Maryland, Minnesota, New Hampshire, New York, North Dakota, South Carolina, Oklahoma, and Vermont.

Figure 2.5

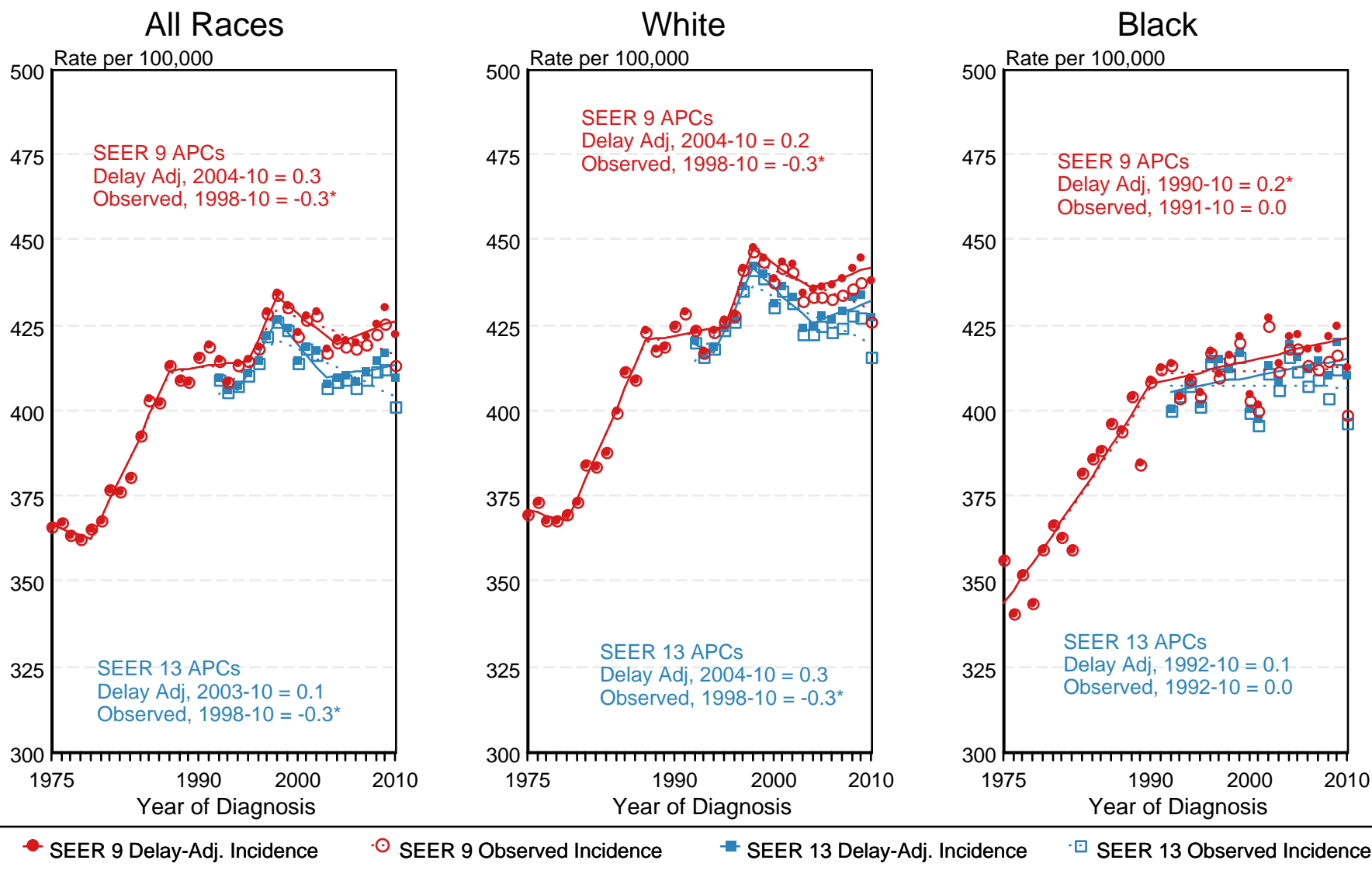
# SEER Observed Incidence and SEER Delay Adjusted Incidence Rates<sup>a</sup> SEER 9 Areas Compared to SEER 13 Areas All Cancer Sites, Males, by Race



<sup>a</sup> Source: SEER 9 areas and SEER 13 areas.  
Rates are age-adjusted to the 2000 US Std Population (19 age groups - Census P25-1103).  
Regression lines and APCs are calculated using the Joinpoint Regression Program Version 4.0.3, April 2013, National Cancer Institute.  
The APC is the Annual Percent Change for the regression line segments. The APC shown on the graph is for the most recent trend.  
\* The APC is significantly different from zero ( $p < 0.05$ ).

Figure 2.6

# SEER Observed Incidence and SEER Delay Adjusted Incidence Rates<sup>a</sup> SEER 9 Areas Compared to SEER 13 Areas All Cancer Sites, Female, by Race



<sup>a</sup> Source: SEER 9 areas and SEER 13 areas.  
Rates are age-adjusted to the 2000 US Std Population (19 age groups - Census P25-1103).  
Regression lines and APCs are calculated using the Joinpoint Regression Program Version 4.0.3, April 2013, National Cancer Institute.  
The APC is the Annual Percent Change for the regression line segments. The APC shown on the graph is for the most recent trend.  
\* The APC is significantly different from zero ( $p < 0.05$ ).