

Table 19.1
Non-Hodgkin Lymphoma

Trends in SEER Incidence^{ab} and U.S. Mortality^c Using the Joinpoint Regression Program,
1975-2010 With up to Five Joinpoints, 1992-2010 With up to Three Joinpoints,
Both Sexes by Race/Ethnicity

	JP Trend 1		JP Trend 2		JP Trend 3		JP Trend 4		JP Trend 5		JP Trend 6		AAPC ^d	
	Years	APC	Years	APC	Years	APC	Years	APC	Years	APC	Years	APC	2001-10	2006-10
<u>SEER 9 Delay-Adjusted Incidence^a, 1975-2010</u>														
All Races	1975-91	3.6*	1991-10	0.6*									0.6*	0.6*
White	1975-90	3.8*	1990-10	0.8*									0.8*	0.8*
Black	1975-93	4.7*	1993-10	0.8*									0.8*	0.8*
<u>SEER 13 Delay-Adjusted Incidence^b, 1992-2010</u>														
All Races	1992-10	0.5*											0.5*	0.5*
White	1992-10	0.6*											0.6*	0.6*
Black	1992-10	0.8*											0.8*	0.8*
<u>SEER 9 Observed Incidence^a, 1975-2010</u>														
All Races	1975-91	3.6*	1991-10	0.5*									0.5*	0.5*
White	1975-90	3.8*	1990-04	0.9*	2004-10	-0.1							0.2	-0.1
Black	1975-93	4.7*	1993-10	0.6*									0.6*	0.6*
<u>SEER 13 Observed Incidence^b, 1992-2010</u>														
All Races	1992-10	0.4*											0.4*	0.4*
White	1992-10	0.5*											0.5*	0.5*
White NH ^{ef}	1992-10	0.6*											0.6*	0.6*
Black	1992-10	0.6*											0.6*	0.6*
Black NH ^{ef}	1992-10	0.7*											0.7*	0.7*
API ^e	1992-10	0.2											0.2	0.2
AI/AN ^{eg}	1992-10	2.8*											2.8*	2.8*
Hispanic ^f	1992-10	0.6*											0.6*	0.6*
<u>U.S. Cancer Mortality^c, 1975-2010</u>														
All Races	1975-91	2.5*	1991-97	1.6*	1997-06	-3.1*	2006-10	-2.2*					-2.7*	-2.2*
White	1975-94	2.4*	1994-97	0.8	1997-10	-2.9*							-2.9*	-2.9*
Black	1975-96	2.7*	1996-10	-2.5*									-2.5*	-2.5*
<u>U.S. Cancer Mortality^c, 1992-2010</u>														
All Races	1992-97	1.7*	1997-05	-3.2*	2005-10	-2.4*							-2.7*	-2.4*
White	1992-97	1.5*	1997-10	-2.9*									-2.9*	-2.9*
White NH ^{ef}	1992-97	1.8*	1997-10	-2.9*									-2.9*	-2.9*
Black	1992-97	1.8	1997-10	-2.6*									-2.6*	-2.6*
Black NH ^{ef}	1992-96	3.4	1996-10	-2.3*									-2.3*	-2.3*
API ^e	1992-10	-2.0*											-2.0*	-2.0*
AI/AN ^{eg}	1992-10	0.0											0.0	0.0
Hispanic ^f	1992-97	3.0*	1997-04	-3.4*	2004-10	-0.7							-1.6*	-0.7

Joinpoint Regression Program Version 4.0.3, April 2013, National Cancer Institute. (<http://surveillance.cancer.gov/joinpoint/>).

The APC is the Annual Percent Change based on rates age-adjusted to the 2000 US Std Population (19 age groups - Census P25-1130).

Trends are from the SEER 9 areas (San Francisco, Connecticut, Detroit, Hawaii, Iowa, New Mexico, Seattle, Utah, and Atlanta).

Trends are from the SEER 13 areas (SEER 9 Areas, Los Angeles, San Jose-Monterey, Rural Georgia, and the Alaska Native Registry).

Trends are from US Mortality Files, National Center for Health Statistics, Centers for Disease Control and Prevention.

The AAPC is the Average Annual Percent Change and is based on the APCs calculated by Joinpoint.

API - Asian/Pacific Islander, AI/AN - American Indian/Alaska Native, NH - Non-Hispanic

Hispanic and Non-Hispanic are not mutually exclusive from whites, blacks, Asian/Pacific Islanders, and American Indians/Alaska

Natives. Incidence data for Hispanics and Non-Hispanics are based on NHIA and exclude cases from the Alaska Native Registry.

The Hispanic and Non-Hispanic mortality trends exclude deaths from CT, DC, ME, MD, MN, NH, NY, ND, SC, OK and VT.

Data for American Indian/Alaska Native are based on the CHSDA (Contract Health Service Delivery Area) counties.

* The APC/AAPC is significantly different from zero ($p < .05$).

- Joinpoint regression line analysis could not be performed on data series.

Table 19.2
Non-Hodgkin Lymphoma

Trends in SEER Incidence^{ab} and U.S. Mortality^c Using the Joinpoint Regression Program,
1975-2010 With up to Five Joinpoints, 1992-2010 With up to Three Joinpoints,
Males by Race/Ethnicity

	JP Trend 1		JP Trend 2		JP Trend 3		JP Trend 4		JP Trend 5		JP Trend 6		AAPC ^d	
	Years	APC	Years	APC	Years	APC	Years	APC	Years	APC	Years	APC	2001-10	2006-10
<u>SEER 9 Delay-Adjusted Incidence^a, 1975-2010</u>														
All Races	1975-91	4.2*	1991-10	0.5*									0.5*	0.5*
White	1975-90	4.4*	1990-10	0.6*									0.6*	0.6*
Black	1975-94	5.4*	1994-10	-0.1									-0.1	-0.1
<u>SEER 13 Delay-Adjusted Incidence^b, 1992-2010</u>														
All Races	1992-95	2.8	1995-98	-2.2	1998-10	0.7*							0.7*	0.7*
White	1992-95	2.7*	1995-98	-2.0	1998-10	0.8*							0.8*	0.8*
Black	1992-10	0.1											0.1	0.1
<u>SEER 9 Observed Incidence^a, 1975-2010</u>														
All Races	1975-91	4.2*	1991-10	0.4*									0.4*	0.4*
White	1975-90	4.5*	1990-10	0.5*									0.5*	0.5*
Black	1975-94	5.4*	1994-10	-0.2									-0.2	-0.2
<u>SEER 13 Observed Incidence^b, 1992-2010</u>														
All Races	1992-95	2.8	1995-98	-2.1	1998-10	0.5*							0.5*	0.5*
White	1992-95	2.6	1995-98	-1.9	1998-10	0.5*							0.5*	0.5*
White NH ^{ef}	1992-10	0.4*											0.4*	0.4*
Black	1992-10	0.0											0.0	0.0
Black NH ^{ef}	1992-10	0.0											0.0	0.0
API ^e	1992-10	0.1											0.1	0.1
AI/AN ^{eg}	1992-10	2.5*											2.5*	2.5*
Hispanic ^f	1992-10	0.4											0.4	0.4
<u>U.S. Cancer Mortality^c, 1975-2010</u>														
All Races	1975-96	2.5*	1996-10	-2.6*									-2.6*	-2.6*
White	1975-96	2.5*	1996-10	-2.6*									-2.6*	-2.6*
Black	1975-96	2.7*	1996-10	-2.6*									-2.6*	-2.6*
<u>U.S. Cancer Mortality^c, 1992-2010</u>														
All Races	1992-97	1.5*	1997-10	-2.7*									-2.7*	-2.7*
White	1992-97	1.5*	1997-10	-2.7*									-2.7*	-2.7*
White NH ^{ef}	1992-97	2.0*	1997-10	-2.6*									-2.6*	-2.6*
Black	1992-96	3.0	1996-10	-2.6*									-2.6*	-2.6*
Black NH ^{ef}	1992-10	-1.6*											-1.6*	-1.6*
API ^e	1992-10	-2.2*											-2.2*	-2.2*
AI/AN ^{eg}	1992-10	-0.6											-0.6	-0.6
Hispanic ^f	1992-10	-1.7*											-1.7*	-1.7*

Joinpoint Regression Program Version 4.0.3, April 2013, National Cancer Institute. (<http://surveillance.cancer.gov/joinpoint/>).

The APC is the Annual Percent Change based on rates age-adjusted to the 2000 US Std Population (19 age groups - Census P25-1130).

Trends are from the SEER 9 areas (San Francisco, Connecticut, Detroit, Hawaii, Iowa, New Mexico, Seattle, Utah, and Atlanta).

Trends are from the SEER 13 areas (SEER 9 Areas, Los Angeles, San Jose-Monterey, Rural Georgia, and the Alaska Native Registry).

Trends are from US Mortality Files, National Center for Health Statistics, Centers for Disease Control and Prevention.

The AAPC is the Average Annual Percent Change and is based on the APCs calculated by Joinpoint.

API - Asian/Pacific Islander, AI/AN - American Indian/Alaska Native, NH - Non-Hispanic

Hispanic and Non-Hispanic are not mutually exclusive from whites, blacks, Asian/Pacific Islanders, and American Indians/Alaska

Natives. Incidence data for Hispanics and Non-Hispanics are based on NHIA and exclude cases from the Alaska Native Registry.

The Hispanic and Non-Hispanic mortality trends exclude deaths from CT, DC, ME, MD, MN, NH, NY, ND, SC, OK and VT.

Data for American Indian/Alaska Native are based on the CHSDA (Contract Health Service Delivery Area) counties.

* The APC/AAPC is significantly different from zero ($p < .05$).

- Joinpoint regression line analysis could not be performed on data series.

Table 19.3
Non-Hodgkin Lymphoma

Trends in SEER Incidence^{ab} and U.S. Mortality^c Using the Joinpoint Regression Program,
1975-2010 With up to Five Joinpoints, 1992-2010 With up to Three Joinpoints,
Females by Race/Ethnicity

	JP Trend 1		JP Trend 2		JP Trend 3		JP Trend 4		JP Trend 5		JP Trend 6		AAPC ^d	
	Years	APC	Years	APC	Years	APC	Years	APC	Years	APC	Years	APC	2001-10	2006-10
<u>SEER 9 Delay-Adjusted Incidence^a, 1975-2010</u>														
All Races	1975-90	2.8*	1990-04	1.3*	2004-10	-0.3							0.2	-0.3
White	1975-88	3.1*	1988-04	1.4*	2004-10	-0.4							0.2	-0.4
Black	1975-82	9.0*	1982-10	2.0*									2.0*	2.0*
<u>SEER 13 Delay-Adjusted Incidence^b, 1992-2010</u>														
All Races	1992-03	1.3*	2003-10	0.0									0.3	0.0
White	1992-04	1.3*	2004-10	0.1									0.5	0.1
Black	1992-98	5.5*	1998-10	0.5									0.5	0.5
<u>SEER 9 Observed Incidence^a, 1975-2010</u>														
All Races	1975-90	2.8*	1990-04	1.2*	2004-10	-0.6							0.0	-0.6
White	1975-88	3.1*	1988-04	1.4*	2004-10	-0.8							-0.1	-0.8
Black	1975-83	7.9*	1983-10	1.9*									1.9*	1.9*
<u>SEER 13 Observed Incidence^b, 1992-2010</u>														
All Races	1992-03	1.3*	2003-10	-0.2									0.1	-0.2
White	1992-04	1.3*	2004-10	-0.4									0.2	-0.4
White NH ^{ef}	1992-04	1.4*	2004-10	-0.6									0.1	-0.6
Black	1992-98	5.6*	1998-10	0.3									0.3	0.3
Black NH ^{ef}	1992-04	2.9*	2004-10	-1.5									-0.1	-1.5
API ^e	1992-10	0.4											0.4	0.4
AI/AN ^{eg}	1992-10	2.9*											2.9*	2.9*
Hispanic ^f	1992-10	1.0*											1.0*	1.0*
<u>U.S. Cancer Mortality^c, 1975-2010</u>														
All Races	1975-94	2.2*	1994-97	0.9	1997-10	-3.2*							-3.2*	-3.2*
White	1975-96	2.2*	1996-10	-3.1*									-3.1*	-3.1*
Black	1975-97	2.6*	1997-10	-2.7*									-2.7*	-2.7*
<u>U.S. Cancer Mortality^c, 1992-2010</u>														
All Races	1992-94	3.4*	1994-98	0.1	1998-04	-3.7*	2004-10	-2.8*					-3.1*	-2.8*
White	1992-94	3.5*	1994-98	0.2	1998-03	-3.8*	2003-10	-2.9*					-3.1*	-2.9*
White NH ^{ef}	1992-94	4.1*	1994-98	-0.2	1998-10	-3.3*							-3.3*	-3.3*
Black	1992-97	2.1	1997-10	-2.6*									-2.6*	-2.6*
Black NH ^{ef}	1992-97	2.8	1997-10	-2.5*									-2.5*	-2.5*
API ^e	1992-10	-1.7*											-1.7*	-1.7*
AI/AN ^{eg}	1992-10	0.4											0.4	0.4
Hispanic ^f	1992-97	2.6	1997-10	-2.0*									-2.0*	-2.0*

Joinpoint Regression Program Version 4.0.3, April 2013, National Cancer Institute. (<http://surveillance.cancer.gov/joinpoint/>).

The APC is the Annual Percent Change based on rates age-adjusted to the 2000 US Std Population (19 age groups - Census P25-1130).

Trends are from the SEER 9 areas (San Francisco, Connecticut, Detroit, Hawaii, Iowa, New Mexico, Seattle, Utah, and Atlanta).

Trends are from the SEER 13 areas (SEER 9 Areas, Los Angeles, San Jose-Monterey, Rural Georgia, and the Alaska Native Registry).

Trends are from US Mortality Files, National Center for Health Statistics, Centers for Disease Control and Prevention.

The AAPC is the Average Annual Percent Change and is based on the APCs calculated by Joinpoint.

API - Asian/Pacific Islander, AI/AN - American Indian/Alaska Native, NH - Non-Hispanic

Hispanic and Non-Hispanic are not mutually exclusive from whites, blacks, Asian/Pacific Islanders, and American Indians/Alaska

Natives. Incidence data for Hispanics and Non-Hispanics are based on NHIA and exclude cases from the Alaska Native Registry.

The Hispanic and Non-Hispanic mortality trends exclude deaths from CT, DC, ME, MD, MN, NH, NY, ND, SC, OK and VT.

Data for American Indian/Alaska Native are based on the CHSDA (Contract Health Service Delivery Area) counties.

* The APC/AAPC is significantly different from zero ($p < .05$).

- Joinpoint regression line analysis could not be performed on data series.

Table 19.4
Non-Hodgkin Lymphoma

Delay-adjusted SEER Incidence^a Rates by Year, Race and Sex

Year of Diagnosis:	All Races			Whites			Blacks		
	Total	Males	Females	Total	Males	Females	Total	Males	Females
1975	11.07	12.89	9.59	11.61	13.49	10.11	6.36	7.31	5.31
1976	11.21	12.82	10.04	11.65	13.27	10.51	5.95	7.45	4.87
1977	11.18	12.92	9.82	11.64	13.50	10.20	6.64	7.23	6.10
1978	11.93	14.29	10.12	12.48	14.77	10.74	7.15	9.46	5.17
1979	12.52	14.20	11.21	13.00	14.60	11.77	8.39	11.81	5.91
1980	12.61	15.01	10.80	12.96	15.26	11.21	8.77	10.89	7.20
1981	13.58	15.90	11.81	14.06	16.35	12.35	7.42	10.59	4.98
1982	13.39	15.56	11.61	14.02	16.42	12.05	10.27	10.22	10.01
1983	13.99	16.62	11.95	14.64	17.53	12.41	10.28	10.88	9.62
1984	15.20	18.31	12.78	15.96	19.12	13.52	9.46	12.52	6.92
1985	15.51	18.37	13.18	16.29	19.23	13.87	9.89	11.96	8.32
1986	15.92	19.43	13.03	16.83	20.57	13.77	10.66	13.13	8.52
1987	16.75	20.79	13.42	17.71	22.15	14.02	10.48	10.56	10.09
1988	17.25	21.33	14.07	18.20	22.42	14.90	11.58	15.80	8.48
1989	17.36	21.64	13.85	18.36	23.03	14.52	11.63	14.18	9.73
1990	18.51	22.99	14.81	19.37	23.97	15.54	13.82	17.53	10.92
1991	18.81	23.73	14.61	19.69	24.82	15.30	14.04	18.74	10.38
1992	18.64	23.06	14.96	19.59	23.98	15.85	13.63	18.75	9.66
1993	18.88	23.48	15.03	19.68	24.35	15.74	14.08	19.40	9.73
1994	19.98	25.00	15.81	20.72	25.62	16.59	14.45	21.61	8.75
1995	20.00	25.44	15.43	20.72	26.19	16.06	16.67	23.58	11.31
1996	19.44	24.25	15.51	20.34	25.29	16.26	15.23	18.90	12.13
1997	20.01	24.55	16.47	20.92	25.28	17.50	16.31	24.20	10.78
1998	19.64	22.99	16.87	20.65	24.07	17.81	14.25	16.59	12.39
1999	19.94	24.60	16.30	20.95	25.54	17.31	14.29	18.39	11.16
2000	19.76	24.27	16.11	20.94	25.64	17.11	13.85	18.31	10.54
2001	20.06	24.45	16.50	20.90	25.53	17.14	16.05	18.37	13.98
2002	20.26	24.26	17.11	21.40	25.61	18.01	14.52	17.30	12.44
2003	20.83	25.10	17.58	22.03	26.48	18.57	16.09	19.69	13.57
2004	21.47	26.05	17.96	22.48	27.08	18.90	18.61	24.23	14.54
2005	20.91	25.73	17.07	22.15	26.97	18.27	16.72	20.15	13.94
2006	20.53	24.74	17.28	21.84	26.15	18.46	16.36	20.73	13.12
2007	21.35	26.28	17.43	22.73	27.84	18.54	15.64	18.99	13.11
2008	20.99	25.73	17.12	21.98	26.95	17.88	16.74	18.72	14.94
2009	20.92	25.29	17.37	22.09	26.76	18.18	15.20	18.73	12.59
2010	21.62	26.82	17.39	22.61	27.69	18.44	17.93	23.50	13.50

Additional information on the model used to delay-adjust SEER Incidence rates can be found at [\(http://surveillance.cancer.gov/delay/\)](http://surveillance.cancer.gov/delay/).

^a SEER 9 areas (San Francisco, Connecticut, Detroit, Hawaii, Iowa, New Mexico, Seattle, Utah, and Atlanta).
Rates are per 100,000 and are age-adjusted to the 2000 US Std Population (19 age groups - Census P25-1130).
- Delay-adjusted rate is not shown for observed rates based on less than 16 cases for the time interval.

Table 19.5
Non-Hodgkin Lymphoma

Age-adjusted SEER Incidence^a Rates by Year, Race and Sex

	All Races			Whites			Blacks		
	Total	Males	Females	Total	Males	Females	Total	Males	Females
Year of Diagnosis:									
1975-2010	18.05	22.11	14.83	18.80	22.96	15.48	13.58	17.15	10.78
1975	11.07	12.89	9.59	11.61	13.49	10.11	6.36	7.31	5.31
1976	11.21	12.82	10.04	11.65	13.27	10.51	5.95	7.45	4.87
1977	11.18	12.92	9.82	11.64	13.50	10.20	6.64	7.23	6.10
1978	11.93	14.29	10.12	12.48	14.77	10.74	7.15	9.46	5.17
1979	12.52	14.20	11.21	13.00	14.60	11.77	8.39	11.81	5.91
1980	12.61	15.01	10.80	12.96	15.26	11.21	8.77	10.89	7.20
1981	13.58	15.90	11.81	14.06	16.35	12.35	7.42	10.59	4.98
1982	13.39	15.56	11.61	14.02	16.42	12.05	10.27	10.22	10.01
1983	13.99	16.62	11.95	14.64	17.52	12.41	10.28	10.88	9.62
1984	15.19	18.31	12.78	15.96	19.12	13.52	9.46	12.52	6.92
1985	15.50	18.37	13.18	16.28	19.23	13.87	9.89	11.96	8.32
1986	15.92	19.43	13.03	16.83	20.56	13.77	10.66	13.13	8.52
1987	16.74	20.79	13.42	17.71	22.14	14.01	10.48	10.55	10.09
1988	17.24	21.32	14.07	18.19	22.40	14.89	11.57	15.79	8.47
1989	17.35	21.63	13.84	18.35	23.01	14.52	11.62	14.17	9.72
1990	18.51	22.98	14.80	19.35	23.95	15.53	13.81	17.51	10.91
1991	18.80	23.72	14.60	19.68	24.80	15.29	14.03	18.72	10.37
1992	18.62	23.04	14.94	19.56	23.95	15.84	13.62	18.73	9.65
1993	18.86	23.46	15.02	19.66	24.31	15.72	14.06	19.37	9.72
1994	19.96	24.97	15.80	20.68	25.58	16.57	14.43	21.58	8.74
1995	19.97	25.41	15.42	20.68	26.14	16.03	16.64	23.54	11.29
1996	19.41	24.22	15.49	20.29	25.24	16.23	15.20	18.86	12.11
1997	19.98	24.51	16.44	20.87	25.21	17.46	16.27	24.14	10.75
1998	19.60	22.94	16.84	20.60	24.01	17.76	14.21	16.54	12.35
1999	19.90	24.54	16.26	20.87	25.44	17.24	14.23	18.32	11.12
2000	19.70	24.20	16.07	20.85	25.52	17.03	13.79	18.23	10.50
2001	19.99	24.37	16.44	20.79	25.40	17.05	15.97	18.27	13.91
2002	20.17	24.15	17.03	21.27	25.45	17.90	14.42	17.19	12.36
2003	20.72	24.97	17.49	21.86	26.28	18.43	15.97	19.55	13.47
2004	21.34	25.89	17.85	22.28	26.84	18.73	18.45	24.01	14.41
2005	20.75	25.54	16.94	21.92	26.68	18.07	16.54	19.93	13.79
2006	20.35	24.51	17.12	21.56	25.81	18.22	16.15	20.46	12.95
2007	21.12	25.99	17.24	22.37	27.40	18.25	15.39	18.69	12.91
2008	20.70	25.38	16.89	21.56	26.44	17.54	16.42	18.36	14.66
2009	20.56	24.86	17.08	21.57	26.14	17.76	14.84	18.30	12.30
2010	20.98	26.03	16.88	21.74	26.63	17.73	17.24	22.60	12.98

^a SEER 9 areas (San Francisco, Connecticut, Detroit, Hawaii, Iowa, New Mexico, Seattle, Utah, and Atlanta). Rates are per 100,000 and are age-adjusted to the 2000 US Std Population (19 age groups - Census P25-1130).
- Statistic not shown. Rate based on less than 16 cases for the time interval.

Table 19.6
Non-Hodgkin Lymphoma

Age-adjusted U.S. Death^a Rates by Year, Race and Sex

Year of Death:	All Races			Whites			Blacks		
	Total	Males	Females	Total	Males	Females	Total	Males	Females
1975-2010	7.32	9.14	5.99	7.62	9.48	6.25	4.95	6.37	3.92
1975	5.63	6.92	4.65	5.83	7.15	4.82	3.74	4.83	2.92
1976	5.71	6.87	4.83	5.94	7.14	5.03	3.54	4.54	2.76
1977	5.77	6.88	4.92	5.96	7.10	5.10	3.89	4.89	3.12
1978	5.93	7.30	4.90	6.15	7.53	5.12	3.90	5.40	2.81
1979	5.95	7.40	4.88	6.18	7.70	5.08	3.65	4.50	2.98
1980	6.23	7.47	5.29	6.47	7.74	5.52	3.99	5.15	3.12
1981	6.16	7.38	5.27	6.40	7.66	5.47	3.98	5.00	3.25
1982	6.55	7.98	5.49	6.83	8.29	5.74	4.12	5.23	3.29
1983	6.66	8.11	5.58	6.92	8.39	5.85	4.30	5.79	3.23
1984	6.76	8.15	5.75	7.05	8.50	6.01	4.19	5.28	3.39
1985	7.06	8.80	5.80	7.34	9.17	6.02	4.62	5.57	3.87
1986	7.31	8.98	6.05	7.59	9.25	6.33	4.95	6.64	3.70
1987	7.26	8.81	6.10	7.56	9.12	6.38	4.73	6.30	3.62
1988	7.52	9.28	6.24	7.82	9.59	6.53	5.01	6.82	3.72
1989	7.83	9.73	6.43	8.12	10.04	6.71	5.33	7.10	4.07
1990	7.87	9.97	6.34	8.16	10.32	6.58	5.39	7.13	4.17
1991	8.19	10.15	6.74	8.50	10.52	7.00	5.70	7.17	4.61
1992	8.22	10.30	6.69	8.53	10.66	6.96	5.64	7.23	4.45
1993	8.25	10.14	6.86	8.57	10.45	7.17	5.69	7.53	4.40
1994	8.63	10.75	7.10	9.00	11.20	7.41	5.54	6.82	4.56
1995	8.72	10.81	7.16	9.09	11.21	7.49	5.79	7.62	4.45
1996	8.75	10.94	7.14	9.09	11.29	7.46	6.21	8.25	4.74
1997	8.88	11.03	7.25	9.21	11.35	7.57	6.34	8.45	4.87
1998	8.69	10.85	7.10	9.03	11.27	7.38	5.99	7.50	4.89
1999	8.32	10.36	6.85	8.67	10.71	7.18	5.65	7.44	4.41
2000	8.17	10.20	6.70	8.54	10.63	7.01	5.20	6.61	4.17
2001	7.91	9.98	6.42	8.21	10.31	6.68	5.61	7.28	4.47
2002	7.65	9.66	6.19	7.97	10.04	6.44	5.41	6.88	4.41
2003	7.38	9.40	5.92	7.69	9.81	6.13	4.94	5.83	4.27
2004	7.09	8.94	5.73	7.38	9.28	5.96	5.01	6.23	4.13
2005	6.95	8.87	5.56	7.24	9.22	5.79	4.77	6.11	3.81
2006	6.74	8.48	5.44	7.01	8.78	5.66	4.92	6.27	3.93
2007	6.59	8.36	5.26	6.86	8.67	5.49	4.52	5.77	3.62
2008	6.41	8.20	5.09	6.71	8.56	5.33	4.31	5.48	3.45
2009	6.30	8.12	4.93	6.56	8.42	5.13	4.49	6.15	3.41
2010	6.14	7.83	4.85	6.37	8.11	5.04	4.57	5.84	3.64

^a US Mortality Files, National Center for Health Statistics, Centers for Disease Control and Prevention.
Rates are per 100,000 and are age-adjusted to the 2000 US Std Population (19 age groups - Census P25-1130).
- Statistic not shown. Rate based on less than 16 cases for the time interval.

Table 19.7
Non-Hodgkin Lymphoma

SEER Incidence^a and U.S. Death^b Rates, Age-Adjusted and Age-Specific Rates, by Race and Sex

	All Races			Whites			Blacks		
	Total	Males	Females	Total	Males	Females	Total	Males	Females
<u>SEER Incidence</u>									
<u>Age at Diagnosis</u>									
Age-Adjusted Rates, 2006-2010									
All ages	19.7	23.9	16.4	20.7	25.0	17.3	14.2	17.4	11.8
Under 65	9.4	11.1	7.6	9.7	11.5	7.9	8.9	11.2	6.9
65 and over	91.4	111.7	77.1	97.2	118.2	82.3	51.2	60.5	45.4
All ages (IARC world std) ^c	13.1	15.7	10.8	13.7	16.3	11.3	10.3	12.6	8.3
Age-Specific Rates, 2006-2010									
<1	-	-	-	-	-	-	-	-	-
1-4	0.7	0.8	0.5	0.6	0.8	0.5	0.7	-	-
5-9	1.0	1.3	0.6	1.0	1.3	0.6	0.9	1.2	-
10-14	1.3	1.8	0.8	1.3	1.8	0.8	1.3	1.6	0.9
15-19	1.7	2.1	1.3	1.8	2.2	1.4	1.8	2.1	1.4
20-24	2.5	3.1	1.9	2.5	3.2	1.9	2.5	3.3	1.7
25-29	3.4	3.9	2.8	3.4	3.9	2.8	4.2	5.6	2.9
30-34	4.9	5.9	4.0	4.7	5.5	3.8	6.9	9.0	5.1
35-39	7.0	8.4	5.7	7.1	8.6	5.6	8.4	10.3	6.6
40-44	10.4	12.7	8.2	10.7	13.0	8.3	11.0	13.4	8.9
45-49	15.0	18.2	11.9	15.5	18.6	12.4	14.8	19.7	10.4
50-54	21.9	25.7	18.1	22.8	26.9	18.8	20.7	24.6	17.3
55-59	31.0	36.5	25.8	32.4	37.7	27.3	26.2	33.7	19.8
60-64	44.6	52.1	37.6	46.9	54.5	39.7	33.7	41.0	27.8
65-69	64.6	76.4	54.2	68.7	80.6	58.0	43.5	51.5	37.2
70-74	82.2	97.0	70.0	88.2	103.4	75.4	48.2	54.2	44.0
75-79	105.5	129.0	87.8	112.9	137.0	94.3	57.9	71.4	49.4
80-84	119.7	145.3	103.1	126.6	153.3	109.0	60.5	69.5	55.7
85+	112.7	151.4	93.9	117.9	158.5	98.1	51.9	63.7	47.2
<u>U.S. Mortality</u>									
<u>Age at Death</u>									
Age-Adjusted Rates, 2006-2010									
All ages	6.4	8.2	5.1	6.7	8.5	5.3	4.6	5.9	3.6
Under 65	1.7	2.2	1.2	1.7	2.2	1.2	2.0	2.7	1.4
65 and over	39.4	49.9	32.2	41.5	52.4	34.0	22.2	28.2	18.7
All ages (IARC world std) ^c	3.5	4.5	2.7	3.6	4.6	2.8	2.9	3.8	2.2
Age-Specific Rates, 2006-2010									
<1	-	-	-	-	-	-	-	-	-
1-4	0.0	0.0	-	0.0	-	-	-	-	-
5-9	0.1	0.1	0.0	0.1	0.1	-	-	-	-
10-14	0.1	0.1	0.1	0.1	0.1	0.1	0.1	-	-
15-19	0.2	0.3	0.1	0.2	0.3	0.1	0.3	0.4	-
20-24	0.4	0.5	0.2	0.3	0.5	0.2	0.5	0.5	0.4
25-29	0.5	0.6	0.3	0.4	0.5	0.3	0.8	1.1	0.5
30-34	0.6	0.8	0.4	0.6	0.8	0.4	0.9	1.1	0.7
35-39	0.9	1.1	0.6	0.8	1.0	0.6	1.4	1.8	1.0
40-44	1.4	1.8	1.0	1.3	1.7	0.9	2.3	2.9	1.7
45-49	2.3	2.9	1.6	2.2	2.9	1.6	3.1	3.9	2.4
50-54	3.8	5.1	2.6	3.8	5.1	2.6	4.7	6.6	3.1
55-59	6.6	8.6	4.6	6.6	8.6	4.7	7.4	10.3	5.0
60-64	10.9	14.0	8.1	11.2	14.4	8.3	10.1	13.6	7.2
65-69	17.6	22.3	13.4	18.3	23.2	14.0	14.0	17.6	11.3
70-74	27.7	34.4	22.1	29.3	36.3	23.4	18.3	23.2	14.9
75-79	43.6	54.0	35.7	46.1	56.9	37.7	24.1	30.0	20.5
80-84	61.0	77.6	50.3	64.4	81.5	53.0	31.0	38.9	26.8
85+	79.2	103.4	67.8	83.6	108.5	71.7	35.0	46.4	30.6

^a SEER 18 areas. Rates are per 100,000 and are age-adjusted to the 2000 US Std Population (19 age groups - Census P25-1130), unless noted.

^b US Mortality Files, National Center for Health Statistics, Centers for Disease Control and Prevention.

^c Rates are per 100,000 and are age-adjusted to the 2000 US Std Population (19 age groups - Census P25-1130), unless noted.

- Rates are per 100,000 and are age-adjusted to the IARC world standard population.

- Statistic not shown. Rate based on less than 16 cases for the time interval.

Table 19.8
Non-Hodgkin Lymphoma

5-Year Relative and Period Survival (Percent) by Race, Sex, Diagnosis Year and Age

	All Races			Whites			Blacks		
	Total	Males	Females	Total	Males	Females	Total	Males	Females
5-Year Relative Survival (Percent)									
Year of Diagnosis:									
1960-1963 ^a	-	-	-	31	31	31	-	-	-
1970-1973 ^a	-	-	-	41	39	43	-	-	-
1975-1977 ^b	46.5	45.5	47.5	46.8	46.3	47.4	48.4	42.6	54.8 ^g
1978-1980 ^b	47.9	46.1	49.8	47.9	46.2	49.6	51.1	46.9	56.7
1981-1983 ^b	50.5	50.2	50.9	50.8	50.5	51.1	49.4	49.0	49.8
1984-1986 ^b	51.6	50.0	53.3	51.9	50.5	53.5	46.7	44.5	49.6
1987-1989 ^b	50.9	47.6	54.9	51.3	48.1	55.3	46.1	41.7	51.2
1990-1992 ^b	50.7	46.7	55.8	51.6	47.6	56.5	42.0	38.1	47.5
1993-1995 ^b	52.5	48.7	57.4	53.2	49.7	57.6	42.1	35.9	53.8
1996-1998 ^b	58.8	57.0	61.0	59.5	57.6	61.6	54.0	52.6	56.1
1999-2002 ^b	65.2	63.0	67.9	66.3	64.3	68.7	57.2	52.2	62.9
2003-2009 ^b	71.2 ^f	70.0 ^f	72.6 ^f	72.3 ^f	71.5 ^f	73.3 ^f	63.5 ^f	58.8 ^f	68.9 ^f
5-Year Period Survival (Percent) ^{cd}									
2009	69.9	68.5	71.4	70.3	69.2	71.6	62.8	58.1	68.2
Stage Distribution (%) 2003-2009 ^{ee}									
All Stages									
Number of cases	91,474	49,146	42,328	76,878	41,355	35,523	7,297	3,945	3,352
Percent	100%	100%	100%	100%	100%	100%	100%	100%	100%
Localized	28	27	29	28	27	29	27	25	30
Regional	15	15	16	15	15	16	15	14	15
Distant	49	51	46	49	51	47	51	55	47
Unstaged	8	8	9	8	7	8	7	7	7
5-Year Relative Survival (Percent), 2003-2009 ^c									
Age at Diagnosis:									
Ages <45	78.6	75.6	83.3	80.4	77.4	85.4	65.6	62.6	70.1
Ages 45-54	77.6	74.3	82.4	79.4	76.3	84.1	62.7	57.2	70.7
Ages 55-64	75.0	71.9	78.9	76.0	73.1	79.7	65.0	59.9	71.6
Ages 65-74	69.7	66.7	73.0	70.3	67.6	73.3	61.8	52.6	69.9
Ages 75+	53.2	52.5	53.7	53.9	53.3	54.3	45.8	43.6	46.8
Ages <65	76.8	73.8	81.1	78.2	75.3	82.4	64.6	60.2	70.8
Ages 65+	60.6	59.5	61.7	61.1	60.2	62.0	55.1	49.6	59.0
Stage ^e :									
All Stages	69.0	67.6	70.6	69.6	68.5	70.8	61.9	57.9	66.6
Localized	81.5	80.9	82.2	82.1	81.8	82.4	76.0	72.5	79.4
Regional	72.5	71.7	73.4	73.1	72.9	73.4	67.8	63.2	72.5
Distant	60.9	59.6	62.7	62.0	60.8	63.5	52.3	49.5	56.1
Unstaged	67.1	66.1	68.0	65.8	65.1	66.6	63.9	59.0	69.0

^a Based on End Results data from a series of hospital registries and one population-based registry.
^b SEER 9 areas (San Francisco, Connecticut, Detroit, Hawaii, Iowa, New Mexico, Seattle, Utah, Atlanta).
Based on follow-up of patients into 2010.
^c SEER 18 areas (San Francisco, Connecticut, Detroit, Hawaii, Iowa, New Mexico, Seattle, Utah, Atlanta, San Jose-Monterey, Los Angeles, Alaska Native Registry, Rural Georgia, California excluding SF/SJM/LA, Kentucky, Louisiana, New Jersey and Georgia excluding ATL/RG).
Based on follow-up of patients into 2010.
^d Period survival provides a 2009 estimate of survival by piecing together the most recent conditional survival estimates from several cohorts. It is computed here using three year calendar blocks (2007-2009: 0-1 year survival), (2006-2008: 1-2 year survival), (2005-2007: 2-3 year survival), (2004-2006: 3-4 year survival), (2003-2005: 4-5 years survival).
^e Stage at diagnosis is classified using SEER Summary Stage 2000.
^f The difference between 1975-1977 and 2003-2009 is statistically significant (p<.05).
^g The standard error is between 5 and 10 percentage points.
^h The standard error is greater than 10 percentage points.
- Statistic could not be calculated due to fewer than 25 cases during the time period.

Table 19.9
Non-Hodgkin Lymphoma

SEER^a Relative Survival (Percent)
By Year of Diagnosis

All Races, Males and Females

Year of Diagnosis

	1975- 1979	1980- 1984	1985- 1989	1990	1991	1992	1993	1994	1995	1996	1997	1998	1999	2000	2001	2002	2003	2004	2005	2006	2007	2008	2009
Survival Time																							
1-year	70.2	73.0	71.2	70.0	69.5	70.8	71.3	70.4	70.3	73.2	75.7	76.6	77.3	77.1	78.7	80.9	80.2	81.0	81.4	80.8	81.5	83.9	83.7
2-year	60.2	63.7	62.8	61.1	60.9	62.2	63.4	63.1	61.7	65.8	68.5	70.0	70.9	71.2	73.3	75.9	75.6	75.9	77.0	76.7	77.3	78.7	
3-year	54.6	58.5	58.2	56.4	56.6	57.8	58.7	58.6	57.4	62.0	64.9	66.4	66.8	67.7	70.1	73.0	73.0	73.4	74.4	74.4	74.8		
4-year	50.5	54.6	54.3	52.4	53.8	54.5	55.8	55.2	54.6	58.6	62.1	63.6	64.3	65.3	68.1	71.1	71.6	71.3	72.5	72.4			
5-year	46.8	50.7	51.0	49.7	51.0	51.3	52.9	52.8	51.9	56.0	59.4	61.0	61.9	63.7	66.0	69.2	70.0	69.9	71.1				
6-year	43.6	47.5	48.3	47.1	48.2	48.8	50.8	50.9	49.8	54.1	57.1	58.4	59.4	61.9	64.7	68.0	68.3	68.5					
7-year	40.8	45.0	45.8	44.4	45.3	46.5	49.0	48.9	47.8	52.1	55.2	56.5	57.6	60.2	63.0	66.2	67.1						
8-year	38.4	42.8	43.3	42.2	43.0	44.9	47.2	47.2	46.3	50.4	52.9	55.2	56.1	58.6	61.4	65.0							
9-year	36.5	40.8	41.4	40.7	41.3	43.7	45.5	45.5	45.2	49.3	51.5	53.6	54.6	57.2	60.0								
10-year	35.0	38.9	39.8	39.6	40.1	42.1	44.2	43.9	44.2	48.0	50.1	52.3	53.4	56.0									
11-year	33.5	37.3	38.4	37.9	38.8	40.7	42.8	42.3	43.2	46.5	48.8	51.2	52.3										
12-year	32.3	35.9	36.8	36.3	37.9	39.9	41.7	41.4	42.1	45.4	48.1	50.2											
13-year	31.4	34.7	35.7	35.0	37.3	38.9	40.1	39.8	41.3	44.6	46.8												
14-year	30.2	33.5	34.6	34.1	36.1	37.5	39.0	38.6	40.5	44.0													
15-year	28.8	32.2	33.4	33.7	34.8	36.8	38.6	37.9	39.6														
16-year	27.9	31.1	32.7	32.6	34.1	36.2	37.3	37.1															
17-year	27.3	30.3	32.0	32.2	33.0	35.5	36.5																
18-year	26.7	29.5	31.2	31.7	32.1	34.9																	
19-year	26.0	28.6	30.5	31.0	31.7																		
20-year	25.1	27.9	30.0	30.8																			

^a Based on the SEER 9 areas (San Francisco, Connecticut, Detroit, Hawaii, Iowa, New Mexico, Seattle, Utah, and Atlanta).

Table 19.10
Non-Hodgkin Lymphoma

SEER^a Relative Survival (Percent)
By Year of Diagnosis

All Races, Males

Year of Diagnosis

	1975- 1979	1980- 1984	1985- 1989	1990	1991	1992	1993	1994	1995	1996	1997	1998	1999	2000	2001	2002	2003	2004	2005	2006	2007	2008	2009
Survival Time																							
1-year	69.4	72.7	68.9	66.0	66.2	67.8	68.1	67.2	66.6	71.1	74.8	74.9	75.8	76.4	77.6	80.5	79.6	80.0	80.8	80.9	81.3	83.4	82.5
2-year	59.4	63.7	60.4	57.1	56.7	57.9	59.5	59.6	58.3	63.5	67.2	68.2	69.1	70.1	71.3	75.2	74.8	75.3	75.9	76.3	77.7	77.6	
3-year	53.3	58.0	55.7	52.0	52.5	54.0	54.7	54.9	54.5	59.7	63.8	64.5	64.3	66.5	67.9	71.9	72.5	72.5	72.8	73.4	75.3		
4-year	49.2	53.9	51.5	48.3	49.6	50.3	51.8	51.5	51.5	56.1	61.0	62.0	61.4	63.6	65.7	70.0	70.8	70.0	70.8	71.2			
5-year	45.4	50.1	48.2	45.9	47.5	46.5	48.7	48.9	48.5	53.6	58.2	59.2	58.9	61.5	63.6	67.9	68.9	68.7	69.7				
6-year	42.5	46.6	45.4	43.9	44.6	44.6	46.8	47.4	46.8	51.0	56.1	56.6	56.1	60.0	62.0	66.7	66.9	67.4					
7-year	39.9	44.1	43.1	41.3	42.1	42.5	45.9	45.7	44.8	49.1	54.2	54.6	54.5	58.4	60.1	65.3	65.8						
8-year	37.7	42.0	40.9	39.3	39.8	41.1	44.2	43.8	43.2	47.4	52.0	53.4	53.4	56.3	58.3	63.7							
9-year	35.6	40.0	39.0	38.0	38.0	39.9	42.8	41.8	42.3	46.4	50.4	51.5	52.2	54.9	57.3								
10-year	33.9	37.9	37.6	37.1	37.1	38.4	42.0	40.5	41.5	45.5	48.9	50.5	51.4	53.9									
11-year	32.7	36.3	36.3	35.9	36.2	37.8	40.4	39.4	40.7	43.7	47.6	49.5	50.6										
12-year	31.8	35.1	35.0	34.3	35.5	37.3	39.9	38.6	39.4	42.6	47.1	48.3											
13-year	30.6	34.2	34.1	33.0	34.8	36.2	38.5	37.3	38.8	41.8	45.5												
14-year	29.4	33.0	33.1	32.3	33.9	34.2	37.3	36.4	37.7	41.3													
15-year	28.0	31.9	32.2	32.0	32.4	33.7	37.1	35.8	36.7														
16-year	27.0	30.7	31.5	30.6	31.7	33.1	35.7	34.8															
17-year	26.4	29.9	30.7	30.1	30.9	32.0	35.1																
18-year	26.0	29.3	30.1	29.8	30.4	31.7																	
19-year	25.4	28.6	29.3	28.9	29.7																		
20-year	24.9	27.9	29.0	28.8																			

^a Based on the SEER 9 areas (San Francisco, Connecticut, Detroit, Hawaii, Iowa, New Mexico, Seattle, Utah, and Atlanta).

Table 19.11
Non-Hodgkin Lymphoma

SEER^a Relative Survival (Percent)
By Year of Diagnosis

All Races, Females

Year of Diagnosis

	1975- 1979	1980- 1984	1985- 1989	1990	1991	1992	1993	1994	1995	1996	1997	1998	1999	2000	2001	2002	2003	2004	2005	2006	2007	2008	2009
Survival Time																							
1-year	71.0	73.3	74.0	74.9	74.0	74.5	75.3	74.6	75.1	75.8	76.7	78.6	79.1	78.1	80.0	81.3	81.0	82.0	82.2	80.8	81.7	84.5	85.1
2-year	61.1	63.7	65.6	65.9	66.4	67.6	68.4	67.6	66.3	68.7	70.1	71.9	73.2	72.5	75.7	76.8	76.5	76.5	78.2	77.2	76.8	80.2	
3-year	55.9	58.9	61.1	61.8	62.1	62.7	63.8	63.4	61.4	64.8	66.1	68.4	69.8	69.1	72.7	74.2	73.6	74.4	76.4	75.5	74.3		
4-year	51.9	55.2	57.6	57.4	59.4	59.8	60.8	60.0	58.8	61.8	63.4	65.3	67.9	67.3	71.0	72.4	72.4	72.8	74.6	73.8			
5-year	48.3	51.4	54.3	54.4	55.7	57.2	58.1	57.9	56.4	59.0	60.7	63.0	65.6	66.3	68.9	70.7	71.3	71.4	72.9				
6-year	44.7	48.4	51.7	51.1	52.9	54.1	55.8	55.4	53.8	57.9	58.3	60.4	63.3	64.2	67.9	69.5	69.8	69.7					
7-year	41.7	45.8	49.0	48.3	49.5	51.5	53.0	53.1	51.8	55.9	56.3	58.6	61.3	62.4	66.4	67.2	68.5						
8-year	39.2	43.7	46.3	45.7	47.2	49.6	50.9	51.7	50.4	54.1	54.0	57.3	59.3	61.3	65.0	66.6							
9-year	37.5	41.6	44.2	44.1	45.7	48.3	48.9	50.2	49.0	52.8	52.9	55.8	57.4	60.1	63.3								
10-year	36.0	39.8	42.3	42.7	44.1	46.6	46.9	48.2	47.7	51.2	51.7	54.3	55.8	58.5									
11-year	34.3	38.5	40.9	40.4	42.2	44.2	45.7	46.0	46.6	50.0	50.1	52.9	54.2										
12-year	32.9	36.8	39.0	38.8	41.1	43.0	44.0	45.0	45.7	49.0	49.3	52.3											
13-year	32.2	35.3	37.5	37.3	40.3	42.2	42.2	43.0	44.5	48.1	48.4												
14-year	31.0	34.0	36.4	36.5	38.9	41.5	41.0	41.3	43.8	47.3													
15-year	29.7	32.5	34.9	35.6	37.9	40.7	40.4	40.5	43.2														
16-year	28.8	31.5	34.1	35.2	37.3	40.0	39.3	40.1															
17-year	28.2	30.6	33.5	34.6	35.7	39.7	38.3																
18-year	27.5	29.7	32.6	34.0	34.5	38.5																	
19-year	26.5	28.6	31.9	33.6	34.3																		
20-year	25.4	27.9	31.0	33.3																			

^a Based on the SEER 9 areas (San Francisco, Connecticut, Detroit, Hawaii, Iowa, New Mexico, Seattle, Utah, and Atlanta).

Table 19.12

Non-Hodgkin Lymphoma

Number of Cases

By SEER Location and Year of Diagnosis, 1975-2010

All Races, Males, All Ages

Year of Diagnosis

SEER Location	1975- 1979	1980- 1981	1982- 1983	1984- 1985	1986- 1987	1988- 1989	1990- 1991	1992- 1993	1994- 1995	1996- 1997	1998- 1999	2000- 2001	2002- 2003	2004- 2005	2006- 2007	2008- 2010
SEER 9 ^b	5,222	2,506	2,704	3,175	3,627	3,989	4,568	4,729	5,326	5,253	5,255	5,539	5,759	6,212	6,354	10,152
SEER 9 except SF-Oakland	4,283	2,088	2,267	2,600	2,818	3,087	3,505	3,695	4,159	4,243	4,357	4,493	4,810	5,196	5,358	8,492
San Francisco-Oakland SMSA ^c	939	418	437	575	809	902	1,063	1,034	1,167	1,010	898	1,046	949	1,016	996	1,660
San Francisco City/County	245	96	123	210	326	393	467	410	451	353	213	256	218	282	218	339

Age-Adjusted Cancer Incidence Rates^a

By SEER Location and Year of Diagnosis, 1975-2010

All Races, Males, All Ages

Year of Diagnosis

SEER Location	1975- 1979	1980- 1981	1982- 1983	1984- 1985	1986- 1987	1988- 1989	1990- 1991	1992- 1993	1994- 1995	1996- 1997	1998- 1999	2000- 2001	2002- 2003	2004- 2005	2006- 2007	2008- 2010
SEER 9 ^b	13.4	15.5	16.1	18.3	20.1	21.5	23.3	23.2	25.2	24.4	23.7	24.3	24.6	25.7	25.3	25.4
SEER 9 except SF-Oakland	13.2	15.4	16.1	18.1	18.8	20.0	21.7	21.8	23.6	23.5	23.5	23.5	24.4	25.5	25.2	25.2
San Francisco-Oakland SMSA ^c	14.8	15.8	16.0	19.5	26.8	28.4	31.7	30.5	33.5	28.8	25.1	28.6	25.4	26.6	25.4	26.6
San Francisco City/County	14.3	14.4	17.6	29.3	44.4	51.9	61.0	52.3	57.5	44.6	27.4	32.5	26.7	35.3	26.4	26.6

^a Rates are per 100,000 males and are age-adjusted to the 2000 US Std Population (19 age groups - Census P25-1130).

^b The SEER 9 areas are San Francisco-Oakland SMSA, Connecticut, Detroit, Hawaii, Iowa, New Mexico, Seattle, Utah and Atlanta.

^c The San Francisco-Oakland SMSA represents 15% of all persons in the SEER areas. For this age group, all SEER areas may not be generalizable to the United States for Non-Hodgkin Lymphoma.

- Statistic not shown. Rate based on less than 4 cases for the time interval.

Table 19.13

Non-Hodgkin Lymphoma

Number of Cases

By SEER Location and Year of Diagnosis, 1975-2010

All Races, Males, Ages 0-19

Year of Diagnosis

SEER Location	1975- 1979	1980- 1981	1982- 1983	1984- 1985	1986- 1987	1988- 1989	1990- 1991	1992- 1993	1994- 1995	1996- 1997	1998- 1999	2000- 2001	2002- 2003	2004- 2005	2006- 2007	2008- 2010
SEER 9 ^b	223	88	108	90	94	85	100	89	119	105	104	119	127	109	105	217
SEER 9 except SF-Oakland	191	79	95	81	80	77	86	74	106	84	93	100	115	92	86	180
San Francisco- Oakland SMSA ^c	32	9	13	9	14	8	14	15	13	21	11	19	12	17	19	37
San Francisco City/County	9	<4	<4	<4	<4	<4	<4	<4	<4	<4	<4	<4	<4	<4	<4	7

Age-Adjusted Cancer Incidence Rates^a

By SEER Location and Year of Diagnosis, 1975-2010

All Races, Males, Ages 0-19

Year of Diagnosis

SEER Location	1975- 1979	1980- 1981	1982- 1983	1984- 1985	1986- 1987	1988- 1989	1990- 1991	1992- 1993	1994- 1995	1996- 1997	1998- 1999	2000- 2001	2002- 2003	2004- 2005	2006- 2007	2008- 2010
SEER 9 ^b	1.2	1.3	1.6	1.3	1.4	1.3	1.5	1.3	1.6	1.4	1.4	1.5	1.6	1.4	1.3	1.8
SEER 9 except SF-Oakland	1.2	1.3	1.6	1.4	1.4	1.3	1.5	1.2	1.7	1.3	1.4	1.5	1.7	1.4	1.3	1.7
San Francisco- Oakland SMSA ^c	1.4	1.0	1.5	1.0	1.6	0.9	1.5	1.6	1.3	2.1	1.1	1.8	1.2	1.7	1.9	2.4
San Francisco City/County	2.3	-	-	-	-	-	-	-	-	-	-	-	-	-	-	3.7

^a Rates are per 100,000 males aged 0-19 and are age-adjusted to the 2000 US Std Population (19 age groups - Census P25-1130).

^b The SEER 9 areas are San Francisco-Oakland SMSA, Connecticut, Detroit, Hawaii, Iowa, New Mexico, Seattle, Utah and Atlanta.

^c The San Francisco-Oakland SMSA represents 15% of all persons in the SEER areas. For this age group, all SEER areas may not be generalizable to the United States for Non-Hodgkin Lymphoma.

- Statistic not shown. Rate based on less than 4 cases for the time interval.

Table 19.14

Non-Hodgkin Lymphoma

Number of Cases

By SEER Location and Year of Diagnosis, 1975-2010

All Races, Males, Ages 20-54

Year of Diagnosis

SEER Location	1975- 1979	1980- 1981	1982- 1983	1984- 1985	1986- 1987	1988- 1989	1990- 1991	1992- 1993	1994- 1995	1996- 1997	1998- 1999	2000- 2001	2002- 2003	2004- 2005	2006- 2007	2008- 2010
SEER 9 ^b	1,464	686	723	956	1,210	1,408	1,763	1,831	2,090	1,761	1,607	1,685	1,614	1,713	1,643	2,578
SEER 9 except SF-Oakland	1,207	562	588	728	826	919	1,192	1,295	1,484	1,318	1,268	1,316	1,303	1,401	1,372	2,136
San Francisco- Oakland SMSA ^c	257	124	135	228	384	489	571	536	606	443	339	369	311	312	271	442
San Francisco City/County	58	29	34	105	215	288	333	303	317	224	105	115	110	110	85	116

Age-Adjusted Cancer Incidence Rates^a

By SEER Location and Year of Diagnosis, 1975-2010

All Races, Males, Ages 20-54

Year of Diagnosis

SEER Location	1975- 1979	1980- 1981	1982- 1983	1984- 1985	1986- 1987	1988- 1989	1990- 1991	1992- 1993	1994- 1995	1996- 1997	1998- 1999	2000- 2001	2002- 2003	2004- 2005	2006- 2007	2008- 2010
SEER 9 ^b	6.9	7.9	8.2	10.4	12.4	13.5	15.9	15.6	16.9	13.7	12.1	12.3	11.6	12.2	11.5	12.0
SEER 9 except SF-Oakland	6.9	7.8	8.1	9.7	10.3	10.8	13.1	13.4	14.4	12.3	11.5	11.5	11.2	11.9	11.4	11.8
San Francisco- Oakland SMSA ^c	7.0	8.4	8.9	13.9	22.6	26.4	29.5	26.7	29.8	21.2	15.6	16.4	13.7	14.1	12.2	13.0
San Francisco City/County	6.7	8.8	9.4	27.2	56.5	71.5	81.3	72.4	74.4	50.7	23.0	25.2	23.7	24.6	19.1	16.6

^a Rates are per 100,000 males aged 20-54 and are age-adjusted to the 2000 US Std Population (19 age groups - Census P25-1130).

^b The SEER 9 areas are San Francisco-Oakland SMSA, Connecticut, Detroit, Hawaii, Iowa, New Mexico, Seattle, Utah and Atlanta.

^c The San Francisco-Oakland SMSA represents 15% of all persons in the SEER areas. For this age group, all SEER areas may not be generalizable to the United States for Non-Hodgkin Lymphoma.

- Statistic not shown. Rate based on less than 4 cases for the time interval.

Table 19.15

Non-Hodgkin Lymphoma

Number of Cases

By SEER Location and Year of Diagnosis, 1975-2010

All Races, Males, Ages 55+

Year of Diagnosis

SEER Location	1975- 1979	1980- 1981	1982- 1983	1984- 1985	1986- 1987	1988- 1989	1990- 1991	1992- 1993	1994- 1995	1996- 1997	1998- 1999	2000- 2001	2002- 2003	2004- 2005	2006- 2007	2008- 2010
SEER 9 ^b	3,535	1,732	1,873	2,129	2,323	2,496	2,705	2,809	3,117	3,387	3,544	3,735	4,018	4,390	4,606	7,357
SEER 9 except SF-Oakland	2,885	1,447	1,584	1,791	1,912	2,091	2,227	2,326	2,569	2,841	2,996	3,077	3,392	3,703	3,900	6,176
San Francisco- Oakland SMSA ^c	650	285	289	338	411	405	478	483	548	546	548	658	626	687	706	1,181
San Francisco City/County	178	65	88	104	109	105	132	106	131	126	106	141	107	169	131	216

Age-Adjusted Cancer Incidence Rates^a

By SEER Location and Year of Diagnosis, 1975-2010

All Races, Males, Ages 55+

Year of Diagnosis

SEER Location	1975- 1979	1980- 1981	1982- 1983	1984- 1985	1986- 1987	1988- 1989	1990- 1991	1992- 1993	1994- 1995	1996- 1997	1998- 1999	2000- 2001	2002- 2003	2004- 2005	2006- 2007	2008- 2010
SEER 9 ^b	45.1	52.2	54.0	59.7	63.3	67.3	70.1	70.6	76.1	80.1	81.0	82.9	85.7	89.9	89.5	88.6
SEER 9 except SF-Oakland	44.0	52.1	54.4	60.1	62.0	66.7	68.8	69.2	74.4	79.7	81.2	81.0	85.8	90.0	89.8	88.1
San Francisco- Oakland SMSA ^c	50.9	52.8	52.0	57.5	70.3	70.3	77.3	78.2	85.5	82.3	79.8	93.0	85.0	89.3	88.0	91.1
San Francisco City/County	48.2	44.6	59.8	72.7	73.9	75.7	93.4	74.7	92.1	87.2	72.7	93.4	68.5	104.7	76.5	80.6

^a Rates are per 100,000 males aged 55+ and are age-adjusted to the 2000 US Std Population (19 age groups - Census P25-1130).^b The SEER 9 areas are San Francisco-Oakland SMSA, Connecticut, Detroit, Hawaii, Iowa, New Mexico, Seattle, Utah and Atlanta.^c The San Francisco-Oakland SMSA represents 15% of all persons in the SEER areas. For this age group, all SEER areas may not be generalizable to the United States for Non-Hodgkin Lymphoma.

- Statistic not shown. Rate based on less than 4 cases for the time interval.

Table 19.16
Non-Hodgkin Lymphoma

Risk of Being Diagnosed With Cancer in 10, 20 and 30 Years,
Lifetime Risk of Being Diagnosed with Cancer Given Alive and Cancer-Free at Current Age, and
Lifetime Risk of Dying from Cancer Given Alive at Current Age
Both Sexes, 2008-2010 By Race/Ethnicity

Race/ Ethnicity	Current Age	Risk of Being Diagnosed with Cancer				Risk of Dying from Cancer	Race/ Ethnicity	Current Age	Risk of Being Diagnosed with Cancer				Risk of Dying from Cancer
		+10 yrs	+20 yrs	+30 yrs	Ever				+10 yrs	+20 yrs	+30 yrs	Ever	
All Races	0	0.01	0.02	0.05	2.14	0.78	Asian/ Pacific Islander	0	0.01	0.02	0.04	1.83	0.75
	10	0.01	0.04	0.11	2.15	0.79		10	0.01	0.03	0.07	1.84	0.76
	20	0.03	0.09	0.21	2.15	0.79		20	0.02	0.06	0.14	1.83	0.76
	30	0.06	0.19	0.43	2.14	0.80		30	0.04	0.12	0.27	1.81	0.76
	40	0.13	0.37	0.83	2.10	0.80		40	0.08	0.23	0.56	1.78	0.76
	50	0.25	0.73	1.39	2.03	0.80		50	0.16	0.49	1.01	1.73	0.75
	60	0.50	1.21	1.76	1.89	0.80		60	0.34	0.88	1.42	1.62	0.74
	70	0.81	1.43	-	1.58	0.76		70	0.57	1.16	-	1.37	0.69
80	0.85	-	-	1.05	0.63	80	0.71	-	-	0.97	0.59		
White	0	0.01	0.02	0.05	2.24	0.82	American Indian/ Alaska Native ^a	0	0.01	0.02	0.03	1.27	0.51
	10	0.02	0.05	0.11	2.26	0.83		10	0.01	0.02	0.06	1.28	0.51
	20	0.03	0.09	0.22	2.25	0.83		20	0.02	0.05	0.12	1.28	0.52
	30	0.06	0.19	0.44	2.24	0.84		30	0.04	0.11	0.25	1.28	0.52
	40	0.13	0.38	0.87	2.21	0.84		40	0.07	0.22	0.54	1.27	0.53
	50	0.26	0.76	1.48	2.13	0.85		50	0.15	0.49	0.91	1.25	0.55
	60	0.53	1.29	1.86	1.98	0.84		60	0.36	0.81	1.09	1.18	0.55
	70	0.86	1.51	-	1.65	0.80		70	0.52	0.84	-	0.94	0.53
80	0.89	-	-	1.09	0.67	80	0.44	-	-	0.58	0.39		
Black	0	0.01	0.02	0.06	1.27	0.44	Hispanic ^b	0	0.01	0.02	0.04	2.23	0.77
	10	0.01	0.05	0.13	1.29	0.45		10	0.01	0.04	0.09	2.25	0.78
	20	0.04	0.11	0.23	1.28	0.45		20	0.03	0.08	0.19	2.24	0.78
	30	0.08	0.20	0.40	1.26	0.45		30	0.05	0.16	0.38	2.23	0.78
	40	0.13	0.34	0.64	1.21	0.45		40	0.11	0.33	0.78	2.20	0.78
	50	0.22	0.54	0.87	1.13	0.44		50	0.23	0.68	1.34	2.13	0.78
	60	0.35	0.73	0.95	1.00	0.42		60	0.48	1.16	1.79	2.00	0.76
	70	0.45	0.72	-	0.79	0.38		70	0.76	1.45	-	1.68	0.72
80	0.40	-	-	0.50	0.29	80	0.88	-	-	1.17	0.58		

Devcan 6.7.0, June 2013, National Cancer Institute (<http://surveillance.cancer.gov/devcan/>).

Source: Incidence data are from the SEER 18 areas (San Francisco, Connecticut, Detroit, Hawaii, Iowa, New Mexico, Seattle, Utah, Atlanta, San Jose-Monterey, Los Angeles, Alaska Native Registry, Rural Georgia, California excluding SF/SJM/LA, Kentucky, Louisiana, New Jersey, and Georgia excluding ATL/RG). Mortality data are from the NCHS public use data file for the total US.

^a Underlying incidence and mortality data for American Indian/Alaska Native are based on the CHSDA (Contract Health Service Delivery Area) counties.

^b Hispanic is not mutually exclusive from whites, blacks, Asian/Pacific Islanders, and American Indians/Alaska Natives. Underlying incidence data for Hispanics are based on NHIA and exclude cases from the Alaska Native Registry. Underlying mortality data for Hispanics exclude deaths from the District of Columbia, Minnesota, New Hampshire, North Dakota and South Carolina.

- Statistic could not be calculated.

A percent of 0.00 represents a value that is below 0.005.

Table 19.17
Non-Hodgkin Lymphoma

Risk of Being Diagnosed With Cancer in 10, 20 and 30 Years,
Lifetime Risk of Being Diagnosed with Cancer Given Alive and Cancer-Free at Current Age, and
Lifetime Risk of Dying from Cancer Given Alive at Current Age
Males, 2008-2010 By Race/Ethnicity

Race/ Ethnicity	Current Age	Risk of Being Diagnosed with Cancer				Risk of Dying from Cancer	Race/ Ethnicity	Current Age	Risk of Being Diagnosed with Cancer				Risk of Dying from Cancer
		+10 yrs	+20 yrs	+30 yrs	Ever				+10 yrs	+20 yrs	+30 yrs	Ever	
All Races	0	0.01	0.03	0.06	2.36	0.87	Asian/ Pacific Islander	0	0.01	0.03	0.05	2.05	0.82
	10	0.02	0.05	0.13	2.38	0.88		10	0.01	0.04	0.08	2.05	0.83
	20	0.04	0.11	0.25	2.38	0.89		20	0.02	0.06	0.15	2.05	0.83
	30	0.07	0.22	0.50	2.37	0.89		30	0.04	0.13	0.31	2.03	0.83
	40	0.15	0.44	0.96	2.33	0.90		40	0.09	0.27	0.67	2.01	0.83
	50	0.30	0.84	1.59	2.26	0.91		50	0.18	0.60	1.22	1.95	0.83
	60	0.59	1.40	1.99	2.12	0.91		60	0.43	1.08	1.67	1.84	0.82
	70	0.95	1.64	-	1.80	0.87		70	0.71	1.36	-	1.55	0.77
80	1.00	-	-	1.23	0.75	80	0.83	-	-	1.06	0.66		
White	0	0.01	0.03	0.06	2.47	0.92	American Indian/ Alaska Native ^a	0	0.01	0.03	0.05	1.32	0.48
	10	0.02	0.05	0.13	2.49	0.93		10	0.01	0.04	0.08	1.33	0.49
	20	0.03	0.11	0.26	2.48	0.93		20	0.02	0.07	0.14	1.32	0.49
	30	0.07	0.22	0.51	2.48	0.94		30	0.05	0.12	0.25	1.33	0.50
	40	0.15	0.45	1.00	2.44	0.94		40	0.07	0.21	0.56	1.32	0.51
	50	0.30	0.87	1.67	2.37	0.95		50	0.15	0.51	1.04	1.31	0.53
	60	0.61	1.47	2.09	2.22	0.95		60	0.39	0.97	1.26	1.26	0.51
	70	1.01	1.73	-	1.88	0.92		70	0.69	1.03	-	1.03	0.48
80	1.05	-	-	1.28	0.78	80	0.49	-	-	0.50	0.27		
Black	0	0.01	0.03	0.07	1.40	0.49	Hispanic ^b	0	0.01	0.02	0.05	2.38	0.83
	10	0.02	0.07	0.16	1.43	0.50		10	0.02	0.04	0.10	2.39	0.84
	20	0.05	0.14	0.30	1.42	0.50		20	0.03	0.09	0.20	2.39	0.84
	30	0.09	0.26	0.52	1.40	0.50		30	0.06	0.17	0.42	2.38	0.84
	40	0.17	0.43	0.78	1.34	0.50		40	0.12	0.36	0.86	2.35	0.84
	50	0.28	0.64	0.99	1.23	0.49		50	0.26	0.76	1.48	2.30	0.84
	60	0.41	0.81	1.02	1.08	0.47		60	0.54	1.30	1.95	2.17	0.83
	70	0.50	0.78	-	0.86	0.43		70	0.87	1.60	-	1.85	0.79
80	0.46	-	-	0.58	0.34	80	0.99	-	-	1.32	0.64		

Devcan 6.7.0, June 2013, National Cancer Institute (<http://surveillance.cancer.gov/devcan/>).

Source: Incidence data are from the SEER 18 areas (San Francisco, Connecticut, Detroit, Hawaii, Iowa, New Mexico, Seattle, Utah, Atlanta, San Jose-Monterey, Los Angeles, Alaska Native Registry, Rural Georgia, California excluding SF/SJM/LA, Kentucky, Louisiana, New Jersey, and Georgia excluding ATL/RG). Mortality data are from the NCHS public use data file for the total US.

^a Underlying incidence and mortality data for American Indian/Alaska Native are based on the CHSDA (Contract Health Service Delivery Area) counties.

^b Hispanic is not mutually exclusive from whites, blacks, Asian/Pacific Islanders, and American Indians/Alaska Natives. Underlying incidence data for Hispanics are based on NHIA and exclude cases from the Alaska Native Registry. Underlying mortality data for Hispanics exclude deaths from the District of Columbia, Minnesota, New Hampshire, North Dakota and South Carolina.

- Statistic could not be calculated.

A percent of 0.00 represents a value that is below 0.005.

Table 19.18
Non-Hodgkin Lymphoma

Risk of Being Diagnosed With Cancer in 10, 20 and 30 Years,
Lifetime Risk of Being Diagnosed with Cancer Given Alive and Cancer-Free at Current Age, and
Lifetime Risk of Dying from Cancer Given Alive at Current Age
Females, 2008-2010 By Race/Ethnicity

Race/ Ethnicity	Current Age	Risk of Being Diagnosed with Cancer				Risk of Dying from Cancer	Race/ Ethnicity	Current Age	Risk of Being Diagnosed with Cancer				Risk of Dying from Cancer
		+10 yrs	+20 yrs	+30 yrs	Ever				+10 yrs	+20 yrs	+30 yrs	Ever	
All Races	0	0.01	0.02	0.04	1.93	0.70	Asian/ Pacific Islander	0	0.01	0.02	0.04	1.65	0.69
	10	0.01	0.03	0.08	1.95	0.71		10	0.01	0.03	0.07	1.66	0.70
	20	0.02	0.07	0.17	1.94	0.71		20	0.02	0.06	0.13	1.65	0.70
	30	0.05	0.15	0.35	1.93	0.71		30	0.04	0.10	0.24	1.63	0.70
	40	0.10	0.31	0.71	1.90	0.72		40	0.07	0.21	0.47	1.60	0.70
	50	0.21	0.62	1.21	1.83	0.72		50	0.14	0.40	0.84	1.55	0.69
	60	0.43	1.05	1.57	1.70	0.71		60	0.27	0.71	1.22	1.44	0.68
	70	0.69	1.26	-	1.41	0.68		70	0.47	1.00	-	1.24	0.64
80	0.75	-	-	0.93	0.57	80	0.62	-	-	0.90	0.54		
White	0	0.00	0.02	0.04	2.04	0.74	American Indian/ Alaska Native ^a	0	0.00	0.00	0.01	1.21	0.53
	10	0.01	0.03	0.08	2.05	0.75		10	0.00	0.01	0.04	1.22	0.54
	20	0.02	0.07	0.18	2.04	0.75		20	0.01	0.04	0.11	1.22	0.54
	30	0.05	0.15	0.37	2.03	0.75		30	0.03	0.10	0.25	1.23	0.54
	40	0.10	0.32	0.75	2.00	0.75		40	0.07	0.22	0.53	1.21	0.55
	50	0.22	0.66	1.29	1.93	0.76		50	0.16	0.47	0.79	1.18	0.56
	60	0.46	1.12	1.66	1.79	0.75		60	0.33	0.67	0.94	1.08	0.58
	70	0.74	1.33	-	1.48	0.72		70	0.38	0.69	-	0.84	0.57
80	0.78	-	-	0.97	0.59	80	0.40	-	-	0.61	0.46		
Black	0	0.01	0.02	0.04	1.15	0.40	Hispanic ^b	0	0.01	0.01	0.04	2.11	0.72
	10	0.01	0.04	0.10	1.16	0.40		10	0.01	0.03	0.08	2.13	0.73
	20	0.03	0.08	0.17	1.16	0.40		20	0.02	0.07	0.17	2.12	0.73
	30	0.06	0.15	0.30	1.14	0.40		30	0.05	0.15	0.34	2.11	0.73
	40	0.09	0.25	0.52	1.10	0.40		40	0.10	0.30	0.70	2.08	0.73
	50	0.16	0.44	0.77	1.04	0.39		50	0.20	0.61	1.21	2.00	0.72
	60	0.30	0.66	0.89	0.95	0.38		60	0.43	1.05	1.66	1.86	0.71
	70	0.42	0.68	-	0.75	0.34		70	0.67	1.33	-	1.55	0.67
80	0.37	-	-	0.46	0.26	80	0.81	-	-	1.08	0.54		

Devcan 6.7.0, June 2013, National Cancer Institute (<http://surveillance.cancer.gov/devcan/>).

Source: Incidence data are from the SEER 18 areas (San Francisco, Connecticut, Detroit, Hawaii, Iowa, New Mexico, Seattle, Utah, Atlanta, San Jose-Monterey, Los Angeles, Alaska Native Registry, Rural Georgia, California excluding SF/SJM/LA, Kentucky, Louisiana, New Jersey, and Georgia excluding ATL/RG). Mortality data are from the NCHS public use data file for the total US.

^a Underlying incidence and mortality data for American Indian/Alaska Native are based on the CHSDA (Contract Health Service Delivery Area) counties.

^b Hispanic is not mutually exclusive from whites, blacks, Asian/Pacific Islanders, and American Indians/Alaska Natives. Underlying incidence data for Hispanics are based on NHIA and exclude cases from the Alaska Native Registry. Underlying mortality data for Hispanics exclude deaths from the District of Columbia, Minnesota, New Hampshire, North Dakota and South Carolina.

- Statistic could not be calculated.

A percent of 0.00 represents a value that is below 0.005.

Table 19.19
Non-Hodgkin Lymphoma

SEER Incidence and U.S. Mortality
Age-Adjusted Rates and Trends^a
By Race/Ethnicity and Sex

SEER Incidence	SEER 18 Areas ^b			SEER 13 Areas ^b			SEER 9 Areas ^b		
	Rate 2006-2010			Trend 2001-2010 ^c			Trend 2001-2010 ^d		
	Rate per 100,000 persons			AAPC (%)			AAPC (%)		
RACE/ETHNICITY	Total	Males	Females	Total	Males	Females	Total	Males	Females
All Races	19.7	23.9	16.4	0.4*	0.5*	0.1	0.5*	0.4*	0.0
White	20.7	25.0	17.3	0.5*	0.5*	0.2	0.2	0.5*	-0.1
White Hispanic ^e	18.4	21.2	16.1	0.6*	0.4	1.1*	-	-	-
White Non-Hispanic ^e	21.2	25.6	17.5	0.6*	0.4*	0.1	-	-	-
Black	14.2	17.4	11.8	0.6*	0.0	0.3	0.6*	-0.2	1.9*
Asian/Pacific Islander	13.1	16.1	10.9	0.2	0.1	0.4	-	-	-
Amer Ind/Alaska Nat ^f	12.3	14.1	10.8	2.8*	-	-	-	-	-
Hispanic ^e	17.8	20.5	15.6	0.6*	0.4	1.0*	-	-	-
<u>U.S. Mortality^g</u>									
RACE/ETHNICITY	Rate 2006-2010			Trend 2001-2010 ^h					
	Rate per 100,000 persons			AAPC (%)					
	Total	Males	Females	Total	Males	Females			
All Races	6.4	8.2	5.1	-2.7*	-2.7*	-3.1*			
White	6.7	8.5	5.3	-2.9*	-2.7*	-3.1*			
White Hispanic ^e	5.6	6.9	4.6	-1.4*	-1.6*	-1.2*			
White Non-Hispanic ^e	6.8	8.6	5.4	-2.9*	-2.6*	-3.3*			
Black	4.6	5.9	3.6	-2.6*	-2.6*	-2.6*			
Asian/Pacific Islander	4.1	5.2	3.4	-2.0*	-2.2*	-1.7*			
Amer Ind/Alaska Nat									
Total U.S.	3.6	4.1	3.2	-1.4	-3.5*	-1.2			
CHSDA Counties	4.8	5.4	4.3	0.0	-0.6	0.4			
Non-CHSDA Counties	2.1	2.5	1.8	-11.2	-	-			
Hispanic ^e	5.3	6.5	4.4	-1.6*	-1.7*	-2.0*			

The AAPC is the Average Annual Percent Change over the time interval. The AAPCs are calculated by the Joinpoint Regression Program Version 4.0.3, April 2013, National Cancer Institute.

- Statistic not shown. Rate based on less than 16 cases for the time interval.

Trend based on less than 10 cases for at least one year within the time interval.

a Rates are age-adjusted to the 2000 US Std Population (19 age groups - Census P25-1130). Trends

are based on rates age-adjusted to the 2000 US Std Population (19 age groups - Census P25-1130).

b The SEER 9 areas are San Francisco, Connecticut, Detroit, Hawaii, Iowa, New Mexico, Seattle, Utah, and Atlanta.

The SEER 13 areas comprise the SEER 9 areas plus San Jose-Monterey, Los Angeles, the Alaska Native Registry, and Rural Georgia.

The SEER 18 areas comprise the SEER 13 areas plus California excluding SF/SJM/LA, Kentucky, Louisiana, New Jersey, and Georgia excluding ATL/RG.

c The 2001-2010 AAPC estimates are based on a Joinpoint analysis with up to 3 Joinpoints over diagnosis years 1992-2010.

d The 2001-2010 AAPC estimates are based on a Joinpoint analysis with up to 5 Joinpoints over diagnosis years 1975-2010.

e Hispanic and Non-Hispanic are not mutually exclusive from whites, blacks, Asian/Pacific Islanders, and American Indians/Alaska Natives. Incidence data for Hispanics and Non-Hispanics are based on NHIA and exclude cases from the Alaska Native Registry. The 2006-2010 Hispanic and Non-Hispanic death rates exclude deaths from the District of Columbia, North Dakota, and South Carolina. The 2001-2010 Hispanic and Non-Hispanic mortality trends exclude deaths from Connecticut, the District of Columbia, Maine, Maryland, Minnesota, New Hampshire, New York, North Dakota, Oklahoma, South Carolina and Vermont.

f Incidence data for American Indian/Alaska Native are based on the CHSDA(Contract Health Service Delivery Area) counties.

g US Mortality Files, National Center for Health Statistics, CDC.

h The 2001-2010 mortality AAPCs are based on a Joinpoint analysis using years of death 1992-2010.

* The APC is significantly different from zero (p<.05).

Table 19.20
Non-Hodgkin Lymphoma

Age-Adjusted SEER Incidence Rates^a
By Registry, Race and Sex

	All Races			Whites			Blacks		
	Total	Males	Females	Total	Males	Females	Total	Males	Females
<u>SEER Incidence Rates^a, 2006-2010</u>									
California	18.94	22.94	15.65	19.98	24.14	16.49	13.57	16.39	11.22
Greater Bay Area	20.71	25.69	16.56	23.20	28.90	18.24	15.29	17.84	13.22
San Francisco-Oakland	20.59	26.19	16.03	23.22	29.72	17.65	14.99	17.34	13.13
San Jose-Monterey	21.03	24.81	17.67	23.24	27.53	19.32	18.54	21.82	15.29
Los Angeles	18.64	22.42	15.59	20.29	24.22	17.05	13.62	17.14	10.88
Greater California	18.46	22.18	15.36	18.94	22.73	15.77	12.79	15.18	10.66
Connecticut	20.75	25.17	17.33	20.94	25.36	17.53	14.54	16.28	12.87
Detroit	21.53	25.89	18.23	22.98	27.39	19.61	16.06	20.31	13.02
Georgia	17.75	21.51	14.76	18.96	22.55	16.00	13.72	17.42	11.05
Atlanta	19.42	24.31	15.82	21.23	26.14	17.48	16.48	20.99	13.37
Rural Georgia	16.49	19.73	13.48	19.42	20.43	17.67	10.19	16.72	-
Greater Georgia	16.93	20.23	14.21	18.11	21.28	15.41	11.83	14.87	9.51
Hawaii	16.88	20.71	13.72	19.94	25.02	14.71	-	-	-
Iowa	22.44	26.78	18.93	22.32	26.58	18.90	18.67	26.96	10.97
Kentucky	20.90	25.26	17.53	21.16	25.39	17.87	15.28	20.33	11.70
Louisiana	20.04	24.47	16.50	21.99	26.83	18.02	14.22	16.71	12.21
New Jersey	21.05	25.24	17.80	22.14	26.40	18.80	14.00	16.45	12.00
New Mexico	15.84	18.24	13.78	15.89	18.42	13.71	15.10	17.26	-
Seattle-Puget Sound	23.04	28.25	18.70	23.65	28.76	19.34	17.51	19.84	14.40
Utah	20.35	25.15	16.26	20.52	25.40	16.37	24.76	-	-
9 SEER Areas ^b	20.74	25.36	17.04	21.76	26.48	17.89	16.02	19.71	13.16
11 SEER Areas ^b	20.28	24.67	16.74	21.53	26.07	17.78	15.48	19.10	12.66
13 SEER Areas ^b	20.26	24.64	16.72	21.52	26.05	17.78	15.41	19.07	12.57
18 SEER Areas ^b	19.73	23.86	16.39	20.73	24.95	17.27	14.25	17.39	11.77

^a Rates are per 100,000 and are age-adjusted to the 2000 US Std Population (19 age groups - Census P25-1130)

^b The SEER 9 areas are San Francisco, Connecticut, Detroit, Hawaii, Iowa, New Mexico, Seattle, Utah and Atlanta.

The SEER 11 areas comprise the SEER 9 areas plus San Jose-Monterey and Los Angeles.

The SEER 13 areas comprise the SEER 11 areas plus the Alaska Native Registry and Rural Georgia.

The SEER 18 areas comprise the SEER 13 areas plus California excluding SF/SJM/LA, Kentucky, Louisiana, New Jersey and Georgia excluding ATL/RG.

- Statistic not shown. Rate based on less than 16 cases for the time interval.

Table 19.21
Non-Hodgkin Lymphoma

Age-Adjusted SEER Death Rates^a
By Registry, Race and Sex

	All Races			Whites			Blacks		
	Total	Males	Females	Total	Males	Females	Total	Males	Females
<u>SEER Death Rates^a, 2006-2010</u>									
California	6.15	7.79	4.90	6.53	8.29	5.15	5.08	6.40	4.08
Greater Bay Area	6.30	8.14	4.91	7.02	9.10	5.39	5.73	7.40	4.72
San Francisco-Oakland	6.21	8.15	4.77	6.89	9.17	5.12	5.77	6.94	5.12
San Jose-Monterey	6.48	8.12	5.21	7.23	8.95	5.85	-	-	-
Los Angeles	5.90	7.30	4.85	6.40	7.88	5.27	5.23	6.58	4.13
Greater California	6.21	7.88	4.91	6.44	8.22	5.03	4.45	5.68	3.47
Connecticut	6.05	7.54	4.95	6.12	7.65	4.97	4.42	5.11	3.99
Detroit	6.96	8.73	5.77	7.51	9.19	6.41	4.99	7.12	3.59
Georgia	5.75	7.62	4.46	6.18	7.98	4.89	4.22	6.12	3.02
Atlanta	5.66	7.70	4.43	6.21	8.17	5.01	4.25	6.70	2.93
Rural Georgia	4.88	5.99	3.95	5.63	-	-	-	-	-
Greater Georgia	5.82	7.61	4.50	6.19	7.92	4.88	4.29	5.86	3.13
Hawaii	5.54	7.22	4.26	6.07	8.08	4.26	-	-	-
Iowa	6.92	8.85	5.51	6.94	8.89	5.51	-	-	-
Kentucky	7.14	9.02	5.74	7.32	9.16	5.96	4.47	7.20	2.62
Louisiana	6.67	8.59	5.18	7.37	9.34	5.81	4.37	5.74	3.28
New Jersey	6.27	7.82	5.19	6.63	8.21	5.52	4.36	5.57	3.49
New Mexico	5.43	6.55	4.45	5.67	6.85	4.62	-	-	-
Seattle-Puget Sound	6.88	8.83	5.39	7.14	9.16	5.57	3.94	-	-
Utah	6.05	7.66	4.67	6.10	7.71	4.71	-	-	-
9 SEER Areas ^b	6.35	8.11	5.06	6.69	8.49	5.33	4.76	6.41	3.68
11 SEER Areas ^b	6.26	7.93	5.02	6.67	8.40	5.35	4.90	6.50	3.80
13 SEER Areas ^b	6.26	7.92	5.02	6.67	8.39	5.35	4.85	6.47	3.75
18 SEER Areas ^b	6.29	7.99	5.03	6.65	8.40	5.33	4.59	6.12	3.49
Total U.S.	6.43	8.20	5.11	6.70	8.50	5.33	4.56	5.90	3.61

^a US Mortality Files, National Center for Health Statistics, Centers for Disease Control and Prevention. Rates are per 100,000 and are age-adjusted to the 2000 US Std Population (19 age groups - Census P25-1130).

^b The SEER 9 areas are San Francisco, Connecticut, Detroit, Hawaii, Iowa, New Mexico, Seattle, Utah and Atlanta. The SEER 11 areas comprise the SEER 9 areas plus San Jose-Monterey and Los Angeles.

The SEER 13 areas comprise the SEER 11 areas plus the Alaska Native Registry and Rural Georgia.

The SEER 18 areas comprise the SEER 13 areas plus California excluding SF/SJM/LA, Kentucky, Louisiana, New Jersey and Georgia excluding ATL/RG.

- Statistic not shown. Rate based on less than 16 cases for the time interval.

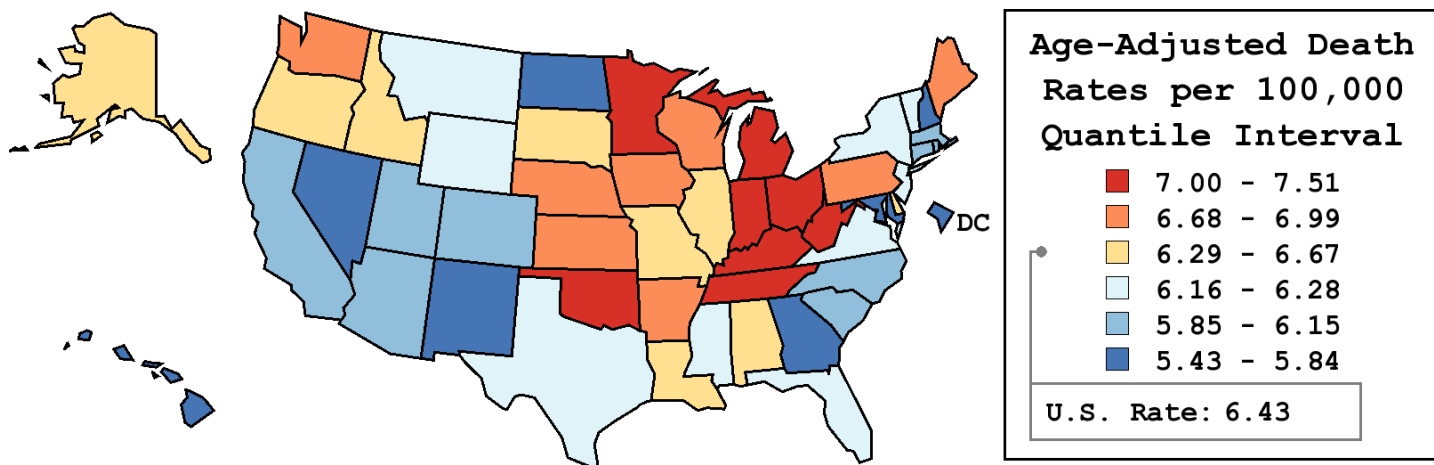
Table 19.22
Non-Hodgkin Lymphoma

Age-Adjusted Cancer Death^a Rates By State, All Races, 2006-2010

Males and Females

State	Rate	SE	Rank	PD
TOTAL U.S.	6.43	0.02		
High Five States				
West Virginia	7.51	0.26	(01)	16.83 ^c
Oklahoma	7.26	0.19	(02)	12.88
Kentucky	7.14	0.18	(03)	10.96
Michigan	7.11	0.12	(04)	10.64
Ohio	7.10	0.11	(05)	10.37
Low Five States				
Georgia	5.75	0.12	(47)	-10.51
Maryland	5.72	0.14	(48)	-10.98
D.C.	5.69	0.45	(49)	-11.48
Hawaii	5.54	0.27	(50)	-13.90
New Mexico	5.43	0.23	(51)	-15.51 ^c

State	Rate	SE	Rank	PD	State	Rate	SE	Rank	PD
Alabama	6.40	0.16	(22)	-0.41	Montana	6.24	0.33	(28)	-2.97
Alaska	6.38	0.59	(23)	-0.83	Nebraska	6.87	0.26	(13)	6.90
Arizona	6.07	0.14	(36)	-5.66	Nevada	5.79	0.23	(46)	-10.02
Arkansas	6.85	0.21	(14)	6.50	New Hampshire	5.79	0.29	(45)	-9.95
California	6.15	0.06	(35)	-4.34	New Jersey	6.27	0.12	(27)	-2.44
Colorado	5.92	0.17	(43)	-7.97	New Mexico	5.43	0.23	(51)	-15.51 ^c
Connecticut	6.05	0.17	(39)	-5.94	New York	6.16	0.08	(34)	-4.14
Delaware	6.32	0.36	(24)	-1.66	North Carolina	6.05	0.11	(37)	-5.87
D.C.	5.69	0.45	(49)	-11.48	North Dakota	5.84	0.39	(44)	-9.24
Florida	6.18	0.07	(32)	-3.87	Ohio	7.10	0.11	(05)	10.37
Georgia	5.75	0.12	(47)	-10.51	Oklahoma	7.26	0.19	(02)	12.88
Hawaii	5.54	0.27	(50)	-13.90	Oregon	6.66	0.18	(18)	3.59
Idaho	6.29	0.29	(25)	-2.13	Pennsylvania	6.97	0.09	(10)	8.34
Illinois	6.60	0.10	(20)	2.59	Rhode Island	5.95	0.31	(42)	-7.47
Indiana	7.05	0.15	(06)	9.65	South Carolina	6.01	0.16	(41)	-6.61
Iowa	6.92	0.20	(11)	7.68	South Dakota	6.41	0.37	(21)	-0.39
Kansas	6.91	0.21	(12)	7.47	Tennessee	7.01	0.15	(07)	9.03
Kentucky	7.14	0.18	(03)	10.96	Texas	6.21	0.08	(30)	-3.44
Louisiana	6.67	0.18	(17)	3.75	Utah	6.05	0.25	(38)	-5.90
Maine	6.70	0.29	(16)	4.19	Vermont	6.18	0.42	(33)	-3.88
Maryland	5.72	0.14	(48)	-10.98	Virginia	6.21	0.13	(29)	-3.39
Massachusetts	6.05	0.13	(40)	-5.96	Washington	6.76	0.15	(15)	5.14
Michigan	7.11	0.12	(04)	10.64	West Virginia	7.51	0.26	(01)	16.83 ^c
Minnesota	7.00	0.16	(08)	8.86	Wisconsin	6.99	0.15	(09)	8.68
Mississippi	6.21	0.21	(31)	-3.47	Wyoming	6.28	0.49	(26)	-2.41
Missouri	6.65	0.14	(19)	3.39					



^a US Mortality Files, National Center for Health Statistics, Centers for Disease Control and Prevention. Rates are per 100,000 and are age-adjusted to the 2000 US Std Population (19 age groups - Census P25-1130).
^b Difference between state rate and total U.S. rate is statistically significant (p<=.0002).
^c Absolute percent difference between state rate and total U.S. rate is 15% or more.
SE Standard error of the rate.
PD Percent difference between state rate and total U.S. rate.
- Statistic not shown. Rate based on less than 16 cases for the time interval.

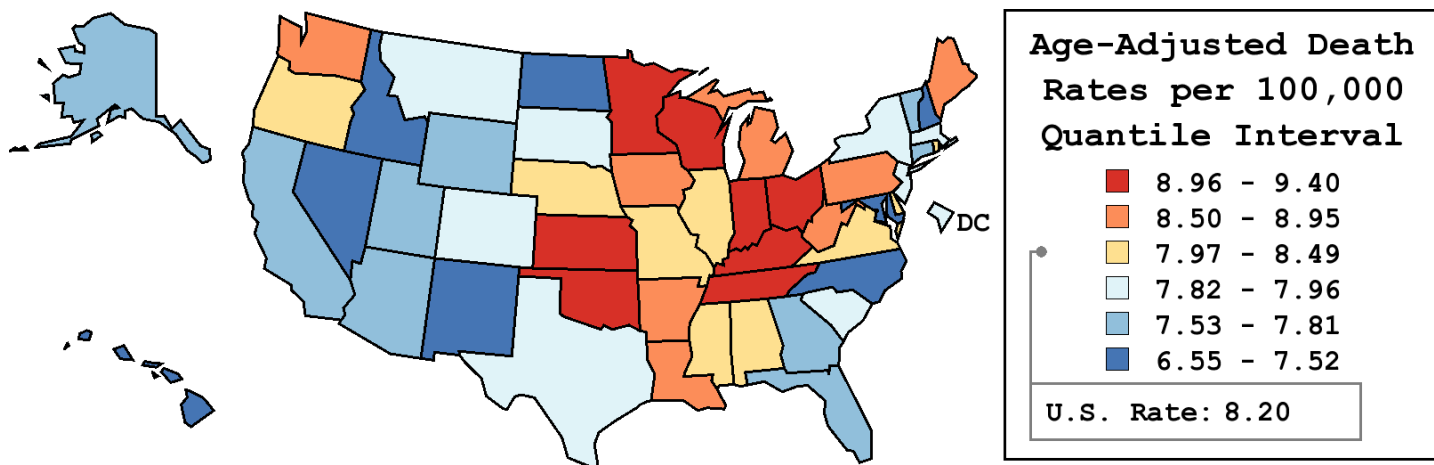
Table 19.23
Non-Hodgkin Lymphoma

Age-Adjusted Cancer Death^a Rates By State, All Races, 2006-2010

Males

State	Rate	SE	Rank	PD
TOTAL U.S.	8.20	0.04		
High Five States				
Minnesota	9.40	0.29	(01)	14.65
Indiana	9.30	0.26	(02)	13.52
Tennessee	9.18	0.27	(03)	12.04
Ohio	9.18	0.19	(04)	11.95
Kansas	9.14	0.38	(05)	11.51
Low Five States				
Hawaii	7.22	0.47	(47)	-11.94
Idaho	7.21	0.48	(48)	-11.98
Nevada	7.14	0.37	(49)	-12.86
North Dakota	6.67	0.63	(50)	-18.63 ^c
New Mexico	6.55	0.38	(51)	-20.05 ^c

State	Rate	SE	Rank	PD	State	Rate	SE	Rank	PD
Alabama	7.98	0.28	(25)	-2.58	Montana	7.90	0.57	(28)	-3.66
Alaska	7.58	0.98	(42)	-7.55	Nebraska	8.43	0.45	(19)	2.87
Arizona	7.59	0.23	(41)	-7.44	Nevada	7.14	0.37	(49)	-12.86
Arkansas	8.57	0.36	(15)	4.57	New Hampshire	7.26	0.50	(46)	-11.44
California	7.79	0.10	(36)	-4.95	New Jersey	7.82	0.20	(33)	-4.57
Colorado	7.84	0.30	(31)	-4.30	New Mexico	6.55	0.38	(51)	-20.05 ^c
Connecticut	7.54	0.30	(43)	-8.00	New York	7.89	0.14	(29)	-3.75
Delaware	8.27	0.64	(23)	0.85	North Carolina	7.52	0.20	(44)	-8.26
D.C.	7.96	0.84	(26)	-2.93	North Dakota	6.67	0.63	(50)	-18.63 ^c
Florida	7.79	0.12	(37)	-5.01	Ohio	9.18	0.19	(04)	11.95
Georgia	7.62	0.23	(40)	-7.09	Oklahoma	9.00	0.33	(07)	9.81
Hawaii	7.22	0.47	(47)	-11.94	Oregon	8.46	0.31	(18)	3.27
Idaho	7.21	0.48	(48)	-11.98	Pennsylvania	8.87	0.17	(10)	8.27
Illinois	8.49	0.18	(17)	3.63	Rhode Island	8.29	0.58	(21)	1.17
Indiana	9.30	0.26	(02)	13.52	South Carolina	7.82	0.29	(34)	-4.59
Iowa	8.85	0.34	(11)	8.04	South Dakota	7.83	0.63	(32)	-4.50
Kansas	9.14	0.38	(05)	11.51	Tennessee	9.18	0.27	(03)	12.04
Kentucky	9.02	0.32	(06)	10.11	Texas	7.93	0.14	(27)	-3.19
Louisiana	8.59	0.31	(14)	4.85	Utah	7.66	0.43	(38)	-6.50
Maine	8.80	0.51	(12)	7.42	Vermont	7.81	0.73	(35)	-4.71
Maryland	7.43	0.26	(45)	-9.29	Virginia	8.16	0.23	(24)	-0.48
Massachusetts	7.85	0.23	(30)	-4.24	Washington	8.57	0.25	(16)	4.56
Michigan	8.95	0.20	(09)	9.17	West Virginia	8.75	0.43	(13)	6.73
Minnesota	9.40	0.29	(01)	14.65	Wisconsin	8.97	0.26	(08)	9.39
Mississippi	8.28	0.38	(22)	1.07	Wyoming	7.65	0.83	(39)	-6.68
Missouri	8.29	0.25	(20)	1.21					



^a US Mortality Files, National Center for Health Statistics, Centers for Disease Control and Prevention. Rates are per 100,000 and are age-adjusted to the 2000 US Std Population (19 age groups - Census P25-1130).
^b Difference between state rate and total U.S. rate is statistically significant (p<=.0002).
^c Absolute percent difference between state rate and total U.S. rate is 15% or more.
SE Standard error of the rate.
PD Percent difference between state rate and total U.S. rate.
- Statistic not shown. Rate based on less than 16 cases for the time interval.

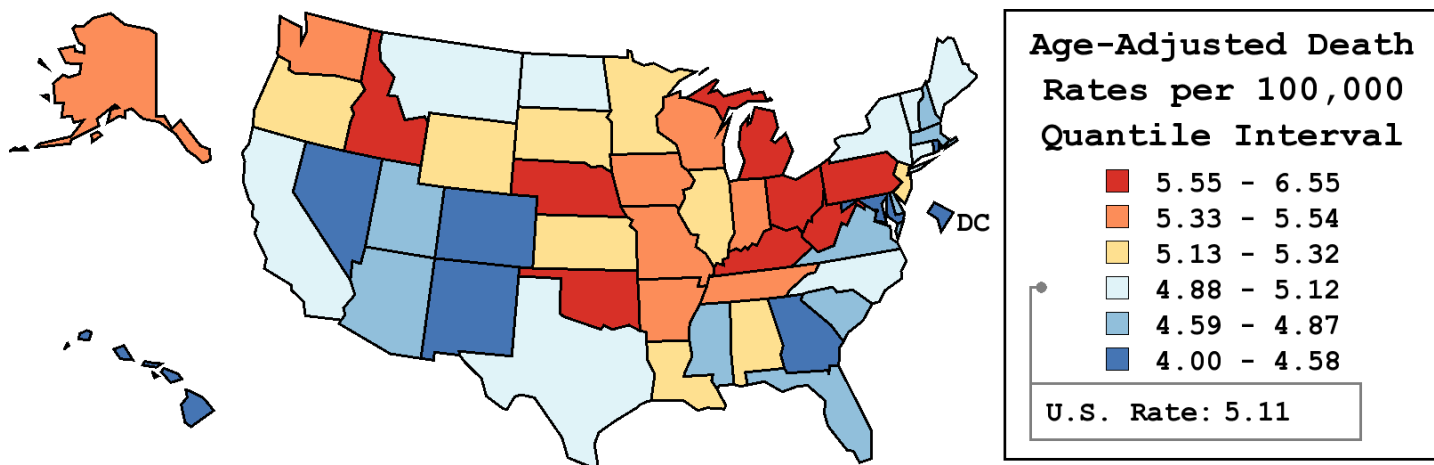
Table 19.24
Non-Hodgkin Lymphoma

Age-Adjusted Cancer Death^a Rates By State, All Races, 2006-2010

Females

State	Rate	SE	Rank	PD
TOTAL U.S.	5.11	0.02		
High Five States				
West Virginia	6.55	0.32	(01)	28.25 ^c
Oklahoma	5.97	0.23	(02)	16.80 ^c
Michigan	5.77	0.14	(03)	12.99
Kentucky	5.74	0.21	(04)	12.40
Nebraska	5.67	0.32	(05)	10.98
Low Five States				
New Mexico	4.45	0.28	(47)	-12.83
Colorado	4.44	0.19	(48)	-13.10
Rhode Island	4.36	0.35	(49)	-14.66
Hawaii	4.26	0.32	(50)	-16.55 ^c
D.C.	4.00	0.49	(51)	-21.71 ^c

State	Rate	SE	Rank	PD	State	Rate	SE	Rank	PD
Alabama	5.25	0.19	(22)	2.83	Montana	4.88	0.40	(34)	-4.48
Alaska	5.46	0.74	(12)	6.84	Nebraska	5.67	0.32	(05)	10.98
Arizona	4.83	0.16	(36)	-5.53	Nevada	4.58	0.27	(44)	-10.30
Arkansas	5.54	0.25	(09)	8.48	New Hampshire	4.73	0.35	(41)	-7.47
California	4.90	0.07	(33)	-4.18	New Jersey	5.19	0.14	(23)	1.65
Colorado	4.44	0.19	(48)	-13.10	New Mexico	4.45	0.28	(47)	-12.83
Connecticut	4.95	0.20	(30)	-3.22	New York	4.93	0.09	(31)	-3.56
Delaware	4.82	0.42	(37)	-5.58	North Carolina	4.96	0.14	(29)	-2.99
D.C.	4.00	0.49	(51)	-21.71 ^c	North Dakota	5.11	0.48	(27)	-0.08
Florida	4.87	0.09	(35)	-4.63	Ohio	5.58	0.12	(07)	9.25
Georgia	4.46	0.14	(46)	-12.75	Oklahoma	5.97	0.23	(02)	16.80 ^c
Hawaii	4.26	0.32	(50)	-16.55 ^c	Oregon	5.31	0.21	(18)	3.88
Idaho	5.59	0.38	(06)	9.39	Pennsylvania	5.55	0.11	(08)	8.55
Illinois	5.26	0.12	(21)	2.90	Rhode Island	4.36	0.35	(49)	-14.66
Indiana	5.44	0.17	(13)	6.56	South Carolina	4.74	0.19	(40)	-7.33
Iowa	5.51	0.23	(11)	7.80	South Dakota	5.32	0.45	(17)	4.06
Kansas	5.26	0.25	(20)	2.91	Tennessee	5.37	0.17	(16)	5.02
Kentucky	5.74	0.21	(04)	12.40	Texas	4.91	0.09	(32)	-3.85
Louisiana	5.18	0.20	(25)	1.32	Utah	4.67	0.30	(43)	-8.65
Maine	5.12	0.33	(26)	0.13	Vermont	4.99	0.50	(28)	-2.38
Maryland	4.46	0.17	(45)	-12.64	Virginia	4.79	0.15	(39)	-6.30
Massachusetts	4.80	0.15	(38)	-6.15	Washington	5.37	0.17	(15)	5.11
Michigan	5.77	0.14	(03)	12.99	West Virginia	6.55	0.32	(01)	28.25 ^c
Minnesota	5.19	0.18	(24)	1.62	Wisconsin	5.51	0.18	(10)	7.89
Mississippi	4.69	0.24	(42)	-8.21	Wyoming	5.31	0.60	(19)	3.87
Missouri	5.44	0.17	(14)	6.56					



^a US Mortality Files, National Center for Health Statistics, Centers for Disease Control and Prevention. Rates are per 100,000 and are age-adjusted to the 2000 US Std Population (19 age groups - Census P25-1130).
^b Difference between state rate and total U.S. rate is statistically significant (p<=.0002).
^c Absolute percent difference between state rate and total U.S. rate is 15% or more.
SE Standard error of the rate.
PD Percent difference between state rate and total U.S. rate.
- Statistic not shown. Rate based on less than 16 cases for the time interval.

Table 19.25
Non-Hodgkin LymphomaEstimated United States Cancer Prevalence Counts^a on January 1, 2010
By Race/Ethnicity, Sex and Years Since Diagnosis

Years Since Diagnosis		0 to <5	5 to <10	10 to <15	15 to <20	20 to <25	25 to <30	0 to <18 ^e	0 to <35 ^e	>=35 ^g	Complete ^h	
Race	Sex											
All Races ^b	Both Sexes	198,946	132,700	78,129	43,600	25,113	13,936	453,373	499,712	9,353	509,065	
	Males	105,553	68,564	40,496	22,771	13,154	7,378	237,383	261,560	4,918	266,478	
	Females	93,393	64,136	37,633	20,829	11,959	6,558	215,990	238,152	4,435	242,587	
White ^b	Both Sexes	173,392	117,218	69,017	38,851	22,746	12,707	398,479	440,727	9,713	450,440	
	Males	92,730	60,876	35,713	20,357	11,942	6,714	209,677	231,746	5,482	237,228	
	Females	80,662	56,342	33,304	18,494	10,804	5,993	188,802	208,981	4,231	213,212	
Black ^b	Both Sexes	15,619	10,026	5,921	2,948	1,511	749	34,515	37,133	747	37,880	
	Males	7,588	4,978	3,116	1,449	795	419	17,132	18,495	311	18,806	
	Females	8,031	5,048	2,805	1,499	716	330	17,383	18,638	436	19,074	
Asian/ Pacific Islander ^c	Both Sexes	5,408	3,518	1,911	+	+	+	11,562	+	+	+	
	Males	2,874	1,779	984	+	+	+	5,983	+	+	+	
	Females	2,534	1,739	927	+	+	+	5,579	+	+	+	
Hispanic ^d	Both Sexes	14,335	8,665	4,824	+	+	+	27,824	+	+	+	
	Males	7,183	4,586	2,545	+	+	+	14,314	+	+	+	
	Females	7,152	4,079	2,279	+	+	+	13,510	+	+	+	

Estimated prevalence percent^a on January 1, 2010, of the SEER 11 population diagnosed in the previous 18 years
By Age at Prevalence, Race/Ethnicity and Sex

Age at Prevalence	All Ages	Age Specific (Crude)									Age-Adjusted ^f	
		0-9	10-19	20-29	30-39	40-49	50-59	60-69	70-79	80+	All Ages	
Race	Sex											
All Races ^c	Both Sexes	0.1199%	0.0028%	0.0111%	0.0215%	0.0416%	0.0886%	0.1741%	0.3276%	0.5227%	0.5731%	0.1181%
	Males	0.1277%	0.0036%	0.0146%	0.0260%	0.0486%	0.1042%	0.1999%	0.3731%	0.5834%	0.6487%	0.1352%
	Females	0.1123%	0.0019%	0.0074%	0.0169%	0.0347%	0.0732%	0.1496%	0.2865%	0.4742%	0.5292%	0.1032%
White ^c	Both Sexes	0.1346%	0.0030%	0.0114%	0.0225%	0.0436%	0.0940%	0.1875%	0.3550%	0.5717%	0.6097%	0.1269%
	Males	0.1427%	0.0041%	0.0151%	0.0277%	0.0509%	0.1104%	0.2143%	0.4023%	0.6341%	0.6837%	0.1448%
	Females	0.1266%	0.0019%	0.0074%	0.0170%	0.0359%	0.0771%	0.1611%	0.3110%	0.5205%	0.5665%	0.1110%
Black ^c	Both Sexes	0.0744%	0.0022%	0.0114%	0.0217%	0.0434%	0.0860%	0.1466%	0.2401%	0.3073%	0.2761%	0.0859%
	Males	0.0790%	0.0019%	0.0148%	0.0259%	0.0531%	0.1016%	0.1686%	0.2757%	0.2863%	0.3231%	0.0958%
	Females	0.0703%	0.0025%	0.0080%	0.0177%	0.0350%	0.0721%	0.1276%	0.2120%	0.3217%	0.2538%	0.0776%
Asian/ Pacific Islander ^c	Both Sexes	0.0739%	0.0023%	0.0085%	0.0160%	0.0270%	0.0550%	0.1050%	0.1908%	0.3318%	0.4270%	0.0756%
	Males	0.0796%	0.0031%	0.0112%	0.0172%	0.0293%	0.0631%	0.1199%	0.2156%	0.4064%	0.5053%	0.0883%
	Females	0.0686%	0.0015%	0.0056%	0.0148%	0.0250%	0.0478%	0.0922%	0.1701%	0.2751%	0.3785%	0.0656%
Hispanic ^d	Both Sexes	0.0569%	0.0025%	0.0081%	0.0157%	0.0305%	0.0660%	0.1351%	0.2491%	0.3956%	0.4649%	0.0910%
	Males	0.0574%	0.0034%	0.0107%	0.0185%	0.0364%	0.0752%	0.1491%	0.2529%	0.3999%	0.4829%	0.0970%
	Females	0.0564%	0.0015%	0.0054%	0.0126%	0.0243%	0.0565%	0.1219%	0.2459%	0.3925%	0.4543%	0.0853%

^a US 2010 cancer prevalence counts are based on 2010 cancer prevalence proportions from the SEER registries and 1/1/2010 US population estimates based on the average of 2009 and 2010 population estimates from the US Bureau of the Census. Prevalence was calculated using the First Malignant Primary Only for a person.

^{b c d} Statistics based on (b) SEER 9 Areas (c) SEER 11 Areas and Rural Georgia (d) NHIA for Hispanic for SEER 11 Areas and Rural Georgia.

^e Maximum limited-duration prevalence: 35 years for 1975-2010 SEER 9 data; 18 years for 1992-2010 SEER 11 data (used to calculate prevalence for Hispanics and Asian Pacific Islanders).

^f Percentages are age-adjusted to the 2000 US Standard Population (19 age groups - Census P25-1130) by 5-year age groups.

^{g h i} (g) Cases diagnosed more than 35 years ago were estimated using the completeness index method (Capocaccia et. al. 1997, Merrill et. al. 2000). (h) Complete prevalence is obtained by summing 0 to <35 and >=35. (i) Age-specific completeness index was approximated using empirical data from historical Connecticut tumor registry.

- Statistic not shown. Statistic based on fewer than 5 cases estimated alive in SEER for the time interval.

+ Not available.

Table 19.26
All Lymphoid Neoplasms With Detailed Non-Hodgkin Lymphoma Subtypes^a
SEER^b Incidence Rates and Annual Percent Change by Age at Diagnosis

All Races, Both Sexes, 2001-2010

Site	All Ages			Ages 0-19			Ages 20-64			Ages 65+		
	Rate	Count	APC	Rate	Count	APC	Rate	Count	APC	Rate	Count	APC
Lymphoid Neoplasm	35.3	284,909	0.0	5.8	13,698	0.9	23.5	121,575	-0.5*	157.2	149,636	0.2
1 Hodgkin Lymphoma	2.8	22,863	0.0	1.2	2,866	1.4*	3.2	16,031	-0.4	4.2	3,966	0.9
2 Non-Hodgkin lymphoma	31.4	252,975	0.1	4.6	10,741	0.7	19.7	102,416	-0.4*	146.9	139,818	0.4
2(a) Non-Hodgkin lymphoma, B-cell	28.7	230,958	0.4	3.3	7,765	3.1*	17.7	92,041	-0.2	137.8	131,152	0.6*
2(a) 1. Precursor Non-Hodgkin lymphoma, B-cell	1.2	10,115	3.8*	2.6	6,183	3.7*	0.6	2,995	3.3*	1.0	937	5.5*
2(a) 2. Mature Non-Hodgkin lymphoma, B-cell	26.2	210,631	0.1	0.6	1,486	0.2	16.4	85,544	-0.4*	129.9	123,601	0.3
2(a) 2.1. Chronic/Small/Prolymphocytic/ Mantle B-cell Non-Hodgkin lymphoma	6.5	51,856	-1.0*	0.0	26	-	3.2	17,282	-1.6*	36.3	34,548	-0.7
2(a) 2.1.1. Chronic/Small lymphocytic leukemia/lymphoma	5.7	45,684	-1.3*	0.0	22	-	2.8	14,981	-1.8*	32.2	30,681	-1.1*
2(a) 2.1.2. Prolymphocytic leukemia, B-cell	0.0	205	-4.8	-	-	-	0.0	56	-	0.2	145	-4.3
2(a) 2.1.3. Mantle-cell lymphoma	0.7	5,967	1.9*	0.0	0	-	0.4	2,245	0.1	3.9	3,722	2.7*
2(a) 2.2. Lymphoplasmacytic lymphoma/ Waldenstrom macroglobulinemia	0.6	4,998	-2.1*	-	-	-	0.3	1,512	-2.6*	3.7	3,483	-2.0*
2(a) 2.2.1. Lymphoplasmacytic lymphoma	0.3	2,217	0.6	-	-	-	0.1	685	-1.8	1.6	1,531	1.5
2(a) 2.2.2. Waldenstrom macroglobulinemia	0.4	2,781	-4.3*	-	-	-	0.2	827	-3.2*	2.1	1,952	-4.6*
2(a) 2.3. Diffuse large B-cell lymphoma (DLBCL)	6.9	55,208	0.2	0.3	641	-0.1	4.6	23,822	-0.6*	32.3	30,745	0.7*
2(a) 2.3.1. DLBCL, NOS ^c	6.8	54,735	0.1	0.3	622	-0.8	4.6	23,446	-0.9*	32.2	30,667	0.7*
2(a) 2.3.2. Intravascular large B-cell lymphoma	0.0	61	-	0.0	0	-	0.0	25	-	0.0	36	-
2(a) 2.3.3. Primary effusion lymphoma	0.0	84	-	0.0	0	-	0.0	64	-	0.0	20	-
2(a) 2.3.4. Mediastinal large B-cell lymphoma	0.0	328	15.0*	0.0	19	-	0.1	287	15.0*	0.0	22	-
2(a) 2.4. Burkitt lymphoma/leukemia	0.4	3,345	1.3	0.3	666	-0.2	0.4	1,930	3.1*	0.8	749	-1.4
2(a) 2.5. Marginal-zone lymphoma (MZL)	1.9	15,060	2.2*	0.0	74	-	1.2	6,327	1.0*	9.1	8,659	2.9*
2(a) 2.5.1. Splenic MZL	0.2	1,266	1.2	0.0	0	-	0.1	498	-1.0	0.8	768	2.4
2(a) 2.5.2. Extranodal MZL, MALT ^c type	1.1	9,105	1.4*	0.0	52	-	0.8	4,086	0.7	5.2	4,967	1.8*
2(a) 2.5.3. Nodal MZL	0.6	4,689	4.0*	0.0	22	-	0.3	1,743	2.1	3.1	2,924	5.0*
2(a) 2.6. Follicular lymphoma	3.7	29,905	0.2	0.0	67	-	3.0	15,400	-0.6	15.2	14,438	1.0
2(a) 2.7. Hairy-cell leukemia	0.3	2,432	-1.0	0.0	0	-	0.3	1,531	-1.2	0.9	901	-0.7
2(a) 2.8. Plasma cell neoplasms	6.0	47,785	0.5	-	-	-	3.4	17,723	0.4	31.6	30,053	0.5
2(a) 2.8.1. Plasmacytoma	0.4	3,055	2.1*	-	-	-	0.3	1,528	1.3	1.6	1,520	2.9*
2(a) 2.8.2. Multiple myeloma/ plasma-cell leukemia	5.6	44,730	0.3	-	-	-	3.1	16,195	0.4	30.0	28,533	0.3
2(a) 2.9. Heavy chain disease	0.0	42	-	0.0	0	-	0.0	17	-	0.0	25	-
2(a) 3. Non-Hodgkin lymphoma, B-cell, NOS ^c	1.3	10,212	3.6*	0.0	96	-	0.7	3,502	1.7	6.9	6,614	4.5*

The APC is the Annual Percent Change over the time interval.

^a Morton LM, Turner JJ, Cerhan JR, Linet MS, Treseler PA, Clarke CA, Jack A, Cozen W, Maynadié M, Spinelli JJ, Costantini AS, Rüdiger T, Scarpa A, Zheng T, Weisenburger DD. Proposed classification of lymphoid neoplasms for epidemiologic research from the Pathology Working Group of the International Lymphoma Epidemiology Consortium (InterLymph). *Blood*. 2007;110:695-708.

^b SEER 18 areas (San Francisco, Connecticut, Detroit, Hawaii, Iowa, New Mexico, Seattle, Utah, Atlanta, San Jose-Monterey, Los Angeles, Alaska Native Registry, Rural Georgia, California excluding SF/SJM/LA, Kentucky, Louisiana, New Jersey and Georgia excluding ATL/RG).

^c NOS = Not otherwise specified. MALT = Mucosa-associated lymphoid tissue. NK = Natural killer.

* The APC is significantly different from zero (p<.05).

- Statistic not shown. Rate based on less than 16 cases for the time interval.

Trend based on less than 10 cases for at least one year within the time interval.

Table 19.26 - continued
 All Lymphoid Neoplasms With Detailed Non-Hodgkin Lymphoma Subtypes
 SEER^b Incidence Rates and Annual Percent Change by Age at Diagnosis

All Races, Both Sexes, 2001-2010

Site	All Ages			Ages 0-19			Ages 20-64			Ages 65+		
	Rate	Count	APC	Rate	Count	APC	Rate	Count	APC	Rate	Count	APC
2(b) Non-Hodgkin lymphoma, T-cell	2.1	16,991	0.5	0.8	1,774	0.7	1.7	8,795	0.2	6.8	6,422	0.9
2(b) 1. Precursor Non-Hodgkin lymphoma, T-cell	0.2	1,368	-2.9	0.3	662	-3.1	0.1	598	-3.3	0.1	108	-
2(b) 2. Mature Non-Hodgkin lymphoma, T-cell	1.9	15,467	0.9*	0.5	1,107	3.0*	1.6	8,123	0.6	6.6	6,237	1.0
2(b) 2.1. Mycosis fungoides/Sezary syndrome	0.5	3,849	0.4	0.0	90	-	0.5	2,306	0.1	1.5	1,453	0.6
2(b) 2.1.1. Mycosis fungoides	0.5	3,737	0.2	0.0	90	-	0.4	2,268	0.0	1.5	1,379	0.2
2(b) 2.1.2. Sezary syndrome	0.0	112	-	0.0	0	-	0.0	38	-	0.1	74	-
2(b) 2.2. Peripheral T-cell lymphoma	1.1	9,328	0.1	0.2	430	-2.0	0.9	4,736	-0.4	4.4	4,162	0.9
2(b) 2.2.1. Peripheral T-cell lymphoma, NOS ^c	0.4	3,273	0.0	0.0	77	-	0.3	1,565	-1.5	1.7	1,631	1.4
2(b) 2.2.2. Angioimmunoblastic T-cell lymphoma	0.1	1,042	8.0*	-	-	-	0.1	421	7.5*	0.7	619	8.3*
2(b) 2.2.3. Subcutaneous panniculitis-like T-cell lymphoma	0.0	111	-	0.0	17	-	0.0	65	-	0.0	29	-
2(b) 2.2.4. Anaplastic large cell lymphoma, T-cell or null-cell type	0.3	2,065	-3.6*	0.1	262	-3.0	0.2	1,150	-2.5	0.7	653	-5.3*
2(b) 2.2.5. Hepatosplenic T-cell lymphoma	0.0	65	-	-	-	-	0.0	46	-	-	-	-
2(b) 2.2.6. Enteropathy-type T-cell lymphoma	0.0	97	-	0.0	0	-	0.0	49	-	0.0	48	-
2(b) 2.2.7. Cutaneous T-cell lymphoma, NOS ^c	0.2	1,840	-0.9	0.0	26	-	0.2	982	-1.5	0.9	832	-0.6
2(b) 2.2.8. Primary cutaneous anaplastic large cell lymphoma	0.1	835	2.0	0.0	33	-	0.1	458	3.0	0.4	344	1.3
2(b) 2.3. Adult T-cell leukemia/lymphoma	0.2	1,232	5.7*	0.2	562	6.8*	0.1	471	8.4*	0.2	199	-1.8
2(b) 2.4. NK ^c /T-cell lymphoma, nasal-type/aggressive NK ^c -cell leukemia	0.1	600	4.7*	0.0	24	-	0.1	415	4.5*	0.2	161	-
2(b) 2.5. T-cell large granular lymphocytic leukemia	0.0	202	-	-	-	-	0.0	82	-	0.1	119	-
2(b) 2.6. Prolymphocytic leukemia, T-cell	0.0	256	6.4*	0.0	0	-	0.0	113	-	0.2	143	-
2(b) 3. Non-Hodgkin lymphoma, NOS ^c , T-cell	0.0	156	-	-	-	-	0.0	74	-	0.1	77	-
2(c) Non-Hodgkin lymphoma, unknown lineage	0.6	5,026	-10.2*	0.5	1,202	-13.5*	0.3	1,580	-10.0*	2.3	2,244	-8.4*
2(c) 1. Precursor lymphoblastic leukemia/lymphoma, unknown lineage	0.3	2,129	-12.6*	0.5	1,178	-13.5*	0.1	553	-11.7*	0.4	398	-9.9*
2(c) 2. Prolymphocytic leukemia, unknown lineage	0.0	115	-	-	-	-	0.0	34	-	0.1	79	-
2(c) 3. Non-Hodgkin lymphoma, NOS ^c , unknown lineage	0.4	2,782	-	0.0	22	-	0.2	993	-	1.9	1,767	-
2(*) 1. Total precursor lymphoma/leukemia ^d	1.7	13,612	0.4	3.4	8,023	0.4	0.8	4,146	0.2	1.5	1,443	0.7
3 Composite Hodgkin lymphoma and Non-Hodgkin lymphoma	0.0	145	4.0	-	-	-	0.0	77	-	0.1	66	-
4 Lymphoid neoplasm, NOS ^c	1.1	8,926	-4.7*	0.0	89	-	0.6	3,051	-5.6*	6.0	5,786	-4.4*

The APC is the Annual Percent Change over the time interval.

^a Morton LM, et al. Proposed classification of lymphoid neoplasms for epidemiologic research from the Pathology Working Group of the International Lymphoma Epidemiology Consortium (InterLymph). Blood. 2007;110:695-708.

^b SEER 18 areas (San Francisco, Connecticut, Detroit, Hawaii, Iowa, New Mexico, Seattle, Utah, Atlanta, San Jose-Monterey, Los Angeles, Alaska Native Registry, Rural Georgia, California excluding SF/SJM/LA, Kentucky, Louisiana, New Jersey and Georgia excluding ATL/RG).

^c NOS = Not otherwise specified. MALT = Mucosa-associated lymphoid tissue. NK = Natural killer.

^d Total precursor lymphoma/leukemia is comprised of categories 2(a)1., 2(b)1., and 2(c)1.

* The APC is significantly different from zero (p<.05).

- Statistic not shown. Rate based on less than 16 cases for the time interval.

Trend based on less than 10 cases for at least one year within the time interval.

Table 19.27
All Lymphoid Neoplasms With Detailed Non-Hodgkin Lymphoma Subtypes^a
SEER^b Incidence Rates and Annual Percent Change by Age at Diagnosis

All Races, Males, 2001-2010

Site	All Ages			Ages 0-19			Ages 20-64			Ages 65+		
	Rate	Count	APC	Rate	Count	APC	Rate	Count	APC	Rate	Count	APC
Lymphoid Neoplasm	43.6	157,485	0.0	6.6	8,015	1.0*	28.1	71,203	-0.6*	199.7	78,267	0.3
1 Hodgkin Lymphoma	3.1	12,519	0.1	1.3	1,543	1.4	3.6	8,892	-0.5	5.2	2,084	1.4
2 Non-Hodgkin lymphoma	39.1	140,228	0.1	5.3	6,417	0.9	23.8	60,435	-0.5*	187.1	73,376	0.5
2(a) Non-Hodgkin lymphoma, B-cell	35.7	127,377	0.4	3.7	4,495	3.2*	21.3	54,214	-0.3	175.1	68,668	0.7*
2(a) 1. Precursor Non-Hodgkin lymphoma, B-cell	1.3	5,516	3.9*	2.8	3,416	3.8*	0.7	1,662	3.1*	1.1	438	6.8*
2(a) 2. Mature Non-Hodgkin lymphoma, B-cell	32.8	116,553	0.1	0.8	1,012	0.8	19.8	50,537	-0.5*	165.7	65,004	0.4
2(a) 2.1. Chronic/Small/Prolymphocytic/ Mantle B-cell Non-Hodgkin lymphoma	9.1	31,456	-1.0*	-	-	-	4.4	11,340	-1.8*	51.4	20,101	-0.6
2(a) 2.1.1. Chronic/Small lymphocytic leukemia/lymphoma	7.8	27,147	-1.4*	-	-	-	3.7	9,641	-2.1*	44.8	17,492	-1.1*
2(a) 2.1.2. Prolymphocytic leukemia, B-cell	0.0	129	-	-	-	-	0.0	36	-	0.2	92	-
2(a) 2.1.3. Mantle-cell lymphoma	1.2	4,180	1.9*	0.0	0	-	0.6	1,663	-0.1	6.4	2,517	2.9*
2(a) 2.2. Lymphoplasmacytic lymphoma/ Waldenstrom macroglobulinemia	0.9	2,908	-2.8*	-	-	-	0.3	880	-3.3*	5.2	2,027	-2.6*
2(a) 2.2.1. Lymphoplasmacytic lymphoma	0.4	1,230	0.4	0.0	0	-	0.2	388	-3.1	2.2	842	1.6
2(a) 2.2.2. Waldenstrom macroglobulinemia	0.5	1,678	-5.1*	-	-	-	0.2	492	-3.3	3.1	1,185	-5.6*
2(a) 2.3. Diffuse large B-cell lymphoma (DLBCL)	8.3	29,887	0.4	0.3	367	-0.5	5.7	14,369	-0.6	38.8	15,151	1.0*
2(a) 2.3.1. DLBCL, NOS ^c	8.3	29,651	0.3	0.3	361	-1.1	5.6	14,182	-0.7	38.7	15,108	1.0*
2(a) 2.3.2. Intravascular large B-cell lymphoma	0.0	30	-	0.0	0	-	-	-	-	0.0	17	-
2(a) 2.3.3. Primary effusion lymphoma	0.0	75	-	0.0	0	-	0.0	60	-	-	-	-
2(a) 2.3.4. Mediastinal large B-cell lymphoma	0.0	131	-	-	-	-	0.0	114	-	-	-	-
2(a) 2.4. Burkitt lymphoma/leukemia	0.6	2,430	1.4	0.4	524	0.4	0.6	1,484	2.9*	1.1	422	-1.6
2(a) 2.5. Marginal-zone lymphoma (MZL)	1.9	6,932	2.7*	0.0	49	-	1.2	3,023	1.4	9.8	3,860	3.3*
2(a) 2.5.1. Splenic MZL	0.2	600	0.3	0.0	0	-	0.1	250	-2.2	0.9	350	1.8
2(a) 2.5.2. Extranodal MZL, MALT ^c type	1.1	4,096	1.8*	0.0	32	-	0.7	1,882	1.5	5.5	2,182	1.9*
2(a) 2.5.3. Nodal MZL	0.6	2,236	5.1*	0.0	17	-	0.3	891	2.2	3.4	1,328	6.4*
2(a) 2.6. Follicular lymphoma	4.0	14,795	0.2	0.0	49	-	3.2	8,065	-0.7	16.7	6,681	1.1
2(a) 2.7. Hairy-cell leukemia	0.5	1,919	-0.5	0.0	0	-	0.5	1,243	-0.7	1.7	676	-0.3
2(a) 2.8. Plasma cell neoplasms	7.5	26,198	0.6*	-	-	-	3.9	10,124	0.4	40.9	16,067	0.7
2(a) 2.8.1. Plasmacytoma	0.5	1,901	1.8*	-	-	-	0.4	999	0.5	2.3	896	2.8*
2(a) 2.8.2. Multiple myeloma/ plasma-cell leukemia	7.0	24,297	0.5*	-	-	-	3.5	9,125	0.4	38.6	15,171	0.6
2(a) 2.9. Heavy chain disease	0.0	28	-	0.0	0	-	-	-	-	0.0	19	-
2(a) 3. Non-Hodgkin lymphoma, B-cell, NOS ^c	1.5	5,308	3.8*	0.1	67	-	0.8	2,015	1.7	8.4	3,226	4.7*

The APC is the Annual Percent Change over the time interval.

^a Morton LM, Turner JJ, Cerhan JR, Linet MS, Treseler PA, Clarke CA, Jack A, Cozen W, Maynadié M, Spinelli JJ, Costantini AS, Rüdiger T, Scarpa A, Zheng T, Weisenburger DD. Proposed classification of lymphoid neoplasms for epidemiologic research from the Pathology Working Group of the International Lymphoma Epidemiology Consortium (InterLymph). *Blood*. 2007;110:695-708.

^b SEER 18 areas (San Francisco, Connecticut, Detroit, Hawaii, Iowa, New Mexico, Seattle, Utah, Atlanta, San Jose-Monterey, Los Angeles, Alaska Native Registry, Rural Georgia, California excluding SF/SJM/LA, Kentucky, Louisiana, New Jersey and Georgia excluding ATL/RG).

^c NOS = Not otherwise specified. MALT = Mucosa-associated lymphoid tissue. NK = Natural killer.

* The APC is significantly different from zero (p<.05).

- Statistic not shown. Rate based on less than 16 cases for the time interval.

Trend based on less than 10 cases for at least one year within the time interval.

Table 19.27 - continued
 All Lymphoid Neoplasms With Detailed Non-Hodgkin Lymphoma Subtypes
 SEER^b Incidence Rates and Annual Percent Change by Age at Diagnosis

All Races, Males, 2001-2010

Site	All Ages			Ages 0-19			Ages 20-64			Ages 65+		
	Rate	Count	APC	Rate	Count	APC	Rate	Count	APC	Rate	Count	APC
2(b) Non-Hodgkin lymphoma, T-cell	2.7	10,138	0.1	1.0	1,231	1.5*	2.1	5,245	-0.1	9.3	3,662	0.0
2(b) 1. Precursor Non-Hodgkin lymphoma, T-cell	0.2	942	-2.4	0.4	476	-2.7	0.2	411	-2.7	0.1	55	-
2(b) 2. Mature Non-Hodgkin lymphoma, T-cell	2.4	9,108	0.5	0.6	751	4.2*	1.9	4,795	0.3	9.0	3,562	0.2
2(b) 2.1. Mycosis fungoides/Sezary syndrome	0.6	2,186	-0.4	0.0	38	-	0.5	1,248	0.6	2.3	900	-1.7*
2(b) 2.1.1. Mycosis fungoides	0.6	2,120	-0.7	0.0	38	-	0.5	1,228	0.4	2.1	854	-2.1*
2(b) 2.1.2. Sezary syndrome	0.0	66	-	0.0	0	-	0.0	20	-	0.1	46	-
2(b) 2.2. Peripheral T-cell lymphoma	1.5	5,468	-0.2	0.2	270	-2.0	1.1	2,866	-1.0	5.9	2,332	0.6
2(b) 2.2.1. Peripheral T-cell lymphoma, NOS ^c	0.5	1,959	0.5	0.0	49	-	0.4	991	-1.3	2.3	919	2.2
2(b) 2.2.2. Angioimmunoblastic T-cell lymphoma	0.1	535	6.3*	-	-	-	0.1	233	6.8*	0.8	301	6.0*
2(b) 2.2.3. Subcutaneous panniculitis-like T-cell lymphoma	0.0	36	-	-	-	-	0.0	19	-	-	-	-
2(b) 2.2.4. Anaplastic large cell lymphoma, T-cell or null-cell type	0.3	1,288	-4.6*	0.1	169	-3.5	0.3	740	-4.0*	1.0	379	-5.6*
2(b) 2.2.5. Hepatosplenic T-cell lymphoma	0.0	43	-	-	-	-	0.0	26	-	-	-	-
2(b) 2.2.6. Enteropathy-type T-cell lymphoma	0.0	59	-	0.0	0	-	0.0	29	-	0.1	30	-
2(b) 2.2.7. Cutaneous T-cell lymphoma, NOS ^c	0.3	1,066	-1.0	-	-	-	0.2	582	-2.0	1.2	469	-0.5
2(b) 2.2.8. Primary cutaneous anaplastic large cell lymphoma	0.1	482	1.4	0.0	19	-	0.1	246	3.4	0.6	217	-0.5
2(b) 2.3. Adult T-cell leukemia/lymphoma	0.2	824	6.4*	0.4	424	7.9*	0.1	305	8.7*	0.2	95	-
2(b) 2.4. NK ^c /T-cell lymphoma, nasal-type/aggressive NK ^c -cell leukemia	0.1	388	4.3	0.0	19	-	0.1	277	4.2	0.2	92	-
2(b) 2.5. T-cell large granular lymphocytic leukemia	0.0	100	-	0.0	0	-	0.0	32	-	0.2	68	-
2(b) 2.6. Prolymphocytic leukemia, T-cell	0.0	142	-	0.0	0	-	0.0	67	-	0.2	75	-
2(b) 3. Non-Hodgkin lymphoma, NOS ^c , T-cell	0.0	88	-	-	-	-	0.0	39	-	0.1	45	-
2(c) Non-Hodgkin lymphoma, unknown lineage	0.7	2,713	-10.7*	0.6	691	-13.9*	0.4	976	-10.3*	2.7	1,046	-9.0*
2(c) 1. Precursor lymphoblastic leukemia/lymphoma, unknown lineage	0.3	1,188	-12.6*	0.6	674	-13.9*	0.1	322	-11.4*	0.5	192	-9.5*
2(c) 2. Prolymphocytic leukemia, unknown lineage	0.0	69	-	-	-	-	0.0	21	-	0.1	47	-
2(c) 3. Non-Hodgkin lymphoma, NOS ^c , unknown lineage	0.4	1,456	-	0.0	16	-	0.3	633	-	2.1	807	-
2(*) 1. Total precursor lymphoma/leukemia ^d	1.9	7,646	0.3	3.8	4,566	0.3	1.0	2,395	0.0	1.7	685	1.2
3 Composite Hodgkin lymphoma and Non-Hodgkin lymphoma	0.0	72	-	-	-	-	0.0	43	-	0.1	28	-
4 Lymphoid neoplasm, NOS ^c	1.4	4,666	-4.5*	0.0	54	-	0.7	1,833	-5.7*	7.3	2,779	-4.0*

The APC is the Annual Percent Change over the time interval.

^a Morton LM, et al. Proposed classification of lymphoid neoplasms for epidemiologic research from the Pathology Working Group of the International Lymphoma Epidemiology Consortium (InterLymph). *Blood*. 2007;110:695-708.

^b SEER 18 areas (San Francisco, Connecticut, Detroit, Hawaii, Iowa, New Mexico, Seattle, Utah, Atlanta, San Jose-Monterey, Los Angeles, Alaska Native Registry, Rural Georgia, California excluding SF/SJM/LA, Kentucky, Louisiana, New Jersey and Georgia excluding ATL/RG).

^c NOS = Not otherwise specified. MALT = Mucosa-associated lymphoid tissue. NK = Natural killer.

^d Total precursor lymphoma/leukemia is comprised of categories 2(a)1., 2(b)1., and 2(c)1.

* The APC is significantly different from zero (p<.05).

- Statistic not shown. Rate based on less than 16 cases for the time interval.

Trend based on less than 10 cases for at least one year within the time interval.

Table 19.28
All Lymphoid Neoplasms With Detailed Non-Hodgkin Lymphoma Subtypes^a
SEER^b Incidence Rates and Annual Percent Change by Age at Diagnosis

All Races, Females, 2001-2010

Site	All Ages			Ages 0-19			Ages 20-64			Ages 65+		
	Rate	Count	APC	Rate	Count	APC	Rate	Count	APC	Rate	Count	APC
Lymphoid Neoplasm	28.8	127,424	-0.2	4.9	5,683	0.7	19.1	50,372	-0.4*	127.7	71,369	-0.1
1 Hodgkin Lymphoma	2.5	10,344	-0.1	1.1	1,323	1.4	2.9	7,139	-0.4	3.4	1,882	0.1
2 Non-Hodgkin lymphoma	25.4	112,747	0.0	3.8	4,324	0.4	15.8	41,981	-0.2	119.1	66,442	0.1
2(a) Non-Hodgkin lymphoma, B-cell	23.3	103,581	0.2	2.9	3,270	2.9*	14.2	37,827	-0.1	112.0	62,484	0.3
2(a) 1. Precursor Non-Hodgkin lymphoma, B-cell	1.1	4,599	3.6*	2.4	2,767	3.5*	0.5	1,333	3.6*	0.9	499	4.5*
2(a) 2. Mature Non-Hodgkin lymphoma, B-cell	21.1	94,078	-0.1	0.4	474	-1.1	13.1	35,007	-0.3	105.1	58,597	0.0
2(a) 2.1. Chronic/Small/Prolymphocytic/ Mantle B-cell Non-Hodgkin lymphoma	4.5	20,400	-1.2*	-	-	-	2.2	5,942	-1.2	25.7	14,447	-1.1*
2(a) 2.1.1. Chronic/Small lymphocytic leukemia/lymphoma	4.1	18,537	-1.4*	-	-	-	1.9	5,340	-1.4*	23.4	13,189	-1.4*
2(a) 2.1.2. Prolymphocytic leukemia, B-cell	0.0	76	-	-	-	-	0.0	20	-	0.1	53	-
2(a) 2.1.3. Mantle-cell lymphoma	0.4	1,787	1.6	0.0	0	-	0.2	582	0.7	2.2	1,205	1.9
2(a) 2.2. Lymphoplasmacytic lymphoma/ Waldenstrom macroglobulinemia	0.5	2,090	-1.5*	-	-	-	0.2	632	-1.6	2.6	1,456	-1.4*
2(a) 2.2.1. Lymphoplasmacytic lymphoma	0.2	987	0.7	-	-	-	0.1	297	0.1	1.2	689	0.9
2(a) 2.2.2. Waldenstrom macroglobulinemia	0.2	1,103	-3.5*	-	-	-	0.1	335	-3.2*	1.4	767	-3.7*
2(a) 2.3. Diffuse large B-cell lymphoma (DLBCL)	5.7	25,321	-0.1	0.2	274	0.2	3.6	9,453	-0.7*	27.9	15,594	0.2
2(a) 2.3.1. DLBCL, NOS ^c	5.6	25,084	-0.3	0.2	261	-0.5	3.5	9,264	-1.1*	27.8	15,559	0.2
2(a) 2.3.2. Intravascular large B-cell lymphoma	0.0	31	-	0.0	0	-	-	-	-	0.0	19	-
2(a) 2.3.3. Primary effusion lymphoma	-	-	-	0.0	0	-	-	-	-	-	-	-
2(a) 2.3.4. Mediastinal large B-cell lymphoma	0.0	197	-	-	-	-	0.1	173	-	-	-	-
2(a) 2.4. Burkitt lymphoma/leukemia	0.2	915	0.8	0.1	142	-	0.2	446	3.7	0.6	327	-1.3
2(a) 2.5. Marginal-zone lymphoma (MZL)	1.8	8,128	1.6*	0.0	25	-	1.2	3,304	0.5	8.7	4,799	2.4*
2(a) 2.5.1. Splenic MZL	0.1	666	1.5	0.0	0	-	0.1	248	0.1	0.8	418	2.4
2(a) 2.5.2. Extranodal MZL, MALT ^c type	1.1	5,009	1.0	0.0	20	-	0.8	2,204	0.1	5.0	2,785	1.7
2(a) 2.5.3. Nodal MZL	0.6	2,453	3.1*	-	-	-	0.3	852	2.0*	2.9	1,596	3.7*
2(a) 2.6. Follicular lymphoma	3.4	15,110	0.2	0.0	18	-	2.8	7,335	-0.3	14.1	7,757	0.8
2(a) 2.7. Hairy-cell leukemia	0.1	513	-2.9	0.0	0	-	0.1	288	-2.9	0.4	225	-2.7
2(a) 2.8. Plasma cell neoplasms	4.8	21,587	0.1	-	-	-	2.8	7,599	0.5	25.2	13,986	0.0
2(a) 2.8.1. Plasmacytoma	0.3	1,154	2.7	-	-	-	0.2	529	2.9	1.1	624	2.6
2(a) 2.8.2. Multiple myeloma/ plasma-cell leukemia	4.6	20,433	0.0	-	-	-	2.6	7,070	0.3	24.0	13,362	-0.2
2(a) 2.9. Heavy chain disease	-	-	-	0.0	0	-	-	-	-	-	-	-
2(a) 3. Non-Hodgkin lymphoma, B-cell, NOS ^c	1.1	4,904	3.2*	0.0	29	-	0.6	1,487	1.5	6.0	3,388	3.9*

The APC is the Annual Percent Change over the time interval.

^a Morton LM, Turner JJ, Cerhan JR, Linet MS, Treseler PA, Clarke CA, Jack A, Cozen W, Maynadié M, Spinelli JJ, Costantini AS, Rüdiger T, Scarpa A, Zheng T, Weisenburger DD. Proposed classification of lymphoid neoplasms for epidemiologic research from the Pathology Working Group of the International Lymphoma Epidemiology Consortium (InterLymph). *Blood*. 2007;110:695-708.

^b SEER 18 areas (San Francisco, Connecticut, Detroit, Hawaii, Iowa, New Mexico, Seattle, Utah, Atlanta, San Jose-Monterey, Los Angeles, Alaska Native Registry, Rural Georgia, California excluding SF/SJM/LA, Kentucky, Louisiana, New Jersey and Georgia excluding ATL/RG).

^c NOS = Not otherwise specified. MALT = Mucosa-associated lymphoid tissue. NK = Natural killer.

* The APC is significantly different from zero (p<.05).

- Statistic not shown. Rate based on less than 16 cases for the time interval.

Trend based on less than 10 cases for at least one year within the time interval.

Table 19.28 - continued
 All Lymphoid Neoplasms With Detailed Non-Hodgkin Lymphoma Subtypes
 SEER^b Incidence Rates and Annual Percent Change by Age at Diagnosis

All Races, Females, 2001-2010

Site	All Ages			Ages 0-19			Ages 20-64			Ages 65+		
	Rate	Count	APC	Rate	Count	APC	Rate	Count	APC	Rate	Count	APC
2(b) Non-Hodgkin lymphoma, T-cell	1.6	6,853	0.8*	0.5	543	-1.0	1.4	3,550	0.5	5.0	2,760	1.7*
2(b) 1. Precursor Non-Hodgkin lymphoma, T-cell	0.1	426	-3.9*	0.2	186	-4.1*	0.1	187	-4.8	0.1	53	-
2(b) 2. Mature Non-Hodgkin lymphoma, T-cell	1.5	6,359	1.3*	0.3	356	0.7	1.3	3,328	0.9	4.8	2,675	1.9*
2(b) 2.1. Mycosis fungoides/Sezary syndrome	0.4	1,663	1.2	0.0	52	-	0.4	1,058	-0.5	1.0	553	4.3*
2(b) 2.1.1. Mycosis fungoides	0.4	1,617	1.0	0.0	52	-	0.4	1,040	-0.5	1.0	525	4.1*
2(b) 2.1.2. Sezary syndrome	0.0	46	-	0.0	0	-	0.0	18	-	0.1	28	-
2(b) 2.2. Peripheral T-cell lymphoma	0.9	3,860	0.6	0.1	160	-	0.7	1,870	0.5	3.3	1,830	1.0
2(b) 2.2.1. Peripheral T-cell lymphoma, NOS ^c	0.3	1,314	-0.9	0.0	28	-	0.2	574	-1.9	1.3	712	0.1
2(b) 2.2.2. Angioimmunoblastic T-cell lymphoma	0.1	507	9.7*	-	-	-	0.1	188	-	0.6	318	10.6*
2(b) 2.2.3. Subcutaneous panniculitis-like T-cell lymphoma	0.0	75	-	-	-	-	0.0	46	-	0.0	17	-
2(b) 2.2.4. Anaplastic large cell lymphoma, T-cell or null-cell type	0.2	777	-2.1	0.1	93	-	0.2	410	0.5	0.5	274	-5.3
2(b) 2.2.5. Hepatosplenic T-cell lymphoma	0.0	22	-	-	-	-	0.0	20	-	-	-	-
2(b) 2.2.6. Enteropathy-type T-cell lymphoma	0.0	38	-	0.0	0	-	0.0	20	-	0.0	18	-
2(b) 2.2.7. Cutaneous T-cell lymphoma, NOS ^c	0.2	774	-0.9	-	-	-	0.2	400	-0.7	0.7	363	-1.4
2(b) 2.2.8. Primary cutaneous anaplastic large cell lymphoma	0.1	353	2.4	-	-	-	0.1	212	2.9	0.2	127	-
2(b) 2.3. Adult T-cell leukemia/lymphoma	0.1	408	4.1	0.1	138	-	0.1	166	7.7	0.2	104	-
2(b) 2.4. NK ^c /T-cell lymphoma, nasal-type/aggressive NK ^c -cell leukemia	0.0	212	5.3	-	-	-	0.1	138	-	0.1	69	-
2(b) 2.5. T-cell large granular lymphocytic leukemia	0.0	102	-	-	-	-	0.0	50	-	0.1	51	-
2(b) 2.6. Prolymphocytic leukemia, T-cell	0.0	114	-	0.0	0	-	0.0	46	-	0.1	68	-
2(b) 3. Non-Hodgkin lymphoma, NOS ^c , T-cell	0.0	68	-	-	-	-	0.0	35	-	0.1	32	-
2(c) Non-Hodgkin lymphoma, unknown lineage	0.5	2,313	-9.8*	0.4	511	-12.8*	0.2	604	-9.6*	2.1	1,198	-8.2*
2(c) 1. Precursor lymphoblastic leukemia/lymphoma, unknown lineage	0.2	941	-12.5*	0.4	504	-12.9*	0.1	231	-11.9*	0.4	206	-11.1*
2(c) 2. Prolymphocytic leukemia, unknown lineage	0.0	46	-	-	-	-	-	-	-	0.1	32	-
2(c) 3. Non-Hodgkin lymphoma, NOS ^c , unknown lineage	0.3	1,326	-	-	-	-	0.1	360	-	1.7	960	-
2(*) 1. Total precursor lymphoma/leukemia ^d	1.4	5,966	0.4	3.0	3,457	0.5	0.7	1,751	0.5	1.4	758	0.0
3 Composite Hodgkin lymphoma and Non-Hodgkin lymphoma	0.0	73	-	-	-	-	0.0	34	-	0.1	38	-
4 Lymphoid neoplasm, NOS ^c	0.9	4,260	-4.9*	0.0	35	-	0.5	1,218	-5.4*	5.1	3,007	-4.9*

The APC is the Annual Percent Change over the time interval.

^a Morton LM, et al. Proposed classification of lymphoid neoplasms for epidemiologic research from the Pathology Working Group of the International Lymphoma Epidemiology Consortium (InterLymph). Blood. 2007;110:695-708.

^b SEER 18 areas (San Francisco, Connecticut, Detroit, Hawaii, Iowa, New Mexico, Seattle, Utah, Atlanta, San Jose-Monterey, Los Angeles, Alaska Native Registry, Rural Georgia, California excluding SF/SJM/LA, Kentucky, Louisiana, New Jersey and Georgia excluding ATL/RG).

^c NOS = Not otherwise specified. MALT = Mucosa-associated lymphoid tissue. NK = Natural killer.

^d Total precursor lymphoma/leukemia is comprised of categories 2(a)1., 2(b)1., and 2(c)1.

* The APC is significantly different from zero (p<.05).

- Statistic not shown. Rate based on less than 16 cases for the time interval.

Trend based on less than 10 cases for at least one year within the time interval.

Table 19.29
All Lymphoid Neoplasms With Detailed Non-Hodgkin Lymphoma Subtypes^a

SEER^b 5-Year Relative Survival (Percent) by Age at Diagnosis

All Races, Both Sexes, 2003-2009

Site	All Ages		Ages 0-19		Ages 20-64		Ages 65+	
	Count	Percent (95% C.I.)	Percent (95% C.I.)	Percent (95% C.I.)	Percent (95% C.I.)	Percent (95% C.I.)	Percent (95% C.I.)	
Lymphoid Neoplasm	166,706	67.5 (67.2 , 67.8)	88.5 (87.7 , 89.2)	75.2 (74.8 , 75.6)	56.7 (56.2 , 57.2)			
1 Hodgkin Lymphoma	14,838	85.1 (84.4 , 85.8)	96.6 (95.5 , 97.5)	89.1 (88.4 , 89.8)	52.4 (49.3 , 55.4)			
2 Non-Hodgkin lymphoma	147,198	66.2 (65.9 , 66.5)	86.3 (85.4 , 87.2)	73.3 (72.9 , 73.7)	57.4 (56.9 , 58.0)			
2(a) Non-Hodgkin lymphoma, B-cell	134,284	66.7 (66.3 , 67.0)	87.5 (86.4 , 88.5)	74.3 (73.9 , 74.7)	58.1 (57.5 , 58.7)			
2(a) 1. Precursor Non-Hodgkin lymphoma, B-cell	6,866	66.8 (65.5 , 68.1)	87.7 (86.5 , 88.8)	33.5 (31.1 , 36.1)	12.1 (8.5 , 16.3)			
2(a) 2. Mature Non-Hodgkin lymphoma, B-cell	121,791	66.7 (66.3 , 67.1)	86.9 (84.5 , 88.9)	75.7 (75.3 , 76.2)	58.3 (57.7 , 58.9)			
2(a) 2.1. Chronic/Small/Prolymphocytic/ Mantle B-cell Non-Hodgkin lymphoma	29,012	75.6 (74.8 , 76.4)	- (- , -)	84.8 (83.9 , 85.7)	69.6 (68.4 , 70.8)			
2(a) 2.1.1. Chronic/Small lymphocytic leukemia/lymphoma	25,623	78.5 (77.6 , 79.3)	- (- , -)	87.6 (86.6 , 88.5)	72.7 (71.4 , 73.9)			
2(a) 2.1.2. Prolymphocytic leukemia, B-cell	113	40.4 (28.8 , 51.7)	- (- , -)	53.0 (30.9 , 70.9)	36.0 (22.5 , 49.7)			
2(a) 2.1.3. Mantle-cell lymphoma	3,276	54.6 (52.2 , 56.9)	- (- , -)	67.0 (63.8 , 70.1)	44.7 (41.3 , 48.0)			
2(a) 2.2. Lymphoplasmacytic lymphoma/ Waldenstrom macroglobulinemia	2,669	77.4 (74.6 , 79.9)	- (- , -)	84.0 (80.6 , 86.9)	73.4 (69.6 , 76.9)			
2(a) 2.2.1. Lymphoplasmacytic lymphoma	1,200	75.9 (71.6 , 79.6)	- (- , -)	81.2 (75.6 , 85.7)	72.8 (66.6 , 78.0)			
2(a) 2.2.2. Waldenstrom macroglobulinemia	1,469	78.7 (75.0 , 81.9)	- (- , -)	86.3 (81.7 , 89.8)	74.0 (68.7 , 78.6)			
2(a) 2.3. Diffuse large B-cell lymphoma (DLBCL)	32,362	60.5 (59.8 , 61.2)	85.1 (81.1 , 88.3)	69.9 (69.0 , 70.7)	51.0 (49.9 , 52.1)			
2(a) 2.3.1. DLBCL, NOS ^c	32,036	60.4 (59.8 , 61.1)	86.1 (82.1 , 89.3)	69.8 (68.9 , 70.6)	51.1 (50.0 , 52.2)			
2(a) 2.3.2. Intravascular large B-cell lymphoma	32	49.0 (27.8 , 67.1)	- (- , -)	- (- , -)	- (- , -)			
2(a) 2.3.3. Primary effusion lymphoma	52	23.1 (11.9 , 36.4)	- (- , -)	26.7 (13.7 , 41.6)	- (- , -)			
2(a) 2.3.4. Mediastinal large B-cell lymphoma	242	81.4 (74.3 , 86.7)	- (- , -)	87.3 (81.2 , 91.5)	- (- , -)			
2(a) 2.4. Burkitt lymphoma/leukemia	2,133	56.7 (54.3 , 59.0)	87.1 (83.5 , 90.0)	54.5 (51.4 , 57.4)	28.0 (22.0 , 34.2)			
2(a) 2.5. Marginal-zone lymphoma (MZL)	8,554	89.5 (88.2 , 90.7)	97.7 (84.9 , 99.7)	93.0 (91.7 , 94.1)	86.1 (83.8 , 88.2)			
2(a) 2.5.1. Splenic MZL	750	85.6 (80.8 , 89.2)	- (- , -)	92.1 (88.0 , 94.9)	78.9 (70.5 , 85.1)			
2(a) 2.5.2. Extranodal MZL, MALT ^c type	5,144	93.7 (92.0 , 95.1)	96.7 (78.5 , 99.5)	95.0 (93.5 , 96.2)	92.3 (88.9 , 94.7)			
2(a) 2.5.3. Nodal MZL	2,660	82.4 (79.8 , 84.6)	- (- , -)	88.1 (85.2 , 90.4)	77.4 (73.5 , 80.8)			
2(a) 2.6. Follicular lymphoma	17,973	85.4 (84.6 , 86.2)	92.8 (78.3 , 97.7)	89.9 (89.0 , 90.6)	79.4 (77.7 , 80.9)			
2(a) 2.7. Hairy-cell leukemia	1,468	94.0 (91.2 , 95.9)	- (- , -)	97.6 (95.7 , 98.6)	85.0 (76.8 , 90.4)			
2(a) 2.8. Plasma cell neoplasms	27,592	43.0 (42.1 , 43.8)	- (- , -)	55.7 (54.5 , 56.8)	33.2 (32.2 , 34.3)			
2(a) 2.8.1. Plasmacytoma	1,732	65.0 (61.8 , 68.1)	- (- , -)	76.5 (72.8 , 79.8)	49.9 (44.4 , 55.1)			
2(a) 2.8.2. Multiple myeloma/ plasma-cell leukemia	25,860	41.5 (40.6 , 42.3)	- (- , -)	53.8 (52.6 , 55.0)	32.4 (31.3 , 33.5)			
2(a) 2.9. Heavy chain disease	28	53.1 (17.5 , 79.5)	- (- , -)	- (- , -)	- (- , -)			
2(a) 3. Non-Hodgkin lymphoma, B-cell, NOS ^c	5,627	66.9 (65.0 , 68.6)	80.5 (63.0 , 90.3)	74.3 (71.9 , 76.4)	61.8 (59.1 , 64.4)			

^a Morton LM, Turner JJ, Cerhan JR, Linet MS, Treseler PA, Clarke CA, Jack A, Cozen W, Maynadié M, Spinelli JJ, Costantini AS, Rüdiger T, Scarpa A, Zheng T, Weisenburger DD. Proposed classification of lymphoid neoplasms for epidemiologic research from the Pathology Working Group of the International Lymphoma Epidemiology Consortium (InterLymph). *Blood*. 2007;110:695-708.

^b SEER 18 areas (San Francisco, Connecticut, Detroit, Hawaii, Iowa, New Mexico, Seattle, Utah, Atlanta, San Jose-Monterey, Los Angeles, Alaska Native Registry, Rural Georgia, California excluding SF/SJM/LA, Kentucky, Louisiana, New Jersey and Georgia excluding ATL/RG).

^c NOS = Not otherwise specified. MALT = Mucosa-associated lymphoid tissue. NK = Natural killer.

- Statistic not displayed due to less than 25 cases.

Table 19.29 - continued
 All Lymphoid Neoplasms With Detailed Non-Hodgkin Lymphoma Subtypes^a

SEER^b 5-Year Relative Survival (Percent) by Age at Diagnosis

All Races, Both Sexes, 2003-2009

Site	All Ages		Ages 0-19		Ages 20-64		Ages 65+	
	Count	Percent (95% C.I.)	Percent (95% C.I.)	Percent (95% C.I.)	Percent (95% C.I.)	Percent (95% C.I.)	Percent (95% C.I.)	
2(b) Non-Hodgkin lymphoma, T-cell	10,083	62.0 (60.8 , 63.2)	81.8 (79.3 , 84.0)	65.3 (63.9 , 66.8)	48.5 (46.0 , 51.0)			
2(b) 1. Precursor Non-Hodgkin lymphoma, T-cell	1,554	63.1 (60.4 , 65.7)	81.7 (78.6 , 84.4)	45.4 (40.9 , 49.8)	6.5 (1.7 , 16.0)			
2(b) 2. Mature Non-Hodgkin lymphoma, T-cell	8,431	62.1 (60.8 , 63.4)	82.2 (77.6 , 85.9)	68.1 (66.5 , 69.6)	50.0 (47.5 , 52.5)			
2(b) 2.1. Mycosis fungoides/Sezary syndrome	2,230	89.0 (86.6 , 90.9)	98.4 (88.6 , 99.8)	93.1 (90.9 , 94.8)	79.0 (72.5 , 84.0)			
2(b) 2.1.1. Mycosis fungoides	2,174	90.1 (87.7 , 92.1)	98.4 (88.6 , 99.8)	93.5 (91.3 , 95.2)	81.5 (74.8 , 86.6)			
2(b) 2.1.2. Sezary syndrome	56	40.5 (23.1 , 57.2)	- (- , -)	- (- , -)	25.1 (8.1 , 46.7)			
2(b) 2.2. Peripheral T-cell lymphoma	5,366	55.0 (53.4 , 56.7)	81.3 (75.9 , 85.6)	61.2 (59.1 , 63.2)	42.6 (39.6 , 45.5)			
2(b) 2.2.1. Peripheral T-cell lymphoma, NOS ^c	1,798	36.8 (34.1 , 39.5)	67.6 (51.1 , 79.5)	42.2 (38.6 , 45.8)	28.7 (24.6 , 32.9)			
2(b) 2.2.2. Angioimmunoblastic T-cell lymphoma	642	42.0 (37.2 , 46.8)	- (- , -)	49.4 (42.5 , 56.0)	35.7 (28.8 , 42.6)			
2(b) 2.2.3. Subcutaneous panniculitis-like T-cell lymphoma	70	56.4 (39.0 , 70.6)	- (- , -)	56.7 (31.5 , 75.7)	- (- , -)			
2(b) 2.2.4. Anaplastic large cell lymphoma, T-cell or null-cell type	1,223	57.4 (54.2 , 60.5)	83.7 (76.9 , 88.6)	61.2 (57.2 , 65.0)	34.3 (27.9 , 40.8)			
2(b) 2.2.5. Hepatosplenic T-cell lymphoma	42	22.3 (10.5 , 36.8)	- (- , -)	24.9 (10.8 , 42.1)	- (- , -)			
2(b) 2.2.6. Enteropathy-type T-cell lymphoma	63	11.4 (4.3 , 22.5)	- (- , -)	14.8 (4.4 , 31.0)	8.9 (1.6 , 24.2)			
2(b) 2.2.7. Cutaneous T-cell lymphoma, NOS ^c	1,033	78.9 (74.9 , 82.3)	- (- , -)	84.5 (80.3 , 87.9)	69.3 (61.2 , 76.0)			
2(b) 2.2.8. Primary cutaneous anaplastic large cell lymphoma	495	90.1 (84.5 , 93.8)	- (- , -)	93.1 (87.5 , 96.2)	82.4 (67.5 , 91.0)			
2(b) 2.3. Adult T-cell leukemia/lymphoma	161	24.2 (16.5 , 32.7)	- (- , -)	20.7 (11.2 , 32.1)	25.3 (13.8 , 38.7)			
2(b) 2.4. NK ^c /T-cell lymphoma, nasal-type/aggressive NK ^c -cell leukemia	389	37.3 (31.5 , 43.1)	- (- , -)	36.1 (29.6 , 42.6)	40.1 (26.4 , 53.4)			
2(b) 2.5. T-cell large granular lymphocytic leukemia	144	61.4 (48.7 , 71.8)	- (- , -)	73.6 (56.6 , 84.8)	51.1 (33.2 , 66.5)			
2(b) 2.6. Prolymphocytic leukemia, T-cell	141	14.4 (7.2 , 23.8)	- (- , -)	15.2 (5.6 , 29.0)	13.3 (4.7 , 26.4)			
2(b) 3. Non-Hodgkin lymphoma, NOS ^c , T-cell	98	36.6 (25.4 , 47.8)	- (- , -)	49.1 (33.3 , 63.2)	19.5 (6.7 , 37.2)			
2(c) Non-Hodgkin lymphoma, unknown lineage	2,831	58.5 (56.2 , 60.7)	85.1 (82.1 , 87.6)	56.0 (52.3 , 59.5)	41.3 (37.2 , 45.3)			
2(c) 1. Precursor lymphoblastic leukemia/lymphoma, unknown lineage	1,215	64.2 (61.2 , 67.0)	85.3 (82.3 , 87.9)	35.6 (29.6 , 41.6)	18.7 (12.4 , 26.0)			
2(c) 2. Prolymphocytic leukemia, unknown lineage	65	43.7 (28.1 , 58.2)	- (- , -)	- (- , -)	24.8 (7.7 , 46.8)			
2(c) 3. Non-Hodgkin lymphoma, NOS ^c , unknown lineage	1,551	54.2 (50.8 , 57.4)	- (- , -)	64.9 (60.4 , 69.1)	46.1 (41.4 , 50.7)			
2(*) 1. Total precursor lymphoma/leukemia ^d	9,635	66.0 (64.9 , 67.0)	86.5 (85.5 , 87.5)	36.5 (34.5 , 38.6)	13.5 (10.5 , 16.9)			
3 Composite Hodgkin lymphoma and Non-Hodgkin lymphoma	71	59.4 (44.6 , 71.4)	- (- , -)	64.8 (46.9 , 78.1)	49.7 (25.0 , 70.3)			
4 Lymphoid neoplasm, NOS ^c	4,599	49.0 (47.2 , 50.9)	88.1 (75.3 , 94.5)	61.5 (58.8 , 64.1)	40.3 (37.7 , 42.8)			

^a Morton LM, Turner JJ, Cerhan JR, Linet MS, Treseler PA, Clarke CA, Jack A, Cozen W, Maynadié M, Spinelli JJ, Costantini AS, Rüdiger T, Scarpa A, Zheng T, Weisenburger DD. Proposed classification of lymphoid neoplasms for epidemiologic research from the Pathology Working Group of the International Lymphoma Epidemiology Consortium (InterLymph). Blood. 2007;110:695-708.

^b SEER 18 areas (San Francisco, Connecticut, Detroit, Hawaii, Iowa, New Mexico, Seattle, Utah, Atlanta, San Jose-Monterey, Los Angeles, Alaska Native Registry, Rural Georgia, California excluding SF/SJM/LA, Kentucky, Louisiana, New Jersey and Georgia excluding ATL/RG).

^c NOS = Not otherwise specified. MALT = Mucosa-associated lymphoid tissue. NK = Natural killer.

^d Total precursor lymphoma/leukemia is comprised of categories 2(a)1., 2(b)1., and 2(c)1.

- Statistic not displayed due to less than 25 cases.

Table 19.30
All Lymphoid Neoplasms With Detailed Non-Hodgkin Lymphoma Subtypes^a

SEER^b 5-Year Relative Survival (Percent) by Age at Diagnosis

All Races, Males, 2003-2009

Site	All Ages		Ages 0-19		Ages 20-64		Ages 65+	
	Count	Percent (95% C.I.)	Percent (95% C.I.)	Percent (95% C.I.)	Percent (95% C.I.)	Percent (95% C.I.)	Percent (95% C.I.)	
Lymphoid Neoplasm	91,488	67.0 (66.6 , 67.4)	87.5 (86.5 , 88.5)	73.2 (72.7 , 73.6)	56.2 (55.5 , 57.0)			
1 Hodgkin Lymphoma	8,053	84.3 (83.3 , 85.2)	97.2 (95.7 , 98.2)	87.3 (86.3 , 88.3)	52.7 (48.1 , 57.0)			
2 Non-Hodgkin lymphoma	81,025	65.7 (65.3 , 66.2)	85.2 (83.9 , 86.3)	71.4 (70.8 , 72.0)	56.8 (56.0 , 57.6)			
2(a) Non-Hodgkin lymphoma, B-cell	73,501	66.3 (65.8 , 66.8)	86.8 (85.4 , 88.1)	72.6 (72.0 , 73.1)	57.6 (56.7 , 58.4)			
2(a) 1. Precursor Non-Hodgkin lymphoma, B-cell	3,771	66.9 (65.1 , 68.5)	86.6 (84.9 , 88.2)	33.8 (30.6 , 37.1)	12.7 (7.3 , 19.5)			
2(a) 2. Mature Non-Hodgkin lymphoma, B-cell	66,816	66.3 (65.8 , 66.8)	88.1 (85.3 , 90.4)	73.9 (73.3 , 74.5)	57.7 (56.9 , 58.6)			
2(a) 2.1. Chronic/Small/Prolymphocytic/ Mantle B-cell Non-Hodgkin lymphoma	17,447	74.3 (73.3 , 75.3)	- (- , -)	83.0 (81.8 , 84.2)	67.6 (66.0 , 69.1)			
2(a) 2.1.1. Chronic/Small lymphocytic leukemia/lymphoma	15,068	77.5 (76.3 , 78.6)	- (- , -)	85.9 (84.6 , 87.1)	71.1 (69.4 , 72.8)			
2(a) 2.1.2. Prolymphocytic leukemia, B-cell	67	43.6 (27.7 , 58.5)	- (- , -)	- (- , -)	42.2 (23.5 , 59.8)			
2(a) 2.1.3. Mantle-cell lymphoma	2,312	54.6 (51.8 , 57.4)	- (- , -)	66.7 (63.0 , 70.3)	43.6 (39.4 , 47.7)			
2(a) 2.2. Lymphoplasmacytic lymphoma/ Waldenstrom macroglobulinemia	1,528	78.5 (74.9 , 81.8)	- (- , -)	84.2 (79.7 , 87.8)	74.9 (69.7 , 79.4)			
2(a) 2.2.1. Lymphoplasmacytic lymphoma	667	78.0 (72.3 , 82.7)	- (- , -)	82.9 (75.6 , 88.1)	74.5 (66.2 , 81.0)			
2(a) 2.2.2. Waldenstrom macroglobulinemia	861	79.0 (74.0 , 83.2)	- (- , -)	85.4 (79.1 , 89.9)	74.9 (67.9 , 80.7)			
2(a) 2.3. Diffuse large B-cell lymphoma (DLBCL)	17,378	60.1 (59.1 , 61.0)	87.1 (82.0 , 90.9)	67.0 (65.9 , 68.1)	50.6 (48.9 , 52.2)			
2(a) 2.3.1. DLBCL, NOS ^c	17,225	60.1 (59.1 , 61.0)	87.4 (82.3 , 91.2)	67.0 (65.9 , 68.1)	50.7 (49.0 , 52.3)			
2(a) 2.3.2. Intravascular large B-cell lymphoma	-	- (- , -)	- (- , -)	- (- , -)	- (- , -)			
2(a) 2.3.3. Primary effusion lymphoma	46	23.6 (11.6 , 38.0)	- (- , -)	25.9 (12.6 , 41.6)	- (- , -)			
2(a) 2.3.4. Mediastinal large B-cell lymphoma	91	80.1 (66.6 , 88.6)	- (- , -)	91.0 (80.8 , 95.9)	- (- , -)			
2(a) 2.4. Burkitt lymphoma/leukemia	1,575	57.6 (54.8 , 60.2)	87.9 (83.9 , 90.9)	53.8 (50.4 , 57.2)	23.3 (15.8 , 31.8)			
2(a) 2.5. Marginal-zone lymphoma (MZL)	3,908	88.6 (86.5 , 90.3)	100.0 (- , -)	91.0 (89.0 , 92.7)	85.6 (81.6 , 88.8)			
2(a) 2.5.1. Splenic MZL	350	86.1 (78.2 , 91.4)	- (- , -)	88.8 (81.9 , 93.1)	80.3 (65.7 , 89.2)			
2(a) 2.5.2. Extranodal MZL, MALT ^c type	2,289	92.6 (89.8 , 94.7)	- (- , -)	93.1 (90.5 , 95.0)	91.8 (85.5 , 95.5)			
2(a) 2.5.3. Nodal MZL	1,269	81.6 (77.8 , 84.8)	- (- , -)	86.5 (82.3 , 89.8)	76.5 (70.3 , 81.7)			
2(a) 2.6. Follicular lymphoma	8,890	85.1 (83.8 , 86.2)	93.6 (75.4 , 98.5)	88.6 (87.3 , 89.7)	79.4 (76.7 , 81.7)			
2(a) 2.7. Hairy-cell leukemia	1,175	94.5 (91.3 , 96.6)	- (- , -)	97.7 (95.1 , 98.9)	85.7 (75.8 , 91.8)			
2(a) 2.8. Plasma cell neoplasms	14,894	43.9 (42.8 , 45.0)	- (- , -)	55.2 (53.7 , 56.8)	34.0 (32.4 , 35.5)			
2(a) 2.8.1. Plasmacytoma	1,066	68.2 (64.2 , 71.9)	- (- , -)	77.1 (72.6 , 81.0)	53.1 (45.7 , 59.9)			
2(a) 2.8.2. Multiple myeloma/ plasma-cell leukemia	13,828	42.0 (40.8 , 43.2)	- (- , -)	53.0 (51.3 , 54.6)	32.8 (31.2 , 34.4)			
2(a) 2.9. Heavy chain disease	-	- (- , -)	- (- , -)	- (- , -)	- (- , -)			
2(a) 3. Non-Hodgkin lymphoma, B-cell, NOS ^c	2,914	65.8 (63.2 , 68.3)	70.4 (44.6 , 85.8)	72.2 (69.0 , 75.1)	60.6 (56.6 , 64.5)			

^a Morton LM, Turner JJ, Cerhan JR, Linet MS, Treseler PA, Clarke CA, Jack A, Cozen W, Maynadié M, Spinelli JJ, Costantini AS, Rüdiger T, Scarpa A, Zheng T, Weisenburger DD. Proposed classification of lymphoid neoplasms for epidemiologic research from the Pathology Working Group of the International Lymphoma Epidemiology Consortium (InterLymph). *Blood*. 2007;110:695-708.

^b SEER 18 areas (San Francisco, Connecticut, Detroit, Hawaii, Iowa, New Mexico, Seattle, Utah, Atlanta, San Jose-Monterey, Los Angeles, Alaska Native Registry, Rural Georgia, California excluding SF/SJM/LA, Kentucky, Louisiana, New Jersey and Georgia excluding ATL/RG).

^c NOS = Not otherwise specified. MALT = Mucosa-associated lymphoid tissue. NK = Natural killer.

- Statistic not displayed due to less than 25 cases.

Table 19.30 - continued
All Lymphoid Neoplasms With Detailed Non-Hodgkin Lymphoma Subtypes^a

SEER^b 5-Year Relative Survival (Percent) by Age at Diagnosis

All Races, Males, 2003-2009

Site	All Ages		Ages 0-19		Ages 20-64		Ages 65+	
	Count	Percent (95% C.I.)	Percent (95% C.I.)	Percent (95% C.I.)	Percent (95% C.I.)	Percent (95% C.I.)		
2(b) Non-Hodgkin lymphoma, T-cell	5,998	60.5 (59.0 , 62.1)	80.4 (77.3 , 83.1)	62.2 (60.3 , 64.1)	47.1 (43.6 , 50.5)			
2(b) 1. Precursor Non-Hodgkin lymphoma, T-cell	1,101	64.3 (61.1 , 67.4)	80.5 (76.9 , 83.7)	46.2 (40.7 , 51.6)	0.0 (- , -)			
2(b) 2. Mature Non-Hodgkin lymphoma, T-cell	4,849	59.8 (58.0 , 61.6)	80.1 (73.6 , 85.1)	64.6 (62.5 , 66.6)	48.5 (44.9 , 52.0)			
2(b) 2.1. Mycosis fungoides/Sezary syndrome	1,252	87.3 (83.8 , 90.1)	100.0 (- , -)	91.4 (88.0 , 93.9)	78.0 (69.2 , 84.6)			
2(b) 2.1.1. Mycosis fungoides	1,218	88.4 (84.8 , 91.2)	100.0 (- , -)	92.0 (88.6 , 94.4)	79.8 (70.5 , 86.4)			
2(b) 2.1.2. Sezary syndrome	34	43.5 (21.1 , 64.0)	- (- , -)	- (- , -)	- (- , -)			
2(b) 2.2. Peripheral T-cell lymphoma	3,121	53.2 (51.0 , 55.3)	79.2 (71.9 , 84.7)	58.2 (55.5 , 60.8)	40.5 (36.3 , 44.6)			
2(b) 2.2.1. Peripheral T-cell lymphoma, NOS ^c	1,058	36.1 (32.5 , 39.7)	66.6 (45.1 , 81.2)	39.1 (34.5 , 43.7)	29.6 (23.5 , 35.8)			
2(b) 2.2.2. Angioimmunoblastic T-cell lymphoma	321	34.9 (28.3 , 41.6)	- (- , -)	45.0 (35.5 , 54.1)	24.4 (15.6 , 34.2)			
2(b) 2.2.3. Subcutaneous panniculitis-like T-cell lymphoma	-	- (- , -)	- (- , -)	- (- , -)	- (- , -)			
2(b) 2.2.4. Anaplastic large cell lymphoma, T-cell or null-cell type	771	55.6 (51.5 , 59.4)	84.0 (75.4 , 89.8)	56.9 (51.9 , 61.6)	31.4 (22.7 , 40.4)			
2(b) 2.2.5. Hepatosplenic T-cell lymphoma	30	19.1 (6.8 , 36.0)	- (- , -)	- (- , -)	- (- , -)			
2(b) 2.2.6. Enteropathy-type T-cell lymphoma	36	0.0 (- , -)	- (- , -)	- (- , -)	- (- , -)			
2(b) 2.2.7. Cutaneous T-cell lymphoma, NOS ^c	608	76.9 (71.4 , 81.4)	- (- , -)	84.7 (78.9 , 89.0)	63.1 (52.0 , 72.2)			
2(b) 2.2.8. Primary cutaneous anaplastic large cell lymphoma	273	90.5 (81.4 , 95.3)	- (- , -)	93.8 (87.4 , 97.0)	84.8 (60.3 , 94.7)			
2(b) 2.3. Adult T-cell leukemia/lymphoma	81	19.0 (9.8 , 30.4)	- (- , -)	16.9 (6.4 , 31.6)	14.5 (2.7 , 35.5)			
2(b) 2.4. NK ^c /T-cell lymphoma, nasal-type/aggressive NK ^c -cell leukemia	257	35.8 (28.9 , 42.7)	- (- , -)	33.6 (26.0 , 41.4)	34.7 (20.3 , 49.6)			
2(b) 2.5. T-cell large granular lymphocytic leukemia	65	48.0 (30.6 , 63.5)	- (- , -)	69.5 (43.1 , 85.4)	32.6 (12.8 , 54.3)			
2(b) 2.6. Prolymphocytic leukemia, T-cell	73	16.0 (6.7 , 29.0)	- (- , -)	18.3 (5.3 , 37.6)	11.7 (2.5 , 28.7)			
2(b) 3. Non-Hodgkin lymphoma, NOS ^c , T-cell	48	43.6 (26.8 , 59.2)	- (- , -)	- (- , -)	- (- , -)			
2(c) Non-Hodgkin lymphoma, unknown lineage	1,526	58.1 (55.1 , 61.0)	83.0 (78.7 , 86.5)	53.2 (48.5 , 57.6)	40.3 (34.3 , 46.2)			
2(c) 1. Precursor lymphoblastic leukemia/lymphoma, unknown lineage	682	64.0 (60.0 , 67.8)	83.4 (79.1 , 86.9)	33.4 (25.9 , 41.0)	22.2 (12.6 , 33.5)			
2(c) 2. Prolymphocytic leukemia, unknown lineage	37	34.7 (16.4 , 53.8)	- (- , -)	- (- , -)	- (- , -)			
2(c) 3. Non-Hodgkin lymphoma, NOS ^c , unknown lineage	807	53.7 (49.2 , 58.0)	- (- , -)	62.0 (56.2 , 67.2)	44.4 (37.4 , 51.2)			
2(*) 1. Total precursor lymphoma/leukemia ^d	5,554	66.1 (64.6 , 67.5)	85.1 (83.7 , 86.4)	37.0 (34.3 , 39.6)	14.2 (9.7 , 19.5)			
3 Composite Hodgkin lymphoma and Non-Hodgkin lymphoma	43	63.7 (42.9 , 78.6)	- (- , -)	61.0 (38.2 , 77.7)	- (- , -)			
4 Lymphoid neoplasm, NOS ^c	2,367	49.6 (47.0 , 52.2)	86.7 (68.3 , 94.8)	58.1 (54.6 , 61.5)	41.3 (37.3 , 45.1)			

^a Morton LM, Turner JJ, Cerhan JR, Linet MS, Treseler PA, Clarke CA, Jack A, Cozen W, Maynadié M, Spinelli JJ, Costantini AS, Rüdiger T, Scarpa A, Zheng T, Weisenburger DD. Proposed classification of lymphoid neoplasms for epidemiologic research from the Pathology Working Group of the International Lymphoma Epidemiology Consortium (InterLymph). Blood. 2007;110:695-708.

^b SEER 18 areas (San Francisco, Connecticut, Detroit, Hawaii, Iowa, New Mexico, Seattle, Utah, Atlanta, San Jose-Monterey, Los Angeles, Alaska Native Registry, Rural Georgia, California excluding SF/SJM/LA, Kentucky, Louisiana, New Jersey and Georgia excluding ATL/RG).

^c NOS = Not otherwise specified. MALT = Mucosa-associated lymphoid tissue. NK = Natural killer.

^d Total precursor lymphoma/leukemia is comprised of categories 2(a)1., 2(b)1., and 2(c)1.

- Statistic not displayed due to less than 25 cases.

Table 19.31
All Lymphoid Neoplasms With Detailed Non-Hodgkin Lymphoma Subtypes^a

SEER^b 5-Year Relative Survival (Percent) by Age at Diagnosis

All Races, Females, 2003-2009

Site	All Ages		Ages 0-19		Ages 20-64		Ages 65+	
	Count	Percent (95% C.I.)	Percent (95% C.I.)	Percent (95% C.I.)	Percent (95% C.I.)	Percent (95% C.I.)	Percent (95% C.I.)	
Lymphoid Neoplasm	75,218	68.1 (67.6 , 68.5)	89.9 (88.7 , 90.9)	78.2 (77.6 , 78.7)	57.1 (56.4 , 57.8)			
1 Hodgkin Lymphoma	6,785	86.0 (85.0 , 87.0)	95.9 (94.0 , 97.2)	91.3 (90.3 , 92.2)	52.1 (47.9 , 56.1)			
2 Non-Hodgkin lymphoma	66,173	66.8 (66.3 , 67.3)	88.0 (86.6 , 89.3)	76.1 (75.4 , 76.7)	58.0 (57.2 , 58.8)			
2(a) Non-Hodgkin lymphoma, B-cell	60,783	67.2 (66.6 , 67.7)	88.4 (86.8 , 89.9)	76.9 (76.2 , 77.5)	58.6 (57.9 , 59.4)			
2(a) 1. Precursor Non-Hodgkin lymphoma, B-cell	3,095	66.8 (64.8 , 68.7)	89.0 (87.3 , 90.6)	33.1 (29.2 , 37.1)	11.3 (7.0 , 16.8)			
2(a) 2. Mature Non-Hodgkin lymphoma, B-cell	54,975	67.1 (66.6 , 67.7)	84.1 (79.2 , 87.9)	78.5 (77.8 , 79.2)	58.8 (58.0 , 59.6)			
2(a) 2.1. Chronic/Small/Prolymphocytic/ Mantle B-cell Non-Hodgkin lymphoma	11,565	77.6 (76.3 , 78.8)	- (- , -)	88.4 (86.9 , 89.7)	72.2 (70.4 , 73.9)			
2(a) 2.1.1. Chronic/Small lymphocytic leukemia/lymphoma	10,555	79.9 (78.6 , 81.2)	- (- , -)	90.7 (89.1 , 92.0)	74.6 (72.7 , 76.3)			
2(a) 2.1.2. Prolymphocytic leukemia, B-cell	46	35.2 (19.2 , 51.7)	- (- , -)	- (- , -)	25.1 (9.4 , 44.7)			
2(a) 2.1.3. Mantle-cell lymphoma	964	54.4 (50.0 , 58.7)	- (- , -)	68.0 (61.5 , 73.7)	46.7 (40.9 , 52.3)			
2(a) 2.2. Lymphoplasmacytic lymphoma/ Waldenstrom macroglobulinemia	1,141	75.5 (71.3 , 79.2)	- (- , -)	83.7 (78.1 , 87.9)	71.1 (65.1 , 76.2)			
2(a) 2.2.1. Lymphoplasmacytic lymphoma	533	72.7 (66.0 , 78.3)	- (- , -)	78.9 (69.4 , 85.8)	69.5 (60.4 , 77.0)			
2(a) 2.2.2. Waldenstrom macroglobulinemia	608	77.9 (72.1 , 82.6)	- (- , -)	87.4 (80.1 , 92.1)	72.4 (64.1 , 79.1)			
2(a) 2.3. Diffuse large B-cell lymphoma (DLBCL)	14,984	61.1 (60.1 , 62.1)	82.1 (75.1 , 87.2)	74.2 (72.9 , 75.5)	51.4 (49.9 , 52.8)			
2(a) 2.3.1. DLBCL, NOS ^c	14,811	60.9 (59.9 , 61.9)	83.9 (76.9 , 89.0)	74.1 (72.7 , 75.3)	51.4 (49.9 , 52.8)			
2(a) 2.3.2. Intravascular large B-cell lymphoma	-	- (- , -)	- (- , -)	- (- , -)	- (- , -)			
2(a) 2.3.3. Primary effusion lymphoma	-	- (- , -)	- (- , -)	- (- , -)	- (- , -)			
2(a) 2.3.4. Mediastinal large B-cell lymphoma	151	81.7 (73.4 , 87.6)	- (- , -)	84.8 (76.3 , 90.5)	- (- , -)			
2(a) 2.4. Burkitt lymphoma/leukemia	558	54.0 (49.2 , 58.5)	84.0 (74.2 , 90.4)	56.6 (49.9 , 62.8)	32.9 (24.7 , 41.3)			
2(a) 2.5. Marginal-zone lymphoma (MZL)	4,646	90.3 (88.6 , 91.8)	- (- , -)	94.8 (93.2 , 96.1)	86.5 (83.5 , 89.0)			
2(a) 2.5.1. Splenic MZL	400	84.1 (77.5 , 88.9)	- (- , -)	94.7 (88.0 , 97.7)	75.8 (65.6 , 83.4)			
2(a) 2.5.2. Extranodal MZL, MALT ^c type	2,855	94.6 (92.3 , 96.2)	- (- , -)	96.7 (94.6 , 98.0)	92.6 (88.2 , 95.4)			
2(a) 2.5.3. Nodal MZL	1,391	82.8 (79.3 , 85.8)	- (- , -)	89.8 (85.6 , 92.8)	77.8 (72.6 , 82.1)			
2(a) 2.6. Follicular lymphoma	9,083	85.8 (84.6 , 86.9)	- (- , -)	91.3 (90.2 , 92.4)	79.4 (77.1 , 81.4)			
2(a) 2.7. Hairy-cell leukemia	293	91.7 (84.5 , 95.6)	- (- , -)	95.8 (91.2 , 98.1)	82.5 (64.1 , 92.0)			
2(a) 2.8. Plasma cell neoplasms	12,698	41.8 (40.7 , 43.0)	- (- , -)	56.2 (54.4 , 58.0)	32.5 (31.0 , 34.0)			
2(a) 2.8.1. Plasmacytoma	666	59.5 (54.0 , 64.5)	- (- , -)	75.0 (68.0 , 80.7)	44.9 (36.9 , 52.5)			
2(a) 2.8.2. Multiple myeloma/ plasma-cell leukemia	12,032	40.9 (39.7 , 42.1)	- (- , -)	55.0 (53.1 , 56.8)	32.0 (30.4 , 33.5)			
2(a) 2.9. Heavy chain disease	-	- (- , -)	- (- , -)	- (- , -)	- (- , -)			
2(a) 3. Non-Hodgkin lymphoma, B-cell, NOS ^c	2,713	68.0 (65.3 , 70.5)	- (- , -)	77.0 (73.6 , 80.1)	62.9 (59.2 , 66.3)			

^a Morton LM, Turner JJ, Cerhan JR, Linet MS, Treseler PA, Clarke CA, Jack A, Cozen W, Maynadié M, Spinelli JJ, Costantini AS, Rüdiger T, Scarpa A, Zheng T, Weisenburger DD. Proposed classification of lymphoid neoplasms for epidemiologic research from the Pathology Working Group of the International Lymphoma Epidemiology Consortium (InterLymph). *Blood*. 2007;110:695-708.

^b SEER 18 areas (San Francisco, Connecticut, Detroit, Hawaii, Iowa, New Mexico, Seattle, Utah, Atlanta, San Jose-Monterey, Los Angeles, Alaska Native Registry, Rural Georgia, California excluding SF/SJM/LA, Kentucky, Louisiana, New Jersey and Georgia excluding ATL/RG).

^c NOS = Not otherwise specified. MALT = Mucosa-associated lymphoid tissue. NK = Natural killer.

- Statistic not displayed due to less than 25 cases.

Table 19.31 - continued
All Lymphoid Neoplasms With Detailed Non-Hodgkin Lymphoma Subtypes^a

SEER^b 5-Year Relative Survival (Percent) by Age at Diagnosis

All Races, Females, 2003-2009

Site	All Ages		Ages 0-19		Ages 20-64		Ages 65+	
	Count	Percent (95% C.I.)	Percent (95% C.I.)	Percent (95% C.I.)	Percent (95% C.I.)	Percent (95% C.I.)		
2(b) Non-Hodgkin lymphoma, T-cell	4,085	64.1 (62.3 , 65.9)	85.1 (80.6 , 88.6)	70.0 (67.7 , 72.1)	50.1 (46.6 , 53.6)			
2(b) 1. Precursor Non-Hodgkin lymphoma, T-cell	453	60.3 (55.0 , 65.1)	85.1 (78.8 , 89.6)	43.8 (36.0 , 51.4)	12.0 (3.2 , 26.9)			
2(b) 2. Mature Non-Hodgkin lymphoma, T-cell	3,582	65.1 (63.1 , 67.0)	85.3 (78.1 , 90.3)	73.1 (70.7 , 75.2)	51.7 (48.1 , 55.2)			
2(b) 2.1. Mycosis fungoides/Sezary syndrome	978	91.0 (87.7 , 93.4)	97.0 (80.3 , 99.6)	94.9 (91.9 , 96.9)	80.5 (70.3 , 87.5)			
2(b) 2.1.1. Mycosis fungoides	956	92.2 (89.0 , 94.5)	97.0 (80.3 , 99.6)	95.2 (92.1 , 97.0)	84.2 (73.4 , 90.9)			
2(b) 2.1.2. Sezary syndrome	-	- (- , -)	- (- , -)	- (- , -)	- (- , -)			
2(b) 2.2. Peripheral T-cell lymphoma	2,245	57.6 (55.1 , 60.1)	84.7 (75.9 , 90.5)	65.8 (62.6 , 68.8)	44.3 (40.3 , 48.2)			
2(b) 2.2.1. Peripheral T-cell lymphoma, NOS ^c	740	37.3 (33.3 , 41.3)	- (- , -)	47.7 (41.8 , 53.4)	26.3 (21.0 , 31.8)			
2(b) 2.2.2. Angioimmunoblastic T-cell lymphoma	321	48.3 (41.7 , 54.7)	- (- , -)	54.5 (44.6 , 63.3)	43.1 (34.1 , 51.7)			
2(b) 2.2.3. Subcutaneous panniculitis-like T-cell lymphoma	46	55.3 (34.8 , 71.8)	- (- , -)	47.4 (17.7 , 72.5)	- (- , -)			
2(b) 2.2.4. Anaplastic large cell lymphoma, T-cell or null-cell type	452	59.9 (54.5 , 64.9)	82.6 (69.2 , 90.6)	68.5 (61.4 , 74.5)	37.0 (27.6 , 46.4)			
2(b) 2.2.5. Hepatosplenic T-cell lymphoma	-	- (- , -)	- (- , -)	- (- , -)	- (- , -)			
2(b) 2.2.6. Enteropathy-type T-cell lymphoma	27	27.8 (11.9 , 46.2)	- (- , -)	- (- , -)	- (- , -)			
2(b) 2.2.7. Cutaneous T-cell lymphoma, NOS ^c	425	81.5 (75.2 , 86.3)	- (- , -)	84.0 (77.2 , 89.0)	77.0 (64.1 , 85.7)			
2(b) 2.2.8. Primary cutaneous anaplastic large cell lymphoma	222	89.2 (81.1 , 94.0)	- (- , -)	92.1 (83.3 , 96.4)	76.8 (56.0 , 88.7)			
2(b) 2.3. Adult T-cell leukemia/lymphoma	80	30.2 (19.6 , 41.4)	- (- , -)	27.1 (13.0 , 43.4)	32.1 (17.6 , 47.7)			
2(b) 2.4. NK ^c /T-cell lymphoma, nasal-type/aggressive NK ^c -cell leukemia	132	40.8 (30.6 , 50.7)	- (- , -)	41.9 (30.0 , 53.3)	41.7 (21.8 , 60.5)			
2(b) 2.5. T-cell large granular lymphocytic leukemia	79	73.0 (54.6 , 84.9)	- (- , -)	75.1 (49.4 , 89.0)	68.7 (41.5 , 85.2)			
2(b) 2.6. Prolymphocytic leukemia, T-cell	68	12.9 (3.9 , 27.5)	- (- , -)	12.4 (2.4 , 31.1)	12.8 (2.0 , 33.9)			
2(b) 3. Non-Hodgkin lymphoma, NOS ^c , T-cell	50	30.0 (16.0 , 45.5)	- (- , -)	40.7 (22.4 , 58.3)	- (- , -)			
2(c) Non-Hodgkin lymphoma, unknown lineage	1,305	58.8 (55.3 , 62.1)	88.0 (83.6 , 91.3)	60.8 (54.6 , 66.4)	41.5 (36.0 , 46.9)			
2(c) 1. Precursor lymphoblastic leukemia/lymphoma, unknown lineage	533	64.2 (59.7 , 68.5)	88.1 (83.6 , 91.4)	38.8 (28.9 , 48.5)	15.3 (8.0 , 24.8)			
2(c) 2. Prolymphocytic leukemia, unknown lineage	28	54.8 (28.8 , 74.8)	- (- , -)	- (- , -)	- (- , -)			
2(c) 3. Non-Hodgkin lymphoma, NOS ^c , unknown lineage	744	54.5 (49.4 , 59.2)	- (- , -)	70.4 (62.7 , 76.8)	46.7 (40.3 , 52.9)			
2(*) 1. Total precursor lymphoma/leukemia ^d	4,081	65.8 (64.1 , 67.4)	88.6 (87.1 , 90.0)	35.8 (32.6 , 39.1)	12.7 (8.9 , 17.1)			
3 Composite Hodgkin lymphoma and Non-Hodgkin lymphoma	28	53.7 (32.2 , 71.1)	- (- , -)	- (- , -)	- (- , -)			
4 Lymphoid neoplasm, NOS ^e	2,232	48.4 (45.7 , 51.1)	- (- , -)	66.9 (62.6 , 70.8)	39.5 (36.1 , 42.8)			

^a Morton LM, Turner JJ, Cerhan JR, Linet MS, Treseler PA, Clarke CA, Jack A, Cozen W, Maynadié M, Spinelli JJ, Costantini AS, Rüdiger T, Scarpa A, Zheng T, Weisenburger DD. Proposed classification of lymphoid neoplasms for epidemiologic research from the Pathology Working Group of the International Lymphoma Epidemiology Consortium (InterLymph). Blood. 2007;110:695-708.

^b SEER 18 areas (San Francisco, Connecticut, Detroit, Hawaii, Iowa, New Mexico, Seattle, Utah, Atlanta, San Jose-Monterey, Los Angeles, Alaska Native Registry, Rural Georgia, California excluding SF/SJM/LA, Kentucky, Louisiana, New Jersey and Georgia excluding ATL/RG).

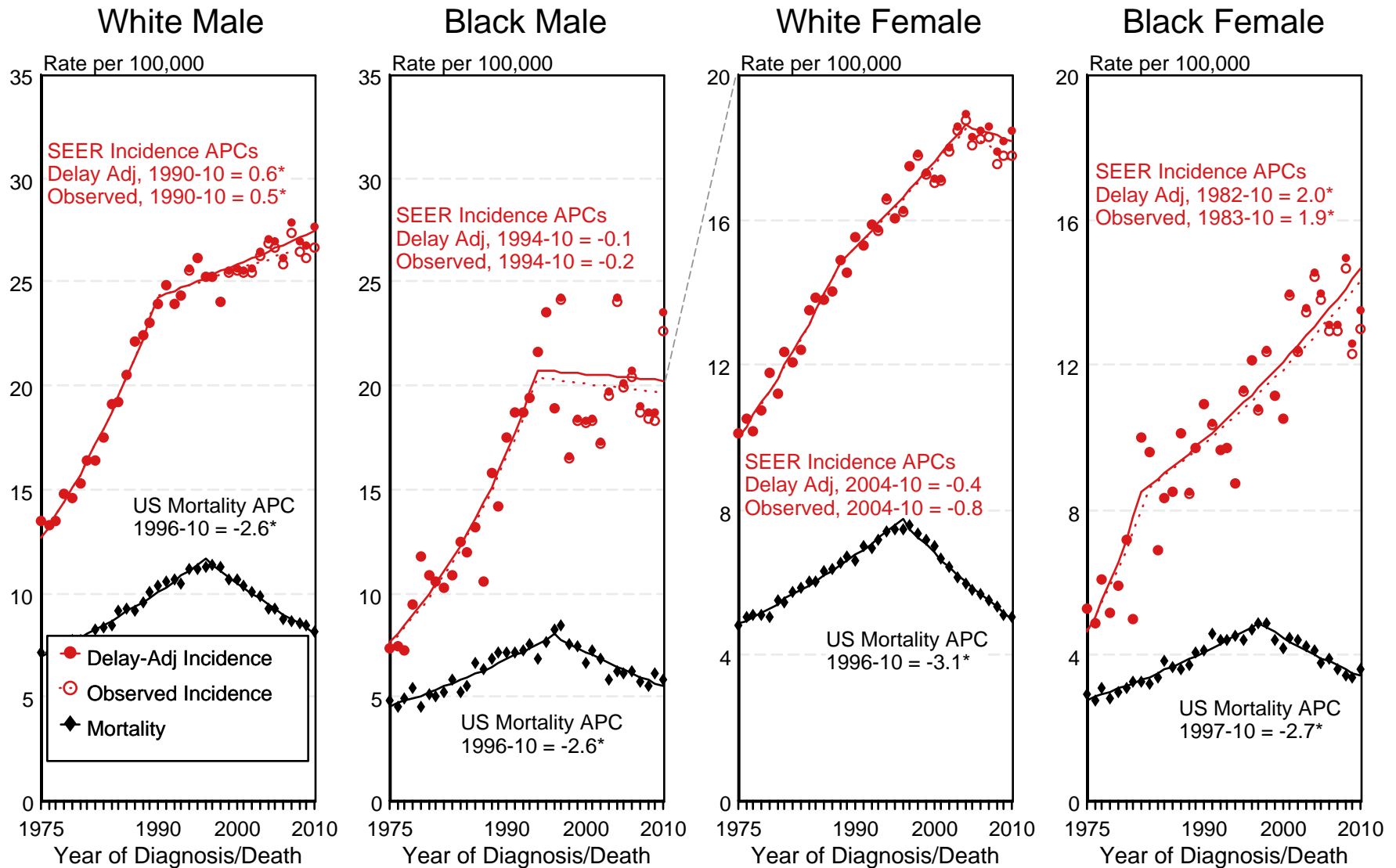
^c NOS = Not otherwise specified. MALT = Mucosa-associated lymphoid tissue. NK = Natural killer.

^d Total precursor lymphoma/leukemia is comprised of categories 2(a)1., 2(b)1., and 2(c)1.

^e - Statistic not displayed due to less than 25 cases.

Figure 19.1

SEER Observed Incidence, SEER Delay Adjusted Incidence and US Death Rates^a Non-Hodgkin Lymphoma, by Race and Sex



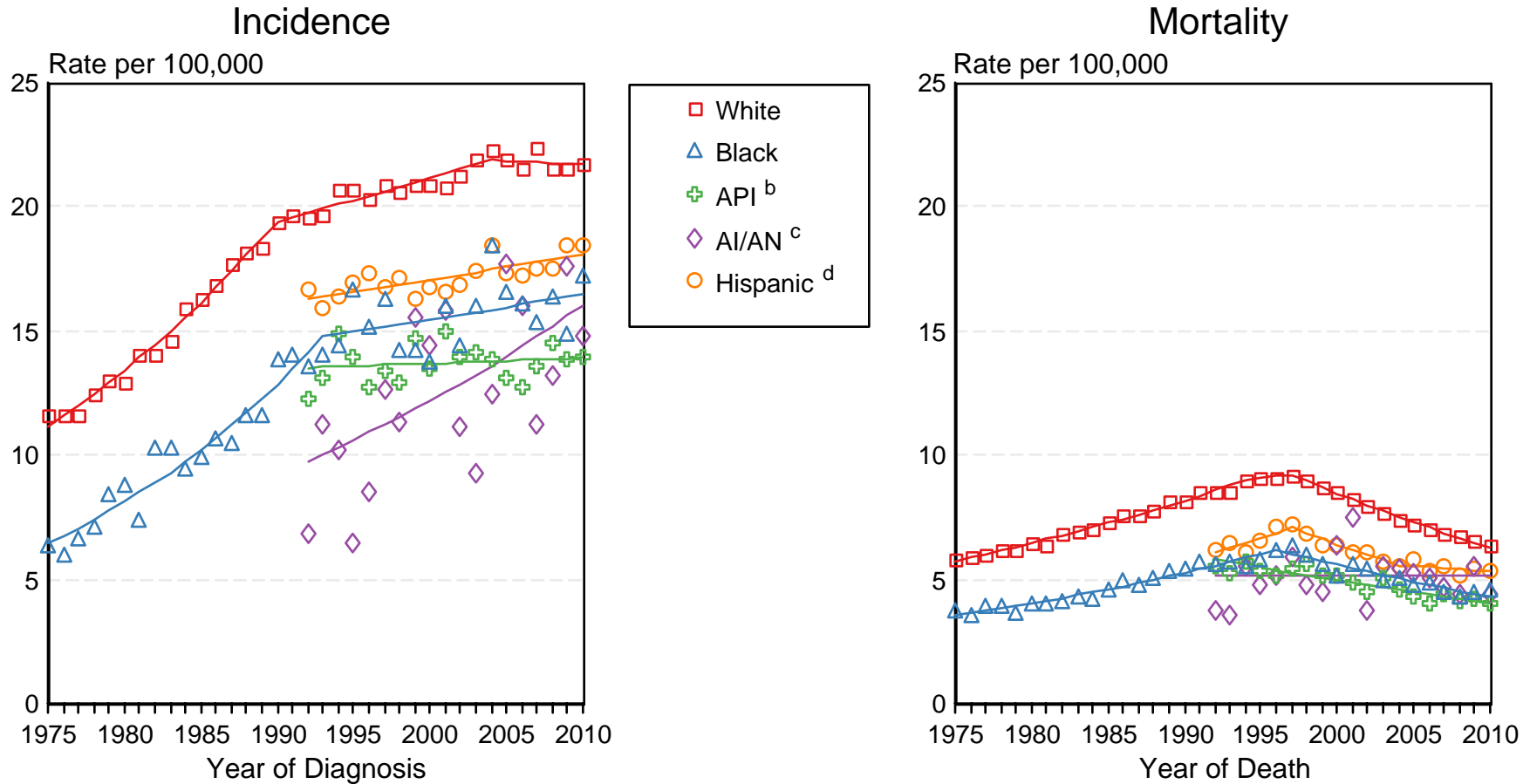
^a Source: SEER 9 areas and US Mortality Files (National Center for Health Statistics, CDC). Rates are age-adjusted to the 2000 US Std Population (19 age groups - Census P25-1103). Regression lines and APCs are calculated using the Joinpoint Regression Program Version 4.0.3, April 2013, National Cancer Institute. The APC is the Annual Percent Change for the regression line segments. The APC shown on the graph is for the most recent trend.
* The APC is significantly different from zero ($p < 0.05$).

Figure 19.2

SEER Incidence and US Death Rates^a Non-Hodgkin Lymphoma, Both Sexes

Joinpoint Analyses for Whites and Blacks from 1975-2010

and for Asian/Pacific Islanders, American Indians/Alaska Natives and Hispanics from 1992-2010



Source: Incidence data for whites and blacks are from the SEER 9 areas (San Francisco, Connecticut, Detroit, Hawaii, Iowa, New Mexico, Seattle, Utah, Atlanta). Incidence data for Asian/Pacific Islanders, American Indians/Alaska Natives and Hispanics are from the SEER 13 Areas (SEER 9 Areas, San Jose-Monterey, Los Angeles, Alaska Native Registry and Rural Georgia). Mortality data are from US Mortality Files, National Center for Health Statistics, CDC.

^a Rates are age-adjusted to the 2000 US Std Population (19 age groups - Census P25-1103). Regression lines are calculated using the Joinpoint Regression Program Version 4.0.3, April 2013, National Cancer Institute. Joinpoint analyses for Whites and Blacks during the 1975-2010 period allow a maximum of 5 joinpoints. Analyses for other ethnic groups during the period 1992-2010 allow a maximum of 3 joinpoints.

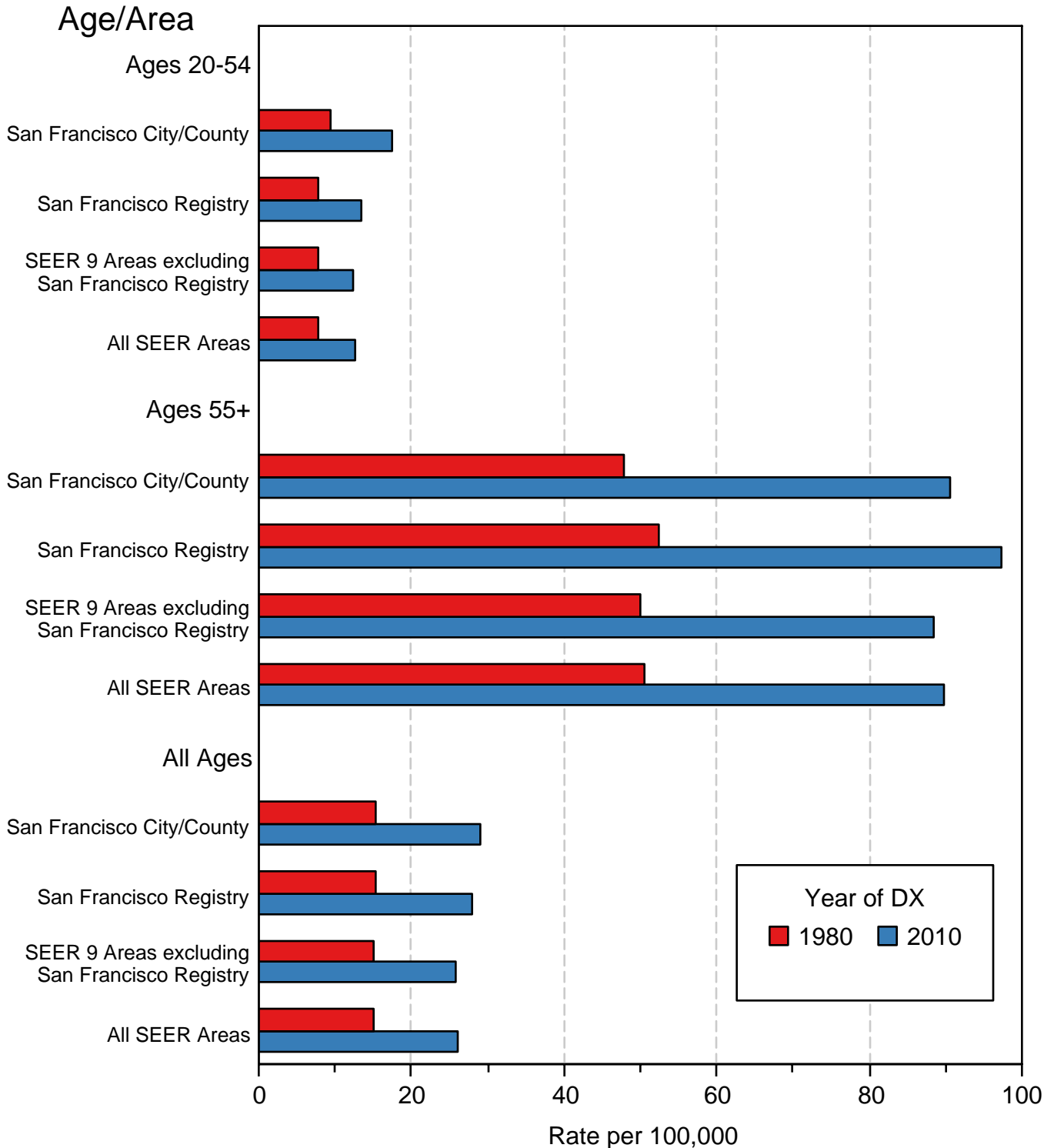
^b API = Asian/Pacific Islander.

^c AI/AN = American Indian/Alaska Native. Rates for American Indian/Alaska Native are based on the CHSDA(Contract Health Service Delivery Area) counties.

^d Hispanic is not mutually exclusive from whites, blacks, Asian/Pacific Islanders, and American Indians/Alaska Natives. Incidence data for Hispanics are based on NHIA and exclude cases from the Alaska Native Registry. Mortality data for Hispanics exclude cases from Connecticut, the District of Columbia, Maine, Maryland, Minnesota, New Hampshire, New York, North Dakota, South Carolina, Oklahoma, and Vermont.

Figure 19.3

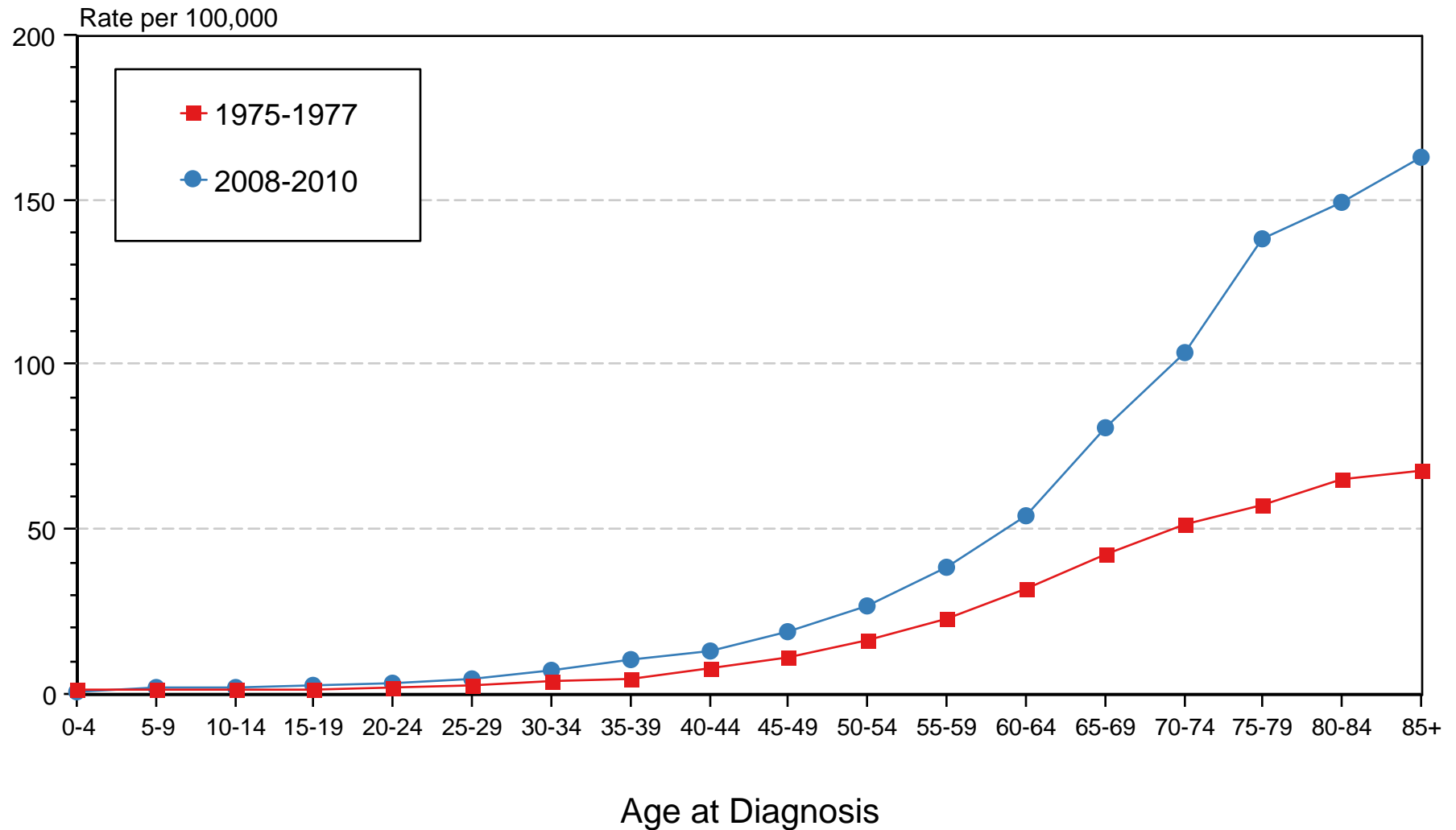
Non-Hodgkin Lymphoma Incidence Rates, 1980 vs 2010 Males by Age at Diagnosis and SEER area



Source: SEER 9 areas. Rates are age-adjusted to the 2000 US Standard Population (19 age groups - Census P25-1103).

Figure 19.4

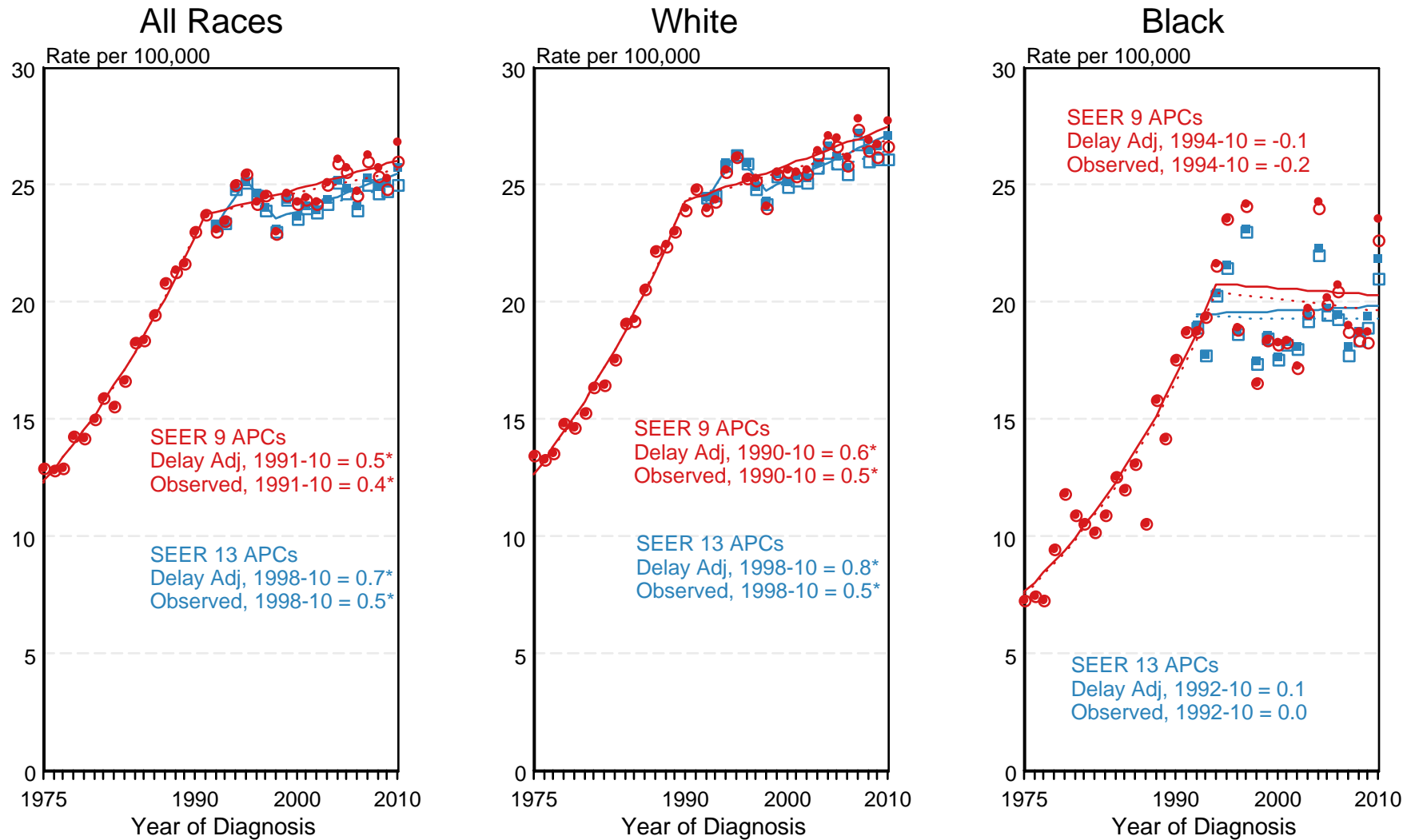
Non-Hodgkin Lymphoma SEER Incidence by Age 1975-1977 vs 2008-2010 All Races, Males



Source: SEER 9 areas. Rates are age-adjusted as appropriate to the 2000 US Std Population (19 age groups - Census P25-1103).

Figure 19.5

SEER Observed Incidence and SEER Delay Adjusted Incidence Rates^a SEER 9 Areas Compared to SEER 13 Areas Non-Hodgkin Lymphoma, Male, by Race

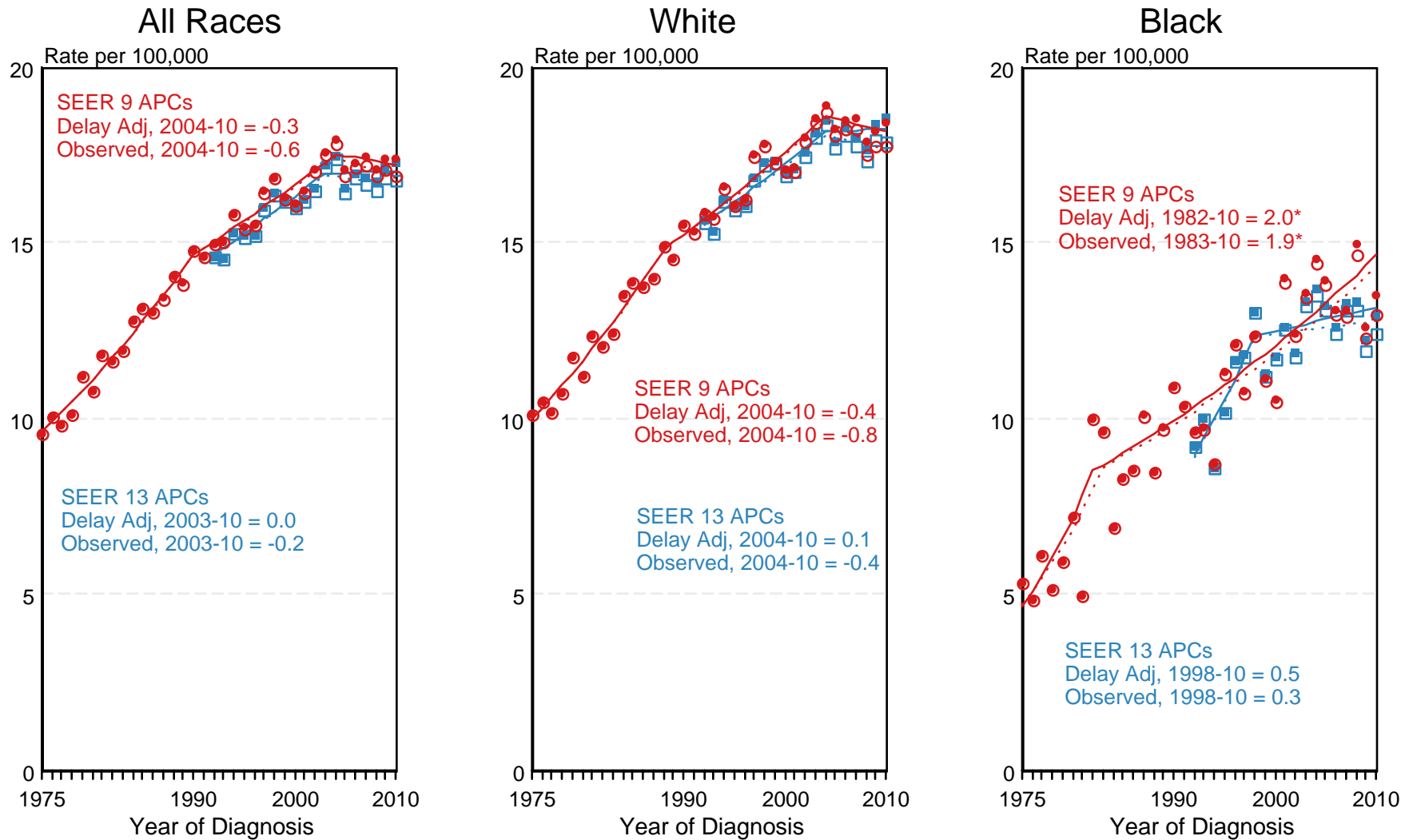


● SEER 9 Delay-Adj. Incidence
 ○ SEER 9 Observed Incidence
 ■ SEER 13 Delay-Adj. Incidence
 □ SEER 13 Observed Incidence

^a Source: SEER 9 areas and SEER 13 areas.
 Rates are age-adjusted to the 2000 US Std Population (19 age groups - Census P25-1103).
 Regression lines and APCs are calculated using the Joinpoint Regression Program Version 4.0.3, April 2013, National Cancer Institute.
 The APC is the Annual Percent Change for the regression line segments. The APC shown on the graph is for the most recent trend.
 * The APC is significantly different from zero ($p < 0.05$).

Figure 19.6

SEER Observed Incidence and SEER Delay Adjusted Incidence Rates^a SEER 9 Areas Compared to SEER 13 Areas Non-Hodgkin Lymphoma, Female, by Race



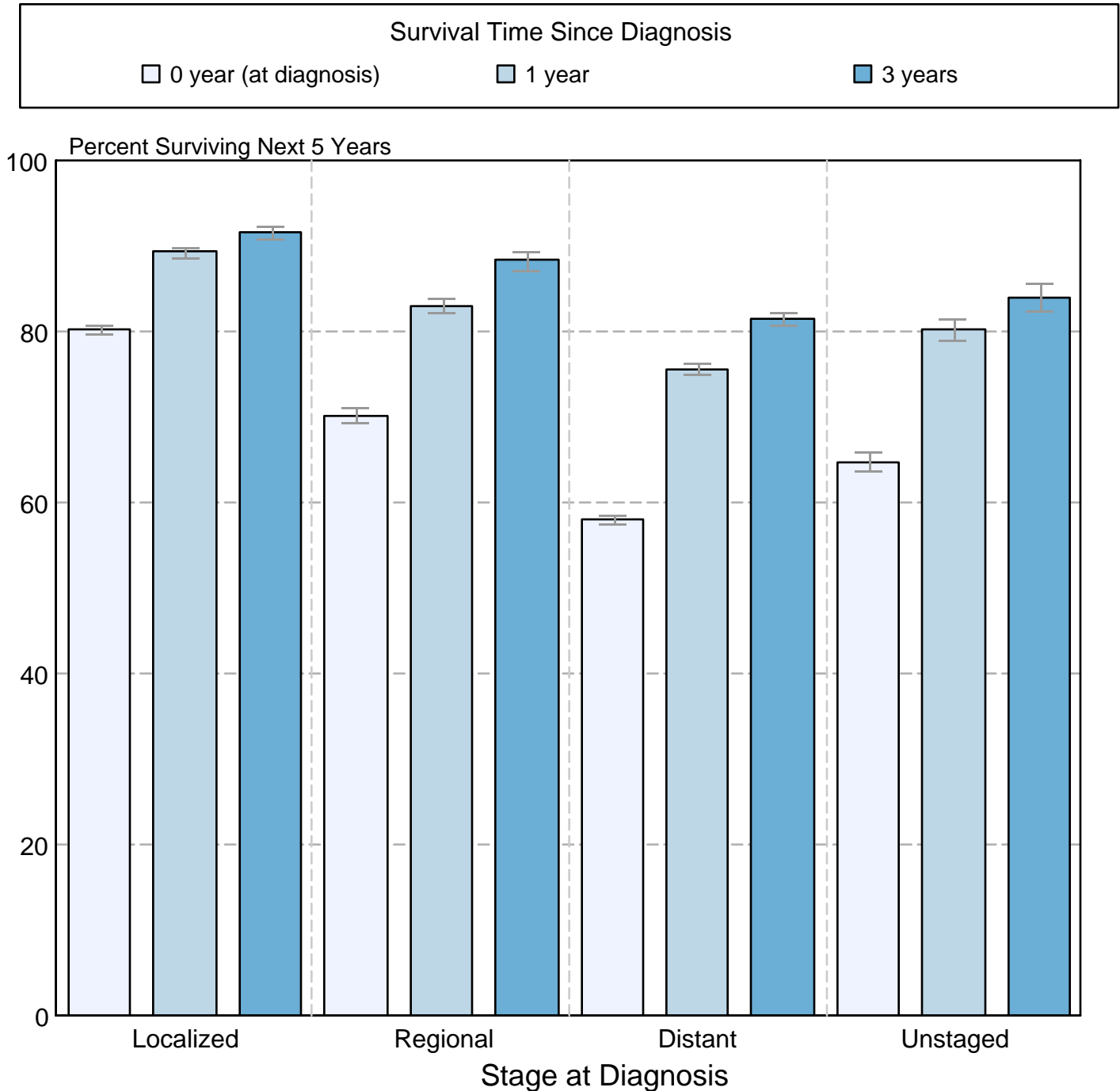
● SEER 9 Delay-Adj. Incidence
 ○ SEER 9 Observed Incidence
 ■ SEER 13 Delay-Adj. Incidence
 □ SEER 13 Observed Incidence

^a Source: SEER 9 areas and SEER 13 areas.
 Rates are age-adjusted to the 2000 US Std Population (19 age groups - Census P25-1103).
 Regression lines and APCs are calculated using the Joinpoint Regression Program Version 4.0.3, April 2013, National Cancer Institute.
 The APC is the Annual Percent Change for the regression line segments. The APC shown on the graph is for the most recent trend.
 * The APC is significantly different from zero ($p < 0.05$).

Figure 19.7

Non-Hodgkin Lymphoma 5-Year SEER Conditional Relative Survival and 95% Confidence Intervals

Probability of surviving the next 5 years given the cohort
has already survived 0, 1, or 3 years
1998-2009 by stage at diagnosis



Source: SEER 18 areas (San Francisco, Connecticut, Detroit, Hawaii, Iowa, New Mexico, Seattle, Utah, Atlanta, San Jose-Monterey, Los Angeles, Alaska Native Registry, Rural Georgia, California excluding SF/SJM/LA, Kentucky, Louisiana, New Jersey and Georgia excluding ATL/RG). California excluding SF/SJM/LA, Kentucky, Louisiana, New Jersey and Georgia excluding ATL/RG contribute cases for diagnosis years 2000-2009. The remaining 13 SEER Areas contribute cases for the entire period 1998-2009. Percent surviving is not shown if based on less than 25 cases. Confidence intervals are not shown if length of the confidence interval is greater than 5 times the standard error.