

Table 2.1
All Cancer Sites (Invasive)

Trends in SEER Incidence^{ab} and U.S. Mortality^c Using the Joinpoint Regression Program,
1975-2013 With up to Five Joinpoints, 1992-2013 With up to Four Joinpoints,
Both Sexes by Race/Ethnicity

	JP Trend 1		JP Trend 2		JP Trend 3		JP Trend 4		JP Trend 5		JP Trend 6		AAPC ^d	
	Years	APC	Years	APC	Years	APC	Years	APC	Years	APC	Years	APC	2004-13	2009-13
<u>SEER 9 Delay-Adjusted Incidence^a, 1975-2013</u>														
All Races	1975-89	1.2*	1989-92	2.8	1992-95	-2.4	1995-98	1.0	1998-09	-0.3*	2009-13	-1.5*	-0.8*	-1.5*
White	1975-82	0.8*	1982-92	1.8*	1992-95	-2.1	1995-98	1.3	1998-09	-0.2	2009-13	-1.5*	-0.8*	-1.5*
Black	1975-84	1.6*	1984-89	0.4	1989-92	4.1*	1992-05	-0.7*	2005-08	0.6	2008-13	-1.8*	-0.9	-1.8*
<u>SEER 13 Delay-Adjusted Incidence^b, 1992-2013</u>														
All Races	1992-94	-3.1*	1994-99	0.4	1999-05	-0.7*	2005-08	0.6	2008-13	-1.7*			-0.8*	-1.7*
White	1992-94	-3.1*	1994-01	0.4*	2001-04	-1.3	2004-08	0.5	2008-13	-1.7*			-0.7*	-1.7*
Black	1992-09	-0.5*	2009-13	-1.8*									-1.1*	-1.8*
<u>SEER 9 Observed Incidence^a, 1975-2013</u>														
All Races	1975-89	1.2*	1989-92	2.8	1992-95	-2.4	1995-98	1.1	1998-09	-0.3*	2009-13	-2.0*	-1.0*	-2.0*
White	1975-82	0.8*	1982-92	1.8*	1992-95	-2.1	1995-98	1.3	1998-09	-0.3*	2009-13	-2.0*	-1.1*	-2.0*
Black	1975-84	1.6*	1984-89	0.4	1989-92	4.7*	1992-95	-1.6	1995-09	-0.5*	2009-13	-2.5*	-1.4*	-2.5*
<u>SEER 13 Observed Incidence^b, 1992-2013</u>														
All Races	1992-94	-3.1*	1994-99	0.4	1999-05	-0.7*	2005-09	0.1	2009-13	-2.4*			-1.1*	-2.4*
White	1992-94	-3.1*	1994-01	0.3	2001-04	-1.1	2004-09	0.1	2009-13	-2.5*			-1.1*	-2.5*
White NH ^{ef}	1992-94	-3.0*	1994-01	0.5*	2001-04	-1.1	2004-09	0.2	2009-13	-2.4*			-1.0*	-2.4*
Black	1992-09	-0.6*	2009-13	-2.7*									-1.5*	-2.7*
Black NH ^{ef}	1992-09	-0.6*	2009-13	-2.5*									-1.4*	-2.5*
API ^e	1992-09	-0.4*	2009-13	-1.9*									-1.1*	-1.9*
AI/AN ^{eg}	1992-13	0.0											0.0	0.0
Hispanic ^f	1992-09	-0.1	2009-13	-2.2*									-1.1*	-2.2*
<u>U.S. Cancer Mortality^c, 1975-2013</u>														
All Races	1975-84	0.5*	1984-91	0.3*	1991-94	-0.5	1994-98	-1.3*	1998-01	-0.8	2001-13	-1.5*	-1.5*	-1.5*
White	1975-90	0.4*	1990-94	-0.3	1994-98	-1.2*	1998-01	-0.6	2001-13	-1.4*			-1.4*	-1.4*
Black	1975-84	1.3*	1984-92	0.6*	1992-99	-1.3*	1999-13	-2.1*					-2.1*	-2.1*
<u>U.S. Cancer Mortality^c, 1992-2013</u>														
All Races	1992-01	-1.0*	2001-13	-1.5*									-1.5*	-1.5*
White	1992-94	-0.3	1994-98	-1.2*	1998-01	-0.6	2001-13	-1.4*					-1.4*	-1.4*
White NH ^{ef}	1992-94	0.2	1994-98	-1.2*	1998-01	-0.5	2001-13	-1.4*					-1.4*	-1.4*
Black	1992-99	-1.3*	1999-13	-2.1*									-2.1*	-2.1*
Black NH ^{ef}	1992-94	0.0	1994-01	-1.6*	2001-13	-2.0*							-2.0*	-2.0*
API ^e	1992-13	-1.4*											-1.4*	-1.4*
AI/AN ^{eg}	1992-04	0.4	2004-13	-1.1*									-1.1*	-1.1*
Hispanic ^f	1992-98	0.2	1998-13	-1.2*									-1.2*	-1.2*

Joinpoint Regression Program Version 4.3.0.0, April 2016, National Cancer Institute. (<http://surveillance.cancer.gov/joinpoint/>).

The APC is the Annual Percent Change based on rates age-adjusted to the 2000 US Std Population (19 age groups - Census P25-1130).

Trends are from the SEER 9 areas (San Francisco, Connecticut, Detroit, Hawaii, Iowa, New Mexico, Seattle, Utah, and Atlanta).

Trends are from the SEER 13 areas (SEER 9 Areas, Los Angeles, San Jose-Monterey, Rural Georgia, and the Alaska Native Registry).

Trends are from US Mortality Files, National Center for Health Statistics, Centers for Disease Control and Prevention.

The AAPC is the Average Annual Percent Change and is based on the APCs calculated by Joinpoint.

API - Asian/Pacific Islander, AI/AN - American Indian/Alaska Native, NH - Non-Hispanic

Hispanic and Non-Hispanic are not mutually exclusive from whites, blacks, Asian/Pacific Islanders, and American Indians/Alaska

Natives. Incidence data for Hispanics and Non-Hispanics are based on NHIA and exclude cases from the Alaska Native Registry.

The Hispanic and Non-Hispanic mortality trends exclude deaths from New Hampshire and Oklahoma.

Data for American Indian/Alaska Native are based on the CHSDA (Contract Health Service Delivery Area) counties.

* The APC/AAPC is significantly different from zero ($p < .05$).

- Joinpoint regression line analysis could not be performed on data series.

Table 2.2
All Cancer Sites (Invasive)

Trends in SEER Incidence^{ab} and U.S. Mortality^c Using the Joinpoint Regression Program,
1975-2013 With up to Five Joinpoints, 1992-2013 With up to Four Joinpoints,
Males by Race/Ethnicity

	JP Trend 1		JP Trend 2		JP Trend 3		JP Trend 4		JP Trend 5		JP Trend 6		AAPC ^d	
	Years	APC	Years	APC	Years	APC	Years	APC	Years	APC	Years	APC	2004-13	2009-13
<u>SEER 9 Delay-Adjusted Incidence^a, 1975-2013</u>														
All Races	1975-89	1.3*	1989-92	5.2*	1992-95	-4.9*	1995-99	0.6	1999-09	-0.6*	2009-13	-2.9*	-1.6*	-2.9*
White	1975-89	1.4*	1989-92	5.0*	1992-95	-5.1*	1995-00	0.6	2000-09	-0.6*	2009-13	-2.8*	-1.6*	-2.8*
Black	1975-81	2.8*	1981-89	0.6	1989-92	6.7*	1992-05	-1.5*	2005-08	0.7	2008-13	-3.3*	-1.8*	-3.3*
<u>SEER 13 Delay-Adjusted Incidence^b, 1992-2013</u>														
All Races	1992-94	-5.8*	1994-09	-0.5*	2009-13	-3.3*							-1.8*	-3.3*
White	1992-94	-6.1*	1994-09	-0.4*	2009-13	-3.3*							-1.7*	-3.3*
Black	1992-05	-1.5*	2005-08	0.2	2008-13	-3.3*							-2.0*	-3.3*
<u>SEER 9 Observed Incidence^a, 1975-2013</u>														
All Races	1975-89	1.3*	1989-92	5.2*	1992-95	-4.8*	1995-00	0.4	2000-09	-0.7*	2009-13	-3.4*	-1.9*	-3.4*
White	1975-89	1.4*	1989-92	5.0*	1992-95	-5.1*	1995-00	0.7	2000-09	-0.7*	2009-13	-3.4*	-1.9*	-3.4*
Black	1975-81	2.8*	1981-89	0.6	1989-92	6.8*	1992-05	-1.6*	2005-08	0.4	2008-13	-4.0*	-2.3*	-4.0*
<u>SEER 13 Observed Incidence^b, 1992-2013</u>														
All Races	1992-94	-5.7*	1994-09	-0.5*	2009-13	-3.9*							-2.0*	-3.9*
White	1992-94	-6.0*	1994-09	-0.4*	2009-13	-4.0*							-2.0*	-4.0*
White NH ^{ef}	1992-94	-6.1*	1994-09	-0.3*	2009-13	-3.8*							-1.9*	-3.8*
Black	1992-09	-1.3*	2009-13	-4.2*									-2.6*	-4.2*
Black NH ^{ef}	1992-09	-1.3*	2009-13	-4.0*									-2.5*	-4.0*
API ^e	1992-96	-2.6*	1996-00	0.5	2000-07	-1.0*	2007-11	-2.3*	2011-13	-4.9*			-2.4*	-3.6*
AI/AN ^{eg}	1992-13	-0.5											-0.5	-0.5
Hispanic ^f	1992-09	-0.5*	2009-13	-4.4*									-2.3*	-4.4*
<u>U.S. Cancer Mortality^c, 1975-2013</u>														
All Races	1975-79	1.0*	1979-90	0.3*	1990-93	-0.5	1993-01	-1.5*	2001-13	-1.8*			-1.8*	-1.8*
White	1975-79	0.9*	1979-91	0.2*	1991-94	-0.8	1994-97	-1.7*	1997-01	-1.2*	2001-13	-1.7*	-1.7*	-1.7*
Black	1975-82	1.8*	1982-90	1.0*	1990-93	-0.2	1993-01	-2.0*	2001-13	-2.7*			-2.7*	-2.7*
<u>U.S. Cancer Mortality^c, 1992-2013</u>														
All Races	1992-01	-1.4*	2001-13	-1.8*									-1.8*	-1.8*
White	1992-01	-1.3*	2001-13	-1.7*									-1.7*	-1.7*
White NH ^{ef}	1992-94	-0.6	1994-02	-1.3*	2002-13	-1.6*							-1.6*	-1.6*
Black	1992-00	-1.8*	2000-13	-2.7*									-2.7*	-2.7*
Black NH ^{ef}	1992-94	-0.1	1994-02	-2.1*	2002-13	-2.6*							-2.6*	-2.6*
API ^e	1992-13	-1.6*											-1.6*	-1.6*
AI/AN ^{eg}	1992-13	-0.3*											-0.3*	-0.3*
Hispanic ^f	1992-98	0.0	1998-13	-1.6*									-1.6*	-1.6*

Joinpoint Regression Program Version 4.3.0.0, April 2016, National Cancer Institute. (<http://surveillance.cancer.gov/joinpoint/>).

The APC is the Annual Percent Change based on rates age-adjusted to the 2000 US Std Population (19 age groups - Census P25-1130).

Trends are from the SEER 9 areas (San Francisco, Connecticut, Detroit, Hawaii, Iowa, New Mexico, Seattle, Utah, and Atlanta).

Trends are from the SEER 13 areas (SEER 9 Areas, Los Angeles, San Jose-Monterey, Rural Georgia, and the Alaska Native Registry).

Trends are from US Mortality Files, National Center for Health Statistics, Centers for Disease Control and Prevention.

The AAPC is the Average Annual Percent Change and is based on the APCs calculated by Joinpoint.

API - Asian/Pacific Islander, AI/AN - American Indian/Alaska Native, NH - Non-Hispanic

Hispanic and Non-Hispanic are not mutually exclusive from whites, blacks, Asian/Pacific Islanders, and American Indians/Alaska

Natives. Incidence data for Hispanics and Non-Hispanics are based on NHIA and exclude cases from the Alaska Native Registry.

The Hispanic and Non-Hispanic mortality trends exclude deaths from New Hampshire and Oklahoma.

Data for American Indian/Alaska Native are based on the CHSDA (Contract Health Service Delivery Area) counties.

* The APC/AAPC is significantly different from zero ($p < .05$).

- Joinpoint regression line analysis could not be performed on data series.

Table 2.3
All Cancer Sites (Invasive)

Trends in SEER Incidence^{ab} and U.S. Mortality^c Using the Joinpoint Regression Program,
1975-2013 With up to Five Joinpoints, 1992-2013 With up to Four Joinpoints,
Females by Race/Ethnicity

	JP Trend 1		JP Trend 2		JP Trend 3		JP Trend 4		JP Trend 5		JP Trend 6		AAPC ^d	
	Years	APC	Years	APC	Years	APC	Years	APC	Years	APC	Years	APC	2004-13	2009-13
<u>SEER 9 Delay-Adjusted Incidence^a, 1975-2013</u>														
All Races	1975-79	-0.3	1979-87	1.6*	1987-95	0.1	1995-98	1.5	1998-03	-0.6	2003-13	0.1	0.1	0.1
White	1975-79	-0.2	1979-87	1.7*	1987-95	0.1	1995-98	1.7	1998-03	-0.5	2003-13	0.1	0.1	0.1
Black	1975-91	1.1*	1991-13	0.1*									0.1*	0.1*
<u>SEER 13 Delay-Adjusted Incidence^b, 1992-2013</u>														
All Races	1992-94	-0.3	1994-98	1.2	1998-04	-0.7*	2004-09	0.4	2009-13	-0.6			0.0	-0.6
White	1992-94	-0.3	1994-98	1.4*	1998-04	-0.7*	2004-08	0.5	2008-13	-0.5			-0.1	-0.5
Black	1992-13	0.1*											0.1*	0.1*
<u>SEER 9 Observed Incidence^a, 1975-2013</u>														
All Races	1975-79	-0.3	1979-87	1.6*	1987-95	0.1	1995-98	1.2	1998-13	-0.2*			-0.2*	-0.2*
White	1975-79	-0.2	1979-87	1.7*	1987-95	0.1	1995-98	1.5	1998-13	-0.2*			-0.2*	-0.2*
Black	1975-91	1.2*	1991-13	0.0									0.0	0.0
<u>SEER 13 Observed Incidence^b, 1992-2013</u>														
All Races	1992-94	-0.3	1994-98	1.2	1998-04	-0.7*	2004-09	0.3	2009-13	-1.0*			-0.3	-1.0*
White	1992-94	-0.3	1994-98	1.4*	1998-04	-0.7*	2004-09	0.3	2009-13	-1.0*			-0.3	-1.0*
White NH ^{ef}	1992-94	0.0	1994-98	1.6*	1998-04	-0.6*	2004-09	0.4	2009-13	-1.0*			-0.2	-1.0*
Black	1992-11	0.1	2011-13	-2.7									-0.6	-1.3
Black NH ^{ef}	1992-11	0.1	2011-13	-2.5									-0.5	-1.2
API ^e	1992-13	0.1											0.1	0.1
AI/AN ^{eg}	1992-13	0.5*											0.5*	0.5*
Hispanic ^f	1992-13	0.1											0.1	0.1
<u>U.S. Cancer Mortality^c, 1975-2013</u>														
All Races	1975-90	0.6*	1990-94	-0.2	1994-02	-0.8*	2002-13	-1.4*					-1.4*	-1.4*
White	1975-90	0.6*	1990-95	-0.2	1995-98	-1.2*	1998-01	-0.2	2001-13	-1.4*			-1.4*	-1.4*
Black	1975-91	1.0*	1991-99	-0.6*	1999-13	-1.6*							-1.6*	-1.6*
<u>U.S. Cancer Mortality^c, 1992-2013</u>														
All Races	1992-94	-0.2	1994-02	-0.8*	2002-13	-1.4*							-1.4*	-1.4*
White	1992-95	-0.2	1995-98	-1.2*	1998-01	-0.2	2001-13	-1.4*					-1.4*	-1.4*
White NH ^{ef}	1992-94	0.6	1994-98	-1.0*	1998-01	-0.2	2001-13	-1.3*					-1.3*	-1.3*
Black	1992-99	-0.6*	1999-13	-1.6*									-1.6*	-1.6*
Black NH ^{ef}	1992-99	-0.5*	1999-13	-1.5*									-1.5*	-1.5*
API ^e	1992-13	-1.0*											-1.0*	-1.0*
AI/AN ^{eg}	1992-04	0.6	2004-13	-1.3*									-1.3*	-1.3*
Hispanic ^f	1992-99	0.1	1999-13	-1.0*									-1.0*	-1.0*

Joinpoint Regression Program Version 4.3.0.0, April 2016, National Cancer Institute. (<http://surveillance.cancer.gov/joinpoint/>).

The APC is the Annual Percent Change based on rates age-adjusted to the 2000 US Std Population (19 age groups - Census P25-1130).

Trends are from the SEER 9 areas (San Francisco, Connecticut, Detroit, Hawaii, Iowa, New Mexico, Seattle, Utah, and Atlanta).

Trends are from the SEER 13 areas (SEER 9 Areas, Los Angeles, San Jose-Monterey, Rural Georgia, and the Alaska Native Registry).

Trends are from US Mortality Files, National Center for Health Statistics, Centers for Disease Control and Prevention.

The AAPC is the Average Annual Percent Change and is based on the APCs calculated by Joinpoint.

API - Asian/Pacific Islander, AI/AN - American Indian/Alaska Native, NH - Non-Hispanic

Hispanic and Non-Hispanic are not mutually exclusive from whites, blacks, Asian/Pacific Islanders, and American Indians/Alaska

Natives. Incidence data for Hispanics and Non-Hispanics are based on NHIA and exclude cases from the Alaska Native Registry.

The Hispanic and Non-Hispanic mortality trends exclude deaths from New Hampshire and Oklahoma.

Data for American Indian/Alaska Native are based on the CHSDA (Contract Health Service Delivery Area) counties.

* The APC/AAPC is significantly different from zero ($p < .05$).

- Joinpoint regression line analysis could not be performed on data series.

Table 2.4
All Cancer Sites (Invasive)

Delay-adjusted SEER Incidence^a Rates by Year, Race and Sex

Year of Diagnosis:	All Races			Whites			Blacks		
	Total	Males	Females	Total	Males	Females	Total	Males	Females
1975	400.46	466.85	365.89	402.16	468.60	369.62	426.52	525.51	356.63
1976	407.44	481.13	367.50	409.77	481.94	373.18	427.71	553.17	340.93
1977	407.76	486.48	363.76	409.32	487.15	367.89	442.85	577.58	352.49
1978	407.29	488.34	362.18	409.74	489.68	367.91	436.59	570.87	344.09
1979	412.51	496.45	365.53	414.10	497.60	369.66	451.70	589.85	359.28
1980	418.10	505.85	368.14	419.51	505.22	373.39	467.52	615.22	366.53
1981	425.31	510.89	377.15	427.69	510.82	383.92	473.02	634.42	363.04
1982	424.51	511.05	376.26	427.75	512.44	383.42	465.25	622.11	359.37
1983	431.11	519.91	380.74	434.31	520.91	387.87	487.29	646.27	382.29
1984	440.01	525.43	392.50	443.64	527.65	399.58	488.31	643.87	386.24
1985	448.85	531.17	403.19	453.44	533.49	411.47	489.05	643.37	388.37
1986	451.34	538.17	402.28	455.98	542.87	409.10	493.80	643.53	396.74
1987	468.03	563.19	413.28	474.84	568.78	423.25	501.10	666.31	394.09
1988	463.88	558.38	409.32	470.21	564.94	417.83	504.09	657.70	404.54
1989	467.85	567.08	408.44	475.13	573.51	418.54	492.84	661.14	385.03
1990	482.06	592.79	415.63	488.90	599.29	424.83	522.32	700.17	409.48
1991	503.09	637.43	418.99	510.52	644.46	428.55	549.36	765.17	412.83
1992	510.64	658.23	414.85	516.76	663.37	423.35	569.63	810.14	413.90
1993	493.47	622.27	408.29	496.89	620.20	416.98	568.85	819.09	404.33
1994	483.61	589.85	413.63	487.44	587.52	423.14	558.24	784.00	409.23
1995	477.15	571.97	414.97	482.13	570.13	426.11	544.01	751.35	405.01
1996	479.36	572.76	418.24	484.87	573.95	428.11	541.77	728.85	417.73
1997	486.60	575.86	428.50	493.39	576.33	440.91	542.49	742.70	411.81
1998	488.57	573.20	434.12	496.41	576.06	446.49	539.94	727.05	419.47
1999	490.78	580.98	430.80	498.46	582.58	443.51	542.45	725.87	422.01
2000	486.64	580.68	422.42	496.47	584.05	437.67	529.57	714.82	405.73
2001	490.28	581.84	427.25	500.89	587.44	442.16	522.19	701.21	401.60
2002	488.13	575.28	428.47	497.73	581.24	440.98	536.70	700.71	427.26
2003	475.94	560.74	417.69	486.17	565.14	432.53	521.22	682.77	413.82
2004	477.04	558.85	420.45	486.74	564.02	433.45	525.28	686.01	419.50
2005	473.70	550.51	420.41	485.34	558.90	434.66	511.75	647.78	421.84
2006	477.96	558.20	420.74	489.40	565.53	435.25	513.01	651.29	418.28
2007	484.54	570.08	422.79	495.02	575.86	436.83	523.14	675.81	418.32
2008	478.64	551.93	426.52	488.52	557.03	440.02	523.68	672.91	422.36
2009	477.73	543.18	431.34	487.31	548.89	443.70	517.50	650.14	427.67
2010	468.35	532.99	421.97	478.26	538.73	435.07	499.77	624.99	413.39
2011	464.09	522.39	423.05	474.44	529.05	436.27	495.00	603.02	421.02
2012	452.85	495.40	424.54	461.81	501.07	436.49	492.72	586.56	428.00
2013	448.63	488.59	422.63	459.27	495.80	436.49	477.47	569.54	413.86

Additional information on the model used to delay-adjust SEER Incidence rates can be found at [\(http://surveillance.cancer.gov/delay/\)](http://surveillance.cancer.gov/delay/).

^a SEER 9 areas (San Francisco, Connecticut, Detroit, Hawaii, Iowa, New Mexico, Seattle, Utah, and Atlanta).
Rates are per 100,000 and are age-adjusted to the 2000 US Std Population (19 age groups - Census P25-1130).
- Delay-adjusted rate is not shown for observed rates based on less than 16 cases for the time interval.

Table 2.5
All Cancer Sites (Invasive)

Age-adjusted SEER Incidence^a Rates by Year, Race and Sex

Year of Diagnosis:	All Races			Whites			Blacks		
	Total	Males	Females	Total	Males	Females	Total	Males	Females
1975-2013	463.34	547.46	408.84	469.53	550.65	418.45	506.34	662.72	402.04
1975	400.46	466.85	365.89	402.16	468.60	369.62	426.52	525.51	356.63
1976	407.44	481.13	367.50	409.77	481.94	373.18	427.71	553.17	340.93
1977	407.76	486.48	363.76	409.32	487.15	367.89	442.85	577.58	352.49
1978	407.29	488.34	362.18	409.74	489.68	367.91	436.59	570.87	344.09
1979	412.51	496.45	365.53	414.10	497.60	369.66	451.70	589.85	359.28
1980	418.10	505.85	368.14	419.51	505.22	373.39	467.52	615.22	366.53
1981	425.31	510.89	377.15	427.69	510.82	383.92	473.02	634.42	363.04
1982	424.51	511.05	376.26	427.75	512.44	383.42	465.25	622.11	359.37
1983	431.11	519.91	380.74	434.31	520.91	387.87	487.29	646.27	382.29
1984	440.01	525.43	392.50	443.64	527.65	399.58	488.31	643.87	386.24
1985	448.85	531.17	403.19	453.44	533.49	411.47	489.05	643.37	388.37
1986	451.34	538.17	402.28	455.98	542.87	409.10	493.80	643.53	396.74
1987	468.03	563.19	413.28	474.84	568.78	423.25	501.10	666.31	394.09
1988	463.88	558.38	409.32	470.21	564.94	417.83	504.09	657.70	404.54
1989	467.85	567.08	408.44	475.13	573.51	418.54	492.84	661.14	385.03
1990	482.06	592.79	415.63	488.90	599.29	424.83	522.32	700.17	409.48
1991	503.09	637.43	418.99	510.52	644.46	428.55	549.36	765.17	412.83
1992	510.64	658.23	414.85	516.76	663.37	423.35	569.63	810.14	413.90
1993	493.47	622.27	408.29	496.89	620.20	416.98	568.85	819.09	404.33
1994	483.61	589.85	413.63	487.44	587.52	423.14	558.24	784.00	409.23
1995	477.15	571.97	414.97	482.13	570.13	426.11	544.01	751.35	405.01
1996	479.36	572.76	418.24	484.87	573.95	428.11	541.77	728.85	417.73
1997	486.60	575.86	428.50	493.39	576.33	440.91	542.49	742.70	411.81
1998	488.57	573.20	434.12	496.41	576.06	446.49	539.94	727.05	419.47
1999	490.78	580.98	430.80	498.46	582.58	443.51	542.45	725.87	422.01
2000	486.64	580.68	422.42	496.47	584.05	437.67	529.57	714.82	405.73
2001	490.28	581.84	427.25	500.89	587.44	442.16	522.19	701.21	401.60
2002	488.13	575.28	428.47	497.73	581.24	440.98	536.70	700.71	427.26
2003	475.94	560.74	417.69	486.17	565.14	432.53	521.22	682.77	413.82
2004	477.04	558.85	420.45	486.74	564.02	433.45	525.28	686.01	419.50
2005	473.06	549.75	419.86	484.66	558.00	434.15	510.32	645.83	420.76
2006	476.67	556.65	419.64	488.03	563.71	434.24	510.17	647.36	416.19
2007	482.59	567.72	421.14	492.97	573.11	435.31	518.77	669.69	415.18
2008	476.07	548.87	424.30	485.82	553.46	438.00	517.79	664.69	418.07
2009	474.52	539.43	428.53	483.94	544.50	441.14	510.39	640.39	422.37
2010	464.59	528.59	418.67	474.30	533.58	432.07	491.43	613.59	407.20
2011	458.90	516.33	418.49	468.91	521.97	431.97	484.61	589.37	412.91
2012	445.70	487.08	418.24	453.98	491.26	430.24	478.87	568.49	417.09
2013	436.47	474.03	412.28	445.45	478.43	425.49	457.12	542.13	398.47

^a SEER 9 areas (San Francisco, Connecticut, Detroit, Hawaii, Iowa, New Mexico, Seattle, Utah, and Atlanta). Rates are per 100,000 and are age-adjusted to the 2000 US Std Population (19 age groups - Census P25-1130).
- Statistic not shown. Rate based on less than 16 cases for the time interval.

Table 2.6
All Cancer Sites (Invasive)

Age-adjusted U.S. Death^a Rates by Year, Race and Sex

Year of Death:	All Races			Whites			Blacks		
	Total	Males	Females	Total	Males	Females	Total	Males	Females
1975-2013	196.29	248.07	162.20	194.09	243.66	161.51	241.61	329.90	186.69
1975	199.14	258.43	160.03	196.33	254.00	158.99	235.50	320.45	174.17
1976	202.30	262.23	162.70	199.38	257.50	161.69	241.76	328.45	179.10
1977	203.02	264.23	162.94	199.67	258.78	161.61	246.38	337.95	181.60
1978	204.42	267.07	163.76	201.14	261.65	162.54	247.24	340.91	181.53
1979	204.53	268.65	163.06	201.20	263.24	161.70	248.98	344.67	182.73
1980	206.96	271.08	165.75	203.27	265.03	164.17	256.18	353.91	189.25
1981	206.40	269.78	165.90	202.64	263.27	164.55	256.77	358.65	187.47
1982	208.32	272.89	167.45	204.54	266.28	166.11	260.36	364.86	190.17
1983	209.21	274.09	168.27	205.17	267.22	166.69	263.75	369.32	193.24
1984	210.91	275.08	170.55	206.66	267.55	169.02	268.15	377.93	195.67
1985	211.35	275.68	170.96	207.25	268.25	169.58	268.06	377.82	196.31
1986	211.79	276.04	171.59	207.73	268.83	170.01	269.45	378.92	199.05
1987	211.91	276.34	171.54	207.78	268.96	169.87	271.12	383.24	199.91
1988	212.62	276.89	172.53	208.48	269.46	170.94	271.59	384.17	200.36
1989	214.30	278.50	174.25	209.96	270.25	172.88	275.87	395.28	200.87
1990	214.95	279.82	174.65	210.41	271.48	172.89	279.30	399.14	205.39
1991	215.06	279.15	175.30	210.62	271.19	173.41	278.97	395.85	207.39
1992	213.46	276.51	174.39	209.24	268.91	172.58	274.93	389.20	205.80
1993	213.45	275.89	174.55	209.16	267.89	172.82	277.09	394.76	206.29
1994	211.74	272.12	174.11	207.83	264.73	172.62	271.96	385.20	204.06
1995	209.89	268.50	173.35	206.09	261.46	171.73	269.51	379.02	204.53
1996	207.00	263.75	171.21	203.40	256.83	169.85	265.28	373.70	200.94
1997	203.55	258.13	169.00	199.94	251.58	167.35	262.14	363.18	202.53
1998	200.82	253.63	166.93	197.56	247.62	165.38	255.66	353.13	198.38
1999	200.72	252.75	167.24	197.75	247.14	165.92	253.80	349.23	197.54
2000	198.79	248.46	166.70	196.37	243.37	165.98	248.07	341.20	193.21
2001	196.29	245.05	164.61	193.98	240.31	163.75	244.34	334.14	192.12
2002	194.36	241.63	163.38	192.38	237.62	162.56	240.81	325.80	191.45
2003	190.89	235.81	161.16	189.10	232.16	160.40	235.16	314.60	188.76
2004	186.84	230.27	157.92	185.21	226.60	157.41	228.98	307.30	183.51
2005	185.23	228.09	156.46	183.87	224.94	156.04	224.83	300.33	180.94
2006	182.03	222.56	154.63	181.10	220.02	154.52	218.93	290.16	177.31
2007	179.26	219.33	152.00	178.30	216.64	151.91	216.23	286.57	175.47
2008	176.32	215.34	149.27	175.69	213.21	149.37	209.37	275.26	170.41
2009	173.40	211.17	147.12	173.03	209.33	147.48	205.39	268.91	167.41
2010	171.75	208.80	145.73	171.36	207.16	145.86	202.85	264.14	166.20
2011	168.72	204.27	143.49	168.53	203.30	143.45	199.04	253.59	166.03
2012	166.30	200.51	141.76	166.40	199.85	142.02	194.08	247.15	161.72
2013	162.98	196.16	139.07	163.35	195.70	139.69	189.54	240.01	158.43

^a US Mortality Files, National Center for Health Statistics, Centers for Disease Control and Prevention. Rates are per 100,000 and are age-adjusted to the 2000 US Std Population (19 age groups - Census P25-1130).
- Statistic not shown. Rate based on less than 16 cases for the time interval.

Table 2.7
All Cancer Sites (Invasive)

SEER Incidence^a and U.S. Death^b Rates, Age-Adjusted and Age-Specific Rates, by Race and Sex

	All Races			Whites			Blacks		
	Total	Males	Females	Total	Males	Females	Total	Males	Females
<u>SEER Incidence</u>									
<u>Age at Diagnosis</u>									
Age-Adjusted Rates, 2009-2013									
All ages	448.7	504.5	409.9	457.4	508.2	422.5	470.2	571.8	400.5
Under 65	220.2	210.4	230.7	223.3	210.4	237.1	240.4	261.1	223.9
65 and over	2,028.7	2,537.8	1,648.8	2,075.4	2,566.5	1,703.9	2,058.8	2,719.9	1,621.4
All ages (IARC world std) ^c	305.4	333.1	285.1	310.8	334.6	293.9	326.7	391.7	279.2
Age-Specific Rates, 2009-2013									
<1	23.6	23.3	23.8	23.9	23.6	24.2	19.9	19.6	20.2
1-4	21.9	22.7	20.9	23.4	24.0	22.8	16.3	17.0	15.6
5-9	12.7	13.9	11.5	13.3	14.8	11.8	11.0	10.6	11.4
10-14	13.8	14.2	13.3	14.5	14.8	14.1	11.8	12.5	11.0
15-19	22.2	22.9	21.4	24.2	25.2	23.1	14.5	14.6	14.4
20-24	35.7	34.6	37.0	39.5	38.4	40.7	22.7	22.4	23.0
25-29	57.8	48.8	67.2	62.6	53.4	72.5	41.1	31.7	49.9
30-34	89.6	66.1	113.4	94.7	70.5	120.2	74.0	50.7	95.2
35-39	134.5	89.5	179.4	139.4	94.5	185.8	120.2	76.7	159.2
40-44	217.0	145.4	288.1	221.4	147.8	297.0	210.2	155.8	259.3
45-49	352.4	270.9	432.5	356.8	271.0	443.4	370.7	332.7	404.9
50-54	559.8	528.2	590.4	561.9	522.7	600.7	632.1	682.6	587.0
55-59	821.5	891.2	755.8	822.0	875.1	770.7	991.8	1,221.1	794.4
60-64	1,181.9	1,376.7	1,003.1	1,187.6	1,358.9	1,025.9	1,426.9	1,857.9	1,075.0
65-69	1,671.1	2,036.1	1,347.4	1,694.0	2,029.9	1,388.9	1,886.0	2,535.0	1,382.2
70-74	1,995.3	2,471.3	1,596.7	2,043.6	2,495.4	1,657.3	2,090.0	2,778.6	1,591.1
75-79	2,243.4	2,785.2	1,826.9	2,308.1	2,826.8	1,899.7	2,211.4	2,883.0	1,776.3
80-84	2,328.7	2,935.1	1,919.2	2,393.0	2,987.1	1,983.1	2,171.1	2,853.7	1,797.1
85+	2,168.2	2,894.8	1,800.1	2,212.7	2,960.5	1,832.9	1,981.9	2,570.4	1,739.6
<u>U.S. Mortality</u>									
<u>Age at Death</u>									
Age-Adjusted Rates, 2009-2013									
All ages	168.5	204.0	143.4	168.4	202.9	143.6	197.9	254.2	163.8
Under 65	53.5	57.5	49.9	52.6	56.3	49.0	71.0	78.3	64.9
65 and over	963.3	1,216.3	789.7	969.5	1,216.0	797.9	1,075.7	1,470.1	847.5
All ages (IARC world std) ^c	99.1	116.1	85.9	98.6	115.0	85.7	121.0	149.5	101.9
Age-Specific Rates, 2009-2013									
<1	1.7	1.8	1.6	1.7	1.9	1.6	1.5	1.3	1.7
1-4	2.2	2.3	2.0	2.2	2.4	2.1	2.1	2.2	2.1
5-9	2.2	2.4	2.0	2.3	2.5	2.0	2.1	2.0	2.1
10-14	2.2	2.3	2.1	2.2	2.3	2.1	2.0	2.1	1.9
15-19	2.9	3.4	2.4	3.0	3.4	2.4	2.8	3.2	2.4
20-24	4.3	5.1	3.5	4.4	5.2	3.5	4.4	4.9	3.9
25-29	6.5	7.0	6.0	6.5	7.0	5.9	7.5	7.5	7.4
30-34	11.0	10.2	11.8	10.8	10.2	11.5	13.7	11.8	15.5
35-39	19.7	17.1	22.3	19.4	17.2	21.6	25.5	19.8	30.6
40-44	37.3	32.2	42.4	36.7	32.2	41.3	47.5	37.5	56.5
45-49	75.6	72.1	79.1	74.3	71.4	77.2	97.7	90.2	104.3
50-54	142.9	150.1	136.0	139.6	146.6	132.8	191.7	203.8	181.1
55-59	235.9	268.0	205.7	230.2	259.8	201.8	323.7	384.1	272.4
60-64	364.0	422.8	309.9	358.5	412.3	307.8	487.0	606.2	389.9
65-69	545.3	640.0	460.7	544.4	633.2	463.4	679.7	859.6	541.2
70-74	777.5	929.3	649.0	781.7	926.8	656.4	915.7	1,185.3	722.9
75-79	1,048.8	1,292.9	859.0	1,058.8	1,295.2	870.9	1,152.8	1,540.4	906.0
80-84	1,345.3	1,733.5	1,082.2	1,355.1	1,735.3	1,091.9	1,452.7	2,044.5	1,134.8
85+	1,678.7	2,348.8	1,347.2	1,694.2	2,360.5	1,361.1	1,710.2	2,619.1	1,347.1

^a SEER 18 areas. Rates are per 100,000 and are age-adjusted to the 2000 US Std Population (19 age groups - Census P25-1130), unless noted.

^b US Mortality Files, National Center for Health Statistics, Centers for Disease Control and Prevention.

^c Rates are per 100,000 and are age-adjusted to the 2000 US Std Population (19 age groups - Census P25-1130), unless noted.

^d Rates are per 100,000 and are age-adjusted to the IARC world standard population.

- Statistic not shown. Rate based on less than 16 cases for the time interval.

Table 2.8
All Cancer Sites (Invasive)

5-Year Relative and Period Survival (Percent) by Race, Sex, Diagnosis Year and Age

	All Races			Whites			Blacks		
	Total	Males	Females	Total	Males	Females	Total	Males	Females
5-Year Relative Survival (Percent)									
Year of Diagnosis:									
1960-1963 ^a	-	-	-	39	-	-	27	-	-
1970-1973 ^a	-	-	-	43	-	-	31	-	-
1975-1977 ^b	48.9	41.7	55.9	49.8	42.7	56.5	39.0	32.7	46.2
1978-1980 ^b	49.0	43.1	54.9	50.0	44.3	55.6	39.0	33.3	45.6
1981-1983 ^b	50.2	45.2	55.1	51.3	46.6	56.0	38.8	34.2	44.4
1984-1986 ^b	52.4	47.2	57.6	53.6	48.6	58.5	40.2	35.5	45.5
1987-1989 ^b	55.3	51.1	59.6	56.7	52.8	60.6	43.0	38.9	47.7
1990-1992 ^b	59.9	59.1	60.9	61.4	60.8	62.0	47.8	47.6	48.2
1993-1995 ^b	61.3	60.8	61.8	62.4	62.0	62.8	52.8	54.4	50.6
1996-1998 ^b	63.3	63.0	63.6	64.3	64.0	64.7	55.2	57.9	52.1
1999-2001 ^b	66.0	66.3	65.7	67.2	67.5	66.8	57.9	61.0	54.3
2002-2005 ^b	67.2	67.8	66.6	68.5	69.0	67.9	59.5	63.2	55.5
2006-2012 ^b	69.0 ^e	69.3 ^e	68.6 ^e	70.0 ^e	70.3 ^e	69.7 ^e	62.7 ^e	65.6 ^e	59.5 ^e
5-Year Period Survival (Percent) ^{cd}									
2012	67.2	66.9	67.5	67.7	67.1	68.3	61.6	64.2	58.8
5-Year Relative Survival (Percent), 2006-2012 ^c									
Age at Diagnosis:									
Ages <45	82.0	77.4	84.9	83.5	79.2	86.3	71.2	65.7	74.4
Ages 45-54	73.8	68.6	78.2	75.1	69.6	79.7	64.6	63.3	65.8
Ages 55-64	70.5	70.1	70.9	71.4	70.8	72.1	63.7	66.2	59.8
Ages 65-74	66.7	69.5	62.7	67.2	69.7	63.7	61.3	66.6	53.4
Ages 75+	51.6	55.1	48.3	52.2	55.1	49.4	44.2	51.3	38.5
Ages <65	73.8	70.9	76.7	74.9	71.8	78.0	65.3	65.3	65.4
Ages 65+	59.5	63.3	55.0	59.9	63.3	56.0	54.5	61.5	46.4

^a Based on End Results data from a series of hospital registries and one population-based registry.
^b SEER 9 areas (San Francisco, Connecticut, Detroit, Hawaii, Iowa, New Mexico, Seattle, Utah, Atlanta).
Based on follow-up of patients into 2013.
^c SEER 18 areas (San Francisco, Connecticut, Detroit, Hawaii, Iowa, New Mexico, Seattle, Utah, Atlanta, San Jose-Monterey, Los Angeles, Alaska Native Registry, Rural Georgia, California excluding SF/SJM/LA, Kentucky, Louisiana, New Jersey and Georgia excluding ATL/RG).
Based on follow-up of patients into 2013.
^d Period survival provides a 2012 estimate of survival by piecing together the most recent conditional survival estimates from several cohorts. It is computed here using three year calendar blocks (2010-2012: 0-1 year survival), (2009-2011: 1-2 year survival), (2008-2010: 2-3 year survival), (2007-2009: 3-4 year survival), (2006-2008: 4-5 years survival).
^e The difference between 1975-1977 and 2006-2012 is statistically significant (p<.05).
^f The standard error is between 5 and 10 percentage points.
^g The standard error is greater than 10 percentage points.
- Statistic could not be calculated due to fewer than 25 cases during the time period.

Table 2.9
All Cancer Sites (Invasive)

SEER^a Relative Survival (Percent)
By Year of Diagnosis

All Races, Males and Females

Year of Diagnosis

	1975- 1979	1980- 1984	1985- 1989	1990- 1994	1995	1996	1997	1998	1999	2000	2001	2002	2003	2004	2005	2006	2007	2008	2009	2010	2011	2012
Survival Time																						
1-year	69.2	70.7	73.2	76.4	76.6	77.0	77.7	78.0	78.7	79.0	79.5	79.8	79.5	80.1	80.3	80.9	81.4	81.6	81.8	81.7	81.9	81.6
2-year	59.8	61.3	64.5	68.8	69.3	70.2	70.9	71.4	72.2	72.7	73.4	73.9	73.4	74.0	74.3	75.3	75.7	75.8	75.9	76.0	76.1	
3-year	54.7	56.2	59.8	64.9	65.7	66.7	67.4	68.0	68.9	69.5	70.2	70.8	70.3	70.9	71.2	72.2	72.6	72.8	72.8			
4-year	51.4	52.8	56.7	62.3	63.3	64.3	65.1	65.7	66.8	67.4	68.2	68.8	68.2	68.7	69.2	70.1	70.6	70.5	70.7			
5-year	48.9	50.2	54.4	60.4	61.6	62.5	63.3	64.0	65.2	66.0	66.8	67.2	66.7	67.3	67.6	68.6	69.1	68.9				
6-year	47.0	48.2	52.6	58.9	60.2	61.2	61.9	62.7	63.9	64.8	65.6	66.1	65.4	66.0	66.4	67.5	67.9					
7-year	45.4	46.5	51.0	57.5	59.0	60.1	60.9	61.6	62.9	63.7	64.6	65.1	64.4	65.0	65.4	66.5						
8-year	44.1	45.1	49.8	56.4	58.0	59.1	60.0	60.8	61.9	62.6	63.7	64.2	63.5	64.2	64.5							
9-year	42.9	43.9	48.6	55.4	57.2	58.2	59.1	59.8	61.1	61.9	63.0	63.5	62.7	63.3								
10-year	41.8	42.8	47.6	54.5	56.4	57.4	58.4	59.0	60.4	61.2	62.3	62.9	61.8									
11-year	40.8	41.9	46.8	53.7	55.6	56.7	57.7	58.3	59.7	60.4	61.6	62.2										
12-year	40.0	41.0	45.9	52.9	54.8	56.1	57.1	57.7	59.0	59.7	60.9											
13-year	39.3	40.3	45.1	52.3	53.9	55.4	56.4	57.0	58.4	59.0												
14-year	38.7	39.6	44.4	51.6	53.2	54.8	55.8	56.4	57.7													
15-year	38.0	38.9	43.7	51.0	52.6	54.2	55.2	55.9														
16-year	37.4	38.2	43.1	50.4	52.0	53.6	54.5															
17-year	36.8	37.6	42.6	49.7	51.3	53.0																
18-year	36.3	37.1	42.1	49.1	50.7																	
19-year	35.9	36.5	41.7	48.5																		
20-year	35.5	36.0	41.2																			
21-year	35.0	35.5	40.8																			
22-year	34.5	35.1	40.3																			
23-year	34.1	34.6	39.8																			
24-year	33.6	34.2	39.3																			
25-year	33.1	33.8																				
26-year	32.7	33.4																				
27-year	32.4	33.0																				
28-year	32.0	32.6																				
29-year	31.7	32.2																				
30-year	31.3																					

^a Based on the SEER 9 areas (San Francisco, Connecticut, Detroit, Hawaii, Iowa, New Mexico, Seattle, Utah, and Atlanta).

Table 2.10
All Cancer Sites (Invasive)

SEER^a Relative Survival (Percent)
By Year of Diagnosis

All Races, Males

Year of Diagnosis

	1975- 1979	1980- 1984	1985- 1989	1990- 1994	1995	1996	1997	1998	1999	2000	2001	2002	2003	2004	2005	2006	2007	2008	2009	2010	2011	2012
Survival Time																						
1-year	63.7	66.6	69.9	75.5	75.3	76.2	76.9	76.8	78.0	78.6	79.1	79.2	79.0	79.7	80.0	80.9	81.4	81.3	81.5	81.3	81.2	80.2
2-year	53.4	56.4	60.4	67.7	68.0	69.4	70.2	70.3	71.5	72.5	73.0	73.5	73.0	73.9	74.1	75.4	75.9	75.5	75.5	75.6	75.4	
3-year	48.2	51.2	55.5	64.0	64.6	66.1	67.0	67.1	68.5	69.5	70.3	70.8	70.1	71.0	71.2	72.5	73.1	72.6	72.7	72.7		
4-year	44.7	47.7	52.2	61.6	62.4	63.8	64.9	65.0	66.6	67.6	68.4	69.1	68.3	69.2	69.4	70.6	71.3	70.6	70.8			
5-year	42.2	45.0	49.9	59.8	60.8	62.3	63.1	63.5	65.2	66.2	67.3	67.9	67.1	68.0	68.1	69.4	70.1	69.4				
6-year	40.2	43.0	48.1	58.4	59.5	61.1	61.8	62.2	64.0	65.1	66.3	66.9	66.0	66.9	66.9	68.5	69.0					
7-year	38.5	41.3	46.4	57.0	58.5	60.0	61.0	61.2	63.2	64.2	65.5	66.2	65.1	65.9	66.0	67.6						
8-year	37.1	39.8	45.0	55.9	57.6	59.2	60.2	60.5	62.3	63.2	64.8	65.4	64.3	65.1	65.1							
9-year	35.8	38.6	43.8	54.8	56.8	58.4	59.4	59.6	61.6	62.6	64.3	64.8	63.4	64.4								
10-year	34.6	37.5	42.8	53.9	55.9	57.5	58.8	58.9	60.9	61.9	63.5	64.3	62.6									
11-year	33.5	36.5	41.8	53.1	55.2	56.8	58.1	58.2	60.4	60.9	62.9	63.5										
12-year	32.6	35.6	40.9	52.3	54.3	56.1	57.5	57.4	59.7	60.4	62.4											
13-year	31.8	34.9	40.0	51.6	53.4	55.6	56.7	56.8	59.1	59.7												
14-year	31.1	34.1	39.3	50.9	52.5	55.0	56.0	56.3	58.5													
15-year	30.3	33.4	38.5	50.2	51.8	54.4	55.6	56.0														
16-year	29.7	32.6	37.8	49.6	51.2	53.8	54.8															
17-year	29.0	32.0	37.3	48.9	50.6	53.3																
18-year	28.4	31.4	36.7	48.4	50.2																	
19-year	28.0	30.8	36.2	47.7																		
20-year	27.5	30.3	35.8																			
21-year	27.0	29.8	35.4																			
22-year	26.5	29.3	34.9																			
23-year	26.1	28.8	34.4																			
24-year	25.5	28.4	33.9																			
25-year	25.0	28.0																				
26-year	24.5	27.5																				
27-year	24.2	27.2																				
28-year	23.8	26.9																				
29-year	23.5	26.6																				
30-year	23.1																					

^a Based on the SEER 9 areas (San Francisco, Connecticut, Detroit, Hawaii, Iowa, New Mexico, Seattle, Utah, and Atlanta).

Table 2.11
All Cancer Sites (Invasive)

SEER^a Relative Survival (Percent)
By Year of Diagnosis

All Races, Females

Year of Diagnosis

	1975- 1979	1980- 1984	1985- 1989	1990- 1994	1995	1996	1997	1998	1999	2000	2001	2002	2003	2004	2005	2006	2007	2008	2009	2010	2011	2012
Survival Time																						
1-year	74.6	74.9	76.7	77.5	77.9	77.9	78.6	79.3	79.4	79.5	80.0	80.4	80.0	80.4	80.7	80.9	81.3	81.9	82.2	82.2	82.6	83.0
2-year	66.0	66.2	68.7	70.0	70.7	71.0	71.6	72.5	73.0	73.0	73.8	74.4	73.9	74.2	74.6	75.1	75.5	76.1	76.4	76.4	76.8	
3-year	61.2	61.2	64.2	65.9	66.9	67.3	67.9	69.0	69.4	69.6	70.2	70.8	70.4	70.8	71.2	71.8	72.0	72.5	72.9	72.9		
4-year	57.9	57.9	61.3	63.2	64.3	64.7	65.3	66.5	67.1	67.3	68.0	68.4	68.1	68.3	69.0	69.5	69.8	70.3	70.6			
5-year	55.6	55.3	59.0	61.1	62.4	62.8	63.5	64.6	65.2	65.7	66.2	66.6	66.2	66.6	67.2	67.7	68.1	68.3				
6-year	53.6	53.4	57.3	59.5	60.9	61.3	62.0	63.2	63.7	64.4	64.9	65.2	64.9	65.2	65.9	66.4	66.7					
7-year	52.1	51.7	55.7	58.1	59.6	60.2	60.9	62.1	62.6	63.2	63.6	64.0	63.7	64.1	64.8	65.3						
8-year	50.8	50.3	54.5	57.1	58.6	59.1	59.9	61.1	61.5	62.1	62.6	63.0	62.7	63.1	63.9							
9-year	49.7	49.2	53.5	56.1	57.6	58.1	58.9	60.1	60.7	61.3	61.7	62.1	61.9	62.2								
10-year	48.7	48.1	52.5	55.2	56.9	57.3	58.1	59.2	60.0	60.5	60.9	61.5	60.9									
11-year	47.8	47.1	51.6	54.4	56.0	56.7	57.3	58.5	59.0	59.7	60.2	60.8										
12-year	47.0	46.3	50.8	53.6	55.3	56.1	56.8	58.0	58.4	59.0	59.3											
13-year	46.4	45.6	50.1	53.0	54.4	55.3	56.2	57.2	57.7	58.3												
14-year	45.7	44.9	49.4	52.3	53.9	54.6	55.6	56.5	56.9													
15-year	45.1	44.3	48.8	51.8	53.4	54.0	55.0	55.8														
16-year	44.6	43.6	48.2	51.2	52.7	53.4	54.1															
17-year	44.0	43.0	47.7	50.6	52.1	52.7																
18-year	43.6	42.5	47.3	50.0	51.3																	
19-year	43.2	41.9	46.8	49.4																		
20-year	42.7	41.5	46.3																			
21-year	42.1	40.9	45.9																			
22-year	41.7	40.5	45.4																			
23-year	41.3	40.0	45.0																			
24-year	40.8	39.5	44.5																			
25-year	40.3	39.1																				
26-year	39.9	38.7																				
27-year	39.5	38.2																				
28-year	39.2	37.8																				
29-year	38.8	37.4																				
30-year	38.4																					

^a Based on the SEER 9 areas (San Francisco, Connecticut, Detroit, Hawaii, Iowa, New Mexico, Seattle, Utah, and Atlanta).

Table 2.12
All Cancer Sites (Invasive)

Risk of Being Diagnosed With Cancer in 10, 20 and 30 Years,
Lifetime Risk of Being Diagnosed with Cancer Given Alive and Cancer-Free at Current Age, and
Lifetime Risk of Dying from Cancer Given Alive at Current Age
Both Sexes, 2011-2013 By Race/Ethnicity

Race/ Ethnicity	Current Age	Risk of Being Diagnosed with Cancer				Risk of Dying from Cancer	Race/ Ethnicity	Current Age	Risk of Being Diagnosed with Cancer				Risk of Dying from Cancer
		+10 yrs	+20 yrs	+30 yrs	Ever				+10 yrs	+20 yrs	+30 yrs	Ever	
All Races	0	0.17	0.35	0.81	39.04	20.41	Asian/ Pacific Islander	0	0.14	0.28	0.59	34.09	18.26
	10	0.18	0.64	1.72	39.35	20.63		10	0.14	0.45	1.28	34.24	18.38
	20	0.46	1.54	4.13	39.35	20.68		20	0.31	1.14	3.23	34.20	18.39
	30	1.10	3.71	9.47	39.38	20.81		30	0.84	2.94	6.99	34.10	18.41
	40	2.67	8.56	18.78	39.11	20.92		40	2.13	6.23	13.41	33.69	18.38
	50	6.17	16.87	28.75	38.18	20.89		50	4.23	11.62	21.01	32.51	18.18
	60	11.89	25.08	33.38	35.55	20.25		60	7.85	17.82	26.25	30.04	17.54
	70	16.27	26.51	-	29.19	18.17		70	11.27	20.79	-	25.07	16.10
80	15.29	-	-	19.28	14.03	80	12.13	-	-	17.59	13.24		
White	0	0.18	0.37	0.86	39.20	20.52	American Indian/ Alaska Native ^a	0	0.15	0.28	0.61	33.08	16.78
	10	0.20	0.69	1.81	39.46	20.71		10	0.13	0.47	1.28	33.32	17.00
	20	0.50	1.62	4.23	39.44	20.75		20	0.34	1.16	3.04	33.40	17.08
	30	1.14	3.78	9.52	39.44	20.87		30	0.83	2.75	7.07	33.68	17.34
	40	2.70	8.57	18.80	39.15	20.98		40	1.97	6.44	14.66	33.88	17.67
	50	6.15	16.87	28.90	38.19	20.96		50	4.72	13.41	23.70	33.74	18.02
	60	11.90	25.24	33.52	35.55	20.31		60	9.65	21.07	29.30	32.20	17.86
	70	16.44	26.64	-	29.15	18.22		70	13.98	24.06	-	27.62	16.40
80	15.32	-	-	19.08	14.00	80	14.99	-	-	20.27	12.93		
Black	0	0.14	0.27	0.58	36.65	20.77	Hispanic ^b	0	0.16	0.33	0.70	35.60	17.57
	10	0.13	0.45	1.36	37.27	21.18		10	0.17	0.55	1.39	35.81	17.72
	20	0.32	1.24	3.83	37.34	21.25		20	0.38	1.22	3.17	35.79	17.74
	30	0.94	3.57	10.10	37.59	21.46		30	0.85	2.82	7.27	35.75	17.80
	40	2.71	9.41	20.41	37.64	21.66		40	2.00	6.52	14.87	35.46	17.82
	50	7.10	18.75	29.41	37.01	21.73		50	4.68	13.31	23.86	34.61	17.74
	60	13.41	25.68	32.41	34.42	21.08		60	9.34	20.76	29.22	32.38	17.24
	70	16.21	25.11	-	27.76	18.91		70	13.44	23.40	-	27.12	15.76
80	14.26	-	-	18.52	14.92	80	13.69	-	-	18.81	12.76		

Devcan 6.7.4, August 2016, National Cancer Institute (<http://surveillance.cancer.gov/devcan/>).

Source: Incidence data are from the SEER 18 areas (San Francisco, Connecticut, Detroit, Hawaii, Iowa, New Mexico, Seattle, Utah, Atlanta, San Jose-Monterey, Los Angeles, Alaska Native Registry, Rural Georgia, California excluding SF/SJM/LA, Kentucky, Louisiana, New Jersey, and Georgia excluding ATL/RG). Mortality data are from the NCHS public use data file for the total US.

^a Underlying incidence and mortality data for American Indian/Alaska Native are based on the CHSDA (Contract Health Service Delivery Area) counties.

^b Hispanic is not mutually exclusive from whites, blacks, Asian/Pacific Islanders, and American Indians/Alaska Natives. Underlying incidence data for Hispanics are based on NHIA and exclude cases from the Alaska Native Registry.

- Statistic could not be calculated.

A percent of 0.00 represents a value that is below 0.005.

Table 2.13
All Cancer Sites (Invasive)

Risk of Being Diagnosed With Cancer in 10, 20 and 30 Years,
Lifetime Risk of Being Diagnosed with Cancer Given Alive and Cancer-Free at Current Age, and
Lifetime Risk of Dying from Cancer Given Alive at Current Age
Males, 2011-2013 By Race/Ethnicity

Race/ Ethnicity	Current Age	Risk of Being Diagnosed with Cancer				Risk of Dying from Cancer	Race/ Ethnicity	Current Age	Risk of Being Diagnosed with Cancer				Risk of Dying from Cancer
		+10 yrs	+20 yrs	+30 yrs	Ever				+10 yrs	+20 yrs	+30 yrs	Ever	
All Races	0	0.18	0.36	0.76	40.84	22.28	Asian/ Pacific Islander	0	0.14	0.29	0.54	35.16	20.60
	10	0.19	0.59	1.33	41.21	22.55		10	0.15	0.40	0.88	35.34	20.75
	20	0.40	1.15	3.08	41.25	22.62		20	0.25	0.73	2.00	35.30	20.76
	30	0.76	2.72	8.63	41.48	22.86		30	0.48	1.76	5.35	35.31	20.82
	40	2.01	8.05	19.87	41.63	23.10		40	1.29	4.93	12.94	35.21	20.84
	50	6.32	18.70	32.04	41.49	23.32		50	3.72	11.93	22.83	34.77	20.76
	60	13.96	29.01	37.63	39.67	22.99		60	8.74	20.34	29.44	33.06	20.25
	70	19.49	30.67	-	33.31	21.19		70	13.44	23.97	-	28.16	18.90
80	18.21	-	-	22.52	17.19	80	14.23	-	-	19.89	15.98		
White	0	0.18	0.38	0.82	40.52	22.35	American Indian/ Alaska Native ^a	0	0.18	0.30	0.62	32.13	17.79
	10	0.20	0.64	1.42	40.83	22.58		10	0.12	0.44	1.01	32.39	18.05
	20	0.44	1.23	3.17	40.86	22.65		20	0.33	0.89	2.29	32.53	18.16
	30	0.80	2.77	8.54	41.05	22.86		30	0.58	2.01	5.98	32.99	18.56
	40	2.01	7.92	19.55	41.15	23.10		40	1.48	5.58	14.11	33.52	19.09
	50	6.18	18.37	31.68	40.97	23.30		50	4.36	13.40	24.35	33.99	19.74
	60	13.71	28.70	37.25	39.16	22.97		60	10.18	22.52	30.63	33.37	19.99
	70	19.32	30.34	-	32.80	21.15		70	15.63	25.92	-	29.38	18.85
80	17.96	-	-	21.97	17.07	80	16.52	-	-	22.09	15.37		
Black	0	0.14	0.27	0.52	39.33	22.97	Hispanic ^b	0	0.16	0.34	0.68	37.49	19.93
	10	0.13	0.39	1.00	40.07	23.47		10	0.18	0.52	1.08	37.74	20.11
	20	0.26	0.88	3.10	40.24	23.59		20	0.34	0.90	2.23	37.75	20.16
	30	0.63	2.90	10.44	40.83	23.98		30	0.56	1.90	6.16	37.87	20.29
	40	2.34	10.11	23.84	41.43	24.42		40	1.36	5.68	15.19	37.91	20.41
	50	8.27	22.90	34.83	41.63	24.87		50	4.47	14.29	26.62	37.78	20.52
	60	17.39	31.58	37.96	39.66	24.76		60	10.74	24.22	33.26	36.42	20.29
	70	20.58	29.84	-	32.31	23.11		70	16.48	27.53	-	31.39	19.01
80	16.96	-	-	21.49	19.69	80	16.43	-	-	22.16	16.01		

Devcan 6.7.4, August 2016, National Cancer Institute (<http://surveillance.cancer.gov/devcan/>).

Source: Incidence data are from the SEER 18 areas (San Francisco, Connecticut, Detroit, Hawaii, Iowa, New Mexico, Seattle, Utah, Atlanta, San Jose-Monterey, Los Angeles, Alaska Native Registry, Rural Georgia, California excluding SF/SJM/LA, Kentucky, Louisiana, New Jersey, and Georgia excluding ATL/RG). Mortality data are from the NCHS public use data file for the total US.

^a Underlying incidence and mortality data for American Indian/Alaska Native are based on the CHSDA (Contract Health Service Delivery Area) counties.

^b Hispanic is not mutually exclusive from whites, blacks, Asian/Pacific Islanders, and American Indians/Alaska Natives. Underlying incidence data for Hispanics are based on NHIA and exclude cases from the Alaska Native Registry.

- Statistic could not be calculated.

A percent of 0.00 represents a value that is below 0.005.

Table 2.14
All Cancer Sites (Invasive)

Risk of Being Diagnosed With Cancer in 10, 20 and 30 Years,
Lifetime Risk of Being Diagnosed with Cancer Given Alive and Cancer-Free at Current Age, and
Lifetime Risk of Dying from Cancer Given Alive at Current Age
Females, 2011-2013 By Race/Ethnicity

Race/ Ethnicity	Current Age	Risk of Being Diagnosed with Cancer				Risk of Dying from Cancer	Race/ Ethnicity	Current Age	Risk of Being Diagnosed with Cancer				Risk of Dying from Cancer
		+10 yrs	+20 yrs	+30 yrs	Ever				+10 yrs	+20 yrs	+30 yrs	Ever	
All Races	0	0.17	0.34	0.86	37.54	18.90	Asian/ Pacific Islander	0	0.14	0.28	0.64	33.35	16.45
	10	0.18	0.70	2.12	37.80	19.08		10	0.13	0.50	1.65	33.47	16.55
	20	0.52	1.94	5.18	37.75	19.10		20	0.37	1.52	4.33	33.41	16.55
	30	1.44	4.70	10.33	37.57	19.14		30	1.16	3.99	8.46	33.22	16.55
	40	3.33	9.09	17.76	36.91	19.14		40	2.87	7.40	13.85	32.52	16.48
	50	6.03	15.13	25.66	35.20	18.92		50	4.69	11.36	19.47	30.67	16.19
	60	9.95	21.48	29.59	31.92	18.05		60	7.08	15.67	23.62	27.56	15.47
	70	13.61	23.19	-	25.94	15.92		70	9.52	18.31	-	22.67	14.04
80	13.34	-	-	17.18	12.01	80	10.72	-	-	16.04	11.38		
White	0	0.17	0.36	0.92	38.14	19.02	American Indian/ Alaska Native ^a	0	0.12	0.25	0.60	34.20	15.99
	10	0.19	0.75	2.22	38.36	19.18		10	0.13	0.49	1.56	34.39	16.17
	20	0.56	2.04	5.34	38.30	19.20		20	0.36	1.43	3.80	34.41	16.22
	30	1.49	4.83	10.55	38.11	19.24		30	1.09	3.49	8.17	34.50	16.35
	40	3.41	9.25	18.10	37.41	19.24		40	2.47	7.28	15.22	34.35	16.52
	50	6.13	15.41	26.22	35.66	19.02		50	5.07	13.44	23.13	33.61	16.61
	60	10.16	22.00	30.13	32.32	18.15		60	9.17	19.78	28.18	31.26	16.16
	70	14.00	23.61	-	26.21	15.99		70	12.61	22.59	-	26.25	14.59
80	13.51	-	-	17.17	12.01	80	13.98	-	-	19.11	11.41		
Black	0	0.14	0.27	0.64	34.36	19.21	Hispanic ^b	0	0.15	0.31	0.72	34.40	15.85
	10	0.13	0.50	1.70	34.87	19.55		10	0.16	0.58	1.72	34.58	15.97
	20	0.37	1.57	4.51	34.86	19.58		20	0.42	1.56	4.17	34.52	15.97
	30	1.21	4.18	9.80	34.82	19.65		30	1.15	3.78	8.44	34.34	15.98
	40	3.04	8.79	17.38	34.39	19.67		40	2.67	7.40	14.71	33.69	15.92
	50	6.06	15.12	24.70	33.06	19.45		50	4.90	12.47	21.55	32.13	15.68
	60	10.14	20.86	27.91	30.20	18.49		60	8.11	17.84	25.89	29.17	15.01
	70	13.18	21.85	-	24.68	16.28		70	11.09	20.26	-	24.00	13.53
80	12.73	-	-	16.88	12.53	80	11.90	-	-	16.75	10.81		

Devcan 6.7.4, August 2016, National Cancer Institute (<http://surveillance.cancer.gov/devcan/>).

Source: Incidence data are from the SEER 18 areas (San Francisco, Connecticut, Detroit, Hawaii, Iowa, New Mexico, Seattle, Utah, Atlanta, San Jose-Monterey, Los Angeles, Alaska Native Registry, Rural Georgia, California excluding SF/SJM/LA, Kentucky, Louisiana, New Jersey, and Georgia excluding ATL/RG). Mortality data are from the NCHS public use data file for the total US.

^a Underlying incidence and mortality data for American Indian/Alaska Native are based on the CHSDA (Contract Health Service Delivery Area) counties.

^b Hispanic is not mutually exclusive from whites, blacks, Asian/Pacific Islanders, and American Indians/Alaska Natives. Underlying incidence data for Hispanics are based on NHIA and exclude cases from the Alaska Native Registry.

- Statistic could not be calculated.

A percent of 0.00 represents a value that is below 0.005.

Table 2.15
All Cancer Sites (Invasive)

SEER Incidence and U.S. Mortality
Age-Adjusted Rates and Trends^a
By Race/Ethnicity and Sex

SEER Incidence	SEER 18 Areas ^b			SEER 13 Areas ^b			SEER 9 Areas ^b		
	Rate 2009-2013			Trend 2004-2013 ^c			Trend 2004-2013 ^d		
	Rate per 100,000 persons			AAPC (%)			AAPC (%)		
RACE/ETHNICITY	Total	Males	Females	Total	Males	Females	Total	Males	Females
All Races	448.7	504.5	409.9	-1.1*	-2.0*	-0.3	-1.0*	-1.9*	-0.2*
White	457.4	508.2	422.5	-1.1*	-2.0*	-0.3	-1.1*	-1.9*	-0.2*
White Hispanic ^e	354.8	391.3	333.8	-1.2*	-2.7*	0.1*	-	-	-
White Non-Hispanic ^e	477.2	529.2	440.8	-1.0*	-1.9*	-0.2	-	-	-
Black	470.2	571.8	400.5	-1.5*	-2.6*	-0.6	-1.4*	-2.3*	0.0
Asian/Pacific Islander	302.8	317.3	296.7	-1.1*	-2.4*	0.1	-	-	-
Amer Ind/Alaska Nat ^f	320.0	338.5	310.7	0.0	-0.5	0.5*	-	-	-
Hispanic ^e	344.6	382.9	321.9	-1.1*	-2.3*	0.1	-	-	-
<u>U.S. Mortality^g</u>									
	Rate 2009-2013			Trend 2004-2013 ^h					
	Rate per 100,000 persons			AAPC (%)					
RACE/ETHNICITY	Total	Males	Females	Total	Males	Females			
All Races	168.5	204.0	143.4	-1.5*	-1.8*	-1.4*			
White	168.4	202.9	143.6	-1.4*	-1.7*	-1.4*			
White Hispanic ^e	124.2	152.8	104.1	-1.1*	-1.3*	-0.9*			
White Non-Hispanic ^e	172.4	207.2	147.3	-1.4*	-1.6*	-1.3*			
Black	197.9	254.2	163.8	-2.1*	-2.7*	-1.6*			
Asian/Pacific Islander	104.4	125.6	89.6	-1.4*	-1.6*	-1.0*			
Amer Ind/Alaska Nat									
Total U.S.	114.4	136.6	98.5	-2.0*	-1.4*	-2.1*			
CHSDA Counties	153.6	183.0	132.3	-1.1*	-0.3*	-1.3*			
Non-CHSDA Counties	70.4	85.1	60.1	-2.8*	-3.3*	-2.5*			
Hispanic ^e	117.6	145.0	98.5	-1.2*	-1.6*	-1.0*			

The AAPC is the Average Annual Percent Change over the time interval. The AAPCs are calculated by the Joinpoint Regression Program Version 4.3.0.0, April 2016, National Cancer Institute.

- Statistic not shown. Rate based on less than 16 cases for the time interval.

Trend based on less than 10 cases for at least one year within the time interval.

a Rates are age-adjusted to the 2000 US Std Population (19 age groups - Census P25-1130). Trends are based on rates age-adjusted to the 2000 US Std Population (19 age groups - Census P25-1130).

b The SEER 9 areas are San Francisco, Connecticut, Detroit, Hawaii, Iowa, New Mexico, Seattle, Utah, and Atlanta.

The SEER 13 areas comprise the SEER 9 areas plus San Jose-Monterey, Los Angeles, the Alaska Native Registry, and Rural Georgia.

The SEER 18 areas comprise the SEER 13 areas plus California excluding SF/SJM/LA, Kentucky, Louisiana, New Jersey, and Georgia excluding ATL/RG.

c The 2004-2013 AAPC estimates are based on a Joinpoint analysis with up to 4 Joinpoints over diagnosis years 1992-2013.

d The 2004-2013 AAPC estimates are based on a Joinpoint analysis with up to 5 Joinpoints over diagnosis years 1975-2013.

e Hispanic and Non-Hispanic are not mutually exclusive from whites, blacks, Asian/Pacific Islanders, and American Indians/Alaska Natives. Incidence data for Hispanics and Non-Hispanics are based on NHIA and exclude cases from the Alaska Native Registry. The 2004-2013 Hispanic and Non-Hispanic mortality trends exclude deaths from New Hampshire and Oklahoma.

f Incidence data for American Indian/Alaska Native are based on the CHSDA (Contract Health Service Delivery Area) counties.

g US Mortality Files, National Center for Health Statistics, CDC.

h The 2004-2013 mortality AAPCs are based on a Joinpoint analysis using years of death 1992-2013.

* The APC is significantly different from zero (p<.05).

Table 2.16
All Cancer Sites (Invasive)

Age-Adjusted SEER Incidence Rates^a
By Registry, Race and Sex

	All Races			Whites			Blacks		
	Total	Males	Females	Total	Males	Females	Total	Males	Females
<u>SEER Incidence Rates^a, 2009-2013</u>									
California	417.14	463.90	384.98	429.84	473.19	400.48	445.27	521.19	390.01
Greater Bay Area	422.59	472.39	388.38	453.12	503.51	418.54	467.52	552.70	403.78
San Francisco-Oakland	427.26	475.66	394.30	456.68	504.51	424.37	475.76	565.01	410.15
San Jose-Monterey	413.68	466.37	376.80	446.82	501.64	408.33	414.49	481.44	354.98
Los Angeles	396.84	440.00	369.01	404.97	442.53	381.77	448.80	526.68	396.25
Greater California	424.49	471.58	391.25	432.91	476.26	402.81	431.24	500.02	376.80
Connecticut	483.18	531.07	451.96	484.15	526.04	458.04	451.86	548.19	388.96
Detroit	507.14	586.71	451.72	504.87	571.66	460.39	530.60	659.35	443.09
Georgia	455.79	531.85	402.58	460.40	525.10	415.27	460.42	577.48	386.35
Atlanta	455.55	528.24	407.17	465.90	523.41	429.59	464.95	575.92	396.54
Rural Georgia	449.66	522.67	396.75	452.59	505.17	412.62	448.44	571.04	374.32
Greater Georgia	456.58	534.06	401.48	459.00	526.92	410.34	458.08	577.45	381.13
Hawaii	416.90	444.14	402.59	485.12	524.61	451.45	392.71	439.18	329.21
Iowa	469.06	524.41	431.10	467.62	520.26	431.88	481.22	552.91	430.61
Kentucky	511.15	581.89	462.01	509.14	575.31	463.86	510.77	603.82	446.37
Louisiana	482.33	574.22	413.63	478.29	558.58	417.94	504.56	632.35	415.23
New Jersey	484.05	543.21	445.40	496.00	549.32	462.38	455.77	553.86	393.81
New Mexico	379.07	407.33	359.26	384.94	411.32	366.47	317.88	366.94	271.60
Seattle-Puget Sound	476.39	522.63	444.44	487.40	531.04	457.46	474.98	549.13	406.37
Utah	406.60	460.12	364.60	407.68	460.63	366.02	411.54	511.27	313.13
SEER 9 Areas ^b	455.53	508.08	419.11	464.86	513.01	432.08	483.67	588.90	411.45
SEER 13 Areas ^b	440.09	490.73	405.42	451.21	497.87	419.80	473.70	571.58	406.42
SEER 18 Areas ^b	448.74	504.54	409.89	457.35	508.19	422.52	470.21	571.83	400.53

^a Rates are per 100,000 and are age-adjusted to the 2000 US Std Population (19 age groups - Census P25-1130)

^b The SEER 9 areas are San Francisco, Connecticut, Detroit, Hawaii, Iowa, New Mexico, Seattle, Utah and Atlanta.
The SEER 13 areas comprise the SEER 9 areas plus San Jose-Monterey, Los Angeles, the Alaska Native Registry and Rural Georgia.
The SEER 18 areas comprise the SEER 13 areas plus California excluding SF/SJM/LA, Kentucky, Louisiana, New Jersey and Georgia excluding ATL/RG.

- Statistic not shown. Rate based on less than 16 cases for the time interval.

Table 2.17
All Cancer Sites (Invasive)

Age-Adjusted SEER Death Rates^a
By Registry, Race and Sex

	All Races			Whites			Blacks		
	Total	Males	Females	Total	Males	Females	Total	Males	Females
<u>SEER Death Rates^a, 2009-2013</u>									
California	152.56	180.35	132.86	158.26	186.21	138.30	194.35	233.41	169.88
Greater Bay Area	142.94	168.04	125.53	150.93	175.73	133.71	197.89	238.83	172.93
San Francisco-Oakland	145.76	171.44	128.07	152.15	177.13	134.85	203.50	248.88	175.84
San Jose-Monterey	137.33	161.40	120.41	148.63	173.11	131.56	160.39	175.99	151.55
Los Angeles	148.42	175.61	129.69	151.21	177.29	133.03	200.41	243.59	174.83
Greater California	157.80	186.74	136.89	162.97	192.49	141.55	186.05	219.49	162.93
Connecticut	156.53	186.64	136.40	157.42	186.95	137.54	162.78	206.18	137.50
Detroit	180.98	217.63	156.75	174.59	209.22	151.47	214.37	266.39	182.08
Georgia	171.62	215.66	142.02	168.86	209.02	140.46	188.56	255.45	151.88
Atlanta	156.39	192.47	134.07	148.48	179.40	128.29	181.59	240.92	151.52
Rural Georgia	184.32	238.99	147.54	171.89	209.71	144.28	209.37	317.84	150.98
Greater Georgia	178.43	225.33	145.99	176.15	219.51	144.91	193.42	263.16	153.29
Hawaii	137.76	168.80	114.21	157.02	184.93	131.74	160.16	186.35	127.38
Iowa	169.70	206.62	143.89	169.45	206.07	143.90	223.34	270.94	190.59
Kentucky	202.63	250.53	168.96	202.50	250.25	168.69	224.61	282.83	188.45
Louisiana	193.45	241.91	158.74	183.46	226.50	152.00	225.67	296.43	179.47
New Jersey	163.75	194.74	143.73	166.77	197.52	146.63	185.86	234.11	158.93
New Mexico	147.97	178.19	125.04	150.80	181.02	127.64	163.69	210.07	124.65
Seattle-Puget Sound	162.86	192.83	141.46	166.10	195.11	145.31	189.09	234.30	152.88
Utah	128.08	152.11	109.81	128.73	153.05	110.21	130.94	148.33	112.36
SEER 9 Areas ^b	157.07	188.02	135.56	158.53	188.70	137.33	193.32	243.35	163.16
SEER 13 Areas ^b	154.39	184.22	133.64	156.72	185.77	136.28	194.61	243.12	165.39
SEER 18 Areas ^b	162.71	195.51	139.73	165.02	197.16	142.25	197.75	251.00	165.17
Total U.S.	168.51	203.98	143.35	168.44	202.90	143.63	197.94	254.21	163.85

^a US Mortality Files, National Center for Health Statistics, Centers for Disease Control and Prevention. Rates are per 100,000 and are age-adjusted to the 2000 US Std Population (19 age groups - Census P25-1130).

^b The SEER 9 areas are San Francisco, Connecticut, Detroit, Hawaii, Iowa, New Mexico, Seattle, Utah and Atlanta. The SEER 13 areas comprise the SEER 9 areas plus San Jose-Monterey, Los Angeles, the Alaska Native Registry and Rural Georgia. The SEER 18 areas comprise the SEER 13 areas plus California excluding SF/SJM/LA, Kentucky, Louisiana, New Jersey and Georgia excluding ATL/RG.

- Statistic not shown. Rate based on less than 16 cases for the time interval.

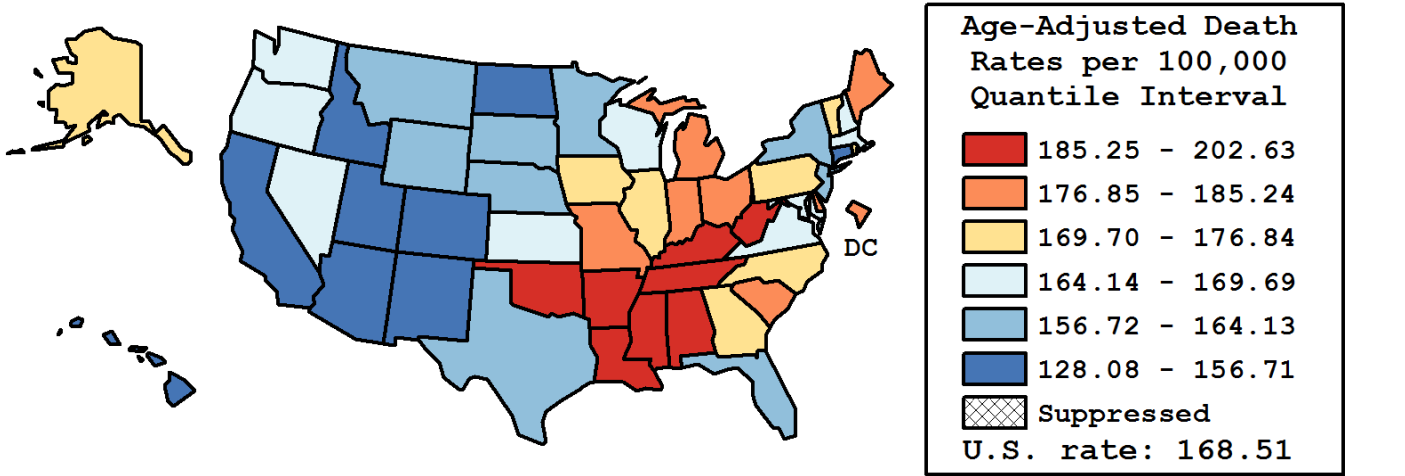
Table 2.18
All Cancer Sites (Invasive)

Age-Adjusted Cancer Death^a Rates by State, All Races, 2009-2013

Males and Females

State	Rate	SE	Rank(CI) ^d	PD
TOTAL U.S.	168.51	0.10		
High Five States				
Kentucky	202.63	0.92	01(01,02)	20.25 ^c
Mississippi	198.61	1.13	02(01,03)	17.86 ^c
West Virginia	196.13	1.30	03(02,05)	16.39 ^c
Louisiana	193.45	0.91	04(03,06)	14.80 ^c
Arkansas	192.16	1.07	05(03,07)	14.04 ^c
Low Five States				
Arizona	149.36	0.65	47(46,48)	-11.37 ^c
New Mexico	147.97	1.16	48(47,49)	-12.19 ^c
Colorado	145.38	0.79	49(48,49)	-13.73 ^c
Hawaii	137.76	1.32	50(50,50)	-18.25 ^c
Utah	128.08	1.10	51(51,51)	-23.99 ^c

State	Rate	SE	Rank(CI) ^d	PD	State	Rate	SE	Rank(CI) ^d	PD
Alabama	188.11	0.84	08(06,09)	11.63 ^c	Montana	159.04	1.64	41(35,45)	-5.62 ^c
Alaska	176.26	2.81	18(10,29)	4.60	Nebraska	164.13	1.27	34(30,39)	-2.60
Arizona	149.36	0.65	47(46,48)	-11.37 ^c	Nevada	169.37	1.14	27(21,33)	0.51
Arkansas	192.16	1.07	05(03,07)	14.04 ^c	New Hampshire	168.88	1.51	29(20,34)	0.22
California	152.56	0.29	46(44,46)	-9.47 ^c	New Jersey	163.75	0.58	35(33,37)	-2.82
Colorado	145.38	0.79	49(48,49)	-13.73 ^c	New Mexico	147.97	1.16	48(47,49)	-12.19 ^c
Connecticut	156.53	0.87	44(41,45)	-7.11 ^c	New York	160.06	0.38	40(37,42)	-5.02 ^c
Delaware	176.85	1.84	16(12,22)	4.95	North Carolina	173.44	0.58	20(18,22)	2.92
D.C.	182.30	2.52	11(07,19)	8.19 ^c	North Dakota	154.67	1.98	45(39,47)	-8.21 ^c
Florida	160.32	0.36	39(37,42)	-4.86	Ohio	184.06	0.53	10(09,12)	9.23 ^c
Georgia	171.62	0.63	21(20,26)	1.84	Oklahoma	189.09	0.96	07(05,09)	12.21 ^c
Hawaii	137.76	1.32	50(50,50)	-18.25 ^c	Oregon	169.69	0.88	25(21,32)	0.70
Idaho	156.71	1.40	43(38,45)	-7.00 ^c	Pennsylvania	176.84	0.47	17(14,19)	4.94
Illinois	176.19	0.51	19(15,20)	4.56	Rhode Island	171.30	1.66	22(18,32)	1.66
Indiana	185.24	0.73	09(08,11)	9.93 ^c	South Carolina	180.04	0.84	14(11,16)	6.84 ^c
Iowa	169.70	0.97	24(21,32)	0.71	South Dakota	162.53	1.85	36(31,43)	-3.55
Kansas	168.43	1.04	30(22,34)	-0.05	Tennessee	190.80	0.74	06(04,08)	13.23 ^c
Kentucky	202.63	0.92	01(01,02)	20.25 ^c	Texas	161.79	0.38	37(35,39)	-3.99
Louisiana	193.45	0.91	04(03,06)	14.80 ^c	Utah	128.08	1.10	51(51,51)	-23.99 ^c
Maine	181.37	1.46	13(09,16)	7.63 ^c	Vermont	171.19	2.15	23(16,34)	1.59
Maryland	168.23	0.75	31(23,33)	-0.16	Virginia	169.09	0.64	28(22,32)	0.34
Massachusetts	166.84	0.67	32(28,34)	-0.99	Washington	165.67	0.69	33(30,35)	-1.69
Michigan	177.09	0.56	15(14,19)	5.09 ^c	West Virginia	196.13	1.30	03(02,05)	16.39 ^c
Minnesota	161.00	0.75	38(35,42)	-4.46	Wisconsin	169.65	0.73	26(21,31)	0.68
Mississippi	198.61	1.13	02(01,03)	17.86 ^c	Wyoming	158.09	2.33	42(34,46)	-6.18 ^c
Missouri	182.09	0.73	12(10,14)	8.06 ^c					



^a US Mortality Files, National Center for Health Statistics, Centers for Disease Control and Prevention. Rates are per 100,000 and are age-adjusted to the 2000 US Std Population (19 age groups - Census P25-1130).

^b Difference between state rate and total U.S. rate is statistically significant ($p \leq .0002$).

^c Absolute percent difference between state rate and total U.S. rate is 5% or more.

^d Rank of state level death rate and the 95% confidence intervals (low, high) for the rank.

SE Standard error of the rate.

PD Percent difference between state rate and total U.S. rate.

- Statistic not shown. Rate based on less than 16 cases for the time interval.

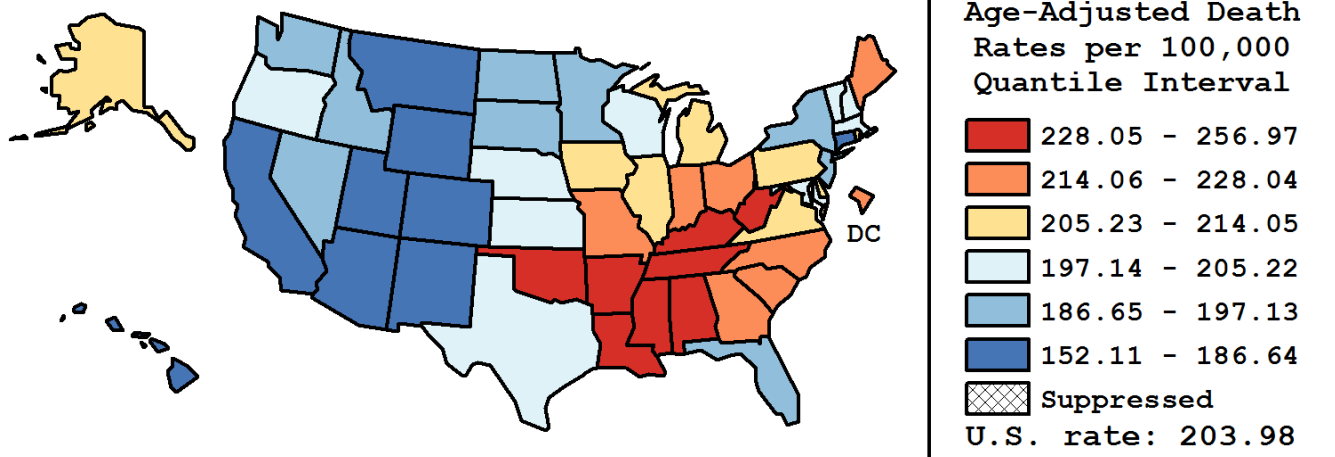
Table 2.19
All Cancer Sites (Invasive)

Age-Adjusted Cancer Death^a Rates by State, All Races, 2009-2013

Males

State	Rate	SE	Rank(CI) ^d	PD
TOTAL U.S.	203.98	0.17		
High Five States				
Mississippi	256.97	2.01	01(01,02)	25.98 ^c
Kentucky	250.53	1.59	02(01,02)	22.82 ^c
Arkansas	242.54	1.84	03(03,07)	18.91 ^c
Alabama	242.28	1.49	04(03,07)	18.78 ^c
Louisiana	241.91	1.58	05(03,07)	18.59 ^c
Low Five States				
New Mexico	178.19	1.92	47(44,48)	-12.64 ^c
Arizona	177.02	1.05	48(46,48)	-13.21 ^c
Colorado	169.98	1.31	49(49,50)	-16.67 ^c
Hawaii	168.80	2.18	50(49,50)	-17.25 ^c
Utah	152.11	1.80	51(51,51)	-25.43 ^c

State	Rate	SE	Rank(CI) ^d	PD	State	Rate	SE	Rank(CI) ^d	PD
Alabama	242.28	1.49	04(03,07)	18.78 ^c	Montana	184.67	2.62	44(39,48)	-9.47 ^c
Alaska	206.54	4.65	23(13,38)	1.26	Nebraska	198.52	2.12	32(25,39)	-2.68
Arizona	177.02	1.05	48(46,48)	-13.21 ^c	Nevada	197.13	1.85	34(27,40)	-3.36
Arkansas	242.54	1.84	03(03,07)	18.91 ^c	New Hampshire	203.41	2.52	26(21,35)	-0.28
California	180.35	0.48	46(44,47)	-11.58 ^c	New Jersey	194.74	0.98	36(33,40)	-4.53
Colorado	169.98	1.31	49(49,50)	-16.67 ^c	New Mexico	178.19	1.92	47(44,48)	-12.64 ^c
Connecticut	186.64	1.46	43(40,45)	-8.50 ^c	New York	190.68	0.65	41(38,43)	-6.52 ^c
Delaware	212.41	3.09	19(12,27)	4.14	North Carolina	218.21	1.02	14(12,17)	6.98 ^c
D.C.	216.33	4.34	15(09,27)	6.06 ^c	North Dakota	191.77	3.31	40(29,45)	-5.99 ^c
Florida	193.13	0.58	39(36,41)	-5.32 ^c	Ohio	223.47	0.89	11(10,13)	9.55 ^c
Georgia	215.66	1.12	16(13,20)	5.73 ^c	Oklahoma	230.50	1.62	08(08,10)	13.00 ^c
Hawaii	168.80	2.18	50(49,50)	-17.25 ^c	Oregon	200.33	1.44	31(25,35)	-1.79
Idaho	186.82	2.29	42(38,46)	-8.41 ^c	Pennsylvania	214.05	0.80	17(15,21)	4.94
Illinois	211.89	0.87	21(16,22)	3.88	Rhode Island	212.75	2.86	18(12,26)	4.30
Indiana	228.04	1.25	09(08,11)	11.80 ^c	South Carolina	227.95	1.47	10(08,11)	11.75 ^c
Iowa	206.62	1.61	22(20,29)	1.30	South Dakota	193.49	3.03	37(27,44)	-5.14 ^c
Kansas	202.12	1.73	29(22,34)	-0.91	Tennessee	241.18	1.30	06(03,07)	18.24 ^c
Kentucky	250.53	1.59	02(01,02)	22.82 ^c	Texas	198.42	0.65	33(29,35)	-2.73
Louisiana	241.91	1.58	05(03,07)	18.59 ^c	Utah	152.11	1.80	51(51,51)	-25.43 ^c
Maine	220.57	2.44	12(10,18)	8.13 ^c	Vermont	202.89	3.56	27(19,39)	-0.53
Maryland	202.41	1.28	28(23,32)	-0.77	Virginia	206.21	1.10	24(21,28)	1.09
Massachusetts	200.35	1.13	30(26,34)	-1.78	Washington	196.28	1.14	35(31,39)	-3.77
Michigan	212.11	0.94	20(16,22)	3.99	West Virginia	239.84	2.18	07(03,07)	17.58 ^c
Minnesota	193.35	1.25	38(34,41)	-5.21 ^c	Wisconsin	205.22	1.21	25(21,29)	0.61
Mississippi	256.97	2.01	01(01,02)	25.98 ^c	Wyoming	184.22	3.77	45(36,48)	-9.69 ^c
Missouri	219.59	1.23	13(11,16)	7.65 ^c					



^a US Mortality Files, National Center for Health Statistics, Centers for Disease Control and Prevention. Rates are per 100,000 and are age-adjusted to the 2000 US Std Population (19 age groups - Census P25-1130).

^b Difference between state rate and total U.S. rate is statistically significant ($p \leq .0002$).

^c Absolute percent difference between state rate and total U.S. rate is 5% or more.

^d Rank of state level death rate and the 95% confidence intervals (low, high) for the rank.

SE Standard error of the rate.

PD Percent difference between state rate and total U.S. rate.

- Statistic not shown. Rate based on less than 16 cases for the time interval.

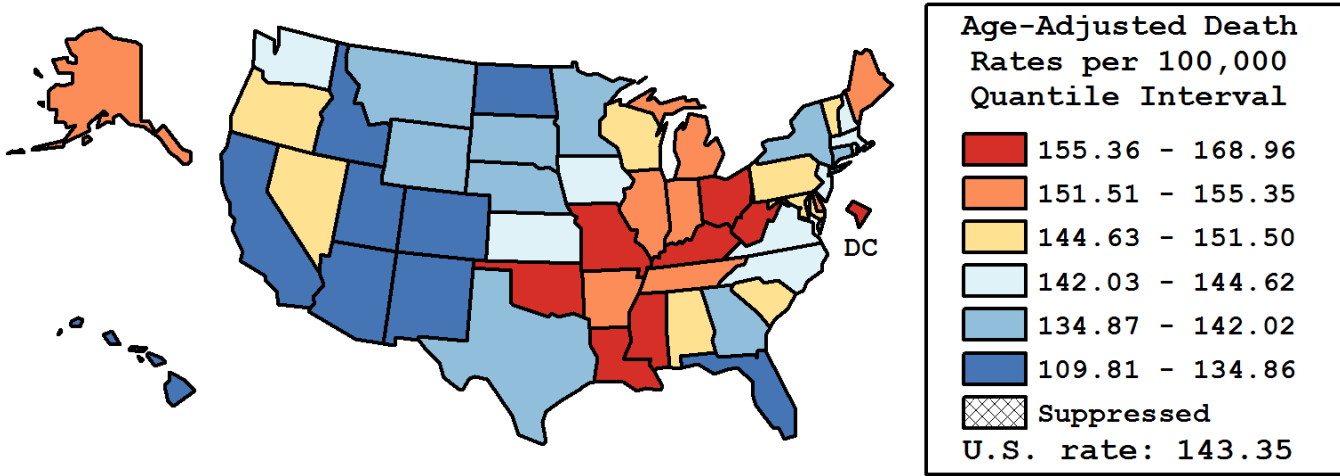
Table 2.20
All Cancer Sites (Invasive)

Age-Adjusted Cancer Death^a Rates by State, All Races, 2009-2013

Females

State	Rate	SE	Rank(CI) ^d	PD
TOTAL U.S.	143.35	0.12		
High Five States				
Kentucky	168.96	1.13	01(01,02)	17.86 ^c
West Virginia	164.35	1.61	02(01,04)	14.65 ^c
D.C.	161.10	3.12	03(01,14)	12.38 ^c
Oklahoma	158.75	1.19	04(03,11)	10.74 ^c
Louisiana	158.74	1.10	05(02,10)	10.73 ^c
Low Five States				
North Dakota	127.79	2.46	47(42,49)	-10.86 ^c
Arizona	127.68	0.82	48(45,49)	-10.93 ^c
New Mexico	125.04	1.44	49(46,49)	-12.77 ^c
Hawaii	114.21	1.64	50(50,51)	-20.33 ^c
Utah	109.81	1.38	51(50,51)	-23.40 ^c

State	Rate	SE	Rank(CI) ^d	PD	State	Rate	SE	Rank(CI) ^d	PD
Alabama	150.20	1.00	18(12,21)	4.78	Montana	139.08	2.10	38(24,44)	-2.98
Alaska	152.04	3.53	15(03,35)	6.06 ^c	Nebraska	139.55	1.59	37(26,43)	-2.66
Arizona	127.68	0.82	48(45,49)	-10.93 ^c	Nevada	146.97	1.45	21(16,33)	2.52
Arkansas	155.20	1.31	11(04,17)	8.26 ^c	New Hampshire	144.21	1.88	27(18,39)	0.60
California	132.86	0.36	44(43,46)	-7.32 ^c	New Jersey	143.73	0.72	30(22,35)	0.26
Colorado	127.94	0.99	46(45,49)	-10.75 ^c	New Mexico	125.04	1.44	49(46,49)	-12.77 ^c
Connecticut	136.40	1.08	41(36,44)	-4.85	New York	139.87	0.48	35(34,40)	-2.43
Delaware	151.53	2.29	16(05,25)	5.70 ^c	North Carolina	142.90	0.70	33(24,36)	-0.32
D.C.	161.10	3.12	03(01,14)	12.38 ^c	North Dakota	127.79	2.46	47(42,49)	-10.86 ^c
Florida	134.86	0.45	43(40,44)	-5.93 ^c	Ohio	156.76	0.65	07(04,12)	9.35 ^c
Georgia	142.02	0.75	34(26,38)	-0.93	Oklahoma	158.75	1.19	04(03,11)	10.74 ^c
Hawaii	114.21	1.64	50(50,51)	-20.33 ^c	Oregon	147.37	1.12	20(17,28)	2.80
Idaho	132.77	1.76	45(39,47)	-7.38 ^c	Pennsylvania	151.50	0.59	17(12,19)	5.68 ^c
Illinois	152.28	0.64	14(11,18)	6.23 ^c	Rhode Island	144.22	2.04	26(17,39)	0.60
Indiana	155.32	0.90	10(05,14)	8.35 ^c	South Carolina	146.47	1.01	22(18,30)	2.17
Iowa	143.89	1.21	29(20,36)	0.38	South Dakota	139.87	2.34	36(21,44)	-2.43
Kansas	143.97	1.30	28(19,37)	0.43	Tennessee	155.35	0.89	09(05,14)	8.37 ^c
Kentucky	168.96	1.13	01(01,02)	17.86 ^c	Texas	135.13	0.47	42(39,44)	-5.74 ^c
Louisiana	158.74	1.10	05(02,10)	10.73 ^c	Utah	109.81	1.38	51(50,51)	-23.40 ^c
Maine	153.02	1.81	12(05,20)	6.74 ^c	Vermont	147.83	2.69	19(09,37)	3.12
Maryland	145.44	0.93	23(18,33)	1.46	Virginia	143.40	0.79	32(23,36)	0.03
Massachusetts	144.62	0.83	25(20,34)	0.89	Washington	143.44	0.87	31(22,36)	0.06
Michigan	152.57	0.70	13(10,18)	6.43 ^c	West Virginia	164.35	1.61	02(01,04)	14.65 ^c
Minnesota	138.29	0.94	40(35,41)	-3.53	Wisconsin	144.70	0.91	24(19,34)	0.94
Mississippi	158.16	1.34	06(03,12)	10.33 ^c	Wyoming	138.57	2.99	39(20,46)	-3.34
Missouri	155.41	0.91	08(05,14)	8.41 ^c					



^a US Mortality Files, National Center for Health Statistics, Centers for Disease Control and Prevention. Rates are per 100,000 and are age-adjusted to the 2000 US Std Population (19 age groups - Census P25-1130).

^b Difference between state rate and total U.S. rate is statistically significant ($p \leq .0002$).

^c Absolute percent difference between state rate and total U.S. rate is 5% or more.

^d Rank of state level death rate and the 95% confidence intervals (low, high) for the rank.

SE Standard error of the rate.

PD Percent difference between state rate and total U.S. rate.

- Statistic not shown. Rate based on less than 16 cases for the time interval.

Table 2.21
All Cancer Sites (Invasive)

Estimated United States Cancer Prevalence Counts^a on January 1, 2013
By Race/Ethnicity, Sex and Years Since Diagnosis

Years Since Diagnosis		0 to <5	5 to <10	10 to <15	15 to <20	20 to <25	25 to <30	0 to <21 ^e	0 to <38 ^e	>=38 ^g	Complete ^h
<u>Race</u>	<u>Sex</u>										
All Races ^b	Both Sexes	4,683,633	3,302,218	2,388,027	1,512,405	914,197	534,563	12,499,657	13,793,147	347,107	14,140,254
	Males	2,371,817	1,687,487	1,160,300	679,900	350,628	174,108	6,148,336	6,558,326	71,818	6,630,144
	Females	2,311,816	1,614,731	1,227,727	832,505	563,569	360,455	6,351,321	7,234,821	275,289	7,510,110
White ^b	Both Sexes	3,918,402	2,837,504	2,087,003	1,335,669	824,524	485,175	10,730,652	11,904,805	302,738	12,207,543
	Males	1,978,263	1,442,623	1,007,901	598,480	319,935	159,759	5,253,660	5,630,885	67,228	5,698,113
	Females	1,940,139	1,394,881	1,079,102	737,189	504,589	325,416	5,476,992	6,273,920	235,510	6,509,430
Black ^b	Both Sexes	496,816	308,718	202,127	116,659	57,326	30,618	1,163,805	1,238,540	21,389	1,259,929
	Males	262,272	169,178	109,086	57,293	20,443	8,443	612,963	632,563	1,749	634,312
	Females	234,544	139,540	93,041	59,366	36,883	22,175	550,842	605,977	19,640	625,617
Asian/ Pacific Islander ^c	Both Sexes	152,791	96,072	63,136	+	+	+	354,019	+	+	+
	Males	63,892	39,982	24,230	+	+	+	142,568	+	+	+
	Females	88,899	56,090	38,906	+	+	+	211,451	+	+	+
Hispanic ^d	Both Sexes	340,558	215,426	141,713	+	+	+	793,696	+	+	+
	Males	159,609	101,176	63,795	+	+	+	363,689	+	+	+
	Females	180,949	114,250	77,918	+	+	+	430,007	+	+	+

Estimated prevalence percent^a on January 1, 2013, of the SEER^c population diagnosed in the previous 21 years
By Age at Prevalence, Race/Ethnicity and Sex

Age at Prevalence		Age Specific (Crude)									Age-Adjusted ^f	
		All Ages	0-9	10-19	20-29	30-39	40-49	50-59	60-69	70-79	80+	All Ages
<u>Race</u>	<u>Sex</u>											
All Races ^c	Both Sexes	3.4482%	0.0866%	0.1883%	0.3439%	0.7993%	1.9479%	4.4448%	9.5130%	16.2143%	18.3787%	3.2687%
	Males	3.4122%	0.0900%	0.1984%	0.3357%	0.6326%	1.3471%	3.5996%	10.0279%	20.4610%	26.0822%	3.6128%
	Females	3.4833%	0.0830%	0.1777%	0.3525%	0.9668%	2.5434%	5.2551%	9.0480%	12.7542%	13.7760%	3.0751%
White ^c	Both Sexes	3.8037%	0.0938%	0.2073%	0.3904%	0.8983%	2.0934%	4.6502%	9.9348%	17.1170%	19.1670%	3.4481%
	Males	3.7336%	0.0966%	0.2203%	0.3830%	0.7191%	1.4735%	3.7359%	10.2671%	21.1825%	26.6695%	3.7488%
	Females	3.8735%	0.0910%	0.1936%	0.3982%	1.0869%	2.7343%	5.5560%	9.6241%	13.7170%	14.6278%	3.2916%
Black ^c	Both Sexes	2.6037%	0.0659%	0.1323%	0.2221%	0.5426%	1.5976%	4.2293%	9.9567%	16.2183%	16.3911%	3.1028%
	Males	2.8675%	0.0683%	0.1304%	0.2199%	0.3999%	1.1222%	4.0876%	12.8552%	24.2461%	27.8880%	4.0796%
	Females	2.3635%	0.0634%	0.1343%	0.2243%	0.6678%	2.0155%	4.3528%	7.6916%	10.6142%	10.7379%	2.5029%
Asian/ Pacific Islander ^c	Both Sexes	2.1998%	0.0665%	0.1395%	0.2080%	0.4921%	1.3929%	3.1810%	6.0037%	9.8741%	12.8225%	2.1496%
	Males	1.8903%	0.0731%	0.1446%	0.1907%	0.3314%	0.7223%	1.9710%	5.2688%	11.4823%	17.8667%	2.1040%
	Females	2.4836%	0.0595%	0.1342%	0.2256%	0.6373%	1.9859%	4.2231%	6.6081%	8.6238%	9.7323%	2.2421%
Hispanic ^d	Both Sexes	1.5228%	0.0812%	0.1766%	0.2786%	0.5914%	1.3797%	3.1675%	6.7103%	11.6348%	13.7425%	2.3775%
	Males	1.3722%	0.0850%	0.1866%	0.2807%	0.4606%	0.8730%	2.2715%	6.6874%	15.1864%	20.3684%	2.6257%
	Females	1.6761%	0.0774%	0.1662%	0.2763%	0.7304%	1.9070%	4.0297%	6.7300%	9.0024%	9.7529%	2.2775%

^a US 2013 cancer prevalence counts are based on 2013 cancer prevalence proportions from the SEER registries and 1/1/2013 US population estimates based on the average of 2012 and 2013 population estimates from the US Bureau of the Census.

^{b c d} Prevalence was calculated using the First Malignant Primary Only for a person.

^{b c d} Statistics based on (b) SEER 9 Areas (c) SEER 13 Areas excluding the Alaska Native Registry

^d NHIA for Hispanic for SEER 13 Areas excluding the Alaska Native Registry.

^e Maximum limited-duration prevalence: 38 years for 1975-2013 SEER 9 data; 21 years for 1992-2013 SEER 13 data (excluding the Alaska Native Registry) used to calculate prevalence for Hispanics and Asian Pacific Islanders.

^f Percentages are age-adjusted to the 2000 US Standard Population (19 age groups - Census P25-1130) by 5-year age groups.

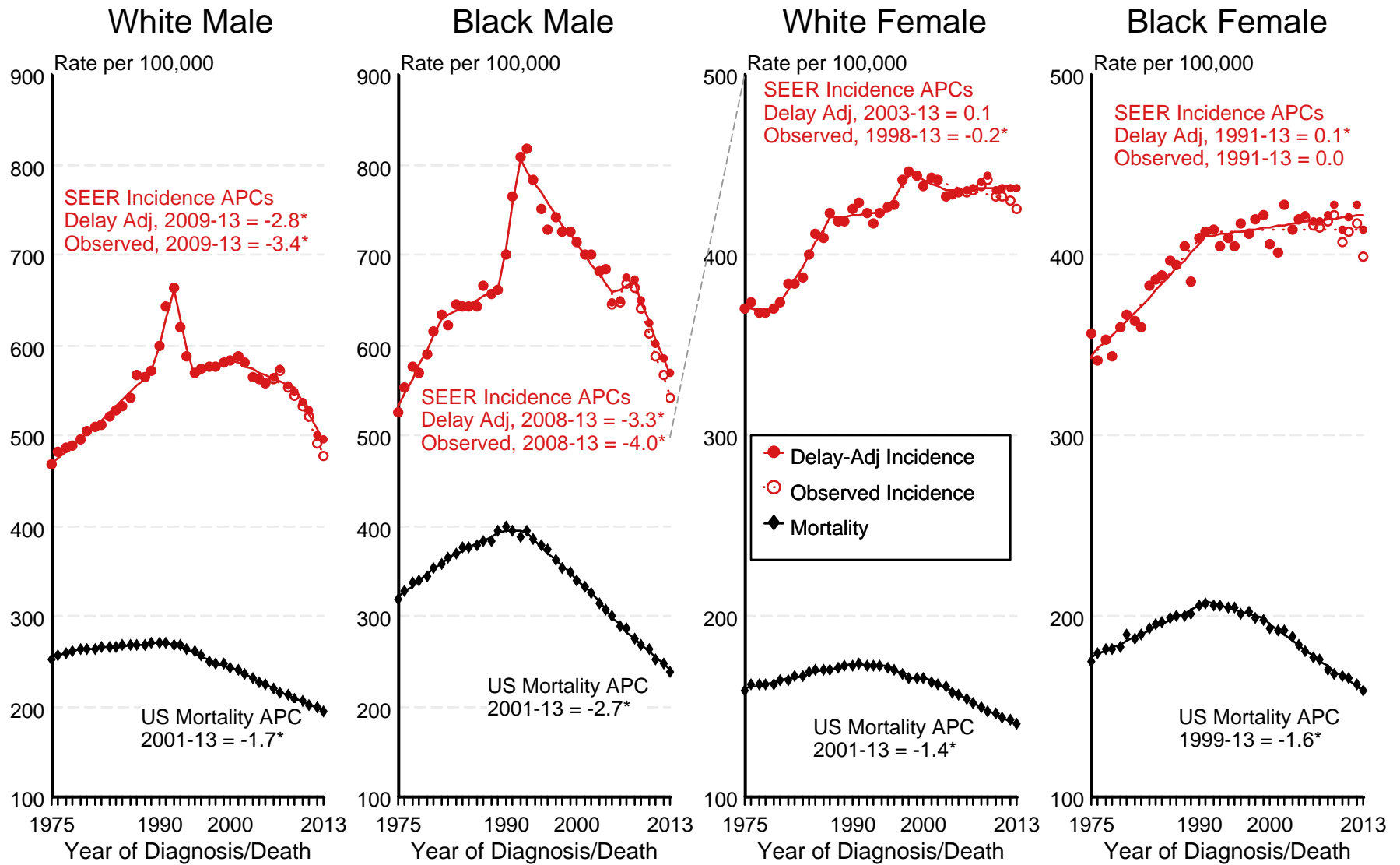
^{g h i} (g) Cases diagnosed more than 38 years ago were estimated using the completeness index method (Capocaccia et. al. 1997, Merrill et. al. 2000). (h) Complete prevalence is obtained by summing 0 to <38 and >=38. (i) Age-specific completeness index was approximated using empirical data from historical Connecticut tumor registry.

- Statistic not shown. Statistic based on fewer than 5 cases estimated alive in SEER for the time interval.

+ Not available.

Figure 2.1

SEER Observed Incidence, SEER Delay Adjusted Incidence and US Death Rates^a All Cancer Sites, by Race and Sex



Source: SEER 9 areas and US Mortality Files (National Center for Health Statistics, CDC).

^a Rates are age-adjusted to the 2000 US Std Population (19 age groups - Census P25-1103).

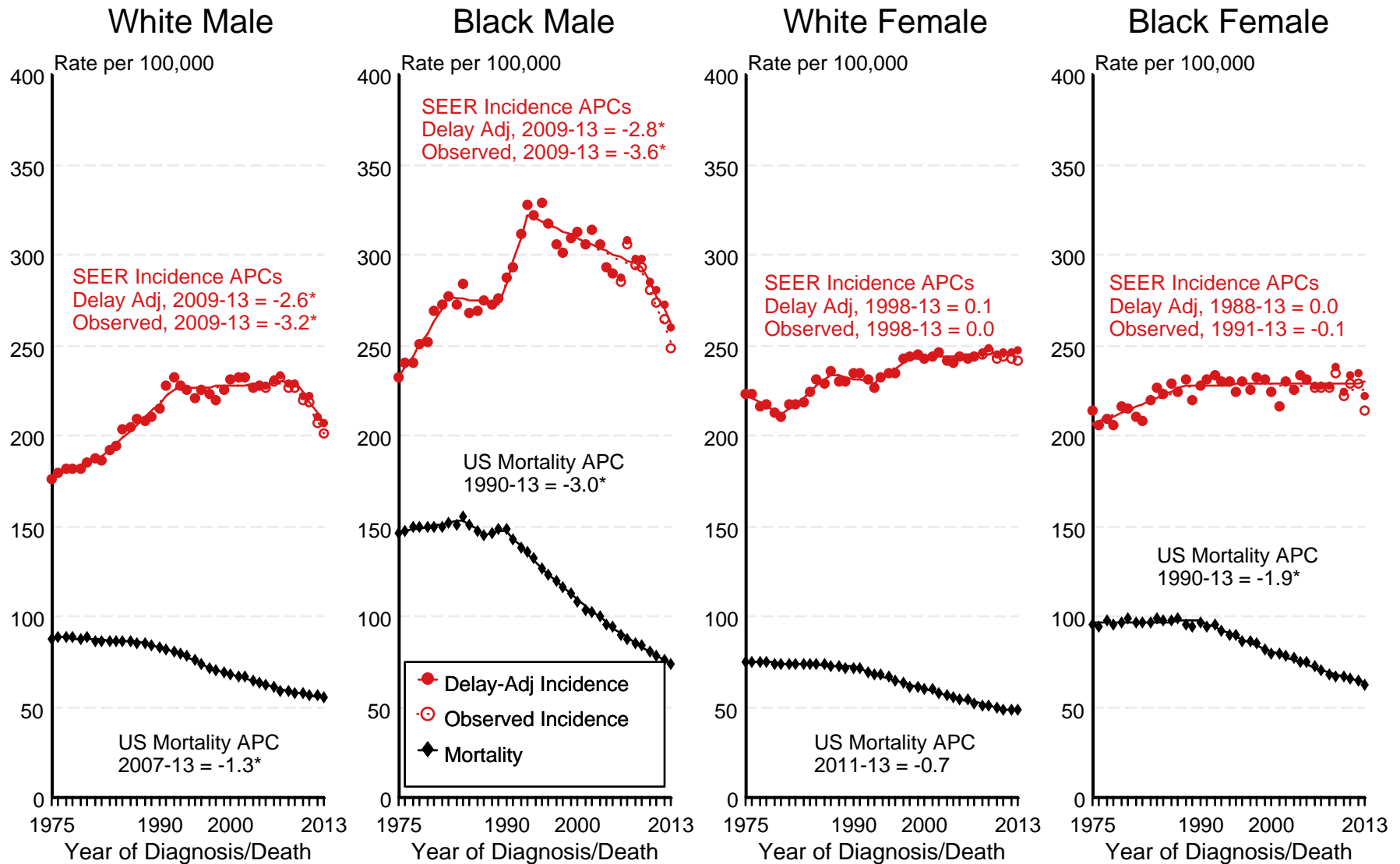
Regression lines and APCs are calculated using the Joinpoint Regression Program Version 4.3.0.0, April 2016, National Cancer Institute.

The APC is the Annual Percent Change for the regression line segments. The APC shown on the graph is for the most recent trend.

* The APC is significantly different from zero ($p < 0.05$).

Figure 2.2

SEER Observed Incidence, SEER Delay Adjusted Incidence and US Death Rates^a All Cancer Sites, Under 65 Years of Age, by Race and Sex



Source: SEER 9 areas and US Mortality Files (National Center for Health Statistics, CDC).

^a Rates are age-adjusted to the 2000 US Std Population (19 age groups - Census P25-1103).

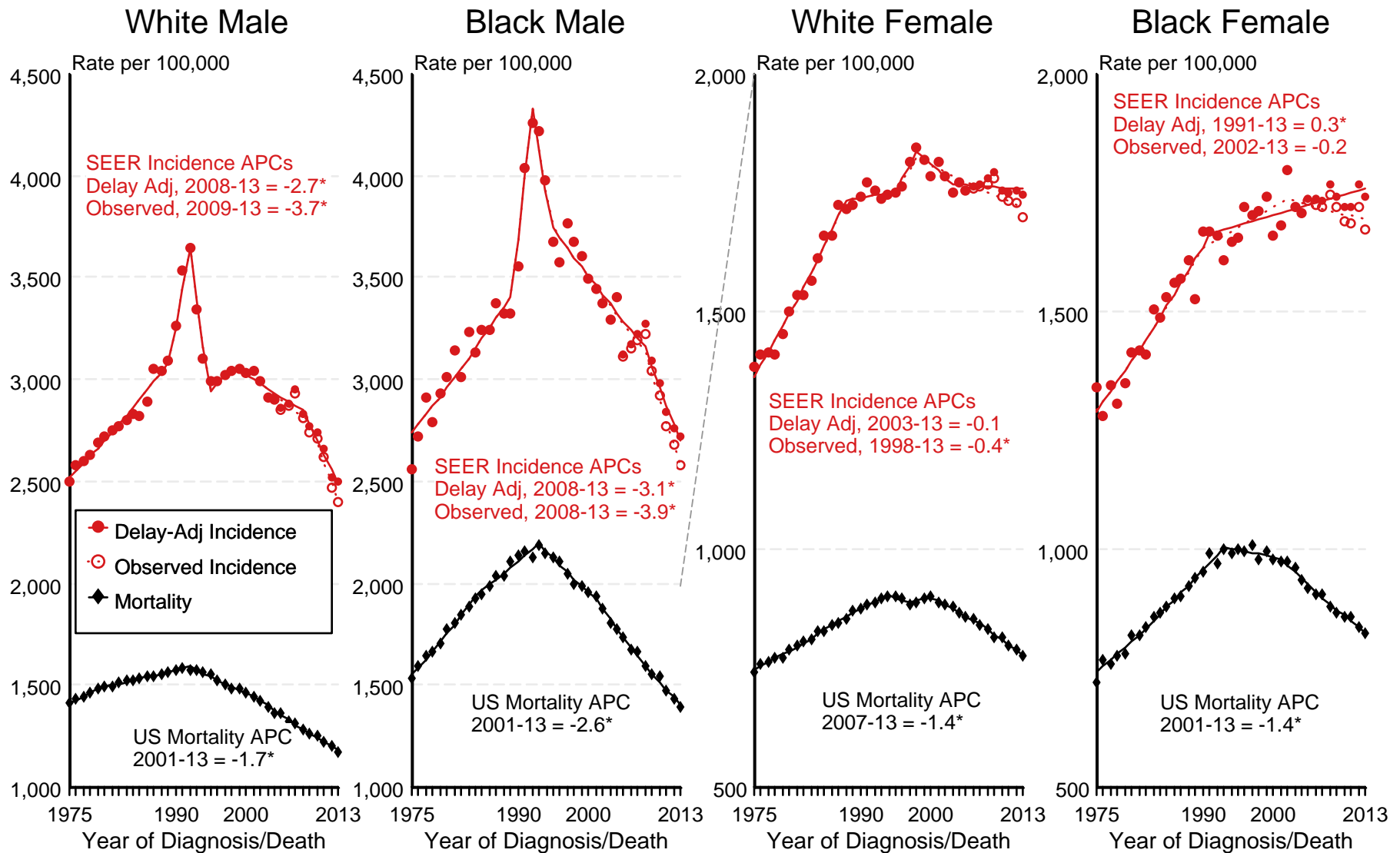
Regression lines and APCs are calculated using the Joinpoint Regression Program Version 4.3.0.0, April 2016, National Cancer Institute.

The APC is the Annual Percent Change for the regression line segments. The APC shown on the graph is for the most recent trend.

* The APC is significantly different from zero ($p < 0.05$).

Figure 2.3

SEER Observed Incidence, SEER Delay Adjusted Incidence and US Death Rates^a All Cancer Sites, Ages 65 and Over, by Race and Sex



Source: SEER 9 areas and US Mortality Files (National Center for Health Statistics, CDC).

^a Rates are age-adjusted to the 2000 US Std Population (19 age groups - Census P25-1103).

Regression lines and APCs are calculated using the Joinpoint Regression Program Version 4.3.0.0, April 2016, National Cancer Institute.

The APC is the Annual Percent Change for the regression line segments. The APC shown on the graph is for the most recent trend.

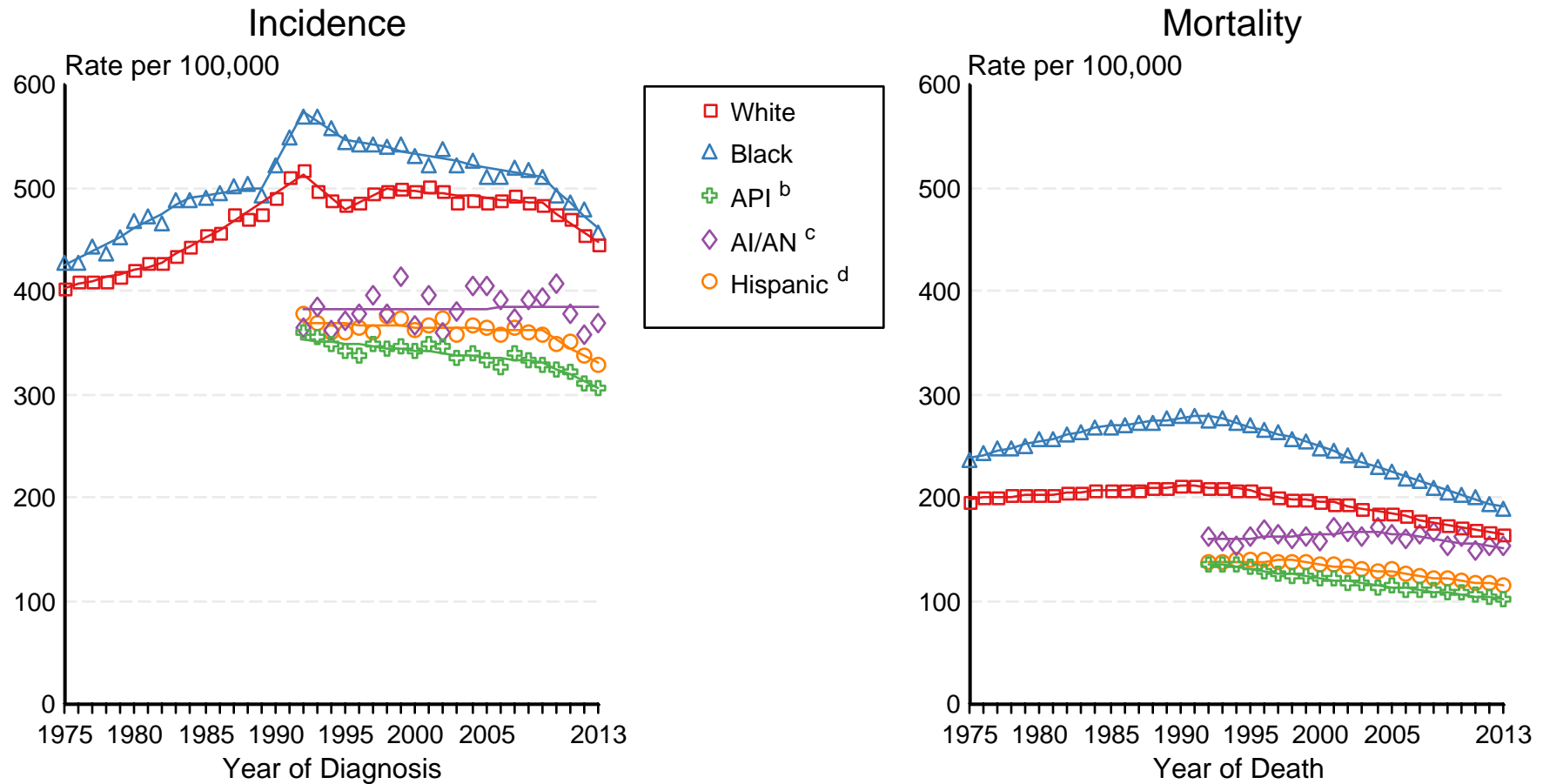
* The APC is significantly different from zero ($p < 0.05$).

Figure 2.4

SEER Incidence and US Death Rates^a All Cancer Sites, Both Sexes

Joinpoint Analyses for Whites and Blacks from 1975-2013

and for Asian/Pacific Islanders, American Indians/Alaska Natives and Hispanics from 1992-2013

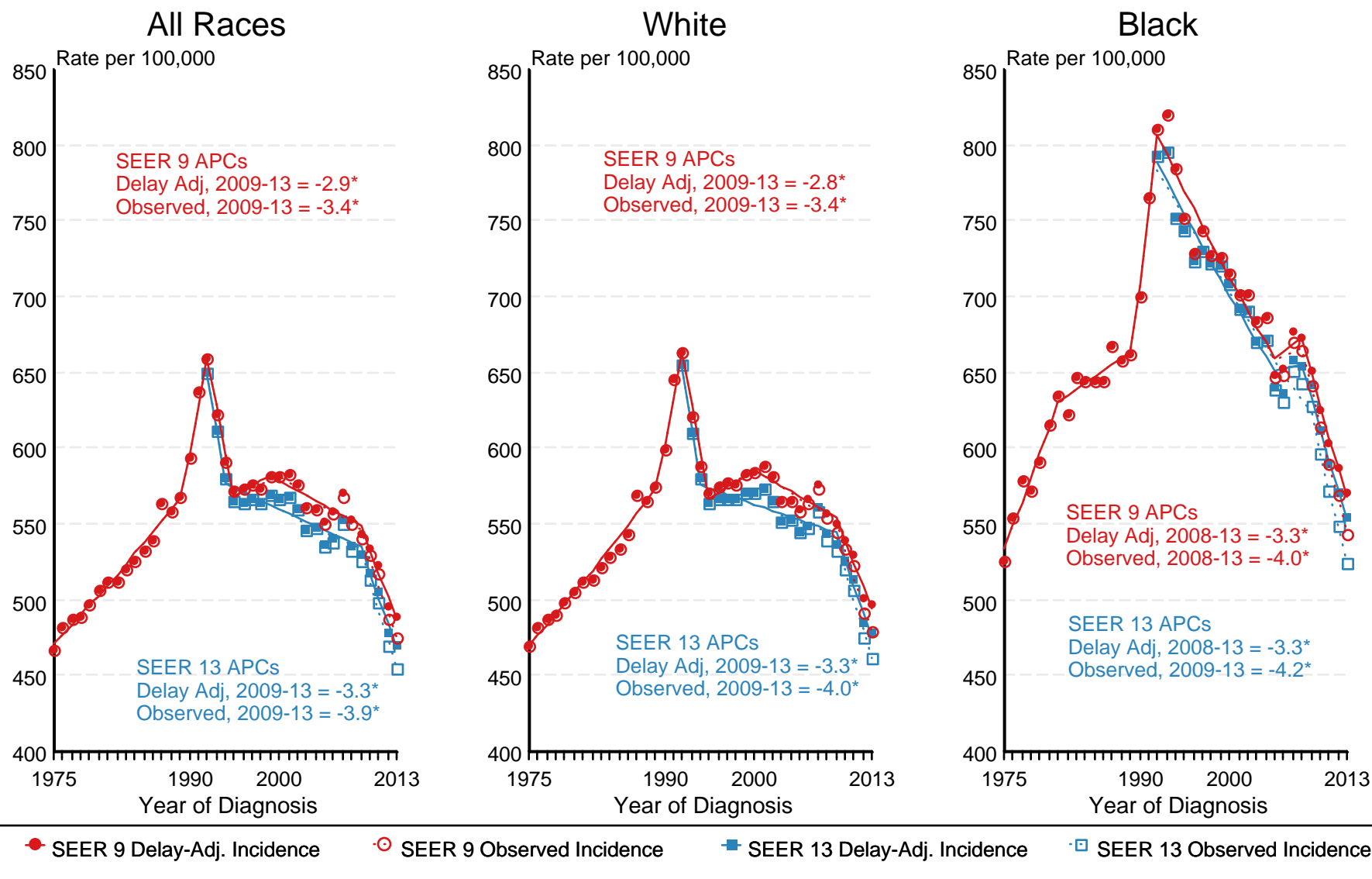


Source: Incidence data for whites and blacks are from the SEER 9 areas (San Francisco, Connecticut, Detroit, Hawaii, Iowa, New Mexico, Seattle, Utah, Atlanta). Incidence data for Asian/Pacific Islanders, American Indians/Alaska Natives and Hispanics are from the SEER 13 Areas (SEER 9 Areas, San Jose-Monterey, Los Angeles, Alaska Native Registry and Rural Georgia). Mortality data are from US Mortality Files, National Center for Health Statistics, CDC.

- ^a Rates are age-adjusted to the 2000 US Std Population (19 age groups - Census P25-1103). Regression lines are calculated using the Joinpoint Regression Program Version 4.3.0.0, April 2016, National Cancer Institute. Joinpoint analyses for Whites and Blacks during the 1975-2013 period allow a maximum of 5 joinpoints. Analyses for other ethnic groups during the period 1992-2013 allow a maximum of 4 joinpoints.
- ^b API = Asian/Pacific Islander.
- ^c AI/AN = American Indian/Alaska Native. Rates for American Indian/Alaska Native are based on the CHSDA(Contract Health Service Delivery Area) counties.
- ^d Hispanic is not mutually exclusive from whites, blacks, Asian/Pacific Islanders, and American Indians/Alaska Natives. Incidence data for Hispanics are based on NHIA and exclude cases from the Alaska Native Registry. Mortality data for Hispanics exclude cases from New Hampshire and Oklahoma.

Figure 2.5

SEER Observed Incidence and SEER Delay Adjusted Incidence Rates^a SEER 9 Areas Compared to SEER 13 Areas All Cancer Sites, Males, by Race



Source: SEER 9 areas and SEER 13 areas.

^a Rates are age-adjusted to the 2000 US Std Population (19 age groups - Census P25-1103).

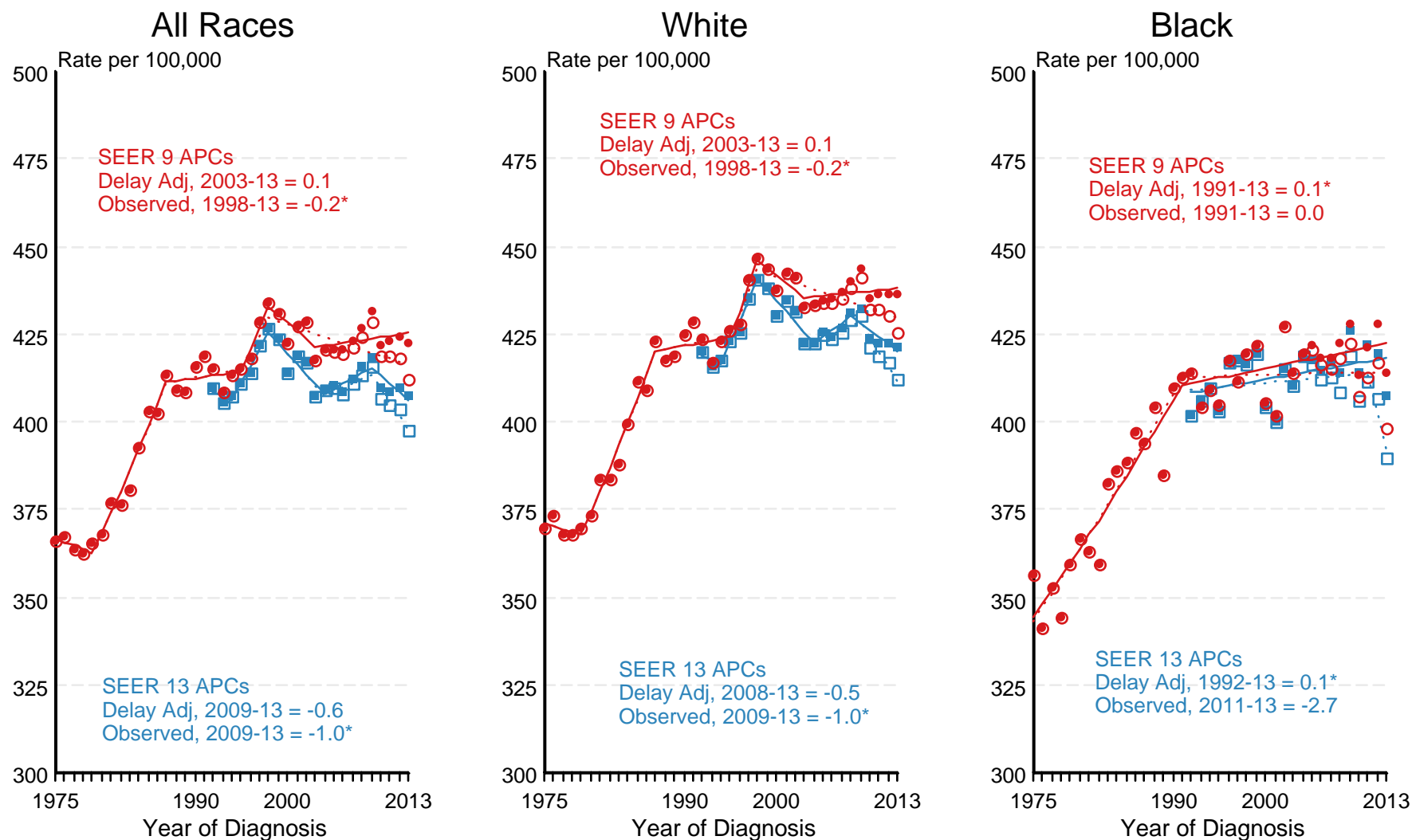
Regression lines and APCs are calculated using the Joinpoint Regression Program Version 4.3.0.0, April 2016, National Cancer Institute.

The APC is the Annual Percent Change for the regression line segments. The APC shown on the graph is for the most recent trend.

* The APC is significantly different from zero ($p < 0.05$).

Figure 2.6

SEER Observed Incidence and SEER Delay Adjusted Incidence Rates^a SEER 9 Areas Compared to SEER 13 Areas All Cancer Sites, Female, by Race



● SEER 9 Delay-Adj. Incidence ○ SEER 9 Observed Incidence ■ SEER 13 Delay-Adj. Incidence □ SEER 13 Observed Incidence

Source: SEER 9 areas and SEER 13 areas.

^a Rates are age-adjusted to the 2000 US Std Population (19 age groups - Census P25-1103).

Regression lines and APCs are calculated using the Joinpoint Regression Program Version 4.3.0.0, April 2016, National Cancer Institute.

The APC is the Annual Percent Change for the regression line segments. The APC shown on the graph is for the most recent trend.

* The APC is significantly different from zero ($p < 0.05$).