

Table 15.1
Cancer of the Lung and Bronchus (Invasive)

Trends in SEER Incidence^{ab} and U.S. Mortality^c Using the Joinpoint Regression Program,
1975-2013 With up to Five Joinpoints, 1992-2013 With up to Four Joinpoints,
Both Sexes by Race/Ethnicity

	JP Trend 1		JP Trend 2		JP Trend 3		JP Trend 4		JP Trend 5		JP Trend 6		AAPC ^d	
	Years	APC	Years	APC	Years	APC	Years	APC	Years	APC	Years	APC	2004-13	2009-13
<u>SEER 9 Delay-Adjusted Incidence^a, 1975-2013</u>														
All Races	1975-82	2.5*	1982-91	0.9*	1991-07	-0.7*	2007-13	-2.1*					-1.7*	-2.1*
White	1975-82	2.6*	1982-91	1.1*	1991-07	-0.6*	2007-13	-2.2*					-1.6*	-2.2*
Black	1975-84	3.3*	1984-98	-0.4	1998-13	-1.7*							-1.7*	-1.7*
<u>SEER 13 Delay-Adjusted Incidence^b, 1992-2013</u>														
All Races	1992-07	-1.0*	2007-13	-2.4*									-1.9*	-2.4*
White	1992-07	-0.9*	2007-13	-2.4*									-1.9*	-2.4*
Black	1992-09	-1.3*	2009-13	-3.7*									-2.4*	-3.7*
<u>SEER 9 Observed Incidence^a, 1975-2013</u>														
All Races	1975-82	2.5*	1982-91	0.9*	1991-07	-0.7*	2007-13	-2.4*					-1.8*	-2.4*
White	1975-82	2.6*	1982-91	1.1*	1991-07	-0.6*	2007-13	-2.4*					-1.8*	-2.4*
Black	1975-84	3.3*	1984-99	-0.5	1999-13	-1.9*							-1.9*	-1.9*
<u>SEER 13 Observed Incidence^b, 1992-2013</u>														
All Races	1992-08	-1.0*	2008-13	-3.1*									-2.1*	-3.1*
White	1992-08	-0.9*	2008-13	-3.1*									-2.1*	-3.1*
White NH ^{ef}	1992-08	-0.8*	2008-13	-3.0*									-2.0*	-3.0*
Black	1992-09	-1.3*	2009-13	-4.3*									-2.7*	-4.3*
Black NH ^{ef}	1992-09	-1.3*	2009-13	-4.3*									-2.6*	-4.3*
API ^e	1992-05	-0.4*	2005-13	-1.5*									-1.4*	-1.5*
AI/AN ^{eg}	1992-13	-0.9*											-0.9*	-0.9*
Hispanic ^f	1992-13	-1.3*											-1.3*	-1.3*
<u>U.S. Cancer Mortality^c, 1975-2013</u>														
All Races	1975-80	3.0*	1980-90	1.8*	1990-95	-0.2	1995-05	-1.0*	2005-13	-2.4*			-2.2*	-2.4*
White	1975-82	2.6*	1982-90	1.7*	1990-94	0.1	1994-05	-0.8*	2005-13	-2.3*			-2.1*	-2.3*
Black	1975-81	3.5*	1981-90	1.9*	1990-95	-0.7*	1995-04	-1.7*	2004-13	-2.7*			-2.7*	-2.7*
<u>U.S. Cancer Mortality^c, 1992-2013</u>														
All Races	1992-05	-0.9*	2005-13	-2.4*									-2.3*	-2.4*
White	1992-05	-0.7*	2005-13	-2.3*									-2.1*	-2.3*
White NH ^{ef}	1992-05	-0.6*	2005-13	-2.2*									-2.0*	-2.2*
Black	1992-97	-1.1*	1997-04	-1.8*	2004-13	-2.7*							-2.7*	-2.7*
Black NH ^{ef}	1992-95	-0.6	1995-04	-1.7*	2004-13	-2.6*							-2.6*	-2.6*
API ^e	1992-13	-1.2*											-1.2*	-1.2*
AI/AN ^{eg}	1992-13	-0.3											-0.3	-0.3
Hispanic ^f	1992-95	1.4	1995-05	-1.2*	2005-13	-2.6*							-2.5*	-2.6*

Joinpoint Regression Program Version 4.3.0.0, April 2016, National Cancer Institute. (<http://surveillance.cancer.gov/joinpoint/>).

The APC is the Annual Percent Change based on rates age-adjusted to the 2000 US Std Population (19 age groups - Census P25-1130).

Trends are from the SEER 9 areas (San Francisco, Connecticut, Detroit, Hawaii, Iowa, New Mexico, Seattle, Utah, and Atlanta).

Trends are from the SEER 13 areas (SEER 9 Areas, Los Angeles, San Jose-Monterey, Rural Georgia, and the Alaska Native Registry).

Trends are from US Mortality Files, National Center for Health Statistics, Centers for Disease Control and Prevention.

The AAPC is the Average Annual Percent Change and is based on the APCs calculated by Joinpoint.

API - Asian/Pacific Islander, AI/AN - American Indian/Alaska Native, NH - Non-Hispanic

Hispanic and Non-Hispanic are not mutually exclusive from whites, blacks, Asian/Pacific Islanders, and American Indians/Alaska

Natives. Incidence data for Hispanics and Non-Hispanics are based on NHIA and exclude cases from the Alaska Native Registry.

The Hispanic and Non-Hispanic mortality trends exclude deaths from New Hampshire and Oklahoma.

Data for American Indian/Alaska Native are based on the CHSDA (Contract Health Service Delivery Area) counties.

* The APC/AAPC is significantly different from zero ($p < .05$).

- Joinpoint regression line analysis could not be performed on data series.

Table 15.2
Cancer of the Lung and Bronchus (Invasive)

Trends in SEER Incidence^{ab} and U.S. Mortality^c Using the Joinpoint Regression Program,
1975-2013 With up to Five Joinpoints, 1992-2013 With up to Four Joinpoints,
Males by Race/Ethnicity

	JP Trend 1		JP Trend 2		JP Trend 3		JP Trend 4		JP Trend 5		JP Trend 6		AAPC ^d	
	Years	APC	Years	APC	Years	APC	Years	APC	Years	APC	Years	APC	2004-13	2009-13
<u>SEER 9 Delay-Adjusted Incidence^a, 1975-2013</u>														
All Races	1975-82	1.5*	1982-91	-0.5*	1991-08	-1.7*	2008-13	-2.9*					-2.4*	-2.9*
White	1975-81	1.5*	1981-90	-0.2	1990-09	-1.7*	2009-13	-3.2*					-2.4*	-3.2*
Black	1975-84	2.9*	1984-97	-1.4*	1997-13	-2.7*							-2.7*	-2.7*
<u>SEER 13 Delay-Adjusted Incidence^b, 1992-2013</u>														
All Races	1992-09	-1.9*	2009-13	-3.6*									-2.6*	-3.6*
White	1992-09	-1.9*	2009-13	-3.6*									-2.6*	-3.6*
Black	1992-13	-2.6*											-2.6*	-2.6*
<u>SEER 9 Observed Incidence^a, 1975-2013</u>														
All Races	1975-82	1.5*	1982-91	-0.5*	1991-09	-1.7*	2009-13	-3.7*					-2.6*	-3.7*
White	1975-81	1.5*	1981-90	-0.2	1990-09	-1.7*	2009-13	-3.7*					-2.6*	-3.7*
Black	1975-84	2.9*	1984-97	-1.3*	1997-13	-2.8*							-2.8*	-2.8*
<u>SEER 13 Observed Incidence^b, 1992-2013</u>														
All Races	1992-09	-1.9*	2009-13	-4.0*									-2.9*	-4.0*
White	1992-09	-1.9*	2009-13	-4.0*									-2.8*	-4.0*
White NH ^{ef}	1992-09	-1.7*	2009-13	-3.9*									-2.7*	-3.9*
Black	1992-13	-2.7*											-2.7*	-2.7*
Black NH ^{ef}	1992-13	-2.7*											-2.7*	-2.7*
API ^e	1992-94	-7.0*	1994-99	1.0	1999-02	-2.8	2002-05	0.5	2005-13	-2.6*			-2.2*	-2.6*
AI/AN ^{eg}	1992-13	-1.6*											-1.6*	-1.6*
Hispanic ^f	1992-13	-2.1*											-2.1*	-2.1*
<u>U.S. Cancer Mortality^c, 1975-2013</u>														
All Races	1975-78	2.4*	1978-84	1.2*	1984-91	0.3*	1991-05	-1.9*	2005-13	-3.0*			-2.9*	-3.0*
White	1975-82	1.7*	1982-91	0.4*	1991-05	-1.8*	2005-13	-2.9*					-2.8*	-2.9*
Black	1975-77	4.9*	1977-84	2.3*	1984-90	1.2*	1990-94	-1.2*	1994-03	-2.7*	2003-13	-3.4*	-3.4*	-3.4*
<u>U.S. Cancer Mortality^c, 1992-2013</u>														
All Races	1992-05	-1.9*	2005-13	-3.0*									-2.9*	-3.0*
White	1992-05	-1.7*	2005-13	-2.9*									-2.8*	-2.9*
White NH ^{ef}	1992-05	-1.6*	2005-13	-2.8*									-2.7*	-2.8*
Black	1992-94	-1.0	1994-03	-2.7*	2003-13	-3.4*							-3.4*	-3.4*
Black NH ^{ef}	1992-94	-0.6	1994-04	-2.7*	2004-13	-3.3*							-3.3*	-3.3*
API ^e	1992-08	-1.4*	2008-13	-2.9*									-2.2*	-2.9*
AI/AN ^{eg}	1992-13	-1.1*											-1.1*	-1.1*
Hispanic ^f	1992-94	3.2	1994-05	-1.9*	2005-13	-3.4*							-3.3*	-3.4*

Joinpoint Regression Program Version 4.3.0.0, April 2016, National Cancer Institute. (<http://surveillance.cancer.gov/joinpoint/>).

The APC is the Annual Percent Change based on rates age-adjusted to the 2000 US Std Population (19 age groups - Census P25-1130).

Trends are from the SEER 9 areas (San Francisco, Connecticut, Detroit, Hawaii, Iowa, New Mexico, Seattle, Utah, and Atlanta).

Trends are from the SEER 13 areas (SEER 9 Areas, Los Angeles, San Jose-Monterey, Rural Georgia, and the Alaska Native Registry).

Trends are from US Mortality Files, National Center for Health Statistics, Centers for Disease Control and Prevention.

The AAPC is the Average Annual Percent Change and is based on the APCs calculated by Joinpoint.

API - Asian/Pacific Islander, AI/AN - American Indian/Alaska Native, NH - Non-Hispanic

Hispanic and Non-Hispanic are not mutually exclusive from whites, blacks, Asian/Pacific Islanders, and American Indians/Alaska

Natives. Incidence data for Hispanics and Non-Hispanics are based on NHIA and exclude cases from the Alaska Native Registry.

The Hispanic and Non-Hispanic mortality trends exclude deaths from New Hampshire and Oklahoma.

Data for American Indian/Alaska Native are based on the CHSDA (Contract Health Service Delivery Area) counties.

* The APC/AAPC is significantly different from zero ($p < .05$).

- Joinpoint regression line analysis could not be performed on data series.

Table 15.3
Cancer of the Lung and Bronchus (Invasive)

Trends in SEER Incidence^{ab} and U.S. Mortality^c Using the Joinpoint Regression Program,
1975-2013 With up to Five Joinpoints, 1992-2013 With up to Four Joinpoints,
Females by Race/Ethnicity

	JP Trend 1		JP Trend 2		JP Trend 3		JP Trend 4		JP Trend 5		JP Trend 6		AAPC ^d	
	Years	APC	Years	APC	Years	APC	Years	APC	Years	APC	Years	APC	2004-13	2009-13
<u>SEER 9 Delay-Adjusted Incidence^a, 1975-2013</u>														
All Races	1975-82	5.6*	1982-91	3.4*	1991-06	0.5*	2006-13	-1.4*					-1.0*	-1.4*
White	1975-82	5.6*	1982-88	4.2*	1988-97	1.5*	1997-07	0.2	2007-13	-1.6*			-1.0*	-1.6*
Black	1975-91	4.3*	1991-13	0.0									0.0	0.0
<u>SEER 13 Delay-Adjusted Incidence^b, 1992-2013</u>														
All Races	1992-07	0.0	2007-13	-1.9*									-1.3*	-1.9*
White	1992-97	0.8	1997-07	-0.2	2007-13	-1.9*							-1.3*	-1.9*
Black	1992-05	0.8*	2005-13	-1.6*									-1.4*	-1.6*
<u>SEER 9 Observed Incidence^a, 1975-2013</u>														
All Races	1975-82	5.6*	1982-91	3.4*	1991-07	0.5*	2007-13	-2.0*					-1.2*	-2.0*
White	1975-82	5.6*	1982-88	4.2*	1988-97	1.5*	1997-07	0.2	2007-13	-1.9*			-1.2*	-1.9*
Black	1975-90	4.2*	1990-06	0.6*	2006-13	-1.8*							-1.3*	-1.8*
<u>SEER 13 Observed Incidence^b, 1992-2013</u>														
All Races	1992-97	0.6	1997-07	-0.2	2007-13	-2.1*							-1.5*	-2.1*
White	1992-97	0.9	1997-08	-0.3	2008-13	-2.5*							-1.5*	-2.5*
White NH ^{ef}	1992-97	1.0*	1997-07	0.0	2007-13	-2.1*							-1.4*	-2.1*
Black	1992-05	0.8*	2005-13	-2.0*									-1.7*	-2.0*
Black NH ^{ef}	1992-05	0.8*	2005-13	-1.9*									-1.6*	-1.9*
API ^e	1992-13	0.2											0.2	0.2
AI/AN ^{eg}	1992-05	2.6*	2005-13	-4.2									-3.5	-4.2
Hispanic ^f	1992-13	-0.4*											-0.4*	-0.4*
<u>U.S. Cancer Mortality^c, 1975-2013</u>														
All Races	1975-82	6.0*	1982-90	4.2*	1990-95	1.7*	1995-03	0.3*	2003-07	-0.8	2007-13	-1.9*	-1.6*	-1.9*
White	1975-83	5.8*	1983-90	4.1*	1990-94	2.0*	1994-02	0.5*	2002-07	-0.5	2007-13	-1.9*	-1.4*	-1.9*
Black	1975-82	6.3*	1982-92	3.7*	1992-04	0.4*	2004-13	-1.9*					-1.9*	-1.9*
<u>U.S. Cancer Mortality^c, 1992-2013</u>														
All Races	1992-95	1.4*	1995-03	0.3*	2003-07	-0.8	2007-13	-1.9*					-1.6*	-1.9*
White	1992-95	1.4*	1995-02	0.5*	2002-07	-0.5	2007-13	-1.9*					-1.4*	-1.9*
White NH ^{ef}	1992-95	1.7*	1995-03	0.6*	2003-08	-0.7	2008-13	-1.9*					-1.4*	-1.9*
Black	1992-04	0.4*	2004-13	-1.9*									-1.9*	-1.9*
Black NH ^{ef}	1992-97	1.3*	1997-05	0.0	2005-13	-1.9*							-1.7*	-1.9*
API ^e	1992-13	-0.4*											-0.4*	-0.4*
AI/AN ^{eg}	1992-05	2.1*	2005-13	-1.6									-1.2	-1.6
Hispanic ^f	1992-03	0.5	2003-13	-1.4*									-1.4*	-1.4*

Joinpoint Regression Program Version 4.3.0.0, April 2016, National Cancer Institute. (<http://surveillance.cancer.gov/joinpoint/>).

The APC is the Annual Percent Change based on rates age-adjusted to the 2000 US Std Population (19 age groups - Census P25-1130). Trends are from the SEER 9 areas (San Francisco, Connecticut, Detroit, Hawaii, Iowa, New Mexico, Seattle, Utah, and Atlanta).

Trends are from the SEER 13 areas (SEER 9 Areas, Los Angeles, San Jose-Monterey, Rural Georgia, and the Alaska Native Registry).

Trends are from US Mortality Files, National Center for Health Statistics, Centers for Disease Control and Prevention.

The AAPC is the Average Annual Percent Change and is based on the APCs calculated by Joinpoint.

API - Asian/Pacific Islander, AI/AN - American Indian/Alaska Native, NH - Non-Hispanic

Hispanic and Non-Hispanic are not mutually exclusive from whites, blacks, Asian/Pacific Islanders, and American Indians/Alaska Natives. Incidence data for Hispanics and Non-Hispanics are based on NHIA and exclude cases from the Alaska Native Registry.

The Hispanic and Non-Hispanic mortality trends exclude deaths from New Hampshire and Oklahoma.

Data for American Indian/Alaska Native are based on the CHSDA (Contract Health Service Delivery Area) counties.

* The APC/AAPC is significantly different from zero ($p < .05$).

- Joinpoint regression line analysis could not be performed on data series.

Table 15.4
Small Cell Cancer of the Lung and Bronchus^a(Invasive) and Non-Small Cell Cancer of the Lung and Bronchus^b(Invasive)

Trends in SEER 9 Observed Incidence^c Using the Joinpoint Regression Program,
1975-2013 With up to Five Joinpoints,
By Race and Sex

		JP Trend 1		JP Trend 2		JP Trend 3		JP Trend 4		JP Trend 5		JP Trend 6		AAPC ^d
		Years	APC	Years	APC	Years	APC	Years	APC	Years	APC	Years	APC	2009-13
<u>SEER 9 Observed Incidence^c for Small Cell Cancer of the Lung and Bronchus^a, 1975-2013</u>														
All Races	Both Sexes	1975-82	6.2*	1982-89	1.3*	1989-13	-2.4*							-2.4*
All Races	Male	1975-81	5.6*	1981-88	-0.1	1988-13	-3.1*							-3.1*
All Races	Female	1975-82	9.6*	1982-91	3.1*	1991-13	-1.9*							-1.9*
White	Both Sexes	1975-82	6.4*	1982-89	1.4*	1989-13	-2.2*							-2.2*
White	Male	1975-78	8.9*	1978-86	1.9*	1986-13	-2.9*							-2.9*
White	Female	1975-82	10.2*	1982-91	3.2*	1991-13	-1.7*							-1.7*
Black	Both Sexes	1975-86	4.9*	1986-13	-2.5*									-2.5*
Black	Male	1975-85	5.0*	1985-13	-3.4*									-3.4*
Black	Female	1975-91	4.6*	1991-13	-2.0*									-2.0*
<u>SEER 9 Observed Incidence^c for Non-Small Cell Cancer of the Lung and Bronchus^b, 1975-2013</u>														
All Races	Both Sexes	1975-80	5.2*	1980-88	1.6*	1988-00	-0.9*	2000-03	6.0*	2003-13	-1.6*			-1.6*
All Races	Male	1975-80	4.5*	1980-88	0.4	1988-99	-2.3*	1999-02	5.1	2002-13	-2.1*			-2.1*
All Races	Female	1975-78	10.2*	1978-88	4.7*	1988-00	0.6*	2000-03	7.0*	2003-13	-0.7*			-0.7*
White	Both Sexes	1975-79	6.1*	1979-88	1.9*	1988-00	-0.8*	2000-03	5.9*	2003-13	-1.6*			-1.6*
White	Male	1975-80	4.4*	1980-88	0.5	1988-99	-2.3*	1999-02	5.1	2002-13	-2.1*			-2.1*
White	Female	1975-78	10.4*	1978-88	4.8*	1988-00	0.7*	2000-03	6.9*	2003-13	-0.7*			-0.7*
Black	Both Sexes	1975-84	4.5*	1984-00	-1.2*	2000-03	5.2	2003-13	-2.0*					-2.0*
Black	Male	1975-84	3.4*	1984-13	-1.6*									-1.6*
Black	Female	1975-90	5.0*	1990-97	-1.5	1997-05	4.0*	2005-13	-1.6*					-1.6*

Joinpoint Regression Program Version 4.3.0.0, April 2016, National Cancer Institute. (<http://surveillance.cancer.gov/joinpoint/>).

The APC is the Annual Percent Change based on rates age-adjusted to the 2000 US Std Population (19 age groups - Census P25-1130).

^a Small Cell Cancer of the Lung and Bronchus includes histologies 8002, 8041-8045.

^b Non-Small Cell Cancer of the Lung and Bronchus includes histologies 8003-8004, 8012-8015, 8021-8022, 8030-8035, 8046, 8050-8052, 8070-8076, 8078, 8082-8084, 8090, 8094, 8120, 8123, 8140-8141, 8143-8145, 8147, 8190, 8200-8201, 8211, 8240-8241, 8243-8246, 8249-8255, 8260, 8290, 8310, 8320, 8323, 8333, 8401, 8430,8440,8470-8471,8480-8481, 8490, 8503, 8507, 8525, 8550, 8560, 8562, 8570-8572, 8574-8576.

^c Trends are from the SEER 9 areas (San Francisco, Connecticut, Detroit, Hawaii, Iowa, New Mexico, Seattle, Utah, and Atlanta).

^d The AAPC is the Average Annual Percent Change and is based on the APCs calculated by Joinpoint.

* The APC/AAPC is significantly different from zero (p<.05).

- Joinpoint regression line analysis could not be performed on data series.

Table 15.5
Cancer of the Lung and Bronchus (Invasive)

Delay-adjusted SEER Incidence^a Rates by Year, Race and Sex

Year of Diagnosis:	All Races			Whites			Blacks		
	Total	Males	Females	Total	Males	Females	Total	Males	Females
1975	52.25	89.55	24.53	51.95	89.15	24.85	64.55	114.90	24.66
1976	55.42	93.80	27.31	54.64	92.75	27.28	72.34	131.00	28.63
1977	56.68	95.48	28.31	55.87	94.73	28.06	73.58	124.86	33.88
1978	57.84	96.67	29.63	57.25	95.85	29.87	74.44	130.51	31.53
1979	58.62	95.81	31.58	58.03	95.19	31.64	74.54	127.72	34.11
1980	60.66	99.96	32.22	59.43	97.70	32.37	86.62	151.43	38.25
1981	62.03	99.41	35.11	61.54	98.44	35.52	82.31	142.96	37.45
1982	63.29	100.69	36.73	63.05	99.68	37.68	80.37	141.06	35.68
1983	63.45	99.46	37.88	63.03	97.63	39.09	86.62	151.34	39.49
1984	65.49	102.05	39.45	64.33	99.89	39.61	92.93	158.84	44.82
1985	64.61	98.59	40.25	63.97	96.84	40.87	89.56	149.68	46.04
1986	65.77	99.03	42.29	65.14	97.32	42.94	92.94	156.27	48.67
1987	67.89	101.51	44.15	68.07	100.64	45.50	84.76	143.59	43.28
1988	68.02	98.67	46.30	68.24	97.89	47.71	88.13	144.93	48.07
1989	67.54	97.94	46.10	67.55	97.03	47.23	89.04	142.77	51.37
1990	68.08	96.91	47.79	68.21	96.10	48.96	86.78	137.17	52.13
1991	69.19	97.20	49.58	68.96	95.88	50.63	93.14	144.76	57.05
1992	69.45	97.19	49.85	68.92	94.88	51.05	93.99	148.73	56.06
1993	67.75	93.95	49.16	67.81	92.52	50.64	86.36	135.35	52.54
1994	67.17	90.93	50.54	67.28	90.13	51.61	87.16	131.39	56.53
1995	66.84	89.83	50.43	67.08	87.95	52.41	85.87	138.94	50.12
1996	66.45	87.98	51.22	66.78	86.66	52.96	84.50	128.46	55.53
1997	66.62	86.29	52.59	67.20	84.79	54.95	82.27	129.54	50.49
1998	67.56	88.04	52.99	68.01	86.60	55.02	87.57	131.01	58.29
1999	65.84	84.58	52.50	66.27	83.24	54.40	84.55	122.34	58.92
2000	64.14	82.10	51.23	64.63	80.75	53.20	80.42	114.78	57.55
2001	64.15	81.39	51.66	64.99	80.98	53.45	80.47	114.29	57.66
2002	64.04	80.42	52.48	64.75	79.77	54.22	81.25	112.83	60.49
2003	64.75	81.01	53.10	65.47	79.47	55.64	81.07	119.25	55.73
2004	62.22	76.24	52.06	62.78	75.28	53.77	76.06	105.06	57.02
2005	63.04	75.84	53.84	64.03	75.57	55.79	74.67	97.92	59.49
2006	62.36	74.38	53.50	62.88	73.15	55.40	76.75	101.22	59.91
2007	62.16	73.79	53.67	63.18	72.90	56.11	74.40	101.00	56.80
2008	60.48	72.29	51.91	61.21	70.86	54.33	75.30	103.78	56.35
2009	60.11	70.81	52.36	60.75	69.80	54.21	74.47	98.63	58.55
2010	57.82	68.07	50.20	58.89	67.84	52.20	67.40	86.25	54.99
2011	56.50	65.94	49.57	57.48	65.57	51.56	66.36	87.26	52.80
2012	55.62	64.45	49.05	56.05	63.41	50.61	70.13	90.04	56.71
2013	54.60	62.26	48.92	55.40	61.53	50.89	63.69	81.55	51.81

Additional information on the model used to delay-adjust SEER Incidence rates can be found at [\(http://surveillance.cancer.gov/delay/\)](http://surveillance.cancer.gov/delay/).

^a SEER 9 areas (San Francisco, Connecticut, Detroit, Hawaii, Iowa, New Mexico, Seattle, Utah, and Atlanta).
Rates are per 100,000 and are age-adjusted to the 2000 US Std Population (19 age groups - Census P25-1130).
- Delay-adjusted rate is not shown for observed rates based on less than 16 cases for the time interval.

Table 15.6
Cancer of the Lung and Bronchus (Invasive)

Age-adjusted SEER Incidence^a Rates by Year, Race and Sex

Year of Diagnosis:	All Races			Whites			Blacks		
	Total	Males	Females	Total	Males	Females	Total	Males	Females
1975-2013	62.69	85.11	46.27	62.95	84.40	47.37	78.97	119.04	51.10
1975	52.25	89.55	24.53	51.95	89.15	24.85	64.55	114.90	24.66
1976	55.42	93.80	27.31	54.64	92.75	27.28	72.34	131.00	28.63
1977	56.68	95.48	28.31	55.87	94.73	28.06	73.58	124.86	33.88
1978	57.84	96.67	29.63	57.25	95.85	29.87	74.44	130.51	31.53
1979	58.62	95.81	31.58	58.03	95.19	31.64	74.54	127.72	34.11
1980	60.66	99.96	32.22	59.43	97.70	32.37	86.62	151.43	38.25
1981	62.03	99.41	35.11	61.54	98.44	35.52	82.31	142.96	37.45
1982	63.29	100.69	36.73	63.05	99.68	37.68	80.37	141.06	35.68
1983	63.45	99.46	37.88	63.03	97.63	39.09	86.62	151.34	39.49
1984	65.49	102.05	39.45	64.33	99.89	39.61	92.93	158.84	44.82
1985	64.61	98.59	40.25	63.97	96.84	40.87	89.56	149.68	46.04
1986	65.77	99.03	42.29	65.14	97.32	42.94	92.94	156.27	48.67
1987	67.89	101.51	44.15	68.07	100.64	45.50	84.76	143.59	43.28
1988	68.02	98.67	46.30	68.24	97.89	47.71	88.13	144.93	48.07
1989	67.54	97.94	46.10	67.55	97.03	47.23	89.04	142.77	51.37
1990	68.08	96.91	47.79	68.21	96.10	48.96	86.78	137.17	52.13
1991	69.19	97.20	49.58	68.96	95.88	50.63	93.14	144.76	57.05
1992	69.45	97.19	49.85	68.92	94.88	51.05	93.99	148.73	56.06
1993	67.75	93.95	49.16	67.81	92.52	50.64	86.36	135.35	52.54
1994	67.17	90.93	50.54	67.28	90.13	51.61	87.16	131.39	56.53
1995	66.84	89.83	50.43	67.08	87.95	52.41	85.87	138.94	50.12
1996	66.45	87.98	51.22	66.78	86.66	52.96	84.50	128.46	55.53
1997	66.62	86.29	52.59	67.20	84.79	54.95	82.27	129.54	50.49
1998	67.56	88.04	52.99	68.01	86.60	55.02	87.57	131.01	58.29
1999	65.84	84.58	52.50	66.27	83.24	54.40	84.55	122.34	58.92
2000	64.14	82.10	51.23	64.63	80.75	53.20	80.42	114.78	57.55
2001	64.15	81.39	51.66	64.99	80.98	53.45	80.47	114.29	57.66
2002	64.04	80.42	52.48	64.75	79.77	54.22	81.25	112.83	60.49
2003	64.75	81.01	53.10	65.47	79.47	55.64	81.07	119.25	55.73
2004	62.22	76.24	52.06	62.78	75.28	53.77	76.06	105.06	57.02
2005	63.00	75.80	53.80	63.99	75.53	55.76	74.56	97.78	59.40
2006	62.29	74.31	53.42	62.81	73.08	55.34	76.54	100.94	59.74
2007	62.05	73.68	53.56	63.08	72.79	56.02	74.08	100.58	56.55
2008	60.33	72.14	51.77	61.08	70.72	54.20	74.88	103.19	56.03
2009	59.93	70.63	52.18	60.59	69.63	54.05	73.94	97.95	58.13
2010	57.61	67.87	49.99	58.70	67.64	52.02	66.83	85.54	54.52
2011	56.15	65.58	49.23	57.16	65.20	51.26	65.64	86.32	52.23
2012	55.05	63.82	48.52	55.50	62.77	50.12	69.05	88.64	55.85
2013	53.23	60.71	47.67	53.97	59.91	49.60	61.85	79.18	50.30

^a SEER 9 areas (San Francisco, Connecticut, Detroit, Hawaii, Iowa, New Mexico, Seattle, Utah, and Atlanta).
Rates are per 100,000 and are age-adjusted to the 2000 US Std Population (19 age groups - Census P25-1130).
- Statistic not shown. Rate based on less than 16 cases for the time interval.

Table 15.7
 Small Cell Cancer of the Lung and Bronchus (Invasive)
 Age-adjusted SEER Incidence^a Rates by Year, Race and Sex

Year of Diagnosis:	All Races			Whites			Blacks		
	Total	Males	Females	Total	Males	Females	Total	Males	Females
1975-2013	8.75	11.03	7.05	9.26	11.47	7.60	8.28	11.43	6.09
1975	6.65	10.34	3.79	6.89	10.70	3.97	5.87	8.94	3.48
1976	7.06	11.36	3.84	7.12	11.51	3.89	8.23	12.82	4.76
1977	7.72	12.40	4.23	7.86	12.82	4.23	8.13	11.19	5.78
1978	8.65	13.39	5.04	8.87	13.69	5.28	7.88	13.89	3.24
1979	8.70	13.10	5.38	9.05	13.64	5.63	7.63	11.83	4.47
1980	9.11	14.20	5.25	9.34	14.40	5.56	9.99	17.53	4.38
1981	9.74	14.59	6.13	10.03	14.87	6.48	9.28	15.87	4.34
1982	10.44	15.00	7.17	10.81	15.36	7.62	9.69	16.08	4.92
1983	10.39	14.92	7.10	10.78	15.09	7.66	9.23	15.20	4.95
1984	10.71	15.24	7.41	11.07	15.71	7.76	10.41	14.99	6.86
1985	10.47	14.98	7.10	10.80	15.26	7.52	11.12	17.90	6.27
1986	11.22	15.57	7.98	11.57	16.05	8.27	12.26	17.70	8.35
1987	10.67	14.15	8.22	11.18	14.57	8.86	9.68	14.61	6.20
1988	11.38	15.28	8.53	11.91	15.62	9.23	10.49	17.86	5.30
1989	11.25	14.85	8.69	11.70	15.24	9.22	12.07	17.67	8.35
1990	10.67	13.86	8.39	11.28	14.49	9.06	9.35	13.70	6.21
1991	11.31	13.99	9.39	11.71	14.32	9.88	12.34	15.92	10.00
1992	10.51	13.41	8.45	10.97	13.85	8.96	10.22	13.32	8.05
1993	10.03	12.34	8.34	10.48	12.64	8.94	9.43	13.36	6.74
1994	9.77	11.69	8.42	10.24	11.97	9.05	9.95	13.53	7.50
1995	9.87	12.30	8.12	10.37	12.64	8.73	9.50	13.89	6.61
1996	9.72	12.09	7.98	10.28	12.48	8.64	8.80	12.02	6.84
1997	9.53	10.86	8.64	10.11	11.12	9.49	7.86	10.82	6.05
1998	9.29	10.87	8.14	9.86	11.29	8.82	9.50	12.26	7.55
1999	8.82	10.06	7.97	9.33	10.25	8.78	8.25	11.21	6.05
2000	8.80	10.45	7.59	9.28	10.85	8.13	9.59	11.80	8.02
2001	8.37	9.86	7.33	8.91	10.35	7.92	8.52	10.80	6.89
2002	8.29	9.39	7.54	8.97	9.86	8.38	7.21	9.80	5.71
2003	8.22	9.12	7.60	8.72	9.37	8.33	7.93	9.50	6.83
2004	8.12	9.00	7.49	8.52	9.24	8.00	8.64	10.08	7.75
2005	7.59	8.69	6.82	8.22	9.24	7.50	6.63	7.78	5.88
2006	7.68	8.53	7.08	8.25	8.84	7.85	6.83	8.19	5.89
2007	7.68	8.60	7.02	8.33	8.96	7.92	7.10	9.40	5.44
2008	7.10	7.96	6.47	7.59	8.11	7.21	6.38	8.85	4.87
2009	7.13	7.78	6.67	7.59	8.10	7.26	7.51	8.36	6.94
2010	6.81	7.48	6.34	7.46	7.97	7.13	5.89	6.87	5.15
2011	6.27	6.85	5.85	6.77	7.11	6.56	5.29	6.45	4.50
2012	6.43	7.17	5.86	6.91	7.53	6.42	6.60	8.22	5.63
2013	6.30	7.07	5.75	6.85	7.45	6.43	5.37	6.57	4.65

Note: Small Cell Cancer of the Lung and Bronchus includes histologies 8002, 8041-8045.
^a SEER 9 areas (San Francisco, Connecticut, Detroit, Hawaii, Iowa, New Mexico, Seattle, Utah, and Atlanta).
 Rates are per 100,000 and are age-adjusted to the 2000 US Std Population (19 age groups - Census P25-1130).
 - Statistic not shown. Rate based on less than 16 cases for the time interval.

Table 15.8
 Non-Small Cell Cancer of the Lung and Bronchus (Invasive)
 Age-adjusted SEER Incidence^a Rates by Year, Race and Sex

Year of Diagnosis:	All Races			Whites			Blacks		
	Total	Males	Females	Total	Males	Females	Total	Males	Females
1975-2013	42.68	57.93	31.30	42.37	56.83	31.66	56.42	85.08	36.16
1975	30.10	51.20	13.90	29.38	49.96	13.86	42.64	77.46	14.84
1976	32.96	54.74	16.40	32.22	53.61	16.26	45.60	82.38	17.51
1977	35.02	58.18	17.44	34.01	56.56	17.25	50.07	88.75	20.09
1978	36.66	60.58	18.75	35.97	59.42	18.81	50.47	90.36	19.70
1979	37.74	61.45	20.01	36.84	59.99	19.92	52.76	91.51	22.84
1980	39.35	64.33	20.69	38.13	62.17	20.55	59.12	103.14	25.80
1981	40.55	64.79	22.59	40.00	63.85	22.68	54.97	94.67	24.97
1982	41.41	66.26	23.20	40.81	65.02	23.49	55.81	97.81	24.13
1983	41.84	66.20	24.06	41.16	64.37	24.68	60.76	107.14	26.02
1984	43.46	68.00	25.50	42.07	65.55	25.26	67.33	116.65	30.98
1985	43.09	65.84	26.35	42.24	63.87	26.58	63.60	107.17	31.77
1986	43.12	64.55	27.46	42.34	62.64	27.82	64.72	109.68	32.57
1987	45.62	69.47	28.34	45.26	68.17	28.88	60.52	104.01	29.58
1988	45.09	65.77	29.99	44.98	65.04	30.63	59.81	96.94	33.14
1989	44.25	64.39	29.70	43.86	63.32	30.10	61.00	97.84	34.69
1990	44.74	63.59	31.10	44.41	62.63	31.39	59.87	92.31	37.15
1991	44.92	63.76	31.37	44.14	61.90	31.68	64.85	102.15	38.11
1992	45.24	63.86	31.70	44.40	61.45	32.29	64.81	104.87	36.51
1993	43.65	61.01	30.96	43.49	59.81	31.71	56.77	89.94	33.69
1994	43.03	58.55	31.84	42.69	57.33	32.35	58.55	90.39	35.94
1995	42.39	57.05	31.67	42.18	55.54	32.58	58.29	93.15	34.32
1996	41.52	54.47	32.10	41.44	53.37	32.93	54.10	81.42	35.24
1997	41.36	54.52	31.60	41.49	53.37	32.77	53.59	84.62	32.39
1998	42.11	55.39	32.52	42.35	54.42	33.78	54.89	83.06	35.77
1999	40.49	52.62	31.60	40.50	51.57	32.43	54.30	79.37	37.16
2000	38.57	49.68	30.48	38.74	48.88	31.49	48.71	69.17	34.71
2001	46.75	59.99	36.95	47.03	59.27	37.96	60.04	86.51	42.34
2002	46.91	59.19	37.99	46.86	58.23	38.66	62.26	85.69	46.38
2003	47.35	60.00	38.08	47.57	58.48	39.71	61.47	92.00	40.77
2004	45.60	56.49	37.61	45.66	55.24	38.66	56.24	79.39	40.83
2005	46.78	56.19	39.87	46.89	55.35	40.72	58.00	74.93	46.57
2006	46.44	55.86	39.41	46.18	54.18	40.27	60.52	81.72	45.82
2007	46.33	55.28	39.67	46.45	53.91	40.91	58.62	79.43	44.67
2008	45.61	54.65	38.99	45.60	52.96	40.32	59.42	81.21	44.54
2009	44.92	52.96	39.01	45.19	51.98	40.18	56.20	75.23	43.51
2010	43.67	51.74	37.61	44.15	51.38	38.65	50.78	64.35	41.80
2011	42.88	49.98	37.56	43.10	49.11	38.58	52.75	70.17	41.32
2012	41.67	48.41	36.64	41.54	47.15	37.40	53.98	69.06	43.54
2013	40.60	46.12	36.48	40.71	45.03	37.52	48.85	62.63	39.63

Note: Non-Small Cell Cancer of the Lung and Bronchus includes histologies 8003-8004, 8012-8015, 8021-8022, 8030-8035, 8046, 8050-8052, 8070-8076, 8078, 8082-8084, 8090, 8094, 8120, 8123, 8140-8141, 8143-8145, 8147, 8190, 8200-8201, 8211, 8240-8241, 8243-8246, 8249-8255, 8260, 8290, 8310, 8320, 8323, 8333, 8401, 8430, 8440, 8470-8471, 8480-8481, 8490, 8503, 8507, 8525, 8550, 8560, 8562, 8570-8572, 8574-8576.

^a SEER 9 areas (San Francisco, Connecticut, Detroit, Hawaii, Iowa, New Mexico, Seattle, Utah, and Atlanta).
 Rates are per 100,000 and are age-adjusted to the 2000 US Std Population (19 age groups - Census P25-1130).

- Statistic not shown. Rate based on less than 16 cases for the time interval.

Table 15.9
Cancer of the Lung and Bronchus (Invasive)

Age-adjusted U.S. Death^a Rates by Year, Race and Sex

Year of Death:	All Races			Whites			Blacks		
	Total	Males	Females	Total	Males	Females	Total	Males	Females
1975-2013	52.58	76.43	35.27	52.59	75.54	35.91	60.20	97.99	34.50
1975	42.56	76.39	17.56	42.08	75.47	17.67	49.33	91.01	17.34
1976	44.20	78.52	18.97	43.72	77.55	19.10	51.07	93.96	18.51
1977	45.49	80.45	20.01	44.82	79.09	20.09	54.56	100.80	19.91
1978	46.88	82.06	21.40	46.29	80.76	21.58	55.26	101.65	20.66
1979	47.69	82.94	22.32	47.08	81.64	22.42	56.43	102.89	22.24
1980	49.41	84.71	24.13	48.75	83.27	24.22	59.16	106.67	24.57
1981	49.99	85.16	24.95	49.28	83.52	25.10	60.57	109.71	25.10
1982	51.43	86.79	26.47	50.78	85.18	26.72	62.27	112.55	26.30
1983	52.40	87.04	28.10	51.70	85.40	28.28	63.68	112.76	28.73
1984	53.36	88.22	28.94	52.64	86.24	29.27	65.07	117.98	27.98
1985	54.32	88.54	30.41	53.68	86.69	30.81	65.76	117.50	29.64
1986	55.04	88.95	31.41	54.36	87.03	31.76	66.95	119.18	31.00
1987	56.24	90.05	32.72	55.56	88.09	33.04	68.65	121.77	32.48
1988	56.97	89.87	34.14	56.35	87.86	34.57	69.18	122.15	33.54
1989	57.90	89.77	35.77	57.21	87.57	36.27	71.04	124.72	34.87
1990	58.85	90.56	36.85	58.18	88.40	37.31	72.06	125.17	36.48
1991	58.99	89.88	37.61	58.38	87.76	38.12	71.64	123.58	37.16
1992	58.90	88.01	38.70	58.34	85.98	39.21	71.35	121.06	38.55
1993	59.13	87.60	39.28	58.66	85.52	39.97	71.12	121.98	37.72
1994	58.54	85.69	39.62	58.15	83.78	40.30	70.15	118.63	38.61
1995	58.38	84.37	40.26	58.08	82.62	40.97	69.28	116.08	38.84
1996	57.91	82.82	40.41	57.69	81.15	41.22	68.30	113.18	39.08
1997	57.51	81.33	40.82	57.31	79.83	41.52	67.89	110.21	40.53
1998	57.08	79.89	40.98	56.93	78.47	41.69	66.86	107.40	40.67
1999	55.42	76.97	40.15	55.31	75.67	40.86	65.00	103.61	40.00
2000	55.85	76.48	41.12	55.99	75.41	42.08	63.77	100.87	39.64
2001	55.32	75.32	41.01	55.55	74.34	42.05	62.54	99.32	38.80
2002	55.00	73.67	41.60	55.31	72.89	42.64	62.05	95.59	40.21
2003	54.19	72.03	41.29	54.52	71.32	42.30	60.92	92.96	40.25
2004	53.37	70.43	40.96	53.71	69.74	41.99	59.79	90.41	39.95
2005	52.85	69.49	40.71	53.32	69.09	41.70	58.52	86.96	40.12
2006	51.73	67.39	40.26	52.27	67.05	41.36	56.73	83.89	39.06
2007	50.71	65.17	40.10	51.28	64.76	41.30	55.38	82.19	38.13
2008	49.59	63.73	39.13	50.28	63.51	40.40	53.13	78.20	36.88
2009	48.41	61.54	38.63	49.18	61.41	39.97	51.56	75.49	35.90
2010	47.42	60.06	37.94	48.11	59.93	39.18	51.15	73.51	36.27
2011	46.00	57.87	37.01	46.72	57.84	38.20	49.31	70.01	35.43
2012	44.93	56.19	36.41	45.65	56.11	37.64	48.33	68.85	34.73
2013	43.39	53.88	35.42	44.09	53.85	36.61	46.93	65.94	34.10

^a US Mortality Files, National Center for Health Statistics, Centers for Disease Control and Prevention. Rates are per 100,000 and are age-adjusted to the 2000 US Std Population (19 age groups - Census P25-1130).
- Statistic not shown. Rate based on less than 16 cases for the time interval.

Table 15.10
Cancer of the Lung and Bronchus (Invasive)SEER Incidence^a and U.S. Death^b Rates, Age-Adjusted and Age-Specific Rates, by Race and Sex

	All Races			Whites			Blacks		
	Total	Males	Females	Total	Males	Females	Total	Males	Females
<u>SEER Incidence</u>									
<u>Age at Diagnosis</u>									
Age-Adjusted Rates, 2009-2013									
All ages	57.3	67.9	49.4	58.8	68.1	51.8	65.0	87.3	50.0
Under 65	17.0	18.6	15.5	16.9	18.0	15.8	23.9	29.3	19.4
65 and over	336.1	409.1	283.7	348.3	414.3	300.6	349.4	488.2	261.8
All ages (IARC world std) ^c	35.0	40.5	30.5	35.7	40.4	32.0	41.9	54.9	32.4
Age-Specific Rates, 2009-2013									
<1	-	-	-	-	-	-	-	-	-
1-4	-	-	-	-	-	-	-	-	-
5-9	-	-	-	-	-	-	-	-	-
10-14	-	-	-	-	-	-	-	-	-
15-19	0.1	-	0.2	0.1	-	0.2	-	-	-
20-24	0.3	0.3	0.3	0.4	0.4	0.4	-	-	-
25-29	0.6	0.5	0.7	0.6	0.6	0.6	0.6	-	-
30-34	1.2	1.2	1.2	1.1	1.0	1.3	1.5	2.0	1.1
35-39	2.8	2.8	2.8	2.9	2.9	2.9	2.7	2.8	2.6
40-44	7.2	6.6	7.7	7.0	6.3	7.8	8.9	9.6	8.4
45-49	20.7	20.0	21.3	20.5	19.7	21.3	28.3	27.8	28.7
50-54	46.6	48.6	44.6	45.9	48.6	45.1	69.4	79.4	60.4
55-59	83.2	93.9	73.2	82.2	90.3	74.5	122.7	154.0	95.8
60-64	139.4	161.5	119.1	140.3	157.3	124.2	191.1	254.8	139.0
65-69	240.3	275.9	208.7	248.4	277.7	221.7	282.8	373.0	212.8
70-74	335.3	389.4	290.1	350.9	397.5	311.1	355.6	477.4	267.4
75-79	410.8	492.0	348.3	427.6	500.2	370.5	415.6	576.6	311.4
80-84	423.1	536.5	346.6	437.2	541.8	365.0	404.0	604.3	294.3
85+	319.0	452.4	251.4	323.6	453.9	257.4	305.7	477.1	235.1
<u>U.S. Mortality</u>									
<u>Age at Death</u>									
Age-Adjusted Rates, 2009-2013									
All ages	46.0	57.8	37.0	46.7	57.7	38.3	49.4	70.6	35.3
Under 65	12.8	15.0	10.7	12.7	14.6	10.9	16.4	21.7	11.9
65 and over	275.5	353.6	219.4	281.5	355.7	227.5	277.2	408.2	196.5
All ages (IARC world std) ^c	27.2	33.5	22.1	27.6	33.4	22.9	30.7	43.0	21.7
Age-Specific Rates, 2009-2013									
<1	-	-	-	-	-	-	-	-	-
1-4	-	-	-	-	-	-	-	-	-
5-9	-	-	-	-	-	-	-	-	-
10-14	0.0	-	-	-	-	-	-	-	-
15-19	0.0	0.0	-	0.0	-	-	-	-	-
20-24	0.1	0.1	0.1	0.1	0.1	0.1	0.1	0.2	-
25-29	0.2	0.2	0.2	0.2	0.2	0.2	0.2	0.3	-
30-34	0.5	0.6	0.5	0.5	0.5	0.5	0.7	1.0	0.5
35-39	1.5	1.5	1.4	1.5	1.6	1.4	1.4	1.6	1.3
40-44	4.8	4.7	4.8	4.9	4.7	5.1	5.0	5.5	4.6
45-49	15.5	16.3	14.8	15.7	16.1	15.2	19.1	21.7	16.8
50-54	36.0	40.7	31.5	35.7	39.2	32.1	48.3	61.3	36.7
55-59	63.9	77.8	50.9	63.3	75.4	51.6	85.9	116.4	60.0
60-64	105.8	129.8	83.6	106.1	127.2	86.2	133.1	186.8	89.4
65-69	179.0	218.2	144.0	182.2	217.5	150.1	201.7	286.1	136.7
70-74	258.5	316.1	209.7	265.3	318.6	219.3	268.2	383.6	185.6
75-79	327.6	410.7	262.9	335.8	414.3	273.5	320.8	462.4	230.7
80-84	369.4	488.5	288.6	376.3	491.6	296.5	354.6	538.2	256.1
85+	325.2	475.4	251.0	330.0	478.6	255.7	297.5	484.6	222.8

^a SEER 18 areas. Rates are per 100,000 and are age-adjusted to the 2000 US Std Population (19 age groups - Census P25-1130), unless noted.^b US Mortality Files, National Center for Health Statistics, Centers for Disease Control and Prevention.^c Rates are per 100,000 and are age-adjusted to the 2000 US Std Population (19 age groups - Census P25-1130), unless noted.

- Rates are per 100,000 and are age-adjusted to the IARC world standard population.

- Statistic not shown. Rate based on less than 16 cases for the time interval.

Table 15.11
 Small Cell Cancer of the Lung and Bronchus^a(Invasive) and Non-Small Cell Cancer of the Lung and Bronchus^b(Invasive)

SEER Incidence^c Rates, Age-Adjusted and Age-Specific Rates, by Race and Sex

	All Races			Whites			Blacks		
	Total	Males	Females	Total	Males	Females	Total	Males	Females
<u>Small Cell Cancer of the Lung and Bronchus^a</u>									
<u>Age at Diagnosis</u>									
Age-Adjusted Rates, 2009-2013									
All ages	6.7	7.4	6.2	7.3	7.8	6.9	6.2	7.4	5.3
Under 65	2.4	2.4	2.3	2.6	2.6	2.6	2.4	2.6	2.2
65 and over	36.5	41.8	32.7	39.4	43.8	36.2	32.4	40.7	27.0
Age-Specific Rates, 2009-2013									
<1	-	-	-	-	-	-	-	-	-
1-4	-	-	-	-	-	-	-	-	-
5-9	-	-	-	-	-	-	-	-	-
10-14	-	-	-	-	-	-	-	-	-
15-19	-	-	-	-	-	-	-	-	-
20-24	-	-	-	-	-	-	-	-	-
25-29	-	-	-	-	-	-	-	-	-
30-34	0.1	-	-	-	-	-	-	-	-
35-39	0.2	0.2	0.2	0.2	0.3	0.2	-	-	-
40-44	0.7	0.7	0.8	0.8	0.8	0.9	0.8	-	-
45-49	2.8	2.5	3.1	3.1	2.7	3.5	2.9	2.9	3.0
50-54	6.8	6.8	6.8	7.5	7.2	7.8	7.3	8.8	6.1
55-59	12.0	12.5	11.5	13.2	13.5	12.9	11.7	12.3	11.2
60-64	20.4	21.2	19.6	22.3	22.6	22.0	19.6	22.0	17.6
65-69	33.9	36.6	31.5	37.2	39.0	35.5	27.8	34.4	22.8
70-74	40.6	44.6	37.3	44.6	47.7	42.0	33.8	41.9	28.0
75-79	44.1	49.7	39.8	47.2	51.5	43.8	42.7	54.8	34.9
80-84	38.1	46.7	32.4	40.2	48.2	34.7	35.9	41.2	33.0
85+	18.6	28.2	13.7	19.0	28.4	14.3	17.6	27.4	13.5
<u>Non-Small Cell Cancer Lung and Bronchus^b</u>									
<u>Age at Diagnosis</u>									
Age-Adjusted Rates, 2009-2013									
All ages	43.1	51.3	37.0	43.8	51.0	38.4	50.3	67.5	38.6
Under 65	13.4	14.6	12.3	13.1	13.9	12.3	19.7	23.9	16.1
65 and over	248.7	305.0	207.8	256.2	307.5	218.6	262.3	368.9	194.1
Age-Specific Rates, 2009-2013									
<1	-	-	-	-	-	-	-	-	-
1-4	-	-	-	-	-	-	-	-	-
5-9	-	-	-	-	-	-	-	-	-
10-14	-	-	-	-	-	-	-	-	-
15-19	0.1	-	0.2	0.1	-	0.2	-	-	-
20-24	0.3	0.3	0.3	0.3	0.3	0.4	-	-	-
25-29	0.5	0.4	0.6	0.5	0.4	0.6	0.5	-	-
30-34	1.0	1.0	1.0	0.9	0.9	1.0	1.3	1.6	1.0
35-39	2.4	2.4	2.4	2.4	2.4	2.5	2.2	2.3	2.1
40-44	5.9	5.3	6.6	5.7	4.9	6.6	7.4	7.8	6.9
45-49	16.6	16.1	17.2	16.2	15.6	16.8	23.7	23.0	24.2
50-54	37.0	38.4	35.6	35.8	36.3	35.2	57.2	64.4	50.8
55-59	65.4	73.5	57.6	63.2	69.3	57.3	101.8	127.3	79.9
60-64	108.3	126.2	92.0	107.1	120.8	94.2	155.1	207.1	112.7
65-69	186.9	215.1	161.9	190.9	214.0	170.0	231.2	306.5	172.6
70-74	260.6	304.1	224.2	270.8	309.1	238.0	281.5	375.7	213.2
75-79	314.4	381.1	263.2	325.3	385.1	278.3	319.6	451.9	234.0
80-84	304.7	393.9	244.5	314.0	397.9	256.1	283.9	430.0	203.9
85+	181.7	270.2	136.8	184.0	271.6	139.6	167.3	278.4	121.5

^a Small Cell Cancer of the Lung and Bronchus includes histologies 8002, 8041-8045.
^b Non-Small Cell Cancer of the Lung and Bronchus includes histologies 8003-8004, 8012-8015, 8021-8022, 8030-8035, 8046, 8050-8052, 8070-8076, 8078, 8082-8084, 8090, 8094, 8120, 8123, 8140-8141, 8143-8145, 8147, 8190, 8200-8201, 8211, 8240-8241, 8243-8246, 8249-8255, 8260, 8290, 8310, 8320, 8323, 8333, 8401, 8430, 8440, 8470-8471, 8480-8481, 8490, 8503, 8507, 8525, 8550, 8560, 8562, 8570-8572, 8574-8576.
^c SEER 18 areas. Rates are per 100,000 and are age-adjusted to the 2000 US Std Population (19 age groups - Census P25-1130), unless noted.
 - Statistic not shown. Rate based on less than 16 cases for the time interval.

Table 15.12
Cancer of the Lung and Bronchus (Invasive)

5-Year Relative and Period Survival (Percent) by Race, Sex, Diagnosis Year, Stage and Age

	All Races			Whites			Blacks		
	Total	Males	Females	Total	Males	Females	Total	Males	Females
5-Year Relative Survival (Percent)									
Year of Diagnosis:									
1960-1963 ^a	-	-	-	8	7	11	5	5	6
1970-1973 ^a	-	-	-	10	9	14	7	6	10
1975-1977 ^b	12.2	11.1	15.3	12.2	11.1	15.4	11.2	10.5	13.8
1978-1980 ^b	12.8	11.3	16.3	12.9	11.5	16.2	11.7	9.7	17.8
1981-1983 ^b	13.1	11.5	16.4	13.3	11.7	16.6	11.3	10.1	14.9
1984-1986 ^b	12.8	11.2	16.0	13.0	11.2	16.3	11.1	10.3	12.8
1987-1989 ^b	13.0	11.9	15.0	13.3	12.0	15.3	10.9	10.8	11.1
1990-1992 ^b	13.6	12.1	15.9	13.9	12.4	16.2	10.5	9.3	12.7
1993-1995 ^b	14.3	12.5	16.9	14.6	12.6	17.1	12.8	11.2	15.7
1996-1998 ^b	14.6	12.9	16.8	14.8	13.0	17.0	12.3	10.7	14.9
1999-2001 ^b	15.3	13.1	17.9	15.5	13.3	18.0	12.6	10.8	15.2
2002-2005 ^b	16.4	14.3	18.8	16.9	14.6	19.3	13.5	12.8	14.5
2006-2012 ^b	18.7 ^f	16.0 ^f	21.7 ^f	19.0 ^f	16.4 ^f	21.8 ^f	15.9 ^f	13.3 ^f	19.0 ^f
5-Year Period Survival (Percent) ^{cd}									
2012	18.1	15.1	21.5	18.3	15.2	21.6	15.5	12.5	19.2
Stage Distribution (%) 2006-2012 ^{ce}									
All Stages									
Number of cases	266,874	141,210	125,664	218,060	113,820	104,240	30,569	17,071	13,498
Percent	100%	100%	100%	100%	100%	100%	100%	100%	100%
Localized	16	14	18	16	15	18	13	12	15
Regional	22	22	22	22	22	22	22	21	23
Distant	57	59	55	56	58	54	61	63	59
Unstaged	5	5	5	5	5	6	4	4	4
5-Year Relative Survival (Percent), 2006-2012 ^c									
Age at Diagnosis:									
Ages <45	31.7	27.1	36.1	33.4	27.9	38.7	26.1	23.6	28.8
Ages 45-54	20.6	16.3	25.4	21.3	17.0	26.1	16.3	12.4	21.1
Ages 55-64	19.9	16.6	24.3	20.2	16.9	24.4	16.2	13.6	20.2
Ages 65-74	18.8	15.8	22.4	19.1	16.1	22.5	15.0	11.9	19.1
Ages 75+	13.0	11.0	14.8	13.2	11.3	15.0	9.4	7.1	11.5
Ages <65	20.7	17.0	25.3	21.2	17.4	25.7	16.7	13.7	21.1
Ages 65+	15.9	13.5	18.4	16.2	13.8	18.6	12.7	10.1	15.5
Stage ^e :									
All Stages	17.7	14.9	20.8	17.9	15.1	20.9	14.7	12.0	18.1
Localized	55.2	49.2	60.7	55.5	49.6	60.8	48.9	43.3	54.7
Regional	28.0	25.0	31.3	28.0	25.3	31.0	25.3	21.3	29.9
Distant	4.3	3.6	5.2	4.2	3.4	5.0	4.0	3.3	5.0
Unstaged	7.4	6.7	8.1	6.8	6.0	7.5	9.9	9.1	11.0

^a Based on End Results data from a series of hospital registries and one population-based registry.

^b SEER 9 areas (San Francisco, Connecticut, Detroit, Hawaii, Iowa, New Mexico, Seattle, Utah, Atlanta).

Based on follow-up of patients into 2013.

^c SEER 18 areas (San Francisco, Connecticut, Detroit, Hawaii, Iowa, New Mexico, Seattle, Utah, Atlanta, San Jose-Monterey, Los Angeles, Alaska Native Registry, Rural Georgia, California excluding SF/SJM/LA, Kentucky, Louisiana, New Jersey and Georgia excluding ATL/RG).

Based on follow-up of patients into 2013.

^d Period survival provides a 2012 estimate of survival by piecing together the most recent conditional survival estimates from several cohorts. It is computed here using three year calendar blocks (2010-2012: 0-1 year survival), (2009-2011: 1-2 year survival), (2008-2010: 2-3 year survival), (2007-2009: 3-4 year survival), (2006-2008: 4-5 years survival).

^e Stage at diagnosis is classified using SEER Summary Stage 2000. Stage distribution percentages may not sum to 100 due to rounding.

^f The difference between 1975-1977 and 2006-2012 is statistically significant ($p < .05$).

^g The standard error is between 5 and 10 percentage points.

^h The standard error is greater than 10 percentage points.

- Statistic could not be calculated due to fewer than 25 cases during the time period.

Table 15.13
Small Cell Cancer of the Lung and Bronchus (Invasive)

5-Year Relative and Period Survival (Percent) by Race, Sex, Diagnosis Year, Stage and Age

	All Races			Whites			Blacks		
	Total	Males	Females	Total	Males	Females	Total	Males	Females
5-Year Relative Survival (Percent)									
Year of Diagnosis:									
1975-1977 ^a	3.6	3.1	4.8	3.7	3.1	4.9	3.7	3.8	3.6
1978-1980 ^a	4.2	3.2	6.4	4.3	3.3	6.4	3.1	2.4	5.0
1981-1983 ^a	4.5	3.5	6.2	4.6	3.6	6.1	5.0	3.7	8.2
1984-1986 ^a	4.5	3.5	6.2	4.7	3.6	6.4	3.5	2.2	5.6
1987-1989 ^a	5.1	3.9	6.6	5.1	3.9	6.8	4.0	3.3	5.1
1990-1992 ^a	5.4	4.5	6.4	5.4	4.5	6.6	4.2	3.9	4.4
1993-1995 ^a	6.4	5.1	7.9	6.3	5.0	7.6	6.7	4.0	10.4
1996-1998 ^a	5.9	5.2	6.5	6.0	5.4	6.7	3.6	2.6	4.5
1999-2001 ^a	5.7	4.8	6.7	5.6	4.4	6.9	5.2	6.0	4.2
2002-2005 ^a	6.6	4.9	8.3	6.5	4.5	8.5	5.7	5.4	5.9
2006-2012 ^a	6.6 ^e	5.4 ^e	7.9 ^e	6.5 ^e	5.3 ^e	7.7 ^e	7.0 ^e	4.9 ^e	9.0
5-Year Period Survival (Percent) ^{bc}									
2012	6.3	5.0	7.6	6.1	4.8	7.5	7.3	6.5	8.1
Stage Distribution (%) 2006-2012 ^{bd}									
All Stages									
Number of cases	34,875	17,568	17,307	30,313	15,061	15,252	3,080	1,578	1,502
Percent	100%	100%	100%	100%	100%	100%	100%	100%	100%
Localized	4	4	4	4	4	4	4	4	4
Regional	20	18	22	20	18	22	20	18	23
Distant	74	76	72	74	76	72	74	76	72
Unstaged	2	2	2	2	2	2	2	2	2
5-Year Relative Survival (Percent), 2006-2012 ^b									
Age at Diagnosis:									
Ages <45	11.8	11.1	12.4	11.3	10.6	12.1	12.5	11.0 ^f	13.2 ^f
Ages 45-54	9.4	7.6	11.3	9.2	7.0	11.4	10.2	9.3	11.4
Ages 55-64	8.2	6.2	10.4	8.1	6.1	10.1	8.6	4.8	12.8
Ages 65-74	5.8	4.7	6.9	5.9	4.7	7.0	4.7	4.1	5.2
Ages 75+	3.3	3.0	3.5	3.2	2.9	3.5	4.3	5.0	3.9
Ages <65	8.7	6.7	10.7	8.5	6.5	10.5	9.3	6.6	12.4
Ages 65+	4.7	4.0	5.4	4.8	4.0	5.5	4.6	4.4	4.7
Stage ^d :									
All Stages	6.4	5.2	7.6	6.3	5.1	7.5	7.0	5.6	8.4
Localized	27.5	23.9	30.9	27.7	24.2	30.4	27.5 ^f	23.0 ^f	32.8 ^f
Regional	14.7	12.7	16.4	14.7	12.6	16.5	14.2	11.8	16.1
Distant	2.9	2.4	3.5	2.8	2.3	3.3	3.9	2.9	4.9
Unstaged	7.8	5.5	9.9	7.4	4.1	10.2	9.1	13.2 ^f	5.2

Note: Small Cell Cancer of the Lung and Bronchus includes histologies 8002, 8041-8045.

^a SEER 9 areas (San Francisco, Connecticut, Detroit, Hawaii, Iowa, New Mexico, Seattle, Utah, Atlanta).

Based on follow-up of patients into 2013.

^b SEER 18 areas (San Francisco, Connecticut, Detroit, Hawaii, Iowa, New Mexico, Seattle, Utah, Atlanta, San Jose-Monterey, Los Angeles, Alaska Native Registry, Rural Georgia, California excluding SF/SJM/LA, Kentucky, Louisiana, New Jersey and Georgia excluding ATL/RG).

Based on follow-up of patients into 2013.

^c Period survival provides a 2012 estimate of survival by piecing together the most recent conditional survival estimates from several cohorts. It is computed here using three year calendar blocks (2010-2012: 0-1 year survival), (2009-2011: 1-2 year survival), (2008-2010: 2-3 year survival), (2007-2009: 3-4 year survival), (2006-2008: 4-5 years survival).

^d Stage at diagnosis is classified using SEER Summary Stage 2000. Stage distribution percentages may not sum to 100 due to rounding.

^e The difference between 1975-1977 and 2006-2012 is statistically significant ($p < .05$).

^f The standard error is between 5 and 10 percentage points.

^g The standard error is greater than 10 percentage points.

- Statistic could not be calculated due to fewer than 25 cases during the time period.

Table 15.14
Non-Small Cell Cancer of the Lung and Bronchus (Invasive)

5-Year Relative and Period Survival (Percent) by Race, Sex, Diagnosis Year, Stage and Age

	All Races			Whites			Blacks		
	Total	Males	Females	Total	Males	Females	Total	Males	Females
5-Year Relative Survival (Percent)									
Year of Diagnosis:									
1975-1977 ^a	16.4	14.8	21.0	16.7	15.0	21.4	13.4	12.4	17.7
1978-1980 ^a	16.7	14.8	21.4	17.0	15.2	21.5	14.2	11.6	22.8
1981-1983 ^a	17.1	15.0	21.8	17.5	15.4	22.1	13.9	12.2	19.2
1984-1986 ^a	16.6	14.4	21.0	17.0	14.7	21.5	13.1	11.9	16.4
1987-1989 ^a	16.9	15.2	19.8	17.4	15.5	20.6	13.2	12.9	14.0
1990-1992 ^a	17.6	15.5	21.1	18.3	16.1	21.7	12.8	11.1	16.2
1993-1995 ^a	18.7	16.1	22.5	19.3	16.5	23.2	15.1	13.3	18.5
1996-1998 ^a	19.4	16.7	22.9	19.9	17.1	23.5	15.3	12.8	19.3
1999-2001 ^a	20.0	16.8	24.0	20.7	17.5	24.6	14.7	12.0	18.6
2002-2005 ^a	19.9	17.2	23.2	20.8	18.0	24.1	15.2	14.0	16.8
2006-2012 ^a	22.8 ^e	19.2 ^e	26.8 ^e	23.5 ^e	19.9 ^e	27.4 ^e	18.1 ^e	14.8 ^e	22.1 ^e
5-Year Period Survival (Percent) ^{bc}									
2012	22.1	18.1	26.7	22.6	18.6	27.2	17.8	13.9	22.6
Stage Distribution (%) 2006-2012 ^{bd}									
All Stages									
Number of cases	199,665	107,280	92,385	160,614	85,329	75,285	24,213	13,633	10,580
Percent	100%	100%	100%	100%	100%	100%	100%	100%	100%
Localized	19	16	21	20	17	22	15	13	17
Regional	24	24	24	24	25	24	24	23	24
Distant	55	57	53	54	56	51	60	62	57
Unstaged	2	2	3	2	2	2	2	2	2
5-Year Relative Survival (Percent), 2006-2012 ^b									
Age at Diagnosis:									
Ages <45	33.5	28.3	38.4	36.2	29.8	42.0	26.2	23.4	29.3
Ages 45-54	23.0	18.1	28.5	24.3	19.2	29.8	17.2	12.8	22.7
Ages 55-64	23.2	19.3	28.6	24.0	19.9	29.2	17.8	15.0	22.1
Ages 65-74	22.8	19.0	27.4	23.4	19.6	27.8	17.5	13.7	22.6
Ages 75+	17.5	14.5	20.5	17.9	14.9	20.9	12.1	8.5	15.3
Ages <65	23.7	19.4	29.2	24.7	20.2	30.2	18.1	14.7	22.8
Ages 65+	20.3	17.0	24.0	20.8	17.5	24.4	15.5	12.0	19.5
Stage ^d :									
All Stages	21.6	17.9	25.9	22.2	18.5	26.4	16.8	13.5	21.1
Localized	59.2	52.8	64.8	59.5	53.2	65.0	52.2	46.2	58.2
Regional	31.4	27.6	35.8	31.6	28.1	35.7	27.5	22.7	33.2
Distant	4.9	4.0	6.1	4.8	3.8	6.0	4.2	3.4	5.3
Unstaged	13.0	11.0	15.2	12.3	10.1	14.5	13.6	11.6	16.3

Note: Non-Small Cell Cancer of the Lung and Bronchus includes histologies 8003-8004, 8012-8015, 8021-8022, 8030-8035, 8046, 8050-8052, 8070-8076, 8078, 8082-8084, 8090, 8094, 8120, 8123, 8140-8141, 8143-8145, 8147, 8190, 8200-8201, 8211, 8240-8241, 8243-8246, 8249-8255, 8260, 8290, 8310, 8320, 8323, 8333, 8401, 8430, 8440, 8470-8471, 8480-8481, 8490, 8503, 8507, 8525, 8550, 8560, 8562, 8570-8572, 8574-8576.

^a SEER 9 areas (San Francisco, Connecticut, Detroit, Hawaii, Iowa, New Mexico, Seattle, Utah, Atlanta).

Based on follow-up of patients into 2013.

^b SEER 18 areas (San Francisco, Connecticut, Detroit, Hawaii, Iowa, New Mexico, Seattle, Utah, Atlanta, San Jose-Monterey, Los Angeles, Alaska Native Registry, Rural Georgia, California excluding SF/SJM/LA, Kentucky, Louisiana, New Jersey and Georgia excluding ATL/RG).

Based on follow-up of patients into 2013.

^c Period survival provides a 2012 estimate of survival by piecing together the most recent conditional survival estimates from several cohorts. It is computed here using three year calendar blocks (2010-2012: 0-1 year survival), (2009-2011: 1-2 year survival), (2008-2010: 2-3 year survival), (2007-2009: 3-4 year survival), (2006-2008: 4-5 years survival).

^d Stage at diagnosis is classified using SEER Summary Stage 2000. Stage distribution percentages may not sum to 100 due to rounding.

^e The difference between 1975-1977 and 2006-2012 is statistically significant ($p < .05$).

^f The standard error is between 5 and 10 percentage points.

^g The standard error is greater than 10 percentage points.

- Statistic could not be calculated due to fewer than 25 cases during the time period.

Table 15.15
Cancer of the Lung and Bronchus (Invasive)

SEER^a Relative Survival (Percent)
By Year of Diagnosis

All Races, Males and Females

Year of Diagnosis

	1975- 1979	1980- 1984	1985- 1989	1990- 1994	1995	1996	1997	1998	1999	2000	2001	2002	2003	2004	2005	2006	2007	2008	2009	2010	2011	2012
Survival Time																						
1-year	35.3	37.2	38.5	39.5	40.3	39.9	40.4	39.9	41.4	40.9	40.2	40.7	41.9	42.2	43.5	44.0	44.4	45.2	45.8	44.8	46.6	45.5
2-year	21.1	22.0	22.6	23.7	24.9	24.7	24.7	25.2	25.8	25.8	25.5	26.5	26.5	27.7	28.4	29.4	30.1	31.0	31.4	31.0	32.5	
3-year	16.3	16.9	17.1	18.3	19.1	19.3	19.3	19.8	19.8	20.2	19.8	20.7	20.7	22.3	22.6	23.5	23.9	24.7	25.2	24.7		
4-year	13.9	14.5	14.6	15.5	16.5	16.2	16.6	17.0	17.0	17.5	16.8	17.5	17.9	18.8	19.5	20.0	20.5	21.3	21.5			
5-year	12.5	12.9	13.0	13.8	14.5	14.5	14.7	14.6	15.1	15.7	14.9	15.5	16.0	16.8	17.4	17.5	18.3	18.7				
6-year	11.4	11.7	11.9	12.6	13.2	13.2	13.3	13.3	13.7	14.2	13.4	14.1	14.5	15.4	15.7	16.2	16.7					
7-year	10.7	10.8	10.9	11.6	12.3	12.1	12.2	12.2	12.7	12.9	12.3	12.9	13.3	14.1	14.5	15.0						
8-year	10.0	10.0	10.1	10.7	11.4	11.2	11.3	11.2	11.8	12.0	11.4	11.8	12.0	13.1	13.4							
9-year	9.4	9.2	9.4	9.9	10.7	10.3	10.4	10.5	11.0	11.2	10.6	11.0	11.1	12.4								
10-year	8.8	8.6	8.8	9.2	10.0	9.4	9.8	10.0	10.5	10.4	10.0	10.3	10.2									
11-year	8.3	8.1	8.2	8.6	9.4	8.8	9.1	9.4	9.7	9.7	9.3	9.4										
12-year	7.8	7.7	7.7	8.0	8.8	8.2	8.4	8.9	9.1	9.0	8.7											
13-year	7.4	7.2	7.2	7.5	8.2	7.9	7.9	8.1	8.5	8.5												
14-year	7.1	6.8	6.8	7.1	7.6	7.5	7.5	7.6	7.9													
15-year	6.6	6.4	6.4	6.7	7.2	7.0	7.1	7.1														
16-year	6.3	6.0	6.1	6.2	6.9	6.6	6.5															
17-year	6.0	5.6	5.7	5.9	6.4	6.3																
18-year	5.7	5.3	5.3	5.5	5.9																	
19-year	5.4	4.9	4.9	5.1																		
20-year	5.1	4.6	4.7																			
21-year	4.9	4.3	4.5																			
22-year	4.6	4.1	4.2																			
23-year	4.4	3.8	4.0																			
24-year	4.2	3.6	3.8																			
25-year	4.0	3.4																				
26-year	3.8	3.2																				
27-year	3.6	3.0																				
28-year	3.5	2.9																				
29-year	3.3	2.7																				
30-year	3.1																					

^a Based on the SEER 9 areas (San Francisco, Connecticut, Detroit, Hawaii, Iowa, New Mexico, Seattle, Utah, and Atlanta).

Table 15.16
Cancer of the Lung and Bronchus (Invasive)

SEER^a Relative Survival (Percent)
By Year of Diagnosis

All Races, Males

Year of Diagnosis

	1975- 1979	1980- 1984	1985- 1989	1990- 1994	1995	1996	1997	1998	1999	2000	2001	2002	2003	2004	2005	2006	2007	2008	2009	2010	2011	2012
Survival Time																						
1-year	33.4	35.4	36.5	37.2	38.0	38.0	38.0	37.0	38.2	38.7	37.0	37.1	39.4	39.0	40.0	41.3	40.9	42.0	42.7	41.1	42.3	41.4
2-year	19.5	20.2	21.0	21.6	23.1	23.0	23.0	22.6	22.7	23.7	22.2	23.1	23.7	24.7	24.8	26.8	26.2	27.8	27.6	27.2	28.3	
3-year	14.8	15.3	15.6	16.3	17.4	17.8	17.7	17.4	16.7	18.2	17.2	17.9	18.2	19.5	19.5	20.8	20.8	22.1	21.8	21.4		
4-year	12.5	12.9	13.1	13.6	14.8	14.6	15.0	14.7	14.1	15.5	14.3	15.0	15.5	16.6	16.6	17.3	17.5	18.9	18.3			
5-year	11.1	11.4	11.6	12.1	13.2	13.1	13.3	12.4	12.5	14.0	12.7	13.5	14.0	14.9	14.9	15.1	15.6	16.7				
6-year	10.1	10.3	10.6	11.0	11.8	11.7	11.9	11.0	11.2	12.6	11.5	12.1	12.6	13.5	13.2	13.9	14.2					
7-year	9.4	9.5	9.7	10.0	11.2	10.6	10.8	10.1	10.3	11.3	10.4	11.1	11.6	12.2	12.1	12.8						
8-year	8.8	8.6	9.0	9.1	10.2	9.8	10.0	9.1	9.5	10.6	9.5	10.0	10.8	11.4	11.2							
9-year	8.2	7.9	8.4	8.4	9.6	9.1	9.1	8.5	8.7	9.9	8.9	9.3	9.8	10.8								
10-year	7.7	7.4	7.9	7.9	8.8	8.2	8.6	8.0	8.3	9.1	8.3	8.6	8.9									
11-year	7.2	7.0	7.3	7.2	8.3	7.4	7.9	7.5	7.7	8.3	7.7	7.9										
12-year	6.7	6.6	6.8	6.7	8.0	6.9	7.2	7.0	7.2	7.7	7.2											
13-year	6.3	6.2	6.3	6.2	7.2	6.7	6.8	6.3	6.8	7.2												
14-year	6.0	5.8	6.0	5.8	6.9	6.3	6.4	5.9	6.3													
15-year	5.6	5.4	5.6	5.5	6.4	5.8	6.0	5.6														
16-year	5.3	5.0	5.3	5.1	6.2	5.4	5.7															
17-year	5.1	4.6	4.8	4.8	5.7	5.2																
18-year	4.7	4.4	4.5	4.5	5.2																	
19-year	4.5	4.1	4.1	4.2																		
20-year	4.2	3.7	3.9																			
21-year	4.1	3.5	3.6																			
22-year	3.9	3.3	3.4																			
23-year	3.7	3.1	3.2																			
24-year	3.4	2.8	3.0																			
25-year	3.3	2.7																				
26-year	3.1	2.5																				
27-year	2.8	2.4																				
28-year	2.8	2.3																				
29-year	2.7	2.1																				
30-year	2.6																					

^a Based on the SEER 9 areas (San Francisco, Connecticut, Detroit, Hawaii, Iowa, New Mexico, Seattle, Utah, and Atlanta).

Table 15.17
Cancer of the Lung and Bronchus (Invasive)

SEER^a Relative Survival (Percent)
By Year of Diagnosis

All Races, Females

Year of Diagnosis

	1975- 1979	1980- 1984	1985- 1989	1990- 1994	1995	1996	1997	1998	1999	2000	2001	2002	2003	2004	2005	2006	2007	2008	2009	2010	2011	2012
Survival Time																						
1-year	40.4	41.3	42.2	42.8	43.5	42.4	43.3	43.6	45.4	43.6	44.2	45.0	44.9	45.8	47.3	47.1	48.2	48.8	49.1	48.8	51.2	50.1
2-year	25.3	25.7	25.5	26.7	27.4	26.9	26.9	28.4	29.5	28.5	29.7	30.5	29.9	31.1	32.3	32.4	34.3	34.5	35.5	35.1	37.0	
3-year	20.2	20.5	19.7	21.1	21.6	21.4	21.3	22.9	23.6	22.8	22.9	24.0	23.8	25.4	26.0	26.6	27.3	27.7	28.8	28.3		
4-year	17.7	17.8	17.2	18.3	18.8	18.3	18.5	19.9	20.5	19.9	19.8	20.4	20.6	21.4	22.7	22.9	23.7	23.9	24.9			
5-year	16.1	16.0	15.4	16.4	16.4	16.5	16.5	17.4	18.3	17.7	17.7	17.9	18.3	18.9	20.1	20.3	21.1	21.0				
6-year	14.9	14.6	14.1	15.1	15.0	15.1	15.1	16.1	16.7	16.1	15.8	16.4	16.7	17.5	18.4	18.7	19.5					
7-year	14.0	13.6	12.9	13.9	13.9	14.0	14.1	14.9	15.5	15.0	14.6	15.0	15.3	16.2	17.0	17.5						
8-year	13.1	12.8	11.9	13.0	13.1	13.0	12.8	13.9	14.7	13.6	13.7	14.0	13.6	15.2	15.8							
9-year	12.4	11.9	11.2	12.1	12.3	11.9	11.9	13.1	13.8	12.8	12.6	13.1	12.6	14.2								
10-year	11.6	11.1	10.4	11.3	11.6	11.0	11.2	12.4	13.1	12.0	12.1	12.3	11.8									
11-year	11.1	10.5	9.8	10.6	10.9	10.6	10.6	11.9	12.1	11.3	11.3	11.2										
12-year	10.6	9.9	9.2	9.9	10.1	10.0	9.9	11.3	11.4	10.6	10.5											
13-year	10.2	9.3	8.8	9.4	9.4	9.5	9.4	10.4	10.6	10.2												
14-year	9.6	8.9	8.2	8.9	8.7	9.0	8.9	9.7	9.9													
15-year	9.1	8.4	7.8	8.4	8.4	8.6	8.3	9.1														
16-year	8.8	8.0	7.4	7.9	7.8	8.1	7.5															
17-year	8.4	7.7	7.0	7.4	7.3	7.6																
18-year	8.0	7.2	6.7	7.0	6.8																	
19-year	7.7	6.6	6.3	6.5																		
20-year	7.4	6.2	6.1																			
21-year	6.9	5.9	5.8																			
22-year	6.5	5.6	5.5																			
23-year	6.2	5.3	5.3																			
24-year	6.0	5.1	5.1																			
25-year	5.7	4.8																				
26-year	5.5	4.6																				
27-year	5.3	4.2																				
28-year	5.1	3.9																				
29-year	4.8	3.7																				
30-year	4.5																					

^a Based on the SEER 9 areas (San Francisco, Connecticut, Detroit, Hawaii, Iowa, New Mexico, Seattle, Utah, and Atlanta).

Table 15.18
Cancer of the Lung and Bronchus (Invasive)

Risk of Being Diagnosed With Cancer in 10, 20 and 30 Years,
Lifetime Risk of Being Diagnosed with Cancer Given Alive and Cancer-Free at Current Age, and
Lifetime Risk of Dying from Cancer Given Alive at Current Age
Both Sexes, 2011-2013 By Race/Ethnicity

Race/ Ethnicity	Current Age	Risk of Being Diagnosed with Cancer				Risk of Dying from Cancer	Race/ Ethnicity	Current Age	Risk of Being Diagnosed with Cancer				Risk of Dying from Cancer
		+10 yrs	+20 yrs	+30 yrs	Ever				+10 yrs	+20 yrs	+30 yrs	Ever	
All Races	0	0.00	0.00	0.01	6.46	5.43	Asian/ Pacific Islander	0	0.00	0.00	0.01	5.54	4.23
	10	0.00	0.01	0.03	6.53	5.49		10	0.00	0.01	0.02	5.58	4.26
	20	0.00	0.03	0.16	6.55	5.51		20	0.01	0.02	0.13	5.59	4.27
	30	0.02	0.16	0.75	6.60	5.56		30	0.02	0.13	0.48	5.61	4.28
	40	0.14	0.74	2.28	6.65	5.62		40	0.11	0.47	1.42	5.62	4.29
	50	0.62	2.19	4.68	6.68	5.67		50	0.36	1.33	3.15	5.58	4.28
	60	1.67	4.32	6.09	6.44	5.51		60	0.99	2.87	4.69	5.38	4.19
	70	3.00	5.02	-	5.41	4.77		70	2.01	3.96	-	4.70	3.83
80	2.72	-	-	3.26	3.13	80	2.33	-	-	3.22	2.97		
White	0	0.00	0.00	0.01	6.59	5.54	American Indian/ Alaska Native ^a	0	0.00	0.00	0.00	5.68	4.11
	10	0.00	0.01	0.03	6.66	5.60		10	0.00	0.00	0.01	5.74	4.16
	20	0.00	0.03	0.16	6.68	5.62		20	0.00	0.01	0.08	5.77	4.19
	30	0.02	0.16	0.75	6.73	5.67		30	0.01	0.08	0.56	5.86	4.26
	40	0.14	0.73	2.31	6.79	5.73		40	0.07	0.57	1.88	5.99	4.37
	50	0.61	2.22	4.81	6.82	5.77		50	0.51	1.88	4.08	6.16	4.50
	60	1.71	4.46	6.25	6.58	5.61		60	1.47	3.84	5.62	6.08	4.54
	70	3.12	5.16	-	5.53	4.85		70	2.72	4.77	-	5.29	4.15
80	2.77	-	-	3.28	3.16	80	2.81	-	-	3.53	2.75		
Black	0	0.00	0.00	0.01	6.18	5.07	Hispanic ^b	0	0.00	0.00	0.00	4.05	2.93
	10	0.00	0.01	0.03	6.30	5.18		10	0.00	0.00	0.02	4.09	2.96
	20	0.00	0.03	0.20	6.33	5.20		20	0.00	0.02	0.08	4.10	2.97
	30	0.02	0.20	1.02	6.41	5.26		30	0.01	0.07	0.32	4.12	2.99
	40	0.18	1.01	2.80	6.51	5.35		40	0.06	0.31	1.05	4.14	3.01
	50	0.86	2.72	4.98	6.57	5.43		50	0.26	1.01	2.46	4.16	3.03
	60	2.04	4.51	5.94	6.26	5.24		60	0.79	2.31	3.64	4.08	3.00
	70	2.99	4.72	-	5.10	4.50		70	1.67	3.13	-	3.62	2.74
80	2.54	-	-	3.09	2.98	80	1.85	-	-	2.46	2.06		

Devcan 6.7.4, August 2016, National Cancer Institute (<http://surveillance.cancer.gov/devcan/>).

Source: Incidence data are from the SEER 18 areas (San Francisco, Connecticut, Detroit, Hawaii, Iowa, New Mexico, Seattle, Utah, Atlanta, San Jose-Monterey, Los Angeles, Alaska Native Registry, Rural Georgia, California excluding SF/SJM/LA, Kentucky, Louisiana, New Jersey, and Georgia excluding ATL/RG). Mortality data are from the NCHS public use data file for the total US.

^a Underlying incidence and mortality data for American Indian/Alaska Native are based on the CHSDA (Contract Health Service Delivery Area) counties.

^b Hispanic is not mutually exclusive from whites, blacks, Asian/Pacific Islanders, and American Indians/Alaska Natives. Underlying incidence data for Hispanics are based on NHIA and exclude cases from the Alaska Native Registry.

- Statistic could not be calculated.

A percent of 0.00 represents a value that is below 0.005.

Table 15.19
Cancer of the Lung and Bronchus (Invasive)

Risk of Being Diagnosed With Cancer in 10, 20 and 30 Years,
Lifetime Risk of Being Diagnosed with Cancer Given Alive and Cancer-Free at Current Age, and
Lifetime Risk of Dying from Cancer Given Alive at Current Age
Males, 2011-2013 By Race/Ethnicity

Race/ Ethnicity	Current Age	Risk of Being Diagnosed with Cancer				Risk of Dying from Cancer	Race/ Ethnicity	Current Age	Risk of Being Diagnosed with Cancer				Risk of Dying from Cancer
		+10 yrs	+20 yrs	+30 yrs	Ever				+10 yrs	+20 yrs	+30 yrs	Ever	
All Races	0	0.00	0.00	0.01	7.00	6.14	Asian/ Pacific Islander	0	0.00	0.00	0.01	6.79	5.27
	10	0.00	0.01	0.03	7.08	6.23		10	0.00	0.01	0.02	6.84	5.31
	20	0.00	0.02	0.16	7.11	6.25		20	0.00	0.02	0.13	6.86	5.32
	30	0.02	0.15	0.79	7.19	6.33		30	0.02	0.13	0.54	6.89	5.35
	40	0.14	0.79	2.50	7.29	6.43		40	0.11	0.53	1.72	6.92	5.37
	50	0.67	2.44	5.17	7.37	6.53		50	0.42	1.64	3.91	6.92	5.39
	60	1.90	4.85	6.84	7.22	6.44		60	1.27	3.62	5.96	6.76	5.32
	70	3.44	5.77	-	6.22	5.71		70	2.58	5.13	-	6.00	4.92
80	3.34	-	-	3.98	3.95	80	3.19	-	-	4.28	3.90		
White	0	0.00	0.00	0.01	6.99	6.19	American Indian/ Alaska Native ^a	0	0.00	0.00	0.00	6.30	4.57
	10	0.00	0.01	0.02	7.07	6.26		10	0.00	0.00	0.01	6.38	4.64
	20	0.00	0.02	0.15	7.09	6.29		20	0.00	0.01	0.08	6.43	4.67
	30	0.02	0.15	0.77	7.17	6.36		30	0.01	0.08	0.59	6.56	4.79
	40	0.13	0.76	2.46	7.27	6.46		40	0.07	0.59	2.01	6.74	4.95
	50	0.65	2.40	5.18	7.36	6.56		50	0.55	2.03	4.57	7.00	5.17
	60	1.89	4.88	6.86	7.22	6.47		60	1.63	4.40	6.40	7.08	5.33
	70	3.49	5.80	-	6.22	5.73		70	3.30	5.67	-	6.48	5.11
80	3.33	-	-	3.93	3.94	80	3.48	-	-	4.67	3.65		
Black	0	0.00	0.00	0.01	7.28	6.24	Hispanic ^b	0	0.00	0.00	0.01	4.67	3.78
	10	0.00	0.01	0.03	7.43	6.38		10	0.00	0.00	0.02	4.71	3.82
	20	0.00	0.03	0.21	7.48	6.42		20	0.00	0.02	0.07	4.73	3.84
	30	0.03	0.21	1.18	7.62	6.54		30	0.01	0.07	0.32	4.77	3.87
	40	0.19	1.18	3.42	7.79	6.69		40	0.05	0.31	1.15	4.81	3.91
	50	1.03	3.38	6.10	7.95	6.85		50	0.26	1.12	2.85	4.87	3.96
	60	2.63	5.68	7.40	7.76	6.75		60	0.91	2.74	4.34	4.87	3.98
	70	3.90	6.08	-	6.54	5.96		70	2.07	3.88	-	4.48	3.71
80	3.53	-	-	4.27	4.18	80	2.41	-	-	3.21	2.87		

Devcan 6.7.4, August 2016, National Cancer Institute (<http://surveillance.cancer.gov/devcan/>).

Source: Incidence data are from the SEER 18 areas (San Francisco, Connecticut, Detroit, Hawaii, Iowa, New Mexico, Seattle, Utah, Atlanta, San Jose-Monterey, Los Angeles, Alaska Native Registry, Rural Georgia, California excluding SF/SJM/LA, Kentucky, Louisiana, New Jersey, and Georgia excluding ATL/RG). Mortality data are from the NCHS public use data file for the total US.

^a Underlying incidence and mortality data for American Indian/Alaska Native are based on the CHSDA (Contract Health Service Delivery Area) counties.

^b Hispanic is not mutually exclusive from whites, blacks, Asian/Pacific Islanders, and American Indians/Alaska Natives. Underlying incidence data for Hispanics are based on NHIA and exclude cases from the Alaska Native Registry.

- Statistic could not be calculated.

A percent of 0.00 represents a value that is below 0.005.

Table 15.20
Cancer of the Lung and Bronchus (Invasive)

Risk of Being Diagnosed With Cancer in 10, 20 and 30 Years,
Lifetime Risk of Being Diagnosed with Cancer Given Alive and Cancer-Free at Current Age, and
Lifetime Risk of Dying from Cancer Given Alive at Current Age
Females, 2011-2013 By Race/Ethnicity

Race/ Ethnicity	Current Age	Risk of Being Diagnosed with Cancer				Risk of Dying from Cancer	Race/ Ethnicity	Current Age	Risk of Being Diagnosed with Cancer				Risk of Dying from Cancer
		+10 yrs	+20 yrs	+30 yrs	Ever				+10 yrs	+20 yrs	+30 yrs	Ever	
All Races	0	0.00	0.00	0.01	6.00	4.80	Asian/ Pacific Islander	0	0.00	0.00	0.01	4.53	3.40
	10	0.00	0.01	0.03	6.06	4.85		10	0.00	0.01	0.03	4.56	3.42
	20	0.01	0.03	0.17	6.06	4.86		20	0.01	0.03	0.13	4.56	3.43
	30	0.02	0.16	0.71	6.09	4.88		30	0.02	0.12	0.43	4.57	3.43
	40	0.14	0.69	2.07	6.12	4.92		40	0.11	0.41	1.15	4.56	3.43
	50	0.56	1.96	4.24	6.09	4.92		50	0.31	1.06	2.51	4.50	3.41
	60	1.46	3.85	5.46	5.79	4.72		60	0.76	2.25	3.69	4.29	3.31
	70	2.63	4.42	-	4.78	4.04		70	1.57	3.08	-	3.72	3.02
80	2.30	-	-	2.77	2.59	80	1.75	-	-	2.49	2.34		
White	0	0.00	0.00	0.01	6.26	4.97	American Indian/ Alaska Native ^a	0	0.00	0.00	0.00	5.15	3.74
	10	0.00	0.01	0.03	6.32	5.02		10	0.00	0.00	0.00	5.19	3.78
	20	0.01	0.03	0.17	6.33	5.03		20	0.00	0.00	0.08	5.21	3.80
	30	0.02	0.16	0.72	6.35	5.05		30	0.00	0.08	0.53	5.26	3.84
	40	0.14	0.71	2.15	6.38	5.09		40	0.08	0.54	1.76	5.36	3.91
	50	0.57	2.05	4.47	6.36	5.08		50	0.48	1.73	3.63	5.45	3.97
	60	1.54	4.07	5.73	6.05	4.88		60	1.33	3.34	4.94	5.25	3.93
	70	2.80	4.64	-	4.99	4.16		70	2.24	4.03	-	4.38	3.44
80	2.38	-	-	2.84	2.63	80	2.34	-	-	2.78	2.22		
Black	0	0.00	0.00	0.01	5.27	4.11	Hispanic ^b	0	0.00	0.00	0.00	3.58	2.25
	10	0.00	0.01	0.03	5.37	4.18		10	0.00	0.00	0.02	3.61	2.27
	20	0.00	0.02	0.19	5.38	4.19		20	0.00	0.02	0.08	3.62	2.27
	30	0.02	0.19	0.87	5.41	4.22		30	0.01	0.08	0.32	3.63	2.28
	40	0.17	0.86	2.26	5.46	4.27		40	0.06	0.31	0.97	3.63	2.28
	50	0.71	2.15	4.02	5.45	4.29		50	0.25	0.92	2.14	3.62	2.28
	60	1.55	3.56	4.80	5.10	4.09		60	0.70	1.95	3.08	3.48	2.23
	70	2.33	3.76	-	4.11	3.52		70	1.35	2.56	-	2.99	2.04
80	1.97	-	-	2.45	2.34	80	1.47	-	-	1.99	1.56		

Devcan 6.7.4, August 2016, National Cancer Institute (<http://surveillance.cancer.gov/devcan/>).

Source: Incidence data are from the SEER 18 areas (San Francisco, Connecticut, Detroit, Hawaii, Iowa, New Mexico, Seattle, Utah, Atlanta, San Jose-Monterey, Los Angeles, Alaska Native Registry, Rural Georgia, California excluding SF/SJM/LA, Kentucky, Louisiana, New Jersey, and Georgia excluding ATL/RG). Mortality data are from the NCHS public use data file for the total US.

^a Underlying incidence and mortality data for American Indian/Alaska Native are based on the CHSDA (Contract Health Service Delivery Area) counties.

^b Hispanic is not mutually exclusive from whites, blacks, Asian/Pacific Islanders, and American Indians/Alaska Natives. Underlying incidence data for Hispanics are based on NHIA and exclude cases from the Alaska Native Registry.

- Statistic could not be calculated.

A percent of 0.00 represents a value that is below 0.005.

Table 15.21
Lung and Bronchus (Invasive)

SEER Incidence and U.S. Mortality
Age-Adjusted Rates and Trends^a
By Race/Ethnicity and Sex

SEER Incidence	SEER 18 Areas ^b			SEER 13 Areas ^b			SEER 9 Areas ^b		
	Rate 2009-2013			Trend 2004-2013 ^c			Trend 2004-2013 ^d		
	Rate per 100,000 persons			AAPC (%)			AAPC (%)		
RACE/ETHNICITY	Total	Males	Females	Total	Males	Females	Total	Males	Females
All Races	57.3	67.9	49.4	-2.1*	-2.9*	-1.5*	-1.8*	-2.6*	-1.2*
White	58.8	68.1	51.8	-2.1*	-2.8*	-1.5*	-1.8*	-2.6*	-1.2*
White Hispanic ^e	30.7	37.9	25.6	-1.3*	-2.1*	-0.4*	-	-	-
White Non-Hispanic ^e	63.2	72.7	56.2	-2.0*	-2.7*	-1.4*	-	-	-
Black	65.0	87.3	50.0	-2.7*	-2.7*	-1.7*	-1.9*	-2.8*	-1.3*
Asian/Pacific Islander	36.7	47.9	28.5	-1.4*	-2.2*	0.2	-	-	-
Amer Ind/Alaska Nat ^f	38.9	48.6	32.0	-0.9*	-1.6*	-3.5	-	-	-
Hispanic ^e	29.7	36.6	24.8	-1.3*	-2.1*	-0.4*	-	-	-
<u>U.S. Mortality^g</u>									
	Rate 2009-2013			Trend 2004-2013 ^h					
	Rate per 100,000 persons			AAPC (%)					
RACE/ETHNICITY	Total	Males	Females	Total	Males	Females			
All Races	46.0	57.8	37.0	-2.3*	-2.9*	-1.6*			
White	46.7	57.7	38.3	-2.1*	-2.8*	-1.4*			
White Hispanic ^e	20.7	29.7	14.2	-2.3*	-3.0*	-1.2*			
White Non-Hispanic ^e	49.1	60.2	40.6	-2.0*	-2.7*	-1.4*			
Black	49.4	70.6	35.3	-2.7*	-3.4*	-1.9*			
Asian/Pacific Islander	24.2	32.7	18.1	-1.2*	-2.2*	-0.4*			
Amer Ind/Alaska Nat									
Total U.S.	30.3	37.5	24.9	-1.2*	-2.1*	-2.3*			
CHSDA Counties	37.8	46.6	31.3	-0.3	-1.1*	-1.2			
Non-CHSDA Counties	21.7	27.1	17.5	-2.3*	-3.3*	-2.2*			
Hispanic ^e	19.7	28.3	13.5	-2.5*	-3.3*	-1.4*			

The AAPC is the Average Annual Percent Change over the time interval. The AAPCs are calculated by the Joinpoint Regression Program Version 4.3.0.0, April 2016, National Cancer Institute.

- Statistic not shown. Rate based on less than 16 cases for the time interval.

Trend based on less than 10 cases for at least one year within the time interval.

a Rates are age-adjusted to the 2000 US Std Population (19 age groups - Census P25-1130). Trends are based on rates age-adjusted to the 2000 US Std Population (19 age groups - Census P25-1130).

b The SEER 9 areas are San Francisco, Connecticut, Detroit, Hawaii, Iowa, New Mexico, Seattle, Utah, and Atlanta.

The SEER 13 areas comprise the SEER 9 areas plus San Jose-Monterey, Los Angeles, the Alaska Native Registry, and Rural Georgia.

The SEER 18 areas comprise the SEER 13 areas plus California excluding SF/SJM/LA, Kentucky, Louisiana, New Jersey, and Georgia excluding ATL/RG.

c The 2004-2013 AAPC estimates are based on a Joinpoint analysis with up to 4 Joinpoints over diagnosis years 1992-2013.

d The 2004-2013 AAPC estimates are based on a Joinpoint analysis with up to 5 Joinpoints over diagnosis years 1975-2013.

e Hispanic and Non-Hispanic are not mutually exclusive from whites, blacks, Asian/Pacific Islanders, and American Indians/Alaska Natives. Incidence data for Hispanics and Non-Hispanics are based on NHIA and exclude cases from the Alaska Native Registry. The 2004-2013 Hispanic and Non-Hispanic mortality trends exclude deaths from New Hampshire and Oklahoma.

f Incidence data for American Indian/Alaska Native are based on the CHSDA (Contract Health Service Delivery Area) counties.

g US Mortality Files, National Center for Health Statistics, CDC.

h The 2004-2013 mortality AAPCs are based on a Joinpoint analysis using years of death 1992-2013.

* The APC is significantly different from zero (p<.05).

Table 15.22
Cancer of the Lung And Bronchus (Invasive)

Age-Adjusted SEER Incidence Rates^a
By Registry, Race and Sex

	All Races			Whites			Blacks		
	Total	Males	Females	Total	Males	Females	Total	Males	Females
<u>SEER Incidence Rates^a, 2009-2013</u>									
California	46.48	53.60	41.17	47.59	53.35	43.32	58.77	72.89	48.85
Greater Bay Area	44.86	51.21	40.20	45.11	48.50	42.75	65.82	78.68	56.47
San Francisco-Oakland	46.91	53.15	42.29	46.84	49.19	45.28	68.80	82.29	59.18
San Jose-Monterey	40.88	47.49	36.04	42.06	47.28	38.30	46.21	57.23	36.26
Los Angeles	39.90	47.84	34.07	39.29	45.76	34.41	56.25	71.52	46.34
Greater California	50.02	56.95	44.80	51.44	57.53	46.91	58.02	71.45	47.82
Connecticut	63.09	70.90	57.69	63.88	70.74	59.25	58.19	75.74	46.77
Detroit	74.66	87.51	65.72	73.88	84.28	66.76	82.04	106.84	65.84
Georgia	67.31	86.67	53.21	71.08	88.23	58.17	58.91	86.48	41.69
Atlanta	55.47	67.97	47.02	57.02	66.39	50.59	55.56	76.40	43.48
Rural Georgia	67.39	93.75	47.13	69.49	91.19	52.48	63.00	102.73	36.63
Greater Georgia	72.64	94.46	56.40	76.07	95.73	61.04	61.39	92.81	40.93
Hawaii	47.17	58.00	38.70	48.95	53.57	44.76	49.95	59.62	-
Iowa	64.59	80.19	52.73	64.49	80.02	52.70	86.05	102.32	74.08
Kentucky	96.41	118.27	80.22	96.88	118.65	80.70	98.85	123.91	81.78
Louisiana	71.39	92.14	55.53	70.47	86.83	57.84	75.34	110.62	50.75
New Jersey	58.96	67.66	53.08	61.24	68.99	56.13	57.92	74.32	47.61
New Mexico	41.89	48.38	36.76	43.94	50.01	39.14	47.98	70.91	28.71
Seattle-Puget Sound	60.73	68.21	55.11	61.91	68.68	56.80	67.50	82.27	54.75
Utah	28.79	34.40	24.21	28.52	34.08	23.98	41.27	54.07	-
SEER 9 Areas ^b	56.32	65.60	49.47	57.12	64.92	51.38	67.33	87.27	54.13
SEER 13 Areas ^b	51.94	60.88	45.34	52.74	60.21	47.20	64.20	83.03	51.69
SEER 18 Areas ^b	57.30	67.93	49.38	58.78	68.08	51.83	65.04	87.26	50.01

^a Rates are per 100,000 and are age-adjusted to the 2000 US Std Population (19 age groups - Census P25-1130)

^b The SEER 9 areas are San Francisco, Connecticut, Detroit, Hawaii, Iowa, New Mexico, Seattle, Utah and Atlanta.
The SEER 13 areas comprise the SEER 9 areas plus San Jose-Monterey, Los Angeles, the Alaska Native Registry and Rural Georgia.
The SEER 18 areas comprise the SEER 13 areas plus California excluding SF/SJM/LA, Kentucky, Louisiana, New Jersey and Georgia excluding ATL/RG.

- Statistic not shown. Rate based on less than 16 cases for the time interval.

Table 15.23
Cancer of the Lung And Bronchus (Invasive)

Age-Adjusted SEER Death Rates^a
By Registry, Race and Sex

	All Races			Whites			Blacks		
	Total	Males	Females	Total	Males	Females	Total	Males	Females
<u>SEER Death Rates^a, 2009-2013</u>									
California	34.81	41.88	29.49	35.99	42.12	31.33	45.33	58.03	36.33
Greater Bay Area	31.72	37.61	27.38	32.52	36.34	29.73	48.91	60.25	40.64
San Francisco-Oakland	33.48	39.54	29.01	33.96	37.17	31.69	51.08	64.39	41.60
San Jose-Monterey	28.31	33.90	24.16	30.00	34.89	26.30	34.62	34.17	34.45
Los Angeles	31.09	39.31	24.98	30.73	37.66	25.46	45.68	60.49	36.02
Greater California	37.58	44.49	32.32	38.95	45.40	34.03	43.07	54.14	34.48
Connecticut	40.63	48.08	35.32	41.32	48.08	36.53	37.96	53.28	28.08
Detroit	51.08	63.25	42.44	50.29	60.45	43.09	57.43	79.25	43.13
Georgia	48.96	66.18	36.52	51.48	66.98	39.86	43.57	67.49	28.72
Atlanta	38.81	50.73	30.78	39.05	48.09	32.78	40.78	61.40	28.91
Rural Georgia	50.91	76.64	31.44	51.87	71.10	36.63	49.70	93.90	22.09
Greater Georgia	53.39	72.43	39.30	55.76	73.31	42.42	45.54	70.87	29.00
Hawaii	32.60	41.88	25.27	36.24	41.58	31.00	39.44	51.67	-
Iowa	47.15	60.39	37.13	47.11	60.38	37.07	63.72	71.31	57.07
Kentucky	69.96	90.49	54.84	70.44	90.98	55.21	70.29	92.54	55.52
Louisiana	56.37	75.07	42.20	55.09	69.94	43.68	61.08	93.10	39.07
New Jersey	40.86	50.24	34.32	42.45	51.34	36.23	41.62	57.86	31.43
New Mexico	32.12	39.04	26.70	33.64	40.37	28.37	42.61	68.32	18.88
Seattle-Puget Sound	42.88	50.57	37.11	44.26	51.45	38.83	44.55	58.39	32.65
Utah	20.35	25.82	15.83	20.47	25.94	15.94	26.98	-	-
SEER 9 Areas ^b	39.39	48.19	32.87	40.17	47.88	34.41	47.98	66.34	35.82
SEER 13 Areas ^b	37.13	45.69	30.76	37.87	45.29	32.29	47.20	64.70	35.59
SEER 18 Areas ^b	41.67	51.78	34.08	42.85	52.03	35.92	48.53	68.50	35.08
Total U.S.	45.97	57.80	37.05	46.69	57.74	38.29	49.38	70.58	35.26

^a US Mortality Files, National Center for Health Statistics, Centers for Disease Control and Prevention.
Rates are per 100,000 and are age-adjusted to the 2000 US Std Population (19 age groups - Census P25-1130).

^b The SEER 9 areas are San Francisco, Connecticut, Detroit, Hawaii, Iowa, New Mexico, Seattle, Utah and Atlanta.
The SEER 13 areas comprise the SEER 9 areas plus San Jose-Monterey, Los Angeles, the Alaska Native Registry and Rural Georgia.
The SEER 18 areas comprise the SEER 13 areas plus California excluding SF/SJM/LA, Kentucky, Louisiana, New Jersey and Georgia excluding ATL/RG.

- Statistic not shown. Rate based on less than 16 cases for the time interval.

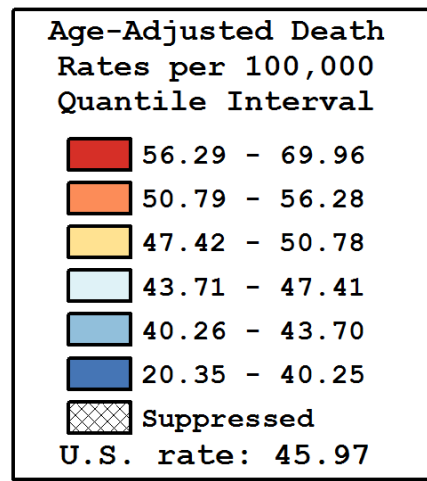
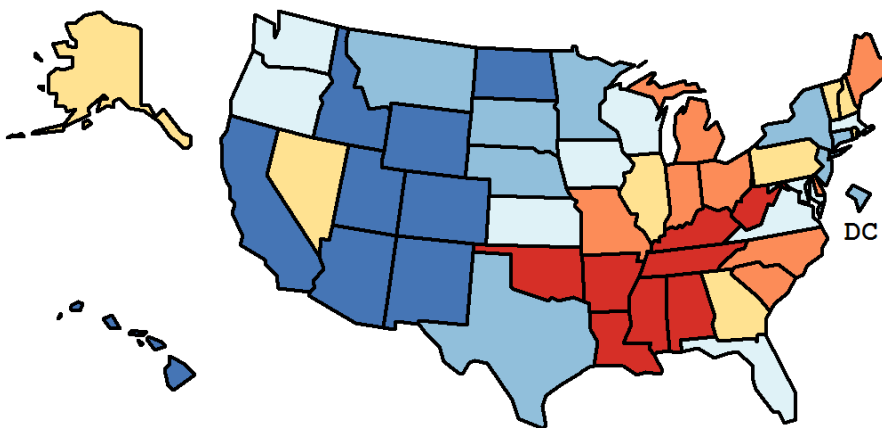
Table 15.24
Cancer of the Lung and Bronchus (Invasive)

Age-Adjusted Cancer Death^a Rates By State, All Races, 2009-2013

Males and Females

State	Rate	SE	Rank(CI) ^d	PD
TOTAL U.S.	45.97	0.05		
High Five States				
Kentucky	69.96	0.54	01(01,01)	52.19 ^c
Arkansas	61.86	0.60	02(02,04)	34.57 ^c
West Virginia	61.61	0.72	03(02,05)	34.03 ^c
Mississippi	60.00	0.62	04(02,06)	30.51 ^c
Tennessee	59.95	0.41	05(03,05)	30.41 ^c
Low Five States				
California	34.81	0.14	47(47,47)	-24.27 ^c
Colorado	33.11	0.38	48(48,50)	-27.98 ^c
Hawaii	32.60	0.64	49(48,50)	-29.08 ^c
New Mexico	32.12	0.54	50(48,50)	-30.13 ^c
Utah	20.35	0.44	51(51,51)	-55.74 ^c

State	Rate	SE	Rank(CI) ^d	PD	State	Rate	SE	Rank(CI) ^d	PD
Alabama	57.29	0.46	07(06,10)	24.63 ^c	Montana	40.83	0.83	39(35,44)	-11.18 ^c
Alaska	50.78	1.52	17(11,27)	10.46 ^c	Nebraska	43.70	0.66	34(29,36)	-4.94
Arizona	37.46	0.32	46(44,46)	-18.50 ^c	Nevada	47.77	0.60	21(18,27)	3.92
Arkansas	61.86	0.60	02(02,04)	34.57 ^c	New Hampshire	47.54	0.80	23(17,29)	3.42
California	34.81	0.14	47(47,47)	-24.27 ^c	New Jersey	40.86	0.29	38(37,43)	-11.10 ^c
Colorado	33.11	0.38	48(48,50)	-27.98 ^c	New Mexico	32.12	0.54	50(48,50)	-30.13 ^c
Connecticut	40.63	0.44	41(36,44)	-11.62 ^c	New York	41.20	0.20	37(36,42)	-10.37 ^c
Delaware	52.19	0.99	13(11,18)	13.53 ^c	North Carolina	51.79	0.32	15(12,17)	12.66 ^c
D.C.	40.64	1.20	40(34,45)	-11.58 ^c	North Dakota	40.25	1.01	43(35,45)	-12.44 ^c
Florida	45.25	0.19	30(27,32)	-1.56	Ohio	54.26	0.29	11(11,13)	18.04 ^c
Georgia	48.96	0.33	19(17,22)	6.51 ^c	Oklahoma	57.87	0.53	06(05,08)	25.89 ^c
Hawaii	32.60	0.64	49(48,50)	-29.08 ^c	Oregon	45.72	0.46	28(25,33)	-0.53
Idaho	38.00	0.69	45(42,46)	-17.34 ^c	Pennsylvania	47.49	0.25	24(20,27)	3.31
Illinois	48.47	0.27	20(17,23)	5.43 ^c	Rhode Island	49.00	0.90	18(15,27)	6.60 ^c
Indiana	56.28	0.40	09(07,10)	22.42 ^c	South Carolina	52.01	0.45	14(12,17)	13.15 ^c
Iowa	47.15	0.51	26(20,28)	2.57	South Dakota	43.58	0.96	35(28,39)	-5.19 ^c
Kansas	47.41	0.55	25(18,28)	3.13	Tennessee	59.95	0.41	05(03,05)	30.41 ^c
Kentucky	69.96	0.54	01(01,01)	52.19 ^c	Texas	41.97	0.20	36(35,38)	-8.69 ^c
Louisiana	56.37	0.49	08(06,10)	22.62 ^c	Utah	20.35	0.44	51(51,51)	-55.74 ^c
Maine	53.71	0.79	12(10,15)	16.85 ^c	Vermont	47.55	1.13	22(17,32)	3.45
Maryland	44.55	0.39	32(28,35)	-3.09	Virginia	46.97	0.34	27(21,28)	2.18
Massachusetts	45.31	0.35	29(27,33)	-1.44	Washington	44.01	0.36	33(30,35)	-4.26
Michigan	50.93	0.30	16(14,18)	10.80 ^c	West Virginia	61.61	0.72	03(02,05)	34.03 ^c
Minnesota	40.40	0.38	42(37,44)	-12.11 ^c	Wisconsin	44.92	0.37	31(28,34)	-2.29
Mississippi	60.00	0.62	04(02,06)	30.51 ^c	Wyoming	38.53	1.15	44(37,46)	-16.19 ^c
Missouri	55.99	0.40	10(07,11)	21.80 ^c					



^a US Mortality Files, National Center for Health Statistics, Centers for Disease Control and Prevention. Rates are per 100,000 and are age-adjusted to the 2000 US Std Population (19 age groups - Census P25-1130).

^b Difference between state rate and total U.S. rate is statistically significant ($p \leq .0002$).

^c Absolute percent difference between state rate and total U.S. rate is 5% or more.

^d Rank of state level death rate and the 95% confidence intervals (low, high) for the rank.

SE Standard error of the rate.

PD Percent difference between state rate and total U.S. rate.

- Statistic not shown. Rate based on less than 16 cases for the time interval.

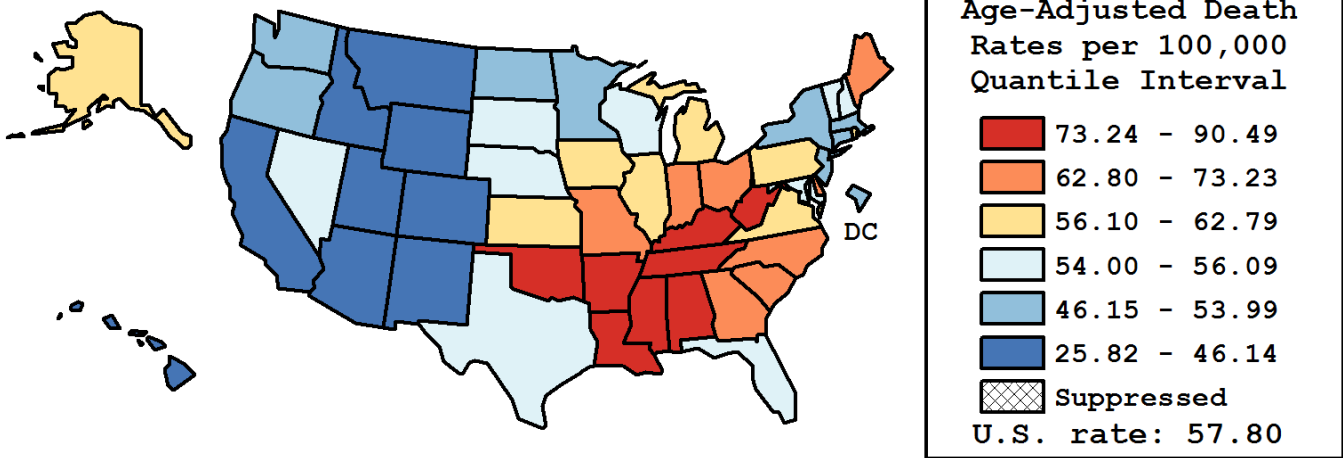
Table 15.25
Cancer of the Lung and Bronchus (Invasive)

Age-Adjusted Cancer Death^a Rates By State, All Races, 2009-2013

Males

State	Rate	SE	Rank(CI) ^d	PD
TOTAL U.S.	57.80	0.09		
High Five States				
Kentucky	90.49	0.94	01(01,01)	56.55 ^c
Mississippi	85.45	1.14	02(02,03)	47.84 ^c
Arkansas	84.60	1.07	03(02,04)	46.36 ^c
Tennessee	80.67	0.74	04(04,06)	39.57 ^c
Alabama	80.30	0.84	05(04,06)	38.93 ^c
Low Five States				
Hawaii	41.88	1.09	47(44,50)	-27.54 ^c
California	41.88	0.23	48(46,48)	-27.55 ^c
New Mexico	39.04	0.90	49(48,50)	-32.46 ^c
Colorado	38.73	0.62	50(48,50)	-32.99 ^c
Utah	25.82	0.74	51(51,51)	-55.32 ^c

State	Rate	SE	Rank(CI) ^d	PD	State	Rate	SE	Rank(CI) ^d	PD
Alabama	80.30	0.84	05(04,06)	38.93 ^c	Montana	46.14	1.30	43(40,47)	-20.18 ^c
Alaska	59.21	2.49	23(14,36)	2.43	Nebraska	55.11	1.12	29(23,38)	-4.67
Arizona	44.89	0.53	45(43,47)	-22.34 ^c	Nevada	54.23	0.96	33(25,38)	-6.17 ^c
Arkansas	84.60	1.07	03(02,04)	46.36 ^c	New Hampshire	55.76	1.31	26(22,37)	-3.53
California	41.88	0.23	48(46,48)	-27.55 ^c	New Jersey	50.24	0.50	40(37,41)	-13.08 ^c
Colorado	38.73	0.62	50(48,50)	-32.99 ^c	New Mexico	39.04	0.90	49(48,50)	-7.66 ^c
Connecticut	48.08	0.74	42(40,44)	-16.83 ^c	New York	50.58	0.33	39(37,41)	-12.50 ^c
Delaware	64.74	1.68	16(12,22)	12.01 ^c	North Carolina	70.04	0.57	11(10,13)	21.18 ^c
D.C.	51.39	2.11	38(24,44)	-11.10 ^c	North Dakota	53.37	1.74	35(23,41)	-7.66 ^c
Florida	56.09	0.31	25(24,30)	-2.97	Ohio	68.75	0.49	13(11,14)	18.94 ^c
Georgia	66.18	0.61	14(14,16)	14.49 ^c	Oklahoma	73.94	0.91	08(07,10)	27.93 ^c
Hawaii	41.88	1.09	47(44,50)	-27.54 ^c	Oregon	52.83	0.74	36(28,39)	-8.60 ^c
Idaho	44.89	1.11	46(42,48)	-22.34 ^c	Pennsylvania	60.71	0.42	18(17,23)	5.03 ^c
Illinois	60.22	0.46	21(18,24)	4.18	Rhode Island	60.51	1.53	19(15,26)	4.68
Indiana	73.23	0.70	09(07,10)	26.69 ^c	South Carolina	69.76	0.80	12(10,14)	20.69 ^c
Iowa	60.39	0.87	20(17,25)	4.47	South Dakota	55.17	1.61	28(21,39)	-4.55
Kansas	58.76	0.93	24(18,27)	1.66	Tennessee	80.67	0.74	04(04,06)	39.57 ^c
Kentucky	90.49	0.94	01(01,01)	56.55 ^c	Texas	54.26	0.34	31(27,36)	-6.13 ^c
Louisiana	75.07	0.87	07(06,09)	29.88 ^c	Utah	25.82	0.74	51(51,51)	-55.32 ^c
Maine	65.75	1.32	15(12,18)	13.76 ^c	Vermont	55.59	1.84	27(18,39)	-3.84
Maryland	54.24	0.66	32(26,37)	-6.17 ^c	Virginia	59.59	0.59	22(18,25)	3.09
Massachusetts	53.99	0.59	34(27,37)	-6.60 ^c	Washington	51.89	0.59	37(33,40)	-10.23 ^c
Michigan	62.79	0.51	17(15,19)	8.63 ^c	West Virginia	78.92	1.23	06(04,07)	36.54 ^c
Minnesota	48.47	0.62	41(39,44)	-16.15 ^c	Wisconsin	54.91	0.62	30(24,36)	-5.00 ^c
Mississippi	85.45	1.14	02(02,03)	47.84 ^c	Wyoming	46.11	1.88	44(38,48)	-20.22 ^c
Missouri	70.89	0.69	10(09,13)	22.65 ^c					



^a US Mortality Files, National Center for Health Statistics, Centers for Disease Control and Prevention. Rates are per 100,000 and are age-adjusted to the 2000 US Std Population (19 age groups - Census P25-1130).

^b Difference between state rate and total U.S. rate is statistically significant ($p \leq .0002$).

^c Absolute percent difference between state rate and total U.S. rate is 5% or more.

^d Rank of state level death rate and the 95% confidence intervals (low, high) for the rank.

SE Standard error of the rate.

PD Percent difference between state rate and total U.S. rate.

- Statistic not shown. Rate based on less than 16 cases for the time interval.

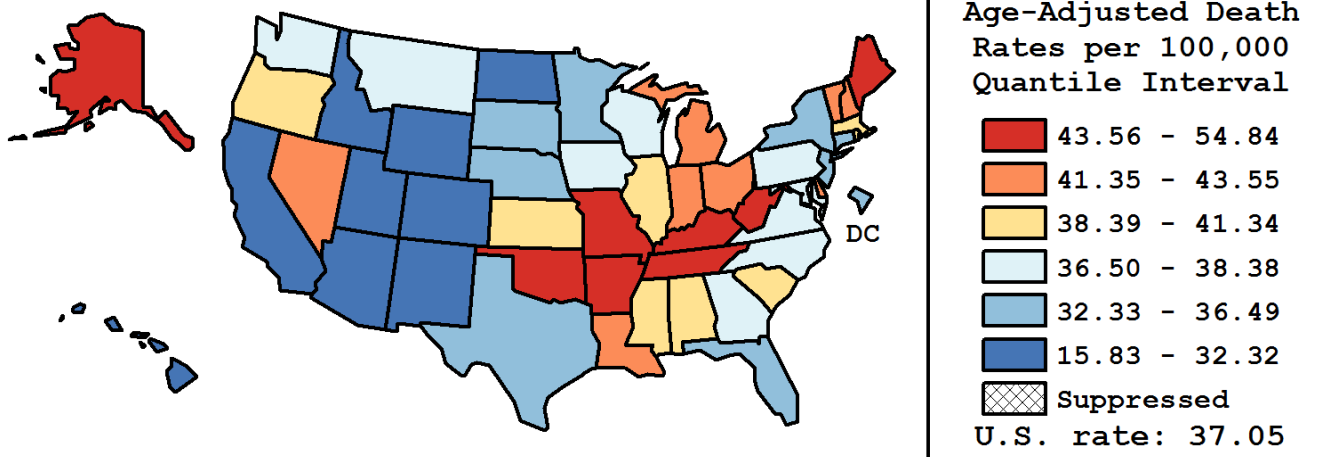
Table 15.26
Cancer of the Lung And Bronchus (Invasive)

Age-Adjusted Cancer Death^a Rates By State, All Races, 2009-2013

Females

State	Rate	SE	Rank(CI) ^d	PD
TOTAL U.S.	37.05	0.06		
High Five States				
Kentucky	54.84	0.64	01(01,01)	48.01 ^c
West Virginia	48.41	0.87	02(02,03)	30.67 ^c
Oklahoma	45.60	0.63	03(02,09)	23.08 ^c
Missouri	44.87	0.49	04(03,10)	21.11 ^c
Maine	44.52	0.97	05(02,15)	20.16 ^c
Low Five States				
California	29.49	0.17	47(45,48)	-20.41 ^c
Colorado	28.81	0.47	48(46,49)	-22.25 ^c
New Mexico	26.70	0.66	49(48,50)	-27.92 ^c
Hawaii	25.27	0.77	50(49,50)	-31.79 ^c
Utah	15.83	0.53	51(51,51)	-57.27 ^c

State	Rate	SE	Rank(CI) ^d	PD	State	Rate	SE	Rank(CI) ^d	PD
Alabama	40.26	0.51	20(14,24)	8.67	Montana	36.56	1.07	32(21,41)	-1.33
Alaska	44.20	1.93	08(02,24)	19.31 ^c	Nebraska	35.00	0.80	36(30,43)	-5.54
Arizona	31.40	0.40	45(42,46)	-15.26 ^c	Nevada	42.45	0.78	12(05,20)	14.57 ^c
Arkansas	44.29	0.69	07(03,14)	19.56 ^c	New Hampshire	41.75	1.02	15(05,24)	12.68 ^c
California	29.49	0.17	47(45,48)	-20.41 ^c	New Jersey	34.32	0.35	40(35,42)	-7.37
Colorado	28.81	0.47	48(46,49)	-22.25 ^c	New Mexico	26.70	0.66	49(48,50)	-27.92 ^c
Connecticut	35.32	0.55	35(31,41)	-4.67	New York	34.60	0.24	38(35,42)	-6.61
Delaware	42.86	1.21	11(03,22)	15.69 ^c	North Carolina	38.38	0.36	25(21,31)	3.59
D.C.	33.17	1.42	41(29,48)	-10.46 ^c	North Dakota	30.51	1.21	46(40,49)	-17.65 ^c
Florida	36.49	0.23	34(29,36)	-1.51	Ohio	43.54	0.34	10(05,14)	17.52 ^c
Georgia	36.52	0.38	33(28,36)	-1.43	Oklahoma	45.60	0.63	03(02,09)	23.08 ^c
Hawaii	25.27	0.77	50(49,50)	-31.79 ^c	Oregon	40.33	0.59	19(13,24)	8.84
Idaho	32.25	0.87	44(37,46)	-12.94 ^c	Pennsylvania	37.93	0.29	27(23,32)	2.37
Illinois	40.02	0.33	21(16,23)	8.02	Rhode Island	41.34	1.10	17(06,25)	11.57 ^c
Indiana	43.55	0.48	09(04,14)	17.54 ^c	South Carolina	38.72	0.52	24(19,31)	4.52
Iowa	37.13	0.62	31(23,36)	0.22	South Dakota	34.83	1.17	37(25,44)	-6.00
Kansas	38.77	0.68	23(17,32)	4.65	Tennessee	44.49	0.47	06(03,11)	20.08 ^c
Kentucky	54.84	0.64	01(01,01)	48.01 ^c	Texas	32.62	0.23	42(40,45)	-11.94 ^c
Louisiana	42.20	0.57	13(08,19)	13.91 ^c	Utah	15.83	0.53	51(51,51)	-57.27 ^c
Maine	44.52	0.97	05(02,15)	20.16 ^c	Vermont	41.50	1.43	16(03,30)	12.02 ^c
Maryland	37.47	0.47	30(23,34)	1.14	Virginia	37.48	0.40	29(23,34)	1.17
Massachusetts	39.31	0.43	22(17,27)	6.12	Washington	37.99	0.45	26(22,33)	2.53
Michigan	42.08	0.37	14(10,18)	13.59 ^c	West Virginia	48.41	0.87	02(02,03)	30.67 ^c
Minnesota	34.53	0.47	39(34,42)	-6.80	Wisconsin	37.52	0.46	28(23,34)	1.28
Mississippi	41.13	0.68	18(10,22)	11.01 ^c	Wyoming	32.32	1.45	43(32,48)	-12.76 ^c
Missouri	44.87	0.49	04(03,10)	21.11 ^c					



^a US Mortality Files, National Center for Health Statistics, Centers for Disease Control and Prevention. Rates are per 100,000 and are age-adjusted to the 2000 US Std Population (19 age groups - Census P25-1130).

^b Difference between state rate and total U.S. rate is statistically significant ($p \leq .0002$).

^c Absolute percent difference between state rate and total U.S. rate is 5% or more.

^d Rank of state level death rate and the 95% confidence intervals (low, high) for the rank.

SE Standard error of the rate.

PD Percent difference between state rate and total U.S. rate.

- Statistic not shown. Rate based on less than 16 cases for the time interval.

Table 15.27
Cancer of the Lung And Bronchus (Invasive)

Estimated United States Cancer Prevalence Counts^a on January 1, 2013
By Race/Ethnicity, Sex and Years Since Diagnosis

Years Since Diagnosis		0 to <5	5 to <10	10 to <15	15 to <20	20 to <25	25 to <30	0 to <21 ^e	0 to <38 ^e	>=38 ^g	Complete ^h
<u>Race</u>	<u>Sex</u>										
All Races ^b	Both Sexes	235,891	83,695	42,860	23,477	12,767	6,435	394,265	409,799	5,908	415,707
	Males	107,952	35,821	18,093	10,288	5,514	2,756	175,769	182,649	3,381	186,030
	Females	127,939	47,874	24,767	13,189	7,253	3,679	218,496	227,150	2,527	229,677
White ^b	Both Sexes	196,844	72,476	37,590	20,395	11,351	5,731	334,693	348,422	2,220	350,642
	Males	89,694	30,463	15,697	8,669	4,861	2,435	147,734	153,689	1,017	154,706
	Females	107,150	42,013	21,893	11,726	6,490	3,296	186,959	194,733	1,203	195,936
Black ^b	Both Sexes	28,016	7,976	3,825	2,212	1,075	525	42,780	44,120	207	44,327
	Males	12,881	3,775	1,693	1,103	502	224	19,767	20,453	101	20,554
	Females	15,135	4,201	2,132	1,109	573	301	23,013	23,667	106	23,773
Asian/ Pacific Islander ^c	Both Sexes	8,262	2,441	1,070	+	+	+	12,423	+	+	+
	Males	4,052	1,216	498	+	+	+	6,131	+	+	+
	Females	4,210	1,225	572	+	+	+	6,292	+	+	+
Hispanic ^d	Both Sexes	9,250	2,945	1,508	+	+	+	14,573	+	+	+
	Males	4,177	1,333	636	+	+	+	6,555	+	+	+
	Females	5,073	1,612	872	+	+	+	8,018	+	+	+

Estimated prevalence percent^a on January 1, 2013, of the SEER^c population diagnosed in the previous 21 years
By Age at Prevalence, Race/Ethnicity and Sex

Age at Prevalence		Age Specific (Crude)									Age-Adjusted ^f	
		All Ages	0-9	10-19	20-29	30-39	40-49	50-59	60-69	70-79	80+	All Ages
<u>Race</u>	<u>Sex</u>											
All Races ^c	Both Sexes	0.1047%	0.0002%	0.0004%	0.0019%	0.0054%	0.0229%	0.1066%	0.3138%	0.6574%	0.6428%	0.1003%
	Males	0.0952%	0.0002%	0.0003%	0.0019%	0.0047%	0.0202%	0.0965%	0.3166%	0.6615%	0.7013%	0.1009%
	Females	0.1140%	-	0.0004%	0.0019%	0.0062%	0.0257%	0.1164%	0.3113%	0.6541%	0.6078%	0.1005%
White ^c	Both Sexes	0.1126%	0.0001%	0.0005%	0.0021%	0.0057%	0.0228%	0.1043%	0.3159%	0.6832%	0.6588%	0.1023%
	Males	0.0996%	-	0.0004%	0.0020%	0.0046%	0.0200%	0.0924%	0.3075%	0.6664%	0.7001%	0.0999%
	Females	0.1255%	-	0.0006%	0.0021%	0.0069%	0.0258%	0.1162%	0.3238%	0.6973%	0.6339%	0.1050%
Black ^c	Both Sexes	0.0930%	-	-	0.0021%	0.0056%	0.0278%	0.1567%	0.4080%	0.6850%	0.5465%	0.1120%
	Males	0.0896%	-	-	0.0023%	0.0060%	0.0261%	0.1501%	0.4680%	0.7491%	0.6264%	0.1221%
	Females	0.0962%	-	-	0.0020%	0.0052%	0.0293%	0.1625%	0.3612%	0.6402%	0.5073%	0.1054%
Asian/ Pacific Islander ^c	Both Sexes	0.0802%	-	-	0.0010%	0.0041%	0.0202%	0.0814%	0.2372%	0.5070%	0.5967%	0.0806%
	Males	0.0823%	-	-	0.0012%	0.0040%	0.0179%	0.0813%	0.2702%	0.5869%	0.7415%	0.0923%
	Females	0.0783%	-	-	-	0.0043%	0.0221%	0.0815%	0.2101%	0.4449%	0.5080%	0.0723%
Hispanic ^d	Both Sexes	0.0280%	-	-	0.0016%	0.0031%	0.0122%	0.0478%	0.1410%	0.3292%	0.3561%	0.0500%
	Males	0.0248%	-	-	0.0014%	0.0028%	0.0108%	0.0435%	0.1428%	0.3387%	0.4009%	0.0516%
	Females	0.0313%	-	-	0.0017%	0.0035%	0.0136%	0.0519%	0.1395%	0.3221%	0.3291%	0.0492%

^a US 2013 cancer prevalence counts are based on 2013 cancer prevalence proportions from the SEER registries and 1/1/2013 US population estimates based on the average of 2012 and 2013 population estimates from the US Bureau of the Census. Prevalence was calculated using the First Malignant Primary Only for a person.

^{b c d} Statistics based on (b) SEER 9 Areas (c) SEER 13 Areas excluding the Alaska Native Registry

(d) NHIA for Hispanic for SEER 13 Areas excluding the Alaska Native Registry.

^e Maximum limited-duration prevalence: 38 years for 1975-2013 SEER 9 data; 21 years for 1992-2013 SEER 13 data (excluding the Alaska Native Registry) used to calculate prevalence for Hispanics and Asian Pacific Islanders.

^f Percentages are age-adjusted to the 2000 US Standard Population (19 age groups - Census P25-1130) by 5-year age groups.

^{g h i} (g) Cases diagnosed more than 38 years ago were estimated using the completeness index method (Capocaccia et. al. 1997, Merrill et. al. 2000). (h) Complete prevalence is obtained by summing 0 to <38 and >=38. (i) Age-specific completeness index was approximated using empirical data from historical Connecticut tumor registry.

- Statistic not shown. Statistic based on fewer than 5 cases estimated alive in SEER for the time interval.

+ Not available.

Table 15.28

Cancer of the Lung and Bronchus (Invasive)

Percent Distribution and Counts by Histology among Histologically Confirmed Cases, 2009-2013
Both Sexes by Race

Histology ^a	All Races			White		Black		Asian/Pacific Islander		American Indian/Alaska Native ^b		Hispanic ^c	
	Rate	Count	Percent	Count	Percent	Count	Percent	Count	Percent	Count	Percent	Count	Percent
Carcinoma	50.6	226,919	99.7%	185,872	99.7%	25,658	99.7%	13,765	99.7%	778	99.1%	13,158	99.5%
Small cell (8002,8041-8045)	6.6	29,925	13.2%	25,960	13.9%	2,692	10.5%	1,048	7.6%	135	17.2%	1,432	10.8%
Non-small cell	42.5	190,182	83.6%	154,490	82.9%	22,082	85.8%	12,272	88.9%	616	78.5%	11,203	84.7%
Squamous and transitional cell ^d	11.8	52,264	23.0%	43,585	23.4%	6,159	23.9%	2,131	15.4%	221	28.2%	2,557	19.3%
Adenocarcinoma ^e	22.8	102,363	45.0%	81,747	43.9%	11,597	45.1%	8,353	60.5%	265	33.8%	6,356	48.0%
Large cell ^f	0.9	4,152	1.8%	3,400	1.8%	558	2.2%	170	1.2%	-	-	213	1.6%
Non-small cell carcinoma ^g	4.4	19,822	8.7%	15,859	8.5%	2,679	10.4%	1,107	8.0%	92	11.7%	1,195	9.0%
Other specified carcinomas ^h	2.6	11,581	5.1%	9,899	5.3%	1,089	4.2%	511	3.7%	27	3.4%	882	6.7%
Carcinoma, NOS ⁱ	1.5	6,812	3.0%	5,422	2.9%	884	3.4%	445	3.2%	27	3.4%	523	4.0%
Sarcoma ^j	0.1	447	0.2%	369	0.2%	44	0.2%	26	0.2%	-	-	53	0.4%
Other specified types ^k	0.0	197	0.1%	162	0.1%	24	0.1%	-	-	-	-	18	0.1%
Total	50.7	227,563	100.0%	186,403	100.0%	25,726	100.0%	13,802	100.0%	785	100.0%	13,229	100.0%

Source: SEER 18 areas (San Francisco, Connecticut, Detroit, Hawaii, Iowa, New Mexico, Seattle, Utah, Atlanta, San Jose-Monterey, Los Angeles, Alaska Native Registry, Rural Georgia, California excluding SF/SJM/LA, Kentucky, Louisiana, New Jersey and Georgia excluding ATL/RG).

Percentages may not sum to 100 due to rounding.

^a Excludes Kaposi Sarcoma, mesothelioma, lymphomas, leukemias, myelomas, lymphoreticular, and immunoproliferative diseases.

^b Estimates for American Indian/Alaska Native are based on the CHSDA (Contract Health Service Delivery Area) counties.

^c Hispanic is not mutually exclusive from whites, blacks, Asian/Pacific Islanders, and American Indians/Alaska Natives.

Underlying incidence data for Hispanics are based on NHIA and exclude cases from the Alaska Native Registry.

^d Squamous and transitional cell includes histologies 8051-8052, 8070-8076, 8078, 8083-8084, 8090, 8094, 8120, 8123.

^e Adenocarcinoma includes histologies 8015, 8050, 8140-8141, 8143-8145, 8147, 8190, 8201, 8211, 8250-8255, 8260, 8290, 8310, 8320, 8323, 8333, 8401, 8440, 8470-8471, 8480-8481, 8490, 8503, 8507, 8550, 8570-8572, 8574, 8576.

^f Large cell includes histologies 8012-8014, 8021, 8034, 8082.

^g Non-small cell carcinoma includes histology 8046.

^h Other specified carcinomas includes histologies 8003-8004, 8022, 8030, 8031-8033, 8035, 8200, 8240-8241, 8243-8246, 8249, 8430, 8525, 8560, 8562, 8575.

ⁱ Carcinoma, NOS includes histologies 8000-8001, 8010-8011, 8020, 8230.

^j Sarcoma includes histologies 8680, 8711, 8800-8805, 8810-8811, 8815, 8824, 8830, 8840, 8852, 8855, 8890-8891, 8894-8895, 8900-8902, 8910, 8920-8921, 8940, 8990, 9040-9041, 9043, 9120, 9130, 9133, 9150, 9180, 9220, 9231, 9240, 9251, 9473, 9540, 9560, 9580.

^k Other specific types includes melanomas and is defined as histologies 8580, 8650, 8720-8790, 8933, 8963, 8972-8973, 8980-8982, 9064-9065, 9070, 9080, 9084-9085, 9100, 9260, 9364, 9503, 9530.

Note: For this analysis, the following histologies were classified as metastases of another primary site and not included: 8005, 8130, 8146, 8170, 8231, 8247, 8263, 8312, 8340-8341, 8350, 8441, 8460, 8500-8501, 8524, 8530, 8551, 8581, 8585, 8710, 8772, 8806, 8850, 8854, 8896, 8935, 9015, 9042, 9071, 9101, 9181, 9370, 9500, 9561, 9581

- Statistic not shown due to fewer than 16 cases during the time period.

Table 15.29

Cancer of the Lung and Bronchus (Invasive)

Percent Distribution and Counts by Histology among Histologically Confirmed Cases, 2009-2013
Males by Race

Histology ^a	All Races			White		Black		Asian/Pacific Islander		American Indian/Alaska Native ^b		Hispanic ^c	
	Rate	Count	Percent	Count	Percent	Count	Percent	Count	Percent	Count	Percent	Count	Percent
Carcinoma	59.8	119,450	99.7%	96,638	99.7%	14,244	99.7%	7,693	99.7%	417	99.5%	6,884	99.4%
Small cell (8002,8041-8045)	7.3	14,892	12.4%	12,743	13.1%	1,352	9.5%	692	9.0%	64	15.3%	762	11.0%
Non-small cell	50.5	100,721	84.1%	80,913	83.5%	12,344	86.4%	6,728	87.2%	339	80.9%	5,813	83.9%
Squamous and transitional cell ^d	16.6	32,725	27.3%	27,037	27.9%	3,904	27.3%	1,537	19.9%	131	31.3%	1,609	23.2%
Adenocarcinoma ^e	24.5	49,117	41.0%	38,679	39.9%	6,001	42.0%	4,100	53.2%	135	32.2%	2,995	43.2%
Large cell ^f	1.1	2,343	2.0%	1,893	2.0%	331	2.3%	106	1.4%	-	-	126	1.8%
Non-small cell carcinoma ^g	5.6	11,233	9.4%	8,847	9.1%	1,574	11.0%	709	9.2%	57	13.6%	693	10.0%
Other specified carcinomas ^h	2.6	5,303	4.4%	4,457	4.6%	534	3.7%	276	3.6%	-	-	390	5.6%
Carcinoma, NOS ⁱ	2.0	3,837	3.2%	2,982	3.1%	548	3.8%	273	3.5%	-	-	309	4.5%
Sarcoma ^j	0.1	254	0.2%	212	0.2%	26	0.2%	-	-	-	-	30	0.4%
Other specified types ^k	0.1	124	0.1%	104	0.1%	-	-	-	-	-	-	-	-
Total	59.9	119,828	100.0%	96,954	100.0%	14,284	100.0%	7,713	100.0%	419	100.0%	6,926	100.0%

Source: SEER 18 areas (San Francisco, Connecticut, Detroit, Hawaii, Iowa, New Mexico, Seattle, Utah, Atlanta, San Jose-Monterey, Los Angeles, Alaska Native Registry, Rural Georgia, California excluding SF/SJM/LA, Kentucky, Louisiana, New Jersey and Georgia excluding ATL/RG).

Percentages may not sum to 100 due to rounding.

^a Excludes Kaposi Sarcoma, mesothelioma, lymphomas, leukemias, myelomas, lymphoreticular, and immunoproliferative diseases.

^b Estimates for American Indian/Alaska Native are based on the CHSDA (Contract Health Service Delivery Area) counties.

^c Hispanic is not mutually exclusive from whites, blacks, Asian/Pacific Islanders, and American Indians/Alaska Natives.

Underlying incidence data for Hispanics are based on NHIA and exclude cases from the Alaska Native Registry.

^d Squamous and transitional cell includes histologies 8051-8052, 8070-8076, 8078, 8083-8084, 8090, 8094, 8120, 8123.

^e Adenocarcinoma includes histologies 8015, 8050, 8140-8141, 8143-8145, 8147, 8190, 8201, 8211, 8250-8255, 8260, 8290, 8310, 8320, 8323, 8333, 8401, 8440, 8470-8471, 8480-8481, 8490, 8503, 8507, 8550, 8570-8572, 8574, 8576.

^f Large cell includes histologies 8012-8014, 8021, 8034, 8082.

^g Non-small cell carcinoma includes histology 8046.

^h Other specified carcinomas includes histologies 8003-8004, 8022, 8030, 8031-8033, 8035, 8200, 8240-8241, 8243-8246, 8249, 8430, 8525, 8560, 8562, 8575.

ⁱ Carcinoma, NOS includes histologies 8000-8001, 8010-8011, 8020, 8230.

^j Sarcoma includes histologies 8680, 8711, 8800-8805, 8810-8811, 8815, 8824, 8830, 8840, 8852, 8855, 8890-8891, 8894-8895, 8900-8902, 8910, 8920-8921, 8940, 8990, 9040-9041, 9043, 9120, 9130, 9133, 9150, 9180, 9220, 9231, 9240, 9251, 9473, 9540, 9560, 9580.

^k Other specific types includes melanomas and is defined as histologies 8580, 8650, 8720-8790, 8933, 8963, 8972-8973, 8980-8982, 9064-9065, 9070, 9080, 9084-9085, 9100, 9260, 9364, 9503, 9530.

Note: For this analysis, the following histologies were classified as metastases of another primary site and not included: 8005, 8130, 8146, 8170, 8231, 8247, 8263, 8312, 8340-8341, 8350, 8441, 8460, 8500-8501, 8524, 8530, 8551, 8581, 8585, 8710, 8772, 8806, 8850, 8854, 8896, 8935, 9015, 9042, 9071, 9101, 9181, 9370, 9500, 9561, 9581

- Statistic not shown due to fewer than 16 cases during the time period.

Table 15.30

Cancer of the Lung and Bronchus (Invasive)

Percent Distribution and Counts by Histology among Histologically Confirmed Cases, 2009-2013
Females by Race

Histology ^a	All Races			White		Black		Asian/Pacific Islander		American Indian/ Alaska Native ^b		Hispanic ^c	
	Rate	Count	Percent	Count	Percent	Count	Percent	Count	Percent	Count	Percent	Count	Percent
Carcinoma	43.7	107,469	99.8%	89,234	99.8%	11,414	99.8%	6,072	99.7%	361	98.6%	6,274	99.5%
Small cell (8002,8041-8045)	6.1	15,033	14.0%	13,217	14.8%	1,340	11.7%	356	5.8%	71	19.4%	670	10.6%
Non-small cell	36.5	89,461	83.0%	73,577	82.3%	9,738	85.1%	5,544	91.0%	277	75.7%	5,390	85.5%
Squamous and transitional cell ^d	8.1	19,539	18.1%	16,548	18.5%	2,255	19.7%	594	9.8%	90	24.6%	948	15.0%
Adenocarcinoma ^e	21.6	53,246	49.4%	43,068	48.1%	5,596	48.9%	4,253	69.8%	130	35.5%	3,361	53.3%
Large cell ^f	0.7	1,809	1.7%	1,507	1.7%	227	2.0%	64	1.1%	-	-	87	1.4%
Non-small cell carcinoma ^g	3.5	8,589	8.0%	7,012	7.8%	1,105	9.7%	398	6.5%	35	9.6%	502	8.0%
Other specified carcinomas ^h	2.6	6,278	5.8%	5,442	6.1%	555	4.9%	235	3.9%	-	-	492	7.8%
Carcinoma, NOS ⁱ	1.2	2,975	2.8%	2,440	2.7%	336	2.9%	172	2.8%	-	-	214	3.4%
Sarcoma ^j	0.1	193	0.2%	157	0.2%	18	0.2%	-	-	-	-	23	0.4%
Other specified types ^k	0.0	73	0.1%	58	0.1%	-	-	-	-	-	-	-	-
Total	43.8	107,735	100.0%	89,449	100.0%	11,442	100.0%	6,089	100.0%	366	100.0%	6,303	100.0%

Source: SEER 18 areas (San Francisco, Connecticut, Detroit, Hawaii, Iowa, New Mexico, Seattle, Utah, Atlanta, San Jose-Monterey, Los Angeles, Alaska Native Registry, Rural Georgia, California excluding SF/SJM/LA, Kentucky, Louisiana, New Jersey and Georgia excluding ATL/RG).

Percentages may not sum to 100 due to rounding.

^a Excludes Kaposi Sarcoma, mesothelioma, lymphomas, leukemias, myelomas, lymphoreticular, and immunoproliferative diseases.

^b Estimates for American Indian/Alaska Native are based on the CHSDA (Contract Health Service Delivery Area) counties.

^c Hispanic is not mutually exclusive from whites, blacks, Asian/Pacific Islanders, and American Indians/Alaska Natives.

Underlying incidence data for Hispanics are based on NHIA and exclude cases from the Alaska Native Registry.

^d Squamous and transitional cell includes histologies 8051-8052, 8070-8076, 8078, 8083-8084, 8090, 8094, 8120, 8123.

^e Adenocarcinoma includes histologies 8015, 8050, 8140-8141, 8143-8145, 8147, 8190, 8201, 8211, 8250-8255, 8260, 8290, 8310, 8320, 8323, 8333, 8401, 8440, 8470-8471, 8480-8481, 8490, 8503, 8507, 8550, 8570-8572, 8574, 8576.

^f Large cell includes histologies 8012-8014, 8021, 8034, 8082.

^g Non-small cell carcinoma includes histology 8046.

^h Other specified carcinomas includes histologies 8003-8004, 8022, 8030, 8031-8033, 8035, 8200, 8240-8241, 8243-8246, 8249, 8430, 8525, 8560, 8562, 8575.

ⁱ Carcinoma, NOS includes histologies 8000-8001, 8010-8011, 8020, 8230.

^j Sarcoma includes histologies 8680, 8711, 8800-8805, 8810-8811, 8815, 8824, 8830, 8840, 8852, 8855, 8890-8891, 8894-8895, 8900-8902, 8910, 8920-8921, 8940, 8990, 9040-9041, 9043, 9120, 9130, 9133, 9150, 9180, 9220, 9231, 9240, 9251, 9473, 9540, 9560, 9580.

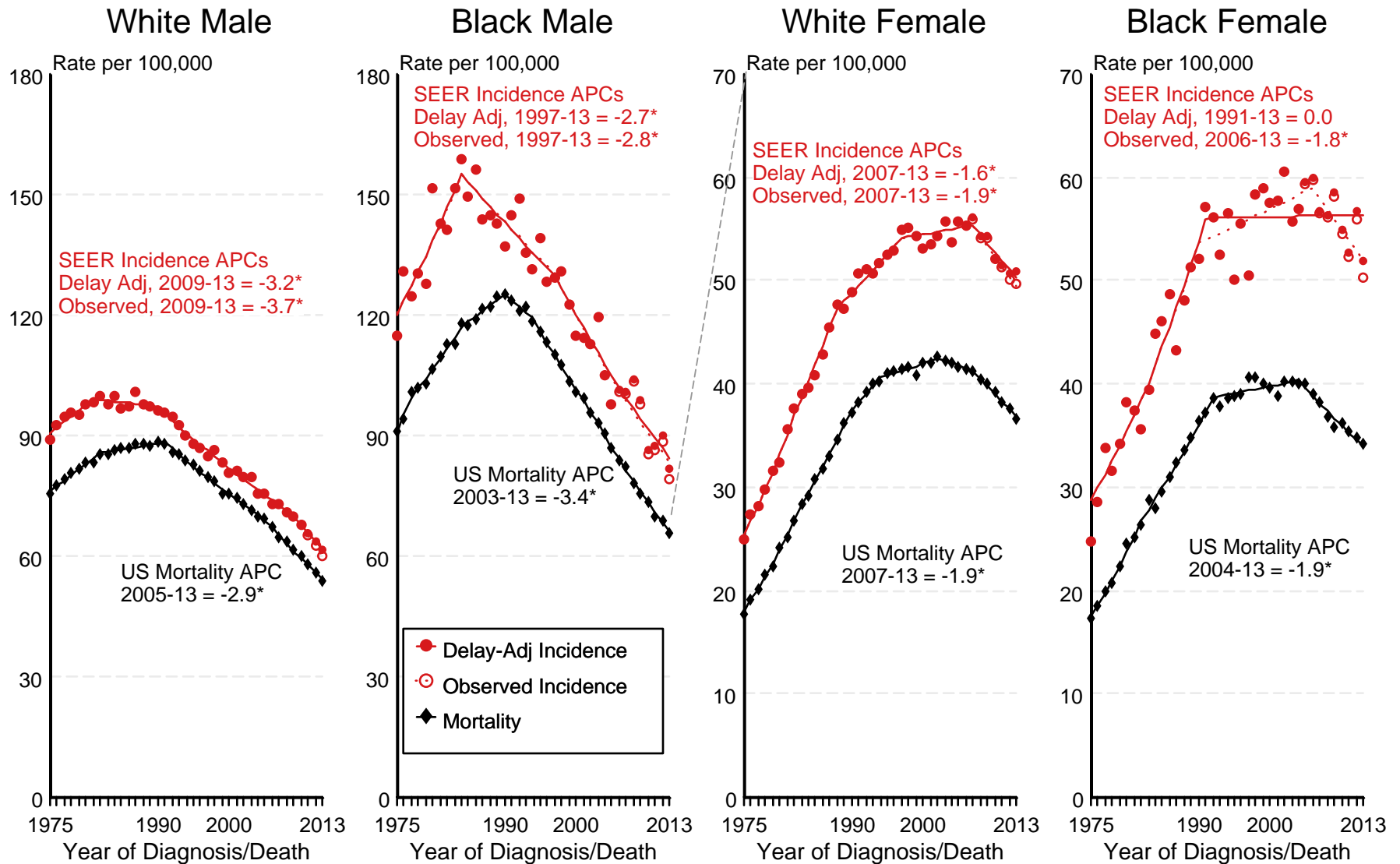
^k Other specific types includes melanomas and is defined as histologies 8580, 8650, 8720-8790, 8933, 8963, 8972-8973, 8980-8982, 9064-9065, 9070, 9080, 9084-9085, 9100, 9260, 9364, 9503, 9530.

Note: For this analysis, the following histologies were classified as metastases of another primary site and not included: 8005, 8130, 8146, 8170, 8231, 8247, 8263, 8312, 8340-8341, 8350, 8441, 8460, 8500-8501, 8524, 8530, 8551, 8581, 8585, 8710, 8772, 8806, 8850, 8854, 8896, 8935, 9015, 9042, 9071, 9101, 9181, 9370, 9500, 9561, 9581

- Statistic not shown due to fewer than 16 cases during the time period.

Figure 15.1

SEER Observed Incidence, SEER Delay Adjusted Incidence and US Death Rates^a Cancer of the Lung and Bronchus, by Race and Sex



Source: SEER 9 areas and US Mortality Files (National Center for Health Statistics, CDC).

^a Rates are age-adjusted to the 2000 US Std Population (19 age groups - Census P25-1103).

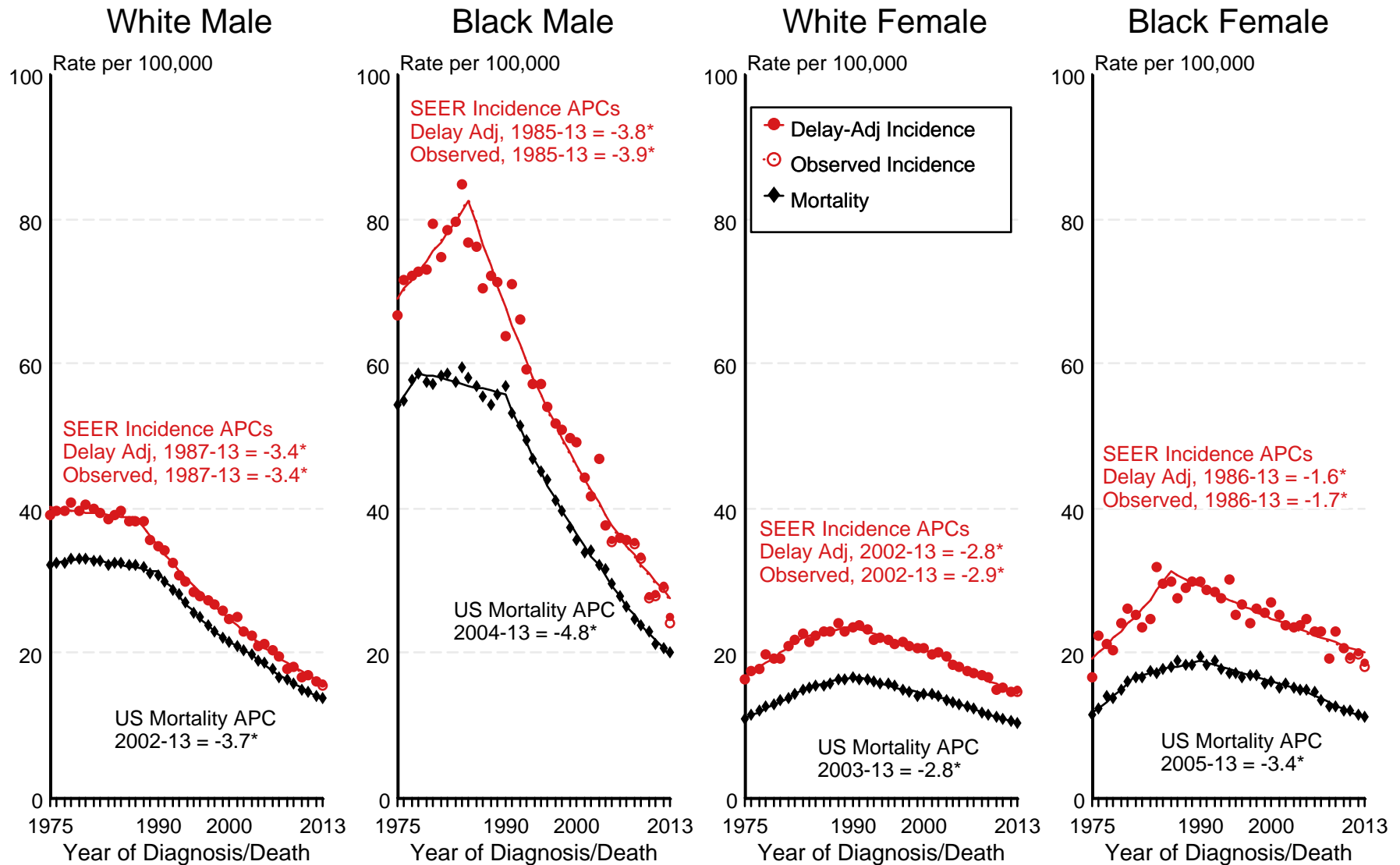
Regression lines and APCs are calculated using the Joinpoint Regression Program Version 4.3.0.0, April 2016, National Cancer Institute.

The APC is the Annual Percent Change for the regression line segments. The APC shown on the graph is for the most recent trend.

* The APC is significantly different from zero ($p < 0.05$).

Figure 15.2

SEER Observed Incidence, SEER Delay Adjusted Incidence and US Death Rates^a Cancer of the Lung and Bronchus, Under 65 Years of Age, by Race and Sex



Source: SEER 9 areas and US Mortality Files (National Center for Health Statistics, CDC).

^a Rates are age-adjusted to the 2000 US Std Population (19 age groups - Census P25-1103).

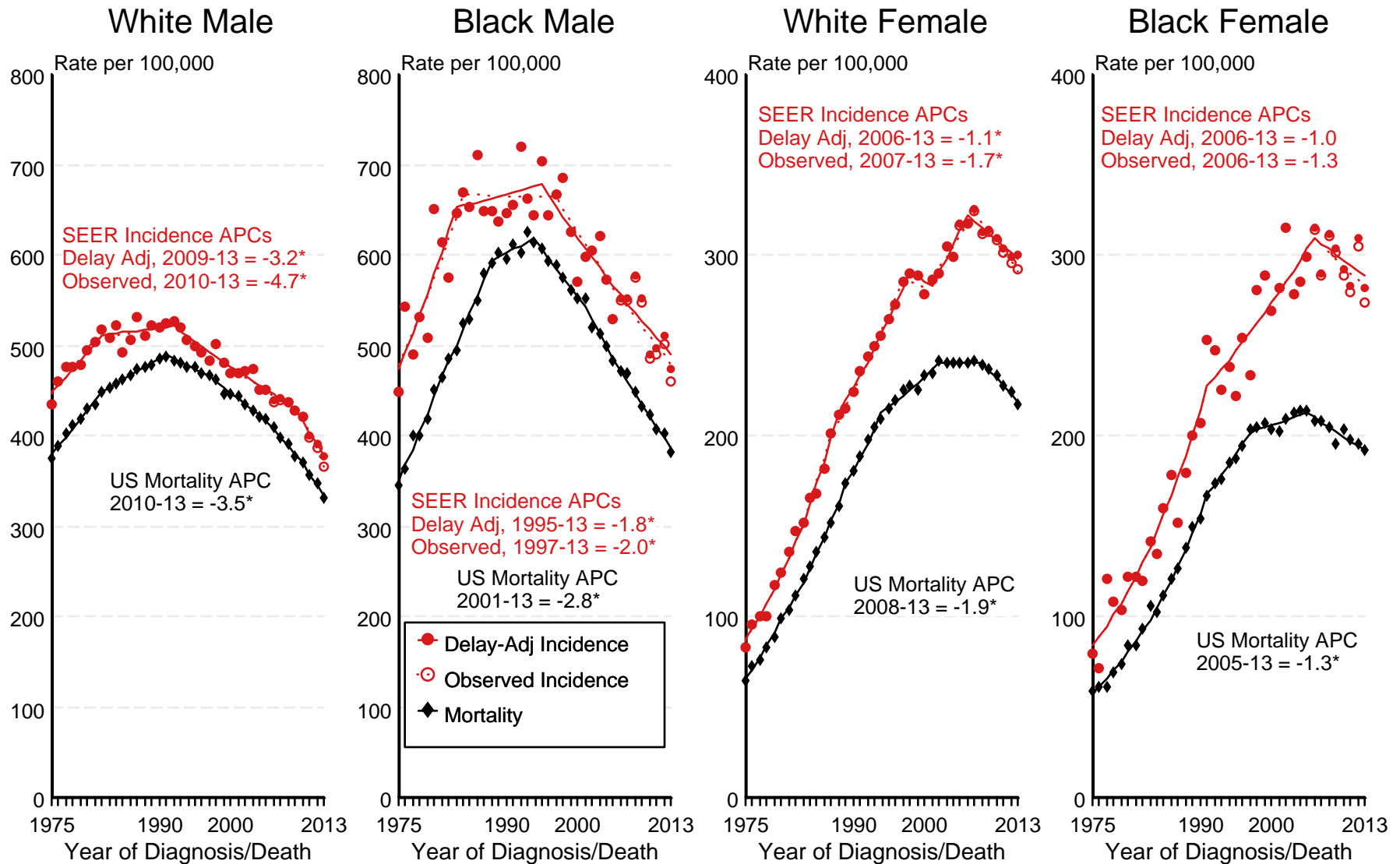
Regression lines and APCs are calculated using the Joinpoint Regression Program Version 4.3.0.0, April 2016, National Cancer Institute.

The APC is the Annual Percent Change for the regression line segments. The APC shown on the graph is for the most recent trend.

* The APC is significantly different from zero ($p < 0.05$).

Figure 15.3

SEER Observed Incidence, SEER Delay Adjusted Incidence and US Death Rates^a Cancer of the Lung and Bronchus, Ages 65 and Over, by Race and Sex



Source: SEER 9 areas and US Mortality Files (National Center for Health Statistics, CDC).

^a Rates are age-adjusted to the 2000 US Std Population (19 age groups - Census P25-1103).

Regression lines and APCs are calculated using the Joinpoint Regression Program Version 4.3.0.0, April 2016, National Cancer Institute.

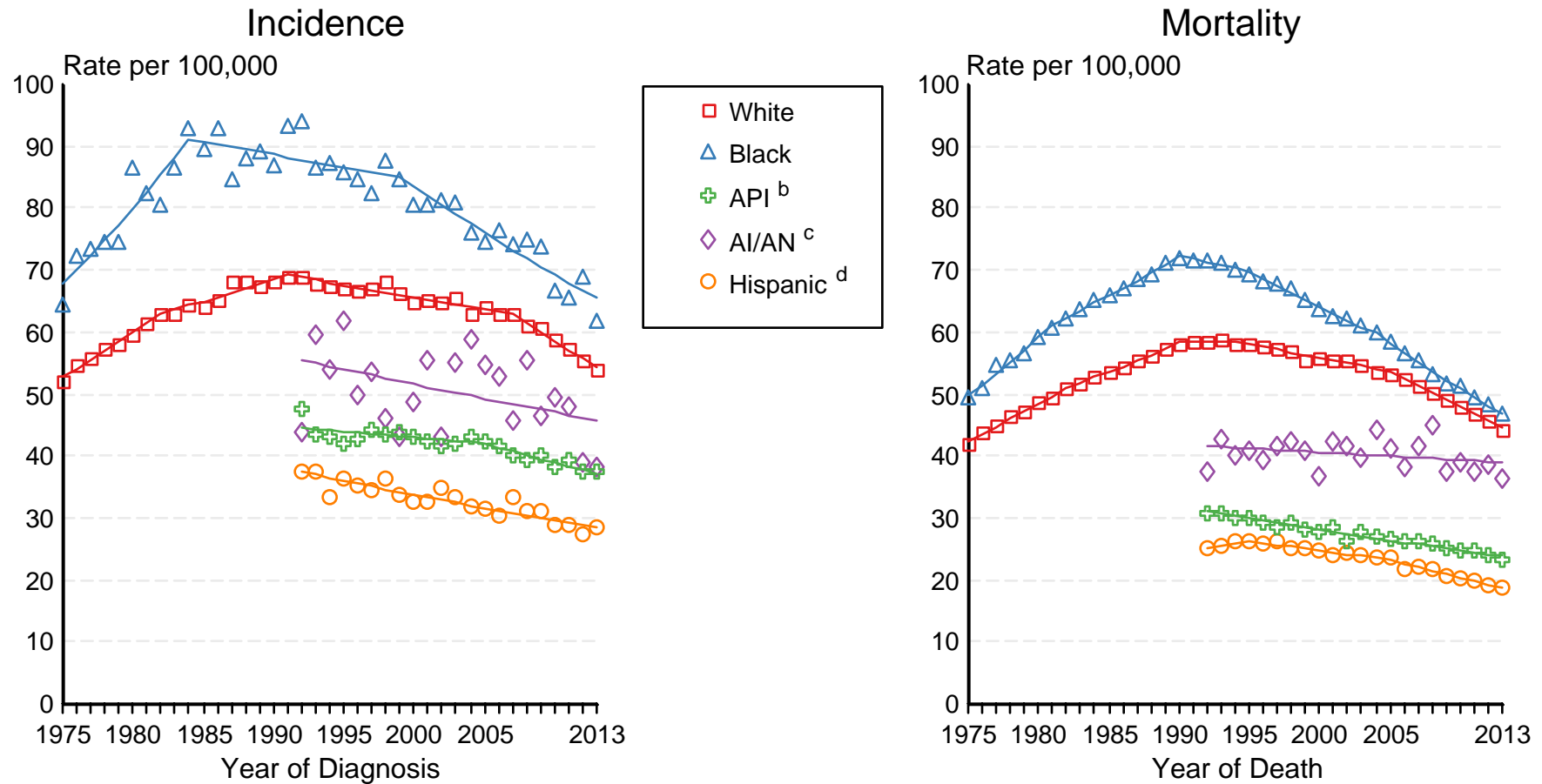
The APC is the Annual Percent Change for the regression line segments. The APC shown on the graph is for the most recent trend.

* The APC is significantly different from zero ($p < 0.05$).

Figure 15.4

SEER Incidence and US Death Rates^a Cancer of the Lung and Bronchus, Both Sexes

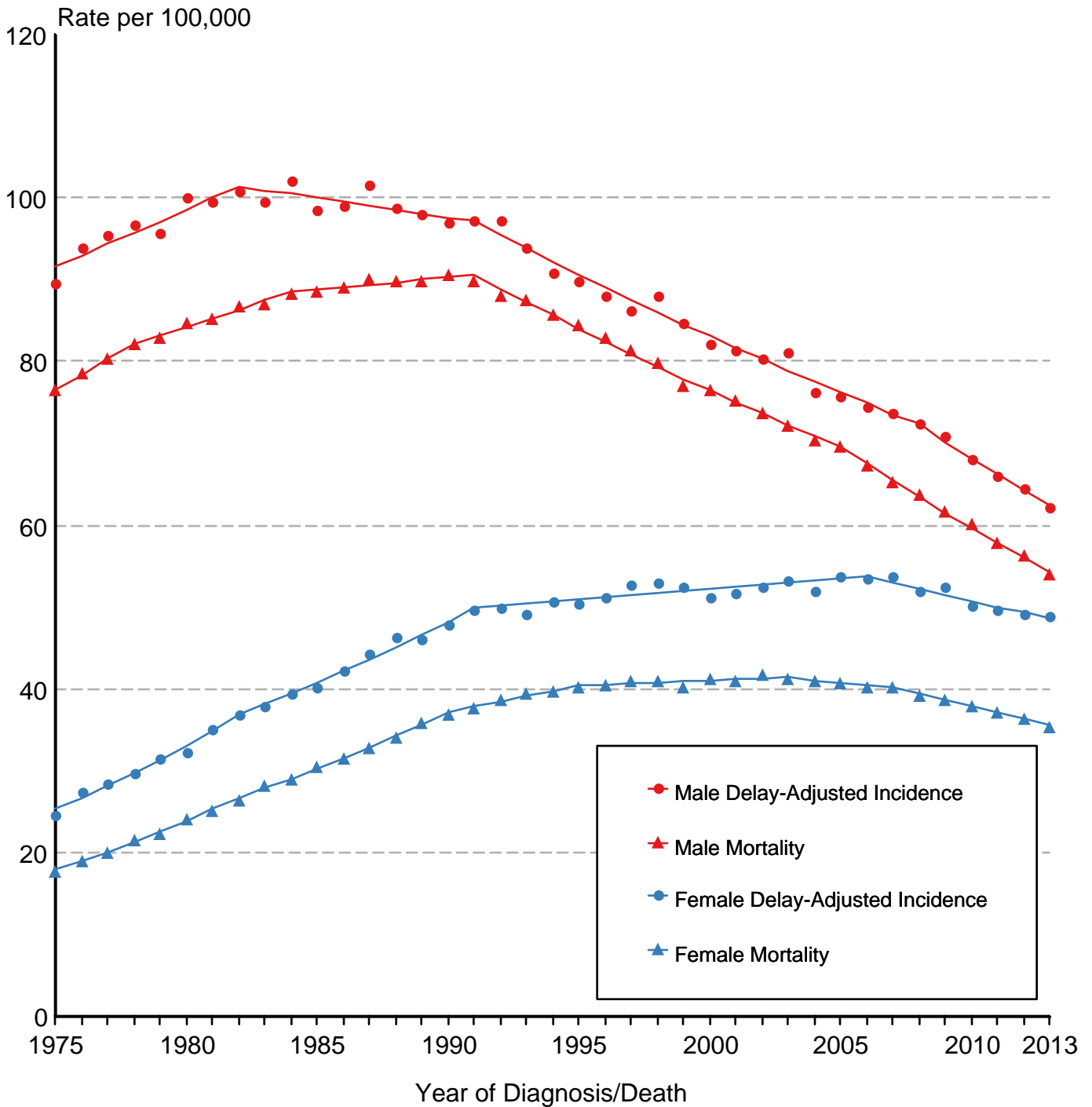
Joinpoint Analyses for Whites and Blacks from 1975-2013
and for Asian/Pacific Islanders, American Indians/Alaska Natives and Hispanics from 1992-2013



Source: Incidence data for whites and blacks are from the SEER 9 areas (San Francisco, Connecticut, Detroit, Hawaii, Iowa, New Mexico, Seattle, Utah, Atlanta). Incidence data for Asian/Pacific Islanders, American Indians/Alaska Natives and Hispanics are from the SEER 13 Areas (SEER 9 Areas, San Jose-Monterey, Los Angeles, Alaska Native Registry and Rural Georgia). Mortality data are from US Mortality Files, National Center for Health Statistics, CDC.

- ^a Rates are age-adjusted to the 2000 US Std Population (19 age groups - Census P25-1103). Regression lines are calculated using the Joinpoint Regression Program Version 4.3.0.0, April 2016, National Cancer Institute. Joinpoint analyses for Whites and Blacks during the 1975-2013 period allow a maximum of 5 joinpoints. Analyses for other ethnic groups during the period 1992-2013 allow a maximum of 4 joinpoints.
- ^b API = Asian/Pacific Islander.
- ^c AI/AN = American Indian/Alaska Native. Rates for American Indian/Alaska Native are based on the CHSDA(Contract Health Service Delivery Area) counties.
- ^d Hispanic is not mutually exclusive from whites, blacks, Asian/Pacific Islanders, and American Indians/Alaska Natives. Incidence data for Hispanics are based on NHIA and exclude cases from the Alaska Native Registry. Mortality data for Hispanics exclude cases from New Hampshire and Oklahoma.

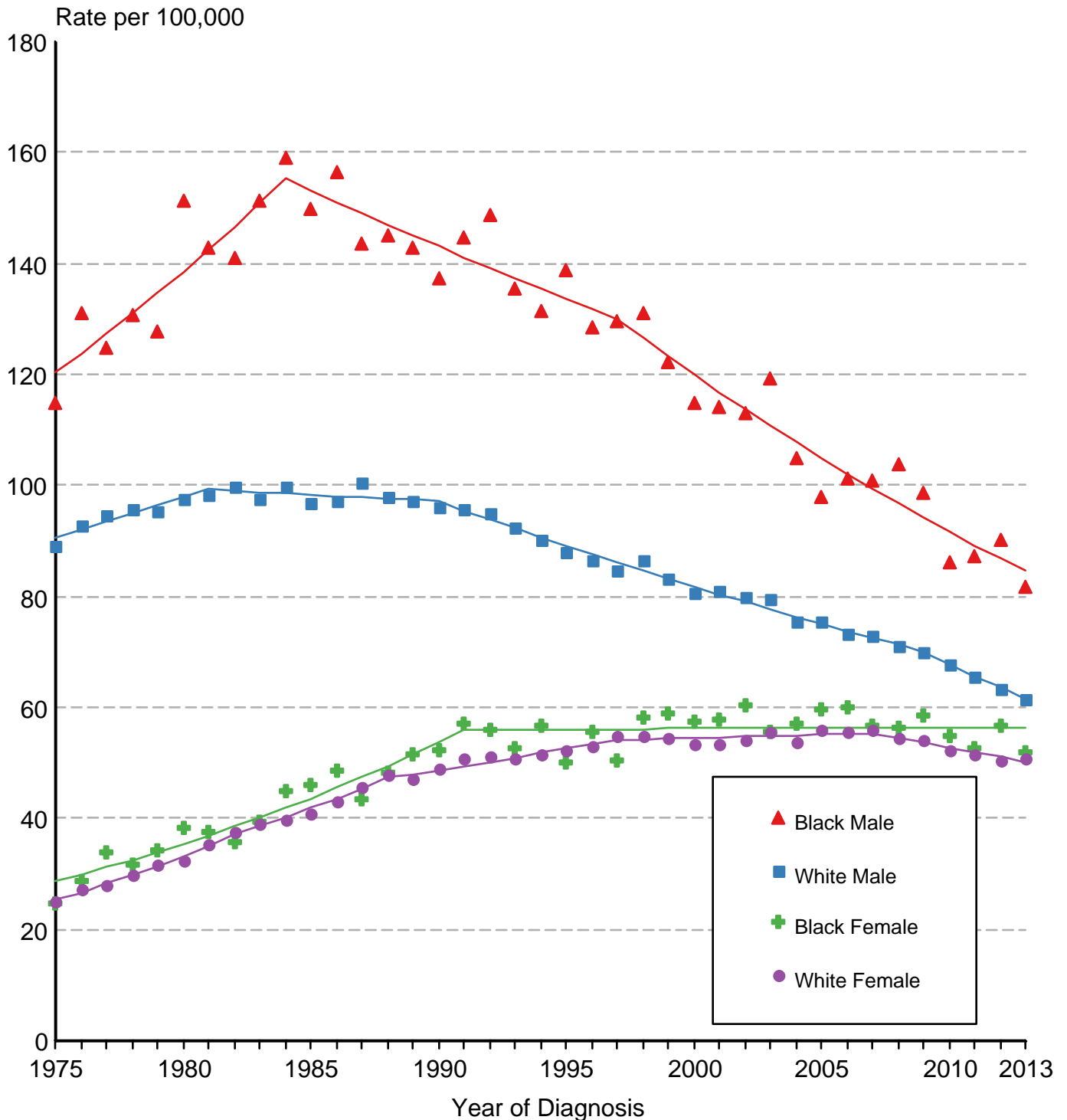
Cancer of the Lung & Bronchus SEER Delay-Adjusted Incidence & US Death Rates, 1975-2013, All Races, By Sex



Source: SEER 9 areas and US Mortality Files (National Center for Health Statistics, CDC). Rates are age-adjusted to the 2000 US Std Population (19 age groups - Census P25-1103). Regression lines are calculated using the Joinpoint Regression Program Version 4.3.0.0, April 2016, National Cancer Institute.

Figure 15.6

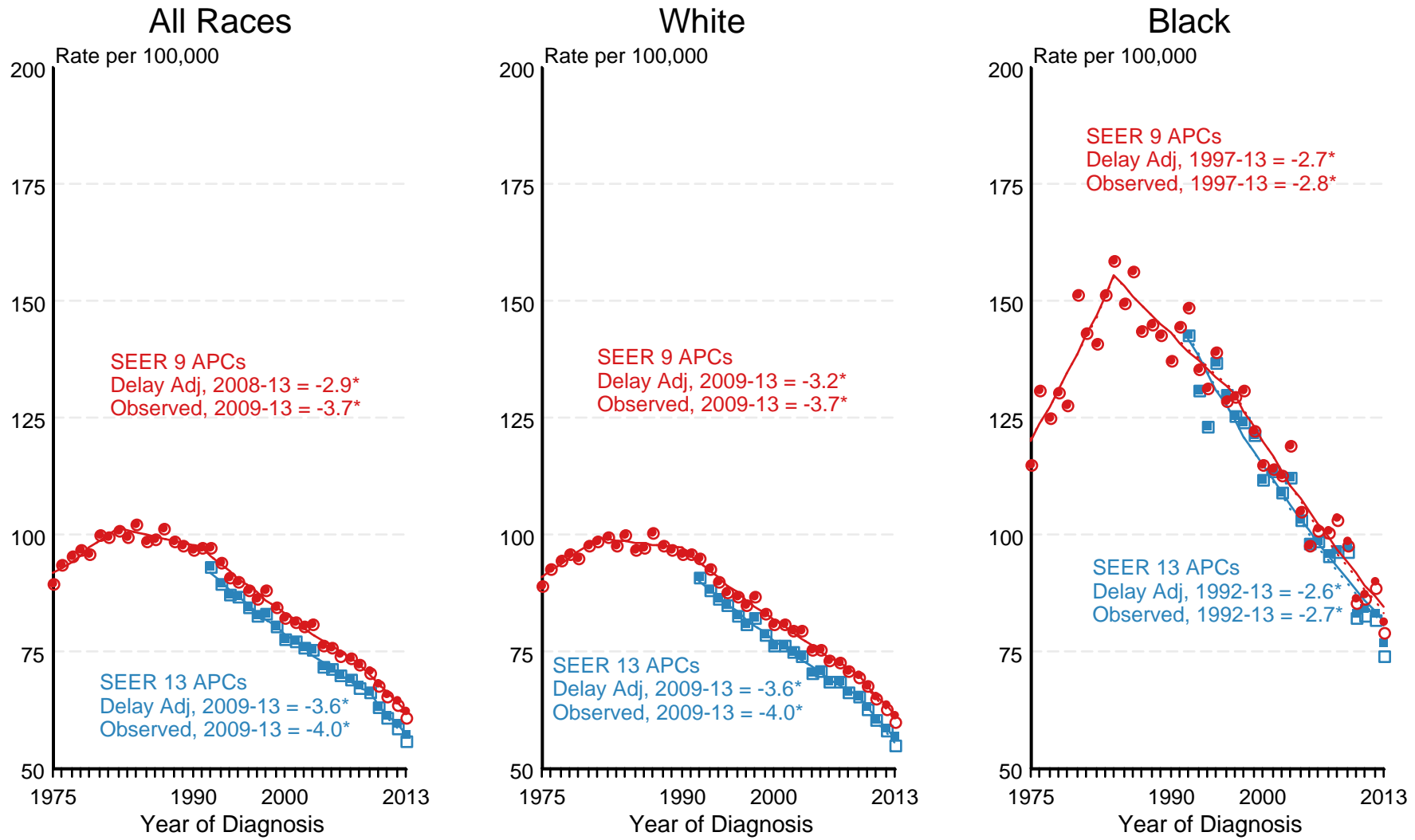
Cancer of the Lung & Bronchus SEER Delay-Adjusted Incidence, 1975-2013 By Sex and Race



Source: SEER 9 areas. Rates are age-adjusted to the 2000 US Std Population (19 age groups - Census P25-1103). Regression lines are calculated using the Joinpoint Regression Program Version 4.3.0.0, April 2016, National Cancer Institute.

Figure 15.7

SEER Observed Incidence and SEER Delay Adjusted Incidence Rates^a SEER 9 Areas Compared to SEER 13 Areas Cancer of the Lung and Bronchus, Male, by Race

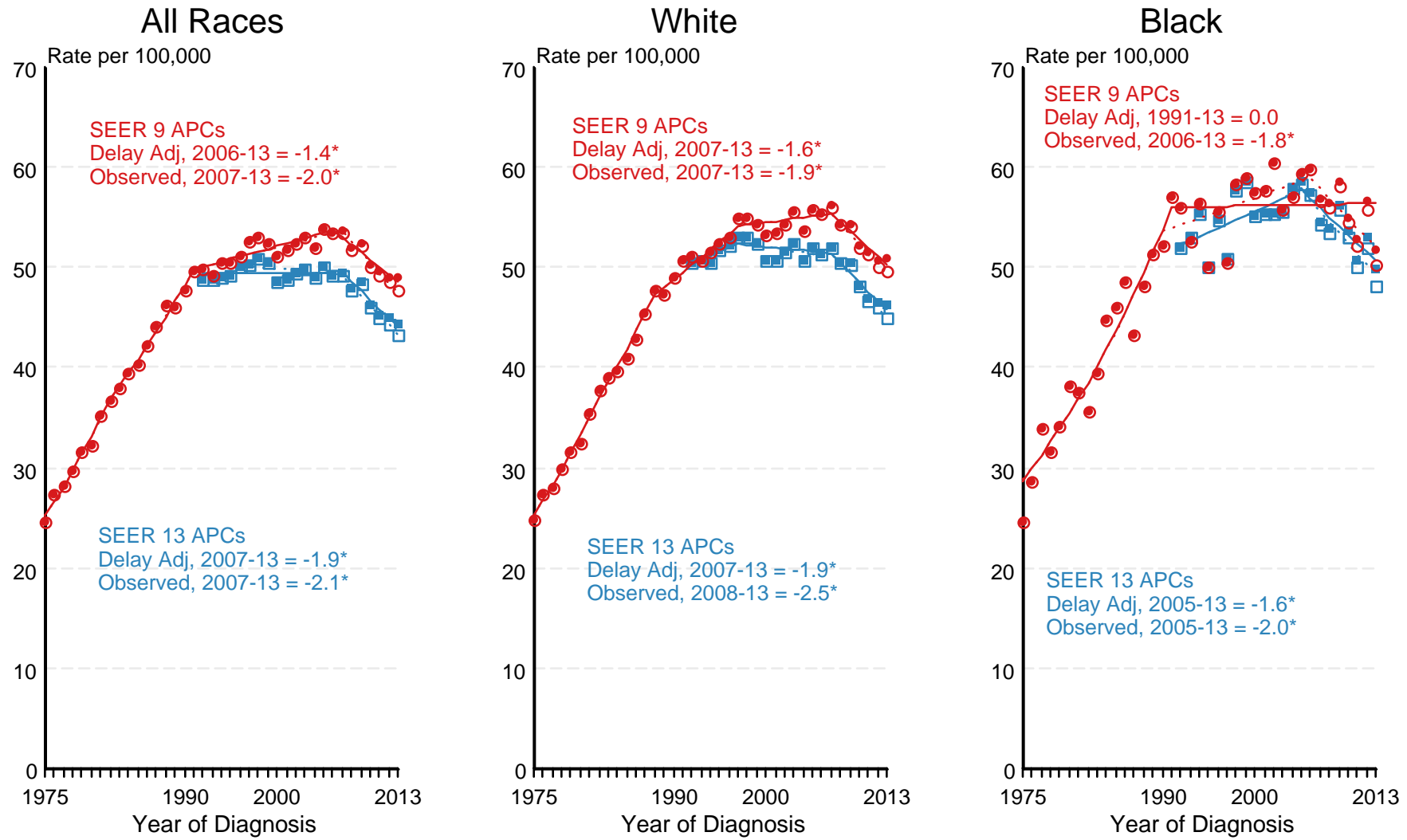


● SEER 9 Delay-Adj. Incidence
 ○ SEER 9 Observed Incidence
 ■ SEER 13 Delay-Adj. Incidence
 □ SEER 13 Observed Incidence

Source: SEER 9 areas and SEER 13 areas.
^a Rates are age-adjusted to the 2000 US Std Population (19 age groups - Census P25-1103).
 Regression lines and APCs are calculated using the Joinpoint Regression Program Version 4.3.0.0, April 2016, National Cancer Institute.
 The APC is the Annual Percent Change for the regression line segments. The APC shown on the graph is for the most recent trend.
 * The APC is significantly different from zero (p < 0.05).

Figure 15.8

SEER Observed Incidence and SEER Delay Adjusted Incidence Rates^a SEER 9 Areas Compared to SEER 13 Areas Cancer of the Lung and Bronchus, Female, by Race



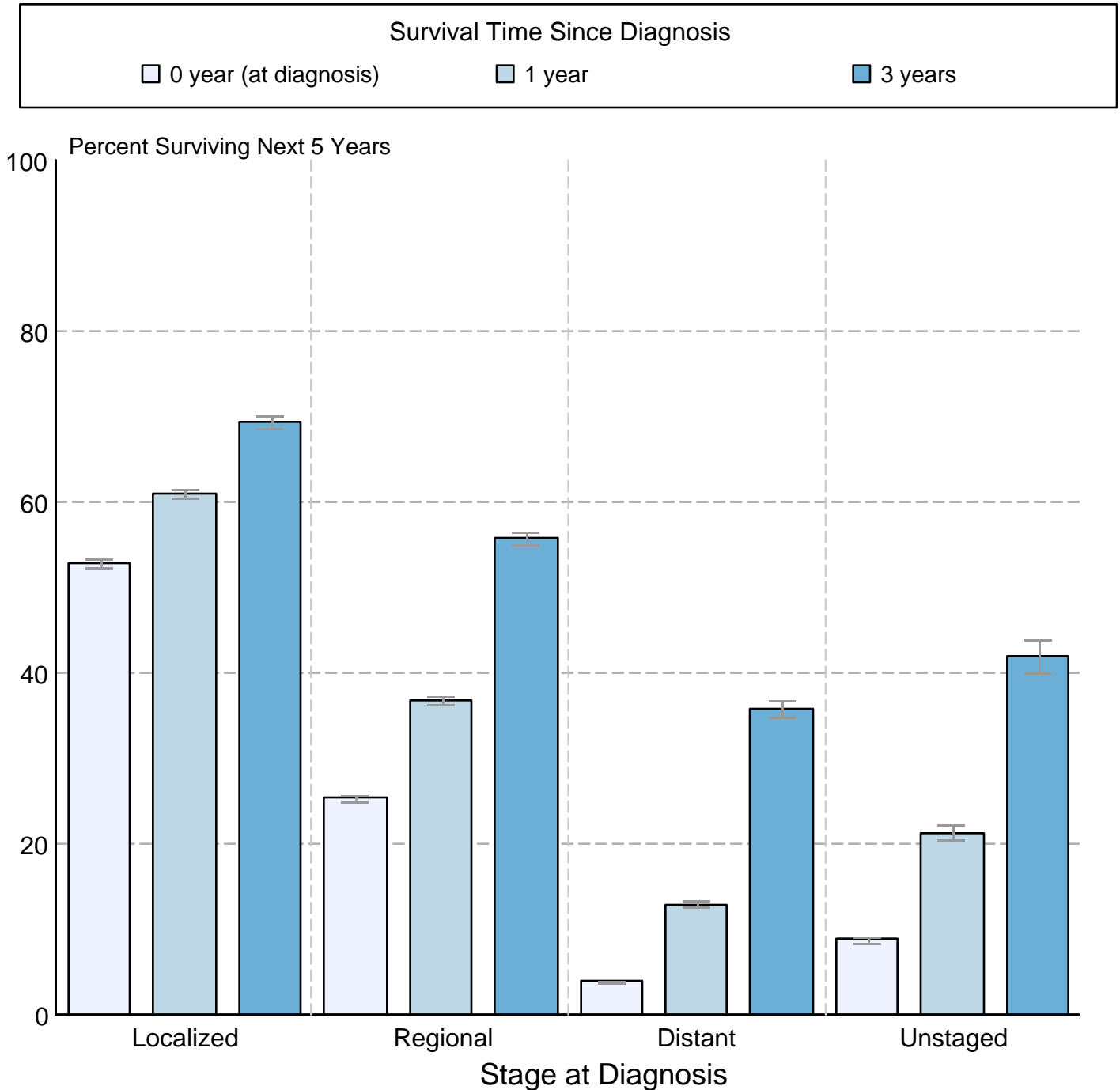
● SEER 9 Delay-Adj. Incidence ○ SEER 9 Observed Incidence ■ SEER 13 Delay-Adj. Incidence □ SEER 13 Observed Incidence

Source: SEER 9 areas and SEER 13 areas.
^a Rates are age-adjusted to the 2000 US Std Population (19 age groups - Census P25-1103).
 Regression lines and APCs are calculated using the Joinpoint Regression Program Version 4.3.0.0, April 2016, National Cancer Institute.
 The APC is the Annual Percent Change for the regression line segments. The APC shown on the graph is for the most recent trend.
 * The APC is significantly different from zero (p < 0.05).

Figure 15.9

Cancer of the Lung and Bronchus 5-Year SEER Conditional Relative Survival and 95% Confidence Intervals

Probability of surviving the next 5 years given the cohort
has already survived 0, 1, or 3 years
1998-2012 by stage at diagnosis



Source: SEER 18 areas (San Francisco, Connecticut, Detroit, Hawaii, Iowa, New Mexico, Seattle, Utah, Atlanta, San Jose-Monterey, Los Angeles, Alaska Native Registry, Rural Georgia, California excluding SF/SJM/LA, Kentucky, Louisiana, New Jersey and Georgia excluding ATL/RG). California excluding SF/SJM/LA, Kentucky, Louisiana, New Jersey and Georgia excluding ATL/RG contribute cases for diagnosis years 2000 and later. The remaining 13 SEER Areas contribute cases for the entire time period. Percent surviving is not shown if based on less than 25 cases. Confidence intervals are not shown if length of the confidence interval is greater than 5 times the standard error.