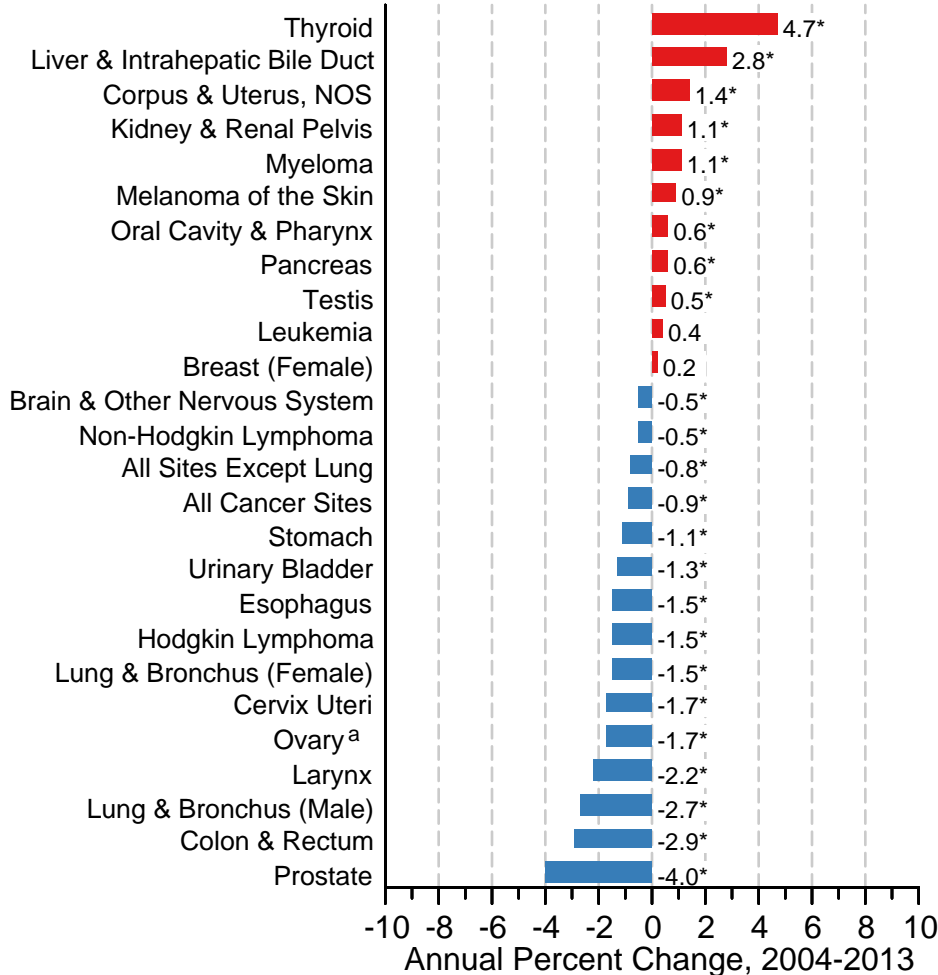


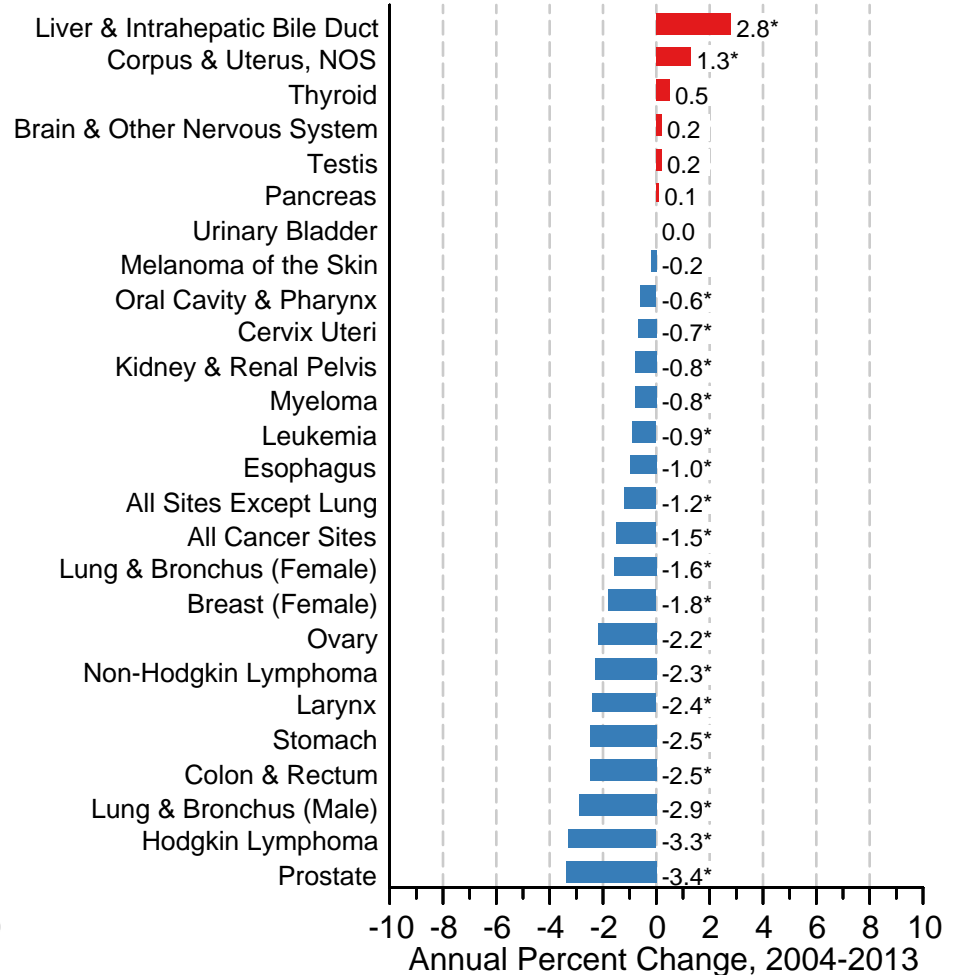
Figure 1.4

# Trends in SEER Incidence and US Death Rates by Primary Cancer Site 2004-2013

## Trends in SEER Incidence Rates



## Trends in US Cancer Death Rates



Source: SEER 18 areas (San Francisco, Connecticut, Detroit, Hawaii, Iowa, New Mexico, Seattle, Utah, Atlanta, San Jose-Monterey, Los Angeles, Alaska Native Registry, Rural Georgia, California excluding SF/SJM/LA, Kentucky, Louisiana, New Jersey and Georgia excluding ATL/RG) and US Mortality Files, National Center for Health Statistics, Centers for Disease Control and Prevention.

Underlying rates are per 100,000 and age-adjusted to the 2000 US Std Population (19 age groups - Census P25-1103).

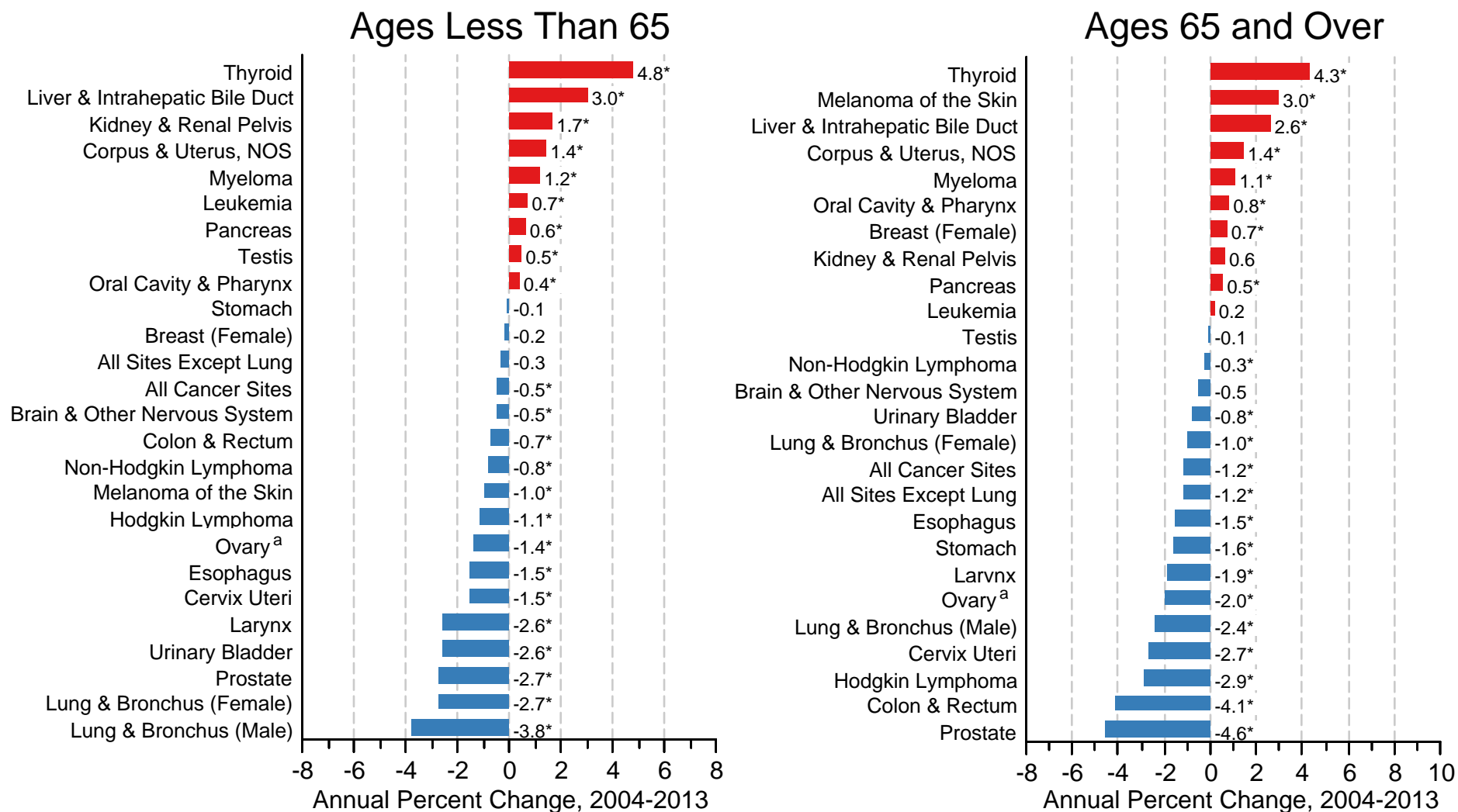
For sex-specific cancer sites, the population was limited to the population of the appropriate sex.

\* The APC is significantly different from zero ( $p < .05$ ).

<sup>a</sup> Ovary excludes borderline cases or histologies 8442, 8451, 8462, 8472, and 8473.

Figure 1.5

# Trends in SEER Incidence Rates by Age Group and Primary Cancer Site 2004-2013



Source: SEER 18 areas (San Francisco, Connecticut, Detroit, Hawaii, Iowa, New Mexico, Seattle, Utah, Atlanta, San Jose-Monterey, Los Angeles, Alaska Native Registry, Rural Georgia, California excluding SF/SJM/LA, Kentucky, Louisiana, New Jersey and Georgia excluding ATL/RG).

Underlying rates are per 100,000 and age-adjusted to the 2000 US Std Population (19 age groups - Census P25-1103).

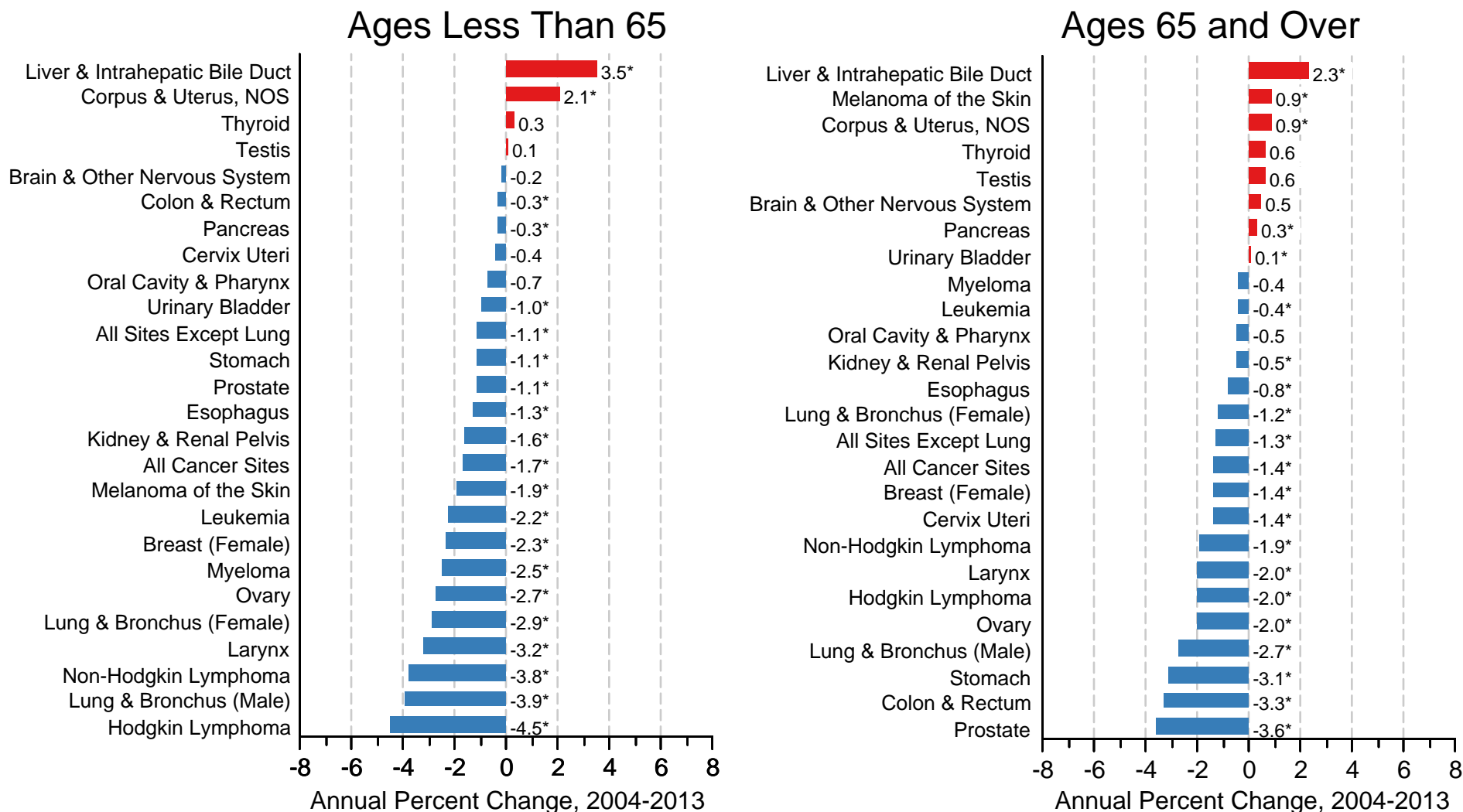
For sex-specific cancer sites, the population was limited to the population of the appropriate sex.

\* The APC is significantly different from zero ( $p < .05$ ).

<sup>a</sup> Ovary excludes borderline cases or histologies 8442, 8451, 8462, 8472, and 8473.

Figure 1.6

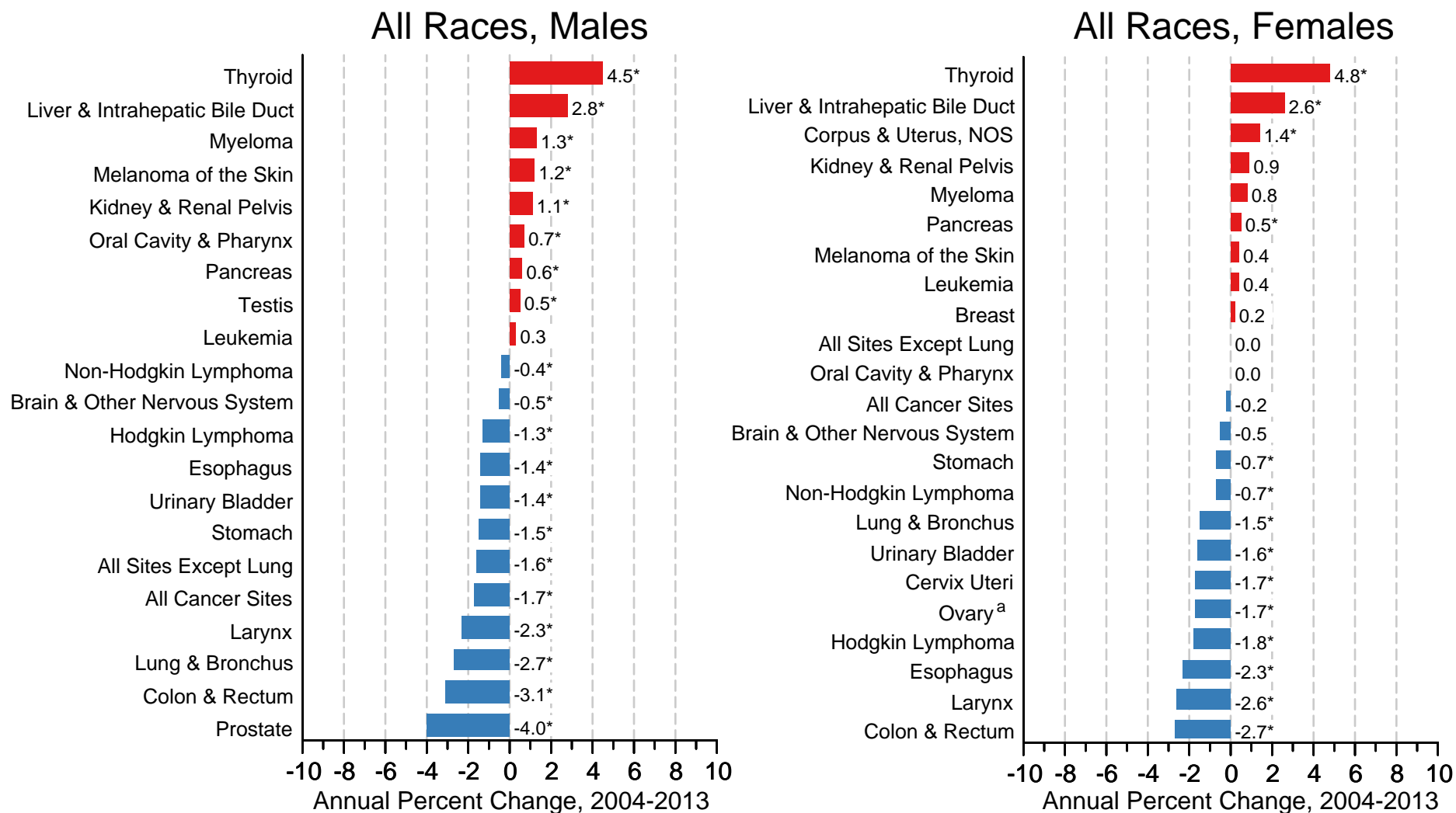
# Trends in US Death Rates by Age Group and Primary Cancer Site 2004-2013



Source: US Mortality Files, National Center for Health Statistics, Centers for Disease Control and Prevention.  
 Underlying rates are per 100,000 and age-adjusted to the 2000 US Std Population (19 age groups - Census P25-1103).  
 For sex-specific cancer sites, the population was limited to the population of the appropriate sex.  
 \* The APC is significantly different from zero ( $p < .05$ ).

Figure 1.7

# Trends in SEER Incidence Rates by Sex and Primary Cancer Site 2004-2013



Source: SEER 18 areas (San Francisco, Connecticut, Detroit, Hawaii, Iowa, New Mexico, Seattle, Utah, Atlanta, San Jose-Monterey, Los Angeles, Alaska Native Registry, Rural Georgia, California excluding SF/SJM/LA, Kentucky, Louisiana, New Jersey and Georgia excluding ATL/RG).

Underlying rates are per 100,000 and age-adjusted to the 2000 US Std Population (19 age groups - Census P25-1103).

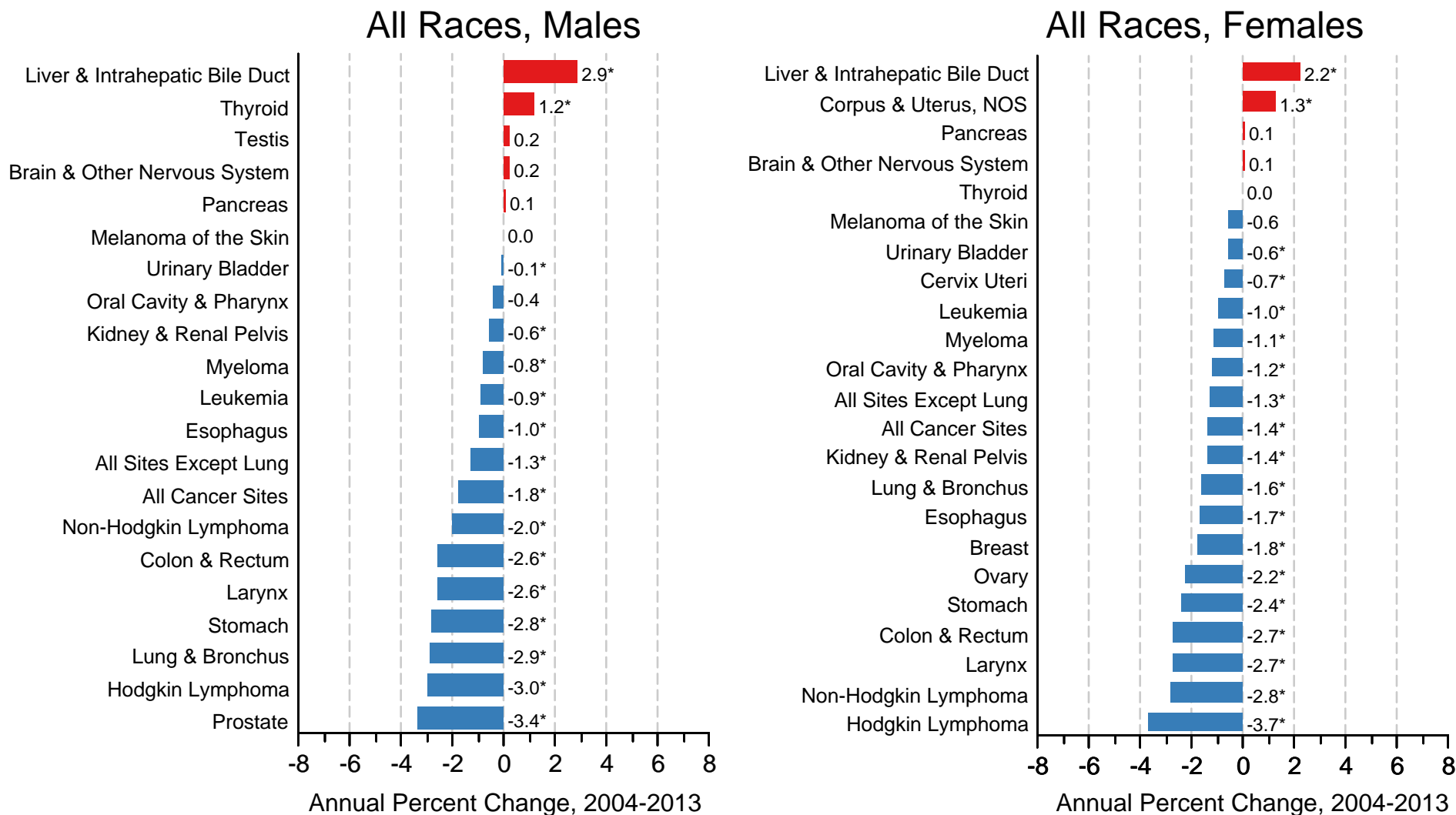
For sex-specific cancer sites, the population was limited to the population of the appropriate sex.

\* The APC is significantly different from zero ( $p < .05$ ).

<sup>a</sup> Ovary excludes borderline cases or histologies 8442, 8451, 8462, 8472, and 8473.

Figure 1.8

# Trends in US Death Rates by Sex and Primary Cancer Site 2004-2013



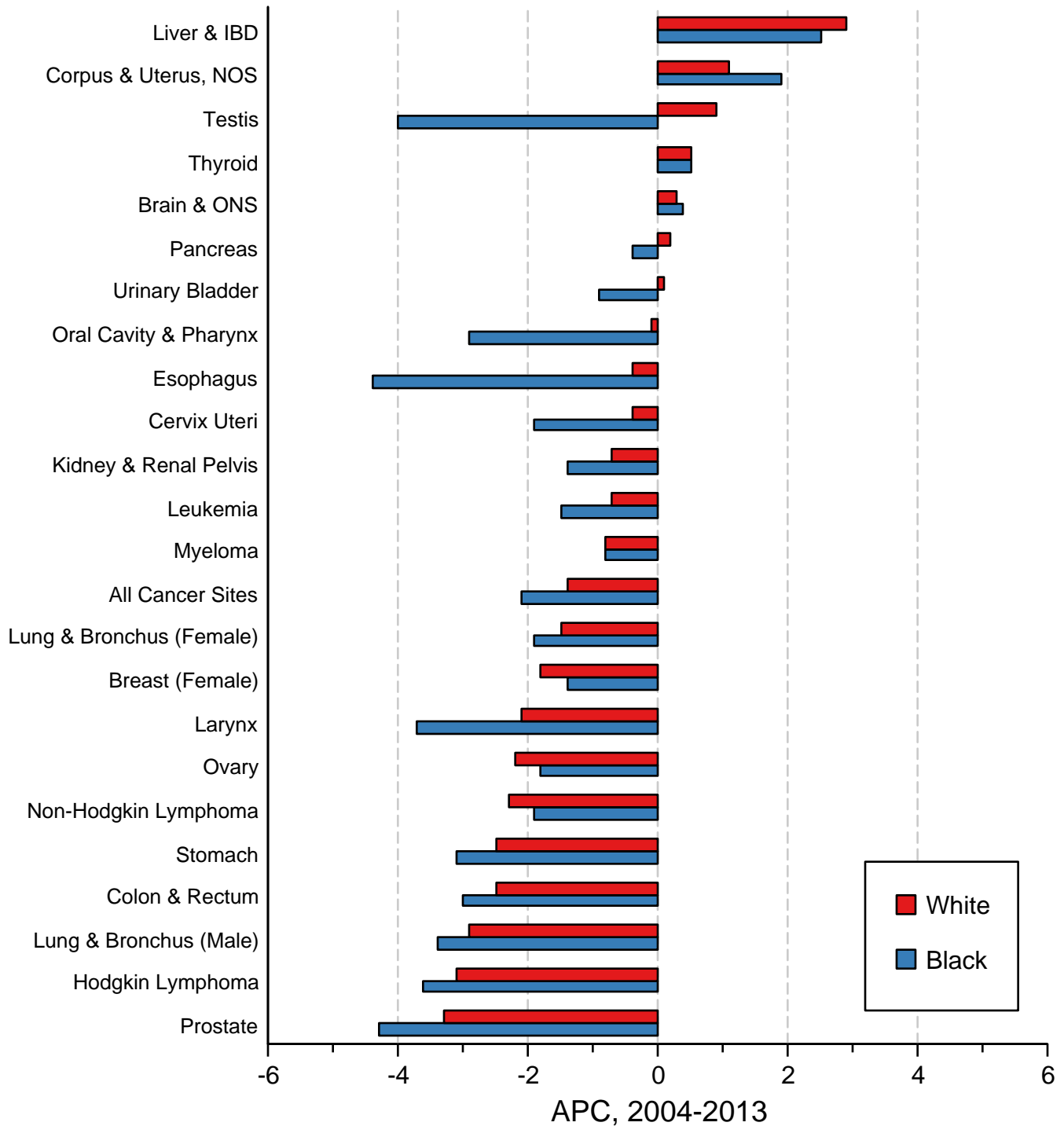
Source: US Mortality Files, National Center for Health Statistics, Centers for Disease Control and Prevention. Underlying rates are per 100,000 and age-adjusted to the 2000 US Std Population (19 age groups - Census P25-1103).

For sex-specific cancer sites, the population was limited to the population of the appropriate sex.

\* The APC is significantly different from zero ( $p < .05$ ).

Figure 1.10

# Trends in US Death Rates, 2004-2013 All Ages, by Race and Primary Cancer Site



Source: US Mortality Files, National Center for Health Statistics, Centers for Disease Control and Prevention. The APC is the Annual Percent Change over the time interval. Trends are based on rates age-adjusted to the 2000 US Std Population (19 age groups - Census P25-1130).