

Table 2.1
All Cancer Sites (Invasive)

Trends in SEER Incidence^{ab} and U.S. Mortality^c Using the Joinpoint Regression Program,
1975-2016 With up to Five Joinpoints, 2000-2016 With up to Three Joinpoints,
Both Sexes by Race/Ethnicity

	JP Trend 1		JP Trend 2		JP Trend 3		JP Trend 4		JP Trend 5		JP Trend 6		AAPC ^d	
	Years	APC	Years	APC	Years	APC	Years	APC	Years	APC	Years	APC	2007-16	2012-16
<u>SEER 9 Delay-Adjusted Incidence^a, 1975-2016</u>														
All Races	1975-89	1.2*	1989-92	2.8	1992-95	-2.4	1995-98	1.1	1998-08	-0.3*	2008-16	-1.0*	-0.9*	-1.0*
White	1975-82	0.8*	1982-92	1.8*	1992-95	-2.1	1995-98	1.4	1998-08	-0.3	2008-16	-1.0*	-0.9*	-1.0*
Black	1975-84	1.6*	1984-89	0.5	1989-92	3.9*	1992-09	-0.6*	2009-14	-1.9*	2014-16	0.4	-1.1*	-0.8
<u>SEER 21 Delay-Adjusted Incidence^b, 2000-2016</u>														
All Races	2000-04	-0.9*	2004-07	0.6	2007-16	-1.0*							-1.0*	-1.0*
White	2000-04	-0.9	2004-07	0.7	2007-16	-1.0*							-1.0*	-1.0*
White NH ^{ef}	2000-04	-0.8	2004-07	0.9	2007-16	-0.9*							-0.9*	-0.9*
Black	2000-06	-0.7*	2006-09	0.5	2009-14	-1.8*	2014-16	0.1					-0.9*	-0.9
Black NH ^{ef}	2000-05	-0.7*	2005-09	0.3	2009-14	-1.8*	2014-16	0.2					-0.9*	-0.8
API ^e	2000-16	-0.4*											-0.4*	-0.4*
AI/AN ^{eg}	2000-16	0.1											0.1	0.1
Hispanic ^f	2000-16	-0.6*											-0.6*	-0.6*
<u>U.S. Cancer Mortality^c, 1975-2016</u>														
All Races	1975-84	0.5*	1984-91	0.3*	1991-94	-0.5	1994-98	-1.3*	1998-01	-0.8*	2001-16	-1.5*	-1.5*	-1.5*
White	1975-90	0.4*	1990-94	-0.3	1994-98	-1.2*	1998-01	-0.6	2001-16	-1.4*			-1.4*	-1.4*
Black	1975-83	1.3*	1983-91	0.7*	1991-95	-0.8*	1995-01	-1.6*	2001-16	-2.1*			-2.1*	-2.1*
<u>U.S. Cancer Mortality^c, 2000-2016</u>														
All Races	2000-16	-1.5*											-1.5*	-1.5*
White	2000-16	-1.4*											-1.4*	-1.4*
White NH ^{ef}	2000-16	-1.4*											-1.4*	-1.4*
Black	2000-16	-2.1*											-2.1*	-2.1*
Black NH ^{ef}	2000-16	-2.0*											-2.0*	-2.0*
API ^e	2000-16	-1.3*											-1.3*	-1.3*
AI/AN ^{eg}	2000-16	-0.9*											-0.9*	-0.9*
Hispanic ^f	2000-16	-1.3*											-1.3*	-1.3*

Joinpoint Regression Program Version 4.7, February 2019, National Cancer Institute. (<https://surveillance.cancer.gov/joinpoint/>).

The APC is the Annual Percent Change based on rates age-adjusted to the 2000 US Std Population (19 age groups - Census P25-1130).

^a Trends are from the SEER 9 areas (San Francisco, Connecticut, Detroit, Hawaii, Iowa, New Mexico, Seattle, Utah, and Atlanta).

^b Trends are from the SEER 21 areas (SEER 9 areas, Los Angeles, Alaska Native Registry, Rural Georgia, California excluding SF/SJM/LA, Kentucky, Louisiana, New Jersey, Georgia excluding ATL/RG, Idaho, New York and Massachusetts).

^c Trends are from US Mortality Files, National Center for Health Statistics, Centers for Disease Control and Prevention.

^d The AAPC is the Average Annual Percent Change and is based on the APCs calculated by Joinpoint.

^e API - Asian/Pacific Islander, AI/AN - American Indian/Alaska Native, NH - Non-Hispanic

^f Hispanic and Non-Hispanic are not mutually exclusive from whites, blacks, Asian/Pacific Islanders, and American Indians/Alaska Natives. Incidence data for Hispanics and Non-Hispanics are based on NHIA and exclude cases from the Alaska Native Registry.

^g Data for American Indian/Alaska Native are based on the Purchased/Referred Care Delivery Area (PRCDA) counties.

* The APC/AAPC is significantly different from zero (p<.05).

- Joinpoint regression line analysis could not be performed on data series.

Table 2.2
All Cancer Sites (Invasive)

Trends in SEER Incidence^{ab} and U.S. Mortality^c Using the Joinpoint Regression Program,
1975-2016 With up to Five Joinpoints, 2000-2016 With up to Three Joinpoints,
Males by Race/Ethnicity

	JP Trend 1		JP Trend 2		JP Trend 3		JP Trend 4		JP Trend 5		JP Trend 6		AAPC ^d	
	Years	APC	Years	APC	Years	APC	Years	APC	Years	APC	Years	APC	2007-16	2012-16
<u>SEER 9 Delay-Adjusted Incidence^a, 1975-2016</u>														
All Races	1975-89	1.3*	1989-92	5.0*	1992-95	-4.2*	1995-08	-0.3*	2008-13	-2.8*	2013-16	-0.4	-1.7*	-1.0
White	1975-89	1.4*	1989-92	4.9*	1992-95	-4.5*	1995-07	-0.1	2007-13	-2.4*	2013-16	-0.5	-1.8*	-1.0
Black	1975-81	2.8*	1981-89	0.6	1989-92	7.6*	1992-96	-2.5	1996-08	-1.0*	2008-16	-2.8*	-2.6*	-2.8*
<u>SEER 21 Delay-Adjusted Incidence^b, 2000-2016</u>														
All Races	2000-04	-1.4	2004-07	0.5	2007-16	-2.0*							-2.0*	-2.0*
White	2000-04	-1.3	2004-07	0.8	2007-13	-2.3*	2013-16	-1.1					-1.9*	-1.4*
White NH ^{ef}	2000-04	-1.3*	2004-07	1.0	2007-13	-2.2*	2013-16	-0.8					-1.7*	-1.1
Black	2000-05	-1.7*	2005-09	-0.2	2009-14	-3.5*	2014-16	-0.2					-2.0*	-1.8*
Black NH ^{ef}	2000-05	-1.6*	2005-09	-0.2	2009-14	-3.5*	2014-16	0.0					-2.0*	-1.7*
API ^e	2000-16	-1.5*											-1.5*	-1.5*
AI/AN ^{eg}	2000-16	-0.4											-0.4	-0.4
Hispanic ^f	2000-08	-0.7*	2008-16	-2.5*									-2.3*	-2.5*
<u>U.S. Cancer Mortality^c, 1975-2016</u>														
All Races	1975-79	1.0*	1979-90	0.3*	1990-93	-0.5	1993-01	-1.5*	2001-16	-1.8*			-1.8*	-1.8*
White	1975-79	0.9*	1979-91	0.2*	1991-94	-0.8	1994-97	-1.8*	1997-00	-1.0*	2000-16	-1.7*	-1.7*	-1.7*
Black	1975-82	1.8*	1982-90	1.0*	1990-93	-0.2	1993-01	-2.0*	2001-16	-2.7*			-2.7*	-2.7*
<u>U.S. Cancer Mortality^c, 2000-2016</u>														
All Races	2000-16	-1.8*											-1.8*	-1.8*
White	2000-16	-1.7*											-1.7*	-1.7*
White NH ^{ef}	2000-16	-1.6*											-1.6*	-1.6*
Black	2000-16	-2.7*											-2.7*	-2.7*
Black NH ^{ef}	2000-16	-2.6*											-2.6*	-2.6*
API ^e	2000-16	-1.6*											-1.6*	-1.6*
AI/AN ^{eg}	2000-16	-0.8*											-0.8*	-0.8*
Hispanic ^f	2000-16	-1.6*											-1.6*	-1.6*

Joinpoint Regression Program Version 4.7, February 2019, National Cancer Institute. (<https://surveillance.cancer.gov/joinpoint/>).

The APC is the Annual Percent Change based on rates age-adjusted to the 2000 US Std Population (19 age groups - Census P25-1130).

^a Trends are from the SEER 9 areas (San Francisco, Connecticut, Detroit, Hawaii, Iowa, New Mexico, Seattle, Utah, and Atlanta).

^b Trends are from the SEER 21 areas (SEER 9 areas, Los Angeles, Alaska Native Registry, Rural Georgia, California excluding SF/SJM/LA, Kentucky, Louisiana, New Jersey, Georgia excluding ATL/RG, Idaho, New York and Massachusetts).

^c Trends are from US Mortality Files, National Center for Health Statistics, Centers for Disease Control and Prevention.

^d The AAPC is the Average Annual Percent Change and is based on the APCs calculated by Joinpoint.

^e API - Asian/Pacific Islander, AI/AN - American Indian/Alaska Native, NH - Non-Hispanic

^f Hispanic and Non-Hispanic are not mutually exclusive from whites, blacks, Asian/Pacific Islanders, and American Indians/Alaska Natives. Incidence data for Hispanics and Non-Hispanics are based on NHIA and exclude cases from the Alaska Native Registry.

^g Data for American Indian/Alaska Native are based on the Purchased/Referred Care Delivery Area (PRCDA) counties.

* The APC/AAPC is significantly different from zero (p<.05).

- Joinpoint regression line analysis could not be performed on data series.

Table 2.3
All Cancer Sites (Invasive)

Trends in SEER Incidence^{ab} and U.S. Mortality^c Using the Joinpoint Regression Program,
1975-2016 With up to Five Joinpoints, 2000-2016 With up to Three Joinpoints,
Females by Race/Ethnicity

	JP Trend 1		JP Trend 2		JP Trend 3		JP Trend 4		JP Trend 5		JP Trend 6		AAPC ^d	
	Years	APC	Years	APC	Years	APC	Years	APC	Years	APC	Years	APC	2007-16	2012-16
<u>SEER 9 Delay-Adjusted Incidence^a, 1975-2016</u>														
All Races	1975-79	-0.3	1979-87	1.6*	1987-95	0.1	1995-98	1.5	1998-03	-0.5	2003-16	0.0	0.0	0.0
White	1975-79	-0.2	1979-87	1.7*	1987-95	0.1	1995-98	1.7	1998-03	-0.5	2003-16	0.0	0.0	0.0
Black	1975-91	1.2*	1991-16	0.1									0.1	0.1
<u>SEER 21 Delay-Adjusted Incidence^b, 2000-2016</u>														
All Races	2000-16	0.0											0.0	0.0
White	2000-16	0.0											0.0	0.0
White NH ^{ef}	2000-16	0.1*											0.1*	0.1*
Black	2000-16	0.2*											0.2*	0.2*
Black NH ^{ef}	2000-16	0.3*											0.3*	0.3*
API ^e	2000-16	0.4*											0.4*	0.4*
AI/AN ^{eg}	2000-16	0.6*											0.6*	0.6*
Hispanic ^f	2000-16	0.3*											0.3*	0.3*
<u>U.S. Cancer Mortality^c, 1975-2016</u>														
All Races	1975-90	0.6*	1990-94	-0.2	1994-02	-0.8*	2002-16	-1.4*					-1.4*	-1.4*
White	1975-90	0.6*	1990-95	-0.2	1995-98	-1.2*	1998-01	-0.3	2001-16	-1.3*			-1.3*	-1.3*
Black	1975-91	1.0*	1991-99	-0.6*	1999-16	-1.6*							-1.6*	-1.6*
<u>U.S. Cancer Mortality^c, 2000-2016</u>														
All Races	2000-16	-1.4*											-1.4*	-1.4*
White	2000-16	-1.3*											-1.3*	-1.3*
White NH ^{ef}	2000-16	-1.3*											-1.3*	-1.3*
Black	2000-16	-1.6*											-1.6*	-1.6*
Black NH ^{ef}	2000-16	-1.5*											-1.5*	-1.5*
API ^e	2000-16	-1.0*											-1.0*	-1.0*
AI/AN ^{eg}	2000-16	-1.2*											-1.2*	-1.2*
Hispanic ^f	2000-16	-1.0*											-1.0*	-1.0*

Joinpoint Regression Program Version 4.7, February 2019, National Cancer Institute. (<https://surveillance.cancer.gov/joinpoint/>).

The APC is the Annual Percent Change based on rates age-adjusted to the 2000 US Std Population (19 age groups - Census P25-1130).

^a Trends are from the SEER 9 areas (San Francisco, Connecticut, Detroit, Hawaii, Iowa, New Mexico, Seattle, Utah, and Atlanta).

^b Trends are from the SEER 21 areas (SEER 9 areas, Los Angeles, Alaska Native Registry, Rural Georgia, California excluding SF/SJM/LA, Kentucky, Louisiana, New Jersey, Georgia excluding ATL/RG, Idaho, New York and Massachusetts).

^c Trends are from US Mortality Files, National Center for Health Statistics, Centers for Disease Control and Prevention.

^d The AAPC is the Average Annual Percent Change and is based on the APCs calculated by Joinpoint.

^e API - Asian/Pacific Islander, AI/AN - American Indian/Alaska Native, NH - Non-Hispanic

^f Hispanic and Non-Hispanic are not mutually exclusive from whites, blacks, Asian/Pacific Islanders, and American Indians/Alaska Natives. Incidence data for Hispanics and Non-Hispanics are based on NHIA and exclude cases from the Alaska Native Registry.

^g Data for American Indian/Alaska Native are based on the Purchased/Referred Care Delivery Area (PRCDA) counties.

* The APC/AAPC is significantly different from zero ($p < .05$).

- Joinpoint regression line analysis could not be performed on data series.

Table 2.4
All Cancer Sites (Invasive)

Delay-adjusted SEER Incidence^a Rates by Year, Race and Sex

Year of Diagnosis:	All Races			Whites			Blacks		
	Total	Males	Females	Total	Males	Females	Total	Males	Females
1975-1979	407.21	484.10	365.02	409.22	485.27	369.82	437.58	564.34	350.92
1980	418.09	505.83	368.14	419.53	505.21	373.43	467.45	615.07	366.53
1981	425.27	510.79	377.15	427.67	510.81	383.88	472.99	634.35	363.04
1982	424.47	511.08	376.16	427.73	512.52	383.31	465.25	622.11	359.37
1983	431.09	519.92	380.69	434.33	520.93	387.91	487.26	646.27	382.24
1984	439.98	525.43	392.45	443.61	527.70	399.48	488.26	643.87	386.15
1985	448.89	531.21	403.21	453.52	533.64	411.48	489.44	643.82	388.71
1986	451.33	538.15	402.29	456.03	542.91	409.16	493.81	643.41	396.85
1987	468.13	563.34	413.34	475.00	569.00	423.37	501.15	666.26	394.20
1988	464.02	558.49	409.48	470.34	565.03	417.99	504.58	658.07	405.10
1989	467.99	567.20	408.59	475.36	573.76	418.77	492.94	661.19	385.17
1990	482.12	592.86	415.66	488.97	599.42	424.84	522.26	699.83	409.66
1991	503.14	637.49	419.03	510.63	644.61	428.65	549.60	765.72	412.79
1992	510.75	658.40	414.92	517.07	663.86	423.53	570.42	811.69	414.18
1993	493.51	622.32	408.32	497.05	620.63	416.97	570.06	821.51	404.73
1994	483.70	589.96	413.70	487.72	587.97	423.28	558.72	784.92	409.43
1995	477.34	572.14	415.17	482.55	570.79	426.34	544.59	752.32	405.31
1996	479.57	572.97	418.47	485.35	574.69	428.40	543.02	730.68	418.53
1997	486.81	576.13	428.66	493.84	577.11	441.14	543.42	744.43	412.18
1998	488.76	573.38	434.33	496.87	576.85	446.73	541.32	728.47	420.86
1999	490.99	581.19	431.01	499.01	583.45	443.84	544.41	729.44	422.88
2000	486.97	581.10	422.70	497.17	585.06	438.18	532.25	718.64	407.52
2001	490.71	582.38	427.60	501.77	588.72	442.75	524.83	705.06	403.41
2002	488.50	575.72	428.80	498.37	582.23	441.38	538.57	703.64	428.42
2003	476.40	561.35	418.05	486.97	566.31	433.09	523.49	687.53	414.38
2004	477.58	559.48	420.93	487.44	565.03	433.92	527.86	690.38	420.83
2005	473.66	550.41	420.41	485.30	558.81	434.64	513.43	650.34	422.87
2006	477.43	557.68	420.19	489.23	565.47	434.98	513.33	652.16	418.05
2007	483.43	568.86	421.75	494.23	575.15	435.95	521.93	674.73	416.91
2008	477.57	550.88	425.42	487.77	556.17	439.40	522.08	671.31	420.72
2009	476.89	542.39	430.46	487.22	548.74	443.69	516.03	648.59	426.37
2010	467.68	532.26	421.32	478.75	539.38	435.44	498.40	622.33	412.92
2011	462.76	520.79	421.89	474.00	528.30	436.09	493.62	599.65	421.00
2012	450.51	492.78	422.35	460.65	499.41	435.69	489.68	582.31	425.87
2013	445.50	485.35	419.47	456.14	491.81	434.02	476.63	570.27	411.71
2014	444.95	479.25	423.54	458.03	488.56	440.32	459.23	536.57	407.43
2015	445.50	479.76	424.12	459.07	490.02	440.89	460.65	533.96	410.70
2016	443.84	479.73	420.40	455.44	487.02	435.96	470.21	543.91	419.27

Reference: [Cancer Incidence Rates Adjusted for Reporting Delay](#).

Individual rates for diagnosis years 1975-1979 available in web browser version of [Cancer Statistics Review](#).

SEER 9 areas (San Francisco, Connecticut, Detroit, Hawaii, Iowa, New Mexico, Seattle, Utah, and Atlanta).

Rates are per 100,000 and are age-adjusted to the 2000 US Std Population (19 age groups - Census P25-1130).

Delay-adjusted rate is not shown for observed rates based on less than 16 cases for the time interval.

^a

-

Table 2.5
All Cancer Sites (Invasive)

Age-adjusted SEER Incidence^a Rates by Year, Race and Sex

Year of Diagnosis:	All Races			Whites			Blacks		
	Total	Males	Females	Total	Males	Females	Total	Males	Females
1975-2016	461.20	540.13	409.77	468.19	544.52	419.81	501.46	648.54	403.03
1975-1979	407.21	484.10	365.02	409.22	485.27	369.82	437.58	564.34	350.92
1980	418.09	505.83	368.14	419.53	505.21	373.43	467.45	615.07	366.53
1981	425.27	510.79	377.15	427.67	510.81	383.88	472.99	634.35	363.04
1982	424.47	511.08	376.16	427.73	512.52	383.31	465.25	622.11	359.37
1983	431.09	519.92	380.69	434.33	520.93	387.91	487.26	646.27	382.24
1984	439.98	525.43	392.45	443.61	527.70	399.48	488.26	643.87	386.15
1985	448.89	531.21	403.21	453.52	533.64	411.48	489.44	643.82	388.71
1986	451.33	538.15	402.29	456.03	542.91	409.16	493.81	643.41	396.85
1987	468.13	563.34	413.34	475.00	569.00	423.37	501.15	666.26	394.20
1988	464.02	558.49	409.48	470.34	565.03	417.99	504.58	658.07	405.10
1989	467.99	567.20	408.59	475.36	573.76	418.77	492.94	661.19	385.17
1990	482.12	592.86	415.66	488.97	599.42	424.84	522.26	699.83	409.66
1991	503.14	637.49	419.03	510.63	644.61	428.65	549.60	765.72	412.79
1992	510.75	658.40	414.92	517.07	663.86	423.53	570.42	811.69	414.18
1993	493.51	622.32	408.32	497.05	620.63	416.97	570.06	821.51	404.73
1994	483.70	589.96	413.70	487.72	587.97	423.28	558.72	784.92	409.43
1995	477.34	572.14	415.17	482.55	570.79	426.34	544.59	752.32	405.31
1996	479.57	572.97	418.47	485.35	574.69	428.40	543.02	730.68	418.53
1997	486.81	576.13	428.66	493.84	577.11	441.14	543.42	744.43	412.18
1998	488.76	573.38	434.33	496.87	576.85	446.73	541.32	728.47	420.86
1999	490.99	581.19	431.01	499.01	583.45	443.84	544.41	729.44	422.88
2000	486.97	581.10	422.70	497.17	585.06	438.18	532.25	718.64	407.52
2001	490.71	582.38	427.60	501.77	588.72	442.75	524.83	705.06	403.41
2002	488.50	575.72	428.80	498.37	582.23	441.38	538.57	703.64	428.42
2003	476.40	561.35	418.05	486.97	566.31	433.09	523.49	687.53	414.38
2004	477.58	559.48	420.93	487.44	565.03	433.92	527.86	690.38	420.83
2005	473.66	550.41	420.41	485.30	558.81	434.64	513.43	650.34	422.87
2006	477.43	557.68	420.19	489.23	565.47	434.98	513.33	652.16	418.05
2007	483.43	568.86	421.75	494.23	575.15	435.95	521.93	674.73	416.91
2008	477.02	550.25	424.93	487.08	555.38	438.77	520.73	669.56	419.64
2009	475.79	541.15	429.47	485.84	547.18	442.43	513.41	645.24	424.24
2010	466.06	530.44	419.86	476.72	537.09	433.59	494.56	617.48	409.78
2011	460.64	518.42	419.95	471.32	525.30	433.63	488.61	593.55	416.76
2012	447.92	489.96	419.91	457.38	495.88	432.60	483.39	574.63	420.53
2013	442.43	482.02	416.55	452.27	487.65	430.32	469.30	561.30	405.50
2014	440.65	474.62	419.45	452.67	482.81	435.18	450.18	525.78	399.54
2015	439.78	473.58	418.69	451.96	482.37	434.11	449.20	520.43	400.68
2016	434.25	469.20	411.46	443.54	474.11	424.72	451.19	521.67	402.51

^a Individual rates for diagnosis years 1975-1979 available in web browser version of [Cancer Statistics Review](#).
SEER 9 areas (San Francisco, Connecticut, Detroit, Hawaii, Iowa, New Mexico, Seattle, Utah, and Atlanta).
Rates are per 100,000 and are age-adjusted to the 2000 US Std Population (19 age groups - Census P25-1130).
- Statistic not shown. Rate based on less than 16 cases for the time interval.

Table 2.6
All Cancer Sites (Invasive)

Age-adjusted U.S. Death^a Rates by Year, Race and Sex

Year of Death:	All Races			Whites			Blacks		
	Total	Males	Females	Total	Males	Females	Total	Males	Females
1975-2016	192.55	241.97	159.64	190.78	238.23	159.20	234.91	318.12	183.06
1975-1979	202.75	264.24	162.54	199.61	259.14	161.35	244.15	334.74	179.95
1980	206.96	271.08	165.75	203.27	265.03	164.17	256.18	353.91	189.25
1981	206.40	269.78	165.90	202.64	263.27	164.55	256.77	358.65	187.47
1982	208.32	272.89	167.45	204.54	266.28	166.11	260.36	364.86	190.17
1983	209.21	274.09	168.27	205.17	267.22	166.69	263.75	369.32	193.24
1984	210.91	275.08	170.55	206.66	267.55	169.02	268.15	377.93	195.67
1985	211.35	275.68	170.96	207.25	268.25	169.58	268.06	377.82	196.31
1986	211.79	276.04	171.59	207.73	268.83	170.01	269.45	378.92	199.05
1987	211.91	276.34	171.54	207.78	268.96	169.87	271.12	383.24	199.91
1988	212.62	276.89	172.53	208.48	269.46	170.94	271.59	384.17	200.36
1989	214.30	278.50	174.25	209.96	270.25	172.88	275.87	395.28	200.87
1990	214.95	279.82	174.65	210.41	271.48	172.89	279.30	399.14	205.39
1991	215.06	279.15	175.30	210.62	271.19	173.41	278.97	395.85	207.39
1992	213.46	276.51	174.39	209.24	268.91	172.58	274.93	389.20	205.80
1993	213.45	275.89	174.55	209.16	267.89	172.82	277.09	394.76	206.29
1994	211.74	272.12	174.11	207.83	264.73	172.62	271.96	385.20	204.06
1995	209.89	268.50	173.35	206.09	261.46	171.73	269.51	379.02	204.53
1996	207.00	263.75	171.21	203.40	256.83	169.85	265.28	373.70	200.94
1997	203.55	258.13	169.00	199.94	251.58	167.35	262.14	363.18	202.53
1998	200.82	253.63	166.93	197.56	247.62	165.38	255.66	353.13	198.38
1999	200.72	252.75	167.24	197.75	247.14	165.92	253.80	349.23	197.54
2000	198.79	248.46	166.70	196.37	243.37	165.98	248.07	341.20	193.21
2001	196.29	245.05	164.61	193.98	240.31	163.75	244.34	334.14	192.12
2002	194.36	241.63	163.38	192.38	237.62	162.56	240.81	325.80	191.45
2003	190.89	235.81	161.16	189.10	232.16	160.40	235.16	314.60	188.76
2004	186.84	230.27	157.92	185.21	226.60	157.41	228.98	307.30	183.51
2005	185.23	228.09	156.46	183.87	224.94	156.04	224.83	300.33	180.94
2006	182.03	222.56	154.63	181.10	220.02	154.52	218.93	290.16	177.31
2007	179.26	219.33	152.00	178.30	216.64	151.91	216.23	286.57	175.47
2008	176.32	215.34	149.27	175.69	213.21	149.37	209.37	275.26	170.41
2009	173.40	211.17	147.12	173.03	209.33	147.48	205.39	268.91	167.41
2010	171.74	208.80	145.73	171.35	207.15	145.85	202.85	264.14	166.19
2011	168.74	204.30	143.50	168.54	203.32	143.45	199.07	253.63	166.06
2012	166.33	200.56	141.78	166.42	199.89	142.03	194.10	247.19	161.73
2013	163.18	196.45	139.22	163.54	195.97	139.83	189.66	240.26	158.50
2014	161.27	193.54	137.87	161.83	193.51	138.48	186.28	233.94	156.89
2015	158.70	189.97	135.84	159.46	190.19	136.60	180.85	226.55	152.49
2016	155.87	185.89	133.95	156.71	186.28	134.72	178.18	221.61	151.34

^a Individual rates for years of death 1975-1979 available in web browser version of [Cancer Statistics Review](#).
US Mortality Files, National Center for Health Statistics, Centers for Disease Control and Prevention.
Rates are per 100,000 and are age-adjusted to the 2000 US Std Population (19 age groups - Census P25-1130).
- Statistic not shown. Rate based on less than 16 cases for the time interval.

Table 2.7
All Cancer Sites (Invasive)

SEER Incidence^a and U.S. Death^b Rates, Age-Adjusted and Age-Specific Rates, by Race and Sex

	All Races			Whites			Blacks		
	Total	Males	Females	Total	Males	Females	Total	Males	Females
<u>SEER Incidence</u>									
<u>Age at Diagnosis</u>									
Age-Adjusted Rates, 2012-2016									
All ages	442.0	481.0	417.1	451.7	486.0	430.9	442.9	520.8	391.3
Under 65	222.6	205.3	240.2	225.5	205.0	246.9	233.3	243.3	226.1
65 and over	1,958.4	2,386.4	1,639.8	2,015.0	2,428.6	1,703.4	1,891.7	2,438.8	1,533.1
All ages (WHO world std) ^c	335.9	356.3	323.2	342.7	358.9	333.8	341.5	396.4	303.7
Age-Specific Rates, 2012-2016									
<1	24.5	24.6	24.3	24.4	25.4	23.4	20.0	18.4	21.5
1-4	21.7	22.5	20.9	22.9	23.8	21.9	15.9	16.4	15.4
5-9	13.0	13.8	12.2	13.8	14.9	12.6	10.1	9.5	10.7
10-14	15.2	15.8	14.5	15.8	16.3	15.4	12.3	13.0	11.6
15-19	24.2	24.5	23.9	26.0	26.3	25.7	16.7	17.1	16.3
20-24	38.0	36.0	40.1	41.6	39.5	43.8	23.5	21.7	25.4
25-29	61.0	51.3	71.0	65.8	56.0	76.2	42.8	34.7	50.6
30-34	96.5	70.9	122.3	101.7	75.6	129.0	75.8	54.2	95.7
35-39	143.0	93.8	191.8	147.8	97.8	199.3	125.6	79.9	166.2
40-44	225.8	147.3	302.7	230.5	150.3	312.1	211.3	148.2	266.8
45-49	353.7	261.2	444.0	357.2	260.8	454.2	357.5	304.8	403.8
50-54	564.7	511.8	615.6	567.1	505.5	628.0	613.4	631.4	597.6
55-59	822.8	861.3	786.5	823.8	845.5	802.9	946.7	1,118.8	799.5
60-64	1,160.4	1,309.9	1,023.9	1,162.5	1,287.2	1,045.4	1,355.1	1,717.9	1,062.6
65-69	1,599.1	1,886.6	1,344.9	1,619.3	1,872.2	1,389.5	1,754.8	2,326.4	1,321.4
70-74	1,929.3	2,307.5	1,612.8	1,982.1	2,334.8	1,679.8	1,932.7	2,510.4	1,526.1
75-79	2,172.3	2,626.2	1,819.7	2,253.1	2,691.1	1,905.3	2,027.3	2,581.0	1,671.4
80-84	2,267.6	2,800.8	1,898.9	2,353.3	2,890.3	1,973.5	1,987.1	2,471.6	1,719.2
85+	2,083.8	2,758.0	1,735.2	2,152.5	2,862.2	1,782.6	1,764.2	2,255.3	1,560.0
<u>U.S. Mortality</u>									
<u>Age at Death</u>									
Age-Adjusted Rates, 2012-2016									
All ages	161.0	193.1	137.7	161.5	193.0	138.3	185.6	233.5	156.0
Under 65	51.3	54.8	48.1	50.5	54.0	47.3	66.5	72.0	62.0
65 and over	919.1	1,149.3	756.8	928.6	1,154.3	766.9	1,008.6	1,349.4	805.8
All ages (WHO world std) ^c	94.4	110.0	82.2	94.3	109.4	82.2	113.6	138.0	97.1
Age-Specific Rates, 2012-2016									
<1	1.5	1.5	1.5	1.5	1.6	1.5	1.5	1.3	1.7
1-4	2.2	2.4	2.0	2.3	2.5	2.1	2.2	2.4	2.1
5-9	2.2	2.4	1.9	2.2	2.5	2.0	2.0	2.1	2.0
10-14	2.1	2.3	2.0	2.2	2.3	2.0	2.1	2.2	1.9
15-19	2.9	3.4	2.4	2.9	3.4	2.4	2.7	3.1	2.4
20-24	4.0	4.6	3.2	4.0	4.7	3.3	4.1	4.6	3.5
25-29	6.2	6.6	5.8	6.3	6.8	5.8	6.7	6.6	6.9
30-34	10.8	10.1	11.7	10.8	10.2	11.4	13.6	11.4	15.6
35-39	19.3	16.4	22.1	18.9	16.4	21.5	24.4	19.4	28.9
40-44	35.6	30.6	40.5	35.2	30.7	39.8	44.2	34.9	52.5
45-49	69.4	64.9	73.8	68.6	64.5	72.7	86.8	79.4	93.3
50-54	134.2	138.8	129.8	132.0	137.2	127.0	173.8	177.4	170.6
55-59	230.7	258.4	204.5	226.5	253.0	200.9	305.3	348.6	268.1
60-64	351.4	410.8	297.0	345.7	401.0	293.9	470.5	580.8	380.6
65-69	510.5	599.9	430.3	509.3	593.6	432.1	641.3	803.7	515.3
70-74	734.2	875.1	613.8	739.9	874.5	622.6	855.5	1,099.8	679.5
75-79	995.6	1,210.5	824.9	1,008.5	1,218.5	838.0	1,085.6	1,410.7	873.3
80-84	1,292.8	1,640.0	1,048.3	1,310.1	1,652.2	1,063.8	1,348.4	1,848.5	1,068.9
85+	1,637.6	2,253.5	1,317.3	1,663.1	2,281.3	1,337.2	1,609.0	2,385.8	1,286.1

^a SEER 21 areas. Rates are per 100,000 and are age-adjusted to the 2000 US Std Population (19 age groups - Census P25-1130), unless noted.

^b US Mortality Files, National Center for Health Statistics, Centers for Disease Control and Prevention.

^c Rates are per 100,000 and are age-adjusted to the 2000 US Std Population (19 age groups - Census P25-1130), unless noted.

^c Rates are per 100,000 and are age-adjusted to the world (WHO 2000-2025) standard million.

- Statistic not shown. Rate based on less than 16 cases for the time interval.

Table 2.8
All Cancer Sites (Invasive)

5-Year Relative and Period Survival (Percent) by Race, Sex, Diagnosis Year and Age

	All Races			Whites			Blacks		
	Total	Males	Females	Total	Males	Females	Total	Males	Females
5-Year Relative Survival (Percent)									
Year of Diagnosis:									
1960-1963 ^a	-	-	-	39	-	-	27	-	-
1970-1973 ^a	-	-	-	43	-	-	31	-	-
1975-1977 ^b	48.9	41.7	55.9	49.8	42.7	56.5	39.1	32.7	46.2
1978-1980 ^b	49.0	43.1	55.0	50.0	44.3	55.6	39.0	33.3	45.6
1981-1983 ^b	50.2	45.2	55.1	51.3	46.6	56.0	38.8	34.2	44.4
1984-1986 ^b	52.4	47.2	57.6	53.6	48.6	58.6	40.2	35.5	45.5
1987-1989 ^b	55.3	51.2	59.6	56.7	52.8	60.6	43.0	38.9	47.7
1990-1992 ^b	59.9	59.1	60.9	61.4	60.8	62.1	47.9	47.7	48.2
1993-1995 ^b	61.3	60.9	61.8	62.4	62.1	62.8	52.9	54.6	50.7
1996-1998 ^b	63.3	63.0	63.7	64.4	64.1	64.7	55.4	58.1	52.2
1999-2001 ^b	66.0	66.3	65.7	67.2	67.6	66.8	58.1	61.3	54.4
2002-2004 ^b	67.1	67.7	66.5	68.4	69.0	67.7	59.7	63.4	55.5
2005-2008 ^b	68.7	69.4	68.0	69.8	70.4	69.2	62.0	65.5	58.1
2009-2015 ^b	69.3 ^e	68.7 ^e	70.0 ^e	70.3 ^e	69.6 ^e	71.0 ^e	63.6 ^e	65.7 ^e	61.4 ^e
5-Year Period Survival (Percent) ^{cd}									
2015	67.1	65.7	68.4	67.4	65.7	69.1	61.8	63.0	60.3
5-Year Relative Survival (Percent), 2009-2015 ^c									
Age at Diagnosis:									
Ages <45	82.9	78.8	85.5	84.3	80.3	86.8	73.3	68.1	76.2
Ages 45-54	74.7	69.2	79.0	75.6	69.7	80.2	67.3	66.3	68.1
Ages 55-64	70.0	68.7	71.6	70.8	69.1	72.8	63.4	65.0	61.1
Ages 65-74	67.2	68.9	64.9	67.5	68.9	65.7	61.9	66.3	56.0
Ages 75+	50.7	52.9	48.6	51.3	52.9	49.7	43.2	47.8	39.6
Ages <65	73.9	70.4	77.3	74.8	71.0	78.4	66.3	67.8	66.9
Ages 65+	59.7	62.3	56.7	60.0	62.2	57.6	54.8	60.5	48.6

^a Based on End Results data from a series of hospital registries and one population-based registry.
^b SEER 9 areas (San Francisco, Connecticut, Detroit, Hawaii, Iowa, New Mexico, Seattle, Utah, Atlanta).
Based on follow-up of patients into 2016. [Expected survival rates](#) are derived from the U.S. Annual Life Tables.
^c SEER 18 areas (San Francisco, Connecticut, Detroit, Hawaii, Iowa, New Mexico, Seattle, Utah, Atlanta, San Jose-Monterey, Los Angeles, Alaska Native Registry, Rural Georgia, California excluding SF/SJM/LA, Kentucky, Louisiana, New Jersey and Georgia excluding ATL/RG). Expected survival rates are derived from life tables by socio-economic status, geography and race developed by the SEER program.
^d Based on follow-up of patients into 2016.
Period survival provides a 2015 estimate of survival by piecing together the most recent conditional survival estimates from several cohorts. It is computed here using three year calendar blocks (2010-2012: 0-1 year survival), (2009-2011: 1-2 year survival), (2008-2010: 2-3 year survival), (2007-2009: 3-4 year survival), (2006-2008: 4-5 years survival).
^e The difference between 1975-1977 and 2009-2015 is statistically significant (p<.05).
^f The standard error is between 5 and 10 percentage points.
^g The standard error is greater than 10 percentage points.
- Statistic could not be calculated due to fewer than 25 cases during the time period.

Table 2.9
All Cancer Sites (Invasive)

SEER^a Relative Survival (Percent)
By Year of Diagnosis

All Races, Males and Females

Year of Diagnosis

	1975- 1979	1980- 1984	1985- 1989	1990- 1994	1995	1996	1997	1998	1999	2000	2001	2002	2003	2004	2005	2006	2007	2008	2009	2010	2011	2012	2013	2014	2015
Survival Time																									
1-year	69.2	70.7	73.2	76.4	76.6	77.1	77.7	78.0	78.7	79.0	79.6	79.8	79.5	80.1	80.4	80.9	81.4	81.6	81.9	81.8	82.1	81.8	82.1	81.9	82.5
2-year	59.8	61.3	64.5	68.8	69.3	70.2	70.9	71.4	72.3	72.7	73.5	73.9	73.5	74.1	74.4	75.3	75.8	75.9	76.1	76.2	76.4	75.8	76.2	76.1	
3-year	54.7	56.2	59.8	64.9	65.7	66.7	67.4	68.1	68.9	69.6	70.3	70.8	70.3	71.0	71.3	72.3	72.7	72.7	73.0	73.1	73.2	72.5	72.8		
4-year	51.4	52.8	56.7	62.3	63.3	64.3	65.1	65.8	66.8	67.5	68.3	68.8	68.3	68.8	69.3	70.2	70.7	70.7	71.0	70.9	71.1	70.4			
5-year	49.0	50.2	54.4	60.4	61.6	62.5	63.3	64.0	65.2	66.0	66.8	67.3	66.7	67.3	67.7	68.7	69.3	69.1	69.5	69.4	69.6				
6-year	47.0	48.2	52.6	58.9	60.2	61.2	62.0	62.7	63.9	64.8	65.7	66.2	65.5	66.1	66.6	67.6	68.1	67.9	68.3						
7-year	45.4	46.5	51.0	57.6	59.0	60.1	61.0	61.7	62.9	63.7	64.6	65.2	64.5	65.1	65.5	66.7	67.1	66.9	67.4						
8-year	44.1	45.1	49.8	56.4	58.1	59.2	60.1	60.8	62.0	62.7	63.8	64.3	63.6	64.3	64.7	65.8	66.3	65.9							
9-year	42.9	43.9	48.6	55.5	57.2	58.3	59.2	59.9	61.2	62.0	63.1	63.6	62.8	63.5	64.0	65.1	65.6								
10-year	41.8	42.9	47.7	54.5	56.4	57.5	58.5	59.1	60.5	61.3	62.4	63.0	62.0	62.8	63.2	64.4									
11-year	40.8	41.9	46.8	53.7	55.6	56.8	57.7	58.4	59.8	60.5	61.7	62.3	61.3	62.1	62.7										
12-year	40.0	41.1	45.9	53.0	54.8	56.1	57.2	57.8	59.1	59.8	61.0	61.7	60.7	61.5											
13-year	39.3	40.3	45.1	52.3	54.0	55.5	56.5	57.1	58.5	59.2	60.4	61.1	60.2												
14-year	38.7	39.6	44.4	51.6	53.3	54.9	55.9	56.5	57.8	58.6	59.8	60.6													
15-year	38.0	39.0	43.8	51.0	52.7	54.3	55.4	56.0	57.3	58.0	59.3														
16-year	37.4	38.3	43.2	50.4	52.1	53.7	54.6	55.4	56.7	57.6															
17-year	36.9	37.7	42.7	49.8	51.5	53.2	54.1	55.0	56.3																
18-year	36.4	37.1	42.2	49.3	50.9	52.7	53.5	54.7																	
19-year	36.0	36.6	41.7	48.7	50.4	52.0	53.1																		
20-year	35.5	36.1	41.3	48.2	49.7	51.3																			
21-year	35.0	35.6	40.9	47.6	49.1																				
22-year	34.6	35.2	40.4	47.0																					
23-year	34.2	34.7	40.0																						
24-year	33.7	34.3	39.5																						
25-year	33.2	33.9	39.1																						
26-year	32.8	33.5	38.6																						
27-year	32.5	33.1	38.1																						
28-year	32.1	32.8																							
29-year	31.8	32.4																							
30-year	31.5	32.0																							

^a Based on the SEER 9 areas (San Francisco, Connecticut, Detroit, Hawaii, Iowa, New Mexico, Seattle, Utah, and Atlanta). [Expected survival rates](#) are derived from the U.S. Annual Life Tables.

Table 2.10
All Cancer Sites (Invasive)

SEER^a Relative Survival (Percent)
By Year of Diagnosis

All Races, Males

Year of Diagnosis

	1975- 1979	1980- 1984	1985- 1989	1990- 1994	1995	1996	1997	1998	1999	2000	2001	2002	2003	2004	2005	2006	2007	2008	2009	2010	2011	2012	2013	2014	2015
Survival Time																									
1-year	63.7	66.6	69.9	75.5	75.3	76.3	76.9	76.8	78.0	78.6	79.2	79.2	79.0	79.7	80.0	80.9	81.5	81.4	81.6	81.4	81.4	80.5	80.8	80.4	81.0
2-year	53.4	56.4	60.4	67.7	68.0	69.4	70.3	70.4	71.5	72.5	73.1	73.5	73.0	73.9	74.1	75.5	75.9	75.7	75.7	75.8	75.7	74.3	74.5	74.3	
3-year	48.2	51.2	55.5	64.1	64.7	66.1	67.0	67.1	68.5	69.5	70.3	70.8	70.2	71.0	71.2	72.6	73.2	72.7	72.9	73.0	72.6	71.1	71.0		
4-year	44.7	47.7	52.2	61.6	62.4	63.9	64.9	65.0	66.6	67.6	68.5	69.1	68.4	69.2	69.5	70.7	71.4	70.8	71.1	71.0	70.7	69.1			
5-year	42.2	45.0	49.9	59.8	60.9	62.3	63.2	63.5	65.2	66.3	67.4	67.9	67.2	68.0	68.2	69.5	70.2	69.6	69.8	69.6	69.3				
6-year	40.2	43.0	48.1	58.4	59.6	61.1	61.9	62.2	64.1	65.2	66.4	67.0	66.0	67.0	67.1	68.6	69.2	68.5	68.8	68.7					
7-year	38.5	41.3	46.4	57.1	58.5	60.1	61.1	61.3	63.2	64.2	65.6	66.2	65.2	66.0	66.1	67.7	68.2	67.7	68.1						
8-year	37.1	39.9	45.0	55.9	57.6	59.3	60.2	60.5	62.3	63.3	64.8	65.5	64.4	65.3	65.3	67.0	67.6	67.0							
9-year	35.8	38.6	43.8	54.9	56.8	58.4	59.4	59.6	61.6	62.7	64.4	64.9	63.6	64.5	64.7	66.3	67.0								
10-year	34.6	37.6	42.8	54.0	56.0	57.6	58.8	58.9	61.0	62.0	63.6	64.4	62.8	63.8	64.1	65.7									
11-year	33.5	36.6	41.9	53.1	55.2	56.9	58.2	58.3	60.5	61.1	63.0	63.6	62.1	63.2	63.6										
12-year	32.6	35.7	40.9	52.4	54.4	56.2	57.6	57.5	59.8	60.5	62.5	63.1	61.6	62.6											
13-year	31.8	34.9	40.1	51.7	53.5	55.7	56.8	56.9	59.3	59.8	62.0	62.6	61.1												
14-year	31.1	34.1	39.3	51.0	52.6	55.1	56.1	56.4	58.6	59.2	61.5	62.2													
15-year	30.4	33.4	38.6	50.3	51.9	54.5	55.7	56.1	58.0	58.6	61.0														
16-year	29.7	32.7	37.9	49.7	51.4	54.0	55.0	55.5	57.6	58.3															
17-year	29.0	32.0	37.4	49.0	50.8	53.4	54.2	55.0	57.1																
18-year	28.5	31.5	36.8	48.5	50.4	53.1	53.6	54.8																	
19-year	28.0	30.9	36.3	47.8	49.7	52.5	53.2																		
20-year	27.6	30.3	35.9	47.4	48.7	51.8																			
21-year	27.1	29.8	35.4	46.8	48.2																				
22-year	26.6	29.4	35.0	46.2																					
23-year	26.1	28.9	34.5																						
24-year	25.6	28.5	34.0																						
25-year	25.1	28.2	33.6																						
26-year	24.7	27.7	33.2																						
27-year	24.3	27.4	32.8																						
28-year	23.9	27.1																							
29-year	23.6	26.8																							
30-year	23.2	26.4																							

^a Based on the SEER 9 areas (San Francisco, Connecticut, Detroit, Hawaii, Iowa, New Mexico, Seattle, Utah, and Atlanta). [Expected survival rates](#) are derived from the U.S. Annual Life Tables.

Table 2.11
All Cancer Sites (Invasive)

SEER^a Relative Survival (Percent)
By Year of Diagnosis

All Races, Females

Year of Diagnosis

	1975- 1979	1980- 1984	1985- 1989	1990- 1994	1995	1996	1997	1998	1999	2000	2001	2002	2003	2004	2005	2006	2007	2008	2009	2010	2011	2012	2013	2014	2015
Survival Time																									
1-year	74.6	74.9	76.7	77.5	77.9	77.9	78.6	79.3	79.4	79.5	80.0	80.4	80.1	80.4	80.8	80.9	81.4	81.9	82.3	82.3	82.8	83.2	83.5	83.4	83.9
2-year	66.0	66.2	68.7	70.0	70.8	71.0	71.6	72.6	73.0	73.0	73.9	74.4	74.0	74.3	74.7	75.2	75.6	76.1	76.5	76.6	77.1	77.3	77.9	77.8	
3-year	61.2	61.2	64.2	65.9	66.9	67.3	67.9	69.0	69.4	69.6	70.2	70.9	70.5	70.9	71.3	71.9	72.1	72.7	73.1	73.2	73.9	73.9	74.6		
4-year	57.9	57.9	61.3	63.2	64.3	64.8	65.3	66.6	67.1	67.3	68.0	68.5	68.2	68.4	69.1	69.6	69.9	70.5	70.9	70.9	71.6				
5-year	55.6	55.3	59.0	61.2	62.4	62.8	63.5	64.6	65.2	65.7	66.2	66.7	66.2	66.6	67.3	67.9	68.3	68.6	69.3	69.1	69.8				
6-year	53.6	53.4	57.3	59.6	60.9	61.3	62.1	63.2	63.8	64.4	64.9	65.3	65.0	65.3	66.0	66.6	66.9	67.3	67.9	68.0					
7-year	52.1	51.7	55.8	58.2	59.6	60.2	60.9	62.1	62.6	63.2	63.7	64.1	63.8	64.2	65.0	65.5	65.9	66.0	66.7						
8-year	50.8	50.3	54.6	57.1	58.6	59.1	59.9	61.2	61.6	62.1	62.6	63.1	62.8	63.3	64.1	64.6	64.9	64.9							
9-year	49.7	49.2	53.5	56.1	57.6	58.2	59.0	60.2	60.8	61.3	61.7	62.2	62.1	62.4	63.2	63.8	64.1								
10-year	48.7	48.1	52.5	55.2	56.9	57.4	58.1	59.3	60.0	60.6	61.1	61.6	61.2	61.7	62.4	63.0									
11-year	47.8	47.1	51.7	54.4	56.1	56.7	57.4	58.6	59.1	59.8	60.4	61.0	60.5	61.0	61.7										
12-year	47.0	46.3	50.9	53.7	55.4	56.1	56.8	58.1	58.5	59.1	59.5	60.2	59.9	60.4											
13-year	46.4	45.6	50.1	53.0	54.5	55.4	56.2	57.3	57.8	58.5	58.8	59.7	59.2												
14-year	45.7	44.9	49.5	52.4	54.0	54.7	55.7	56.7	57.1	58.0	58.2	59.1													
15-year	45.1	44.3	48.9	51.8	53.5	54.1	55.1	56.0	56.6	57.4	57.6														
16-year	44.6	43.6	48.3	51.3	52.9	53.5	54.4	55.4	55.9	56.8															
17-year	44.1	43.0	47.8	50.7	52.3	52.9	54.1	55.0	55.4																
18-year	43.6	42.5	47.3	50.1	51.5	52.3	53.5	54.6																	
19-year	43.2	42.0	46.9	49.5	51.1	51.6	53.0																		
20-year	42.7	41.5	46.4	49.0	50.5	50.9																			
21-year	42.2	41.0	46.0	48.5	50.0																				
22-year	41.8	40.6	45.6	47.9																					
23-year	41.3	40.2	45.1																						
24-year	40.9	39.7	44.6																						
25-year	40.4	39.2	44.2																						
26-year	40.0	38.9	43.6																						
27-year	39.7	38.4	43.1																						
28-year	39.3	38.0																							
29-year	39.0	37.6																							
30-year	38.6	37.2																							

^a Based on the SEER 9 areas (San Francisco, Connecticut, Detroit, Hawaii, Iowa, New Mexico, Seattle, Utah, and Atlanta). [Expected survival rates](#) are derived from the U.S. Annual Life Tables.

Table 2.12
All Cancer Sites (Invasive)

Risk of Being Diagnosed With Cancer in 10, 20 and 30 Years,
Lifetime Risk of Being Diagnosed with Cancer Given Alive and Cancer-Free at Current Age, and
Lifetime Risk of Dying from Cancer Given Alive at Current Age
Both Sexes, 2014-2016 By Race/Ethnicity

Race/ Ethnicity	Current Age	Risk of Being Diagnosed with Cancer				Risk of Dying from Cancer	Race/ Ethnicity	Current Age	Risk of Being Diagnosed with Cancer				Risk of Dying from Cancer
		+10 yrs	+20 yrs	+30 yrs	Ever				+10 yrs	+20 yrs	+30 yrs	Ever	
All Races	0	0.18	0.38	0.86	39.30	19.71	Asian/ Pacific Islander	0	0.16	0.32	0.67	33.92	17.87
	10	0.20	0.69	1.85	39.58	19.93		10	0.16	0.51	1.42	34.04	17.99
	20	0.49	1.65	4.30	39.56	19.97		20	0.35	1.26	3.46	33.99	18.00
	30	1.18	3.86	9.72	39.58	20.11		30	0.91	3.13	7.36	33.87	18.03
	40	2.74	8.74	18.80	39.30	20.25		40	2.24	6.53	13.70	33.39	18.01
	50	6.28	16.82	28.52	38.30	20.25		50	4.42	11.80	20.91	32.09	17.82
	60	11.71	24.70	33.20	35.56	19.66		60	7.85	17.54	25.61	29.43	17.18
	70	15.96	26.40	-	29.31	17.75		70	10.93	20.04	-	24.35	15.74
80	15.35	-	-	19.62	13.93	80	11.49	-	-	16.93	13.02		
White	0	0.19	0.40	0.93	39.52	19.85	American Indian/ Alaska Native ^a	0	0.11	0.23	0.53	27.87	15.99
	10	0.22	0.75	1.95	39.74	20.03		10	0.12	0.43	1.26	28.07	16.20
	20	0.53	1.74	4.41	39.71	20.07		20	0.31	1.15	2.80	28.11	16.27
	30	1.22	3.92	9.76	39.71	20.21		30	0.86	2.54	6.63	28.33	16.53
	40	2.77	8.74	18.80	39.41	20.35		40	1.74	5.97	12.70	28.40	16.88
	50	6.26	16.80	28.69	38.41	20.34		50	4.46	11.57	19.73	28.12	17.27
	60	11.70	24.89	33.44	35.68	19.76		60	7.88	16.92	23.60	26.22	17.10
	70	16.19	26.68	-	29.43	17.85		70	10.80	18.79	-	21.93	15.86
80	15.52	-	-	19.59	13.95	80	11.25	-	-	15.68	12.52		
Black	0	0.13	0.27	0.59	36.16	19.71	Hispanic ^b	0	0.17	0.37	0.79	36.25	17.13
	10	0.14	0.47	1.43	36.73	20.11		10	0.20	0.63	1.57	36.44	17.27
	20	0.33	1.30	3.86	36.79	20.18		20	0.43	1.37	3.47	36.40	17.29
	30	0.98	3.58	9.96	37.00	20.39		30	0.95	3.08	7.77	36.36	17.36
	40	2.67	9.22	19.80	36.98	20.61		40	2.16	6.94	15.48	36.04	17.40
	50	6.92	18.11	28.39	36.28	20.71		50	4.95	13.81	24.20	35.12	17.31
	60	12.80	24.55	31.32	33.56	20.13		60	9.60	20.88	29.26	32.73	16.84
	70	15.29	24.09	-	27.01	18.09		70	13.32	23.21	-	27.31	15.44
80	13.59	-	-	18.10	14.42	80	13.48	-	-	19.06	12.58		

Devcan 6.7.7, April 2019, National Cancer Institute (<https://surveillance.cancer.gov/devcan/>).

Source: Incidence data are from the SEER 21 areas (San Francisco, Connecticut, Detroit, Hawaii, Iowa, New Mexico, Seattle, Utah, Atlanta, San Jose-Monterey, Los Angeles, Alaska Native Registry, Rural Georgia, California excluding SF/SJM/LA, Kentucky, Louisiana, New Jersey, Georgia excluding ATL/RG, Idaho, New York and Massachusetts). Mortality data are from the NCHS public use data file for the total US.

^a Underlying incidence and mortality data for American Indian/Alaska Native are based on the PRCA (Purchased/Referred Care Delivery Areas) counties.

^b Hispanic is not mutually exclusive from whites, blacks, Asian/Pacific Islanders, and American Indians/Alaska Natives. Underlying incidence data for Hispanics are based on NHIA and exclude cases from the Alaska Native Registry.

- Statistic could not be calculated.

A percent of 0.00 represents a value that is below 0.005.

Table 2.13
All Cancer Sites (Invasive)

Risk of Being Diagnosed With Cancer in 10, 20 and 30 Years,
Lifetime Risk of Being Diagnosed with Cancer Given Alive and Cancer-Free at Current Age, and
Lifetime Risk of Dying from Cancer Given Alive at Current Age
Males, 2014-2016 By Race/Ethnicity

Race/ Ethnicity	Current Age	Risk of Being Diagnosed with Cancer				Risk of Dying from Cancer	Race/ Ethnicity	Current Age	Risk of Being Diagnosed with Cancer				Risk of Dying from Cancer
		+10 yrs	+20 yrs	+30 yrs	Ever				+10 yrs	+20 yrs	+30 yrs	Ever	
All Races	0	0.18	0.39	0.81	40.14	21.34	Asian/ Pacific Islander	0	0.16	0.33	0.61	34.32	20.17
	10	0.21	0.63	1.42	40.46	21.59		10	0.17	0.46	1.02	34.46	20.33
	20	0.43	1.22	3.12	40.49	21.66		20	0.29	0.86	2.16	34.42	20.35
	30	0.81	2.73	8.53	40.71	21.91		30	0.57	1.89	5.52	34.40	20.42
	40	1.97	7.91	19.22	40.85	22.18		40	1.33	5.01	12.78	34.22	20.45
	50	6.21	18.04	30.93	40.68	22.42		50	3.77	11.73	22.06	33.69	20.38
	60	13.31	27.81	36.55	38.77	22.16		60	8.47	19.46	28.11	31.84	19.89
	70	18.61	29.82	-	32.67	20.52		70	12.68	22.66	-	26.96	18.53
80	17.85	-	-	22.37	16.90	80	13.24	-	-	18.95	15.80		
White	0	0.20	0.41	0.87	39.89	21.45	American Indian/ Alaska Native ^a	0	0.13	0.27	0.55	27.02	16.97
	10	0.22	0.68	1.51	40.14	21.66		10	0.15	0.43	0.99	27.24	17.22
	20	0.47	1.30	3.19	40.15	21.72		20	0.29	0.85	2.05	27.28	17.31
	30	0.84	2.77	8.43	40.33	21.96		30	0.58	1.81	5.68	27.66	17.70
	40	1.97	7.77	18.85	40.45	22.23		40	1.28	5.29	12.35	28.13	18.24
	50	6.07	17.66	30.59	40.26	22.45		50	4.26	11.74	20.24	28.47	18.96
	60	13.01	27.53	36.29	38.38	22.18		60	8.42	17.98	25.06	27.25	19.18
	70	18.52	29.70	-	32.37	20.53		70	11.79	20.52	-	23.21	18.31
80	17.82	-	-	22.08	16.85	80	12.90	-	-	16.87	14.77		
Black	0	0.12	0.27	0.54	38.05	21.45	Hispanic ^b	0	0.17	0.38	0.76	37.12	19.33
	10	0.15	0.42	1.05	38.71	21.92		10	0.21	0.59	1.20	37.33	19.50
	20	0.28	0.91	2.96	38.84	22.04		20	0.38	0.99	2.36	37.32	19.54
	30	0.65	2.74	9.82	39.34	22.44		30	0.62	2.01	6.37	37.44	19.69
	40	2.15	9.45	22.49	39.86	22.89		40	1.41	5.86	15.29	37.49	19.83
	50	7.75	21.59	33.01	40.03	23.36		50	4.60	14.36	26.05	37.33	19.95
	60	16.29	29.73	36.02	37.98	23.31		60	10.69	23.49	32.36	35.83	19.77
	70	19.06	27.99	-	30.76	21.78		70	15.65	26.51	-	30.75	18.61
80	15.55	-	-	20.38	18.63	80	15.86	-	-	22.06	15.81		

Devcan 6.7.7, April 2019, National Cancer Institute (<https://surveillance.cancer.gov/devcan/>).

Source: Incidence data are from the SEER 21 areas (San Francisco, Connecticut, Detroit, Hawaii, Iowa, New Mexico, Seattle, Utah, Atlanta, San Jose-Monterey, Los Angeles, Alaska Native Registry, Rural Georgia, California excluding SF/SJM/LA, Kentucky, Louisiana, New Jersey, Georgia excluding ATL/RG, Idaho, New York and Massachusetts). Mortality data are from the NCHS public use data file for the total US.

^a Underlying incidence and mortality data for American Indian/Alaska Native are based on the PRCDA (Purchased/Referred Care Delivery Areas) counties.

^b Hispanic is not mutually exclusive from whites, blacks, Asian/Pacific Islanders, and American Indians/Alaska Natives. Underlying incidence data for Hispanics are based on NHIA and exclude cases from the Alaska Native Registry.

- Statistic could not be calculated.

A percent of 0.00 represents a value that is below 0.005.

Table 2.14
All Cancer Sites (Invasive)

Risk of Being Diagnosed With Cancer in 10, 20 and 30 Years,
Lifetime Risk of Being Diagnosed with Cancer Given Alive and Cancer-Free at Current Age, and
Lifetime Risk of Dying from Cancer Given Alive at Current Age
Females, 2014-2016 By Race/Ethnicity

Race/ Ethnicity	Current Age	Risk of Being Diagnosed with Cancer				Risk of Dying from Cancer	Race/ Ethnicity	Current Age	Risk of Being Diagnosed with Cancer				Risk of Dying from Cancer
		+10 yrs	+20 yrs	+30 yrs	Ever				+10 yrs	+20 yrs	+30 yrs	Ever	
All Races	0	0.17	0.37	0.92	38.70	18.37	Asian/ Pacific Islander	0	0.16	0.32	0.72	33.75	16.14
	10	0.20	0.76	2.28	38.95	18.55		10	0.15	0.56	1.78	33.85	16.24
	20	0.56	2.09	5.49	38.89	18.57		20	0.41	1.63	4.62	33.78	16.24
	30	1.55	4.98	10.90	38.71	18.62		30	1.22	4.23	9.00	33.57	16.24
	40	3.51	9.57	18.43	38.01	18.63		40	3.05	7.89	14.54	32.82	16.17
	50	6.36	15.66	26.27	36.21	18.43		50	5.02	11.89	19.93	30.84	15.89
	60	10.21	21.85	30.21	32.77	17.61		60	7.31	15.86	23.50	27.45	15.16
	70	13.75	23.63	-	26.65	15.64		70	9.47	17.94	-	22.32	13.75
80	13.64	-	-	17.81	11.96	80	10.26	-	-	15.56	11.21		
White	0	0.18	0.39	0.98	39.40	18.52	American Indian/ Alaska Native ^a	0	0.09	0.18	0.52	28.85	15.12
	10	0.21	0.82	2.41	39.60	18.67		10	0.09	0.43	1.55	29.04	15.30
	20	0.60	2.20	5.67	39.54	18.69		20	0.34	1.47	3.59	29.07	15.35
	30	1.61	5.12	11.13	39.34	18.74		30	1.14	3.29	7.61	29.12	15.49
	40	3.59	9.74	18.80	38.61	18.75		40	2.21	6.65	13.09	28.77	15.67
	50	6.46	15.97	26.89	36.79	18.56		50	4.66	11.42	19.29	27.88	15.77
	60	10.45	22.43	30.87	33.30	17.74		60	7.39	15.98	22.39	25.37	15.34
	70	14.19	24.18	-	27.05	15.75		70	10.00	17.45	-	20.92	13.92
80	13.92	-	-	17.92	11.99	80	10.12	-	-	14.84	10.99		
Black	0	0.13	0.27	0.65	34.66	18.48	Hispanic ^b	0	0.16	0.35	0.82	36.02	15.51
	10	0.13	0.52	1.79	35.15	18.81		10	0.19	0.67	1.96	36.19	15.62
	20	0.39	1.66	4.70	35.14	18.84		20	0.48	1.78	4.64	36.12	15.63
	30	1.28	4.35	10.09	35.09	18.91		30	1.31	4.19	9.23	35.92	15.64
	40	3.14	9.01	17.49	34.60	18.94		40	2.93	8.06	15.81	35.22	15.58
	50	6.19	15.13	24.47	33.16	18.76		50	5.32	13.37	22.72	33.52	15.33
	60	9.97	20.39	27.57	30.08	17.84		60	8.66	18.72	26.78	30.34	14.66
	70	12.69	21.43	-	24.50	15.71		70	11.54	20.78	-	24.86	13.21
80	12.47	-	-	16.84	12.22	80	11.96	-	-	17.25	10.58		

Devcan 6.7.7, April 2019, National Cancer Institute (<https://surveillance.cancer.gov/devcan/>).

Source: Incidence data are from the SEER 21 areas (San Francisco, Connecticut, Detroit, Hawaii, Iowa, New Mexico, Seattle, Utah, Atlanta, San Jose-Monterey, Los Angeles, Alaska Native Registry, Rural Georgia, California excluding SF/SJM/LA, Kentucky, Louisiana, New Jersey, Georgia excluding ATL/RG, Idaho, New York and Massachusetts). Mortality data are from the NCHS public use data file for the total US.

^a Underlying incidence and mortality data for American Indian/Alaska Native are based on the PRCD (Purchased/Referred Care Delivery Areas) counties.

^b Hispanic is not mutually exclusive from whites, blacks, Asian/Pacific Islanders, and American Indians/Alaska Natives. Underlying incidence data for Hispanics are based on NHIA and exclude cases from the Alaska Native Registry.

- Statistic could not be calculated.

A percent of 0.00 represents a value that is below 0.005.

Table 2.15
All Cancer Sites (Invasive)

SEER Incidence and U.S. Mortality
Age-Adjusted Rates and Trends^a
By Race/Ethnicity and Sex

SEER Incidence	SEER 21 Areas ^b			SEER 21 Areas ^b			SEER 9 Areas ^b		
	Rate 2012-2016			Trend 2007-2016 ^c			Trend 2007-2016 ^d		
	Rate per 100,000 persons			AAPC (%)			AAPC (%)		
Race/Ethnicity	Total	Males	Females	Total	Males	Females	Total	Males	Females
All Races	442.0	481.0	417.1	-1.3*	-2.1*	-0.1*	-1.1*	-2.0*	-0.2*
White	451.7	486.0	430.9	-1.3*	-2.1*	-0.1*	-1.1*	-2.1*	-0.2*
White Hispanic ^e	351.4	372.1	343.9	-1.5*	-3.0*	0.0	-	-	-
White Non-Hispanic ^e	470.1	505.5	448.0	-1.2*	-2.1*	-0.1	-	-	-
Black	442.9	520.8	391.3	-1.5*	-2.7*	-0.3*	-1.7*	-2.9*	-0.6*
Asian/Pacific Islander	297.9	301.1	299.7	-1.0*	-2.2*	0.1	-	-	-
Amer Ind/Alaska Nat ^f	307.6	315.3	306.0	-0.5*	-1.1*	-0.1	-	-	-
Hispanic ^e	345.8	370.4	334.9	-1.2*	-2.6*	0.1	-	-	-
<u>U.S. Mortality^g</u>									
	Rate 2012-2016			Trend 2007-2016 ^h					
	Rate per 100,000 persons			AAPC (%)					
Race/Ethnicity	Total	Males	Females	Total	Males	Females			
All Races	161.0	193.1	137.7	-1.5*	-1.8*	-1.4*			
White	161.5	193.0	138.3	-1.4*	-1.7*	-1.3*			
White Hispanic ^e	120.0	145.8	101.8	-1.1*	-1.5*	-0.9*			
White Non-Hispanic ^e	165.4	197.3	141.9	-1.4*	-1.6*	-1.3*			
Black	185.6	233.5	156.0	-2.1*	-2.7*	-1.6*			
Asian/Pacific Islander	100.0	118.6	86.6	-1.3*	-1.6*	-1.0*			
Amer Ind/Alaska Nat									
Total U.S.	108.8	129.6	93.1	-1.7*	-1.7*	-1.8*			
PRCDA Counties	146.7	176.3	124.9	-0.9*	-0.8*	-1.2*			
Non-PRCDA Counties	65.8	78.0	56.2	-2.5*	-2.8*	-2.4*			
Hispanic ^e	113.5	138.1	96.2	-1.3*	-1.6*	-1.0*			

The AAPC is the Average Annual Percent Change over the time interval. The AAPCs are calculated by the Joinpoint Regression Program Version 4.7, February 2019, National Cancer Institute.

Statistic not shown. Rate based on less than 16 cases for the time interval.

Trend based on less than 10 cases for at least one year within the time interval.

Rates are age-adjusted to the 2000 US Std Population (19 age groups - Census P25-1130). Trends are based on rates age-adjusted to the 2000 US Std Population (19 age groups - Census P25-1130).

The SEER 9 areas are San Francisco, Connecticut, Detroit, Hawaii, Iowa, New Mexico, Seattle, Utah, and Atlanta.

The SEER 21 areas comprise the SEER 9 areas plus San Jose-Monterey, Los Angeles, the Alaska Native Registry, Rural Georgia, California excluding SF/SJM/LA, Kentucky, Louisiana, New Jersey, Georgia excluding ATL/RG, Idaho, New York and Massachusetts.

The 2007-2016 AAPC estimates are based on a Joinpoint analysis with up to 3 Joinpoints over diagnosis years 2000-2016.

The 2007-2016 AAPC estimates are based on a Joinpoint analysis with up to 5 Joinpoints over diagnosis years 1975-2016.

Hispanic and Non-Hispanic are not mutually exclusive from whites, blacks, Asian/Pacific Islanders, and American Indians/Alaska Natives. Incidence data for Hispanics and Non-Hispanics are based on NHIA and exclude cases from the Alaska Native Registry.

Incidence data for American Indian/Alaska Native are based on the Purchased/Referred Care Delivery Area (PRCDA) counties.

US Mortality Files, National Center for Health Statistics, CDC.

The 2007-2016 mortality AAPCs are based on a Joinpoint analysis using years of death 2000-2016.

The APC is significantly different from zero (p<.05).

Table 2.16
All Cancer Sites (Invasive)

Age-Adjusted SEER Incidence Rates^a
By Registry, Race and Sex

	All Races			Whites			Blacks		
	Total	Males	Females	Total	Males	Females	Total	Males	Females
<u>SEER Incidence Rates^a, 2012-2016</u>									
California	397.78	426.21	380.55	411.67	437.79	396.74	405.83	456.55	370.31
Greater Bay Area	398.30	427.67	380.62	427.73	456.84	411.03	436.62	494.21	394.64
San Francisco-Oakland	403.01	433.82	384.18	431.68	461.63	414.32	444.61	505.06	401.00
San Jose-Monterey	389.33	416.19	373.68	420.84	448.44	405.36	391.28	436.87	353.27
Los Angeles	375.94	401.61	362.12	386.70	409.01	376.25	404.52	453.79	372.83
Greater California	407.51	436.64	389.06	416.87	443.44	400.84	392.77	441.19	356.07
Connecticut	463.46	495.55	444.50	464.12	491.98	448.87	421.66	491.17	376.95
Detroit	487.73	540.70	452.31	490.59	534.10	463.98	499.48	588.69	438.81
Georgia	456.55	520.99	411.86	463.38	517.43	426.85	453.65	549.26	391.74
Atlanta	451.07	514.24	409.24	463.35	511.66	434.45	455.26	552.06	394.25
Rural Georgia	471.88	548.29	415.89	475.96	528.41	434.33	468.05	602.58	386.62
Greater Georgia	459.82	524.17	414.61	463.97	520.37	424.64	452.98	545.06	392.20
Hawaii	407.70	426.00	399.95	479.13	503.25	459.66	409.79	475.16	320.90
Idaho	432.21	460.34	412.01	430.47	456.84	411.88	335.04	381.09	273.73
Iowa	466.53	509.78	438.00	466.08	507.73	438.92	482.48	549.18	432.76
Kentucky	510.42	566.08	473.12	509.18	559.48	476.29	483.39	547.41	442.58
Louisiana	472.26	548.62	415.89	470.47	537.30	421.33	488.23	592.05	415.40
Massachusetts	443.53	463.43	434.57	445.32	461.12	440.13	394.48	447.02	359.50
New Jersey	473.24	516.28	447.11	485.13	522.74	464.03	440.87	509.12	399.56
New Mexico	368.70	382.91	361.31	373.79	385.37	368.64	320.82	358.38	288.76
New York	471.78	517.77	443.12	485.82	525.09	463.05	436.84	523.74	383.22
Seattle-Puget Sound	462.04	495.60	441.45	472.79	503.82	454.21	455.57	517.48	403.81
Utah	395.88	430.83	370.35	398.83	433.46	373.47	372.01	435.57	297.52
SEER 9 Areas ^b	440.85	477.61	417.12	451.46	484.35	431.36	459.98	539.74	405.29
SEER 13 Areas ^b	423.61	457.60	402.34	436.19	466.99	418.00	446.20	518.69	396.83
SEER 18 Areas ^b	435.12	474.30	409.57	445.00	480.11	423.15	447.92	523.73	396.34
SEER 21 Areas ^b	442.00	480.97	417.07	451.68	486.00	430.94	442.91	520.81	391.28

^a Rates are per 100,000 and are age-adjusted to the 2000 US Std Population (19 age groups - Census P25-1130)

^b The SEER 9 areas are San Francisco, Connecticut, Detroit, Hawaii, Iowa, New Mexico, Seattle, Utah and Atlanta.

The SEER 13 areas comprise the SEER 9 areas plus San Jose-Monterey, Los Angeles, the Alaska Native Registry and Rural Georgia.

The SEER 18 areas comprise the SEER 13 areas plus California excluding SF/SJM/LA, Kentucky, Louisiana, New Jersey and Georgia

excluding ATL/RG.

The SEER 21 areas comprise the SEER 18 areas plus Idaho, New York and Massachusetts.

- Statistic not shown. Rate based on less than 16 cases for the time interval.

Table 2.17
All Cancer Sites (Invasive)

Age-Adjusted SEER Death Rates^a
By Registry, Race and Sex

	All Races			Whites			Blacks		
	Total	Males	Females	Total	Males	Females	Total	Males	Females
<u>SEER Death Rates^a, 2012-2016</u>									
California	145.27	171.10	126.68	151.35	177.45	132.40	180.39	215.17	158.51
Greater Bay Area	133.43	156.62	116.93	141.36	164.47	124.97	187.14	224.20	163.09
San Francisco-Oakland	136.02	159.04	119.72	142.37	164.78	126.48	192.40	233.28	165.96
San Jose-Monterey	128.35	151.91	111.34	139.49	163.82	122.20	153.92	172.24	142.30
Los Angeles	140.69	165.64	123.57	144.36	169.02	127.14	184.62	219.08	164.80
Greater California	151.49	178.61	131.53	156.77	184.27	136.43	173.16	207.14	149.61
Connecticut	145.81	173.25	127.03	146.83	174.04	128.02	153.53	189.66	132.47
Detroit	172.29	203.51	151.08	167.27	196.85	146.89	200.10	243.60	172.87
Georgia	165.57	206.61	137.00	163.53	202.08	135.23	179.96	237.94	146.68
Atlanta	150.67	184.82	128.82	143.18	173.14	123.04	172.68	226.20	143.79
Rural Georgia	183.71	233.25	146.66	171.33	210.84	138.89	211.78	297.76	160.99
Greater Georgia	172.52	216.33	141.13	170.94	212.50	139.83	185.22	245.11	149.35
Hawaii	133.13	160.54	112.38	156.48	177.92	136.91	143.30	168.28	112.97
Idaho	154.81	181.37	133.63	156.06	182.83	134.63	77.51	100.93	-
Iowa	165.63	201.47	139.90	165.69	201.55	139.93	197.47	232.49	173.26
Kentucky	197.93	243.97	164.85	198.86	245.26	165.16	202.07	250.18	173.14
Louisiana	183.02	227.10	150.83	173.34	213.28	143.47	213.60	275.00	172.68
Massachusetts	155.82	186.59	134.92	159.66	190.47	138.79	137.27	170.72	116.26
New Jersey	153.50	180.24	135.97	157.50	184.84	139.24	172.59	210.75	151.77
New Mexico	143.99	171.01	123.12	146.86	174.25	125.38	148.27	193.49	113.08
New York	150.96	178.54	132.44	156.44	183.65	137.79	150.14	184.05	131.33
Seattle-Puget Sound	153.90	180.56	134.42	157.48	183.16	138.61	170.60	210.30	139.80
Utah	127.01	148.89	109.81	127.33	149.23	110.09	144.41	144.06	139.89
SEER 9 Areas ^b	149.62	177.59	129.71	151.58	178.97	131.80	180.80	224.26	154.11
SEER 13 Areas ^b	146.80	173.88	127.60	149.68	176.30	130.54	181.50	222.93	156.28
SEER 18 Areas ^b	155.17	185.23	133.68	158.07	187.84	136.47	185.12	230.88	156.76
SEER 21 Areas ^b	154.45	184.08	133.54	157.85	187.20	136.85	174.25	216.94	148.52
Total U.S.	160.96	193.11	137.65	161.50	193.02	138.26	185.58	233.47	156.04

^a US Mortality Files, National Center for Health Statistics, Centers for Disease Control and Prevention. Rates are per 100,000 and are age-adjusted to the 2000 US Std Population (19 age groups - Census P25-1130).

^b The SEER 9 areas are San Francisco, Connecticut, Detroit, Hawaii, Iowa, New Mexico, Seattle, Utah and Atlanta. The SEER 13 areas comprise the SEER 9 areas plus San Jose-Monterey, Los Angeles, the Alaska Native Registry and Rural Georgia. The SEER 18 areas comprise the SEER 13 areas plus California excluding SF/SJM/LA, Kentucky, Louisiana, New Jersey and Georgia excluding ATL/RG.

The SEER 21 areas comprise the SEER 18 areas plus Idaho, New York and Massachusetts.

- Statistic not shown. Rate based on less than 16 cases for the time interval.

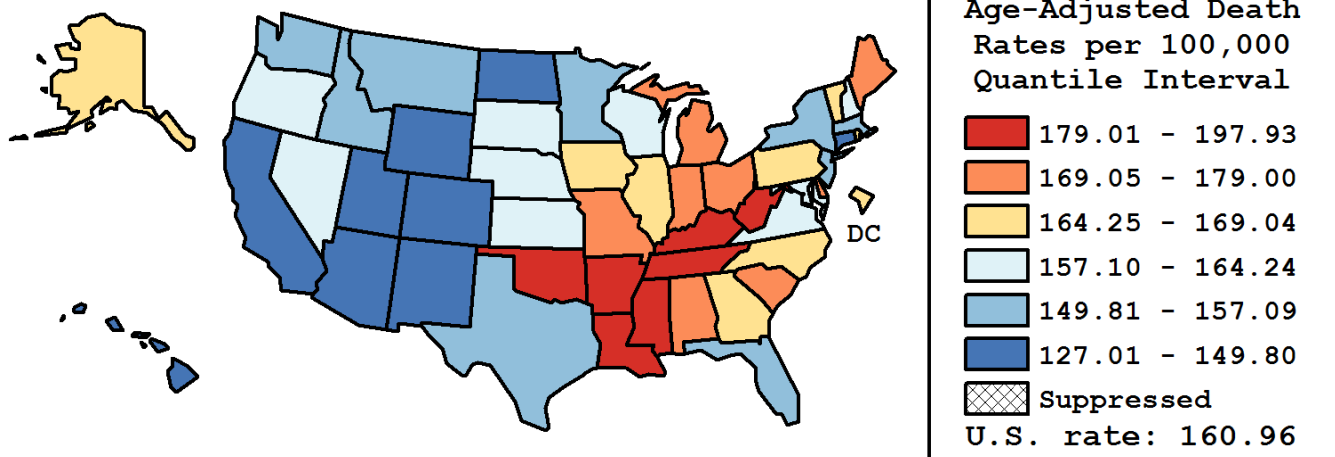
Table 2.18
All Cancer Sites (Invasive)

Age-Adjusted Cancer Death^a Rates by State, All Races, 2012-2016

Males and Females

State	Rate	SE	Rank(CI) ^d	PD
TOTAL U.S.	160.96	0.10		
High Five States				
Kentucky	197.93	0.89	01(01,01)	22.97 ^c
Mississippi	193.62	1.09	02(02,03)	20.29 ^c
West Virginia	189.41	1.25	03(02,04)	17.67 ^c
Arkansas	185.17	1.03	04(03,07)	15.04 ^c
Tennessee	183.95	0.70	05(04,07)	14.28 ^c
Low Five States				
Arizona	144.08	0.61	47(44,48)	-10.49 ^c
New Mexico	143.99	1.11	48(44,48)	-10.54 ^c
Colorado	138.87	0.73	49(48,49)	-13.72 ^c
Hawaii	133.13	1.25	50(50,50)	-17.29 ^c
Utah	127.01	1.05	51(51,51)	-21.09 ^c

State	Rate	SE	Rank(CI) ^d	PD	State	Rate	SE	Rank(CI) ^d	PD
Alabama	179.00	0.80	08(08,10)	11.21 ^c	Montana	154.97	1.57	36(32,43)	-3.72
Alaska	164.85	2.56	22(13,34)	2.42	Nebraska	159.29	1.23	33(26,35)	-1.04
Arizona	144.08	0.61	47(44,48)	-10.49 ^c	Nevada	162.29	1.06	28(22,33)	0.83
Arkansas	185.17	1.03	04(03,07)	15.04 ^c	New Hampshire	162.04	1.43	29(20,33)	0.67
California	145.27	0.27	45(44,48)	-9.75 ^c	New Jersey	153.50	0.55	39(36,42)	-4.63
Colorado	138.87	0.73	49(48,49)	-13.72 ^c	New Mexico	143.99	1.11	48(44,48)	-10.54 ^c
Connecticut	145.81	0.82	44(43,48)	-9.41 ^c	New York	150.96	0.36	42(41,43)	-6.21 ^c
Delaware	169.57	1.73	15(12,24)	5.35 ^c	North Carolina	166.90	0.55	19(17,23)	3.69
D.C.	169.04	2.35	17(11,27)	5.02 ^c	North Dakota	149.80	1.92	43(36,46)	-6.93 ^c
Florida	152.56	0.33	41(38,42)	-5.22 ^c	Ohio	177.12	0.51	10(08,11)	10.04 ^c
Georgia	165.57	0.59	21(18,25)	2.86	Oklahoma	183.69	0.93	06(04,07)	14.12 ^c
Hawaii	133.13	1.25	50(50,50)	-17.29 ^c	Oregon	162.79	0.84	26(22,32)	1.14
Idaho	154.81	1.34	37(33,42)	-3.82	Pennsylvania	169.04	0.46	16(14,19)	5.02 ^c
Illinois	168.48	0.49	18(15,20)	4.67	Rhode Island	164.75	1.61	24(16,32)	2.35
Indiana	178.39	0.70	09(08,11)	10.83 ^c	South Carolina	171.81	0.79	13(12,16)	6.74 ^c
Iowa	165.63	0.94	20(17,27)	2.90	South Dakota	160.46	1.81	31(21,36)	-0.31
Kansas	164.24	1.01	25(19,30)	2.04	Tennessee	183.95	0.70	05(04,07)	14.28 ^c
Kentucky	197.93	0.89	01(01,01)	22.97 ^c	Texas	154.01	0.36	38(36,40)	-4.32
Louisiana	183.02	0.86	07(04,07)	13.71 ^c	Utah	127.01	1.05	51(51,51)	-21.09 ^c
Maine	174.06	1.39	12(09,15)	8.14 ^c	Vermont	164.82	2.06	23(14,33)	2.40
Maryland	160.28	0.71	32(27,33)	-0.42	Virginia	160.84	0.60	30(26,33)	-0.07
Massachusetts	155.82	0.63	35(33,38)	-3.19	Washington	157.09	0.65	34(32,37)	-2.40
Michigan	170.42	0.54	14(13,17)	5.88 ^c	West Virginia	189.41	1.25	03(02,04)	17.67 ^c
Minnesota	153.44	0.71	40(36,42)	-4.67	Wisconsin	162.77	0.69	27(22,31)	1.12
Mississippi	193.62	1.09	02(02,03)	20.29 ^c	Wyoming	144.66	2.16	46(43,49)	-10.12 ^c
Missouri	175.59	0.70	11(10,12)	9.09 ^c					



^a US Mortality Files, National Center for Health Statistics, Centers for Disease Control and Prevention. Rates are per 100,000 and are age-adjusted to the 2000 US Std Population (19 age groups - Census P25-1130).

^b Difference between state rate and total U.S. rate is statistically significant ($p \leq .0002$).

^c Absolute percent difference between state rate and total U.S. rate is 5% or more.

^d Rank of state level death rate and the 95% confidence intervals (low, high) for the rank.

SE Standard error of the rate.

PD Percent difference between state rate and total U.S. rate.

- Statistic not shown. Rate based on less than 16 cases for the time interval.

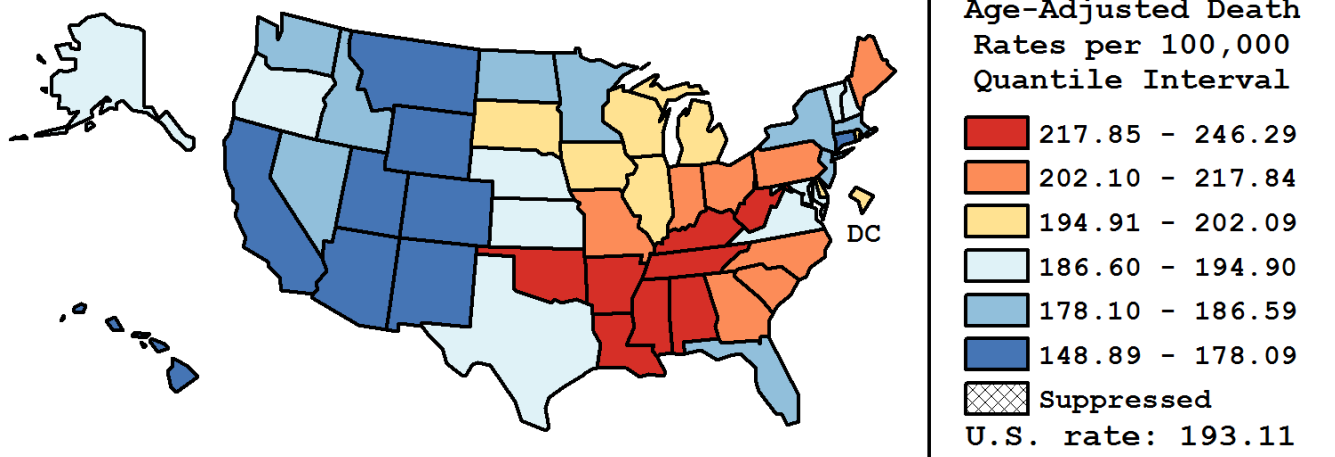
Table 2.19
All Cancer Sites (Invasive)

Age-Adjusted Cancer Death^a Rates by State, All Races, 2012-2016

Males

State	Rate	SE	Rank(CI) ^d	PD
TOTAL U.S.	193.11	0.16		
High Five States				
Mississippi	246.29	1.90	01(01,02)	27.54 ^c
Kentucky	243.97	1.52	02(01,02)	26.34 ^c
Arkansas	229.84	1.74	03(03,07)	19.02 ^c
Tennessee	228.43	1.21	04(03,07)	18.29 ^c
Louisiana	227.10	1.47	05(03,08)	17.60 ^c
Low Five States				
Arizona	169.21	0.97	47(44,48)	-12.38 ^c
Wyoming	166.15	3.43	48(43,50)	-13.96 ^c
Colorado	163.32	1.21	49(48,50)	-15.43 ^c
Hawaii	160.54	2.04	50(48,50)	-16.86 ^c
Utah	148.89	1.70	51(51,51)	-22.90 ^c

State	Rate	SE	Rank(CI) ^d	PD	State	Rate	SE	Rank(CI) ^d	PD
Alabama	226.45	1.39	07(03,08)	17.27 ^c	Montana	178.09	2.48	43(35,45)	-7.78 ^c
Alaska	188.05	4.12	32(21,43)	-2.62	Nebraska	190.43	2.03	30(23,36)	-1.39
Arizona	169.21	0.97	47(44,48)	-12.38 ^c	Nevada	184.29	1.67	36(31,41)	-4.57
Arkansas	229.84	1.74	03(03,07)	19.02 ^c	New Hampshire	191.57	2.34	28(21,35)	-0.80
California	171.10	0.45	45(44,47)	-11.40 ^c	New Jersey	180.24	0.91	40(36,43)	-6.66 ^c
Colorado	163.32	1.21	49(48,50)	-15.43 ^c	New Mexico	171.01	1.80	46(43,48)	-11.45 ^c
Connecticut	173.25	1.36	44(42,47)	-10.28 ^c	New York	178.54	0.61	42(39,43)	-7.55 ^c
Delaware	201.73	2.86	18(13,26)	4.46	North Carolina	206.33	0.95	15(13,17)	6.85 ^c
D.C.	194.96	3.94	24(14,36)	0.96	North Dakota	179.08	3.12	41(32,46)	-7.26 ^c
Florida	182.29	0.54	37(35,41)	-5.60 ^c	Ohio	212.88	0.85	11(10,13)	10.24 ^c
Georgia	206.61	1.03	14(12,17)	6.99 ^c	Oklahoma	222.06	1.54	08(06,09)	14.99 ^c
Hawaii	160.54	2.04	50(48,50)	-16.86 ^c	Oregon	190.89	1.36	29(24,33)	-1.15
Idaho	181.37	2.15	39(33,43)	-6.08 ^c	Pennsylvania	203.63	0.76	16(14,20)	5.45 ^c
Illinois	201.57	0.82	19(16,22)	4.38	Rhode Island	201.05	2.72	21(13,27)	4.11
Indiana	217.84	1.18	09(08,10)	12.80 ^c	South Carolina	214.06	1.35	10(09,13)	10.85 ^c
Iowa	201.47	1.56	20(15,23)	4.33	South Dakota	195.40	2.97	22(16,33)	1.18
Kansas	194.71	1.66	26(21,31)	0.83	Tennessee	228.43	1.21	04(03,07)	18.29 ^c
Kentucky	243.97	1.52	02(01,02)	26.34 ^c	Texas	187.30	0.60	33(30,35)	-3.01
Louisiana	227.10	1.47	05(03,08)	17.60 ^c	Utah	148.89	1.70	51(51,51)	-22.90 ^c
Maine	208.25	2.30	13(10,19)	7.84 ^c	Vermont	194.90	3.37	25(16,34)	0.92
Maryland	190.26	1.19	31(25,33)	-1.48	Virginia	193.80	1.02	27(22,30)	0.36
Massachusetts	186.59	1.06	34(30,37)	-3.38	Washington	184.65	1.06	35(32,39)	-4.38
Michigan	202.09	0.89	17(16,22)	4.65	West Virginia	226.87	2.07	06(03,08)	17.48 ^c
Minnesota	181.80	1.17	38(34,42)	-5.86 ^c	Wisconsin	195.04	1.15	23(21,29)	1.00
Mississippi	246.29	1.90	01(01,02)	27.54 ^c	Wyoming	166.15	3.43	48(43,50)	-13.96 ^c
Missouri	210.76	1.17	12(10,14)	9.14 ^c					



^a US Mortality Files, National Center for Health Statistics, Centers for Disease Control and Prevention. Rates are per 100,000 and are age-adjusted to the 2000 US Std Population (19 age groups - Census P25-1130).

^b Difference between state rate and total U.S. rate is statistically significant ($p \leq .0002$).

^c Absolute percent difference between state rate and total U.S. rate is 5% or more.

^d Rank of state level death rate and the 95% confidence intervals (low, high) for the rank.

SE Standard error of the rate.

PD Percent difference between state rate and total U.S. rate.

- Statistic not shown. Rate based on less than 16 cases for the time interval.

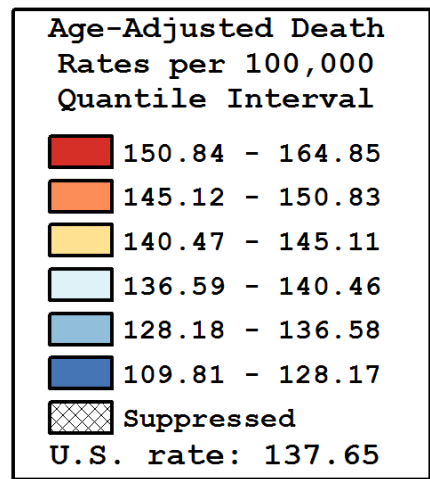
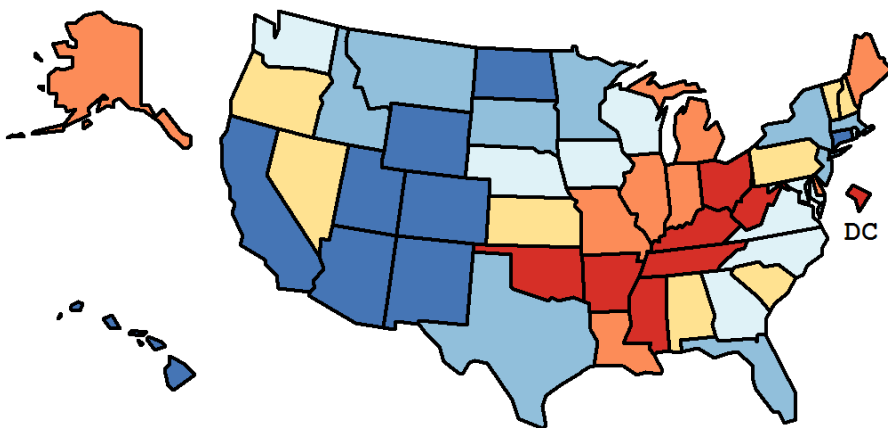
Table 2.20
All Cancer Sites (Invasive)

Age-Adjusted Cancer Death^a Rates by State, All Races, 2012-2016

Females

State	Rate	SE	Rank(CI) ^d	PD
TOTAL U.S.	137.65	0.12		
High Five States				
Kentucky	164.85	1.09	01(01,02)	19.76 ^c
West Virginia	161.39	1.58	02(01,03)	17.25 ^c
Mississippi	156.25	1.31	03(02,06)	13.51 ^c
Oklahoma	154.86	1.15	04(03,08)	12.50 ^c
D.C.	152.77	2.96	05(02,18)	10.99 ^c
Low Five States				
Arizona	123.88	0.78	47(45,49)	-10.00 ^c
New Mexico	123.12	1.39	48(44,49)	-10.56 ^c
Colorado	121.30	0.93	49(47,49)	-11.88 ^c
Hawaii	112.38	1.58	50(50,51)	-18.36 ^c
Utah	109.81	1.33	51(50,51)	-20.23 ^c

State	Rate	SE	Rank(CI) ^d	PD	State	Rate	SE	Rank(CI) ^d	PD
Alabama	145.11	0.97	17(13,22)	5.42 ^c	Montana	136.58	2.04	34(20,41)	-0.78
Alaska	145.83	3.27	15(04,33)	5.94 ^c	Nebraska	136.99	1.55	32(22,40)	-0.48
Arizona	123.88	0.78	47(45,49)	-10.00 ^c	Nevada	143.86	1.37	19(13,26)	4.51
Arkansas	151.46	1.27	08(04,13)	10.03 ^c	New Hampshire	140.78	1.81	24(15,35)	2.28
California	126.68	0.34	46(43,46)	-7.97 ^c	New Jersey	135.97	0.68	35(29,38)	-1.22
Colorado	121.30	0.93	49(47,49)	-11.88 ^c	New Mexico	123.12	1.39	44(36,49)	-10.56 ^c
Connecticut	127.03	1.02	45(41,47)	-7.72 ^c	New York	132.44	0.46	40(37,42)	-3.79
Delaware	146.14	2.16	14(05,26)	6.17 ^c	North Carolina	139.11	0.67	29(23,32)	1.06
D.C.	152.77	2.96	05(02,18)	10.99 ^c	North Dakota	128.13	2.44	44(36,49)	-6.92 ^c
Florida	129.01	0.42	42(40,45)	-6.28 ^c	Ohio	151.77	0.63	06(04,11)	10.26 ^c
Georgia	137.00	0.71	31(27,37)	-0.47	Oklahoma	154.86	1.15	04(03,08)	12.50 ^c
Hawaii	112.38	1.58	50(50,51)	-18.36 ^c	Oregon	141.95	1.06	21(16,29)	3.12
Idaho	133.63	1.71	38(29,43)	-2.92	Pennsylvania	144.99	0.57	18(14,21)	5.33 ^c
Illinois	145.73	0.61	16(12,20)	5.87 ^c	Rhode Island	140.46	1.99	25(15,37)	2.04
Indiana	150.07	0.87	11(05,14)	9.02 ^c	South Carolina	141.43	0.96	23(18,29)	2.74
Iowa	139.90	1.18	27(19,34)	1.63	South Dakota	134.57	2.28	37(23,44)	-2.24
Kansas	141.89	1.28	22(15,30)	3.08	Tennessee	151.71	0.86	07(04,12)	10.21 ^c
Kentucky	164.85	1.09	01(01,02)	19.76 ^c	Texas	129.38	0.44	41(40,45)	-6.01 ^c
Louisiana	150.83	1.05	09(04,14)	9.57 ^c	Utah	109.81	1.33	51(50,51)	-20.23 ^c
Maine	148.75	1.75	12(05,19)	8.06 ^c	Vermont	142.26	2.60	20(11,36)	3.35
Maryland	139.93	0.88	26(20,32)	1.66	Virginia	137.33	0.75	30(26,37)	-0.23
Massachusetts	134.92	0.78	36(31,40)	-1.99	Washington	136.64	0.82	33(28,38)	-0.73
Michigan	147.71	0.68	13(10,16)	7.30 ^c	West Virginia	161.39	1.58	02(01,03)	17.25 ^c
Minnesota	133.11	0.90	39(34,41)	-3.30	Wisconsin	139.73	0.88	28(20,32)	1.51
Mississippi	156.25	1.31	03(02,06)	13.51 ^c	Wyoming	128.17	2.80	43(33,49)	-6.89 ^c
Missouri	150.20	0.88	10(05,14)	9.11 ^c					



^a US Mortality Files, National Center for Health Statistics, Centers for Disease Control and Prevention. Rates are per 100,000 and are age-adjusted to the 2000 US Std Population (19 age groups - Census P25-1130).

^b Difference between state rate and total U.S. rate is statistically significant ($p \leq .0002$).

^c Absolute percent difference between state rate and total U.S. rate is 5% or more.

^d Rank of state level death rate and the 95% confidence intervals (low, high) for the rank.

SE Standard error of the rate.

PD Percent difference between state rate and total U.S. rate.

- Statistic not shown. Rate based on less than 16 cases for the time interval.

Table 2.21
All Cancer Sites (Invasive)

Estimated United States Cancer Prevalence Counts^a on January 1, 2016
By Race/Ethnicity, Sex and Years Since Diagnosis

Years Since Diagnosis		0 to <5	5 to <10	10 to <15	15 to <20	20 to <24	0 to <24 ^b	>=24 ^d	Complete ^e
<u>Race</u>	<u>Sex</u>								
All Races	Both Sexes	4,788,249	3,608,607	2,608,324	1,793,597	926,801	13,725,578	1,613,409	15,338,988
	Males	2,321,794	1,829,893	1,272,515	808,408	382,770	6,615,379	431,441	7,046,820
	Females	2,466,455	1,778,715	1,335,809	985,189	544,031	7,110,200	1,181,968	8,292,168
White	Both Sexes	3,968,466	3,053,020	2,255,275	1,568,276	818,502	11,663,539	1,415,076	13,324,536
	Males	1,916,728	1,536,815	1,094,048	703,143	338,020	5,588,755	397,269	6,143,984
	Females	2,051,738	1,516,204	1,161,227	865,133	480,481	6,074,784	1,017,807	7,180,552
Black	Both Sexes	511,191	353,620	232,335	146,476	69,448	1,313,069	113,724	1,426,793
	Males	253,883	191,846	122,833	72,371	30,400	671,332	22,538	693,871
	Females	257,308	161,774	109,502	74,105	39,048	641,737	91,186	732,922
Asian/ Pacific Islander	Both Sexes	175,153	114,975	76,704	47,271	22,714	436,817	+	+
	Males	70,211	46,774	29,571	16,332	7,072	169,960	+	+
	Females	104,942	68,200	47,133	30,939	15,642	266,857	+	+
Hispanic	Both Sexes	389,479	259,791	174,874	108,086	53,984	986,213	+	+
	Males	171,164	120,631	79,132	44,942	20,093	435,962	+	+
	Females	218,314	139,160	95,742	63,144	33,891	550,250	+	+

Estimated prevalence percent^a on January 1, 2016, of the SEER population diagnosed in the previous 24 years
By Age at Prevalence, Race/Ethnicity and Sex

Age at Prevalence		Age Specific (Crude)										Age-Adjusted ^c
		All Ages	0-9	10-19	20-29	30-39	40-49	50-59	60-69	70-79	80+	All Ages
<u>Race</u>	<u>Sex</u>											
All Races	Both Sexes	4.2597	0.0899	0.2023	0.3922	0.8989	2.1532	4.9326	10.4420	18.3168	21.5939	3.6659
	Males	4.1699	0.0922	0.2141	0.3839	0.7190	1.4723	3.9242	10.6514	22.0759	29.4584	3.9311
	Females	4.3467	0.0875	0.1899	0.4009	1.0798	2.8229	5.8958	10.2522	15.1851	16.7558	3.5353
White	Both Sexes	4.6254	0.0951	0.2182	0.4325	0.9779	2.2654	5.0324	10.5285	18.5682	21.9709	3.7456
	Males	4.4728	0.0966	0.2321	0.4256	0.7883	1.5534	3.9221	10.4574	21.8930	29.3620	3.9319
	Females	4.7752	0.0935	0.2036	0.4397	1.1737	2.9850	6.1157	10.5944	15.7385	17.3436	3.6809
Black	Both Sexes	2.9117	0.0668	0.1406	0.2434	0.5916	1.6512	4.4428	10.3411	17.2760	18.1672	3.2840
	Males	3.1033	0.0708	0.1416	0.2341	0.4508	1.1414	4.1261	12.7006	24.6323	29.6595	4.1495
	Females	2.7350	0.0627	0.1395	0.2528	0.7206	2.1031	4.7187	8.4565	12.1550	12.4940	2.7687
Asian/ Pacific Islander	Both Sexes	2.1454	0.0723	0.1485	0.2388	0.5246	1.4613	3.3932	6.5148	10.4674	13.3000	2.2837
	Males	1.7424	0.0765	0.1606	0.2210	0.3500	0.7578	2.0343	5.4264	11.4323	17.2834	2.1151
	Females	2.5161	0.0679	0.1362	0.2567	0.6822	2.0847	4.5689	7.3937	9.6921	10.7354	2.4628
Hispanic	Both Sexes	1.7268	0.0837	0.1898	0.3320	0.6683	1.5085	3.4100	7.1864	12.5767	14.9162	2.5729
	Males	1.5106	0.0874	0.2050	0.3350	0.5272	0.9328	2.3723	6.7440	15.2423	21.1008	2.6949
	Females	1.9476	0.0798	0.1739	0.3288	0.8210	2.1006	4.4323	7.5777	10.5338	11.0982	2.5702

^a US 2016 cancer prevalence counts are based on 2016 cancer prevalence proportions from the SEER 13 Areas (excluding the Alaska Native Registry) and 1/1/2016 US population estimates based on the average of 2015 and 2016 population estimates from the US Bureau of the Census.

^b Prevalence was calculated using the first invasive tumor for each cancer site diagnosed during the previous 24 years. Maximum limited-duration prevalence is 24 years for 1992-2016 data.

^c Percentages are age-adjusted to the 2000 US Standard Population (19 age groups - Census P25-1130) by 5-year age groups.

^d Cases diagnosed more than 24 years ago were estimated using the completeness index method (Capocaccia et. al. 1997, Merrill et. al. 2000).

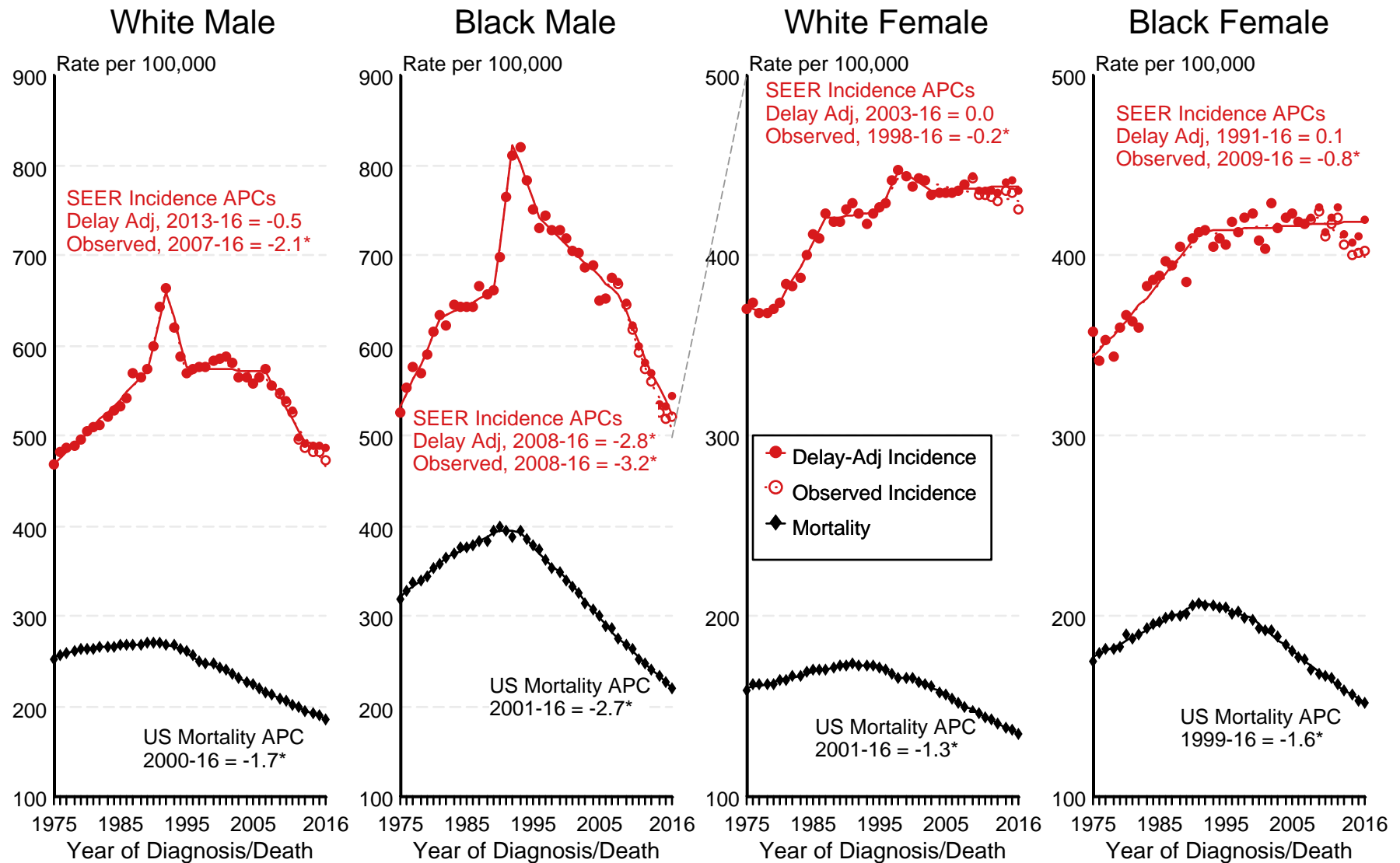
^e Complete prevalence is obtained by summing 0 to <24 and >=24.

- Statistic not shown. Statistic based on fewer than 5 cases estimated alive in SEER for the time interval.

+ Not available.

Figure 2.1

SEER Observed Incidence, SEER Delay Adjusted Incidence and US Death Rates^a All Cancer Sites, by Race and Sex



Source: SEER 9 areas and US Mortality Files (National Center for Health Statistics, CDC).

^a Rates are age-adjusted to the 2000 US Std Population (19 age groups - Census P25-1103).

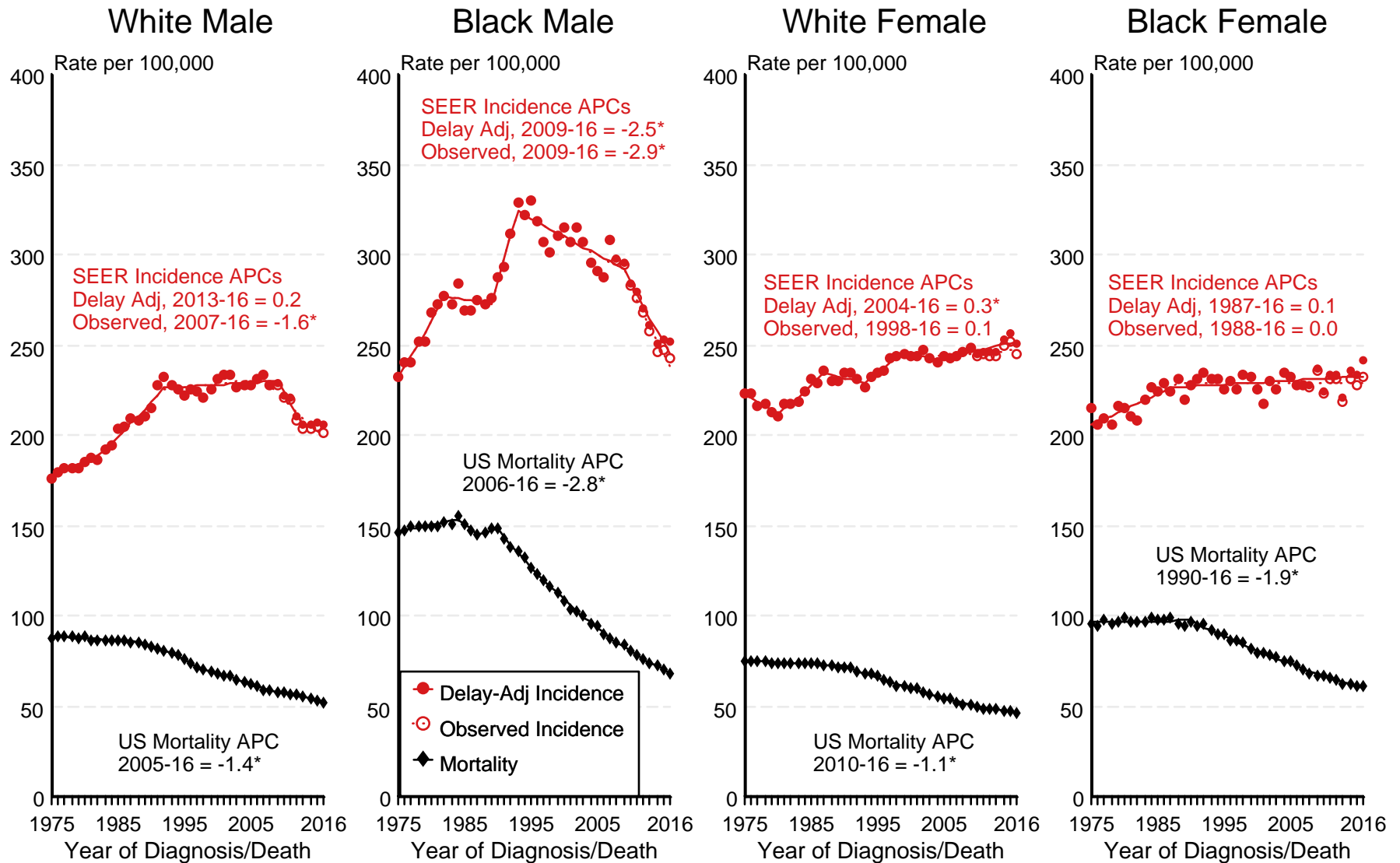
Regression lines and APCs are calculated using the Joinpoint Regression Program Version 4.7, February 2019, National Cancer Institute.

The APC is the Annual Percent Change for the regression line segments. The APC shown on the graph is for the most recent trend.

* The APC is significantly different from zero ($p < 0.05$).

Figure 2.2

SEER Observed Incidence, SEER Delay Adjusted Incidence and US Death Rates^a All Cancer Sites, Under 65 Years of Age, by Race and Sex



Source: SEER 9 areas and US Mortality Files (National Center for Health Statistics, CDC).

^a Rates are age-adjusted to the 2000 US Std Population (19 age groups - Census P25-1103).

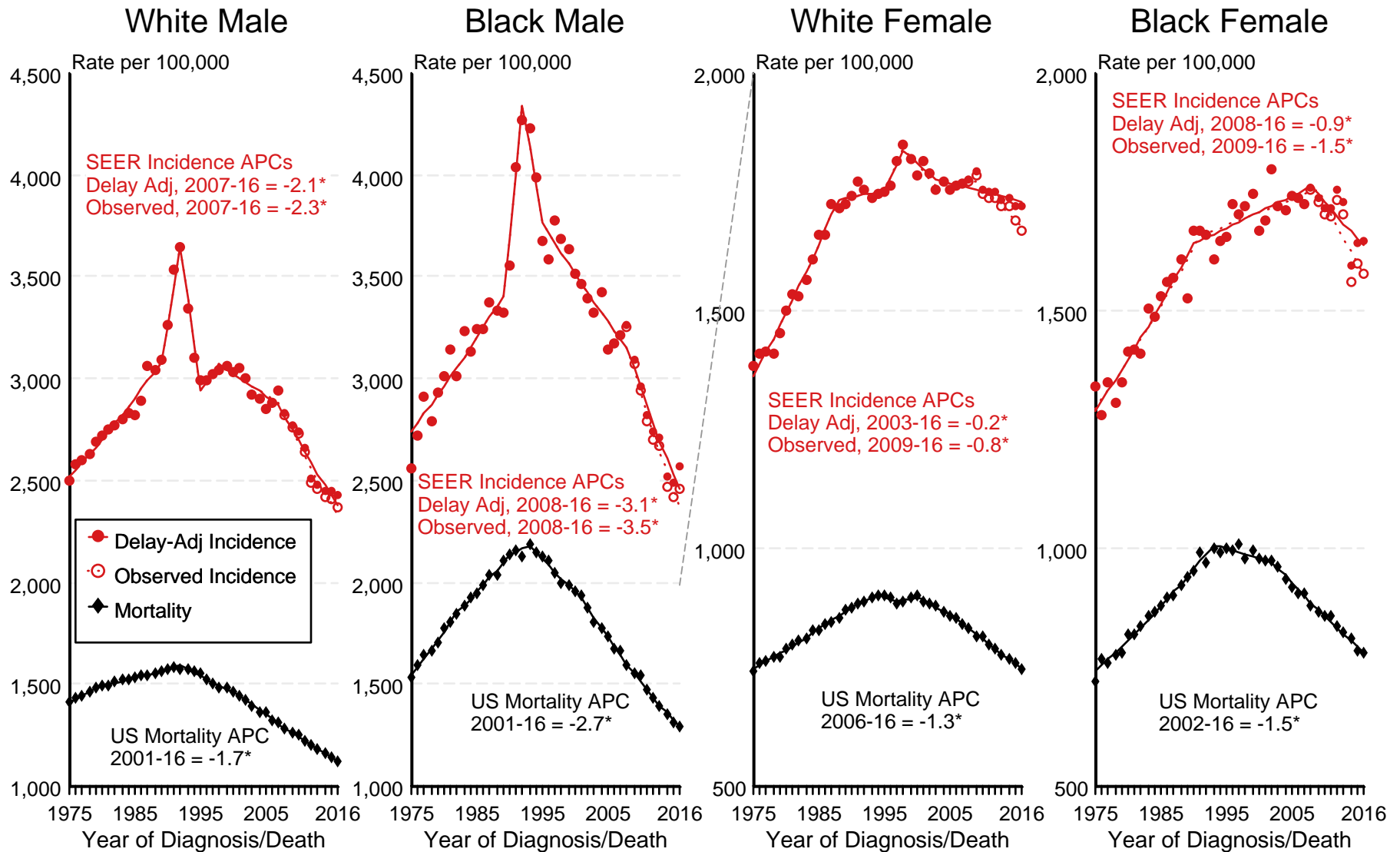
Regression lines and APCs are calculated using the Joinpoint Regression Program Version 4.7, February 2019, National Cancer Institute.

The APC is the Annual Percent Change for the regression line segments. The APC shown on the graph is for the most recent trend.

* The APC is significantly different from zero ($p < 0.05$).

Figure 2.3

SEER Observed Incidence, SEER Delay Adjusted Incidence and US Death Rates^a All Cancer Sites, Ages 65 and Over, by Race and Sex



Source: SEER 9 areas and US Mortality Files (National Center for Health Statistics, CDC).

^a Rates are age-adjusted to the 2000 US Std Population (19 age groups - Census P25-1103).

Regression lines and APCs are calculated using the Joinpoint Regression Program Version 4.7, February 2019, National Cancer Institute.

The APC is the Annual Percent Change for the regression line segments. The APC shown on the graph is for the most recent trend.

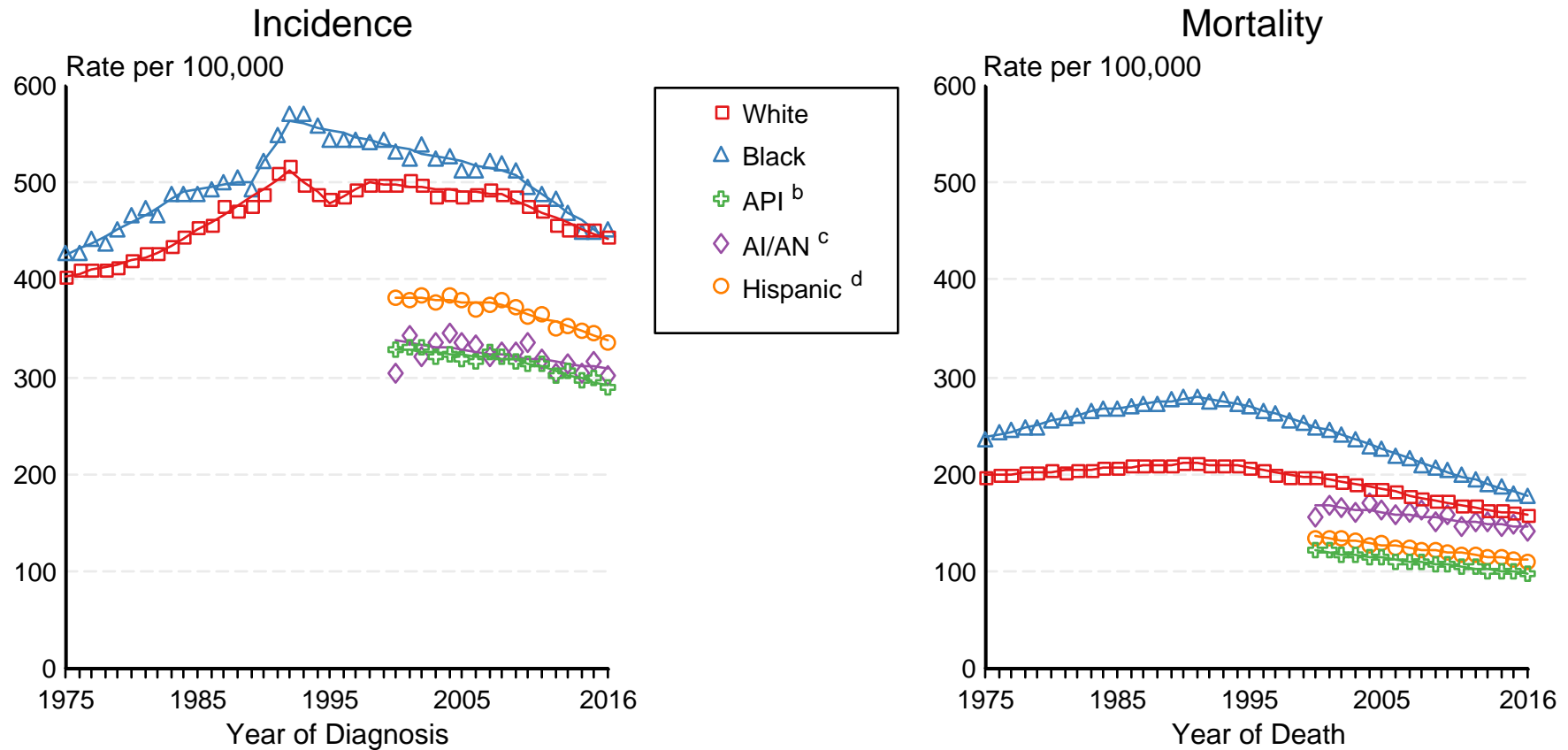
* The APC is significantly different from zero ($p < 0.05$).

Figure 2.4

SEER Incidence and US Death Rates^a All Cancer Sites, Both Sexes

Joinpoint Analyses for Whites and Blacks from 1975-2016

and for Asian/Pacific Islanders, American Indians/Alaska Natives and Hispanics from 2000-2016



Source: Incidence data for whites and blacks are from the SEER 9 areas (San Francisco, Connecticut, Detroit, Hawaii, Iowa, New Mexico, Seattle, Utah, Atlanta). Incidence data for Asian/Pacific Islanders, American Indians/Alaska Natives and Hispanics are from the SEER 21 areas (SEER 9 areas, San Jose-Monterey, Los Angeles, Alaska Native Registry, Rural Georgia, California excluding SF/SJM/LA, Kentucky, Louisiana, New Jersey, Georgia excluding ATL/RG, Idaho, New York and Massachusetts).

Mortality data are from US Mortality Files, National Center for Health Statistics, CDC.

^a Rates are age-adjusted to the 2000 US Std Population (19 age groups - Census P25-1103).

Regression lines are calculated using the Joinpoint Regression Program Version 4.7, February 2019, National Cancer Institute. Joinpoint analyses for Whites and Blacks during the 1975-2016 period allow a maximum of 5 joinpoints. Analyses for other ethnic groups during the period 1992-2016 allow a maximum of 4 joinpoints.

^b API = Asian/Pacific Islander.

^c AI/AN = American Indian/Alaska Native. Rates for American Indian/Alaska Native are based on the Purchased/Referred Care Delivery Area (PRCDA) counties.

^d Hispanic is not mutually exclusive from whites, blacks, Asian/Pacific Islanders, and American Indians/Alaska Natives. Incidence data for Hispanics are based on NHIA and exclude cases from the Alaska Native Registry.