

Table 1.23
Age-Adjusted SEER Incidence Rates and Trends for the Top 15 Cancer Sites^a by Race/Ethnicity
Both Sexes

	All Races		White		Black		
	Rate ^b 2012-2016	APC ^c 2007-2016	Rate ^b 2012-2016	APC ^c 2007-2016	Rate ^b 2012-2016	APC ^c 2007-2016	
All Sites	442.0	-1.3*	451.7	-1.3*	442.9	-1.7*	
Breast	68.4	-0.1	69.2	-0.2	Prostate ^f	74.9	-4.9*
Lung and Bronchus	54.9	-2.3*	56.7	-2.3*	Breast	70.9	0.2
Prostate ^f	50.0	-5.5*	47.0	-6.0*	Lung and Bronchus	56.2	-2.6*
Colon and Rectum	38.6	-2.6*	38.1	-2.6*	Colon and Rectum	44.6	-3.1*
Melanoma of the Skin	22.2	1.2*	26.6	1.3*	Kidney and Renal Pelvis	17.4	0.4
Urinary Bladder	20.1	-1.5*	22.2	-1.5*	Corpus and Uterus, NOS ^f	15.6	1.6*
Non-Hodgkin Lymphoma	19.6	-0.7*	20.6	-0.8*	Pancreas	15.2	-0.1
Kidney and Renal Pelvis	16.1	0.3	16.6	0.3	Non-Hodgkin Lymphoma	14.7	-0.3
Thyroid	15.8	2.0*	16.5	1.8*	Myeloma	13.7	0.7
Corpus and Uterus, NOS ^f	14.6	0.9*	14.9	-0.1	Urinary Bladder	11.8	-0.7
Leukemia	14.1	0.0	14.8	0.7*	Leukemia	10.9	0.9
Pancreas	12.9	0.4*	13.0	0.4*	Liver & IBD ^g	10.8	1.2*
Oral Cavity and Pharynx	11.3	0.6*	11.9	0.8*	Stomach	10.3	-2.2*
Liver & IBD ^g	8.8	1.7*	8.0	2.2*	Thyroid	9.6	3.0*
Stomach	7.4	-0.9*	7.0	-0.8*	Oral Cavity and Pharynx	8.6	-1.7*
	Asian/Pacific Islander		American Indian/Alaska Native ^d		Hispanic ^e		
	Rate ^b 2012-2016	APC ^c 2007-2016	Rate ^b 2012-2016	APC ^c 2007-2016	Rate ^b 2012-2016	APC ^c 2007-2016	
All Sites	297.9	-1.2*	307.6	-0.8*	All Sites	345.8	-1.3*
Breast	54.8	1.0*	42.8	-0.3	Breast	52.3	0.4
Lung and Bronchus	36.0	-1.4*	39.3	-0.2	Prostate ^f	41.3	-6.1*
Colon and Rectum	31.8	-3.0*	37.8	-2.0*	Colon and Rectum	33.7	-2.2*
Prostate ^f	24.6	-6.4*	24.6	-6.1*	Lung and Bronchus	29.1	-2.5*
Thyroid	15.6	2.0*	16.8	-1.2	Non-Hodgkin Lymphoma	17.9	-0.5
Non-Hodgkin Lymphoma	13.4	-0.3	13.6	1.1	Kidney and Renal Pelvis	15.7	1.0*
Liver & IBD ^g	13.0	-2.5*	11.3	-1.3	Thyroid	13.9	3.2*
Corpus and Uterus, NOS ^f	11.3	1.4*	10.5	-0.5	Liver & IBD ^g	13.6	0.8
Stomach	10.9	-2.9*	9.5	0.6	Corpus and Uterus, NOS ^f	12.8	2.4*
Pancreas	9.8	0.2	9.3	3.3*	Pancreas	11.3	0.1
Urinary Bladder	8.8	-1.2*	8.9	0.2	Urinary Bladder	11.1	-1.4*
Kidney and Renal Pelvis	8.4	-0.1	8.7	-1.3	Leukemia	10.8	-0.1
Oral Cavity and Pharynx	8.4	0.8	8.6	2.4	Stomach	10.4	-1.8*
Leukemia	7.8	-0.3	8.3	0.9	Oral Cavity and Pharynx	6.9	-1.1*
Ovary ^{fh}	5.1	-0.9	5.5	3.6	Myeloma	6.7	0.5

Source: SEER 21 areas (San Francisco, Connecticut, Detroit, Hawaii, Iowa, New Mexico, Seattle, Utah, Atlanta, San Jose-Monterey, Los Angeles, Alaska Native Registry, Rural Georgia, California excluding SF/SJM/LA, Kentucky, Louisiana, New Jersey, Georgia excluding ATL/RG, Idaho, New York and Massachusetts).

^a Top 15 cancer sites selected based on 2012-2016 age-adjusted rates for the race/ethnic group.

^b Rates are per 100,000 and age-adjusted to the 2000 US Std Population (19 age groups - Census P25-1130).

^c The APC is the Annual Percent Change over the time interval.

^d Trends are based on rates age-adjusted to the 2000 US Std Population (19 age groups - Census P25-1130).

^e Rates for American Indian/Alaska Native are based on the Purchased/Referred Care Delivery Area (PRCDA) counties.

^f Hispanic is not mutually exclusive from whites, blacks, Asian/Pacific Islanders, and American Indians/Alaska Natives.

^g Incidence data for Hispanics are based on NHIA and exclude cases from the Alaska Native Registry.

^h The rates for sex-specific cancer sites are calculated using the population for both sexes combined.

ⁱ IBD = Intrahepatic Bile Duct. ONS = Other Nervous System.

^j Ovary excludes borderline cases or histologies 8442, 8451, 8462, 8472, and 8473.

* The APC is significantly different from zero (p<.05).

- Statistic not shown. Rate based on less than 16 cases for the time interval. Trend based on less than 10 cases for at least one year within the time interval.

Table 1.24
Age-Adjusted SEER Incidence Rates and Trends for the Top 15 Cancer Sites^a by Race/Ethnicity

			Males					
All Races			White			Black		
	Rate ^b	APC ^c		Rate ^b	APC ^c		Rate ^b	APC ^c
	2012-2016	2007-2016		2012-2016	2007-2016		2012-2016	2007-2016
All Sites	481.0	-2.3*	All Sites	486.0	-2.3*	All Sites	520.8	-3.0*
Prostate	109.5	-5.7*	Prostate	101.9	-6.2*	Prostate	176.7	-5.3*
Lung and Bronchus	63.0	-3.0*	Lung and Bronchus	63.5	-3.0*	Lung and Bronchus	73.5	-3.4*
Colon and Rectum	44.2	-2.8*	Colon and Rectum	43.4	-2.9*	Colon and Rectum	52.4	-3.1*
Urinary Bladder	35.2	-1.7*	Urinary Bladder	38.5	-1.7*	Kidney and Renal Pelvis	24.3	0.4
Melanoma of the Skin	28.8	1.2*	Melanoma of the Skin	33.9	1.2*	Urinary Bladder	19.7	-1.2*
Non-Hodgkin Lymphoma	23.9	-0.7*	Non-Hodgkin Lymphoma	25.0	-0.8*	Liver & IBD ^f	17.8	0.9
Kidney and Renal Pelvis	22.1	0.2	Kidney and Renal Pelvis	22.8	0.3	Non-Hodgkin Lymphoma	17.7	-0.5
Leukemia	18.1	0.0	Leukemia	19.1	-0.2	Pancreas	16.7	-0.2
Oral Cavity and Pharynx	17.0	0.6*	Oral Cavity and Pharynx	17.9	0.9*	Myeloma	16.3	0.2
Pancreas	14.6	0.3	Pancreas	14.8	0.4	Stomach	14.1	-2.7*
Liver & IBD ^f	13.6	1.4*	Liver & IBD ^f	12.2	1.9*	Leukemia	13.9	0.7
Stomach	10.0	-1.5*	Stomach	8.9	-1.4*	Oral Cavity and Pharynx	13.4	-1.8*
Myeloma	8.7	0.8	Thyroid	8.6	2.3*	Larynx	7.6	-2.9*
Thyroid	8.0	2.5*	Brain and ONS ^f	8.3	-0.9*	Esophagus	6.4	-4.8*
Brain and ONS ^f	7.5	-0.9*	Myeloma	8.1	0.7	Brain and ONS ^f	4.7	-0.7
Asian/Pacific Islander			American Indian/Alaska Native ^d			Hispanic ^e		
	Rate ^b	APC ^c		Rate ^b	APC ^c		Rate ^b	APC ^c
	2012-2016	2007-2016		2012-2016	2007-2016		2012-2016	2007-2016
All Sites	301.1	-2.4*	All Sites	315.3	-1.7*	All Sites	370.4	-2.8*
Prostate	55.6	-6.6*	Prostate	55.4	-6.3*	Prostate	93.4	-6.5*
Lung and Bronchus	46.3	-2.1*	Lung and Bronchus	43.3	-3.3*	Colon and Rectum	40.0	-2.6*
Colon and Rectum	37.9	-2.4*	Colon and Rectum	41.2	-0.8	Lung and Bronchus	35.2	-3.6*
Liver & IBD ^f	19.9	-2.5*	Kidney and Renal Pelvis	21.2	-2.0	Kidney and Renal Pelvis	20.8	0.8
Non-Hodgkin Lymphoma	16.4	-0.5	Liver & IBD ^f	19.3	1.3	Non-Hodgkin Lymphoma	20.7	-0.7
Urinary Bladder	15.5	-1.3*	Urinary Bladder	14.9	-1.4	Liver & IBD ^f	20.3	0.3
Stomach	14.3	-2.9*	Non-Hodgkin Lymphoma	12.0	-3.7	Urinary Bladder	19.5	-1.5*
Kidney and Renal Pelvis	12.0	-0.1	Oral Cavity and Pharynx	11.8	-0.6	Leukemia	13.0	-0.2
Oral Cavity and Pharynx	11.8	0.5	Stomach	11.5	-1.5	Stomach	13.0	-3.0*
Pancreas	10.8	0.3	Pancreas	11.4	2.6	Pancreas	12.0	-0.1
Leukemia	9.7	-0.3	Leukemia	11.0	5.5	Oral Cavity and Pharynx	10.1	-1.3
Thyroid	7.7	3.9*	Myeloma	6.0	-	Myeloma	8.2	0.4
Myeloma	4.9	0.5	Esophagus	5.9	-	Brain and ONS ^f	5.8	-1.0*
Brain and ONS ^f	4.3	-0.5	Melanoma of the Skin	5.8	-	Thyroid	5.7	3.6*
Esophagus	3.6	-0.5	Testis	5.2	4.3	Testis	5.2	1.8*

Source: SEER 21 areas (San Francisco, Connecticut, Detroit, Hawaii, Iowa, New Mexico, Seattle, Utah, Atlanta, San Jose-Monterey, Los Angeles, Alaska Native Registry, Rural Georgia, California excluding SF/SJM/LA, Kentucky, Louisiana, New Jersey, Georgia excluding ATL/RG, Idaho, New York and Massachusetts).

^a Top 15 cancer sites selected based on 2012-2016 age-adjusted rates for the race/ethnic group.

^b Rates are per 100,000 and age-adjusted to the 2000 US Std Population (19 age groups - Census P25-1130).

^c The APC is the Annual Percent Change over the time interval.

Trends are based on rates age-adjusted to the 2000 US Std Population (19 age groups - Census P25-1130).

^d Rates for American Indian/Alaska Native are based on the Purchased/Referred Care Delivery Area (PRCDA) counties.

^e Hispanic is not mutually exclusive from whites, blacks, Asian/Pacific Islanders, and American Indians/Alaska Natives.

Incidence data for Hispanics are based on NHIA and exclude cases from the Alaska Native Registry.

^f IBD = Intrahepatic Bile Duct. ONS = Other Nervous System.

* The APC is significantly different from zero (p<.05).

- Statistic not shown. Rate based on less than 16 cases for the time interval. Trend based on less than 10 cases for at least one year within the time interval.

Table 1.25
Age-Adjusted SEER Incidence Rates and Trends for the Top 15 Cancer Sites^a by Race/Ethnicity

Females

	All Races		White		Black	
	Rate ^b 2012-2016	APC ^c 2007-2016	Rate ^b 2012-2016	APC ^c 2007-2016	Rate ^b 2012-2016	APC ^c 2007-2016
All Sites	417.1	-0.3*	430.9	-0.4*	391.3	-0.4*
Breast	127.5	0.1	130.5	-0.1	124.0	0.4
Lung and Bronchus	48.9	-1.7*	51.8	-1.6*	44.6	-1.8*
Colon and Rectum	33.9	-2.5*	33.6	-2.4*	39.1	-3.2*
Corpus and Uterus, NOS	27.5	1.1*	28.1	0.9*	27.4	1.9*
Thyroid	23.3	2.0*	24.5	1.7*	14.3	3.3*
Melanoma of the Skin	17.5	1.1*	21.3	1.3*	14.0	0.0
Non-Hodgkin Lymphoma	16.2	-0.8*	17.0	-0.9*	12.4	0.0
Pancreas	11.5	0.4	11.9	-2.1*	12.1	0.3
Ovary ^g	11.4	-2.0*	11.5	-0.2	11.9	0.9
Kidney and Renal Pelvis	10.9	0.1	11.4	0.4*	9.2	-1.4*
Leukemia	10.9	-0.1	11.3	0.1	8.9	1.1*
Urinary Bladder	8.7	-1.6*	9.5	-1.6*	8.7	-2.9*
Cervix Uteri	7.3	-1.1*	7.2	-1.0*	7.7	-1.9*
Oral Cavity and Pharynx	6.4	0.2	6.6	0.3	6.6	-0.3
Myeloma	5.6	0.9*	6.0	-0.8	5.4	1.8*
	Asian/Pacific Islander		American Indian/Alaska Native ^d		Hispanic ^e	
	Rate ^b 2012-2016	APC ^c 2007-2016	Rate ^b 2012-2016	APC ^c 2007-2016	Rate ^b 2012-2016	APC ^c 2007-2016
All Sites	299.7	-0.2	306.0	0.0	334.9	0.1
Breast	100.1	1.0*	79.5	-0.2	97.2	0.6
Lung and Bronchus	28.2	-0.6	37.9	0.5	28.8	-1.8*
Colon and Rectum	26.9	-3.6*	33.9	-0.7	24.8	-1.3*
Thyroid	22.6	1.5*	19.7	-0.4	24.1	2.7*
Corpus and Uterus, NOS	20.8	1.5*	14.2	3.4*	21.9	3.2*
Non-Hodgkin Lymphoma	11.0	-0.1	13.1	0.0	15.7	-0.1
Ovary ^g	9.4	-0.9	10.6	1.1	11.6	1.0
Pancreas	9.1	0.3	8.5	0.4	10.7	0.3
Stomach	8.2	-3.1*	8.1	-4.4*	10.3	-1.0*
Liver & IBD ^f	7.4	-2.4*	8.0	-1.3	9.3	-2.1*
Cervix Uteri	6.4	-1.3*	7.9	0.7	9.1	-0.2
Leukemia	6.3	-0.6	6.6	-0.9	8.5	-0.5
Oral Cavity and Pharynx	5.6	1.3	6.4	-1.7	7.9	1.7
Kidney and Renal Pelvis	5.5	-0.1	5.3	-	5.5	0.6
Urinary Bladder	3.8	-1.2	5.3	-	5.1	-2.0*

Source: SEER 21 areas (San Francisco, Connecticut, Detroit, Hawaii, Iowa, New Mexico, Seattle, Utah, Atlanta, San Jose-Monterey, Los Angeles, Alaska Native Registry, Rural Georgia, California excluding SF/SJM/LA, Kentucky, Louisiana, New Jersey, Georgia excluding ATL/RG, Idaho, New York and Massachusetts).

^a Top 15 cancer sites selected based on 2012-2016 age-adjusted rates for the race/ethnic group.

^b Rates are per 100,000 and age-adjusted to the 2000 US Std Population (19 age groups - Census P25-1130).

^c The APC is the Annual Percent Change over the time interval.

Trends are based on rates age-adjusted to the 2000 US Std Population (19 age groups - Census P25-1130).

^d Rates for American Indian/Alaska Native are based on the Purchased/Referred Care Delivery Area (PRCDA) counties.

^e Hispanic is not mutually exclusive from whites, blacks, Asian/Pacific Islanders, and American Indians/Alaska Natives.

Incidence data for Hispanics are based on NHIA and exclude cases from the Alaska Native Registry.

^f IBD = Intrahepatic Bile Duct. ONS = Other Nervous System.

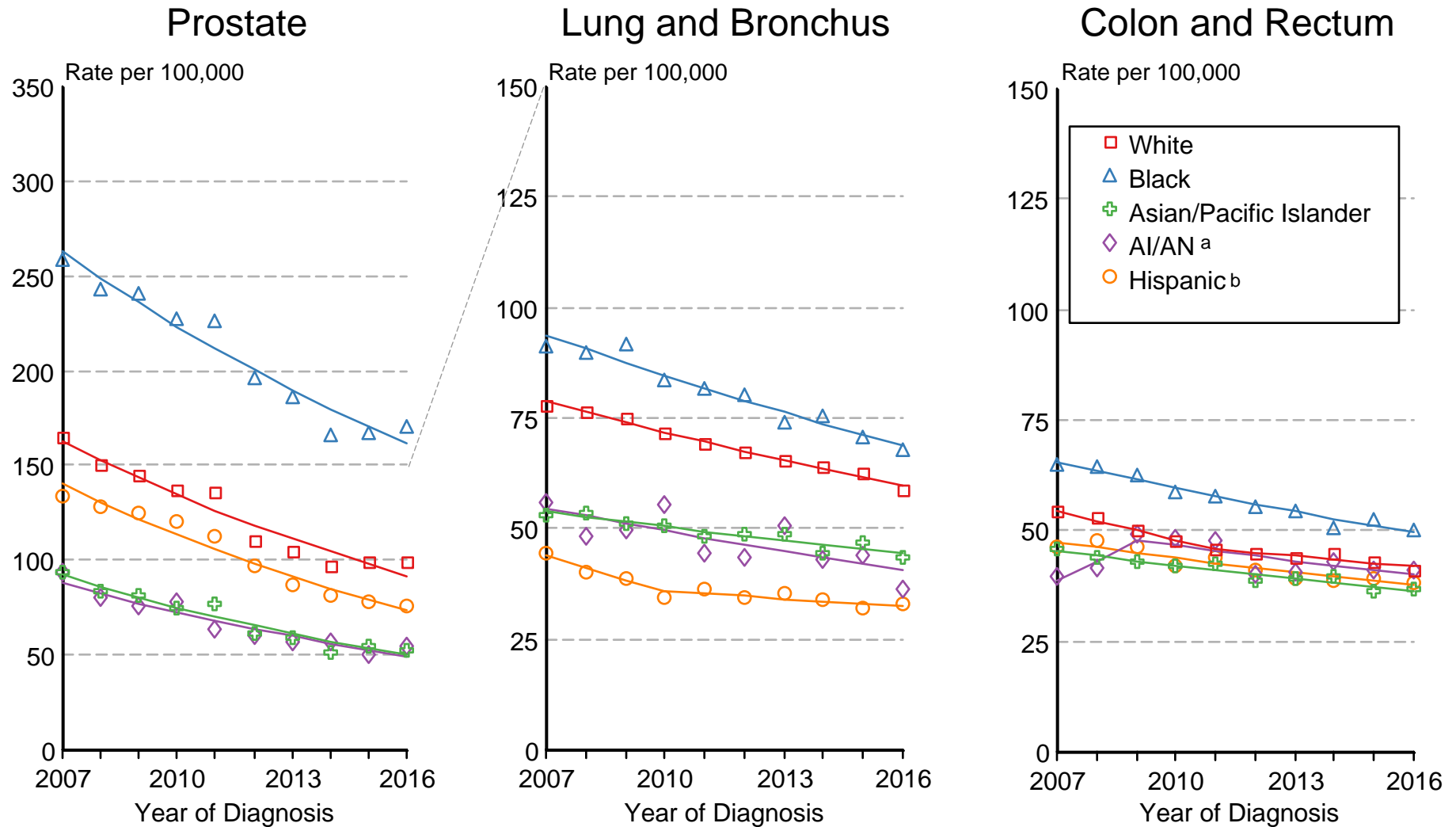
^g Ovary excludes borderline cases or histologies 8442, 8451, 8462, 8472, and 8473.

* The APC is significantly different from zero (p<.05).

- Statistic not shown. Rate based on less than 16 cases for the time interval. Trend based on less than 10 cases for at least one year within the time interval.

Figure 1.13

SEER Incidence 2007-2016 Males by Race/Ethnicity



Source: SEER 21 areas (San Francisco, Connecticut, Detroit, Hawaii, Iowa, New Mexico, Seattle, Utah, Atlanta, San Jose-Monterey, Los Angeles, Alaska Native Registry, Rural Georgia, California excluding SF/SJM/LA, Kentucky, Louisiana, New Jersey, Georgia excluding ATL/RG), Idaho, New York and Massachusetts.

Rates are age-adjusted to the 2000 US Std Population (19 age groups - Census P25-1103).

Regression lines are calculated using the Joinpoint Regression Program Version 4.7, February 2019, National Cancer Institute.

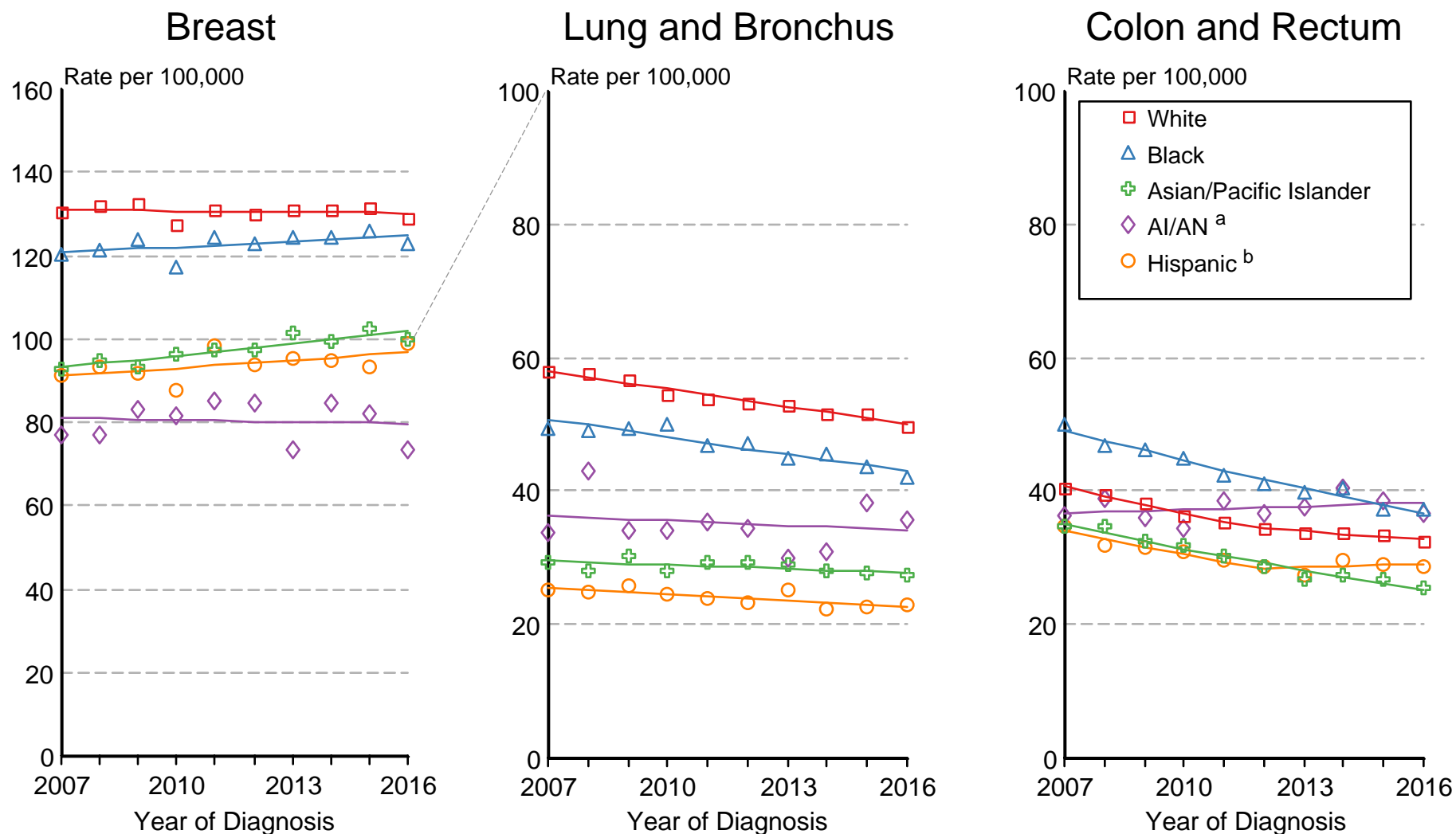
^a Incidence rates for American Indian/Alaska Native (AI/AN) are based on the CHSDA (Contract Health Service Delivery Area) counties.

^b Hispanic is not mutually exclusive from whites, blacks, Asian/Pacific Islanders, and American Indians/Alaska Natives.

Incidence data for Hispanics are based on NHIA and exclude cases from the Alaska Native Registry.

Figure 1.14

SEER Incidence 2007-2016 Females by Race/Ethnicity



Source: SEER 21 areas (San Francisco, Connecticut, Detroit, Hawaii, Iowa, New Mexico, Seattle, Utah, Atlanta, San Jose-Monterey, Los Angeles, Alaska Native Registry, Rural Georgia, California excluding SF/SJM/LA, Kentucky, Louisiana, New Jersey, Georgia excluding ATL/RG), Idaho, New York and Massachusetts.

Rates are age-adjusted to the 2000 US Std Population (19 age groups - Census P25-1103).

Regression lines are calculated using the Joinpoint Regression Program Version 4.7, February 2019, National Cancer Institute.

^a Incidence rates for American Indian/Alaska Native (AI/AN) are based on the CHSDA (Contract Health Service Delivery Area) counties.

^b Hispanic is not mutually exclusive from whites, blacks, Asian/Pacific Islanders, and American Indians/Alaska Natives.

Incidence data for Hispanics are based on NHIA and exclude cases from the Alaska Native Registry.