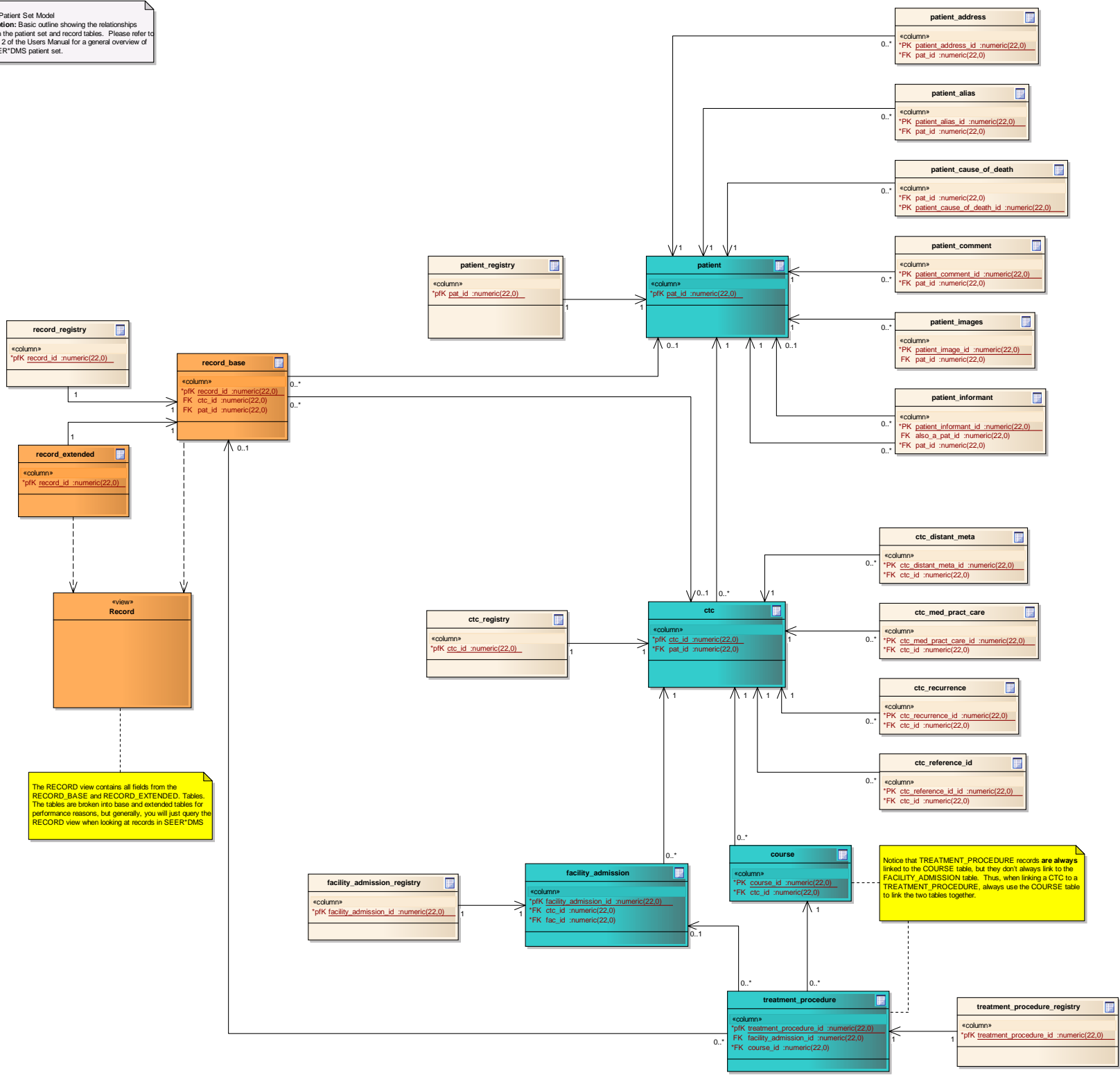


Name: Patient Set Model
Description: Basic outline showing the relationships between the patient set and record tables. Please refer to Chapter 2 of the Users Manual for a general overview of the SEER*DMS patient set.



The RECORD view contains all fields from the RECORD_BASE and RECORD_EXTENDED tables. The tables are broken into base and extended tables for performance reasons, but generally, you will just query the RECORD view when looking at records in SEER*DMS

Notice that TREATMENT_PROCEDURE records are always linked to the COURSE table, but they don't always link to the FACILITY_ADMISSION table. Thus, when linking a CTC to a TREATMENT_PROCEDURE, always use the COURSE table to link the two tables together.