

Table XXV-1  
TESTIS CANCER (Invasive)

TRENDS IN SEER INCIDENCE<sup>a</sup> AND U.S. MORTALITY<sup>b</sup> USING THE JOINPOINT REGRESSION PROGRAM, 1975-2002  
WITH UP TO THREE JOINPOINTS BY RACE AND AGE

		<u>Joinpoint Segment 1</u>		<u>Joinpoint Segment 2</u>		<u>Joinpoint Segment 3</u>		<u>Joinpoint Segment 4</u>	
		<u>Year</u>	<u>APC</u>	<u>Year</u>	<u>APC</u>	<u>Year</u>	<u>APC</u>	<u>Year</u>	<u>APC</u>
<u>SEER Cancer Incidence<sup>a</sup></u>									
All Races	All Ages	1975-2002	1.5 <sup>c</sup>						
All Races	Under 50	1975-1987	3.0 <sup>c</sup>	1987-2002	1.0 <sup>c</sup>				
All Races	50 and Over	1975-2002	-0.3						
White	All Ages	1975-2002	1.7 <sup>c</sup>						
White	Under 50	1975-1987	3.3 <sup>c</sup>	1987-2002	1.2 <sup>c</sup>				
White	50 and Over	1975-2002	-0.1						
Black	All Ages	1975-2002	2.8 <sup>c</sup>						
Black	Under 50	1975-2002	2.7 <sup>c</sup>						
<u>SEER Delay-Adjusted Incidence<sup>a</sup></u>									
All Races	All Ages	1975-2002	1.5 <sup>c</sup>						
White	All Ages	1975-2002	1.8 <sup>c</sup>						
Black	All Ages	1975-2002	2.9 <sup>c</sup>						
<u>U.S. Cancer Mortality<sup>b</sup></u>									
All Races	All Ages	1975-1981	-10.4 <sup>c</sup>	1981-1995	-3.2 <sup>c</sup>	1995-2002	0.6		
All Races	Under 50	1975-1982	-10.7 <sup>c</sup>	1982-2002	-1.9 <sup>c</sup>				
All Races	50 and Over	1975-1994	-5.3 <sup>c</sup>	1994-2002	2.3				
White	All Ages	1975-1981	-10.8 <sup>c</sup>	1981-1995	-3.0 <sup>c</sup>	1995-2002	0.5		
White	Under 50	1975-1982	-10.9 <sup>c</sup>	1982-2002	-1.8 <sup>c</sup>				
White	50 and Over	1975-1990	-5.9 <sup>c</sup>	1990-2002	-0.1				
Black	All Ages	1975-2002	-2.3 <sup>c</sup>						
Black	Under 50	1975-2002	-1.5 <sup>c</sup>						
Black	50 and Over	1975-2002	-3.1 <sup>c</sup>						

Joinpoint Regression Program Version 3.0, April 2005, National Cancer Institute. (<http://srab.cancer.gov/joinpoint/>).

The APC is the Annual Percent Change based on rates age-adjusted to the 2000 US Std Population (19 age groups - Census P25-1130).

<sup>a</sup> Trends are from the SEER 9 areas.

<sup>b</sup> Trends are from the NCHS public use data file for the total US.

<sup>c</sup> The APC is significantly different from zero (p<.05).

Table XXV-2  
TESTIS CANCER (Invasive)

SEER INCIDENCE<sup>a</sup> AND U.S. DEATH<sup>b</sup> RATES, AGE-ADJUSTED AND AGE-SPECIFIC RATES, BY RACE

	Incidence <sup>a</sup>			US Death <sup>b</sup>		
	All Races, Males	White Males	Black Males	All Races, Males	White Males	Black Males
<u>AGE-SPECIFIC RATES, 1998-2002</u>						
AGE AT DIAGNOSIS/DEATH:						
<1	-	-	-	-	-	-
1-4	-	-	-	-	-	-
5-9	-	-	-	-	-	-
10-14	-	-	-	-	-	-
15-19	3.4	4.0	-	0.1	0.1	-
20-24	9.8	11.7	-	0.3	0.3	-
25-29	12.2	14.8	-	0.4	0.5	-
30-34	13.5	16.4	-	0.5	0.5	-
35-39	12.7	14.9	4.5	0.5	0.5	-
40-44	10.7	12.6	-	0.5	0.5	-
45-49	6.6	7.5	-	0.4	0.4	-
50-54	3.9	4.5	-	0.2	0.2	-
55-59	2.0	2.3	-	0.2	0.3	-
60-64	1.5	1.6	-	0.2	0.2	-
65-69	-	-	-	0.3	0.3	-
70-74	-	-	-	0.3	0.3	-
75-79	-	-	-	0.3	0.2	-
80-84	-	-	-	0.5	0.5	-
85+	-	-	-	0.5	0.6	-
<u>AGE-ADJUSTED RATES, 1998-2002</u>						
AGE AT DIAGNOSIS/DEATH:						
All ages	5.6	6.6	1.6	0.3	0.3	0.2
Under 65	6.3	7.4	1.8	0.3	0.3	0.1
65 and over	0.9	1.0	-	0.3	0.3	-
All ages(IARC world std) <sup>c</sup>	5.1	6.1	1.4	0.2	0.2	0.1

<sup>a</sup> SEER 9 areas. Rates are per 100,000 and are age-adjusted to the 2000 US Std Population (19 age groups - Census P25-1130), unless noted.

<sup>b</sup> NCHS public use data file for the total US. Rates are per 100,000 and are age-adjusted to the 2000 US Std Population (19 age groups - Census P25-1130), unless noted.

<sup>c</sup> Rates are per 100,000 and are age-adjusted to the IARC world standard population.

- Statistic not shown. Rate based on less than 25 cases for the time interval.

Table XXV-3  
TESTIS CANCER (Invasive)

SEER INCIDENCE<sup>a</sup> AND U.S. DEATH<sup>b</sup> RATES, AGE-ADJUSTED RATES, BY RACE AND AGE

	All Races, Males			White Males			Black Males		
	All	<50	50+	All	<50	50+	All	<50	50+
<u>SEER INCIDENCE RATES</u>									
YEAR OF DIAGNOSIS:									
1975	3.7	4.2	2.4	4.2	4.7	2.6	-	-	-
1976	3.4	4.2	1.5	3.8	4.5	1.7	-	-	-
1977	4.3	5.1	2.2	4.9	5.8	2.4	-	-	-
1978	3.6	4.2	1.8	4.0	4.7	2.1	-	-	-
1979	3.9	4.5	2.2	4.3	5.1	2.3	-	-	-
1980	4.3	5.3	1.9	4.9	6.0	2.1	-	-	-
1981	4.2	5.1	1.8	4.8	5.8	2.1	-	-	-
1982	4.4	5.2	2.3	5.0	6.0	2.4	-	-	-
1983	4.6	5.5	2.2	5.2	6.3	2.5	-	-	-
1984	4.4	5.4	1.9	5.0	6.1	2.1	-	-	-
1985	4.5	5.5	1.8	5.1	6.3	2.1	-	-	-
1986	4.8	5.8	2.2	5.6	6.8	2.4	-	-	-
1987	5.0	6.3	1.8	5.7	7.1	1.9	-	-	-
1988	4.6	5.8	1.5	5.4	6.9	1.7	-	-	-
1989	5.5	6.7	2.2	6.3	7.8	2.5	-	-	-
1990	5.1	6.3	2.1	6.0	7.4	2.3	-	-	-
1991	5.1	6.2	2.1	5.7	7.0	2.3	-	-	-
1992	5.1	6.4	1.8	6.0	7.6	2.0	-	-	-
1993	5.1	6.4	1.6	6.0	7.5	1.9	-	-	-
1994	5.5	6.7	2.1	6.3	7.8	2.3	-	-	-
1995	4.6	5.6	1.8	5.3	6.5	2.1	-	-	-
1996	5.2	6.6	1.7	6.2	7.8	1.9	-	-	-
1997	5.4	6.5	2.4	6.3	7.7	2.7	-	-	-
1998	5.6	7.1	1.6	6.6	8.5	1.7	-	-	-
1999	5.4	6.8	1.8	6.3	7.9	2.0	1.8	2.2	-
2000	5.7	7.2	2.0	6.8	8.4	2.3	1.5	-	-
2001	5.5	6.8	2.1	6.5	8.1	2.3	1.7	-	-
2002	5.6	7.1	1.9	6.8	8.5	2.2	-	-	-
<u>U.S. DEATH RATES</u>									
YEAR OF DEATH:									
1975	0.7	0.7	0.7	0.8	0.8	0.8	-	-	-
1976	0.7	0.7	0.7	0.8	0.8	0.7	0.4	-	-
1977	0.6	0.7	0.6	0.7	0.7	0.6	-	-	-
1978	0.6	0.6	0.5	0.6	0.6	0.6	0.2	-	-
1979	0.5	0.5	0.6	0.5	0.5	0.6	0.4	-	-
1980	0.5	0.4	0.5	0.5	0.5	0.5	-	-	-
1981	0.4	0.4	0.4	0.4	0.4	0.4	-	-	-
1982	0.4	0.4	0.4	0.4	0.4	0.4	-	-	-
1983	0.4	0.4	0.4	0.4	0.4	0.4	-	-	-
1984	0.3	0.3	0.4	0.4	0.4	0.4	-	-	-
1985	0.4	0.3	0.4	0.4	0.4	0.4	-	-	-
1986	0.3	0.3	0.3	0.3	0.3	0.4	-	-	-
1987	0.3	0.4	0.3	0.4	0.4	0.3	-	-	-
1988	0.3	0.3	0.4	0.3	0.3	0.4	-	-	-
1989	0.3	0.3	0.3	0.3	0.3	0.3	0.2	-	-
1990	0.3	0.3	0.2	0.3	0.3	0.2	-	-	-
1991	0.3	0.3	0.3	0.3	0.3	0.3	-	-	-
1992	0.3	0.3	0.3	0.3	0.3	0.3	-	-	-
1993	0.3	0.3	0.3	0.3	0.3	0.3	-	-	-
1994	0.3	0.3	0.2	0.3	0.3	0.2	-	-	-
1995	0.2	0.2	0.2	0.3	0.3	0.2	-	-	-
1996	0.3	0.3	0.3	0.3	0.3	0.3	-	-	-
1997	0.2	0.2	0.2	0.3	0.3	0.3	-	-	-
1998	0.3	0.3	0.3	0.3	0.3	0.3	-	-	-
1999	0.3	0.3	0.3	0.3	0.3	0.3	-	-	-
2000	0.2	0.3	0.2	0.3	0.3	0.2	0.2	-	-
2001	0.2	0.2	0.3	0.3	0.3	0.2	-	-	-
2002	0.3	0.3	0.3	0.3	0.3	0.3	0.2	-	-

<sup>a</sup> SEER 9 areas. Rates are per 100,000 and are age-adjusted to the 2000 US Std Population (19 age groups - Census P25-1130).  
<sup>b</sup> NCHS public use data file for the total US. Rates are per 100,000 and are age-adjusted to the 2000 US Std Population (19 age groups - Census P25-1130), unless noted.  
 - Statistic not shown. Rate based on less than 25 cases for the time interval.

Table XXV-4  
TESTIS CANCER (Invasive)

SURVIVAL RATES, BY RACE, DIAGNOSIS YEAR, STAGE AND AGE

	All Races, Males			White Males			Black Males		
	All	<50	50+	All	<50	50+	All	<50	50+
<u>5-YR RELATIVE SURVIVAL RATES</u>									
YEAR OF DIAGNOSIS:									
1960-1963 <sup>a</sup>	-	-	-	63	-	-	-	-	-
1970-1973 <sup>a</sup>	-	-	-	72	-	-	-	-	-
1974-1976 <sup>b</sup>	78.7	78.2	82.7	78.8	78.2	82.9	76.1 <sup>e</sup>	-	-
1977-1979 <sup>b</sup>	87.5	88.7	76.9	87.9	89.0	77.9	65.8 <sup>f</sup>	-	-
1980-1982 <sup>b</sup>	91.9	91.9	91.5	92.1	92.1	92.1	89.7 <sup>e</sup>	89.2 <sup>e</sup>	-
1983-1985 <sup>b</sup>	90.9	91.8	81.8	91.3	92.3	80.2	87.5 <sup>e</sup>	84.1 <sup>e</sup>	-
1986-1988 <sup>b</sup>	95.2	95.3	92.6	95.6	95.7	93.8	85.6 <sup>e</sup>	-	-
1989-1991 <sup>b</sup>	95.5	95.5	93.7	95.9	95.8	94.7	89.8 <sup>e</sup>	93.3 <sup>e</sup>	-
1992-1994 <sup>b</sup>	95.5	95.7	90.4	95.7	95.9	90.1	85.9 <sup>e</sup>	85.3 <sup>e</sup>	-
1995-2001 <sup>b</sup>	96.0 <sup>d</sup>	96.5 <sup>d</sup>	88.9	96.3 <sup>d</sup>	96.7 <sup>d</sup>	89.9	87.8	90.4	-
1995-2001 <sup>b</sup>									
All Stages	96.0	96.5	88.9	96.3	96.7	89.9	87.8	90.4	-
Localized	99.4	99.5	97.0	99.5	99.5	97.9	95.8	98.6	-
Regional	96.3	96.7	90.0	96.4	96.8	90.6	93.9 <sup>e</sup>	93.5 <sup>e</sup>	-
Distant	71.7	74.6	43.9 <sup>e</sup>	72.8	76.0	43.7 <sup>e</sup>	-	-	-
Unstaged	87.9	93.2	-	90.0	94.3	-	-	-	-
<u>5-YR PERIOD SURVIVAL RATES<sup>bc</sup></u>									
YEAR OF DIAGNOSIS:									
1995-2001	96.2	96.5	91.8	96.5	96.8	92.8	90.0	92.0	-
<u>STAGE DISTRIBUTION (%) 1995-2001<sup>b</sup></u>									
All Stages									
Number of cases	4,894	4,510	384	4,504	4,144	360	148	138	10
Percent	100%	100%	100%	100%	100%	100%	100%	100%	100%
Localized	71	71	67	71	72	68	60	62	40
Regional	18	18	17	18	18	17	22	23	10
Distant	10	10	14	10	10	14	15	13	40
Unstaged	1	1	2	1	1	2	3	2	10
<u>5-YR RELATIVE SURVIVAL RATES, 1995-2001<sup>b</sup></u>									
AGE AT DIAGNOSIS:									
<45	96.5	-	-	96.7	-	-	91.0	-	-
45-54	95.0	-	-	95.4	-	-	-	-	-
55-64	86.8	-	-	88.7	-	-	-	-	-
65-74	76.0 <sup>e</sup>	-	-	76.0 <sup>e</sup>	-	-	-	-	-
75+	-	-	-	-	-	-	-	-	-
Under 65	96.2	-	-	96.5	-	-	87.8	-	-
65 and over	73.9 <sup>e</sup>	-	-	76.1 <sup>e</sup>	-	-	-	-	-

<sup>a</sup> Rates are based on End Results data from a series of hospital registries and one population-based registry.

<sup>b</sup> Rates are from the SEER 9 areas (San Francisco, Connecticut, Detroit, Hawaii, Iowa, New Mexico, Seattle, Utah, Atlanta). Rates are based on follow-up of patients into 2002.

<sup>c</sup> Period survival provides a more up-to-date estimate of survival by piecing together the most recent conditional survival estimates from several cohorts. It is computed here using three calendar year blocks (1999-2001: 0-1 year survival), (1998-2000: 1-2 year survival), (1997-1999: 2-3 year survival), (1996-1998: 3-4 year survival), (1995-1997: 4-5 years survival).

<sup>d</sup> The difference in rates between 1974-1976 and 1995-2001 is statistically significant (p<.05).

<sup>e</sup> The standard error of the survival rate is between 5 and 10 percentage points.

<sup>f</sup> The standard error of the survival rate is greater than 10 percentage points.

- Statistic could not be calculated.

Table XXV-5  
TESTIS CANCER (Invasive)

SURVIVAL RATES<sup>a</sup>

By Year of Diagnosis

All Races, Males

Year of Diagnosis

	1975- 1979	1980- 1984	1985	1986	1987	1988	1989	1990	1991	1992	1993	1994	1995	1996	1997	1998	1999	2000	2001
Relative Survival Rates (SEER <sup>b</sup> )																			
1-year	93.4	96.1	97.1	98.1	98.1	98.7	98.2	98.2	98.4	97.9	96.8	97.7	98.3	97.9	97.4	98.2	96.9	97.9	98.7
2-year	88.7	92.7	94.0	96.6	97.2	96.6	95.7	96.7	96.9	96.7	95.8	96.5	97.5	96.4	95.7	96.6	96.2	96.7	
3-year	86.6	92.1	93.3	96.5	96.3	95.8	95.0	96.2	95.7	95.6	95.3	96.0	96.5	95.9	95.2	96.3	95.6		
4-year	85.7	91.5	92.7	95.8	95.5	95.2	94.8	96.2	95.3	95.5	95.1	96.0	96.4	95.9	95.0	96.2			
5-year	85.1	91.2	92.5	95.4	95.2	94.8	94.7	96.2	95.3	95.4	95.1	95.7	96.4	95.9	95.0				
6-year	84.8	90.9	92.2	95.3	94.6	94.6	94.6	95.9	95.2	95.0	95.1	95.7	96.4	95.9					
7-year	84.7	90.7	92.2	95.3	94.3	94.4	94.2	95.9	95.1	94.8	95.1	95.6	96.4						
8-year	84.6	90.5	91.4	95.3	94.3	93.6	94.1	95.8	94.8	94.2	95.1	94.8							
9-year	84.6	90.1	91.4	95.2	94.3	93.4	93.8	95.8	94.7	94.2	94.7								
10-year	83.9	89.9	91.1	94.8	94.3	93.4	93.8	95.8	94.5	94.2									
11-year	83.4	89.7	90.5	94.7	94.3	93.4	93.8	95.8	94.4										
12-year	83.2	89.7	90.4	94.4	94.1	93.4	93.8	95.5											
13-year	82.8	89.4	89.8	94.3	93.8	93.4	93.5												
14-year	82.4	88.9	88.8	94.2	93.6	93.4													
15-year	82.2	88.6	88.6	94.2	93.6														
16-year	81.8	88.2	88.5	94.2															
17-year	81.2	87.9	88.2																
18-year	80.7	87.8																	
19-year	80.2																		
20-year	80.1																		

<sup>a</sup> Survival rates are relative rates expressed as percents.  
<sup>b</sup> Rates are from the SEER 9 areas.

Table XXV-6  
TESTIS CANCER (Invasive)

Percent Diagnosed With Cancer In 10, 20 and 30 Years and In Remaining Lifetime,  
 Given Cancer Free At Current Age By Race

Lifetime Risk (Percent) of Being Diagnosed (13 SEER Areas) With Cancer and  
 Lifetime Risk (Percent) of Dying (Total U.S.) From Cancer

2000-2002

All Races

Current Age	+10 yrs	+20 yrs	+30 yrs	Eventually
0	0.00	0.02	0.12	0.36
10	0.02	0.12	0.24	0.36
20	0.10	0.22	0.29	0.34
30	0.12	0.19	0.22	0.24
40	0.08	0.11	0.12	0.13
50	0.03	0.04	0.05	0.05
60	0.01	0.02	0.02	0.02

Lifetime Risk of Being Diagnosed = 0.36%  
 Lifetime Risk of Dying = 0.02%

Whites

Current Age	+10 yrs	+20 yrs	+30 yrs	Eventually
0	0.00	0.03	0.15	0.43
10	0.03	0.15	0.29	0.43
20	0.12	0.26	0.35	0.41
30	0.14	0.23	0.26	0.29
40	0.09	0.13	0.14	0.15
50	0.04	0.05	0.06	0.06
60	0.02	0.02	0.03	0.03

Lifetime Risk of Being Diagnosed = 0.43%  
 Lifetime Risk of Dying = 0.02%

Blacks

Current Age	+10 yrs	+20 yrs	+30 yrs	Eventually
0	0.00	0.01	0.03	0.10
10	0.01	0.03	0.06	0.10
20	0.03	0.06	0.08	0.09
30	0.03	0.05	0.06	0.07
40	0.02	0.03	0.03	0.04
50	0.01	0.02	0.02	0.02
60	0.01	0.01	0.01	0.01

Lifetime Risk of Being Diagnosed = 0.10%  
 Lifetime Risk of Dying = 0.01%

Devcan Version 6.0, April 2005, National Cancer Institute (<http://srab.cancer.gov/devcan/>).

Source: Incidence data are from the SEER 13 areas (San Francisco, Connecticut, Detroit, Hawaii, Iowa, New Mexico, Seattle, Utah, Atlanta, San Jose-Monterey, Los Angeles, Alaska Native Registry, Rural Georgia). Mortality data are from the NCHS public use data file for the total US.

Table XXV-7  
TESTIS CANCER (Invasive)

SEER INCIDENCE AND U.S. MORTALITY  
AGE-ADJUSTED RATES AND TRENDS<sup>a</sup>  
 By Race/Ethnicity

Incidence<sup>b</sup>

RACE/ETHNICITY	Rate 1998-2002	Trend 1992-2002
	Rate per 100,000 persons	APC (%)
	Males	Males
All Races	5.3	1.1 <sup>e</sup>
White	6.3	1.3 <sup>e</sup>
White Hispanic <sup>c</sup>	3.6	0.5
White Non-Hispanic <sup>c</sup>	7.2	1.9 <sup>e</sup>
Black	1.5	5.5 <sup>e</sup>
Asian/Pacific Islander	2.0	0.7
Amer Ind/Alaska Nat	2.1	-
Hispanic <sup>c</sup>	3.5	0.5

Mortality<sup>d</sup>

RACE/ETHNICITY	Rate 1998-2002	Trend 1992-2002
	Rate per 100,000 persons	APC (%)
	Males	Males
All Races	0.3	-0.6
White	0.3	-0.7
White Hispanic <sup>c</sup>	0.3	-2.1
White Non-Hispanic <sup>c</sup>	0.3	-0.6
Black	0.2	2.6
Asian/Pacific Islander	0.1	-
Amer Ind/Alaska Nat	-	-
Hispanic <sup>c</sup>	0.2	-1.8

- The APC is the Annual Percent Change over the time interval.  
 - Statistic not shown. Rate based on less than 25 cases for the time interval. Trend based on less than 10 cases for at least one year within the time interval.  
 a Rates are age-adjusted to the 2000 US Std Population (19 age groups - Census P25-1130). Trends are based on rates age-adjusted to the 2000 US Std Population (19 age groups - Census P25-1130).  
 b Incidence data are from the 13 SEER areas (San Francisco, Connecticut, Detroit, Hawaii, Iowa, New Mexico, Seattle, Utah, Atlanta, San Jose-Monterey, Los Angeles, Alaska Native Registry and Rural Georgia).  
 c Hispanic and Non-Hispanic are not mutually exclusive from Whites, Blacks, Asian Pacific Islanders, and American Indians/Alaska Natives. Incidence data for Hispanics and Non-Hispanics do not include cases from Detroit, Hawaii, Alaska Native Registry and Rural Georgia. For mortality, information is included for all states except Connecticut, Maine, Maryland, Minnesota, New Hampshire, New York, North Dakota, Oklahoma and Vermont.  
 d Mortality data are analyzed from a public use file provided by the National Center for Health Statistics (NCHS).  
 e The APC is significantly different from zero (p<.05).

Table XXV-8  
TESTIS CANCER (Invasive)

AGE-ADJUSTED SEER INCIDENCE RATES AND SEER DEATH RATES<sup>a</sup>  
 By Registry and Race

	<u>All Races, Males</u>			<u>White Males</u>			<u>Black Males</u>		
	<u>All</u>	<u>&lt;50</u>	<u>50+</u>	<u>All</u>	<u>&lt;50</u>	<u>50+</u>	<u>All</u>	<u>&lt;50</u>	<u>50+</u>
<u>SEER INCIDENCE RATES<sup>b</sup>, 1998-2002</u>									
REGISTRY									
13 SEER Areas	5.3	6.6	1.9	6.3	7.8	2.1	1.5	1.8	-
11 SEER Areas	5.3	6.6	1.9	6.3	7.8	2.1	1.5	1.8	-
9 SEER Areas	5.6	7.0	1.9	6.6	8.3	2.1	1.6	1.9	-
San Francisco-Oakland	5.4	6.8	2.0	6.7	8.4	2.5	2.7	3.5	-
Connecticut	6.0	7.7	1.7	6.7	8.5	1.8	-	-	-
Metropolitan Detroit	5.2	6.3	2.2	6.6	8.1	2.6	1.3	1.5	-
Hawaii	4.3	5.6	-	6.0	7.7	-	-	-	-
Iowa	6.6	8.3	2.1	6.7	8.5	2.0	-	-	-
New Mexico	5.4	6.7	-	5.9	7.3	-	-	-	-
Seattle-Puget Sound	6.4	8.1	1.8	7.2	9.3	1.9	-	-	-
Utah	5.9	7.4	-	6.2	7.8	-	-	-	-
Metropolitan Atlanta	4.1	5.2	-	5.7	7.3	-	1.3	1.7	-
San Jose-Monterey	4.9	5.9	2.4	6.0	7.2	2.8	-	-	-
Los Angeles	4.5	5.6	1.7	5.4	6.8	2.0	1.3	-	-
<u>SEER DEATH RATES<sup>c</sup>, 1998-2002</u>									
REGISTRY									
13 SEER Areas	0.3	0.3	0.3	0.3	0.3	0.3	-	-	-
11 SEER Areas	0.3	0.3	0.3	0.3	0.3	0.3	-	-	-
9 SEER Areas	0.2	0.2	0.3	0.3	0.3	0.3	-	-	-
San Francisco-Oakland	0.2	-	-	-	-	-	-	-	-
Connecticut	-	-	-	-	-	-	-	-	-
Metropolitan Detroit	-	-	-	-	-	-	-	-	-
Hawaii	-	-	-	-	-	-	-	-	-
Iowa	0.4	-	-	0.4	-	-	-	-	-
New Mexico	-	-	-	-	-	-	-	-	-
Seattle-Puget Sound	0.3	-	-	0.3	-	-	-	-	-
Utah	-	-	-	-	-	-	-	-	-
Metropolitan Atlanta	-	-	-	-	-	-	-	-	-
San Jose-Monterey	-	-	-	-	-	-	-	-	-
Los Angeles	0.3	0.3	-	0.4	0.4	-	-	-	-

<sup>a</sup> Incidence and death rates are per 100,000 and are age-adjusted to the 2000 US Std Population (19 age groups - Census P25-1130).

<sup>b</sup> The SEER 9 areas are San Francisco, Connecticut, Detroit, Hawaii, Iowa, New Mexico, Seattle, Utah, and Atlanta. The SEER 11 areas comprise the SEER 9 areas plus San Jose-Monterey and Los Angeles. The SEER 13 areas comprise the SEER 11 areas plus the Alaska Native Registry and Rural Georgia.

<sup>c</sup> NCHS public use data file for the total US with analyses limited to the SEER geographic areas.

- Statistic could not be calculated or populations are inadequate.



Table XXV-9  
TESTIS CANCER (Invasive)

AVERAGE ANNUAL AGE-ADJUSTED CANCER DEATH<sup>a</sup> RATES BY STATE, ALL RACES, 1998-2002

All Ages

State	Rate	SE	Rank	PD
TOTAL U.S.	0.3	0.01		
High Five States				
New Hampshire	0.5 <sup>b</sup>	0.13	(01)	66.7
Montana	0.4 <sup>b</sup>	0.14	(02)	33.3
Oregon	0.4 <sup>b</sup>	0.07	(03)	33.3
Iowa	0.4 <sup>b</sup>	0.07	(04)	33.3
Hawaii	0.4 <sup>b</sup>	0.11	(05)	33.3
Low Five States				
Kentucky	0.2 <sup>b</sup>	0.04	(47)	-33.3
Georgia	0.2 <sup>b</sup>	0.03	(48)	-33.3
Delaware	0.2 <sup>b</sup>	0.09	(49)	-33.3
Alaska	0.2 <sup>b</sup>	0.09	(50)	-33.3
Alabama	0.2 <sup>b</sup>	0.04	(51)	-33.3

Ages <50

State	Rate	SE	Rank	PD
TOTAL U.S.	0.3	0.01		
High Five States				
New Hampshire	0.5 <sup>b</sup>	0.15	(01)	66.7
Hawaii	0.4 <sup>b</sup>	0.13	(02)	33.3
Oregon	0.4 <sup>b</sup>	0.08	(03)	33.3
Montana	0.4 <sup>b</sup>	0.15	(04)	33.3
South Carolina	0.4 <sup>b</sup>	0.07	(05)	33.3
Low Five States				
Alabama	0.2 <sup>b</sup>	0.05	(47)	-33.3
Indiana	0.1 <sup>b</sup>	0.04	(48)	-66.7
Arkansas	0.1 <sup>b</sup>	0.05	(49)	-66.7
District of Columbia	0.1 <sup>b</sup>	0.11	(50)	-66.7
South Dakota	0.1 <sup>b</sup>	0.08	(51)	-66.7

Ages 50+

State	Rate	SE	Rank	PD
TOTAL U.S.	0.3	0.01		
High Five States				
District of Columbia	0.6 <sup>b</sup>	0.43	(01)	100.0
Mississippi	0.6 <sup>b</sup>	0.19	(02)	100.0
Montana	0.5 <sup>b</sup>	0.30	(03)	66.7
Arkansas	0.5 <sup>b</sup>	0.17	(04)	66.7
North Dakota	0.5 <sup>b</sup>	0.34	(05)	66.7
Low Five States				
South Carolina	0.1 <sup>b</sup>	0.07	(47)	-66.7
Oklahoma	0.1 <sup>b</sup>	0.06	(48)	-66.7
Alaska	0.0 <sup>b</sup>	.	(49)	-100.0
Delaware	0.0 <sup>b</sup>	.	(50)	-100.0
Vermont	0.0 <sup>b</sup>	.	(51)	-100.0

For additional detailed cancer statistics by state, please visit the State Cancer Profiles website. <http://statecancerprofiles.cancer.gov/>

<sup>a</sup> NCHS public use data file. Rates are per 100,000 and are age-adjusted to the 2000 US Std Population (19 age groups - Census P25-1130).  
<sup>b</sup> Absolute percent difference between state rate and total U.S. rate is 15% or more.  
<sup>c</sup> Difference between state rate and total U.S. rate is statistically significant (p<=.0002).  
SE Standard error of the rate.  
PD Percent difference between state rate and total U.S. rate.

Table XXV-10  
TESTIS CANCER (Invasive)

Estimated United States Cancer Prevalence Counts<sup>a</sup> on January 1, 2002  
By Race/Ethnicity and Years Since Diagnosis

Years Since Diagnosis	0 to <5	5 to <10	10 to <15	15 to <20	20 to <25	0 to <12 <sup>e</sup>	0 to <27 <sup>e</sup>	>=27 <sup>g</sup>	Complete <sup>h</sup>
<u>Race</u>									
All Races <sup>b</sup>	37,578	32,462	29,752	22,954	16,896	82,309	144,174	19,835	164,009
White <sup>b</sup>	35,220	30,808	28,513	22,189	16,326	77,733	137,335	19,072	156,407
Black <sup>b</sup>	1,138	649	438	361	259	1,951	2,967	192	3,159
Asian/Pacific Islander <sup>c</sup>	610	468	+	+	+	1,261	+	+	+
Hispanic <sup>d</sup>	3,411	2,416	+	+	+	6,739	+	+	+

Estimated prevalence percent<sup>a</sup> on January 1, 2002, of the SEER 11 population diagnosed in the previous 10 years  
By Age at Prevalence and Race/Ethnicity

Age at Prevalence	Age Specific (Crude)										Age-Adjusted <sup>f</sup>
	All Ages	0-9	10-19	20-29	30-39	40-49	50-59	60-69	70-79	80+	All Ages
<u>Race</u>											
All Races <sup>c</sup>	0.0471%	0.0021%	0.0042%	0.0512%	0.1084%	0.0935%	0.0446%	0.0169%	0.0077%	0.0059%	0.0454%
White <sup>c</sup>	0.0565%	0.0020%	0.0048%	0.0626%	0.1310%	0.1113%	0.0526%	0.0197%	0.0090%	0.0067%	0.0543%
Black <sup>c</sup>	0.0106%	-	0.0031%	0.0086%	0.0248%	0.0240%	0.0097%	-	-	-	0.0106%
Asian/Pacific Islander <sup>c</sup>	0.0173%	0.0036%	0.0016%	0.0183%	0.0370%	0.0328%	0.0162%	0.0059%	-	-	0.0163%
Hispanic <sup>d</sup>	0.0305%	0.0024%	0.0041%	0.0448%	0.0678%	0.0531%	0.0219%	0.0100%	-	-	0.0288%

<sup>a</sup> US 2002 cancer prevalence counts are based on 2002 cancer prevalence proportions from the SEER registries and 1/1/2002 US population estimates based on the average of 2001 and 2002 population estimates from the US Bureau of the Census. Prevalence was calculated using the First Malignant Primary Only for a person.

<sup>b c d</sup> Statistics based on <sup>b</sup> SEER 9 Areas <sup>c</sup> SEER 11 Areas and Rural Georgia <sup>d</sup> SEER 11 Areas excluding Hawaii and Detroit.

<sup>e</sup> Maximum limited-duration prevalence: 27 years for 1975-2002 SEER 9 data; 12 years for 1990-2002 SEER 11 data (used to calculate prevalence for Hispanics and Asian Pacific Islanders).

<sup>f</sup> Percentages are age-adjusted to the 2000 US standard population by 5-year age groups.

<sup>g h</sup> (g) Cases diagnosed more than 27 years ago were estimated using the completeness index method (Capocaccia et. al. 1997, Merrill et. al. 2000). (h) Complete prevalence is obtained by summing 0 to <27 and >=27.

- Statistic not shown. Statistic based on fewer than 5 cases estimated alive in SEER for the time interval.

+ Not available.

# SEER Incidence, Delay Adjusted Incidence and US Death Rates+ Testis Cancer, by Race

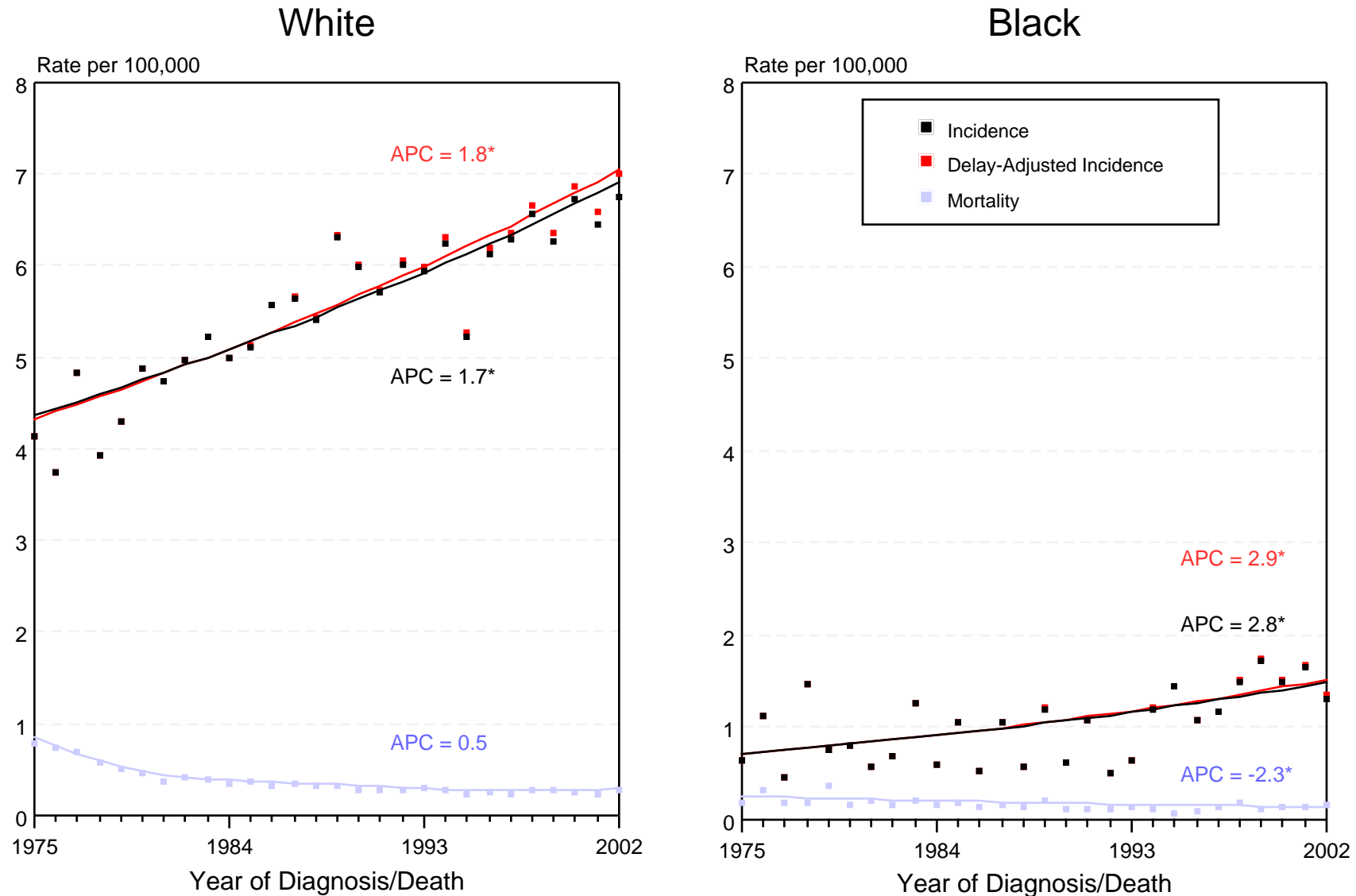


Figure XXV-1

+ Source: SEER 9 areas and NCHS public use data file for the total US. Rates are age-adjusted to the 2000 US Std Population (19 age groups - Census P25-1103). Regression lines and APCs are calculated using the Joinpoint Regression Program Version 3.0, April 2005, National Cancer Institute.

The APC is the Annual Percent Change for the regression line segments. The APC shown on the graph is for the most recent trend.

\* The APC is significantly different from zero ( $p < 0.05$ ).

# SEER Incidence and US Death Rates+ Testis Cancer, by Age and Race

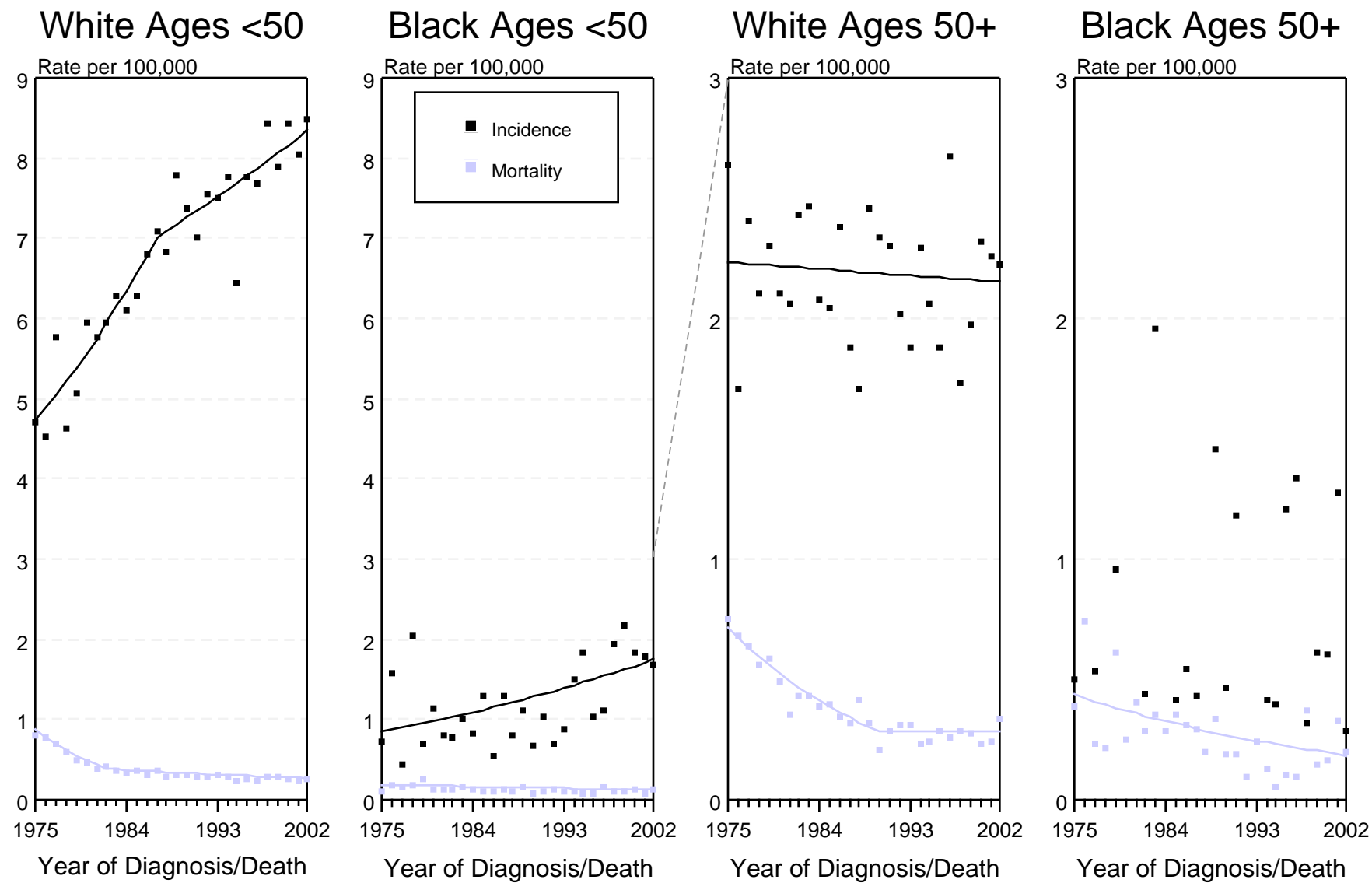


Figure XXV-2

+ Source: SEER 9 areas and NCHS public use data file for the total US. Rates are age-adjusted to the 2000 US Std Population (19 age groups - Census P25-1103). Regression lines are calculated using the Joinpoint Regression Program Version 3.0, April 2005, National Cancer Institute. Regression line could not be calculated for the Black Male 50+ Incidence Rates due to years with a rate of zero.

# SEER Incidence and US Death Rates + Testis Cancer

Joinpoint Analyses for 1975-2002 for Whites and Blacks

Rates for 1992-2002 for Asian/Pacific Islander, American Indian/Alaska Native and Hispanic

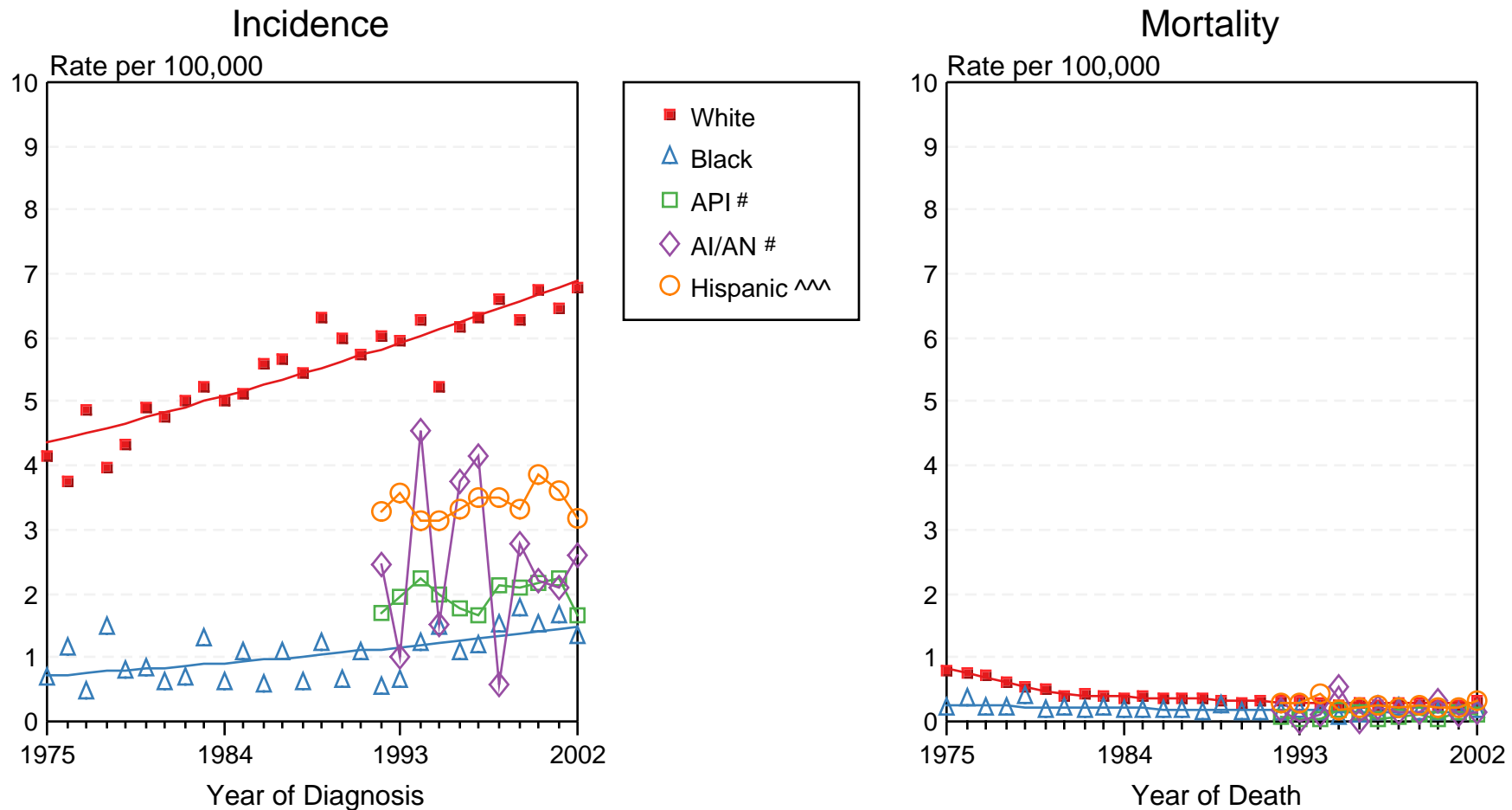


Figure XXV-3

+ Source: Incidence data for whites and blacks is from the SEER 9 areas (San Francisco, Connecticut, Detroit, Hawaii, Iowa, New Mexico, Seattle, Utah, Atlanta). Incidence data for Asian/Pacific Islanders, American Indian/Alaska Natives and Hispanics is from the SEER 13 Areas (SEER 9 Areas, San Jose-Monterey, Los Angeles, Alaska Native Registry and Rural Georgia). Mortality data is from NCHS public use data file for the total US. Rates are age-adjusted to the 2000 US Std Population (19 age groups - Census P25-1103). Regression lines for whites and blacks are calculated using the Joinpoint Regression Program Version 3.0, April 2005, National Cancer Institute.

# API = Asian/Pacific Islander. AI/AN = American Indian/Alaska Native.

^^ Hispanic is not mutually exclusive from Whites, Blacks, Asian/Pacific Islanders, and American Indians/Alaska Natives. Incidence data for Hispanics excludes cases from Detroit, Hawaii, Alaska Native Registry and Rural Georgia. Mortality data for Hispanics excludes cases from Connecticut, Maine, Maryland, Minnesota, Oklahoma, New Hampshire, New York, North Dakota, and Vermont.