

Table XX-1
ORAL CAVITY AND PHARYNX CANCER (Invasive)

TRENDS IN SEER INCIDENCE^a AND U.S. MORTALITY^b USING THE JOINPOINT REGRESSION PROGRAM, 1975-2003
WITH UP TO THREE JOINPOINTS BY RACE AND SEX

		<u>Joinpoint Segment 1</u>		<u>Joinpoint Segment 2</u>		<u>Joinpoint Segment 3</u>		<u>Joinpoint Segment 4</u>	
		Year	APC	Year	APC	Year	APC	Year	APC
<u>SEER Cancer Incidence^a</u>									
All Races	Male and Female	1975-1981	0.8	1981-2003	-1.2*				
All Races	Male	1975-1983	-0.1	1983-2003	-1.5*				
All Races	Female	1975-1980	2.7	1980-2003	-1.0*				
White	Male and Female	1975-1983	0.0	1983-2003	-1.2*				
White	Male	1975-2003	-1.2*						
White	Female	1975-1981	2.1	1981-2003	-1.0*				
Black	Male and Female	1975-1984	2.3*	1984-2003	-2.5*				
Black	Male	1975-1987	1.9*	1987-2003	-3.2*				
Black	Female	1975-2003	-1.3*						
<u>SEER Delay-Adjusted Incidence^a</u>									
All Races	Male and Female	1975-1981	0.7	1981-2003	-1.1*				
All Races	Male	1975-2003	-1.2*						
All Races	Female	1975-1980	2.5	1980-2003	-0.9*				
White	Male and Female	1975-2003	-0.8*						
White	Male	1975-2003	-1.1*						
White	Female	1975-1981	2.0	1981-2003	-0.9*				
Black	Male and Female	1975-1984	2.3*	1984-2003	-2.3*				
Black	Male	1975-1987	1.8*	1987-2003	-3.1*				
Black	Female	1975-2003	-1.2*						
<u>U.S. Cancer Mortality^b</u>									
All Races	Male and Female	1975-1991	-1.5*	1991-2003	-2.4*				
All Races	Male	1975-1980	-0.8	1980-2003	-2.3*				
All Races	Female	1975-1991	-1.0*	1991-2003	-2.5*				
White	Male and Female	1975-2003	-1.9*						
White	Male	1975-2003	-2.2*						
White	Female	1975-1990	-1.0*	1990-2003	-2.3*				
Black	Male and Female	1975-1980	3.2*	1980-1993	-1.4*	1993-2003	-4.2*		
Black	Male	1975-1980	3.8*	1980-1993	-1.5*	1993-2003	-4.3*		
Black	Female	1975-1994	-0.6*	1994-2003	-4.5*				

Joinpoint Regression Program Version 3.1, April 2006, National Cancer Institute. (<http://srab.cancer.gov/joinpoint/>).

The APC is the Annual Percent Change based on rates age-adjusted to the 2000 US Std Population (19 age groups - Census P25-1130).

^a Trends are from the SEER 9 areas (San Francisco, Connecticut, Detroit, Hawaii, Iowa, New Mexico, Seattle, Utah, and Atlanta).

^b Trends are from the NCHS public use data file for the total US.

* The APC is significantly different from zero (p<.05).

Table XX-2
ORAL CAVITY AND PHARYNX CANCER (Invasive)

AGE ADJUSTED SEER INCIDENCE^a RATES BY YEAR, RACE AND SEX

	<u>All Races</u>			<u>Whites</u>			<u>Blacks</u>		
	<u>Total</u>	<u>Males</u>	<u>Females</u>	<u>Total</u>	<u>Males</u>	<u>Females</u>	<u>Total</u>	<u>Males</u>	<u>Females</u>
<u>AGE-ADJUSTED RATES</u>									
<u>YEAR OF DIAGNOSIS:</u>									
1975	13.2	21.2	7.1	13.3	21.7	6.9	13.4	20.2	8.2
1976	13.3	21.0	7.4	13.2	21.0	7.4	15.2	23.8	8.4
1977	12.7	20.1	7.0	12.6	19.9	7.0	14.4	23.9	6.6
1978	13.4	20.9	7.7	13.2	20.7	7.6	15.8	26.0	8.1
1979	14.0	22.0	8.0	13.7	21.6	7.7	18.4	28.2	10.6
1980	13.3	20.3	7.9	13.0	20.0	7.6	16.8	25.4	9.6
1981	13.6	20.8	7.9	13.4	20.5	7.9	16.7	28.2	7.5
1982	13.3	20.3	7.9	13.1	19.9	7.9	17.1	27.4	8.9
1983	13.3	21.2	7.2	13.2	21.2	7.3	16.1	26.1	8.3
1984	13.5	20.8	7.9	13.0	20.1	7.6	18.9	30.0	10.1
1985	13.3	19.8	8.2	13.2	19.6	8.3	16.0	25.7	8.5
1986	12.5	19.1	7.2	12.4	18.8	7.3	16.2	28.1	7.0
1987	13.2	20.5	7.5	13.1	20.2	7.7	16.8	30.0	7.0
1988	12.1	18.1	7.3	11.8	17.6	7.1	16.4	25.6	9.1
1989	12.1	18.3	7.3	11.8	17.7	7.3	15.7	27.2	7.0
1990	12.6	19.4	7.3	12.4	18.8	7.4	16.0	27.9	6.9
1991	12.2	18.3	7.2	12.1	18.1	7.3	14.4	23.7	7.3
1992	12.0	18.3	6.9	11.8	18.0	6.9	14.8	25.1	6.9
1993	12.4	18.7	7.3	12.2	18.4	7.2	15.5	24.9	8.1
1994	11.7	17.7	6.8	11.4	16.8	6.9	15.7	26.7	7.1
1995	11.5	16.9	7.2	11.5	16.7	7.3	13.5	22.5	6.7
1996	11.7	17.6	7.0	11.4	17.1	6.8	14.8	24.3	7.5
1997	11.5	17.3	6.8	11.5	17.1	6.9	11.4	18.2	6.2
1998	11.2	16.6	6.7	11.2	16.4	6.8	13.0	22.4	6.2
1999	10.5	15.5	6.4	10.4	15.4	6.3	11.6	19.5	5.7
2000	10.7	16.1	6.3	10.7	15.7	6.4	11.6	20.6	4.8
2001	10.7	15.3	6.8	10.7	15.4	6.8	11.9	18.7	6.8
2002	10.9	16.1	6.6	11.1	16.3	6.7	11.1	16.8	6.5
2003	10.2	15.2	6.0	10.2	15.2	5.8	11.5	16.2	7.7
1975-2003	12.2	18.5	7.2	12.1	18.3	7.2	14.4	23.5	7.3

^a SEER 9 areas (San Francisco, Connecticut, Detroit, Hawaii, Iowa, New Mexico, Seattle, Utah, and Atlanta). Rates are per 100,000 and are age-adjusted to the 2000 US Std Population (19 age groups - Census P25-1130).

- Statistic not shown. Rate based on less than 16 cases for the time interval.

Table XX-3
ORAL CAVITY AND PHARYNX CANCER (Invasive)

AGE-ADJUSTED U.S. DEATH^a RATES BY YEAR, RACE AND SEX

	<u>All Races</u>			<u>Whites</u>			<u>Blacks</u>		
	<u>Total</u>	<u>Males</u>	<u>Females</u>	<u>Total</u>	<u>Males</u>	<u>Females</u>	<u>Total</u>	<u>Males</u>	<u>Females</u>
<u>AGE-ADJUSTED RATES</u>									
<u>YEAR OF DEATH:</u>									
1975	4.3	6.9	2.3	4.1	6.6	2.3	5.8	9.9	2.5
1976	4.2	6.9	2.2	4.0	6.6	2.2	6.1	10.6	2.6
1977	4.3	7.0	2.3	4.1	6.7	2.2	6.2	10.9	2.6
1978	4.2	6.8	2.3	4.0	6.4	2.2	6.1	10.7	2.7
1979	4.2	6.7	2.4	4.0	6.3	2.3	6.6	11.5	3.0
1980	4.2	6.7	2.3	3.9	6.1	2.2	7.0	12.5	2.8
1981	4.1	6.5	2.2	3.8	6.0	2.2	6.5	11.4	2.8
1982	4.0	6.5	2.2	3.7	6.0	2.1	6.6	11.5	2.9
1983	3.9	6.3	2.2	3.6	5.7	2.1	6.6	11.8	2.8
1984	3.9	6.2	2.2	3.6	5.6	2.1	6.4	11.7	2.4
1985	3.8	5.9	2.1	3.5	5.4	2.0	6.2	11.0	2.6
1986	3.7	5.8	2.2	3.4	5.3	2.1	6.5	11.4	2.9
1987	3.5	5.5	2.1	3.3	5.0	2.0	5.7	10.0	2.5
1988	3.6	5.6	2.0	3.3	5.1	2.0	6.0	10.7	2.5
1989	3.5	5.3	2.1	3.2	4.8	2.0	5.9	10.4	2.6
1990	3.6	5.6	2.0	3.3	5.1	2.0	6.1	11.0	2.5
1991	3.5	5.3	2.0	3.2	4.9	2.0	5.8	10.1	2.7
1992	3.3	5.1	1.9	3.1	4.7	1.9	5.6	10.0	2.3
1993	3.3	5.2	1.9	3.1	4.7	1.8	5.7	10.1	2.4
1994	3.2	4.8	1.8	2.9	4.4	1.8	5.3	9.3	2.4
1995	3.2	4.9	1.8	2.9	4.4	1.8	5.4	9.3	2.5
1996	3.0	4.6	1.8	2.8	4.2	1.7	4.9	8.7	2.1
1997	3.0	4.5	1.8	2.8	4.2	1.7	4.7	8.1	2.2
1998	3.0	4.5	1.7	2.8	4.2	1.7	4.5	7.9	2.1
1999	2.7	4.1	1.6	2.5	3.8	1.5	4.4	7.5	2.1
2000	2.7	4.1	1.6	2.5	3.7	1.6	4.1	7.3	1.8
2001	2.7	4.1	1.6	2.6	3.9	1.5	3.9	6.7	1.8
2002	2.7	4.1	1.5	2.6	3.9	1.5	3.7	6.3	1.7
2003	2.6	4.1	1.5	2.5	3.8	1.4	3.9	6.9	1.6
1975-2003	3.4	5.4	2.0	3.2	5.0	1.9	5.4	9.5	2.4

^a NCHS public use data file for the total US. Rates are per 100,000 and are age-adjusted to the 2000 US Std Population (19 age groups - Census P25-1130).

- Statistic not shown. Rate based on less than 16 cases for the time interval.

Table XX-4
ORAL CAVITY AND PHARYNX CANCER (Invasive)SEER INCIDENCE^a AND U.S. DEATH^b RATES, AGE-ADJUSTED AND AGE-SPECIFIC RATES, BY RACE AND SEX

	All Races			Whites			Blacks		
	Total	Males	Females	Total	Males	Females	Total	Males	Females
<u>SEER INCIDENCE</u>									
<u>AGE AT DIAGNOSIS</u>									
AGE-ADJUSTED RATES, 2000-2003									
All ages	10.5	15.6	6.1	10.5	15.7	6.1	11.1	18.0	5.8
Under 65	6.3	9.4	3.3	6.2	9.2	3.2	7.6	12.2	3.8
65 and over	39.3	58.8	25.3	40.5	60.4	26.1	34.9	58.3	19.4
All ages(IARC world std) ^c	7.5	11.1	4.2	7.5	11.1	4.2	8.3	13.5	4.2
AGE-SPECIFIC RATES, 2000-2003									
<1	-	-	-	-	-	-	-	-	-
1-4	-	-	-	-	-	-	-	-	-
5-9	0.1	-	-	0.1	-	-	-	-	-
10-14	0.2	0.2	0.2	0.2	-	0.2	-	-	-
15-19	0.4	0.4	0.4	0.4	0.4	0.3	0.6	-	-
20-24	0.6	0.6	0.7	0.6	0.5	0.6	0.7	-	-
25-29	1.0	1.0	1.0	0.9	0.9	1.0	1.1	-	-
30-34	1.7	1.9	1.5	1.6	1.8	1.3	1.5	2.0	1.2
35-39	3.0	3.7	2.2	2.7	3.4	1.9	3.2	3.9	2.6
40-44	6.1	8.8	3.4	5.9	8.5	3.2	6.7	9.2	4.4
45-49	11.7	17.7	5.8	11.3	17.2	5.3	16.0	24.3	8.7
50-54	18.6	28.9	8.8	18.4	28.7	8.3	23.6	37.3	12.0
55-59	24.8	38.6	11.7	24.7	38.2	11.8	31.1	54.9	11.4
60-64	32.2	49.2	16.8	32.7	49.3	17.2	36.6	63.5	15.0
65-69	36.1	55.6	19.3	36.9	56.9	19.5	37.7	62.8	18.6
70-74	40.1	59.2	24.9	41.8	60.8	26.3	37.4	65.8	17.7
75-79	41.7	60.7	28.3	43.0	62.4	29.3	34.8	57.9	20.6
80-84	40.9	59.2	29.6	41.6	60.4	30.0	35.0	58.3	22.4
85+	39.1	60.8	29.4	40.5	64.0	30.1	23.6	34.1	19.5
<u>U.S. MORTALITY</u>									
<u>AGE AT DEATH</u>									
AGE-ADJUSTED RATES, 2000-2003									
All ages	2.7	4.1	1.5	2.5	3.8	1.5	3.9	6.8	1.7
Under 65	1.3	2.0	0.6	1.1	1.7	0.5	2.3	4.1	0.9
65 and over	12.5	18.6	8.3	12.4	18.0	8.4	14.5	25.4	7.7
All ages(IARC world std) ^c	1.8	2.7	0.9	1.6	2.5	0.9	2.8	5.0	1.2
AGE-SPECIFIC RATES, 2000-2003									
<1	-	-	-	-	-	-	-	-	-
1-4	-	-	-	-	-	-	-	-	-
5-9	-	-	-	-	-	-	-	-	-
10-14	0.0	-	-	-	-	-	-	-	-
15-19	0.1	0.1	0.0	0.0	-	-	-	-	-
20-24	0.1	0.1	0.1	0.1	0.1	0.1	-	-	-
25-29	0.1	0.1	0.1	0.1	0.1	0.1	-	-	-
30-34	0.2	0.2	0.1	0.1	0.2	0.1	0.2	0.3	-
35-39	0.4	0.5	0.3	0.3	0.4	0.2	0.6	0.7	0.6
40-44	0.9	1.3	0.4	0.7	1.1	0.4	1.6	2.4	1.0
45-49	2.0	3.2	0.9	1.7	2.7	0.8	4.1	6.8	1.8
50-54	3.6	5.9	1.4	3.2	5.1	1.2	7.0	12.6	2.2
55-59	5.8	9.5	2.3	5.3	8.6	2.1	10.8	19.6	3.5
60-64	8.0	12.8	3.6	7.4	11.5	3.5	14.3	26.8	4.6
65-69	9.5	14.6	5.0	9.0	13.6	4.9	14.7	26.1	6.3
70-74	11.5	17.3	6.9	11.3	16.6	7.0	14.9	27.5	6.5
75-79	13.0	19.1	8.7	12.9	18.7	8.9	13.7	24.1	7.4
80-84	14.2	20.6	10.3	14.2	20.3	10.5	14.4	25.3	8.8
85+	18.8	26.7	15.4	19.1	27.1	15.7	14.9	22.3	12.0

^a SEER 17 areas. Rates are per 100,000 and are age-adjusted to the 2000 US Std Population (19 age groups - Census P25-1130), unless noted.

^b NCHS public use data file for the total US. Rates are per 100,000 and are age-adjusted to the 2000 US Std Population (19 age groups - Census P25-1130), unless noted.

^c Rates are per 100,000 and are age-adjusted to the IARC world standard population.

- Statistic not shown. Rate based on less than 16 cases for the time interval.

Table XX-5
 ORAL CAVITY AND PHARYNX CANCER (Invasive)

SURVIVAL RATES, BY RACE, SEX, DIAGNOSIS YEAR, STAGE AND AGE

	All Races			Whites			Blacks		
	Total	Males	Females	Total	Males	Females	Total	Males	Females
<u>5-YR RELATIVE SURVIVAL RATES</u>									
YEAR OF DIAGNOSIS:									
1960-1963 ^a	-	-	-	45	-	-	-	-	-
1970-1973 ^a	-	-	-	43	-	-	-	-	-
1975-1977 ^b	52.9	51.7	55.7	54.5	53.9	55.8	36.4	30.2	48.9
1978-1980 ^b	53.8	52.3	57.0	56.0	55.1	57.9	35.3	29.8	46.9
1981-1983 ^b	52.5	51.0	55.7	55.0	53.8	57.4	31.6	26.3	45.0
1984-1986 ^b	54.5	51.9	59.7	56.7	55.0	60.0	35.9	29.7	50.9
1987-1989 ^b	54.1	51.2	59.8	56.6	54.3	61.1	34.6	30.4	44.8
1990-1992 ^b	56.1	53.8	61.0	58.8	57.2	62.1	33.5	28.6	46.8
1993-1995 ^b	58.8	57.4	61.8	61.4	60.8	62.7	38.7	33.4	51.7
1996-2002 ^b	59.9 ^e	58.7 ^e	62.4 ^e	62.2 ^e	62.0 ^e	62.7 ^e	39.9	35.1	51.3
<u>5-YR PERIOD SURVIVAL RATES^{cd}</u>									
YEAR OF DIAGNOSIS:									
1996-2002	59.4	58.1	62.2	61.6	61.0	62.9	40.5	36.7	49.2
<u>STAGE DISTRIBUTION (%) 1996-2002^c</u>									
All Stages									
Number of cases	30,031	20,522	9,509	24,344	16,629	7,715	3,061	2,185	876
Percent	100%	100%	100%	100%	100%	100%	100%	100%	100%
Localized	33	30	40	35	32	42	21	17	31
Regional	52	55	46	50	53	44	59	61	52
Distant	10	10	8	9	9	8	15	16	13
Unstaged	5	5	6	5	5	6	5	5	5
<u>5-YR RELATIVE SURVIVAL RATES, 1996-2002^c</u>									
AGE AT DIAGNOSIS:									
<45	75.2	70.7	83.3	78.2	74.8	84.6	59.1	52.5	69.4
45-54	62.8	61.5	67.1	67.6	66.9	69.9	37.7	35.4	45.2
55-64	57.4	55.7	62.0	59.7	58.0	64.4	36.8	34.9	42.7
65-74	53.4	52.2	55.6	55.5	55.0	56.5	30.9	25.0	41.3 ^f
75+	46.7	48.0	45.4	47.8	49.8	45.4	31.5 ^f	23.0 ^f	40.6 ^f
Under 65	63.4	61.0	69.8	66.4	64.6	71.4	42.4	38.6	52.4
65 and over	50.9	50.8	51.0	52.5	53.3	51.3	31.4	24.8	41.4
STAGE:									
All Stages	58.8	57.6	61.3	60.9	60.6	61.6	39.7	35.6	49.1
Localized	81.3	81.3	81.4	82.1	82.9	80.8	71.1	63.9	79.7
Regional	51.7	51.7	51.4	53.4	54.2	51.3	33.9	32.1	39.1
Distant	26.4	25.4	28.7	26.9	25.6	29.9	21.8	22.6	19.6 ^f
Unstaged	45.0	45.4	43.7	45.9	48.5	40.5	30.5	26.6 ^f	38.3 ^f

- ^a Rates are based on End Results data from a series of hospital registries and one population-based registry.
- ^b Rates are from the SEER 9 areas (San Francisco, Connecticut, Detroit, Hawaii, Iowa, New Mexico, Seattle, Utah, Atlanta).
- ^c Rates are based on follow-up of patients into 2003.
- ^c Rates are from the SEER 17 areas (San Francisco, Connecticut, Detroit, Hawaii, Iowa, New Mexico, Seattle, Utah, Atlanta, San Jose-Monterey, Los Angeles, Alaska Native Registry, Rural Georgia, California excluding SF/SJM/LA, Kentucky, Louisiana and New Jersey). California excluding SF/SJM/LA, Kentucky, Louisiana, and New Jersey contribute cases for diagnosis years 2000-2002. The remaining 13 SEER Areas contribute cases for the entire period 1996-2002. Rates are based on follow-up of patients into 2003.
- ^d Period survival provides a more up-to-date estimate of survival by piecing together the most recent conditional survival estimates from several cohorts. It is computed here using three calendar year blocks (2000-2002: 0-1 year survival), (1999-2001: 1-2 year survival), (1998-2000: 2-3 year survival), (1997-1999: 3-4 year survival), (1996-1998: 4-5 years survival).
- ^e The difference in rates between 1975-1977 and 1996-2002 is statistically significant (p<.05).
- ^f The standard error of the survival rate is between 5 and 10 percentage points.
- ^g The standard error of the survival rate is greater than 10 percentage points.
- Statistic could not be calculated due to fewer than 16 cases during the time period.

Table XX-6
ORAL CAVITY AND PHARYNX CANCER (Invasive)

SURVIVAL RATES^a

By Year of Diagnosis

All Races, Males and Females

Year of Diagnosis

	1975- 1979	1980- 1984	1985	1986	1987	1988	1989	1990	1991	1992	1993	1994	1995	1996	1997	1998	1999	2000	2001	2002
Relative Survival Rates (SEER ^b)																				
1-year	80.2	80.1	81.9	80.8	81.2	82.2	79.9	82.1	81.9	80.5	82.1	83.8	83.5	82.2	84.5	81.5	84.3	85.4	83.5	84.2
2-year	66.3	66.4	68.5	67.3	68.5	67.4	68.2	70.0	69.5	69.5	69.1	72.4	72.2	70.3	72.0	70.6	73.1	74.2	73.9	
3-year	60.0	60.0	61.2	61.5	62.3	60.1	61.6	63.5	63.0	62.2	63.2	66.9	66.3	64.0	67.2	65.0	66.3	69.4		
4-year	56.1	56.0	57.8	58.2	59.1	55.2	57.3	60.3	58.3	57.8	59.2	62.8	62.7	60.6	63.4	61.0	63.1			
5-year	53.2	53.0	54.9	55.4	55.9	52.1	54.0	57.6	55.1	55.7	56.5	60.2	60.0	58.8	60.3	58.3				
6-year	50.8	50.4	53.0	53.0	53.7	49.2	51.3	55.6	52.6	53.4	54.5	57.6	57.7	56.7	58.2					
7-year	48.8	48.2	50.5	51.1	51.3	46.4	48.8	53.5	50.6	51.0	52.4	56.7	55.5	55.2						
8-year	46.7	46.8	49.2	49.4	48.4	44.2	47.4	51.9	49.4	49.1	50.6	53.7	53.6							
9-year	44.9	45.0	47.4	47.4	46.8	42.6	45.8	49.2	48.0	47.4	48.6	51.4								
10-year	42.9	43.3	46.2	45.6	45.6	41.4	43.8	47.6	46.5	46.1	47.6									
11-year	41.1	42.0	45.3	44.7	44.5	39.7	43.1	46.6	44.7	44.2										
12-year	39.8	40.7	43.8	43.7	43.3	38.4	41.9	45.8	42.7											
13-year	38.6	39.2	42.4	42.5	41.4	37.4	41.0	43.9												
14-year	37.6	38.3	41.1	41.8	40.4	36.8	39.3													
15-year	36.3	36.9	40.4	40.5	39.7	36.8														
16-year	35.2	36.0	40.0	39.2	38.7															
17-year	34.5	35.2	40.0	39.2																
18-year	33.7	34.5	39.2																	
19-year	33.2	33.2																		
20-year	32.3																			

^a Survival rates are relative rates expressed as percents.

^b Rates are from the SEER 9 areas (San Francisco, Connecticut, Detroit, Hawaii, Iowa, New Mexico, Seattle, Utah, and Atlanta).

Table XX-7
ORAL CAVITY AND PHARYNX CANCER (Invasive)

SURVIVAL RATES^a

By Year of Diagnosis

All Races, Males

Year of Diagnosis

	1975- 1979	1980- 1984	1985	1986	1987	1988	1989	1990	1991	1992	1993	1994	1995	1996	1997	1998	1999	2000	2001	2002
Relative Survival Rates (SEER ^b)																				
1-year	79.6	79.6	82.4	79.3	80.7	81.3	78.5	81.3	81.4	79.8	80.9	84.0	83.5	82.2	83.8	81.3	84.8	85.2	84.1	84.5
2-year	65.4	65.7	68.3	64.6	67.3	66.3	66.0	68.0	68.7	68.1	67.4	72.7	71.4	70.0	70.6	70.7	72.1	73.7	74.0	
3-year	59.2	58.8	60.3	57.6	60.9	58.3	58.9	61.6	61.3	60.2	60.8	65.7	65.8	63.2	65.8	64.6	64.7	68.2		
4-year	54.7	54.7	57.3	54.2	57.4	52.7	53.8	58.2	55.3	56.2	57.2	61.3	61.7	59.5	61.4	60.3	61.1			
5-year	51.8	51.4	53.7	50.8	53.9	49.2	50.3	55.3	52.0	54.0	54.3	59.0	59.0	57.8	58.3	57.5				
6-year	49.5	48.7	52.0	48.9	51.6	46.6	48.2	53.2	49.6	51.9	52.0	56.8	56.5	55.1	56.2					
7-year	47.3	46.6	49.5	47.2	49.9	44.0	45.8	51.0	47.3	49.1	49.5	56.1	53.9	53.1						
8-year	45.4	45.1	48.6	45.1	46.6	41.0	44.2	49.9	46.1	47.2	48.5	53.3	51.8							
9-year	43.5	43.4	47.1	43.3	45.1	39.2	42.2	47.3	44.9	45.5	46.4	50.7								
10-year	41.5	41.5	45.8	41.4	43.8	37.5	39.5	46.6	43.1	44.3	45.7									
11-year	39.7	40.1	45.1	41.1	42.1	35.8	38.7	45.5	41.5	42.7										
12-year	38.4	39.0	43.6	40.4	40.8	34.6	37.6	44.9	39.2											
13-year	37.3	37.7	42.4	39.1	39.2	33.7	37.4	43.1												
14-year	36.4	36.9	40.8	38.9	38.2	32.5	36.2													
15-year	35.2	35.6	40.0	37.4	37.4	32.5														
16-year	33.9	34.7	39.4	36.4	36.5															
17-year	33.3	34.0	39.3	36.4																
18-year	32.6	33.2	38.5																	
19-year	32.2	31.6																		
20-year	31.5																			

^a Survival rates are relative rates expressed as percents.

^b Rates are from the SEER 9 areas (San Francisco, Connecticut, Detroit, Hawaii, Iowa, New Mexico, Seattle, Utah, and Atlanta).

Table XX-8
ORAL CAVITY AND PHARYNX CANCER (Invasive)

SURVIVAL RATES^a

By Year of Diagnosis

All Races, Females

Year of Diagnosis

	1975- 1979	1980- 1984	1985	1986	1987	1988	1989	1990	1991	1992	1993	1994	1995	1996	1997	1998	1999	2000	2001	2002
Relative Survival Rates (SEER ^b)																				
1-year	81.6	81.1	81.1	84.2	82.1	84.2	82.7	83.9	82.7	82.1	84.6	83.3	83.5	82.1	86.1	81.9	83.4	85.7	82.6	83.5
2-year	68.3	68.1	69.0	73.3	70.9	69.9	72.6	74.5	71.3	72.4	72.8	71.7	73.8	70.9	74.9	70.2	75.2	75.3	73.4	
3-year	61.9	62.8	62.9	69.9	65.3	63.7	67.1	67.6	66.4	66.3	68.6	69.3	67.2	65.6	70.2	65.8	69.6	71.9		
4-year	59.1	58.9	58.6	66.9	62.9	60.1	64.3	64.9	64.2	61.2	63.6	65.9	64.6	62.7	67.6	62.5	67.0			
5-year	56.2	56.4	57.0	65.0	60.1	57.9	61.3	62.3	61.3	59.3	60.7	62.6	61.7	60.7	64.8	59.9				
6-year	53.7	53.7	55.0	61.7	58.1	54.4	57.2	60.6	58.5	56.4	59.6	59.1	60.0	59.6	62.5					
7-year	51.8	51.5	52.3	59.2	54.4	51.0	54.6	58.5	57.2	54.8	58.5	57.9	58.4	59.2						
8-year	49.4	50.2	50.1	58.3	52.2	50.5	53.5	56.0	55.6	53.0	54.8	54.6	56.8							
9-year	47.8	48.1	48.1	55.7	50.4	49.2	52.6	53.2	54.0	51.2	52.9	52.6								
10-year	45.9	46.9	47.0	53.7	49.3	49.0	51.4	49.7	53.1	49.9	51.5									
11-year	44.0	45.7	45.5	51.7	49.3	47.1	51.3	48.8	50.7	46.9										
12-year	42.5	44.0	43.8	50.2	48.4	45.4	49.5	47.4	49.4											
13-year	41.1	41.9	42.5	49.4	46.0	44.2	47.5	45.7												
14-year	40.0	41.0	41.5	47.7	45.0	44.2	44.7													
15-year	38.4	39.3	41.1	46.2	44.4	43.8														
16-year	37.5	38.3	40.7	44.7	42.9															
17-year	36.8	37.5	40.7	44.0																
18-year	35.7	36.8	40.2																	
19-year	34.9	36.0																		
20-year	33.8																			

^a Survival rates are relative rates expressed as percents.

^b Rates are from the SEER 9 areas (San Francisco, Connecticut, Detroit, Hawaii, Iowa, New Mexico, Seattle, Utah, and Atlanta).

Table XX-9
ORAL CAVITY AND PHARYNX CANCER (Invasive)

Percent Diagnosed With Cancer In 10, 20 and 30 Years and In Remaining Lifetime,
 Given Cancer Free At Current Age By Race and Sex

Lifetime Risk (Percent) of Being Diagnosed (17 SEER Areas) With Cancer and
 Lifetime Risk (Percent) of Dying (Total U.S.) From Cancer

2001-2003

Race/ Ethnicity	Current Age	Males				Females			
		+10 yrs	+20 yrs	+30 yrs	Eventually	+10 yrs	+20 yrs	+30 yrs	Eventually
All Races	0	0.00	0.00	0.01	1.39	0.00	0.00	0.01	0.66
	10	0.00	0.01	0.04	1.41	0.00	0.01	0.03	0.66
	20	0.01	0.04	0.16	1.41	0.01	0.03	0.07	0.66
	30	0.03	0.16	0.45	1.42	0.02	0.06	0.16	0.66
	40	0.13	0.43	0.83	1.42	0.05	0.14	0.29	0.64
	50	0.31	0.73	1.10	1.34	0.10	0.25	0.44	0.61
White	0	0.00	0.00	0.01	1.41	0.00	0.00	0.01	0.66
	10	0.00	0.01	0.04	1.43	0.00	0.01	0.03	0.67
	20	0.01	0.03	0.16	1.44	0.01	0.03	0.07	0.67
	30	0.03	0.15	0.45	1.45	0.02	0.06	0.15	0.66
	40	0.13	0.43	0.84	1.44	0.04	0.14	0.29	0.65
	50	0.31	0.74	1.12	1.36	0.10	0.25	0.45	0.62
Black	0	0.00	0.01	0.02	1.26	0.00	0.00	0.01	0.53
	10	0.01	0.01	0.05	1.30	0.00	0.01	0.03	0.54
	20	0.01	0.04	0.19	1.30	0.01	0.03	0.10	0.54
	30	0.03	0.18	0.55	1.33	0.02	0.09	0.19	0.54
	40	0.16	0.53	0.94	1.34	0.07	0.18	0.31	0.52
	50	0.41	0.84	1.14	1.27	0.12	0.26	0.37	0.48
Asian/ Pacific Islander	0	0.00	0.00	0.01	1.11	0.00	0.00	0.02	0.66
	10	0.00	0.01	0.05	1.13	0.00	0.02	0.05	0.67
	20	0.01	0.04	0.17	1.13	0.01	0.04	0.09	0.67
	30	0.04	0.16	0.37	1.12	0.03	0.08	0.16	0.65
	40	0.12	0.34	0.60	1.10	0.05	0.13	0.26	0.63
	50	0.22	0.49	0.76	0.99	0.09	0.21	0.35	0.59
Hispanic ^a	0	0.00	0.00	0.01	0.96	0.00	0.00	0.01	0.47
	10	0.00	0.01	0.02	0.97	0.00	0.01	0.02	0.47
	20	0.00	0.02	0.08	0.98	0.00	0.01	0.04	0.47
	30	0.02	0.08	0.24	0.98	0.01	0.04	0.09	0.47
	40	0.07	0.23	0.50	0.98	0.03	0.08	0.15	0.46
	50	0.17	0.45	0.72	0.94	0.05	0.13	0.25	0.44
60	0.30	0.59	0.74	0.83	0.08	0.21	0.34	0.40	

Race/Ethnicity	Lifetime Risk of Developing		Lifetime Risk of Dying	
	Males	Females	Males	Females
All Races	1.39%	0.66%	0.39%	0.19%
White	1.41%	0.66%	0.37%	0.19%
Black	1.26%	0.53%	0.50%	0.17%
Asian/Pacific Islander	1.11%	0.66%	0.45%	0.24%
Hispanic ^a	0.96%	0.47%	0.32%	0.14%

Devcan Version 6.1.0, April 2006, National Cancer Institute (<http://srab.cancer.gov/devcan/>).

Source: Incidence data are from the SEER 17 areas (San Francisco, Connecticut, Detroit, Hawaii, Iowa, New Mexico, Seattle, Utah, Atlanta, San Jose-Monterey, Los Angeles, Alaska Native Registry, Rural Georgia, California excluding SF/SJM/LA, Kentucky, Louisiana and New Jersey). Mortality data are from the NCHS public use data file for the total US.

^a Hispanic is not mutually exclusive from Whites, Blacks, Asian/Pacific Islanders, and American Indians/Alaska Natives. Underlying incidence data for Hispanics are based on NHIA and exclude cases from Hawaii, Seattle, Alaska Native Registry and Kentucky. Underlying mortality data for Hispanics exclude deaths from Minnesota, New Hampshire and North Dakota.

Table XX-10
ORAL CAVITY AND PHARYNX CANCER (Invasive)

SEER INCIDENCE AND U.S. MORTALITY
AGE-ADJUSTED RATES AND TRENDS^a
 By Race/Ethnicity and Sex

SEER Incidence

RACE/ETHNICITY	Rate 2000-2003 ^b			Trend 1994-2003 ^c		
	Rate per 100,000 persons			APC (%)		
	Total	Males	Females	Total	Males	Females
All Races	10.5	15.6	6.1	-1.5*	-1.7*	-1.6*
White	10.5	15.7	6.1	-1.3*	-1.3*	-1.7*
White Hispanic ^d	6.2	9.3	3.7	-2.9*	-3.9*	-1.3
White Non-Hispanic ^d	11.1	16.5	6.5	-0.9*	-0.9*	-1.4*
Black	11.1	18.0	5.8	-2.9*	-3.5*	-1.3
Asian/Pacific Islander	7.9	11.0	5.4	-1.7	-2.2	-0.6
Amer Ind/Alaska Nat ^e	8.2	11.4	5.4	-8.4*	-	-
Hispanic ^d	6.1	9.2	3.7	-2.9*	-3.9*	-1.4

U.S. Mortality^f

RACE/ETHNICITY	Rate 2000-2003			Trend 1994-2003		
	Rate per 100,000 persons			APC (%)		
	Total	Males	Females	Total	Males	Females
All Races	2.7	4.1	1.5	-2.2*	-2.3*	-2.5*
White	2.5	3.8	1.5	-1.9*	-1.9*	-2.3*
White Hispanic ^d	1.7	2.9	0.9	-3.1*	-4.1*	-0.5
White Non-Hispanic ^d	2.6	3.9	1.5	-1.8*	-1.8*	-2.3*
Black	3.9	6.8	1.7	-4.2*	-4.1*	-4.4*
Asian/Pacific Islander	2.4	3.6	1.4	-1.6*	-1.4	-1.6
Amer Ind/Alaska Nat	2.2	3.2	1.4	-1.1	-2.4	-
Hispanic ^d	1.7	2.8	0.8	-3.0*	-3.9*	-0.5

- The APC is the Annual Percent Change over the time interval.
- Statistic not shown. Rate based on less than 16 cases for the time interval. Trend based on less than 10 cases for at least one year within the time interval.
- ^a Rates are age-adjusted to the 2000 US Std Population (19 age groups - Census P25-1130). Trends are based on rates age-adjusted to the 2000 US Std Population (19 age groups - Census P25-1130).
- ^b Incidence data used in calculating the rates are from the 17 SEER areas (San Francisco, Connecticut, Detroit, Hawaii, Iowa, New Mexico, Seattle, Utah, Atlanta, San Jose-Monterey, Los Angeles, Alaska Native Registry, Rural Georgia, California excluding SF/SJM/LA, Kentucky, Louisiana and New Jersey).
- ^c Incidence data used in calculating the trends are from the 13 SEER areas (San Francisco, Connecticut, Detroit, Hawaii, Iowa, New Mexico, Seattle, Utah, Atlanta, San Jose-Monterey, Los Angeles, Alaska Native Registry and Rural Georgia).
- ^d Hispanic and Non-Hispanic are not mutually exclusive from Whites, Blacks, Asian/Pacific Islanders, and American Indians/Alaska Natives. Incidence data for Hispanics and Non-Hispanics are based on NHIA and exclude cases from Hawaii, Seattle, Alaska Native Registry and Kentucky. The 2000-2003 Hispanic and Non-Hispanic death rates exclude deaths from Minnesota, New Hampshire and North Dakota. The 1994-2003 Hispanic and Non-Hispanic mortality trends exclude deaths from Maine, Minnesota, New Hampshire, North Dakota, and Oklahoma.
- ^e Incidence data for American Indians/Alaska Natives include cases from Connecticut, Detroit, Iowa, New Mexico, Seattle, Utah, Atlanta, and the Alaska Native Registry. Incidence rates are for diagnosis years 1999-2002. Incidence trends are for diagnosis years 1994-2002.
- ^f Mortality data are analyzed from a public use file provided by the National Center for Health Statistics (NCHS).
- * The APC is significantly different from zero (p<.05).

Table XX-11
 ORAL CAVITY AND PHARYNX CANCER (Invasive)

AGE-ADJUSTED SEER INCIDENCE RATES^a
 By Registry, Race/Ethnicity and Sex

	All Races			Whites		Blacks		Asian/Pacific Islanders		Hispanics ^b	
	Total	Males	Females	Males	Females	Males	Females	Males	Females	Males	Females
<u>SEER INCIDENCE RATES^a, 2000-2003</u>											
REGISTRY											
17 SEER Areas ^c	10.5	15.6	6.1	15.7	6.1	18.0	5.8	11.0	5.4	9.2	3.7
13 SEER Areas ^c	10.3	15.2	6.2	15.3	6.2	17.9	6.2	11.6	5.5	8.8	3.6
11 SEER Areas ^c	10.3	15.1	6.2	15.3	6.2	17.8	6.2	11.6	5.5	8.8	3.6
9 SEER Areas ^c	10.6	15.6	6.4	15.6	6.4	18.1	6.5	13.0	5.7	8.9	3.7
San Francisco-Oakland	10.7	15.4	6.8	15.7	6.9	15.0	6.1	14.0	6.5	8.6	4.0
Connecticut	10.0	14.7	6.1	14.7	5.9	16.0	6.9	-	-	8.6	5.3
Metropolitan Detroit	12.3	18.8	7.1	17.7	7.4	23.5	6.1	12.6	-	-	-
Hawaii	10.8	15.9	6.2	20.8	9.0	-	-	13.8	5.3	-	-
Iowa	10.8	16.3	6.4	16.1	6.4	-	-	-	-	-	-
New Mexico	9.1	13.5	5.3	14.1	5.5	-	-	-	-	8.7	3.6
Seattle-Puget Sound	10.9	15.5	6.6	15.9	6.8	13.0	-	10.9	4.4	-	-
Utah	8.3	11.7	5.2	11.9	5.1	-	-	-	-	-	-
Metropolitan Atlanta	10.8	15.4	6.9	15.8	6.4	15.7	8.1	-	-	14.4	-
San Jose-Monterey	9.1	13.2	5.6	13.7	5.5	-	-	10.0	5.4	9.1	3.5
Los Angeles	9.5	14.1	5.7	14.5	5.7	17.4	5.3	9.5	5.2	8.7	3.7
Rural Georgia	15.5	23.4	9.3	20.7	10.5	30.2	-	-	-	-	-
California exclud. SF/SJM/LA	10.5	15.5	6.2	15.9	6.3	14.5	4.8	9.2	4.7	8.6	3.6
Kentucky	11.6	18.7	5.7	18.5	5.6	19.7	5.9	-	-	-	-
Louisiana	11.7	18.8	5.9	18.4	6.1	20.1	5.0	-	-	18.4	-
New Jersey	9.8	14.6	5.9	14.2	5.6	18.3	6.0	9.9	7.4	12.5	4.0

^a Rates are per 100,000 and are age-adjusted to the 2000 US Std Population (19 age groups - Census P25-1130)

^b Hispanic is not mutually exclusive from Whites, Blacks, Asian/Pacific Islanders, and American Indians/Alaska Natives. Incidence data for Hispanics are based on NHIA and exclude cases from Hawaii, Seattle, Alaska Native Registry and Kentucky.

^c The SEER 9 areas are San Francisco, Connecticut, Detroit, Hawaii, Iowa, New Mexico, Seattle, Utah and Atlanta.

The SEER 11 areas comprise the SEER 9 areas plus San Jose-Monterey and Los Angeles.

The SEER 13 areas comprise the SEER 11 areas plus the Alaska Native Registry and Rural Georgia.

The SEER 17 areas comprise the SEER 13 areas plus California excluding SF/SJM/LA, Kentucky, Louisiana and New Jersey

- Statistic not shown. Rate based on less than 16 cases for the time interval.

Table XX-12
 ORAL CAVITY AND PHARYNX CANCER (Invasive)

AGE-ADJUSTED SEER DEATH RATES^a
 By Registry, Race/Ethnicity and Sex

	All Races			Whites		Blacks		Asian/Pacific Islanders		Hispanics ^b	
	Total	Males	Females	Males	Females	Males	Females	Males	Females	Males	Females
<u>SEER DEATH RATES^a, 2000-2003</u>											
REGISTRY											
17 SEER Areas ^c	2.7	4.1	1.6	3.8	1.6	6.6	1.9	3.9	1.5	2.6	0.9
13 SEER Areas ^c	2.6	3.8	1.6	3.5	1.5	6.0	1.9	4.0	1.5	2.7	0.8
11 SEER Areas ^c	2.5	3.8	1.5	3.5	1.5	6.0	1.9	4.1	1.5	2.7	0.8
9 SEER Areas ^c	2.5	3.8	1.5	3.5	1.5	5.7	1.8	4.4	1.5	2.5	0.6
San Francisco-Oakland	3.0	4.4	1.9	3.9	1.9	6.0	2.8	5.4	1.7	2.5	-
Connecticut	2.2	3.6	1.2	3.5	1.2	6.2	-	-	-	-	-
Metropolitan Detroit	2.7	4.1	1.5	3.5	1.5	6.7	1.4	-	-	-	-
Hawaii	3.2	5.0	1.7	6.7	2.9	-	-	4.3	1.4	-	-
Iowa	2.3	3.4	1.3	3.4	1.3	-	-	-	-	-	-
New Mexico	1.8	2.5	1.1	2.4	1.1	-	-	-	-	1.7	-
Seattle-Puget Sound	3.0	4.3	1.8	4.3	1.7	-	-	4.1	-	-	-
Utah	1.9	2.6	1.2	2.6	1.2	-	-	-	-	-	-
Metropolitan Atlanta	2.2	3.2	1.5	2.7	1.3	4.6	1.8	-	-	-	-
San Jose-Monterey	2.3	3.3	1.5	3.0	1.6	-	-	3.9	-	-	-
Los Angeles	2.6	3.9	1.7	3.6	1.6	6.6	2.2	3.4	1.7	2.9	0.9
Rural Georgia	4.8	7.7	-	-	-	-	-	-	-	-	-
California exclud. SF/SJM/LA	2.9	4.1	1.9	4.2	1.9	4.7	1.8	3.6	1.8	2.4	0.9
Kentucky	3.0	4.9	1.5	4.6	1.5	9.5	-	-	-	-	-
Louisiana	3.5	5.9	1.7	5.1	1.6	8.1	2.0	-	-	-	-
New Jersey	2.5	3.9	1.4	3.5	1.4	7.2	2.0	3.4	-	3.2	-
Total U.S.	2.7	4.1	1.5	3.8	1.5	6.8	1.7	3.6	1.4	2.8	0.8

^a NCHS public use data file for the total US. Rates are per 100,000 and are age-adjusted to the 2000 US Std Population (19 age groups - Census P25-1130).

^b Hispanic is not mutually exclusive from Whites, Blacks, Asian/Pacific Islanders, and American Indians/Alaska Natives. The 2000-2003 Hispanic death rates do not include deaths from Minnesota, New Hampshire and North Dakota.

^c The SEER 9 areas are San Francisco, Connecticut, Detroit, Hawaii, Iowa, New Mexico, Seattle, Utah and Atlanta.

The SEER 11 areas comprise the SEER 9 areas plus San Jose-Monterey and Los Angeles.

The SEER 13 areas comprise the SEER 11 areas plus the Alaska Native Registry and Rural Georgia.

The SEER 17 areas comprise the SEER 13 areas plus California excluding SF/SJM/LA, Kentucky, Louisiana and New Jersey

- Statistic not shown. Rate based on less than 16 cases for the time interval.

Table XX-13
 ORAL CAVITY AND PHARYNX CANCER (Invasive)

AVERAGE ANNUAL AGE-ADJUSTED CANCER DEATH^a RATES BY STATE, ALL RACES, 2000-2003

Males and Females

State	Rate	SE	Rank	PD	State	Rate	SE	Rank	PD
TOTAL U.S.	2.7	0.02							
High Five States									
Alaska	4.2 ^b	0.56	(01)	55.6					
District of Columbia	4.1 ^b	0.43	(02)	51.9					
Mississippi	3.7 ^{bc}	0.18	(03)	37.0					
Louisiana	3.5 ^{bc}	0.14	(04)	29.6					
South Carolina	3.5 ^{bc}	0.14	(05)	29.6					
Low Five States									
Nebraska	2.2 ^b	0.17	(47)	-18.5					
Rhode Island	2.2 ^b	0.22	(48)	-18.5					
Colorado	2.0 ^{bc}	0.12	(49)	-25.9					
Utah	1.9 ^{bc}	0.17	(50)	-29.6					
New Mexico	1.8 ^{bc}	0.16	(51)	-33.3					
Alabama	2.9	0.13	(13)	7.4	Montana	2.2 ^b	0.24	(46)	-18.5
Alaska	4.2 ^b	0.56	(01)	55.6	Nebraska	2.2 ^b	0.17	(47)	-18.5
Arizona	2.2 ^{bc}	0.10	(45)	-18.5	Nevada	2.9	0.20	(14)	7.4
Arkansas	2.9	0.16	(15)	7.4	New Hampshire	3.1	0.25	(09)	14.8
California	2.8	0.05	(20)	3.7	New Jersey	2.5	0.08	(33)	-7.4
Colorado	2.0 ^{bc}	0.12	(49)	-25.9	New Mexico	1.8 ^{bc}	0.16	(51)	-33.3
Connecticut	2.2 ^{bc}	0.12	(44)	-18.5	New York	2.4 ^c	0.05	(39)	-11.1
Delaware	2.4	0.27	(37)	-11.1	North Carolina	2.8	0.09	(19)	3.7
District of Columbia	4.1 ^b	0.43	(02)	51.9	North Dakota	3.3 ^b	0.34	(06)	22.2
Florida	3.0 ^c	0.06	(10)	11.1	Ohio	2.5	0.07	(32)	-7.4
Georgia	2.9	0.10	(12)	7.4	Oklahoma	2.7	0.14	(25)	0.0
Hawaii	3.2 ^b	0.25	(07)	18.5	Oregon	2.7	0.14	(23)	0.0
Idaho	2.9	0.24	(17)	7.4	Pennsylvania	2.4 ^c	0.07	(35)	-11.1
Illinois	2.6	0.07	(27)	-3.7	Rhode Island	2.2 ^b	0.22	(48)	-18.5
Indiana	2.3 ^c	0.10	(40)	-14.8	South Carolina	3.5 ^{bc}	0.14	(05)	29.6
Iowa	2.3	0.13	(43)	-14.8	South Dakota	2.6	0.28	(30)	-3.7
Kansas	2.3	0.14	(41)	-14.8	Tennessee	3.2 ^{bc}	0.12	(08)	18.5
Kentucky	3.0	0.13	(11)	11.1	Texas	2.8	0.06	(22)	3.7
Louisiana	3.5 ^{bc}	0.14	(04)	29.6	Utah	1.9 ^{bc}	0.17	(50)	-29.6
Maine	2.9	0.22	(18)	7.4	Vermont	2.3	0.30	(42)	-14.8
Maryland	2.8	0.12	(21)	3.7	Virginia	2.6	0.10	(26)	-3.7
Massachusetts	2.7	0.10	(24)	0.0	Washington	2.9	0.11	(16)	7.4
Michigan	2.6	0.08	(29)	-3.7	West Virginia	2.5	0.17	(34)	-7.4
Minnesota	2.4	0.11	(38)	-11.1	Wisconsin	2.6	0.11	(28)	-3.7
Mississippi	3.7 ^{bc}	0.18	(03)	37.0	Wyoming	2.6	0.36	(31)	-3.7
Missouri	2.4	0.10	(36)	-11.1					

^a NCHS public use data file. Rates are per 100,000 and are age-adjusted to the 2000 US Std Population (19 age groups - Census P25-1130).

^b Absolute percent difference between state rate and total U.S. rate is 15% or more.

^c Difference between state rate and total U.S. rate is statistically significant ($p \leq .0002$).

SE Standard error of the rate.

PD Percent difference between state rate and total U.S. rate.

Table XX-14
 ORAL CAVITY AND PHARYNX CANCER (Invasive)

AVERAGE ANNUAL AGE-ADJUSTED CANCER DEATH^a RATES BY STATE, ALL RACES, 2000-2003

Males

State	Rate	SE	Rank	PD	State	Rate	SE	Rank	PD
TOTAL U.S.	4.1	0.03							
High Five States									
District of Columbia	7.4 ^{bc}	0.88	(01)	80.5					
Mississippi	6.0 ^{bc}	0.35	(02)	46.3					
Louisiana	5.9 ^{bc}	0.29	(03)	43.9					
South Carolina	5.7 ^{bc}	0.28	(04)	39.0					
Alaska	5.5 ^b	0.98	(05)	34.1					
Low Five States									
Wyoming	3.1 ^b	0.59	(47)	-24.4					
Colorado	3.1 ^{bc}	0.22	(48)	-24.4					
Montana	2.9 ^b	0.41	(49)	-29.3					
Utah	2.6 ^{bc}	0.30	(50)	-36.6					
New Mexico	2.5 ^{bc}	0.28	(51)	-39.0					
Alabama	4.8 ^b	0.25	(12)	17.1	Montana	2.9 ^b	0.41	(49)	-29.3
Alaska	5.5 ^b	0.98	(05)	34.1	Nebraska	3.2 ^b	0.32	(46)	-22.0
Arizona	3.4 ^b	0.19	(41)	-17.1	Nevada	4.3	0.36	(16)	4.9
Arkansas	5.0 ^b	0.32	(07)	22.0	New Hampshire	4.8 ^b	0.47	(11)	17.1
California	4.0	0.09	(26)	-2.4	New Jersey	3.9	0.16	(29)	-4.9
Colorado	3.1 ^{bc}	0.22	(48)	-24.4	New Mexico	2.5 ^{bc}	0.28	(51)	-39.0
Connecticut	3.6	0.24	(36)	-12.2	New York	3.6 ^c	0.10	(34)	-12.2
Delaware	3.5	0.49	(38)	-14.6	North Carolina	4.1	0.18	(21)	0.0
District of Columbia	7.4 ^{bc}	0.88	(01)	80.5	North Dakota	4.9 ^b	0.63	(09)	19.5
Florida	4.6 ^c	0.11	(13)	12.2	Ohio	4.1	0.14	(24)	0.0
Georgia	4.3	0.20	(17)	4.9	Oklahoma	3.9	0.25	(27)	-4.9
Hawaii	5.0 ^b	0.45	(08)	22.0	Oregon	3.7	0.24	(33)	-9.8
Idaho	4.1	0.43	(22)	0.0	Pennsylvania	3.9	0.13	(28)	-4.9
Illinois	4.1	0.14	(25)	0.0	Rhode Island	3.2 ^b	0.41	(44)	-22.0
Indiana	3.6	0.19	(35)	-12.2	South Carolina	5.7 ^{bc}	0.28	(04)	39.0
Iowa	3.4 ^b	0.24	(43)	-17.1	South Dakota	3.2 ^b	0.47	(45)	-22.0
Kansas	3.4 ^b	0.27	(40)	-17.1	Tennessee	5.1 ^{bc}	0.23	(06)	24.4
Kentucky	4.9 ^b	0.27	(10)	19.5	Texas	4.2	0.12	(19)	2.4
Louisiana	5.9 ^{bc}	0.29	(03)	43.9	Utah	2.6 ^{bc}	0.30	(50)	-36.6
Maine	4.5	0.42	(15)	9.8	Vermont	3.4 ^b	0.56	(42)	-17.1
Maryland	4.5	0.23	(14)	9.8	Virginia	4.1	0.19	(20)	0.0
Massachusetts	4.1	0.19	(23)	0.0	Washington	4.3	0.21	(18)	4.9
Michigan	3.8	0.15	(30)	-7.3	West Virginia	3.8	0.32	(31)	-7.3
Minnesota	3.5	0.20	(39)	-14.6	Wisconsin	3.8	0.20	(32)	-7.3
Mississippi	6.0 ^{bc}	0.35	(02)	46.3	Wyoming	3.1 ^b	0.59	(47)	-24.4
Missouri	3.5	0.18	(37)	-14.6					

^a NCHS public use data file. Rates are per 100,000 and are age-adjusted to the 2000 US Std Population (19 age groups - Census P25-1130).

^b Absolute percent difference between state rate and total U.S. rate is 15% or more.

^c Difference between state rate and total U.S. rate is statistically significant ($p \leq .0002$).

SE Standard error of the rate.

PD Percent difference between state rate and total U.S. rate.

Table XX-15
 ORAL CAVITY AND PHARYNX CANCER (Invasive)

AVERAGE ANNUAL AGE-ADJUSTED CANCER DEATH^a RATES BY STATE, ALL RACES, 2000-2003

Females

State	Rate	SE	Rank	PD	State	Rate	SE	Rank	PD
TOTAL U.S.	1.5	0.02							
High Five States									
Alaska	2.9 ^b	0.65	(01)	93.3					
North Dakota	2.1 ^b	0.37	(02)	40.0					
South Dakota	2.0 ^b	0.33	(03)	33.3					
Wyoming	1.9 ^b	0.42	(04)	26.7					
Idaho	1.9 ^b	0.27	(05)	26.7					
Low Five States									
Utah	1.2 ^b	0.19	(47)	-20.0					
Connecticut	1.2 ^b	0.12	(48)	-20.0					
Arizona	1.2 ^{bc}	0.10	(49)	-20.0					
New Mexico	1.1 ^b	0.17	(50)	-26.7					
Colorado	1.1 ^b	0.12	(51)	-26.7					
Alabama	1.5	0.12	(26)	0.0	Montana	1.7	0.28	(17)	13.3
Alaska	2.9 ^b	0.65	(01)	93.3	Nebraska	1.4	0.18	(37)	-6.7
Arizona	1.2 ^{bc}	0.10	(49)	-20.0	Nevada	1.7	0.21	(14)	13.3
Arkansas	1.3	0.14	(43)	-13.3	New Hampshire	1.8 ^b	0.26	(09)	20.0
California	1.8 ^{bc}	0.05	(10)	20.0	New Jersey	1.4	0.08	(31)	-6.7
Colorado	1.1 ^b	0.12	(51)	-26.7	New Mexico	1.1 ^b	0.17	(50)	-26.7
Connecticut	1.2 ^b	0.12	(48)	-20.0	New York	1.4	0.05	(39)	-6.7
Delaware	1.5	0.29	(28)	0.0	North Carolina	1.8 ^b	0.10	(11)	20.0
District of Columbia	1.5	0.35	(30)	0.0	North Dakota	2.1 ^b	0.37	(02)	40.0
Florida	1.7	0.06	(15)	13.3	Ohio	1.4	0.07	(40)	-6.7
Georgia	1.9 ^b	0.11	(07)	26.7	Oklahoma	1.7	0.14	(16)	13.3
Hawaii	1.7	0.24	(18)	13.3	Oregon	1.9 ^b	0.15	(06)	26.7
Idaho	1.9 ^b	0.27	(05)	26.7	Pennsylvania	1.3 ^c	0.06	(45)	-13.3
Illinois	1.4	0.07	(34)	-6.7	Rhode Island	1.4	0.23	(35)	-6.7
Indiana	1.3	0.10	(46)	-13.3	South Carolina	1.6	0.13	(23)	6.7
Iowa	1.3	0.13	(42)	-13.3	South Dakota	2.0 ^b	0.33	(03)	33.3
Kansas	1.3	0.15	(41)	-13.3	Tennessee	1.6	0.11	(21)	6.7
Kentucky	1.5	0.13	(27)	0.0	Texas	1.6	0.06	(24)	6.7
Louisiana	1.7	0.13	(13)	13.3	Utah	1.2 ^b	0.19	(47)	-20.0
Maine	1.6	0.22	(22)	6.7	Vermont	1.4	0.31	(36)	-6.7
Maryland	1.4	0.11	(38)	-6.7	Virginia	1.4	0.10	(33)	-6.7
Massachusetts	1.6	0.10	(19)	6.7	Washington	1.7	0.12	(12)	13.3
Michigan	1.6	0.08	(25)	6.7	West Virginia	1.3	0.16	(44)	-13.3
Minnesota	1.4	0.11	(32)	-6.7	Wisconsin	1.6	0.11	(20)	6.7
Mississippi	1.8 ^b	0.17	(08)	20.0	Wyoming	1.9 ^b	0.42	(04)	26.7
Missouri	1.5	0.10	(29)	0.0					

^a NCHS public use data file. Rates are per 100,000 and are age-adjusted to the 2000 US Std Population (19 age groups - Census P25-1130).

^b Absolute percent difference between state rate and total U.S. rate is 15% or more.

^c Difference between state rate and total U.S. rate is statistically significant ($p \leq .0002$).

SE Standard error of the rate.

PD Percent difference between state rate and total U.S. rate.

Table XX-16
 ORAL CAVITY AND PHARYNX CANCER (Invasive)

Estimated United States Cancer Prevalence Counts^a on January 1, 2003
 By Race/Ethnicity, Sex and Years Since Diagnosis

Years Since Diagnosis	0 to <5	5 to <10	10 to <15	15 to <20	20 to <25	0 to <13 ^e	0 to <28 ^e	>=28 ^g	Complete ^h
Race/Sex									
All Races ^b	83,955	53,187	33,089	23,756	14,902	159,086	215,563	20,070	235,633
Males	55,821	34,234	20,500	14,600	8,756	104,017	138,069	11,982	150,051
Females	28,134	18,953	12,589	9,156	6,146	55,069	77,494	8,088	85,582
White ^b	72,358	46,686	29,436	21,420	13,273	138,642	189,210	17,097	206,307
Males	48,421	30,334	18,539	13,334	8,040	91,425	122,521	10,298	132,819
Females	23,937	16,352	10,897	8,086	5,233	47,217	66,689	6,799	73,488
Black ^b	7,329	3,836	2,187	1,486	991	12,543	16,171	951	17,122
Males	4,784	2,261	1,142	783	370	7,756	9,458	389	9,847
Females	2,545	1,575	1,045	703	621	4,787	6,713	562	7,275
Asian/Pacific Islander ^c	2,714	1,754	+	+	+	5,086	+	+	+
Males	1,702	1,078	+	+	+	3,161	+	+	+
Females	1,012	676	+	+	+	1,925	+	+	+
Hispanic ^d	3,409	1,978	+	+	+	6,159	+	+	+
Males	2,209	1,175	+	+	+	3,792	+	+	+
Females	1,200	803	+	+	+	2,367	+	+	+

Estimated prevalence percent^a on January 1, 2003, of the SEER 11 population diagnosed in the previous 10 years
 By Age at Prevalence, Race/Ethnicity and Sex

Age at Prevalence	Age Specific (Crude)										Age-Adjusted ^f
	All Ages	0-9	10-19	20-29	30-39	40-49	50-59	60-69	70-79	80+	All Ages
Race/Sex											
All Races ^c	0.0428%	0.0003%	0.0016%	0.0049%	0.0116%	0.0369%	0.0920%	0.1476%	0.1783%	0.1545%	0.0450%
Males	0.0569%	0.0002%	0.0015%	0.0042%	0.0123%	0.0500%	0.1369%	0.2195%	0.2647%	0.2295%	0.0648%
Females	0.0290%	0.0004%	0.0017%	0.0056%	0.0109%	0.0239%	0.0495%	0.0835%	0.1132%	0.1137%	0.0284%
White ^c	0.0454%	0.0003%	0.0017%	0.0045%	0.0107%	0.0350%	0.0925%	0.1545%	0.1885%	0.1608%	0.0459%
Males	0.0604%	0.0002%	0.0014%	0.0036%	0.0118%	0.0481%	0.1380%	0.2290%	0.2765%	0.2431%	0.0663%
Females	0.0303%	0.0003%	0.0021%	0.0054%	0.0094%	0.0217%	0.0481%	0.0864%	0.1210%	0.1166%	0.0285%
Black ^c	0.0295%	-	0.0015%	0.0055%	0.0092%	0.0349%	0.0919%	0.1258%	0.1258%	0.0841%	0.0375%
Males	0.0397%	-	0.0025%	0.0057%	0.0086%	0.0433%	0.1475%	0.1933%	0.2014%	0.1158%	0.0554%
Females	0.0203%	-	-	0.0053%	0.0098%	0.0276%	0.0459%	0.0729%	0.0760%	0.0691%	0.0239%
Asian/Pacific Islander ^c	0.0383%	-	0.0011%	0.0065%	0.0172%	0.0476%	0.0841%	0.1137%	0.1318%	0.1271%	0.0406%
Males	0.0493%	-	-	0.0066%	0.0162%	0.0655%	0.1138%	0.1695%	0.2006%	0.1701%	0.0561%
Females	0.0281%	-	-	0.0063%	0.0181%	0.0313%	0.0580%	0.0672%	0.0819%	0.0981%	0.0280%
Hispanic ^d	0.0137%	-	0.0013%	0.0020%	0.0059%	0.0182%	0.0442%	0.0799%	0.1166%	0.0905%	0.0250%
Males	0.0166%	-	0.0007%	0.0020%	0.0066%	0.0224%	0.0618%	0.1188%	0.1808%	0.0971%	0.0345%
Females	0.0106%	-	0.0019%	0.0020%	0.0052%	0.0139%	0.0280%	0.0478%	0.0708%	0.0868%	0.0173%

^a US 2003 cancer prevalence counts are based on 2003 cancer prevalence proportions from the SEER registries and 1/1/2003 US population estimates based on the average of 2002 and 2003 population estimates from the US Bureau of the Census. Prevalence was calculated using the First Malignant Primary Only for a person.

^{b c d} Statistics based on (b) SEER 9 Areas (c) SEER 11 Areas and Rural Georgia (d) NHIA for Hispanic for SEER 11 Areas and Rural Georgia excluding Hawaii and Seattle.

^e Maximum limited-duration prevalence: 28 years for 1975-2003 SEER 9 data; 13 years for 1990-2003 SEER 11 data (used to calculate prevalence for Hispanics and Asian Pacific Islanders).

^f Percentages are age-adjusted to the 2000 US standard population by 5-year age groups.

^{g h} (g) Cases diagnosed more than 28 years ago were estimated using the completeness index method (Capocaccia et. al. 1997, Merrill et. al. 2000). (h) Complete prevalence is obtained by summing 0 to <28 and >=28.

- Statistic not shown. Statistic based on fewer than 5 cases estimated alive in SEER for the time interval.

+ Not available.

SEER Incidence, Delay Adjusted Incidence and US Death Rates+ Oral Cavity and Pharynx Cancer, by Race and Sex

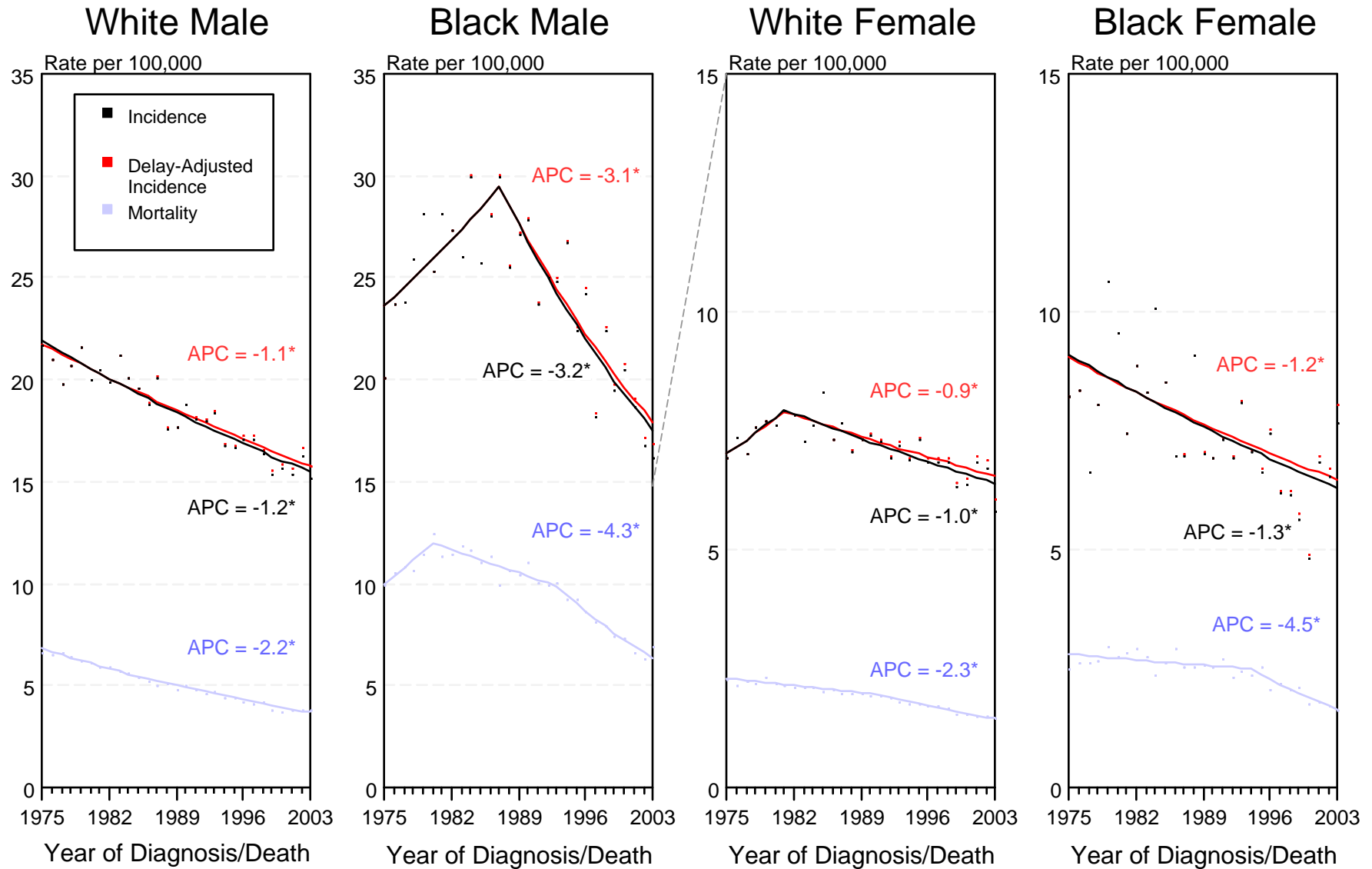


Figure XX-1

+ Source: SEER 9 areas and NCHS public use data file for the total US. Rates are age-adjusted to the 2000 US Std Population (19 age groups - Census P25-1103). Regression lines and APCs are calculated using the Joinpoint Regression Program Version 3.1, April 2006, National Cancer Institute.

The APC is the Annual Percent Change for the regression line segments. The APC shown on the graph is for the most recent trend.

* The APC is significantly different from zero ($p < 0.05$).

SEER Incidence and US Death Rates* Oral Cavity and Pharynx Cancer, Both Sexes

Joinpoint Analyses for Whites and Blacks from 1975-2003 and for Asian/Pacific Islanders, American Indians/Alaska Natives and Hispanics from 1992-2003

and for Asian/Pacific Islanders, American Indians/Alaska Natives and Hispanics from 1992-2003

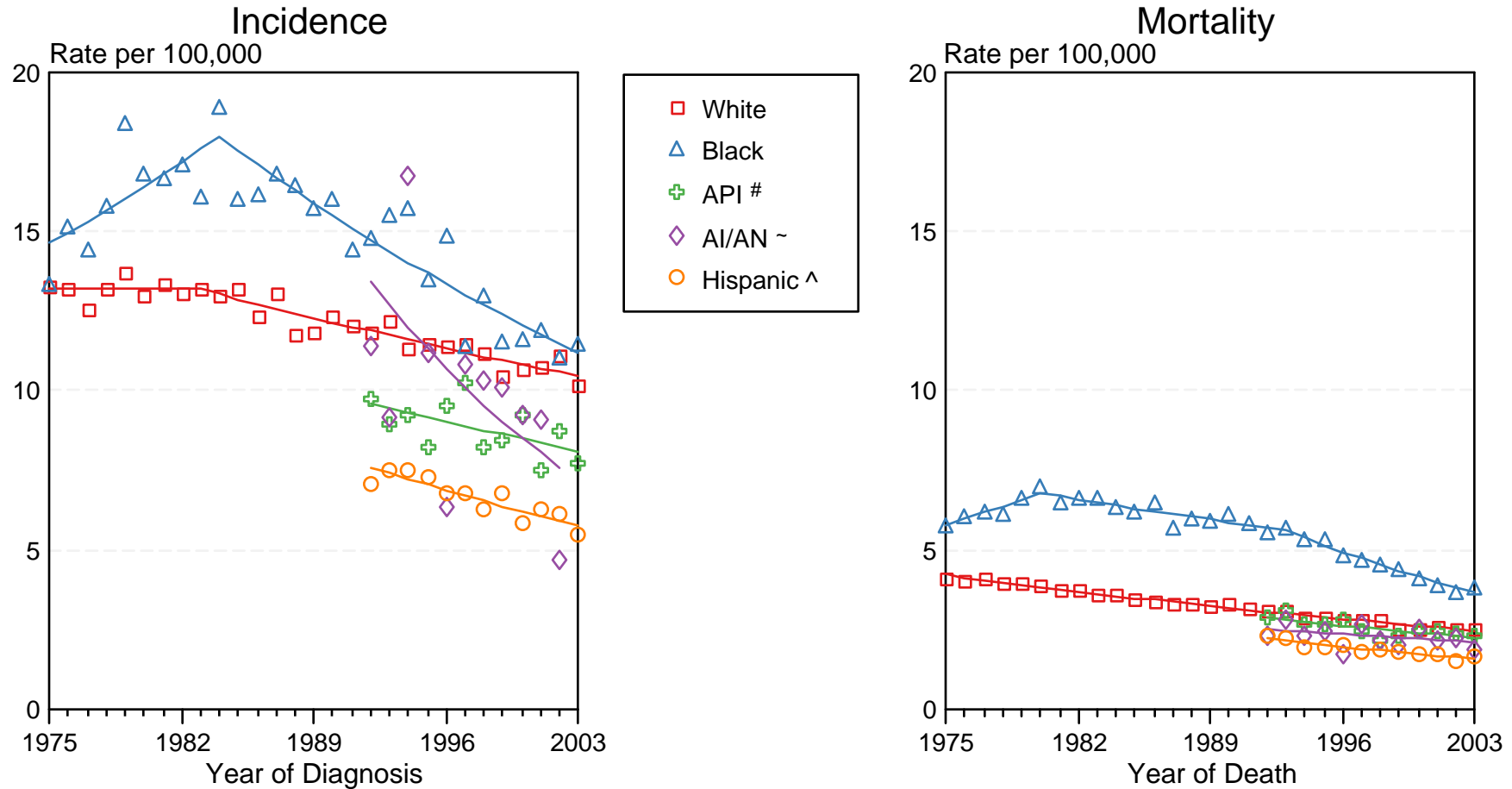


Figure XX-2

Source: Incidence data for Whites and Blacks are from the SEER 9 areas (San Francisco, Connecticut, Detroit, Hawaii, Iowa, New Mexico, Seattle, Utah, Atlanta). Incidence data for Asian/Pacific Islanders and Hispanics are from the SEER 13 Areas (SEER 9 Areas, San Jose-Monterey, Los Angeles, Alaska Native Registry and Rural Georgia). Mortality data are from NCHS public use data file for the total US.

* Rates are age-adjusted to the 2000 US Std Population (19 age groups - Census P25-1103).

Regression lines are calculated using the Joinpoint Regression Program Version 3.1, April 2006, National Cancer Institute.

API = Asian/Pacific Islander.

~ AI/AN = American Indian/Alaska Native. Incidence data for AI/AN include cases from Connecticut, Detroit, Iowa, New Mexico, Seattle, Utah, Atlanta and the Alaska Native Registry for the time period 1992-2002. Mortality data are from the entire US for the time period 1992-2003.

^ Hispanic is not mutually exclusive from Whites, Blacks, Asian/Pacific Islanders, and American Indians/Alaska Natives. Incidence data for Hispanics are based on NHIA and exclude cases from Hawaii, Seattle, and the Alaska Native Registry. Mortality data for Hispanics exclude cases from Connecticut, Maine, Maryland, Minnesota, New Hampshire, New York, North Dakota, Oklahoma, and Vermont.