

Table I-4
AGE-ADJUSTED SEER INCIDENCE AND U.S. DEATH RATES AND 5-YEAR RELATIVE SURVIVAL RATES
 By Primary Cancer Site, Sex and Time Period

All Races

Site	Incidence ^a (2000-2003)			US Mortality ^b (2000-2003)			Survival ^c (1996-2002)		
	Total	Males	Females	Total	Males	Females	Total	Males	Females
All Sites	471.3	558.1	412.0	194.5	241.5	163.5	65.0	65.3	64.8
Oral Cavity & Pharynx:	10.5	15.6	6.1	2.7	4.1	1.5	58.8	57.6	61.3
Lip	0.9	1.5	0.4	0.0	0.0	0.0	90.2	91.3	85.7
Tongue	2.7	4.0	1.6	0.6	0.9	0.4	56.1	55.9	56.4
Salivary gland	1.2	1.6	0.9	0.2	0.4	0.2	74.0	69.3	79.7
Floor of mouth	0.7	1.1	0.4	0.1	0.1	0.0	51.9	49.4	57.1
Gum & other oral cavity	1.6	1.9	1.3	0.4	0.5	0.3	58.7	54.7	63.4
Nasopharynx	0.7	1.0	0.4	0.2	0.3	0.1	59.2	57.9	62.3
Tonsil	1.4	2.4	0.6	0.2	0.3	0.1	59.6	60.4	56.4
Oropharynx	0.3	0.5	0.2	0.2	0.3	0.1	36.1	35.3	38.4
Hypopharynx	0.7	1.3	0.3	0.1	0.2	0.0	30.8	31.4	28.3
Other oral cavity & pharynx	0.3	0.4	0.1	0.6	0.9	0.3	30.8	30.4	31.8
Digestive System:	89.9	110.4	73.9	46.3	59.3	36.4	44.7	43.3	46.2
Esophagus	4.5	7.8	2.0	4.4	7.8	1.8	15.6	15.4	16.0
Stomach	8.1	11.5	5.6	4.3	6.0	3.1	23.9	22.7	25.6
Small intestine	1.8	2.1	1.5	0.4	0.4	0.3	56.2	55.6	56.8
Colon & Rectum:	52.4	61.7	45.3	19.8	24.0	16.8	64.1	65.0	63.2
Colon	37.9	43.1	34.0	-	-	-	63.7	65.2	62.4
Rectum	14.5	18.6	11.2	-	-	-	65.1	64.7	65.6
Anus, anal canal & anorectum	1.5	1.3	1.6	0.2	0.2	0.2	66.7	60.3	71.4
Liver & Intrahep:	6.0	9.3	3.3	4.8	7.1	3.0	10.5	10.1	11.4
Liver	5.4	8.5	2.8	3.8	5.8	2.1	11.1	10.4	12.6
Intrahep bile duct	0.6	0.8	0.5	1.0	1.2	0.9	6.2	6.6	5.6
Gallbladder	1.2	0.8	1.5	0.7	0.5	0.8	15.0	15.1	14.9
Other biliary	1.7	2.0	1.4	0.6	0.7	0.5	20.0	21.7	18.1
Pancreas	11.3	12.8	10.0	10.5	12.1	9.2	5.0	5.1	4.9
Retroperitoneum	0.4	0.4	0.4	0.1	0.1	0.1	52.0	49.9	53.8
Peritoneum, omentum & mesentery	0.6	0.1	1.0	0.2	0.1	0.3	30.4	40.0	29.8
Other digestive system	0.5	0.5	0.4	0.3	0.4	0.3	7.4	5.1	9.3
Respiratory System:	69.4	90.0	54.3	56.7	77.2	41.9	18.6	18.3	18.9
Nose, nasal cavity & middle ear	0.7	0.9	0.5	0.2	0.2	0.1	53.9	51.1	57.8
Larynx	3.8	6.7	1.4	1.3	2.4	0.5	64.1	65.9	57.6
Lung & bronchus	64.8	82.1	52.3	55.1	74.2	41.2	15.0	13.1	17.2
Pleura ^d	0.0	0.1	0.0	0.1	0.2	0.0	19.9	31.8	9.5
Trachea & other respiratory organs	0.2	0.3	0.1	0.1	0.1	0.1	46.2	44.7	48.6
Bones & joints	0.9	1.1	0.8	0.4	0.5	0.3	67.9	64.7	72.0
Soft tissue (incl heart)	3.0	3.6	2.6	1.3	1.4	1.2	66.4	66.8	66.0
Skin (ex basal & squam):	20.0	25.6	16.1	3.5	5.3	2.2	91.2	89.8	92.9
Melanoma of the skin	18.2	23.2	14.7	2.6	3.8	1.8	91.5	90.1	93.1
Other non-epithelial skin	1.8	2.4	1.3	0.8	1.4	0.4	88.1	86.4	90.1
Breast	70.4	1.3	129.1	14.6	0.3	25.8	88.5	86.2	88.5
Breast (<i>in situ</i>)	15.7	0.2	29.4	-	-	-	100.0	100.0	100.0

Note: Incidence and death rates are per 100,000 and are age-adjusted to the 2000 US Std Population (19 age groups - Census P25-1130).

^a SEER 17 areas (San Francisco, Connecticut, Detroit, Hawaii, Iowa, New Mexico, Seattle, Utah, Atlanta, San Jose-Monterey, Los Angeles, Alaska Native Registry, Rural Georgia, California excluding SF/SJM/LA, Kentucky, Louisiana and New Jersey).

^b NCHS public use data file for the total US.

^c SEER 17 areas. California excluding SF/SJM/LA, Kentucky, Louisiana, and New Jersey contribute cases for diagnosis years 2000-2002. The remaining 13 SEER Areas contribute cases for the entire period 1996-2002.

^d Mesotheliomas of the Pleura are included in the separate group Mesothelioma for incidence but are included in the Pleura grouping for mortality.

- Statistic could not be calculated due to less than 16 cases in the time interval.

Table I-4 - continued
AGE-ADJUSTED SEER INCIDENCE AND U.S. DEATH RATES AND 5-YEAR RELATIVE SURVIVAL RATES
 By Primary Cancer Site, Sex and Time Period

All Races

Site	Incidence ^a (2000-2003)			US Mortality ^b (2000-2003)			Survival ^c (1996-2002)		
	Total	Males	Females	Total	Males	Females	Total	Males	Females
Female Genital System:	26.7	-	49.3	9.4	-	16.6	69.8	-	69.8
Cervix uteri	4.6	-	8.8	1.4	-	2.6	71.6	-	71.6
Corpus uteri	12.3	-	22.7	1.1	-	2.0	84.1	-	84.1
Uterus, NOS	0.3	-	0.6	1.3	-	2.2	30.3	-	30.3
Ovary ^d	7.4	-	13.7	5.1	-	8.9	44.7	-	44.7
Vagina	0.4	-	0.7	0.1	-	0.2	48.8	-	48.8
Vulva	1.2	-	2.2	0.3	-	0.4	78.1	-	78.1
Other female genital system	0.4	-	0.7	0.1	-	0.2	62.7	-	62.7
Male Genital System:	77.9	176.7	-	10.9	29.0	-	99.8	99.8	-
Prostate	74.8	170.3	-	10.7	28.5	-	99.9	99.9	-
Testis	2.7	5.3	-	0.1	0.3	-	95.7	95.7	-
Penis	0.4	0.9	-	0.1	0.2	-	67.9	67.9	-
Other male genital system	0.1	0.3	-	0.0	0.0	-	83.7	83.7	-
Urinary System:	34.4	55.8	18.5	8.8	13.9	5.2	74.3	76.4	69.8
Urinary bladder	20.9	37.0	9.3	4.3	7.5	2.3	80.8	82.8	75.4
Kidney & renal pelvis	12.6	17.5	8.7	4.2	6.1	2.8	65.6	65.7	65.4
Ureter	0.6	0.8	0.4	0.1	0.1	0.1	50.2	53.3	45.6
Other urinary system	0.3	0.5	0.1	0.1	0.2	0.1	58.1	65.6	45.7
Eye & Orbit	0.8	1.0	0.6	0.1	0.1	0.1	84.3	86.1	82.2
Brain & Nervous System: ^e	6.4	7.6	5.4	4.5	5.5	3.6	33.5	32.0	35.3
Brain	6.0	7.2	4.9	-	-	-	30.5	29.3	31.9
Cranial nerves & other nervous system	0.4	0.4	0.4	-	-	-	75.7	74.7	76.3
Endocrine System:	8.9	5.0	12.6	0.8	0.8	0.8	93.8	88.6	95.6
Thyroid	8.2	4.2	12.1	0.5	0.5	0.5	96.7	94.5	97.3
Other endocrine & thymus	0.7	0.8	0.6	0.3	0.3	0.3	60.8	61.2	60.1
Lymphoma:	21.8	26.0	18.4	8.2	10.3	6.7	66.1	64.1	68.4
Hodgkin lymphoma	2.7	3.0	2.3	0.5	0.6	0.4	84.9	83.5	86.6
Non-Hodgkin lymphoma	19.1	23.0	16.1	7.7	9.8	6.3	62.5	60.4	64.9
Myeloma	5.5	6.9	4.5	3.8	4.7	3.2	32.9	35.4	30.1
Leukemia:	12.2	15.9	9.4	7.5	10.1	5.8	48.2	48.6	47.8
Lymphocytic:	5.7	7.7	4.2	2.2	3.1	1.5	70.5	70.0	71.1
Acute lymphocytic	1.5	1.7	1.4	0.5	0.6	0.4	63.7	62.6	65.2
Chronic lymphocytic	3.8	5.3	2.6	1.5	2.2	1.1	73.7	72.6	75.2
Other lymphocytic	0.4	0.7	0.2	0.1	0.2	0.1	80.0	82.3	72.4
Myeloid & Monocytic:	5.7	7.2	4.6	3.5	4.6	2.8	27.7	27.0	28.4
Acute myeloid	3.7	4.6	3.0	2.7	3.5	2.2	20.9	19.7	22.2
Chronic myeloid	1.5	2.0	1.2	0.5	0.7	0.4	43.8	43.3	44.6
Acute monocytic	0.3	0.4	0.2	0.0	0.1	0.0	20.4	20.3	19.9
Other myeloid & monocytic	0.2	0.2	0.1	0.2	0.3	0.2	26.6	27.1	24.4
Other:	0.8	1.0	0.7	1.8	2.4	1.4	19.1	18.1	19.6
Other acute	0.4	0.5	0.3	0.8	1.1	0.7	10.6	7.7	12.5
Aleukemic, subleuk & NOS	0.4	0.6	0.3	1.0	1.3	0.8	28.9	29.3	27.5
Kaposi Sarcoma ^f	0.7	1.3	0.1	-	-	-	55.0	54.3	66.3
Mesothelioma ^f	1.1	2.0	0.4	-	-	-	9.2	7.6	14.5
Ill-defined & unspecified	10.9	12.5	9.8	15.1	19.0	12.3	15.3	18.4	12.5

Note: Incidence and death rates are per 100,000 and are age-adjusted to the 2000 US Std Population (19 age groups - Census P25-1130).

^a SEER 17 areas (San Francisco, Connecticut, Detroit, Hawaii, Iowa, New Mexico, Seattle, Utah, Atlanta, San Jose-Monterey, Los Angeles, Alaska Native Registry, Rural Georgia, California excluding SF/SJM/LA, Kentucky, Louisiana and New Jersey).

^b NCHS public use data file for the total US.

^c SEER 17 areas. California excluding SF/SJM/LA, Kentucky, Louisiana, and New Jersey contribute cases for diagnosis years 2000-2002. The remaining 13 SEER Areas contribute cases for the entire period 1996-2002.

^d Ovary excludes borderline cases or histologies 8442, 8451, 8462, 8472, and 8473.

^e Due to coding changes, Brain & Nervous System mortality are no longer shown separately.

^f Rate not shown for mortality. Category did not exist in mortality coding until 1999.

- Statistic could not be calculated due to less than 16 cases in the time interval.

Table I-5
AGE-ADJUSTED SEER INCIDENCE AND U.S. DEATH RATES AND 5-YEAR RELATIVE SURVIVAL RATES
 By Primary Cancer Site, Sex and Time Period

Whites

Site	Incidence ^a (2000-2003)			US Mortality ^b (2000-2003)			Survival ^c (1996-2002)		
	Total	Males	Females	Total	Males	Females	Total	Males	Females
All Sites	478.4	558.3	424.6	192.4	237.3	162.8	66.3	66.8	65.9
Oral Cavity & Pharynx:	10.5	15.7	6.1	2.5	3.8	1.5	60.9	60.6	61.6
Lip	1.0	1.7	0.4	0.0	0.1	0.0	90.4	91.3	85.9
Tongue	2.8	4.2	1.6	0.6	0.9	0.4	58.2	58.4	57.6
Salivary gland	1.2	1.7	0.9	0.3	0.4	0.2	73.9	69.4	79.6
Floor of mouth	0.7	1.1	0.4	0.0	0.1	0.0	53.8	52.3	56.6
Gum & other oral cavity	1.6	1.9	1.3	0.4	0.5	0.3	59.8	56.7	63.2
Nasopharynx	0.4	0.6	0.2	0.2	0.2	0.1	54.8	55.4	52.9
Tonsil	1.5	2.5	0.6	0.2	0.3	0.1	63.2	64.4	58.0
Oropharynx	0.3	0.5	0.2	0.2	0.3	0.1	38.4	37.5	40.8
Hypopharynx	0.7	1.2	0.3	0.1	0.2	0.0	33.1	33.9	29.5
Other oral cavity & pharynx	0.3	0.4	0.1	0.5	0.8	0.2	34.3	34.6	33.7
Digestive System:	87.4	107.1	71.8	44.5	57.1	34.8	46.1	44.8	47.5
Esophagus	4.5	7.8	1.9	4.3	7.7	1.7	16.3	16.2	16.8
Stomach	7.1	10.2	4.7	3.8	5.3	2.7	22.0	20.9	23.9
Small intestine	1.7	2.0	1.4	0.4	0.4	0.3	57.9	57.3	58.6
Colon & Rectum:	52.0	61.4	44.7	19.3	23.4	16.2	65.1	66.0	64.2
Colon	37.6	42.7	33.6	-	-	-	64.9	66.3	63.6
Rectum	14.5	18.6	11.1	-	-	-	65.7	65.5	65.9
Anus, anal canal & anorectum	1.5	1.3	1.7	0.2	0.2	0.2	68.0	61.6	72.6
Liver & Intrahep:	5.1	7.8	2.8	4.4	6.4	2.8	10.2	9.5	11.6
Liver	4.5	7.0	2.4	3.4	5.2	1.9	11.0	9.9	13.3
Intrahep bile duct	0.6	0.7	0.5	1.0	1.2	0.9	6.1	6.2	5.8
Gallbladder	1.1	0.8	1.4	0.7	0.5	0.8	14.5	14.6	14.3
Other biliary	1.6	2.0	1.3	0.6	0.7	0.5	20.0	22.3	17.7
Pancreas	11.1	12.7	9.8	10.3	12.0	9.0	4.9	5.3	4.6
Retroperitoneum	0.4	0.5	0.4	0.1	0.1	0.1	55.2	52.3	57.8
Peritoneum, omentum & mesentery	0.7	0.1	1.1	0.2	0.1	0.4	30.5	37.4	30.0
Other digestive system	0.5	0.5	0.4	0.3	0.4	0.3	7.5	4.9	9.6
Respiratory System:	70.6	89.5	56.7	56.9	76.1	42.9	18.9	18.7	19.1
Nose, nasal cavity & middle ear	0.7	0.9	0.5	0.2	0.2	0.1	56.0	53.5	59.0
Larynx	3.7	6.6	1.4	1.2	2.2	0.5	65.8	67.3	60.3
Lung & bronchus	66.0	81.7	54.7	55.3	73.4	42.2	15.3	13.4	17.4
Pleura ^d	0.0	0.1	0.0	0.1	0.2	0.0	20.9	32.6	10.1
Trachea & other respiratory organs	0.2	0.3	0.1	0.1	0.1	0.1	48.0	49.0	46.2
Bones & joints	0.9	1.1	0.8	0.4	0.6	0.4	67.8	64.4	72.1
Soft tissue (incl heart)	3.1	3.7	2.6	1.3	1.5	1.1	67.2	68.0	66.2
Skin (ex basal & squam):	22.9	29.0	18.6	3.9	5.8	2.5	91.3	89.9	93.1
Melanoma of the skin	21.1	26.5	17.3	3.0	4.3	2.0	91.7	90.3	93.4
Other non-epithelial skin	1.8	2.5	1.4	0.9	1.5	0.5	87.0	85.2	89.0
Breast	72.4	1.2	134.0	14.3	0.3	25.3	89.7	88.4	89.7
Breast (<i>in situ</i>)	16.0	0.2	30.1	-	-	-	100.0	100.0	100.0

Note: Incidence and death rates are per 100,000 and are age-adjusted to the 2000 US Std Population (19 age groups - Census P25-1130).

^a SEER 17 areas (San Francisco, Connecticut, Detroit, Hawaii, Iowa, New Mexico, Seattle, Utah, Atlanta, San Jose-Monterey, Los Angeles, Alaska Native Registry, Rural Georgia, California excluding SF/SJM/LA, Kentucky, Louisiana and New Jersey).

^b NCHS public use data file for the total US.

^c SEER 17 areas. California excluding SF/SJM/LA, Kentucky, Louisiana, and New Jersey contribute cases for diagnosis years 2000-2002. The remaining 13 SEER Areas contribute cases for the entire period 1996-2002.

^d Mesotheliomas of the Pleura are included in the separate group Mesothelioma for incidence but are included in the Pleura grouping for mortality.

- Statistic could not be calculated due to less than 16 cases in the time interval.

Table I-5 - continued
AGE-ADJUSTED SEER INCIDENCE AND U.S. DEATH RATES AND 5-YEAR RELATIVE SURVIVAL RATES
 By Primary Cancer Site, Sex and Time Period

Whites

Site	Incidence ^a (2000-2003)			US Mortality ^b (2000-2003)			Survival ^c (1996-2002)		
	Total	Males	Females	Total	Males	Females	Total	Males	Females
Female Genital System:	27.3	-	51.0	9.2	-	16.4	70.8	-	70.8
Cervix uteri	4.4	-	8.5	1.3	-	2.4	72.8	-	72.8
Corpus uteri	12.8	-	23.8	1.1	-	1.9	85.9	-	85.9
Uterus, NOS	0.3	-	0.5	1.2	-	2.0	32.6	-	32.6
Ovary ^d	7.8	-	14.5	5.2	-	9.3	44.2	-	44.2
Vagina	0.4	-	0.7	0.1	-	0.2	51.3	-	51.3
Vulva	1.3	-	2.3	0.3	-	0.5	78.1	-	78.1
Other female genital system	0.4	-	0.7	0.1	-	0.2	61.7	-	61.7
Male Genital System:	76.0	170.8	-	10.0	26.6	-	99.9	99.9	-
Prostate	72.4	163.4	-	9.8	26.2	-	99.9	99.9	-
Testis	3.2	6.2	-	0.1	0.3	-	95.9	95.9	-
Penis	0.4	0.9	-	0.1	0.2	-	67.6	67.6	-
Other male genital system	0.1	0.3	-	0.0	0.0	-	88.1	88.1	-
Urinary System:	36.6	59.5	19.4	9.0	14.4	5.2	75.3	77.4	70.7
Urinary bladder	22.8	40.2	10.0	4.5	7.8	2.3	81.8	83.6	76.8
Kidney & renal pelvis	13.0	18.0	9.0	4.3	6.2	2.8	65.7	66.1	65.1
Ureter	0.6	0.8	0.4	0.1	0.2	0.1	52.5	55.4	47.7
Other urinary system	0.3	0.5	0.1	0.1	0.2	0.1	60.4	67.0	46.5
Eye & Orbit	0.9	1.1	0.7	0.1	0.1	0.1	84.1	86.1	81.8
Brain & Nervous System: ^e	7.0	8.3	5.9	4.8	5.8	3.9	32.7	31.5	34.3
Brain	6.6	7.9	5.4	-	-	-	29.8	28.8	31.1
Cranial nerves & other nervous system	0.4	0.4	0.5	-	-	-	77.1	77.1	76.7
Endocrine System:	9.2	5.2	13.2	0.8	0.8	0.7	94.2	89.2	95.9
Thyroid	8.6	4.5	12.7	0.5	0.5	0.5	97.0	94.8	97.6
Other endocrine & thymus	0.7	0.8	0.6	0.3	0.4	0.3	59.9	60.7	58.8
Lymphoma:	22.8	27.1	19.3	8.6	10.7	6.9	67.1	65.3	69.2
Hodgkin lymphoma	2.9	3.2	2.6	0.5	0.6	0.4	85.3	84.0	86.7
Non-Hodgkin lymphoma	19.9	23.8	16.8	8.1	10.1	6.5	63.6	61.6	65.8
Myeloma	5.1	6.5	4.1	3.5	4.4	2.9	32.9	35.4	30.0
Leukemia:	12.7	16.5	9.8	7.8	10.4	5.9	49.4	49.7	49.0
Lymphocytic:	6.1	8.2	4.5	2.3	3.2	1.6	71.7	71.5	72.1
Acute lymphocytic	1.7	1.9	1.5	0.5	0.6	0.4	64.5	63.2	65.9
Chronic lymphocytic	4.0	5.6	2.8	1.6	2.3	1.1	74.9	74.3	75.8
Other lymphocytic	0.5	0.7	0.2	0.1	0.2	0.1	81.2	83.2	74.6
Myeloid & Monocytic:	5.8	7.3	4.7	3.6	4.7	2.8	27.2	26.2	28.4
Acute myeloid	3.8	4.7	3.1	2.8	3.7	2.2	20.3	19.1	21.7
Chronic myeloid	1.5	2.0	1.2	0.5	0.7	0.4	43.6	42.2	45.6
Acute monocytic	0.3	0.4	0.3	0.0	0.1	0.0	21.2	20.4	21.1
Other myeloid & monocytic	0.2	0.2	0.1	0.2	0.3	0.2	27.2	25.9	26.6
Other:	0.8	1.0	0.6	1.9	2.5	1.5	19.2	18.2	19.1
Other acute	0.4	0.5	0.3	0.9	1.1	0.7	9.8	5.3	12.8
Aleukemic, subleuk & NOS	0.4	0.5	0.3	1.0	1.3	0.8	30.1	32.3	25.5
Kaposi Sarcoma ^f	0.6	1.1	0.1	-	-	-	58.8	57.6	79.0
Mesothelioma ^f	1.2	2.3	0.5	-	-	-	9.0	7.2	14.7
Ill-defined & unspecified	11.0	12.6	9.8	14.9	18.7	12.2	16.1	19.7	12.8

Note: Incidence and death rates are per 100,000 and are age-adjusted to the 2000 US Std Population (19 age groups - Census P25-1130).

^a SEER 17 areas (San Francisco, Connecticut, Detroit, Hawaii, Iowa, New Mexico, Seattle, Utah, Atlanta, San Jose-Monterey, Los Angeles, Alaska Native Registry, Rural Georgia, California excluding SF/SJM/LA, Kentucky, Louisiana and New Jersey).

^b NCHS public use data file for the total US.

^c SEER 17 areas. California excluding SF/SJM/LA, Kentucky, Louisiana, and New Jersey contribute cases for diagnosis years 2000-2002. The remaining 13 SEER Areas contribute cases for the entire period 1996-2002.

^d Ovary excludes borderline cases or histologies 8442, 8451, 8462, 8472, and 8473.

^e Due to coding changes, Brain & Nervous System mortality are no longer shown separately.

^f Rate not shown for mortality. Category did not exist in mortality coding until 1999.

- Statistic could not be calculated due to less than 16 cases in the time interval.

Table I-6
AGE-ADJUSTED SEER INCIDENCE AND U.S. DEATH RATES AND 5-YEAR RELATIVE SURVIVAL RATES
 By Primary Cancer Site, Sex and Time Period

Blacks

Site	Incidence ^a (2000-2003)			US Mortality ^b (2000-2003)			Survival ^c (1996-2002)		
	Total	Males	Females	Total	Males	Females	Total	Males	Females
All Sites	504.4	666.4	395.4	241.7	326.8	191.1	56.7	59.7	53.4
Oral Cavity & Pharynx:	11.1	18.0	5.8	3.9	6.8	1.7	39.7	35.6	49.1
Lip	0.1	0.2	-	-	-	-	94.3	100.0	82.1
Tongue	2.4	4.0	1.2	0.7	1.3	0.3	38.1	37.1	40.7
Salivary gland	1.0	1.2	0.9	0.2	0.2	0.1	66.9	63.9	69.1
Floor of mouth	0.9	1.6	0.4	0.1	0.1	0.0	39.0	32.0	57.0
Gum & other oral cavity	1.9	2.6	1.3	0.5	0.8	0.3	51.8	45.9	60.2
Nasopharynx	0.7	1.2	0.4	0.3	0.5	0.2	47.2	45.6	50.8
Tonsil	1.7	2.9	0.6	0.3	0.6	0.1	33.6	31.2	40.7
Oropharynx	0.6	1.1	0.3	0.4	0.8	0.2	24.6	24.8	20.9
Hypopharynx	1.2	2.3	0.4	0.2	0.4	0.1	16.5	16.8	15.8
Other oral cavity & pharynx	0.5	0.9	0.2	1.1	2.1	0.4	17.0	16.8	15.6
Digestive System:	112.7	138.6	94.2	64.6	83.9	51.4	37.1	35.1	39.1
Esophagus	6.4	10.8	3.3	6.1	10.5	3.0	11.1	10.8	11.8
Stomach	12.8	17.7	9.3	8.4	12.1	6.0	23.1	20.5	26.4
Small intestine	3.1	3.9	2.6	0.6	0.7	0.5	51.6	48.3	52.3
Colon & Rectum:	62.8	72.9	56.1	27.3	33.4	23.4	54.7	55.6	53.9
Colon	48.5	55.3	44.0	-	-	-	53.8	55.7	52.4
Rectum	14.3	17.5	12.1	-	-	-	57.0	55.6	58.4
Anus, anal canal & anorectum	1.5	1.6	1.4	0.2	0.2	0.2	59.4	52.9	65.8
Liver & Intrahep:	7.2	12.1	3.5	6.3	9.8	3.8	6.7	7.3	5.4
Liver	6.8	11.5	3.2	5.4	8.7	3.0	6.7	7.4	5.0
Intrahep bile duct	0.5	0.7	0.4	0.9	1.1	0.8	6.3	0.0	8.2
Gallbladder	1.3	0.8	1.6	0.8	0.5	1.0	13.6	16.0	12.7
Other biliary	1.4	1.8	1.2	0.4	0.5	0.4	14.4	14.0	14.5
Pancreas	14.9	16.2	13.7	13.8	15.4	12.5	4.6	3.4	5.5
Retroperitoneum	0.4	0.3	0.5	0.1	0.1	0.1	36.1	51.1	23.1
Peritoneum, omentum & mesentery	0.3	-	0.4	0.2	0.1	0.2	25.0	-	25.1
Other digestive system	0.6	0.5	0.6	0.5	0.6	0.4	0.0	0.0	0.0
Respiratory System:	83.9	125.0	55.7	65.4	102.9	40.8	16.0	15.6	16.5
Nose, nasal cavity & middle ear	0.6	0.9	0.4	0.2	0.3	0.1	44.5	34.4	57.7
Larynx	6.1	11.7	2.0	2.6	5.1	0.9	53.4	56.4	44.4
Lung & bronchus	76.9	112.2	53.1	62.5	97.2	39.8	12.2	10.5	14.5
Pleura ^d	-	-	-	0.0	0.1	-	-	-	-
Trachea & other respiratory organs	0.2	0.2	0.1	0.1	0.2	0.1	28.0	18.2	43.3
Bones & joints	0.7	0.9	0.6	0.4	0.5	0.4	66.5	65.5	67.5
Soft tissue (incl heart)	3.2	3.6	3.0	1.4	1.5	1.4	60.1	59.4	60.6
Skin (ex basal & squam):	2.0	2.2	1.8	1.0	1.4	0.7	86.8	84.5	88.2
Melanoma of the skin	1.0	1.1	0.9	0.4	0.5	0.4	72.0	67.4	74.5
Other non-epithelial skin	1.0	1.1	0.9	0.6	1.0	0.3	96.3	95.7	96.6
Breast	67.9	2.0	118.0	20.4	0.6	34.3	77.2	74.5	77.3
Breast (<i>in situ</i>)	14.2	0.2	25.0	-	-	-	100.0	100.0	100.0

Note: Incidence and death rates are per 100,000 and are age-adjusted to the 2000 US Std Population (19 age groups - Census P25-1130).

^a SEER 17 areas (San Francisco, Connecticut, Detroit, Hawaii, Iowa, New Mexico, Seattle, Utah, Atlanta, San Jose-Monterey, Los Angeles, Alaska Native Registry, Rural Georgia, California excluding SF/SJM/LA, Kentucky, Louisiana and New Jersey).

^b NCHS public use data file for the total US.

^c SEER 17 areas. California excluding SF/SJM/LA, Kentucky, Louisiana, and New Jersey contribute cases for diagnosis years 2000-2002. The remaining 13 SEER Areas contribute cases for the entire period 1996-2002.

^d Mesotheliomas of the Pleura are included in the separate group Mesothelioma for incidence but are included in the Pleura grouping for mortality.

- Statistic could not be calculated due to less than 16 cases in the time interval.

Table I-6 - continued
AGE-ADJUSTED SEER INCIDENCE AND U.S. DEATH RATES AND 5-YEAR RELATIVE SURVIVAL RATES
 By Primary Cancer Site, Sex and Time Period

Blacks

Site	Incidence ^a (2000-2003)			US Mortality ^b (2000-2003)			Survival ^c (1996-2002)		
	Total	Males	Females	Total	Males	Females	Total	Males	Females
Female Genital System:	25.6	-	44.6	12.2	-	20.5	57.0	-	57.0
Cervix uteri	6.4	-	11.5	2.9	-	5.0	62.6	-	62.6
Corpus uteri	10.7	-	18.5	1.9	-	3.2	61.6	-	61.6
Uterus, NOS	0.6	-	1.0	2.4	-	4.0	27.7	-	27.7
Ovary ^d	5.8	-	10.1	4.4	-	7.4	39.5	-	39.5
Vagina	0.6	-	1.0	0.2	-	0.4	38.0	-	38.0
Vulva	1.1	-	1.9	0.2	-	0.3	76.3	-	76.3
Other female genital system	0.4	-	0.7	0.2	-	0.3	68.5	-	68.5
Male Genital System:	107.8	260.9	-	22.6	64.4	-	97.4	97.4	-
Prostate	106.6	258.3	-	22.4	64.0	-	97.6	97.6	-
Testis	0.7	1.5	-	0.1	0.2	-	90.0	90.0	-
Penis	0.4	1.0	-	0.1	0.3	-	68.8	68.8	-
Other male genital system	0.1	0.2	-	0.0	0.0	-	70.8	70.8	-
Urinary System:	27.1	40.8	17.6	8.1	11.8	5.8	63.4	64.9	60.8
Urinary bladder	12.4	19.8	7.4	3.8	5.4	2.8	63.7	68.9	53.9
Kidney & renal pelvis	14.1	20.1	9.7	4.1	6.2	2.8	64.4	62.4	66.3
Ureter	0.3	0.4	0.2	0.0	-	0.0	24.0	31.5	0.0
Other urinary system	0.4	0.5	0.4	0.2	0.2	0.2	48.3	57.9	37.0
Eye & Orbit	0.2	0.3	0.2	0.0	0.0	0.0	84.3	79.3	87.7
Brain & Nervous System: ^e	4.1	4.9	3.5	2.6	3.3	2.2	35.4	32.8	38.1
Brain	3.7	4.5	3.1	-	-	-	32.3	30.7	34.0
Cranial nerves & other nervous system	0.4	0.4	0.4	-	-	-	61.8	58.4	63.4
Endocrine System:	5.6	3.2	7.7	0.8	0.7	0.9	89.6	79.2	92.4
Thyroid	5.0	2.4	7.1	0.5	0.4	0.5	94.2	89.1	95.3
Other endocrine & thymus	0.7	0.8	0.6	0.3	0.3	0.3	57.2	56.0	57.7
Lymphoma:	16.6	20.3	13.7	5.7	7.1	4.6	59.5	56.0	64.0
Hodgkin lymphoma	2.4	2.8	2.0	0.4	0.5	0.3	82.5	78.5	87.1
Non-Hodgkin lymphoma	14.3	17.6	11.7	5.3	6.6	4.3	53.9	50.6	58.0
Myeloma	10.9	13.7	9.1	7.2	8.5	6.3	33.2	35.1	31.5
Leukemia:	10.1	12.9	8.0	6.7	8.7	5.3	40.2	40.6	39.6
Lymphocytic:	4.0	5.4	3.0	1.9	2.7	1.4	57.8	54.0	62.4
Acute lymphocytic	0.8	0.9	0.8	0.4	0.4	0.3	54.3	52.7	56.1
Chronic lymphocytic	2.9	4.2	2.1	1.4	2.1	1.0	59.5	52.7	67.7
Other lymphocytic	0.3	0.4	0.2	0.1	0.2	0.1	61.2	70.8	49.4
Myeloid & Monocytic:	5.1	6.3	4.1	3.0	3.7	2.5	28.5	31.6	24.8
Acute myeloid	3.2	4.0	2.7	2.2	2.7	1.8	22.3	24.6	19.5
Chronic myeloid	1.5	1.9	1.1	0.6	0.8	0.5	41.5	43.3	39.1
Acute monocytic	0.2	0.2	0.2	0.0	-	0.0	12.6	12.8	0.0
Other myeloid & monocytic	0.2	0.2	0.2	0.2	0.2	0.1	32.7	46.7	21.1
Other:	1.0	1.1	0.9	1.8	2.3	1.5	18.4	13.9	21.9
Other acute	0.4	0.5	0.4	0.6	0.9	0.5	14.7	14.6	0.0
Aleukemic, subleuk & NOS	0.5	0.6	0.5	1.1	1.4	0.9	22.3	11.5	28.5
Kaposi Sarcoma ^f	1.3	2.7	0.1	-	-	-	42.7	43.1	36.5
Mesothelioma ^f	0.5	1.0	0.2	-	-	-	16.3	12.1	22.1
Ill-defined & unspecified	13.1	15.3	11.4	18.6	24.5	14.8	10.1	10.9	9.2

Note: Incidence and death rates are per 100,000 and are age-adjusted to the 2000 US Std Population (19 age groups - Census P25-1130).

^a SEER 17 areas (San Francisco, Connecticut, Detroit, Hawaii, Iowa, New Mexico, Seattle, Utah, Atlanta, San Jose-Monterey, Los Angeles, Alaska Native Registry, Rural Georgia, California excluding SF/SJM/LA, Kentucky, Louisiana and New Jersey).

^b NCHS public use data file for the total US.

^c SEER 17 areas. California excluding SF/SJM/LA, Kentucky, Louisiana, and New Jersey contribute cases for diagnosis years 2000-2002. The remaining 13 SEER Areas contribute cases for the entire period 1996-2002.

^d Ovary excludes borderline cases or histologies 8442, 8451, 8462, 8472, and 8473.

^e Due to coding changes, Brain & Nervous System mortality are no longer shown separately.

^f Rate not shown for mortality. Category did not exist in mortality coding until 1999.

- Statistic could not be calculated due to less than 16 cases in the time interval.

SEER Incidence* and US Death Rates,# 2000-2003 5-Year Relative Survival Rates,^ 1996-2002 All Cancer Combined, by Race and Sex

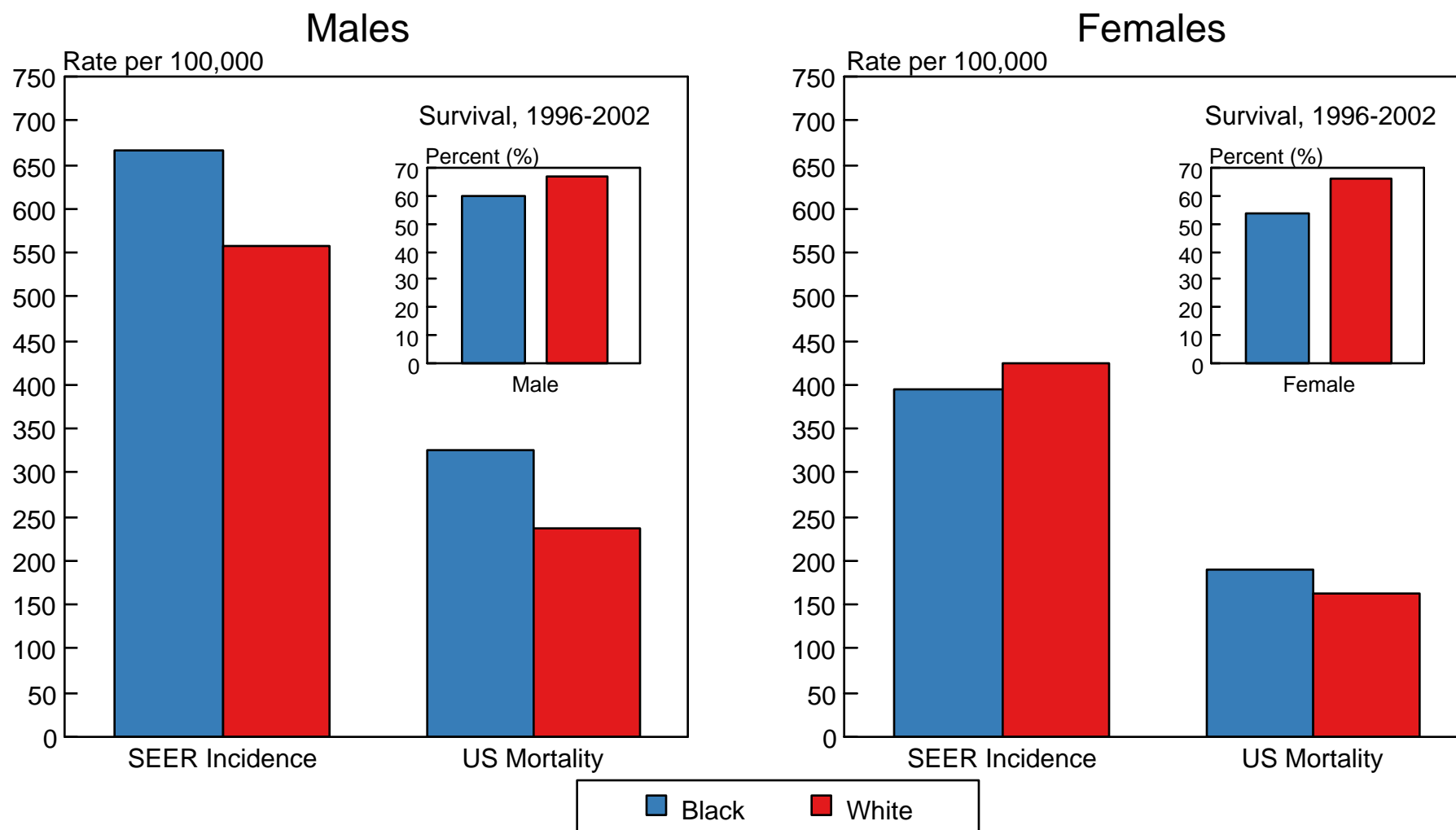


Figure 1-9

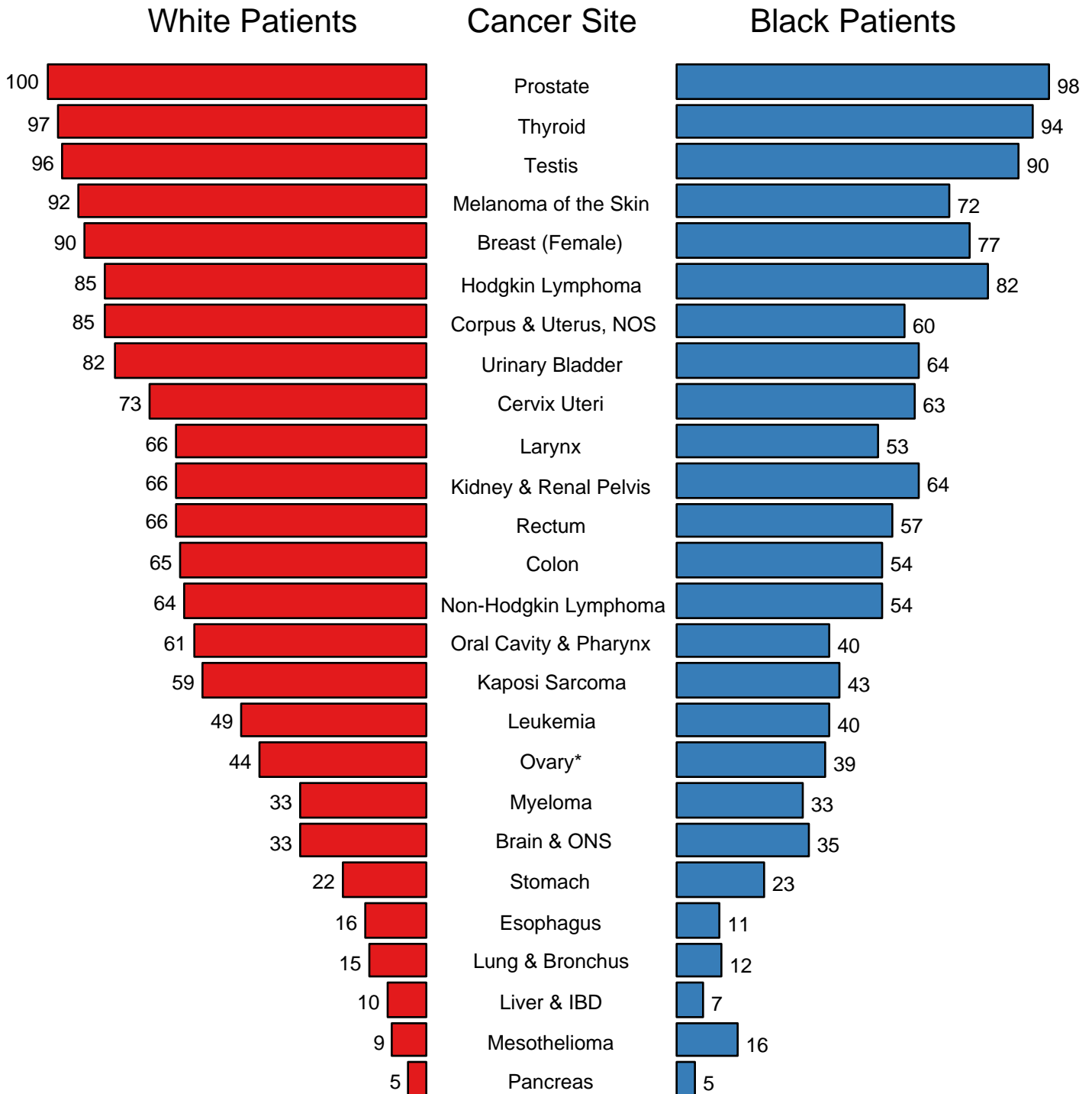
* Incidence rates are from the SEER 17 areas (San Francisco, Connecticut, Detroit, Hawaii, Iowa, New Mexico, Seattle, Utah, Atlanta, San Jose-Monterey, Los Angeles, Alaska Native Registry, Rural Georgia, California excluding SF/SJM/LA, Kentucky, Louisiana, and New Jersey) and are age-adjusted to the 2000 US Std Population (19 age groups - Census P25-1103).

Death rates are from the NCHS public use data file for the total US and are age-adjusted to the 2000 US Std Population (19 age groups - Census P25-1103).

^ Survival rates are from the SEER 17 areas (San Francisco, Connecticut, Detroit, Hawaii, Iowa, New Mexico, Seattle, Utah, Atlanta, San Jose-Monterey, Los Angeles, Alaska Native Registry, Rural Georgia, California excluding SF/SJM/LA, Kentucky, Louisiana, and New Jersey). California excluding SF/SJM/LA, Kentucky, Louisiana, and New Jersey contribute cases for diagnosis years 2000-2002. The remaining 13 SEER Areas contribute cases for the entire period 1996-2002. Relative survival rates are expressed as percents.

Figure I-11

5-Year Relative Survival Rates SEER Program, 1996-2002 Both Sexes, by Race



Source: SEER 17 areas (San Francisco, Connecticut, Detroit, Hawaii, Iowa, New Mexico, Seattle, Utah, Atlanta, San Jose-Monterey, Los Angeles, Alaska Native Registry, Rural Georgia, California excluding SF/SJM/LA, Kentucky, Louisiana, and New Jersey). California excluding SF/SJM/LA, Kentucky, Louisiana, and New Jersey contribute cases for diagnosis years 2000-2002. The remaining 13 SEER Areas contribute cases for the entire period 1996-2002.

* Ovary excludes borderline cases or histologies 8442, 8451, 8462, 8472, and 8473.

Table II-5
ALL SITES (Invasive)

	All Races			Whites			Blacks		
	Total	Males	Females	Total	Males	Females	Total	Males	Females
<u>5-YR RELATIVE SURVIVAL RATES</u>									
YEAR OF DIAGNOSIS:									
1960-1963 ^a	-	-	-	39	-	-	27	-	-
1970-1973 ^a	-	-	-	43	-	-	31	-	-
1975-1977 ^b	49.9	42.1	56.9	50.9	43.2	57.7	39.8	32.7	47.2
1978-1980 ^b	50.3	43.9	56.2	51.4	45.2	57.0	39.6	33.2	46.6
1981-1983 ^b	51.5	46.0	56.6	52.7	47.5	57.5	39.5	34.2	45.5
1984-1986 ^b	53.3	47.5	58.8	54.7	49.1	59.9	40.7	35.4	46.3
1987-1989 ^b	56.2	51.5	60.9	57.7	53.3	62.0	43.7	38.8	48.9
1990-1992 ^b	60.8	59.6	62.2	62.4	61.5	63.5	48.3	47.5	49.2
1993-1995 ^b	62.6	62.0	63.2	64.0	63.5	64.4	53.4	54.7	51.8
1996-2002 ^b	66.1 ^e	66.3 ^e	65.8 ^e	67.5 ^e	67.8 ^e	67.1 ^e	57.2 ^e	60.3 ^e	53.9 ^e
<u>5-YR PERIOD SURVIVAL RATES^{cd}</u>									
YEAR OF DIAGNOSIS:									
1996-2002	65.6	66.0	65.3	66.9	67.3	66.4	57.5	60.8	53.9
<u>5-YR RELATIVE SURVIVAL RATES, 1996-2002^c</u>									
AGE AT DIAGNOSIS:									
<45	76.6	70.5	80.6	78.9	73.5	82.6	62.0	53.5	67.6
45-54	70.0	63.0	75.4	71.9	65.1	77.1	58.1	54.7	61.5
55-64	67.2	67.1	67.4	68.7	68.5	69.0	59.6	63.6	53.5
65-74	63.7	67.6	58.5	64.7	68.5	59.9	57.5	65.7	45.8
75+	53.1	58.4	48.6	54.3	59.6	49.8	44.0	52.4	36.9
Under 65	70.4	66.6	73.9	72.2	68.6	75.5	59.7	58.9	60.5
65 and over	59.2	64.2	53.8	60.3	65.2	55.0	52.5	61.5	41.9

- ^a Rates are based on End Results data from a series of hospital registries and one population-based registry.
- ^b Rates are from the SEER 9 areas (San Francisco, Connecticut, Detroit, Hawaii, Iowa, New Mexico, Seattle, Utah, Atlanta).
- ^c Rates are based on follow-up of patients into 2003.
- ^d Rates are from the SEER 17 areas (San Francisco, Connecticut, Detroit, Hawaii, Iowa, New Mexico, Seattle, Utah, Atlanta, San Jose-Monterey, Los Angeles, Alaska Native Registry, Rural Georgia, California excluding SF/SJM/LA, Kentucky, Louisiana and New Jersey). California excluding SF/SJM/LA, Kentucky, Louisiana, and New Jersey contribute cases for diagnosis years 2000-2002. The remaining 13 SEER Areas contribute cases for the entire period 1996-2002. Rates are based on follow-up of patients into 2003.
- ^e Period survival provides a more up-to-date estimate of survival by piecing together the most recent conditional survival estimates from several cohorts. It is computed here using three calendar year blocks (2000-2002: 0-1 year survival), (1999-2001: 1-2 year survival), (1998-2000: 2-3 year survival), (1997-1999: 3-4 year survival), (1996-1998: 4-5 years survival).
- ^f The difference in rates between 1975-1977 and 1996-2002 is statistically significant ($p < .05$).
- ^g The standard error of the survival rate is between 5 and 10 percentage points.
- The standard error of the survival rate is greater than 10 percentage points.
- Statistic could not be calculated due to fewer than 16 cases during the time period.

Table III-5
BRAIN AND OTHER NERVOUS SYSTEM CANCER (Invasive)
SURVIVAL RATES, BY RACE, SEX, DIAGNOSIS YEAR, STAGE AND AGE

	All Races			Whites			Blacks		
	Total	Males	Females	Total	Males	Females	Total	Males	Females
<u>5-YR RELATIVE SURVIVAL RATES</u>									
YEAR OF DIAGNOSIS:									
1960-1963 ^a	-	-	-	18	16	21	19	17	21
1970-1973 ^a	-	-	-	20	18	22	19	19	19
1975-1977 ^b	23.5	22.0	25.5	23.0	21.5	24.8	26.0	19.7	35.9 ^f
1978-1980 ^b	25.0	23.8	26.5	24.5	23.4	25.9	29.1	29.4	28.4 ^f
1981-1983 ^b	25.4	24.5	26.5	24.6	23.9	25.4	32.5	33.4	30.6 ^f
1984-1986 ^b	28.7	27.6	30.0	27.9	26.7	29.4	32.3	34.3	29.8
1987-1989 ^b	30.6	29.1	32.4	30.0	28.1	32.3	32.2	34.1	29.7
1990-1992 ^b	32.0	32.8	31.1	31.2	31.8	30.4	41.4	43.9	38.2
1993-1995 ^b	33.9	34.7	32.9	33.0	33.5	32.2	42.4	47.1	37.2
1996-2002 ^b	34.2 ^e	32.5 ^e	36.3 ^e	33.5 ^e	32.1 ^e	35.3 ^e	37.0 ^e	34.1 ^e	40.3
<u>5-YR PERIOD SURVIVAL RATES^{cd}</u>									
YEAR OF DIAGNOSIS:									
1996-2002	33.3	31.5	35.7	32.7	31.1	34.7	35.4	33.6	37.3
<u>5-YR RELATIVE SURVIVAL RATES, 1996-2002^c</u>									
AGE AT DIAGNOSIS:									
<45	61.8	58.7	65.8	62.3	59.6	65.8	54.6	49.3	60.7
45-54	27.2	25.5	29.7	27.1	25.0	30.1	26.3	28.1 ^f	24.2 ^f
55-64	12.3	10.3	15.3	11.9	10.5	14.1	9.9	-	20.6 ^f
65-74	6.3	4.7	7.9	6.0	4.2	8.0	7.9	-	6.7
75+	4.4	3.4	4.9	4.3	3.5	4.8	5.3	-	8.1
Under 65	43.3	40.3	47.4	42.9	40.2	46.7	41.1	36.7	46.1
65 and over	5.5	4.3	6.5	5.3	4.0	6.5	7.0	-	7.9

- ^a Rates are based on End Results data from a series of hospital registries and one population-based registry.
- ^b Rates are from the SEER 9 areas (San Francisco, Connecticut, Detroit, Hawaii, Iowa, New Mexico, Seattle, Utah, Atlanta).
- ^c Rates are based on follow-up of patients into 2003.
- ^d Rates are from the SEER 17 areas (San Francisco, Connecticut, Detroit, Hawaii, Iowa, New Mexico, Seattle, Utah, Atlanta, San Jose-Monterey, Los Angeles, Alaska Native Registry, Rural Georgia, California excluding SF/SJM/LA, Kentucky, Louisiana and New Jersey). California excluding SF/SJM/LA, Kentucky, Louisiana, and New Jersey contribute cases for diagnosis years 2000-2002. The remaining 13 SEER Areas contribute cases for the entire period 1996-2002. Rates are based on follow-up of patients into 2003.
- ^e Period survival provides a more up-to-date estimate of survival by piecing together the most recent conditional survival estimates from several cohorts. It is computed here using three calendar year blocks (2000-2002: 0-1 year survival), (1999-2001: 1-2 year survival), (1998-2000: 2-3 year survival), (1997-1999: 3-4 year survival), (1996-1998: 4-5 years survival).
- ^f The difference in rates between 1975-1977 and 1996-2002 is statistically significant ($p < .05$).
- ^g The standard error of the survival rate is between 5 and 10 percentage points.
- The standard error of the survival rate is greater than 10 percentage points.
- Statistic could not be calculated due to fewer than 16 cases during the time period.

Table IV-10
FEMALE BREAST CANCER (Invasive)

SURVIVAL RATES, BY RACE, DIAGNOSIS YEAR, STAGE AND AGE

	All Races, Females			White Females			Black Females		
	All	<50	50+	All	<50	50+	All	<50	50+
<u>5-YR RELATIVE SURVIVAL RATES</u>									
YEAR OF DIAGNOSIS:									
1960-1963 ^a	-	-	-	63	-	-	46	-	-
1970-1973 ^a	-	-	-	68	-	-	51	-	-
1975-1977 ^b	75.1	76.6	74.6	75.8	77.8	75.2	62.5	62.9	62.3
1978-1980 ^b	74.8	75.5	74.6	75.6	76.2	75.4	63.9	67.0	62.1
1981-1983 ^b	76.7	77.4	76.5	77.7	78.6	77.4	64.0	65.2	63.4
1984-1986 ^b	79.3	77.9	79.8	80.4	79.7	80.6	65.1	63.8	65.9
1987-1989 ^b	84.2	81.4	85.2	85.3	82.8	86.2	71.2	69.4	72.2
1990-1992 ^b	85.4	83.3	86.2	86.7	85.1	87.2	71.6	70.0	72.7
1993-1995 ^b	86.6	84.2	87.6	88.0	86.3	88.6	72.9	70.0	74.7
1996-2002 ^b	89.0 ^e	87.1 ^e	89.7 ^e	90.1 ^e	88.8 ^e	90.6 ^e	77.3 ^e	75.9 ^e	78.2 ^e
<u>5-YR PERIOD SURVIVAL RATES^{cd}</u>									
YEAR OF DIAGNOSIS:									
1996-2002	89.1	86.7	90.0	90.1	88.2	90.8	78.5	76.3	79.8
<u>STAGE DISTRIBUTION (%) 1996-2002^c</u>									
All Stages									
Number of cases	211,875	52,253	159,622	177,883	40,737	137,146	18,478	6,174	12,304
Percent	100%	100%	100%	100%	100%	100%	100%	100%	100%
Localized	61	54	64	62	55	64	52	46	54
Regional	31	39	28	30	39	28	36	43	33
Distant	6	5	6	6	5	6	9	9	10
Unstaged	2	2	2	2	1	2	3	2	3
<u>5-YR RELATIVE SURVIVAL RATES, 1996-2002^c</u>									
AGE AT DIAGNOSIS:									
<45	84.6	-	-	86.3	-	-	73.0	-	-
45-54	89.0	-	-	90.2	-	-	78.6	-	-
55-64	90.0	-	-	91.2	-	-	79.1	-	-
65-74	90.5	-	-	91.2	-	-	80.2	-	-
75+	87.5	-	-	88.2	-	-	75.2	-	-
Under 65	88.3	-	-	89.7	-	-	77.0	-	-
65 and over	89.3	-	-	90.0	-	-	78.2	-	-
STAGE:									
All Stages	88.5	86.5	89.3	89.7	88.0	90.2	77.3	75.2	78.4
Localized	98.1	95.3	98.9	98.5	95.8	99.3	93.6	90.4	95.2
Regional	83.1	82.4	83.5	84.6	84.2	84.7	71.8	72.0	71.6
Distant	26.0	32.5	23.7	27.7	36.6	24.9	16.1	17.6	15.2
Unstaged	54.1	66.8	50.3	56.0	72.4	51.6	44.9	47.2 ^f	43.3
<i>IN SITU</i> ^h	100.0	100.0	100.0	100.0	100.0	100.0	100.0	99.1	100.0

^a Rates are based on End Results data from a series of hospital registries and one population-based registry.

^b Rates are from the SEER 9 areas (San Francisco, Connecticut, Detroit, Hawaii, Iowa, New Mexico, Seattle, Utah, Atlanta). Rates are based on follow-up of patients into 2003.

^c Rates are from the SEER 17 areas (San Francisco, Connecticut, Detroit, Hawaii, Iowa, New Mexico, Seattle, Utah, Atlanta, San Jose-Monterey, Los Angeles, Alaska Native Registry, Rural Georgia, California excluding SF/SJM/LA, Kentucky, Louisiana and New Jersey). California excluding SF/SJM/LA, Kentucky, Louisiana, and New Jersey contribute cases for diagnosis years 2000-2002. The remaining 13 SEER Areas contribute cases for the entire period 1996-2002. Rates are based on follow-up of patients into 2003.

^d Period survival provides a more up-to-date estimate of survival by piecing together the most recent conditional survival estimates from several cohorts. It is computed here using three calendar year blocks (2000-2002: 0-1 year survival), (1999-2001: 1-2 year survival), (1998-2000: 2-3 year survival), (1997-1999: 3-4 year survival), (1996-1998: 4-5 years survival).

^e The difference in rates between 1975-1977 and 1996-2002 is statistically significant ($p < .05$).

^f The standard error of the survival rate is between 5 and 10 percentage points.

^g The standard error of the survival rate is greater than 10 percentage points.

^h *In situ* cases are not included in the All Stages group.

- Statistic could not be calculated due to fewer than 16 cases during the time period.

Table V-5
CERVIX UTERI CANCER (Invasive)

SURVIVAL RATES, BY RACE, DIAGNOSIS YEAR, STAGE AND AGE

	All Races, Females			White Females			Black Females		
	All	<50	50+	All	<50	50+	All	<50	50+
<u>5-YR RELATIVE SURVIVAL RATES</u>									
YEAR OF DIAGNOSIS:									
1960-1963 ^a	-	-	-	58	-	-	47	-	-
1970-1973 ^a	-	-	-	64	-	-	61	-	-
1975-1977 ^b	69.8	82.3	58.5	70.6	83.8	58.9	64.8	75.4	54.9
1978-1980 ^b	68.4	78.3	58.9	69.2	79.8	59.4	61.7	70.6	52.7
1981-1983 ^b	68.2	79.4	56.5	68.9	80.7	56.3	61.6	73.7	49.4
1984-1986 ^b	67.9	77.6	56.3	70.0	79.6	57.7	58.4	67.7	48.7
1987-1989 ^b	70.9	79.4	59.4	73.6	82.6	59.9	58.4	63.8	53.1
1990-1992 ^b	70.3	78.6	58.4	71.9	81.1	58.1	58.6	63.0	52.4
1993-1995 ^b	73.1	81.6	60.5	74.7	83.5	60.5	64.3	70.6	55.7
1996-2002 ^b	73.3 ^e	81.9	60.0	74.6 ^e	83.9	59.0	66.3	70.4	60.4
<u>5-YR PERIOD SURVIVAL RATES^{cd}</u>									
YEAR OF DIAGNOSIS:									
1996-2002	71.6	79.9	59.4	72.7	81.4	59.0	63.2	68.8	56.1
<u>STAGE DISTRIBUTION (%) 1996-2002^c</u>									
All Stages									
Number of cases	16,192	9,231	6,961	12,380	7,305	5,075	2,103	1,120	983
Percent	100%	100%	100%	100%	100%	100%	100%	100%	100%
Localized	52	63	38	53	64	38	45	53	35
Regional	34	27	43	33	26	43	38	33	43
Distant	9	7	13	9	6	13	10	8	13
Unstaged	5	4	6	5	4	6	7	6	9
<u>5-YR RELATIVE SURVIVAL RATES, 1996-2002^c</u>									
AGE AT DIAGNOSIS:									
<45	81.5	-	-	83.1	-	-	70.4	-	-
45-54	70.1	-	-	71.2	-	-	58.8	-	-
55-64	62.7	-	-	61.5	-	-	59.9	-	-
65-74	59.9	-	-	59.0	-	-	53.8	-	-
75+	43.0	-	-	40.5	-	-	45.3 ^f	-	-
Under 65	75.1	-	-	76.5	-	-	65.3	-	-
65 and over	53.4	-	-	52.2	-	-	51.3	-	-
STAGE:									
All Stages	71.6	79.6	59.9	72.8	81.2	59.3	62.6	67.5	56.1
Localized	92.0	93.4	88.4	92.6	94.2	88.1	86.4	87.0	85.2
Regional	55.5	61.5	50.1	56.0	63.0	49.2	47.6	49.6	45.4
Distant	14.6	20.7	10.2	15.5	24.2	8.9	6.8	6.9	7.5
Unstaged	59.1	70.5	47.3	61.2	72.1	47.3	55.9 ^f	64.6 ^f	49.0 ^f

^a Rates are based on End Results data from a series of hospital registries and one population-based registry.
^b Rates are from the SEER 9 areas (San Francisco, Connecticut, Detroit, Hawaii, Iowa, New Mexico, Seattle, Utah, Atlanta).
^c Rates are based on follow-up of patients into 2003.
^c Rates are from the SEER 17 areas (San Francisco, Connecticut, Detroit, Hawaii, Iowa, New Mexico, Seattle, Utah, Atlanta, San Jose-Monterey, Los Angeles, Alaska Native Registry, Rural Georgia, California excluding SF/SJM/LA, Kentucky, Louisiana and New Jersey). California excluding SF/SJM/LA, Kentucky, Louisiana, and New Jersey contribute cases for diagnosis years 2000-2002. The remaining 13 SEER Areas contribute cases for the entire period 1996-2002. Rates are based on follow-up of patients into 2003.
^d Period survival provides a more up-to-date estimate of survival by piecing together the most recent conditional survival estimates from several cohorts. It is computed here using three calendar year blocks (2000-2002: 0-1 year survival), (1999-2001: 1-2 year survival), (1998-2000: 2-3 year survival), (1997-1999: 3-4 year survival), (1996-1998: 4-5 years survival).
^e The difference in rates between 1975-1977 and 1996-2002 is statistically significant (p<.05).
^f The standard error of the survival rate is between 5 and 10 percentage points.
^g The standard error of the survival rate is greater than 10 percentage points.
⁻ Statistic could not be calculated due to fewer than 16 cases during the time period.

Table VI-9
COLON AND RECTUM CANCER (Invasive)

SURVIVAL RATES, BY RACE, SEX, DIAGNOSIS YEAR, STAGE AND AGE

	All Races			Whites			Blacks		
	Total	Males	Females	Total	Males	Females	Total	Males	Females
5-YR RELATIVE SURVIVAL RATES									
YEAR OF DIAGNOSIS:									
1960-1963 ^a	-	-	-	-	-	-	-	-	-
1970-1973 ^a	-	-	-	-	-	-	-	-	-
1975-1977 ^b	50.6	49.7	51.5	50.8	50.1	51.5	46.0	44.3	47.1
1978-1980 ^b	52.4	51.5	53.2	52.8	51.9	53.7	46.0	44.1	47.4
1981-1983 ^b	55.4	55.1	55.6	55.8	55.8	55.8	47.6	43.9	50.4
1984-1986 ^b	58.4	58.3	58.6	59.2	59.2	59.3	49.0	48.0	49.8
1987-1989 ^b	60.5	60.8	60.2	61.0	61.6	60.5	53.3	51.0	55.3
1990-1992 ^b	62.4	62.5	62.4	63.2	63.2	63.2	53.8	55.7	52.2
1993-1995 ^b	61.5	61.6	61.4	62.2	62.2	62.1	53.2	52.8	53.5
1996-2002 ^b	65.1 ^e	66.0 ^e	64.3 ^e	66.2 ^e	67.0 ^e	65.4 ^e	55.4 ^e	56.8 ^e	54.3 ^e
5-YR PERIOD SURVIVAL RATES^{cd}									
YEAR OF DIAGNOSIS:									
1996-2002	64.8	65.8	63.8	66.1	67.2	65.0	54.6	55.5	53.9
STAGE DISTRIBUTION (%) 1996-2002^c									
All Stages									
Number of cases	145,771	73,357	72,414	119,572	60,440	59,132	14,323	6,610	7,713
Percent	100%	100%	100%	100%	100%	100%	100%	100%	100%
Localized	39	40	38	40	41	39	35	35	35
Regional	37	36	37	37	36	37	35	34	35
Distant	19	19	19	19	19	18	24	25	23
Unstaged	5	4	5	5	4	5	6	6	7
5-YR RELATIVE SURVIVAL RATES, 1996-2002^c									
AGE AT DIAGNOSIS:									
<45	64.6	64.5	64.7	67.0	65.9	68.3	55.0	57.9	52.2
45-54	66.4	66.1	66.8	67.4	66.7	68.4	59.9	60.8	59.0
55-64	66.2	66.2	66.3	67.2	67.3	67.2	57.3	56.3	58.4
65-74	66.4	66.4	66.3	67.3	67.0	67.6	57.3	58.2	56.6
75+	59.7	62.1	58.1	60.9	63.8	59.0	44.2	43.4	44.6
Under 65	66.0	65.9	66.2	67.3	66.9	67.8	57.8	58.1	57.6
65 and over	63.1	64.6	61.8	64.1	65.7	62.7	51.4	52.5	50.7
STAGE:									
All Stages	64.1	65.0	63.2	65.1	66.0	64.2	54.7	55.6	53.9
Localized	90.4	91.3	89.5	90.9	91.9	89.9	84.5	85.9	83.4
Regional	68.1	68.9	67.3	69.0	69.9	68.2	60.2	62.2	58.6
Distant	9.8	9.8	9.9	10.1	10.0	10.3	7.4	7.7	7.2
Unstaged	34.6	39.7	30.0	34.8	40.2	30.0	35.1	37.5	32.6

^a Rates are based on End Results data from a series of hospital registries and one population-based registry.

^b Rates are from the SEER 9 areas (San Francisco, Connecticut, Detroit, Hawaii, Iowa, New Mexico, Seattle, Utah, Atlanta).

Rates are based on follow-up of patients into 2003.

^c Rates are from the SEER 17 areas (San Francisco, Connecticut, Detroit, Hawaii, Iowa, New Mexico, Seattle, Utah, Atlanta, San Jose-Monterey, Los Angeles, Alaska Native Registry, Rural Georgia, California excluding SF/SJM/LA, Kentucky, Louisiana and New Jersey). California excluding SF/SJM/LA, Kentucky, Louisiana, and New Jersey contribute cases for diagnosis years 2000-2002. The remaining 13 SEER Areas contribute cases for the entire period 1996-2002. Rates are based on follow-up of patients into 2003.

^d Period survival provides a more up-to-date estimate of survival by piecing together the most recent conditional survival estimates from several cohorts. It is computed here using three calendar year blocks (2000-2002: 0-1 year survival), (1999-2001: 1-2 year survival), (1998-2000: 2-3 year survival), (1997-1999: 3-4 year survival), (1996-1998: 4-5 years survival).

^e The difference in rates between 1975-1977 and 1996-2002 is statistically significant (p<.05).

^f The standard error of the survival rate is between 5 and 10 percentage points.

^g The standard error of the survival rate is greater than 10 percentage points.

- Statistic could not be calculated due to fewer than 16 cases during the time period.

Table VI-10
COLON CANCER (Invasive)

SURVIVAL RATES, BY RACE, SEX, DIAGNOSIS YEAR, STAGE AND AGE

	All Races			Whites			Blacks		
	Total	Males	Females	Total	Males	Females	Total	Males	Females
<u>5-YR RELATIVE SURVIVAL RATES</u>									
YEAR OF DIAGNOSIS:									
1960-1963 ^a	-	-	-	43	42	44	34	32	35
1970-1973 ^a	-	-	-	49	47	50	37	36	38
1975-1977 ^b	51.3	50.7	51.9	51.6	51.1	52.0	46.3	45.3	46.7
1978-1980 ^b	53.4	52.4	54.2	53.6	52.6	54.4	49.5	47.7	50.7
1981-1983 ^b	56.4	56.9	56.0	56.7	57.5	56.0	49.7	46.0	52.4
1984-1986 ^b	59.0	59.4	58.7	59.8	60.2	59.4	49.8	49.4	50.1
1987-1989 ^b	61.2	61.8	60.6	61.7	62.5	60.9	53.2	51.6	54.5
1990-1992 ^b	63.2	63.7	62.7	64.0	64.5	63.6	54.4	56.2	53.0
1993-1995 ^b	61.3	61.8	60.9	62.1	62.5	61.7	52.5	52.2	52.6
1996-2002 ^b	64.8 ^e	66.3 ^e	63.5 ^e	66.1 ^e	67.6 ^e	64.8 ^e	54.3 ^e	56.3 ^e	52.7 ^e
<u>5-YR PERIOD SURVIVAL RATES^{cd}</u>									
YEAR OF DIAGNOSIS:									
1996-2002	64.4	66.0	63.0	65.9	67.6	64.4	54.1	55.6	52.9
<u>STAGE DISTRIBUTION (%) 1996-2002^c</u>									
All Stages									
Number of cases	103,458	49,526	53,932	84,847	40,852	43,995	10,824	4,812	6,012
Percent	100%	100%	100%	100%	100%	100%	100%	100%	100%
Localized	37	38	36	38	39	37	33	34	33
Regional	38	37	39	38	37	38	36	35	36
Distant	21	21	20	20	21	20	26	26	25
Unstaged	4	4	5	4	4	5	5	5	6
<u>5-YR RELATIVE SURVIVAL RATES, 1996-2002^c</u>									
AGE AT DIAGNOSIS:									
<45	62.9	64.9	60.5	65.6	65.4	65.8	52.6	60.1	45.9
45-54	64.2	64.6	63.6	65.1	65.5	64.6	58.0	57.9	58.2
55-64	65.3	65.5	65.2	66.6	67.0	66.1	55.8	55.6	55.9
65-74	66.3	66.8	65.9	67.4	67.3	67.4	58.5	61.1	56.5
75+	60.6	63.8	58.7	61.9	65.5	59.9	44.3	44.1	44.3
Under 65	64.6	65.1	64.0	66.0	66.3	65.6	56.0	57.1	55.1
65 and over	63.4	65.5	61.8	64.5	66.6	63.0	51.9	54.3	50.5
STAGE:									
All Stages	63.7	65.2	62.4	64.9	66.3	63.6	53.8	55.7	52.4
Localized	91.5	93.1	90.1	92.4	94.0	90.8	84.2	85.6	83.0
Regional	69.8	71.4	68.5	70.7	72.2	69.3	62.6	65.9	60.2
Distant	10.4	10.6	10.2	10.7	10.8	10.7	7.7	8.1	7.5
Unstaged	28.6	34.3	24.3	29.5	34.6	25.6	26.6	33.2 ^f	21.9

^a Rates are based on End Results data from a series of hospital registries and one population-based registry.

^b Rates are from the SEER 9 areas (San Francisco, Connecticut, Detroit, Hawaii, Iowa, New Mexico, Seattle, Utah, Atlanta).

Rates are based on follow-up of patients into 2003.

^c Rates are from the SEER 17 areas (San Francisco, Connecticut, Detroit, Hawaii, Iowa, New Mexico, Seattle, Utah, Atlanta, San Jose-Monterey, Los Angeles, Alaska Native Registry, Rural Georgia, California excluding SF/SJM/LA, Kentucky, Louisiana and New Jersey). California excluding SF/SJM/LA, Kentucky, Louisiana, and New Jersey contribute cases for diagnosis years 2000-2002. The remaining 13 SEER Areas contribute cases for the entire period 1996-2002. Rates are based on follow-up of patients into 2003.

^d Period survival provides a more up-to-date estimate of survival by piecing together the most recent conditional survival estimates from several cohorts. It is computed here using three calendar year blocks (2000-2002: 0-1 year survival), (1999-2001: 1-2 year survival), (1998-2000: 2-3 year survival), (1997-1999: 3-4 year survival), (1996-1998: 4-5 years survival).

^e The difference in rates between 1975-1977 and 1996-2002 is statistically significant ($p < .05$).

^f The standard error of the survival rate is between 5 and 10 percentage points.

^g The standard error of the survival rate is greater than 10 percentage points.

- Statistic could not be calculated due to fewer than 16 cases during the time period.

Table VI-11
RECTUM CANCER (Invasive)

SURVIVAL RATES, BY RACE, SEX, DIAGNOSIS YEAR, STAGE AND AGE

	All Races			Whites			Blacks		
	Total	Males	Females	Total	Males	Females	Total	Males	Females
<u>5-YR RELATIVE SURVIVAL RATES</u>									
YEAR OF DIAGNOSIS:									
1960-1963 ^a	-	-	-	38	36	41	27	28	27
1970-1973 ^a	-	-	-	45	43	48	30	20	40
1975-1977 ^b	49.0	47.9	50.3	49.2	48.3	50.3	45.0	41.6	47.8
1978-1980 ^b	50.2	49.7	50.7	51.1	50.6	51.7	35.1	35.0	34.9
1981-1983 ^b	52.9	51.4	54.7	53.7	52.3	55.3	40.9	38.2	43.5
1984-1986 ^b	57.1	56.3	58.2	57.9	57.2	58.8	46.4	44.0	48.7
1987-1989 ^b	58.9	58.8	59.2	59.5	59.8	59.2	53.6	49.0	58.0
1990-1992 ^b	60.5	59.8	61.4	61.3	60.6	62.2	52.0	54.2	49.4
1993-1995 ^b	61.9	61.0	62.9	62.4	61.6	63.3	55.4	53.7	57.2
1996-2002 ^b	65.9 ^e	65.6 ^e	66.3 ^e	66.4 ^e	66.0 ^e	66.9 ^e	58.6 ^e	57.9 ^e	59.2 ^e
<u>5-YR PERIOD SURVIVAL RATES^{cd}</u>									
YEAR OF DIAGNOSIS:									
1996-2002	65.7	65.4	66.1	66.5	66.3	66.8	56.4	55.7	56.9
<u>STAGE DISTRIBUTION (%) 1996-2002^c</u>									
All Stages									
Number of cases	42,313	23,831	18,482	34,725	19,588	15,137	3,499	1,798	1,701
Percent	100%	100%	100%	100%	100%	100%	100%	100%	100%
Localized	44	44	45	45	44	45	41	40	43
Regional	34	35	34	34	35	34	31	31	31
Distant	15	16	14	15	15	14	18	20	16
Unstaged	6	6	7	6	5	6	9	9	10
<u>5-YR RELATIVE SURVIVAL RATES, 1996-2002^c</u>									
AGE AT DIAGNOSIS:									
<45	67.4	63.7	71.8	69.2	66.6	72.4	60.0	53.3 ^f	67.7
45-54	69.9	68.0	72.7	70.9	68.3	74.9	63.9	66.0	61.1
55-64	67.9	67.4	68.8	68.5	67.7	69.7	61.0	57.5	65.3
65-74	66.6	65.7	67.8	67.3	66.5	68.4	53.4	49.9	56.5
75+	56.7	57.6	55.9	57.3	59.0	55.9	43.2	40.5 ^f	44.7
Under 65	68.5	67.0	70.7	69.4	67.7	71.9	61.9	59.9	64.3
65 and over	62.2	62.6	61.7	62.8	63.6	61.8	49.5	46.8	51.0
STAGE:									
All Stages	65.1	64.7	65.6	65.7	65.5	65.9	57.0	55.6	58.4
Localized	88.1	88.3	87.9	88.1	88.2	88.0	85.1	86.0	83.9
Regional	63.8	63.7	63.8	64.9	64.9	64.8	52.1	52.1	51.9
Distant	8.0	7.4	8.8	8.3	7.7	9.1	6.4	6.6	5.9
Unstaged	43.7	46.2	40.6	43.1	46.7	38.4	47.9	42.3 ^f	52.9 ^f

^a Rates are based on End Results data from a series of hospital registries and one population-based registry.

^b Rates are from the SEER 9 areas (San Francisco, Connecticut, Detroit, Hawaii, Iowa, New Mexico, Seattle, Utah, Atlanta).

Rates are based on follow-up of patients into 2003.

^c Rates are from the SEER 17 areas (San Francisco, Connecticut, Detroit, Hawaii, Iowa, New Mexico, Seattle, Utah, Atlanta, San Jose-Monterey, Los Angeles, Alaska Native Registry, Rural Georgia, California excluding SF/SJM/LA, Kentucky, Louisiana and New Jersey). California excluding SF/SJM/LA, Kentucky, Louisiana, and New Jersey contribute cases for diagnosis years 2000-2002. The remaining 13 SEER Areas contribute cases for the entire period 1996-2002. Rates are based on follow-up of patients into 2003.

^d Period survival provides a more up-to-date estimate of survival by piecing together the most recent conditional survival estimates from several cohorts. It is computed here using three calendar year blocks (2000-2002: 0-1 year survival), (1999-2001: 1-2 year survival), (1998-2000: 2-3 year survival), (1997-1999: 3-4 year survival), (1996-1998: 4-5 years survival).

^e The difference in rates between 1975-1977 and 1996-2002 is statistically significant ($p < .05$).

^f The standard error of the survival rate is between 5 and 10 percentage points.

^g The standard error of the survival rate is greater than 10 percentage points.

- Statistic could not be calculated due to fewer than 16 cases during the time period.

Table VII-5
CORPUS AND UTERUS, NOS CANCER (Invasive)

SURVIVAL RATES, BY RACE, DIAGNOSIS YEAR, STAGE AND AGE

	All Races, Females			White Females			Black Females		
	All	<50	50+	All	<50	50+	All	<50	50+
5-YR RELATIVE SURVIVAL RATES									
YEAR OF DIAGNOSIS:									
1960-1963 ^a	-	-	-	73	-	-	31	-	-
1970-1973 ^a	-	-	-	81	-	-	44	-	-
1975-1977 ^b	87.4	92.5	86.8	88.5	93.1	88.0	61.0	84.4 ^f	56.1
1978-1980 ^b	83.5	91.7	82.3	84.7	93.1	83.7	55.9	82.0 ^f	50.5
1981-1983 ^b	81.8	91.2	80.5	83.2	92.3	82.1	52.7	82.8 ^f	47.4
1984-1986 ^b	83.4	93.4	82.1	85.0	93.8	83.8	57.7	83.5 ^f	54.0
1987-1989 ^b	83.4	90.2	82.3	85.0	91.0	84.1	58.4	84.6 ^f	54.2
1990-1992 ^b	84.5	90.0	83.6	86.6	92.2	85.8	54.9	72.1 ^f	51.1
1993-1995 ^b	84.0	90.1	82.9	85.7	91.5	84.7	60.4	82.3	55.4
1996-2002 ^b	84.4 ^e	89.3 ^e	83.4 ^e	86.3 ^e	90.7	85.6 ^e	60.9	77.2	56.9
5-YR PERIOD SURVIVAL RATES^{cd}									
YEAR OF DIAGNOSIS:									
1996-2002	83.1	88.9	82.0	85.1	89.9	84.2	60.2	76.5	56.4
STAGE DISTRIBUTION (%) 1996-2002^c									
All Stages									
Number of cases	38,812	6,040	32,772	33,247	4,694	28,553	2,804	471	2,333
Percent	100%	100%	100%	100%	100%	100%	100%	100%	100%
Localized	70	73	69	71	74	71	54	67	52
Regional	17	16	17	16	16	16	22	15	24
Distant	9	7	9	8	7	8	16	11	17
Unstaged	4	4	4	4	4	4	7	7	7
5-YR RELATIVE SURVIVAL RATES, 1996-2002^c									
AGE AT DIAGNOSIS:									
<45	90.1	-	-	91.0	-	-	80.8	-	-
45-54	88.7	-	-	89.9	-	-	70.4	-	-
55-64	86.4	-	-	88.8	-	-	62.3	-	-
65-74	80.6	-	-	83.2	-	-	53.7	-	-
75+	72.3	-	-	74.5	-	-	42.7	-	-
Under 65	87.8	-	-	89.5	-	-	68.2	-	-
65 and over	77.3	-	-	79.7	-	-	50.1	-	-
STAGE:									
All Stages	83.2	89.1	82.0	85.0	90.1	84.2	60.2	77.8	56.5
Localized	95.7	96.5	95.6	96.5	96.8	96.5	82.8	89.4	81.0
Regional	66.9	80.5	64.4	69.4	83.6	67.0	42.6	56.0 ^f	40.9
Distant	23.1	37.1	20.6	24.8	37.4	22.7	12.6	30.0 ^f	10.5
Unstaged	54.8	83.6	48.8	56.3	85.4	50.6	41.5 ^f	78.6 ^f	34.0 ^f

^a Rates are based on End Results data from a series of hospital registries and one population-based registry.

^b Rates are from the SEER 9 areas (San Francisco, Connecticut, Detroit, Hawaii, Iowa, New Mexico, Seattle, Utah, Atlanta).

Rates are based on follow-up of patients into 2003.

^c Rates are from the SEER 17 areas (San Francisco, Connecticut, Detroit, Hawaii, Iowa, New Mexico, Seattle, Utah, Atlanta, San Jose-Monterey, Los Angeles, Alaska Native Registry, Rural Georgia, California excluding SF/SJM/LA, Kentucky, Louisiana and New Jersey). California excluding SF/SJM/LA, Kentucky, Louisiana, and New Jersey contribute cases for diagnosis years 2000-2002. The remaining 13 SEER Areas contribute cases for the entire period 1996-2002. Rates are based on follow-up of patients into 2003.

^d Period survival provides a more up-to-date estimate of survival by piecing together the most recent conditional survival estimates from several cohorts. It is computed here using three calendar year blocks (2000-2002: 0-1 year survival), (1999-2001: 1-2 year survival), (1998-2000: 2-3 year survival), (1997-1999: 3-4 year survival), (1996-1998: 4-5 years survival).

^e The difference in rates between 1975-1977 and 1996-2002 is statistically significant (p<.05).

^f The standard error of the survival rate is between 5 and 10 percentage points.

^g The standard error of the survival rate is greater than 10 percentage points.

- Statistic could not be calculated due to fewer than 16 cases during the time period.

Table VIII-5
ESOPHAGUS CANCER (Invasive)

SURVIVAL RATES, BY RACE, SEX, DIAGNOSIS YEAR, STAGE AND AGE

	All Races			Whites			Blacks		
	Total	Males	Females	Total	Males	Females	Total	Males	Females
<u>5-YR RELATIVE SURVIVAL RATES</u>									
YEAR OF DIAGNOSIS:									
1960-1963 ^a	-	-	-	4	4	6	1	0	2
1970-1973 ^a	-	-	-	4	4	4	4	4	3
1975-1977 ^b	5.1	4.2	7.4	5.7	5.1	6.9	3.1	1.6	7.1
1978-1980 ^b	5.1	4.9	5.6	5.5	5.5	5.2	4.3	3.3	7.0
1981-1983 ^b	6.8	6.2	8.3	7.5	6.8	9.1	4.3	3.6	6.4
1984-1986 ^b	9.6	8.5	12.3	10.5	9.2	13.3	8.2	7.6	9.9
1987-1989 ^b	9.7	9.6	10.0	11.0	11.4	9.7	6.4	5.0	10.3
1990-1992 ^b	12.6	12.2	13.8	13.5	12.8	15.4	9.4	9.8	8.4
1993-1995 ^b	12.9	13.1	12.4	14.6	14.8	13.9	7.6	8.1	6.3
1996-2002 ^b	16.2 ^e	15.9 ^e	16.9 ^e	17.1 ^e	16.9 ^e	17.8 ^e	11.9 ^e	10.8 ^e	14.1
<u>5-YR PERIOD SURVIVAL RATES^{cd}</u>									
YEAR OF DIAGNOSIS:									
1996-2002	16.3	16.0	17.5	17.0	16.5	18.9	12.5	13.0	11.9
<u>STAGE DISTRIBUTION (%) 1996-2002^c</u>									
All Stages									
Number of cases	12,553	9,484	3,069	10,181	7,781	2,400	1,620	1,130	490
Percent	100%	100%	100%	100%	100%	100%	100%	100%	100%
Localized	24	24	25	25	24	27	20	20	20
Regional	29	30	27	29	30	26	28	29	28
Distant	30	31	25	29	31	24	33	34	31
Unstaged	17	15	23	16	14	23	19	17	21
<u>5-YR RELATIVE SURVIVAL RATES, 1996-2002^c</u>									
AGE AT DIAGNOSIS:									
<45	22.4	21.7	25.8 ^f	21.6	20.7	29.2 ^f	21.8	22.7 ^f	19.5 ^f
45-54	18.3	18.0	19.7	20.1	20.1	18.7	11.8	10.1	18.4 ^f
55-64	16.1	15.1	20.5	16.8	15.8	22.2	11.9	10.5	14.9
65-74	15.5	15.3	15.9	16.5	16.1	18.0	6.4	7.3	6.0
75+	11.0	10.7	11.1	11.5	11.2	11.6	7.9	10.6 ^f	4.7
Under 65	17.4	16.7	20.9	18.4	17.8	21.9	13.1	11.8	16.5
65 and over	13.8	13.9	13.6	14.6	14.5	14.8	6.9	8.1	5.8
STAGE:									
All Stages	15.6	15.4	16.0	16.3	16.2	16.8	11.1	10.8	11.8
Localized	33.6	34.3	30.8	35.8	37.1	31.0	19.5	15.5	26.4 ^f
Regional	16.8	16.0	19.3	17.4	16.7	20.1	14.3	14.4	14.0
Distant	2.6	2.7	2.2	2.8	2.7	2.9	1.2	1.3	-
Unstaged	10.8	10.8	10.7	9.4	8.7	10.6	14.5	16.8	8.9

^a Rates are based on End Results data from a series of hospital registries and one population-based registry.
^b Rates are from the SEER 9 areas (San Francisco, Connecticut, Detroit, Hawaii, Iowa, New Mexico, Seattle, Utah, Atlanta).
^c Rates are based on follow-up of patients into 2003.
^d Rates are from the SEER 17 areas (San Francisco, Connecticut, Detroit, Hawaii, Iowa, New Mexico, Seattle, Utah, Atlanta, San Jose-Monterey, Los Angeles, Alaska Native Registry, Rural Georgia, California excluding SF/SJM/LA, Kentucky, Louisiana and New Jersey). California excluding SF/SJM/LA, Kentucky, Louisiana, and New Jersey contribute cases for diagnosis years 2000-2002. The remaining 13 SEER Areas contribute cases for the entire period 1996-2002. Rates are based on follow-up of patients into 2003.
^e Period survival provides a more up-to-date estimate of survival by piecing together the most recent conditional survival estimates from several cohorts. It is computed here using three calendar year blocks (2000-2002: 0-1 year survival), (1999-2001: 1-2 year survival), (1998-2000: 2-3 year survival), (1997-1999: 3-4 year survival), (1996-1998: 4-5 years survival).
^f The difference in rates between 1975-1977 and 1996-2002 is statistically significant (p<.05).
^g The standard error of the survival rate is between 5 and 10 percentage points.
^h The standard error of the survival rate is greater than 10 percentage points.
ⁱ - Statistic could not be calculated due to fewer than 16 cases during the time period.

Table IX-5
HODGKIN LYMPHOMA

	All Races			Whites			Blacks		
	Total	Males	Females	Total	Males	Females	Total	Males	Females
<u>5-YR RELATIVE SURVIVAL RATES</u>									
YEAR OF DIAGNOSIS:									
1960-1963 ^a	-	-	-	40	34	48	-	-	-
1970-1973 ^a	-	-	-	67	66	69	-	-	-
1975-1977 ^b	73.4	71.7	75.5	73.8	72.1	75.8	71.3	69.3 ^f	75.3 ^f
1978-1980 ^b	73.4	72.1	75.2	73.5	71.7	75.9	71.4	75.4 ^f	64.0 ^f
1981-1983 ^b	75.6	74.5	77.1	76.0	75.3	76.8	73.4	71.1 ^f	77.5 ^f
1984-1986 ^b	79.1	77.5	81.1	79.7	77.9	81.7	74.8	75.2 ^f	73.0 ^f
1987-1989 ^b	80.3	77.7	83.5	80.9	78.1	84.4	73.2	72.2 ^f	74.3 ^f
1990-1992 ^b	82.9	80.6	85.6	84.1	82.5	85.9	74.1	65.1	84.1
1993-1995 ^b	83.1	80.6	86.0	83.6	81.4	86.3	78.7	74.8	82.8
1996-2002 ^b	86.0 ^e	84.6 ^e	87.7 ^e	86.9 ^e	85.5 ^e	88.6 ^e	81.0 ^e	78.4	83.7
<u>5-YR PERIOD SURVIVAL RATES^{cd}</u>									
YEAR OF DIAGNOSIS:									
1996-2002	84.9	82.9	87.3	85.2	83.6	87.1	82.4	76.6	89.7
<u>5-YR RELATIVE SURVIVAL RATES, 1996-2002^c</u>									
AGE AT DIAGNOSIS:									
<45	91.0	89.5	92.6	91.7	90.1	93.5	85.2	83.6	86.8
45-54	82.5	80.3	85.9	83.4	81.5	86.3	75.3	67.6 ^f	86.1 ^f
55-64	73.4	70.1	77.8	73.3	71.0	76.2	73.7 ^f	59.6 ^g	89.0 ^f
65-74	58.7	58.2	58.9	57.7	57.9	57.1	70.2 ^g	61.4 ^g	75.8 ^g
75+	44.4	45.5 ^f	41.1 ^f	46.1	47.2 ^f	42.9 ^f	47.2 ^g	-	-
Under 65	88.4	86.4	90.9	89.1	87.0	91.6	83.2	79.4	87.6
65 and over	53.0	54.0	51.7	53.1	54.1	51.2	64.0 ^g	58.8 ^g	65.4 ^g

- ^a Rates are based on End Results data from a series of hospital registries and one population-based registry.
- ^b Rates are from the SEER 9 areas (San Francisco, Connecticut, Detroit, Hawaii, Iowa, New Mexico, Seattle, Utah, Atlanta).
- ^c Rates are based on follow-up of patients into 2003.
- ^d Rates are from the SEER 17 areas (San Francisco, Connecticut, Detroit, Hawaii, Iowa, New Mexico, Seattle, Utah, Atlanta, San Jose-Monterey, Los Angeles, Alaska Native Registry, Rural Georgia, California excluding SF/SJM/LA, Kentucky, Louisiana and New Jersey). California excluding SF/SJM/LA, Kentucky, Louisiana, and New Jersey contribute cases for diagnosis years 2000-2002. The remaining 13 SEER Areas contribute cases for the entire period 1996-2002. Rates are based on follow-up of patients into 2003.
- ^e Period survival provides a more up-to-date estimate of survival by piecing together the most recent conditional survival estimates from several cohorts. It is computed here using three calendar year blocks (2000-2002: 0-1 year survival), (1999-2001: 1-2 year survival), (1998-2000: 2-3 year survival), (1997-1999: 3-4 year survival), (1996-1998: 4-5 years survival).
- ^f The difference in rates between 1975-1977 and 1996-2002 is statistically significant ($p < .05$).
- ^g The standard error of the survival rate is between 5 and 10 percentage points.
- The standard error of the survival rate is greater than 10 percentage points.
- Statistic could not be calculated due to fewer than 16 cases during the time period.

Table X-6
KAPOSI SARCOMA (Invasive)

SURVIVAL RATES, BY RACE, SEX, DIAGNOSIS YEAR, STAGE AND AGE

	All Races			Whites			Blacks		
	Total	Males	Females	Total	Males	Females	Total	Males	Females
<u>5-YR RELATIVE SURVIVAL RATES</u>									
YEAR OF DIAGNOSIS:									
1960-1963 ^a	-	-	-	-	-	-	-	-	-
1970-1973 ^a	-	-	-	-	-	-	-	-	-
1975-1977 ^b	82.7 ^f	81.3 ^f	82.8 ^g	81.5 ^f	79.2 ^f	80.9 ^g	-	-	-
1978-1980 ^b	76.4 ^f	76.9 ^f	72.6 ^g	75.9 ^f	75.7 ^f	72.3 ^g	-	-	-
1981-1983 ^b	33.7	31.1	74.2 ^g	32.3	29.8	72.5 ^g	44.4 ^g	41.5 ^g	-
1984-1986 ^b	12.1	10.9	77.4 ^g	12.0	10.7	75.4 ^g	16.3	15.2	-
1987-1989 ^b	9.6	9.0	63.9 ^g	9.3	8.8	68.7 ^g	11.9	10.8	-
1990-1992 ^b	8.8	8.3	48.4 ^f	8.6	8.0	50.3 ^f	11.8	10.9	-
1993-1995 ^b	20.8	20.2	49.7 ^f	21.6	21.0	58.6 ^g	15.9	15.2	32.5 ^g
1996-2002 ^b	52.9 ^e	52.3 ^e	60.6 ^f	58.9 ^e	57.7 ^e	79.8 ^g	39.2	39.6	35.4 ^g
<u>5-YR PERIOD SURVIVAL RATES^{cd}</u>									
YEAR OF DIAGNOSIS:									
1996-2002	56.6	55.6	69.9	61.3	59.9	79.7	42.8	42.9	-
<u>5-YR RELATIVE SURVIVAL RATES, 1996-2002^c</u>									
AGE AT DIAGNOSIS:									
<45	50.5	50.6	46.1 ^f	54.0	53.7	73.5 ^g	40.9	41.8	22.6 ^g
45-54	51.4	52.1	30.4 ^g	53.0	53.4	-	43.8 ^f	45.1 ^f	-
55-64	73.1	73.3	-	73.3	73.5	-	63.6 ^g	64.0 ^g	-
65-74	77.3 ^f	73.4 ^f	74.9 ^g	79.2 ^f	76.3 ^f	87.1 ^f	-	-	-
75+	90.2 ^f	93.1 ^f	80.9 ^g	90.1 ^f	93.2 ^g	82.2 ^g	93.6 ^g	-	-
Under 65	51.9	52.1	45.5 ^f	55.0	54.8	64.4 ^f	42.2	43.1	24.4 ^f
65 and over	85.7 ^f	84.6 ^f	82.8 ^f	86.3 ^f	86.0 ^f	83.5 ^f	72.0 ^g	-	-

- ^a Rates are based on End Results data from a series of hospital registries and one population-based registry.
- ^b Rates are from the SEER 9 areas (San Francisco, Connecticut, Detroit, Hawaii, Iowa, New Mexico, Seattle, Utah, Atlanta).
- ^c Rates are based on follow-up of patients into 2003.
- ^d Rates are from the SEER 17 areas (San Francisco, Connecticut, Detroit, Hawaii, Iowa, New Mexico, Seattle, Utah, Atlanta, San Jose-Monterey, Los Angeles, Alaska Native Registry, Rural Georgia, California excluding SF/SJM/LA, Kentucky, Louisiana and New Jersey). California excluding SF/SJM/LA, Kentucky, Louisiana, and New Jersey contribute cases for diagnosis years 2000-2002. The remaining 13 SEER Areas contribute cases for the entire period 1996-2002. Rates are based on follow-up of patients into 2003.
- ^e Period survival provides a more up-to-date estimate of survival by piecing together the most recent conditional survival estimates from several cohorts. It is computed here using three calendar year blocks (2000-2002: 0-1 year survival), (1999-2001: 1-2 year survival), (1998-2000: 2-3 year survival), (1997-1999: 3-4 year survival), (1996-1998: 4-5 years survival).
- ^f The difference in rates between 1975-1977 and 1996-2002 is statistically significant (p<.05).
- ^g The standard error of the survival rate is between 5 and 10 percentage points.
- The standard error of the survival rate is greater than 10 percentage points.
- Statistic could not be calculated due to fewer than 16 cases during the time period.

Table XI-5
KIDNEY AND RENAL PELVIS CANCER (Invasive)

SURVIVAL RATES, BY RACE, SEX, DIAGNOSIS YEAR, STAGE AND AGE

	All Races			Whites			Blacks		
	Total	Males	Females	Total	Males	Females	Total	Males	Females
<u>5-YR RELATIVE SURVIVAL RATES</u>									
YEAR OF DIAGNOSIS:									
1960-1963 ^a	-	-	-	37	36	39	38	38	37
1970-1973 ^a	-	-	-	46	44	50	44	40	49
1975-1977 ^b	50.8	50.8	50.7	50.6	50.8	50.4	50.1	48.9	52.0 ^f
1978-1980 ^b	53.9	53.8	53.9	53.7	54.1	52.9	57.1	52.0	63.4 ^f
1981-1983 ^b	51.3	52.3	49.6	51.3	52.6	49.2	51.8	51.6	52.0
1984-1986 ^b	55.7	56.2	55.0	55.9	56.6	54.9	53.9	50.5	59.1
1987-1989 ^b	57.9	58.2	57.4	58.5	59.1	57.5	55.8	53.2	58.6
1990-1992 ^b	61.5	61.8	61.1	62.2	62.7	61.5	57.9	56.5	59.1
1993-1995 ^b	63.0	63.2	62.7	63.6	64.4	62.4	59.2	56.1	63.5
1996-2002 ^b	65.7 ^e	65.4 ^e	66.1 ^e	65.8 ^e	65.8 ^e	65.7 ^e	66.0 ^e	64.1 ^e	67.6 ^e
<u>5-YR PERIOD SURVIVAL RATES^{cd}</u>									
YEAR OF DIAGNOSIS:									
1996-2002	66.6	66.5	66.7	66.8	66.9	66.6	64.9	63.4	66.2
<u>STAGE DISTRIBUTION (%) 1996-2002^c</u>									
All Stages									
Number of cases	32,374	19,935	12,439	27,208	16,851	10,357	3,288	1,903	1,385
Percent	100%	100%	100%	100%	100%	100%	100%	100%	100%
Localized	54	53	56	54	53	56	58	58	59
Regional	20	21	19	20	21	19	16	17	16
Distant	21	21	20	21	21	20	19	20	18
Unstaged	5	4	6	5	4	6	6	5	7
<u>5-YR RELATIVE SURVIVAL RATES, 1996-2002^c</u>									
AGE AT DIAGNOSIS:									
<45	78.9	76.3	82.4	80.3	78.2	83.3	72.2	65.6	78.9
45-54	70.6	68.0	76.1	70.8	68.2	76.8	67.8	65.0	72.3
55-64	66.3	66.0	66.8	66.7	66.5	67.0	63.2	60.2	66.7
65-74	63.2	63.7	62.6	63.1	63.7	62.3	63.3	64.9	60.8
75+	51.8	55.5	48.1	52.5	56.9	48.2	44.3	44.9 ^f	43.3 ^f
Under 65	70.6	68.8	74.0	71.1	69.4	74.3	67.6	63.6	72.9
65 and over	58.7	60.8	56.0	59.0	61.2	55.9	56.5	59.3	53.5
STAGE:									
All Stages	65.6	65.7	65.4	65.7	66.1	65.1	64.4	62.4	66.3
Localized	90.4	90.5	90.1	90.8	91.1	90.4	86.4	85.3	87.2
Regional	61.7	63.7	58.2	62.2	64.5	58.0	55.4	54.5	55.2
Distant	9.5	9.9	9.0	9.5	10.1	8.3	10.3	7.8	14.1
Unstaged	33.1	36.1	29.0	31.5	35.7	26.0	37.9 ^f	34.6 ^f	38.9 ^f

^a Rates are based on End Results data from a series of hospital registries and one population-based registry.

^b Rates are from the SEER 9 areas (San Francisco, Connecticut, Detroit, Hawaii, Iowa, New Mexico, Seattle, Utah, Atlanta).

Rates are based on follow-up of patients into 2003.

^c Rates are from the SEER 17 areas (San Francisco, Connecticut, Detroit, Hawaii, Iowa, New Mexico, Seattle, Utah, Atlanta, San Jose-Monterey, Los Angeles, Alaska Native Registry, Rural Georgia, California excluding SF/SJM/LA, Kentucky, Louisiana and New Jersey). California excluding SF/SJM/LA, Kentucky, Louisiana, and New Jersey contribute cases for diagnosis years 2000-2002. The remaining 13 SEER Areas contribute cases for the entire period 1996-2002. Rates are based on follow-up of patients into 2003.

^d Period survival provides a more up-to-date estimate of survival by piecing together the most recent conditional survival estimates from several cohorts. It is computed here using three calendar year blocks (2000-2002: 0-1 year survival), (1999-2001: 1-2 year survival), (1998-2000: 2-3 year survival), (1997-1999: 3-4 year survival), (1996-1998: 4-5 years survival).

^e The difference in rates between 1975-1977 and 1996-2002 is statistically significant ($p < .05$).

^f The standard error of the survival rate is between 5 and 10 percentage points.

^g The standard error of the survival rate is greater than 10 percentage points.

- Statistic could not be calculated due to fewer than 16 cases during the time period.

Table XII-5
LARYNX CANCER (Invasive)

SURVIVAL RATES, BY RACE, SEX, DIAGNOSIS YEAR, STAGE AND AGE

	All Races			Whites			Blacks		
	Total	Males	Females	Total	Males	Females	Total	Males	Females
<u>5-YR RELATIVE SURVIVAL RATES</u>									
YEAR OF DIAGNOSIS:									
1960-1963 ^a	-	-	-	53	54	46	-	-	-
1970-1973 ^a	-	-	-	62	63	56	-	-	-
1975-1977 ^b	66.4	67.1	62.3	67.0	67.9	61.9	59.2	58.3	63.5 ^f
1978-1980 ^b	65.9	66.2	64.8	66.9	67.2	65.6	57.1	57.3	56.0 ^f
1981-1983 ^b	68.7	68.9	67.9	70.2	70.4	69.4	56.5	57.3	53.1 ^f
1984-1986 ^b	65.7	66.6	61.6	67.6	68.4	63.7	52.7	53.6	49.4 ^f
1987-1989 ^b	66.3	67.3	62.3	67.7	69.2	61.8	56.8	54.7	62.9 ^f
1990-1992 ^b	66.6	67.5	63.0	68.5	69.4	65.1	53.3	53.9	51.1 ^f
1993-1995 ^b	64.7	66.6	57.2	66.4	68.4	58.4	53.9	55.3	48.1 ^f
1996-2002 ^b	65.1	67.0	58.4	67.4	69.1	61.3	51.8	54.5	44.3
<u>5-YR PERIOD SURVIVAL RATES^{cd}</u>									
YEAR OF DIAGNOSIS:									
1996-2002	64.2	65.5	59.0	66.2	67.0	63.2	52.9	56.6	41.6
<u>STAGE DISTRIBUTION (%) 1996-2002^c</u>									
All Stages									
Number of cases	11,053	8,810	2,243	8,947	7,121	1,826	1,640	1,291	349
Percent	100%	100%	100%	100%	100%	100%	100%	100%	100%
Localized	45	46	43	47	48	44	35	35	36
Regional	47	47	50	46	45	48	55	55	56
Distant	4	4	4	3	3	4	6	6	5
Unstaged	3	3	4	3	3	4	3	3	3
<u>5-YR RELATIVE SURVIVAL RATES, 1996-2002^c</u>									
AGE AT DIAGNOSIS:									
<45	72.3	70.6	76.3	74.9	72.9	79.0	61.3 ^f	60.1 ^f	62.2 ^g
45-54	65.0	65.3	63.3	68.6	68.6	68.4	51.3	51.7	49.2 ^f
55-64	64.5	65.6	60.3	66.2	67.2	62.3	56.8	58.2	52.4 ^f
65-74	63.8	66.9	52.8	64.8	67.1	56.3	49.7	59.3	18.1 ^f
75+	58.8	63.1	45.4	60.0	64.4	47.2	46.3 ^f	48.1 ^f	35.3 ^g
Under 65	65.5	66.0	63.6	67.9	68.2	66.9	55.4	56.2	52.9
65 and over	62.4	65.9	50.3	63.4	66.5	53.1	48.8	56.4	25.0 ^f
STAGE:									
All Stages	64.1	65.9	57.6	65.8	67.3	60.3	53.4	56.4	44.4
Localized	83.5	85.3	76.4	84.8	86.5	78.1	74.5	77.6	64.3 ^f
Regional	50.4	51.6	46.3	50.9	51.6	48.3	45.7	48.7	37.1
Distant	13.7	14.6	9.7 ^f	14.4	15.6	-	11.9	11.4	15.5 ^g
Unstaged	48.9	54.6	32.1 ^f	52.3	57.2	37.3 ^f	27.5 ^g	40.1 ^g	-

^a Rates are based on End Results data from a series of hospital registries and one population-based registry.

^b Rates are from the SEER 9 areas (San Francisco, Connecticut, Detroit, Hawaii, Iowa, New Mexico, Seattle, Utah, Atlanta).

Rates are based on follow-up of patients into 2003.

^c Rates are from the SEER 17 areas (San Francisco, Connecticut, Detroit, Hawaii, Iowa, New Mexico, Seattle, Utah, Atlanta, San Jose-Monterey, Los Angeles, Alaska Native Registry, Rural Georgia, California excluding SF/SJM/LA, Kentucky, Louisiana and New Jersey). California excluding SF/SJM/LA, Kentucky, Louisiana, and New Jersey contribute cases for diagnosis years 2000-2002. The remaining 13 SEER Areas contribute cases for the entire period 1996-2002. Rates are based on follow-up of patients into 2003.

^d Period survival provides a more up-to-date estimate of survival by piecing together the most recent conditional survival estimates from several cohorts. It is computed here using three calendar year blocks (2000-2002: 0-1 year survival), (1999-2001: 1-2 year survival), (1998-2000: 2-3 year survival), (1997-1999: 3-4 year survival), (1996-1998: 4-5 years survival).

^e The difference in rates between 1975-1977 and 1996-2002 is statistically significant ($p < .05$).

^f The standard error of the survival rate is between 5 and 10 percentage points.

^g The standard error of the survival rate is greater than 10 percentage points.

- Statistic could not be calculated due to fewer than 16 cases during the time period.

Table XIII-11
LEUKEMIA

SURVIVAL RATES, BY RACE, SEX, DIAGNOSIS YEAR AND AGE

	All Races			Whites			Blacks		
	Total	Males	Females	Total	Males	Females	Total	Males	Females
<u>5-YR RELATIVE SURVIVAL RATES</u>									
YEAR OF DIAGNOSIS:									
1960-1963 ^a	-	-	-	14	-	-	-	-	-
1970-1973 ^a	-	-	-	22	-	-	-	-	-
1975-1977 ^b	35.2	34.1	36.5	35.8	34.8	37.1	33.4	30.4	36.4
1978-1980 ^b	37.6	36.7	38.8	38.3	37.6	39.3	29.6	28.3	31.2
1981-1983 ^b	39.1	38.9	39.4	40.1	40.0	40.4	34.2	33.7	34.9
1984-1986 ^b	41.7	41.1	42.3	43.0	42.6	43.5	33.6	32.3	35.0
1987-1989 ^b	44.1	45.7	42.1	45.3	47.4	42.6	37.0	35.0	39.4
1990-1992 ^b	46.3	46.0	46.6	47.8	48.0	47.5	37.2	31.3	43.5
1993-1995 ^b	48.4	49.3	47.2	49.6	50.5	48.4	42.2	42.0	42.4
1996-2002 ^b	48.7 ^e	49.1 ^e	48.2 ^e	50.3 ^e	50.5 ^e	50.0 ^e	38.7	39.4	37.6
<u>5-YR PERIOD SURVIVAL RATES^{cd}</u>									
YEAR OF DIAGNOSIS:									
1996-2002	48.9	49.2	48.5	50.0	50.3	49.5	40.1	40.8	39.3
<u>5-YR RELATIVE SURVIVAL RATES, 1996-2002^c</u>									
AGE AT DIAGNOSIS:									
<45	65.0	64.1	66.3	66.9	65.9	68.2	52.2	50.8	54.0
45-54	53.9	55.3	51.7	55.6	56.4	54.4	46.1	50.3	42.1 ^f
55-64	51.3	51.0	51.6	53.8	53.6	54.3	33.1	29.1	36.9
65-74	39.6	38.3	41.6	41.4	39.8	43.8	30.4	31.2	29.5
75+	27.8	27.7	27.9	29.1	29.0	29.0	24.0	19.6 ^f	24.9
Under 65	58.9	58.5	59.5	60.7	60.1	61.7	46.3	45.9	46.9
65 and over	33.7	33.7	33.8	35.2	35.0	35.3	27.5	28.0	26.9

^a Rates are based on End Results data from a series of hospital registries and one population-based registry.

^b Rates are from the SEER 9 areas (San Francisco, Connecticut, Detroit, Hawaii, Iowa, New Mexico, Seattle, Utah, Atlanta). Rates are based on follow-up of patients into 2003.

^c Rates are from the SEER 17 areas (San Francisco, Connecticut, Detroit, Hawaii, Iowa, New Mexico, Seattle, Utah, Atlanta, San Jose-Monterey, Los Angeles, Alaska Native Registry, Rural Georgia, California excluding SF/SJM/LA, Kentucky, Louisiana and New Jersey). California excluding SF/SJM/LA, Kentucky, Louisiana, and New Jersey contribute cases for diagnosis years 2000-2002. The remaining 13 SEER Areas contribute cases for the entire period 1996-2002. Rates are based on follow-up of patients into 2003.

^d Period survival provides a more up-to-date estimate of survival by piecing together the most recent conditional survival estimates from several cohorts. It is computed here using three calendar year blocks (2000-2002: 0-1 year survival), (1999-2001: 1-2 year survival), (1998-2000: 2-3 year survival), (1997-1999: 3-4 year survival), (1996-1998: 4-5 years survival).

^e The difference in rates between 1975-1977 and 1996-2002 is statistically significant ($p < .05$).

^f The standard error of the survival rate is between 5 and 10 percentage points.

^g The standard error of the survival rate is greater than 10 percentage points.

- Statistic could not be calculated due to fewer than 16 cases during the time period.

Table XIII-12
LYMPHOCYTIC LEUKEMIA

SURVIVAL RATES, BY RACE, SEX, DIAGNOSIS YEAR AND AGE

	All Races			Whites			Blacks		
	Total	Males	Females	Total	Males	Females	Total	Males	Females
ACUTE LYMPHOCYTIC LEUKEMIA									
5-YR RELATIVE SURVIVAL RATES									
YEAR OF DIAGNOSIS:									
1975-1977 ^a	42.2	38.2	47.4	42.7	39.0	47.9	34.5 ^e	-	38.9 ^f
1978-1980 ^a	50.5	47.1	55.4	50.7	47.4	55.4	31.7 ^e	31.4 ^e	-
1981-1983 ^a	51.9	48.6	56.1	52.8	49.6	57.1	43.5 ^e	37.6 ^e	49.1 ^e
1984-1986 ^a	53.5	50.3	57.7	54.4	50.4	60.1	36.0 ^e	43.6 ^e	27.4 ^e
1987-1989 ^a	56.0	55.6	56.3	56.7	56.9	56.2	46.0 ^e	43.1 ^e	48.0 ^e
1990-1992 ^a	59.5	56.1	64.4	59.6	57.1	63.3	57.8 ^e	51.1 ^e	63.8 ^e
1993-1995 ^a	61.5	58.6	65.4	61.1	58.8	64.2	54.1 ^e	45.9 ^e	65.0 ^e
1996-2002 ^a	65.2 ^d	64.0 ^d	66.8 ^d	66.4 ^d	64.7 ^d	68.4 ^d	56.8 ^d	56.6 ^e	56.7 ^e
5-YR PERIOD SURVIVAL RATES^{bc}									
YEAR OF DIAGNOSIS:									
1996-2002	64.3	63.0	66.0	65.2	64.2	66.4	53.5	49.3	58.3
5-YR RELATIVE SURVIVAL RATES, 1996-2002^b									
AGE AT DIAGNOSIS:									
<45	73.2	70.8	76.5	74.4	71.8	77.8	61.0	58.2	64.3 ^e
45-54	25.0	25.3	23.7	25.0	26.3	21.3 ^e	11.6 ^e	-	-
55-64	16.3	14.6	19.2	14.1	13.2	16.5 ^e	-	-	-
65-74	8.1	7.3	8.4	9.7	8.6	10.0	-	-	-
75+	6.3	3.2	7.5	5.1	-	7.0	-	-	-
Under 65	67.6	65.6	70.3	68.5	66.3	71.3	56.4	54.3	59.0 ^e
65 and over	7.4	6.3	8.0	7.7	6.2	8.5	9.8 ^e	-	-
CHRONIC LYMPHOCYTIC LEUKEMIA									
5-YR RELATIVE SURVIVAL RATES									
YEAR OF DIAGNOSIS:									
1975-1977 ^a	68.7	66.5	71.6	69.5	67.1	72.6	57.1 ^e	56.3 ^e	57.9 ^e
1978-1980 ^a	70.5	67.7	74.1	71.2	68.4	75.0	59.6 ^e	58.6 ^e	60.6 ^e
1981-1983 ^a	68.3	67.8	69.0	69.1	68.8	69.4	57.6 ^e	54.3 ^e	62.9 ^e
1984-1986 ^a	73.6	72.2	75.4	74.0	72.7	75.7	70.1 ^e	67.3 ^e	70.5 ^e
1987-1989 ^a	74.0	74.1	74.0	75.2	75.4	75.0	60.3	59.0 ^e	62.2 ^e
1990-1992 ^a	75.1	73.8	76.8	76.4	75.2	78.0	54.0 ^e	45.5 ^e	62.6 ^e
1993-1995 ^a	77.8	77.9	77.7	78.9	78.9	78.9	64.7	63.5 ^e	66.1 ^e
1996-2002 ^a	74.2 ^d	73.1 ^d	75.6	75.5 ^d	74.6 ^d	76.8	56.0	48.9 ^e	63.4 ^e
5-YR PERIOD SURVIVAL RATES^{bc}									
YEAR OF DIAGNOSIS:									
1996-2002	74.8	74.1	75.8	76.0	75.5	76.6	61.1	56.2	67.1
5-YR RELATIVE SURVIVAL RATES, 1996-2002^b									
AGE AT DIAGNOSIS:									
<45	88.3	89.2	85.7 ^e	90.3	90.3	90.3	62.2 ^f	72.8 ^f	-
45-54	82.0	80.1	85.7	83.3	81.1	87.5	71.4 ^e	65.9 ^e	80.9 ^e
55-64	83.1	79.2	90.4	84.9	82.2	90.3	60.6 ^e	42.3 ^e	85.6 ^e
65-74	74.9	71.1	80.8	76.4	72.5	82.3	55.8 ^e	56.3 ^e	55.7 ^f
75+	59.4	59.0	59.6	60.5	60.5	60.4	50.8 ^e	38.2 ^e	56.1 ^e
Under 65	83.2	80.5	88.5	84.9	82.8	89.4	65.4	53.9 ^e	81.5 ^e
65 and over	67.4	66.2	68.9	68.7	67.5	69.9	53.6	51.5 ^e	55.5 ^e

^a Rates are from the SEER 9 areas (San Francisco, Connecticut, Detroit, Hawaii, Iowa, New Mexico, Seattle, Utah, Atlanta). Rates are based on follow-up of patients into 2003.

^b Rates are from the SEER 17 areas (San Francisco, Connecticut, Detroit, Hawaii, Iowa, New Mexico, Seattle, Utah, Atlanta, San Jose-Monterey, Los Angeles, Alaska Native Registry, Rural Georgia, California excluding SF/SJM/LA, Kentucky, Louisiana and New Jersey). California excluding SF/SJM/LA, Kentucky, Louisiana, and New Jersey contribute cases for diagnosis years 2000-2002. The remaining 13 SEER Areas contribute cases for the entire period 1996-2002. Rates are based on follow-up of patients into 2003.

^c Period survival provides a more up-to-date estimate of survival by piecing together the most recent conditional survival estimates from several cohorts. It is computed here using three calendar year blocks (2000-2002: 0-1 year survival), (1999-2001: 1-2 year survival), (1998-2000: 2-3 year survival), (1997-1999: 3-4 year survival), (1996-1998: 4-5 years survival).

^d The difference in rates between 1975-1977 and 1996-2002 is statistically significant (p<.05).

^e The standard error of the survival rate is between 5 and 10 percentage points.

^f The standard error of the survival rate is greater than 10 percentage points.

- Statistic could not be calculated due to fewer than 16 cases during the time period.

Table XIII-13
MYELOID LEUKEMIA

	SURVIVAL RATES, BY RACE, SEX, DIAGNOSIS YEAR AND AGE								
	All Races			Whites			Blacks		
	Total	Males	Females	Total	Males	Females	Total	Males	Females
ACUTE MYELOID LEUKEMIA									
5-YR RELATIVE SURVIVAL RATES									
YEAR OF DIAGNOSIS:									
1975-1977 ^a	6.4	6.0	6.8	6.1	5.9	6.4	10.4	8.5 ^e	11.8 ^e
1978-1980 ^a	8.3	7.8	8.8	7.7	6.8	8.6	10.2	7.2	13.2
1981-1983 ^a	9.4	8.3	10.7	8.7	7.3	10.4	12.5	16.4 ^e	8.8
1984-1986 ^a	12.0	10.5	13.6	11.7	10.4	13.2	10.2	6.9	13.3
1987-1989 ^a	12.7	10.5	15.1	12.7	11.2	14.3	10.1	4.7	16.9 ^e
1990-1992 ^a	15.3	13.9	16.8	15.0	13.5	16.7	14.6	14.3	14.7
1993-1995 ^a	18.1	16.7	19.5	17.4	15.9	19.0	23.1	23.1 ^e	22.5 ^e
1996-2002 ^a	20.4 ^d	19.2 ^d	21.6 ^d	19.8 ^d	18.3 ^d	21.4 ^d	21.5 ^d	25.0 ^d	17.4
5-YR PERIOD SURVIVAL RATES^{bc}									
YEAR OF DIAGNOSIS:									
1996-2002	21.7	20.3	23.2	21.3	19.9	22.9	21.7	22.4	20.6
5-YR RELATIVE SURVIVAL RATES, 1996-2002^b									
AGE AT DIAGNOSIS:									
<45	48.5	46.9	50.1	49.5	48.8	50.3	41.2	40.2	42.4 ^e
45-54	25.9	24.7	27.3	25.7	22.6	29.5	25.6 ^e	29.2 ^e	21.7 ^e
55-64	16.9	15.0	19.1	17.4	15.2	20.3	7.5	-	5.7
65-74	6.3	5.2	7.7	6.4	5.3	7.9	5.9	6.8	-
75+	2.3	1.8	2.7	2.2	1.7	2.6	2.6	-	4.0
Under 65	34.4	32.5	36.6	34.5	32.3	37.1	30.3	31.6	28.5
65 and over	4.3	3.7	4.9	4.3	3.8	4.8	4.3	4.5	4.1
CHRONIC MYELOID LEUKEMIA									
5-YR RELATIVE SURVIVAL RATES									
YEAR OF DIAGNOSIS:									
1975-1977 ^a	23.7	21.4	26.8	22.7	20.5	25.7	28.7 ^e	22.6 ^e	36.0 ^e
1978-1980 ^a	24.9	24.1	25.8	25.4	25.2	25.5	21.7 ^e	20.9 ^e	22.7 ^e
1981-1983 ^a	30.4	26.3	35.2	31.0	27.2	35.1	29.6	20.6 ^e	40.3 ^e
1984-1986 ^a	23.7	21.2	27.2	24.5	21.7	28.5	22.5	21.9 ^e	22.6 ^e
1987-1989 ^a	32.3	33.0	31.3	32.1	33.5	30.3	36.9 ^e	30.3 ^e	45.0 ^e
1990-1992 ^a	32.3	31.0	34.1	32.1	32.2	32.0	34.9 ^e	22.1 ^e	48.2 ^e
1993-1995 ^a	37.2	37.1	37.3	37.3	37.4	37.2	35.2 ^e	33.2 ^e	38.5 ^e
1996-2002 ^a	42.3 ^d	41.2 ^d	43.6 ^d	42.5 ^d	40.7 ^d	44.5 ^d	38.0	38.7 ^e	37.1 ^e
5-YR PERIOD SURVIVAL RATES^{bc}									
YEAR OF DIAGNOSIS:									
1996-2002	44.7	44.1	45.7	44.3	43.0	46.3	41.6	44.5	37.5
5-YR RELATIVE SURVIVAL RATES, 1996-2002^b									
AGE AT DIAGNOSIS:									
<45	64.7	63.2	67.3	66.6	63.5	71.9	56.8 ^e	56.0 ^e	58.9 ^e
45-54	62.0	58.3	65.7	62.9	58.9	66.8	56.5 ^e	58.6 ^e	55.4 ^f
55-64	50.0	48.5	52.0	52.8	50.1	57.9	26.1 ^e	32.8 ^f	-
65-74	28.2	27.0	29.7	27.6	26.3	29.8	25.5 ^e	22.2 ^e	29.2 ^f
75+	14.9	14.5	15.5	14.9	13.8	16.1	10.9 ^e	7.4 ^e	10.6 ^e
Under 65	60.1	58.1	63.1	61.8	58.6	66.5	50.9	52.2 ^e	49.6 ^e
65 and over	21.4	21.2	21.7	21.0	20.4	21.8	20.9 ^e	19.1 ^e	22.7 ^e

^a Rates are from the SEER 9 areas (San Francisco, Connecticut, Detroit, Hawaii, Iowa, New Mexico, Seattle, Utah, Atlanta). Rates are based on follow-up of patients into 2003.

^b Rates are from the SEER 17 areas (San Francisco, Connecticut, Detroit, Hawaii, Iowa, New Mexico, Seattle, Utah, Atlanta, San Jose-Monterey, Los Angeles, Alaska Native Registry, Rural Georgia, California excluding SF/SJM/LA, Kentucky, Louisiana and New Jersey). California excluding SF/SJM/LA, Kentucky, Louisiana, and New Jersey contribute cases for diagnosis years 2000-2002. The remaining 13 SEER Areas contribute cases for the entire period 1996-2002. Rates are based on follow-up of patients into 2003.

^c Period survival provides a more up-to-date estimate of survival by piecing together the most recent conditional survival estimates from several cohorts. It is computed here using three calendar year blocks (2000-2002: 0-1 year survival), (1999-2001: 1-2 year survival), (1998-2000: 2-3 year survival), (1997-1999: 3-4 year survival), (1996-1998: 4-5 years survival).

^d The difference in rates between 1975-1977 and 1996-2002 is statistically significant ($p < .05$).

^e The standard error of the survival rate is between 5 and 10 percentage points.

^f The standard error of the survival rate is greater than 10 percentage points.

- Statistic could not be calculated due to fewer than 16 cases during the time period.

Table XIV-5
LIVER AND INTRAHEPATIC BILE DUCT CANCER (Invasive)

SURVIVAL RATES, BY RACE, SEX, DIAGNOSIS YEAR, STAGE AND AGE

	All Races			Whites			Blacks		
	Total	Males	Females	Total	Males	Females	Total	Males	Females
5-YR RELATIVE SURVIVAL RATES									
YEAR OF DIAGNOSIS:									
1960-1963 ^a	-	-	-	-	-	-	-	-	-
1970-1973 ^a	-	-	-	-	-	-	-	-	-
1975-1977 ^b	3.6	2.0	6.4	3.7	2.1	6.1	1.9	0.0	5.9
1978-1980 ^b	3.5	2.3	5.5	3.4	2.3	4.8	3.8	3.2	5.1
1981-1983 ^b	4.0	3.2	5.5	4.4	3.5	5.8	3.0	2.1	4.9
1984-1986 ^b	6.0	3.7	10.1	6.0	3.7	9.9	4.5	2.2	9.5
1987-1989 ^b	5.2	3.4	8.6	6.1	3.6	10.1	3.4	2.5	5.1
1990-1992 ^b	6.0	5.1	7.6	6.9	5.6	9.1	2.7	2.0	3.7
1993-1995 ^b	5.8	5.5	6.4	5.5	5.2	6.1	4.3	2.8	7.8
1996-2002 ^b	10.0 ^e	9.5 ^e	11.0 ^e	9.7 ^e	8.6 ^e	11.9 ^e	6.9 ^e	8.4	4.1
5-YR PERIOD SURVIVAL RATES^{cd}									
YEAR OF DIAGNOSIS:									
1996-2002	11.5	10.9	12.7	11.5	10.7	12.8	5.8	6.0	5.3
STAGE DISTRIBUTION (%) 1996-2002^c									
All Stages									
Number of cases	17,388	11,898	5,490	11,545	7,812	3,733	1,818	1,284	534
Percent	100%	100%	100%	100%	100%	100%	100%	100%	100%
Localized	33	33	33	32	32	31	29	28	33
Regional	25	27	23	24	25	22	28	30	25
Distant	21	21	21	21	21	21	24	24	24
Unstaged	21	20	24	23	22	26	19	19	19
5-YR RELATIVE SURVIVAL RATES, 1996-2002^c									
AGE AT DIAGNOSIS:									
<45	22.5	18.2	32.4	25.9	19.8	37.9	15.5	16.7	12.1 ^f
45-54	13.8	12.9	17.4	15.7	14.5	20.4	4.4	3.9	4.9
55-64	10.0	9.6	11.0	9.8	9.3	11.5	6.6	6.5	7.1
65-74	8.8	8.4	9.4	6.9	5.8	8.9	8.1	10.1	5.1
75+	4.8	4.3	5.1	4.4	3.9	4.8	-	-	-
Under 65	13.6	12.3	17.9	14.8	13.0	20.5	7.0	6.9	7.0
65 and over	7.1	6.9	7.2	5.8	5.0	6.6	5.7	7.5	3.4
STAGE:									
All Stages	10.5	10.1	11.4	10.2	9.5	11.6	6.7	7.3	5.4
Localized	21.9	21.5	22.7	22.1	20.5	25.6	16.4	21.0	5.2
Regional	7.2	6.9	7.9	7.0	6.5	8.2	3.3	3.0	3.8
Distant	3.3	2.5	4.5	2.8	1.9	4.3	2.1	2.3	1.5
Unstaged	4.1	3.5	5.0	3.9	3.7	4.0	2.4	-	9.3

^a Rates are based on End Results data from a series of hospital registries and one population-based registry.

^b Rates are from the SEER 9 areas (San Francisco, Connecticut, Detroit, Hawaii, Iowa, New Mexico, Seattle, Utah, Atlanta).

Rates are based on follow-up of patients into 2003.

^c Rates are from the SEER 17 areas (San Francisco, Connecticut, Detroit, Hawaii, Iowa, New Mexico, Seattle, Utah, Atlanta, San Jose-Monterey, Los Angeles, Alaska Native Registry, Rural Georgia, California excluding SF/SJM/LA, Kentucky, Louisiana and New Jersey). California excluding SF/SJM/LA, Kentucky, Louisiana, and New Jersey contribute cases for diagnosis years 2000-2002. The remaining 13 SEER Areas contribute cases for the entire period 1996-2002. Rates are based on follow-up of patients into 2003.

^d Period survival provides a more up-to-date estimate of survival by piecing together the most recent conditional survival estimates from several cohorts. It is computed here using three calendar year blocks (2000-2002: 0-1 year survival), (1999-2001: 1-2 year survival), (1998-2000: 2-3 year survival), (1997-1999: 3-4 year survival), (1996-1998: 4-5 years survival).

^e The difference in rates between 1975-1977 and 1996-2002 is statistically significant ($p < .05$).

^f The standard error of the survival rate is between 5 and 10 percentage points.

^g The standard error of the survival rate is greater than 10 percentage points.

- Statistic could not be calculated due to fewer than 16 cases during the time period.

Table XV-9
LUNG AND BRONCHUS CANCER (Invasive)

SURVIVAL RATES, BY RACE, SEX, DIAGNOSIS YEAR, STAGE AND AGE

	All Races			Whites			Blacks		
	Total	Males	Females	Total	Males	Females	Total	Males	Females
5-YR RELATIVE SURVIVAL RATES									
YEAR OF DIAGNOSIS:									
1960-1963 ^a	-	-	-	8	7	11	5	5	6
1970-1973 ^a	-	-	-	10	9	14	7	6	10
1975-1977 ^b	12.7	11.4	15.8	12.8	11.5	16.0	11.5	10.7	14.0
1978-1980 ^b	13.3	11.8	16.6	13.4	12.0	16.6	12.0	10.0	18.0
1981-1983 ^b	13.7	12.1	16.8	13.9	12.3	17.0	11.7	10.5	14.9
1984-1986 ^b	13.3	11.6	16.3	13.5	11.7	16.7	11.4	10.6	13.0
1987-1989 ^b	13.5	12.4	15.4	13.8	12.5	15.8	11.2	11.1	11.5
1990-1992 ^b	14.2	12.6	16.4	14.6	13.0	16.7	10.8	9.6	12.9
1993-1995 ^b	15.0	13.1	17.4	15.3	13.3	17.8	13.2	11.7	15.8
1996-2002 ^b	15.5 ^e	13.6 ^e	17.8 ^e	15.8 ^e	13.7 ^e	18.0 ^e	12.8 ^e	11.3	14.9
5-YR PERIOD SURVIVAL RATES^{cd}									
YEAR OF DIAGNOSIS:									
1996-2002	15.2	13.2	17.7	15.6	13.4	17.9	12.4	10.7	14.8
STAGE DISTRIBUTION (%) 1996-2002^c									
All Stages									
Number of cases	173,341	95,984	77,357	144,196	78,166	66,030	18,367	11,115	7,252
Percent	100%	100%	100%	100%	100%	100%	100%	100%	100%
Localized	16	15	18	16	15	18	14	13	16
Regional	37	38	37	37	38	36	39	38	39
Distant	39	40	37	39	40	37	41	42	38
Unstaged	8	7	8	8	8	8	7	6	7
5-YR RELATIVE SURVIVAL RATES, 1996-2002^c									
AGE AT DIAGNOSIS:									
<45	22.2	19.4	25.2	24.5	21.7	27.3	14.2	11.3	17.8
45-54	17.8	14.5	22.2	18.4	14.6	23.2	14.8	12.9	17.8
55-64	17.0	14.6	20.1	17.5	15.1	20.5	13.0	11.1	16.2
65-74	15.2	13.2	17.4	15.4	13.4	17.6	11.2	9.6	13.4
75+	10.4	9.5	11.3	10.6	9.6	11.5	8.7	7.6	9.6
Under 65	17.6	14.9	21.2	18.3	15.4	21.8	13.8	11.8	16.9
65 and over	13.2	11.8	14.7	13.4	12.0	14.9	10.4	9.1	12.0
STAGE:									
All Stages	15.0	13.1	17.2	15.3	13.4	17.4	12.2	10.5	14.5
Localized	49.3	45.3	53.0	49.9	46.0	53.3	42.0	38.7	45.8
Regional	15.5	14.4	16.9	15.7	14.6	17.1	13.2	11.6	15.5
Distant	2.1	1.9	2.3	2.0	1.7	2.3	2.0	2.0	1.9
Unstaged	7.9	7.7	8.2	7.7	7.3	8.0	7.6	7.6	7.6

^a Rates are based on End Results data from a series of hospital registries and one population-based registry.

^b Rates are from the SEER 9 areas (San Francisco, Connecticut, Detroit, Hawaii, Iowa, New Mexico, Seattle, Utah, Atlanta).

Rates are based on follow-up of patients into 2003.

^c Rates are from the SEER 17 areas (San Francisco, Connecticut, Detroit, Hawaii, Iowa, New Mexico, Seattle, Utah, Atlanta, San Jose-Monterey, Los Angeles, Alaska Native Registry, Rural Georgia, California excluding SF/SJM/LA, Kentucky, Louisiana and New Jersey). California excluding SF/SJM/LA, Kentucky, Louisiana, and New Jersey contribute cases for diagnosis years 2000-2002. The remaining 13 SEER Areas contribute cases for the entire period 1996-2002. Rates are based on follow-up of patients into 2003.

^d Period survival provides a more up-to-date estimate of survival by piecing together the most recent conditional survival estimates from several cohorts. It is computed here using three calendar year blocks (2000-2002: 0-1 year survival), (1999-2001: 1-2 year survival), (1998-2000: 2-3 year survival), (1997-1999: 3-4 year survival), (1996-1998: 4-5 years survival).

^e The difference in rates between 1975-1977 and 1996-2002 is statistically significant ($p < .05$).

^f The standard error of the survival rate is between 5 and 10 percentage points.

^g The standard error of the survival rate is greater than 10 percentage points.

- Statistic could not be calculated due to fewer than 16 cases during the time period.

Table XV-10
SMALL CELL LUNG AND BRONCHUS CANCER (Invasive)

SURVIVAL RATES, BY RACE, SEX, DIAGNOSIS YEAR, STAGE AND AGE

	All Races			Whites			Blacks		
	Total	Males	Females	Total	Males	Females	Total	Males	Females
<u>5-YR RELATIVE SURVIVAL RATES</u>									
YEAR OF DIAGNOSIS:									
1975-1977 ^a	3.7	3.2	4.8	3.8	3.2	5.0	3.8	3.9	3.6
1978-1980 ^a	4.4	3.3	6.5	4.5	3.4	6.5	3.2	2.4	5.0
1981-1983 ^a	4.8	3.8	6.5	4.9	3.9	6.3	5.6	4.3	8.4
1984-1986 ^a	4.7	3.5	6.4	4.9	3.7	6.6	3.6	2.3	5.6
1987-1989 ^a	5.2	4.0	6.7	5.3	4.0	6.9	4.0	3.4	4.7
1990-1992 ^a	5.6	4.8	6.7	5.7	4.8	6.9	4.2	4.4	3.9
1993-1995 ^a	6.7	5.5	8.1	6.6	5.4	7.9	7.0	4.7	10.0
1996-2002 ^a	6.0 ^d	5.3 ^d	6.8 ^d	6.1 ^d	5.2 ^d	7.0 ^d	4.7 ^d	5.2 ^d	4.3
<u>5-YR PERIOD SURVIVAL RATES^{bc}</u>									
YEAR OF DIAGNOSIS:									
1996-2002	6.1	5.1	7.0	6.2	5.1	7.3	4.2	4.5	4.2
<u>STAGE DISTRIBUTION (%) 1996-2002^b</u>									
All Stages									
Number of cases	24,329	12,623	11,706	21,296	10,831	10,465	1,941	1,060	881
Percent	100%	100%	100%	100%	100%	100%	100%	100%	100%
Localized	6	6	7	6	6	7	6	6	6
Regional	34	32	36	34	32	36	37	36	38
Distant	55	58	52	55	58	52	52	53	51
Unstaged	5	5	5	5	5	5	5	4	5
<u>5-YR RELATIVE SURVIVAL RATES, 1996-2002^b</u>									
AGE AT DIAGNOSIS:									
<45	8.4	5.5	11.4	8.6	4.8	12.1	-	-	-
45-54	8.3	6.8	10.2	8.4	7.2	9.9	6.1	2.7	9.6
55-64	7.5	6.4	8.8	7.8	6.5	9.1	3.7	-	4.4
65-74	4.8	4.2	5.4	4.9	3.8	5.8	3.4	5.1	2.1
75+	2.7	2.3	3.0	2.8	2.5	3.1	1.7	2.3	1.1
Under 65	7.8	6.5	9.3	8.0	6.7	9.5	4.6	3.0	5.9
65 and over	4.1	3.5	4.5	4.1	3.3	4.8	3.0	4.4	1.9
STAGE:									
All Stages	5.7	4.9	6.5	5.8	4.9	6.7	3.7	3.8	3.6
Localized	19.8	17.8	21.5	19.2	17.2	20.5	19.5 ^e	23.7 ^e	13.1 ^e
Regional	9.5	8.8	10.1	9.9	9.0	10.7	5.7	6.5	5.3
Distant	1.8	1.5	2.2	1.8	1.5	2.3	0.4	-	0.7
Unstaged	5.9	5.0	6.6	6.3	5.3	6.8	4.8	-	7.0

^a Rates are from the SEER 9 areas (San Francisco, Connecticut, Detroit, Hawaii, Iowa, New Mexico, Seattle, Utah, Atlanta).

Rates are based on follow-up of patients into 2003.

^b Rates are from the SEER 17 areas (San Francisco, Connecticut, Detroit, Hawaii, Iowa, New Mexico, Seattle, Utah, Atlanta, San Jose-Monterey, Los Angeles, Alaska Native Registry, Rural Georgia, California excluding SF/SJM/LA, Kentucky, Louisiana and New Jersey). California excluding SF/SJM/LA, Kentucky, Louisiana, and New Jersey contribute cases for diagnosis years 2000-2002. The remaining 13 SEER Areas contribute cases for the entire period 1996-2002. Rates are based on follow-up of patients into 2003.

^c Period survival provides a more up-to-date estimate of survival by piecing together the most recent conditional survival estimates from several cohorts. It is computed here using three calendar year blocks (2000-2002: 0-1 year survival), (1999-2001: 1-2 year survival), (1998-2000: 2-3 year survival), (1997-1999: 3-4 year survival), (1996-1998: 4-5 years survival).

^d The difference in rates between 1975-1977 and 1996-2002 is statistically significant ($p < .05$).

^e The standard error of the survival rate is between 5 and 10 percentage points.

^f The standard error of the survival rate is greater than 10 percentage points.

- Statistic could not be calculated due to fewer than 16 cases during the time period.

Table XV-11
NON-SMALL CELL LUNG AND BRONCHUS CANCER (Invasive)

SURVIVAL RATES, BY RACE, SEX, DIAGNOSIS YEAR, STAGE AND AGE

	All Races			Whites			Blacks		
	Total	Males	Females	Total	Males	Females	Total	Males	Females
5-YR RELATIVE SURVIVAL RATES									
YEAR OF DIAGNOSIS:									
1975-1977 ^a	14.2	12.7	18.0	14.3	12.8	18.1	12.4	11.4	16.2
1978-1980 ^a	15.0	13.4	18.8	15.3	13.7	18.9	13.2	10.9	20.0
1981-1983 ^a	15.6	13.7	19.4	15.9	14.0	19.8	12.5	11.3	15.9
1984-1986 ^a	15.1	13.2	18.7	15.5	13.4	19.2	12.6	11.8	14.6
1987-1989 ^a	15.3	14.0	17.5	15.7	14.2	18.1	12.3	12.1	12.7
1990-1992 ^a	15.9	14.0	18.6	16.5	14.6	19.1	11.7	10.2	14.4
1993-1995 ^a	16.6	14.5	19.5	17.1	14.8	20.0	14.0	12.5	16.7
1996-2002 ^a	17.2 ^d	14.9 ^d	19.9 ^d	17.6 ^d	15.3 ^d	20.3 ^d	13.8 ^d	11.9	16.5
5-YR PERIOD SURVIVAL RATES^{bc}									
YEAR OF DIAGNOSIS:									
1996-2002	16.8	14.4	19.6	17.2	14.8	20.0	13.3	11.3	16.3
STAGE DISTRIBUTION (%) 1996-2002^b									
All Stages									
Number of cases	149,012	83,361	65,651	122,900	67,335	55,565	16,426	10,055	6,371
Percent	100%	100%	100%	100%	100%	100%	100%	100%	100%
Localized	18	16	20	18	16	20	15	13	17
Regional	38	39	37	38	38	36	39	39	39
Distant	36	38	35	36	37	34	39	41	36
Unstaged	8	8	9	9	8	9	7	7	8
5-YR RELATIVE SURVIVAL RATES, 1996-2002^b									
AGE AT DIAGNOSIS:									
<45	23.9	21.1	26.8	26.7	24.0	29.4	14.9	11.5	19.0
45-54	19.5	15.8	24.4	20.4	16.0	26.0	15.7	13.8	18.8
55-64	18.8	16.1	22.7	19.6	16.8	23.3	14.2	12.0	17.9
65-74	17.0	14.7	19.9	17.3	15.0	20.1	12.3	10.1	15.4
75+	11.5	10.4	12.4	11.7	10.6	12.7	9.5	8.1	10.6
Under 65	19.5	16.4	23.7	20.4	17.1	24.6	14.8	12.6	18.4
65 and over	14.7	13.1	16.5	15.0	13.3	16.7	11.3	9.6	13.6
STAGE:									
All Stages	16.6	14.4	19.2	17.0	14.8	19.5	13.2	11.2	16.0
Localized	51.0	46.9	54.9	51.7	47.7	55.3	43.0	39.4	47.2
Regional	16.5	15.1	18.1	16.7	15.4	18.3	14.0	12.0	16.9
Distant	2.1	1.9	2.4	2.0	1.7	2.3	2.2	2.3	2.2
Unstaged	8.1	7.9	8.4	7.9	7.5	8.2	7.8	8.0	7.6

^a Rates are from the SEER 9 areas (San Francisco, Connecticut, Detroit, Hawaii, Iowa, New Mexico, Seattle, Utah, Atlanta).

Rates are based on follow-up of patients into 2003.

^b Rates are from the SEER 17 areas (San Francisco, Connecticut, Detroit, Hawaii, Iowa, New Mexico, Seattle, Utah, Atlanta, San Jose-Monterey, Los Angeles, Alaska Native Registry, Rural Georgia, California excluding SF/SJM/LA, Kentucky, Louisiana and New Jersey). California excluding SF/SJM/LA, Kentucky, Louisiana, and New Jersey contribute cases for diagnosis years 2000-2002. The remaining 13 SEER Areas contribute cases for the entire period 1996-2002. Rates are based on follow-up of patients into 2003.

^c Period survival provides a more up-to-date estimate of survival by piecing together the most recent conditional survival estimates from several cohorts. It is computed here using three calendar year blocks (2000-2002: 0-1 year survival), (1999-2001: 1-2 year survival), (1998-2000: 2-3 year survival), (1997-1999: 3-4 year survival), (1996-1998: 4-5 years survival).

^d The difference in rates between 1975-1977 and 1996-2002 is statistically significant ($p < .05$).

^e The standard error of the survival rate is between 5 and 10 percentage points.

^f The standard error of the survival rate is greater than 10 percentage points.

- Statistic could not be calculated due to fewer than 16 cases during the time period.

Table XVI-5
MELANOMA OF THE SKIN (Invasive)

SURVIVAL RATES, BY RACE, SEX, DIAGNOSIS YEAR, STAGE AND AGE

	All Races			Whites			Blacks		
	Total	Males	Females	Total	Males	Females	Total	Males	Females
5-YR RELATIVE SURVIVAL RATES									
YEAR OF DIAGNOSIS:									
1960-1963 ^a	-	-	-	60	51	68	-	-	-
1970-1973 ^a	-	-	-	68	62	75	-	-	-
1975-1977 ^b	81.9	77.3	86.3	82.3	77.9	86.5	58.4 ^f	44.2 ^g	68.1 ^g
1978-1980 ^b	83.1	78.1	87.9	83.3	78.4	88.2	59.7 ^g	-	69.5 ^g
1981-1983 ^b	83.0	78.5	87.5	83.2	78.7	87.7	62.2 ^f	51.5 ^g	70.5 ^g
1984-1986 ^b	86.3	82.0	90.9	86.4	82.1	91.0	71.0 ^g	-	73.3 ^g
1987-1989 ^b	88.0	85.0	91.3	88.2	85.3	91.3	79.9 ^f	61.7 ^g	90.5 ^f
1990-1992 ^b	89.4	87.0	91.9	89.6	87.3	92.1	61.6 ^f	53.3 ^g	70.5 ^g
1993-1995 ^b	90.0	87.7	92.6	90.1	87.8	92.8	67.6 ^f	66.1 ^g	66.8 ^g
1996-2002 ^b	92.3 ^e	91.1 ^e	93.7 ^e	92.5 ^e	91.3 ^e	93.9 ^e	75.2 ^f	73.8 ^f	75.0 ^f
5-YR PERIOD SURVIVAL RATES^{cd}									
YEAR OF DIAGNOSIS:									
1996-2002	91.8	90.4	93.5	92.0	90.5	93.8	77.8	76.1	76.1
STAGE DISTRIBUTION (%) 1996-2002^c									
All Stages									
Number of cases	48,923	26,994	21,929	48,141	26,617	21,524	266	129	137
Percent	100%	100%	100%	100%	100%	100%	100%	100%	100%
Localized	80	78	83	81	79	83	60	53	66
Regional	12	14	11	12	13	11	21	22	20
Distant	4	4	3	3	4	2	12	16	9
Unstaged	4	4	4	4	4	4	6	8	5
5-YR RELATIVE SURVIVAL RATES, 1996-2002^c									
AGE AT DIAGNOSIS:									
<45	93.2	89.5	96.1	93.4	89.6	96.3	70.2 ^f	78.7 ^g	64.4 ^f
45-54	91.1	88.6	94.4	91.2	88.6	94.6	84.4 ^f	90.0 ^f	-
55-64	91.3	90.4	92.9	91.5	90.6	92.9	85.0 ^f	73.9 ^g	90.6 ^f
65-74	91.7	92.1	90.7	92.1	92.3	91.2	66.5 ^g	46.5 ^g	88.4 ^g
75+	85.6	87.3	82.2	86.0	87.8	82.4	38.6 ^g	32.0 ^g	43.8 ^g
Under 65	92.1	89.5	95.0	92.3	89.6	95.2	78.7	81.5 ^f	75.7 ^f
65 and over	89.6	90.5	87.4	90.0	90.9	87.8	55.7 ^f	41.8 ^g	69.6 ^g
STAGE:									
All Stages	91.5	90.1	93.1	91.7	90.3	93.4	72.0	67.4 ^f	74.5 ^f
Localized	99.0	99.4	98.6	99.1	99.5	98.7	93.5	88.4 ^f	94.4
Regional	64.9	61.5	70.1	65.2	61.7	70.8	33.7 ^g	43.3 ^g	23.6 ^g
Distant	15.3	14.9	16.0	14.8	14.8	14.9	24.8 ^f	-	-
Unstaged	76.8	74.7	78.9	77.1	75.0	79.4	62.1 ^g	-	-

^a Rates are based on End Results data from a series of hospital registries and one population-based registry.

^b Rates are from the SEER 9 areas (San Francisco, Connecticut, Detroit, Hawaii, Iowa, New Mexico, Seattle, Utah, Atlanta).

Rates are based on follow-up of patients into 2003.

^c Rates are from the SEER 17 areas (San Francisco, Connecticut, Detroit, Hawaii, Iowa, New Mexico, Seattle, Utah, Atlanta, San Jose-Monterey, Los Angeles, Alaska Native Registry, Rural Georgia, California excluding SF/SJM/LA, Kentucky, Louisiana and New Jersey). California excluding SF/SJM/LA, Kentucky, Louisiana, and New Jersey contribute cases for diagnosis years 2000-2002. The remaining 13 SEER Areas contribute cases for the entire period 1996-2002. Rates are based on follow-up of patients into 2003.

^d Period survival provides a more up-to-date estimate of survival by piecing together the most recent conditional survival estimates from several cohorts. It is computed here using three calendar year blocks (2000-2002: 0-1 year survival), (1999-2001: 1-2 year survival), (1998-2000: 2-3 year survival), (1997-1999: 3-4 year survival), (1996-1998: 4-5 years survival).

^e The difference in rates between 1975-1977 and 1996-2002 is statistically significant ($p < .05$).

^f The standard error of the survival rate is between 5 and 10 percentage points.

^g The standard error of the survival rate is greater than 10 percentage points.

- Statistic could not be calculated due to fewer than 16 cases during the time period.

Table XVII-4
MESOTHELIOMA (Invasive)

SURVIVAL RATES, BY RACE, SEX, DIAGNOSIS YEAR, STAGE AND AGE

	All Races			Whites			Blacks		
	Total	Males	Females	Total	Males	Females	Total	Males	Females
<u>5-YR RELATIVE SURVIVAL RATES</u>									
YEAR OF DIAGNOSIS:									
1960-1963 ^a	-	-	-	-	-	-	-	-	-
1970-1973 ^a	-	-	-	-	-	-	-	-	-
1975-1977 ^b	10.4	3.2	27.9 ^f	11.1	3.5	28.5 ^f	-	-	-
1978-1980 ^b	6.0	5.4	8.3	6.1	5.4	8.9	6.9 ^f	-	-
1981-1983 ^b	8.2	5.7	15.4	8.6	5.8	16.5	5.9 ^f	7.6 ^f	-
1984-1986 ^b	7.1	5.0	13.8	6.6	4.3	13.9	11.8 ^f	14.9 ^f	-
1987-1989 ^b	6.6	4.8	12.9	6.7	4.9	13.0	4.5	0.0	-
1990-1992 ^b	8.5	4.7	21.9	8.1	4.4	21.3	12.9 ^f	12.0 ^f	-
1993-1995 ^b	7.0	3.5	18.9	6.9	3.3	19.8	9.6 ^f	8.5 ^f	-
1996-2002 ^b	9.6	7.4	16.9	9.6	7.3	17.4	19.6 ^f	16.7 ^f	24.4 ^g
<u>5-YR PERIOD SURVIVAL RATES^{cd}</u>									
YEAR OF DIAGNOSIS:									
1996-2002	10.0	7.9	16.5	9.4	7.3	16.1	23.9	21.2	28.4
<u>STAGE DISTRIBUTION (%) 1996-2002^c</u>									
All Stages									
Number of cases	2,959	2,301	658	2,720	2,132	588	131	90	41
Percent	100%	100%	100%	100%	100%	100%	100%	100%	100%
Localized	12	12	11	12	12	11	16	17	15
Regional	20	20	19	20	20	19	15	12	20
Distant	58	57	60	58	57	61	62	64	56
Unstaged	10	11	10	11	11	10	8	7	10
<u>5-YR RELATIVE SURVIVAL RATES, 1996-2002^c</u>									
AGE AT DIAGNOSIS:									
<45	36.7 ^f	28.3 ^f	46.7 ^f	37.3 ^f	28.6 ^f	48.0 ^f	-	-	-
45-54	19.7	15.2	26.6 ^f	19.3	14.2	28.1 ^f	40.0 ^g	-	-
55-64	10.0	8.4	16.6 ^f	9.4	8.1	15.5 ^f	16.6 ^f	8.3 ^f	-
65-74	5.6	5.2	6.5	5.5	5.0	7.3	3.4	4.8 ^f	-
75+	5.1	5.2	4.7	5.0	4.8	5.0	6.4 ^f	10.4 ^g	-
Under 65	16.3	11.9	27.8	15.9	11.3	29.0	26.5 ^f	15.8 ^f	41.9 ^g
65 and over	5.4	5.3	5.5	5.4	5.1	5.9	4.8	7.2 ^f	-
STAGE:									
All Stages	9.2	7.6	14.5	9.0	7.2	14.7	16.3	12.1	22.1 ^f
Localized	15.3	11.9	28.1 ^f	15.0	11.8	28.3 ^f	16.2 ^g	-	-
Regional	10.2	9.2	13.1	9.5	8.4	13.1	15.0 ^g	-	-
Distant	7.0	5.5	11.3	6.9	5.2	11.7	14.1	13.1 ^f	14.5 ^f
Unstaged	10.9	8.5	20.0 ^f	9.6	7.7	17.5 ^f	-	-	-

^a Rates are based on End Results data from a series of hospital registries and one population-based registry.
^b Rates are from the SEER 9 areas (San Francisco, Connecticut, Detroit, Hawaii, Iowa, New Mexico, Seattle, Utah, Atlanta).
Rates are based on follow-up of patients into 2003.
^c Rates are from the SEER 17 areas (San Francisco, Connecticut, Detroit, Hawaii, Iowa, New Mexico, Seattle, Utah, Atlanta, San Jose-Monterey, Los Angeles, Alaska Native Registry, Rural Georgia, California excluding SF/SJM/LA, Kentucky, Louisiana and New Jersey). California excluding SF/SJM/LA, Kentucky, Louisiana, and New Jersey contribute cases for diagnosis years 2000-2002. The remaining 13 SEER Areas contribute cases for the entire period 1996-2002. Rates are based on follow-up of patients into 2003.
^d Period survival provides a more up-to-date estimate of survival by piecing together the most recent conditional survival estimates from several cohorts. It is computed here using three calendar year blocks (2000-2002: 0-1 year survival), (1999-2001: 1-2 year survival), (1998-2000: 2-3 year survival), (1997-1999: 3-4 year survival), (1996-1998: 4-5 years survival).
^e The difference in rates between 1975-1977 and 1996-2002 is statistically significant (p<.05).
^f The standard error of the survival rate is between 5 and 10 percentage points.
^g The standard error of the survival rate is greater than 10 percentage points.
- Statistic could not be calculated due to fewer than 16 cases during the time period.

Table XVIII-5
MYELOMA

SURVIVAL RATES, BY RACE, SEX, DIAGNOSIS YEAR AND AGE

	All Races			Whites			Blacks		
	Total	Males	Females	Total	Males	Females	Total	Males	Females
<u>5-YR RELATIVE SURVIVAL RATES</u>									
YEAR OF DIAGNOSIS:									
1960-1963 ^a	-	-	-	12	13	10	-	-	-
1970-1973 ^a	-	-	-	19	20	17	-	-	-
1975-1977 ^b	25.8	25.5	26.1	25.3	25.1	25.5	30.7	31.6	29.7
1978-1980 ^b	26.9	25.5	28.3	25.9	25.5	26.4	32.5	26.7	38.1
1981-1983 ^b	28.7	26.8	30.6	28.4	26.7	30.1	29.5	30.3	28.7
1984-1986 ^b	28.5	28.9	28.1	27.6	27.4	27.7	32.0	33.4	30.4
1987-1989 ^b	28.4	30.1	26.8	28.2	30.4	25.9	30.8	30.3	31.3
1990-1992 ^b	30.5	31.7	29.2	29.6	30.7	28.4	35.5	39.5	31.9
1993-1995 ^b	32.9	34.0	31.7	32.0	33.4	30.5	35.8	35.0	36.0
1996-2002 ^b	33.0 ^e	36.2 ^e	29.5 ^e	33.1 ^e	36.5 ^e	29.3 ^e	31.8	34.8	29.4
<u>5-YR PERIOD SURVIVAL RATES^{cd}</u>									
YEAR OF DIAGNOSIS:									
1996-2002	32.8	35.6	29.6	32.6	35.4	29.3	33.4	35.6	31.4
<u>5-YR RELATIVE SURVIVAL RATES, 1996-2002^c</u>									
AGE AT DIAGNOSIS:									
<45	53.4	55.4	49.6	55.5	57.5	51.2 ^f	43.9 ^f	45.6 ^f	42.4 ^f
45-54	49.4	49.7	48.9	50.8	51.8	49.1	42.9	39.2	46.6
55-64	38.8	40.0	37.2	40.5	41.6	39.0	35.7	37.9	33.0
65-74	30.3	31.3	29.0	30.4	30.6	30.0	31.2	35.4	27.6
75+	18.6	19.5	17.9	18.3	18.8	17.9	18.9	14.9	20.7
Under 65	44.5	45.7	42.7	46.0	47.5	43.7	39.5	39.3	39.7
65 and over	24.8	26.5	23.1	24.5	25.7	23.3	26.4	29.6	24.3

- ^a Rates are based on End Results data from a series of hospital registries and one population-based registry.
- ^b Rates are from the SEER 9 areas (San Francisco, Connecticut, Detroit, Hawaii, Iowa, New Mexico, Seattle, Utah, Atlanta).
- ^c Rates are based on follow-up of patients into 2003.
- ^d Rates are from the SEER 17 areas (San Francisco, Connecticut, Detroit, Hawaii, Iowa, New Mexico, Seattle, Utah, Atlanta, San Jose-Monterey, Los Angeles, Alaska Native Registry, Rural Georgia, California excluding SF/SJM/LA, Kentucky, Louisiana and New Jersey). California excluding SF/SJM/LA, Kentucky, Louisiana, and New Jersey contribute cases for diagnosis years 2000-2002. The remaining 13 SEER Areas contribute cases for the entire period 1996-2002. Rates are based on follow-up of patients into 2003.
- ^e Period survival provides a more up-to-date estimate of survival by piecing together the most recent conditional survival estimates from several cohorts. It is computed here using three calendar year blocks (2000-2002: 0-1 year survival), (1999-2001: 1-2 year survival), (1998-2000: 2-3 year survival), (1997-1999: 3-4 year survival), (1996-1998: 4-5 years survival).
- ^f The difference in rates between 1975-1977 and 1996-2002 is statistically significant ($p < .05$).
- ^g The standard error of the survival rate is between 5 and 10 percentage points.
- The standard error of the survival rate is greater than 10 percentage points.
- Statistic could not be calculated due to fewer than 16 cases during the time period.

Table XIX-5
NON-HODGKIN LYMPHOMA

SURVIVAL RATES, BY RACE, SEX, DIAGNOSIS YEAR AND AGE

	<u>All Races</u>			<u>Whites</u>			<u>Blacks</u>		
	<u>Total</u>	<u>Males</u>	<u>Females</u>	<u>Total</u>	<u>Males</u>	<u>Females</u>	<u>Total</u>	<u>Males</u>	<u>Females</u>
<u>5-YR RELATIVE SURVIVAL RATES</u>									
YEAR OF DIAGNOSIS:									
1960-1963 ^a	-	-	-	31	31	31	-	-	-
1970-1973 ^a	-	-	-	41	39	43	-	-	-
1975-1977 ^b	47.8	46.6	49.0	48.3	47.7	48.9	48.4	41.4	56.1 ^f
1978-1980 ^b	49.8	47.9	51.7	49.9	48.3	51.6	52.1	48.0	57.7
1981-1983 ^b	52.4	52.0	52.8	52.7	52.4	53.0	50.4	49.5	51.5
1984-1986 ^b	53.1	51.3	55.2	53.7	51.9	55.6	47.5	44.9	51.0
1987-1989 ^b	52.2	48.5	56.7	52.7	49.2	57.1	47.5	42.6	53.5
1990-1992 ^b	51.9	47.4	57.6	52.9	48.4	58.6	42.2	38.2	47.8
1993-1995 ^b	53.8	49.6	59.2	54.8	51.0	59.6	42.1	35.6	54.5
1996-2002 ^b	62.9 ^e	61.3 ^e	64.9 ^e	64.0 ^e	62.5 ^e	65.8 ^e	56.3	52.9	60.7
<u>5-YR PERIOD SURVIVAL RATES^{cd}</u>									
YEAR OF DIAGNOSIS:									
1996-2002	64.2	62.3	66.3	65.3	63.6	67.2	55.0	52.1	58.5
<u>5-YR RELATIVE SURVIVAL RATES, 1996-2002^c</u>									
AGE AT DIAGNOSIS:									
<45	69.0	64.9	76.5	71.7	67.3	79.8	54.2	49.5	62.6
45-54	71.4	67.2	77.6	73.2	69.4	79.1	58.0	52.7	65.5
55-64	67.5	63.7	72.3	69.0	65.6	73.3	56.4	48.5	65.1
65-74	59.5	56.1	63.0	60.2	56.3	64.2	52.2	52.2	51.9
75+	46.9	46.5	47.2	47.8	47.2	48.2	38.0	45.6 ^f	32.7 ^f
Under 65	69.3	65.3	75.3	71.2	67.5	77.0	56.0	50.6	64.2
65 and over	53.8	52.2	55.1	54.5	52.6	56.1	46.9	50.1	44.1

^a Rates are based on End Results data from a series of hospital registries and one population-based registry.

^b Rates are from the SEER 9 areas (San Francisco, Connecticut, Detroit, Hawaii, Iowa, New Mexico, Seattle, Utah, Atlanta). Rates are based on follow-up of patients into 2003.

^c Rates are from the SEER 17 areas (San Francisco, Connecticut, Detroit, Hawaii, Iowa, New Mexico, Seattle, Utah, Atlanta, San Jose-Monterey, Los Angeles, Alaska Native Registry, Rural Georgia, California excluding SF/SJM/LA, Kentucky, Louisiana and New Jersey). California excluding SF/SJM/LA, Kentucky, Louisiana, and New Jersey contribute cases for diagnosis years 2000-2002. The remaining 13 SEER Areas contribute cases for the entire period 1996-2002. Rates are based on follow-up of patients into 2003.

^d Period survival provides a more up-to-date estimate of survival by piecing together the most recent conditional survival estimates from several cohorts. It is computed here using three calendar year blocks (2000-2002: 0-1 year survival), (1999-2001: 1-2 year survival), (1998-2000: 2-3 year survival), (1997-1999: 3-4 year survival), (1996-1998: 4-5 years survival).

^e The difference in rates between 1975-1977 and 1996-2002 is statistically significant ($p < .05$).

^f The standard error of the survival rate is between 5 and 10 percentage points.

^g The standard error of the survival rate is greater than 10 percentage points.

- Statistic could not be calculated due to fewer than 16 cases during the time period.

Table XX-5
ORAL CAVITY AND PHARYNX CANCER (Invasive)

SURVIVAL RATES, BY RACE, SEX, DIAGNOSIS YEAR, STAGE AND AGE

	All Races			Whites			Blacks		
	Total	Males	Females	Total	Males	Females	Total	Males	Females
5-YR RELATIVE SURVIVAL RATES									
YEAR OF DIAGNOSIS:									
1960-1963 ^a	-	-	-	45	-	-	-	-	-
1970-1973 ^a	-	-	-	43	-	-	-	-	-
1975-1977 ^b	52.9	51.7	55.7	54.5	53.9	55.8	36.4	30.2	48.9
1978-1980 ^b	53.8	52.3	57.0	56.0	55.1	57.9	35.3	29.8	46.9
1981-1983 ^b	52.5	51.0	55.7	55.0	53.8	57.4	31.6	26.3	45.0
1984-1986 ^b	54.5	51.9	59.7	56.7	55.0	60.0	35.9	29.7	50.9
1987-1989 ^b	54.1	51.2	59.8	56.6	54.3	61.1	34.6	30.4	44.8
1990-1992 ^b	56.1	53.8	61.0	58.8	57.2	62.1	33.5	28.6	46.8
1993-1995 ^b	58.8	57.4	61.8	61.4	60.8	62.7	38.7	33.4	51.7
1996-2002 ^b	59.9 ^e	58.7 ^e	62.4 ^e	62.2 ^e	62.0 ^e	62.7 ^e	39.9	35.1	51.3
5-YR PERIOD SURVIVAL RATES^{cd}									
YEAR OF DIAGNOSIS:									
1996-2002	59.4	58.1	62.2	61.6	61.0	62.9	40.5	36.7	49.2
STAGE DISTRIBUTION (%) 1996-2002^c									
All Stages									
Number of cases	30,031	20,522	9,509	24,344	16,629	7,715	3,061	2,185	876
Percent	100%	100%	100%	100%	100%	100%	100%	100%	100%
Localized	33	30	40	35	32	42	21	17	31
Regional	52	55	46	50	53	44	59	61	52
Distant	10	10	8	9	9	8	15	16	13
Unstaged	5	5	6	5	5	6	5	5	5
5-YR RELATIVE SURVIVAL RATES, 1996-2002^c									
AGE AT DIAGNOSIS:									
<45	75.2	70.7	83.3	78.2	74.8	84.6	59.1	52.5	69.4
45-54	62.8	61.5	67.1	67.6	66.9	69.9	37.7	35.4	45.2
55-64	57.4	55.7	62.0	59.7	58.0	64.4	36.8	34.9	42.7
65-74	53.4	52.2	55.6	55.5	55.0	56.5	30.9	25.0	41.3 ^f
75+	46.7	48.0	45.4	47.8	49.8	45.4	31.5 ^f	23.0 ^f	40.6 ^f
Under 65	63.4	61.0	69.8	66.4	64.6	71.4	42.4	38.6	52.4
65 and over	50.9	50.8	51.0	52.5	53.3	51.3	31.4	24.8	41.4
STAGE:									
All Stages	58.8	57.6	61.3	60.9	60.6	61.6	39.7	35.6	49.1
Localized	81.3	81.3	81.4	82.1	82.9	80.8	71.1	63.9	79.7
Regional	51.7	51.7	51.4	53.4	54.2	51.3	33.9	32.1	39.1
Distant	26.4	25.4	28.7	26.9	25.6	29.9	21.8	22.6	19.6 ^f
Unstaged	45.0	45.4	43.7	45.9	48.5	40.5	30.5	26.6 ^f	38.3 ^f

- ^a Rates are based on End Results data from a series of hospital registries and one population-based registry.
- ^b Rates are from the SEER 9 areas (San Francisco, Connecticut, Detroit, Hawaii, Iowa, New Mexico, Seattle, Utah, Atlanta).
- ^c Rates are based on follow-up of patients into 2003.
- ^c Rates are from the SEER 17 areas (San Francisco, Connecticut, Detroit, Hawaii, Iowa, New Mexico, Seattle, Utah, Atlanta, San Jose-Monterey, Los Angeles, Alaska Native Registry, Rural Georgia, California excluding SF/SJM/LA, Kentucky, Louisiana and New Jersey). California excluding SF/SJM/LA, Kentucky, Louisiana, and New Jersey contribute cases for diagnosis years 2000-2002. The remaining 13 SEER Areas contribute cases for the entire period 1996-2002. Rates are based on follow-up of patients into 2003.
- ^d Period survival provides a more up-to-date estimate of survival by piecing together the most recent conditional survival estimates from several cohorts. It is computed here using three calendar year blocks (2000-2002: 0-1 year survival), (1999-2001: 1-2 year survival), (1998-2000: 2-3 year survival), (1997-1999: 3-4 year survival), (1996-1998: 4-5 years survival).
- ^e The difference in rates between 1975-1977 and 1996-2002 is statistically significant ($p < .05$).
- ^f The standard error of the survival rate is between 5 and 10 percentage points.
- ^g The standard error of the survival rate is greater than 10 percentage points.
- Statistic could not be calculated due to fewer than 16 cases during the time period.

Table XXI-5
OVARY CANCER (Invasive)

SURVIVAL RATES, BY RACE, DIAGNOSIS YEAR, STAGE AND AGE

	All Races, Females			White Females			Black Females		
	All	<65	65+	All	<65	65+	All	<65	65+
<u>5-YR RELATIVE SURVIVAL RATES</u>									
YEAR OF DIAGNOSIS:									
1960-1963 ^a	-	-	-	32	-	-	32	-	-
1970-1973 ^a	-	-	-	36	-	-	32	-	-
1975-1977 ^b	37.0	44.3	21.9	36.4	43.6	21.7	43.4	49.5	25.5 ^f
1978-1980 ^b	38.7	47.2	22.6	37.9	46.4	22.8	40.3	49.7	13.0
1981-1983 ^b	40.4	50.3	24.3	40.2	50.4	24.4	39.3	46.3	23.4 ^f
1984-1986 ^b	39.8	49.5	24.9	38.9	48.5	24.6	40.6	52.4	21.5
1987-1989 ^b	39.9	51.3	24.7	39.9	51.4	25.1	35.5	47.8	17.9
1990-1992 ^b	42.4	55.5	25.6	42.5	56.3	25.6	36.8	48.6	17.6
1993-1995 ^b	43.2	55.6	27.9	42.6	55.5	27.5	42.6	54.3	27.4
1996-2002 ^b	44.9 ^e	56.4 ^e	28.7 ^e	44.6 ^e	56.6 ^e	28.8 ^e	38.9	48.1	22.6
<u>5-YR PERIOD SURVIVAL RATES^{cd}</u>									
YEAR OF DIAGNOSIS:									
1996-2002	45.0	57.3	27.5	44.9	57.8	27.7	36.5	47.2	18.4
<u>STAGE DISTRIBUTION (%) 1996-2002^c</u>									
All Stages									
Number of cases	22,395	12,028	10,367	19,215	9,993	9,222	1,505	867	638
Percent	100%	100%	100%	100%	100%	100%	100%	100%	100%
Localized	19	27	10	18	26	9	17	23	8
Regional	7	8	5	7	8	5	7	7	7
Distant	68	61	75	69	62	76	67	64	72
Unstaged	7	4	10	7	4	10	9	6	12
<u>5-YR RELATIVE SURVIVAL RATES, 1996-2002^c</u>									
AGE AT DIAGNOSIS:									
<45	72.5	-	-	73.1	-	-	68.3	-	-
45-54	55.2	-	-	55.5	-	-	42.4	-	-
55-64	46.4	-	-	46.6	-	-	37.4	-	-
65-74	34.5	-	-	34.4	-	-	25.1	-	-
75+	20.4	-	-	20.8	-	-	18.1	-	-
Under 65	56.4	-	-	56.4	-	-	49.7	-	-
65 and over	28.0	-	-	28.1	-	-	22.2	-	-
STAGE:									
All Stages	44.7	56.4	28.0	44.2	56.4	28.1	39.5	49.7	22.2
Localized	93.1	93.4	92.4	93.3	93.8	91.5	93.9	93.6	90.3 ^f
Regional	69.0	74.1	58.2	69.0	74.7	57.6	59.9 ^f	61.3 ^f	56.1 ^g
Distant	29.6	38.5	19.6	29.7	38.8	20.0	23.8	30.7	13.7
Unstaged	23.3	44.5	10.4	23.0	43.9	11.2	21.9 ^f	50.6 ^f	-

Ovary excludes borderline cases or histologies 8442, 8451, 8462, 8472, and 8473.

- ^a Rates are based on End Results data from a series of hospital registries and one population-based registry.
- ^b Rates are from the SEER 9 areas (San Francisco, Connecticut, Detroit, Hawaii, Iowa, New Mexico, Seattle, Utah, Atlanta).
- ^c Rates are based on follow-up of patients into 2003.
- ^c Rates are from the SEER 17 areas (San Francisco, Connecticut, Detroit, Hawaii, Iowa, New Mexico, Seattle, Utah, Atlanta, San Jose-Monterey, Los Angeles, Alaska Native Registry, Rural Georgia, California excluding SF/SJM/LA, Kentucky, Louisiana and New Jersey). California excluding SF/SJM/LA, Kentucky, Louisiana, and New Jersey contribute cases for diagnosis years 2000-2002. The remaining 13 SEER Areas contribute cases for the entire period 1996-2002. Rates are based on follow-up of patients into 2003.
- ^d Period survival provides a more up-to-date estimate of survival by piecing together the most recent conditional survival estimates from several cohorts. It is computed here using three calendar year blocks (2000-2002: 0-1 year survival), (1999-2001: 1-2 year survival), (1998-2000: 2-3 year survival), (1997-1999: 3-4 year survival), (1996-1998: 4-5 years survival).
- ^e The difference in rates between 1975-1977 and 1996-2002 is statistically significant (p<.05).
- ^f The standard error of the survival rate is between 5 and 10 percentage points.
- ^g The standard error of the survival rate is greater than 10 percentage points.
- Statistic could not be calculated due to fewer than 16 cases during the time period.

Table XXII-5
PANCREAS CANCER (Invasive)

SURVIVAL RATES, BY RACE, SEX, DIAGNOSIS YEAR, STAGE AND AGE

	All Races			Whites			Blacks		
	Total	Males	Females	Total	Males	Females	Total	Males	Females
<u>5-YR RELATIVE SURVIVAL RATES</u>									
YEAR OF DIAGNOSIS:									
1960-1963 ^a	-	-	-	1	1	2	1	0	3
1970-1973 ^a	-	-	-	2	2	2	2	0	3
1975-1977 ^b	2.4	2.6	2.2	2.5	2.7	2.2	2.3	2.7	2.0
1978-1980 ^b	3.0	2.8	3.2	2.6	2.6	2.6	5.9	4.3	7.4
1981-1983 ^b	3.0	2.6	3.4	2.8	2.3	3.3	3.7	4.0	3.2
1984-1986 ^b	2.9	2.4	3.5	2.6	2.2	3.0	4.9	4.2	5.3
1987-1989 ^b	3.8	3.5	4.0	3.4	3.2	3.5	5.7	5.1	6.1
1990-1992 ^b	4.5	4.2	4.7	4.6	4.4	4.8	3.6	3.2	4.0
1993-1995 ^b	4.3	4.0	4.5	4.3	4.0	4.5	3.7	3.5	3.8
1996-2002 ^b	5.0 ^e	5.0 ^e	4.9 ^e	4.9 ^e	5.3 ^e	4.5 ^e	4.7 ^e	3.2	5.8 ^e
<u>5-YR PERIOD SURVIVAL RATES^{cd}</u>									
YEAR OF DIAGNOSIS:									
1996-2002	5.2	5.3	5.2	5.1	5.5	4.7	4.7	3.1	6.1
<u>STAGE DISTRIBUTION (%) 1996-2002^c</u>									
All Stages									
Number of cases	31,156	15,126	16,030	25,287	12,382	12,905	3,506	1,592	1,914
Percent	100%	100%	100%	100%	100%	100%	100%	100%	100%
Localized	7	6	8	7	6	8	8	6	9
Regional	26	25	26	26	25	26	24	23	25
Distant	52	55	49	52	55	49	55	59	51
Unstaged	15	13	17	16	14	18	14	12	15
<u>5-YR RELATIVE SURVIVAL RATES, 1996-2002^c</u>									
AGE AT DIAGNOSIS:									
<45	19.7	16.7	23.4	19.5	17.4	22.1	19.4	16.1	22.9 ^f
45-54	7.9	7.0	9.1	8.2	7.9	8.9	4.5	2.8	7.6
55-64	5.2	4.2	6.7	5.2	4.1	6.7	4.7	3.6	6.3
65-74	3.9	4.2	3.6	3.9	4.6	3.2	3.5	2.2	4.4
75+	2.6	2.9	2.3	2.5	2.8	2.3	2.3	-	2.6
Under 65	7.8	6.6	9.5	7.8	6.9	9.2	6.3	4.6	8.9
65 and over	3.3	3.7	2.9	3.2	3.9	2.7	3.0	1.8	3.6
STAGE:									
All Stages	5.0	5.1	4.9	4.9	5.3	4.6	4.6	3.4	5.5
Localized	19.6	18.3	20.5	19.5	18.9	19.7	18.4	13.6 ^f	21.0
Regional	8.2	8.5	8.0	8.2	9.3	7.3	7.2	4.7	8.7
Distant	1.9	2.2	1.5	1.8	2.1	1.5	1.5	1.8	1.3
Unstaged	3.7	4.3	3.2	3.4	4.2	2.7	4.5	2.6	5.4

^a Rates are based on End Results data from a series of hospital registries and one population-based registry.
^b Rates are from the SEER 9 areas (San Francisco, Connecticut, Detroit, Hawaii, Iowa, New Mexico, Seattle, Utah, Atlanta).
Rates are based on follow-up of patients into 2003.
^c Rates are from the SEER 17 areas (San Francisco, Connecticut, Detroit, Hawaii, Iowa, New Mexico, Seattle, Utah, Atlanta, San Jose-Monterey, Los Angeles, Alaska Native Registry, Rural Georgia, California excluding SF/SJM/LA, Kentucky, Louisiana and New Jersey). California excluding SF/SJM/LA, Kentucky, Louisiana, and New Jersey contribute cases for diagnosis years 2000-2002. The remaining 13 SEER Areas contribute cases for the entire period 1996-2002. Rates are based on follow-up of patients into 2003.
^d Period survival provides a more up-to-date estimate of survival by piecing together the most recent conditional survival estimates from several cohorts. It is computed here using three calendar year blocks (2000-2002: 0-1 year survival), (1999-2001: 1-2 year survival), (1998-2000: 2-3 year survival), (1997-1999: 3-4 year survival), (1996-1998: 4-5 years survival).
^e The difference in rates between 1975-1977 and 1996-2002 is statistically significant (p<.05).
^f The standard error of the survival rate is between 5 and 10 percentage points.
^g The standard error of the survival rate is greater than 10 percentage points.
- Statistic could not be calculated due to fewer than 16 cases during the time period.

Table XXIII-5
PROSTATE CANCER (Invasive)

SURVIVAL RATES, BY RACE, DIAGNOSIS YEAR, STAGE AND AGE

	All Races, Males			White Males			Black Males		
	All	<65	65+	All	<65	65+	All	<65	65+
<u>5-YR RELATIVE SURVIVAL RATES</u>									
YEAR OF DIAGNOSIS:									
1960-1963 ^a	-	-	-	50	-	-	35	-	-
1970-1973 ^a	-	-	-	63	-	-	55	-	-
1975-1977 ^b	68.8	73.4	67.1	69.6	75.2	67.7	61.3	62.0	60.9
1978-1980 ^b	71.9	75.7	70.5	73.2	77.2	71.7	62.7	65.4	61.4
1981-1983 ^b	73.7	76.3	72.8	75.0	78.0	73.9	63.7	65.4	62.9
1984-1986 ^b	76.0	77.4	75.6	77.3	79.1	76.7	66.2	67.5	65.7
1987-1989 ^b	83.8	83.3	83.9	85.4	84.8	85.6	72.2	72.8	71.9
1990-1992 ^b	94.6	93.6	94.9	95.8	94.6	96.1	85.9	87.3	85.3
1993-1995 ^b	97.4	96.8	97.6	98.3	97.4	98.6	93.7	94.6	93.1
1996-2002 ^b	99.9 ^e	100.0 ^e	99.8 ^e	99.9 ^e	100.0 ^e	99.8 ^e	98.0 ^e	99.2 ^e	97.5 ^e
<u>5-YR PERIOD SURVIVAL RATES^{cd}</u>									
YEAR OF DIAGNOSIS:									
1996-2002	99.9	99.9	99.9	100.0	100.0	99.9	98.6	99.1	98.1
<u>STAGE DISTRIBUTION (%) 1996-2002^c</u>									
All Stages									
Number of cases	225,416	80,018	145,398	184,678	63,876	120,802	28,856	13,051	15,805
Percent	100%	100%	100%	100%	100%	100%	100%	100%	100%
Localized/Regional	91	95	89	92	95	90	88	92	85
Distant	5	3	5	4	3	5	6	5	8
Unstaged	4	2	6	4	2	5	5	3	7
<u>5-YR RELATIVE SURVIVAL RATES, 1996-2002^c</u>									
AGE AT DIAGNOSIS:									
<45	93.0	-	-	92.3	-	-	94.9	-	-
45-54	97.9	-	-	98.1	-	-	96.8	-	-
55-64	100.0	-	-	100.0	-	-	99.7	-	-
65-74	100.0	-	-	100.0	-	-	100.0	-	-
75+	98.2	-	-	99.0	-	-	88.9	-	-
Under 65	99.8	-	-	100.0	-	-	98.8	-	-
65 and over	99.8	-	-	99.8	-	-	97.0	-	-
STAGE:									
All Stages	99.9	99.8	99.8	99.9	100.0	99.8	97.6	98.8	97.0
Localized/Regional	100.0	100.0	100.0	100.0	100.0	100.0	100.0	100.0	100.0
Distant	33.3	33.2	33.5	32.7	33.6	32.5	31.1	29.3	32.3
Unstaged	79.5	89.4	76.9	80.5	91.2	77.7	74.6	82.4	71.0

^a Rates are based on End Results data from a series of hospital registries and one population-based registry.

^b Rates are from the SEER 9 areas (San Francisco, Connecticut, Detroit, Hawaii, Iowa, New Mexico, Seattle, Utah, Atlanta).

Rates are based on follow-up of patients into 2003.

^c Rates are from the SEER 17 areas (San Francisco, Connecticut, Detroit, Hawaii, Iowa, New Mexico, Seattle, Utah, Atlanta, San Jose-Monterey, Los Angeles, Alaska Native Registry, Rural Georgia, California excluding SF/SJM/LA, Kentucky, Louisiana and New Jersey). California excluding SF/SJM/LA, Kentucky, Louisiana, and New Jersey contribute cases for diagnosis years 2000-2002. The remaining 13 SEER Areas contribute cases for the entire period 1996-2002. Rates are based on follow-up of patients into 2003.

^d Period survival provides a more up-to-date estimate of survival by piecing together the most recent conditional survival estimates from several cohorts. It is computed here using three calendar year blocks (2000-2002: 0-1 year survival), (1999-2001: 1-2 year survival), (1998-2000: 2-3 year survival), (1997-1999: 3-4 year survival), (1996-1998: 4-5 years survival).

^e The difference in rates between 1975-1977 and 1996-2002 is statistically significant (p<.05).

^f The standard error of the survival rate is between 5 and 10 percentage points.

^g The standard error of the survival rate is greater than 10 percentage points.

- Statistic could not be calculated due to fewer than 16 cases during the time period.

Table XXIV-5
STOMACH CANCER (Invasive)

SURVIVAL RATES, BY RACE, SEX, DIAGNOSIS YEAR, STAGE AND AGE

	All Races			Whites			Blacks		
	Total	Males	Females	Total	Males	Females	Total	Males	Females
5-YR RELATIVE SURVIVAL RATES									
YEAR OF DIAGNOSIS:									
1960-1963 ^a	-	-	-	11	10	13	8	5	14
1970-1973 ^a	-	-	-	13	12	14	13	15	10
1975-1977 ^b	15.8	15.0	16.9	14.7	13.7	16.3	16.3	16.4	16.0
1978-1980 ^b	16.7	15.0	19.5	16.1	14.4	18.7	16.9	16.0	18.5
1981-1983 ^b	18.0	17.1	19.4	16.9	16.0	18.2	17.2	17.1	17.2
1984-1986 ^b	18.3	16.2	21.6	17.6	15.2	21.5	20.0	17.5	23.4
1987-1989 ^b	20.6	17.5	25.8	19.1	16.0	24.3	19.9	17.2	24.4
1990-1992 ^b	21.7	18.6	26.6	19.4	16.4	24.2	24.5	23.7	25.4
1993-1995 ^b	21.9	20.8	23.7	20.9	19.7	23.0	20.0	18.0	22.8
1996-2002 ^b	23.9 ^e	22.8 ^e	25.5 ^e	21.9 ^e	20.5 ^e	24.3 ^e	23.3 ^e	21.2	25.4 ^e
5-YR PERIOD SURVIVAL RATES^{cd}									
YEAR OF DIAGNOSIS:									
1996-2002	24.3	23.0	26.2	22.7	21.5	24.7	22.3	19.6	25.7
STAGE DISTRIBUTION (%) 1996-2002^c									
All Stages									
Number of cases	24,188	14,688	9,500	17,002	10,580	6,422	3,074	1,711	1,363
Percent	100%	100%	100%	100%	100%	100%	100%	100%	100%
Localized	23	23	24	23	22	24	24	22	26
Regional	31	33	29	30	32	28	30	31	28
Distant	33	35	32	34	35	32	33	36	30
Unstaged	12	10	15	12	11	15	13	10	16
5-YR RELATIVE SURVIVAL RATES, 1996-2002^c									
AGE AT DIAGNOSIS:									
<45	28.2	26.4	30.5	27.7	25.5	30.4	31.4	26.7	37.6
45-54	26.7	24.8	30.3	23.6	21.8	27.4	30.8	24.5	40.0
55-64	23.9	23.3	25.4	22.0	21.2	24.0	21.2	18.5	26.4
65-74	24.8	22.8	28.3	22.3	20.1	26.5	24.4	22.7	26.3
75+	20.4	19.7	21.0	19.5	19.4	19.7	13.2	10.4	15.5
Under 65	25.7	24.3	28.4	23.7	22.1	26.9	27.1	22.4	34.9
65 and over	22.6	21.5	24.1	20.9	19.8	22.4	19.3	17.7	20.4
STAGE:									
All Stages	23.9	22.7	25.6	22.0	20.9	23.9	23.1	20.5	26.4
Localized	61.9	59.4	65.5	58.6	55.6	63.2	58.8	56.0	61.8
Regional	22.2	22.0	22.7	20.3	20.3	20.2	23.2	21.4	26.0
Distant	3.4	3.3	3.6	3.1	2.9	3.6	2.5	2.3	3.2
Unstaged	13.0	12.4	13.6	12.7	12.2	13.1	10.5	7.9	12.9

^a Rates are based on End Results data from a series of hospital registries and one population-based registry.
^b Rates are from the SEER 9 areas (San Francisco, Connecticut, Detroit, Hawaii, Iowa, New Mexico, Seattle, Utah, Atlanta).
Rates are based on follow-up of patients into 2003.
^c Rates are from the SEER 17 areas (San Francisco, Connecticut, Detroit, Hawaii, Iowa, New Mexico, Seattle, Utah, Atlanta, San Jose-Monterey, Los Angeles, Alaska Native Registry, Rural Georgia, California excluding SF/SJM/LA, Kentucky, Louisiana and New Jersey). California excluding SF/SJM/LA, Kentucky, Louisiana, and New Jersey contribute cases for diagnosis years 2000-2002. The remaining 13 SEER Areas contribute cases for the entire period 1996-2002. Rates are based on follow-up of patients into 2003.
^d Period survival provides a more up-to-date estimate of survival by piecing together the most recent conditional survival estimates from several cohorts. It is computed here using three calendar year blocks (2000-2002: 0-1 year survival), (1999-2001: 1-2 year survival), (1998-2000: 2-3 year survival), (1997-1999: 3-4 year survival), (1996-1998: 4-5 years survival).
^e The difference in rates between 1975-1977 and 1996-2002 is statistically significant (p<.05).
^f The standard error of the survival rate is between 5 and 10 percentage points.
^g The standard error of the survival rate is greater than 10 percentage points.
- Statistic could not be calculated due to fewer than 16 cases during the time period.

Table XXV-5
TESTIS CANCER (Invasive)

SURVIVAL RATES, BY RACE, DIAGNOSIS YEAR, STAGE AND AGE

	All Races, Males			White Males			Black Males		
	All	<50	50+	All	<50	50+	All	<50	50+
<u>5-YR RELATIVE SURVIVAL RATES</u>									
YEAR OF DIAGNOSIS:									
1960-1963 ^a	-	-	-	63	-	-	-	-	-
1970-1973 ^a	-	-	-	72	-	-	-	-	-
1975-1977 ^b	82.7	83.2	78.2	82.7	83.3	78.1	82.0 ^f	85.0 ^f	-
1978-1980 ^b	89.0	89.3	84.2	89.4	89.7	85.1	72.7 ^f	77.1 ^f	-
1981-1983 ^b	92.2	92.6	87.1	92.5	92.9	87.4	87.5 ^f	84.7 ^f	-
1984-1986 ^b	92.7	93.6	82.3	93.2	94.0	82.6	87.0 ^f	89.4 ^f	-
1987-1989 ^b	95.0	94.9	95.5	95.3	95.3	95.2	88.4 ^f	87.8 ^f	-
1990-1992 ^b	95.8	95.8	94.4	96.2	96.1	95.4	83.6 ^f	88.6 ^f	-
1993-1995 ^b	95.9	96.4	86.7	96.1	96.6	87.8	88.7	89.9	-
1996-2002 ^b	96.1 ^e	96.6 ^e	89.9 ^e	96.4 ^e	96.8 ^e	90.5 ^e	88.8	90.1	-
<u>5-YR PERIOD SURVIVAL RATES^{cd}</u>									
YEAR OF DIAGNOSIS:									
1996-2002	95.9	96.1	93.3	96.1	96.2	93.9	91.0	93.2	-
<u>STAGE DISTRIBUTION (%) 1996-2002^c</u>									
All Stages									
Number of cases	9,706	8,900	806	8,995	8,246	749	288	261	27
Percent	100%	100%	100%	100%	100%	100%	100%	100%	100%
Localized	70	70	66	70	71	66	59	61	48
Regional	18	18	19	18	17	18	22	21	26
Distant	11	11	13	11	11	13	16	16	15
Unstaged	1	1	3	1	1	3	3	2	11
<u>5-YR RELATIVE SURVIVAL RATES, 1996-2002^c</u>									
AGE AT DIAGNOSIS:									
<45	96.0	-	-	96.2	-	-	92.0	-	-
45-54	95.7	-	-	96.1	-	-	89.8 ^f	-	-
55-64	91.9	-	-	92.6	-	-	-	-	-
65-74	80.5 ^f	-	-	82.4 ^f	-	-	-	-	-
75+	64.2 ^g	-	-	70.3 ^g	-	-	-	-	-
Under 65	95.9	-	-	96.1	-	-	90.8	-	-
65 and over	76.3 ^f	-	-	79.9 ^f	-	-	-	-	-
STAGE:									
All Stages	95.7	95.9	92.1	95.9	96.2	93.0	90.0	91.7	54.8 ^g
Localized	99.5	99.5	99.1	99.5	99.5	99.7	98.8	100.0	-
Regional	96.3	96.4	92.9	96.2	96.1	93.8	96.1	98.6	-
Distant	70.1	71.5	53.8 ^f	71.5	73.1	54.1 ^f	51.7 ^f	51.6 ^f	-
Unstaged	87.5	91.3	67.6 ^g	88.8	91.7	72.3 ^g	-	-	-

^a Rates are based on End Results data from a series of hospital registries and one population-based registry.

^b Rates are from the SEER 9 areas (San Francisco, Connecticut, Detroit, Hawaii, Iowa, New Mexico, Seattle, Utah, Atlanta).

Rates are based on follow-up of patients into 2003.

^c Rates are from the SEER 17 areas (San Francisco, Connecticut, Detroit, Hawaii, Iowa, New Mexico, Seattle, Utah, Atlanta, San Jose-Monterey, Los Angeles, Alaska Native Registry, Rural Georgia, California excluding SF/SJM/LA, Kentucky, Louisiana and New Jersey). California excluding SF/SJM/LA, Kentucky, Louisiana, and New Jersey contribute cases for diagnosis years 2000-2002. The remaining 13 SEER Areas contribute cases for the entire period 1996-2002. Rates are based on follow-up of patients into 2003.

^d Period survival provides a more up-to-date estimate of survival by piecing together the most recent conditional survival estimates from several cohorts. It is computed here using three calendar year blocks (2000-2002: 0-1 year survival), (1999-2001: 1-2 year survival), (1998-2000: 2-3 year survival), (1997-1999: 3-4 year survival), (1996-1998: 4-5 years survival).

^e The difference in rates between 1975-1977 and 1996-2002 is statistically significant (p<.05).

^f The standard error of the survival rate is between 5 and 10 percentage points.

^g The standard error of the survival rate is greater than 10 percentage points.

- Statistic could not be calculated due to fewer than 16 cases during the time period.

Table XXVI-5
THYROID CANCER (Invasive)

SURVIVAL RATES, BY RACE, SEX, DIAGNOSIS YEAR, STAGE AND AGE

	All Races			Whites			Blacks		
	Total	Males	Females	Total	Males	Females	Total	Males	Females
5-YR RELATIVE SURVIVAL RATES									
YEAR OF DIAGNOSIS:									
1960-1963 ^a	-	-	-	83	75	87	-	-	-
1970-1973 ^a	-	-	-	86	82	87	-	-	-
1975-1977 ^b	93.0	92.5	93.2	92.9	92.3	93.1	90.5	83.9 ^g	91.6
1978-1980 ^b	93.1	88.4	94.5	92.6	88.9	93.8	90.5	68.8 ^g	95.7
1981-1983 ^b	94.4	92.9	94.8	93.9	91.9	94.5	96.2	100.0	93.8
1984-1986 ^b	93.7	90.5	94.7	93.7	90.1	94.7	89.9	86.1 ^f	90.7
1987-1989 ^b	95.1	92.4	95.8	94.9	92.4	95.5	92.6	90.7 ^f	92.7
1990-1992 ^b	94.9	91.2	96.0	95.5	92.5	96.5	86.9	84.9 ^f	87.5
1993-1995 ^b	96.1	93.1	97.0	96.2	92.9	97.2	93.4	88.3 ^f	94.4
1996-2002 ^b	96.8 ^e	94.3	97.6 ^e	97.2 ^e	94.9	97.9 ^e	94.4	87.9	95.2
5-YR PERIOD SURVIVAL RATES^{cd}									
YEAR OF DIAGNOSIS:									
1996-2002	96.8	94.5	97.4	97.1	94.8	97.7	93.8	87.7	94.7
STAGE DISTRIBUTION (%) 1996-2002^c									
All Stages									
Number of cases	24,422	5,705	18,717	20,233	4,882	15,351	1,378	260	1,118
Percent	100%	100%	100%	100%	100%	100%	100%	100%	100%
Localized	58	48	61	58	49	62	62	52	64
Regional	34	41	32	34	41	32	28	34	27
Distant	5	9	4	5	8	4	7	10	6
Unstaged	3	3	2	3	3	3	3	3	2
5-YR RELATIVE SURVIVAL RATES, 1996-2002^c									
AGE AT DIAGNOSIS:									
<45	99.2	97.5	99.6	99.3	97.9	99.6	97.7	89.9	99.0
45-54	97.8	95.3	98.5	98.1	96.0	98.6	93.7	81.5 ^f	96.1
55-64	94.7	91.4	95.7	95.0	91.8	96.1	93.2	86.7 ^f	94.7
65-74	91.4	90.2	91.8	91.5	89.1	92.3	90.3 ^f	87.8 ^g	89.2 ^f
75+	76.3	79.0 ^f	75.5	78.3	79.2 ^f	78.1	57.5 ^g	-	51.0 ^g
Under 65	98.2	95.8	98.9	98.4	96.3	99.0	95.8	87.0	97.8
65 and over	86.2	86.8	85.9	86.8	86.4	87.1	81.7 ^f	89.9 ^g	76.6 ^f
STAGE:									
All Stages	96.7	94.5	97.3	97.0	94.8	97.6	94.2	89.1	95.3
Localized	99.7	99.2	99.8	99.8	99.4	99.9	98.0	94.7	98.5
Regional	96.9	96.2	97.1	97.0	96.4	97.2	96.3	94.0	96.8
Distant	56.4	56.0	56.4	56.8	56.5	56.8	47.1 ^f	37.5 ^g	51.5 ^f
Unstaged	87.0	85.0	87.0	87.7	83.9	88.2	82.0 ^f	-	79.2 ^f

^a Rates are based on End Results data from a series of hospital registries and one population-based registry.
^b Rates are from the SEER 9 areas (San Francisco, Connecticut, Detroit, Hawaii, Iowa, New Mexico, Seattle, Utah, Atlanta).
Rates are based on follow-up of patients into 2003.
^c Rates are from the SEER 17 areas (San Francisco, Connecticut, Detroit, Hawaii, Iowa, New Mexico, Seattle, Utah, Atlanta, San Jose-Monterey, Los Angeles, Alaska Native Registry, Rural Georgia, California excluding SF/SJM/LA, Kentucky, Louisiana and New Jersey). California excluding SF/SJM/LA, Kentucky, Louisiana, and New Jersey contribute cases for diagnosis years 2000-2002. The remaining 13 SEER Areas contribute cases for the entire period 1996-2002. Rates are based on follow-up of patients into 2003.
^d Period survival provides a more up-to-date estimate of survival by piecing together the most recent conditional survival estimates from several cohorts. It is computed here using three calendar year blocks (2000-2002: 0-1 year survival), (1999-2001: 1-2 year survival), (1998-2000: 2-3 year survival), (1997-1999: 3-4 year survival), (1996-1998: 4-5 years survival).
^e The difference in rates between 1975-1977 and 1996-2002 is statistically significant (p<.05).
^f The standard error of the survival rate is between 5 and 10 percentage points.
^g The standard error of the survival rate is greater than 10 percentage points.
- Statistic could not be calculated due to fewer than 16 cases during the time period.

Table XXVII-5
URINARY BLADDER CANCER (Invasive and *In Situ*)

SURVIVAL RATES, BY RACE, SEX, DIAGNOSIS YEAR, STAGE AND AGE

	All Races			Whites			Blacks		
	Total	Males	Females	Total	Males	Females	Total	Males	Females
5-YR RELATIVE SURVIVAL RATES									
YEAR OF DIAGNOSIS:									
1960-1963 ^a	-	-	-	53	53	53	24	24	24
1970-1973 ^a	-	-	-	61	61	60	36	38	27
1975-1977 ^b	73.3	74.8	69.3	74.3	75.5	71.2	50.4	56.4	38.8 ^f
1978-1980 ^b	75.7	77.0	72.3	76.7	77.4	74.5	55.3	64.0	40.5
1981-1983 ^b	78.4	79.7	74.8	79.2	80.3	76.2	60.2	65.5	48.4 ^f
1984-1986 ^b	78.1	79.4	74.6	78.7	79.9	75.6	60.8	63.7	54.2 ^f
1987-1989 ^b	80.6	82.8	74.2	81.4	83.5	75.5	63.4	68.0	54.6 ^f
1990-1992 ^b	81.0	83.5	73.9	82.0	84.4	75.2	64.8	67.9	59.8
1993-1995 ^b	82.6	84.7	76.7	83.4	85.2	78.6	62.7	70.4	47.2
1996-2002 ^b	81.8 ^e	83.3 ^e	77.8 ^e	82.9 ^e	84.2 ^e	79.2 ^e	64.5 ^e	68.9 ^e	55.7 ^e
5-YR PERIOD SURVIVAL RATES^{cd}									
YEAR OF DIAGNOSIS:									
1996-2002	80.4	82.3	75.3	81.4	83.0	76.9	63.8	69.4	53.6
STAGE DISTRIBUTION (%) 1996-2002^c									
All Stages									
Number of cases	53,946	40,172	13,774	49,219	36,911	12,308	2,533	1,601	932
Percent	100%	100%	100%	100%	100%	100%	100%	100%	100%
Localized	74	76	70	75	77	72	59	64	52
Regional	19	18	21	18	18	20	28	25	33
Distant	4	3	5	3	3	5	6	5	9
Unstaged	3	3	4	3	3	4	6	6	5
5-YR RELATIVE SURVIVAL RATES, 1996-2002^c									
AGE AT DIAGNOSIS:									
<45	90.4	90.4	90.6	91.3	91.1	91.9	81.7	83.5 ^f	78.4 ^f
45-54	85.7	86.5	83.2	86.9	87.4	85.1	71.8	76.3	58.9 ^f
55-64	85.6	86.5	82.4	86.5	87.2	83.8	75.6	80.7	62.0 ^f
65-74	81.6	83.0	77.3	82.6	83.7	78.8	60.4	64.9	53.1
75+	72.8	75.9	66.1	74.0	76.9	67.3	48.6	51.3 ^f	44.1
Under 65	86.3	87.0	83.8	87.2	87.8	85.4	75.5	79.8	63.7
65 and over	77.6	80.1	71.2	78.6	81.0	72.5	54.6	59.0	48.5
STAGE:									
All Stages	80.8	82.8	75.4	81.8	83.6	76.8	63.7	68.9	53.9
Localized	93.7	94.5	91.3	94.2	95.0	91.8	84.0	86.4	77.1
Regional	46.0	48.1	40.7	46.8	48.8	41.5	38.0	42.2	32.0
Distant	6.2	6.0	6.1	5.9	6.0	5.2	7.7	2.1	14.1
Unstaged	60.4	65.1	47.0	61.6	65.7	48.8	42.6 ^f	48.8 ^f	30.9 ^f

^a Rates are based on End Results data from a series of hospital registries and one population-based registry.

^b Rates are from the SEER 9 areas (San Francisco, Connecticut, Detroit, Hawaii, Iowa, New Mexico, Seattle, Utah, Atlanta).

Rates are based on follow-up of patients into 2003.

^c Rates are from the SEER 17 areas (San Francisco, Connecticut, Detroit, Hawaii, Iowa, New Mexico, Seattle, Utah, Atlanta, San Jose-Monterey, Los Angeles, Alaska Native Registry, Rural Georgia, California excluding SF/SJM/LA, Kentucky, Louisiana and New Jersey). California excluding SF/SJM/LA, Kentucky, Louisiana, and New Jersey contribute cases for diagnosis years 2000-2002. The remaining 13 SEER Areas contribute cases for the entire period 1996-2002. Rates are based on follow-up of patients into 2003.

^d Period survival provides a more up-to-date estimate of survival by piecing together the most recent conditional survival estimates from several cohorts. It is computed here using three calendar year blocks (2000-2002: 0-1 year survival), (1999-2001: 1-2 year survival), (1998-2000: 2-3 year survival), (1997-1999: 3-4 year survival), (1996-1998: 4-5 years survival).

^e The difference in rates between 1975-1977 and 1996-2002 is statistically significant ($p < .05$).

^f The standard error of the survival rate is between 5 and 10 percentage points.

^g The standard error of the survival rate is greater than 10 percentage points.

- Statistic could not be calculated due to fewer than 16 cases during the time period.

Table XXVIII-9

CHILDHOOD CANCER
SEER Incidence, U.S. Death and 5-Year Relative Survival Rates
For Top Cancer Sites^f By 5-Year Age Groups
All Races, Males and Females

Age/Site	SEER Incidence ^a					US Mortality ^b					Survival ^a	
	2000-2003 Num Cases	2000-2003 Rate	1975-2003 APC	1975-1988 APC	1989-2003 APC	2000-2003 Num Deaths	2000-2003 Rate	1975-2003 APC	1975-1988 APC	1989-2003 APC	1975-1977	1996-2002
<u>Ages 0-4</u>												
All Sites	4,457	21.0	0.7*	1.1*	0.1 ^o	1,941	2.5	-2.8*	-2.7*	-2.3*	57.3	80.1 ^c
Soft tissue	342	1.6	0.6	0.8	1.0	93	0.1	-2.1*	-0.1	-2.6	61.1 ^e	71.3
Kidney and Renal pelvis	390	1.8	0.3	-0.5	-0.4	67	0.1	-4.0*	-6.4*	-1.5 [#]	72.2	92.0 ^c
Eye and Orbit	270	1.3	0.7	1.5	-0.3	24	0.0	-	-	-	87.1 ^e	94.5
Brain and Other nervous	845	4.0	1.4*	3.6*	0.3 [#]	488	0.6	-1.3*	-1.4*	-1.8*	52.4	71.0 ^c
Other endocrine	290	1.4	-	-	-	317	0.4	-	-	-	33.8 ^e	63.8 ^c
Leukemia	1,649	7.8	0.7*	1.1	0.5	643	0.8	-3.2*	-3.9*	-2.3* [#]	55.6	85.2 ^c
Acute lymphocytic	1,332	6.3	0.8*	1.7*	0.7	226	0.3	-4.6*	-5.8*	-1.9* [#]	63.4	90.5 ^c
<u>Ages 5-9</u>												
All Sites	2,475	11.2	0.3	1.0	-0.1	2,035	2.5	-3.0*	-3.5*	-2.2* [#]	58.2	77.9 ^c
Brain and Other nervous	707	3.2	0.5	1.6	-0.1	713	0.9	-0.8*	-1.1*	-1.3*	58.0	72.4 ^c
Leukemia	847	3.8	0.6	1.0	-0.9	599	0.7	-5.0*	-5.7*	-4.3* [#]	52.0	80.7 ^c
Acute lymphocytic	701	3.2	0.9*	1.8	-0.5	331	0.4	-5.8*	-6.6*	-4.2* [#]	55.2	84.0 ^c
<u>Ages 10-14</u>												
All Sites	2,814	12.5	0.7*	1.1	0.1	2,135	2.5	-2.2*	-2.7*	-1.5* [#]	58.8	79.7 ^c
Bone and Joint	285	1.3	0.0	2.7*	-1.7 [#]	259	0.3	-1.5*	-3.3*	0.9 [#]	53.8 ^e	69.8 ^c
Brain and Other nervous	593	2.6	1.3*	0.6	0.1	576	0.7	-1.2*	-2.1*	-0.6	59.5	80.1 ^c
Hodgkin lymphoma	242	1.1	-1.1*	-1.1	-2.3	18	0.0	-	-	-	78.7	95.2 ^c
Leukemia	640	2.8	0.4	3.0	0.4	697	0.8	-3.0*	-3.2*	-2.8*	35.2	70.1 ^c
Acute lymphocytic	440	1.9	0.8	3.6	0.0 ^o	348	0.4	-3.4*	-2.8*	-3.1*	43.6 ^e	80.7 ^c
<u>Ages 15-19</u>												
All Sites	4,487	21.0	0.6*	1.0*	0.4	2,890	3.6	-2.0*	-2.4*	-1.6* [#]	67.7	79.7 ^c
Bone and Joint	330	1.5	0.5	1.4	0.4	397	0.5	-1.5*	-2.8*	0.2 [#]	51.0 ^e	63.3 ^c
Melanoma of the skin	364	1.7	1.7*	0.8	1.0	34	0.0	-	-	-	75.1 ^e	97.5 ^c
Testis(males)	373	3.4	1.2*	1.6	0.4	35	0.1	-	-	-	66.0 ^e	91.7 ^c
Brain and Other nervous	423	2.0	0.4	1.3	-1.0	436	0.5	-1.1*	-1.0	-1.0*	64.7	79.9 ^c
Thyroid	384	1.8	1.4*	1.3	2.6*	-	-	-	-	-	100.0	97.5
Hodgkin lymphoma	629	2.9	-0.7*	0.0	-2.0* ^o	89	0.1	-4.3*	-2.8*	-4.4*	88.9	94.9 ^c
Non-Hodgkin lymphoma	389	1.8	1.7*	3.5*	1.0	218	0.3	-2.7*	-2.5*	-3.3*	45.2 ^e	75.5 ^c
Leukemia	632	3.0	0.9*	-0.3	1.9	887	1.1	-2.1*	-2.2*	-2.4*	24.4	48.9 ^c
Acute lymphocytic	360	1.7	1.2*	1.6	1.6	391	0.5	-2.0*	-1.2	-2.3*	29.5 ^e	52.7 ^c

The APC is the Annual Percent Change over the time interval.

Note: Incidence and death rates are per 100,000 and are age-adjusted to the 2000 US Std Population (19 age groups - Census P25-1130). Survival rates are expressed as percents.

^a Incidence data used in calculating the rates are from the 17 SEER areas (San Francisco, Connecticut, Detroit, Hawaii, Iowa, New Mexico, Seattle, Utah, Atlanta, San Jose-Monterey, Los Angeles, Alaska Native Registry, Rural Georgia, California excluding SF/SJM/LA, Kentucky, Louisiana and New Jersey).

Incidence data used in calculating the trends and survival estimates are from the 9 SEER areas (San Francisco, Connecticut, Detroit, Hawaii, Iowa, New Mexico, Seattle, Utah, and Atlanta).

^b NCHS public use data file for the total US.

^c The difference in rates between 1975-1977 and 1996-2002 is statistically significant (p<.05).

^d The standard error of the survival rate is between 5 and 10 percentage points.

^e The standard error of the survival rate is greater than 10 percentage points.

^f Sites were chosen based on more than 100 SEER incident cases between 2000-2003.

* The APC is significantly different from zero (p<.05).

The APC for 1989-2003 is significantly different from the APC for 1975-1988 (p<.05).

^o The APC for 1989-2003 is significantly different from the APC for 1975-1988 (p<.10).

- Statistic not shown. Rate based on less than 16 cases for the time interval. Trend based on less than 10 cases for at least one year within the time interval.

Table XXIX-6

5-YEAR RELATIVE SURVIVAL RATES, 1996-2002^aBy International Classification of Childhood Cancer (ICCC)^b Selected Group and Subgroup^c and Sex and Age (excludes MDS)

ICCC Group & Subgroup	Ages 0-19 by Sex			Both Sexes by Age					
	Total	Male	Female	<1	1-4	5-9	10-14	15-19	0-14
All ICCC Groups Combined	77.9	76.3	79.7	73.1	80.0	76.3	77.8	78.2	77.7
I Leukemia	75.2	73.8	76.9	51.6	86.3	80.2	70.8	50.5	79.5
I(a) Lymphoid leukemia	81.4	79.7	83.6	50.8 ^d	90.2	84.5	76.1	55.4	84.7
I(b) Acute myeloid leukemia	50.5	50.4	50.5	47.6 ^d	59.0	54.2	53.7	39.1	54.4
II Lymphomas and reticuloendothelial neo.	86.9	86.0	88.3	49.7 ^d	82.9	88.7	88.0	87.6	86.3
II(a) Hodgkin lymphoma	94.6	94.7	94.4	-	100.0	96.0	93.9	94.5	94.7
II(b,c,e) Non-Hodgkin lymphoma	79.4	79.3	79.5	-	79.5	85.1	82.2	74.5	82.3
III CNS & misc intracranial & intraspinal neo.	71.7	70.5	73.2	51.0	71.6	68.4	78.7	74.1	71.2
III(a) Ependymomas and choroid plexus tumor	73.5	75.2	72.1 ^d	72.0 ^e	69.9 ^d	68.3 ^d	73.5 ^d	89.5 ^d	70.7
III(b) Astrocytoma	82.6	79.2	86.5	67.7 ^d	90.8	81.3	83.0	75.5	84.2
III(c) Intracranial and intraspinal embryonal tumors	67.3	68.3	66.1	32.3 ^d	56.9	77.2	84.0	69.9 ^d	66.9
III(d) Other gliomas	52.0	53.7	50.0	-	46.0 ^d	35.9	62.8	73.5	46.8
IV Neuroblastoma and other peripheral nervous cell tumors	68.9	68.3	69.5	90.6	59.3	53.1 ^d	68.7 ^d	71.4 ^e	68.8
IV(a) Neuroblastoma and ganglioneuroblastoma	68.9	68.2	69.5	90.6	59.4	51.5 ^d	71.3 ^d	-	68.8
V Retinoblastoma	97.0	97.3	96.8	99.4	94.2	-	-	-	97.0
VI Renal tumors	87.1	87.8	86.3	89.2	90.1	86.7	48.9 ^e	76.9 ^d	87.5
VI(a) Nephroblastoma and other nonepithelial renal tumor	88.3	89.5	87.0	89.2	90.1	86.1	59.9 ^e	-	88.3
VII Hepatic tumors	47.1	46.5	47.4 ^d	68.6 ^d	61.6 ^d	12.3 ^e	18.2 ^d	18.3 ^d	52.8
VII(a) Hepatoblastoma	59.2	57.0 ^d	61.5 ^d	70.6 ^d	61.8 ^d	-	-	-	59.5
VIII Malignant bone tumors	65.1	64.6	66.2	-	49.2 ^e	73.4	65.3	62.8	66.9
VIII(a) Osteosarcoma	65.8	64.6	68.1	-	-	69.7 ^d	66.6	63.7	67.3
VIII(c) Ewing tumor and related sarcomas of bone	59.0	59.8	57.9 ^d	-	0.0	82.2 ^d	58.7 ^d	52.5 ^d	63.8
IX Soft tissue and other extrasosseous sarcomas	69.2	68.5	70.1	54.3 ^d	71.3	71.1	71.9	68.0	69.7
IX(a) Rhabdomyosarcoma	61.0	63.6	57.3	45.0 ^e	67.0	66.1	58.5 ^d	52.7 ^d	63.0
X Germ cell & trophoblastic tumors & neo. of gonads	89.7	89.1	90.7	81.8	87.3 ^d	88.7 ^d	93.5	90.3	88.7
X(a) Intracranial and intraspinal germ-cell tumor	84.8	86.8	79.5 ^d	-	-	93.2 ^d	89.5	80.9 ^d	86.4
X(c) Malignant gonadal germ cell tumor	76.7	67.2 ^d	86.3	80.6 ^d	87.4 ^d	-	-	67.4 ^d	80.9
XI Other malignant epithelial neo. and melanomas	89.2	83.8	91.8	-	92.9	82.2	89.9	89.4	88.6
XI(b) Thyroid carcinoma	97.8	94.1	98.6	-	-	100.0	96.8	97.9	97.5
XI(d) Malignant melanoma	94.7	95.0	94.4	-	88.2 ^d	89.3 ^d	90.8 ^d	95.8	90.3

^a SEER 17 areas (San Francisco, Connecticut, Detroit, Hawaii, Iowa, New Mexico, Seattle, Utah, Atlanta, San Jose-Monterey, Los Angeles, Alaska Native Registry, Rural Georgia, California excluding SF/SJM/LA, Kentucky, Louisiana and New Jersey). California excluding SF/SJM/LA, Kentucky, Louisiana, and New Jersey contribute cases for diagnosis years 2000-2002. The remaining 13 SEER Areas contribute cases for the entire period 1996-2002. Rates are based on follow-up of patients into 2003.

^b International Classification of Childhood Cancer is based on ICD-0-3. Steliarova-Foucher E, Stiller C, Lacour B, Kaatsch P. International Classification of Childhood Cancer, Third Edition. Cancer. April 1, 2005: Vol 103, No. 7, pg 1457-1467.

^c Classifications are shown for invasive cases only. Groups and subgroups that include *in situ* behavior reflect only invasive cases.

^d The standard error of the survival rate is between 5 and 10 percentage points.

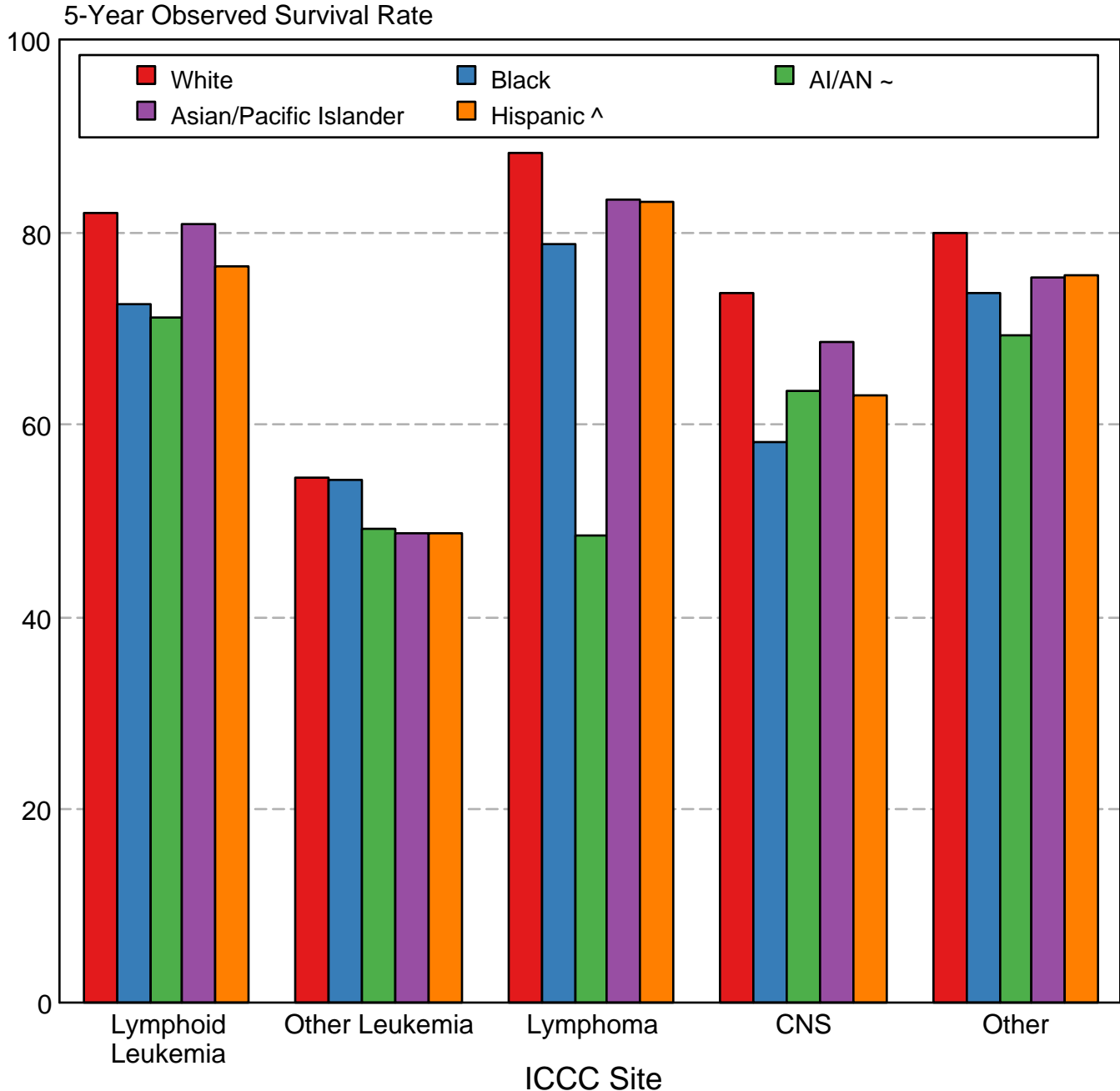
^e The standard error of the survival rate is greater than 10 percentage points.

- Statistic could not be calculated due to fewer than 16 cases during the time period.

Neoplasms are abbreviated as neo.

Survival rates are relative rates expressed as percents.

SEER Childhood Cancer 1996-2002 5-Year Observed Survival Rates by ICCC Group and Race/Ethnicity Both Sexes, Under 20 Years of Age



Source: SEER 17 areas (San Francisco, Connecticut, Detroit, Hawaii, Iowa, New Mexico, Seattle, Utah, Atlanta, San Jose-Monterey, Los Angeles, Alaska Native Registry, Rural Georgia, California excluding SF/SJM/LA, Kentucky, Louisiana, and New Jersey). California excluding SF/SJM/LA, Kentucky, Louisiana, and New Jersey contribute cases for diagnosis years 2000-2002. The remaining 13 SEER Areas contribute cases for the entire period 1996-2002.

International Classification of Childhood Cancer is based on ICD-0-3. Steliarova-Foucher E, Stiller C, Lacour B, Kaatsch P. International Classification of Childhood Cancer, Third Edition. Cancer. April 1, 2005; Vol 103, No. 7, pg 1457-1467.

~ American Indian/Alaska Native. Survival data for AI/AN include cases from Connecticut, Detroit, Iowa, New Mexico, Seattle, Utah, Atlanta and the Alaska Native Registry.

^ Hispanic is not mutually exclusive from Whites, Blacks, Asian/Pacific Islanders, and American Indians/Alaska Natives.

Survival data for Hispanics are based on NHIA and excludes cases from Hawaii, Seattle, Alaska Native Registry and Kentucky.