

Table 13.1
LeukemiaTrends in SEER Incidence^{ab} and U.S. Mortality^c Using the Joinpoint Regression Program,
1975-2007 With up to Four Joinpoints, 1992-2007 With up to Two Joinpoints,
Both Sexes by Race/Ethnicity

	Joinpoint Trend 1		Joinpoint Trend 2		Joinpoint Trend 3		Joinpoint Trend 4		Joinpoint Trend 5		AAPC ^d	
	Years	APC	Years	APC	Years	APC	Years	APC	Years	APC	1998-2007	2003-2007
<u>SEER 9 Delay-Adjusted Incidence^a, 1975-2007</u>												
All Races	1975-2007	0.3*									0.3*	0.3*
White	1975-2007	0.4*									0.4*	0.4*
Black	1975-2007	-0.1									-0.1	-0.1
<u>SEER 13 Delay-Adjusted Incidence^b, 1992-2007</u>												
All Races	1992-2007	0.3*									0.3*	0.3*
White	1992-2007	0.4*									0.4*	0.4*
Black	1992-2007	0.2									0.2	0.2
<u>SEER 9 Observed Incidence^a, 1975-2007</u>												
All Races	1975-2004	0.1	2004-2007	-3.4*							-1.1*	-2.5*
White	1975-2002	0.3*	2002-2007	-1.7*							-0.8*	-1.7*
Black	1975-2007	-0.4*									-0.4*	-0.4*
<u>SEER 13 Observed Incidence^b, 1992-2007</u>												
All Races	1992-2004	-0.1	2004-2007	-2.6							-0.9*	-2.0
White	1992-2007	-0.3									-0.3*	-0.3*
White NH ^{ef}	1992-2007	-0.2									-0.2	-0.2
Black	1992-2007	-0.6									-0.6	-0.6
Black NH ^{ef}	1992-2007	-0.6									-0.6	-0.6
API ^e	1992-2007	-0.9*									-0.9*	-0.9*
AI/AN ^{eg}	1992-2007	1.5									1.5	1.5
Hispanic ^f	1992-2007	-0.3									-0.3	-0.3
<u>U.S. Cancer Mortality^c, 1975-2007</u>												
All Races	1975-1980	0.6	1980-1988	-0.6*	1988-1991	0.7	1991-2001	-0.5*	2001-2007	-1.3*	-1.0*	-1.3*
White	1975-1980	0.5	1980-1988	-0.7*	1988-1991	0.7	1991-2001	-0.4*	2001-2007	-1.2*	-0.9*	-1.2*
Black	1975-1991	0.7*	1991-2007	-1.2*							-1.2*	-1.2*
<u>U.S. Cancer Mortality^c, 1992-2007</u>												
All Races	1992-2001	-0.5*	2001-2007	-1.3*							-1.0*	-1.3*
White	1992-2001	-0.4*	2001-2007	-1.2*							-0.9*	-1.2*
White NH ^{ef}	1992-2001	-0.4*	2001-2007	-1.0*							-0.8*	-1.0*
Black	1992-2007	-1.2*									-1.2*	-1.2*
Black NH ^{ef}	1992-2007	-1.0*									-1.0*	-1.0*
API ^e	1992-2007	-1.5*									-1.5*	-1.5*
AI/AN ^{eg}	1992-2007	-0.2									-0.2	-0.2
Hispanic ^f	1992-1997	1.6	1997-2007	-1.7*							-1.7*	-1.7*

Joinpoint Regression Program Version 3.4.3, April 2010, National Cancer Institute. (<http://srab.cancer.gov/joinpoint/>).

The APC is the Annual Percent Change based on rates age-adjusted to the 2000 US Std Population (19 age groups - Census P25-1130).

^a Trends are from the SEER 9 areas (San Francisco, Connecticut, Detroit, Hawaii, Iowa, New Mexico, Seattle, Utah, and Atlanta).^b Trends are from the SEER 13 areas (SEER 9 Areas, Los Angeles, San Jose-Monterey, Rural Georgia, and the Alaska Native Registry).^c Trends are from US Mortality Files, National Center for Health Statistics, Centers for Disease Control and Prevention.^d The AAPC is the Average Annual Percent Change and is based on the APCs calculated by Joinpoint.^e API - Asian/Pacific Islander, AI/AN - American Indian/Alaska Native, NH - Non-Hispanic^f Hispanic and Non-Hispanic are not mutually exclusive from whites, blacks, Asian/Pacific Islanders, and American Indians/Alaska

Natives. Incidence data for Hispanics and Non-Hispanics are based on NHIA and exclude cases from the Alaska Native Registry.

The Hispanic and Non-Hispanic mortality trends exclude deaths from CT, DC, ME, MD, MN, NH, NY, ND, OK and VT.

^g Data for American Indian/Alaska Native are based on the CHSDA (Contract Health Service Delivery Area) counties.

* The APC/AAPC is significantly different from zero (p<.05).

- Joinpoint regression line analysis could not be performed on data series.

Table 13.2
LeukemiaTrends in SEER Incidence^{ab} and U.S. Mortality^c Using the Joinpoint Regression Program,
1975-2007 With up to Four Joinpoints, 1992-2007 With up to Two Joinpoints,
Males by Race/Ethnicity

	Joinpoint Trend 1		Joinpoint Trend 2		Joinpoint Trend 3		Joinpoint Trend 4		Joinpoint Trend 5		AAPC ^d	
	Years	APC	Years	APC	Years	APC	Years	APC	Years	APC	1998-2007	2003-2007
<u>SEER 9 Delay-Adjusted Incidence^a, 1975-2007</u>												
All Races	1975-2007	0.2*									0.2*	0.2*
White	1975-2007	0.2*									0.2*	0.2*
Black	1975-2007	-0.1									-0.1	-0.1
<u>SEER 13 Delay-Adjusted Incidence^b, 1992-2007</u>												
All Races	1992-2007	0.1									0.1	0.1
White	1992-2007	0.1									0.1	0.1
Black	1992-2007	0.1									0.1	0.1
<u>SEER 9 Observed Incidence^a, 1975-2007</u>												
All Races	1975-2004	0.0	2004-2007	-3.9*							-1.3*	-3.0*
White	1975-2003	0.1	2003-2007	-2.7*							-1.2*	-2.7*
Black	1975-2007	-0.4									-0.4*	-0.4*
<u>SEER 13 Observed Incidence^b, 1992-2007</u>												
All Races	1992-2007	-0.6*									-0.6*	-0.6*
White	1992-2007	-0.6*									-0.6*	-0.6*
White NH ^{ef}	1992-2007	-0.5*									-0.5*	-0.5*
Black	1992-2007	-0.6									-0.6	-0.6
Black NH ^{ef}	1992-2007	-0.6									-0.6	-0.6
API ^e	1992-2007	-0.8									-0.8	-0.8
AI/AN ^{eg}	1992-2007	2.0									2.0	2.0
Hispanic ^f	1992-2007	-0.4									-0.4	-0.4
<u>U.S. Cancer Mortality^c, 1975-2007</u>												
All Races	1975-1996	-0.2*	1996-2007	-0.9*							-0.9*	-0.9*
White	1975-2000	-0.3*	2000-2007	-1.1*							-0.9*	-1.1*
Black	1975-1991	1.0*	1991-2007	-1.3*							-1.3*	-1.3*
<u>U.S. Cancer Mortality^c, 1992-2007</u>												
All Races	1992-2007	-0.8*									-0.8*	-0.8*
White	1992-2007	-0.7*									-0.7*	-0.7*
White NH ^{ef}	1992-2007	-0.7*									-0.7*	-0.7*
Black	1992-2007	-1.2*									-1.2*	-1.2*
Black NH ^{ef}	1992-2007	-1.2*									-1.2*	-1.2*
API ^e	1992-2007	-1.1*									-1.1*	-1.1*
AI/AN ^{eg}	1992-2007	-0.6									-0.6	-0.6
Hispanic ^f	1992-1997	2.6	1997-2007	-2.0*							-2.0*	-2.0*

Joinpoint Regression Program Version 3.4.3, April 2010, National Cancer Institute. (<http://srab.cancer.gov/joinpoint/>).

The APC is the Annual Percent Change based on rates age-adjusted to the 2000 US Std Population (19 age groups - Census P25-1130).

^a Trends are from the SEER 9 areas (San Francisco, Connecticut, Detroit, Hawaii, Iowa, New Mexico, Seattle, Utah, and Atlanta).^b Trends are from the SEER 13 areas (SEER 9 Areas, Los Angeles, San Jose-Monterey, Rural Georgia, and the Alaska Native Registry).^c Trends are from US Mortality Files, National Center for Health Statistics, Centers for Disease Control and Prevention.^d The AAPC is the Average Annual Percent Change and is based on the APCs calculated by Joinpoint.^e API - Asian/Pacific Islander, AI/AN - American Indian/Alaska Native, NH - Non-Hispanic^f Hispanic and Non-Hispanic are not mutually exclusive from whites, blacks, Asian/Pacific Islanders, and American Indians/Alaska

Natives. Incidence data for Hispanics and Non-Hispanics are based on NHIA and exclude cases from the Alaska Native Registry.

The Hispanic and Non-Hispanic mortality trends exclude deaths from CT, DC, ME, MD, MN, NH, NY, ND, OK and VT.

^g Data for American Indian/Alaska Native are based on the CHSDA (Contract Health Service Delivery Area) counties.

* The APC/AAPC is significantly different from zero (p<.05).

- Joinpoint regression line analysis could not be performed on data series.

Table 13.3
LeukemiaTrends in SEER Incidence^{ab} and U.S. Mortality^c Using the Joinpoint Regression Program,
1975-2007 With up to Four Joinpoints, 1992-2007 With up to Two Joinpoints,
Females by Race/Ethnicity

	Joinpoint Trend 1		Joinpoint Trend 2		Joinpoint Trend 3		Joinpoint Trend 4		Joinpoint Trend 5		AAPC ^d	
	Years	APC	Years	APC	Years	APC	Years	APC	Years	APC	1998-2007	2003-2007
<u>SEER 9 Delay-Adjusted Incidence^a, 1975-2007</u>												
All Races	1975-2007	0.4*									0.4*	0.4*
White	1975-2007	0.5*									0.5*	0.5*
Black	1975-2007	-0.1									-0.1	-0.1
<u>SEER 13 Delay-Adjusted Incidence^b, 1992-2007</u>												
All Races	1992-2007	0.5*									0.5*	0.5*
White	1992-2007	0.6*									0.6*	0.6*
Black	1992-2007	0.3									0.3	0.3
<u>SEER 9 Observed Incidence^a, 1975-2007</u>												
All Races	1975-2007	0.0									0.0	0.0
White	1975-2007	0.2*									0.2*	0.2*
Black	1975-2007	-0.4									-0.4	-0.4
<u>SEER 13 Observed Incidence^b, 1992-2007</u>												
All Races	1992-2007	-0.3									-0.3	-0.3
White	1992-2007	-0.1									-0.1	-0.1
White NH ^{ef}	1992-2007	0.0									0.0	0.0
Black	1992-2007	-0.4									-0.4	-0.4
Black NH ^{ef}	1992-2007	-0.5									-0.5	-0.5
API ^e	1992-2007	-0.8*									-0.8*	-0.8*
AI/AN ^{eg}	1992-2007	1.3									1.3	1.3
Hispanic ^f	1992-2007	-0.2									-0.2	-0.2
<u>U.S. Cancer Mortality^c, 1975-2007</u>												
All Races	1975-1980	0.7	1980-2000	-0.4*	2000-2007	-1.6*					-1.3*	-1.6*
White	1975-2000	-0.3*	2000-2007	-1.6*							-1.3*	-1.6*
Black	1975-1992	0.4	1992-2007	-1.1*							-1.1*	-1.1*
<u>U.S. Cancer Mortality^c, 1992-2007</u>												
All Races	1992-2001	-0.5*	2001-2007	-1.7*							-1.3*	-1.7*
White	1992-2000	-0.4	2000-2007	-1.4*							-1.2*	-1.4*
White NH ^{ef}	1992-2001	-0.4*	2001-2007	-1.5*							-1.2*	-1.5*
Black	1992-2007	-1.1*									-1.1*	-1.1*
Black NH ^{ef}	1992-2007	-0.8*									-0.8*	-0.8*
API ^e	1992-2007	-1.8*									-1.8*	-1.8*
AI/AN ^{eg}	1992-2007	-0.2									-0.2	-0.2
Hispanic ^f	1992-2007	-1.1*									-1.1*	-1.1*

Joinpoint Regression Program Version 3.4.3, April 2010, National Cancer Institute. (<http://srab.cancer.gov/joinpoint/>).

The APC is the Annual Percent Change based on rates age-adjusted to the 2000 US Std Population (19 age groups - Census P25-1130).

^a Trends are from the SEER 9 areas (San Francisco, Connecticut, Detroit, Hawaii, Iowa, New Mexico, Seattle, Utah, and Atlanta).^b Trends are from the SEER 13 areas (SEER 9 Areas, Los Angeles, San Jose-Monterey, Rural Georgia, and the Alaska Native Registry).^c Trends are from US Mortality Files, National Center for Health Statistics, Centers for Disease Control and Prevention.^d The AAPC is the Average Annual Percent Change and is based on the APCs calculated by Joinpoint.^e API - Asian/Pacific Islander, AI/AN - American Indian/Alaska Native, NH - Non-Hispanic^f Hispanic and Non-Hispanic are not mutually exclusive from whites, blacks, Asian/Pacific Islanders, and American Indians/Alaska

Natives. Incidence data for Hispanics and Non-Hispanics are based on NHIA and exclude cases from the Alaska Native Registry.

The Hispanic and Non-Hispanic mortality trends exclude deaths from CT, DC, ME, MD, MN, NH, NY, ND, OK and VT.

^g Data for American Indian/Alaska Native are based on the CHSDA (Contract Health Service Delivery Area) counties.

* The APC/AAPC is significantly different from zero (p<.05).

- Joinpoint regression line analysis could not be performed on data series.

Table 13.4
LeukemiaDelay-adjusted SEER Incidence^a Rates by Year, Race and Sex

Year of Diagnosis:	All Races			Whites			Blacks		
	Total	Males	Females	Total	Males	Females	Total	Males	Females
1975	12.78	16.91	9.95	13.08	17.48	10.08	11.52	16.21	8.47
1976	13.55	18.48	10.21	13.84	19.13	10.31	11.30	14.19	9.39
1977	12.74	16.34	10.22	13.20	17.04	10.52	10.15	13.61	7.72
1978	12.87	17.25	9.78	13.54	18.30	10.24	9.16	11.42	7.47
1979	12.56	16.80	9.69	13.02	17.55	10.01	10.63	13.59	8.64
1980	12.92	17.36	9.84	13.27	17.90	10.11	12.18	16.11	9.47
1981	12.37	16.48	9.64	12.65	17.03	9.81	12.24	14.47	10.34
1982	13.16	18.25	9.71	13.51	18.79	9.95	10.75	15.16	7.91
1983	13.16	17.82	9.92	13.50	18.46	10.08	12.49	15.96	10.07
1984	12.99	17.09	10.11	13.45	17.95	10.34	10.68	11.88	9.62
1985	13.36	17.72	10.39	13.73	18.24	10.66	12.31	16.99	9.31
1986	12.84	17.55	9.52	13.41	18.40	9.94	10.24	13.22	8.10
1987	13.36	17.75	10.32	13.80	18.48	10.60	12.60	17.64	9.27
1988	12.98	17.54	9.70	13.43	18.32	9.98	11.58	14.06	9.44
1989	13.45	17.67	10.48	13.98	18.31	10.99	11.35	15.96	8.13
1990	12.90	17.31	9.79	13.52	18.26	10.24	11.35	14.84	8.85
1991	13.09	16.86	10.23	13.73	17.82	10.59	10.86	12.14	10.02
1992	13.06	17.57	9.81	13.65	18.72	10.02	10.73	13.99	8.46
1993	13.09	17.11	10.07	13.66	18.05	10.34	11.65	15.22	9.14
1994	13.10	17.03	10.19	13.79	17.98	10.71	9.89	12.71	7.84
1995	13.59	17.79	10.46	14.46	18.92	11.15	9.91	13.48	7.49
1996	13.20	17.07	10.42	13.77	17.85	10.87	10.88	14.07	8.89
1997	13.33	17.79	10.08	14.17	18.93	10.72	10.59	14.08	8.30
1998	13.31	17.36	10.31	14.11	18.26	11.01	9.99	14.64	7.08
1999	12.97	17.35	9.73	13.57	18.10	10.20	10.46	14.07	8.13
2000	13.79	17.87	10.74	14.44	18.75	11.21	11.65	13.51	10.24
2001	14.52	18.89	11.23	15.37	19.87	11.96	11.99	14.71	10.10
2002	13.74	18.10	10.44	14.74	19.41	11.18	8.91	11.66	6.99
2003	13.83	18.01	10.65	14.53	19.05	11.09	11.31	14.42	9.01
2004	14.21	18.38	11.05	14.75	19.02	11.44	12.56	17.11	9.75
2005	14.08	18.42	10.71	14.76	19.59	10.98	11.34	12.87	10.21
2006	13.96	17.34	11.43	14.68	18.10	12.12	11.28	15.61	8.30
2007	14.01	18.26	10.79	14.84	19.37	11.37	9.81	13.24	7.59

^a Additional information on the model used to delay-adjust SEER Incidence rates can be found at (<http://srab.cancer.gov/delay/>).

SEER 9 areas (San Francisco, Connecticut, Detroit, Hawaii, Iowa, New Mexico, Seattle, Utah, and Atlanta).

Rates are per 100,000 and are age-adjusted to the 2000 US Std Population (19 age groups - Census P25-1130).

- Delay-adjusted rate is not shown for observed rates based on less than 16 cases for the time interval.

Table 13.5
LeukemiaAge-adjusted SEER Incidence^a Rates by Year, Race and Sex

Year of Diagnosis:	All Races			Whites			Blacks		
	Total	Males	Females	Total	Males	Females	Total	Males	Females
1975	12.78	16.91	9.95	13.08	17.48	10.08	11.52	16.21	8.47
1976	13.55	18.48	10.21	13.84	19.13	10.31	11.30	14.19	9.39
1977	12.74	16.34	10.22	13.20	17.04	10.52	10.15	13.61	7.72
1978	12.87	17.25	9.78	13.54	18.30	10.24	9.16	11.42	7.47
1979	12.56	16.80	9.69	13.02	17.55	10.01	10.63	13.59	8.64
1980	12.92	17.36	9.84	13.27	17.90	10.11	12.18	16.11	9.47
1981	12.37	16.48	9.64	12.65	17.03	9.81	12.24	14.47	10.34
1982	13.16	18.25	9.71	13.51	18.79	9.95	10.75	15.16	7.91
1983	13.15	17.81	9.91	13.49	18.45	10.07	12.48	15.95	10.06
1984	12.99	17.08	10.10	13.44	17.94	10.34	10.68	11.87	9.61
1985	13.35	17.71	10.38	13.71	18.22	10.65	12.30	16.98	9.30
1986	12.83	17.53	9.51	13.39	18.37	9.93	10.23	13.20	8.09
1987	13.34	17.73	10.31	13.78	18.45	10.58	12.57	17.60	9.26
1988	12.96	17.51	9.68	13.40	18.28	9.96	11.55	14.03	9.42
1989	13.43	17.63	10.46	13.94	18.26	10.96	11.31	15.91	8.11
1990	12.87	17.26	9.77	13.48	18.20	10.20	11.31	14.78	8.82
1991	13.05	16.80	10.20	13.67	17.75	10.55	10.81	12.09	9.98
1992	13.00	17.49	9.77	13.58	18.62	9.97	10.68	13.91	8.42
1993	13.02	17.01	10.02	13.57	17.94	10.28	11.57	15.12	9.09
1994	13.00	16.90	10.12	13.68	17.83	10.62	9.82	12.61	7.78
1995	13.46	17.63	10.36	14.32	18.74	11.04	9.82	13.35	7.42
1996	13.05	16.88	10.30	13.61	17.64	10.74	10.75	13.91	8.79
1997	13.14	17.54	9.94	13.97	18.65	10.56	10.44	13.88	8.19
1998	13.08	17.06	10.13	13.86	17.94	10.82	9.82	14.39	6.96
1999	12.67	16.95	9.51	13.28	17.70	9.98	10.24	13.77	7.95
2000	13.39	17.35	10.43	14.05	18.24	10.92	11.35	13.17	9.97
2001	14.00	18.21	10.82	14.86	19.20	11.57	11.58	14.20	9.77
2002	13.13	17.29	9.98	14.15	18.61	10.74	8.55	11.18	6.72
2003	13.07	17.01	10.06	13.78	18.06	10.53	10.71	13.66	8.54
2004	13.23	17.11	10.29	13.82	17.81	10.73	11.75	15.97	9.15
2005	12.87	16.85	9.79	13.59	18.03	10.13	10.44	11.86	9.39
2006	12.48	15.49	10.22	13.22	16.29	10.93	10.17	14.05	7.49
2007	11.92	15.54	9.18	12.74	16.61	9.78	8.43	11.35	6.53
1975-2007	12.97	17.09	9.98	13.56	17.95	10.39	10.70	13.87	8.53

^a SEER 9 areas (San Francisco, Connecticut, Detroit, Hawaii, Iowa, New Mexico, Seattle, Utah, and Atlanta).
Rates are per 100,000 and are age-adjusted to the 2000 US Std Population (19 age groups - Census P25-1130).
- Statistic not shown. Rate based on less than 16 cases for the time interval.

Table 13.6
Acute Lymphocytic Leukemia

Age-adjusted SEER Incidence^a Rates by Year, Race and Sex

Year of Diagnosis:	All Races			Whites			Blacks		
	Total	Males	Females	Total	Males	Females	Total	Males	Females
1975	0.93	1.12	0.76	0.99	1.23	0.78	-	-	-
1976	1.08	1.29	0.93	1.09	1.34	0.91	0.79	-	-
1977	1.10	1.30	0.91	1.17	1.38	0.96	-	-	-
1978	1.03	1.24	0.83	1.11	1.33	0.90	-	-	-
1979	1.02	1.18	0.88	1.08	1.20	0.97	-	-	-
1980	1.12	1.41	0.88	1.16	1.47	0.90	0.73	-	-
1981	1.24	1.31	1.18	1.30	1.39	1.23	0.95	-	-
1982	1.23	1.50	0.99	1.30	1.56	1.05	-	-	-
1983	1.29	1.53	1.08	1.39	1.65	1.17	0.80	-	-
1984	1.32	1.49	1.20	1.35	1.50	1.24	0.92	-	-
1985	1.30	1.55	1.09	1.35	1.62	1.12	-	-	-
1986	1.30	1.67	0.96	1.38	1.82	0.97	0.77	-	-
1987	1.32	1.48	1.19	1.35	1.55	1.19	0.89	-	1.15
1988	1.40	1.79	1.07	1.44	1.84	1.12	0.98	-	-
1989	1.62	1.81	1.44	1.69	1.89	1.50	1.03	-	-
1990	1.41	1.75	1.16	1.52	1.85	1.28	0.57	-	-
1991	1.38	1.73	1.05	1.52	1.95	1.09	0.86	-	-
1992	1.35	1.59	1.14	1.39	1.72	1.09	0.91	-	-
1993	1.26	1.41	1.09	1.37	1.57	1.13	0.82	-	-
1994	1.19	1.48	0.93	1.28	1.59	1.01	0.68	-	-
1995	1.49	1.80	1.20	1.60	1.87	1.34	0.96	1.27	-
1996	1.38	1.56	1.20	1.46	1.65	1.25	0.85	-	-
1997	1.33	1.51	1.16	1.45	1.62	1.28	0.75	0.89	-
1998	1.47	1.63	1.30	1.58	1.74	1.41	0.93	1.16	-
1999	1.31	1.49	1.14	1.41	1.58	1.24	0.68	-	-
2000	1.39	1.49	1.30	1.52	1.60	1.46	0.85	-	-
2001	1.46	1.65	1.28	1.58	1.80	1.37	0.68	-	-
2002	1.49	1.79	1.20	1.65	2.00	1.28	0.62	-	-
2003	1.42	1.64	1.21	1.47	1.69	1.27	0.73	-	-
2004	1.53	1.67	1.38	1.63	1.90	1.36	1.09	-	1.40
2005	1.56	1.85	1.26	1.65	1.95	1.34	0.90	1.01	-
2006	1.43	1.60	1.27	1.48	1.61	1.37	0.96	1.36	-
2007	1.51	1.65	1.38	1.55	1.66	1.46	1.00	1.01	0.91
1975-2007	1.33	1.55	1.13	1.40	1.64	1.19	0.80	0.87	0.74

^a SEER 9 areas (San Francisco, Connecticut, Detroit, Hawaii, Iowa, New Mexico, Seattle, Utah, and Atlanta).
Rates are per 100,000 and are age-adjusted to the 2000 US Std Population (19 age groups - Census P25-1130).
- Statistic not shown. Rate based on less than 16 cases for the time interval.

Table 13.7
Chronic Lymphocytic Leukemia

Age-adjusted SEER Incidence^a Rates by Year, Race and Sex

Year of Diagnosis:	All Races			Whites			Blacks		
	Total	Males	Females	Total	Males	Females	Total	Males	Females
1975	4.33	5.90	3.26	4.47	6.11	3.37	4.76	6.94	3.23
1976	4.57	6.77	3.10	4.77	7.18	3.17	4.26	6.58	2.95
1977	4.18	5.72	3.13	4.37	5.96	3.31	3.81	5.78	2.46
1978	4.46	5.94	3.43	4.75	6.43	3.61	3.33	3.64	3.07
1979	4.05	5.69	2.93	4.31	6.09	3.12	3.06	4.16	-
1980	4.52	6.30	3.33	4.69	6.54	3.46	4.51	7.06	2.89
1981	4.26	6.30	2.88	4.46	6.63	3.03	3.79	5.41	2.44
1982	4.31	6.16	3.02	4.52	6.41	3.19	3.77	6.65	-
1983	4.46	6.40	3.14	4.69	6.79	3.26	4.21	6.11	3.03
1984	4.41	6.27	3.11	4.70	6.79	3.28	3.45	4.46	2.65
1985	4.46	6.15	3.30	4.75	6.55	3.52	4.11	6.15	2.87
1986	4.49	6.31	3.24	4.86	6.82	3.54	2.79	4.18	-
1987	4.63	6.78	3.05	4.92	7.22	3.26	4.03	6.14	2.45
1988	4.52	6.44	3.12	4.73	6.84	3.23	4.43	5.32	3.53
1989	4.66	6.39	3.44	4.94	6.84	3.63	3.96	5.26	3.04
1990	4.57	6.26	3.38	4.86	6.72	3.56	4.51	6.13	3.43
1991	4.57	6.17	3.39	4.96	6.77	3.60	3.40	3.75	3.15
1992	4.56	6.66	3.12	4.98	7.33	3.38	3.21	4.96	2.08
1993	4.40	6.07	3.14	4.67	6.47	3.31	4.44	6.61	2.89
1994	4.52	6.04	3.37	4.94	6.59	3.71	3.19	4.13	2.32
1995	4.43	6.31	3.07	4.81	6.86	3.35	3.34	5.22	2.06
1996	4.58	6.19	3.43	4.98	6.66	3.78	3.55	5.36	2.31
1997	4.42	6.00	3.22	4.82	6.53	3.53	3.39	4.96	2.37
1998	4.12	5.83	2.88	4.51	6.35	3.17	2.77	3.67	2.21
1999	4.00	5.86	2.62	4.31	6.28	2.84	3.56	5.69	2.29
2000	4.33	6.10	2.99	4.78	6.77	3.25	3.00	3.71	2.54
2001	4.93	6.90	3.45	5.40	7.53	3.81	3.64	4.70	2.90
2002	4.67	6.57	3.23	5.21	7.33	3.61	2.72	3.85	1.92
2003	4.88	6.73	3.48	5.35	7.40	3.79	3.84	5.37	2.72
2004	4.91	6.79	3.51	5.32	7.15	3.92	3.88	6.79	1.99
2005	4.64	6.69	3.07	5.07	7.40	3.25	3.41	4.13	2.92
2006	4.67	6.17	3.56	5.08	6.65	3.91	3.61	5.68	2.26
2007	4.22	5.99	2.87	4.72	6.66	3.21	2.03	3.43	1.19
1975-2007	4.48	6.26	3.19	4.82	6.76	3.43	3.54	5.07	2.49

^a SEER 9 areas (San Francisco, Connecticut, Detroit, Hawaii, Iowa, New Mexico, Seattle, Utah, and Atlanta).
Rates are per 100,000 and are age-adjusted to the 2000 US Std Population (19 age groups - Census P25-1130).
- Statistic not shown. Rate based on less than 16 cases for the time interval.

Table 13.8
Acute Myeloid Leukemia

Age-adjusted SEER Incidence^a Rates by Year, Race and Sex

Year of Diagnosis:	All Races			Whites			Blacks		
	Total	Males	Females	Total	Males	Females	Total	Males	Females
1975	3.43	4.17	2.98	3.48	4.28	2.99	2.49	3.37	2.02
1976	3.50	4.43	2.86	3.53	4.46	2.91	2.56	-	2.64
1977	3.51	4.19	3.05	3.64	4.40	3.14	1.87	-	-
1978	3.42	4.43	2.69	3.53	4.59	2.77	2.70	3.47	2.13
1979	3.32	4.05	2.85	3.36	4.17	2.85	3.43	3.47	3.37
1980	3.14	4.10	2.43	3.17	4.11	2.49	2.88	3.28	2.53
1981	3.16	3.99	2.64	3.22	4.11	2.69	3.07	3.22	2.89
1982	3.42	4.80	2.59	3.47	4.91	2.62	2.50	3.22	2.09
1983	3.21	4.22	2.53	3.18	4.29	2.41	2.93	3.02	2.92
1984	3.30	4.06	2.73	3.35	4.16	2.77	2.35	2.10	2.44
1985	3.33	4.15	2.87	3.25	4.02	2.84	3.78	5.06	2.99
1986	3.00	3.91	2.40	2.95	3.85	2.38	3.21	4.04	2.68
1987	3.02	3.98	2.47	3.03	4.01	2.47	3.05	4.73	2.12
1988	3.03	3.79	2.51	3.07	3.87	2.56	2.79	3.14	2.49
1989	3.19	4.00	2.61	3.29	4.02	2.78	2.22	3.79	-
1990	3.04	3.89	2.43	3.11	4.03	2.47	2.51	3.02	2.12
1991	3.33	3.93	2.88	3.38	3.90	2.98	3.34	4.53	2.59
1992	3.22	3.86	2.76	3.28	4.05	2.74	3.05	2.99	3.05
1993	3.45	4.31	2.86	3.52	4.45	2.86	2.48	2.62	2.55
1994	3.46	4.14	3.02	3.48	4.25	2.97	2.94	3.24	2.77
1995	3.66	4.16	3.31	3.81	4.32	3.45	2.60	2.56	2.73
1996	3.48	4.35	2.90	3.47	4.30	2.94	3.24	4.10	2.73
1997	3.53	4.61	2.78	3.66	4.83	2.85	3.02	3.78	2.60
1998	3.91	4.93	3.18	4.04	5.05	3.30	3.05	4.64	2.11
1999	3.73	4.51	3.18	3.84	4.62	3.30	3.03	3.45	2.76
2000	4.05	4.93	3.41	4.04	4.94	3.39	4.40	4.87	4.00
2001	4.03	4.91	3.38	4.18	4.96	3.59	3.43	4.07	2.98
2002	3.61	4.54	2.96	3.75	4.74	3.08	2.88	3.24	2.66
2003	3.57	4.45	2.93	3.64	4.57	3.00	3.26	3.44	2.93
2004	3.37	4.08	2.89	3.46	4.16	2.97	3.25	4.04	2.90
2005	3.52	4.13	3.14	3.57	4.26	3.14	3.45	3.34	3.57
2006	3.44	3.94	3.09	3.53	4.03	3.18	2.78	3.25	2.52
2007	3.39	4.13	2.89	3.51	4.27	3.01	3.16	3.93	2.67
1975-2007	3.43	4.25	2.87	3.49	4.34	2.91	3.01	3.57	2.65

^a SEER 9 areas (San Francisco, Connecticut, Detroit, Hawaii, Iowa, New Mexico, Seattle, Utah, and Atlanta). Rates are per 100,000 and are age-adjusted to the 2000 US Std Population (19 age groups - Census P25-1130).
- Statistic not shown. Rate based on less than 16 cases for the time interval.

Table 13.9
Chronic Myeloid Leukemia

Age-adjusted SEER Incidence^a Rates by Year, Race and Sex

Year of Diagnosis:	All Races			Whites			Blacks		
	Total	Males	Females	Total	Males	Females	Total	Males	Females
1975	1.98	2.93	1.33	2.00	3.01	1.31	1.94	-	-
1976	1.93	2.48	1.55	1.90	2.45	1.52	1.86	2.58	-
1977	1.68	2.08	1.39	1.69	2.14	1.37	1.84	-	-
1978	1.72	2.26	1.34	1.74	2.28	1.39	1.43	-	-
1979	1.87	2.48	1.43	1.89	2.49	1.45	1.94	2.80	-
1980	1.70	2.05	1.46	1.73	2.09	1.51	1.48	-	-
1981	1.64	1.97	1.41	1.59	1.90	1.39	2.38	3.00	1.81
1982	1.68	2.16	1.35	1.65	2.19	1.31	1.75	-	1.79
1983	1.69	2.23	1.33	1.64	2.15	1.32	2.51	3.44	1.85
1984	1.67	2.40	1.18	1.62	2.40	1.10	2.58	2.61	2.59
1985	1.98	2.76	1.44	2.01	2.80	1.48	2.06	2.89	-
1986	1.68	2.20	1.29	1.71	2.26	1.31	1.54	-	-
1987	1.88	2.32	1.58	1.90	2.38	1.58	2.14	2.88	-
1988	1.91	2.54	1.50	1.92	2.59	1.49	2.08	2.88	-
1989	1.69	2.22	1.34	1.67	2.18	1.34	2.21	3.12	-
1990	1.75	2.46	1.24	1.75	2.50	1.20	2.57	3.53	1.95
1991	1.88	2.44	1.47	1.91	2.55	1.46	1.56	-	1.75
1992	1.76	2.16	1.47	1.80	2.22	1.49	1.49	1.73	-
1993	1.92	2.53	1.48	1.95	2.52	1.56	2.26	3.56	-
1994	1.86	2.46	1.42	1.90	2.48	1.50	1.65	2.47	-
1995	1.89	2.55	1.37	1.96	2.69	1.39	1.54	1.98	-
1996	1.81	2.45	1.35	1.81	2.53	1.28	1.99	2.39	1.83
1997	1.86	2.67	1.28	1.92	2.73	1.35	1.67	2.53	-
1998	1.63	1.93	1.41	1.72	1.95	1.54	1.48	2.31	-
1999	1.78	2.45	1.29	1.77	2.41	1.29	1.68	2.20	1.26
2000	1.77	2.32	1.35	1.79	2.33	1.38	1.55	1.72	1.33
2001	1.77	2.30	1.37	1.81	2.31	1.43	1.92	2.71	1.35
2002	1.58	2.02	1.26	1.62	2.07	1.29	1.06	-	-
2003	1.57	2.11	1.14	1.65	2.23	1.17	1.36	1.92	-
2004	1.74	2.44	1.21	1.80	2.54	1.24	1.39	1.84	1.08
2005	1.56	2.12	1.11	1.63	2.19	1.19	1.47	2.30	-
2006	1.64	2.16	1.24	1.72	2.27	1.30	1.52	2.12	1.07
2007	1.53	2.08	1.09	1.61	2.22	1.10	1.28	1.71	1.01
1975-2007	1.75	2.31	1.33	1.77	2.35	1.35	1.75	2.30	1.35

^a SEER 9 areas (San Francisco, Connecticut, Detroit, Hawaii, Iowa, New Mexico, Seattle, Utah, and Atlanta). Rates are per 100,000 and are age-adjusted to the 2000 US Std Population (19 age groups - Census P25-1130).
- Statistic not shown. Rate based on less than 16 cases for the time interval.

Table 13.10
LeukemiaAge-adjusted U.S. Death^a Rates by Year, Race and Sex

Year of Death:	All Races			Whites			Blacks		
	Total	Males	Females	Total	Males	Females	Total	Males	Females
1975	8.09	10.98	6.16	8.27	11.28	6.29	6.58	8.57	5.15
1976	8.10	10.88	6.19	8.27	11.19	6.28	6.76	8.49	5.48
1977	8.11	10.84	6.26	8.27	11.11	6.34	6.82	8.76	5.51
1978	8.02	10.83	6.15	8.19	11.06	6.28	6.70	9.25	4.94
1979	8.26	11.06	6.41	8.43	11.36	6.52	6.99	8.90	5.68
1980	8.36	11.21	6.46	8.54	11.51	6.56	7.05	9.09	5.67
1981	8.10	10.89	6.24	8.24	11.16	6.31	7.11	8.92	5.86
1982	8.19	11.04	6.31	8.33	11.29	6.39	7.14	9.36	5.67
1983	8.11	10.93	6.26	8.24	11.19	6.32	7.22	9.21	5.90
1984	8.08	10.68	6.37	8.23	10.91	6.47	7.08	9.16	5.69
1985	8.07	10.77	6.31	8.23	10.97	6.44	7.08	9.62	5.42
1986	7.96	10.71	6.16	8.10	10.97	6.23	7.25	9.26	5.91
1987	7.80	10.31	6.14	7.91	10.50	6.20	7.24	9.41	5.85
1988	7.83	10.60	6.00	7.95	10.79	6.08	7.24	9.83	5.58
1989	7.95	10.62	6.15	8.07	10.75	6.26	7.36	10.34	5.45
1990	7.98	10.71	6.18	8.10	10.90	6.26	7.44	9.96	5.83
1991	7.99	10.50	6.32	8.12	10.64	6.44	7.45	10.05	5.80
1992	7.96	10.71	6.13	8.11	10.94	6.24	7.16	9.41	5.68
1993	7.93	10.66	6.09	8.04	10.84	6.16	7.36	9.76	5.77
1994	7.85	10.57	6.03	8.00	10.78	6.13	7.12	9.59	5.54
1995	7.90	10.80	5.98	8.04	11.03	6.05	7.17	9.75	5.53
1996	7.84	10.53	6.05	7.97	10.71	6.13	7.46	10.09	5.90
1997	7.71	10.42	5.89	7.89	10.68	6.01	6.83	9.23	5.29
1998	7.58	10.11	5.82	7.72	10.31	5.91	7.04	9.37	5.55
1999	7.68	10.22	5.96	7.87	10.47	6.09	6.74	8.78	5.43
2000	7.68	10.27	5.90	7.88	10.53	6.05	6.71	9.06	5.27
2001	7.61	10.14	5.87	7.81	10.41	6.00	6.72	8.76	5.40
2002	7.51	10.10	5.70	7.71	10.39	5.82	6.69	8.81	5.35
2003	7.40	9.93	5.59	7.62	10.28	5.71	6.50	8.37	5.26
2004	7.24	9.71	5.47	7.41	9.95	5.59	6.73	8.84	5.35
2005	7.19	9.72	5.40	7.43	10.04	5.57	6.03	8.03	4.74
2006	7.16	9.61	5.40	7.41	9.89	5.59	6.24	8.72	4.67
2007	7.00	9.44	5.27	7.22	9.76	5.39	6.16	7.96	5.03
1975-2007	7.79	10.44	5.99	7.96	10.70	6.10	6.91	9.12	5.47

^a US Mortality Files, National Center for Health Statistics, Centers for Disease Control and Prevention.
Rates are per 100,000 and are age-adjusted to the 2000 US Std Population (19 age groups - Census P25-1130).
- Statistic not shown. Rate based on less than 16 cases for the time interval.

Table 13.11
LeukemiaSEER Incidence^a and U.S. Death^b Rates, Age-Adjusted and Age-Specific Rates, by Race and Sex

	All Races			Whites			Blacks		
	Total	Males	Females	Total	Males	Females	Total	Males	Females
<u>SEER Incidence</u>									
<u>Age at Diagnosis</u>									
Age-Adjusted Rates, 2003-2007									
All ages	12.3	15.8	9.6	12.9	16.6	10.0	9.8	12.7	7.8
Under 65	6.1	7.3	5.0	6.4	7.6	5.2	5.1	6.2	4.1
65 and over	55.1	74.9	41.4	58.0	79.1	43.4	42.4	57.5	33.3
All ages (IARC world std) ^c	8.9	11.1	7.1	9.4	11.6	7.4	7.0	8.8	5.7
Age-Specific Rates, 2003-2007									
<1	4.9	5.3	4.3	5.0	5.5	4.5	4.3	5.3	-
1-4	9.1	10.1	8.0	9.7	10.7	8.6	5.2	6.2	4.1
5-9	4.0	4.3	3.6	4.2	4.7	3.8	2.2	2.3	2.1
10-14	3.1	3.5	2.7	3.3	3.7	2.9	2.3	2.5	2.0
15-19	3.1	3.7	2.4	3.3	4.1	2.5	2.0	2.1	2.0
20-24	2.6	3.0	2.2	2.7	3.2	2.2	2.3	2.3	2.2
25-29	2.6	3.0	2.1	2.7	3.0	2.3	2.0	2.9	1.2
30-34	3.1	3.3	2.8	3.1	3.4	2.8	2.9	3.1	2.6
35-39	3.6	4.2	3.0	3.7	4.3	3.2	3.2	4.2	2.2
40-44	4.9	5.6	4.2	4.9	5.7	4.1	4.5	5.0	4.0
45-49	7.1	8.6	5.6	7.3	8.7	5.8	6.4	7.9	5.1
50-54	10.3	12.1	8.5	10.7	12.6	8.7	9.1	10.6	7.9
55-59	15.5	19.4	11.8	16.0	20.0	12.1	14.4	17.9	11.5
60-64	23.3	29.8	17.3	24.3	30.9	18.2	20.4	27.6	14.7
65-69	34.9	44.8	26.3	37.2	47.9	27.7	25.6	31.6	21.0
70-74	47.3	62.5	35.1	49.7	65.6	36.6	41.2	55.1	31.4
75-79	62.7	86.2	45.7	66.4	90.8	48.5	45.1	65.1	32.8
80-84	74.4	104.9	55.3	78.3	111.0	57.7	52.0	68.3	43.0
85+	79.8	112.5	64.3	83.1	118.6	66.5	65.9	93.5	54.4
<u>U.S. Mortality</u>									
<u>Age at Death</u>									
Age-Adjusted Rates, 2003-2007									
All ages	7.2	9.7	5.4	7.4	10.0	5.6	6.3	8.4	5.0
Under 65	2.2	2.7	1.8	2.3	2.7	1.8	2.4	2.9	2.0
65 and over	41.5	58.1	30.4	43.0	60.2	31.4	33.4	46.1	25.9
All ages (IARC world std) ^c	4.2	5.5	3.2	4.4	5.7	3.3	4.0	5.2	3.1
Age-Specific Rates, 2003-2007									
<1	0.6	0.6	0.7	0.7	0.6	0.8	-	-	-
1-4	0.7	0.8	0.7	0.8	0.8	0.7	0.7	0.9	0.5
5-9	0.7	0.8	0.6	0.7	0.8	0.6	0.5	0.6	0.4
10-14	0.8	0.9	0.7	0.8	0.9	0.7	0.7	0.8	0.7
15-19	1.0	1.2	0.8	1.0	1.2	0.8	0.9	1.0	0.8
20-24	1.1	1.4	0.9	1.2	1.4	0.9	1.0	1.4	0.7
25-29	1.0	1.2	0.8	1.0	1.2	0.8	1.1	1.1	1.0
30-34	1.2	1.4	1.0	1.2	1.4	1.0	1.4	1.6	1.2
35-39	1.4	1.5	1.3	1.4	1.4	1.3	1.6	1.9	1.3
40-44	1.9	2.1	1.7	1.9	2.0	1.7	2.3	2.7	2.0
45-49	2.6	2.9	2.3	2.6	2.9	2.3	2.9	3.2	2.6
50-54	4.0	4.8	3.3	4.0	4.8	3.3	4.9	6.1	3.9
55-59	6.9	8.7	5.2	7.0	8.8	5.2	7.3	9.4	5.5
60-64	11.8	15.3	8.7	12.1	15.7	8.7	12.4	15.2	10.2
65-69	19.7	26.2	14.0	20.3	26.9	14.4	18.6	26.1	13.0
70-74	31.6	43.1	22.2	32.6	44.5	22.8	28.8	39.7	21.3
75-79	45.8	65.1	31.9	47.5	67.3	32.9	36.8	51.5	28.1
80-84	62.1	89.6	45.1	64.7	93.4	46.6	45.2	61.6	36.6
85+	78.6	110.5	64.0	81.8	115.5	66.3	55.9	76.6	47.6

^a SEER 17 areas. Rates are per 100,000 and are age-adjusted to the 2000 US Std Population (19 age groups - Census P25-1130), unless noted.

^b US Mortality Files, National Center for Health Statistics, Centers for Disease Control and Prevention.

^c Rates are per 100,000 and are age-adjusted to the 2000 US Std Population (19 age groups - Census P25-1130), unless noted.

- Rates are per 100,000 and are age-adjusted to the IARC world standard population.

- Statistic not shown. Rate based on less than 16 cases for the time interval.

Table 13.12
Lymphocytic Leukemia

SEER Incidence^a Rates, Age-Adjusted and Age-Specific Rates, by Race and Sex

	All Races			Whites			Blacks		
	Total	Males	Females	Total	Males	Females	Total	Males	Females
<u>Acute Lymphocytic Leukemia</u>									
<u>Age at Diagnosis</u>									
Age-Adjusted Rates, 2003-2007									
All ages	1.6	1.9	1.4	1.8	2.0	1.5	0.9	1.1	0.8
Under 65	1.7	1.9	1.4	1.8	2.1	1.5	0.9	1.1	0.7
65 and over	1.5	1.7	1.4	1.5	1.7	1.4	1.0	-	1.0
All ages (IARC world std) ^b	2.0	2.3	1.7	2.2	2.5	1.9	1.1	1.3	0.9
Age-Specific Rates, 2003-2007									
<1	2.2	2.6	1.8	2.2	2.5	1.9	-	-	-
1-4	7.8	8.6	6.9	8.5	9.4	7.5	3.7	4.5	2.7
5-9	3.4	3.7	3.1	3.7	4.0	3.4	1.6	1.8	1.4
10-14	2.2	2.5	1.9	2.4	2.7	2.0	1.2	1.4	1.0
15-19	1.8	2.3	1.1	2.0	2.6	1.3	0.9	1.0	-
20-24	1.0	1.3	0.6	1.0	1.4	0.7	0.6	-	-
25-29	0.7	0.9	0.6	0.8	0.9	0.7	-	-	-
30-34	0.7	0.8	0.6	0.8	0.9	0.7	-	-	-
35-39	0.6	0.8	0.5	0.7	0.8	0.6	-	-	-
40-44	0.7	0.8	0.6	0.7	0.8	0.6	0.5	-	-
45-49	0.7	0.8	0.5	0.7	0.9	0.6	-	-	-
50-54	0.8	0.9	0.8	0.9	1.0	0.8	0.7	-	-
55-59	0.9	0.8	0.9	1.0	0.9	1.0	-	-	-
60-64	1.1	1.2	1.0	1.1	1.2	1.0	-	-	-
65-69	1.4	1.1	1.6	1.4	1.2	1.6	-	-	-
70-74	1.5	1.7	1.3	1.4	1.6	1.3	-	-	-
75-79	1.6	2.1	1.2	1.5	2.0	1.2	-	-	-
80-84	1.5	1.5	1.5	1.6	1.6	1.6	-	-	-
85+	1.7	2.3	1.4	1.7	2.3	1.4	-	-	-
<u>Chronic Lymphocytic Leukemia</u>									
<u>Age at Diagnosis</u>									
Age-Adjusted Rates, 2003-2007									
All ages	4.2	5.7	3.0	4.4	6.1	3.2	3.0	4.4	2.0
Under 65	1.3	1.7	0.9	1.4	1.8	0.9	1.0	1.5	0.6
65 and over	23.9	33.2	17.4	25.6	35.6	18.6	16.5	23.9	12.2
All ages (IARC world std) ^b	2.5	3.4	1.8	2.7	3.6	1.9	1.8	2.7	1.2
Age-Specific Rates, 2003-2007									
<1	-	-	-	-	-	-	-	-	-
1-4	-	-	-	-	-	-	-	-	-
5-9	-	-	-	-	-	-	-	-	-
10-14	-	-	-	-	-	-	-	-	-
15-19	-	-	-	-	-	-	-	-	-
20-24	-	-	-	-	-	-	-	-	-
25-29	-	-	-	-	-	-	-	-	-
30-34	0.1	0.1	-	0.1	-	-	-	-	-
35-39	0.2	0.3	0.2	0.2	0.3	0.2	-	-	-
40-44	0.6	0.8	0.4	0.6	0.8	0.4	-	-	-
45-49	1.8	2.5	1.1	1.9	2.7	1.2	1.3	1.9	-
50-54	3.3	4.3	2.4	3.5	4.4	2.6	2.8	4.1	1.7
55-59	6.2	8.3	4.1	6.5	8.6	4.4	4.7	7.2	2.6
60-64	10.8	14.5	7.4	11.4	14.9	8.1	8.6	13.6	4.6
65-69	16.0	21.8	11.0	17.4	23.7	11.8	10.6	13.9	8.2
70-74	20.9	28.2	15.0	22.5	30.2	16.1	15.4	20.5	11.8
75-79	27.5	37.9	20.0	29.5	40.6	21.4	19.6	29.2	13.6
80-84	30.7	43.8	22.5	32.6	46.9	23.7	20.8	28.9	16.3
85+	33.2	48.3	26.1	35.4	51.5	27.8	21.6	38.3	14.6

^a SEER 17 areas. Rates are per 100,000 and are age-adjusted to the 2000 US Std Population (19 age groups - Census P25-1130), unless noted.

^b Rates are per 100,000 and are age-adjusted to the IARC world standard population.

- Statistic not shown. Rate based on less than 16 cases for the time interval.

Table 13.13
Myeloid Leukemia

SEER Incidence^a Rates, Age-Adjusted and Age-Specific Rates, by Race and Sex

	All Races			Whites			Blacks		
	Total	Males	Females	Total	Males	Females	Total	Males	Females
<u>Acute Myeloid Leukemia</u>									
<u>Age at Diagnosis</u>									
Age-Adjusted Rates, 2003-2007									
All ages	3.5	4.3	2.9	3.6	4.4	3.0	3.1	3.5	2.7
Under 65	1.7	1.8	1.6	1.7	1.9	1.6	1.6	1.7	1.5
65 and over	15.9	21.1	12.4	16.5	22.0	12.7	13.4	16.3	11.5
All ages (IARC world std) ^b	2.4	2.8	2.1	2.5	2.9	2.1	2.2	2.4	1.9
Age-Specific Rates, 2003-2007									
<1	1.6	1.5	1.7	1.7	1.6	1.7	-	-	-
1-4	0.9	1.0	0.8	0.8	0.9	0.7	0.9	-	-
5-9	0.4	0.4	0.3	0.4	0.5	0.3	-	-	-
10-14	0.7	0.7	0.7	0.6	0.6	0.6	0.8	0.8	-
15-19	0.8	0.8	0.8	0.9	0.9	0.8	0.7	-	-
20-24	0.9	0.9	1.0	1.0	1.0	1.1	0.9	-	1.0
25-29	1.0	1.1	1.0	1.0	1.1	1.0	0.7	-	-
30-34	1.2	1.1	1.2	1.2	1.1	1.3	1.1	1.2	-
35-39	1.3	1.4	1.2	1.3	1.4	1.3	1.2	1.4	1.1
40-44	1.7	1.8	1.6	1.7	1.7	1.6	1.6	1.7	1.5
45-49	2.3	2.3	2.2	2.2	2.3	2.2	2.3	2.3	2.4
50-54	3.2	3.4	3.0	3.3	3.6	3.0	2.9	2.9	2.9
55-59	4.5	5.0	3.9	4.6	5.3	4.0	4.3	5.0	3.7
60-64	6.2	7.5	5.0	6.6	8.0	5.2	5.2	5.7	4.9
65-69	9.5	11.5	7.8	10.0	12.0	8.1	7.8	10.2	6.1
70-74	14.0	17.6	11.1	14.4	18.1	11.3	14.2	18.5	11.1
75-79	18.7	25.4	13.8	19.5	26.5	14.3	12.6	15.6	10.7
80-84	23.0	32.2	17.2	23.7	33.8	17.3	16.3	17.1	15.9
85+	21.2	29.5	17.3	21.5	30.6	17.2	22.2	25.8	20.6
<u>Chronic Myeloid Leukemia</u>									
<u>Age at Diagnosis</u>									
Age-Adjusted Rates, 2003-2007									
All ages	1.5	2.0	1.1	1.5	2.0	1.2	1.5	1.9	1.2
Under 65	0.8	0.9	0.6	0.8	0.9	0.6	0.9	1.0	0.8
65 and over	6.6	9.1	4.8	6.9	9.4	5.0	5.3	8.3	3.5
All ages (IARC world std) ^b	1.0	1.3	0.8	1.0	1.3	0.8	1.0	1.2	0.9
Age-Specific Rates, 2003-2007									
<1	0.3	-	-	-	-	-	-	-	-
1-4	0.1	-	-	0.1	-	-	-	-	-
5-9	-	-	-	-	-	-	-	-	-
10-14	0.1	0.1	-	0.1	0.2	-	-	-	-
15-19	0.2	0.3	0.2	0.2	0.2	0.2	-	-	-
20-24	0.4	0.5	0.3	0.4	0.5	0.3	-	-	-
25-29	0.5	0.6	0.3	0.4	0.6	0.3	-	-	-
30-34	0.7	0.8	0.6	0.6	0.8	0.5	1.0	-	1.1
35-39	0.9	1.2	0.7	0.9	1.2	0.7	1.0	1.5	-
40-44	1.0	1.2	0.9	1.0	1.1	0.9	1.3	1.7	1.0
45-49	1.3	1.6	1.1	1.3	1.5	1.1	1.4	1.6	1.2
50-54	1.4	1.6	1.3	1.4	1.6	1.2	1.5	-	1.8
55-59	2.0	2.5	1.5	2.0	2.5	1.4	2.8	3.1	2.6
60-64	2.6	3.1	2.0	2.6	3.3	2.0	3.2	3.4	3.0
65-69	4.1	5.2	3.0	4.3	5.5	3.2	2.4	-	-
70-74	5.6	8.1	3.7	5.8	8.4	3.7	5.6	8.2	3.7
75-79	7.5	10.3	5.5	8.1	10.8	6.0	5.7	9.7	-
80-84	9.2	13.4	6.5	9.6	13.6	7.0	7.5	14.5	-
85+	9.2	12.4	7.7	9.5	12.9	7.9	8.2	-	7.1

^a SEER 17 areas. Rates are per 100,000 and are age-adjusted to the 2000 US Std Population (19 age groups - Census P25-1130), unless noted.

^b Rates are per 100,000 and are age-adjusted to the IARC world standard population.

- Statistic not shown. Rate based on less than 16 cases for the time interval.

Table 13.14
Leukemia

5-Year Relative and Period Survival (Percent) by Race, Sex, Diagnosis Year and Age

	All Races			Whites			Blacks		
	Total	Males	Females	Total	Males	Females	Total	Males	Females
5-Year Relative Survival (Percent)									
Year of Diagnosis:									
1960-1963 ^a	-	-	-	14	-	-	-	-	-
1970-1973 ^a	-	-	-	22	-	-	-	-	-
1975-1977 ^b	35.6	34.5	36.8	36.1	35.2	37.2	33.6	30.5	36.8
1978-1980 ^b	37.7	36.7	39.0	38.4	37.5	39.7	29.3	28.8	30.0
1981-1983 ^b	39.1	38.8	39.5	40.1	39.9	40.4	34.1	33.4	35.0
1984-1986 ^b	42.0	41.5	42.7	43.3	42.9	43.9	33.7	32.6	35.0
1987-1989 ^b	44.5	46.0	42.6	45.6	47.6	43.0	36.8	35.0	39.0
1990-1992 ^b	46.8	46.4	47.4	48.1	48.2	48.1	37.2	31.8	43.1
1993-1995 ^b	48.9	49.6	48.0	50.0	50.7	49.0	42.3	41.8	42.9
1996-1998 ^b	49.9	50.1	49.5	51.3	51.1	51.5	39.4	40.2	38.2
1999-2006 ^b	55.3 ^e	55.7 ^e	54.9 ^e	56.2 ^e	56.5 ^e	55.8 ^e	47.2 ^e	48.3 ^e	46.0
5-Year Period Survival (Percent) ^{cd}									
Year of Diagnosis:									
1999-2006	56.6	56.7	56.4	56.8	56.9	56.6	49.6	49.9	49.5
5-Year Relative Survival (Percent), 1999-2006 ^c									
Age at Diagnosis:									
Ages <45	68.8	68.0	69.8	70.0	69.6	70.6	57.7	54.6	61.9
Ages 45-54	61.5	63.0	59.2	62.8	64.0	61.0	49.1	51.9	44.5
Ages 55-64	57.6	57.6	57.5	58.4	58.1	59.1	43.9	44.7	42.7
Ages 65-74	47.8	46.1	50.2	48.3	46.4	51.2	41.1	39.8	42.4
Ages 75+	33.9	33.1	34.7	34.5	33.7	35.2	25.9	24.2	26.7
Ages <65	63.9	63.7	64.2	64.9	64.7	65.3	52.3	51.5	53.4
Ages 65+	40.6	40.0	41.2	41.0	40.4	41.8	34.6	34.5	34.6

^a Based on End Results data from a series of hospital registries and one population-based registry.

^b Based on the SEER 9 areas (San Francisco, Connecticut, Detroit, Hawaii, Iowa, New Mexico, Seattle, Utah, Atlanta).

Based on follow-up of patients into 2007.

^c Based on the SEER 17 areas (San Francisco, Connecticut, Detroit, Hawaii, Iowa, New Mexico, Seattle, Utah, Atlanta, San Jose-Monterey, Los Angeles, Alaska Native Registry, Rural Georgia, California excluding SF/SJM/LA, Kentucky, Louisiana and New Jersey). California excluding SF/SJM/LA, Kentucky, Louisiana, and New Jersey contribute cases for diagnosis years 2000-2006. The remaining 13 SEER Areas contribute cases for the entire period 1999-2006. Based on follow-up of patients into 2007.

^d Period survival provides a more up-to-date estimate of survival by piecing together the most recent conditional survival estimates from several cohorts. It is computed here using three year calendar blocks (2004-2006: 0-1 year survival), (2003-2005: 1-2 year survival), (2002-2004: 2-3 year survival), (2001-2003: 3-4 year survival), (2000-2002: 4-5 years survival). The difference between 1975-1977 and 1999-2006 is statistically significant ($p < .05$).

^e The standard error is between 5 and 10 percentage points.

^f The standard error is greater than 10 percentage points.

^g The standard error is greater than 10 percentage points.

- Statistic could not be calculated due to fewer than 25 cases during the time period.

Table 13.15
Lymphocytic Leukemia

5-Year Relative and Period Survival (Percent) by Race, Sex, Diagnosis Year and Age

	All Races			Whites			Blacks		
	Total	Males	Females	Total	Males	Females	Total	Males	Females
<u>Acute Lymphocytic Leukemia</u>									
5-Year Relative Survival (Percent)									
Year of Diagnosis:									
1975-1977 ^a	42.4	38.6	47.4	42.8	39.3	47.7	34.5 ^e	-	-
1978-1980 ^a	50.4	46.8	55.6	50.8	47.4	55.6	31.7 ^e	31.4 ^e	-
1981-1983 ^a	51.9	48.5	56.4	52.8	49.5	57.2	43.4 ^e	37.6 ^e	49.1 ^e
1984-1986 ^a	53.7	50.5	58.0	54.7	50.8	60.1	36.4 ^e	44.2 ^e	27.4 ^e
1987-1989 ^a	56.1	55.7	56.6	56.8	57.1	56.4	46.0 ^e	43.1 ^e	48.0 ^e
1990-1992 ^a	60.0	56.4	65.0	59.9	57.1	64.0	57.7 ^e	50.9 ^e	63.8 ^e
1993-1995 ^a	61.5	58.7	65.3	61.1	58.7	64.2	53.9 ^e	45.8 ^e	65.0 ^e
1996-1998 ^b	66.7	65.5	68.2	67.5	65.3	70.3	56.5 ^e	60.4 ^e	50.6 ^e
1999-2006 ^a	66.4 ^d	65.4 ^d	67.8 ^d	67.3 ^d	66.5 ^d	68.3 ^d	59.5 ^d	56.9 ^e	62.6 ^e
5-Year Period Survival (Percent) ^{bc}									
Year of Diagnosis:									
1999-2006	66.2	66.2	66.2	66.1	66.3	65.7	62.0	59.4	64.8
5-Year Relative Survival (Percent), 1999-2006 ^b									
Age at Diagnosis:									
Ages <45	75.0	73.4	77.2	75.5	74.2	77.4	69.1	63.8	75.8
Ages 45-54	26.6	25.8	27.7	26.4	24.7	28.7	17.7 ^e	-	-
Ages 55-64	18.1	17.6	18.7	18.5	17.7	19.7	-	-	-
Ages 65-74	9.8	8.6	11.2	10.6	9.6	11.9	-	-	-
Ages 75+	6.1	5.6	6.5	4.6	4.1	4.7	-	-	-
Ages <65	69.1	67.9	70.6	69.5	68.5	70.9	63.1	59.1	67.9
Ages 65+	8.4	7.3	8.9	8.3	7.3	8.5	4.4	-	-
<u>Chronic Lymphocytic Leukemia</u>									
5-Year Relative Survival (Percent)									
Year of Diagnosis:									
1975-1977 ^a	69.3	67.1	72.0	70.1	67.9	73.1	57.3 ^e	56.4 ^e	58.2 ^e
1978-1980 ^a	70.5	67.6	74.2	71.2	68.1	75.2	59.2 ^e	59.5 ^e	58.4 ^e
1981-1983 ^a	68.2	67.6	69.0	68.9	68.6	69.3	57.6 ^e	54.3 ^e	62.9 ^e
1984-1986 ^a	74.2	72.9	76.1	74.5	73.1	76.4	70.2 ^e	67.3 ^e	70.5 ^e
1987-1989 ^a	74.6	74.6	74.7	75.7	75.9	75.5	60.6	58.9 ^e	63.1 ^e
1990-1992 ^a	75.6	74.1	77.7	76.7	75.3	78.7	54.3	46.1 ^e	62.6 ^e
1993-1995 ^a	78.2	77.8	78.8	79.2	78.8	79.8	64.5	63.3 ^e	65.9 ^e
1996-1998 ^b	76.5	74.6	79.2	77.5	75.7	80.1	58.2 ^e	51.6 ^e	66.3 ^e
1999-2006 ^a	79.7 ^d	78.6 ^d	81.4 ^d	80.1 ^d	78.9 ^d	82.2 ^d	67.2	66.2	68.9 ^e
5-Year Period Survival (Percent) ^{bc}									
Year of Diagnosis:									
1999-2006	79.2	77.3	81.9	79.4	77.3	82.5	66.1	65.0	67.1
5-Year Relative Survival (Percent), 1999-2006 ^b									
Age at Diagnosis:									
Ages <45	91.1	89.2	94.3	92.8	90.7	96.5	71.5 ^e	-	-
Ages 45-54	88.8	87.5	91.5	89.8	88.2	93.1	72.5	74.0 ^e	68.8 ^f
Ages 55-64	85.0	82.3	90.5	85.5	83.0	90.7	68.3	62.8	79.2 ^e
Ages 65-74	80.7	77.5	85.5	81.0	77.5	86.4	70.0	67.6 ^e	72.5 ^e
Ages 75+	65.2	62.6	67.8	65.4	62.5	68.3	47.8	38.6 ^e	54.4 ^e
Ages <65	86.7	84.5	91.1	87.4	85.2	91.9	70.0	67.2	75.7
Ages 65+	72.9	70.7	75.6	73.0	70.6	76.0	60.9	57.0	64.3

^a Based on the SEER 9 areas (San Francisco, Connecticut, Detroit, Hawaii, Iowa, New Mexico, Seattle, Utah, Atlanta).

Based on follow-up of patients into 2007.

^b Based on the SEER 17 areas (San Francisco, Connecticut, Detroit, Hawaii, Iowa, New Mexico, Seattle, Utah, Atlanta, San Jose-Monterey, Los Angeles, Alaska Native Registry, Rural Georgia, California excluding SF/SJM/LA, Kentucky, Louisiana and New Jersey). California excluding SF/SJM/LA, Kentucky, Louisiana, and New Jersey contribute cases for diagnosis years 2000-2006. The remaining 13 SEER Areas contribute cases for the entire period 1999-2006. Based on follow-up of patients into 2007.

^c Period survival provides a more up-to-date estimate of survival by piecing together the most recent conditional survival estimates from several cohorts. It is computed here using three year calendar blocks (2004-2006: 0-1 year survival), (2003-2005: 1-2 year survival), (2002-2004: 2-3 year survival), (2001-2003: 3-4 year survival), (2000-2002: 4-5 years survival).

^d The difference between 1975-1977 and 1999-2006 is statistically significant (p<.05).

^e The standard error is between 5 and 10 percentage points.

^f The standard error is greater than 10 percentage points.

- Statistic could not be calculated due to fewer than 25 cases during the time period.

Table 13.16
Myeloid Leukemia

5-Year Relative and Period Survival (Percent) by Race, Sex, Diagnosis Year and Age

	All Races			Whites			Blacks		
	Total	Males	Females	Total	Males	Females	Total	Males	Females
<u>Acute Myeloid Leukemia</u>									
5-Year Relative Survival (Percent)									
Year of Diagnosis:									
1975-1977 ^a	6.7	6.2	7.3	6.3	6.1	6.5	10.6	8.6	12.1 ^e
1978-1980 ^a	8.4	7.8	9.1	7.8	6.9	9.0	10.2	7.2	13.2
1981-1983 ^a	9.4	8.2	10.8	8.7	7.3	10.4	12.5	16.4 ^e	8.8
1984-1986 ^a	11.9	10.5	13.5	11.7	10.4	13.1	10.1	6.7	13.3
1987-1989 ^a	12.8	10.4	15.4	12.7	11.1	14.5	10.1	4.7	16.9 ^e
1990-1992 ^a	15.3	13.8	17.0	15.1	13.5	16.8	14.5	14.1	14.7
1993-1995 ^a	18.0	16.6	19.6	17.3	15.9	19.0	23.5	22.8 ^e	23.2
1996-1998 ^b	19.1	18.1	20.2	17.8	16.7	19.0	24.6	26.9 ^e	21.3 ^e
1999-2006 ^a	24.2 ^d	22.4 ^d	26.3 ^d	23.9 ^d	21.6 ^d	26.5 ^d	23.5 ^d	25.4 ^d	20.2
5-Year Period Survival (Percent) ^{bc}									
Year of Diagnosis:									
1999-2006	26.0	24.5	27.7	25.3	24.0	26.7	28.6	29.5	27.3
5-Year Relative Survival (Percent), 1999-2006 ^b									
Age at Diagnosis:									
Ages <45	52.1	49.9	54.6	53.3	51.4	55.4	42.0	40.4	43.6
Ages 45-54	32.0	31.5	32.7	32.8	32.3	33.6	25.6	25.4	25.4 ^e
Ages 55-64	19.7	16.9	23.3	19.5	16.6	23.4	17.1	16.5	16.9
Ages 65-74	8.7	6.8	11.2	8.5	6.6	11.3	8.0	6.2	9.7
Ages 75+	1.9	1.8	1.9	1.9	1.9	1.8	1.4	-	1.7
Ages <65	37.9	35.5	40.7	38.1	35.6	41.3	32.3	31.8	32.5
Ages 65+	5.1	4.5	5.8	5.0	4.4	5.7	5.4	4.5	5.8
<u>Chronic Myeloid Leukemia</u>									
5-Year Relative Survival (Percent)									
Year of Diagnosis:									
1975-1977 ^a	24.0	21.6	27.2	22.7	20.5	25.6	28.7 ^e	22.6 ^e	36.1 ^e
1978-1980 ^a	25.1	24.1	26.2	25.2	24.7	25.7	22.0 ^e	20.9 ^e	23.6 ^e
1981-1983 ^a	30.4	26.4	34.9	30.9	27.4	34.7	30.1	20.6 ^e	41.3 ^e
1984-1986 ^a	23.9	21.6	27.3	24.5	21.6	28.7	22.2	21.4 ^e	22.6 ^e
1987-1989 ^a	32.2	32.9	31.1	32.1	33.4	30.4	35.7 ^e	30.2 ^e	43.8 ^e
1990-1992 ^a	32.5	31.1	34.2	32.1	31.9	32.5	35.2 ^e	24.2 ^e	46.9 ^e
1993-1995 ^a	37.4	37.0	37.9	37.3	37.3	37.2	35.7 ^e	32.8 ^e	40.4 ^e
1996-1998 ^b	38.9	39.3	38.2	40.1	39.4	40.7	29.8 ^e	29.1 ^e	30.0 ^e
1999-2006 ^a	54.6 ^d	53.5 ^d	56.2 ^d	53.6 ^d	52.6 ^d	54.9 ^d	54.8 ^d	54.6 ^{de}	54.9 ^e
5-Year Period Survival (Percent) ^{bc}									
Year of Diagnosis:									
1999-2006	60.5	59.9	61.5	59.3	58.9	59.8	60.0	58.8	61.4
5-Year Relative Survival (Percent), 1999-2006 ^b									
Age at Diagnosis:									
Ages <45	78.2	76.7	80.5	79.0	77.1	82.0	70.8	70.5	70.9 ^e
Ages 45-54	77.4	75.6	79.7	78.0	77.4	78.5	67.0 ^e	59.3 ^e	73.9 ^e
Ages 55-64	63.0	62.2	64.4	63.3	61.6	66.0	53.9 ^e	59.4 ^e	44.8 ^e
Ages 65-74	39.5	35.9	45.3	38.4	34.3	44.9	35.8 ^e	33.6 ^e	38.6 ^e
Ages 75+	24.7	23.2	26.1	24.9	23.5	26.3	20.6 ^e	9.3 ^e	27.9 ^e
Ages <65	73.9	72.5	76.0	74.3	72.7	76.6	66.1	65.5	66.2
Ages 65+	31.7	30.0	33.8	31.1	29.2	33.3	30.0	26.1 ^e	33.6 ^e

^a Based on the SEER 9 areas (San Francisco, Connecticut, Detroit, Hawaii, Iowa, New Mexico, Seattle, Utah, Atlanta).

Based on follow-up of patients into 2007.

^b Based on the SEER 17 areas (San Francisco, Connecticut, Detroit, Hawaii, Iowa, New Mexico, Seattle, Utah, Atlanta, San Jose-Monterey, Los Angeles, Alaska Native Registry, Rural Georgia, California excluding SF/SJM/LA, Kentucky, Louisiana and New Jersey). California excluding SF/SJM/LA, Kentucky, Louisiana, and New Jersey contribute cases for diagnosis years 2000-2006. The remaining 13 SEER Areas contribute cases for the entire period 1999-2006. Based on follow-up of patients into 2007.

^c Period survival provides a more up-to-date estimate of survival by piecing together the most recent conditional survival estimates from several cohorts. It is computed here using three year calendar blocks (2004-2006: 0-1 year survival), (2003-2005: 1-2 year survival), (2002-2004: 2-3 year survival), (2001-2003: 3-4 year survival), (2000-2002: 4-5 years survival).

^d The difference between 1975-1977 and 1999-2006 is statistically significant (p<.05).

^e The standard error is between 5 and 10 percentage points.

The standard error is greater than 10 percentage points.

- Statistic could not be calculated due to fewer than 25 cases during the time period.

Table 13.17
LeukemiaSEER^a Relative Survival (Percent)
By Year of Diagnosis

All Races, Males and Females

Survival Time	Year of Diagnosis																			
	1975- 1979	1980- 1984	1985- 1989	1990	1991	1992	1993	1994	1995	1996	1997	1998	1999	2000	2001	2002	2003	2004	2005	2006
1-year	61.7	63.8	65.6	67.6	66.8	68.0	68.1	67.4	68.5	69.0	68.6	67.0	66.0	66.8	70.3	71.7	73.1	74.4	73.0	74.0
2-year	51.2	53.5	56.2	57.0	57.5	59.0	58.9	58.8	59.4	60.3	60.5	58.5	58.9	58.6	62.9	64.1	65.5	66.9	66.9	
3-year	44.9	47.8	50.6	52.4	52.1	54.1	55.3	54.6	54.8	55.9	56.1	54.8	55.2	55.0	58.9	61.3	61.3	63.7		
4-year	40.2	43.1	46.9	49.1	48.0	50.6	52.0	51.4	51.4	52.7	52.4	51.4	52.4	52.1	56.6	59.2	58.7			
5-year	36.2	39.3	43.9	46.8	45.6	47.9	48.8	48.9	49.0	49.6	50.1	49.8	49.5	50.3	54.4	57.5				
6-year	33.0	36.9	41.6	43.3	43.8	45.6	46.8	46.6	46.9	47.9	48.2	47.9	47.5	49.6	52.7					
7-year	30.9	34.5	39.2	41.1	41.4	43.0	44.3	44.8	45.9	47.1	46.6	46.9	46.3	48.6						
8-year	28.8	32.6	37.1	39.2	39.2	41.2	43.5	42.5	43.7	46.1	46.4	46.0	45.0							
9-year	27.1	31.0	35.4	37.9	38.0	39.7	42.1	41.4	42.8	44.7	45.6	45.5								
10-year	25.8	29.7	34.2	36.5	37.1	39.0	41.4	41.0	41.5	43.6	44.9									
11-year	24.6	28.6	32.9	35.2	36.0	37.6	41.0	40.0	40.4	43.3										
12-year	23.5	27.7	32.1	33.8	35.6	37.1	40.5	39.2	40.2											
13-year	22.9	26.9	31.6	32.9	35.5	37.0	39.8	38.1												
14-year	22.3	26.6	31.3	32.7	35.0	36.2	39.8													
15-year	21.9	26.1	31.0	32.7	34.9	36.0														
16-year	21.2	25.5	30.7	32.7	34.4															
17-year	20.9	24.9	30.7	32.7																
18-year	20.6	24.7	30.6																	
19-year	20.3	24.3																		
20-year	19.8	24.2																		

^a Based on the SEER 9 areas (San Francisco, Connecticut, Detroit, Hawaii, Iowa, New Mexico, Seattle, Utah, and Atlanta).

Table 13.18
LeukemiaSEER^a Relative Survival (Percent)
By Year of Diagnosis

All Races, Males

Year of Diagnosis

	1975- 1979	1980- 1984	1985- 1989	1990	1991	1992	1993	1994	1995	1996	1997	1998	1999	2000	2001	2002	2003	2004	2005	2006
Survival Time																				
1-year	61.4	64.1	66.4	68.2	67.9	68.5	69.3	69.3	70.1	70.5	69.4	67.2	67.0	68.3	72.5	72.6	74.1	75.9	75.3	74.7
2-year	50.7	53.5	57.1	57.0	58.5	59.3	60.4	60.0	60.9	62.2	61.6	59.1	59.7	60.3	64.8	64.1	66.1	67.4	69.1	
3-year	44.0	47.4	51.1	51.7	52.7	54.1	56.9	55.0	56.3	57.9	56.2	55.6	55.8	57.1	60.6	61.5	61.5	64.3		
4-year	39.3	42.5	47.4	48.2	47.6	50.8	53.6	52.5	52.5	54.5	51.8	51.9	52.7	53.6	57.7	58.9	59.1			
5-year	35.1	38.8	44.7	44.8	45.5	48.6	50.0	49.7	49.2	50.7	49.5	50.2	49.0	52.4	55.2	56.6				
6-year	32.0	36.2	42.3	41.1	44.0	45.8	48.1	46.8	46.6	48.7	48.0	48.1	47.2	51.5	52.9					
7-year	29.7	33.8	39.6	38.9	41.4	42.8	45.4	45.0	45.6	47.8	46.4	46.8	45.5	50.6						
8-year	27.3	31.6	37.6	36.6	39.3	41.2	44.5	42.1	44.0	47.0	46.1	45.9	44.0							
9-year	25.4	29.9	35.8	35.6	38.1	40.0	43.2	40.3	42.9	45.1	45.6	45.3								
10-year	24.0	28.7	34.4	33.8	36.9	39.5	42.5	39.9	41.1	43.8	45.4									
11-year	22.7	27.7	33.2	32.7	35.5	38.7	42.1	39.0	40.8	43.3										
12-year	21.7	27.3	32.4	31.3	34.7	38.0	41.3	38.3	40.6											
13-year	21.2	26.6	32.0	30.6	34.3	38.0	40.4	36.7												
14-year	20.5	26.3	31.8	30.6	33.3	36.8	40.4													
15-year	20.2	25.9	31.3	30.6	32.7	36.8														
16-year	19.5	25.1	31.0	30.6	32.4															
17-year	19.2	24.5	31.0	30.6																
18-year	18.9	24.2	30.9																	
19-year	18.5	23.9																		
20-year	17.6	23.6																		

^a Based on the SEER 9 areas (San Francisco, Connecticut, Detroit, Hawaii, Iowa, New Mexico, Seattle, Utah, and Atlanta).

Table 13.19
LeukemiaSEER^a Relative Survival (Percent)
By Year of Diagnosis

All Races, Females

Year of Diagnosis

	1975- 1979	1980- 1984	1985- 1989	1990	1991	1992	1993	1994	1995	1996	1997	1998	1999	2000	2001	2002	2003	2004	2005	2006
Survival Time																				
1-year	62.0	63.4	64.6	66.7	65.3	67.2	66.6	64.9	66.4	67.0	67.5	66.8	64.7	64.7	67.3	70.5	71.7	72.4	69.9	73.2
2-year	51.9	53.6	55.1	57.1	56.2	58.5	57.1	57.3	57.3	57.9	59.1	57.7	57.7	56.4	60.2	64.1	64.7	66.1	63.8	
3-year	46.0	48.4	50.1	53.4	51.4	54.2	53.2	54.2	52.7	53.3	55.9	53.8	54.4	52.4	56.4	61.1	61.0	62.8		
4-year	41.4	44.0	46.1	50.3	48.4	50.4	49.8	50.0	49.9	50.4	53.2	50.7	52.0	50.2	55.0	59.6	58.2			
5-year	37.5	40.0	42.8	49.5	45.8	46.9	47.3	47.9	48.6	48.3	51.0	49.3	50.2	47.6	53.2	58.3				
6-year	34.3	37.8	40.8	46.4	43.6	45.2	45.0	46.4	47.4	46.9	48.6	47.7	48.0	47.1	52.2					
7-year	32.6	35.5	38.6	43.9	41.4	43.2	43.0	44.6	46.2	46.0	46.8	46.9	47.2	45.8						
8-year	30.7	33.9	36.5	42.6	39.2	41.2	42.2	43.1	43.3	44.9	46.8	45.9	46.5							
9-year	29.2	32.5	34.9	40.9	37.9	39.2	40.8	42.8	42.7	44.1	45.2	45.6								
10-year	27.9	30.9	34.1	40.2	37.4	38.3	40.0	42.2	41.8	43.4	43.9									
11-year	26.8	29.8	32.4	38.5	36.6	36.1	39.5	41.4	39.9	43.3										
12-year	25.7	28.3	31.8	37.2	36.4	35.5	39.2	40.3	39.7											
13-year	24.9	27.3	31.1	35.7	36.4	35.5	38.7	40.0												
14-year	24.4	26.9	30.5	34.8	36.4	35.3	38.7													
15-year	23.8	26.4	30.5	34.8	36.4	34.6														
16-year	23.2	25.9	30.4	34.8	36.4															
17-year	22.9	25.4	30.1	34.8																
18-year	22.7	25.3	30.1																	
19-year	22.4	24.8																		
20-year	22.3	24.8																		

^a Based on the SEER 9 areas (San Francisco, Connecticut, Detroit, Hawaii, Iowa, New Mexico, Seattle, Utah, and Atlanta).

Table 13.20
Leukemia

Risk of Being Diagnosed With Cancer in 10, 20 and 30 Years,
Lifetime Risk of Being Diagnosed with Cancer Given Alive and Cancer-Free at Current Age, and
Lifetime Risk of Dying from Cancer Given Alive at Current Age
Both Sexes, 2005-2007 By Race/Ethnicity

Race/ Ethnicity	Current Age	Risk of Being Diagnosed with Cancer				Risk of Dying from Cancer	Race/ Ethnicity	Current Age	Risk of Being Diagnosed with Cancer				Risk of Dying from Cancer
		+10 yrs	+20 yrs	+30 yrs	Ever				+10 yrs	+20 yrs	+30 yrs	Ever	
All Races	0	0.06	0.09	0.12	1.30	0.84	Asian/ Pacific Islander	0	0.05	0.08	0.10	0.84	0.60
	10	0.03	0.06	0.09	1.25	0.85		10	0.03	0.05	0.08	0.80	0.60
	20	0.03	0.06	0.12	1.23	0.84		20	0.03	0.05	0.10	0.77	0.59
	30	0.03	0.09	0.21	1.21	0.84		30	0.03	0.07	0.14	0.75	0.58
	40	0.06	0.18	0.42	1.19	0.84		40	0.04	0.11	0.23	0.73	0.58
	50	0.12	0.37	0.75	1.16	0.84		50	0.07	0.19	0.38	0.69	0.57
	60	0.26	0.66	1.00	1.10	0.84		60	0.12	0.32	0.54	0.65	0.55
	70	0.46	0.84	-	0.96	0.79		70	0.22	0.46	-	0.57	0.51
80	0.53	-	-	0.70	0.65	80	0.29	-	-	0.43	0.40		
White	0	0.06	0.10	0.12	1.37	0.88	American Indian/ Alaska Native ^a	0	0.04	0.07	0.09	0.59	0.51
	10	0.03	0.06	0.10	1.32	0.88		10	0.03	0.05	0.07	0.55	0.51
	20	0.03	0.06	0.12	1.29	0.88		20	0.02	0.04	0.07	0.53	0.50
	30	0.03	0.10	0.22	1.27	0.88		30	0.02	0.06	0.14	0.52	0.50
	40	0.06	0.19	0.45	1.25	0.87		40	0.04	0.12	0.26	0.51	0.51
	50	0.13	0.39	0.79	1.22	0.88		50	0.09	0.23	0.45	0.50	0.51
	60	0.28	0.70	1.05	1.16	0.87		60	0.15	0.40	0.44	0.44	0.51
	70	0.48	0.88	-	1.00	0.82		70	0.28	0.33	-	0.34	0.49
80	0.55	-	-	0.72	0.67	80	0.07	-	-	0.07	0.38		
Black	0	0.04	0.06	0.08	0.82	0.59	Hispanic ^b	0	0.06	0.10	0.14	1.02	0.62
	10	0.02	0.04	0.07	0.81	0.60		10	0.04	0.08	0.11	0.97	0.62
	20	0.02	0.05	0.10	0.79	0.59		20	0.04	0.07	0.12	0.93	0.61
	30	0.03	0.08	0.17	0.78	0.59		30	0.04	0.09	0.19	0.90	0.60
	40	0.05	0.15	0.31	0.77	0.59		40	0.05	0.15	0.32	0.87	0.59
	50	0.10	0.28	0.51	0.76	0.59		50	0.10	0.28	0.53	0.84	0.58
	60	0.19	0.46	0.64	0.73	0.59		60	0.18	0.45	0.70	0.77	0.56
	70	0.32	0.56	-	0.66	0.56		70	0.30	0.57	-	0.65	0.51
80	0.36	-	-	0.53	0.46	80	0.35	-	-	0.46	0.40		

Devcan Version 6.5.0, June 2010, National Cancer Institute (<http://srab.cancer.gov/devcan/>).

Source: Incidence data are from the SEER 17 areas (San Francisco, Connecticut, Detroit, Hawaii, Iowa, New Mexico, Seattle, Utah, Atlanta, San Jose-Monterey, Los Angeles, Alaska Native Registry, Rural Georgia, California excluding SF/SJM/LA, Kentucky, Louisiana and New Jersey). Mortality data are from the NCHS public use data file for the total US.

^a Underlying incidence and mortality data for American Indian/Alaska Native are based on the CHSDA (Contract Health Service Delivery Area) counties.

^b Hispanic is not mutually exclusive from whites, blacks, Asian/Pacific Islanders, and American Indians/Alaska Natives.

Underlying incidence data for Hispanics are based on NHIA and exclude cases from the Alaska Native Registry.

Underlying mortality data for Hispanics exclude deaths from the District of Columbia, Minnesota, New Hampshire and North Dakota.

- Statistic could not be calculated.

A percent of 0.00 represents a value that is below 0.005.

Table 13.21
Leukemia

Risk of Being Diagnosed With Cancer in 10, 20 and 30 Years,
Lifetime Risk of Being Diagnosed with Cancer Given Alive and Cancer-Free at Current Age, and
Lifetime Risk of Dying from Cancer Given Alive at Current Age
Males, 2005-2007 By Race/Ethnicity

Race/ Ethnicity	Current Age	Risk of Being Diagnosed with Cancer				Risk of Dying from Cancer	Race/ Ethnicity	Current Age	Risk of Being Diagnosed with Cancer				Risk of Dying from Cancer
		+10 yrs	+20 yrs	+30 yrs	Ever				+10 yrs	+20 yrs	+30 yrs	Ever	
All Races	0	0.06	0.10	0.13	1.52	1.00	Asian/ Pacific Islander	0	0.06	0.09	0.12	0.95	0.75
	10	0.04	0.07	0.10	1.48	1.01		10	0.03	0.06	0.09	0.90	0.75
	20	0.03	0.07	0.14	1.45	1.00		20	0.03	0.06	0.11	0.87	0.75
	30	0.04	0.11	0.25	1.44	1.00		30	0.03	0.08	0.15	0.85	0.74
	40	0.07	0.22	0.51	1.42	1.01		40	0.05	0.12	0.24	0.82	0.74
	50	0.15	0.46	0.92	1.40	1.02		50	0.07	0.20	0.45	0.79	0.73
	60	0.33	0.83	1.24	1.35	1.03		60	0.13	0.40	0.64	0.75	0.72
	70	0.59	1.07	-	1.20	1.00		70	0.29	0.56	-	0.68	0.68
80	0.71	-	-	0.90	0.85	80	0.35	-	-	0.50	0.54		
White	0	0.07	0.11	0.14	1.62	1.05	American Indian/ Alaska Native ^a	0	0.04	0.08	0.09	0.66	0.56
	10	0.04	0.07	0.11	1.57	1.06		10	0.04	0.06	0.09	0.63	0.56
	20	0.03	0.07	0.14	1.54	1.05		20	0.02	0.05	0.09	0.60	0.56
	30	0.04	0.11	0.26	1.52	1.05		30	0.03	0.07	0.17	0.60	0.56
	40	0.07	0.23	0.54	1.51	1.05		40	0.04	0.14	0.32	0.59	0.57
	50	0.16	0.49	0.98	1.48	1.07		50	0.11	0.29	0.51	0.58	0.57
	60	0.35	0.89	1.31	1.42	1.08		60	0.20	0.44	0.51	0.52	0.57
	70	0.63	1.13	-	1.26	1.04		70	0.28	0.37	-	0.38	0.56
80	0.74	-	-	0.94	0.87	80	0.13	-	-	0.13	0.39		
Black	0	0.04	0.07	0.09	0.90	0.66	Hispanic ^b	0	0.07	0.12	0.16	1.17	0.73
	10	0.02	0.05	0.08	0.88	0.67		10	0.05	0.09	0.13	1.12	0.73
	20	0.02	0.05	0.11	0.87	0.67		20	0.04	0.08	0.13	1.08	0.72
	30	0.03	0.09	0.20	0.87	0.67		30	0.04	0.09	0.20	1.05	0.72
	40	0.06	0.17	0.36	0.86	0.67		40	0.06	0.17	0.36	1.02	0.71
	50	0.11	0.32	0.58	0.85	0.68		50	0.11	0.31	0.59	0.99	0.71
	60	0.23	0.54	0.75	0.84	0.70		60	0.21	0.51	0.82	0.94	0.70
	70	0.40	0.68	-	0.80	0.70		70	0.34	0.70	-	0.83	0.65
80	0.49	-	-	0.70	0.60	80	0.48	-	-	0.67	0.54		

Devcan Version 6.5.0, June 2010, National Cancer Institute (<http://srab.cancer.gov/devcan/>).

Source: Incidence data are from the SEER 17 areas (San Francisco, Connecticut, Detroit, Hawaii, Iowa, New Mexico, Seattle, Utah, Atlanta, San Jose-Monterey, Los Angeles, Alaska Native Registry, Rural Georgia, California excluding SF/SJM/LA, Kentucky, Louisiana and New Jersey). Mortality data are from the NCHS public use data file for the total US.

^a Underlying incidence and mortality data for American Indian/Alaska Native are based on the CHSDA (Contract Health Service Delivery Area) counties.

^b Hispanic is not mutually exclusive from whites, blacks, Asian/Pacific Islanders, and American Indians/Alaska Natives.

Underlying incidence data for Hispanics are based on NHIA and exclude cases from the Alaska Native Registry.

Underlying mortality data for Hispanics exclude deaths from the District of Columbia, Minnesota, New Hampshire and North Dakota.

- Statistic could not be calculated.

A percent of 0.00 represents a value that is below 0.005.

Table 13.22
Leukemia

Risk of Being Diagnosed With Cancer in 10, 20 and 30 Years,
Lifetime Risk of Being Diagnosed with Cancer Given Alive and Cancer-Free at Current Age, and
Lifetime Risk of Dying from Cancer Given Alive at Current Age
Females, 2005-2007 By Race/Ethnicity

Race/ Ethnicity	Current Age	Risk of Being Diagnosed with Cancer				Risk of Dying from Cancer	Race/ Ethnicity	Current Age	Risk of Being Diagnosed with Cancer				Risk of Dying from Cancer
		+10 yrs	+20 yrs	+30 yrs	Ever				+10 yrs	+20 yrs	+30 yrs	Ever	
All Races	0	0.05	0.08	0.10	1.10	0.71	Asian/ Pacific Islander	0	0.05	0.07	0.09	0.75	0.47
	10	0.03	0.05	0.08	1.05	0.71		10	0.02	0.04	0.07	0.71	0.47
	20	0.02	0.05	0.10	1.03	0.71		20	0.02	0.05	0.08	0.69	0.46
	30	0.03	0.08	0.17	1.01	0.70		30	0.03	0.06	0.12	0.67	0.46
	40	0.05	0.15	0.33	0.99	0.70		40	0.04	0.10	0.21	0.64	0.45
	50	0.10	0.29	0.59	0.96	0.69		50	0.06	0.17	0.33	0.61	0.44
	60	0.20	0.51	0.80	0.90	0.68		60	0.11	0.27	0.47	0.57	0.42
	70	0.35	0.66	-	0.78	0.64		70	0.17	0.37	-	0.48	0.38
80	0.41	-	-	0.57	0.54	80	0.25	-	-	0.37	0.30		
White	0	0.06	0.09	0.11	1.15	0.74	American Indian/ Alaska Native ^a	0	0.04	0.07	0.08	0.52	0.45
	10	0.03	0.05	0.08	1.10	0.74		10	0.03	0.04	0.05	0.48	0.46
	20	0.02	0.05	0.10	1.07	0.73		20	0.01	0.02	0.06	0.45	0.45
	30	0.03	0.08	0.18	1.05	0.73		30	0.01	0.05	0.11	0.45	0.45
	40	0.05	0.15	0.35	1.03	0.72		40	0.04	0.10	0.20	0.45	0.45
	50	0.10	0.30	0.62	1.00	0.72		50	0.07	0.16	0.40	0.42	0.46
	60	0.21	0.54	0.83	0.94	0.71		60	0.10	0.36	0.38	0.38	0.45
	70	0.36	0.69	-	0.81	0.66		70	0.29	0.31	-	0.31	0.43
80	0.43	-	-	0.58	0.55	80	0.03	-	-	0.03	0.37		
Black	0	0.03	0.05	0.07	0.76	0.53	Hispanic ^b	0	0.06	0.09	0.12	0.89	0.54
	10	0.02	0.04	0.06	0.74	0.54		10	0.03	0.06	0.09	0.84	0.54
	20	0.02	0.04	0.08	0.73	0.53		20	0.03	0.06	0.11	0.81	0.52
	30	0.02	0.06	0.14	0.71	0.53		30	0.03	0.08	0.17	0.79	0.51
	40	0.04	0.13	0.27	0.70	0.52		40	0.05	0.14	0.29	0.76	0.50
	50	0.09	0.24	0.45	0.69	0.52		50	0.09	0.24	0.48	0.72	0.49
	60	0.16	0.39	0.56	0.65	0.51		60	0.16	0.40	0.60	0.65	0.47
	70	0.27	0.47	-	0.57	0.48		70	0.26	0.47	-	0.53	0.41
80	0.29	-	-	0.44	0.39	80	0.26	-	-	0.33	0.31		

Devcan Version 6.5.0, June 2010, National Cancer Institute (<http://srab.cancer.gov/devcan/>).

Source: Incidence data are from the SEER 17 areas (San Francisco, Connecticut, Detroit, Hawaii, Iowa, New Mexico, Seattle, Utah, Atlanta, San Jose-Monterey, Los Angeles, Alaska Native Registry, Rural Georgia, California excluding SF/SJM/LA, Kentucky, Louisiana and New Jersey). Mortality data are from the NCHS public use data file for the total US.

^a Underlying incidence and mortality data for American Indian/Alaska Native are based on the CHSDA (Contract Health Service Delivery Area) counties.

^b Hispanic is not mutually exclusive from whites, blacks, Asian/Pacific Islanders, and American Indians/Alaska Natives.

Underlying incidence data for Hispanics are based on NHIA and exclude cases from the Alaska Native Registry.

Underlying mortality data for Hispanics exclude deaths from the District of Columbia, Minnesota, New Hampshire and North Dakota.

- Statistic could not be calculated.

A percent of 0.00 represents a value that is below 0.005.

Table 13.23
Leukemia

SEER Incidence and U.S. Mortality
Age-Adjusted Rates and Trends^a
By Race/Ethnicity and Sex

SEER Incidence	SEER 17 Areas ^b			SEER 13 Areas ^b			SEER 9 Areas ^b		
	Rate 2003-2007			Trend 1998-2007 ^c			Trend 1998-2007 ^d		
	Rate per 100,000 persons			AAPC (%)			AAPC (%)		
RACE/ETHNICITY	Total	Males	Females	Total	Males	Females	Total	Males	Females
All Races	12.3	15.8	9.6	-0.9*	-0.6*	-0.3	-1.1*	-1.3*	0.0
White	12.9	16.6	10.0	-0.3*	-0.6*	-0.1	-0.8*	-1.2*	0.2*
White Hispanic ^e	9.7	11.5	8.2	-0.4	-0.5	-0.4	-	-	-
White Non-Hispanic ^e	13.2	17.1	10.2	-0.2	-0.5*	0.0	-	-	-
Black	9.8	12.7	7.8	-0.6	-0.6	-0.4	-0.4*	-0.4*	-0.4
Asian/Pacific Islander	7.2	8.8	6.0	-0.9*	-0.8	-0.8*	-	-	-
Amer Ind/Alaska Nat ^f	6.5	7.2	5.9	1.5	-	-	-	-	-
Hispanic ^e	9.5	11.2	8.0	-0.3	-0.4	-0.2	-	-	-
<u>U.S. Mortality^g</u>									
	Rate 2003-2007			Trend 1998-2007 ^h					
	Rate per 100,000 persons			AAPC (%)					
RACE/ETHNICITY	Total	Males	Females	Total	Males	Females			
All Races	7.2	9.7	5.4	-1.0*	-0.8*	-1.3*			
White	7.4	10.0	5.6	-0.9*	-0.7*	-1.2*			
White Hispanic ^e	5.0	6.3	4.1	-1.7*	-0.9*	-1.1*			
White Non-Hispanic ^e	7.5	10.2	5.6	-0.8*	-0.7*	-1.2*			
Black	6.3	8.4	5.0	-1.2*	-1.2*	-1.1*			
Asian/Pacific Islander	3.8	4.9	2.9	-1.5*	-1.1*	-1.8*			
Amer Ind/Alaska Nat									
Total U.S.	3.6	4.2	3.1	-1.7*	-2.8*	-1.4			
CHSDA Counties	4.8	5.8	3.9	-0.2	-0.6	-			
Non-CHSDA Counties	2.1	2.2	2.0	-4.1*	-	-			
Hispanic ^e	4.8	6.0	3.9	-1.7*	-2.0*	-1.1*			

The AAPC is the Average Annual Percent Change over the time interval. The AAPCs are calculated by the Joinpoint Regression Program Version 3.4.3, April 2010, National Cancer Institute.

- Statistic not shown. Rate based on less than 16 cases for the time interval.

Trend based on less than 10 cases for at least one year within the time interval.

a Rates are age-adjusted to the 2000 US Std Population (19 age groups - Census P25-1130). Trends

are based on rates age-adjusted to the 2000 US Std Population (19 age groups - Census P25-1130).

b The SEER 9 areas are San Francisco, Connecticut, Detroit, Hawaii, Iowa, New Mexico, Seattle, Utah and Atlanta.

The SEER 13 areas comprise the SEER 9 areas plus San Jose-Monterey, Los Angeles, the Alaska Native Registry and Rural Georgia.

The SEER 17 areas comprise the SEER 13 areas plus California excluding SF/SJM/LA, Kentucky, Louisiana and New Jersey.

c The 1998-2007 AAPC estimates are based on a Joinpoint analysis with up to 2 Joinpoints over diagnosis years 1992-2007.

d The 1998-2007 AAPC estimates are based on a Joinpoint analysis with up to 4 Joinpoints over diagnosis years 1975-2007.

e Hispanic and Non-Hispanic are not mutually exclusive from whites, blacks, Asian/Pacific Islanders, and American Indians/Alaska Natives. Incidence data for Hispanics and Non-Hispanics are based on NHIA and exclude cases from the Alaska Native Registry. The 2003-2007 Hispanic and Non-Hispanic death rates exclude deaths from the District of Columbia, New Hampshire, and North Dakota. The 1998-2007 Hispanic and Non-Hispanic mortality trends exclude deaths from Connecticut, the District of Columbia, Maine, Maryland, Minnesota, New Hampshire, New York, North Dakota, Oklahoma and Vermont.

f Incidence data for American Indian/Alaska Native are based on the CHSDA(Contract Health Service Delivery Area) counties.

g US Mortality Files, National Center for Health Statistics, CDC.

h The 1998-2007 mortality AAPCs are based on a Joinpoint analysis using years of death 1992-2007.

* The APC is significantly different from zero (p<.05).

Table 13.24
LeukemiaAge-Adjusted SEER Incidence Rates^a
By Registry, Race and Sex

	All Races			Whites			Blacks		
	Total	Males	Females	Total	Males	Females	Total	Males	Females
<u>SEER Incidence Rates^a, 2003-2007</u>									
Atlanta & Rural Georgia	11.07	14.93	8.47	11.75	15.84	8.95	9.90	13.43	7.64
Atlanta	11.03	14.87	8.42	11.74	15.73	9.00	9.72	13.53	7.33
Rural Georgia	11.66	15.71	9.14	11.61	17.76	7.69	12.48	-	11.91
California	11.53	14.72	9.02	12.15	15.49	9.49	9.28	11.88	7.43
Greater Bay Area	11.19	14.52	8.61	12.31	16.01	9.40	9.09	11.24	7.63
San Francisco-Oakland	10.84	13.98	8.43	12.09	15.63	9.30	8.89	11.13	7.47
San Jose-Monterey	11.86	15.53	8.98	12.68	16.62	9.63	10.59	10.76	-
Los Angeles	11.45	14.60	8.99	12.33	15.77	9.60	9.48	11.99	7.86
Greater California	11.68	14.83	9.17	12.01	15.20	9.47	9.20	12.16	6.81
Connecticut	11.60	15.37	8.79	11.86	15.57	9.07	8.99	13.09	6.44
Detroit	14.18	18.40	11.10	14.66	19.02	11.43	11.83	15.34	9.34
Hawaii	10.31	12.63	8.38	12.94	17.59	8.94	-	-	-
Iowa	14.48	18.67	11.39	14.43	18.65	11.32	8.16	-	-
Kentucky	12.73	16.29	9.98	12.84	16.46	10.03	8.47	10.53	7.04
Louisiana	11.93	15.65	9.13	12.76	16.64	9.78	9.99	13.26	7.70
New Jersey	13.27	17.25	10.26	13.75	17.99	10.47	9.48	12.10	7.83
New Mexico	12.99	16.05	10.45	13.66	17.03	10.80	-	-	-
Seattle-Puget Sound	14.77	18.90	11.61	15.28	19.49	12.03	12.98	16.12	11.10
Utah	12.10	15.38	9.40	12.34	15.67	9.61	-	-	-
9 SEER Areas ^b	12.70	16.37	9.90	13.42	17.34	10.42	10.26	13.32	8.19
11 SEER Areas ^b	12.39	15.96	9.65	13.19	17.03	10.21	10.07	12.97	8.12
13 SEER Areas ^b	12.38	15.95	9.65	13.18	17.03	10.21	10.10	12.96	8.17
17 SEER Areas ^b	12.32	15.84	9.61	12.92	16.62	10.04	9.80	12.65	7.83

^a Rates are per 100,000 and are age-adjusted to the 2000 US Std Population (19 age groups - Census P25-1130)^b The SEER 9 areas are San Francisco, Connecticut, Detroit, Hawaii, Iowa, New Mexico, Seattle, Utah and Atlanta.

The SEER 11 areas comprise the SEER 9 areas plus San Jose-Monterey and Los Angeles.

The SEER 13 areas comprise the SEER 11 areas plus the Alaska Native Registry and Rural Georgia.

The SEER 17 areas comprise the SEER 13 areas plus California excluding SF/SJM/LA, Kentucky, Louisiana and New Jersey.

- Statistic not shown. Rate based on less than 16 cases for the time interval.

Table 13.25
LeukemiaAge-Adjusted SEER Death Rates^a
By Registry, Race and Sex

	All Races			Whites			Blacks		
	Total	Males	Females	Total	Males	Females	Total	Males	Females
<u>SEER Death Rates^a, 2003-2007</u>									
Atlanta & Rural Georgia	6.33	8.73	4.79	6.59	8.86	5.09	5.95	9.08	4.14
Atlanta	6.22	8.51	4.74	6.42	8.51	5.05	6.01	9.40	4.10
Rural Georgia	8.12	12.31	5.24	9.67	15.45	5.78	-	-	-
California	6.76	8.91	5.17	7.25	9.54	5.55	6.54	9.11	4.79
Greater Bay Area	6.11	8.26	4.61	6.75	9.19	5.05	6.72	8.59	5.63
San Francisco-Oakland	5.92	7.99	4.51	6.58	8.91	4.95	6.46	8.72	5.21
San Jose-Monterey	6.54	8.82	4.90	7.12	9.74	5.27	10.26	-	-
Los Angeles	6.37	8.48	4.86	6.95	9.20	5.34	6.50	9.49	4.57
Greater California	7.17	9.33	5.52	7.52	9.77	5.80	6.56	9.05	4.65
Connecticut	6.97	9.51	5.24	7.08	9.65	5.31	6.16	8.23	5.24
Detroit	7.77	10.72	5.72	8.00	11.22	5.75	7.11	9.19	5.68
Hawaii	4.96	6.78	3.46	6.65	9.25	4.53	-	-	-
Iowa	8.14	11.20	6.09	8.17	11.28	6.07	-	-	-
Kentucky	7.50	9.85	5.82	7.57	9.94	5.86	6.13	8.62	4.81
Louisiana	7.12	9.58	5.40	7.33	9.77	5.62	6.52	9.20	4.76
New Jersey	7.06	9.57	5.34	7.40	10.09	5.53	5.47	6.99	4.49
New Mexico	6.36	8.28	4.87	6.56	8.59	4.98	-	-	-
Seattle-Puget Sound	7.52	10.34	5.45	7.75	10.57	5.70	7.30	11.24	4.73
Utah	6.72	8.90	5.00	6.79	8.96	5.07	-	-	-
9 SEER Areas ^b	6.93	9.42	5.16	7.30	9.95	5.43	6.50	8.85	5.04
11 SEER Areas ^b	6.79	9.19	5.09	7.24	9.81	5.42	6.54	8.98	4.99
13 SEER Areas ^b	6.80	9.20	5.09	7.24	9.81	5.42	6.53	8.94	4.98
17 SEER Areas ^b	6.99	9.35	5.29	7.37	9.85	5.57	6.35	8.69	4.82
Total U.S.	7.20	9.68	5.42	7.42	9.98	5.57	6.33	8.38	5.01

^a US Mortality Files, National Center for Health Statistics, Centers for Disease Control and Prevention.
Rates are per 100,000 and are age-adjusted to the 2000 US Std Population (19 age groups - Census P25-1130).

^b The SEER 9 areas are San Francisco, Connecticut, Detroit, Hawaii, Iowa, New Mexico, Seattle, Utah and Atlanta.
The SEER 11 areas comprise the SEER 9 areas plus San Jose-Monterey and Los Angeles.
The SEER 13 areas comprise the SEER 11 areas plus the Alaska Native Registry and Rural Georgia.
The SEER 17 areas comprise the SEER 13 areas plus California excluding SF/SJM/LA, Kentucky, Louisiana and New Jersey.
- Statistic not shown. Rate based on less than 16 cases for the time interval.

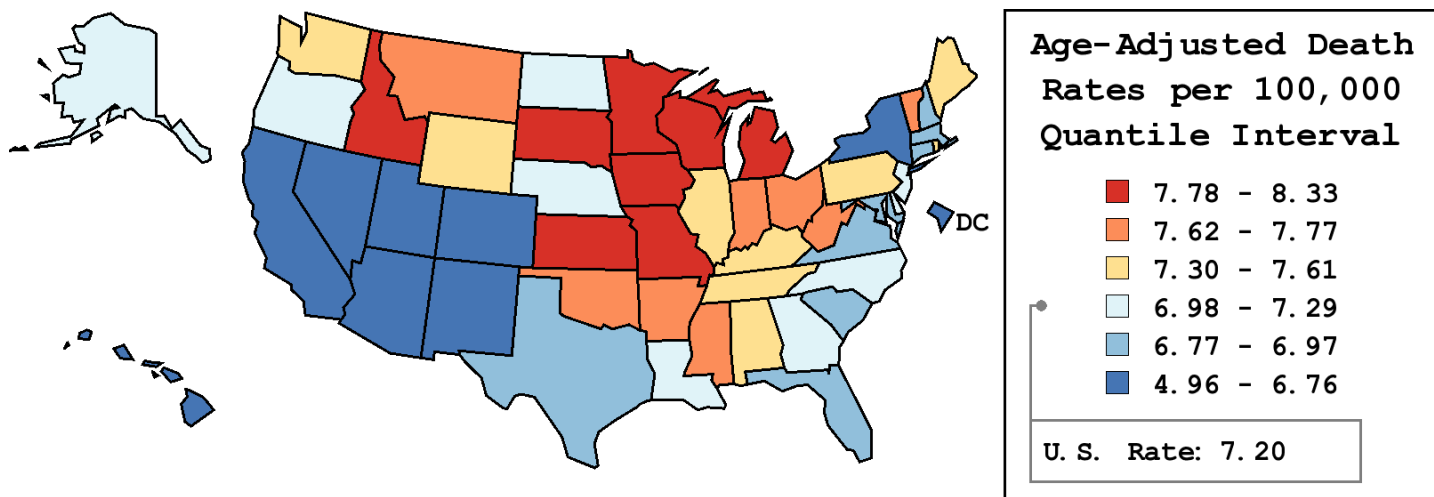
Table 13.26
Leukemia

Age-Adjusted Cancer Death^a Rates By State, All Races, 2003-2007

Males and Females

State	Rate	SE	Rank	PD
TOTAL U.S.	7.20	0.02		
High Five States				
Idaho	8.33	0.35	(01)	15.78 ^c
Wisconsin	8.22 ^b	0.17	(02)	14.25
Iowa	8.14 ^b	0.22	(03)	13.14
Missouri	7.95 ^b	0.16	(04)	10.47
Kansas	7.92	0.23	(05)	10.06
Low Five States				
D.C.	6.63	0.48	(47)	-7.82
Nevada	6.59	0.25	(48)	-8.43
New Mexico	6.36	0.26	(49)	-11.66
Arizona	6.35 ^b	0.14	(50)	-11.68
Hawaii	4.96 ^b	0.27	(51)	-31.13 ^c

State	Rate	SE	Rank	PD	State	Rate	SE	Rank	PD
Alabama	7.37	0.18	(23)	2.40	Montana	7.74	0.39	(12)	7.52
Alaska	7.29	0.65	(26)	1.37	Nebraska	7.27	0.28	(27)	1.01
Arizona	6.35 ^b	0.14	(50)	-11.68	Nevada	6.59	0.25	(48)	-8.43
Arkansas	7.68	0.22	(14)	6.70	New Hampshire	6.79	0.32	(42)	-5.57
California	6.76 ^b	0.06	(44)	-6.09	New Jersey	7.06	0.12	(33)	-1.87
Colorado	6.74	0.19	(45)	-6.30	New Mexico	6.36	0.26	(49)	-11.66
Connecticut	6.97	0.19	(36)	-3.19	New York	6.76 ^b	0.08	(43)	-6.03
Delaware	6.99	0.40	(34)	-2.91	North Carolina	7.09	0.13	(31)	-1.52
D.C.	6.63	0.48	(47)	-7.82	North Dakota	7.15	0.44	(29)	-0.63
Florida	6.87 ^b	0.08	(40)	-4.46	Ohio	7.71 ^b	0.11	(13)	7.12
Georgia	7.07	0.14	(32)	-1.73	Oklahoma	7.74	0.20	(11)	7.57
Hawaii	4.96 ^b	0.27	(51)	-31.13 ^c	Oregon	7.25	0.19	(28)	0.79
Idaho	8.33	0.35	(01)	15.78 ^c	Pennsylvania	7.56 ^b	0.10	(18)	5.02
Illinois	7.55	0.11	(19)	4.95	Rhode Island	7.35	0.35	(24)	2.10
Indiana	7.77 ^b	0.16	(09)	8.04	South Carolina	6.95	0.18	(37)	-3.37
Iowa	8.14 ^b	0.22	(03)	13.14	South Dakota	7.81	0.42	(07)	8.61
Kansas	7.92	0.23	(05)	10.06	Tennessee	7.55	0.16	(20)	4.88
Kentucky	7.50	0.19	(21)	4.22	Texas	6.97	0.09	(35)	-3.09
Louisiana	7.12	0.18	(30)	-1.04	Utah	6.72	0.27	(46)	-6.58
Maine	7.61	0.32	(17)	5.69	Vermont	7.64	0.48	(16)	6.14
Maryland	6.87	0.16	(41)	-4.57	Virginia	6.92	0.14	(38)	-3.81
Massachusetts	6.91	0.14	(39)	-4.00	Washington	7.46	0.16	(22)	3.69
Michigan	7.79 ^b	0.12	(08)	8.27	West Virginia	7.64	0.27	(15)	6.21
Minnesota	7.82 ^b	0.18	(06)	8.63	Wisconsin	8.22 ^b	0.17	(02)	14.25
Mississippi	7.75	0.23	(10)	7.74	Wyoming	7.33	0.54	(25)	1.81
Missouri	7.95 ^b	0.16	(04)	10.47					



^a US Mortality Files, National Center for Health Statistics, Centers for Disease Control and Prevention. Rates are per 100,000 and are age-adjusted to the 2000 US Std Population (19 age groups - Census P25-1130).

^b Difference between state rate and total U.S. rate is statistically significant ($p \leq .0002$).

^c Absolute percent difference between state rate and total U.S. rate is 15% or more.

SE Standard error of the rate.

PD Percent difference between state rate and total U.S. rate.

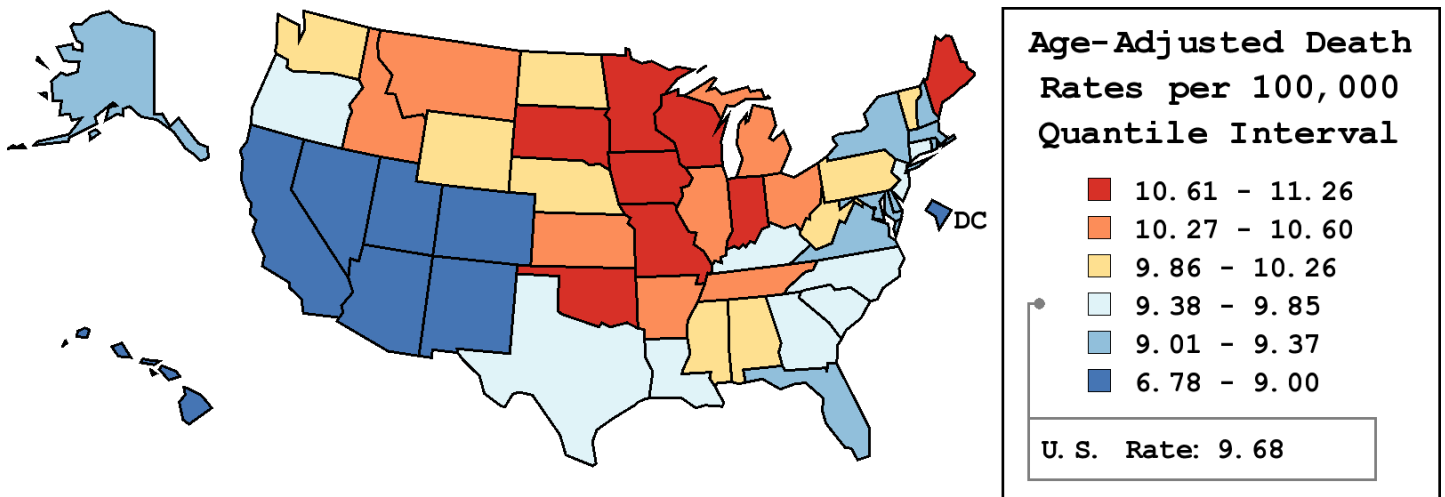
Table 13.27
Leukemia

Age-Adjusted Cancer Death^a Rates By State, All Races, 2003-2007

Males

State	Rate	SE	Rank	PD
TOTAL U.S.	9.68	0.04		
High Five States				
Wisconsin	11.26 ^b	0.30	(01)	16.37 ^c
Iowa	11.20 ^b	0.39	(02)	15.69 ^c
Missouri	11.02 ^b	0.29	(03)	13.89
South Dakota	10.87	0.75	(04)	12.33
Oklahoma	10.85	0.38	(05)	12.07
Low Five States				
Nevada	8.83	0.43	(47)	-8.78
D.C.	8.53	0.87	(48)	-11.82
New Mexico	8.28	0.45	(49)	-14.42
Arizona	8.17 ^b	0.24	(50)	-15.61 ^c
Hawaii	6.78 ^b	0.47	(51)	-29.91 ^c

State	Rate	SE	Rank	PD	State	Rate	SE	Rank	PD
Alabama	9.91	0.32	(24)	2.43	Montana	10.60	0.69	(09)	9.57
Alaska	9.32	1.14	(37)	-3.70	Nebraska	9.92	0.50	(23)	2.48
Arizona	8.17 ^b	0.24	(50)	-15.61 ^c	Nevada	8.83	0.43	(47)	-8.78
Arkansas	10.29	0.40	(15)	6.28	New Hampshire	9.02	0.58	(43)	-6.78
California	8.91 ^b	0.11	(45)	-7.95	New Jersey	9.57	0.23	(30)	-1.12
Colorado	9.00	0.34	(44)	-7.00	New Mexico	8.28	0.45	(49)	-14.42
Connecticut	9.51	0.35	(32)	-1.72	New York	9.18	0.15	(41)	-5.17
Delaware	9.29	0.71	(38)	-4.00	North Carolina	9.82	0.24	(27)	1.42
D.C.	8.53	0.87	(48)	-11.82	North Dakota	10.18	0.80	(19)	5.16
Florida	9.09 ^b	0.13	(42)	-6.12	Ohio	10.28	0.20	(16)	6.23
Georgia	9.44	0.26	(33)	-2.42	Oklahoma	10.85	0.38	(05)	12.07
Hawaii	6.78 ^b	0.47	(51)	-29.91 ^c	Oregon	9.57	0.34	(31)	-1.16
Idaho	10.38	0.59	(14)	7.22	Pennsylvania	10.15	0.18	(20)	4.84
Illinois	10.38	0.20	(13)	7.28	Rhode Island	9.25	0.62	(39)	-4.43
Indiana	10.74 ^b	0.29	(08)	10.95	South Carolina	9.59	0.33	(28)	-0.91
Iowa	11.20 ^b	0.39	(02)	15.69 ^c	South Dakota	10.87	0.75	(04)	12.33
Kansas	10.53	0.42	(12)	8.81	Tennessee	10.59	0.30	(10)	9.45
Kentucky	9.85	0.34	(26)	1.82	Texas	9.41	0.16	(34)	-2.78
Louisiana	9.58	0.33	(29)	-1.03	Utah	8.90	0.47	(46)	-8.04
Maine	10.79	0.58	(06)	11.50	Vermont	10.24	0.86	(18)	5.85
Maryland	9.32	0.30	(36)	-3.66	Virginia	9.18	0.26	(40)	-5.13
Massachusetts	9.37	0.26	(35)	-3.13	Washington	10.26	0.28	(17)	5.98
Michigan	10.58 ^b	0.22	(11)	9.35	West Virginia	10.00	0.47	(22)	3.37
Minnesota	10.75	0.32	(07)	11.10	Wisconsin	11.26 ^b	0.30	(01)	16.37 ^c
Mississippi	10.14	0.42	(21)	4.75	Wyoming	9.86	0.95	(25)	1.84
Missouri	11.02 ^b	0.29	(03)	13.89					



^a US Mortality Files, National Center for Health Statistics, Centers for Disease Control and Prevention. Rates are per 100,000 and are age-adjusted to the 2000 US Std Population (19 age groups - Census P25-1130).

^b Difference between state rate and total U.S. rate is statistically significant ($p \leq .0002$).

^c Absolute percent difference between state rate and total U.S. rate is 15% or more.

SE Standard error of the rate.

PD Percent difference between state rate and total U.S. rate.

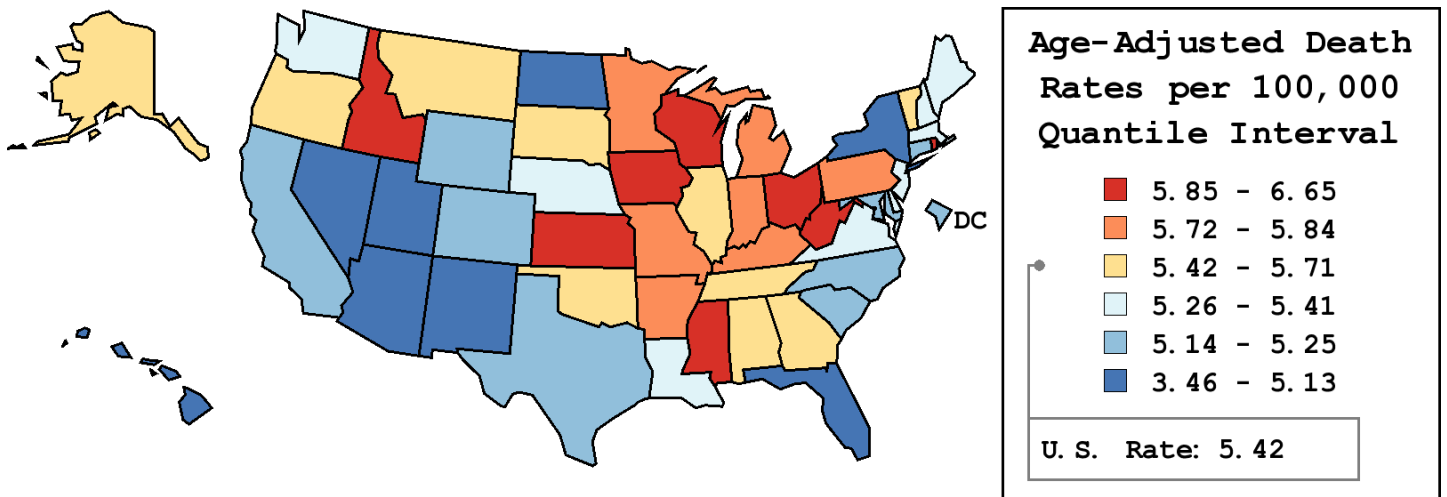
Table 13.28
Leukemia

Age-Adjusted Cancer Death^a Rates By State, All Races, 2003-2007

Females

State	Rate	SE	Rank	PD
TOTAL U.S.	5.42	0.03		
High Five States				
Idaho	6.65	0.42	(01)	22.53 ^c
Mississippi	6.15	0.27	(02)	13.34
Rhode Island	6.12	0.43	(03)	12.85
Kansas	6.10	0.27	(04)	12.55
Iowa	6.09	0.25	(05)	12.23
Low Five States				
Utah	5.00	0.31	(47)	-7.91
New Mexico	4.87	0.31	(48)	-10.31
Arizona	4.85	0.17	(49)	-10.63
Nevada	4.74	0.29	(50)	-12.69
Hawaii	3.46 ^b	0.30	(51)	-36.27 ^c

State	Rate	SE	Rank	PD	State	Rate	SE	Rank	PD
Alabama	5.68	0.20	(18)	4.74	Montana	5.56	0.44	(20)	2.55
Alaska	5.71	0.76	(16)	5.33	Nebraska	5.33	0.31	(32)	-1.66
Arizona	4.85	0.17	(49)	-10.63	Nevada	4.74	0.29	(50)	-12.69
Arkansas	5.84	0.26	(09)	7.69	New Hampshire	5.29	0.38	(34)	-2.39
California	5.17 ^b	0.08	(40)	-4.74	New Jersey	5.34	0.14	(31)	-1.60
Colorado	5.15	0.21	(41)	-5.04	New Mexico	4.87	0.31	(48)	-10.31
Connecticut	5.24	0.22	(36)	-3.38	New York	5.11	0.09	(45)	-5.82
Delaware	5.41	0.47	(26)	-0.30	North Carolina	5.21	0.14	(38)	-3.86
D.C.	5.15	0.55	(42)	-5.09	North Dakota	5.13	0.51	(44)	-5.50
Florida	5.10 ^b	0.09	(46)	-6.06	Ohio	5.94 ^b	0.13	(07)	9.55
Georgia	5.51	0.16	(22)	1.53	Oklahoma	5.50	0.23	(23)	1.31
Hawaii	3.46 ^b	0.30	(51)	-36.27 ^c	Oregon	5.47	0.23	(24)	0.88
Idaho	6.65	0.42	(01)	22.53 ^c	Pennsylvania	5.77	0.12	(15)	6.29
Illinois	5.66	0.12	(19)	4.44	Rhode Island	6.12	0.43	(03)	12.85
Indiana	5.81	0.18	(12)	7.18	South Carolina	5.15	0.20	(43)	-5.14
Iowa	6.09	0.25	(05)	12.23	South Dakota	5.46	0.47	(25)	0.59
Kansas	6.10	0.27	(04)	12.55	Tennessee	5.55	0.18	(21)	2.41
Kentucky	5.82	0.22	(11)	7.36	Texas	5.22	0.10	(37)	-3.74
Louisiana	5.40	0.21	(27)	-0.43	Utah	5.00	0.31	(47)	-7.91
Maine	5.34	0.35	(30)	-1.55	Vermont	5.71	0.56	(17)	5.30
Maryland	5.17	0.18	(39)	-4.74	Virginia	5.36	0.16	(29)	-1.23
Massachusetts	5.32	0.16	(33)	-1.93	Washington	5.40	0.18	(28)	-0.44
Michigan	5.78	0.14	(14)	6.49	West Virginia	5.93	0.31	(08)	9.39
Minnesota	5.83	0.20	(10)	7.54	Wisconsin	6.01	0.19	(06)	10.71
Mississippi	6.15	0.27	(02)	13.34	Wyoming	5.25	0.60	(35)	-3.14
Missouri	5.79	0.18	(13)	6.67					



^a US Mortality Files, National Center for Health Statistics, Centers for Disease Control and Prevention. Rates are per 100,000 and are age-adjusted to the 2000 US Std Population (19 age groups - Census P25-1130).
^b Difference between state rate and total U.S. rate is statistically significant ($p \leq .0002$).
^c Absolute percent difference between state rate and total U.S. rate is 15% or more.
SE Standard error of the rate.
PD Percent difference between state rate and total U.S. rate.

Table 13.29
LeukemiaEstimated United States Cancer Prevalence Counts^a on January 1, 2007
By Race/Ethnicity, Sex and Years Since Diagnosis

Years Since Diagnosis		0 to <5	5 to <10	10 to <15	15 to <20	20 to <25	25 to <30	0 to <17 ^e	0 to <32 ^e	>=32 ^g	Complete ^h
<u>Race</u>	<u>Sex</u>										
All Races ^b	Both Sexes	99,568	56,704	36,263	22,054	13,763	8,044	202,425	238,435	5,837	244,272
	Males	57,160	32,439	20,489	12,144	7,615	3,875	115,334	134,732	2,666	137,398
	Females	42,408	24,265	15,774	9,910	6,148	4,169	87,091	103,703	3,171	106,874
White ^b	Both Sexes	87,445	50,650	32,627	19,931	12,643	7,410	179,727	212,560	4,933	217,493
	Males	50,580	29,024	18,501	11,179	7,018	3,603	102,972	120,851	1,919	122,770
	Females	36,865	21,626	14,126	8,752	5,625	3,807	76,755	91,709	3,014	94,723
Black ^b	Both Sexes	7,126	3,438	1,954	1,176	566	362	13,027	14,752	672	15,424
	Males	3,824	1,724	997	515	324	126	6,763	7,564	313	7,877
	Females	3,302	1,714	957	661	242	236	6,264	7,188	359	7,547
Asian/ Pacific Islander ^c	Both Sexes	2,359	1,280	950	+	+	+	4,870	+	+	+
	Males	1,262	755	510	+	+	+	2,685	+	+	+
	Females	1,097	525	440	+	+	+	2,185	+	+	+
Hispanic ^d	Both Sexes	8,614	4,762	3,457	+	+	+	17,809	+	+	+
	Males	4,998	2,595	2,023	+	+	+	10,181	+	+	+
	Females	3,616	2,167	1,434	+	+	+	7,628	+	+	+

Estimated prevalence percent^a on January 1, 2007, of the SEER 11 population diagnosed in the previous 17 years
By Age at Prevalence, Race/Ethnicity and Sex

Age at Prevalence		Age Specific (Crude)										Age-Adjusted ^f
		All Ages	0-9	10-19	20-29	30-39	40-49	50-59	60-69	70-79	80+	All Ages
<u>Race</u>	<u>Sex</u>											
All Races ^c	Both Sexes	0.0587%	0.0298%	0.0504%	0.0226%	0.0215%	0.0323%	0.0630%	0.1311%	0.2141%	0.2369%	0.0600%
	Males	0.0680%	0.0323%	0.0546%	0.0245%	0.0245%	0.0383%	0.0783%	0.1716%	0.2861%	0.3203%	0.0743%
	Females	0.0496%	0.0272%	0.0459%	0.0204%	0.0185%	0.0262%	0.0483%	0.0945%	0.1581%	0.1903%	0.0481%
White ^c	Both Sexes	0.0659%	0.0326%	0.0563%	0.0252%	0.0229%	0.0338%	0.0674%	0.1447%	0.2376%	0.2604%	0.0657%
	Males	0.0762%	0.0356%	0.0606%	0.0275%	0.0258%	0.0403%	0.0830%	0.1888%	0.3160%	0.3545%	0.0813%
	Females	0.0557%	0.0294%	0.0518%	0.0226%	0.0199%	0.0270%	0.0519%	0.1037%	0.1751%	0.2085%	0.0525%
Black ^c	Both Sexes	0.0314%	0.0141%	0.0230%	0.0149%	0.0155%	0.0247%	0.0443%	0.0773%	0.1480%	0.1263%	0.0369%
	Males	0.0354%	0.0147%	0.0248%	0.0144%	0.0168%	0.0303%	0.0569%	0.1012%	0.1827%	0.1748%	0.0451%
	Females	0.0279%	0.0135%	0.0211%	0.0154%	0.0143%	0.0198%	0.0339%	0.0588%	0.1247%	0.1027%	0.0310%
Asian/ Pacific Islander ^c	Both Sexes	0.0329%	0.0291%	0.0444%	0.0155%	0.0186%	0.0260%	0.0365%	0.0533%	0.0701%	0.0705%	0.0340%
	Males	0.0373%	0.0311%	0.0497%	0.0172%	0.0230%	0.0275%	0.0427%	0.0587%	0.0940%	0.0956%	0.0397%
	Females	0.0287%	0.0270%	0.0388%	0.0138%	0.0144%	0.0245%	0.0310%	0.0487%	0.0526%	0.0542%	0.0292%
Hispanic ^d	Both Sexes	0.0380%	0.0297%	0.0584%	0.0249%	0.0218%	0.0263%	0.0459%	0.0763%	0.0967%	0.1077%	0.0437%
	Males	0.0421%	0.0323%	0.0639%	0.0288%	0.0248%	0.0309%	0.0540%	0.0864%	0.1188%	0.1366%	0.0506%
	Females	0.0338%	0.0271%	0.0527%	0.0203%	0.0184%	0.0214%	0.0382%	0.0677%	0.0805%	0.0908%	0.0375%

^a US 2007 cancer prevalence counts are based on 2007 cancer prevalence proportions from the SEER registries and 1/1/2007 US population estimates based on the average of 2006 and 2007 population estimates from the US Bureau of the Census. Prevalence was calculated using the First Malignant Primary Only for a person.

^{b c d} Statistics based on (b) SEER 9 Areas (c) SEER 11 Areas and Rural Georgia (d) NHIA for Hispanic for SEER 11 Areas and Rural Georgia.

^e Maximum limited-duration prevalence: 32 years for 1975-2007 SEER 9 data; 17 years for 1990-2007 SEER 11 data (used to calculate prevalence for Hispanics and Asian Pacific Islanders).

^f Percentages are age-adjusted to the 2000 US Standard Population (19 age groups - Census P25-1130) by 5-year age groups.

^{g h i} (g) Cases diagnosed more than 32 years ago were estimated using the completeness index method (Capocaccia et. al. 1997, Merrill et. al. 2000). (h) Complete prevalence is obtained by summing 0 to <32 and >=32. (i) Age-specific completeness index was approximated using empirical data from historical Connecticut tumor registry.

- Statistic not shown. Statistic based on fewer than 5 cases estimated alive in SEER for the time interval.

+ Not available.

Table 13.30
Acute Lymphocytic Leukemia

Estimated United States Cancer Prevalence Counts^a on January 1, 2007
By Race/Ethnicity, Sex and Years Since Diagnosis

Years Since Diagnosis		0 to <5	5 to <10	10 to <15	15 to <20	20 to <25	25 to <30	0 to <17 ^e	0 to <32 ^e	>=32 ^g	Complete ^h
<u>Race</u>	<u>Sex</u>										
All Races ^b	Both Sexes	15,056	11,555	9,860	8,516	6,647	4,876	40,117	57,526	3,257	60,783
	Males	8,617	6,300	5,530	4,660	3,644	2,408	22,431	31,667	1,727	33,394
	Females	6,439	5,255	4,330	3,856	3,003	2,468	17,686	25,859	1,530	27,389
White ^b	Both Sexes	12,844	10,163	8,537	7,495	6,030	4,505	34,815	50,529	+	+
	Males	7,390	5,544	4,856	4,178	3,325	2,262	19,610	28,027	+	+
	Females	5,454	4,619	3,681	3,317	2,705	2,243	15,205	22,502	+	+
Black ^b	Both Sexes	1,088	745	655	549	297	178	2,692	3,539	+	+
	Males	639	368	306	241	173	57	1,405	1,814	+	+
	Females	449	377	349	308	124	121	1,287	1,725	+	+
Asian/ Pacific Islander ^c	Both Sexes	770	442	433	+	+	+	1,778	+	+	+
	Males	416	269	238	+	+	+	989	+	+	+
	Females	354	173	195	+	+	+	789	+	+	+
Hispanic ^d	Both Sexes	3,908	2,479	2,096	+	+	+	9,069	+	+	+
	Males	2,265	1,321	1,266	+	+	+	5,170	+	+	+
	Females	1,643	1,158	830	+	+	+	3,899	+	+	+

Estimated prevalence percent^a on January 1, 2007, of the SEER 11 population diagnosed in the previous 17 years
By Age at Prevalence, Race/Ethnicity and Sex

Age at Prevalence		Age Specific (Crude)									Age-Adjusted ^f	
		All Ages	0-9	10-19	20-29	30-39	40-49	50-59	60-69	70-79	80+	All Ages
<u>Race</u>	<u>Sex</u>											
All Races ^c	Both Sexes	0.0133%	0.0252%	0.0434%	0.0133%	0.0051%	0.0032%	0.0028%	0.0027%	0.0017%	0.0012%	0.0136%
	Males	0.0152%	0.0271%	0.0476%	0.0152%	0.0064%	0.0035%	0.0032%	0.0030%	0.0017%	0.0018%	0.0151%
	Females	0.0115%	0.0232%	0.0391%	0.0112%	0.0037%	0.0029%	0.0025%	0.0025%	0.0017%	0.0009%	0.0121%
White ^c	Both Sexes	0.0147%	0.0279%	0.0493%	0.0155%	0.0056%	0.0034%	0.0032%	0.0029%	0.0016%	0.0013%	0.0153%
	Males	0.0167%	0.0303%	0.0536%	0.0178%	0.0072%	0.0036%	0.0036%	0.0034%	0.0017%	0.0020%	0.0170%
	Females	0.0127%	0.0254%	0.0447%	0.0130%	0.0038%	0.0032%	0.0028%	0.0024%	0.0016%	0.0009%	0.0136%
Black ^c	Both Sexes	0.0063%	0.0106%	0.0170%	0.0068%	0.0022%	0.0015%	-	-	-	-	0.0057%
	Males	0.0070%	0.0116%	0.0183%	0.0067%	0.0015%	0.0021%	-	-	-	-	0.0060%
	Females	0.0058%	0.0095%	0.0157%	0.0068%	0.0027%	-	-	-	-	-	0.0054%
Asian/ Pacific Islander ^c	Both Sexes	0.0109%	0.0240%	0.0375%	0.0071%	0.0048%	0.0038%	0.0019%	0.0030%	0.0029%	-	0.0119%
	Males	0.0126%	0.0241%	0.0428%	0.0092%	0.0060%	0.0041%	0.0027%	-	-	-	0.0131%
	Females	0.0092%	0.0239%	0.0319%	0.0050%	0.0037%	0.0035%	-	0.0040%	-	-	0.0106%
Hispanic ^d	Both Sexes	0.0192%	0.0256%	0.0520%	0.0157%	0.0063%	0.0048%	0.0057%	0.0038%	0.0024%	-	0.0162%
	Males	0.0213%	0.0271%	0.0577%	0.0187%	0.0072%	0.0057%	0.0055%	0.0035%	-	-	0.0178%
	Females	0.0170%	0.0240%	0.0461%	0.0122%	0.0054%	0.0037%	0.0058%	0.0040%	-	-	0.0144%

^a US 2007 cancer prevalence counts are based on 2007 cancer prevalence proportions from the SEER registries and 1/1/2007 US population estimates based on the average of 2006 and 2007 population estimates from the US Bureau of the Census. Prevalence was calculated using the First Malignant Primary Only for a person.

^{b c d} Statistics based on (b) SEER 9 Areas (c) SEER 11 Areas and Rural Georgia (d) NHIA for Hispanic for SEER 11 Areas and Rural Georgia.

^e Maximum limited-duration prevalence: 32 years for 1975-2007 SEER 9 data; 17 years for 1990-2007 SEER 11 data (used to calculate prevalence for Hispanics and Asian Pacific Islanders).

^f Percentages are age-adjusted to the 2000 US Standard Population (19 age groups - Census P25-1130) by 5-year age groups.

^{g h i} (g) Cases diagnosed more than 32 years ago were estimated using the completeness index method (Capocaccia et. al. 1997, Merrill et. al. 2000). (h) Complete prevalence is obtained by summing 0 to <32 and >=32. (i) Age-specific completeness index was approximated using empirical data from historical Connecticut tumor registry.

- Statistic not shown. Statistic based on fewer than 5 cases estimated alive in SEER for the time interval.

+ Not available.

SEER Observed Incidence, SEER Delay Adjusted Incidence and US Death Rates^a Leukemia, by Race and Sex

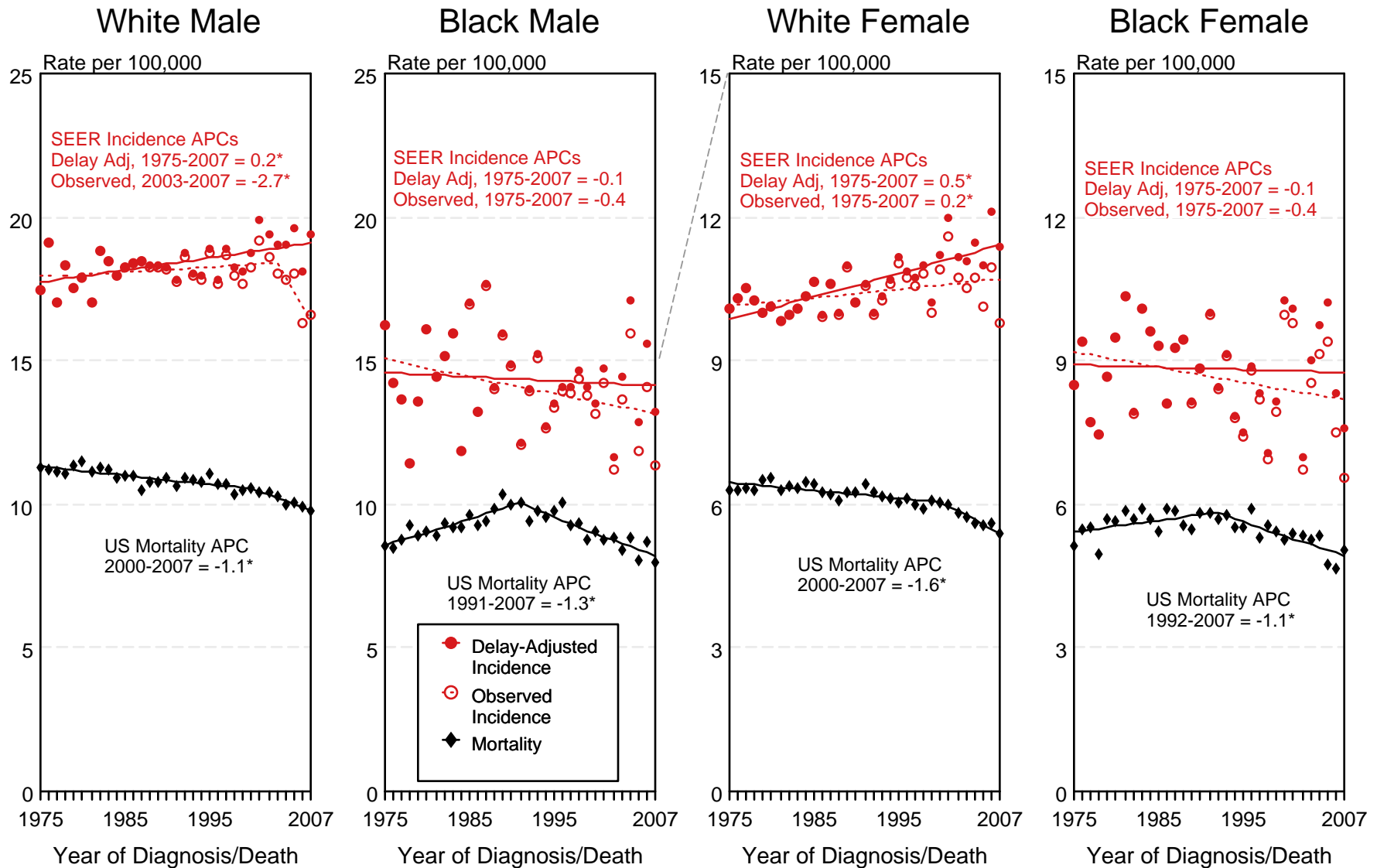


Figure 13.1

- ^a Source: SEER 9 areas and US Mortality Files (National Center for Health Statistics, CDC). Rates are age-adjusted to the 2000 US Std Population (19 age groups - Census P25-1103). Regression lines and APCs are calculated using the Joinpoint Regression Program Version 3.4.3, April 2010, National Cancer Institute. The APC is the Annual Percent Change for the regression line segments. The APC shown on the graph is for the most recent trend.
- * The APC is significantly different from zero ($p < 0.05$).

SEER Observed Incidence Rates^a Lymphocytic and Myeloid Leukemia (Acute and Chronic), by Sex

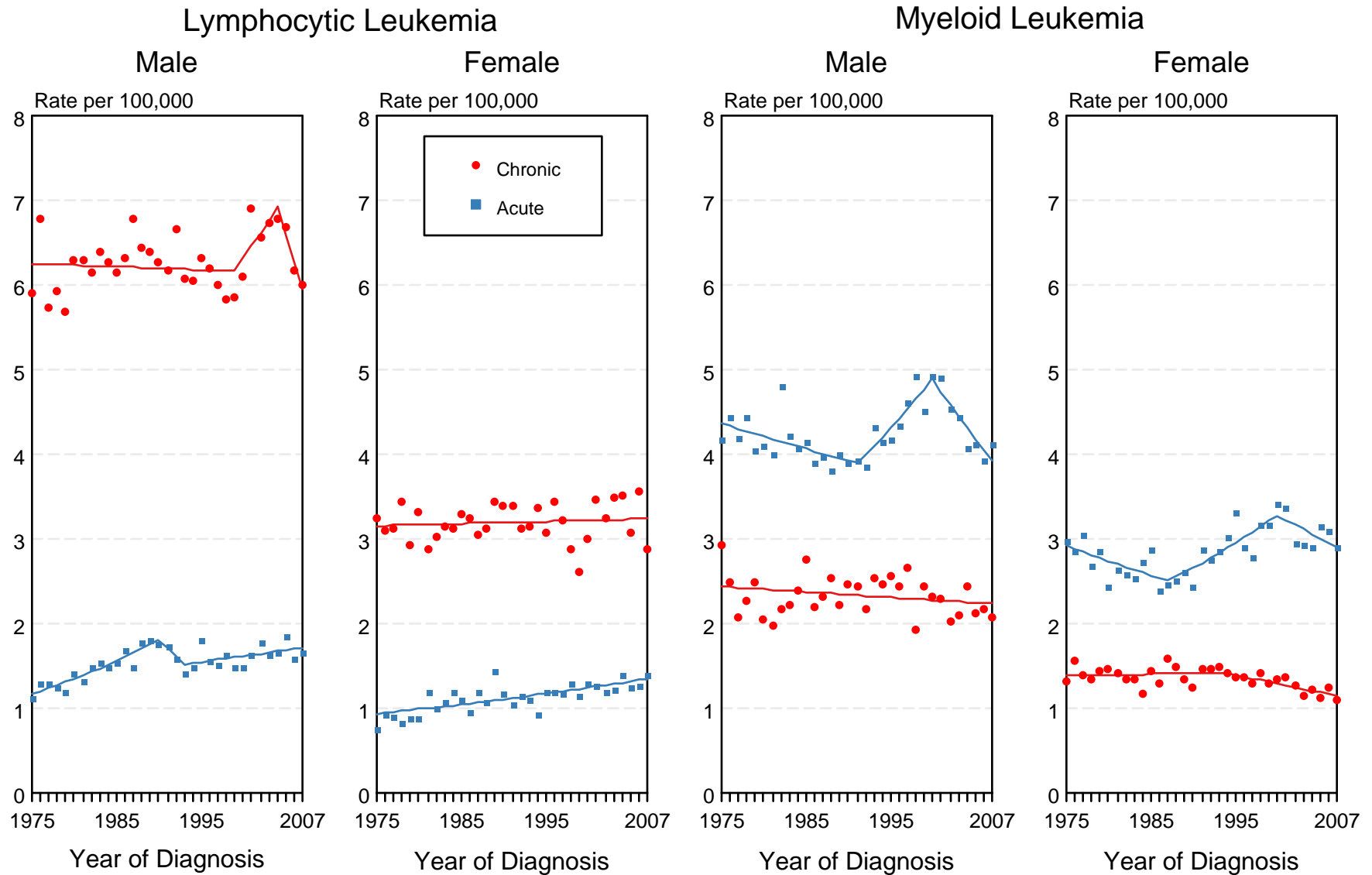


Figure 13.2

^a Source: SEER 9 areas. Rates are age-adjusted to the 2000 US Std Population (19 age groups - Census P25-1103). Regression lines and APCs are calculated using the Joinpoint Regression Program Version 3.4.3, April 2010, National Cancer Institute.

SEER Incidence and US Death Rates^a Leukemia, Both Sexes

Joinpoint Analyses for Whites and Blacks from 1975-2007
and for Asian/Pacific Islanders, American Indians/Alaska Natives and Hispanics from 1992-2007

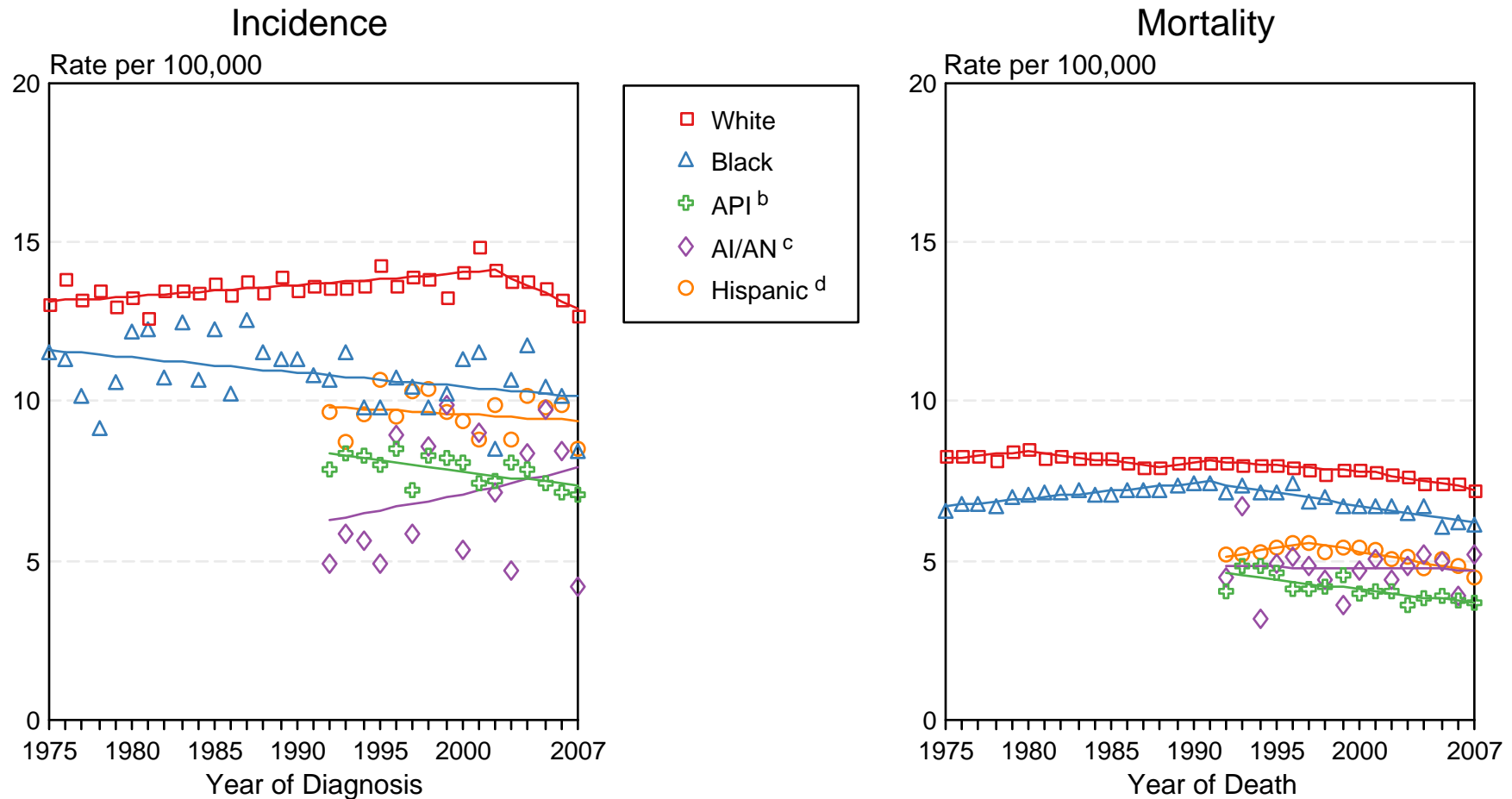


Figure 13.3

Source: Incidence data for whites and blacks are from the SEER 9 areas (San Francisco, Connecticut, Detroit, Hawaii, Iowa, New Mexico, Seattle, Utah, Atlanta).

Incidence data for Asian/Pacific Islanders, American Indians/Alaska Natives and Hispanics are from the SEER 13 Areas (SEER 9 Areas, San Jose-Monterey, Los Angeles, Alaska Native Registry and Rural Georgia). Mortality data are from US Mortality Files, National Center for Health Statistics, CDC.

^a Rates are age-adjusted to the 2000 US Std Population (19 age groups - Census P25-1103).

Regression lines are calculated using the Joinpoint Regression Program Version 3.4.3, April 2010, National Cancer Institute. Joinpoint analyses for Whites and Blacks during the 1975-2007 period allow a maximum of 4 joinpoints. Analyses for other ethnic groups during the period 1992-2007 allow a maximum of 2 joinpoints.

^b API = Asian/Pacific Islander.

^c AI/AN = American Indian/Alaska Native. Rates for American Indian/Alaska Native are based on the CHSDA (Contract Health Service Delivery Area) counties.

^d Hispanic is not mutually exclusive from whites, blacks, Asian/Pacific Islanders, and American Indians/Alaska Natives. Incidence data for Hispanics are based on NHIA and exclude cases from the Alaska Native Registry. Mortality data for Hispanics exclude cases from Connecticut, the District of Columbia, Maine, Maryland, Minnesota, New Hampshire, New York, North Dakota, Oklahoma, and Vermont.

SEER Observed Incidence and SEER Delay Adjusted Incidence Rates^a SEER 9 Areas Compared to SEER 13 Areas Leukemia, Male, by Race

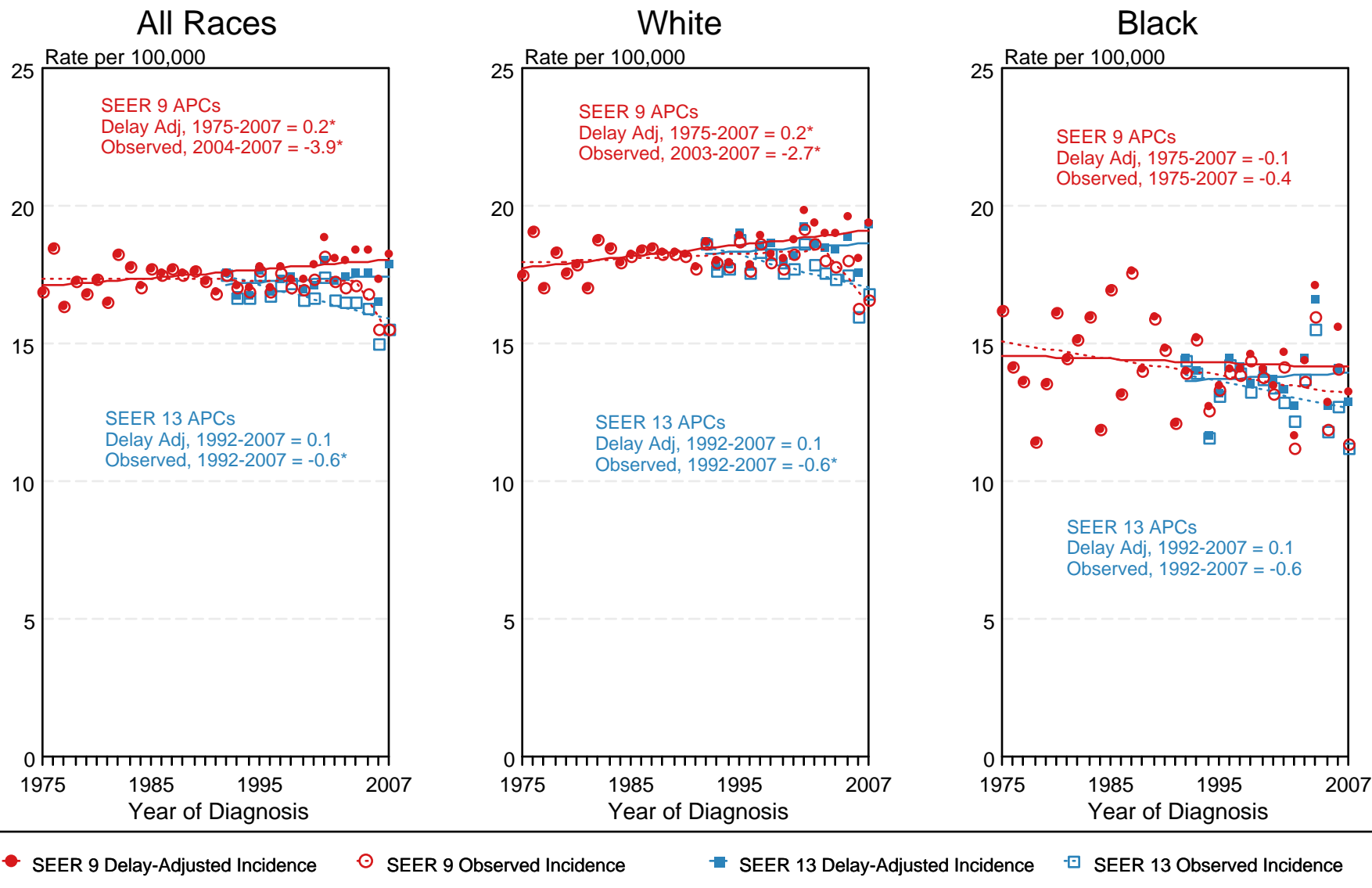
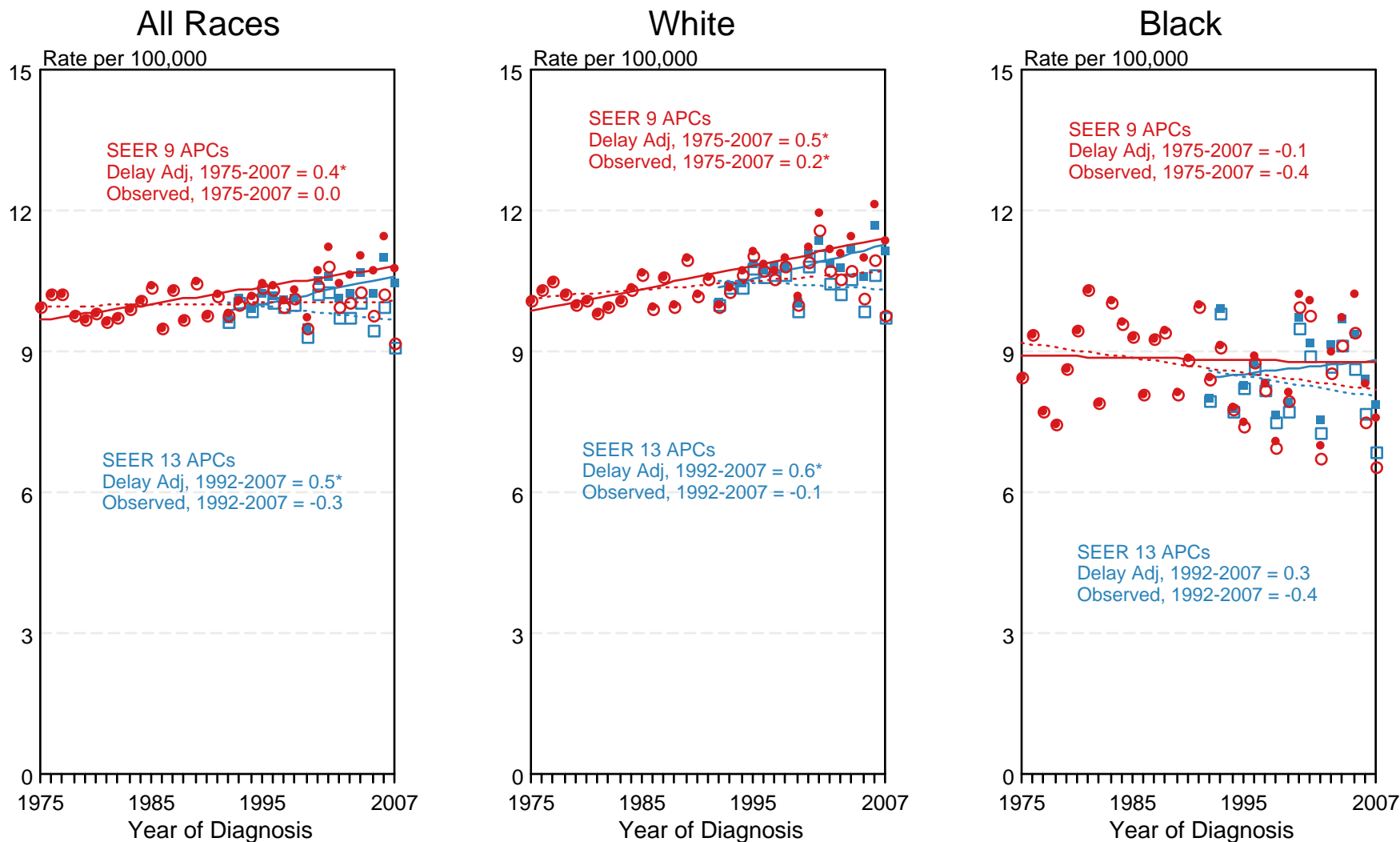


Figure 13.4

^a Source: SEER 9 areas and SEER 13 areas.
Rates are age-adjusted to the 2000 US Std Population (19 age groups - Census P25-1103).
Regression lines and APCs are calculated using the Joinpoint Regression Program Version 3.4.3, April 2010, National Cancer Institute.
The APC is the Annual Percent Change for the regression line segments. The APC shown on the graph is for the most recent trend.
* The APC is significantly different from zero ($p < 0.05$).

SEER Observed Incidence and SEER Delay Adjusted Incidence Rates^a SEER 9 Areas Compared to SEER 13 Areas Leukemia, Female, by Race



● SEER 9 Delay-Adjusted Incidence ○ SEER 9 Observed Incidence ■ SEER 13 Delay-Adjusted Incidence □ SEER 13 Observed Incidence

^a Source: SEER 9 areas and SEER 13 areas.
Rates are age-adjusted to the 2000 US Std Population (19 age groups - Census P25-1103).
Regression lines and APCs are calculated using the Joinpoint Regression Program Version 3.4.3, April 2010, National Cancer Institute.
The APC is the Annual Percent Change for the regression line segments. The APC shown on the graph is for the most recent trend.
* The APC is significantly different from zero ($p < 0.05$).

Figure 13.5