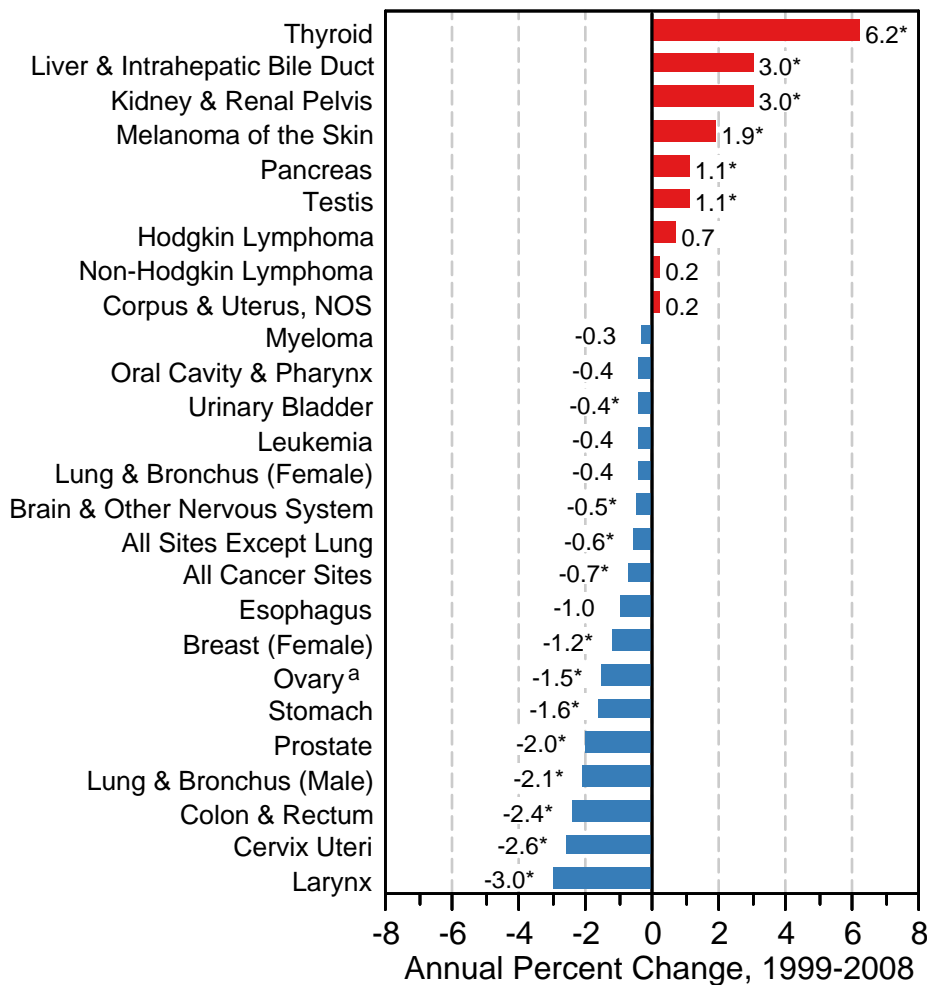


Trends in SEER Incidence & US Death Rates by Primary Cancer Site 1999-2008

Trends in SEER Incidence Rates



Trends in US Cancer Death Rates

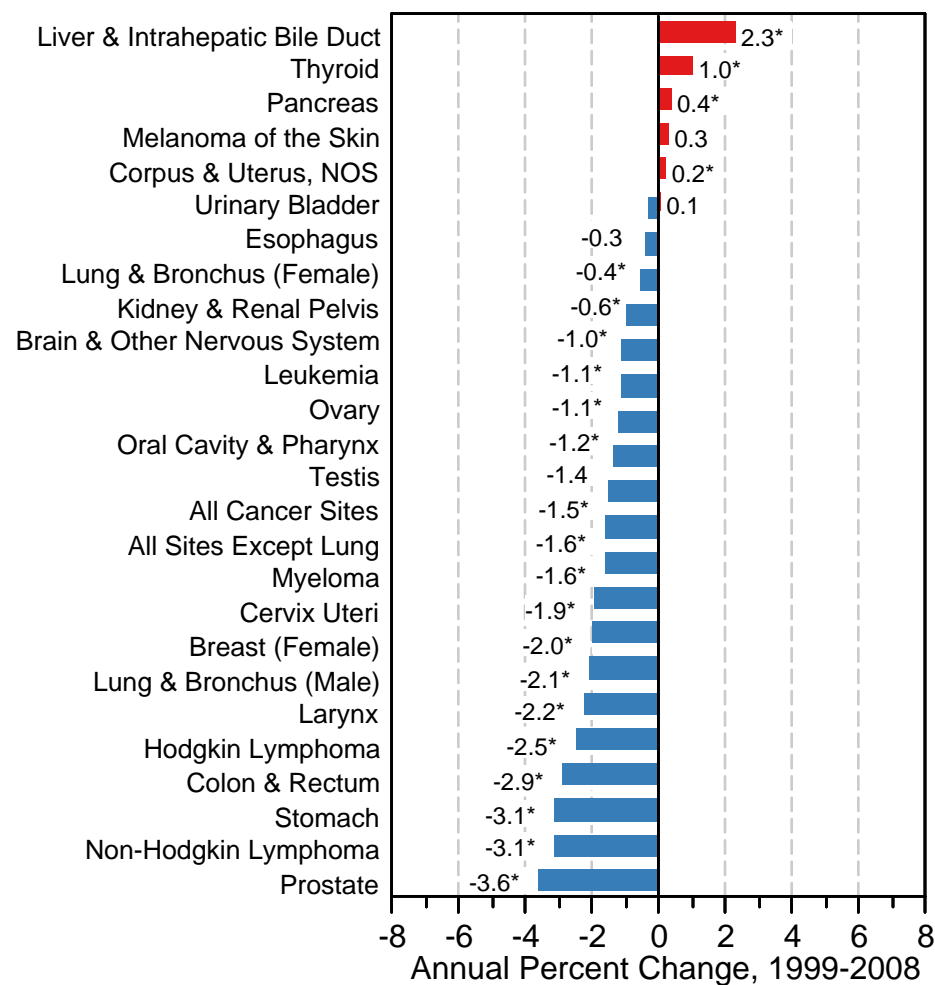


Figure 14

Source: SEER 13 areas (San Francisco, Connecticut, Detroit, Hawaii, Iowa, New Mexico, Seattle, Utah, Atlanta, San Jose-Monterey, Los Angeles, Alaska Native Registry and Rural Georgia) and US Mortality Files, National Center for Health Statistics, Centers for Disease Control and Prevention. Underlying rates are per 100,000 and age-adjusted to the 2000 US Std Population (19 age groups - Census P25-1103).

For sex-specific cancer sites, the population was limited to the population of the appropriate sex.

* The APC is significantly different from zero ($p < .05$).

^a Ovary excludes borderline cases or histologies 8442, 8451, 8462, 8472, and 8473.

Trends in SEER Incidence Rates by Age Group and Primary Cancer Site 1999-2008

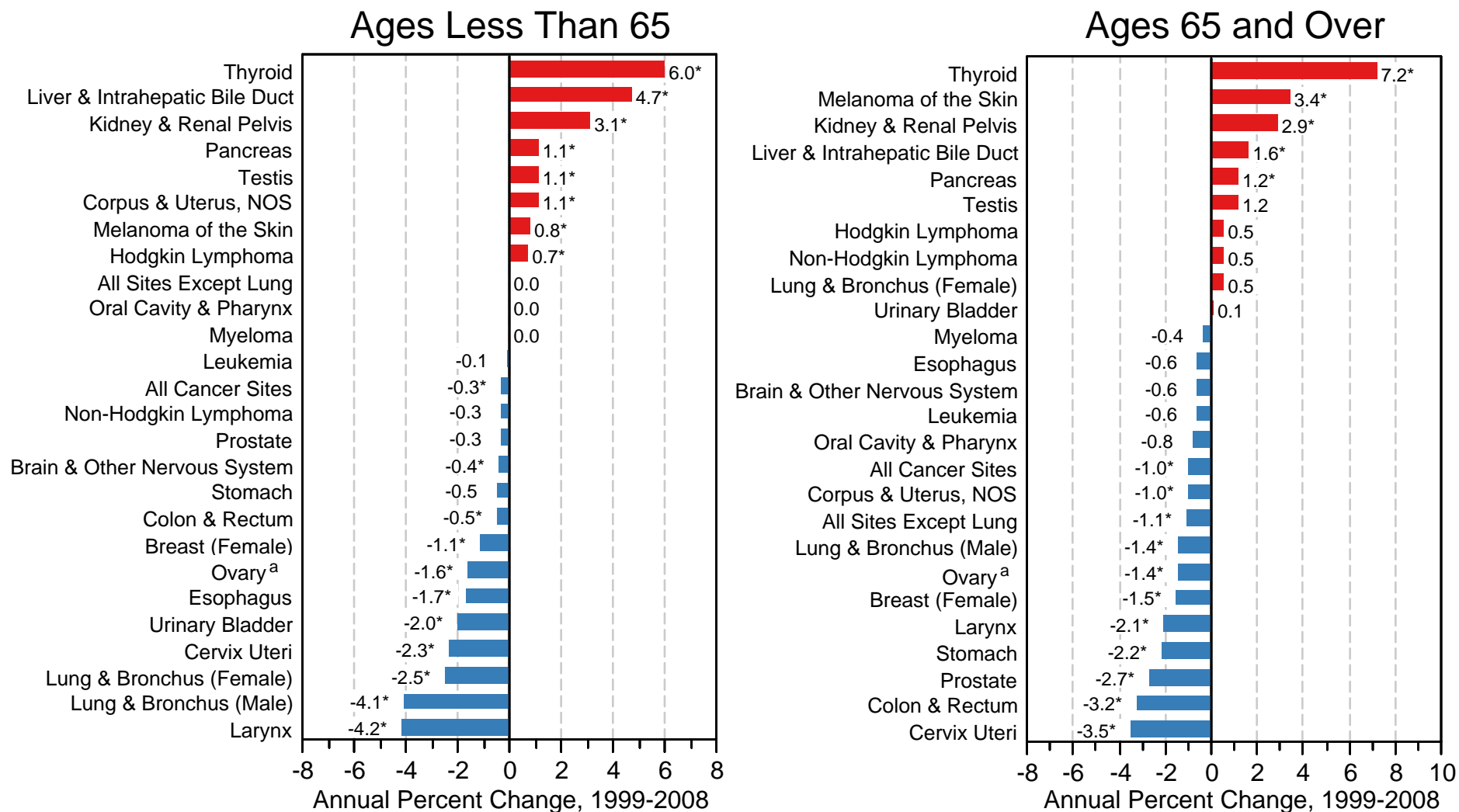


Figure 15

Source: SEER 13 areas (San Francisco, Connecticut, Detroit, Hawaii, Iowa, New Mexico, Seattle, Utah, Atlanta, San Jose-Monterey, Los Angeles, Alaska Native Registry and Rural Georgia).

Underlying rates are per 100,000 and age-adjusted to the 2000 US Std Population (19 age groups - Census P25-1103).

For sex-specific cancer sites, the population was limited to the population of the appropriate sex.

* The APC is significantly different from zero ($p < .05$).

^a Ovary excludes borderline cases or histologies 8442, 8451, 8462, 8472, and 8473.

Trends in US Death Rates by Age Group and Primary Cancer Site 1999-2008

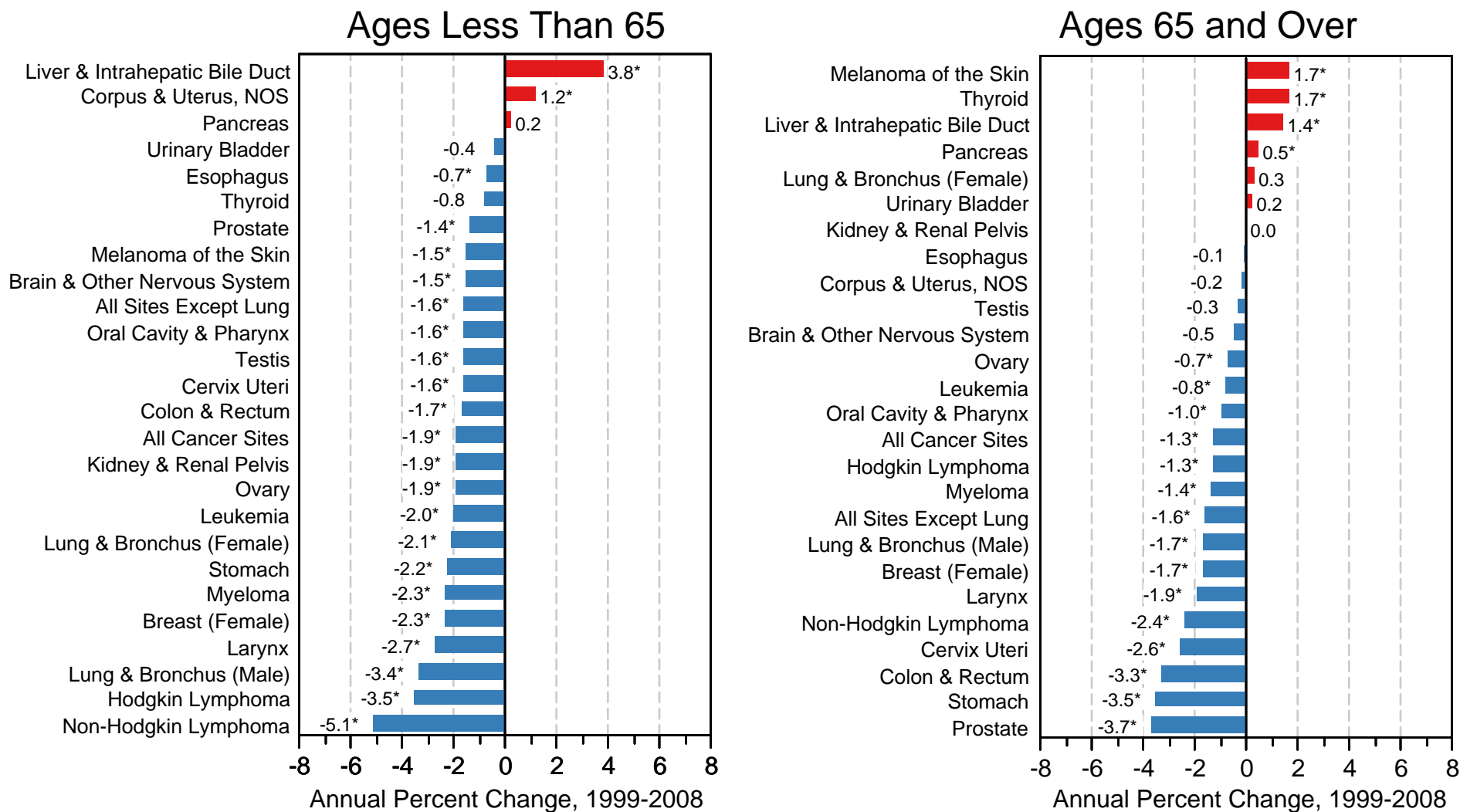


Figure 1.6

Source: US Mortality Files, National Center for Health Statistics, Centers for Disease Control and Prevention.
 Underlying rates are per 100,000 and age-adjusted to the 2000 US Std Population (19 age groups - Census P25-1103).
 For sex-specific cancer sites, the population was limited to the population of the appropriate sex.
 * The APC is significantly different from zero ($p < .05$).

Trends in SEER Incidence Rates by Sex and Primary Cancer Site 1999-2008

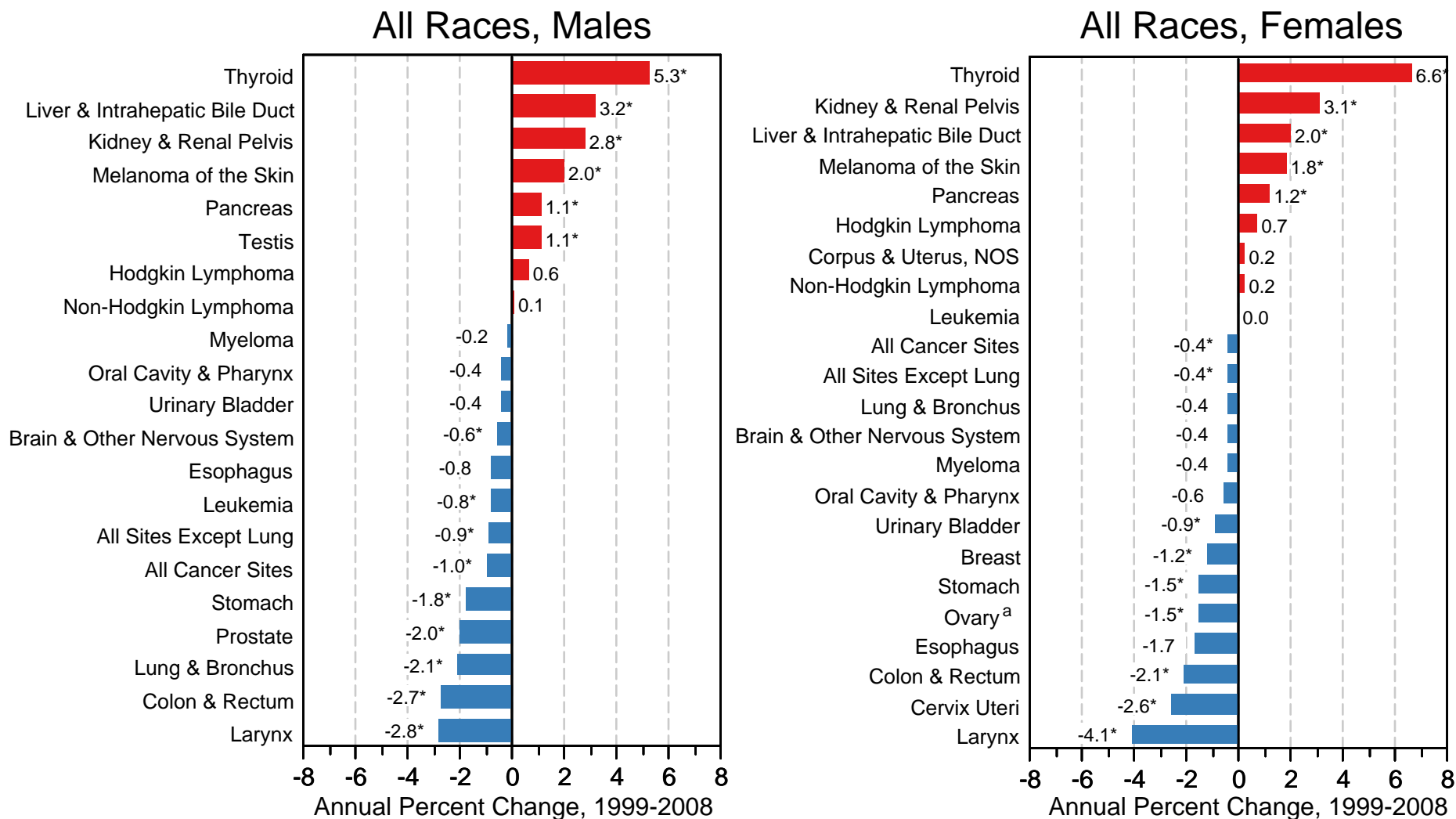


Figure 17

Source: SEER 13 areas (San Francisco, Connecticut, Detroit, Hawaii, Iowa, New Mexico, Seattle, Utah, Atlanta, San Jose-Monterey, Los Angeles, Alaska Native Registry and Rural Georgia).

Underlying rates are per 100,000 and age-adjusted to the 2000 US Std Population (19 age groups - Census P25-1103).

For sex-specific cancer sites, the population was limited to the population of the appropriate sex.

* The APC is significantly different from zero (p<.05).

^a Ovary excludes borderline cases or histologies 8442, 8451, 8462, 8472, and 8473.

Trends in US Death Rates by Sex and Primary Cancer Site 1999-2008

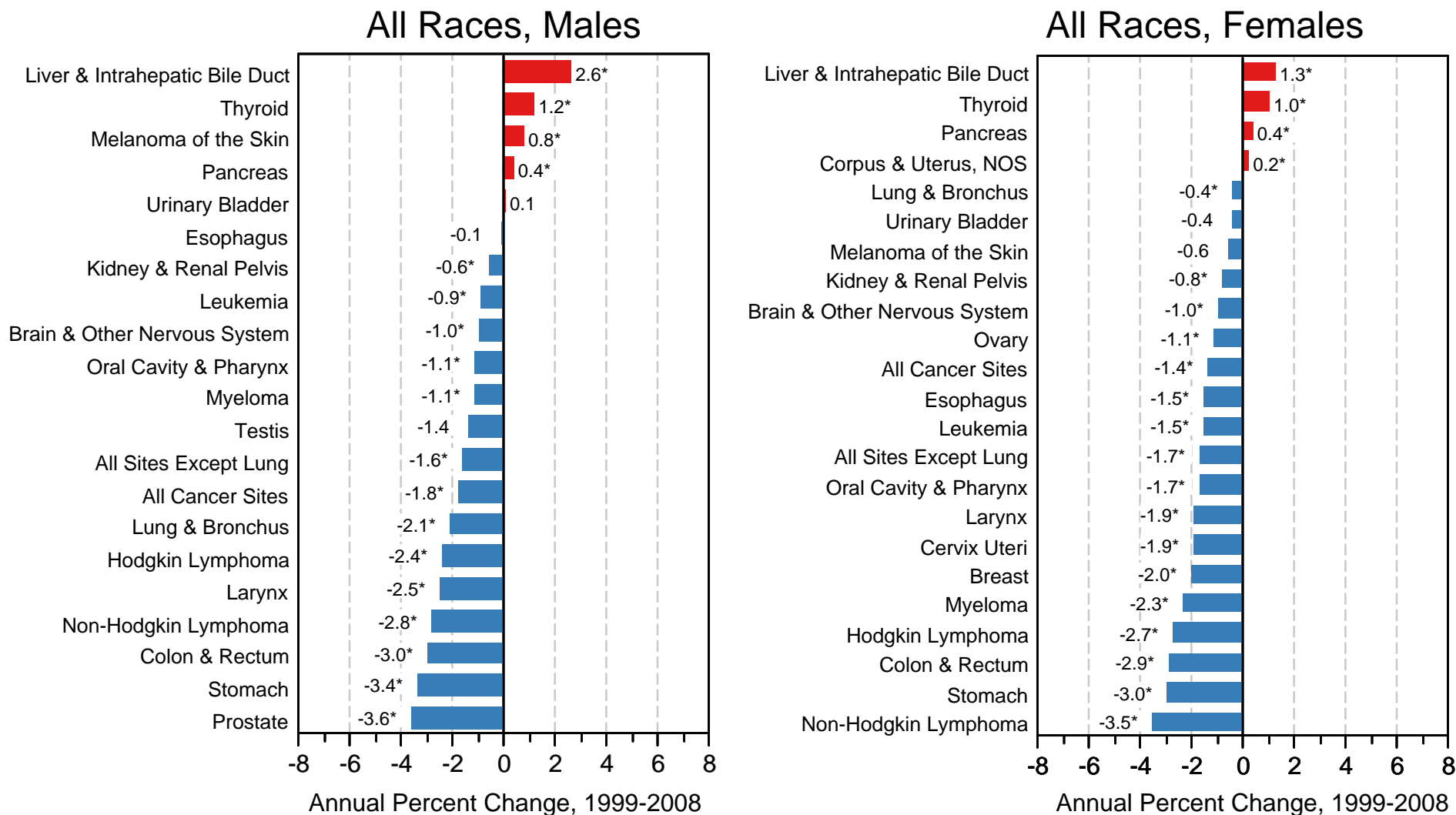
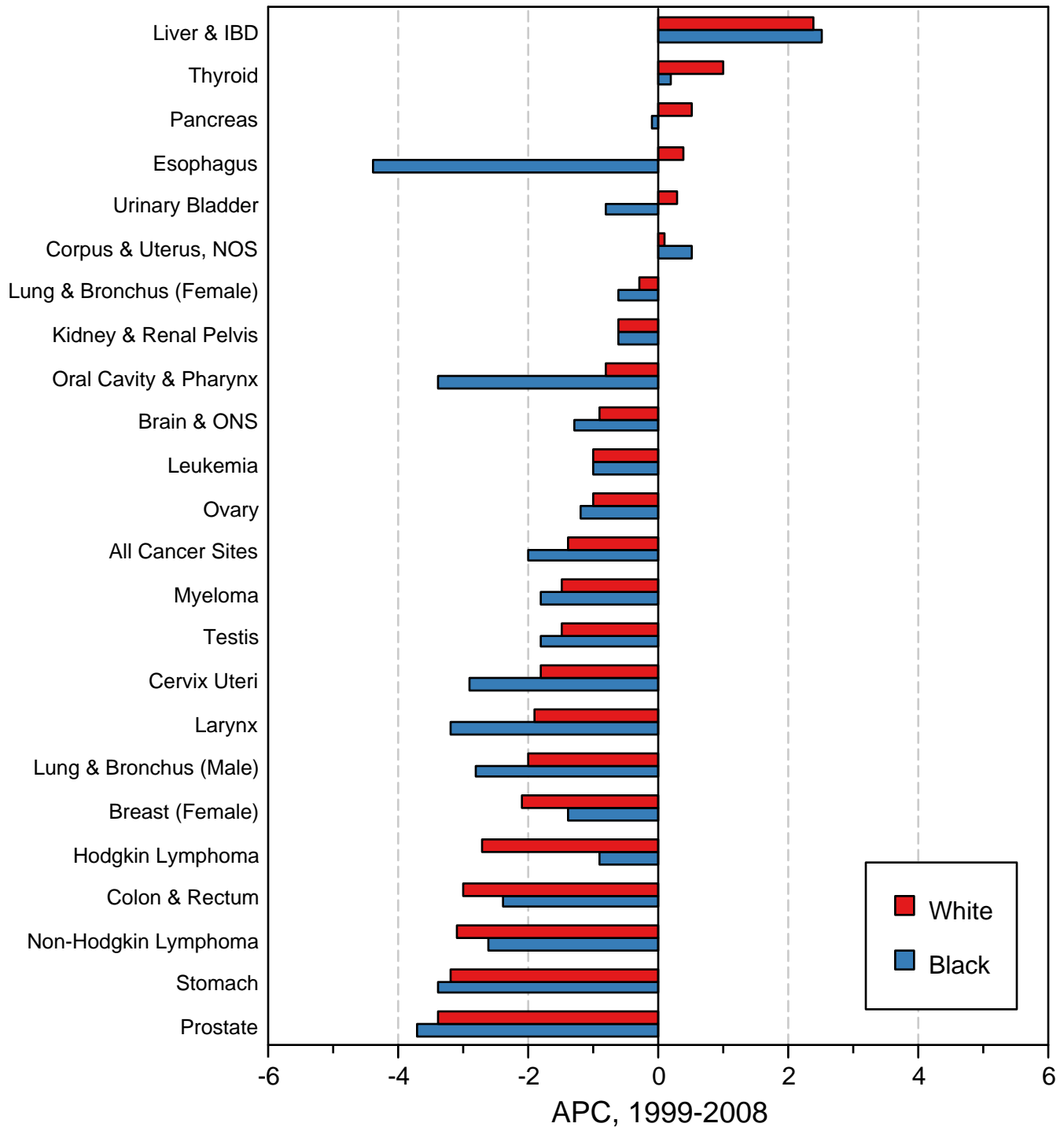


Figure 18

Source: US Mortality Files, National Center for Health Statistics, Centers for Disease Control and Prevention.
 Underlying rates are per 100,000 and age-adjusted to the 2000 US Std Population (19 age groups - Census P25-1103).
 For sex-specific cancer sites, the population was limited to the population of the appropriate sex.
 * The APC is significantly different from zero ($p < .05$).

Figure 1.10

Trends in US Death Rates, 1999-2008 All Ages, by Race and Primary Cancer Site



Source: US Mortality Files, National Center for Health Statistics, Centers for Disease Control and Prevention. The APC is the Annual Percent Change over the time interval. Trends are based on rates age-adjusted to the 2000 US Std Population (19 age groups - Census P25-1130).