

Table 27.1
Cancer of the Urinary Bladder (Invasive and *In Situ*)

Trends in SEER Incidence^{ab} and U.S. Mortality^c Using the Joinpoint Regression Program,
1975-2010 With up to Five Joinpoints, 1992-2010 With up to Three Joinpoints,
Both Sexes by Race/Ethnicity

	JP Trend 1		JP Trend 2		JP Trend 3		JP Trend 4		JP Trend 5		JP Trend 6		AAPC ^d	
	Years	APC	Years	APC	Years	APC	Years	APC	Years	APC	Years	APC	2001-10	2006-10
<u>SEER 9 Delay-Adjusted Incidence^a, 1975-2010</u>														
All Races	1975-86	0.7*	1986-10	0.2*									0.2*	0.2*
White	1975-87	0.9*	1987-10	0.3*									0.3*	0.3*
Black	1975-10	0.3*											0.3*	0.3*
<u>SEER 13 Delay-Adjusted Incidence^b, 1992-2010</u>														
All Races	1992-10	0.0											0.0	0.0
White	1992-10	0.2*											0.2*	0.2*
Black	1992-10	0.5											0.5	0.5
<u>SEER 9 Observed Incidence^a, 1975-2010</u>														
All Races	1975-86	0.7*	1986-07	0.2*	2007-10	-1.3							-0.3	-0.9
White	1975-86	0.9*	1986-05	0.3*	2005-10	-0.7							-0.2	-0.7
Black	1975-10	0.2											0.2	0.2
<u>SEER 13 Observed Incidence^b, 1992-2010</u>														
All Races	1992-05	0.2	2005-10	-0.9									-0.4	-0.9
White	1992-04	0.3*	2004-10	-0.7									-0.4	-0.7
White NH ^{ef}	1992-10	0.2*											0.2*	0.2*
Black	1992-10	0.3											0.3	0.3
Black NH ^{ef}	1992-10	0.4											0.4	0.4
API ^e	1992-10	0.2											0.2	0.2
AI/AN ^{eg}	1992-10	1.9											1.9	1.9
Hispanic ^f	1992-07	0.2	2007-10	-5.0									-1.5	-3.7
<u>U.S. Cancer Mortality^c, 1975-2010</u>														
All Races	1975-77	0.0	1977-87	-2.1*	1987-00	-0.2*	2000-10	0.1					0.1	0.1
White	1975-77	0.1	1977-87	-2.1*	1987-00	0.0	2000-10	0.3*					0.3*	0.3*
Black	1975-10	-1.0*											-1.0*	-1.0*
<u>U.S. Cancer Mortality^c, 1992-2010</u>														
All Races	1992-99	-0.4	1999-10	0.2									0.2	0.2
White	1992-99	-0.2	1999-10	0.3*									0.3*	0.3*
White NH ^{ef}	1992-97	-0.3	1997-10	0.5*									0.5*	0.5*
Black	1992-10	-1.0*											-1.0*	-1.0*
Black NH ^{ef}	1992-10	-0.7*											-0.7*	-0.7*
API ^e	1992-10	-0.7											-0.7	-0.7
AI/AN ^{eg}	1992-10	3.2*											3.2*	3.2*
Hispanic ^f	1992-10	-0.3											-0.3	-0.3

Joinpoint Regression Program Version 4.0.3, April 2013, National Cancer Institute. (<http://surveillance.cancer.gov/joinpoint/>).

The APC is the Annual Percent Change based on rates age-adjusted to the 2000 US Std Population (19 age groups - Census P25-1130).

Trends are from the SEER 9 areas (San Francisco, Connecticut, Detroit, Hawaii, Iowa, New Mexico, Seattle, Utah, and Atlanta).

Trends are from the SEER 13 areas (SEER 9 Areas, Los Angeles, San Jose-Monterey, Rural Georgia, and the Alaska Native Registry).

Trends are from US Mortality Files, National Center for Health Statistics, Centers for Disease Control and Prevention.

The AAPC is the Average Annual Percent Change and is based on the APCs calculated by Joinpoint.

API - Asian/Pacific Islander, AI/AN - American Indian/Alaska Native, NH - Non-Hispanic

Hispanic and Non-Hispanic are not mutually exclusive from whites, blacks, Asian/Pacific Islanders, and American Indians/Alaska

Natives. Incidence data for Hispanics and Non-Hispanics are based on NHIA and exclude cases from the Alaska Native Registry.

The Hispanic and Non-Hispanic mortality trends exclude deaths from CT, DC, ME, MD, MN, NH, NY, ND, SC, OK and VT.

Data for American Indian/Alaska Native are based on the CHSDA (Contract Health Service Delivery Area) counties.

* The APC/AAPC is significantly different from zero ($p < .05$).

- Joinpoint regression line analysis could not be performed on data series.

Table 27.2
Cancer of the Urinary Bladder (Invasive and *In Situ*)

Trends in SEER Incidence^{ab} and U.S. Mortality^c Using the Joinpoint Regression Program,
1975-2010 With up to Five Joinpoints, 1992-2010 With up to Three Joinpoints,
Males by Race/Ethnicity

	JP Trend 1		JP Trend 2		JP Trend 3		JP Trend 4		JP Trend 5		JP Trend 6		AAPC ^d	
	Years	APC	Years	APC	Years	APC	Years	APC	Years	APC	Years	APC	2001-10	2006-10
<u>SEER 9 Delay-Adjusted Incidence^a, 1975-2010</u>														
All Races	1975-86	0.9*	1986-10	0.1									0.1	0.1
White	1975-87	1.0*	1987-10	0.1*									0.1*	0.1*
Black	1975-10	0.3*											0.3*	0.3*
<u>SEER 13 Delay-Adjusted Incidence^b, 1992-2010</u>														
All Races	1992-10	0.0											0.0	0.0
White	1992-10	0.1											0.1	0.1
Black	1992-10	0.6*											0.6*	0.6*
<u>SEER 9 Observed Incidence^a, 1975-2010</u>														
All Races	1975-87	1.0*	1987-96	-0.5	1996-99	1.8	1999-10	-0.3					-0.3	-0.3
White	1975-87	1.2*	1987-95	-0.5	1995-00	1.2	2000-10	-0.3					-0.3	-0.3
Black	1975-10	0.3*											0.3*	0.3*
<u>SEER 13 Observed Incidence^b, 1992-2010</u>														
All Races	1992-10	-0.1											-0.1	-0.1
White	1992-10	0.0											0.0	0.0
White NH ^{ef}	1992-10	0.1											0.1	0.1
Black	1992-10	0.6*											0.6*	0.6*
Black NH ^{ef}	1992-10	0.6*											0.6*	0.6*
API ^e	1992-10	0.5*											0.5*	0.5*
AI/AN ^{eg}	1992-10	2.0											2.0	2.0
Hispanic ^f	1992-10	-0.3											-0.3	-0.3
<u>U.S. Cancer Mortality^c, 1975-2010</u>														
All Races	1975-83	-1.4*	1983-87	-2.8*	1987-93	0.2	1993-97	-1.1	1997-10	0.1			0.1	0.1
White	1975-82	-1.4*	1982-87	-2.3*	1987-02	-0.2*	2002-10	0.3					0.2	0.3
Black	1975-10	-1.0*											-1.0*	-1.0*
<u>U.S. Cancer Mortality^c, 1992-2010</u>														
All Races	1992-00	-0.6*	2000-10	0.2									0.2	0.2
White	1992-99	-0.5*	1999-10	0.2*									0.2*	0.2*
White NH ^{ef}	1992-97	-0.8	1997-10	0.4*									0.4*	0.4*
Black	1992-10	-0.8*											-0.8*	-0.8*
Black NH ^{ef}	1992-10	-0.5*											-0.5*	-0.5*
API ^e	1992-10	0.0											0.0	0.0
AI/AN ^{eg}	1992-10	4.9*											4.9*	4.9*
Hispanic ^f	1992-10	-0.4											-0.4	-0.4

Joinpoint Regression Program Version 4.0.3, April 2013, National Cancer Institute. (<http://surveillance.cancer.gov/joinpoint/>).

The APC is the Annual Percent Change based on rates age-adjusted to the 2000 US Std Population (19 age groups - Census P25-1130).

Trends are from the SEER 9 areas (San Francisco, Connecticut, Detroit, Hawaii, Iowa, New Mexico, Seattle, Utah, and Atlanta).

Trends are from the SEER 13 areas (SEER 9 Areas, Los Angeles, San Jose-Monterey, Rural Georgia, and the Alaska Native Registry).

Trends are from US Mortality Files, National Center for Health Statistics, Centers for Disease Control and Prevention.

The AAPC is the Average Annual Percent Change and is based on the APCs calculated by Joinpoint.

API - Asian/Pacific Islander, AI/AN - American Indian/Alaska Native, NH - Non-Hispanic

Hispanic and Non-Hispanic are not mutually exclusive from whites, blacks, Asian/Pacific Islanders, and American Indians/Alaska

Natives. Incidence data for Hispanics and Non-Hispanics are based on NHIA and exclude cases from the Alaska Native Registry.

The Hispanic and Non-Hispanic mortality trends exclude deaths from CT, DC, ME, MD, MN, NH, NY, ND, SC, OK and VT.

Data for American Indian/Alaska Native are based on the CHSDA (Contract Health Service Delivery Area) counties.

* The APC/AAPC is significantly different from zero ($p < .05$).

- Joinpoint regression line analysis could not be performed on data series.

Table 27.3
Cancer of the Urinary Bladder (Invasive and *In Situ*)

Trends in SEER Incidence^{ab} and U.S. Mortality^c Using the Joinpoint Regression Program,
1975-2010 With up to Five Joinpoints, 1992-2010 With up to Three Joinpoints,
Females by Race/Ethnicity

	JP Trend 1		JP Trend 2		JP Trend 3		JP Trend 4		JP Trend 5		JP Trend 6		AAPC ^d	
	Years	APC	Years	APC	Years	APC	Years	APC	Years	APC	Years	APC	2001-10	2006-10
<u>SEER 9 Delay-Adjusted Incidence^a, 1975-2010</u>														
All Races	1975-02	0.2*	2002-10	-0.9*									-0.7*	-0.9*
White	1975-02	0.4*	2002-10	-0.8									-0.7	-0.8
Black	1975-10	0.2											0.2	0.2
<u>SEER 13 Delay-Adjusted Incidence^b, 1992-2010</u>														
All Races	1992-10	-0.4*											-0.4*	-0.4*
White	1992-10	-0.3*											-0.3*	-0.3*
Black	1992-10	0.1											0.1	0.1
<u>SEER 9 Observed Incidence^a, 1975-2010</u>														
All Races	1975-03	0.2*	2003-10	-1.3*									-1.0*	-1.3*
White	1975-02	0.4*	2002-10	-1.2*									-1.0*	-1.2*
Black	1975-10	0.2											0.2	0.2
<u>SEER 13 Observed Incidence^b, 1992-2010</u>														
All Races	1992-04	-0.2	2004-10	-1.3*									-0.9*	-1.3*
White	1992-04	-0.1	2004-10	-1.3*									-0.9*	-1.3*
White NH ^{ef}	1992-03	0.2	2003-10	-0.9*									-0.7*	-0.9*
Black	1992-10	-0.1											-0.1	-0.1
Black NH ^{ef}	1992-10	-0.1											-0.1	-0.1
API ^e	1992-10	0.0											0.0	0.0
AI/AN ^{eg}	1992-10	4.0											4.0	4.0
Hispanic ^f	1992-10	-0.6											-0.6	-0.6
<u>U.S. Cancer Mortality^c, 1975-2010</u>														
All Races	1975-86	-1.7*	1986-10	-0.4*									-0.4*	-0.4*
White	1975-86	-1.8*	1986-10	-0.2*									-0.2*	-0.2*
Black	1975-10	-0.9*											-0.9*	-0.9*
<u>U.S. Cancer Mortality^c, 1992-2010</u>														
All Races	1992-10	-0.5*											-0.5*	-0.5*
White	1992-10	-0.3*											-0.3*	-0.3*
White NH ^{ef}	1992-10	-0.1											-0.1	-0.1
Black	1992-10	-1.2*											-1.2*	-1.2*
Black NH ^{ef}	1992-10	-1.0*											-1.0*	-1.0*
API ^e	1992-10	-1.3											-1.3	-1.3
AI/AN ^{eg}	1992-10	0.2											0.2	0.2
Hispanic ^f	1992-10	-0.3											-0.3	-0.3

Joinpoint Regression Program Version 4.0.3, April 2013, National Cancer Institute. (<http://surveillance.cancer.gov/joinpoint/>).

The APC is the Annual Percent Change based on rates age-adjusted to the 2000 US Std Population (19 age groups - Census P25-1130).

Trends are from the SEER 9 areas (San Francisco, Connecticut, Detroit, Hawaii, Iowa, New Mexico, Seattle, Utah, and Atlanta).

Trends are from the SEER 13 areas (SEER 9 Areas, Los Angeles, San Jose-Monterey, Rural Georgia, and the Alaska Native Registry).

Trends are from US Mortality Files, National Center for Health Statistics, Centers for Disease Control and Prevention.

The AAPC is the Average Annual Percent Change and is based on the APCs calculated by Joinpoint.

API - Asian/Pacific Islander, AI/AN - American Indian/Alaska Native, NH - Non-Hispanic

Hispanic and Non-Hispanic are not mutually exclusive from whites, blacks, Asian/Pacific Islanders, and American Indians/Alaska

Natives. Incidence data for Hispanics and Non-Hispanics are based on NHIA and exclude cases from the Alaska Native Registry.

The Hispanic and Non-Hispanic mortality trends exclude deaths from CT, DC, ME, MD, MN, NH, NY, ND, SC, OK and VT.

Data for American Indian/Alaska Native are based on the CHSDA (Contract Health Service Delivery Area) counties.

* The APC/AAPC is significantly different from zero ($p < .05$).

- Joinpoint regression line analysis could not be performed on data series.

Table 27.4
Cancer of the Urinary Bladder (Invasive and *In Situ*)

Delay-adjusted SEER Incidence^a Rates by Year, Race and Sex

Year of Diagnosis:	All Races			Whites			Blacks		
	Total	Males	Females	Total	Males	Females	Total	Males	Females
1975	19.32	34.37	8.88	20.23	36.39	9.17	10.56	16.34	6.26
1976	19.69	34.39	9.44	20.73	36.70	9.73	12.48	18.16	8.59
1977	18.99	33.40	8.88	20.01	35.61	9.18	13.45	22.67	7.06
1978	19.99	35.36	9.44	21.07	37.83	9.74	11.73	19.36	6.39
1979	19.98	35.35	9.39	21.30	38.19	9.84	10.35	15.61	6.54
1980	20.41	37.14	8.91	21.52	39.81	9.06	13.33	18.23	9.98
1981	20.70	36.36	9.75	21.95	38.77	10.31	11.60	20.72	5.48
1982	20.08	35.79	9.52	21.38	38.31	10.15	12.19	21.78	5.60
1983	20.05	36.00	9.01	21.32	38.71	9.41	12.17	18.71	7.57
1984	20.87	37.73	9.19	22.36	40.91	9.64	11.49	18.93	6.24
1985	20.69	36.40	9.88	22.13	39.34	10.37	13.07	20.34	8.14
1986	21.05	37.95	9.44	22.46	40.85	9.97	12.94	22.17	6.64
1987	21.66	39.53	9.24	23.18	42.84	9.58	13.23	21.79	7.41
1988	20.86	38.10	9.00	22.73	41.87	9.69	11.30	18.00	6.45
1989	21.05	37.45	9.65	22.76	40.96	10.21	11.38	17.62	7.17
1990	21.09	37.51	9.64	22.65	40.81	10.04	12.70	18.61	8.75
1991	20.94	37.66	9.35	22.74	41.32	9.91	12.88	19.59	8.51
1992	21.28	37.58	9.82	22.99	40.81	10.52	12.50	20.84	6.90
1993	21.27	37.69	9.72	22.88	40.61	10.39	14.18	24.43	7.86
1994	20.83	36.92	9.47	22.66	40.33	10.20	12.30	20.05	6.92
1995	20.68	36.28	9.57	22.51	39.62	10.31	11.82	18.13	7.40
1996	20.85	36.75	9.56	22.73	40.19	10.30	12.35	20.11	7.30
1997	21.13	37.22	9.60	23.05	40.81	10.26	12.75	20.16	8.19
1998	21.64	38.61	9.46	23.71	42.37	10.20	11.94	20.49	6.40
1999	21.83	38.34	9.99	23.76	41.86	10.64	14.58	22.57	9.48
2000	21.91	38.92	9.59	24.04	42.67	10.41	13.24	20.53	8.51
2001	21.83	38.66	9.69	24.21	42.78	10.69	11.67	18.66	7.19
2002	21.35	37.31	9.75	23.50	40.99	10.63	12.70	17.88	9.16
2003	21.68	37.97	9.81	23.98	41.90	10.72	13.01	21.42	7.44
2004	21.63	38.14	9.61	23.90	42.04	10.47	13.81	22.79	8.37
2005	22.09	39.05	9.66	24.30	43.02	10.36	14.09	23.17	8.12
2006	21.55	38.22	9.28	23.79	42.21	10.00	11.92	18.29	7.70
2007	22.09	39.53	9.07	24.50	43.61	9.92	13.21	21.59	7.81
2008	21.60	37.97	9.45	23.85	41.75	10.33	12.92	22.19	6.84
2009	21.15	37.48	8.90	23.28	41.09	9.63	12.93	22.34	6.86
2010	21.74	38.16	9.38	24.35	42.51	10.30	12.62	21.29	6.97

Additional information on the model used to delay-adjust SEER Incidence rates can be found at [\(http://surveillance.cancer.gov/delay/\)](http://surveillance.cancer.gov/delay/).

^a SEER 9 areas (San Francisco, Connecticut, Detroit, Hawaii, Iowa, New Mexico, Seattle, Utah, and Atlanta). Rates are per 100,000 and are age-adjusted to the 2000 US Std Population (19 age groups - Census P25-1130).

- Delay-adjusted rate is not shown for observed rates based on less than 16 cases for the time interval.

Table 27.5
Cancer of the Urinary Bladder (Invasive and *In Situ*)
Age-adjusted SEER Incidence^a Rates by Year, Race and Sex

Year of Diagnosis:	All Races			Whites			Blacks		
	Total	Males	Females	Total	Males	Females	Total	Males	Females
1975-2010	21.00	37.35	9.39	22.73	40.65	10.00	12.57	20.24	7.48
1975	19.32	34.37	8.88	20.23	36.39	9.17	10.56	16.34	6.26
1976	19.69	34.39	9.44	20.73	36.70	9.73	12.48	18.16	8.59
1977	18.99	33.40	8.88	20.01	35.61	9.18	13.45	22.67	7.06
1978	19.99	35.36	9.44	21.07	37.83	9.74	11.73	19.36	6.39
1979	19.98	35.35	9.39	21.30	38.19	9.84	10.35	15.61	6.54
1980	20.41	37.14	8.91	21.52	39.81	9.06	13.33	18.23	9.98
1981	20.70	36.36	9.75	21.95	38.77	10.31	11.60	20.72	5.48
1982	20.08	35.79	9.52	21.38	38.31	10.15	12.19	21.77	5.60
1983	20.05	36.00	9.01	21.32	38.70	9.41	12.17	18.70	7.57
1984	20.86	37.72	9.18	22.35	40.89	9.64	11.49	18.93	6.24
1985	20.69	36.40	9.87	22.12	39.32	10.37	13.06	20.33	8.14
1986	21.04	37.94	9.43	22.45	40.84	9.96	12.94	22.16	6.63
1987	21.65	39.51	9.24	23.17	42.82	9.58	13.22	21.78	7.41
1988	20.85	38.08	8.99	22.72	41.85	9.68	11.29	17.99	6.45
1989	21.03	37.43	9.64	22.75	40.93	10.21	11.37	17.61	7.16
1990	21.08	37.49	9.64	22.63	40.78	10.03	12.69	18.59	8.75
1991	20.92	37.63	9.34	22.72	41.28	9.90	12.87	19.57	8.50
1992	21.26	37.55	9.81	22.96	40.76	10.50	12.48	20.82	6.89
1993	21.24	37.65	9.71	22.85	40.56	10.38	14.16	24.40	7.85
1994	20.80	36.87	9.45	22.62	40.27	10.19	12.28	20.01	6.91
1995	20.64	36.23	9.56	22.47	39.54	10.29	11.80	18.09	7.39
1996	20.82	36.69	9.55	22.68	40.10	10.28	12.32	20.06	7.28
1997	21.09	37.15	9.58	22.98	40.70	10.23	12.72	20.11	8.17
1998	21.60	38.54	9.44	23.64	42.25	10.17	11.90	20.43	6.38
1999	21.77	38.24	9.96	23.66	41.69	10.60	14.52	22.48	9.44
2000	21.85	38.80	9.56	23.92	42.46	10.36	13.17	20.43	8.47
2001	21.75	38.54	9.66	24.08	42.54	10.63	11.60	18.55	7.16
2002	21.28	37.18	9.72	23.35	40.72	10.56	12.62	17.75	9.11
2003	21.58	37.80	9.77	23.80	41.58	10.64	12.91	21.25	7.39
2004	21.52	37.94	9.56	23.68	41.66	10.37	13.69	22.58	8.30
2005	21.95	38.80	9.60	24.04	42.58	10.25	13.94	22.92	8.04
2006	21.38	37.92	9.20	23.50	41.70	9.88	11.77	18.07	7.60
2007	21.87	39.15	8.98	24.14	43.00	9.78	13.02	21.29	7.70
2008	21.32	37.49	9.33	23.41	40.99	10.14	12.68	21.78	6.71
2009	20.79	36.85	8.75	22.71	40.10	9.39	12.61	21.79	6.69
2010	21.10	37.03	9.10	23.40	40.86	9.90	12.12	20.46	6.69

^a SEER 9 areas (San Francisco, Connecticut, Detroit, Hawaii, Iowa, New Mexico, Seattle, Utah, and Atlanta). Rates are per 100,000 and are age-adjusted to the 2000 US Std Population (19 age groups - Census P25-1130).
- Statistic not shown. Rate based on less than 16 cases for the time interval.

Table 27.6
Cancer of the Urinary Bladder (Invasive)

Age-adjusted U.S. Death^a Rates by Year, Race and Sex

Year of Death:	All Races			Whites			Blacks		
	Total	Males	Females	Total	Males	Females	Total	Males	Females
1975-2010	4.60	8.10	2.40	4.70	8.41	2.37	4.21	6.17	3.04
1975	5.50	9.77	2.76	5.56	10.11	2.68	4.96	6.85	3.63
1976	5.59	9.79	2.88	5.64	10.05	2.83	5.29	7.80	3.54
1977	5.52	9.67	2.89	5.58	9.94	2.83	5.19	7.57	3.57
1978	5.44	9.54	2.86	5.51	9.83	2.82	4.94	7.22	3.40
1979	5.25	9.34	2.71	5.30	9.59	2.66	5.00	7.61	3.28
1980	5.17	9.16	2.73	5.24	9.51	2.66	4.72	6.21	3.71
1981	5.07	9.02	2.66	5.13	9.28	2.61	4.89	7.20	3.40
1982	4.99	8.95	2.58	5.04	9.23	2.50	4.86	6.83	3.56
1983	4.88	8.79	2.54	4.93	9.04	2.50	4.72	7.17	3.19
1984	4.74	8.49	2.49	4.78	8.73	2.43	4.74	6.89	3.39
1985	4.67	8.43	2.44	4.73	8.67	2.40	4.48	6.86	3.02
1986	4.53	8.10	2.41	4.60	8.41	2.34	4.25	5.83	3.29
1987	4.41	7.87	2.34	4.46	8.09	2.28	4.37	6.50	3.11
1988	4.41	7.76	2.41	4.47	8.02	2.34	4.30	5.89	3.33
1989	4.48	7.99	2.37	4.52	8.18	2.31	4.61	7.02	3.20
1990	4.49	7.97	2.42	4.55	8.22	2.37	4.44	6.44	3.24
1991	4.42	7.89	2.34	4.48	8.14	2.28	4.40	6.58	3.12
1992	4.46	7.89	2.43	4.52	8.11	2.38	4.35	6.66	3.08
1993	4.47	8.05	2.31	4.55	8.32	2.27	4.17	6.36	2.93
1994	4.47	7.86	2.42	4.54	8.13	2.37	4.34	6.36	3.19
1995	4.35	7.78	2.28	4.45	8.08	2.23	4.05	5.77	3.09
1996	4.41	7.79	2.37	4.51	8.08	2.33	4.16	5.89	3.14
1997	4.39	7.59	2.42	4.50	7.88	2.40	4.00	5.88	2.98
1998	4.38	7.71	2.32	4.49	8.02	2.29	3.95	5.58	3.03
1999	4.36	7.66	2.28	4.47	7.95	2.24	4.01	5.84	2.96
2000	4.32	7.60	2.27	4.48	7.94	2.27	3.74	5.68	2.69
2001	4.35	7.62	2.27	4.48	7.97	2.24	3.74	5.17	2.93
2002	4.43	7.61	2.39	4.56	7.94	2.36	3.99	5.67	3.08
2003	4.30	7.49	2.23	4.45	7.82	2.22	3.76	5.60	2.72
2004	4.42	7.73	2.28	4.60	8.13	2.28	3.69	5.20	2.82
2005	4.42	7.73	2.25	4.58	8.07	2.26	3.78	6.00	2.60
2006	4.41	7.72	2.22	4.57	8.09	2.21	3.87	5.79	2.81
2007	4.44	7.72	2.25	4.62	8.10	2.25	3.84	5.59	2.82
2008	4.41	7.62	2.25	4.61	8.04	2.28	3.38	4.83	2.52
2009	4.37	7.67	2.16	4.57	8.05	2.18	3.60	5.56	2.46
2010	4.43	7.72	2.20	4.63	8.12	2.22	3.66	5.63	2.53

^a US Mortality Files, National Center for Health Statistics, Centers for Disease Control and Prevention. Rates are per 100,000 and are age-adjusted to the 2000 US Std Population (19 age groups - Census P25-1130).
- Statistic not shown. Rate based on less than 16 cases for the time interval.

Table 27.7
Cancer of the Urinary Bladder (Invasive and *In Situ*)

SEER Incidence^a and U.S. Death^b Rates, Age-Adjusted and Age-Specific Rates, by Race and Sex

	All Races			Whites			Blacks		
	Total	Males	Females	Total	Males	Females	Total	Males	Females
<u>SEER Incidence</u>									
<u>Age at Diagnosis</u>									
Age-Adjusted Rates, 2006-2010									
All ages	20.7	36.6	8.9	22.5	39.8	9.5	12.5	21.0	7.1
Under 65	5.5	8.7	2.6	6.1	9.5	2.9	3.5	5.5	1.7
65 and over	125.3	229.9	52.3	136.2	249.7	55.5	75.2	127.7	44.1
All ages (IARC world std) ^c	12.0	20.5	5.2	13.2	22.3	5.6	7.3	12.0	4.0
Age-Specific Rates, 2006-2010									
<1	-	-	-	-	-	-	-	-	-
1-4	-	-	-	-	-	-	-	-	-
5-9	-	-	-	-	-	-	-	-	-
10-14	-	-	-	-	-	-	-	-	-
15-19	0.1	-	-	0.1	-	-	-	-	-
20-24	0.2	0.2	0.1	0.2	0.3	-	-	-	-
25-29	0.4	0.5	0.2	0.4	0.6	0.3	-	-	-
30-34	0.7	1.0	0.3	0.7	1.1	0.4	-	-	-
35-39	1.4	2.0	0.8	1.6	2.2	0.9	0.9	1.4	-
40-44	2.9	4.2	1.7	3.3	4.6	1.9	1.4	2.3	-
45-49	6.8	10.3	3.5	7.6	11.3	3.8	4.0	5.6	2.5
50-54	13.8	20.9	6.9	15.0	22.5	7.5	10.0	15.1	5.4
55-59	25.8	41.2	11.4	28.5	44.9	12.7	16.8	27.6	7.7
60-64	45.8	74.2	19.7	50.6	81.2	21.7	27.8	45.9	13.0
65-69	76.6	126.8	32.4	84.2	139.0	34.8	48.5	76.3	27.0
70-74	108.4	187.5	43.3	120.1	206.5	47.3	61.6	101.4	33.1
75-79	147.1	262.3	60.6	160.8	285.7	64.7	81.6	133.6	48.7
80-84	174.5	331.8	72.7	186.9	355.5	76.1	114.3	201.3	68.1
85+	172.9	371.0	76.5	183.1	398.1	78.6	106.0	200.5	68.7
<u>U.S. Mortality</u>									
<u>Age at Death</u>									
Age-Adjusted Rates, 2006-2010									
All ages	4.4	7.7	2.2	4.6	8.1	2.2	3.7	5.5	2.6
Under 65	0.7	1.1	0.4	0.7	1.1	0.4	0.7	1.0	0.5
65 and over	30.0	53.4	15.0	31.3	56.1	15.1	24.1	36.5	17.4
All ages (IARC world std) ^c	2.2	3.7	1.1	2.3	3.8	1.1	1.9	2.7	1.3
Age-Specific Rates, 2006-2010									
<1	-	-	-	-	-	-	-	-	-
1-4	-	-	-	-	-	-	-	-	-
5-9	-	-	-	-	-	-	-	-	-
10-14	-	-	-	-	-	-	-	-	-
15-19	-	-	-	-	-	-	-	-	-
20-24	-	-	-	-	-	-	-	-	-
25-29	0.0	-	-	-	-	-	-	-	-
30-34	0.0	0.1	0.0	0.0	0.1	-	-	-	-
35-39	0.1	0.2	0.1	0.1	0.2	0.1	-	-	-
40-44	0.3	0.4	0.2	0.3	0.4	0.2	0.3	0.4	0.3
45-49	0.8	1.1	0.5	0.8	1.2	0.5	1.0	1.1	0.8
50-54	1.7	2.6	1.0	1.8	2.7	0.9	1.9	2.6	1.3
55-59	3.4	5.3	1.6	3.5	5.5	1.6	3.7	5.3	2.4
60-64	6.4	10.1	2.9	6.7	10.7	3.0	5.4	8.1	3.3
65-69	11.1	17.8	5.2	11.7	18.8	5.3	9.2	13.5	6.0
70-74	18.2	29.5	8.7	19.1	31.4	8.7	15.3	21.5	10.9
75-79	30.3	50.7	14.9	31.7	53.2	15.0	24.9	35.5	18.3
80-84	47.6	85.0	23.4	49.6	88.8	23.6	36.7	57.9	25.6
85+	75.1	149.5	40.1	77.7	156.5	40.3	58.9	94.6	45.2

^a SEER 18 areas. Rates are per 100,000 and are age-adjusted to the 2000 US Std Population (19 age groups - Census P25-1130), unless noted.

^b US Mortality Files, National Center for Health Statistics, Centers for Disease Control and Prevention.

^c Rates are per 100,000 and are age-adjusted to the 2000 US Std Population (19 age groups - Census P25-1130), unless noted.

- Rates are per 100,000 and are age-adjusted to the IARC world standard population.

- Statistic not shown. Rate based on less than 16 cases for the time interval.

Table 27.8
Cancer of the Urinary Bladder (Invasive and *In Situ*)

5-Year Relative and Period Survival (Percent) by Race, Sex, Diagnosis Year, Stage and Age

	All Races			Whites			Blacks		
	Total	Males	Females	Total	Males	Females	Total	Males	Females
5-Year Relative Survival (Percent)									
Year of Diagnosis:									
1960-1963 ^a	-	-	-	53	53	53	24	24	24
1970-1973 ^a	-	-	-	61	61	60	36	38	27
1975-1977 ^b	72.3	73.7	68.2	73.2	74.3	70.2	50.3	56.5	38.1 ^g
1978-1980 ^b	73.9	75.1	70.3	74.7	75.4	72.3	54.6	62.6	40.4
1981-1983 ^b	76.7	78.0	72.7	77.4	78.5	74.0	59.5	64.9	47.0 ^g
1984-1986 ^b	76.7	78.1	72.7	77.2	78.5	73.6	59.4	62.3	52.8
1987-1989 ^b	79.0	81.3	72.0	79.8	81.9	73.2	62.6	67.5	52.9
1990-1992 ^b	79.2	81.7	71.9	80.2	82.6	73.1	63.2	66.0	58.5
1993-1995 ^b	80.2	82.1	75.0	81.0	82.5	76.8	59.7	67.0	45.6
1996-1998 ^b	79.1	80.4	75.5	79.8	81.1	76.0	62.1	65.0	55.4
1999-2002 ^b	80.1	81.3	76.4	81.1	82.0	78.6	66.0	70.2	58.9
2003-2009 ^b	79.8 ^f	81.5 ^f	74.7 ^f	80.5 ^f	82.0 ^f	75.7 ^f	63.7 ^f	68.6 ^f	54.1 ^f
5-Year Period Survival (Percent) ^{cd}									
2009	77.8	79.5	72.7	78.2	79.8	73.4	64.5	69.0	55.7
Stage Distribution (%) 2003-2009 ^{ee}									
All Stages									
Number of cases	86,597	64,975	21,622	77,292	58,412	18,880	4,557	2,988	1,569
Percent	100%	100%	100%	100%	100%	100%	100%	100%	100%
In Situ	51	52	49	52	52	51	38	41	32
Localized	35	35	34	35	35	34	39	38	41
Regional	7	7	8	7	7	8	11	10	13
Distant	4	3	5	4	3	5	7	6	9
Unstaged	3	2	3	2	2	3	4	4	4
5-Year Relative Survival (Percent), 2003-2009 ^c									
Age at Diagnosis:									
Ages <45	87.9	89.1	84.7	88.3	89.2	85.8	77.6	80.3	67.7 ^g
Ages 45-54	84.2	84.4	83.4	84.9	84.5	86.0	70.2	75.0	57.2
Ages 55-64	83.2	83.5	82.0	83.6	83.8	83.0	70.3	71.8	64.8
Ages 65-74	79.1	80.1	75.7	79.6	80.3	76.9	66.5	71.3	57.2
Ages 75+	71.5	74.2	64.8	72.1	74.7	65.3	55.1	58.4	50.4
Ages <65	83.9	84.2	82.7	84.4	84.4	84.2	71.2	74.2	62.7
Ages 65+	74.7	76.8	68.8	75.3	77.1	69.6	60.7	65.6	53.1
Stage ^e :									
All Stages	77.9	79.4	73.1	78.3	79.7	74.0	64.9	69.5	56.1
In Situ	96.4	96.4	96.4	96.5	96.4	96.7	91.2	91.9	88.8
Localized	70.2	72.4	63.6	70.4	72.4	64.0	62.0	66.8	53.6
Regional	33.0	35.0	27.7	33.0	35.0	27.3	28.5	31.8	23.6
Distant	5.4	6.0	4.2	5.3	5.7	4.4	7.2	8.5	5.4
Unstaged	49.6	53.3	41.2	46.9	50.8	37.7	45.0	51.3 ^g	33.7 ^g

^a Based on End Results data from a series of hospital registries and one population-based registry.

^b SEER 9 areas (San Francisco, Connecticut, Detroit, Hawaii, Iowa, New Mexico, Seattle, Utah, Atlanta).

Based on follow-up of patients into 2010.

^c SEER 18 areas (San Francisco, Connecticut, Detroit, Hawaii, Iowa, New Mexico, Seattle, Utah, Atlanta, San Jose-Monterey, Los Angeles, Alaska Native Registry, Rural Georgia, California excluding SF/SJM/LA, Kentucky, Louisiana, New Jersey and Georgia excluding ATL/RG).

Based on follow-up of patients into 2010.

^d Period survival provides a 2009 estimate of survival by piecing together the most recent conditional survival estimates from several cohorts. It is computed here using three year calendar blocks (2007-2009: 0-1 year survival), (2006-2008: 1-2 year survival), (2005-2007: 2-3 year survival), (2004-2006: 3-4 year survival), (2003-2005: 4-5 years survival).

^e Stage at diagnosis is classified using SEER Summary Stage 2000.

^f The difference between 1975-1977 and 2003-2009 is statistically significant ($p < .05$).

^g The standard error is between 5 and 10 percentage points.

^h The standard error is greater than 10 percentage points.

- Statistic could not be calculated due to fewer than 25 cases during the time period.

Table 27.9
Cancer of the Urinary Bladder (Invasive and *In Situ*)

SEER^a Relative Survival (Percent)
By Year of Diagnosis

All Races, Males and Females

Year of Diagnosis

	1975- 1979	1980- 1984	1985- 1989	1990	1991	1992	1993	1994	1995	1996	1997	1998	1999	2000	2001	2002	2003	2004	2005	2006	2007	2008	2009
Survival Time																							
1-year	87.0	88.6	90.0	89.6	89.7	89.8	90.4	90.5	90.6	89.6	91.3	90.9	89.9	90.9	91.0	89.8	90.3	90.8	90.6	91.1	90.1	89.2	89.5
2-year	80.8	83.5	85.1	85.5	85.1	84.8	85.4	85.9	86.4	85.4	86.2	86.5	85.0	86.5	86.4	85.7	85.7	86.1	85.4	86.5	85.0	84.8	
3-year	77.6	80.4	82.2	82.5	82.7	82.1	82.9	83.8	83.9	83.3	83.1	83.4	82.4	83.6	84.6	83.6	83.5	83.7	82.6	83.8	82.1		
4-year	74.8	78.0	80.0	80.8	81.1	81.0	81.2	81.6	81.7	81.1	80.6	81.4	80.4	81.6	82.4	81.2	81.6	81.6	81.1	82.5			
5-year	73.0	76.1	78.1	79.7	79.2	78.8	79.5	80.1	81.1	79.6	78.5	79.3	78.3	80.4	81.6	80.0	79.9	80.2	80.2				
6-year	71.1	74.4	76.4	78.1	78.0	77.6	77.8	78.3	79.2	78.2	76.9	77.6	76.8	79.5	80.1	78.6	78.6	78.4					
7-year	68.9	72.9	74.9	76.8	75.9	75.7	76.1	76.7	77.4	77.4	75.8	76.5	75.8	77.9	78.3	77.5	77.5						
8-year	67.5	71.8	73.3	74.8	74.3	74.3	75.0	75.9	76.3	76.0	74.8	74.9	74.5	76.5	77.3	76.3							
9-year	65.8	70.0	72.2	72.8	73.0	73.3	73.6	74.8	74.8	74.2	73.2	73.6	73.3	75.6	76.2								
10-year	63.8	68.8	70.8	70.7	71.6	71.7	72.5	74.1	73.9	72.9	72.2	71.9	72.9	73.7									
11-year	62.1	67.4	69.7	68.9	70.8	70.9	71.2	72.7	73.2	71.9	71.3	71.1	71.8										
12-year	60.7	66.1	68.2	67.3	69.8	70.1	70.5	71.5	71.9	70.1	70.3	68.9											
13-year	59.7	65.1	66.9	66.7	68.8	69.3	69.1	71.4	69.4	69.0	70.1												
14-year	58.4	63.5	65.3	65.4	68.6	68.2	68.2	70.0	67.9	67.5													
15-year	57.1	62.1	64.1	64.2	65.9	65.9	66.6	69.3	67.3														
16-year	56.0	60.5	62.6	62.3	65.2	64.5	65.5	68.2															
17-year	55.0	59.6	61.8	60.7	64.1	63.6	64.6																
18-year	54.2	58.5	60.7	59.5	63.2	62.5																	
19-year	53.6	57.6	60.1	59.1	61.9																		
20-year	52.7	57.0	59.5	59.1																			

^a Based on the SEER 9 areas (San Francisco, Connecticut, Detroit, Hawaii, Iowa, New Mexico, Seattle, Utah, and Atlanta).

Table 27.10
Cancer of the Urinary Bladder (Invasive and *In Situ*)

SEER^a Relative Survival (Percent)
By Year of Diagnosis

All Races, Males

Year of Diagnosis

	1975- 1979	1980- 1984	1985- 1989	1990	1991	1992	1993	1994	1995	1996	1997	1998	1999	2000	2001	2002	2003	2004	2005	2006	2007	2008	2009
Survival Time																							
1-year	89.0	89.9	91.7	91.4	91.3	91.4	92.1	92.2	92.1	91.2	93.0	92.6	91.7	92.1	91.6	91.9	91.9	91.9	92.1	92.5	91.6	90.8	90.7
2-year	82.7	85.0	87.0	87.7	87.1	87.0	87.8	87.6	87.9	87.1	88.2	88.3	86.7	87.9	86.9	88.4	87.3	87.8	87.2	88.1	86.5	86.8	
3-year	79.4	81.9	84.2	84.9	85.1	84.7	85.2	85.5	85.5	84.9	85.1	84.8	84.2	84.7	85.3	86.2	85.0	85.3	84.4	85.4	83.3		
4-year	76.5	79.4	81.9	83.1	83.5	83.7	83.2	83.3	83.0	82.5	82.3	82.6	81.9	82.6	83.1	83.4	83.0	83.3	82.9	84.2			
5-year	74.3	77.4	80.0	82.2	81.3	81.7	81.5	81.8	82.8	80.9	79.9	80.4	79.4	81.1	82.4	82.2	81.1	82.3	82.3				
6-year	72.3	75.8	78.3	80.3	79.8	80.6	80.1	79.8	80.8	79.6	78.0	78.8	77.8	80.4	80.9	80.8	79.5	80.6					
7-year	70.0	74.3	76.5	78.5	77.4	78.6	78.2	78.1	79.1	78.5	76.7	77.9	76.7	78.5	78.6	79.9	78.1						
8-year	68.3	73.2	74.9	76.4	75.7	76.9	77.4	77.2	77.8	77.0	75.9	76.0	75.4	76.9	77.9	78.6							
9-year	66.4	71.4	73.7	74.1	74.1	75.3	76.3	76.4	75.7	75.7	74.3	74.9	74.7	75.5	77.4								
10-year	64.2	70.2	72.3	72.5	72.3	73.9	75.2	75.8	74.8	74.1	73.3	73.1	74.5	73.4									
11-year	62.2	68.9	71.3	70.6	71.6	73.0	74.2	74.1	74.0	72.9	72.4	72.2	73.7										
12-year	60.8	67.3	69.5	69.2	71.0	71.9	73.4	72.7	72.6	71.0	71.0	69.8											
13-year	59.6	66.4	68.3	68.5	70.0	71.3	71.7	72.7	70.8	70.0	70.3												
14-year	58.4	64.6	66.7	67.3	70.0	71.0	70.5	71.6	68.9	68.2													
15-year	57.1	63.0	65.4	65.6	67.8	69.2	69.6	70.7	68.3														
16-year	55.7	61.1	63.8	63.4	67.3	67.1	68.8	69.6															
17-year	54.6	60.3	63.1	61.9	66.8	66.1	67.7																
18-year	53.6	59.2	61.8	60.6	66.7	65.0																	
19-year	52.8	58.5	61.2	60.0	65.4																		
20-year	52.0	58.0	60.7	60.0																			

^a Based on the SEER 9 areas (San Francisco, Connecticut, Detroit, Hawaii, Iowa, New Mexico, Seattle, Utah, and Atlanta).

Table 27.11
Cancer of the Urinary Bladder (Invasive and *In Situ*)

SEER^a Relative Survival (Percent)
By Year of Diagnosis

All Races, Females

Year of Diagnosis

	1975- 1979	1980- 1984	1985- 1989	1990	1991	1992	1993	1994	1995	1996	1997	1998	1999	2000	2001	2002	2003	2004	2005	2006	2007	2008	2009
Survival Time																							
1-year	81.3	84.9	85.0	83.9	85.2	85.0	85.4	85.6	86.6	85.3	86.3	86.0	84.8	87.4	89.4	83.7	85.9	87.4	86.1	87.0	85.2	84.3	85.9
2-year	75.2	78.9	79.7	79.2	79.0	78.4	78.3	80.9	82.3	80.8	80.5	81.2	80.2	82.2	85.1	78.1	81.3	81.2	80.3	81.7	80.0	79.1	
3-year	72.5	75.9	76.5	75.4	75.2	74.3	76.3	79.0	79.6	78.9	77.2	79.4	77.1	80.5	82.4	76.2	79.5	78.6	77.3	78.9	78.2		
4-year	70.1	73.7	74.4	73.8	73.6	73.0	75.6	76.8	78.1	76.9	75.6	77.7	75.9	78.7	80.4	74.7	77.8	76.3	75.9	77.1			
5-year	69.1	72.1	72.4	72.2	72.8	70.6	73.9	75.1	76.0	75.7	74.6	76.1	74.9	78.1	79.0	73.8	76.4	74.1	74.0				
6-year	67.6	70.5	70.8	71.5	72.4	68.7	71.2	74.0	74.8	74.4	73.7	73.9	74.1	76.4	77.9	72.2	75.5	71.9					
7-year	65.9	68.7	70.0	71.4	71.4	67.3	69.9	72.7	72.7	74.0	72.8	72.4	73.0	75.9	77.4	70.0	75.2						
8-year	65.1	67.6	68.7	69.8	70.2	66.8	68.2	72.0	72.2	72.9	71.2	71.6	72.1	75.0	75.3	69.7							
9-year	64.1	66.1	67.6	68.6	69.6	66.8	65.7	70.1	71.9	70.1	70.0	69.8	69.4	75.0	72.6								
10-year	62.5	64.7	66.2	65.2	69.1	65.4	64.7	69.1	71.1	69.4	68.5	68.2	68.3	74.0									
11-year	61.4	63.3	65.0	63.7	68.0	64.4	62.7	68.6	70.2	68.9	67.8	67.9	65.5										
12-year	60.1	62.5	64.0	61.2	66.0	64.2	61.8	67.5	69.7	67.6	67.8	65.9											
13-year	59.5	61.3	62.7	60.6	65.0	63.0	61.5	66.8	65.6	66.1	67.8												
14-year	58.0	60.4	61.3	59.6	64.3	59.1	61.0	65.0	64.8	65.3													
15-year	56.7	59.4	60.2	59.6	60.2	56.7	57.7	65.0	64.4														
16-year	56.5	58.3	59.1	58.6	58.2	56.7	56.0	63.3															
17-year	55.5	57.4	57.8	57.0	55.8	56.0	55.2																
18-year	55.1	56.0	57.4	55.6	53.3	55.2																	
19-year	55.1	54.7	56.6	55.6	51.8																		
20-year	54.1	53.9	55.7	55.5																			

^a Based on the SEER 9 areas (San Francisco, Connecticut, Detroit, Hawaii, Iowa, New Mexico, Seattle, Utah, and Atlanta).

Table 27.12
Cancer of the Urinary Bladder (Invasive and In Situ)

Risk of Being Diagnosed With Cancer in 10, 20 and 30 Years,
Lifetime Risk of Being Diagnosed with Cancer Given Alive and Cancer-Free at Current Age, and
Lifetime Risk of Dying from Cancer Given Alive at Current Age
Both Sexes, 2008-2010 By Race/Ethnicity

Race/ Ethnicity	Current Age	Risk of Being Diagnosed with Cancer				Risk of Dying from Cancer	Race/ Ethnicity	Current Age	Risk of Being Diagnosed with Cancer				Risk of Dying from Cancer
		+10 yrs	+20 yrs	+30 yrs	Ever				+10 yrs	+20 yrs	+30 yrs	Ever	
All Races	0	0.00	0.00	0.00	2.40	0.59	Asian/ Pacific Islander	0	0.00	0.00	0.00	1.44	0.39
	10	0.00	0.00	0.01	2.43	0.60		10	0.00	0.00	0.01	1.45	0.40
	20	0.00	0.01	0.06	2.44	0.60		20	0.00	0.01	0.03	1.45	0.40
	30	0.01	0.06	0.24	2.46	0.61		30	0.00	0.03	0.10	1.46	0.40
	40	0.05	0.23	0.74	2.48	0.61		40	0.02	0.10	0.31	1.46	0.40
	50	0.19	0.71	1.58	2.49	0.62		50	0.08	0.30	0.73	1.46	0.40
	60	0.55	1.47	2.25	2.45	0.64		60	0.23	0.67	1.18	1.42	0.41
	70	1.05	1.93	-	2.16	0.63		70	0.48	1.03	-	1.28	0.40
80	1.21	-	-	1.52	0.58	80	0.67	-	-	0.98	0.38		
White	0	0.00	0.00	0.00	2.61	0.62	American Indian/ Alaska Native ^a	0	0.00	0.00	0.00	0.95	0.31
	10	0.00	0.00	0.02	2.63	0.63		10	0.00	0.00	0.01	0.96	0.31
	20	0.00	0.02	0.07	2.64	0.63		20	0.00	0.01	0.02	0.97	0.32
	30	0.01	0.07	0.27	2.66	0.64		30	0.00	0.02	0.10	0.98	0.32
	40	0.06	0.26	0.81	2.68	0.64		40	0.02	0.10	0.31	1.00	0.33
	50	0.21	0.78	1.73	2.69	0.65		50	0.09	0.31	0.62	1.02	0.34
	60	0.61	1.62	2.44	2.64	0.66		60	0.23	0.57	0.87	1.00	0.35
	70	1.15	2.09	-	2.31	0.65		70	0.39	0.73	-	0.88	0.33
80	1.29	-	-	1.60	0.59	80	0.46	-	-	0.67	0.35		
Black	0	0.00	0.00	0.00	1.24	0.40	Hispanic ^b	0	0.00	0.00	0.00	1.59	0.40
	10	0.00	0.00	0.01	1.26	0.41		10	0.00	0.00	0.01	1.61	0.41
	20	0.00	0.01	0.03	1.27	0.41		20	0.00	0.01	0.03	1.62	0.41
	30	0.01	0.03	0.15	1.28	0.42		30	0.01	0.03	0.11	1.62	0.41
	40	0.03	0.15	0.44	1.30	0.42		40	0.02	0.11	0.38	1.63	0.42
	50	0.13	0.43	0.87	1.33	0.43		50	0.09	0.36	0.86	1.64	0.42
	60	0.33	0.81	1.21	1.33	0.45		60	0.29	0.81	1.37	1.63	0.43
	70	0.59	1.08	-	1.22	0.46		70	0.58	1.20	-	1.48	0.42
80	0.73	-	-	0.93	0.44	80	0.79	-	-	1.15	0.39		

Devcan 6.7.0, June 2013, National Cancer Institute (<http://surveillance.cancer.gov/devcan/>).

Source: Incidence data are from the SEER 18 areas (San Francisco, Connecticut, Detroit, Hawaii, Iowa, New Mexico, Seattle, Utah, Atlanta, San Jose-Monterey, Los Angeles, Alaska Native Registry, Rural Georgia, California excluding SF/SJM/LA, Kentucky, Louisiana, New Jersey, and Georgia excluding ATL/RG). Mortality data are from the NCHS public use data file for the total US.

^a Underlying incidence and mortality data for American Indian/Alaska Native are based on the CHSDA (Contract Health Service Delivery Area) counties.

^b Hispanic is not mutually exclusive from whites, blacks, Asian/Pacific Islanders, and American Indians/Alaska Natives. Underlying incidence data for Hispanics are based on NHIA and exclude cases from the Alaska Native Registry. Underlying mortality data for Hispanics exclude deaths from the District of Columbia, Minnesota, New Hampshire, North Dakota and South Carolina.

- Statistic could not be calculated.

A percent of 0.00 represents a value that is below 0.005.

Table 27.13
Cancer of the Urinary Bladder (Invasive and In Situ)

Risk of Being Diagnosed With Cancer in 10, 20 and 30 Years,
Lifetime Risk of Being Diagnosed with Cancer Given Alive and Cancer-Free at Current Age, and
Lifetime Risk of Dying from Cancer Given Alive at Current Age
Males, 2008-2010 By Race/Ethnicity

Race/ Ethnicity	Current Age	Risk of Being Diagnosed with Cancer				Risk of Dying from Cancer	Race/ Ethnicity	Current Age	Risk of Being Diagnosed with Cancer				Risk of Dying from Cancer
		+10 yrs	+20 yrs	+30 yrs	Ever				+10 yrs	+20 yrs	+30 yrs	Ever	
All Races	0	0.00	0.00	0.00	3.82	0.90	Asian/ Pacific Islander	0	0.00	0.00	0.00	2.26	0.60
	10	0.00	0.00	0.02	3.87	0.91		10	0.00	0.00	0.01	2.28	0.61
	20	0.00	0.02	0.09	3.89	0.91		20	0.00	0.01	0.04	2.28	0.61
	30	0.02	0.09	0.37	3.93	0.92		30	0.01	0.04	0.16	2.29	0.61
	40	0.07	0.36	1.16	3.98	0.94		40	0.03	0.16	0.51	2.30	0.62
	50	0.29	1.12	2.53	4.04	0.96		50	0.13	0.49	1.23	2.31	0.62
	60	0.90	2.42	3.72	4.05	1.00		60	0.37	1.15	1.99	2.27	0.63
	70	1.79	3.33	-	3.71	1.02		70	0.85	1.77	-	2.08	0.64
80	2.26	-	-	2.82	1.00	80	1.17	-	-	1.57	0.62		
White	0	0.00	0.00	0.01	4.15	0.95	American Indian/ Alaska Native ^a	0	0.00	0.00	0.00	1.52	0.47
	10	0.00	0.01	0.02	4.19	0.96		10	0.00	0.00	0.01	1.54	0.48
	20	0.00	0.02	0.10	4.21	0.97		20	0.00	0.01	0.04	1.56	0.49
	30	0.02	0.10	0.40	4.26	0.98		30	0.00	0.03	0.18	1.59	0.50
	40	0.08	0.39	1.27	4.31	0.99		40	0.03	0.18	0.56	1.63	0.52
	50	0.32	1.23	2.77	4.36	1.02		50	0.16	0.55	1.16	1.68	0.54
	60	0.98	2.64	4.03	4.36	1.05		60	0.43	1.09	1.49	1.66	0.56
	70	1.95	3.59	-	3.97	1.07		70	0.79	1.25	-	1.45	0.56
80	2.41	-	-	2.99	1.04	80	0.68	-	-	0.97	0.67		
Black	0	0.00	0.00	0.00	1.76	0.48	Hispanic ^b	0	0.00	0.00	0.00	2.56	0.61
	10	0.00	0.00	0.01	1.80	0.50		10	0.00	0.00	0.01	2.59	0.61
	20	0.00	0.01	0.05	1.82	0.50		20	0.00	0.01	0.04	2.60	0.62
	30	0.01	0.05	0.23	1.85	0.51		30	0.01	0.04	0.16	2.63	0.62
	40	0.04	0.23	0.66	1.89	0.52		40	0.03	0.16	0.58	2.65	0.63
	50	0.20	0.66	1.32	1.95	0.54		50	0.13	0.56	1.39	2.69	0.64
	60	0.52	1.26	1.83	1.98	0.57		60	0.46	1.34	2.30	2.71	0.66
	70	0.96	1.69	-	1.88	0.60		70	0.99	2.09	-	2.56	0.67
80	1.20	-	-	1.52	0.61	80	1.48	-	-	2.11	0.65		

Devcan 6.7.0, June 2013, National Cancer Institute (<http://surveillance.cancer.gov/devcan/>).

Source: Incidence data are from the SEER 18 areas (San Francisco, Connecticut, Detroit, Hawaii, Iowa, New Mexico, Seattle, Utah, Atlanta, San Jose-Monterey, Los Angeles, Alaska Native Registry, Rural Georgia, California excluding SF/SJM/LA, Kentucky, Louisiana, New Jersey, and Georgia excluding ATL/RG). Mortality data are from the NCHS public use data file for the total US.

^a Underlying incidence and mortality data for American Indian/Alaska Native are based on the CHSDA (Contract Health Service Delivery Area) counties.

^b Hispanic is not mutually exclusive from whites, blacks, Asian/Pacific Islanders, and American Indians/Alaska Natives. Underlying incidence data for Hispanics are based on NHIA and exclude cases from the Alaska Native Registry. Underlying mortality data for Hispanics exclude deaths from the District of Columbia, Minnesota, New Hampshire, North Dakota and South Carolina.

- Statistic could not be calculated.

A percent of 0.00 represents a value that is below 0.005.

Table 27.14
Cancer of the Urinary Bladder (Invasive and In Situ)

Risk of Being Diagnosed With Cancer in 10, 20 and 30 Years,
Lifetime Risk of Being Diagnosed with Cancer Given Alive and Cancer-Free at Current Age, and
Lifetime Risk of Dying from Cancer Given Alive at Current Age
Females, 2008-2010 By Race/Ethnicity

Race/ Ethnicity	Current Age	Risk of Being Diagnosed with Cancer				Risk of Dying from Cancer	Race/ Ethnicity	Current Age	Risk of Being Diagnosed with Cancer				Risk of Dying from Cancer
		+10 yrs	+20 yrs	+30 yrs	Ever				+10 yrs	+20 yrs	+30 yrs	Ever	
All Races	0	0.00	0.00	0.00	1.15	0.34	Asian/ Pacific Islander	0	0.00	0.00	0.00	0.76	0.23
	10	0.00	0.00	0.01	1.16	0.34		10	0.00	0.00	0.00	0.77	0.23
	20	0.00	0.01	0.03	1.17	0.34		20	0.00	0.00	0.01	0.77	0.23
	30	0.01	0.03	0.12	1.17	0.35		30	0.00	0.01	0.05	0.77	0.23
	40	0.03	0.11	0.33	1.17	0.35		40	0.01	0.05	0.15	0.77	0.23
	50	0.09	0.32	0.70	1.17	0.35		50	0.04	0.13	0.31	0.76	0.23
	60	0.24	0.64	1.01	1.13	0.35		60	0.10	0.28	0.54	0.74	0.23
	70	0.45	0.86	-	0.99	0.35		70	0.19	0.46	-	0.68	0.23
80	0.53	-	-	0.70	0.32	80	0.32	-	-	0.57	0.21		
White	0	0.00	0.00	0.00	1.23	0.34	American Indian/ Alaska Native ^a	0	0.00	0.00	0.00	0.43	0.18
	10	0.00	0.00	0.01	1.24	0.35		10	0.00	0.01	0.01	0.44	0.18
	20	0.00	0.01	0.04	1.24	0.35		20	0.01	0.01	0.01	0.44	0.19
	30	0.01	0.04	0.13	1.24	0.35		30	0.00	0.01	0.03	0.44	0.19
	40	0.03	0.12	0.37	1.24	0.35		40	0.01	0.03	0.08	0.44	0.19
	50	0.10	0.34	0.76	1.24	0.35		50	0.02	0.08	0.14	0.45	0.19
	60	0.26	0.70	1.07	1.19	0.36		60	0.06	0.12	0.34	0.45	0.20
	70	0.49	0.90	-	1.04	0.35		70	0.07	0.32	-	0.44	0.19
80	0.55	-	-	0.72	0.32	80	0.32	-	-	0.48	0.17		
Black	0	0.00	0.00	0.00	0.80	0.34	Hispanic ^b	0	0.00	0.00	0.00	0.80	0.25
	10	0.00	0.00	0.00	0.81	0.34		10	0.00	0.00	0.01	0.80	0.25
	20	0.00	0.00	0.02	0.81	0.34		20	0.00	0.01	0.02	0.80	0.25
	30	0.00	0.02	0.08	0.82	0.35		30	0.00	0.02	0.06	0.80	0.25
	40	0.01	0.08	0.23	0.83	0.35		40	0.01	0.06	0.19	0.80	0.26
	50	0.07	0.23	0.49	0.84	0.36		50	0.04	0.18	0.41	0.80	0.26
	60	0.17	0.45	0.74	0.84	0.36		60	0.14	0.38	0.63	0.78	0.26
	70	0.33	0.66	-	0.77	0.37		70	0.25	0.53	-	0.69	0.25
80	0.46	-	-	0.62	0.35	80	0.33	-	-	0.53	0.24		

Devcan 6.7.0, June 2013, National Cancer Institute (<http://surveillance.cancer.gov/devcan/>).

Source: Incidence data are from the SEER 18 areas (San Francisco, Connecticut, Detroit, Hawaii, Iowa, New Mexico, Seattle, Utah, Atlanta, San Jose-Monterey, Los Angeles, Alaska Native Registry, Rural Georgia, California excluding SF/SJM/LA, Kentucky, Louisiana, New Jersey, and Georgia excluding ATL/RG). Mortality data are from the NCHS public use data file for the total US.

^a Underlying incidence and mortality data for American Indian/Alaska Native are based on the CHSDA (Contract Health Service Delivery Area) counties.

^b Hispanic is not mutually exclusive from whites, blacks, Asian/Pacific Islanders, and American Indians/Alaska Natives. Underlying incidence data for Hispanics are based on NHIA and exclude cases from the Alaska Native Registry. Underlying mortality data for Hispanics exclude deaths from the District of Columbia, Minnesota, New Hampshire, North Dakota and South Carolina.

- Statistic could not be calculated.

A percent of 0.00 represents a value that is below 0.005.

Table 27.15
Cancer of the Urinary Bladder

SEER Incidence (Invasive and *In Situ*) and U.S. Mortality
Age-Adjusted Rates and Trends^a
By Race/Ethnicity and Sex

SEER Incidence	SEER 18 Areas ^b			SEER 13 Areas ^b			SEER 9 Areas ^b		
	Rate 2006-2010			Trend 2001-2010 ^c			Trend 2001-2010 ^d		
	Rate per 100,000 persons			AAPC (%)			AAPC (%)		
RACE/ETHNICITY	Total	Males	Females	Total	Males	Females	Total	Males	Females
All Races	20.7	36.6	8.9	-0.4	-0.1	-0.9*	-0.3	-0.3	-1.0*
White	22.5	39.8	9.5	-0.4	0.0	-0.9*	-0.2	-0.3	-1.0*
White Hispanic ^e	11.8	20.8	5.3	-1.5	-0.3	-0.6	-	-	-
White Non-Hispanic ^e	24.1	42.4	10.1	0.2*	0.1	-0.7*	-	-	-
Black	12.5	21.0	7.1	0.3	0.6*	-0.1	0.2	0.3*	0.2
Asian/Pacific Islander	9.0	16.1	3.9	0.2	0.5*	0.0	-	-	-
Amer Ind/Alaska Nat ^f	7.8	13.7	3.0	-	-	-	-	-	-
Hispanic ^e	11.5	20.2	5.2	-1.5	-0.3	-0.6	-	-	-
<u>U.S. Mortality^g</u>									
	Rate 2006-2010			Trend 2001-2010 ^h					
	Rate per 100,000 persons			AAPC (%)					
RACE/ETHNICITY	Total	Males	Females	Total	Males	Females			
All Races	4.4	7.7	2.2	0.2	0.2	-0.5*			
White	4.6	8.1	2.2	0.3*	0.2*	-0.3*			
White Hispanic ^e	2.5	4.2	1.3	-0.2	-0.4	-0.2			
White Non-Hispanic ^e	4.8	8.4	2.3	0.5*	0.4*	-0.1			
Black	3.7	5.5	2.6	-1.0*	-0.8*	-1.2*			
Asian/Pacific Islander	1.7	2.8	0.9	-0.7	0.0	-1.3			
Amer Ind/Alaska Nat									
Total U.S.	2.1	3.5	1.2	2.2*	-	-			
CHSDA Counties	2.4	4.1	1.2	-	-	-			
Non-CHSDA Counties	1.8	2.8	1.1	-	-	-			
Hispanic ^e	2.4	4.0	1.3	-0.3	-0.4	-0.3			

The AAPC is the Average Annual Percent Change over the time interval. The AAPCs are calculated by the Joinpoint Regression Program Version 4.0.3, April 2013, National Cancer Institute.

- Statistic not shown. Rate based on less than 16 cases for the time interval.

Trend based on less than 10 cases for at least one year within the time interval.

a Rates are age-adjusted to the 2000 US Std Population (19 age groups - Census P25-1130). Trends

are based on rates age-adjusted to the 2000 US Std Population (19 age groups - Census P25-1130).

b The SEER 9 areas are San Francisco, Connecticut, Detroit, Hawaii, Iowa, New Mexico, Seattle, Utah, and Atlanta.

The SEER 13 areas comprise the SEER 9 areas plus San Jose-Monterey, Los Angeles, the Alaska Native Registry, and Rural Georgia.

The SEER 18 areas comprise the SEER 13 areas plus California excluding SF/SJM/LA, Kentucky, Louisiana, New Jersey, and Georgia excluding ATL/RG.

c The 2001-2010 AAPC estimates are based on a Joinpoint analysis with up to 3 Joinpoints over diagnosis years 1992-2010.

d The 2001-2010 AAPC estimates are based on a Joinpoint analysis with up to 5 Joinpoints over diagnosis years 1975-2010.

e Hispanic and Non-Hispanic are not mutually exclusive from whites, blacks, Asian/Pacific Islanders, and American Indians/Alaska Natives. Incidence data for Hispanics and Non-Hispanics are based on NHIA and exclude cases from the Alaska Native Registry. The 2006-2010 Hispanic and Non-Hispanic death rates exclude deaths from the District of Columbia, North Dakota, and South Carolina. The 2001-2010 Hispanic and Non-Hispanic mortality trends exclude deaths from Connecticut, the District of Columbia, Maine, Maryland, Minnesota, New Hampshire, New York, North Dakota, Oklahoma, South Carolina and Vermont.

f Incidence data for American Indian/Alaska Native are based on the CHSDA(Contract Health Service Delivery Area) counties.

g US Mortality Files, National Center for Health Statistics, CDC.

h The 2001-2010 mortality AAPCs are based on a Joinpoint analysis using years of death 1992-2010.

* The APC is significantly different from zero (p<.05).

Table 27.16
Cancer of the Urinary Bladder (Invasive and *In Situ*)

Age-Adjusted SEER Incidence Rates^a
By Registry, Race and Sex

	All Races			Whites			Blacks		
	Total	Males	Females	Total	Males	Females	Total	Males	Females
<u>SEER Incidence Rates^a, 2006-2010</u>									
California	18.97	33.55	7.95	20.79	36.65	8.66	13.36	22.29	7.03
Greater Bay Area	18.85	32.90	8.21	22.20	38.58	9.58	14.44	23.87	7.62
San Francisco-Oakland	18.90	33.09	8.23	22.59	39.42	9.64	14.12	23.92	7.30
San Jose-Monterey	18.73	32.51	8.16	21.47	37.06	9.46	17.94	23.61	-
Los Angeles	17.29	30.99	7.31	19.07	34.07	7.96	14.37	24.51	7.71
Greater California	19.78	34.92	8.16	21.07	37.09	8.66	11.46	18.85	5.71
Connecticut	26.97	46.75	12.62	28.28	49.12	12.94	11.54	16.28	8.84
Detroit	24.39	43.17	11.29	27.32	48.17	12.38	13.93	23.42	7.83
Georgia	18.64	33.91	7.87	21.15	38.09	8.58	10.54	17.91	6.13
Atlanta	17.73	33.13	7.40	21.39	39.53	8.44	10.29	17.53	5.88
Rural Georgia	17.05	31.30	6.73	20.90	37.67	7.80	7.80	-	-
Greater Georgia	19.14	34.44	8.15	21.16	37.78	8.69	10.81	18.27	6.40
Hawaii	14.89	25.83	6.25	25.57	42.36	9.98	-	-	-
Iowa	23.02	41.72	8.82	22.74	41.34	8.62	11.17	19.99	-
Kentucky	22.69	40.55	9.71	23.06	41.12	9.83	14.52	25.86	7.65
Louisiana	19.06	34.07	8.12	21.42	38.18	8.75	12.38	20.93	6.81
New Jersey	24.88	43.65	11.59	26.96	47.22	12.37	13.48	22.13	8.20
New Mexico	15.17	26.24	6.24	15.85	27.23	6.58	-	-	-
Seattle-Puget Sound	23.29	41.07	9.61	24.48	42.79	10.17	11.80	20.08	5.05
Utah	17.05	31.44	5.35	17.35	31.95	5.42	-	-	-
9 SEER Areas ^b	21.28	37.67	9.07	23.43	41.32	9.81	12.44	20.71	7.07
11 SEER Areas ^b	20.26	35.92	8.62	22.43	39.62	9.40	13.02	21.78	7.29
13 SEER Areas ^b	20.23	35.87	8.61	22.42	39.61	9.40	12.94	21.65	7.24
18 SEER Areas ^b	20.67	36.63	8.86	22.54	39.81	9.52	12.54	20.99	7.06

^a Rates are per 100,000 and are age-adjusted to the 2000 US Std Population (19 age groups - Census P25-1130)

^b The SEER 9 areas are San Francisco, Connecticut, Detroit, Hawaii, Iowa, New Mexico, Seattle, Utah and Atlanta.

The SEER 11 areas comprise the SEER 9 areas plus San Jose-Monterey and Los Angeles.

The SEER 13 areas comprise the SEER 11 areas plus the Alaska Native Registry and Rural Georgia.

The SEER 18 areas comprise the SEER 13 areas plus California excluding SF/SJM/LA, Kentucky, Louisiana, New Jersey and Georgia excluding ATL/RG.

- Statistic not shown. Rate based on less than 16 cases for the time interval.

Table 27.17
Cancer of the Urinary Bladder

Age-Adjusted SEER Death Rates^a
By Registry, Race and Sex

	All Races			Whites			Blacks		
	Total	Males	Females	Total	Males	Females	Total	Males	Females
<u>SEER Death Rates^a, 2006-2010</u>									
California	4.02	6.83	2.07	4.38	7.53	2.18	4.21	5.85	3.14
Greater Bay Area	3.55	6.00	1.88	4.12	7.12	2.05	4.48	6.29	3.37
San Francisco-Oakland	3.68	6.35	1.91	4.28	7.57	2.05	4.36	6.29	3.24
San Jose-Monterey	3.26	5.29	1.82	3.81	6.30	2.05	-	-	-
Los Angeles	3.77	6.19	2.14	4.14	6.84	2.31	4.17	5.91	3.14
Greater California	4.30	7.41	2.09	4.55	7.90	2.16	4.08	5.51	3.02
Connecticut	4.77	8.31	2.46	4.92	8.70	2.43	3.10	2.82	3.11
Detroit	4.94	8.69	2.61	5.26	9.39	2.64	4.00	6.30	2.65
Georgia	4.18	7.51	2.14	4.41	7.92	2.13	3.54	6.05	2.27
Atlanta	3.98	7.11	2.14	4.35	7.96	2.09	3.14	4.78	2.27
Rural Georgia	3.80	7.15	-	4.66	-	-	-	-	-
Greater Georgia	4.29	7.70	2.16	4.44	7.95	2.14	3.79	6.69	2.35
Hawaii	2.78	4.78	1.30	5.05	8.37	2.50	-	-	-
Iowa	4.51	8.34	2.00	4.55	8.42	2.00	-	-	-
Kentucky	4.74	8.51	2.29	4.79	8.58	2.31	4.29	8.26	-
Louisiana	4.25	7.23	2.34	4.49	7.88	2.21	3.64	5.10	2.84
New Jersey	4.93	8.62	2.60	5.20	9.18	2.65	3.91	5.58	2.92
New Mexico	3.39	5.99	1.46	3.56	6.28	1.52	-	-	-
Seattle-Puget Sound	4.68	8.18	2.29	4.87	8.54	2.33	4.82	6.46	-
Utah	3.62	6.40	1.52	3.73	6.57	1.57	-	-	-
9 SEER Areas ^b	4.24	7.45	2.09	4.58	8.15	2.16	3.72	5.48	2.68
11 SEER Areas ^b	4.08	7.05	2.09	4.45	7.79	2.18	3.86	5.60	2.82
13 SEER Areas ^b	4.07	7.04	2.08	4.44	7.77	2.18	3.85	5.62	2.78
18 SEER Areas ^b	4.29	7.44	2.18	4.59	8.04	2.24	3.85	5.75	2.74
Total U.S.	4.41	7.69	2.22	4.60	8.08	2.23	3.67	5.47	2.63

^a US Mortality Files, National Center for Health Statistics, Centers for Disease Control and Prevention. Rates are per 100,000 and are age-adjusted to the 2000 US Std Population (19 age groups - Census P25-1130).

^b The SEER 9 areas are San Francisco, Connecticut, Detroit, Hawaii, Iowa, New Mexico, Seattle, Utah and Atlanta. The SEER 11 areas comprise the SEER 9 areas plus San Jose-Monterey and Los Angeles.

The SEER 13 areas comprise the SEER 11 areas plus the Alaska Native Registry and Rural Georgia.

The SEER 18 areas comprise the SEER 13 areas plus California excluding SF/SJM/LA, Kentucky, Louisiana, New Jersey and Georgia excluding ATL/RG.

- Statistic not shown. Rate based on less than 16 cases for the time interval.

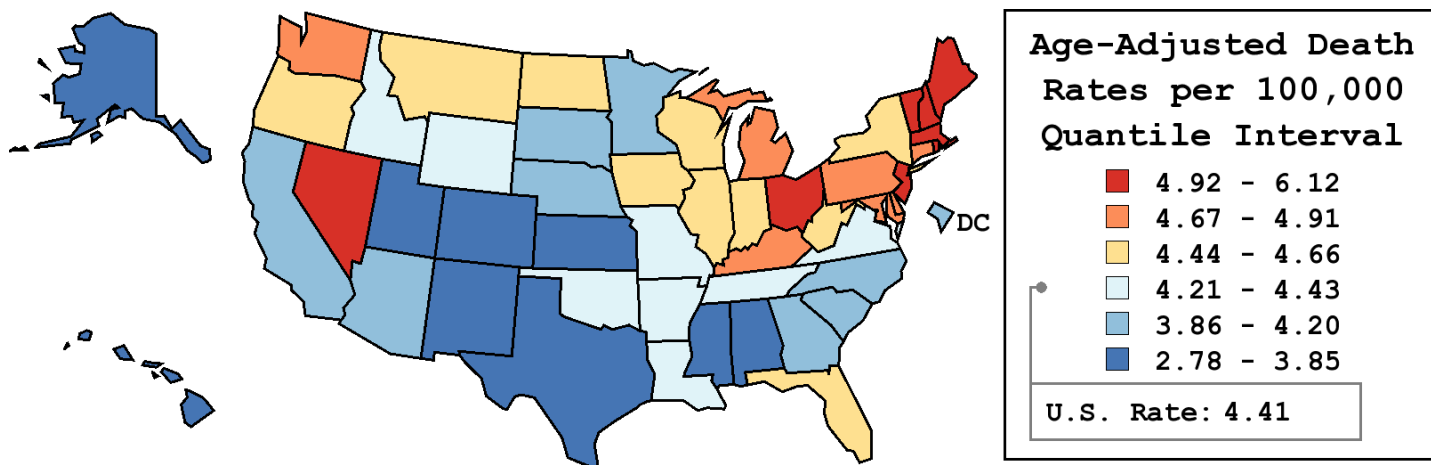
Table 27.18
Cancer of the Urinary Bladder (Invasive)

Age-Adjusted Cancer Death^a Rates By State, All Races, 2006-2010

Males and Females

State	Rate	SE	Rank	PD
TOTAL U.S.	4.41	0.02		
High Five States				
Maine	6.12	0.27	(01)	38.79 ^c
Vermont	5.62	0.40	(02)	27.39 ^c
Nevada	5.42	0.22	(03)	22.93 ^c
Massachusetts	5.19	0.12	(04)	17.74 ^c
Rhode Island	5.10	0.29	(05)	15.60 ^c
Low Five States				
Utah	3.62	0.20	(47)	-17.87 ^c
Mississippi	3.58	0.16	(48)	-18.81 ^c
Alaska	3.49	0.44	(49)	-20.84 ^c
New Mexico	3.39	0.18	(50)	-23.15 ^c
Hawaii	2.78	0.19	(51)	-37.09 ^c

State	Rate	SE	Rank	PD	State	Rate	SE	Rank	PD
Alabama	3.82	0.12	(46)	-13.38	Montana	4.57	0.28	(21)	3.62
Alaska	3.49	0.44	(49)	-20.84 ^c	Nebraska	4.04	0.20	(39)	-8.54
Arizona	3.99	0.11	(41)	-9.57	Nevada	5.42	0.22	(03)	22.93 ^c
Arkansas	4.38	0.17	(27)	-0.79	New Hampshire	5.01	0.27	(07)	13.60
California	4.02	0.05	(40)	-8.96	New Jersey	4.93	0.10	(08)	11.73
Colorado	3.85	0.14	(43)	-12.84	New Mexico	3.39	0.18	(50)	-23.15 ^c
Connecticut	4.77	0.15	(13)	8.19	New York	4.48	0.07	(25)	1.65
Delaware	4.91	0.32	(09)	11.24	North Carolina	4.20	0.10	(34)	-4.69
D.C.	4.20	0.39	(35)	-4.74	North Dakota	4.65	0.34	(18)	5.38
Florida	4.51	0.06	(23)	2.24	Ohio	5.09	0.09	(06)	15.37 ^c
Georgia	4.18	0.11	(36)	-5.21	Oklahoma	4.29	0.15	(30)	-2.84
Hawaii	2.78	0.19	(51)	-37.09 ^c	Oregon	4.63	0.15	(19)	5.02
Idaho	4.32	0.24	(28)	-2.10	Pennsylvania	4.81	0.08	(11)	8.99
Illinois	4.49	0.08	(24)	1.89	Rhode Island	5.10	0.29	(05)	15.60 ^c
Indiana	4.63	0.12	(20)	4.96	South Carolina	4.14	0.13	(37)	-6.23
Iowa	4.51	0.16	(22)	2.30	South Dakota	3.90	0.29	(42)	-11.54
Kansas	3.82	0.16	(45)	-13.35	Tennessee	4.28	0.12	(31)	-3.03
Kentucky	4.74	0.15	(14)	7.45	Texas	3.85	0.06	(44)	-12.84
Louisiana	4.25	0.14	(32)	-3.60	Utah	3.62	0.20	(47)	-17.87 ^c
Maine	6.12	0.27	(01)	38.79 ^c	Vermont	5.62	0.40	(02)	27.39 ^c
Maryland	4.79	0.13	(12)	8.67	Virginia	4.23	0.11	(33)	-4.19
Massachusetts	5.19	0.12	(04)	17.74 ^c	Washington	4.72	0.12	(15)	7.01
Michigan	4.82	0.09	(10)	9.27	West Virginia	4.66	0.20	(17)	5.61
Minnesota	4.10	0.12	(38)	-7.13	Wisconsin	4.66	0.12	(16)	5.65
Mississippi	3.58	0.16	(48)	-18.81 ^c	Wyoming	4.43	0.40	(26)	0.38
Missouri	4.31	0.11	(29)	-2.35					



^a US Mortality Files, National Center for Health Statistics, Centers for Disease Control and Prevention. Rates are per 100,000 and are age-adjusted to the 2000 US Std Population (19 age groups - Census P25-1130).
^b Difference between state rate and total U.S. rate is statistically significant (p<=.0002).
^c Absolute percent difference between state rate and total U.S. rate is 15% or more.
SE Standard error of the rate.
PD Percent difference between state rate and total U.S. rate.
- Statistic not shown. Rate based on less than 16 cases for the time interval.

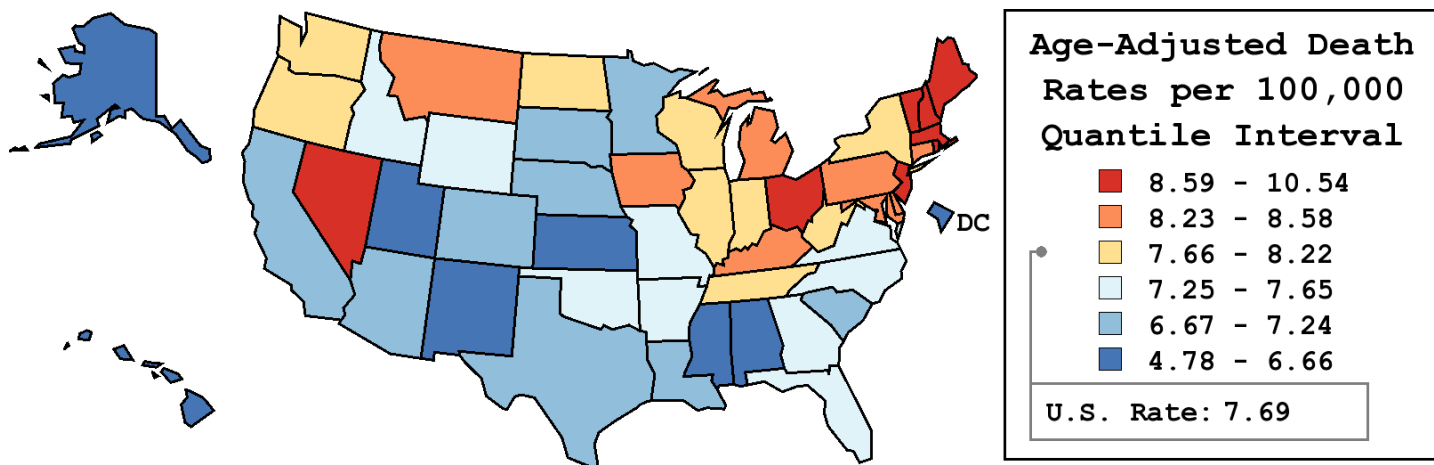
Table 27.19
Cancer of the Urinary Bladder (Invasive)

Age-Adjusted Cancer Death^a Rates By State, All Races, 2006-2010

Males

State	Rate	SE	Rank	PD
TOTAL U.S.	7.69	0.04		
High Five States				
Maine	10.54	0.56	(01)	37.02 ^c
Vermont	9.73	0.83	(02)	26.48 ^c
Massachusetts	9.22	0.25	(03)	19.90 ^c
Rhode Island	9.07	0.61	(04)	17.98 ^c
Ohio	9.04	0.19	(05)	17.56 ^c
Low Five States				
Mississippi	6.50	0.35	(47)	-15.45 ^c
Utah	6.40	0.40	(48)	-16.80 ^c
New Mexico	5.99	0.38	(49)	-22.17 ^c
Alaska	5.57	0.85	(50)	-27.61 ^c
Hawaii	4.78	0.38	(51)	-37.88 ^c

State	Rate	SE	Rank	PD	State	Rate	SE	Rank	PD
Alabama	6.66	0.27	(44)	-13.40	Montana	8.28	0.59	(16)	7.61
Alaska	5.57	0.85	(50)	-27.61 ^c	Nebraska	6.95	0.41	(39)	-9.61
Arizona	6.95	0.23	(38)	-9.59	Nevada	8.77	0.44	(06)	14.09
Arkansas	7.34	0.34	(34)	-4.51	New Hampshire	8.73	0.56	(07)	13.58
California	6.83	0.10	(41)	-11.14	New Jersey	8.62	0.22	(08)	12.11
Colorado	6.73	0.28	(43)	-12.52	New Mexico	5.99	0.38	(49)	-22.17 ^c
Connecticut	8.31	0.32	(14)	8.11	New York	7.96	0.14	(21)	3.44
Delaware	8.30	0.65	(15)	7.94	North Carolina	7.36	0.21	(33)	-4.28
D.C.	6.52	0.79	(46)	-15.21 ^c	North Dakota	8.22	0.69	(17)	6.94
Florida	7.65	0.12	(26)	-0.57	Ohio	9.04	0.19	(05)	17.56 ^c
Georgia	7.51	0.24	(28)	-2.34	Oklahoma	7.55	0.31	(27)	-1.81
Hawaii	4.78	0.38	(51)	-37.88 ^c	Oregon	7.93	0.30	(22)	3.15
Idaho	7.43	0.49	(31)	-3.39	Pennsylvania	8.52	0.16	(10)	10.79
Illinois	7.87	0.18	(23)	2.37	Rhode Island	9.07	0.61	(04)	17.98 ^c
Indiana	8.07	0.25	(19)	4.90	South Carolina	6.94	0.28	(40)	-9.71
Iowa	8.34	0.33	(13)	8.40	South Dakota	7.03	0.60	(37)	-8.57
Kansas	6.63	0.33	(45)	-13.75	Tennessee	7.72	0.26	(25)	0.39
Kentucky	8.51	0.32	(11)	10.65	Texas	6.75	0.13	(42)	-12.19
Louisiana	7.23	0.30	(36)	-6.04	Utah	6.40	0.40	(48)	-16.80 ^c
Maine	10.54	0.56	(01)	37.02 ^c	Vermont	9.73	0.83	(02)	26.48 ^c
Maryland	8.34	0.28	(12)	8.43	Virginia	7.39	0.23	(32)	-3.88
Massachusetts	9.22	0.25	(03)	19.90 ^c	Washington	8.05	0.25	(20)	4.67
Michigan	8.58	0.20	(09)	11.52	West Virginia	7.76	0.41	(24)	0.90
Minnesota	7.24	0.26	(35)	-5.90	Wisconsin	8.21	0.26	(18)	6.80
Mississippi	6.50	0.35	(47)	-15.45 ^c	Wyoming	7.44	0.80	(30)	-3.27
Missouri	7.47	0.24	(29)	-2.87					



^a US Mortality Files, National Center for Health Statistics, Centers for Disease Control and Prevention. Rates are per 100,000 and are age-adjusted to the 2000 US Std Population (19 age groups - Census P25-1130).
^b Difference between state rate and total U.S. rate is statistically significant ($p \leq .0002$).
^c Absolute percent difference between state rate and total U.S. rate is 15% or more.
SE Standard error of the rate.
PD Percent difference between state rate and total U.S. rate.
- Statistic not shown. Rate based on less than 16 cases for the time interval.

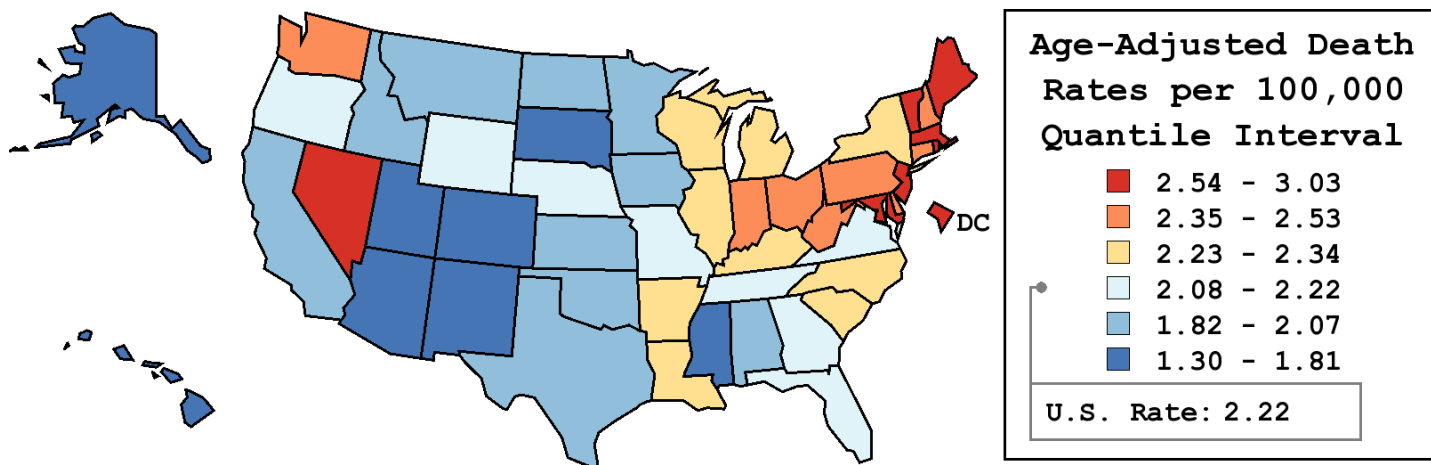
Table 27.20
Cancer of the Urinary Bladder (Invasive)

Age-Adjusted Cancer Death^a Rates By State, All Races, 2006-2010

Females

State	Rate	SE	Rank	PD
TOTAL U.S.	2.22	0.02		
High Five States				
Maine	3.03	0.25	(01)	36.89 ^c
Nevada	2.84	0.22	(02)	28.07 ^c
D.C.	2.77	0.41	(03)	25.16 ^c
Vermont	2.69	0.36	(04)	21.47 ^c
Massachusetts	2.63	0.11	(05)	18.70 ^c
Low Five States				
Arizona	1.75	0.10	(47)	-20.82 ^c
South Dakota	1.66	0.24	(48)	-25.00 ^c
Utah	1.52	0.17	(49)	-31.22 ^c
New Mexico	1.46	0.16	(50)	-33.94 ^c
Hawaii	1.30	0.18	(51)	-41.20 ^c

State	Rate	SE	Rank	PD	State	Rate	SE	Rank	PD
Alabama	1.99	0.12	(39)	-10.22	Montana	1.87	0.24	(43)	-15.62 ^c
Alaska	1.77	0.43	(46)	-19.95 ^c	Nebraska	2.10	0.19	(33)	-5.47
Arizona	1.75	0.10	(47)	-20.82 ^c	Nevada	2.84	0.22	(02)	28.07 ^c
Arkansas	2.34	0.16	(17)	5.77	New Hampshire	2.53	0.25	(09)	13.95
California	2.07	0.05	(35)	-6.82	New Jersey	2.60	0.10	(06)	17.34 ^c
Colorado	1.81	0.12	(44)	-18.54 ^c	New Mexico	1.46	0.16	(50)	-33.94 ^c
Connecticut	2.46	0.14	(12)	11.22	New York	2.27	0.06	(24)	2.62
Delaware	2.41	0.29	(13)	8.94	North Carolina	2.25	0.09	(25)	1.67
D.C.	2.77	0.41	(03)	25.16 ^c	North Dakota	2.07	0.30	(34)	-6.81
Florida	2.19	0.06	(27)	-1.09	Ohio	2.50	0.08	(10)	12.73
Georgia	2.14	0.10	(29)	-3.39	Oklahoma	2.04	0.13	(36)	-7.75
Hawaii	1.30	0.18	(51)	-41.20 ^c	Oregon	2.22	0.13	(26)	0.38
Idaho	1.95	0.22	(40)	-12.22	Pennsylvania	2.41	0.07	(14)	8.92
Illinois	2.33	0.08	(20)	5.29	Rhode Island	2.59	0.26	(08)	16.81 ^c
Indiana	2.38	0.11	(16)	7.33	South Carolina	2.31	0.13	(22)	4.03
Iowa	2.00	0.14	(37)	-9.92	South Dakota	1.66	0.24	(48)	-25.00 ^c
Kansas	1.99	0.15	(38)	-10.05	Tennessee	2.10	0.11	(31)	-5.21
Kentucky	2.29	0.13	(23)	3.30	Texas	1.90	0.06	(42)	-14.31
Louisiana	2.34	0.14	(18)	5.57	Utah	1.52	0.17	(49)	-31.22 ^c
Maine	3.03	0.25	(01)	36.89 ^c	Vermont	2.69	0.36	(04)	21.47 ^c
Maryland	2.59	0.13	(07)	17.07 ^c	Virginia	2.13	0.10	(30)	-3.91
Massachusetts	2.63	0.11	(05)	18.70 ^c	Washington	2.40	0.12	(15)	8.26
Michigan	2.33	0.09	(19)	5.31	West Virginia	2.49	0.19	(11)	12.23
Minnesota	1.92	0.11	(41)	-13.49	Wisconsin	2.33	0.11	(21)	4.96
Mississippi	1.78	0.14	(45)	-19.52 ^c	Wyoming	2.10	0.37	(32)	-5.37
Missouri	2.17	0.11	(28)	-1.91					



^a US Mortality Files, National Center for Health Statistics, Centers for Disease Control and Prevention. Rates are per 100,000 and are age-adjusted to the 2000 US Std Population (19 age groups - Census P25-1130).
^b Difference between state rate and total U.S. rate is statistically significant (p<=.0002).
^c Absolute percent difference between state rate and total U.S. rate is 15% or more.
SE Standard error of the rate.
PD Percent difference between state rate and total U.S. rate.
- Statistic not shown. Rate based on less than 16 cases for the time interval.

Table 27.21
Cancer of the Urinary Bladder (Invasive and *In Situ*)

Estimated United States Cancer Prevalence Counts^a on January 1, 2010
By Race/Ethnicity, Sex and Years Since Diagnosis

Years Since Diagnosis		0 to <5	5 to <10	10 to <15	15 to <20	20 to <25	25 to <30	0 to <18 ^e	0 to <35 ^e	>=35 ^g	Complete ^h
<u>Race</u>	<u>Sex</u>										
All Races ^b	Both Sexes	198,998	134,705	90,043	58,795	36,321	21,372	482,542	551,278	12,362	563,640
	Males	151,489	100,571	66,397	43,603	26,844	15,440	362,060	411,638	8,010	419,648
	Females	47,509	34,134	23,646	15,192	9,477	5,932	120,482	139,640	4,352	143,992
White ^b	Both Sexes	181,710	125,929	84,624	55,622	34,763	20,458	447,885	513,591	9,653	523,244
	Males	139,169	94,374	62,500	41,198	25,612	14,794	337,241	384,585	6,140	390,725
	Females	42,541	31,555	22,124	14,424	9,151	5,664	110,644	129,006	3,513	132,519
Black ^b	Both Sexes	8,909	5,139	3,063	1,986	976	569	19,098	20,897	204	21,101
	Males	6,065	3,338	2,187	1,474	826	379	13,065	14,422	166	14,588
	Females	2,844	1,801	876	512	150	190	6,033	6,475	38	6,513
Asian/ Pacific Islander ^c	Both Sexes	3,498	1,959	1,173	+	+	+	7,124	+	+	+
	Males	2,706	1,515	830	+	+	+	5,447	+	+	+
	Females	792	444	343	+	+	+	1,677	+	+	+
Hispanic ^d	Both Sexes	7,356	4,187	2,631	+	+	+	14,174	+	+	+
	Males	5,467	3,088	2,007	+	+	+	10,562	+	+	+
	Females	1,889	1,099	624	+	+	+	3,612	+	+	+

Estimated prevalence percent^a on January 1, 2010, of the SEER 11 population diagnosed in the previous 18 years
By Age at Prevalence, Race/Ethnicity and Sex

Age at Prevalence		Age Specific (Crude)									Age-Adjusted ^f	
		All Ages	0-9	10-19	20-29	30-39	40-49	50-59	60-69	70-79	80+	All Ages
<u>Race</u>	<u>Sex</u>											
All Races ^c	Both Sexes	0.1170%	0.0001%	0.0003%	0.0015%	0.0066%	0.0274%	0.1031%	0.3322%	0.7219%	1.0087%	0.1178%
	Males	0.1791%	-	0.0005%	0.0021%	0.0097%	0.0416%	0.1620%	0.5415%	1.2502%	1.9863%	0.2070%
	Females	0.0565%	-	0.0002%	0.0008%	0.0036%	0.0134%	0.0469%	0.1429%	0.3002%	0.4424%	0.0508%
White ^c	Both Sexes	0.1407%	0.0002%	0.0003%	0.0017%	0.0079%	0.0315%	0.1175%	0.3818%	0.8292%	1.1024%	0.1333%
	Males	0.2140%	-	0.0006%	0.0025%	0.0112%	0.0462%	0.1817%	0.6141%	1.4222%	2.1802%	0.2321%
	Females	0.0679%	-	-	0.0010%	0.0045%	0.0164%	0.0542%	0.1653%	0.3441%	0.4738%	0.0575%
Black ^c	Both Sexes	0.0422%	-	-	-	0.0038%	0.0150%	0.0585%	0.1671%	0.3235%	0.4866%	0.0573%
	Males	0.0612%	-	-	-	0.0070%	0.0255%	0.0931%	0.2797%	0.5350%	0.8867%	0.0976%
	Females	0.0250%	-	-	-	-	0.0057%	0.0285%	0.0781%	0.1781%	0.2973%	0.0307%
Asian/ Pacific Islander ^c	Both Sexes	0.0496%	-	-	0.0006%	0.0026%	0.0118%	0.0422%	0.1267%	0.3004%	0.5825%	0.0536%
	Males	0.0783%	-	-	-	0.0038%	0.0201%	0.0719%	0.2165%	0.5434%	1.0784%	0.0965%
	Females	0.0232%	-	-	-	0.0015%	0.0044%	0.0167%	0.0519%	0.1154%	0.2760%	0.0226%
Hispanic ^d	Both Sexes	0.0289%	-	-	0.0012%	0.0033%	0.0130%	0.0466%	0.1520%	0.3457%	0.5502%	0.0584%
	Males	0.0424%	-	-	0.0015%	0.0044%	0.0172%	0.0728%	0.2493%	0.6291%	1.0499%	0.1036%
	Females	0.0151%	-	-	0.0008%	0.0022%	0.0087%	0.0219%	0.0696%	0.1375%	0.2548%	0.0262%

^a US 2010 cancer prevalence counts are based on 2010 cancer prevalence proportions from the SEER registries and 1/1/2010 US population estimates based on the average of 2009 and 2010 population estimates from the US Bureau of the Census. Prevalence was calculated using the First Malignant Primary Only for a person.

^{b c d} Statistics based on (b) SEER 9 Areas (c) SEER 11 Areas and Rural Georgia (d) NHIA for Hispanic for SEER 11 Areas and Rural Georgia.

^e Maximum limited-duration prevalence: 35 years for 1975-2010 SEER 9 data; 18 years for 1992-2010 SEER 11 data (used to calculate prevalence for Hispanics and Asian Pacific Islanders).

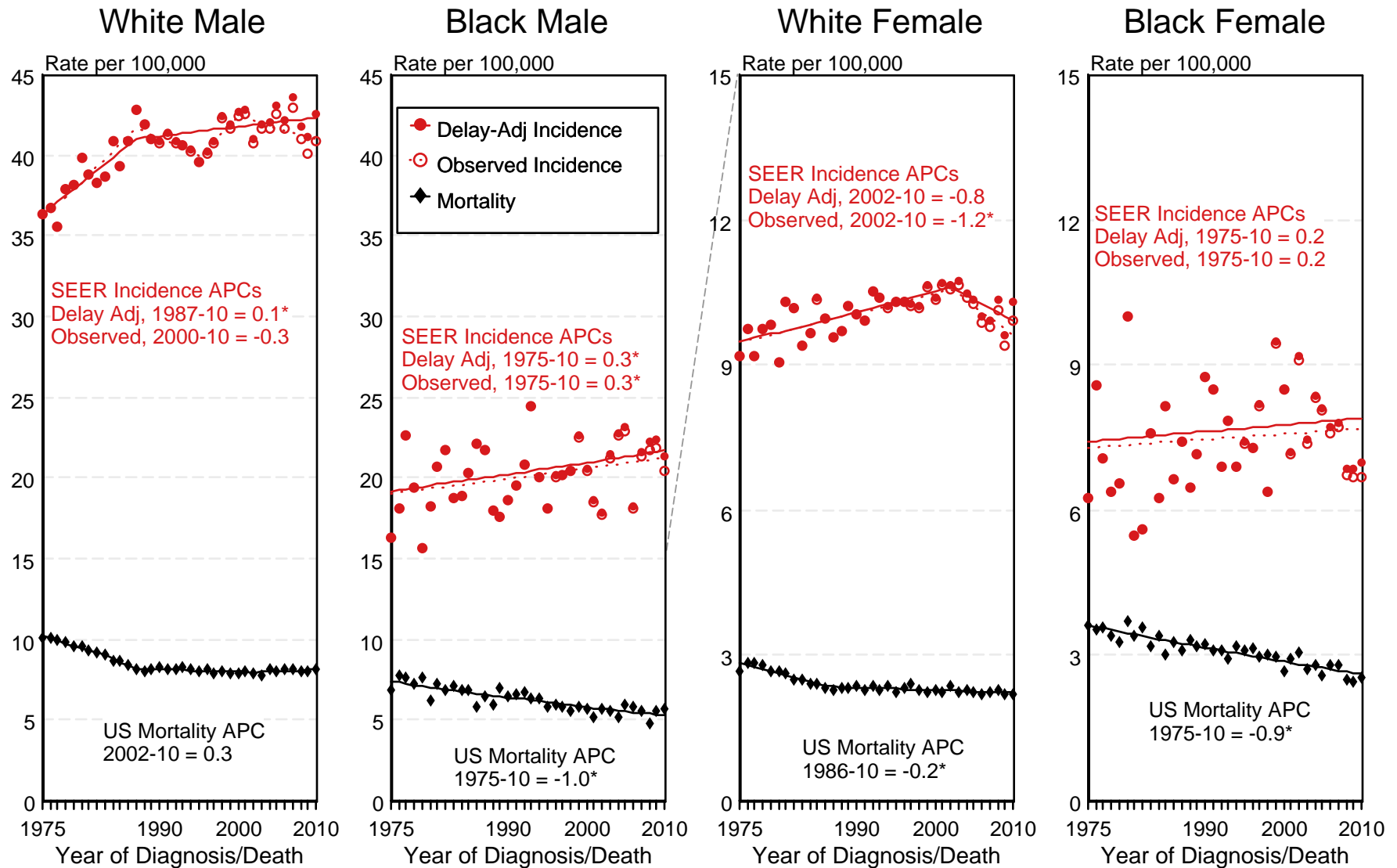
^f Percentages are age-adjusted to the 2000 US Standard Population (19 age groups - Census P25-1130) by 5-year age groups.

^{g h i} (g) Cases diagnosed more than 35 years ago were estimated using the completeness index method (Capocaccia et. al. 1997, Merrill et. al. 2000). (h) Complete prevalence is obtained by summing 0 to <35 and >=35. (i) Age-specific completeness index was approximated using empirical data from historical Connecticut tumor registry.

- Statistic not shown. Statistic based on fewer than 5 cases estimated alive in SEER for the time interval.

+ Not available.

SEER Observed Incidence, SEER Delay Adjusted Incidence and US Death Rates^a Cancer of the Urinary Bladder, by Race and Sex

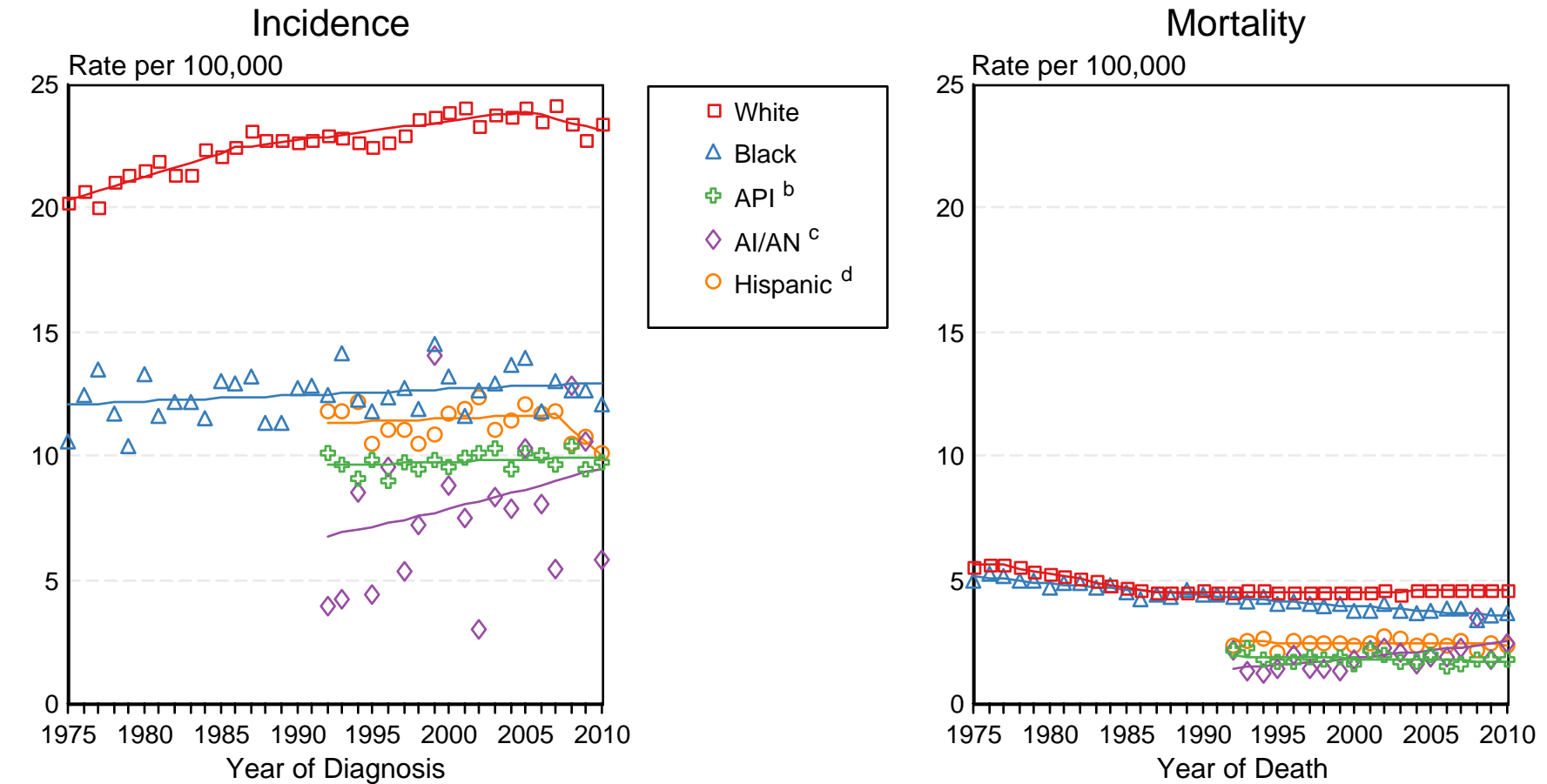


^a Source: SEER 9 areas and US Mortality Files (National Center for Health Statistics, CDC). Rates are age-adjusted to the 2000 US Std Population (19 age groups - Census P25-1103). Regression lines and APCs are calculated using the Joinpoint Regression Program Version 4.0.3, April 2013, National Cancer Institute. The APC is the Annual Percent Change for the regression line segments. The APC shown on the graph is for the most recent trend.
* The APC is significantly different from zero ($p < 0.05$).

Figure 27.2

SEER Incidence and US Death Rates^a Cancer of the Urinary Bladder, Both Sexes

Joinpoint Analyses for Whites and Blacks from 1975-2010
and for Asian/Pacific Islanders, American Indians/Alaska Natives and Hispanics from 1992-2010



Source: Incidence data for whites and blacks are from the SEER 9 areas (San Francisco, Connecticut, Detroit, Hawaii, Iowa, New Mexico, Seattle, Utah, Atlanta). Incidence data for Asian/Pacific Islanders, American Indians/Alaska Natives and Hispanics are from the SEER 13 Areas (SEER 9 Areas, San Jose-Monterey, Los Angeles, Alaska Native Registry and Rural Georgia). Mortality data are from US Mortality Files, National Center for Health Statistics, CDC.

^a Rates are age-adjusted to the 2000 US Std Population (19 age groups - Census P25-1103). Regression lines are calculated using the Joinpoint Regression Program Version 4.0.3, April 2013, National Cancer Institute. Joinpoint analyses for Whites and Blacks during the 1975-2010 period allow a maximum of 5 joinpoints. Analyses for other ethnic groups during the period 1992-2010 allow a maximum of 3 joinpoints.

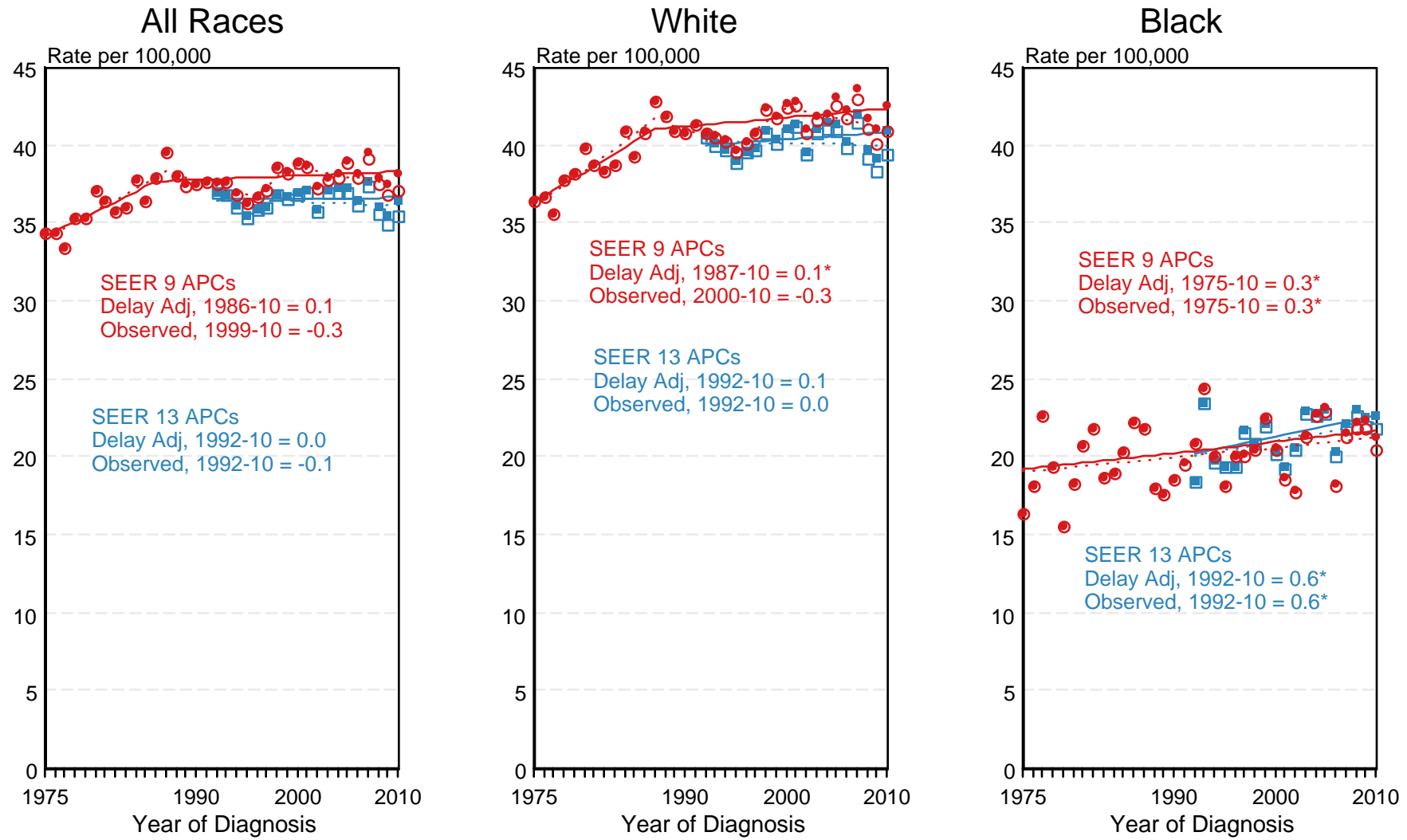
^b API = Asian/Pacific Islander.

^c AI/AN = American Indian/Alaska Native. Rates for American Indian/Alaska Native are based on the CHSDA(Contract Health Service Delivery Area) counties.

^d Hispanic is not mutually exclusive from whites, blacks, Asian/Pacific Islanders, and American Indians/Alaska Natives. Incidence data for Hispanics are based on NHIA and exclude cases from the Alaska Native Registry. Mortality data for Hispanics exclude cases from Connecticut, the District of Columbia, Maine, Maryland, Minnesota, New Hampshire, New York, North Dakota, South Carolina, Oklahoma, and Vermont.

Figure 27.3

SEER Observed Incidence and SEER Delay Adjusted Incidence Rates^a SEER 9 Areas Compared to SEER 13 Areas Cancer of the Urinary Bladder, Male, by Race

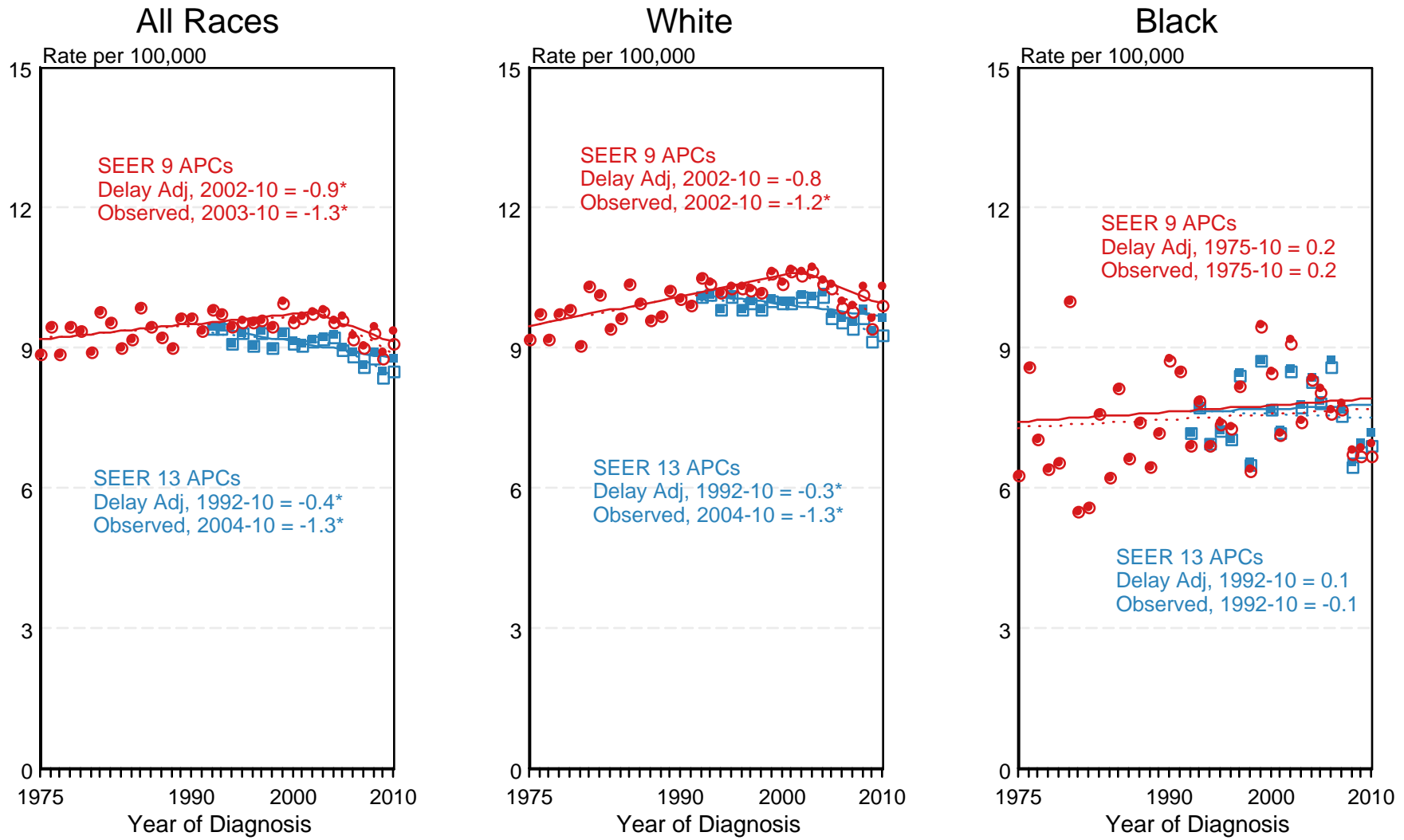


● SEER 9 Delay-Adj. Incidence
 ○ SEER 9 Observed Incidence
 ■ SEER 13 Delay-Adj. Incidence
 □ SEER 13 Observed Incidence

^a Source: SEER 9 areas and SEER 13 areas.
 Rates are age-adjusted to the 2000 US Std Population (19 age groups - Census P25-1103).
 Regression lines and APCs are calculated using the Joinpoint Regression Program Version 4.0.3, April 2013, National Cancer Institute.
 The APC is the Annual Percent Change for the regression line segments. The APC shown on the graph is for the most recent trend.
 * The APC is significantly different from zero ($p < 0.05$).

Figure 27.4

SEER Observed Incidence and SEER Delay Adjusted Incidence Rates^a SEER 9 Areas Compared to SEER 13 Areas Cancer of the Urinary Bladder, Female, by Race



● SEER 9 Delay-Adj. Incidence
 ○ SEER 9 Observed Incidence
 ■ SEER 13 Delay-Adj. Incidence
 □ SEER 13 Observed Incidence

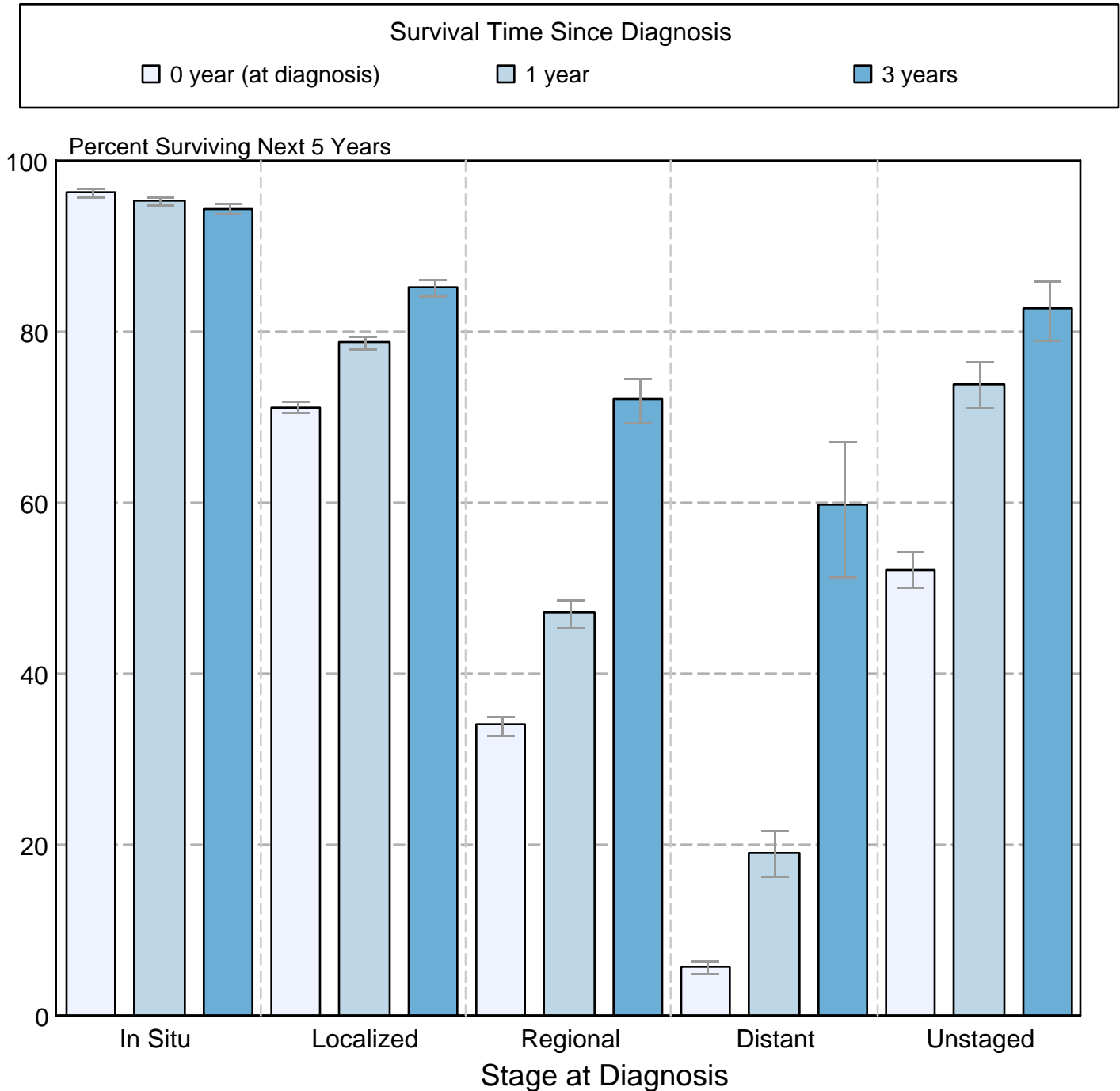
^a Source: SEER 9 areas and SEER 13 areas.
 Rates are age-adjusted to the 2000 US Std Population (19 age groups - Census P25-1103).
 Regression lines and APCs are calculated using the Joinpoint Regression Program Version 4.0.3, April 2013, National Cancer Institute.
 The APC is the Annual Percent Change for the regression line segments. The APC shown on the graph is for the most recent trend.
 * The APC is significantly different from zero (p < 0.05).

Figure 27.5

Cancer of the Urinary Bladder

5-Year SEER Conditional Relative Survival and 95% Confidence Intervals

Probability of surviving the next 5 years given the cohort
has already survived 0, 1, or 3 years
1998-2009 by stage at diagnosis



Source: SEER 18 areas (San Francisco, Connecticut, Detroit, Hawaii, Iowa, New Mexico, Seattle, Utah, Atlanta, San Jose-Monterey, Los Angeles, Alaska Native Registry, Rural Georgia, California excluding SF/SJM/LA, Kentucky, Louisiana, New Jersey and Georgia excluding ATL/RG). California excluding SF/SJM/LA, Kentucky, Louisiana, New Jersey and Georgia excluding ATL/RG contribute cases for diagnosis years 2000-2009. The remaining 13 SEER Areas contribute cases for the entire period 1998-2009. Percent surviving is not shown if based on less than 25 cases. Confidence intervals are not shown if length of the confidence interval is greater than 5 times the standard error.