

Table 9.1  
Hodgkin Lymphoma

Trends in SEER Incidence<sup>ab</sup> and U.S. Mortality<sup>c</sup> Using the Joinpoint Regression Program,  
1975-2011 With up to Five Joinpoints, 1992-2011 With up to Three Joinpoints,  
Both Sexes by Race/Ethnicity

	JP Trend 1		JP Trend 2		JP Trend 3		JP Trend 4		JP Trend 5		JP Trend 6		AAPC <sup>d</sup>	
	Years	APC	Years	APC	Years	APC	Years	APC	Years	APC	Years	APC	2002-11	2007-11
<u>SEER 9 Delay-Adjusted Incidence<sup>a</sup>, 1975-2011</u>														
All Races	1975-03	-0.2	2003-07	2.9	2007-11	-3.4*							-0.3	-3.4*
White	1975-88	0.7*	1988-01	-0.9*	2001-07	2.3	2007-11	-3.2					-0.2	-3.2
Black	1975-11	1.2*											1.2*	1.2*
<u>SEER 13 Delay-Adjusted Incidence<sup>b</sup>, 1992-2011</u>														
All Races	1992-01	-0.2	2001-07	1.6*	2007-11	-2.6*							-0.3	-2.6*
White	1992-02	-0.1	2002-07	1.9	2007-11	-2.8*							-0.2	-2.8*
Black	1992-11	1.1*											1.1*	1.1*
<u>SEER 9 Observed Incidence<sup>a</sup>, 1975-2011</u>														
All Races	1975-89	0.3	1989-01	-0.9*	2001-07	2.3*	2007-11	-3.6*					-0.3	-3.6*
White	1975-89	0.6*	1989-01	-1.0*	2001-07	2.3	2007-11	-3.6*					-0.4	-3.6*
Black	1975-11	1.1*											1.1*	1.1*
<u>SEER 13 Observed Incidence<sup>b</sup>, 1992-2011</u>														
All Races	1992-03	0.0	2003-07	2.2	2007-11	-3.1*							-0.4	-3.1*
White	1992-02	-0.2	2002-07	1.8	2007-11	-3.2*							-0.4	-3.2*
White NH <sup>ef</sup>	1992-04	0.2	2004-07	3.1	2007-11	-4.0*							-0.8	-4.0*
Black	1992-11	1.0*											1.0*	1.0*
Black NH <sup>ef</sup>	1992-11	1.1*											1.1*	1.1*
API <sup>e</sup>	1992-96	-9.3	1996-01	11.4	2001-11	-0.2							-0.2	-0.2
AI/AN <sup>eg</sup>	-	-											-	-
Hispanic <sup>f</sup>	1992-11	0.2											0.2	0.2
<u>U.S. Cancer Mortality<sup>c</sup>, 1975-2011</u>														
All Races	1975-79	-6.5*	1979-98	-3.5*	1998-11	-2.3*							-2.3*	-2.3*
White	1975-79	-6.2*	1979-96	-3.6*	1996-11	-2.3*							-2.3*	-2.3*
Black	1975-11	-2.9*											-2.9*	-2.9*
<u>U.S. Cancer Mortality<sup>c</sup>, 1992-2011</u>														
All Races	1992-11	-2.7*											-2.7*	-2.7*
White	1992-94	-8.1	1994-11	-2.3*									-2.3*	-2.3*
White NH <sup>ef</sup>	1992-11	-2.6*											-2.6*	-2.6*
Black	1992-11	-2.9*											-2.9*	-2.9*
Black NH <sup>ef</sup>	1992-11	-2.7*											-2.7*	-2.7*
API <sup>e</sup>	1992-11	-1.5											-1.5	-1.5
AI/AN <sup>eg</sup>	1992-11	0.2											0.2	0.2
Hispanic <sup>f</sup>	1992-11	-2.5*											-2.5*	-2.5*

Joinpoint Regression Program Version 4.1.0, April 2014, National Cancer Institute. (<http://surveillance.cancer.gov/joinpoint/>).

The APC is the Annual Percent Change based on rates age-adjusted to the 2000 US Std Population (19 age groups - Census P25-1130).

Trends are from the SEER 9 areas (San Francisco, Connecticut, Detroit, Hawaii, Iowa, New Mexico, Seattle, Utah, and Atlanta).

Trends are from the SEER 13 areas (SEER 9 Areas, Los Angeles, San Jose-Monterey, Rural Georgia, and the Alaska Native Registry).

Trends are from US Mortality Files, National Center for Health Statistics, Centers for Disease Control and Prevention.

The AAPC is the Average Annual Percent Change and is based on the APCs calculated by Joinpoint.

API - Asian/Pacific Islander, AI/AN - American Indian/Alaska Native, NH - Non-Hispanic

Hispanic and Non-Hispanic are not mutually exclusive from whites, blacks, Asian/Pacific Islanders, and American Indians/Alaska

Natives. Incidence data for Hispanics and Non-Hispanics are based on NHIA and exclude cases from the Alaska Native Registry.

The Hispanic and Non-Hispanic mortality trends exclude deaths from New Hampshire and Oklahoma.

Data for American Indian/Alaska Native are based on the CHSDA (Contract Health Service Delivery Area) counties.

\* The APC/AAPC is significantly different from zero ( $p < .05$ ).

- Joinpoint regression line analysis could not be performed on data series.

Table 9.2  
Hodgkin Lymphoma

Trends in SEER Incidence<sup>ab</sup> and U.S. Mortality<sup>c</sup> Using the Joinpoint Regression Program,  
1975-2011 With up to Five Joinpoints, 1992-2011 With up to Three Joinpoints,  
Males by Race/Ethnicity

	JP Trend 1		JP Trend 2		JP Trend 3		JP Trend 4		JP Trend 5		JP Trend 6		AAPC <sup>d</sup>	
	Years	APC	Years	APC	Years	APC	Years	APC	Years	APC	Years	APC	2002-11	2007-11
<u>SEER 9 Delay-Adjusted Incidence<sup>a</sup>, 1975-2011</u>														
All Races	1975-99	-0.7*	1999-11	0.6									0.6	0.6
White	1975-89	0.5	1989-92	-5.0	1992-11	0.3							0.3	0.3
Black	1975-11	0.7*											0.7*	0.7*
<u>SEER 13 Delay-Adjusted Incidence<sup>b</sup>, 1992-2011</u>														
All Races	1992-11	0.3											0.3	0.3
White	1992-11	0.2											0.2	0.2
Black	1992-11	1.5*											1.5*	1.5*
<u>SEER 9 Observed Incidence<sup>a</sup>, 1975-2011</u>														
All Races	1975-99	-0.7*	1999-11	0.5									0.5	0.5
White	1975-89	0.5	1989-92	-4.9	1992-11	0.2							0.2	0.2
Black	1975-11	0.6											0.6	0.6
<u>SEER 13 Observed Incidence<sup>b</sup>, 1992-2011</u>														
All Races	1992-11	0.2											0.2	0.2
White	1992-11	0.1											0.1	0.1
White NH <sup>ef</sup>	1992-11	0.4											0.4	0.4
Black	1992-11	1.3*											1.3*	1.3*
Black NH <sup>ef</sup>	1992-11	1.4*											1.4*	1.4*
API <sup>e</sup>	1992-11	1.4											1.4	1.4
AI/AN <sup>eg</sup>	-	-											-	-
Hispanic <sup>f</sup>	1992-11	-0.4											-0.4	-0.4
<u>U.S. Cancer Mortality<sup>c</sup>, 1975-2011</u>														
All Races	1975-97	-4.0*	1997-11	-2.2*									-2.2*	-2.2*
White	1975-97	-4.1*	1997-11	-2.0*									-2.0*	-2.0*
Black	1975-11	-3.2*											-3.2*	-3.2*
<u>U.S. Cancer Mortality<sup>c</sup>, 1992-2011</u>														
All Races	1992-94	-11.0*	1994-11	-2.2*									-2.2*	-2.2*
White	1992-94	-11.4*	1994-11	-2.1*									-2.1*	-2.1*
White NH <sup>ef</sup>	1992-94	-10.6	1994-11	-2.0*									-2.0*	-2.0*
Black	1992-11	-3.2*											-3.2*	-3.2*
Black NH <sup>ef</sup>	1992-11	-3.0*											-3.0*	-3.0*
API <sup>e</sup>	1992-11	-2.7											-2.7	-2.7
AI/AN <sup>eg</sup>	-	-											-	-
Hispanic <sup>f</sup>	1992-11	-2.6*											-2.6*	-2.6*

Joinpoint Regression Program Version 4.1.0, April 2014, National Cancer Institute. (<http://surveillance.cancer.gov/joinpoint/>).

The APC is the Annual Percent Change based on rates age-adjusted to the 2000 US Std Population (19 age groups - Census P25-1130).

Trends are from the SEER 9 areas (San Francisco, Connecticut, Detroit, Hawaii, Iowa, New Mexico, Seattle, Utah, and Atlanta).

Trends are from the SEER 13 areas (SEER 9 Areas, Los Angeles, San Jose-Monterey, Rural Georgia, and the Alaska Native Registry).

Trends are from US Mortality Files, National Center for Health Statistics, Centers for Disease Control and Prevention.

The AAPC is the Average Annual Percent Change and is based on the APCs calculated by Joinpoint.

API - Asian/Pacific Islander, AI/AN - American Indian/Alaska Native, NH - Non-Hispanic

Hispanic and Non-Hispanic are not mutually exclusive from whites, blacks, Asian/Pacific Islanders, and American Indians/Alaska

Natives. Incidence data for Hispanics and Non-Hispanics are based on NHIA and exclude cases from the Alaska Native Registry.

The Hispanic and Non-Hispanic mortality trends exclude deaths from New Hampshire and Oklahoma.

Data for American Indian/Alaska Native are based on the CHSDA (Contract Health Service Delivery Area) counties.

\* The APC/AAPC is significantly different from zero ( $p < .05$ ).

- Joinpoint regression line analysis could not be performed on data series.

Table 9.3  
Hodgkin Lymphoma

Trends in SEER Incidence<sup>ab</sup> and U.S. Mortality<sup>c</sup> Using the Joinpoint Regression Program,  
1975-2011 With up to Five Joinpoints, 1992-2011 With up to Three Joinpoints,  
Females by Race/Ethnicity

	JP Trend 1		JP Trend 2		JP Trend 3		JP Trend 4		JP Trend 5		JP Trend 6		AAPC <sup>d</sup>	
	Years	APC	Years	APC	Years	APC	Years	APC	Years	APC	Years	APC	2002-11	2007-11
<u>SEER 9 Delay-Adjusted Incidence<sup>a</sup>, 1975-2011</u>														
All Races	1975-11	0.4*											0.4*	0.4*
White	1975-11	0.3*											0.3*	0.3*
Black	1975-11	2.0*											2.0*	2.0*
<u>SEER 13 Delay-Adjusted Incidence<sup>b</sup>, 1992-2011</u>														
All Races	1992-11	0.2											0.2	0.2
White	1992-11	0.1											0.1	0.1
Black	1992-11	0.6											0.6	0.6
<u>SEER 9 Observed Incidence<sup>a</sup>, 1975-2011</u>														
All Races	1975-11	0.3*											0.3*	0.3*
White	1975-11	0.3*											0.3*	0.3*
Black	1975-11	1.9*											1.9*	1.9*
<u>SEER 13 Observed Incidence<sup>b</sup>, 1992-2011</u>														
All Races	1992-11	0.1											0.1	0.1
White	1992-11	0.0											0.0	0.0
White NH <sup>ef</sup>	1992-11	0.1											0.1	0.1
Black	1992-11	0.5											0.5	0.5
Black NH <sup>ef</sup>	1992-11	0.6											0.6	0.6
API <sup>e</sup>	1992-11	2.9*											2.9*	2.9*
AI/AN <sup>eg</sup>	-	-											-	-
Hispanic <sup>f</sup>	1992-11	0.9											0.9	0.9
<u>U.S. Cancer Mortality<sup>c</sup>, 1975-2011</u>														
All Races	1975-85	-4.8*	1985-11	-2.6*									-2.6*	-2.6*
White	1975-85	-4.9*	1985-11	-2.6*									-2.6*	-2.6*
Black	1975-11	-2.5*											-2.5*	-2.5*
<u>U.S. Cancer Mortality<sup>c</sup>, 1992-2011</u>														
All Races	1992-11	-2.7*											-2.7*	-2.7*
White	1992-11	-2.7*											-2.7*	-2.7*
White NH <sup>ef</sup>	1992-11	-2.7*											-2.7*	-2.7*
Black	1992-11	-2.5*											-2.5*	-2.5*
Black NH <sup>ef</sup>	1992-11	-2.4*											-2.4*	-2.4*
API <sup>e</sup>	-	-											-	-
AI/AN <sup>eg</sup>	-	-											-	-
Hispanic <sup>f</sup>	1992-11	-2.4*											-2.4*	-2.4*

Joinpoint Regression Program Version 4.1.0, April 2014, National Cancer Institute. (<http://surveillance.cancer.gov/joinpoint/>).

The APC is the Annual Percent Change based on rates age-adjusted to the 2000 US Std Population (19 age groups - Census P25-1130).

<sup>a</sup> Trends are from the SEER 9 areas (San Francisco, Connecticut, Detroit, Hawaii, Iowa, New Mexico, Seattle, Utah, and Atlanta).

<sup>b</sup> Trends are from the SEER 13 areas (SEER 9 Areas, Los Angeles, San Jose-Monterey, Rural Georgia, and the Alaska Native Registry).

<sup>c</sup> Trends are from US Mortality Files, National Center for Health Statistics, Centers for Disease Control and Prevention.

<sup>d</sup> The AAPC is the Average Annual Percent Change and is based on the APCs calculated by Joinpoint.

<sup>e</sup> API - Asian/Pacific Islander, AI/AN - American Indian/Alaska Native, NH - Non-Hispanic

<sup>f</sup> Hispanic and Non-Hispanic are not mutually exclusive from whites, blacks, Asian/Pacific Islanders, and American Indians/Alaska

Natives. Incidence data for Hispanics and Non-Hispanics are based on NHIA and exclude cases from the Alaska Native Registry.

The Hispanic and Non-Hispanic mortality trends exclude deaths from New Hampshire and Oklahoma.

<sup>g</sup> Data for American Indian/Alaska Native are based on the CHSDA (Contract Health Service Delivery Area) counties.

\* The APC/AAPC is significantly different from zero ( $p < .05$ ).

- Joinpoint regression line analysis could not be performed on data series.

Table 9.4  
Hodgkin Lymphoma

Delay-adjusted SEER Incidence<sup>a</sup> Rates by Year, Race and Sex

Year of Diagnosis:	All Races			Whites			Blacks		
	Total	Males	Females	Total	Males	Females	Total	Males	Females
1975	3.09	3.86	2.40	3.23	3.91	2.64	2.58	4.41	-
1976	2.76	3.37	2.24	2.88	3.44	2.41	2.57	3.91	-
1977	2.98	3.61	2.46	3.27	3.93	2.71	1.68	1.91	-
1978	2.80	3.41	2.32	3.07	3.70	2.58	1.47	2.01	-
1979	2.93	3.91	2.08	3.09	4.05	2.27	2.86	4.68	-
1980	2.77	3.31	2.27	2.98	3.53	2.48	1.82	2.07	1.54
1981	2.92	3.59	2.33	3.23	3.92	2.61	1.39	1.86	-
1982	2.93	3.50	2.46	3.13	3.68	2.70	2.58	3.15	2.04
1983	3.03	3.73	2.39	3.34	4.00	2.70	2.11	3.85	-
1984	3.06	3.72	2.47	3.38	4.01	2.79	2.07	3.31	-
1985	2.98	3.50	2.51	3.31	3.84	2.84	1.74	2.26	-
1986	2.73	3.34	2.21	2.91	3.50	2.40	2.27	2.81	1.90
1987	3.05	3.72	2.50	3.35	4.02	2.78	2.12	2.78	1.54
1988	3.10	3.59	2.67	3.43	4.00	2.94	1.94	1.93	1.93
1989	3.07	3.69	2.55	3.37	3.99	2.85	2.17	3.16	1.38
1990	3.07	3.52	2.64	3.31	3.83	2.80	3.00	3.18	2.82
1991	3.03	3.50	2.60	3.34	3.84	2.90	2.41	2.71	2.08
1992	2.88	3.12	2.70	3.06	3.24	2.92	2.67	2.72	2.62
1993	2.86	3.27	2.51	3.09	3.50	2.75	2.94	3.60	2.47
1994	2.86	3.16	2.60	3.16	3.51	2.83	2.10	2.37	1.92
1995	2.78	3.24	2.37	3.06	3.53	2.66	2.30	2.86	1.79
1996	2.86	3.32	2.43	3.14	3.62	2.68	2.48	3.20	1.84
1997	2.84	2.96	2.72	3.08	3.25	2.93	2.58	2.40	2.73
1998	2.81	3.12	2.56	3.14	3.44	2.89	2.16	2.48	1.90
1999	2.88	3.11	2.70	3.12	3.26	3.04	2.54	3.16	2.02
2000	2.83	3.32	2.39	3.09	3.55	2.65	2.44	3.06	1.89
2001	2.59	2.96	2.25	2.75	3.13	2.40	2.45	3.15	1.95
2002	2.98	3.30	2.72	3.16	3.45	2.93	2.94	3.27	2.72
2003	2.75	3.15	2.40	3.03	3.47	2.64	2.43	2.80	2.27
2004	2.98	3.08	2.91	3.15	3.21	3.13	3.11	3.30	2.98
2005	3.07	3.57	2.65	3.29	3.80	2.86	3.18	3.42	2.96
2006	3.04	3.37	2.73	3.25	3.55	2.95	3.18	3.91	2.56
2007	3.22	3.73	2.76	3.49	3.95	3.05	3.37	4.19	2.68
2008	3.01	3.45	2.61	3.25	3.68	2.87	3.17	3.76	2.66
2009	2.99	3.26	2.75	3.28	3.54	3.05	2.68	3.30	2.13
2010	2.84	3.30	2.42	3.06	3.56	2.58	2.61	3.17	2.14
2011	2.80	3.22	2.42	3.00	3.44	2.59	3.01	3.55	2.50

Additional information on the model used to delay-adjust SEER Incidence rates can be found at <http://surveillance.cancer.gov/delay/>.

<sup>a</sup> SEER 9 areas (San Francisco, Connecticut, Detroit, Hawaii, Iowa, New Mexico, Seattle, Utah, and Atlanta). Rates are per 100,000 and are age-adjusted to the 2000 US Std Population (19 age groups - Census P25-1130).

- Delay-adjusted rate is not shown for observed rates based on less than 16 cases for the time interval.

Table 9.5  
Hodgkin Lymphoma

Age-adjusted SEER Incidence<sup>a</sup> Rates by Year, Race and Sex

Year of Diagnosis:	All Races			Whites			Blacks		
	Total	Males	Females	Total	Males	Females	Total	Males	Females
1975-2011	2.90	3.36	2.51	3.15	3.61	2.75	2.50	3.07	2.04
1975	3.09	3.86	2.40	3.23	3.91	2.64	2.58	4.41	-
1976	2.76	3.37	2.24	2.88	3.44	2.41	2.57	3.91	-
1977	2.98	3.61	2.46	3.27	3.93	2.71	1.68	1.91	-
1978	2.80	3.41	2.32	3.07	3.70	2.58	1.47	2.01	-
1979	2.93	3.91	2.08	3.09	4.05	2.27	2.86	4.68	-
1980	2.77	3.31	2.27	2.98	3.53	2.48	1.82	2.07	1.54
1981	2.92	3.59	2.33	3.23	3.92	2.61	1.39	1.86	-
1982	2.93	3.50	2.46	3.13	3.67	2.70	2.58	3.15	2.04
1983	3.03	3.73	2.39	3.33	4.00	2.70	2.11	3.85	-
1984	3.06	3.72	2.47	3.38	4.01	2.79	2.07	3.31	-
1985	2.98	3.50	2.51	3.31	3.84	2.83	1.74	2.26	-
1986	2.73	3.33	2.21	2.91	3.50	2.40	2.27	2.80	1.90
1987	3.05	3.72	2.50	3.34	4.01	2.78	2.12	2.78	1.54
1988	3.10	3.59	2.67	3.43	4.00	2.94	1.94	1.93	1.93
1989	3.06	3.68	2.55	3.36	3.98	2.85	2.16	3.15	1.37
1990	3.07	3.51	2.64	3.31	3.83	2.80	2.99	3.18	2.81
1991	3.02	3.49	2.60	3.34	3.83	2.90	2.40	2.70	2.08
1992	2.87	3.11	2.69	3.05	3.23	2.92	2.66	2.71	2.61
1993	2.85	3.26	2.50	3.09	3.49	2.74	2.93	3.59	2.46
1994	2.85	3.15	2.59	3.15	3.50	2.82	2.09	2.36	1.91
1995	2.76	3.22	2.36	3.05	3.52	2.65	2.29	2.84	1.78
1996	2.84	3.31	2.41	3.13	3.61	2.68	2.46	3.19	1.83
1997	2.82	2.95	2.70	3.07	3.23	2.92	2.57	2.38	2.72
1998	2.79	3.10	2.54	3.13	3.43	2.88	2.15	2.46	1.89
1999	2.86	3.09	2.68	3.10	3.24	3.02	2.52	3.14	2.01
2000	2.81	3.29	2.37	3.07	3.53	2.64	2.42	3.03	1.87
2001	2.57	2.93	2.23	2.74	3.11	2.39	2.42	3.12	1.92
2002	2.95	3.27	2.69	3.14	3.43	2.91	2.90	3.23	2.68
2003	2.72	3.12	2.37	3.01	3.45	2.62	2.40	2.76	2.23
2004	2.94	3.04	2.88	3.12	3.18	3.11	3.07	3.25	2.93
2005	3.03	3.52	2.62	3.25	3.76	2.83	3.12	3.36	2.90
2006	3.00	3.32	2.69	3.22	3.51	2.91	3.12	3.83	2.51
2007	3.17	3.67	2.72	3.44	3.90	3.01	3.30	4.10	2.62
2008	2.95	3.39	2.56	3.20	3.63	2.83	3.09	3.67	2.60
2009	2.93	3.19	2.70	3.23	3.48	3.00	2.61	3.21	2.07
2010	2.78	3.23	2.37	3.00	3.49	2.53	2.53	3.07	2.08
2011	2.71	3.11	2.34	2.91	3.33	2.51	2.87	3.39	2.39

<sup>a</sup> SEER 9 areas (San Francisco, Connecticut, Detroit, Hawaii, Iowa, New Mexico, Seattle, Utah, and Atlanta). Rates are per 100,000 and are age-adjusted to the 2000 US Std Population (19 age groups - Census P25-1130).  
- Statistic not shown. Rate based on less than 16 cases for the time interval.

Table 9.6  
Hodgkin Lymphoma

Age-adjusted U.S. Death<sup>a</sup> Rates by Year, Race and Sex

Year of Death:	All Races			Whites			Blacks		
	Total	Males	Females	Total	Males	Females	Total	Males	Females
1975-2011	0.63	0.79	0.50	0.66	0.82	0.52	0.54	0.72	0.39
1975	1.31	1.69	1.00	1.35	1.73	1.04	1.07	1.50	0.72
1976	1.17	1.50	0.90	1.20	1.52	0.94	0.97	1.44	0.60
1977	1.14	1.45	0.87	1.18	1.49	0.90	0.92	1.20	0.69
1978	1.06	1.35	0.82	1.10	1.38	0.87	0.76	1.17	0.44
1979	0.97	1.27	0.71	1.00	1.31	0.74	0.76	1.06	0.51
1980	0.98	1.23	0.76	1.01	1.27	0.80	0.75	1.09	0.48
1981	0.93	1.15	0.74	0.96	1.19	0.76	0.74	0.88	0.62
1982	0.88	1.09	0.70	0.92	1.15	0.72	0.70	0.78	0.62
1983	0.85	1.09	0.65	0.88	1.13	0.68	0.64	0.90	0.45
1984	0.86	1.18	0.60	0.88	1.19	0.63	0.79	1.18	0.47
1985	0.77	0.98	0.58	0.78	1.00	0.60	0.71	0.96	0.51
1986	0.78	1.00	0.58	0.80	1.04	0.60	0.65	0.85	0.49
1987	0.74	0.96	0.56	0.77	0.98	0.58	0.67	0.94	0.46
1988	0.67	0.88	0.50	0.69	0.91	0.51	0.59	0.75	0.48
1989	0.71	0.92	0.54	0.73	0.94	0.56	0.66	0.92	0.47
1990	0.66	0.85	0.50	0.69	0.88	0.52	0.56	0.81	0.36
1991	0.65	0.83	0.51	0.66	0.83	0.51	0.67	0.89	0.49
1992	0.65	0.83	0.50	0.67	0.86	0.52	0.58	0.77	0.45
1993	0.61	0.79	0.47	0.63	0.80	0.50	0.57	0.83	0.39
1994	0.56	0.66	0.47	0.56	0.66	0.48	0.55	0.73	0.41
1995	0.55	0.67	0.44	0.56	0.68	0.46	0.53	0.73	0.36
1996	0.53	0.64	0.44	0.55	0.65	0.46	0.47	0.63	0.36
1997	0.53	0.62	0.46	0.54	0.63	0.47	0.54	0.67	0.43
1998	0.48	0.61	0.36	0.49	0.62	0.37	0.48	0.66	0.33
1999	0.51	0.63	0.41	0.53	0.66	0.43	0.41	0.55	0.30
2000	0.46	0.55	0.39	0.48	0.57	0.41	0.35	0.42	0.30
2001	0.47	0.56	0.38	0.48	0.59	0.39	0.42	0.52	0.35
2002	0.47	0.58	0.38	0.49	0.60	0.41	0.40	0.57	0.27
2003	0.46	0.55	0.39	0.48	0.57	0.41	0.36	0.47	0.27
2004	0.43	0.55	0.34	0.44	0.57	0.35	0.40	0.47	0.34
2005	0.42	0.51	0.36	0.43	0.51	0.37	0.42	0.55	0.32
2006	0.44	0.56	0.33	0.45	0.57	0.35	0.41	0.56	0.30
2007	0.41	0.51	0.33	0.43	0.53	0.35	0.36	0.45	0.29
2008	0.37	0.45	0.31	0.39	0.47	0.33	0.33	0.39	0.28
2009	0.40	0.48	0.32	0.41	0.49	0.34	0.39	0.48	0.30
2010	0.38	0.49	0.29	0.40	0.51	0.31	0.30	0.36	0.26
2011	0.36	0.47	0.27	0.37	0.48	0.28	0.35	0.50	0.24

<sup>a</sup> US Mortality Files, National Center for Health Statistics, Centers for Disease Control and Prevention. Rates are per 100,000 and are age-adjusted to the 2000 US Std Population (19 age groups - Census P25-1130).  
- Statistic not shown. Rate based on less than 16 cases for the time interval.

Table 9.7  
Hodgkin LymphomaSEER Incidence<sup>a</sup> and U.S. Death<sup>b</sup> Rates, Age-Adjusted and Age-Specific Rates, by Race and Sex

	All Races			Whites			Blacks		
	Total	Males	Females	Total	Males	Females	Total	Males	Females
<u>SEER Incidence</u>									
<u>Age at Diagnosis</u>									
Age-Adjusted Rates, 2007-2011									
All ages	2.7	3.1	2.4	2.9	3.3	2.6	2.7	3.1	2.3
Under 65	2.5	2.8	2.3	2.7	2.9	2.5	2.7	3.1	2.3
65 and over	4.2	5.3	3.4	4.6	5.7	3.7	2.8	3.4	2.4
All ages (IARC world std) <sup>c</sup>	2.5	2.7	2.2	2.7	2.9	2.4	2.4	2.8	2.1
Age-Specific Rates, 2007-2011									
<1	-	-	-	-	-	-	-	-	-
1-4	0.1	0.2	-	0.1	-	-	-	-	-
5-9	0.5	0.7	0.3	0.5	0.7	0.3	0.5	-	-
10-14	1.2	1.2	1.1	1.2	1.3	1.1	1.2	1.3	1.1
15-19	3.2	3.0	3.3	3.6	3.4	3.7	2.1	1.9	2.2
20-24	4.5	4.3	4.6	4.8	4.6	5.1	3.6	3.7	3.5
25-29	4.1	4.1	4.1	4.4	4.3	4.6	4.4	4.8	4.1
30-34	3.7	3.9	3.5	4.0	4.2	3.8	4.1	4.5	3.8
35-39	2.9	3.3	2.6	3.2	3.5	2.8	3.2	3.6	2.9
40-44	2.8	3.4	2.3	3.0	3.5	2.5	3.3	4.6	2.1
45-49	2.4	2.9	1.9	2.5	3.1	2.0	3.0	3.9	2.3
50-54	2.4	3.1	1.8	2.5	3.1	1.9	3.3	4.4	2.4
55-59	2.6	3.3	1.9	2.7	3.5	2.0	2.8	3.5	2.3
60-64	2.8	3.3	2.4	3.0	3.5	2.5	3.5	3.1	3.8
65-69	3.6	4.4	2.8	3.9	4.7	3.2	3.3	4.0	2.8
70-74	4.5	5.4	3.7	4.9	5.9	4.0	3.3	3.7	3.0
75-79	4.6	5.5	3.9	5.1	6.2	4.2	-	-	-
80-84	4.7	6.5	3.5	5.0	6.7	3.8	4.0	-	-
85+	3.9	5.0	3.4	4.2	5.6	3.6	-	-	-
<u>U.S. Mortality</u>									
<u>Age at Death</u>									
Age-Adjusted Rates, 2007-2011									
All ages	0.4	0.5	0.3	0.4	0.5	0.3	0.3	0.4	0.3
Under 65	0.2	0.3	0.2	0.2	0.3	0.2	0.3	0.3	0.2
65 and over	1.5	2.0	1.3	1.6	2.1	1.3	0.9	1.1	0.8
All ages (IARC world std) <sup>c</sup>	0.3	0.3	0.2	0.3	0.3	0.2	0.3	0.3	0.2
Age-Specific Rates, 2007-2011									
<1	-	-	-	-	-	-	-	-	-
1-4	-	-	-	-	-	-	-	-	-
5-9	-	-	-	-	-	-	-	-	-
10-14	-	-	-	-	-	-	-	-	-
15-19	0.1	0.1	0.1	0.1	0.1	0.1	0.1	-	-
20-24	0.2	0.2	0.2	0.2	0.2	0.2	0.2	0.2	0.3
25-29	0.2	0.3	0.2	0.3	0.3	0.2	0.3	0.4	0.2
30-34	0.3	0.3	0.2	0.3	0.3	0.3	0.4	0.3	0.4
35-39	0.3	0.4	0.2	0.3	0.4	0.3	0.4	0.6	0.3
40-44	0.3	0.3	0.2	0.3	0.4	0.2	0.3	0.4	-
45-49	0.3	0.4	0.2	0.3	0.4	0.2	0.3	0.5	-
50-54	0.3	0.5	0.2	0.3	0.4	0.2	0.4	0.6	0.3
55-59	0.5	0.5	0.4	0.5	0.6	0.4	0.5	0.6	0.5
60-64	0.6	0.7	0.5	0.6	0.7	0.5	0.7	0.9	0.4
65-69	0.9	1.1	0.6	0.9	1.2	0.7	0.7	1.0	0.5
70-74	1.2	1.5	1.0	1.3	1.6	1.1	0.7	-	0.6
75-79	1.7	2.2	1.3	1.8	2.3	1.4	1.0	1.4	-
80-84	2.4	2.9	2.1	2.6	3.1	2.2	1.1	-	1.2
85+	2.4	3.3	2.0	2.5	3.4	2.1	1.7	-	1.5

<sup>a</sup> SEER 18 areas. Rates are per 100,000 and are age-adjusted to the 2000 US Std Population (19 age groups - Census P25-1130), unless noted.

<sup>b</sup> US Mortality Files, National Center for Health Statistics, Centers for Disease Control and Prevention.

<sup>c</sup> Rates are per 100,000 and are age-adjusted to the 2000 US Std Population (19 age groups - Census P25-1130), unless noted.

- Rates are per 100,000 and are age-adjusted to the IARC world standard population.

- Statistic not shown. Rate based on less than 16 cases for the time interval.

Table 9.8  
Hodgkin Lymphoma

## 5-Year Relative and Period Survival (Percent) by Race, Sex, Diagnosis Year and Age

	All Races			Whites			Blacks		
	Total	Males	Females	Total	Males	Females	Total	Males	Females
5-Year Relative Survival (Percent)									
Year of Diagnosis:									
1960-1963 <sup>a</sup>	-	-	-	40	34	48	-	-	-
1970-1973 <sup>a</sup>	-	-	-	67	66	69	-	-	-
1975-1977 <sup>b</sup>	71.8	69.9	74.3	72.1	70.2	74.5	70.1	68.5 <sup>g</sup>	73.3 <sup>g</sup>
1978-1980 <sup>b</sup>	71.7	70.3	73.5	71.8	69.8	74.3	70.6	74.7 <sup>g</sup>	63.1 <sup>g</sup>
1981-1983 <sup>b</sup>	74.2	72.9	75.8	74.6	73.8	75.6	71.5	69.2 <sup>g</sup>	75.9 <sup>g</sup>
1984-1986 <sup>b</sup>	78.2	76.4	80.6	78.7	76.8	81.1	74.7	75.7 <sup>g</sup>	72.1 <sup>g</sup>
1987-1989 <sup>b</sup>	79.2	76.6	82.5	79.7	76.9	83.3	72.3	70.9 <sup>g</sup>	74.0 <sup>g</sup>
1990-1992 <sup>b</sup>	81.7	79.2	84.7	82.8	81.0	85.0	74.0	64.5	84.3
1993-1995 <sup>b</sup>	81.6	79.1	84.6	82.1	79.9	84.7	78.3	74.1	82.8
1996-1998 <sup>b</sup>	85.1	84.4	85.9	85.7	84.3	87.3	81.2	84.3	77.7
1999-2003 <sup>b</sup>	85.6	83.6	87.9	86.5	85.1	88.2	80.9	75.1	87.6
2004-2010 <sup>b</sup>	87.7 <sup>f</sup>	86.8 <sup>f</sup>	88.7 <sup>f</sup>	88.3 <sup>f</sup>	87.9 <sup>f</sup>	88.7 <sup>f</sup>	84.7 <sup>f</sup>	80.9 <sup>f</sup>	88.9 <sup>f</sup>
5-Year Period Survival (Percent) <sup>cd</sup>									
2010	86.1	84.7	87.7	86.7	85.6	88.1	81.3	77.6	85.6
Stage Distribution (%) 2004-2010 <sup>ce</sup>									
All Stages									
Number of cases	14,949	8,123	6,826	12,238	6,659	5,579	1,808	965	843
Percent	100%	100%	100%	100%	100%	100%	100%	100%	100%
Localized	17	18	15	17	18	15	19	20	19
Regional	41	35	47	41	36	48	33	28	39
Distant	38	42	34	38	41	33	45	50	39
Unstaged	4	4	5	4	4	5	3	3	3
5-Year Relative Survival (Percent), 2004-2010 <sup>c</sup>									
Age at Diagnosis:									
Ages <45	93.7	92.7	94.8	94.4	93.8	95.2	88.0	84.7	91.6
Ages 45-54	84.9	83.1	87.7	87.0	85.7	89.0	72.8	67.3	81.5
Ages 55-64	76.5	76.0	76.9	78.7	78.4	79.0	60.5 <sup>g</sup>	56.8 <sup>g</sup>	63.3 <sup>g</sup>
Ages 65-74	64.2	62.7	65.6	63.6	61.0	66.6	67.1 <sup>g</sup>	78.1 <sup>g</sup>	57.3 <sup>g</sup>
Ages 75+	40.7	39.0	41.2	41.4	38.4	42.7	37.9 <sup>h</sup>	-	26.4 <sup>h</sup>
Ages <65	90.5	89.1	92.2	91.5	90.5	92.8	83.1	79.2	87.7
Ages 65+	52.8	52.6	52.7	52.7	51.2	53.7	58.3 <sup>g</sup>	75.1 <sup>g</sup>	45.6 <sup>g</sup>
Stage <sup>e</sup> :									
All Stages	85.3	84.4	86.4	85.7	85.0	86.6	81.6	79.2	84.4
Localized	90.8	91.6	89.7	90.8	91.2	90.3	89.9	92.2	86.2
Regional	92.1	91.1	92.9	92.5	91.8	93.0	87.6	84.2	90.4
Distant	76.2	75.9	76.5	76.2	76.2	76.1	74.4	71.5	78.7
Unstaged	80.7	80.7	80.7	81.9	82.0	81.5	67.1 <sup>g</sup>	66.4 <sup>h</sup>	67.9 <sup>h</sup>

<sup>a</sup> Based on End Results data from a series of hospital registries and one population-based registry.

<sup>b</sup> SEER 9 areas (San Francisco, Connecticut, Detroit, Hawaii, Iowa, New Mexico, Seattle, Utah, Atlanta).  
Based on follow-up of patients into 2011.

<sup>c</sup> SEER 18 areas (San Francisco, Connecticut, Detroit, Hawaii, Iowa, New Mexico, Seattle, Utah, Atlanta, San Jose-Monterey, Los Angeles, Alaska Native Registry, Rural Georgia, California excluding SF/SJM/LA, Kentucky, Louisiana, New Jersey and Georgia excluding ATL/RG).  
Based on follow-up of patients into 2011.

<sup>d</sup> Period survival provides a 2010 estimate of survival by piecing together the most recent conditional survival estimates from several cohorts. It is computed here using three year calendar blocks (2007-2009: 0-1 year survival), (2006-2008: 1-2 year survival), (2005-2007: 2-3 year survival), (2004-2006: 3-4 year survival), (2003-2005: 4-5 years survival).

<sup>e</sup> Stage at diagnosis is classified using SEER Summary Stage 2000. Stage distribution percentages may not sum to 100 due to rounding.

<sup>f</sup> The difference between 1975-1977 and 2004-2010 is statistically significant ( $p < .05$ ).

<sup>g</sup> The standard error is between 5 and 10 percentage points.

<sup>h</sup> The standard error is greater than 10 percentage points.

- Statistic could not be calculated due to fewer than 25 cases during the time period.



Table 9.9  
Hodgkin Lymphoma

SEER<sup>a</sup> Relative Survival (Percent)  
By Year of Diagnosis

All Races, Males and Females

Year of Diagnosis

	1975- 1979	1980- 1984	1985- 1989	1990- 1994	1995	1996	1997	1998	1999	2000	2001	2002	2003	2004	2005	2006	2007	2008	2009	2010
Survival Time																				
1-year	86.9	89.4	90.7	92.0	92.8	91.5	93.6	94.5	91.0	92.4	94.0	92.8	93.2	91.5	93.4	92.5	93.3	94.6	92.0	91.6
2-year	80.8	83.6	86.3	87.7	88.6	88.1	90.9	90.4	87.7	90.6	90.8	89.8	92.2	89.6	90.9	90.2	92.5	92.5	89.3	
3-year	76.5	80.0	82.9	85.1	86.5	86.7	89.3	88.3	85.4	88.7	88.5	88.4	89.9	87.4	90.3	89.0	90.6	91.5		
4-year	73.7	77.3	80.5	83.1	83.4	84.5	88.4	86.5	84.2	87.8	86.6	86.1	88.1	86.2	89.5	88.6	88.8			
5-year	71.4	74.8	79.0	81.6	82.2	83.2	87.2	84.9	83.4	86.3	85.2	85.1	87.4	85.8	88.3	88.3				
6-year	69.0	72.2	77.4	80.0	80.1	81.7	85.9	83.7	82.2	85.4	84.3	84.7	87.0	84.8	87.9					
7-year	67.1	70.5	75.1	78.6	78.9	80.0	85.2	83.0	80.9	84.7	84.3	83.3	86.3	84.2						
8-year	65.0	69.2	74.0	77.7	78.4	79.2	84.7	82.4	80.0	83.6	83.8	82.3	85.5							
9-year	63.0	67.8	73.2	76.7	77.2	78.2	84.4	81.4	79.0	82.7	82.8	81.2								
10-year	61.7	66.7	72.6	75.9	76.6	76.6	83.8	80.2	78.1	82.7	81.8									
11-year	60.4	65.7	71.6	75.4	75.6	75.6	83.3	79.5	77.9	82.6										
12-year	59.4	64.5	70.8	74.6	75.5	74.8	82.8	79.2	77.5											
13-year	58.7	63.7	69.6	73.9	75.4	74.2	81.7	78.8												
14-year	57.4	62.5	68.5	73.5	75.4	73.2	80.0													
15-year	56.4	61.7	67.4	72.9	75.3	72.8														
16-year	55.6	60.6	66.6	72.4	75.0															
17-year	54.6	59.3	66.1	71.8																
18-year	53.7	58.4	65.5																	
19-year	53.1	57.8	64.7																	
20-year	52.1	56.7	64.0																	

<sup>a</sup> Based on the SEER 9 areas (San Francisco, Connecticut, Detroit, Hawaii, Iowa, New Mexico, Seattle, Utah, and Atlanta).

Table 9.10  
Hodgkin Lymphoma

SEER<sup>a</sup> Relative Survival (Percent)  
By Year of Diagnosis

All Races, Males

Year of Diagnosis

	1975- 1979	1980- 1984	1985- 1989	1990- 1994	1995	1996	1997	1998	1999	2000	2001	2002	2003	2004	2005	2006	2007	2008	2009	2010
Survival Time																				
1-year	85.9	89.4	89.8	91.2	92.2	92.7	92.1	94.3	89.3	90.8	92.8	90.8	93.0	89.7	93.3	91.7	92.4	93.2	92.8	90.1
2-year	80.2	83.5	84.7	85.8	88.0	88.6	89.5	90.9	86.1	88.4	89.0	88.2	92.2	88.4	90.7	89.3	91.6	91.2	89.1	
3-year	75.3	80.2	81.3	82.9	85.1	87.0	87.4	88.8	83.6	85.3	86.5	86.7	89.9	86.4	90.0	88.7	89.3	90.4		
4-year	71.7	77.2	78.3	80.7	81.0	85.0	86.9	86.4	82.8	83.7	85.0	84.8	86.8	85.8	88.7	87.6	87.6			
5-year	69.2	74.1	76.5	78.9	80.2	82.9	85.8	84.4	82.6	81.8	83.6	83.7	86.1	85.8	87.5	87.4				
6-year	66.5	71.4	74.6	77.0	78.8	81.7	83.5	83.5	80.5	80.6	82.0	83.0	86.1	83.8	86.8					
7-year	64.4	69.6	71.8	75.9	77.6	79.6	82.9	82.2	78.7	79.9	81.7	81.1	85.1	83.6						
8-year	62.4	68.1	70.4	74.8	76.5	78.5	82.2	81.7	77.6	78.7	81.3	79.9	84.2							
9-year	60.0	66.9	69.2	73.8	75.4	77.4	82.2	80.3	76.2	78.5	79.5	79.0								
10-year	58.9	65.6	68.6	73.1	75.4	75.1	81.0	78.2	75.2	78.4	78.0									
11-year	57.5	64.6	67.1	72.5	74.3	74.0	80.4	77.6	75.2	77.5										
12-year	56.4	63.2	66.0	71.8	74.2	72.4	80.3	77.1	74.2											
13-year	55.7	62.6	64.4	70.9	74.2	71.8	78.5	76.9												
14-year	54.3	61.2	63.2	70.5	74.2	70.1	76.8													
15-year	53.1	60.5	62.1	69.8	74.2	69.5														
16-year	52.4	59.4	61.2	69.4	74.2															
17-year	51.1	58.0	60.7	68.7																
18-year	50.1	57.0	60.0																	
19-year	49.5	56.5	59.4																	
20-year	48.5	55.2	58.4																	

<sup>a</sup> Based on the SEER 9 areas (San Francisco, Connecticut, Detroit, Hawaii, Iowa, New Mexico, Seattle, Utah, and Atlanta).

Table 9.11  
Hodgkin Lymphoma

SEER<sup>a</sup> Relative Survival (Percent)  
By Year of Diagnosis

All Races, Females

Year of Diagnosis

	1975- 1979	1980- 1984	1985- 1989	1990- 1994	1995	1996	1997	1998	1999	2000	2001	2002	2003	2004	2005	2006	2007	2008	2009	2010
Survival Time																				
1-year	88.2	89.5	91.8	93.0	93.7	90.0	95.1	94.9	92.9	94.5	95.3	95.1	93.5	93.4	93.4	93.4	94.4	96.0	91.2	93.4
2-year	81.6	83.7	88.3	89.9	89.3	87.4	92.3	89.9	89.4	93.6	92.8	91.6	92.2	90.9	91.1	91.3	93.3	94.0	89.4	
3-year	78.1	79.7	85.0	87.6	88.1	86.2	91.3	87.7	87.4	93.1	90.9	90.2	89.9	88.3	90.6	89.4	92.3	92.7		
4-year	76.2	77.6	83.2	86.0	86.5	83.9	89.8	86.6	85.6	93.1	88.6	87.5	89.6	86.2	90.4	89.4	90.4			
5-year	74.4	75.7	82.1	84.7	84.6	83.5	88.5	85.3	84.3	92.6	87.1	86.7	89.0	85.8	89.2	89.3				
6-year	72.3	73.4	80.9	83.4	81.8	81.4	88.5	84.0	83.9	92.0	86.9	86.5	88.0	85.5	89.1					
7-year	70.8	71.8	79.2	81.7	80.6	80.4	87.7	83.7	83.1	91.1	86.9	85.7	87.7	84.6						
8-year	68.5	70.6	78.4	81.2	80.6	80.1	87.2	83.2	82.6	90.4	86.9	84.8	87.1							
9-year	66.9	68.9	78.1	80.3	79.4	78.9	86.7	82.7	82.1	88.5	86.8	83.3								
10-year	65.4	68.1	77.6	79.3	78.2	78.4	86.5	82.3	81.2	88.5	86.6									
11-year	64.2	67.1	77.2	78.8	77.4	77.5	86.1	81.7	80.7	88.5										
12-year	63.5	66.3	76.7	77.9	76.8	77.4	85.1	81.3	80.7											
13-year	62.5	65.2	76.0	77.5	76.0	77.1	84.9	80.8												
14-year	61.5	64.3	75.1	77.0	76.0	76.8	83.3													
15-year	60.7	63.3	74.0	76.5	75.8	76.8														
16-year	59.9	62.3	73.5	76.0	75.6															
17-year	59.3	61.0	72.7	75.4																
18-year	58.5	60.2	72.3																	
19-year	57.8	59.5	71.4																	
20-year	56.8	58.8	71.0																	

<sup>a</sup> Based on the SEER 9 areas (San Francisco, Connecticut, Detroit, Hawaii, Iowa, New Mexico, Seattle, Utah, and Atlanta).

Table 9.12  
Hodgkin Lymphoma

Risk of Being Diagnosed With Cancer in 10, 20 and 30 Years,  
Lifetime Risk of Being Diagnosed with Cancer Given Alive and Cancer-Free at Current Age, and  
Lifetime Risk of Dying from Cancer Given Alive at Current Age  
Both Sexes, 2009-2011 By Race/Ethnicity

Race/ Ethnicity	Current Age	Risk of Being Diagnosed with Cancer					Risk of Dying from Cancer	Race/ Ethnicity	Current Age	Risk of Being Diagnosed with Cancer					Risk of Dying from Cancer
		+10 yrs	+20 yrs	+30 yrs	Ever	+10 yrs				+20 yrs	+30 yrs	Ever			
All Races	0	0.00	0.02	0.06	0.22	0.04	Asian/ Pacific Islander	0	0.00	0.02	0.04	0.12	0.03		
	10	0.02	0.06	0.09	0.22	0.04		10	0.02	0.04	0.05	0.12	0.03		
	20	0.04	0.07	0.10	0.20	0.04		20	0.02	0.03	0.04	0.10	0.03		
	30	0.03	0.06	0.08	0.16	0.04		30	0.01	0.02	0.03	0.08	0.03		
	40	0.03	0.05	0.08	0.13	0.04		40	0.01	0.02	0.03	0.07	0.03		
	50	0.02	0.05	0.08	0.11	0.03		50	0.01	0.02	0.04	0.06	0.03		
	60	0.03	0.06	0.08	0.09	0.03		60	0.01	0.03	0.05	0.05	0.03		
	70	0.04	0.06	-	0.07	0.03		70	0.02	0.04	-	0.04	0.03		
80	0.03	-	-	0.04	0.02	80	0.02	-	-	0.03	0.02				
White	0	0.00	0.03	0.07	0.24	0.04	American Indian/ Alaska Native <sup>a</sup>	0	0.00	0.01	0.02	0.09	0.02		
	10	0.02	0.07	0.10	0.24	0.04		10	0.01	0.02	0.03	0.09	0.02		
	20	0.04	0.08	0.10	0.21	0.04		20	0.01	0.02	0.02	0.09	0.02		
	30	0.03	0.06	0.08	0.17	0.04		30	0.01	0.01	0.03	0.08	0.02		
	40	0.03	0.05	0.08	0.14	0.04		40	0.00	0.02	0.03	0.07	0.02		
	50	0.02	0.05	0.09	0.11	0.04		50	0.02	0.03	0.06	0.07	0.02		
	60	0.03	0.07	0.09	0.10	0.03		60	0.01	0.04	0.05	0.05	0.02		
	70	0.04	0.07	-	0.07	0.03		70	0.03	0.04	-	0.04	0.02		
80	0.03	-	-	0.04	0.02	80	0.02	-	-	0.02	0.02				
Black	0	0.00	0.02	0.05	0.19	0.03	Hispanic <sup>b</sup>	0	0.00	0.02	0.05	0.21	0.05		
	10	0.02	0.05	0.09	0.19	0.03		10	0.02	0.04	0.06	0.21	0.05		
	20	0.04	0.07	0.10	0.18	0.03		20	0.03	0.05	0.07	0.20	0.05		
	30	0.03	0.07	0.09	0.14	0.03		30	0.02	0.04	0.06	0.17	0.05		
	40	0.03	0.06	0.09	0.11	0.02		40	0.02	0.04	0.07	0.15	0.05		
	50	0.03	0.06	0.07	0.08	0.02		50	0.02	0.05	0.10	0.13	0.05		
	60	0.03	0.05	0.06	0.06	0.02		60	0.03	0.08	0.11	0.12	0.05		
	70	0.02	0.03	-	0.03	0.02		70	0.06	0.08	-	0.09	0.04		
80	0.01	-	-	0.01	0.01	80	0.04	-	-	0.05	0.03				

Devcan 6.8.0, August 2014, National Cancer Institute (<http://surveillance.cancer.gov/devcan/>).

Source: Incidence data are from the SEER 18 areas (San Francisco, Connecticut, Detroit, Hawaii, Iowa, New Mexico, Seattle, Utah, Atlanta, San Jose-Monterey, Los Angeles, Alaska Native Registry, Rural Georgia, California excluding SF/SJM/LA, Kentucky, Louisiana, New Jersey, and Georgia excluding ATL/RG). Mortality data are from the NCHS public use data file for the total US.

<sup>a</sup> Underlying incidence and mortality data for American Indian/Alaska Native are based on the CHSDA (Contract Health Service Delivery Area) counties.

<sup>b</sup> Hispanic is not mutually exclusive from whites, blacks, Asian/Pacific Islanders, and American Indians/Alaska Natives. Underlying incidence data for Hispanics are based on NHIA and exclude cases from the Alaska Native Registry.

- Statistic could not be calculated.

A percent of 0.00 represents a value that is below 0.005.

Table 9.13  
Hodgkin Lymphoma

Risk of Being Diagnosed With Cancer in 10, 20 and 30 Years,  
Lifetime Risk of Being Diagnosed with Cancer Given Alive and Cancer-Free at Current Age, and  
Lifetime Risk of Dying from Cancer Given Alive at Current Age  
Males, 2009-2011 By Race/Ethnicity

Race/ Ethnicity	Current Age	Risk of Being Diagnosed with Cancer					Risk of Dying from Cancer	Race/ Ethnicity	Current Age	Risk of Being Diagnosed with Cancer					Risk of Dying from Cancer
		+10 yrs	+20 yrs	+30 yrs	Ever	+10 yrs				+20 yrs	+30 yrs	Ever			
All Races	0	0.00	0.03	0.06	0.24	0.05	Asian/ Pacific Islander	0	0.00	0.02	0.04	0.13	0.04		
	10	0.02	0.06	0.09	0.24	0.05		10	0.01	0.04	0.05	0.12	0.04		
	20	0.04	0.07	0.10	0.22	0.05		20	0.02	0.03	0.04	0.11	0.04		
	30	0.03	0.06	0.09	0.18	0.04		30	0.01	0.02	0.03	0.09	0.04		
	40	0.03	0.06	0.09	0.15	0.04		40	0.01	0.02	0.04	0.08	0.04		
	50	0.03	0.06	0.10	0.13	0.04		50	0.01	0.03	0.05	0.07	0.04		
	60	0.03	0.07	0.10	0.10	0.04		60	0.02	0.04	0.06	0.06	0.04		
	70	0.05	0.08	-	0.08	0.03		70	0.02	0.04	-	0.05	0.04		
80	0.04	-	-	0.05	0.03	80	0.02	-	-	0.03	0.03				
White	0	0.00	0.03	0.07	0.26	0.05	American Indian/ Alaska Native <sup>a</sup>	0	0.00	0.01	0.02	0.09	0.04		
	10	0.02	0.07	0.10	0.26	0.05		10	0.01	0.02	0.03	0.09	0.04		
	20	0.04	0.08	0.11	0.24	0.05		20	0.01	0.02	0.02	0.08	0.04		
	30	0.04	0.07	0.10	0.19	0.05		30	0.01	0.01	0.03	0.07	0.04		
	40	0.03	0.06	0.09	0.16	0.04		40	0.00	0.02	0.04	0.06	0.04		
	50	0.03	0.06	0.11	0.13	0.04		50	0.02	0.04	0.06	0.06	0.04		
	60	0.04	0.08	0.11	0.11	0.04		60	0.02	0.04	0.04	0.04	0.04		
	70	0.05	0.08	-	0.09	0.03		70	0.03	0.03	-	0.03	0.03		
80	0.04	-	-	0.05	0.03	80	0.00	-	-	0.00	0.04				
Black	0	0.00	0.02	0.06	0.21	0.04	Hispanic <sup>b</sup>	0	0.01	0.02	0.05	0.24	0.06		
	10	0.02	0.05	0.09	0.21	0.04		10	0.02	0.04	0.06	0.24	0.06		
	20	0.04	0.07	0.12	0.20	0.04		20	0.03	0.04	0.07	0.22	0.06		
	30	0.04	0.08	0.11	0.16	0.03		30	0.02	0.04	0.07	0.20	0.06		
	40	0.05	0.08	0.10	0.13	0.03		40	0.02	0.05	0.08	0.18	0.06		
	50	0.03	0.06	0.08	0.09	0.03		50	0.03	0.06	0.12	0.16	0.06		
	60	0.03	0.05	0.06	0.06	0.02		60	0.03	0.09	0.12	0.14	0.06		
	70	0.03	0.04	-	0.04	0.02		70	0.07	0.10	-	0.12	0.05		
80	0.01	-	-	0.01	0.02	80	0.05	-	-	0.07	0.03				

Devcan 6.8.0, August 2014, National Cancer Institute (<http://surveillance.cancer.gov/devcan/>).

Source: Incidence data are from the SEER 18 areas (San Francisco, Connecticut, Detroit, Hawaii, Iowa, New Mexico, Seattle, Utah, Atlanta, San Jose-Monterey, Los Angeles, Alaska Native Registry, Rural Georgia, California excluding SF/SJM/LA, Kentucky, Louisiana, New Jersey, and Georgia excluding ATL/RG). Mortality data are from the NCHS public use data file for the total US.

<sup>a</sup> Underlying incidence and mortality data for American Indian/Alaska Native are based on the CHSDA (Contract Health Service Delivery Area) counties.

<sup>b</sup> Hispanic is not mutually exclusive from whites, blacks, Asian/Pacific Islanders, and American Indians/Alaska Natives. Underlying incidence data for Hispanics are based on NHIA and exclude cases from the Alaska Native Registry.

- Statistic could not be calculated.

A percent of 0.00 represents a value that is below 0.005.

Table 9.14  
Hodgkin Lymphoma

Risk of Being Diagnosed With Cancer in 10, 20 and 30 Years,  
Lifetime Risk of Being Diagnosed with Cancer Given Alive and Cancer-Free at Current Age, and  
Lifetime Risk of Dying from Cancer Given Alive at Current Age  
Females, 2009-2011 By Race/Ethnicity

Race/ Ethnicity	Current Age	Risk of Being Diagnosed with Cancer					Risk of Dying from Cancer	Race/ Ethnicity	Current Age	Risk of Being Diagnosed with Cancer					Risk of Dying from Cancer
		+10 yrs	+20 yrs	+30 yrs	Ever	+10 yrs				+20 yrs	+30 yrs	Ever			
All Races	0	0.00	0.02	0.06	0.20	0.03	Asian/ Pacific Islander	0	0.00	0.02	0.04	0.11	0.02		
	10	0.02	0.06	0.09	0.20	0.03		10	0.02	0.04	0.05	0.11	0.02		
	20	0.04	0.07	0.09	0.18	0.03		20	0.02	0.04	0.04	0.09	0.02		
	30	0.03	0.05	0.07	0.14	0.03		30	0.01	0.02	0.03	0.07	0.02		
	40	0.02	0.04	0.06	0.11	0.03		40	0.01	0.02	0.02	0.06	0.02		
	50	0.02	0.04	0.07	0.09	0.03		50	0.01	0.01	0.03	0.05	0.02		
	60	0.03	0.05	0.07	0.08	0.03		60	0.01	0.02	0.04	0.04	0.02		
	70	0.03	0.05	-	0.06	0.02		70	0.02	0.03	-	0.04	0.02		
80	0.03	-	-	0.03	0.02	80	0.02	-	-	0.02	0.02				
White	0	0.00	0.03	0.07	0.22	0.04	American Indian/ Alaska Native <sup>a</sup>	0	0.00	0.01	0.01	0.10	0.01		
	10	0.02	0.07	0.10	0.22	0.04		10	0.01	0.01	0.03	0.10	0.01		
	20	0.05	0.08	0.10	0.19	0.04		20	0.01	0.02	0.02	0.09	0.01		
	30	0.03	0.05	0.07	0.15	0.03		30	0.01	0.01	0.03	0.08	0.01		
	40	0.02	0.04	0.06	0.12	0.03		40	0.00	0.02	0.03	0.07	0.01		
	50	0.02	0.04	0.07	0.10	0.03		50	0.02	0.03	0.05	0.07	0.01		
	60	0.03	0.06	0.08	0.08	0.03		60	0.00	0.03	0.05	0.05	0.01		
	70	0.03	0.06	-	0.06	0.03		70	0.02	0.05	-	0.05	0.01		
80	0.03	-	-	0.03	0.02	80	0.04	-	-	0.04	0.00				
Black	0	0.00	0.02	0.05	0.18	0.03	Hispanic <sup>b</sup>	0	0.00	0.02	0.04	0.19	0.04		
	10	0.02	0.05	0.08	0.18	0.03		10	0.02	0.04	0.06	0.19	0.04		
	20	0.04	0.07	0.09	0.16	0.03		20	0.03	0.05	0.07	0.18	0.04		
	30	0.03	0.06	0.08	0.13	0.02		30	0.02	0.04	0.06	0.15	0.04		
	40	0.02	0.05	0.07	0.10	0.02		40	0.02	0.04	0.07	0.13	0.04		
	50	0.02	0.05	0.07	0.07	0.02		50	0.02	0.05	0.09	0.11	0.04		
	60	0.03	0.05	0.05	0.06	0.02		60	0.03	0.07	0.09	0.10	0.04		
	70	0.02	0.02	-	0.03	0.02		70	0.05	0.07	-	0.07	0.03		
80	0.01	-	-	0.01	0.01	80	0.03	-	-	0.03	0.03				

Devcan 6.8.0, August 2014, National Cancer Institute (<http://surveillance.cancer.gov/devcan/>).

Source: Incidence data are from the SEER 18 areas (San Francisco, Connecticut, Detroit, Hawaii, Iowa, New Mexico, Seattle, Utah, Atlanta, San Jose-Monterey, Los Angeles, Alaska Native Registry, Rural Georgia, California excluding SF/SJM/LA, Kentucky, Louisiana, New Jersey, and Georgia excluding ATL/RG). Mortality data are from the NCHS public use data file for the total US.

<sup>a</sup> Underlying incidence and mortality data for American Indian/Alaska Native are based on the CHSDA (Contract Health Service Delivery Area) counties.

<sup>b</sup> Hispanic is not mutually exclusive from whites, blacks, Asian/Pacific Islanders, and American Indians/Alaska Natives. Underlying incidence data for Hispanics are based on NHIA and exclude cases from the Alaska Native Registry.

- Statistic could not be calculated.

A percent of 0.00 represents a value that is below 0.005.

Table 9.15  
Hodgkin Lymphoma

SEER Incidence and U.S. Mortality  
Age-Adjusted Rates and Trends<sup>a</sup>  
By Race/Ethnicity and Sex

SEER Incidence	SEER 18 Areas <sup>b</sup>			SEER 13 Areas <sup>b</sup>			SEER 9 Areas <sup>b</sup>		
	Rate 2007-2011			Trend 2002-2011 <sup>c</sup>			Trend 2002-2011 <sup>d</sup>		
	Rate per 100,000 persons			AAPC (%)			AAPC (%)		
	Total	Males	Females	Total	Males	Females	Total	Males	Females
RACE/ETHNICITY									
All Races	2.7	3.1	2.4	-0.4	0.2	0.1	-0.3	0.5	0.3*
White	2.9	3.3	2.6	-0.4	0.1	0.0	-0.4	0.2	0.3*
White Hispanic <sup>e</sup>	2.5	2.8	2.2	0.3	-0.3	1.0	-	-	-
White Non-Hispanic <sup>e</sup>	3.2	3.6	2.9	-0.8	0.4	0.1	-	-	-
Black	2.7	3.1	2.3	1.0*	1.3*	0.5	1.1*	0.6	1.9*
Asian/Pacific Islander	1.3	1.5	1.1	-0.2	1.4	2.9*	-	-	-
Amer Ind/Alaska Nat <sup>f</sup>	1.0	0.9	1.1	-	-	-	-	-	-
Hispanic <sup>e</sup>	2.4	2.7	2.1	0.2	-0.4	0.9	-	-	-
U.S. Mortality <sup>g</sup>									
	Rate 2007-2011			Trend 2002-2011 <sup>h</sup>					
	Rate per 100,000 persons			AAPC (%)					
	Total	Males	Females	Total	Males	Females			
RACE/ETHNICITY									
All Races	0.4	0.5	0.3	-2.7*	-2.2*	-2.7*			
White	0.4	0.5	0.3	-2.3*	-2.1*	-2.7*			
White Hispanic <sup>e</sup>	0.5	0.6	0.3	-2.3*	-2.5*	-2.2*			
White Non-Hispanic <sup>e</sup>	0.4	0.5	0.3	-2.6*	-2.0*	-2.7*			
Black	0.3	0.4	0.3	-2.9*	-3.2*	-2.5*			
Asian/Pacific Islander	0.1	0.2	0.1	-	-	-			
Amer Ind/Alaska Nat									
Total U.S.	0.1	-	-	-	-	-			
CHSDA Counties	-	-	-	-	-	-			
Non-CHSDA Counties	-	-	-	-	-	-			
Hispanic <sup>e</sup>	0.4	0.5	0.3	-2.5*	-2.6*	-2.4*			

The AAPC is the Average Annual Percent Change over the time interval. The AAPCs are calculated by the Joinpoint Regression Program Version 4.1.0, April 2014, National Cancer Institute.

- Statistic not shown. Rate based on less than 16 cases for the time interval.

Trend based on less than 10 cases for at least one year within the time interval.

<sup>a</sup> Rates are age-adjusted to the 2000 US Std Population (19 age groups - Census P25-1130). Trends are based on rates age-adjusted to the 2000 US Std Population (19 age groups - Census P25-1130).

<sup>b</sup> The SEER 9 areas are San Francisco, Connecticut, Detroit, Hawaii, Iowa, New Mexico, Seattle, Utah, and Atlanta.

The SEER 13 areas comprise the SEER 9 areas plus San Jose-Monterey, Los Angeles, the Alaska Native Registry, and Rural Georgia.

The SEER 18 areas comprise the SEER 13 areas plus California excluding SF/SJM/LA, Kentucky, Louisiana, New Jersey, and Georgia excluding ATL/RG.

<sup>c</sup> The 2002-2011 AAPC estimates are based on a Joinpoint analysis with up to 3 Joinpoints over diagnosis years 1992-2011.

<sup>d</sup> The 2002-2011 AAPC estimates are based on a Joinpoint analysis with up to 5 Joinpoints over diagnosis years 1975-2011.

<sup>e</sup> Hispanic and Non-Hispanic are not mutually exclusive from whites, blacks, Asian/Pacific Islanders, and American Indians/Alaska Natives. Incidence data for Hispanics and Non-Hispanics are based on NHIA and exclude cases from the Alaska Native Registry. The 2002-2011 Hispanic and Non-Hispanic mortality trends exclude deaths from New Hampshire and Oklahoma.

<sup>f</sup> Incidence data for American Indian/Alaska Native are based on the CHSDA (Contract Health Service Delivery Area) counties.

<sup>g</sup> US Mortality Files, National Center for Health Statistics, CDC.

<sup>h</sup> The 2002-2011 mortality AAPCs are based on a Joinpoint analysis using years of death 1992-2011.

\* The APC is significantly different from zero (p<.05).

Table 9.16  
Hodgkin Lymphoma

Age-Adjusted SEER Incidence Rates<sup>a</sup>  
By Registry, Race and Sex

	All Races			Whites			Blacks		
	Total	Males	Females	Total	Males	Females	Total	Males	Females
<u>SEER Incidence Rates<sup>a</sup>, 2007-2011</u>									
California	2.52	2.87	2.21	2.77	3.13	2.44	2.66	3.07	2.28
Greater Bay Area	2.59	2.87	2.38	2.97	3.24	2.77	3.47	4.02	2.98
San Francisco-Oakland	2.75	3.12	2.43	3.12	3.52	2.78	3.81	4.41	3.33
San Jose-Monterey	2.33	2.43	2.30	2.73	2.77	2.77	-	-	-
Los Angeles	2.47	2.86	2.11	2.73	3.13	2.36	2.64	3.11	2.24
Greater California	2.53	2.89	2.20	2.73	3.11	2.38	2.34	2.65	2.04
Connecticut	3.40	3.84	2.97	3.59	4.04	3.13	2.65	3.03	2.26
Detroit	3.31	3.89	2.83	3.56	4.05	3.14	2.89	3.65	2.26
Georgia	2.57	2.90	2.29	2.63	2.94	2.37	2.68	3.05	2.36
Atlanta	2.70	3.25	2.24	2.89	3.36	2.51	2.75	3.46	2.20
Rural Georgia	2.70	-	-	-	-	-	-	-	-
Greater Georgia	2.50	2.74	2.30	2.53	2.79	2.31	2.57	2.75	2.42
Hawaii	2.01	1.99	2.06	3.76	4.06	3.46	-	-	-
Iowa	3.08	3.35	2.81	3.12	3.37	2.89	-	-	-
Kentucky	2.68	2.93	2.44	2.72	2.94	2.52	2.25	2.45	2.00
Louisiana	2.98	3.34	2.66	3.02	3.36	2.71	2.78	3.17	2.46
New Jersey	3.28	3.58	3.03	3.57	3.80	3.40	2.65	3.16	2.27
New Mexico	2.18	2.43	1.97	2.29	2.49	2.14	-	-	-
Seattle-Puget Sound	3.01	3.51	2.55	3.23	3.73	2.76	3.18	3.26	3.11
Utah	2.73	3.24	2.24	2.83	3.32	2.34	-	-	-
9 SEER Areas <sup>b</sup>	2.91	3.32	2.53	3.15	3.56	2.78	2.87	3.47	2.35
11 SEER Areas <sup>b</sup>	2.76	3.15	2.42	3.02	3.40	2.67	2.80	3.37	2.29
13 SEER Areas <sup>b</sup>	2.76	3.14	2.41	3.02	3.40	2.67	2.80	3.36	2.32
18 SEER Areas <sup>b</sup>	2.74	3.10	2.43	2.95	3.30	2.64	2.68	3.10	2.31

<sup>a</sup> Rates are per 100,000 and are age-adjusted to the 2000 US Std Population (19 age groups - Census P25-1130)

<sup>b</sup> The SEER 9 areas are San Francisco, Connecticut, Detroit, Hawaii, Iowa, New Mexico, Seattle, Utah and Atlanta.

The SEER 11 areas comprise the SEER 9 areas plus San Jose-Monterey and Los Angeles.

The SEER 13 areas comprise the SEER 11 areas plus the Alaska Native Registry and Rural Georgia.

The SEER 18 areas comprise the SEER 13 areas plus California excluding SF/SJM/LA, Kentucky, Louisiana, New Jersey and Georgia excluding ATL/RG.

- Statistic not shown. Rate based on less than 16 cases for the time interval.



Table 9.17  
Hodgkin Lymphoma

Age-Adjusted SEER Death Rates<sup>a</sup>  
By Registry, Race and Sex

	All Races			Whites			Blacks		
	Total	Males	Females	Total	Males	Females	Total	Males	Females
<u>SEER Death Rates<sup>a</sup>, 2007-2011</u>									
California	0.40	0.49	0.32	0.45	0.55	0.37	0.31	0.39	0.24
Greater Bay Area	0.34	0.39	0.31	0.41	0.44	0.40	-	-	-
San Francisco-Oakland	0.32	0.38	0.27	0.39	0.42	0.37	-	-	-
San Jose-Monterey	0.37	0.41	0.36	0.44	0.47	0.46	-	-	-
Los Angeles	0.41	0.57	0.30	0.49	0.65	0.37	-	-	-
Greater California	0.41	0.49	0.34	0.44	0.54	0.35	-	-	-
Connecticut	0.40	0.44	0.36	0.40	0.41	0.38	-	-	-
Detroit	0.38	0.47	0.31	0.43	0.53	0.34	-	-	-
Georgia	0.35	0.50	0.25	0.36	0.48	0.29	0.34	0.52	-
Atlanta	0.37	0.65	-	0.44	0.72	-	0.24	-	-
Rural Georgia	-	-	-	-	-	-	-	-	-
Greater Georgia	0.34	0.44	0.27	0.34	0.41	0.31	0.35	0.54	-
Hawaii	0.21	-	-	-	-	-	-	-	-
Iowa	0.38	0.42	0.35	0.37	0.41	0.34	-	-	-
Kentucky	0.35	0.44	0.27	0.36	0.44	0.28	-	-	-
Louisiana	0.49	0.60	0.40	0.51	0.60	0.44	0.43	0.62	-
New Jersey	0.41	0.51	0.32	0.43	0.58	0.29	0.42	-	0.50
New Mexico	0.34	0.49	-	0.35	0.48	-	-	-	-
Seattle-Puget Sound	0.28	0.39	0.20	0.30	0.42	0.21	-	-	-
Utah	0.26	0.33	-	0.26	0.33	-	-	-	-
9 SEER Areas <sup>b</sup>	0.34	0.43	0.26	0.36	0.45	0.29	0.33	0.52	-
11 SEER Areas <sup>b</sup>	0.35	0.46	0.27	0.39	0.49	0.32	0.32	0.50	0.17
13 SEER Areas <sup>b</sup>	0.35	0.45	0.27	0.39	0.49	0.32	0.33	0.49	0.19
18 SEER Areas <sup>b</sup>	0.38	0.47	0.30	0.41	0.50	0.33	0.35	0.46	0.26
Total U.S.	0.38	0.48	0.31	0.40	0.50	0.32	0.35	0.44	0.27

<sup>a</sup> US Mortality Files, National Center for Health Statistics, Centers for Disease Control and Prevention. Rates are per 100,000 and are age-adjusted to the 2000 US Std Population (19 age groups - Census P25-1130).

<sup>b</sup> The SEER 9 areas are San Francisco, Connecticut, Detroit, Hawaii, Iowa, New Mexico, Seattle, Utah and Atlanta. The SEER 11 areas comprise the SEER 9 areas plus San Jose-Monterey and Los Angeles.

The SEER 13 areas comprise the SEER 11 areas plus the Alaska Native Registry and Rural Georgia.

The SEER 18 areas comprise the SEER 13 areas plus California excluding SF/SJM/LA, Kentucky, Louisiana, New Jersey and Georgia excluding ATL/RG.

- Statistic not shown. Rate based on less than 16 cases for the time interval.

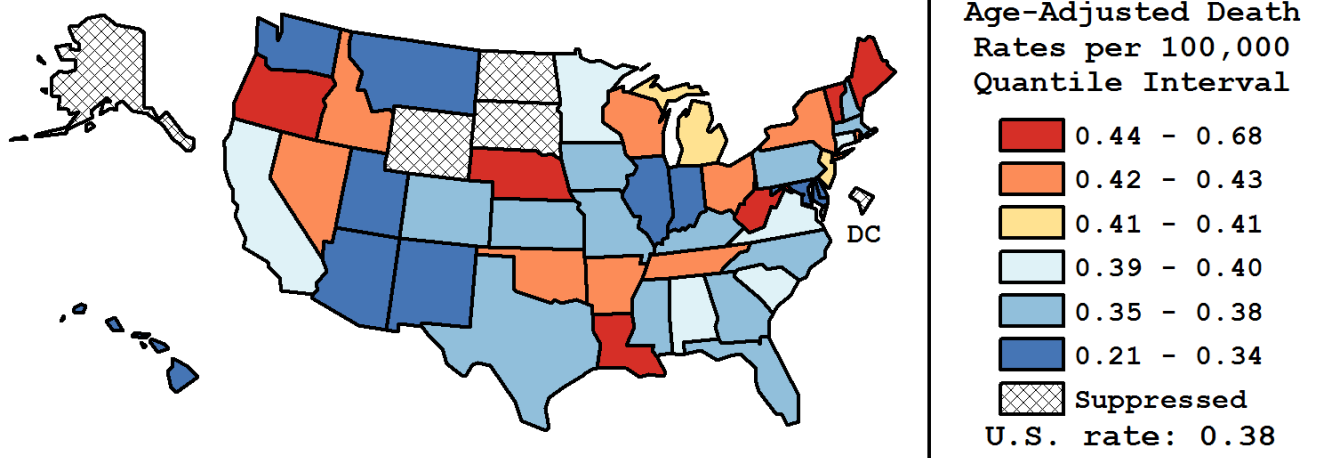
Table 9.18  
Hodgkin Lymphoma

Age-Adjusted Cancer Death<sup>a</sup> Rates By State, All Races, 2007-2011

Males and Females

State	Rate	SE	Rank	PD
TOTAL U.S.	0.38	0.00		
High Five States				
Vermont	0.68	0.15	(01)	76.83 <sup>c</sup>
Louisiana	0.49	0.05	(02)	28.45 <sup>c</sup>
Maine	0.49	0.08	(03)	26.71 <sup>c</sup>
Nebraska	0.47	0.07	(04)	22.31 <sup>c</sup>
Oregon	0.45	0.05	(05)	17.94 <sup>c</sup>
Low Five States				
Arizona	0.32	0.03	(42)	-15.99 <sup>c</sup>
Maryland	0.32	0.03	(43)	-17.02 <sup>c</sup>
Montana	0.29	0.08	(44)	-23.34 <sup>c</sup>
Utah	0.26	0.05	(45)	-32.42 <sup>c</sup>
Hawaii	0.21	0.05	(46)	-45.74 <sup>c</sup>

State	Rate	SE	Rank	PD	State	Rate	SE	Rank	PD
Alabama	0.40	0.04	(18)	4.93	Montana	0.29	0.08	(44)	-23.34 <sup>c</sup>
Alaska	-	-	(-)	-	Nebraska	0.47	0.07	(04)	22.31 <sup>c</sup>
Arizona	0.32	0.03	(42)	-15.99 <sup>c</sup>	Nevada	0.42	0.06	(12)	8.80
Arkansas	0.42	0.05	(13)	8.68	New Hampshire	0.37	0.08	(32)	-2.71
California	0.40	0.02	(20)	3.10	New Jersey	0.41	0.03	(17)	5.87
Colorado	0.35	0.04	(36)	-9.87	New Mexico	0.34	0.06	(37)	-10.61
Connecticut	0.40	0.05	(19)	3.84	New York	0.42	0.02	(10)	10.05
Delaware	0.34	0.09	(38)	-10.67	North Carolina	0.38	0.03	(30)	-1.56
D.C.	-	-	(-)	-	North Dakota	-	-	(-)	-
Florida	0.38	0.02	(25)	-0.42	Ohio	0.43	0.03	(07)	12.99
Georgia	0.35	0.03	(35)	-9.15	Oklahoma	0.42	0.05	(11)	9.13
Hawaii	0.21	0.05	(46)	-45.74 <sup>c</sup>	Oregon	0.45	0.05	(05)	17.94 <sup>c</sup>
Idaho	0.43	0.08	(09)	10.95	Pennsylvania	0.38	0.02	(24)	-0.09
Illinois	0.34	0.02	(39)	-11.51	Rhode Island	0.42	0.08	(14)	8.51
Indiana	0.34	0.03	(40)	-11.53	South Carolina	0.39	0.04	(21)	2.49
Iowa	0.38	0.05	(29)	-1.21	South Dakota	-	-	(-)	-
Kansas	0.38	0.05	(26)	-0.66	Tennessee	0.42	0.04	(15)	8.43
Kentucky	0.35	0.04	(33)	-7.60	Texas	0.38	0.02	(27)	-0.88
Louisiana	0.49	0.05	(02)	28.45 <sup>c</sup>	Utah	0.26	0.05	(45)	-32.42 <sup>c</sup>
Maine	0.49	0.08	(03)	26.71 <sup>c</sup>	Vermont	0.68	0.15	(01)	76.83 <sup>c</sup>
Maryland	0.32	0.03	(43)	-17.02 <sup>c</sup>	Virginia	0.39	0.03	(23)	0.33
Massachusetts	0.37	0.03	(31)	-2.48	Washington	0.33	0.03	(41)	-14.40
Michigan	0.41	0.03	(16)	7.47	West Virginia	0.45	0.07	(06)	17.93 <sup>c</sup>
Minnesota	0.39	0.04	(22)	1.19	Wisconsin	0.43	0.04	(08)	11.02
Mississippi	0.35	0.05	(34)	-8.93	Wyoming	-	-	(-)	-
Missouri	0.38	0.03	(28)	-0.90					



<sup>a</sup> US Mortality Files, National Center for Health Statistics, Centers for Disease Control and Prevention. Rates are per 100,000 and are age-adjusted to the 2000 US Std Population (19 age groups - Census P25-1130).  
<sup>b</sup> Difference between state rate and total U.S. rate is statistically significant (p<=.0002).  
<sup>c</sup> Absolute percent difference between state rate and total U.S. rate is 15% or more.  
SE Standard error of the rate.  
PD Percent difference between state rate and total U.S. rate.  
- Statistic not shown. Rate based on less than 16 cases for the time interval.

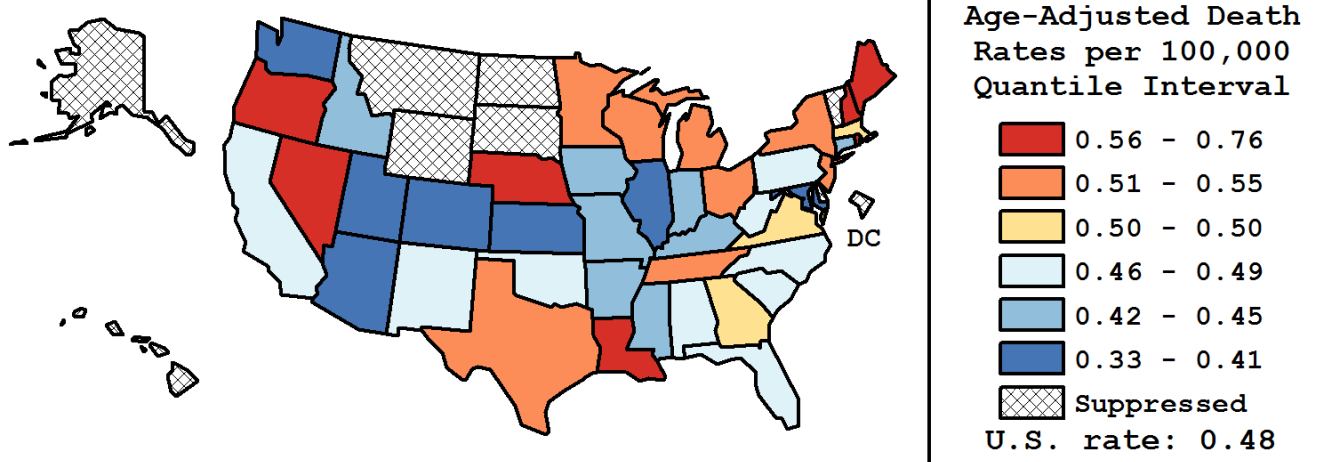
Table 9.19  
Hodgkin Lymphoma

Age-Adjusted Cancer Death<sup>a</sup> Rates By State, All Races, 2007-2011

Males

State	Rate	SE	Rank	PD
TOTAL U.S.	0.48	0.01		
High Five States				
Rhode Island	0.76	0.17	(01)	58.13 <sup>c</sup>
Nebraska	0.76	0.13	(02)	57.79 <sup>c</sup>
Maine	0.62	0.14	(03)	30.13 <sup>c</sup>
Louisiana	0.60	0.08	(04)	25.66 <sup>c</sup>
Oregon	0.59	0.08	(05)	23.37 <sup>c</sup>
Low Five States				
Illinois	0.40	0.04	(38)	-16.57 <sup>c</sup>
Kansas	0.40	0.08	(39)	-17.11 <sup>c</sup>
Maryland	0.39	0.06	(40)	-17.87 <sup>c</sup>
Arizona	0.39	0.05	(41)	-19.33 <sup>c</sup>
Utah	0.33	0.08	(42)	-30.10 <sup>c</sup>

State	Rate	SE	Rank	PD	State	Rate	SE	Rank	PD
Alabama	0.49	0.07	(21)	1.45	Montana	-	-	(-)	-
Alaska	-	-	(-)	-	Nebraska	0.76	0.13	(02)	57.79 <sup>c</sup>
Arizona	0.39	0.05	(41)	-19.33 <sup>c</sup>	Nevada	0.58	0.10	(07)	22.15 <sup>c</sup>
Arkansas	0.45	0.08	(30)	-6.80	New Hampshire	0.59	0.14	(06)	22.29 <sup>c</sup>
California	0.49	0.03	(19)	2.14	New Jersey	0.51	0.05	(10)	7.17
Colorado	0.41	0.06	(37)	-15.10 <sup>c</sup>	New Mexico	0.49	0.10	(20)	1.93
Connecticut	0.44	0.07	(32)	-8.93	New York	0.53	0.03	(09)	10.01
Delaware	-	-	(-)	-	North Carolina	0.48	0.05	(23)	-0.75
D.C.	-	-	(-)	-	North Dakota	-	-	(-)	-
Florida	0.47	0.03	(25)	-1.57	Ohio	0.55	0.05	(08)	14.69
Georgia	0.50	0.05	(17)	3.92	Oklahoma	0.48	0.08	(22)	0.14
Hawaii	-	-	(-)	-	Oregon	0.59	0.08	(05)	23.37 <sup>c</sup>
Idaho	0.43	0.11	(34)	-10.85	Pennsylvania	0.46	0.04	(26)	-4.57
Illinois	0.40	0.04	(38)	-16.57 <sup>c</sup>	Rhode Island	0.76	0.17	(01)	58.13 <sup>c</sup>
Indiana	0.45	0.06	(28)	-6.17	South Carolina	0.47	0.07	(24)	-1.48
Iowa	0.42	0.07	(35)	-12.35	South Dakota	-	-	(-)	-
Kansas	0.40	0.08	(39)	-17.11 <sup>c</sup>	Tennessee	0.51	0.06	(13)	6.14
Kentucky	0.44	0.07	(31)	-7.55	Texas	0.51	0.03	(15)	5.49
Louisiana	0.60	0.08	(04)	25.66 <sup>c</sup>	Utah	0.33	0.08	(42)	-30.10 <sup>c</sup>
Maine	0.62	0.14	(03)	30.13 <sup>c</sup>	Vermont	-	-	(-)	-
Maryland	0.39	0.06	(40)	-17.87 <sup>c</sup>	Virginia	0.50	0.05	(16)	4.68
Massachusetts	0.50	0.06	(18)	3.60	Washington	0.41	0.05	(36)	-13.96
Michigan	0.51	0.05	(12)	6.18	West Virginia	0.46	0.10	(27)	-4.73
Minnesota	0.51	0.06	(14)	6.11	Wisconsin	0.51	0.06	(11)	6.39
Mississippi	0.43	0.09	(33)	-9.29	Wyoming	-	-	(-)	-
Missouri	0.45	0.06	(29)	-6.49					



<sup>a</sup> US Mortality Files, National Center for Health Statistics, Centers for Disease Control and Prevention. Rates are per 100,000 and are age-adjusted to the 2000 US Std Population (19 age groups - Census P25-1130).  
<sup>b</sup> Difference between state rate and total U.S. rate is statistically significant (p<=.0002).  
<sup>c</sup> Absolute percent difference between state rate and total U.S. rate is 15% or more.  
SE Standard error of the rate.  
PD Percent difference between state rate and total U.S. rate.  
- Statistic not shown. Rate based on less than 16 cases for the time interval.

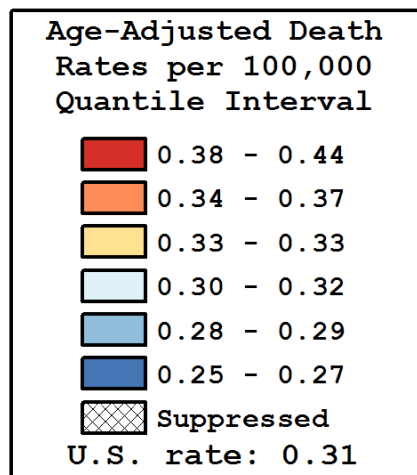
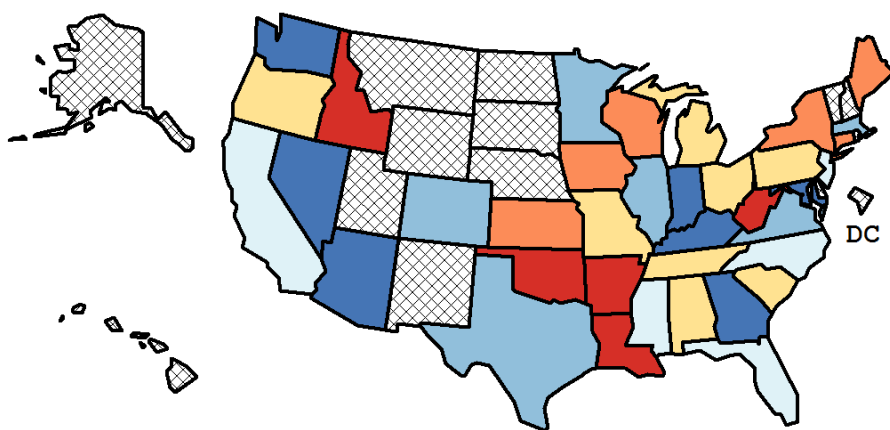
Table 9.20  
Hodgkin Lymphoma

Age-Adjusted Cancer Death<sup>a</sup> Rates By State, All Races, 2007-2011

Females

State	Rate	SE	Rank	PD
TOTAL U.S.	0.31	0.01		
High Five States				
West Virginia	0.44	0.09	(01)	44.48 <sup>c</sup>
Idaho	0.41	0.10	(02)	34.82 <sup>c</sup>
Arkansas	0.40	0.07	(03)	32.32 <sup>c</sup>
Louisiana	0.40	0.06	(04)	32.28 <sup>c</sup>
Oklahoma	0.39	0.06	(05)	27.13 <sup>c</sup>
Low Five States				
Arizona	0.27	0.04	(33)	-13.04
Indiana	0.26	0.04	(34)	-13.26
Washington	0.26	0.04	(35)	-14.03
Maryland	0.25	0.04	(36)	-17.02 <sup>c</sup>
Georgia	0.25	0.03	(37)	-19.68 <sup>c</sup>

State	Rate	SE	Rank	PD	State	Rate	SE	Rank	PD
Alabama	0.33	0.05	(16)	8.36	Montana	-	-	(-)	-
Alaska	-	-	(-)	-	Nebraska	-	-	(-)	-
Arizona	0.27	0.04	(33)	-13.04	Nevada	0.27	0.07	(31)	-9.88
Arkansas	0.40	0.07	(03)	32.32 <sup>c</sup>	New Hampshire	-	-	(-)	-
California	0.32	0.02	(20)	4.70	New Jersey	0.32	0.04	(21)	3.58
Colorado	0.28	0.05	(28)	-6.76	New Mexico	-	-	(-)	-
Connecticut	0.36	0.06	(08)	18.08 <sup>c</sup>	New York	0.34	0.02	(11)	11.17
Delaware	-	-	(-)	-	North Carolina	0.30	0.03	(24)	-1.81
D.C.	-	-	(-)	-	North Dakota	-	-	(-)	-
Florida	0.30	0.02	(23)	-1.12	Ohio	0.33	0.03	(12)	9.77
Georgia	0.25	0.03	(37)	-19.68 <sup>c</sup>	Oklahoma	0.39	0.06	(05)	27.13 <sup>c</sup>
Hawaii	-	-	(-)	-	Oregon	0.33	0.05	(13)	9.72
Idaho	0.41	0.10	(02)	34.82 <sup>c</sup>	Pennsylvania	0.33	0.03	(19)	6.62
Illinois	0.29	0.03	(25)	-3.86	Rhode Island	-	-	(-)	-
Indiana	0.26	0.04	(34)	-13.26	South Carolina	0.33	0.05	(17)	7.92
Iowa	0.35	0.06	(10)	14.09	South Dakota	-	-	(-)	-
Kansas	0.37	0.07	(06)	22.17 <sup>c</sup>	Tennessee	0.33	0.04	(15)	8.42
Kentucky	0.27	0.05	(32)	-11.49	Texas	0.28	0.02	(30)	-9.03
Louisiana	0.40	0.06	(04)	32.28 <sup>c</sup>	Utah	-	-	(-)	-
Maine	0.37	0.10	(07)	19.77 <sup>c</sup>	Vermont	-	-	(-)	-
Maryland	0.25	0.04	(36)	-17.02 <sup>c</sup>	Virginia	0.29	0.04	(26)	-4.49
Massachusetts	0.28	0.04	(29)	-8.25	Washington	0.26	0.04	(35)	-14.03
Michigan	0.33	0.03	(14)	8.70	West Virginia	0.44	0.09	(01)	44.48 <sup>c</sup>
Minnesota	0.29	0.04	(27)	-5.49	Wisconsin	0.35	0.05	(09)	16.21 <sup>c</sup>
Mississippi	0.30	0.06	(22)	-0.89	Wyoming	-	-	(-)	-
Missouri	0.33	0.04	(18)	7.81					



<sup>a</sup> US Mortality Files, National Center for Health Statistics, Centers for Disease Control and Prevention. Rates are per 100,000 and are age-adjusted to the 2000 US Std Population (19 age groups - Census P25-1130).  
<sup>b</sup> Difference between state rate and total U.S. rate is statistically significant (p<=.0002).  
<sup>c</sup> Absolute percent difference between state rate and total U.S. rate is 15% or more.  
SE Standard error of the rate.  
PD Percent difference between state rate and total U.S. rate.  
- Statistic not shown. Rate based on less than 16 cases for the time interval.

Table 9.21  
Hodgkin LymphomaEstimated United States Cancer Prevalence Counts<sup>a</sup> on January 1, 2011  
By Race/Ethnicity, Sex and Years Since Diagnosis

Years Since Diagnosis		0 to <5	5 to <10	10 to <15	15 to <20	20 to <25	25 to <30	0 to <19 <sup>e</sup>	0 to <36 <sup>e</sup>	>=36 <sup>g</sup>	Complete <sup>h</sup>
<u>Race</u>	<u>Sex</u>										
All Races <sup>b</sup>	Both Sexes	38,529	32,259	28,383	24,620	20,988	16,105	128,515	172,689	13,104	185,793
	Males	20,912	16,780	14,406	12,472	10,357	8,594	67,067	89,550	6,550	96,100
	Females	17,617	15,479	13,977	12,148	10,631	7,511	61,448	83,139	6,554	89,693
White <sup>b</sup>	Both Sexes	32,135	27,499	24,853	22,086	19,267	15,073	110,813	152,110	14,550	166,660
	Males	17,509	14,470	12,551	11,186	9,575	7,839	58,021	78,738	7,517	86,255
	Females	14,626	13,029	12,302	10,900	9,692	7,234	52,792	73,372	7,033	80,405
Black <sup>b</sup>	Both Sexes	4,833	3,583	2,799	2,133	1,343	851	13,748	15,982	1,003	16,985
	Males	2,622	1,622	1,453	1,099	587	675	6,946	8,372	707	9,079
	Females	2,211	1,961	1,346	1,034	756	176	6,802	7,610	296	7,906
Asian/ Pacific Islander <sup>c</sup>	Both Sexes	932	734	423	+	+	+	2,315	+	+	+
	Males	454	390	230	+	+	+	1,161	+	+	+
	Females	478	344	193	+	+	+	1,154	+	+	+
Hispanic <sup>d</sup>	Both Sexes	4,173	3,005	2,322	+	+	+	10,828	+	+	+
	Males	2,290	1,665	1,285	+	+	+	5,982	+	+	+
	Females	1,883	1,340	1,037	+	+	+	4,846	+	+	+

Estimated prevalence percent<sup>a</sup> on January 1, 2011, of the SEER<sup>c</sup> population diagnosed in the previous 19 years  
By Age at Prevalence, Race/Ethnicity and Sex

Age at Prevalence		Age Specific (Crude)									Age-Adjusted <sup>f</sup>	
		All Ages	0-9	10-19	20-29	30-39	40-49	50-59	60-69	70-79	80+	All Ages
<u>Race</u>	<u>Sex</u>											
All Races <sup>c</sup>	Both Sexes	0.0351%	0.0007%	0.0106%	0.0395%	0.0624%	0.0593%	0.0412%	0.0327%	0.0313%	0.0238%	0.0350%
	Males	0.0373%	0.0009%	0.0117%	0.0388%	0.0611%	0.0627%	0.0482%	0.0399%	0.0360%	0.0278%	0.0372%
	Females	0.0329%	0.0005%	0.0093%	0.0402%	0.0636%	0.0559%	0.0346%	0.0261%	0.0275%	0.0214%	0.0331%
White <sup>c</sup>	Both Sexes	0.0399%	0.0007%	0.0116%	0.0448%	0.0724%	0.0675%	0.0466%	0.0367%	0.0357%	0.0270%	0.0400%
	Males	0.0422%	0.0009%	0.0130%	0.0430%	0.0706%	0.0708%	0.0534%	0.0447%	0.0408%	0.0314%	0.0420%
	Females	0.0376%	0.0005%	0.0101%	0.0468%	0.0743%	0.0642%	0.0398%	0.0292%	0.0315%	0.0244%	0.0381%
Black <sup>c</sup>	Both Sexes	0.0311%	0.0007%	0.0097%	0.0306%	0.0596%	0.0569%	0.0404%	0.0317%	0.0256%	0.0135%	0.0321%
	Males	0.0327%	-	0.0088%	0.0327%	0.0569%	0.0608%	0.0504%	0.0358%	0.0320%	0.0159%	0.0344%
	Females	0.0297%	-	0.0107%	0.0286%	0.0619%	0.0534%	0.0317%	0.0283%	0.0212%	0.0124%	0.0302%
Asian/ Pacific Islander <sup>c</sup>	Both Sexes	0.0132%	-	0.0053%	0.0213%	0.0215%	0.0191%	0.0117%	0.0097%	0.0095%	0.0078%	0.0126%
	Males	0.0138%	-	0.0067%	0.0240%	0.0201%	0.0187%	0.0125%	0.0122%	0.0102%	0.0092%	0.0134%
	Females	0.0126%	-	0.0038%	0.0186%	0.0227%	0.0194%	0.0110%	0.0076%	0.0090%	0.0069%	0.0119%
Hispanic <sup>d</sup>	Both Sexes	0.0214%	0.0011%	0.0100%	0.0263%	0.0336%	0.0329%	0.0283%	0.0329%	0.0373%	0.0204%	0.0236%
	Males	0.0233%	0.0012%	0.0127%	0.0271%	0.0331%	0.0357%	0.0355%	0.0369%	0.0389%	0.0423%	0.0263%
	Females	0.0195%	0.0009%	0.0072%	0.0254%	0.0341%	0.0299%	0.0214%	0.0295%	0.0361%	0.0074%	0.0212%

<sup>a</sup> US 2011 cancer prevalence counts are based on 2011 cancer prevalence proportions from the SEER registries and 1/1/2011 US population estimates based on the average of 2010 and 2011 population estimates from the US Bureau of the Census. Prevalence was calculated using the First Malignant Primary Only for a person.

<sup>b c d</sup> Statistics based on (b) SEER 9 Areas (c) SEER 11 Areas and Rural Georgia (d) NHIA for Hispanic for SEER 11 Areas and Rural Georgia.

<sup>e</sup> Maximum limited-duration prevalence: 36 years for 1975-2011 SEER 9 data; 19 years for 1992-2011 SEER 11 data (used to calculate prevalence for Hispanics and Asian Pacific Islanders).

<sup>f</sup> Percentages are age-adjusted to the 2000 US Standard Population (19 age groups - Census P25-1130) by 5-year age groups.

<sup>g h i</sup> (g) Cases diagnosed more than 36 years ago were estimated using the completeness index method (Capocaccia et. al. 1997, Merrill et. al. 2000). (h) Complete prevalence is obtained by summing 0 to <36 and >=36. (i) Age-specific completeness index was approximated using empirical data from historical Connecticut tumor registry.

- Statistic not shown. Statistic based on fewer than 5 cases estimated alive in SEER for the time interval.

+ Not available.

Table 9.22

All Lymphoid Neoplasms With Detailed Hodgkin Lymphoma Subtypes<sup>a</sup>SEER<sup>b</sup> Incidence Rates and Annual Percent Change by Age at Diagnosis

All Races, Both Sexes, 2002-2011

Site	All Ages			Ages 0-19			Ages 20-64			Ages 65+		
	Rate	Count	APC	Rate	Count	APC	Rate	Count	APC	Rate	Count	APC
Lymphoid Neoplasm	35.5	291,708	-0.1	5.8	13,801	0.9	23.5	124,330	-0.5*	158.8	153,577	0.0
1 Hodgkin Lymphoma	2.8	23,039	-0.4	1.2	2,871	1.1	3.2	16,085	-0.7	4.2	4,083	-0.1
1(a) Classical Hodgkin lymphoma	2.6	21,926	-0.7	1.1	2,710	0.9	3.1	15,311	-1.0*	4.0	3,905	-0.4
1(a)1. Lymphocyte-rich/mixed cellularity/ lymphocyte-depleted	0.5	3,825	-1.4*	0.1	304	5.6*	0.5	2,438	-1.3*	1.1	1,083	-3.5*
1(a)1.1 Lymphocyte-rich	0.1	734	2.0	0.0	66	-	0.1	497	2.1	0.2	171	0.0
1(a)1.2 Mixed cellularity	0.3	2,798	-2.4*	0.1	222	4.6*	0.4	1,781	-2.1*	0.8	795	-4.8*
1(a)1.3 Lymphocyte-depleted	0.0	293	-0.5	0.0	16	-	0.0	160	-3.0	0.1	117	-
1(a)2. Nodular sclerosis	1.6	13,152	-2.1*	0.9	2,059	-0.8	1.9	9,679	-2.5*	1.5	1,414	-1.1
1(a)3. Classical Hodgkin lymphoma, NOS <sup>c</sup>	0.6	4,949	3.8*	0.1	347	6.9*	0.6	3,194	4.0*	1.5	1,408	2.8
1(b) Nodular lymphocyte predominant Hodgkin Lymphoma	0.1	1,113	5.4*	0.1	161	6.4*	0.2	774	5.3*	0.2	178	-
2 Non-Hodgkin lymphoma	31.7	259,916	0.0	4.6	10,841	0.8	19.7	105,264	-0.3*	148.8	143,811	0.2
3 Composite Hodgkin lymphoma and Non-Hodgkin lymphoma	0.0	157	5.8	-	-	-	0.0	85	-	0.1	70	-
4 Lymphoid neoplasm, NOS <sup>c</sup>	1.1	8,596	-4.3*	0.0	87	-	0.6	2,896	-5.1*	5.7	5,613	-4.1*

<sup>a</sup> The APC is the Annual Percent Change over the time interval.

Morton LM, Turner JJ, Cerhan JR, Linet MS, Treseler PA, Clarke CA, Jack A, Cozen W, Maynadié M, Spinelli JJ, Costantini AS, Rüdiger T, Scarpa A, Zheng T, Weisenburger DD. Proposed classification of lymphoid neoplasms for epidemiologic research from the Pathology Working Group of the International Lymphoma Epidemiology Consortium (InterLymph). *Blood*. 2007;110:695-708.

<sup>b</sup> SEER 18 areas (San Francisco, Connecticut, Detroit, Hawaii, Iowa, New Mexico, Seattle, Utah, Atlanta, San Jose-Monterey, Los Angeles, Alaska Native Registry, Rural Georgia, California excluding SF/SJM/LA, Kentucky, Louisiana, New Jersey and Georgia excluding ATL/RG).

<sup>c</sup> NOS = Not otherwise specified.

\* The APC is significantly different from zero (p<.05).

- Statistic not shown. Rate based on less than 16 cases for the time interval.

Trend based on less than 10 cases for at least one year within the time interval.

Table 9.23  
All Lymphoid Neoplasms With Detailed Hodgkin Lymphoma Subtypes<sup>a</sup>

SEER<sup>b</sup> Incidence Rates and Annual Percent Change by Age at Diagnosis

All Races, Males, 2002-2011

Site	All Ages			Ages 0-19			Ages 20-64			Ages 65+		
	Rate	Count	APC	Rate	Count	APC	Rate	Count	APC	Rate	Count	APC
Lymphoid Neoplasm	43.9	161,493	-0.2	6.7	8,048	0.6	28.0	72,662	-0.6*	201.9	80,783	0.1
1 Hodgkin Lymphoma	3.1	12,578	-0.3	1.3	1,539	1.3	3.5	8,879	-0.6	5.3	2,160	-0.2
1(a) Classical Hodgkin lymphoma	2.9	11,796	-0.7	1.2	1,409	0.9	3.3	8,337	-1.0	5.0	2,050	-0.5
1(a)1. Lymphocyte-rich/mixed cellularity/ lymphocyte-depleted	0.6	2,384	-1.9*	0.2	216	6.1*	0.6	1,620	-1.9*	1.3	548	-4.2*
1(a)1.1 Lymphocyte-rich	0.1	436	0.4	0.0	51	-	0.1	309	0.7	0.2	76	-
1(a)1.2 Mixed cellularity	0.4	1,771	-2.3*	0.1	156	5.9*	0.5	1,204	-2.2	1.0	411	-4.5*
1(a)1.3 Lymphocyte-depleted	0.0	177	-3.7	-	-	-	0.0	107	-	0.1	61	-
1(a)2. Nodular sclerosis	1.6	6,570	-2.0*	0.8	991	-1.2	1.9	4,826	-2.3*	1.8	753	-1.3
1(a)3. Classical Hodgkin lymphoma, NOS <sup>c</sup>	0.7	2,842	3.4*	0.2	202	6.1*	0.8	1,891	3.2*	1.9	749	3.0
1(b) Nodular lymphocyte predominant Hodgkin Lymphoma	0.2	782	5.5*	0.1	130	6.3*	0.2	542	5.6*	0.3	110	-
2 Non-Hodgkin lymphoma	39.5	144,319	0.0	5.4	6,456	0.4	23.8	61,995	-0.5*	189.5	75,868	0.2
3 Composite Hodgkin lymphoma and Non-Hodgkin lymphoma	0.0	81	-	-	-	-	0.0	48	-	0.1	32	-
4 Lymphoid neoplasm, NOS <sup>c</sup>	1.3	4,515	-4.4*	0.0	52	-	0.7	1,740	-5.8*	7.0	2,723	-3.8*

<sup>a</sup> The APC is the Annual Percent Change over the time interval.

<sup>a</sup> Morton LM, Turner JJ, Cerhan JR, Linet MS, Treseler PA, Clarke CA, Jack A, Cozen W, Maynadié M, Spinelli JJ, Costantini AS, Rüdiger T, Scarpa A, Zheng T, Weisenburger DD. Proposed classification of lymphoid neoplasms for epidemiologic research from the Pathology Working Group of the International Lymphoma Epidemiology Consortium (InterLymph). *Blood*. 2007;110:695-708.

<sup>b</sup> SEER 18 areas (San Francisco, Connecticut, Detroit, Hawaii, Iowa, New Mexico, Seattle, Utah, Atlanta, San Jose-Monterey, Los Angeles, Alaska Native Registry, Rural Georgia, California excluding SF/SJM/LA, Kentucky, Louisiana, New Jersey and Georgia excluding ATL/RG).

<sup>c</sup> NOS = Not otherwise specified.

\* The APC is significantly different from zero (p<.05).

- Statistic not shown. Rate based on less than 16 cases for the time interval.

Trend based on less than 10 cases for at least one year within the time interval.

Table 9.24  
All Lymphoid Neoplasms With Detailed Hodgkin Lymphoma Subtypes<sup>a</sup>

SEER<sup>b</sup> Incidence Rates and Annual Percent Change by Age at Diagnosis

All Races, Females, 2002-2011

Site	All Ages			Ages 0-19			Ages 20-64			Ages 65+		
	Rate	Count	APC	Rate	Count	APC	Rate	Count	APC	Rate	Count	APC
Lymphoid Neoplasm	29.0	130,215	-0.2	5.0	5,753	1.4*	19.2	51,668	-0.3	128.7	72,794	-0.3
1 Hodgkin Lymphoma	2.5	10,461	-0.5	1.1	1,332	0.8	2.9	7,206	-0.9	3.5	1,923	-0.1
1(a) Classical Hodgkin lymphoma	2.4	10,130	-0.7	1.1	1,301	0.6	2.8	6,974	-1.1*	3.3	1,855	-0.4
1(a)1. Lymphocyte-rich/mixed cellularity/ lymphocyte-depleted	0.3	1,441	-0.6	0.1	88	-	0.3	818	0.0	1.0	535	-2.6
1(a)1.1 Lymphocyte-rich	0.1	298	4.2	-	-	-	0.1	188	4.9*	0.2	95	-
1(a)1.2 Mixed cellularity	0.2	1,027	-2.6*	0.1	66	-	0.2	577	-1.7	0.7	384	-5.1
1(a)1.3 Lymphocyte-depleted	0.0	116	-	-	-	-	0.0	53	-	0.1	56	-
1(a)2. Nodular sclerosis	1.6	6,582	-2.2*	0.9	1,068	-0.6	2.0	4,853	-2.8*	1.2	661	-0.9
1(a)3. Classical Hodgkin lymphoma, NOS <sup>c</sup>	0.5	2,107	4.3*	0.1	145	-	0.5	1,303	5.1*	1.2	659	2.1
1(b) Nodular lymphocyte predominant Hodgkin Lymphoma	0.1	331	4.9*	0.0	31	-	0.1	232	4.6	0.1	68	-
2 Non-Hodgkin lymphoma	25.6	115,597	0.0	3.8	4,385	1.4*	15.9	43,269	-0.1	120.3	67,943	-0.1
3 Composite Hodgkin lymphoma and Non-Hodgkin lymphoma	0.0	76	-	-	-	-	0.0	37	-	0.1	38	-
4 Lymphoid neoplasm, NOS <sup>c</sup>	0.9	4,081	-4.2*	0.0	35	-	0.4	1,156	-4.0*	4.9	2,890	-4.5*

<sup>a</sup> The APC is the Annual Percent Change over the time interval.

Morton LM, Turner JJ, Cerhan JR, Linet MS, Treseler PA, Clarke CA, Jack A, Cozen W, Maynadié M, Spinelli JJ, Costantini AS, Rüdiger T, Scarpa A, Zheng T, Weisenburger DD. Proposed classification of lymphoid neoplasms for epidemiologic research from the Pathology Working Group of the International Lymphoma Epidemiology Consortium (InterLymph). *Blood*. 2007;110:695-708.

<sup>b</sup> SEER 18 areas (San Francisco, Connecticut, Detroit, Hawaii, Iowa, New Mexico, Seattle, Utah, Atlanta, San Jose-Monterey, Los Angeles, Alaska Native Registry, Rural Georgia, California excluding SF/SJM/LA, Kentucky, Louisiana, New Jersey and Georgia excluding ATL/RG).

<sup>c</sup> NOS = Not otherwise specified.

\* The APC is significantly different from zero (p<.05).

- Statistic not shown. Rate based on less than 16 cases for the time interval.

Trend based on less than 10 cases for at least one year within the time interval.



Table 9.25  
All Lymphoid Neoplasms With Detailed Hodgkin Lymphoma Subtypes<sup>a</sup>

SEER<sup>b</sup> 5-Year Relative Survival (Percent) by Age at Diagnosis

All Races, Both Sexes, 2004-2010

Site	All Ages		Ages 0-19		Ages 20-64		Ages 65+	
	Count	Percent ( 95% C.I. )	Percent ( 95% C.I. )	Percent ( 95% C.I. )	Percent ( 95% C.I. )	Percent ( 95% C.I. )	Percent ( 95% C.I. )	
Lymphoid Neoplasm	169,687	68.1 ( 67.8 , 68.4 )	89.0 ( 88.3 , 89.7 )	75.8 ( 75.4 , 76.1 )	57.4 ( 56.9 , 57.9 )			
1 Hodgkin Lymphoma	14,949	85.3 ( 84.6 , 86.0 )	96.4 ( 95.3 , 97.3 )	89.4 ( 88.7 , 90.1 )	52.8 ( 49.9 , 55.6 )			
1(a) Classical Hodgkin lymphoma	14,242	84.8 ( 84.1 , 85.5 )	96.2 ( 95.0 , 97.1 )	89.0 ( 88.3 , 89.7 )	51.6 ( 48.5 , 54.6 )			
1(a)1. Lymphocyte-rich/mixed cellularity/ lymphocyte-depleted	2,369	79.7 ( 77.6 , 81.6 )	96.4 ( 92.4 , 98.3 )	86.0 ( 83.9 , 87.9 )	54.9 ( 49.1 , 60.3 )			
1(a)1.1 Lymphocyte-rich	482	87.1 ( 82.2 , 90.7 )	100.0 ( - , - )	91.2 ( 86.6 , 94.2 )	66.6 ( 50.7 , 78.4 )			
1(a)1.2 Mixed cellularity	1,697	80.0 ( 77.5 , 82.2 )	94.9 ( 89.3 , 97.6 )	86.0 ( 83.4 , 88.1 )	56.5 ( 49.6 , 62.7 )			
1(a)1.3 Lymphocyte-depleted	190	56.6 ( 47.8 , 64.4 )	- ( - , - )	70.2 ( 59.5 , 78.6 )	26.0 ( 13.1 , 40.9 )			
1(a)2. Nodular sclerosis	8,816	89.4 ( 88.6 , 90.2 )	96.1 ( 94.7 , 97.1 )	91.7 ( 90.8 , 92.5 )	55.6 ( 50.4 , 60.4 )			
1(a)3. Classical Hodgkin lymphoma, NOS <sup>c</sup>	3,057	75.2 ( 73.3 , 77.0 )	96.6 ( 92.4 , 98.5 )	82.7 ( 80.7 , 84.5 )	43.9 ( 39.2 , 48.5 )			
1(b) Nodular lymphocyte predominant Hodgkin Lymphoma	707	95.3 ( 92.4 , 97.2 )	100.0 ( - , - )	96.4 ( 93.4 , 98.0 )	78.8 ( 59.2 , 89.8 )			
2 Non-Hodgkin lymphoma	150,164	66.9 ( 66.6 , 67.3 )	87.0 ( 86.1 , 87.8 )	74.0 ( 73.5 , 74.4 )	58.1 ( 57.6 , 58.7 )			
3 Composite Hodgkin lymphoma and Non-Hodgkin lymphoma	83	60.1 ( 45.8 , 71.7 )	- ( - , - )	63.5 ( 46.1 , 76.6 )	53.4 ( 29.0 , 72.7 )			
4 Lymphoid neoplasm, NOS <sup>c</sup>	4,491	48.8 ( 46.9 , 50.7 )	84.5 ( 72.3 , 91.6 )	61.4 ( 58.6 , 64.0 )	39.8 ( 37.2 , 42.4 )			

<sup>a</sup> Morton LM, Turner JJ, Cerhan JR, Linet MS, Treseler PA, Clarke CA, Jack A, Cozen W, Maynadié M, Spinelli JJ, Costantini AS, Rüdiger T, Scarpa A, Zheng T, Weisenburger DD. Proposed classification of lymphoid neoplasms for epidemiologic research from the Pathology Working Group of the International Lymphoma Epidemiology Consortium (InterLymph). *Blood*. 2007;110:695-708.

<sup>b</sup> SEER 18 areas (San Francisco, Connecticut, Detroit, Hawaii, Iowa, New Mexico, Seattle, Utah, Atlanta, San Jose-Monterey, Los Angeles, Alaska Native Registry, Rural Georgia, California excluding SF/SJM/LA, Kentucky, Louisiana, New Jersey and Georgia excluding ATL/RG).

<sup>c</sup> NOS = Not otherwise specified.

- Statistic not displayed due to less than 25 cases.

Table 9.26  
All Lymphoid Neoplasms With Detailed Hodgkin Lymphoma Subtypes<sup>a</sup>

SEER<sup>b</sup> 5-Year Relative Survival (Percent) by Age at Diagnosis

All Races, Males, 2004-2010

Site	All Ages		Ages 0-19	Ages 20-64	Ages 65+
	Count	Percent ( 95% C.I. )	Percent ( 95% C.I. )	Percent ( 95% C.I. )	Percent ( 95% C.I. )
Lymphoid Neoplasm	93,448	67.7 ( 67.3 , 68.1 )	88.3 ( 87.3 , 89.2 )	73.8 ( 73.3 , 74.3 )	57.1 ( 56.3 , 57.9 )
1 Hodgkin Lymphoma	8,123	84.4 ( 83.4 , 85.3 )	96.8 ( 95.3 , 97.8 )	87.7 ( 86.6 , 88.6 )	52.6 ( 48.2 , 56.8 )
1(a) Classical Hodgkin lymphoma	7,632	83.7 ( 82.6 , 84.7 )	96.5 ( 94.9 , 97.6 )	87.1 ( 86.0 , 88.1 )	51.2 ( 46.6 , 55.5 )
1(a)1. Lymphocyte-rich/mixed cellularity/ lymphocyte-depleted	1,472	81.3 ( 78.6 , 83.6 )	97.1 ( 92.0 , 98.9 )	85.9 ( 83.2 , 88.2 )	52.7 ( 43.7 , 60.9 )
1(a)1.1 Lymphocyte-rich	296	87.8 ( 81.6 , 92.1 )	100.0 ( - , - )	91.3 ( 85.5 , 94.9 )	60.0 ( 36.3 , 77.3 )
1(a)1.2 Mixed cellularity	1,064	81.7 ( 78.7 , 84.4 )	95.7 ( 88.5 , 98.4 )	85.9 ( 82.6 , 88.5 )	56.3 ( 45.7 , 65.6 )
1(a)1.3 Lymphocyte-depleted	112	56.4 ( 44.8 , 66.4 )	- ( - , - )	67.1 ( 53.4 , 77.6 )	20.1 ( 4.2 , 44.5 )
1(a)2. Nodular sclerosis	4,414	88.3 ( 87.0 , 89.4 )	96.4 ( 94.4 , 97.7 )	90.0 ( 88.7 , 91.2 )	55.5 ( 47.7 , 62.6 )
1(a)3. Classical Hodgkin lymphoma, NOS <sup>c</sup>	1,746	73.8 ( 71.2 , 76.2 )	96.1 ( 89.0 , 98.7 )	79.9 ( 77.0 , 82.4 )	44.3 ( 37.5 , 50.9 )
1(b) Nodular lymphocyte predominant Hodgkin Lymphoma	491	95.3 ( 91.9 , 97.3 )	100.0 ( - , - )	96.4 ( 92.7 , 98.2 )	77.6 ( 53.3 , 90.3 )
2 Non-Hodgkin lymphoma	82,956	66.5 ( 66.1 , 67.0 )	86.3 ( 85.1 , 87.4 )	72.1 ( 71.6 , 72.7 )	57.8 ( 57.0 , 58.5 )
3 Composite Hodgkin lymphoma and Non-Hodgkin lymphoma	45	69.6 ( 49.6 , 82.9 )	- ( - , - )	65.6 ( 44.7 , 80.2 )	- ( - , - )
4 Lymphoid neoplasm, NOS <sup>c</sup>	2,324	49.4 ( 46.7 , 52.0 )	82.9 ( 65.8 , 91.9 )	59.0 ( 55.4 , 62.3 )	39.7 ( 35.8 , 43.5 )

<sup>a</sup> Morton LM, Turner JJ, Cerhan JR, Linet MS, Treseler PA, Clarke CA, Jack A, Cozen W, Maynadié M, Spinelli JJ, Costantini AS, Rüdiger T, Scarpa A, Zheng T, Weisenburger DD. Proposed classification of lymphoid neoplasms for epidemiologic research from the Pathology Working Group of the International Lymphoma Epidemiology Consortium (InterLymph). *Blood*. 2007;110:695-708.

<sup>b</sup> SEER 18 areas (San Francisco, Connecticut, Detroit, Hawaii, Iowa, New Mexico, Seattle, Utah, Atlanta, San Jose-Monterey, Los Angeles, Alaska Native Registry, Rural Georgia, California excluding SF/SJM/LA, Kentucky, Louisiana, New Jersey and Georgia excluding ATL/RG).

<sup>c</sup> NOS = Not otherwise specified.

- Statistic not displayed due to less than 25 cases.

Table 9.27  
All Lymphoid Neoplasms With Detailed Hodgkin Lymphoma Subtypes<sup>a</sup>

SEER<sup>b</sup> 5-Year Relative Survival (Percent) by Age at Diagnosis

All Races, Females, 2004-2010

Site	All Ages		Ages 0-19		Ages 20-64		Ages 65+	
	Count	Percent ( 95% C.I. )	Percent ( 95% C.I. )	Percent ( 95% C.I. )	Percent ( 95% C.I. )	Percent ( 95% C.I. )	Percent ( 95% C.I. )	
Lymphoid Neoplasm	76,239	68.6 ( 68.2 , 69.1 )	90.0 ( 88.9 , 91.0 )	78.6 ( 78.1 , 79.1 )	57.7 ( 56.9 , 58.4 )			
1 Hodgkin Lymphoma	6,826	86.4 ( 85.4 , 87.3 )	96.0 ( 94.2 , 97.2 )	91.5 ( 90.5 , 92.4 )	52.7 ( 48.6 , 56.6 )			
1(a) Classical Hodgkin lymphoma	6,610	86.1 ( 85.1 , 87.1 )	95.9 ( 94.0 , 97.1 )	91.3 ( 90.3 , 92.2 )	51.6 ( 47.5 , 55.5 )			
1(a)1. Lymphocyte-rich/mixed cellularity/ lymphocyte-depleted	897	77.0 ( 73.4 , 80.2 )	94.9 ( 84.7 , 98.4 )	86.3 ( 82.6 , 89.3 )	55.6 ( 47.8 , 62.8 )			
1(a)1.1 Lymphocyte-rich	186	85.2 ( 76.4 , 90.9 )	- ( - , - )	90.2 ( 80.8 , 95.2 )	70.1 ( 49.6 , 83.5 )			
1(a)1.2 Mixed cellularity	633	76.8 ( 72.5 , 80.5 )	93.2 ( 80.0 , 97.8 )	85.7 ( 81.3 , 89.2 )	56.2 ( 46.9 , 64.5 )			
1(a)1.3 Lymphocyte-depleted	78	56.7 ( 42.8 , 68.4 )	- ( - , - )	75.1 ( 55.8 , 86.8 )	27.1 ( 10.8 , 46.4 )			
1(a)2. Nodular sclerosis	4,402	90.5 ( 89.4 , 91.5 )	95.8 ( 93.7 , 97.2 )	93.3 ( 92.2 , 94.3 )	54.9 ( 48.5 , 60.9 )			
1(a)3. Classical Hodgkin lymphoma, NOS <sup>c</sup>	1,311	76.9 ( 74.1 , 79.5 )	97.2 ( 91.4 , 99.1 )	86.7 ( 83.8 , 89.1 )	42.9 ( 35.8 , 49.8 )			
1(b) Nodular lymphocyte predominant Hodgkin Lymphoma	216	95.2 ( 88.4 , 98.1 )	100.0 ( - , - )	96.2 ( 89.7 , 98.6 )	78.1 ( 29.0 , 95.2 )			
2 Non-Hodgkin lymphoma	67,208	67.4 ( 66.9 , 67.9 )	88.1 ( 86.7 , 89.3 )	76.6 ( 76.0 , 77.2 )	58.5 ( 57.7 , 59.2 )			
3 Composite Hodgkin lymphoma and Non-Hodgkin lymphoma	38	46.4 ( 25.6 , 64.8 )	- ( - , - )	- ( - , - )	- ( - , - )			
4 Lymphoid neoplasm, NOS <sup>c</sup>	2,167	48.3 ( 45.5 , 51.0 )	86.8 ( 64.3 , 95.6 )	65.1 ( 60.8 , 69.2 )	39.7 ( 36.3 , 43.1 )			

<sup>a</sup> Morton LM, Turner JJ, Cerhan JR, Linet MS, Treseler PA, Clarke CA, Jack A, Cozen W, Maynadié M, Spinelli JJ, Costantini AS, Rüdiger T, Scarpa A, Zheng T, Weisenburger DD. Proposed classification of lymphoid neoplasms for epidemiologic research from the Pathology Working Group of the International Lymphoma Epidemiology Consortium (InterLymph). *Blood*. 2007;110:695-708.

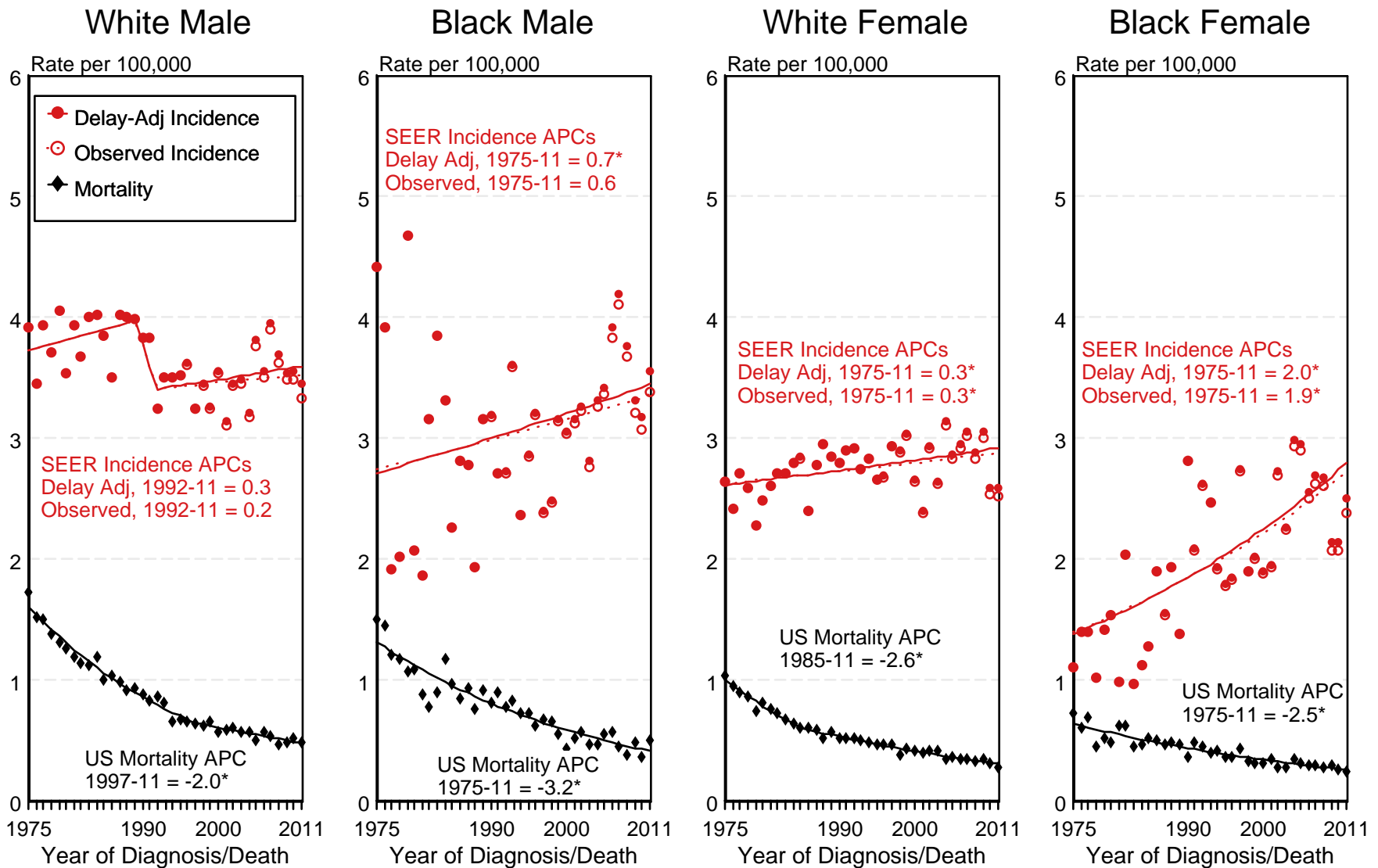
<sup>b</sup> SEER 18 areas (San Francisco, Connecticut, Detroit, Hawaii, Iowa, New Mexico, Seattle, Utah, Atlanta, San Jose-Monterey, Los Angeles, Alaska Native Registry, Rural Georgia, California excluding SF/SJM/LA, Kentucky, Louisiana, New Jersey and Georgia excluding ATL/RG).

<sup>c</sup> NOS = Not otherwise specified.

- Statistic not displayed due to less than 25 cases.

Figure 9.1

# SEER Observed Incidence, SEER Delay Adjusted Incidence and US Death Rates<sup>a</sup> Hodgkin Lymphoma, by Race and Sex



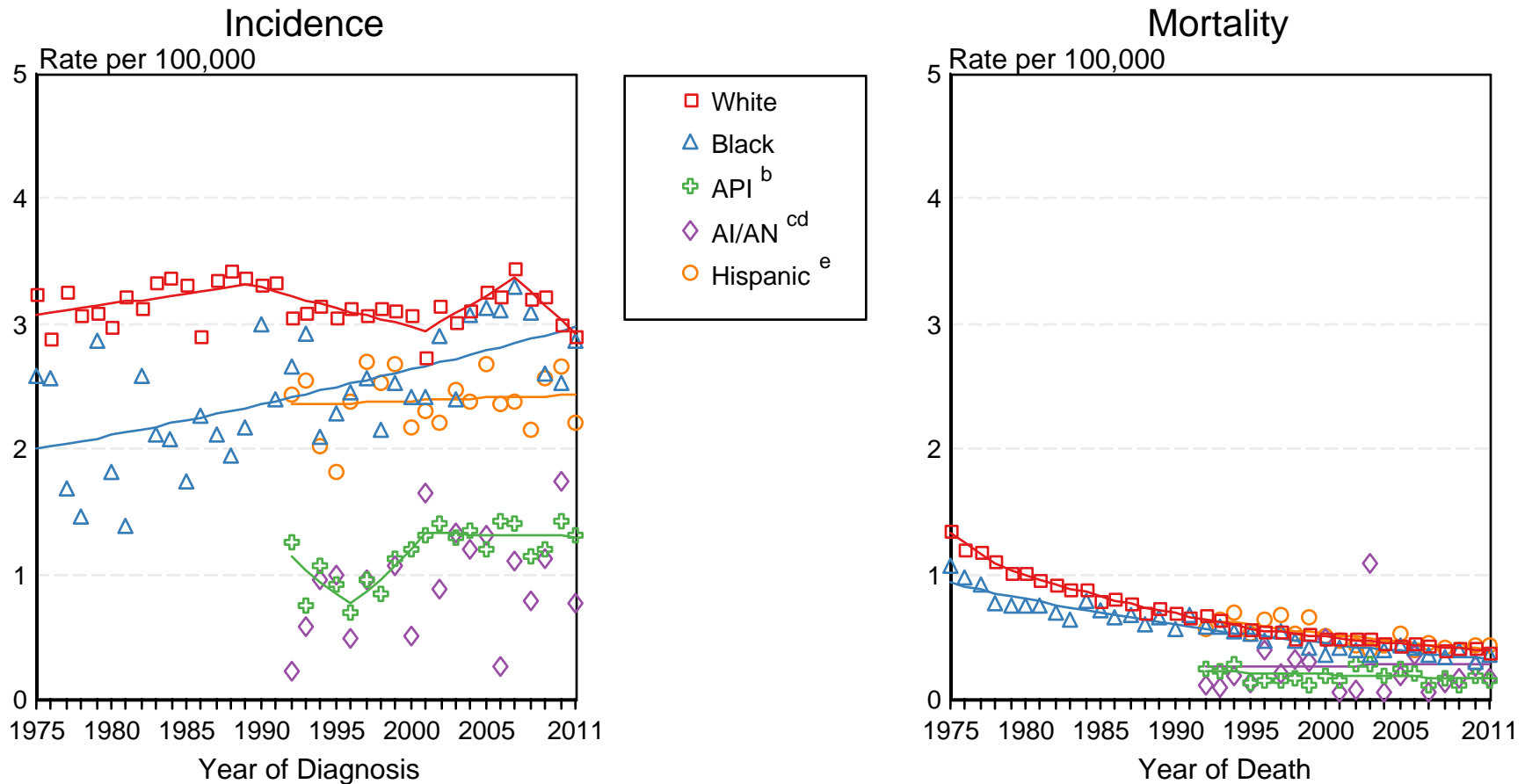
<sup>a</sup> Source: SEER 9 areas and US Mortality Files (National Center for Health Statistics, CDC). Rates are age-adjusted to the 2000 US Std Population (19 age groups - Census P25-1103). Regression lines and APCs are calculated using the Joinpoint Regression Program Version 4.1.0, April 2014, National Cancer Institute. The APC is the Annual Percent Change for the regression line segments. The APC shown on the graph is for the most recent trend.  
\* The APC is significantly different from zero ( $p < 0.05$ ).

Figure 9.2

# SEER Incidence and US Death Rates<sup>a</sup> Hodgkin Lymphoma, Both Sexes

Joinpoint Analyses for Whites and Blacks from 1975-2011

and for Asian/Pacific Islanders, American Indians/Alaska Natives and Hispanics from 1992-2011



Source: Incidence data for whites and blacks are from the SEER 9 areas (San Francisco, Connecticut, Detroit, Hawaii, Iowa, New Mexico, Seattle, Utah, Atlanta).

Incidence data for Asian/Pacific Islanders, American Indians/Alaska Natives and Hispanics are from the SEER 13 Areas (SEER 9 Areas, San Jose-Monterey, Los Angeles, Alaska Native Registry and Rural Georgia). Mortality data are from US Mortality Files, National Center for Health Statistics, CDC.

Rates are age-adjusted to the 2000 US Std Population (19 age groups - Census P25-1103).

Regression lines are calculated using the Joinpoint Regression Program Version 4.1.0, April 2014, National Cancer Institute. Joinpoint analyses for Whites and Blacks during the 1975-2011 period allow a maximum of 5 joinpoints. Analyses for other ethnic groups during the period 1992-2011 allow a maximum of 3 joinpoints.

<sup>c</sup> API = Asian/Pacific Islander.

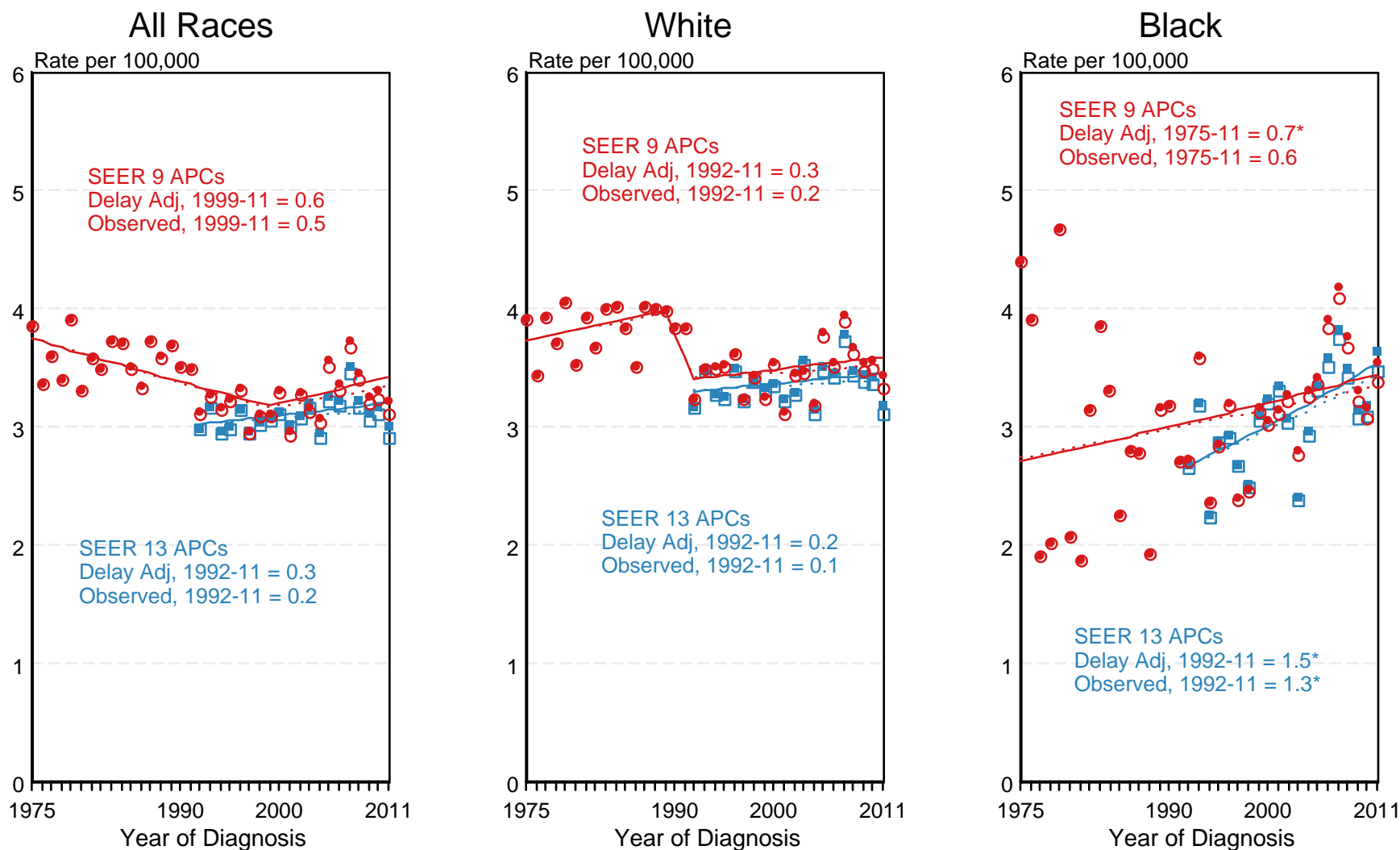
<sup>d</sup> AI/AN = American Indian/Alaska Native. Rates for American Indian/Alaska Native are based on the CHSDA(Contract Health Service Delivery Area) counties.

<sup>e</sup> Joinpoint could not fit a regression line for American Indian/Alaska Native Incidence due to insufficient data.

Hispanic is not mutually exclusive from whites, blacks, Asian/Pacific Islanders, and American Indians/Alaska Natives. Incidence data for Hispanics are based on NHIA and exclude cases from the Alaska Native Registry. Mortality data for Hispanics exclude cases from New Hampshire and Oklahoma.

Figure 9.3

# SEER Observed Incidence and SEER Delay Adjusted Incidence Rates<sup>a</sup> SEER 9 Areas Compared to SEER 13 Areas Hodgkin Lymphoma, Male, by Race

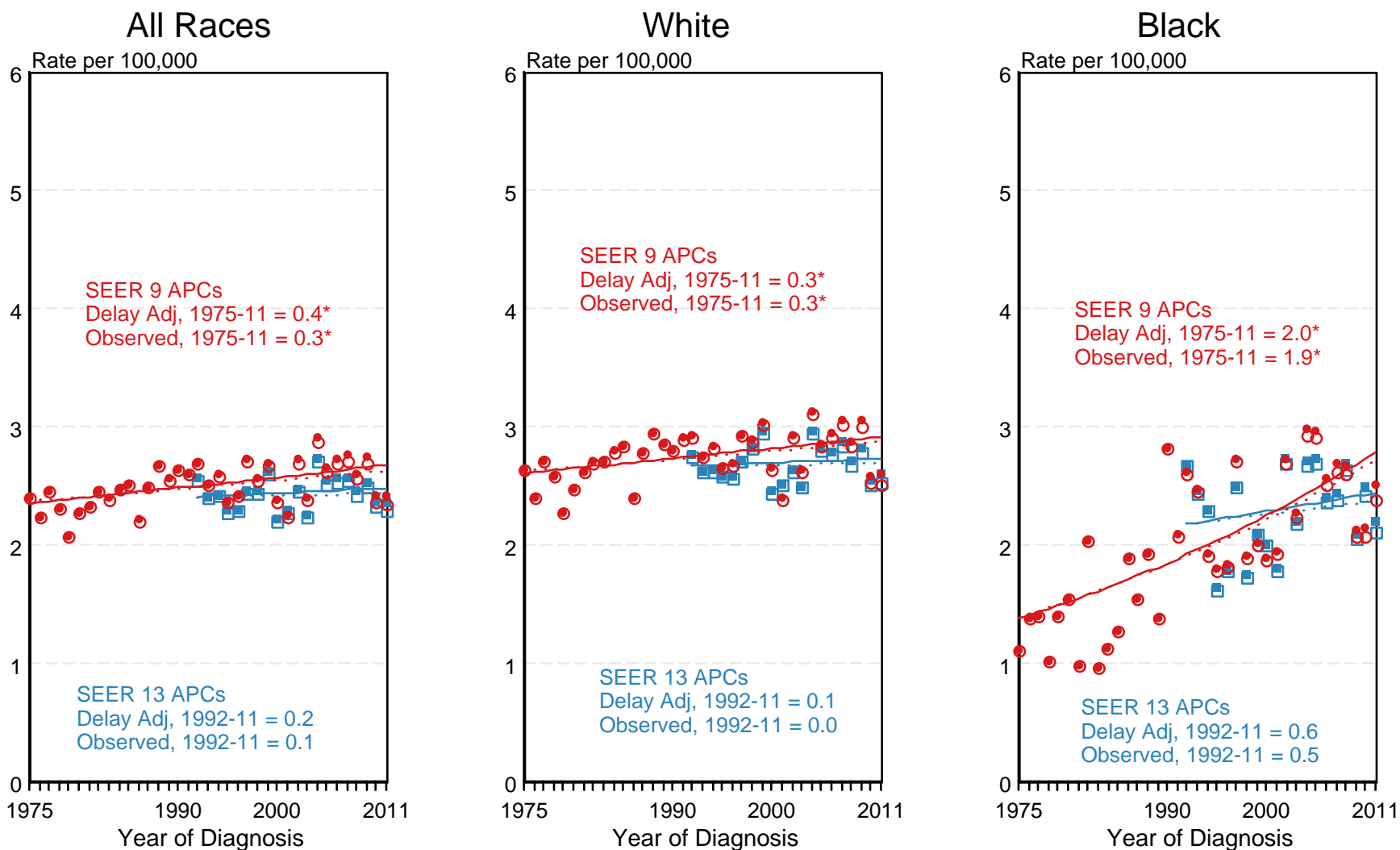


● SEER 9 Delay-Adj. Incidence   
 ○ SEER 9 Observed Incidence   
 ■ SEER 13 Delay-Adj. Incidence   
 □ SEER 13 Observed Incidence

<sup>a</sup> Source: SEER 9 areas and SEER 13 areas. Rates are age-adjusted to the 2000 US Std Population (19 age groups - Census P25-1103). Regression lines and APCs are calculated using the Joinpoint Regression Program Version 4.1.0, April 2014, National Cancer Institute. The APC is the Annual Percent Change for the regression line segments. The APC shown on the graph is for the most recent trend. \* The APC is significantly different from zero (p < 0.05).

Figure 9.4

# SEER Observed Incidence and SEER Delay Adjusted Incidence Rates<sup>a</sup> SEER 9 Areas Compared to SEER 13 Areas Hodgkin Lymphoma, Female, by Race



● SEER 9 Delay-Adj. Incidence    
 ○ SEER 9 Observed Incidence    
 ■ SEER 13 Delay-Adj. Incidence    
 □ SEER 13 Observed Incidence

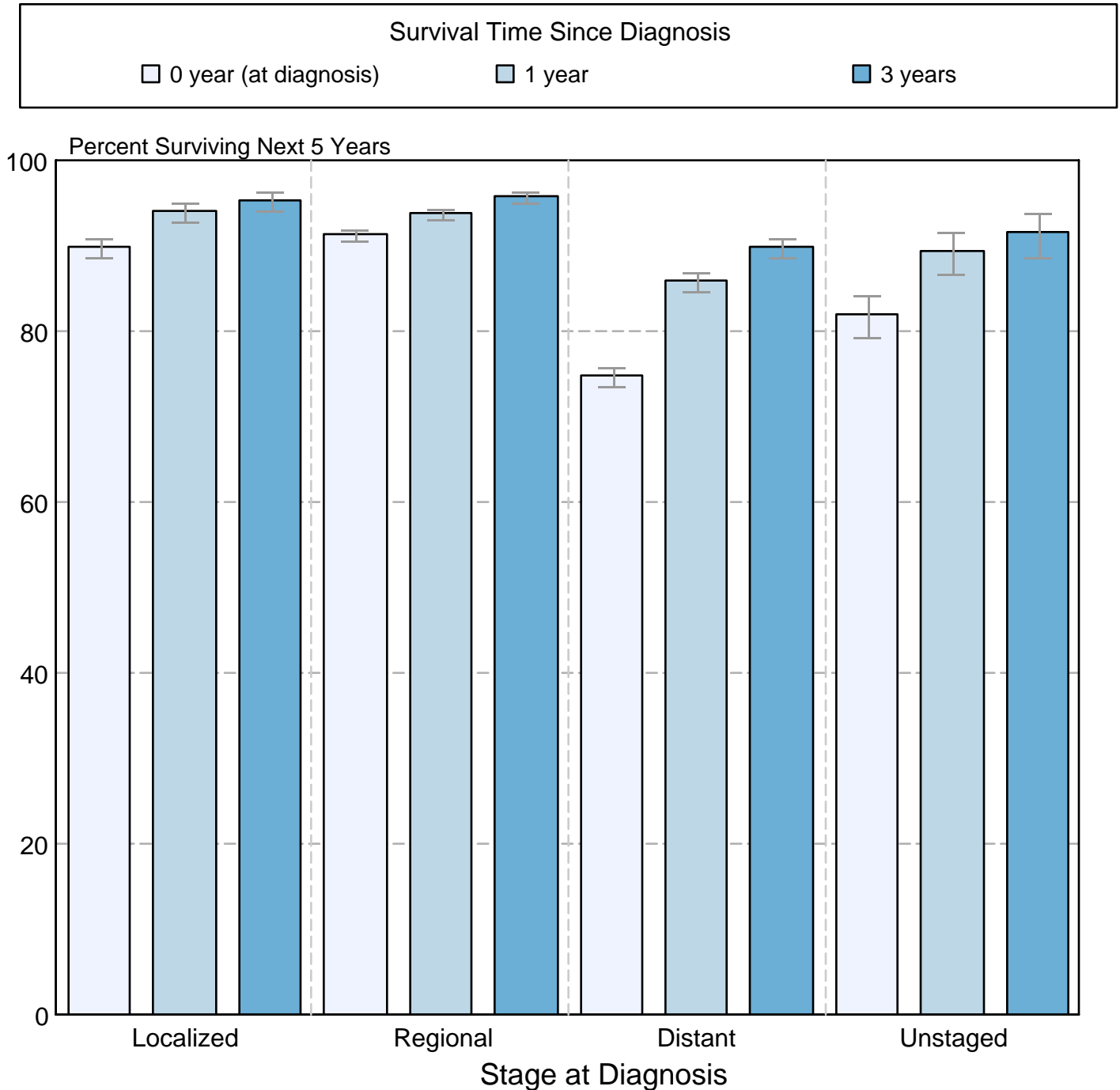
<sup>a</sup> Source: SEER 9 areas and SEER 13 areas.  
 Rates are age-adjusted to the 2000 US Std Population (19 age groups - Census P25-1103).  
 Regression lines and APCs are calculated using the Joinpoint Regression Program Version 4.1.0, April 2014, National Cancer Institute.  
 The APC is the Annual Percent Change for the regression line segments. The APC shown on the graph is for the most recent trend.  
 \* The APC is significantly different from zero ( $p < 0.05$ ).

Figure 9.5

## Hodgkin Lymphoma

### 5-Year SEER Conditional Relative Survival and 95% Confidence Intervals

Probability of surviving the next 5 years given the cohort  
has already survived 0, 1, or 3 years  
1998-2010 by stage at diagnosis



Source: SEER 18 areas (San Francisco, Connecticut, Detroit, Hawaii, Iowa, New Mexico, Seattle, Utah, Atlanta, San Jose-Monterey, Los Angeles, Alaska Native Registry, Rural Georgia, California excluding SF/SJM/LA, Kentucky, Louisiana, New Jersey and Georgia excluding ATL/RG). California excluding SF/SJM/LA, Kentucky, Louisiana, New Jersey and Georgia excluding ATL/RG contribute cases for diagnosis years 2000-2009. The remaining 13 SEER Areas contribute cases for the entire period 1998-2010. Percent surviving is not shown if based on less than 25 cases. Confidence intervals are not shown if length of the confidence interval is greater than 5 times the standard error.