

Table 25.1
Cancer of the Testis (Invasive)

Trends in SEER Incidence^{ab} and U.S. Mortality^c Using the Joinpoint Regression Program,
1975-2011 With up to Five Joinpoints, 1992-2011 With up to Three Joinpoints,
All Ages by Race/Ethnicity

	JP Trend 1		JP Trend 2		JP Trend 3		JP Trend 4		JP Trend 5		JP Trend 6		AAPC ^d	
	Years	APC	Years	APC	Years	APC	Years	APC	Years	APC	Years	APC	2002-11	2007-11
<u>SEER 9 Delay-Adjusted Incidence^a, 1975-2011</u>														
All Races	1975-87	2.5*	1987-11	0.9*									0.9*	0.9*
White	1975-89	2.6*	1989-11	1.1*									1.1*	1.1*
Black	1975-11	2.2*											2.2*	2.2*
<u>SEER 13 Delay-Adjusted Incidence^b, 1992-2011</u>														
All Races	1992-11	1.1*											1.1*	1.1*
White	1992-11	1.4*											1.4*	1.4*
Black	1992-94	50.3	1994-11	0.8									0.8	0.8
<u>SEER 9 Observed Incidence^a, 1975-2011</u>														
All Races	1975-89	2.3*	1989-11	0.8*									0.8*	0.8*
White	1975-89	2.6*	1989-11	1.0*									1.0*	1.0*
Black	1975-11	2.1*											2.1*	2.1*
<u>SEER 13 Observed Incidence^b, 1992-2011</u>														
All Races	1992-11	1.1*											1.1*	1.1*
White	1992-08	1.5*	2008-11	-2.0									0.3	-1.2
White NH ^{ef}	1992-05	1.8*	2005-11	-0.7									0.1	-0.7
Black	1992-94	50.6	1994-11	0.7									0.7	0.7
Black NH ^{ef}	1992-11	1.9*											1.9*	1.9*
API ^e	1992-11	1.0*											1.0*	1.0*
AI/AN ^{eg}	1992-11	3.1											3.1	3.1
Hispanic ^f	1992-02	1.0	2002-09	5.4*	2009-11	-7.5							2.4	-1.2
<u>U.S. Cancer Mortality^c, 1975-2011</u>														
All Races	1975-81	-10.5*	1981-95	-3.1*	1995-11	-0.2							-0.2	-0.2
White	1975-81	-10.8*	1981-95	-3.0*	1995-11	0.0							0.0	0.0
Black	1975-11	-2.0*											-2.0*	-2.0*
<u>U.S. Cancer Mortality^c, 1992-2011</u>														
All Races	1992-11	-0.5*											-0.5*	-0.5*
White	1992-11	-0.4											-0.4	-0.4
White NH ^{ef}	1992-11	-0.7*											-0.7*	-0.7*
Black	1992-11	-0.8											-0.8	-0.8
Black NH ^{ef}	1992-11	-0.8											-0.8	-0.8
API ^e	1992-11	0.9											0.9	0.9
AI/AN ^{eg}	-	-											-	-
Hispanic ^f	1992-11	1.3											1.3	1.3

Joinpoint Regression Program Version 4.1.0, April 2014, National Cancer Institute. (<http://surveillance.cancer.gov/joinpoint/>).

The APC is the Annual Percent Change based on rates age-adjusted to the 2000 US Std Population (19 age groups - Census P25-1130).

Trends are from the SEER 9 areas (San Francisco, Connecticut, Detroit, Hawaii, Iowa, New Mexico, Seattle, Utah, and Atlanta).

Trends are from the SEER 13 areas (SEER 9 Areas, Los Angeles, San Jose-Monterey, Rural Georgia, and the Alaska Native Registry).

Trends are from US Mortality Files, National Center for Health Statistics, Centers for Disease Control and Prevention.

The AAPC is the Average Annual Percent Change and is based on the APCs calculated by Joinpoint.

API - Asian/Pacific Islander, AI/AN - American Indian/Alaska Native, NH - Non-Hispanic

Hispanic and Non-Hispanic are not mutually exclusive from whites, blacks, Asian/Pacific Islanders, and American Indians/Alaska

Natives. Incidence data for Hispanics and Non-Hispanics are based on NHIA and exclude cases from the Alaska Native Registry.

The Hispanic and Non-Hispanic mortality trends exclude deaths from New Hampshire and Oklahoma.

Data for American Indian/Alaska Native are based on the CHSDA (Contract Health Service Delivery Area) counties.

* The APC/AAPC is significantly different from zero ($p < .05$).

- Joinpoint regression line analysis could not be performed on data series.

Table 25.2
Cancer of the Testis (Invasive)

Trends in SEER Incidence^{ab} and U.S. Mortality^c Using the Joinpoint Regression Program,
1975-2011 With up to Five Joinpoints, 1992-2011 With up to Three Joinpoints,
Ages <50 by Race/Ethnicity

	JP Trend 1		JP Trend 2		JP Trend 3		JP Trend 4		JP Trend 5		JP Trend 6		AAPC ^d	
	Years	APC	Years	APC	Years	APC	Years	APC	Years	APC	Years	APC	2002-11	2007-11
<u>SEER 9 Delay-Adjusted Incidence^a, 1975-2011</u>														
All Races	1975-89	2.7*	1989-11	0.9*									0.9*	0.9*
White	1975-87	3.4*	1987-11	1.2*									1.2*	1.2*
Black	1975-11	2.0*											2.0*	2.0*
<u>SEER 13 Delay-Adjusted Incidence^b, 1992-2011</u>														
All Races	1992-11	1.1*											1.1*	1.1*
White	1992-11	1.3*											1.3*	1.3*
Black	1992-11	1.5*											1.5*	1.5*
<u>SEER 9 Observed Incidence^a, 1975-2011</u>														
All Races	1975-89	2.7*	1989-11	0.8*									0.8*	0.8*
White	1975-89	3.1*	1989-11	1.0*									1.0*	1.0*
Black	1975-11	1.9*											1.9*	1.9*
<u>SEER 13 Observed Incidence^b, 1992-2011</u>														
All Races	1992-11	1.1*											1.1*	1.1*
White	1992-11	1.2*											1.2*	1.2*
White NH ^{ef}	1992-05	1.8*	2005-11	-0.9									0.0	-0.9
Black	1992-11	1.4*											1.4*	1.4*
Black NH ^{ef}	1992-11	1.6*											1.6*	1.6*
API ^e	1992-11	0.8											0.8	0.8
AI/AN ^{eg}	1992-11	2.9*											2.9*	2.9*
Hispanic ^f	1992-02	1.5*	2002-09	5.3*	2009-11	-8.0							2.2	-1.6
<u>U.S. Cancer Mortality^c, 1975-2011</u>														
All Races	1975-83	-10.0*	1983-11	-1.5*									-1.5*	-1.5*
White	1975-83	-10.2*	1983-11	-1.3*									-1.3*	-1.3*
Black	1975-11	-1.4*											-1.4*	-1.4*
<u>U.S. Cancer Mortality^c, 1992-2011</u>														
All Races	1992-11	-0.9*											-0.9*	-0.9*
White	1992-11	-0.7*											-0.7*	-0.7*
White NH ^{ef}	1992-11	-1.3*											-1.3*	-1.3*
Black	1992-11	-1.4											-1.4	-1.4
Black NH ^{ef}	1992-11	-1.5											-1.5	-1.5
API ^e	1992-08	5.4*	2008-11	-42.3									-13.8	-33.0
AI/AN ^{eg}	-	-											-	-
Hispanic ^f	1992-11	2.0*											2.0*	2.0*

Joinpoint Regression Program Version 4.1.0, April 2014, National Cancer Institute. (<http://surveillance.cancer.gov/joinpoint/>).

The APC is the Annual Percent Change based on rates age-adjusted to the 2000 US Std Population (19 age groups - Census P25-1130).

Trends are from the SEER 9 areas (San Francisco, Connecticut, Detroit, Hawaii, Iowa, New Mexico, Seattle, Utah, and Atlanta).

Trends are from the SEER 13 areas (SEER 9 Areas, Los Angeles, San Jose-Monterey, Rural Georgia, and the Alaska Native Registry).

Trends are from US Mortality Files, National Center for Health Statistics, Centers for Disease Control and Prevention.

The AAPC is the Average Annual Percent Change and is based on the APCs calculated by Joinpoint.

API - Asian/Pacific Islander, AI/AN - American Indian/Alaska Native, NH - Non-Hispanic

Hispanic and Non-Hispanic are not mutually exclusive from whites, blacks, Asian/Pacific Islanders, and American Indians/Alaska

Natives. Incidence data for Hispanics and Non-Hispanics are based on NHIA and exclude cases from the Alaska Native Registry.

The Hispanic and Non-Hispanic mortality trends exclude deaths from New Hampshire and Oklahoma.

Data for American Indian/Alaska Native are based on the CHSDA (Contract Health Service Delivery Area) counties.

* The APC/AAPC is significantly different from zero (p<.05).

- Joinpoint regression line analysis could not be performed on data series.

Table 25.3
Cancer of the Testis (Invasive)

Trends in SEER Incidence^{ab} and U.S. Mortality^c Using the Joinpoint Regression Program,
1975-2011 With up to Five Joinpoints, 1992-2011 With up to Three Joinpoints,
Ages 50+ by Race/Ethnicity

	JP Trend 1		JP Trend 2		JP Trend 3		JP Trend 4		JP Trend 5		JP Trend 6		AAPC ^d	
	Years	APC	Years	APC	Years	APC	Years	APC	Years	APC	Years	APC	2002-11	2007-11
<u>SEER 9 Delay-Adjusted Incidence^a, 1975-2011</u>														
All Races	1975-11	0.5*											0.5*	0.5*
White	1975-11	0.5*											0.5*	0.5*
Black	-	-											-	-
<u>SEER 13 Delay-Adjusted Incidence^b, 1992-2011</u>														
All Races	1992-11	1.5*											1.5*	1.5*
White	1992-11	1.6*											1.6*	1.6*
Black	-	-											-	-
<u>SEER 9 Observed Incidence^a, 1975-2011</u>														
All Races	1975-11	0.4*											0.4*	0.4*
White	1975-11	0.5*											0.5*	0.5*
Black	-	-											-	-
<u>SEER 13 Observed Incidence^b, 1992-2011</u>														
All Races	1992-11	1.4*											1.4*	1.4*
White	1992-11	1.5*											1.5*	1.5*
White NH ^{ef}	1992-11	1.7*											1.7*	1.7*
Black	-	-											-	-
Black NH ^{ef}	-	-											-	-
API ^e	1992-11	2.0											2.0	2.0
AI/AN ^{eg}	-	-											-	-
Hispanic ^f	1992-11	0.9											0.9	0.9
<u>U.S. Cancer Mortality^c, 1975-2011</u>														
All Races	1975-91	-5.8*	1991-11	0.4									0.4	0.4
White	1975-91	-5.8*	1991-11	0.6									0.6	0.6
Black	1975-11	-2.7*											-2.7*	-2.7*
<u>U.S. Cancer Mortality^c, 1992-2011</u>														
All Races	1992-11	0.5											0.5	0.5
White	1992-11	0.6											0.6	0.6
White NH ^{ef}	1992-11	0.8											0.8	0.8
Black	1992-11	0.1											0.1	0.1
Black NH ^{ef}	1992-11	0.0											0.0	0.0
API ^e	-	-											-	-
AI/AN ^{eg}	-	-											-	-
Hispanic ^f	1992-97	-19.6	1997-11	4.1									4.1	4.1

Joinpoint Regression Program Version 4.1.0, April 2014, National Cancer Institute. (<http://surveillance.cancer.gov/joinpoint/>).

The APC is the Annual Percent Change based on rates age-adjusted to the 2000 US Std Population (19 age groups - Census P25-1130).

^a Trends are from the SEER 9 areas (San Francisco, Connecticut, Detroit, Hawaii, Iowa, New Mexico, Seattle, Utah, and Atlanta).

^b Trends are from the SEER 13 areas (SEER 9 Areas, Los Angeles, San Jose-Monterey, Rural Georgia, and the Alaska Native Registry).

^c Trends are from US Mortality Files, National Center for Health Statistics, Centers for Disease Control and Prevention.

^d The AAPC is the Average Annual Percent Change and is based on the APCs calculated by Joinpoint.

^e API - Asian/Pacific Islander, AI/AN - American Indian/Alaska Native, NH - Non-Hispanic

^f Hispanic and Non-Hispanic are not mutually exclusive from whites, blacks, Asian/Pacific Islanders, and American Indians/Alaska

Natives. Incidence data for Hispanics and Non-Hispanics are based on NHIA and exclude cases from the Alaska Native Registry.

The Hispanic and Non-Hispanic mortality trends exclude deaths from New Hampshire and Oklahoma.

^g Data for American Indian/Alaska Native are based on the CHSDA (Contract Health Service Delivery Area) counties.

* The APC/AAPC is significantly different from zero ($p < .05$).

- Joinpoint regression line analysis could not be performed on data series.

Table 25.4
Cancer of the Testis (Invasive)

Delay-adjusted SEER Incidence^a Rates by Year, Race and Age

Year of Diagnosis:	All Races, Males			White Males			Black Males		
	All	<50	50+	All	<50	50+	All	<50	50+
1975	3.73	4.23	2.41	4.16	4.74	2.65	-	-	-
1976	3.44	4.18	1.51	3.77	4.56	1.72	-	-	-
1977	4.30	5.09	2.24	4.88	5.82	2.41	-	-	-
1978	3.57	4.23	1.84	3.94	4.64	2.11	-	-	-
1979	3.88	4.54	2.15	4.33	5.10	2.31	-	-	-
1980	4.35	5.28	1.89	4.90	5.96	2.11	-	-	-
1981	4.22	5.12	1.85	4.77	5.79	2.07	-	-	-
1982	4.40	5.23	2.25	5.01	5.99	2.44	-	-	-
1983	4.60	5.50	2.24	5.24	6.31	2.43	-	-	-
1984	4.40	5.37	1.86	5.05	6.18	2.09	-	-	-
1985	4.47	5.48	1.83	5.14	6.32	2.05	-	-	-
1986	4.82	5.83	2.17	5.58	6.80	2.39	-	-	-
1987	5.05	6.27	1.86	5.71	7.14	1.95	-	-	-
1988	4.63	5.84	1.46	5.44	6.87	1.72	-	-	-
1989	5.48	6.72	2.24	6.33	7.81	2.47	-	-	-
1990	5.10	6.27	2.02	6.00	7.42	2.31	-	-	-
1991	5.10	6.24	2.12	5.78	7.10	2.31	-	-	-
1992	5.15	6.45	1.76	6.10	7.68	1.98	-	-	-
1993	5.07	6.38	1.66	6.01	7.57	1.94	-	-	-
1994	5.48	6.76	2.12	6.31	7.83	2.31	1.23	1.54	-
1995	4.56	5.59	1.88	5.27	6.47	2.12	1.47	1.88	-
1996	5.26	6.61	1.73	6.23	7.88	1.89	-	-	-
1997	5.40	6.52	2.47	6.37	7.78	2.69	1.27	-	-
1998	5.61	7.13	1.63	6.64	8.49	1.79	1.52	1.98	-
1999	5.46	6.85	1.81	6.38	8.04	2.03	1.73	2.03	-
2000	5.75	7.18	1.99	6.79	8.49	2.35	1.53	1.87	-
2001	5.54	6.88	2.05	6.57	8.22	2.26	1.75	1.92	-
2002	5.81	7.27	1.99	7.01	8.78	2.36	1.40	1.82	-
2003	5.35	6.70	1.84	6.55	8.28	2.00	1.15	-	-
2004	5.98	7.40	2.28	7.42	9.25	2.65	1.06	-	-
2005	6.04	7.53	2.13	7.34	9.26	2.33	1.03	1.34	-
2006	5.68	7.05	2.11	6.88	8.56	2.48	1.64	1.74	-
2007	6.06	7.49	2.33	7.33	9.10	2.68	1.50	1.58	-
2008	6.13	7.42	2.75	7.48	9.16	3.06	1.47	1.77	-
2009	6.10	7.53	2.35	7.36	9.21	2.51	1.73	1.74	-
2010	5.87	7.16	2.50	7.01	8.59	2.87	1.68	1.89	-
2011	5.98	7.49	2.03	7.29	9.20	2.30	1.53	2.03	-

Additional information on the model used to delay-adjust SEER Incidence rates can be found at [\(http://surveillance.cancer.gov/delay/\)](http://surveillance.cancer.gov/delay/).

^a SEER 9 areas (San Francisco, Connecticut, Detroit, Hawaii, Iowa, New Mexico, Seattle, Utah, and Atlanta). Rates are per 100,000 and are age-adjusted to the 2000 US Std Population (19 age groups - Census P25-1130).

- Delay-adjusted rate is not shown for observed rates based on less than 16 cases for the time interval.

Table 25.5
Cancer of the Testis (Invasive)

Age-adjusted SEER Incidence^a Rates by Year, Race and Age

	All Races, Males			White Males			Black Males		
	All	<50	50+	All	<50	50+	All	<50	50+
Year of Diagnosis:									
1975-2011	5.17	6.36	2.06	6.01	7.43	2.29	1.19	1.38	0.70
1975	3.73	4.23	2.41	4.16	4.74	2.65	-	-	-
1976	3.44	4.18	1.51	3.77	4.56	1.72	-	-	-
1977	4.30	5.09	2.24	4.88	5.82	2.41	-	-	-
1978	3.57	4.23	1.84	3.94	4.64	2.11	-	-	-
1979	3.88	4.54	2.15	4.33	5.10	2.31	-	-	-
1980	4.35	5.28	1.89	4.90	5.96	2.11	-	-	-
1981	4.22	5.12	1.85	4.77	5.79	2.07	-	-	-
1982	4.40	5.23	2.25	5.01	5.99	2.44	-	-	-
1983	4.60	5.50	2.24	5.23	6.30	2.43	-	-	-
1984	4.40	5.36	1.86	5.04	6.17	2.08	-	-	-
1985	4.47	5.47	1.83	5.14	6.32	2.05	-	-	-
1986	4.82	5.83	2.17	5.57	6.79	2.39	-	-	-
1987	5.05	6.27	1.86	5.70	7.13	1.94	-	-	-
1988	4.63	5.83	1.46	5.44	6.86	1.72	-	-	-
1989	5.48	6.71	2.24	6.32	7.79	2.46	-	-	-
1990	5.09	6.27	2.02	5.99	7.40	2.30	-	-	-
1991	5.10	6.24	2.12	5.76	7.08	2.31	-	-	-
1992	5.15	6.44	1.76	6.09	7.66	1.97	-	-	-
1993	5.07	6.37	1.65	5.99	7.54	1.93	-	-	-
1994	5.48	6.76	2.12	6.29	7.81	2.30	1.23	1.54	-
1995	4.56	5.58	1.88	5.25	6.45	2.11	1.46	1.87	-
1996	5.25	6.60	1.73	6.20	7.85	1.89	-	-	-
1997	5.40	6.52	2.46	6.35	7.74	2.68	1.27	-	-
1998	5.60	7.12	1.62	6.61	8.45	1.79	1.52	1.97	-
1999	5.45	6.84	1.81	6.34	7.99	2.02	1.71	2.02	-
2000	5.74	7.17	1.99	6.74	8.43	2.33	1.52	1.86	-
2001	5.53	6.86	2.04	6.52	8.15	2.24	1.73	1.90	-
2002	5.80	7.25	1.98	6.95	8.70	2.34	1.39	1.80	-
2003	5.34	6.68	1.83	6.49	8.21	1.98	1.14	-	-
2004	5.96	7.37	2.27	7.35	9.15	2.63	1.05	-	-
2005	6.02	7.51	2.13	7.26	9.16	2.30	1.02	1.32	-
2006	5.66	7.02	2.10	6.80	8.46	2.45	1.62	1.71	-
2007	6.03	7.45	2.32	7.23	8.98	2.64	1.48	1.56	-
2008	6.10	7.38	2.73	7.37	9.03	3.02	1.45	1.74	-
2009	6.05	7.47	2.33	7.23	9.05	2.47	1.70	1.71	-
2010	5.82	7.10	2.48	6.86	8.41	2.81	1.64	1.85	-
2011	5.88	7.36	1.99	7.05	8.89	2.22	1.48	1.96	-

^a SEER 9 areas (San Francisco, Connecticut, Detroit, Hawaii, Iowa, New Mexico, Seattle, Utah, and Atlanta).
Rates are per 100,000 and are age-adjusted to the 2000 US Std Population (19 age groups - Census P25-1130).
- Statistic not shown. Rate based on less than 16 cases for the time interval.

Table 25.6
Cancer of the Testis (Invasive)

Age-adjusted U.S. Death^a Rates by Year, Race and Age

Year of Death:	All Races, Males			White Males			Black Males		
	All	<50	50+	All	<50	50+	All	<50	50+
1975-2011	0.33	0.32	0.33	0.36	0.36	0.35	0.17	0.14	0.24
1975	0.74	0.75	0.72	0.81	0.83	0.76	0.20	-	-
1976	0.71	0.72	0.69	0.77	0.80	0.69	0.36	0.21	-
1977	0.65	0.66	0.60	0.71	0.73	0.65	0.20	-	-
1978	0.56	0.57	0.53	0.60	0.61	0.57	0.22	0.22	-
1979	0.52	0.49	0.59	0.54	0.52	0.60	0.38	0.29	-
1980	0.45	0.44	0.47	0.49	0.49	0.50	0.18	-	-
1981	0.37	0.38	0.36	0.40	0.41	0.36	0.23	-	-
1982	0.40	0.39	0.42	0.43	0.43	0.44	0.19	-	-
1983	0.39	0.37	0.44	0.41	0.40	0.44	0.23	0.18	-
1984	0.35	0.33	0.39	0.37	0.36	0.40	0.19	-	-
1985	0.36	0.34	0.40	0.39	0.38	0.40	0.20	-	-
1986	0.32	0.32	0.34	0.35	0.35	0.35	0.17	-	-
1987	0.34	0.35	0.32	0.37	0.38	0.33	0.19	0.15	-
1988	0.32	0.29	0.40	0.35	0.32	0.42	0.16	-	-
1989	0.32	0.31	0.33	0.34	0.34	0.33	0.23	0.19	-
1990	0.27	0.30	0.21	0.30	0.33	0.22	-	-	-
1991	0.29	0.29	0.28	0.31	0.32	0.29	0.15	-	-
1992	0.28	0.28	0.30	0.31	0.31	0.32	0.14	0.15	-
1993	0.30	0.29	0.30	0.33	0.33	0.32	0.17	0.14	-
1994	0.27	0.28	0.23	0.29	0.31	0.24	0.14	0.14	-
1995	0.24	0.24	0.23	0.26	0.27	0.25	-	-	-
1996	0.26	0.26	0.27	0.29	0.29	0.29	0.12	-	-
1997	0.24	0.24	0.25	0.26	0.26	0.27	0.16	0.18	-
1998	0.28	0.27	0.29	0.30	0.30	0.30	0.20	0.13	-
1999	0.28	0.28	0.26	0.31	0.32	0.28	0.14	0.14	-
2000	0.25	0.25	0.23	0.27	0.28	0.24	0.16	0.16	-
2001	0.24	0.24	0.25	0.26	0.27	0.25	0.16	-	-
2002	0.28	0.27	0.33	0.31	0.30	0.34	0.17	0.16	-
2003	0.25	0.24	0.28	0.27	0.27	0.29	0.18	0.12	-
2004	0.25	0.25	0.25	0.28	0.28	0.27	0.15	0.15	-
2005	0.25	0.24	0.28	0.27	0.26	0.29	0.19	0.18	-
2006	0.25	0.24	0.27	0.27	0.26	0.30	0.13	0.15	-
2007	0.22	0.22	0.24	0.25	0.25	0.25	0.12	-	-
2008	0.24	0.23	0.29	0.26	0.25	0.31	0.14	0.12	-
2009	0.25	0.23	0.30	0.29	0.27	0.34	-	-	-
2010	0.26	0.26	0.27	0.30	0.31	0.29	0.14	-	-
2011	0.25	0.23	0.31	0.29	0.27	0.34	0.12	-	-

^a US Mortality Files, National Center for Health Statistics, Centers for Disease Control and Prevention.
Rates are per 100,000 and are age-adjusted to the 2000 US Std Population (19 age groups - Census P25-1130).
- Statistic not shown. Rate based on less than 16 cases for the time interval.

Table 25.7
Cancer of the Testis (Invasive)

SEER Incidence^a and U.S. Death^b Rates, Age-Adjusted and Age-Specific Rates, by Race

	SEER Incidence ^a			U.S. Mortality ^b		
	All Races Males	White Males	Black Males	All Races Males	White Males	Black Males
<u>Age-Adjusted Rates, 2007-2011</u>						
Age at Diagnosis/Death:						
All ages	5.6	6.6	1.4	0.2	0.3	0.1
Under 65	6.2	7.4	1.5	0.2	0.3	0.1
65 and over	1.2	1.3	-	0.3	0.3	-
All ages (IARC world std) ^c	5.3	6.3	1.3	0.2	0.2	0.1
<u>Age-Specific Rates, 2007-2011</u>						
Age at Diagnosis/Death:						
<1	1.1	1.1	-	-	-	-
1-4	0.5	0.6	-	-	-	-
5-9	-	-	-	-	-	-
10-14	0.2	0.2	-	-	-	-
15-19	3.9	4.9	0.6	0.1	0.1	-
20-24	10.6	13.0	1.7	0.4	0.4	-
25-29	14.3	17.2	2.4	0.5	0.5	-
30-34	13.5	16.2	3.2	0.4	0.5	-
35-39	10.7	12.8	2.7	0.4	0.5	-
40-44	8.3	9.6	2.6	0.3	0.4	-
45-49	6.3	7.4	1.8	0.3	0.4	-
50-54	4.2	4.8	1.6	0.3	0.3	-
55-59	3.1	3.6	-	0.3	0.3	-
60-64	1.9	2.2	-	0.2	0.2	-
65-69	1.3	1.5	-	0.2	0.2	-
70-74	1.1	1.3	-	0.2	0.2	-
75-79	1.3	1.4	-	0.3	0.3	-
80-84	0.8	0.9	-	0.4	0.5	-
85+	1.1	1.2	-	0.7	0.7	-

^a SEER 18 areas. Rates are per 100,000 and are age-adjusted to the 2000 US Std Population (19 age groups - Census P25-1130), unless noted.

^b US Mortality Files, National Center for Health Statistics, Centers for Disease Control and Prevention.

^c Rates are per 100,000 and are age-adjusted to the 2000 US Std Population (19 age groups - Census P25-1130), unless noted.

- Rates are per 100,000 and are age-adjusted to the IARC world standard population.

- Statistic not shown. Rate based on less than 16 cases for the time interval.

Table 25.8
Cancer of the Testis (Invasive)

5-Year Relative and Period Survival (Percent) by Race, Diagnosis Year, Stage and Age

	All Races, Males			White Males			Black Males		
	All	<50	50+	All	<50	50+	All	<50	50+
5-Year Relative Survival (Percent)									
Year of Diagnosis:									
1960-1963 ^a	-	-	-	63	-	-	-	-	-
1970-1973 ^a	-	-	-	72	-	-	-	-	-
1975-1977 ^b	82.6	83.3	77.6	82.5	83.2	77.3	-	-	-
1978-1980 ^b	88.9	89.6	82.2	89.2	89.9	83.1	73.1 ^g	78.0 ^g	-
1981-1983 ^b	92.0	92.5	85.5	92.2	92.7	86.2	87.7 ^g	84.7 ^g	-
1984-1986 ^b	92.6	93.6	80.4	92.9	94.0	80.6	87.0 ^g	89.4 ^g	-
1987-1989 ^b	95.2	95.0	95.7	95.5	95.4	95.3	88.4 ^g	87.8 ^g	-
1990-1992 ^b	95.8	95.8	93.7	96.2	96.1	94.6	83.5 ^g	-	-
1993-1995 ^b	95.8	96.4	86.7	96.1	96.6	87.8	88.0	89.4	-
1996-1998 ^b	95.6	96.3	86.6	95.8	96.4	86.6	88.7	90.1	-
1999-2003 ^b	96.2	96.6	91.2	96.6	96.9	92.0	86.9	88.3	-
2004-2010 ^b	96.6 ^f	96.7 ^f	95.3 ^f	97.0 ^f	97.1 ^f	96.0 ^f	90.0	89.0	-
5-Year Period Survival (Percent) ^{cd}									
2010	95.7	95.6	95.8	95.7	95.7	96.1	93.6	94.2	-
Stage Distribution (%) 2004-2010 ^{ce}									
All Stages									
Number of cases	15,354	13,688	1,666	13,957	12,428	1,529	431	379	52
Percent	100%	100%	100%	100%	100%	100%	100%	100%	100%
Localized	68	68	70	68	68	70	62	62	60
Regional	18	18	18	18	18	18	20	20	23
Distant	12	12	10	12	12	10	16	16	13
Unstaged	1	1	3	1	1	3	2	2	4
5-Year Relative Survival (Percent), 2004-2010 ^c									
Age at Diagnosis:									
Ages <45	95.5	-	-	95.6	-	-	91.3	-	-
Ages 45-54	94.9	-	-	95.1	-	-	89.1	-	-
Ages 55-64	93.2	-	-	93.5	-	-	-	-	-
Ages 65-74	89.5	-	-	89.2 ^g	-	-	-	-	-
Ages 75+	80.6 ^h	-	-	80.6 ^h	-	-	-	-	-
Ages <65	95.4	-	-	95.5	-	-	91.2	-	-
Ages 65+	86.6	-	-	86.4 ^g	-	-	-	-	-
Stage ^e :									
All Stages	95.3	95.4	94.2	95.4	95.5	94.6	90.9	91.4	87.6 ^g
Localized	99.2	99.2	99.3	99.2	99.2	99.4	99.4	99.1	98.3 ^g
Regional	96.0	96.1	94.0	96.3	96.4	94.7	90.1	91.8	-
Distant	73.1	73.9	64.0	73.6	74.3	65.3	60.4 ^g	60.6 ^g	-
Unstaged	79.1	85.1	61.9 ^g	78.9	85.5	60.9 ^g	-	-	-

^a Based on End Results data from a series of hospital registries and one population-based registry.^b SEER 9 areas (San Francisco, Connecticut, Detroit, Hawaii, Iowa, New Mexico, Seattle, Utah, Atlanta).

Based on follow-up of patients into 2011.

^c SEER 18 areas (San Francisco, Connecticut, Detroit, Hawaii, Iowa, New Mexico, Seattle, Utah, Atlanta, San Jose-Monterey, Los Angeles, Alaska Native Registry, Rural Georgia, California excluding SF/SJM/LA, Kentucky, Louisiana, New Jersey and Georgia excluding ATL/RG).

Based on follow-up of patients into 2011.

^d Period survival provides a 2010 estimate of survival by piecing together the most recent conditional survival estimates from several cohorts. It is computed here using three year calendar blocks (2007-2009: 0-1 year survival), (2006-2008: 1-2 year survival), (2005-2007: 2-3 year survival), (2004-2006: 3-4 year survival), (2003-2005: 4-5 years survival).^e Stage at diagnosis is classified using SEER Summary Stage 2000. Stage distribution percentages may not sum to 100 due to rounding.^f The difference between 1975-1977 and 2004-2010 is statistically significant (p<.05).^g The standard error is between 5 and 10 percentage points.^h The standard error is greater than 10 percentage points.

- Statistic could not be calculated due to fewer than 25 cases during the time period.

Table 25.9
Cancer of the Testis (Invasive)

SEER^a Relative Survival (Percent)
By Year of Diagnosis

All Races, Males

Year of Diagnosis

	1975- 1979	1980- 1984	1985- 1989	1990- 1994	1995	1996	1997	1998	1999	2000	2001	2002	2003	2004	2005	2006	2007	2008	2009	2010
Survival Time																				
1-year	93.2	95.8	98.0	97.7	98.1	97.6	97.4	97.9	96.9	97.9	98.5	98.1	98.4	97.9	98.1	98.9	98.9	98.7	98.5	98.0
2-year	88.5	92.6	96.2	96.4	97.4	96.4	95.6	96.6	96.3	96.6	97.4	97.1	96.9	96.4	97.3	98.4	97.5	97.3	97.4	
3-year	86.5	92.0	95.5	95.7	96.4	95.8	95.1	96.2	95.7	95.9	96.9	96.8	96.6	95.7	97.0	98.2	96.7	97.3		
4-year	85.6	91.5	95.0	95.7	96.3	95.8	94.8	96.1	95.6	95.9	96.8	96.7	96.4	95.3	96.8	98.0	96.5			
5-year	85.0	91.0	94.7	95.7	96.3	95.8	94.8	95.8	95.6	95.9	96.6	96.2	96.1	95.2	96.8	98.0				
6-year	84.7	90.9	94.5	95.5	96.3	95.8	94.7	95.6	95.5	95.9	96.1	96.0	96.1	95.2	96.4					
7-year	84.6	90.7	94.3	95.5	96.3	95.8	94.7	95.4	95.5	95.9	96.1	96.0	96.1	95.2						
8-year	84.5	90.5	94.1	95.0	96.3	95.8	94.7	95.4	95.4	95.9	96.1	96.0	96.1							
9-year	84.5	90.1	93.9	94.9	96.2	95.8	94.7	95.4	95.2	95.9	96.1	95.7								
10-year	83.7	89.9	93.8	94.9	96.1	95.8	94.7	94.7	95.2	95.9	96.1									
11-year	83.2	89.7	93.6	94.8	96.0	95.8	94.7	94.2	95.0	95.9										
12-year	82.9	89.7	93.4	94.8	96.0	95.8	94.7	94.1	95.0											
13-year	82.5	89.2	93.2	94.8	95.9	95.8	94.7	94.1												
14-year	82.0	88.8	93.0	94.8	95.7	95.8	94.7													
15-year	81.7	88.4	93.0	94.7	95.7	95.8														
16-year	81.2	88.0	92.8	94.6	95.7															
17-year	80.6	87.6	92.6	94.3																
18-year	80.0	87.4	92.5																	
19-year	79.5	87.2	92.4																	
20-year	79.3	86.8	92.2																	

^a Based on the SEER 9 areas (San Francisco, Connecticut, Detroit, Hawaii, Iowa, New Mexico, Seattle, Utah, and Atlanta).

Table 25.10
Cancer of the Testis (Invasive)

Risk of Being Diagnosed With Cancer in 10, 20 and 30 Years,
Lifetime Risk of Being Diagnosed with Cancer Given Alive and Cancer-Free at Current Age, and
Lifetime Risk of Dying from Cancer Given Alive at Current Age
Males, 2009-2011 By Race/Ethnicity

Race/ Ethnicity	Current Age	Risk of Being Diagnosed with Cancer				Risk of Dying from Cancer	Race/ Ethnicity	Current Age	Risk of Being Diagnosed with Cancer				Risk of Dying from Cancer
		+10 yrs	+20 yrs	+30 yrs	Ever				+10 yrs	+20 yrs	+30 yrs	Ever	
All Races	0	0.00	0.03	0.14	0.38	0.02	Asian/ Pacific Islander	0	0.01	0.01	0.06	0.14	0.00
	10	0.02	0.14	0.26	0.38	0.02		10	0.01	0.06	0.09	0.14	0.00
	20	0.12	0.23	0.30	0.36	0.02		20	0.05	0.09	0.11	0.13	0.00
	30	0.12	0.19	0.22	0.25	0.02		30	0.04	0.06	0.07	0.08	0.00
	40	0.07	0.11	0.12	0.13	0.01		40	0.02	0.04	0.04	0.05	0.00
	50	0.03	0.05	0.06	0.06	0.01		50	0.01	0.02	0.02	0.02	0.00
	60	0.02	0.03	0.03	0.03	0.01		60	0.00	0.01	0.01	0.01	0.00
	70	0.01	0.02	-	0.02	0.01		70	0.00	0.01	-	0.01	0.00
80	0.01	-	-	0.01	0.00	80	0.00	-	-	0.00	0.00		
White	0	0.00	0.03	0.17	0.46	0.02	American Indian/ Alaska Native ^a	0	0.00	0.01	0.09	0.34	0.02
	10	0.03	0.17	0.31	0.46	0.02		10	0.01	0.09	0.23	0.34	0.02
	20	0.14	0.28	0.36	0.43	0.02		20	0.08	0.22	0.29	0.33	0.02
	30	0.14	0.22	0.26	0.29	0.02		30	0.13	0.21	0.24	0.25	0.01
	40	0.08	0.12	0.14	0.15	0.01		40	0.08	0.11	0.12	0.12	0.01
	50	0.04	0.06	0.07	0.07	0.01		50	0.03	0.05	0.05	0.05	0.00
	60	0.02	0.03	0.03	0.03	0.01		60	0.02	0.02	0.02	0.02	0.00
	70	0.01	0.02	-	0.02	0.01		70	0.00	0.00	-	0.00	0.00
80	0.01	-	-	0.01	0.01	80	0.00	-	-	0.00	0.00		
Black	0	0.00	0.01	0.03	0.09	0.01	Hispanic ^b	0	0.01	0.04	0.17	0.35	0.03
	10	0.00	0.02	0.05	0.09	0.01		10	0.04	0.17	0.26	0.35	0.03
	20	0.02	0.05	0.07	0.09	0.01		20	0.13	0.23	0.27	0.31	0.02
	30	0.03	0.05	0.06	0.07	0.01		30	0.10	0.14	0.16	0.18	0.02
	40	0.02	0.03	0.04	0.04	0.01		40	0.04	0.07	0.08	0.09	0.01
	50	0.01	0.02	0.02	0.02	0.00		50	0.02	0.03	0.04	0.05	0.01
	60	0.00	0.01	0.01	0.01	0.00		60	0.01	0.02	0.02	0.03	0.01
	70	0.01	0.01	-	0.01	0.00		70	0.01	0.01	-	0.02	0.01
80	0.00	-	-	0.00	0.00	80	0.01	-	-	0.01	0.01		

Devcan 6.8.0, August 2014, National Cancer Institute (<http://surveillance.cancer.gov/devcan/>).

Source: Incidence data are from the SEER 18 areas (San Francisco, Connecticut, Detroit, Hawaii, Iowa, New Mexico, Seattle, Utah, Atlanta, San Jose-Monterey, Los Angeles, Alaska Native Registry, Rural Georgia, California excluding SF/SJM/LA, Kentucky, Louisiana, New Jersey, and Georgia excluding ATL/RG). Mortality data are from the NCHS public use data file for the total US.

^a Underlying incidence and mortality data for American Indian/Alaska Native are based on the CHSDA (Contract Health Service Delivery Area) counties.

^b Hispanic is not mutually exclusive from whites, blacks, Asian/Pacific Islanders, and American Indians/Alaska Natives. Underlying incidence data for Hispanics are based on NHIA and exclude cases from the Alaska Native Registry.

- Statistic could not be calculated.

A percent of 0.00 represents a value that is below 0.005.

Table 25.11
Cancer of the Testis (Invasive)

SEER Incidence and U.S. Mortality
Age-Adjusted Rates and Trends^a
By Race/Ethnicity

SEER Incidence	SEER 18 Areas ^b	SEER 13 Areas ^b	SEER 9 Areas ^b
	Rate 2007-2011	Trend 2002-2011 ^c	Trend 2002-2011 ^d
	Rate per 100,000 persons	AAPC (%)	AAPC (%)
	Males	Males	Males
<u>RACE/ETHNICITY</u>			
All Races	5.6	1.1*	0.8*
White	6.6	0.3	1.0*
White Hispanic ^e	5.1	2.8	-
White Non-Hispanic ^e	7.2	0.1	-
Black	1.4	0.7	2.1*
Asian/Pacific Islander	1.9	1.0*	-
Amer Ind/Alaska Nat ^f	4.5	-	-
Hispanic ^e	4.8	2.4	-
<u>U.S. Mortality^g</u>			
	Rate 2007-2011	Trend 2002-2011 ^h	
	Rate per 100,000 persons	AAPC (%)	
	Males	Males	
<u>RACE/ETHNICITY</u>			
All Races	0.2	-0.5*	
White	0.3	-0.4	
White Hispanic ^e	0.3	1.5	
White Non-Hispanic ^e	0.3	-0.7*	
Black	0.1	-0.8	
Asian/Pacific Islander	0.1	-	
Amer Ind/Alaska Nat			
Total U.S.	0.2	-	
CHSDA Counties	-	-	
Non-CHSDA Counties	-	-	
Hispanic ^e	0.3	1.3	

The AAPC is the Average Annual Percent Change over the time interval. The AAPCs are calculated by the Joinpoint Regression Program Version 4.1.0, April 2014, National Cancer Institute.

- Statistic not shown. Rate based on less than 16 cases for the time interval.

Trend based on less than 10 cases for at least one year within the time interval.

^a Rates are age-adjusted to the 2000 US Std Population (19 age groups - Census P25-1130). Trends are based on rates age-adjusted to the 2000 US Std Population (19 age groups - Census P25-1130).

^b The SEER 9 areas are San Francisco, Connecticut, Detroit, Hawaii, Iowa, New Mexico, Seattle, Utah, and Atlanta.

The SEER 13 areas comprise the SEER 9 areas plus San Jose-Monterey, Los Angeles, the Alaska Native Registry, and Rural Georgia.

The SEER 18 areas comprise the SEER 13 areas plus California excluding SF/SJM/LA, Kentucky, Louisiana, New Jersey, and Georgia excluding ATL/RG.

^c The 2002-2011 AAPC estimates are based on a Joinpoint analysis with up to 3 Joinpoints over diagnosis years 1992-2011.

^d The 2002-2011 AAPC estimates are based on a Joinpoint analysis with up to 5 Joinpoints over diagnosis years 1975-2011.

^e Hispanic and Non-Hispanic are not mutually exclusive from whites, blacks, Asian/Pacific Islanders, and American Indians/Alaska Natives. Incidence data for Hispanics and Non-Hispanics are based on NHIA and exclude cases from the Alaska Native Registry. The 2002-2011 Hispanic and Non-Hispanic mortality trends exclude deaths from New Hampshire and Oklahoma.

^f Incidence data for American Indian/Alaska Native are based on the CHSDA (Contract Health Service Delivery Area) counties.

^g US Mortality Files, National Center for Health Statistics, CDC.

^h The 2002-2011 mortality AAPCs are based on a Joinpoint analysis using years of death 1992-2011.

* The APC is significantly different from zero (p<.05).

Table 25.12
Cancer of the Testis (Invasive)

Age-Adjusted SEER Incidence Rates^a
By Registry, Race and Age

	All Races			Whites			Blacks		
	All Ages	Ages <50	Ages 50+	All Ages	Ages <50	Ages 50+	All Ages	Ages <50	Ages 50+
<u>SEER Incidence Rates^a, 2007-2011</u>									
California	5.61	6.89	2.27	6.61	8.11	2.68	1.67	2.01	-
Greater Bay Area	5.55	6.82	2.21	7.25	8.96	2.77	1.84	2.35	-
San Francisco-Oakland	5.42	6.69	2.08	6.99	8.66	2.62	2.29	2.94	-
San Jose-Monterey	5.75	7.01	2.44	7.61	9.36	3.01	-	-	-
Los Angeles	5.28	6.55	1.94	6.26	7.69	2.49	1.71	2.10	-
Greater California	5.80	7.08	2.45	6.59	8.06	2.73	1.60	1.80	-
Connecticut	6.34	7.94	2.15	7.26	9.18	2.25	-	-	-
Detroit	5.69	6.95	2.39	7.14	8.85	2.69	1.65	1.85	-
Georgia	4.09	4.92	1.94	5.61	6.85	2.37	1.15	1.26	-
Atlanta	4.07	4.83	2.09	6.25	7.60	2.72	1.58	1.70	-
Rural Georgia	-	-	-	-	-	-	-	-	-
Greater Georgia	4.16	5.02	1.91	5.37	6.55	2.29	0.83	0.92	-
Hawaii	5.63	6.91	2.29	10.41	13.22	-	-	-	-
Iowa	6.73	8.48	2.15	6.94	8.76	2.17	-	-	-
Kentucky	5.33	6.68	1.79	5.61	7.02	1.93	-	-	-
Louisiana	4.21	5.12	1.82	5.62	6.91	2.24	1.47	1.73	-
New Jersey	5.72	6.84	2.79	7.12	8.63	3.19	1.21	1.28	-
New Mexico	6.19	7.90	1.69	6.37	8.21	1.54	-	-	-
Seattle-Puget Sound	6.81	8.23	3.07	7.68	9.35	3.30	-	-	-
Utah	7.23	8.70	3.36	7.52	9.05	3.52	-	-	-
9 SEER Areas ^b	5.97	7.35	2.37	7.15	8.87	2.63	1.55	1.77	0.96
11 SEER Areas ^b	5.79	7.13	2.28	6.96	8.61	2.62	1.54	1.80	0.87
13 SEER Areas ^b	5.79	7.13	2.27	6.95	8.60	2.61	1.53	1.78	0.89
18 SEER Areas ^b	5.57	6.82	2.29	6.63	8.16	2.62	1.39	1.59	0.85

^a Rates are per 100,000 and are age-adjusted to the 2000 US Std Population (19 age groups - Census P25-1130)

^b The SEER 9 areas are San Francisco, Connecticut, Detroit, Hawaii, Iowa, New Mexico, Seattle, Utah and Atlanta.

The SEER 11 areas comprise the SEER 9 areas plus San Jose-Monterey and Los Angeles.

The SEER 13 areas comprise the SEER 11 areas plus the Alaska Native Registry and Rural Georgia.

The SEER 18 areas comprise the SEER 13 areas plus California excluding SF/SJM/LA, Kentucky, Louisiana, New Jersey and Georgia excluding ATL/RG.

- Statistic not shown. Rate based on less than 16 cases for the time interval.

Table 25.13
Cancer of the Testis (Invasive)

Age-Adjusted SEER Death Rates^a
By Registry, Race and Age

	All Races			Whites			Blacks		
	All Ages	Ages <50	Ages 50+	All Ages	Ages <50	Ages 50+	All Ages	Ages <50	Ages 50+
<u>SEER Death Rates^a, 2007-2011</u>									
California	0.31	0.33	0.27	0.37	0.40	0.32	-	-	-
Greater Bay Area	0.25	0.31	-	0.35	0.43	-	-	-	-
San Francisco-Oakland	0.26	0.31	-	0.37	0.45	-	-	-	-
San Jose-Monterey	0.24	-	-	-	-	-	-	-	-
Los Angeles	0.28	0.32	-	0.34	0.37	-	-	-	-
Greater California	0.34	0.34	0.36	0.40	0.40	0.39	-	-	-
Connecticut	-	-	-	-	-	-	-	-	-
Detroit	0.19	-	-	-	-	-	-	-	-
Georgia	0.19	0.19	-	0.21	0.23	-	-	-	-
Atlanta	-	-	-	-	-	-	-	-	-
Rural Georgia	-	-	-	-	-	-	-	-	-
Greater Georgia	0.18	0.20	-	0.21	0.23	-	-	-	-
Hawaii	-	-	-	-	-	-	-	-	-
Iowa	-	-	-	-	-	-	-	-	-
Kentucky	0.24	-	-	0.25	-	-	-	-	-
Louisiana	0.19	-	-	0.25	-	-	-	-	-
New Jersey	0.25	0.25	0.25	0.32	0.33	0.29	-	-	-
New Mexico	-	-	-	-	-	-	-	-	-
Seattle-Puget Sound	0.16	0.19	-	0.19	-	-	-	-	-
Utah	-	-	-	-	-	-	-	-	-
9 SEER Areas ^b	0.19	0.20	0.16	0.21	0.23	0.16	-	-	-
11 SEER Areas ^b	0.22	0.24	0.17	0.25	0.28	0.17	-	-	-
13 SEER Areas ^b	0.22	0.23	0.18	0.25	0.27	0.19	-	-	-
18 SEER Areas ^b	0.25	0.25	0.24	0.29	0.30	0.26	0.11	0.09	-
Total U.S.	0.25	0.23	0.28	0.28	0.27	0.31	0.12	0.09	0.18

^a US Mortality Files, National Center for Health Statistics, Centers for Disease Control and Prevention. Rates are per 100,000 and are age-adjusted to the 2000 US Std Population (19 age groups - Census P25-1130).

^b The SEER 9 areas are San Francisco, Connecticut, Detroit, Hawaii, Iowa, New Mexico, Seattle, Utah and Atlanta. The SEER 11 areas comprise the SEER 9 areas plus San Jose-Monterey and Los Angeles.

The SEER 13 areas comprise the SEER 11 areas plus the Alaska Native Registry and Rural Georgia.

The SEER 18 areas comprise the SEER 13 areas plus California excluding SF/SJM/LA, Kentucky, Louisiana, New Jersey and Georgia excluding ATL/RG.

- Statistic not shown. Rate based on less than 16 cases for the time interval.

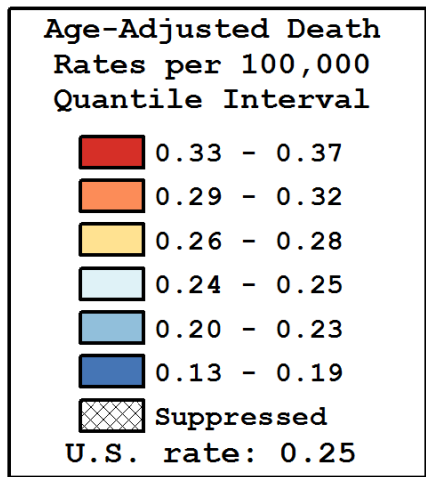
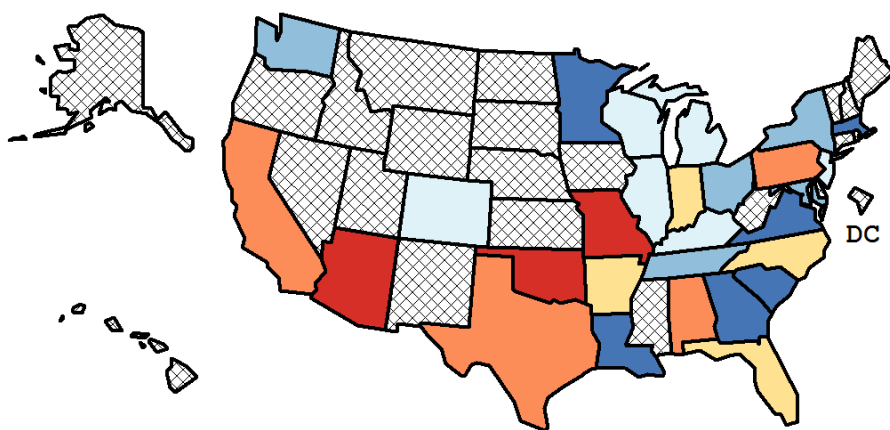
Table 25.14
Cancer of the Testis (Invasive)

Age-Adjusted Cancer Death^a Rates By State, All Races, 2007-2011

Males

State	Rate	SE	Rank	PD
TOTAL U.S.	0.25	0.01		
High Five States				
Oklahoma	0.37	0.07	(01)	48.28 ^c
Arizona	0.35	0.05	(02)	42.96 ^c
Missouri	0.35	0.05	(03)	41.23 ^c
Pennsylvania	0.32	0.03	(04)	28.87 ^c
California	0.31 ^b	0.02	(05)	25.65 ^c
Low Five States				
Georgia	0.19	0.03	(24)	-24.53 ^c
South Carolina	0.17	0.04	(25)	-31.44 ^c
Massachusetts	0.14	0.03	(26)	-42.36 ^c
Virginia	0.14 ^b	0.03	(27)	-43.04 ^c
Minnesota	0.13 ^b	0.03	(28)	-47.69 ^c

State	Rate	SE	Rank	PD	State	Rate	SE	Rank	PD
Alabama	0.30	0.05	(06)	19.95 ^c	Montana	-	-	(-)	-
Alaska	-	-	(-)	-	Nebraska	-	-	(-)	-
Arizona	0.35	0.05	(02)	42.96 ^c	Nevada	-	-	(-)	-
Arkansas	0.28	0.07	(08)	14.38	New Hampshire	-	-	(-)	-
California	0.31 ^b	0.02	(05)	25.65 ^c	New Jersey	0.25	0.03	(12)	1.78
Colorado	0.24	0.04	(16)	-4.22	New Mexico	-	-	(-)	-
Connecticut	-	-	(-)	-	New York	0.20	0.02	(22)	-17.73 ^c
Delaware	-	-	(-)	-	North Carolina	0.28	0.04	(09)	13.64
D.C.	-	-	(-)	-	North Dakota	-	-	(-)	-
Florida	0.26	0.02	(11)	3.78	Ohio	0.23	0.03	(18)	-7.54
Georgia	0.19	0.03	(24)	-24.53 ^c	Oklahoma	0.37	0.07	(01)	48.28 ^c
Hawaii	-	-	(-)	-	Oregon	-	-	(-)	-
Idaho	-	-	(-)	-	Pennsylvania	0.32	0.03	(04)	28.87 ^c
Illinois	0.24	0.03	(17)	-4.42	Rhode Island	-	-	(-)	-
Indiana	0.26	0.04	(10)	4.89	South Carolina	0.17	0.04	(25)	-31.44 ^c
Iowa	-	-	(-)	-	South Dakota	-	-	(-)	-
Kansas	-	-	(-)	-	Tennessee	0.23	0.04	(19)	-8.00
Kentucky	0.24	0.05	(15)	-3.06	Texas	0.29	0.02	(07)	16.60 ^c
Louisiana	0.19	0.04	(23)	-24.24 ^c	Utah	-	-	(-)	-
Maine	-	-	(-)	-	Vermont	-	-	(-)	-
Maryland	0.22	0.04	(20)	-9.37	Virginia	0.14 ^b	0.03	(27)	-43.04 ^c
Massachusetts	0.14	0.03	(26)	-42.36 ^c	Washington	0.22	0.04	(21)	-9.61
Michigan	0.25	0.03	(13)	1.37	West Virginia	-	-	(-)	-
Minnesota	0.13 ^b	0.03	(28)	-47.69 ^c	Wisconsin	0.25	0.04	(14)	-0.09
Mississippi	-	-	(-)	-	Wyoming	-	-	(-)	-
Missouri	0.35	0.05	(03)	41.23 ^c					



^a US Mortality Files, National Center for Health Statistics, Centers for Disease Control and Prevention. Rates are per 100,000 and are age-adjusted to the 2000 US Std Population (19 age groups - Census P25-1130).
^b Difference between state rate and total U.S. rate is statistically significant (p<=.0002).
^c Absolute percent difference between state rate and total U.S. rate is 15% or more.
SE Standard error of the rate.
PD Percent difference between state rate and total U.S. rate.
- Statistic not shown. Rate based on less than 16 cases for the time interval.

Table 25.15
Cancer of the Testis (Invasive)

Estimated United States Cancer Prevalence Counts^a on January 1, 2011
By Race/Ethnicity and Years Since Diagnosis

Years Since Diagnosis	0 to <5	5 to <10	10 to <15	15 to <20	20 to <25	25 to <30	0 to <19 ^e	0 to <36 ^e	>=36 ^g	Complete ^h
<u>Race</u>										
All Races ^b	42,114	39,198	36,255	31,088	28,044	20,211	154,737	212,079	15,327	227,406
White ^b	38,604	37,033	34,094	29,566	27,142	19,521	145,211	200,534	14,651	215,185
Black ^b	1,309	889	944	594	320	325	3,794	4,697	166	4,863
Asian/Pacific Islander ^c	870	649	544	+	+	+	2,439	+	+	+
Hispanic ^d	6,416	4,519	3,407	+	+	+	16,352	+	+	+

Estimated prevalence percent^a on January 1, 2011, of the SEER^c population diagnosed in the previous 19 years
By Age at Prevalence and Race/Ethnicity

Age at Prevalence	Age Specific (Crude)										Age-Adjusted ^f All Ages	
	All Ages	0-9	10-19	20-29	30-39	40-49	50-59	60-69	70-79	80+		
<u>Race</u>												
All Races ^c	0.0885%	0.0026%	0.0073%	0.0704%	0.1660%	0.2005%	0.1368%	0.0585%	0.0238%	0.0115%	0.0881%	
White ^c	0.1090%	0.0026%	0.0086%	0.0870%	0.2078%	0.2481%	0.1644%	0.0693%	0.0281%	0.0132%	0.1084%	
Black ^c	0.0187%	0.0016%	0.0025%	0.0138%	0.0315%	0.0416%	0.0378%	0.0167%	-	-	0.0193%	
Asian/Pacific Islander ^c	0.0293%	0.0042%	0.0042%	0.0269%	0.0497%	0.0579%	0.0455%	0.0192%	0.0077%	-	0.0282%	
Hispanic ^d	0.0638%	0.0029%	0.0102%	0.0750%	0.1429%	0.1291%	0.0731%	0.0280%	0.0110%	-	0.0642%	

^a US 2011 cancer prevalence counts are based on 2011 cancer prevalence proportions from the SEER registries and 1/1/2011 US population estimates based on the average of 2010 and 2011 population estimates from the US Bureau of the Census. Prevalence was calculated using the First Malignant Primary Only for a person.

^{b c d} Statistics based on (b) SEER 9 Areas (c) SEER 11 Areas and Rural Georgia (d) NHIA for Hispanic for SEER 11 Areas and Rural Georgia.

^e Maximum limited-duration prevalence: 36 years for 1975-2011 SEER 9 data; 19 years for 1992-2011 SEER 11 data (used to calculate prevalence for Hispanics and Asian Pacific Islanders).

^f Percentages are age-adjusted to the 2000 US Standard Population (19 age groups - Census P25-1130) by 5-year age groups.

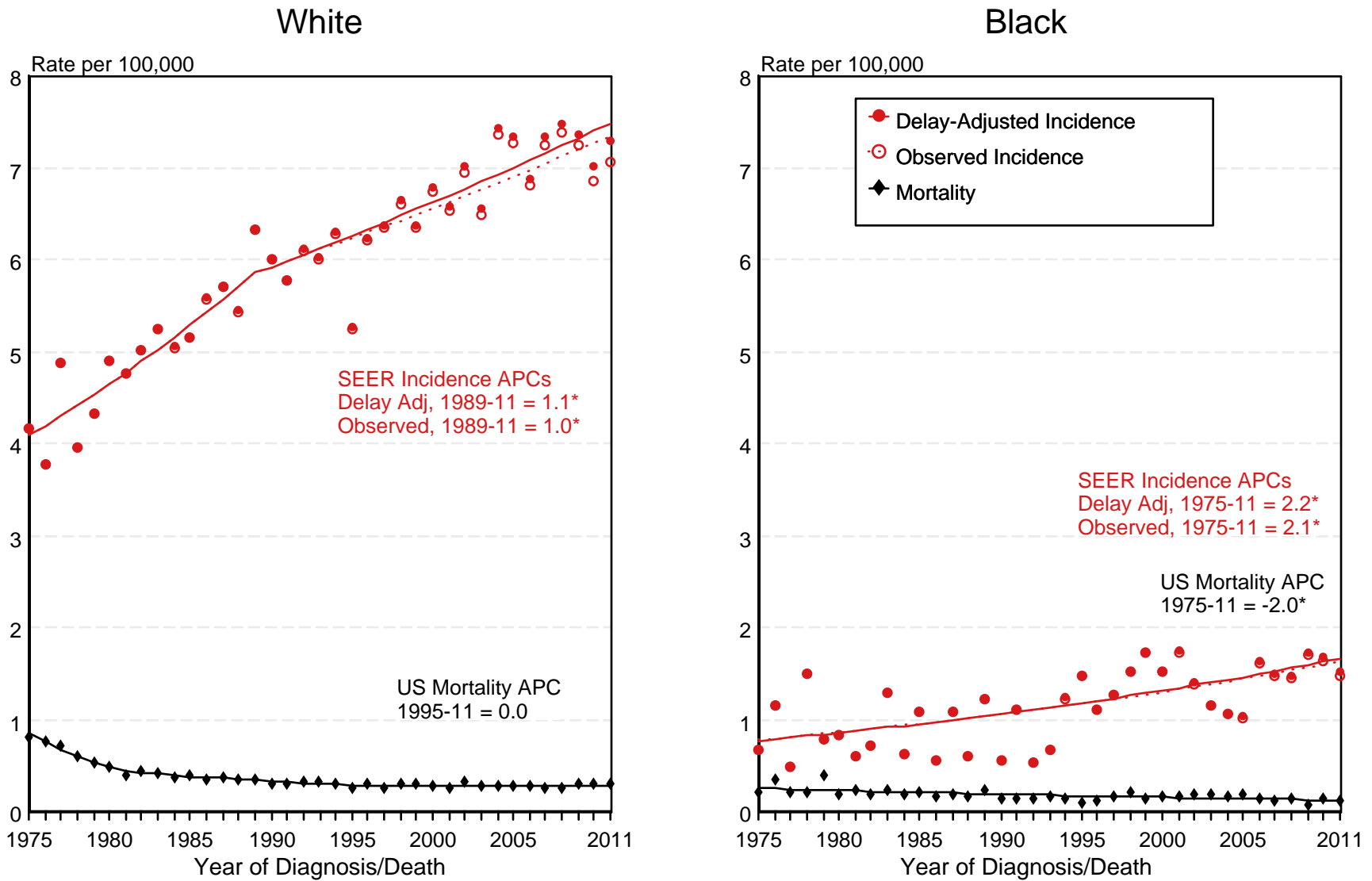
^{g h i} (g) Cases diagnosed more than 36 years ago were estimated using the completeness index method (Capocaccia et. al. 1997, Merrill et. al. 2000). (h) Complete prevalence is obtained by summing 0 to <36 and >=36. (i) Age-specific completeness index was approximated using empirical data from historical Connecticut tumor registry.

- Statistic not shown. Statistic based on fewer than 5 cases estimated alive in SEER for the time interval.

+ Not available.

Figure 25.1

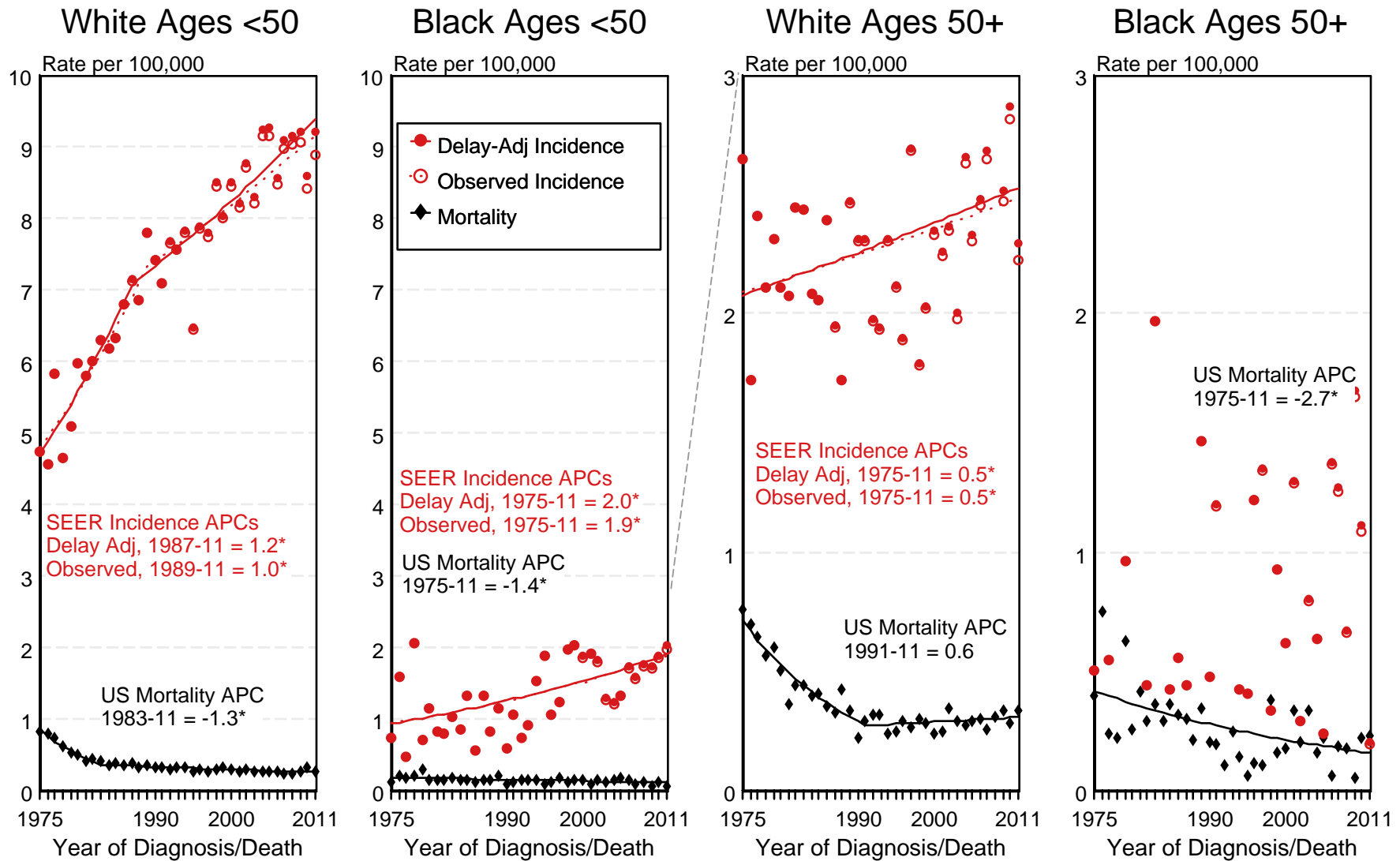
SEER Observed Incidence, SEER Delay Adjusted Incidence and US Death Rates^a Cancer of the Testis, by Race



^a Source: SEER 9 areas and US Mortality Files (National Center for Health Statistics, CDC). Rates are age-adjusted to the 2000 US Std Population (19 age groups - Census P25-1103). Regression lines and APCs are calculated using the Joinpoint Regression Program Version 4.1.0, April 2014, National Cancer Institute. The APC is the Annual Percent Change for the regression line segments. The APC shown on the graph is for the most recent trend.
* The APC is significantly different from zero ($p < 0.05$).

Figure 25.2

SEER Observed Incidence, SEER Delay Adjusted Incidence and US Death Rates^a Cancer of the Testis, by Age and Race



Regression line cannot be calculated for Black Male Age 50+ Incidence and Delay-adjusted Incidence due to years with zero count.

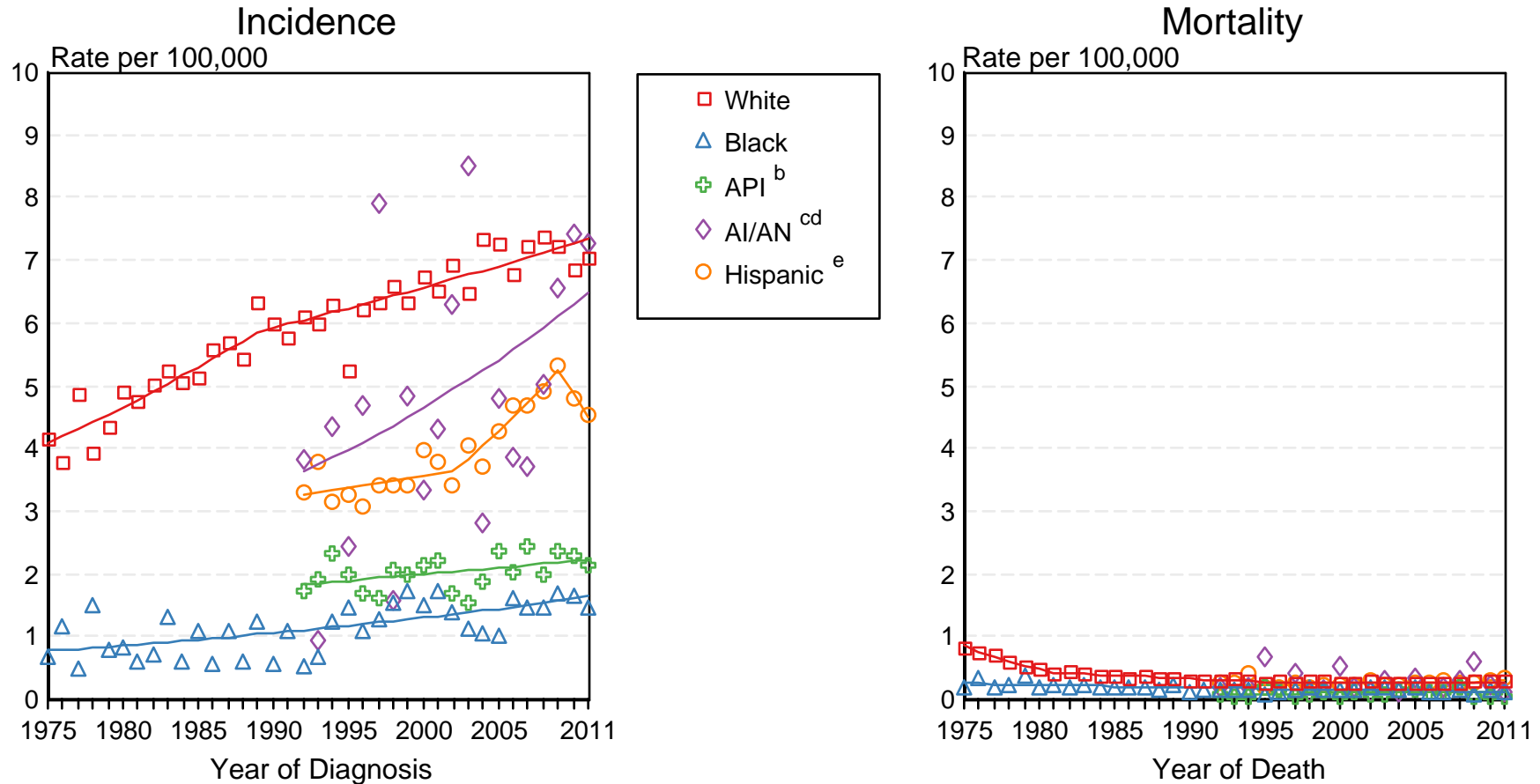
^a Source: SEER 9 areas and US Mortality Files (National Center for Health Statistics, CDC). Rates are age-adjusted to the 2000 US Std Population (19 age groups - Census P25-1103). Regression lines and APCs are calculated using the Joinpoint Regression Program Version 4.1.0, April 2014, National Cancer Institute. The APC is the Annual Percent Change for the regression line segments. The APC shown on the graph is for the most recent trend.

* The APC is significantly different from zero ($p < 0.05$).

Figure 25.3

SEER Incidence and US Death Rates^a Cancer of the Testis

Joinpoint Analyses for Whites and Blacks from 1975-2011
and for Asian/Pacific Islanders, American Indians/Alaska Natives and Hispanics from 1992-2011



Source: Incidence data for whites and blacks are from the SEER 9 areas (San Francisco, Connecticut, Detroit, Hawaii, Iowa, New Mexico, Seattle, Utah, Atlanta).

Incidence data for Asian/Pacific Islanders, American Indians/Alaska Natives and Hispanics are from the SEER 13 Areas (SEER 9 Areas, San Jose-Monterey, Los Angeles, Alaska Native Registry and Rural Georgia). Mortality data are from US Mortality Files, National Center for Health Statistics, CDC.

Rates are age-adjusted to the 2000 US Std Population (19 age groups - Census P25-1103).

^a Regression lines are calculated using the Joinpoint Regression Program Version 4.1.0, April 2014, National Cancer Institute. Joinpoint analyses for Whites and Blacks during the 1975-2011 period allow a maximum of 5 joinpoints. Analyses for other ethnic groups during the period 1992-2011 allow a maximum of 3 joinpoints.

^b API = Asian/Pacific Islander.

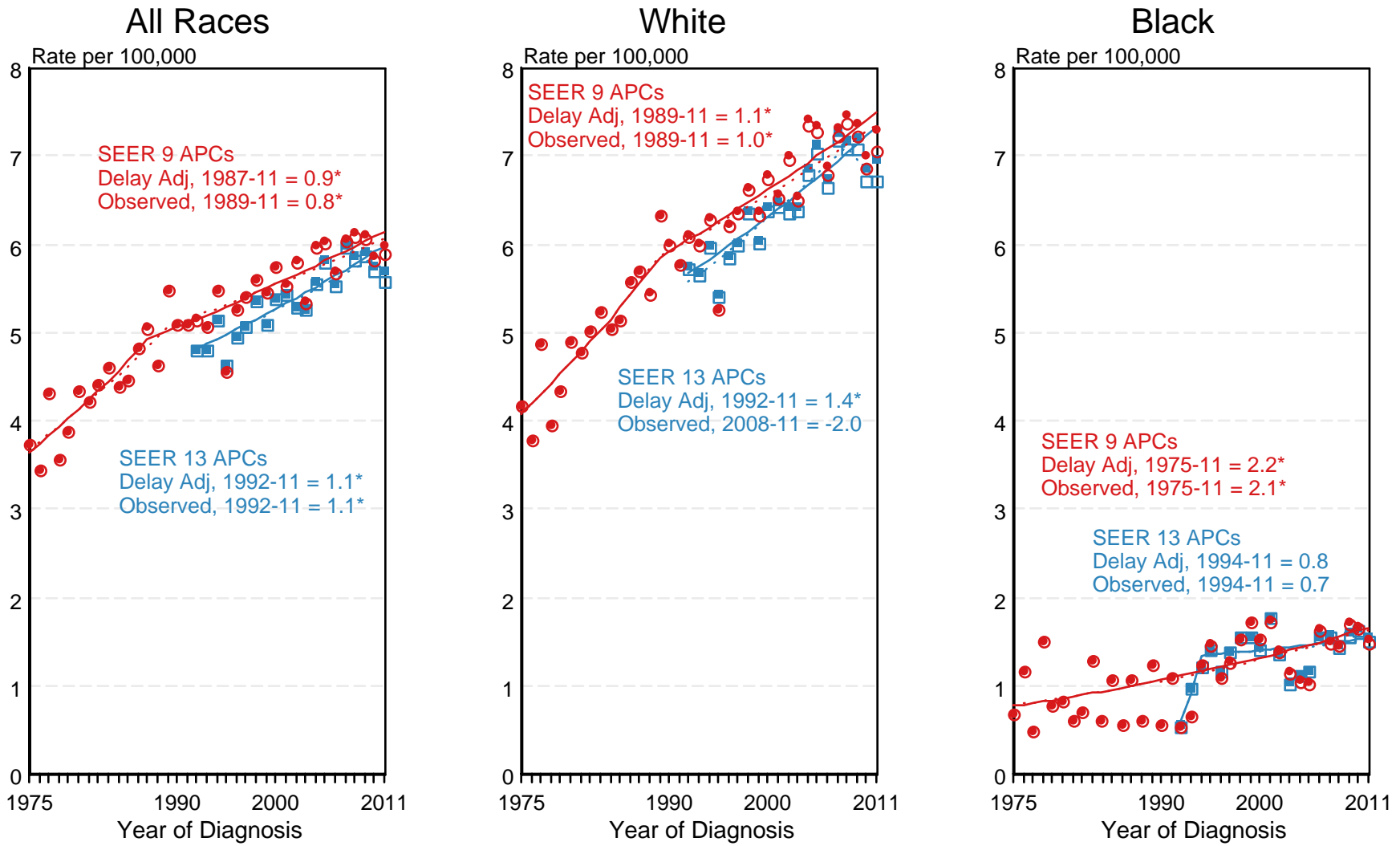
^c AI/AN = American Indian/Alaska Native. Rates for American Indian/Alaska Native are based on the CHSDA(Contract Health Service Delivery Area) counties.

^d Joinpoint could not fit a regression line for American Indian/Alaska Native Mortality due to insufficient data.

^e Hispanic is not mutually exclusive from whites, blacks, Asian/Pacific Islanders, and American Indians/Alaska Natives. Incidence data for Hispanics are based on NHIA and exclude cases from the Alaska Native Registry. Mortality data for Hispanics exclude cases from New Hampshire and Oklahoma.

Figure 25.4

SEER Observed Incidence and SEER Delay Adjusted Incidence Rates^a SEER 9 Areas Compared to SEER 13 Areas Cancer of the Testis, by Race



● SEER 9 Delay-Adj. Incidence
 ○ SEER 9 Observed Incidence
 ■ SEER 13 Delay-Adj. Incidence
 □ SEER 13 Observed Incidence

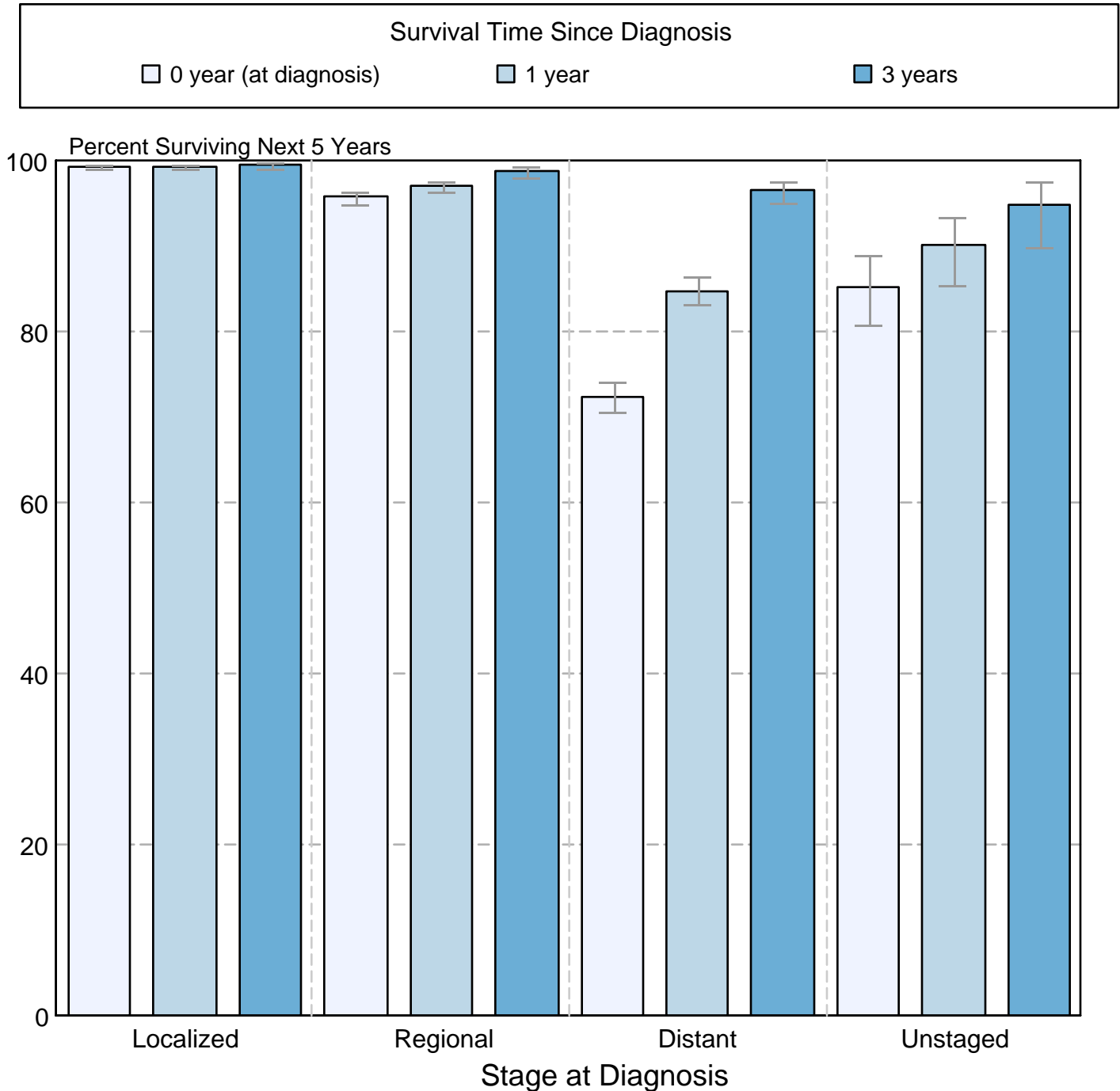
^a Source: SEER 9 areas and SEER 13 areas.
 Rates are age-adjusted to the 2000 US Std Population (19 age groups - Census P25-1103).
 Regression lines and APCs are calculated using the Joinpoint Regression Program Version 4.1.0, April 2014, National Cancer Institute.
 The APC is the Annual Percent Change for the regression line segments. The APC shown on the graph is for the most recent trend.
 * The APC is significantly different from zero ($p < 0.05$).

Figure 25.5

Cancer of the Testis

5-Year SEER Conditional Relative Survival and 95% Confidence Intervals

Probability of surviving the next 5 years given the cohort
has already survived 0, 1, or 3 years
1998-2010 by stage at diagnosis



Source: SEER 18 areas (San Francisco, Connecticut, Detroit, Hawaii, Iowa, New Mexico, Seattle, Utah, Atlanta, San Jose-Monterey, Los Angeles, Alaska Native Registry, Rural Georgia, California excluding SF/SJM/LA, Kentucky, Louisiana, New Jersey and Georgia excluding ATL/RG). California excluding SF/SJM/LA, Kentucky, Louisiana, New Jersey and Georgia excluding ATL/RG contribute cases for diagnosis years 2000-2009. The remaining 13 SEER Areas contribute cases for the entire period 1998-2010. Percent surviving is not shown if based on less than 25 cases. Confidence intervals are not shown if length of the confidence interval is greater than 5 times the standard error.