

Table 13.1
LeukemiaTrends in SEER Incidence^{ab} and U.S. Mortality^c Using the Joinpoint Regression Program,
1975-2012 With up to Five Joinpoints, 1992-2012 With up to Three Joinpoints,
Both Sexes by Race/Ethnicity

	JP Trend 1		JP Trend 2		JP Trend 3		JP Trend 4		JP Trend 5		JP Trend 6		AAPC ^d	
	Years	APC	Years	APC	Years	APC	Years	APC	Years	APC	Years	APC	2003-12	2008-12
<u>SEER 9 Delay-Adjusted Incidence^a, 1975-2012</u>														
All Races	1975-07	0.3*	2007-12	2.7*									1.6*	2.7*
White	1975-09	0.5*	2009-12	4.5*									1.8*	3.5*
Black	1975-12	0.3											0.3	0.3
<u>SEER 13 Delay-Adjusted Incidence^b, 1992-2012</u>														
All Races	1992-07	0.4*	2007-12	2.1*									1.3*	2.1*
White	1992-12	0.8*											0.8*	0.8*
Black	1992-12	0.8*											0.8*	0.8*
<u>SEER 9 Observed Incidence^a, 1975-2012</u>														
All Races	1975-12	0.2*											0.2*	0.2*
White	1975-12	0.3*											0.3*	0.3*
Black	1975-12	0.0											0.0	0.0
<u>SEER 13 Observed Incidence^b, 1992-2012</u>														
All Races	1992-12	0.2*											0.2*	0.2*
White	1992-12	0.3*											0.3*	0.3*
White NH ^{ef}	1992-12	0.4*											0.4*	0.4*
Black	1992-12	0.2											0.2	0.2
Black NH ^{ef}	1992-12	0.2											0.2	0.2
API ^e	1992-12	-0.2											-0.2	-0.2
AI/AN ^{eg}	1992-12	1.6											1.6	1.6
Hispanic ^f	1992-12	0.4											0.4	0.4
<u>U.S. Cancer Mortality^c, 1975-2012</u>														
All Races	1975-80	0.6	1980-88	-0.6*	1988-91	0.7	1991-01	-0.6*	2001-12	-1.0*			-1.0*	-1.0*
White	1975-00	-0.3*	2000-12	-0.9*									-0.9*	-0.9*
Black	1975-91	0.7*	1991-12	-1.2*									-1.2*	-1.2*
<u>U.S. Cancer Mortality^c, 1992-2012</u>														
All Races	1992-01	-0.5*	2001-12	-1.0*									-1.0*	-1.0*
White	1992-01	-0.4*	2001-12	-0.9*									-0.9*	-0.9*
White NH ^{ef}	1992-01	-0.3*	2001-12	-0.8*									-0.8*	-0.8*
Black	1992-12	-1.2*											-1.2*	-1.2*
Black NH ^{ef}	1992-12	-1.1*											-1.1*	-1.1*
API ^e	1992-07	-1.4*	2007-12	2.3									0.6	2.3
AI/AN ^{eg}	1992-12	-0.2											-0.2	-0.2
Hispanic ^f	1992-96	2.0	1996-12	-0.7*									-0.7*	-0.7*

Joinpoint Regression Program Version 4.2.0, April 2015, National Cancer Institute. (<http://surveillance.cancer.gov/joinpoint/>).

The APC is the Annual Percent Change based on rates age-adjusted to the 2000 US Std Population (19 age groups - Census P25-1130).

Trends are from the SEER 9 areas (San Francisco, Connecticut, Detroit, Hawaii, Iowa, New Mexico, Seattle, Utah, and Atlanta).

Trends are from the SEER 13 areas (SEER 9 Areas, Los Angeles, San Jose-Monterey, Rural Georgia, and the Alaska Native Registry).

Trends are from US Mortality Files, National Center for Health Statistics, Centers for Disease Control and Prevention.

The AAPC is the Average Annual Percent Change and is based on the APCs calculated by Joinpoint.

API - Asian/Pacific Islander, AI/AN - American Indian/Alaska Native, NH - Non-Hispanic

Hispanic and Non-Hispanic are not mutually exclusive from whites, blacks, Asian/Pacific Islanders, and American Indians/Alaska

Natives. Incidence data for Hispanics and Non-Hispanics are based on NHIA and exclude cases from the Alaska Native Registry.

The Hispanic and Non-Hispanic mortality trends exclude deaths from New Hampshire and Oklahoma.

Data for American Indian/Alaska Native are based on the CHSDA (Contract Health Service Delivery Area) counties.

* The APC/AAPC is significantly different from zero (p<.05).

- Joinpoint regression line analysis could not be performed on data series.

Table 13.2
LeukemiaTrends in SEER Incidence^{ab} and U.S. Mortality^c Using the Joinpoint Regression Program,
1975-2012 With up to Five Joinpoints, 1992-2012 With up to Three Joinpoints,
Males by Race/Ethnicity

	JP Trend 1		JP Trend 2		JP Trend 3		JP Trend 4		JP Trend 5		JP Trend 6		AAPC ^d	
	Years	APC	Years	APC	Years	APC	Years	APC	Years	APC	Years	APC	2003-12	2008-12
<u>SEER 9 Delay-Adjusted Incidence^a, 1975-2012</u>														
All Races	1975-07	0.2*	2007-12	2.5*									1.5*	2.5*
White	1975-98	0.1	1998-12	1.0*									1.0*	1.0*
Black	1975-12	0.3*											0.3*	0.3*
<u>SEER 13 Delay-Adjusted Incidence^b, 1992-2012</u>														
All Races	1992-06	0.2	2006-12	1.8*									1.3*	1.8*
White	1992-12	0.7*											0.7*	0.7*
Black	1992-12	0.8*											0.8*	0.8*
<u>SEER 9 Observed Incidence^a, 1975-2012</u>														
All Races	1975-12	0.1*											0.1*	0.1*
White	1975-12	0.2*											0.2*	0.2*
Black	1975-12	0.0											0.0	0.0
<u>SEER 13 Observed Incidence^b, 1992-2012</u>														
All Races	1992-12	0.1											0.1	0.1
White	1992-12	0.1											0.1	0.1
White NH ^{ef}	1992-12	0.2											0.2	0.2
Black	1992-12	0.2											0.2	0.2
Black NH ^{ef}	1992-12	0.3											0.3	0.3
API ^e	1992-12	-0.1											-0.1	-0.1
AI/AN ^{eg}	1992-12	2.2											2.2	2.2
Hispanic ^f	1992-12	0.2											0.2	0.2
<u>U.S. Cancer Mortality^c, 1975-2012</u>														
All Races	1975-80	0.5	1980-87	-0.7*	1987-95	0.1	1995-12	-0.9*					-0.9*	-0.9*
White	1975-00	-0.3*	2000-12	-0.8*									-0.8*	-0.8*
Black	1975-91	1.0*	1991-12	-1.3*									-1.3*	-1.3*
<u>U.S. Cancer Mortality^c, 1992-2012</u>														
All Races	1992-12	-0.8*											-0.8*	-0.8*
White	1992-12	-0.7*											-0.7*	-0.7*
White NH ^{ef}	1992-12	-0.7*											-0.7*	-0.7*
Black	1992-12	-1.3*											-1.3*	-1.3*
Black NH ^{ef}	1992-12	-1.2*											-1.2*	-1.2*
API ^e	1992-12	-0.5											-0.5	-0.5
AI/AN ^{eg}	1992-12	0.5											0.5	0.5
Hispanic ^f	1992-12	-0.5*											-0.5*	-0.5*

Joinpoint Regression Program Version 4.2.0, April 2015, National Cancer Institute. (<http://surveillance.cancer.gov/joinpoint/>).

The APC is the Annual Percent Change based on rates age-adjusted to the 2000 US Std Population (19 age groups - Census P25-1130).

Trends are from the SEER 9 areas (San Francisco, Connecticut, Detroit, Hawaii, Iowa, New Mexico, Seattle, Utah, and Atlanta).

Trends are from the SEER 13 areas (SEER 9 Areas, Los Angeles, San Jose-Monterey, Rural Georgia, and the Alaska Native Registry).

Trends are from US Mortality Files, National Center for Health Statistics, Centers for Disease Control and Prevention.

The AAPC is the Average Annual Percent Change and is based on the APCs calculated by Joinpoint.

API - Asian/Pacific Islander, AI/AN - American Indian/Alaska Native, NH - Non-Hispanic

Hispanic and Non-Hispanic are not mutually exclusive from whites, blacks, Asian/Pacific Islanders, and American Indians/Alaska

Natives. Incidence data for Hispanics and Non-Hispanics are based on NHIA and exclude cases from the Alaska Native Registry.

The Hispanic and Non-Hispanic mortality trends exclude deaths from New Hampshire and Oklahoma.

Data for American Indian/Alaska Native are based on the CHSDA (Contract Health Service Delivery Area) counties.

* The APC/AAPC is significantly different from zero (p<.05).

- Joinpoint regression line analysis could not be performed on data series.

Table 13.3
LeukemiaTrends in SEER Incidence^{ab} and U.S. Mortality^c Using the Joinpoint Regression Program,
1975-2012 With up to Five Joinpoints, 1992-2012 With up to Three Joinpoints,
Females by Race/Ethnicity

	JP Trend 1		JP Trend 2		JP Trend 3		JP Trend 4		JP Trend 5		JP Trend 6		AAPC ^d	
	Years	APC	Years	APC	Years	APC	Years	APC	Years	APC	Years	APC	2003-12	2008-12
<u>SEER 9 Delay-Adjusted Incidence^a, 1975-2012</u>														
All Races	1975-09	0.3*	2009-12	4.9*									1.9*	3.8*
White	1975-09	0.5*	2009-12	5.0*									2.0*	3.9*
Black	1975-12	0.3											0.3	0.3
<u>SEER 13 Delay-Adjusted Incidence^b, 1992-2012</u>														
All Races	1992-12	0.7*											0.7*	0.7*
White	1992-12	0.9*											0.9*	0.9*
Black	1992-12	0.7*											0.7*	0.7*
<u>SEER 9 Observed Incidence^a, 1975-2012</u>														
All Races	1975-12	0.3*											0.3*	0.3*
White	1975-12	0.4*											0.4*	0.4*
Black	1975-12	0.0											0.0	0.0
<u>SEER 13 Observed Incidence^b, 1992-2012</u>														
All Races	1992-12	0.3*											0.3*	0.3*
White	1992-12	0.4*											0.4*	0.4*
White NH ^{ef}	1992-12	0.4*											0.4*	0.4*
Black	1992-12	0.1											0.1	0.1
Black NH ^{ef}	1992-12	0.2											0.2	0.2
API ^e	1992-12	-0.1											-0.1	-0.1
AI/AN ^{eg}	1992-12	1.5											1.5	1.5
Hispanic ^f	1992-12	0.5											0.5	0.5
<u>U.S. Cancer Mortality^c, 1975-2012</u>														
All Races	1975-80	0.7	1980-99	-0.4*	1999-12	-1.2*							-1.2*	-1.2*
White	1975-80	0.6	1980-00	-0.4*	2000-12	-1.1*							-1.1*	-1.1*
Black	1975-93	0.4	1993-12	-1.2*									-1.2*	-1.2*
<u>U.S. Cancer Mortality^c, 1992-2012</u>														
All Races	1992-00	-0.5*	2000-12	-1.2*									-1.2*	-1.2*
White	1992-00	-0.4*	2000-12	-1.1*									-1.1*	-1.1*
White NH ^{ef}	1992-00	-0.2	2000-12	-1.1*									-1.1*	-1.1*
Black	1992-12	-1.1*											-1.1*	-1.1*
Black NH ^{ef}	1992-12	-1.1*											-1.1*	-1.1*
API ^e	1992-12	-0.5											-0.5	-0.5
AI/AN ^{eg}	1992-12	-1.1											-1.1	-1.1
Hispanic ^f	1992-12	-0.5*											-0.5*	-0.5*

Joinpoint Regression Program Version 4.2.0, April 2015, National Cancer Institute. (<http://surveillance.cancer.gov/joinpoint/>).

The APC is the Annual Percent Change based on rates age-adjusted to the 2000 US Std Population (19 age groups - Census P25-1130).

Trends are from the SEER 9 areas (San Francisco, Connecticut, Detroit, Hawaii, Iowa, New Mexico, Seattle, Utah, and Atlanta).

Trends are from the SEER 13 areas (SEER 9 Areas, Los Angeles, San Jose-Monterey, Rural Georgia, and the Alaska Native Registry).

Trends are from US Mortality Files, National Center for Health Statistics, Centers for Disease Control and Prevention.

The AAPC is the Average Annual Percent Change and is based on the APCs calculated by Joinpoint.

API - Asian/Pacific Islander, AI/AN - American Indian/Alaska Native, NH - Non-Hispanic

Hispanic and Non-Hispanic are not mutually exclusive from whites, blacks, Asian/Pacific Islanders, and American Indians/Alaska

Natives. Incidence data for Hispanics and Non-Hispanics are based on NHIA and exclude cases from the Alaska Native Registry.

The Hispanic and Non-Hispanic mortality trends exclude deaths from New Hampshire and Oklahoma.

Data for American Indian/Alaska Native are based on the CHSDA (Contract Health Service Delivery Area) counties.

* The APC/AAPC is significantly different from zero (p<.05).

- Joinpoint regression line analysis could not be performed on data series.

Table 13.4
LeukemiaDelay-adjusted SEER Incidence^a Rates by Year, Race and Sex

Year of Diagnosis:	All Races			Whites			Blacks		
	Total	Males	Females	Total	Males	Females	Total	Males	Females
1975	12.80	16.93	9.96	13.10	17.49	10.10	11.58	16.33	8.47
1976	13.54	18.48	10.20	13.83	19.12	10.30	11.30	14.19	9.39
1977	12.74	16.34	10.22	13.20	17.04	10.52	10.15	13.61	7.72
1978	12.87	17.25	9.79	13.54	18.30	10.26	9.16	11.42	7.47
1979	12.56	16.79	9.70	13.03	17.56	10.02	10.60	13.52	8.64
1980	12.93	17.36	9.85	13.28	17.91	10.12	12.18	16.11	9.47
1981	12.38	16.47	9.65	12.65	17.03	9.82	12.27	14.47	10.37
1982	13.15	18.23	9.71	13.50	18.77	9.95	10.75	15.16	7.91
1983	13.15	17.81	9.91	13.48	18.43	10.07	12.48	15.95	10.06
1984	13.01	17.11	10.12	13.46	17.98	10.34	10.68	11.87	9.61
1985	13.37	17.77	10.38	13.74	18.29	10.64	12.32	17.03	9.30
1986	12.84	17.54	9.51	13.39	18.38	9.92	10.23	13.20	8.09
1987	13.36	17.76	10.33	13.79	18.46	10.61	12.57	17.60	9.26
1988	12.97	17.51	9.70	13.41	18.27	9.99	11.55	14.03	9.42
1989	13.46	17.68	10.49	13.99	18.32	11.00	11.26	15.80	8.11
1990	12.92	17.34	9.80	13.53	18.27	10.24	11.40	14.91	8.89
1991	13.08	16.80	10.25	13.70	17.76	10.61	10.81	12.09	9.98
1992	13.06	17.55	9.82	13.65	18.71	10.03	10.68	13.91	8.42
1993	13.08	17.08	10.07	13.65	18.02	10.34	11.64	15.20	9.14
1994	13.09	16.99	10.21	13.77	17.92	10.74	9.86	12.71	7.78
1995	13.60	17.77	10.49	14.47	18.87	11.21	9.97	13.69	7.42
1996	13.17	17.03	10.41	13.76	17.83	10.86	10.77	14.00	8.73
1997	13.23	17.64	10.02	14.05	18.72	10.66	10.67	14.23	8.29
1998	13.23	17.23	10.27	14.02	18.12	10.96	9.99	14.46	7.19
1999	12.88	17.21	9.69	13.52	18.02	10.17	10.66	14.13	8.43
2000	13.79	17.91	10.71	14.50	18.87	11.22	11.91	14.02	10.34
2001	14.51	18.87	11.21	15.46	19.99	12.03	12.04	14.74	10.16
2002	13.72	18.13	10.40	14.83	19.55	11.23	9.09	11.98	7.08
2003	13.82	18.11	10.57	14.62	19.27	11.09	11.61	15.04	9.15
2004	14.08	18.35	10.85	14.84	19.25	11.41	13.21	18.08	10.16
2005	14.06	18.48	10.66	14.99	19.95	11.12	11.80	13.40	10.64
2006	14.11	17.71	11.41	15.16	18.86	12.39	11.50	15.69	8.60
2007	13.85	18.22	10.53	14.96	19.60	11.38	10.24	14.31	7.72
2008	14.49	18.90	11.04	15.41	20.09	11.68	11.50	15.74	8.43
2009	14.23	18.35	11.04	15.14	19.52	11.66	11.82	16.19	8.92
2010	15.08	19.83	11.46	16.11	21.16	12.18	11.65	15.61	9.30
2011	15.51	20.04	11.87	16.48	21.20	12.63	13.54	16.69	11.05
2012	16.06	20.45	12.60	17.18	21.68	13.57	13.69	17.65	11.06

Additional information on the model used to delay-adjust SEER Incidence rates can be found at [\(http://surveillance.cancer.gov/delay/\)](http://surveillance.cancer.gov/delay/).

^a SEER 9 areas (San Francisco, Connecticut, Detroit, Hawaii, Iowa, New Mexico, Seattle, Utah, and Atlanta).
Rates are per 100,000 and are age-adjusted to the 2000 US Std Population (19 age groups - Census P25-1130).
- Delay-adjusted rate is not shown for observed rates based on less than 16 cases for the time interval.

Table 13.5
LeukemiaAge-adjusted SEER Incidence^a Rates by Year, Race and Sex

Year of Diagnosis:	All Races			Whites			Blacks		
	Total	Males	Females	Total	Males	Females	Total	Males	Females
1975-2012	13.33	17.52	10.26	13.97	18.42	10.71	11.05	14.37	8.79
1975	12.80	16.93	9.96	13.10	17.49	10.10	11.58	16.33	8.47
1976	13.54	18.48	10.20	13.83	19.12	10.30	11.30	14.19	9.39
1977	12.74	16.34	10.22	13.20	17.04	10.52	10.15	13.61	7.72
1978	12.87	17.25	9.79	13.54	18.30	10.26	9.16	11.42	7.47
1979	12.56	16.79	9.70	13.03	17.56	10.02	10.60	13.52	8.64
1980	12.93	17.36	9.85	13.28	17.91	10.12	12.18	16.11	9.47
1981	12.38	16.47	9.65	12.65	17.03	9.82	12.27	14.47	10.37
1982	13.15	18.23	9.71	13.50	18.77	9.95	10.75	15.16	7.91
1983	13.15	17.81	9.91	13.48	18.43	10.07	12.48	15.95	10.06
1984	13.01	17.11	10.12	13.46	17.98	10.34	10.68	11.87	9.61
1985	13.37	17.77	10.38	13.74	18.29	10.64	12.32	17.03	9.30
1986	12.84	17.54	9.51	13.39	18.38	9.92	10.23	13.20	8.09
1987	13.36	17.76	10.33	13.79	18.46	10.61	12.57	17.60	9.26
1988	12.97	17.51	9.70	13.41	18.27	9.99	11.55	14.03	9.42
1989	13.46	17.68	10.49	13.99	18.32	11.00	11.26	15.80	8.11
1990	12.92	17.34	9.80	13.53	18.27	10.24	11.40	14.91	8.89
1991	13.08	16.80	10.25	13.70	17.76	10.61	10.81	12.09	9.98
1992	13.06	17.55	9.82	13.65	18.71	10.03	10.68	13.91	8.42
1993	13.08	17.08	10.07	13.65	18.02	10.34	11.64	15.20	9.14
1994	13.09	16.99	10.21	13.77	17.92	10.74	9.86	12.71	7.78
1995	13.60	17.77	10.49	14.47	18.87	11.21	9.97	13.69	7.42
1996	13.17	17.03	10.41	13.76	17.83	10.86	10.77	14.00	8.73
1997	13.23	17.64	10.02	14.05	18.72	10.66	10.67	14.23	8.29
1998	13.21	17.21	10.26	14.00	18.10	10.95	9.97	14.44	7.18
1999	12.86	17.17	9.67	13.49	17.97	10.15	10.62	14.07	8.40
2000	13.74	17.85	10.67	14.44	18.79	11.18	11.83	13.93	10.27
2001	14.43	18.77	11.15	15.36	19.85	11.96	11.93	14.60	10.07
2002	13.62	17.99	10.32	14.70	19.37	11.14	8.97	11.82	7.00
2003	13.68	17.91	10.46	14.45	19.02	10.96	11.43	14.79	9.00
2004	13.88	18.07	10.70	14.60	18.93	11.24	12.93	17.69	9.94
2005	13.80	18.10	10.47	14.67	19.50	10.90	11.48	13.02	10.36
2006	13.76	17.25	11.15	14.75	18.32	12.07	11.10	15.13	8.31
2007	13.40	17.59	10.21	14.43	18.86	11.00	9.79	13.65	7.39
2008	13.88	18.05	10.61	14.69	19.10	11.17	10.89	14.88	7.99
2009	13.43	17.26	10.46	14.22	18.26	11.00	11.01	15.04	8.32
2010	13.97	18.29	10.69	14.84	19.38	11.29	10.64	14.20	8.52
2011	14.04	18.04	10.81	14.79	18.92	11.42	12.06	14.84	9.85
2012	13.92	17.57	11.03	14.71	18.41	11.74	11.68	14.96	9.48

^a SEER 9 areas (San Francisco, Connecticut, Detroit, Hawaii, Iowa, New Mexico, Seattle, Utah, and Atlanta). Rates are per 100,000 and are age-adjusted to the 2000 US Std Population (19 age groups - Census P25-1130).
- Statistic not shown. Rate based on less than 16 cases for the time interval.

Table 13.6
Acute Lymphocytic Leukemia

Age-adjusted SEER Incidence^a Rates by Year, Race and Sex

Year of Diagnosis:	All Races			Whites			Blacks		
	Total	Males	Females	Total	Males	Females	Total	Males	Females
1975-2012	1.36	1.57	1.17	1.44	1.66	1.24	0.86	0.97	0.75
1975	0.93	1.12	0.76	0.99	1.23	0.78	-	-	-
1976	1.08	1.29	0.93	1.09	1.34	0.91	0.79	-	-
1977	1.10	1.30	0.91	1.17	1.38	0.96	-	-	-
1978	1.03	1.24	0.83	1.11	1.33	0.90	-	-	-
1979	1.02	1.18	0.88	1.08	1.20	0.97	-	-	-
1980	1.12	1.40	0.88	1.16	1.47	0.90	0.73	-	-
1981	1.24	1.31	1.18	1.30	1.39	1.23	0.95	-	-
1982	1.23	1.50	0.99	1.30	1.56	1.05	-	-	-
1983	1.29	1.52	1.08	1.39	1.64	1.18	0.80	-	-
1984	1.32	1.49	1.20	1.35	1.50	1.24	0.92	-	-
1985	1.30	1.55	1.09	1.35	1.62	1.12	-	-	-
1986	1.30	1.67	0.96	1.38	1.82	0.96	0.77	-	-
1987	1.32	1.48	1.19	1.35	1.54	1.19	0.89	-	1.15
1988	1.40	1.79	1.07	1.44	1.84	1.12	0.98	-	-
1989	1.62	1.82	1.43	1.69	1.90	1.49	1.03	-	-
1990	1.42	1.76	1.16	1.52	1.85	1.29	0.57	-	-
1991	1.38	1.72	1.05	1.51	1.94	1.09	0.86	-	-
1992	1.35	1.59	1.14	1.40	1.73	1.09	0.91	-	-
1993	1.26	1.41	1.09	1.37	1.57	1.14	0.82	-	-
1994	1.19	1.48	0.93	1.28	1.59	1.01	0.68	-	-
1995	1.50	1.81	1.20	1.60	1.87	1.34	0.98	1.32	-
1996	1.38	1.56	1.20	1.46	1.65	1.25	0.85	-	-
1997	1.33	1.51	1.16	1.44	1.60	1.28	0.79	0.98	-
1998	1.47	1.62	1.31	1.57	1.70	1.44	0.93	1.16	-
1999	1.31	1.48	1.15	1.40	1.56	1.24	0.68	-	-
2000	1.40	1.51	1.29	1.52	1.61	1.45	0.87	-	-
2001	1.47	1.67	1.26	1.59	1.83	1.35	0.68	-	-
2002	1.50	1.79	1.20	1.65	2.00	1.29	0.62	-	-
2003	1.43	1.67	1.22	1.48	1.70	1.27	0.78	0.97	-
2004	1.55	1.70	1.40	1.67	1.94	1.39	1.12	-	1.43
2005	1.58	1.88	1.29	1.66	1.94	1.38	0.97	1.18	-
2006	1.45	1.63	1.28	1.51	1.64	1.39	0.97	1.42	-
2007	1.52	1.68	1.38	1.60	1.72	1.50	0.95	1.06	-
2008	1.50	1.85	1.15	1.67	2.01	1.32	0.93	1.32	-
2009	1.47	1.60	1.34	1.57	1.73	1.41	0.96	1.08	0.85
2010	1.45	1.56	1.34	1.58	1.66	1.50	0.95	1.05	0.85
2011	1.78	1.90	1.65	1.93	2.02	1.85	1.36	1.69	1.02
2012	1.46	1.51	1.42	1.59	1.60	1.59	1.09	1.38	0.89

^a SEER 9 areas (San Francisco, Connecticut, Detroit, Hawaii, Iowa, New Mexico, Seattle, Utah, and Atlanta).
Rates are per 100,000 and are age-adjusted to the 2000 US Std Population (19 age groups - Census P25-1130).
- Statistic not shown. Rate based on less than 16 cases for the time interval.

Table 13.7
Chronic Lymphocytic Leukemia

Age-adjusted SEER Incidence^a Rates by Year, Race and Sex

Year of Diagnosis:	All Races			Whites			Blacks		
	Total	Males	Females	Total	Males	Females	Total	Males	Females
1975-2012	4.75	6.60	3.39	5.13	7.14	3.67	3.73	5.30	2.67
1975	4.35	5.92	3.27	4.48	6.12	3.39	4.82	7.06	3.23
1976	4.57	6.76	3.10	4.77	7.17	3.16	4.26	6.58	2.95
1977	4.18	5.72	3.13	4.37	5.96	3.31	3.81	5.78	2.46
1978	4.46	5.94	3.45	4.76	6.43	3.62	3.33	3.64	3.07
1979	4.06	5.69	2.94	4.32	6.09	3.13	3.06	4.16	-
1980	4.52	6.30	3.33	4.69	6.54	3.46	4.51	7.06	2.89
1981	4.27	6.30	2.90	4.46	6.63	3.05	3.82	5.41	2.47
1982	4.30	6.14	3.01	4.50	6.39	3.18	3.77	6.65	-
1983	4.45	6.41	3.13	4.68	6.79	3.25	4.21	6.11	3.03
1984	4.43	6.30	3.12	4.71	6.82	3.28	3.45	4.46	2.65
1985	4.48	6.20	3.30	4.78	6.61	3.53	4.11	6.15	2.87
1986	4.50	6.33	3.24	4.87	6.84	3.54	2.79	4.18	-
1987	4.66	6.81	3.07	4.95	7.25	3.28	4.03	6.14	2.45
1988	4.54	6.45	3.14	4.75	6.85	3.26	4.43	5.32	3.53
1989	4.69	6.43	3.47	4.99	6.88	3.67	3.91	5.15	3.04
1990	4.60	6.30	3.42	4.90	6.76	3.61	4.51	6.13	3.43
1991	4.59	6.18	3.43	4.99	6.78	3.65	3.40	3.75	3.15
1992	4.61	6.73	3.16	5.05	7.42	3.43	3.21	4.96	2.08
1993	4.44	6.12	3.17	4.72	6.53	3.36	4.48	6.70	2.89
1994	4.59	6.10	3.45	5.03	6.67	3.82	3.19	4.13	2.32
1995	4.53	6.40	3.17	4.95	6.98	3.48	3.39	5.34	2.06
1996	4.71	6.34	3.54	5.14	6.86	3.91	3.52	5.36	2.26
1997	4.49	6.07	3.30	4.90	6.59	3.62	3.57	5.18	2.52
1998	4.22	5.96	2.95	4.64	6.52	3.26	2.80	3.73	2.21
1999	4.15	6.04	2.75	4.50	6.51	2.98	3.87	5.89	2.68
2000	4.63	6.50	3.21	5.11	7.22	3.48	3.41	4.46	2.72
2001	5.28	7.32	3.75	5.82	8.05	4.15	3.91	4.89	3.20
2002	5.06	7.12	3.52	5.67	7.96	3.95	3.02	4.29	2.10
2003	5.32	7.36	3.78	5.84	8.12	4.11	4.27	5.98	3.06
2004	5.44	7.52	3.87	5.93	8.01	4.34	4.92	8.10	2.80
2005	5.28	7.58	3.51	5.85	8.49	3.77	3.98	4.83	3.40
2006	5.58	7.40	4.22	6.16	8.09	4.70	4.38	6.49	3.00
2007	5.20	7.28	3.62	5.86	8.08	4.11	2.89	4.60	1.94
2008	5.33	7.15	3.94	5.88	7.76	4.43	3.76	5.77	2.28
2009	5.12	7.05	3.60	5.64	7.70	3.97	3.75	5.47	2.68
2010	5.19	7.27	3.62	5.70	7.87	4.01	3.35	4.97	2.35
2011	5.03	6.71	3.67	5.48	7.29	4.01	3.88	5.06	3.00
2012	4.92	6.62	3.57	5.37	7.11	3.95	3.63	4.85	2.83

^a SEER 9 areas (San Francisco, Connecticut, Detroit, Hawaii, Iowa, New Mexico, Seattle, Utah, and Atlanta). Rates are per 100,000 and are age-adjusted to the 2000 US Std Population (19 age groups - Census P25-1130).
- Statistic not shown. Rate based on less than 16 cases for the time interval.

Table 13.8
Acute Myeloid Leukemia

Age-adjusted SEER Incidence^a Rates by Year, Race and Sex

Year of Diagnosis:	All Races			Whites			Blacks		
	Total	Males	Females	Total	Males	Females	Total	Males	Females
1975-2012	3.54	4.40	2.95	3.60	4.50	2.99	3.12	3.73	2.73
1975	3.43	4.17	2.98	3.48	4.28	2.99	2.49	3.37	2.02
1976	3.50	4.43	2.86	3.53	4.46	2.91	2.56	-	2.64
1977	3.51	4.19	3.05	3.64	4.40	3.14	1.87	-	-
1978	3.42	4.43	2.69	3.53	4.59	2.78	2.70	3.47	2.13
1979	3.32	4.04	2.85	3.36	4.17	2.85	3.39	3.40	3.37
1980	3.14	4.10	2.43	3.17	4.11	2.49	2.88	3.28	2.53
1981	3.16	3.99	2.64	3.22	4.11	2.69	3.07	3.22	2.89
1982	3.42	4.79	2.60	3.47	4.90	2.63	2.50	3.22	2.09
1983	3.21	4.22	2.53	3.17	4.28	2.41	2.93	3.02	2.92
1984	3.30	4.06	2.73	3.35	4.17	2.77	2.35	2.10	2.44
1985	3.33	4.15	2.87	3.25	4.02	2.84	3.78	5.06	2.99
1986	3.00	3.91	2.40	2.95	3.85	2.38	3.21	4.04	2.68
1987	3.02	3.97	2.47	3.03	4.00	2.46	3.05	4.73	2.12
1988	3.03	3.79	2.51	3.07	3.87	2.56	2.79	3.14	2.49
1989	3.19	4.00	2.61	3.29	4.02	2.78	2.22	3.79	-
1990	3.04	3.91	2.43	3.12	4.06	2.46	2.55	3.02	2.19
1991	3.33	3.93	2.88	3.38	3.90	2.98	3.34	4.53	2.59
1992	3.22	3.85	2.76	3.28	4.03	2.75	3.05	2.99	3.05
1993	3.45	4.31	2.86	3.52	4.45	2.86	2.48	2.62	2.55
1994	3.46	4.14	3.02	3.48	4.25	2.97	2.94	3.24	2.77
1995	3.66	4.17	3.31	3.81	4.32	3.45	2.62	2.62	2.73
1996	3.47	4.35	2.90	3.47	4.30	2.94	3.21	4.05	2.73
1997	3.53	4.61	2.77	3.66	4.82	2.85	3.02	3.83	2.55
1998	3.92	4.94	3.19	4.05	5.06	3.31	3.05	4.64	2.11
1999	3.72	4.50	3.18	3.84	4.62	3.30	3.03	3.45	2.76
2000	4.05	4.95	3.41	4.05	4.96	3.39	4.41	4.88	4.01
2001	4.06	4.95	3.39	4.20	5.00	3.61	3.45	4.08	3.00
2002	3.64	4.59	2.98	3.79	4.79	3.11	2.91	3.31	2.67
2003	3.60	4.49	2.96	3.67	4.60	3.02	3.33	3.52	2.96
2004	3.41	4.14	2.92	3.50	4.21	3.00	3.37	4.31	2.96
2005	3.59	4.24	3.17	3.64	4.38	3.19	3.52	3.47	3.64
2006	3.54	4.11	3.14	3.66	4.22	3.26	2.81	3.34	2.52
2007	3.54	4.38	2.96	3.64	4.48	3.07	3.41	4.52	2.72
2008	3.82	4.68	3.18	3.85	4.84	3.08	3.07	3.78	2.74
2009	3.63	4.42	3.07	3.77	4.65	3.10	3.15	4.04	2.55
2010	4.10	5.17	3.32	4.28	5.44	3.40	3.28	4.43	2.57
2011	4.10	5.06	3.34	4.12	5.06	3.36	4.15	4.58	3.83
2012	4.52	5.53	3.74	4.62	5.63	3.83	3.86	4.49	3.43

^a SEER 9 areas (San Francisco, Connecticut, Detroit, Hawaii, Iowa, New Mexico, Seattle, Utah, and Atlanta). Rates are per 100,000 and are age-adjusted to the 2000 US Std Population (19 age groups - Census P25-1130).
- Statistic not shown. Rate based on less than 16 cases for the time interval.

Table 13.9
Chronic Myeloid Leukemia

Age-adjusted SEER Incidence^a Rates by Year, Race and Sex

Year of Diagnosis:	All Races			Whites			Blacks		
	Total	Males	Females	Total	Males	Females	Total	Males	Females
1975-2012	1.78	2.35	1.36	1.80	2.38	1.38	1.80	2.37	1.40
1975	1.98	2.93	1.33	2.00	3.01	1.31	1.94	-	-
1976	1.93	2.48	1.55	1.90	2.45	1.52	1.86	2.58	-
1977	1.68	2.08	1.39	1.69	2.14	1.37	1.84	-	-
1978	1.71	2.26	1.34	1.74	2.28	1.39	1.43	-	-
1979	1.87	2.48	1.43	1.89	2.50	1.45	1.94	2.80	-
1980	1.70	2.06	1.46	1.73	2.10	1.51	1.48	-	-
1981	1.64	1.97	1.41	1.59	1.90	1.39	2.38	3.00	1.81
1982	1.68	2.16	1.35	1.65	2.19	1.31	1.75	-	1.79
1983	1.69	2.23	1.33	1.64	2.15	1.32	2.51	3.44	1.85
1984	1.68	2.40	1.18	1.63	2.41	1.10	2.58	2.61	2.59
1985	1.97	2.76	1.43	2.00	2.80	1.47	2.06	2.89	-
1986	1.68	2.19	1.29	1.71	2.25	1.31	1.54	-	-
1987	1.88	2.32	1.58	1.90	2.38	1.58	2.14	2.88	-
1988	1.91	2.54	1.50	1.92	2.59	1.49	2.08	2.88	-
1989	1.70	2.22	1.35	1.68	2.18	1.35	2.21	3.12	-
1990	1.76	2.47	1.24	1.75	2.50	1.20	2.63	3.66	1.95
1991	1.88	2.44	1.47	1.91	2.55	1.46	1.56	-	1.75
1992	1.76	2.16	1.47	1.80	2.22	1.49	1.49	1.73	-
1993	1.92	2.53	1.48	1.95	2.52	1.55	2.28	3.56	-
1994	1.86	2.47	1.42	1.90	2.48	1.50	1.70	2.57	-
1995	1.89	2.55	1.38	1.96	2.68	1.39	1.59	2.09	-
1996	1.81	2.45	1.35	1.80	2.51	1.27	2.06	2.54	1.83
1997	1.87	2.68	1.29	1.93	2.74	1.36	1.67	2.53	-
1998	1.66	1.95	1.43	1.73	1.97	1.54	1.61	2.31	1.20
1999	1.80	2.49	1.28	1.77	2.44	1.28	1.72	2.30	1.26
2000	1.78	2.34	1.35	1.80	2.33	1.40	1.55	1.72	1.33
2001	1.79	2.35	1.38	1.84	2.36	1.45	1.97	2.83	1.36
2002	1.62	2.08	1.29	1.65	2.11	1.32	1.13	-	-
2003	1.64	2.20	1.19	1.73	2.32	1.24	1.44	2.11	-
2004	1.79	2.53	1.23	1.86	2.64	1.26	1.47	1.97	1.11
2005	1.68	2.26	1.23	1.76	2.36	1.29	1.75	2.44	1.29
2006	1.82	2.39	1.40	1.92	2.50	1.49	1.61	2.17	1.16
2007	1.69	2.30	1.19	1.78	2.47	1.21	1.41	1.83	1.14
2008	1.82	2.33	1.41	1.82	2.26	1.48	1.80	2.54	1.16
2009	1.78	2.35	1.33	1.76	2.25	1.38	1.89	2.94	1.23
2010	1.82	2.44	1.33	1.79	2.44	1.27	1.83	2.07	1.74
2011	1.86	2.49	1.35	1.95	2.65	1.37	1.60	1.95	1.29
2012	1.79	2.18	1.48	1.83	2.23	1.52	1.96	2.59	1.49

^a SEER 9 areas (San Francisco, Connecticut, Detroit, Hawaii, Iowa, New Mexico, Seattle, Utah, and Atlanta). Rates are per 100,000 and are age-adjusted to the 2000 US Std Population (19 age groups - Census P25-1130).
- Statistic not shown. Rate based on less than 16 cases for the time interval.

Table 13.10
LeukemiaAge-adjusted U.S. Death^a Rates by Year, Race and Sex

Year of Death:	All Races			Whites			Blacks		
	Total	Males	Females	Total	Males	Females	Total	Males	Females
1975-2012	7.67	10.29	5.87	7.86	10.57	6.00	6.74	8.91	5.34
1975	8.09	10.98	6.16	8.27	11.28	6.29	6.58	8.57	5.15
1976	8.10	10.88	6.19	8.27	11.19	6.28	6.76	8.49	5.48
1977	8.11	10.84	6.26	8.27	11.11	6.34	6.82	8.76	5.51
1978	8.02	10.83	6.15	8.19	11.06	6.28	6.70	9.25	4.94
1979	8.26	11.06	6.41	8.43	11.36	6.52	6.99	8.90	5.68
1980	8.36	11.21	6.46	8.54	11.51	6.56	7.05	9.09	5.67
1981	8.10	10.89	6.24	8.24	11.16	6.31	7.11	8.92	5.86
1982	8.19	11.04	6.31	8.33	11.29	6.39	7.14	9.36	5.67
1983	8.11	10.93	6.26	8.24	11.19	6.32	7.22	9.21	5.90
1984	8.08	10.68	6.37	8.23	10.91	6.47	7.08	9.16	5.69
1985	8.07	10.77	6.31	8.23	10.97	6.44	7.08	9.62	5.42
1986	7.96	10.71	6.16	8.10	10.97	6.23	7.25	9.26	5.91
1987	7.80	10.31	6.14	7.91	10.50	6.20	7.24	9.41	5.85
1988	7.83	10.60	6.00	7.95	10.79	6.08	7.24	9.83	5.58
1989	7.95	10.62	6.15	8.07	10.75	6.26	7.36	10.34	5.45
1990	7.98	10.71	6.18	8.10	10.90	6.26	7.44	9.96	5.83
1991	7.99	10.50	6.32	8.12	10.64	6.44	7.45	10.05	5.80
1992	7.96	10.71	6.13	8.11	10.94	6.24	7.16	9.41	5.68
1993	7.93	10.66	6.09	8.04	10.84	6.16	7.36	9.76	5.77
1994	7.85	10.57	6.03	8.00	10.78	6.13	7.12	9.59	5.54
1995	7.90	10.80	5.98	8.04	11.03	6.05	7.17	9.75	5.53
1996	7.84	10.53	6.05	7.97	10.71	6.13	7.46	10.09	5.90
1997	7.71	10.42	5.89	7.89	10.68	6.01	6.83	9.23	5.29
1998	7.58	10.11	5.82	7.72	10.31	5.91	7.04	9.37	5.55
1999	7.68	10.22	5.96	7.87	10.47	6.09	6.74	8.78	5.43
2000	7.69	10.28	5.91	7.89	10.54	6.05	6.71	9.07	5.27
2001	7.64	10.19	5.88	7.83	10.46	6.02	6.74	8.80	5.41
2002	7.54	10.18	5.73	7.75	10.46	5.85	6.73	8.91	5.38
2003	7.45	10.02	5.63	7.68	10.37	5.76	6.54	8.47	5.30
2004	7.29	9.81	5.52	7.47	10.04	5.64	6.77	8.94	5.39
2005	7.26	9.82	5.46	7.50	10.14	5.63	6.07	8.11	4.78
2006	7.23	9.70	5.46	7.48	9.97	5.66	6.27	8.84	4.70
2007	7.08	9.54	5.33	7.30	9.86	5.46	6.19	8.07	5.05
2008	7.09	9.54	5.33	7.32	9.83	5.49	6.27	8.65	4.78
2009	7.06	9.53	5.25	7.31	9.86	5.41	6.05	8.14	4.71
2010	6.91	9.26	5.20	7.16	9.58	5.37	5.75	7.46	4.60
2011	6.94	9.28	5.24	7.18	9.60	5.39	6.00	7.75	4.85
2012	6.83	9.21	5.07	7.08	9.56	5.22	5.78	7.58	4.63

^a US Mortality Files, National Center for Health Statistics, Centers for Disease Control and Prevention.
Rates are per 100,000 and are age-adjusted to the 2000 US Std Population (19 age groups - Census P25-1130).
- Statistic not shown. Rate based on less than 16 cases for the time interval.

Table 13.11
LeukemiaSEER Incidence^a and U.S. Death^b Rates, Age-Adjusted and Age-Specific Rates, by Race and Sex

	All Races			Whites			Blacks		
	Total	Males	Females	Total	Males	Females	Total	Males	Females
<u>SEER Incidence</u>									
<u>Age at Diagnosis</u>									
Age-Adjusted Rates, 2008-2012									
All ages	13.3	17.0	10.4	14.0	17.9	10.9	10.6	13.5	8.5
Under 65	6.6	7.8	5.5	7.0	8.1	5.8	5.3	6.2	4.5
65 and over	59.4	81.2	43.9	62.7	85.4	46.1	47.0	63.7	36.7
All ages (IARC world std) ^c	9.6	11.8	7.7	10.1	12.4	8.2	7.4	9.1	6.1
Age-Specific Rates, 2008-2012									
<1	4.6	4.6	4.5	4.7	4.5	4.9	3.8	4.3	-
1-4	9.2	9.3	9.1	10.3	10.2	10.5	4.5	5.0	4.0
5-9	4.3	4.8	3.8	4.8	5.3	4.1	2.6	2.6	2.5
10-14	3.2	3.5	2.9	3.3	3.5	3.1	2.7	3.3	2.1
15-19	3.1	3.6	2.6	3.5	4.0	2.8	1.7	2.0	1.4
20-24	2.6	3.0	2.2	2.9	3.2	2.5	1.8	1.9	1.7
25-29	2.7	3.1	2.4	2.9	3.4	2.5	2.3	2.3	2.3
30-34	3.3	3.7	3.0	3.4	3.8	3.0	3.0	3.5	2.5
35-39	4.3	4.7	3.9	4.3	4.7	4.0	4.4	4.9	4.0
40-44	5.5	6.4	4.7	5.6	6.5	4.8	5.4	6.4	4.5
45-49	7.8	8.9	6.7	8.0	9.1	6.8	6.8	7.7	6.0
50-54	11.5	13.8	9.2	11.8	14.3	9.4	9.5	11.4	7.8
55-59	16.5	21.1	12.3	17.2	21.5	13.0	13.9	18.8	9.8
60-64	25.0	32.0	18.5	26.3	33.9	19.2	19.8	22.4	17.7
65-69	37.8	49.7	27.2	39.9	52.4	28.6	31.1	40.2	24.0
70-74	50.6	67.0	36.9	53.3	70.4	38.8	41.2	53.6	32.2
75-79	66.9	91.0	48.5	71.0	96.1	51.4	51.6	72.4	38.3
80-84	81.4	112.9	60.4	85.4	117.6	63.5	63.4	91.9	48.0
85+	87.2	126.1	67.8	91.3	133.3	70.3	66.9	88.9	58.0
<u>U.S. Mortality</u>									
<u>Age at Death</u>									
Age-Adjusted Rates, 2008-2012									
All ages	7.0	9.4	5.2	7.2	9.7	5.4	6.0	7.9	4.7
Under 65	2.0	2.4	1.6	2.1	2.5	1.7	2.1	2.6	1.7
65 and over	41.1	57.3	29.9	42.8	59.7	31.0	32.4	44.3	25.5
All ages (IARC world std) ^c	4.0	5.2	3.0	4.1	5.4	3.1	3.6	4.7	2.9
Age-Specific Rates, 2008-2012									
<1	0.6	0.6	0.6	0.6	0.7	0.6	0.5	-	-
1-4	0.7	0.7	0.7	0.8	0.7	0.8	0.6	0.6	0.6
5-9	0.5	0.6	0.5	0.5	0.6	0.5	0.4	0.4	0.3
10-14	0.7	0.7	0.6	0.7	0.7	0.6	0.6	0.6	0.6
15-19	0.8	0.9	0.6	0.8	1.0	0.7	0.6	0.8	0.5
20-24	1.0	1.2	0.7	1.0	1.2	0.8	0.9	1.0	0.8
25-29	1.0	1.2	0.8	1.1	1.2	0.9	0.9	1.3	0.6
30-34	1.1	1.4	0.9	1.2	1.4	0.9	1.2	1.6	0.9
35-39	1.3	1.6	1.1	1.3	1.5	1.1	1.5	1.9	1.2
40-44	1.7	1.8	1.5	1.6	1.8	1.5	2.0	2.3	1.7
45-49	2.5	2.8	2.2	2.5	2.8	2.2	2.6	3.1	2.2
50-54	3.8	4.4	3.2	3.7	4.3	3.2	4.5	5.4	3.7
55-59	6.0	7.4	4.7	6.1	7.5	4.8	6.7	8.7	5.1
60-64	10.7	13.9	7.8	11.0	14.3	7.9	10.9	14.3	8.1
65-69	18.2	24.1	12.9	18.8	24.9	13.3	17.1	23.3	12.3
70-74	29.3	39.7	20.5	30.5	41.4	21.1	25.5	33.6	19.7
75-79	44.8	61.7	31.8	46.8	64.5	32.8	35.5	46.8	28.3
80-84	63.1	89.6	45.4	65.8	93.1	47.2	45.7	65.0	35.4
85+	84.1	121.9	65.8	87.7	127.1	68.3	59.8	84.1	50.2

^a SEER 18 areas. Rates are per 100,000 and are age-adjusted to the 2000 US Std Population (19 age groups - Census P25-1130), unless noted.

^b US Mortality Files, National Center for Health Statistics, Centers for Disease Control and Prevention.

^c Rates are per 100,000 and are age-adjusted to the 2000 US Std Population (19 age groups - Census P25-1130), unless noted.

^c Rates are per 100,000 and are age-adjusted to the IARC world standard population.

- Statistic not shown. Rate based on less than 16 cases for the time interval.

Table 13.12
Lymphocytic Leukemia

SEER Incidence^a Rates, Age-Adjusted and Age-Specific Rates, by Race and Sex

	All Races			Whites			Blacks		
	Total	Males	Females	Total	Males	Females	Total	Males	Females
<u>Acute Lymphocytic Leukemia</u>									
<u>Age at Diagnosis</u>									
Age-Adjusted Rates, 2008-2012									
All ages	1.7	1.9	1.5	1.9	2.1	1.7	1.0	1.2	0.8
Under 65	1.7	1.9	1.5	1.9	2.1	1.7	0.9	1.1	0.8
65 and over	1.6	1.9	1.3	1.6	2.0	1.3	1.3	1.3	1.3
All ages (IARC world std) ^b	2.1	2.3	1.9	2.3	2.5	2.1	1.1	1.3	0.9
Age-Specific Rates, 2008-2012									
<1	1.9	1.6	2.3	2.0	1.6	2.4	-	-	-
1-4	7.8	7.9	7.6	8.9	8.8	9.0	3.2	3.8	2.6
5-9	3.6	4.1	3.1	4.1	4.7	3.5	2.0	2.1	1.9
10-14	2.2	2.4	2.0	2.3	2.4	2.2	1.8	2.3	1.2
15-19	1.7	2.2	1.2	2.0	2.6	1.4	0.9	1.1	-
20-24	1.0	1.3	0.7	1.2	1.6	0.8	0.4	-	-
25-29	0.7	0.9	0.5	0.8	1.0	0.6	-	-	-
30-34	0.7	0.8	0.6	0.8	0.9	0.6	-	-	-
35-39	0.7	0.8	0.7	0.8	0.9	0.7	-	-	-
40-44	0.7	0.7	0.7	0.8	0.9	0.7	-	-	-
45-49	0.8	0.9	0.7	0.9	1.0	0.8	0.4	-	-
50-54	0.9	0.9	0.8	0.9	1.0	0.8	0.7	-	-
55-59	1.0	1.1	0.9	1.1	1.1	1.1	0.9	1.2	-
60-64	1.3	1.3	1.3	1.4	1.4	1.3	1.1	-	-
65-69	1.5	1.7	1.3	1.5	1.9	1.2	1.3	-	-
70-74	1.4	1.6	1.3	1.5	1.6	1.4	-	-	-
75-79	1.6	1.8	1.4	1.6	1.9	1.3	-	-	-
80-84	2.0	2.6	1.5	1.9	2.4	1.6	-	-	-
85+	1.5	2.2	1.2	1.6	2.3	1.2	-	-	-
<u>Chronic Lymphocytic Leukemia</u>									
<u>Age at Diagnosis</u>									
Age-Adjusted Rates, 2008-2012									
All ages	4.5	6.2	3.2	4.9	6.6	3.5	3.2	4.6	2.3
Under 65	1.4	1.9	1.0	1.5	2.0	1.1	0.9	1.3	0.7
65 and over	26.0	36.1	18.6	27.8	38.4	20.1	18.9	27.7	13.5
All ages (IARC world std) ^b	2.7	3.7	1.9	2.9	3.9	2.0	1.9	2.7	1.3
Age-Specific Rates, 2008-2012									
<1	-	-	-	-	-	-	-	-	-
1-4	-	-	-	-	-	-	-	-	-
5-9	-	-	-	-	-	-	-	-	-
10-14	-	-	-	-	-	-	-	-	-
15-19	-	-	-	-	-	-	-	-	-
20-24	-	-	-	-	-	-	-	-	-
25-29	-	-	-	-	-	-	-	-	-
30-34	0.1	0.1	-	0.1	0.2	-	-	-	-
35-39	0.3	0.3	0.2	0.3	0.3	0.3	-	-	-
40-44	0.9	1.1	0.6	0.9	1.1	0.7	0.7	1.1	-
45-49	1.9	2.4	1.4	2.1	2.6	1.5	1.4	1.8	1.0
50-54	4.0	5.3	2.8	4.2	5.4	3.0	2.8	3.9	1.8
55-59	6.9	9.5	4.5	7.5	10.0	5.0	4.0	5.8	2.4
60-64	10.7	14.2	7.4	11.5	15.3	7.8	6.9	8.2	5.8
65-69	17.1	23.5	11.4	18.2	24.8	12.2	12.9	18.6	8.5
70-74	22.7	31.1	15.6	24.2	32.9	16.8	16.5	23.6	11.4
75-79	29.1	39.7	21.0	31.7	42.8	23.1	18.8	28.2	12.8
80-84	34.3	47.5	25.6	36.5	50.3	27.2	25.7	38.8	18.7
85+	37.3	54.5	28.8	39.8	58.2	30.6	29.3	42.3	24.0

^a SEER 18 areas. Rates are per 100,000 and are age-adjusted to the 2000 US Std Population (19 age groups - Census P25-1130), unless noted.

^b Rates are per 100,000 and are age-adjusted to the IARC world standard population.

- Statistic not shown. Rate based on less than 16 cases for the time interval.

Table 13.13
Myeloid Leukemia

SEER Incidence^a Rates, Age-Adjusted and Age-Specific Rates, by Race and Sex

	All Races			Whites			Blacks		
	Total	Males	Females	Total	Males	Females	Total	Males	Females
<u>Acute Myeloid Leukemia</u>									
<u>Age at Diagnosis</u>									
Age-Adjusted Rates, 2008-2012									
All ages	4.0	4.8	3.3	4.1	5.0	3.4	3.5	4.0	3.1
Under 65	1.9	2.0	1.8	1.9	2.0	1.8	1.8	1.9	1.7
65 and over	18.3	24.3	14.1	19.1	25.4	14.5	14.9	18.5	12.7
All ages (IARC world std) ^b	2.7	3.1	2.4	2.8	3.2	2.4	2.4	2.7	2.3
Age-Specific Rates, 2008-2012									
<1	1.5	1.7	1.3	1.5	1.5	1.5	-	-	-
1-4	1.1	1.0	1.1	1.1	1.0	1.1	1.1	0.9	1.4
5-9	0.4	0.4	0.4	0.4	0.4	0.4	-	-	-
10-14	0.7	0.8	0.7	0.7	0.8	0.6	0.7	0.8	-
15-19	0.9	0.9	1.0	1.0	1.0	1.0	0.6	-	0.7
20-24	0.9	0.9	1.0	1.0	0.9	1.1	0.9	-	1.0
25-29	1.1	1.1	1.1	1.1	1.2	1.1	1.0	-	1.3
30-34	1.5	1.5	1.5	1.5	1.5	1.5	1.4	1.5	1.4
35-39	1.6	1.6	1.7	1.6	1.6	1.6	1.6	1.6	1.7
40-44	1.9	2.0	1.7	1.8	2.0	1.7	2.1	2.4	1.9
45-49	2.5	2.4	2.6	2.5	2.4	2.5	2.3	2.1	2.5
50-54	3.4	3.6	3.2	3.4	3.7	3.2	3.1	3.5	2.8
55-59	4.4	5.2	3.7	4.4	5.1	3.8	4.7	6.0	3.6
60-64	7.5	8.8	6.3	7.7	9.1	6.4	6.7	7.4	6.1
65-69	11.3	13.9	9.0	12.1	15.0	9.5	8.6	10.2	7.4
70-74	16.0	20.2	12.5	16.6	21.4	12.5	14.5	15.1	14.0
75-79	21.8	29.1	16.3	22.9	30.3	17.0	18.3	25.0	14.0
80-84	25.6	34.9	19.4	26.4	35.7	20.1	19.6	28.7	14.6
85+	24.3	34.9	18.9	24.9	36.6	19.1	18.1	21.2	16.8
<u>Chronic Myeloid Leukemia</u>									
<u>Age at Diagnosis</u>									
Age-Adjusted Rates, 2008-2012									
All ages	1.7	2.2	1.3	1.7	2.2	1.3	1.6	2.0	1.4
Under 65	0.9	1.1	0.8	0.9	1.1	0.8	1.0	1.2	0.9
65 and over	7.0	9.8	5.0	7.3	10.1	5.3	5.7	7.4	4.6
All ages (IARC world std) ^b	1.2	1.5	0.9	1.2	1.5	0.9	1.2	1.4	1.0
Age-Specific Rates, 2008-2012									
<1	0.3	-	-	0.4	-	-	-	-	-
1-4	0.1	-	-	-	-	-	-	-	-
5-9	0.1	-	-	-	-	-	-	-	-
10-14	0.2	0.2	0.1	0.2	0.2	0.2	-	-	-
15-19	0.2	0.3	0.2	0.2	0.2	0.3	-	-	-
20-24	0.4	0.5	0.4	0.4	0.5	0.4	-	-	-
25-29	0.6	0.8	0.5	0.7	0.8	0.5	0.6	-	-
30-34	0.8	0.9	0.6	0.7	0.9	0.6	0.8	1.0	-
35-39	1.1	1.3	0.9	1.0	1.2	0.8	1.4	1.6	1.2
40-44	1.3	1.5	1.1	1.3	1.5	1.1	1.6	1.9	1.4
45-49	1.6	1.8	1.3	1.5	1.7	1.3	1.8	2.1	1.5
50-54	1.9	2.2	1.6	1.8	2.2	1.5	1.9	2.1	1.8
55-59	2.4	2.8	2.0	2.3	2.7	1.9	2.8	3.5	2.1
60-64	3.1	4.0	2.3	3.1	4.1	2.3	3.3	3.4	3.1
65-69	4.6	5.9	3.4	4.7	6.0	3.5	4.8	5.6	4.1
70-74	5.9	7.8	4.3	6.2	8.1	4.6	4.8	7.0	3.2
75-79	7.8	11.3	5.1	8.1	11.8	5.3	5.9	8.7	4.1
80-84	9.7	13.6	7.1	10.2	14.1	7.5	7.5	9.0	6.6
85+	10.0	15.0	7.5	10.4	15.8	7.7	7.1	-	6.9

^a SEER 18 areas. Rates are per 100,000 and are age-adjusted to the 2000 US Std Population (19 age groups - Census P25-1130), unless noted.

^b Rates are per 100,000 and are age-adjusted to the IARC world standard population.

- Statistic not shown. Rate based on less than 16 cases for the time interval.

Table 13.14
Leukemia

5-Year Relative and Period Survival (Percent) by Race, Sex, Diagnosis Year and Age

	All Races			Whites			Blacks		
	Total	Males	Females	Total	Males	Females	Total	Males	Females
5-Year Relative Survival (Percent)									
Year of Diagnosis:									
1960-1963 ^a	-	-	-	14	-	-	-	-	-
1970-1973 ^a	-	-	-	22	-	-	-	-	-
1975-1977 ^b	34.1	33.0	35.6	34.5	33.6	35.8	33.2	30.0	36.7
1978-1980 ^b	36.1	35.0	37.5	36.7	35.8	38.1	28.2	27.3	29.3
1981-1983 ^b	37.3	36.9	37.7	38.0	37.7	38.4	33.9	33.4	34.3
1984-1986 ^b	40.5	40.1	41.1	41.6	41.3	42.0	32.7	31.5	34.1
1987-1989 ^b	42.8	43.9	41.3	43.8	45.4	41.7	35.0	32.7	37.8
1990-1992 ^b	45.1	44.5	46.0	46.4	46.2	46.6	35.7	30.5	41.3
1993-1995 ^b	47.4	48.2	46.2	48.4	49.3	47.2	41.2	41.4	40.9
1996-1998 ^b	48.1	48.3	47.8	49.4	49.3	49.5	38.5	39.0	37.7
1999-2001 ^b	50.6	51.6	49.3	51.6	52.6	50.4	43.2	43.9	42.3
2002-2004 ^b	57.7	57.7	57.6	58.5	58.6	58.3	53.0	53.2	52.6
2005-2011 ^b	61.7 ^e	63.1 ^e	59.7 ^e	62.5 ^e	63.6 ^e	60.9 ^e	55.4 ^e	59.1 ^e	50.5 ^e
5-Year Period Survival (Percent) ^{cd}									
2011	59.4	60.2	58.4	59.7	60.4	58.8	54.4	54.9	53.7
5-Year Relative Survival (Percent), 2005-2011 ^c									
Age at Diagnosis:									
Ages <45	73.5	73.3	73.9	74.6	74.1	75.3	64.8	66.4	62.8
Ages 45-54	67.2	69.2	64.1	68.3	70.1	65.3	59.3	59.8	58.5
Ages 55-64	65.7	65.9	65.4	66.5	66.5	66.4	56.1	55.6	56.5
Ages 65-74	55.5	55.4	55.7	56.5	55.9	57.4	44.8	44.4	44.9
Ages 75+	38.1	38.6	37.6	38.9	39.4	38.4	28.1	27.3	28.6
Ages <65	69.6	69.8	69.2	70.4	70.5	70.4	61.1	61.7	60.3
Ages 65+	45.5	46.5	44.4	46.3	47.0	45.4	36.3	37.0	35.7

^a Based on End Results data from a series of hospital registries and one population-based registry.

^b SEER 9 areas (San Francisco, Connecticut, Detroit, Hawaii, Iowa, New Mexico, Seattle, Utah, Atlanta).

Based on follow-up of patients into 2012.

^c SEER 18 areas (San Francisco, Connecticut, Detroit, Hawaii, Iowa, New Mexico, Seattle, Utah, Atlanta, San Jose-Monterey, Los Angeles, Alaska Native Registry, Rural Georgia, California excluding SF/SJM/LA, Kentucky, Louisiana, New Jersey and Georgia excluding ATL/RG).

Based on follow-up of patients into 2012.

^d Period survival provides a 2011 estimate of survival by piecing together the most recent conditional survival estimates from several cohorts. It is computed here using three year calendar blocks (2009-2011: 0-1 year survival), (2008-2010: 1-2 year survival), (2007-2009: 2-3 year survival), (2006-2008: 3-4 year survival), (2005-2007: 4-5 years survival).

^e The difference between 1975-1977 and 2005-2011 is statistically significant ($p < .05$).

^f The standard error is between 5 and 10 percentage points.

^g The standard error is greater than 10 percentage points.

- Statistic could not be calculated due to fewer than 25 cases during the time period.

Table 13.15
Lymphocytic Leukemia

5-Year Relative and Period Survival (Percent) by Race, Sex, Diagnosis Year and Age

	All Races			Whites			Blacks		
	Total	Males	Females	Total	Males	Females	Total	Males	Females
<u>Acute Lymphocytic Leukemia</u>									
5-Year Relative Survival (Percent)									
Year of Diagnosis:									
1975-1977 ^a	40.6	36.9	45.6	40.8	37.4	45.7	33.5 ^e	-	-
...									
1984-1986 ^a	52.0	49.1	56.1	52.8	49.3	57.7	36.0 ^e	43.5 ^e	27.3 ^e
1987-1989 ^a	54.3	53.7	55.0	54.8	54.7	54.9	44.7 ^e	42.0 ^e	47.1 ^e
1990-1992 ^a	58.0	54.5	63.1	57.7	54.9	62.0	57.1 ^e	50.4 ^e	63.3 ^e
1993-1995 ^a	60.1	57.9	63.3	59.6	57.8	62.3	53.2 ^e	45.9 ^e	63.8 ^e
1996-1998 ^a	65.4	64.3	66.9	66.3	64.2	68.9	55.6 ^e	59.1 ^e	50.2 ^e
1999-2001 ^a	63.4	63.4	63.5	64.8	65.2	64.2	56.0 ^e	48.8 ^e	63.0 ^e
2002-2004 ^a	67.1	65.9	68.8	67.4	66.3	69.1	64.5 ^e	59.4 ^e	69.7 ^e
2005-2011 ^a	70.1 ^d	69.6 ^d	70.7 ^d	70.7 ^d	69.7 ^d	72.0 ^d	63.3 ^d	68.1	54.8 ^e
5-Year Period Survival (Percent) ^{bc}									
2011	68.4	67.6	69.4	68.4	67.6	69.4	67.4	68.3	65.3
5-Year Relative Survival (Percent), 2005-2011 ^b									
Age at Diagnosis:									
Ages <45	78.7	77.5	80.4	79.1	77.9	80.6	73.7	73.7	73.6
Ages 45-54	31.6	34.3	28.1	30.6	32.6	27.7	30.8 ^e	42.4 ^f	-
Ages 55-64	27.0	23.1	31.3	28.0	23.8	32.6	17.1 ^e	-	-
Ages 65-74	21.2	22.3	20.0	21.1	21.8	20.3	-	-	-
Ages 75+	6.8	8.3	4.7	6.2	7.9	4.1	0.0	-	-
Ages <65	72.0	71.2	73.0	72.1	71.2	73.2	68.2	69.8	65.3
Ages 65+	14.7	16.1	13.1	14.5	15.9	12.7	-	-	-
<u>Chronic Lymphocytic Leukemia</u>									
5-Year Relative Survival (Percent)									
Year of Diagnosis:									
1975-1977 ^a	67.1	64.7	70.3	67.9	65.4	71.2	56.9 ^e	55.1 ^e	59.0 ^e
...									
1984-1986 ^a	72.3	71.0	73.9	72.6	71.3	74.3	67.0 ^e	64.4 ^e	68.4 ^e
1987-1989 ^a	72.6	72.5	72.8	73.7	73.7	73.6	58.1	55.5 ^e	61.5 ^e
1990-1992 ^a	74.0	71.6	77.3	75.1	72.9	78.2	52.2	43.4 ^e	60.9 ^e
1993-1995 ^a	76.9	76.8	77.0	78.0	77.8	78.2	63.0	63.6 ^e	62.1 ^e
1996-1998 ^a	75.1	73.5	77.4	76.1	74.6	78.2	57.7 ^e	51.5 ^e	65.3 ^e
1999-2001 ^a	78.0	77.4	78.9	78.7	78.0	79.8	65.6	63.8 ^e	66.7 ^e
2002-2004 ^a	83.4	82.5	84.7	83.9	82.9	85.2	75.3	72.2 ^e	79.4 ^e
2005-2011 ^a	84.8 ^d	84.7 ^d	84.9 ^d	84.8 ^d	84.8 ^d	84.8 ^d	80.5 ^d	80.8 ^d	79.1 ^d
5-Year Period Survival (Percent) ^{bc}									
2011	81.8	82.0	81.5	81.8	82.2	81.3	70.3	68.1	73.1
5-Year Relative Survival (Percent), 2005-2011 ^b									
Age at Diagnosis:									
Ages <45	93.7	92.4	95.8	93.2	91.6	95.8	93.4 ^e	96.5	-
Ages 45-54	92.6	92.3	93.0	93.7	93.3	94.4	76.1	77.6 ^e	73.0 ^e
Ages 55-64	89.2	87.9	91.5	89.2	88.1	91.2	81.1	77.0	88.5
Ages 65-74	84.7	82.8	87.7	85.2	82.9	88.8	69.4	66.4	72.6 ^e
Ages 75+	69.5	69.6	69.5	69.6	70.1	69.1	56.1	50.3 ^e	60.1 ^e
Ages <65	90.5	89.5	92.2	90.8	89.8	92.4	80.3	78.6	83.1
Ages 65+	76.4	76.2	76.6	76.5	76.4	76.8	63.3	60.2	65.9

^a SEER 9 areas (San Francisco, Connecticut, Detroit, Hawaii, Iowa, New Mexico, Seattle, Utah, Atlanta).

Based on follow-up of patients into 2012.

^b SEER 18 areas (San Francisco, Connecticut, Detroit, Hawaii, Iowa, New Mexico, Seattle, Utah, Atlanta, San Jose-Monterey, Los Angeles, Alaska Native Registry, Rural Georgia, California excluding SF/SJM/LA, Kentucky, Louisiana, New Jersey and Georgia excluding ATL/RG).

Based on follow-up of patients into 2012.

^c Period survival provides a 2011 estimate of survival by piecing together the most recent conditional survival estimates from several cohorts. It is computed here using three year calendar blocks (2009-2011: 0-1 year survival), (2008-2010: 1-2 year survival), (2007-2009: 2-3 year survival), (2006-2008: 3-4 year survival), (2005-2007: 4-5 years survival).

^d The difference between 1975-1977 and 2005-2011 is statistically significant (p<.05).

^e The standard error is between 5 and 10 percentage points.

^f The standard error is greater than 10 percentage points.

- Statistic could not be calculated due to fewer than 25 cases during the time period.

Table 13.16
Myeloid Leukemia

5-Year Relative and Period Survival (Percent) by Race, Sex, Diagnosis Year and Age

	All Races			Whites			Blacks		
	Total	Males	Females	Total	Males	Females	Total	Males	Females
<u>Acute Myeloid Leukemia</u>									
5-Year Relative Survival (Percent)									
Year of Diagnosis:									
1975-1977 ^a	6.2	5.5	7.0	5.8	5.4	6.2	10.1	8.2	11.7
...									
1984-1986 ^a	10.6	9.2	12.3	10.2	8.9	11.8	9.8	6.7	12.9
1987-1989 ^a	11.4	9.1	14.1	11.3	9.6	13.2	9.2	4.4	15.7 ^e
1990-1992 ^a	13.7	12.6	15.1	13.4	12.2	14.9	13.5	12.9	13.9
1993-1995 ^a	16.2	14.9	17.5	15.4	14.2	16.8	21.5	20.6 ^e	22.0
1996-1998 ^a	16.9	16.0	18.2	15.6	14.4	17.1	22.1	25.2	18.2
1999-2001 ^a	19.2	18.7	19.7	18.7	17.6	19.9	19.3	24.8	14.2
2002-2004 ^a	23.3	20.8	26.3	23.1	20.7	26.0	25.0	26.5	23.2
2005-2011 ^a	26.0 ^d	25.3 ^d	26.7 ^d	25.3 ^d	24.4 ^d	26.4 ^d	26.9 ^d	26.3 ^d	27.6 ^d
5-Year Period Survival (Percent) ^{bc}									
2011	27.0	25.7	28.4	26.2	24.9	27.8	31.3	31.1	31.4
5-Year Relative Survival (Percent), 2005-2011 ^b									
Age at Diagnosis:									
Ages <45	56.6	55.0	58.3	57.7	55.9	59.7	49.1	47.9	50.3
Ages 45-54	40.0	38.1	42.2	40.6	38.3	43.3	40.9	37.3 ^e	44.1
Ages 55-64	29.0	28.0	30.4	29.6	28.3	31.5	21.1	20.4	22.1
Ages 65-74	11.5	9.9	13.5	11.6	9.9	13.8	9.8	6.6	12.7
Ages 75+	1.8	1.6	2.0	1.9	1.8	1.9	1.4	-	1.8
Ages <65	44.0	41.9	46.5	44.4	42.0	47.3	40.3	38.0	42.5
Ages 65+	5.8	5.3	6.2	5.8	5.4	6.1	5.4	4.3	6.2
<u>Chronic Myeloid Leukemia</u>									
5-Year Relative Survival (Percent)									
Year of Diagnosis:									
1975-1977 ^a	21.6	19.3	24.7	20.4	18.4	23.0	27.7 ^e	21.6 ^e	35.5 ^e
...									
1984-1986 ^a	22.4	20.2	25.6	22.9	20.2	26.8	21.4	20.3 ^e	22.2 ^e
1987-1989 ^a	30.2	30.5	29.8	30.1	30.8	29.1	33.3 ^e	28.1 ^e	41.3 ^e
1990-1992 ^a	30.7	29.6	32.1	30.3	30.0	30.6	34.9 ^e	25.5 ^e	44.9 ^e
1993-1995 ^a	35.3	35.0	35.7	35.0	35.0	35.0	35.6 ^e	32.8 ^e	40.2 ^e
1996-1998 ^a	37.0	37.8	36.0	37.8	37.5	38.1	31.0	30.4 ^e	31.4 ^e
1999-2001 ^a	47.1	45.5	49.2	45.8	44.0	48.2	48.1 ^e	48.1 ^e	48.1 ^e
2002-2004 ^a	53.7	52.1	55.9	51.9	50.5	53.6	62.0 ^e	60.2 ^e	64.0 ^e
2005-2011 ^a	63.2 ^d	63.8 ^d	62.4 ^d	62.2 ^d	62.8 ^d	61.5 ^d	62.3 ^d	64.9 ^{de}	57.9 ^e
5-Year Period Survival (Percent) ^{bc}									
2011	64.2	63.6	64.9	63.1	62.7	63.8	66.6	67.8	65.6
5-Year Relative Survival (Percent), 2005-2011 ^b									
Age at Diagnosis:									
Ages <45	87.3	86.7	88.3	88.8	87.9	90.3	74.9	75.7	73.6 ^e
Ages 45-54	83.0	81.7	85.0	83.4	83.5	83.1	79.1	71.6 ^e	87.6 ^e
Ages 55-64	71.9	69.6	75.4	71.6	69.3	75.5	68.6	66.1 ^e	70.9 ^e
Ages 65-74	52.6	50.3	56.1	52.1	49.6	55.7	56.3 ^e	59.0 ^e	53.9 ^f
Ages 75+	26.5	26.2	26.8	26.6	25.9	27.3	17.4 ^e	14.0 ^e	19.6 ^e
Ages <65	81.3	79.9	83.4	81.7	80.5	83.7	74.2	72.0	76.5
Ages 65+	37.8	37.5	38.2	37.5	36.9	38.3	36.2 ^e	39.3 ^e	34.0 ^e

^a SEER 9 areas (San Francisco, Connecticut, Detroit, Hawaii, Iowa, New Mexico, Seattle, Utah, Atlanta).
Based on follow-up of patients into 2012.

^b SEER 18 areas (San Francisco, Connecticut, Detroit, Hawaii, Iowa, New Mexico, Seattle, Utah, Atlanta, San Jose-Monterey, Los Angeles, Alaska Native Registry, Rural Georgia, California excluding SF/SJM/LA, Kentucky, Louisiana, New Jersey and Georgia excluding ATL/RG).
Based on follow-up of patients into 2012.

^c Period survival provides a 2011 estimate of survival by piecing together the most recent conditional survival estimates from several cohorts. It is computed here using three year calendar blocks (2009-2011: 0-1 year survival), (2008-2010: 1-2 year survival), (2007-2009: 2-3 year survival), (2006-2008: 3-4 year survival), (2005-2007: 4-5 years survival).
The difference between 1975-1977 and 2005-2011 is statistically significant (p<.05).

^d The standard error is between 5 and 10 percentage points.

^e The standard error is greater than 10 percentage points.

^f -
Statistic could not be calculated due to fewer than 25 cases during the time period.

Table 13.17
LeukemiaSEER^a Relative Survival (Percent)
By Year of Diagnosis

All Races, Males and Females

Year of Diagnosis

	1975- 1979	1980- 1984	1985- 1989	1990- 1994	1995	1996	1997	1998	1999	2000	2001	2002	2003	2004	2005	2006	2007	2008	2009	2010	2011
Survival Time																					
1-year	60.7	62.6	64.7	66.7	68.0	68.0	67.7	66.3	65.9	66.6	70.3	71.8	73.0	74.7	73.8	75.7	76.5	75.9	76.3	77.2	77.7
2-year	50.1	52.5	55.3	57.5	58.8	59.8	59.6	57.8	58.3	58.7	62.8	64.6	65.9	67.0	67.8	69.6	70.0	69.4	69.6	71.1	
3-year	43.8	46.5	49.6	52.7	54.1	55.1	54.8	53.8	54.5	54.8	58.8	61.6	62.0	63.7	64.2	66.2	66.7	65.4	66.9		
4-year	38.9	41.7	45.5	49.0	50.5	51.6	50.8	50.0	51.5	51.6	56.4	59.2	59.0	61.3	62.0	63.5	64.2	62.7			
5-year	34.6	37.6	42.2	45.9	47.9	48.4	48.1	47.8	48.2	49.4	54.0	57.2	56.9	58.9	60.2	61.2	62.5				
6-year	31.4	35.0	39.8	43.4	45.5	46.2	45.6	45.7	46.0	48.1	52.0	55.4	55.0	56.4	58.4	59.1					
7-year	29.1	32.5	37.1	40.8	44.0	44.7	43.6	44.2	44.1	46.8	50.6	53.7	53.0	55.1	56.8						
8-year	27.0	30.3	34.9	38.7	41.4	43.5	43.0	42.7	42.7	45.2	49.2	52.7	51.1	53.6							
9-year	25.0	28.5	32.9	37.1	40.3	41.7	41.6	41.6	41.8	44.3	47.7	50.8	49.8								
10-year	23.7	26.9	31.5	35.9	38.7	40.3	40.4	40.5	40.3	43.1	46.5	49.4									
11-year	22.4	25.7	29.9	34.5	37.4	39.4	38.5	39.1	38.8	41.9	45.2										
12-year	21.2	24.5	28.8	33.4	36.8	38.3	37.4	38.3	38.0	41.1											
13-year	20.4	23.6	27.9	32.5	36.3	37.8	36.7	37.2	36.8												
14-year	19.8	22.9	27.1	31.6	35.1	36.6	36.5	36.2													
15-year	19.2	22.2	26.6	31.1	34.9	35.6	35.9														
16-year	18.5	21.4	26.0	30.4	34.5	35.4															
17-year	18.0	20.6	25.5	29.7	33.5																
18-year	17.6	20.1	25.2	29.1																	
19-year	17.1	19.4	24.7																		
20-year	16.6	19.0	24.3																		

^a Based on the SEER 9 areas (San Francisco, Connecticut, Detroit, Hawaii, Iowa, New Mexico, Seattle, Utah, and Atlanta).

Table 13.18
LeukemiaSEER^a Relative Survival (Percent)
By Year of Diagnosis

All Races, Males

Year of Diagnosis

	1975- 1979	1980- 1984	1985- 1989	1990- 1994	1995	1996	1997	1998	1999	2000	2001	2002	2003	2004	2005	2006	2007	2008	2009	2010	2011
Survival Time																					
1-year	60.3	62.8	65.4	67.8	69.3	69.4	68.6	66.5	66.8	68.4	72.5	72.5	74.1	76.2	75.8	76.3	77.6	76.6	78.2	78.3	78.9
2-year	49.5	52.4	56.1	58.2	60.3	61.5	60.8	58.3	58.9	60.5	64.5	64.7	66.7	67.9	69.6	69.8	71.2	70.5	71.5	72.7	
3-year	42.7	46.0	49.9	53.1	55.5	57.0	55.0	54.4	55.0	56.8	60.6	61.9	62.3	64.6	66.1	66.4	68.2	66.6	68.6		
4-year	37.8	41.1	45.9	49.4	51.4	53.3	50.3	50.4	51.8	53.4	57.7	59.2	59.6	62.0	64.5	63.6	65.8	63.6			
5-year	33.5	37.0	42.9	46.1	48.1	49.3	47.5	48.2	47.7	51.8	54.8	56.5	57.2	59.3	62.3	61.2	64.2				
6-year	30.3	34.3	40.4	43.4	45.0	46.9	45.5	45.8	45.8	50.2	52.4	54.6	55.0	56.6	60.0	58.6					
7-year	27.7	31.8	37.4	40.7	43.7	45.5	43.5	44.1	43.5	49.2	50.9	52.2	52.8	55.4	58.5						
8-year	25.4	29.4	35.3	38.4	41.4	44.3	42.8	42.7	41.9	47.1	49.4	51.1	50.6	53.9							
9-year	23.2	27.5	33.2	36.9	40.1	42.1	41.8	41.5	41.1	45.6	48.0	49.5	49.3								
10-year	21.9	26.1	31.6	35.6	37.9	40.4	41.0	40.5	39.7	44.6	46.6	48.1									
11-year	20.5	24.9	30.1	34.5	37.4	39.4	38.7	38.8	37.8	43.6	45.3										
12-year	19.3	24.2	29.0	33.2	36.7	38.7	37.6	37.9	37.1	42.8											
13-year	18.6	23.4	28.2	32.3	36.4	38.5	36.9	36.3	35.7												
14-year	17.9	22.7	27.6	31.3	35.3	37.3	36.6	35.2													
15-year	17.4	22.1	26.9	30.7	34.9	36.6	36.1														
16-year	16.7	21.2	26.3	30.1	34.4	36.5															
17-year	16.3	20.4	25.9	29.3	33.4																
18-year	15.9	19.9	25.6	28.7																	
19-year	15.3	19.2	25.2																		
20-year	14.6	18.7	24.8																		

^a Based on the SEER 9 areas (San Francisco, Connecticut, Detroit, Hawaii, Iowa, New Mexico, Seattle, Utah, and Atlanta).

Table 13.19
LeukemiaSEER^a Relative Survival (Percent)
By Year of Diagnosis

All Races, Females

Year of Diagnosis

	1975- 1979	1980- 1984	1985- 1989	1990- 1994	1995	1996	1997	1998	1999	2000	2001	2002	2003	2004	2005	2006	2007	2008	2009	2010	2011
Survival Time																					
1-year	61.3	62.3	63.8	65.4	66.4	66.1	66.4	66.1	64.6	64.2	67.2	70.8	71.6	72.6	70.9	74.9	75.1	74.9	73.8	75.6	76.1
2-year	50.9	52.6	54.2	56.5	56.8	57.5	58.0	57.0	57.4	56.2	60.3	64.4	64.9	65.8	65.3	69.4	68.2	67.9	67.0	68.8	
3-year	45.1	47.1	49.2	52.2	52.3	52.7	54.5	53.1	53.8	52.0	56.2	61.0	61.4	62.4	61.5	66.0	64.7	63.8	64.7		
4-year	40.3	42.4	44.9	48.5	49.1	49.5	51.4	49.5	51.1	49.2	54.6	59.1	58.2	60.3	58.6	63.3	62.1	61.5			
5-year	36.2	38.3	41.4	45.7	47.6	47.1	48.8	47.4	48.8	46.4	52.8	58.0	56.5	58.2	57.2	61.2	60.2				
6-year	32.8	35.9	39.1	43.5	46.1	45.3	45.6	45.6	46.2	45.2	51.3	56.3	55.0	56.1	55.9	59.6					
7-year	31.0	33.4	36.7	41.0	44.4	43.8	43.8	44.2	44.9	43.4	50.2	55.6	53.3	54.7	54.3						
8-year	29.1	31.5	34.4	39.0	41.3	42.5	43.3	42.7	43.7	42.5	48.8	55.0	51.8	53.2							
9-year	27.4	29.8	32.5	37.4	40.5	41.3	41.3	41.7	42.8	42.5	47.4	52.7	50.6								
10-year	25.9	28.1	31.4	36.2	39.5	40.2	39.6	40.2	41.2	41.0	46.4	51.3									
11-year	24.8	26.8	29.5	34.6	37.4	39.3	38.2	39.5	40.1	39.6	45.0										
12-year	23.5	24.9	28.5	33.6	36.7	37.8	37.2	38.9	39.1	38.9											
13-year	22.8	23.8	27.5	32.7	36.0	36.8	36.4	38.3	38.2												
14-year	22.1	23.1	26.6	32.1	34.9	35.6	36.1	37.5													
15-year	21.5	22.4	26.3	31.6	34.8	34.2	35.6														
16-year	20.7	21.6	25.7	30.8	34.7	33.8															
17-year	20.1	20.9	25.0	30.2	33.5																
18-year	19.8	20.4	24.6	29.8																	
19-year	19.3	19.7	24.0																		
20-year	19.0	19.4	23.6																		

^a Based on the SEER 9 areas (San Francisco, Connecticut, Detroit, Hawaii, Iowa, New Mexico, Seattle, Utah, and Atlanta).

Table 13.20
Leukemia

Risk of Being Diagnosed With Cancer in 10, 20 and 30 Years,
Lifetime Risk of Being Diagnosed with Cancer Given Alive and Cancer-Free at Current Age, and
Lifetime Risk of Dying from Cancer Given Alive at Current Age
Both Sexes, 2010-2012 By Race/Ethnicity

Race/ Ethnicity	Current Age	Risk of Being Diagnosed with Cancer				Risk of Dying from Cancer	Race/ Ethnicity	Current Age	Risk of Being Diagnosed with Cancer				Risk of Dying from Cancer
		+10 yrs	+20 yrs	+30 yrs	Ever				+10 yrs	+20 yrs	+30 yrs	Ever	
All Races	0	0.06	0.09	0.12	1.47	0.86	Asian/ Pacific Islander	0	0.05	0.08	0.10	0.99	0.67
	10	0.03	0.06	0.10	1.43	0.87		10	0.03	0.05	0.08	0.95	0.66
	20	0.03	0.07	0.13	1.40	0.86		20	0.02	0.05	0.09	0.93	0.66
	30	0.04	0.10	0.24	1.39	0.86		30	0.03	0.07	0.14	0.91	0.65
	40	0.07	0.20	0.47	1.36	0.86		40	0.04	0.11	0.26	0.88	0.64
	50	0.14	0.42	0.85	1.33	0.86		50	0.07	0.22	0.46	0.85	0.64
	60	0.30	0.75	1.15	1.27	0.87		60	0.15	0.40	0.68	0.80	0.62
	70	0.52	0.96	-	1.10	0.83		70	0.27	0.56	-	0.70	0.57
80	0.60	-	-	0.78	0.69	80	0.36	-	-	0.52	0.46		
White	0	0.07	0.10	0.13	1.54	0.90	American Indian/ Alaska Native ^a	0	0.05	0.08	0.12	0.81	0.52
	10	0.03	0.06	0.10	1.49	0.90		10	0.04	0.08	0.12	0.77	0.52
	20	0.03	0.07	0.14	1.47	0.90		20	0.04	0.08	0.12	0.74	0.52
	30	0.04	0.11	0.25	1.45	0.89		30	0.05	0.08	0.18	0.71	0.52
	40	0.07	0.21	0.50	1.43	0.89		40	0.04	0.13	0.25	0.68	0.52
	50	0.14	0.44	0.89	1.39	0.90		50	0.10	0.22	0.43	0.67	0.54
	60	0.31	0.79	1.21	1.32	0.90		60	0.13	0.35	0.52	0.61	0.54
	70	0.55	1.01	-	1.14	0.86		70	0.25	0.44	-	0.54	0.52
80	0.63	-	-	0.81	0.71	80	0.26	-	-	0.40	0.45		
Black	0	0.03	0.05	0.07	1.02	0.62	Hispanic ^b	0	0.07	0.11	0.14	1.22	0.68
	10	0.02	0.04	0.08	1.00	0.63		10	0.04	0.07	0.11	1.16	0.68
	20	0.02	0.06	0.12	0.99	0.62		20	0.03	0.07	0.13	1.13	0.67
	30	0.04	0.10	0.21	0.98	0.62		30	0.04	0.10	0.20	1.10	0.66
	40	0.06	0.17	0.38	0.96	0.62		40	0.06	0.16	0.35	1.07	0.66
	50	0.11	0.33	0.64	0.93	0.62		50	0.10	0.29	0.60	1.03	0.65
	60	0.24	0.57	0.82	0.90	0.62		60	0.20	0.52	0.84	0.97	0.64
	70	0.40	0.69	-	0.79	0.59		70	0.34	0.70	-	0.84	0.59
80	0.43	-	-	0.58	0.50	80	0.45	-	-	0.63	0.48		

Devcan 6.8.0, August 2014, National Cancer Institute (<http://surveillance.cancer.gov/devcan/>).

Source: Incidence data are from the SEER 18 areas (San Francisco, Connecticut, Detroit, Hawaii, Iowa, New Mexico, Seattle, Utah, Atlanta, San Jose-Monterey, Los Angeles, Alaska Native Registry, Rural Georgia, California excluding SF/SJM/LA, Kentucky, Louisiana, New Jersey, and Georgia excluding ATL/RG). Mortality data are from the NCHS public use data file for the total US.

^a Underlying incidence and mortality data for American Indian/Alaska Native are based on the CHSDA (Contract Health Service Delivery Area) counties.

^b Hispanic is not mutually exclusive from whites, blacks, Asian/Pacific Islanders, and American Indians/Alaska Natives. Underlying incidence data for Hispanics are based on NHIA and exclude cases from the Alaska Native Registry.

- Statistic could not be calculated.

A percent of 0.00 represents a value that is below 0.005.

Table 13.21
Leukemia

Risk of Being Diagnosed With Cancer in 10, 20 and 30 Years,
Lifetime Risk of Being Diagnosed with Cancer Given Alive and Cancer-Free at Current Age, and
Lifetime Risk of Dying from Cancer Given Alive at Current Age
Males, 2010-2012 By Race/Ethnicity

Race/ Ethnicity	Current Age	Risk of Being Diagnosed with Cancer				Risk of Dying from Cancer	Race/ Ethnicity	Current Age	Risk of Being Diagnosed with Cancer				Risk of Dying from Cancer
		+10 yrs	+20 yrs	+30 yrs	Ever				+10 yrs	+20 yrs	+30 yrs	Ever	
All Races	0	0.06	0.10	0.13	1.75	1.03	Asian/ Pacific Islander	0	0.06	0.09	0.11	1.20	0.78
	10	0.03	0.06	0.11	1.71	1.03		10	0.03	0.06	0.09	1.16	0.78
	20	0.03	0.07	0.15	1.68	1.03		20	0.03	0.06	0.11	1.13	0.77
	30	0.04	0.12	0.28	1.67	1.03		30	0.04	0.08	0.17	1.11	0.77
	40	0.08	0.24	0.59	1.66	1.04		40	0.04	0.13	0.31	1.08	0.76
	50	0.17	0.53	1.06	1.63	1.05		50	0.09	0.27	0.59	1.05	0.75
	60	0.38	0.96	1.44	1.57	1.07		60	0.18	0.52	0.88	1.00	0.74
	70	0.68	1.24	-	1.39	1.05		70	0.37	0.76	-	0.89	0.69
80	0.80	-	-	1.02	0.89	80	0.49	-	-	0.65	0.55		
White	0	0.07	0.10	0.13	1.84	1.07	American Indian/ Alaska Native ^a	0	0.05	0.09	0.13	0.90	0.69
	10	0.04	0.07	0.11	1.79	1.08		10	0.04	0.08	0.10	0.86	0.70
	20	0.03	0.07	0.15	1.76	1.08		20	0.04	0.07	0.09	0.83	0.70
	30	0.04	0.12	0.29	1.75	1.08		30	0.03	0.06	0.16	0.81	0.71
	40	0.08	0.25	0.61	1.73	1.08		40	0.03	0.13	0.27	0.80	0.72
	50	0.18	0.55	1.12	1.70	1.09		50	0.11	0.25	0.49	0.81	0.75
	60	0.40	1.01	1.51	1.64	1.11		60	0.16	0.42	0.69	0.77	0.79
	70	0.71	1.29	-	1.44	1.09		70	0.31	0.62	-	0.72	0.82
80	0.84	-	-	1.05	0.93	80	0.45	-	-	0.59	0.83		
Black	0	0.04	0.06	0.08	1.14	0.68	Hispanic ^b	0	0.07	0.11	0.15	1.40	0.79
	10	0.03	0.04	0.08	1.12	0.69		10	0.05	0.08	0.12	1.34	0.79
	20	0.02	0.06	0.13	1.11	0.69		20	0.04	0.08	0.14	1.30	0.78
	30	0.04	0.11	0.24	1.11	0.69		30	0.04	0.11	0.22	1.28	0.78
	40	0.07	0.21	0.46	1.09	0.69		40	0.06	0.17	0.41	1.25	0.77
	50	0.14	0.40	0.77	1.07	0.70		50	0.11	0.35	0.71	1.22	0.76
	60	0.29	0.70	0.97	1.04	0.71		60	0.26	0.63	1.01	1.17	0.77
	70	0.52	0.86	-	0.94	0.69		70	0.42	0.85	-	1.03	0.73
80	0.54	-	-	0.68	0.59	80	0.57	-	-	0.80	0.63		

Devcan 6.8.0, August 2014, National Cancer Institute (<http://surveillance.cancer.gov/devcan/>).

Source: Incidence data are from the SEER 18 areas (San Francisco, Connecticut, Detroit, Hawaii, Iowa, New Mexico, Seattle, Utah, Atlanta, San Jose-Monterey, Los Angeles, Alaska Native Registry, Rural Georgia, California excluding SF/SJM/LA, Kentucky, Louisiana, New Jersey, and Georgia excluding ATL/RG). Mortality data are from the NCHS public use data file for the total US.

^a Underlying incidence and mortality data for American Indian/Alaska Native are based on the CHSDA (Contract Health Service Delivery Area) counties.

^b Hispanic is not mutually exclusive from whites, blacks, Asian/Pacific Islanders, and American Indians/Alaska Natives. Underlying incidence data for Hispanics are based on NHIA and exclude cases from the Alaska Native Registry.

- Statistic could not be calculated.

A percent of 0.00 represents a value that is below 0.005.

Table 13.22
Leukemia

Risk of Being Diagnosed With Cancer in 10, 20 and 30 Years,
Lifetime Risk of Being Diagnosed with Cancer Given Alive and Cancer-Free at Current Age, and
Lifetime Risk of Dying from Cancer Given Alive at Current Age
Females, 2010-2012 By Race/Ethnicity

Race/ Ethnicity	Current Age	Risk of Being Diagnosed with Cancer				Risk of Dying from Cancer	Race/ Ethnicity	Current Age	Risk of Being Diagnosed with Cancer				Risk of Dying from Cancer
		+10 yrs	+20 yrs	+30 yrs	Ever				+10 yrs	+20 yrs	+30 yrs	Ever	
All Races	0	0.06	0.09	0.11	1.22	0.72	Asian/ Pacific Islander	0	0.04	0.06	0.08	0.82	0.57
	10	0.03	0.05	0.09	1.18	0.72		10	0.02	0.04	0.06	0.78	0.57
	20	0.02	0.06	0.11	1.15	0.72		20	0.01	0.04	0.08	0.76	0.56
	30	0.03	0.09	0.19	1.13	0.71		30	0.02	0.07	0.12	0.75	0.56
	40	0.06	0.16	0.37	1.11	0.71		40	0.04	0.10	0.21	0.72	0.55
	50	0.11	0.32	0.65	1.07	0.71		50	0.06	0.18	0.35	0.69	0.54
	60	0.22	0.57	0.90	1.01	0.70		60	0.12	0.30	0.52	0.65	0.52
	70	0.38	0.75	-	0.87	0.66		70	0.19	0.42	-	0.55	0.48
80	0.47	-	-	0.63	0.56	80	0.27	-	-	0.43	0.39		
White	0	0.06	0.10	0.12	1.28	0.74	American Indian/ Alaska Native ^a	0	0.04	0.08	0.12	0.74	0.38
	10	0.03	0.06	0.09	1.23	0.75		10	0.04	0.08	0.14	0.70	0.38
	20	0.03	0.06	0.12	1.20	0.74		20	0.04	0.10	0.15	0.66	0.38
	30	0.04	0.09	0.20	1.18	0.74		30	0.06	0.11	0.20	0.63	0.37
	40	0.06	0.17	0.38	1.15	0.73		40	0.05	0.14	0.24	0.58	0.37
	50	0.11	0.33	0.68	1.12	0.73		50	0.09	0.20	0.36	0.55	0.37
	60	0.23	0.60	0.94	1.05	0.72		60	0.11	0.29	0.38	0.48	0.35
	70	0.41	0.78	-	0.90	0.68		70	0.20	0.29	-	0.41	0.31
80	0.49	-	-	0.64	0.57	80	0.13	-	-	0.28	0.22		
Black	0	0.03	0.05	0.07	0.92	0.57	Hispanic ^b	0	0.07	0.10	0.13	1.07	0.60
	10	0.02	0.04	0.07	0.90	0.58		10	0.04	0.07	0.10	1.02	0.59
	20	0.02	0.05	0.11	0.89	0.57		20	0.03	0.06	0.12	0.98	0.59
	30	0.03	0.09	0.17	0.88	0.57		30	0.04	0.09	0.18	0.96	0.58
	40	0.05	0.14	0.32	0.85	0.57		40	0.05	0.14	0.29	0.93	0.57
	50	0.09	0.27	0.52	0.82	0.56		50	0.09	0.24	0.50	0.88	0.56
	60	0.20	0.47	0.70	0.79	0.56		60	0.16	0.42	0.70	0.82	0.54
	70	0.31	0.58	-	0.69	0.53		70	0.28	0.58	-	0.71	0.49
80	0.36	-	-	0.52	0.44	80	0.36	-	-	0.52	0.39		

Devcan 6.8.0, August 2014, National Cancer Institute (<http://surveillance.cancer.gov/devcan/>).

Source: Incidence data are from the SEER 18 areas (San Francisco, Connecticut, Detroit, Hawaii, Iowa, New Mexico, Seattle, Utah, Atlanta, San Jose-Monterey, Los Angeles, Alaska Native Registry, Rural Georgia, California excluding SF/SJM/LA, Kentucky, Louisiana, New Jersey, and Georgia excluding ATL/RG). Mortality data are from the NCHS public use data file for the total US.

^a Underlying incidence and mortality data for American Indian/Alaska Native are based on the CHSDA (Contract Health Service Delivery Area) counties.

^b Hispanic is not mutually exclusive from whites, blacks, Asian/Pacific Islanders, and American Indians/Alaska Natives. Underlying incidence data for Hispanics are based on NHIA and exclude cases from the Alaska Native Registry.

- Statistic could not be calculated.

A percent of 0.00 represents a value that is below 0.005.

Table 13.23
Leukemia

SEER Incidence and U.S. Mortality
Age-Adjusted Rates and Trends^a
By Race/Ethnicity and Sex

SEER Incidence	SEER 18 Areas ^b			SEER 13 Areas ^b			SEER 9 Areas ^b		
	Rate 2008-2012			Trend 2003-2012 ^c			Trend 2003-2012 ^d		
	Rate per 100,000 persons			AAPC (%)			AAPC (%)		
	Total	Males	Females	Total	Males	Females	Total	Males	Females
RACE/ETHNICITY									
All Races	13.3	17.0	10.4	0.2*	0.1	0.3*	0.2*	0.1*	0.3*
White	14.0	17.9	10.9	0.3*	0.1	0.4*	0.3*	0.2*	0.4*
White Hispanic ^e	10.9	13.1	9.2	0.4	0.2	0.5	-	-	-
White Non-Hispanic ^e	14.2	18.3	11.0	0.4*	0.2	0.4*	-	-	-
Black	10.6	13.5	8.5	0.2	0.2	0.1	0.0	0.0	0.0
Asian/Pacific Islander	7.8	9.8	6.3	-0.2	-0.1	-0.1	-	-	-
Amer Ind/Alaska Nat ^f	8.4	10.1	7.2	1.6	2.2	1.5	-	-	-
Hispanic ^e	10.5	12.6	8.9	0.4	0.2	0.5	-	-	-
U.S. Mortality ^g									
	Rate 2008-2012			Trend 2003-2012 ^h					
	Rate per 100,000 persons			AAPC (%)					
	Total	Males	Females	Total	Males	Females			
RACE/ETHNICITY									
All Races	7.0	9.4	5.2	-1.0*	-0.8*	-1.2*			
White	7.2	9.7	5.4	-0.9*	-0.7*	-1.1*			
White Hispanic ^e	5.2	6.5	4.2	-0.4*	-0.4	-0.4*			
White Non-Hispanic ^e	7.3	9.9	5.4	-0.8*	-0.7*	-1.1*			
Black	6.0	7.9	4.7	-1.2*	-1.3*	-1.1*			
Asian/Pacific Islander	4.0	5.1	3.2	0.6	-0.5	-0.5			
Amer Ind/Alaska Nat									
Total U.S.	3.6	5.0	2.6	-1.3*	-1.0	-1.8*			
CHSDA Counties	4.6	6.7	3.2	-0.2	0.5	-1.1			
Non-CHSDA Counties	2.4	3.0	2.0	-2.7*	-3.1*	-2.4			
Hispanic ^e	4.9	6.1	4.0	-0.7*	-0.5*	-0.5*			

The AAPC is the Average Annual Percent Change over the time interval. The AAPCs are calculated by the Joinpoint Regression Program Version 4.2.0, April 2015, National Cancer Institute.

- Statistic not shown. Rate based on less than 16 cases for the time interval.

Trend based on less than 10 cases for at least one year within the time interval.

a Rates are age-adjusted to the 2000 US Std Population (19 age groups - Census P25-1130). Trends are based on rates age-adjusted to the 2000 US Std Population (19 age groups - Census P25-1130).

b The SEER 9 areas are San Francisco, Connecticut, Detroit, Hawaii, Iowa, New Mexico, Seattle, Utah, and Atlanta.

The SEER 13 areas comprise the SEER 9 areas plus San Jose-Monterey, Los Angeles, the Alaska Native Registry, and Rural Georgia.

The SEER 18 areas comprise the SEER 13 areas plus California excluding SF/SJM/LA, Kentucky, Louisiana, New Jersey, and Georgia excluding ATL/RG.

c The 2003-2012 AAPC estimates are based on a Joinpoint analysis with up to 3 Joinpoints over diagnosis years 1992-2012.

d The 2003-2012 AAPC estimates are based on a Joinpoint analysis with up to 5 Joinpoints over diagnosis years 1975-2012.

e Hispanic and Non-Hispanic are not mutually exclusive from whites, blacks, Asian/Pacific Islanders, and American Indians/Alaska Natives. Incidence data for Hispanics and Non-Hispanics are based on NHIA and exclude cases from the Alaska Native Registry. The 2003-2012 Hispanic and Non-Hispanic mortality trends exclude deaths from New Hampshire and Oklahoma.

f Incidence data for American Indian/Alaska Native are based on the CHSDA (Contract Health Service Delivery Area) counties.

g US Mortality Files, National Center for Health Statistics, CDC.

h The 2003-2012 mortality AAPCs are based on a Joinpoint analysis using years of death 1992-2012.

* The APC is significantly different from zero (p<.05).

Table 13.24
LeukemiaAge-Adjusted SEER Incidence Rates^a
By Registry, Race and Sex

	All Races			Whites			Blacks		
	Total	Males	Females	Total	Males	Females	Total	Males	Females
<u>SEER Incidence Rates^a, 2008-2012</u>									
California	12.52	15.96	9.78	13.34	16.91	10.45	10.51	13.96	7.89
Greater Bay Area	12.78	16.32	10.01	14.62	18.71	11.36	11.68	16.59	8.04
San Francisco-Oakland	12.50	16.01	9.80	14.39	18.36	11.26	12.03	17.13	8.32
San Jose-Monterey	13.24	16.85	10.35	14.94	19.18	11.48	9.34	13.48	-
Los Angeles	12.29	15.80	9.53	13.20	17.00	10.16	10.24	13.16	8.21
Greater California	12.54	15.89	9.82	13.03	16.35	10.32	10.15	13.31	7.43
Connecticut	14.70	19.39	11.10	15.15	19.91	11.47	9.45	11.60	7.67
Detroit	14.93	20.13	11.06	15.66	20.90	11.68	12.04	16.20	9.23
Georgia	12.24	15.52	9.87	12.93	16.43	10.25	10.54	12.91	9.14
Atlanta	11.70	14.85	9.51	12.57	16.14	9.91	10.64	13.05	9.19
Rural Georgia	11.50	13.32	10.08	11.77	13.86	9.31	10.62	-	-
Greater Georgia	12.51	15.86	10.05	13.10	16.62	10.40	10.47	12.72	9.11
Hawaii	11.96	14.92	9.58	15.85	18.75	13.11	-	-	-
Iowa	15.18	19.04	12.13	15.14	18.96	12.15	12.64	15.76	10.14
Kentucky	14.71	18.95	11.50	14.66	18.91	11.45	11.88	14.22	10.32
Louisiana	12.58	16.05	9.99	13.61	17.43	10.65	10.02	12.13	8.54
New Jersey	14.23	18.41	11.00	14.70	18.96	11.37	9.85	12.80	7.90
New Mexico	12.57	15.67	9.94	12.24	15.30	9.61	7.68	-	-
Seattle-Puget Sound	15.23	19.64	11.62	15.79	20.28	12.04	13.28	17.12	10.04
Utah	13.27	16.84	10.21	13.43	17.02	10.36	-	-	-
9 SEER Areas ^b	13.85	17.84	10.72	14.65	18.81	11.32	11.27	14.78	8.86
11 SEER Areas ^b	13.49	17.36	10.45	14.42	18.52	11.12	10.98	14.34	8.65
13 SEER Areas ^b	13.47	17.34	10.44	14.41	18.51	11.12	10.97	14.33	8.66
18 SEER Areas ^b	13.30	17.03	10.37	14.00	17.88	10.91	10.56	13.47	8.55

^a Rates are per 100,000 and are age-adjusted to the 2000 US Std Population (19 age groups - Census P25-1130)^b The SEER 9 areas are San Francisco, Connecticut, Detroit, Hawaii, Iowa, New Mexico, Seattle, Utah and Atlanta.

The SEER 11 areas comprise the SEER 9 areas plus San Jose-Monterey and Los Angeles.

The SEER 13 areas comprise the SEER 11 areas plus the Alaska Native Registry and Rural Georgia.

The SEER 18 areas comprise the SEER 13 areas plus California excluding SF/SJM/LA, Kentucky, Louisiana, New Jersey and Georgia excluding ATL/RG.

- Statistic not shown. Rate based on less than 16 cases for the time interval.

Table 13.25
LeukemiaAge-Adjusted SEER Death Rates^a
By Registry, Race and Sex

	All Races			Whites			Blacks		
	Total	Males	Females	Total	Males	Females	Total	Males	Females
<u>SEER Death Rates^a, 2008-2012</u>									
California	6.55	8.51	5.08	7.02	9.16	5.37	6.33	7.94	5.19
Greater Bay Area	6.00	7.84	4.64	6.60	8.64	5.06	6.80	9.31	4.95
San Francisco-Oakland	5.94	7.65	4.71	6.53	8.44	5.15	6.80	8.89	5.22
San Jose-Monterey	6.11	8.19	4.51	6.67	8.93	4.89	6.99	-	-
Los Angeles	6.58	8.49	5.20	7.10	9.38	5.41	6.46	7.68	5.76
Greater California	6.73	8.75	5.17	7.09	9.21	5.43	5.85	7.38	4.60
Connecticut	6.95	9.55	5.09	7.17	9.87	5.23	4.90	6.13	4.11
Detroit	7.15	9.57	5.48	7.39	10.01	5.55	6.29	7.65	5.40
Georgia	6.48	8.94	4.79	6.77	9.36	4.92	5.67	7.34	4.60
Atlanta	5.99	8.39	4.44	6.36	8.93	4.58	5.66	8.03	4.41
Rural Georgia	7.15	10.17	5.16	7.84	10.86	-	-	-	-
Greater Georgia	6.67	9.11	4.95	6.87	9.44	5.02	5.73	6.96	4.76
Hawaii	5.49	7.00	4.28	6.21	7.48	5.02	-	-	-
Iowa	7.04	9.58	5.23	7.11	9.63	5.32	-	-	-
Kentucky	7.58	10.66	5.48	7.66	10.80	5.50	6.61	8.63	5.53
Louisiana	7.43	10.19	5.49	7.55	10.40	5.47	7.02	9.48	5.46
New Jersey	6.58	8.95	4.95	7.03	9.60	5.23	4.97	6.58	3.99
New Mexico	6.17	7.89	4.76	6.39	8.19	4.89	-	-	-
Seattle-Puget Sound	6.82	9.24	5.03	7.11	9.65	5.19	6.64	7.74	5.88
Utah	6.23	8.55	4.36	6.33	8.63	4.49	-	-	-
9 SEER Areas ^b	6.53	8.76	4.91	6.88	9.26	5.12	5.99	7.73	4.86
11 SEER Areas ^b	6.53	8.68	4.96	6.94	9.30	5.19	6.11	7.78	5.04
13 SEER Areas ^b	6.53	8.70	4.95	6.95	9.32	5.18	6.11	7.81	5.01
18 SEER Areas ^b	6.70	8.95	5.06	7.06	9.47	5.27	6.02	7.76	4.87
Total U.S.	6.96	9.36	5.22	7.21	9.69	5.37	5.96	7.89	4.71

^a US Mortality Files, National Center for Health Statistics, Centers for Disease Control and Prevention. Rates are per 100,000 and are age-adjusted to the 2000 US Std Population (19 age groups - Census P25-1130).

^b The SEER 9 areas are San Francisco, Connecticut, Detroit, Hawaii, Iowa, New Mexico, Seattle, Utah and Atlanta. The SEER 11 areas comprise the SEER 9 areas plus San Jose-Monterey and Los Angeles.

The SEER 13 areas comprise the SEER 11 areas plus the Alaska Native Registry and Rural Georgia.

The SEER 18 areas comprise the SEER 13 areas plus California excluding SF/SJM/LA, Kentucky, Louisiana, New Jersey and Georgia excluding ATL/RG.

- Statistic not shown. Rate based on less than 16 cases for the time interval.

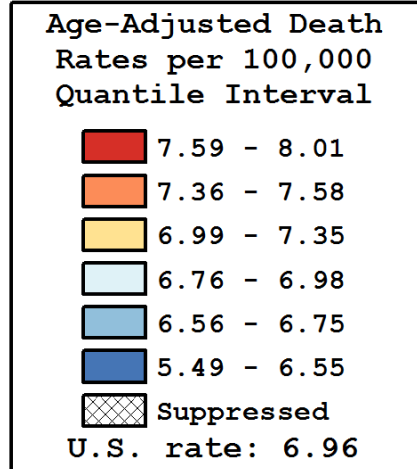
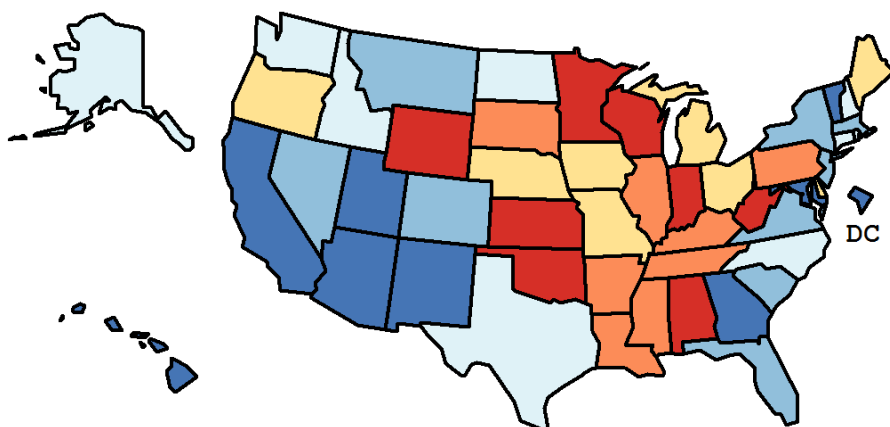
Table 13.26
Leukemia

Age-Adjusted Cancer Death^a Rates By State, All Races, 2008-2012

Males and Females

State	Rate	SE	Rank(CI) ^d	PD
TOTAL U.S.	6.96	0.02		
High Five States				
Wyoming	8.01	0.54	01(01,44)	15.07 ^c
Wisconsin	7.95 ^b	0.16	02(01,13)	14.17
West Virginia	7.82	0.26	03(01,25)	12.28
Oklahoma	7.77 ^b	0.20	04(01,21)	11.63
Minnesota	7.77 ^b	0.17	05(01,19)	11.55
Low Five States				
Vermont	6.34	0.42	47(09,51)	-8.96
Utah	6.23	0.25	48(24,51)	-10.54
New Mexico	6.17	0.24	49(28,51)	-11.42
D.C.	5.78	0.45	50(21,51)	-17.02 ^c
Hawaii	5.49 ^b	0.27	51(45,51)	-21.14 ^c

State	Rate	SE	Rank(CI) ^d	PD	State	Rate	SE	Rank(CI) ^d	PD
Alabama	7.66 ^b	0.17	08(01,22)	10.05	Montana	6.75	0.34	34(05,50)	-3.08
Alaska	6.76	0.58	33(01,51)	-2.90	Nebraska	7.08	0.27	21(03,47)	1.62
Arizona	6.46 ^b	0.14	46(27,50)	-7.17	Nevada	6.57	0.23	41(18,50)	-5.61
Arkansas	7.51	0.22	10(01,30)	7.90	New Hampshire	6.88	0.31	29(05,50)	-1.20
California	6.55 ^b	0.06	43(31,48)	-5.86	New Jersey	6.58	0.12	39(26,49)	-5.46
Colorado	6.63	0.17	38(21,49)	-4.83	New Mexico	6.17	0.24	49(28,51)	-11.42
Connecticut	6.95	0.19	26(11,46)	-0.23	New York	6.58 ^b	0.08	40(29,48)	-5.57
Delaware	7.23	0.38	20(01,48)	3.87	North Carolina	6.79	0.12	31(21,45)	-2.49
D.C.	5.78	0.45	50(21,51)	-17.02 ^c	North Dakota	6.86	0.42	30(02,50)	-1.47
Florida	6.57 ^b	0.07	42(29,48)	-5.68	Ohio	7.29	0.11	19(08,27)	4.67
Georgia	6.48 ^b	0.13	45(28,49)	-6.93	Oklahoma	7.77 ^b	0.20	04(01,21)	11.63
Hawaii	5.49 ^b	0.27	51(45,51)	-21.14 ^c	Oregon	7.00	0.18	24(09,45)	0.55
Idaho	6.89	0.30	27(04,49)	-1.10	Pennsylvania	7.45 ^b	0.10	12(05,23)	7.00
Illinois	7.42 ^b	0.11	15(05,24)	6.58	Rhode Island	6.76	0.33	32(05,50)	-2.90
Indiana	7.76 ^b	0.15	06(01,18)	11.51	South Carolina	6.68	0.17	36(20,49)	-4.13
Iowa	7.04	0.20	23(08,45)	1.17	South Dakota	7.41	0.40	16(01,48)	6.38
Kansas	7.70	0.22	07(01,25)	10.53	Tennessee	7.50 ^b	0.15	11(02,25)	7.66
Kentucky	7.58	0.18	09(01,24)	8.91	Texas	6.88	0.08	28(21,38)	-1.18
Louisiana	7.43	0.18	14(02,28)	6.75	Utah	6.23	0.25	48(24,51)	-10.54
Maine	7.06	0.29	22(02,48)	1.38	Vermont	6.34	0.42	47(09,51)	-8.96
Maryland	6.53	0.15	44(24,49)	-6.23	Virginia	6.65	0.13	37(23,48)	-4.55
Massachusetts	6.72	0.14	35(21,47)	-3.48	Washington	6.98	0.15	25(13,41)	0.25
Michigan	7.35	0.12	17(05,26)	5.58	West Virginia	7.82	0.26	03(01,25)	12.28
Minnesota	7.77 ^b	0.17	05(01,19)	11.55	Wisconsin	7.95 ^b	0.16	02(01,13)	14.17
Mississippi	7.44	0.22	13(01,31)	6.88	Wyoming	8.01	0.54	01(01,44)	15.07 ^c
Missouri	7.31	0.15	18(04,29)	4.97					



^a US Mortality Files, National Center for Health Statistics, Centers for Disease Control and Prevention. Rates are per 100,000 and are age-adjusted to the 2000 US Std Population (19 age groups - Census P25-1130).

^b Difference between state rate and total U.S. rate is statistically significant ($p < .0002$).

^c Absolute percent difference between state rate and total U.S. rate is 15% or more.

^d Rank of state level death rate and the 95% confidence intervals (low, high) for the rank.

SE Standard error of the rate.

PD Percent difference between state rate and total U.S. rate.

- Statistic not shown. Rate based on less than 16 cases for the time interval.

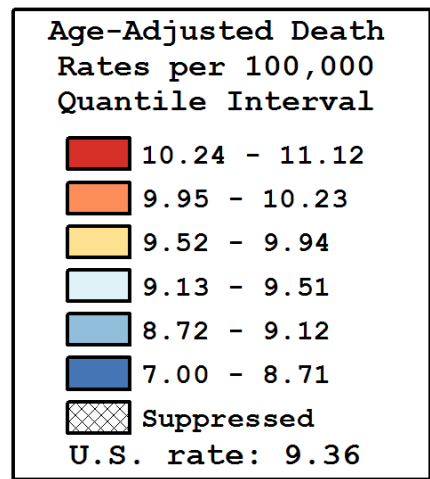
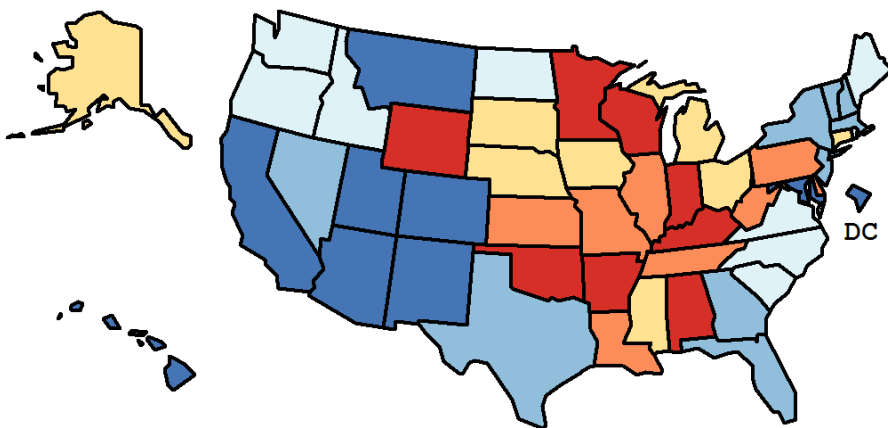
Table 13.27
Leukemia

Age-Adjusted Cancer Death^a Rates By State, All Races, 2008-2012

Males

State	Rate	SE	Rank(CI) ^d	PD
TOTAL U.S.	9.36	0.04		
High Five States				
Wisconsin	11.12 ^b	0.29	01(01,11)	18.87 ^c
Alabama	10.87 ^b	0.33	02(01,19)	16.13 ^c
Minnesota	10.72 ^b	0.30	03(01,19)	14.52
Wyoming	10.66	0.93	04(01,49)	13.92
Kentucky	10.66 ^b	0.34	05(01,23)	13.91
Low Five States				
California	8.51 ^b	0.11	47(37,50)	-9.04
Colorado	8.51	0.30	48(26,50)	-9.05
D.C.	8.26	0.87	49(03,51)	-11.78
New Mexico	7.89 ^b	0.41	50(31,51)	-15.70 ^c
Hawaii	7.00 ^b	0.45	51(46,51)	-25.15 ^c

State	Rate	SE	Rank(CI) ^d	PD	State	Rate	SE	Rank(CI) ^d	PD
Alabama	10.87 ^b	0.33	02(01,19)	16.13 ^c	Montana	8.71	0.58	43(06,51)	-6.92
Alaska	9.76	1.05	19(01,51)	4.33	Nebraska	9.52	0.47	24(02,49)	1.75
Arizona	8.52 ^b	0.24	46(29,50)	-8.97	Nevada	8.84	0.41	41(13,50)	-5.53
Arkansas	10.33	0.39	08(01,33)	10.36	New Hampshire	8.96	0.55	37(05,50)	-4.25
California	8.51 ^b	0.11	47(37,50)	-9.04	New Jersey	8.95	0.21	38(21,48)	-4.34
Colorado	8.51	0.30	48(26,50)	-9.05	New Mexico	7.89 ^b	0.41	50(31,51)	-15.70 ^c
Connecticut	9.55	0.34	23(05,45)	2.01	New York	8.98	0.14	35(25,46)	-4.08
Delaware	10.01	0.69	14(01,49)	6.95	North Carolina	9.33	0.22	29(14,43)	-0.28
D.C.	8.26	0.87	49(03,51)	-11.78	North Dakota	9.46	0.74	26(01,50)	1.09
Florida	8.78 ^b	0.13	42(30,48)	-6.14	Ohio	9.93	0.19	18(06,29)	6.09
Georgia	8.94	0.24	39(21,49)	-4.47	Oklahoma	10.38	0.35	07(01,29)	10.92
Hawaii	7.00 ^b	0.45	51(46,51)	-25.15 ^c	Oregon	9.43	0.32	27(08,46)	0.77
Idaho	9.25	0.52	31(03,50)	-1.21	Pennsylvania	10.02 ^b	0.18	13(05,26)	7.12
Illinois	10.00	0.19	15(05,27)	6.81	Rhode Island	9.42	0.61	28(01,50)	0.61
Indiana	10.43 ^b	0.27	06(01,23)	11.49	South Carolina	9.18	0.31	33(13,48)	-1.95
Iowa	9.58	0.35	22(05,45)	2.40	South Dakota	9.74	0.70	20(01,50)	4.09
Kansas	10.16	0.40	12(01,36)	8.57	Tennessee	10.23	0.28	09(02,28)	9.36
Kentucky	10.66 ^b	0.34	05(01,23)	13.91	Texas	9.12	0.14	34(22,44)	-2.56
Louisiana	10.19	0.34	10(01,31)	8.90	Utah	8.55	0.44	45(16,51)	-8.60
Maine	9.51	0.52	25(02,50)	1.64	Vermont	8.96	0.77	36(01,51)	-4.23
Maryland	8.62	0.27	44(24,50)	-7.86	Virginia	9.19	0.24	32(16,46)	-1.76
Massachusetts	8.91	0.24	40(21,49)	-4.75	Washington	9.33	0.26	30(12,45)	-0.34
Michigan	9.65	0.21	21(09,36)	3.11	West Virginia	10.19	0.47	11(01,40)	8.87
Minnesota	10.72 ^b	0.30	03(01,19)	14.52	Wisconsin	11.12 ^b	0.29	01(01,11)	18.87 ^c
Mississippi	9.94	0.41	17(01,41)	6.21	Wyoming	10.66	0.93	04(01,49)	13.92
Missouri	9.97	0.27	16(03,32)	6.59					



^a US Mortality Files, National Center for Health Statistics, Centers for Disease Control and Prevention. Rates are per 100,000 and are age-adjusted to the 2000 US Std Population (19 age groups - Census P25-1130).

^b Difference between state rate and total U.S. rate is statistically significant ($p < .0002$).

^c Absolute percent difference between state rate and total U.S. rate is 15% or more.

^d Rank of state level death rate and the 95% confidence intervals (low, high) for the rank.

SE Standard error of the rate.

PD Percent difference between state rate and total U.S. rate.

- Statistic not shown. Rate based on less than 16 cases for the time interval.

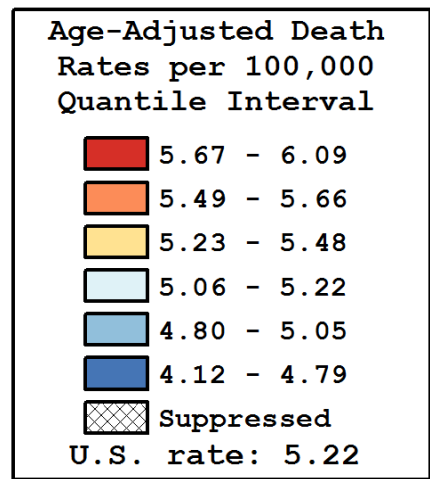
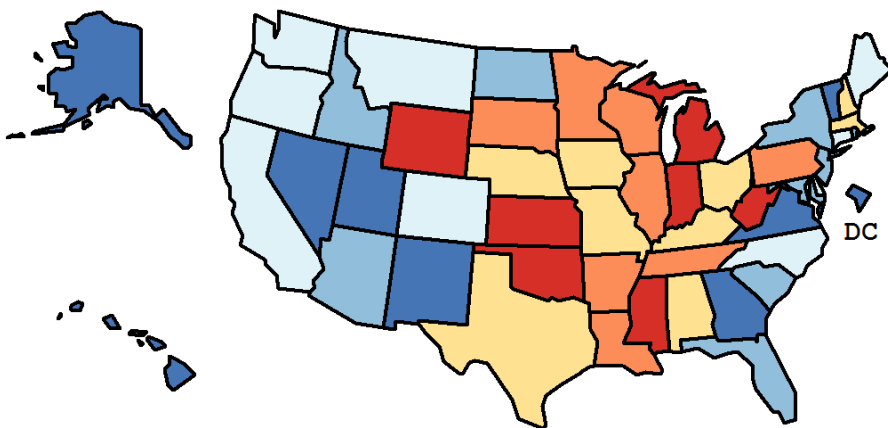
Table 13.28
Leukemia

Age-Adjusted Cancer Death^a Rates By State, All Races, 2008-2012

Females

State	Rate	SE	Rank(CI) ^d	PD
TOTAL U.S.	5.22	0.02		
High Five States				
West Virginia	6.09	0.31	01(01,29)	16.72 ^c
Wyoming	5.96	0.63	02(01,49)	14.30
Indiana	5.94 ^b	0.18	03(01,19)	13.78
Oklahoma	5.88	0.23	04(01,25)	12.62
Kansas	5.86	0.26	05(01,31)	12.22
Low Five States				
Utah	4.36	0.28	47(26,51)	-16.51 ^c
Vermont	4.34	0.47	48(06,51)	-16.83 ^c
Hawaii	4.28	0.33	49(20,51)	-17.91 ^c
D.C.	4.22	0.50	50(05,51)	-19.19 ^c
Alaska	4.12	0.61	51(02,51)	-21.05 ^c

State	Rate	SE	Rank(CI) ^d	PD	State	Rate	SE	Rank(CI) ^d	PD
Alabama	5.48	0.19	17(02,38)	4.99	Montana	5.22	0.42	25(01,51)	-0.02
Alaska	4.12	0.61	51(02,51)	-21.05 ^c	Nebraska	5.27	0.31	22(01,48)	1.00
Arizona	4.85	0.16	41(19,49)	-7.03	Nevada	4.71	0.27	46(14,51)	-9.81
Arkansas	5.51	0.25	14(01,42)	5.54	New Hampshire	5.40	0.37	19(01,49)	3.42
California	5.08	0.07	32(21,41)	-2.73	New Jersey	4.95	0.13	36(19,48)	-5.17
Colorado	5.15	0.20	29(07,47)	-1.36	New Mexico	4.76	0.28	45(10,51)	-8.78
Connecticut	5.09	0.21	30(06,48)	-2.45	New York	4.89 ^b	0.09	39(27,47)	-6.37
Delaware	5.09	0.42	31(01,51)	-2.50	North Carolina	5.07	0.14	33(14,45)	-2.76
D.C.	4.22	0.50	50(05,51)	-19.19 ^c	North Dakota	4.86	0.47	40(01,51)	-6.90
Florida	4.83 ^b	0.09	42(29,48)	-7.36	Ohio	5.42	0.12	18(05,33)	3.83
Georgia	4.79	0.14	43(24,49)	-8.21	Oklahoma	5.88	0.23	04(01,25)	12.62
Hawaii	4.28	0.33	49(20,51)	-17.91 ^c	Oregon	5.19	0.21	27(05,46)	-0.45
Idaho	4.98	0.34	35(02,51)	-4.58	Pennsylvania	5.62 ^b	0.11	09(02,24)	7.68
Illinois	5.66 ^b	0.12	08(02,24)	8.48	Rhode Island	4.92	0.38	37(02,51)	-5.80
Indiana	5.94 ^b	0.18	03(01,19)	13.78	South Carolina	4.91	0.19	38(15,49)	-5.94
Iowa	5.23	0.23	24(04,47)	0.22	South Dakota	5.52	0.46	13(01,49)	5.72
Kansas	5.86	0.26	05(01,31)	12.22	Tennessee	5.53	0.17	12(02,34)	5.92
Kentucky	5.48	0.21	16(02,40)	5.09	Texas	5.24	0.09	23(13,37)	0.44
Louisiana	5.49	0.21	15(01,40)	5.21	Utah	4.36	0.28	47(26,51)	-16.51 ^c
Maine	5.16	0.34	28(01,50)	-1.07	Vermont	4.34	0.47	48(06,51)	-16.83 ^c
Maryland	5.05	0.18	34(11,48)	-3.18	Virginia	4.77	0.15	44(24,49)	-8.60
Massachusetts	5.28	0.16	21(06,41)	1.12	Washington	5.21	0.17	26(07,44)	-0.14
Michigan	5.67	0.14	07(02,25)	8.58	West Virginia	6.09	0.31	01(01,29)	16.72 ^c
Minnesota	5.58	0.19	10(01,34)	7.00	Wisconsin	5.58	0.18	11(01,33)	6.85
Mississippi	5.67	0.26	06(01,37)	8.64	Wyoming	5.96	0.63	02(01,49)	14.30
Missouri	5.36	0.17	20(04,40)	2.66					



^a US Mortality Files, National Center for Health Statistics, Centers for Disease Control and Prevention. Rates are per 100,000 and are age-adjusted to the 2000 US Std Population (19 age groups - Census P25-1130).

^b Difference between state rate and total U.S. rate is statistically significant ($p < .0002$).

^c Absolute percent difference between state rate and total U.S. rate is 15% or more.

^d Rank of state level death rate and the 95% confidence intervals (low, high) for the rank.

SE Standard error of the rate.

PD Percent difference between state rate and total U.S. rate.

- Statistic not shown. Rate based on less than 16 cases for the time interval.

Table 13.29
LeukemiaEstimated United States Cancer Prevalence Counts^a on January 1, 2012
By Race/Ethnicity, Sex and Years Since Diagnosis

Years Since Diagnosis		0 to <5	5 to <10	10 to <15	15 to <20	20 to <25	25 to <30	0 to <20 ^e	0 to <37 ^e	>=37 ^g	Complete ^h
<u>Race</u>	<u>Sex</u>										
All Races ^b	Both Sexes	120,252	77,467	46,472	30,150	18,163	11,594	282,475	312,923	5,466	318,389
	Males	70,027	43,970	26,212	17,070	9,951	6,383	161,521	177,810	2,421	180,231
	Females	50,225	33,497	20,260	13,080	8,212	5,211	120,954	135,113	3,045	138,158
White ^b	Both Sexes	103,680	68,433	41,514	26,850	16,228	10,578	247,816	275,376	4,574	279,950
	Males	60,589	39,019	23,441	15,284	9,046	5,895	142,242	157,183	1,698	158,881
	Females	43,091	29,414	18,073	11,566	7,182	4,683	105,574	118,193	2,876	121,069
Black ^b	Both Sexes	9,177	5,387	2,761	1,771	1,028	500	19,539	21,066	775	21,841
	Males	5,147	3,002	1,366	915	455	257	10,612	11,290	358	11,648
	Females	4,030	2,385	1,395	856	573	243	8,927	9,776	417	10,193
Asian/ Pacific Islander ^c	Both Sexes	2,924	1,989	1,213	+	+	+	7,090	+	+	+
	Males	1,720	1,063	712	+	+	+	4,006	+	+	+
	Females	1,204	926	501	+	+	+	3,084	+	+	+
Hispanic ^d	Both Sexes	11,633	7,482	4,749	+	+	+	27,364	+	+	+
	Males	6,637	4,246	2,603	+	+	+	15,540	+	+	+
	Females	4,996	3,236	2,146	+	+	+	11,824	+	+	+

Estimated prevalence percent^a on January 1, 2012, of the SEER^c population diagnosed in the previous 20 years
By Age at Prevalence, Race/Ethnicity and Sex

Age at Prevalence		Age Specific (Crude)									Age-Adjusted ^f	
		All Ages	0-9	10-19	20-29	30-39	40-49	50-59	60-69	70-79	80+	All Ages
<u>Race</u>	<u>Sex</u>											
All Races ^c	Both Sexes	0.0800%	0.0323%	0.0605%	0.0424%	0.0275%	0.0430%	0.0818%	0.1649%	0.2784%	0.3306%	0.0785%
	Males	0.0932%	0.0339%	0.0666%	0.0458%	0.0317%	0.0511%	0.1010%	0.2132%	0.3724%	0.4367%	0.0967%
	Females	0.0672%	0.0307%	0.0541%	0.0388%	0.0234%	0.0349%	0.0634%	0.1213%	0.2021%	0.2678%	0.0631%
White ^c	Both Sexes	0.0915%	0.0362%	0.0694%	0.0476%	0.0305%	0.0456%	0.0890%	0.1831%	0.3133%	0.3652%	0.0872%
	Males	0.1060%	0.0372%	0.0763%	0.0509%	0.0351%	0.0535%	0.1099%	0.2345%	0.4170%	0.4812%	0.1068%
	Females	0.0770%	0.0351%	0.0622%	0.0441%	0.0256%	0.0373%	0.0683%	0.1352%	0.2271%	0.2959%	0.0703%
Black ^c	Both Sexes	0.0440%	0.0172%	0.0258%	0.0274%	0.0191%	0.0343%	0.0556%	0.1097%	0.1719%	0.2086%	0.0497%
	Males	0.0500%	0.0201%	0.0295%	0.0293%	0.0209%	0.0386%	0.0704%	0.1412%	0.2272%	0.2529%	0.0607%
	Females	0.0385%	0.0142%	0.0219%	0.0255%	0.0174%	0.0305%	0.0428%	0.0849%	0.1333%	0.1871%	0.0414%
Asian/ Pacific Islander ^c	Both Sexes	0.0414%	0.0266%	0.0492%	0.0294%	0.0210%	0.0331%	0.0435%	0.0604%	0.0991%	0.1168%	0.0421%
	Males	0.0489%	0.0301%	0.0538%	0.0339%	0.0237%	0.0427%	0.0504%	0.0751%	0.1321%	0.1701%	0.0513%
	Females	0.0344%	0.0230%	0.0443%	0.0250%	0.0185%	0.0245%	0.0375%	0.0482%	0.0737%	0.0842%	0.0346%
Hispanic ^d	Both Sexes	0.0525%	0.0357%	0.0692%	0.0460%	0.0279%	0.0395%	0.0560%	0.0957%	0.1584%	0.1802%	0.0602%
	Males	0.0587%	0.0389%	0.0745%	0.0518%	0.0354%	0.0459%	0.0623%	0.1160%	0.1834%	0.2547%	0.0705%
	Females	0.0462%	0.0324%	0.0636%	0.0396%	0.0199%	0.0328%	0.0500%	0.0783%	0.1398%	0.1356%	0.0512%

^a US 2012 cancer prevalence counts are based on 2012 cancer prevalence proportions from the SEER registries and 1/1/2012 US population estimates based on the average of 2011 and 2012 population estimates from the US Bureau of the Census. Prevalence was calculated using the First Malignant Primary Only for a person.

^{b c d} Statistics based on (b) SEER 9 Areas (c) SEER 11 Areas and Rural Georgia (d) NHIA for Hispanic for SEER 11 Areas and Rural Georgia.

^e Maximum limited-duration prevalence: 37 years for 1975-2012 SEER 9 data; 20 years for 1992-2012 SEER 11 data (used to calculate prevalence for Hispanics and Asian Pacific Islanders).

^f Percentages are age-adjusted to the 2000 US Standard Population (19 age groups - Census P25-1130) by 5-year age groups.

^{g h i} (g) Cases diagnosed more than 37 years ago were estimated using the completeness index method (Capocaccia et. al. 1997, Merrill et. al. 2000). (h) Complete prevalence is obtained by summing 0 to <37 and >=37. (i) Age-specific completeness index was approximated using empirical data from historical Connecticut tumor registry.

- Statistic not shown. Statistic based on fewer than 5 cases estimated alive in SEER for the time interval.

+ Not available.

Table 13.30
Acute Lymphocytic Leukemia

Estimated United States Cancer Prevalence Counts^a on January 1, 2012
By Race/Ethnicity, Sex and Years Since Diagnosis

Years Since Diagnosis		0 to <5	5 to <10	10 to <15	15 to <20	20 to <25	25 to <30	0 to <20 ^e	0 to <37 ^e	>=37 ^g	Complete ^h
<u>Race</u>	<u>Sex</u>										
All Races ^b	Both Sexes	17,081	13,446	11,446	9,730	8,142	6,255	55,252	71,898	3,278	75,176
	Males	9,480	7,618	6,175	5,431	4,443	3,384	30,632	39,375	1,680	41,055
	Females	7,601	5,828	5,271	4,299	3,699	2,871	24,620	32,523	1,598	34,121
White ^b	Both Sexes	14,348	11,402	10,036	8,376	7,130	5,665	47,334	62,330	+	+
	Males	7,881	6,453	5,384	4,726	3,945	3,080	26,198	34,133	+	+
	Females	6,467	4,949	4,652	3,650	3,185	2,585	21,136	28,197	+	+
Black ^b	Both Sexes	1,471	1,013	738	657	520	280	4,081	4,884	+	+
	Males	926	608	376	320	235	162	2,321	2,711	+	+
	Females	545	405	362	337	285	118	1,760	2,173	+	+
Asian/ Pacific Islander ^c	Both Sexes	770	712	462	+	+	+	2,422	+	+	+
	Males	432	396	282	+	+	+	1,375	+	+	+
	Females	338	316	180	+	+	+	1,047	+	+	+
Hispanic ^d	Both Sexes	5,171	3,540	2,644	+	+	+	13,595	+	+	+
	Males	2,976	2,054	1,392	+	+	+	7,775	+	+	+
	Females	2,195	1,486	1,252	+	+	+	5,820	+	+	+

Estimated prevalence percent^a on January 1, 2012, of the SEER^c population diagnosed in the previous 20 years
By Age at Prevalence, Race/Ethnicity and Sex

Age at Prevalence		Age Specific (Crude)									Age-Adjusted ^f	
		All Ages	0-9	10-19	20-29	30-39	40-49	50-59	60-69	70-79	80+	All Ages
<u>Race</u>	<u>Sex</u>											
All Races ^c	Both Sexes	0.0178%	0.0273%	0.0516%	0.0297%	0.0080%	0.0051%	0.0040%	0.0043%	0.0038%	0.0022%	0.0184%
	Males	0.0203%	0.0287%	0.0570%	0.0331%	0.0103%	0.0056%	0.0045%	0.0045%	0.0039%	0.0031%	0.0203%
	Females	0.0154%	0.0259%	0.0460%	0.0260%	0.0058%	0.0046%	0.0036%	0.0041%	0.0036%	0.0017%	0.0164%
White ^c	Both Sexes	0.0201%	0.0309%	0.0600%	0.0345%	0.0098%	0.0055%	0.0044%	0.0046%	0.0039%	0.0020%	0.0211%
	Males	0.0226%	0.0318%	0.0657%	0.0382%	0.0125%	0.0061%	0.0050%	0.0049%	0.0042%	0.0025%	0.0232%
	Females	0.0177%	0.0300%	0.0540%	0.0306%	0.0069%	0.0049%	0.0039%	0.0044%	0.0036%	0.0018%	0.0190%
Black ^c	Both Sexes	0.0090%	0.0124%	0.0204%	0.0158%	0.0032%	0.0028%	0.0021%	0.0024%	-	-	0.0083%
	Males	0.0107%	0.0156%	0.0237%	0.0179%	0.0035%	0.0028%	-	-	-	-	0.0094%
	Females	0.0075%	0.0090%	0.0170%	0.0138%	0.0030%	0.0027%	0.0031%	0.0024%	-	-	0.0072%
Asian/ Pacific Islander ^c	Both Sexes	0.0128%	0.0227%	0.0396%	0.0189%	0.0045%	0.0045%	0.0030%	0.0030%	0.0043%	0.0028%	0.0139%
	Males	0.0152%	0.0252%	0.0443%	0.0227%	0.0053%	0.0048%	0.0040%	0.0031%	-	0.0074%	0.0157%
	Females	0.0105%	0.0201%	0.0347%	0.0151%	0.0038%	0.0042%	0.0020%	0.0029%	0.0057%	-	0.0120%
Hispanic ^d	Both Sexes	0.0257%	0.0307%	0.0607%	0.0339%	0.0101%	0.0071%	0.0068%	0.0069%	0.0076%	-	0.0220%
	Males	0.0290%	0.0334%	0.0651%	0.0396%	0.0130%	0.0083%	0.0079%	0.0057%	-	-	0.0242%
	Females	0.0224%	0.0278%	0.0561%	0.0275%	0.0069%	0.0059%	0.0058%	0.0078%	0.0105%	-	0.0195%

^a US 2012 cancer prevalence counts are based on 2012 cancer prevalence proportions from the SEER registries and 1/1/2012 US population estimates based on the average of 2011 and 2012 population estimates from the US Bureau of the Census. Prevalence was calculated using the First Malignant Primary Only for a person.

^{b c d} Statistics based on (b) SEER 9 Areas (c) SEER 11 Areas and Rural Georgia (d) NHIA for Hispanic for SEER 11 Areas and Rural Georgia.

^e Maximum limited-duration prevalence: 37 years for 1975-2012 SEER 9 data; 20 years for 1992-2012 SEER 11 data (used to calculate prevalence for Hispanics and Asian Pacific Islanders).

^f Percentages are age-adjusted to the 2000 US Standard Population (19 age groups - Census P25-1130) by 5-year age groups.

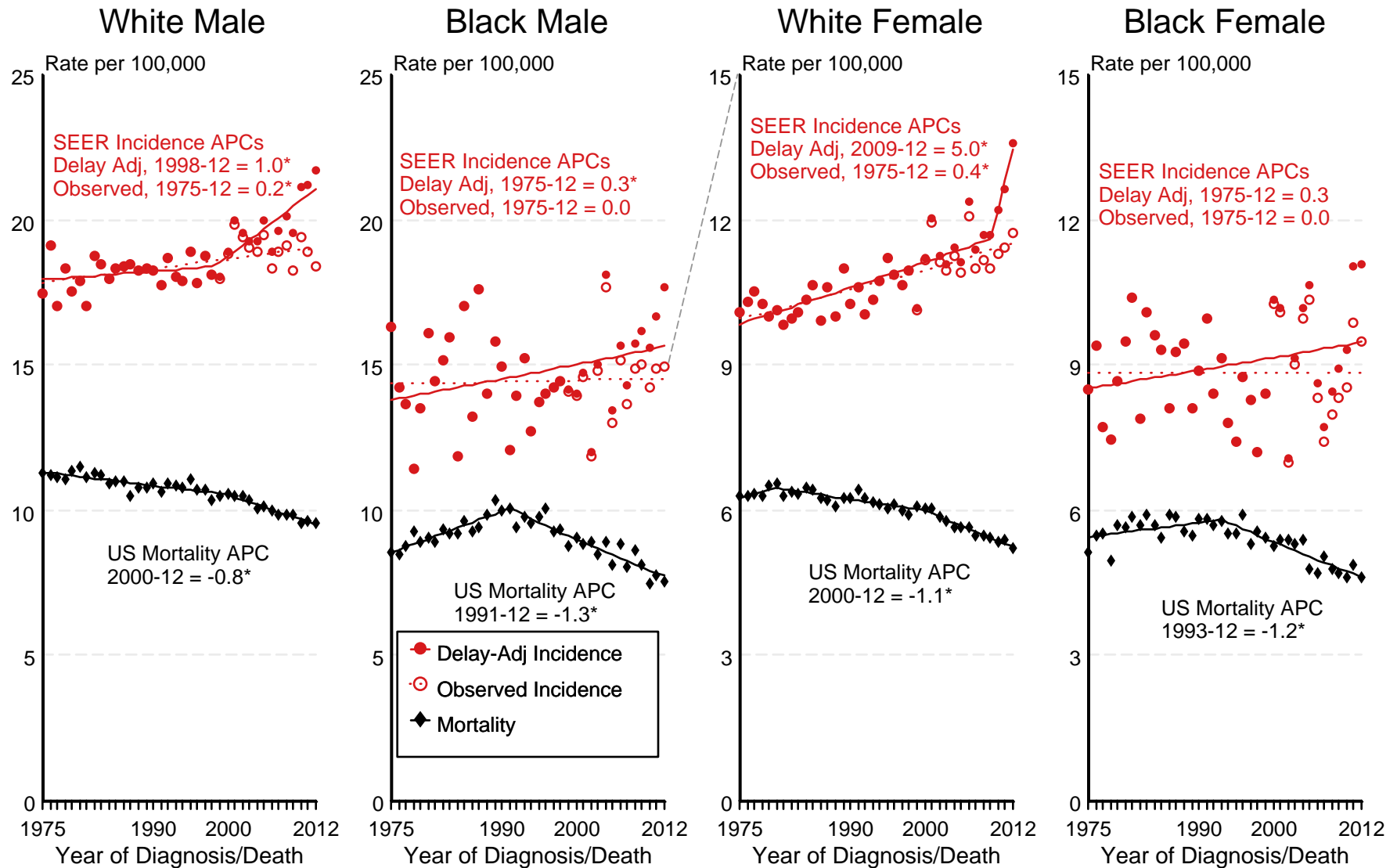
^{g h i} (g) Cases diagnosed more than 37 years ago were estimated using the completeness index method (Capocaccia et. al. 1997, Merrill et. al. 2000). (h) Complete prevalence is obtained by summing 0 to <37 and >=37. (i) Age-specific completeness index was approximated using empirical data from historical Connecticut tumor registry.

- Statistic not shown. Statistic based on fewer than 5 cases estimated alive in SEER for the time interval.

+ Not available.

Figure 13.1

SEER Observed Incidence, SEER Delay Adjusted Incidence and US Death Rates^a Leukemia, by Race and Sex



Source: SEER 9 areas and US Mortality Files (National Center for Health Statistics, CDC).

^a Rates are age-adjusted to the 2000 US Std Population (19 age groups - Census P25-1103).

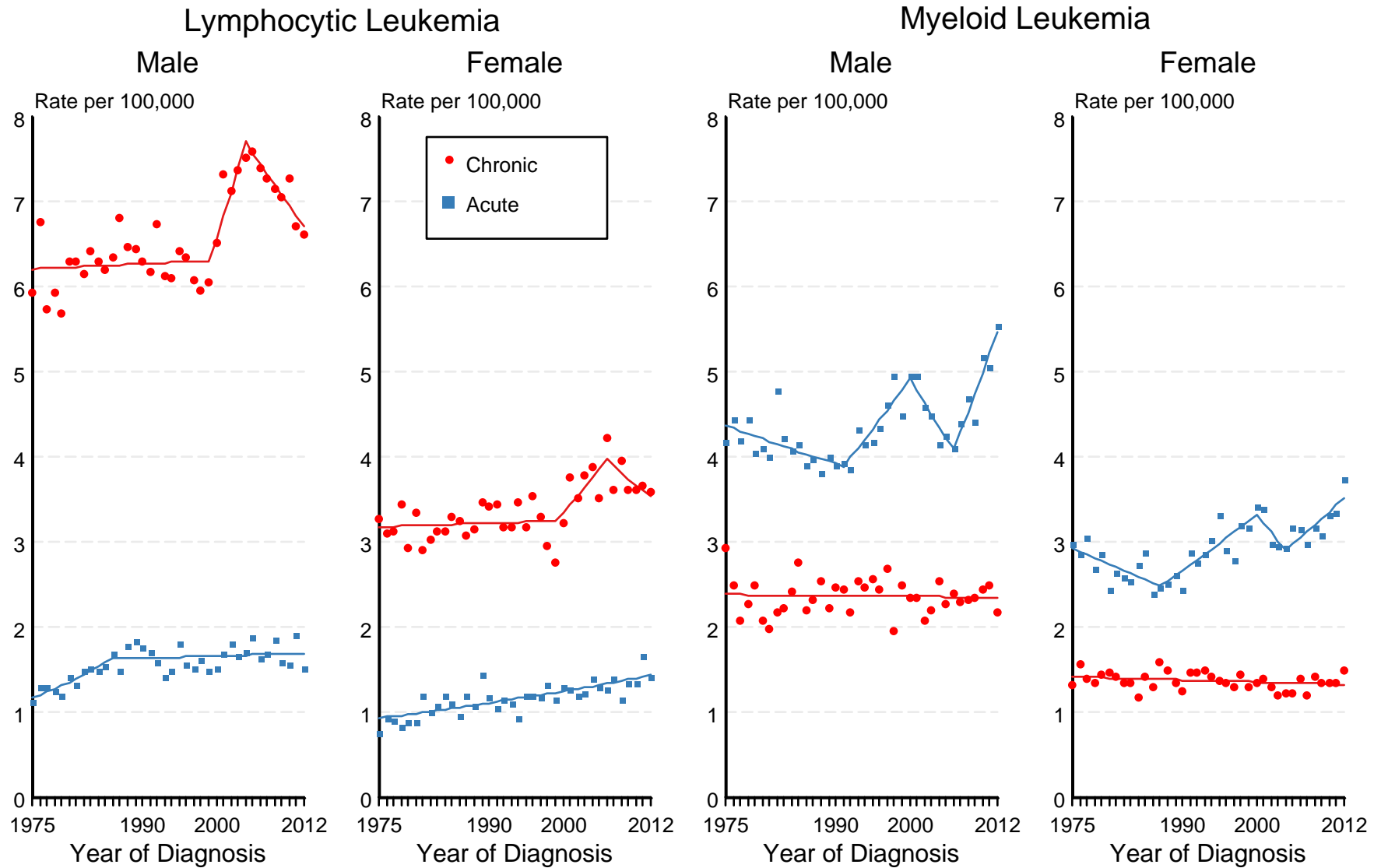
Regression lines and APCs are calculated using the Joinpoint Regression Program Version 4.2.0, April 2015, National Cancer Institute.

The APC is the Annual Percent Change for the regression line segments. The APC shown on the graph is for the most recent trend.

* The APC is significantly different from zero ($p < 0.05$).

Figure 13.2

SEER Observed Incidence Rates^a Lymphocytic and Myeloid Leukemia (Acute and Chronic), by Sex



Source: SEER 9 areas.

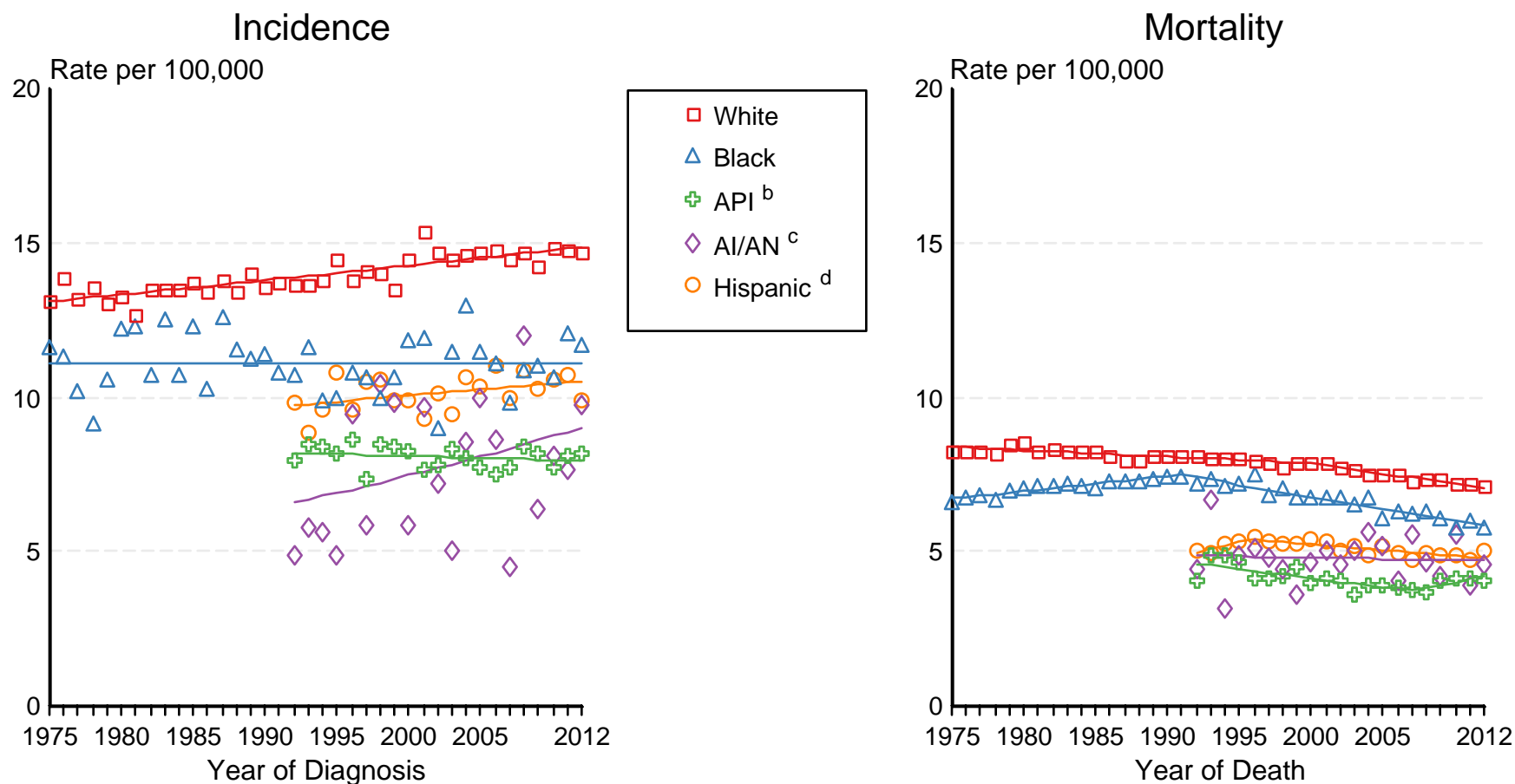
^a Rates are age-adjusted to the 2000 US Std Population (19 age groups - Census P25-1103).

Regression lines and APCs are calculated using the Joinpoint Regression Program Version 4.2.0, April 2015, National Cancer Institute.

Figure 13.3

SEER Incidence and US Death Rates^a Leukemia, Both Sexes

Joinpoint Analyses for Whites and Blacks from 1975-2012
and for Asian/Pacific Islanders, American Indians/Alaska Natives and Hispanics from 1992-2012



Source: Incidence data for whites and blacks are from the SEER 9 areas (San Francisco, Connecticut, Detroit, Hawaii, Iowa, New Mexico, Seattle, Utah, Atlanta). Incidence data for Asian/Pacific Islanders, American Indians/Alaska Natives and Hispanics are from the SEER 13 Areas (SEER 9 Areas, San Jose-Monterey, Los Angeles, Alaska Native Registry and Rural Georgia). Mortality data are from US Mortality Files, National Center for Health Statistics, CDC.

^a Rates are age-adjusted to the 2000 US Std Population (19 age groups - Census P25-1103). Regression lines are calculated using the Joinpoint Regression Program Version 4.2.0, April 2015, National Cancer Institute. Joinpoint analyses for Whites and Blacks during the 1975-2012 period allow a maximum of 5 joinpoints. Analyses for other ethnic groups during the period 1992-2012 allow a maximum of 3 joinpoints.

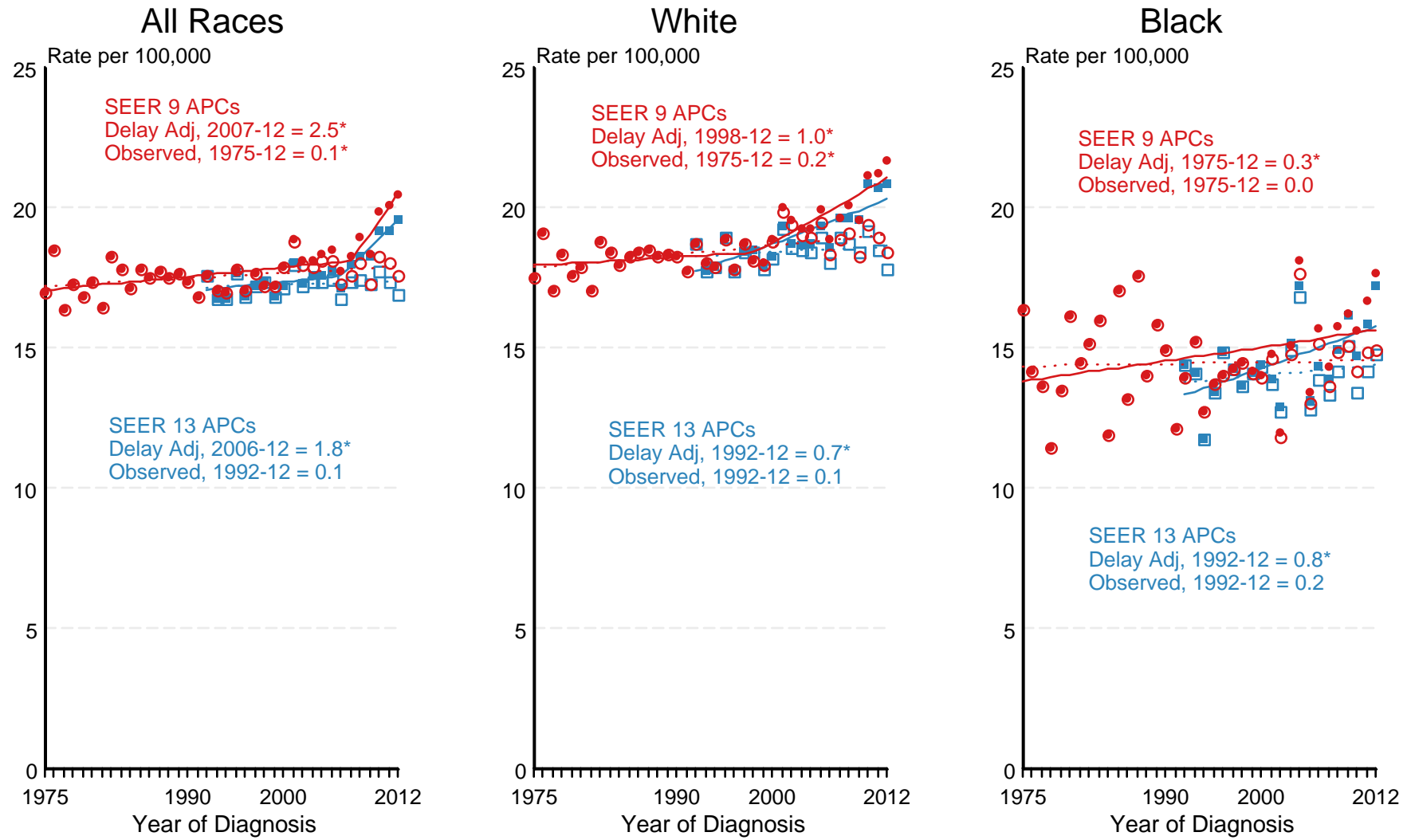
^b API = Asian/Pacific Islander.

^c AI/AN = American Indian/Alaska Native. Rates for American Indian/Alaska Native are based on the CHSDA(Contract Health Service Delivery Area) counties.

^d Hispanic is not mutually exclusive from whites, blacks, Asian/Pacific Islanders, and American Indians/Alaska Natives. Incidence data for Hispanics are based on NHIA and exclude cases from the Alaska Native Registry. Mortality data for Hispanics exclude cases from New Hampshire and Oklahoma.

Figure 13.4

SEER Observed Incidence and SEER Delay Adjusted Incidence Rates^a SEER 9 Areas Compared to SEER 13 Areas Leukemia, Male, by Race

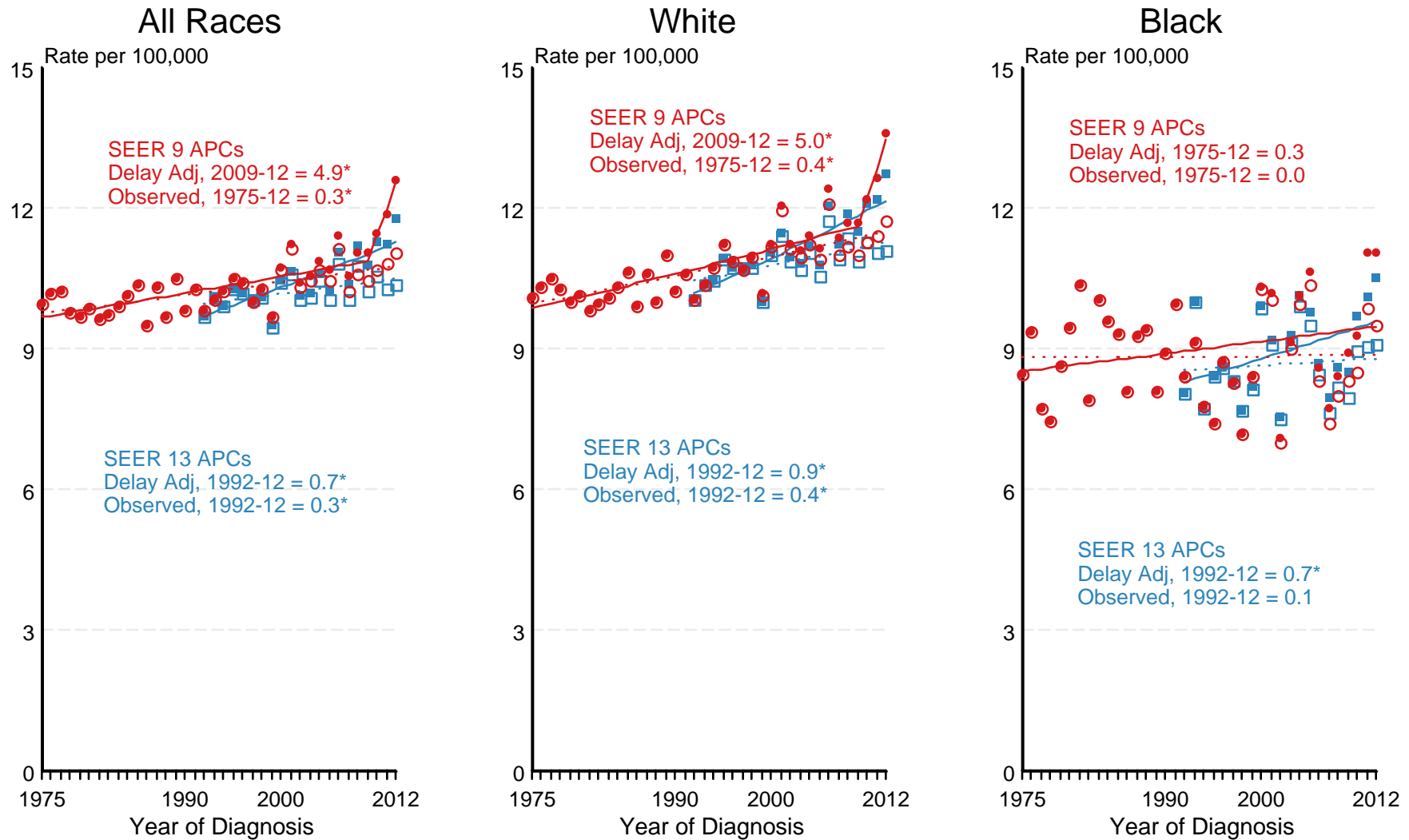


● SEER 9 Delay-Adj. Incidence
 ○ SEER 9 Observed Incidence
 ■ SEER 13 Delay-Adj. Incidence
 □ SEER 13 Observed Incidence

Source: SEER 9 areas and SEER 13 areas.
^a Rates are age-adjusted to the 2000 US Std Population (19 age groups - Census P25-1103).
 Regression lines and APCs are calculated using the Joinpoint Regression Program Version 4.2.0, April 2015, National Cancer Institute.
 The APC is the Annual Percent Change for the regression line segments. The APC shown on the graph is for the most recent trend.
 * The APC is significantly different from zero ($p < 0.05$).

Figure 13.5

SEER Observed Incidence and SEER Delay Adjusted Incidence Rates^a SEER 9 Areas Compared to SEER 13 Areas Leukemia, Female, by Race



● SEER 9 Delay-Adj. Incidence ○ SEER 9 Observed Incidence ■ SEER 13 Delay-Adj. Incidence □ SEER 13 Observed Incidence

Source: SEER 9 areas and SEER 13 areas.

^a Rates are age-adjusted to the 2000 US Std Population (19 age groups - Census P25-1103).

Regression lines and APCs are calculated using the Joinpoint Regression Program Version 4.2.0, April 2015, National Cancer Institute.

The APC is the Annual Percent Change for the regression line segments. The APC shown on the graph is for the most recent trend.

* The APC is significantly different from zero ($p < 0.05$).